



**HAL**  
open science

## CHANG-ES XXVII: A radio/X-ray catalogue of compact sources in and around edge-on galaxies

Judith Irwin, Jacqueline Dyer, Leonardo Drake, Q Daniel Wang, Jeroen Stil, Yelena Stein, Jayanne English, Theresa Wiegert

► **To cite this version:**

Judith Irwin, Jacqueline Dyer, Leonardo Drake, Q Daniel Wang, Jeroen Stil, et al.. CHANG-ES XXVII: A radio/X-ray catalogue of compact sources in and around edge-on galaxies. Monthly Notices of the Royal Astronomical Society, 2022, 10.1093/mnras/stac659 . hal-03615049

**HAL Id: hal-03615049**

**<https://hal.science/hal-03615049v1>**

Submitted on 22 Mar 2023

**HAL** is a multi-disciplinary open access archive for the deposit and dissemination of scientific research documents, whether they are published or not. The documents may come from teaching and research institutions in France or abroad, or from public or private research centers.

L'archive ouverte pluridisciplinaire **HAL**, est destinée au dépôt et à la diffusion de documents scientifiques de niveau recherche, publiés ou non, émanant des établissements d'enseignement et de recherche français ou étrangers, des laboratoires publics ou privés.

# CHANG-ES – XXVII. A radio/X-ray catalogue of compact sources in and around edge-on galaxies

Judith Irwin<sup>1</sup>,<sup>\*</sup> Jacqueline Dyer,<sup>1</sup> Leonardo Drake,<sup>2</sup> Q. Daniel Wang<sup>2</sup>,<sup>\*</sup> Jeroen Stil,<sup>3</sup> Yelena Stein,<sup>4,5</sup> Jayanne English<sup>6</sup> and Theresa Wiegert<sup>1</sup>

<sup>1</sup>Department of Physics, Engineering Physics & Astronomy, Queens University, Kingston, ON K7L 3N6, Canada

<sup>2</sup>Department of Astronomy, University of Massachusetts, LGRT-B 619E, 710 North Pleasant Street, Amherst, MA 01003-9305, USA

<sup>3</sup>Department of Physics & Astronomy, University of Calgary, 834 Campus Place N. W., 2500 University Drive N W, Calgary, AB T2N 1N4, Canada

<sup>4</sup>Faculty of Physics and Astronomy, Ruhr University Bochum, AIRUB D-44780, Germany

<sup>5</sup>Observatoire Astronomique de Strasbourg, Université de Strasbourg, CNRS, UMR 7550, 11 rue de l'Université, F-67000 Strasbourg, France

<sup>6</sup>Department of Physics and Astronomy, University of Manitoba, Winnipeg, MB R3T 2N2, Canada

Accepted 2022 February 21. Received 2022 January 28; in original form 2021 June 25

## ABSTRACT

We present catalogues of discrete, compact radio sources in and around the discs of 35 edge-on galaxies in the Continuum Halos in Nearby Galaxies – an EVLA Survey. The sources were extracted using the PYBDSF program at both 1.6 GHz (*L* band) and 6.0 GHz (*C* band) from matching resolution ( $\approx 3$  arcsec) data. We also present catalogues of X-ray sources from Chandra data sets for 27 of the galaxies. The sources at the two radio frequency bands were positionally cross-correlated with each other, and the result cross-correlated with the X-ray sources. All catalogues are included for download with this paper. We detect a total of 2507 sources at *L* band and 1413 sources at *C* band. 75 sources have been successfully cross-correlated in both radio bands plus X-ray. Three new nuclear sources are candidates for low luminosity active galactic nuclei in NGC 3877, NGC 4192, and NGC 5792; the one in NGC 3877 also appears to be variable. We also find new nuclear sources in two companion galaxies: NGC 4435 (companion to NGC 4438) and NGC 4298 (companion to NGC 4302). We have also discovered what appears to be a foreground double star; each star has X-ray emission and there is radio emission at both *L* band and *C* band in between them. This could be a colliding wind binary system. Suggestions for follow-up studies are offered.

**Key words:** catalogues – galaxies: nuclei – radio continuum: galaxies – X-rays: galaxies.

## 1 INTRODUCTION

We present a radio continuum and X-ray catalogue of discrete sources in and around a sample of nearby edge-on galaxies (Table 1). All galaxies in this sample are from the CHANG-ES (Continuum Halos in Nearby Galaxies – an EVLA<sup>1</sup> Survey) program. CHANG-ES data (Irwin et al. 2012a) were obtained with the Karl G. Jansky Very Large Array (hereafter, the VLA). A summary of CHANG-ES goals and selected results can be found in Irwin et al. (2019a). The X-ray data were obtained using the *Chandra* X-ray satellite. This new catalogue represents the first systematic investigation of discrete radio/X-ray sources in such galaxies. In this paper, we present the catalogues, point out some intriguing new results, and suggest future research projects that could make use of the data.

Radio continuum emission consists of thermal and non-thermal contributions and these components are often mixed together. However, when discrete sources are isolated spatially, which can be accomplished with high-resolution data, one or the other of these emission processes may dominate. A discrete thermal source is typically an H II region that has the well-known  $I_\nu \propto \nu^{-0.1}$  flat

thermal bremsstrahlung spectrum, where  $I_\nu$  is the specific intensity and  $\nu$  is the frequency. A non-thermal discrete source will display a synchrotron spectrum,  $I_\nu \propto \nu^\alpha$ , with  $\alpha$  values that are typically much steeper than  $-0.1$ . For example, a sample of Galactic and extragalactic supernova remnants (SNRs) exhibit a range of  $\alpha$  from  $-0.4$  to  $-1.1$  (Bell, Schure & Reville 2011) and even so-called flat-spectrum SNRs show spectra with  $-0.5 < \alpha < -0.2$ , significantly steeper than H II regions (Urošević 2014).

Another important category of non-thermal sources is the energetic active galactic nuclei (AGNs), or galactic cores, for which the spectral index could take on a range of values. For example, a recent study (Lähteenmäki 2016) lists  $-0.8$  to  $+0.2$ , depending on source type and frequency. The identifiable location of a core at the centre of a galaxy is key. An earlier detailed study of CHANG-ES galaxies using high resolution *L*-band (1.6 GHz) data alone, along with information on whether or not the galaxies harbour AGNs, can be found in Irwin et al. (2019b). With the addition of the *C*-band (6 GHz) data and the source finding algorithm used here (Section 2.2), we now identify new nuclear sources to add to this lexicon.

It is clear from the above discussion that both high spatial resolution as well as measurements at two different radio frequencies (which permits spectral index measurements) provide key constraints on the type of object being identified. CHANG-ES has provided the requisite high-resolution ( $\approx 3$  arcsec) radio data at two different frequencies: *L* band in the B-configuration of the VLA, and *C* band

\* E-mail: irwinja@queensu.ca (JI); wqd@astro.umass.edu (QW)

<sup>1</sup>The Expanded Very Large Array (EVLA) is now known as the Karl G. Jansky Very Large Array.

**Table 1.** Image parameters of CHANGES galaxies.

Galaxy name	RA <sup>a</sup>	Dec. <sup>a</sup>	<i>D</i> <sup>b</sup> (Mpc)	<i>d</i> <sub>25</sub> , <i>r</i> <sub>25</sub> , PA <sup>c</sup>	<i>L</i> band <sup>f</sup>			<i>C</i> band <sup>f</sup>		
	h m s	° ′ ″			′ ″ ″	Ang. res. ″ ″ ″	Lin. res. (pc)	rms (μJy beam <sup>-1</sup> )	Ang. res. ″ ″ ″	Lin. res. (pc)
N 660	01 43 02.40	+13 38 42.2	12.3	3.16, 0.98, 41 <sup>d</sup>	3.39, 3.27, 44.4	199	24	3.15, 2.64, -55.7	173	3.8
N 891	02 22 33.41	+42 20 56.9	9.1	13.5, 2.51, 24	3.15, 2.90, 54.2	133	16.0	2.77, 2.61, 85.9	119	3.1
N 2613	08 33 22.84	-22 58 25.2	23.4	7.24, 1.78, 114	5.18, 3.02, -179.7	465	19.6	4.95, 2.37, -6.2	415	3.3
N 2683	08 52 41.35	+33 25 18.5	6.27	9.33, 2.19, 41	3.06, 2.98, 57.8	92	14.5	2.71, 2.61, -31.5	81	5.0
N 2820	09 21 45.58	+64 15 28.6	26.5	4.07, 0.49, 60 <sup>e</sup>	3.23, 3.17, 52.8	411	16.3	2.64, 2.62, 49.0	338	3.2
N 2992	09 45 42.00	-14 19 35.0	34	3.55, 1.10, 22	4.87, 3.57, 16.4	696	16.5	4.12, 2.48, -8.0	544	3.2
N 3003	09 48 36.05	+33 25 17.4	25.4	5.75, 1.35, 78	3.11, 3.00, 70.1	376	14.0	2.65, 2.56, -72.7	321	3.0
N 3044	09 53 40.88	+01 34 46.7	20.3	4.90, 0.71, 115	3.67, 3.39, 68.8	347	15.0	3.34, 2.82, -34.2	303	3.6
N 3079	10 01 57.80	+55 40 47.3	20.6	7.94, 1.45, 179	3.14, 3.00, 58.4	307	18.0	2.68, 2.58, -89.0	263	3.4
N 3432	10 52 31.13	+36 37 07.6	9.42	6.76, 1.48, 42.0	3.20, 3.12, 82.8	144	21.0	2.75, 2.52, -79.0	120	3.5
N 3448	10 54 39.24	+54 18 18.8	24.5	5.62, 1.78, 65	3.16, 2.98, 63.9	365	17.0	2.57, 2.55, 59.0	304	3.2
N 3556	11 11 30.97	+55 40 26.8	14.09	8.71, 2.24, 81	3.12, 2.98, 58.2	207	16.0	2.58, 2.55, 38.9	174	3.1
N 3628	11 20 17.01	+13 35 22.9	8.5	14.8, 2.95, 104	3.21, 3.13, 3.7	131	14.5	3.68, 2.74, -79.0	132	4.6
N 3735	11 35 57.30	+70 32 08.1	42	4.17, 0.83, 130	3.24, 3.11, 33.8	646	16.0	2.64, 2.60, 24.4	533	4.1
N 3877	11 46 07.80	+47 29 41.2	17.7	5.50, 1.29, 34	3.01, 2.87, 22.4	252	11.5	2.56, 2.50, -75.5	217	3.4
N 4013	11 58 31.38	+43 56 47.7	16	5.25, 1.02, 66	3.01, 2.90, -84.2	229	14.0	2.65, 2.50, -87.9	200	2.9
N 4096	12 06 01.13	+47 28 42.4	10.32	6.61, 1.78, 17	3.06, 2.94, -84.9	150	14.5	2.55, 2.49, -75.5	126	3.4
N 4157	12 11 04.37	+50 29 04.8	15.6	6.76, 1.35, 63	3.02, 2.84, 29.5	222	11.7	2.60, 2.49, -83.2	192	3.3
N 4192	12 13 48.29	+14 54 01.2	13.55	9.77, 2.75, 152	3.21, 3.07, -7.5	206	14.5	2.78, 2.65, -67.0	178	3.4
N 4217	12 15 50.90	+47 05 30.4	20.6	5.25, 1.55, 49	3.07, 2.94, -85.5	300	14.5	2.58, 2.50, -78.7	254	3.1
N 4244	12 17 29.66	+37 48 25.6	4.4	16.6, 1.91, 45	3.09, 3.00, 45.0	65	14.4	2.64, 2.54, -81.0	55	3.0
N 4302	12 21 42.48	+14 35 53.9	19.41	5.50, 1.00, 178	3.50, 3.13, -8.4	312	13.5	2.78, 2.66, -67.0	256	3.4
N 4388	12 25 46.75	+12 39 43.5	16.6	5.62, 1.29, 89	3.57, 3.22, -2.1	273	16.0	2.76, 2.67, -10.4	219	3.2
N 4438	12 27 45.59	+13 00 31.8	10.39	8.51, 3.16, 20	3.32, 2.91, -6.3	156	25.0	2.75, 2.66, -2.86	135	3.2
N 4565	12 36 20.78	+25 59 15.6	11.9	15.9, 2.14, 134	3.31, 3.01, 45.5	182	15.0	2.63, 2.59, -61.7	151	3.0
N 4594	12 39 59.43	-11 37 23.0	12.7	8.71, 3.55, 87	4.36, 3.25, -14.0	234	17.5	3.90, 2.58, -3.3	199	2.9
N 4631	12 42 08.01	+32 32 29.4	7.4	15.5, 2.69, 84	3.40, 3.05, 63.4	116	16.0	2.61, 2.50, -76.8	92	3.1
N 4666	12 45 08.59	-00 27 42.8	27.5	4.57, 1.29, 40	3.80, 3.48, 39.6	485	15.0	3.14, 2.73, -25.1	391	3.8
N 4845	12 58 01.19	+01 34 33.0	16.98	5.01, 1.32, 75	3.51, 3.33, 22.7	280	18.0	3.05, 2.75, -11.7	238	3.9
N 5084	13 20 16.92	-21 49 39.3	23.4	9.33, 1.74, 80	5.63, 2.95, -11.8	487	17.0	4.81, 2.38, -5.3	408	3.0
N 5297	13 46 23.68	+43 52 20.5	40.4	5.62, 1.26, 149	3.13, 2.99, 52.8	599	13.6	2.63, 2.50, -72.6	502	2.9
N 5775	14 53 57.60	+03 32 40.0	28.9	4.17, 1.00, 146	3.65, 3.44, 64.3	497	14.0	3.06, 2.69, -5.28	403	3.0
N 5792	14 58 22.71	-01 05 27.9	31.7	6.92, 1.74, 82	3.89, 3.42, 48.6	562	15.0	3.20, 2.78, -6.93	460	3.0
N 5907	15 15 53.77	+56 19 43.6	16.8	12.6, 1.38, 155	3.35, 2.79, -4.6	250	13.5	2.66, 2.60, 82.5	214	3.2
U10288	16 14 24.80	-00 12 27.1	34.1	4.79, 0.58, 91	3.80, 3.58, 66.2	610	14.0	3.14, 2.87, -11.0	497	3.1

Notes. <sup>a</sup>Pointing and image centre.

<sup>b</sup>Distance, from Irwin et al. (2019b).

<sup>c</sup>Galaxy major and minor axis diameters at the 25 magnitude per square arcsec level from the Third Reference Catalogue of Bright Galaxies (RC3, de Vaucouleurs et al. 1991), unless otherwise indicated. The third value gives the galaxy position angle (PA) (counterclockwise from north) from the *K<sub>s</sub>* passband as given in the Nasa Extragalactic Database (NED), with minor adjustments (<5 deg), where necessary, to match the C-configuration, C-band angle, as specified in Krause et al. (2020).

<sup>d</sup>The RC3 value for the major and minor axes is grossly overestimated because of the extended tidal features in the north-south direction. For this galaxy, we adopt the *K*-band major and minor axes from The Two Micron All Sky Survey (2MASS) (Skrutskie et al. 2006).

<sup>e</sup>The *K<sub>s</sub>* PA is 65°. This galaxy's major axis differs between the innermost and outermost regions due to an interaction with a companion.

<sup>f</sup>*L*- and *C*-band image parameters are listed in three columns each. First column: Angular size of the synthesized beam – Major axis FWHM, minor axis FWHM, and position angle, respectively. Second column: Linear resolution corresponding to the average of the major and minor axes FWHM. Third column: average rms noise in the map measured over multiple boxes at positions away from the galaxy or background sources.

in C-configuration. As can be seen in Table 1, of the entire 35 galaxy sample, the corresponding linear resolutions range from 55 to 646 pc over galaxy distances that range from 4.4 to 42 Mpc. H II region sizes span many orders of magnitude, from less than  $\approx 0.01$  pc to  $\approx 1$  kpc (Hunt & Hirashita 2009, their fig. 2). As for SNRs, in very close galaxies such as the Large and Small Magellanic Clouds, M 31, M 33, and M 82, their sizes range from about a parsec to a few hundred pc (Long 2017), with tens of pc being typical. Consequently, CHANGES linear resolutions span the range from unresolved to resolved discrete sources in the discs of galaxies. AGNs, on the other hand, will likely be unresolved.

In addition to discrete sources in galaxy discs, there are also background sources (typically radio galaxies and quasars), which are visible in the field, some of which could be just projected in the fields of the foreground galaxies under consideration. The identification of such sources can be interesting in their own rights, but can also sometimes be very useful for the study of foreground galaxies. For example, a background source that is seen through the disc or halo

of a foreground galaxy experiences Faraday rotation of its polarized emission. A good example, also from CHANGES, is given in Irwin et al. (2013b). Although we do not discuss polarization in this paper, our catalogues may be useful for future follow-up studies.

A final interesting category is foreground sources, i.e. stars. While there should be very few such cases, we will provide an interesting example in Section 5.

Important additional constraints are provided by X-ray data. For AGNs, for example, observations in radio and X-ray can provide sensitive probes of the accretion state of AGNs, as well as their jet ejection and interaction with the ambient medium (e.g. Perlman & et al. 2020). Compact X-ray sources in the disc typically represent very young SNRs, including plerions or pulsar wind nebulae, plus some giant H II regions or superbubbles produced by fast stellar winds and supernovae (SNe) collectively (e.g. Yew et al. 2018). They should also include luminous X-ray binaries – black holes or neutron stars accreting from their companions; some of such accreting binaries could produce radio jets. The observations of such off-

nucleus sources in radio and X-ray together can provide information about the end-products of massive stars (e.g. their stellar origins, populations, emission mechanisms, circumstellar environments, etc.; see e.g. Maddox et al. 2006; Pannuti, Schlegel & Lacey 2007; Wang 2012).

Our X-ray source detections are based on *Chandra* observations that were available for 27 of the CHANG-ES galaxies by 2020 June. Sixteen of them have been used in the survey of galactic gaseous coronae of edge-on galaxies (Li & Wang 2013). Some of these galaxies now have more available observations. The *Chandra* spatial resolution is  $\sim 0.4$  arcsec (Weisskopf et al. 2000).

Existing radio and X-ray studies of high-energy sources in nearby galaxies are typically on face-on ones (e.g. Maddox et al. 2006; Pannuti et al. 2007). In face-on galaxies, it is relatively easy to examine the association of sources with galactic disc structures such as spiral arms. However, because of the larger projected areas on the sky, it is often statistically difficult to resolve the confusion with background sources (e.g. distant AGNs), as well as the galactic halo emission of the host galaxies. The advantages of studying edge-on disc galaxies include relatively cleaner separation of the disc and halo emission and smaller confusion with background sources because of their discs' smaller footprints in the sky. In addition, the edge-on orientation of the CHANG-ES galaxies provides a unique opportunity to search for discrete sources that are associated with a galaxy, but may not be embedded in the disc. For example, one H II region that is far outside of the disc of the CHANG-ES galaxy, NGC 4157, has already been identified (Vargas et al. 2019). Thus, our catalogues will lay the groundwork for potential future follow-up studies of discrete in-disc or halo objects.

This new catalogue of discrete sources includes all 35 CHANG-ES galaxies in the radio, 27 of which have X-ray data. The rest of the paper is organized as follows. In Section 2, after a brief review of the observations and data reduction, we describe the algorithms that were used to detect radio and X-ray sources. We present the results in Section 3, including the cross-matching of the two radio bands and the additional cross-matching with X-ray sources. In Section 4, we present some statistics and quality checks of the data. Section 5 provides a general discussion, and points out several intriguing sources for follow-up. Section 6 gives a summary.

## 2 OBSERVATIONS AND DATA ANALYSES

### 2.1 Radio observations

The images relevant to this study consist of B-configuration, *L* band (hereafter B/L) observations centred at 1.6 GHz using a 500 MHz bandwidth, and approximately matching resolution C-configuration, *C* band (hereafter C/C) observations at 6.0 GHz with a 2 GHz bandwidth.

Data reduction was carried out using the Common Astronomy Software Application (CASA).<sup>2</sup> Reduction of the VLA data has been fully described in previous CHANG-ES papers, for example, Irwin et al. (2012b, 2013a, 2019b).

As indicated in Wiegert et al. (2015), maps were made with two different uv weightings, corresponding to two different spatial resolutions. Here, we use only the highest resolution maps which used robust = 0 uv weighting, as implemented in CASA, resulting in

a resolution of approximately 3 arcsec. The rms noise, however, was significantly higher in *L* band than in *C* band (Table 1).

Very wide fields were made for almost all galaxies with pixel sizes of 0.5 arcsec in both bands. We then extracted field sizes of  $2000 \times 2000$  (16.7 arcmin  $\times$  16.7 arcmin) at *L* band and  $1441 \times 1441$  pixels (12.0 arcmin  $\times$  12.0 arcmin) at *C* band for analysis, as summarized in Table 2. These field sizes cover 0.65 and 1.6 times the primary beam (PB) full width at half-maximum (FWHM) at *L* band and *C* band, respectively. However, the galaxies that are largest in angular size (NGC 891, NGC 3628, NGC 4244, NGC 4565, NGC 4594, NGC 4631, NGC 5084, and NGC 5907), were observed with two pointings at *C* band, so the effective PB for those cases does not decline as rapidly from the field centre, compared to single-pointing galaxies. See Wiegert et al. (2015) for details.

For three galaxies, NGC 3735, NGC 4096, and NGC 4666, the original C/C map size was slightly less than the  $1441 \times 1441$  field size specified in Table 2. We therefore remade these maps with a larger field size for consistency with the other galaxies. The rms values of Table 1 correspond to these remade maps.

The largest angular scale visible at *L* band is 2 arcmin and at *C* band it is 4 arcmin. These limits are because of missing short spacings in the uv plane. All of our galaxies are larger than these limits so these high-resolution observations do not recover all of the flux of any of the galaxies. They will, however, recover all of the flux of any source within the galaxy of smaller angular size. Consequently, we do not expect missing spacings to affect any results in this paper which focuses only on compact sources.

Maps were also made with and without a PB correction. With no PB correction, the noise is uniform across the map (except for residual imperfectly cleaned sidelobes) but the fluxes are incorrect. With a PB correction, the noise increases with distance from the centre of the map but the fluxes are correct. In order to identify and extract discrete sources, it was necessary to run the source-extraction algorithm (next section) on maps that had uniform noise. Corrections to the flux densities and related spectral indices were made after the extraction process. Formulae for the PB correction as a function of distance from the map centre are well known<sup>3</sup> for an assumption of circular symmetry.

The B/L data have been described in Irwin et al. (2019b) and can be downloaded from <https://www.queensu.ca/changes/>. Details of the C/C data will be described in Walterbos (in preparation) with images to be downloaded from the same website.

### 2.2 Radio source extraction (PYBDSF)

We use Python Blob Detector and Source Finder (PYBDSF; Mohan & Rafferty 2015) software for our radio source detection. The algorithm first computes an rms (root mean square, or  $\sigma$ ) and mean level as a function of position for a given map by using a sliding box whose parameters can be specified. It then identifies 'islands' which are regions of *contiguous* emission that are above a user-specified threshold. For this work, we accept an island if all contiguous points are more than 3 times the local rms, above the local mean value. PYBDSF then fits Gaussians to sources within the island that meet another user-specified threshold. In this work, a source is fit with a Gaussian if it is more than 5 times the rms value above the mean.

A visual representation of islands and Gaussians can be seen for some background off-galaxy sources in Fig. 1. The Gaussian sources

<sup>2</sup>See casa.nrao.edu.

<sup>3</sup>[https://library.nrao.edu/public/memos/evla/EVLAM\\_195](https://library.nrao.edu/public/memos/evla/EVLAM_195)

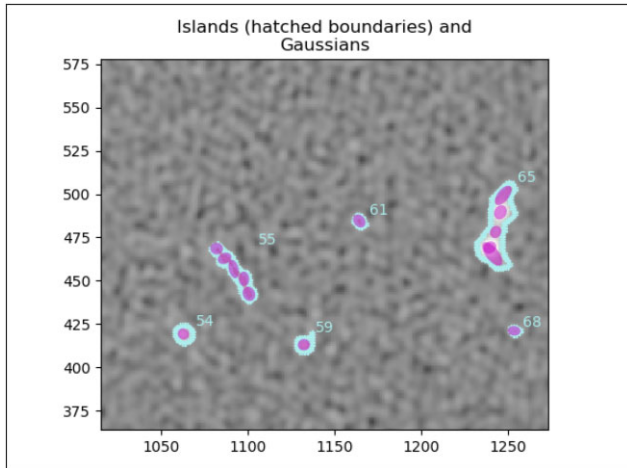
**Table 2.** Image size in *L* band and *C* band.

Frequency	Field size (pix)	Field size (arcmin)	Cell size (arcsec)	Res. (arcsec) <sup>b</sup>	PB FWHM (arcmin) <sup>c</sup>
<i>L</i> band (1.575 GHz <sup>a</sup> )	2000 × 2000	16.7	0.5	3	25.4
<i>C</i> band (6.000 GHz)	1441 × 1441	12.0	0.5	3	7.02

Notes.<sup>a</sup>For NGC 4438,  $\nu = 1.77$  GHz and primary beam (PB) FWHM = 23.6 arcmin.

<sup>b</sup>Approximate spatial resolution. Accurate values are given in Table 1.

<sup>c</sup>PB full width at half-maximum.



**Figure 1.** Qualitative view of the islands and Gaussians showing background sources in the field of NGC 4565 as calculated by PYBDSF. The axis labels are in pixels. The hatched blue boundaries outline the locations of individual islands, while the magenta ellipses represent the Gaussians that have been fit to the individual detected sources. Islands 55 and 65 likely represent background extragalactic radio sources. Island 65 is located at RA = 12<sup>h</sup>36<sup>m</sup>11<sup>s</sup>.77, Dec. = 25°54′54″.94, and Island 55 is located at RA = 12<sup>h</sup>36<sup>m</sup>17<sup>s</sup>.34, Dec. = 25°54′42″.92. A quantitative view of the NGC 4565 field can be seen in Appendix A.

can be seen in magenta with islands shown as blue boundaries. This introductory image is meant to be qualitative only.

The software also checks whether sources are significantly overlapped or can be considered separate sources. PYBDSF will group overlapping Gaussian sources within an island into a larger single source with a reconstructed Gaussian size, provided all emission on a line between them exceeds a specified value. This is important because, often, the entire disc of a galaxy has contiguous emission and is therefore identified as a single island. The emission throughout the island has variable intensity but we do not necessarily expect such variability to belong to discrete sources that we wish to highlight. Such a multi-Gaussian source is easily identifiable by the larger FWHM of its reconstructed Gaussian and by its label (*M*, next paragraph) in Table B1. PYBDSF flags questionable Gaussians (e.g. if the centre is outside of the island) and we do not include flagged Gaussians in this analysis.

PYBDSF then provides tabular output (our catalogue) which includes the sizes of sources, their fluxes, and positions, including errors. A source size that is deconvolved from the known synthesized beam (ang. res. in Table 1) is also provided, enabling an estimate of the true source size. A value of zero means that the source is unresolved. This source list is given in Appendix B. An important identifier is a label that is given to each source so that it is obvious whether or not the source is: *S*: a single-Gaussian source that is unique on the island, *C*: a single-Gaussian source that is on an island with other sources, or *M*: a multi-Gaussian source.

It is technically possible to convert all emission into a series of Gaussians. However, the fact that PYBDSF allows us to identify sources that exceed a threshold above the background contiguous mean makes it ideal in identifying *discrete* sources. The default threshold of the  $3\sigma$  island and  $5\sigma$  Gaussian source is a good compromise between having so many ‘detections’ as to be meaningless and so few detections that potentially real discrete sources are missed.

We provide further information about the PYBDSF inputs and tests in Appendix A, and also show typical images that are generated during the fitting process. Note that PYBDSF computes uncertainties that take into account both the rms map noise (which includes random errors) as well as errors in the ellipse fitting, as given in the output of Appendix B. When we compute the primary-beam-corrected flux densities and spectral index, we also include uncertainties in the PB and a 1 per cent calibration error on the primary flux calibrator, added in quadrature (Appendix C). Previous use of this program by others can be found in, for example, van Weeren et al. (2014), Williams et al. (2016), and Hale et al. (2018). The code and documentation are available at <https://www.astron.nl/citt/pybdsf/>.

### 2.3 X-ray data and analysis

The 27 galaxies in the sample are covered by 55 Chandra imaging observations. All but three of the observations were performed with the Advanced CCD Imaging Spectrometer S Array (ACIS-S), while the others were obtained by the ACIS-I Array (Garmire et al. 2003). The observation log is reported in Table 3. The ACIS detector was operated in the standard timed exposure mode, with FAINT or VERY FAINT telemetry format. In five observations, the subarray mode was used. We reprocessed the data with the Chandra Interactive Analysis of Observations software package (CIAO) version 4.12 and Calibration Database (CALDB) version 4.9.1<sup>4</sup> (Fruscione et al. 2006). We followed standard data reduction procedures: after downloading the data from the public archive, we ran the CHANDRA\_REPRO tool to perform all the recommended data processing steps. We used the MERGE\_OBS tool to merge the event files of all of the observations for the same target with more than one exposure, create point spread function (PSF) maps and exposure maps for each observation and for the merged observations, and then created exposure-corrected images of the single and merged observations limited to the 0.3–7.0 keV energy range. The exposure-corrected images are restricted to the S2, S3, and S4 chips (CCD 6, 7, 8), with the exception of the three observations using ACIS-I, which were produced using all four ACIS-I chips along with one of the three ACIS-S chips listed above. For ObsID 3956 (NGC 2992), we removed a very bright readout streak using the ACISREADCORR tool.

Source detection was performed with the WAVEDETECT tool on a merged image of the data generated by MERGE\_OBS. In order to optimize the output of each WAVEDETECT run, we calculated the

<sup>4</sup><http://cxc.harvard.edu/ciao/>

**Table 3.** *Chandra* observation log.

Object	OBSID	RA (J2000) <sup>a</sup> (h m s)	Dec. (J2000) <sup>a</sup> (° ′ ″)	Roll Angle (°)	Exposure <sup>b</sup> (s)	OBS date (yyyy-mm-dd)
NGC 660	15333	1 43 03.1	13 38 40	287	22 763	2012-12-18
	15587	1 43 03.1	13 38 40	287	27 698	2012-11-20
	1633	1 43 03.8	13 36 44	291	1916	2001-01-28
	18352	1 43 01.2	13 38 56	106	9994	2015-08-26
	4010	1 43 02.2	13 38 00	292	5068	2003-02-12
NGC 891	14376	2 22 34.2	42 20 19	263	1823	2011-12-20
	19297	2 22 31.3	42 19 41	217	39 540	2016-11-14
	4613	2 22 29.9	42 19 26	253	118 878	2003-12-10
NGC 2683	794	2 22 22.5	42 20 48	187	50 905	2000-11-01
	11311	8 52 26.0	33 28 41	107	38 529	2011-01-05
NGC 2992	1636	8 52 44.2	33 26 48	72	1737	2000-10-26
	3956	9 45 55.2	-14 20 05	352	49 548	2003-02-16
NGC 3079	19307	10 01 56.2	55 40 43	154	53 158	2018-01-30
	2038	10 01 53.7	55 40 41	200	26 578	2001-03-07
	20947	10 01 56.4	55 40 43	154	44 478	2018-02-01
NGC 3432	7091	10 52 29.0	36 34 56	261	1929	2006-06-25
NGC 3448	19360	10 54 37.5	54 18 02	181	9972	2018-03-04
NGC 3556	2025	11 11 45.7	55 40 19	359	59 365	2001-09-08
NGC 3628	2039	11 20 18.2	13 35 52	71	57 960	2000-12-02
	395	11 20 20.3	13 36 52	60	1753	1999-11-03
NGC 3877	1971	11 46 06.3	47 29 31	97	29 180	2001-01-14
	1972	11 46 09.4	47 29 06	27	28 722	2001-10-17
	767	11 46 06.6	47 29 32	92	18 914	2000-01-10
	768	11 46 02.7	47 29 06	174	23 455	2000-03-07
	952	11 46 06.9	47 28 21	293	19 772	2000-08-01
NGC 4013	4013	11 58 28.2	43 56 58	174	4899	2003-03-16
	4739	11 58 26.5	43 59 06	113	79 100	2004-02-03
NGC 4096	19345	12 06 01.4	47 29 04	36	7963	2017-11-01
	7103	12 05 52.0	47 30 21	135	1734	2006-02-18
NGC 4157	11310	12 11 08.6	50 25 09	314	59 255	2010-08-21
NGC 4192	19390	12 13 48.1	14 54 27	51	14 864	2017-11-04
NGC 4217	4738	12 15 43.2	47 07 09	132	72 728	2004-02-19
NGC 4244	942	12 17 22.3	37 46 51	230	49 215	2000-05-20
NGC 4302	19392	12 21 42.0	14 35 28	209	14 222	2018-04-09
	19397	12 21 32.3	14 35 57	210	7808	2018-04-09
NGC 4388	12291	12 25 46.4	12 39 53	61	27 606	2011-12-07
	1619	12 25 45.2	12 39 16	242	19 977	2001-06-08
NGC 4438	2883	12 27 46.4	13 01 05	79	25 072	2002-01-29
	8042	12 27 40.0	13 05 00	83	4895	2008-02-11
NGC 4565	3950	12 36 20.5	26 01 19	94	59 202	2003-02-08
	404	12 36 17.5	25 57 39	249	2829	2000-06-30
NGC 4594	1586	12 39 57.0	-11 38 37	251	18 518	2001-05-31
	407	12 40 01.9	-11 35 51	68	1766	1999-12-20
	9532*	12 39 57.9	-11 39 07	257	84 914	2008-04-29
	9533*	12 40 02.8	-11 35 17	71	88 975	2008-12-02
NGC 4631	797	12 41 57.1	32 31 49	200	59 215	2000-04-16
NGC 4666	4018	12 45 09.8	-0 27 11	71	4937	2003-02-14
NGC 5084	12173*	13 20 16.5	-21 50 07	240	9923	2011-08-22
NGC 5297	19370	13 46 25.1	43 52 37	4	9944	2017-10-25
NGC 5775	2940	14 53 57.1	3 33 17	109	58 213	2002-04-05
NGC 5907	12987	15 15 57.6	56 18 17	86	15 977	2012-02-11
	14391	15 15 57.6	56 18 18	86	13 086	2012-02-11
	20830	15 16 00.6	56 18 24	353	51 270	2017-11-07
	20994	15 15 56.2	56 18 22	104	32 621	2018-02-27
	20995	15 15 55.9	56 18 24	104	16 033	2018-03-01

*Notes.* All observations were obtained using the ACIS-S detector with the exception of the observations marked with (\*), which were obtained by the ACIS-I detector.

<sup>a</sup>The coordinates correspond to the time-averaged location of the optical axis (the on-axis position).

<sup>b</sup>The exposure represents the live (dead-time-corrected) time of each observation.

significance threshold for source detection as the inverse of the total number of pixels so that the expected number of false sources per field is one. We also increased the maximum number of source-cleansing iterations as well as the number of wavelet scales for a better estimate of the background map and to distinguish between sources varying in size, respectively. For galaxies NGC 4013 and NGC 4594, we also lowered the minimum relative exposure needed in a pixel in order to analyse it because the images had large differences in exposure time, leading to one observation dominating the others.

We estimate the position error of each detected source by including both statistical and systematic contributions, which are added in quadrature. The statistical contribution is obtained directly from the WAVEDetect detection output, while the systematic one from  $0.2'' + 1.4''(r/8')^2$ , which is an analytical approximation of the result presented in fig. 4 of Feigelson et al. (2002). Here,  $r$  is the off-axis angle. For a source detected in a merged image of involved observations,  $r$  is their exposure-weighted mean.

### 3 RESULTS

We present the catalogue of our detected radio sources in Appendix B. Appendix C gives the results of the cross-matching of the radio sources at  $L$  band and  $C$  band. The catalogue of X-ray sources is in Appendix D. The catalogue of sources that have been cross-matched in  $L$  band,  $C$  band, and X-rays is presented in Table 6.  $H\alpha$  figures of all galaxies with detected sources overlaid are in Appendix E. Tables and figures are available for download as described in these appendices.

#### 3.1 Radio source detections

We detect a total of 2507 and 1413 sources at  $L$  band and  $C$  band, respectively (Table 4). The number of detected sources depends on a number of factors as we now discuss.

The galaxy that shows the lowest number of sources at  $L$  band is NGC 4438, with only 30 sources. The main reason for this low number is the higher rms of this field compared to other galaxies, at  $25 \mu\text{Jy beam}^{-1}$  (Table 1). Consequently, there are fewer off-galaxy background sources showing up. There is some variation in the number of background sources from field to field, in any event. For example, NGC 4157 and NGC 3877 have similar rms values, but NGC 3877 shows more off-galaxy sources. Such variation is to be expected, given the different background environments from galaxy to galaxy.

Galaxies of smaller angular size and/or smoother emission in which individual sources are less likely to be distinguished compared to the background disc emission will also show fewer sources. For example, NGC 4565 is a galaxy that has a large angular size and ‘patchier’ emission than NGC 3044 (both having the same rms). Few discrete sources on the disc of NGC 3044 have been detected in comparison to NGC 4565. This is apparent in the figures of these two galaxies in Appendix E. It is important to keep in mind that the radio continuum intensity distribution does not necessarily follow the appearance of the  $H\alpha$  emission that is shown as grey-scale in the figures.

At  $C$  band, the arguments are similar. In this band, the rms noise is lower than at  $L$  band, favouring the detection of more sources. However, the PB is only 26 per cent as large as at  $L$  band, so the adopted field size at  $C$  band is 52 per cent smaller than at  $L$  band (Table 2). Consequently, the total number of sources detected at  $C$  band is only 56 per cent of the total number of sources detected at  $L$  band.

Additional differences depend on the spectral indices of the sources, which favour  $L$ -band detections for steep spectrum sources

(see also Section 3.2 in which we indicate the spectral index at which the sensitivity in  $L$  band and  $C$  band are equal).

Fig. 2 shows the source counts for all sources detected. The median flux density of sources at  $L$  band is  $163 \mu\text{Jy}$  and the median at  $C$  band is  $39.2 \mu\text{Jy}$ . The higher flux density, on average, for  $L$ -band sources compared to  $C$ -band sources is consistent with a steep non-thermal spectral index in most cases (Section 3.2).

In Table 4, we also list the number of sources within the optical disc of the galaxy in projection (‘on-disc’) at both bands, as determined by the galaxy disc size given in Table 1. Because the radio sources do not suffer from extinction, we also compute the number of sources per  $\text{kpc}^2$  for each deprojected galaxy, i.e. as if the galaxy were face-on (‘deproj.’). The total flux density on-disc is also given by summing the flux density of each source over the disc region.

The column labelled, F\_Fract., lists the fraction of the flux that is contained in compact sources compared to the galaxy’s total flux, the latter from Wiegert et al. (2015). Excluding UGC 10288 (see table notes), the median fraction at  $L$  band is 17 per cent and the median fraction at  $C$  band is 38 per cent. In general therefore the compact sources constitute a small fraction of the galaxy’s total flux. For our largest galaxies, in addition, the total flux may be underestimated, especially at  $C$  band, because of possible missing zero-spacing flux. Thus the fraction could be slightly lower in few cases.

There are, however, some exceptions. For example, those galaxies for which compact sources account for more than 75 per cent of the total flux at  $L$  band are NGC 660, NGC 2992, NGC 4845, and NGC 5084. At  $C$  band, they are NGC 660, NGC 2992, NGC 3079, NGC 4594, NGC 4845, and NGC 5084. Each of these galaxies are well-known AGN galaxies in which the nuclear source dominates the flux density of the compact sources.

Over all galaxies, we detect 205 on-disc sources at  $L$  band and about  $2.5\times$  more at  $C$  band, i.e. 508. Since on-disc sources are generally centred in the field of view (not as down-weighted by the PB), and since most sources show a steep spectral index with lower flux at  $C$  band than  $L$  band, this suggests that it is the lower noise level in  $C$  band that results in the higher number of sources detected.

Fig. 3 shows the number of sources detected on the galaxy disc as a function of galaxy distance. A decline in the number of sources would suggest that PYBDSF was detecting more discrete sources in the nearby galaxies because of the higher resolution. We see that this is hinted at, but it appears to be a minor effect. There are still galaxies at larger distances with many sources. Note that the ordinate axis is represented as a logarithmic plot because the purpose of the figure is to check for any distance dependence; the differences between  $L$ -band and  $C$ -band numbers are therefore not as obvious as in Fig. 4 (see below).

We finally plot the luminosity function for all sources that are on the galaxy disc (in projection – see Section 3.4.2) in Fig. 4. Consistent with Table 4, the figures of Appendix E, and comments above, there are more on-disc sources at  $C$  band than at  $L$  band. Of the reasons offered for differences given above, the most likely explanation for this is the lower rms at  $C$  band because the on-disc sources are clustered around the centres of the fields where PB effects are minimal.

The median spectral power is  $L_{L\text{-Band}} = 7.56 \times 10^{18} \text{ W/Hz}$  ( $\log L_{L\text{-band}} = 18.9$ ), and  $L_{C\text{-Band}} = 1.61 \times 10^{18} \text{ W/Hz}$  ( $\log L_{C\text{-band}} = 18.2$ ). Again, this is consistent with steep spectral indices, on average. By comparison, the median  $L$ -band flux density of a collection of SNRs in M 82 is  $L_{L\text{-Band}} = 3 \times 10^{18} \text{ W/Hz}$  (Irwin et al. 2019b) and  $L_{C\text{-Band}} = 1.6 \times 10^{18} \text{ W/Hz}$  (Muxlow

**Table 4.** Number and fluxes of detected radio sources.

Galaxy	L band					C band				
	Number <sup>a</sup> total	Number <sup>b</sup> on-disc	Deproj. <sup>c</sup> on-disc (kpc <sup>-2</sup> )	Flux density <sup>d</sup> on-disc (mJy)	F_Fract. <sup>e</sup> on-disc (per cent)	Number <sup>a</sup> total	Number <sup>b</sup> on-disc (kpc <sup>-2</sup> )	Deproj. <sup>c</sup> on-disc (mJy)	Flux density <sup>d</sup> on-disc (mJy)	F_Fract. <sup>e</sup> on-disc (per cent)
NGC 660	51	1	0.00996	399.2	76	20	4	0.03984	608.0	92
NGC 891	69	9	0.00897	102.2	14	43	15	0.01496	34.46	17
NGC 2613	55	7	0.00367	3.472	5.8	25	10	0.00524	2.896	19
NGC 2683	76	9	0.03957	3.72	5.6	20	9	0.03957	3.173	16
NGC 2820	65	2	0.00259	9.521	15	25	3	0.00388	4.36	23
NGC 2992	61	3	0.00310	192.0	94	25	2	0.00207	77.63	97
NGC 3003	89	4	0.00282	3.024	8.7	41	16	0.01129	3.190	30
NGC 3044	65	2	0.00304	44.080	42	13	2	0.00304	14.34	38
NGC 3079	34	1	0.00056	496.9	61	27	7	0.00394	305.8	84
NGC 3432	59	3	0.01113	8.220	9.9	37	10	0.03711	7.381	28
NGC 3448	76	5	0.00397	20.56	45	44	9	0.00714	10.10	49
NGC 3556	67	14	0.01399	36.00	12	54	30	0.02997	27.44	35
NGC 3628	58	10	0.00951	233.9	44	56	32	0.03043	113.0	61
NGC 3735	75	2	0.00098	13.54	17	24	4	0.00196	9.962	40
NGC 3877	128	13	0.02064	7.373	17	50	20	0.03176	4.985	39
NGC 4013	78	1	0.00213	10.11	27	24	2	0.00427	8.142	65
NGC 4096	70	9	0.02910	1.598	2.8	47	27	0.08731	3.684	23
NGC 4157	92	4	0.00541	5.516	3.0	30	8	0.01082	2.595	4.7
NGC 4192	78	9	0.00773	15.15	19	46	23	0.01975	8.441	35
NGC 4217	90	2	0.00257	12.17	11	30	3	0.00386	6.327	18
NGC 4244	105	17	0.04795	5.077	28	100	48	0.13539	4.616	51
NGC 4302	79	4	0.00528	4.672	10	32	9	0.01188	6.262	52
NGC 4388	36	2	0.00346	77.41	59	27	4	0.00692	37.61	61
NGC 4438	30	4	0.00770	75.39	57	32	10	0.01925	30.75	56
NGC 4565	85	12	0.00504	6.540	4.3	72	33	0.01387	8.529	20.2
NGC 4594	70	6	0.00738	73.58	79	74	28	0.03443	129.6	100
NGC 4631	70	18	0.02059	115.8	11	90	62	0.07091	80.69	28
NGC 4666	66	3	0.00286	41.59	10	25	3	0.00286	30.47	24
NGC 4845	54	4	0.00832	237.3	100	27	4	0.00832	361.7	84
NGC 5084	62	2	0.00063	34.07	84	35	7	0.00221	33.73	93
NGC 5297	84	6	0.00175	0.9376	3.8	39	17	0.00496	1.732	26
NGC 5775	90	1	0.00104	33.59	13	27	1	0.00104	24.63	33
NGC 5792	65	4	0.00125	28.27	49	46	15	0.00469	13.61	67
NGC 5907	99	12	0.00403	68.09	38	69	27	0.00907	19.84	39
UGC 10288 <sup>f</sup>	76	0	0.000	0.000	–	37	4	0.00226	12.13	–

Notes. <sup>a</sup>Total number of sources detected per galaxy over the entire field (field sizes are given in Table 2).

<sup>b</sup>Total number of sources on the projected optical disc whose dimensions are given in Table 1, and shown by the green ellipses in the figures of Appendix E.

<sup>c</sup>Total number of disc sources per square kpc, for a deprojected disc size. The deprojected disc area is taken to be  $\pi a^2$ , where  $a$  is the galaxy's semimajor axis, in kpc.

<sup>d</sup>Total flux density of all sources on the projected disc. The flux density of each source (as in Column 7 of Table B1) was corrected for the PB (Column 35) and then the corrected flux densities of all sources on the disc were summed. Uncertainties can be read from Table B1 and the reader can adjust significant figures accordingly.

<sup>e</sup>Fraction of the galaxy's on-disc flux that is contained in compact sources, calculated from the on-disc flux density divided by the total flux of the galaxy, as given in Wiegert et al. (2015).

<sup>f</sup>The radio emission from this galaxy is dominated by a strong background source (Irwin et al. 2013b) whose centre is just at the boundary of the disc. The centre of the background source at L band is just outside of the disc and the centring at C band is just inside of it. We therefore exclude this galaxy when calculating F\_Fract.

et al. 1994). These values are quite comparable and suggest that most detected sources represent SNRs, although nuclear sources are also included in our sample (Section 3.4.1).

Mascoop et al. (2021) derived the 1.4 GHz luminosity function of 797 H II regions in the first Galactic quadrant, with the most luminous H II regions around  $L_{L-Band} = 2 \times 10^{16} \text{ W Hz}^{-1}$ , corresponding with the ionizing flux of an early O star. Clearly, single-star H II regions are well below the sensitivity of CHANG-ES in either L or C band. The thermal free-free luminosity of the 13 largest star formation regions in the Milky Way outside the Galactic Centre, measured at 90 GHz and reduced to 1.5 GHz using a spectral

index  $\alpha_{ff} = -0.1$ , is in the range  $L_{L-Band} = 5 \times 10^{18} \text{ W Hz}^{-1}$  to  $L_{L-Band} = 1 \times 10^{19} \text{ W Hz}^{-1}$  with the corresponding C-band luminosity 15 per cent lower (using data listed in Rahman & Murray 2010). The 30 Dor region in the Large Magellanic Cloud with a thermal radio luminosity  $L_{L-Band} = 1 \times 10^{19} \text{ W Hz}^{-1}$ , derived from the 22 GHz flux density in Sabalisck & Abraham (1991) for a distance of 49.6 kpc, is on the extreme luminosity side of Local Group H II regions. These values are near the peak of the distributions in Fig. 4.

Resolution is a factor in determining the luminosity of the brightest H II regions. Substructure may lead to subdivision of larger



**Table 5.** New nuclear sources – radio.

Galaxy	LC_id <sup>a</sup>	Source_id <sup>b</sup>	Flux <sub>cor</sub> <sup>c</sup> ( $\mu\text{Jy}$ )	$\alpha^d$	DC <sub>Maj</sub> <sup>e</sup> (arcsec)	DC <sub>Min</sub> <sup>e</sup> (arcsec)	DC <sub>PA</sub> <sup>e</sup> (deg)
NGC 3877	278			$-0.092 \pm 0.037$			
<i>L</i> band		73	$2367 \pm 68$		$4.06 \pm 0.09$	$1.53 \pm 0.04$	$32.3 \pm 1.9$
<i>C</i> band		23	$2093 \pm 81$		$4.49 \pm 0.06$	$2.58 \pm 0.04$	$29.1 \pm 1.7$
NGC 4192	364			$-0.672 \pm 0.019$			
<i>L</i> band		33	$13370 \pm 275$		$9.61 \pm 0.06$	$4.26 \pm 0.03$	$155.6 \pm 0.5$
<i>C</i> band		22	$5434 \pm 73$		$9.39 \pm 0.04$	$3.68 \pm 0.02$	$153.4 \pm 0.3$
NGC 5792	663			$-0.619 \pm 0.015$			
<i>L</i> band		30	$27102 \pm 389$		$12.57 \pm 0.10$	$3.61 \pm 0.03$	$79.0 \pm 0.5$
<i>C</i> band		23	$11828 \pm 153$		$12.10 \pm 0.06$	$3.72 \pm 0.02$	$80.0 \pm 0.4$

Notes. Galaxy information has been extracted from the tables of Appendices B and C.

<sup>a</sup>Unique *L* band to *C* band cross-identification number.

<sup>b</sup>Unique source identification number for the specified galaxy and band.

<sup>c</sup>Source flux, corrected for the PB, and its error.

<sup>d</sup>Spectral index of the source, and its error.

<sup>e</sup>Major axis, minor axis, and position angle (North through East) of the source, after deconvolution from the beam.

structures in nearby galaxies. Kennicutt, Edgar & Hodge (1989) found that the H II region luminosity function is fairly independent of resolution up to a resolution of 200 pc, while the effects of blending became apparent at resolutions of more than 300–500 pc. The linear resolution of the *C*-band data exceeds 300 pc in 13 galaxies, but it exceeds 500 pc in only 3 galaxies. At this scale, it is likely that SNRs and H II regions are blended as well. Arguably, blending is more significant in an extinction-free tracer applied to edge-on galaxies. Also, the radio flux density may be confused with brighter diffuse non-thermal emission from the spiral arms. If this is a factor, the most luminous sources should have a steeper spectrum than the lower luminosity sources. Resolution also affects the contribution of diffuse ionized gas, but this is effectively subtracted by the source finder. We have suggested above, however, that most sources have fluxes that are typical of SNRs and will also see in the next section that the sample is dominated by steep spectrum sources. Therefore, the sources found in this paper are generally not dominated by H II regions.

In summary, the observed peak of the distribution of Fig. 4 is consistent with either SNRs or H II regions. However, we show in the next section, that most spectral indices are consistent with non-thermal emission. The high luminosity tail, which is 2–3 orders of magnitude higher than the luminosity at the peak of the distribution, is influenced by some relatively strong AGNs.

### 3.2 Cross-matching of radio sources between *L* band and *C* band

In Appendix C, we provide a description of the catalogue of all radio sources that have been positionally matched between *L* band and *C* band. The catalogue is available for download, as described in the appendix.

The cross-matching was carried out by PYTHON programming language scripts developed by the authors which looked for sources in both bands that were within a radius of 1 arcsec of each other. The choice of 1 arcsec was based on the typical positional error in RA and Dec. for each of the detected sources.

A total of 723 sources were found to be positionally matched at both bands over all 35 galaxies. Of these, 684 cross-matched sources had good PB-corrected flux densities. The reason for unreliable flux densities was if the source was located far from the map centre where the PB fell below 11 per cent. In such cases, we did not accept the resulting PB-corrected flux. However, the positions are

still acceptable so the cross-matched sources are still included in the catalogue without flux values.

For each of the matched sources, we further calculate the radio spectral index ( $\alpha$ ) between *L* band and *C* band, according to

$$\frac{S_L}{S_C} = \left( \frac{\nu_L}{\nu_C} \right)^\alpha, \quad (1)$$

where  $S_L$  and  $S_C$  are the primary-beam-corrected source flux densities in *L* band and *C* band, respectively, and  $\nu_L$  and  $\nu_C$  are their centre frequencies, respectively. Standard error propagation was carried out in quadrature including uncertainties in the PB and a 1 per cent calibration uncertainty (see Appendix C).

The average spectral index and average spectral index error are  $\alpha_a = -0.58$  and  $\pm 0.18$ , and the median values are  $\alpha_m = -0.67$  and  $\pm 0.18$ . These spectral indices have not been corrected for any differences in size between *L* band and *C* band. There could be minor modifications to the spectral index values if, for example, the deconvolved source sizes (Columns 21–26 in Table B1) differ between *L* band and *C* band. However, the average and median indicate that the sources are clearly dominated by non-thermal emission, as suggested previously in Figs 2 and 3. Note that, for median rms values of  $15 \mu\text{Jy beam}^{-1}$  at *L* band and  $3.2 \mu\text{Jy beam}^{-1}$  at *C* band, the  $3\sigma$  sensitivity in both bands corresponds to a spectral index of  $\alpha_{3\sigma} = -1.17$ . That is, the two bands have equal sensitivity at a spectral index of  $\approx -1$ .

The maximum spectral index in the entire sample is  $\alpha_{max} = +0.91 \pm 0.02$  in the NGC 2683 field, and the minimum spectral index in the entire sample is  $\alpha_{min} = -1.93 \pm 0.10$  in the NGC 5775 field. Both of these sources are not on the discs of the galaxies, in projection, and are likely background sources.

We further separately identify sources that are within 3 arcsec ( $\approx$  the spatial resolution) of the nucleus of the galaxy, as listed in Table 1. We label these ‘nuclear sources’, by virtue of their position only. Each of these sources was then compared with the CHANG-ES galaxies for which there was evidence of an AGN, as given in table 10 of Irwin et al. (2019b). That paper identified 18 AGN candidates using a variety of criteria and using B/L images only, plus the B/L to C/C spectral index at the galaxy core. Using PYBDSF extraction, we now find three new galaxies for which there are coincident *L*-band and *C*-band sources right at the nucleus and whose deconvolved major axis size is less than 15 arcsec ( $5\times$  the spatial resolution). The size limit was imposed in order to exclude any galaxy whose emission simply

**Table 6.** Cross-matched radio and X-ray sources.

Galaxy	ID_LCX <sup>a</sup>	ID_L <sup>b</sup>	ID_C <sup>b</sup>	ID_X <sup>c</sup>	RA_avg <sup>d</sup> (deg)	Dec_avg <sup>d</sup> (deg)	alpha_LC <sup>e</sup>	Dist_to_centre <sup>f</sup> (arcmin)	Angle_from_ x = 0 <sup>g</sup> (deg)	Position <sup>g</sup>
NGC 660	0	11	2	36	25.8189	13.6334	-0.738	3.5	191.5	
NGC 660	1	20	13	19	25.7597	13.6458	0.313	0.05	68.7	Nuclear
NGC 660	2	27	15	41	25.7449	13.6824	0.572	2.41	68.5	
NGC 891	0	18	4	92	35.707	42.3332	-0.050	3.15	197.7	
NGC 891	1	22	10	97	35.6908	42.3803	-1.196	2.95	140.7	
NGC 891	2	30	23	137	35.6623	42.3983	-0.835	3.13	109	On-disc
NGC 891	3	35	26	87	35.6358	42.4389	0.382	5.39	88.4	
NGC 891	4	39	30	82	35.6129	42.3934	-0.960	2.91	66.2	
NGC 891	5	43	33	50	35.6018	42.3606	-0.821	1.8	22.6	
NGC 891	6	52	36	69	35.565	42.323	-0.816	3.64	334.6	
NGC 891	7	57	39	133	35.5519	42.3246	-1.156	4.14	339.2	
NGC 2683	0	41	11	1	133.1721	32.42178	-0.058	0.01	22.1	Nuclear
NGC 2992	0	18	2	8	146.4831	-14.3539	-0.680	3.76	206	
NGC 2992	1	22	4	4	146.4515	-14.3682	-0.679	2.94	238.6	
NGC 2992	2	32	12	13	146.4246	-14.3266	-0.685	0.02	332.8	Nuclear
NGC 2992	3	32	12	14	146.4247	-14.3264	-0.685	0.02	332.8	Nuclear
NGC 2992	4	40	19	40	146.3932	-14.2766	0.511	3.51	58.3	
NGC 2992	5	41	22	35	146.3905	-14.2574	-0.673	4.6	64.1	
NGC 3079	0	9	0	108	150.6108	55.7318	0.116	5.11	142.4	
NGC 3079	1	21	22	94	150.4293	55.7419	0.441	4.26	60.8	
NGC 3432	0	20	11	3	163.1411	36.6043	-0.846	1.03	237.7	
NGC 3448	0	31	16	23	163.7081	54.3669	-0.954	4.01	112.8	
NGC 3556	0	26	17	22	167.9123	55.684	-0.557	1.27	152.3	On-disc
NGC 3556	1	28	20	25	167.9089	55.7101	-0.703	2.38	115	
NGC 3556	2	31	24	24	167.893	55.6969	-0.883	1.45	109	
NGC 3556	3	36	33	62	167.8531	55.6782	-0.189	0.91	15.5	On-disc
NGC 3556	4	43	40	27	167.8242	55.6712	-0.384	1.86	354.6	On-disc
NGC 3556	5	45	42	41	167.819	55.6932	0.156	2.33	29.5	
NGC 3628	0	17	20	25	170.1042	13.6078	-0.692	2.22	150.8	
NGC 3628	1	37	47	49	170.0118	13.5978	-0.275	3.48	8.00	On-disc
NGC 3877	0	54	8	75	176.568	47.4783	-0.734	1.75	214.5	
NGC 3877	1	71	21	66	176.5362	47.5792	-0.844	5.07	91.7	
NGC 3877	2	73	23	25	176.5322	47.4945	-0.092	0.02	310.7	Nuclear
NGC 3877	3	81	32	1	176.5187	47.4447	-0.657	3.05	280.6	
NGC 4013	0	25	2	95	179.7041	43.9498	-0.773	3.18	176.4	
NGC 4013	1	32	6	1	179.6607	43.9183	0.192	2.13	232.7	
NGC 4013	2	62	22	91	179.5331	43.997	-0.924	5.19	35.7	
NGC 4096	0	17	2	15	181.5938	47.4947	-0.049	3.74	164.9	
NGC 4157	0	34	6	7	182.8259	50.4478	-0.995	3.12	225.2	
NGC 4157	1	58	23	17	182.7107	50.4625	-1.048	2.57	328.8	On-disc
NGC 4192	0	24	8	18	183.4844	14.9387	-0.827	3.01	130	
NGC 4192	1	33	22	3	183.4512	14.9005	-0.672	0.01	96.8	Nuclear
NGC 4192	2	41	36	13	183.4192	14.8915	0.065	1.93	344.1	
NGC 4217	0	64	26	53	183.8763	47.1028	-0.819	3.56	10.6	
NGC 4244	0	34	25	9	184.4174	37.7971	-0.723	2.16	196.2	
NGC 4244	1	54	52	3	184.3648	37.7369	-0.413	4.24	275.6	
NGC 4302	0	40	4	8	185.4427	14.6159	0.505	1.39	130.9	
NGC 4302	1	56	25	3	185.3865	14.6062	-0.383	2.4	11.2	Nucleus of N 4298
NGC 4302	2	58	26	24	185.3823	14.6351	-0.855	3.41	40.3	
NGC 4388	0	5	0	50	186.5368	12.7262		6.62	144.5	
NGC 4388	1	12	6	36	186.4859	12.6053	-1.132	4.17	234.8	

Downloaded from https://academic.oup.com/mnras/article/512/4/5755/6549937 by CNRS - ISTO user on 22 March 2023

Table 6 – *continued*

Galaxy	ID_LCX <sup>a</sup>	ID_L <sup>b</sup>	ID_C <sup>b</sup>	ID_X <sup>c</sup>	RA_avg <sup>d</sup> (deg)	Dec_avg <sup>d</sup> (deg)	alpha_LCX <sup>e</sup>	Dist_to_centre <sup>f</sup> (arcmin)	Angle_from_ x = 0 <sup>g</sup> (deg)	Position <sup>g</sup>
NGC 4388	2	20	15	34	186.4529	12.7403	−0.827	4.72	95.8	
NGC 4388	3	21	17	3	186.4472	12.6228	−1.041	2.36	266.5	
NGC 4438	0	8	2	12	186.9883	13.0425	−0.522	3.47	144.5	
NGC 4438	1	9	5	49	186.9768	13.0216	−0.299	2.28	160.3	
NGC 4438	2	15	18	7	186.9401	13.0089	−0.756	0.01	162.2	Nuclear
NGC 4438	3	16	19	21	186.934	12.976	−0.313	2.00	280	On-disc
NGC 4438	4	18	24	29	186.9188	13.079	−0.522	4.39	73.6	Nucleus of N 4435
NGC 4565	0	66	55	32	189.0453	26.0133	−0.334	2.71	34.7	On-disc
NGC 4594	0	22	18	202	190.0309	−11.6672	−0.703	3.28	233.8	
NGC 4594	1	22	18	307	190.0303	−11.6672	−0.703	3.28	233.8	
NGC 4594	2	27	25	34	190.0151	−11.6275	−1.073	1.06	194.5	On-disc
NGC 4594	3	30	29	52	189.9976	−11.6231	0.427	0.00	234.9	Nuclear
NGC 4594	4	46	61	233	189.930	−11.6124	−0.140	4.03	9.1	
NGC 4631	0	7	0	59	190.6467	32.5612	−0.946	5.85	168.4	On-disc
NGC 4631	1	35	45	20	190.5218	32.6097	−0.687	4.13	81.9	
NGC 4631	2	49	76	6	190.4615	32.5313	−0.819	3.69	350.4	On-disc
NGC 5084	0	33	15	8	200.0702	−21.8273	−0.147	0.03	38.3	Nuclear
NGC 5297	0	57	32	0	206.5634	43.8389	−0.865	2.52	307.3	
NGC 5775	0	55	12	50	223.4737	3.6065	0.411	3.85	75.3	
NGC 5775	1	56	13	18	223.4714	3.5486	−0.991	1.14	12.5	
NGC 5775	2	60	16	66	223.4622	3.5234	−0.627	2.09	322.7	
NGC 5907	0	9	0	69	229.1461	56.3139	−0.183	5.79	188.7	
NGC 5907	1	21	5	8	229.067	56.2838	0.656	4.11	221	
NGC 5907	2	82	67	70	228.8484	56.3201	−0.652	4.22	352.9	

Notes. This table is available in the file, Table\_6\_LCX\_cross\_matched.csv.

<sup>a</sup>Unique identifier for the cross-matched *L*-band, *C*-band, and X-ray sources, starting at zero.

<sup>b</sup>Unique identifiers for the *L*-band and *C*-band sources, equivalent to Source\_id for the respective radio bands in Appendices B and C.

<sup>c</sup>Unique identifier for the X-ray sources, equivalent to ID in Appendix D.

<sup>d</sup>Average of the positions in the three bands. Radio positions match to within 1 arcsec and X-ray positions match to within 3 delta\_x, where delta\_x is given in the tables of Appendix D and is typically  $\approx 0.5$  arcsec.

<sup>e</sup>Radio spectral index between *L* and *C* bands, as described in Appendix C and given in Column 9 of Table C1.

<sup>f</sup>Average distance to map centre and angle, CCW, from the direction,  $x = 0$  (due west) as described in Appendix C.

<sup>g</sup>If Dist\_to\_center is less than 3.0 arcsec, the source is flagged as ‘nuclear’. If the source falls within the optical disc, in projection, as delineated by the green ellipses in the Figures of Appendix E, then it is denoted, ‘on-disc’.

peaks towards the nucleus in a more gradual, smooth fashion.<sup>5</sup> These new nuclear sources are listed in Table 5.

The new, tabulated nuclear source galaxies have not previously been identified as AGN candidates, to our knowledge. However, recently, Yang et al. (2022) have independently argued that the galaxy, NGC 5792, harbours an AGN. Moreover, NGC 3877 appears to be variable, which is a strong argument for the presence of an AGN. Ulvestad & Ho (2002), in a search for weak AGNs in galaxies at *C* band, did *not* detect a nuclear source in NGC 3877 to an rms limit of  $70 \mu\text{Jy beam}^{-1}$  with a resolution of approximately 1 arcsec. We measure 2 mJy for the core of this galaxy (Table 5) which is  $\approx 30\sigma$  of the Ulvestad & Ho noise. If the flux of the nuclear source had been constant, Ulvestad & Ho (2002) would have easily detected this source. Therefore, between the time of the Ulvestad & Ho observations (1999 October 28) and the CHANG-ES observations (2012 April 4th), the core of NGC 3877 has brightened at *C* band by at

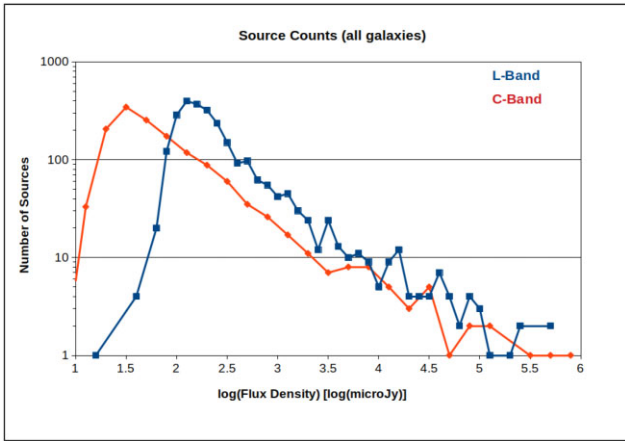
least a factor of 6, if we take  $5\sigma$  as a detection limit. The CHANG-ES core spectral power is  $L_{C\text{-band}} = 7.5 \times 10^{19}$  W/Hz. The spectral index of the NGC 3877 core is also very flat ( $\alpha_{LC} = -0.092$ , Table 6) which is typical of an AGN. Although the CHANG-ES *L*-band and *C*-band observations are not at the same time, only 74 d separate the two observations, making it unlikely that the spectral index has changed significantly.

These new nuclear sources warrant further investigation to confirm their nature. Note that the sources are resolved, suggesting that if AGNs are indeed embedded in these galaxy nuclei, other more extended emission is also present. In Section 3.4.1, we indicate which nuclear sources also show X-ray emission. These may be ‘low-luminosity AGNs’ (LLAGNs). For more discussion of LLAGNs, see Irwin et al. (2019b).

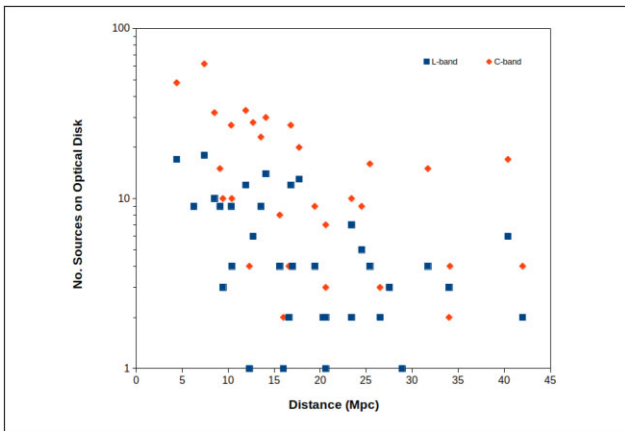
### 3.3 X-ray sources

We present a catalogue of our detected X-ray sources in Appendix D. The count rates are calculated in the 0.3–1.2 keV (Soft, Sft), 1.2–

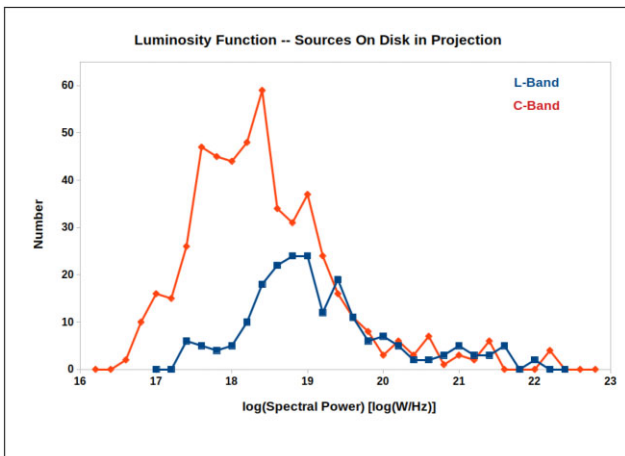
<sup>5</sup>An example is NGC 3044.



**Figure 2.** Number of detected radio sources at  $L$  band and  $C$  band. All galaxies are included. At  $L$  band and  $C$  band, the flux density divisions are separated by 0.1 and 0.2 dex, respectively. The median flux density at  $L$  band is  $163 \mu\text{Jy}$  (2.2 in the log), and at  $C$  band, it is  $39.2 \mu\text{Jy}$  (1.6 in the log). All values are primary-beam-corrected.



**Figure 3.** Number of detected radio sources on the galaxy disc as a function of galaxy distance.



**Figure 4.** Number of detected radio sources on the galaxy disc in projection, as a function of spectral power at  $L$  band (blue) and  $C$  band (red). The  $x$ -axis values were computed via  $L_\nu = 4\pi D^2 F_\nu$ , where  $F_\nu$  corresponds to Total\_Flux (Column 7), corrected for the PB (Column 35) in Table B1, and  $D$  is the distance. The median uncertainty in power is 19 per cent at  $L$  band and 15 per cent at  $C$  band. The bin width is 0.2 dex.

2 keV (Medium, Med), 2–7 keV (Hard, Hrd), and 0.3–7 keV (Broad, Brd) bands, while the hardness ratios, defined as  $\text{HR1} = (\text{Med} - \text{Sft}) / (\text{Med} + \text{Sft})$  and  $\text{HR2} = (\text{Hrd} - \text{Med}) / (\text{Hrd} + \text{Med})$ , are listed for sources with broad counts greater than 10. X-ray sources are marked with blue crosses in the figures of Appendix E.

### 3.4 Cross-matching of radio and X-ray sources

We cross-match the positions of the radio sources that have already been cross-matched in the two radio bands, with the X-ray sources.  $L$ -band and  $C$ -band cross-matches are within 1 arcsec, as described in Section 3.2. For the X-ray sources, the cross-match uses a matching radius of  $3\times$  the uncertainty radius of the X-ray sources (3 times  $\text{delta}_x$ , as given in the table of Appendix D). A typical value of  $\text{delta}_x$  is  $\approx 0.5$  arcsec.

We present the results in their entirety in Table 6 and also provide this table in downloadable csv format associated with this paper, called Table\_6\_LCX\_cross\_matched.csv.

This table gives the identification numbers of the  $L$ -band,  $C$ -band, and X-ray sources, as well as assigns a unique number for all sources for which cross-matches occurred. The average RA and Dec of the sources, and the spectral index between  $L$  band and  $C$  band are specified. The distance from the map centre and angle from  $x = 0$  (due west, counterclockwise) are also listed to aid in identifying the sources on the maps of Appendix E. Note that NGC 4666 is missing because there were no successful cross-matches for that galaxy.

#### 3.4.1 Nuclear sources – all bands

Sources in Table 6 were flagged as ‘nuclear’ if the average distance of the cross-matched  $L$ -band,  $C$ -band, and X-ray source is within 3.0 arcsec of the galaxy centre (approximately the radio synthesized beam’s FWHM). This tolerance is slightly larger than the 1.5 arcsec radius used in Section 3.2 for the nuclear sources based on radio data only. When the X-ray sources are included, somewhat higher positional uncertainties are tolerated.

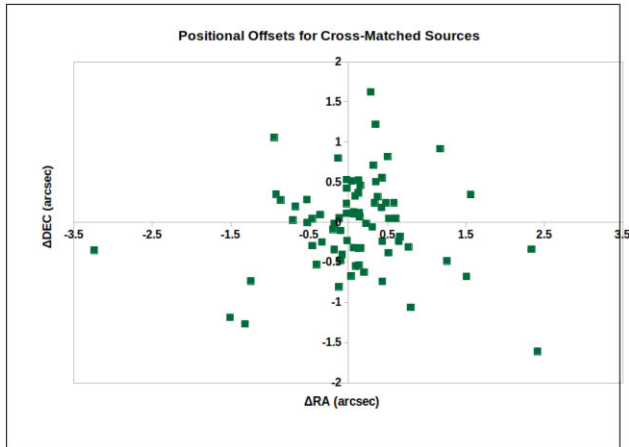
With only two exceptions, each of the nuclear sources has been listed previously as an AGN candidate in Irwin et al. (2019b). The two nuclear sources that were not previously identified as AGN candidates are NGC 4192 and NGC 3877, both of which were identified as ‘nuclear’ in Table 5 from radio data alone.<sup>6</sup> As indicated in Section 3.2, this is the first evidence for a compact nuclear source in these two galaxies.

#### 3.4.2 On-disc versus background sources

In Table 6, we also list whether or not the source falls on the disc. As before, the interpretation of a source being ‘on-disc’ simply means that the source is within the green ellipse as displayed in the figures of Appendix E and listed in Table 1. That is, the source is ‘in the disc’ in projection.

It is clear that most cross-matched sources are likely background sources in the field. Of all 75 sources, only 19 fall on the discs of the galaxies.

<sup>6</sup>The third source in that table, NGC 5792, had no X-ray data and so does not appear in Table 6.



**Figure 5.** Plot of the offsets in RA and Dec between the average radio position and the X-ray position for all cross-matched sources from Table 6.

#### 4 STATISTICS AND QUALITY CHECKS

As indicated in Section 3.2, the radio sources at the two bands are taken to be cross-matched if their positions agree to within 1 arcsec in RA and Dec. However, agreement between radio and the X-ray sources depends on the X-ray error,  $\delta x$ , whose value is given in Table D1 and related downloadable files. The median  $\delta x$  for all X-ray sources is 0.48 arcsec and the average is 0.75 arcsec. By design, all cross-matched sources have positional agreement within  $3\delta x$ . Consequently, positive matches are typically within  $\sim 1.5$  arcsec, although the value varies with individual  $\delta x$ . The offsets are visualized in Fig. 5, where we have plotted the offsets between the average radio position and the X-ray position. The rms values are  $\Delta RA = 0.78$  arcsec and  $\Delta Dec = 0.56$  arcsec. The median  $|\Delta RA|$  and  $|\Delta Dec|$  are 0.35 and 0.33 arcsec, respectively.

The number of successfully cross-matched radio/X-ray sources is not large for any given galaxy (Table 6). However, there is some possibility that some matches could be chance coincidences rather than physical associations.

To test this, we created fields of artificial X-ray sources that are randomly scattered over the cross-match field for each galaxy. We first count the number of detected X-ray sources for each galaxy from the catalogue of X-ray sources in Appendix D. The number of detected X-ray sources are listed in Table 7, first the total number of sources, then the number of sources in the cross-match field (i.e. the 12 arcmin square field, Table 2) and finally, the number of detected sources that are on the galaxy disc in projection, i.e. within the green ellipse as drawn in Appendix E. The locations of the detected sources were determined by calculation using spherical coordinates as outlined in Appendix B.

We next generated the same number of artificial X-ray sources as actually occur in the cross-match region (e.g. 57 for NGC 660) and placed them randomly within this region. We then search for cross-matches between the radio sources and the artificial X-ray sources within a cross-match radius of  $3 \times$  the average of RA and Dec rms offsets shown in Fig. 5, i.e. 2.0 arcsec. Because all radii are the same for all artificial sources, we are able to use the Aladin Sky Atlas<sup>7</sup> for this cross-matching. Any matches are labelled as ‘False Matches’ in Table 7. The result for the cross-match fields show that only one

<sup>7</sup><https://aladin.u-strasbg.fr/>

chance alignment was found (for NGC 5907) when the artificial X-ray sources are sprinkled randomly over the field.

The above analysis assumes that all sources are randomly placed over the cross-match field area. However, the radio sources cluster more centrally because of the PB pattern weighting. We therefore repeated the above analysis for the on-disc regions by randomly distributing artificial X-ray sources over only on the disc, as outlined above. We ensure that the number of artificial X-ray sources is the same as the number of actual X-ray sources detected. The results are listed in the last column of Table 7.

It is clear that any possible false detections in the sample are very small and therefore the cross-matches that are listed in Table 6 have a high probability of being physically associated with each other. The above randomization exercises are meant to be a useful guide and result from a single randomization exercise for the two cases denoted above. Therefore, follow-up observations on cross-matched sources may be required to ensure that chance matches have not occurred for any specific source. When examining the figures of Appendix E, it is helpful to remember that the symbol sizes are larger than the error bars on the source positions.

#### 5 DISCUSSION AND SUGGESTIONS FOR FOLLOW-UP STUDIES

A detailed analysis of the sources in our catalogues remains for follow-up studies. However, a brief preliminary analysis was carried out to better understand the sources in our sample.

Fig. 6 shows a plot of the spectral power of the sum of all sources on the disc (in projection) as a function of star formation rate (SFR), as given in Vargas et al. (2019). It is apparent that there is no convincing trend from these data. Similarly there is no convincing trend for the number of sources as a function of SFR (not shown). Given that the total flux density of all compact sources in any given galaxy (except for AGNs) represents only a minor fraction of the total galaxy flux (Table 4), this lack of correlation is perhaps not surprising. The total flux reflects an integration of previous star formation activity over time, whereas the compact sources are more likely to represent current SF. The current work, then, may be a starting point for follow-up studies of active star-forming regions in these galaxies. A study of compact source flux over the disc (i.e. per  $\text{kpc}^2$  of disc area) in comparison with various measures of SFR over equivalent disc area could help in investigating the scale over which these SFR-measures apply.

We then focused only on the radio+X-ray cross-correlated sources of Table 6. Each of these sources were loaded into the Aladin Sky Atlas over an optical representation of each galaxy. All objects from the Set of Identifications, Measurements, and Bibliography for Astronomical Data (Simbad, Wenger et al. 2000) were then loaded for comparison. In addition, sources from the *Gaia* satellite (Gaia Collaboration 2016) were also loaded, in the event that stars might also be represented in the catalogues. The sources in the fields of each galaxy were then visually inspected.

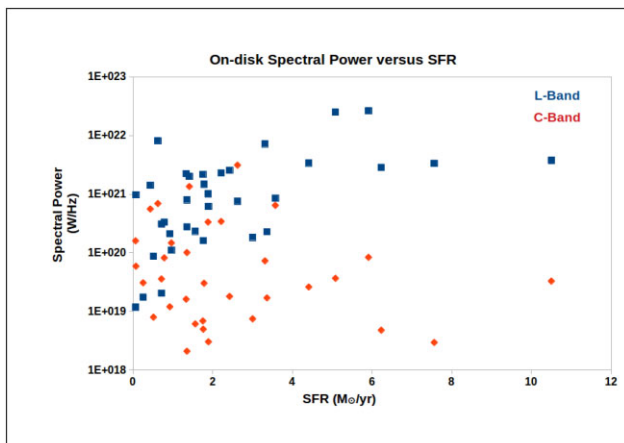
Some sources in our galaxies are previously known compact X-ray sources (e.g. Wang, Chaves & Irwin 2003; Colbert et al. 2004; Machacek, Jones & Forman 2004; Li et al. 2008). However, they have not previously been identified with compact radio sources. An example is NGC 4438 (Fig. 7), where we show two of the cross-matched radio/X-ray sources in solid magenta circles superimposed on the Sloan Digital Sky Survey Data Release 9 (SDSS9, Ahn et al. 2012) image in colour. The nuclear source (ID\_LCX = 2 in Table 6), indicative of an AGN, has been reported earlier (table 10 of Irwin et al. 2019b). The off-nuclear source, ID\_LCX = 3 for this galaxy

**Table 7.** X-ray statistics and possible false matches.

Galaxy	No. detected X-ray sources <sup>a</sup>			No. possible false matches <sup>b</sup>	
	Total	In cross-match field	On-disc	In cross-match field	On-disc
NGC 660	72	57	11	0	0
NGC 891	160	118	61	0	0
NGC 2683	53	44	15	0	0
NGC 2992	56	42	6	0	0
NGC 3079	123	78	46	0	0
NGC 3432	7	7	3	0	0
NGC 3448	31	22	13	0	0
NGC 3556	97	68	39	0	0
NGC 3628	87	74	41	0	0
NGC 3877	129	78	23	0	0
NGC 4013	101	66	21	0	0
NGC 4096	36	29	19	0	0
NGC 4157	69	45	18	0	0
NGC 4192	31	26	13	0	0
NGC 4217	78	48	19	0	0
NGC 4244	57	42	9	0	0
NGC 4302	29	22	4	0	0
NGC 4388	50	44	13	0	0
NGC 4438	58	47	22	0	0
NGC 4565	120	101	65	0	0
NGC 4594	388	301	187	0	2
NGC 4631	72	52	31	0	0
NGC 4666	34	29	17	0	0
NGC 5084	43	36	15	0	0
NGC 5297	20	17	5	0	0
NGC 5775	100	86	26	0	0
NGC 5907	97	66	44	1	0

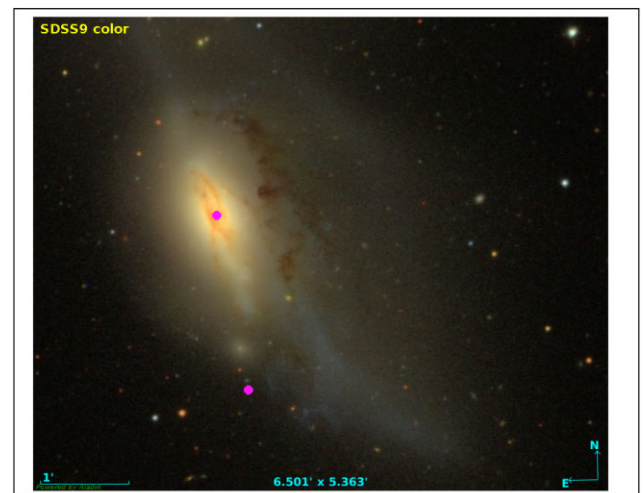
*Notes.* <sup>a</sup>Number of X-ray sources detected, as specified in Appendix D. ‘Total’ is all sources in the catalogue. ‘In Cross-match field’ specifies the number in the overlap region for cross-matching, which is the C-band field (12 arcmin  $\times$  12 arcmin) as given in Table 2. ‘On-disc’ is the number of sources within the optical disc as delineated by the green ellipses in Appendix E.

<sup>b</sup>Number of possible false-matches when artificial X-ray sources are randomly inserted ‘In Cross-match field’ and ‘On-disc’ as defined above.



**Figure 6.** Spectral power of all sources on the disc, in projection, as a function of SFR. The median uncertainty at *L* band is 19 per cent and, at *C* band, it is 15 per cent (assuming accurate distances).

(Table 6), 2 arcmin to the SSW of the nucleus, has previously been identified as an X-ray source in Machacek et al. (2004), but never before identified as a radio source. There is no Simbad source at this position. These X-ray/radio detections are particularly interesting because they suggest the possibility of energetic activity, such as jets,



**Figure 7.** SDSS9 image of the galaxy, NGC 4438, showing two sources, which are cross-matched in X-ray and both radio bands, from Table 6 in magenta. The source near the centre of the image is the nuclear source (ID.LCX = 2) and the source approximately 2 arcmin to the south is an X-ray source with a previously unknown corresponding radio source (ID.LCX = 3).



**Figure 8.** The binary star system near the galaxy, NGC 4594 (data in Table 8), is shown as the background image in colour using the Aladin Sky Atlas<sup>8</sup>. The stellar identifications from Gaia EDR3 are 3530134264552397440 (right star, our S1 in Table 8) and 3530134264552424960 (left star, our S2); the *Gaia* centres are denoted by green dots. The *Gaia* error is too small to show (less than 20 mas). The small blue and red dots with corresponding blue and red error ellipses ( $1\sigma$ ), located between the stars, denote the positions of the *L*-band and *C*-band sources, respectively. The black dots with surrounding black circles denote the positions and error circles of the two X-ray sources. These are the original positions, rather than the average of the cross-matched source positions given in Table 6. The scale showing 1 arcsec is displayed at lower left, the field of view is marked at the bottom, and the orientation is marked at lower right.

microquasars, or colliding winds. In this particular case, the source is located in the outer part of the disc galaxy, which is undergoing strong ram-pressure stripping in the Virgo cluster. This location and the lack of an optical counterpart, together with the apparent X-ray/radio association, indicate that the source may be a background blazar, although a deep optical confirmation is needed.

An unexpected result is what is likely a foreground double-star near NGC 4594. There are no Simbad sources at this location. In Fig. 8, we plot the positions of the various sources with their error ellipses, taken from the original data of Appendices B and D, rather than the average of the cross-correlated positions of Table 6. The original error ellipses are also shown, rather than the  $3\sigma$  tolerance that we used to do the radio/X-ray cross-correlations. Relevant data for the double star are given in Table 8.

The background colour image of Fig. 8, from the SDSS9, shows two stars separated by 5.4 arcsec. The green dots represent the centres from the Gaia satellite Early Data Release 3 (EDR3, Gaia Collaboration 2021) and are clearly located right at the centres of stars that are apparent in the SDSS9 image. X-ray emission is seen from the locations of both stars (black dots with circles). Radio emission is seen at *L* band (blue dot with  $1\sigma$  error ellipse) and *C* band (red dot with  $1\sigma$  error ellipse) almost midway between the stars. All sources satisfy the cross-correlation tolerances described in Section 3.4.

At the time of writing, parallax measurements are not available for the EDR3 *Gaia* objects. The *G*-band mean magnitude for S1 (right star in figure) is  $G = 20.965 \pm 0.015$  and for S2, (left star in figure) it is  $G = 21.632 \pm 0.046$ . The listed colour value for S1 is

$G_{BP} - G_{RP} = 1.075$ , and for S2 it is  $G_{BP} - G_{RP} = 0.932$ . These colours would imply stellar effective temperatures between 5000 and 6000 K (Andrae et al. 2018). However, because these stars are so faint, the  $G_{BP} - G_{RP}$  colour index cannot be used with confidence (Gaia General Enquiry, private communication). The spectral index of the radio source is  $\alpha = -0.703 \pm 0.083$ .

The two X-ray detections shown in black are ID\_X: 203 and 308 (Table 6) which are separated by 5.4 arcsec. Unfortunately, with only about 19 and 13 net counts in the 0.3–7 keV band (Table D1), the detections give little X-ray spectral information about these two X-ray sources. Nevertheless, from the count rates, we estimate their energy fluxes, which are included in Table 8. They have similar luminosities of  $\sim 1 \times 10^{28} \text{ erg s}^{-1} (D/10^2 \text{ pc})^2$ , where  $D$  is the distance to the source.

Follow-up data are clearly required. However, we note that radio emission and X-ray emission have been observed from colliding wind binary systems (CWBs; Dougherty et al. 2003; Callingham et al. 2019; Romero 2019). Further study is needed to confirm whether this system is indeed a CWB or whether there is some other explanation for this activity. It is also possible that there are other such systems in our data, which could be revealed with more thorough scrutiny.

We finally report on the discovery of new nuclear sources in two companion galaxies. NGC 4298, which is the companion galaxy to NGC 4302 has a nuclear *L*-band/*C*-band/X-ray source right at its nucleus. This source is ID\_LCX = 1 in Table 6 in the NGC 4302 field. To our knowledge, there appears to have been no previously known nuclear source in this galaxy. NGC 4435, which is the companion galaxy to NGC 4438, also has a new nuclear source, namely ID\_LCX = 4 in Table 6 in the NGC 4438 field. There appear to have been X-ray detections in the nucleus of this galaxy (e.g. Wang et al. 2016) but no radio source has previously been detected.

A NED<sup>8</sup> search for NGC 4435 resulted in little new information about the X-ray source in the literature, including Wang et al. (2016), except for the X-ray detection as 2CXO J122740.7+130447 with the net counts of  $\sim 65.6$  and a count rate of 2.5 counts/ks. We estimate the energy flux of the source as  $\sim 5 \times 10^{-14} \text{ erg s}^{-1} \text{ cm}^{-2}$  or the luminosity as  $\sim 4.0 \times 10^{38} \text{ erg s}^{-1}$  at the distance of the galaxy, assuming the same spectrum for the conversion as described in the caption to Table 8.

The catalogues that have been produced represent a wealth of data that can be probed in much more detail. We have looked briefly only at the sources that are observed in *L* band, *C* band, and the X-ray as listed in Table 6. Many more of these listed sources could be investigated in their own rights. Moreover, there are other sources that might have radio observations at only one frequency (due, for example, to signal-to-noise issues), yet a cross-correlation with the X-ray could still be very fruitful.

It could be useful to examine the number and fluxes of sources as a function of height above the plane in the galaxies. Such studies may point either to compact halo objects, or background sources which could be used to probe the foreground halo, as described in Section 1. To our knowledge, such a study has not been carried out before. An investigation of radio source number and spectral power as a function of SFR (both per unit area) could provide information on the relation between in-disc sources and SFR, as suggested earlier in this section.

In the introduction, we discussed the issue of distinguishing between H II regions and SNRs. Although most sources appear to represent SNRs, the degree to which some sources could represent

<sup>8</sup><https://ned.ipac.caltech.edu>.

**Table 8.** Double star in NGC 4594 field.

Source or band	ID <sup>a</sup>	RA <sup>b</sup> (deg)	E_RA <sup>b</sup> (arcsec)	Dec <sup>b</sup> (deg)	E_Dec <sup>b</sup> (arcsec)	Flux <sup>c</sup>	E_flux <sup>c</sup>	Comments
Gaia EDR3	S1	190.02969	2.94	−11.66722	1.57	–	–	
Gaia EDR3	S2	190.03124	19.95	−11.66707	8.86	–	–	
This work L band	22	190.03069	0.15	−11.66713	0.43	592.3	57.3	Unresolved
This work C band	17	190.03059	0.092	−11.66717	0.27	231.1	11.7	Unresolved
This work X-ray	307	190.02974	0.591	−11.66725	0.591	0.4	0.1	
This work X-ray	202	190.03128	0.534	−11.66725	0.534	0.3	0.1	

Notes. <sup>a</sup>Source identification number as in Table 6 (ID\_L, ID\_C, or ID\_X). For *Gaia*, we give our new ID number, where S1 is the *Gaia* identification number, 3530134264552397440, and S2 is the *Gaia* identification number, 3530134264552424960.

<sup>b</sup>Positions and errors as given in the tables of Appendices B and D, or the EDR3 for *Gaia*.

<sup>c</sup>Flux and the associated errors, where available. For the radio sources, these are flux densities and errors that are PB corrected, as given in Columns 5–8 of Appendix C in units of  $\mu\text{Jy}$ . A dash means that the data are not available. For the X-ray sources, the unabsorbed energy fluxes in units of  $10^{-14} \text{ erg s}^{-1} \text{ cm}^{-2}$  are crudely estimated from the count rates (Appendix D), assuming a power law spectrum with a photon index of 1.7 and a foreground absorption of  $N_{\text{H}} = 1 \times 10^{21} \text{ cm}^{-2}$ .

H II regions has yet to be explored. As an aid, we have presented H $\alpha$  maps in Appendix E which show only H II regions that are unobscured by dust. Thus the distribution of H $\alpha$  emission is not the same as seen in the radio band, but these data still provide clues as to which sources could be dominated by (or have a significant fraction of) thermal emission. Because the deconvolved sizes of the radio sources are provided in the catalogues, the size and luminosity distributions of compact sources can also be compared with known distributions for SNRs and H II regions (e.g. Lockman, Pisano & Howard 1996; Tremblin et al. 2014; Green 2019).

Most sources in this work are actually background sources that are in the field of view but not near the galaxy disc, likely AGNs, quasars, or extragalactic radio sources. Those background sources that are close to the foreground galaxy in projection, however, could provide opportunities to explore the foreground galaxy disc or halo via Faraday Rotation of the polarized emission. A simple example of such a study is given in Irwin et al. (2013b). Such studies will become more feasible with S-band (4 GHz) observations of the galaxies.

## 6 SUMMARY

We have systematically identified compact radio and X-ray sources in the CHANG-ES sample of nearby edge-on galaxies. The radio data used are from VLA observations in the B-array/L band and C-array/C band, covering all 35 CHANGES galaxies, while the X-ray data are from archival Chandra observations available for 27 galaxies in this sample. The radio detections utilized the PYBDSF algorithm which helps to isolate discrete sources amongst more general, spread-out radio emission. The radio data have  $\approx 3$  arcsec resolution. The results of these searches are in a number of catalogues, available with this manuscript, and described in Appendices B and D. Maps showing a blow-up of each galaxy and their discrete sources are presented in Appendix E; images of the entire field can also be downloaded as described in the appendix.

In the radio, we find 2507 sources at L band over all galaxies in a field size of  $16.7 \text{ arcmin} \times 16.7 \text{ arcmin}$  and 1413 sources at C band in a field size of  $12.0 \text{ arcmin} \times 12.0 \text{ arcmin}$ . The median spectral power is  $L_{L\text{-Band}} = 7.56 \times 10^{18} \text{ W/Hz}$  ( $\log L_{L\text{-band}} = 18.9$ ), and  $L_{C\text{-Band}} = 1.61 \times 10^{18} \text{ W/Hz}$  ( $\log L_{C\text{-band}} = 18.2$ ), both largely consistent with SNRs. The median spectral index is  $\alpha_m = -0.669 \pm 0.18$ , clearly non-thermal and also consistent with SNRs.

We have cross-correlated the radio data between L band and C band over the smaller  $12 \text{ arcmin}$  field of C-band. The cross-matched L/C sources are given in Appendix C. We also cross-correlated the

(cross-correlated) radio sources with the X-ray sources. The results are presented Table 6 and are available for download as described in the footnotes to that table. Of these sources, we find a number of previously known X-ray sources, but many were not previously known to have radio counterparts. We present only one in Fig. 7, but there are many others.

Three new nuclear sources have been identified from the radio cross-correlation: NGC 3877, NGC 4192, and NGC 5792 (Table 5). NGC 3877 and NGC 4192 also have X-ray sources right at the nucleus. When compared to previous observations, we find that NGC 3877 is also variable. As suggested in Section 3.2, follow-up data would help to confirm the nature of these apparent LLAGNs. It is interesting that, between the 18 galaxies identified to have AGNs in table 10 of Irwin et al. (2019b) and three more candidates from this paper, a total of 21 out of 35 CHANG-ES galaxies (60 per cent) appear to have AGNs. Note that the sample was *not* chosen for its AGN population, but was chosen for angular size, edge-on orientation, and observability (Irwin et al. 2012a).

In addition, we find new nuclear sources in two companion galaxies: NGC 4298 (companion to NGC 4302) and NGC 4435 (companion to NGC 4438). These nuclear sources are also listed in Table 6.

An unexpected result is what appears to be a foreground double star (Fig. 8). Both stars have associated X-ray emission, and radio emission at both L band and C band is seen in between the stars.

## ACKNOWLEDGEMENTS

The first author wishes to thank the Natural Sciences and Engineering Research Council of Canada for a Discovery Grant. We also thank an anonymous referee for valuable comments. This research has made use of the NASA/IPAC Extragalactic Database (NED), which is funded by the National Aeronautics and Space Administration and operated by the California Institute of Technology. This research has used the Karl G. Jansky Very Large Array operated by the National Radio Astronomy Observatory (NRAO). NRAO is a facility of the National Science Foundation operated under cooperative agreement by Associated Universities, Inc. This research has made use of the ‘Aladin Sky Atlas’ developed at CDS, Strasbourg Observatory, France, and the software provided by the Chandra X-ray centre (CXC) in the application packages CIAO and SHERPA, as well as data obtained from the Chandra Data Archive and from the European Space Agency (ESA) mission *Gaia* (<https://www.cosmos.esa.int/gaia>), processed by the *Gaia* Data Processing and Analysis



Consortium (DPAC, <https://www.cosmos.esa.int/web/gaia/dpac/consortium>). Funding for the DPAC has been provided by national institutions, in particular the institutions participating in the *Gaia* Multilateral Agreement.

Facility keywords: VLA and CXO; Data set identifiers (Chandra OBSID): 15333, 14376, 2038, 1972, 11310, 2883, 797, 20994, 15587, 19297, 20947, 767, 19390, 8042, 4018, 20995, 1633, 4613, 7091, 768, 4738, 3950, 12173, 18352, 794, 19360, 952, 942, 404, 19370, 4010, 11311, 2025, 4013, 19392, 1586, 2940, 1636, 2039, 4739, 19397, 407, 12987, 3956, 395, 19345, 12291, 9532, 14391, 19307, 1971, 7103, 1619, 9533, 20830.

## DATA AVAILABILITY

The data underlying this research are available at <https://queensu.ca/changes> and in the online supplementary material accompanying this article.

## REFERENCES

- Andrae R. et al., 2018, *A&A*, 616, A8  
 Bell A. R., Schure K. M., Reville B., 2011, *MNRAS*, 418, 1208  
 Bhatnagar S., Rau U., Golap K., 2013, *ApJ*, 770, 91  
 Callingham J. R., Tuthill P. G., Pope B. J. S., Williams P. M., Crowther P. A., Edwards M., Norris B., Kedziora-Chudczer L., 2019, *Nat. Astron.*, 3, 82  
 Colbert E. J. M., Heckman T. M., Ptak A. F., Strickland D. K., Weaver K. A., 2004, *ApJ*, 602, 231  
 Collins J. A., Rand R. J., Duric N., Walterbos R. A. M., 2000, *ApJ*, 536, 645  
 Condon J. J., 1997, *Astron. Soc. Pac.*, 109, 166  
 Dale D. A. et al., 2009, *ApJ*, 703, 517  
 de Vaucouleurs G., de Vaucouleurs A., Corwin Herold G. J., Buta R. J., Paturel G., Fouque P., 1991, *Third Reference Catalogue of Bright Galaxies*. Springer, New York, NY, USA  
 Dougherty S. M., Pittard J. M., Kasian L., Coker R. F., Williams P. M., Lloyd H. M., 2003, *A&A*, 409, 217  
 Feigelson E. D., Broos P., Gaffney James A. I., Garmire G., Hillenbrand L. A., Pravdo S. H., Townsley L., Tsuboi Y., 2002, *ApJ*, 574, 258  
 Fruscione A. et al., 2006, in Silva D. R., Doxsey R. E., eds, *Proc. SPIE Conf. Ser. Vol. 6270, Observatory Operations: Strategies, Processes, and Systems*. SPIE, Bellingham, p. 62701V  
 Gaia Collaboration, 2016, *A&A*, 595, A1  
 Gaia Collaboration, 2021, *A&A*, 649, A1  
 Garmire G. P., Bautz M. W., Ford P. G., Nousek J. A., Ricker George R. J., 2003, in Truemper J. E., Tananbaum H. D., eds, *Proc. SPIE Conf. Ser. Vol. 4851, X-Ray and Gamma-Ray Telescopes and Instruments for Astronomy*. SPIE, Bellingham, p. 28  
 Green D. A., 2019, *J. Astrophys. Astron.*, 40, 36  
 Hale C. et al., 2018, *A&A*, 622, 24  
 Hunt L. K., Hirashita H., 2009, *A&A*, 507, 1327  
 Irwin J. et al., 2012a, *AJ*, 144, 43  
 Irwin J. et al., 2012b, *AJ*, 144, 44  
 Irwin J. et al., 2013a, *AJ*, 146, 18  
 Irwin J. et al., 2013b, *AJ*, 146, 164  
 Irwin J. et al., 2019a, *Galaxies*, 7, 42  
 Irwin J. et al., 2019b, *AJ*, 158, 21  
 Kenney J. D. P., Tal T., Crowl H. H., Feldmeier J., Jacoby G. H., 2008, *ApJ*, 687, L69  
 Kennicutt Robert C. J. et al., 2003, *PASP*, 115, 928  
 Kennicutt Robert C. J., Edgar B. K., Hodge P. W., 1989, *ApJ*, 337, 761  
 Krause M. et al., 2020, *A&A*, 639, A112  
 Lähteenmäki A., 2016, *Galaxies*, 4, 49  
 Li J.-T., Li Z., Wang Q. D., Irwin J. A., Rossa J., 2008, *MNRAS*, 390, 59  
 Li J.-T., Wang Q. D., 2013, *MNRAS*, 428, 2085  
 Lockman F. J., Pisano D. J., Howard G. J., 1996, *ApJ*, 472, 173  
 Long K. S., 2017, *Galactic and Extragalactic Samples of Supernova Remnants: How They Are Identified and What They Tell Us*. Springer International Publishing, Cham, Switzerland, p. 2005  
 Machacek M. E., Jones C., Forman W. R., 2004, *ApJ*, 610, 183  
 Maddox L. A., Cowan J. J., Kilgard R. E., Lacey C. K., Prestwich A. H., Stockdale C. J., Wolfing E., 2006, *AJ*, 132, 310  
 Mascoop J. L., Anderson L. D., Wenger T. V., Makai Z., Armentrout W. P., Balser D. S., Bania T. M., 2021, *ApJ*, 910, 159  
 Mohan N., Rafferty D., 2015, *Astrophysics Source Code Library*, record ascl:1502.007  
 Muxlow T. W. B., Pedlar A., Wilkinson P. N., Axon D. J., Sanders E. M., de Bruyn A. G., 1994, *MNRAS*, 266, 455  
 Pannuti T. G., Schlegel E. M., Lacey C. K., 2007, *AJ*, 133, 1361  
 Patterson M., 2012, *Properties of Star Formation and the Interstellar Medium in Galaxy Outskirts*. ProQuest Dissertations Publishing  
 Perley R. A., Butler B. J., 2013, *ApJS*, 204, 19  
 Perley R., 2016, *Jansky Very Large Array Primary Beam Characteristics*  
 Perlman E. S. et al., 2020, *Galaxies*, 8, 71  
 Rahman M., Murray N., 2010, *ApJ*, 719, 1104  
 Rand R. J., 1996, *ApJ*, 462, 712  
 Romero G. E., 2019, *Rendiconti Lincei. Scienze Fisiche e Naturali*, 30, 115  
 Sabalick N. S., Abraham Z., 1991, in Haynes R., Milne D., eds, *International Astronomical Union. Symposium no. 148*. Kluwer Academic Publishers, Dordrecht, p. 230  
 Shimwell T. W. et al., 2019, *A&A*, 622, A1  
 Skrutskie M. F. et al., 2006, *AJ*, 131, 1163  
 Tremblin P. et al., 2014, *A&A*, 568, A4  
 Ulvestad J. S., Ho L. C., 2002, *ApJ*, 581, 925  
 Urošević D., 2014, *Ap&SS*, 354, 541  
 van Weeren R. J. et al., 2014, *ApJ*, 793, 82  
 Vargas C. J., Walterbos R. A. M., Rand R. J., Stil J., Krause M., Li J.-T., Irwin J., Dettmar R.-J., 2019, *ApJ*, 881, 26  
 Wang Q. D., 2012, in Tuffs R. J., Popescu C. C., eds, *The Spectral Energy Distribution of Galaxies - SED 2011*, Vol. 284. Cambridge University Press, Cambridge, UK, p. 183  
 Wang Q. D., Chaves T., Irwin J. A., 2003, *ApJ*, 598, 969  
 Wang S., Liu J., Qiu Y., Bai Y., Yang H., Guo J., Zhang P., 2016, *ApJS*, 224, 40  
 Weisskopf M. C., Tananbaum H. D., Van Speybroeck L. P., O'Dell S. L., 2000, in Truemper J. E., Aschenbach B., eds, *Proc. SPIE Conf. Ser. Vol. 4012, X-Ray Optics, Instruments, and Missions III*. SPIE, Bellingham, p. 2  
 Wenger M. et al., 2000, *A&AS*, 143, 9  
 Wiegert T. et al., 2015, *AJ*, 150, 81  
 Williams W. L. et al., 2016, *MNRAS*, 460, 28  
 Yang Y. et al., 2022, *ApJ*, 927, 4  
 Yew M. et al., 2018, *Publ. Astron. Soc. Aust.*, 35, e015

## SUPPORTING INFORMATION

Supplementary data are available at [MNRAS](https://www.mnras.org) online.

**APPENDIX A:** PYBDSF setup and testing

**APPENDIX B:** Description of radio source catalogues

**APPENDIX C:** Description of cross-matched *L*-Band and *C*-band radio catalogue

**APPENDIX D:** Description of X-Ray source catalogue

**APPENDIX E:** Images of changes galaxies showing overlays of detected sources

Please note: Oxford University Press is not responsible for the content or functionality of any supporting materials supplied by the authors. Any queries (other than missing material) should be directed to the corresponding author for the article.

This paper has been typeset from a  $\text{\TeX}/\text{\LaTeX}$  file prepared by the author.