



**HAL**  
open science

## **GBA variants in REM sleep behavior disorder: A multicenter study.**

Lynne Krohn, Jennifer A. Ruskey, Uladzislau Rudakou, Etienne Leveille, Farnaz Asayesh, Michele T.M. Hu, Isabelle Arnulf, Yves Dauvilliers, Birgitte Högl, Ambra Stefani, et al.

► **To cite this version:**

Lynne Krohn, Jennifer A. Ruskey, Uladzislau Rudakou, Etienne Leveille, Farnaz Asayesh, et al.. GBA variants in REM sleep behavior disorder: A multicenter study.. *Neurology*, 2020, 95 (8), pp.e1008-e1016. 10.1212/WNL.0000000000010042 . hal-03609051

**HAL Id: hal-03609051**

**<https://hal.science/hal-03609051>**

Submitted on 15 Mar 2022

**HAL** is a multi-disciplinary open access archive for the deposit and dissemination of scientific research documents, whether they are published or not. The documents may come from teaching and research institutions in France or abroad, or from public or private research centers.

L'archive ouverte pluridisciplinaire **HAL**, est destinée au dépôt et à la diffusion de documents scientifiques de niveau recherche, publiés ou non, émanant des établissements d'enseignement et de recherche français ou étrangers, des laboratoires publics ou privés.



Distributed under a Creative Commons Attribution 4.0 International License

# GBA variants in REM sleep behavior disorder

## A multicenter study

Lynne Krohn, MSc, Jennifer A. Ruskey, MSc, Uladzislau Rudakou, BSc, Etienne Leveille, Farnaz Asayesh, MSc, Michele T.M. Hu, MBBS, FRCP, PhD, Isabelle Arnulf, MD, PhD, Yves Dauvilliers, MD, PhD, Birgit Högl, MD, Ambra Stefani, MD, Christelle Charley Monaca, MD, PhD, Beatriz Abril, MD, Giuseppe Plazzi, MD, Elena Antelmi, MD, PhD, Luigi Ferini-Strambi, MD, Anna Heidebreder, MD, Bradley F. Boeve, MD, Alberto J. Espay, MD, MSc, Valérie Cochen De Cock, MD, PhD, Brit Mollenhauer, MD, Friederike Sixel-Döring, MD, Claudia Trenkwalder, MD, Karel Sonka, MD, David Kemlink, MD, PhD, Michela Figorilli, MD, PhD, Monica Puligheddu, MD, PhD, Femke Dijkstra, MD, Mineke Viaene, MD, PhD, Wolfgang Oertel, MD, Marco Toffoli, MD, Gian Luigi Gigli, MD, Mariarosaria Valente, MD, Jean-François Gagnon, PhD, Alex Desautels, MD, PhD, Jacques Y. Montplaisir, MD, PhD, Ronald B. Postuma, MD, MSc, Guy A. Rouleau, MD, PhD, FRCPC, and Ziv Gan-Or, MD, PhD

### Correspondence

Dr. Gan-Or  
ziv.gan-or@mcgill.ca

*Neurology*® 2020;95:e1008-e1016. doi:10.1212/WNL.000000000010042

## Abstract

### Objective

To study the role of *GBA* variants in the risk for isolated REM sleep behavior disorder (iRBD) and conversion to overt neurodegeneration.

### Methods

A total of 4,147 individuals were included: 1,061 patients with iRBD and 3,086 controls. *GBA* was fully sequenced using molecular inversion probes and Sanger sequencing. We analyzed the effects of *GBA* variants on the risk of iRBD, age at onset (AAO), and conversion rates.

### Results

*GBA* variants were found in 9.5% of patients with iRBD compared to 4.1% of controls (odds ratio, 2.45; 95% confidence interval [CI], 1.87–3.22;  $p = 1 \times 10^{-10}$ ). The estimated OR for mild p.N370S variant carriers was 3.69 (95% CI, 1.90–7.14;  $p = 3.5 \times 10^{-5}$ ), while for severe variant carriers it was 17.55 (95% CI, 2.11–145.9;  $p = 0.0015$ ). Carriers of severe *GBA* variants had an average AAO of 52.8 years, 7–8 years earlier than those with mild variants or noncarriers ( $p = 0.029$ ). Of the *GBA* variant carriers with available data, 52.5% had converted, compared to 35.6% of noncarriers ( $p = 0.011$ ), with a trend for faster conversion among severe *GBA* variant carriers. However, the results on AAO and conversion were based on small numbers and should be interpreted with caution.

### Conclusions

*GBA* variants robustly and differentially increase the risk of iRBD. The rate of conversion to neurodegeneration is also increased and may be faster among severe *GBA* variant carriers, although confirmation will be required in larger samples. Screening for RBD in healthy carriers of *GBA* variants should be studied as a potential way to identify *GBA* variant carriers who will develop a synucleinopathy in the future.

From the Department of Human Genetics (L.K., U.R., G.A.R., Z.G.-O.), Montreal Neurological Institute (L.K., J.A.R., U.R., E.L., F.A., R.B.P., G.A.R., Z.G.-O.), and Department of Neurology and Neurosurgery (J.A.R., F.A., R.B.P., G.A.R., Z.G.-O.), McGill University, Montréal; Oxford Parkinson's Disease Centre (M.T.M.H.) and Nuffield Department of Clinical Neurosciences (M.T.M.H.), University of Oxford, UK; Sleep Disorders Unit (I.A.), Pitié Salpêtrière Hospital, Centre de Recherche de l'Institut du Cerveau et de la Moelle Epinière and Sorbonne Universities, Paris; National Reference Center for Narcolepsy, Sleep Unit (Y.D.), Department of Neurology, Gui-de-Chauliac Hospital, CHU Montpellier, University of Montpellier, Inserm U1061, France; Sleep Disorders Unit, Department of Neurology (B.H., A.S.), Medical University of Innsbruck, Austria; Department of Clinical Neurophysiology and Sleep Center (C.C.M.), University Lille North of France, CHU Lille; Sleep Disorder Unit (B.A.), Carêmeau Hospital, University Hospital of Nîmes, France; Department of Biomedical and Neuromotor Sciences (DIBINEM) (G.P., E.A.), Alma Mater Studiorum, University of Bologna; IRCCS (G.P., E.A.), Istituto delle Scienze Neurologiche, Bologna; Department of Neurological Sciences (L.F.-S.), Università Vita-Salute San Raffaele, Milan, Italy; Department of Neurology with Institute of Translational Neurology (A.H.), University of Muenster, Germany; Department of Neurology (B.F.B.), Mayo Clinic, Rochester, MN; UC Gardner Neuroscience Institute and Gardner Family Center for Parkinson's Disease and Movement Disorders (A.J.E.), Cincinnati, OH; Sleep and Neurology Unit (V.C.D.C.), Beau Soleil Clinic, Montpellier; EuroMov (V.C.D.C.), University of Montpellier, France; Paracelsus-Elena-Klinik (B.M., F.S.-D., C.T.), Kassel; Department of Neurology (B.M., C.T.), University Medical Centre Goettingen; Department of Neurology (F.S.-D., W.O.), Philipps University, Marburg, Germany; Department of Neurology and Centre of Clinical Neuroscience (K.S., D.K.), Charles University, First Faculty of Medicine and General University Hospital, Prague, Czech Republic; Department of Medical Sciences and Public Health, Sleep Disorder Research Center (M.F., M.P.), University of Cagliari, Italy; Laboratory for Sleep Disorders (F.D., M.V.) and Department of Neurology (F.D., M.V.), St. Dimpna Regional Hospital, Geel, Belgium; Department of Medicine (DAME) (M.T., M.V.), University of Udine, Italy; Department of Clinical and Movement Neurosciences (M.T.), UCL Queen Square Institute of Neurology, London, UK; Clinical Neurology Unit (G.L.G., M.V.), Department of Neurosciences, University Hospital of Udine; DMIF (G.L.G.), University of Udine, Italy; Centre d'Études Avancées en Médecine du Sommeil (J.-F.G., A.D., J.Y.M., R.B.P.), Hôpital du Sacré-Cœur de Montréal; and Departments of Psychology (J.-F.G.), Neurosciences (A.D.), and Psychiatry (J.Y.M.), Université du Québec à Montréal, Canada.

Go to [Neurology.org/N](https://www.neurology.org/N) for full disclosures. Funding information and disclosures deemed relevant by the authors, if any, are provided at the end of the article.

The Article Processing Charge was funded by The Charity Open Access Fund (COAF).

This is an open access article distributed under the terms of the Creative Commons Attribution License 4.0 (CC BY), which permits unrestricted use, distribution, and reproduction in any medium, provided the original work is properly cited.

## Glossary

**AAO** = age at onset; **CI** = confidence interval; **DLB** = dementia with Lewy bodies; **GCase** = glucocerebrosidase; **GD** = Gaucher disease; **GWAS** = genome-wide association study; **iRBD** = isolated REM sleep behavior disorder; **MIP** = molecular inversion probe; **MSA** = multiple system atrophy; **NGS** = next-generation sequencing; **OR** = odds ratio; **PD** = Parkinson disease; **pRBD** = probable REM sleep behavior disorder; **RBD** = REM sleep behavior disorder.

Isolated REM sleep behavior disorder (iRBD) can be considered a prodromal synucleinopathy, because >80% of patients with iRBD will eventually convert to an overt neurodegenerative syndrome associated with  $\alpha$ -synuclein accumulation—Parkinson disease (PD), dementia with Lewy bodies (DLB), or multiple system atrophy (MSA)<sup>1</sup>—with a conversion rate of about 6% a year.<sup>2</sup> For unknown reasons, while some patients with iRBD convert rapidly, others can remain free from parkinsonism or dementia for decades.<sup>3,4</sup>

Variants in the gene encoding for the lysosomal enzyme glucocerebrosidase, *GBA*, are strong and relatively common risk factors for PD<sup>5,6</sup> and DLB,<sup>7</sup> yet their role in MSA is unclear.<sup>8–10</sup> Patients with PD who carry *GBA* variants, as a group, tend to have higher rates of nonmotor symptoms, including REM sleep behavior disorder (RBD), cognitive impairment, hyposmia, and autonomic dysfunction.<sup>11</sup> *GBA* variants can be classified as severe or mild based on the type of Gaucher disease (GD) associated with the variant.<sup>12</sup> Accordingly, patients with severe *GBA* variants have a higher risk for PD, an earlier average age at onset (AAO),<sup>5</sup> and faster cognitive decline<sup>13,14</sup> compared to patients with PD with mild or no *GBA* variants.

Few studies with small sample size have examined the role of *GBA* in iRBD, including studies of 69,<sup>15</sup> 171,<sup>16</sup> and 265 patients with iRBD,<sup>15</sup> all supporting an association between *GBA* variants and iRBD but with different risk estimates. It has been shown that in PD cohorts with available data on probable RBD (pRBD), *GBA* variants are more frequent in the group with pRBD.<sup>15</sup> However, there are no accurate estimates of the risk of iRBD among *GBA* variant carriers and there have been no studies separately analyzing severe and mild *GBA* variants. It is not clear whether *GBA* variants affect the rate of conversion from iRBD to overt synucleinopathies, as only 2 small sample size studies with contradicting results examined this hypothesis. In one, there was no association with the rate of conversion in 8 *GBA* variant carriers with iRBD<sup>16</sup>; in the other, a faster conversion was shown for 13 *GBA* variant carriers with iRBD compared to noncarriers.<sup>17</sup>

In this study, we analyzed *GBA* variants in a large, multicenter study including 1,061 patients with iRBD, more than double the sample than all previous studies combined, and 3,086 controls, all of European origin. We further examined the effects of severe vs mild *GBA* variants on risk of iRBD,

reported AAO of iRBD, and the potential effects on conversion from iRBD to an overt neurodegenerative disease.

## Methods

### Population

The patient population included 1,061 individuals diagnosed with iRBD with video-polysomnography according to the International Classification of Sleep Disorders, version 2 or 3 criteria.<sup>18</sup> The recruiting centers and the number of patients from each center are detailed in table 1. Additional data were available for subsets of samples, including reported AAO of RBD (n = 594), age at diagnosis of iRBD (n = 599), eventual phenocconversion to an overt neurodegenerative disease (data available for n = 584, converted n = 218), and rate of phenocconversion (n = 217). The average follow-up period for *GBA* carriers was 4.8 years and for noncarriers it was 4.1 years ( $p = 0.22$ ).

The data on these variables were collected in 2018. The control population included a total of 3,086 individuals, comprised of 1,317 in-house controls of European origin (confirmed by principal component analysis using available genome-wide association study [GWAS] data compared to data from HapMap v.3 and hg19/GRCh37) and an additional 1,769 previously published European controls in which *GBA* was fully sequenced and all the variants were reported (table e-1 details these controls and the reported *GBA* variants in each of the articles; [github.com/gan-orlab/GBA\\_RBD/](https://github.com/gan-orlab/GBA_RBD/)). The in-house controls had a mean age of  $46.5 \pm 15.0$  years and included 46.6% men, compared to  $60.5 \pm 9.9$  and 81% men in the patients, therefore when analyzing these populations, adjustment for age and sex was performed (see Statistical analysis and Results).

### GBA sequencing and classification of GBA variants

*GBA* was fully sequenced as described previously<sup>19</sup> and the full protocol is available upon request. In brief, we designed molecular inversion probes (MIPs) targeting the coding sequence of *GBA* and performed next-generation sequencing (NGS) post capture. Alignment, variant calling, and annotations were done as previously described<sup>19</sup> using a standard pipeline. Exons 10 and 11 were also sequenced using Sanger sequencing since the coverage of NGS of these exons was low. Table e-2 ([github.com/gan-orlab/GBA\\_RBD/](https://github.com/gan-orlab/GBA_RBD/)) details the probes used for the MIPs capture. Classification of *GBA* variants as severe or mild was performed as described

**Table 1** *GBA* variants in the participating centers

Center	<i>GBA</i> variant carriers, n (%) / n total patients with iRBD	<i>GBA</i> variants identified		Conversion data available for patients, n	Conversion in <i>GBA</i> carriers: condition (n converted)	
		Mild	Severe		Mild	Severe
<b>Montreal, Canada</b>	20 (15)/138	p.N370S-3 p.E326K-5 p.T369M-7 p.W378G-2	p.L444P-1 p.H255Q-1 p.W291X-1	125	p.E326K-DLB (2), PD (1), dementia (1) p.T369M-PD (3), MSA (1), dementia (1) p.W378G-DLB (2)	p.L444P-PD (1) p.H255Q-PD (1) p.W291X-PD (1)
<b>Innsbruck, Austria</b>	7 (9)/80	p.E326K-7		69	p.E326K-PD (1)	
<b>Bologna, Italy</b>	2 (7)/28	p.E326K-1 p.R2L-1		19	—	
<b>Prague, Czech Republic</b>	3 (6)/47	p.E326K-1 p.T369M-2		46	p.T369M-dementia (1)	
<b>Paris, France</b>	14 (6)/219	p.E326K-8 p.N370S-4 p.T369M-2		77	p.E326K-PD (1), dementia (1) p.N370S-PD (1)	
<b>Montpellier, France (Beau Soleil Clinic)</b>	5 (19)/26	p.E326K-2 p.N370S-1 p.T369M-1 p.R502C-1		2	p.R502C-PD (1)	
<b>Lille, France</b>	5 (22)/23	p.E326K-2 p.N370S-2	p.R131L-1	15	p.N370S-PD (1), MSA (1)	p.R131L-PD (1)
<b>Montpellier, France (CHU Montpellier)</b>	8 (8)/96	p.E326K-5 p.N370S-2 p.T369M-1		14	p.T369M-DLB (1)	
<b>Kessel, Germany</b>	3 (11)/27	p.E326K-2 p.T369M-1		27	p.T369M-DLB (1)	
<b>Udine, Italy</b>	6 (7)/83	p.E326K-2 p.N370S-2 p.T369M-1	p.D409H-1	25	p.E326K-unknown (1) p.N370S-unknown (1)	p.D409H-unknown (1)
<b>Milan, Italy</b>	1 (5)/19	p.T369M-1		19	None	
<b>Oxford, United Kingdom</b>	27 (15)/181	p.E326K-12 p.N370S-6 p.N227S-1 p.T369M-4 p.T369M/ p.E326K-1 p.R2L-1 p.Y212H-1	p.D409H-1	97	p.E326K-PD (2) p.N370S-PD (1)	

Abbreviations: DLB = dementia with Lewy bodies; iRBD = isolated REM sleep behavior disorder; MSA = multiple system atrophy; Parkinson disease. Centers with no *GBA* variant carriers are excluded from the table: Geel, Belgium (n = 9); Nimes, France (n = 5); Marburg, Germany (n = 29); Munster, Germany (n = 23); Cagliari, Italy (n = 28).

previously<sup>5,12</sup> based on the occurrence of these variants in the severe (type II and type III) and mild (type I) forms of GD. The p.E326K and p.T369M variants, which do not cause GD but have a comparable risk as that of the p.N370S variants in PD,<sup>20,21</sup> were therefore included in the mild variant group.

### Statistical analysis

To examine the association between *GBA* variants and risk of iRBD and controls, we performed association tests ( $\chi^2$  or Fisher exact test), logistic regression adjusted for sex and age, and burden tests. To examine the association of *GBA* variants with risk of iRBD comparing all controls, we used  $\chi^2$  or Fisher

exact tests since there were no available data on age and sex from the controls collected from the literature to perform adjusted logistic regression. We therefore also performed this association using only our in-house European controls, for which data on age and sex were available, using logistic regression model adjusted for age and sex. Of note, having younger controls may result in underestimation of the risk, as some of the young controls with *GBA* variants may develop iRBD or overt neurodegeneration in the future. Therefore, if the statistical adjustment is not complete, the risk estimations that were calculated could be slightly lower (i.e., false-positive results are not likely; rather, underestimated risk is likely). We

also performed burden tests using the R package SKAT. Association with AAO and specific types of *GBA* variants (severe or mild) was tested using the nonparametric Kruskal-Wallis test since the group of severe *GBA* variants included only 5 patients. The association with conversion was tested using a  $\chi^2$  test for the total number of conversions, and Kaplan-Meier survival analysis was performed to examine the rate of conversion. All statistical analyses were performed using R or SPSS v24 (IBM, Armonk, NY).

### Standard protocols approvals, registrations, and patient consents

All study participants signed informed consent forms, and the study protocol was approved by the institutional review boards.

### Data availability

Anonymized data will be shared by request from any qualified investigator.

## Results

*GBA* variants are associated with increased risk of iRBD with differential effects of severe and mild variants.

The variants in *GBA* identified in each of the participating centers are detailed in table 1, with a total of 17 distinct variants found in patients and controls (table 2). Table e-1 details the variants found in each of the previously published control populations. Out of 1,061 patients with iRBD, 101 *GBA* variant carriers (9.5%) were identified, compared to 126 out of 3,086 (4.1%) controls (table 2; odds ratio [OR], 2.45; 95% confidence interval [CI], 1.87–3.22;  $p = 1 \times 10^{-10}$ ). We repeated this analysis using a logistic regression model adjusted for age and sex using the controls with available data ( $n = 1,317$ ), which yielded very similar results (OR, 2.12; 95% CI, 1.34–3.36;  $p = 0.001$ ). Burden tests using the R package SKAT also yielded similar results ( $p = 2.6 \times 10^{-6}$  using the in-house controls and  $p = 1.7 \times 10^{-12}$  using all controls). Similar to previous observations in PD, different *GBA* variants have different effects on the risk of iRBD. The mild p.N370S variant was found in 20 patients with iRBD (1.9%) compared to 16 (0.5%) controls (OR, 3.69; 95% CI, 1.90–7.14;  $p = 3.5 \times 10^{-5}$ ), while severe variants (p.L444P, p.D409H, p.W291X, p.H255Q, and p.R131L) were found in 6 (0.6%) patients with iRBD and in 1 (p.L444P, 0.03%) control (OR, 17.55; 95% CI, 2.11–145.9;  $p = 0.0015$ ). Of the 2 polymorphisms known to be risk factors for PD, p.E326K and p.T369M, only p.E326K was associated with iRBD (4.4% vs 1.5% in patients and controls; OR, 3.2; 95% CI, 2.12–4.84;  $p = 6 \times 10^{-9}$ ), and the carrier frequency of p.T369M was only slightly elevated in iRBD but not statistically significant (1.9% vs 1.7%; OR, 1.13; 95% CI, 0.68–1.89;  $p = 0.6$ ). The carrier frequencies of the p.N370S, p.E326K, and p.T369M variants in gnomAD (gnomad.broadinstitute.org/) in the European population are 0.4%, 2.4%, and 1.9%, respectively, similar to the frequencies in our controls.

### Estimated AAO of iRBD may be affected by the type of *GBA* variant

AAO as reported by the patients could be an unreliable estimate and data were not available for all patients. Therefore, the following results should be considered with caution. Carriers of the severe *GBA* variants had an average AAO of  $52.8 \pm 2.8$  years (data were available for 5 out of 6 patients with a severe *GBA* variant), carriers of all other variants had an average AAO of  $59.7 \pm 9.6$  years (data were available for 58 patients), and noncarriers of *GBA* variants had an average AAO of  $60.6 \pm 9.9$  years (data were available for 531 patients). Because there were only 5 patients in the severe variants group, the nonparametric Kruskal-Wallis test was performed, demonstrating a possible association with the type of variant ( $\chi^2 = 7.083$ ,  $df = 3$ ,  $p = 0.029$ ), which will benefit from replication in a larger sample size.

### Do *GBA* variants affect the rate of conversion of iRBD to overt neurodegenerative diseases?

Data on conversion of iRBD was available for 59 *GBA* variant carriers and 525 noncarriers of *GBA* variants. Of the *GBA* variant carriers, 31 (52.5%) had converted, and in noncarriers 187 (35.6%) had converted ( $p = 0.011$ ). Data on time from iRBD diagnosis to phenoconversion or last follow-up was available for 29 *GBA* variant carriers and for 276 noncarriers. Kaplan-Meier survival analysis suggested that *GBA* variant carriers progressed faster but the difference vs noncarriers of *GBA* variants was not statistically significant (figure). When severe *GBA* variant carriers were compared to mild *GBA* carriers and noncarriers, a possible association was demonstrated, as the Breslow test was statistically significant and the Tarone-Ware test was at near statistical significance, while the log-rank test did not reach statistical significance (figure; Breslow  $p = 0.017$ , Tarone-Ware  $p = 0.051$ , log-rank  $p = 0.24$ ).

## Discussion

Our results confirm the association between *GBA* variants and increased risk of iRBD and suggest that severe and mild *GBA* variants have differential effects on risk, similar to previous reports in PD.<sup>5</sup> These results also suggest that patients with iRBD with severe *GBA* variants may have earlier AAO and may convert faster to overt neurodegenerative disease. However, the results on AAO and conversion should be considered as preliminary only and with caution, due to several limitations discussed below.

Three previous small sample size studies have examined the association between *GBA* variants and iRBD.<sup>15,16,22</sup> Two of these studies included full sequencing of the gene<sup>15,16</sup> and the third only examined 2 specific variants (p.N370S and p.L444P).<sup>22</sup> Due to their size, analyses of specific variants or types of variants, such as severe or mild, were not possible. The current study includes 2 of the previously published cohorts<sup>15,22</sup> and additional cohorts of European ancestry. With the larger sample size accrued, we were able to

**Table 2** *GBA* variants in patients with isolated REM sleep behavior disorder (iRBD) and controls

<i>GBA</i> variant <sup>a</sup>	Patients with iRBD, n (%) (n = 1,061)	All controls, n (%) (n = 3,086)	In-house controls, n (%) (n = 1,317)	Literature controls, n (%) (n = 1,769)
<b>Heterozygous</b>				
p.R2L	2 (0.2)	2 (0.06)	1 (0.08)	1 (0.06)
p.K79M	—	1 (0.03)	—	1 (0.06)
p.R131L	1 (0.1)	—	—	—
p.Y212H	1 (0.1)	—	—	—
p.N227S	1 (0.1)	—	—	—
p.H255Q	1 (0.1)	—	—	—
p.W291X	1 (0.1)	—	—	—
p.E326K	47 (4.4)	45 (1.4)	18 (1.4)	27 (1.5)
p.T369M	20 (1.9)	54 (1.7)	35 (2.7)	19 (1.1)
p.N370S	20 (1.9)	16 (0.5)	10 (0.8)	6 (0.3)
p.W378G	2 (0.2)	1 (0.03)	1 (0.08)	—
p.E388K	—	3 (0.09)	—	3 (0.17)
p.D409H	2 (0.2)	—	—	—
p.L444P	1 (0.1)	1 (0.03)	—	1 (0.06)
p.V460L	—	2 (0.06)	—	2 (0.11)
p.T482K	—	1 (0.03)	—	1 (0.06)
p.R502C	1 (0.1)	—	—	—
<b>Homozygous/compound heterozygous</b>				
p.E326K/p.T369M	1 (0.1)	—	—	—
<b>Total</b>	101 (9.5)	126 (4.1)	65 (4.9)	61 (3.4)

<sup>a</sup> Variants nomenclature is according to the nomenclature typically used for *GBA* variants, of the active enzyme (497 amino acids) after the removal of the 39 amino acids of the leader peptide.

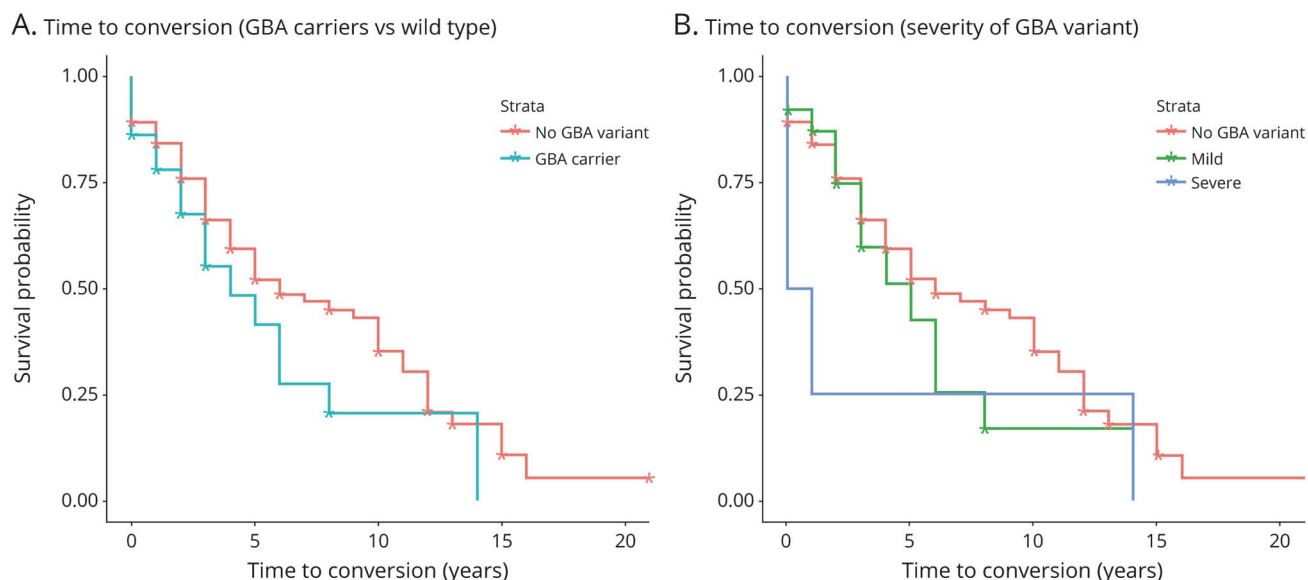
demonstrate a much larger risk in carriers of severe *GBA* variants. Given the small numbers of these variants and the wide range of the CIs, the risk estimates may be different in future, larger studies. The current results are in line with previous results from PD, which clearly demonstrated similar relationships between severe and mild *GBA* variants and risk for PD.<sup>5</sup> Previous studies have also suggested that the type of *GBA* variants may affect PD progression,<sup>13,14</sup> which is further supported by our preliminary findings on AAO and conversion of iRBD.

In recent years it has been demonstrated that the coding variants p.E326K and p.T369M, which do not cause GD, are risk factors for PD.<sup>20,21,23</sup> In DLB, the association between p.E326K and risk for the disease is clear, yet it is still unclear whether p.T369M is a risk factor for DLB. Only a few studies that examined p.T369M in DLB have been performed and in most of them there was no association. A multicenter study that included over 700 patients with DLB reported lack of association, and in a GWAS with over 1,700 patients with

DLB, only the p.E326K variant was reported to be associated with the disease.<sup>7</sup> Conversely, recent data from 556 patients with DLB did suggest an association.<sup>24</sup> The lack of association in the current study in iRBD may also provide further support for lack of association of p.T369M with iRBD and DLB. However, it is important to keep in mind that the association of this variant with PD was only reported in much larger studies<sup>20,21</sup> due to its lower effect on risk compared to other *GBA* variants. Only much larger studies can determine conclusively whether p.T369M is associated with iRBD and DLB. There was a large difference between the frequency of p.T369M in our in-house controls (2.7%) and the controls from the literature (1.1%), perhaps due to population structure, but the combined frequency (1.7%) is comparable to that seen in the gnomAD European population (1.9%), rendering our results for this variant as likely unbiased.

Our study has several limitations. The possible association between *GBA* variants and rate of conversion reported here,

**Figure** Conversion to overt neurodegenerative disease in patients with iRBD with and without *GBA* variants



(A) Survival plot comparing *GBA* variant carriers (blue) and noncarriers (red) from diagnosis until conversion or recent follow-up. Log-rank  $p = 0.13$ , Breslow  $p = 0.32$ , Tarone-Ware  $p = 0.22$ . (B) Survival plot comparing carriers of severe *GBA* variants (blue), mild/other *GBA* variants (green), and noncarriers (red). Log-rank  $p = 0.24$ , Breslow  $p = 0.017$ , Tarone-Ware  $p = 0.051$ .

although potentially interesting, should be taken with caution for several reasons. (1) The results include the cohort from Montreal, in which it was previously reported that *GBA* variants are associated with rate of conversion, but it does not include the negative study from Barcelona (data could not be shared). (2) The results are based on a small number of variant carriers (4 patients with a severe *GBA* variant, 25 with other *GBA* variants). Larger studies will be required to determine conclusively whether *GBA* variants are associated with the rate of phenocconversion. An additional potential limitation is that the measured duration from age at diagnosis or iRBD to conversion might not reflect the actual length of disease duration, as patients can remain unaware for many years about their dream-enactment behaviors, especially if they do not have a bed partner or if they do not have very active or violent dreams. The small number of severe *GBA* variants is also a limitation in the risk analysis, as it created a wide CI. Since the effect of severe vs mild variants is in line with previous studies in PD, it is likely that these risk estimates of iRBD are overall correct, yet the precise estimate might change in future, larger studies.

The mechanisms underlying the association between *GBA* variants, the enzyme encoded by *GBA*, glucocerebrosidase (GCase), and the development of neurodegeneration are unknown.<sup>11</sup> Several mechanisms have been proposed, including interaction of GCase substrates with  $\alpha$ -synuclein, which may lead to its accumulation,<sup>25</sup> changes in the lysosomal membrane composition, which may lead to reduced autophagy and mitophagy,<sup>26,27</sup> accumulation of misfolded

GCase and endoplasmic reticulum stress,<sup>28</sup> and others. The association with iRBD may suggest that studying these mechanisms in nondopaminergic neuronal models that are involved in RBD could lead to new discoveries and better understanding of these potential mechanisms.

Our results demonstrate that *GBA* variants are associated with increased risk of iRBD. These results may also suggest that severe and mild *GBA* variants may have differential effects on the risk, and possibly on AAO, of iRBD and its conversion to overt neurodegenerative disease. Due to the limitations mentioned above, the latter associations should be considered as preliminary with additional, larger studies on *GBA* in iRBD required to confirm or refute them. One important implication of the association between *GBA* variants and iRBD is the possibility to perform screening for iRBD in healthy *GBA* variant carriers. This may allow for even earlier detection of prodromal neurodegeneration and could be especially useful when home detection of iRBD will be made possible.

### Acknowledgment

The authors thank the patients and controls for participation and Helene Catoire, Sandra B. Laurent, and Dan Spiegelman for assistance. J.-F.G. holds a Canada Research Chair in Cognitive Decline in Pathological Aging. W.O. is Hertie Senior Research Professor, supported by the Charitable Hertie Foundation, Frankfurt/Main, Germany. G.A.R. holds a Canada Research Chair in Genetics of the Nervous System and the Wilder Penfield Chair in Neurosciences. Z.G.-O. is supported by the Fonds de Recherche du Québec-Santé (FRQS) Chercheurs-Boursiers Award given in collaboration

with Parkinson QC, and is a Parkinson Canada New Investigator awardee.

## Study funding

This work was supported financially by Parkinson Canada, the Michael J. Fox Foundation, the Canadian Consortium on Neurodegeneration in Aging (CCNA), the Canadian Glycomics Network (GlycoNet), the Canada First Research Excellence Fund (CFREF), awarded to McGill University for the Healthy Brains for Healthy Lives (HBHL) program, the Canadian Institutes for Health Research (CIHR), Weston Foundation, and Fonds de Recherche du Québec-Santé (FRQS) Chercheurs-Boursiers. The Oxford Discovery study is funded by the Monument Trust Discovery Award from Parkinson's UK and supported by the National Institute for Health Research (NIHR) Oxford Biomedical Research Centre based at Oxford University Hospitals NHS Trust and University of Oxford, the NIHR Clinical Research Network, and the Dementias and Neurodegenerative Diseases Research Network (DeNDRoN).

## Disclosure

L. Krohn, J. Ruskey, U. Rudakou, E. Leveille, and F. Asayesh report no disclosures relevant to the manuscript. M. Hu received consultancy fees from Roche and Biogen Pharmaceuticals. I. Arnulf received fees for speaking engagements from UCB Pharma and consultancy for Roche, Novartis, and Ono Pharma. Y. Dauvilliers reports no disclosures relevant to the manuscript. B. Högl received consultancy fees from Axovant, benevolent Bio, Takeda, Roche, and Ono Pharma, and received speaker honoraria from Eli Lilly, Mundipharma, UCB, AbbVie, Inspire, and Lundbeck. A. Stefani, C. Monaca, B. Abril, G. Plazzi, E. Antelmi, and L. Ferini-Strambi report no disclosures relevant to the manuscript. A. Heidebreder received honoraria for lectures from UCB, Bioprojet, Servier, and Medice and consultancy fees from UCB. B. Boeve has served as an investigator for clinical trials sponsored by Biogen and Alector; serves on the Scientific Advisory Board of the Tau Consortium; and receives research support from the NIH, the Mayo Clinic Dorothy and Harry T. Mangurian Jr. Lewy Body Dementia Program, the Little Family Foundation, and the LBD Functional Genomics Program. A.J. Espay received grant support from the NIH and the Michael J. Fox Foundation; personal compensation as a consultant/scientific advisory board member for AbbVie, Adamas, Acadia, Acorda, Neuroderm, Neurocrine, Impax/Amneal, Sunovion, Lundbeck, Osmotica Pharmaceutical, and USWorldMeds; publishing royalties from Lippincott Williams & Wilkins, Cambridge University Press, and Springer; and honoraria from USWorldMeds, Lundbeck, Acadia, Sunovion, the American Academy of Neurology, and the Movement Disorders Society. V. Cochen De Cock reports no disclosures relevant to the manuscript. B. Mollenhauer has received honoraria for consultancy from Roche, Biogen, UCB, and Sun Pharma Advanced Research Company; is a member of the executive steering committee of the Parkinson Progression Marker Initiative and PI of the Systemic Synuclein Sampling

Study of the Michael J. Fox Foundation for Parkinson's Research; and has received research funding from the Deutsche Forschungsgemeinschaft (DFG), EU (Horizon2020), Parkinson Fonds Deutschland, Deutsche Parkinson Vereinigung, and the Michael J. Fox Foundation for Parkinson's Research. F. Sixel-Döring has received honoraria for lectures from Abbott, Desitin, Grünenthal, Licher MT, STADA Pharm, and UCB; seminar fees from Boston Scientific and Licher MT; serves on an advisory board for STADA Pharm; and reports no conflict of interest with the presented study. C. Trenkwalder has received honoraria for lectures from UCB, Grünenthal, and Otsuka and consultancy fees from Britannia Pharmaceuticals and Roche. K. Sonka, D. Kemlink, M. Figorilli, M. Puligheddu, F. Dijkstra, and M. Viaene report no disclosures relevant to the manuscript. W. Oertel received consultancy or speaker fees from Adamas, AbbVie, Desitin, Novartis and Roche, and reports no conflicts of interest related to the study. M. Toffoli, G. Luigi Gigli, and M. Valente report no disclosures relevant to the manuscript. J.F. Gagnon reports research funding from the Canadian Institutes for Health Research (CIHR). A. Desautels received grants from Flamel Ireland, Pfized, Biron, and Canopy Growth, as well as fees for speaking engagements from Biogen and consultancy from UCB Pharma. J. Montplaisir reports no disclosures relevant to the manuscript. R. Postuma reports grants from Fonds de la Recherche en Sante, the Canadian Institute of Health Research, The Parkinson Society of Canada, the Weston-Garfield Foundation, the Michael J. Fox Foundation, and the Webster Foundation, as well as personal fees from Takeda, Roche, Teva Neurosciences, Novartis Canada, Biogen, Boehringer Ingelheim, Theranexus, GE HealthCare, Jazz Pharmaceuticals, AbbVie, Janssen, Otsuka, Phytopharmics, and Inception Sciences. G. Rouleau reports no disclosures relevant to the manuscript. Z. Gan-Or received consultancy fees from Lysosomal Therapeutics Inc. (LTI), Idorsia, Prevail Therapeutics, Inceptions Sciences (now Ventus), Denali, and Deerfield. Go to [Neurology.org/N](http://Neurology.org/N) for full disclosures.

## Publication history

Received by *Neurology* October 30, 2019. Accepted in final form February 14, 2020.

## Appendix Authors

Name	Location	Contribution
<b>Lynne Krohn, MSc</b>	McGill University, Montréal, Canada	Designed and conceptualized study, analyzed the data, drafted the manuscript for intellectual content
<b>Jennifer A. Ruskey, MSc</b>	McGill University, Montréal, Canada	Major role in the acquisition of data, revised the manuscript for intellectual content
<b>Uladsislau Rudakou, BSc</b>	McGill University, Montréal, Canada	Analyzed the data, revised the manuscript for intellectual content



## Appendix (continued)

Name	Location	Contribution
<b>Etienne Leveille</b>	McGill University, Montréal, Canada	Interpreted the data, revised the manuscript for intellectual content
<b>Farnaz Asayesh, MSc</b>	McGill University, Montréal, Canada	Major role in the acquisition of data, revised the manuscript for intellectual content
<b>Michele T.M. Hu, MBBS, FRCP, PhD</b>	Oxford University, UK	Major role in the acquisition of data, revised the manuscript for intellectual content
<b>Isabelle Arnulf, MD, PhD</b>	Moelle Epinière and Sorbonne Universities, Paris, France	Major role in the acquisition of data, revised the manuscript for intellectual content
<b>Yves Dauvilliers, MD, PhD</b>	CHU Montpellier, France	Major role in the acquisition of data, revised the manuscript for intellectual content
<b>Birgit Högl, MD</b>	Medical University of Innsbruck, Austria	Major role in the acquisition of data, revised the manuscript for intellectual content
<b>Ambra Stefani, MD</b>	Medical University of Innsbruck, Austria	Major role in the acquisition of data, revised the manuscript for intellectual content
<b>Christelle Charley Monaca, MD, PhD</b>	CHU Lille, France	Major role in the acquisition of data, revised the manuscript for intellectual content
<b>Beatriz Abril, MD</b>	University Hospital of Nîmes, France	Major role in the acquisition of data, revised the manuscript for intellectual content
<b>Giuseppe Piazzi, MD</b>	University of Bologna, Italy	Major role in the acquisition of data, revised the manuscript for intellectual content
<b>Elena Antelmi, MD, PhD</b>	University of Bologna, Italy	Major role in the acquisition of data, revised the manuscript for intellectual content
<b>Luigi Ferini-Strambi, MD</b>	Università Vita-Salute San Raffaele, Milan, Italy	Major role in the acquisition of data, revised the manuscript for intellectual content
<b>Anna Heidbreder, MD</b>	University of Muenster, Germany	Major role in the acquisition of data, revised the manuscript for intellectual content
<b>Bradley F. Boeve, MD</b>	Mayo Clinic, Rochester, MN	Major role in the acquisition of data, revised the manuscript for intellectual content
<b>Alberto J. Espay, MD, MSc</b>	UC Gardner Neuroscience Institute, Cincinnati, OH	Major role in the acquisition of data, revised the manuscript for intellectual content
<b>Valérie Cochen De Cock, MD, PhD</b>	Beau Soleil Clinic, Montpellier, France	Major role in the acquisition of data, revised the manuscript for intellectual content

## Appendix (continued)

Name	Location	Contribution
<b>Brit Mollenhauer, MD</b>	University Medical Centre Goettingen, Germany	Major role in the acquisition of data, revised the manuscript for intellectual content
<b>Friederike Sixel-Döring, MD</b>	Philipps University, Marburg, Germany	Major role in the acquisition of data, revised the manuscript for intellectual content
<b>Claudia Trenkwalder, MD</b>	University Medical Centre Goettingen, Germany	Major role in the acquisition of data, revised the manuscript for intellectual content
<b>Karel Sonka, MD</b>	Charles University, Prague, Czech Republic	Major role in the acquisition of data, revised the manuscript for intellectual content
<b>David Kemlink, MD, PhD</b>	Charles University, Prague, Czech Republic	Major role in the acquisition of data, revised the manuscript for intellectual content
<b>Michela Figorilli, MD, PhD</b>	University of Cagliari, Italy	Major role in the acquisition of data, revised the manuscript for intellectual content
<b>Monica Puligheddu, MD, PhD</b>	University of Cagliari, Italy	Major role in the acquisition of data, revised the manuscript for intellectual content
<b>Femke Dijkstra, MD</b>	St. Dimpna Regional Hospital, Geel, Belgium	Major role in the acquisition of data, revised the manuscript for intellectual content
<b>Mineke Viaene, MD, PhD</b>	St. Dimpna Regional Hospital, Geel, Belgium	Major role in the acquisition of data, revised the manuscript for intellectual content
<b>Wolfgang Oertel, MD</b>	Philipps University, Marburg, Germany	Major role in the acquisition of data, revised the manuscript for intellectual content
<b>Marco Toffoli, MD</b>	University of Udine, Italy	Major role in the acquisition of data, revised the manuscript for intellectual content
<b>Gian Luigi Gigli, MD</b>	University Hospital of Udine, Italy	Major role in the acquisition of data, revised the manuscript for intellectual content
<b>Mariarosaria Valente, MD</b>	University Hospital of Udine, Italy	Major role in the acquisition of data, revised the manuscript for intellectual content
<b>Jean-François Gagnon, PhD</b>	Université du Québec à Montréal, Canada	Major role in the acquisition of data, revised the manuscript for intellectual content
<b>Alex Desautels, MD, PhD</b>	Université de Montréal, Canada	Major role in the acquisition of data, revised the manuscript for intellectual content
<b>Jacques Y. Montplaisir, MD, PhD</b>	Université de Montréal, Canada	Major role in the acquisition of data, revised the manuscript for intellectual content

Continued

## Appendix (continued)

Name	Location	Contribution
<b>Ronald B. Postuma, MD, MSc</b>	McGill University, Montréal, Canada	Major role in the acquisition of data, revised the manuscript for intellectual content
<b>Guy A. Rouleau, MD, PhD, FRCPC</b>	McGill University, Montréal, Canada	Major role in the acquisition of data, revised the manuscript for intellectual content
<b>Ziv Gan-Or, MD, PhD</b>	McGill University, Montréal, Canada	Designed and conceptualized study, major role in the acquisition of data, drafted the manuscript for intellectual content

## References

- Hogf B, Stefani A, Videnovic A. Idiopathic REM sleep behaviour disorder and neurodegeneration: an update. *Nat Rev Neurol* 2018;14:40–55.
- Postuma RB, Iranzo A, Hu M, et al. Risk and predictors of dementia and parkinsonism in idiopathic REM sleep behaviour disorder: a multicentre study. *Brain* 2019;142:744–759.
- Yao C, Fereshtehnejad SM, Dawson BK, et al. Longstanding disease-free survival in idiopathic REM sleep behavior disorder: is neurodegeneration inevitable? *Parkinsonism Relat Disord* 2018;54:99–102.
- Iranzo A, Stefani A, Serradell M, et al. Characterization of patients with longstanding idiopathic REM sleep behavior disorder. *Neurology* 2017;89:242–248.
- Gan-Or Z, Amshalom I, Kilarski LL, et al. Differential effects of severe vs mild GBA mutations on Parkinson disease. *Neurology* 2015;84:880–887.
- Sidransky E, Nalls MA, Aasly JO, et al. Multicenter analysis of glucocerebrosidase mutations in Parkinson's disease. *N Engl J Med* 2009;361:1651–1661.
- Nalls MA, Duran R, Lopez G, et al. A multicenter study of glucocerebrosidase mutations in dementia with Lewy bodies. *JAMA Neurol* 2013;70:727–735.
- Mitsui J, Matsukawa T, Sasaki H, et al. Variants associated with Gaucher disease in multiple system atrophy. *Ann Clin Transl Neurol* 2015;2:417–426.
- Sailer A, Scholz SW, Nalls MA, et al. A genome-wide association study in multiple system atrophy. *Neurology* 2016;87:1591–1598.
- Sklerov M, Kang UJ, Liang C, et al. Frequency of GBA variants in autopsy-proven multiple system atrophy. *Mov Disord Clin Pract* 2017;4:574–581.
- Gan-Or Z, Liang C, Alcalay RN. GBA-associated Parkinson's disease and other synucleinopathies. *Curr Neurol Neurosci Rep* 2018;18:44.
- Beutler E, Gelbart T, Scott CR. Hematologically important mutations: Gaucher disease. *Blood Cell Mol Dis* 2005;35:355–364.
- Cilia R, Tunesi S, Marotta G, et al. Survival and dementia in GBA-associated Parkinson's disease: the mutation matters. *Ann Neurol* 2016;80:662–673.
- Liu G, Boot B, Locascio JJ, et al. Specifically neuropathic Gaucher's mutations accelerate cognitive decline in Parkinson's. *Ann Neurol* 2016;80:674–685.
- Gan-Or Z, Mirelman A, Postuma RB, et al. GBA mutations are associated with rapid eye movement sleep behavior disorder. *Ann Clin Transl Neurol* 2015;2:941–945.
- Gamez-Valero A, Iranzo A, Serradell M, et al. Glucocerebrosidase gene variants are accumulated in idiopathic REM sleep behavior disorder. *Parkinsonism Relat Disord* 2018;50:94–98.
- Honeycutt L, Montplaisir JY, Gagnon JF, et al. Glucocerebrosidase mutations and phenoconversion of REM sleep behavior disorder to parkinsonism and dementia. *Parkinsonism Relat Disord* 2019;65:230–233.
- Hogf B, Stefani A. REM sleep behavior disorder (RBD): update on diagnosis and treatment. *Somnologie* 2017;21:1–8.
- Ruskey JA, Zhou S, Santiago R, et al. The GBA p.Trp378Gly mutation is a probable French-Canadian founder mutation causing Gaucher disease and synucleinopathies. *Clin Genet* 2018;94:339–345.
- Blauwendraat C, Bras JM, Nalls MA, et al. Coding variation in GBA explains the majority of the SYT11-GBA Parkinson's disease GWAS locus. *Mov Disord* 2018;33:1821–1823.
- Mallett V, Ross JP, Alcalay RN, et al. GBA p.T369M substitution in Parkinson disease: polymorphism or association? A meta-analysis. *Neurol Genet* 2016;2:e104.
- Barber TR, Lawton M, Rolinski M, et al. Prodromal parkinsonism and neurodegenerative risk stratification in REM sleep behavior disorder. *Sleep* 2017;40.
- Berge-Seidl V, Pihlstrom L, Maple-Groden J, et al. The GBA variant E326K is associated with Parkinson's disease and explains a genome-wide association signal. *Neurosci Lett* 2017;658:48–52.
- Gan-Or Z, Alcalay RN, Makarios MB, et al. Classification of GBA variants and their effects in synucleinopathies. *Mov Disord* 2019;34:1581–1582.
- Mazzulli JR, Xu YH, Sun Y, et al. Gaucher disease glucocerebrosidase and alpha-synuclein form a bidirectional pathogenic loop in synucleinopathies. *Cell* 2011;146:37–52.
- Gan-Or Z, Dion PA, Rouleau GA. Genetic perspective on the role of the autophagy-lysosome pathway in Parkinson disease. *Autophagy* 2015;11:1443–1457.
- Osellame LD, Duchon MR. Defective quality control mechanisms and accumulation of damaged mitochondria link Gaucher and Parkinson diseases. *Autophagy* 2013;9:1633–1635.
- Ron I, Rapaport D, Horowitz M. Interaction between parkin and mutant glucocerebrosidase variants: a possible link between Parkinson disease and Gaucher disease. *Hum Mol Genet* 2010;19:3771–3781.

# Neurology<sup>®</sup>

**GBA variants in REM sleep behavior disorder: A multicenter study**  
Lynne Krohn, Jennifer A. Ruskey, Uladzislau Rudakou, et al.  
*Neurology* 2020;95:e1008-e1016 Published Online before print June 26, 2020  
DOI 10.1212/WNL.0000000000010042

**This information is current as of June 26, 2020**

<b>Updated Information &amp; Services</b>	including high resolution figures, can be found at: <a href="http://n.neurology.org/content/95/8/e1008.full">http://n.neurology.org/content/95/8/e1008.full</a>
<b>References</b>	This article cites 27 articles, 3 of which you can access for free at: <a href="http://n.neurology.org/content/95/8/e1008.full#ref-list-1">http://n.neurology.org/content/95/8/e1008.full#ref-list-1</a>
<b>Citations</b>	This article has been cited by 3 HighWire-hosted articles: <a href="http://n.neurology.org/content/95/8/e1008.full##otherarticles">http://n.neurology.org/content/95/8/e1008.full##otherarticles</a>
<b>Subspecialty Collections</b>	This article, along with others on similar topics, appears in the following collection(s): <b>Dementia with Lewy bodies</b> <a href="http://n.neurology.org/cgi/collection/dementia_with_lewy_bodies">http://n.neurology.org/cgi/collection/dementia_with_lewy_bodies</a> <b>Parkinson's disease/Parkinsonism</b> <a href="http://n.neurology.org/cgi/collection/parkinsons_disease_parkinsonism">http://n.neurology.org/cgi/collection/parkinsons_disease_parkinsonism</a>
<b>Permissions &amp; Licensing</b>	Information about reproducing this article in parts (figures, tables) or in its entirety can be found online at: <a href="http://www.neurology.org/about/about_the_journal#permissions">http://www.neurology.org/about/about_the_journal#permissions</a>
<b>Reprints</b>	Information about ordering reprints can be found online: <a href="http://n.neurology.org/subscribers/advertise">http://n.neurology.org/subscribers/advertise</a>

*Neurology*® is the official journal of the American Academy of Neurology. Published continuously since 1951, it is now a weekly with 48 issues per year. Copyright © 2020 The Author(s). Published by Wolters Kluwer Health, Inc. on behalf of the American Academy of Neurology. All rights reserved. Print ISSN: 0028-3878. Online ISSN: 1526-632X.

