



HAL
open science

Personalized treatment of asthma: the importance of sex and gender differences

Christine R Jenkins, Louis-Philippe Boulet, Kim L Lavoie, Chantal Raherison-Semjen, Dave Singh

► To cite this version:

Christine R Jenkins, Louis-Philippe Boulet, Kim L Lavoie, Chantal Raherison-Semjen, Dave Singh. Personalized treatment of asthma: the importance of sex and gender differences. *Journal of Allergy and Clinical Immunology: In Practice*, In press, 10.1016/j.jaip.2022.02.002 . hal-03606324

HAL Id: hal-03606324

<https://hal.science/hal-03606324v1>

Submitted on 11 Mar 2022

HAL is a multi-disciplinary open access archive for the deposit and dissemination of scientific research documents, whether they are published or not. The documents may come from teaching and research institutions in France or abroad, or from public or private research centers.

L'archive ouverte pluridisciplinaire **HAL**, est destinée au dépôt et à la diffusion de documents scientifiques de niveau recherche, publiés ou non, émanant des établissements d'enseignement et de recherche français ou étrangers, des laboratoires publics ou privés.



Distributed under a Creative Commons Attribution - NonCommercial - NoDerivatives 4.0 International License

Clinical Commentary Review

Personalized Treatment of Asthma: The Importance of Sex and Gender Differences

Christine R. Jenkins, MBBS, MD, FRACP^a, Louis-Philippe Boulet, MD, FRCPC^b, Kim L. Lavoie, PhD, FCPA, FABMR^c, Chantal Raheison-Semjen, MD, PhD^{d,e}, and Dave Singh, MD^f Sydney, New South Wales, Australia; Québec City and Montreal, Québec, Canada; Guadeloupe and Bordeaux, France; and Manchester, United Kingdom

An individual's sex (nominally male or female, based on biological attributes) and gender (a complex term referring to socially constructed roles, behaviors, and expressions of identity) influence the clinical course of asthma in several ways. The physiologic development of the lungs and effects of sex hormones may explain why more boys than girls have asthma, and after puberty, more women than men have asthma. Female sex hormones have an impact throughout the life span and are associated with poor asthma control. Gender may influence exposure to asthma triggers, and sex and gender can influence the prevalence of comorbidities and interactions with health care professionals. Despite widely reported sex- and gender-based differences in asthma and asthma management, these issues

frequently are not considered by health care professionals. There is also inconsistency regarding the use of "sex" and "gender" in scientific discourse; research is needed to define sex- and gender-based differences better and how they might interact to influence asthma outcomes. This review outlines the impact an individual's sex and gender can have on the pathogenesis, clinical course, diagnosis, treatment, and management of asthma. © 2022 The Authors. Published by Elsevier Inc. on behalf of the American Academy of Allergy, Asthma & Immunology. This is an open access article under the CC BY-NC-ND license (<http://creativecommons.org/licenses/by-nc-nd/4.0/>). (J Allergy Clin Immunol Pract 2022;■:■-■)

Key words: Asthma; Sex; Gender; Comorbidities; Gender differences; Sex differences

^aGeorge Institute for Global Health, Sydney, New South Wales, Australia

^bQuébec Heart and Lung Institute, Laval University, Québec City, Québec, Canada

^cDepartment of Psychology, University of Québec at Montreal and Montreal Behavioural Medicine Centre, CIUSSS-NIM, Hôpital du Sacré-Cœur de Montréal, Montreal, Canada

^dCentre Hospitalier Universitaire de Guadeloupe, Guadeloupe, France

^eINSERM U1219, EpiCene Team, University of Bordeaux, Bordeaux, France

^fUniversity of Manchester, Manchester University NHS Foundation Trust, Manchester, United Kingdom

This study was funded by Novartis Pharma AG, Basel, Switzerland. Medical writing support for the development of the manuscript, under the direction of the authors, was provided by Ellen Maxwell, PhD, of Ashfield MedComms, an Ashfield Health company, and funded by Novartis.

Conflicts of interest: C.R. Jenkins reports personal fees from AstraZeneca, Boehringer Ingelheim, and Sanofi-Genzyme; writing support and personal fees from Novartis; and grant and personal fees from GlaxoSmithKline, outside the submitted work. L.-P. Boulet reports research grants, consulting fees, and honoraria from AstraZeneca, GlaxoSmithKline, Merck, Novartis, and Sanofi-Regeneron; research grants from Amgen; and honoraria from Covis, outside the submitted work. K.L. Lavoie reports consulting fees and honoraria from AstraZeneca, Novartis, GlaxoSmithKline, AbbVie, and Boehringer Ingelheim; consulting fees from Bausch and Lomb, Inc; and honoraria from Astellas, Janssen, xFacto, and Respiplus, outside the submitted work. C. Raheison-Semjen reports grants and personal fees from Novartis, Chiesi, and AstraZeneca; and personal fees from GlaxoSmithKline, outside the submitted work. D. Singh reports personal fees from Aerogen, AstraZeneca, Boehringer Ingelheim, Chiesi, Cipla, CSL Behring, Epiendo, Genentech, GlaxoSmithKline, Glenmark, Gossamerbio, Kinaset, Menarini, Novartis, Pulmatrix, Sanofi, Synairgen, Teva, Theravance, and Verona, outside the submitted work.

Received for publication November 15, 2021; revised January 18, 2022; accepted for publication February 3, 2022.

Available online ■ ■ ■

Corresponding author: Christine R. Jenkins, MBBS, MD, FRACP, George Institute for Global Health, Level 5, 1 King St, Newtown, Sydney, New South Wales 2042, Australia. E-mail: christine.jenkins@sydney.edu.au.

2213-2198

© 2022 The Authors. Published by Elsevier Inc. on behalf of the American Academy of Allergy, Asthma & Immunology. This is an open access article under the CC BY-NC-ND license (<http://creativecommons.org/licenses/by-nc-nd/4.0/>).

<https://doi.org/10.1016/j.jaip.2022.02.002>

INTRODUCTION

Asthma affects approximately 300 million people globally.¹ More than one in three patients with asthma are uncontrolled despite the availability of effective treatments.² Physiologic and behavioral differences between women and men can affect asthma severity, control, and management.³ In scientific discourse, there is frequent inconsistency regarding the use of "sex" and "gender." "Sex" is usually defined as male or female, based on anatomic and physiologic attributes that are genetically determined. The concept of gender is more complex and refers to socially constructed roles, behaviors, and expressions of identity in girls, women, boys, men, and gender-diverse people.⁴⁻⁶ There is no universally recognized definition of gender. Because of a lack of knowledge, misunderstanding, and unawareness, or because sex- and gender-related effects can be difficult to differentiate, the terms are not always clearly defined and may erroneously be used interchangeably.^{5,6} This often prevents accurate data interpretation and hinders research.⁵

It is important for health care professionals (HCPs) to be aware of the distinct impacts that sex and gender can have on asthma care.⁶ For example, patients of different sexes and genders may report symptoms differently^{7,8} and experience different exposures that affect asthma.⁹ Women's reproductive cycles can also affect asthma in unpredictable ways.¹⁰ If these aspects go unnoticed by HCPs, they may contribute to clinical mismanagement and poor asthma control. Interest in precision medicine makes this a timely opportunity to raise awareness about sex and gender differences as a key first step in providing optimized, personalized asthma treatment.^{6,11} This narrative review summarizes current evidence for sex- and gender-related differences that influence asthma pathogenesis, clinical course, severity,

Abbreviations used

BMI- Body mass index

HCP- Health care professional

HRT- Hormone replacement therapy

ICS- Inhaled corticosteroids

OCS- Oral corticosteroids

symptoms, and management. Because publications on gender-diverse people with asthma are limited and many studies have been carried out defining males and females only by sex, we have used the terminology of “women” and “men” throughout this review, unless the research referenced specifically relates to “females” and “males.” A structured literature search was conducted to ensure comprehensive appraisal of this topic (see Appendix E1 in this article’s Online Repository at www.jaci-inpractice.org).

EFFECTS OF SEX AND GENDER ON ASTHMA DEVELOPMENT AND RISK

Sex hormones

Before puberty, asthma is more prevalent and severe in males than females, and this is reversed after puberty when asthma is more common in females.¹² This indicates that fluctuations in sex hormones have an important role in the pathogenesis of asthma. As summarized in Figure 1,¹²⁻¹⁵ estrogen and progesterone directly modulate immune pathways involved in asthma pathogenesis, whereas testosterone could be protective against inflammatory processes that cause asthma, although the mechanisms involved are not fully understood.

Some women with asthma experience worse symptoms in specific phases of the menstrual cycle and during pregnancy.^{10,15} Cyclical deterioration of asthma during the luteal phase, when estrogen and progesterone levels rise (premenstrual asthma), affects 11% to 45% of women.^{10,15} These women tend to have more severe asthma, a higher body mass index (BMI), longer duration of asthma, and a greater likelihood of aspirin sensitivity than do women who do not report premenstrual asthma.¹⁰ Hormonal contraceptives (mini pill, combined oral contraceptives, emergency pills, hormonal intrauterine device, injections, or implants) may help reduce asthma exacerbations in these women^{16,17} and reduce the risk for new-onset asthma in women of reproductive age.¹⁷ Although the mechanism of action is unknown, it is possible that hormonal contraceptives suppress levels of estrogen and progesterone that fluctuate during the menstrual cycle.

In terms of the menopause, studies have demonstrated that it is associated with more severe asthma¹⁸ and an increased risk for new-onset asthma.¹⁹ Hormone replacement therapy (HRT) has also been associated with an increased risk for developing asthma, although the risk may differ according to the type of HRT. A case-control study based on Danish registers (N = 379,649) found that estrogen as monotherapy and combined with progesterone increased the risk for new asthma, whereas monotherapy with progesterone decreased the risk.²⁰ Other studies found a reduced risk for the development of asthma in menopausal women receiving only estrogen HRT and combined estrogen and progesterone HRT.²¹

It is possible that gender-affirming surgery may have an impact on asthma, but studies are limited. In a large cross-sectional study (N = 50,009,780), transgender individuals

(n = 7,210) and those who had undergone gender-affirming surgery (n = 490) had a higher prevalence of asthma compared with non-transgender individuals of the same birth sex.²² Asthma risk was highest in individuals who had undergone male-to-female gender-affirming surgery, but it was also high in male-to-female transgender individuals.²² This study does not give a causative effect of gender-affirming surgery; further studies in these patients with asthma are needed.

Anatomic differences

Sex differences in lung architecture and respiratory function have been implicated in the sex disparity in asthma.^{3,23} An explanation for the greater predominance of boys with asthma in the prepubertal years could be dysanaptic lung growth.²⁴ In girls, bronchial airways and lung parenchyma grow proportionally, but in boys, bronchial airway growth lags behind parenchymal growth, resulting in disproportionately fewer alveoli for the number of airways.²⁵ Upon maturation, males develop larger diameter airways, lung volumes, maximum expiratory flow, and diffusion surface than do females.²³ Some propose that size, rather than any other aspect of sex-related biology or physiology, is the reason for these differences.²³

Sex-specific phenotypes

Cluster analysis studies have identified neutrophilic asthma with obesity as a distinct phenotype in women.²⁶⁻²⁸ People with obesity are more likely to have asthma, and this risk is higher in women.²⁹ Obese-asthma is associated with higher morbidity and a poorer response to inhaled corticosteroids (ICS) (likely owing to neutrophilia) compared with nonobese asthma.^{28,30} Because the origins of obesity are multifactorial, the mechanisms behind the interaction between obesity and asthma in women are still a subject of debate. However, sex hormones may mediate the neutrophilic obese-asthma phenotype in women: studies have shown that testosterone and oral contraceptive use are negative predictors of sputum neutrophils.^{31,32} This protective effect of oral contraceptives gives credence to the possibility of synthetic or exogenous sex hormones for therapeutic applications for asthma.³³ Clinicians should be aware that neutrophilic asthma with obesity differs from conventional asthma, and therefore women with obese asthma should have the airway inflammation type determined before treatment. Corticosteroids may be inappropriate, as would biologics targeting type 2 asthma.²⁸ Inappropriate treatment may further contribute to the vicious cycle of obesity and asthma symptoms.

Gender-specific lifestyle and behaviors

Different behaviors influenced by or associated with gender (eg, occupation, smoking habits, diet, lifestyle) can increase asthma risk and affect asthma control and outcomes.

Triggers and exposures. Women and men tend to be exposed to different triggers owing to gender roles and occupations.⁹ Traditionally male occupations (carpentry, metalworking, auto-spray painting, and baking) can result in exposure to asthma triggers such as wood dust, cooling lubricants, or flour.⁹ Traditionally female occupations (cleaning, hairdressing, and salons) may result in exposure to chemicals that are implicated in airway inflammation, allergic sensitization, and lung function decline.³⁴⁻³⁶ Women may also have more exposure to cleaning chemicals at home: a 2019 US survey reported that women

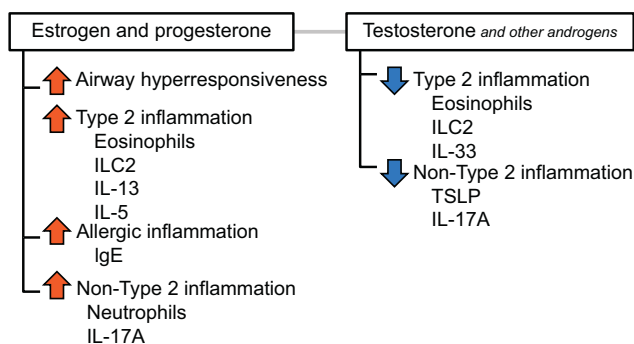


FIGURE 1. Some potential asthma-modifying effects of sex hormones.¹²⁻¹⁴ *IgE*, immunoglobulin E; *IL*, interleukin; *ILC2*, group 2 innate lymphoid cells; *TSLP*, thymic stromal lymphopoietin.

spend an average of 1.34 to 1.87 h/d on housework versus 0.40 to 0.84 h/d for men.³⁷

Smoking. Tobacco smoke can be a powerful trigger of asthma symptoms.³⁸ The prevalence of smoking varies by country, culture, and socioeconomic status.^{39,40} Interestingly, although women have more severe asthma than do men, proportionally more men than women smoke worldwide.^{39,41,42} For example, in China, 52% of men versus 3% of women smoke.^{42,43} This indicates that smoking may not be a major factor explaining the gender disparity in asthma; however, it is still important for HCPs to consider gender aspects of smoking, including passive smoking, vaping, and marijuana use. Smoking is more common in women with asthma than in those without it, including during pregnancy.^{44,45} Tobacco smoke and vaping during pregnancy could increase the risk for the child developing asthma^{46,47} and developing more severe asthma into early adulthood,⁴⁸ and newborn admission to the hospital.⁴⁹

Physical activity and diet. Adults with asthma tend to have lower levels of physical activity compared with those without asthma,⁵⁰ which is associated with poor asthma outcomes.⁵¹ Engaging in regular physical activity improves asthma control and quality of life⁵² and is linked to a lower risk for early-onset asthma.⁵³ Women are less likely to partake in physical activity compared with men.⁵⁴ Physical inactivity and poor diet are linked to high BMI, and obesity is associated with increased asthma risk and severity.³⁰ Furthermore, the association between obesity and asthma is stronger in women than men.^{55,56} Although risk factors for obesity are multifactorial, physical inactivity and poor diet remain primary behavioral factors leading to obesity, and interventions that address these behaviors have been shown to improve asthma outcomes.⁵⁷

EFFECTS OF SEX AND GENDER ON ASTHMA SEVERITY AND SYMPTOMS

Asthma severity

Whereas some studies suggest no significant difference in the distribution of asthma severity between women and men,⁵⁸⁻⁶¹ others report a higher proportion of women with severe asthma compared with men.^{62,63} Women with asthma tend to have a greater morbidity and mortality than do men with asthma.³ Women have an increased risk for hospitalization

caused by asthma compared with men,⁶³ and higher mortality rates.¹ Asthma is also often reported to have a greater impact on the health status and daily activities of women compared with men.^{7,64}

The reproductive cycle may also affect asthma severity in women. Some women report symptom worsening before menstruation,^{65,66} which may relate to sex hormone levels.⁶⁷ Pregnancy may also affect asthma control and severity in ways that are difficult to predict. In some women, pregnancy has no impact on asthma, and some may even experience asthma improvement; however, some women experience asthma worsening.^{10,68} Exacerbations and poor asthma control are also common in pregnancy^{10,68,69} and may be due to hormonal changes, or potentially to cessation or reduction of asthma medication owing to unfounded safety concerns.¹⁰ Smoking during pregnancy may also contribute to poor control.⁴⁴

Impact of sex- or gender-related comorbidities on symptoms

The presence of a chronic comorbidity with asthma is more common in women than in men.⁷⁰ Compared with men, women with asthma are more likely to have comorbid osteoporosis,⁷⁰ obesity,⁷¹ anxiety,⁷¹ and depression.⁷¹ Asthma is also linked to an increased risk for postpartum depression.⁷² To date, there is no conclusive evidence that men with asthma are more likely to present with a particular comorbidity more often than are women. In a large retrospective cohort study from the Netherlands of 32,787 patients with asthma, men were more likely to have coronary heart disease than were women.⁷⁰ However, two meta-analyses suggest a significantly increased risk for comorbid cardiovascular disease in women but not men with asthma.^{73,74} There is also evidence that obesity may have a larger impact on asthma-related quality of life in men with asthma compared with women with asthma.⁷⁵

These comorbidities can be linked to sex-specific hormones. Osteoporosis is common in women after the menopause owing to declining estrogen levels, and an increased risk for adverse events related to bone density is associated with long-term use of high-dose ICS or oral corticosteroids (OCS).⁷⁶ In women, obesity increases levels of circulating estrogen and leptin (a proinflammatory hormone), with negative effects on lung function, response to medication, and asthma control.^{77,78} Anxiety and depression are more common in women than men in the general population, and estrogen and progesterone may have a significant part in driving these conditions.⁷⁹ However, obesity, anxiety, and depression may also be related to gender; women may experience different exposures to psychosocial stressors compared with men, and respond differently. The same could be said for individuals across gender and marginalized sexual groups, who report significantly higher rates of depression and anxiety compared with cisgender or heterosexual individuals.⁸⁰ An indication of this may be seen in results showing that transgender status is associated with higher risk for lifetime asthma.²²

Compared with men, women with asthma are also more likely to have dyslipidemia, type 2 diabetes mellitus and hypertension, although the reasons for this are unknown.⁸¹

Patient symptom perception and reporting

Evidence suggests that women tend to perceive asthma symptoms as more bothersome than do men, even if the severity of asthma and lung function (as measured by FEV₁) is similar.^{7,8}

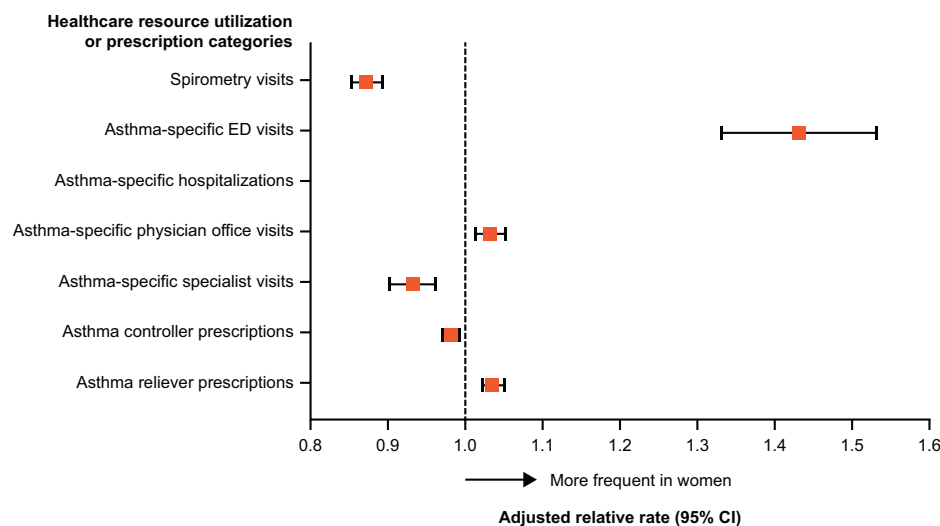


FIGURE 2. Forest plot for adjusted relative rates of asthma-specific health services use and prescriptions for women versus men (N = 209,054). *CI*, confidence interval; *ED*, emergency department. Reproduced with permission of ©ERS 2021. To T et al. *ERJ Open Res* 2019;5:00242-2019.⁹⁷

At the same FEV₁, women experience more discomfort,^{82,83} an increased cough reflex,⁷ and greater perception of dyspnea^{84,85} than do men. The reasons for these gender discrepancies are poorly understood. This may be related to sex-based physiologic differences; however, a study found that female gender and poor quality of life, but not airway obstruction severity, were predictors of increased perception of dyspnea, indicating a role for nonphysiologic factors.⁸⁴

Obesity may increase asthma symptom perception, possibly because of the misattribution of obesity-related breathing difficulties to asthma.⁸⁶ Women with asthma are more likely to have obesity than are men with asthma,⁵⁶ which may contribute to differences in symptom perception. Patients with comorbid anxiety, which is more prevalent among women^{70,71} (which could be due to reporting bias rather than a lack of anxiety and depression among men⁸⁷), tend to be high symptom perceivers and reporters⁸⁸⁻⁹¹ and may experience breathlessness or hyper-ventilation as the result of a panic disorder that is misattributed to asthma.⁹¹ Another reason for gender disparity in symptom reporting is that men may not feel as comfortable reporting symptoms because of gender role expectations.⁹²

Differences in the perception of symptoms may be problematic when the patient-reported severity of symptoms is used to make treatment decisions,^{60,93} particularly when a questionnaire relies on subjective measures of severity.

EFFECTS OF SEX AND GENDER ON ASTHMA TREATMENT AND MANAGEMENT

Gender bias in HCP behavior

Implicit gender bias among HCPs is widespread and may unknowingly sway diagnosis and management decisions.⁹⁴⁻⁹⁶ In patients with chronic pain, men can be viewed as brave whereas women are viewed as complaining and emotional.⁹⁶ In addition, women frequently report not being believed by HCPs when they report symptoms.⁹⁶ This implicit bias may prevent women from receiving adequate asthma care. In a Canadian study of health service use among older adults with asthma (aged 66

years and older, mostly urban with a mixed socioeconomic status), women had a higher rate of physician office and asthma-specific emergency department visits; however, they were less likely than men to receive spirometry and specialist care (Figure 2).⁹⁷ The authors hypothesized this may be due to either provider or patient behavior. Similarly, studies showed that women are more likely to engage with their HCP when needed, have an asthma management plan, and regularly use a peak flow meter.⁶¹ Despite this, women with asthma report a lower quality of life than do men, even at the same FEV₁.^{7,8} This seems counterintuitive, and the apparent sensitivity to symptoms could be perceived by HCPs as excessive; therefore, HCPs may regard symptoms of women with asthma to be exaggerated.⁹⁸ In some studies, men are reported to have better asthma control and health-related quality of life compared with women,^{64,99-101} which could also account for differences in care-seeking behavior, as well as receiving better or more aggressive care.

Studies also highlight that the gender of the HCP may affect how seriously symptom reporting is taken and how the patient received the diagnosis and is managed.^{102,103} Women are more likely to experience clinical inertia (ie, “provider failure to initiate or intensify treatment despite a clear indication and recognition to do so”)^{104,105} and less likely to receive preventative interventions compared with men, particularly when treated by male doctors.^{106,107} There is evidence that having a woman HCP may be beneficial for men or women, particularly for shared decision-making, preventative interventions, and lifestyle modification.¹⁰⁶

Gender-based preconceptions about workplace environments that do not reflect data on trigger exposure may adversely influence patient management. For example, despite evidence that work-related asthma is as common in women as in men,^{9,108} women are historically viewed as working in areas perceived as safe and are associated with less occupational exposure to triggers than are men.¹⁰¹ However, traditional roles are changing, and this will likely reflect occupational and domestic exposures and the risk for asthma in women and men.

Gender differences in asthma treatment

Gender differences in prescribed asthma treatments are documented in several studies; however, results are conflicting and there is an urgent need for more information on sex- and gender-based differences in response to interventions. Most large randomized pharmacotherapy trials adjust for sex, gender, or both and do not report sex- and gender-based results, even though these studies provide a unique opportunity to do so.

In a population-based study, men were more likely than women to be prescribed combination therapy (ICS/long-acting β_2 -agonist), and there was no difference in short-acting β_2 -agonist use between genders.¹⁰⁹ In a Canadian study in adults with asthma aged 66 years and older, women were less likely than men to be prescribed controllers (Figure 2).⁹⁷ Contrarily, a real-world study in Italy reported no gender differences in the frequency of ICS or long-acting β_2 -agonist given to patients with asthma when corrected for age and BMI.⁵⁹ In terms of OCS use, women are more frequently prescribed OCS for asthma compared with men.¹¹⁰ It is possible that this is the result of the greater perception and reporting of asthma symptoms by women compared with men, as noted earlier. This is important, because evidence links even short courses of OCS with serious adverse effects.¹¹¹ To date, there are no studies on gender differences in prescribing biologics. The reason why men are treated differently from women is not understood. However, it is possible that HCP gender bias may have a role⁹⁶; men seem to be prescribed more aggressive treatments even when women report worse symptoms.¹⁰⁹ It is possible that FeNO could be used to guide treatment decisions versus symptom-based treatment; however, evidence for the benefits of this is inconclusive.^{112,113} More research (using objective measures to eliminate HCP bias) is required to understand these gender discrepancies in asthma treatment so that interventions can be implemented.

Men are often believed to be less adherent to asthma treatment compared with women,¹¹⁴ but there is no clear consensus regarding a link between gender and adherence.¹¹⁵⁻¹¹⁷ However, there is evidence that men are more likely than women to overuse short-acting β_2 -agonists.^{118,119}

Impact of sex- or gender-related comorbidities on asthma management

The presence of comorbidities can lead to misattribution of asthma symptoms, overtreatment or undertreatment of asthma, and increased risk for poor asthma outcomes.^{120,121} Asthma patients with comorbid depression are less adherent to asthma treatment than are patients without depression.¹²² Patients with asthma are more likely to have depression compared with the general population,¹²³ and women are more likely than men to have psychological comorbidities (although this could be a reporting phenomenon^{87, 70,71}). Importantly, asthma symptoms can mimic those of psychological illnesses (eg, anxiety and panic disorders, dysfunctional breathing).¹²⁴ So, women may be more likely to receive an asthma misdiagnosis, which highlights the need for an accurate patient history and spirometry testing.

As mentioned earlier, women are more likely than men to be prescribed OCS for asthma. The prevalence and types of comorbidities associated with OCS use that present in women and men with asthma differ.⁷⁶ Increasing asthma severity usually leads to greater OCS use,^{76,125} and data show that the risk for certain comorbidities also increases with asthma severity.^{72,76} In patients with asthma, an increased risk for adverse events related

to bone density is associated with long-term use of high-dose ICS or OCS.⁷⁶ Although the increase in risk seems to be greater for men,⁷⁶ a generally increased risk and expectation of osteoporosis in women after menopause may mask an increase in osteoporosis owing to treatment with OCS. Osteoporosis is typically seen as a disease affecting older women, and osteoporosis testing is usually offered to postmenopausal women as a matter of course.^{76,126} Lack of routine bone mineral density testing in men could lead to underdiagnosis of osteoporosis in men with asthma and underestimation of a possible link between corticosteroids and osteoporosis in these individuals.⁷⁶

Pregnancy may also have an impact on how women are treated for asthma. It is vital for mothers and children for asthma control to be optimized during pregnancy; however, this is complicated because pregnancy can affect asthma control and severity in ways that are difficult to predict. During pregnancy, women may reduce asthma medication or stop taking it, or stop breastfeeding, because of concerns about the possible effects of medications on the child.^{127,128} In some cases, this may be advised by a doctor, because some HCPs have reservations regarding the use of corticosteroids in pregnancy.¹²⁹⁻¹³¹ Although there is some evidence for harm to the fetus from high-dose ICS in the first trimester,¹³² the safety of ICS use during pregnancy has been established in systematic reviews,^{133,134} and ICS use is recommended in the Global Initiative for Asthma strategy.¹⁰ There is also a low uptake of influenza and COVID-19 vaccination by pregnant women; the major reason is safety.^{135,136} Because pregnant women are particularly susceptible to respiratory infections,¹³⁷ which can exacerbate asthma symptoms,¹³⁸ it is important for vaccination to be encouraged.

The risks for poor outcomes for mothers and children, including childhood asthma and wheezing illnesses in early childhood¹³⁹ resulting from reduced asthma control, are greater than the potential for adverse events associated with medication use.¹⁰ Poor asthma control during pregnancy is also associated with low birth weight,^{140,141} which in turn is associated with an increased risk for childhood asthma.⁴⁶ Optimal assessment of asthma in pregnancy can reduce the likelihood of poor pregnancy outcomes.¹⁴² Use of FeNO to assess pregnant women appears to be a better determinant of treatment needs than are clinical symptoms alone.¹⁴³

SUMMARY AND CONCLUSIONS

There are marked differences in the prevalence, severity, and presentation of asthma in women and men of different age groups. Evidence suggests that these differences are attributable to a combination of physiology (sex) and cultural expectations and behaviors (gender) (Figure 3).

Clarity regarding the use and definition of “male” and “female” would help researchers determine whether sex or gender is the appropriate term, even when the definitions evolve in the future. We have identified several areas where there is no consensus regarding the potential influence of sex and gender (eg, medication adherence, asthma severity). Although large randomized trials have a unique opportunity to report sex- and gender-based results, most do not build sex and/or gender into their study design. Studies that carefully build in a methodology to test sex and gender differences would allow physicians to account for this better in their treatment choices. Gender differences may be influenced or confounded by socioeconomic, cultural, and other factors; these should be documented and

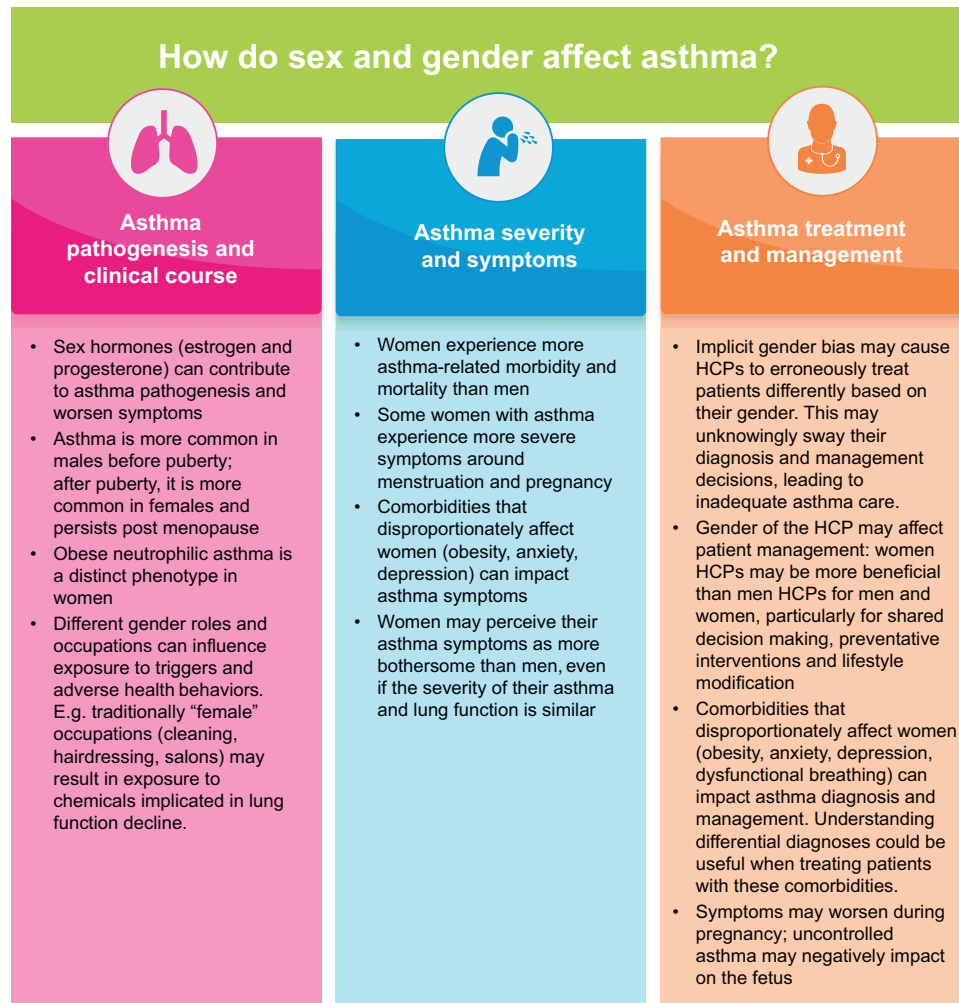


FIGURE 3. How do sex and gender affect asthma pathogenesis, clinical course, severity, symptoms, treatment, and management?^{3,9,12,27,68,71,77,86,91,97,104,107,125,140,141,144} HCP, health care professional.

appropriately analyzed. There is also a distinct lack of studies involving patients with asthma who are transgender or have undergone gender-affirming surgery. Although affecting a small number of people worldwide, this is a growing population, and the link between estrogen (in feminizing hormone therapy) and worsening pulmonary outcomes exacerbates the need for further studies in these individuals.

The major reason for differences according to sex are changes in sex hormones, in which asthma may be affected by life transitions such as puberty in women and men, and the monthly cycle, pregnancy, and menopause in women. Sex differences may also be attributable to genetic, cellular, or physiologic aspects, although research into this is ongoing. Comorbidities that occur more often in women (eg, obesity, depression, anxiety) may affect quality of life and disease management in those with asthma. These comorbidities may be sex-specific (eg, driven by sex hormones), or gender-specific (driven by cultural behaviors and expectations). Disparities in asthma caused by gender include trigger exposure, the propensity to seek treatment, symptom perception, and symptom recognition and assessment by HCPs.

Health care providers should be aware of clinically relevant risk factors in women and men, and of behaviors associated with

gender, so that these can be factored into personalized asthma management. Furthermore, there is a need for greater consideration of sex and gender in the design and analysis of clinical trials. Improving access to innovative treatments for all patients will help people with asthma receive optimal treatment according to their needs.

Finally, future education directed to HCPs and patients should provide a better understanding of sex- and gender-based differences in asthma outcomes, should be based on evidence rather than preconceptions or biases (eg, HCP training to recognize their own implicit bias), and should empower patients to become more involved in treatment and management decisions. Fostering a collaborative, patient-centric approach to decision-making tailored to the individual's sex and gender could help to improve adherence to treatment and clinical outcomes, and address some of the wider unmet needs in asthma.

Acknowledgements

This publication was written in accordance with Good Publications Practice guidelines (<http://www.ismpp.org/gpp3>).

D. Singh is supported by the National Institute for Health Research Manchester Biomedical Research Centre, UK.

REFERENCES

- Mattiuzzi C, Lippi G. Worldwide asthma epidemiology: insights from the Global Health Data Exchange Database. *Int Forum Allergy Rhinol* 2020;10:75-80.
- Buhl R, Heaney LG, Loeffler E, Larbig M, Kostikas K, Conti V, et al. One-year follow up of asthmatic patients newly initiated on treatment with medium- or high-dose inhaled corticosteroid-long-acting beta₂-agonist in UK primary care settings. *Respir Med* 2020;162:105859.
- Pignataro FS, Bonini M, Forgiione A, Melandri S, Usmani OS. Asthma and gender: the female lung. *Pharmacol Res* 2017;119:384-90.
- Clayton JA, Tannenbaum C. Reporting sex, gender, or both in clinical research? *JAMA* 2016;316:1863-4.
- Hammarstrom A, Annandale E. A conceptual muddle: an empirical analysis of the use of 'sex' and 'gender' in 'gender-specific medicine' journals. *PLoS One* 2012;7:e34193.
- Mauvais-Jarvis F, Bairey Merz N, Barnes PJ, Brinton RD, Carrero JJ, DeMeo DL, et al. Sex and gender: modifiers of health, disease, and medicine. *Lancet* 2020;396:565-82.
- Zillmer LR, Gazzotti MR, Nascimento OA, Montealegre F, Fish J, Jardim JR. Gender differences in the perception of asthma and respiratory symptoms in a population sample of asthma patients in four Brazilian cities. *J Bras Pneumol* 2014;40:591-8.
- Colombo D, Zagni E, Ferri F, Canonica GW. Gender differences in asthma perception and its impact on quality of life: a post hoc analysis of the PROXIMA (Patient Reported Outcomes and Xolair[®]) In the Management of Asthma) study. *Allergy Asthma Clin Immunol* 2019;15:65.
- Moscato G, Apfelbacher C, Brockow K, Eberle C, Genuneit J, Mortz CG, et al. Gender and occupational allergy: report from the task force of the EAACI Environmental and Occupational Allergy Interest Group. *Allergy* 2020;75:2753-63.
- Global Initiative for Asthma. 2021 GINA Report, Global Strategy for Asthma Management and Prevention. Accessed February 18, 2022. <https://ginasthma.org/gina-reports/>
- Zein JG, Denson JL, Wechsler ME. Asthma over the adult life course: gender and hormonal influences. *Clin Chest Med* 2019;40:149-61.
- Fuseini H, Newcomb DC. Mechanisms driving gender differences in asthma. *Curr Allergy Asthma Rep* 2017;17:19.
- Cephus JY, Stier MT, Fuseini H, Yung JA, Toki S, Bloodworth MH, et al. Testosterone attenuates group 2 innate lymphoid cell-mediated airway inflammation. *Cell Rep* 2017;21:2487-99.
- Fuseini H, Yung JA, Cephus JY, Zhang J, Goleniewska K, Polosukhin VV, et al. Testosterone decreases house dust mite-induced type 2 and IL-17A-mediated airway inflammation. *J Immunol* 2018;201:1843-54.
- Sánchez-Ramos JL, Pereira-Vega AR, Alvarado-Gómez F, Maldonado-Pérez JA, Svanes C, Gómez-Real F. Risk factors for premenstrual asthma: a systematic review and meta-analysis. *Expert Rev Respir Med* 2017;11:57-72.
- Nwaru BI, Sheikh A. Hormonal contraceptives and asthma in women of reproductive age: analysis of data from serial national Scottish Health Surveys. *J R Soc Med* 2015;108:358-71.
- Nwaru BI, Pillinger R, Tibble H, Shah SA, Ryan D, Critchley H, et al. Hormonal contraceptives and onset of asthma in reproductive-age women: population-based cohort study. *J Allergy Clin Immunol* 2020;146:438-46.
- McCleary N, Nwaru BI, Nurmatov UB, Critchley H, Sheikh A. Endogenous and exogenous sex steroid hormones in asthma and allergy in females: a systematic review and meta-analysis. *J Allergy Clin Immunol* 2018;141:1510-1513.e1518.
- Triebner K, Johannessen A, Puggini L, Benediktsdóttir B, Bertelsen RJ, Bifulco E, et al. Menopause as a predictor of new-onset asthma: a longitudinal Northern European population study. *J Allergy Clin Immunol* 2016;137:50-7.e56.
- Hansen ESH, Aasbjerg K, Moeller AL, Gade EJ, Torp-Pedersen C, Backer V. Hormone replacement therapy and development of new asthma. *Chest* 2021;160:45-52.
- Shah SA, Tibble H, Pillinger R, McLean S, Ryan D, Critchley H, et al. Hormone replacement therapy and asthma onset in menopausal women: national cohort study. *J Allergy Clin Immunol* 2021;147:1662-70.
- Morales-Estrella JL, Boyle M, Zein JG. Transgender status is associated with higher risk of lifetime asthma. In: A34. Asthma Clinical Studies I. American Thoracic Society; 2018. A1371-A1371. Thematic poster session presentation at the American Thoracic Society International Conference, May 18-23, 2018, San Diego, USA.
- LoMauro A, Aliverti A. Sex differences in respiratory function. *Breathe* (Sheff) 2018;14:131-40.
- LoMauro A, Aliboni L, Aliverti A. Sex Differences in the anatomy of the airways and the lungs: impact on dysanapsis across the lifespan. In: Silveira P, Tigno XT, editors. Sex-based differences in lung physiology. Cham, Switzerland: Springer International Publishing; 2021. p. 13-38.
- Prakash YS, Pabelick CM, Chiarella SE. Sex differences in respiratory physiology. In: Silveira P, Tigno XT, editors. Sex-based differences in lung physiology. Cham, Switzerland: Springer International Publishing; 2021. p. 1-11.
- Moore WC, Meyers DA, Wenzel SE, Teague WG, Li H, Li X, et al. Identification of asthma phenotypes using cluster analysis in the Severe Asthma Research Program. *Am J Respir Crit Care Med* 2010;181:315-23.
- Hsiao HP, Lin MC, Wu CC, Wang CC, Wang TN. Sex-specific asthma phenotypes, inflammatory patterns, and asthma control in a cluster analysis. *J Allergy Clin Immunol Pract* 2019;7:556-567.e15.
- Telenga ED, Tideman SW, Kerstjens HA, Hacken NH, Timens W, Postma DS, et al. Obesity in asthma: more neutrophilic inflammation as a possible explanation for a reduced treatment response. *Allergy* 2012;67:1060-8.
- Akinbami LJ, Fryar CD. Current asthma prevalence by weight status among adults: United States, 2001-2014. *NCHS Data Brief* 2016;239:1-8.
- Peters U, Dixon AE, Forno E. Obesity and asthma. *J Allergy Clin Immunol* 2018;141:1169-79.
- Scott HA, Gibson PG, Garg ML, Upham JW, Wood LG. Sex hormones and systemic inflammation are modulators of the obese-asthma phenotype. *Allergy* 2016;71:1037-47.
- Han YY, Forno E, Celedon JC. Sex steroid hormones and asthma in a nationwide study of U.S. adults. *Am J Respir Crit Care Med* 2020;201:158-66.
- Osman M. Therapeutic implications of sex differences in asthma and atopy. *Arch Dis Child* 2003;88:587-90.
- Svanes O, Bertelsen RJ, Lygre SHL, Carsin AE, Anto JM, Forsberg B, et al. Cleaning at home and at work in relation to lung function decline and airway obstruction. *Am J Respir Crit Care Med* 2018;197:1157-63.
- Siracusa A, De Blay F, Folletti I, Moscato G, Olivieri M, Quirce S, et al. Asthma and exposure to cleaning products - a European Academy of Allergy and Clinical Immunology task force consensus statement. *Allergy* 2013;68:1532-45.
- Vandenplas O, Godet J, Hurdubaea L, Riffart C, Suojalehto H, Wiszniewska M, et al. Are high- and low-molecular-weight sensitizing agents associated with different clinical phenotypes of occupational asthma? *Allergy* 2019;74:261-72.
- US Bureau of Labor Statistics. American Time Use Survey. Accessed February 18, 2022. <https://www.bls.gov/tus/>
- Comhair SA, Gaston BM, Ricci KS, Hammel J, Dweik RA, Teague WG, et al. Detrimental effects of environmental tobacco smoke in relation to asthma severity. *PLoS One* 2011;6:e18574.
- Ritchie H. Who smokes more, men or women? Accessed February 18, 2022. <https://ourworldindata.org/who-smokes-more-men-or-women>
- Wellman RJ, Sylvestre MP, O'Loughlin EK, Dutczak H, Montreuil A, Datta GD, et al. Socioeconomic status is associated with the prevalence and co-occurrence of risk factors for cigarette smoking initiation during adolescence. *Int J Public Health* 2018;63:125-36.
- GBD 2015 Tobacco Collaborators. Smoking prevalence and attributable disease burden in 195 countries and territories, 1990-2015: a systematic analysis from the Global Burden of Disease Study 2015. *Lancet* 2017;389:1885-906.
- Zhang M, Liu S, Yang L, Jiang Y, Huang Z, Zhao Z, et al. Prevalence of smoking and knowledge about the hazards of smoking among 170 000 Chinese adults, 2013-2014. *Nicotine Tob Res* 2019;21:1644-51.
- Lin J, Wang W, Chen P, Zhou X, Wan H, Yin K, et al. Prevalence and risk factors of asthma in mainland China: the CARE study. *Respir Med* 2018;137:48-54.
- Murphy VE, Clifton VL, Gibson PG. The effect of cigarette smoking on asthma control during exacerbations in pregnant women. *Thorax* 2010;65:739-44.
- Guo SE, Ratner PA, Okoli CT, Johnson JL. The gender-specific association between asthma and the need to smoke tobacco. *Heart Lung* 2014;43:77-83.
- Thacher JD, Gehring U, Gruzjeva O, Standl M, Pershagen G, Bauer CP, et al. Maternal smoking during pregnancy and early childhood and development of asthma and rhinoconjunctivitis - a MeDALL Project. *Environ Health Perspect* 2018;126:047005.
- Li G, Saad S, Oliver BG, Chen H. Heat or burn? Impacts of intrauterine tobacco smoke and e-cigarette vapor exposure on the offspring's health outcome. *Toxics* 2018;6:43.
- Izadi N, Baraghoshi D, Curran-Everett D, Zeiger RS, Szefer SJ, Covar RA, et al. Factors associated with persistence of severe asthma from late adolescence to early adulthood. *Am J Respir Crit Care Med* 2021;204:776-87.

49. Fazel N, Kundi M, Kazemzadeh A, Esmaily H, Akbarzadeh R, Ahmadi R. Environmental tobacco smoke exposure during pregnancy affects complications and birth outcomes in women with and without asthma. *BMC Pregnancy Childbirth* 2020;20:314.
50. Xu M, Lodge CJ, Lowe AJ, Dharmage SC, Cassim R, Tan D, et al. Are adults with asthma less physically active? A systematic review and meta-analysis. *J Asthma* 2021;58:1426-43.
51. Yawn BP, Rank MA, Bertram SL, Wollan PC. Obesity, low levels of physical activity and smoking present opportunities for primary care asthma interventions: an analysis of baseline data from The Asthma Tools Study. *NPJ Prim Care Respir Med* 2015;25:15058.
52. Lang JE. The impact of exercise on asthma. *Curr Opin Allergy Clin Immunol* 2019;19:118-25.
53. Lochte L, Nielsen KG, Petersen PE, Platts-Mills TA. Childhood asthma and physical activity: a systematic review with meta-analysis and Graphic Appraisal Tool for Epidemiology assessment. *BMC Pediatr* 2016;16:50.
54. Jones H, Millward P, Buraimo B. Adult participation in sport: analysis of the Taking Part Survey, Department for Culture, Media and Sport. Accessed February 18, 2022. https://assets.publishing.service.gov.uk/government/uploads/system/uploads/attachment_data/file/137986/tp-adult-participation-sport-analysis.pdf
55. Greenblatt R, Mansour O, Zhao E, Ross M, Himes BE. Gender-specific determinants of asthma among U.S. adults. *Asthma Res Pract* 2017;3:2.
56. Zhang P, Zein J. Novel insights on sex-related differences in asthma. *Curr Allergy Asthma Rep* 2019;19:44.
57. Nyenhuis SM, Dixon AE, Ma J. Impact of lifestyle interventions targeting healthy diet, physical activity, and weight loss on asthma in adults: what is the evidence? *J Allergy Clin Immunol Pract* 2018;6:751-63.
58. Raheison C, Janson C, Jarvis D, Burney P, Cazzoletti L, de Marco R, et al. Evolution of asthma severity in a cohort of young adults: is there any gender difference? *PLoS One* 2009;4:e7146.
59. Ricciardolo FLM, Levra S, Sprio AE, Bertolini F, Carriero V, Gallo F, et al. Asthma in the real-world: the relevance of gender. *Int Arch Allergy Immunol* 2020;181:462-6.
60. Ciprandi G, Gallo F. The impact of gender on asthma in the daily clinical practice. *Postgrad Med* 2018;130:271-3.
61. Naleway AL, Vollmer WM, Frazier EA, O'Connor E, Magid DJ. Gender differences in asthma management and quality of life. *J Asthma* 2006;43:549-52.
62. Wang E, Wechsler ME, Tran TN, Heaney LG, Jones RC, Menzies-Gow AN, et al. Characterization of severe asthma worldwide: data from the International Severe Asthma Registry. *Chest* 2020;157:790-804.
63. Senna G, Latorre M, Bugiani M, Caminati M, Heffler E, Morrone D, et al. Sex differences in severe asthma: results from Severe Asthma Network in Italy-SANI. *Allergy Asthma Immunol Res* 2021;13:219-28.
64. Forte GC, Hennemann ML, Dalcin PTR. Asthma control, lung function, nutritional status, and health-related quality of life: differences between adult males and females with asthma. *J Bras Pneumol* 2018;44:273-8.
65. Pauli BD, Reid RL, Munt PW, Wigle RD, Forkert L. Influence of the menstrual cycle on airway function in asthmatic and normal subjects. *Am Rev Respir Dis* 1989;140:358-62.
66. Oguzulgen IK, Turkas H, Erbas D. Airway inflammation in premenstrual asthma. *J Asthma* 2002;39:517-22.
67. Raheison C, Hamzaoui A, Nocent-Ejnaini C, Essari LA, Ouksel H, Zysman M, et al. Woman's asthma throughout life: towards a personalized management? [in French]. *Rev Mal Respir* 2020;37:144-60.
68. Bokern MP, Robijn AL, Jensen ME, Barker D, Callaway L, Clifton V, et al. Factors associated with asthma exacerbations during pregnancy. *J Allergy Clin Immunol Pract* 2021;9:4343-4352.e4.
69. Cohen JM, Bateman BT, Huybrechts KF, Mogun H, Yland J, Schatz M, et al. Poorly controlled asthma during pregnancy remains common in the United States. *J Allergy Clin Immunol Pract* 2019;7:2672-2680.e10.
70. Veenendaal M, Westerik JAM, van den Bemt L, Kocks JWH, Bischoff EW, Schermer TR. Age- and sex-specific prevalence of chronic comorbidity in adult patients with asthma: a real-life study. *NPJ Prim Care Respir Med* 2019;29:14.
71. Hekking PP, Amelink M, Wener RR, Bouvy ML, Bel EH. Comorbidities in difficult-to-control asthma. *J Allergy Clin Immunol Pract* 2018;6:108-13.
72. Blais L, Salah Ahmed SI, Beauchesne MF, Forget A, Kettani FZ, Lavoie KL. Risk of postpartum depression among women with asthma. *J Allergy Clin Immunol Pract* 2019;7:925-33.e2.
73. Wang L, Gao S, Yu M, Sheng Z, Tan W. Association of asthma with coronary heart disease: a meta analysis of 11 trials. *PLoS One* 2017;12:e0179335.
74. Xu M, Xu J, Yang X. Asthma and risk of cardiovascular disease or all-cause mortality: a meta-analysis. *Ann Saudi Med* 2017;37:99-105.
75. Lavoie KL, Bacon SL, Labrecque M, Cartier A, Ditto B. Higher BMI is associated with worse asthma control and quality of life but not asthma severity. *Respir Med* 2006;100:648-57.
76. Barry LE, O'Neill C, Patterson C, Sweeney J, Price D, Heaney LG. Age and sex associations with systemic corticosteroid-induced morbidity in asthma. *J Allergy Clin Immunol Pract* 2018;6:2014-23.e2.
77. Marko M, Pawliczak R. Obesity and asthma: risk, control and treatment. *Postepy Dermatol Alergol* 2018;35:563-71.
78. Melgert BN, Ray A, Hylkema MN, Timens W, Postma DS. Are there reasons why adult asthma is more common in females? *Curr Allergy Asthma Rep* 2007;7:143-50.
79. Li SH, Graham BM. Why are women so vulnerable to anxiety, trauma-related and stress-related disorders? The potential role of sex hormones. *Lancet Psychiatry* 2017;4:73-82.
80. Borgogna NC, McDermott RC, Aita SL, Kridel MM. Anxiety and depression across gender and sexual minorities: implications for transgender, gender nonconforming, pansexual, demisexual, asexual, queer, and questioning individuals. *Psycho Sex Orientat Gend Divers* 2019;6:54-63.
81. Cazzola M, Calzetta L, Bettoncelli G, Novelli L, Cricelli C, Rogliani P. Asthma and comorbid medical illness. *Eur Respir J* 2011;38:42-9.
82. Ekici M, Apan A, Ekici A, Erdemoglu AK. Perception of bronchoconstriction in elderly asthmatics. *J Asthma* 2001;38:691-6.
83. Osborne ML, Vollmer WM, Linton KL, Buist AS. Characteristics of patients with asthma within a large HMO: a comparison by age and gender. *Am J Respir Crit Care Med* 1998;157:123-8.
84. Chhabra SK, Chhabra P. Gender differences in perception of dyspnea, assessment of control, and quality of life in asthma. *J Asthma* 2011;48:609-15.
85. Skoczynski S, Zejda J, Brozek G, Glinka K, Waz S, Kotulska B, et al. Clinical importance of sex differences in dyspnea and its sex related determinants in asthma and COPD patients. *Adv Med Sci* 2019;64:303-8.
86. Kopel SJ, Walders-Abramson N, McQuaid EL, Seifer R, Koinis-Mitchell D, Klein RB, et al. Asthma symptom perception and obesity in children. *Biol Psychol* 2010;84:135-41.
87. Fisher K, Seidler ZE, King K, Oliffe JL, Rice SM. Men's anxiety: a systematic review. *J Affect Disord* 2021;295:688-702.
88. Lavoie KL, Cartier A, Labrecque M, Bacon SL, Lemiere C, Malo JL, et al. Are psychiatric disorders associated with worse asthma control and quality of life in asthma patients? *Respir Med* 2005;99:1249-57.
89. Lavoie KL, Bacon SL, Barone S, Cartier A, Ditto B, Labrecque M. What is worse for asthma control and quality of life: depressive disorders, anxiety disorders, or both? *Chest* 2006;130:1039-47.
90. Boudreau M, Lavoie KL, Cartier A, Trutshnigg B, Morizio A, Lemiere C, et al. Do asthma patients with panic disorder really have worse asthma? A comparison of physiological and psychological responses to a methacholine challenge. *Respir Med* 2015;109:1250-6.
91. Boudreau M, Bacon SL, Paine NJ, Cartier A, Trutshnigg B, Morizio A, et al. Impact of panic attacks on bronchoconstriction and subjective distress in asthma patients with and without panic disorder. *Psychosom Med* 2017;79:576-84.
92. Cleveland Clinic MENTION It® Survey Results Overview. Accessed February 18, 2022. <https://newsroom.clevelandclinic.org/2019/09/04/cleveland-clinic-survey-men-will-do-almost-anything-to-avoid-going-to-the-doctor/>
93. Juniper EF, O'Byrne PM, Guyatt GH, Ferrie PJ, King DR. Development and validation of a questionnaire to measure asthma control. *Eur Respir J* 1999;14:902-7.
94. FitzGerald C, Hurst S. Implicit bias in healthcare professionals: a systematic review. *BMC Med Ethics* 2017;18:19.
95. Wallis CJD, Jerath A, Coburn N, Klaassen Z, Luckenbaugh AN, Magee DE, et al. Association of surgeon-patient sex concordance with postoperative outcomes. *JAMA Surg* 2022;157:146-56.
96. Samulowitz A, Gremyr I, Eriksson E, Hensing G. "Brave men" and "emotional women": a theory-guided literature review on gender bias in health care and gendered norms towards patients with chronic pain. *Pain Res Manag* 2018;2018:6358624.
97. To T, Gray N, Ryckman K, Zhu J, Fong I, Gershon A. Sex differences in health services and medication use among older adults with asthma. *ERJ Open Res* 2019;5:00242-2019.
98. Hunt K, Adamson J, Galdas P. Gender and help-seeking: towards gender comparative studies. In: Kuhlmann E, Annandale E, editors. *The Palgrave handbook of gender and healthcare*. London, UK: Palgrave Macmillan; 2010. p. 207-21.
99. Selberg S, Hedman L, Jansson SA, Backman H, Stridsman C. Asthma control and acute healthcare visits among young adults with asthma – a population-based study. *J Adv Nurs* 2019;75:3525-34.

100. Stridsman C, Backman H, Eklund BM, Ronmark E, Hedman L. Adolescent girls with asthma have worse asthma control and health-related quality of life than boys – a population based study. *Pediatr Pulmonol* 2017;52:866-72.
101. Raulf M, Bruning T, Jensen-Jarolim E, van Kampen V. Gender-related aspects in occupational allergies – secondary publication and update. *World Allergy Organ J* 2017;10:44.
102. Bertakis KD, Franks P, Azari R. Effects of physician gender on patient satisfaction. *J Am Med Womens Assoc* (1972) 2003;58:69-75.
103. Roter DL, Hall JA. Physician gender and patient-centered communication: a critical review of empirical research. *Annu Rev Public Health* 2004;25:497-519.
104. Lavoie KL, Rash JA, Campbell TS. Changing provider behavior in the context of chronic disease management: focus on clinical inertia. *Annu Rev Pharmacol Toxicol* 2017;57:263-83.
105. Nau DP, Mallya U. Sex disparity in the management of dyslipidemia among patients with type 2 diabetes mellitus in a managed care organization. *Am J Manag Care* 2005;11:69-73.
106. Delpech R, Bloy G, Panjo H, Falcoff H, Ringa V, Rigal L. Physicians' preventive practices: more frequently performed for male patients and by female physicians. *BMC Health Serv Res* 2020;20:331.
107. Greenwood BN, Carnahan S, Huang L. Patient-physician gender concordance and increased mortality among female heart attack patients. *Proc Natl Acad Sci U S A* 2018;115:8569-74.
108. White GE, Seaman C, Filios MS, Mazurek JM, Flattery J, Harrison RJ, et al. Gender differences in work-related asthma: surveillance data from California, Massachusetts, Michigan, and New Jersey, 1993-2008. *J Asthma* 2014;51:691-702.
109. Amegadzie JE, Gamble JM, Farrell J, Gao Z. Gender differences in inhaled pharmacotherapy utilization in patients with obstructive airway diseases (OADs): a population-based study. *Int J Chron Obstruct Pulmon Dis* 2020;15:2355-66.
110. Tran TN, King E, Sarkar R, Nan C, Rubino A, O'Leary C, et al. Oral corticosteroid prescription patterns for asthma in France, Germany, Italy and the UK. *Eur Respir J* 2020;55:1902363.
111. Price D, Castro M, Bourdin A, Fucile S, Altman P. Short-course systemic corticosteroids in asthma: striking the balance between efficacy and safety. *Eur Respir Rev* 2020;29:190151.
112. Petsky HL, Kew KM, Turner C, Chang AB. Exhaled nitric oxide levels to guide treatment for adults with asthma. *Cochrane Database Syst Rev* 2016;9:CD011440.
113. Bernholm KF, Homoe AS, Meteran H, Jensen CB, Porsbjerg C, Backer V. F_{eNO} -based asthma management results in faster improvement of airway hyperresponsiveness. *ERJ Open Res* 2018;4:00147-2017.
114. Sundberg R, Toren K, Franklin KA, Gislason T, Omenaas E, Svanes C, et al. Asthma in men and women: treatment adherence, anxiety, and quality of sleep. *Respir Med* 2010;104:337-44.
115. Dima AL, Hernandez G, Cunillera O, Ferrer M, de Bruin M; ASTRO-LAB Group. Asthma inhaler adherence determinants in adults: systematic review of observational data. *Eur Respir J* 2015;45:994-1018.
116. Rolnick SJ, Pawloski PA, Hedblom BD, Asche SE, Bruzek RJ. Patient characteristics associated with medication adherence. *Clin Med Res* 2013;11:54-65.
117. Lindner PS, Lindner AJ. Gender differences in asthma inhaler compliance. *Conn Med* 2014;78:207-10.
118. Nwaru BI, Ekstrom M, Hasvold P, Wiklund F, Telg G, Janson C. Overuse of short-acting beta₂-agonists in asthma is associated with increased risk of exacerbation and mortality: a nationwide cohort study of the global SABINA programme. *Eur Respir J* 2020;55:1901872.
119. Worth H, Criege CP, Vogelmeier CF, Kardos P, Becker EM, Kostev K, et al. Prevalence of overuse of short-acting beta-2 agonists (SABA) and associated factors among patients with asthma in Germany. *Respir Res* 2021;22:108.
120. Fretzayas A, Moustaki M, Loukou I, Douros K. Differentiating vocal cord dysfunction from asthma. *J Asthma Allergy* 2017;10:277-83.
121. Bardin PG, Low K, Ruane L, Lau KK. Controversies and conundrums in vocal cord dysfunction. *Lancet Respir Med* 2017;5:546-8.
122. Smith A, Krishnan JA, Bilderback A, Riekert KA, Rand CS, Bartlett SJ. Depressive symptoms and adherence to asthma therapy after hospital discharge. *Chest* 2006;130:1034-8.
123. Zielinski TA, Brown ES, Nejtjek VA, Khan DA, Moore JJ, Rush AJ. Depression in asthma: prevalence and clinical implications. *Prim Care Companion J Clin Psychiatry* 2000;2:153-8.
124. Gherasim A, Dao A, Bernstein JA. Confounders of severe asthma: diagnoses to consider when asthma symptoms persist despite optimal therapy. *World Allergy Organ J* 2018;11:29.
125. Zeiger RS, Schatz M, Li Q, Chen W, Khattry DB, Tran TN. Burden of chronic oral corticosteroid use by adults with persistent asthma. *J Allergy Clin Immunol Pract* 2017;5:1050-1060.e9.
126. National Health Service. When it is used: bone density scan (DEXA scan). Accessed February 18, 2022. <https://www.nhs.uk/conditions/dexa-scan/why-its-done/>
127. Robijn AL, Barker D, Gibson PG, Giles WB, Clifton VL, Mattes J, et al. Factors associated with nonadherence to inhaled corticosteroids for asthma during pregnancy. *J Allergy Clin Immunol Pract* 2021;9:1242-1245.e1.
128. Robijn AL, Jensen ME, McLaughlin K, Gibson PG, Murphy VE. Inhaled corticosteroid use during pregnancy among women with asthma: a systematic review and meta-analysis. *Clin Exp Allergy* 2019;49:1403-17.
129. Stenius-Aarniala BS, Hedman J, Teramo KA. Acute asthma during pregnancy. *Thorax* 1996;51:411-4.
130. Nelson-Piercy C. Asthma in pregnancy. *Thorax* 2001;56:325-8.
131. Cydulka RK, Emerman CL, Schreiber D, Molander KH, Woodruff PG, Camargo CA Jr. Acute asthma among pregnant women presenting to the emergency department. *Am J Respir Crit Care Med* 1999;160:887-92.
132. Blais L, Beauchesne MF, Lemiere C, Elftouh N. High doses of inhaled corticosteroids during the first trimester of pregnancy and congenital malformations. *J Allergy Clin Immunol* 2009;124:1229-34.e4.
133. Lim A, Stewart K, König K, George J. Systematic review of the safety of regular preventive asthma medications during pregnancy. *Ann Pharmacother* 2011;45:931-45.
134. Rahimi R, Nikfar S, Abdollahi M. Meta-analysis finds use of inhaled corticosteroids during pregnancy safe: a systematic meta-analysis review. *Hum Exp Toxicol* 2006;25:447-52.
135. Wilson RJ, Paterson P, Jarrett C, Larson HJ. Understanding factors influencing vaccination acceptance during pregnancy globally: a literature review. *Vaccine* 2015;33:6420-9.
136. Goncu Ayhan S, Oluklu D, Atalay A, Menekse Beser D, Tanacan A, Moraloglu Tekin O, et al. COVID-19 vaccine acceptance in pregnant women. *Int J Gynaecol Obstet* 2021;154:291-6.
137. Murphy VE, Powell H, Wark PAB, Gibson PG. A prospective study of respiratory viral infection in pregnant women with and without asthma. *Chest* 2013;144:420-7.
138. Trinh P, Jung TH, Keene D, Demmer RT, Perzanowski M, Lovasi G. Temporal and spatial associations between influenza and asthma hospitalisations in New York City from 2002 to 2012: a longitudinal ecological study. *BMJ Open* 2018;8:e020362.
139. Mirzakhani H, Carey VJ, Zeiger R, Bacharier LB, O'Connor GT, Schatz MX, et al. Impact of parental asthma, prenatal maternal asthma control, and vitamin D status on risk of asthma and recurrent wheeze in 3-year-old children. *Clin Exp Allergy* 2019;49:419-29.
140. Abdullah K, Zhu J, Gershon A, Dell S, To T. Effect of asthma exacerbation during pregnancy in women with asthma: a population-based cohort study. *Eur Respir J* 2020;55:1901335.
141. Yland JJ, Bateman BT, Huybrechts KF, Brill G, Schatz MX, Wurst KE, et al. Perinatal outcomes associated with maternal asthma and its severity and control during pregnancy. *J Allergy Clin Immunol Pract* 2020;8:1928-37.e3.
142. Bonham CA, Patterson KC, Strek ME. Asthma outcomes and management during pregnancy. *Chest* 2018;153:515-27.
143. Murphy VE, Porsbjerg CM, Robijn AL, Gibson PG. Biomarker-guided management reduces exacerbations in non-eosinophilic asthma in pregnancy: a secondary analysis of a randomized controlled trial. *Respirology* 2020;25:719-25.
144. Wilson SR, Strub P, Buist AS, Knowles SB, Lavori PW, Lapidus J, et al. Shared treatment decision making improves adherence and outcomes in poorly controlled asthma. *Am J Respir Crit Care Med* 2010;181:566-77.

ONLINE REPOSITORY

APPENDIX E1

Search strategy and reference selection

References were identified through literature searches via PubMed and Google, using the terms listed in [Table E1](#). Results were subsequently filtered for papers published in the past 10 years and ranked by the additional terms listed in [Table E2](#). Ranked results were screened for relevance to topics under

discussion, and information gaps were supplemented by additional references selected by the authors. When conducting this search, we focused on women and girls with asthma; however, we now believe that the focus should be on all genders, and so extended our scope to focus on the impact of men and women's sex and gender on the pathogenesis, clinical course, diagnosis, treatment, and management of asthma.

TABLE E1. Search string used to identify literature via PubMed

Search terms related to women	Search ("Women"[Majr] OR "Woman"[TI] OR "Women"[TI] OR "Girls"[TI] OR "Girl"[TI] OR "Women's"[TI] OR "Womens"[TI] OR "Woman's"[TI] OR "Womans"[TI] OR "Girl's"[TI] OR "Female"[Majr] OR "Female"[TI] OR "Females"[TI] OR "Sex"[Majr] OR "Gender Identity"[Majr] OR "Gender"[TI] OR "Gender Identity"[TI] OR "Gender Identities"[TI] OR "Sex"[TI] OR "Phenotypic Sex"[TI] OR "Genotypic Sex"[TI] OR "Sex Role"[TI] OR "Sex Roles"[TI] OR "Gender Role"[TI] OR "Gender Roles"[TI] OR "Woman's Role"[TI] OR "Woman's Roles"[TI] OR "Women's Role"[TI] OR "Women's Roles"[TI] OR "Sex Characteristics"[Majr] OR "Gender differences"[TI] OR "Gender difference"[TI] OR "Sex Characteristic"[TI] OR "Sex Differences"[TI] OR "Sex Difference"[TI] OR "Sex characteristics"[TI]) Filters: published in past 10 y
AND	
Search terms related to asthma	Search ("Asthma"[Majr] OR "Asthma"[TI] OR "Asthmas"[TI]) Filters: published in past 10 y

TABLE E2. Additional search terms used to rank search results according to relevance to various topics and categories

Topic or category	Term
Asthma type	
Allergic asthma	Allergic asthma, Allergen asthma, Allergic, Allergen, Allergies
Eosinophilic asthma	Eosinophilic asthma, Eosinophilic asthmas
T _H 2 asthma	Th2, Th-2, TH 2, Th2 cytokines, Th-2 cytokines, TH 2 cytokines, Th2 asthma, Th-2 asthma, TH 2 asthma
Comorbidities	
	Comorbidity, Comorbidities, Rhinitis, Rhinitides, Nasal Catarrh, Nasal Catarrhs, Sinusitis, Sinusitides, Sinus Infections, Sinus Infection, Gastric Acid Reflux, Gastric Acid Reflux Disease, Gastro-Esophageal Reflux, Gastro Esophageal Reflux, Gastroesophageal Reflux, Gastro-Esophageal Reflux, Gastro Esophageal Reflux, Gastroesophageal Reflux, GERD, Esophageal Reflux, Oesophageal Reflux, Obstructive Sleep Apnea, Obstructive Sleep Apneas, OSAHS, Sleep Apnea, Hypopnea, Sleep Apnea Hypopneas, Upper Airway Resistance Sleep Apnea Syndrome, Hormonal, Hormonal Disorder, Hormonal Disorders, Hormonal Disease, Hormonal Diseases, Osteoporosis, Osteoporoses, Bone Loss, Bone Losses, Osteopenia, Osteopenias, Diabetes, Diabetes Mellitus, Diabetes Insipidus, Diabetic, Type 2, Type II, Adult-Onset, Adult Onset, Maturity Onset, Maturity-Onset, Noninsulin Dependent, Noninsulin-Dependent, Non Insulin Dependent, Non Insulin-Dependent, Non-Insulin Dependent, Non-Insulin-Dependent, Slow-Onset, Slow Onset, NIDDM, T2DM, T2D, T2
Prevalence and epidemiology	
Prevalence	Prevalence, Prevalences, Prevalent
Epidemiology	Epidemiology, Epidemiologies, Incidence
Risk, history, and susceptibility	
Susceptibility	Diathesis, Diatheses, Susceptibilities, Susceptible
Natural history	Natural history
Risk factors	Risk Factor, Risk Factors, Risk, Family History, Medical History, Family Medical History, Respiratory Infection, Viral Respiratory Infection, Viral Infection, Occupational, Workplace, Dust, Dusts, Chemical Fumes, Chemical, Chemicals, Chemical Vapour, Chemical Vapours, Chemical Vapor, Chemical Vapors, Mould, Molds, Smoking, Cigarette, Cigar, Tobacco, Smoker, Smokers, Air Pollution, Pollution, Smog, Obesity, Obese, Overweight, Oestrogen, Estrogen, Exercise, Exercise-Induced Bronchoconstriction, Exercise Induced Bronchoconstriction, Exercise-Induced Bronchoconstrictions, Exercise Induced Bronchoconstrictions, EIB, Bronchoconstriction, Bronchoconstrictions, Bronchial Constriction, Bronchial Constrictions, Exercise, Exercise-Induced, Exercise Induced, Exercise-Induced Bronchospasm, Exercise Induced Bronchospasm, Exercise-Induced Bronchospasms, Exercise Induced Bronchospasms, Bronchospasm, Bronchospasms, Bronchial Spasm, Bronchial Spasms
Quality of life and outcomes	
Outcomes	Outcome, Outcomes, Outcome Assessment, Outcome Measure, Outcomes Assessment, Outcomes Measure, Outcome Assessments, Outcome Measures, Outcomes Assessments, Outcomes Measures
Quality of life	Quality of Life, Life Quality, Health-Related Quality of Life, Health Related Quality of Life, HRQOL, QOL, Q-O-L
Corticosteroids	
Inhaled corticosteroids	Inhaled Corticosteroid, Inhaled Corticosteroids, Inhaled, ICS, Luticasone, Flonase, Flovent HFA, Budesonide, Pulmicort Flexhaler, Rhinocort, Flunisolide, Aerospan HFA, Ciclesonide, Alvesco, Omnaris, Zetonna, Beclomethasone, Qnasl, Qvar, Mometasone, Asmanex, Fluticasone Furoate, Arnuity Ellipta
Oral corticosteroids	Oral Corticosteroid, Oral Corticosteroids, Oral, OCS, Cortisone Acetate
Systemic corticosteroids	Systemic Corticosteroids, Dexamethasone, Hydrocortisone, Cortef, Methylprednisolone, Medrol, Prednisolone, Prednisone, Orapred, Prelone, Pediapred
Phenotype	Phenotype, Phenotypes
Diagnosis	Diagnosis, Diagnoses, Diagnose, Diagnosed, Examination, Recognise, Recognize, Recognition, Spirometry, Peak Flow, Pulmonary Function Test, Pulmonary Function Tests, Lung Function Test, Lung Function Tests
Management	Management, Managements, Control
Treatment	Treatment, Treatments, Therapy, Therapies, Long-Term, Long Term, Quick-Relief, Quick Relief, Rescue
Exacerbations	Exacerbation, Exacerbations, Exacerbate, Shortness of Breath, Breathlessness, Breathless, Cough, Chest Tightness, Tight Chest, Disease Progression, Asthma Progression
Wheeze	Wheeze, Wheezing