



**HAL**  
open science

## Fluoroless intravascular ultrasound image-guided liver navigation in porcine models

Takeshi Urade, Juan Verde, Alain García Vázquez, Konstance Gunzert,  
Patrick Pessaux, Jacques Marescaux, Mariano Giménez

► **To cite this version:**

Takeshi Urade, Juan Verde, Alain García Vázquez, Konstance Gunzert, Patrick Pessaux, et al.. Fluoroless intravascular ultrasound image-guided liver navigation in porcine models. *BMC Gastroenterology*, 2021, 21, pp.24. 10.1186/s12876-021-01600-3 . hal-03600926

**HAL Id: hal-03600926**

**<https://hal.science/hal-03600926v1>**

Submitted on 7 Mar 2022

**HAL** is a multi-disciplinary open access archive for the deposit and dissemination of scientific research documents, whether they are published or not. The documents may come from teaching and research institutions in France or abroad, or from public or private research centers.

L'archive ouverte pluridisciplinaire **HAL**, est destinée au dépôt et à la diffusion de documents scientifiques de niveau recherche, publiés ou non, émanant des établissements d'enseignement et de recherche français ou étrangers, des laboratoires publics ou privés.

RESEARCH ARTICLE

Open Access



# Fluoroless intravascular ultrasound image-guided liver navigation in porcine models

Takeshi Urade<sup>1,2\*†</sup>, Juan Manuel Verde<sup>1,2†</sup>, Alain García Vázquez<sup>1,2</sup>, Konstanze Gunzert<sup>3</sup>, Patrick Pessaux<sup>1,2,4</sup>, Jacques Marescaux<sup>1,2</sup> and Mariano Eduardo Giménez<sup>1,2</sup>

## Abstract

**Background:** An intravascular ultrasound catheter (IVUSc) was developed for intracardiac ultrasound to assess interventions with compelling results. However, intrahepatic vascular exploration was rarely tested and was always associated with X-ray techniques. The aim of this study was to demonstrate the feasibility to navigate through the whole liver using an IVUSc, providing high-quality images and making it unnecessary to use ionizing radiation.

**Methods:** An ex vivo pig visceral block and an in vivo pig model were used in this study. The IVUS equipment was composed of an US system, and of an 8 French lateral firing IVUSc capable of producing 90-degree sector images in the longitudinal plane. After accessing the intravascular space with the IVUSc into the models, predetermined anatomical landmarks were visualized from the inferior vena cava and hepatic veins and corroborated.

**Results:** IVUS navigation was achieved in both models successfully. The entire navigation protocol took 87 and 48 min respectively, and 100% (21/21) and 96.15% (25/26) of the landmarks were correctly identified with the IVUSc alone in the ex vivo and in vivo models respectively. IVUS allowed to clearly visualize the vasculature beyond third-order branches of the hepatic and portal veins.

**Conclusions:** A complete IVUS liver navigation is feasible using the IVUSc alone, making it unnecessary to use ionizing radiation. This approach provides high-definition and real-time images of the complex liver structure and offers a great potential for future clinical applications during diagnostic and therapeutic interventions.

**Keywords:** Fluoroless, Image guidance, Intravascular, Liver, Navigation, Ultrasound catheter

## Background

A wide range of image-guided strategies and techniques have been used to approach diseased livers with diagnostic, theragnostic, or therapeutic intentions, with the aim to decrease the invasiveness and the rate of complications. The liver motion and deformation, as well as its

complex anatomy comprising major vascular and biliary structures, constantly challenge the implementation of image-guided minimally invasive techniques. From the hepatic imaging repertoire, ultrasound (US) excels the others because it is innocuous (non-ionizing) and it provides a real-time assessment of the target and/or the environment, hence increasing situational awareness and spatial orientation. As it addresses the abovementioned issues, US is nowadays broadly integrated in almost all interventional and surgical workflows as a first-line tool, exposing its limitations and drawbacks. The depth/

\*Correspondence: uradet1125@gmail.com

†Takeshi Urade and Juan Manuel Verde have contributed to this work equally.

<sup>1</sup> Institute of Image-Guided Surgery, IHU Strasbourg, 1, place de l'Hôpital, 67091 Strasbourg Cedex, France

Full list of author information is available at the end of the article



distance-associated low resolution, along with air-related interference in the course of percutaneous interventions, the high number of time-consuming iterations required during liver surgery and ablations, as well as its long learning curves, confirm the foremost drawbacks of US.

In an attempt to address these issues, other disciplines started to use intravascular ultrasound catheters (IVUSc) to assess the procedures with image guidance, reporting promising results in the literature, being widely adopted in the end, hence expanding their cardiac indications. An IVUSc was developed for intracardiac and intraluminal exploration, and during cardiovascular interventions, intracardiac echocardiography was reported as a powerful guide in multiple procedures (atrial defects and patent foramen ovale closures [1, 2], and ablation [3, 4]. These IVUS approaches were scarcely attempted in the liver, and as far as we know, they were exclusively related to transjugular intrahepatic portosystemic shunts (TIPS) [5–9] and direct intrahepatic portocaval shunts (DIPS) [10–12], using ionizing radiation and remaining in the lumen of the inferior vena cava (IVC). To our knowledge, there is only one report describing intrahepatic IVUS navigation through hepatic veins with diagnostic intentions, but also relying on fluoroscopic guidance [13].

We envision several potential indications of the IVUSc in the diagnostic, theragnostic and therapeutic liver fields. Accordingly, we created and developed a dual ex vivo and in vivo test aiming to explore the feasibility of navigating the liver beyond the IVC and through the hepatic veins (HVs), without using X-rays.

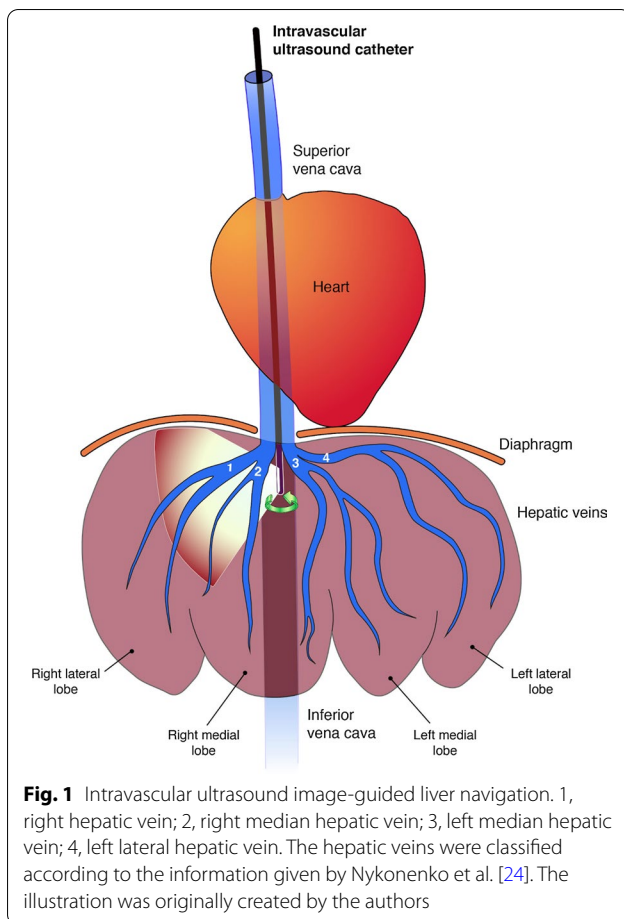
## Methods

The study was performed in strict accordance with the recommendations available in the Guide for the Care and Use of Laboratory Animals of the National Institutes of Health [14], after obtaining full approval from the Institutional and French National Ethics Committee (APAFIS #16886-2018092712542067v2), and in full compliance with French laws for animal use and care, and also with the directives of the European Community Council (2010/63/EU). The written consent was not needed because this study included only animal models. All sections of this report adhere to the ARRIVE Guidelines for reporting animal research [15]. This experimental study was designed in compliance with the 3Rs principles (Replacement, Refinement, and Reduction), and developed in congruence with the best welfare animal conditions [16]. Accordingly, it started ex vivo as a proof-of-concept and was performed in one pig model aiming to replicate human characters, facilitating its reproducibility and potential transfer. One 56 kg male pig (*Sus Scrofa Domestica*, ssp. Large White; Comptoir Agricole, France), and one thoraco-abdominal pig visceral block

were used. The pig was housed in a group, and acclimatized for 48 h in an enriched environment, respecting circadian cycles of light-darkness, and with constant humidity and temperature conditions. It was fasted 24 h before surgery, with ad libitum access to water, and finally sedated (zolazepam + tiletamine 10 mg/kg IM) 30 min before the procedure to decrease stress. Anesthesia induction was achieved by means of intravenous (18 G IV catheter in ear vein) propofol 3 mg/kg, and maintained with rocuronium 0.8 mg/kg along with inhaled isoflurane 2%. At the end, the animal was euthanized with an IV lethal dose of pentobarbital (40 mg/kg) and checked twice for vital signs before it was properly discarded. The study was conducted in the animal dedicated hybrid operating room of the IHU Strasbourg and the animal facilities of the Research Institute against Digestive Cancer (IRCAD), in Strasbourg, France.

For imaging purposes, two US systems were used, one with an intravascular transducer and the other with an extracorporeal transducer. The intravascular US system (ACUSON S3000 HELX Touch Ultrasound System, Siemens Healthineers, Germany), equipped with a cardiac package, a special connector (ACUSON Swift-Link™), and an 8 French lateral firing IVUS catheter (ACUSON AcuNav™, 4–10 MHz) with a four-way steering in two planes, each direction via 160 degrees, producing images in the longitudinal plane and providing color Doppler tissue imaging capabilities on demand. The second system, called external system, consisted of an additional US system (ACUSON S3000 Ultrasound System), with a convex transducer (6C1HD, 1–6 MHz).

For the ex vivo model, a pig visceral block (comprising heart, IVC, liver) was partially mounted in a gelatin-based medium (200 bloom gelatin powder, Louis François, France—fast technique) inside a large plastic container. Both the portal vein (PV) (18 French Silicone Tiemann Foley Catheter, Teleflex Medical, USA), and the common bile duct (cholangiography catheter) were perfused with a warm (60°C) saline solution. A 9 French vascular introducer (Radiofocus, TERUMO Corp., Japan) was placed through the right atrium in the IVC, and the model was covered with a saline solution to improve US visualization, preventing air interference as well as organ motion/deformation related to probe-tissue interaction. After initiating the experiment, a regular intravascular flow/pressure (PV to HVs) circulation was achieved using a tripod to suspend the saline solution container at a height of 2 m. The bile duct catheter was closed but ready to be used according to the needs. For the in vivo pig model, the same abovementioned 9 French vascular introducer was introduced under US guidance into the right jugular vein (RJV) to grant the access of the IVUSc (Fig. 1).



The success of the US-guided intravascular navigation of the liver using the IVUSc was defined beforehand as the precise recognition of more than 95% of the prearranged anatomical landmarks, only relying upon the images provided by the IVUSc without any further complementary methods. The landmarks were selected cephalocaudally, starting immediately after passing through a central vein, and ending with extrahepatic neighboring structures, namely thoracic IVC, retrohepatic IVC, infrahepatic IVC, HVs confluence, right HV, right median HV, left median HV, left lateral HV, third-order HV branches, main PV, right PV, left PV, third-order PV branches, common bile duct, right hepatic bile duct, left hepatic bile duct, gallbladder with the access to four HVs in an ex vivo model, and the abovementioned structures with hepatic artery, right hepatic artery, left hepatic artery, pancreas, and duodenum in an in vivo model (see Additional file 1: Supplementary file 1 and Additional file 2: Supplementary file 2, which illustrate the data collection sheets for IVUS image-guided liver navigation). Both ex vivo/in vivo tests started when operator #1 introduced the IVUSc through the vascular introducer into a central vein and

navigated the liver stepwise with the IVUS information alone. The partial times elapsed to identify each landmark were annotated, and when each of them was identified by operator #1, two other experienced US operators (#2 and #3) checked the indicated location with the secondary US system using a convex external probe and collected them as categorical variables (yes/no—checkboxes), along with the timestamp and video images of both US systems. No feedback was given back to operator #1 to avoid intraprocedure external biases. As a contingency plan, the experiment was scheduled in the hybrid operating room, and two extra scenarios were prepared in case of failure of the IVUS navigation alone: one making the secondary external US system available to operator #1 (second scenario), and the other incorporating X-ray fluoroscopy and/or cone-beam computed tomography images (Artis Zeego, Siemens Healthineers).

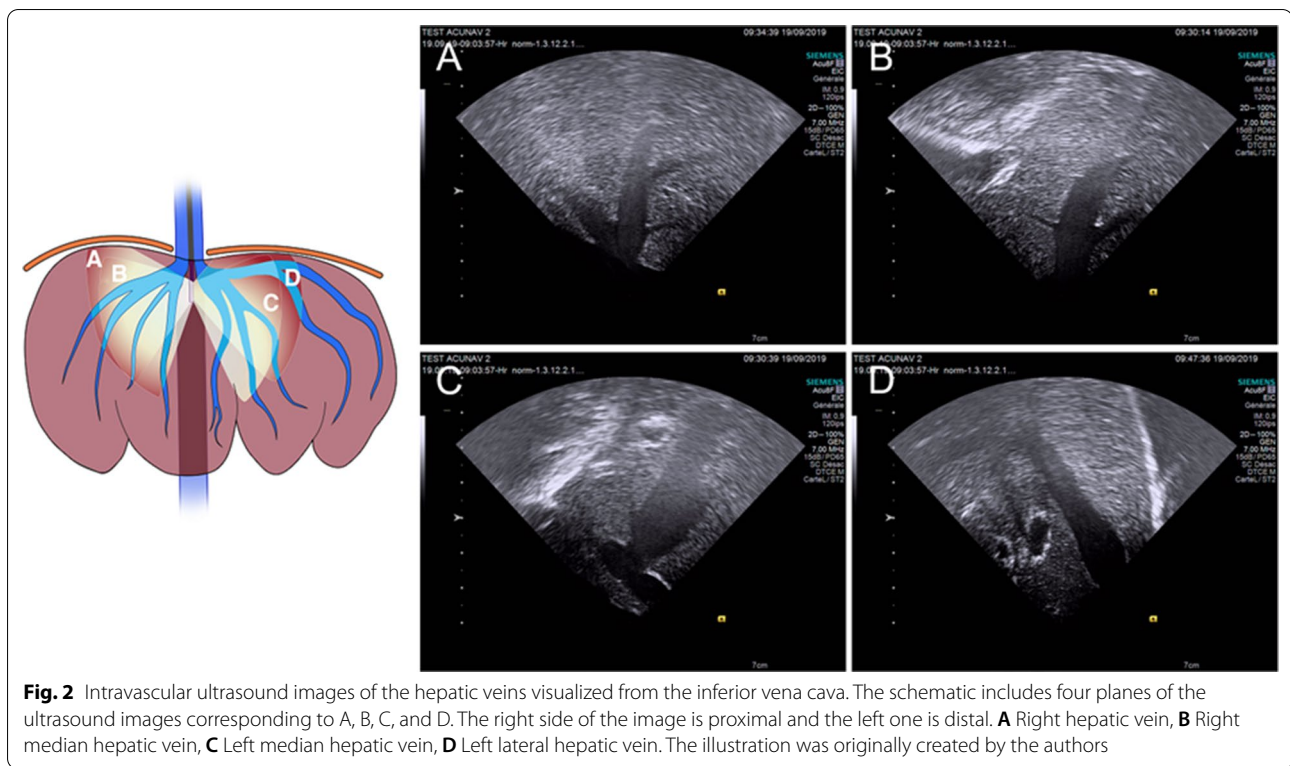
## Results

All IVUS scans were performed in B and/or color Doppler mode, using a 7 MHz frequency with a mechanical index ranging from 0.8 to 1.0, and the gain and focus were adapted to visualize landmarks properly. The resulting image was inverted both up/down and right/left to display the correct anatomical orientation during liver navigation.

In the ex vivo settings, the entire navigation protocol took 87 min, and all of the 21 (100%) preselected landmarks were recognized. In the in vivo pig model, IVUS navigation was accomplished without the need for any other extra medical imaging method (US/X-rays), recognizing 96.15% (25/26, left lateral HV recognized later, see below) of landmarks in a total time of 48 min.

All expectations were achieved using the ex vivo model and it is worth mentioning that intravascular perfusion, through the PV to the HVs with a saline solution, allowed the correct configuration of both venous inflow and outflow as well as a positive Doppler signal helping to recognize vascular structures. Similarly, the underwater submersion of the model helped to avoid air-related interferences as well as unnecessary motion and deformations related to probe-tissue interaction. Under such circumstances, the hepatic artery (HA) could not be recognized, its lack of perfusion and circulation meant that it was impossible to use Doppler/color modes to assist with identification.

In the in vivo settings, the RJV approach was the one which best matched the IVUSc length. However, the left side was also tested without any further difficulties or complications. The IVC navigation did not present any difficulties, and the HV outlets could be recognized via mere rotations of the IVUSc (Fig. 2). At this point, the IVUS operator misrecognized the left lateral HV and the



left median HV, interpreting that they converged into a common trunk in the IVC, and this issue was later corrected during their cannulation maneuvers. The catheter had to be taken out twice after the concomitance of imaging artifacts and a loss of control of the endoscope's handle (latterly attributed to the bending of the catheter tip, which went unnoticed at the time), even with the control wheels in the neutral position. The PV, the right and left trunks, and also third- and fourth-order branches (same for the HVs) were individually visualized as well as both main branches of the common bile duct (Fig. 3), while the HA and its right and left branches required Doppler/color modes to be adequately detected and recognized.

## Discussion

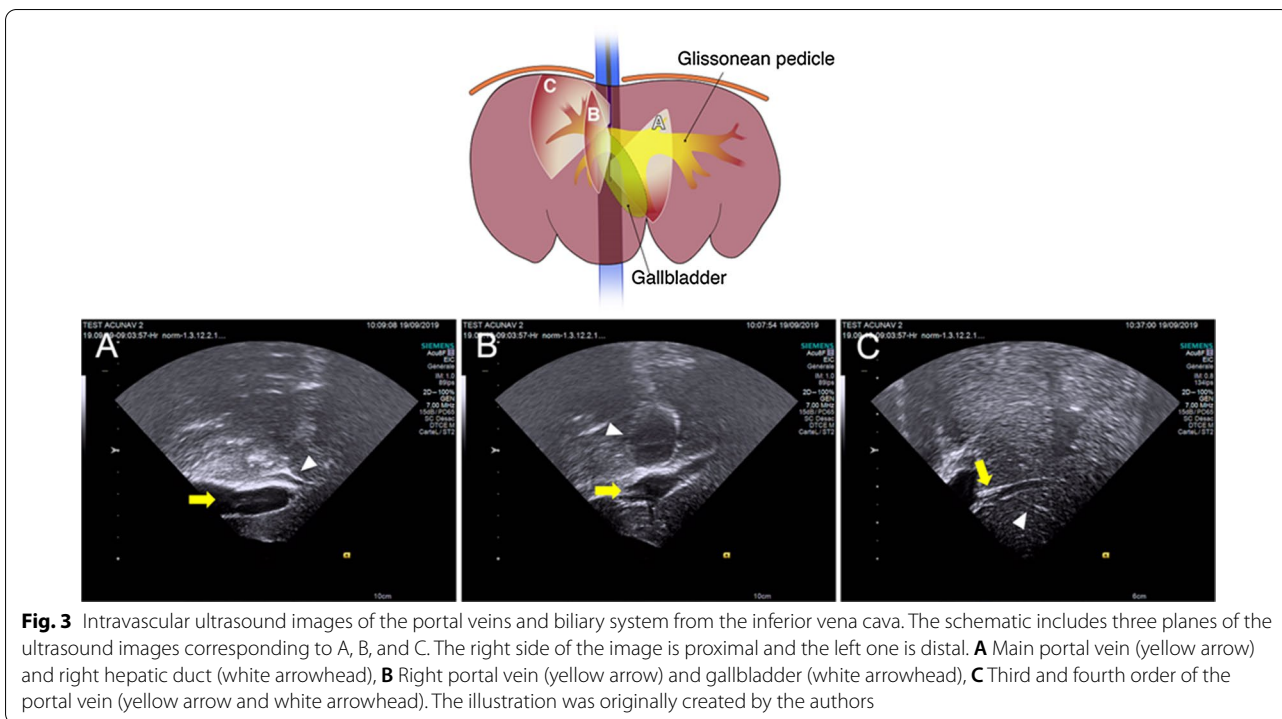
This study showed that IVUS liver navigation using a catheter proved to be a powerful tool to explore the liver without exposure to radiation (or the need for other medical imaging systems). The image quality of the liver parenchyma, vascular structures and biliary elements, as well as intravascular navigation, exceeded expectations, inspiring researchers to envision several potential indications in the liver and also beyond it.

This approach has several strengths and advantages. The first advantage is related to the 4 degrees of freedom (pitch, roll, yaw, and translation), its steering properties and real-time images, facilitating intrahepatic navigation.

As a result, high-quality images beyond third-order vascular structures (PV and HV) can be acquired from the IVC, but also from the interior of any cannulated HV. Peripheral and central branches, usually inconspicuous due to their deep location inside the liver, can be observed as well. In addition, the intravascular space avoids gas-related interferences and liver deformations, contributing to a secondary point of view, which can work synergically with other medical imaging techniques. Doppler/color modes were essential tools during the entire experiment, and mandatory to deal with the HA and its branches. Similarly, other US imaging modalities such as shear wave elastography, contrast-enhanced ultrasound and image fusion which are currently unavailable for the abovementioned IVUSc, could well enhance this approach and extend indications even further.

A second and considerable advantage is the lack of exposure to ionizing radiation of the patient and the team, the harmful effect of which has been extensively demonstrated among physicians performing interventional procedures. It is reported to be associated with an increased incidence of lens opacities and left-sided brain tumors [17–19]. Gottardi et al. [13] reported the need for extra doses of ionizing radiation to guide and verify IVUSc positions, and major limitations to access the left hepatic vein resulting in incomplete evaluations. Although we used porcine models, we managed

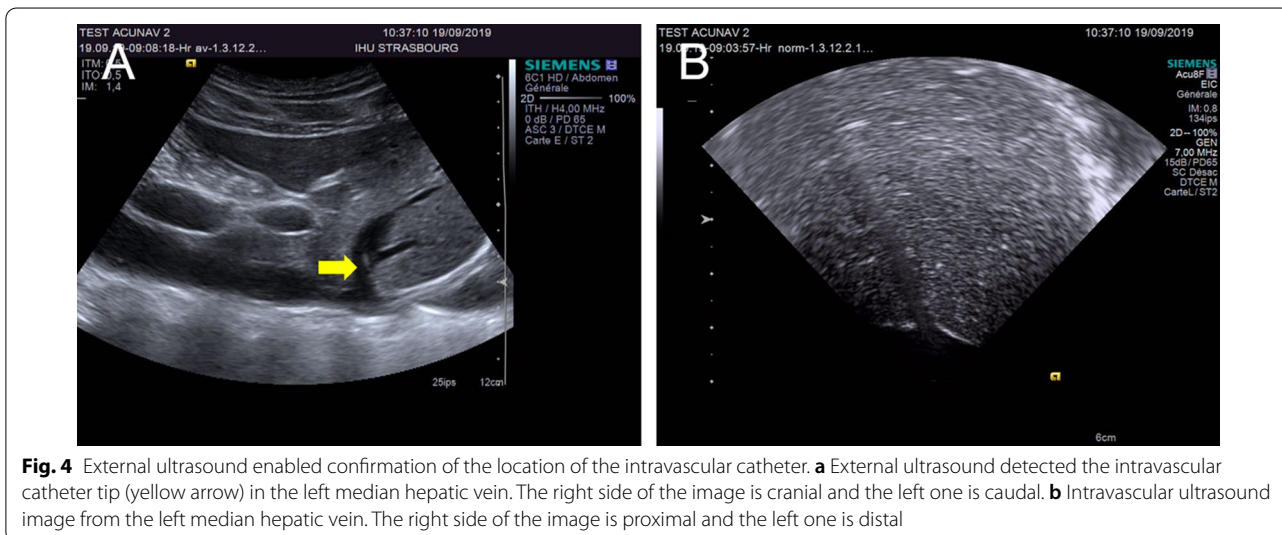




to navigate the entire liver without radiation, and it is also worth mentioning that the combination of IVUS and other US systems (percutaneous, laparoscopic, etc.) should ideally be considered as an alternative to X-ray, or at least be implemented as a first step before the use of X-ray-based techniques, in order to potentially decrease the radiation dose (Fig. 4).

Among a wide list of potential translations of this approach to other organs, we can envisage multiple

indications in the liver and beyond it, using the jugular approach and also femoral vessels (maybe also avoiding general anesthesia). US is commonly used for the intra-operative detection and location of liver lesions, and as a guidance to demarcate and assess liver transections (open, laparoscopic, and robotic). However, this extra-hepatic US guidance cannot be performed simultaneously, requires multiple instrument iterations, and is more demanding, extending surgical time. With the



IVUSc, both problems can be addressed simultaneously, planning the transection line, its demarcation, and real-time instrumental visualization. As Abdelaziz et al. [20] described in the perioperative liver transplantation phase, ultrasound represents a powerful tool which can be used on demand and in real time to assess the patency and/or potential complications of vascular anastomoses. Considering that these patients usually have a central line during this period, we might envision a role for IVUS, avoiding the use of transesophageal echocardiography as reported by Khurmi et al. [21].

In the field of image-guided minimally invasive procedures, this IVUS approach can be conceived as a guidance system, allowing and enhancing the guidance, navigation, and control modalities of needle-based procedures, relying upon two real-time US systems (external and intravascular), with two different and synergic points of view. Even more, in the dynamic and growing field of liver ablation, some weaknesses of this technique in terms of precision and accuracy, as well as the real-time control of the results (“shadowing effect”), can be potentially mitigated. With this approach, we can expect to considerably decrease the X-ray dose (and maybe avoid it completely), as well as decrease contrast medium volumes, providing better images than the reported use of IVUS during TIPS/DIPS [6–12], always relying on X-rays and placing the catheter in the interior of the IVC. In addition, this hepatoportal communication can be used to access the PV with IVUS navigation, seeking diagnostic or interventional intentions. Extending previous works such as the one of Kaneko et al. [22] describing the role of the intra-portal endovascular ultrasound assessment to determine portal venous invasion, and the report of Chick et al. [23] using IVUS guidance to perform a transbiliary biopsy of pancreatobiliary carcinomas, further potential indications can be conceived beyond the liver and related to the exploration of abdominal regions which are traditionally difficult to approach with US (e.g. pancreatic necrosis, borderline resectable pancreatic cancer, or retroperitoneal hematoma, etc.), or even outside blood vessels (e.g. biliary tree exploration).

This study has the limitations of a proof-of-concept translational study, and it should be tested and evaluated exhaustively before being used in humans. The above-mentioned technique is demanding (HV cannulation/US planes recognition), and will potentially have steep learning curves, even in professionals with US skills. At this point, it is worth mentioning that ex vivo models such as the one developed for this study, are good enough to acquire these skills and abilities before moving on to living tissues. The lack of contrast enhancement, shear-wave elastography, and image fusion capabilities put this approach at a disadvantage as compared to other US

assessments, so their incorporation might be important. The damage to blood vessels (thermal/mechanical) when in direct contact with them should be meticulously studied. Concerning the used catheter, when it is manipulated as a vascular catheter without control of the steering knobs, the tip can be bent and the steering knobs remain in a neutral position, thereby producing an inversion of the handle system (e.g. right–left mirror images).

## Conclusions

This study clearly shows that it is feasible to complete the entire navigation of the liver through the IVC and HV only relying upon IVUS images, without the need for any further X-ray imaging techniques. This approach provides a high-definition and real-time visualization of vascular structures beyond third-order branches, as well as those located in central positions. This approach has great potential for many clinical applications in both diagnostic and therapeutic fields. As a result, further investigations are required to ensure a secure and profitable translation to humans.

## Supplementary Information

The online version contains supplementary material available at <https://doi.org/10.1186/s12876-021-01600-3>.

**Additional file 1.** Data collection sheets for intravascular ultrasound image-guided liver navigation in an ex vivo model. The number of landmarks were 21 in the ex vivo model.

**Additional file 2.** Data collection sheets for intravascular ultrasound image-guided liver navigation in an in vivo model. The number of landmarks was 26 in the in vivo model. It included duodenum, pancreas, hepatic artery, and its left and right branches.

## Abbreviations

IVUSc: Intravascular ultrasound catheter; US: Ultrasound; TIPS: Transjugular intrahepatic portosystemic shunts; DIPS: Direct intrahepatic portocaval shunts; IVC: Inferior vena cava; HV: Hepatic vein; PV: Portal vein; RVJ: Right jugular vein; HA: Hepatic artery.

## Acknowledgements

The authors would like to thank Guy Temporal, Christopher Burel, and Helen Cleminson for their assistance in proofreading the article, Catherine Cers-Meunier for the drawings and figures, and Fanélie Wanert, Gaël Fouré, Cindy Vincent, Nariaki Okamoto, and Maxime Gignoux for their support in the experimental platform during the experiments. This experiment is the result of the collaboration between the research team and the Ultrasound Advanced Development Collaboration Team, Siemens Medical Solutions USA, Inc.

## Authors' contributions

TU, JV, AGV, and MG contributed to the study conception and design. TU, JV, AGV, and KG acquired the data. TU, JV, AGV, and MG analyzed and interpreted the data. TU and JV drafted the manuscript. PP, JM, and MG critically revised the manuscript. All authors approved the final version of the manuscript.

## Funding

This research did not receive any specific grant from funding agencies in the public, commercial, or not-for-profit sectors.

**Availability of data and materials**

The datasets generated and/or analyzed during the current study are available from the corresponding author on reasonable request.

**Ethics approval and consent to participate**

The study was performed in strict accordance with the recommendations available in the Guide for the Care and Use of Laboratory Animals of the National Institutes of Health, after obtaining full approval from the Institutional and French National Ethics Committee (APAFIS #16886-2018092712542067v2), and in full compliance with French laws for animal use and care, and also with the directives of the European Community Council (2010/63/EU). IRCAD was accredited by French Ministry of Agriculture to house and use pigs for scientific purposes (license F-67-48216).

**Consent for publication**

Not applicable.

**Competing interests**

The authors declare that they have no competing interest.

**Author details**

<sup>1</sup> Institute of Image-Guided Surgery, IHU Strasbourg, 1, place de l'Hôpital, 67091 Strasbourg Cedex, France. <sup>2</sup> IRCAD, Research Institute Against Digestive Cancer, Strasbourg, France. <sup>3</sup> Siemens Healthcare SAS, Strasbourg, France. <sup>4</sup> Department of General, Digestive and Endocrine Surgery, Nouvel Hôpital Civil, University of Strasbourg, Strasbourg, France.

Received: 29 September 2020 Accepted: 1 January 2021

Published online: 09 January 2021

**References**

- Hijazi Z, Wang Z, Cao Q, Koenig P, Waight D, Lang R. Transcatheter closure of atrial septal defects and patent foramen ovale under intracardiac echocardiographic guidance: feasibility and comparison with transesophageal echocardiography. *Catheter Cardiovasc Interv*. 2001;2:194–9.
- Medford BA, Taggart NW, Cabalka AK, Cetta F, Reeder GS, Hagler DJ, et al. Intracardiac echocardiography during atrial septal defect and patent foramen ovale device closure in pediatric and adolescent patients. *J Am Soc Echocardiogr*. 2014;27:984–90.
- Miyake CY, Mah DY, Atallah J, Oikle HP, Melgar ML, Alexander ME, et al. Nonfluoroscopic imaging systems reduce radiation exposure in children undergoing ablation of supraventricular tachycardia. *Heart Rhythm*. 2011;8:519–25.
- Baran J, Stec S, Pilichowska-Paszkiel E, Zaborska B, Sikora-Fraç M, Kryński T, et al. Intracardiac echocardiography for detection of thrombus in the left atrial appendage: comparison with transesophageal echocardiography in patients undergoing ablation for atrial fibrillation: the Action-Ice I Study. *Circ Arrhythm Electrophysiol*. 2013;6:1074–81.
- Farsad K, Fuss C, Kolbeck KJ, Barton RE, Lakin PC, Keller FS, et al. Transjugular intrahepatic portosystemic shunt creation using intravascular ultrasound guidance. *J Vasc Interv Radiol*. 2012;23:1594–602.
- Thakrar PD, Petersen BD, Kaufman JA. Intravascular ultrasound for transvenous interventions. *Tech Vasc Interv Radiol*. 2013;16:161–7.
- Gipson MG, Smith MT, Durham JD, Brown A, Johnson T, Ray CE, et al. Intravascular US-guided portal vein access: improved procedural metrics during TIPS creation. *J Vasc Interv Radiol*. 2016;27:1140–7.
- Kao SD, Morshedi MM, Narsinh KH, Kinney TB, Minocha J, Picel AC, et al. Intravascular ULTRASOUND IN THE CREATION OF TRANSHEPATIC PORTOSYSTEMIC SHUNTS REDUCES NEEDLE PASSES, RADIATION DOSE, AND PROCEDURE TIME: A RETROSPECTIVE STUDY OF A SINGLE-INSTITUTION EXPERIENCE. *J Vasc Interv Radiol*. 2016;27:1148–53.
- Pillai AK, Andring B, Faulconer N, Reis SP, Xi Y, Iyamu I, et al. Utility of intravascular US-guided portal vein access during transjugular intrahepatic portosystemic shunt creation: retrospective comparison with conventional technique in 109 patients. *J Vasc Interv Radiol*. 2016;27:1154–9.
- Petersen B. Intravascular ultrasound-guided direct intrahepatic portacaval shunt: description of technique and technical refinements. *J Vasc Interv Radiol*. 2003;14:21–32.
- Petersen B, Binkert C. Intravascular ultrasound-guided direct intrahepatic portacaval shunt: midterm follow-up. *J Vasc Interv Radiol*. 2004;15:927–38.
- Hoppe H, Wang SL, Petersen BD. Intravascular US-guided direct intrahepatic portocaval shunt with an expanded polytetrafluoroethylene-covered stent-graft. *Radiology*. 2008;246:306–14.
- De Gottardi A, Keller P-F, Hadengue A, Giostra E, Spahr L. Transjugular intravascular ultrasound for the evaluation of hepatic vasculature and parenchyma in patients with chronic liver disease. *BMC Res Notes*. 2012;5:77.
- National Research Council (US) Committee for the Update of the Guide for the Care and Use of Laboratory Animals. Guide for the care and use of laboratory animals (8th edn). *Laboratory Animals* 2011. PMID:21595115.
- Kilkenny C, Browne WJ, Cuthill IC, Emerson M, Altman DG. Improving bioscience research reporting: the ARRIVE guidelines for reporting animal research. *PLoS Biol*. 2010;8:e1000412.
- Prescott MJ, Lidster K. Improving quality of science through better animal welfare: the NC3Rs strategy. *Lab Anim (NY)*. 2017;46:152–6.
- Vano E, Kleiman NJ, Duran A, Romano-Miller M, Rehani MM. Radiation-associated lens opacities in catheterization personnel: results of a survey and direct assessments. *J Vasc Interv Radiol*. 2013;24:197–204.
- Roguin A, Goldstein J, Bar O, Goldstein JA. Brain and neck tumors among physicians performing interventional procedures. *Am J Cardiol*. 2013;111:1368–72.
- Goldstein JA, Balter S, Cowley M, Hodgson J, Klein LW. Interventional Committee of the Society of Cardiovascular Interventions. Occupational hazards of interventional cardiologists: prevalence of orthopedic health problems in contemporary practice. *Catheter Cardiovasc Interv*. 2004;63:407–11.
- Abdelaziz O, Attia H. Doppler ultrasonography in living donor liver transplantation recipients: Intra- and post-operative vascular complications. *World J Gastroenterol*. 2016;22:6145–72.
- Khurmi N, Seman M, Gaitan B, Young S, Rosenfeld D, Giorgakis E, et al. Nontraditional use of TEE to evaluate hepatic vasculature and guide surgical management in orthotopic liver transplantation. *Case Rep Transplant*. 2019;2019:5293069. <https://doi.org/10.1155/2019/5293069>.
- Kaneko T, Nakao A, Inoue S, Endo T, Itoh S, Harada A, et al. Portal venous invasion by pancreaticobiliary carcinoma: diagnosis with intraportal endovascular US. *Radiology*. 1994;192:681–6.
- Chick JFB, Roush BB, Khaja MS, Prohaska D, Cooper KJ, Saad WE, et al. Transbiliary intravascular ultrasound-guided diagnostic biopsy of an inaccessible pancreatic head mass. *Radiol Case Rep*. 2017;12:323–6.
- Nykonenko A, Vávra P, Zonča P. Anatomic peculiarities of pig and human liver. *Exp Clin Transplant*. 2017;15:21–6.

**Publisher's Note**

Springer Nature remains neutral with regard to jurisdictional claims in published maps and institutional affiliations.