



**HAL**  
open science

# Management of Time Constraints Tunnels in Semiconductor Manufacturing: A Decision Support System

Benjamin Anthouard, Valeria Borodin, Stéphane Dauzere-Peres, Quentin Christ, Renaud Roussel

## ► To cite this version:

Benjamin Anthouard, Valeria Borodin, Stéphane Dauzere-Peres, Quentin Christ, Renaud Roussel. Management of Time Constraints Tunnels in Semiconductor Manufacturing: A Decision Support System. 23ème congrès annuel de la Société Française de Recherche Opérationnelle et d'Aide à la Décision, INSA Lyon, Feb 2022, Villeurbanne - Lyon, France. hal-03595323

**HAL Id: hal-03595323**

**<https://hal.science/hal-03595323>**

Submitted on 3 Mar 2022

**HAL** is a multi-disciplinary open access archive for the deposit and dissemination of scientific research documents, whether they are published or not. The documents may come from teaching and research institutions in France or abroad, or from public or private research centers.

L'archive ouverte pluridisciplinaire **HAL**, est destinée au dépôt et à la diffusion de documents scientifiques de niveau recherche, publiés ou non, émanant des établissements d'enseignement et de recherche français ou étrangers, des laboratoires publics ou privés.

# Management of Time Constraints Tunnels in Semiconductor Manufacturing : A Decision Support System

B. Anthouard<sup>1,2</sup>, V. Borodin<sup>1</sup>, Q. Christ<sup>2</sup>, S. Dauzère-Pérès<sup>1</sup>, R. Roussel<sup>2</sup>

<sup>1</sup> Mines Saint-Etienne, Univ Clermont Auvergne, CNRS, UMR 6158 LIMOS,  
F-42023 Saint-Etienne, France

{b.anthouard, valeria.borodin, dauzere-peres}@emse.fr

<sup>2</sup> STMicroelectronics F-38926 Crolles Cedex, France

{quentin.christ, renaud.rousseau}@st.com

**Keywords:** *Production control, Time constraints, Semiconductor manufacturing, Discrete-event simulation, List scheduling, Decision support*

## 1 Context, problem statement and motivation

To ensure the quality of integrated circuits, semiconductor manufacturing companies need to respect *Time Constraints* (TC). *Time constraints* are critical times not to exceed between two operations or steps in a product route. More broadly, a set of consecutive steps under at least one TC is called *Time Constraint Tunnel* (TCT). These quality requirements, added to other challenges in a High Mix/Medium Volume (HM/MV) fab (e.g. long cycle times, re-entrant flows and heterogeneous complex machines) become stressful for operators regulating TCTs in real time. Moreover, understanding the effects of mid-term changes can be difficult to qualify and quantify given the high complexity in semiconductor manufacturing facilities (fabs). This paper focuses on the management of releasing lots in TCTs at the operational and tactical levels using a simulation-based approach.

In the related literature, the management of time constraints is a relatively recent problem. TCs have been considered in different problems, that can be regrouped in three categories : **(i) scheduling** [2] : To assign lots (jobs) to resources subject to TCs and other constraints, while optimizing a given criterion, **(ii) capacity planning** : To determine the maximum number of work-in-process lots respecting TCs [3, 6], and **(iii) production control** [5] : To determine production rates respecting TCs. Because handling TCT management by classical scheduling approaches is most often irrelevant, recent works have been dedicated to supporting the context-aware dispatching regulation of lots in a given TCT [4, 5]. Based on these previous studies, a simulation system and its decision support capabilities are presented in this paper to help operators in taking decisions in real time when processing lots under TCs in TCTs. Perspectives on the use of the system for tactical decisions are discussed.

## 2 Solution approach

To help in taking decisions at the operational and tactical levels, an improved discrete-event simulation approach based on the work of [4, 5] has been developed. The improvements are the modeling of more complex machines, the extraction of Key Performance Indicators (KPIs), and the addition of new dispatching policies that better match the actual dispatching in fabs.

The simulation approach is based on a disjunctive graph representation, in which the nodes represent the steps of the routes of the lots being simulated, and the arcs represent the assignment of lots to machines as well as the route of the lots. Figure 1 gives an overview of the simulation procedure. First, an initialization step is required to retrieve the state of the fab (i.e.

lots, machines and their respective states) and to create the disjunctive graph for all the lots currently in the fab. This disjunctive graph is then used to start  $N$  different simulation runs. Each simulation run applies a list scheduling approach to generate feasible schedules based on a dispatching policy with a random component. During the simulation, different features are extracted and used at the end of the simulation procedure to generate KPIs related to TCs, machines, lots and steps.

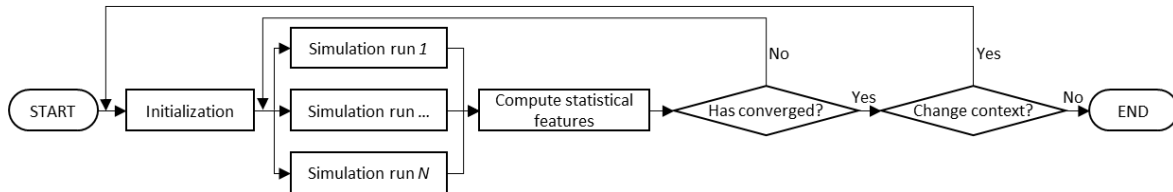


FIG. 1 – Overview of the simulation procedure

In the framework of the proposed simulation-based decision support system, multiple scenarios can be explored in  $N$  simulation runs and statistical studies conducted to understand what could happen in the fab. However, in a high-mix fab, the variability of machine states, or processing times or even the choice of the lot to process among the set of lots waiting in front of a machine, can be impossible to characterize and handle for operational or real-time purposes.

### 3 Conclusions and perspectives

The simulation approach of [4, 5] has been improved in different ways. Adjustments consistent with the ground truth have been performed and continue to be done in order : To validate the representation of the considered fab, to identify improvement directions and to tune simulation parameters.

At the operational level, more KPIs need to be extracted in short computational times, while guaranteeing the desired accuracy of the results. To support tactical decisions, more complex optimization-based dispatching policies should be proposed to better support the achievement of production targets. Another perspective is to develop and validate production planning models with time constraints to study their impact, using for example linear programming models with flexible lead times as in [1].

### Références

- [1] Beraudy, S., Absi, N., Dauzère-Pérès, S., 2021. Timed route approaches for large multi-product multi-step capacitated production planning problems. *European Journal of Operational Research* (2021), 13 pages.
- [2] Jung, C., Pabst, D., Ham, M., Stehli, M., Rothe, M., 2014. An effective problem decomposition method for scheduling of diffusion processes based on mixed integer linear programming. *IEEE Transactions on Semiconductor Manufacturing* 27 (3), 357–363.
- [3] Kitamura, S., Mori, K., Ono, A., 2006. Capacity planning method for semiconductor fab with time constraints between operations. In : *2006 IEEE SICE-ICASE International Joint Conference*, 1100–1103.
- [4] Lima, A., Borodin, V., Dauzère-Pérès, S., Vialletelle, P., 2021. A sampling-based approach for managing lot release in time constraint tunnels in semiconductor manufacturing. *International Journal of Production Research* 59 (3), 860–884.
- [5] Sadeghi, R., Dauzère-Pérès, S., Yugma, C., Lepelletier, G., 2015. Production control in semiconductor manufacturing with time constraints. In : *26th IEEE annual SEMI Advanced semiconductor manufacturing conference (ASMC 2015)*, 29–33.
- [6] Wu, C.-H., Chien, W.-C., Chuang, Y.-T., Cheng, Y.-C., 2016. Multiple product admission control in semiconductor manufacturing systems with process queue time (pqt) constraints. *Computers & Industrial Engineering* 99, 347–363.