



HAL
open science

Proposal for a modernised ESPON Cartographic Design

Christine Zanin, Nicolas Lambert

► **To cite this version:**

Christine Zanin, Nicolas Lambert. Proposal for a modernised ESPON Cartographic Design. [Research Report] ESPON | Inspire Policy Making with Territorial Evidence. 2013. hal-03594621

HAL Id: hal-03594621

<https://hal.science/hal-03594621>

Submitted on 2 Mar 2022

HAL is a multi-disciplinary open access archive for the deposit and dissemination of scientific research documents, whether they are published or not. The documents may come from teaching and research institutions in France or abroad, or from public or private research centers.

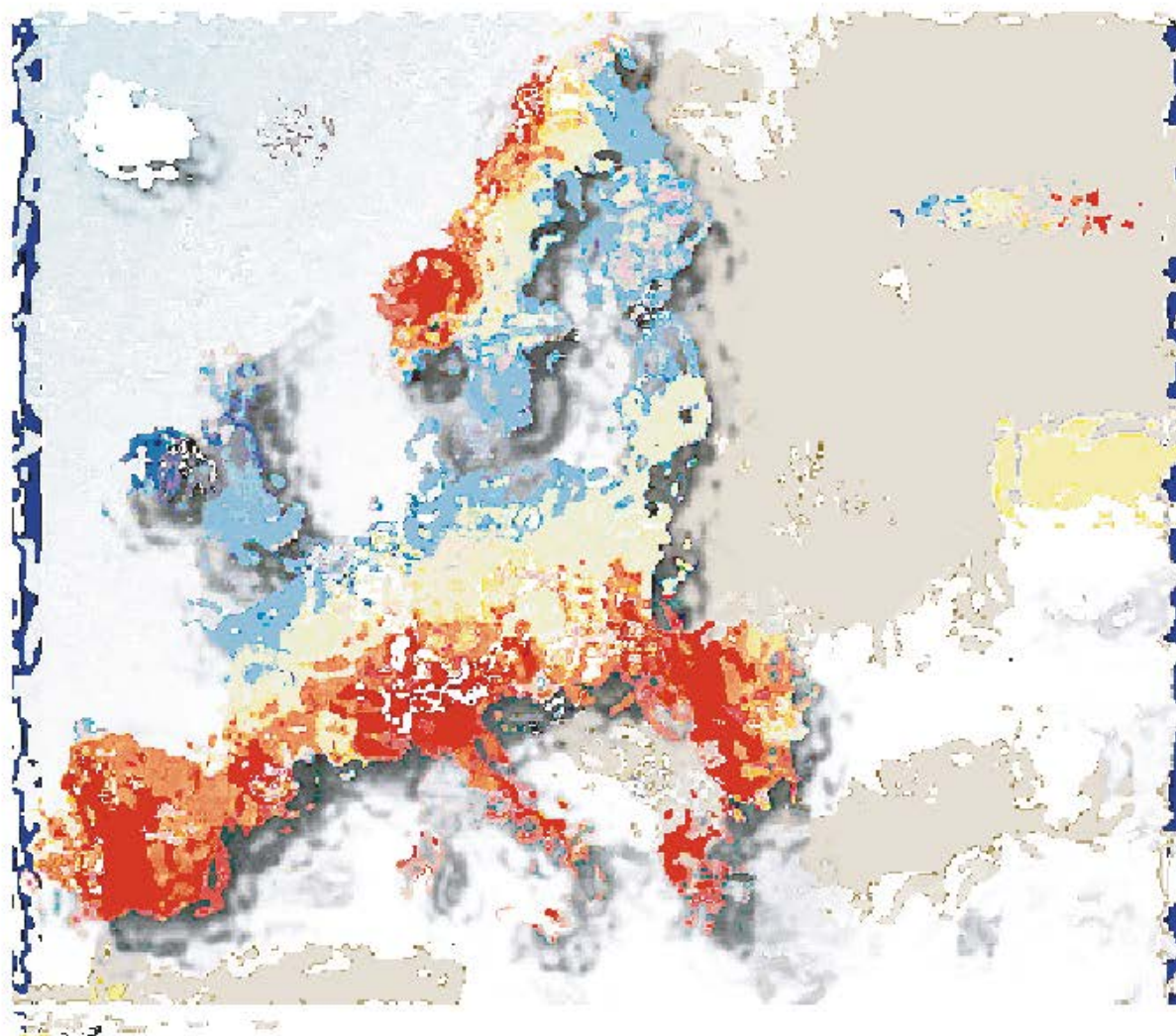
L'archive ouverte pluridisciplinaire **HAL**, est destinée au dépôt et à la diffusion de documents scientifiques de niveau recherche, publiés ou non, émanant des établissements d'enseignement et de recherche français ou étrangers, des laboratoires publics ou privés.

Nicolas Lambert
Christine Zanin



Proposal for a modernised **ESPON CARTOGRAPHIC DESIGN**

Dec 2013



ADDITIONAL DELIVERY FOR THE
ESPON CARTOGRAPHIC LANGUAGE PROJECT

This report is task 6 of ESPON ECL Project. 2013

LIST OF AUTHORS

Christine Zanin, University Paris Diderot, UMR 8504 Géographie-Cités-UMS 2414 RIATE

Nicolas Lambert, UMS 2414 RIATE

Contact :

christine.zanin@univ-paris-diderot.fr

nicolas.lambert@ums-riate.fr

isabelle.salmon@ums-riate.fr

tel. + 33 1 57 27 65 32

A cartographic language is a graphic method, which uses properties of the visual image to show differences, order and proportionality between geographical data. It allows conveying more pragmatic spatial information from the map, and transmitting geospatial information in a more vividly and accurately way. The ESPON Mapping guide (Task 4) aims to:

- Demonstrate that a cartographic language can be a source of innovation, as long as semiotic rules are respected;
- Propose some keys elements to design and produce maps;
- Propose an approach focusing on the key points needed for the construction of maps. Thus, for each type of representation, the map maker or designer has to understand issues that underlay the map: explanations of the mapping type, the mapping process, the appropriate data, strengths and weaknesses of the method, some software that could be used, and a homemade map proposition.

This following proposal is an additional task that complements the ESPON ECL Task 4 report.

We propose to re-design 10 ESPON maps from the Second ESPON 2013 Synthesis Report, (1) on the basis of all the mapping guide recommendations and (2) respecting the ESPON corporate identity. This proposal is intended to mean a reflection on a compromise between scientific and political issues.

This work focus on three main aspects:

- Aesthetical considerations (colors, symbol style, graphic effects, etc.);
- Layout and map staging (legend, titles, etc.);
- Enhancing statistical and geographical information.

Even if those aspects might be incompatible among themselves and since already stated a map kit too prescriptive is a hindrance to creativity and innovation, this Deliverable 6 aims to provide a constructive consensus to meet and as much as possible the political demand without sacrificing principles underpinning scientific mapping.

Each represented map systematically depicts all ESPON member states (including remote territories). The northern part of the Cyprus Island will be represented in white with the label « no data available »; the blue stripes on both sides of the map will be maintained. However, to enhance the efficiency of the cartographic message, a generalised based map is used. As much as possible, the legend is displayed within the map. Some graphical tricks are used to enhance spatial structures.

MAPS ISSUED FROM THE Second ESPON 2013 Synthesis Report
Territorial insight: Where to focus what types of investments

Map 01: Territorial patterns of innovation (p21)

Map 02: E-commerce, 2010 (p26)

Map 05: Greenhouse gas emissions in 2010 (p38)

Map 06: On-shore wind energy costs (p40)

Map 07: Land change hotspots, 1990-2006 (p44)

Map 09: Regions affected by directive on air quality (p51)

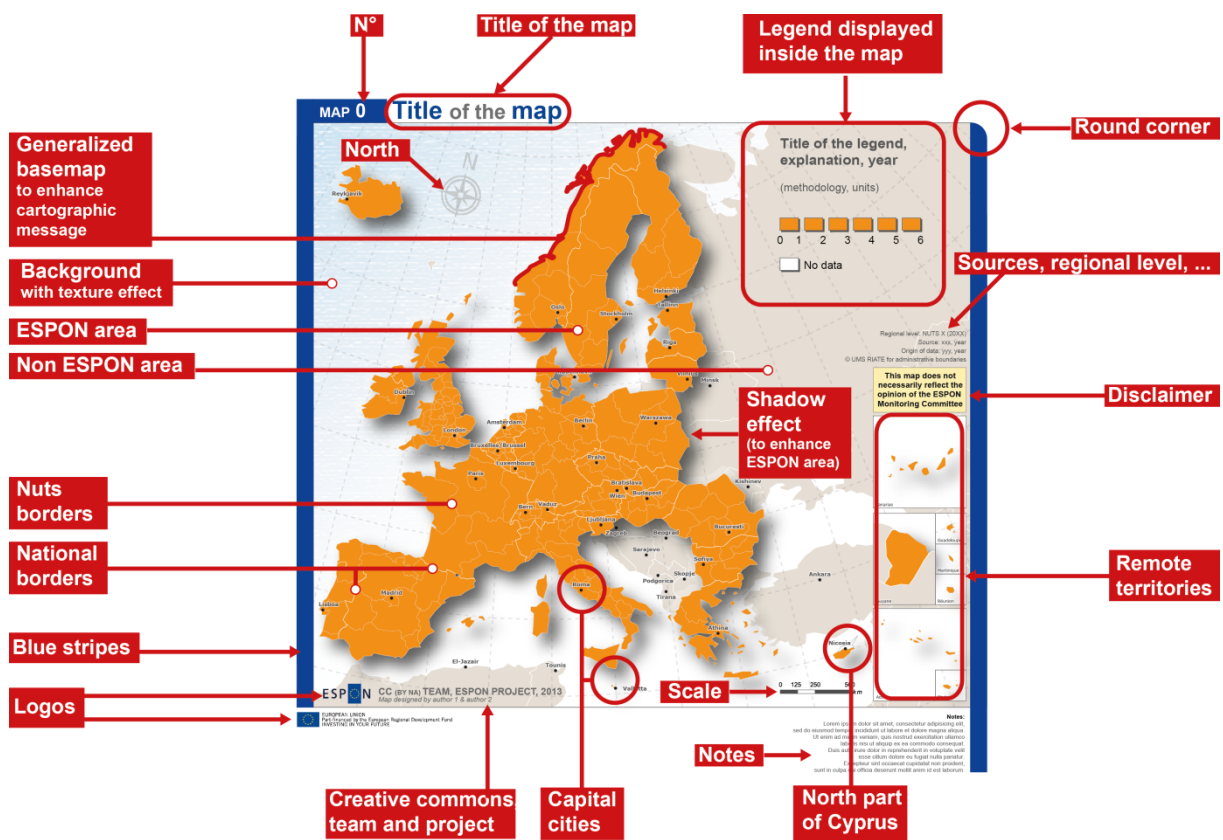
Map 14: Old age dependency rate, 2011 (p66)

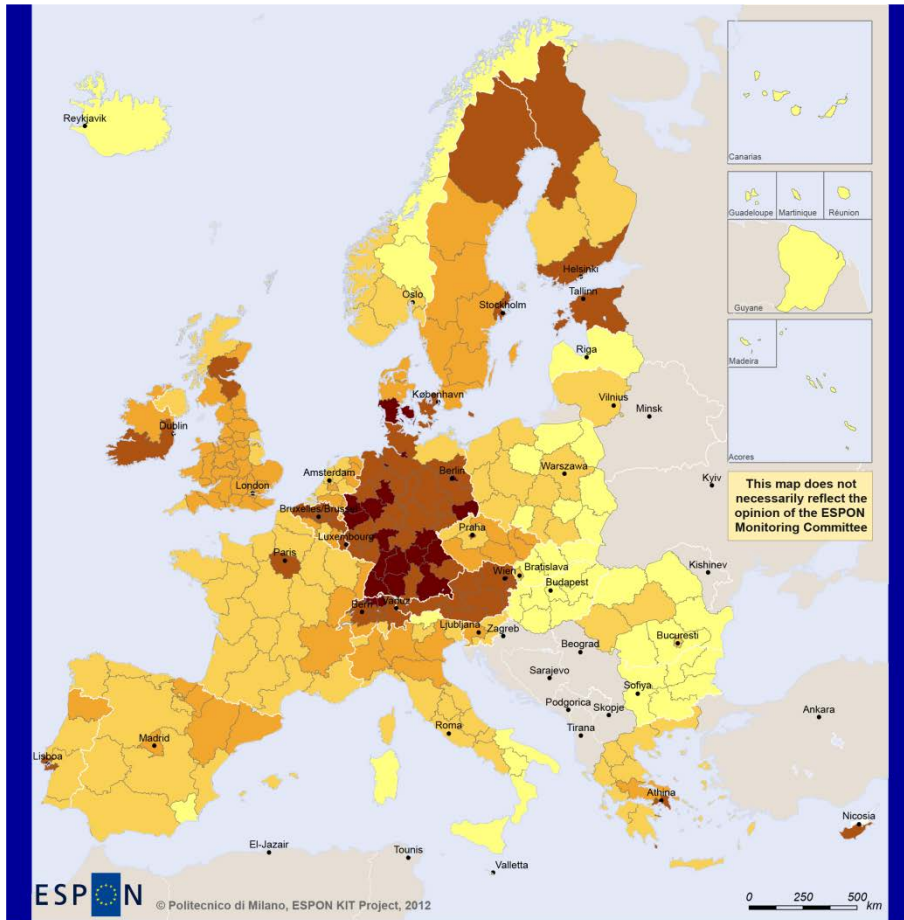
Map 15: Number of women per 100 coeval men, 2008 (p68)

Map 21: Interreg C III and IV partners (p85)

Map 22: Interreg C III and IV lead partners (p86)

Proposal for a modernised ESPON cartographic template





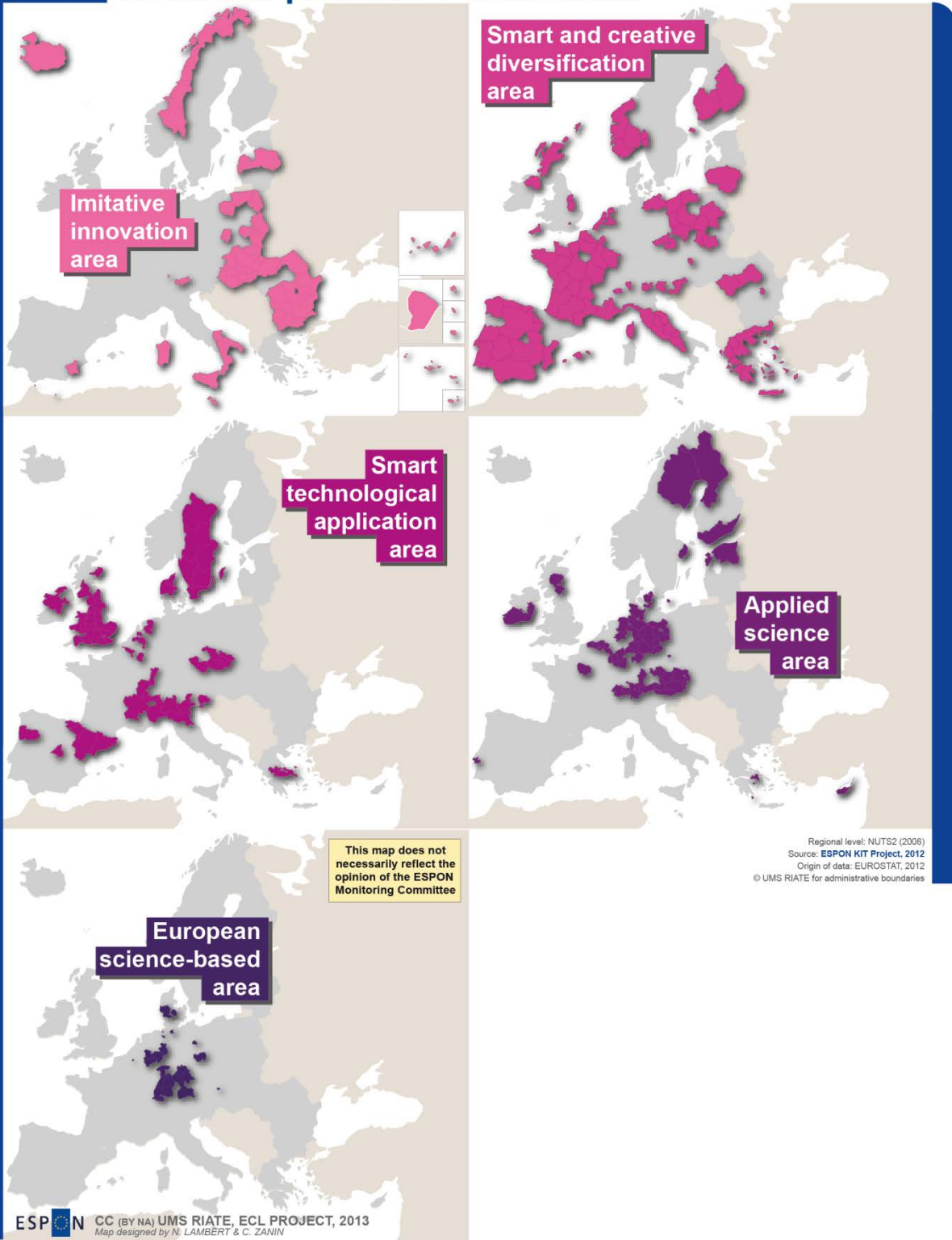
EUROPEAN UNION
Part-financed by the European Regional Development Fund
INVESTING IN YOUR FUTURE

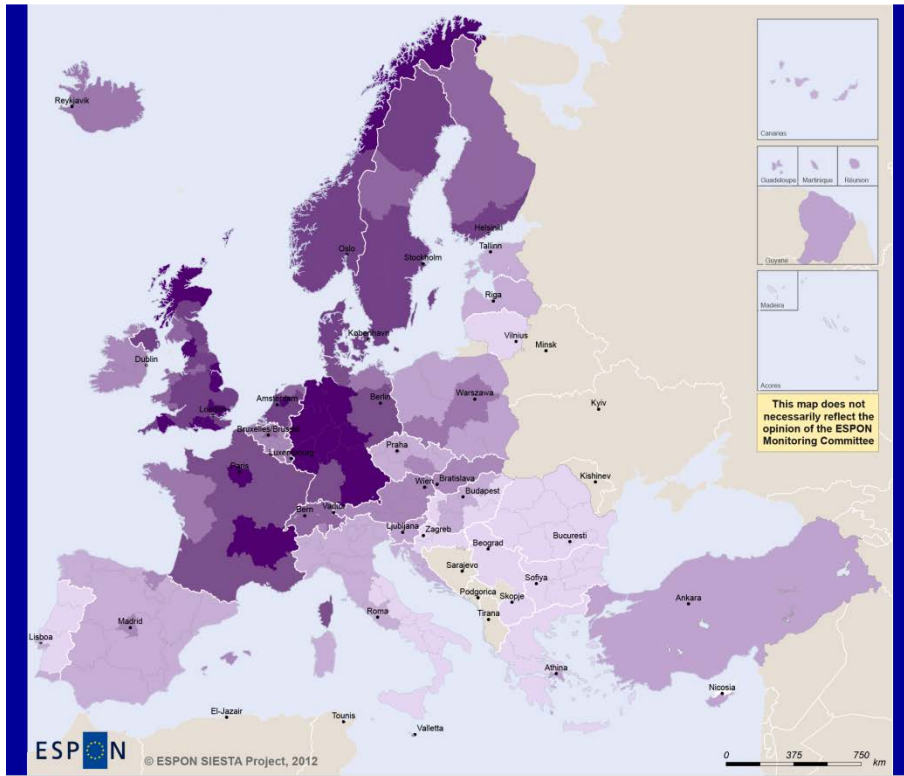
Regional level: NUTS2
Source: ESPON KIT Project, 2012
Origin of data: EUROSTAT, 2012
© EuroGeographics Association for administrative boundaries

Types of innovation regions

- Imitative innovation area
- Smart and creative diversification area
- Smart technological application area
- Applied science area
- European science-based area
- No data

MAP 1 Territorial patterns of innovation



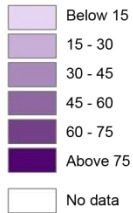


ESPON
 © ESPON SIESTA Project, 2012

EUROPEAN UNION
 Part-financed by the European Regional Development Fund
 INVESTING IN YOUR FUTURE

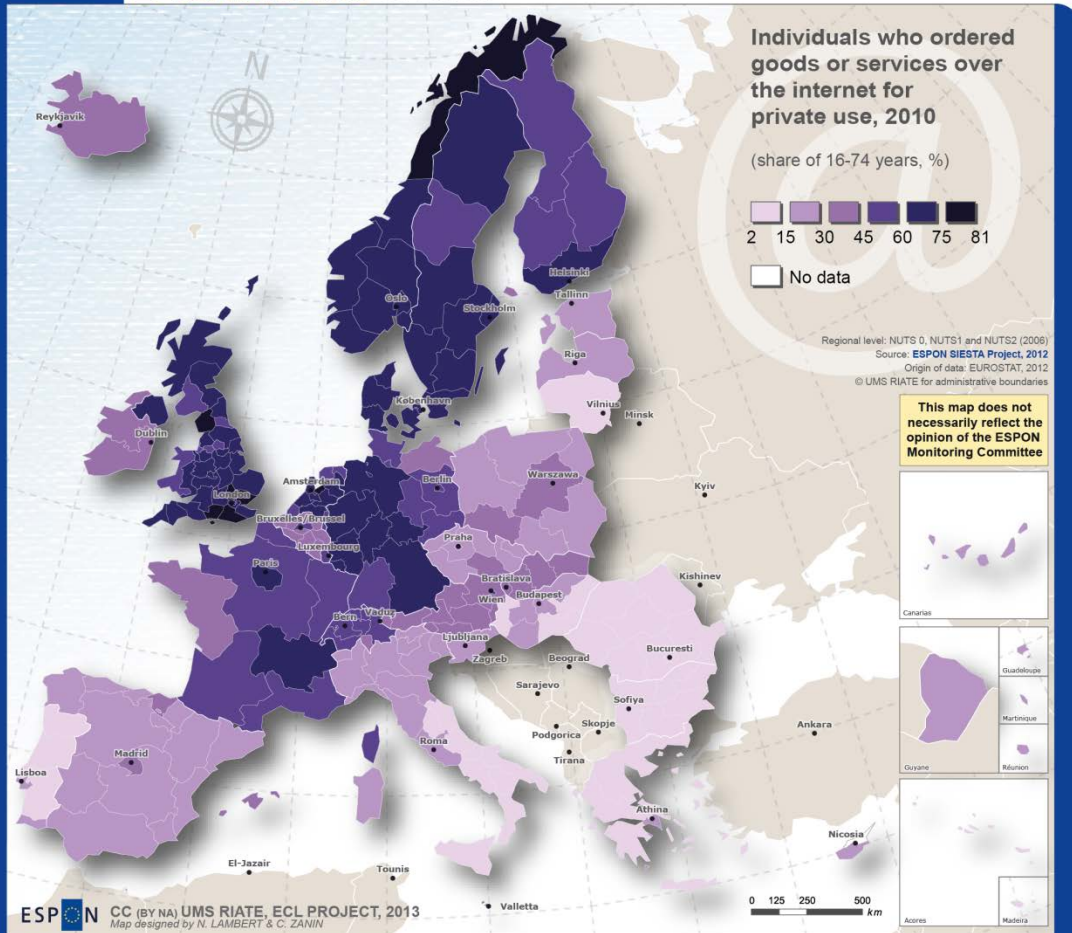
Regional level: NUTS0, NUTS1 and NUTS2
 Source: ESPON SIESTA Project, 2012
 Origin of data: EUROSTAT, 2012
 © EuroGeographics Association for administrative boundaries

Individuals who ordered goods or services over the internet for private use, 2010 (share of 16-74 years, %)



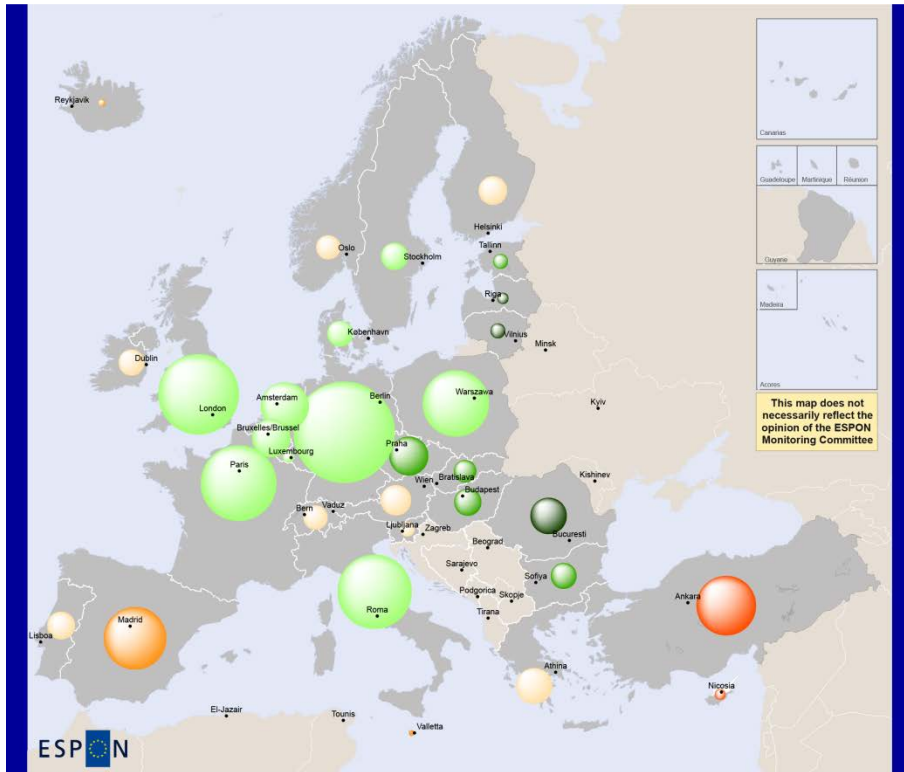
Notes:
 DE, FR, EL, RS and PL are shown at NUTS1 level.
 TR is shown at country level and data for this country were provided by Turkstat.
 Data for CH was provided by Swiss Statistics web site:
<http://www.bfs.admin.ch/bfs/portal/en/index.html>
 Data for BH11, BG12, BG13, BG21, BG22, BG23 and FI2 are not available for 2010.
 These regions are shown for 2007.
 TR data corresponds to 2011.
 UKE1 data are not available for 2010 and are shown for 2009.

MAP 2 E-commerce in 2010



EUROPEAN UNION
Part-financed by the European Regional Development Fund
INVESTING IN YOUR FUTURE

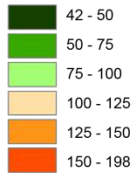
Notes:
DE, FR, EL, RS and PL are shown at NUTS1 level
TR is shown at country level and data for this country were provided by Turkstat
Data for CH was provided by Swiss Statistics web site: <http://www.bfs.admin.ch/bfs/portal/en/index.html>
Data for BH11, BG12, BG13, BG21, BG22, BG23 and F12 are not available for 2010. This regions are shown for 2007.
TR data corresponds to 2011.
UKE1 data are not available for 2010 and are shown for 2009.



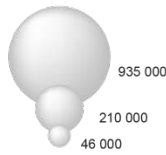
EUROPEAN UNION
Part-financed by the European Regional Development Fund
INVESTING IN YOUR FUTURE

Regional level: NUTSO
Source: EEA
Origin of data: EEA, 2013
© EuroGeographics Association for administrative boundaries

**Variation of GHG emissions
1990-2010 (index 1990 = 100)**



**Greenhouse gas emissions, 2010
in thousands tons of CO² equivalent**



Notes:
The aggregated greenhouse gas emissions are expressed in units of CO₂ equivalents. 2009 for TR.

The indicator does not include emissions and removals related to land use, land use change and forestry (LULUCF); it does not include emissions from international aviation and international maritime transport. CO₂ emissions from biomass with energy recovery are reported as a Memorandum Item according to UNFCCC Guidelines and not included in national GHG totals.

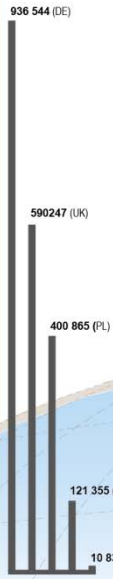
The EU as a whole is committed to achieving at least a 20% reduction of its greenhouse gas emissions by 2020 compared to 1990. This objective implies:

- Reduction of 21% in emissions from sectors covered by the EU ETS (emissions trading scheme) compared to 2005 by 2020;
- Reduction of 10% in emissions for sectors outside the EU ETS.

To achieve this 10% overall target each Member State has agreed country-specific greenhouse gas emissions limits for 2020 compared to 2005 (Council Decision 2009/406/EC).

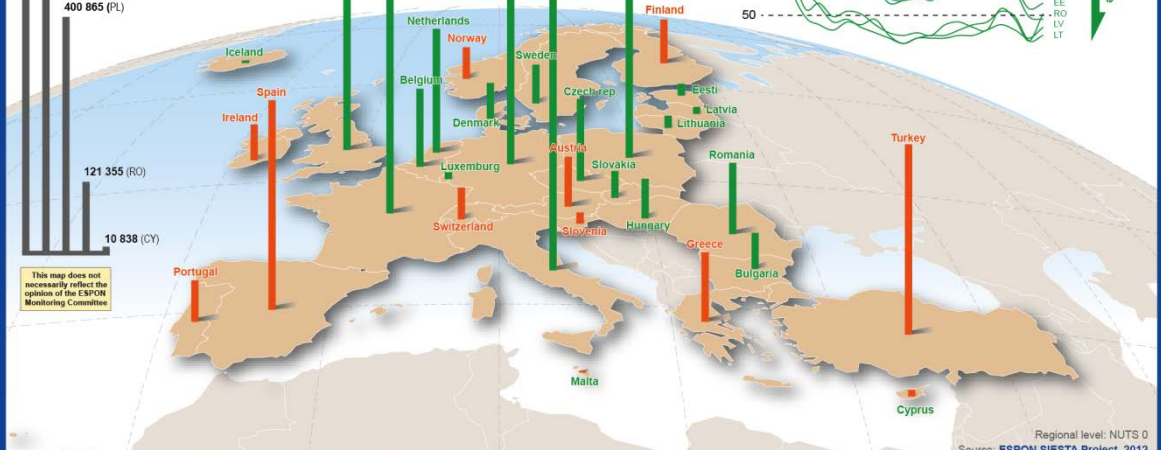
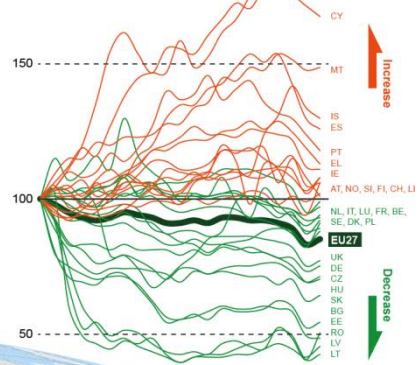
MAP 5 Greenhouse gas emissions

Emissions in 2010 (in thousands tons of CO₂ equivalent)



This map does not necessarily reflect the opinion of the ESPON Monitoring Committee

Variation of emissions 1990-2010 (index 1990 = 100)



ESPON CC (BY NA) UMS RIATE, ECL PROJECT, 2013
Map designed by N. LAMBERT & C. ZANIN

Regional level: NUTS 0
Source: ESPON SIESTA Project, 2012
Origin of data: EEA, 2013
© UMS RIATE for administrative boundaries

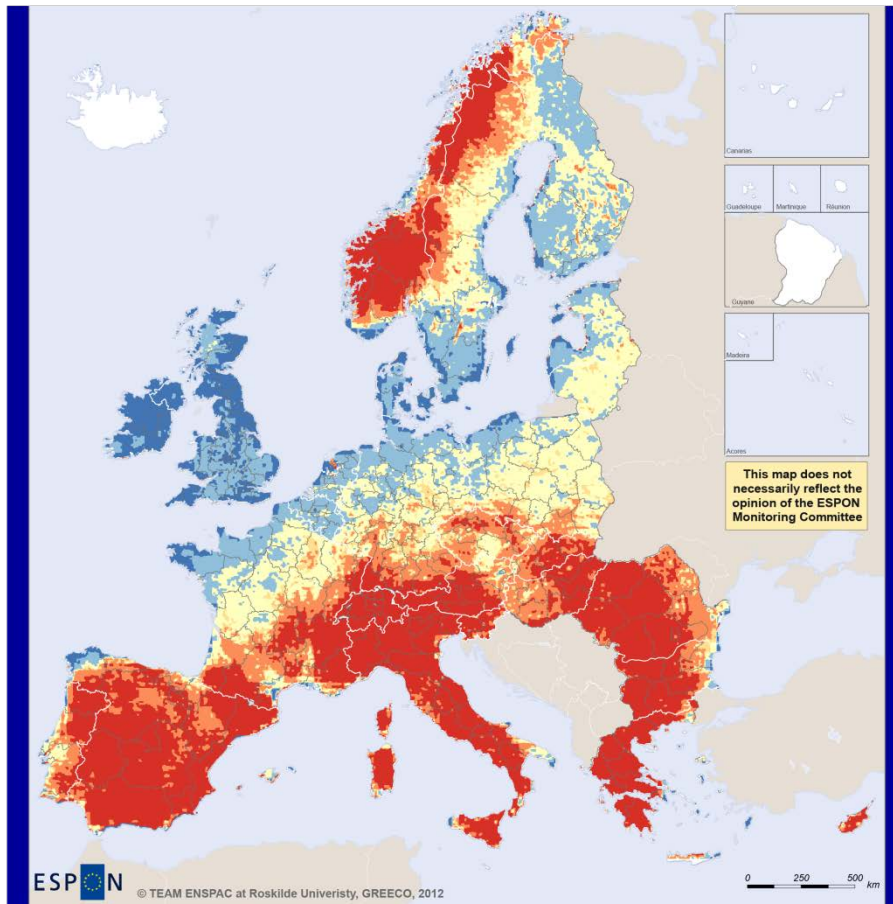
EUROPEAN UNION
Part-financed by the European Regional Development Fund
INVESTING IN YOUR FUTURE

Notes:

The aggregated greenhouse gas emissions are expressed in units of CO₂ equivalents: 2009 for TR. The indicator does not include emissions and removals related to and use, land use change and forestry (LULUCF); it does not include emissions from international aviation and international maritime transport. CO₂ emissions from biomass with energy recovery are reported as a Memorandum item according to UNFCCC Guidelines and not included in national GHG totals. The EU as a whole is committed to achieving at least a 20% reduction of its greenhouse gas emissions by 2020 compared to 1990. This objective implies:

- Reduction of 21% in emissions from sectors covered by the EU ETS (emissions trading scheme) compared to 2005 by 2020;
- Reduction of 10% in emissions for sectors outside the EU ETS.

To achieve this 10% overall target each Member State has agreed



ESPON
© TEAM ENSPAC at Roskilde University, GREECO, 2012

EUROPEAN UNION
Part-financed by the European Regional Development Fund
INVESTING IN YOUR FUTURE

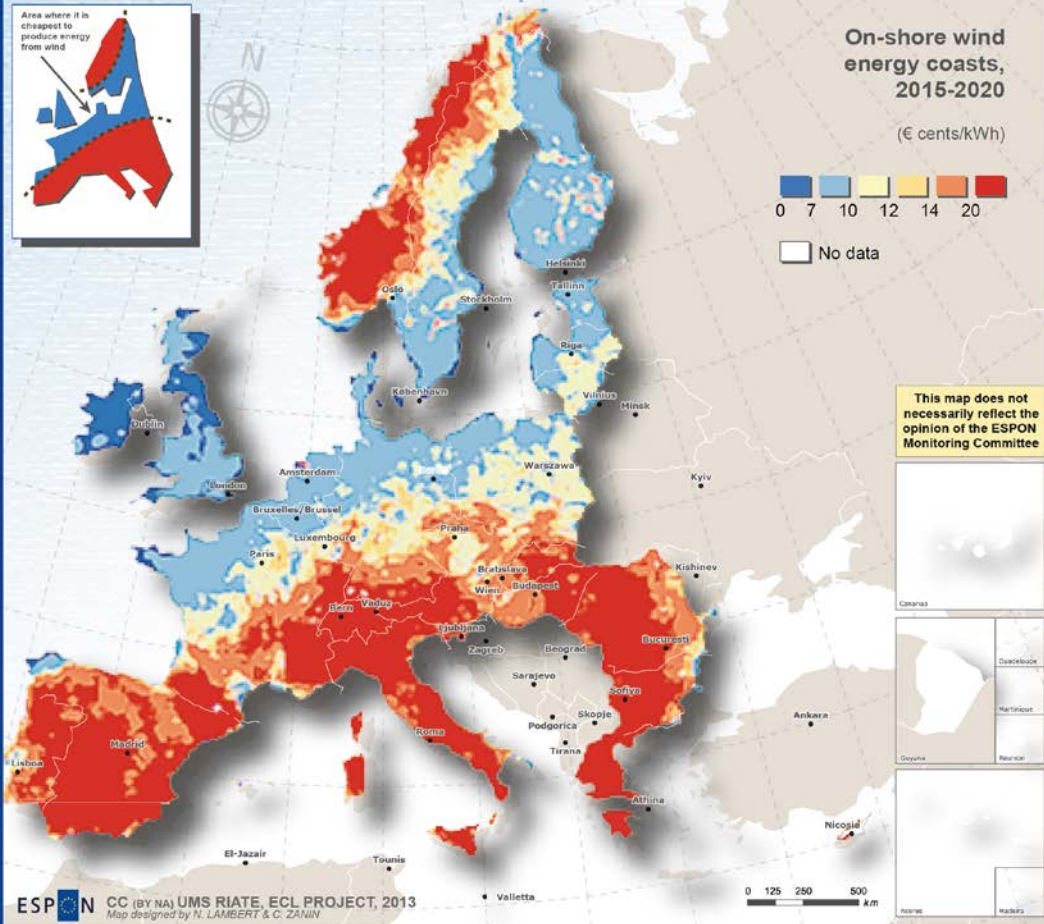
Regional level: Grid
Source: ESPON Database, ESPON GREECO Project, Roskilde University, 2013
Origin of data: European Environmental Agency, 2009 and International Energy Agency, 2012
© EuroGeographics Association for administrative boundaries

On-shore wind energy costs, 2015-2020
(€ cents/kWh)

- 0 - 7
- 7 - 10
- 10 - 12
- 12 - 14
- 14 - 20
- Above 20
- No data

Notes:
The map presents the levelised cost of electricity generated by onshore wind turbines of the most efficient type expected to be installed in the period 2015-2020 (3.5MW wind turbines).
The wind data are collected from European wind speed measurement stations used in an assessment of the European wind power potential by the European Environmental Agency (2009) and adjusted to the wind energy potential expected at 100 m above ground depending on land cover class and landscape roughness. The cost data are from the International Energy Agency (2012).
The levels of remuneration in the form of feed-in tariffs and other financial arrangements differ widely by country but 8 and 10 c/kWh could be useful reference levels for the 2015-2020 period

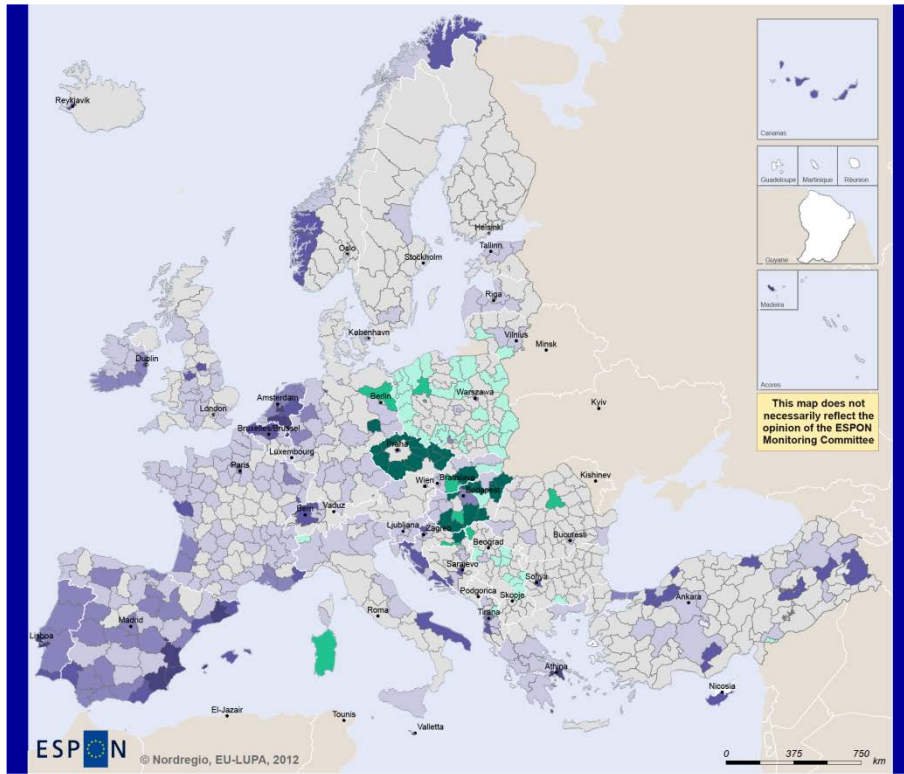
MAP 6 Wind power



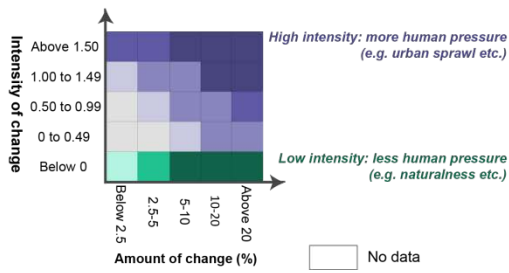
EUROPEAN UNION
Part-financed by the European Regional Development Fund
INVESTING IN YOUR FUTURE

Geographical level: Grid
Source: ESPON Database, ESPON GREECO Project, Hochschule University, 2013
Origin of data: European Environmental Agency, 2009 and International Energy Agency, 2012
© UMS RIATE for administrative boundaries

Notes:
The map presents the levelised cost of electricity generated by on-shore wind turbines of the most efficient type expected to be installed in the period 2015-2020 (3.5MW wind turbines).
The wind data are collected from European wind speed measurement stations used in an assessment of the European wind power potential by the European Environmental Agency (2009) and adjusted to the wind energy potential expected at 100 m above ground depending on land cover class and landscape roughness. The cost data are from the International Energy Agency (2012).
The levels of remuneration in the form of feed-in tariffs and other financial arrangements differ widely by country but 9 and 10 c/kWh could be useful reference levels for the 2015-2020 period.



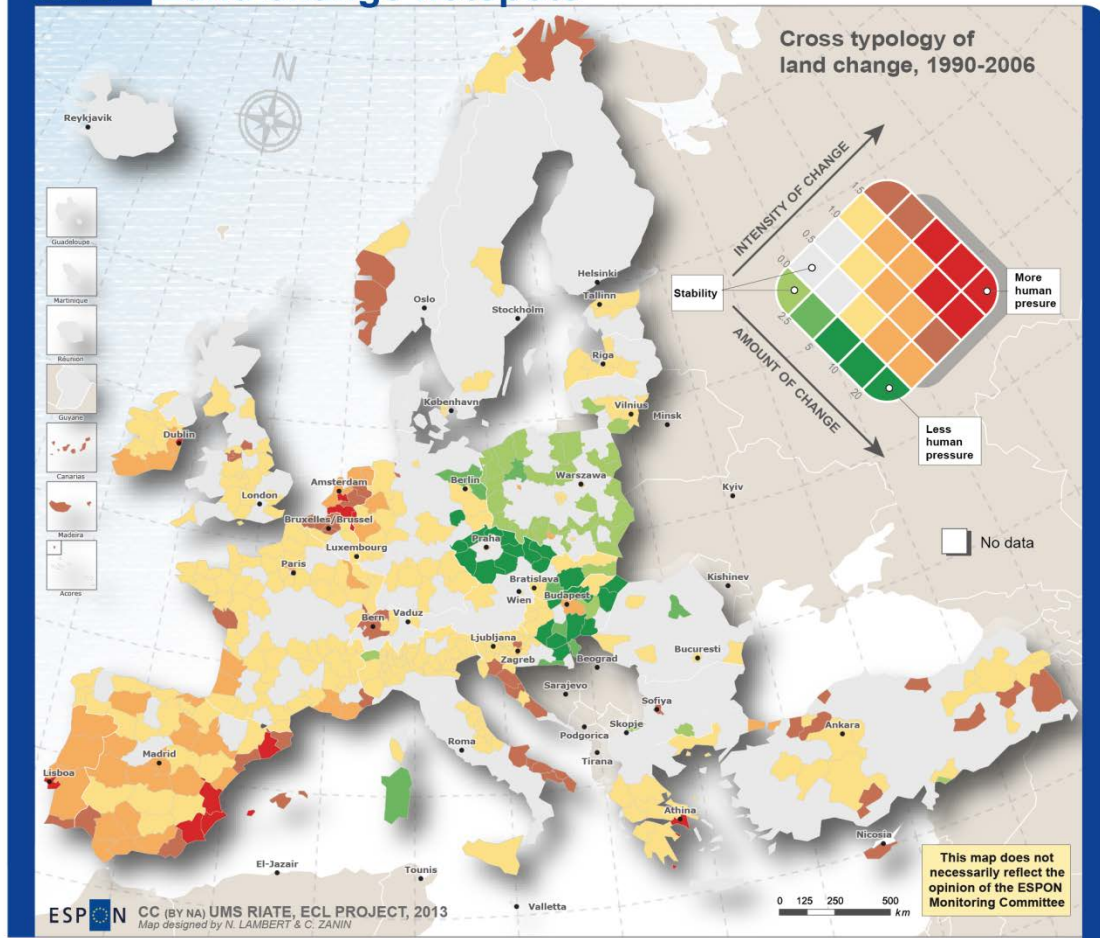
Land change hotspots 1990-2006



Notes:
Reference period: 1990-2006
except EL (1990-2000), AL, BA, CH, FI, IS, MK, NO, SE, TR (2000-2006)

The x-axis shows the amount of land that has underwent change during the given years (in percent) while the y-axis indicates the change in intensity that resulted from those changes. Therefore, regions in grey represent those with relatively stable land cover characteristics. Increasingly darker shades of green or purple identify "hotspots" of change where high intensifications or extensifications are coupled with increasing levels of overall land change are evident.

MAP 7 Land change hotspots

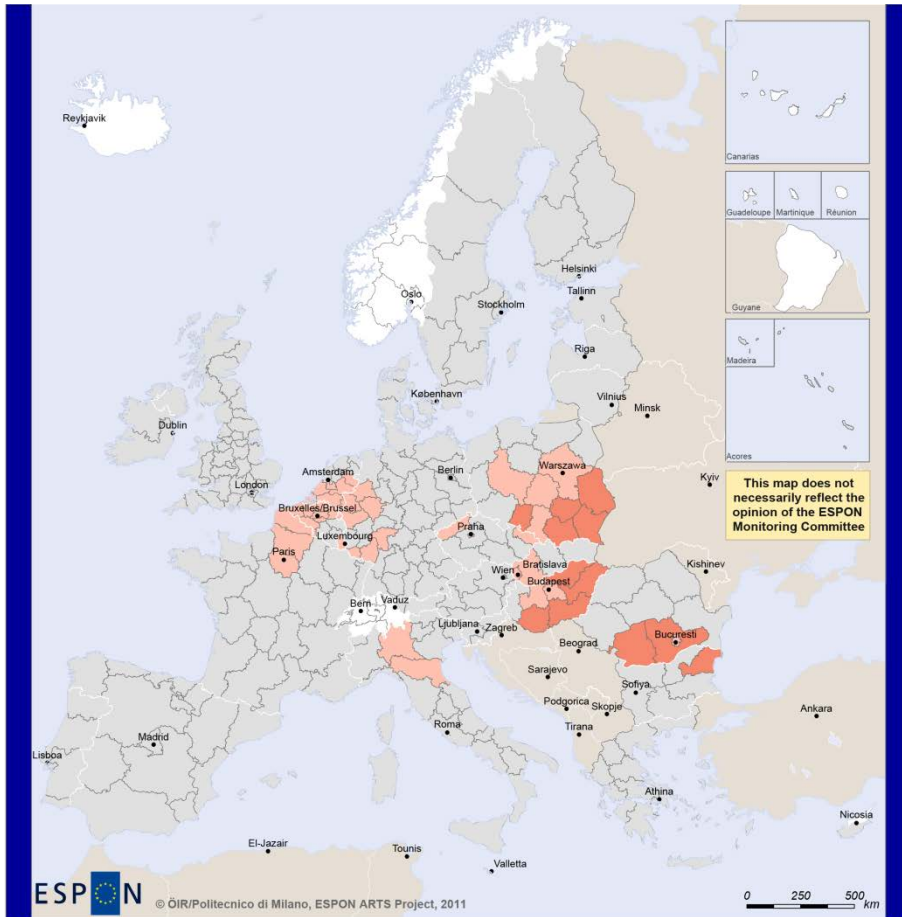


This map does not necessarily reflect the opinion of the ESPON Monitoring Committee

EUROPEAN UNION
Part-financed by the European Regional Development Fund
INVESTING IN YOUR FUTURE

Regional level: NUTS 2/3
Source: Nordregio, EU-LUPA, 2012
Origin of data: EEA, 2011
© UMS RIATE for administrative boundaries

Notes:
Reference period: 1990-2006 except EL (1990-2000), AL, BA, CH, FI, IS, MK, NO, SE, TR (2000-2006)
The x-axis shows the amount of land that has undergone change during the given years (in percent) while the y-axis indicates the change in intensity that resulted from those changes. Therefore, regions in grey represent those with relatively stable land cover characteristics. Increasingly darker shades of green or purple identify "hotspots" of change where high intensifications or extensifications are coupled with increasing levels of overall land change are evident.



EUROPEAN UNION
Part-financed by the European Regional Development Fund
INVESTING IN YOUR FUTURE

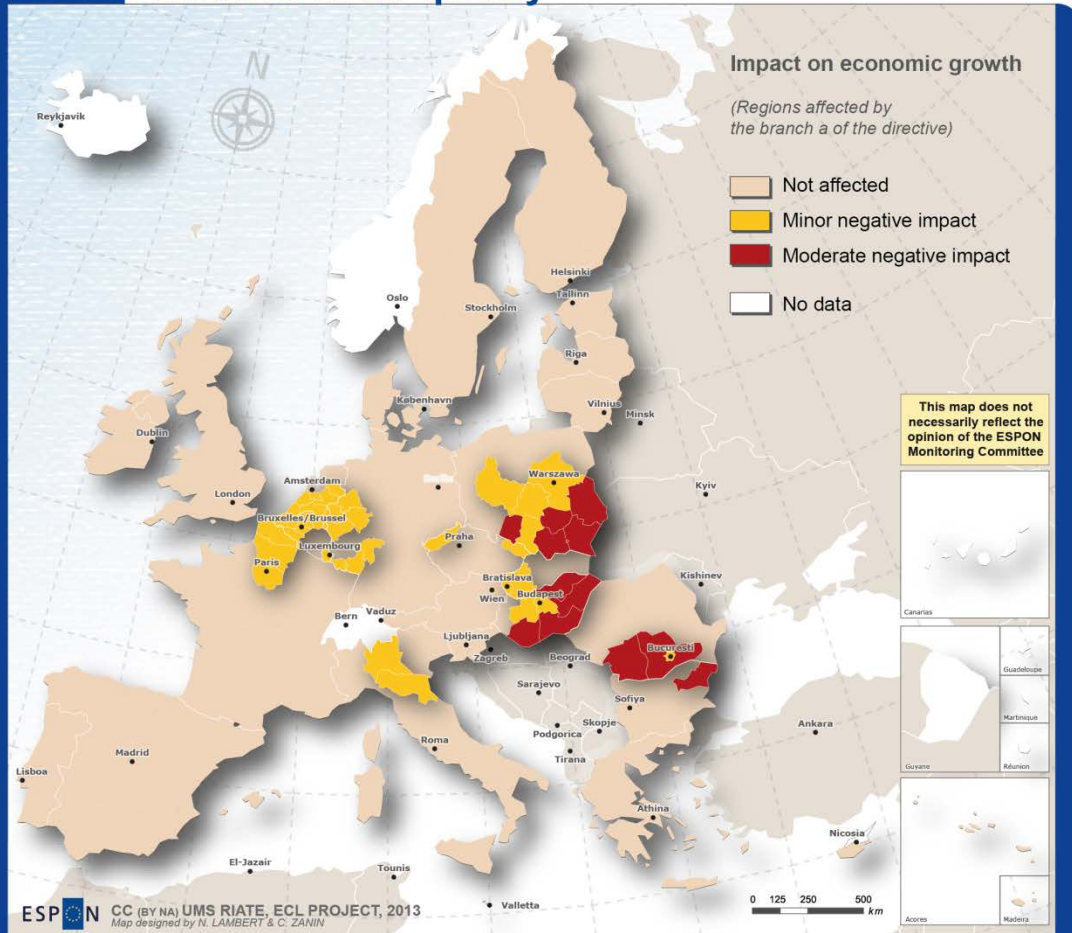
Regional level: NUTS2
Source: ESPON ARTS Project, 2012
Origin of data: ESPON Database, EUROSTAT, EEA (Corine Land Cover), 5th Cohesion Report, BOKU University, DG AGRI
© EuroGeographics Association for administrative boundaries

**Regions affected by Directive on air quality
branch a (negative impact on economic growth)**

- Not affected
- Minor impact
- Moderate impact
- No data

Note:
With regard to branch a, the assumption is that the measures are successful in reducing traffic in non-compliance areas, and hence in reducing emissions of sulphur dioxide, nitrogen dioxide and oxides of nitrogen, particulate matter and lead in ambient air. Indirect effects are perceptible in the environment due to less contamination of soil and water and a reduction of acid rain (which also harms historical buildings, and hence cultural heritage, and natural habitats of species and agricultural crops). Traffic reduction measures are also seen as potentially improving urban quality of life, human health, and hence, indirectly, promote economic growth. It could also reduce economic activity in the same urban areas. This could either harm growth or just shift it to more sustainable modes, which may actually have a positive effect on the economy. The measures are expected to increase the complexity of spatial projects in urban areas, which could also negatively impact economic growth.

MAP 9 Directive on air quality

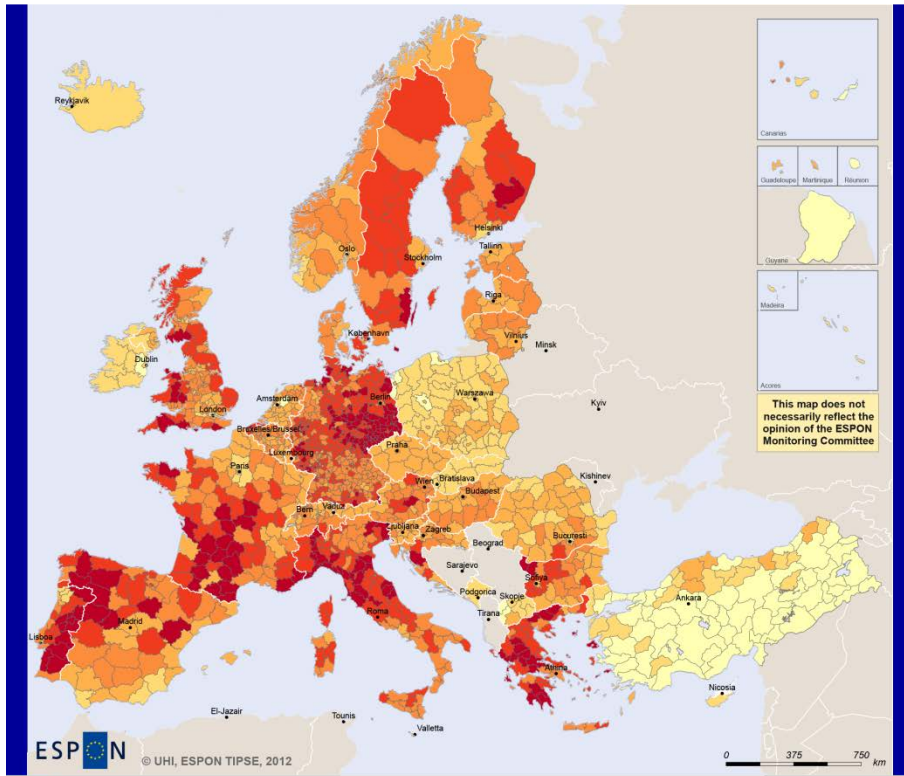


EUROPEAN UNION
Part-financed by the European Regional Development Fund
INVESTING IN YOUR FUTURE

Regional level: NUTS2
Source: ESPON ARTS Project, 2012
Origin of data: ESPON Database, EUROSTAT, EEA (Corine Land Cover), 5th Cohesion Report, BOKU University, DG AGRI
© UMS RIATE for administrative boundaries

Notes:

With regard to branch a, the assumption is that the measures are successful in reducing traffic in non-compliance areas, and hence in reducing emissions of sulphur dioxide, nitrogen dioxide and oxides of nitrogen, particulate matter and lead in ambient air. Indirect effects are perceptible in the environment due to less contamination of soil and water and a reduction of acid rain (which also harms historical buildings, and hence cultural heritage, and natural habitats of species and agricultural crops). Traffic reduction measures are also seen as potentially improving urban quality of life, human health, and hence, indirectly, promote economic growth. It could also reduce economic activity in the same urban areas. This could either harm growth or just shift it to more sustainable modes, which may actually have a positive effect on the economy. The measures are expected to increase the complexity of spatial projects in urban areas, which could also negatively impact economic growth.

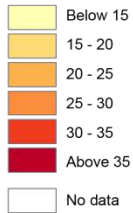


ESPON
 © UHI, ESPON TIPSE, 2012

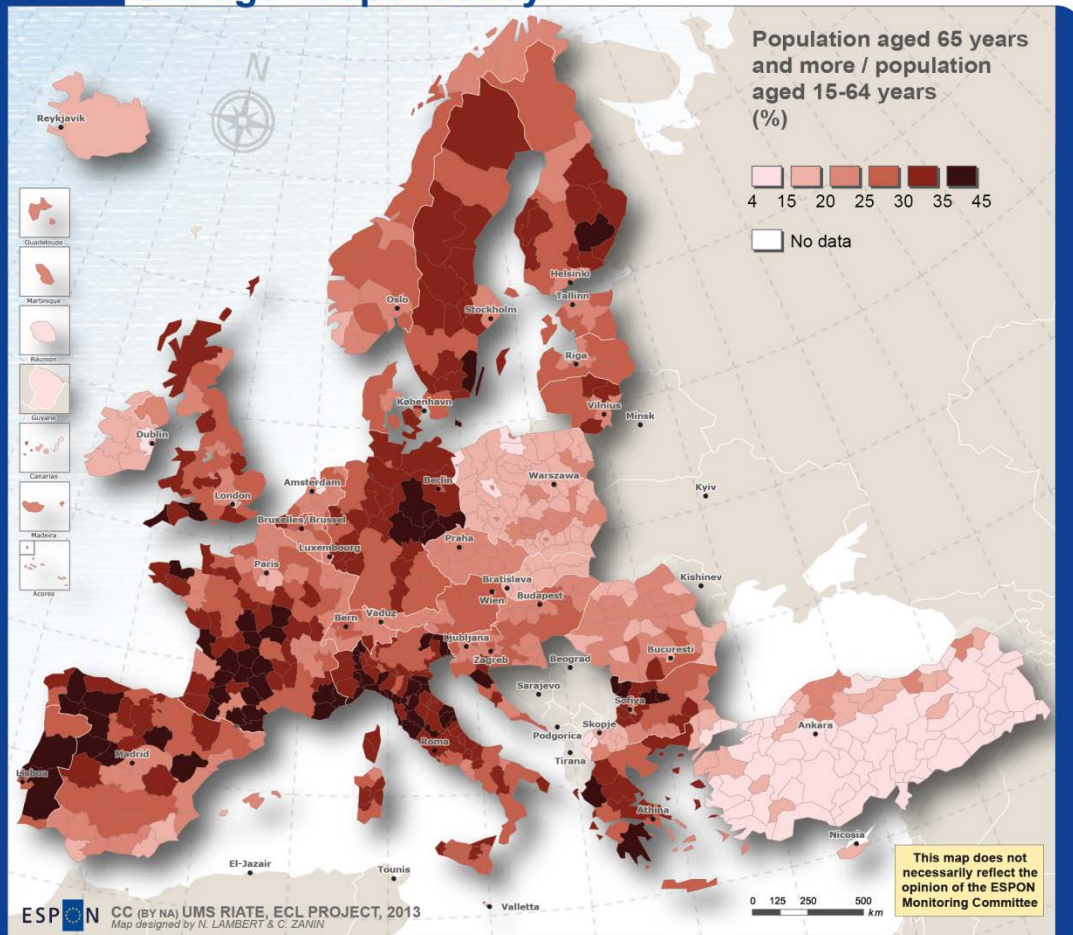
EUROPEAN UNION
 Part-financed by the European Regional Development Fund
 INVESTING IN YOUR FUTURE

Regional level: NUTS3
 Source: ESPON TIPSE, 2010
 Origin of data: Eurostat, 2012
 © EuroGeographics Association for administrative boundaries

Old age dependency rate, 2011
 Population aged 65 years and more / population aged 15-64 years (%)

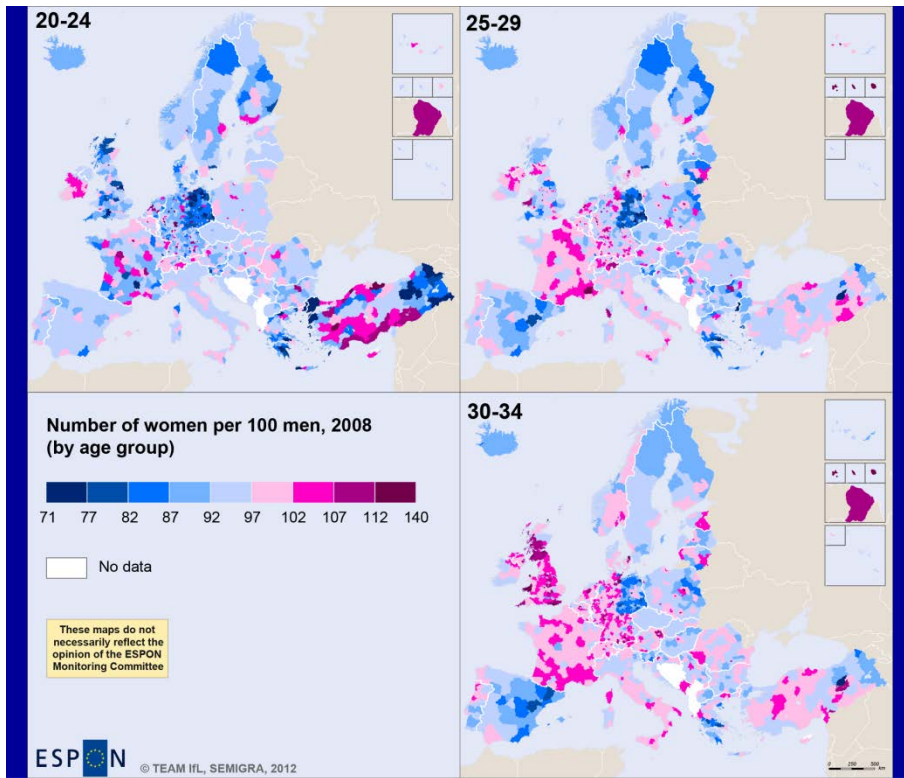


MAP 14 Old-age «dependency»



EUROPEAN UNION
Part-financed by the European Regional Development Fund
INVESTING IN YOUR FUTURE

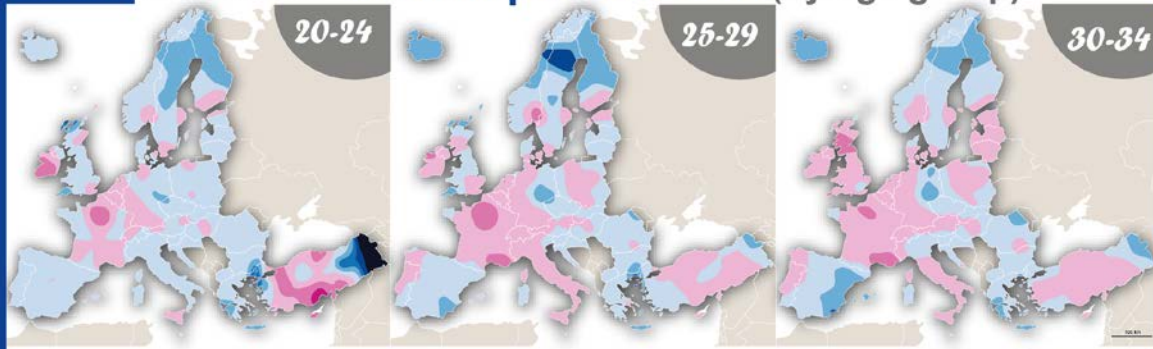
Regional level: NUTS 2/3 (2010)
Sources: ESPON TIPSE, 2012
Origin of data: Eurostat, 2013
© UMS RIATE for administrative boundaries



EUROPEAN UNION
Part-financed by the European Regional Development Fund
INVESTING IN YOUR FUTURE

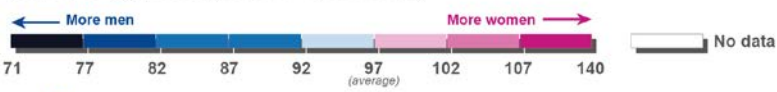
Regional level: NUTS 3
Source: Own calculations, 2011
Origin of data: EUROSTAT and national statistical offices, 2011
© EuroGeographics Association for administrative boundaries

MAP 15 Number of **women per 100 men** (by age group)



Number of women in the age group 20 to 24, 25 to 29 and 30 to 34 per 100 coeval men, 2009

(smoothed by gaussian potential - span 100 km)

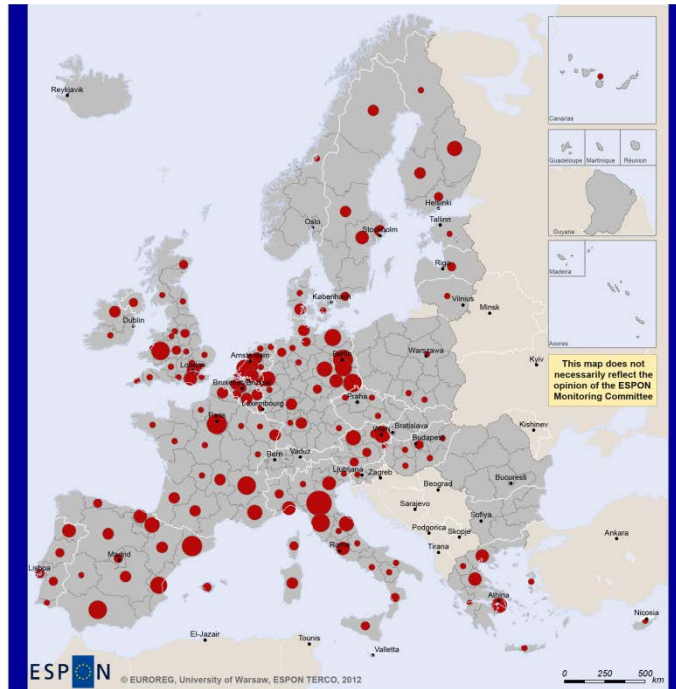


This map does not necessarily reflect the opinion of the ESPON Monitoring Committee

ESPON CC (BY NA) UMS RIATE, ECL PROJECT, 2013
Map designed by N. LAMBERT & C. ZANIN

Regional level: NUTS2 with smoothing
Source: ESPON SEMIGRA, 2012
Origin of data: EUROSTAT
© UMS RIATE for administrative boundaries

EUROPEAN UNION
Part-financed by the European Regional Development Fund
INVESTING IN YOUR FUTURE



EUROPEAN UNION
Part-financed by the European Regional Development Fund
INVESTING IN YOUR FUTURE

Number of lead partners in INTERREG IIIC and IVC programmes, situation in January 2011

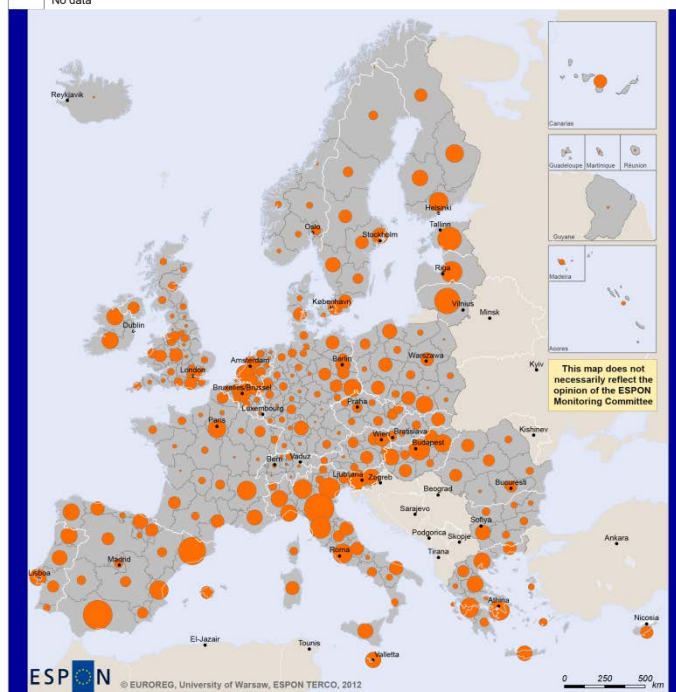


Regional level: NUTS 2
Source: ESPON Database, EUROREG, University of Warsaw, 2012
Origin of data: EUROREG, University of Warsaw, 2012
© EuroGeographics Association for administrative boundaries

Notes:
INTERREG is designed to stimulate cooperation between member states of the European Union on different levels and is financed under the European Regional Development Fund (ERDF). INTERREG III refers to the third programming period (2000-2006) and INTERREG IV to the fourth programming period (2007-2013).

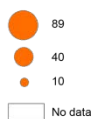
Interregional cooperation (Strand C of the INTERREG Programme) aims to improve the effectiveness of regional development policies and instruments through large-scale information exchange and sharing of experience (networks). This is financially the smallest strand of the INTERREG Programme. The programmes cover all EU Member States.

Under INTERREG IIIC and IVC initiative 384 projects were implemented (as of January 2011), that had over four thousand partners.



EUROPEAN UNION
Part-financed by the European Regional Development Fund
INVESTING IN YOUR FUTURE

Number of project partners in INTERREG IIIC and IVC programmes, situation in January 2011

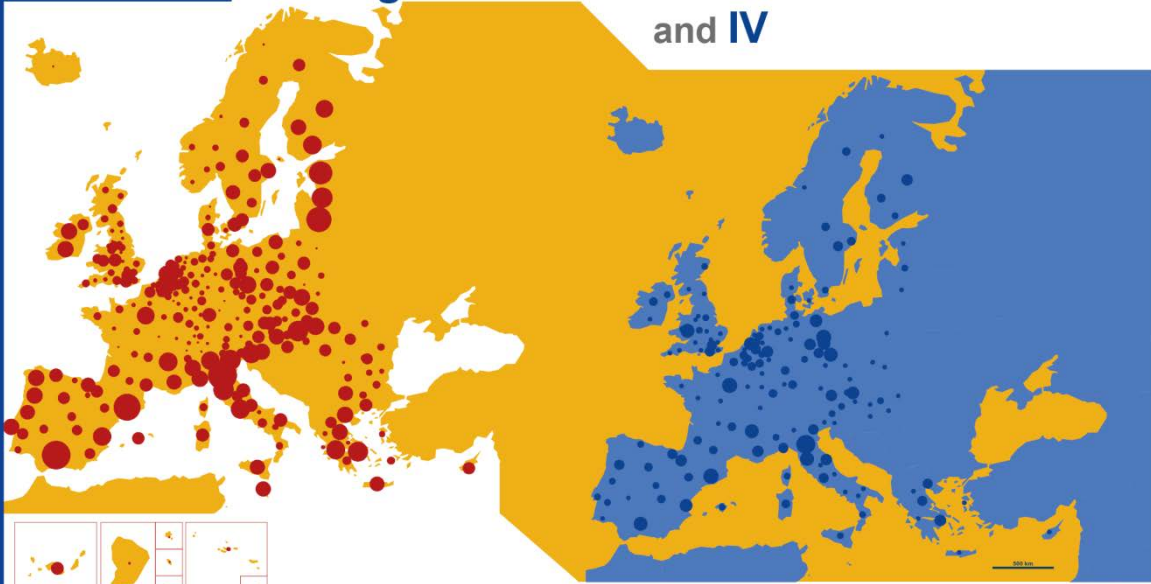


Regional level: NUTS 2
Source: ESPON Database, EUROREG, University of Warsaw, 2012
Origin of data: EUROREG, University of Warsaw, 2012
© EuroGeographics Association for administrative boundaries

Notes:
INTERREG is designed to stimulate cooperation between member states of the European Union on different levels and is financed under the European Regional Development Fund (ERDF). INTERREG III refers to the third programming period (2000-2006) and INTERREG IV to the fourth programming period (2007-2013).

Interregional cooperation (Strand C of the INTERREG Programme) aims to improve the effectiveness of regional development policies and instruments through large-scale information exchange and sharing of experience (networks). This is financially the smallest strand of the INTERREG Programme. The programmes cover all EU Member States.

Under INTERREG IIIC and IVC initiative 384 projects were implemented (as of January 2011), that had over four thousand partners.



Number of **project partners** in INTERREG III C and IVC programmes, situation in January 2011



ESPON CC (BY NA) UMS RIATE, ECL PROJECT, 2013
Map designed by N. LAMBERT & C. ZANIN

EUROPEAN UNION
Part-financed by the European Regional Development Fund
INVESTING IN YOUR FUTURE

This map does not necessarily reflect the opinion of the ESPON Monitoring Committee



Number of **lead partners** in INTERREG III C and IVC programmes, situation in January 2011



Regional level: NUTS 2
Source: **ESPON TERCO, 2012**
Origin of data: EUROREG, University of Warsaw, 2012
© UMS RIATE for administrative boundaries

Notes:

INTERREG is designed to stimulate cooperation between member states of the European Union on different levels and is financed under the European Regional Development Fund (ERDF). INTERREG III refers to the third programming period (2000-2006) and INTERREG IV to the fourth programming period (2007-2013).

Interregional cooperation (Strand C of the INTERREG Programme) aims to improve the effectiveness of regional development policies and instruments through large-scale information exchange and sharing of experience (networks). This is financially the smallest strand of the three strands of the INTERREG Programme. The programmes cover all EU Member States.

Under INTERREG III C and IVC initiative 384 projects were implemented (as of January 2011), that had over four thousand partners.



ESPON will achieve three goals in using a generalised base map:

- 1- Enhance the ESPON visual identity (no one use it within European organisations, so it will be a strong identity for ESPON to do so) ;
- 2- From a scientific point a view, it's proved that a use of a generalised base map improves a lot the efficiency of the stated message;
- 3- The lightweight format of a generalised base map is well adapted to be integrated to ESPON tools and all maps produced in the ESPON program (whatever the technical solution chosen).