



**HAL**  
open science

## Children's Diet at 2 Years and Trajectories of Hyperactivity-Inattention Symptoms and Conduct Problems Between 3 and 8 Years: The EDEN Cohort

Nicolas Iv, Marie Herbein, Barbara Heude, Judith van Der Waerden, Maria Melchior, Catherine Feart, Cécile Delcourt, Sylvana M. Cote, Blandine de Lauzon-Guillain, Sandrine Lioret, et al.

► **To cite this version:**

Nicolas Iv, Marie Herbein, Barbara Heude, Judith van Der Waerden, Maria Melchior, et al.. Children's Diet at 2 Years and Trajectories of Hyperactivity-Inattention Symptoms and Conduct Problems Between 3 and 8 Years: The EDEN Cohort. *Journal of Nutrition*, 2022, 152 (2), pp.484-491. 10.1093/jn/nxab398 . hal-03593602

**HAL Id: hal-03593602**

**<https://hal.science/hal-03593602>**

Submitted on 30 Jan 2023

**HAL** is a multi-disciplinary open access archive for the deposit and dissemination of scientific research documents, whether they are published or not. The documents may come from teaching and research institutions in France or abroad, or from public or private research centers.

L'archive ouverte pluridisciplinaire **HAL**, est destinée au dépôt et à la diffusion de documents scientifiques de niveau recherche, publiés ou non, émanant des établissements d'enseignement et de recherche français ou étrangers, des laboratoires publics ou privés.

# **Children's diet at 2 years and trajectories of hyperactivity-inattention symptoms and conduct problems between 3 and 8 years: the EDEN cohort**

Nicolas Iv,<sup>1,2</sup> Marie Herbein,<sup>1,2,3</sup> Barbara Heude,<sup>4</sup> Judith van der Waerden,<sup>5,6</sup> Maria Melchior,<sup>5,6</sup> Catherine Feart,<sup>1</sup> Cécile Delcourt,<sup>1</sup> Sylvana Côté,<sup>1,3,7,8</sup> Blandine De Lauzon-Guillain,<sup>4</sup> Sandrine Lioret,<sup>4</sup> and Cédric Galera<sup>1,2,3,7</sup>

<sup>1</sup> Institut national de la santé et de la recherche médicale (INSERM) unité mixte de recherche 1219 (UMR1219), Bordeaux, France;

<sup>2</sup> University of Bordeaux, Bordeaux, France;

<sup>3</sup>Centre Hospitalier Perrens, Bordeaux, France; <sup>4</sup>Université de Paris, Centre for Research in Epidemiology and Statistics (CRESS), Institut national de la santé et de la recherche médicale (INSERM), Institut national de recherche pour l'agriculture, l'alimentation et l'environnement (INRAE), Paris, France;

<sup>5</sup>Social Epidemiology Research Group, Institut Pierre Louis d'Epidémiologie et de Santé Publique (IPLESP), Institut national de la santé et de la recherche médicale (INSERM), unité mixte de recherche scientifique (UMR-S) 1136, Paris, France;

<sup>6</sup>Sorbonne Universités, Université Pierre-et-Marie-Curie (UPMC) Univ Paris 06, Paris, France;

<sup>7</sup>Research Unit on Children's Psychosocial Maladjustment, Montreal, Quebec, Canada; and

<sup>8</sup>Department of Social and Preventive Medicine, University of Montreal, Montreal, Quebec, Canada

## ABSTRACT

**Background:** Although the role of diet is increasingly acknowledged in psychiatry, data are still scarce regarding its early impact on the most significant behavioral disorders of childhood (i.e., hyperactivity-inattention and conduct problems). **Objectives:** The objective of this study was to explore the relation between children's dietary patterns at 2 years and developmental trajectories of hyperactivity-inattention and conduct problems between 3 and 8 years.

**Methods:** We recruited 1432 mother-child dyads from the French EDEN (étude sur les déterminants pré- et postnatals du développement et de la santé de l'enfant) mother-child cohort to conduct the analyses. Three dietary patterns, labeled guidelines, processed and fast foods, and baby foods, were identified using an FFQ in children aged 2 years in a previous study. The Strengths and Difficulties Questionnaire was used to assess hyperactivity-inattention and conduct problems at 3, 5, and 8 years of age and build related trajectories from 3 to 8 years. The relation between children's dietary patterns at 2 years and the worst developmental trajectories of hyperactivity-inattention and conduct problems were determined with multivariable logistic regressions adjusted for potential socioeconomic, maternal, and child confounders.

**Results:** The score on the guidelines dietary pattern was negatively associated with the risk of hyperactivity-inattention problems (OR: 0.75; 95% CI: 0.60–0.94), contrary to adherence to the baby foods dietary pattern (OR: 1.41; 95% CI: 1.16–1.71).

**Conclusions:** Distinct patterns of children's diet at 2 years were predictive of developmental trajectories of hyperactivity-inattention problems between 3 and 8 years. These results highlight the relevance of conducting further studies to clarify the mechanisms involved.

**Keywords:** hyperactivity-inattention problems, conduct problems, externalizing problems, dietary patterns, childhood

## Introduction

The role of diet as a factor contributing to health and diseases is now well established, and various recommendations on appropriate dietary and nutritional interventions have been published to promote a healthy lifestyle throughout life (1–3). Systematic reviews and meta-analyses examining the associations between diet and common psychiatric disorders have shown that healthy eating habits are inversely associated with the risk of depression in adult males and females (4–6). These diets are characterized by a high intake of vegetables, fruits, whole grains, nuts, seeds, and fish, with limited amounts of processed foods. In contrast, unhealthy energy-dense and nutrient-poor diets rich in processed food and high in fats and sugars in adolescence and adulthood have been positively associated with common psychiatric disorders such as depression and anxiety (4, 7). Similar evidence exists in early childhood, where maternal and young child diets were associated with emotional and behavioral dysregulation in children, although this was based in part on cross-sectional studies (7–9). It is noteworthy that the longitudinal associations between children's diet early in life and externalizing behaviors in childhood have been far less investigated. However, externalizing problems represent the most frequent behavioral problems during childhood. Husky et al. (10) found that 10.4% of children were identified in France per their own evaluation as having an externalizing disorder including attention deficit disorder with or without hyperactivity (ADHD; 4.1%) and conduct problems (CP): that is, oppositional defiant disorder (5.3%) and conduct disorder (4.5%). Moreover, they are all associated with a wide range of negative outcomes during life, such as internalizing disorder, school failure, unemployment, and delinquency (11, 12). An association between a healthy diet and a lower risk of ADHD in children and adolescents was recently suggested in a meta-analysis, but this was based mostly on cross-sectional studies (13). Conduct problems have been associated with suboptimal eating habits, characterized by the intake of energy-dense foods (14). While there is a plausible biological hypothesis involving inflammatory systems, oxidative stress, and alterations of the intestinal microbiota, the role of environmental lifestyle factors also seems to be a major source of confusion bias in the diet–mental health relationship (15). Maternal age affects both the child's diet and the risk of ADHD or CP (16–18). Poor maternal eating habits shape

children's eating behavior (19). Socio-economic position plays an important role in the quality of a child's diet (20–22). Notably, maternal education level is known to influence a child's diet before and after 2 years of age (3, 23–28) and is negatively associated with the risk of ADHD and CP (29–31). In addition, a low family income is also associated with inadequate nutritional intake (32) and with a higher risk of ADHD and CP (31, 33). It is therefore essential to take these confounding factors into account when studying the potential effects of diet on the evolution of the developmental trajectories of these externalizing problems. Given the high socioeconomic costs of ADHD and CP and the significant comorbidities associated with these disorders, it seems relevant to study their relations with children's diets, as this could be a potentially modifiable behavior (34, 35). The objective of this study was to explore the longitudinal association between dietary patterns of 2-year-old children and the worst trajectories of symptoms of hyperactivity-inattention and CP in children between 3 and 8 years of age, accounting for relevant confounders.

## **Methods**

### **Study design**

The mother-child cohort EDEN (étude sur les déterminants pré- et postnatals du développement psychomoteur et de la santé de l'enfant) was designed to study the pre- and postnatal determinants that have a potential role in the child's psychological and social development and health (36). Pregnant women were recruited before 24 weeks of gestation during a prenatal appointment in the Obstetrics-Gynecology departments of Nancy and Poitiers university hospitals. Exclusion criteria included multiple pregnancies, a history of diabetes, an inability to speak or read French, and plans to move from the region within 3 years. Recruitment began in February 2003 in Poitiers and in September 2003 in Nancy, and lasted 27 months in each center. During pregnancy and after birth (2, 3, 5, and 8 years), socio- demographic and medical data on the mother and her child were collected from medical records, through interviews with the mother conducted between 24 and 28 weeks of gestational age at the university hospital maternity ward by dedicated investigators, and through self- administered questionnaires mailed to the mother during her

child's first year of life and at 2, 3, 5, and 8 years. Informed written consent from the parents was obtained at enrollment and consent for the child was obtained from both parents after the child's birth. The EDEN cohort received approval from the Bicêtre Hospital ethics committee and the Commission Nationale Informatique et Libertés, which oversees ethical aspects of data collection in France.

## **Participants**

Of the 2002 pregnant women included in the EDEN cohort mother-child dyads were excluded for the following reasons: miscarriage (n=11) deaths in utero (n=7), medical termination of pregnancy (n=2), loss of sight (n=14), moving (n=8), withdrawal of consent (n=51), not meeting inclusion criteria (n=2). Data were obtained at birth for 1,899 mother-child dyads. Of these, 1527 children were still being followed at 3 years, 1255 at 5 years, and 883 at 8 years. For our analysis, we included 1432 mother-child respondents who had at least 1 measurement on the Strengths and Difficulties Questionnaire (SDQ). The characteristics of participants in the EDEN cohort were comparable to those of the national population in terms of the average age, proportion of unmarried couples, socio-demographic characteristics of parents, birth weight, and rate of prematurity, with the exception of a higher level of education among mothers in the cohort (36). During the follow-up period, the attrition rate was higher among families whose mothers were young, had lower levels of education and lower income, did not live with the child's father, smoked during pregnancy, had psychological difficulties during pregnancy, and had a child that was not of low birth weight (36).

## **Dependent variables: children's hyperactivity-inattention and CP trajectories from 3 to 8 years**

Children's behavior at 3, 5, and 8 years of age was assessed using the SDQ, which was completed by their mothers (37, 38). This validated questionnaire includes 25 items related to 5 dimensions of children's behavior: emotions, CP, hyperactivity-inattention, peer relationships, and prosocial behavior (39). In this paper, we focused on the CP and hyperactivity-inattention subscales. The dimension of hyperactivity-inattention is composed of 5 items, 2 of which deal with hyperactivity ("restless, hyperactive, can't

stay still for long,” and “constantly fidgeting or squirming”), 2 with inattention [“easily distracted, concentration wanders,” “can stop and think things out before acting” (wave 3 years) or “think things out before acting” (waves 5 and 8 years)], and 1 with impulsivity (“good attention span, sees work through to the end”). The SDQ items are rated from 0 to 2 points (0 = never, 1 = sometime true, 2 = certainly true). The CP dimension is composed of 5 items that relate to temper tantrums (“often loses his/her temper”), obedience (“generally behaves well, obeys adults most of the time”), fights (“often fights with or bullies other children”), lying [“often fights with adults” (3 years old) or “often lies or cheats” (5 and 8 years old)], stealing [“can be mean to others” (wave 3 years old) or “steals at home, school or elsewhere” (waves 5 and 8 years old)]. All items corresponded to the prior 6 months or the current school year. The scores range from 0 to 10 for each dimension. The higher the score, the poorer the child’s functioning. Measurements of scores in each of the 2 dimensions at 3, 5, and 8 years of age were used to identify individual developmental trajectories of symptoms of hyperactivity-inattention and CP. Data on SDQ were available for 1308 children at 3 years, 1185 at 5 years, and 874 at 8 years.

### **Main exposure: child’s dietary patterns at 2 years old**

Children’s dietary intake at the age of 2 years was collected using an FFQ, as previously described (28). A previous analysis of these data using principal component analysis (PCA) identified 3 dietary patterns, which accounted for 26.8% of the explained variance. The first pattern, labeled processed and fast foods, was mainly characterized by a high consumption of French fries, processed meat, carbonated soft drinks, crisps, biscuits, pizzas, fruit juices, dairy puddings and ice cream, legumes, and bread (in descending order of factor loadings) and by a low consumption of cooked vegetables (10.9% of explained variance). The second pattern, labeled guidelines, was mainly characterized by the frequent consumption of cooked vegetables, rice, fruits, raw vegetables, low-fat fish, potatoes, ham, compotes, meat, and bread (9.3% of explained variance). The third pattern, named baby foods, had high positive loadings for baby foods, breakfast cereals, and stewed fruit and negative loadings for raw vegetables and fresh fruit (6.6% of explained variance). Scores for each pattern were calculated at the individual level by summing the observed

standardized frequencies of consumption per food group, weighted according to the PCA loadings. The higher the score, the higher the child's adherence to the dietary pattern (28).

### **Covariates**

The adjustment variables selected for the main analysis were based on a directed acyclic graph (DAG) constructed from the literature (**Supplemental Figures 1 and 2**). Children's characteristics included sex (male/female), birth weight (kg), gestational age (weeks), and mode of delivery (spontaneous vaginal delivery, surgical vaginal delivery, cesarean section). Parental characteristics included maternal education (school years), maternal age (years), maternal BMI (kg/m<sup>2</sup>), maternal smoking during pregnancy (cigarettes), maternal alcohol use during pregnancy (yes/no), maternal depression during pregnancy (Center for Epidemiologic Studies–Depression Scale, with scores ranging from 0 to 60), maternal anxiety (State-Trait Anxiety Inventory, with scores ranging from 20 to 80), any breastfeeding duration (month), maternal cannabis use (yes/no), maternal employment (“no, housewife”; “no maternity leave”; “no, parental leave”; “no, student”; “no, unemployed or looking for a job”; “no, other situation”; “yes”), paternal age (years), paternal employment (“no, student”; “no, unemployed or looking for a job”; “no, other situation”; “yes”), parental separation before birth assessment (biological father not living with the mother and child; yes/no), family income at age 2 (<450€/month, 450–800€/month, 800–1500€/month, 1500–2300€/month, 2300–3000€/month, 3000–3800€/month, 3800–4500€/month, >4500€/month), and 2 maternal dietary patterns during pregnancy, previously identified using PCA: healthy (i.e., characterized by a high intake of fruit, vegetables, fish, and whole-grain cereals) and Western (characterized by a high intake of processed and snacking foods).

Data on maternal age, maternal education, maternal smoking, maternal alcohol consumption, maternal depression, maternal anxiety, paternal age, and parental separation were assessed during pregnancy. Data on the child's sex, birth weight, gestational age, mode of delivery, and maternal dietary patterns during pregnancy were collected at birth. Data on the breastfeeding duration were collected between birth and 1 year. Data on the maternal BMI, maternal cannabis use, maternal employment, and family income were assessed at 2 years.



## Statistical analyses

The identification of developmental trajectories of symptoms of hyperactivity-inattention and CP was based on latent process mixed modeling. This approach divides the structural linear mixed model that describes the quantity of interest (a latent process) according to time and covariates from the measurement model that link the quantity of interest to the observations (details are available in the **Supplemental Statistical Methods**) (40). The best models were selected based on the Bayesian information criterion and Akaike information criterion, and by maximizing the posterior probability of membership in the class of highest developmental trajectory. The data on SDQ were available for 1308 children at 3 years, 1185 at 5 years, and 874 at 8 years. Trajectories from 3 to 8 years were identified for 1432 subjects. A descriptive analysis of the study population was conducted in terms of means and SDs for quantitative variables and percentages for qualitative variables based on the LPMM (latent process mixed model) grouping (the worst trajectory compared with other trajectories). Then, a comparison of the characteristics of these groups was made using a Student's test or Wilcoxon's nonparametric test for quantitative variables and a chi-squared test or Fisher's exact test for qualitative variables, depending on the application conditions. A descriptive analysis of the excluded and included populations was conducted following the same procedure.

The relationships between child dietary patterns at 2 years and the highest trajectories of externalized problems (hyperactivity-inattention and CP) were studied using logistic regression, adjusted for covariates selected by the DAG (Supplemental Figures 1 and 2) after multiple imputation of the main exposure and covariates, assuming that data were missing at random. The chained equation process comprised 5 cycles, and 10 data sets were created. Three sensitivity analyses were performed. The first analysis used complete data and the original set of confounding variables (hyperactivity-inattention:  $n = 580$ ; CP:  $n = 650$ ). The second sensitivity analysis was adjusted with additional covariates (including paternal age, mode of delivery, gestational age, maternal smoking during pregnancy, maternal alcohol use during pregnancy, maternal depression, maternal anxiety during pregnancy, maternal cannabis use at 2 years, and employment of the mother and the father at 2 years), and used complete data (hyperactivity-inattention:  $n = 444$ ; CP:  $n = 500$ ).

The last sensitivity analysis consisted of logistic models fitted with cofounders selected according to the augmented backward elimination procedure, which combined significance criteria with the change in the estimate and used complete data (hyperactivity-inattention:  $n = 476$ ; CP:  $n = 547$ ) (41). Finally, the linearity of the quantitative variables used in the logistic regression models was verified. The analyses were performed using R v4.0.2 (R core team) and the LCMM and MICE packages.

## Results

Data of 1432 mother-child dyads from the French mother-child cohort were analyzed (a flowchart is available in Figure 1).

Compared to children excluded from the present analyses, included children were breastfed for longer durations. They scored lower and higher on the processed and fast foods and guidelines dietary patterns, respectively. They were born to older mothers, with a higher level of education and with higher score on the Western dietary pattern during pregnancy. Their mothers were also less likely to be separated from their fathers and had a higher family income (further details available in **Supplemental Table 1**).

Trajectories of hyperactivity-inattention symptoms (the worst trajectory,  $n = 132$ ; other trajectories,  $n = 300$ ) and CP (highest,  $n = 217$ ; other trajectories,  $n = 1215$ ) were identified (**Supplemental Figures 3–6**). The characteristics of the total study population, according to children's hyperactivity-inattention and CP trajectories from 3 to 8 years, are summarized in Tables 1 and 2. Compared to others, children in the worst trajectory (i.e., the highest trajectory) of hyperactivity-inattention scored lower on the guidelines dietary pattern (mean SD:  $-0.2 \pm 0.9$  compared with  $0.1 \pm 1.0$  in other children;  $P = 0.003$ ), while their score was higher on the baby foods dietary pattern ( $0.3 \pm 1.0$  compared with  $0.0 \pm 1.0$  in other children;  $P < 0.001$ ).

Table 3 shows the associations between children's dietary patterns at 2 years of age and hyperactivity-inattention and CP between 3 and 8 years, before and after adjusting for covariates. Children who scored higher on the guidelines and the baby foods dietary patterns were less and more likely, respectively, to belong to the worst trajectory of

hyperactivity- inattention symptoms, in both the unadjusted [guidelines: OR: 0.77 (95% CI: 0.62–0.97); baby foods: OR: 1.36 (95% CI:1.10–1.67)] and adjusted [guidelines: OR: 0.75 (95% CI: 0.60–0.94); baby foods: OR: 1.41 (95% CI: 1.16–1.71)] models. No significant associations were found between any of the 3 dietary patterns and CP. These results were confirmed in the sensitivity analysis using only complete data adjusted with the original set of confounding variables [guidelines: OR: 0.49 (95% CI: 0.34–0.71); baby foods: OR: 1.79 (95% CI: 1.30–2.47)], with additional covariates [guidelines: OR: 0.42 (95%CI: 0.26–0.67); baby foods: OR: 1.63 (95% CI: 1.12–2.37)], and with cofounders selected according to the augmented backward elimination procedure [guidelines: OR: 0.47 (95%CI: 0.31–0.71); baby foods: OR: 1.66 (95% CI: 1.17–2.35); **Supplemental Tables 2 and 3**].

## **Discussion**

### **Main findings**

This study, based on the longitudinal follow-up of children of the EDEN cohort, shows that toddlers' diet at 2 years predicts hyperactivity-inattention symptoms trajectories between 3 and 8 years. Even after accounting for covariates, lower adherence to the guidelines dietary pattern and higher scores on the baby foods dietary pattern were predictive of taking the worst trajectory of hyperactivity-inattention. No association was observed between children's dietary patterns and CP. Our results, based on a longitudinal design, are consistent with a meta-analysis mostly based on cross-sectional studies, suggesting that energy-dense and nutrient-poor diets mostly based on the high consumption of processed foods can enhance the risk of ADHD symptoms, while healthier diets rich in fruits and vegetables would seem to protect against ADHD symptoms (13). Previously, Lioret et al. (28) showed that the baby foods dietary pattern at 2 years that was used in our analyses was positively correlated with the processed and fast foods component (high loadings for chips, carbonated soft drinks, cookies, chocolate, dairy desserts, ice cream, and processed meat and low amounts of cooked and raw vegetables and fresh fruits) measured at 5 years of age, while the guidelines component at 2 years of age was positively correlated with the protein-rich and diversified component (foods of animal origin, starchy foods, raw and

cooked vegetables, fresh fruit, and pizza) at 5 years of age. The absence of a correlation between toddlers' dietary patterns and children's CP could correspond to a real absence, as found by Kohlboeck et al. (42), or could be the consequence of underrepresentation in the EDEN cohort of the most socially disadvantaged families, and therefore underrepresentation of unhealthy foods, leading to a lack of statistical power. However, the scientific literature concerning the relationship between children's dietary patterns and CP is less abundant, and the results are heterogeneous.

## **Interpretation**

Several hypotheses can explain why children with high scores on the guidelines dietary pattern and low scores on the baby foods dietary pattern—that is, those with a healthier and more balanced diet—are less likely to take the worst trajectory of hyperactivity-inattention. Healthy diets like the Mediterranean diet are rich in omega-3 [ $n-3$  ( $\omega-3$ )] PUFAs. A meta-analysis showed that  $n-3$  PUFA supplementation improves ADHD clinical symptom scores and cognitive performance in children with ADHD, and that children and adolescents with ADHD have lower levels of DHA, EPA, and total  $n-3$  PUFAs (43). The potential role of trace elements has also been investigated (44). A meta-analysis conducted by Tseng et al. (45) showed that peripheral serum ferritin levels were significantly lower in children with ADHD. Moreover, ADHD was significantly associated with iron deficiency, and the severity of ADHD was significantly higher in iron-deficient children than those without iron deficiency. Associations between zinc and ADHD were found, although 1 meta-analysis showed no association (46–48). Magnesium was also investigated, with lower serum magnesium levels among subjects with ADHD (49). Other mechanisms have been hypothesized. A systematic review reported that a diet without additives and food coloring was associated with a reduction in symptoms of hyperactivity-inattention in children, although the causal relationship could not be proven (50). The current study did not find an association between the processed and fast foods dietary pattern, which is presumably richer in additives, and a high trajectory of hyperactivity-inattention symptoms. However, the baby foods dietary pattern at 2 years is correlated with the processed and fast foods at 3 and 5 years. It is possible that food additives and coloring play a later role in developmental trajectories of inattention-

hyperactivity (28). Finally, a noncausal relationship between children's dietary patterns and trajectories of hyperactivity-inattention problems is possible. Indeed, parental educational practices are likely to influence the types of food consumed by the child. A cross-sectional study examining children aged 2 to 5 years and their parents showed that children of parents who overreacted and had restrictive eating practices had reduced consumption of fruits and vegetables (51). In addition, children consumed more fruits and vegetables if the parents were authoritarian and if family members dined together. Parental overreaction and laxity were also associated with higher intakes of nonessential foods (rich in fat and sugar) (51). Low parental coping skills and a lack of authority are linked to the exacerbation of ADHD symptoms (52). It is therefore conceivable that parenting practices may act as a confounding factor. However, the current study could not take this into account.

### **Strengths and weaknesses**

This study presents several strengths: externalizing symptoms measured using SDQ, a validated questionnaire; the temporal precedence of diet on behavioral evaluations; the determination of developmental trajectories of externalizing behaviors based on latent process mixed modeling; and a global and multidimensional approach to diet. However, it also has limitations. There is selection bias related to an attrition rate higher among mothers with an adverse socioeconomic context and those whose children did not have a low birth weight in the EDEN cohort. Moreover, the dyads excluded from this study due to the lack of SDQ measurements are characterized by the same adverse socioeconomic context and by children who scored higher on the processed and fast foods and the guidelines dietary patterns. Information bias may also have been generated, as toddlers' diet was assessed using a short FFQ that did not allow for an extensive evaluation of the intake of different foods or of the quantity consumed. However, this questionnaire is appropriate for a global approach to diet. In addition, to maximize the number of individuals in the determination of the developmental trajectories of externalizing behaviors, subjects who had only 1 in 3 SDQ measures were included. An approach to diet based on an a priori analysis, where dietary patterns are based on existing knowledge about the relationships between food, nutrients, and disease, would have made it possible to study more specifically the potential value of diets that are currently recognized as healthy.

However, the guidelines dietary pattern is close enough to a diet considered healthy and could pave the way for new hypotheses concerning foods not taken into account in the a priori approach. Finally, we accounted for the main potential confounders in our main results but could not exclude residual confounding, such as parenting style, which is a cause of aggravation of ADHD and a risk factor of CP, or parents' physical issues, child care issues, medical care, insurance coverage, family support, and children's screen time, which may also be important to consider. However, the inclusion of different sets of additional covariates used for sensitivity analyses limited the confounding bias and underlines the robustness of the results.

### **Implications**

In a previous publication using data from the EDEN cohort, Galera et al. (53) found that prenatal maternal dietary patterns were also associated with a high trajectory of hyperactivity-inattention symptoms in children. Altogether, the results of the current study are an additional argument in favor of preventive approaches that should combine the healthy eating habits of mothers and their children. Such preventive strategies involve the promotion of a healthy diet by making healthy foods more accessible, reducing the promotion of unhealthy foods, and promoting healthy food in different contexts, while taking the lifestyles of families into account. The findings are also an additional argument in favor of this type of preventive approach, and focus on healthy eating that goes beyond mothers and places the emphasis on their children. The promotion to parents of healthy diets in children from an early age could be facilitated through pediatricians or maternal and child welfare organizations. However, additional longitudinal studies are needed to replicate these results, while at the same time taking the complexity of the family environment in these associations into account. A better understanding of the mechanisms that explain the effects of healthy diets on mental health outcomes is necessary in order to develop effective interventions.

### **Conclusions**

This study, which was based on a longitudinal design allowing the determination of developmental trajectories of externalizing behaviors and on a global and multidimensional

approach to diet, found an association between toddlers' diet at 2 years and hyperactivity-inattention symptom trajectories between 3 and 8 years. Further studies are needed to clarify the mechanisms involved in order to promote a healthier diet from an early age, especially among the least advantaged populations, who are also the most vulnerable and are therefore likely to adopt a diet dictated by economic imperatives (21). The growing evidence of the importance of diet as a factor influencing mental health is adding to the extensive scientific literature that supports healthy food as early as possible in life for better health outcomes.

## References

1. WHO. Healthy diet. Geneva (Switzerland): World Health Organization; [Internet]. [Cited 2020 Dec 19]. Available from: <https://www.who.int/news-room/fact-sheets/detail/healthy-diet>.
2. WHO. Nutrition interventions. Geneva (Switzerland): World Health Organization; [Internet]. [Cited 2020 Dec 19]. Available: <http://www.who.int/elena/intervention/en/>.
3. Smithers LG, Brazionis L, Golley RK, Mittinty MN, Northstone K, Emmett P, McNaughton SA, Campbell KJ, Lynch JW. Associations between dietary patterns at 6 and 15 months of age and sociodemographic factors. *Eur J Clin Nutr* 2012;66(6):658–66.
4. Lai JS, Hiles S, Bisquera A, Hure AJ, McEvoy M, Attia J. A systematic review and meta-analysis of dietary patterns and depression in community-dwelling adults. *Am J Clin Nutr* 2014;99(1):181–97.
5. Psaltopoulou T, Sergentanis TN, Panagiotakos DB, Sergentanis IN, Kosti R, Scarmeas N. Mediterranean diet, stroke, cognitive impairment, and depression: A meta-analysis. *Ann Neurol* 2013;74(4):580–91.
6. Opie RS, O'Neil A, Itsiopoulos C, Jacka FN. The impact of whole- of-diet interventions on depression and anxiety: a systematic review of randomised controlled trials. *Public Health Nutr* 2015;18(11): 2074–93.

7. O'Neil A, Quirk SE, Housden S, Brennan SL, Williams LJ, Pasco JA, Berk M, Jacka FN. Relationship between diet and mental health in children and adolescents: a systematic review. *Am J Public Health* 2014;104(10):e31–42.
8. Pina-Camacho L, Jensen SK, Gaysina D, Barker ED. Maternal depression symptoms, unhealthy diet and child emotional-behavioural dysregulation. *Psychol Med* 2015;45(9):1851–60.
9. Steenweg-de Graaff J, Tiemeier H, Steegers-Theunissen RPM, Hofman A, Jaddoe VWV, Verhulst FC, Roza SJ. Maternal dietary patterns during pregnancy and child internalising and externalising problems. The Generation R study. *Clin Nutr* 2014;33(1):115–21.
10. Husky MM, Boyd A, Bitfoi A, Carta MG, Chan-Chee C, Goelitz D, Koç C, Lesinskiene S, Mihova Z, Otten R, et al. Self-reported mental health in children ages 6–12 years across eight European countries. *Eur Child Adolesc Psychiatry* 2018;27(6):785–95.
11. Faraone SV, Asherson P, Banaschewski T, Biederman J, Buitelaar JK, Ramos-Quiroga JA, Rohde LA, Sonuga-Barke EJS, Tannock R, Franke B. Attention-deficit/hyperactivity disorder. *Nat Rev Dis Primers* 2015;1:1–23.
12. Fairchild G, Hawes DJ, Frick PJ, Copeland WE, Odgers CL, Franke B, Freitag CM, De Brito SA. Conduct disorder. *Nat Rev Dis Primers* 2019;5:1–25.
13. Del-Ponte B, Quinte GC, Cruz S, Grellert M, Santos IS. Dietary patterns and attention deficit/hyperactivity disorder (ADHD): a systematic review and meta-analysis. *J Affect Disord* 2019;252:160–73.
14. Mesriow MS, Cecil C, Maughan B, Barker ED. Associations between prenatal and early childhood fish and processed food intake, conduct problems, and co-occurring difficulties. *J Abnorm Child Psychol* 2017;45(5):1039–49.
15. Kaplan BJ, Rucklidge JJ, Romijn A, McLeod K. The emerging field of nutritional mental health: inflammation, the microbiome, oxidative stress, and mitochondrial function. *Clin Psychol Sci* 2015;3(6):964–80.
16. Kristiansen AL, Lande B, Sexton JA, Andersen LF. Dietary patterns among Norwegian 2-year-olds in 1999 and in 2007 and associations with child and parent



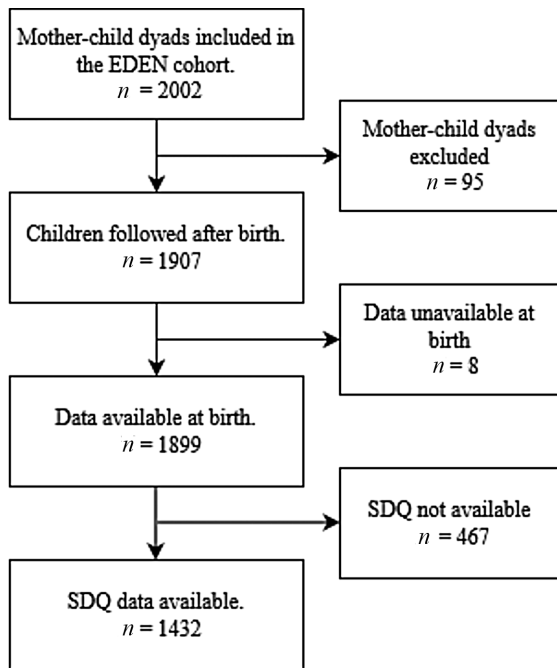
- characteristics. *Br J Nutr* 2013;110(1):135–44.
17. Chang Z, Lichtenstein P, D’Onofrio BM, Almqvist C, Kuja-Halkola R, Sjölander A, Larsson H. Maternal age at childbirth and risk for ADHD in offspring: a population-based cohort study. *Int J Epidemiol* 2014;43(6):1815–24.
  18. INSERM Collective Expertise Centre. Conduct: disorder in children and adolescents. INSERM Collective Expert Reports. Paris: Institut national de la santé et de la recherche médicale; 2000. [Internet]. [Cited 2020 Sept 2]. Available from: <http://www.ncbi.nlm.nih.gov/books/NBK7133/>.
  19. Thompson AL. Intergenerational impact of maternal obesity and postnatal feeding practices on pediatric obesity. *Nutr Rev* 2013;71:S55– 61.
  20. Hiza HAB, Casavale KO, Guenther PM, Davis CA. Diet quality of Americans differs by age, sex, race/ethnicity, income, and education level. *J Acad Nutr Diet* 2013;113(2):297–306.
  21. Manyanga T, Tremblay MS, Chaput J-P, Katzmarzyk PT, Fogelholm M, Hu G, Kuriyan R, Kurpad A, Lambert EV, Maher C, et al. Socioeconomic status and dietary patterns in children from around the world: Different associations by levels of country human development? *BMC Public Health* 2017;17(1):457.
  22. Cameron AJ, Spence AC, Laws R, Hesketh KD, Lioret S, Campbell KJ. A review of the relationship between socioeconomic position and the early-life predictors of obesity. *Curr Obes Rep* 2015;4(3):350–62.
  23. Vereecken CA, Keukelier E, Maes L. Influence of mother’s educational level on food parenting practices and food habits of young children. *Appetite* 2004;43(1):93–103.
  24. Fisk CM, Crozier SR, Inskip HM, Godfrey KM, Cooper C, Robinson SM; Southampton Women’s Survey Study Group. Influences on the quality of young children’s diets: the importance of maternal food choices. *Br J Nutr* 2011;105(2):287–96.
  25. North K, Emmett P. Multivariate analysis of diet among three-year-old children and associations with socio-demographic characteristics. The Avon Longitudinal Study of Pregnancy and Childhood (ALSPAC) study team. *Eur J Clin Nutr* 2000;54(1):73–80.
  26. Northstone K, Emmett P. Multivariate analysis of diet in children at four and seven

- years of age and associations with socio-demographic characteristics. *Eur J Clin Nutr* 2005;59(6):751–60.
27. Ystrom E, Niegel S, Vollrath ME. The impact of maternal negative affectivity on dietary patterns of 18-month-old children in the Norwegian Mother and Child Cohort Study. *Matern Child Nutr* 2009;5(3):234–42.
  28. Lioret S, Betoko A, Forhan A, Charles M-A, Heude B, de Lauzon- Guillain B. Dietary patterns track from infancy to preschool age: cross- sectional and longitudinal perspectives. *J Nutr* 2015;145:775–82.
  29. Soheilipour F, Shiri S, Ahmadkhaniha HR, Abdollahi E, Hosseini- Baharanchi FS. Risk factors for attention-deficit/hyperactivity disorder: a case-control study in 5 to 12 years old children. *Med Pharm Rep* 2020;93:175–80.
  30. Hjern A, Weitoft GR, Lindblad F. Social adversity predicts ADHD- medication in school children—a national cohort study. *Acta Paediatr* 2010;99(6):920–4.
  31. Boden JM, Fergusson DM, Horwood LJ. Risk factors for conduct disorder and oppositional/defiant disorder: evidence from a New Zealand birth cohort. *J Am Acad Child Adolesc Psychiatry* 2010;49:1125–33.
  32. Kim K, Shin SC, Shim JE. Nutritional status of toddlers and preschoolers according to household income level: overweight tendency and micronutrient deficiencies. *Nutr Res Pract* 2015;9(5):547–53.
  33. Larsson H, Sariaslan A, Långström N, D’Onofrio B, Lichtenstein P. Family income in early childhood and subsequent attention deficit/hyperactivity disorder: a quasi-experimental study. *J Child Psychol Psychiatry* 2014;55(5):428–35.
  34. Leibson CL, Katusic SK, Barbaresi WJ, Ransom J, O’Brien PC. Use and costs of medical care for children and adolescents with and without attention-deficit/hyperactivity disorder. *JAMA* 2001;285(1):60–6.
  35. Romeo R, Knapp M, Scott S. Economic cost of severe antisocial behaviour in children—and who pays it. *Br J Psychiatry* 2006;188:547– 53.
  36. Heude B, Forhan A, Slama R, Douhaud L, Bedel S, Saurel-Cubizolles M-J, Hankard R, Thiebaugeorges O, De Agostini M, Annesi-Maesano I, et al. Cohort profile: the EDEN mother-child cohort on the prenatal and early postnatal determinants

of child health and development. *Int J Epidemiol* 2016;45(2):353–63.

37. Goodman R. The strengths and difficulties questionnaire: a research note. *J Child Psychol Psychiatry* 1997;38(5):581–6.
38. Marzocchi GM, Capron C, Di Pietro M, Duran Tauleria E, Duyme M, Frigerio A, Gaspar MF, Hamilton H, Pithon G, Simões A, et al. The use of the Strengths and Difficulties Questionnaire (SDQ) in Southern European countries. *Eur Child Adolesc Psychiatry* 2004;13(S2): ii40–6.
39. Hall CL, Guo B, Valentine AZ, Groom MJ, Daley D, Sayal K, Hollis C. The validity of the Strengths and Difficulties Questionnaire (SDQ) for children with ADHD symptoms. *PLoS One* 2019;14(6):e0218518.
40. Proust-Lima C, Philipps V, Liquet B. Estimation of extended mixed models using latent classes and latent processes: the R package lmm. *JStat Softw* 2017;78(2):1–56.
41. Dunkler D, Plischke M, Leffondré K, Heinze G. Augmented backward elimination: a pragmatic and purposeful way to develop statistical models. *PLoS One* 2014;9(11):e113677.
42. Kohlboeck G, Sausenthaler S, Standl M, Koletzko S, Bauer C-P, Berg A, Berdel D, Krämer U, Schaaf B, Lehmann I, et al. Food intake, diet quality and behavioral problems in children: Results from the GINI-plus/LISA- plus studies. *Ann Nutr Metab* 2012;60:247–56.
43. Chang JP-C, Su K-P, Mondelli V, Pariante CM. Omega-3 polyunsaturated fatty acids in youths with attention deficit hyperactivity disorder: A systematic review and meta-analysis of clinical trials and biological studies. *Neuropsychopharmacology* 2018;43(3): 534–45.
44. Robberecht H, Verlaet AAJ, Breynaert A, De Bruyne T, Hermans N. Magnesium, iron, zinc, copper and selenium status in attention- deficit/hyperactivity disorder (ADHD). *Molecules* 2020;25:4440.
45. Tseng P-T, Cheng Y-S, Yen C-F, Chen Y-W, Stubbs B, Whiteley P, Carvalho AF, Li D-J, Chen T-Y, Yang W-C, et al. Peripheral iron levels in children with attention-deficit hyperactivity disorder: a systematic review and meta-analysis. *Sci Rep* 2018;8(1):788.

46. Scassellati C, Bonvicini C, Faraone SV, Gennarelli M. Biomarkers and attention-deficit/hyperactivity disorder: a systematic review and meta- analyses. *J Am Acad Child Adolesc Psychiatry* 2012;51(10):1003– 19.e20.
47. Sun G-X, Wang B-H, Zhang Y-F. Relationship between serum zinc levels and attention deficit hyperactivity disorder in children. *Zhongguo Dang Dai Er Ke Za Zhi* 2015;17:980–3.
48. Luo J, Mo Y, Liu M. Blood and hair zinc levels in children with attention deficit hyperactivity disorder: a meta-analysis. *Asian J Psychiatry* 2020;47:101805.
49. Effatpanah M, Rezaei M, Effatpanah H, Effatpanah Z, Varkaneh HK, Mousavi SM, Fatahi S, Rinaldi G, Hashemi R. Magnesium status and attention deficit hyperactivity disorder (ADHD): a meta-analysis. *Psychiatry Res* 2019;274:228–34.
50. Stevens LJ, Kuczek T, Burgess JR, Hurt E, Arnold LE. Dietary sensitivities and ADHD symptoms: thirty-five years of research. *Clin Pediatr (Phila)* 2011;50(4):279–93.
51. Peters J, Dollman J, Petkov J, Parletta N. Associations between parenting styles and nutrition knowledge and 2-5-year-old children’s fruit, vegetable and non-core food consumption. *Public Health Nutr* 2013;16(11):1979–87.
52. Keown LJ, Woodward LJ. Early parent-child relations and family functioning of preschool boys with pervasive hyperactivity. *J Abnorm Child Psychol* 2002;30(6):541–53.
53. Galera C, Heude B, Forhan A, Bernard JY, Peyre H, Van der Waerden J, Pryor L, Bouvard M-P, Melchior M, Lioret S, et al. Prenatal diet and children’s trajectories of hyperactivity-inattention and conduct problems from 3 to 8 years: the EDEN mother-child cohort. *J Child Psychol Psychiatry* 2018;59(9):1003–11.



**FIGURE 1** Flow chart of the EDEN Cohort, France, 2005–2011. Abbreviations: EDEN, etude sur les déterminants pré- et postnatals du développement psychomoteur et de la santé de l’enfant; SDQ, Strengths and Difficulties Questionnaire

**TABLE 1** Children's characteristics of the study population according to children's hyperactivity-inattention and conduct problems trajectories from 3 to 8 years

	All participants	Hyperactivity-inattention			Conduct problems		
		Other trajectories ( <i>n</i> = 1300)	Worst trajectory ( <i>n</i> = 132)	<i>P</i>	Other trajectories ( <i>n</i> = 1215)	Worst trajectory ( <i>n</i> = 217)	<i>P</i>
Children's characteristics							
Male sex	746 (52.1)	656 (50.5)	90 (68.2)	<0.001 <sup>1</sup>	608 (50.0)	138 (63.6)	<0.001
Birth weight (kg)	3.3 ± 0.5	3.3 ± 0.5	3.2 ± 0.5	0.080	3.3 ± 0.5	3.3 ± 0.6	0.741
Gestational age (weeks)	39.3 ± 1.7	39.3 ± 1.7	39.3 ± 1.8	0.656	39.3 ± 1.7	39.2 ± 1.7	0.840
Mode of delivery							
spontaneous vaginal delivery	1058 (74.2)	965 (74.6)	93 (71.0)	0.657	897 (74.2)	161 (74.5)	0.679
surgical vaginal delivery	160 (11.2)	144 (11.1)	16 (12.2)		139 (11.5)	21 (9.7)	
cesarean section	207 (14.5)	185 (14.3)	22 (16.8)		173 (14.3)	34 (15.7)	
Any breast-feeding duration							
No	366 (25.6)	333 (25.6)	33 (25.0)	0.819	311 (25.6)	55 ± 25.3	0.891
[0-6] months	780 (54.5)	705 (54.2)	75 (56.8)		659 (54.2)	121 ± 55.8	
>6 months	286 (20.0)	262 (20.2)	24 (18.2)		245 (20.2)	41 ± 18.9	
Children's dietary patterns <sup>1</sup>							
Processed and fast foods	0.0 ± 1.0	0.0 ± 1.0	0.1 ± 1.1	0.272	0.0 ± 1.0	0.0 ± 1.0	0.323
Guidelines	0.0 ± 1.0	0.1 ± 1.0	-0.2 ± 0.9	0.003	0.0 ± 1.0	0.0 ± 1.0	0.802
Baby foods	0.0 ± 1.0	0.0 ± 1.0	0.3 ± 1.0	<0.001	0.0 ± 1.0	0.2 ± 1.1	0.041

Data are from the EDEN cohort, France, 2005–2011. Values are *n* (%) or mean (SD). Abbreviation: EDEN, etude sur les déterminants pré- et postnatals du développement psychomoteur et de la santé de l'enfant.

<sup>1</sup> Data were obtained when the child was 2 years old.

**TABLE 2** Parental characteristics of the study population according to children’s hyperactivity-inattention and conduct problems trajectories from 3 to 8 years

	All participants	Hyperactivity-inattention			Conduct problems		
		Other trajectories (n = 1300)	Worst trajectory (n = 132)	<i>P</i>	Other trajectories (n = 1215)	Worst trajectory (n = 217)	<i>P</i>
Parental characteristics							
Maternal age (years) <sup>2</sup>	29.5 ± 4.7	29.5 ± 4.7	28.8 ± 4.6	0.087	29.5 ± 4.7	29.2 ± 5.0	0.307
Maternal BMI (kg/m <sup>2</sup> ) <sup>1</sup>							
≤18.5	47 (7.0)	40 (6.6)	7 (10.9)	0.639	38 (63.7)	9 (8.6)	0.813
18.5–25	421 (62.9)	382 (63.1)	39 (60.9)				
25–30	131 (19.6)	119 (19.7)	12 (18.8)		109 (19.3)	22 (21.0)	
≥30	70 (10.5)	60 (10.6)	6 (9.4)		58 (10.3)	12 (11.4)	
Maternal education (years)	13.9 ± 2.6	14.0 ± 2.6	13.4 ± 2.5	0.008	14.0 ± 2.6	13.4 ± 2.7	0.003
Maternal dietary patterns <sup>2</sup>							
Healthy	0.0 ± 0.9	0.0 ± 0.9	-0.1 ± 1.0	0.563	0.0 ± 0.9	-0.1 ± 1.0	0.195
Western	0.0 ± 0.9	-0.1 ± 0.9	0.1 ± 1.1	0.137	0.1 ± 0.9	0.1 ± 1.1	0.005
Maternal smoking (cigarettes) <sup>2</sup>	1.1 ± 2.7	1.0 ± 2.7	1.4 ± 3.0	0.200	1.0 ± 2.6	1.5 ± 3.3	0.032
Maternal alcohol consumption <sup>2</sup>	108 (7.6)	91 (7.0)	17 (12.9)	0.015	87 (7.2)	21 (9.7)	0.201
Maternal depression (CES-D) <sup>2</sup>	11.0 ± 7.7	10.8 ± 7.7	13.3 ± 7.6	<0.001	10.8 ± 7.8	12.5 ± 7.5	<0.001
Maternal anxiety (STAI) <sup>2</sup>	30.0 ± 9.7	29.8 ± 9.5	32.3 ± 10.7	0.006	29.7 ± 9.6	31.6 ± 9.9	0.018
Maternal cannabis use <sup>1</sup>	38 (3.0)	34 (2.9)	4 (3.4)	1.000	33 (3.0)	5 (2.6)	0.766
Maternal employment <sup>1</sup>							
no, housewife	91 (7.2)	81 (7.0)	10 (8.4)	0.113	70 (6.5)	21 (11.1)	<0.001

no, maternity leave	56 (4.4)	51 (4.4)	5 (4.2)		53 (4.9)	3 (1.6)	
no, parental leave	159 (12.5)	145 (12.6)	14 (11.8)		128 (11.9)	31 (16.4)	
no, student	19 (1.5)	15 (1.3)	4 (3.4)		18 (1.7)	1 (0.5)	
no, unemployed or looking for a job	59 (4.7)	48 (4.2)	11 (9.2)		42 (3.9)	17 (9.0)	
no, other situation (disability, pension)	2 (0.2)	2 (0.2)	0 (0.0)		2 (0.2)	0 (0.0)	
yes	882 (69.6)	807 (70.2)	75 (63.0)		766 (71.0)	116 (61.4)	
Paternal age (years) <sup>2</sup>	34.8 ± 87.8	35.1 ± 92.1	31.9 ± 5.3	0.235	35.3 ± 95.0	31.2 ± 5.0	0.242
Paternal employment <sup>1</sup>							
no, student	1 (0.1)	1 (0.1)	0 (0.0)	0.768	1 (0.1)	0 (0.0)	0.302
no, unemployed or looking for a job	45 (3.6)	42 (3.7)	3 (2.5)		34 (3.2)	11 (5.8)	
no, other situation (disability, pension)	15 (1.2)	13 (1.1)	2 (1.7)		13 (1.2)	2 (1.1)	
yes	1206 (95.2)	1092 (95.1)	114 (95.8)		1030 (95.5)	176 (93.1)	
Parental separation <sup>2</sup>	57 (4.0)	49 (3.8)	8 (6.1)	0.303	42 (3.5)	15 (6.9)	0.029
Family income per month <sup>1</sup>							
<450 euros	1 (0.1)	1 (0.1)	0 (0.0)	0.029	1 (0.1)	0 (0.0)	0.076
451-800 euros	25 (2.0)	23 (2.0)	2 (1.7)		20 (1.9)	5 (2.7)	
801-1500 euros	92 (7.3)	75 (6.6)	17 (14.4)		71 (6.7)	21 (11.2)	
1501-2300 euros	304 (24.3)	266 (23.5)	38 (32.2)		250 (23.5)	54 (28.9)	
2301-3000 euros	356 (28.4)	329 (29.0)	27 (22.9)		306 (28.7)	50 (26.7)	
3000-3800 euros	248 (19.8)	230 (20.3)	18 (15.3)		218 (20.5)	30 (16.0)	
3801-4500 euros	121 (9.7)	113 (10.0)	8 (6.8)		110 (10.3)	11 (5.9)	
>4500 euros	105 (8.4)	97 (8.6)	8 (6.8)		89 (8.4)	16 (8.6)	

Values are *n* (%) or mean ± SD. Abbreviations: CES-D, Center for Epidemiologic Studies-Depression Scale; EDEN, etude sur les déterminants pré- et postnataux du développement psychomoteur et de la santé de l'enfant; STAI, State-Trait Anxiety Inventory.

<sup>1</sup>Data were obtained during pregnancy.

<sup>2</sup>Data were obtained when the child was 2 years old.



**TABLE 3** Association between children’s dietary patterns at 2 years old and developmental trajectories of inattention-hyperactivity and conduct problems

	Unadjusted model ( <i>n</i> = 1432)		Adjusted model* ( <i>n</i> = 1432)	
	OR	95% CI	OR	95% CI
<b>Hyperactivity-inattention</b>				
Processed and fast foods, per SD	1.06	0.89–1.27	0.99	0.82–1.20
Guidelines, per SD	0.77	0.62–0.97	0.75	0.60–0.94
Baby foods, per SD	1.36	1.10–1.67	1.41	1.16–1.71
<b>Conduct problems</b>				
Processed and fast foods, per SD	1.06	0.92–1.22	1.00	0.85–1.18
Guidelines, per SD	0.97	0.83–1.14	1.03	0.87–1.21
Baby foods, per SD	1.14	0.98–1.34	1.15	0.97–1.35

Data are from the EDEN cohort, France, 2005–2011.

Abbreviation: EDEN, etude sur les déterminants pré- et postnatals du développement psychomoteur et de la santé de l’enfant.

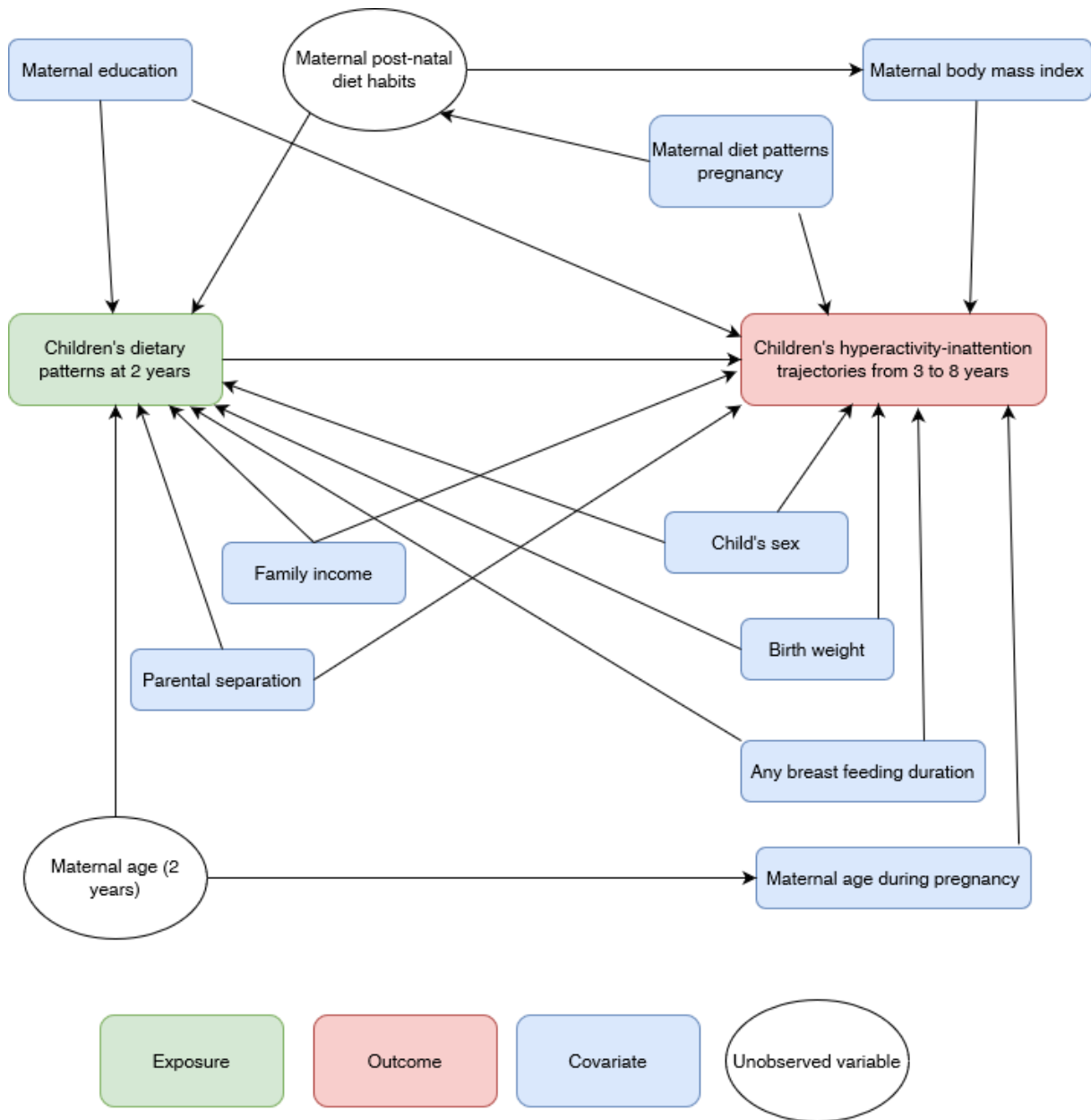
\* Common adjustments for inattention-hyperactivity and conduct problems include: children’s sex, maternal education, maternal BMI, parental separation, family income, mother’s age at pregnancy, and any breastfeeding duration. Additional adjustments for inattention-hyperactivity include: birth weight, prenatal maternal dietary patterns.

**Children's diet at 2 years and trajectories of hyperactivity-inattention symptoms and conduct problems between 3 and 8 years: the EDEN cohort**

Nicolas IV

Online Supplementary Material

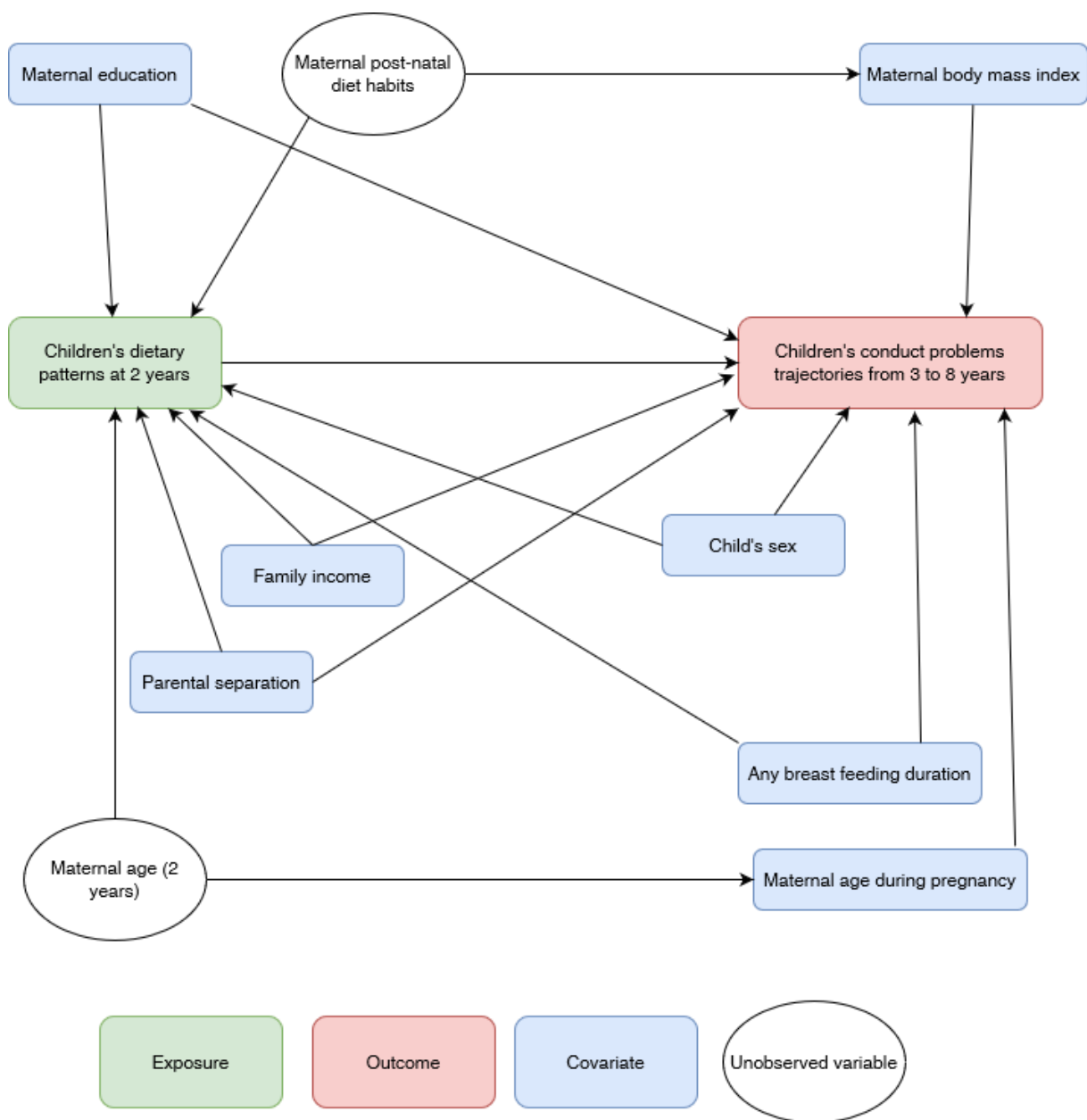
Supplementary figure 1. Directed acyclic graph illustrating relationships between developmental trajectories of hyperactivity-inattention and dietary patterns of children at 2 years old.



- Maternal education → Children's dietary patterns at 2 years (1–6)
- Maternal education → Children's hyperactivity-inattention trajectory from 3 to 8 years (7,8)
- Maternal age → Children's dietary patterns at 2 years (9)
- Maternal age → Children's hyperactivity-inattention trajectory from 3 to 8 years (10)
- Maternal BMI → Children's hyperactivity-inattention trajectory from 3 to 8 years (11)
- Maternal diet during pregnancy → Maternal post-natal dietary habits → Children's dietary patterns at 2 years (12)
- Children's sex → Children's dietary patterns at 2 years (13)
- Children's sex → Children's hyperactivity-inattention trajectory from 3 to 8 years (14–18)
- Birth weight → Children's dietary patterns at 2 years (19)
- Birth weight → Children's hyperactivity-inattention trajectory from 3 to 8 years (20)
- Breast feeding duration → Children's dietary patterns at 2 years (21)

- Breast feeding duration → Children's hyperactivity-inattention trajectory from 3 to 8 years (22)
- Family income → Children's dietary patterns at 2 years (23)
- Family income → Children's hyperactivity-inattention trajectory from 3 to 8 years (24)
- Parental separation → Children's dietary patterns at 2 years (25)
- Parental separation → Children's hyperactivity-inattention trajectory from 3 to 8 years (26)
- Maternal diet during pregnancy → Children's hyperactivity-inattention trajectory from 3 to 8 years (27)

Supplementary figure 2. Directed acyclic graph illustrating relationships between developmental trajectories of conduct problems and dietary patterns of children at 2 years.



Maternal education → Children's dietary patterns at 2 years (1–6)

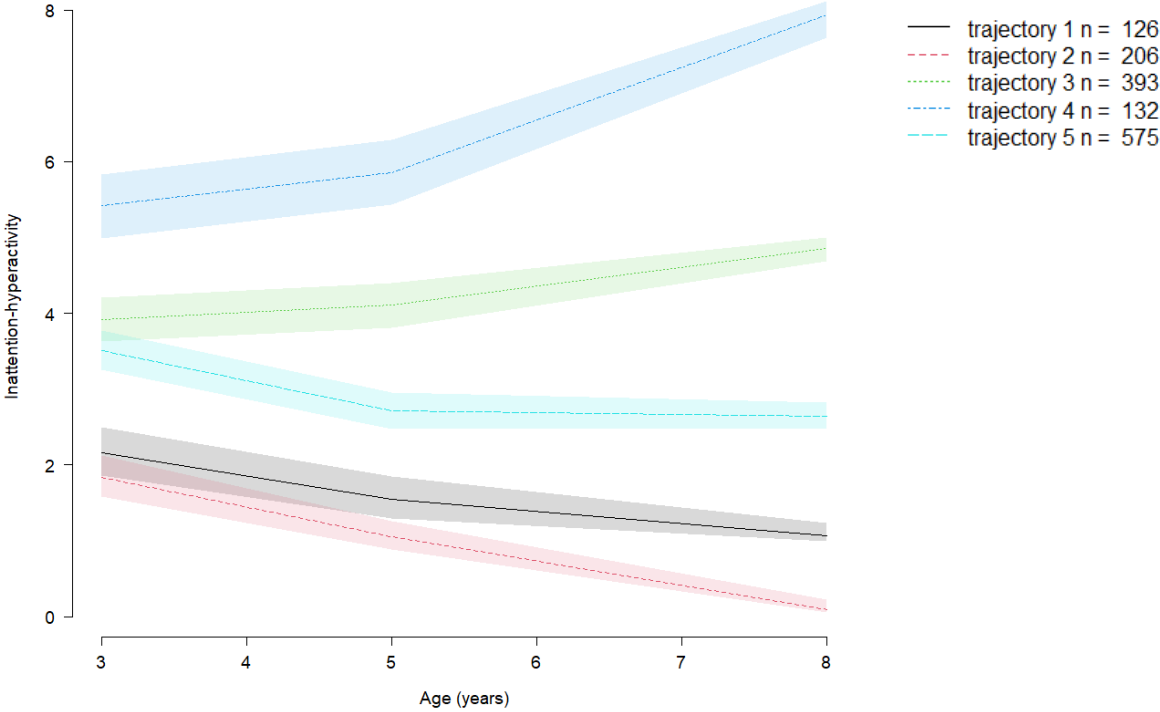
Maternal education → Children's conduct problem trajectories from 3 to 8 years (28)  
 Maternal age → Children's dietary patterns at 2 years (9)  
 Maternal age → Children's conduct problems trajectories from 3 to 8 years (29)  
 Maternal BMI → Children's conduct problems trajectories from 3 to 8 years (30)  
 Maternal post-natal dietary habits → Children's dietary patterns at 2 years (12)  
 Maternal post-natal dietary habits → Maternal BMI (31)  
 Children's sex → Children's dietary patterns at 2 years (13)  
 Children's sex → Children's conduct problems trajectories from 3 to 8 years (32,33)  
 Breast feeding duration → Children's dietary patterns at 2 years (21)  
 Breast feeding duration → Children's conduct problems trajectories from 3 to 8 years (34)  
 Family income → Children's dietary patterns at 2 years (23)  
 Family income → Children's conduct problems trajectory from 3 to 8 years (28)  
 Parental separation → Children's dietary patterns at 2 years (25)  
 Parental separation → Children's conduct problems trajectories from 3 to 8 years (35)

1. Smithers LG, Brazionis L, Golley RK, Mittinty MN, Northstone K, Emmett P, et al. Associations between dietary patterns at 6 and 15 months of age and sociodemographic factors. *Eur J Clin Nutr.* juin 2012;66(6):658-66.
2. Vereecken CA, Keukelier E, Maes L. Influence of mother's educational level on food parenting practices and food habits of young children. *Appetite.* août 2004;43(1):93-103.
3. Fisk CM, Crozier SR, Inskip HM, Godfrey KM, Cooper C, Robinson SM, et al. Influences on the quality of young children's diets: the importance of maternal food choices. *Br J Nutr.* janv 2011;105(2):287-96.
4. North K, Emmett P. Multivariate analysis of diet among three-year-old children and associations with socio-demographic characteristics. The Avon Longitudinal Study of Pregnancy and Childhood (ALSPAC) Study Team. *Eur J Clin Nutr.* janv 2000;54(1):73-80.
5. Northstone K, Emmett P. Multivariate analysis of diet in children at four and seven years of age and associations with socio-demographic characteristics. *Eur J Clin Nutr.* juin 2005;59(6):751-60.
6. Ystrom E, Niegel S, Vollrath ME. The impact of maternal negative affectivity on dietary patterns of 18-month-old children in the Norwegian Mother and Child Cohort Study. *Matern Child Nutr.* juill 2009;5(3):234-42.
7. Soheilipour F, Shiri S, Ahmadkhaniha HR, Abdollahi E, Hosseini-Baharanchi FS. Risk factors for attention-deficit/hyperactivity disorder: a case-control study in 5 to 12 years old children. *Med Pharm Rep.* avr 2020;93(2):175-80.
8. Hjern A, Weitoft GR, Lindblad F. Social adversity predicts ADHD-medication in school children – a national cohort study. *Acta Paediatrica.* 2010;99(6):920-4.
9. Kristiansen AL, Lande B, Sexton JA, Andersen LF. Dietary patterns among Norwegian 2-year-olds in 1999 and in 2007 and associations with child and parent characteristics. *British Journal of Nutrition.* juill 2013;110(1):135-44.

10. Chang Z, Lichtenstein P, D'Onofrio BM, Almqvist C, Kuja-Halkola R, Sjölander A, et al. Maternal age at childbirth and risk for ADHD in offspring: a population-based cohort study. *Int J Epidemiol*. déc 2014;43(6):1815-24.
11. Li L, Lagerberg T, Chang Z, Cortese S, Rosenqvist MA, Almqvist C, et al. Maternal pre-pregnancy overweight/obesity and the risk of attention-deficit/hyperactivity disorder in offspring: a systematic review, meta-analysis and quasi-experimental family-based study. *Int J Epidemiol*. 1 juin 2020;49(3):857-75.
12. Ashman AM, Collins CE, Hure AJ, Jensen M, Oldmeadow C. Maternal diet during early childhood, but not pregnancy, predicts diet quality and fruit and vegetable acceptance in offspring. *Matern Child Nutr*. 2016;12(3):579-90.
13. Lioret S, Betoko A, Forhan A, Charles M-A, Heude B, de Lauzon-Guillain B. Dietary Patterns Track from Infancy to Preschool Age: Cross-Sectional and Longitudinal Perspectives. *J Nutr*. 1 avr 2015;145(4):775-82.
14. Willcutt EG. The Prevalence of DSM-IV Attention-Deficit/Hyperactivity Disorder: A Meta-Analytic Review. *Neurotherapeutics*. juill 2012;9(3):490-9.
15. Gaub M, Carlson CL. Gender differences in ADHD: a meta-analysis and critical review. *J Am Acad Child Adolesc Psychiatry*. août 1997;36(8):1036-45.
16. Nøvik TS, Hervas A, Ralston SJ, Dalsgaard S, Rodrigues Pereira R, Lorenzo MJ, et al. Influence of gender on attention-deficit/hyperactivity disorder in Europe--ADORE. *Eur Child Adolesc Psychiatry*. déc 2006;15 Suppl 1:115-24.
17. Ramtekkar UP, Reiersen AM, Todorov AA, Todd RD. Sex and age differences in Attention-Deficit/Hyperactivity Disorder symptoms and diagnoses: Implications for DSM-V and ICD-11. *J Am Acad Child Adolesc Psychiatry*. mars 2010;49(3):217-28.e1-3.
18. Arnold LE. Sex differences in ADHD: conference summary. *J Abnorm Child Psychol*. oct 1996;24(5):555-69.
19. Oliveira A, de Lauzon-Guillain B, Jones L, Emmett P, Moreira P, Ramos E, et al. Birth weight and eating behaviors of young children. *J Pediatr*. janv 2015;166(1):59-65.
20. Banerjee TD, Middleton F, Faraone SV. Environmental risk factors for attention-deficit hyperactivity disorder. *Acta Paediatr*. sept 2007;96(9):1269-74.
21. Shim JE, Kim J, Mathai RA, STRONG Kids Research Team. Associations of infant feeding practices and picky eating behaviors of preschool children. *J Am Diet Assoc*. sept 2011;111(9):1363-8.
22. Shamberger R. Attention-deficit disorder associated with breast-feeding: a brief report. *J Am Coll Nutr*. août 2012;31(4):239-42.
23. Kim K, Shin SC, Shim JE. Nutritional status of toddlers and preschoolers according to household income level: overweight tendency and micronutrient deficiencies. *Nutr Res Pract*. oct 2015;9(5):547-53.

24. Larsson H, Sariaslan A, Långström N, D'Onofrio B, Lichtenstein P. Family income in early childhood and subsequent attention deficit/hyperactivity disorder: a quasi-experimental study. *J Child Psychol Psychiatry*. mai 2014;55(5):428-35.
25. Baek YJ, Paik HY, Shim JE. Association between family structure and food group intake in children. *Nutr Res Pract*. août 2014;8(4):463-8.
26. Sasser TR, Beekman CR, Bierman KL. Preschool Executive Functions, Single-Parent Status, and School Quality Predict Diverging Trajectories of Classroom Inattention in Elementary School. *Dev Psychopathol*. août 2015;27(3):681-93.
27. Galera C, Heude B, Forhan A, Bernard JY, Peyre H, Van der Waerden J, et al. Prenatal diet and children's trajectories of hyperactivity-inattention and conduct problems from 3 to 8 years: the EDEN mother-child cohort. *J Child Psychol Psychiatry*. 2018;59(9):1003-11.
28. Boden JM, Fergusson DM, Horwood LJ. Risk factors for conduct disorder and oppositional/defiant disorder: evidence from a New Zealand birth cohort. *J Am Acad Child Adolesc Psychiatry*. nov 2010;49(11):1125-33.
29. INSERM Collective Expertise Centre. Conduct: Disorder in children and adolescents. In: INSERM Collective Expert Reports [Internet]. Paris: Institut national de la santé et de la recherche médicale; 2000 [cité 2 sept 2020]. Disponible sur: <http://www.ncbi.nlm.nih.gov/books/NBK7133/>
30. Menting MD, van de Beek C, de Rooij SR, Painter RC, Vrijkotte TGM, Roseboom TJ. The association between pre-pregnancy overweight/obesity and offspring's behavioral problems and executive functioning. *Early Human Development*. 1 juill 2018;122:32-41.
31. Newby PK, Muller D, Hallfrisch J, Qiao N, Andres R, Tucker KL. Dietary patterns and changes in body mass index and waist circumference in adults. *Am J Clin Nutr*. juin 2003;77(6):1417-25.
32. Anderson JC, Williams S, McGee R, Silva PA. DSM-III disorders in preadolescent children. Prevalence in a large sample from the general population. *Arch Gen Psychiatry*. janv 1987;44(1):69-76.
33. Cohen P, Cohen J, Kasen S, Velez CN, Hartmark C, Johnson J, et al. An epidemiological study of disorders in late childhood and adolescence--I. Age- and gender-specific prevalence. *J Child Psychol Psychiatry*. sept 1993;34(6):851-67.
34. Poton WL, Soares ALG, de Oliveira ERA, Gonçalves H. Breastfeeding and behavior disorders among children and adolescents: a systematic review. *Rev Saude Publica* [Internet]. 29 janv 2018 [cité 3 sept 2020];52. Disponible sur: <https://www.ncbi.nlm.nih.gov/pmc/articles/PMC5802715/>
35. Daryanai I, Hamilton JL, Abramson LY, Alloy LB. Single Mother Parenting and Adolescent Psychopathology. *J Abnorm Child Psychol*. oct 2016;44(7):1411-23.

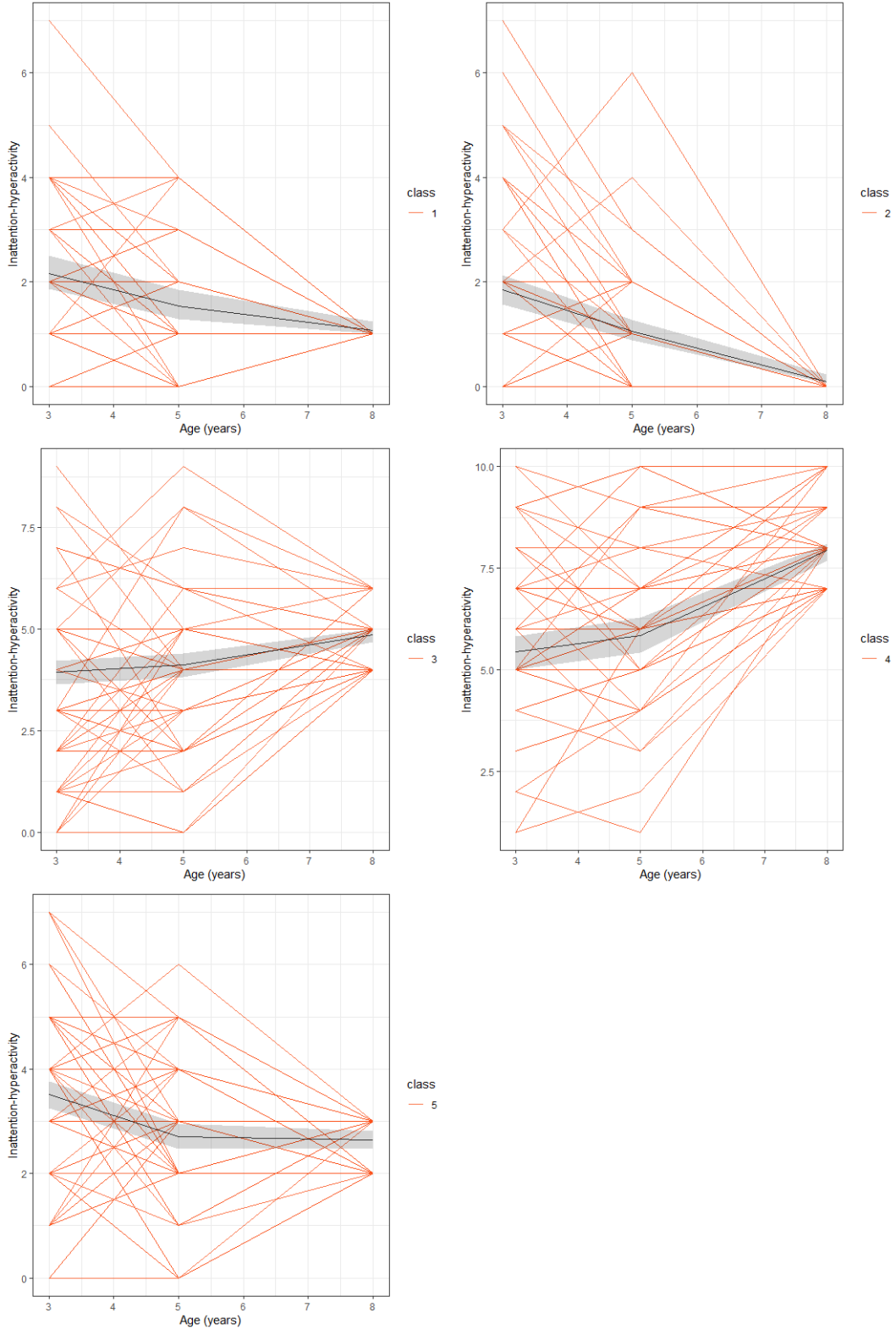
Supplementary figure 3. Mean developmental trajectories of inattention-hyperactivity in children between 3 and 8 years old. EDEN Cohort, France, 2005-2011.



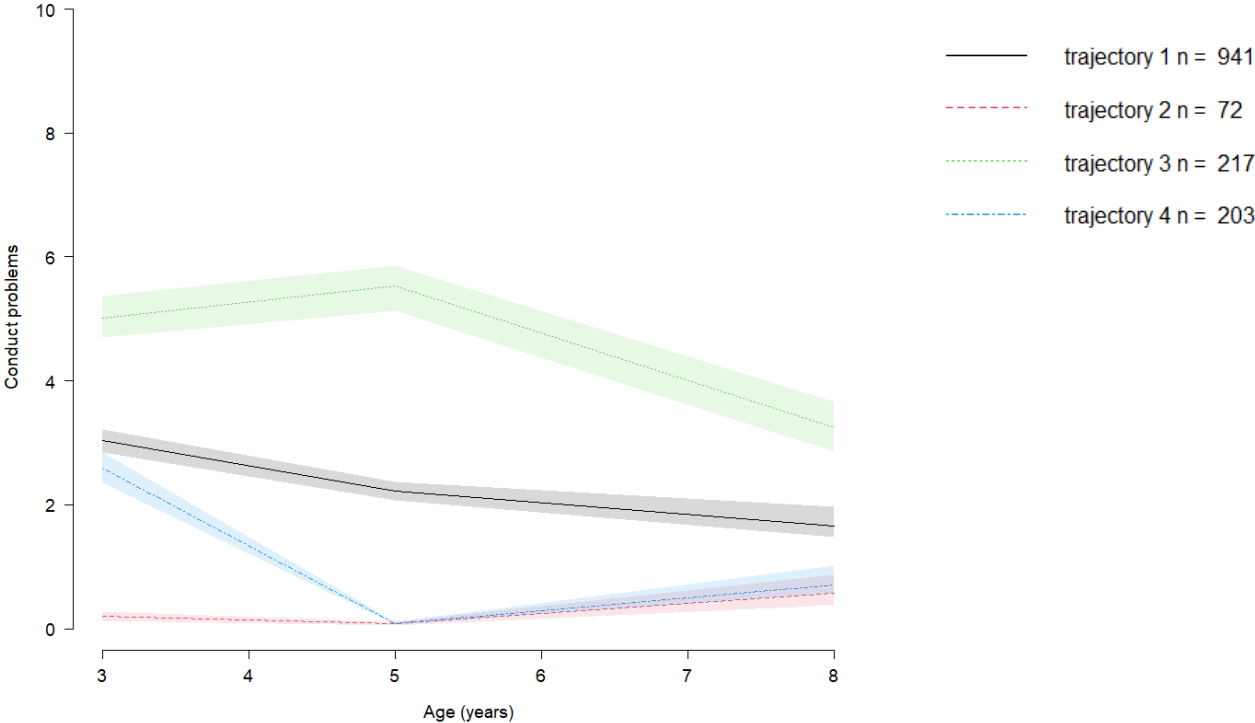
Five trajectories of hyperactivity-inattention symptoms were identified. BIC and AIC were equal to 13773.09 and 13620.35, respectively. The mean posterior probability of belonging to the highest trajectory was 0.87. 75.8 % of individuals in this group had a posterior probability greater than 0.7 and 0.9.



Supplementary figure 4. Individual trajectories within each developmental trajectory class of inattention-hyperactivity. EDEN Cohort, France, 2005-2011.

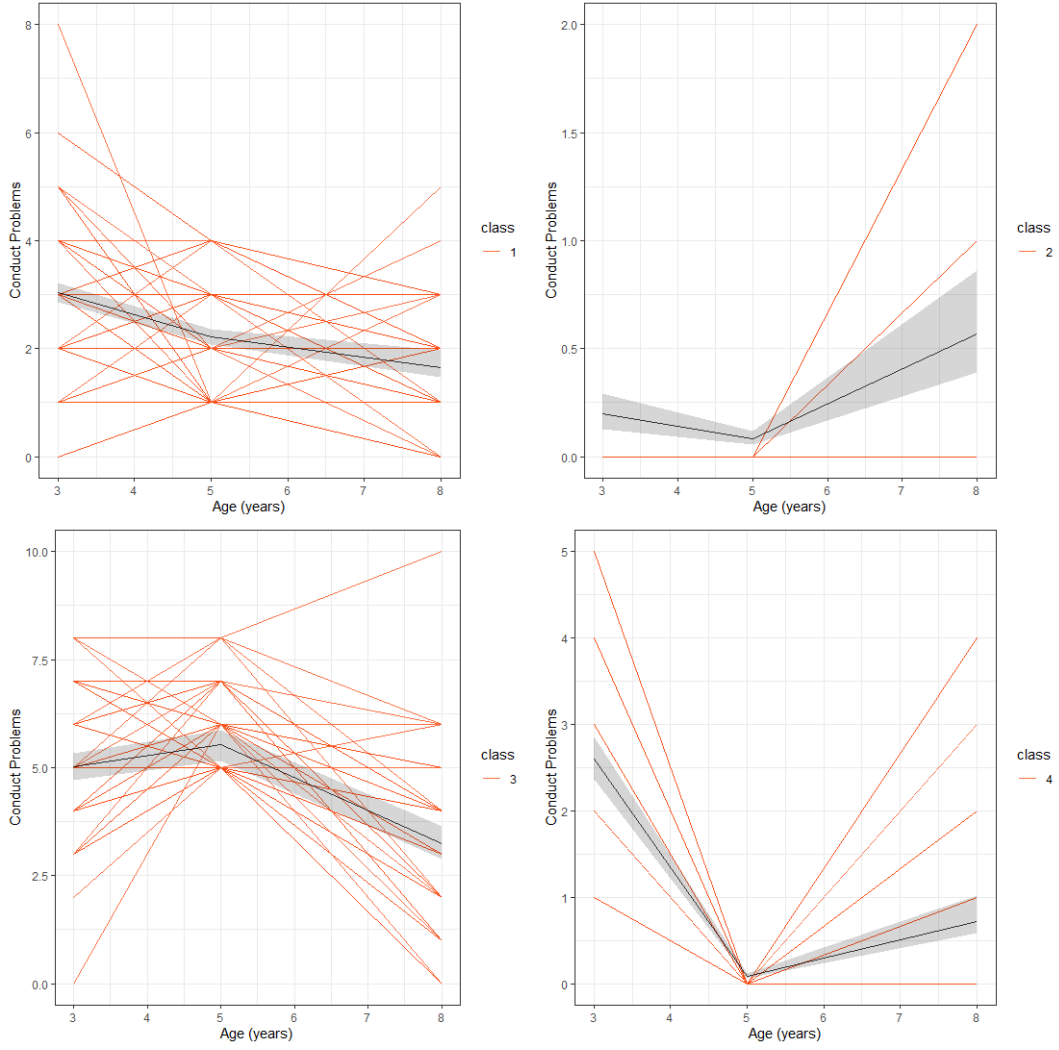


Supplementary figure 5. Mean developmental trajectories of conduct problems in children between 3 and 8 years old. EDEN Cohort, France, 2005-2011



Four conduct problems trajectories were identified. BIC and AIC were equal to 12243.02 and 12111.33, respectively. The mean posterior probability of belonging to the highest trajectory was 0.90. 86.6% and 83.4% of individuals in this group had a posterior probability greater than 0.7 and 0.9, respectively.

Supplementary figure 6. Individual trajectories within each developmental trajectory class of conduct problems. EDEN Cohort, France, 2005-2011.



Supplementary table 1. Characteristics of excluded and included populations. EDEN cohort, France, 2005-2011.

	All	Excluded (n=570)	Included (n=1432)	<i>p</i>
<b>Child characteristics</b>				
Male sex	1000 (52.5)	254 (53.9)	746 (52.1)	0.490
Birth weight (kg)	3.3 ± 0.5	3.2 ± 0.5	3.3 ± 0.5	0.114
Gestational age (weeks)	39.2 ± 1.8	39.1 ± 1.9	39.3 ± 1.7	0.689
Mode of delivery				
spontaneous vaginal delivery	1405 (74.0)	343 (73.0)	1062 (74.3)	0.004
surgical vaginal delivery	195 (10.3)	35 (7.4)	160 (11.2)	
cesarean section	299 (15.7)	92 (19.6)	207 (14.5)	
Any breast-feeding duration				
No	504 (26.6)	138 (30.0)	366 (25.6)	0.041
[0-6] months	1031 (54.5)	251 (54.6)	780 (54.5)	
>6 months	357 (18.9)	71 (15.4)	286 (20.0)	
Children's dietary patterns <sup>1</sup>				
Processed and fast foods	0.0 ± 1.0	0.2 (1.1)	0.0 ± 1.0	0.030
Guidelines	0.0 ± 1.0	-0.2 (1.0)	0.0 ± 1.0	0.003
Baby foods	0.0 ± 1.0	0.0 (1.0)	0.0 ± 1.0	0.780
<b>Parental characteristics</b>				
Maternal age (years) <sup>2</sup>	29.0 ± 5.0	27.7 ± 5.3	29.5 ± 4.7	<0.001
Maternal BMI (kg/m <sup>2</sup> ) <sup>1</sup>				
≤18.5	56 (7.4)	9 (9.8)	47 (7.0)	0.672
18.5–25	478 (62.8)	57 (62.0)	421 (62.9)	
25–30	150 (19.7)	19 (20.7)	131 (19.6)	
≥30	77 (10.1)	7 (7.6)	70 (10.5)	
Maternal education (years)	13.6 ± 2.7	12.6 ± 2.7	13.9 ± 2.6	<0.001
Maternal dietary patterns <sup>2</sup>				
Healthy	0.0 ± 1.0	0.0 ± 1.2	0.0 ± 0.9	0.789
Western	0.0 ± 1.0	0.0 ± 1.1	0.0 ± 0.9	0.001
Maternal smoking (cigarettes) <sup>2</sup>	1.5 ± 3.4	2.6 ± 4.8	1.1 ± 2.7	<0.001
Maternal alcohol consumption <sup>2</sup>	137 (7.1)	29 (5.9)	108 (7.5)	0.220
Maternal depression (CES-D) <sup>2</sup>	11.0 ± 7.8	NA	11.0 ± 7.8	NA
Maternal anxiety (STAI) <sup>2</sup>	30.0 ± 9.7	NA	30.0 ± 9.7	NA
Maternal cannabis use <sup>1</sup>	47 (3.3)	9 (6.0)	38 (3.0)	0.087
Maternal employment <sup>1</sup>				
no, housewife	111 (7.8)	20 (13.5)	91 (7.2)	0.002
no, maternity leave	66 (4.7)	10 (6.8)	56 (4.4)	
no, parental leave	182 (12.9)	23 (15.5)	159 (12.5)	
no, student	22 (1.6)	3 (2.0)	19 (1.5)	
no, unemployed or looking for a job	71 (5.0)	12 (8.1)	59 (4.7)	
no, other situation (disability, pension)	3 (0.2)	1 (0.7)	2 (0.2)	
yes	961 (67.9)	79 (53.4)	882 (69.6)	
Paternal age (years) <sup>2</sup>	33.9 ± 76.2	31.1 ± 6.3	34.8 ± 87.7	0.125
Paternal employment <sup>1</sup>				
no, student	1 (0.1)	0 (0.0)	1 (0.1)	<0.001
no, unemployed or looking for a job	62 (4.4)	17 (12.1)	45 (3.6)	
no, other situation (disability, pension)	17 (1.2)	2 (1.4)	15 (1.2)	
yes	1328 (94.3)	122 (86.5)	1206 (95.2)	
Parental separation <sup>2</sup>	122 (6.4)	65 (13.3)	57 (4.0)	<0.001
Family income per month <sup>1</sup>				
<450 euros	1 (0.1)	0 (0.0)	1 (0.1)	
451-800 euros	40 (2.9)	15 (10.3)	25 (2.0)	
801-1500 euros	114 (8.2)	22 (15.1)	92 (7.3)	
1501-2300 euros	345 (24.7)	41 (28.1)	304 (24.3)	
2301-3000 euros	387 (27.7)	31 (21.2)	356 (28.4)	
3000-3800 euros	270 (19.3)	22 (15.1)	248 (19.8)	
3801-4500 euros	131 (9.4)	10 (6.8)	121 (9.7)	
>4500 euros	110 (7.9)	5 (3.4)	105 (8.4)	

<sup>1</sup> data obtained when child was 2 years old; <sup>2</sup> data obtained during pregnancy; BMI, body mass index; CES-D, Center for Epidemiologic Studies-Depression Scale; STAI, State-Trait Anxiety Inventory; NA, not available

Supplementary table 2. Association between children's dietary patterns at 2 years old and developmental trajectories of inattention-hyperactivity and conduct problems. Sensitivity analysis on complete data. EDEN cohort, France, 2005-2011.

	Unadjusted model (N=1252)		Adjusted model * (N <sub>1</sub> =572; N <sub>2</sub> =641)	
	OR	95% CI	OR	95% CI
<b>Hyperactivity-inattention</b>				
Processed and fast foods	1.07	0.90 - 1.28	1.13	0.82 - 1.56
Guidelines	0.73	0.60 - 0.90	0.49	0.34 - 0.71
Baby foods	1.46	1.20 - 1.76	1.79	1.30 - 2.47
<b>Conduct problems</b>				
Processed and fast foods	1.08	0.93 - 1.25	1.18	0.95 - 1.46
Guidelines	0.98	0.84 - 1.14	0.93	0.74 - 1.17
Baby foods	1.19	1.02 - 1.38	1.43	0.88 - 1.37

OR, odds ratio; CI, confidence interval;

\*Common adjustments for inattention-hyperactivity and conduct problems:

Children's sex, maternal education, maternal BMI, parental separation, family income, mother's age at pregnancy, breastfeeding duration. Additional adjustment for inattention-hyperactivity: birth weight, prenatal maternal nutrition;

N<sub>1</sub>, number of subjects for hyperactivity-inattention;

N<sub>2</sub>, number of subjects for conduct problems.

Supplementary table 3. Association between children's dietary patterns at 2 years old and developmental trajectories of inattention-hyperactivity and conduct problems. Sensitivity analysis with additional confounders and confounders selected according to the augmented backward elimination procedure. EDEN cohort, France, 2005-2011.

	Ajusted model <sup>1</sup> (N <sub>1</sub> =444; N <sub>2</sub> =500)		Adjusted model <sup>2</sup> (N <sub>1</sub> =476; N <sub>2</sub> =547)	
	OR	95% CI	OR	95% CI
<b>Hyperactivity-inattention</b>				
Processed and fast foods (per SD)	1.37	0.90 - 2.1	1.36	0.92 - 2.00
Guidelines (per SD)	0.42	0.26 - 0.67	0.47	0.31 - 0.71
Baby foods (per SD)	1.63	1.12 - 2.37	1.66	1.17 - 2.35
<b>Conduct problems</b>				
Processed and fast foods (per SD)	1.26	0.96 - 1.65	1.22	0.97 - 1.55
Guidelines (per SD)	1.07	0.81 - 1.41	1.00	0.79 - 1.29
Baby foods (per SD)	1.17	0.90 - 1.51	1.12	0.88 - 1.42

OR, odds ratio; CI, confidence interval; SD, standard deviation

<sup>1</sup>Common adjustments with additional confounders for inattention-hyperactivity and conduct problems: Children's sex, maternal education, maternal BMI at 2 years, parental separation, family income, mother's age at pregnancy, any breast feeding duration, gestational age, paternal age, mode of delivery, maternal alcohol consumption during pregnancy, maternal smoking during pregnancy, maternal depression during pregnancy, maternal anxiety during pregnancy, maternal cannabis use at 2 years, maternal employment at 2 years, and paternal employment at 2 years. Additional adjustment for inattention-hyperactivity: birth weight, prenatal maternal nutrition;

<sup>2</sup>Adjustments selected according to the augmented backward elimination procedure.

Adjustments for hyperactivity-inattention: Maternal dietary patterns during pregnancy, maternal BMI, birth weight, family income, children's sex, gestational age, maternal depression during pregnancy, maternal employment at 2 years, paternal employment at 2 years. Adjustments for conduct problems: maternal BMI at 2 years, family income, children's sex, maternal alcohol consumption during pregnancy, maternal anxiety during pregnancy;

N<sub>1</sub>, number of subjects for hyperactivity-inattention;

N<sub>2</sub>, number of subjects for conduct problems

## How to estimate a latent process mixed model using lcmm function (Proust-Lima) (1,2)

Each dynamic phenomenon can be characterized by a latent process ( $\Lambda(t)$ ) which evolves in continuous time  $t$ . When modeling repeated measures of marker, it is usually not conceived as a latent process measured with error. Yet this is the underlying assumption made by the mixed model theory. Function `lcmm` exploits this framework to extend the linear mixed model theory to any type of outcome (ordinal, binary, continuous with any distribution).

### The latent process mixed model

The quantity of interest defined as a latent process is modeled according to time using a linear mixed model:

$$\Lambda(t) = X(t)\beta + Z(t)u_i + w_i(t)$$

where:

- $X(t)$  and  $Z(t)$  are vectors of covariates ( $Z(t)$  is included in  $X(t)$ );
- $\beta$  are the fixed effects (i.e., population mean effects);
- $u_i$  are the random effects (i.e., individual effects); they are distributed according to a zero-mean multivariate normal distribution with covariance matrix  $B$ ;
- ( $w_i(t)$ ) is a Gaussian process that might be added in the model to relax the intra-subject correlation structure.

The relationship between the latent process of interest and the observations of the marker  $Y_{ij}$  (for subject  $i$  and occasion  $j$ ) is simultaneously defined in an equation of observation:

$$Y_{ij} = H(\Lambda(t_{ij}) + \varepsilon_{ij}; \eta)$$

where:

- $t_{ij}$  is the time of measurement for subject  $i$  and occasion  $j$ ;
- $\varepsilon_{ij}$  is an independent zero-mean Gaussian error;
- $H$  is the link function (parameterized by  $\eta$ ) that transforms the latent process into the scale and metric of the marker.

Different parametric families are used. When the marker is continuous,  $H^{-1}$  is a parametric family of increasing monotonic functions among:

- the linear transformation: this reduces to the linear mixed model (2 parameters)
- the Beta cumulative distribution family rescaled (4 parameters)
- the basis of quadratic I-splines with  $m$  knots ( $m+2$  parameters)

### Steps to determine trajectories of hyperactivity-inattention and conduct problems.

Only time (Children's age) was used to determine latent processes. There were no other covariates involved in the models.

First, we fitted latent process mixed models without and with random effect to test if quadratic and cubic terms of time (Children's age) had a significant fixed effect and random effect. We found that there were significant quadratic effects for fixed and random effects for both outcome trajectories.

Second, we fitted different latent process mixed model with quadratic effect of time in fixed and random effects, and with different numbers of groups (ranging from 2 to 5 groups) and different quadratic I-splines link functions. To select the most appropriate link function, we compared the different models based on the Bayesian information criterion, the Akaike information criterion, the mean posterior probability of belonging to the worst trajectory, the percentage of individuals of the

worst trajectory who had a posterior probability greater than 0.7 and 0.9 of belonging to their trajectory. We selected a model with five trajectories and an I-splines link function with five nodes located at the quantiles of the SDQ hyperactivity-inattention subscale score distribution for the hyperactivity-inattention trajectories, and a model with four trajectories and an I-splines link function with three nodes located at the quantiles of the SDQ conduct problems subscale score distribution for the conduct problems trajectories.

## Bibliography

1. Proust-Lima C, Philipps V, Lique B. Estimation of Extended Mixed Models Using Latent Classes and Latent Processes: The R Package lcmm. *Journal of Statistical Software* 2017;78:1–56.
2. The latent process mixed model [Internet]. [cited 2021 Sep 17]. Available from: [https://cran.r-project.org/web/packages/lcmm/vignettes/latent\\_process\\_model\\_with\\_lcmm.html](https://cran.r-project.org/web/packages/lcmm/vignettes/latent_process_model_with_lcmm.html)