



**HAL**  
open science

## **MUSE sneaks a peek at extreme ram-pressure stripping events – V. Towards a complete view of the galaxy cluster A1367**

Alex Pedrini, Matteo Fossati, Giuseppe Gavazzi, Michele Fumagalli, Alessandro Boselli, Guido Consolandi, Ming Sun, Masafumi Yagi, Michitoshi Yoshida

### ► To cite this version:

Alex Pedrini, Matteo Fossati, Giuseppe Gavazzi, Michele Fumagalli, Alessandro Boselli, et al.. MUSE sneaks a peek at extreme ram-pressure stripping events – V. Towards a complete view of the galaxy cluster A1367. *Monthly Notices of the Royal Astronomical Society*, 2022, 511 (4), pp.5180-5197. 10.1093/mnras/stac345 . hal-03593013

**HAL Id: hal-03593013**

**<https://hal.science/hal-03593013v1>**

Submitted on 7 Apr 2023

**HAL** is a multi-disciplinary open access archive for the deposit and dissemination of scientific research documents, whether they are published or not. The documents may come from teaching and research institutions in France or abroad, or from public or private research centers.

L'archive ouverte pluridisciplinaire **HAL**, est destinée au dépôt et à la diffusion de documents scientifiques de niveau recherche, publiés ou non, émanant des établissements d'enseignement et de recherche français ou étrangers, des laboratoires publics ou privés.

# MUSE sneaks a peek at extreme ram-pressure stripping events – V. Towards a complete view of the galaxy cluster A1367

Alex Pedrini <sup>1</sup>★, Matteo Fossati <sup>1,2</sup>★, Giuseppe Gavazzi,<sup>1</sup> Michele Fumagalli <sup>1,3</sup>, Alessandro Boselli,<sup>4</sup> Guido Consolandi,<sup>1</sup> Ming Sun,<sup>5</sup> Masafumi Yagi<sup>6</sup> and Michitoshi Yoshida <sup>7</sup>

<sup>1</sup>*Dipartimento di Fisica G. Occhialini, Università degli Studi di Milano-Bicocca, Piazza della Scienza 3, I-20126 Milano, Italy*

<sup>2</sup>*INAF - Osservatorio Astronomico di Brera, via Brera 28, I-20121 Milano, Italy*

<sup>3</sup>*INAF - Osservatorio Astronomico di Trieste, via G. B. Tiepolo 11, I-34143 Trieste, Italy*

<sup>4</sup>*Aix Marseille Univ, CNRS, CNES, LAM, F-13013 Marseille, France*

<sup>5</sup>*Department of Physics and Astronomy, University of Alabama in Huntsville, Huntsville, AL 35899, USA*

<sup>6</sup>*National Astronomical Observatory of Japan, 2-21-1, Osawa, Mitaka, Tokyo 181-8588, Japan*

<sup>7</sup>*Subaru Telescope, National Astronomical Observatory of Japan, 650 North A'ohoku Place, Hilo, HI 96720, USA*

Accepted 2022 February 4. Received 2022 February 4; in original form 2021 November 15

## ABSTRACT

We present an analysis of the kinematics and ionization conditions in a sample composed of seven star-forming galaxies undergoing ram-pressure stripping in the A1367 cluster, and the galaxy ESO137–001 in the Norma cluster. MUSE observations of two new galaxies in this sample, CGCG097–073 and CGCG097–079, are also presented. This sample is characterized by homogeneous integral field spectroscopy with MUSE and by a consistent selection based on the presence of ionized gas tails. The ratio  $[O\text{I}]/H\alpha$  is consistently elevated in the tails of these objects compared to what observed in unperturbed galaxy discs, an ubiquitous feature which we attribute to shocks or turbulent phenomena in the stripped gas. Compact star-forming regions are observed in only  $\approx 50$  per cent of the tails, implying that specific (currently unknown) conditions are needed to trigger star formation inside the stripped gas. Focusing on the interface regions between the interstellar and intracluster medium, we observe different line ratios that we associate to different stages of the stripping process, with galaxies at an early stage of perturbation showing more prominent signatures of elevated star formation. Our analysis, thus, demonstrates the power of a well selected and homogeneous sample to infer general properties arising from ram-pressure stripping inside local clusters.

**Key words:** ISM: evolution – galaxies: clusters: individual: A1367 – galaxies: clusters: intracluster medium – galaxies: evolution – galaxies: interactions – galaxies: star formation.

## 1 INTRODUCTION

Within the general framework of galaxy evolution, the environment is known to play a key role in shaping the galaxy life cycle. In particular, the environment can actively remove the gas reservoir from a galaxy or lead to its consumption, ultimately quenching the star formation activity and turning blue objects into red and dead ones. Since the seminal work of Dressler (1980), and later with the advent of large multiwavelength surveys (e.g. the Sloan Digital Sky Survey, SDSS York et al. 2000), it has become apparent that the properties of galaxies in groups and clusters are substantially different compared to their counterparts in the field (Dressler et al. 1997; Baldry et al. 2006; Fumagalli et al. 2009; Peng et al. 2010; Wetzel et al. 2013). Specifically, massive haloes host a large fraction of red ellipticals and less blue spirals compared to the field (Whitmore, Gilmore & Jones 1993). Differently from isolated galaxies, where only internal processes determine their evolution, galaxies in dense environments are potentially subject to a large number of physical processes. These can be divided in two main subclasses: gravitational interactions

between galaxies or with the host halo potential such as tidal interactions or galaxy harassment (Merritt 1983; Byrd & Valtonen 1990; Moore et al. 1996), and hydrodynamic interactions acting between the interstellar medium (ISM) of a galaxy moving at high velocity through the hot and dense plasma of the host halo (the intracluster medium, ICM). Among the hydrodynamic processes, there are ram-pressure stripping (RPS; Gunn & Gott 1972), viscous stripping (Nulsen 1982), thermal evaporation (Cowie & McKee 1977), and starvation (Larson, Tinsley & Caldwell 1980).

In this picture, if the gas reservoir is being removed from the galaxy as opposed to being consumed by star formation, gas can be observed in various phases usually distributed in ‘cometary tails’ downstream of the parent galaxy. In the last decades, several observations have unveiled these tails at different wavelengths, such as in X-ray (e.g. Wang, Owen & Ledlow 2004; Sun et al. 2010; Zhang et al. 2013; Schellenberger & Reiprich 2015), in the  $H\alpha$  emission line (e.g. Gavazzi et al. 1995; Kenney et al. 1995; Conselice, Gallagher & Wyse 2001; Yoshida et al. 2002; Sun, Donahue & Voit 2007; Kenney et al. 2014; Boselli et al. 2016b; Yagi et al. 2017), in H I (e.g. Oosterloo & van Gorkom 2005; Chung et al. 2007; Hota & Saikia 2007; Scott et al. 2013), in radio continuum (e.g. Gavazzi 1978; Miley 1980; Dickey & Salpeter 1984; Hummel & Saikia 1991; Roberts et al. 2021), and

\* E-mail: alexpedrini4297@gmail.com (AP); matteo.fossati@unimib.it (MF)

from the analysis of molecular lines (e.g. Boselli et al. 1994; Salomé et al. 2006; Scott et al. 2013, 2015; Jáchym et al. 2014).

Despite this multitude of observations, we have yet to obtain a full understanding of what physical processes are the most relevant in dense environments, what is their interplay and how they transform galaxies of different stellar mass and morphology. Recent observations of entire clusters (Yagi et al. 2010, 2017; Boselli et al. 2016b, 2018a) suggest that RPS is almost ubiquitous in local massive clusters and has high efficiency in quenching galaxies removing their ISM on time-scales comparable with (or shorter than) their cluster crossing time (Boselli, Fossati & Sun 2021a). The sample from the GASP survey (Poggianti et al. 2017) also revealed a significant fraction of galaxies with RPS tails among cluster galaxies. Furthermore, this mechanism is sometimes able to temporarily enhance the star formation in the interface region of galaxies as indicated from observations or simulations (e.g. Boselli et al. 1994, 2021b; Bekki & Couch 2003; Steinhauser et al. 2012; Scott et al. 2015; Vulcani et al. 2018; Lee et al. 2020; Troncoso-Iribarren et al. 2020). As a result, the study of galaxies suffering RPS has become crucial in order to understand the general evolution and physical properties of cluster galaxies.

While extended RPS tails can be observed at several wavelengths and gas phases, an ideal tracer for the stripping phenomenon is the ionized gas around galaxies which can be observed in the optical combining the high spatial resolution and sensitivity of ground-based telescopes by means of observations of the  $H\alpha$  emission line (Fossati et al. 2012; Fumagalli et al. 2014; Gavazzi et al. 2017; Boselli et al. 2018b). Significant progress in the study of this process has been enabled by recent observations of entire clusters at great depth with wide-field cameras (Fasano et al. 2006; Yagi et al. 2010, 2017). Despite their largest discovery power, however, narrow-band imaging observations of the  $H\alpha$  line do not provide stringent constraints on the physics of the stripping phenomenon, for which it is critical to have access to the kinematics and the ionization conditions of the gas from spectroscopic observations. First attempts to collect spectra of these faint and extended filaments have been carried out, e.g. by Cortese et al. (2006) and Yoshida et al. (2008, 2012) using traditional long-slit spectroscopic observations. These efforts, however, provide modest spatial information and are often limited to the brightest filaments. A revolution in this field has been brought by the deployment of integral field spectroscopic instruments, like the Multi Unit Spectroscopic Explorer (MUSE; Bacon et al. 2010) at the ESO Very Large Telescope (VLT), thanks to their ability to map extended sources, thus, reducing slit losses and reaching the more typical surface brightness levels of RPS tails.

Using MUSE, we have carried out a survey of RPS events in the Norma and A1367 clusters which we have presented in previous papers of this series (Fumagalli et al. 2014; Fossati et al. 2016, 2019; Consolandi et al. 2017). This sample has been selected by narrow-band imaging observations revealing long tails of ionized gas trailing behind cluster galaxies. Specifically, in this sample of galaxies suffering RPS we include ESO137–001, which is falling in the Norma cluster presenting a double tail of diffuse gas, and CGCG097–087 in A1367 which is travelling edge-on through the ICM of the cluster with its smaller companion CGCG097–087N. We also include the Blue Infalling Group (BIG) found near the centre of A1367 which is composed of three massive galaxies (two of which suffering from RPS) CGCG097–120, CGCG097–114, and CGCG097–125 and several dwarf systems formed by the tidal interactions in the group. Adding to this sample, in this work we present the analysis of the new MUSE observations of two low-mass galaxies CGCG097–079 and CGCG097–073 undergoing RPS

in A1367. These new observations allow us to obtain a statistical view of RPS among star-forming galaxies in this rich cluster, enabling the study of a galaxy sample (as opposed to individual objects) and paving the road to future work to understand the physical properties of the galaxies and the diffuse gas around them in large samples.

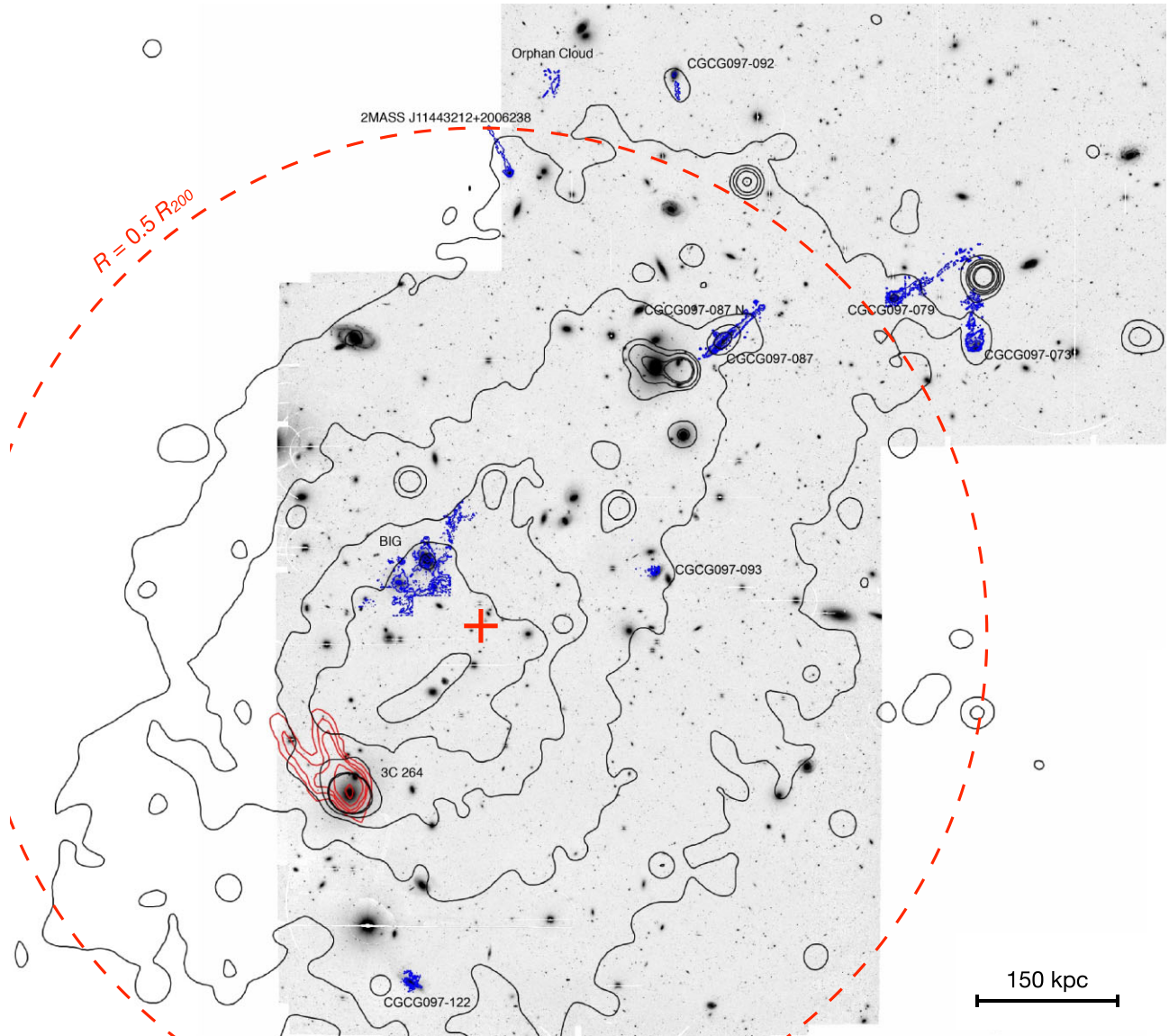
The paper is structured as follows. After a presentation of the A1367 galaxy cluster in Section 2, where we introduce the main features that make this environment particularly rich in perturbed objects, we present novel data for two cluster members, CGCG097–079 and CGCG097–073. We first present the data reduction procedures and the techniques used to derive the stellar continuum from the galaxies and maps of pure emission lines in Section 3. We present the results of an in-depth study of these two new objects in Section 4. We then combine all these homogeneous MUSE observations into a coherent sample and we discuss our results in the broader context of galaxies suffering RPS in clusters in Sections 5 and 6. Our conclusions can be found in Section 7.

Throughout, we adopt a Chabrier (2003) stellar initial mass function and we assume a flat  $\Lambda$ CDM Universe with  $\Omega_M = 0.3$ ,  $\Omega_\Lambda = 0.7$ , and  $H_0 = 70 \text{ km s}^{-1} \text{ Mpc}^{-1}$ . With the adopted cosmology, the comoving radial distance of A1367 becomes 92.2 Mpc (Boselli et al. 2021a) and 1 arcsec on the sky corresponds to 0.45 kpc.

## 2 ABELL 1367 AND ITS GALAXY POPULATION

The cluster Abell 1367, located at a distance of  $92.2 \pm 1.2$  Mpc and with an average recessional velocity of  $6484 \pm 81 \text{ km s}^{-1}$  (Cortese et al. 2004), is an excellent laboratory to study galaxies currently ongoing RPS. In particular, the presence of a high fraction of spiral galaxies (Butcher & Oemler 1984) together with the cluster ongoing merging of two substructures makes this system one of the best environments to search for tails of ionized gas outside galaxies. In Fig. 1, we present a map of this rich cluster, showing the X-rays distribution (black contours, Forman et al. 2003) overlaid on the  $B$ -band Subaru image of the cluster (Yagi et al. 2017). Individual galaxies with ionized gas tails (studied in this series of papers and in Gavazzi et al. 2017) are shown in blue, while a head-tail elliptical radio-galaxy is shown in red near the cluster centre. Specifically, near the centre of A1367 it is possible to notice the BIG and more to the NW we see CGCG097–087 with its companion CGCG097–087N and the pair composed by CGCG097–079 and CGCG097–073.

The cluster is highly elongated in the NW–SE direction both in the optical distribution of the galaxies (Cortese et al. 2004) as well as in the X-rays (Sun & Murray 2002). This evidence has been interpreted as due to two merging substructures where the NW one is rich of young star-forming galaxies (Donnelly et al. 1998; Cortese et al. 2004). A shock front (Ge et al. 2019) arising from the merger is roughly at the position where most of the RPS galaxies are located in projection. It is therefore possible that the significant number of galaxies undergoing RPS in the NW region of the cluster is also due to a higher density in the hot gas as the shock propagates outwards, enhancing the local ram-pressure above what typical for comparable distances from the cluster centre. Finally, observations in 120–168 MHz radio continuum (Gavazzi et al. 1995; Roberts et al. 2021) reveal that four of the galaxies we studied (namely CGCG097–073, CGCG097–079, CGCG097–114, and CGCG097–087) have also clear radio continuum extended tails, further reinforcing the interpretation of RPS being at work in this sample. For completeness, although it is not the subject of this work, we mention that near the cluster centre lies NGC 3862 (3C 264), a well-known strong head-tail radio galaxy (red contours in Fig. 1, Gavazzi et al. 1981) showing



**Figure 1.** The galaxy cluster Abell1367: in grey scale, the  $B$ -band Subaru image of the cluster (Yagi et al. 2017); in black, X-ray contours from XMM observations of A1367; in blue, the  $H\alpha$  flux contours of the extended  $H\alpha$  emitters observed with Subaru (Yagi et al. 2017), MUSE (Consolandi et al. 2017; Fossati et al. 2019), and the 2.12-m telescope of San Pedro Martir (Gavazzi et al. 2017); in red, the VLA 21-cm radio continuum contours of the head-tail radio galaxy NGC 3862 (Gavazzi, Perola & Jaffe 1981). The red cross marks the X-Ray cluster centre and the dashed circle shows  $R = 0.5R_{200}$  from Boselli et al. (2021a).

that some form of RPS is taking place also for more massive and passive galaxies.

As a result of the ongoing merger of the two sub-structures, the cluster is not yet virialized. Estimates of the halo mass are therefore more uncertain compared to more relaxed clusters, but there is a good agreement between different works (Girardi et al. 1998; Rines et al. 2003; Cortese et al. 2004; Boselli et al. 2021a) and are in the halo mass range of  $M_{\text{halo}} \approx 3\text{--}7 \times 10^{14} M_{\odot}$ . Using the sample in Gavazzi et al. (2010) and later updated in Gavazzi et al. (in preparation) based on a catalogue drawn from SDSS, we find 174 galaxies with  $M_* > 10^9 M_{\odot}$  within a  $R_{\text{vir}}$  of A1367 ( $R_{\text{vir}} = R_{200} \approx 1.4$  Mpc; Cortese et al. 2004; Boselli et al. 2021a). Of these, 47 (27 per cent) are blue and star forming according to a  $NUV-i$  colour selection (corrected for internal extinction). Boselli & Gavazzi (2014) and Boselli et al. (2021a) show that 11 star-forming galaxies (23 per cent) show signs of RPS (as seen from either ionized gas or radio continuum observations).

## 2.1 The RPS galaxy population

With the advent of MUSE, in the last 5 yr we have observed 7/11 (63 per cent) of the galaxies suffering RPS in A1367 with deep integral field spectroscopy. While the RPS signatures come from observations at different wavelengths, all the objects we followed-up with MUSE have ionized gas tails longer than twice the size of the stellar disc from Yagi et al. (2017). These authors observed the cluster up to  $R \approx 0.6 \times R_{\text{vir}}$  down to a surface brightness limit of  $2 \times 10^{-18} \text{ erg s}^{-1} \text{ cm}^{-2} \text{ arcsec}^{-2}$  finding 10 objects. Requiring a long ionized gas tail (longer than twice the disc size) leads to eight objects, of which we have observed six, plus CGCG097-120 which is in the BIG field and is a face-on RPS event (Fossati et al. 2019).

The consistent selection coupled with the uniform IFU follow-up with MUSE makes our sample highly homogeneous and representative of RPS objects in the A1367 cluster. Our sample includes CGCG097-087 (a.k.a. UGC6697) and CGCG097-087N

(Consolandi et al. 2017) and BIG (Fossati et al. 2019) as discussed in detail in previous papers of this series. Here, we include also new observations of CGCG097–079 and CGCG097–073, and analyse them in Section 4. We now briefly overview the properties of this sample, also summarizing the salient details of the MUSE analysis presented in previous papers.

CGCG097–087 is the second brightest spiral/Irr member of A1367, transiting almost edge-on through the ICM towards the cluster centre. Its smaller companion (CGCG097–087N) lies at  $\sim 20$  arcsec in the NE direction from CGCG097–087 and recent Subaru observations (Yagi et al. 2017) were highly suggestive of galaxy–galaxy interactions due to double gaseous tails connecting the two galaxies. CGCG097–087 and CGCG097–087N have a stellar mass of  $\log(M_*/M_\odot) = 10.13$  and  $\log(M_*/M_\odot) = 8.78$  respectively, computed from  $g$ - and  $i$ -band photometry following the colour calibrations by Zibetti, Charlot & Rix (2009). The analysis of this galaxy pair using the high sensitivity and spatial resolution of MUSE gave us unique new information about the hydrodynamic processes driving the stripping and the interaction of the two systems, and most importantly about the physics in the tails. Consolandi et al. (2017) found that CGCG097–087 shows complex gas kinematics due to the superposition of gas with different velocity components along the line of sight. Specifically, the ionized gas is split in a component still bound to the galaxy and in a stripped component that is consistent with a RPS event seen edge-on. Furthermore, also CGCG097–087N is suffering RPS from the ICM of the cluster, even if kinematics indicators suggest also a past galaxy–galaxy interaction.

In the more complex scenario of RPS and ‘pre-processing’, i.e. the environmental transformation occurring within galaxy groups before they are accreted on to galaxy clusters, we find the BIG, also known as BIG. Studied by Sakai et al. (2002), Gavazzi et al. (2003), Cortese et al. (2006), Ge et al. (2021b), the more recent observations with MUSE (Fossati et al. 2019) confirm that BIG is an exceptional system in order to understand the role of different processes in the group environment. The BIG is mainly composed of two galaxies CGCG097–125 and CGCG097–114 with mass of  $\log(M_*/M_\odot) \approx 10.32$ ,  $\log(M_*/M_\odot) \approx 9.22$ , respectively. A third galaxy CGCG097–120 ( $\log(M_*/M_\odot) \approx 10.53$ ) is unlikely to be part of the group due to its offset in recessional velocity compared to the other galaxies and filaments in BIG (Fossati et al. 2019). Furthermore, we find lower mass star-forming systems connected by ionized gas filaments, which have originated from strong tides during the merger of the galaxies that now compose CGCG097–125. Both CGCG097–120 and CGCG097–114 are galaxies suffering RPS. CGCG097–120, despite not being part of the group, gives us one of the best known example of face-on RPS in the cluster potential. During our analysis in Section 5, we thus exclude CGCG097–125 as its highly perturbed stellar and gaseous kinematics is likely to arise more from a past merger.

CGCG097–073 and CGCG097–079 (Zwicky, Herzog & Wild 1968) are two blue, late-type galaxies of  $\log(M_*/M_\odot) \approx 9.27$  and  $\log(M_*/M_\odot) \approx 9.08$ , respectively, which are likely to be infalling for the first time into the cluster environment (Gavazzi et al. 2001). Their recessional velocities are 7298 and 7025 km s<sup>−1</sup>, respectively or +814 and +541 km s<sup>−1</sup> compared to the average velocity of the cluster. They lie well within the A1367 virial radius, being at a projected distance of  $\approx 0.5 \times R_{\text{vir}}$ . CGCG097–073 is face-on and appears as a spiral galaxy while CGCG097–079 is possibly seen edge-on but its morphology appears irregular, with no evident spiral arms. These galaxies were selected from the works in radio continuum of Gavazzi (1978) and Gavazzi & Jaffe (1987), who discovered their head–tail radio morphology indicative of an ongoing RPS event.

Since these discovery papers, CGCG097–073 and CGCG097–079 have been extensively studied at all wavelengths, including in optical (Gavazzi et al. 1995; Yagi et al. 2017), H $\alpha$  (Kennicutt, Bothun & Schommer 1984; Gavazzi et al. 2001; Yagi et al. 2017), near-infrared (Gavazzi et al. 1996), CO (Boselli et al. 1994; Scott et al. 2013, 2015; Sivanandam, Rieke & Rieke 2014), H I (Gavazzi et al. 2006; Scott et al. 2010), and radio continuum (Gavazzi et al. 1995; Scott et al. 2010). All works consistently indicate that both galaxies are suffering RPS from the ICM of A1367. In particular, the H $\alpha$  narrow-band imaging works by Gavazzi et al. (2001) and Yagi et al. (2017) revealed that the ionized gas of CGCG097–073 and CGCG097–079 extends in two tails of  $\approx 70$  and  $\approx 100$  kpc, respectively. The orientation of the two tails suggests a  $\approx 60^\circ$  motion between the two galaxies in the plane of the sky. The two tails are convergent and although there is no clear spatial continuity in the flux of the two tails even in the deep Subaru observations of Yagi et al. (2017), it cannot yet be excluded that the two galaxies may have interacted in the past (Gavazzi et al. 2001). We will discuss in Section 6.1 if the MUSE observations support this scenario or whether we are observing only a superposition of two galaxies in the dense cluster environment.

We also include in the following sections data from ESO137–001 (Fumagalli et al. 2014; Fossati et al. 2016) which has similar high-quality MUSE data and is falling in the Norma cluster which has a similar halo mass ( $M_{\text{halo, Norma}} \approx 2\text{--}3 \times M_{\text{halo, A1367}}$ , Cortese et al. 2004; Woudt et al. 2008; Boselli et al. 2021a). ESO137–001 is suffering extreme RPS showing a double tail which extends for at least 80 kpc and with a large number of bright compact H II regions, located where the gas is dynamically cool.

Thus, altogether, we have collected a statistical and homogeneous sample of galaxies suffering RPS in the mass range  $\approx 10^9\text{--}10^{10.5} M_\odot$ . The physical properties of the galaxies in our sample are listed in Table 1.

In this paper, we want to fully understand what are the different physical properties leading to different observational features in this sample, constraining the role of RPS in rich nearby clusters. We will also discuss to what extent different ionization stages in these galaxies and their tails can be explained as evolutionary sequence due to different phases of the RPS interaction.

Before proceeding with the analysis of the whole sample, in Sections 3 and 4 we will present the techniques, the reduction procedures and the detailed analysis of the two new galaxies observed by MUSE CGCG097–079 and CGCG097–073. Readers interested only in the discussion of the statistical sample of galaxies can move directly to Section 5.

### 3 OBSERVATIONS AND DATA REDUCTION

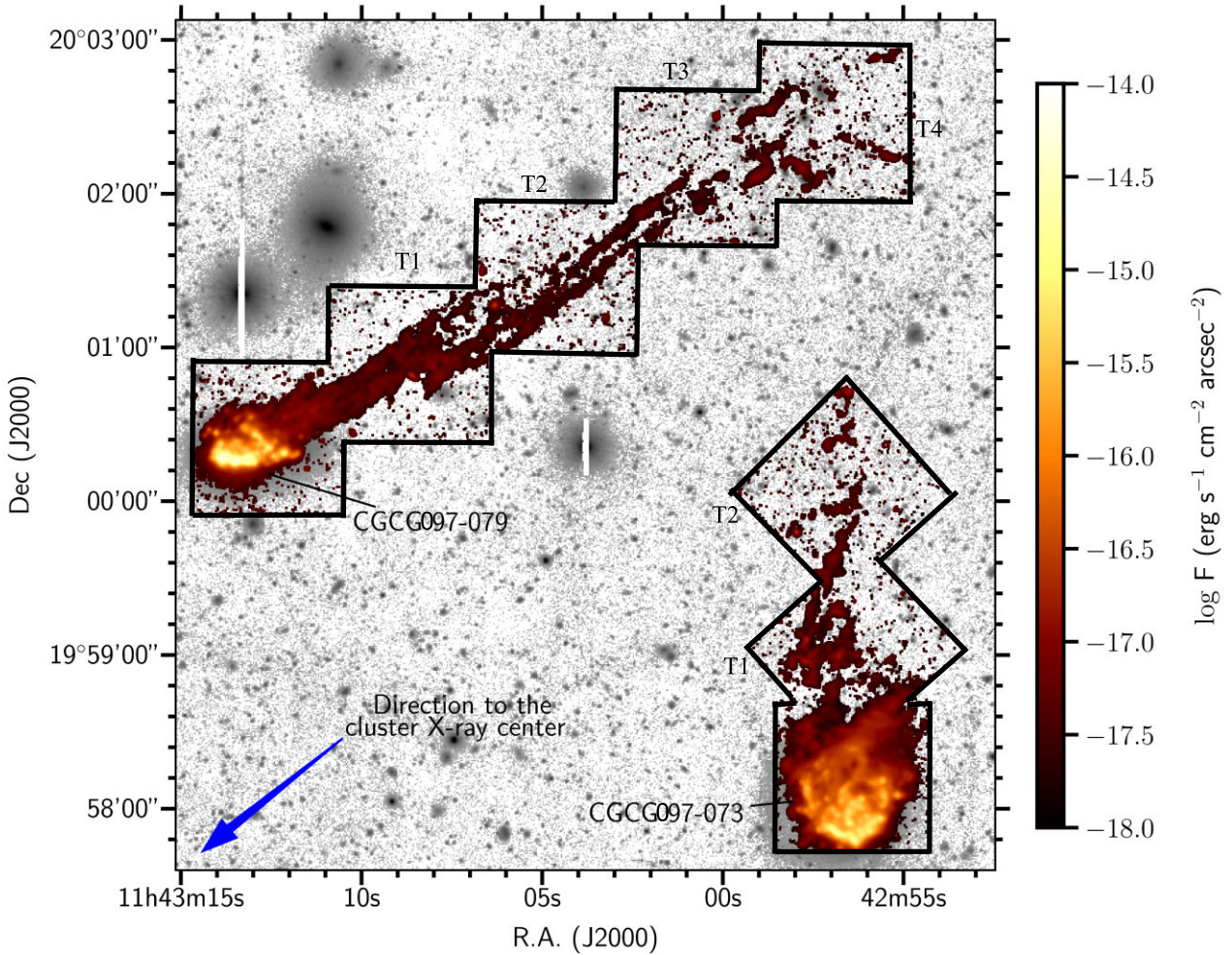
CGCG097–079 and CGCG097–073, together with their ionized gas tails, were observed with MUSE at VLT (UT4) from 2016 February to 2017 April as part of programmes 096.B-0019(A) and 098.B-0020(A) (PIG. Gavazzi), using the Wide Field Mode and the nominal wavelength range of the instrument. These galaxies were observed at airmass  $\approx 1.4$  under clear skies or, occasionally, with thin clouds. The final point spread function (PSF) full width at half-maximum (FWHM) covers the range 0.75–1.00 arcsec with a median value over the entire mosaic of 0.85 arcsec. Flux calibration has been achieved by means of observations of the standard star GD 153 for 160 s. The mosaic is composed of eight MUSE pointings covering the optical extent of the two galaxies and their respective tails.

In particular, two pointings were centered on the galaxy stellar discs, while the other ones on the tails, as shown in Fig. 2. Each observation consisted of two 1290 s exposures (or three 777 s in the

**Table 1.** The sample of RPS galaxies used in this work.

Name	Cluster	Nuclear activity	$\log(M_*/M_\odot)$	$R/R_{200}$	$cz$ (km s $^{-1}$ )	H I-def
ESO137-001	Norma	H II	9.81	0.18	4461	–
CGCG097-087	A1367	H II	10.13	0.38	6727	0.00
CGCG097-087N	A1367	H II	8.78	0.37	7542	–
CGCG097-073	A1367	H II	9.27	0.57	7298	–0.09
CGCG097-079	A1367	H II	9.08	0.52	7026	0.17
CGCG097-114	A1367	H II	9.22	0.05	8425	–0.32
CGCG097-120	A1367	LIN	10.53	0.08	5620	0.90
CGCG097-125	A1367	H II	10.32	0.08	8311	–0.05

The table lists: the galaxy name; the name of the parent cluster; the nuclear activity based on optical line ratios ( $[\text{O III}]/\text{H}\beta$  versus  $[\text{N II}]/\text{H}\alpha$ ); the galaxy stellar mass; the projected distance from the cluster centre normalized by the cluster  $R_{200}$ ; the radial heliocentric velocity; the H I-deficiency parameter. A full description of the origin of these values is given in appendix A of Boselli et al. (2021a).



**Figure 2.** The Subaru  $B$ -band image of the field covering CGCG097-079 and CGCG097-073. The  $\text{H}\alpha$  map of the ionized gas from the MUSE datacube is overlaid in red. The black boxes mark the edges of the individual MUSE exposures. The blue arrow indicates the direction to the X-ray centre of Abell 1367.

pointings of the tails). Each science pointing is interspersed by a sky exposure of 4 and 2 min for the observations taken in 2016 and 2017, respectively. The instrument was rotated by  $90^\circ$  after each exposure to improve the final uniformity of the reconstructed image.

The raw data have been processed with the MUSE data reduction pipeline (v2.8.3, Weilbacher et al. 2020) and more details about the

data reduction steps can be found in the previous papers of this series (Fumagalli et al. 2014; Fossati et al. 2016, 2019; Consolandi et al. 2017). These steps include bias subtraction, flat fielding, wavelength calibration and illumination corrections, and the reconstruction of exposures into datacubes. Despite the use of the twilight exposures as calibrators, the spatial uniformity of the reconstructed cubes

remain uneven. For this reason, we use the internal illumination uniformity calibration (dubbed autocalibration in the data reduction software) which uses background spaxels to individually calibrate the flux level of each stack. This procedure requires a field that is mostly empty of continuum sources and is therefore not applied for the pointings centred on the galaxy discs. In order to produce a mosaic containing the eight different pointings, we construct a reference WCS grid that encompasses our observations as described in Fossati et al. (2019), with a 0.2 arcsec spatial pixel scale and a 1.25 Å spectral step from 4750 to 9300 Å. All science exposures are then astrometrically calibrated using SDSS point sources, and projected on to the reference grid using the MUSE pipeline.

We use the ZAP code (Soto et al. 2016) in order to improve the removal of sky line residuals. This tool is based on principal component analysis (PCA) to isolate and remove from the datacube residual sky features. It is possible to operate with this code using the sky in the science image or an external one. For our purposes, we have to assume that faint emission lines from the target galaxies fill most of the field of view of each exposure. We therefore use the external sky exposures to generate the PCA decomposition that is then applied to the science exposures as also done in Fossati et al. (2019). Furthermore, after checking the reliability of the photometric calibration of the data also as a function of wavelength, we perform an in-house sky subtraction of the sky continuum which is known to vary between exposures and is not corrected by ZAP.

Specifically, we manually select small background regions without detectable emission from continuum sources in each cube. Enough background regions are present even in the pointings covering the galaxy discs, thanks to the large FOV of MUSE. We also explicitly tested that the choice of different regions does not affect the results presented here. We coadd the pixels of these regions in each cube to obtain spectra of the sky background for which we derive average values in bins of 150 Å along the wavelength axis. By fitting these values with a fourth degree polynomial function and subtracting each best-fitting function from the respective data cube, we refine the zero level of the sky subtraction. We stress that this procedure has no effect on the absolute level of the flux of emission lines.

Lastly, we combine the exposures with mean statistics and we test the flux calibration of our final mosaic by comparing the  $r$ -band flux of point-like sources in the field with the SDSS data base, finding consistency within  $\approx 5$  per cent.

### 3.1 Stellar continuum and emission line fitting

We start by extracting the flux maps of ionized gas emission lines covered by MUSE in order to characterize the physical properties of the gas in the discs and in the tails of the two galaxies. Before fitting these lines, we apply to the mosaic cube a  $10 \times 10$  pixels ( $2 \times 2$  arcsec) median filter to improve the signal-to-noise ( $S/N$ ) ratio for each pixel without significantly degrading the original spatial resolution.

Moreover, we perform a stellar continuum correction aimed at removing the underlying Balmer absorption using the GANDALF fitting code (Sarzi et al. 2006) and a selection of stellar spectra from the the Indo–U.S. Library of Coudé Feed Stellar Spectra library (Valdes et al. 2004), similar to what was done in Fossati et al. (2019). For this purpose, we run the code only on cutouts centered on the two galaxies CGCG097–079 and CGCG097–073. Then, for each spaxel, it is possible to subtract the best-fitting stellar continuum spectrum obtaining a cube of pure emission lines.

As a result of this procedure, GANDALF returns maps of the stellar kinematics for each galaxy (Fossati et al. 2019). However,

in this paper, we present two low-mass galaxies for which it is difficult to obtain reliable stellar kinematics parameters due to the low surface brightness of the stellar emission. We therefore do not use these products in the following analysis. In order to obtain a new datacube with only the emission lines associated to the two galaxies investigated, we have also to remove isolated background objects from the field. Four background galaxies at  $z \sim 0.82$  are found from their [O II] and [O III] emission lines, and are then masked to avoid contamination.

Using the KUBEVIZ code as detailed in previous papers of this series, we then extract flux maps of the strongest emission lines falling in the MUSE wavelength range, namely: H  $\beta$ ; [O III]  $\lambda\lambda 4959, 5007$ ; [O I]  $\lambda 6300$ ; [N II]  $\lambda\lambda 6548, 6583$ ; H  $\alpha$ ; [S II]  $\lambda\lambda 6716, 6731$ . The procedure fits the entire MUSE datacube flagging spaxels with  $S/N > 5$  in H  $\alpha$  and with uncertainties on the kinematics smaller than  $50 \text{ km s}^{-1}$  as robust fits that we use for the analysis. Due to the very similar redshift of the two galaxies, we assume for the entire mosaic the systemic redshift of CGCG097–079,  $z_{\text{sys}} = 0.02363$  (Gavazzi et al. 2010), as velocity zero-point.

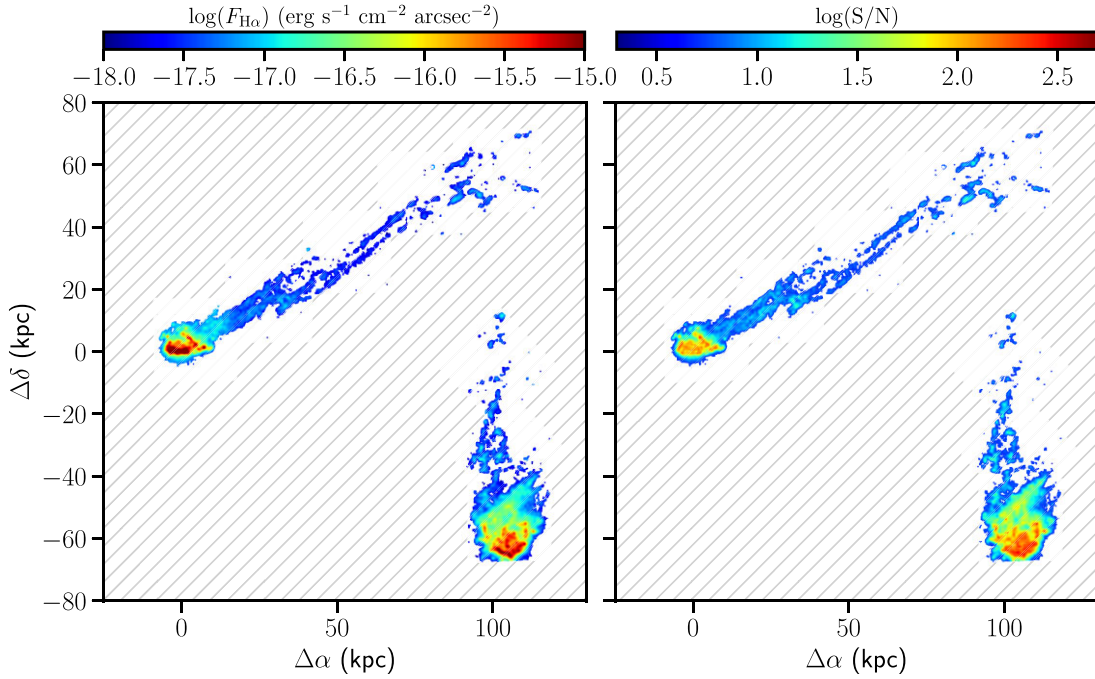
## 4 PROPERTIES OF CGCG097–079 AND CGCG097–073

In this section, we present an in-depth analysis of the new observations of CGCG097–079 and CGCG097–073. Specifically, we present the results obtained from the study of the gas kinematics and the ionization conditions of the diffuse gas in these two galaxies.

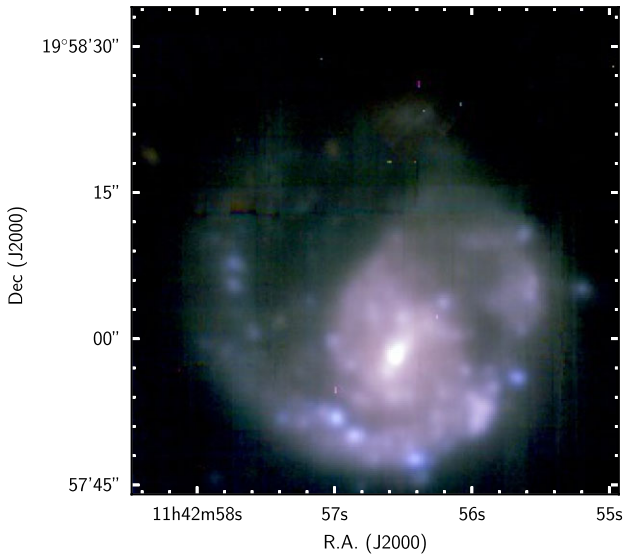
### 4.1 Gas kinematics

The sensitivity and high spatial resolution of the MUSE observations allow us to study maps of the ionized gas emission and kinematics in detail. In Fig. 3, we present the H  $\alpha$  map of the observed mosaic. We can immediately see two long filamentary tails starting from the centre of the two galaxies. In particular, for CGCG097–079, the tail extends in projection for about 100 kpc with surface brightness approximately ranging from  $10^{-18} \text{ erg s}^{-1} \text{ cm}^{-2} \text{ arcsec}^{-2}$  to  $10^{-17} \text{ erg s}^{-1} \text{ cm}^{-2} \text{ arcsec}^{-2}$ , which are typical of ionized gas RPS tails (Yoshida et al. 2012; Boselli et al. 2016a; Consolandi et al. 2017; Yagi et al. 2017). Similarly, CGCG097–073 presents a tail extension of about 70 kpc and roughly the same surface brightness of the other galaxy tail. The morphology of the galaxies and the surface brightness are consistent with what measured in narrow-band imaging by Yagi et al. (2017). The strongest emission in H  $\alpha$  is located at the leading edge of the two galaxies and despite an intense star formation activity in the two galaxy discs (that we can clearly observe in Fig. 4 for CGCG097–073 and Fig. 5 for CGCG097–079), we only observe a few compact regions (putative H II regions) in the low surface brightness tails. Following Kennicutt (1998), we estimate the SFR from the integrated H  $\alpha$  flux within the galaxy discs. We find  $\approx 1.62 \pm 0.05$  and  $\approx 1.20 \pm 0.02 M_{\odot} \text{ yr}^{-1}$ , respectively for CGCG097–079 and CGCG097–073, after correcting for dust attenuation using the Balmer decrement in each pixel of the galaxy discs. Here, we have made the assumption that the gas ionization is dominated by photoionization (and not by shocks or AGN), and we verified that this assumption holds as we will show in Fig. 8.

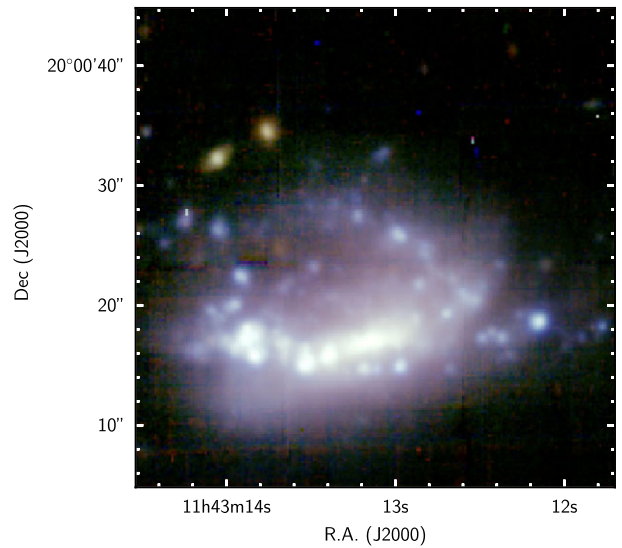
Maps of the velocity relative to systemic redshift,  $\Delta v = v - v_{\text{sys}}$ , and the intrinsic velocity dispersion  $\sigma$  from the fit of the H  $\alpha$  + [N II] line complex are shown in Figs 6 and 7. From the velocity map, we see ordered rotation for the two galaxies and we observe that CGCG097–073 has a larger recessional velocity along the line of



**Figure 3.** Left-hand panel:  $H\alpha$  surface brightness map of the ionized gas in CGCG097–079 and CGCG097–073. Right-hand panel:  $\log S/N$  map obtained dividing the  $H\alpha$  flux value by the associated errors in each pixel of the datacube. Areas not covered by MUSE observations are shaded in grey.



**Figure 4.** RGB false colour of CGCG097–073, obtained by convolving the MUSE data cube with the *gri* SDSS filters.



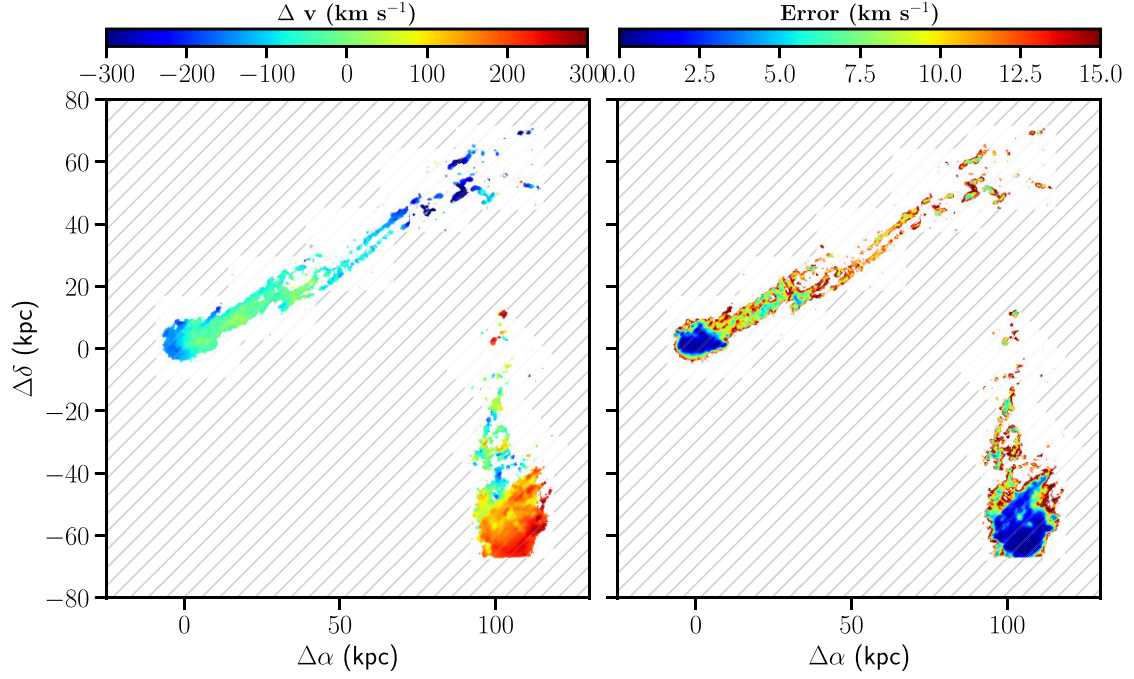
**Figure 5.** The same of Fig. 4, but for CGCG097–079.

sight compared to the other galaxy. Furthermore, we see a clear velocity gradient in the tail of CGCG097–079, in the direction to the cluster X-ray centre (Fig. 2), suggesting that the gas at larger distance from the galaxy is decelerated to lower velocities by the ICM ram-pressure (see e.g. Tonnesen & Bryan 2010 for numerical simulations of this effect).

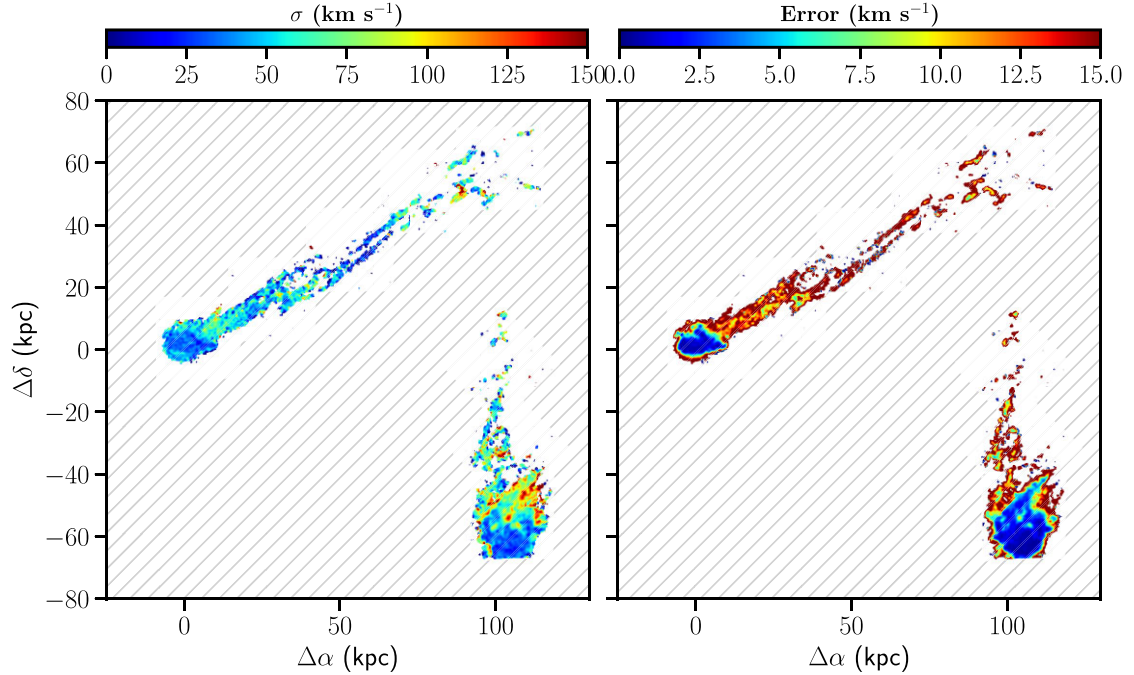
Moreover, one can notice that in CGCG097–073 there is a side tail pointing in the NW direction presenting slightly higher values of velocity dispersion. However, further discussions about emission

line ratio maps in the following section suggests that turbulence in this region does not appear to be associated with a variation in the gas ionization conditions, therefore we propose it to be a purely dynamical process observed in projection on the sky. Moreover, it is important to point out that velocity dispersion values below  $50 \text{ km s}^{-1}$  are marginally resolved at the MUSE resolution (e.g. Boselli et al. 2021b) and consequently are more uncertain and affected by systematics in the estimate of the line spread function.





**Figure 6.** Left-hand panel: Velocity map of the  $H\alpha + [N II]$  line complex relative to the galaxies systemic redshift. Right-hand panel: Error map of the velocity. Areas not covered by MUSE observations are shaded in grey.

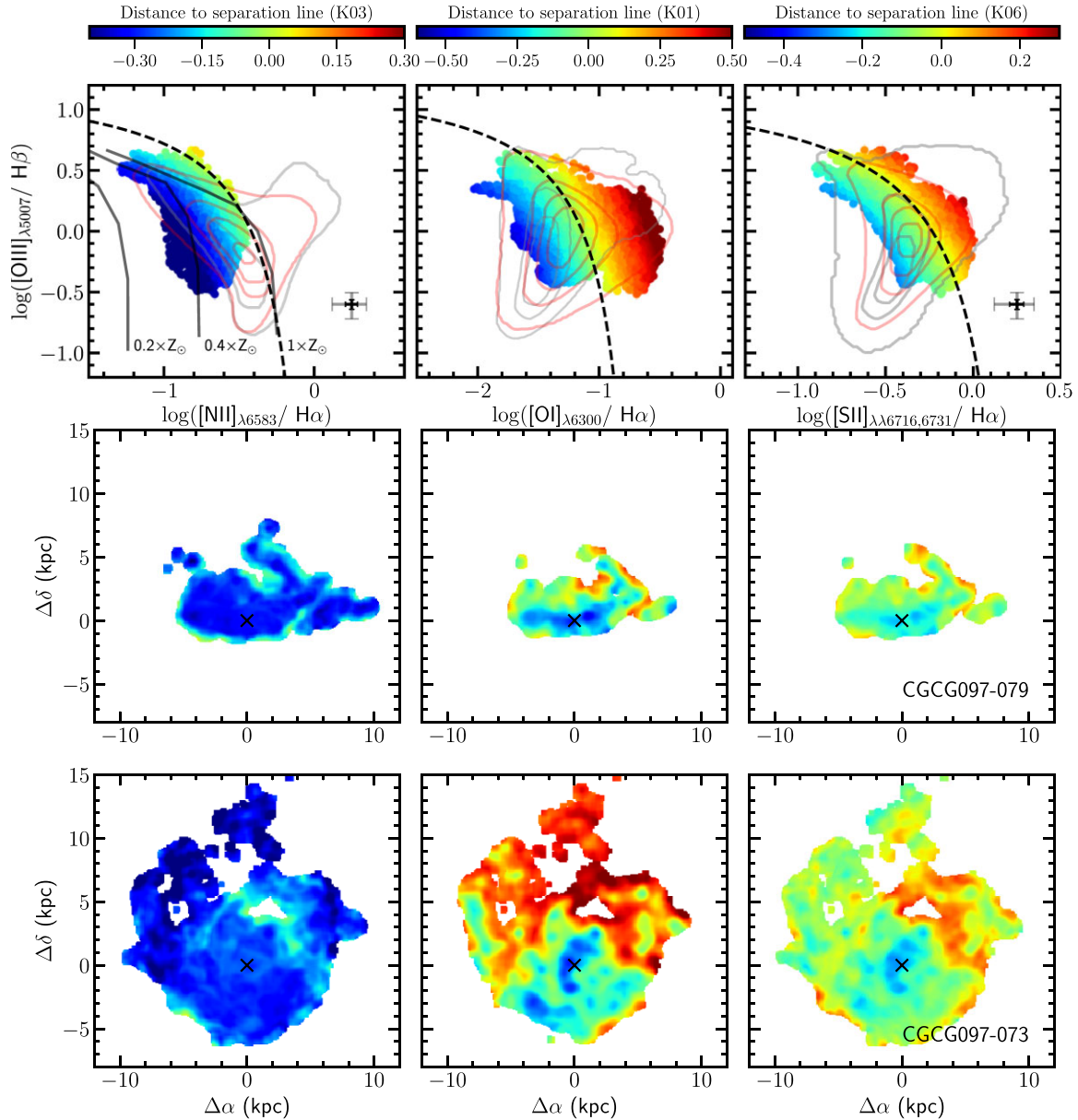


**Figure 7.** Left-hand panel: Velocity dispersion map of the  $H\alpha + [N II]$  line complex. Right-hand panel: Error map of the velocity dispersion. Areas not covered by MUSE observations are shaded in grey.

#### 4.2 Emission line diagnostic

In the previous section, we have examined the properties of the  $H\alpha + [N II]$  emission. We now turn to the study of the physical properties of the ionized gas using line ratios. Kewley et al. (2001, 2006), Ferland et al. (2008), and Rich, Kewley & Dopita (2011) have shown

that different ionization processes (photo-ionization from hot stars or from harder sources, shocks, turbulence, and magneto-hydrodynamic waves) lead to different ratios in the intensity of the emission lines. In order to place constraints on which ionization processes are taking place in these galaxies, we make use of three optical diagnostic diagrams (BPT diagrams; Baldwin, Phillips & Terlevich 1981).



**Figure 8.** Top row: BPT diagnostic diagrams  $[\text{O III}]\lambda 5007/\text{H}\beta$  versus  $[\text{N II}]\lambda 6583/\text{H}\alpha$  (left-hand panels),  $[\text{O I}]\lambda 6300/\text{H}\alpha$  (centre panels),  $[\text{S II}]\lambda\lambda 6716, 6731/\text{H}\alpha$  (right-hand panels) derived from cutouts of the MUSE mosaic centred on CGCG097–073 and CGCG097–079. We show only spaxels with  $S/N > 5$  for all emission lines considered. The colour bars represent the distance from the dashed lines which separate stellar photo-ionization processes (left of the lines) from AGN/shock ionization (right of the lines) as defined in Kauffmann et al. (2003) (K03, left), in Kewley et al. (2001) (K01, centre) and in Kewley et al. (2006) (K06, right). The black and grey crosses show the characteristic error of line ratios with  $S/N = 15$  and 5, respectively. The black solid lines in the top left-hand panel show the tracks from photo-ionization models of Kewley et al. (2001) for three different metallicities (0.2, 0.4,  $1 Z_{\odot}$ ). The grey contours are obtained from the nuclear spectra of a sample of 50 000 SDSS galaxies at  $0.03 < z < 0.08$  whose emission lines are detected at  $S/N > 5$ . The innermost to outermost contours include the 25, 50, 75, and 98 per cent of each data set, respectively. Middle and bottom row: The spatial (on-sky) position of the spaxels colour coded as in the top row panels is shown for CGCG097–079 and CGCG097–073 in the middle and bottom row panels, respectively. The black crosses indicate the optical centre of the galaxies.

Specifically, we show the ratio between  $[\text{O III}]\lambda 5007/\text{H}\beta$  and either  $[\text{N II}]\lambda 6583/\text{H}\alpha$  or  $[\text{O I}]\lambda 6300/\text{H}\alpha$  or  $[\text{S II}]\lambda\lambda 6716, 6731/\text{H}\alpha$ .

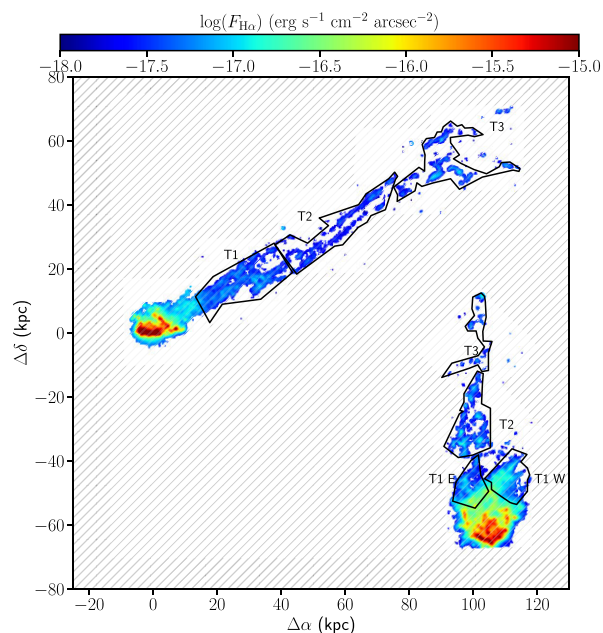
When considering only spaxels with  $S/N > 5$  for each emission line contributing to a given BPT diagram, we are left only with spaxels on the galaxy discs of CGCG097–079 and CGCG097–073 and their immediate surroundings where the emission line flux is high enough to obtain robust line ratios in individual spaxels. We present these

results in Fig. 8. The top panel shows the distribution of individual spaxels in the aforementioned BPT diagrams. Each spaxel is colour coded by its distance from the lines separating the region dominated by photo-ionization from the one dominated by active galactic nuclei (AGNs) or shocks, following the separation of Kauffmann et al. (2003). The distributions of line ratios from nuclear spectra of a sample of 50 000 SDSS galaxies at  $0.03 < z < 0.08$  whose emission

lines are detected at  $S/N > 5$  (Fossati et al. 2016) are shown with grey contours. The innermost to outermost contours include the 25, 50, 75, and 98 per cent of the full data set, respectively. However, this SDSS sample only represents the nuclear properties of galaxies which might be different from their outskirts which are likely providing most of the stripped gas. To overcome this possible issue, we add to the diagnostic diagrams the same density contours from a sample of individual spaxels from the DR17 of the Mapping Nearby Galaxies at APO (MaNGA) IFU survey of  $\sim 10\,000$  galaxies (Abdurro'uf et al. 2021). For each BPT diagram, we selected spaxels outside the effective radius ( $R > 1 R_e$ ) of each individual galaxy whose emission lines are detected at  $S/N > 5$ . This sample includes roughly half a million spaxels in the BPT diagram using the fainter [O I] line and roughly 2 million spaxels in the other two BPT diagrams. Density contours from this sample (at the same levels mentioned above) are shown in pink in Fig. 8. We also verified that by using spaxels from the entire galaxy discs, the density contours would appear very similar to the SDSS sample, due larger weight given to the inner parts of the discs. Despite the differences seen in these two reference samples, the BPT diagnostic made using [O I]/ $H\alpha$  shows enhanced [O I]/ $H\alpha$  in the RPS tails that appear not to be typical neither of the galaxy nuclei nor of their disc outskirts. We will discuss this point in a more quantitative fashion in Section 5.1. In the middle and bottom panels, we show the spatial distribution of the spaxels from the two galaxies, with points colour coded as above.

Fig. 8 shows that only the BPT diagram with [O I]  $\lambda 6300/H\alpha$  shows significant deviations from the photo-ionization region, with a large fraction of points downstream of the galaxy CGCG097–073 exhibiting a significantly enhanced [O I]/ $H\alpha$  ratio. This line ratio also appears to be significantly enhanced in the inner part of the RPS tail for CGCG097–079 as can be seen in the bottom panel of Fig. 8. Indeed this ratio has been typically considered as the most sensitive tracer of shocks and turbulence in RPS tails (Yoshida et al. 2012; Fossati et al. 2016, 2019; Consolandi et al. 2017; Poggianti et al. 2018, 2019; Boselli et al. 2018b). Conversely, [S II]/ $H\alpha$  is only marginally enhanced in the surroundings of the galaxy discs, and only slightly deviates from the photo-ionization sequence. Lastly, the ratio [N II]/ $H\alpha$  is entirely consistent with stellar photo-ionization although the ratio is also known to depend on the metallicity of the galaxy, with lower metallicity objects having an intrinsically lower [N II]/ $H\alpha$ . In particular, the lower envelope of [N II]/ $H\alpha$  values for our two galaxies (as seen from the top left-hand panels) suggests a sub-solar metallicity for these objects, as one could expect from the low stellar mass of these galaxies (Tremonti et al. 2004). This feature is also confirmed by the metallicity versus stellar mass relation from Maiolino & Mannucci (2019) which gives typical values of  $\sim 0.3\text{--}0.8 Z_\odot$  for galaxies with stellar mass of  $10^9\text{--}10^{10} M_\odot$ .

A resolved, pixel-by-pixel analysis of the BPT diagrams is possible only in the central regions of the galaxies due to the high  $S/N$  of the emission lines involved. To study the processes taking place in the filamentary tails of the galaxies in detail, we generate instead high  $S/N$  composite spectra. For this purpose, we focus on three and four independent regions (see Fig. 9) for CGCG097–079 and CGCG097–073, respectively. These regions cover the RPS tails of the two galaxies at increasing distances from the galaxy discs. The closest region to the disc of CGCG097–073 is split in two parts to evaluate the potential difference in the line ratios of these two regions which appear as distinct both in the ionized gas surface brightness and its kinematics. To extract the co-added spectra, we follow Fossati et al. (2016, 2019) and we select the spaxels in each region where



**Figure 9.**  $H\alpha$  map of the ionized gas in CGCG097–079 and CGCG097–073. Black polygonal apertures represent selected regions used to derive the composite spectra as outlined in the text. Specifically, in CGCG097–079,  $T1$ ,  $T2$ , and  $T3$  extend from the nearest area to the galaxy disc to the furthest. The same is true for  $T1$ ,  $T2$ , and  $T3$  in CGCG097–073 except for  $T1 E$  and  $T1 W$  which are roughly at the same distance from the galaxy but have a different ionized gas surface brightness and kinematics. Areas not covered by MUSE observations are shaded in grey.

$S/N(H\alpha) > 5$ . We then sum the spectra of these spaxels after shifting them to rest-frame wavelengths using the kinematics information. Then, for each region, we fit the composite spectra with KUBEVIZ in order to obtain emission line fluxes. As discussed in detail in Section 5.1, the spectra extracted from the tails prominently show enhanced [O I]/ $H\alpha$ , and typical values of other line ratio diagnostics as seen in previous studies of RPS galaxies.

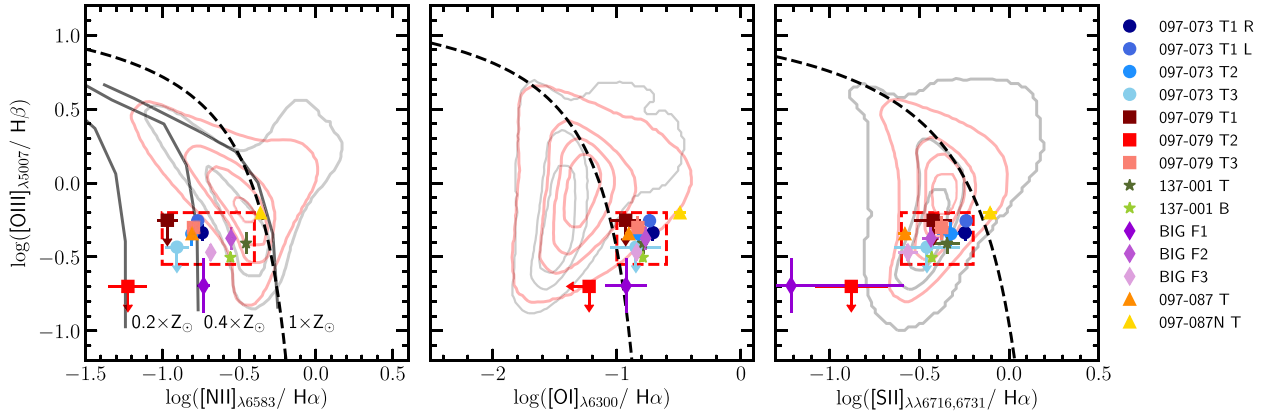
Having discussed the properties of these two new galaxies, in the following section, we turn to the properties of the larger sample, and put these results in the broader context of galaxies suffering RPS in A1367.

## 5 THE RPS SCENARIO IN A1367

With the goal of obtaining a more complete view of RPS in A1367 and in other massive clusters, we now combine the new observations of CGCG097–079 and CGCG097–073 presented in the previous sections of this paper with other objects studied in this series of papers to build a sample of known RPS galaxies. We can proceed then to study the properties of the diffuse gas filaments around these galaxies (Section 5.1) and the regions of interaction between the discs and the ICM (Section 5.2).

### 5.1 Ionization conditions outside galaxies

This analysis on the diffuse gas in the tails of several galaxies with different properties (e.g. stellar mass, metallicity, star formation activity) is the first step towards a deeper knowledge of the interaction between the cluster ICM and the galaxy ISM.



**Figure 10.** BPT diagnostic diagrams  $[\text{O III}]/\text{H}\beta$  versus  $[\text{N II}]/\text{H}\alpha$  (left-hand panel),  $[\text{O I}]/\text{H}\alpha$  (centre panel),  $[\text{S II}]/\text{H}\alpha$  (right-hand panel) derived from the composite spectra extracted from the seven regions of CGCG097–073 and CGCG097–079 presented in Fig. 9 and gas diffuse filaments from BIG, CGCG097–087, CGCG097–087N, and ESO137–001 obtained from the previous papers of this series. Error bars are obtained from KUBEVIZ fits. Downward or leftward arrows represent the  $2\sigma$  upper limits of the line ratios when metal lines are too faint to be detected. The grey and pink contours, and the solid and dashed black lines are as in Fig. 8.

Fig. 10 shows the BPT diagrams obtained from the co-added spectra of different regions outside galaxies and on the RPS tails in our sample. Specifically, we show seven regions of CGCG097–079 and CGCG097–073 (Fig. 9), tail (T) and blob (B) regions in ESO137–001 in the Norma Cluster (Fumagalli et al. 2014; Fossati et al. 2016), regions F1, F2, and F3 in the BIG (Sakai et al. 2002; Cortese et al. 2006; Fossati et al. 2019), and finally the ionized gas tails in CGCG097–087 and CGCG097–087N (Consolandi et al. 2017). While the Balmer  $\text{H}\alpha$  and  $\text{H}\beta$  lines are robustly detected in each composite spectrum, metal lines can be too faint to be detected in some regions. In these cases, we show the  $2\sigma$  upper limit of the line ratios as downward or leftward arrows.

The  $[\text{O III}]/\text{H}\beta$  versus  $[\text{O I}]/\text{H}\alpha$  diagram confirms the result found also in Fig. 8. Indeed, almost all points populate the bottom right-hand corner of the diagram, which we interpret as an indication of the relevance of ionization from shocks induced by the RPS events. The reference contours from SDSS nuclear regions (grey contours) or MaNGA outer discs (pink contours) indicate that these line ratios are not typical in local star-forming galaxies.

Furthermore, we note that the  $[\text{O III}]/\text{H}\beta$  versus  $[\text{S II}]/\text{H}\alpha$  diagram is not a particularly good discriminator for the conditions in the RPS tails, as all the regions examined here are consistent with both reference samples of unperturbed star-forming galaxies. Lastly, the  $[\text{O III}]/\text{H}\beta$  versus  $[\text{N II}]/\text{H}\alpha$  diagram indicates typical  $[\text{N II}]/\text{H}\alpha$  values consistent with photo-ionization from  $\text{H II}$  regions, as mentioned in the previous section. In this plane, the points present a larger scatter compared to the other diagrams, a feature which we ascribe to the metallicity sensitivity of this indicator. If used alone, this latter diagram would let us conclude that standard photoionization conditions prevail in RPS tails, while the peculiar  $[\text{O I}]/\text{H}\alpha$  ratios indicate a significant contribution of other ionization processes.

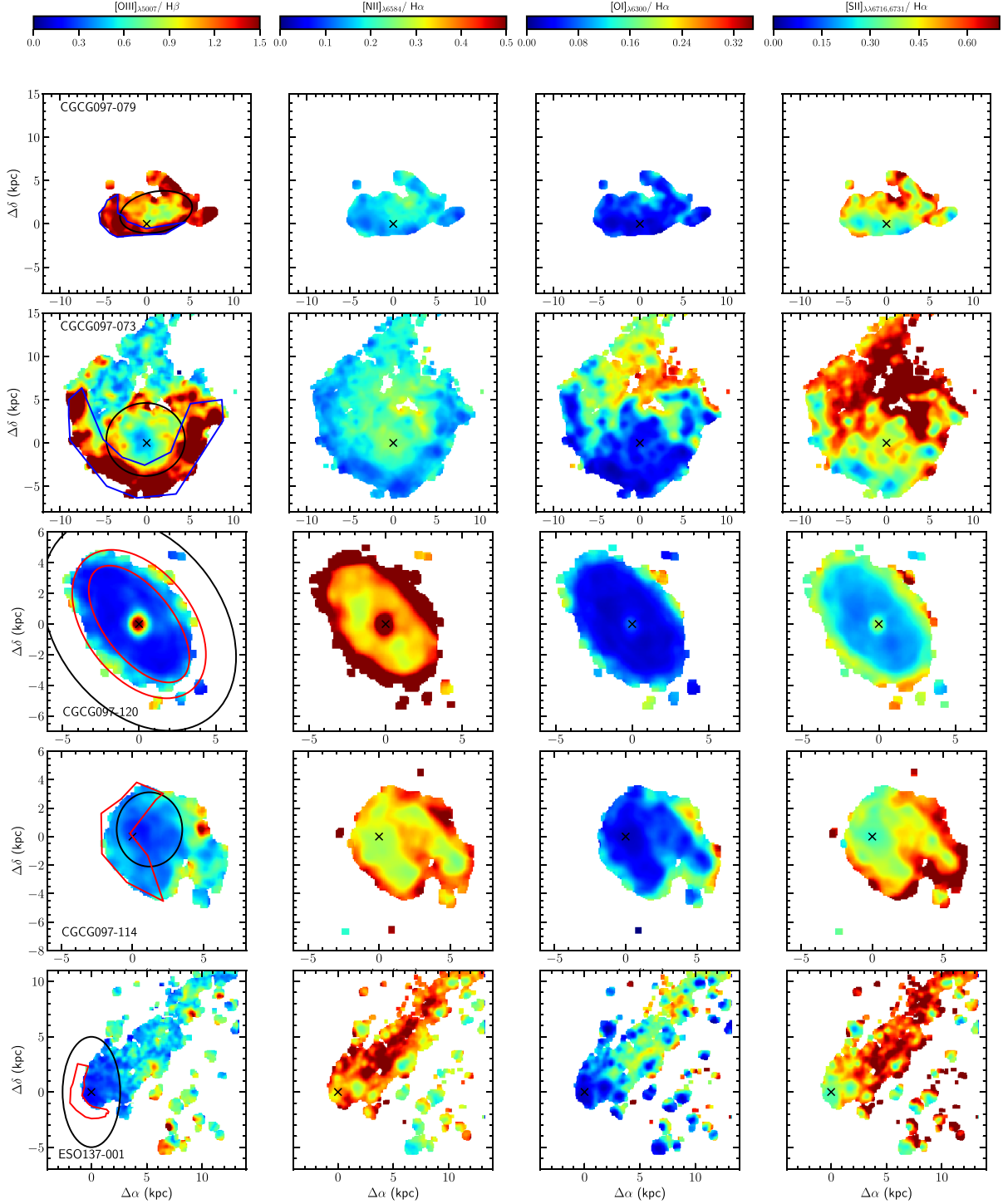
An outlier with respect to the other points is the CGCG097–087N, marked by a yellow triangle in the BPT diagrams. We notice in fact that this region shows a higher value compared to the other galaxies in all ratios on the  $x$ -axis of the BPT diagrams:  $[\text{N II}]/\text{H}\alpha$ ,  $[\text{O I}]/\text{H}\alpha$ , and  $[\text{S II}]/\text{H}\alpha$ . This is probably related to the tidal interaction driven by its higher mass companion CGCG097–087, as already discussed in Consolandi et al. (2017). The regions labelled BIG F1 and CGCG097–079 T2 are also outlying having lower values (or upper limits) on the  $[\text{O III}]/\text{H}\beta$  ratio. This could

indicate a weak ionization parameter but could also be a consequence of larger errors arising from shallower observations in these regions, or some skyline residuals.

To further quantify the unusual  $[\text{O I}]/\text{H}\alpha$  signature of RPS tails compared to galaxy discs, we have identified a rectangular region (red dashed rectangle in Fig. 8) in each BPT diagram that includes 11 of our 14 data points. We exclude the three outliers (CGCG097–087N, BIG F1, and CGCG097–079 T2) for the reasons described above. Each rectangle therefore includes  $79 \pm 11$  per cent of our sample. The fraction of MaNGA spaxels, representative of the outer discs of galaxies, that falls in each rectangle is 20 and 27 per cent for the  $[\text{N II}]$  and  $[\text{S II}]$  BPT diagrams, respectively. While the difference is significant, it can be ascribed to the limited metallicity and ionization parameter range of our sample. The same fraction of MaNGA spaxels, however, becomes a mere 2 per cent in the  $[\text{O I}]$  diagnostic diagram, i.e. there are virtually no galaxy discs in the region of the  $[\text{O I}]$  BPT diagram where the vast majority of RPS tails live. As a last test, we limit the fraction of MaNGA spaxels to those that have  $-0.55 < \log([\text{O III}]/\text{H}\beta) < -0.20$  ratios as low as the RPS tails. In this case, we are answering the question, how statistically significant is the  $[\text{O I}]/\text{H}\alpha$  elevated ratio among normal galaxies at fixed  $[\text{O III}]/\text{H}\beta$ ? The fraction of MaNGA spaxels raises only to 7 per cent, roughly an order of magnitude lower than for RPS tails. While selection effects are present even in the MaNGA sample, we are therefore confident that the specific locus occupied by RPS tails in the  $[\text{O I}]$  BPT diagnostic is not directly related to the properties of the gas ablated from the outer regions of galaxies but that it rather encodes more information on the physics of the stripping process.

## 5.2 The RPS interface regions

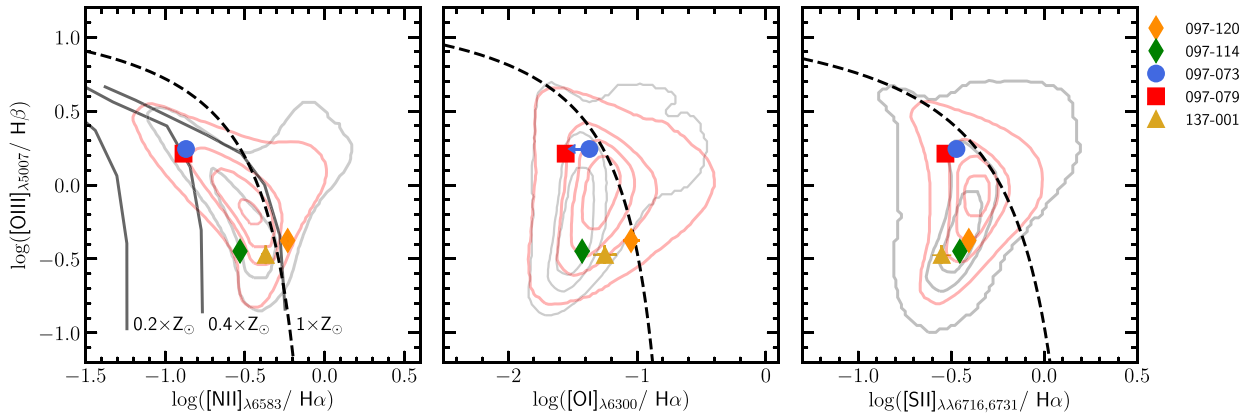
In the previous section, we have shown how the full sample shares common physical properties of the diffuse gas in the tails as inferred from the analysis of emission lines through BPT diagrams. Focusing instead on the RPS interface regions, i.e. the regions of interaction between the galaxy disc and the cluster ICM, it is possible to notice that different galaxies show different physical properties from the study of the emission line ratios. Specifically, we examine the  $[\text{O III}]/\text{H}\beta$ ,  $[\text{N II}]/\text{H}\alpha$ ,  $[\text{O I}]/\text{H}\alpha$ , and  $[\text{S II}]/\text{H}\alpha$  ratios to explore in more detail



**Figure 11.** From left- to right-hand panels:  $[\text{O III}]/\text{H}\beta$ ,  $[\text{N II}]/\text{H}\alpha$ ,  $[\text{O I}]/\text{H}\alpha$ , and  $[\text{S II}]/\text{H}\alpha$  line ratio maps for CGCG097–079, CGCG097–073, CGCG097–120, CGCG097–114, and ESO137–001 (top to bottom). For visualization purpose, we show only spaxels with  $S/N > 3.5$  for all emission lines considered. Black ellipses mark the stellar discs (see text for details). Blue polygonal regions (red for CGCG097–120, CGCG097–114, and ESO137–001 for visualization purpose) are the RPS interface regions extracted from the line ratios. The black crosses indicate the optical centre of the galaxies.

the ionization strength, metal content, and contribution of shocks in this interface region. We exclude from the analysis CGCG097–087 and CGCG097–087N because of the complex kinematics due to the existence of multiple velocity components along the line of sight in CGCG097–087 and the gravitational and tidal interactions in CGCG097–087N (Consolandi et al. 2017).

In Fig. 11, we present line ratio maps of five galaxies: CGCG097–079, CGCG097–073, CGCG097–120, CGCG097–114, and ESO137–001, ordered from top to bottom. The black ellipses in the left-hand panels represent the stellar disc of the five galaxies obtained at a SB limit of  $25 \text{ mag arcsec}^{-2}$  from  $r$ -band images of the galaxies extracted from the MUSE data cube. The polygonal



**Figure 12.** BPT diagnostic diagrams  $[\text{O III}]/\text{H}\beta$  versus  $[\text{N II}]/\text{H}\alpha$  (left-hand panel),  $[\text{O I}]/\text{H}\alpha$  (centre panel),  $[\text{S II}]/\text{H}\alpha$  (right-hand panel) derived from the composite spectra extracted from the five RPS interface regions of CGCG097–079, CGCG097–073, CGCG097–120, CGCG097–114, and ESO137–001 shown in Fig. 11 (blue/red polygonal regions). Error bars are obtained from the KUBEVIZ fit and leftward arrow in the central panel represents the  $2\sigma$  upper limit for  $[\text{O I}]/\text{H}\alpha$ . The grey and pink contours, and the solid and dashed black lines are as in Fig. 8.

regions (blue: CGCG097–079 and CGCG097–073, red: CGCG097–120, CGCG097–114, and ESO137–001) in the same panels mark the projected areas in which galaxies are likely to be interacting with the ICM. They are selected to be on the opposite side of the tails, at the edges of the  $\text{H}\alpha$  discs, where we can obtain good signal to noise on the emission lines and without a pre-selection on emission line ratios. In ESO137–001, this region is defined as ‘front’ in Fossati et al. (2016) and we show it for consistency with that work, although the low S/N of lines fainter than  $\text{H}\alpha$  limits our ability to show a spatially resolved map. The integrated spectrum of the region, however, provides a better S/N on most of the lines we use for the BPT diagnostics.

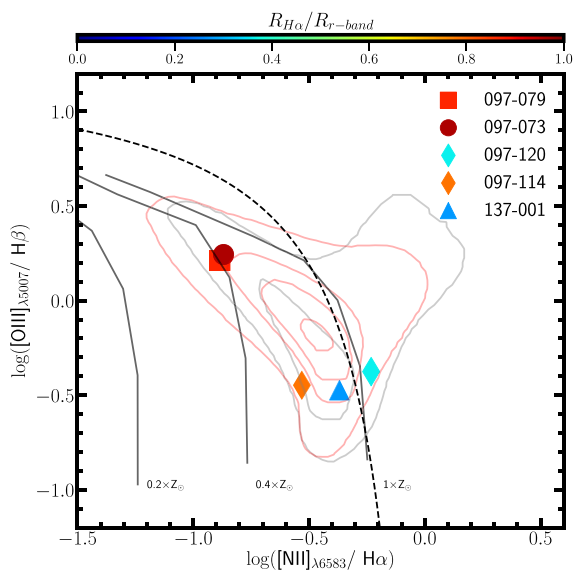
Focusing first on CGCG097–079 and CGCG097–073, we witness a clear increase of the  $[\text{O III}]/\text{H}\beta$  ratio in the RPS interface regions. The same areas are also peculiar for the low values of  $[\text{N II}]/\text{H}\alpha$ ,  $[\text{O I}]/\text{H}\alpha$ , and  $[\text{S II}]/\text{H}\alpha$  compared to the rest of the disc. This is consistent with a photo-ionization region with an elevated star formation and a high ionization parameter of the gas Fossati et al. (2016). Indeed, a local increase in specific SFR is usually connected with an increase also in the strength of the  $[\text{O III}]$  emission line (Kennicutt 1992). This is the first time in this series of papers in which we identify such a significant increase of  $[\text{O III}]/\text{H}\beta$  in these regions. Conversely, in CGCG097–120, CGCG097–114, and ESO137–001, we observe an enhanced  $[\text{N II}]/\text{H}\alpha$  ratio and low values of  $[\text{O III}]/\text{H}\beta$ . In particular, in CGCG097–120 the increase of  $[\text{N II}]/\text{H}\alpha$  ratio is located at the edge of the truncated ionized gas disc (red region of Fig. 11). This is well within the stellar disc and corresponds to the region where the stripping process is currently taking place. A similar increase in  $[\text{N II}]/\text{H}\alpha$  is present at the centre of the galaxy where, however, a weak AGN is present. Although only marginally visible in these maps, the integrated spectrum of the interface region of CGCG097–120 also shows elevated  $[\text{O I}]/\text{H}\alpha$  and  $[\text{S II}]/\text{H}\alpha$  compared to the inner regions of the disc. Similar features are present in the maps of CGCG097–114, although we caution that the interpretation of the higher value of  $[\text{N II}]/\text{H}\alpha$  suffers from a larger uncertainty on the line ratios, which are measured at  $3.5 < S/N < 5$ .

Fig. 11 gives us a spatially resolved view of the processes taking place at the ICM interface regions. Indeed, we see that different galaxies in our sample can be divided in two macro-branches: galaxies with high  $[\text{O III}]/\text{H}\beta$  and low  $[\text{N II}]/\text{H}\alpha$  (and with a similar behaviour if  $[\text{N II}]$  is replaced by  $[\text{O I}]$  or  $[\text{S II}]$ ) or low  $[\text{O III}]/\text{H}\beta$  and

relatively high  $[\text{N II}]/\text{H}\alpha$ . We now investigate whether these different line ratios can be related to different stages of evolution of the RPS process. To examine in more details the physical conditions of these galaxies and to obtain a more precise picture of this scenario, we generate high S/N composite spectra of the RPS interface regions (blue and red polygonal areas in Fig. 11) in the same way as in Section 5.1.

The BPT diagrams for these five regions are shown in Fig. 12 in which we present the five galaxies described above. Focusing on the left-hand panel, CGCG097–073 (blue circle) and CGCG097–079 (red square) populate the top left-hand region of the diagram corresponding to the top left-hand area of the SDSS/MaNGA samples of galaxies which are populated by objects with strong photoionization from  $\text{H II}$  regions. CGCG097–120 (orange diamond), CGCG097–114 (green diamond), and ESO137–001 (yellow triangle) settle in the central region of the BPT diagram and only CGCG097–120 is at the right of the separation line. A less strong separation along the  $x$ -axis can be found in the central and left-hand panels which indicate that these regions are more consistent with each other in terms of  $[\text{O I}]/\text{H}\alpha$  and  $[\text{S II}]/\text{H}\alpha$  ratios, with CGCG097–120 consistently showing the highest value for these ratios. We explicitly verified the impact of an uncertain GANDALF stellar continuum subtraction on these results by measuring the line ratios in the extreme assumption of not applying any continuum subtraction and we found the line ratios to vary by less than 10 per cent.

To better understand if the different line ratios arise due to an evolution of the RPS process, we focus next on whether the relative extension of the stellar and gas discs can be linked to these different line ratios. Indeed, the degree of truncation of the disc has often been regarded as a proxy for the progress of the RPS event with more truncated discs being at a more advanced stage in the stripping (Cortese et al. 2012; Tonnesen & Bryan 2012; Fossati et al. 2013). Qualitatively, it is possible to see that the gas disc of CGCG097–079, CGCG097–073, and CGCG097–114 have a similar extent to the stellar disc. Conversely, in CGCG097–120 and in ESO137–001, the region characterized by ionized gas emission is between half to one-third the size of the stellar disc. We quantify this by computing the  $R_{\text{H}\alpha}/R_{r\text{-band}}$  ratio, where  $R_{r\text{-band}}$  is the radius at the 25th mag arcsec $^{-2}$  of the stellar optical disc as previously seen in Fig. 11, and  $R_{\text{H}\alpha}$  is obtained from the  $\text{H}\alpha$  emission line at a surface brightness limit of  $\approx 2 \times 10^{-18}$  erg s $^{-1}$  cm $^{-2}$  arcsec $^{-2}$ , for all the



**Figure 13.** BPT diagnostic diagram  $[\text{O III}]/\text{H}\beta$  versus  $[\text{N II}]/\text{H}\alpha$  derived from the composite spectra extracted from the same regions of Fig. 12. Error bars are obtained from the KUBEVIZ fit. The colourbar represents the  $R_{\text{H}\alpha}/R_{r\text{-band}}$  ratio. The grey and pink contours, and the solid and dashed black lines are as in Fig. 8.

objects. We now attempt to bring together the line ratio diagnostics and the  $R_{\text{H}\alpha}/R_{r\text{-band}}$  ratio to identify if an evolutionary sequence can be identified in our sample.

In Fig. 13, we show the BPT diagram of the  $[\text{O III}]/\text{H}\beta$  versus  $[\text{N II}]/\text{H}\alpha$ , as already plotted in the left-hand panel of Fig. 12 and which appears to maximize the differences in the emission line properties of the five galaxies in our sample. We colour code the points extracted from the five interface regions of the galaxies by their value of  $R_{\text{H}\alpha}/R_{r\text{-band}}$ . It is immediately clear that the points in the top left-hand region of the diagram show no or negligible truncation of the gaseous disc (i.e. values close to unity for the  $R_{\text{H}\alpha}/R_{r\text{-band}}$  ratio). Conversely, CGCG097-120 and ESO137-001 show a significant truncation of the disc, with values of  $R_{\text{H}\alpha}/R_{r\text{-band}} \approx 0.36$  and  $\approx 0.27$ , respectively. We, thus, conclude that the two galaxies with high  $[\text{O III}]/\text{H}\beta$  appear to be undergoing a starburst at an early phase of the stripping process when they are still rich in cold/warm gas, while CGCG097-120 and ESO137-001 are already at a later stripping stage – as shown by the significant truncation – and their activity in the interface region is characterized by low levels of star formation and a more prominent contribution from shocks. Moreover, as shown in Table 1, CGCG097-120 exhibits the highest H I-deficiency of our sample indicating a significant lack of cold H I gas in its disc. An intermediate phase is shown by CGCG097-114, which does not show a starburst while still having an extended gaseous disc and a rich H I-content. We will discuss in detail the implications of these results in the following section.

## 6 DISCUSSION

Thanks to the increasing number of MUSE observations of active galaxies in the past years, we are now in the position of building a statistical sample of galaxies with the purpose of reaching a more complete view of the RPS events in the active cluster A1367. The rich multiwavelength data set available and the presence of an high fraction of blue galaxies infalling in the cluster at present days,

make A1367 an ideal environment to better understand how RPS can actively remove the ISM of galaxies and what are the typical time-scales leading to the quenching of the star formation activity.

With our eight galaxies, we can identify similarities and differences both for the properties inside the galaxies and their ionized gas tails, also taking into account morphology, location in the cluster, and line-of-sight velocity, with the ultimate goal of understanding the evolutionary stages of RPS. We now discuss the main effects of RPS on the activity of the galaxies and the physical conditions of their ionized gas tails.

### 6.1 RPS in CGCG097-79 and CGCG097-073

By focusing on the two galaxies CGCG097-079 and CGCG097-073, which we presented in this paper, it is possible to notice that both galaxies show ordered rotation with a velocity gradient (particularly obvious in CGCG097-079) in the direction of the gas flow. Furthermore, from the study of the velocity dispersion, we can assert that there are no significant regions of high turbulence ( $\sigma > 75 \text{ km s}^{-1}$ ) in the disc and in the tail of the two galaxies. Gavazzi et al. (2001) and Boselli & Gavazzi (2014) argued that the morphology at the far end of the tail of CGCG097-079, which becomes less streamlined and more clumpy, is suggestive of an interaction between the galaxies. With our MUSE data, we do not detect significant variations in the kinematics of the ionized gas in this region. While this does not rule out conclusively an interaction, the lack of kinematic signature does not offer support for this hypothesis, favouring instead a superposition in projection of these galaxies.

The diffuse gas filaments in these two galaxies do not exhibit bright and compact ionized gas regions, which are identified as H II regions in other RPS galaxies. While two regions can be identified in the tail of CGCG097-073 using the criteria detailed in Fossati et al. (2016), these are relatively extended ( $\text{FWHM} \approx 2\text{--}3$  times the MUSE PSF) and are a factor of 10 fainter than the H II regions found in ESO137-001 (Fossati et al. 2016) or in CGCG097-087 (Consolandi et al. 2017). These properties make them only candidate H II regions. Conversely, no source is identified in the tail of CGCG097-079. We will further discuss this piece of evidence in Section 6.3.1. The line ratios in these tails is typical of galaxies subject to RPS and confirms that they are undergoing a significant stripping process in the cluster hot halo. On the other hand, the compression of the gas in the leading edge of the two galaxies leads to a significant burst of star formation (Fig. 11), which results in the global SFR of the two galaxies being roughly a factor of 10 above the main sequence of galaxies of the same mass.

### 6.2 Star formation in the discs of RPS galaxies

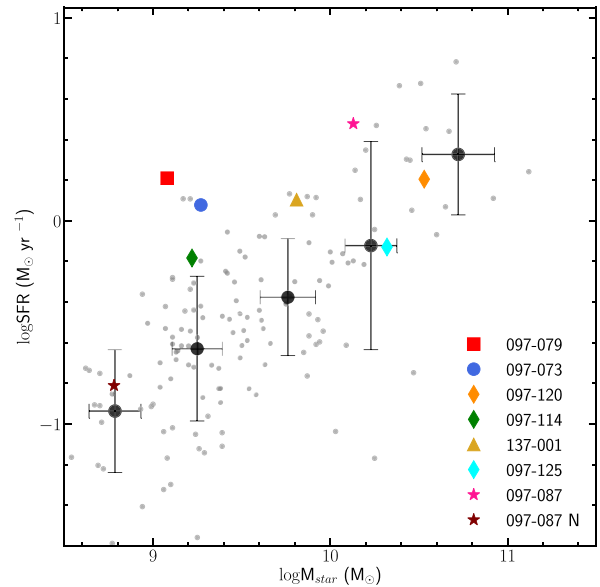
Several studies have shown that galaxies in clusters lose their gas via RPS. The lack of atomic gas and the decrease of the molecular component induce a decrease of the star formation activity (Balogh et al. 2004; Baldry et al. 2006; Boselli & Gavazzi 2006, 2014; Weinmann et al. 2006; Fumagalli et al. 2009; Gavazzi et al. 2010; Wilman, Zibetti & Budavári 2010). However, observations and simulations suggest that under certain conditions the SFR can be enhanced, generating a starburst (Donas et al. 1990; Fossati et al. 2012; Vulcani et al. 2018; Poggianti et al. 2019; Boselli et al. 2021b). Moreover, observations (Gavazzi et al. 1995; Vollmer & Huchtmeier 2003; Boselli et al. 2021b) and simulations (Troncoso Iribarren et al. 2016) show SF enhancement only in the interface region of the galaxies, suggesting that RPS is responsible for a compression at the leading edge of the stellar disc and a temporary increase in the SFR.

In this scenario, it is then possible to build an evolutionary sequence, in which galaxies infalling in clusters experience first a localized boost in the SFR, due to gas compression. After this enhancement, galaxies continue to lose their gas via RPS, finally quenching their star formation activity.

The different features observed in our sample of galaxies suggest that ionized gas in RPS interface regions shows different star formation properties at different stages of evolution. The increasing in  $[\text{O III}]/\text{H}\beta$  ratio observed in CGCG097–079 and CGCG097–073 could be a result of the SFR boost caused by compression of the ionized gas due to RPS, as also indicated by the presence of several bright star-forming knots in arc-shaped regions as shown in Figs 4 and 5 (see also Gavazzi et al. 1995). On the other hand, high values of  $[\text{N II}]/\text{H}\alpha$  and low  $[\text{O III}]/\text{H}\beta$  ratio in CGCG097–120, CGCG097–114, and ESO137–001 may be caused by a more advanced stripping phase when the outer regions of the galaxies have been completely emptied of gas and the star formation process has almost stopped. In this case, shocks could be dominating the residual ionization of the gas. As it can be seen in Fig. 11, the inner parts of these discs (particularly CGCG097–120) show line ratios consistent with photoionization which is indicative that the stripping process has not yet reached those inner regions. Furthermore, the progress of the RPS event can be seen from the amount of truncation of the star-forming disc (Fossati et al. 2013). For CGCG097–120 and ESO137–001 (see Fig. 13), the stellar disc is approximately twice as large as the star-forming region. A similar feature is visible in NGC 4330 in the Virgo cluster (Fossati et al. 2018) where ram pressure has removed the outer gas in the past 500 Myr and is now proceeding in the inner half of the stellar disc extension. Galaxies presenting low truncation in the disc, such as CGCG097–073 and CGCG097–079, settle in the top left-hand region of the BPT diagram where they experience an enhancement in the SFR. A disc truncation is not observed in CGCG097–114, even if it shows shock-like emission-line properties, making this object possibly in an intermediate stage between the gas compression phase and the truncation and quenching phase.

In Fig. 14, we show the relationship between the star formation rate and the stellar mass (main sequence, MS) for our sample of RPS galaxies, compared with the main sequence relation from the *Herschel* Reference Survey (grey filled dots) for H I normal galaxies which represent an unbiased sample of unperturbed galaxies at comparable redshifts (Boselli et al. 2015). In both samples, SFR values are obtained using the dust corrected  $\text{H}\alpha$  flux, limiting the systematic offsets that could arise when different tracers are used. Furthermore, as shown in Table 1, our RPS galaxies do not host a central AGN emission that could affect the SFR estimates, and in the case of CGCG097–120 which is classified as a LINER, we remove the central emission when computing the SFR.

CGCG097–079 and CGCG097–073 stand out as significant outliers, being  $\approx 1$  dex above the main sequence and are undergoing a strong starburst. CGCG097–087 is also above the main sequence but its edge-on morphology makes the analysis of the interface region and of the disc truncation more difficult. The other galaxies are generally on or slightly above the MS. This is not unexpected as even for the most truncated galaxy in our sample (CGCG097–120), the amount of star formation taking place in the outer disc is small compared to the inner disc. Other galaxies in the Virgo cluster, for instance NGC 4569 (Boselli et al. 2016a) and NGC 4330 (Fossati et al. 2018), show more truncated discs and a global SF activity that is a factor of 5–10 below the MS. We therefore expect that the galaxies in our A1367 sample, as well as the aforementioned Virgo galaxies, will become passive objects in the next 1–2 Gyr (Fossati et al. 2018). Moreover, the fact that only a fraction of galaxies show an active



**Figure 14.** Relationship between the star formation rate and the stellar mass (main sequence) for our sample of galaxies suffering RPS. The grey filled dots represent the mean main sequence relation extracted from the *Herschel* Reference Survey (HRS) for H I-normal galaxies (Boselli et al. 2015) and the black filled circles give the mean values and the standard deviations in different bins of stellar mass for these points.

starburst could be an indication that this is a relatively short-lived phase at the beginning of the stripping process and it is followed by a decrease in the star formation activity leading to quiescence. This is consistent with the study of a complete sample of galaxies in the Virgo cluster by Boselli et al. (2016b). These authors found that RPS could be responsible for the majority of the transformations of star-forming objects into passive ones in the cluster environment.

### 6.3 Properties of the RPS tails

The  $\text{H}\alpha$  emission line is mostly used to detect extended ionized gas around galaxies at a typical gas temperature of  $T \approx 10^4$  K (Osterbrock & Ferland 2006). All the objects, we followed-up with MUSE exhibit extended ionized gas tail, with the only exception of CGCG097–120 where the RPS event is seen almost face-on (Fossati et al. 2019).

Due to the extension of the tails, we have been able to study the ionization conditions of the gas, using the BPT diagrams (Fig. 10), in 14 independent spatial regions. A clear evidence stands out: 13/14 regions have an elevated  $[\text{O I}]/\text{H}\alpha$  ratio combined with a low  $[\text{O III}]/\text{H}\beta$  ratio, placing them on the right of the photoionization separation line. These ratios are highly unusual both for the nuclei and the outer discs of star-forming galaxies occurring in  $< 2$  per cent of the data sets drawn from these surveys. In our sample instead, the fraction of tails with elevated  $[\text{O I}]/\text{H}\alpha$  is close to 100 per cent. We therefore argue that these ratios are a very typical signature of the diffuse gas emission of RPS events.

The observed line ratio cannot be explained by photoionization alone or by classic shock-heating models, as first discussed in Yoshida et al. (2012). These authors conclude that the low-velocity shocks are the most likely origin of this line diagnostic signature. We cannot, however, rule out the contribution of heat conduction or radiation from the hot ICM and of magneto-hydrodynamic waves or cosmic-rays in generating this distinctive signature. Conversely, the tail regions cluster in the photoionization region of the  $[\text{S II}]/\text{H}\alpha$



diagram making the [S II] line less sensitive to the aforementioned processes than [O I]. Lastly, the individual data points are scattered over more than one order of magnitude in the [N II]/H $\alpha$  ratio, probably because this ratio is more sensitive to the gas metallicity (Wuyts et al. 2016). Despite this scatter, all the points are in the photoionization part of the [N II]/H $\alpha$  BPT diagram. We note that the ‘Diffuse Ionized Gas (DIG)’ associated with some nearby star-forming galaxies shows similar emission-line ratios (see e.g. Rand 1998). Binette et al. (2009) tried to explain the emission-line spectrum of the DIG in NGC 891 with a combined model of turbulent mixing layer and photoionization, reproducing the emission-line ratios except for [N II]/H $\alpha$  ratio (which could be modulated by metallicity). However, their model cannot reproduce the luminosity of the emission lines, and it remains unclear whether the same physical conditions apply in a completely different environment like the tails of RPS galaxies. Moreover, we can observe the same ionization features in the orphan cloud in A1367 that cannot be traced to a parent galaxy and has an unclear origin (Ge et al. 2021a). Poggianti et al. (2019) found similar trends for the [N II]/H $\alpha$  and [O I]/H $\alpha$  ratios in a sample of RPS tails behind 16 galaxies from the GASP survey. The authors conclude that the ionization mechanism is mostly photoionization. Our results make clear that diagnostic diagrams have to be interpreted with caution and that while some lines show ratios consistent with photoionization, the role of shocks or other processes cannot be neglected due to the peculiar [O I]/H $\alpha$  ratios found in these tails (see also Campitiello et al. 2021). We also note that the GASP sample include galaxies selected to have star formation activity in the tails, as a result, the dominance of photoionization could be higher than in our sample of galaxies selected solely on the presence of H $\alpha$  tails.

Focusing on the kinematics, our sample of tails mostly show ordered rotation consistent with the gas kinematics when it was still located in the galaxy disc (Fumagalli et al. 2014). The velocity dispersion is mostly below 50 km s<sup>-1</sup> and it increases only at large distances from the galaxies where turbulence starts to dominate over the ordered motion. Similar features are also observed in the MUSE data of galaxies subject to RPS in the Virgo cluster (Boselli et al. 2021b) or in galaxies in the GASP survey (Bellhouse et al. 2017). The ordered motion of the gas in the tail could be an additional evidence of the RPS mechanism and can be used to disentangle pure RPS events from other cases where gravitational interactions are at play (e.g. CGCG097–125 in BIG; Fossati et al. 2019). Vulcani et al. (2021) provides a complete checklist to identify RPS events from other environmental mechanisms. The presence of a companion is usually a clear indication of gravitational interactions, however, in the case of CGCG097–125, a companion might not be obviously found as the galaxy appears to be a post-merger remnant. Similarly, high-speed encounters in the cluster environments could lead to a companion being at large distances from the perturbed galaxy. In summary, the presence of a ionized gas tail, evidence of shocks and of ordered motion of the galaxy stellar disc and of the tail are excellent indications of RPS. However, in the rich environment of clusters, it is very likely that RPS galaxies are also perturbed by other mechanisms, further increasing the complexity of the interpretation.

### 6.3.1 Star formation in tails

The presence of SF in filaments around galaxies (Smith et al. 2010) is a highly debated topic, with contrasting results in literature. Vulcani et al. (2018) and Poggianti et al. (2019) show that there is a systematic enhancement in SF both in tails and galaxy discs at redshift  $0.04 < z < 0.1$  within the GASP survey. As mentioned

**Table 2.** The fraction of H $\alpha$  flux in compact knots (putative H II regions) to the total flux in the tails and filaments of the galaxies in our sample. The samples of compact knots are taken from Fossati et al. (2016, 2019) and Consolandi et al. (2017) for the literature sample presented in these papers; and are extracted using the same procedures for the two galaxies first presented in this work: CGCG097–073 and CGCG097–079. In the case of CGCG097–079, we identify no compact source in the tail and we assume the same flux of sources as in CGCG097–073 in computing the fraction, which we consider to be an upper limit.

Name	$f_{\text{H}\alpha, \text{H II}} / f_{\text{H}\alpha, \text{tail}}$
ESO137–001	0.18
CGCG097–087	0.30
CGCG097–073	<0.02
CGCG097–079	0.03
BIG F1	0.03
BIG F2	0.24
BIG F3	0.03

above, this enhancement is likely to increase the photoionization rate and therefore the energy input into the diffuse gas in the tails. This effect could be more pronounced in the GASP galaxies due to their selection method, where galaxies are followed up with MUSE if they have an asymmetric distribution of compact young knots outside the galaxy discs. Indeed, CGCG097–079 and CGCG097–073, despite their long tails, only show a few faint and relatively extended knots (which we classify as candidate H II regions) without a continuum counterpart in the Subaru *B*-band image. As a result, those galaxies would not satisfy the GASP selection. Conversely, ESO137–001 shows 33 compact SF knots mostly located in the inner part of the tail where the gas velocity dispersion is lower and the tail is younger (Fumagalli et al. 2014; Fossati et al. 2016), and CGCG097–087 presents SF knots throughout the entire extent of the tail covered by our MUSE observations (Consolandi et al. 2017). Table 2 presents the fraction of H $\alpha$  flux in compact knots to the total flux in the tails and filaments of the galaxies in our sample. In our sample, the fraction ranges from 2 to 30 per cent in the tail of CGCG097–087. At face value, this result is not in contrast with the conclusions of Poggianti et al. (2019) that the GASP RPS tails are powered by SF, since we cannot exclude that the diffuse gas in the tail is at least partially kept ionized by H II regions. However, the presence of extended tails with little or no detectable H II regions and the almost ubiquitous elevated [O I]/H $\alpha$  ratio in our tails could suggest a minor role of SF as ionization mechanism.

Our results are reinforced by observations of RPS tails in the Virgo cluster. NGC 4569 has the most extended RPS tail in the cluster (Boselli et al. 2016a) but without detectable regions of star formation. Boissier et al. (2012) analysed deep UV images of seven galaxies in the Virgo cluster with H I tails. These authors did not detect star formation in the tails which they interpreted with a lower star formation efficiency in these environments. With the samples that have been collected so far, it remains unclear what drives the presence or absence of compact knots of star formation in the tails. We postulate that the local ICM density and the inclination of the galaxy with respect to the wind could be relevant parameters leading to these differences but we cannot yet draw firm conclusions with the data at hand.

## 7 CONCLUSIONS

RPS is an efficient process for the removal of ionized gas from galaxies in rich clusters like A1367. The morphology and the turbulence of this cluster makes it an ideal environment to study the

physics of RPS with high spatial resolution due to its small distance to us. We presented new MUSE observations of a large mosaic of eight pointings covering CGCG097–079 and CGCG097–073, two galaxy members of A1367, and their respective DIG filaments arising from RPS. This analysis builds on previous work presented in a series of papers (Fumagalli et al. 2014; Fossati et al. 2016, 2019; Consolandi et al. 2017), which includes the study of galaxies suffering RPS in A1367, plus ESO137–001 which is falling in the Norma cluster. Despite this sample not being fully complete, it is large and homogeneous enough to put constraints on the physical properties of this type of galaxies and on the ionization conditions of their tails.

Focusing on the new observations of MUSE of CGCG097–079 and CGCG097–073 for which we presented an in-depth analysis of the kinematics and the ionization conditions of the gas, we show that these galaxies do not present significant regions of high turbulence in the disc and in their tails (within the limits allowed by the MUSE spectral resolution). Moreover, we do not find trace of compact star formation regions in the gas diffuse filaments. However, we do see a clear enhancement of SF in the leading edge of the two galaxies, due to the compression of the gas. The study of the emission line ratios in the tails show that they are typical of galaxies subject to RPS.

Adding these new results to the previous work from this series of papers, we obtain a better picture of the properties of galaxies falling in A1367.

Our analysis has produced the following results:

(i) From the analysis of the emission line ratios in the RPS interface regions and the relationship between the star formation rate and the stellar mass, we find that different ionization features are connected to different stages of the evolution. We find that this possible evolutionary sequence is strictly related to the ionization properties of the gas and the level of the gas truncation in the disc. We identify three main phases of the interaction. In an early phase, galaxies could experience a burst of star formation placing them above the MS and before any truncation of the gas disc takes place. In an intermediate phase, galaxies show a low ionization parameter in their star-forming disc with little or no truncation of the gaseous disc (these objects are generally on the MS). In a later phase, galaxies have strongly truncated gaseous discs possibly characterized by shocks at the edges of the disc and are moving below the star-forming MS.

(ii) The study of the emission line ratios in the tails in our sample of galaxies reveal a consistently elevated  $[O\text{I}]/H\alpha$  ratio combined with a low  $[O\text{III}]/H\beta$  ratio in all the regions of the tails. This is possibly the strongest spectroscopic signature of RPS in the extended gas. This feature cannot be explained by photoionization alone or by classical shock-heating models, and it only occurs in a small fraction of outer galaxy discs, while being very typical of hydrodynamic processes due to RPS. We conclude that in our representative sample of galaxies, shocks (or other complex ionization phenomena) play the most important role in setting the ionization conditions of these diffuse gas filaments.

(iii) Lastly, we find that only in  $\approx 50$  per cent of our objects (including RPS galaxies in Virgo), we observe compact H II regions in the tails. It is still unclear what drives the presence or absence of compact knots of star formation in the tails but it is becoming evident that this feature is not found in all the RPS events.

Our integral field spectroscopic follow-up of RPS galaxies in A1367 revealed many similarities but also key differences in a homogeneous sample of RPS objects in a single cluster. Despite these efforts, our sample remains relatively small and additional follow-up programmes and future observations targeting other rich clusters will continue to add constraints on the physical parameters

of these type of galaxies, ultimately bringing us closer to understand how RPS shapes the formation of the red sequence in rich clusters.

## ACKNOWLEDGEMENTS

We thank D. Wilman for help in developing the KUBEVIZ software. We thank the anonymous referee whose comments have improved the quality of this manuscript. This work is based on observations collected at the European Southern Observatory under ESO programmes 60.A-9349(A), 60.A-9100(G), 095.B-0023(A), 096.B-0019(A), and 098.B-0020(A) and, in part, on data collected at Subaru Telescope, which is operated by the National Astronomical Observatory of Japan. This project has received funding from the European Research Council (ERC) under the European Union’s Horizon 2020 research and innovation programme (grant agreement no. 757535) and by Fondazione Cariplo (grant no. 2018-2329). MS acknowledges the support from the NSF grant 1714764.

## DATA AVAILABILITY

The raw and reduced data used in this work are available from the ESO Science Archive. Post-processed data and analysis codes are available from the corresponding author upon request. The KUBEVIZ software is publicly available at: <https://github.com/matteofox/kubeviz>.

## REFERENCES

- Abdurro’uf et al., 2021, preprint ([arXiv:2112.02026](https://arxiv.org/abs/2112.02026))
- Bacon R. et al., 2010, in McLean I. S., Ramsay S. K., Takami H., eds, SPIE Conf. Ser. Vol. 7735, Ground-Based and Airborne Instrumentation for Astronomy III. SPIE, Bellingham, p. 773508
- Baldry I. K., Balogh M. L., Bower R. G., Glazebrook K., Nichol R. C., Bamford S. P., Budavari T., 2006, *MNRAS*, 373, 469
- Baldwin J. A., Phillips M. M., Terlevich R., 1981, *PASP*, 93, 5
- Balogh M. L., Baldry I. K., Nichol R., Miller C., Bower R., Glazebrook K., 2004, *ApJ*, 615, L101
- Bekki K., Couch W. J., 2003, *ApJ*, 596, L13
- Bellhouse C. et al., 2017, *ApJ*, 844, 49
- Binette L., Flores-Fajardo N., Raga A. C., Drissen L., Morisset C., 2009, *ApJ*, 695, 552
- Boissier S. et al., 2012, *A&A*, 545, A142
- Boselli A., Gavazzi G., 2006, *PASP*, 118, 517
- Boselli A., Gavazzi G., 2014, *A&AR*, 22, 74
- Boselli A., Gavazzi G., Combes F., Lequeux J., Casoli F., 1994, *A&A*, 285, 69
- Boselli A., Fossati M., Gavazzi G., Ciesla L., Buat V., Boissier S., Hughes T. M., 2015, *A&A*, 579, A102
- Boselli A. et al., 2016a, *A&A*, 587, A68
- Boselli A. et al., 2016b, *A&A*, 596, A11
- Boselli A. et al., 2018a, *A&A*, 614, A56
- Boselli A. et al., 2018b, *A&A*, 620, A164
- Boselli A., Fossati M., Sun M., 2021a, preprint ([arXiv:2109.13614](https://arxiv.org/abs/2109.13614))
- Boselli A. et al., 2021b, *A&A*, 646, A139
- Butcher H., Oemler A. J., 1984, *ApJ*, 285, 426
- Byrd G., Valtonen M., 1990, *ApJ*, 350, 89
- Campitiello M. G. et al., 2021, *ApJ*, 911, 144
- Chabrier G., 2003, *PASP*, 115, 763
- Chung A., van Gorkom J. H., Kenney J. D. P., Vollmer B., 2007, *ApJ*, 659, L115
- Conselice C. J., Gallagher J. S., III, Wyse R. F. G., 2001, *AJ*, 122, 2281
- Consolandi G., Gavazzi G., Fossati M., Fumagalli M., Boselli A., Yagi M., Yoshida M., 2017, *A&A*, 606, A83
- Cortese L., Gavazzi G., Boselli A., Iglesias-Paramo J., Carrasco L., 2004, *A&A*, 425, 429

- Cortese L., Gavazzi G., Boselli A., Franzetti P., Kennicutt R. C., O’Neil K., Sakai S., 2006, *A&A*, 453, 847
- Cortese L. et al., 2012, *A&A*, 544, A101
- Cowie L. L., McKee C. F., 1977, *ApJ*, 211, 135
- Dickey J. M., Salpeter E. E., 1984, *ApJ*, 284, 461
- Donas J., Buat V., Milliard B., Laget M., 1990, *A&A*, 235, 60
- Donnelly R. H., Markevitch M., Forman W., Jones C., David L. P., Churazov E., Gilfanov M., 1998, *ApJ*, 500, 138
- Dressler A., 1980, *ApJ*, 236, 351
- Dressler A. et al., 1997, *ApJ*, 490, 577
- Fasano G. et al., 2006, *A&A*, 445, 805
- Ferland G. J., Fabian A. C., Hatch N. A., Johnstone R. M., Porter R. L., van Hoof P. A. M., Williams R. J. R., 2008, *MNRAS*, 386, L72
- Forman W. et al., 2003, preprint ([arXiv:astro-ph/0301476](https://arxiv.org/abs/astro-ph/0301476))
- Fossati M., Gavazzi G., Boselli A., Fumagalli M., 2012, *A&A*, 544, A128
- Fossati M. et al., 2013, *A&A*, 553, A91
- Fossati M., Fumagalli M., Boselli A., Gavazzi G., Sun M., Wilman D. J., 2016, *MNRAS*, 455, 2028
- Fossati M. et al., 2018, *A&A*, 614, A57
- Fossati M., Fumagalli M., Gavazzi G., Consolandi G., Boselli A., Yagi M., Sun M., Wilman D. J., 2019, *MNRAS*, 484, 2212
- Fumagalli M., Krumholz M. R., Prochaska J. X., Gavazzi G., Boselli A., 2009, *ApJ*, 697, 1811
- Fumagalli M., Fossati M., Hau G. K. T., Gavazzi G., Bower R., Sun M., Boselli A., 2014, *MNRAS*, 445, 4335
- Gavazzi G., 1978, *A&A*, 69, 355
- Gavazzi G., Jaffe W., 1987, *A&A*, 186, L1
- Gavazzi G., Perola G. C., Jaffe W., 1981, *A&A*, 103, 35
- Gavazzi G., Contursi A., Carrasco L., Boselli A., Kennicutt R., Scodreggio M., Jaffe W., 1995, *A&A*, 304, 325
- Gavazzi G., Pierini D., Boselli A., Tuffs R., 1996, *A&AS*, 120, 489
- Gavazzi G., Boselli A., Mayer L., Iglesias-Paramo J., Vílchez J. M., Carrasco L., 2001, *ApJ*, 563, L23
- Gavazzi G., Cortese L., Boselli A., Iglesias-Paramo J., Vílchez J. M., Carrasco L., 2003, *ApJ*, 597, 210
- Gavazzi G., O’Neil K., Boselli A., van Driel W., 2006, *A&A*, 449, 929
- Gavazzi G., Fumagalli M., Cucciati O., Boselli A., 2010, *A&A*, 517, A73
- Gavazzi G., Consolandi G., Yagi M., Yoshida M., 2017, *A&A*, 606, A131
- Ge C. et al., 2019, *MNRAS*, 486, L36
- Ge C. et al., 2021a, *MNRAS*, 505, 4702
- Ge C. et al., 2021b, *MNRAS*, 508, L69
- Girardi M., Giuricin G., Mardirossian F., Mezzetti M., Boschin W., 1998, *ApJ*, 505, 74
- Gunn J. E., Gott J., Richard I., 1972, *ApJ*, 176, 1
- Hota A., Saikia D. J., 2007, *Bull. Astron. Soc. India*, 35, 121
- Hummel E., Saikia D. J., 1991, *A&A*, 249, 43
- Jáchym P., Combes F., Cortese L., Sun M., Kenney J. D. P., 2014, *ApJ*, 792, 11
- Kauffmann G. et al., 2003, *MNRAS*, 346, 1055
- Kenney J. D. P., Rubin V. C., Planesas P., Young J. S., 1995, *ApJ*, 438, 135
- Kenney J. D. P., Geha M., Jáchym P., Crowl H. H., Dague W., Chung A., van Gorkom J., Vollmer B., 2014, *ApJ*, 780, 119
- Kennicutt R. C., Jr, 1992, *ApJ*, 388, 310
- Kennicutt R. C., Jr, 1998, *ARA&A*, 36, 189
- Kennicutt R. C., Jr, Bothun G. D., Schommer R. A., 1984, *AJ*, 89, 1279
- Kewley L. J., Heisler C. A., Dopita M. A., Lumsden S., 2001, *ApJS*, 132, 37
- Kewley L. J., Groves B., Kauffmann G., Heckman T., 2006, *MNRAS*, 372, 961
- Larson R. B., Tinsley B. M., Caldwell C. N., 1980, *ApJ*, 237, 692
- Lee J., Kimm T., Katz H., Rosdahl J., Devriendt J., Slyz A., 2020, *ApJ*, 905, 31
- Maiolino R., Mannucci F., 2019, *A&AR*, 27, 3
- Merritt D., 1983, *ApJ*, 264, 24
- Miley G., 1980, *ARA&A*, 18, 165
- Moore B., Katz N., Lake G., Dressler A., Oemler A., 1996, *Nature*, 379, 613
- Nulsen P. E. J., 1982, *MNRAS*, 198, 1007
- Oosterloo T., van Gorkom J., 2005, *A&A*, 437, L19
- Osterbrock D. E., Ferland G. J., eds, 2006, *Astrophysics of Gaseous Nebulae and Active Galactic Nuclei*, 2nd edn. University Science Books, Sausalito, CA
- Peng Y.-j. et al., 2010, *ApJ*, 721, 193
- Poggianti B. M. et al., 2017, *ApJ*, 844, 48
- Poggianti B. M. et al., 2018, *ApJ*, 853, 200
- Poggianti B. M. et al., 2019, *MNRAS*, 482, 4466
- Rand R. J., 1998, *ApJ*, 501, 137
- Rich J. A., Kewley L. J., Dopita M. A., 2011, *ApJ*, 734, 87
- Rines K., Geller M. J., Kurtz M. J., Diaferio A., 2003, *AJ*, 126, 2152
- Roberts I. D. et al., 2021, *A&A*, 650, A111
- Sakai S., Kennicutt R. C., Jr, van der Hulst J. M., Moss C., 2002, *ApJ*, 578, 842
- Salomé P. et al., 2006, *A&A*, 454, 437
- Sarzi M. et al., 2006, *MNRAS*, 366, 1151
- Schellenberger G., Reiprich T. H., 2015, *A&A*, 583, L2
- Scott T. C. et al., 2010, *MNRAS*, 403, 1175
- Scott T. C., Usero A., Brinks E., Boselli A., Cortese L., Bravo-Alfaro H., 2013, *MNRAS*, 429, 221
- Scott T. C., Usero A., Brinks E., Bravo-Alfaro H., Cortese L., Boselli A., Argudo-Fernández M., 2015, *MNRAS*, 453, 328
- Sivanandam S., Rieke M. J., Rieke G. H., 2014, *ApJ*, 796, 89
- Smith R. J. et al., 2010, *MNRAS*, 408, 1417
- Soto K. T., Lilly S. J., Bacon R., Richard J., Conseil S., 2016, *Astrophysics Source Code Library*, record ascl:1602.003
- Steinhauser D., Haider M., Kapferer W., Schindler S., 2012, *A&A*, 544, A54
- Sun M., Murray S. S., 2002, *ApJ*, 576, 708
- Sun M., Donahue M., Voit G. M., 2007, *ApJ*, 671, 190
- Sun M., Donahue M., Roediger E., Nulsen P. E. J., Voit G. M., Sarazin C., Forman W., Jones C., 2010, *ApJ*, 708, 946
- Tonnesen S., Bryan G. L., 2010, *ApJ*, 709, 1203
- Tonnesen S., Bryan G. L., 2012, *MNRAS*, 422, 1609
- Tremonti C. A. et al., 2004, *ApJ*, 613, 898
- Troncoso Iribarren P., Padilla N., Contreras S., Rodríguez S., García-Lambas D., Lagos C., 2016, *Galaxies*, 4, 77
- Troncoso-Iribarren P., Padilla N., Santander C., Lagos C. D. P., García-Lambas D., Rodríguez S., Contreras S., 2020, *MNRAS*, 497, 4145
- Valdes F., Gupta R., Rose J. A., Singh H. P., Bell D. J., 2004, *ApJS*, 152, 251
- Vollmer B., Huchtmeier W., 2003, *A&A*, 406, 427
- Vulcani B. et al., 2018, *ApJ*, 866, L25
- Vulcani B. et al., 2021, *ApJ*, 914, 27
- Wang Q. D., Owen F., Ledlow M., 2004, *ApJ*, 611, 821
- Weilbacher P. M. et al., 2020, *A&A*, 641, A28
- Weinmann S. M., van den Bosch F. C., Yang X., Mo H. J., 2006, *MNRAS*, 366, 2
- Wetzel A. R., Tinker J. L., Conroy C., van den Bosch F. C., 2013, *MNRAS*, 432, 336
- Whitmore B. C., Gilmore D. M., Jones C., 1993, *ApJ*, 407, 489
- Wilman D. J., Zibetti S., Budavári T., 2010, *MNRAS*, 406, 1701
- Woudt P. A., Kraan-Korteweg R. C., Lucey J., Fairall A. P., Moore S. A. W., 2008, *MNRAS*, 383, 445
- Wuyts E. et al., 2016, *ApJ*, 827, 74
- Yagi M. et al., 2010, *AJ*, 140, 1814
- Yagi M., Yoshida M., Gavazzi G., Komiyama Y., Kashikawa N., Okamura S., 2017, *ApJ*, 839, 65
- York D. G. et al., 2000, *AJ*, 120, 1579
- Yoshida M. et al., 2002, *ApJ*, 567, 118
- Yoshida M. et al., 2008, *ApJ*, 688, 918
- Yoshida M., Yagi M., Komiyama Y., Furusawa H., Kashikawa N., Hattori T., Okamura S., 2012, *ApJ*, 749, 43
- Zhang B. et al., 2013, *ApJ*, 777, 122
- Zibetti S., Charlot S., Rix H.-W., 2009, *MNRAS*, 400, 1181
- Zwicky F., Herzog E., Wild P., 1968, *Catalogue of Galaxies and of Clusters of Galaxies*. California Institute of Technology, Pasadena, CA

This paper has been typeset from a  $\text{\TeX}/\text{\LaTeX}$  file prepared by the author.