

SUPPORTING INFORMATION

Self-accommodating honeycomb networks from supramolecular self-assembly of *s*-indacene-tetrone on silver surfaces

Nataliya Kalashnyk, Sylvain Clair*

Aix Marseille Univ, CNRS, IM2NP, Marseille, France

* Corresponding author: S. Clair, sylvain.clair@cnrs.fr

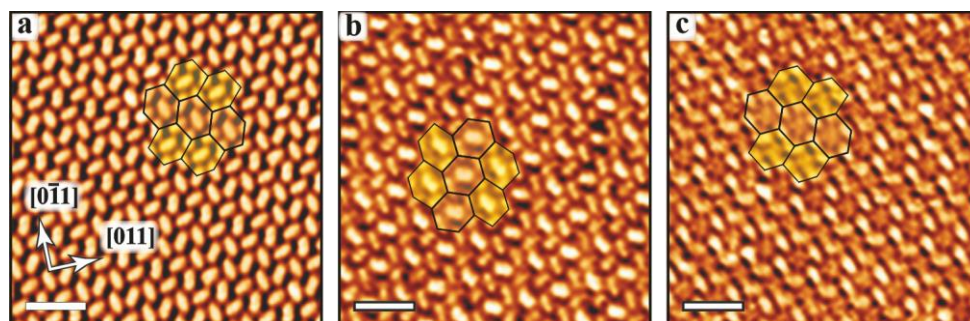


Figure S1: STM images of the self-accommodating honeycomb supramolecular phase HC1 formed by INDO_4 on $\text{Ag}(100)$, and registered under three distinct tip imaging conditions. Visualization of the backbones of INDO_4 type A and type B adsorption configurations as (a) oval-shaped features of same brightness, (b) bright and dim protrusions, respectively, and (c) in reverse way. Scale bars: (a-c) 3 nm. Tunneling parameters: (a) 280 pA, -1450 mV; (b) 250 pA, -1930 mV; (c) 250 pA, -1100 mV.

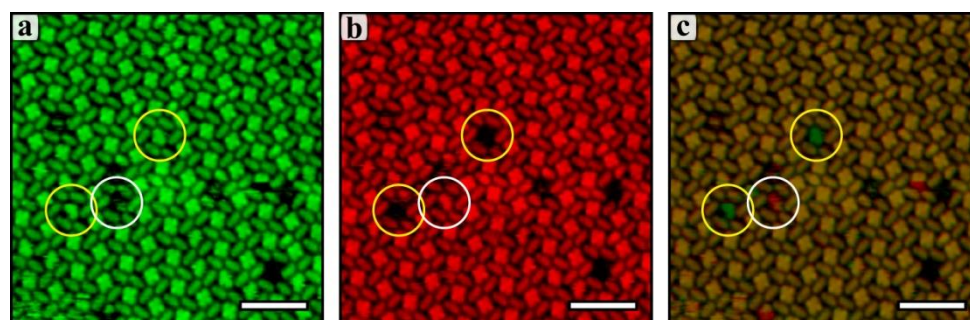


Figure S2: Subsequent STM images of the same region of the honeycomb pattern HC2 formed by INDO_4 on $\text{Ag}(111)$ surface. (a,b) Initial and final positions of the mobile molecular species indicated by yellow and white contours in STM images that were acquired with a time separation of 3 min. (c) Overlay of the two images modified into red and green color scale, respectively, such that stationary STM features appear approximately yellow and mobile species in green or red. Scale bars: (a-c) 4 nm. Tunneling parameters: (a-c) 220 pA, -1450 mV.

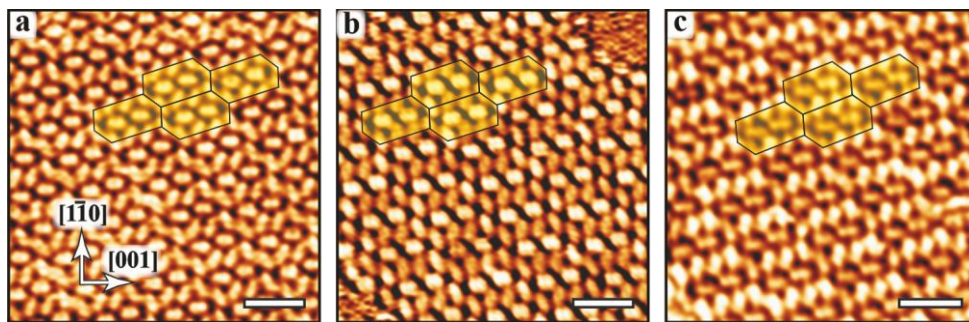


Figure S3: STM images of the self-accommodating honeycomb supramolecular phase HC3 formed by INDO₄ on Ag(110), and registered under three distinct tip imaging conditions. Visualization of the backbones of INDO₄ type A and type B adsorption configurations as (a) oval-shaped features of similar brightness, (b) bright and dim protrusions, respectively, and (c) in reverse way. Scale bars: (a-c) 3 nm. Tunneling parameters: (a) 250 pA, 770 mV; (b) 250 pA, 1400 mV; (c) 220 pA, -1400 mV.

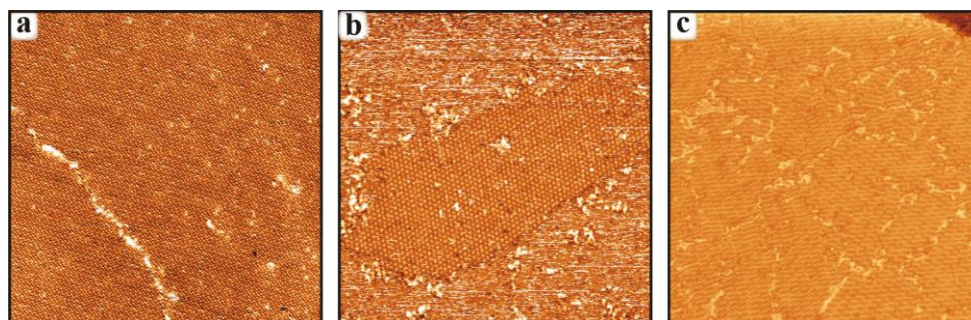


Figure S4: Large scale STM images ($100 \times 100 \text{ nm}^2$) of the phases (a) HC1 on Ag(100), (b) HC2 on Ag(111) and (c) HC3 on Ag(110).