



**HAL**  
open science

# Global weak solutions of the Serre–Green–Naghdi equations with surface tension

Billel Guelmame

► **To cite this version:**

Billel Guelmame. Global weak solutions of the Serre–Green–Naghdi equations with surface tension. *Annales de l'Institut Henri Poincaré C, Analyse non linéaire*, In press, 10.4171/aihpc/99. hal-03585433v2

**HAL Id: hal-03585433**

**<https://hal.science/hal-03585433v2>**

Submitted on 3 Apr 2023

**HAL** is a multi-disciplinary open access archive for the deposit and dissemination of scientific research documents, whether they are published or not. The documents may come from teaching and research institutions in France or abroad, or from public or private research centers.

L'archive ouverte pluridisciplinaire **HAL**, est destinée au dépôt et à la diffusion de documents scientifiques de niveau recherche, publiés ou non, émanant des établissements d'enseignement et de recherche français ou étrangers, des laboratoires publics ou privés.

# GLOBAL WEAK SOLUTIONS OF THE SERRE–GREEN–NAGHDI EQUATIONS WITH SURFACE TENSION

BILLEL GUELMAME

ABSTRACT. We consider in this paper the Serre–Green–Naghdi equations with surface tension. Smooth solutions of this system conserve an  $H^1$ -equivalent energy. We prove the existence of global weak dissipative solutions for any relatively small-energy initial data. We also prove that the Riemann invariants of the solutions satisfy a one-sided Oleinik inequality.

**AMS Classification :** 35G25; 35Q35; 76B15; 35B65.

**Key words :** Serre–Green–Naghdi equations, shallow water, surface tension, weak solutions, energy dissipation.

## CONTENTS

1. Introduction	1
2. Review of previous results	6
3. Main results	8
4. An approximated system	9
5. Uniform estimates	12
6. Precompactness	23
7. The global weak solutions	35
Appendix A. Some classical lemmas	36
Appendix B. The energy equation	37
References	38

## 1. INTRODUCTION

The Euler equations are usually used to describe water waves in oceans and Channels. Due to the difficulties to resolve the Euler equations both numerically and analytically, several simpler approximations have been proposed in the literature for different regimes. In the shallow water regime, the main assumption is on the ratio of the mean water depth  $\bar{h}$  to the wave wave-length  $\iota$ , the shallowness parameter  $\sigma = \bar{h}^2/\iota^2$  is considered to be small. Beside the shallowness condition, a restriction on the amplitude of the wave  $a$  can be considered assuming that the nonlinearity (or the amplitude) parameter  $\epsilon = a/\bar{h}$  is small. Considering the shallow water regime with the small-amplitude condition [31, 39] ( $\sigma \ll 1$ ,  $\epsilon \ll 1$ ). Many equations have been derived to model the propagation of the

waves, such as the Camassa–Holm equation [10], the Korteweg–deVries (KdV) equation [38] and some variants of the Boussinesq equations [8, 9, 58]. Considering shallow water with possibly large-amplitude waves ( $\sigma \ll 1$ ,  $\epsilon \approx 1$ ), by neglecting the terms of order  $\mathcal{O}(\sigma)$  in the water waves equations, Saint-Venant obtained the Nonlinear Shallow Water (or Saint-Venant) equations [57]. Smooth solutions of the Saint-Venant equations have a precision of order  $\mathcal{O}(t\sigma)$ , where  $t$  denotes the time [39]. In order to obtain a better precision, one can keep the  $\mathcal{O}(\sigma)$  terms in the equations and only neglect the  $\mathcal{O}(\sigma^2)$  terms. This leads to the Serre–Green–Naghdi equations. Those equations were firstly derived by Serre [53], rediscovered independently by Su and Gardner [56] and another time by Green, Laws and Naghdi [23, 24]. The Serre–Green–Naghdi equations are the most general and most precise, but also the most complicated of the models of shallow water equations presented above. One can always keep higher order terms in the equation (keeping terms of order  $\mathcal{O}(\sigma^2)$  for example), this will lead to equations with a better precision, but with higher order derivatives. Those equations are not accurate due to the high order derivative terms which make their numerical resolution much slower.

The influence of the surface tension is generally neglected on water waves problems. However, in certain cases, the effect of the surface tension is appreciable. Indeed, Longuet-Higgins [45] showed that the surface tension is significant in certain localized regions, and cannot be neglected near the sharp crest of the breaking wave. Other experimental studies showed the importance of the surface tension on thin layers [21, 48, 49]. Those experimentations have been done for different fluids including water and mercury. Various mathematical studies of water waves equations with surface tension exist in the literature, we refer to [2, 3, 4, 7, 12, 13, 29, 46, 52, 54, 60].

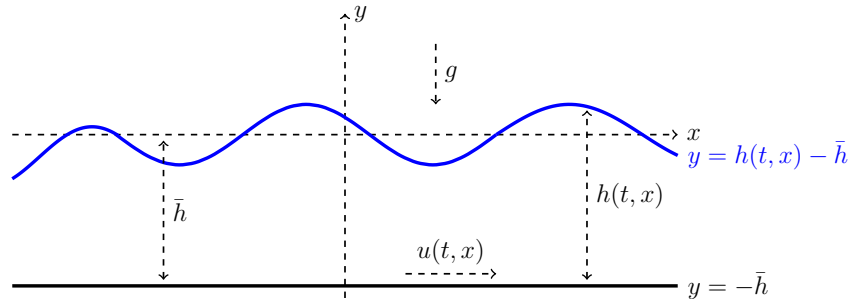


FIGURE 1. Fluid domain.

Considering a two-dimensional coordinate system  $Oxy$  (Figure 1) and an incompressible fluid layer. Considering the still fluid level at  $y = 0$ , the fluid layer is bounded between the flat bottom at  $y = -\bar{h}$  and a free surface  $y = h(t, x) - \bar{h}$ , where  $h$  is the total water depth. Assuming long waves in shallow water with possibly large-amplitude. The Serre–Green–Naghdi system (without neglecting the surface tension influence) reads

$$h_t + [hu]_x = 0, \quad (1.1a)$$

$$[hu]_t + \left[ hu^2 + \frac{1}{2}gh^2 + \mathcal{R} \right]_x = 0, \quad (1.1b)$$

$$\mathcal{R} \stackrel{\text{def}}{=} \frac{1}{3} h^3 (-u_{tx} - u u_{xx} + u_x^2) - \gamma (h h_{xx} - \frac{1}{2} h_x^2), \quad (1.1c)$$

where  $u$  denotes the depth-averaged horizontal velocity,  $g$  is the gravitational acceleration and  $\gamma > 0$  is a constant (the ratio of the surface tension coefficient to the density). The classical Serre–Green–Naghdi equations (without surface tension) are recovered taking  $\gamma = 0$ . The Serre–Green–Naghdi (SGN $_\gamma$ ) equations (1.1) have been derived in [17] as a generalisation of the classical SGN equations ( $\gamma = 0$ ). As mentioned above, the Serre–Green–Naghdi equations are obtained in the shallow water regime by neglecting all the  $\mathcal{O}(\sigma^2)$  terms. An extension of the Serre–Green–Naghdi system with surface tension (1.1) have been derived in [37] by neglecting only the  $\mathcal{O}(\sigma^3)$  terms, local well-posedness and justification of the extended system have been studied in [35, 36, 37].

Due to the appearance of time derivatives in (1.1c), it is convenient to apply the inverse of the Sturm–Liouville operator

$$\mathcal{L}_h \stackrel{\text{def}}{=} h - \frac{1}{3} \partial_x h^3 \partial_x, \quad (1.2)$$

the system (1.1) becomes then

$$h_t + [h u]_x = 0, \quad (1.3a)$$

$$u_t + u u_x + g h_x = -\mathcal{L}_h^{-1} \partial_x \left\{ \frac{2}{3} h^3 u_x^2 - [\gamma h - \frac{1}{3} g h^3] h_{xx} + \frac{1}{2} \gamma h_x^2 \right\}. \quad (1.3b)$$

When  $h > 0$ , the operator  $\mathcal{L}_h^{-1}$  is well defined and smoothes two derivatives (see Lemma 5.2 below). This is not enough to control the term containing  $h_{xx}$  on the right-hand side of (1.3b). To overcome this problem, we use the definition of  $\mathcal{L}_h$  to rewrite the system (1.3) in the equivalent form

$$h_t + [h u]_x = 0, \quad (1.4a)$$

$$u_t + u u_x + 3\gamma h^{-2} h_x = -\mathcal{L}_h^{-1} \partial_x \left\{ \frac{2}{3} h^3 u_x^2 - \frac{3}{2} \gamma h_x^2 + \frac{1}{2} g h^2 - 3\gamma \ln(h) \right\}. \quad (1.4b)$$

Smooth solutions of the SGN $_\gamma$  equations (1.4) satisfy the energy equation (see Appendix B)

$$\mathcal{E}_t + \mathcal{D}_x = 0, \quad (1.5)$$

where

$$\mathcal{E} \stackrel{\text{def}}{=} \frac{1}{2} h u^2 + \frac{1}{2} g (h - \bar{h})^2 + \frac{1}{6} h^3 u_x^2 + \frac{1}{2} \gamma h_x^2, \quad (1.6)$$

$$\mathcal{D} \stackrel{\text{def}}{=} u \mathcal{E} + u \left( \mathcal{R} + \frac{1}{2} g h^2 - \frac{1}{2} g \bar{h}^2 \right) + \gamma h h_x u_x. \quad (1.7)$$

Linearising the SGN $_\gamma$  equations (1.4) around the constant state  $(h, u) = (\bar{h}, 0)$  and looking for travelling waves having the form  $\exp\{(kx - \omega t) i\}$  we obtain the dispersion relation  $\omega^2 = g \bar{h} k^2 (1 + \gamma k^2 / g) / (1 + \bar{h}^2 k^2 / 3)$ . Defining the Bond number  $B = g \bar{h}^2 / \gamma$ , the SGN $_\gamma$  equations are linearly dispersive if and only if  $B \neq 3$ . In the dispersionless case ( $B = 3$ ), the SGN $_\gamma$  equations admit weakly singular peakon travelling wave solutions [19, 47]. More travelling wave solutions are obtained in [41]. A mathematical study of the Serre–Green–Naghdi equations with or without surface tension have been widely studied in the literature. We refer to [1, 28, 30, 34, 39, 42] for the case  $\inf h_0 > 0$  and to [40] for the shoreline problem ( $\text{sign}(h) = \mathbb{1}_{x > x_0}$ ). In [1, 30, 42], a proof of the local well-posedness of the SGN equations

without surface tension ( $\gamma = 0$ ) is given. Kazerani has proved in [34] the existence of global smooth solutions of the SGN equations with viscosity for small initial data. A full justification of the model (1.4) is given in [28, 39]. By “full justification” we mean local well-posedness of the system and, the solution is close to the solution of the water waves equations with the same initial data. In a recent work [25], we have obtained a precise blow-up criterion of (1.4) (Theorem 2.3 below) and we proved that such scenario occurs for a class of small-energy initial data (Theorem 2.6 below). Then, in general, smooth solutions cannot exist globally in time.

This paper investigates the existence of global weak solutions of (1.4) with  $\gamma > 0$ . To the best of the author’s knowledge, the existence of global weak solutions for all the different variants of the inviscid Serre–Green–Naghdi equations has not been established before. Here, the existence of global weak solutions is established by approximating the system (1.4) with another system that admits global smooth solutions. We recover weak solutions of (1.4) by taking the limit. The proof involves several steps.

We consider initial data satisfying  $\int \mathcal{E}_0 dx < \sqrt{g\gamma}\bar{h}^2$ , which is propagated due to the energy conservation (1.5). Using the fact that the energy is equivalent to  $\|(h - \bar{h}, u)\|_{H^1}^2$  and a Sobolev-like inequality (essentially  $H^1 \hookrightarrow L^\infty$ , see Proposition 2.4 below) we obtain a uniform lower bound of  $h$ . This is important for ensuring the invertibility of the operator  $\mathcal{L}_h$  defined in (1.2). Smooth solutions of (1.4) blow-up in finite time due to the presence of quadratic terms in the associated Riccati-type equations. In order to approximate the  $\text{SGN}_\gamma$  system, we use a cut-off to obtain a linear growth that leads to global smooth solutions (due to Gronwall’s inequality). However, cutting-off directly as in [63, 64] violates the energy conservation (1.5). The choice the approximated system is crucial and must conserve the properties of the  $\text{SGN}_\gamma$  system. In Section 4 below, we chose carefully a suitable approximated system that is globally well-posed and satisfies the energy equation (5.11). In order to pass to the limit, some uniform estimates are needed. In the previous studies of smooth solutions of the SGN equations, some estimates of the operator  $\mathcal{L}_h^{-1}$  have been obtained, those estimates usually depend on the  $L^\infty$  norm of  $h_x$  which may blow-up for weak solutions. In Lemma 5.2 below, we present some new estimates of  $\mathcal{L}_h^{-1}$  depending only on the  $L^\infty$  norm of  $h$  and  $1/h$ . As in [59, 63, 64], an  $L_{loc}^p$  estimate of  $(h_x, u_x)$  with  $p < 3$  is also needed. In our case and due to the complexity of the  $\text{SGN}_\gamma$  equations, we have to use a change of coordinates to obtain this estimate (see Lemma 5.6 below). We use then some classical compactness arguments with Young measures [32] and a generalised compensated compactness result [22] to pass to the limit. We follow in this step the techniques developed in [59] for the Camassa–Holm equation and in [63, 64] for the variational wave equation. The structure of the  $\text{SGN}_\gamma$  system being more complex, we have to handle the weak limit of some nonlinear terms that do not exist in [63, 64] (see Lemma 6.4 for example). Finally, the global weak solutions of (1.4) are obtained by taking the limit in the approximated system, and are shown to dissipate the energy and satisfy the one-sided Oleinik inequality (3.6).

The existence of global solutions to the Boussinesq equations [9, 58]

$$h_t + [hu]_x = 0, \quad u_t + uu_x + gh_x = u_{txx} \quad (1.8)$$

have been studied in [5, 51]. Schonbek [51] regularised the conservation of the mass by adding a defusion term, i.e.,  $h_t + [hu]_x = \varepsilon h_{xx}$ , with  $\varepsilon > 0$ . She proved the global well-posedness of the regularised system, and she obtained global weak solutions of (1.8) by taking  $\varepsilon \rightarrow 0$ . In [5], Amick proved that if the initial data,  $(h_0, u_0)$ , is smooth, then the solution,  $(h, u)$ , obtained by Schonbek [51] is also smooth and is the unique smooth solution of the Boussinesq equations (1.8).

The  $\text{SGN}_\gamma$  equations (1.1) can be compared with the dispersionless regularised Saint-Venant (rSV) system presented in [11]. The rSV system can be obtained replacing  $\mathcal{R}$  in (1.1c) by  $\varepsilon \mathcal{R}_{rSV}$  with

$$\mathcal{R}_{rSV} \stackrel{\text{def}}{=} h^3 (u_x^2 - u_{xt} - u u_{xx}) - g h^2 (h h_{xx} + \frac{1}{2} h_x^2)$$

and  $\varepsilon \geq 0$ , the classical Saint-Venant system is recovered taking  $\varepsilon = 0$ . Weakly singular shock profiles of the rSV equations are studied in [50]. In [44], Liu et al. proved the local well-posedness of the rSV equations and identified a class of initial data such that the corresponding solutions blow-up in finite time. The rSV system have been generalised recently to obtain a regularisation of any unidimensional barotropic Euler (rE) system [26]. The system (1.1) can also be compared with the modified Serre–Green–Naghdi (mSGN) equations derived in [14] to improve the dispersion relation of the classical SGN system. The mSGN system presented in [14] can be obtained replacing  $\mathcal{R}$  in (1.1c) by

$$\mathcal{R}_{mSGN} \stackrel{\text{def}}{=} \frac{1}{3} (1 + \frac{3}{2} \beta) h^3 (-u_{tx} - u u_{xx} + u_x^2) - \frac{1}{2} \beta g h^2 (h h_{xx} + \frac{1}{2} h_x^2).$$

where  $\beta$  is a positive parameter. The rSV, rE and mSGN conserve  $H^1$ -equivalent energies and have similar properties as the  $\text{SGN}_\gamma$  system (1.1). One may can obtain the existence of global weak solutions of those equations following the proof given in this paper.

The study of the classical Serre–Green–Naghdi equations is more challenging. Indeed, when  $\gamma = 0$ , the energy (1.6) fails to control the  $H^1$  norm of  $h - \bar{h}$ , then, a lower bound of  $h$  cannot be obtained. This bound is crucial to obtaining the blow-up result [25] and the global existence in this paper for  $\gamma > 0$ . To the author's knowledge, the questions of the blow-up of smooth solutions and the existence of global solutions of the SGN equations without surface tension are still open. However, Bae and Granero-Belinchén [6] proved recently that for a class of periodic initial data satisfying  $\inf h_0 = 0$ , smooth solutions cannot exist globally in time. For this class of initial data, it is not known if smooth solutions exist locally in time, but if they do, a singularity must appear in finite time.

This paper is organised as follows. In Section 2 we present the local well-posedness of (1.4) and some blow-up results. Section 3 is devoted to define weak solutions of (1.4) and to present the main result which is the existence of global dissipative weak solutions. We discuss in Section 4 the properties needed of the approximated system and we propose a suitable choice. Section 5 is devoted to prove the existence of global smooth solutions of the approximated system and to obtain some uniform estimates. We obtain strong precompactness results in Section 6. The existence of the global weak solutions is proved in Section 7. In Appendix A we recall some classical lemmas that are used in this paper. Appendix B is devoted to obtain the energy equations of the approximated system and of (1.4).

## 2. REVIEW OF PREVIOUS RESULTS

We consider the Serre–Green–Naghdi equations with surface tension in this form

$$h_t + [hu]_x = 0, \quad (2.1a)$$

$$u_t + uu_x + 3\gamma h^{-2}h_x = -\mathcal{L}_h^{-1}\partial_x \{\mathcal{C} + F(h)\}, \quad (2.1b)$$

$$u(0, x) = u_0(x), \quad h(0, x) = h_0(x), \quad (2.1c)$$

with

$$\mathcal{C} \stackrel{\text{def}}{=} \frac{2}{3}h^3u_x^2 - \frac{3}{2}\gamma h_x^2, \quad (2.2)$$

$$F(h) \stackrel{\text{def}}{=} \frac{1}{2}gh^2 - \frac{1}{2}g\bar{h}^2 - 3\gamma \ln(h/\bar{h}). \quad (2.3)$$

The system (2.1) is locally well-posed in the Sobolev space

$$H^s(\mathbb{R}) \stackrel{\text{def}}{=} \left\{ f, \|f\|_{H^s(\mathbb{R})}^2 \stackrel{\text{def}}{=} \int_{\mathbb{R}} (1 + |\xi|^2)^s |\hat{f}(\xi)|^2 d\xi < \infty \right\}$$

where  $s \geq 2$  is a real number.

**Theorem 2.1.** *Let  $\gamma > 0$ ,  $\bar{h} > 0$  and  $s \geq 2$ , then, for any  $(h_0 - \bar{h}, u_0) \in H^s(\mathbb{R})$  satisfying  $\inf_{x \in \mathbb{R}} h_0(x) > 0$  there exists  $T > 0$  and  $(h - \bar{h}, u) \in C([0, T], H^s(\mathbb{R})) \cap C^1([0, T], H^{s-1}(\mathbb{R}))$  a unique solution of (2.1) such that*

$$\inf_{(t,x) \in [0,T] \times \mathbb{R}} h(t, x) > 0.$$

Moreover, the solution satisfies the conservation of the energy

$$\frac{d}{dt} \int_{\mathbb{R}} \left( \frac{1}{2}h u^2 + \frac{1}{2}g(h - \bar{h})^2 + \frac{1}{6}h^3 u_x^2 + \frac{1}{2}\gamma h_x^2 \right) dx = 0. \quad (2.4)$$

*Remark 2.2.* The solution given in Theorem 2.1 depends continuously on the initial data, i.e., If  $(h_0^1 - \bar{h}, u_0^1), (h_0^2 - \bar{h}, u_0^2) \in H^s$ , such that  $h_0^1, h_0^2 \geq h_{min} > 0$ , then for all  $t \leq T$  there exists a constant  $C(\|(h^2 - \bar{h}, u^2)\|_{L^\infty([0,t], H^s)}, \|(h^1 - \bar{h}, u^1)\|_{L^\infty([0,t], H^s)}) > 0$ , such that

$$\|(h^1 - h^2, u^1 - u^2)\|_{L^\infty([0,t], H^{s-1})} \leq C \|(h_0^1 - h_0^2, u_0^1 - u_0^2)\|_{H^s}.$$

The proof of Theorem 2.1 is classic and omitted in this paper, see [26, 27, 28, 30, 39, 44] for more details. It is clear from Theorem 2.1 that if the solution at time  $T$  remains in  $H^s$  and  $\inf_x h(T, x) > 0$  then one can extend the interval of existence. This leads to the blow-up criterion

$$T_{max} < \infty \implies \liminf_{t \rightarrow T_{max}} \inf_{x \in \mathbb{R}} h(t, x) = 0 \quad \text{or} \quad \limsup_{t \rightarrow T_{max}} \|(h - \bar{h}, u)\|_{H^s} = \infty,$$

where  $T_{max}$  is the maximum time existence of the solution. This criterion has been improved in [25] to

**Theorem 2.3.** ([25]) *Let  $T_{max}$  be the maximum time existence of the solution given by Theorem 2.1, then*

$$T_{max} < \infty \implies \liminf_{t \rightarrow T_{max}} \inf_{x \in \mathbb{R}} h(t, x) = 0 \quad \text{or} \quad \begin{cases} \liminf_{t \rightarrow T_{max}} \inf_{x \in \mathbb{R}} u_x(t, x) = -\infty, \\ \text{and} \\ \limsup_{t \rightarrow T_{max}} \|h_x(t, x)\|_{L^\infty} = \infty, \end{cases}$$

which is equivalent to the second criterion

$$T_{max} < \infty \implies \limsup_{t \rightarrow T_{max}} \|u_x(t, x)\|_{L^\infty} = \infty \quad \text{and} \quad \begin{cases} \liminf_{t \rightarrow T_{max}} \inf_{x \in \mathbb{R}} h(t, x) = 0, \\ \text{or} \\ \limsup_{t \rightarrow T_{max}} \|h_x(t, x)\|_{L^\infty} = \infty. \end{cases}$$

Noting that the energy conserved in (2.4) is equivalent to the  $H^1$  norm of  $(h - \bar{h}, u)$ . Due to the continuous embedding  $H^1 \hookrightarrow L^\infty$ , we can obtain a uniform (on time) estimate of  $\|(h - \bar{h}, u)\|_{L^\infty}$ , and, if the initial energy is not very large compared to  $\bar{h}$ , we can obtain a lower bound of  $h$ . For that purpose, we present the following proposition.

**Proposition 2.4.** *For  $\gamma > 0$ ,  $\bar{h} > 0$ , let  $E$  be a positive number such that*

$$0 < E < \sqrt{g\gamma} \bar{h}^2, \quad (2.5)$$

Defining

$$\begin{aligned} h_{min} &\stackrel{\text{def}}{=} \bar{h} - (g\gamma)^{-\frac{1}{4}} \sqrt{E}, & h_{max} &\stackrel{\text{def}}{=} \bar{h} + (g\gamma)^{-\frac{1}{4}} \sqrt{E}, \\ u_{max} &\stackrel{\text{def}}{=} -u_{min} &\stackrel{\text{def}}{=} 3^{\frac{1}{4}} \sqrt{E} / h_{min}. \end{aligned}$$

Then, for any  $(h - \bar{h}, u) \in H^1$  satisfying  $\int \mathcal{E} \, dx \leq E$ , we have

$$0 < h_{min} \leq h \leq h_{max} < 2\bar{h}, \quad u_{min} \leq u \leq u_{max}, \quad (2.6)$$

*Remark 2.5.* Taking an initial data satisfying  $\int_{\mathbb{R}} \mathcal{E}_0 \, dx \leq E$ , then, due to the energy conservation (2.4) and Proposition 2.4 the depth  $h$  cannot vanish. The blow-up criteria given in Theorem 2.3 becomes then

$$T_{max} < \infty \implies \inf_{[0, T_{max}) \times \mathbb{R}} u_x(t, x) = -\infty \quad \text{and} \quad \limsup_{t \rightarrow T_{max}} \|h_x(t, x)\|_{L^\infty} = \infty.$$

*Proof of Proposition 2.4.* The Young inequality  $\frac{1}{2}a^2 + \frac{1}{2}b^2 \geq \pm ab$  implies that

$$\begin{aligned} E &\geq \int_{\mathbb{R}} \mathcal{E} \, dy \geq \int_{\mathbb{R}} \left( \frac{1}{2} g (h - \bar{h})^2 + \frac{1}{2} \gamma h_x^2 \right) \, dx \\ &\geq \sqrt{g\gamma} \left( \int_{-\infty}^x (h - \bar{h}) h_x \, dy - \int_x^{\infty} (h - \bar{h}) h_x \, dy \right) \\ &\geq \sqrt{g\gamma} |h - \bar{h}|^2, \end{aligned}$$



which implies that  $h_{min} \leq h \leq h_{max}$ . Doing the same estimates with  $u$  one obtains

$$\begin{aligned} E &\geq \int_{\mathbb{R}} \mathcal{E} \, dy \geq \int_{\mathbb{R}} \left( \frac{1}{2} h u^2 + \frac{1}{6} h^3 u_x^2 \right) \, dy \\ &\geq \frac{1}{\sqrt{3}} h_{min}^2 \left( \int_{-\infty}^x u u_x \, dy - \int_x^{\infty} u u_x \, dy \right) \\ &\geq \frac{1}{\sqrt{3}} h_{min}^2 |u|^2, \end{aligned}$$

the last inequality ends the proof of  $u_{min} \leq u \leq u_{max}$ .  $\square$

As in [25], we can build some initial data with small initial data such that the corresponding solutions blow-up in small time.

**Theorem 2.6.** ([25]) *For any  $T > 0$  and  $E$  satisfying (2.5), there exist*

- $(h_0 - \bar{h}, u_0) \in C_c^\infty(\mathbb{R})$  satisfying  $\int_{\mathbb{R}} \mathcal{E}_0 \, dx \leq E$  such that the corresponding solution of (2.1) blows-up at finite time  $T_{max} \leq T$  and

$$\inf_{[0, T_{max}) \times \mathbb{R}} u_x(t, x) = -\infty, \quad \sup_{[0, T_{max}) \times \mathbb{R}} h_x(t, x) = \infty, \quad \inf_{[0, T_{max}) \times \mathbb{R}} h_x(t, x) > -\infty.$$

- $(\tilde{h}_0 - \bar{h}, \tilde{u}_0) \in C_c^\infty(\mathbb{R})$  satisfying  $\int_{\mathbb{R}} \tilde{\mathcal{E}}_0 \, dx \leq E$  such that the corresponding solution of (2.1) blows-up at finite time  $\tilde{T}_{max} \leq T$  and

$$\inf_{[0, \tilde{T}_{max}) \times \mathbb{R}} \tilde{u}_x(t, x) = -\infty, \quad \inf_{[0, \tilde{T}_{max}) \times \mathbb{R}} \tilde{h}_x(t, x) = -\infty, \quad \sup_{[0, \tilde{T}_{max}) \times \mathbb{R}} \tilde{h}_x(t, x) < \infty.$$

### 3. MAIN RESULTS

Since smooth solutions fail to exist globally in time, even for arbitrary small-energy initial data, we shall define weak solutions of the SGN $_\gamma$  system (2.1). For that purpose, we define the domain  $\mathfrak{D} \subset H^1$

$$\mathfrak{D} \stackrel{\text{def}}{=} \left\{ (h - \bar{h}, u) \in H^1, \int_{\mathbb{R}} \mathcal{E} \, dx < \sqrt{g\gamma} \bar{h}^2 \right\}. \quad (3.1)$$

**Definition 3.1.** *We say that  $(h - \bar{h}, u) \in L^\infty(\mathbb{R}^+, H^1) \cap \text{Lip}(\mathbb{R}^+, L^2)$  is a weak solution of (2.1) if it satisfies the initial condition (2.1c) with (2.1a) in  $L^2$  and for all  $\varphi \in C_c^\infty((0, \infty) \times \mathbb{R})$  we have*

$$\int_{\mathbb{R}^+ \times \mathbb{R}} \left\{ \{u_t + u u_x + 3\gamma (h)^{-2} h_x\} \mathcal{L}_h \varphi - \varphi_x \{\mathcal{E} + F(h)\} \right\} \, dx \, dt = 0. \quad (3.2)$$

Moreover,  $(h(t, \cdot) - \bar{h}, u(t, \cdot))$  belongs to  $\mathfrak{D}$  for all  $t \geq 0$  and  $(h - \bar{h}, u) \in C_r(\mathbb{R}^+, H^1)$ . More precisely, for all  $t_0 \geq 0$  we have

$$\lim_{\substack{t \rightarrow t_0 \\ t > t_0}} \|(h(t, \cdot) - h(t_0, \cdot), u(t, \cdot) - u(t_0, \cdot))\|_{H^1} = 0. \quad (3.3)$$

Now we can state the main result of this paper.

**Theorem 3.2.** *Let  $\bar{h}, g, \gamma > 0$  and  $(h_0 - \bar{h}, u_0) \in \mathfrak{D}$ , then there exist a global weak solution  $(h - \bar{h}, u) \in L^\infty([0, \infty), H^1(\mathbb{R})) \cap C([0, \infty) \times \mathbb{R})$  of (2.1) in the sense of Definition 3.1. Moreover,*

- *For any bounded set  $\Omega = [t_1, t_2] \times [a, b] \subset (0, \infty) \times \mathbb{R}$  and  $\alpha \in [0, 1)$  there exists  $C_{\alpha, \Omega} > 0$  such that*

$$\int_{\Omega} [|h_t|^{2+\alpha} + |h_x|^{2+\alpha} + |u_t|^{2+\alpha} + |u_x|^{2+\alpha}] dx dt \leq C_{\alpha, \Omega}. \quad (3.4)$$

- *The solution dissipates the energy*

$$\int_{\mathbb{R}} \mathcal{E} dx \leq \int_{\mathbb{R}} \mathcal{E}_0 dx. \quad (3.5)$$

- *There exists  $C > 0$  such that the solution satisfies the Oleinik inequality*

$$u_x \pm \sqrt{3\gamma} h^{-\frac{3}{2}} h_x \leq C \left(1 + \frac{1}{t}\right), \quad \text{a.e. } (t, x) \in (0, \infty) \times \mathbb{R}. \quad (3.6)$$

*Remark 3.3.* The constants  $C_{\alpha, \Omega}$  and  $C$  depend on  $\bar{h}, \gamma, g$  and  $\int_{\mathbb{R}} \mathcal{E}_0 dx$  but not on the initial data.

In order to obtain global solutions of (2.1), we use a suitable approximation of the system (2.1) that admits global smooth solutions. Using some compactness arguments and taking the limit we recover a global weak solution of (2.1). In the next section we present the choice of the suitable approximated system.

#### 4. AN APPROXIMATED SYSTEM

The blow-up of the solutions given in Theorem 2.6 is due to the Riccati-type equations. In order to prevent the singularities from appearing, we modify slightly the Riccati-type equations.

**4.1. Riccati-type equations.** Defining the Riemann invariants<sup>1</sup>  $R$  and  $S$

$$R \stackrel{\text{def}}{=} u + 2\sqrt{3\gamma} h^{-\frac{1}{2}}, \quad S \stackrel{\text{def}}{=} u - 2\sqrt{3\gamma} h^{-\frac{1}{2}}, \quad (4.1)$$

$$\lambda \stackrel{\text{def}}{=} u - \sqrt{3\gamma} h^{-\frac{1}{2}}, \quad \eta \stackrel{\text{def}}{=} u + \sqrt{3\gamma} h^{-\frac{1}{2}}. \quad (4.2)$$

The system (2.1) can be rewritten as

$$R_t + \lambda R_x = -\mathcal{L}_h^{-1} \partial_x \{\mathcal{E} + F(h)\}, \quad (4.3a)$$

$$S_t + \eta S_x = -\mathcal{L}_h^{-1} \partial_x \{\mathcal{E} + F(h)\}. \quad (4.3b)$$

Defining

$$P \stackrel{\text{def}}{=} h R_x = h u_x - \sqrt{3\gamma} h^{-\frac{1}{2}} h_x,$$

$$Q \stackrel{\text{def}}{=} h S_x = h u_x + \sqrt{3\gamma} h^{-\frac{1}{2}} h_x,$$

---

<sup>1</sup>Those quantities are constants along the characteristics if the right-hand side of (2.1) is zero.

we have

$$u_x = \frac{P + Q}{2h}, \quad h_x = h^{\frac{1}{2}} \frac{Q - P}{2\sqrt{3}\gamma}. \quad (4.4)$$

From the definition of  $\mathcal{L}_h$  in (1.2), we obtain that

$$\partial_x \mathcal{L}_h^{-1} \partial_x \Psi = -3h^{-3} \Psi + 3 \partial_x \mathcal{L}_h^{-1} \left( h \int_{-\infty}^x h^{-3} \Psi \right) \quad (4.5)$$

for any smooth function  $\Psi$  satisfying  $\Psi(\pm\infty) = 0$ . Then,

$$\mathcal{C} + \frac{1}{3} h^3 \partial_x \mathcal{L}_h^{-1} \partial_x \mathcal{C} = h^3 \partial_x \mathcal{L}_h^{-1} \left( h \int_{-\infty}^x h^{-3} \mathcal{C} \right). \quad (4.6)$$

From (1.1c) and (2.1b) we obtain

$$\begin{aligned} \mathcal{R} &= -\frac{1}{3} h^3 [u_t + u u_x + 3\gamma h^{-2} h_x]_x + \mathcal{C} \\ &= \mathcal{C} + \frac{1}{3} h^3 \partial_x \mathcal{L}_h^{-1} \partial_x \{ \mathcal{C} + F(h) \} \end{aligned} \quad (4.7)$$

$$= h^3 \partial_x \mathcal{L}_h^{-1} \left( h \int_{-\infty}^x h^{-3} \mathcal{C} \right) + \frac{1}{3} h^3 \partial_x \mathcal{L}_h^{-1} \partial_x F(h). \quad (4.8)$$

Let the characteristics  $X_x, Y_x$  starting from  $x$  defined as the solutions of the ordinary differential equations

$$\frac{d}{dt} X_x(t) = \eta(t, X_x(t)), \quad X_x(0) = x, \quad (4.9)$$

$$\frac{d}{dt} Y_x(t) = \lambda(t, Y_x(t)), \quad Y_x(0) = x. \quad (4.10)$$

Differentiation (4.3) with respect to  $x$ , and using (4.8) we obtain the Riccati-type equations

$$\frac{d^\lambda}{dt} P \stackrel{\text{def}}{=} P_t + \lambda P_x = -\frac{1}{8h} P^2 + \frac{1}{8h} Q^2 - 3h^{-2} \mathcal{R}, \quad (4.11a)$$

$$\frac{d^\eta}{dt} Q \stackrel{\text{def}}{=} Q_t + \eta Q_x = -\frac{1}{8h} Q^2 + \frac{1}{8h} P^2 - 3h^{-2} \mathcal{R}, \quad (4.11b)$$

where  $\frac{d^\lambda}{dt}, \frac{d^\eta}{dt}$  denote the derivatives along the characteristics with the speed  $\lambda, \eta$  respectively. We prove below that the term  $\mathcal{R}$  is bounded. Also, we obtain a bound of the integral of  $P^2$  (respectively  $Q^2$ ) on the characteristics  $X_x$  (respectively  $Y_x$ ). Then, the singularities given in Theorem 2.6 appear due to the term  $P^2$  in (4.11a) and/or the term  $Q^2$  in (4.11b).

**4.2. The choice of the approximated system.** In order to obtain a system that admits global smooth solutions, we linearise the negative quadratic terms on the right-hand side of (4.11) on the neighbourhood of  $-\infty$ . For that purpose, let  $\varepsilon > 0$  and we define as in [63, 64]

$$\chi_\varepsilon(\zeta) \stackrel{\text{def}}{=} \left( \zeta + \frac{1}{\varepsilon} \right)^2 \mathbb{1}_{(-\infty, -\frac{1}{\varepsilon}]}(\zeta) = \begin{cases} \left( \zeta + \frac{1}{\varepsilon} \right)^2, & \zeta \leq -1/\varepsilon, \\ 0, & \zeta > -1/\varepsilon. \end{cases} \quad (4.12)$$

Noting that (4.11) is like a derivative of (2.1), then, adding terms to (4.11) will involve some primitive terms in (2.1) which are not uniquely defined and cannot vanish at  $\infty$  and  $-\infty$ . That is why the system (2.1) will not be approximated simply by adding  $\chi_\varepsilon$  to (4.11) as in [63, 64].

Our goal is to obtain a system on the form

$$\begin{aligned} h_t + [hu]_x &= h^+, \\ u_t + uu_x + 3\gamma h^{-2}h_x &= -\mathcal{L}_h^{-1}\partial_x \{\mathcal{E} + F(h)\} + u^+, \end{aligned}$$

where  $h^+, u^+$  are suitable terms to be chosen. As in Section 4.1, we obtain

$$\begin{aligned} P_t + \lambda P_x &= -\frac{1}{8h}P^2 + \frac{1}{8h}\chi_\varepsilon(P) + \frac{1}{8h}Q^2 - 3h^{-2}\mathcal{R} + \underline{P}, \\ Q_t + \eta Q_x &= -\frac{1}{8h}Q^2 + \frac{1}{8h}\chi_\varepsilon(Q) + \frac{1}{8h}P^2 - 3h^{-2}\mathcal{R} + \underline{Q}, \end{aligned}$$

where

$$\begin{aligned} \underline{P} &\stackrel{\text{def}}{=} h(u^+)_x + u_x h^+ - \sqrt{3\gamma}h^{-1/2}(h^+)_x + \frac{1}{2}\sqrt{3\gamma}h^{-3/2}h_x h^+ - \frac{1}{8h}\chi_\varepsilon(P), \\ \underline{Q} &\stackrel{\text{def}}{=} h(u^+)_x + u_x h^+ + \sqrt{3\gamma}h^{-1/2}(h^+)_x - \frac{1}{2}\sqrt{3\gamma}h^{-3/2}h_x h^+ - \frac{1}{8h}\chi_\varepsilon(Q). \end{aligned}$$

Due to the definition (4.12), when  $\zeta$  is near  $-\infty$ , the term  $\chi_\varepsilon(\zeta) - \zeta^2$  behaves as a linear map. This prevents singularities from appearing in finite time. From (1.6), we have

$$\mathcal{E} = \frac{1}{2}hu^2 + \frac{1}{2}g(h - \bar{h})^2 + \frac{1}{12}hP^2 + \frac{1}{12}hQ^2.$$

Then the energy equation (1.5) becomes

$$\begin{aligned} \mathcal{E}_t + \mathcal{D}_x &= huu^+ + \frac{1}{2}u^2h^+ + g(h - \bar{h})h^+ + \left(\frac{1}{6}h^2u_x^2 + \frac{\gamma}{2h}h_x^2\right)h^+ \\ &\quad + \frac{1}{6}hP\underline{P} + \frac{1}{6}hQ\underline{Q} + \frac{1}{48}P\chi_\varepsilon(P) + \frac{1}{48}Q\chi_\varepsilon(Q) \\ &\leq huu^+ + \frac{1}{2}u^2h^+ + g(h - \bar{h})h^+ + \left(\frac{1}{6}h^2u_x^2 + \frac{\gamma}{2h}h_x^2\right)h^+ \\ &\quad + \frac{1}{6}hP\underline{P} + \frac{1}{6}hQ\underline{Q}. \end{aligned} \tag{4.13}$$

The goal is to find  $h^+$  and  $u^+$  such that

- The right-hand side of (4.13) is a derivative of some quantity (i.e.,  $[\dots]_x$ ), which will insure that  $\int_{\mathbb{R}} \mathcal{E} dx$  is a decreasing function of time.
- When  $P, Q$  are large, we have  $\underline{P} = \mathcal{O}(P)$  and  $\underline{Q} = \mathcal{O}(Q)$ . This insures (with Gronwall inequality) that no singularity will appear in finite time.

We can write the right-hand side of (4.13) as  $T_1 + T_2$  such that

$$\begin{aligned} T_1 &= g(h - \bar{h})h^+ + \gamma h_x (h^+)_x + \frac{\sqrt{3\gamma}}{48h^{1/2}}h_x(\chi_\varepsilon(P) - \chi_\varepsilon(Q)) \\ &= g(h - \bar{h})h^+ + (h - \bar{h})_x \left[ \gamma (h^+)_x + \frac{\sqrt{3\gamma}}{48h^{1/2}}(\chi_\varepsilon(P) - \chi_\varepsilon(Q)) \right]. \end{aligned}$$

Then, a sufficient condition to obtain  $T_1 = [\dots]_x$  is

$$gh^+ = \left[ \gamma (h^+)_x + \frac{\sqrt{3\gamma}}{48h^{1/2}}(\chi_\varepsilon(P) - \chi_\varepsilon(Q)) \right]_x. \tag{4.14}$$

On another hand we have

$$\begin{aligned} T_2 &= \frac{1}{3} h^3 u_x (u^+)_x + \frac{1}{2} h^2 u_x^2 h^+ + \frac{1}{2} u^2 h^+ + h u u^+ - \frac{1}{48} h (\chi_\varepsilon(P) + \chi_\varepsilon(Q)) u_x \\ &= \left( \frac{1}{2} u h^+ + h u^+ \right) u + \left[ \frac{1}{3} h^3 (u^+)_x + \frac{1}{2} h^2 u_x h^+ - \frac{1}{48} h (\chi_\varepsilon(P) + \chi_\varepsilon(Q)) \right] u_x \end{aligned}$$

Then, a sufficient condition to obtain  $T_2 = [\dots]_x$  is

$$\frac{1}{2} u h^+ + h u^+ = \left[ \frac{1}{3} h^3 (u^+)_x + \frac{1}{2} h^2 u_x h^+ - \frac{1}{48} h (\chi_\varepsilon(P) + \chi_\varepsilon(Q)) \right]_x. \quad (4.15)$$

In next section we prove the global existence of smooth solutions of the approximated system, and we obtain some uniform estimates that do not depend on  $\varepsilon$ .

## 5. UNIFORM ESTIMATES

In this section, we consider  $\gamma > 0, h > 0$ , and  $h_0 - \bar{h}, u_0 \in H^1$  such that  $\int_{\mathbb{R}} \mathcal{E}_0 dx < \sqrt{g\gamma} \bar{h}^2$ . Let also  $j_\varepsilon$  be a Friedrichs mollifier, we define  $h_0^\varepsilon \stackrel{\text{def}}{=} ((h_0 - \bar{h}) * j_\varepsilon) + \bar{h}$  and  $u_0^\varepsilon \stackrel{\text{def}}{=} (u_0 * j_\varepsilon)$  where  $(f * g)(x) \stackrel{\text{def}}{=} \int_{\mathbb{R}} f(x - x') g(x') dx'$ . Using that  $\|(h_0 - h_0^\varepsilon, u_0 - u_0^\varepsilon)\|_{H^1} \rightarrow 0$  as  $\varepsilon \rightarrow 0$ , we can prove

$$\lim_{\varepsilon \rightarrow 0} \int_{\mathbb{R}} \mathcal{E}_0^\varepsilon dx = \int_{\mathbb{R}} \mathcal{E}_0 dx < \sqrt{g\gamma} \bar{h}^2, \quad (5.1)$$

which implies that there exists  $\varepsilon_0 > 0$  such that

$$\int_{\mathbb{R}} \mathcal{E}_0^\varepsilon dx \leq E \stackrel{\text{def}}{=} \frac{1}{2} \int_{\mathbb{R}} \mathcal{E}_0 dx + \frac{1}{2} g \gamma \bar{h}^2 \quad \forall \varepsilon \leq \varepsilon_0. \quad (5.2)$$

Following the arguments of the previous section (see (4.14) and (4.15)), we consider the system

$$h_t^\varepsilon + [h^\varepsilon u^\varepsilon]_x = \mathcal{A}_x^\varepsilon, \quad (5.3a)$$

$$u_t^\varepsilon + u^\varepsilon u_x^\varepsilon + 3\gamma (h^\varepsilon)^{-2} h_x^\varepsilon = -\mathcal{L}_{h^\varepsilon}^{-1} \partial_x \{ \mathcal{C}^\varepsilon + F(h^\varepsilon) \} + \mathcal{B}^\varepsilon, \quad (5.3b)$$

$$u^\varepsilon(0, \cdot) = u_0^\varepsilon \stackrel{\text{def}}{=} j_\varepsilon * u_0, \quad h^\varepsilon(0, \cdot) = h_0^\varepsilon \stackrel{\text{def}}{=} j_\varepsilon * (h_0 - \bar{h}) + \bar{h}, \quad (5.3c)$$

where

$$\begin{aligned} \mathcal{A}^\varepsilon &\stackrel{\text{def}}{=} (g - \gamma \partial_x^2)^{-1} \left\{ \frac{\sqrt{3\gamma}}{48 (h^\varepsilon)^{1/2}} (\chi_\varepsilon(P^\varepsilon) - \chi_\varepsilon(Q^\varepsilon)) \right\}, \\ &= \mathfrak{G} * \left\{ \frac{\sqrt{3\gamma}}{48 (h^\varepsilon)^{1/2}} (\chi_\varepsilon(P^\varepsilon) - \chi_\varepsilon(Q^\varepsilon)) \right\}, \end{aligned} \quad (5.4)$$

$$\mathcal{B}^\varepsilon \stackrel{\text{def}}{=} \mathcal{L}_{h^\varepsilon}^{-1} \left\{ -\frac{1}{2} u^\varepsilon \mathcal{A}_x^\varepsilon + \partial_x \left\{ \frac{1}{2} (h^\varepsilon)^2 u_x^\varepsilon \mathcal{A}_x^\varepsilon - \frac{1}{48} h^\varepsilon (\chi_\varepsilon(P^\varepsilon) + \chi_\varepsilon(Q^\varepsilon)) \right\} \right\}, \quad (5.5)$$

with  $\mathfrak{G}$  is defined as

$$\mathfrak{G} \stackrel{\text{def}}{=} \frac{1}{2\gamma} \exp \left\{ -\frac{g}{\gamma} |\cdot| \right\}. \quad (5.6)$$

Differentiation (5.3) with respect to  $x$  we obtain

$$\frac{d^\lambda}{dt} P^\varepsilon \stackrel{\text{def}}{=} P_t^\varepsilon + \lambda^\varepsilon P_x^\varepsilon = -\frac{1}{8h^\varepsilon} (P^\varepsilon)^2 + \frac{1}{8h^\varepsilon} \chi_\varepsilon(P^\varepsilon) + \frac{1}{8h^\varepsilon} (Q^\varepsilon)^2 - \frac{1}{2h^\varepsilon} \mathcal{A}_x^\varepsilon P^\varepsilon + \mathcal{M}^\varepsilon, \quad (5.7a)$$

$$\frac{d\eta}{dt} Q^\varepsilon \stackrel{\text{def}}{=} Q_t^\varepsilon + \eta^\varepsilon Q_x^\varepsilon = -\frac{1}{8h^\varepsilon} (Q^\varepsilon)^2 + \frac{1}{8h^\varepsilon} \chi_\varepsilon(Q^\varepsilon) + \frac{1}{8h^\varepsilon} (P^\varepsilon)^2 - \frac{1}{2h^\varepsilon} \mathcal{A}_x^\varepsilon Q^\varepsilon + \mathcal{N}^\varepsilon, \quad (5.7b)$$

with

$$\mathcal{M}^\varepsilon \stackrel{\text{def}}{=} -3(h^\varepsilon)^{-2} \mathcal{R}^\varepsilon + \mathcal{V}_1^\varepsilon - \mathcal{V}_2^\varepsilon, \quad \mathcal{N}^\varepsilon \stackrel{\text{def}}{=} -3(h^\varepsilon)^{-2} \mathcal{R}^\varepsilon + \mathcal{V}_1^\varepsilon + \mathcal{V}_2^\varepsilon, \quad (5.8)$$

$$\mathcal{V}_1^\varepsilon \stackrel{\text{def}}{=} \frac{1}{2} h^\varepsilon \partial_x \mathcal{L}_{h^\varepsilon}^{-1} \left\{ -u^\varepsilon \mathcal{A}_x^\varepsilon + h^\varepsilon \int_{-\infty}^x \left[ 3(h^\varepsilon)^{-1} u_x^\varepsilon \mathcal{A}_x^\varepsilon - \frac{1}{8(h^\varepsilon)^2} (\chi_\varepsilon(P^\varepsilon) + \chi_\varepsilon(Q^\varepsilon)) \right] dy \right\}, \quad (5.9)$$

$$\mathcal{V}_2^\varepsilon \stackrel{\text{def}}{=} \frac{g}{16} (h^\varepsilon)^{-1/2} \mathfrak{G} * \left\{ (h^\varepsilon)^{-1/2} (\chi_\varepsilon(P^\varepsilon) - \chi_\varepsilon(Q^\varepsilon)) \right\} = \frac{3g}{\sqrt{3}\gamma} (h^\varepsilon)^{-1/2} \mathcal{A}^\varepsilon. \quad (5.10)$$

Smooth solutions of (5.3) satisfy the energy equation (see Appendix B)

$$\mathcal{E}_t^\varepsilon + \tilde{\mathcal{D}}_x^\varepsilon = \frac{1}{48} P^\varepsilon \chi_\varepsilon(P^\varepsilon) + \frac{1}{48} Q^\varepsilon \chi_\varepsilon(Q^\varepsilon) \leq 0, \quad (5.11)$$

where

$$\tilde{\mathcal{D}}^\varepsilon \stackrel{\text{def}}{=} u^\varepsilon \mathcal{E}^\varepsilon + u^\varepsilon \left( \mathcal{R}^\varepsilon + \frac{1}{2} g (h^\varepsilon)^2 - \frac{1}{2} g \bar{h}^2 \right) + \gamma h^\varepsilon h_x^\varepsilon u_x^\varepsilon - \frac{1}{3} (h^\varepsilon)^2 u^\varepsilon \mathcal{V}_1^\varepsilon - \frac{\sqrt{3}\gamma}{3} (h^\varepsilon)^{1/2} \mathcal{V}_2^\varepsilon (h^\varepsilon - \bar{h}).$$

The first result on this section is the global well-posedness of (5.3).

**Theorem 5.1.** *Let  $\bar{h} > 0$ ,  $(h_0 - \bar{h}, u_0) \in \mathfrak{D}$  and  $\varepsilon \in (0, \varepsilon_0]$  then there exists a global smooth solution  $(h^\varepsilon - \bar{h}, u^\varepsilon) \in C(\mathbb{R}^+, H^3(\mathbb{R})) \cap C^1(\mathbb{R}^+, H^2(\mathbb{R}))$  of (5.3) and for all  $t > 0$  we have*

$$\int_{\mathbb{R}} \mathcal{E}^\varepsilon dx - \int_0^t \int_{\mathbb{R}} \frac{1}{48} (P^\varepsilon \chi_\varepsilon(P^\varepsilon) + Q^\varepsilon \chi_\varepsilon(Q^\varepsilon)) dx dt = \int_{\mathbb{R}} \mathcal{E}_0^\varepsilon dx. \quad (5.12)$$

Moreover, there exist  $A, B > 0$  depending only on  $\bar{h}, \gamma, g$  and  $E$  such that for any  $t > 0$ ,  $x_2 \in \mathbb{R}$ , and for  $x_1 \in (-\infty, x_2)$  the solution of  $X_{x_1}(t) = Y_{x_2}(t)$  (see Figure 2) we have

$$\int_\tau^t [P^\varepsilon(s, X_{x_1}(s))]^2 ds + \int_\tau^t [Q^\varepsilon(s, Y_{x_2}(s))]^2 ds \leq A(t - \tau) + B \quad \forall \tau \in [0, t]. \quad (5.13)$$

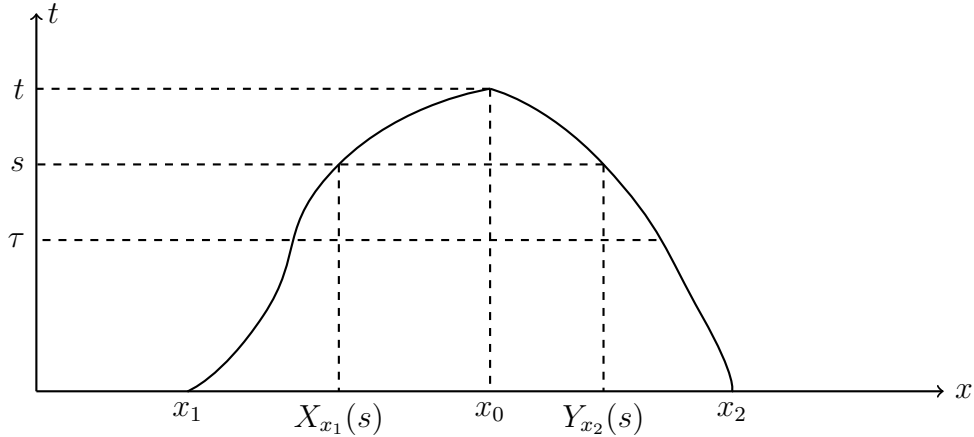


FIGURE 2. Characteristics.

In order to prove Theorem 5.1, we need to prove the invertibility of the operator  $\mathcal{L}_h$  and to obtain some estimates of its inverse.

**Lemma 5.2.** *Let  $0 < h \in H^1(\mathbb{R}) + \bar{h}$  with  $h^{-1} \in L^\infty$ . Then the operator  $\mathcal{L}_h$  is an isomorphism from  $H^2$  to  $L^2$ . Moreover, if  $\psi \in C_{\text{lim}} \stackrel{\text{def}}{=} \{f \in C(\mathbb{R}), f(\infty), f(-\infty) \in \mathbb{R}\}$ , then  $\mathcal{L}_h^{-1} \psi$  is well defined and there exists constants  $C = C(\bar{h}, \|h^{-1}\|_{L^\infty}, \|h\|_{L^\infty}) > 0$  such that*

$$\|\mathcal{L}_h^{-1} \psi\|_{W^{1,\infty}} \leq C \|\psi\|_{L^\infty}, \quad (5.14)$$

$$|\partial_x^2 \mathcal{L}_h^{-1} \psi|(x) \leq C (1 + |h_x(x)|) \|\psi\|_{L^\infty} \quad \forall x \in \mathbb{R}, \quad (5.15)$$

$$\|\mathcal{L}_h^{-1} \psi\|_{H^1} \leq C \|\psi\|_{L^1}, \quad (5.16)$$

$$\|\mathcal{L}_h^{-1} \partial_x \psi\|_{L^\infty} \leq C \|\psi\|_{L^1}, \quad (5.17)$$

$$\|\partial_x \mathcal{L}_h^{-1} \partial_x \psi\|_{L^\infty} \leq C [\|\psi\|_{L^1} + \|\psi\|_{L^\infty}], \quad (5.18)$$

$$\|\mathcal{L}_h^{-1} \partial_x \psi\|_{L^2} \leq C \|\psi\|_{L^1} (\|h_x\|_{L^2} + 1), \quad (5.19)$$

$$\|\mathcal{L}_h^{-1} \partial_x \psi\|_{H^1} + \|\mathcal{L}_h^{-1} \psi\|_{H^1} \leq C \|\psi\|_{L^2}, \quad (5.20)$$

$$\|\mathcal{L}_h^{-1} \psi\|_{W^{1,\infty}} \leq \|\mathcal{L}_h^{-1} \psi\|_{H^2} \leq C [1 + \|h_x\|_{L^2}^2] \|\psi\|_{L^2}, \quad (5.21)$$

$$|\partial_x^2 \mathcal{L}_h^{-1} \psi|(x) \leq C [(1 + \|h_x\|_{L^2}) (1 + |h_x(x)|) \|\psi\|_{L^2} + |\psi|(x)]. \quad (5.22)$$

Also, if  $h - \bar{h} \in H^2(\mathbb{R})$  we have

$$\|\mathcal{L}_h^{-1} \partial_x \varphi\|_{H^3} \leq C [(1 + \|h_x\|_{L^\infty}^2) \|\varphi\|_{H^2} + \|h - \bar{h}\|_{H^2} \|\mathcal{L}_h^{-1} \partial_x \varphi\|_{W^{1,\infty}}], \quad (5.23a)$$

$$\|\mathcal{L}_h^{-1} \psi\|_{H^3} \leq C [(1 + \|h_x\|_{L^\infty}^2) \|\psi\|_{H^2} + \|h - \bar{h}\|_{H^2} \|\mathcal{L}_h^{-1} \psi\|_{W^{1,\infty}}]. \quad (5.23b)$$

Moreover, there exists a constant  $\tilde{C} = \tilde{C}(\gamma, g)$  such that

$$\|(g - \gamma \partial_x^2)^{-1} \psi\|_{H^3} \leq \tilde{C} \|\psi\|_{H^1}, \quad \|\partial_x (g - \gamma \partial_x^2)^{-1} \psi\|_{H^3} \leq \tilde{C} \|\psi\|_{H^2}. \quad (5.24)$$

The proof of (5.14), (5.18) and (5.23) is inspired by [44].

*Proof. Step 0.* Let  $(\cdot, \cdot)$  be the scalar product in  $L^2$ . Defining the bilinear map  $a : H^1 \times H^1 \rightarrow \mathbb{R}$

$$a(u, v) \stackrel{\text{def}}{=} (hu, v) + \frac{1}{3} (h^3 u_x, v_x).$$

It is easy to check that  $a$  is continuous and coercive. Then, Lax–Milgram theorem insures the existence of a continuous bijective linear operator  $J : H^1 \rightarrow H^{-1}$  satisfying

$$a(u, v) = \langle Ju, v \rangle_{H^{-1} \times H^1} \quad \forall u, v \in H^1.$$

If  $Ju \in L^2$ , an integration by parts shows that  $(h^3 u_x)_x = hu - Ju \in L^2$  and  $J = \mathcal{L}_h$ , this implies that  $u \in H^2$  which finishes the proof that  $\mathcal{L}_h$  is an isomorphism from  $H^2$  to  $L^2$ .

Defining now  $C_0 \stackrel{\text{def}}{=} \{f \in C, f(\pm\infty) = 0\}$ , using that  $L^2 \cap C_0$  is dense in  $C_0$  one can define  $\mathcal{L}_h^{-1}$  on  $C_0$ . If  $\varphi$  is in  $C_{\text{lim}}$ , we use the change of functions (see Lemma 4.4 in [44])

$$\varphi_0(x) \stackrel{\text{def}}{=} \varphi(x) - \mathcal{L}_h \frac{1}{h} \left( \varphi(-\infty) + (\varphi(\infty) - \varphi(-\infty)) \frac{e^x}{1 + e^x} \right) \in C_0,$$

the operator  $\mathcal{L}_h^{-1}$  can be defined as

$$\mathcal{L}_h^{-1} \varphi \stackrel{\text{def}}{=} \mathcal{L}_h^{-1} \varphi_0 + \frac{1}{h} \left( \varphi(-\infty) + (\varphi(\infty) - \varphi(-\infty)) \frac{e^x}{1 + e^x} \right).$$

**Step 1.** Let

$$\psi = \mathcal{L}_h u = h u - \frac{1}{3} (h^3 u_x)_x, \quad (5.25)$$

using the change of variables

$$z = \int \frac{dx}{h^3}, \quad (5.26)$$

we obtain

$$\psi = h u - \frac{1}{3h^3} u_{zz}. \quad (5.27)$$

The maximum principle insures that  $\|u\|_{L^\infty} \leq C \|\psi\|_{L^\infty}$  which implies with (5.27) that

$$\|u_{zz}\|_{L^\infty} \leq C \|\psi\|_{L^\infty}. \quad (5.28)$$

Using Landau–Kolmogorov inequality we obtain  $\|u_z\|_{L^\infty} \leq C \|\psi\|_{L^\infty}$ . Using again the change of variables (5.26) we get  $\|u_x\|_{L^\infty} \leq C \|\psi\|_{L^\infty}$  which completes the proof of (5.14). The estimate (5.15) follows directly from the change of variables (5.26), (5.28) and (5.14).

Multiplying (5.25) by  $u$  and using and integration by parts one obtains

$$\|u\|_{H^1}^2 \leq C \|\psi\|_{L^1} \|u\|_{L^\infty}. \quad (5.29)$$

The inequality (5.16) follows directly using the embedding  $H^1 \hookrightarrow L^\infty$ . Using (5.14) and

$$\mathcal{L}_h^{-1} \partial_x \psi = -3 \int_{-\infty}^x (h^{-3} \psi) + 3 \mathcal{L}_h^{-1} \left( h \int_{-\infty}^x h^{-3} \psi \right) \quad (5.30)$$

we obtain (5.17) and (5.18). Using the definition of  $\mathcal{L}_h$  we obtain

$$\begin{aligned} \mathcal{L}_h^{-1} \partial_x \psi &= \mathcal{L}_h^{-1} \partial_x h^3 \mathcal{L}_h \mathcal{L}_h^{-1} h^{-3} \psi \\ &= \mathcal{L}_h^{-1} \partial_x [h^4 \mathcal{L}_h^{-1} h^{-3} \psi - \frac{1}{3} h^3 \partial_x h^3 \partial_x \mathcal{L}_h^{-1} h^{-3} \psi] \\ &= \mathcal{L}_h^{-1} [4 h^3 h_x \mathcal{L}_h^{-1} h^{-3} \psi + h^4 \partial_x \mathcal{L}_h^{-1} h^{-3} \psi - \frac{1}{3} \partial_x h^3 \partial_x h^3 \partial_x \mathcal{L}_h^{-1} h^{-3} \psi] \\ &= \mathcal{L}_h^{-1} [4 h^3 h_x \mathcal{L}_h^{-1} h^{-3} \psi] + h^3 \partial_x \mathcal{L}_h^{-1} h^{-3} \psi. \end{aligned} \quad (5.31)$$

The inequality (5.19) follows from (5.16) and the Cauchy–Schwarz inequality.

Let  $\mathcal{L}_h u = \psi + \varphi_x$ , then

$$\begin{aligned} \|u\|_{H^1}^2 &= (u, u) + (u_x, u_x) \\ &\leq C [(h u, u) + \frac{1}{3} (h^3 u_x, u_x)] \\ &= C (\mathcal{L}_h u, u) = C [(\psi, u) - (\varphi, u_x)] \\ &\leq C \|u\|_{H^1} (\|\psi\|_{L^2} + \|\varphi\|_{L^2}), \end{aligned}$$

which implies that

$$\|u\|_{H^1} \leq C (\|\psi\|_{L^2} + \|\varphi\|_{L^2}). \quad (5.32)$$



Taking  $\psi = 0$  (respectively  $\varphi = 0$ ) we obtain (5.20). Replacing  $h^{-3}\psi$  by  $\psi$  in (5.31), we multiply by  $h^{-3}$  and we differentiate with respect to  $x$  to obtain

$$\partial_x^2 \mathcal{L}_h^{-1} \psi = -3h^{-2} h_x [\mathcal{L}_h^{-1} \partial_x h^3 \psi - \mathcal{L}_h^{-1} [4h^3 h_x \mathcal{L}_h^{-1} \psi]] \quad (5.33)$$

$$+ h^{-3} \partial_x \mathcal{L}_h^{-1} \partial_x h^3 \psi - h^{-3} \partial_x \mathcal{L}_h^{-1} [4h^3 h_x \mathcal{L}_h^{-1} \psi]. \quad (5.34)$$

Using (5.20) and the embedding  $H^1 \hookrightarrow L^\infty$  we obtain

$$\begin{aligned} \|\partial_x^2 \mathcal{L}_h^{-1} \psi\|_{L^2} &\leq C \|h_x\|_{L^2} [\|\mathcal{L}_h^{-1} \partial_x h^3 \psi\|_{H^1} + \|\mathcal{L}_h^{-1} [4h^3 h_x \mathcal{L}_h^{-1} \psi]\|_{H^1}] \\ &\quad + C \|\partial_x \mathcal{L}_h^{-1} \partial_x h^3 \psi\|_{L^2} + C \|\partial_x \mathcal{L}_h^{-1} [4h^3 h_x \mathcal{L}_h^{-1} \psi]\|_{L^2} \\ &\leq C \|h_x\|_{L^2} [\|\psi\|_{L^2} + \|h_x\|_{L^2} \|\mathcal{L}_h^{-1} \psi\|_{H^1}] \\ &\quad + C \|\psi\|_{L^2} + C \|h_x\|_{L^2} \|\mathcal{L}_h^{-1} \psi\|_{H^1} \\ &\leq C [1 + \|h_x\|_{L^2}^2] \|\psi\|_{L^2}. \end{aligned}$$

This with (5.20) imply (5.21).

Differentiating now (5.31) with respect to  $x$ , using the definition of  $\mathcal{L}_h$  and replacing  $h^{-3}\psi$  by  $\psi$  we obtain

$$\partial_x \mathcal{L}_h^{-1} \partial_x h^3 \psi = \partial_x \mathcal{L}_h^{-1} [4h^3 h_x \mathcal{L}_h^{-1} \psi] + 3h \mathcal{L}_h^{-1} \psi - 3\psi.$$

Then (5.33) becomes

$$\partial_x^2 \mathcal{L}_h^{-1} \psi = -3h^{-2} h_x [\mathcal{L}_h^{-1} \partial_x h^3 \psi - \mathcal{L}_h^{-1} [4h^3 h_x \mathcal{L}_h^{-1} \psi]] + 3h^{-2} \mathcal{L}_h^{-1} \psi - 3h^{-3} \psi.$$

Then, using (5.20) we obtain (5.22).

**Step 2.** Using  $\mathcal{L}_h u = \psi + \varphi_x$  and the Young inequality  $ab \leq \frac{1}{2\alpha} a^2 + \frac{\alpha}{2} b^2$  with  $\alpha > 0$  we obtain

$$\begin{aligned} \|u_x\|_{H^1}^2 &= (u_x, u_x) + (u_{xx}, u_{xx}) \\ &\leq C [(h u_x, u_x) + \frac{1}{3} (h^3 u_{xx}, u_{xx})] \\ &= C [-(h u, u_{xx}) - (h_x u, u_x) + \frac{1}{3} ((h^3 u_x)_x - (h^3)_x u_x, u_{xx})] \\ &= C [-(\mathcal{L}_h u, u_{xx}) - (h_x u, u_x) - (h^2 h_x u_x, u_{xx})] \\ &\leq C [\alpha \|u_{xx}\|_{L^2}^2 + \frac{1}{\alpha} \|\mathcal{L}_h u\|_{L^2}^2 + C_\alpha (1 + \|h_x\|_{L^\infty}^2) \|u\|_{H^1}^2]. \end{aligned}$$

Taking  $\alpha > 0$  small enough we obtain that

$$\|u_x\|_{H^1}^2 \leq C [\|\mathcal{L}_h u\|_{L^2}^2 + (1 + \|h_x\|_{L^\infty}^2) \|u\|_{H^1}^2],$$

then

$$\|u_x\|_{H^1} \leq C [\|\mathcal{L}_h u\|_{L^2} + (1 + \|h_x\|_{L^\infty}) \|u\|_{H^1}].$$

Taking  $\psi = 0$  (respectively  $\varphi = 0$ ) and using (5.32), we obtain

$$\|\mathcal{L}_h^{-1} \partial_x \varphi\|_{H^2} \leq C (1 + \|h_x\|_{L^\infty}) \|\varphi\|_{H^1}, \quad \|\mathcal{L}_h^{-1} \psi\|_{H^2} \leq C (1 + \|h_x\|_{L^\infty}) \|\psi\|_{L^2}. \quad (5.35)$$

Let  $\Lambda$  be defined as  $\widehat{\Lambda} f = (1 + \xi^2)^{\frac{1}{2}} \widehat{f}$ . Since  $\mathcal{L}_h u = \psi + \varphi_x$ , we have

$$\mathcal{L}_h \Lambda^2 u = [h, \Lambda^2] u + \Lambda^2 \psi + \partial_x \left\{ -\frac{1}{3} [h^3, \Lambda^2] u_x + \Lambda^2 \varphi \right\}.$$

Defining  $\tilde{u} = \Lambda^2 u$ ,  $\tilde{\psi} = [h, \Lambda^2]u + \Lambda^2 \psi$  and  $\tilde{\varphi} = -\frac{1}{3}[h^3, \Lambda^2]u_x + \Lambda^2 \varphi$  and using (5.32), (A.6) we obtain

$$\begin{aligned} \|\Lambda^2 u\|_{H^1} &\leq C [\|[h, \Lambda^2]u\|_{L^2} + \|[h^3, \Lambda^2]u_x\|_{L^2} + \|\psi\|_{H^2} + \|\varphi\|_{H^2}] \\ &\leq C [\|h_x\|_{L^\infty} \|u\|_{H^2} + \|h - \bar{h}\|_{H^2} \|u\|_{W^{1,\infty}} + \|\psi\|_{H^2} + \|\varphi\|_{H^2}]. \end{aligned}$$

Taking  $\psi = 0$  (respectively  $\varphi = 0$ ) and using (5.32) with (5.35), we obtain (5.23).

**Step 3.** It remains only to prove the inequalities (5.24). Since the operator  $(g - \gamma \partial_x^2)^{-1}$  is nothing but a convolution with the function  $\mathfrak{G}$ , the result follows directly using the Young inequality.  $\square$

**Lemma 5.3.** *Let  $(h - \bar{h}, u) \in H^1(\mathbb{R})$  such that  $\int_{\mathbb{R}} \mathcal{E} \, dx \leq E < \sqrt{g\gamma} \bar{h}^2$ , then, there exists a constant  $C = C(\gamma, \bar{h}, E) > 0$  independent on  $\varepsilon$  and  $h$  such that*

$$\|\mathcal{L}_h^{-1} \partial_x \mathcal{C}\|_{L^\infty(\mathbb{R})} + \|\mathcal{R}\|_{L^\infty(\mathbb{R})} \leq C, \quad (5.36)$$

$$\int_{\mathbb{R}} (\chi_\varepsilon(P) + \chi_\varepsilon(Q)) \, dx \leq C, \quad (5.37)$$

$$\|\mathcal{L}_h^{-1} \partial_x \{h(\chi_\varepsilon(P) + \chi_\varepsilon(Q))\}\|_{L^\infty(\mathbb{R})} \leq C, \quad (5.38)$$

$$\|(\mathcal{L}_h^{-1} \partial_x \{h^2 u_x \mathcal{A}_x^\varepsilon\}, \mathcal{L}_h^{-1} \{u \mathcal{A}_x^\varepsilon\})\|_{L^\infty(\mathbb{R})} \leq C, \quad (5.39)$$

$$\|\mathcal{A}_x^\varepsilon\|_{L^2} + \|(\mathcal{A}^\varepsilon, \mathcal{A}_x^\varepsilon, \mathcal{B}^\varepsilon, \mathcal{V}_1^\varepsilon, \mathcal{V}_2^\varepsilon)\|_{L^\infty(\mathbb{R})} \leq C, \quad (5.40)$$

where  $\mathcal{A}^\varepsilon$ ,  $\mathcal{B}^\varepsilon$ ,  $\mathcal{V}_1^\varepsilon$  and  $\mathcal{V}_2^\varepsilon$  are defined as in (5.4), (5.5), (5.9) and (5.10) by replacing  $(h^\varepsilon, u^\varepsilon)$  with  $(h, u)$ .

*Proof.* From  $\int_{\mathbb{R}} \mathcal{E} \, dx \leq E$  we have  $\|(\mathcal{C}, P^2, Q^2)\|_{L^1} \leq C$ , then the proof of (5.36) follows from (4.8), (5.14), (5.17) and (5.21). Since  $\chi_\varepsilon(\lambda) \leq \lambda^2$  we obtain (5.37). Then, (5.37) with (5.17) imply (5.38). In remains to prove (5.40). For that purpose, we use Young inequality, (5.4) and (5.10) to obtain

$$\|\mathcal{A}\|_{L^\infty} + \|\mathcal{A}_x\|_{L^2} + \|\mathcal{A}_x\|_{L^\infty} + \|\mathcal{V}_2\|_{L^\infty} \leq C. \quad (5.41)$$

The estimates (5.14), (5.17), (5.37), (5.9), (5.41), (5.5) and the Cauchy–Schwarz inequality imply (5.40).  $\square$

*Proof of Theorem 5.1.* Following [26, 27, 30, 39, 44], we can prove easily the local existence of solutions of (5.3). Integrating the energy equation (5.11) on  $[0, t] \times \mathbb{R}$ , we obtain (5.12).

**Step 1.** Defining

$$\begin{aligned} U^\varepsilon &\stackrel{\text{def}}{=} (h^\varepsilon - \bar{h}, u^\varepsilon)^\top & A(U^\varepsilon) &\stackrel{\text{def}}{=} \begin{pmatrix} 3\gamma (h^\varepsilon)^{-3} & 0 \\ 0 & h^\varepsilon \end{pmatrix}, & B(U^\varepsilon) &\stackrel{\text{def}}{=} \begin{pmatrix} u^\varepsilon & h^\varepsilon \\ 3\gamma (h^\varepsilon)^{-3} & u^\varepsilon \end{pmatrix}, \\ \mathcal{F}^\varepsilon(U^\varepsilon) &\stackrel{\text{def}}{=} \begin{pmatrix} \mathcal{A}_x^\varepsilon \\ -\mathcal{L}_{h^\varepsilon}^{-1} \partial_x \{\mathcal{C}^\varepsilon + F(h^\varepsilon)\} + \mathcal{B}^\varepsilon \end{pmatrix}, \end{aligned}$$

the system (5.3) becomes

$$U_t^\varepsilon + B(U^\varepsilon) U_x^\varepsilon = \mathcal{F}^\varepsilon(U^\varepsilon). \quad (5.42)$$

Let  $(\cdot, \cdot)$  be the scalar product in  $L^2$  and  $E(U^\varepsilon) \stackrel{\text{def}}{=} (\Lambda^3 U^\varepsilon, A^\varepsilon \Lambda^3 U^\varepsilon)$ . Since  $A^\varepsilon B^\varepsilon$  is a symmetric matrix, straightforward calculations with (5.42) imply that

$$\begin{aligned} E(U^\varepsilon)_t &= -2 ([\Lambda^3, B^\varepsilon] U_x^\varepsilon, A^\varepsilon \Lambda^3 U^\varepsilon) - 2 (B^\varepsilon \Lambda^3 U_x^\varepsilon, A^\varepsilon \Lambda^3 U^\varepsilon) \\ &\quad + 2 (\Lambda^3 \mathcal{F}^\varepsilon, A^\varepsilon \Lambda^3 U^\varepsilon) + (\Lambda^3 U^\varepsilon, A_t^\varepsilon \Lambda^3 U^\varepsilon) \\ &= -2 ([\Lambda^3, B^\varepsilon] U_x^\varepsilon, A^\varepsilon \Lambda^3 U^\varepsilon) + (\Lambda^3 U^\varepsilon, (A^\varepsilon B^\varepsilon)_x \Lambda^3 U^\varepsilon) \\ &\quad + 2 (\Lambda^3 \mathcal{F}^\varepsilon, A^\varepsilon \Lambda^3 U^\varepsilon) + (\Lambda^3 U^\varepsilon, A_t^\varepsilon \Lambda^3 U^\varepsilon). \end{aligned} \quad (5.43)$$

From the definition of  $\chi_\varepsilon$  we have

$$|\chi_\varepsilon(\xi)| \leq \xi^2, \quad |\chi'_\varepsilon(\xi)| \leq 2|\xi|, \quad |\chi''_\varepsilon(\xi)| \leq 2.$$

Then, using the Gagliardo–Nirenberg interpolation inequality  $\|f_x\|_{L^4}^2 \leq C \|f\|_{L^\infty} \|f_{xx}\|_{L^2}$  with (A.5), we obtain

$$\begin{aligned} \|\chi_\varepsilon(P^\varepsilon)\|_{H^2} &\leq C [\|\chi_\varepsilon(P^\varepsilon)\|_{L^2} + \|\chi'_\varepsilon(P^\varepsilon) P_x^\varepsilon\|_{L^2} + \|\chi'_\varepsilon(P^\varepsilon) P_{xx}^\varepsilon\|_{L^2} + \|\chi''_\varepsilon(P^\varepsilon) (P_x^\varepsilon)^2\|_{L^2}] \\ &\leq C \|P^\varepsilon\|_{L^\infty} \|P^\varepsilon\|_{H^2} \leq C \|U_x^\varepsilon\|_{L^\infty} \|U^\varepsilon\|_{H^3}. \end{aligned} \quad (5.44)$$

The same inequality can be obtained for  $Q^\varepsilon$

$$\|\chi_\varepsilon(Q^\varepsilon)\|_{H^2} \leq C \|U_x^\varepsilon\|_{L^\infty} \|U^\varepsilon\|_{H^3}. \quad (5.45)$$

Using (5.24) and (A.5), we obtain

$$\begin{aligned} \|(\mathcal{A}^\varepsilon, \mathcal{A}_x^\varepsilon)\|_{H^3} &\leq C [\|P^\varepsilon\|_{L^\infty}^2 \|h^\varepsilon - \bar{h}\|_{H^2} + \|(\chi_\varepsilon(P^\varepsilon), \chi_\varepsilon(Q^\varepsilon))\|_{H^2}] \\ &\leq C (1 + \|U_x^\varepsilon\|_{L^\infty}^2) \|U^\varepsilon\|_{H^3}. \end{aligned} \quad (5.46)$$

Using (5.12), (5.17), (5.18), (5.20) and Lemma 5.3 we obtain that

$$\|-\mathcal{L}_{h^\varepsilon}^{-1} \partial_x \{\mathcal{C}^\varepsilon + F(h^\varepsilon)\} + \mathcal{B}^\varepsilon\|_{W^{1,\infty}} \leq C (1 + \|U_x^\varepsilon\|_{L^\infty}^2). \quad (5.47)$$

Using now (5.23), (A.5), (A.7), (5.44), (5.45), (5.46) and (5.47) we obtain

$$\|\mathcal{B}^\varepsilon - \mathcal{L}_{h^\varepsilon}^{-1} \partial_x \{\mathcal{C}^\varepsilon + F(h^\varepsilon)\}\|_{H^3} \leq \mathcal{P}(\|U_x^\varepsilon\|_{L^\infty}) \|U^\varepsilon\|_{H^3}, \quad (5.48)$$

where  $\mathcal{P}$  is a polynomial function. The last inequality with (5.46) imply that

$$\|\mathcal{F}^\varepsilon\|_{H^3} \leq \mathcal{P}(\|U_x^\varepsilon\|_{L^\infty}) \|U^\varepsilon\|_{H^3}. \quad (5.49)$$

Defining  $\bar{B} \stackrel{\text{def}}{=} B(\bar{h}, 0)$ , and using (A.6) one obtains

$$\begin{aligned} |([\Lambda^3, B^\varepsilon] U_x^\varepsilon, A^\varepsilon \Lambda^3 U^\varepsilon)| &\leq C \|A^\varepsilon\|_{L^\infty} \|U^\varepsilon\|_{H^3} (\|B_x^\varepsilon\|_{L^\infty} \|U_x^\varepsilon\|_{H^2} + \|B^\varepsilon - \bar{B}\|_{H^3} \|U_x^\varepsilon\|_{L^\infty}) \\ &\leq C \|U_x^\varepsilon\|_{L^\infty} \|U^\varepsilon\|_{H^3}^2. \end{aligned} \quad (5.50)$$

Using (5.3a) and (5.40) one obtains that

$$|(\Lambda^3 U^\varepsilon, (A^\varepsilon B^\varepsilon)_x \Lambda^3 U^\varepsilon)| + |(\Lambda^3 U^\varepsilon, A_t^\varepsilon \Lambda^3 U^\varepsilon)| \leq C (\|U_x^\varepsilon\|_{L^\infty} + 1) \|U^\varepsilon\|_{H^3}^2. \quad (5.51)$$

Summing up (5.49), (5.50) and (5.51) we obtain

$$E(U^\varepsilon)_t \leq \mathcal{P}(\|U_x^\varepsilon\|_{L^\infty}) \|U^\varepsilon\|_{H^3} \leq \mathcal{P}(\|U_x^\varepsilon\|_{L^\infty}) E(U^\varepsilon),$$

which implies with Gronwall inequality that

$$\|U^\varepsilon\|_{H^3} \leq C E(U^\varepsilon) \leq C E(U_0^\varepsilon) e^{\int_0^t \mathcal{P}(\|U_x^\varepsilon\|_{L^\infty}) ds} \leq C \|U_0^\varepsilon\|_{H^3} e^{\int_0^t \mathcal{P}(\|U_x^\varepsilon\|_{L^\infty}) ds}. \quad (5.52)$$

This implies that if  $T_{max}^\varepsilon$  is the maximal existence time, then

$$T_{max}^\varepsilon < \infty \implies \limsup_{t \rightarrow T_{max}^\varepsilon} \|U_x^\varepsilon(t, \cdot)\|_{L^\infty} = \infty. \quad (5.53)$$

**Step 2.** Defining

$$\begin{aligned} \mathcal{H}_1^\varepsilon &\stackrel{\text{def}}{=} \frac{1}{2} \sqrt{3\gamma} \left( (h^\varepsilon)^{1/2} (u^\varepsilon)^2 + g(h^\varepsilon)^{-1/2} (h^\varepsilon - \bar{h})^2 \right) - u^\varepsilon \left( \mathcal{R}^\varepsilon + \frac{1}{2} g((h^\varepsilon)^2 - \bar{h}^2) \right) \\ &\quad + u^\varepsilon \frac{1}{3} (h^\varepsilon)^2 \mathcal{V}_1^\varepsilon + \frac{\sqrt{3\gamma}}{3} (h^\varepsilon)^{1/2} (h - \bar{h}) \mathcal{V}_2^\varepsilon, \\ \mathcal{H}_2^\varepsilon &\stackrel{\text{def}}{=} \frac{1}{2} \sqrt{3\gamma} \left( (h^\varepsilon)^{1/2} (u^\varepsilon)^2 + g(h^\varepsilon)^{-1/2} (h^\varepsilon - \bar{h})^2 \right) + u^\varepsilon \left( \mathcal{R}^\varepsilon + \frac{1}{2} g((h^\varepsilon)^2 - \bar{h}^2) \right) \\ &\quad - u^\varepsilon \frac{1}{3} (h^\varepsilon)^2 \mathcal{V}_1^\varepsilon - \frac{\sqrt{3\gamma}}{3} (h^\varepsilon)^{1/2} (h - \bar{h}) \mathcal{V}_2^\varepsilon. \end{aligned}$$

We note that

$$\eta^\varepsilon \mathcal{E}^\varepsilon - \tilde{\mathcal{D}}^\varepsilon = \frac{\sqrt{3\gamma}}{6} (h^\varepsilon)^{1/2} (P^\varepsilon)^2 + \mathcal{H}_1^\varepsilon, \quad \tilde{\mathcal{D}}^\varepsilon - \lambda^\varepsilon \mathcal{E}^\varepsilon = \frac{\sqrt{3\gamma}}{6} (h^\varepsilon)^{1/2} (Q^\varepsilon)^2 + \mathcal{H}_2^\varepsilon.$$

From Lemma 5.3 we deduce that  $\mathcal{H}_1^\varepsilon$  and  $\mathcal{H}_2^\varepsilon$  are bounded, then, integrating (5.11) on the set (see Figure 2)

$$\{(s, x), s \in [\tau, t], X_{x_1}(s) \leq x \leq Y_{x_2}(s)\},$$

and using the divergence theorem with (5.12) one obtains (5.13) for all  $t \in [0, T_{max}^\varepsilon]$ .

Defining  $t_1 \stackrel{\text{def}}{=} \inf\{t \geq 0, P^\varepsilon(t, Y_{x_2}(t)) \geq 1\}$  and  $t_2 \leq T_{max}^\varepsilon$  be the largest time such that  $P^\varepsilon(t, Y_{x_2}(t)) \geq 1$  on  $[t_1, t_2]$ . Dividing (5.7a) by  $P^\varepsilon$  and integrating on the characteristics between  $t_1$  and  $t \in [t_1, t_2]$  we obtain with (5.13) and Lemma 5.3 that

$$P^\varepsilon(t, Y_{x_2}(t)) \leq P^\varepsilon(t_1, Y_{x_2}(t_1)) e^{C(1+t)t} \quad \forall t \in [t_1, t_2].$$

Using that  $P^\varepsilon(t_1, Y_{x_2}(t_1)) = \max\{1, P_0^\varepsilon(x_2)\}$  and doing the same for  $Q^\varepsilon$  we obtain

$$P^\varepsilon(t, Y_{x_2}(t)) \leq \max\{1, P_0^\varepsilon(x_2)\} e^{C(1+t)t} \quad \forall (t, x_2) \in [0, T_{max}^\varepsilon] \times \mathbb{R}, \quad (5.54)$$

$$Q^\varepsilon(t, X_{x_1}(t)) \leq \max\{1, Q_0^\varepsilon(x_1)\} e^{C(1+t)t} \quad \forall (t, x_1) \in [0, T_{max}^\varepsilon] \times \mathbb{R}. \quad (5.55)$$

On another hand, we define  $\tilde{t}_1 \stackrel{\text{def}}{=} \inf\{t \geq 0, P^\varepsilon(t, Y_{x_2}(t)) \leq -1/\varepsilon\}$  and  $\tilde{t}_2 \leq T_{max}^\varepsilon$  be the largest time such that  $P^\varepsilon(t, Y_{x_2}(t)) \leq -1/\varepsilon$  on  $[\tilde{t}_1, \tilde{t}_2]$ . Using (5.7a) and Lemma 5.3 one obtains

$$\frac{d^\lambda}{dt} P^\varepsilon \stackrel{\text{def}}{=} P_t^\varepsilon + \lambda^\varepsilon P_x^\varepsilon \geq C \left( \frac{1}{\varepsilon} + 1 \right) P^\varepsilon - C \quad \forall t \in [\tilde{t}_1, \tilde{t}_2]. \quad (5.56)$$

Using that  $P^\varepsilon(\tilde{t}_1, Y_{x_2}(\tilde{t}_1)) = \min\{P_0^\varepsilon(x_2), -1/\varepsilon\}$  we obtain for all  $(t, x_2) \in [0, T_{max}^\varepsilon] \times \mathbb{R}$

$$P^\varepsilon(t, Y_{x_2}(t)) \geq \min\{-1/\varepsilon, \min\{P_0^\varepsilon(x_2), -1/\varepsilon\} e^{C(1+1/\varepsilon)t} + \frac{\varepsilon}{\varepsilon+1} (1 - e^{C(1+1/\varepsilon)t})\}. \quad (5.57)$$

Doing the same for  $Q^\varepsilon$  we obtain for all  $(t, x_1) \in [0, T_{max}^\varepsilon] \times \mathbb{R}$

$$Q^\varepsilon(t, X_{x_1}(t)) \geq \min\{-1/\varepsilon, \min\{Q_0^\varepsilon(x_1), -1/\varepsilon\} e^{C(1+1/\varepsilon)t} + \frac{\varepsilon}{\varepsilon+1} (1 - e^{C(1+1/\varepsilon)t})\}. \quad (5.58)$$

Finally, using (5.53), (5.54), (5.55), (5.57) and (5.58) we deduce that  $T_{max}^\varepsilon = \infty$ .  $\square$

The remaining of this section is devoted to obtain some uniform (on  $\varepsilon$ ) estimates on the solution of (5.3) given by Theorem 5.1. Those estimate are crucial to obtain the precompactness results in next section.

**Lemma 5.4.** *Let  $(h_0 - \bar{h}, u_0) \in \mathfrak{D}$  and let  $(h^\varepsilon - \bar{h}, u^\varepsilon)$  be the solution given by Theorem 5.1, then there exists a constant  $C = C(\gamma, \bar{h}, E) > 0$  independent on  $\varepsilon \leq \varepsilon_0$  and  $(h_0 - \bar{h}, u_0)$  such that*

$$\|\mathcal{L}_{h^\varepsilon}^{-1} \partial_x \mathcal{C}^\varepsilon\|_{L^\infty(\mathbb{R}^+ \times \mathbb{R})} + \|(\mathcal{B}^\varepsilon, \mathcal{V}_1^\varepsilon, \mathcal{V}_2^\varepsilon, \mathcal{R}^\varepsilon)\|_{L^\infty(\mathbb{R}^+ \times \mathbb{R})} + \|\mathcal{A}^\varepsilon\|_{L^\infty(\mathbb{R}^+, H^1(\mathbb{R}))} \leq C, \quad (5.59)$$

$$\int_{\mathbb{R}^+} \int_{\mathbb{R}} (\chi_\varepsilon(P^\varepsilon) + \chi_\varepsilon(Q^\varepsilon)) \, dx \, dt \leq \varepsilon C, \quad (5.60)$$

$$\int_{\mathbb{R}^+} \|\mathcal{L}_{h^\varepsilon}^{-1} \partial_x \{h^\varepsilon (\chi_\varepsilon(P^\varepsilon) + \chi_\varepsilon(Q^\varepsilon))\}\|_{L^\infty(\mathbb{R})} \, dt \leq \varepsilon C, \quad (5.61)$$

$$\int_{\mathbb{R}^+} \|(\mathcal{L}_{h^\varepsilon}^{-1} \partial_x \{(h^\varepsilon)^2 u_x^\varepsilon \mathcal{A}_x^\varepsilon\}, \mathcal{L}_{h^\varepsilon}^{-1} \{u^\varepsilon \mathcal{A}_x^\varepsilon\})\|_{L^\infty(\mathbb{R}^\varepsilon)} \, dt \leq \varepsilon C \quad (5.62)$$

$$\int_{\mathbb{R}^+} \|(\mathcal{A}^\varepsilon, \mathcal{A}_x^\varepsilon, \mathcal{B}^\varepsilon, \mathcal{V}_1^\varepsilon, \mathcal{V}_2^\varepsilon)\|_{L^\infty(\mathbb{R})} \, dt \leq \varepsilon C. \quad (5.63)$$

*Proof.* The inequality (5.59) follows from (5.12), (5.36) and (5.40). Note that

$$\begin{aligned} \int_{\mathbb{R}^+} \int_{\mathbb{R}} (\chi_\varepsilon(P^\varepsilon) + \chi_\varepsilon(Q^\varepsilon)) \, dx \, dt &\leq -\varepsilon \int_{\{P^\varepsilon \leq -1/\varepsilon\}} P^\varepsilon \chi_\varepsilon(P^\varepsilon) \, dx \, dt \\ &\quad - \varepsilon \int_{\{Q^\varepsilon \leq -1/\varepsilon\}} Q^\varepsilon \chi_\varepsilon(Q^\varepsilon) \, dx \, dt. \end{aligned}$$

The last inequality with (5.12) imply (5.60). Finally, we use (5.60) and Lemma 5.2 as in the proofs of (5.38), (5.39) and (5.40). We integrate on  $\mathbb{R}^+$  with respect to  $t$  to obtain (5.61), (5.62) and (5.63).  $\square$

**Lemma 5.5. [Oleinik inequality]** *There exists  $C > 0$  that depends only on  $\gamma, \bar{h}, g$  and  $E$  such that for all  $(t, x) \in (0, \infty) \times \mathbb{R}$  and  $\varepsilon \leq \varepsilon_0$  we have*

$$P^\varepsilon(t, x) \leq C(1 + t^{-1}), \quad Q^\varepsilon(t, x) \leq C(1 + t^{-1}). \quad (5.64)$$

*Proof.* Let  $D > 0$  be a constant such that  $2D^{-1} \leq 16h^\varepsilon \leq D$ , and  $A, B > 0$  be the constants given in Theorem 5.1. Using Lemma 5.4, we obtain a constant  $M > 0$  depending only on  $\gamma, \bar{h}$  and  $E$  such that

$$M \geq \sup_{t,x} \left\{ \frac{1}{h^\varepsilon} (\mathcal{A}_x^\varepsilon)^2 + \mathcal{M}^\varepsilon \right\} + DA.$$

Defining

$$\mathcal{F}(s) \stackrel{\text{def}}{=} \frac{D}{s} + \sqrt{2MD}, \quad \mathcal{G}(s) \stackrel{\text{def}}{=} \mathcal{F}(s) + BD. \quad (5.65)$$

The goal is to prove that for all  $t$  and  $x$  we have  $P^\varepsilon(t, X_x(t)) \leq \mathcal{G}(t)$  and  $Q^\varepsilon(t, Y_x(t)) \leq \mathcal{G}(t)$ . Since the proof is the same, we only prove the inequality for  $P^\varepsilon$ .

Using the inequality  $-\mathcal{A}_x^\varepsilon P^\varepsilon \leq 2(\mathcal{A}^\varepsilon)_x^2 + (P^\varepsilon)^2/8$  and using (5.7a), we obtain

$$\begin{aligned} \frac{d^\lambda}{dt} P^\varepsilon &\stackrel{\text{def}}{=} P_t^\varepsilon + \lambda^\varepsilon P_x^\varepsilon \leq -\frac{1}{16h^\varepsilon} (P^\varepsilon)^2 + \frac{1}{8h^\varepsilon} \chi_\varepsilon(P^\varepsilon) + \frac{1}{8h^\varepsilon} (Q^\varepsilon)^2 + \frac{1}{h^\varepsilon} (\mathcal{A}_x^\varepsilon)^2 + \mathcal{M}^\varepsilon \\ &\leq -\frac{1}{D} (P^\varepsilon)^2 + D(Q^\varepsilon)^2 + \frac{1}{8h^\varepsilon} \chi_\varepsilon(P^\varepsilon) + M - AD. \end{aligned} \quad (5.66)$$

Let  $x \in \mathbb{R}$  be fixed, we suppose that there exist  $t_1 > 0$  such that  $P^\varepsilon(t_1, X_x(t_1)) = \mathcal{F}(t_1)$  and  $P^\varepsilon(t, X_x(t)) \geq \mathcal{F}(t)$  for all  $t \in [t_1, t_2]$ . Since  $P^\varepsilon \geq 0$  then  $\chi_\varepsilon(P^\varepsilon) = 0$ . Integrating (5.66) on the characteristics between  $t_1$  and  $t \in [t_1, t_2]$  we obtain

$$\begin{aligned} P^\varepsilon(t, X_x(t)) &\leq P^\varepsilon(t_1, X_x(t_1)) - \int_{t_1}^t \frac{\mathcal{F}(s)^2}{D} ds + AD(t - t_1) + BD + (M - AD)(t - t_1) \\ &= \mathcal{F}(t_1) + \frac{D}{t} - \frac{D}{t_1} - M(t - t_1) - 2\sqrt{2MD} \ln(t/t_1) + BD \\ &\leq \mathcal{G}(t). \end{aligned} \quad (5.67)$$

Since the solution  $(h^\varepsilon - \bar{h}, u^\varepsilon) \in L^\infty(\mathbb{R}^+, H^3)$ , then initially we have  $P^\varepsilon(0^+, X_x(0^+)) < \mathcal{F}(0^+) = \infty$ . The inequality (5.67) shows that if  $P^\varepsilon$  crosses  $\mathcal{F}$  at some  $t_1 > 0$ ,  $P^\varepsilon$  remains always smaller than  $\mathcal{G}$  for  $t \geq t_1$ . This completes the proof of  $P^\varepsilon(t, X_x(t)) \leq \mathcal{G}(t)$  for all  $t > 0$ . The proof for  $Q^\varepsilon$  can be done similarly.  $\square$

**Lemma 5.6.** [ $L^{2+\alpha}$  estimates] *For any bounded set  $\Omega = [t_1, t_2] \times [a, b] \subset (0, \infty) \times \mathbb{R}$  and  $\alpha \in (0, 1)$  there exists  $C_{\alpha, \Omega} > 0$  such that for all  $\varepsilon \leq \varepsilon_0$  we have*

$$\int_{\Omega} [|h_t^\varepsilon|^{2+\alpha} + |h_x^\varepsilon|^{2+\alpha} + |u_t^\varepsilon|^{2+\alpha} + |u_x^\varepsilon|^{2+\alpha}] dx dt \leq C_{\alpha, \Omega}, \quad (5.68)$$

$$\left\| \mathcal{L}_{h^\varepsilon}^{-1} \left( h^\varepsilon \int_{-\infty}^x (h^\varepsilon)^{-3} \mathcal{C}^\varepsilon dy + \frac{1}{3} F(h^\varepsilon)_x \right) \right\|_{L^\infty([t_1, t_2], W^{2, 2+\alpha}([a, b]))} \leq C_{\alpha, \Omega}. \quad (5.69)$$

*Remark 5.7.* The constant  $C_{\alpha, \Omega}$  depends also on  $\bar{h}, \gamma$  and  $E$  but not on  $\varepsilon$  and the initial data.

*Proof. Step 1.* In order to prove (5.68) we use the change of variables

$$\tau \stackrel{\text{def}}{=} t, \quad z \stackrel{\text{def}}{=} \frac{1}{2} \left( \int_{-\infty}^x - \int_x^\infty \right) (h^\varepsilon(t, y) - \bar{h}) dy + \bar{h}x,$$

we obtain with (5.3a) that

$$\partial_x = h^\varepsilon \partial_z, \quad \partial_t = \partial_\tau + (\mathcal{A}^\varepsilon - h^\varepsilon u^\varepsilon) \partial_z, \quad \partial_t + u^\varepsilon \partial_x = \partial_\tau + \mathcal{A}^\varepsilon \partial_z.$$

The map

$$\Phi : \mathbb{R}^+ \times \mathbb{R} \rightarrow \mathbb{R}^+ \times \mathbb{R}, \quad (t, x) \mapsto \Phi(t, x) = (\tau, z)$$

is bijective. Then (5.7) becomes

$$\begin{aligned} P_\tau^\varepsilon + \left( \mathcal{A}^\varepsilon - \sqrt{3}\gamma (h^\varepsilon)^{1/2} \right) P_z^\varepsilon &= -\frac{1}{8h^\varepsilon} (P^\varepsilon)^2 + \frac{1}{8h^\varepsilon} \chi_\varepsilon(P^\varepsilon) + \frac{1}{8h^\varepsilon} (Q^\varepsilon)^2 \\ &\quad - \frac{1}{2h^\varepsilon} \mathcal{A}_x^\varepsilon P^\varepsilon + \mathcal{M}^\varepsilon, \end{aligned} \quad (5.70a)$$

$$\begin{aligned}
Q_\tau^\varepsilon + \left( \mathcal{A}^\varepsilon + \sqrt{3\gamma} (h^\varepsilon)^{1/2} \right) Q_z^\varepsilon &= -\frac{1}{8h^\varepsilon} (Q^\varepsilon)^2 + \frac{1}{8h^\varepsilon} \chi_\varepsilon(Q^\varepsilon) + \frac{1}{8h^\varepsilon} (P^\varepsilon)^2 \\
&\quad - \frac{1}{2h^\varepsilon} \mathcal{A}_x^\varepsilon Q^\varepsilon + \mathcal{N}^\varepsilon.
\end{aligned} \tag{5.70b}$$

Without loss of generality, we suppose that  $\alpha = 2k/(2k+1)$  with  $k \in \mathbb{N}$ . Multiplying (5.70a) by  $(P^\varepsilon)^\alpha$ , using  $\frac{2}{\alpha+1} = 1 + \frac{1-\alpha}{\alpha+1}$ ,  $(P^\varepsilon)^\alpha \chi_\varepsilon(P^\varepsilon) \geq 0$  and (5.59) one obtains

$$\begin{aligned}
&\frac{1}{8h^\varepsilon} \left\{ \frac{1-\alpha}{\alpha+1} (P^\varepsilon)^{\alpha+1} (P^\varepsilon - Q^\varepsilon) - (P^\varepsilon)^\alpha Q^\varepsilon (P^\varepsilon - Q^\varepsilon) \right\} \\
&\leq \left( \frac{(P^\varepsilon)^{\alpha+1}}{\alpha+1} \right)_\tau + \left( \frac{\mathcal{A}^\varepsilon - \sqrt{3\gamma} (h^\varepsilon)^{1/2}}{\alpha+1} (P^\varepsilon)^{\alpha+1} \right)_z + C (|P^\varepsilon|^{\alpha+1} + (P^\varepsilon)^\alpha).
\end{aligned}$$

Doing the same with (5.7b), we obtain

$$\begin{aligned}
&\frac{1}{8h^\varepsilon} \left\{ \frac{1-\alpha}{\alpha+1} (Q^\varepsilon)^{\alpha+1} (Q^\varepsilon - P^\varepsilon) - (Q^\varepsilon)^\alpha P^\varepsilon (Q^\varepsilon - P^\varepsilon) \right\} \\
&\leq \left( \frac{(Q^\varepsilon)^{\alpha+1}}{\alpha+1} \right)_\tau + \left( \frac{\mathcal{A}^\varepsilon + \sqrt{3\gamma} (h^\varepsilon)^{1/2}}{\alpha+1} (Q^\varepsilon)^{\alpha+1} \right)_z + C (|Q^\varepsilon|^{\alpha+1} + (Q^\varepsilon)^\alpha).
\end{aligned}$$

Adding both equations yields to

$$\begin{aligned}
&\frac{1}{8h^\varepsilon} \left\{ \frac{1-\alpha}{\alpha+1} ((P^\varepsilon)^{\alpha+1} - (Q^\varepsilon)^{\alpha+1}) (P^\varepsilon - Q^\varepsilon) + (P^\varepsilon)^\alpha (Q^\varepsilon)^\alpha ((P^\varepsilon)^{1-\alpha} - (Q^\varepsilon)^{1-\alpha}) (P^\varepsilon - Q^\varepsilon) \right\} \\
&\leq \left( \frac{(P^\varepsilon)^{\alpha+1} + (Q^\varepsilon)^{\alpha+1}}{\alpha+1} \right)_\tau + \left( \frac{\sqrt{3\gamma} (h^\varepsilon)^{1/2} ((Q^\varepsilon)^{\alpha+1} - (P^\varepsilon)^{\alpha+1}) + \mathcal{A}^\varepsilon ((Q^\varepsilon)^{\alpha+1} + (P^\varepsilon)^{\alpha+1})}{\alpha+1} \right)_z \\
&\quad + C (|Q^\varepsilon|^{\alpha+1} + (Q^\varepsilon)^\alpha + |P^\varepsilon|^{\alpha+1} + (P^\varepsilon)^\alpha).
\end{aligned} \tag{5.71}$$

Let  $\varphi \in C_c^\infty((t_1/2, t_2+1) \times (a-1, b+1))$  be a non negative function such that  $\varphi(t, x) = 1$  on  $\Omega$ . Multiplying (5.71) by  $\varphi(\Phi^{-1}(\tau, z))$  and using integration by parts with (5.12) we obtain

$$\begin{aligned}
&\frac{1-\alpha}{\alpha+1} \int_{\mathbb{R}^+ \times \mathbb{R}} \varphi (P^\varepsilon - Q^\varepsilon)^2 ((P^\varepsilon)^\alpha + (Q^\varepsilon)^\alpha) dx dt \\
&\leq \int_{\mathbb{R}^+ \times \mathbb{R}} \left\{ \frac{1-\alpha}{\alpha+1} ((P^\varepsilon)^{\alpha+1} - (Q^\varepsilon)^{\alpha+1}) (P^\varepsilon - Q^\varepsilon) \right\} \varphi(t, x) dx dt \\
&\quad + \int_{\mathbb{R}^+ \times \mathbb{R}} \left\{ (P^\varepsilon)^\alpha (Q^\varepsilon)^\alpha ((P^\varepsilon)^{1-\alpha} - (Q^\varepsilon)^{1-\alpha}) (P^\varepsilon - Q^\varepsilon) \right\} \varphi(t, x) dx dt \\
&= \int_{\mathbb{R}^+ \times \mathbb{R}} \left\{ \frac{1-\alpha}{\alpha+1} ((P^\varepsilon)^{\alpha+1} - (Q^\varepsilon)^{\alpha+1}) (P^\varepsilon - Q^\varepsilon) \right\} \varphi(\Phi^{-1}(\tau, z)) \frac{dz d\tau}{h} \\
&\quad + \int_{\mathbb{R}^+ \times \mathbb{R}} \left\{ (P^\varepsilon)^\alpha (Q^\varepsilon)^\alpha ((P^\varepsilon)^{1-\alpha} - (Q^\varepsilon)^{1-\alpha}) (P^\varepsilon - Q^\varepsilon) \right\} \varphi(\Phi^{-1}(\tau, z)) \frac{dz d\tau}{h} \\
&\leq 8 \int_{\mathbb{R}^+ \times \mathbb{R}} \left[ C (|Q^\varepsilon|^{\alpha+1} + (Q^\varepsilon)^\alpha + |P^\varepsilon|^{\alpha+1} + (P^\varepsilon)^\alpha) \varphi dz - \left( \frac{(P^\varepsilon)^{\alpha+1} + (Q^\varepsilon)^{\alpha+1}}{\alpha+1} \right) \varphi_\tau \right] dz d\tau \\
&\quad - 8 \int_{\mathbb{R}^+ \times \mathbb{R}} \left( \frac{\sqrt{3\gamma} (h^\varepsilon)^{1/2} ((Q^\varepsilon)^{\alpha+1} - (P^\varepsilon)^{\alpha+1}) + \mathcal{A}^\varepsilon ((Q^\varepsilon)^{\alpha+1} + (P^\varepsilon)^{\alpha+1})}{\alpha+1} \right) \varphi_z dz d\tau \\
&= 8 \int_{\mathbb{R}^+ \times \mathbb{R}} C (|Q^\varepsilon|^{\alpha+1} + (Q^\varepsilon)^\alpha + |P^\varepsilon|^{\alpha+1} + (P^\varepsilon)^\alpha) \varphi h^\varepsilon dx dt
\end{aligned}$$

$$\begin{aligned}
& - 8 \int_{\mathbb{R}^+ \times \mathbb{R}} \left( \frac{(P^\varepsilon)^{\alpha+1} + (Q^\varepsilon)^{\alpha+1}}{\alpha+1} \right) h^\varepsilon (\varphi_t + u^\varepsilon \varphi_x - (h^\varepsilon)^{-1} \mathcal{A}^\varepsilon \varphi_x) \, dx \, dt \\
& - 8 \int_{\mathbb{R}^+ \times \mathbb{R}} \left( \frac{\sqrt{3}\gamma (h^\varepsilon)^{1/2} ((Q^\varepsilon)^{\alpha+1} - (P^\varepsilon)^{\alpha+1}) + \mathcal{A}^\varepsilon ((Q^\varepsilon)^{\alpha+1} + (P^\varepsilon)^{\alpha+1})}{\alpha+1} \right) \varphi_x \, dx \, dt \\
& \leq C_{\alpha, \Omega}.
\end{aligned}$$

The last inequality follows from (5.12) and from the fact that  $\varphi$  is compactly supported. Then we have

$$\int_{\Omega} (P^\varepsilon - Q^\varepsilon)^2 ((P^\varepsilon)^\alpha + (Q^\varepsilon)^\alpha) \, dx \, dt \leq C_{\alpha, \Omega}. \quad (5.72)$$

**Step 2.** Multiplying (5.71) by  $(h^\varepsilon)^{-1/2}$  we obtain

$$\begin{aligned}
& \frac{1}{8(h^\varepsilon)^{3/2}} \left\{ \frac{1-\alpha}{\alpha+1} ((P^\varepsilon)^{\alpha+1} - (Q^\varepsilon)^{\alpha+1}) (P^\varepsilon - Q^\varepsilon) + (P^\varepsilon)^\alpha (Q^\varepsilon)^\alpha ((P^\varepsilon)^{1-\alpha} - (Q^\varepsilon)^{1-\alpha}) (P^\varepsilon - Q^\varepsilon) \right\} \\
& \leq \left( \frac{(P^\varepsilon)^{\alpha+1} + (Q^\varepsilon)^{\alpha+1}}{(\alpha+1)(h^\varepsilon)^{1/2}} \right)_\tau + \left( \frac{\sqrt{3}\gamma ((Q^\varepsilon)^{\alpha+1} - (P^\varepsilon)^{\alpha+1})}{\alpha+1} \right)_z + \left( \frac{\mathcal{A}^\varepsilon ((Q^\varepsilon)^{\alpha+1} + (P^\varepsilon)^{\alpha+1})}{(\alpha+1)(h^\varepsilon)^{1/2}} \right)_z \\
& + (h^\varepsilon)^{-1/2} C (|Q^\varepsilon|^{\alpha+1} + (Q^\varepsilon)^\alpha + |P^\varepsilon|^{\alpha+1} + (P^\varepsilon)^\alpha) + \frac{1}{2} \mathcal{A}_x^\varepsilon \frac{(P^\varepsilon)^{\alpha+1} + (Q^\varepsilon)^{\alpha+1}}{(\alpha+1)(h^\varepsilon)^{3/2}} \\
& - \frac{1}{8(h^\varepsilon)^{3/2}} \frac{4}{\alpha+1} \{ (P^\varepsilon)^{\alpha+1} Q^\varepsilon + (Q^\varepsilon)^{\alpha+1} P^\varepsilon \}.
\end{aligned}$$

Using (5.59) one obtain

$$\begin{aligned}
& \frac{1}{8(h^\varepsilon)^{3/2}} \left\{ \frac{1-\alpha}{\alpha+1} ((P^\varepsilon)^{\alpha+1} + (Q^\varepsilon)^{\alpha+1}) (P^\varepsilon + Q^\varepsilon) + (P^\varepsilon)^\alpha (Q^\varepsilon)^\alpha ((P^\varepsilon)^{1-\alpha} + (Q^\varepsilon)^{1-\alpha}) (P^\varepsilon + Q^\varepsilon) \right\} \\
& \leq \left( \frac{(P^\varepsilon)^{\alpha+1} + (Q^\varepsilon)^{\alpha+1}}{(\alpha+1)(h^\varepsilon)^{1/2}} \right)_\tau + \left( \frac{\sqrt{3}\gamma ((Q^\varepsilon)^{\alpha+1} - (P^\varepsilon)^{\alpha+1})}{\alpha+1} \right)_z + \left( \frac{\mathcal{A}^\varepsilon ((Q^\varepsilon)^{\alpha+1} + (P^\varepsilon)^{\alpha+1})}{(\alpha+1)(h^\varepsilon)^{1/2}} \right)_z \\
& C (|Q^\varepsilon|^{\alpha+1} + (Q^\varepsilon)^\alpha + |P^\varepsilon|^{\alpha+1} + (P^\varepsilon)^\alpha).
\end{aligned}$$

As in the first step we obtain

$$\int_{\Omega} (P^\varepsilon + Q^\varepsilon)^2 ((P^\varepsilon)^\alpha + (Q^\varepsilon)^\alpha) \, dx \, dt \leq C_{\alpha, \Omega}. \quad (5.73)$$

Summing up (5.72) and (5.73) one obtains

$$\int_{\Omega} ((P^\varepsilon)^{\alpha+2} + (Q^\varepsilon)^{\alpha+2}) \, dx \, dt \leq C_{\alpha, \Omega} \quad \implies \quad \int_{\Omega} [|u_x^\varepsilon|^{2+\alpha} + |h_x^\varepsilon|^{2+\alpha}] \, dx \, dt \leq C_{\alpha, \Omega}.$$

**Step 3.** The inequality (5.68) follows directly from (5.3) and Lemma 5.4. Finally, using (5.14), (5.15), (5.21), (5.22) and (5.68) we obtain (5.69).  $\square$

## 6. PRECOMPACTNESS

The goal of this section is to obtain a compactness of the solution. Due to the non-linear terms of the equations, strong precompactness is needed to pass to the limit  $\varepsilon \rightarrow 0$ . The strong precompactness of  $(h^\varepsilon)_\varepsilon$  and  $(u^\varepsilon)_\varepsilon$  is easy to obtain. However, the strong precompactness of  $(P^\varepsilon)_\varepsilon$  and  $(Q^\varepsilon)_\varepsilon$  is more challenging. Several lemmas in this section are inspired by [15, 59, 61, 62, 63, 64]. Along this section, Lemma A.2 is used many times without mentioning it.

We start by strong precompactness of  $(h^\varepsilon)_\varepsilon$  and  $(u^\varepsilon)_\varepsilon$ .



**Lemma 6.1.** *There exist  $(h - \bar{h}, u) \in L^\infty([0, \infty), H^1(\mathbb{R}))$  and a subsequence of  $(h^\varepsilon, u^\varepsilon)_\varepsilon$  such that we have the following convergences*

$$\begin{aligned} (h^\varepsilon - \bar{h}, u^\varepsilon) &\rightarrow (h - \bar{h}, u) && \text{in } L_{loc}^\infty([0, \infty) \times \mathbb{R}), \\ (h^\varepsilon - \bar{h}, u^\varepsilon) &\rightharpoonup (h - \bar{h}, u) && \text{in } H^1([0, T] \times \mathbb{R}), \quad \forall T > 0. \end{aligned}$$

*Proof.* From the energy equation (5.12) we have that  $(h^\varepsilon - \bar{h}, u^\varepsilon)$  is uniformly bounded in  $L^\infty([0, \infty), H^1(\mathbb{R}))$ . Then, using (5.3), and (5.59) we obtain that

$$\|(h_t^\varepsilon, u_t^\varepsilon)\|_{L^2([0, T] \times \mathbb{R})} \leq C_T. \quad (6.1)$$

The weak convergence in  $H^1([0, T] \times \mathbb{R})$  follows directly. Using the inequality

$$\|\theta(t, \cdot) - \theta(s, \cdot)\|_{L^2(\mathbb{R})}^2 = \int_{\mathbb{R}} \left( \int_s^t \theta_t(\tau, x) d\tau \right)^2 dx \leq |t - s| \|\theta_t\|_{L^2([0, T] \times \mathbb{R})}^2,$$

with (6.1) we obtain that

$$\lim_{t \rightarrow s} \|u^\varepsilon(t, \cdot) - u^\varepsilon(s, \cdot)\|_{L^2(\mathbb{R})} + \lim_{t \rightarrow s} \|h^\varepsilon(t, \cdot) - h^\varepsilon(s, \cdot)\|_{L^2(\mathbb{R})} = 0$$

uniformly on  $\varepsilon$ . Then, using Theorem 5 in [55] we can deduce that up to a subsequence,  $(h^\varepsilon, u^\varepsilon)$  converges uniformly to  $(h, u)$  on any compact set of  $[0, \infty) \times \mathbb{R}$  when  $\varepsilon \rightarrow 0$ .  $\square$

Now, we establish the weak precompactness of  $(P^\varepsilon)_\varepsilon$  and  $(Q^\varepsilon)_\varepsilon$ .

**Lemma 6.2.** *There exist a subsequence of  $\{P^\varepsilon, Q^\varepsilon\}_\varepsilon$  denoted also  $\{P^\varepsilon, Q^\varepsilon\}_\varepsilon$  and families of probability Young measures  $\nu_{t,x}^1, \nu_{t,x}^2$  on  $\mathbb{R}$  and  $\mu_{t,x}$  on  $\mathbb{R}^2$ , such that for all functions  $f, \phi \in C_c^\infty(\mathbb{R})$ ,  $g \in C(\mathbb{R}^2)$  with  $g(\xi, \zeta) = \mathcal{O}(|\xi|^2 + |\zeta|^2)$  at infinity, and for all  $\varphi \in C_c^\infty((0, \infty) \times \mathbb{R})$  we have*

$$\lim_{\varepsilon \rightarrow 0} \int_{\mathbb{R}} \phi(x) f(P^\varepsilon(t, x)) dx = \int_{\mathbb{R}} \phi(x) \int_{\mathbb{R}} f(\xi) d\nu_{t,x}^1(\xi) dx, \quad (6.2)$$

$$\lim_{\varepsilon \rightarrow 0} \int_{\mathbb{R}} \phi(x) f(Q^\varepsilon(t, x)) dx = \int_{\mathbb{R}} \phi(x) \int_{\mathbb{R}} f(\zeta) d\nu_{t,x}^2(\zeta) dx, \quad (6.3)$$

uniformly on any compact set  $[0, T] \subset [0, \infty)$ , and

$$\lim_{\varepsilon \rightarrow 0} \int_{\mathbb{R}^+ \times \mathbb{R}} \varphi(t, x) g(P^\varepsilon, Q^\varepsilon) dx dt = \int_{\mathbb{R}^+ \times \mathbb{R}} \varphi(t, x) \int_{\mathbb{R}^2} g(\xi, \zeta) d\mu_{t,x}(\xi, \zeta) dx dt. \quad (6.4)$$

Moreover, the map

$$(t, x) \mapsto \int_{\mathbb{R}} \xi^2 d\nu_{t,x}^1(\xi) + \int_{\mathbb{R}} \zeta^2 d\nu_{t,x}^2(\zeta) \quad (6.5)$$

belongs to  $L^\infty(\mathbb{R}^+, L^1(\mathbb{R}))$ , and

$$\mu_{t,x}(\xi, \zeta) = \nu_{t,x}^1(\xi) \otimes \nu_{t,x}^2(\zeta). \quad (6.6)$$

We define

$$\overline{g(P, Q)} \stackrel{\text{def}}{=} \int_{\mathbb{R}^2} g(\xi, \zeta) d\mu_{t,x}(\xi, \zeta) \quad (6.7)$$

which is from (6.4) the weak limit of  $g(P^\varepsilon, Q^\varepsilon)$ .

*Proof. Step 1.* The pointwise convergence of (6.2) is a direct corollary of Lemma A.1 with  $\mathcal{O} = \mathbb{R}$  and  $p = 2$  and the energy equation (5.12). The key point to prove the uniform convergence is to show that the map

$$t \in [0, T] \mapsto \int_{\mathbb{R}} \phi(x) f(P^\varepsilon(t, x)) dx dt \quad (6.8)$$

is equicontinuous. Multiplying (5.7a) with  $f'(P^\varepsilon)$  one obtains

$$\begin{aligned} f(P^\varepsilon)_t + [\lambda^\varepsilon f(P^\varepsilon)]_x &= \frac{1}{4h^\varepsilon} (P^\varepsilon + 3Q^\varepsilon) f(P^\varepsilon) \\ + \left[ -\frac{1}{8h^\varepsilon} (P^\varepsilon)^2 + \frac{1}{8h^\varepsilon} \chi_\varepsilon(P^\varepsilon) + \frac{1}{8h^\varepsilon} (Q^\varepsilon)^2 - \frac{1}{2h^\varepsilon} \mathcal{A}_x^\varepsilon P^\varepsilon + \mathcal{M}^\varepsilon \right] f'(P^\varepsilon). \end{aligned} \quad (6.9)$$

Multiplying by  $\phi(x)$  and integrating over  $[t_1, t_2] \times \mathbb{R}$  we have

$$\begin{aligned} & \int_{\mathbb{R}} \phi(x) [f(P^\varepsilon(t_2, x)) - f(P^\varepsilon(t_1, x))] dx \\ &= \int_{t_1}^{t_2} \int_{\mathbb{R}} \left[ \phi'(x) \lambda^\varepsilon f(P^\varepsilon) + \frac{1}{4h^\varepsilon} \phi(x) (P^\varepsilon + 3Q^\varepsilon) f(P^\varepsilon) \right] dx dt \\ &+ \int_{t_1}^{t_2} \int_{\mathbb{R}} \phi(x) \left[ -\frac{1}{8h^\varepsilon} (P^\varepsilon)^2 + \frac{1}{8h^\varepsilon} \chi_\varepsilon(P^\varepsilon) + \frac{1}{8h^\varepsilon} (Q^\varepsilon)^2 - \frac{1}{2h^\varepsilon} \mathcal{A}_x^\varepsilon P^\varepsilon + \mathcal{M}^\varepsilon \right] f'(P^\varepsilon) dx dt. \end{aligned}$$

Using that  $f \in C_c^\infty$ , the the energy equation (5.12), Proposition 2.4, and Lemma 5.4 we find that the map (6.8) is equicontinuous. This finishes the proof of the uniform convergence of (6.2). The same proof can be used for (6.3). Using (A.2) we deduce that the map (6.5) belongs to  $L^\infty(\mathbb{R}^+, L^1(\mathbb{R}))$ .

**Step 2.** Now, we suppose that  $g$  satisfies  $g(\xi, \zeta) = o(|\xi|^2 + |\zeta|^2)$  at infinity, then, using again Lemma A.1 with  $\mathcal{O} = (0, \infty) \times \mathbb{R}$  and  $p = 2$  we obtain (6.4). If  $g(\xi, \zeta) = \mathcal{O}(|\xi|^2 + |\zeta|^2)$ , let  $\psi$  be a smooth cut-off function with  $\psi(\xi) = 1$  for  $|\xi| \leq 1$  and  $\psi(\xi) = 0$  for  $|\xi| \geq 2$ , then

$$\lim_{\varepsilon \rightarrow 0} \int_{\mathbb{R}^+ \times \mathbb{R}} \varphi(t, x) g_k(P^\varepsilon, Q^\varepsilon) dx dt = \int_{\mathbb{R}^+ \times \mathbb{R}} \varphi(t, x) \int_{\mathbb{R}^2} g_\kappa(\xi, \zeta) d\mu_{t,x}(\xi, \zeta) dx dt, \quad (6.10)$$

where  $g_\kappa(\xi, \zeta) \stackrel{\text{def}}{=} g(\xi, \zeta) \psi\left(\frac{\xi}{\kappa}\right) \psi\left(\frac{\zeta}{\kappa}\right)$  with  $\kappa > 0$ . Using Holder inequality, Lemma 5.6 with  $\Omega = \text{supp}(\varphi)$  we obtain

$$\begin{aligned} & \left| \int_{\mathbb{R}^+ \times \mathbb{R}} \varphi(t, x) (g(P^\varepsilon, Q^\varepsilon) - g_\kappa(P^\varepsilon, Q^\varepsilon)) dx dt \right| \\ & \leq \int_{\text{supp}(\varphi) \cap \{|P^\varepsilon| \geq \kappa, \text{ or } |Q^\varepsilon| \geq \kappa\}} |\varphi(t, x)| |g(P^\varepsilon, Q^\varepsilon)| dx dt \\ & \leq C \left( \int_{\text{supp}(\varphi)} |g(P^\varepsilon, Q^\varepsilon)|^{p/2} dx dt \right)^{2/p} \left( \int_{\text{supp}(\varphi) \cap \{|P^\varepsilon| \geq \kappa, \text{ or } |Q^\varepsilon| \geq \kappa\}} dx dt \right)^{\frac{p-2}{p}} \\ & \leq C \left[ |\{(t, x) \in \text{supp}(\varphi), |P^\varepsilon| \geq \kappa\}| + |\{(t, x) \in \text{supp}(\varphi), |Q^\varepsilon| \geq \kappa\}| \right]^{\frac{p-2}{p}} \\ & \leq C \kappa^{2-p}. \end{aligned}$$

where  $2 < p < 3$ . The last inequality with (6.10) imply that we can interchange the limits  $\kappa \rightarrow \infty$  and  $\varepsilon \rightarrow 0$ . Using that  $|g_\kappa| \leq |g|$  and the dominated convergence theorem we obtain (6.4).

**Step 3.** It only remains to prove (6.6), for that purpose, let  $f \in C_c^\infty(\mathbb{R})$ , we rewrite (6.9) on the form

$$\begin{aligned} f(P^\varepsilon)_t + [\lambda f(P^\varepsilon)]_x &= [(\lambda - \lambda^\varepsilon) f(P^\varepsilon)]_x + \frac{1}{4h^\varepsilon} (P^\varepsilon + 3Q^\varepsilon) f(P^\varepsilon) \\ &+ \left[ -\frac{1}{8h^\varepsilon} (P^\varepsilon)^2 + \frac{1}{8h^\varepsilon} \chi_\varepsilon(P^\varepsilon) + \frac{1}{8h^\varepsilon} (Q^\varepsilon)^2 - \frac{1}{2h^\varepsilon} \mathcal{A}_x^\varepsilon P^\varepsilon + \mathcal{M}^\varepsilon \right] f'(P^\varepsilon). \end{aligned} \quad (6.11)$$

Lemma 6.1 implies that  $(\lambda - \lambda^\varepsilon)f(P^\varepsilon) \rightarrow 0$  in  $L_{loc}^2((0, \infty) \times \mathbb{R})$  when  $\varepsilon \rightarrow 0$ . This implies that  $[(\lambda - \lambda^\varepsilon)f(P^\varepsilon)]_x$  is relatively compact in  $H_{loc}^{-1}((0, \infty) \times \mathbb{R})$ . Since  $f \in C_c^\infty(\mathbb{R})$ , using (5.59) and the energy equation (5.12) we obtain that the remaining terms of the right-hand side of (6.11) are uniformly bounded in  $L_{loc}^1((0, \infty) \times \mathbb{R})$ . Then, due to Lemma A.3 they are relatively compact in  $H_{loc}^{-1}((0, \infty) \times \mathbb{R})$ . Doing the same we can prove that for all  $f, g \in C_c^\infty(\mathbb{R})$  the sequences

$$\{[f(P^\varepsilon)]_t + [\lambda f(P^\varepsilon)]_x\}_\varepsilon, \quad \{[g(Q^\varepsilon)]_t + [\eta g(Q^\varepsilon)]_x\}_\varepsilon$$

are relatively compact in  $H_{loc}^{-1}((0, \infty) \times \mathbb{R})$ . Then, using Lemma A.6 (a generalised compensated compactness result) we obtain

$$f(P^\varepsilon)g(Q^\varepsilon) \rightharpoonup \overline{f(P)}\overline{g(Q)} \quad \text{when } \varepsilon \rightarrow 0, \quad (6.12)$$

where  $(\overline{f(P)}, \overline{g(Q)})$  is the weak limit of  $(f(P^\varepsilon), g(Q^\varepsilon))$  defined in (6.7). Then, for any  $\varphi \in C_c^\infty((0, \infty) \times \mathbb{R})$ , we have

$$\begin{aligned} \int_{\mathbb{R}^+ \times \mathbb{R}} \int_{\mathbb{R}^2} \varphi(t, x) f(\xi) g(\zeta) d\mu_{t,x}(\xi, \zeta) dx dt &= \lim_{\varepsilon \rightarrow 0} \int_{\mathbb{R}^+ \times \mathbb{R}} \varphi(t, x) f(P^\varepsilon) g(Q^\varepsilon) dx dt \\ &= \int_{\mathbb{R}^+ \times \mathbb{R}} \varphi(t, x) \overline{f(P)} \overline{g(Q)} dx dt \\ &= \int_{\mathbb{R}^+ \times \mathbb{R}} \int_{\mathbb{R}^2} \varphi(t, x) f(\xi) g(\zeta) d\nu_{t,x}^1(\xi) \otimes \nu_{t,x}^2(\zeta) dx dt, \end{aligned}$$

which implies (6.6). The proof of Lemma 6.2 is completed.  $\square$

Using (4.4), Lemma 6.2, (5.3a), (5.63) and Lemma 6.1 we can obtain the identities

$$u_x = \frac{\overline{P} + \overline{Q}}{2h}, \quad h_x = h^{\frac{1}{2}} \frac{\overline{Q} - \overline{P}}{2\sqrt{3}\gamma} \quad (6.13)$$

$$h_t + (hu)_x = 0. \quad (6.14)$$

Now, we present some technical lemmas that are needed to obtain the strong precompactness of  $(P^\varepsilon)_\varepsilon$  and  $(Q^\varepsilon)_\varepsilon$ .

**Lemma 6.3.** *As  $t \rightarrow 0$  we have*

$$\|(h - h_0, u - u_0)\|_{H^1(\mathbb{R})} \rightarrow 0, \quad (6.15)$$

$$\int_{\mathbb{R}} (\overline{P^2} - \overline{P}^2) dx + \int_{\mathbb{R}} (\overline{Q^2} - \overline{Q}^2) dx \rightarrow 0. \quad (6.16)$$

*Proof.* Defining

$$\begin{aligned} W^\varepsilon(t, x) &\stackrel{\text{def}}{=} \left( \sqrt{\frac{g}{2}}(h^\varepsilon - \bar{h}), \sqrt{\frac{h^\varepsilon}{2}}u^\varepsilon, \frac{1}{\sqrt{12h^\varepsilon}}P^\varepsilon, \frac{1}{\sqrt{12h^\varepsilon}}Q^\varepsilon \right), & t \geq 0, \\ W(t, x) &\stackrel{\text{def}}{=} \left( \sqrt{\frac{g}{2}}(h - \bar{h}), \sqrt{\frac{h}{2}}u, \frac{1}{\sqrt{12h}}\bar{P}, \frac{1}{\sqrt{12h}}\bar{Q} \right), & t > 0, \\ \widetilde{W}(t, x) &\stackrel{\text{def}}{=} \left( \sqrt{\frac{g}{2}}(h - \bar{h}), \sqrt{\frac{h}{2}}u, \frac{1}{\sqrt{12h}}\sqrt{\bar{P}^2}, \frac{1}{\sqrt{12h}}\sqrt{\bar{Q}^2} \right), & t > 0, \\ W_0(x) &\stackrel{\text{def}}{=} \left( \sqrt{\frac{g}{2}}(h_0 - \bar{h}), \sqrt{\frac{h_0}{2}}u_0, \frac{1}{\sqrt{12h_0}}P_0, \frac{1}{\sqrt{12h_0}}Q_0 \right). \end{aligned}$$

From Lemma 6.1 and Lemma 6.2 we have for all  $t > 0$

$$\begin{aligned} W^\varepsilon(t, \cdot) &\rightharpoonup W(t, \cdot) \quad \text{when } \varepsilon \rightarrow 0 \quad \text{in } L^2(\mathbb{R}), \\ (P^\varepsilon(t, \cdot)^2, Q^\varepsilon(t, \cdot)^2) &\rightharpoonup (\bar{P}^2(t, \cdot), \bar{Q}^2(t, \cdot)) \quad \text{when } \varepsilon \rightarrow 0 \quad \text{in } \mathcal{D}'(\mathbb{R}). \end{aligned}$$

This, with Jensen's inequality, (5.12) and (5.1) imply that

$$\begin{aligned} \|W(t)\|_{L^2(\mathbb{R})}^2 &\leq \left\| \widetilde{W}(t) \right\|_{L^2(\mathbb{R})}^2 \leq \liminf_{\varepsilon \rightarrow 0} \|W^\varepsilon(t)\|_{L^2(\mathbb{R})}^2 \\ &= \liminf_{\varepsilon \rightarrow 0} \int_{\mathbb{R}} \mathcal{E}^\varepsilon(t, x) dx \leq \lim_{\varepsilon \rightarrow 0} \int_{\mathbb{R}} \mathcal{E}_0^\varepsilon dx = \int_{\mathbb{R}} \mathcal{E}_0 dx = \|W_0\|_{L^2}^2. \end{aligned} \quad (6.17)$$

The energy inequality (5.12) with (5.1) imply that  $(u^\varepsilon, P^\varepsilon, Q^\varepsilon)$  is bounded in the space  $L^\infty([0, \infty), L^2(\mathbb{R}))$ . We multiply (5.3a) by 1, (5.3b) by  $(h^\varepsilon)^{1/2}$  and (5.7a), (5.7b) by  $(h^\varepsilon)^{-1/2}$  we obtain

$$\begin{aligned} h_t^\varepsilon + [h^\varepsilon u^\varepsilon]_x &= \mathcal{A}_x^\varepsilon, \\ \left[ \sqrt{h^\varepsilon} u^\varepsilon \right]_t + \frac{[h^\varepsilon u^\varepsilon]_x - \mathcal{A}_x^\varepsilon}{2(h^\varepsilon)^{1/2}} u^\varepsilon + (h^\varepsilon)^{1/2} u^\varepsilon u_x^\varepsilon + 3\gamma(h^\varepsilon)^{-3/2} h_x^\varepsilon &= -(h^\varepsilon)^{1/2} \mathcal{L}_{h^\varepsilon}^{-1} \partial_x \mathcal{C}^\varepsilon + (h^\varepsilon)^{1/2} \mathcal{B}^\varepsilon, \\ \left[ \frac{P^\varepsilon}{\sqrt{h^\varepsilon}} \right]_t + \left[ \frac{\lambda^\varepsilon P^\varepsilon}{\sqrt{h^\varepsilon}} \right]_x &= \frac{1}{8(h^\varepsilon)^{3/2}} [(P^\varepsilon)^2 + \chi_\varepsilon(P^\varepsilon) + (Q^\varepsilon)^2 + 10 P^\varepsilon Q^\varepsilon - 8 \mathcal{A}_x^\varepsilon P^\varepsilon] + \frac{\mathcal{M}^\varepsilon}{\sqrt{h^\varepsilon}}, \\ \left[ \frac{Q^\varepsilon}{\sqrt{h^\varepsilon}} \right]_t + \left[ \frac{\eta^\varepsilon Q^\varepsilon}{\sqrt{h^\varepsilon}} \right]_x &= \frac{1}{8(h^\varepsilon)^{3/2}} [(Q^\varepsilon)^2 + \chi_\varepsilon(Q^\varepsilon) + (P^\varepsilon)^2 + 10 P^\varepsilon Q^\varepsilon - 8 \mathcal{A}_x^\varepsilon Q^\varepsilon] + \frac{\mathcal{N}^\varepsilon}{\sqrt{h^\varepsilon}}. \end{aligned}$$

Then for all  $T > 0$  and for all  $\varphi \in H^1(\mathbb{R})$ , the map

$$t \mapsto \int_{\mathbb{R}} \varphi(x) W^\varepsilon dx \quad (6.18)$$

is uniformly (on  $t \in [0, T]$  and  $\varepsilon \leq \varepsilon_0$ ) continuous. Then, Lemma A.5 implies that

$$W(t, \cdot) \rightharpoonup W_0 \quad \text{when } t \rightarrow 0 \quad \text{in } L^2(\mathbb{R}), \quad (6.19)$$

which implies that

$$\int_{\mathbb{R}} \mathcal{E}_0 dx = \|W_0\|_{L^2}^2 \leq \liminf_{t \rightarrow 0} \|W\|_{L^2}^2.$$

On another hand, (6.17) implies

$$\limsup_{t \rightarrow 0} \|W\|_{L^2}^2 = \limsup_{t \rightarrow 0} \int_{\mathbb{R}} \mathcal{E} \, dx \leq \int_{\mathbb{R}} \mathcal{E}_0 \, dx = \|W_0\|_{L^2}^2,$$

then

$$\lim_{t \rightarrow 0} \|W\|_{L^2}^2 = \|W_0\|_{L^2}^2 = \int_{\mathbb{R}} \mathcal{E}_0 \, dx, \quad (6.20)$$

which implies with (6.19) that

$$W(t, \cdot) \rightarrow W_0 \quad \text{when } t \rightarrow 0 \quad \text{in } L^2(\mathbb{R}). \quad (6.21)$$

The inequality (6.17) with (6.20) imply

$$\lim_{t \rightarrow 0} \left\| \widetilde{W} \right\|_{L^2}^2 = \lim_{t \rightarrow 0} \|W\|_{L^2}^2 = \|W_0\|_{L^2}^2. \quad (6.22)$$

Then (6.16) follows directly from (6.22). Using (6.21) and (6.13) we obtain the strong convergence

$$\left\| \left( h - h_0, \sqrt{h} u - \sqrt{h_0} u_0, h_x/h - h'_0/h_0, \sqrt{h} u_x - \sqrt{h_0} u'_0 \right) \right\|_{L^2} \rightarrow 0,$$

as  $t \rightarrow 0$ . In order to obtain (6.15), we write

$$\begin{aligned} u - u_0 &= \frac{1}{\sqrt{h}} \left( \sqrt{h} u - \sqrt{h_0} u_0 \right) + \sqrt{h_0} u_0 \left( \frac{1}{\sqrt{h}} - \frac{1}{\sqrt{h_0}} \right), \\ h_x - h'_0 &= h \left( \frac{h_x}{h} - \frac{h'_0}{h_0} \right) + \frac{h'_0}{\sqrt{h_0}} (h - h_0), \\ u_x - u'_0 &= \frac{1}{\sqrt{h}} \left( \sqrt{h} u_x - \sqrt{h_0} u'_0 \right) + \sqrt{h_0} u'_0 \left( \frac{1}{\sqrt{h}} - \frac{1}{\sqrt{h_0}} \right). \end{aligned}$$

On the right-hand side of the previous equations, the first term converges to 0 in  $L^2$  as  $t \rightarrow 0$ . Since  $h, 1/h \in L^\infty$ ,  $u_0, h'_0, u'_0 \in L^2$  and  $h \in C([0, \infty) \times \mathbb{R})$ , the dominated convergence theorem implies that the second term goes to 0 as  $t \rightarrow 0$ . This ends the proof of (6.15).  $\square$

For any  $\kappa > 0$ , we define

$$S_\kappa(\xi) \stackrel{\text{def}}{=} \frac{1}{2} \xi^2 - \frac{1}{2} (\xi + \kappa)^2 \mathbf{1}_{\xi \leq -\kappa} - \frac{1}{2} (\xi - \kappa)^2 \mathbf{1}_{\xi \geq \kappa} = \begin{cases} -\kappa (\xi + \frac{1}{2} \kappa), & \xi \leq -\kappa, \\ \frac{1}{2} \xi^2, & |\xi| \leq \kappa, \\ \kappa (\xi - \frac{1}{2} \kappa), & \xi \geq \kappa. \end{cases} \quad (6.23)$$

$$T_\kappa(\xi) \stackrel{\text{def}}{=} S'_\kappa(\xi) = \xi - (\xi + \kappa) \mathbf{1}_{\xi \leq -\kappa} - (\xi - \kappa) \mathbf{1}_{\xi \geq \kappa} = \begin{cases} -\kappa, & \xi \leq -\kappa, \\ \xi, & |\xi| \leq \kappa, \\ \kappa, & \xi \geq \kappa. \end{cases} \quad (6.24)$$

**Lemma 6.4.** *For any  $\kappa > 0$ , there exists a subsequence  $\{\mathcal{M}^\varepsilon, \mathcal{N}^\varepsilon, P^\varepsilon, Q^\varepsilon\}_\varepsilon$  and  $\widetilde{\mathcal{M}} \in L_{loc}^\infty((0, \infty) \times \mathbb{R})$  such that, when  $\varepsilon \rightarrow 0$  we have the limits in the sense of distributions on  $(0, \infty) \times \mathbb{R}$*

$$\mathcal{M}^\varepsilon \rightharpoonup \widetilde{\mathcal{M}}, \quad \text{and} \quad \mathcal{M}^\varepsilon T_\kappa(P^\varepsilon) \rightharpoonup \overline{T_\kappa(P)} \widetilde{\mathcal{M}}, \quad (6.25)$$

$$\mathcal{N}^\varepsilon \rightharpoonup \widetilde{\mathcal{M}}, \quad \text{and} \quad \mathcal{N}^\varepsilon T_\kappa(Q^\varepsilon) \rightharpoonup \overline{T_\kappa(Q)} \widetilde{\mathcal{M}}. \quad (6.26)$$

*Proof. Step 1.* We define

$$\mathcal{P}^\varepsilon \stackrel{\text{def}}{=} \mathcal{L}_{h^\varepsilon}^{-1} \left( h^\varepsilon \int_{-\infty}^x (h^\varepsilon)^{-3} \mathcal{C}^\varepsilon dy + \frac{1}{3} F(h^\varepsilon)_x \right). \quad (6.27)$$

From (5.59), we have that  $\mathcal{P}^\varepsilon$  is bounded in  $L^\infty([t_1, t_2], W^{1,\infty}([a, b]))$  for any  $b > a, t_2 > t_1 > 0$ . Thus, there exists  $\widetilde{\mathcal{P}} \in L^\infty([t_1, t_2], W^{1,\infty}([a, b]))$  such that, up to a subsequence we have

$$\mathcal{P}^\varepsilon \rightharpoonup \widetilde{\mathcal{P}}, \quad \partial_x \mathcal{P}^\varepsilon \rightharpoonup \partial_x \widetilde{\mathcal{P}}, \quad \text{as } \varepsilon \rightarrow 0 \quad (6.28)$$

in  $L_{loc}^p((0, \infty) \times \mathbb{R})$  for any  $p < \infty$ .

**Step 2.** For a fixed  $\varphi \in C_c^\infty((0, \infty) \times \mathbb{R})$ , the inequality (5.15), Lemma 5.4 and (5.69) imply that  $(1 - \partial_x^2) \{\varphi \mathcal{P}^\varepsilon\}$  is uniformly bounded in  $L_{loc}^{2+\alpha}((0, \infty) \times \mathbb{R})$  for all  $\alpha \in [0, 1)$ . Then, up to a subsequence we have

$$(1 - \partial_x^2) \{\varphi \mathcal{P}^\varepsilon\} \rightharpoonup (1 - \partial_x^2) \{\varphi \widetilde{\mathcal{P}}\}$$

in  $L_{loc}^{2+\alpha}((0, \infty) \times \mathbb{R})$ .

**Step 3.** Since  $|T_\kappa(P^\varepsilon)| \leq \kappa$ , the convergence  $T_\kappa(P^\varepsilon) \rightharpoonup \overline{T_\kappa(P)}$  is in  $L_{loc}^p((0, \infty) \times \mathbb{R})$  for any  $p \in (1, \infty)$ . Then, for any  $\psi \in C_c^\infty((0, \infty) \times \mathbb{R})$  we have up to a subsequence

$$\lim_{\varepsilon \rightarrow 0} \int_{(0, \infty) \times \mathbb{R}} \psi (1 - \partial_x^2)^{-1} \{\partial_x T_\kappa(P^\varepsilon)\} dx dt = \int_{(0, \infty) \times \mathbb{R}} \psi (1 - \partial_x^2)^{-1} \{\partial_x \overline{T_\kappa(P)}\} dx dt.$$

This limit is stronger. Indeed, replacing  $f$  in (6.9) by  $T_\kappa$  we obtain

$$\begin{aligned} [T_\kappa(P^\varepsilon)]_t + [\lambda^\varepsilon T_\kappa(P^\varepsilon)]_x &= \frac{1}{4h^\varepsilon} (P^\varepsilon + 3Q^\varepsilon) T_\kappa(P^\varepsilon) \\ &+ \left[ -\frac{1}{8h^\varepsilon} (P^\varepsilon)^2 + \frac{1}{8h^\varepsilon} \chi_\varepsilon(P^\varepsilon) + \frac{1}{8h^\varepsilon} (Q^\varepsilon)^2 - \frac{1}{2h^\varepsilon} \mathcal{A}_x^\varepsilon P^\varepsilon + \mathcal{M}^\varepsilon \right] T_\kappa'(P^\varepsilon). \end{aligned}$$

Then, the sequences  $\left\{ (1 - \partial_x^2)^{-1} \{\partial_x T_\kappa(P^\varepsilon)\} \right\}_\varepsilon$  is uniformly bounded in  $W^{1,\infty}((0, \infty) \times \mathbb{R})$ . Arzela–Ascoli theorem implies that, up to a subsequence, we have the convergence

$$(1 - \partial_x^2)^{-1} \{\partial_x T_\kappa(P^\varepsilon)\} \longrightarrow (1 - \partial_x^2)^{-1} \{\partial_x \overline{T_\kappa(P)}\} \quad (6.29)$$

is uniform on any compact set of  $(0, \infty) \times \mathbb{R}$ . Doing the same proof again we obtain the uniform convergence

$$(1 - \partial_x^2)^{-1} \{T_\kappa(P^\varepsilon)\} \longrightarrow (1 - \partial_x^2)^{-1} \{\overline{T_\kappa(P)}\} \quad (6.30)$$

on any compact set of  $(0, \infty) \times \mathbb{R}$ .

**Step 4.** Let  $\varphi \in C_c^\infty((0, \infty) \times \mathbb{R})$ , then

$$\begin{aligned} \int_{(0, \infty) \times \mathbb{R}} T_\kappa(P^\varepsilon) \varphi \mathcal{P}_x^\varepsilon dx dt &= \int_{(0, \infty) \times \mathbb{R}} T_\kappa(P^\varepsilon) (1 - \partial_x^2)^{-1} (1 - \partial_x^2) [(\varphi \mathcal{P}^\varepsilon)_x - \varphi_x \mathcal{P}^\varepsilon] dx dt \\ &= - \int_{(0, \infty) \times \mathbb{R}} (1 - \partial_x^2)^{-1} \{\partial_x T_\kappa(P^\varepsilon)\} \cdot (1 - \partial_x^2) \{\varphi \mathcal{P}^\varepsilon\} dx dt \end{aligned}$$

$$- \int_{(0,\infty) \times \mathbb{R}} (1 - \partial_x^2)^{-1} \{T_\kappa(P^\varepsilon)\} \cdot (1 - \partial_x^2) \{\varphi_x \mathcal{P}^\varepsilon\} dx dt.$$

Taking the limit  $\varepsilon \rightarrow 0$  and using Step 2, Step 3 and Lemma A.2 we obtain

$$\begin{aligned} \lim_{\varepsilon \rightarrow 0} \int_{(0,\infty) \times \mathbb{R}} T_\kappa(P^\varepsilon) \varphi \mathcal{P}_x^\varepsilon dx dt &= - \int_{(0,\infty) \times \mathbb{R}} (1 - \partial_x^2)^{-1} \left\{ \partial_x \overline{T_\kappa(P)} \right\} \cdot (1 - \partial_x^2) \left\{ \varphi \widetilde{\mathcal{P}} \right\} dx dt \\ &\quad - \int_{(0,\infty) \times \mathbb{R}} (1 - \partial_x^2)^{-1} \left\{ \overline{T_\kappa(P)} \right\} \cdot (1 - \partial_x^2) \left\{ \varphi_x \widetilde{\mathcal{P}} \right\} dx dt \\ &= \int_{(0,\infty) \times \mathbb{R}} \overline{T_\kappa(P)} \varphi \partial_x \widetilde{\mathcal{P}} dx dt. \end{aligned} \quad (6.31)$$

**Step 5.** Since  $|T_\kappa(P^\varepsilon)| \leq \kappa$ , then, from (5.63) we have  $\mathcal{V}_1 T_\kappa(P^\varepsilon) \rightarrow 0$  and  $\mathcal{V}_2 T_\kappa(P^\varepsilon) \rightarrow 0$ . Then, using (6.31) we obtain (6.25) with

$$\widetilde{\mathcal{M}} \stackrel{\text{def}}{=} -3h \partial_x \widetilde{\mathcal{P}}.$$

Following the same proof we obtain (6.26).  $\square$

**Lemma 6.5.** *For all  $T > 0$ , we have*

$$\lim_{\kappa \rightarrow \infty} \left\| \overline{T_\kappa(P)} - T_\kappa(\overline{P}) \right\|_{L^1([0,T] \times \mathbb{R})} = \lim_{\kappa \rightarrow \infty} \left\| \overline{T_\kappa(Q)} - T_\kappa(\overline{Q}) \right\|_{L^1([0,T] \times \mathbb{R})} = 0, \quad (6.32)$$

$$\lim_{\kappa \rightarrow \infty} \left\| \overline{T_\kappa(P)} - \overline{P} \right\|_{L^1([0,T] \times \mathbb{R})} = \lim_{\kappa \rightarrow \infty} \left\| \overline{T_\kappa(Q)} - \overline{Q} \right\|_{L^1([0,T] \times \mathbb{R})} = 0. \quad (6.33)$$

Moreover, for all  $\kappa > 0$  we have

$$\frac{1}{2} \left( \overline{T_\kappa(P)} - T_\kappa(\overline{P}) \right)^2 \leq \overline{S_\kappa(P)} - S_\kappa(\overline{P}), \quad (6.34)$$

$$\frac{1}{2} \left( \overline{T_\kappa(Q)} - T_\kappa(\overline{Q}) \right)^2 \leq \overline{S_\kappa(Q)} - S_\kappa(\overline{Q}). \quad (6.35)$$

*Proof.* Since the proof for  $P$  and  $Q$  is the same, we only do the proof for  $P$ . From (6.24) we have

$$|T_\kappa(\xi) - \xi| \leq |\xi + \kappa| \mathbf{1}_{\xi \leq -\kappa} + |\xi - \kappa| \mathbf{1}_{\xi \geq \kappa} \leq 2|\xi| \mathbf{1}_{\kappa \leq |\xi|} \leq \frac{2}{\kappa} \xi^2.$$

Then, we have

$$\left| \overline{T_\kappa(P)} - T_\kappa(\overline{P}) \right| \leq \left| \overline{T_\kappa(P)} - \overline{P} \right| + |T_\kappa(\overline{P}) - \overline{P}| \leq \frac{2}{\kappa} \left( \overline{P^2} + \overline{P}^2 \right). \quad (6.36)$$

Jenson's inequality imply that  $\overline{P^2} \leq \overline{P}^2$ . Lemma 6.2 implies that  $\overline{P^2} \in L^\infty(\mathbb{R}^+, L^1(\mathbb{R}))$ . Then (6.32) and (6.33) follow directly.

Cauchy-Schwarz inequality implies that  $\overline{T_\kappa(P)^2} \leq \overline{T_\kappa(P)^2}$ , then, using the definition (6.24) we obtain

$$\begin{aligned} \left( \overline{T_\kappa(P)} - T_\kappa(\overline{P}) \right)^2 &\leq \overline{T_\kappa(P)^2} + T_\kappa(\overline{P})^2 - 2T_\kappa(\overline{P}) \overline{T_\kappa(P)} \\ &= \overline{T_\kappa(P)^2} + T_\kappa(\overline{P})^2 - 2T_\kappa(\overline{P}) \overline{P} + 2T_\kappa(\overline{P}) \overline{(P + \kappa) \mathbf{1}_{P \leq -\kappa}} \end{aligned}$$

$$\begin{aligned}
& + 2T_\kappa(\overline{P}) \overline{(P - \kappa) \mathbb{1}_{P \geq \kappa}} \\
& = \overline{T_\kappa(P)^2} + 2T_\kappa(\overline{P}) \left[ \overline{(P + \kappa) \mathbb{1}_{P \leq -\kappa}} - (\overline{P} + \kappa) \mathbb{1}_{\overline{P} \leq -\kappa} \right] \\
& \quad - T_\kappa(\overline{P})^2 + 2T_\kappa(\overline{P}) \left[ \overline{(P - \kappa) \mathbb{1}_{P \geq \kappa}} - (\overline{P} - \kappa) \mathbb{1}_{\overline{P} \geq \kappa} \right] \\
& \leq \overline{T_\kappa(P)^2} - 2\kappa \left[ \overline{(P + \kappa) \mathbb{1}_{P \leq -\kappa}} - (\overline{P} + \kappa) \mathbb{1}_{\overline{P} \leq -\kappa} \right] \\
& \quad - T_\kappa(\overline{P})^2 + 2\kappa \left[ \overline{(P - \kappa) \mathbb{1}_{P \geq \kappa}} - (\overline{P} - \kappa) \mathbb{1}_{\overline{P} \geq \kappa} \right], \quad (6.37)
\end{aligned}$$

where the last inequality follows from Jensen's inequality with the concavity of  $\xi \mapsto (\xi + \kappa) \mathbb{1}_{\xi \leq -\kappa}$ , the convexity of  $\xi \mapsto (\xi - \kappa) \mathbb{1}_{\xi \geq \kappa}$  and  $-\kappa \leq T_\kappa(\xi) \leq \kappa$ . Since

$$S_\kappa(\xi) = \frac{1}{2} T_\kappa(\xi)^2 + \kappa (\xi - \kappa) \mathbb{1}_{\xi \geq \kappa} - \kappa (\xi + \kappa) \mathbb{1}_{\xi \leq -\kappa}$$

we have

$$\begin{aligned}
\overline{S_\kappa(P)} & = \frac{1}{2} \overline{T_\kappa(P)^2} + \kappa \overline{(P - \kappa) \mathbb{1}_{P \geq \kappa}} - \kappa \overline{(P + \kappa) \mathbb{1}_{P \leq -\kappa}}, \\
S_\kappa(\overline{P}) & = \frac{1}{2} T_\kappa(\overline{P})^2 + \kappa (\overline{P} - \kappa) \mathbb{1}_{\overline{P} \geq \kappa} - \kappa (\overline{P} + \kappa) \mathbb{1}_{\overline{P} \leq -\kappa}.
\end{aligned}$$

The last two identities with (6.37) imply (6.34).  $\square$

Now we state the main result of this section.

**Lemma 6.6.** *The measures  $\nu^1, \nu^2$  given in Lemma 6.2 are Dirac measures, and*

$$\nu_{t,x}^1(\xi) = \delta_{\overline{P}(t,x)}(\xi), \quad \nu_{t,x}^2(\zeta) = \delta_{\overline{Q}(t,x)}(\zeta). \quad (6.38)$$

*Proof.* Since the proof is the same, we present here only the proof of  $\nu_{t,x}^1(\xi) = \delta_{\overline{P}(t,x)}(\xi)$ . Note that if  $\overline{P^2} = \overline{P}^2$  then  $\int_{\mathbb{R}} (\overline{P} - \xi)^2 d\nu_{t,x}^1(\xi) = 0$  which implies that  $\text{supp}(\nu_{t,x}^1) = \{\overline{P}\}$ . Since  $\nu_{t,x}^1$  is a probability measure, necessarily  $\nu_{t,x}^1 = \delta_{\overline{P}}$ . It remains then only to prove that  $\overline{P^2} = \overline{P}^2$ . The goal is to obtain an evolutionary inequality of  $\overline{P^2} - \overline{P}^2$ , then, since it is equal to zero initially, we prove that it remains zero for all time. The proof is given in several steps.

**Step 1.** Replacing  $f$  in (6.9) by  $S_\kappa$  one obtains

$$\begin{aligned}
& S_\kappa(P^\varepsilon)_t + [\lambda^\varepsilon S_\kappa(P^\varepsilon)]_x = \frac{1}{4h^\varepsilon} (P^\varepsilon + 3Q^\varepsilon) S_\kappa(P^\varepsilon) \\
& + \left[ -\frac{1}{8h^\varepsilon} (P^\varepsilon)^2 + \frac{1}{8h^\varepsilon} \chi_\varepsilon(P^\varepsilon) + \frac{1}{8h^\varepsilon} (Q^\varepsilon)^2 - \frac{1}{2h^\varepsilon} \mathcal{A}_x^\varepsilon P^\varepsilon + \mathcal{M}^\varepsilon \right] T_\kappa(P^\varepsilon).
\end{aligned}$$

Taking  $\varepsilon \rightarrow 0$ , using (5.63), Lemma 6.2 and Lemma 6.4 we obtain

$$\begin{aligned}
& \overline{S_\kappa(P)}_t + \left( \lambda \overline{S_\kappa(P)} \right)_x = \\
& \frac{1}{8h} \left\{ 2 \overline{P S_\kappa(P)} - \overline{P^2 T_\kappa(P)} + 6 \overline{Q S_\kappa(P)} + \overline{Q^2 T_\kappa(P)} \right\} + \overline{T_\kappa(P)} \widetilde{\mathcal{M}}. \quad (6.39)
\end{aligned}$$

**Step 2.** Replacing  $f$  in (6.9) by the identity function and taking  $\varepsilon \rightarrow 0$  we obtain

$$\overline{P}_t + (\lambda \overline{P})_x = \frac{1}{8h} \left( \overline{P^2} + 6 \overline{P Q} + \overline{Q^2} \right) + \widetilde{\mathcal{M}}. \quad (6.40)$$



Let  $j_\varepsilon$  be a Friedrichs mollifier, we note  $\overline{P^\varepsilon} \stackrel{\text{def}}{=} \overline{P} * j_\varepsilon$ , then we have

$$\overline{P^\varepsilon}_t + (\lambda \overline{P^\varepsilon})_x = \theta_\varepsilon + \left\{ \frac{1}{8h} \left( \overline{P^2} + 6\overline{P}\overline{Q} + \overline{Q^2} \right) \right\} * j_\varepsilon + \widetilde{\mathcal{M}} * j_\varepsilon, \quad (6.41)$$

where  $\theta_\varepsilon \stackrel{\text{def}}{=} (\lambda \overline{P^\varepsilon})_x - (\lambda \overline{P})_x * j_\varepsilon$ . Multiplying by  $T_\kappa(\overline{P^\varepsilon})$  and using (6.13), we obtain

$$\begin{aligned} S_\kappa(\overline{P^\varepsilon})_t + (\lambda S_\kappa(\overline{P^\varepsilon}))_x &= \frac{1}{4h} (3\overline{Q} + \overline{P}) S_\kappa(\overline{P^\varepsilon}) - \frac{1}{4h} (3\overline{Q} + \overline{P}) \overline{P^\varepsilon} T_\kappa(\overline{P^\varepsilon}) \\ &+ T_\kappa(\overline{P^\varepsilon}) \left\{ \frac{1}{8h} \left( \overline{P^2} + 6\overline{P}\overline{Q} + \overline{Q^2} \right) \right\} * j_\varepsilon + T_\kappa(\overline{P^\varepsilon}) (\widetilde{\mathcal{M}} * j_\varepsilon) + T_\kappa(\overline{P^\varepsilon}) \theta_\varepsilon. \end{aligned}$$

Taking  $\varepsilon \rightarrow 0$  and using Lemma A.4, one obtains

$$\begin{aligned} S_\kappa(\overline{P})_t + (\lambda S_\kappa(\overline{P}))_x &= \\ \frac{1}{8h} \left\{ 2\overline{P} S_\kappa(\overline{P}) + 6\overline{Q} S_\kappa(\overline{P}) + T_\kappa(\overline{P}) \left( \overline{P^2} - 2\overline{P}^2 + \overline{Q^2} \right) \right\} &+ T_\kappa(\overline{P}) \widetilde{\mathcal{M}}. \end{aligned} \quad (6.42)$$

**Step 3.** From (6.39) and (6.42) we obtain

$$\begin{aligned} \left[ \overline{S_\kappa(P)} - S_\kappa(\overline{P}) \right]_t + \left[ \lambda \left( \overline{S_\kappa(P)} - S_\kappa(\overline{P}) \right) \right]_x &= \widetilde{\mathcal{M}} \left( \overline{T_\kappa(P)} - T_\kappa(\overline{P}) \right) \\ \frac{1}{8h} \left\{ 2\overline{P} \overline{S_\kappa(P)} - \overline{P^2} \overline{T_\kappa(P)} + \overline{P^2} T_\kappa(\overline{P}) - 2\overline{P} S_\kappa(\overline{P}) + T_\kappa(\overline{P}) \left( \overline{P^2} - \overline{P}^2 \right) \right\} \\ + \frac{1}{8h} \left\{ 6\overline{Q} \left( \overline{S_\kappa(P)} - S_\kappa(\overline{P}) \right) + \overline{Q^2} \left( \overline{T_\kappa(P)} - T_\kappa(\overline{P}) \right) \right\}. \end{aligned} \quad (6.43)$$

From (6.23) and (6.24) we have

$$\begin{aligned} \xi^2 T_\kappa(\xi) - 2\xi S_\kappa(\xi) &= \xi^2 T_\kappa(\xi) - 2\xi S_\kappa(\xi) + \xi^3 - \xi^3 \\ &= \xi^2 [T_\kappa(\xi) - \xi] + \xi(\xi + \kappa)^2 \mathbf{1}_{\xi \leq -\kappa} + \xi(\xi - \kappa)^2 \mathbf{1}_{\xi \geq \kappa} \\ &= \kappa^2 [T_\kappa(\xi) - \xi] - (\xi^2 - \kappa^2) [(\xi + \kappa) \mathbf{1}_{\xi \leq -\kappa} + (\xi - \kappa) \mathbf{1}_{\xi \geq \kappa}] \\ &\quad + \xi(\xi + \kappa)^2 \mathbf{1}_{\xi \leq -\kappa} + \xi(\xi - \kappa)^2 \mathbf{1}_{\xi \geq \kappa} \\ &= \kappa^2 [T_\kappa(\xi) - \xi] + \kappa(\xi + \kappa)^2 \mathbf{1}_{\xi \leq -\kappa} - \kappa(\xi - \kappa)^2 \mathbf{1}_{\xi \geq \kappa}. \end{aligned}$$

Then from (6.23) we have

$$\begin{aligned} 2\overline{P} \overline{S_\kappa(P)} - \overline{P^2} \overline{T_\kappa(P)} + \overline{P^2} T_\kappa(\overline{P}) - 2\overline{P} S_\kappa(\overline{P}) + T_\kappa(\overline{P}) \left( \overline{P^2} - \overline{P}^2 \right) \\ = (T_\kappa(\overline{P}) + \kappa) (\overline{P} + \kappa)^2 \mathbf{1}_{\overline{P} \leq -\kappa} + (T_\kappa(\overline{P}) - \kappa) (\overline{P} - \kappa)^2 \mathbf{1}_{\overline{P} \geq \kappa} \\ - (T_\kappa(\overline{P}) + \kappa) \overline{(P + \kappa)^2} \mathbf{1}_{P \leq -\kappa} - (T_\kappa(\overline{P}) - \kappa) \overline{(P - \kappa)^2} \mathbf{1}_{P \geq \kappa} \\ - \kappa^2 \left( \overline{T_\kappa(P)} - T_\kappa(\overline{P}) \right) - 2T_\kappa(\overline{P}) \left( \overline{S_\kappa(P)} - S_\kappa(\overline{P}) \right) \end{aligned} \quad (6.44)$$

From the definition (6.24) we have

$$(T_\kappa(\overline{P}) + \kappa) (\overline{P} + \kappa)^2 \mathbf{1}_{\overline{P} \leq -\kappa} = (T_\kappa(\overline{P}) - \kappa) (\overline{P} - \kappa)^2 \mathbf{1}_{\overline{P} \geq \kappa} = 0 \quad (6.45)$$

Since  $T_\kappa(\overline{P}) \geq -\kappa$ , then

$$- (T_\kappa(\overline{P}) + \kappa) \overline{(P + \kappa)^2} \mathbf{1}_{P \leq -\kappa} \leq 0. \quad (6.46)$$

Let  $t_0 > 0$  and  $\kappa \geq C(1 + t_0^{-1})$ , then from Lemma 5.5, we have for all  $t \geq t_0$  that  $P^\varepsilon \leq \kappa$  and  $\bar{P} \leq \kappa$ . Then, using the convexity of  $T_\kappa$  on  $(-\infty, \kappa)$  and the Jensen's inequality we obtain

$$-\kappa^2 \left( \overline{T_\kappa(P)} - T_\kappa(\bar{P}) \right) \leq 0, \quad \forall t \geq t_0, \quad \kappa \geq C(1 + t_0^{-1}). \quad (6.47)$$

We take again  $t_0 > 0$  and  $\kappa \geq C(1 + t_0^{-1})$ , then for all  $\varphi \in C_c^\infty((t_0, \infty) \times \mathbb{R})$  we have

$$\int \overline{(P - \kappa)^2} \mathbf{1}_{P \geq \kappa} \varphi \, dx \, dt = \lim_{\varepsilon \rightarrow 0} \int (P^\varepsilon - \kappa)^2 \mathbf{1}_{P^\varepsilon \geq \kappa} \varphi \, dx \, dt = 0. \quad (6.48)$$

Then, using (6.43), (6.44), (6.45), (6.46), (6.47) and (6.48) we obtain that

$$\begin{aligned} & \left[ S_\kappa(\bar{P}) - S_\kappa(\bar{P}) \right]_t + \left[ \lambda \left( \overline{S_\kappa(P)} - S_\kappa(\bar{P}) \right) \right]_x \leq \widetilde{\mathcal{M}} \left( \overline{T_\kappa(P)} - T_\kappa(\bar{P}) \right) \\ & + \frac{1}{8h} \left\{ (6\bar{Q} - 2T_\kappa(\bar{P})) \left( \overline{S_\kappa(P)} - S_\kappa(\bar{P}) \right) + \bar{Q}^2 \left( \overline{T_\kappa(P)} - T_\kappa(\bar{P}) \right) \right\}, \end{aligned} \quad (6.49)$$

for any  $t_0 > 0$ ,  $\kappa \geq C(1 + t_0^{-1})$  and  $t > t_0$ .

**Step 4.** Let  $f_\kappa(t, x) \stackrel{\text{def}}{=} \overline{S_\kappa(P)} - S_\kappa(\bar{P})$  and  $f_\kappa^\varepsilon \stackrel{\text{def}}{=} f_\kappa * j_\varepsilon$  where  $j_\varepsilon$  is a Friedrichs mollifier, then, from (6.49) and Lemma A.4 we obtain

$$(f_\kappa^\varepsilon)_t + (\lambda f_\kappa^\varepsilon)_x \leq \frac{1}{4h} \{3\bar{Q} - T_\kappa(\bar{P})\} f_\kappa^\varepsilon + \left( \widetilde{\mathcal{M}} + \frac{\bar{Q}^2}{8h} \right) \left( \overline{T_\kappa(P)} - T_\kappa(\bar{P}) \right) + \theta_\varepsilon,$$

where  $\theta_\varepsilon \rightarrow 0$  in  $L^1_{loc}((0, \infty) \times \mathbb{R})$ . Let  $\beta > 0$ , multiplying by  $h^{3/2} (h^{3/2} f_\kappa^\varepsilon + \beta)^{-1/2} / 2$  and using (6.14) one obtains

$$\begin{aligned} & \left[ \sqrt{h^{3/2} f_\kappa^\varepsilon + \beta} \right]_t + \left[ \lambda \sqrt{h^{3/2} f_\kappa^\varepsilon + \beta} \right]_x \leq \left( \widetilde{\mathcal{M}} + \frac{\bar{Q}^2}{8h} \right) \frac{\overline{T_\kappa(P)} - T_\kappa(\bar{P})}{2\sqrt{h^{3/2} f_\kappa^\varepsilon + \beta}} h^{3/2} + \tilde{\theta}_\varepsilon \\ & + \frac{(\bar{P} - T_\kappa(\bar{P}))h^{1/2} f_\kappa^\varepsilon}{8\sqrt{h^{3/2} f_\kappa^\varepsilon + \beta}} + \frac{\beta \lambda_x}{\sqrt{h^{3/2} f_\kappa^\varepsilon + \beta}}, \end{aligned}$$

where  $\tilde{\theta}_\varepsilon \stackrel{\text{def}}{=} \theta_\varepsilon h^{3/2} (h^{3/2} f_\kappa^\varepsilon + \beta)^{-1/2} / 2 \rightarrow 0$  in  $L^1_{loc}((0, \infty) \times \mathbb{R})$ . Taking  $\varepsilon \rightarrow 0$  we obtain

$$\begin{aligned} & \left[ \sqrt{h^{3/2} f_\kappa + \beta} \right]_t + \left[ \lambda \sqrt{h^{3/2} f_\kappa + \beta} \right]_x \leq \left( \widetilde{\mathcal{M}} + \frac{\bar{Q}^2}{8h} \right) \frac{\overline{T_\kappa(P)} - T_\kappa(\bar{P})}{2\sqrt{h^{3/2} f_\kappa + \beta}} h^{3/2} \\ & + \frac{(\bar{P} - T_\kappa(\bar{P}))h^{1/2} f_\kappa}{8\sqrt{h^{3/2} f_\kappa + \beta}} + \frac{\beta \lambda_x}{\sqrt{h^{3/2} f_\kappa + \beta}}. \end{aligned} \quad (6.50)$$

From (6.34) we have

$$\left| \left( \widetilde{\mathcal{M}} + \frac{\bar{Q}^2}{8h} \right) \frac{\overline{T_\kappa(P)} - T_\kappa(\bar{P})}{2\sqrt{h^{3/2} f_\kappa + \beta}} h^{3/2} \right| \leq \frac{\sqrt{2}}{2} \left| \widetilde{\mathcal{M}} + \frac{\bar{Q}^2}{8h} \right| h^{3/4}.$$

Using that  $|T_\kappa(\xi)| \leq |\xi|$  and  $S_\kappa(\xi) \leq \xi^2/2$  we obtain

$$\left| \frac{(\bar{P} - T_\kappa(\bar{P}))h^{1/2} f_\kappa}{8\sqrt{h^{3/2} f_\kappa + \beta}} \right| \leq \frac{|\bar{P}| \sqrt{f_\kappa}}{4h^{1/4}} \leq \frac{1}{8h^{1/4}} \left( \bar{P}^2 + f_\kappa \right) \leq \frac{1}{8h^{1/4}} \left( \frac{3}{2} \bar{P}^2 + \frac{1}{2} \bar{P}^2 \right).$$

Since the  $L^1$  convergence implies the pointwise convergence (up to a subsequence), then, using the dominated convergence theorem with (6.32) and (6.33), we obtain

$$\lim_{\kappa \rightarrow \infty} \left\| \left( \widetilde{\mathcal{M}} + \frac{\overline{Q^2}}{8h} \right) \frac{\overline{T_\kappa(P)} - T_\kappa(\overline{P})}{2\sqrt{h^{3/2} f_\kappa + \beta}} h^{3/2} \right\|_{L^1(\Omega)} + \lim_{\kappa \rightarrow \infty} \left\| \frac{(\overline{P} - T_\kappa(\overline{P})) h^{1/2} f_\kappa}{8\sqrt{h^{3/2} f_\kappa + \beta}} \right\|_{L^1(\Omega)} = 0$$

for any compact set  $\Omega \subset (0, \infty) \times \mathbb{R}$ . Since  $|S_\kappa(\xi)| \leq \xi^2/2$ , then  $|f_\kappa| \leq \overline{P^2}/2 + \overline{P^2}/2$ . Taking  $\kappa \rightarrow \infty$  in (6.50) and using the dominated convergence theorem again we obtain

$$\left[ \sqrt{h^{3/2} f + \beta} \right]_t + \left[ \lambda \sqrt{h^{3/2} f + \beta} \right]_x \leq \frac{\beta \lambda_x}{\sqrt{h^{3/2} f + \beta}}, \quad f \stackrel{\text{def}}{=} \frac{1}{2} (\overline{P^2} - \overline{P^2}).$$

Taking now  $\beta \rightarrow 0$  we obtain

$$\left[ \sqrt{h^{3/2} f} \right]_t + \left[ \lambda \sqrt{h^{3/2} f} \right]_x \leq 0 \quad \text{in } (t_0, \infty) \times \mathbb{R}. \quad (6.51)$$

**Step 5.** Following [64], let  $g \stackrel{\text{def}}{=} \sqrt{h^{3/2} f} \in L^\infty((0, \infty), L^2(\mathbb{R}))$ . Let also  $\varphi \in C_c^\infty(\mathbb{R})$  satisfying  $\varphi(x) = 1$  for  $|x| \leq 1$  and  $\varphi(x) = 0$  for  $|x| \geq 2$ . Then, for all  $n \geq 1$ , we have  $g\varphi(x/n) \in L^\infty((0, \infty), L^1(\mathbb{R}))$ . Then almost all  $t > 0$  are Lebesgue points of  $t \mapsto \int_{\mathbb{R}} g(t, x)\varphi(x/n)dx$ ,  $\forall n \geq 1$ . Let  $\bar{t} > 0$  be a Lebesgue point of  $t \mapsto \int_{\mathbb{R}} g(t, x)\varphi(x/n)dx$  and  $\delta \in (0, \bar{t}/2)$ . Let also  $\psi \in C_c^\infty((0, \infty))$  satisfying

$$\begin{aligned} \psi(t) &= 0 \quad \text{on } (0, \delta/2) \cup (\bar{t} + \delta, \infty), & \psi(t) &= 1 \quad \text{on } (\delta, \bar{t} - \delta), \\ 0 &\leq \psi'(t) \leq C/\delta, \quad \text{on } (\delta/2, \delta), & -\psi'(t) &\geq C/\delta, \quad \text{on } (\bar{t} - \delta, \bar{t} + \delta). \end{aligned}$$

Multiplying (6.51) by  $\varphi(x/n)\psi(t)$ , integrating on  $(0, \infty) \times \mathbb{R}$  and using integration by parts one obtains

$$\begin{aligned} \frac{C}{\delta} \int_{\bar{t}-\delta}^{\bar{t}+\delta} \int_{\mathbb{R}} g(t, x) \varphi(x/n) dx dt &\leq - \int_{\bar{t}-\delta}^{\bar{t}+\delta} \int_{\mathbb{R}} g(t, x) \varphi(x/n) \psi'(t) dx dt \\ &\leq \frac{C}{\delta} \int_{\delta/2}^{\delta} \int_{\mathbb{R}} g(t, x) \varphi(x/n) dx dt + \frac{1}{n} \|\lambda\|_{L^\infty} \int_{\delta/2}^{\bar{t}+\delta} \int_{\mathbb{R}} g(t, x) |\varphi'(x/n)| dx dt. \end{aligned}$$

From (6.16), we have

$$\lim_{t \rightarrow 0} \int_{\mathbb{R}} g(t, x) \varphi(x/n) dx = 0 \quad \implies \quad \lim_{\delta \rightarrow 0} \frac{1}{\delta} \int_{\delta/2}^{\delta} \int_{\mathbb{R}} g(t, x) \varphi(x/n) dx dt = 0.$$

Since  $\bar{t} > 0$  is a Lebesgue point of  $t \mapsto \int_{\mathbb{R}} g(t, x)\varphi(x/n)dx$ , then taking first  $\delta \rightarrow 0$  and then  $n \rightarrow \infty$  we obtain

$$g(\bar{t}, x) = 0 \quad \text{a.e. } (\bar{t}, x) \in (0, \infty) \times \mathbb{R}.$$

Hence  $\overline{P^2} = \overline{P^2}$  almost everywhere, which implies that  $\nu_{t,x}^1(\xi) = \delta_{\overline{P}(t,x)}(\xi)$ . The proof of  $\nu_{t,x}^2(\zeta) = \delta_{\overline{Q}(t,x)}(\zeta)$  can be done similarly.  $\square$

## 7. THE GLOBAL WEAK SOLUTIONS

We use in this section the precompactness results given in the previous section to prove that the limit  $(h, u)$  given in Lemma 6.1 is a weak solution of (2.1). All the limits in this section are up to a subsequence.

Let  $(h^\varepsilon - \bar{h}, u^\varepsilon)$  be the solution given in Theorem 5.1. Then, from Lemma 6.2, Lemma 6.6, Lemma 5.6, (4.4) and (6.13) we have that

$$\begin{aligned} (P^\varepsilon, Q^\varepsilon, u_x^\varepsilon, h_x^\varepsilon) &\rightharpoonup (\bar{P}, \bar{Q}, u_x, h_x) \quad \text{in } L_{loc}^p((0, \infty) \times \mathbb{R}), \\ \|(P^\varepsilon)^2, (Q^\varepsilon)^2, (u_x^\varepsilon)^2, (h_x^\varepsilon)^2\|_{L^1(\Omega)} &\rightarrow \|\bar{P}^2, \bar{Q}^2, u_x^2, h_x^2\|_{L^1(\Omega)}, \end{aligned} \quad (7.1)$$

for any  $p \in [2, 3)$  and compact set  $\Omega \subset (0, \infty) \times \mathbb{R}$ . This implies that

$$(P^\varepsilon, Q^\varepsilon, u_x^\varepsilon, h_x^\varepsilon) \rightarrow (\bar{P}, \bar{Q}, u_x, h_x) \quad \text{in } L_{loc}^2((0, \infty) \times \mathbb{R}). \quad (7.2)$$

Using Lemma 5.6 and Lemma 6.1 we obtain that for all  $p \in [2, 3)$ , we have

$$(u_t^\varepsilon, h_t^\varepsilon) \rightharpoonup (u_t, h_t) \quad \text{in } L_{loc}^p((0, \infty) \times \mathbb{R}). \quad (7.3)$$

Now, using (5.63) and taking the weak limit  $\varepsilon \rightarrow 0$  in (5.3a) we obtain (2.1a). Applying  $\mathcal{L}_{h^\varepsilon}$  on (5.3b) and multiplying by  $\varphi \in C_c^\infty((0, \infty) \times \mathbb{R})$  we obtain

$$\begin{aligned} &\int_{\mathbb{R}^+ \times \mathbb{R}} \left\{ \{u_t^\varepsilon + u^\varepsilon u_x^\varepsilon + 3\gamma (h^\varepsilon)^{-2} h_x^\varepsilon\} \{h^\varepsilon \varphi - (h^\varepsilon)^2 h_x^\varepsilon \varphi_x - \frac{1}{3} (h^\varepsilon)^3 \varphi_{xx}\} + \frac{1}{2} \varphi u^\varepsilon \mathcal{A}_x^\varepsilon \right\} dx dt \\ &= \int_{\mathbb{R}^+ \times \mathbb{R}} \varphi_x \left\{ \mathcal{C}^\varepsilon + F(h^\varepsilon) - \frac{1}{2} (h^\varepsilon)^2 u_x^\varepsilon \mathcal{A}_x^\varepsilon + \frac{1}{48} h^\varepsilon (\chi_\varepsilon(P^\varepsilon) + \chi_\varepsilon(Q^\varepsilon)) \right\} dx dt. \end{aligned}$$

From (7.2) and Lemma 6.1 we obtain the following convergence as  $\varepsilon \rightarrow 0$

$$\{h^\varepsilon \varphi - (h^\varepsilon)^2 h_x^\varepsilon \varphi_x - \frac{1}{3} (h^\varepsilon)^3 \varphi_{xx}\} \rightarrow \mathcal{L}_h \varphi \quad \text{in } L_{loc}^2((0, \infty) \times \mathbb{R}).$$

Using again (7.2), Lemma 6.1 and also (7.3) obtain the convergence

$$\{u_t^\varepsilon + u^\varepsilon u_x^\varepsilon + 3\gamma (h^\varepsilon)^{-2} h_x^\varepsilon\} \rightharpoonup \{u_t + u u_x + 3\gamma h^{-2} h_x\} \quad \text{in } L_{loc}^2((0, \infty) \times \mathbb{R}).$$

We suppose that  $\text{supp}(\varphi) \subset [t_1, t_2] \times [a, b]$ , then using the energy equation (5.12) and Lemma 5.4 we obtain

$$\left| \int_{\mathbb{R}^+ \times \mathbb{R}} \varphi_x (h^\varepsilon)^2 u_x^\varepsilon \mathcal{A}_x^\varepsilon dx dt \right| \leq C \|\varphi_x (h^\varepsilon)^2 u_x^\varepsilon\|_{L^\infty([t_1, t_2], L^2([a, b]))} \|\mathcal{A}_x^\varepsilon\|_{L^1([t_1, t_2], L^\infty([a, b]))} \leq \varepsilon C.$$

Following the same argument we obtain

$$\left| \int_{\mathbb{R}^+ \times \mathbb{R}} \varphi u^\varepsilon \mathcal{A}_x^\varepsilon dx dt \right| \leq \varepsilon C.$$

Then, taking  $\varepsilon \rightarrow 0$ , using Lemma A.2, (5.60) and (7.2) we obtain (3.2). Doing the proof of (6.15) for any  $t_0$ , we obtain that  $(h - \bar{h}, u) \in C_r(\mathbb{R}^+, H^1(\mathbb{R}))$ . Lemma 5.5 implies (3.6). The inequality (3.4) follows from Lemma 5.6, (7.1) and (7.3). Finally, the energy inequality (3.5) follows from (6.17).

## APPENDIX A. SOME CLASSICAL LEMMAS

Here, we recall simple versions of some classical lemmas that are needed in this paper. We start this section by the following lemma on the Young measures.

**Lemma A.1.** ([32]) *Let  $\mathcal{O}$  be a subset of  $\mathbb{R}^n$  with a zero-measure boundary. For any bounded family  $\{v^\varepsilon\}_\varepsilon \subset L^p(\mathcal{O}, \mathbb{R}^N)$  with  $p > 1$  there exists a subsequence denoted also  $\{v^\varepsilon\}_\varepsilon$  and a family of probability measures on  $\mathbb{R}^N$ ,  $\{\mu_y, y \in \mathcal{O}\}$  such that for all  $f \in C^0(\mathbb{R}^N)$  with  $f(\xi) = o(|\xi|^p)$  at infinity and for all  $\phi \in C_c^\infty(\mathcal{O})$  we have*

$$\lim_{\varepsilon \rightarrow 0} \int_{\mathcal{O}} \phi(y) f(v^\varepsilon(y)) dy = \int_{\mathcal{O}} \phi(y) \int_{\mathbb{R}} f(\xi) d\mu_y(\xi) dy \quad (\text{A.1})$$

with

$$\int_{\mathcal{O}} \int_{\mathbb{R}} |\xi|^p d\mu_y(\xi) dy \leq \liminf_{\varepsilon \rightarrow 0} \|u^\varepsilon\|_{L^p(\mathcal{O})}^p. \quad (\text{A.2})$$

Also, some other results on strong and weak precompactness are needed, then we recall.

**Lemma A.2.** ([20]) *Let  $\Omega$  be an open set of  $\mathbb{R}^n$ , assuming that  $f_n \rightarrow f$  in  $L^p(\Omega)$  with  $p \in (1, \infty)$ ,  $g_n$  is bounded in  $L^q$  with  $q \in (1, \infty)$  and  $g_n \rightharpoonup g$  in  $L^q(\Omega)$ , then for any  $\varphi \in L^r(\Omega)$  such that  $1/p + 1/q + 1/r = 1$ , we have*

$$\lim_{n \rightarrow \infty} \int_{\Omega} f_n g_n \varphi dx = \int_{\Omega} f g \varphi dx. \quad (\text{A.3})$$

**Lemma A.3.** ([20]) *For any  $p > 2$  we have  $L_{loc}^1(\mathbb{R}^2) \cap W_{loc}^{-1,p}(\mathbb{R}^2) \Subset H_{loc}^{-1}(\mathbb{R}^2)$ . In other words, for any open, bounded, smooth set  $U \subset \mathbb{R}^2$ , if the sequence  $(f_n)_n$  is bounded in  $L^1(U) \cap W^{-1,p}(U)$ , then  $(f_n)_n$  is relatively compact in  $H^{-1}(U)$ .*

**Lemma A.4.** (Lemma II.1 in [18]) *Let  $c \in L_{loc}^1(\mathbb{R}^+, H_{loc}^1(\mathbb{R}))$  and  $f \in L_{loc}^\infty(\mathbb{R}^+, L_{loc}^2(\mathbb{R}))$ . Let also  $j_\varepsilon$  be a Friedrichs mollifier, then*

$$(c \partial_x f) * j_\varepsilon - c(\partial_x f * j_\varepsilon) \xrightarrow{\varepsilon \rightarrow 0} 0, \quad \text{in } L_{loc}^1(\mathbb{R}^+ \times \mathbb{R}). \quad (\text{A.4})$$

**Lemma A.5.** (Lemma C.1 in [43]) *Let  $(f_n)_n$  be a bounded sequence in  $L^\infty([0, T], L^2(\mathbb{R}))$ . If  $f_n$  belongs to  $C([0, T], H^{-1}(\mathbb{R}))$  and for any  $\varphi \in H^1(\mathbb{R})$ , the map*

$$t \mapsto \int_{\mathbb{R}} \varphi(x) f_n(t, x) dx$$

*is uniformly continuous for  $t \in [0, T]$  and  $n \geq 1$ , then  $(f_n)_n$  is relatively compact in the space  $C([0, T], L_w^2(\mathbb{R}))$ , where  $L_w^2$  is the  $L^2$  space equipped with its weak topology.*

**Lemma A.6. (Compensated compactness [22])** *Let  $\Omega$  be an open set of  $\mathbb{R}^2$ , let  $a, b \in C(\Omega, \mathbb{R})$  such that for all  $(x_1, x_2) \in \Omega$  we have  $a(x_1, x_2) \neq b(x_1, x_2)$ . Let also  $(f_n), (g_n)$  be bounded sequences in  $L_{loc}^2(\Omega, \mathbb{R})$  such that  $f_n \rightharpoonup f$  and  $g_n \rightharpoonup g$ . If the sequences*

$$\{\partial_{x_1} f_n + \partial_{x_2}(a f_n)\}_n, \quad \text{and} \quad \{\partial_{x_1} g_n + \partial_{x_2}(b g_n)\}_n,$$

*are relatively compact in  $H_{loc}^{-1}(\Omega)$ , then  $f_n g_n \rightharpoonup fg$  in the sense of distributions.*

Let  $\Lambda$  be defined such that  $\widehat{\Lambda}f = (1+\xi^2)^{\frac{1}{2}}\widehat{f}$  and let  $[A, B] \stackrel{\text{def}}{=} AB - BA$  be the commutator of the operators  $A$  and  $B$ . We recall now some estimates of the  $H^s$  norm of the product, the commutator and the composition of functions.

**Lemma A.7.** ([33]) *If  $r \geq 0$ , then  $\exists C > 0$  such that*

$$\|fg\|_{H^r} \leq C (\|f\|_{L^\infty} \|g\|_{H^r} + \|f\|_{H^r} \|g\|_{L^\infty}), \quad (\text{A.5})$$

$$\|[\Lambda^r, f]g\|_{L^2} \leq C (\|f_x\|_{L^\infty} \|g\|_{H^{r-1}} + \|f\|_{H^r} \|g\|_{L^\infty}). \quad (\text{A.6})$$

**Lemma A.8.** ([16]) *Let  $F \in C^\infty(\mathbb{R})$  with  $F(0) = 0$ , then for any  $m \in \mathbb{N}$  there exists a continuous function  $\tilde{F}$ , such that for all  $f \in H^m$  we have*

$$\|F(f)\|_{H^m} \leq \tilde{F}(\|f\|_{L^\infty}) \|f\|_{H^m}. \quad (\text{A.7})$$

## APPENDIX B. THE ENERGY EQUATION

The goal of this section is to prove that smooth solutions of (2.1) (respectively (5.3)) satisfy the energy equation (1.5) (respectively (5.11)). Taking  $\varepsilon = 0$ , we notice that (1.5) is a particular case of (5.11). We consider  $\varepsilon \geq 0$  and  $(h^\varepsilon, u^\varepsilon)$  smooth solutions of (5.3). Then we have

$$\begin{aligned} \frac{1}{2} g \left[ (h^\varepsilon - \bar{h})^2 \right]_t &= -g (h^\varepsilon - \bar{h}) (h^\varepsilon u^\varepsilon)_x + g (h^\varepsilon - \bar{h}) \mathcal{A}_x^\varepsilon, \\ \frac{1}{2} \gamma \left[ (h_x^\varepsilon)^2 \right]_t &= -\gamma h_x^\varepsilon (h^\varepsilon u^\varepsilon)_{xx} + g h_x^\varepsilon \mathcal{A}^\varepsilon - \frac{\sqrt{3}\gamma}{48(h^\varepsilon)^{1/2}} h_x^\varepsilon (\chi_\varepsilon(P^\varepsilon) - \chi_\varepsilon(Q^\varepsilon)). \end{aligned}$$

Summing up we obtain

$$\begin{aligned} \frac{1}{2} g \left[ (h^\varepsilon - \bar{h})^2 \right]_t + \frac{1}{2} \gamma \left[ (h_x^\varepsilon)^2 \right]_t &= g \left[ (h^\varepsilon - \bar{h}) \mathcal{A}^\varepsilon \right]_x \\ &- g (h^\varepsilon - \bar{h}) (h^\varepsilon u^\varepsilon)_x - \gamma h_x^\varepsilon (h^\varepsilon u^\varepsilon)_{xx} - \frac{1}{96} (Q^\varepsilon - P^\varepsilon) (\chi_\varepsilon(P^\varepsilon) - \chi_\varepsilon(Q^\varepsilon)). \end{aligned} \quad (\text{B.1})$$

Defining  $\mathcal{X}^\varepsilon \stackrel{\text{def}}{=} \mathcal{C}^\varepsilon + F(h^\varepsilon)$ , from (5.3) we have

$$\begin{aligned} \frac{1}{6} \left[ (h^\varepsilon)^3 (u_x^\varepsilon)^2 \right]_t &= \frac{1}{2} (h^\varepsilon)^2 (u_x^\varepsilon)^2 \mathcal{A}_x^\varepsilon - \frac{1}{2} (h^\varepsilon)^2 (u_x^\varepsilon)^2 (h^\varepsilon u^\varepsilon)_x - \frac{1}{3} (h^\varepsilon)^3 u_x^\varepsilon (u^\varepsilon u_x^\varepsilon)_x \\ &- \gamma (h^\varepsilon)^3 u_x^\varepsilon ((h^\varepsilon)^{-2} h_x^\varepsilon)_x - \frac{1}{3} u_x^\varepsilon (h^\varepsilon)^3 \partial_x \mathcal{L}_{h^\varepsilon}^{-1} \partial_x \mathcal{X}^\varepsilon + \frac{1}{3} u_x^\varepsilon (h^\varepsilon)^3 \partial_x \mathcal{B}^\varepsilon. \end{aligned} \quad (\text{B.2})$$

Using again (5.3) and the definition of  $\mathcal{L}_{h^\varepsilon}$  we obtain

$$\begin{aligned} \frac{1}{2} \left[ h^\varepsilon (u^\varepsilon)^2 \right]_t &= \frac{1}{2} (u^\varepsilon)^2 \mathcal{A}_x^\varepsilon - \frac{1}{2} (u^\varepsilon)^2 (h^\varepsilon u^\varepsilon)_x - h^\varepsilon (u^\varepsilon)^2 u_x^\varepsilon - 3\gamma (h^\varepsilon)^{-1} u^\varepsilon h_x^\varepsilon \\ &- h^\varepsilon u^\varepsilon \mathcal{L}_{h^\varepsilon}^{-1} \mathcal{X}_x^\varepsilon + h^\varepsilon u^\varepsilon \mathcal{B}^\varepsilon \\ &= -\frac{1}{2} (u^\varepsilon)^2 (h^\varepsilon u^\varepsilon)_x - h^\varepsilon (u^\varepsilon)^2 u_x^\varepsilon - 3\gamma (h^\varepsilon)^{-1} u^\varepsilon h_x^\varepsilon - u^\varepsilon \mathcal{X}_x^\varepsilon \\ &- \frac{1}{3} u^\varepsilon \partial_x (h^\varepsilon)^3 \partial_x \mathcal{L}_{h^\varepsilon}^{-1} \partial_x \mathcal{X}^\varepsilon + \frac{1}{3} u^\varepsilon \partial_x (h^\varepsilon)^3 \partial_x \mathcal{B}^\varepsilon + \frac{1}{2} u^\varepsilon ((h^\varepsilon)^2 u_x^\varepsilon \mathcal{A}_x^\varepsilon)_x \\ &- \frac{1}{48} u^\varepsilon [h^\varepsilon (\chi_\varepsilon(P^\varepsilon) + \chi_\varepsilon(Q^\varepsilon))]_x \\ &= -\frac{1}{2} [(u^\varepsilon)^3 h^\varepsilon]_x - 3\gamma (h^\varepsilon)^{-1} u^\varepsilon h_x^\varepsilon - [u^\varepsilon \mathcal{X}^\varepsilon]_x - \frac{1}{3} [u^\varepsilon (h^\varepsilon)^3 \partial_x \mathcal{L}_{h^\varepsilon}^{-1} \partial_x \mathcal{X}^\varepsilon]_x \\ &+ \frac{1}{3} [u^\varepsilon (h^\varepsilon)^3 \partial_x \mathcal{B}^\varepsilon]_x + \frac{1}{2} [u^\varepsilon (h^\varepsilon)^2 u_x^\varepsilon \mathcal{A}_x^\varepsilon]_x - \frac{1}{48} [u^\varepsilon h^\varepsilon (\chi_\varepsilon(P^\varepsilon) + \chi_\varepsilon(Q^\varepsilon))]_x \\ &+ u_x^\varepsilon \mathcal{X}^\varepsilon + \frac{1}{3} u_x^\varepsilon (h^\varepsilon)^3 \partial_x \mathcal{L}_{h^\varepsilon}^{-1} \partial_x \mathcal{X}^\varepsilon - \frac{1}{3} u_x^\varepsilon (h^\varepsilon)^3 \partial_x \mathcal{B}^\varepsilon - \frac{1}{2} (h^\varepsilon)^2 (u_x^\varepsilon)^2 \mathcal{A}_x^\varepsilon \end{aligned}$$

$$+ \frac{1}{96} (P^\varepsilon + Q^\varepsilon) (\chi_\varepsilon(P^\varepsilon) + \chi_\varepsilon(Q^\varepsilon)). \quad (\text{B.3})$$

Summing up (B.2) and (B.3) one obtains

$$\begin{aligned} \frac{1}{2} [h^\varepsilon (u^\varepsilon)^2]_t + \frac{1}{6} [(h^\varepsilon)^3 (u_x^\varepsilon)^2]_t &= -3\gamma (h^\varepsilon)^{-1} u^\varepsilon h_x^\varepsilon + u_x^\varepsilon \mathcal{X}^\varepsilon - \frac{1}{2} (h^\varepsilon)^2 (u_x^\varepsilon)^2 (h^\varepsilon u^\varepsilon)_x \\ &- \frac{1}{3} (h^\varepsilon)^3 u_x^\varepsilon (u^\varepsilon u_x^\varepsilon)_x - \frac{1}{2} [(u^\varepsilon)^3 h^\varepsilon]_x - [u^\varepsilon \mathcal{X}^\varepsilon]_x - \frac{1}{3} [u^\varepsilon (h^\varepsilon)^3 \partial_x \mathcal{L}_{h^\varepsilon}^{-1} \partial_x \mathcal{X}^\varepsilon]_x \\ &+ \frac{1}{3} [u^\varepsilon (h^\varepsilon)^3 \partial_x \mathcal{B}^\varepsilon]_x + \frac{1}{2} [u^\varepsilon (h^\varepsilon)^2 u_x^\varepsilon \mathcal{A}^\varepsilon]_x - \frac{1}{48} [u^\varepsilon h^\varepsilon (\chi_\varepsilon(P^\varepsilon) + \chi_\varepsilon(Q^\varepsilon))]_x \\ &- \gamma (h^\varepsilon)^3 u_x^\varepsilon ((h^\varepsilon)^{-2} h_x^\varepsilon)_x + \frac{1}{96} (P^\varepsilon + Q^\varepsilon) (\chi_\varepsilon(P^\varepsilon) + \chi_\varepsilon(Q^\varepsilon)). \end{aligned} \quad (\text{B.4})$$

Using (4.5) and (5.5) we obtain

$$\begin{aligned} \frac{1}{3} (h^\varepsilon)^3 \partial_x \mathcal{B}^\varepsilon &= \frac{1}{3} (h^\varepsilon)^3 \partial_x \mathcal{L}_{h^\varepsilon}^{-1} \left\{ -\frac{1}{2} u^\varepsilon \mathcal{A}_x^\varepsilon \right\} - \frac{1}{2} (h^\varepsilon)^2 u_x^\varepsilon \mathcal{A}_x^\varepsilon + \frac{1}{48} h^\varepsilon (\chi_\varepsilon(P^\varepsilon) + \chi_\varepsilon(Q^\varepsilon)) \\ &+ (h^\varepsilon)^3 \partial_x \mathcal{L}_{h^\varepsilon}^{-1} \left\{ h^\varepsilon \int_{-\infty}^x \left( \frac{1}{2} (h^\varepsilon)^{-1} u_x^\varepsilon \mathcal{A}_x^\varepsilon - \frac{1}{48 (h^\varepsilon)^2} (\chi_\varepsilon(P^\varepsilon) + \chi_\varepsilon(Q^\varepsilon)) \right) dy \right\} \\ &= \frac{1}{3} (h^\varepsilon)^2 \mathcal{V}_1^\varepsilon - \frac{1}{2} (h^\varepsilon)^2 u_x^\varepsilon \mathcal{A}_x^\varepsilon + \frac{1}{48} h^\varepsilon (\chi_\varepsilon(P^\varepsilon) + \chi_\varepsilon(Q^\varepsilon)). \end{aligned}$$

Using now (4.7) and (B.4) we obtain

$$\begin{aligned} \frac{1}{2} [h^\varepsilon (u^\varepsilon)^2]_t + \frac{1}{6} [(h^\varepsilon)^3 (u_x^\varepsilon)^2]_t &= -3\gamma (h^\varepsilon)^{-1} u^\varepsilon h_x^\varepsilon + u_x^\varepsilon \mathcal{X}^\varepsilon - \frac{1}{2} (h^\varepsilon)^2 (u_x^\varepsilon)^2 (h^\varepsilon u^\varepsilon)_x \\ &- \frac{1}{3} (h^\varepsilon)^3 u_x^\varepsilon (u^\varepsilon u_x^\varepsilon)_x - \frac{1}{2} [(u^\varepsilon)^3 h^\varepsilon]_x - [u^\varepsilon \mathcal{B}^\varepsilon]_x - \left[ u^\varepsilon \left( \frac{1}{2} g ((h^\varepsilon)^2 - \bar{h}^2) - 3\gamma \ln(h^\varepsilon/\bar{h}) \right) \right]_x \\ &+ \frac{1}{3} [u^\varepsilon (h^\varepsilon)^2 \mathcal{V}_1^\varepsilon]_x - \gamma (h^\varepsilon)^3 u_x^\varepsilon ((h^\varepsilon)^{-2} h_x^\varepsilon)_x + \frac{1}{96} (P^\varepsilon + Q^\varepsilon) (\chi_\varepsilon(P^\varepsilon) + \chi_\varepsilon(Q^\varepsilon)). \end{aligned} \quad (\text{B.5})$$

Forward calculations lead to

$$\begin{aligned} g (h^\varepsilon - \bar{h}) (h^\varepsilon u^\varepsilon)_x + \gamma h_x^\varepsilon (h^\varepsilon u^\varepsilon)_{xx} + 3\gamma (h^\varepsilon)^{-1} u^\varepsilon h_x^\varepsilon - u_x^\varepsilon \mathcal{X}^\varepsilon + \frac{1}{2} (h^\varepsilon)^2 (u_x^\varepsilon)^2 (h^\varepsilon u^\varepsilon)_x \\ + \frac{1}{3} (h^\varepsilon)^3 u_x^\varepsilon (u^\varepsilon u_x^\varepsilon)_x + \gamma (h^\varepsilon)^3 u_x^\varepsilon ((h^\varepsilon)^{-2} h_x^\varepsilon)_x = \frac{1}{2} g \left[ u^\varepsilon (h^\varepsilon - \bar{h})^2 \right]_x \\ + \frac{1}{6} [(h^\varepsilon)^3 u^\varepsilon (u_x^\varepsilon)^2]_x + 3\gamma [u^\varepsilon \ln(h^\varepsilon/\bar{h})]_x + \frac{1}{2} \gamma [u^\varepsilon (h_x^\varepsilon)^2]_x + \gamma [h^\varepsilon h_x^\varepsilon u_x^\varepsilon]_x. \end{aligned} \quad (\text{B.6})$$

Summing up (B.1), (B.5) and (B.6) we obtain

$$\begin{aligned} \left[ \frac{1}{2} h^\varepsilon (u^\varepsilon)^2 + \frac{1}{2} g (h^\varepsilon - \bar{h})^2 + \frac{1}{6} (h^\varepsilon)^3 (u_x^\varepsilon)^2 + \frac{1}{2} \gamma (h_x^\varepsilon)^2 \right]_t + \\ \left[ \frac{1}{2} (u^\varepsilon)^3 h^\varepsilon - g (h^\varepsilon - \bar{h}) \mathcal{A}^\varepsilon + u^\varepsilon \mathcal{B}^\varepsilon + \frac{1}{2} g u^\varepsilon ((h^\varepsilon)^2 - \bar{h}^2) - \frac{1}{3} u^\varepsilon (h^\varepsilon)^2 \mathcal{V}_1^\varepsilon \right. \\ \left. + \frac{1}{2} g u^\varepsilon (h^\varepsilon - \bar{h})^2 + \frac{1}{6} (h^\varepsilon)^3 u^\varepsilon (u_x^\varepsilon)^2 + \frac{1}{2} \gamma u^\varepsilon (h_x^\varepsilon)^2 + \gamma h^\varepsilon h_x^\varepsilon u_x^\varepsilon \right]_x \\ = \frac{1}{48} P^\varepsilon \chi_\varepsilon(P^\varepsilon) + \frac{1}{48} Q^\varepsilon \chi_\varepsilon(Q^\varepsilon). \end{aligned}$$

This is (5.11).

## REFERENCES

- [1] B. Alvarez-Samaniego and D. Lannes. A Nash–Moser theorem for singular evolution equations. Application to the Serre and Green–Naghdi equations. *Indiana University mathematics journal.*, 97–131, 2008.
- [2] T. Alazard, N. Burq and C. Zuily. On the water-wave equations with surface tension. *Duke Mathematical Journal.*, 158(3), 413–499, 2011.

- [3] D. Ambrose and N. Masmoudi. The zero surface tension limit two-dimensional water waves. *Communications on Pure and Applied Mathematics.*, 58(10), 1287–1315, 2005.
- [4] D.M. Ambrose and N. Masmoudi. The zero surface tension limit of three-dimensional water waves. *Indiana University mathematics journal.*, 479–521, 2009.
- [5] C. J. Amick. Regularity and uniqueness of solutions to the Boussinesq system of equations. *J. Differential Equations.*, 54(2):231–247, 1984.
- [6] H. Bae and R. Granero-Belinchón. Singularity formation for the Serre–Green–Naghdi equations and applications to abcd-Boussinesq systems. *Monatshefte für Mathematik.*, 1–14, 2021.
- [7] K. Beyer and M. Günther. On the Cauchy problem for a capillary drop. Part I: irrotational motion. *Mathematical methods in the applied sciences.*, 21(12), 1149–1183, 1998.
- [8] J.L. Bona., M. Chen and J.C. Saut. Boussinesq Equations and Other Systems for Small-Amplitude Long Waves in Nonlinear Dispersive Media. I: Derivation and Linear Theory. *Journal of Nonlinear Science.*, 12(4):2002.
- [9] J. Boussinesq. Essai sur la théorie des eaux courantes. *Imprimerie nationale.*, 1877.
- [10] R. Camassa and D. Holm. An integrable shallow water equation with peaked solitons. *Phys. Rev. Lett.*, 71(11):1661–1664, 1993.
- [11] D. Clamond and D. Dutykh. Non-dispersive conservative regularisation of nonlinear shallow water (and isentropic Euler) equations. *Comm. Nonlin. Sci. Numer. Simul.*, 55:237–247, 2018.
- [12] D. Clamond, D. Dutykh and A. Durén. A plethora of generalised solitary gravity-capillary water waves. *J. Fluid Mech.*, 784:, 664–680, 2015.
- [13] D. Clamond, D. Dutykh and A. Galligo. Algebraic method for constructing singular steady solitary waves: a case study. *Proc. R. Soc. Lond. A.*, 472(2191), 2016.
- [14] D. Clamond, D. Dutykh and D. Mitsotakis. Conservative modified Serre–Green–Naghdi equations with improved dispersion characteristics. *Comm. Nonlin. Sci. Numer. Simul.*, 45:245–257, 2017.
- [15] G.M. Coclite, H. Holden and K.H. Karlsen. Global weak solutions to a generalized hyperelastic-rod wave equation. *SIAM Journal on Mathematical Analysis.*, 37:(4) 1044–1069, 2005.
- [16] A. Constantin and L. Molinet. The initial value problem for a generalized Boussinesq equation. *Differential and Integral equations.*, 15(9):1061–1072, 2002.
- [17] F. Dias and P. Milewski. On the fully-nonlinear shallow-water generalized Serre equations. *Physics Letters A.*, 374(8):1049–1053, 2010.
- [18] R.J. DiPerna and P.L. Lions. Ordinary differential equations, transport theory and Sobolev spaces. *Inventiones mathematicae.*, 98:(3) 511–547, 1989.
- [19] D. Dutykh, M. Hoefer and D. Mitsotakis. Solitary wave solutions and their interactions for fully nonlinear water waves with surface tension in the generalized Serre equations. *Theoretical and Computational Fluid Dynamics.*, 32:(3) 371–397, 2018.
- [20] L.C. Evans. Weak convergence methods for nonlinear partial differential equations. *Amer. Math. Soc.*, 74, 1990.



- [21] E. Falcon, C. Laroche and S. Fauve. Observation of depression solitary surface waves on a thin fluid layer. *Physical review letters.*, 89(20):204501, 2002.
- [22] P. Gérard. Microlocal defect measures. *Communications in Partial Differential Equations*, 16(11):1761–1794, 1991.
- [23] A.E. Green, N. Laws and P.M. Naghdi. On the theory of water waves. *Proceedings of the Royal Society of London. A. Mathematical and Physical Sciences.*, 338(1612): 43–55, 1974.
- [24] A.E. Green and P.M. Naghdi. A derivation of equations for wave propagation in water of variable depth. *J. Fluid Mech.*, 78: 237–246, 1976.
- [25] B. Guelmame. On the blow-up scenario for some modified Serre–Green–Naghdi equations. *Nonlinear Anal*, 224, 113084, 2022.
- [26] B. Guelmame, D. Clamond, and S. Junca. Hamiltonian regularisation of the unidimensional barotropic Euler equations. *Nonlinear Anal. Real World Appl*, 64, 103455, 2022.
- [27] B. Guelmame, D. Clamond, and S. Junca. Local well-posedness of a Hamiltonian regularisation of the Saint-Venant system with uneven bottom. To appear in *Methods and Applications of Analysis*.
- [28] M. Haidar, T. El Arwadi and S. Israwi. Existence of a regular solution for 1D Green–Naghdi equations with surface tension at a large time instant. *Boundary Value Problems*, 1, 1–20, 2018.
- [29] M. Haidar, T. El Arwadi and S. Israwi. On the Green–Naghdi equations with surface tension in the Camassa–Holm scale. *Ann. Univ. Ferrara Sez. VII Sci. Mat.*, 67, 83–110, 2021.
- [30] S. Israwi. Large time existence for 1D Green–Naghdi equations. *Nonlinear Analysis*, 74(1):81–93, 2011.
- [31] R.S. Johnson. A modern introduction to the mathematical theory of water waves *Cambridge university press.*, 191997.
- [32] J.L. Joly., G. Métivier and J. Rauch. Focusing at a point and absorption of nonlinear oscillations. *Transactions of the American Mathematical Society.*, 347(10):3921–3969, 1995.
- [33] T. Kato and G. Ponce. Commutator estimates and the Euler and Navier–Stokes equations. *Communications on Pure and Applied Mathematics.*, 41(7):891–907, 1988.
- [34] D. Kazerani. Global existence for small data of the viscous Green–Naghdi type equations. *Journal of Differential Equations.*, 261(1):762–796, 2016.
- [35] B. Khorbatly and S. Israwi. Full justification for the extended Green-Naghdi system for an uneven bottom with surface tension. *hal-02994586.*, 2021.
- [36] B. Khorbatly and S. Israwi. On the extended Green-Naghdi system for an uneven bottom with surface tension. *hal-02189917.*, 2019.
- [37] B. Khorbatly, I. Zaiter and S. Israwi. Derivation and well-posedness of the extended Green–Naghdi equations for flat bottoms with surface tension. *Journal of Mathematical Physics.*, 59(7): 071501, 2018.
- [38] D.J. Korteweg and G. de Vries. XLI. On the change of form of long waves advancing in a rectangular canal, and on a new type of long stationary waves. *The London*,

- Edinburgh, and Dublin Philosophical Magazine and Journal of Science.*, 39(240):422–443, 1895.
- [39] D. Lannes. The Water Waves Problem: Mathematical Analysis and Asymptotics. *Amer. Math. Soc.*, 2013.
- [40] D. Lannes and G. Métivier. The shoreline problem for the one-dimensional shallow water and Green–Naghdi equations. *Journal de l'École polytechnique-Mathématiques.*, 5, 455–518, 2018.
- [41] J. Li, G. Chen and J. Song Bifurcations of traveling wave solutions for fully nonlinear water waves with surface tension in the generalized Serre–Green–Naghdi equations. *International Journal of Bifurcation and Chaos.*, 1, 2050019, 2020.
- [42] Y.A. LI. A shallow-water approximation to the full water wave problem. *Communications on Pure and Applied Mathematics.*, 59(9), 1225–1285, 2006.
- [43] P.L. Lions. Mathematical topics in fluid mechanics. Vol. 1. Incompressible Models. *Oxford Lecture Series in Mathematics and its Applications*, 3., 1996.
- [44] J.-L. Liu, R. L. Pego, and Y. Pu. Well-posedness and derivative blow-up for a dispersionless regularized shallow water system. *Nonlinearity.*, 32(11):4346-4376, 2019.
- [45] M.S. Longuet-Higgins. The generation of capillary waves by steep gravity waves. *Journal of Fluid Mechanics.*, 16(1):138–159, 1963.
- [46] M. Ming and Z. Zhang. Well-posedness of the water-wave problem with surface tension. *Journal de mathématiques pures et appliquées.*, 92(5):429–455, 2009.
- [47] D. Mitsotakis, D. Dutykh, A. Assylbekuly and D. Zhakebayev. On weakly singular and fully nonlinear travelling shallow capillary-gravity waves in the critical regime. *Physics Letters A.*, 381(20):1719–1726, 2017
- [48] T.G. Myers. Thin films with high surface tension. *SIAM review.*, 40(3):441-462, 1998.
- [49] B.A. Packham. Capillary-gravity waves against a vertical cliff. *Mathematical Proceedings of the Cambridge Philosophical Society.*, 64(3):827–832, 1968.
- [50] Y. Pu, R. L. Pego, D. Dutykh, and D. Clamond. Weakly singular shock profiles for a non-dispersive regularization of shallow-water equations. *Comm. Math. Sci.*, 16(5): 1361–1378, 2018.
- [51] M. E. Schonbek. Existence of solutions for the Boussinesq system of equations. *J. Differential Equations.*, 42(3):325–352, 1981.
- [52] B. Schweizer. On the three-dimensional Euler equations with a free boundary subject to surface tension. *Ann. Inst. H. Poincaré Anal. Non Linéaire.*, 22, 753–781, 2005.
- [53] F. Serre. Contribution à l'étude des écoulements permanents et variables dans les canaux. *La Houille Blanche.*, (6):830–872, 1953.
- [54] J. Shatah and C. Zeng. Geometry and a priori estimates for free boundary problems of the Euler equation. *Comm. Pure Appl. Math.*, 61:698–744, 2008.
- [55] J. Simon. Compact sets in the space  $L^p(0, T; B)$ . *Annali di Matematica pura ed applicata.*, 146(1):65–96, 1986.
- [56] C.H. Su and C.S. Gardner. Korteweg–de Vries equation and generalizations. III. Derivation of the Korteweg–de Vries equation and Burgers equation. *Journal of Mathematical Physics.*, 10(3):536–539, 1969.

- [57] J.V. Wehausen and E.V. Laitone. Surface waves. *Fluid Dynamics/Strömungsmechanik.*, 446–778, 1960.
- [58] G. B. Whitham. Linear and nonlinear waves. *John Wiley.*, 2011.
- [59] Z. Xin and P. Zhang. On the weak solutions to a shallow water equation. *Communications on Pure and Applied Mathematics.*, 53(11) :1411–1433, 2000.
- [60] H. Yosihara. Capillary-gravity waves for an incompressible ideal fluid. *Journal of Mathematics of Kyoto University.*, 23(4) :649–694, 1983.
- [61] P. Zhang and Y. Zheng. On oscillations of an asymptotic equation of a nonlinear variational wave equation. *Asymptotic Analysis.*, 18(3-4) :307–327, 1998.
- [62] P. Zhang and Y. Zheng. Rarefactive solutions to a nonlinear variational wave equation of liquid crystals. *Communications in Partial Differential Equations.*, 26(3-4) :381–419, 2001.
- [63] P. Zhang and Y. Zheng. Weak solutions to a nonlinear variational wave equation. *Arch. Rat. Mech. Anal.*, 166:303–319, 2003.
- [64] P. Zhang and Y. Zheng. Weak solutions to a nonlinear variational wave equation with general data. *Annals of Inst. H. Poincaré, Non Linear Anal.*, 22:207–226, 2005.

(**Billel Guelmame**) LJAD, INRIA, CNRS, UNIVERSITÉ CÔTE D’AZUR, FRANCE.  
Email address: [billel.guelmame@univ-cotedazur.fr](mailto:billel.guelmame@univ-cotedazur.fr)