



**HAL**  
open science

## Mesures in situ des concentrations en particules à l'aide du Light Optical Aerosol Counter (LOAC)

J Leglise, A Mellouki, Véronique Daële, J Chen

► **To cite this version:**

J Leglise, A Mellouki, Véronique Daële, J Chen. Mesures in situ des concentrations en particules à l'aide du Light Optical Aerosol Counter (LOAC). Colloque francophone combustion et pollution atmosphérique (COMPOLA 2016), Apr 2016, Saïdia, Maroc. hal-03583476

**HAL Id: hal-03583476**

**<https://hal.science/hal-03583476v1>**

Submitted on 4 Mar 2022

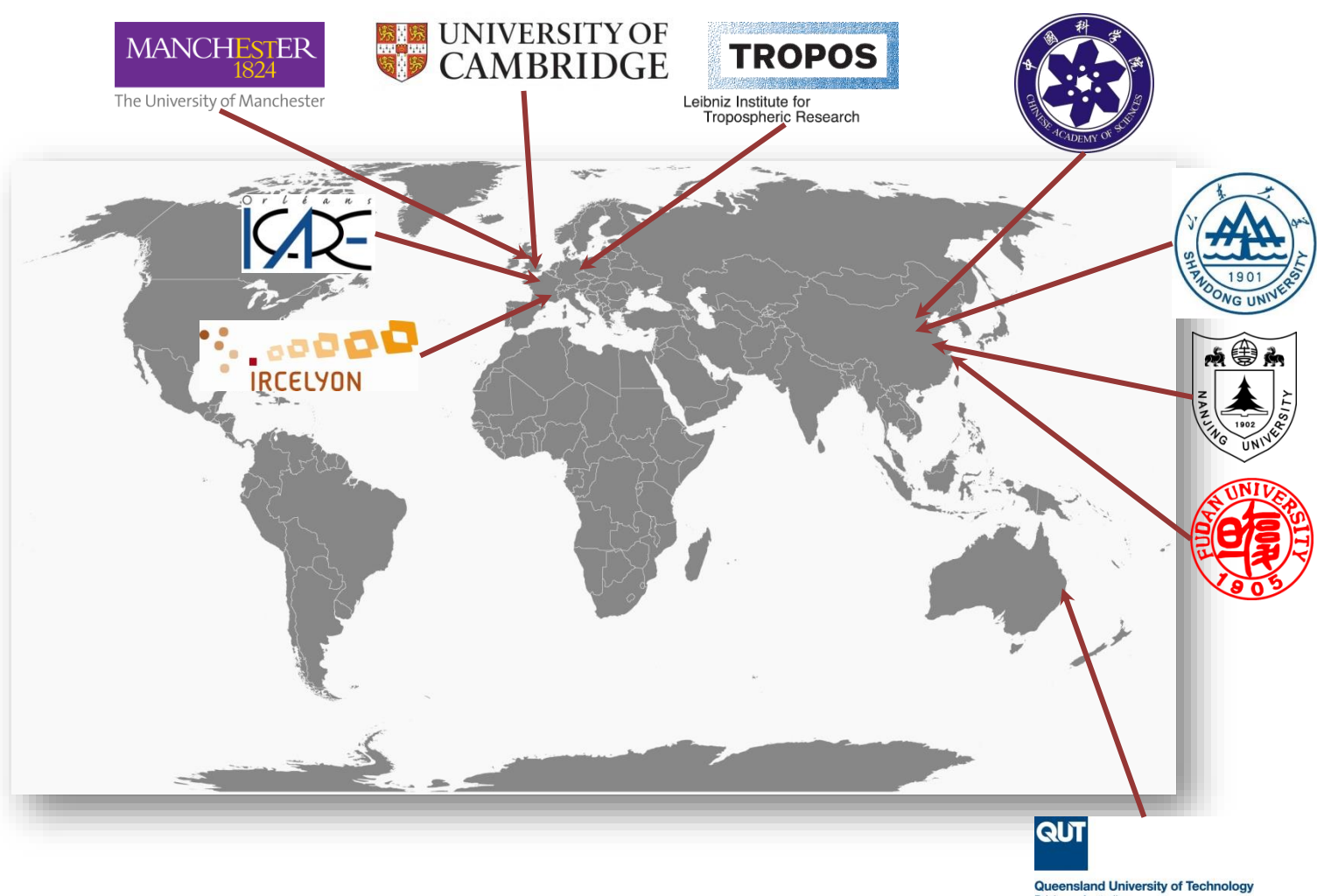
**HAL** is a multi-disciplinary open access archive for the deposit and dissemination of scientific research documents, whether they are published or not. The documents may come from teaching and research institutions in France or abroad, or from public or private research centers.

L'archive ouverte pluridisciplinaire **HAL**, est destinée au dépôt et à la diffusion de documents scientifiques de niveau recherche, publiés ou non, émanant des établissements d'enseignement et de recherche français ou étrangers, des laboratoires publics ou privés.



### Introduction

**Collaborators**  
An international consortium :



### Objectives

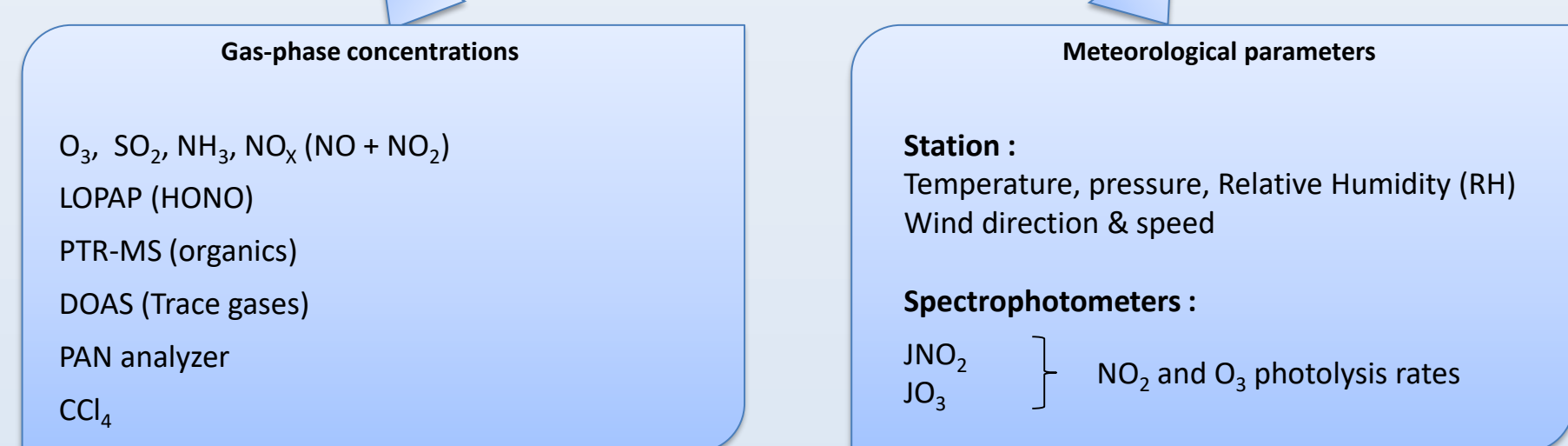
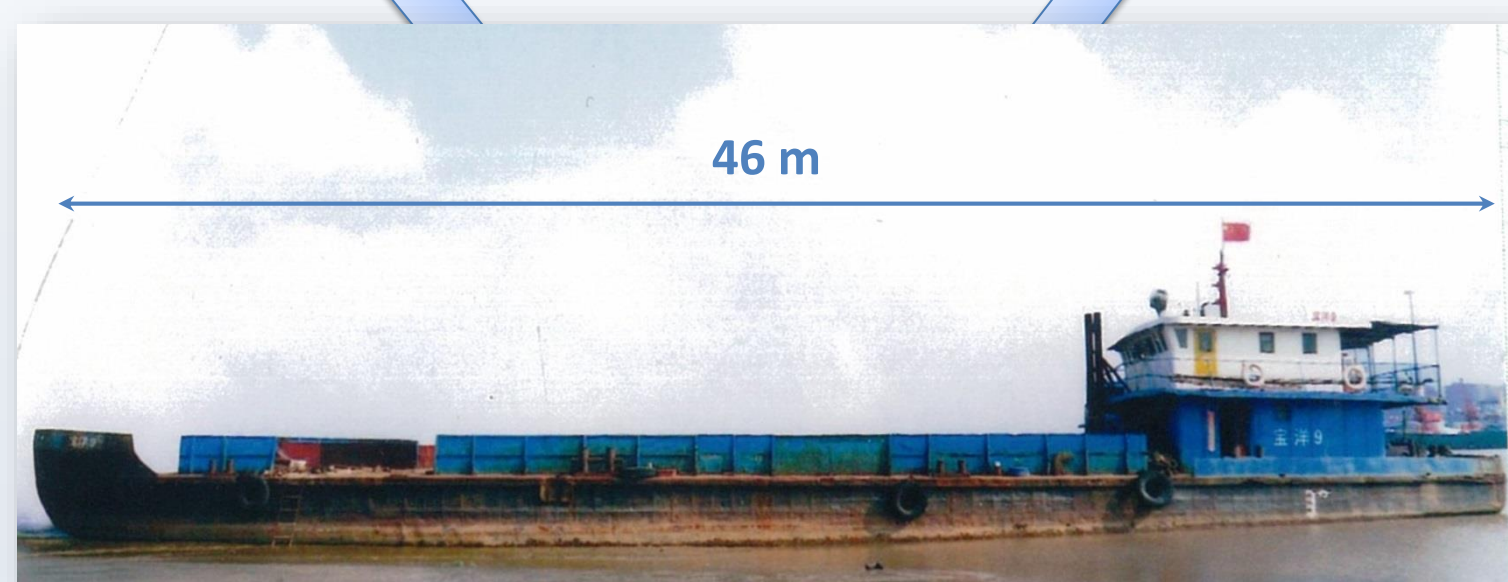
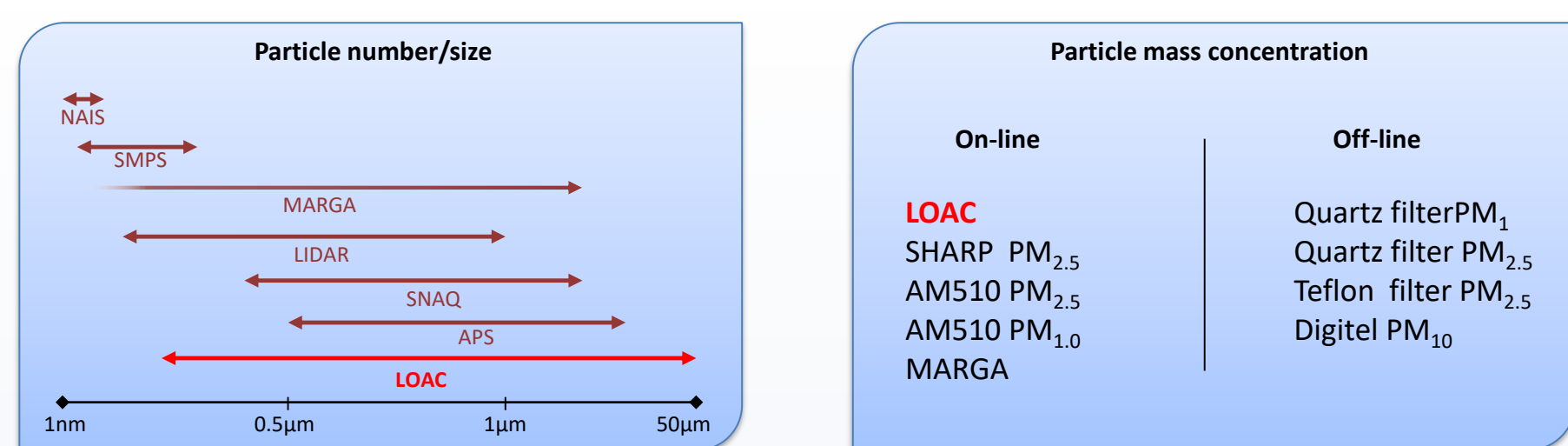
- Ships emissions
- Yangtze river air pollution during heating season
- Aerosol chemical and optical properties
- Photochemistry over Yangtze river
- Fog chemistry
- Dry/wet deposition of nutrient into the river



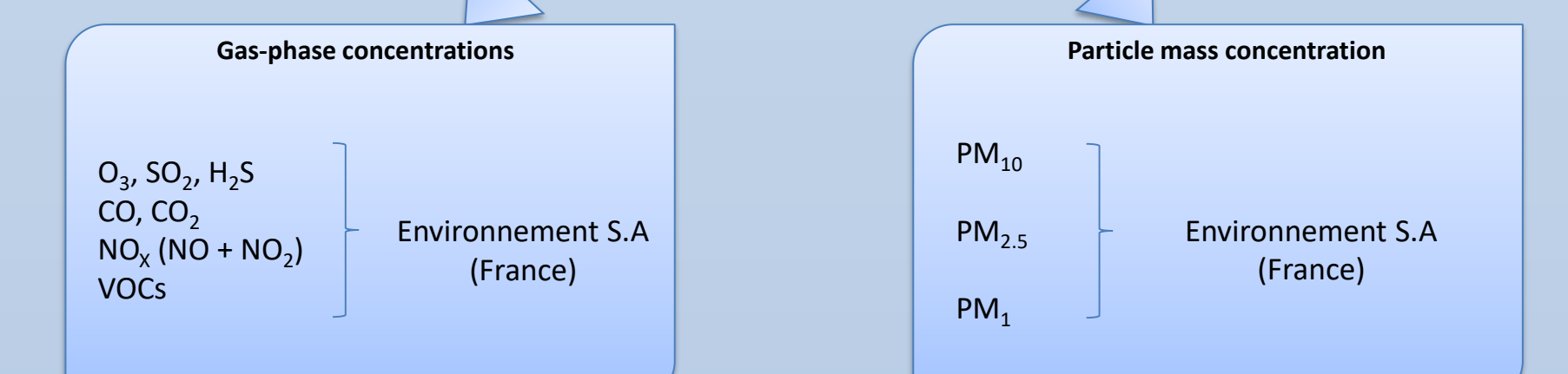
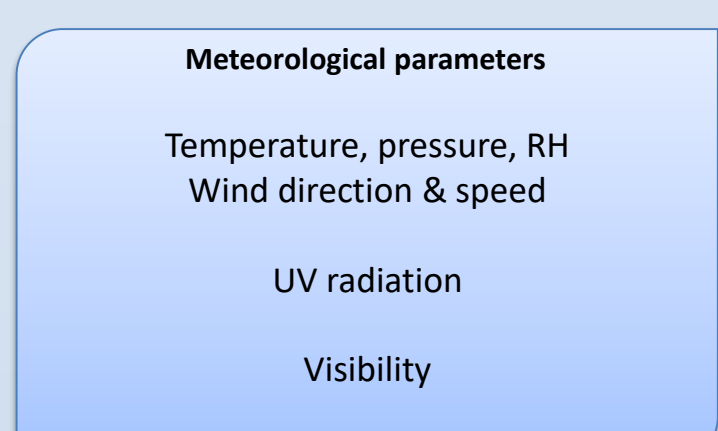
Dates: 20th november – 4th december 2015 (Day 324 → Day 338)  
Route: Round trip between Shanghai and Wuhan (2150 km)

### Materials & Methods

#### Ship



#### Monitoring van



### LOAC

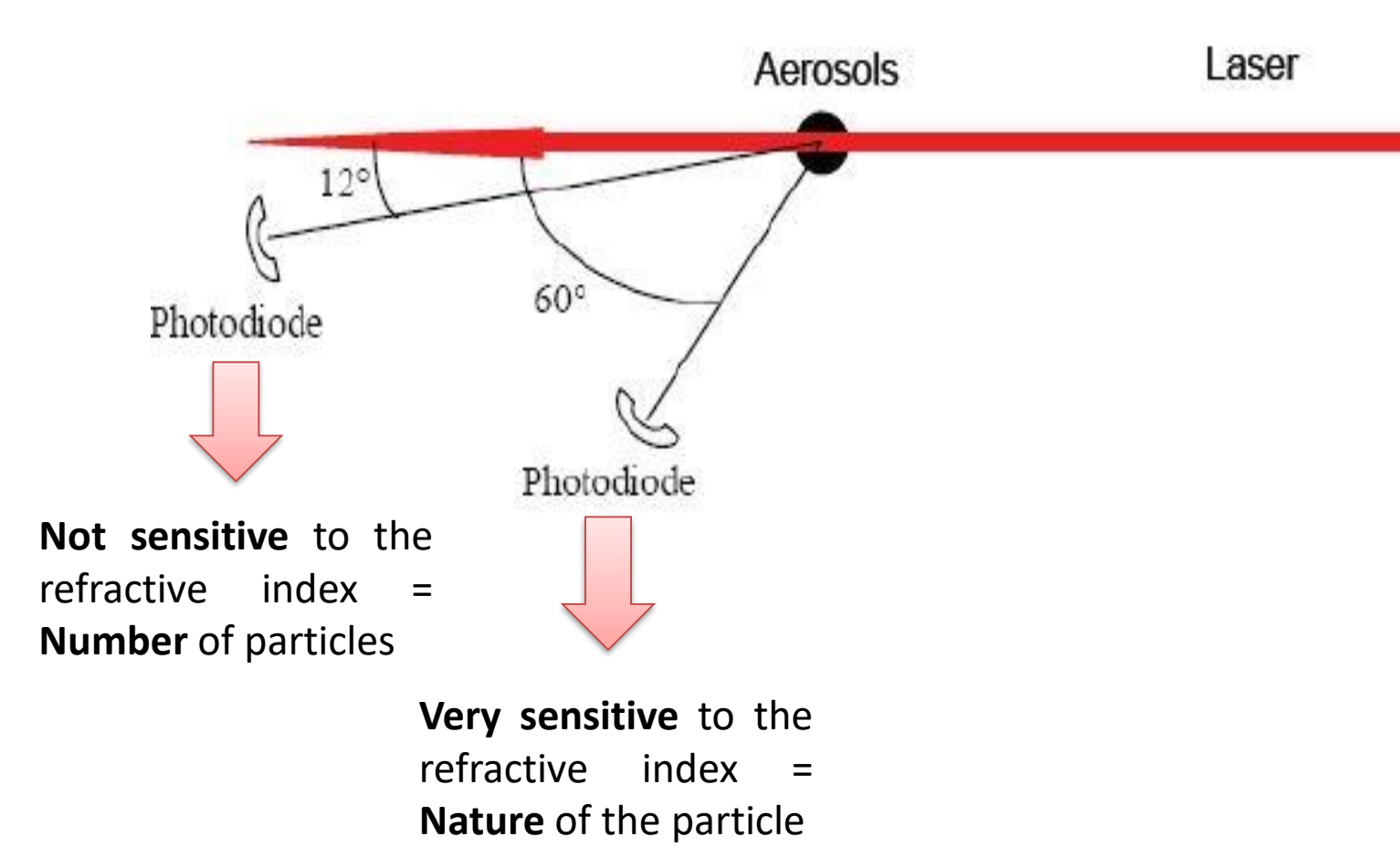
**LOAC = Light Optical Aerosol Counter**

- Developed by LPC2E, MeteoMODEM, Environnement S.A.
- Light instrument (approx. 300 g, pump included)
- Optical measurement ( $\lambda = 650 \text{ nm}$ ) based on Mie scattering theory
- Size range : 0.2 – 50  $\mu\text{m}$  within 19 size classes
- Aerosol nature identification
  - Mineral
  - Carbonaceous particles
  - Inorganic
  - Droplets
- Limitations: Very sensitive to the background electronic noise

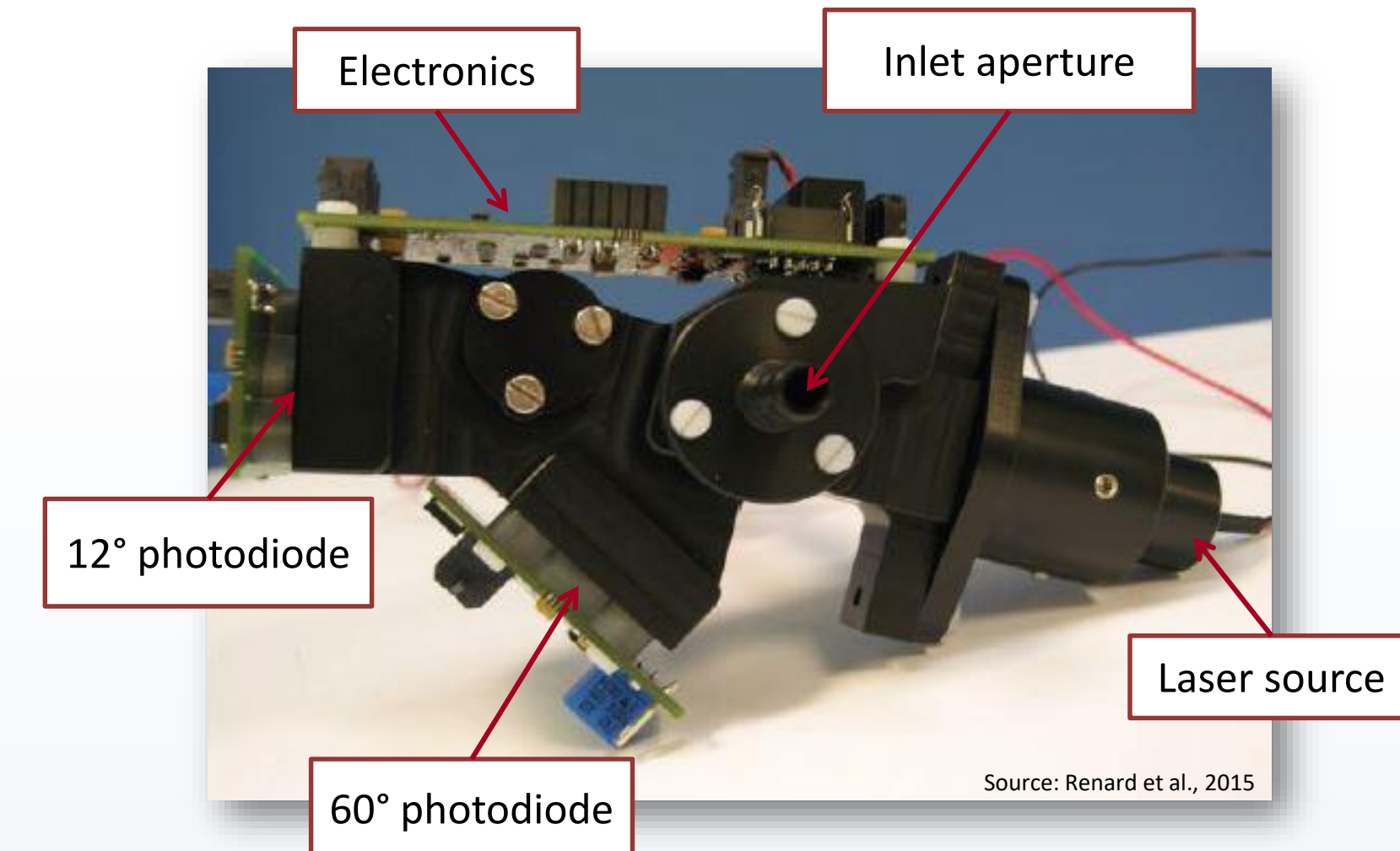
Class	Diameter ( $\mu\text{m}$ )
1	0.2–0.3
2	0.4–0.5
3	0.5–0.6
4	0.6–0.7
5	0.7–0.9
6	0.9–1.1
7	1.1–1.3
8	1.3–3
9	3–5
10	5–7.5
11	7.5–10
12	10–12.5
13	12.5–15
14	15–17.5
15	17.5–20
16	20–22
17	22–30
18	30–40
19	40–50

#### Principle

- 2 scattering angles : 12° and 60°

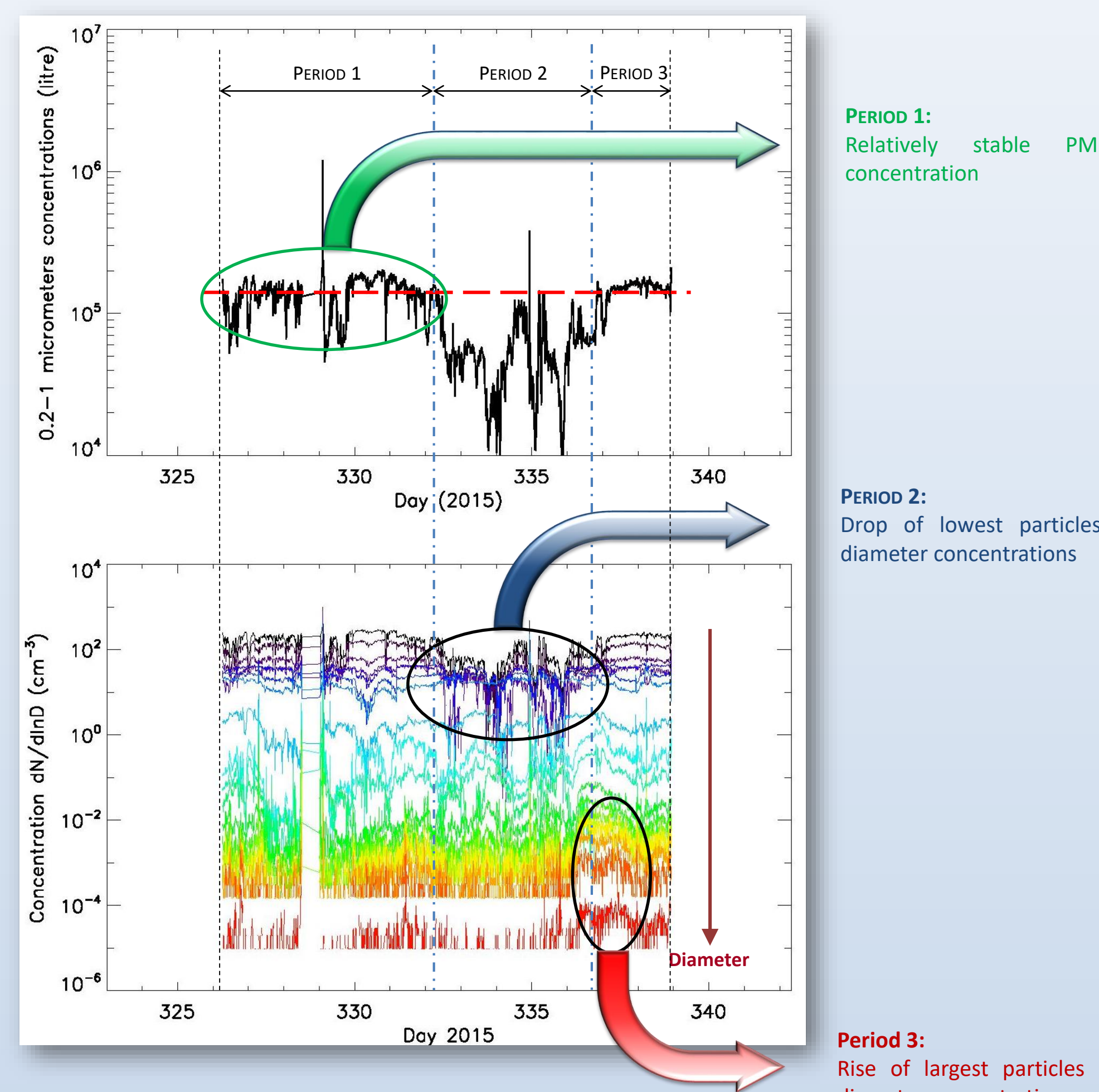


Not sensitive to the refractive index = Number of particles  
Very sensitive to the refractive index = Nature of the particle



### Results

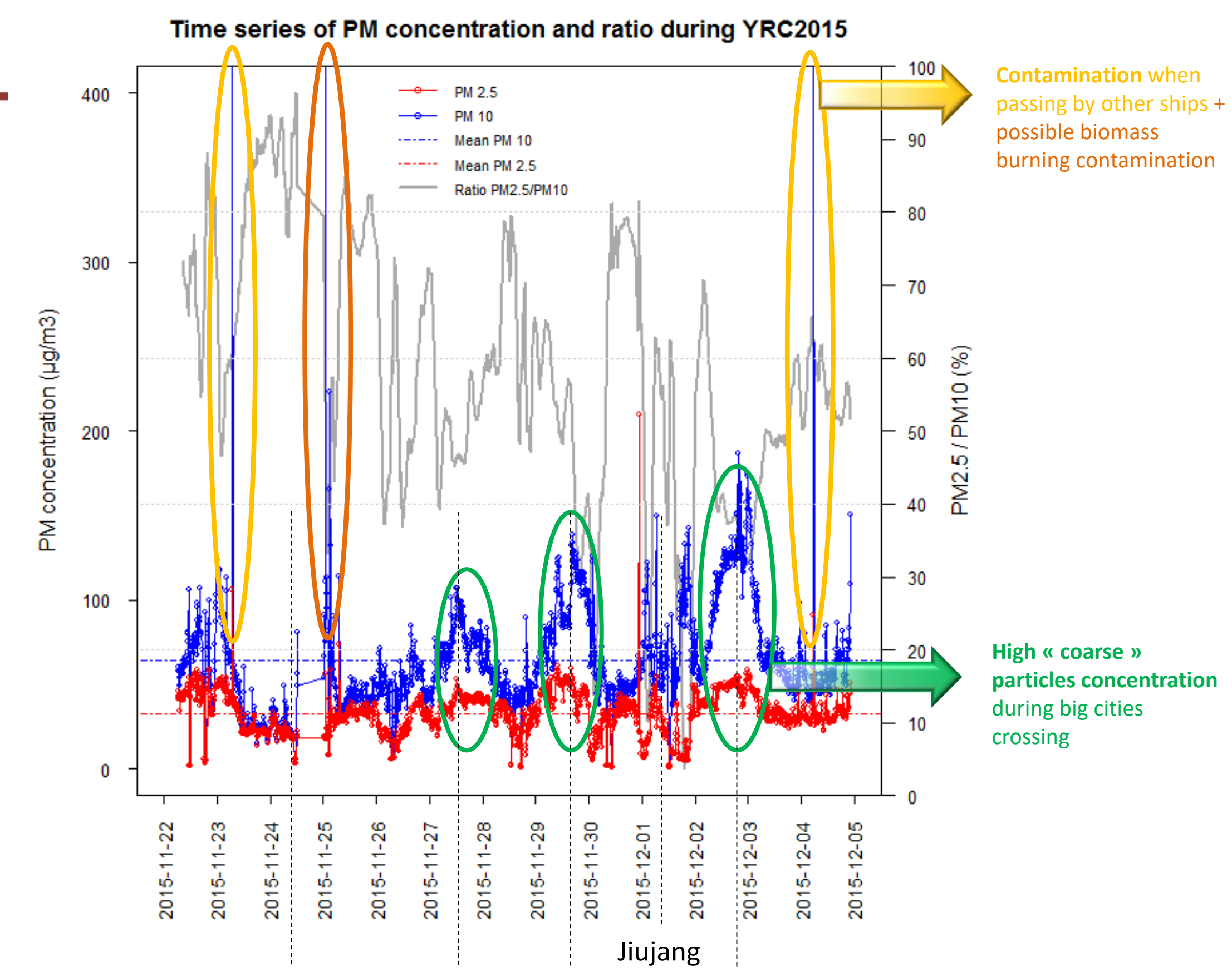
#### 1) Output data given by the LOAC during YRC15:



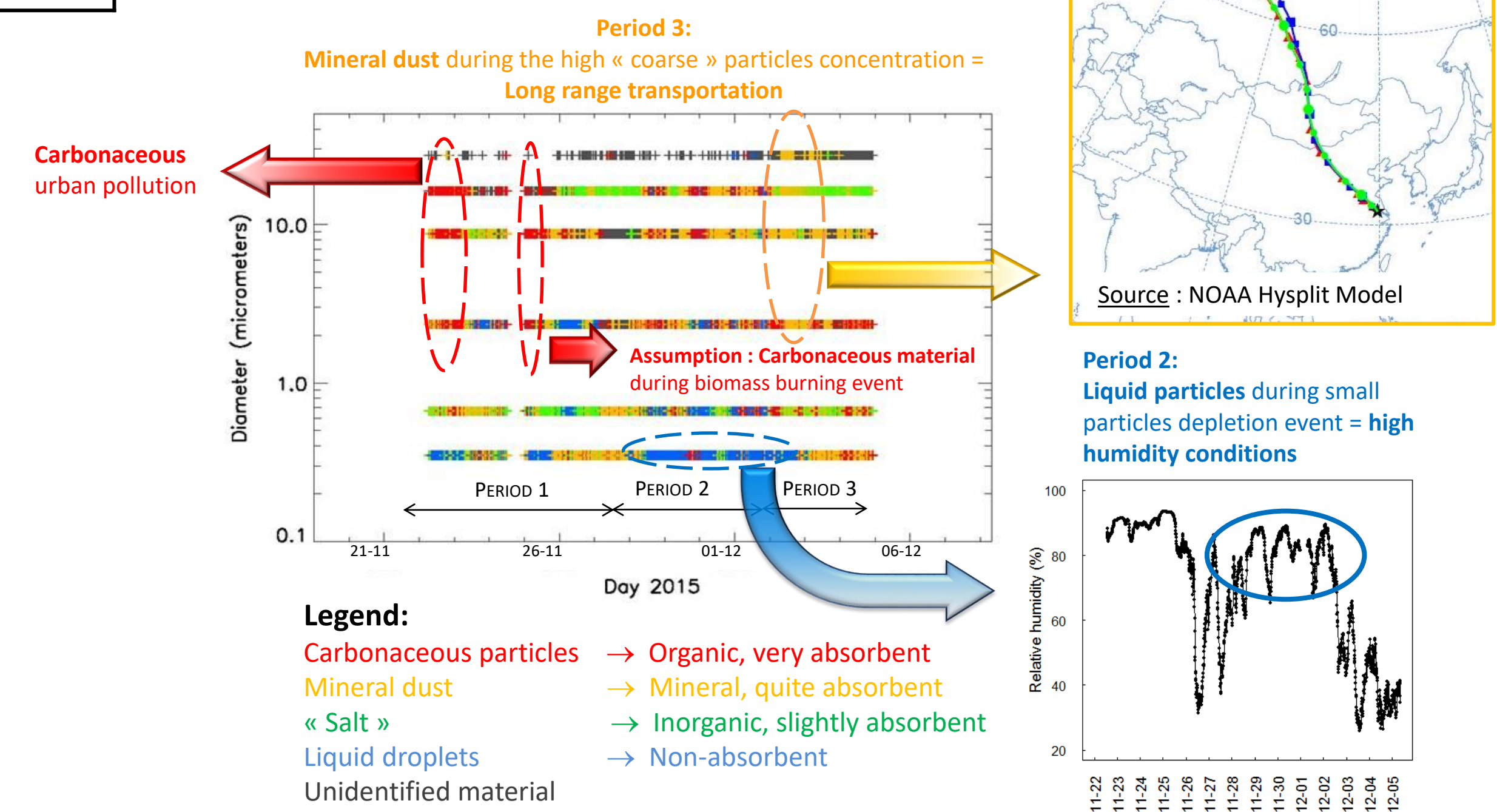
**PERIOD 1:** Relatively stable  $\text{PM}_{10}$  concentration  
**PERIOD 2:** Drop of lowest particles diameter concentrations  
**PERIOD 3:** Rise of largest particles diameter concentrations

#### For more details about the LOAC

- Renard et al., Small-angle light scattering by air-borne particulates, Meas.Sci.Technol., 2010a
- Renard et al., LOAC: a small aerosol optical counter/sizer for ground-based and balloon measurements of the size distribution and nature of atmospheric particles – Part 1: Principle of measurements and instrument evaluation, Atmos. Meas. Tech. Discuss, 2015
- Renard et al., LOAC: a small aerosol optical counter/sizer for ground-based and balloon measurements of the size distribution and nature of atmospheric particles – Part 2: First results from balloon and unmanned aerial vehicle flights, Atmos. Meas. Tech. Discuss, 2015

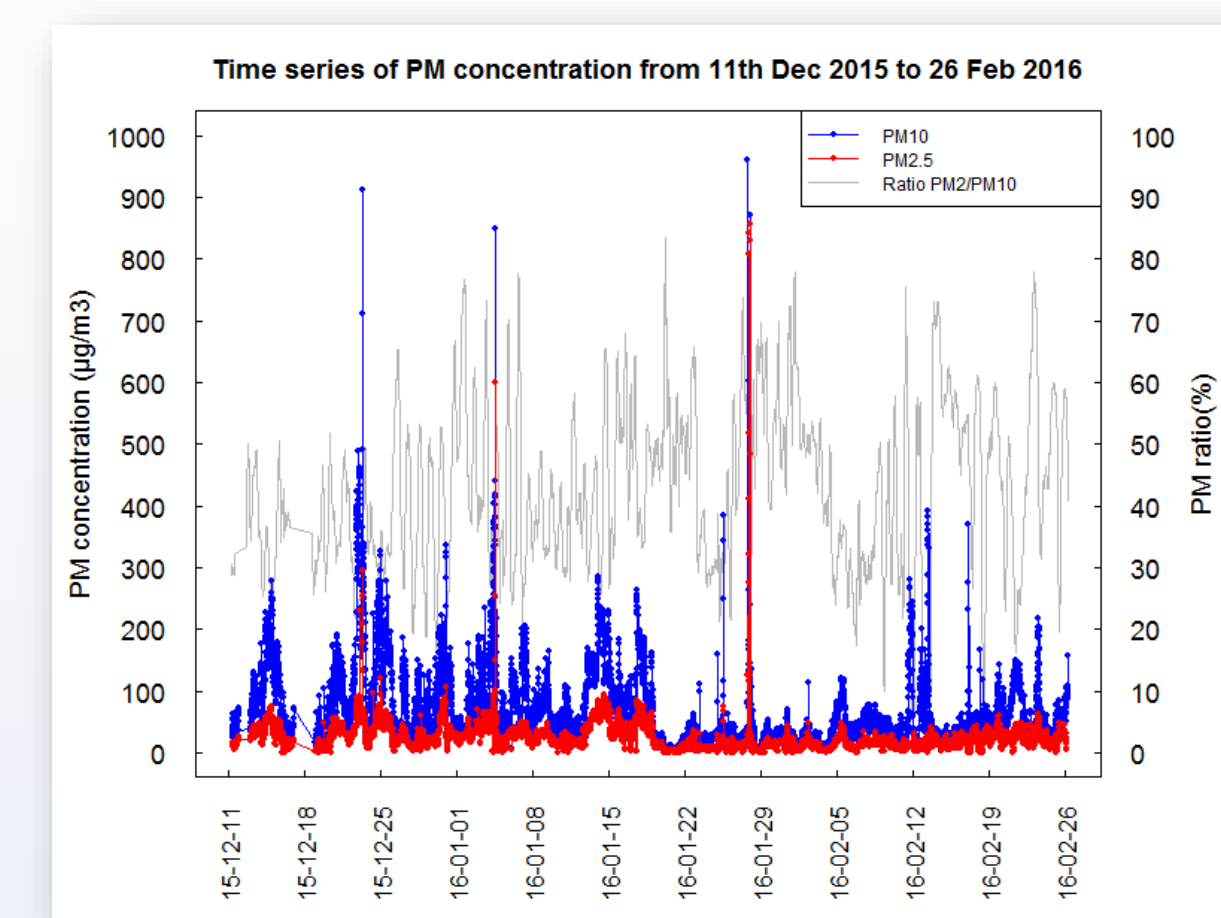


Contamination when passing by other ships + possible biomass burning contamination  
High « coarse » particles concentration during big cities crossing

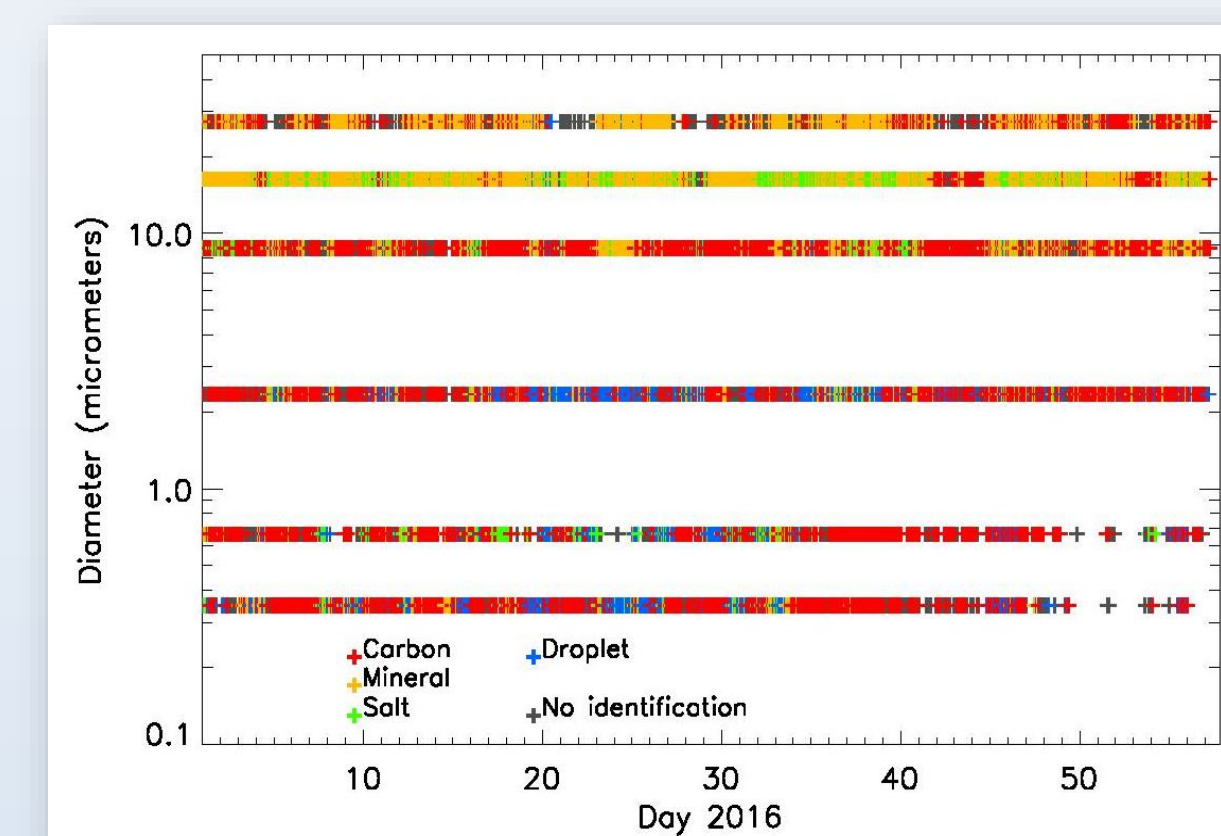


#### 2) Fudan University monitoring (December 2015 → May 2016)

LOAC localisation : 31.298504 °N - 121.501412 °E



- Heavy pollution events
- $\text{PM}_{10}$  concentration often higher than 200  $\mu\text{g}/\text{m}^3$
- Approx 40% of the particulate matter has a  $D_p < 2.5 \mu\text{m}$
- $\text{PM}_{10}$  essentially consist in carbonaceous material = typical of urban pollution from combustion, vehicle exhausts and industries



### Conclusion and future work

LOAC measurements allow to:

- Identify pollution events
- Pinpoint contamination peaks
- Roughly retrieve the particles nature

But very sensitive to the electronic noise → Be cautious in interpreting the data

#### Future work:

- Comparison with other instruments data (YRC15)
- Matching these results with transport/emission aerosol sources
- Collect/interpretation of new data from the LOAC set in Fudan University, and cross-comparison with other *in situ* measurements

#### Contact Information

Joris Légise, PhD student, ICARE-CNRS Orléans  
E-mail : joris.leglise@cnrs-orleans.fr