



Simulated poaching affects global connectivity and efficiency in social networks of African savanna elephants - an exemplar of how human disturbance impacts group-living species

Maggie Wiśniewska, Ivan Puga-Gonzalez, Phyllis Lee, Cynthia J Moss, Gareth Russell, Simon Garnier, Cédric Sueur

► To cite this version:

Maggie Wiśniewska, Ivan Puga-Gonzalez, Phyllis Lee, Cynthia J Moss, Gareth Russell, et al.. Simulated poaching affects global connectivity and efficiency in social networks of African savanna elephants - an exemplar of how human disturbance impacts group-living species. PLoS Computational Biology, 2022, 10.1101/2020.08.24.252536 . hal-03582309

HAL Id: hal-03582309

<https://hal.science/hal-03582309>

Submitted on 21 Feb 2022

HAL is a multi-disciplinary open access archive for the deposit and dissemination of scientific research documents, whether they are published or not. The documents may come from teaching and research institutions in France or abroad, or from public or private research centers.

L'archive ouverte pluridisciplinaire **HAL**, est destinée au dépôt et à la diffusion de documents scientifiques de niveau recherche, publiés ou non, émanant des établissements d'enseignement et de recherche français ou étrangers, des laboratoires publics ou privés.

Published in "Plos Computational Biology"

Full Title

Simulated poaching affects global connectivity and efficiency in social networks of African savanna elephants - an exemplar of how human disturbance impacts group-living species

Short Title

Simulated poaching affects social networks in of African savanna elephants

Authors

Maggie Wiśniewska^{1*}, Ivan Puga-Gonzalez^{2,3}, Phyllis Lee^{4,5}, Cynthia J. Moss⁴, Gareth Russell¹, Simon Garnier¹ and Cédric Sueur^{6,7}

*Corresponding author's e-mail address: mw298@njit.edu

Affiliations

¹Department of Biological Sciences, New Jersey Institute of Technology, Newark, NJ, USA

²Institutt for global utvikling og samfunnsplanlegging, Universitetet i Agder, Kristiansand, Norway

³Center for Modeling Social Systems at NORCE, Kristiansand, Norway

⁴Amboseli Trust for Elephants, Nairobi. Kenya

⁵Faculty of Natural Science, University of Stirling, Stirling, UK

⁶Université de Strasbourg, CNRS, IPHC, UMR 7178, Strasbourg, France

⁷Institut Universitaire de France, Paris, France

Author contributions

Maggie Wiśniewska - conceptualization; data curation; formal analysis; funding acquisition; investigation; methodology; project administration; software; supervision; validation,

visualization; writing-original draft preparation; writing-review and editing

Ivan Puga-Gonzalez - data curation; formal analysis; investigation; methodology; software; validation; visualization; writing-review and editing

Phyllis Lee - resources; writing-review and editing

Cynthia Moss - resources; writing-review and editing

Simon Garnier - conceptualization; writing-review and editing

Gareth Russell - writing-review and editing

Cédric Sueur - conceptualization; methodology; supervision; visualization; writing-review and editing

Abstract

Selective harvest, such as poaching, impacts group-living animals directly through mortality of individuals with desirable traits, and indirectly by altering the structure of their social networks. Understanding the relationship between the structural network changes and group performance in wild animals remains an outstanding problem. To address this knowledge gap, we evaluate the immediate effect of disturbance on group sociality in African savanna elephants — an example, group-living species threatened by poaching. Drawing on static association data from one free ranging population, we constructed 100 virtual networks; performed a series of experiments ‘poaching’ the oldest, socially central or random individuals; and quantified the immediate change in the theoretical indices of network connectivity and efficiency of social diffusion. Although the virtual networks never broke down, targeted elimination of the socially central conspecifics, regardless of age, decreased network connectivity and efficiency. These findings hint at the need to further study resilience by modeling network reorganization and

interaction-mediated socioecological learning, empirical data permitting. Our work is unique in quantifying connectivity together with global efficiency in multiple virtual networks that represent the sociodemographic diversity of elephant populations likely found in the wild. The basic design of our simulation platform makes it adaptable for hypothesis testing about the consequences of anthropogenic disturbance or lethal management on social interactions in a variety of group-living species with limited, real-world data.

Author Summary

We consider the immediate response of animal groups to human disturbance by using the African savanna elephant as an example of a group-living species threatened by poaching. Previous research in one elephant population showed that poaching-induced mortality reduced social interaction among distantly related elephants, but not among close kin. Whether this type of resilience indicates that affected populations function similarly before and after poaching is an open problem. Understanding it is important because poaching often targets the largest and most socially and ecologically experienced group members. Drawing on empirical association data, we simulated poaching in 100 virtual elephant populations and eliminated the most senior or sociable members. Targeted poaching of sociable conspecifics was more impactful. Although it did not lead to population breakdown, it hampered theoretical features of interspecific associations that in other systems have been associated with group cohesion and the efficiency of transferring social information. Our findings suggest that further inquiry into the relationship between resilience to poaching and group performance is warranted. In addition, our simulation platform offers a generalizable basis for hypothesis testing in other social species, wild or captive, subject to exploitation by humans.

Introduction

In group-living animals, from insects to mammals (1,2), interactions among conspecifics with diverse social roles (3–5) impact individual survival (6–9), reproductive success (10–12) and adaptive behaviors (13–16). In species with complex organization characterized by flexible aggregates of stable social units (17–19), the loss of influential group members through natural or anthropogenic causes can be detrimental to surviving conspecifics (20–22) and to entire populations (23,24). Unlike natural phenomena, such as fire (25,26), harvest is intrinsically nonrandom (27–29). For instance, poachers profiting from pet trade prefer to capture immature individuals as the most desirable commodity (30), eliminating gregarious ‘brokers’ of social interactions (31,32). As another example, trophy hunters target individuals with prominent features, such as elephants with big tusks (33,34), killing the oldest and socioecologically experienced conspecifics (35–37).

Animal social network analysis (ASNA) can be a powerful tool in demonstrating how selective elimination of individuals with key social roles impacts closely knit animal groups. Quantifying relationships between members of a group as ‘networks of nonrandomly linked nodes’ (38,39) has revealed that while some disturbed groups break down (40,41), others stay connected (20,42). Understanding whether the relationships in remaining groups operate as prior to disturbance is based on a small number of studies. In an instance of captive zebra finches, group foraging ability decreased following repeated social disturbance (43). In simulated primate groups, network disturbance led to a decrease in its global connectivity and the efficiency of social diffusion but did not lead to group fragmentation (44). These indices depend on network structure; are based on an assumption that transmissible currency, such as information, diffuses through network links (45); and have been related to cohesion, the transfer of social currency and robustness to loss of influential conspecifics in animal groups (46–48). In light of the anthropogenic impact on ecological communities (49–52), evaluating the relationship between post-disturbance social structure and limitations to social resilience vis-à-vis group performance in natural animal systems is becoming increasingly important (20,53).

To explore this relationship, we considered the African savanna elephant (*Loxodonta africana*) — a group-living species threatened by poaching (54–56). Elephant social organization consists of several tiers, ranging from transitional clans and bonded groups of distant kin, to matrilinear core units of adults and their immature offspring (57); or flexible groups of post-dispersal males of varying ages and kinship (36). While immature elephants frequently engage in affiliative interactions (58,59), mature individuals are more experienced about resource distribution and phenology (60,61) and about social dynamics (62–64). The interactions among individuals with diverse social roles across social tiers manifests as fission-fusion dynamics in response to changing sociophysical landscape (19,65). Poaching (which during the militarized wave of the past decade eliminated large subsets of populations including mature and immature elephants (66)), impacts demography (67), resource acquisition (68,69) population genetics (70) and various social behaviors (71,72) in affected populations.

Evidence from ASNA of data spanning periods of low and high poaching in one free-ranging population revealed that the composition and association patterns within matriline were conserved among close but not distant surviving kin. This outcome suggests clan-level impact of poaching on network structure and resilience, with little detrimental effect at the bonded group- or core unit-levels (73). Whether changes in network structure in elephants relate to group functionality is difficult to test directly. However, quantifying network connectivity together with global efficiency while simulating poaching may shed new light on the theoretical capacity for dissemination of social currency and the limitation to social resilience in disturbed populations. These insights may eventually inform our understanding about the mechanisms of group performance, as well as the efforts to mitigate human-elephant conflict (74,75) and conserve this economically important but endangered, keystone species (76,77).

We characterized the immediate effect of eliminating the most influential individuals on the global structure of simulated, social networks. We used a static set of empirical association data on one free-ranging elephant population from Amboseli National Park (NP) in Kenya (78)

because continuous data featuring network reorganization after poaching, necessary to parametrize time-varying models, do not yet exist for wild elephants. Initially, we assembled one social network using an Amboseli dataset and conducted a series of ‘poaching’ experiments by either incrementally removing 1) the oldest elephants as presumably the most experienced and prone to poaching, or topologically central individuals as the most sociable network members (79,80); or 2) by removing individuals randomly (41,81). To quantify network-wide structural changes, we evaluated four theoretical indices expressing network-wide connectivity (i.e., clustering coefficient and modularity, dependent on local neighborliness or global partitioning, respectively); as well as the efficiency of social diffusion (i.e, diameter and global efficiency, based on the distance or pervasiveness of diffusion, respectively) (47). To set these results in the context of a large-scale variation in demography and social interactions found in real elephant populations, we generated 100 distinct, virtual populations modeled on demographic trends in empirical data. To simulate social network formation in these populations, we built a spatiotemporally nonexplicit, individual-based model with rules informed by empirical associations (57,78). The steps of assigning social influence, conducting deletion experiments and quantifying deletion effects were as mentioned earlier.

We hypothesized that elimination of the most influential individuals, defined according to their age category or network position would lead to a decrease in global network connectedness and efficiency. Specifically, we predicted that relative to random deletions, targeted removal of the most central or mature individuals would result in a decrease in global clustering coefficient and efficiency, and an increase in diameter and modularity. We also anticipated a worsening in these outcomes as a function of the proportion of deleted individuals, resulting in an eventual network breakdown. This set of findings would be an indication of increased subgrouping at the population level, fewer interactions with immediate social partners and fewer pathways for timely and fault-tolerant transfer of social currency.

Partly consistent with our expectations, our work shows that targeted ‘poaching’ of the most sociable elephants was more impactful on simulated network structure than elimination of senior network members. Although it was not parameterized to reflect the rate of ‘poaching’ events in absolute time, and cannot be used to inform response to poaching after network reorganization, our work offers a novel perspective on the immediate response to disturbance in a large number of sociodemographically diverse populations with experience of poaching-like stress. Keeping in mind the delimitations of our approach, we interpret our findings in the context of a common behavioral repertoire in wild elephant populations and offer insights about how our findings may potentially help view natural populations subject to poaching. Finally, we consider the utility of our simulation platform as a generalizable tool for testing hypotheses about the disturbance of social dynamics in other species that facilitate ecosystem functioning or impact human welfare (82,83).

Materials and Methods

We performed a series of deletions using one social network derived from association data on a free-ranging elephant population and 100 virtual networks mimicking the empirical one. Details of these experiments and underlying assumptions are described in the following subsections.

Empirical data

Specifying empirical population composition

To gather baseline information about demography and social interactions characterizing elephant sociality, we considered two dyadic association datasets from Amboseli NP originally published elsewhere (78). We assume that these datasets, collected at vantage points where different social units converge to drink, capture of a range of social processes including events that required group cohesion and transfer of information (e.g., conflict avoidance in a multigroup

gathering at a waterhole requires learning and recall about which conspecifics to affiliate with and whom to avoid (84)).

During the original data collection, the authors inferred proximity-based, dyadic associations at two social tiers: among individuals within 10 separate, core groups (within core group - WCG) and between 64 core groups (between core group - BCG), where each group was treated as a single social entity. However, we had a different goal — to examine population-wide dynamics. To represent associations that occurred within each core group in the population, we used the unaltered WCG association data according to the following association index (AI) formula: $AI_{i,j} = x_{i,j} / (x_{i,j} + d + (n - d - x_{i,j}))$. In this formula, $x_{i,j}$ is the number of times individuals i and j were seen together; d is the number of times neither individual was seen; n is the total number of times a group was observed; and by extrapolation $(n - d - x_{i,j})$ represents the number of times either individual i or j was seen. To express the interactions occurring between individuals from different core groups, we assembled a dyadic association matrix by combining the WCG and BCG data as (85) (85).

Although the original dataset included 64 groups, we could only focus on 10 groups for which both WCG and BCG data were available (labeled AA, CB, DB, EA, EB, FB, JAYA, GB, OA, and PC). To reflect the typical, multi-tier structure of an elephant society (57), we aggregated the 10 core groups into eight bond groups [i.e., B1 (core group AA, including 10 individuals); B2 (FB, 6); B3 (EA, 9 and EB, 10); B4 (DB, 4); B5 (CB, 6 and OA, 10); B6 (GB, 11); B7 (PC, 9); and B8 (JAYA, 8)] and three clan groups [i.e., K1 (bond groups B1, B2, B3 and B4); K2 (B5, B6 and B7); and K3 (B8)] using genetically determined relatedness indices and long-term, behavioral associations inferred by the authors (78).

Inferring population-wide social interactions and assembling one social network based on empirical association data

We calculated the fraction of all sightings when an individual i from core group G was seen in that group according to the following formula: $f_{i,G} = \text{average } n_{i,j,G} / (n_G - \text{average } d_{i,j,G})$ where the averages are over all the other individuals j in group G . In this formula, $n_{i,j,G}$ represents the number of times individuals i and j were seen within group G ; $d_{i,j,G}$ is the number of times neither individual i nor individual j was seen within group G ; and n_G is the number of times group G was observed. The denominator is, therefore, the average number of times group G was observed with either individual i , individual j or both present; and $f_{i,G}$, which falls in the interval $\{0,1\}$, can be thought of as the average fraction of these occasions when they were both present or an index of the overall sociability of individual i . This process was repeated for every individual in the population.

Using the information available for the BCG association data, we calculated the fraction of all sightings when group G was seen with group B according to the following formula: $f_{G,B} = n_{G,B} / (n_G + n_B - n_{G,B})$. Here, $n_{G,B}$ indicates the number of times groups G and B were seen together; n_G indicates the number of times group G was seen without group B ; and n_B indicates the number of times group B was seen without group G . Thus the denominator is the number of times groups G and B were seen individually. This process was repeated for every pair of groups in the population and can be thought of as the probability of seeing a given pair of groups together. We then derived a symmetric, weighted matrix consisting of probabilities of dyadic associations between individuals from two different groups, for instance, individuals i_G and a_B from groups G and B respectively, by using the following formula: $p(i_G, a_B) = f_{i,G} \times f_{a,B} \times f_{G,B}$. Finally, using this matrix, we constructed a population-wide network of associations or links.

Quantifying social influence in empirically based social network

To identify influential network members serving as social centers and intermediaries (86), we quantified each individual's betweenness and degree scores (80). Given that these metrics were highly correlated, we used betweenness going forward as particularly suitable for questions

about global connectivity and more importantly the efficiency of social diffusion in a society with fission-fusion dynamics (48,87). From this point onward we often refer to individuals with high betweenness scores as the most central individual. To include age as a form of social influence due to presumed disparity in socioecological experience between mature versus immature individuals, we considered four age categories. They included young adults, prime adults, mature adults and the matriarchs (88). Betweenness and age category were not correlated. Their definitions are detailed in Table 1.

Conducting deletions using empirically based social network

To assess how disturbance affects global structure in elephant social networks and determine the level of stress that would bring about network fragmentation, we carried out a sequence of targeted deletions by selecting 20 percent of the oldest or most central network members (together referred to as '*deletion metrics*') and deleting them in a random sequence in increments of two percent. By eliminating up to 20 percent of members, we attempted to mimic the varying degree of poaching stress likely imposed on wild populations (89). In addition, we were motivated by evidence that many synthetic, biological systems (90) are organized around several, highly connected nodes, important for network development and stability (91). We compared the effect of targeted deletions against a null model by also deleting 20 percent of network members randomly (together referred to as '*deletion types*') in increments of two percent (collectively referred to as '*deletion proportions*'). Each deletion proportion was replicated 1000 times per both deletion types and both metrics (92).

After each deletion proportion, in each deletion type and metric, we quantified four, established, theoretical indices diagnostic of social network connectivity and efficiency of social diffusion. These indices included the clustering coefficient and weighted forms of the diameter, global efficiency and modularity. Weighted variants of these indices are informative when individuals associate differently with different conspecifics, which has been reported in

elephants (e.g., young adults may associate more frequently with close rather than distant kin) (63). Given the importance of fission-fusion dynamics in elephant populations occurring through interactions among immediate and distant kin (93), we quantified the clustering coefficient and weighted modularity before and after removal of socially influential elephants. By characterizing the number and weight of links within (i.e., clustering coefficient) and across (i.e., modularity) disparate subgroups or modules, we simultaneously compared the change to network connectivity at the social unit and population levels. By measuring weighted diameter and global efficiency we aimed to illustrate the potential rapidness (i.e., diameter) and pervasiveness (i.e., global efficiency) of social diffusion. Evaluating these indices in the context of elephant social networks allowed us to identify social interactions with capacity for timely and pervasive diffusion of social currency, and their change after poaching-like disturbance. The definitions of these indices and our predictions regarding their change after deletions are detailed in Table 1 (48).

We assessed the mean value of each index as a function of the proportion, type and metric of deletion. Each deletion condition (e.g., targeted deletion of two percent of the most mature network members) was repeated 1000 times — a process theoretically unlimited in the sample size. Therefore, instead of using a comparison of means statistical test informed by a biological distribution, we quantified the difference in the effect size between means of targeted and random deletions using Hedge's *g* test (94). We expressed the differences in the mean values between all corresponding conditions using the 95 percent confidence intervals.

Table 1. Definitions of social influence metrics and network indices used in this publication, as well as expected outcomes for weighted (W) and unweighted indices measured after incremental deletion of the most socially influential individuals in targeted deletions, or in random deletions without consideration for their social influence.

Individual level metric	Definition	
Betweenness	The number of shortest paths ¹ passing through an individual. High value indicates high social interconnectedness and thus important theoretical role that an individual has in the exchange of social currency, such as information (97,98)	
Age category	A segment of the population within a specified range of ages, including: 1) young adults (individuals <12 and < 20 years old); 2) prime adults (20-35); 3) mature adults (>35); 4) the matriarchs (the oldest or most dominant females in the core group)) used when categorical consideration of age is desired, or when data on absolute age are not available; in the empirically based population the age ranges were based on year of birth; in the virtual populations, the age range distribution was modeled to parallel the empirical distribution of ages (78,88)	
Network level index	Definition	Predictions
Clustering coefficient	The number of triplets (where any set of three individuals are connected by either two or three links, referred to respectively as open and closed triplets, respectively) divided by the total possible number of triplets. High values have been associated with high group cohesion, little subgrouping, and resilience against disturbance-induced breakdown (39,80,99)	deletion proportion: $0 > 0.2$ deletion type: random > targeted
Diameter W	The path with the maximum weight ² among the shortest path lengths across all dyads. High values have been associated with low degree of cohesion potentially impeding rapid transmission of information (39,41,80)	$0 < 0.2$ random < targeted
Global efficiency W	The inverse of the network's global efficiency: which measures the ratio between the total number of individuals and links multiplied by the network diameter ³ . High values have been associated with high probability of social diffusion in a group and thus important theoretical role in efficient transmission of information (95,100).	$0 > 0.2$ random > targeted

Modularity W	The density of links within a module in a weighted network relative to the density of links between modules. High value indicates low group cohesion with cohesive subgroups, and susceptibility to breakdown after disturbance (101–103).	$0 < 0.2$ random < targeted
--------------	--	--------------------------------

¹Shortest path - the path with the minimum number of links between any pair of individuals (95,96). ²Path weight - the inverse of the weight of a link, where links with highest weights are equivalent to shortest paths (48). ³Diameter - the longest among the shortest path lengths in a network (39).

Virtual data

Characterizing composition and association properties in virtual populations

To evaluate the impact of poaching-like disturbance on global network structure in the context of sociodemographic diversity likely seen in wild elephant communities, we generated 100 virtual populations based on empirical population composition (78). Each virtual population consisted of females in the previously detailed age categories (Table 1) and four social tiers, namely core, bond, clan and non-kin clan group (S1 Table) (57).

Evaluating the distribution of AIs in the empirically based network, according to age category and kinship, revealed the following patterns. 1) Individuals of any age category were most likely to associate within their core group. They were also more likely to associate with kin from the same bond group than from other bond groups; then with individuals from their clan; and lastly with non-kin (104). 2) In a core group, individuals of any age category were slightly more likely to associate with conspecifics from older age categories (Figure 1a). Since these patterns are generally consistent with the dynamics described in many elephant populations (genetic relatedness — (104,105); multilevel structure — (78); spatial proximity — (63,106)), we used the empirically based AI ranges for social network assembly in the virtual populations. To show the parallels, we present the ranges of dyadic associations across all age categories and social tiers in the empirically based and virtual populations (Figure 1 and S1 Table).

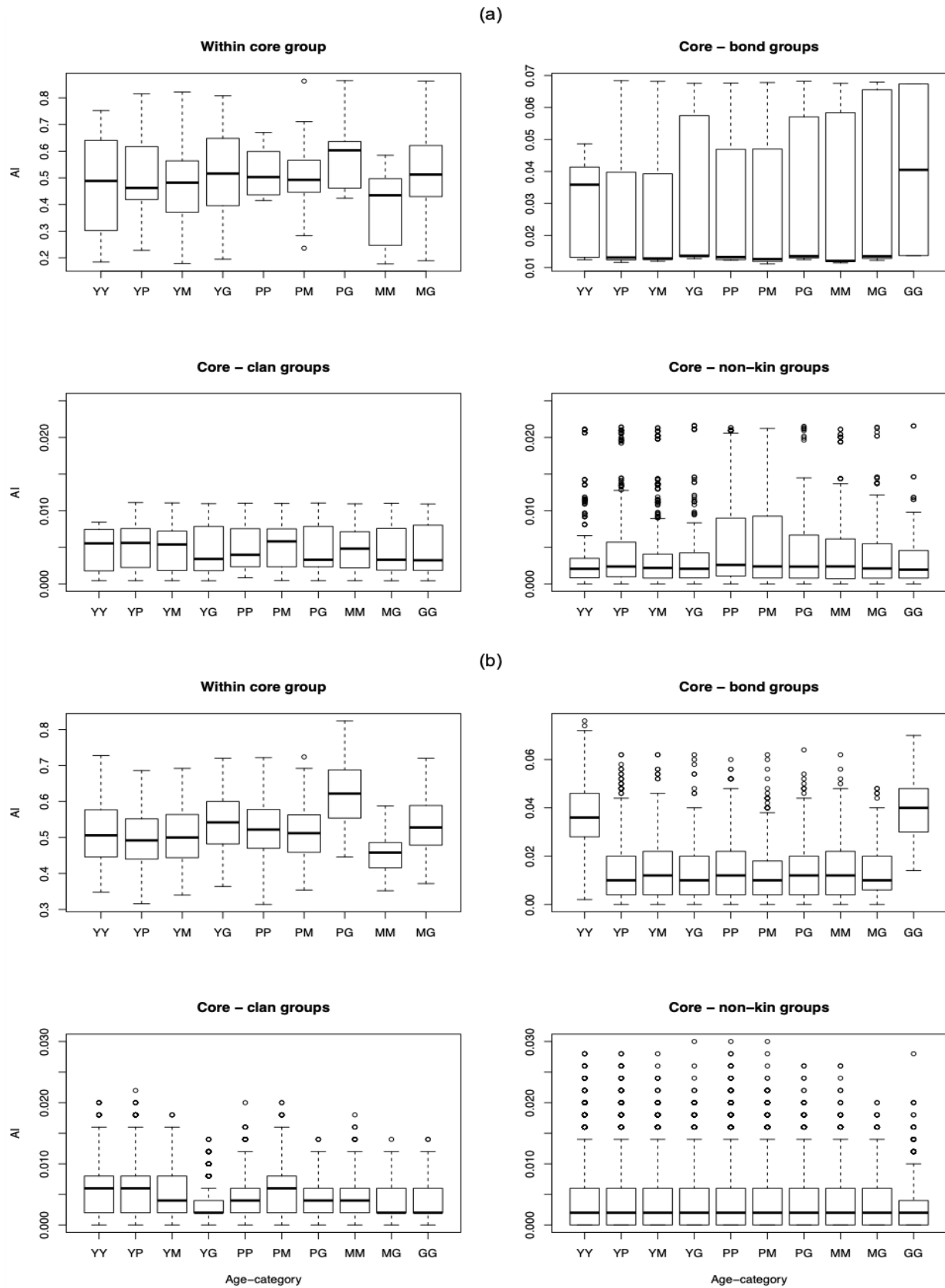


Figure 1. Graph representing the distribution of association indices (AI) in **(a)** the empirically based versus **(b)** virtual populations as a function of age category (Y = young adult; P = prime adult; M = mature adult; G = matriarch) and kinship of the associating individuals. A detailed account of population composition in the empirically based versus virtual populations can be found **S1 Table** in the Supplemental Materials section.

Simulating virtual social networks

To simulate 100 virtual social networks, we used a spatiotemporally nonexplicit, individual-based model at two levels — between core groups and then dyads. The range of probabilities of kinship- or age-based association between two groups or individuals, respectively, were drawn from a triangular distribution mimicking empirically based data (Figure 1b). At each time step, each dad in the population had the opportunity to associate. Once a core group and a dyadic association had been determined to occur, the time step was terminated and the total number of observed associations per each dyad was updated (S1 Figure).

The networks had started to reach a plateau after 500-time steps (S2 Figure). However, to study how deletions may affect the global structure of networks at different stages of development, we stopped the simulation at 100-, 200-, 300-, 400- or 500-'*time steps*'. From these networks, we noted the age category and quantified betweenness of every individual. To compare their structure, we present graphs of the empirically based network and an example of a similarly sized virtual network (Figures 2). They appear similar in age category makeup and WGS associations. The empirically based network has fewer BCG associations and nodes with higher overall betweenness values than the virtual network.

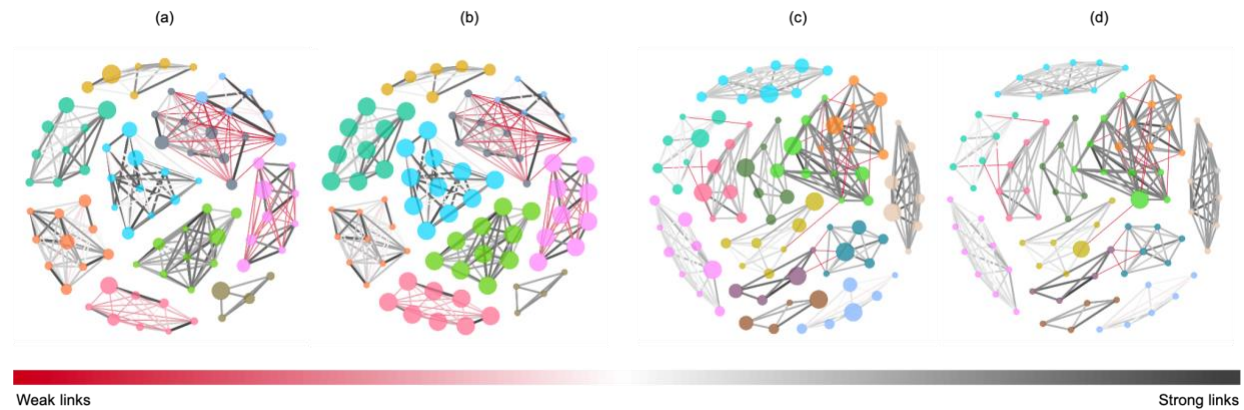


Figure 2. Social network graphs of the empirically based population with color partitioning according to a core group, considered from the perspective of either **(a)** age category or **(b)** betweenness; and a comparable example of a virtual population with the partitioning according to a core group, and either **(c)** age category or **(d)** betweenness. The nodes are ranked by size where the largest nodes indicate oldest age or highest betweenness. The links are ranked according to their relative weight. The color and thickness scheme depicting the weight of each link ranges from red/thin (low) to dark grey/thick (high weight). The links with weight less than 5 percent were filtered out for visual clarity.

Conducting deletions using virtual social networks

To measure if the disappearance of the most socially influential individuals changed the connectivity and efficiency in the 100 virtual networks at each of the five time steps, we performed a series of targeted and random deletions. Individuals were deleted in four percent increments, ranging from zero to 20 percent. In targeted deletions, 20 percent of individuals selected for removal had the highest betweenness or belonged to the oldest age category. During each random deletion, the same proportion of individuals as in targeted deletions was removed randomly, disregarding their betweenness or their age category. After every deletion proportion, we recalculated the following network level indices: clustering coefficient, as well as weighted diameter, global efficiency and modularity (Table 1). As in the empirically based portion of our study, we used the Hedge's *g* test to quantify the difference in the effect size

between the means of all network indices across 1) the deletion proportion spectrum, 2) deletion type, 3) time step and 4) deletion metric (94).

Motivated by a preliminary assessment indicating a high degree of resilience to fragmentation after the deletion of the oldest or most central members, even at early stages of network formation (i.e., 100-time steps), we explored if simulated networks would break down when subject to prior elimination of relatively weak associations (107). Here we wanted to determine if weak associations, likely formed among individuals with high betweenness, could also be explained by age category. During this process, we manipulated only the most robust networks (i.e., 500-time steps) by filtering out the ‘*weakest links*.’ To do so, we divided the value of each link in the association matrix by the highest link value and eliminated the links with values up to three percent of the highest link in increments of one percent. After each elimination without replacement, we carried out the deletions and quantification of outcomes as described above.

The social network quantification and analysis of both the empirically based and virtual data were performed using the R statistical software, version 3.2. (R Core Team 2017). Visualization of the social networks was performed in Gephi software, version 0.9.2 (108).

Results

Empirically based network

Contrary to our expectations, the results of targeted deletions in the empirically based portion of our study revealed disparities in almost all network indices between age category and betweenness (S2 Table) and an overall unexpected level of resilience against disturbance.

The effect size statistics estimating the mean difference between age category-targeted and random deletions at each deletion proportion revealed no change in clustering coefficient, as well as weighted global efficiency and modularity. Weighted diameter decreased in targeted deletions but only at larger deletion proportions (e.g., proportions in the interval {0.1, 0.2})

(Figure 3). Although we did not expect these results, the removal of the oldest elephants in simulated populations appears less damaging to the network connectivity than we expected. Network efficiency, however, based on the weighted diameter results, was negatively affected by elimination of seniors.

In contrast, the effect size statistics comparing the differences between targeted and random elimination of individuals with highest betweenness, as a function of deletion proportion, showed an expected decrease in clustering coefficient and weighted global efficiency, as well as an increase in weighted diameter (Figure 3). Weighted modularity revealed no change relative to random deletions (Figure 3). This set of results indicates that the loss of the most central conspecifics, particularly if more than 10 percent of them are removed, impedes connectivity and efficiency in simulated networks.

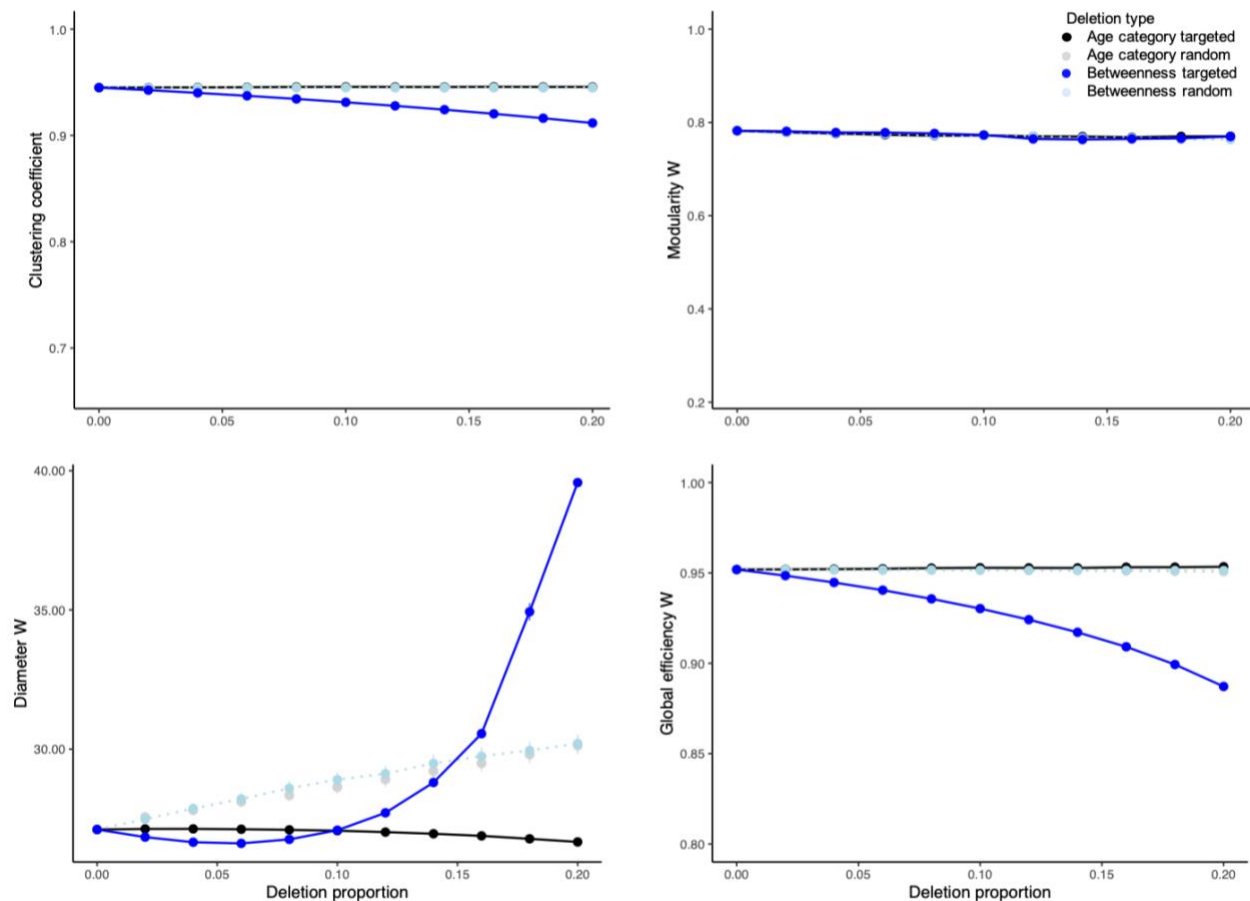


Figure 3. Graphs representing results (mean plus 95% confidence interval) of 1000 deletions per each combination of deletion proportion (i.e., 0-20%) and type (i.e., random vs. targeted) in the empirically based network. The deletions were either targeted according to age category (black series) or betweenness (blue series); or were random (grey and teal series represent random deletions without considering individual traits conducted as control conditions to age- or betweenness-targeted experiments, respectively). The network indices evaluated included clustering coefficient as well as weighted modularity, diameter and global efficiency. For across-species context, the minima of y-axis ranges per clustering coefficient as well as weighted modularity and global efficiency are plotted to express the minima from a similar, theoretical treatment in an egalitarian primate society (92). The weighted diameter index depends on group size, thus the pertinent y-axis is not expressed in across-species context. For results of Hedge's g test expressing the difference in the effect size between the mean values of each network level index in targeted versus random deletions along the deletion proportion axis and per deletion type, refer to **S2 Table** in the Supplemental Materials section.

Virtual networks

The results in the virtual portion of this study were similar to those from the empirically based portion. When age category was the focus of deletions, the effect size statistics comparing means of targeted and random deletions in the 100 virtual networks, along the time step and deletion proportion axes, revealed an increase in clustering coefficient and weighted global efficiency, and a decrease in weighted diameter. For the latter two indices, large effect size statistics were only apparent at early time steps and large deletion proportions (e.g., up to 300-time steps and proportions in the interval {0.16, 0.2}). There was no change in mean, weighted modularity between targeted and random deletions (S3 Table). Contrary to our expectation, these results suggest that removal of older individuals improved connectivity in 400- and 500-time step networks but without improving their efficiency.

When targeted deletions were performed according to betweenness, the clustering coefficient and weighted global efficiency decreased, while weighted modularity and diameter increased. The effect size statistics for these indices were large across most time steps and

deletion proportions (S3 Table). As we expected, these results point to a decrease in connectivity and efficiency of simulated networks and importance of individuals with high betweenness in shaping these network features .

Elimination of the weakest association links with values ranging from one to three percent of the highest link in 500-time step networks led to multiple events of breakdown into at least two modules (S4 Table). Given their ‘premature’ disruption, we excluded these networks from the subsequent deletions. In the remaining filtered networks, targeted deletions of individuals with the highest betweenness, more so than age category, caused more fragmentation than random deletions. Finally, although the weakest links were rather evenly distributed between individuals of various age categories, they occurred more often among individuals from different clans (S3 Figure) indicating an important role in network connectivity.

Discussion

In this study, we addressed a timely question about the response of animal groups to human disturbance by simulating poaching in African savanna elephant populations. After targeted removal of socially influential individuals, according to their age category or position in a social network (i.e., betweenness), we characterized network indices associated with cohesion and transfer of information in animal groups. We anticipated that targeted disturbance would 1) perturb theoretical indices of network connectivity and the efficiency of social diffusion immediately after disturbance and 2) increase as a function of deletion proportion (i.e., 0 - 0.2) leading to network breakdown.

Contrary to our expectations, targeted deletions according to age category resulted in improved connectivity in simulated networks. This outcome, however, instead of pointing to social influence of seniors, revealed their peripheral roles in contributing to network connectivity relative to younger conspecifics. Elimination of individuals with high betweenness led to an anticipated decrease in indices expressing connectivity and efficiency of social diffusion in

simulated networks. Unlike age category, betweenness proved to be an indicator of social influence in the context of strong links among close kin as well as weak links among distant kin. Finally, regardless of the deletion metric, the simulated networks did not break down even when subject to relatively high degree of ‘poaching’, leaving the question of a theoretical breaking point outstanding.

The disparities between age category- and betweenness-specific deletions are consistent with intraspecific behaviors in species with multilevel sociality, established dominance hierarchy and high degree of tolerance towards subordinate group members (109). For instance, in real elephant populations, immature individuals are rather indiscriminate in their affiliations and likely to engage with multiple conspecifics of different ages and kinship (58,59,110). Frequent bouts of social engagement may afford them some social skills without direct engagement of senior kin and fosters cohesion between distinct subgroups (31,73). In contrast, similarly to mature individuals in other group-living species (111,112), senior elephants may be more selective about their social partners and less sociable (78). Their value as social intermediaries contributing to network connectivity and efficiency may for that reason be comparable to their immature conspecifics (36,73), regardless of the wealth of socioecological experience seniors likely possess and display during social activities (e.g., such as group antipredator defense led by the matriarch — (113)).

This type of organization, where network stability is mediated by different categories of individuals, exemplifies a decentralized system, likely selected for to buffer destabilizing effects of prolonged fission or stochastic events such as disease-induced die-off (114) or poaching. The notion of network decentralization, reflected in our simulation, parallels the findings by Goldenberg and collaborators who propose that the redundancy between social roles of mature elephants, prior to poaching, and their surviving offspring is a potential mechanism of network resilience against breakdown (73). The simulated networks in our research were also resilient to removal of the socially influential group members. Given the seemingly greater flexibility and

interconnectedness in elephant populations, relative to other closely knit social species (92) finding hypothetical limitations to social resilience may require evaluating more intensive yet biologically meaningful ‘poaching’ disturbance than considered in our work (115).

Although our assessment of the effects of disturbance on social organization and resilience does not account for the dynamic or indirect responses to poaching (e.g., network reorganization or avoidance of poaching hotspots), it is a valuable first step in systems with limited real-world data. Having access to information about the proportion and type of missing group members may 1) offer basic but meaningful insights about why some poached elephant populations take exceptionally long to recover from member loss (116), while others recover much quicker(117) and 2) help reason about the fate of recovering populations. Our ideas may also be transferable to management of other group-living, keystone species (118–122). For instance, applied without consideration for social interactions, trophy hunting of pride lions may intensify infanticide by immigrant males (23,28,120) and displace distressed females to hunt in fringe habitats exacerbating conflict with humans (121,123). Prior to making decisions about lethal management or translocations of ‘problem’ individuals, wildlife managers may be well served by simulating relevant disturbance on focal populations, quantifying social network effects and adjusting management decisions for better outcomes (39,124). As another example, the use of ASNA in captive animal populations is already helping researchers characterize the dynamics of harmful agonistic interactions, such as tail biting in newly mixed groups of domestic pigs (125). These data may help parametrize simulated disturbance to social network structure in captive systems by taking into account traits such as genetic relatedness in group composition to determine its link to aggression and health of animal subjects. Insights from this type of assessment may improve animal husbandry and safety of farm workers (126,127).

In summary, our work confirms previous findings that although elimination of the most central network members decreases network connectivity at the population level, it does not lead to network fragmentation. Uniquely, however, our research shows that poaching-like stress in a

large number of virtual elephant populations impedes the theoretical efficiency of social diffusion. A follow-up question about the relationship between the structural network changes and population performance will require simulating a dynamic process that accounts for network reorganization after poaching. In addition, to tease apart an individual's importance due to network position versus age-specific experience will require a method that accounts for interaction-mediated information transfer. Still, our simulation platform can be easily altered to test basic hypotheses about disturbance of social interactions in wild and captive systems.

Data Availability Statement

Data and code will be available on the Dryad repository.

Acknowledgments

Funding for this project was provided by the 2018-2019 STEM Chateaubriand Fellowship Program. Empirical data were provided by the Amboseli Trust for Elephants.

References

1. Fisher DN, Rodríguez-Muñoz R, Tregenza T. Wild cricket social networks show stability across generations. *BMC Evol Biol.* 2016 Jul 27;16:151.
2. Lusseau D, Wilson B, Hammond PS, Grellier K, Durban JW, Parsons KM, et al. Quantifying the influence of sociality on population structure in bottlenose dolphins. *J Anim Ecol.* 2006 Jan;75(1):14–24.
3. Brent LNJ. Friends of friends: are indirect connections in social networks important to animal behaviour? *Anim Behav.* 2015 May 1;103:211–22.
4. Sueur C, King AJ, Pelé M, Petit O. Fast and Accurate Decisions as a Result of Scale-Free Network Properties in Two Primate Species. In: *Proceedings of the European Conference on Complex Systems 2012*. Springer International Publishing; 2013. p. 579–84.
5. Lusseau D, Newman MEJ. Identifying the role that animals play in their social networks. *Proc Biol Sci.* 2004 Dec 7;271 Suppl 6:S477–81.
6. Alberts SC. Social influences on survival and reproduction: Insights from a long-term study

of wild baboons. *J Anim Ecol.* 2019 Jan;88(1):47–66.

7. Wilkinson GS. Communal nursing in the evening bat, *Nycticeius humeralis*. *Behav Ecol Sociobiol.* 1992 Oct 1;31(4):225–35.
8. Lopes PC, Block P, König B. Infection-induced behavioural changes reduce connectivity and the potential for disease spread in wild mice contact networks. *Sci Rep.* 2016 Aug 22;6:31790.
9. Silk JB, Beehner JC, Bergman TJ, Crockford C, Engh AL, Moscovice LR, et al. Strong and consistent social bonds enhance the longevity of female baboons. *Curr Biol.* 2010 Aug 10;20(15):1359–61.
10. Pope TR. Reproductive success increases with degree of kinship in cooperative coalitions of female red howler monkeys (*Alouatta seniculus*). *Behav Ecol Sociobiol.* 2000 Sep;48(4):253–67.
11. Silk JB. The adaptive value of sociality in mammalian groups. *Philos Trans R Soc Lond B Biol Sci.* 2007 Apr 29;362(1480):539–59.
12. Schülke O, Bhagavatula J, Vigilant L, Ostner J. Social bonds enhance reproductive success in male macaques. *Curr Biol.* 2010 Dec 21;20(24):2207–10.
13. Rosenthal SB, Twomey CR, Hartnett AT, Wu HS, Couzin ID. Revealing the hidden networks of interaction in mobile animal groups allows prediction of complex behavioral contagion. *Proc Natl Acad Sci U S A.* 2015 Apr 14;112(15):4690–5.
14. Fletcher RJ Jr, Acevedo MA, Reichert BE, Pias KE, Kitchens WM. Social network models predict movement and connectivity in ecological landscapes. *Proc Natl Acad Sci U S A.* 2011 Nov 29;108(48):19282–7.
15. Blumstein DT, Wey TW, Tang K. A test of the social cohesion hypothesis: interactive female marmots remain at home. *Proc Biol Sci.* 2009 Aug 22;276(1669):3007–12.
16. Canteloup C, Hoppitt W, van de Waal E. Wild primates copy higher-ranked individuals in a social transmission experiment. *Nat Commun.* 2020 Jan 23;11(1):459.
17. Grueter CC, Qi X, Zinner D, Bergman T, Li M, Xiang Z, et al. Multilevel Organisation of Animal Sociality. *Trends Ecol Evol.* 2020 Sep;35(9):834–47.
18. Lewis JS, Wartzok D, Heithaus M. Highly dynamic fission–fusion species can exhibit leadership when traveling. *Behavioral Ecology and Sociobiology.* 2011 May 1;65(5):1061–9.
19. Couzin ID, Laidre ME. Fission-fusion populations. *Curr Biol.* 2009 Aug 11;19(15):R633–5.
20. Borg BL, Brainerd SM, Meier TJ, Prugh LR. Impacts of breeder loss on social structure, reproduction and population growth in a social canid. *J Anim Ecol.* 2015 Jan;84(1):177–87.
21. Krofel M, Treves A, Ripple WJ, Chapron G, López-Bao JV. Hunted carnivores at outsized risk. *Science.* 2015 Oct 30;350(6260):518–9.
22. Goldenberg SZ, Wittemyer G. Orphaned female elephant social bonds reflect lack of

- access to mature adults. *Sci Rep*. 2017 Oct 31;7(1):14408.
23. Loveridge AJ, Searle AW, Murindagomo F, Macdonald DW. The impact of sport-hunting on the population dynamics of an African lion population in a protected area. *Biol Conserv*. 2007 Feb 1;134(4):548–58.
24. Jesmer BR, Merkle JA, Goheen JR, Aikens EO, Beck JL, Courtemanch AB, et al. Is ungulate migration culturally transmitted? Evidence of social learning from translocated animals. *Science*. 2018 Sep 7;361(6406):1023–5.
25. Lantz SM, Karubian J. Environmental disturbance increases social connectivity in a passerine bird. *PLoS One*. 2017 Aug 30;12(8):e0183144.
26. Kock RA, Orynbayev M, Robinson S, Zuther S, Singh NJ, Beauvais W, et al. Saigas on the brink: Multidisciplinary analysis of the factors influencing mass mortality events. *Sci Adv*. 2018 Jan;4(1):aa2314.
27. Pires S, Clarke RV. Are Parrots CRAVED? An Analysis of Parrot Poaching in Mexico. *J Res Crime Delinq*. 2012 Feb 1;49(1):122–46.
28. Coltman DW, O'Donoghue P, Jorgenson JT, Hogg JT, Strobeck C, Festa-Bianchet M. Undesirable evolutionary consequences of trophy hunting. *Nature*. 2003 Dec 11;426(6967):655–8.
29. Fewell JH. Social insect networks. *Science*. 2003 Sep 26;301(5641):1867–70.
30. Svensson MS, Ingram DJ, Nekaris KAI, Nijman V. Trade and ethnozoological use of African lorises in the last 20 years. *Hystrix, the Italian Journal of Mammalogy*. 2016 Jan 11;26(2):153–61.
31. Wey TW, Blumstein DT. Social cohesion in yellow-bellied marmots is established through age and kin structuring. *Anim Behav*. 2010 Jun 1;79(6):1343–52.
32. Liao Z, Sosa S, Wu C, Zhang P. The influence of age on wild rhesus macaques' affiliative social interactions. *Am J Primatol [Internet]*. 2018 Feb;80(2).
33. Chiyo PI, Obanda V, Korir DK. Illegal tusk harvest and the decline of tusk size in the African elephant. *Ecol Evol*. 2015 Nov 1;5(22):5216–29.
34. Wasser SK, Brown L, Mailand C, Mondol S, Clark W, Laurie C, et al. CONSERVATION. Genetic assignment of large seizures of elephant ivory reveals Africa's major poaching hotspots. *Science*. 2015 Jul 3;349(6243):84–7.
35. Lee HC, Teichroeb JA. Partially shared consensus decision making and distributed leadership in vervet monkeys: older females lead the group to forage. *Am J Phys Anthropol*. 2016 Dec;161(4):580–90.
36. Murphy D, Mumby HS, Henley MD. Age differences in the temporal stability of a male African elephant (*Loxodonta africana*) social network. *Behav Ecol*. 2019 Sep 27; 31(1).
37. Burger J, Gochfeld M. Feeding Behavior in Laughing Gulls: Compensatory Site Selection by Young. *Condor*. 1983 Nov 1;85(4):467–73.

38. Krause J, Lusseau D, James R. Animal social networks: an introduction. *Behav Ecol Sociobiol.* 2009 May 1;63(7):967–73.
39. Wey T, Blumstein DT, Shen W, Jordán F. Social network analysis of animal behaviour: a promising tool for the study of sociality. *Anim Behav.* 2008 Feb 1;75(2):333–44.
40. Williams R, Lusseau D. A killer whale social network is vulnerable to targeted removals. *Biol Lett.* 2006 Dec 22;2(4):497–500.
41. Manno TG. Social networking in the Columbian ground squirrel, *Spermophilus columbianus*. *Anim Behav.* 2008 Apr;75(4):1221–8.
42. Firth JA, Voelkl B, Crates RA, Aplin LM, Biro D, Croft DP, et al. Wild birds respond to flockmate loss by increasing their social network associations to others. *Proc Biol Sci [Internet].* 2017 May 17;284(1854).
43. Maldonado-Chaparro AA, Alarcón-Nieto G, Klarevas-Irby JA, Farine DR. Experimental disturbances reveal group-level costs of social instability. *Proc Biol Sci [Internet].* 2018 Nov 14;285(1891). Available from: <http://dx.doi.org/10.1098/rspb.2018.1577>
44. Puga-Gonzalez I, Sosa S, Sueur C. Social style and resilience of macaques' networks, a theoretical investigation. *Primates.* 2019 May;60(3):233–46.
45. Hasenjager MJ, Leadbeater E, Hoppitt W. Detecting and quantifying social transmission using network-based diffusion analysis. *J Anim Ecol [Internet].* 2020 Aug 3; Available from: <http://dx.doi.org/10.1111/1365-2656.13307>
46. Duboscq J, Romano V, MacIntosh A, Sueur C. Social Information Transmission in Animals: Lessons from Studies of Diffusion. *Front Psychol.* 2016 Aug 4;7:1147.
47. Pasquaretta C, Levé M, Claidière N, van de Waal E, Whiten A, MacIntosh AJJ, et al. Social networks in primates: smart and tolerant species have more efficient networks. *Sci Rep.* 2014 Dec 23;4:7600.
48. Sosa S, Sueur C, Puga-Gonzalez I. Network measures in animal social network analysis: Their strengths, limits, interpretations and uses. *Methods Ecol Evol.* 2020 Mar 10;(2041-210X.13366).
49. Mokross K, Ryder TB, Côrtes MC, Wolfe JD, Stouffer PC. Decay of interspecific avian flock networks along a disturbance gradient in Amazonia. *Proc Biol Sci.* 2014 Feb 7;281(1776):20132599.
50. Doherty TS, Hays GC, Driscoll DA. Human disturbance causes widespread disruption of animal movement. *Nat Ecol Evol.* 2021 Feb 1.
51. Davis M, Faurby S, Svenning J-C. Mammal diversity will take millions of years to recover from the current biodiversity crisis. *Proc Natl Acad Sci U S A.* 2018 Oct 30;115(44):11262–7.
52. Barnosky AD, Hadly EA, Bascompte J, Berlow EL, Brown JH, Fortelius M, et al. Approaching a state shift in Earth's biosphere. *Nature.* 2012 Jun 6;486(7401):52–8.
53. Rutledge LY, White BN, Row JR, Patterson BR. Intense harvesting of eastern wolves

- facilitated hybridization with coyotes. *Ecol Evol.* 2012 Jan;2(1):19–33.
54. Chase MJ, Schlossberg S, Griffin CR, Bouché PJC, Djene SW, Elkan PW, et al. Continent-wide survey reveals massive decline in African savannah elephants. *PeerJ.* 2016 Aug 31;4:e2354.
 55. Blanc J. *Loxodonta africana*. The IUCN Red List of Threatened Species [Internet]. IUCN Red List of Threatened Species. 2008.
 56. Wittemyer G, Northrup JM, Blanc J, Douglas-Hamilton I, Omondi P, Burnham KP. Illegal killing for ivory drives global decline in African elephants. *Proc Natl Acad Sci U S A.* 2014 Sep 9;111(36):13117–21.
 57. Wittemyer G, Douglas-Hamilton I, Getz WM. The socioecology of elephants: analysis of the processes creating multitiered social structures. *Anim Behav.* 2005 Jun 1;69(6):1357–71.
 58. Lee PC, Moss CJ. African elephant play, competence and social complexity. *Animal Behavior and Cognition.* 2014;1(2):144–56.
 59. Webber CE, Lee PC. Play in Elephants: Wellbeing, Welfare or Distraction? *Animals.* 2020 Feb 14;10(2).
 60. Polansky L, Kilian W, Wittemyer G. Elucidating the significance of spatial memory on movement decisions by African savannah elephants using state-space models. *Proc Biol Sci.* 2015 Apr 22;282(1805).
 61. Wittemyer G, Getz WM, Vollrath F, Douglas-Hamilton I. Social dominance, seasonal movements, and spatial segregation in African elephants: a contribution to conservation behavior. *Behav Ecol Sociobiol.* 2007 Oct 1;61(12):1919–31.
 62. McComb, Moss, Durant, Baker, Sayialel. Matriarchs as repositories of social knowledge in African elephants. *Science.* 2001 Apr 20;292(5516):491–4.
 63. Esposito RMM. The effect of matriarchs on group interactions, kinship fitness, and differences in chemosensory behavior of African elephants (*Loxodonta africana*). 2008. Available from: <https://digitalcommons.georgiasouthern.edu/cgi/viewcontent.cgi?article=1716&context=etd>
 64. Allen CRB, Brent LJJ, Motsentwa T, Weiss MN, Croft DP. Importance of old bulls: leaders and followers in collective movements of all-male groups in African savannah elephants (*Loxodonta africana*). *Sci Rep.* 2020 Sep 3;10(1):13996.
 65. Douglas-Hamilton I. On the ecology and behaviour of the African elephant: the elephants of Lake Manyara. 1972; Available from: <https://www.africabib.org/s/rec.php?RID=391727281>
 66. Dreifus C. Samuel K. Wasser, a Scientific Detective Tailing Poachers. *The New York Times.* 2016 Jun 13.
 67. Wittemyer G, Daballen D, Douglas-Hamilton I. Comparative demography of an at-risk African elephant population. *PLoS One.* 2013 Jan 16;8(1):e53726.
 68. Ihwagi FW, Wang T, Wittemyer G, Skidmore AK, Toxopeus AG, Ngene S, et al. Using Poaching Levels and Elephant Distribution to Assess the Conservation Efficacy of Private,

- Communal and Government Land in Northern Kenya. *PLoS One*. 2015 Sep 25;10(9):e0139079.
69. Ruggiero R. The effects of poaching disturbance on elephant behavior. *Pachyderm*. 1990;13:42–4.
 70. Gobush K, Kerr B, Wasser S. Genetic relatedness and disrupted social structure in a poached population of African elephants. *Mol Ecol*. 2009 Feb;18(4):722–34.
 71. Slotow R, van Dyk G, Poole J, Page B, Klocke A. Older bull elephants control young males. *Nature*. 2000 Nov 23;408(6811):425–6.
 72. Bradshaw GA, Schore AN. How Elephants are Opening Doors: Developmental Neuroethology, Attachment and Social Context. 2007 May 1;113(5):426.
 73. Goldenberg SZ, Douglas-Hamilton I, Wittemyer G. Vertical Transmission of Social Roles Drives Resilience to Poaching in Elephant Networks. *Curr Biol*. 2016 Jan 11;26(1):75–9.
 74. Chiyo PI, Moss CJ, Alberts SC. The influence of life history milestones and association networks on crop-raiding behavior in male African elephants. *PLoS One*. 2012 Feb 8;7(2):e31382.
 75. Chiyo PI, Archie EA, Hollister-Smith JA, Lee PC, Poole JH, Moss CJ, et al. Association patterns of African elephants in all-male groups: the role of age and genetic relatedness. *Anim Behav*. 2011 Jun;81(6):1093–9.
 76. Pellegrini AFA, Pringle RM, Govender N, Hedin LO. Woody plant biomass and carbon exchange depend on elephant-fire interactions across a productivity gradient in African savanna. Wardle D, editor. *J Ecol*. 2017 Jan 8;105(1):111–21.
 77. Naidoo R, Fisher B, Manica A, Balmford A. Estimating economic losses to tourism in Africa from the illegal killing of elephants. *Nat Commun*. 2016 Nov 1;7:13379.
 78. Archie EA, Moss CJ, Alberts SC. The ties that bind: genetic relatedness predicts the fission and fusion of social groups in wild African elephants. *Proc Biol Sci*. 2006 Mar 7;273(1586):513–22.
 79. Sueur C, Jacobs A, Amblard F, Petit O, King AJ. How can social network analysis improve the study of primate behavior? *Am J Primatol*. 2011 Aug;73(8):703–19.
 80. Farine DR, Whitehead H. Constructing, conducting and interpreting animal social network analysis. *J Anim Ecol*. 2015 Sep;84(5):1144–63.
 81. Kanngiesser P, Sueur C, Riedl K, Grossmann J, Call J. Grooming network cohesion and the role of individuals in a captive chimpanzee group. *Am J Primatol*. 2011 Aug;73(8):758–67.
 82. Krause J, Croft DP, James R. Social network theory in the behavioural sciences: potential applications. *Behav Ecol Sociobiol*. 2007 Nov 1;62(1):15–27.
 83. Snijders L, Blumstein DT, Stanley CR, Franks DW. Animal Social Network Theory Can Help Wildlife Conservation. *Trends Ecol Evol*. 2017 Aug;32(8):567–77.

84. Shannon G, Slotow R, Durant SM, Sayialel KN, Poole J, Moss C, et al. Effects of social disruption in elephants persist decades after culling. *Front Zool*. 2013 Oct 23;10(1):62.
85. Cairns SJ, Schwager SJ. A comparison of association indices. *Anim Behav*. 1987 Oct 1;35(5):1454–69.
86. Kulahci IG, Ghazanfar AA, Rubenstein DI. Knowledgeable Lemurs Become More Central in Social Networks. *Curr Biol*. 2018 Apr 23;28(8):1306–10.e2.
87. Webber QMR, Schneider DC, Vander Wal E. Is less more? A commentary on the practice of “metric hacking” in animal social network analysis. *Anim Behav*. 2020 Oct 1;168:109–20.
88. Laws RM. Age criteria for the African elephant: *Loxodonta a. africana*. *Afr J Ecol*. 1966 Aug 29;4(1):1–37.
89. Hauenstein S, Kshatriya M, Blanc J, Dormann CF, Beale CM. African elephant poaching rates correlate with local poverty, national corruption and global ivory price. *Nat Commun*. 2019 May 28;10(1):2242.
90. Rispoli FJ, Zeng S, Green T, Higbie J. Even birds follow Pareto's 80-20 rule. *Significance*. 2014 Feb;11(1):37–8.
91. Barabasi AL, Albert R. Emergence of scaling in random networks. *Science*. 1999 Oct 15;286(5439):509–12.
92. Puga-Gonzalez I, Sosa S, Sueur C. Social style and resilience of macaques' networks, a theoretical investigation. *Primates*. 2018 Sep 21; 60: 233-46.
93. Wittemyer G, Getz WM. Hierarchical dominance structure and social organization in African elephants, *Loxodonta africana*. *Anim Behav*. 2007 Apr 1;73(4):671–81.
94. Fritz CO, Morris PE, Richler JJ. Effect size estimates: current use, calculations, and interpretation. *J Exp Psychol Gen*. 2012 Feb;141(1):2–18.
95. Ek B, VerSchneider C, Narayan DA. Global efficiency of graphs. *AKCE Int J Graphs Comb*. 2015 Jul 1;12(1):1–13.
96. Latora V, Marchiori M. Efficient behavior of small-world networks. *Phys Rev Lett*. 2001 Nov 5;87(19):198701.
97. Singh RR, Goel K, Iyengar SRS, Gupta S. A Faster Algorithm to Update Betweenness Centrality After Node Alteration. *Internet Math*. 2015 Sep 3;11(4-5):403–20.
98. Newman MEJ. A measure of betweenness centrality based on random walks. *Soc Networks*. 2005 Jan 1;27(1):39–54.
99. Phan B, Engø-Monsen K, Fjeldstad Ø D. Considering clustering measures: Third ties, means, and triplets. *Soc Networks*. 2013 Jul;35(3):300–8.
100. Migliano AB, Page AE, Gómez-Gardeñes J, Salali GD, Viguier S, Dyble M, et al. Characterization of hunter-gatherer networks and implications for cumulative culture. *Nature Human Behaviour*. 2017 Feb 8;1:0043.

101. Blondel VD, Guillaume J-L, Lambiotte R, Lefebvre E. Fast unfolding of communities in large networks. *J Stat Mech*. 2008 Oct 9;2008(10):P10008.
102. Newman MEJ. Modularity and community structure in networks. *Proc Natl Acad Sci U S A*. 2006 Jun 6;103(23):8577–82.
103. Li W, Schuurmans D. Modular Community Detection in Networks. In: *Proceedings of the Twenty-Second International Joint Conference on Artificial Intelligence - Volume Volume Two*. Barcelona, Catalonia, Spain: AAAI Press; 2011. p. 1366–71. (IJCAI'11).
104. Poole JH, Payne K, Langbauer WR Jr, Moss CJ. The social contexts of some very low frequency calls of African elephants. *Behav Ecol Sociobiol*. 1988;22(6):385–92.
105. Wittemyer G, Okello JBA, Rasmussen HB, Arctander P, Nyakaana S, Douglas-Hamilton I, et al. Where sociality and relatedness diverge: the genetic basis for hierarchical social organization in African elephants. *Proc Biol Sci*. 2009 Oct 7;276(1672):3513–21.
106. Charif RA, Ramey RR, Langbauer WR, Payne KB, Martin RB, Brown LM. Spatial relationships and matrilineal kinship in African savanna elephant (*Loxodonta africana*) clans. *Behav Ecol Sociobiol*. 2005 Feb 1;57(4):327–38.
107. Granovetter MS. The Strength of Weak Ties. *Am J Sociol*. 1973;78(6):1360–80.
108. Bastian M, Heymann S, Jacomy M. Gephi: An Open Source Software for Exploring and Manipulating Networks. In: *Proceedings of the Third International ICWSM Conference*. 2009.
109. Archie EA, Morrison TA, Foley CAH, Moss CJ, Alberts SC. Dominance rank relationships among wild female African elephants, *Loxodonta africana*. *Anim Behav*. 2006/1;71(1):117–27.
110. Evans KE, Harris S. Adolescence in male African elephants, *Loxodonta africana*, and the importance of sociality. *Anim Behav*. 2008 Sep;76(3):779–87.
111. Wrzus C, Hänel M, Wagner J, Neyer FJ. Social network changes and life events across the life span: a meta-analysis. *Psychol Bull*. 2013 Jan;139(1):53–80.
112. Almeling L, Hammerschmidt K, Sennhenn-Reulen H, Freund AM, Fischer J. Motivational Shifts in Aging Monkeys and the Origins of Social Selectivity. *Curr Biol*. 2016 Jul 11;26(13):1744–9.
113. McComb K, Shannon G, Durant SM, Sayialel K, Slotow R, Poole J, et al. Leadership in elephants: the adaptive value of age. *Proc Biol Sci*. 2011 Nov 7;278(1722):3270–6.
114. van Aarde RJ, Pimm SL, Guldemond R, Huang R, Maré C. The 2020 elephant die-off in Botswana. *PeerJ*. 2021 Jan 11;9:e10686.
115. Poulsen JR, Koerner SE, Moore S, Medjibe VP, Blake S, Clark CJ, et al. Poaching empties critical Central African wilderness of forest elephants. *Curr Biol*. 2017 Feb 20;27(4):R134–5.
116. Gobush KS, Mutayoba BM, Wasser SK. Long-term impacts of poaching on relatedness, stress physiology, and reproductive output of adult female african elephants. *Conserv Biol*.

2008 Dec;22(6):1590–9.

117. Schlossberg S, Chase MJ, Gobush KS, Wasser SK, Lindsay K. State-space models reveal a continuing elephant poaching problem in most of Africa. *Sci Rep*. 2020 Jun 23;10(1):10166.
118. Mengak MT. Wildlife Damage Management Technical Series - Wildlife Translocation. U.S. Department of Agriculture. Animal & Plant Health Inspection Service Wildlife Services ; 2018.
119. Muller Z, Cuthill IC, Harris S. Giraffe (*Giraffa camelopardalis*) social networks in areas of contrasting human activity and lion density. McQualter K, editor. *Ethology*. 2019 Oct 6;125(10):702–15.
120. Rutledge LY, Patterson B, Mills KJ, Loveless KM, White B. Protection from harvesting restores the natural social structure of eastern wolf packs. *Biological Conservation*. 2010 Feb 1;143(2):332–9.
121. Feber RE, Johnson PJ, Macdonald DW. Shooting pheasants for sport: What does the death of Cecil tell us? Palmer C, editor. *People and Nature*. 2020 Mar 29;2(1):82–95.
122. Froehly JL, Beane NR, Evans DE, Cagle KE, Jachowski DS. Using multi-scale behavioral investigations to inform wild pig (*Sus scrofa*) population management. *PLoS One*. 2020 Feb 7;15(2):e0228705.
123. Weise FJ, Tomeletso M, Stein AB, Somers MJ, Hayward MW. Lions Panthera leo Prefer Killing Certain Cattle Bos taurus Types. *Animals*. 2020 Apr 16;10(4). 124. Shier DM. Effect of family support on the success of translocated black-tailed prairie dogs. *Conserv Biol*. 2006 Dec;20(6):1780–90.
125. Büttner K, Scheffler K, Czycholl I, Krieter J. Social network analysis - centrality parameters and individual network positions of agonistic behavior in pigs over three different age levels. *Springerplus*. 2015 Apr 17;4:185.
126. Pinillos RG, Appleby MC, Manteca X, Scott-Park F, Smith C, Velarde A. One Welfare - a platform for improving human and animal welfare. *Vet Rec*. 2016 Oct 22;179(16):412–3.
127. Sinclair M, Fryer C, Phillips CJC. The Benefits of Improving Animal Welfare from the Perspective of Livestock Stakeholders across Asia. *Animals*. 2019 Mar 28;9(4).

Supporting Information Captions

S1 Table. The summary composition of 100 virtual populations with the numbers of clan, bond and core groups, as well as individuals per population; the number of bond and core groups, and individuals per clan; the number of core groups per bond group; and the number of individuals per bond and core groups. The distribution of age categories within each core group was the following: young adults (mean = 2 individuals, min = 1 , max = 5); prime adults (mean = 2, min = 0, max = 7); mature adults (mean = 1, min = 0, max = 3); and matriarchs (mean = 1 , min = 1, max = 1).

The composition of the empirical population is included as a reference (i.e., = 10 core groups including a total of n= 83 individuals) (78,88).

S2 Table. Results of Hedge's g test expressing the effect size difference between mean values of each network index in targeted versus random deletions in empirically based networks, along the deletion proportion axis, with deletions performed according to either age category or betweenness (94). Bold values indicate medium ($\geq |0.5|$) and large ($\geq |0.8|$) effect size.

S3 Table: Results of Hedge's g test expressing the difference in the effect size between the means of each network level index (i.e., weighted (W) diameter, modularity and global efficiency; as well as clustering coefficient) in targeted and random deletions, spanning all network time step and deletion proportion increments. The deletions were performed according to age category or betweenness (94). Bold values indicate medium ($\geq |0.5|$) and large ($\geq |0.8|$) effect size.

S4 Table. The summary of the percentages of filtered, virtual networks that broke down into two or more modules as a result of the deletions performed according to age category or betweenness. The filtering process was carried out before the onset of the deletions by dividing the value of each link in the association matrix by the highest link value and eliminating the links with values up to three percent of the highest link in increments of one percent (107). Only 500-time step networks were considered in these experiments.

S1 Figure. Flow chart summarizing the process of simulating social networks among virtual elephant populations. At initialization, the probabilities of association between and within groups are set according to kinship and age category (Figure 1). At the beginning of each time step, the set probability of association between or within each set of groups and between each dyad is compared to a randomly generated number (RDN) between {0,1}. If this probability is greater than RDN, the association is set to occur; if this probability is lower than RDN, the association does not occur, and the time step is terminated. At the end of each time step the number of times a specific dyad has formed across all previous time steps is updated (i.e., increased by one if the association had occurred, or remained the same otherwise). For the distribution of network indices as a function of the number of simulation time steps refer to **S2 Figures**.

S2 Figure. The distribution of values per each of the network indices evaluated, including the clustering coefficient, as well as weighted diameter, global efficiency and modularity, expressed as a function of the number of simulation time steps. The 500-time step cut-off was based on when the density (or the proportion of existing interactions among network members, relative to the number of possible interactions) of the resulting networks started to reach a plateau (~ 75% median density) (80).

S3 Figure. The percentage of the weakest associations (i.e., links with values up to three percent of the highest link) filtered out from the 500-time step, virtual networks prior to deletion experiments. These links are presented according to age class in a dyad (Y = young adult; P = prime adult; M = mature adult; G = matriarch) and one of four social tiers. For the summary of filtering experiments showing percentages of filtered, 500-time step, virtual networks that broke down into two or more modules as a result of the deletions performed according to age category or betweenness, refer to **S4 Table**.

Supporting Information

S1 Table.

Demographic group	Minimum	Maximum	Median	Empirical contrast
Clan groups per population	1	8	5	3
Bond groups per population	1	28	14	8
Core groups per population	5	86	40	10
Bond groups per clan group	1	5	3	4,3,1
Core groups per clan group	1	20	9	5,4,1
Core groups per bond group	1	5	3	1,1,2,1,2,1,1,1
Individuals per population	95	760	350	83
Individuals per clan group	10	175	74	39,36,8

Individuals per bond group	1	45	25	10,6,19,4,16,11,9,8
Individuals per core group	4	15	8	10,6,9,10,4,6,10,11,9,8

S2 Table.

Network Index	Deletion proportion	Hedge's g statistic	
		Age category	Betweenness
Modularity W	0.02	-0.0348	0.2513
	0.04	-0.0239	0.1394
	0.06	-0.1002	0.3639
	0.08	-0.0538	0.2219
	0.1	0.0380	0.1154
	0.12	0.0171	-0.4311
	0.14	0.0630	-0.1442

	0.16	0.0315	-0.1178
	0.18	0.2038	0.0303
	0.2	0.3683	0.3449
Global efficiency W	0.02	0.0750	-1.5411
	0.04	0.1247	-2.2205
	0.06	0.1565	-2.9173
	0.08	0.2054	-3.5236
	0.1	0.2066	-4.04176
	0.12	0.1941	-4.6401
	0.14	0.1994	-5.3114
	0.16	0.2650	-6.0381
	0.18	0.2883	-6.9214
	0.2	0.3328	-8.1713
Clustering coefficient	0.02	0.0476	-1.6673
	0.04	0.0904	-2.3356
	0.06	0.1218	-3.0060
	0.08	0.1693	-3.5128
	0.1	0.1572	-3.9375
	0.12	0.12531	-4.3778
	0.14	0.1212	-4.8515

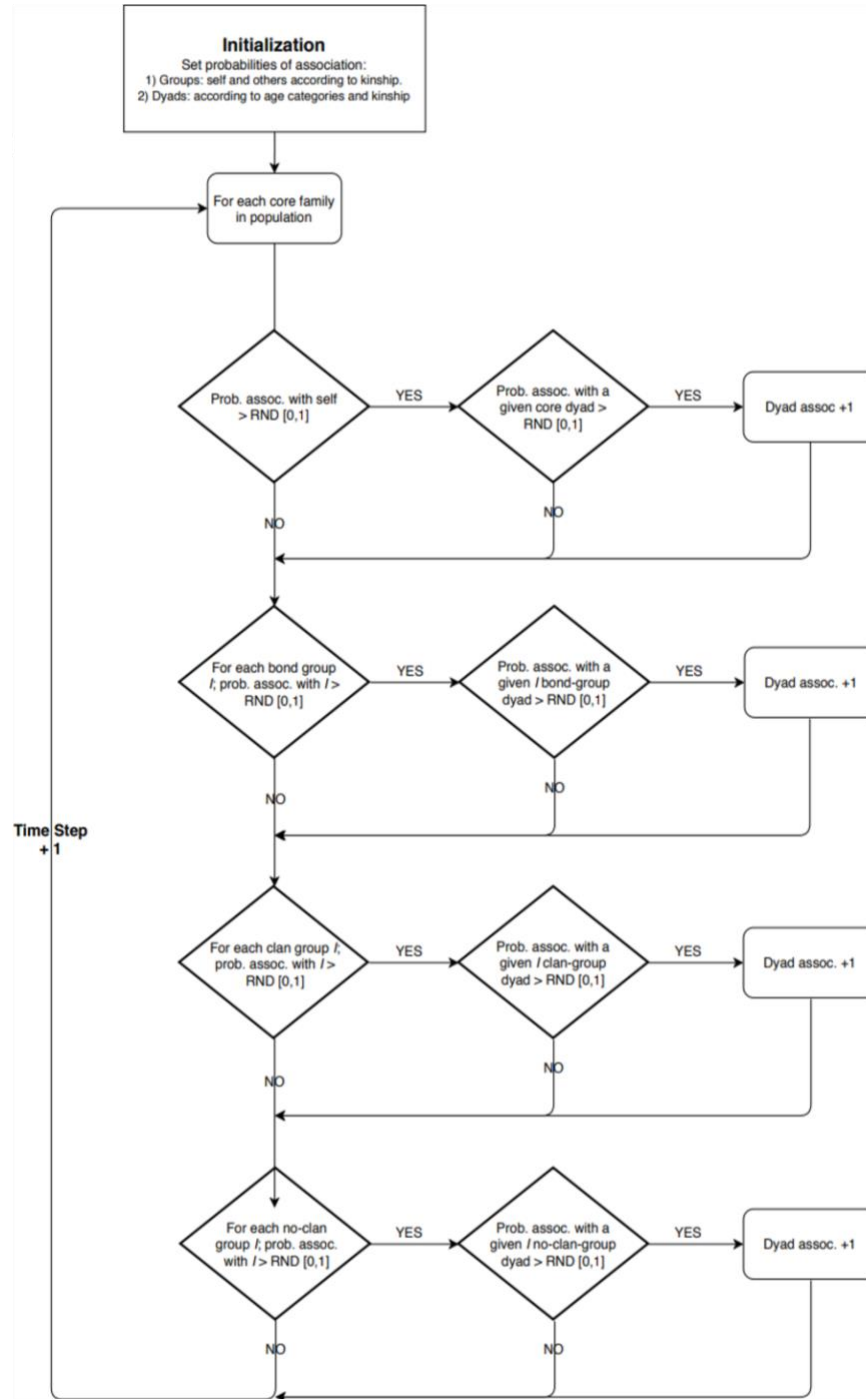
	0.16	0.1635	-5.3056
	0.18	0.1570	-5.7977
	0.2	0.1709	-6.2864
Diameter W	0.02	-0.2706	-0.4453
	0.04	-0.3439	-0.5870
	0.06	-0.4264	-0.6470
	0.08	-0.4898	-0.6503
	0.1	-0.5604	-0.5966
	0.12	-0.6311	-0.4333
	0.14	-0.7000	-0.1889
	0.16	-0.7693	0.1999
	0.18	-0.8560	0.9766
	0.2	-0.9446	2.4932

S 3Table:

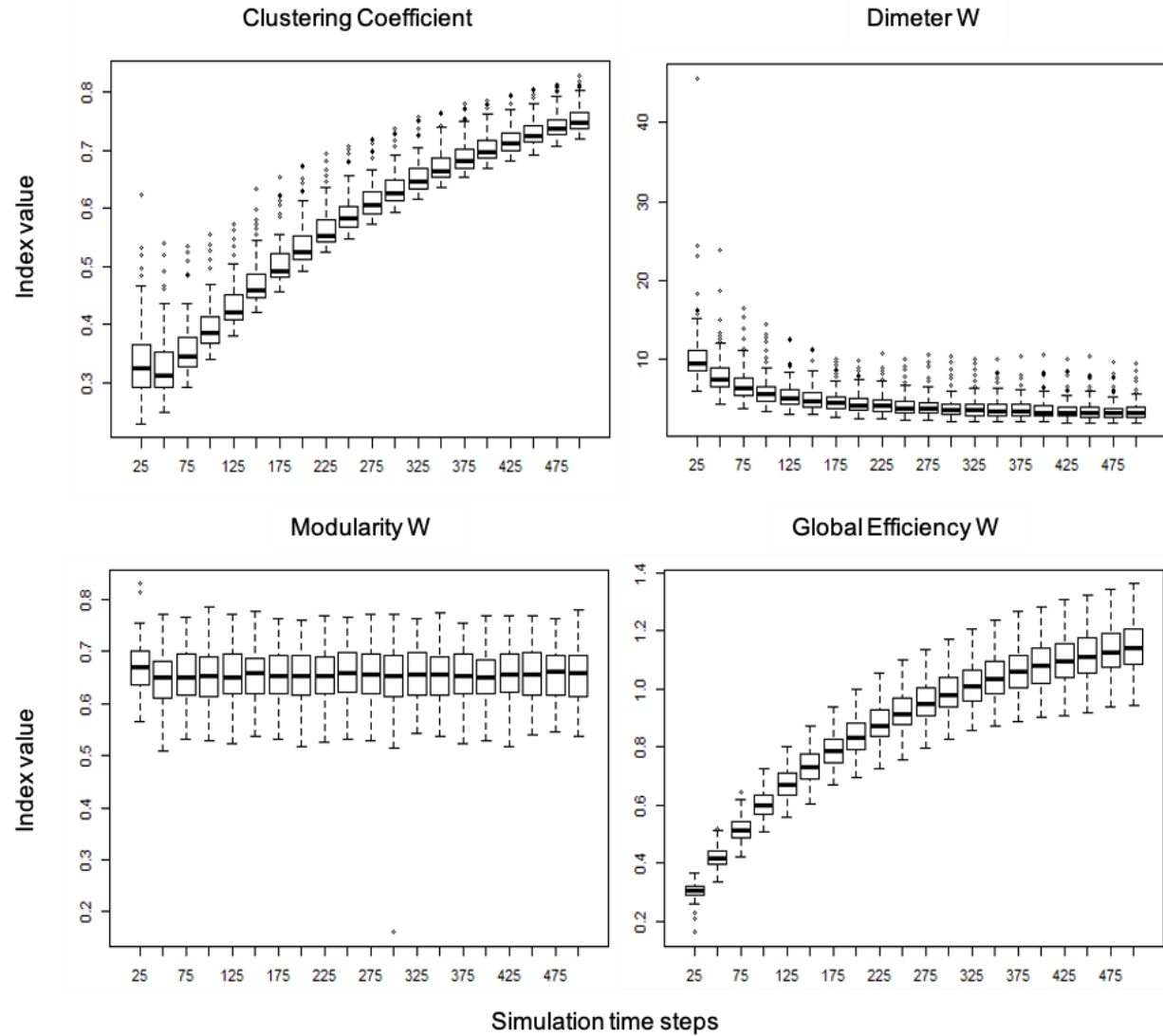
		Simulation time step/Deletion proportion																								
		100					200					300					400					500				
Deletion metric	Network level index	0.04	0.08	0.12	0.16	0.20	0.04	0.08	0.12	0.16	0.20	0.04	0.08	0.12	0.16	0.20	0.04	0.08	0.12	0.16	0.20	0.04	0.08	0.12	0.16	0.20
Age category	Diameter W	-0.13	-0.28	-0.45	-0.66	-0.89	-0.06	-0.17	-0.33	-0.53	-0.73	0.01	-0.07	-0.20	-0.37	-0.59	0.05	0.00	-0.14	-0.31	-0.54	0.05	-0.01	-0.11	-0.28	-0.47
	Modularity W	-0.01	-0.04	-0.09	-0.18	-0.24	-0.04	-0.10	-0.15	-0.22	-0.29	-0.02	-0.05	-0.10	-0.18	-0.26	-0.01	-0.06	-0.12	-0.19	-0.27	-0.04	-0.06	-0.13	-0.19	-0.25
	Global efficiency W	0.18	0.34	0.51	0.70	0.91	0.04	0.14	0.32	0.54	0.77	-0.04	0.04	0.19	0.39	0.63	-0.19	-0.14	-0.01	0.18	0.43	-0.27	-0.27	-0.17	0.00	0.25
	Clustering coefficient	0.65	0.87	1.02	1.13	1.22	0.58	0.79	0.96	1.08	1.20	0.60	0.82	0.98	1.11	1.21	0.55	0.77	0.94	1.06	1.17	0.53	0.74	0.89	1.01	1.13
Betweenness	Diameter W	1.59	1.82	1.89	1.91	1.98	1.36	1.67	1.81	1.89	1.98	1.11	1.53	1.75	1.86	1.97	0.96	1.41	1.68	1.83	1.96	0.76	1.26	1.60	1.80	1.95
	Modularity W	0.41	0.73	1.08	1.37	1.70	0.24	0.55	0.90	1.25	1.57	0.22	0.55	0.90	1.29	1.57	0.16	0.44	0.78	1.15	1.51	0.13	0.44	0.77	1.15	1.53
	Global efficiency W	-1.86	-1.94	-1.96	-1.98	-1.99	-1.83	-1.93	-1.96	-1.98	-1.99	-1.79	-1.91	-1.96	-1.97	-1.98	-1.74	-1.90	-1.95	-1.97	-1.98	-1.69	-1.88	-1.94	-1.97	-1.98
	Clustering coefficient	-1.73	-1.81	-1.82	-1.80	-1.76	-1.86	-1.93	-1.95	-1.97	-1.97	-1.88	-1.94	-1.96	-1.97	-1.98	-1.89	-1.94	-1.96	-1.97	-1.98	-1.89	-1.95	-1.97	-1.98	-1.98

S4 Table.

Deletion metric	Deletion type	Filtering percent	Deletion proportion					Minimum number of modules at 0.2 deletion	Maximum number of modules at 0.2 deletion
			0.04	0.08	0.12	0.16	0.2		
Age category	Targeted	1	0	0	0	0	0	1	1
		2	0	1	2	2	2	1	1.41
		3	0	0	0	0	0	1	1
	Random	1	0	0	0	0	0	1	1
		2	3	4	5	8	14	1	1.22
		3	100	100	100	100	100	1.25	1.25
Betweenness	Targeted	1	0	0	0	0	0	1	1
		2	6	14	17	19	19	1	4
		3	100	100	100	100	100	2	5
	Random	1	0	0	0	0	0	1	1
		2	1	5	7	11	16	1	1.34
		3	0	100	100	100	100	1.22	1.22

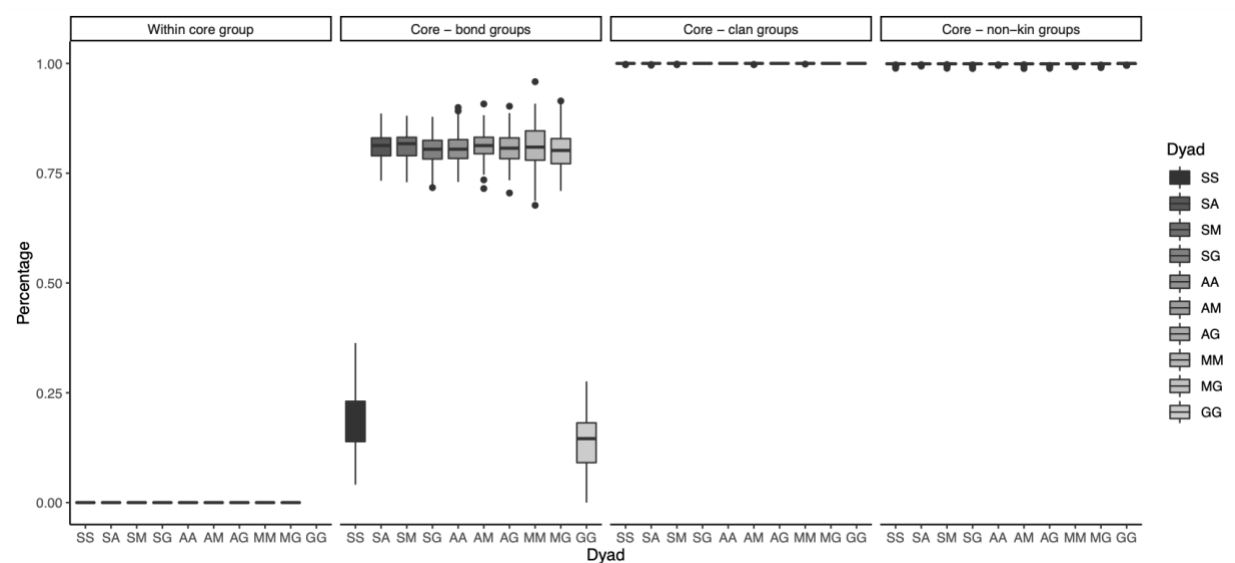


S1 Figure.



11

12 S2 Figure.



S3 Figure.