



**HAL**  
open science

## Diurnal variation and potential sources of indoor formaldehyde at elementary school, high school and university in the Centre Val de Loire region of France

Dawei Hu, Yeny Tobon, Aymeric Agostini, Benoit Grosselin, Ying Chen, Corinne Robin, Abderrazak Yahyaoui, Patrice Colin, Abdelwahid Mellouki, Véronique Daële

### ► To cite this version:

Dawei Hu, Yeny Tobon, Aymeric Agostini, Benoit Grosselin, Ying Chen, et al.. Diurnal variation and potential sources of indoor formaldehyde at elementary school, high school and university in the Centre Val de Loire region of France. *Science of the Total Environment*, 2022, 811, pp.152271. 10.1016/j.scitotenv.2021.152271 . hal-03575565

**HAL Id: hal-03575565**

**<https://hal.science/hal-03575565v1>**

Submitted on 15 Feb 2022

**HAL** is a multi-disciplinary open access archive for the deposit and dissemination of scientific research documents, whether they are published or not. The documents may come from teaching and research institutions in France or abroad, or from public or private research centers.

L'archive ouverte pluridisciplinaire **HAL**, est destinée au dépôt et à la diffusion de documents scientifiques de niveau recherche, publiés ou non, émanant des établissements d'enseignement et de recherche français ou étrangers, des laboratoires publics ou privés.

**Diurnal variation and potential sources of indoor formaldehyde at elementary school, high school and university in the Centre Val de Loire region of France**

Dawei Hu<sup>1,3,\*</sup>, Yeny Tobon<sup>1,#</sup>, Aymeric Agostini<sup>1,&</sup>, Benoit Grosselin<sup>1</sup>, Ying Chen<sup>4</sup>,  
5 Corinne Robin<sup>2</sup>, Abderrazak Yahyaoui<sup>2</sup>, Patrice Colin<sup>2</sup>, Abdelwahid Mellouki<sup>1</sup>,  
Véronique Daële<sup>1,\*</sup>

<sup>1</sup>*Institut de Combustion, Aérothermique, Réactivité et Environnement, Centre National de la Recherche Scientifique, ICARE-CNRSINSIS, 1C, Avenue de la Recherche Scientifique, 45071 Orléans cedex 2, France*

10 <sup>2</sup>*Lig'Air – Réseau de surveillance de la qualité de l'air en région Centre, 260, Avenue de la Pomme de Pin, 45590 Saint-Cyr-en-Val, France*

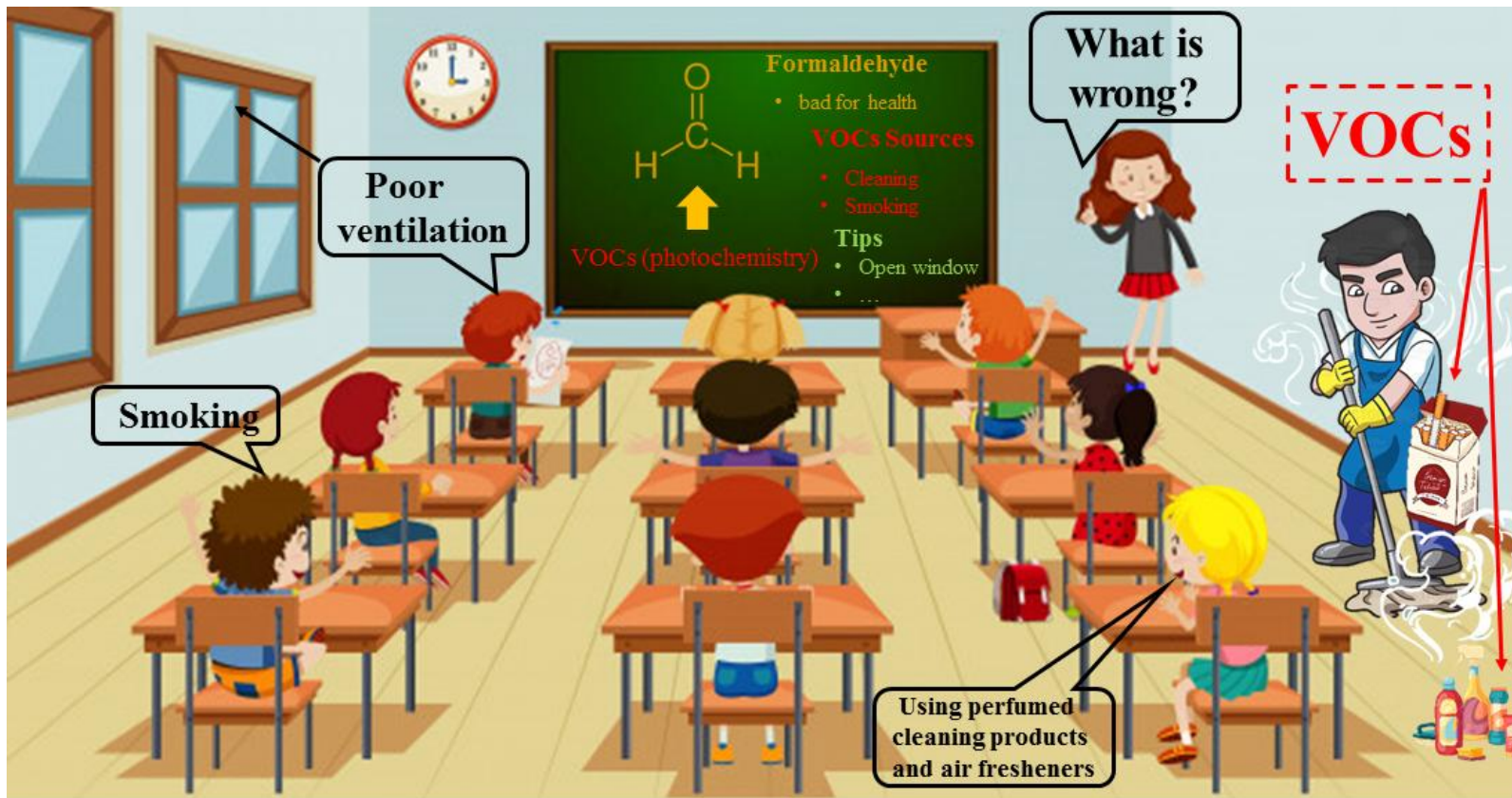
<sup>3</sup>*Department of Earth and Environmental Sciences, University of Manchester, UK.*

<sup>4</sup>*Lancaster Environment Centre (LEC), Lancaster University, UK.*

15 <sup>#</sup>*Now at: Univ. Lille, CNRS, UMR 8516 - LASIRE - Laboratoire de Spectroscopie pour les Interactions, la Réactivité et l'Environnement, F-59000 Lille, France.*

<sup>&</sup>*Now at: ATMOSF'Air Bourgogne, 76-78 avenue V. Hugo, F-21000 Dijon, France*

\* Correspondence to: [dawei.hu@manchester.ac.uk](mailto:dawei.hu@manchester.ac.uk); [veronique.daele@cnrs-orleans.fr](mailto:veronique.daele@cnrs-orleans.fr)



20

Background Image: Freepik.com

Image link: [https://www.freepik.com/free-vector/student-classroom-template\\_4428227.htm#page=1&query=classroom&position=31](https://www.freepik.com/free-vector/student-classroom-template_4428227.htm#page=1&query=classroom&position=31)

## ABSTRACT

Formaldehyde (HCHO) is one of the abundant indoor pollutants and has been  
25 classified as a human carcinogen by the International Agency for Research on Cancer  
(IARC). Indoor HCHO at schools is particularly important due to the high occupancy  
density and the health effects on children. In this study, high time resolved  
measurement of formaldehyde concentration was conducted in the classrooms at  
elementary school, high school and university under normal students' activities in  
30 three different locations in the Region Centre Val de Loire-France. Indoor average  
formaldehyde concentrations at those three educational institutions were observed to  
be in the range 10.96 - 17.95  $\mu\text{g}/\text{m}^3$ , not exceeding the World Health Organization  
(WHO) guideline value of 100  $\mu\text{g}/\text{m}^3$ . As expected, ventilation was found playing an  
important role in the control of indoor formaldehyde concentration. After opening  
35 windows for 30 minutes, formaldehyde level decreased by ~ 25% and 38% in the  
classroom at the elementary school and the high school, respectively. In addition to  
the primary sources, the objective of this study was also to determine potential  
secondary sources of indoor formaldehyde in these schools by measuring the other  
volatile organic compounds (VOCs) present in the classrooms by a Proton Transfer  
40 Reaction Time-of-Flight Mass Spectrometry (PTR-ToF-MS). The measurements  
suggest that the release of residue from tobacco smokers is one of the major sources  
of indoor HCHO at the high school, which increases HCHO by ~ 55% averagely

within 1 hour. Moreover, the control experiments conducted in the university suggests that VOCs such as that released from cleaning products like terpenes, can contribute  
45 to the increase of indoor formaldehyde levels through chemical reactions with ozone. This study confirms simple recommendations to reduce the indoors HCHO concentration in schools: use ventilation systems, limit the emissions like cigarette smoke or cleaning products. It also points out that the secondary sources of formaldehyde must be also considered in the classroom.

## 50 **1. Introduction**

Indoor air quality is an important occupational health and safety issue because people spend more than 80% of their time in indoor environments, where some pollutants can be at much higher concentration levels than outdoor (*Hodgson et al.*, 2002; *Jones*, 1999; *Lu et al.*, 2018). Indoor air quality at schools has attracted a lot of attention  
55 because of the poor air quality reported in classrooms and the health problems associated to it (*Annesi-Maesano et al.*, 2013; *Annesi-Maesano et al.*, 2012; *Baloch et al.*, 2020). Formaldehyde (HCHO) is one of the major and abundant indoor pollutants. It can be released directly from building and furnishing materials, cleaning agents, disinfectants, arts and crafts materials, personal care products and so on (*Chang et al.*,  
60 2002; *Harčárová et al.*, 2020; *Salthammer*, 2019; *Salthammer et al.*, 2010). HCHO can also be formed by ozonolysis of alkenes present in indoor air (*Weschler*, 2001),

most often monoterpenes found in many consumer products, such as household products, air freshener and perfumed candles but also released from plants, wooden materials and paints. Short-term exposure to formaldehyde causes irritation of the

65 airways and the eyes, while chronic exposure is associated with an increased risk of asthma (*Yu et al.*, 2020), and nasopharyngeal and sinonasal cancer (*HealthCanada*, 2005). Formaldehyde has been classified as a human carcinogen by the International Agency for Research on Cancer (*IARC*, 2006). In 2010, the World Health Organization (WHO) established an indoor air quality guideline for 30 min average

70 exposure to formaldehyde of  $100 \mu\text{g}/\text{m}^3$  (*WHO*, 2011). This guideline has been re-evaluated for cancer risk assessment by *Nielsen et al.* (2017) who found that it has not been challenged by new studies. In France, the French Agency for Environmental and Occupational Health Safety (AFSSET) has suggested a healthy value of lower than  $10 \mu\text{g}/\text{m}^3$  and  $50 \mu\text{g}/\text{m}^3$  for long-term exposure and short-term exposure (2h),

75 respectively (*AFSSET*, 2007). However, in 2011, French government established two target formaldehyde values for a long-term exposure:  $30 \mu\text{g}/\text{m}^3$  to be reached on January 1, 2015 and  $10 \mu\text{g}/\text{m}^3$  to be achieved on January 1, 2023 (*Ministère de L'Écologie, du Développement Durable, des Transports et du Logement*, 2011). In 2014, the Minister of the Environment postponed these obligations scheduled for

80 January 2015, and in 2015 replaced it by a new decree (n° 2015-1000 of August 17,

2015, Ministère de la Transition écologique, 15 December 2020) with new deadlines: 2018 for nursery, elementary and nursery schools, January 1, 2020 for leisure centers and educational establishments of secondary school and January 1, 2023 for other establishments.

85 The regulatory framework for monitoring indoor air quality in these establishments includes:

- an assessment of the ventilation means that can be carried out by the establishments;

- implementation, as desired of a pollutant measurement campaign by an accredited body; or a self-assessment of air quality using the practical guide, 90 allowing the establishment of an action plan (Ministère de la Transition écologique, 2019).

In recent decades, indoor HCHO concentration has been investigated intensively all over the world (*Brdarić et al.*, 2019; *Lee et al.*, 2018; *Norbäck et al.*, 2017; *Qin et al.*, 95 2020; *Yang et al.*, 2015). Studies demonstrate that the variation of HCHO concentration in indoor air varies depending on the age and type of buildings, ventilation, indoor air temperature, relative humidity (RH) etc. (*Clarisse et al.*, 2003; *Minami et al.*, 2002; *Parthasarathy et al.*, 2011; *Zhao et al.*, 2004). The concentration

of formaldehyde in indoor air is usually inversely correlated to the building age and  
100 air exchange rate (*Qin et al.*, 2020; *Zhao et al.*, 2004), but positively correlated to  
temperature and RH (*Parthasarathy et al.*, 2011). For example, *Zhao et al.* (2004)  
reported that the concentration of indoor formaldehyde showed a declining trend  
along with increase of building age and showed an increasing trend with temperature  
increase. *Minami et al.* (2002) reported that in a new private house, formaldehyde  
105 concentrations ranged between 0.07 and 0.23 ppm (corresponding to 93.8 and 308  
 $\mu\text{g}/\text{m}^3$ ) during the first months, while natural ventilation by opening windows was  
effective in decreasing the formaldehyde concentration. *Clarisse et al.* (2003)  
observed the formaldehyde levels in 61 dwellings in Paris were 21.7  $\mu\text{g}/\text{m}^3$ , 24.3  
 $\mu\text{g}/\text{m}^3$ , and 24.5  $\mu\text{g}/\text{m}^3$  in the kitchen, living room and bedroom, respectively.

110 Indoor air quality at schools is particularly important due to the high occupancy  
density and the health effects on children, which are more vulnerable to respiratory  
diseases such as allergic and asthma (*Daisey et al.*, 2003; *Zhao et al.*, 2008). Several  
recent studies were performed to survey indoor air pollution in schools and nurseries  
(*Baloch et al.*, 2020; *Becerra et al.*, 2020; *Brdaric et al.*, 2020; *Canha et al.*, 2016;  
115 *Michelot et al.*, 2013) and others have been focused on the incidence of respiratory  
problems (*Branco et al.*, 2020; *Huang et al.*, 2020; *Mohd Isa et al.*, 2020) and other  
symptoms like rhinitis, ocular, nasal and dermal problems, headache and fatigue



(*Norbäck et al.*, 2017). Other studies were concentrated on thermal conditions (*De Giuli et al.*, 2012; *Traumann et al.*, 2012), particulate matter (*Almeida et al.*, 2011; 120 *Broich et al.*, 2012; *Devi et al.*, 2009; *Fromme et al.*, 2007; *Habil and Taneja*, 2011; *Lee and Chang*, 1999; 2000; *Wallace et al.*, 2011; *Yang et al.*, 2015), bioaerosol (*Kabir et al.*, 2012; *Pegas et al.*, 2011) and some specific groups of pollutants such as carbon dioxide (CO<sub>2</sub>), carbon monoxide (CO), carbonyls, BTEX (benzene, toluene, ethylbenzene, xylenes) (*Brdarić et al.*, 2019; *Pegas et al.*, 2012; *St-Jean et al.*, 2012; 125 *Stranger et al.*, 2008). In France, only one study dedicated to determine the potential sources of formaldehyde in educational institutions was reported in 2014 by *Poulhet et al.* (2014). The study was carried out during two campaigns in 2011 and 2012 in 8 schools of different cities of France where 29 primary sources of formaldehyde were identified. However, it was mainly emitted by ceiling and building materials and 130 ranged from 1.2 to 252 µg/m<sup>2</sup>/h. Some more recent studies have been devoted to characterize and measure the volatile organic compounds (VOCs) concentrations, including formaldehyde in schools. *Verrièle et al.* (2016) studied 10 built energy-efficient French schools and levels of formaldehyde were around 15.9 µg/m<sup>3</sup>. In 2016, *Cahna and coworkers* published a study on the relationship between ventilation and 135 indoor air quality (IAQ) on 51 classrooms at 17 schools in France performed in 2010. Mean value of formaldehyde was 25±15 µg/m<sup>3</sup> (*Canha et al.*, 2016). A published

study in 2013 presented the monitoring of 310 French schools and day-care centers performed during campaigns in 2009 and 2010 (*Michelot et al.*, 2013). Concentration levels of formaldehyde were higher than  $30 \mu\text{g}/\text{m}^3$  for 10.6% of the investigated schools. However, most of these studies report the concentration levels of formaldehyde as an hourly or even daily/weekly average, which may hide the higher concentration which occurred in a short time period (few minutes). Moreover, only limited studies focus on the potential primary sources (*Poulhet et al.*, 2014). To our knowledge, so far no studies have been reported on the secondary sources of formaldehyde in schools in France.

The purpose of this work was to: (i) investigate the indoor levels and diurnal variation of formaldehyde at elementary school, high school and university in the Centre Val de Loire region of France by using a high time resolution HCHO monitor, and (ii) identify the potential primary and secondary sources of indoor formaldehyde at those educational institutions.

## **2. Material and methods**

### ***2.1 Site descriptions and sampling periods***

Three representative classrooms from an elementary school, a high school and university of the Centre Val de Loire region of France were chosen for this study. The characteristics of investigated locations are summarized in Table 1. The elementary

school is situated in Bourges city, in the southeast of the central region of France, in an urban area close to the city center and near to streets with busy traffic. We have selected a 67-m<sup>2</sup> classroom that can receive 32 elementary-schoolers. It benefits from both northern and southern sun exposure and depends only on natural ventilation  
160 through two doors and seven windows. The school building is 140 years old. The high school is located in an urban area on the south side of Orleans city, near to streets with busy traffic. We have selected a 62-m<sup>2</sup> classroom that can receive 37 junior high school students. It benefits from western sun exposure and depends on a small controlled mechanical ventilation (CMV) and natural ventilation through two doors,  
165 five windows and two small natural ventilation grills. The school building is 24 years old. The third location was the Polytech Engineering school at the Orleans University campus which is located in a suburban area about ten kilometers south of Orleans city center and built in 1995. In this site, we selected a 81-m<sup>2</sup> classroom equipped for 48 students. It receives both southern and eastern sun exposure and depends only on  
170 natural ventilation through two doors and nine windows.

The measurements were conducted at the elementary school during the period from June 1 to June 18, 2012 (noted as “Elementary School-1”) and from February 1 to February 18, 2013 (noted as “Elementary School-2”). Measurements were carried out at the high school from March 9 to March 26, 2012 (noted as “High School-1”) and

175 from November 9 to November 26, 2012 (noted as “High School-2”). Measurements  
at the University campus were performed from January 17 to January 27, 2014 (noted  
as “University”). All measurements were performed in occupied classrooms. In  
addition, measurements on the unoccupied University’s classroom were also  
performed from June 26 to July 22, 2013 to identify the potential secondary sources of  
180 indoor formaldehyde.

## ***2.2 Sampling and analyses***

The instruments for indoor sampling were placed in a room adjoining the classrooms.  
All instruments were connected to an air-sampling manifold, equipped with a 15-m  
fluorinated ethylene propylene (FEP) Teflon tube, which reached the target classroom  
185 through the suspended ceiling. For each campaign, the sampling tube was placed in  
the middle of the classrooms and distance between the ceiling and air-entry point was  
set at 50 cm. A pump was used to sample the classroom air at a flow rate of 60 L/min.  
Consequently, all instruments received essentially identical air samples.

Formaldehyde was monitored by using an *on-line* HCHO analyzer (Aerolaser, AL  
190 4021) with a temporal resolution of 30 seconds. The Aerolaser formaldehyde monitor  
is an extremely sensitive chemical analyzer, based on the transfer of gaseous HCHO  
from the atmosphere to a H<sub>2</sub>SO<sub>4</sub> stripping solution. Quantification of the obtained  
HCHO liquid solution is based on the Hantzsch reaction with a detection by

fluorescence at  $\lambda=510$  nm. A liquid calibration was made every week with a blank and  
195 two different dilutions of a HCHO standard solution (previously back titrated at 0.01  
mol/L by pH metry method with HCl and  $\text{Na}_2\text{CO}_3$ ), to obtain a curve with a  
coefficient of determination  $R^2$  higher than 0.999. A liquid blank measurement was  
also done every morning during 15 minutes with a “zero” solution (from stripping  
solution of the system), to correct the baseline deviation. In these conditions, the limit  
200 of detection is estimated at 100 ppt and the uncertainty, determined by comparison of  
calibration factors, was less than 10% in this study. Meanwhile, the HCHO  
concentrations measured by an offline DNPH (2,4-Dinitrophenylhydrazine)-coated  
silica gel cartridge (Supelco) were used for HCHO inter-comparison in this study. The  
detailed description of the offline DNPH cartridge method is provided in the  
205 Supplementary materials (S1).

A Proton Transfer Reactor Time-of-Flight Mass Spectrometry (PTR-ToF-MS,  
IONICON) was used for monitoring VOCs with a temporal resolution of 10 minutes.  
Quantification by PTR-ToF-MS was reduced to some VOCs due to the limited  
number of gases available to be used as standards for a calibration. However, PTR-  
210 ToF-MS was also used to monitor qualitatively the variation trend of non-quantified  
VOCs in the classrooms air. At the meantime, VOCs were also sampled by a Perkin  
Elmer air sampler through a stainless-steel tube, using a pump at a flow rate of around

200 ml/min. Tubes were sampled every 2 hours on weekdays and every 3 hours at the weekend. Air Toxic tube analyses were performed using a thermal desorption  
215 technique with a Perkin Elmer gas chromatography separation and mass spectrometry (MS) detection. Blank samples were also analyzed under the same conditions. The detection limits were 0.01 ppb. Indoor temperature, relative humidity and CO<sub>2</sub> were examined by a QTrak monitor, the only instrument inside the classrooms.

*Questionnaire:* Two questionnaires were administered. The first one was provided to  
220 the school principals to collect general information about the building, furniture and maintenance activities, while the second one was provided to the teachers to obtain information about the specific daily activities and routine in class. The information was used to identify potential sources of pollutants and determine the effect of the natural ventilation supported by doors and windows.

### 225 ***2.3 Validation of methodology to monitor HCHO in the classrooms***

Fig. 1(a) shows the comparison of HCHO concentration measured by both HCHO monitor and DNPH-Cartridges from January 20 to January 27, 2014 at the University classroom. As expected, they exhibit the same variation trend and match very well, implying the good quality of HCHO data obtained in this study. In the following  
230 discussion, all HCHO analysis results are based on the HCHO monitor data with high time resolution.

In addition, as the inlet point of the sampling tube was set at 50 cm from the ceiling for all measurements, we have studied the influence of the sampling height on the concentration of HCHO. Fig 1(b) shows the HCHO concentrations measured at the University classroom when varying the sampling height during the day. The figure shows that HCHO concentration follows a linear increase throughout the time. No significant change in the behavior of the HCHO concentration was evidenced when varying the sampling height.

### **3 Results and discussion**

#### **3.1 Indoor HCHO concentrations at three schools**

Fig. 2 presents the variation of HCHO and CO<sub>2</sub> at the elementary school, high school and university, while Table 2 summarizes the corresponding average, minimum and maximum values together with indoor temperature (T) and relative humidity (RH). The average HCHO concentrations for Elementary School-1, Elementary School-2, High School-1, High School-2 and University measurements are 17.95, 11.73, 11.48, 10.96 and 13.33 µg/m<sup>3</sup>, respectively. These values do not exceed the WHO guideline value of 100 µg/m<sup>3</sup> (WHO, 2011) and are comparable with other observations in schools in other places around the world (Brdarić *et al.*, 2019; Norbäck *et al.*, 2017) and in France (Canha *et al.*, 2016; Poulhet *et al.*, 2014; Verrièle *et al.*, 2016). While average HCHO concentrations found in this study were lower than the French

regulation threshold of  $30 \mu\text{g}/\text{m}^3$  for long-term exposure applicable from January 2015, pretentions of a target value of  $10 \mu\text{m}/\text{m}^3$  are still not reached. It is noteworthy that the formaldehyde level in Elementary School-1 ( $17.95 \mu\text{g}/\text{m}^3$ ) is higher than those observed in the other four measurements. This is probably due to: (1) the limited  
255 ventilation in the classroom at the elementary school which was based only on natural ventilation through doors and windows, and (2) relative higher average indoor temperature during this measurement ( $22 \text{ }^\circ\text{C}$ , Table 2). Formaldehyde is easy to be released from wood based products in the classroom under higher temperature. Moreover, photochemical production of HCHO is more active in hot seasons, even in  
260 an indoor environment (*Pang and Mu, 2006*).

As shown in Fig. 2, HCHO exhibits daily variations during working days, while it looks stable during the weekend. By comparison with the timetable of the class, as well as the information collected by the questionnaire, we found the formaldehyde level decreased when one or more windows were opened and increased when they  
265 were closed. Table 3 summarized the average, minimum and maximum decrease/increase percent of HCHO concentration after the windows were opened/closed for 30 minutes at elementary and high school classes. In the Elementary school-1 campaign, HCHO concentration decreased by around 25.5% when windows were opened, while it was observed to increase of around 34.1% when



270 windows were closed. Similarly, in the High School-1 measurements, HCHO  
concentration decreased by 37.8% when opening the windows and increased by 37.7%  
when closing them. Because Elementary School-2, High School-2 and University  
campaigns were conducted in winter where windows remain close, effect of window  
opening on the formaldehyde concentration was not carried out. In addition, HCHO  
275 shows the same variation trend as CO<sub>2</sub>. As can be seen in Fig. S1, HCHO shows a  
positive correlation with CO<sub>2</sub> during the daytime (8:00-18:00) of working days, while  
it exhibits a weak correlation with CO<sub>2</sub> during the night (18:00-8:00) and weekend.  
This result implies that indoor HCHO concentration at schools was influenced by the  
activities of students.

### 280 ***3.2 Diurnal variation of indoor formaldehyde in three schools***

Fig. 3 shows the statistical diurnal variation of indoor HCHO concentration at  
elementary school, high school and university. In the elementary school, indoor  
HCHO concentrations were stable during the weekend for both Elementary School-1  
and Elementary School-2 measurements, while it showed a distinguished variation  
285 during working days. For the Elementary School-1 observation, HCHO concentration  
during the daytime (8:00-18:00) of working days was lower than that in the night  
(18:00-8:00). This was mainly due to windows and doors of the classroom at  
elementary school remained usually open during the daytime in summer (June).

Natural ventilation was effective for decreasing the formaldehyde concentration in  
290 indoor air (formaldehyde levels dropped by 25.5% after the windows are opened by  
30 minutes, see Table 3). Furthermore, HCHO exhibited a clear daily pattern, with  
three steep falls around 8:00, 12:00 and 18:00 within a day (red arrows in Fig. 3(a1)).  
At around 8:00 am, students arrive in the morning and doors and windows are opened  
allowing indoor formaldehyde accumulated during the night to decrease. HCHO  
295 concentration increased with student class activities and showed several spikes during  
the period from 9:00 to 11:00. The second fall was exhibited around 12:00 when  
students left the classroom for lunch. After students returned to the classroom, HCHO  
concentration spikes were observed again from 13:00 to 17:00. The last fall occurred  
at around 18:00 when students finished their class and left the rooms. After that, the  
300 doors and windows were closed, and HCHO accumulated during the night time. In the  
Elementary School-2 observation, HCHO concentration during the daytime (8:00-  
18:00) of working days were higher than that in the night (18:00-8:00), and exhibited  
a clear daily pattern with a peak around 13:00. This difference compared to the  
Elementary School-1 campaign was attributed to the poorer ventilation during winter  
305 where windows and doors of the classroom were always closed even in the daytime.  
Thus, HCHO accumulated in the indoor air.

In the high school, the HCHO concentration was stable during the weekend but showed a particular variation during the working days. During the work days of the first campaign (High School-1), windows and doors were opened during the class.

310 Therefore, HCHO showed a lower level during the daytime (8:00-18:00). It was notable that HCHO exhibited a peak around 8:15 am when students arrive to the classroom and few peaks after the breaks. This phenomenon is in contradiction with the observations made at the elementary school (Elementary School-1), where HCHO levels decreased when students arrive. It is suspected that tobacco smoke, desorbed

315 from clothes or hair of students could be the origin of these morning HCHO peaks (see section 3.3). During the High School-2 measurement, windows and doors were mainly closed during the class and although a CMV ensured ventilation, HCHO concentration during the daytime (8:00-18:00) on working days was higher than that in the night (18:00-8:00). HCHO levels exhibited a clear daily pattern, with two peaks

320 around 10:00 and 16:00 within a day. Interestingly, unlike that observed in High School-1 measurement, there was no typical HCHO peak, which proposed related with the tobacco smoke, around 8:15 am when students arrive. That's mainly because the windows and doors were closed during the High School-2 measurement, HCHO was continuously accumulated since the students arrive and the typical HCHO peak

325 contributed from the tobacco smoke is immersed in the main peak at 10:00. The

decrease of HCHO at noon corresponded to the lunch time for students, when the classroom was empty.

In the university, HCHO concentration showed a relative weaker variation during the working days than that observed in elementary and high schools. By comparison with  
330 the timetable and occupancy of the class and the physical information of the classroom for these three schools, it is suggested that the weaker variation of HCHO at university was probably due to the larger volume and lower occupancy of the classroom. In addition, no typical HCHO peak (which may be related to tobacco smoke) was observed as well when the students arrive in the school. The same reason  
335 as that explained in High School-2 measurement, i.e., the closed windows and doors makes HCHO continuously accumulated since the students arrive and then the typical HCHO peak cannot be clearly identified. During the weekend, HCHO concentration is stable due to the lack of human activities.

### ***3.3 Potential sources of indoor HCHO at schools***

340 It is well known that formaldehyde can be released directly from building and furnishing materials, cleaning agents, disinfectants, arts and crafts materials, personal care products and so on. As shown in Fig. 2, during the working days in the high school, some sharp formaldehyde and CO<sub>2</sub> peaks were observed appearing when the students arrived in the morning or after some breaks. The formaldehyde level was

345 observed to rapidly increase by 4.5 to 11  $\mu\text{g}/\text{m}^3$  (55.3% on average) within one hour.

This result implies that these formaldehyde peaks are strongly related to the student activities. It is well known that people can increase the indoor pollution levels by wearing dry cleaned clothes and perfumes. Moreover, smokers can increase indoor pollution, even if smoking inside the buildings is forbidden, because compounds can

350 be retained in clothing and hair and then released into the classroom.

To determine if the tobacco smoke is responsible for the source of these formaldehyde peaks appearing upon students' arrival in the high school, the behavior of some tobacco compounds such as nicotine/anabasine ( $\text{C}_{10}\text{H}_{14}\text{N}_2$ ), propyne ( $\text{C}_3\text{H}_4$ ), myosmine ( $\text{C}_9\text{H}_{10}\text{N}_2$ ), and nornicotine ( $\text{C}_9\text{H}_{12}\text{N}_2$ ) were measured by a PTR-ToF-MS

355 in the classroom (*Breiev et al.*, 2016; *Graus et al.*, 2010). As shown in Fig. 4, those tobacco emitted compounds were detected and showed the same trend as formaldehyde on the arrival of students in the high school-1 measurement. In addition,

it is clear that there is no formaldehyde peak correlated with the children's arrival at elementary school-1 measurements, although it has the similar measurement condition

360 as that in the high school-1 measurement, i.e., doors and windows opened. This is because elementary students don't smoke. This further supports the suggestion that the sharp formaldehyde peaks at the high school originating from the tobacco smoke from clothes or hair. Comparison between the measurements in high school and

elementary school shows that the residue from smokers' clothes or hair may further  
365 increase indoor HCHO by 55.3% in addition to human activities within 1 hour.

In addition to formaldehyde released directly from the surfaces inside the room, it can  
also be formed by oxidation of VOCs in ambient air (*Li et al.*, 2021; *Wolfe et al.*,  
2016). Generally, using cleaning products in the classroom is one of the most  
common and important sources of indoor VOCs at schools (*Ramalho et al.*, 2015).

370 For example, terpenes in the cleaning products can form formaldehyde through  
ozonolysis process in the indoor environment. To better understand the potential  
secondary sources of indoor formaldehyde at schools, a series of experiments, such as  
using the selected terpene-contained cleaning products or adding terpenes in the  
classroom, were planned and performed in an empty classroom at university (Fig. 5).

375 For comparison, a reference experiment, i.e., without using cleaning products and  
keep the windows and doors closed, was carried out during the period from June 26 to  
July 3, 2014, The average HCHO concentration was  $34.7 \mu\text{g}/\text{m}^3$ , a much higher value  
than that observed at the same classroom in January 2014 ( $13.33 \mu\text{g}/\text{m}^3$ , Table 2),  
when doors and windows were regularly opened by students and teachers. This result  
380 demonstrates that formaldehyde accumulates more easily in an enclosed environment.

On July 4, some selected terpene-contained commercially purchased cleaning  
products (the chemical composition was analyzed by Gas Chromatography Mass

Spectroscopy (GC/MS) and presented in Fig. S2) were used to clean floors, tables, charts and windows in the classroom, and then the classroom was kept enclosed until  
385 July 10. Interestingly, no significant change of HCHO level was observed after using cleaning products, the average value over this period is  $48.9 \mu\text{g}/\text{m}^3$ . This value is comparable with the average HCHO concentration ( $41.4 \mu\text{g}/\text{m}^3$ , from July 1 to July 3) before using cleaning products. As shown in Fig. 5, the ozone ( $\text{O}_3$ ) concentration was very low (average values less than  $4 \mu\text{g}/\text{m}^3$ ) during both observation periods. It is  
390 evident from this study that the lack of indoor  $\text{O}_3$  is restricting formaldehyde formation after using cleaning products.

To avoid the limitation of  $\text{O}_3$  and better represent the condition of a real classroom in use, windows were opened for 20 minutes to bring ozone into the classroom before each of the following tests. On July 11 and July 15, two control experiments were  
395 conducted under normal conditions (i.e., without using any cleaning products and adding any VOCs, denoted as “control experiment”). On July 16 and July 18, the selected terpene-contained cleaning products were used inside the classroom. On July 12 and July 19, to figure out the contribution of the terpenes to increasing indoor formaldehyde levels through chemical reactions in schools, several terpenes which  
400 identified in the selected terpene-contained cleaning products (limonene,  $\alpha$ -pinene, myrcene, sabinene, caryophyllene, decene, isoprene, linalool) were pre-mixed in the

lab and then introduced into the classroom by putting terpene-impregnated paper towels inside the classroom. For all these experiments (Fig. 5), a sharp decrease of HCHO with a distinct increase of O<sub>3</sub> was observed when opening windows. However  
405 after closing windows, the HCHO concentration increased with the consumption of O<sub>3</sub>. To better understand the contribution of VOCs to the indoor formaldehyde, the comparisons of HCHO concentrations in presence and absence of cleaning products and terpenes in the classroom at the university are displayed in Fig. 6. It is obvious that after using cleaning products or adding terpenes inside the classroom, HCHO  
410 level increases faster than during the control experiment. These results imply that the VOCs from cleaning products such as terpenes can contribute to increase the indoor formaldehyde levels through chemical reactions, such as through ozonolysis process (Weschler, 2001) or photo-oxidation process (e.g., reaction with the OH radical formed by the photolysis of HONO in the classroom) (Gómez Alvarez *et al.*, 2013; Zhou *et al.*, 2021), at schools.

#### **4 Conclusions**

In the Framework of the FORMUL'AIR (FORMaldéhyde et siMULations dans l'AIR: détermination des sources secondaires de formaldéhyde) project, measurements of indoor formaldehyde have been performed at elementary school, high school and  
420 university in Region Centre Val de Loire of France. The indoor average formaldehyde



concentrations at the three schools observed range from 10.96 to 17.95  $\mu\text{g}/\text{m}^3$ , which is lower than the WHO guideline value of 100  $\mu\text{g}/\text{m}^3$  (WHO, 2011) and the current French regulation limit of 30  $\mu\text{g}/\text{m}^3$  for long term exposure. However, the threshold of 10  $\mu\text{g}/\text{m}^3$  considered for the French government, on January 2023, is not reached.

425 Ventilation was found playing an important role in the control of indoor formaldehyde concentration. After opening windows for 30 minutes, indoor formaldehyde level decreased by 25.5% and 37.8% in the classroom at the elementary school and the high school, respectively. In addition, HCHO showed a positive correlation with CO<sub>2</sub> during the daytime (8:00-18:00) of weekdays, while it exhibited a weak correlation  
430 with CO<sub>2</sub> during the night (18:00-8:00) and at the weekend. This result implies that indoor HCHO concentration at schools was influenced by the activities of students. The PTR-ToF-MS measurements suggested that the releasing of the residue from tobacco smokers' clothes or hair is one of the primary sources of indoor HCHO at the high school, which increased HCHO concentration by an average of 55.3% within 1  
435 hour. Moreover, the control experiments conducted at the university suggested that some VOCs released from cleaning products such as terpenes can contribute to increasing the indoor formaldehyde levels through chemical reactions.

Based on the results in this study, we believe that the following simple suggestions would effectively reduce the indoor HCHO concentration in Schools:

- 440 (1) Open the windows and doors regularly during the daytime on weekdays, and  
opening the windows and doors as long as possible before the students arrive  
in the morning is strongly recommended. Opening windows for 30 minutes  
can reduce indoor HCHO concentration by about 25-40%.
- (2) Forbid the students from smoking. Indeed, HCHO from the clothes or hair of  
445 the tobacco smoker can be an important source of indoor HCHO, leading to  
an increase of ~ 55% within 1 hour.
- (3) Use less emissive cleaning products and well ventilate afterward.
- (4) Installation of adequate CMVs with high flow to guaranty the exchange of  
the indoor air in a short time would be a best investment to do for a best and  
450 healthy indoor air quality.

### **Acknowledgements**

This project was financially supported by Centre Val de Loire Region (project FORMUL’AIR). The authors also thank the principals and staff of the schools for their support.

### 455 **References**

Ministère de L’Écoologie, du Développement Durable, des Transports et du Logement,  
Décret n° 2011-1727 du 2 décembre 2011 relatif aux valeurs-guides pour l’air

intérieur pour le formaldéhyde et le benzene (2011), France,

<https://www.legifrance.gouv.fr/jorf/id/JORFARTI000024909122>.

460 Ministère de la Transition écologique, Guide pratique pour une meilleure qualité de l'air dans les lieux accueillant des enfants et des adolescents (2019), France,

<https://www.ecologie.gouv.fr/sites/default/files/Guide-complet-QAI-web.pdf>.

Ministère de la Transition écologique, Qualité de l'air intérieur (2020), France,

[https://www.ecologie.gouv.fr/qualite-lair-interieur#scroll-nav\\_1](https://www.ecologie.gouv.fr/qualite-lair-interieur#scroll-nav_1).

465 AFSSET (2007), AFSSET Working Group on Indoor Air Quality Guideline Values.

Indoor Air Quality, Guideline Value Proposal—Formaldehyde, edited, AFSSET, AFSSET: Maisons-Alfort Cedex, French.

Almeida, S. M., Canha, N., Silva, A., Freitas, M. d. C., Pegas, P., Alves, C., et al.

(2011), Children exposure to atmospheric particles in indoor of Lisbon primary

470 schools, *Atmospheric Environment*, 45(40), 7594-7599,

doi:10.1016/j.atmosenv.2010.11.052.

Annesi-Maesano, I., Baiz, N., Banerjee, S., Rudnai, P., Rive, S., & the, S. G. (2013),

Indoor Air Quality and Sources in Schools and Related Health Effects, *Journal of*

*Toxicology and Environmental Health, Part B*, 16(8), 491-550,

475 doi:10.1080/10937404.2013.853609.

Annesi-Maesano, I., Hulin, M., Lavaud, F., Raheison, C., Kopferschmitt, C., de Blay, F., et al. (2012), Poor air quality in classrooms related to asthma and rhinitis in primary schoolchildren of the French 6 Cities Study, *Thorax*, 67(8), 682-688, doi:10.1136/thoraxjnl-2011-200391.

480 Baloch, R. M., Maesano, C. N., Christoffersen, J., Banerjee, S., Gabriel, M., Csobod, É., et al. (2020), Indoor air pollution, physical and comfort parameters related to schoolchildren's health: Data from the European SINPHONIE study, *Science of The Total Environment*, 739, 139870, doi:10.1016/j.scitotenv.2020.139870.

Becerra, J. A., Lizana, J., Gil, M., Barrios-Padura, A., Blondeau, P., & Chacartegui, R. (2020), Identification of potential indoor air pollutants in schools, *Journal of Cleaner Production*, 242, 118420, doi:10.1016/j.jclepro.2019.118420.

Branco, P. T. B. S., Alvim-Ferraz, M. C. M., Martins, F. G., Ferraz, C., Vaz, L. G., & Sousa, S. I. V. (2020), Impact of indoor air pollution in nursery and primary schools on childhood asthma, *Science of The Total Environment*, 745, 140982, doi:10.1016/j.scitotenv.2020.140982.

490 Brdarić, D., Kovač-Andrić, E., Šapina, M., Kramarić, K., Lutz, N., Perković, T., et al. (2019), Indoor air pollution with benzene, formaldehyde, and nitrogen dioxide in schools in Osijek, Croatia, *Air Quality, Atmosphere & Health*, 12(8), 963-968, doi:10.1007/s11869-019-00715-7.

- 495 Brdaric, D., Kulinkina, A., Šapina, M., Kramarić, K., Gvozdić, V., Cvetkovic, B., et al.  
(2020), Exposure Assessment Survey in Schools: Pilot Project in Osijek, Croatia,  
*Journal of environmental health*, 82, 14-21.
- Breiev, K., Burseg, K. M. M., O'Connell, G., Hartungen, E., Biel, S. S., Cahours, X.,  
et al. (2016), An online method for the analysis of volatile organic compounds in  
500 electronic cigarette aerosol based on proton transfer reaction mass spectrometry,  
*Rapid Commun. Mass Spectrom.*, 30(6), 691-697, doi:10.1002/rcm.7487.
- Broich, A. V., Gerharz, L. E., & Klemm, O. (2012), Personal monitoring of exposure  
to particulate matter with a high temporal resolution, *Environmental Science and  
Pollution Research*, 19(7), 2959-2972, doi:10.1007/s11356-012-0806-3.
- 505 Canha, N., Mandin, C., Ramalho, O., Wyart, G., Ribéron, J., Dassonville, C., et al.  
(2016), Assessment of ventilation and indoor air pollutants in nursery and elementary  
schools in France, *Indoor Air*, 26(3), 350-365, doi:10.1111/ina.12222.
- Chang, J. C. S., Guo, Z. S., Fortmann, R., & Lao, H. C. (2002), Characterization and  
reduction of formaldehyde emissions from a low-VOC latex paint, *Indoor Air*, 12(1),  
510 10-16, doi:10.1034/j.1600-0668.2002.120103.x.
- Clarisse, B., Laurent, A. M., Seta, N., Le Moullec, Y., El Hasnaoui, A., & Momas, I.  
(2003), Indoor aldehydes: measurement of contamination levels and identification of

their determinants in Paris dwellings, *Environmental Research*, 92(3), 245-253,  
doi:10.1016/s0013-9351(03)00039-2.

515 Daisey, J. M., Angell, W. J., & Apte, M. G. (2003), Indoor air quality, ventilation and  
health symptoms in schools: an analysis of existing information, *Indoor Air*, 13(1),  
53-64, doi:10.1034/j.1600-0668.2003.00153.x.

De Giuli, V., Da Pos, O., & De Carli, M. (2012), Indoor environmental quality and  
pupil perception in Italian primary schools, *Building and Environment*, 56, 335-345.

520 Devi, J. J., Gupta, T., Tripathi, S. N., & Ujinwal, K. K. (2009), Assessment of  
personal exposure to inhalable indoor and outdoor particulate matter for student  
residents of an academic campus (IIT-Kanpur), *Inhalation Toxicology*, 21(14), 1208-  
1222, doi:10.3109/08958370902822875.

Fromme, H., Twardella, D., Dietrich, S., Heitmann, D., Schierl, R., Liebl, B., et al.  
525 (2007), Particulate matter in the indoor air of classrooms - exploratory results from  
Munich and surrounding area, *Atmospheric Environment*, 41(4), 854-866,  
doi:10.1016/j.atmosenv.2006.08.053.

Gómez Alvarez, E., Amedro, D., Afif, C., Gligorovski, S., Schoemacker, C., Fittschen,  
C., et al. (2013), Unexpectedly high indoor hydroxyl radical concentrations associated  
530 with nitrous acid, *Proceedings of the National Academy of Sciences*, 201308310,  
doi:10.1073/pnas.1308310110.

Graus, M., Müller, M., & Hansel, A. (2010), High Resolution PTR-TOF: Quantification and Formula Confirmation of VOC in Real Time, *J. Am. Soc. Mass. Spectrom.*, 21(6), 1037-1044, doi:10.1016/j.jasms.2010.02.006.

535 Habil, M., & Taneja, A. (2011), Children's Exposure to Indoor Particulate Matter in Naturally Ventilated Schools in India, *Indoor and Built Environment*, 20(4), 430-448, doi:10.1177/1420326x11409455.

Harčárová, K., Vilčeková, S., & Balintova, M. (2020), Building Materials as Potential Emission Sources of VOC in the Indoor Environment of Buildings, *Key Engineering*

540 *Materials*, 838, 74-80, doi:10.4028/[www.scientific.net/KEM.838.74](http://www.scientific.net/KEM.838.74).

Health Canada, Proposed Residential Indoor Air Quality Guidelines for Formaldehyde (2005), 31pp pp, Ottawa, Canada.

Hodgson, A. T., Beal, D., & McIlvaine, J. E. R. (2002), Sources of formaldehyde, other aldehydes and terpenes in a new manufactured house, *Indoor Air*, 12(4), 235-

545 242, doi:10.1034/j.1600-0668.2002.01129.x.

Huang, C., Zhang, J., Sun, C., Liu, W., Zhang, Y., Li, B., et al. (2020), Associations between household renovation and rhinitis among preschool children in China: A cross-sectional study, *Indoor Air*, 30(5), 827-840, doi:10.1111/ina.12675.

- IARC (2006), *International Agency for Research on Cancer - IARC Monographs on the Evaluation of Carcinogenic Risks to Humans: Formaldehyde, 2-Butoxyethanol and 1-tert-Butoxypropan-2-ol.* , World Health Organization.
- 550
- Jones, A. P. (1999), Indoor air quality and health, *Atmospheric Environment*, 33(28), 4535-4564, doi:10.1016/s1352-2310(99)00272-1.
- Kabir, E., Kim, K. H., Sohn, J. R., Kweon, B. Y., & Shin, J. H. (2012), Indoor air
- 555 quality assessment in child care and medical facilities in Korea, *Environmental Monitoring and Assessment*, 184(10), 6395-6409, doi:10.1007/s10661-011-2428-5.
- Lee, K., Choi, J.-H., Lee, S., Park, H.-J., Oh, Y.-J., Kim, G.-B., et al. (2018), Indoor levels of volatile organic compounds and formaldehyde from emission sources at elderly care centers in Korea, *PLOS ONE*, 13(6), e0197495,
- 560 doi:10.1371/journal.pone.0197495.
- Lee, S. C., & Chang, M. (1999), Indoor air quality investigations at five classrooms, *Indoor Air-International Journal of Indoor Air Quality and Climate*, 9(2), 134-138, doi:10.1111/j.1600-0668.1999.t01-2-00008.x.
- Lee, S. C., & Chang, M. (2000), Indoor and outdoor air quality investigation at
- 565 schools in Hong Kong, *Chemosphere*, 41(1-2), 109-113, doi:10.1016/s0045-6535(99)00396-3.



- Li, S., Liu, D., Hu, D., Kong, S., Wu, Y., Ding, S., et al. (2021), Evolution of Organic Aerosol From Wood Smoke Influenced by Burning Phase and Solar Radiation, *Journal of Geophysical Research: Atmospheres*, 126(8), e2021JD034534, doi:10.1029/2021JD034534.
- 570
- Lu, C.-Y., Tsai, M.-C., Muo, C.-H., Kuo, Y.-H., Sung, F.-C., & Wu, C.-C. (2018), Personal, Psychosocial and Environmental Factors Related to Sick Building Syndrome in Official Employees of Taiwan, *International Journal of Environmental Research and Public Health*, 15(1), 7.
- 575
- Michelot, N., Marchand, C., Ramalho, O., Delmas, V., & Carrega, M. (2013), Monitoring indoor air quality in French schools and day-care centers, *HVAC&R Research*, 19(8), 1083-1089, doi:10.1080/10789669.2013.812498.
- Minami, T., Matsumoto, H., Kondo, F., Yamada, S., Matsumura, T., Ando, M., et al. (2002), *Variation in indoor air pollutant concentrations with time in a newly constructed private house*, 211-221 pp., doi:10.11236/jph.49.3\_211.
- 580
- Mohd Isa, K. N., Hashim, Z., Jalaludin, J., Lung Than, L. T., & Hashim, J. H. (2020), The Effects of Indoor Pollutants Exposure on Allergy and Lung Inflammation: An Activation State of Neutrophils and Eosinophils in Sputum, *International Journal of Environmental Research and Public Health*, 17(15), 5413.

- 585 Nielsen, G. D., Larsen, S. T., & Wolkoff, P. (2017), Re-evaluation of the WHO (2010) formaldehyde indoor air quality guideline for cancer risk assessment, *Arch Toxicol*, 91(1), 35-61, doi:10.1007/s00204-016-1733-8.
- Norbäck, D., Hashim, J. H., Hashim, Z., & Ali, F. (2017), Volatile organic compounds (VOC), formaldehyde and nitrogen dioxide (NO<sub>2</sub>) in schools in Johor Bahru, Malaysia: Associations with rhinitis, ocular, throat and dermal symptoms, headache and fatigue, *Science of The Total Environment*, 592, 153-160, doi:10.1016/j.scitotenv.2017.02.215.
- 590 Pang, X., & Mu, Y. (2006), Seasonal and diurnal variations of carbonyl compounds in Beijing ambient air, *Atmospheric Environment*, 40(33), 6313-6320, doi:10.1016/j.atmosenv.2006.05.044.
- 595 Parthasarathy, S., Maddalena, R., Russell, M., & Apte, M. (2011), Effect of Temperature and Humidity on Formaldehyde Emissions in Temporary Housing Units, *Journal of the Air & Waste Management Association (1995)*, 61, 689-695, doi:10.3155/1047-3289.61.6.689.
- 600 Pegas, P. N., Alves, C. A., Evtugina, M. G., Nunes, T., Cerqueira, M., Franchi, M., et al. (2011), Seasonal evaluation of outdoor/indoor air quality in primary schools in Lisbon, *Journal of Environmental Monitoring*, 13(3), 657-667, doi:10.1039/c0em00472c.

- Pegas, P. N., Nunes, T., Alves, C. A., Silva, J. R., Vieira, S. L. A., Caseiro, A., et al.  
605 (2012), Indoor and outdoor characterisation of organic and inorganic compounds in  
city centre and suburban elementary schools of Aveiro, Portugal, *Atmospheric  
Environment*, 55, 80-89, doi:10.1016/j.atmosenv.2012.03.059.
- Poulhet, G., Dusanter, S., Crunaire, S., Locoge, N., Gaudion, V., Merlen, C., et al.  
(2014), Investigation of formaldehyde sources in French schools using a passive flux  
610 sampler, *Building and Environment*, 71, 111-120, doi:10.1016/j.buildenv.2013.10.002.
- Qin, D., Guo, B., Zhou, J., Cheng, H., & Chen, X. (2020), Indoor air formaldehyde  
(HCHO) pollution of urban coach cabins, *Scientific Reports*, 10(1), 332,  
doi:10.1038/s41598-019-57263-4.
- Ramalho, O., Wyart, G., Mandin, C., Blondeau, P., Cabanes, P.-A., Leclerc, N., et al.  
615 (2015), Association of carbon dioxide with indoor air pollutants and exceedance of  
health guideline values, *Building and Environment*, 93, 115-124,  
doi:10.1016/j.buildenv.2015.03.018.
- Salthammer, T. (2019), Formaldehyde sources, formaldehyde concentrations and air  
exchange rates in European housings, *Building and Environment*, 150, 219-232,  
620 doi:10.1016/j.buildenv.2018.12.042.
- Salthammer, T., Mentese, S., & Marutzky, R. (2010), Formaldehyde in the Indoor  
Environment, *Chemical Reviews*, 110(4), 2536-2572, doi:10.1021/cr800399g.

- St-Jean, M., St-Amand, A., Gilbert, N. L., Soto, J. C., Guay, M., Davis, K., et al. (2012), Indoor air quality in Montreal area day-care centres, Canada, *Environmental Research*, 118, 1-7, doi:10.1016/j.envres.2012.07.001.
- 625
- Stranger, M., Potgieter-Vermaak, S. S., & Van Grieken, R. (2008), Characterization of indoor air quality in primary schools in Antwerp, Belgium, *Indoor Air*, 18(6), 454-463, doi:10.1111/j.1600-0668.2008.00545.x.
- Traumann, A., Tint, P., & Tuulik, V. (2012), Indoor air quality in educational institutions in Estonia, *Environmental Engineering and Management Journal*, 11(1), 207-214.
- 630
- Verriele, M., Schoemaeker, C., Hanoune, B., Leclerc, N., Germain, S., Gaudion, V., et al. (2016), The MERMAID study: indoor and outdoor average pollutant concentrations in 10 low-energy school buildings in France, *Indoor Air*, 26(5), 702-713, doi:10.1111/ina.12258.
- 635
- Wallace, L. A., Wheeler, A. J., Kearney, J., Van Ryswyk, K., You, H., Kulka, R. H., et al. (2011), Validation of continuous particle monitors for personal, indoor, and outdoor exposures, *Journal of Exposure Science and Environmental Epidemiology*, 21(1), 49-64, doi:10.1038/jes.2010.15.
- 640
- Weschler, C. (2001), Ozone in Indoor Environments: Concentration and Chemistry, *Indoor air*, 10, 269-288, doi:10.1034/j.1600-0668.2000.010004269.x.

World Health Organization. The regional Office for Europe., WHO guidelines for indoor air quality: selected pollutants. (2011).

Wolfe, G. M., Kaiser, J., Hanisco, T. F., Keutsch, F. N., de Gouw, J. A., Gilman, J. B.,  
645 et al. (2016), Formaldehyde production from isoprene oxidation across NO<sub>x</sub> regimes, *Atmos. Chem. Phys.*, 16(4), 2597-2610, doi:10.5194/acp-16-2597-2016.

Yang, J., Nam, I., Yun, H., Kim, J., Oh, H.-J., Lee, D., et al. (2015), Characteristics of indoor air quality at urban elementary schools in Seoul, Korea: Assessment of effect of surrounding environments, *Atmospheric Pollution Research*, 6(6), 1113-1122,  
650 doi:10.1016/j.apr.2015.06.009.

Yu, L., Wang, B., Cheng, M., Yang, M., Gan, S., Fan, L., et al. (2020), Association between indoor formaldehyde exposure and asthma: A systematic review and meta-analysis of observational studies, *Indoor Air*, 30(4), 682-690, doi:10.1111/ina.12657.

Zhao, Y., Chen, B., Guo, Y. L., Peng, F. F., & Zhao, J. L. (2004), Indoor air  
655 environment of residential buildings in Dalian, China, *Energy and Buildings*, 36(12), 1235-1239, doi:10.1016/j.enbuild.2003.09.011.

Zhao, Z. H., Zhang, Z., Wang, Z. H., Ferm, M., Liang, Y. L., & Norback, D. (2008), Asthmatic symptoms among pupils in relation to winter indoor and outdoor air pollution in schools in Taiyuan, China, *Environmental Health Perspectives*, 116(1),  
660 90-97, doi:10.1289/ehp.10576.

Zhou, S., Kowal, S. F., Cregan, A. R., & Kahan, T. F. (2021), Factors affecting wavelength-resolved ultraviolet irradiance indoors and their impacts on indoor photochemistry, *Indoor Air*, 31(4), 1187-1198, doi:10.1111/ina.12784.

**Table 1.** Characteristics of the studied schools.

<b>Characteristics</b>	<b>Elementary School</b>	<b>High School</b>	<b>Polytech University</b>
<b>Location</b>	Bourges	Orleans	Orleans
<b>Classification</b>	Urban (near to the city center)	Urban (near streets)	Sub-Urban (8 km south of the city center)
<b>Champagne date</b>	June 2012 and February 2013	March and November 2012	July 2013 and January 2014
<b>Tested microenvironment</b>	1 classroom	1 classroom	1 classroom
<b>Room size</b>	67 m <sup>2</sup> (8.95×7.46×3.03 m)	62 m <sup>2</sup> (8.23×7.52×2.70 m)	81 m <sup>2</sup> (12.50×6.50×2.90 m)
<b>Windows</b>	7	5	9
<b>Doors</b>	2	2	2
<b>Floor</b>	Tiled floor	Linoleum	Tiled floor
<b>Ceiling</b>	False ceiling	False ceiling	False ceiling
<b>Board (Black or White)</b>	4	1	2
<b>Tables</b>	17	18	42
<b>Chairs</b>	32	37	48
<b>Built</b>	1881	1997	1995
<b>Ventilation</b>	Natural	CMV*, Natural	Natural
<b>Heating</b>	Gas central system	Gas central system	Gas central system

CMV\*: Controlled mechanical ventilation.

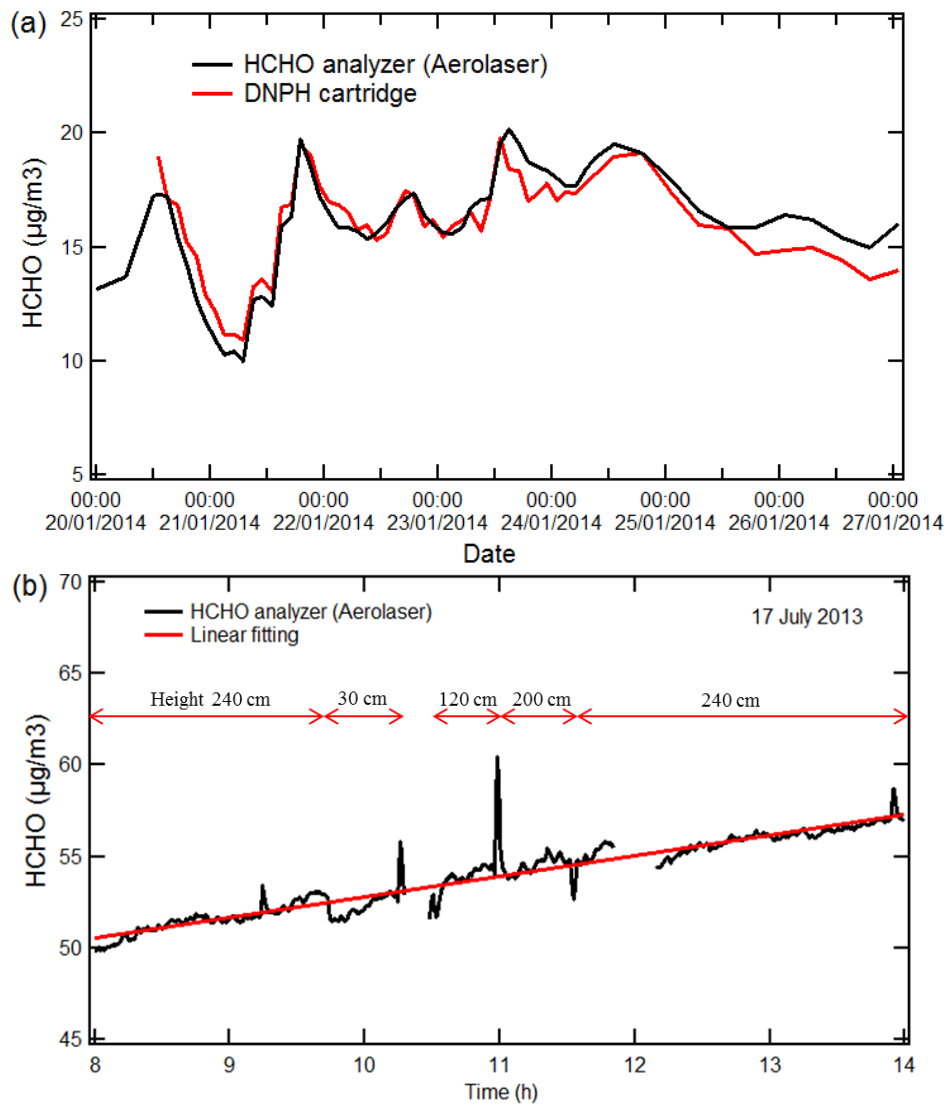
**Table 2.** Average, minimum and maximum values of HCHO, CO<sub>2</sub>, Temperature and RH at elementary school, high school and university.

School	Period	HCHO ( $\mu\text{g}/\text{m}^3$ )			CO <sub>2</sub> (ppm)			Temperature ( $^{\circ}\text{C}$ )			RH (%)		
		Ave	Min	Max	Ave	Min	Max	Ave	Min	Max	Ave	Min	Max
Elementary school	June 2012	17.95	4.98	32.85	532	367	2375	21.7	18.7	26.0	54.2	42.6	68.9
	February 2013	11.73	2.57	21.35	598	396	1954	16.4	8.8	22.0	42.2	26.3	62.0
High school	March 2012	11.48	2.81	22.67	522	349	2232	23.4	21.1	26.0	35.5	24.6	53.0
	November 2012	10.96	3.00	21.75	732	363	3363	21.1	17.6	24.9	43.9	32.1	59.5
University	January 2014	13.33	7.71	23.73	1016	230	4980	20.2	17.9	25.0	40.1	29.6	56.9

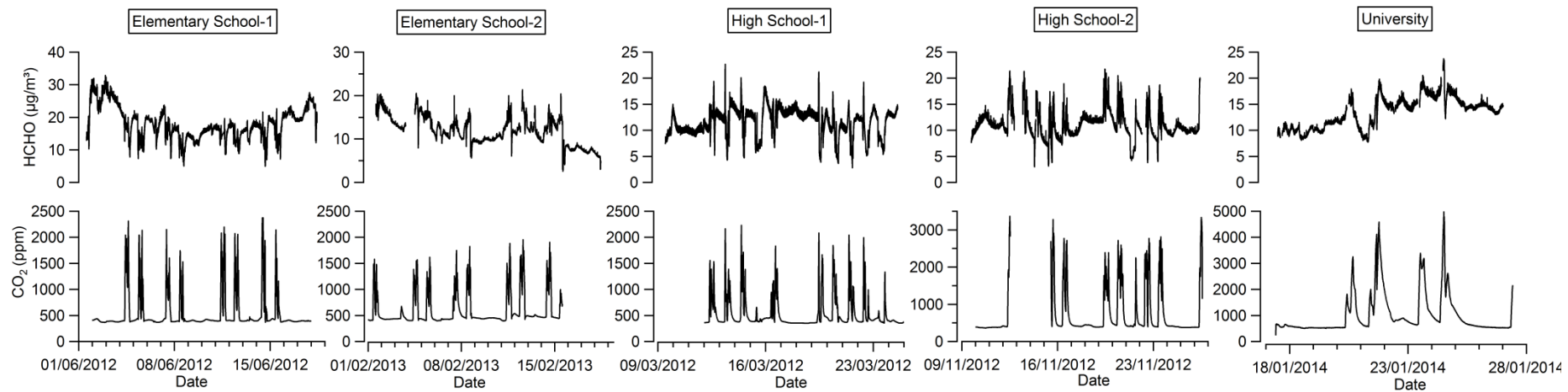


**Table 3.** Average, minimum and maximum decrease/increase percent of HCHO concentration after the windows are opened/closed in 30 minutes at elementary school and high school.

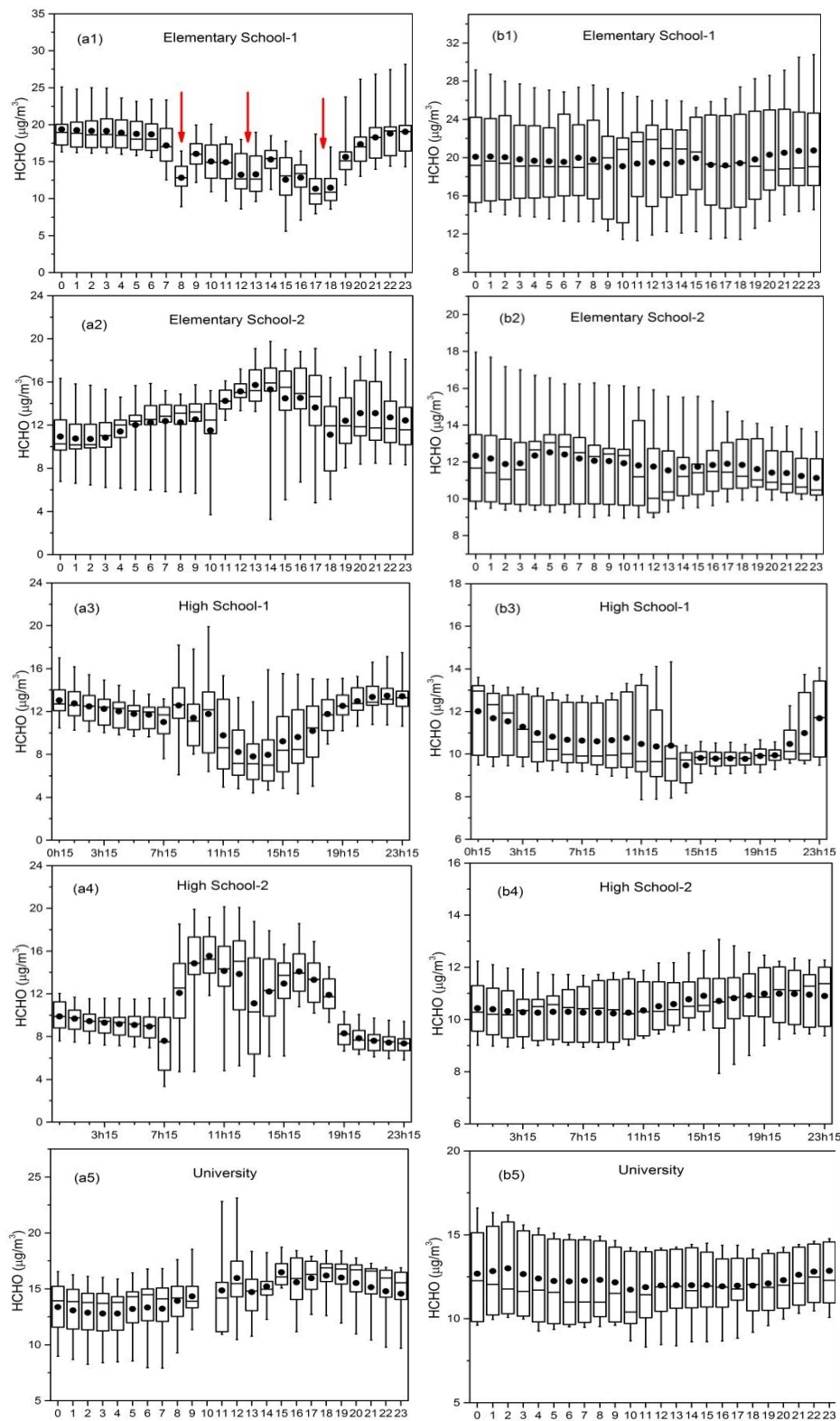
<b>Campaign</b>	<b>Decrease percent (%)</b>			<b>Increase percent (%)</b>		
	<b>Ave</b>	<b>Min</b>	<b>Max</b>	<b>Ave</b>	<b>Min</b>	<b>Max</b>
Elementary School-1	25.5	15.5	39.0	34.1	12.9	59.8
Elementary School-2	-	-	-	-	-	-
High School-1	37.8	20.3	67.4	37.7	19.6	73.3
High School-2	-	-	-	-	-	-



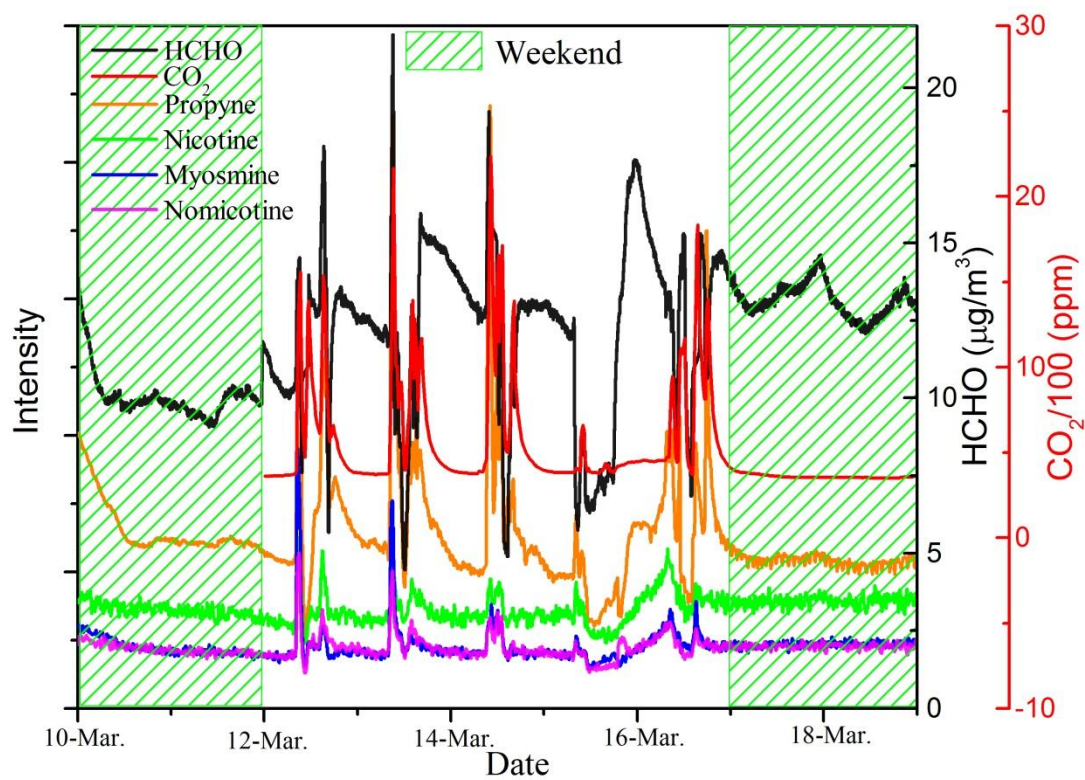
**Fig. 1.** Validation of HCHO data: (a) comparison of HCHO concentration measured by HCHO monitor and by DNP-Cartridges during the period from January 20 to January 27, 2014 at Polytech University (b) Variation of HCHO concentration with sample height at Polytech University.



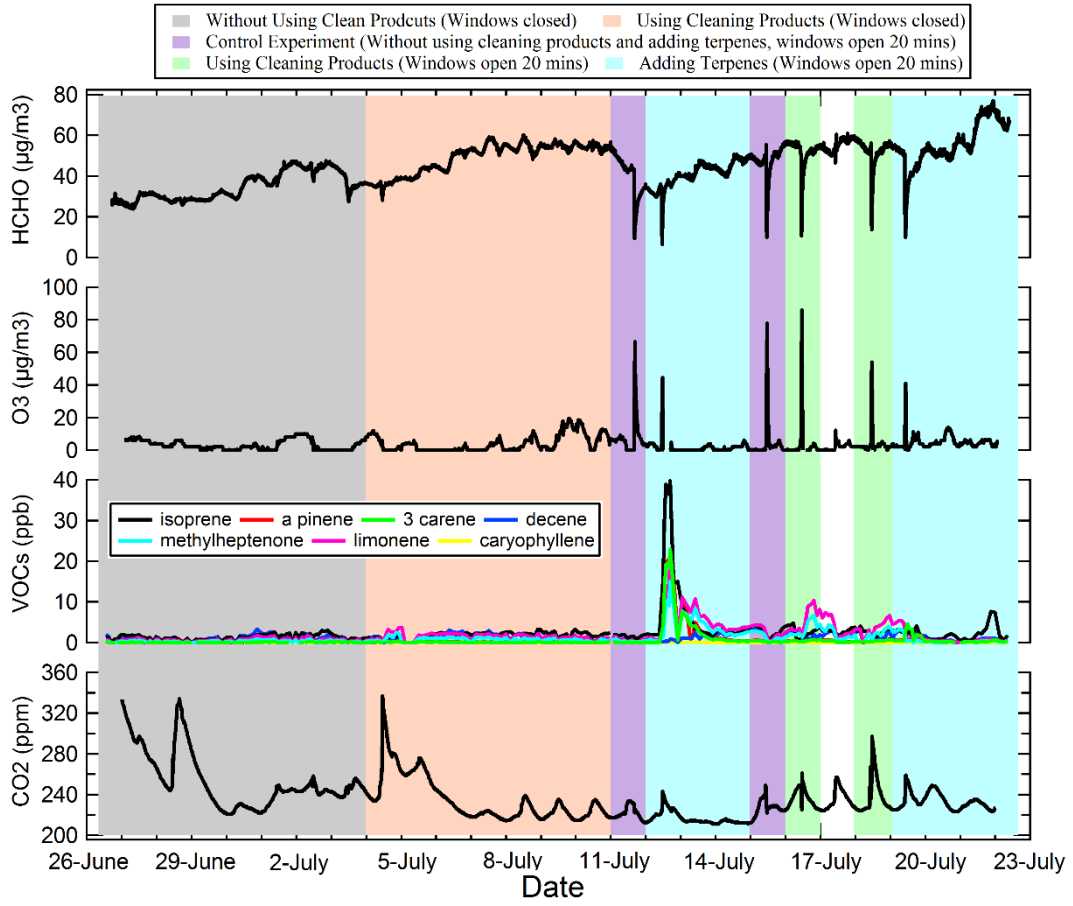
**Fig. 2.** Variation of HCHO and  $\text{CO}_2$  concentration at elementary school, high school and university.



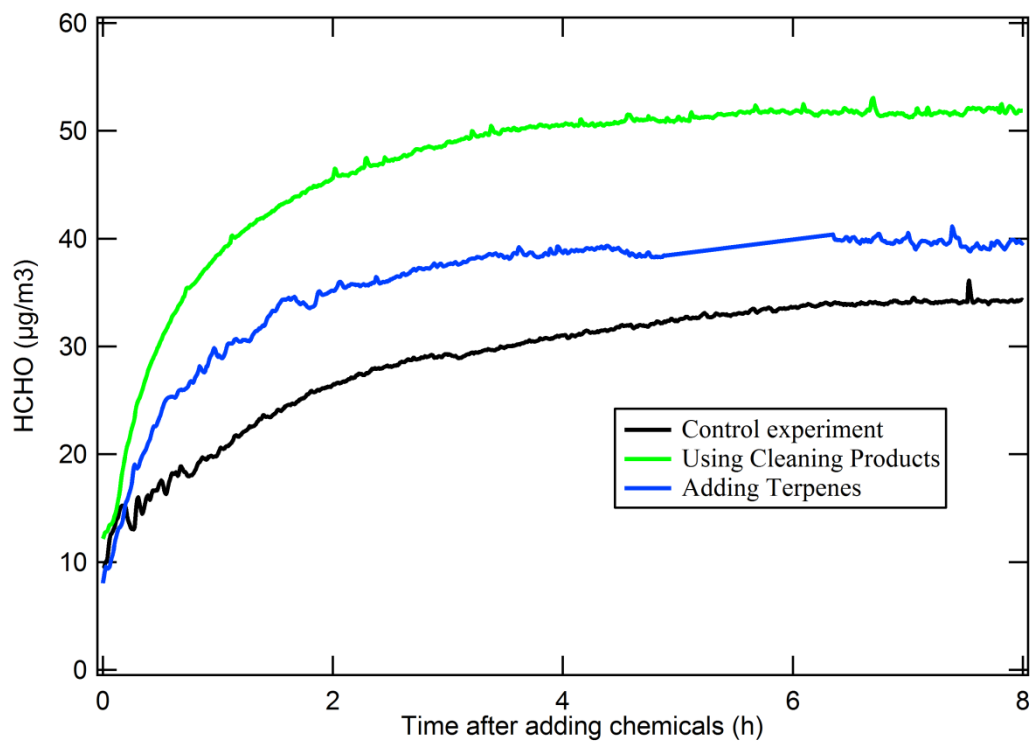
**Fig. 3.** Statistic diurnal variation of indoor HCHO during: (a) work days, and (b) weekend at elementary school, high school and university. The mean is represented by a dot, the dividing segment in the box is the median, the top and bottom box limits represent the 75<sup>th</sup> and 25<sup>th</sup> percentile, the error bars are related to the 95<sup>th</sup> and 5<sup>th</sup> percentiles.



**Fig. 4** Comparison of the formaldehyde variation and some tobacco compounds during the first week of campaign at High School-1.



**Fig. 5** Variation of indoor formaldehyde, VOCs and CO<sub>2</sub> at the university during the period from June 26 to July 22, 2013. The part marked in white corresponds to measurements during a day without specific experiment.



**Fig. 6** Variation of HCHO concentration with and without using clean products and adding terpenes in the classroom at the university.