



**HAL**  
open science

## A balanced watershed decomposition method for rain-on-grid simulations in HEC-RAS

Sleimane Hariri, Sylvain Weill, Jens Gustedt, Isabelle Charpentier

► **To cite this version:**

Sleimane Hariri, Sylvain Weill, Jens Gustedt, Isabelle Charpentier. A balanced watershed decomposition method for rain-on-grid simulations in HEC-RAS. *Journal of Hydroinformatics*, 2022, 24 (2), pp.315-332. hal-03561729v1

**HAL Id: hal-03561729**

**<https://hal.science/hal-03561729v1>**

Submitted on 5 Jun 2021 (v1), last revised 8 Feb 2022 (v2)

**HAL** is a multi-disciplinary open access archive for the deposit and dissemination of scientific research documents, whether they are published or not. The documents may come from teaching and research institutions in France or abroad, or from public or private research centers.

L'archive ouverte pluridisciplinaire **HAL**, est destinée au dépôt et à la diffusion de documents scientifiques de niveau recherche, publiés ou non, émanant des établissements d'enseignement et de recherche français ou étrangers, des laboratoires publics ou privés.

# A balanced watershed decomposition method

## Application to HEC-RAS

Sleimane Hariri<sup>a</sup>, Sylvain Weill<sup>b</sup>, Jens Gustedt<sup>a,c</sup>, Isabelle Charpentier<sup>a</sup>

<sup>a</sup>ICube UMR 7357, Université de Strasbourg and CNRS, 67412 Illkirch, France

<sup>b</sup>LHyGeS UMR 7517, Université de Strasbourg and CNRS, 67000 Strasbourg, France

<sup>c</sup>INRIA, France

---

### Abstract

Hydrological models are used for water management plans and risk assessment. Based on more and more complex nonlinear partial differential equations, their solution at a watershed level is time and memory consuming for both academic and commercial software. Domain decomposition together with parallelization offer opportunities for faster computations that possibly use larger data sets, as long as a certain balance between the tasks is maintained.

Starting from a digital elevation model and an outlet, we propose a GIS tool for the generation of an area balanced partition of watersheds. For the sake of general usability, the HEC-RAS software together with the HECRASController tool are chosen for the solution of the hydrological sub-problems. Numerical simulations of a rural watershed assess the sought properties of the domain decomposition and shows the potential gains of the method in terms of parallelization.

*Key words:* Watershed partitioning, Area balancing, Hydrological models, Partial differential equations, Parallel computing

---

### 1. Introduction

Hydrological models widely support the management of water resources, the forecasting of floods, the assessment of hazards [1, 2], the simulation of extreme event scenarios [3], and landscape modifications [4].

Since the mid-eighties [5, 6], nonlinear partial differential equations (PDEs) and additional physical parameterizations allow for the account of more and more complex hydrological processes. Carried out on either a grid or an unstructured mesh, the computational load of their iterative solution is all the more time and memory consuming when the modeled zone is large.

Several parallel computing strategies have been proposed to balance the computational load over a multi-processor cluster. In a hydrological context, either the watershed itself or the linear system can be split in order to solve smaller problems.

On the one hand, a sparse parallel solver may be implemented as in the HEC-RAS software [7]. This method is generally more efficient on a multi-core processor.

On the over hand, GIS tools may be used to split the watershed into a number of hydrological sub-units so

as to split the PDE problem into a number of boundary value sub-problems. A domain decomposition method (DDM) then organizes the solution by gathering the solutions computed for the sub-units and by setting relevant boundary conditions at the interfaces.

In practice, the watershed partition is usually carried out at the stream confluences [8, 9]. As no guarantee is brought on the balance of the sub-unit areas, the resulting linear systems are generally of very different sizes and the efficiency of parallelized DDM is limited. As an improvement to that, Pontes et al. [10] use the reach length as a criterion for a decomposition, which reduces the sizes of the largest sub-units, but has not much impact on the size of the smallest ones.

In Section 3 of this paper we describe how flow accumulation information may be used to produce an area balanced partition of the watershed and the related load-balanced DDM. For the sake of general usability, the HEC-RAS software and HECRASController tool are chosen for the solution of the hydrological sub-problems. Technical solutions are recalled to overcome some issues well-known to practitioners.

The paper is organized as follows. A brief state-of-the-art on the partitioning methods is provided in Sec-

tion 2 to highlight requirements and design opportunities. The area balanced partition process and its coupling with the HEC-RAS software are presented in Section 3. Decomposition and parallelization results are discussed in Section 4. Finally, Section 5 provides a summary and an outlook.

## 2. Watershed partition methods

The simulation of large-scale watersheds may involve a large amount of data and long computational times. Consequently, sequential or parallel domain decomposition methods are widely used to face memory and time shortages.

In hydrology, a drainage basin may be partitioned into smaller basins to account for the heterogeneity of soil properties and the presence of hydraulic structures, for instance. We consider the rural watershed described in §2.1 to discuss the state-of-the-art on partitioning methods in §2.2, and the desired abilities in §2.3.

### 2.1. Case study

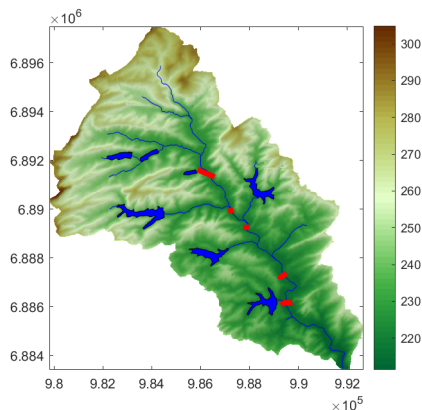


Figure 1: DEM of Moderbach stream.

The slightly undulating catchment of the Moderbach stream (89 km<sup>2</sup>, Région Grand-Est, France) is represented in Fig. 1. Elevations range from 210 to 305 meters above sea level. The digital elevation model (DEM) raster is issued from BD Alti @25m - V2, and is available for research purposes. Due to the clayey soil, the watershed was converted into a defense waterline in the thirties, comprising 11 dams delineating 6 reservoirs on the Moderbach's tributaries (blue polygons) and 5 forebays along the main stream delineated by 5 dams (red lines) to be flooded.

Properties	(a)	(b)
	Confluences	Reach length
#sub-units	23	34
Max. area (km <sup>2</sup> )	11.5	6.7
Min. area (km <sup>2</sup> )	0.2	0.2
Ratio	47.5	27.7
Mean area (km <sup>2</sup> )	3.8	2.6
Std dev. (km <sup>2</sup> )	2.7	1.5

Table 1: Characteristics of the partitions displayed in Fig. 2.

### 2.2. State-of-the-art

Provided with a DEM, the watershed delineation (Fig. 1) and the partition at the confluences (Fig. 2.a) may be carried out using either a generic GIS software tool such as ArcGis or QGIS, or a dedicated one [11] as in this paper. Fig. 2.a and Tab. 1 show that the area of the sub-units varies considerably.

As proposed in [10] and provided in IPH-Hydro Tools [12], the longest river reaches may then be subdivided to improve the balance between the areas. In Fig. 2.b, the reaches between two successive outlets is set to 2 km. Modified sub-basins are filled in orange. Obviously, this method does not expand the area of the smallest units; the characteristics of the partitions that result from the the two methods are reported in Tab. 1.

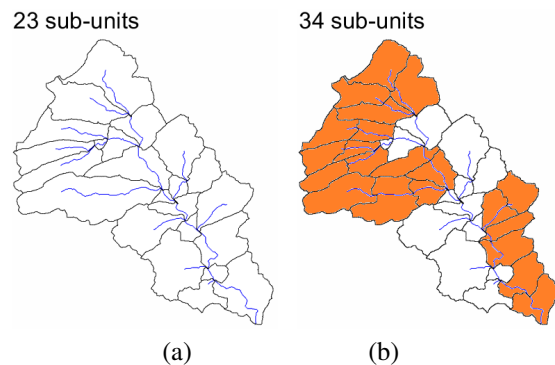


Figure 2: a: Partition at confluences, b: Additional partition with respect to a reach length of 2 km.

Both methods produce very small sub-watersheds. In particular, the ratio between the maximum and the minimum area is larger than 20 and the balance of areas is not satisfactory for both. This has motivated our design of a novel partition method that ensures the balance of the sub-watershed areas and consequently improves the balance of the computation.

### 2.3. From terrain to methodological requirements

Digital elevation models are only an approximation of the topography and may underestimate the significant impact of bridges and other engineered structures on the water flow.

Watershed partitions can account for civil engineering structures by setting inlets/outlets that are near to them, or by comparing the computed and observed discharges when a gauging device is available. A partition also allows to represent the heterogeneity of the terrain and the meteorological variability over the catchment.

From a computational point of view, finite element models that are applied to sub-units with similar area involve linear systems with a similar number of unknowns. Thereby, their solution has a comparable computational cost and the domain decomposition method is more efficient [13].

The partition method we propose aims to:

- account for engineered structures as user-defined outlets,
- consider small, but homogeneous hydrological sub-units,
- ensure a balance of the sub-unit areas,
- obtain a prescribed number of sub-units.

The first two points ensure a better quality of the model, the latter two are intended to improve the efficiency of the simulation.

## 3. Area balanced partitioning method

### 3.1. DEM analysis and sub-units delineation

GIS are precious tools to support hydrological modeling. Software like ArcGIS or QGIS, provides graphical user interfaces and programming interfaces with Python. In contrast to that, Topotoolbox [11] is a set of Matlab functions dedicated to DEM analysis, with a special focus on hydrology. An overview of the respective performance of these tools is proposed in [14]. We choose TopoToolbox because it is integrated in a scientific computation framework with a good efficiency.

Topotoolbox is object-oriented toolbox provided with a user guide that describes the methods that are necessary to our partition tool. Firstly, the DEM is read as a grid object (@GRID obj class). Secondly, the flow direction and flow accumulation rasters (@FLOWobj classes) are computed and, thirdly, the stream network (@STREAMobj class) is deduced. Finally, drainage

basins may be delineated starting with either user-defined (UD) outlets or other prescribed points. Better simulation results may then be improved either by filling the sinks of the DEM, or by carving it when computing the flow direction.

The partition into hydrological sub-units may be carried out using the split method with respect to

- (1) user-defined points,
- (2) confluences as in Fig. 2 (a) or
- (3) at random locations to cut the stream network at that points.

The decomposition with respect to a prescribed reach length, Fig. 2.b, uses the distance property of the stream object to define the points for the split method.

### 3.2. Partition under constraints

The requirements formulated in subsection 2.3 motivate the design of the new partitioning method. In particular to accommodate parallel computing, a special emphasis is put on area balancing by considering the flow accumulation raster (2D information) rather than the reach length (1D information) or the confluence information (pointwise information).

Put briefly, for each cell of the flow accumulation raster we maintain the number of upstream cells it drains. This parameter is thus related to the area of its upstream watershed.

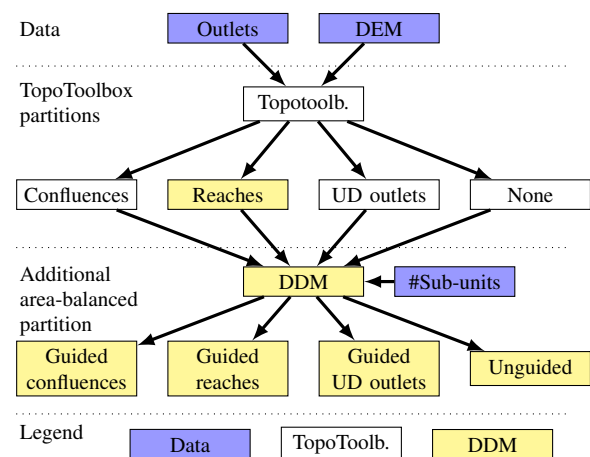


Figure 3: Partitioning workflow.

The workflow is illustrated in Fig. 3. A preprocess is set up to read the DEM and user-defined points that represent the outlets and engineered structures of interest.

In our case study, these are located near the pond outlets. The partition, Fig. 4.a, is carried out with respect to these points using the TopoToolbox. This yields 6 sub-units corresponding to the 6 ponds, and a large sub-unit comprising the main stream.

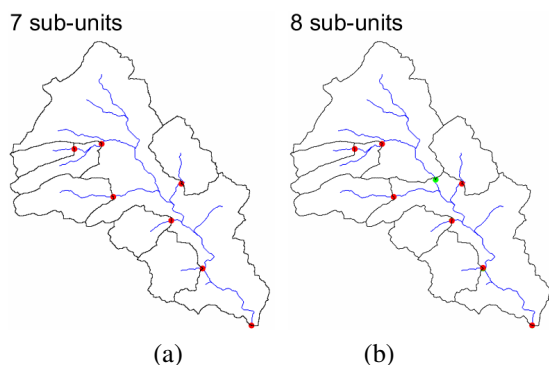


Figure 4: Guided partitioning. a: User-defined points (red dots). b: Partition of the largest watershed into 2 sub-watersheds of similar area (green dot).

The area balancing watershed decomposition method is organized as follows. The sub-unit with largest area is selected and its flow accumulation information is computed. A cutting point is determined by searching for the cell that drains half of that flow, see Fig. 4.b. This process is iterated until the desired stopping criterion is met. This can be based on the number of sub-units and/or on the sub-unit areas.

In Fig. 4.b, the largest sub-unit of 58 km<sup>2</sup> has been split in two, one of 27 and one of 31 km<sup>2</sup>. Subsequent partitions and their related characteristics are reported in Section 4.

The sub-watersheds are saved in the shapefile format using the `shapewrite` function of the Matlab Mapping toolbox such that it then can be used in the HEC-RAS simulations, for instance.

### 3.3. Improvements

Depending on the actual topography or its digitization, the watershed delineation may produce sub-units that present isolated cells, notably near to the outlet, see Fig. 5. Defects with respect to the 4-neighbor connectivity may occur for any partition method or partition software. These are not appropriate to a finite element modeling.

Thus, at the end of the partition process a connectivity check is performed to correct the decomposition by moving some of the outlet points upward. For each

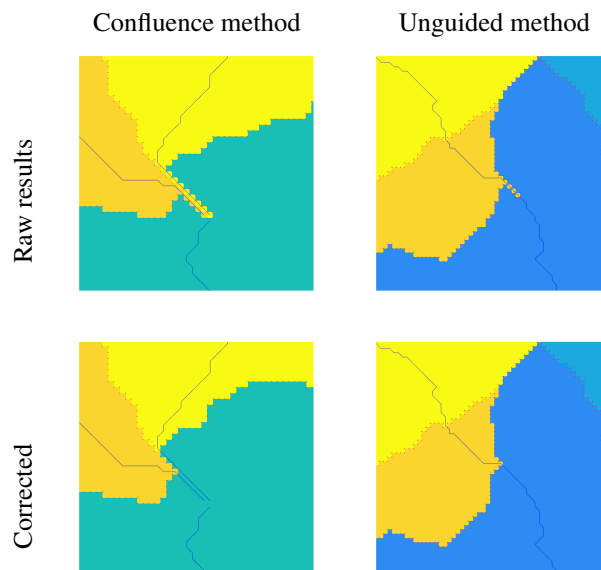


Figure 5: Isolated cells near to outlets. Left: Partition method at confluences. Right: Unguided area balanced partition method.

sub-unit, this can be achieved by inspecting its properties by means of the `regionprops` Matlab function, for instance.

### 3.4. Domain decomposition with HEC-RAS

The HEC-RAS version V-5 released in 2014 allows for 2D unsteady rain-on-grid simulations. The minimal data set comprises a DEM, the polygon delineating the area of interest (shapefile, for instance), the boundary conditions, Manning's roughness coefficient, and hydrological data (precipitation and/ or discharge). The HEC-RAS 2D, black-box, simulator comes with a sparse parallel solver for the solution of discrete flow equations on a multi-core processor.

HEC-RAS 2D is principally available for Windows and the the set-up of a multi-domain simulation remains challenging. In this paper, a proof of concept is proposed to evaluate the benefits of the domain decomposition method.

It is worth mentioning that HEC-RAS neither allows to delineate watersheds nor performs a partition at confluences in an automatic manner.

#### 3.4.1. Workflow

As shown in Fig. 6, the RAS Mapper interface is used to model the terrain starting from a DEM. Sub-unit shapefiles are imported to implement an area-balanced domain decomposition method. Then, corresponding

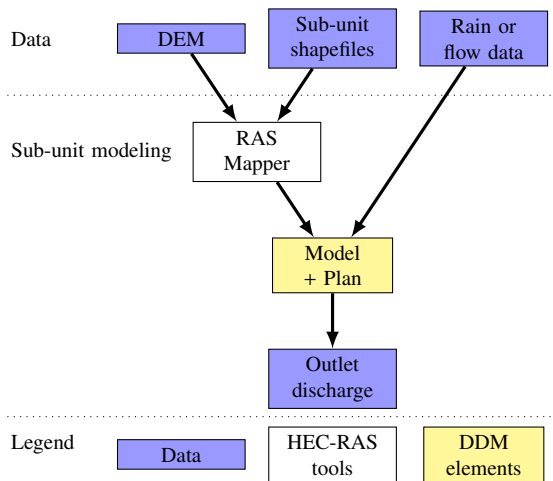


Figure 6: HEC-RAS workflow for a unique hydrological unit.

sub-units are meshed to discretize the partial differential equations. A 1D river model is added at the sub-unit outlet, see subsection 3.4.2 below, so as to extract the flow hydrograph that serves as an input to the downstream sub-unit.

The DDM sequence and the communications are automated by means of a Virtual Basic Script (VBA) written using the HECRAS Controller functions, see subsection 3.4.3 below. In this manner, the outflow of a sub-unit becomes the inflow of its downstream sub-unit.

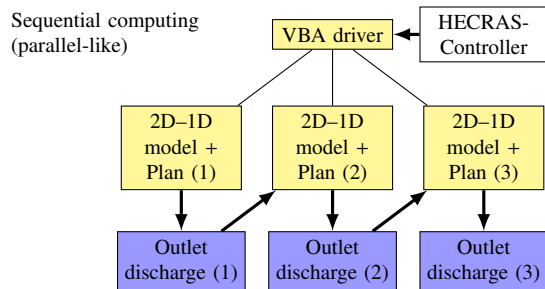


Figure 7: DDM/HEC-RAS workflow.

### 3.4.2. 2D-1D modeling

The HECRAS Controller is initially designed to deal with 1D problems. Although it may run a 2D plan, it does not provide routines for the extraction of a 2D output information for now.

As proposed in [15], this shortcoming is addressed by adding a 1D model (river and cross sections) at the outlet of the 2D model of each of the sub-units. In that case, the HECRAS Controller function

`OutputDSS.GetStageFlow` allows to derive the out-flow data of the sub-unit to be passed as inflow data to its downstream sub-unit.

As a downstream boundary condition, the 1D model makes use of the normal depth (slope) imposed on the most downstream cross-section of the 1D model.

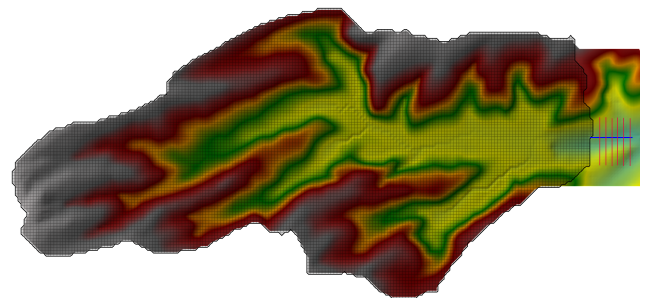


Figure 8: 2D gridded flow area connected to a 1d river model with cross-sections

### 3.4.3. HECRAS Controller

The HECRAS Controller application programming interface [16] is designed to make transparent use of HEC-RAS 1D to drive a sequence of simulations.

In a nutshell, HECRAS Controller provides a collection of routines that allows to open a project, to select and to run the so-called plans and to extract output data.

These routines can be accessed in a number of interpreted programming languages, notably Visual Basic for Applications (VBA-in Excel).

The VBA script, see Fig. 7 organizes the computation sequence to account for the natural water flow. It runs sub-unit models from the most upstream to accumulate the stream flow at the watershed outlet. Each sub-unit calculation is carried out in one go, providing all the necessary input flow data to its downstream sub-unit.

The number of HEC-RAS plans corresponds to the number of sub-units.

## 4. Results

The performance of the confluence method and the area-balanced methods are compared on the generation of nested partitions, subsection 4.1, and the solution of 2D unsteady rain-on-grid simulations built for the Moderbach's watershed, subsection 4.2. A discussion and an outlook are proposed in subsection 4.3.

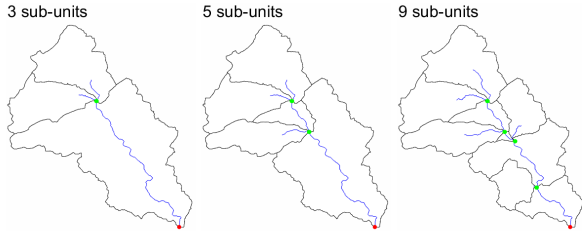


Figure 9: Confluence partition method.

#### 4.1. Nested partitions

##### 4.1.1. Confluence method

In a watershed DEM, the stream network model is a set of connected segments, the number of which is parameterized by means of a threshold  $\Delta$  on minimum drained cells, related to the minimum drained area in a straightforward manner. In the general case, stream confluences are connection points joining two upstream segments to one downstream segment. Consequently, the partition of a watershed at a unique confluence usually yields two upstream sub-units and one downstream sub-unit.

The nested partitions plotted in Fig. 9 are produced with the thresholds reported in Tab. 2.

Properties	Confluence partitions			
	20000	15000	9200	3100
$\Delta$	20000	15000	9200	3100
#sub-units	3	5	9	23
Max. area	58.1	42.0	17.4	11.5
Min. area	13.6	4.9	0.4	0.2
Ratio	4.3	8.6	37.0	47.5
Mean area	29.7	17.8	9.9	3.8
Std dev.	24.9	14.2	5.6	2.7

Table 2: Characteristics of the confluence partitioning method. Area is expressed in km<sup>2</sup>.

As the number of confluences increases, there is an increasing probability for a very small sub-unit in the

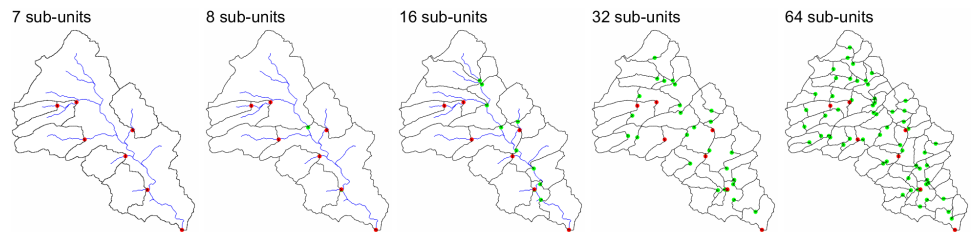


Figure 10: Guided iterative area-balanced partition method.

partition. Consequently, the ratio between the maximum and minimum areas increases, too.

##### 4.1.2. Guided area-balanced method

The guided method is carried out by starting from the 7 user-defined outlets that are located at the 6 pond outlets and the watershed outlet. The generated sequence of nested partitions is illustrated in Fig. 10 and partition properties are reported in Tab. 3. The minimum area corresponds to the smaller sub-unit defined by a user points. Clearly, this strongly impacts the ratio between the maximum and minimum areas and the performance of the method. In the present case, the ratio decreases from 18.7 corresponding to the user-defined partition to 2.7 because the partitions into 7 and 8 sub-units involve very large sub-units.

Properties	Partitions from user-defined points				
	7	8	16	32	64
#sub-units	7	8	16	32	64
Max. area	57.9	27.4	7.6	3.9	2.0
Min. area	3.0	3.0	2.9	1.7	0.7
Ratio	19.3	9.1	2.6	2.3	2.9
Mean area	12	11.1	5.6	2.7	1.4
Std dev.	18.7	10.2	1.6	0.6	0.3

Table 3: Characteristics of the guided area-balanced partitioning method. Area is expressed in km<sup>2</sup>.

##### 4.1.3. Unguided area-balanced method

The unguided method only requires the watershed outlet as an input. The nested partitions into a number of sub-units that is a powers of 2 are plotted in Fig. 11. Corresponding properties are reported in Table 4. This shows an increase of the ratio from 1.1 (the two sub-units have almost the same area) to approximately 2.9.

To summarize, the two area-balanced methods provide similar performances when the number of sub-units is large. It should be mentioned that in these two methods, the minimum drained cells threshold  $\Delta$

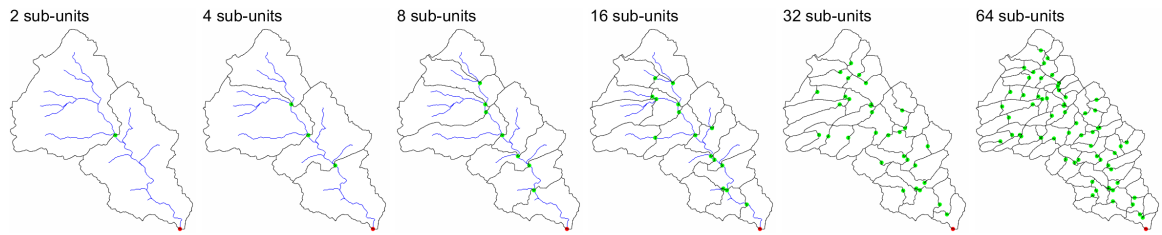


Figure 11: Unguided iterative area-balanced partitioning method.

Properties	Unguided partitions					
#sub-units	2	4	8	16	32	64
Max. area	47.1	30.0	15.8	8.1	4.0	2.0
Min. area	42.1	17.1	8.1	3.8	2.0	0.7
Ratio	1.1	1.8	1.9	2.1	2.0	2.9
Mean area	44.6	22.3	11.1	5.6	2.8	1.4
Std dev.	3.5	5.5	2.7	1.3	0.6	0.3

Table 4: Characteristics of the unguided area balanced partitioning method. Area is expressed in km<sup>2</sup>.

is set to 1000 allowing to reach a large number of sub-units. The unguided method outperforms the confluence method in any case.

## 4.2. Domain decomposition

### 4.2.1. Numerical set-up

The HEC-RAS version 5.0.7 is used to model the hydrological behavior of the Moderbach watershed. A precipitation event of 28 hours with an amount of 80 mm/day is imposed to saturate the watershed in a reasonable time. The remaining 44 h of the simulation are carried out with no precipitation in order to drain the watershed until reaching a null discharge at the main outlet.

This HEC-RAS version neglects infiltration, which supposes an quasi-impervious soil. Such a strong hypothesis is credible for this watershed in winter conditions. Manning's coefficient is set to 0.03.

The boundary condition at the 1D river uses a normal depth estimated using the RAS Mapper. In our case, the slope parameter is about 0.001.

Runtimes were recorded in minutes on a Intel Xeon 64 bits @3.80 GHz×6 processor with 16 GB RAM memory. The sparse parallel solver of HEC-RAS makes use of the 6 cores of that processor.

### 4.2.2. Discharge results

Presented in Fig. 13(a).a are the discharge results computed at the outlet with HEC-RAS (workflow of

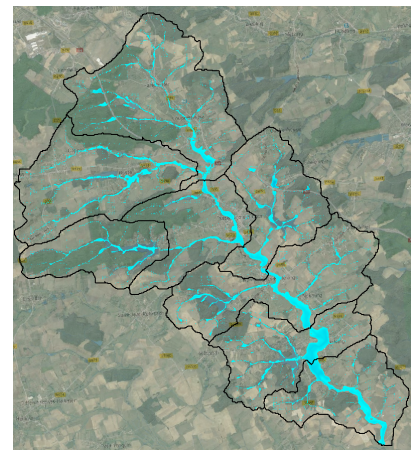


Figure 12: Flow extent generated from the simulation of the Moderbach decomposed into 8 sub-units using unguided partition.

Fig. 6), and those obtained with the DDMs (workflow of Fig. 7) involving nested partitions of 2, 4 and 8 sub-units, respectively. Not shown are very similar results with the confluence partitioning method.

The relative errors displayed in Fig. 13(a).b exhibit very small discrepancies. These may be due to the value of the slope parameters or to topographical effects. Indeed, the partitioning methods may modify the hydrological behavior of the basin when a sub-unit outlet is located near to a dam, for instance.

### 4.2.3. Efficiency results

The computational efficiency of the DDM method is evaluated for a number of partitions carried out with respect to either the confluences or the (unguided) area balancing.

To evaluate the performances of the sparse parallel solver of HEC-RAS and the general behavior of the DDM, an overview of the computation times with respect to the sub-unit areas and the partition methods is provided in Fig. 14. In the graph, points of the same



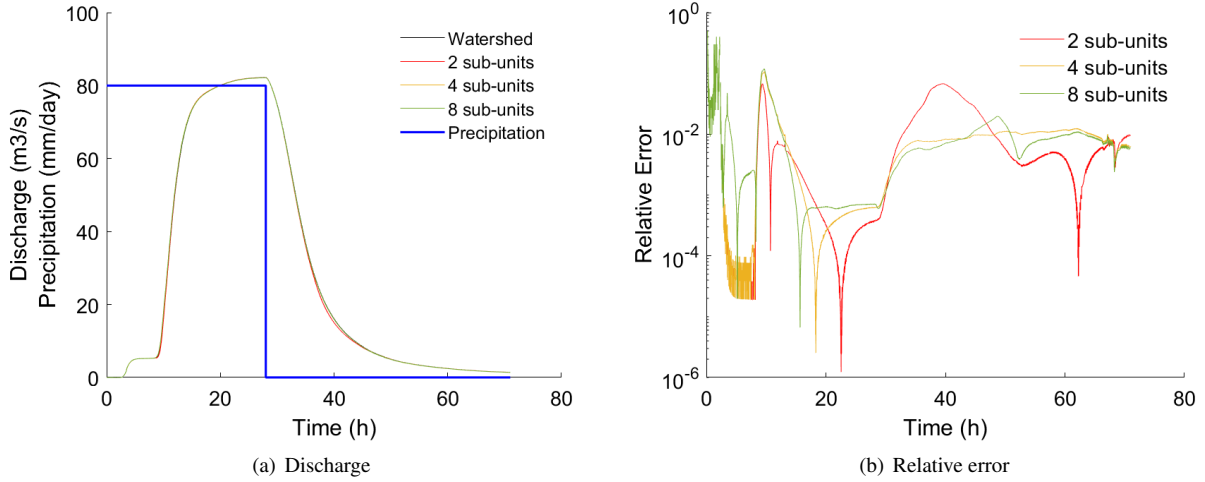


Figure 13: Main outlet flow computed using the unguided area-balanced partition. a: Discharge, b: Relative error evaluated with respect to the discharge computed on the total watershed.

Properties	Unguided partitions			
#Sub-units	1	2	4	8
Max. time	183.0	70.3	45.4	20.1
Min. time	183.0	59.1	16.1	7.2
Ratio	1.0	1.2	2.8	2.8
Mean time	183.0	64.7	26.9	11.7
Std dev.	-	7.9	13.1	4.7
Total time	183.0	129.4	107.6	93.9
Speed-up	1.0	1.4	1.7	2

Table 5: Computation time and speed up data for the DDM/HEC-RAS simulations of unguided partitions

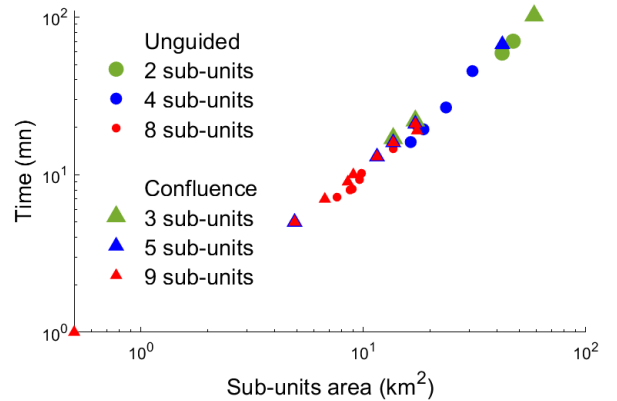


Figure 14: Computation time per basin for the unguided area-balanced partition (triangles) and the confluence partition (filled circles).

color and of the same shape correspond to sub-units of the same partition. Triangles and filled circles are used to the unguided area-balanced partition method and the confluence partition method, respectively.

As expected, points are almost aligned in this log-log representation. The computation times and the areas are linked by a power law, the slope of which reflects the performance of the HEC-RAS sparse parallel solver. The differences in the solution times for the sub-units of very similar area indicate that the latter is a key parameter, but not the only one in this nonlinear solver.

Moreover, Fig. 14 exhibits three colored clusters (filled circles of the area-balanced method) with very similar area and computing time. In contrast to that, the dispersion of the triangular points is much higher for the confluence method and very small sub-units are created.

The main characteristics of these solution times are

presented in Tables 5 and 6.

The total time and the speedup are plotted, Fig. 15, against the number of sub-units. We see that for both partitioning methods, the decrease in computing time is multiplicative. For example, the times for the unguided balanced partition, Tab. 5, shows a speedup of 1.4 for the simulation of the configuration with 2 sub-units and 2 for 8 sub-units. For the confluence partition, Tab. 6, we have a speedup of 1.30 for 3 and 1.8 for 9 sub-units.

As we have seen, the computation of the linear system generally grows super-linear in the size of the parts and thus with Jensen's inequality [17] the sum of the

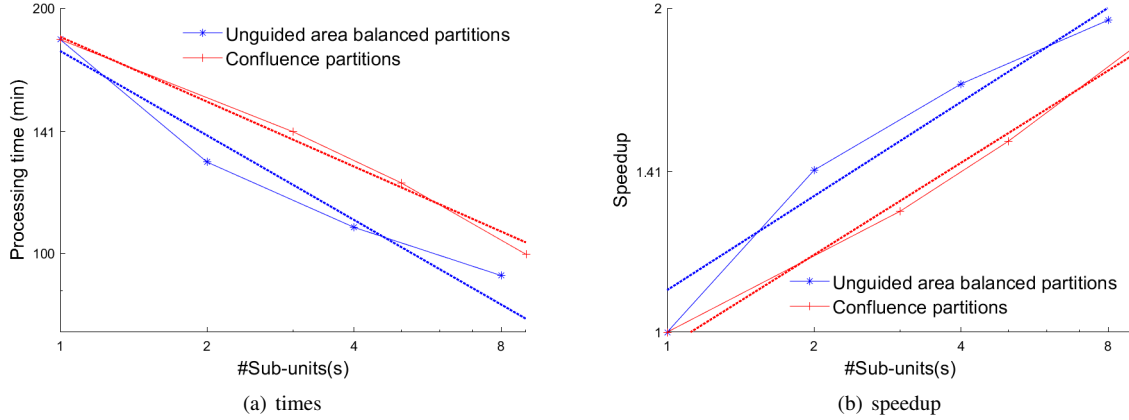


Figure 15: DDM-HEC-RAS computing times.

Properties	Confluence partitions			
#Sub-units	1	3	5	9
Max. time	183.0	102.0	66.8	21.3
Min. time	183.0	17.1	4.7	0.8
Ratio	1.0	6.0	14.3	25.5
Mean time	183.0	47.1	24.3	11.1
Std dev.	-	47.6	24.5	6.7
Total time	183.0	141.3	121.6	99.7
Speed-up	1.0	1.3	1.5	1.8

Table 6: Computation time and speed up data for the DDM/HEC-RAS simulations of confluence partitions

times of the linear systems of all parts is much smaller than for the linear system of the original watershed.

Additionally, Fig. 15 shows regressions of the form  $ax^b$ , where  $b$  is  $-0.27$  and  $-0.32$ , respectively. This clearly shows the advantage of the partition method by a DDM in general, but also that the unguided balanced partition method improve the confluence method by an important factor.

#### 4.3. Discussion

Even though hydrological data are considered as homogeneous over the watershed in this paper, the DDM method allows to build simulation plans with homogeneous data over the sub-units, but with heterogeneity over a large watershed. In particular, this may facilitate the account for more actual precipitation and soil properties (Manning's coefficient). Such heterogeneity is not considered here in order to carry out fair hydrological and methodological comparisons.

A two-dimensional PDE solver is time and memory consuming, especially when the domain under study becomes large. This applies to the two dimensional unsteady rain-on-grid solver recently proposed within the HEC-RAS software. Therein, linear systems are processed by a sparse parallel solver to take advantage of a multi-core processor.

This software is chosen to assess the benefits that could be brought by an additional partition of the watershed into hydrological sub-units.

A number of watershed partitioning methods had been previously provided in the literature, for different purposes and following different constraints (section 2.2) without, however, fully addressing the area balancing issue as demonstrated in Tab. 2. As demonstrated in Tabs. 3 and 4, both versions (user-guided or unguided) of our automated area-balanced partitioning method performs much better.

In particular, some user-defined outlets may be set to facilitate the account for civil engineering structural or topographical effects in the simulations. Then, complementary outlets may be positioned in an automatic manner either at confluences or at points determined with respect to particular criteria. Finally, these allow to delineate sub-units with a similar area that can be used with a distributed hydrological model.

The impact of the improved balance in the sub-unit areas on the 2D PDE computation is assessed using HEC-RAS in Fig. 15 and Tab. 14. For our case study, the DDM workflow described in Figs. 6 and 7 results in a speed up of 2 when 8 sub units of similar size are considered. Performances are a little lower with the confluence method. Simultaneously, the memory require-

ments are also reduced.

For now, the VBA code developed using the HECRAS Controller functions allows to automate the DDM/HEC-RAS coupling strategy. The implementation on a multi-processor cluster could bring an additional reduction of the time to results. For the moment, this strongly depends on the maximum number of the sub-units in the upstream to downstream sequence.

Assuming the availability of the HEC-RAS sources, the DDM/HEC-RAS approach could benefit from two levels of parallelism. First, the sparse parallel solver of HEC-RAS performs the sub-unit computation on a multi-core processor. Second, the distribution of the sub-units on a multi-processor cluster may then further improve computing times.

## 5. Conclusion and outlook

As long as a certain balance between the tasks is maintained, domain decomposition together with parallelization offer good opportunities for faster computations that use larger data sets.

The GIS-based watershed partitioning methods we propose are based on an area-balancing criterion. They outperform the classical confluence and reach partition methods in the solution for the 2D unsteady rain-on-grid partial differential equations.

For general availability, the HEC-RAS software together with the HECRASController tool have been chosen for the solution of the hydrological sub-problems, and the sequential implementation of a domain decomposition method.

Access to the internals of the software either by a programmable API or by providing source code would be needed to go one step further. In that case, this DDM approach could provide two levels of parallelism to reduce the computation time and to scale up the problem size. This would comprise a sparse parallel solver for the sub-unit computation on a multi-core processor, and the distribution of the sub-units on a multi-core multi-processor cluster.

## References

- [1] F. M. Fan, W. Collischonn, K. Quiroz, M. Sorribas, D. Buarque, V. Siqueira, Flood forecasting on the Tocantins River using ensemble rainfall forecasts and real-time satellite rainfall estimates, *Journal of Flood Risk Management* 9 (3) (2016) 278–288.
- [2] D. Falter, N. Dung, S. Vorogushyn, K. Schröter, Y. Hündecha, H. Kreibich, H. Apel, F. Theisselmann, B. Merz, Continuous, large-scale simulation model for flood risk assessments: proof-of-concept, *Journal of Flood Risk Management* 9 (1) (2016) 3–21.
- [3] M. V. Sorribas, R. C. Paiva, J. M. Melack, J. M. Bravo, C. Jones, L. Carvalho, E. Beighley, B. Forsberg, M. H. Costa, Projections of climate change effects on discharge and inundation in the Amazon basin, *Climatic Change* 136 (3-4) (2016) 555–570.
- [4] D. M. Bayer, W. Collischonn, Deforestation impacts on discharge of the Ji-Paraná River–Brazilian Amazon, *Climate and land surface changes in hydrology*. 359th ed. Gothenburg: IAHS Publication H 1 (2013) 327–332.
- [5] D. Yang, S. Herath, K. Musiak, Development of a geomorphology-based hydrological model for large catchments, *Proceedings of Hydraulic Engineering* 42 (1998) 169–174.
- [6] F. Rodriguez, H. Andrieu, F. Morena, A distributed hydrological model for urbanized areas–Model development and application to case studies, *Journal of Hydrology* 351 (3-4) (2008) 268–287.
- [7] G. Brunner, HEC-RAS River analysis system, 2D modeling user’s manual version 5.0, Davis: US Army Corps of Engineers, hydrologic engineering center.
- [8] T. K. Apostolopoulos, K. P. Georgakakos, Parallel computation for streamflow prediction with distributed hydrologic models, *Journal of Hydrology* 197 (1-4) (1997) 1–24.
- [9] E. R. Vivoni, G. Mascaro, S. Mniszewski, P. Fasel, E. P. Springer, V. Y. Ivanov, R. L. Bras, Real-world hydrologic assessment of a fully-distributed hydrological model in a parallel computing environment, *Journal of Hydrology* 409 (1-2) (2011) 483–496.
- [10] P. R. M. Pontes, F. M. Fan, A. S. Fleischmann, R. C. D. de Paiva, D. C. Buarque, V. A. Siqueira, P. F. Jardim, M. V. Sorribas, W. Collischonn, MGB-IPH model for hydrological and hydraulic simulation of large floodplain river systems coupled with open source GIS, *Environmental Modelling & Software* 94 (2017) 1–20.
- [11] W. Schwanghart, N. J. Kuhn, TopoToolbox: A set of Matlab functions for topographic analysis, *Environmental Modelling & Software* 25 (6) (2010) 770–781.
- [12] V. A. Siqueira, A. Fleischmann, P. F. Jardim, F. M. Fan, W. Collischonn, IPH-Hydro Tools: a GIS coupled tool for watershed topology acquisition in an open-source environment, *Rbrh* 21 (1) (2016) 274–287.
- [13] M. Kumar, C. Duffy, Exploring the Role of Domain Partitioning on Efficiency of Parallel Distributed Hydrologic Model Simulations, *J Hydrogeol Hydrol Eng* 4: 1, of 12 (2015) 2.
- [14] W. Schwanghart, D. Scherler, TopoToolbox 2–MATLAB-based software for topographic analysis and modeling in Earth surface sciences, *Earth Surface Dynamics* 2 (1) (2014) 1–7.
- [15] C. Goodell, The HECRAS controller, a powerful feature of HEC-RAS exposed, retrieved from <https://www.icewarm.com.au/><sup>1</sup>, 2018.
- [16] C. Goodell, Breaking the HEC-RAS Code: A User’s Guide to Automating HEC-RAS, H21s, 2014.
- [17] J. L. W. V. Jensen, Sur les fonctions convexes et les inégalités entre les valeurs Moyennes, *Acta Mathematica* 30 (1) (1906) 175–193, doi:10.1007/bf02418571, URL <https://doi.org/10.1007/bf02418571>.

<sup>1</sup><https://www.icewarm.com.au/australian-water-school/short-courses/course/powerful-hec-ras-features-exposed/>