



**HAL**  
open science

## Biodiversité de la flore lactique autochtone de 3 produits laitiers fermentés de chèvre artisanaux au Liban

Imad Ammoun, Pierre Renault, Rita Yaacoub, Catherine Béal

### ► To cite this version:

Imad Ammoun, Pierre Renault, Rita Yaacoub, Catherine Béal. Biodiversité de la flore lactique autochtone de 3 produits laitiers fermentés de chèvre artisanaux au Liban. 22ème colloque du Club des Bactéries Lactiques, Jun 2019, Caen, France. hal-03560570

**HAL Id: hal-03560570**

**<https://hal.science/hal-03560570>**

Submitted on 19 Apr 2022

**HAL** is a multi-disciplinary open access archive for the deposit and dissemination of scientific research documents, whether they are published or not. The documents may come from teaching and research institutions in France or abroad, or from public or private research centers.

L'archive ouverte pluridisciplinaire **HAL**, est destinée au dépôt et à la diffusion de documents scientifiques de niveau recherche, publiés ou non, émanant des établissements d'enseignement et de recherche français ou étrangers, des laboratoires publics ou privés.

# Biodiversity of Native Lactic Acid Bacteria in Three Artisanal Lebanese Fermented Goat Dairy Products: Ambriss, Serdaleh and Labneh El Darff

AMMOUN I.<sup>1,3</sup>, RENAULT P.<sup>1</sup>, YAACOUB R.<sup>4</sup> and BEAL C.<sup>2</sup>

<sup>1</sup>Institut National de la Recherche Agronomique (INRA), UMR 1319, Institut Micalis, Jouy-en-Josas, France

<sup>2</sup>AgroParisTech, UMR 782 Génie et Microbiologie des Procédés Alimentaires, Thiverval-Grignon, France

<sup>3</sup>Lebanese Agricultural Research Institute (LARI), Milk and milk products Department, Fanar, Lebanon

<sup>4</sup>Lebanese University, Faculty of Agricultural and Veterinary Sciences, Food Science and Technology Department, Dekwaneh, Lebanon



## Introduction and Objectives

In Lebanon, the production of traditional fermented goat dairy products is carried out at small scale, and only in a limited number of production units. As a result, there is a real risk of extinction of these products and loss of corresponding microbial resources (Serhan & Mattar 2013). The recovery, enhancement and valorization of their microbial ecosystems are becoming necessary and urgent. This may be a good potential for Geographical Indications (SRVA, 2005). The aim of this work was to isolate and characterize representative strains of Lactic Acid Bacteria (LAB) of three Lebanese traditional fermented goat dairy products, namely "Ambriss", "Serdaleh" and "Labneh El Darff" and to provide an overview of their microbial biodiversity.

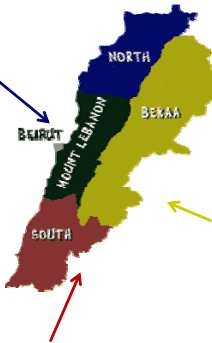
## Materials and Methods

### Selection of three artisanal fermented goat milk

**Serdaleh in Chouf**  
Production in small caves, in old Amphora filled with 60L of raw goat milk, together with whey evacuation and surface salting



**Ambriss in Bekaa valley**  
In-house production in small jars filled with 13L raw goat milk, together with whey evacuation and surface salting

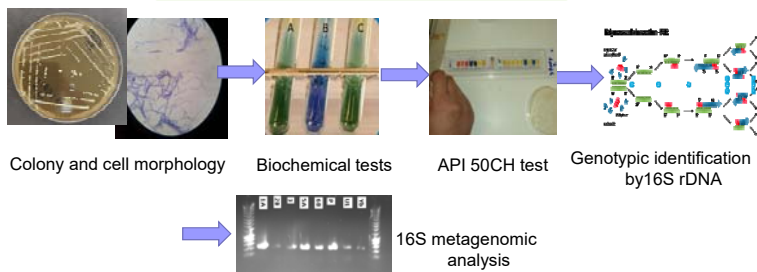


**Labneh El Darff**  
In south Lebanon Goat skin (Darff) filled with fermented milk (Laban) and hung to be strained



14 samples of the 3 fermented products and their respective raw materials (raw milk and Laban) were collected from 6 producers located in the selected regions.

### LAB isolation and identification



## Results and discussion

### 1. Microbial enumeration in samples

Genus	Media	T °C	Ambriss			Serdaleh			Labneh El Darff				
			P1	P2	P3	P4	P5	P6					
Lactobacilli	MRS	30	8.0*10 <sup>8</sup>	1.5*10 <sup>9</sup>	1.3*10 <sup>9</sup>	7.9*10 <sup>8</sup>	1.2*10 <sup>9</sup>	8.8*10 <sup>8</sup>	3.46*10 <sup>8</sup>	1.80*10 <sup>8</sup>	1.10*10 <sup>8</sup>	3.2*10 <sup>8</sup>	1.7*10 <sup>8</sup>
	MRS	42	<10	1.8*10 <sup>8</sup>	2.0*10 <sup>8</sup>	66*10 <sup>8</sup>	2.2*10 <sup>8</sup>	<10	<10	6.4*10 <sup>8</sup>	<10	4.7*10 <sup>8</sup>	2.0*10 <sup>8</sup>
Lactococci	M17	30	1.3*10 <sup>9</sup>	2.3*10 <sup>9</sup>	4.8*10 <sup>9</sup>	2.5*10 <sup>9</sup>	2.5*10 <sup>9</sup>	<10	1.87*10 <sup>9</sup>	<10	1.02*10 <sup>9</sup>	1.1*10 <sup>9</sup>	3.1*10 <sup>9</sup>
	KF	37	1.8*10 <sup>9</sup>	3.4*10 <sup>9</sup>	<10	2.9*10 <sup>9</sup>	2.0*10 <sup>9</sup>	<10	3.2*10 <sup>9</sup>	<10	<10	<10	1.3*10 <sup>9</sup>
Streptococci	PCA	30	2.3*10 <sup>8</sup>	2.0*10 <sup>8</sup>	2.5*10 <sup>8</sup>	2.8*10 <sup>8</sup>	1.9*10 <sup>8</sup>	5.5*10 <sup>8</sup>	3.3*10 <sup>8</sup>	1.3*10 <sup>8</sup>	2.6*10 <sup>8</sup>	1.4*10 <sup>8</sup>	2.9*10 <sup>8</sup>
		42	2.0*10 <sup>8</sup>	2.0*10 <sup>8</sup>	2.8*10 <sup>8</sup>	1.9*10 <sup>8</sup>	5.5*10 <sup>8</sup>	3.3*10 <sup>8</sup>	1.3*10 <sup>8</sup>	2.6*10 <sup>8</sup>	1.4*10 <sup>8</sup>	2.9*10 <sup>8</sup>	2.4*10 <sup>8</sup>

Table 1: Bacterial counts (CFU/ml) on selective media from the Ambriss, Serdaleh and Labneh El Darff and their raw materials

Results show a dominance of mesophilic *Lactobacilli* ( $3.46 \times 10^8$  -  $8.8 \times 10^8$  UFC/mL) over *Lactococci* in Serdaleh, whereas in Ambriss, *Lactococcus* and *Streptococcus* were most present on M17.

### 2. Physico-chemical characteristics of the products

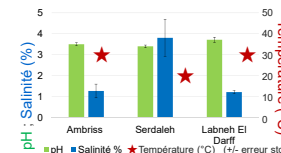


Fig 1: Physico-chemical characteristics (pH and salinity %) of Ambriss, Serdaleh and Labneh El Darff

pH and salinity varied between 3.40 - 3.71 and 1.22 - 3.80% respectively in the three products. High levels of salinity (3.84%) and acidity (pH = 3.40) were observed in Serdaleh in comparison to its counterpart Ambriss, which might have affected bacterial composition of the two products.

### 3. Microbial biodiversity by 16 S gene sequencing and metagenomics



Fig 2: LAB compositions (%) of Ambriss, Serdaleh and Labneh El Darff samples as determined by 16S rDNA gene sequencing

*Enterococcus durans* was the most abundant species in Ambriss, followed by *Lactobacillus rhamnosus* and *Pediococcus acidilacti*. *Lactobacillus brevis* was predominant in Labneh El Darff, followed by *L. delbrueckii ssp bulgaricus*. Serdaleh had the lowest biodiversity with *Lactobacillus kefirii* and *L. diolivorans* as the main species.

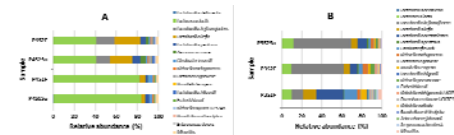


Fig 3: Microbial community structures of Serdaleh samples at two fermentation time intervals (S1 and S2) at the top (Su) and the bottom (F) layers of the jar producers (A) and (B), as determined using 16S metagenomic sequencing, expressed as relative abundance (%) of the microorganisms identified.

Metagenomics allowed better characterization of Serdaleh microbial composition, showing that *Lactococcus lactis* and *Lactobacillus kefirianofaciens* were the most abundant, followed by *L. kefirii* and *L. acetotolerant*. Bacterial composition varied with producing location and time of fermentation, with no difference between the top and the bottom layers of the jar.

## Conclusion et perspectives

Our study indicates that microbial ecosystems of "Ambriss", "Serdaleh", and "Labneh El Darff" differ significantly. The physico-chemical characteristics of the products may play an important role in these differences, where Serdaleh presents the lowest biodiversity. 16S Metagenomic analysis allowed us to better characterize microflora diversity of Serdaleh, showing a clear effect of location and fermentation time. Further studies focusing on the technological characterization of LAB strains will be very important step in development of starters and probiotics for use in dairy application.

### References

- Serhan M. and Mattar . 2013. Characterization of four artisanal goat milk cheese: Darfieh, Ariche, Shanklish and Serdal by physico-chemical, microbiological and sensory analyses. J. Food Agric Environ, 11 (3 and 4): 97 – 101.  
 Traditional Lebanese cheese in danger of disappearing [https://www.beirut.com/l/56124\\_17/08/2018](https://www.beirut.com/l/56124_17/08/2018)  
 SRVA, 2005. Proposal for the protection of geographical indication in Lebanon. Report on the intention of IDEAS centre Arabesque10, 1204 Geneva. 33p.