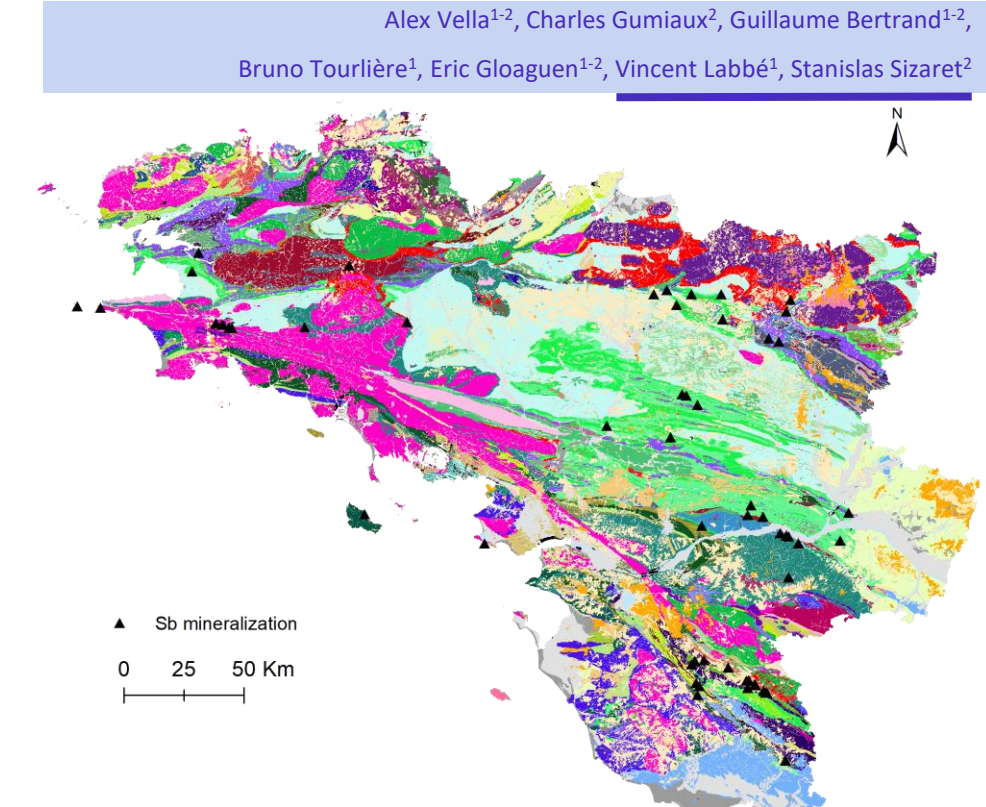
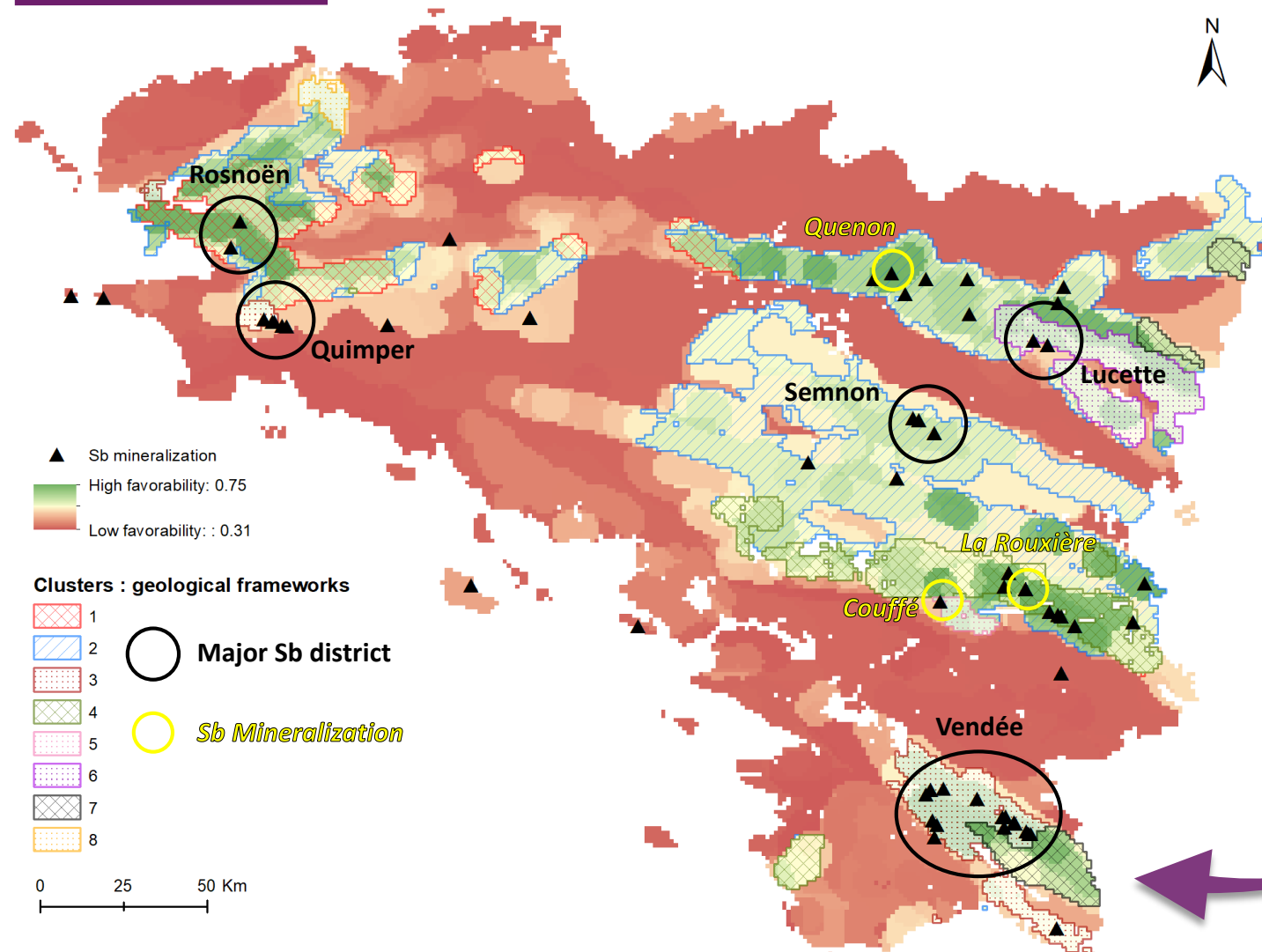


A.I. oriented prospectivity mapping to study relationships between Sb mineralization and geological framework

Alex Vella¹⁻², Charles Gumiaux², Guillaume Bertrand¹⁻²,
Bruno Tourlière¹, Eric Gloaguen¹⁻², Vincent Labbé¹, Stanislas Sizaret²



Input datasets: geological map (50K) + Sb mineralization occurrences (BRGM)



From lithological data to favorability maps and classes of geological frameworks: homogenization, predictive model and classification

Results: Sb favorability map and identified geological frameworks compared to known Sb districts and mineralization