



**HAL**  
open science

# Auditory Reverse Correlation on a Phoneme-Discrimination Task: Assessing the Effect of Different Types of Background Noise

Alejandro Osses, Léo Varnet

► **To cite this version:**

Alejandro Osses, Léo Varnet. Auditory Reverse Correlation on a Phoneme-Discrimination Task: Assessing the Effect of Different Types of Background Noise. ARO Midwinter Meeting, Feb 2022, San José, United States. hal-03553443

**HAL Id: hal-03553443**

**<https://hal.science/hal-03553443>**

Submitted on 14 Feb 2022

**HAL** is a multi-disciplinary open access archive for the deposit and dissemination of scientific research documents, whether they are published or not. The documents may come from teaching and research institutions in France or abroad, or from public or private research centers.

L'archive ouverte pluridisciplinaire **HAL**, est destinée au dépôt et à la diffusion de documents scientifiques de niveau recherche, publiés ou non, émanant des établissements d'enseignement et de recherche français ou étrangers, des laboratoires publics ou privés.



## 1. Introduction

- Reverse correlation is a behavioral method that can be used to explore which properties of a sound are used as perceptually-relevant cues. In our case, the method assesses which acoustic cues of the phonemes /b/ and /d/ relate to correct or incorrect listener responses in a phoneme-in-noise task. Based on the tested noises, a fine-grained time-frequency map of acoustic cues can be obtained: The auditory classification image (ACI, Varnet et al. 2013, 2015). We used three noise types and compared the robustness of the ACIs with respect to noise statistics.
- In this poster, we focus on the effect of the statistics of the background noises with respect to the efficiency and robustness of the method. We used three different noise types that have a flat long-term spectrum, but differ in the amount of temporal envelope fluctuations: White noise (WN), white noise low-pass filtered in the modulation power spectrum (MPS), and bump noise (BP).

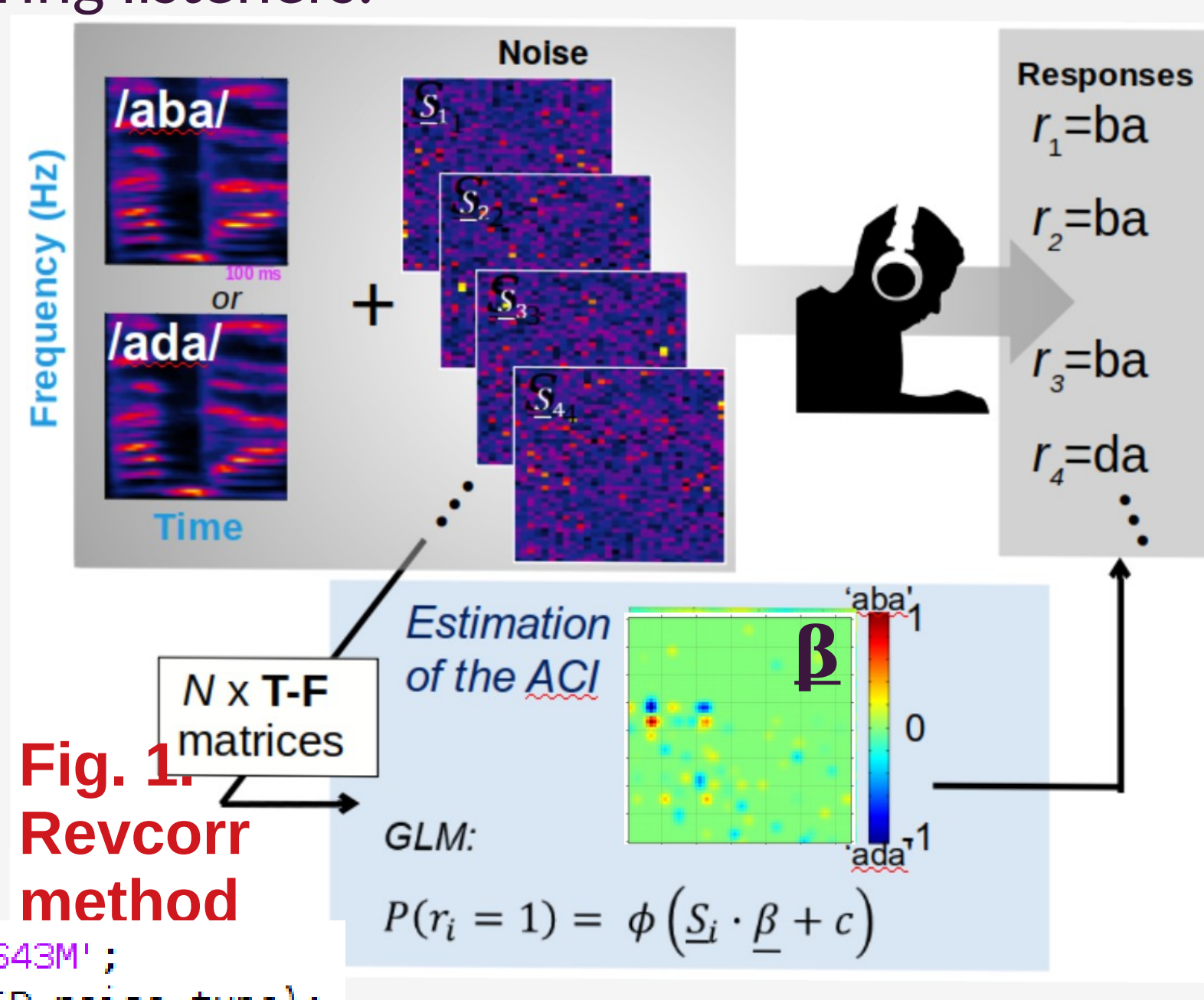
## 2. Methods: Experiments

- Stimuli:** two natural male speech productions of /aba/ and /ada/ were taken from the OLLO database (Meyer et al. 2010, speaker S43M). The sounds were pre-processed to have equal duration and same acoustic energy in the first syllable. The speech level was adjusted according to the trial SNR, using one of three noise types.

- Background noises:** 4000 realizations of each noise –WN, MPS, and BP– were used. The noises were presented at 65 dB SPL. The total level of the noisy trials was varied (roved) by ± 2.5 dB.

- Participants:** two normal-hearing listeners.

- Task:** Each participant performed 4000 phoneme categorizations for each noise, indicating whether the last syllable was /ba/ or /da/. The SNR was continuously adapted using a one-up one-down weighted rule to ensure a correct response rate of 70.7%. In the fastACI toolbox (Osses & Varnet, 2021a):



```
experiment = 'speechACI_Logatome-abda-S43M';
fastACI_experiment(experiment, Subject_ID, noise_type);
```

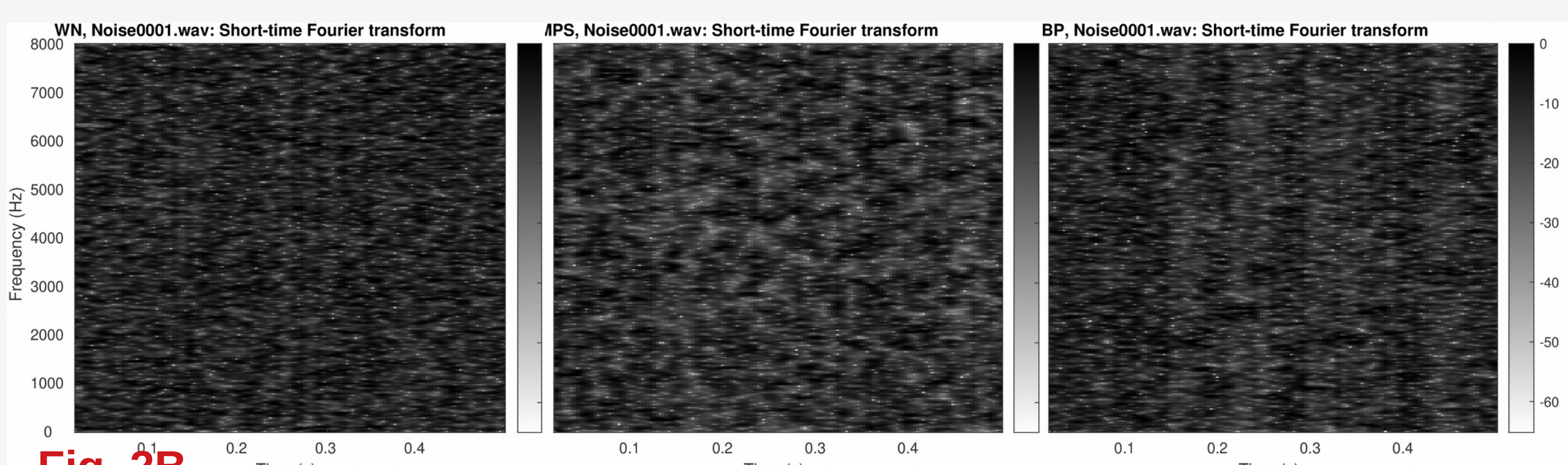
- Data analysis:** The probability of “ga” answer was linked via a Generalized Linear Model (GLM) to a time-frequency representation in an ERB space of the presented stimulus. As we used in a previous study (Osses & Varnet 2021b), the GLM was fitted by penalized likelihood maximization with sparseness prior, a tradeoff between fitting the data well and obtaining a smooth ACI.

- The ACI ( $\beta$ , Fig. 1) shows how the presence of energy at each time-frequency point influences the decision (i.e. which parts of the stimulus serve as cues for categorization). Positive clusters of weights correspond to regions favoring response “ba”, whereas negative clusters correspond to “da” regions.

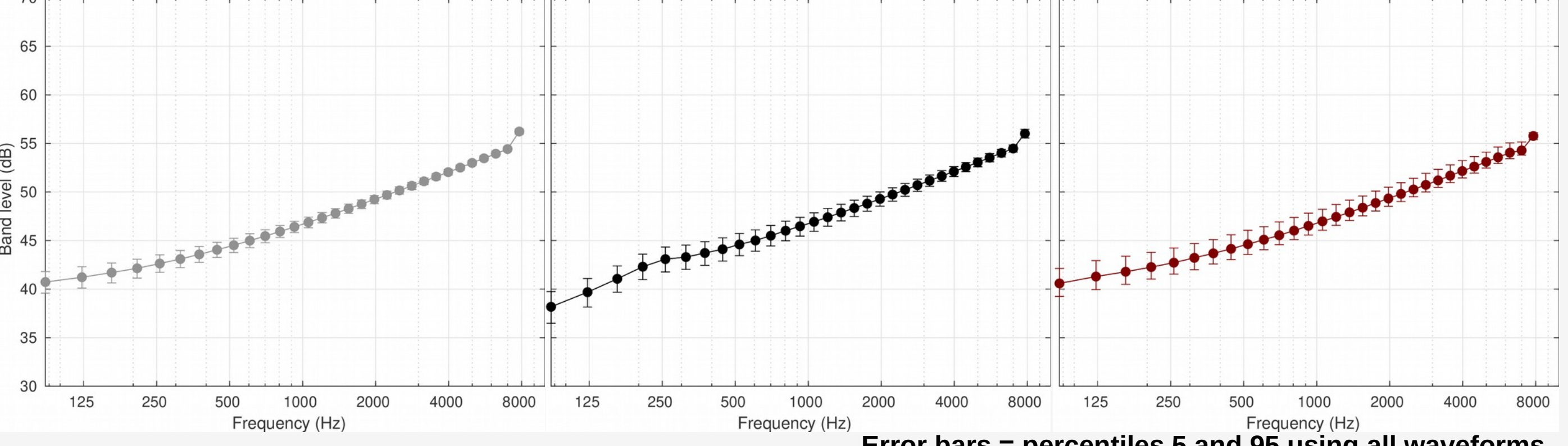
## 3. Methods: Noise characterization

All sounds are sampled at 16 kHz and have a duration of 0.85 ms.

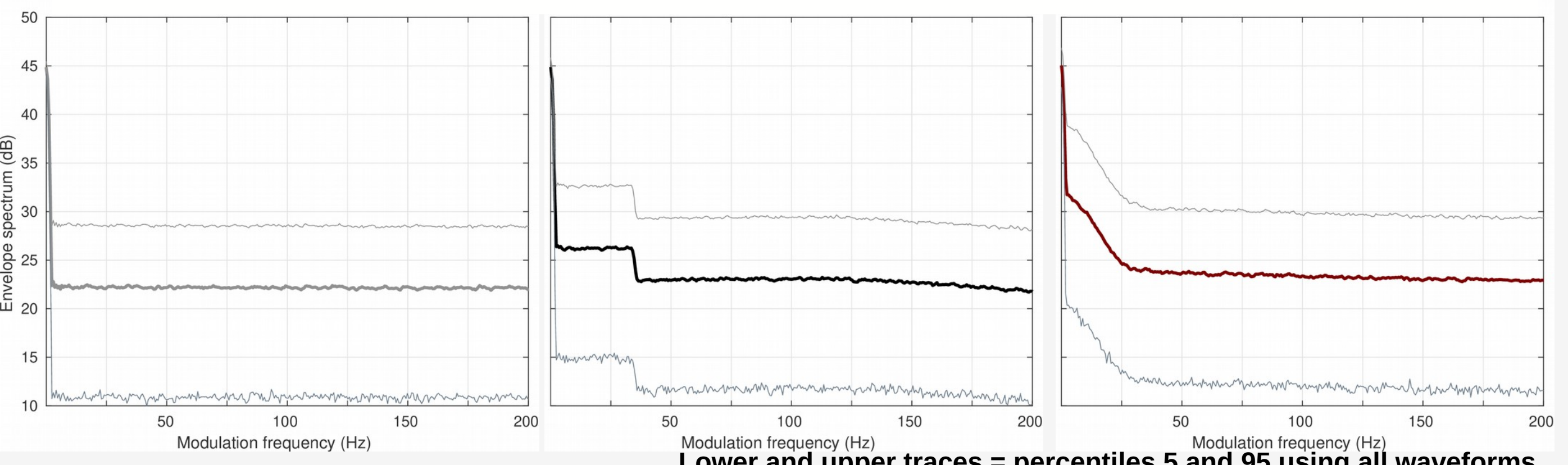
- Power spectrum:** 512-point FFT, 90% overlap, 32-ms analysis windows



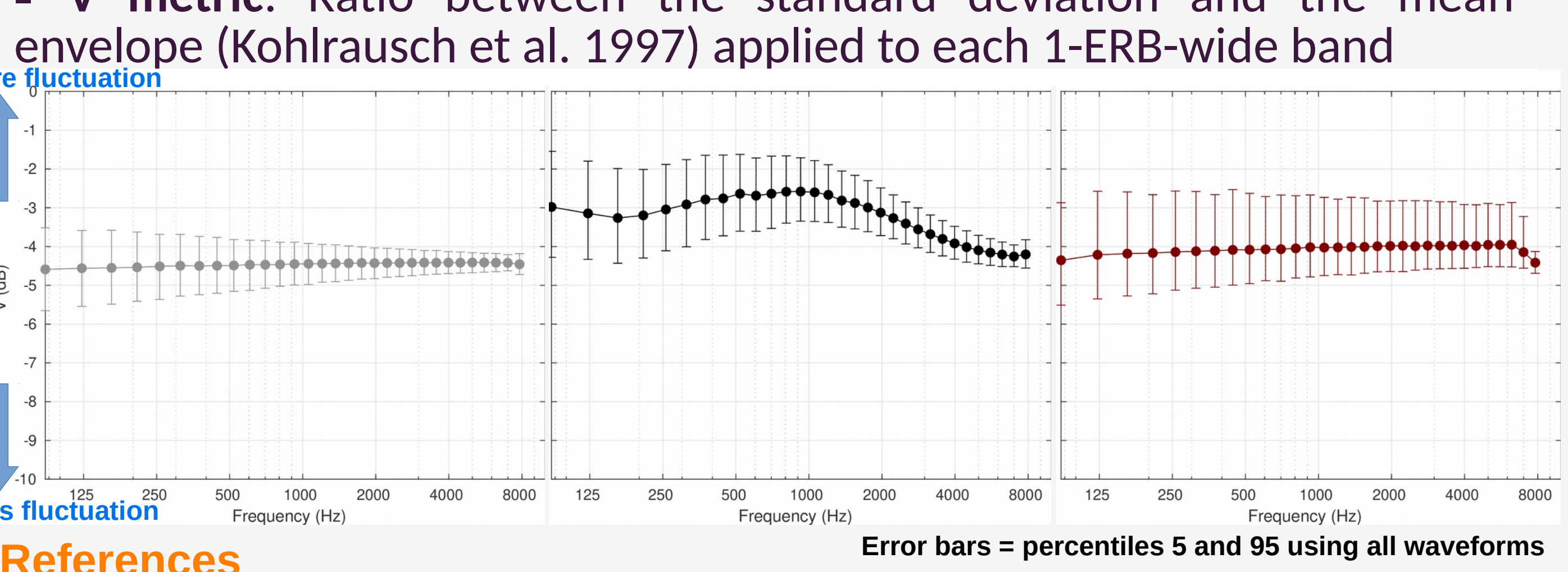
- Band level within 1-ERB. bands (auditoryfilterbank.m from AMT):**



- Modulation power spectrum:**



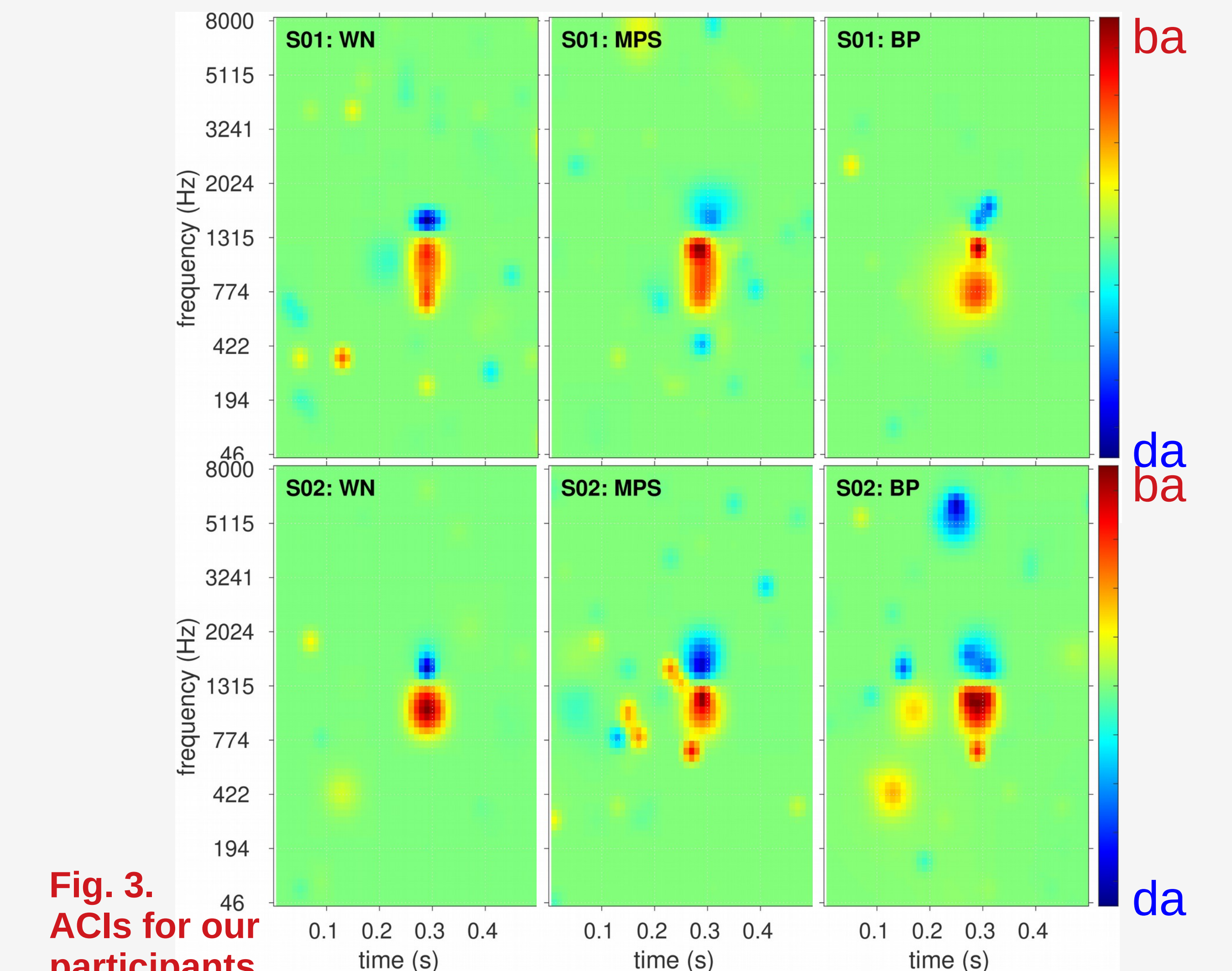
- V metric:** Ratio between the standard deviation and the mean envelope (Kohlrausch et al. 1997) applied to each 1-ERB-wide band



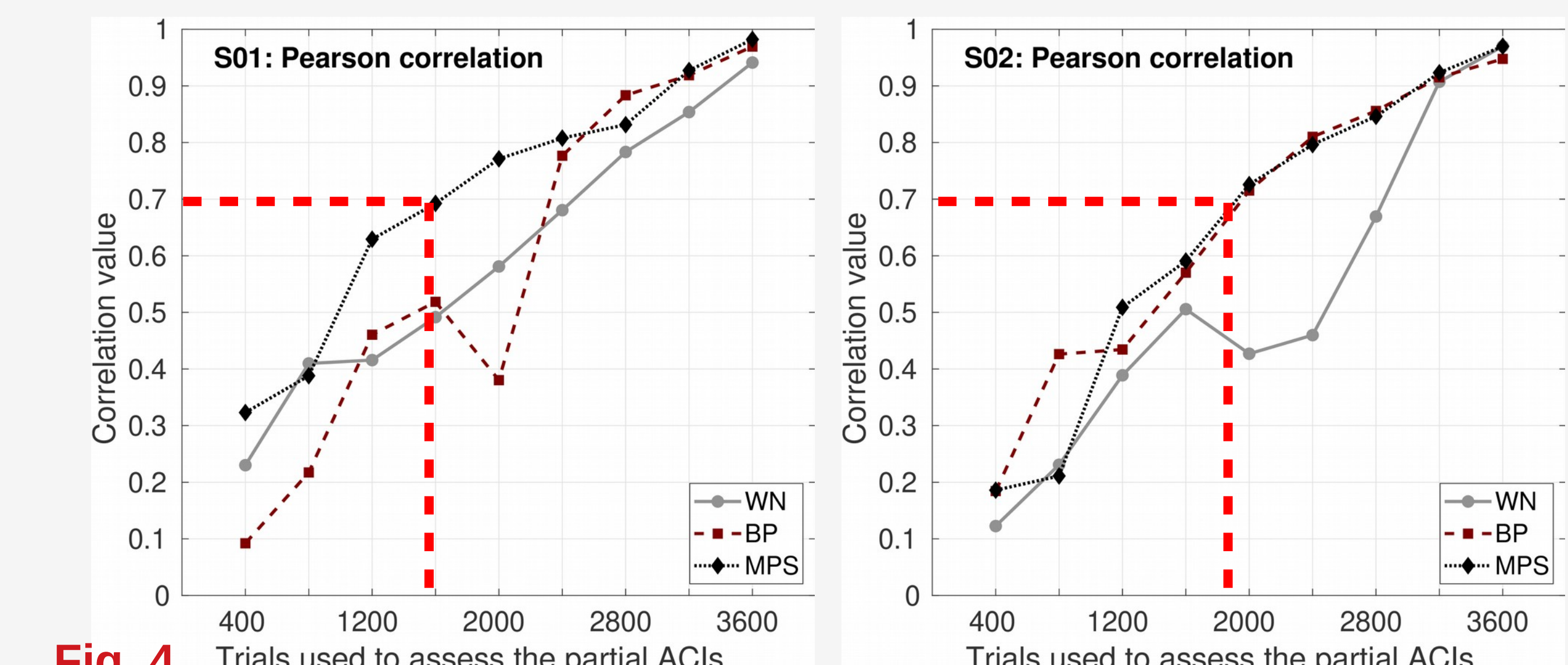
## References

Meyer et al. (2010). Human phoneme recognition depending on speech-intrinsic variability. *J. Acoust. Soc. Am.*, 128, 3126–3141.  
 Osses & Varnet (2021a). fastACI toolbox: the MATLAB toolbox for investigating auditory perception using reverse correlation (v1.0). doi:10.5281/zenodo.5500139  
 Osses & Varnet (2021b). Consonant-in-noise discrimination using an auditory model with different speech-based decision devices. *DAGA*, 298–301.  
 Varnet et al. (2013). Using auditory classification images for the identification of fine acoustic cues used in speech perception. *Front. Hum. Neurosci.*, 7, 1–1  
 Varnet et al. (2015). A psychophysical imaging method evidencing auditory cue extraction during speech perception. *PLoS One*, 10(3), 1–23

## 3. Experimental results



In line with previous studies using WN, all ACIs revealed a primary cue around the time onsets of the second syllable and the frequency region of the F1 and F2 formants.



Correlation between “partial ACIs” and the ACI obtained with 4000 trials

## 5. Summary

Our analyses suggest that the reverse correlation method applied to a consonant-in-noise discrimination task, the ACI, converges more quickly to a stable result when the background noises contain dominant components in the modulation frequency range between 0 and 40 Hz, which is the case for MPS and BP noises. The prominent envelope fluctuations in this range lead to more systematic confusion errors compared to white noise and, therefore, to higher prediction accuracy and more robust reverse correlation results.

This research was supported by the French National Research Agency (Grant ANR-17-EURE-0017).