



**HAL**  
open science

## **Tibial plateau fracture management: ARIF versus ORIF - clinical and radiological comparison.**

Marie Le Baron, Mathieu Cermolacce, Xavier Flecher, Cyril Guillotin,  
Thomas Bauer, Matthieu Ehlinger

### ► To cite this version:

Marie Le Baron, Mathieu Cermolacce, Xavier Flecher, Cyril Guillotin, Thomas Bauer, et al.. Tibial plateau fracture management: ARIF versus ORIF - clinical and radiological comparison.. Orthopaedics & Traumatology: Surgery & Research, 2019, 105 (1), pp.101–106. 10.1016/j.otsr.2018.10.015 . hal-03551893

**HAL Id: hal-03551893**

**<https://hal.science/hal-03551893v1>**

Submitted on 29 Nov 2024

**HAL** is a multi-disciplinary open access archive for the deposit and dissemination of scientific research documents, whether they are published or not. The documents may come from teaching and research institutions in France or abroad, or from public or private research centers.

L'archive ouverte pluridisciplinaire **HAL**, est destinée au dépôt et à la diffusion de documents scientifiques de niveau recherche, publiés ou non, émanant des établissements d'enseignement et de recherche français ou étrangers, des laboratoires publics ou privés.



Distributed under a Creative Commons Attribution - NonCommercial 4.0 International License

## **Tibial plateau fracture management: ARIF versus ORIF - clinical and radiological comparison<sup>1</sup>**

Marie Le Baron\*, Mathieu Cermolacce\*, Xavier Flecher\*, Cyril Guillotin\*\*,  
Thomas Bauer\*\*, Matthieu Ehlinger\*\*\*, et la SoFCOT\*\*\*\*

\* Département de Chirurgie Orthopédique et de Traumatologie, Hôpital Nord, Chemin des Bourrely, 13015 Marseille, France

\*\* Service de Chirurgie Orthopédique et Traumatologie, APHP, Hôpital Ambroise Paré, 9 Avenue Charles de Gaulle, 92100 Boulogne-Billancourt, France

\*\*\* Service de Chirurgie Orthopédique et Traumatologie, Hôpital de Hautepierre, 1 Avenue Molière, 67200 Strasbourg, France

\*\*\*\* 56 Rue Boissonade 75014 Paris, France

### Corresponding author:

Marie Le Baron

marie.lebaron@ap-hm.fr

Département de Chirurgie Orthopédique et de Traumatologie, Hôpital Nord, Chemin des Bourrely, 13015 Marseille, France

---

<sup>1</sup> This article is based on the symposium “Role of arthroscopy in the management of joint fracture”, held at the 92<sup>nd</sup> Congress of the French Society of Orthopedic Surgery and Traumatology (SoFCOT), November 2017, Paris, France

## **Abstract**

**Introduction:** Arthroscopy has enabled minimally invasive procedures to be developed to treat tibial plateau fracture. The aim of the present study was to assess and compare clinical and radiological results between arthroscopically assisted reduction and internal fixation (ARIF) and open reduction and internal fixation (ORIF) procedures. The study hypothesis was that, in selected tibial plateau fractures, ARIF provides 1) clinical results comparable to those of ORIF, and 2) satisfactory reduction and stable fixation.

**Material and method:** A retrospective multicenter study included adult patients with tibial plateau fracture (Schatzker I to III), over the period January 2010 to December 2014, enabling a minimum 2 years' follow-up. Clinical and radiological data (RoM, IKDC, HSS, Lysholm) were collected at 3, 6 and 12 months and at last follow-up. 317 patients (317 fractures), aged  $48\pm 14$  years (range, 18-82 years) were followed up for  $38\pm 23$  months (range, 24-90 months), with 77 fractures (24%) in the ARIF group and 240 (76%) in the ORIF group.

**Results:** Clinically, there were no significant inter-group differences for active flexion, passive or active extension or Lysholm and IKDC scores, with significant differences for HSS (ARIF:  $74\pm 29$ ; ORIF:  $70\pm 31$ ;  $p < 0.01$ ) and passive flexion (ARIF:  $130\pm 19^\circ$  (range, 80-160°); ORIF:  $130\pm 15.965^\circ$  (range, 60-140°);  $p < 0.05$ ). Radiologically, there were no significant inter-group differences for reduction quality, lower-limb mechanical axis or signs of osteoarthritis. There were no secondary displacements. There were 7 complications (7/77, 9%) in the ARIF group and 18 (18/240, 8%) in the ORIF group, and 6 surgical revisions for early infection (2 ARIF, 4 ORIF), with no significant inter-group differences.

**Discussion:** The study hypothesis was confirmed: in Schatzker I-III fractures, ARIF provided clinical results comparable to those of ORIF, with satisfactory reduction and stable fixation. ARIF has its place in the treatment of tibial plateau subsidence and/or separation fracture.

**Level of evidence:** III, retrospective comparative study

**Key-words:** knee, tibial plateau fracture, arthroscopy, open surgery, results.

## **1. Introduction**

Tibial plateau fractures account for 1-2% of fractures in adults [1]. Although rare, they involve various different lesions, with potentially serious consequences if not properly managed [2,3]. Treatment is consensual: restoring joint anatomy and lower-limb mechanical axis, and achieving consolidation.

Various surgical approaches have been developed. Internal fixation by plate and screws after open reduction is the treatment of choice for complex fracture (Schatzker types V–VI). For Schatzker types I-III, the surgical options are arthroscopic reduction and internal fixation (ARIF) and open reduction and internal fixation (ORIF). ARIF in Schatzker types I-III was first described by Caspari and Jennings [4,5]. It is a minimally invasive alternative to ORIF, with lower morbidity, precise assessment of joint reduction and the possibility of treating associated intra-articular lesions [6–17]. Classical drawbacks are higher cost and longer operative time. The recent literature reports good short- and medium-term functional and radiological results [9,11,13,14,18–34], although this remains controversial. The aim of the present study was to assess and compare functional and radiological results between ARIF and ORIF. The study hypothesis was that, in selected tibial plateau fractures, ARIF provides 1) clinical results comparable to those of ORIF, and 2) satisfactory reduction with stable fixation.

## **2. Material and method**

### **2.1 Study design**

A multicenter retrospective study conducted in 6 university hospitals (Paris, Strasbourg, Rouen, Toulouse, Grenoble, Marseille), included adults treated for Schatzker I, II or III tibial plateau fracture [35] between January 2010 and December 2014.

Exclusion criteria comprised: 1) Schatzker types IV, V and VI [35]; 2) pathologic fractures; 3) fractures managed by external fixation or other non-operative means; 4) incomplete patient records; and 5) follow-up shorter than 2 years.

Patients treated by arthroscopy were included in the ARIF group and those undergoing open surgery in the ORIF group. Fractures were assessed preoperatively on AP and mediolateral X-ray and CT.

Patients provided consent for the study; review board approval was not sought.

Surgical technique, and hence group allocation, were at the surgeon's discretion. Three centers performed both ARIF and ORIF (Paris, Toulouse, Grenoble) and 3 only ORIF (Strasbourg, Rouen, Marseille).

## 2.2 Series

Between January 2010 and December 2014, 485 patients (mean age, 52±14 years; range, 20–82 years) presented with tibial plateau fracture in the 6 university hospitals.

After application of the exclusion criteria, 317 patients (317 fractures) remained eligible: mean age, 48±14 years (range, 18-82 years); mean follow-up, 38±23 months (range, 24-90 months) (Figure 1).

Seventy-seven fractures (n=77/317, 24%) were included in the ARIF group (figures 2 and 3) and 240 (n=240/317, 76%) in the ORIF group (figure 4). The 2 groups were comparable for age, gender and operated side (Table 1). Distribution between Schatzker types I, II and III differed significantly: respectively, 26%, 41.6% and 32.4% in the ARIF group and 23.3%, 58.8% and 17.9% in the ORIF group (p = 0.011). ARIF was used especially in type III (36.8%, versus 26.3% and 18.5% in types I and II, respectively).

A tourniquet was applied in 253 cases (n=253/317, 80%). Irrigation was implemented for arthroscopy, with (n=48/77; 62%) or without (n=29/77; 37%) arthroscopy pump.

In the ORIF group, the approach was anterolateral in 201 cases (201/240, 84%), medial in 28 (12%), and combined in 11 (4%).

Graft filling was used in 37.5% of cases (autologous in  $\frac{1}{4}$  of patients, synthetic in  $\frac{3}{4}$ ), with no significant difference between groups ( $p=0.39$ ).

In the ORIF group, fixation used a standard plate ( $n=67/240$ ; 27.9%), locking plate ( $n=107/240$ ; 44.6%) or 6.5mm percutaneous screws ( $n=66/240$ ; 27.6%). In the ARIF group, fixation used 6.5mm percutaneous screws in 94.8% of cases ( $n=73$ ), with 1 ( $n=4$ ), 2 ( $n=42$ ) or 3 screws ( $n=27$ ).

In both groups, 6 weeks' non-weight-bearing was applied, with immobilization between physiotherapy sessions. Immediate postoperative free mobilization was allowed.

#### 2.4 Radiological and clinical assessment

Postoperative reduction was assessed on AP and mediolateral X-ray, analyzing: 1) reduction quality, considered satisfactory for frontal and sagittal deficit  $<2\text{mm}$ , on immediate postoperative radiographs and at last follow-up; 2) lower-limb mechanical axis (heel-knee-ankle angle: HKA); and 3) osteoarthritis at last follow-up on Ahlback's classification [36]. Radiographs were read by an independent observer in each center. For ethical reasons, CT was not performed to assess joint reduction.

Clinical assessment was performed in each center, by the patient's surgeon at 3, 6 and 12 months, and by an independent observer at last follow-up. The following scores were used for last-follow-up assessment: Hospital for Special Surgery (HSS) [37], Lysholm [38] and IKDC [39]. Passive and active ranges of motion in flexion and extension were measured. Intra- and post-operative complications were recorded.

#### 2.5 Statistical analysis

The non-parametric Mann-Whitney test for non-matched samples was used to compare HSS and IKDC scores, ranges of motion and HKA angle between groups. Alpha risk was set at 0.05. A bilateral  $\chi^2$  independence test was used to assess association between use of arthroscopy on the one hand and reduction quality and presence of osteoarthritis on the other. Statistical analyses used the EasyMedStat on-line app ([www.easymedstat.com](http://www.easymedstat.com); Neuilly-Sur-Seine; France).

### 3. Results

Results are shown in **Table 2**

#### 3.1 Clinical and radiographic results

At follow-up, there were no significant inter-group differences, taking all Schatzker types together, in terms of: 1) passive or active extension, 2) active flexion, 3) Lysholm or IKDC scores, 4) reduction quality, 5) HKA, or 6) radiologic signs of osteoarthritis.

On the other hand, there were significant differences in HSS score (mean  $74 \pm 29$  for ARIF versus  $70 \pm 31$  for ORIF;  $p < 0.01$ ) and passive flexion (ARIF:  $130 \pm 19$  (range, 80-160); ORIF:  $130 \pm 16$  (range, 60-140);  $p < 0.05$ ); these differences, nevertheless, were not clinically relevant.

#### 3.2 Reduction quality

Reduction quality on immediate postoperative views was satisfactory in 65 cases (65/77, 84%) with ARIF and 192 cases (192/240, 80%) with ORIF ( $p > 0.05$ ). There were no cases of secondary displacement between immediate postoperative views and last follow-up. There was no significant association between Schatzker type and clinical results.

#### 3.3 Complications



There were 7 complications (7/77, 9%) in the ARIF group and 18 in the ORIF group (18/240, 8%), which was not significantly different, requiring 13 revision procedures in all: 4/77 in the ARIF group and 9/240 in the ORIF group. Two patients in the ARIF group (2/77) and 4 in the ORIF group (4/240) contracted early postoperative infection, treated by surgical lavage and adapted antibiotic therapy. Two patients in the ARIF group (2.6%) and 5 in the ORIF group (2.1%) required surgical revision, by osteotomy or total joint replacement, for mechanical complications ( $p>0.05$ )

#### **4. Discussion**

The main findings of the present study are: 1) there were no significant differences in clinical results between ARIF and ORIF except for HSS score and passive flexion, neither of which have great clinical importance; 2) there was no significant difference in reduction quality; and 3) the complications rates were comparable. This confirms the study hypothesis that, in Schatzker I-III fracture, ARIF provides clinical results comparable to those of ORIF, with satisfactory reduction.

Open internal fixation of tibial plateau fracture has theoretic drawbacks. Arthrotomy with a submeniscal approach or transverse meniscal sectioning are required for joint surface visualization, which may induce stiffness, proprioceptive disorder, severe postoperative pain and scar-related complications [13,21–25,40]. Arthroscopy was introduced to avoid these drawbacks; yet, in the present study, only HSS score and passive flexion were better with ARIF than ORIF; all other clinical criteria (Lysholm, IKDC, active flexion, extension) were comparable, finally indicating that ORIF is a relatively safe procedure. Ohdera et al. [22] confirmed this, with no significant difference in operative time, postoperative flexion or

clinical results, although postoperative recovery was quicker with ARIF.

There is consensus that arthroscopy provides good-quality joint reduction. Fowble et al. [41] achieved 100% satisfactory reduction with ARIF, but only 55% with ORIF. Kiefer et al. [27] reported 80% good-quality reduction with arthroscopy. Van Glabbeek et al. [33] reported only 1 reduction failure out of 20 separation/subsidence fractures managed arthroscopically. And Ohdera et al. [22] reported 85% satisfactory reduction with arthroscopy, compared to only 55% with open surgery [22].

Reduction of subsidence under arthroscopy can be considerable, as shown by Gill et al. [29], with mean correction from 7.7 mm to 0.8 mm; internal fixation used isolated screwing in ARIF and plate in ORIF; at 38 months' follow-up, there were no secondary displacements, with mean HKA angle of 180°. The mechanical stability of isolated screwing in Schatzker types I-III is confirmed in the literature [18,22,26,27]. This minimally invasive internal fixation is therefore perfectly adapted to arthroscopically assisted surgery. A ligament reconstruction tibial guide without fluoroscope allows subsidence to be reduced directly on the guide, with optimal positioning of the cannulated screws under the joint subsidence [42].

ARIF incurs technical issues and especially fracture bleeding, hindering the arthroscopic procedure. This can be minimized by using a pump, but with risk of irrigation fluid extravasation and compartment syndrome, although this was not found in the present series, despite a pump being used in 62% of cases. Herbort et al. [7] clearly identified complex tibial plateau fracture as a contraindication for ARIF, due to the high risk of iatrogenic compartment syndrome secondary to irrigation fluid extravasation, however rare in the literature [7,27,43]. The present rate of revision procedures was lower than reported

elsewhere (5-7.4% reoperation, 4% revision by tibial osteotomy or total knee replacement [9,30]), doubtless due to the short follow-up in the present series.

The present study had certain limitations. 1) Choice of technique was at the surgeon's discretion, with a risk of center effect and hence selection bias, with some centers performing both ARIF and ORIF and others only ORIF. 2) There was a significant difference in fracture type between the 2 treatment groups: Schatzker type II was most frequent overall, but ARIF was mainly implemented in type III (36.8%, vs. 26.3% and 18.5% for types I and II, respectively). 3) 168 files were excluded; even so, this was one of the largest comparative series in the literature. 4) Systematic CT was not used, for ethical reasons, to assess reduction quality and fixation stability; this makes the reduction assessment criterion less reliable, but this assessment method is quite classical in the literature [9,13,18]. 5) Results were not assessed according to degree of primary subsidence or osteoporosis, both of which have been reported as major limitations for arthroscopy [34].

## **5. Conclusion**

ARIF and ORIF provided comparable satisfactory results in Schatzker I-III tibial plateau fracture, but with HSS score and passive flexion favoring ARIF. Complications rates were low with both techniques. In such selected cases, arthroscopy provides satisfactory reduction and stable fixation by isolated screwing, and is thus suited for minimally invasive treatment of tibial plateau separation and/or subsidence fracture.

Acknowledgments: The authors thank all the symposium participants, from Paris, Strasbourg, Marseille, Rouen, Toulouse and Grenoble, who made this study possible.

**Conflicts of interest:**

MLB: none

MC: none

XF: consultant for Zimmer/Biomet®, Stryker®

CG: none

ME: educational consultant for Depuy-Synthes®, Newclip®, Amplitude®, Lepine®

TB: consultant for Arthrex®, Zimmer/Biomet®

- Funding:

Study conducted as part of a 2017 SoFCOT symposium; no funding was provided.

- Author contributions:

M Le Baron: manuscript writing

M Cermolacce: data collection

X Flecher: manuscript writing

C Guillotin: data collection

T Bauer: manuscript re-editing

M Ehlinger: manuscript writing and re-editing

## References

- [1] Court-Brown CM, Caesar B. Epidemiology of adult fractures: A review. *Injury* 2006;37:691–7.
- [2] Chen H-W, Liu G-D, Wu L-J. Clinical and radiological outcomes following arthroscopic-assisted management of tibial plateau fractures: a systematic review. *Knee Surg Sports Traumatol Arthrosc* 2015;23:3464–72.
- [3] McNamara IR, Smith TO, Shepherd KL, Clark AB, Nielsen DM, Donell S, et al. Surgical fixation methods for tibial plateau fractures. *Cochrane Database Syst Rev* 2015
- [4] Caspari RB, Hutton PM, Whipple TL, Meyers JF. The role of arthroscopy in the management of tibial plateau fractures. *Arthroscopy* 1985;1:76–82.
- [5] Jennings JE. Arthroscopic management of tibial plateau fractures. *Arthroscopy* 1985;1:160–8.
- [6] Hannouche D, Duparc F, Beaufils P. The arterial vascularization of the lateral tibial condyle: anatomy and surgical applications. *Surg Radiol Anat* 2006;28:38–45.
- [7] Herbort M, Domnick C, Petersen W. Arthroscopic treatment of tibial plateau fractures. *Oper Orthop Traumatol* 2014;26:573-88; quiz 589-90.
- [8] Burdin G. Arthroscopic management of tibial plateau fractures: surgical technique. *Orthop Traumatol Surg Res* 2013;99:S208-18.
- [9] Siegler J, Galissier B, Marcheix P-S, Charissoux J-L, Mabit C, Arnaud J-P. Percutaneous fixation of tibial plateau fractures under arthroscopy: a medium term perspective. *Orthop Traumatol Surg Res* 2011;97:44–50.
- [10] Boisrenoult P, Bricteux S, Beaufils P, Hardy P. Screws versus screw-plate fixation of type 2 Schatzker fractures of the lateral tibial plateau. Cadaver biomechanical study.

- Arthroscopy French Society. *Rev Chir Orthop Reparatrice Appar Mot* 2000;86:707–11.
- [11] Duan X, Yang L, Guo L, Chen G, Dai G. Arthroscopically assisted treatment for Schatzker type I-V tibial plateau fractures. *Chinese J Traumatol = Zhonghua Chuang Shang Za Zhi* 2008;11:288–92.
- [12] Harris N, Purnell M, Pevny T, Larson A. Arthroscopic management of tibial plateau fractures. *Tech Knee Surg* 2007;6:9–16.
- [13] Kayali C, Oztürk H, Altay T, Reisoglu A, Agus H. Arthroscopically assisted percutaneous osteosynthesis of lateral tibial plateau fractures. *Can J Surg* 2008;51:378–82.
- [14] Ruiz-Ibán MÁ, Diaz-Heredía J, Elías-Martín E, Moros-Marco S, Cebreiro Martinez Del Val I. Repair of meniscal tears associated with tibial plateau fractures: a review of 15 cases. *Am J Sports Med* 2012;40:2289–95.
- [15] Lee H-J, Jung H-J, Chang E-C, Lee J-S, Jung H-S. Second-look arthroscopy after surgical treatment of Schatzker type II plateau fractures through the lateral submeniscal approach. *Arch Orthop Trauma Surg* 2014;134:495–9.
- [16] Chen L, Ma S, Li X. Minimally invasive treatment of tibial plateau fracture under arthroscopy monitoring. *Zhongguo Yi Liao Qi Xie Za Zhi* 2014;38:232–4.
- [17] Fu F. *Master techniques in orthopedic surgery - Sports Medecine*. 2010.
- [18] Rossi R, Bonasia DE, Blonna D, Assom M, Castoldi F. Prospective follow-up of a simple arthroscopic-assisted technique for lateral tibial plateau fractures: results at 5 years. *Knee* 2008;15:378–83.
- [19] Chan Y-S, Chiu C-H, Lo Y-P, Chen AC-Y, Hsu K-Y, Wang C-J, et al. Arthroscopy-assisted surgery for tibial plateau fractures: 2- to 10-year follow-up results. *Arthroscopy* 2008;24:760–8.

- [20] Di Caprio F, Buda R, Ghermandi R, Ferruzzi A, Timoncini A, Parma A, et al. Combined arthroscopic treatment of tibial plateau and intercondylar eminence avulsion fractures. *J Bone Joint Surg Am* 2010;92 Suppl 2:161–9.
- [21] Hung SS, Chao E-K, Chan Y-S, Yuan L-J, Chung PC-H, Chen C-Y, et al. Arthroscopically assisted osteosynthesis for tibial plateau fractures. *J Trauma* 2003;54:356–63.
- [22] Ohdera T, Tokunaga M, Hiroshima S, Yoshimoto E, Tokunaga J, Kobayashi A. Arthroscopic management of tibial plateau fractures--comparison with open reduction method. *Arch Orthop Trauma Surg* 2003;123:489–93.
- [23] Chan Y-S, Yuan L-J, Hung S-S, Wang C-J, Yu S-W, Chen C-Y, et al. Arthroscopic-assisted reduction with bilateral buttress plate fixation of complex tibial plateau fractures. *Arthroscopy* 2003;19:974–84.
- [24] Chiu C-H, Cheng C-Y, Tsai M-C, Chang S-S, Chen AC-Y, Chen Y-J, et al. Arthroscopy-assisted reduction of posteromedial tibial plateau fractures with buttress plate and cannulated screw construct. *Arthroscopy* 2013;29:1346–54.
- [25] Roerdink WH, Oskam J, Vierhout PA. Arthroscopically assisted osteosynthesis of tibial plateau fractures in patients older than 55 years. *Arthroscopy* 2001;17:826–31.
- [26] Asik M, Cetik O, Talu U, Sozen Y V. Arthroscopy-assisted operative management of tibial plateau fractures. *Knee Surg Sports Traumatol Arthrosc* 2002;10:364–70.
- [27] Kiefer H, Zivaljevic N, Imbriglia JE. Arthroscopic reduction and internal fixation (ARIF) of lateral tibial plateau fractures. *Knee Surg Sports Traumatol Arthrosc* 2001;9:167–72.
- [28] Levy BA, Herrera DA, Macdonald P, Cole PA. The medial approach for arthroscopic-assisted fixation of lateral tibial plateau fractures: patient selection and mid- to long-

- term results. *J Orthop Trauma* 2008;22:201–5.
- [29] Gill TJ, Moezzi DM, Oates KM, Sterett WI. Arthroscopic reduction and internal fixation of tibial plateau fractures in skiing. *Clin Orthop Relat Res* 2001;383:243–9.
- [30] Dall’oca C, Maluta T, Lavini F, Bondi M, Micheloni GM, Bartolozzi P. Tibial plateau fractures: compared outcomes between ARIF and ORIF. *Strategies Trauma Limb Reconstr* 2012;7:163–75.
- [31] Horstmann WG, Verheyen CCPM, Leemans R. An injectable calcium phosphate cement as a bone-graft substitute in the treatment of displaced lateral tibial plateau fractures. *Injury* 2003;34:141–4.
- [32] Pogliacomì F, Verdano MA, Frattini M, Costantino C, Vaienti E, Soncini G. Combined arthroscopic and radioscopy management of tibial plateau fractures: report of 18 clinical cases. *Acta Biomed* 2005;76:107–14.
- [33] van Glabbeek F, van Riet R, Jansen N, D’Anvers J, Nuyts R. Arthroscopically assisted reduction and internal fixation of tibial plateau fractures: report of twenty cases. *Acta Orthop Belg* 2002;68:258–64.
- [34] Cassard X, Beaufile P, Blin JL, Hardy P. Osteosynthesis under arthroscopic control of separated tibial plateau fractures. 26 case reports. *Rev Chir Orthop Reparatrice Appar Mot* 1999;85:257–66.
- [35] Schatzker J, McBroom R, Bruce D. The tibial plateau fracture. The Toronto experience 1968–1975. *Clin Orthop Relat Res* 1979;jan-feb(138):94–104.
- [36] Ahlbäck S. Osteoarthritis of the knee. A radiographic investigation. *Acta Radiol Diagn (Stockh)* 1968:Suppl 277:7-72.
- [37] Ranawat CS, Insall J, Shine J. Duo-condylar knee arthroplasty: hospital for special surgery design. *Clin Orthop Relat Res* 1976;120:76–82.



- [38] Tegner Y, Lysholm J. Rating systems in the evaluation of knee ligament injuries. *Clin Orthop Relat Res* 1985;198:43–9.
- [39] Hefti F, Müller W. Current state of evaluation of knee ligament lesions. The new IKDC knee evaluation form. *Orthopade* 1993;22:351–62.
- [40] Chan Y-S. Arthroscopy-assisted surgery for tibial plateau fractures. *Chang Gung Med J* 2011;34:239–47.
- [41] Fowble CD, Zimmer JW, Schepsis AA. The role of arthroscopy in the assessment and treatment of tibial plateau fractures. *Arthroscopy* 1993;9:584–90.
- [42] Thauinat M, Camelo Barbosa N, Tuteja S, Jan N, Fayard JM, Sonnery-Cottet B. A Fluoroscopy-Free Technique for Percutaneous Screw Positioning During Arthroscopic Treatment of Depression Tibial Plateau Fractures. *Arthrosc Tech* 2016;5:e507-11.
- [43] Belanger M, Fadale P. Compartment syndrome of the leg after arthroscopic examination of a tibial plateau fracture. Case report and review of the literature. *Arthroscopy* 1997;13:646–51.

## **Figure legends**

**Figure 1:** Study flow chart

**Figure 2:** Schatzker type III fracture treated arthroscopically (ARIF): preoperative radiography and CT, postoperative radiography

**Figure 3:** Schatzker type III fracture treated arthroscopically (ARIF): arthroscopic views

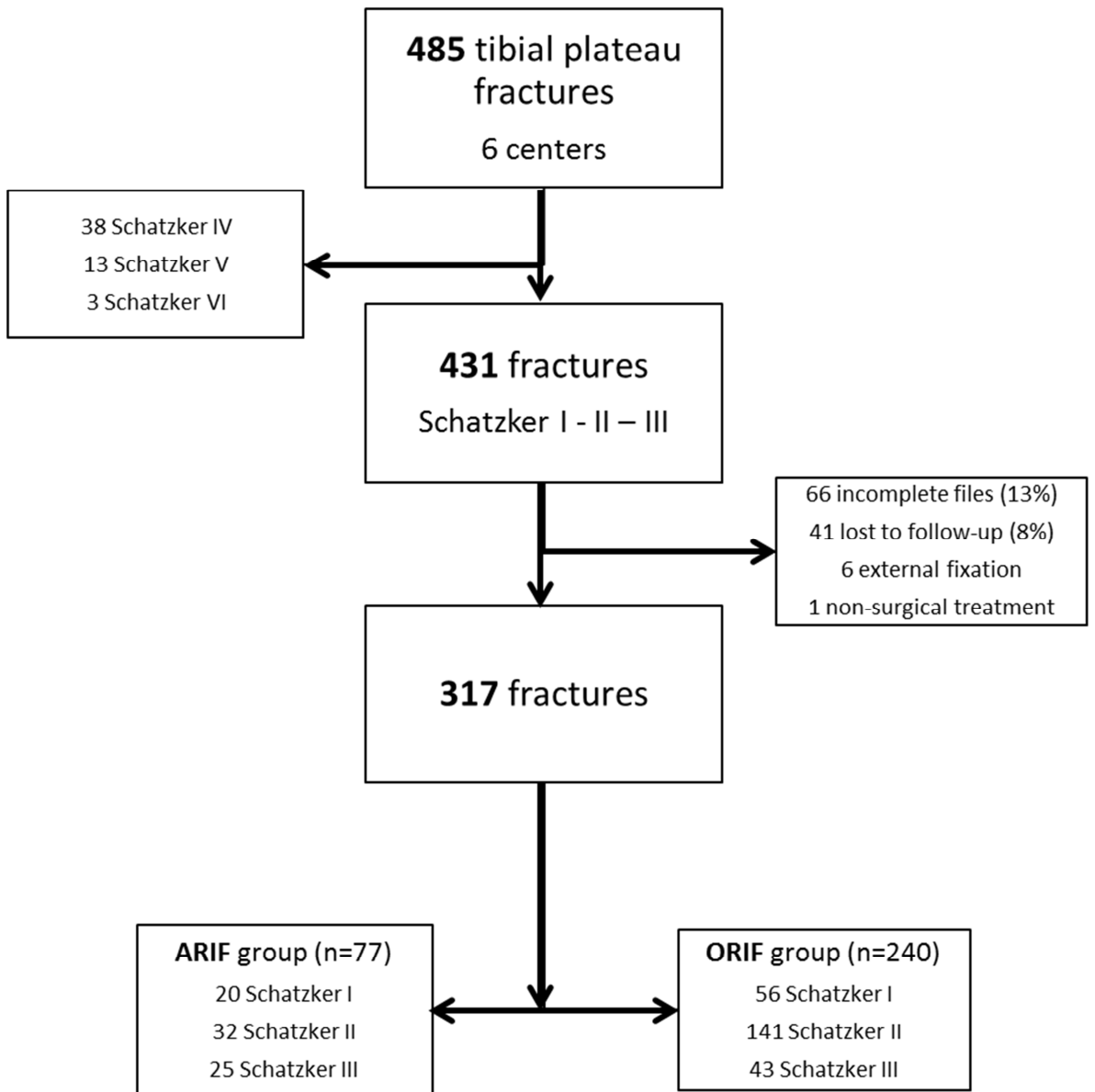
**Figure 4:** Schatzker type III fracture treated by open surgery (ORIF): preoperative radiography and CT, immediate postoperative and 5-year radiography

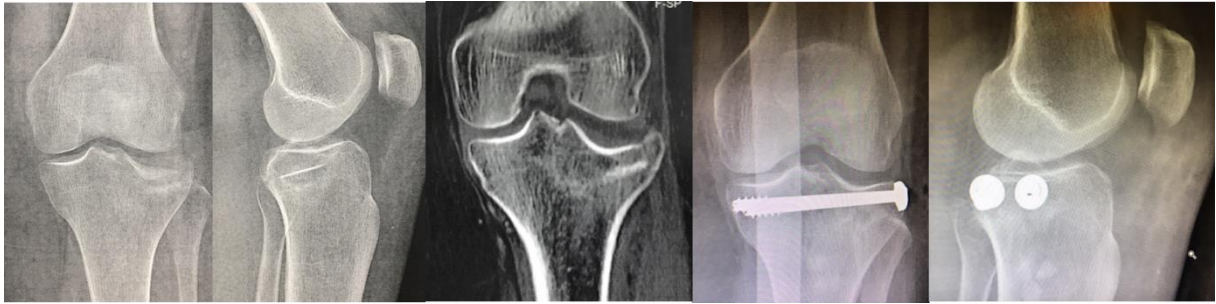
<b>Variable</b>	<b>ARIF n = 77 patients</b>	<b>ORIF n = 240 patients</b>	<b>p-value</b>
<b>Follow-up (months)</b>	38±23 (24-90)	37±23 (24-87)	p = 0.322
<b>Age at inclusion (years)</b>	52 ±14 (20-82)	53 ±13 (20-82)	p = 0.584
<b>Female gender</b>	no 57.1% yes 42.9%	no 59.2% yes 40.8%	p = 0.75360
<b>Side (left/right)</b>	50/27 (65%/35%)	109/79 (58%/42%)	p = 0.294 bilateral chi <sup>2</sup> independence test
<b>Schatzker type [34]</b>	Schatzker I = 26.0% Schatzker II = 41.6% Schatzker III = 32.4%	Schatzker I = 23.3% Schatzker II = 58.8% Schatzker III = 17.9%	<b>p = 0.01067</b>
<b>Operative time (mn)</b>	75 ±15 (20-180)	77±16 (30-180)	p= 0.4754
<b>Tourniquet</b>	70 (97%)	28 (91%)	p=0.31
<b>Arthroscopic pump</b>	N = 48 (62%) at 50 mm Hg	-	-

Table 1: Characteristics of ARIF and ORIF groups

Variable	ARIF n = 77 patients	ORIF n = 240 patients	p-value
Active flexion (°)	123±18.8 (80-145)	123±14.7 (48-135)	p = 0.577
Passive flexion (°)	130±19.2 (80-160)	130±16 (60-140)	<b>p &lt; 0.05</b>
Active extension (°)	0±2.6 (-10 to 0)	-0.7±3.2 (-20 to 0)	p = 0.4024
Passive extension (°)	-0.22±3.9 (-10 to 0)	-0.22±9 (-15 to 0)	p = 0.483
HSS score [35]	85±14.6 (40-100)	73±32.8 (10-100)	<b>p &lt; 0.01</b>
Lysholm score [36]	85±15.7 (35-100)	85±14.7 (2-100)	p = 0.489
IKDC score [37]	74±29.3 (0-100)	70±31.9 (0-100)	p = 0.543
Reduction quality	satisfactory n= 65 (84.4%) vs unsatisfactory n= 12 (15.6%)	satisfactory n= 192 (80%) vs unsatisfactory n= 48 (20%)	p = 0.501
HKA angle (°)	182±6 (170-195)	182± 5 (170-185)	p = 0.821
Early complications	n= 5 (5.2%)  2 infections 1 deep venous thrombosis 1 neural palsy	n= 13 (5.4%)  1 non-union 4 healing delays 4 infections 1 neural palsy 2 deep venous thromboses 1 complex regional pain syndrome	p = 0.713
Surgical revision for mechanical complication	2 (2.6%)	5 (2.1%)	p = 0.5858
Osteoarthritis (Ahlback > 0)	n= 47 (62%)	n= 161 (69%)	p = 0.766

Table 2: Inter-group comparison





**Figure 1:** Schatzker III fracture treated with arthroscopically-assisted reduction and internal fixation: preoperative X-ray and CT-scan view, postoperative X-rays



**Figure 2:** Schatzker III fracture treated with arthroscopically-assisted reduction and internal fixation:  
arthroscopic views



**Figure 3:** Schatzker III fracture treated with open reduction and internal fixation: preoperative X-ray and CT-scan view, immediate postoperative X-rays and at five years