



**HAL**  
open science

## **InvaVAL project : Valorization of invasive plants in Savoie Mont-Blanc territory : green chemistry and circular economy strategies**

Vanille Quinty, Christine Piot, Micheline Draye, Gregory Chatel

### ► **To cite this version:**

Vanille Quinty, Christine Piot, Micheline Draye, Gregory Chatel. InvaVAL project : Valorization of invasive plants in Savoie Mont-Blanc territory : green chemistry and circular economy strategies. Journée des Doctorants de l'ED SISEO, Nov 2021, Le Bourget du Lac, France. hal-03547626

**HAL Id: hal-03547626**

**<https://hal.science/hal-03547626v1>**

Submitted on 28 Jan 2022

**HAL** is a multi-disciplinary open access archive for the deposit and dissemination of scientific research documents, whether they are published or not. The documents may come from teaching and research institutions in France or abroad, or from public or private research centers.

L'archive ouverte pluridisciplinaire **HAL**, est destinée au dépôt et à la diffusion de documents scientifiques de niveau recherche, publiés ou non, émanant des établissements d'enseignement et de recherche français ou étrangers, des laboratoires publics ou privés.



# InvaVAL project : Valorization of invasive plants in Savoie Mont-Blanc territory : green chemistry and circular economy strategies

Vanille QUINTY, Christine PIOT, Micheline DRAYE and Grégory CHATEL\*



Univ. Savoie Mont Blanc, LCME, F-73000 Chambéry, France

Email : vanille.quinty@univ-smb.fr



## WHAT IS AN INVASIVE ALIEN SPECIES (IAS)?

An IAS or invasive species is a species introduced by humans outside their natural range, voluntarily or accidentally, whose establishment and spread threaten ecosystems, with **negative ecological, health consequences and / or economic.**

Examples :



*Ambrosia artemisiifolia L.*



*Ailanthus altissima*



*Reynoutria japonica*



*Phytolacca americana*



## TERRITORY MANAGEMENT

Inventory of IAS found on Savoie Mont Blanc territory

(*Ambrosia artemisiifolia L.* ; *Reynoutria japonica* ; *Ailanthus altissima* ; *Phytolacca americana* ; *Impatiens glandulifera* ; *Robinia pseudo-acacia* ; ...)

Mapping the most problematic

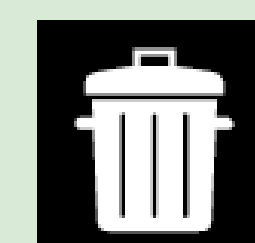
Consultation with the **managers** of territory

Existing **management actions** ?

Available **volumes** ?



## AWARENESS AND TRAINING

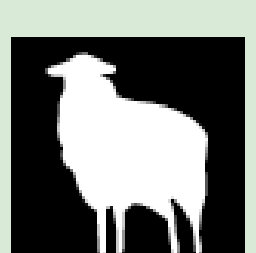
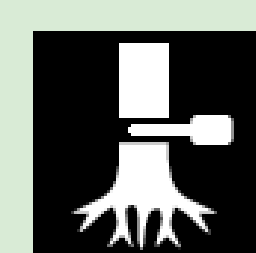
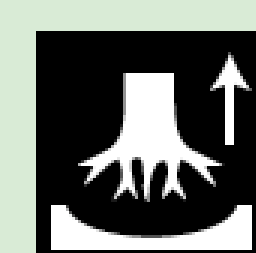
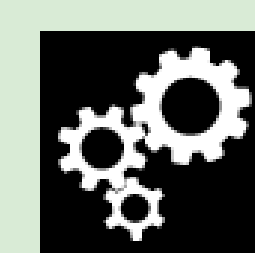
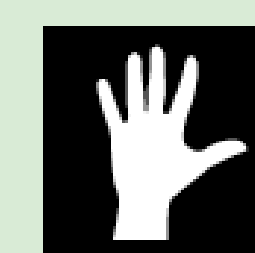


Waste Treatment



Monitoring

## COLLECTION METHODS

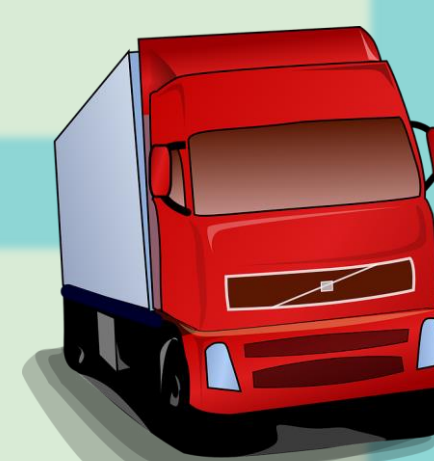


(Manual, Mechanical, Stump, Full cut, Cut, Pasture, ...)

## TRANSPORT



## OBJECTIVES



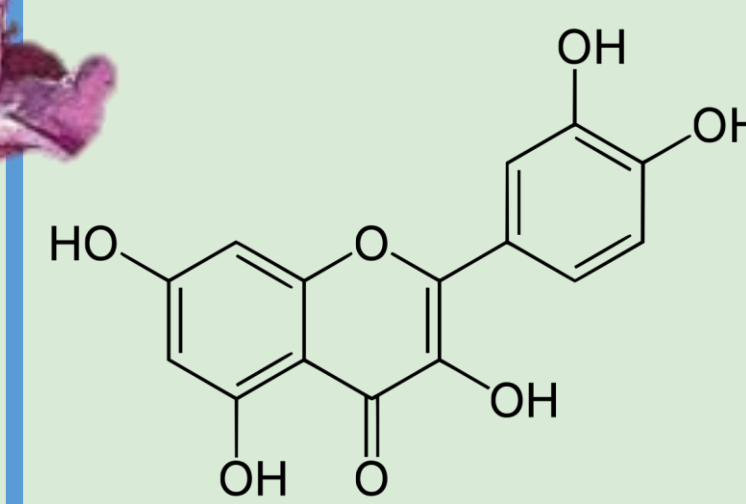
Identify the **molecules** of interest in **different parts of the plant** : roots, flowers, leaves, stem, seed, ...

Example : Annual PLant

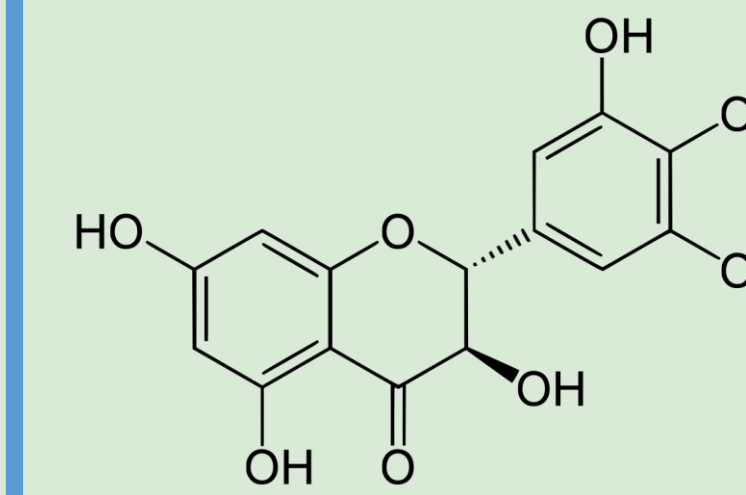


### Flowers

Quercetin

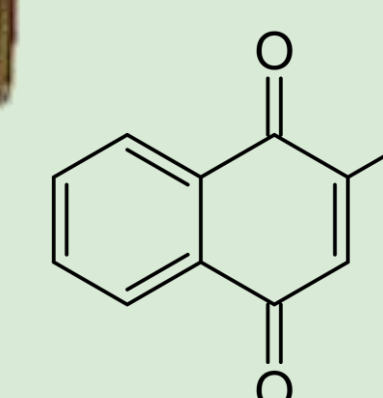


Ampelopsin



### Stem

Leaves



2-methoxy-1,4-naphthoquinone



*Impatiens glandulifera*

## CHEMICAL VALORIZATION

Consumers of **high quality natural molecules** from the local environment

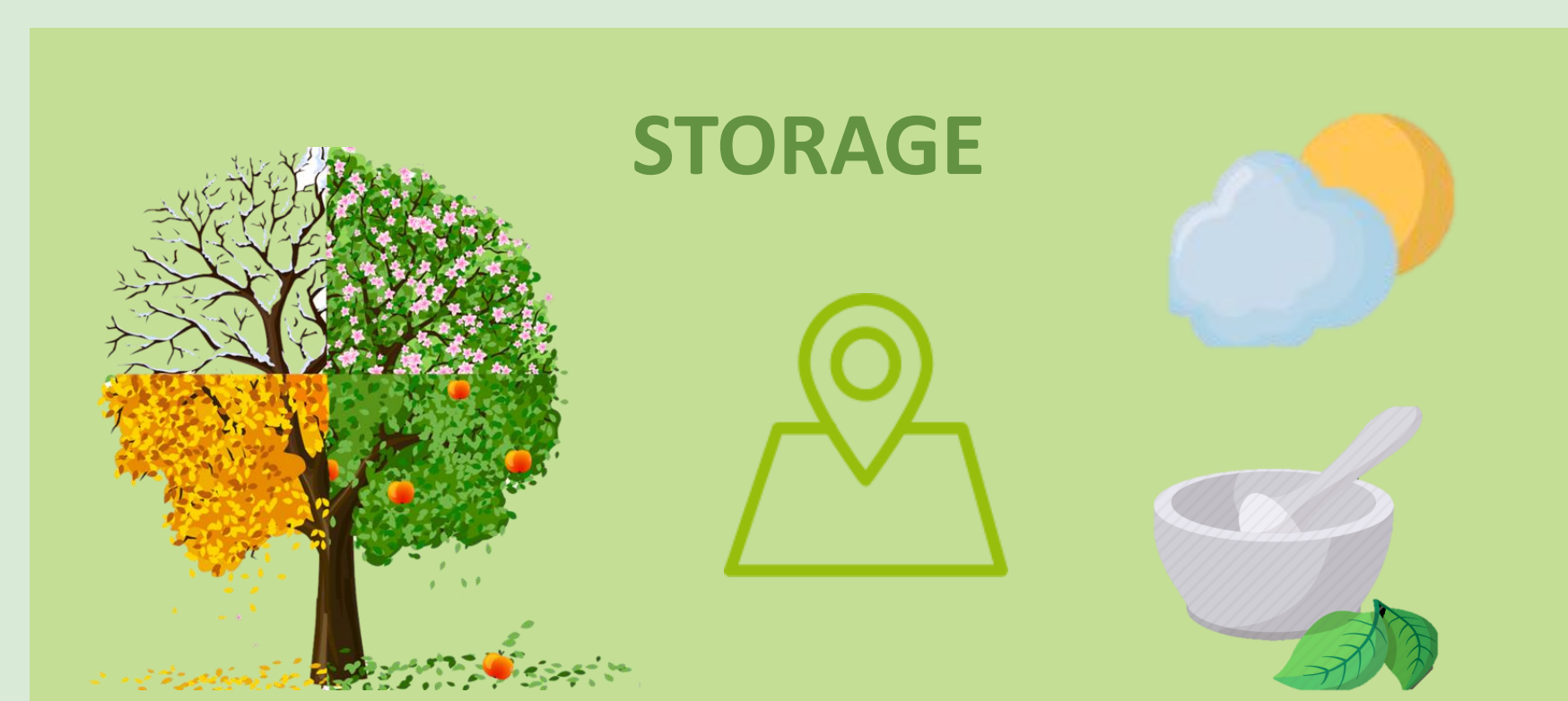
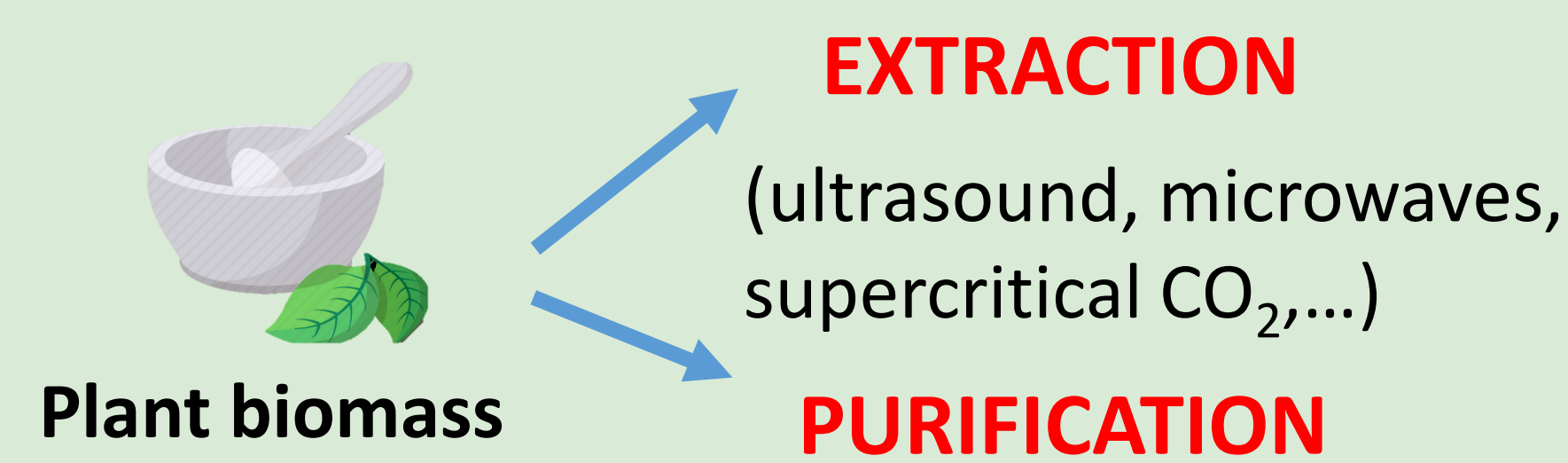
Bio-based ingredients



Sale of **cosmetics or food supplements**

CONSERVATION OF BIODIVERSITY AND LOCAL ECONOMIC DEVELOPMENT

Development of a powerful, innovative and respectful process of **Green Chemistry** to **extract and purify** these target molecules



Understand / control the **parameters** that can influence the **concentrations of selected molecules** (species, harvest season, location, climate, collection method, storage, sample preparation, process, ...)

## References

- [1] M. Kettunen et al. 2009. Technical support to EU strategy on invasive species (IAS) - Assessment of the impacts of IAS in Europe and the EU. *Institute for European Environmental Policy* 44 pages.  
 [2] Mariana N. Vieira, Peter Winterhalter and Gerold Jerz. 2016. Flavonoids from the flowers of *Impatiens glandulifera* Royle isolated by high performance countercurrent chromatography *Phytochem Anal* 27: 116–125.  
 [3] Regina Ruckli et al. 2014. Inhibitory Potential of Naphthoquinones Leached from Leaves and Exuded from Roots of the Invasive Plant *Impatiens glandulifera*. *J Chem Ecol* 40: 371–378.