



HAL
open science

Acoustically induced thermal effects on Rayleigh streaming

Virginie Daru, Catherine Weisman, Diana Baltean-Carlès, Hélène Bailliet

► To cite this version:

Virginie Daru, Catherine Weisman, Diana Baltean-Carlès, Hélène Bailliet. Acoustically induced thermal effects on Rayleigh streaming. *Journal of Fluid Mechanics*, 2021, 911, pp.911-A7-1 - 22. <10.1017/jfm.2020.996>. <hal-03543127>

HAL Id: hal-03543127

<https://hal.science/hal-03543127v1>

Submitted on 25 Jan 2022

HAL is a multi-disciplinary open access archive for the deposit and dissemination of scientific research documents, whether they are published or not. The documents may come from teaching and research institutions in France or abroad, or from public or private research centers.

L'archive ouverte pluridisciplinaire **HAL**, est destinée au dépôt et à la diffusion de documents scientifiques de niveau recherche, publiés ou non, émanant des établissements d'enseignement et de recherche français ou étrangers, des laboratoires publics ou privés.



HAL Authorization

Acoustically induced thermal effects on Rayleigh streaming

Virginie Daru^{1,2,†}, Catherine Weisman^{2,3}, Diana Baltean-Carlès^{2,3} and H el ene Bailliet⁴

¹Dynfluid Laboratory, Arts et M etiers Paris, 151 boulevard de l'H opital, 75013 Paris, France

²LIMSI, CNRS, Universit e Paris-Saclay, B at. 507, Rue du Belv ed ere, Campus Universitaire, F-91405 Orsay CEDEX, France

³Sorbonne-Universit e, Facult e des Sciences et Ing enierie, UFR d'Ing enierie, 4 Place Jussieu, 75005 Paris, France

⁴Institut Pprime, CNRS – Universit e de Poitiers – ENSMA, ENSIP, 6 rue Marcel Dor e, B at. B17 – BP 633, 86022 Poitiers CEDEX, France

The present study focuses on acoustically induced thermal effects on Rayleigh streaming inside a resonator. Firstly, we consider the effect of the transverse (or wall-normal) mean temperature gradient on the acoustic streaming flow generated by a standing wave between two parallel plates. Analytical expressions for acoustic quantities are developed and used to express the sources of linear streaming. The influence of a transverse temperature variation on the streaming velocity is clearly identified through a term proportional to the temperature difference and to the square of the half-width of the guide. This term modifies the Rayleigh streaming pattern and may generate an additional vortex. On the other hand, the longitudinal (or wall-parallel) temperature difference is calculated as a cumulated effect of thermoacoustic heat transport in the fluid, heat conduction in the wall and heat convection of the air outside the resonator. At high acoustic levels, heat is significantly convected by the streaming flow and the resulting transverse temperature difference is proportional to the longitudinal temperature difference. Combining these expressions brings out a new criterion parameter for the nonlinear Reynolds number (Re_{NL}) characterizing the transition in streaming patterns at high acoustic levels. This result explains previous experimental and numerical observations of the streaming flow dynamics at high acoustic amplitudes, under different temperature boundary conditions, and can provide a powerful prediction tool for streaming pattern transitions.

Key words: acoustics, boundary layers

1. Introduction

Acoustic streaming is a steady flow generated by Reynolds stresses in an acoustically oscillating fluid, either due to absorption in the main body of the fluid of an irrotational sound beam (for Eckart streaming or Quartz wind) or associated with the Stokes boundary layer adjacent to a solid boundary (Rayleigh's streaming, Rayleigh 1884). Quartz wind is generally observed in systems where the length scale is much longer than the wavelength whereas Rayleigh streaming is associated with a length scale of the same order of magnitude as the wavelength.

The typical geometry leading to the development of Rayleigh streaming flow is a resonator of length much larger than its transverse (or wall-normal) dimensions filled with compressible gas (initially at homogeneous pressure and temperature) submitted to an acoustic plane wave in the longitudinal (or axial, wall-parallel) direction. Figure 1 shows a schematic of the problem studied in the present paper corresponding to such a typical geometry. Rayleigh streaming flow is encountered for example in thermoacoustic devices, in which it is responsible for reducing the efficiency of the machines, especially for high powered devices. Indeed, the power density of a thermoacoustic device being roughly proportional to the square of the acoustic pressure amplitude, the streaming flow developing at high acoustic amplitudes is an important issue when optimizing thermoacoustic systems.

It is well established that, in the case of a plane standing wave at low amplitude, Rayleigh streaming is composed of toroidal so-called inner and outer vortices that have a half-wavelength spatial periodicity, the maximum axial streaming velocity being a quadratic function of the acoustic velocity amplitude at antinode. The inner vortices are slender and located near the walls, while the outer vortices develop in the core of the resonator. Figure 2 shows schematically the corresponding streamlines of the streaming flow in a half-wavelength resonator with acoustic velocity nodes at the extremities. The section shown is a longitudinal half-section between the axis (bottom) and the resonator wall (top). Heat is pumped by thermoacoustic effect initially in the near-wall region, from the acoustic velocity antinode towards the acoustic velocity nodes (Merkli & Thomann 1975; Gopinath, Tait & Garrett 1998). It then diffuses transversely, resulting in a longitudinal temperature gradient. A colour map of the resulting isotherms of the mean temperature is displayed in the same figure. In this case, where the acoustic amplitude is low, the convective transport effect by the streaming flow is negligible and does not influence the organization of the thermal field.

For higher acoustic levels, Menguy & Gilbert (2000) showed that the influence of inertial effects on the streaming flow is characterized by a reference nonlinear Reynolds number $Re_{NL} = (M \times R/\delta_v)^2$, where M is the acoustic Mach number, $M = U_{ac}/c_0$, with U_{ac} the maximum acoustic velocity on the channel axis and c_0 the initial speed of sound, R being the half-width of the channel and δ_v the viscous boundary layer thickness. For $Re_{NL} = O(1)$, they found that the outer vortices are distorted by inertia, while the inner vortices are not affected. However, their study was limited to low values of Re_{NL} (up to $Re_{NL} = 6$) and they used the assumption of isentropic flow. Later, it was found, both experimentally by Thompson, Atchley & Maccarone (2005), Moreau, Bailliet & Valière (2008), Reyt *et al.* (2013) and Reyt, Bailliet & Valière (2014) and numerically by Boluriaan & Morris (2003), Reyt *et al.* (2013) and Daru *et al.* (2013, 2017a), that the longitudinal streaming velocity component along the axis, which is a sinusoidal function of the axial coordinate at low acoustic levels, becomes distorted as the acoustic level is increased. For high acoustic amplitudes, this distortion leads to the generation of counter-rotating additional vortices in the centre of the guide near the acoustic

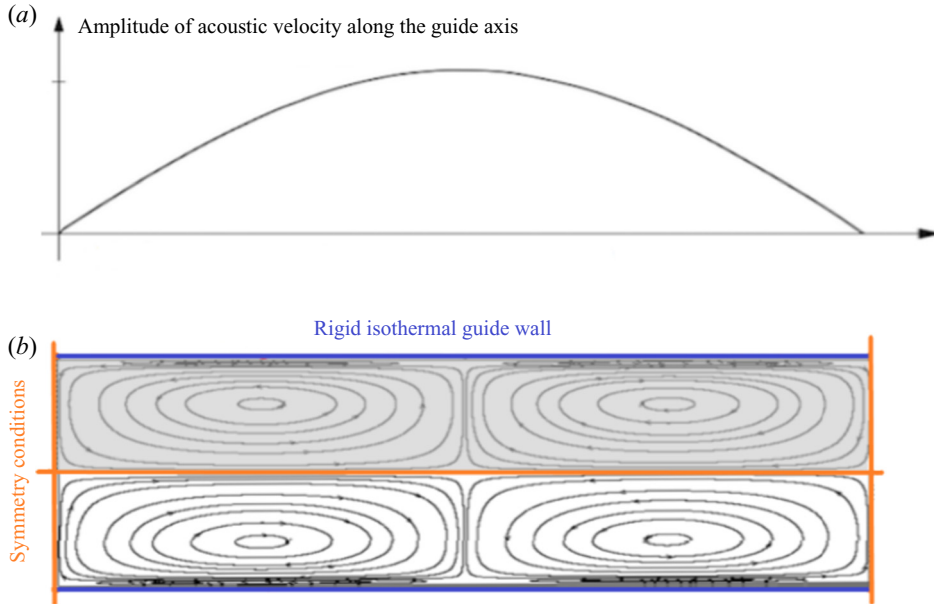


Figure 1. Typical problem geometry for Rayleigh streaming. (a) Axial acoustic velocity amplitude along the guide axis. (b) Associated streaming cells. The fluid domain under study in the present paper corresponds to the grey area.

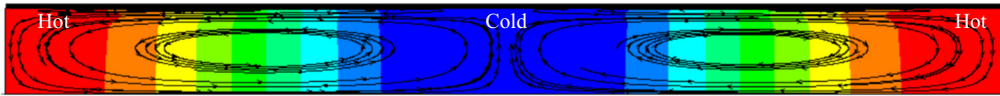


Figure 2. Schematic of isothermal lines and streaming streamlines obtained in a half-wavelength resonator at low acoustic level. The section shown is a longitudinal half-section between the axis (bottom) and the resonator wall (top). Hot and cold regions are depicted.

velocity antinodes, while in the near-wall region inner streaming vortices are only slightly modified.

In order to disentangle the physical phenomena responsible for the change of streaming pattern at high acoustic levels, the isentropic case was analysed in Daru *et al.* (2017b). A similar evolution of streaming pattern was observed, although for higher values of Re_{NL} than in experiments. It was shown numerically that inertial effects cannot be considered as the leading phenomenon to explain this evolution, which was rather attributed to nonlinear interactions between acoustic and streaming flows (Daru *et al.* 2017a). The change of pattern was shown to occur when the radial streaming velocity becomes larger than the radial acoustic velocity.

Thermal effects on acoustic streaming flow were investigated analytically at low acoustic levels by Hamilton, Ilinskii & Zabolotskaya (2003) in channels/cylindrical guides of arbitrary width, where the base state (including temperature) is spatially uniform. They included variation of thermophysical gas properties with temperature (for several gases corresponding to several Prandtl numbers) and showed that thermal effects have a limited influence on the streaming flow for low amplitude acoustic waves.

The influence of an imposed longitudinal temperature gradient on acoustic streaming was considered theoretically by Rott (1974), Olson & Swift (1997) and Bailliet *et al.* (2001)

in the context of thermoacoustic devices, where parts of the resonator are maintained under large temperature gradients using heat exchangers. Thompson *et al.* (2005) showed experimentally the strong effect of a small thermoacoustically induced longitudinal temperature gradient on the acoustic streaming flow for values of the nonlinear Reynolds number Re_{NL} up to 20. The temperature gradient measured on the outside wall was small (up to 8 K m^{-1} , corresponding to a temperature difference across the streaming cell of 2.3 K). These streaming velocity measurements were not explained by theoretical studies in previously cited references.

The influence of an imposed transverse temperature gradient on Rayleigh streaming flow has been far less studied. Lin & Farouk (2008) and Aktas & Ozgumus (2010) conducted some two-dimensional (2-D) numerical simulations with the two longitudinal walls maintained at different temperatures. They found that the outer symmetric vortices are distorted and merge to one vortex pattern for high values of the temperature difference (up to 60 K). Note that gravity is neglected in these studies. Nabavi, Siddiqui & Dargahi (2008) studied experimentally the influence of differentially heated horizontal walls on acoustic streaming in a parallelepipedic channel of square cross-section. They applied a vertical bottom–top temperature difference (bottom wall hotter than the top wall) ranging from 0.8 K to 3 K and found that streaming patterns are greatly modified, both in shape and in value; the streaming velocity amplitude was increased when the temperature difference was increased. In their experiment the channel width is very large, of approximately $400\delta_v$. However, in their study it is difficult to distinguish between buoyancy and inhomogeneity of temperature effects on the acoustic streaming flow. More recently Chini, Malecha & Dreeben (2014) and Michel & Chini (2019) conducted theoretical studies of the acoustic streaming flow produced in a fluid with inhomogeneous background temperature and density, based on a multiple scale analysis. In Chini *et al.* (2014), the streaming velocity is first order in Mach number, only induced by the transverse temperature gradient (it does not exist if the temperature gradient is zero) and the acoustic flow is non-dissipative. The authors called this streaming flow ‘baroclinic acoustic streaming’. The motivation was the study of high-intensity discharge lamps, where large temperature differences exist and a strong two-way coupling between the acoustic field and the streaming flow is to be expected. The analysis of Michel & Chini (2019) quantitatively explains the results of numerical simulations by Lin & Farouk (2008) conducted for a temperature difference equal to 60 K.

Cervenka & Bednarrik (2017) numerically studied in 2-D channels the evolution of streaming patterns with inhomogeneous background temperature, the inhomogeneity being introduced via varying prescribed temperature distribution along the resonator walls. They found that the resulting temperature heterogeneity in the direction perpendicular to the resonator axis has a great influence on the streaming field if the ratio of the channel width to the viscous boundary layer thickness is large enough. Depending on the conditions they showed that Rayleigh streaming can be enhanced (for the axis colder than the wall) or decreased (for the axis hotter than the wall), and that the streaming patterns can be considerably distorted even if the transverse temperature difference is small. In Cervenka & Bednarrik (2018), the authors studied the added effect of convective heat transport on the streaming field in a cylindrical geometry. Their study was, however, limited to weak convective effects (and thus low values of Re_{NL}), because their model was not numerically stable for values of the Reynolds number of the streaming flow, $Re_{NL} > 4$. They explained that when a longitudinal temperature gradient is established in the tube due to the thermoacoustic effect, the streaming flow convects heat along the axis from the acoustic velocity node towards the antinode, causing the appearance of a transverse temperature gradient responsible for the modification of streaming patterns at

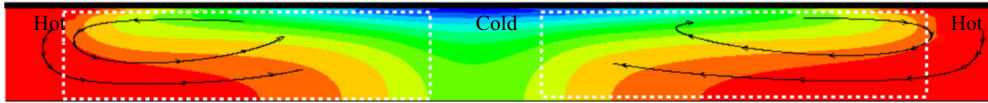


Figure 3. Schematic of isothermal lines and streaming streamlines obtained in the waveguide at high acoustic levels. The white dashed-line rectangles indicate the transversely stratified temperature regions.

high acoustic levels. Even though the mechanism for the distortion of streaming due to temperature effects was qualitatively identified, the effects need to be further quantified.

In the present study, the acoustically induced thermal effects on Rayleigh streaming flow in a waveguide at high acoustic amplitude are analysed by following a combined formal and phenomenological approach. In such a waveguide, a longitudinal temperature difference in the boundary layer near the wall is first created by thermoacoustic effect, as shown in figure 2. At high acoustic amplitude, convective transport effects by the streaming flow are no more negligible. Since transport occurs towards the acoustic velocity antinode near the waveguide axis and towards the acoustic velocity node near the wall, a large zone of transverse temperature stratification appears in the central part of the streaming cells (figure 3). Similar temperature distributions were observed in early numerical simulations by Gopinath & Mills (1994). This mean temperature reorganization results in spatial modification of the streaming patterns, and possibly the emergence of a new cell as previously observed experimentally and numerically by Thompson *et al.* (2005), Reyt *et al.* (2013) and Daru *et al.* (2013).

One of our aims is to identify the scaling parameters that predict this modification of streaming pattern. Following Cervenka & Bednarrik (2018), we postulate that a major effect on the streaming flow patterns is to be attributed to the change of the temperature field distribution due to heat transport by convective effect. We thus expect that the streaming flow at high acoustic levels can be adequately studied theoretically by solving linear equations for both acoustic and streaming flows with an imposed background transversely stratified temperature distribution.

The transverse temperature difference observed in figure 3 is proportional to the longitudinal temperature difference observed in the boundary layer. The latter could be well approximated by the longitudinal temperature difference calculated on the inside boundary of the wall. Since the longitudinal temperature gradient due to thermoacoustic effect is expected to be small, the transverse variations of temperature under study here are supposed to be small.

Following the ideas presented above, the present study is divided in five sections. In § 2 the effect of a transversely stratified temperature distribution on the streaming flow is analysed in the plane case of low acoustic amplitude. The analytical model developed in Baltean-Carlès *et al.* (2019) for isentropic flow is extended here to the case of variable mean temperature for a perfect gas. As in Baltean-Carlès *et al.* (2019), the symbolic computational software Mathematica (Wolfram Research Inc. 2018) is used to solve the equations throughout this study. The plane case is addressed because analytical expressions are simpler and also we expect a behaviour very similar to the axisymmetric case (a cylindrical geometry would involve integration of products of Bessel function that do not have any known analytic expression). An important result is the quantification of the relevant similarity parameters, essential to provide guidelines in numerical and experimental studies.

In § 3 the wall temperature distribution is calculated from the combined thermoacoustic effect in the fluid, heat conduction in the wall and convection from the outside air.

The maximum transverse temperature difference to be expected due to convective transport can then be estimated, since it is proportional to the maximum longitudinal temperature difference (figure 3).

These results are then combined in § 4 to exhibit a new criterion characterizing the transition in streaming pattern.

This criterion is shown in § 5 to be in good agreement with the experimental results in the literature reported by Thompson *et al.* (2005) and Reyt *et al.* (2014). It thus provides the first quantitative explanation of the evolution of streaming observed in these experiments. Moreover, it explains for the first time the influence of thermal boundary conditions observed in previous experiments.

2. Analytical solution for Rayleigh streaming flow under a transverse gradient of temperature

In this section the effect of a transverse gradient of temperature on acoustic streaming is investigated. As stated in the Introduction, previous studies by Chini *et al.* (2014), Cervenka & Bednarrik (2017, 2018) and Michel & Chini (2019) have already shown that transverse variations of the fluid temperature lead to drastic changes in the streaming flow structure. Our goal here is to quantify these changes in Rayleigh streaming with respect to the geometrical parameters of the guide, thermophysical characteristics of the gas and transverse temperature difference.

The configuration under study consists in a waveguide filled with a perfect gas initially at rest. A plane standing acoustic wave of angular frequency ω is installed inside the channel. The channel has a length L and a half-width R . Figure 1 shows the flow domain, the symmetry conditions and the thermal boundary conditions. The reference state corresponds to uniform temperature T_0 , density ρ_0 , pressure p_0 . The corresponding sound velocity is $c_0 = \sqrt{\gamma p_0 / \rho_0}$, with γ the ratio of specific heats. The angular frequency is equal to ω_0 corresponding to the acoustic standing wave resonating at its first mode along x (so-called $\lambda/2$ mode), in the case of a non-viscous gas ($\omega_0 = \pi c_0 / L$). The channel length is large compared to its width, $L \gg R$. The effects of gravity are not included in this study.

In the following, coordinates x, y and velocity components u, v correspond respectively to the axial and transverse directions. The origin is at the centre of the channel. Pressure, density and temperature are denoted respectively p, ρ and T . The following non-dimensional quantities are used:

$$\hat{y} = y/\delta_v, \quad \hat{x} = x/L, \quad \hat{R} = R/\delta_v, \quad \hat{L} = L/\delta_v, \quad (2.1a-d)$$

where $\delta_v = \sqrt{2\mu/(\rho_0\omega_0)}$ is the oscillating viscous boundary layer thickness, μ being the dynamic viscosity of the gas. For symmetry reasons only a half-channel is considered, that is, the velocity and temperature fields are calculated and shown for $-1/2 \leq \hat{x} \leq 1/2$ and $0 \leq \hat{y} \leq \hat{R}$ only. The propagation of a low amplitude plane acoustic wave is associated with a perturbation of the initial state (defined by p_0, ρ_m and T_m) for the fluid yielding

$$p = p_0 + p', \quad u = u', \quad v = v', \quad T = T_m + T', \quad \rho = \rho_m + \rho'. \quad (2.2a-e)$$

We introduce the complex acoustic amplitudes $\tilde{p}, \tilde{\rho}, \tilde{u}, \tilde{v}, \tilde{T}$ such that $p' = Re(\tilde{p} \exp(i2\pi\hat{t}))$, $\rho' = Re(\tilde{\rho} \exp(i2\pi\hat{t}))$, etc., where $\hat{t} = \omega_0/(2\pi)t$ is the non-dimensional time.

Using Reynolds decomposition, any fluid variable ϕ is separated into a fluctuating, periodic, component ϕ' , and a steady component $\bar{\phi}$ according to

$$\phi = \bar{\phi} + \phi', \quad (2.3)$$

where the overline denotes the average over an acoustic period. It should be noted that the averaged product of variables ϕ and ψ writes

$$\overline{\phi\psi} = \bar{\phi}\bar{\psi} + \overline{\phi'\psi'}. \quad (2.4)$$

It is assumed that the transport properties of the gas such as specific heats c_p and c_v , heat conductivity k and viscosity μ are constant, since the effect of their variation with temperature is expected to be very small for the range of temperature variations under study. Only gases with Prandtl number $Pr < 1$ are considered here (where $Pr = \mu c_p/k$).

The wall temperature is constant and equal to the reference temperature T_0 . The temperature difference in the fluid between the wall and the resonator axis is noted ΔT . As stated before, for our application, ΔT is supposed to be small, that is $\Theta = (\Delta T/T_0) \ll 1$. This corresponds to temperature differences of few degrees when working at room temperature. In the following, terms in $O(\Theta^2)$ and smaller will be neglected. Axial symmetry for temperature induces $\partial T/\partial \hat{y}|_{\hat{y}=0} = 0$.

The initial temperature distribution is taken as the simplest function $T_m(\hat{y})$ satisfying both boundary and symmetry conditions

$$\frac{T_m}{T_0} = 1 + \Theta \left(1 - \frac{\hat{y}^2}{\hat{R}^2} \right) = f(\hat{y}). \quad (2.5)$$

This temperature distribution can be obtained by adding a source term $Q = 2k(\Delta T/R^2)$ in the energy equation, which in the absence of fluid motion reduces to $k(\partial^2 T_m/\partial x^2 + \partial^2 T_m/\partial y^2) = -Q$.

The equation of state for a perfect gas is $p = r\rho T$ (where $r = c_p - c_v$), resulting for the average state in the approximate equation $p_0 = r\rho_m T_m$, where the averaged fluctuating term $\overline{\rho'T'}$ is neglected (since it is second order in Mach number).

The temperature distribution (2.5) induces a density distribution in order to satisfy the equation of state $p_0 = r\rho_m T_m$, and the average density $\rho_m(\hat{y})$ takes the form

$$\frac{\rho_m}{\rho_0} = \frac{1}{f(\hat{y})}. \quad (2.6)$$

The imposed temperature distribution also induces a modification of the acoustic quantities. The following paragraph is devoted to establish the modified expression of the acoustic field.

2.1. Acoustics

Since $R \ll L$ the acoustic wave is plane. For the configuration under study $(\partial u'/\partial x)/(\partial u'/\partial y)$ scales as $\delta_v/\lambda \ll 1$, therefore $\partial^2 u'/\partial x^2 \ll \partial^2 u'/\partial y^2$ and the first-order

equations governing the acoustics are

$$\left. \begin{aligned} \frac{c_0}{2} \frac{\partial \rho'}{\partial \hat{t}} + \rho_m \frac{\partial u'}{\partial \hat{x}} + \hat{L} \frac{\partial}{\partial \hat{y}} (\rho_m v') &= 0, \\ \rho_m \frac{c_0}{2} \frac{\partial u'}{\partial \hat{t}} + \frac{\partial p'}{\partial \hat{x}} &= \rho_0 \frac{\pi}{2} c_0 \frac{\partial^2 u'}{\partial \hat{y}^2}, \\ \frac{\partial p'}{\partial \hat{y}} &= 0, \\ \rho_m \frac{\partial T'}{\partial \hat{t}} &= \rho_0 \frac{\pi}{Pr} \frac{\partial^2 T'}{\partial \hat{y}^2} + \frac{1}{c_p} \frac{\partial p'}{\partial \hat{t}}. \end{aligned} \right\} \quad (2.7a-d)$$

The first-order equation of state for density is

$$\frac{\rho'}{\rho_m} = \frac{p'}{p_0} - \frac{T'}{T_m}. \quad (2.8)$$

The boundary and symmetry conditions for u' , v' and T' with respect to \hat{y} give

$$\left. \begin{aligned} u' = 0 \text{ at } \hat{y} = \hat{R}; \quad \frac{\partial u'}{\partial \hat{y}} = 0 \text{ at } \hat{y} = 0, \\ v' = 0 \text{ at } \hat{y} = \hat{R} \quad \text{and} \quad \text{at } \hat{y} = 0, \\ T' = 0 \text{ at } \hat{y} = \hat{R}; \quad \frac{\partial T'}{\partial \hat{y}} = 0 \text{ at } \hat{y} = 0. \end{aligned} \right\} \quad (2.9a-c)$$

Considering that the acoustic wave is plane, the acoustic pressure amplitude \tilde{p} is supposed to be real and of the form

$$\tilde{p} = \rho_0 c_0 U_{ac} \sin(\pi \hat{x}). \quad (2.10)$$

The complex acoustic velocity amplitude \tilde{u} should verify the following equation:

$$i\tilde{u} - \frac{1}{2} f(\hat{y}) \frac{\partial^2 \tilde{u}}{\partial \hat{y}^2} = -\frac{1}{\rho_0 \pi c_0} f(\hat{y}) \frac{d\tilde{p}}{d\hat{x}}. \quad (2.11)$$

Because we were not able to find an exact formal solution for (2.11), the following approximate solution is proposed $\tilde{u} = \tilde{u}_1 f(\hat{y})$, where \tilde{u}_1 is the solution of

$$i\tilde{u}_1 - \frac{1}{2} \frac{\partial^2 \tilde{u}_1}{\partial \hat{y}^2} = -\frac{1}{\rho_0 \pi c_0} \frac{d\tilde{p}}{d\hat{x}}, \quad (2.12)$$

that is the usual equation written when temperature is homogeneous. The corresponding solution for \tilde{u}_1 is

$$\tilde{u}_1 = \frac{i}{\rho_0 \pi c_0} (1 - \exp((1+i)(\hat{y} - \hat{R}))) \frac{d\tilde{p}}{d\hat{x}}. \quad (2.13)$$

Therefore \tilde{u} is equal to

$$\tilde{u} = i U_{ac} f(\hat{y}) (1 - \exp((1+i)(\hat{y} - \hat{R}))) \cos(\pi \hat{x}). \quad (2.14)$$

In order to test the validity of this approximation, \tilde{u} is replaced in (2.11), resulting in

$$i\tilde{u} - \frac{1}{2} f(\hat{y}) \frac{\partial^2 \tilde{u}}{\partial \hat{y}^2} = -\frac{1}{\rho_0 \pi c_0} f(\hat{y}) \frac{d\tilde{p}}{d\hat{x}} \left[1 + \delta(\Theta, \hat{y}, \hat{R}) \right], \quad (2.15)$$

with $\delta(\Theta, \hat{y}, \hat{R}) = \Theta / \hat{R}^2 (-i + \exp((1+i)(\hat{y} - \hat{R}))) (i + \hat{R}^2 - 2(1-i)\hat{y} - \hat{y}^2)$.

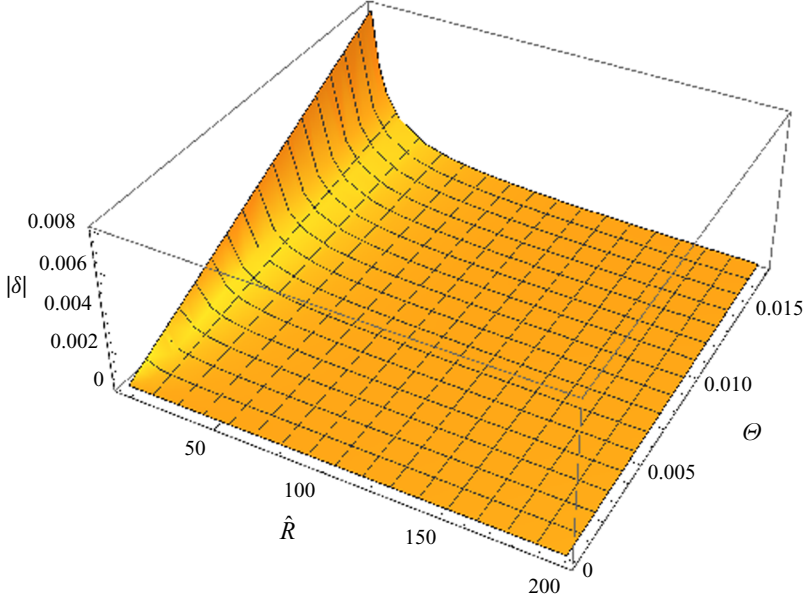


Figure 4. Values of $|\delta(\Theta, \hat{R}, \hat{R})|$; Θ varies between 0 and $5/294$, \hat{R} between 6 and 200.

The residual function δ (shown in figure 4) has maximum modulus values for $\hat{y} = \hat{R}$, where $|\delta(\Theta, \hat{R}, \hat{R})| = 2\sqrt{2}(\Theta/\hat{R})$. Therefore, $|\delta(\Theta, \hat{R}, \hat{R})|$ remains less than 8×10^{-3} for $0 \leq \Theta \leq 5/T_0$ ($T_0 = 294$ K) and $6 \leq \hat{R} \leq 200$. The applications under study in the present paper correspond to a small enough transverse temperature gradient and large enough guides to validate the approximation of the solution of (2.11) by (2.14).

The oscillating temperature amplitude \tilde{T} verifies an equation similar to (2.11)

$$i\tilde{T} - \frac{1}{2Pr}f(\hat{y})\frac{\partial^2\tilde{T}}{\partial\hat{y}^2} = i\frac{1}{\rho_0c_p}f(\hat{y})\tilde{p}. \quad (2.16)$$

Following the same approach as for the velocity amplitude, the solution is approximated as

$$\tilde{T} = \frac{1}{\rho_0c_p}f(\hat{y})(1 - \exp((1+i)\sqrt{Pr}(\hat{y} - \hat{R})))\tilde{p}. \quad (2.17)$$

Finally the transverse acoustic velocity amplitude \tilde{v} is calculated by integrating the continuity equation. The density amplitude $\tilde{\rho}$ is obtained from the equation of state

$$\frac{\tilde{\rho}}{\rho_m} = \frac{\tilde{p}}{p_0} - \frac{\tilde{T}}{T_m}. \quad (2.18)$$

Substituting (2.18) in (2.7a) gives the following differential equation for \tilde{v} :

$$\hat{L}f(\hat{y})\frac{\partial}{\partial\hat{y}}\left(\frac{1}{f(\hat{y})}\tilde{v}\right) = -i\pi c_0\left(\frac{\tilde{p}}{p_0} - \frac{1}{f(\hat{y})}\frac{\tilde{T}}{T_0}\right) - \frac{\partial\tilde{u}}{\partial\hat{x}}. \quad (2.19)$$

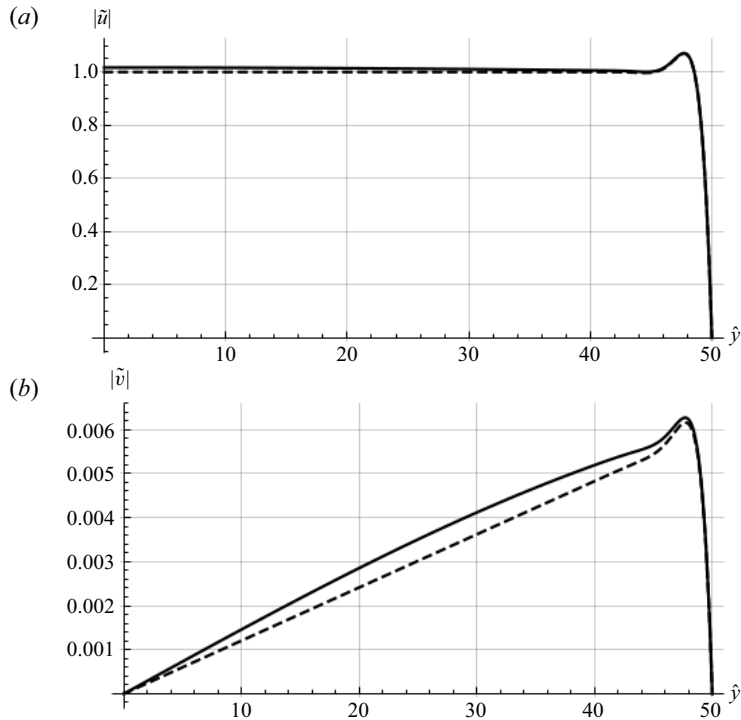


Figure 5. Transverse profiles of axial ($\hat{x} = 0$, *a*) and transverse ($\hat{x} = -1/2$, *b*) acoustic velocities (m s^{-1}), $\hat{R} = 50$. With $\Delta T = 5$ K (solid), $\Delta T = 0$ K (dashed) and $U_{ac} = 1 \text{ m s}^{-1}$, air at standard conditions.

The resulting expression for \tilde{v} provided by formal integration is very lengthy and will not be given here. Instead, [figure 5](#) shows the transverse profiles of \tilde{u} and \tilde{v} for $\Delta T = 0$ and 5 K. This figure shows that the two velocity component profiles are not modified inside the boundary layer. Outside the boundary layer, the axial velocity amplitude is barely modified (maximum variation of $5/294 = 1.7\%$) while the transverse velocity amplitude varies by a maximum of approximately 15%. We have previously shown in Daru *et al.* (2017a) that such variations on the transverse velocity amplitude can lead to significant modifications of the streaming flow. In that previous study, the modification of the transverse velocity was identified as coming from the nonlinear interaction between streaming and acoustic flows. The present development confirms that, as shown by Chini *et al.* (2014) and Michel & Chini (2019), another source of modification of transverse acoustic velocity and thus of acoustic streaming is the presence of a transverse temperature gradient, via a baroclinic mechanism.

As can be seen in [figure 5](#), the influence of the inhomogeneity of temperature is less apparent on the axial acoustic velocity than on the radial one. However, as shown in the next section, both components have comparable resulting influence on the streaming velocity.

2.2. Streaming flow

In this section, the effect of a small transverse temperature gradient on acoustic streaming is investigated using the acoustic quantities calculated in the previous section.

Thermal effects on Rayleigh streaming

Using the hypothesis that $\partial^2 \bar{u} / \partial x^2 \ll \partial^2 \bar{u} / \partial y^2$, the Navier–Stokes equations are averaged in time over one acoustic period, linearized and simplified as

$$\left. \begin{aligned} \frac{\partial}{\partial \hat{x}} (\rho_m \bar{u}) + \hat{L} \frac{\partial}{\partial \hat{y}} (\rho_m \bar{v}) &= -\frac{\partial}{\partial \hat{x}} (\overline{\rho' u'}) - \hat{L} \frac{\partial}{\partial \hat{y}} (\overline{\rho' v'}), \\ \rho_0 \frac{\pi}{2} c_0 \frac{\partial^2 \bar{u}}{\partial \hat{y}^2} &= \frac{\partial \bar{p}}{\partial \hat{x}} + \frac{\partial}{\partial \hat{x}} (\rho_m \overline{u' u'}) + \hat{L} \frac{\partial}{\partial \hat{y}} (\rho_m \overline{u' v'}), \\ \frac{\partial \bar{p}}{\partial \hat{y}} &= 0, \end{aligned} \right\} \quad (2.20)$$

where \bar{u} , \bar{v} and \bar{p} are the averaged velocity components and pressure, and the fluid mean density ρ_m is given by (2.6). The averaged terms on the right-hand side of system (2.20) are the averaged products (Reynolds stresses) of acoustic quantities. They are the sources of streaming. In the present study, two of the three sources of streaming that were investigated in Baltean-Carlès *et al.* (2019) are taken into consideration. This is because the third source is negligible for the configuration presently studied.

The boundary conditions for \bar{u} and \bar{v} are

$$\left. \begin{aligned} \bar{u} = 0 \text{ at } \hat{y} = \hat{R}; \quad \frac{\partial \bar{u}}{\partial \hat{y}} = 0 \text{ at } \hat{y} = 0, \\ \bar{v} = 0 \text{ at } \hat{y} = 0 \quad \text{and} \quad \hat{y} = \hat{R}, \\ \int_0^{\hat{R}} \rho_m \bar{u} \, d\hat{y} = 0. \end{aligned} \right\} \quad (2.21a-c)$$

The third condition in (2.21a–c) is obtained by integrating the continuity equation in (2.20) over the half-width of the channel.

Following Westervelt (1953), we take the curl of the momentum equations, which eliminates pressure, and use the assumption $1/L\partial\bar{v}/\partial\hat{x} \ll 1/\delta_v\partial\bar{u}/\partial\hat{y}$, to obtain

$$\frac{\pi}{2} c_0 \frac{\partial^3 \bar{u}}{\partial \hat{y}^3} = \frac{\partial}{\partial \hat{y}} \left(\frac{1}{f(\hat{y})} \frac{\partial (\overline{u' u'})}{\partial \hat{x}} \right) + \hat{L} \frac{\partial^2}{\partial \hat{y}^2} \left(\frac{1}{f(\hat{y})} \overline{u' v'} \right). \quad (2.22)$$

Since the formulae are very lengthy, formal integration is simplified for large guides and a small transverse temperature gradient by neglecting terms proportional to $e^{-\hat{R}}$ and smaller as well as terms quadratic in Θ and smaller.

The solution of the problem given by (2.22) is the superposition of solutions associated with each source term. Therefore, in the following, the two problems associated with the two source terms in (2.22) are solved successively.

2.2.1. First problem

The equation to be solved for the axial streaming velocity corresponding to the first source term is

$$\frac{\pi}{2} c_0 \frac{\partial^3 \bar{u}_1}{\partial \hat{y}^3} = \frac{\partial}{\partial \hat{y}} \left(\frac{1}{f(\hat{y})} \frac{\partial (\overline{u' u'})}{\partial \hat{x}} \right). \quad (2.23)$$

The solution results in a lengthy expression not developed here. However, along the axis when smaller terms can be neglected the solution can be simplified into

$$\frac{\bar{u}_1(\hat{x}, 0)}{\bar{u}_R} = \frac{2}{3} - \frac{5}{\hat{R}} - \frac{4}{45} \Theta \hat{R}^2, \quad (2.24)$$

where the reference Rayleigh solution has been used for normalization

$$\bar{u}_R = -\frac{3}{16} \frac{U_{ac}^2}{c_0} \sin(2\pi\hat{x}). \quad (2.25)$$

2.2.2. Second problem

The equation to be solved for the axial streaming velocity corresponding to the second source term writes

$$\frac{\pi}{2} c_0 \frac{\partial^3 \bar{u}_2}{\partial \hat{y}^3} = \hat{L} \frac{\partial^2}{\partial \hat{y}^2} \left(\frac{1}{f(\hat{y})} \overline{u'v'} \right). \quad (2.26)$$

Again, only the streaming velocity along the axis is given here, neglecting smaller terms and normalizing with Rayleigh's solution; it writes

$$\begin{aligned} \frac{\bar{u}_2(\hat{x}, 0)}{\bar{u}_R} &= \frac{1}{3} + \frac{2}{3} \frac{(\gamma - 1)\sqrt{Pr}}{1 + Pr} \\ &+ \frac{1}{6\hat{R}} \left[1 + \frac{2(\gamma - 1)}{Pr^{3/2}(1 + Pr)^2} (3 + 5Pr + 6Pr^{3/2} - 8Pr^2 - 4Pr^3) \right] + \frac{2}{45} \Theta \hat{R}^2. \end{aligned} \quad (2.27)$$

Note that the additional term in Θ is of a sign opposite to the one in the first problem.

2.2.3. Total axial streaming velocity

The total axial streaming velocity is given by $\bar{u} = \bar{u}_1 + \bar{u}_2$, resulting along the axis in

$$\begin{aligned} \frac{\bar{u}(\hat{x}, 0)}{\bar{u}_R} &= 1 + \frac{2}{3} \frac{(\gamma - 1)\sqrt{Pr}}{1 + Pr} - \frac{29}{6} \frac{1}{\hat{R}} - \frac{2}{45} \Theta \hat{R}^2 \\ &+ \frac{1}{6\hat{R}} \left[\frac{2(\gamma - 1)}{Pr^{3/2}(1 + Pr)^2} (3 + 5Pr + 6Pr^{3/2} - 8Pr^2 - 4Pr^3) \right]. \end{aligned} \quad (2.28)$$

The first two terms in the right-hand side of (2.28) correspond to the solution given by Rott (1974), and also to that given in Hamilton *et al.* (2003) in the limit of wide channels. This expression depicts the huge effect of transverse temperature variation on the streaming velocity field, due to the term that varies in \hat{R}^2 . Note that, under the hypotheses of the present study, the order of magnitude of the term $\frac{2}{45} \Theta \hat{R}^2$ is up to unity. This term, proportional to $\Theta \hat{R}^2$, may be at the origin of the generation of an additional vortex. Expression (2.28) shows that this additional vortex rotates in the same direction as the Rayleigh outer cell if Θ is negative (corresponding to the fluid near the axis being colder than the fluid near the wall), increasing the global amplitude of the outer streaming flow. In the opposite case, where $\Theta \geq 0$ (fluid near the axis hotter than near the wall), the additional cell rotates in the opposite direction, thus decreasing the outer streaming flow. This phenomenon can eventually result in streaming flowing reversely with respect to the usual Rayleigh streaming flow. Unlike the case where $\Theta = 0$, for which the fluctuating velocity field is rotational only in the boundary layer, when $\Theta \neq 0$ it is rotational in the whole fluid which induces a baroclinic-type streaming flow as shown in Chini *et al.* (2014) and Michel & Chini (2019). In our case, there are two mechanisms creating streaming: one inside the boundary layer, as for classical Rayleigh streaming, and one related to the transverse temperature gradient. This is consistent with findings by Cervenka &

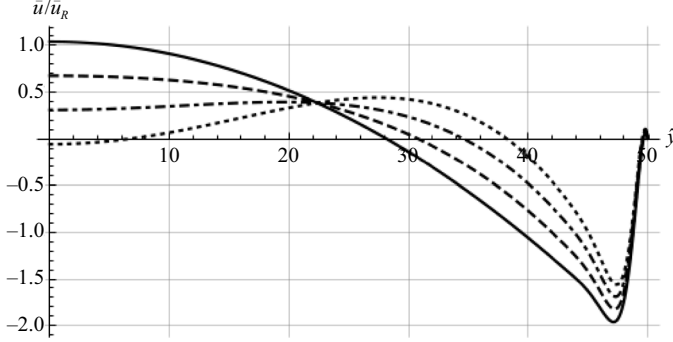


Figure 6. Transverse profiles of axial streaming velocity normalized by Rayleigh streaming for different transverse temperature gradients. Here, $\hat{R} = 50$, $\hat{x} = -1/4$, Θ varies between 0 (solid line) and $3K/T_0$ (dotted line).

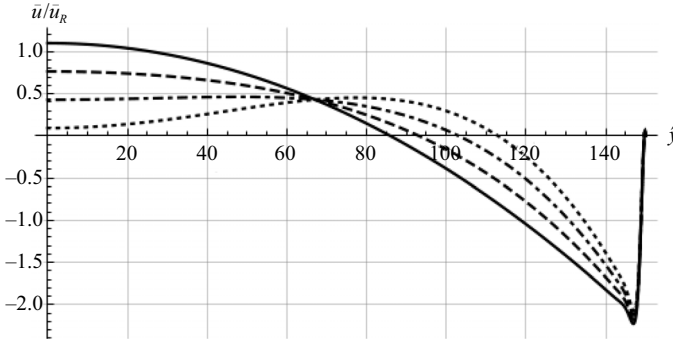


Figure 7. Transverse profiles of axial streaming velocity normalized by Rayleigh streaming for different transverse temperature gradients. Here, $\hat{R} = 150$, $\hat{x} = -1/4$, Θ varies between 0 (solid line) and $0.3K/T_0$ (dotted line).

Bednarrik (2017, 2018). The interest of the present work is to provide simple expressions that quantify this phenomenon in cases of small temperature gradients.

Let us consider the condition for reversing streaming flow for two guide widths, with air at standard conditions ($T_0 = 294$ K). Figure 6 shows the axial streaming velocity normalized with the reference Rayleigh solution \bar{u}_R as a function of \hat{y} for $\hat{R} = 50$ and for four values of Θ ($\Theta \times T_0 = 0, 1, 2, 3$ K). In this case, a temperature gradient of a few degrees changes drastically the velocity, which becomes negative on the axis. Figure 7 shows analogous curves for a wider guide, corresponding to $\hat{R} = 150$, and for four values of Θ ($\Theta \times T_0 = 0, 0.1, 0.2, 0.3$ K). Here, the effect of temperature is even more important: only a few tenths of a degree is enough to reverse the velocity on the axis. Comparing these two figures illustrates the fact that, as \hat{R} increases, the ΔT needed to reverse the streaming flow on the axis decreases since it is inversely proportional to \hat{R}^2 .

2.2.4. Comparison with direct numerical simulation

To validate the simplifications made in our analytical study, we run a numerical simulation using the code described in Daru *et al.* (2013), that solves the complete compressible Navier–Stokes equations. In the code, the acoustic wave is created by shaking the channel periodically in the axial direction. The displacement amplitude is small in order to remain

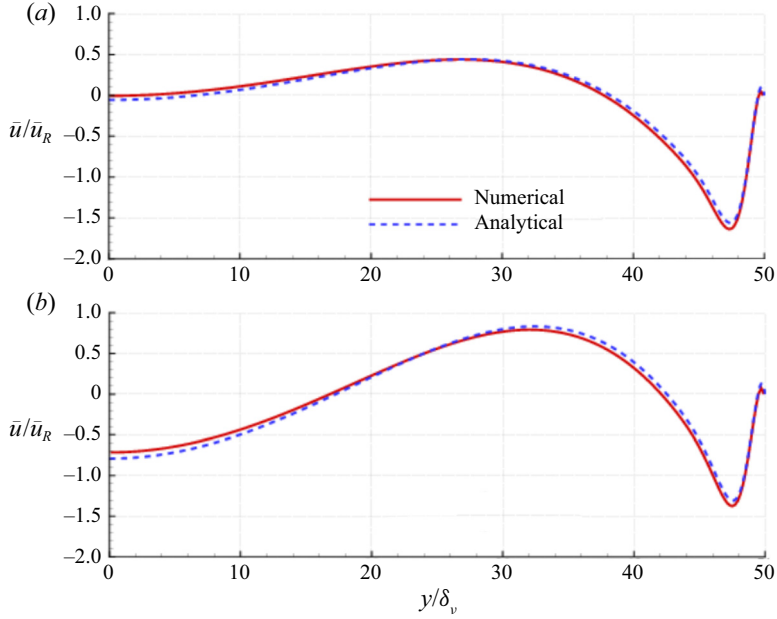


Figure 8. Comparison between numerical simulation and analytical solution, $\hat{R} = 50$, $\hat{x} = -1/4$;
(a) $\Theta = 3 \text{ K}/T_0$, (b) $\Theta = 5 \text{ K}/T_0$.

in the monofrequency acoustic regime. An initial temperature profile (2.5) is imposed, and maintained by adding the corresponding source term in the energy equation. The configuration used in this case corresponds to an acoustic wave frequency of 20 000 Hz in a plane channel of width $\hat{R} = 50$, filled with air at standard conditions ($T_0 = 294 \text{ K}$). The results are shown in figure 8, showing the normalized axial streaming velocity along the transverse direction, in the middle of the streaming cells $\hat{x} = -1/4$. A very good agreement between numerical and analytical solutions is observed, showing that our analytical approach gives a very good approximation to the complete problem.

3. Temperature distribution along the resonator wall

In order to describe the interaction between acoustic streaming and thermal effects in a standing waveguide, as stated in the Introduction, we now focus on the resonator mean wall temperature and its longitudinal variation. The wall temperature distribution is a result of the combination of thermoacoustic effect in the fluid, heat conduction in the wall and possible convection by the outside air.

The channel walls are assumed to be of thickness w and made with a material of thermal conductivity k_s , density ρ_s and specific heat c_s . The initial temperature field is supposed to be uniform in the fluid, in the wall and outside the waveguide, that is $T = T_0$ everywhere. Three different thermal boundary conditions on the resonator wall are encountered in experimental studies: isothermal, uncontrolled and insulated. In the following, the temperature distribution along the wall is set first for the so-called ‘isothermal’ condition, where the outer side of the wall is maintained at temperature T_0 . Secondly, the influence of convection outside the guide is taken into account by using a heat transfer coefficient. This second case should mimic the so-called ‘uncontrolled’ boundary conditions in experimental studies. The third boundary condition encountered

in experimental studies is the insulated condition. In experiments, there always remains a very small heat exchange with the outside air. Therefore, this condition is equivalent to an uncontrolled boundary condition with a much smaller effective wall conductivity.

3.1. Isothermal condition

In the isothermal case, the temperature of the fluid outside the guide is supposed constant and equal to T_0 . The equation governing heat transfer by the fluid inside the waveguide is written by averaging over an acoustic period and neglecting terms smaller than second order in M (Swift 1988)

$$\frac{\partial}{\partial \hat{x}} \overline{u'T'} + \hat{L} \frac{\partial}{\partial \hat{y}} \overline{v'T'} = \frac{1}{2} \pi c_0 \frac{1}{Pr} \frac{\partial^2 \bar{T}}{\partial \hat{y}^2}. \quad (3.1)$$

Integrating (3.1) from 0 to \hat{R} yields

$$\int_0^{\hat{R}} \frac{\partial}{\partial \hat{x}} \overline{u'T'} dy = \frac{1}{2} \pi c_0 \frac{1}{Pr} \frac{\partial \bar{T}}{\partial \hat{y}} \Big|_{\hat{y}=\hat{R}}. \quad (3.2)$$

It is assumed that a steady state is established within the wall so that the temperature profile is linear across the wall, that is between $\hat{y} = \hat{R}$ and $\hat{y} = \hat{R} + \hat{w}$, with $\hat{w} = w/\delta_v$. Let us denote by $\bar{T}_{w,in}$ the mean temperature on the inner side of the wall. The boundary condition for the heat flux at the wall is

$$k \frac{\partial \bar{T}}{\partial \hat{y}} \Big|_{\hat{y}=\hat{R}} = k_s \frac{T_0 - \bar{T}_{w,in}}{\hat{w}}. \quad (3.3)$$

Combining (3.2) and (3.3) gives an expression for the temperature of the inner side of the wall

$$\bar{T}_{w,in} = T_0 - \frac{2Pr}{\pi c_0} \frac{k}{k_s} \hat{w} \int_0^{\hat{R}} \frac{\partial}{\partial \hat{x}} \overline{u'T'} dy. \quad (3.4)$$

In order to calculate the integral in (3.4), we use the classical acoustic velocity u' given by (2.14) with $f(\hat{y}) = 1$

$$u' = Re[iU_{ac}(1 - \exp((1+i)(\hat{y} - \hat{R}))) \cos(\pi\hat{x}) \exp(i2\pi\hat{t})], \quad (3.5)$$

and the fluctuating temperature for conducting walls given by Swift (1988) and simplified for large enough guides ($\hat{R} \gtrsim 6$)

$$T' = Re \left[\frac{1}{\rho_0 c_p} p' \left(1 - \frac{1}{1 + \varepsilon_0} \exp((1+i)\sqrt{Pr}(\hat{y} - \hat{R})) \right) \right]. \quad (3.6)$$

In this expression $p' = \tilde{p} \exp(i2\pi\hat{t})$, with \tilde{p} given by (2.10) and $\varepsilon_0 = \sqrt{(\rho_0/\rho_s)(k/k_s)(c_p/c_s)}$. Also, the convective term depending on the average temperature gradient in the x direction has not been included, as opposed to Swift (1988). This is because in Swift (1988), the axial temperature gradient was supposed to be of order $O(1)$, which is not the case in our study, where the initial temperature is uniform.

Replacing the expressions for the first-order quantities, the simplified solution (neglecting terms smaller than $e^{-\hat{R}}$) for $\bar{T}_{w,in}$ is obtained after time and space integration

in (3.4) as

$$\bar{T}_{w,in} = T_0 + \hat{w} \frac{k}{k_s} \frac{U_{ac}^2}{2c_p} \sqrt{Pr} \left[\frac{-1 + Pr^{3/2} + \varepsilon_0 \sqrt{Pr}(1 + Pr)}{(1 + \varepsilon_0)(1 + Pr)} \right] \cos(2\pi\hat{x}). \quad (3.7)$$

It is apparent from (3.7) that the inner-wall temperature depends neither on the length of the channel nor on its width. It only depends on the thickness of the wall, the fluid to solid conductivity ratio, the acoustic velocity amplitude, the Prandtl number and the fluid specific heat c_p . The parameter ε_0 being generally very small has a very small effect on the wall temperature. Note that a similar dependence on the Prandtl number was reported by Gopinath *et al.* (1998) in the expression of the mean driving temperature gradient at the inner fluid–solid interface in a resonant channel.

3.2. Uncontrolled condition

In the ‘uncontrolled’ condition, the air surrounding the guide is heated and not maintained at the reference temperature T_0 . In this case, convection occurs and the outside boundary condition is modified following Newton’s law of cooling. Taking into account heat conduction within the wall results in

$$k \left. \frac{\partial \bar{T}}{\partial y} \right|_R = k_s \frac{\bar{T}_{w,out} - \bar{T}_{w,in}}{w} = h(T_0 - \bar{T}_{w,out}), \quad (3.8)$$

where $\bar{T}_{w,out}$ is the outside wall temperature and h the heat transfer coefficient. Now, T_0 is the temperature outside of the heated layer of air surrounding the guide. For convection in calm air, h takes values between 2 and 25 (e.g. Incropera *et al.* 2013). The resulting expression for the inner-wall temperature becomes

$$\bar{T}_{w,in} = T_0 + \left(\frac{k}{k_s} \hat{w} + \frac{k}{h\delta_v} \right) \frac{U_{ac}^2}{2c_p} \sqrt{Pr} \left[\frac{-1 + Pr^{3/2} + \varepsilon_0 \sqrt{Pr}(1 + Pr)}{(1 + \varepsilon_0)(1 + Pr)} \right] \cos(2\pi\hat{x}). \quad (3.9)$$

Equation (3.9) shows that the surrounding air layer has a very strong influence on the wall temperature, since k/k_s is generally small, implying that the dominant term in the coefficient $((k/k_s)\hat{w} + k/(h\delta_v))$ is $k/(h\delta_v)$. The outside wall temperature takes the form

$$\bar{T}_{w,out} = T_0 + \frac{k_s}{k_s + h\hat{w}\delta_v} (\bar{T}_{w,in} - T_0). \quad (3.10)$$

As an example, figure 9 shows both temperature differences $\bar{T}_{w,in} - T_0$ and $\bar{T}_{w,out} - T_0$ as a function of \hat{x} , in a case representative of experiments, corresponding to $\hat{R} = 150$, air at standard conditions, $k_s = 1.2 \text{ W (m K)}^{-1}$, $\hat{w} = 20$, $h = 3 \text{ W m}^{-2} \text{ K}^{-1}$, $U_{ac} = 10 \text{ m s}^{-1}$, $\delta_v = 1.4 \times 10^{-4} \text{ m}$. As expected, the wall is cooled in the middle of the channel, and heated at the edges (Merkli & Thomann 1975). The temperature difference between the inner and outer wall is very small. Indeed, if the heat transfer coefficient h is varied between 2 and 25 $\text{W m}^{-2} \text{ K}^{-1}$, the ratio $(\bar{T}_{w,out} - T_0)/(\bar{T}_{w,in} - T_0)$ varies from 0.997 to 0.96. It is thus adequate to consider that the mean wall temperature \bar{T}_w is the same inside and outside the wall $\bar{T}_w \simeq \bar{T}_{w,in} \simeq \bar{T}_{w,out}$.

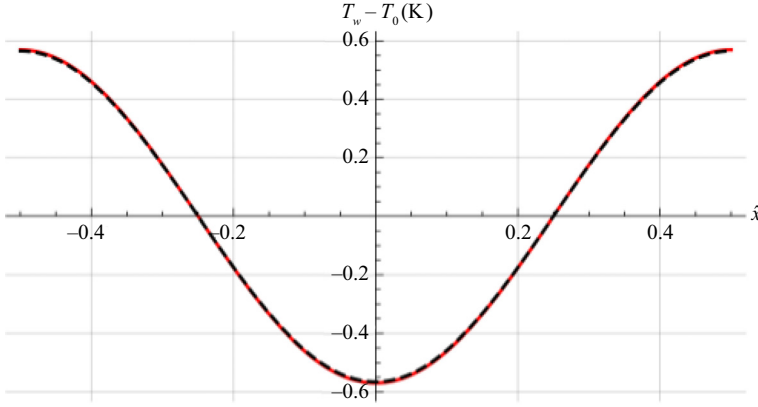


Figure 9. Temperature difference, in Kelvin, $T_{w,in} - T_0$ (solid red) and $T_{w,out} - T_0$ (dashed black); $\hat{R} = 150$, air at standard conditions, $k_s = 1.2 \text{ W (m K)}^{-1}$, $\hat{w} = 20$, $h = 3 \text{ W m}^{-2} \text{ K}^{-1}$, $U_{ac} = 10 \text{ m s}^{-1}$, $\delta_v = 1.4 \times 10^{-4} \text{ m}$.

Therefore, using (3.9), the longitudinal wall temperature difference ΔT_{long} between the acoustic velocity node ($\hat{x} = -1/2$) and the antinode ($\hat{x} = 0$) can be written as

$$\Delta T_{long} = \left(\frac{k}{k_s} \hat{w} + \frac{k}{h\delta_v} \right) \frac{1}{c_p} \sqrt{Pr} \left[\frac{-1 + Pr^{3/2} + \varepsilon_0 \sqrt{Pr}(1 + Pr)}{(1 + \varepsilon_0)(1 + Pr)} \right] U_{ac}^2, \quad (3.11)$$

which shows that ΔT_{long} is proportional to the square of the acoustic velocity amplitude, U_{ac}^2 . This was verified experimentally, and will allow us to estimate the heat transfer coefficient h (see § 5).

4. Transition criterion

The transition in streaming pattern occurs when the streaming velocity vanishes on the guide axis in between the acoustic node and antinode. Equation (2.28) shows that the streaming velocity on the axis can vanish or become negative for $\Theta \geq 0$, when neglecting terms in $1/\hat{R}$ as a first approximation, if

$$\frac{\Delta T}{T_0} \geq \frac{45}{2} \frac{1}{\hat{R}^2} \left(1 + \frac{2(\gamma - 1)\sqrt{Pr}}{1 + Pr} \right), \quad (4.1)$$

where ΔT is the transverse temperature difference. As previously stated, ΔT is proportional to the longitudinal temperature difference between cold and hot regions generated by the thermoacoustic effect. We choose to estimate the average value of ΔT at the middle of the cell, corresponding to $\hat{x} = -1/4$. For this longitudinal position, the wall temperature is T_0 and the temperature on the axis is approximately equal to $\bar{T}_{w,in}$ ($\hat{x} = -1/2$) because of convective heat transport (see figure 3). Neglecting small terms in ε_0 in (3.9), this results in

$$\Delta T = \bar{T}_{w,in}(\hat{x} = -1/2) - T_0 = \left(\frac{k}{k_s} \hat{w} + \frac{k}{h\delta_v} \right) \frac{U_{ac}^2}{2c_p} \sqrt{Pr} \left[\frac{1 - Pr^{3/2}}{(1 + Pr)} \right], \quad (4.2)$$

Experiment	R cm	w mm	$\lambda/2$ m	δ_v mm	T_0 K	$T_{w,max}$ K
Thompson <i>et al.</i> (2005)	2.325	2	0.56	0.124	296	297.1
Reyt <i>et al.</i> (2014)	1.96	2.5	0.712	0.139	291	297.25

Table 1. Geometrical and thermal parameters of experiments reported in Thompson *et al.* (2005) and Reyt *et al.* (2014).

which, using the relation $c_p T_0 = c_0^2 / (\gamma - 1)$, can equivalently be written as

$$\frac{\Delta T}{T_0} = \frac{1}{2} \left(\frac{k}{k_s} \hat{w} + \frac{k}{h\delta_v} \right) (\gamma - 1) M^2 \sqrt{Pr} \frac{1 - Pr^{3/2}}{1 + Pr}, \quad (4.3)$$

where M is the Mach number.

Replacing (4.3) in (4.1) results in

$$\frac{1}{2} \left(\frac{k}{k_s} \hat{w} + \frac{k}{h\delta_v} \right) (\gamma - 1) M^2 \sqrt{Pr} \frac{1 - Pr^{3/2}}{1 + Pr} \geq \frac{45}{2} \frac{1}{\hat{R}^2} \left(1 + \frac{2(\gamma - 1)\sqrt{Pr}}{1 + Pr} \right), \quad (4.4)$$

or, equivalently, since $Re_{NL} = M^2 \hat{R}^2$

$$Re_{NL} \geq K_C, \quad (4.5)$$

where

$$K_C = 30 \frac{k_s/k}{\hat{w} + k_s/(h\delta_v)} \left(1 + \frac{3}{2} \frac{1 + Pr}{(\gamma - 1)\sqrt{Pr}} \right) \frac{1}{(1 - Pr^{3/2})}. \quad (4.6)$$

This shows that the parameter Re_{NL} is indeed adequate for the study of streaming at high acoustic levels, and K_C given by (4.6) is a new parameter characterizing the transition of the streaming pattern. The value of K_C depends on the thermo-physical characteristics of the fluid and the wall, as well as on the wave frequency and on the heat transfer coefficient. In the case of isothermal wall conditions (no air convection effects), the term $k_s/(h\delta_v)$ in (4.6) should be set to zero. Therefore the value of K_C depends strongly on the wall temperature boundary conditions.

5. Comparison with experimental results

In order to compare results from the previous sections with experimental data available in the literature, we have selected experiments by Thompson *et al.* (2005) and Reyt *et al.* (2014) that include temperature and Rayleigh streaming velocity measurements for low and high acoustic amplitudes and several thermal boundary conditions. Note that these experiments were conducted in cylindrical waveguides and therefore some discrepancy with our theoretical results (obtained for a plane geometry) is to be expected. Geometrical and thermal parameters related to both experiments are detailed in table 1, with $T_{w,max}$ the highest value of T_w reported.

In both cases, air at standard conditions was used as the working fluid, so that $\rho_0 = 1.2 \text{ kg m}^{-3}$, $\mu = 1.795 \times 10^{-5} \text{ kg m}^{-1} \text{ s}^{-1}$, $k = 0.026 \text{ W m}^{-1} \text{ K}^{-1}$, $c_p = 1004.5 \text{ J kg}^{-1} \text{ K}^{-1}$ resulting in $Pr = 0.726$. The tube wall was constituted of borosilicate glass (Thompson *et al.* 2005) or Pyrex (Reyt *et al.* 2014) of similar thermophysical properties, $\rho_s = 2230 \text{ kg m}^{-3}$, $k_s = 1.2 \text{ W m}^{-1} \text{ K}^{-1}$, $c_s = 830 \text{ J kg}^{-1} \text{ K}^{-1}$.

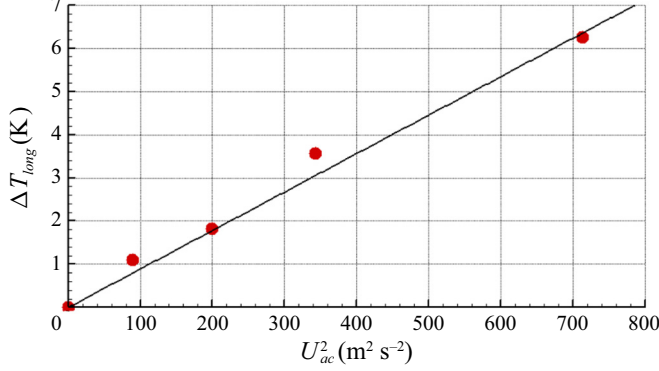


Figure 10. Longitudinal wall temperature difference (in Kelvin) between the acoustic node and antinode ΔT_{long} as a function of U_{ac}^2 . Unpublished data corresponding to experiments in Rey *et al.* (2014).

Ref. experiment	h W m ⁻² K ⁻¹	Ra_D	\overline{Nu}_D	\bar{h} W m ⁻² K ⁻¹
Thompson <i>et al.</i> (2005)	2.35	10 862	4.47	2.5
Rey <i>et al.</i> (2014)	3.19	38 909	6.12	4.1

Table 2. Values of the parameters.

In the experiments reported in Thompson *et al.* (2005), (uncontrolled boundary condition), the inner temperature was found to be less than 0.1 K higher than the outer temperature. This confirms that it is adequate to consider that the wall temperature is the same inside and outside the wall. Thompson *et al.* (2005) also verified experimentally that the longitudinal wall temperature difference between acoustic velocity node and antinode (ΔT_{long}) is proportional to the square of the acoustic velocity amplitude, even for high acoustic amplitudes, in agreement with (3.11).

In figure 10, the dots indicate the longitudinal outer-wall temperature differences across a streaming cell measured with thermocouples in the experimental set-up described in Rey *et al.* (2014), in the case of uncontrolled thermal conditions for several acoustic velocity amplitudes. A best linear fit (solid line in figure 10) shows that, as previously, ΔT_{long} is proportional to U_{ac}^2 with a slope equal to 0.0089 K s² m⁻². We assume also that the wall temperature is the same inside and outside the wall. Using (3.11) gives an estimate of the heat transfer coefficient h . Similarly, h is estimated for the experiments of Thompson *et al.* (2005). Corresponding values of h are reported in table 2 for both reference experiments.

For a horizontal cylinder of radius R with outside wall temperature T_w , placed in air at temperature T_0 , the average heat transfer coefficient \bar{h} can be calculated using the following correlation giving the global Nusselt coefficient \overline{Nu}_D (Churchill & Chu 1975), valid for $Ra_D \lesssim 10^{12}$:

$$\overline{Nu}_D = \frac{\bar{h}D}{k} = \left(0.6 + \frac{0.387Ra_D^{1/6}}{\left(1 + \left(\frac{0.559}{Pr} \right)^{9/16} \right)^{8/27}} \right)^2, \quad (5.1)$$

with $Ra_D = (2g\rho_0c_p/(\mu k))(T_w - T_0)/(T_w + T_0)D^3$ the Rayleigh number based on the tube diameter $D = 2R$ and g the gravitational acceleration. The Rayleigh number Ra_D is calculated based on $T_{w,max}$.

Corresponding values of Ra_D , \overline{Nu}_D and \bar{h} are reported in [table 2](#) for both reference experiments. The values of h and \bar{h} are very comparable and therefore reliable.

In the case of experiment by Thompson *et al.* (2005), using the value found for h ($h = 2.35 \text{ W m}^{-2} \text{ K}^{-1}$) in (4.6) yields $K_C = 7.57$. In Thompson *et al.* (2005), the axial streaming velocity was shown to almost vanish on the axis for $Re_{NL} = 10$ and to reach zero on the axis for $Re_{NL} = 20$ in the case of uncontrolled thermal boundary conditions. Therefore, we expect K_C to fall in between these two values. The agreement is pretty good keeping in mind that the theoretical approach was conducted in the plane case. In cylindrical tubes at low acoustic amplitudes, the maximum axial streaming velocity on the axis is twice that of the plane case. This could explain that K_C slightly underestimates the transition in streaming pattern.

The situation is very similar in Reyt *et al.* (2014). Using the value found for h ($h = 3.19 \text{ W m}^{-2} \text{ K}^{-1}$) in (4.6) yields $K_C = 11$. In these experiments, the axial streaming velocity was shown to almost vanish on the axis for $Re_{NL} = 14$ and to reach zero on the axis for $Re_{NL} = 30$ in the uncontrolled case. Here again, K_C slightly underestimates the transition. However, our prediction of the Re_{NL} value corresponding to the transition is higher for the experiments in Reyt *et al.* (2014) than for those of Thompson *et al.* (2005), for the same ratio as the measured values of Re_{NL} .

Conditions corresponding to the change in streaming flow patterns are very different in the case of isothermal walls. In this case, for values of parameters corresponding to Thompson *et al.* (2005), we obtain $K_C = 931$. This shows that, in these experiments, the Mach number should be larger than 0.16 in order to satisfy the inequality (4.5), implying $U_{ac} \geq 56 \text{ m s}^{-1}$. In Thompson *et al.* (2005), the largest acoustic amplitude, equal to 8.6 m s^{-1} (corresponding to $Re_{NL} = 20$), is much smaller than this limit velocity. This is why the streaming flow measured by Thompson *et al.* (2005) in the isothermal case is almost unchanged compared to the low acoustic amplitude case.

6. Conclusion

Coupling between inhomogeneity of temperature and Rayleigh streaming flow in a half-wavelength resonating waveguide at high acoustic levels was analysed by following a combined formal and phenomenological approach. In such a waveguide, a longitudinal temperature difference in the boundary layer near the wall is first created by the thermoacoustic effect. Due to convective transport by the streaming flow towards the acoustic velocity antinode near the waveguide axis and towards the acoustic velocity node near the wall, a large zone of transverse temperature stratification appears in the central part of the streaming cells.

We thus started by solving equations for both acoustic and streaming flows with an imposed background transversely stratified temperature distribution. For this, we solved the linear equations of streaming flow, by considering the effect of the dominant Reynolds stress source terms. It was determined (as in Cervenka & Bednarrik 2018) that when the fluid near the axis is hotter than close to the wall, the total axial streaming velocity can vanish on the guide axis in between the acoustic velocity node and antinode. This eventually results in streaming flowing in the reverse sense with respect to the usual Rayleigh streaming flow, hence a modification of the streaming pattern. The temperature reorganization therefore has a large impact on streaming patterns. In fact, the streaming

pattern is modified primarily as a consequence of the temperature reorganization. We concluded that, by solving linear equations for both acoustic and streaming flows with an imposed background that has a transversely stratified temperature distribution, we could reproduce the mechanism of the modification of the streaming flow pattern at high acoustic levels.

In order to estimate the transverse temperature difference to be expected at high acoustic levels, we started by estimating the wall temperature. Inner and outer wall temperature distributions were calculated from the combined thermoacoustic effect in the fluid, heat conduction in the wall and convection from the outside air. It was shown that, for all considered applications, the temperature difference between the inner and outer wall remains very small.

At high acoustic levels, since heat is transported by the streaming flow towards the acoustic velocity antinode near the waveguide axis, the maximum transverse temperature difference was expected to be proportional to the longitudinal temperature difference between cold and hot regions generated by the thermoacoustic effect. The results were then combined to exhibit a new criterion characterizing the transition in streaming pattern: the transition occurs when the classical nonlinear Reynolds parameter Re_{NL} becomes greater than a transition parameter we called K_C . The value of K_C depends on the thermophysical characteristics of the fluid and the solid constituting the tube wall, as well as on the wave frequency. This new criterion allows us to explain the role of thermal boundary conditions on the dynamics of streaming flow at high acoustic levels. In particular, it can explain the different behaviours observed under uncontrolled or isothermal boundary conditions that had not been understood previously. In the case of isothermal wall conditions, the transition value becomes so large that it is not usually attained so that streaming Rayleigh flow patterns are almost unmodified. For ‘uncontrolled’ thermal boundary conditions, the new criterion gives a lower bound for the transition in the streaming pattern.

To conclude, we highlighted in this paper the interaction between the mean temperature distribution and the streaming flow. This interaction is somehow similar to, but with a much stronger effect than, the nonlinear coupling between acoustic and streaming flows exhibited numerically in Daru *et al.* (2017a) in the isentropic case. A complete numerical simulation in a configuration similar to existing experiments is under study and will be addressed in a follow-up paper.

Declaration of interests. The authors report no conflict of interest.

Author ORCIDs.

-  Virginie Daru <https://orcid.org/0000-0002-5410-0141>;
-  Catherine Weisman <https://orcid.org/0000-0003-4082-4023>;
-  Diana Baltean-Carlès <https://orcid.org/0000-0001-7236-4557>;
-  H el ene Bailliet <https://orcid.org/0000-0003-2625-014X>.

REFERENCES

- AKTAS, M.K. & OZGUMUS, T. 2010 The effects of acoustic streaming on thermal convection in an enclosure with differentially heated horizontal walls. *Intl J. Heat Mass Transfer* **53** (23–24), 5289–5297.
- BAILLIET, H., GUSEV, V., RASPET, R. & HILLER, R.A. 2001 Acoustic streaming in closed thermoacoustic devices. *J. Acoust. Soc. Am.* **110**, 1808–1821.
- BALTEAN-CARL ES, D., DARU, V., WEISMAN, C., TABAKOVA, S. & BAILLIET, H. 2019 An unexpected balance between outer Rayleigh streaming sources. *J. Fluid Mech.* **867**, 985–1011.
- BOLURIAAN, S. & MORRIS, P.J. 2003 Numerical simulation of acoustic streaming in high amplitude standing wave. In *9th AIAA/CEAS Aeroacoustics Conference and Exhibit 12–14 May 2003, Hilton Head, South Carolina*, AIAA 2003-3152.

- CERVENKA, M. & BEDNARRIK, M. 2017 Effect of inhomogeneous temperature fields on acoustic streaming structures in resonators. *J. Acoust. Soc. Am.* **141**, 4418–4426.
- CERVENKA, M. & BEDNARRIK, M. 2018 Numerical study of the influence of the convective heat transport on acoustic streaming in a standing wave. *J. Acoust. Soc. Am.* **143**, 727–734.
- CHINI, G.P., MALECHA, Z. & DREEBEN, T.B. 2014 Large-amplitude acoustic streaming. *J. Fluid Mech.* **744**, 329–351.
- CHURCHILL, S.W. & CHU, H.H.S. 1975 Correlating equations for laminar and turbulent free convection from a horizontal cylinder. *Intl J. Heat Mass Transfer* **18** (9), 1323–1329.
- DARU, V., BALTEAN-CARLÈS, D., WEISMAN, C., DEBESSE, P. & GANDIKOTA, G. 2013 Two-dimensional numerical simulations of nonlinear acoustic streaming in standing waves. *Wave Motion* **50**, 955–963.
- DARU, V., REYT, I., BAILLIET, H., WEISMAN, C. & BALTEAN-CARLÈS, D. 2017a Acoustic and streaming velocity components in a resonant wave guide at high acoustic levels. *J. Acoust. Soc. Am.* **141** (1), 563–574.
- DARU, V., WEISMAN, C., BALTEAN-CARLÈS, D., REYT, I. & BAILLIET, H. 2017b Inertial effects on acoustic Rayleigh streaming flow: transient and established regimes. *Wave Motion* **74**, 1–17.
- GOPINATH, A. & MILLS, A.F. 1994 Convective heat transfer due to acoustic streaming across the ends of a Kundt tube. *Trans. ASME: J. Heat Transfer* **102** (3), 47–53.
- GOPINATH, A., TAIT, N.L. & GARRETT, S.L. 1998 Thermoacoustic streaming in a resonant channel: the time averaged temperature distribution. *J. Acoust. Soc. Am.* **102** (3), 1388–1405.
- HAMILTON, M.F., ILINSKII, Y.A. & ZABOLOTSKAYA, E.A. 2003 Thermal effects on acoustic streaming in standing waves. *J. Acoust. Soc. Am.* **114** (6), 3092–3101.
- INCROPERA, F.P., DEWIT, D.P., BERGMAN, T.L. & LAVINE, A.S. 2013 *Principles of Heat and Mass Transfer*, 7th edn. John Wiley & Sons.
- LIN, Y. & FAROUK, B. 2008 Heat transfer in a rectangular chamber with differentially heated horizontal walls: effects of a vibrating sidewall. *Intl J. Heat Mass Transfer* **51**, 3179–3189.
- MENGUY, L. & GILBERT, J. 2000 Non-linear Acoustic Streaming Accompanying a Plane Stationary Wave in a Guide. *Acta Acust.* **86**, 249–259.
- MERKLI, P. & THOMANN, H. 1975 Thermoacoustic effects in a resonance tube. *J. Fluid Mech.* **70**, 161–177.
- MICHEL, G. & CHINI, G.P. 2019 Strong wave-mean-flow coupling in baroclinic acoustic streaming. *J. Fluid Mech.* **858**, 536–564.
- MOREAU, S., BAILLIET, H. & VALIÈRE, J.-C. 2008 Measurements of inner and outer streaming vortices in a standing waveguide using laser Doppler velocimetry. *J. Acoust. Soc. Am.* **123** (2), 640–647.
- NABAVI, M., SIDDIQUI, K. & DARGAHI, J. 2008 Influence of differentially heated horizontal walls on the streaming shape and velocity in a standing wave resonator. *Intl Commun. Heat Mass Transfer* **35**, 1061–1064.
- OLSON, J.R. & SWIFT, G.W. 1997 Acoustic streaming in pulse tube refrigerators: tapered pulse tubes. *Cryogenics* **37**, 769–776.
- RAYLEIGH, LORD 1884 On the circulation of air observed in Kundt tubes, and on some allied acoustical problems. *Phil. Trans. R. Soc. Lond. A* **175**, 1–21.
- REYT, I., DARU, V., BAILLIET, H., MOREAU, S., VALIÈRE, J.-C., BALTEAN-CARLÈS, D. & WEISMAN, C. 2013 Fast acoustic streaming in standing waves: generation of an additional outer streaming cell. *J. Acoust. Soc. Am.* **134**, 1791–1801.
- REYT, I., BAILLIET, H. & VALIÈRE, J.-C. 2014 Experimental investigation of acoustic streaming in a cylindrical wave guide up to high streaming Reynolds numbers. *J. Acoust. Soc. Am.* **135** (1), 27–37.
- ROTT, N. 1974 The influence of heat conduction on acoustic streaming. *Z. Angew. Math. Phys.* **25**, 417–421.
- SWIFT, G.W. 1988 Thermoacoustic engines. *J. Acoust. Soc. Am.* **84**, 1145–1180.
- THOMPSON, M.W., ATCHLEY, A.A. & MACCARONE, M.J. 2005 Influences of a temperature gradient and fluid inertia on acoustic streaming in a standing wave. *J. Acoust. Soc. Am.* **117** (4), 1839–1849.
- WESTERVELT, P.J. 1953 The theory of steady rotational flow generated by a sound field. *J. Acoust. Soc. Am.* **25**, 60–67.
- WOLFRAM RESEARCH, INC. 2018 Mathematica, Version 11.3, Champaign, IL.