



HAL
open science

Predictive simulation of post-stroke gait with functional electrical stimulation

Gilmar Santos, Eike Jakubowitz, Nicolas Pronost, Thomas Bonis, Christof Hurschler

► **To cite this version:**

Gilmar Santos, Eike Jakubowitz, Nicolas Pronost, Thomas Bonis, Christof Hurschler. Predictive simulation of post-stroke gait with functional electrical stimulation. *Scientific Reports*, 2021, 11 (1), pp.21351. <10.1038/s41598-021-00658-z>. <hal-03542660>

HAL Id: hal-03542660

<https://hal.science/hal-03542660v1>

Submitted on 14 Mar 2025

HAL is a multi-disciplinary open access archive for the deposit and dissemination of scientific research documents, whether they are published or not. The documents may come from teaching and research institutions in France or abroad, or from public or private research centers.

L'archive ouverte pluridisciplinaire **HAL**, est destinée au dépôt et à la diffusion de documents scientifiques de niveau recherche, publiés ou non, émanant des établissements d'enseignement et de recherche français ou étrangers, des laboratoires publics ou privés.



Distributed under a Creative Commons CC BY 4.0 - Attribution - International License



OPEN

Predictive simulation of post-stroke gait with functional electrical stimulation

Gilmar F. Santos¹✉, Eike Jakobowitz¹, Nicolas Pronost², Thomas Bonis² & Christof Hurschler¹

Post-stroke patients present various gait abnormalities such as drop foot, stiff-knee gait (SKG), and knee hyperextension. Functional electrical stimulation (FES) improves drop foot gait although the mechanistic basis for this effect is not well understood. To answer this question, we evaluated the gait of a post-stroke patient walking with and without FES by inverse dynamics analysis and compared the results to an optimal control framework. The effect of FES and cause-effect relationship of changes in knee and ankle muscle strength were investigated; personalized muscle–tendon parameters allowed the prediction of pathologic gait. We also predicted healthy gait patterns at different speeds to simulate the subject walking without impairment. The passive moment of the knee played an important role in the estimation of muscle force with knee hyperextension, which was decreased during FES and knee extensor strengthening. Weakening the knee extensors and strengthening the flexors improved SKG. During FES, weak ankle plantarflexors and strong ankle dorsiflexors resulted in increased ankle dorsiflexion, which reduced drop foot. FES also improved gait speed and reduced circumduction. These findings provide insight into compensatory strategies adopted by post-stroke patients that can guide the design of individualized rehabilitation and treatment programs.

Patients who have suffered a stroke can present with various typical gait abnormalities including drop foot¹, stiff-knee gait (SKG)², and knee hyperextension³, which may lead to an asymmetric gait pattern. Slow gait speed and asymmetry of spatiotemporal, kinematic, and kinetic parameters are also often observed^{4,5}. Spatial asymmetry is typically calculated using inter-limb step length asymmetry, but post-stroke patients may walk with longer paretic steps or longer nonparetic steps^{6,7}. Impaired paretic propulsion may be related to longer paretic steps^{6,8}. Duration of gait phases such as swing time and stance time could be used in the analysis of temporal symmetry, which could be related to vertical ground reaction force (GRF) symmetry and self-selected gait speed^{7,9}. The causes of these impairments have been debated, with no real consensus^{10,11}. This is likely due to the complexity of different residuals as well as the variable pathologies of stroke patients, which also make it challenging to establish a cause-effect relationship for pathologic changes in the gait of those patients.

The above-mentioned pathologic gait patterns have specific characteristics. Knee hyperextension occurs during the stance phase of gait, when the knee joint extends beyond the neutral anatomic position; a peak knee extension of up to 22° has been reported in stroke patients³. Several factors are thought to contribute to knee hyperextension including early calf muscle activity¹⁰, ankle plantarflexor muscle weakness, flat foot or forefoot landing patterns^{3,11,12}, or knee extensor muscle weakness¹³. SKG is characterized by a lack of knee flexion during the swing phase of gait. Possible causes are overactivity of the ankle plantarflexor or rectus femoris muscles in pre-swing, weakened knee flexor muscles¹⁰, rectus femoris hyperreflexia¹⁴, low knee flexion velocity¹⁵, or impaired ankle push-off². In drop foot, patients are unable to achieve dorsiflexion of the foot during the swing phase of gait, which is presumably caused by peroneal nerve paralysis or paresis, ankle dorsiflexor muscle weakness, or ankle plantarflexor muscle overactivity and shortening^{1,10,16}.

Rehabilitation of post-stroke patients typically involves muscle strength and robot-assisted gait training^{11,17}, the use of orthoses¹¹, botulinum toxin injection¹⁸, and functional electrical stimulation (FES)¹⁹. An example of FES that has been shown to improve the gait of drop foot patients is the ActiGait device (Ottobock, Duderstadt, Germany), which is an implantable stimulator placed around the peroneal nerve^{20,21}. The neuroprosthesis includes a heel switch that differentiates stance and swing phases during the gait cycle. Based on this information, an adjustable pulse is induced within the stimulator, the motor branch of the common peroneal nerve is

¹Laboratory for Biomechanics and Biomaterials, Department of Orthopedics, Hannover Medical School, Hannover, Germany. ²CNRS LIRIS, Université Claude Bernard Lyon 1, Université de Lyon, Lyon, France. ✉email: FernandesdosSantos.Gilmar@mh-hannover.de

stimulated, and a timely adequate dorsiflexion is achieved^{21,22}. This FES may reduce the risk of falling and increase self-selected gait speed^{22,23}.

Inverse dynamics (ID) is a method that is widely used to estimate the joint moments of human gait. As this approach typically depends on known kinematics and GRF, changes in the musculoskeletal system that significantly affect gait patterns cannot be investigated. Although there is a higher degree of complexity in terms of formulating the problem, predictive simulation methods can provide a better understanding of pathologic gait and the effects of treatments as new motion patterns can be predicted. The ability to choose the speed of simulated gait is also a useful feature of predictive simulation, given its influence on kinematic, kinetic, and muscle activity patterns^{24,25}. Several predictive simulation approaches have been proposed. One method is based on forward dynamics simulation where the motion is computed via integration. Stable gait patterns have been generated by this method using reflex-based controllers²⁶ or neural networks²⁷. Gait prediction may also be formulated as an optimal control problem^{28,29}, where an objective function that represents optimization criteria is minimized. System dynamics and other constraints are satisfied and the states and controls of the model such as joint kinematics and muscle recruitment patterns are optimized. The optimal control approach has demonstrated a lower computational cost in the predictive simulation of human gait using a three dimensional (3D) model²⁹. When the predictive simulation includes a term in the objective function that minimizes the difference between experimental and estimated kinematics and GRF, it is also referred to as tracking simulation. To date, predictive simulation methods have been used to investigate pathologic gait patterns in cerebral palsy³⁰ as well as in post-stroke³¹ and crutch-assisted walking³². However, few studies using complex 3D muscle-driven models compared predictions to experimental pathologic gait data and the clinical application of these methods still presents challenges such as inter-individual variability^{33,34}, which is greater in stroke patients than in healthy individuals¹⁰.

We have observed different gait patterns and responses to FES among stroke patients with drop foot pathology in our gait laboratory. The FES device provides us with an opportunity to characterize gait in our patients with the device deactivated or activated²². Both gait conditions were analyzed using ID for a patient presenting with considerable gait disturbance. Tracking simulation, in which there is a trade-off between predicted and prescribed gait patterns, was performed in order to determine how the predictive model formulation affects the observed pathologic gait pattern compared to ID by solving an optimal control problem using a published model²⁹. A predictive simulation of a healthy gait pattern was generated using a similar approach to estimate how the subject would walk without impairment. In order to predict impaired gait, a parameter estimation was performed whereby altered muscle–tendon parameters were calculated based on observed joint moments³⁰. The predictive simulation of the impaired gait represented gait abnormalities without the use of experimental kinematics and kinetics. This allowed us to perform exploratory cause-effect analyses for the pathologic gait and compare the results of the different methods and conditions. The objectives of this work were as follows: (1) to explore the main differences between ID, tracking, and predictive simulation results of a post-stroke patient; (2) to investigate the possible causes of three gait abnormalities presented by the subject (i.e., knee hyperextension, SKG, and drop foot); and (3) to evaluate the effects of FES on the gait of the patient.

Methods

Experimental data. We investigated a post-stroke patient (female; age, 47.2 years; height, 1.60 m; body weight, 63.8 kg) treated with the ActiGait FES device. The patient suffered a left hemispheric hemorrhagic stroke 10.3 years prior to, and received FES treatment approximately 1 year prior to the measurements. The study was approved by the local Ethics Committee at Hannover Medical School (MHH) under reference no. 2489 and the patient provided written and informed consent to participate. All methods were performed in accordance with relevant guidelines and regulations. Overground gait was performed at a self-selected gait speed. Motion capture data were obtained with an optical infrared system consisting of 12 MX cameras controlled by Nexus v1.8.5 software (Vicon Motion System, Oxford, UK) at a sampling rate of 200 Hz and with the retroreflective markers attached to the subject in accordance with the Plug-in Gait model³⁵. GRF was measured at 1 kHz using two force plates (Type BP400600; AMTI, Watertown, MA, USA). Two conditions of the patient were recorded in the same session: the unassisted drop foot (DF) condition and the FES condition using the ActiGait device on the right (ipsilateral) paretic side of the patient. The pulse timing and duration of the device was adjusted to the patient in order to obtain functional movement of the ankle and a physiologic gait pattern (standard stimulation parameters 1.1 mA, 20–30 Hz; impulse duration of 70 μ s)^{21,22}. The preferred gait speed in the DF and FES conditions were 0.55 ± 0.04 and 0.95 ± 0.05 m/s, respectively. A static trial used to scale the model was recorded and four gait trials for each condition were processed.

Inverse kinematics, ID, kinematics analysis, and static optimization were performed using the default tools in OpenSim v3.3³⁶ to obtain joint angles, moments and velocities, and muscle forces. The 3D lower body model gait2392 was used and the metatarsophalangeal joint was locked. Model scaling was performed in OpenSim using the static trial. The results obtained in OpenSim for each condition are referred to as ID results in the comparisons (ID-DF and ID-FES).

Optimal control problem formulation. Parameter estimation, tracking, and predictive simulation were formulated as an optimal control problem. The frameworks used in this study were developed by Falisse et al.^{29,30}. The optimal control problem was transcribed into a nonlinear programming problem using CasADi³⁷ and the resultant optimization problem was solved using IPOPT³⁸. Both software were implemented in MATLAB (R2019a). Direct collocation with a third-order Radau collocation scheme was used for transcription²⁹.

The tracking simulation included terms in the objective function that minimized the difference between the optimized variables and ID results. The objective function J_{Track} was defined as follows:

$$J_{Track} = \int_{ti}^{tf} \sum \left(W_{T1}(q - q_R)^2 + W_{T2}(Mj - Mj_R)^2 + W_{T3}(Fr - Fr_R)^2 + W_{T4}(Mr - Mr_R)^2 + W_{T5}a^2 + W_{T6}(\dot{q}^2 + \dot{a}^2 + \dot{Fm}^2) \right) dt, \quad (1)$$

where ti and tf are the initial and final times, respectively; q and Mj are the joint angle and moment, respectively; Fr and Mr are the ground reaction force and moment, respectively; the subscript R represents the experimental data; a and Fm are the muscle activation and tendon force, respectively; and W_{T1-6} are the weight factors.

Each trial of the ID was separately tracked and the weight factors varied between trials (Supplementary Table S3). The body model (21 degrees of freedom and 92 muscles) used in ID was adapted using Hill-type muscle-tendon model^{39,40} and Raasch's model^{41,42} to describe muscle activation dynamics. Muscle-tendon lengths, velocities, and moment arms were defined as polynomial function of joint positions and velocities^{29,43}. Foot-ground interaction was modeled as Hunt-Crossley contact^{36,44} using six spheres, the parameters of which were optimized during the tracking simulation. Additional details on the model can be found elsewhere²⁹.

The model included a formulation of passive joint moments, representing the effect of passive structures and generating a moment in the opposite direction when the joint angle exceeded a certain limit. The net internal joint moment was calculated as the sum of the passive moment and moment generated by the muscles. An exponential function was used to represent the passive joint moment M_{pass} :

$$M_{pass} = K_{pass1} \exp(K_{pass2}(q - \theta_{pass2})) + K_{pass3} \exp(K_{pass4}(q - \theta_{pass1})) - 0.001\dot{q}, \quad (2)$$

where $K_{pass1-4}$ are the stiffness parameters and $\theta_{pass1-2}$ are the joint angle limits. In order to investigate the effects of the passive moment generated during knee hyperextension, three sets of parameters that determine the passive knee flexion moment (K_{pass1} , K_{pass2} , and θ_{pass2}) were applied in the tracking simulation for DF. In the first parameter set (PM-Def), the default values of the passive moment parameters used by Falisse et al.²⁹ were applied. In a second set (PM-High), the parameters were changed to increase the passive knee flexion moment that can be attained. Finally, in a third set (PM-None), the extension angle limit was increased beyond the knee range of motion (ROM), resulting in no passive moment being generated. The specific values used are shown in Supplementary Table S1 and the resultant passive moment curves are shown in Supplementary Fig. S1. The tracking simulations of DF were performed with all three parameter sets (Track-DF_{PM-Def}, Track-DF_{PM-High}, and Track-DF_{PM-None}), while the tracking simulation of the FES condition (Track-FES) was performed using only the PM-High set.

The formulation and musculoskeletal model used in the predictive simulation were similar to those in the tracking simulation, but the objective function did not include the tracking terms. Thus, the gait pattern derived from the simulation was independent of the experimental (kinematics, kinetics and GRF) data. Other terms were included in the objective function J_{Pred} :

$$J_{Pred} = \int_{ti}^{tf} \sum \left(W_{P1}a^2 + W_{P2}\dot{E}^2 + W_{P3}\dot{q}^2 + W_{P4}(\dot{a}^2 + \dot{Fm}^2) \right) \frac{1}{Dist} dt, \quad (3)$$

where \dot{E} is the metabolic energy rate, $Dist$ is the distance traveled by the pelvis in the forward direction, and W_{P1-4} are the weight factors. Solving the optimal control problem with this objective function allowed the prediction of gait. Since the weight factors have an impact on the predicted gait pattern^{28,29}, the values were kept constant across all predictive simulations (Supplementary Table S3). The passive knee moment set PM-High was used. Gait speed was imposed but the stride time of the gait cycle was optimized. A complete gait cycle was simulated and periodicity was imposed.

In order to represent the healthy gait pattern, the predictive simulations of normal gait (Pred-Normal) were performed using the generic muscle-tendon parameters obtained after the static scaling in OpenSim (i.e., the same as those used in ID and tracking simulations). Two experimental and three faster gait speeds were used in the simulations: 0.55, 0.95, 1.10, 1.40, and 1.70 m/s (Pred-Normal_{0.55}, Pred-Normal_{0.95}, Pred-Normal_{1.10}, Pred-Normal_{1.40}, and Pred-Normal_{1.70}, respectively).

Predictive simulation of the DF condition (Pred-DF) was performed to investigate the effect of changes in the musculoskeletal system on pathologic gait. The simulation was performed at 0.55 m/s gait speed. In this case, the generic muscle-tendon parameters were replaced with personalized ones obtained in the parameter estimation, which was formulated as an optimal control problem³⁰ and the muscle redundancy problem was solved⁴⁰. The personalized muscle-tendon parameters for the patient performing the DF gait were estimated (additional details can be found in Supplementary Information, and values are presented in Supplementary Table S2). In order to investigate the causes of the above-mentioned gait abnormalities, the maximal isometric forces of the knee flexors (KF) and extensors (KE) and the ankle dorsiflexors (AD) and plantarflexors (AP) of Pred-DF were individually decreased and increased by 50%, representing weak and strong conditions, respectively (i.e., Weak-KF, Weak-KE, Weak-AD, Weak-AP, Strong-KF, Strong-KE, Strong-AD, and Strong-AP). The gait speed of the DF condition (0.55 m/s) was imposed in these simulations. Supplementary Table S5 shows the muscles spanning the knee and ankle and major muscles depicted in the figures. In order to investigate the effects of FES, the muscle activation weight factor W_{P1} of the objective function in Eq. (3) for the ankle dorsiflexor muscles was set to 1% of the value used in Pred-DF. This condition (Pred-FES) was performed at 0.95 m/s gait speed. Details of the settings used in tracking and predictive simulations can be found in the Supplementary Information. A sensitivity analysis was performed for the predictive simulations with different parameters altered (i.e., objective function weight factors, initial guess, metabolic energy model, parameters for foot-ground contact spheres, passive knee moment set, and muscle-tendon parameters [Supplementary Information]).

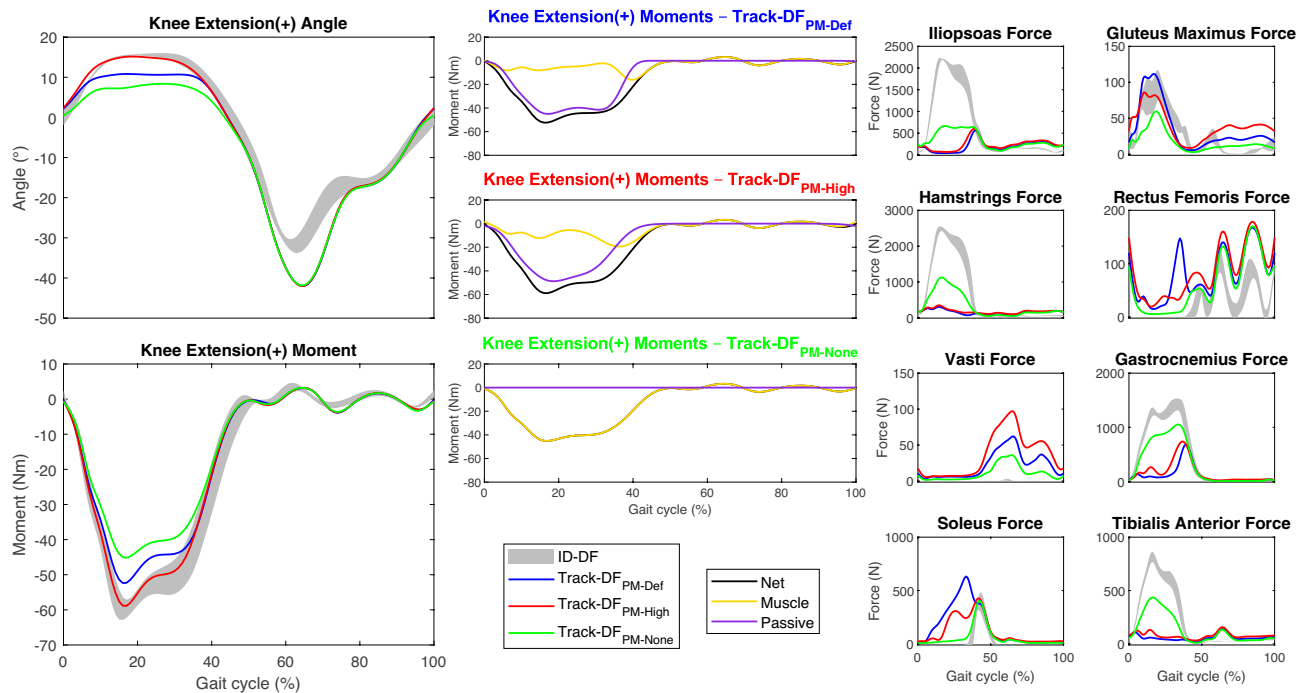


Figure 1. Influence of passive knee moment on the ID (mean \pm standard deviation) and tracking of gait in the DF condition (ipsilateral knee angle, moments, and major muscle forces).

Data processing. We used three metrics to evaluate gait abnormalities. For knee hyperextension, mean knee extension (MKE) angle from the initial contact to the end of the terminal stance phase of the gait cycle was calculated. For SKG, the peak of knee flexion (PKF) angle during the swing phase was calculated. The drop foot was represented by the mean ankle dorsiflexion (MAD) angle during the swing phase. Knee flexion velocity at toe-off, ankle push-off work, leg circumduction, and early and late braking impulses⁴⁵ were also computed. Early and late braking impulses were calculated as the areas of the posterior component of GRF curve (i.e., negative anterior-posterior GRF) preceding and following the propulsion, respectively. Circumduction was calculated as the maximum lateral displacement of the calcaneus body origin (tracking and prediction results) and of the ankle marker (ID results).

Since the ID and tracking simulation results were based on kinematic and GRF data collected during gait analysis, each condition had four trials; the mean and standard deviation were calculated after normalizing the gait cycle. Each predictive simulation condition yielded a single result that was also normalized. The ID and tracking results were filtered using a low-pass second-order Butterworth filter in MATLAB. All simulations were performed on the same workstation (3.60 GHz Intel Core i3 processor). The central processing unit time, number of iterations, and stride time of the simulations are presented in Supplementary Table S4.

Results

Passive knee moment. The passive component of the knee joint moment changed with the representation of passive moment in the DF condition (Fig. 1). Only Track-DF_{PM-High} was able to adequately represent the hyperextension and knee flexion moment of ID-DF during the stance phase. The MKE and mean knee moment during the same period in ID-DF were 12.3° and -41.6 Nm, respectively; the values in Track-DF_{PM-High} were similar at 12.4° and -39.8 Nm. The difference was greater in Track-DF_{PM-None} (6.4° and -31.4 Nm) and intermediate in Track-DF_{PM-Def} (9.2° and -35.7 Nm). As expected, no passive moment was observed in Track-DF_{PM-None} (Fig. 1 and Supplementary Fig. S1). Both ID-DF and Track-DF_{PM-None} resulted in high forces calculated for the iliopsoas, hamstrings, gastrocnemius, and tibialis anterior muscles during the stance phase (Fig. 1). There was good tracking of the ipsilateral joint angles and moments except for the PKF, peak ankle dorsiflexion, and ankle plantarflexion during the swing phase (Supplementary Fig. S2 and Video S1).

Muscle-tendon parameters. Pred-Normal_{0.55} did not reveal the abnormalities seen in Track-DF_{PM-High} and yielded a more natural gait, with the exception of hip angle, which showed reduced ROM (Fig. 2 and Supplementary Video S2). All of the joint moments were decreased except ankle dorsiflexion at the beginning of the gait cycle. On the other hand, Pred-DF showed knee hyperextension, SKG, and drop foot. MKE increased from -2.1° in Pred-Normal_{0.55} to 5.2° in Pred-DF, while PKF decreased from 51° to 35.2° and MAD decreased from 0.04° to -3.9°. Compared to Pred-DF, Strong-KE corrected knee hyperextension, created knee extension moment, and increased posterior GRF in the early stance phase while PKF was decreased (Fig. 2 and Supplementary Video S3). Strong-AD increased the ankle dorsiflexion angle and moment. Strong-AP and Strong-KF slightly improved knee hyperextension and SKG, respectively. The hip was most affected by Strong-KE, which

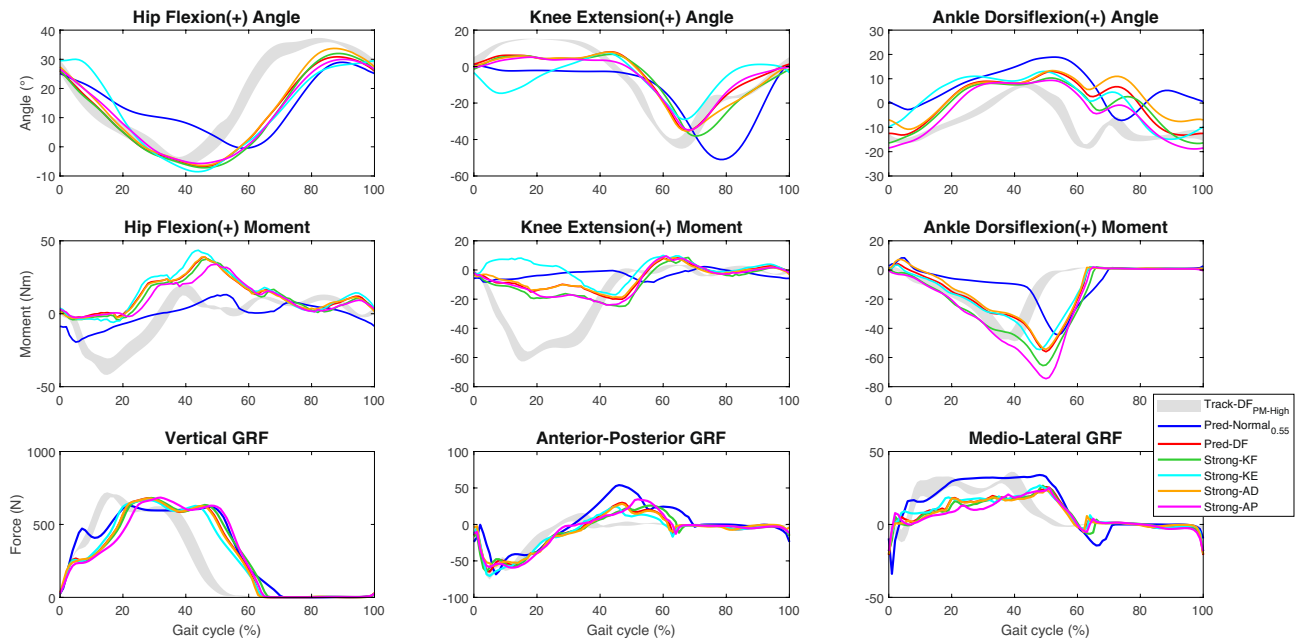


Figure 2. Influence of altered muscle–tendon parameters on Track-DF_{PM-High} (mean ± standard deviation), Pred-Normal_{0.55}, Pred-DF, and Strong gait (ipsilateral hip, knee, and ankle angles, moments, and GRF). All simulations were performed at 0.55 m/s.

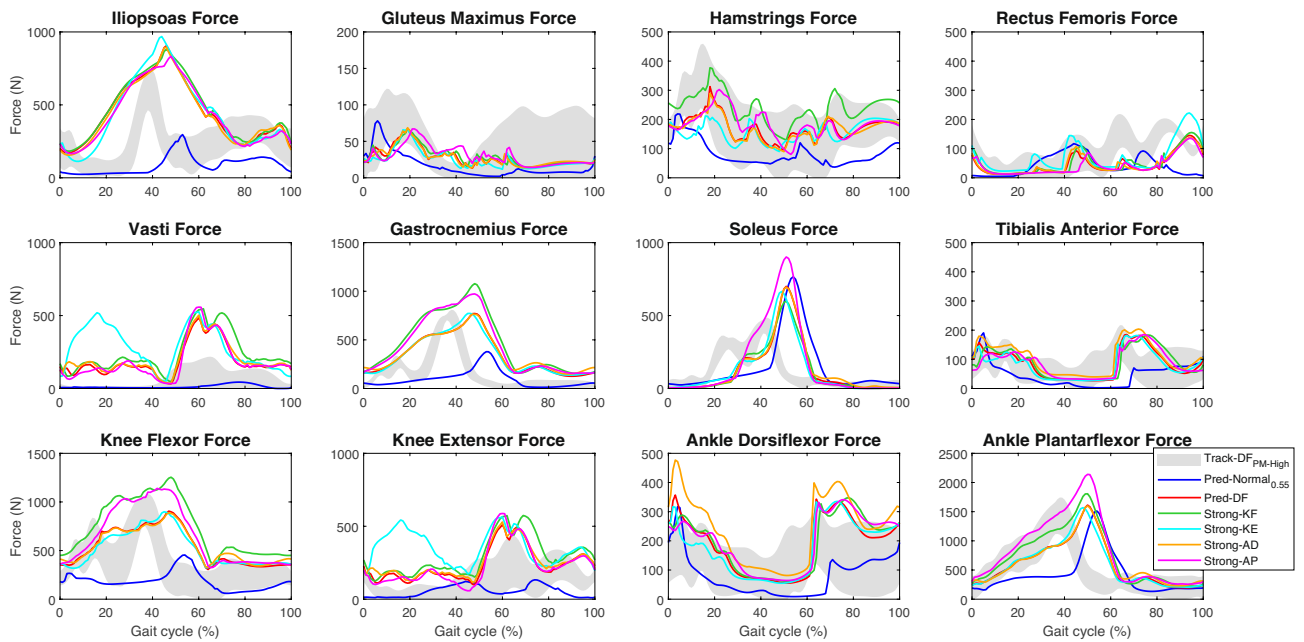


Figure 3. Influence of altered muscle–tendon parameters on Track-DF_{PM-High} (mean ± standard deviation), Pred-Normal_{0.55}, Pred-DF, and Strong gait (ipsilateral major muscle forces). All simulations were performed at 0.55 m/s.

increased hip ROM in the stance phase (Fig. 2). Regarding gait abnormalities, most of the effects of knee and ankle muscle weakening were the opposite of the strengthening. Weak-KF and Weak-AD decreased knee hyperextension, Weak-AP increased ankle dorsiflexion, and Weak-KE corrected the SKG, resulting in knee flexion during the swing phase similar to Pred-Normal_{0.55} (Supplementary Fig. S3 and Video S3).

Pred-Normal_{0.55} showed less muscle force than Track-DF_{PM-High} for all muscles with the exception of the soleus (Fig. 3). Forces were increased in Pred-DF compared to Pred-Normal_{0.55}. The sum of muscles spanning the knee and ankle joints showed that Strong-KF and Strong-AP increased the force in both muscle groups. Strong-KE

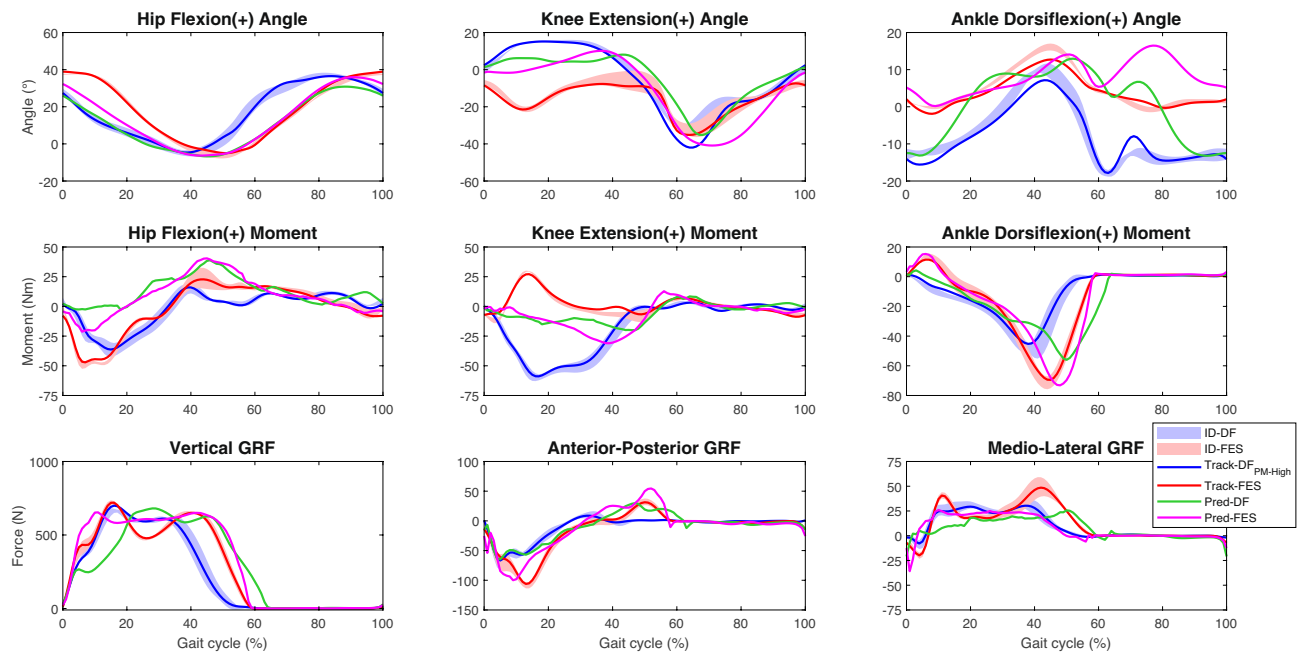


Figure 4. Effect of FES on ID (mean \pm standard deviation), tracking, and prediction DF gait (ipsilateral hip, knee, and ankle angles, moments, and GRF). Contralateral results are presented in Supplementary Fig. S5.

also affected the hip and ankle dorsiflexor muscles; and Strong-AD had little effect on other muscles (Fig. 3). Weakening the muscle groups had the opposite effect to strengthening these muscles (Supplementary Fig. S4).

FES. In the ID results, FES corrected knee hyperextension and drop foot but did not improve SKG compared to DF (Fig. 4 and Supplementary Video S1). Thus, MKE for the ID-DF condition was 12.3° compared to -12.1° in the ID-FES gait; PKF was 32.1° and 33.2° , respectively, and MAD increased from -13.8° in ID-DF to 1.1° in ID-FES. Hip ROM and moment during the stance phase and ankle joint moment were increased in ID-FES. ID-DF resulted in a knee flexion moment during the stance phase while ID-FES yielded a knee extension moment. The values of GRF components were also increased in ID-FES compared to ID-DF. Peak ankle dorsiflexion was not well tracked in Track-DF_{PM-High} and Track-FES, with deviations observed between ID and tracking results (Fig. 4). No gait abnormalities were observed in the contralateral leg. FES had less effect on joint angles and moments, and both the DF and FES conditions were well tracked (Supplementary Fig. S5). The effects of FES on Pred-DF in the ipsilateral leg were similar to those of ID-FES except on the knee joint, where the hyperextension was improved only at the beginning of the cycle and the extension moment was not created in Pred-FES. Pred-DF and ID-DF showed longer and shorter stance phases, respectively, than all other results. GRF components in Pred-FES were similar to those in ID-FES except for the medio-lateral GRF (Fig. 4).

Muscle forces were similar in Track-FES and ID-FES. FES increased gluteus maximus, rectus femoris, vasti, soleus, and tibialis anterior muscle forces compared to Track-DF_{PM-High}. The effects of Pred-FES and Pred-DF on iliopsoas, soleus, and tibialis anterior muscles were similar to those of Track-FES and Track-DF_{PM-High} (Fig. 5). The forces of the contralateral muscles for ID-DF and ID-FES were similar to those for Track-DF_{PM-High} and Track-FES, respectively (Supplementary Fig. S6). The ID gait pattern of a representative trial for each condition showed that the direction of the ipsilateral resultant GRF vector moved from the anterior (in DF condition) to the posterior of the knee during the use of FES (Supplementary Fig. S7 and Video S1).

Gait metrics. The increased speed in Pred-Normal resulted in increased PKF, knee flexion velocity at the toe-off, and ankle push-off work, while MKE and MAD were less affected (Fig. 6 and Supplementary Fig. S8). The knee flexion velocity and ankle push-off work were linearly related to PKF, with all values being near to the normal regression lines. FES decreased circumduction and increased the early braking impulse in both ID and tracking (Fig. 6). Weak-KE showed a high knee flexion velocity compared to the other results at the same gait speed (0.55 m/s), while ID-FES and Track-FES showed lower knee flexion velocity at the gait speed of 0.95 m/s. Weak-KE and Track-DF_{PM-High} did not show a relationship between ankle push-off work and PKF similar to other results, but ID-DF was closer to the total regression line (Fig. 6). The decreases in MKE and PKF in the Pred-DF alterations were related to increases in early and late braking impulses, respectively, except for Pred-FES and Weak-AD. Weak-KE, Weak-KE, Weak-AP, Strong-AD, and Pred-FES increased MAD and decreased the circumduction of Pred-DF as in the FES condition compared to DF for tracking and ID (Fig. 6). Different settings yielded similar results for MKE, PKF, and MAD in the predictive simulations (Supplementary Fig. S9).

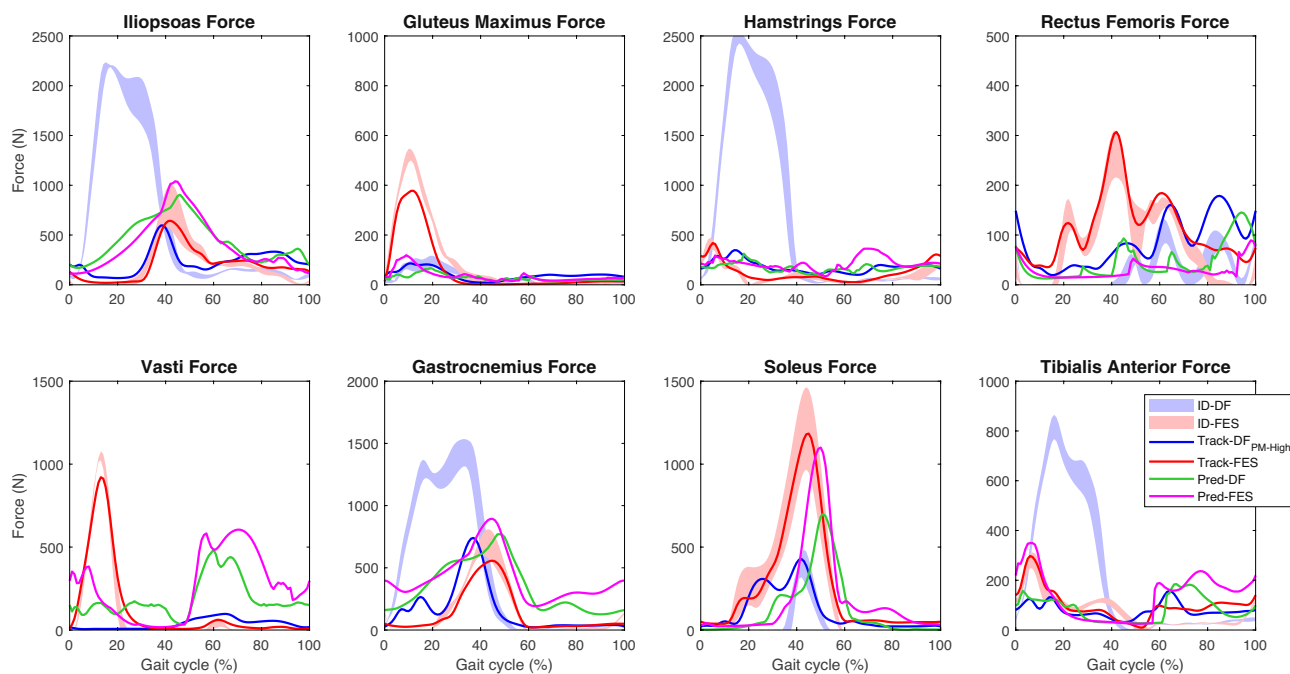


Figure 5. Effect of FES on ID (mean \pm standard deviation), tracking, and prediction DF gait (ipsilateral major muscle forces). Contralateral results are presented in Supplementary Fig. S6.

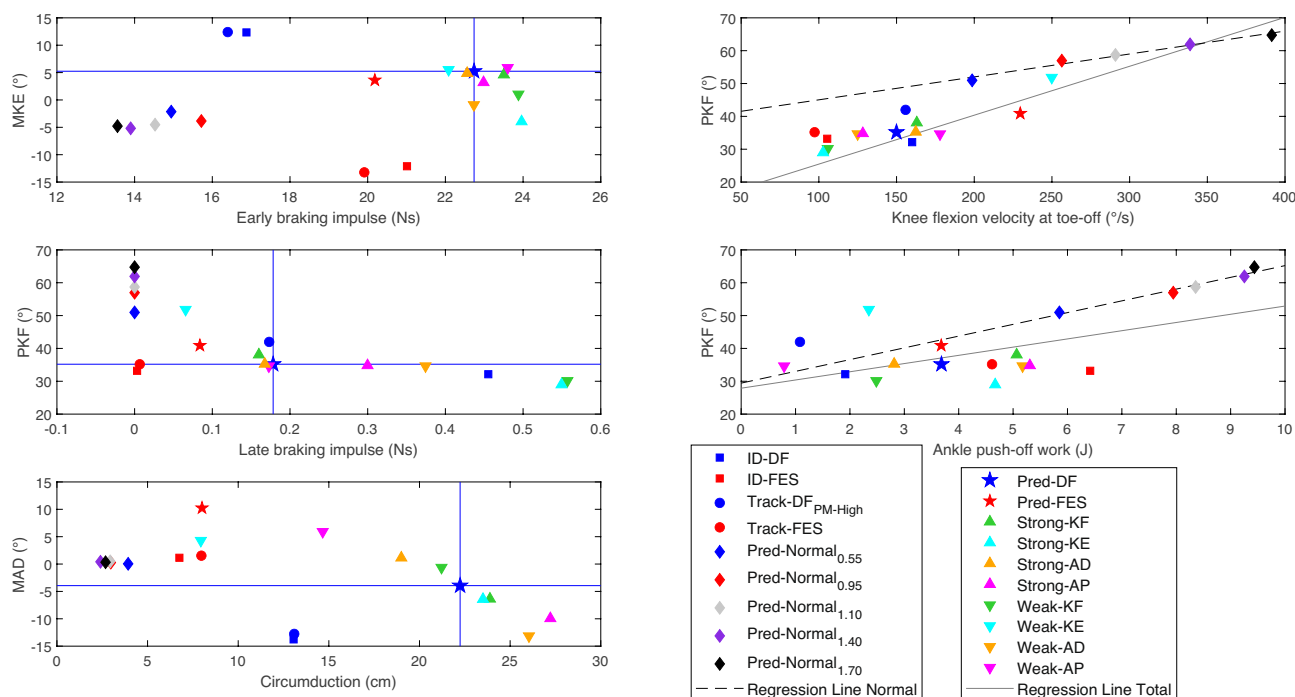


Figure 6. Relationship between MKE and early braking impulse; PKF and knee flexion velocity at toe-off; PKF and late braking impulse; PKF and ankle push-off work; and MAD and circumduction. Only values for the ipsilateral leg are shown. The horizontal and vertical blue lines indicate the values for Pred-DF. The dashed regression line was calculated based on the five Pred-Normal results, while the solid regression line was calculated based on all results.

Discussion

In this work, we compared the gait of a post-stroke patient under different conditions using ID, tracking, and predictive simulations. The ID and tracking of the ipsilateral knee angle, moments, and muscle forces showed greater deviation in DF than in the FES condition. The predictive simulation of the post-stroke patient represented gait abnormalities as well as a normal gait at different gait speeds; changing the maximal isometric force of

muscle groups spanning the knee and ankle corrected the predicted gait abnormalities. Additionally, predictive simulation of the effect of FES corrected the drop foot, but there were deviations from the ID and tracking results.

The patient we investigated presented with knee hyperextension, where the passive structures posterior to the knee play a greater role in controlling further extension^{3,13}. In tracking the DF condition, we observed that the passive knee moment affected the ability of the model to track ID knee hyperextension and knee flexion moment in the stance phase. The knee flexion moment pattern is related to knee hyperextension¹². If the passive moment was not represented in the model such as in ID, the knee flexion moment in the hyperextended knee is generated entirely by the knee flexor muscle force (i.e., hamstrings and gastrocnemius muscles), misrepresenting the actual situation. Both muscles are biarticular and also act as hip extensor and ankle plantarflexor, respectively. These forces are in turn counterbalanced by the antagonist muscles to achieve the hip and ankle moments. Consequently, the forces of the iliopsoas and tibialis anterior muscles, which are the above-mentioned antagonist muscles (i.e., hip flexor and ankle dorsiflexor muscles, respectively), were also misrepresented (Fig. 1). This problem was apparent in our subject, who presented with drop foot pathology: the ID increased the tibialis anterior muscle force during drop foot gait, which the patient could not generate and with no net ankle dorsiflexion moment produced. This was also illustrated by Track-DF_{PM-None} in which the net knee flexion moment was created solely by the muscles, as the onset of the passive knee flexion moment would only occur at 22° of extension, which was not reached by the subject (Supplementary Fig. S1). This caused a similar result to that observed in ID-DF. For Track-DF_{PM-Def} and Track-DF_{PM-High}, the net knee flexion moment was mainly generated by the passive moment. Consequently, less muscle force was predicted for the hamstrings, gastrocnemius, iliopsoas, and tibialis anterior muscles. As Track-DF_{PM-High} created more passive moment than Track-DF_{PM-Def} (Supplementary Fig. S1), the peaks of the knee hyperextension and knee flexion moment increased to the values observed in ID-DF. During FES, where the passive moment was not generated, similar muscle forces were observed with both methods (ID-FES and Track-FES). The same was observed on the contralateral side for both conditions. Thus, representing the passive flexion moment caused by passive dorsal structures of the knee during hyperextension is important in order to prevent the calculation of non-physiologic muscle forces. This also illustrates the importance of representing the passive moment when estimating muscle force^{46,47}, especially in gait patterns where the joint ROM differs significantly from the healthy condition as is the case in knee hyperextension.

During healthy gait at a natural cadence, the knee joint is flexed during the early stance phase and the peak extension moment is generated by the quadriceps muscles^{13,48}. The increases in ipsilateral knee flexion angle and knee extension moment in ID-FES, Track-FES, Strong-KE, Weak-KF, and Weak-AD during the early stance were accompanied by an increase in vasti muscle force, while the ID-DF, Track-DF_{PM-High}, and Weak-KE resulted in less force. This suggests a possible association between knee hyperextension and knee extensor weakness in our stroke patient^{13,49}. The same was also observed on the contralateral side for ID, tracking and prediction of FES and DF, which presented knee flexion and vasti muscle force in early stance. The lack of vasti muscle force could also explain why Pred-Normal showed low knee flexion during the stance phase. Although Pred-DF showed more vasti muscle force than Pred-Normal_{0.55}, the personalized muscle–tendon parameters altered the balance among several muscles, causing knee hyperextension and other gait abnormalities.

Knee hyperextension in mid-stance is often attributed to ankle plantarflexor weakness, especially as the gastrocnemius muscle physiologically produces a knee flexion moment during this phase^{3,11}. In this study, hyperextension was increased slightly in the stance phase in Weak-AP and was decreased in the early and late stance but not during mid-stance phase in Strong-AP, which is not consistent with the literature³. Like Strong-AP, Strong-KF reduced hyperextension but to a lesser extent. Both simulations resulted in an increased knee flexion moment; however, since the knee flexor muscles were able to generate more force, less passive moment was needed compared to Pred-DF and hyperextension was reduced.

A GRF vector anterior to the knee creates an external moment that extends the knee and may cause knee hyperextension^{11,50}. This also occurred during the initial contact in the DF condition, as the center of pressure (origin of the GRF) was shifted distally from the heel (i.e. more anteriorly) due to the increased plantarflexion. During FES, the foot was placed on the ground in a dorsiflexed position, with the center of pressure shifted back to the heel. As a result, the experimental GRF was directed posteriorly to the knee, allowing for correction of the knee hyperextension (Supplementary Fig. S7 and Video S1). A similar outcome was reported in a case study¹⁹. A related parameter, the braking impulse, is defined as the time integral of the posterior component of GRF and indicates the degree to which braking is present during stance. The early braking impulse was increased in ID-FES and Track-FES compared to ID-DF and Track-DF_{PM-High}, as well as in Strong-KE and Weak-KF, which clearly reduced hyperextension compared to Pred-DF (Fig. 6). An increase in braking impulse in severe stroke patients has been linked to increased vastus lateralis muscle force in the early stance phase⁵¹. This is consistent with our observation that increased vasti muscle force in Strong-KE and Weak-KF was related to the increase in early braking impulse compared to Pred-DF. The same relationship was observed in the comparison between FES and DF conditions for tracking and ID, but not in Pred-FES and Weak-AD compared to Pred-DF.

Knee hyperextension has also been attributed to early activity of the calf muscles and forefoot landing^{10,12}. ID-FES and Track-FES delayed the onset of gastrocnemius muscle force and improved ankle kinematics during the initial contact phase on the ipsilateral side. This response was not obvious in the predictive simulation when hyperextension was decreased, as Weak-AD presented reduced ankle dorsiflexion at initial contact and reduced knee hyperextension compared to Pred-DF.

Track-DF_{PM-High} showed less ankle push-off work and more knee flexion in the swing phase than ID-DF whereas for FES, the difference between the two methods was more apparent in the ankle push-off, where a decrease was also observed. It is unclear why the ipsilateral PKF was not well tracked only in the DF condition, which showed impaired ankle push-off work that could explain SKG². Pred-FES did not improve the push-off work compared to Pred-DF. FES improved the push-off in tracking and ID, as reported by others⁵², but SKG was not improved. This may be attributable to the increased action of the ipsilateral rectus femoris muscle in the

stance phase (Fig. 5), as hyperreflexia or overactivity of the rectus femoris muscle are among the main causes of SKG¹⁴. In ID-FES and Track-FES, the contralateral rectus femoris muscle force was delayed relative to the ipsilateral side. Interestingly, it was suggested that rectus femoris muscle spasticity can be triggered following an improved push-off and gait speed². Indeed, the increase in these gait parameters was accompanied by increased rectus femoris muscle action in ID-FES and Track-FES compared to ID-DF and Track-DF_{PM-High}, but the spasticity was not examined in this work. Clarifying the causes of SKG could improve the efficacy of botulinum toxin injection into the rectus femoris muscle. In our patient, the treatment may be more effective during FES, because impaired push-off could be the main cause of SKG in the DF condition.

The changes in maximal isometric force of the knee muscles affected SKG in Pred-DF. Both Weak-KF and Strong-KE decreased knee flexion in the swing phase. The opposite effect was observed in Strong-KF and Weak-KE, suggesting that knee flexor weakening may cause SKG¹⁰. We observed an association between SKG and increased late braking impulse, but SKG was related to decreased ankle push-off work only in Strong-KF and Weak-KF (Fig. 6). Both mechanisms were shown to affect knee flexion during the swing phase^{2,45}. Strong-AP and Weak-AD increased the ankle push-off work of Pred-DF, whereas the opposite was true in Weak-AP and Strong-AD. This indicates that the weakness of the ankle plantarflexor muscles may be related to impaired ankle push-off, since these muscles contribute to this mechanism⁵³. However, changes in the strength of these muscle groups had little effect on PKF.

In previous simulations, increased iliopsoas and gastrocnemius muscle forces increased knee flexion velocity, which was decreased by higher rectus femoris, vasti and soleus muscle forces⁵⁴. Knee flexion velocity at toe-off in Weak-KE, which decreased vasti and rectus femoris muscle forces, was increased to a value close to Pred-Normal_{0.95}. This could explain the correction of SKG in this result, which showed a knee flexion pattern similar to Pred-Normal_{0.55} during the swing phase. The opposite effect was observed in Strong-KE. Weak-KF and Strong-KF affected the gastrocnemius muscle force to a greater extent than the soleus muscle force, decreasing and increasing, respectively, the knee flexion velocity, as well as PKF. Thus, the changes in the strength of knee muscles indicated an association between knee flexion velocity at toe-off and PKF, which has been reported by other studies^{15,55}. However, in ankle muscles, the change in knee flexion velocity had little effect on PKF. Although gait speed in the FES condition was nearly two times higher than in the DF condition, knee flexion velocity at toe-off was decreased in ID and tracking, possibly due to the action of knee extensor muscles that enhanced the braking mechanism². Pred-FES showed a higher knee flexion velocity and PKF than Pred-DF.

Weak-AD increased drop foot compared to Pred-DF while the strengthening of these muscles increased ankle dorsiflexion during the swing phase, implying that weak ankle dorsiflexors is a potential cause of the drop foot¹. Weak-AP increased MAD, supporting the possibility that spasticity of these muscles prevents ankle dorsiflexion⁵⁶.

Gait under FES showed increased ankle dorsiflexion compared to the DF condition, which is the desired outcome of this treatment^{19,52}. The lack of dorsiflexion in the late swing phase of stroke patients may affect the ankle during initial contact, causing a flat foot or even a forefoot landing and decreasing ankle dorsiflexion moment^{16,56}, which was observed in our study when drop foot increased. Drop foot patients may also present circumduction of the leg²¹, which is a potential strategy to achieve foot clearance^{10,12}. In our study, the drop foot correction was accompanied by decreased circumduction in the different conditions of the ID, tracking, and Pred-DF results, while decreased ankle dorsiflexion in the swing phase was accompanied by increased circumduction (Fig. 6). However, the circumduction was unrelated to the late braking impulse in our results, which is in disagreement with previous work demonstrating a link between a large late braking impulse and increased circumduction⁴⁵. It is interesting to note that ID-DF and Track-DF_{PM-High} presented the same value for ipsilateral circumduction and that Pred-FES, ID-FES, and Track-FES values were similar, with Pred-DF showing more circumduction.

Pred-Normal results were similar to those of healthy gait, which confirmed that the gait abnormalities present in Pred-DF were caused by altered muscle–tendon parameters, as that was the only difference between these results. The effect of increased gait speed in Pred-Normal is supported by earlier reports^{24,25}, except for the lack of knee flexion during the stance phase at faster speeds, which has also been reported in other predictive simulation studies^{28,29}. The different gait speeds showed a linear relationship between the increases in PKF, ankle push-off work, and knee flexion velocity, which has also been described by others².

The developers of the framework used in our work validated that the model could predict the relationship between gait speed and metabolic cost of transport during healthy gait^{29,34}. Using a similar model, personalized muscle–tendon parameters allowed the prediction of the crouch gait pattern of a child with cerebral palsy³⁰. Nonetheless, the validation of predictive simulations is, in general, still limited^{33,34}.

A limitation of the present work was the use of a generic musculoskeletal model that did not include subject-specific characteristics. As neither magnetic resonance imaging (MRI) nor electromyography (EMG) data were collected, it was not possible to create a personalized musculoskeletal model. Ultrasound imaging, MRI and EMG data could allow validation and improve the personalization of muscle–tendon parameters, particularly where the values may not accurately represent the physiology and anatomy of the patient. Another limitation is that we analyzed only one patient, since the focus of this study was on the application of the methodology. Therefore, the results and conclusions may not be generalized to the whole stroke population. Additionally, this work could be improved by more accurate modeling of FES in the predictive model. Future studies on pathologic gait using these methods in more patients could lead to their application in a clinical context. For instance, predictive simulation could be used to evaluate how the gait of stroke patients is affected by different treatment options such as use of orthoses, FES, and botulinum toxin injection. This would allow individualized therapeutic recommendations or even recommendations based on level of motor impairment, time since stroke, and age.

A limitation of the optimal control problem is the lack of confidence that the results represent a global optimum. To address this issue, all predictive simulation results were solved using a different initial guess for joint kinematics. The weight factors of objective functions of parameter estimation, tracking, and predictive simulation were manually tuned. In the tracking simulation, the values that yielded the gait pattern most similar to the

experimental data were selected for each trial. The different values of weight factors had no impact on the knee hyperextension observed during the tracking simulation. Parameter estimation and predictive simulations were performed using different sets of weight factors. Other settings were altered in the predictive simulation during the sensitivity analysis; simulations that converged for all conditions and predicted a human-like gait pattern were analyzed. Although differences were observed in some results, most of the gait patterns were similar to those presented in this work and the main conclusions were the same.

Conclusion

This study investigated the causes of abnormalities and improvements in the gait under different conditions of a stroke patient using ID, tracking, and predictive simulations. The results showed that the passive knee moment plays an important role in gait when joint ROM is beyond the physiologic values as in patients with knee hyperextension. Tracking simulation reproduced the gait patterns observed in ID. Predictive simulation of healthy gait at different speeds captured relationships reported in the literature. Altered muscle–tendon parameters allowed us to predict gait abnormalities, but differences were observed in comparison to the experimental results. Increase of knee extensor strength predicted a reduction in knee hyperextension. SKG was corrected by the weakening of the knee extensors and strengthening of the knee flexors. Weak ankle plantarflexors and strong ankle dorsiflexors predicted a reduced drop foot. During the use of FES, we observed a corrected knee hyperextension and drop foot, whereas SKG was not improved. It is possible that the increased activity of the rectus femoris limited the peak of knee flexion in swing phase during this condition. FES also improved gait speed and reduced circumduction, which was predicted in our work. Therefore, we demonstrated that these methods have the potential to aid the investigation of the causes of gait impairments and the design of individualized rehabilitation and treatment programs of post-stroke patients.

Data availability

The datasets generated and analyzed during the current study are available from the corresponding author on reasonable request.

Received: 24 June 2021; Accepted: 14 October 2021

Published online: 01 November 2021

References

- Chisholm, A. E., Perry, S. D. & McIlroy, W. E. Correlations between ankle-foot impairments and dropped foot gait deviations among stroke survivors. *Clin. Biomech.* **28**, 1049–1054 (2013).
- Campanini, I., Merlo, A. & Damiano, B. A method to differentiate the causes of stiff-knee gait in stroke patients. *Gait Posture* **38**, 165–169 (2013).
- Cooper, A., Alghamdi, G. A., Alghamdi, M. A., Altowajri, A. & Richardson, S. The relationship of lower limb muscle strength and knee joint hyperextension during the stance phase of gait in hemiparetic stroke patients. *Physiother. Res. Int.* **17**, 150–156 (2012).
- Lauzière, S., Betschart, M., Aïssaoui, R. & Nadeau, S. Understanding spatial and temporal gait asymmetries in individuals post stroke. *Int. J. Phys. Med. Rehabil.* **2**, 201 (2014).
- Olney, S. J. & Richards, C. Hemiparetic gait following stroke. Part I: Characteristics. *Gait Posture* **4**, 136–148 (1996).
- Balasubramanian, C. K., Bowden, M. G., Neptune, R. R. & Kautz, S. A. Relationship between step length asymmetry and walking performance in subjects with chronic hemiparesis. *Arch. Phys. Med. Rehabil.* **88**, 43–49 (2007).
- Kim, C. M. & Eng, J. J. Symmetry in vertical ground reaction force is accompanied by symmetry in temporal but not distance variables of gait in persons with stroke. *Gait Posture* **18**, 23–28 (2003).
- Roelker, S. A., Bowden, M. G., Kautz, S. A. & Neptune, R. R. Paretic propulsion as a measure of walking performance and functional motor recovery post-stroke: A review. *Gait Posture* **68**, 6–14 (2019).
- Guzik, A. *et al.* Relationships between walking velocity and distance and the symmetry of temporospatial parameters in chronic post-stroke subjects. *Acta Bioeng. Biomech.* **19**, 147–154 (2017).
- Balaban, B. & Tok, F. Gait disturbances in patients with stroke. *PM R* **6**, 635–642 (2014).
- Beyaert, C., Vasa, R. & Frykberg, G. E. Gait post-stroke: Pathophysiology and rehabilitation strategies. *Neurophysiol. Clin.* **45**, 335–355 (2015).
- Kim, C. M. & Eng, J. J. Magnitude and pattern of 3D kinematic and kinetic gait profiles in persons with stroke: Relationship to walking speed. *Gait Posture* **20**, 140–146 (2004).
- Moseley, A., Wales, A., Herbert, R., Schurr, K. & Moore, S. Observation and analysis of hemiplegic gait: Stance phase. *Aust. J. Physiother.* **39**, 259–267 (1993).
- Akbas, T. *et al.* Rectus femoris hyperreflexia contributes to Stiff-Knee gait after stroke. *J. Neuroeng. Rehabil.* **17**, 117 (2020).
- Goldberg, S. R., Öunpuu, S. & Delp, S. L. The importance of swing-phase initial conditions in stiff-knee gait. *J. Biomech.* **36**, 1111–1116 (2003).
- Simonsen, E. B., Moesby, L. M., Hansen, L. D., Comins, J. & Alkjaer, T. Redistribution of joint moments during walking in patients with drop-foot. *Clin. Biomech.* **25**, 949–952 (2010).
- Goffredo, M. *et al.* Stroke gait rehabilitation: A comparison of end-effector, overground exoskeleton, and conventional gait training. *Appl. Sci.* **9**, 2627 (2019).
- Stoquart, G. G., Detrembleur, C., Palumbo, S., Deltombe, T. & Lejeune, T. M. Effect of botulinum toxin injection in the rectus femoris on stiff-knee gait in people with stroke: A prospective observational study. *Arch. Phys. Med. Rehabil.* **89**, 56–61 (2008).
- Chantraine, F., Schreiber, C., Kolanowski, E. & Moissenet, F. Control of stroke-related genu recurvatum with prolonged timing of dorsiflexor functional electrical stimulation: A case study. *J. Neurol. Phys. Ther.* **40**, 209–215 (2016).
- Burrige, J. H. *et al.* Phase II trial to evaluate the ActiGait implanted drop-foot stimulator in established hemiplegia. *J. Rehabil. Med.* **39**, 212–218 (2007).
- Daniilidis, K. *et al.* Does a foot-drop implant improve kinetic and kinematic parameters in the foot and ankle?. *Arch. Orthop. Trauma Surg.* **137**, 499–506 (2017).
- Yao, D. *et al.* Restoring mobility after stroke: First kinematic results from a pilot study with a hybrid drop foot stimulator. *Musculoskelet. Surg.* **100**, 223–229 (2016).
- Martin, K. D. *et al.* ActiGait implantable drop foot stimulator in multiple sclerosis: A new indication. *J. Neurosurg.* **126**, 1685–1690 (2017).

24. Stoquart, G., Detrembleur, C. & Lejeune, T. Effect of speed on kinematic, kinetic, electromyographic and energetic reference values during treadmill walking. *Neurophysiol. Clin.* **38**, 105–116 (2008).
25. Wu, A. R., Simpson, C. S., van Asseldonk, E. H. F., van der Kooij, H. & Ijspeert, A. J. Mechanics of very slow human walking. *Sci. Rep.* **9**, 18079 (2019).
26. Geyer, H. & Herr, H. A muscle-reflex model that encodes principles of legged mechanics produces human walking dynamics and muscle activities. *IEEE Trans. Neural Syst. Rehabil. Eng.* **18**, 263–273 (2010).
27. Lee, S., Park, M., Lee, K. & Lee, J. Scalable muscle-actuated human simulation and control. *ACM Trans. Graph.* **38**, 1–13 (2019).
28. Ackermann, M. & van den Bogert, A. J. Optimality principles for model-based prediction of human gait. *J. Biomech.* **43**, 1055–1060 (2010).
29. Falisse, A. *et al.* Rapid predictive simulations with complex musculoskeletal models suggest that diverse healthy and pathological human gaits can emerge from similar control strategies. *J. R. Soc. Interface* **16**, 20190402 (2019).
30. Falisse, A. *et al.* Physics-based simulations to predict the differential effects of motor control and musculoskeletal deficits on gait dysfunction in cerebral palsy: A retrospective case study. *Front. Hum. Neurosci.* **14**, 40 (2020).
31. Meyer, A. J. *et al.* Muscle synergies facilitate computational prediction of subject-specific walking motions. *Front. Bioeng. Biotechnol.* **4**, 77 (2016).
32. Febrer-Nafria, M., Pallarès-López, R., Fregly, B. J. & Font-Llagunes, J. M. Prediction of three-dimensional crutch walking patterns using a torque-driven model. *Multibody Syst. Dyn.* **51**, 1–19 (2021).
33. Fregly, B. J. A conceptual blueprint for making neuromusculoskeletal models clinically useful. *Appl. Sci.* **11**, 2037 (2021).
34. De Groote, F. & Falisse, A. Perspective on musculoskeletal modelling and predictive simulations of human movement to assess the neuromechanics of gait. *Proc. R. Soc. B* **288**, 20202432 (2021).
35. Kadaba, M. P. *et al.* Repeatability of kinematic, kinetic, and electromyographic data in normal adult gait. *J. Orthop. Res.* **7**, 849–860 (1989).
36. Delp, S. L. *et al.* OpenSim: Open-source software to create and analyze dynamic simulations of movement. *IEEE Trans. Biomed. Eng.* **54**, 1940–1950 (2007).
37. Andersson, J. A. E., Gillis, J., Horn, G., Rawlings, J. B. & Diehl, M. CasADi: A software framework for nonlinear optimization and optimal control. *Math. Prog. Comp.* **11**, 1–36 (2019).
38. Wächter, A. & Biegler, L. T. On the implementation of an interior-point filter line-search algorithm for large-scale nonlinear programming. *Math. Program.* **106**, 25–57 (2006).
39. Zajac, F. Muscle and tendon: Properties, models, scaling, and application to biomechanics and motor control. *Crit. Rev. Biomed. Eng.* **17**, 359–411 (1989).
40. De Groote, F., Kinney, A. L., Rao, A. V. & Fregly, B. J. Evaluation of direct collocation optimal control problem formulations for solving the muscle redundancy problem. *Ann. Biomed. Eng.* **44**, 2922–2936 (2016).
41. De Groote, F. *et al.* A physiology based inverse dynamic analysis of human gait: Potential and perspectives. *Comput. Methods Biomech. Biomed. Eng.* **12**, 563–574 (2009).
42. Raasch, C. C., Zajac, F. E., Ma, B. & Levine, W. S. Muscle coordination of maximum-speed pedaling. *J. Biomech.* **30**, 595–602 (1997).
43. van den Bogert, A. J., Geijtenbeek, T., Even-Zohar, O., Steenbrink, F. & Hardin, E. C. A real-time system for biomechanical analysis of human movement and muscle function. *Med. Biol. Eng. Comput.* **51**, 1069–1077 (2013).
44. Sherman, M. A., Seth, A. & Delp, S. L. Simbody: Multibody dynamics for biomedical research. *Procedia IUTAM* **2**, 241–261 (2011).
45. Dean, J. C., Bowden, M. G., Kelly, A. L. & Kautz, S. A. Altered post-stroke propulsion is related to paretic swing phase kinematics. *Clin. Biomech.* **72**, 24–30 (2020).
46. Mansour, J. M. & Audu, M. L. The passive elastic moment at the knee and its influence on human gait. *J. Biomech.* **19**, 369–373 (1986).
47. Santos, G. F., Gomes, A. A., Sacco, I. C. N. & Ackermann, M. Predictive simulation of diabetic gait: Individual contribution of ankle stiffness and muscle weakening. *Gait Posture* **58**, 208–213 (2017).
48. Simonsen, E. B. Contributions to the understanding of gait control. *Dan. Med. J.* **61**, B4823 (2014).
49. Mulroy, S., Gronley, J., Weiss, W., Newsam, C. & Perry, J. Use of cluster analysis for gait pattern classification of patients in the early and late recovery phases following stroke. *Gait Posture* **18**, 114–125 (2003).
50. Teran-Yengle, P. *et al.* Efficacy of gait training with real-time biofeedback in correcting knee hyperextension patterns in young women. *J. Orthop. Sports Phys. Ther.* **41**, 948–952 (2011).
51. Turns, L. J., Neptune, R. R. & Kautz, S. A. Relationships between muscle activity and anteroposterior ground reaction forces in hemiparetic walking. *Arch. Phys. Med. Rehabil.* **88**, 1127–1135 (2007).
52. van Swigchem, R. *et al.* Near-normal gait pattern with peroneal electrical stimulation as a neuroprosthesis in the chronic phase of stroke: A case report. *Arch. Phys. Med. Rehabil.* **92**, 320–324 (2011).
53. Nadeau, S., Gravel, D., Arseneault, A. B. & Bourbonnais, D. Plantarflexor weakness as a limiting factor of gait speed in stroke subjects and the compensating role of hip flexors. *Clin. Biomech.* **14**, 125–135 (1999).
54. Goldberg, S. R., Anderson, F. C., Pandy, M. G. & Delp, S. L. Muscles that influence knee flexion velocity in double support: Implications for stiff-knee gait. *J. Biomech.* **37**, 1189–1196 (2004).
55. Piazza, S. J. & Delp, S. L. The influence of muscles on knee flexion during the swing phase of gait. *J. Biomech.* **29**, 723–733 (1996).
56. Bensoussan, L., Mesure, S., Viton, J. M. & Delarque, A. Kinematic and kinetic asymmetries in hemiplegic patients' gait initiation patterns. *J. Rehabil. Med.* **38**, 287–294 (2006).

Acknowledgements

This work is part of the OMEGA project funded by the German Research Foundation (DFG) (Grant No. 316739714) and the French National Research Agency (ANR) (Grant No. 16-CE92-0042).

Author contributions

G.F.S. processed patient data, performed the simulations, analyzed the data, wrote the manuscript, and prepared all of the figures. E.J. collected patient data, assisted with data analysis, and revised the manuscript. N.P. acquired the funding, assisted with coordination of the study, assisted with data analysis, and revised the manuscript. T.B. assisted with data analysis and revised the manuscript. C.H. acquired the funding, coordinated the study, assisted with data analysis, and revised the manuscript.

Funding

Open Access funding enabled and organized by Projekt DEAL.

Competing interests

The authors declare no competing interests.

Additional information

Supplementary Information The online version contains supplementary material available at <https://doi.org/10.1038/s41598-021-00658-z>.

Correspondence and requests for materials should be addressed to G.F.S.

Reprints and permissions information is available at www.nature.com/reprints.

Publisher's note Springer Nature remains neutral with regard to jurisdictional claims in published maps and institutional affiliations.



Open Access This article is licensed under a Creative Commons Attribution 4.0 International License, which permits use, sharing, adaptation, distribution and reproduction in any medium or format, as long as you give appropriate credit to the original author(s) and the source, provide a link to the Creative Commons licence, and indicate if changes were made. The images or other third party material in this article are included in the article's Creative Commons licence, unless indicated otherwise in a credit line to the material. If material is not included in the article's Creative Commons licence and your intended use is not permitted by statutory regulation or exceeds the permitted use, you will need to obtain permission directly from the copyright holder. To view a copy of this licence, visit <http://creativecommons.org/licenses/by/4.0/>.

© The Author(s) 2021