



HAL
open science

Potential Transmission of Dengue Virus in Japan

Akiyoshi Senda, Anavaj Sakuntabhai, Fumihiko Matsuda, Richard E. Paul

► **To cite this version:**

Akiyoshi Senda, Anavaj Sakuntabhai, Fumihiko Matsuda, Richard E. Paul. Potential Transmission of Dengue Virus in Japan. Makoto Yano; Fumihiko Matsuda; Anavaj Sakuntabhai; Shigeru Hirota. Socio-Life Science and the COVID-19 Outbreak. Public Health and Public Policy, Springer Singapore, pp.259-274, 2022, Economics, Law, and Institutions in Asia Pacific, 978-981-16-5729-0. 10.1007/978-981-16-5727-6_11 . hal-03532951

HAL Id: hal-03532951

<https://hal.science/hal-03532951v1>

Submitted on 18 Jan 2022

HAL is a multi-disciplinary open access archive for the deposit and dissemination of scientific research documents, whether they are published or not. The documents may come from teaching and research institutions in France or abroad, or from public or private research centers.

L'archive ouverte pluridisciplinaire **HAL**, est destinée au dépôt et à la diffusion de documents scientifiques de niveau recherche, publiés ou non, émanant des établissements d'enseignement et de recherche français ou étrangers, des laboratoires publics ou privés.

Chapter 11

Potential Transmission of Dengue Virus in Japan



Akiyoshi Senda, Anavaj Sakuntabhai, Fumihiko Matsuda, and Richard Paul

Abstract The global burden of dengue is increasing at an alarming rate and increased international travel will lead to constant importation of dengue virus into non-endemic areas. The potential for dengue epidemics in such countries during seasons with permissive temperatures has already been underlined by epidemics in Japan and Madeira. While improved surveillance can help identify clinical cases of dengue, differentiating between imported and autochthonous cases remains problematical. Implementation of a threshold criterion can help in identifying aberrant incidences of dengue. This threshold approach was applied to dengue cases reported in the Japanese surveillance system from 2011–2019. Several aberrant incidences occurring during consecutive weeks were detected, one of which was concomitant to the Yoyogi Park Tokyo epidemic but in another area, Kanagawa, and another above threshold week was coincidental with a symptomatic case of a German traveller. This indicates autochthonous transmission. Despite the occurrence of several alert periods, however, on no occasion did the spread of dengue progress into a full epidemic as was seen in Yoyogi. It thus seems likely that Yoyogi Park was a particular event and that stochastic die-out of viruses is occurring frequently without progression, perhaps reflecting the negative impact of societal infra-structure on dengue transmission despite permissive temperatures. Implementation of a dengue epidemic threshold as used for seasonal influenza may provide a basis for future seroprevalence studies to assess the true prevalence of dengue in light of the high frequency of subclinical, asymptomatic infections.

A. Senda (✉) · A. Sakuntabhai · F. Matsuda · R. Paul
Institut Pasteur–Kyoto University International Mixed Research Unit for Vaccinomics, Institut Pasteur, 75015 Paris, France
e-mail: asenda@kuhp.kyoto-u.ac.jp

A. Senda
Department of Dermatology, Kyoto University Graduate School of Medicine, Kyoto, Japan

A. Sakuntabhai · R. Paul
Functional Genetics of Infectious Diseases Unit, Institut Pasteur, 75015 Paris, France
UMR 2000, Centre National de La Recherche Scientifique, 75015 Paris, France

F. Matsuda
Center for Genomic Medicine, Kyoto University Graduate School of Medicine, Kyoto, Japan

Keywords Dengue · Autochthonous and imported cases · Epidemic alert · Critical community size · Japan

1 Introduction

Dengue is a mosquito-borne viral disease with a major international public health concern as a consequence of urbanization, globalization, and global warming (Gubler and Kuno 1997; Halstead 2007; Lambrechts et al. 2010; WHO 2015). Dengue outbreaks have become more frequent in recent years. More than 3.5 billion people are at risk of dengue virus (DENV) infection, and it has recently been estimated that there are 390 million DENV infections every year, of which up to three-quarters are estimated to be subclinical, resulting in insufficient discomfort for clinical consultation (Bhatt et al. 2013; Grange et al. 2014). However, infection can lead to dengue haemorrhagic fever (DHF) and dengue shock syndrome leading to an estimated 20,000 deaths annually. Over the past few decades, the number of countries affected worldwide and the frequency of epidemics have increased significantly (WHO 2015). This prolific increase has been associated with increased global trade and travel, as well as societal changes such as population growth and increasing urbanization, particularly in tropical cities with poor waste and water management. This leads to the proliferation of the major mosquito species that transmit DENV, *Aedes aegypti* and *Ae. albopictus* (Gubler 2002). *Aedes aegypti* is restricted to the tropics and subtropics and is well adapted to the peridomestic environment. *Aedes albopictus*, by contrast, spread from southeast Asia and has successfully invaded temperate regions such as southern Europe and Japan and found in more sub-urban or rural areas, and in outdoor habitats, such as gardens, parks, or forests. In Japan, *Ae. albopictus* is the main vector, although larvae and pupae of *Ae. aegypti* have been intermittently detected at international airports in Japan since 2012 (Sukehiro et al. 2013).

Rising temperatures associated with global climate change are enabling the spread and establishment of many disease vector species and will influence the capacity of mosquito populations to transmit arthropod-borne viruses such as DENV. Warming can generate optimal temperatures for decreasing the extrinsic incubation period of viral development within the mosquito and mosquito survival, growth, and biting rates (Hales et al. 2002; Misslin et al. 2016; Quam et al. 2016; Thai and Anders 2011). International travel will ensure importation of virus into non-endemic countries from regions endemic for dengue (Chen and Wilson 2008) and the increased global burden of dengue will have knock-on effects in such non-endemic countries. The potential threat of DENV invasion into naïve areas is illustrated by cases of autochthonous dengue intermittently occurring in France and the US over the past decade (Effler et al. 2005; La Ruche et al. 2010; Murray et al. 2013) and both Madeira, Portugal and Tokyo, Japan have recently experienced unprecedented epidemics (Alves et al. 2013; Kutsuna et al. 2015; Seki et al. 2015). In so far as the majority of DENV infections are subclinical and infected individuals can infect mosquitoes prior to

expressing symptoms, or even if experiencing no clinical symptoms (Duong et al. 2015), repeated “silent” DENV invasion is likely to be increasingly frequent.

Within this context we examine the case of Japan, which had an unprecedented autochthonous dengue 1 epidemic in Tokyo in 2014, and which is experiencing an ever-increasing number of dengue cases every year, thereby providing an increasing opportunity for new epidemics. Analysing dengue case surveillance data over the last ten years and for the specific case of the Yoyogi Park, Tokyo epidemic, we assess whether (1) there were particular prefectures with constant dengue cases, (2) there were incidences (other than the Yoyogi Park epidemic) when the number of dengue cases exceeded that expected due to importation and whether these incidences represented potential foci of epidemics. Finally, we analyze the Yoyogi epidemic, discuss whether it was an unfortunate rare event, the probability of a repeat epidemic in the near future and the value of establishing a threshold for dengue alert.

2 Materials and Methods

2.1 Surveillance System and Case Definition of Dengue Fever

Since 1999, dengue has been one of the notifiable diseases under surveillance across Japan. The case definition of dengue fever requires suspicious clinical symptoms (fever, myalgia, arthralgia, retro-orbital pain, rash, thrombocytopenia, and leukopenia) and laboratory confirmation (virus isolation, RT-PCR, detection of NS1 antigen or anti-dengue IgM antibodies, hemagglutination inhibition test or neutralization test) (Ministry of Health, Labour and Welfare 2011). Among these diagnostics, the rapid diagnostic test (NS1 ELISA test) has been covered by health insurance for the hospitalized cases after the 2014 epidemic.

In the surveillance system (Fig. 1), physicians report clinically suspect dengue cases immediately to the health centre via fax with demographic, clinical, exposure, and travel history information (Taniguchi et al. 2008) The public health centre is the primary level public health institution (PHI) established in all prefectures and many government ordinance cities. The health centres immediately register the reported cases in the national electronic database and the case report is validated by the regional infectious disease surveillance centre (IDSC) or the regional health department as a substitute. The confirmed data becomes available throughout governmental institutions and other institutions related to public health via the database. The central institution of this surveillance is the National IDSC. Regional IDSC serves the same role at the regional level (Ministry of Health, Labour and Welfare 2018). It takes approximately two days for a case report to be transmitted from a doctor to the national IDSC. If there are no dengue diagnostics available in the hospital, the doctor submits the specimen to the prefectural PHI or National Institute of Infectious Diseases to test the specimen.

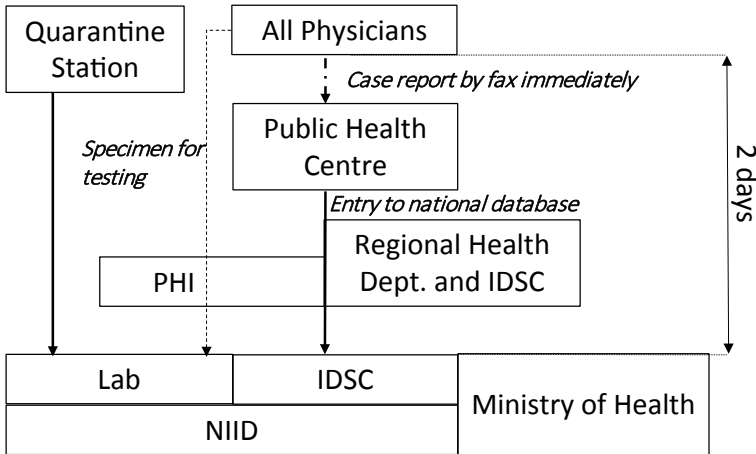


Fig. 1 Surveillance system of dengue in Japan

Key: NIID: National Institute of Infectious Diseases, IDSC: infectious disease surveillance centre under the institute, PHI: public health institutes.

2.2 *Autochthonous Case Definition and Epidemic Response*

The definition of an imported case is infection with travel to a dengue-infected area within two weeks prior to onset of symptoms and an autochthonous dengue case is otherwise (Tuberculosis and Infectious Disease Control Division, Health Service Bureau, Ministry of Health, Labour and Welfare 2016). After an autochthonous case is reported to the nearby health centre by the doctor, the health centre questions not only the patient but also the companions and the cohabitants about their activities and experience of mosquito bites from 14 days prior to onset of symptoms, in order to estimate the place of infection to implement active surveillance and intervention. On receiving the case report and the estimated place of infection, the regional municipalities implement insecticide treatment in the locality, with mosquito abundance measured prior to and after treatment; insecticide treatment may be repeated depending on the efficacy of the first treatment. In addition, environmental hygiene measures are recommended to the local population, as well use of insect repellents and community-based source reduction.

2.3 Dengue Data Source

All of the dengue cases diagnosed by doctors in Japan are registered in the database of surveillance system in Japan, which is published weekly at the website of Infectious Disease Weekly Report (IDWR), the Japanese Ministry of Health, Labour and Welfare surveillance system (National Institute of Infectious Diseases 2021b: www.nih.go.jp/niid/ja/idwr.html). The data are updated in the annual report of IDWR, which is available from 1999 to 2019 (National Institute of Infectious Diseases 2021a: www.niid.go.jp/niid/ja/allarticles/surveillance/2270-idwr/nenpou/10115-idwr-nenpo2019.html). With this data we describe the annual occurrence of dengue. In addition, we then calculate the critical community size (CCS). This is generally used as a broad indicator of the population size necessary for a pathogen to persist in the face of immunity and stochastic die-out (Teissier et al. 2020). That is, if the population size estimated to be necessary to maintain DENV permanently exceeds that of any prefecture, then the virus must be continually imported. The ambient temperature in Japan is suitable (>15 °C) for viral dissemination and spread by *Ae. albopictus* mosquitoes from May until October. Thus, we divided the annual data into two time periods, November–April and May–October, denoted hereafter cold and warm seasons. To estimate the CCS, the number of dengue-free four-week periods per year was plotted against population size and compared in cold and warm seasons (Tokyo epidemic autochthonous cases were removed prior to analyses). Population data were taken from the national census in 2015 (Statistics Bureau, Ministry of Internal Affairs and Communications 2017). A period of four weeks was considered to cover the lifecycle of the virus, including the incubation periods in both man and mosquito (on average respectively six and 15 days at 25 °C (Chan and Johansson 2012)). Each year was thus divided into 13 periods by four weeks.

2.4 Background Threshold for Identifying Outliers

The largest metropolitan area, Greater Tokyo area, was then selected for study, encompassing the largest number of dengue cases across the study period. Greater Tokyo area consists of Tokyo, Saitama, Kanagawa, and Chiba. Since this area functions as a commuting zone, the area-based data were calculated from the sum of the case number of member prefectures in each week. To calculate the threshold, the data were extracted from the annual reports from 2005 to the end of 2019, including information on reporting prefectures and estimated place of infection. Tukey's Box Plot method was used to establish the median background weekly incidence of dengue in each study area using the past six years' data. The weekly threshold was defined as rounded-up value of the third quartile plus $1.5 \times$ the interquartile range of the case numbers from the same week (using the previous six years prior to the year of comparison). A six-year period was chosen since it was the minimal required number of data points for calculating the box plot method (Senda et al. 2018). The

six-previous-year weekly thresholds of cases in each prefecture were respectively applied to the weekly reported cases from 2011 to 2019. The Yoyogi Park outbreak was excluded from the analysis. We defined an outlier as a week with more than one case above or equal to the threshold. The “autochthonous epidemic alert” was defined as at least two consecutive weeks of outliers.

2.5 Outlying Events in the Tokyo Epidemic

The Tokyo epidemic in and around Yoyogi Park was analysed separately to assess whether the epidemic was a single event dominated by the cases from Yoyogi Park or whether the cases in neighbouring parks represented a second series of events. Non-linear (Gaussian, double Gaussian) regression models were fitted to the incidence data by day and by place (Yoyogi Park and/or other satellite parks) and the goodness of fit was assessed by the percent of variation explained.

For all statistical analyses and model fitting, we used Genstat version 15 (GenStat for Windows 15th Edition).

3 Results

3.1 Japan Annual and Monthly Incidence

The number of imported cases has been rising steadily over the last decade (Fig. 2), concomitant with the increase in visitors, most especially from Korea, China, Taiwan,

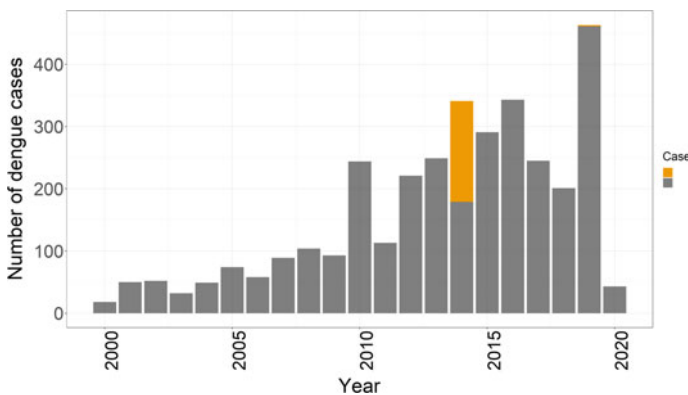


Fig. 2 Annual reported dengue cases reported in the surveillance system (grey imported and yellow known autochthonous)

southeast Asian countries. Until 2015, the number of outbound Japanese travellers exceeded the inbound foreign travellers, of which a third went to dengue endemic countries (including China) (JTB Tourism Research & Consulting Co. 2021). However, since that period the number of incoming visitors has surpassed the outbound travellers. Although the number of tourists visiting Japan does increase marginally during the warm season, outbound Japanese travellers specifically those visiting dengue-endemic countries (for example, the Philippines, Thailand, and Singapore) peak in August. As can be seen in Fig. 3, peak reported cases occur during the summer months, notably August–October, which coincides with the dengue season in endemic countries in Asia.

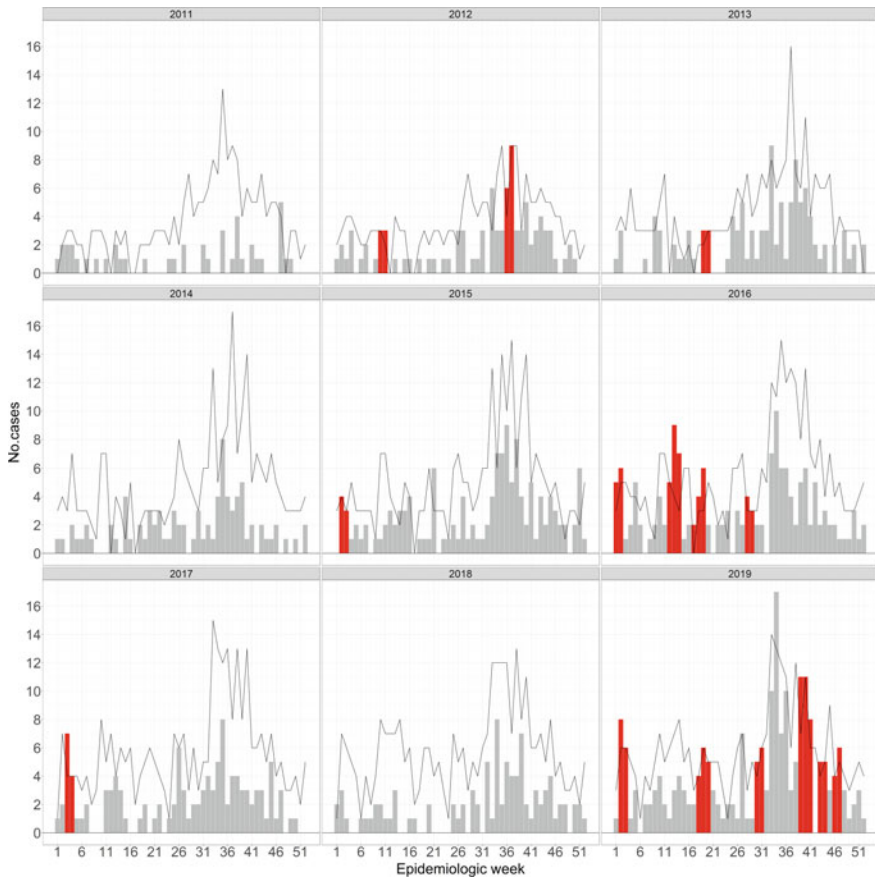


Fig. 3 Detection of conditions warranting an autochthonous dengue case alert (red bars) compared with number of reported dengue cases per week (histogram) and estimated background threshold (black line), by year, Greater Tokyo area, Japan, 2011–2019

3.2 Critical Community Size for Persistent Dengue

As shown in Fig. 4a, b, there is a negative relationship in both seasons between population size of the prefecture and the number of four-week periods during that season with no dengue cases occurring. The cold season relationship clearly reflects the baseline occurrence of imported dengue; during the cold season, the estimated CCS (13.5 million 95% confidence intervals 12.7–14.2 million) is larger than any single prefecture in Japan, indicating that there is no single area having a sufficient frequency of imported cases to maintain permanent, potentially circulating virus; the virus just dies out. However, by contrast, it is notable that the CCS during the warm season is significantly lower (11.8 million 95% confidence intervals 11.1–12.4 million) and the Tokyo prefecture is large enough to maintain transmission (13.5 million). On only four occasions did Tokyo report a dengue-free month during either the warm and cold seasons from 2010 until 2019. While this could be due to higher importation rates in Tokyo during the warm season, DENV is permanently circulating and could generate autochthonous infections. In addition, several smaller prefectures also show some years with dengue every month during the warm season. Overall, there was a three-fold decrease in the probability of having a dengue-free month anywhere in Japan than during the cold season (logistic regression of dengue free month over total months taking into account population size and year: odds ratio = 3.20, 95% confidence intervals 2.69–3.82, $F_{1,904} = 170.4$ $P < 0.001$). Thus, while imported cases are the likely cause of the majority of cases registered, it is not unfeasible that there is potential misdiagnosis of imported for autochthonous cases, where imported cases are defined simply on the basis of recent travel abroad. In the

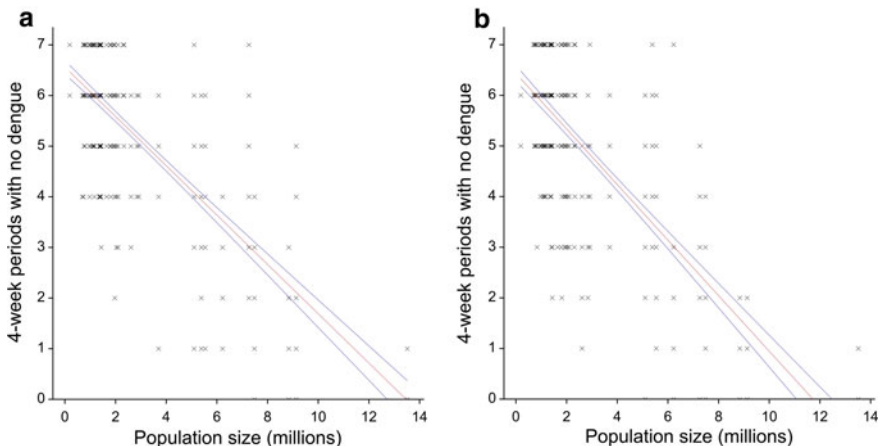


Fig. 4 Critical Community Size of dengue in Japanese cities from 2010 to 2019 in, **a** cold season (November–April) and, **b** warm season (May–October). Shown are the best fit linear regression lines (red) and 95% confidence intervals (blue)

following section we extend a method we previously applied to attempting to identify potential situations of autochthonous transmission (Senda et al. 2018).

3.3 *Dengue Incidence and Thresholds*

In the Greater Tokyo area, and prefectures within this “commuting zone”, the threshold weekly incidence rate was calculated using weekly dengue incidence over the previous six years for each year from 2011 to 2019 using the box-plot method. The observed weekly incidence of dengue cases was then compared to the threshold and outliers were classified as those greater than the threshold by at least one dengue case. Such outlying dengue case weeks were detected in all prefectures and in the aggregated Greater area several times during the nine-year period (Fig. 3). There were several occasions when there were outliers for two consecutive weeks, our definition of an alert, occurring 14 times in the Greater Tokyo area: in 2012 (weeks 10–11 and 36–37), 2013 (weeks 19–20), 2015 (weeks 2–3), in 2016 (weeks 1–2, 12–14, 17–19, 28–29), in 2017 (weeks 3–4), and in 2019 (weeks 2–3, 18–20, 30–31, 39–41, 43–44 and 46–47) (Fig. 3). At the prefectural level, an alert was detected from August 25 to September 7, 2014 in Kanagawa, which coincides with the Tokyo autochthonous epidemic. In addition, nine “alerts” were identified in Tokyo: in 2013 (weeks 32–33), 2016 (weeks 13–14), 2017 (weeks 31–32), and 2019 (weeks 2–3, weeks 18–19, 30–31, 40–41, 43–44, 46–47). The alert in 2013 in Tokyo prefecture was coincidental with the period of visit by a German traveller who was allegedly infected with DENV in Japan (Schmidt-Chanasit et al. 2014). The Tokyo 2016 alerts occurred during (up to week 17) or just after the cold season and were due to an increase in the number of cases imported from Indonesia according to the National IDSC (National Institute of Infectious Diseases 2021c: Notification Trends Among Imported Dengue Cases in Japan). Most alarmingly, we detected five warm season alerts in 2019, three of which occurred almost sequentially during the period from weeks 39–47 (October and November). These alerts occurred just after the peak in imported cases from southeast Asia and elsewhere that occurred in August and September and that diminished steadily in October to reach background levels in November (National Institute of Infectious Diseases 2021c: Notification Trends Among Imported Dengue Cases in Japan). This would raise the suspicion of autochthonous transmission in autumn seeded by imported cases in the summer.

3.4 *Tokyo Epidemic Yoyogi Park*

The autochthonous 2014 Tokyo epidemic generated 162 confirmed dengue cases, which were spatially clustered around Yoyogi Park. Out of the 162 cases, 131 could be localized to a probable location of infection: namely 110 in Yoyogi Park and 21 distributed among four satellite parks as shown in Fig. 5a. Figure 5a also shows

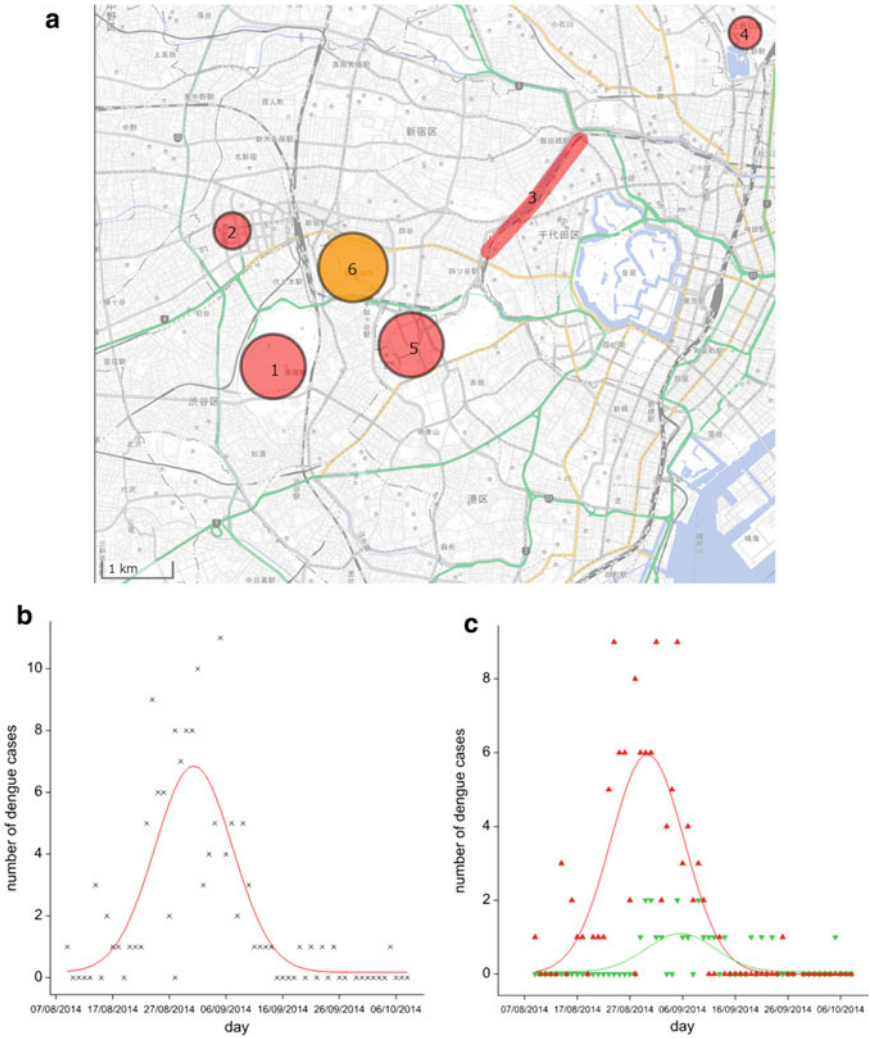


Fig. 5 Yoyogi Park Epidemic. **a** Map of parks with dengue cases: (1) Yoyogi Park, (2) Shinjuku Central Park, (3) Sotobori Park, (4) Ueno Park, (5) Meiji Jingu Gaien Park, ((6) Shinjuku Gyoen Park where only infected mosquitoes were detected.) Map edited from electronic topographic map provided by Geospatial Information Authority of Japan to include all parks with cases in Tokyo epidemic (Geospatial Information Authority of Japan 2021); **b** Gaussian fit to all dengue case data by day and **c** Gaussian curve fit treating Yoyogi (red triangles) and satellite (green points) parks separately

Shinjuku Gyoen Park, which although was not associated with any dengue cases, did have DENV-1 positive adult mosquitoes collected from September 11–25 after its closure on the 7th (Seki et al. 2015). To ascertain whether the cases in the satellite parks were simultaneous or subsequent to the Yoyogi cases, we fitted the following non-linear regression models: (1) Gaussian fit to all data from both parks; (2) a Double-Gaussian to all data from both parks; and (3) Gaussian with Yoyogi and satellite parks treated as independent. The double Gaussian curve yielded the poorest fit ($F_{5,55} = 21.4$ $P < 0.001$; 62.9% variation explained). The Gaussian fitted to all data yielded a similar result ($F_{3,57} = 35.4$ $P < 0.001$; 63.2% variation explained) (Fig. 5b). Treating parks as separate entities yielded the best fit ($F_{5,116} = 45.9$ $P < 0.001$; 65.0% variation explained) (Fig. 5c). The epidemics in Yoyogi and the satellite parks are therefore not contiguous, with the seeding event clearly arising in Yoyogi Park and leading to delayed cases in the satellite parks, but which failed to generate a large number of cases in any of the satellite parks.

4 Discussion

In this study we have addressed the potentially increasing invasion probability of dengue into Japan following the wake-up call of the 2014 Tokyo mini-epidemic. The number of dengue cases reported in Japan has been increasing yearly, is concomitant with the increasing human flux between Japan and dengue endemic areas, and related to the population size of the cities within Japan. Tokyo in particular has persistent cases of dengue throughout the warm months of the year and the frequency of anomalously warm spring, summer, and autumn months has been suggested to increase the probability of a second dengue epidemic in Japan at this time (Quam et al. 2016). Japan previously had epidemics in the 1940s, but not until 2014 when there were autochthonous cases reported. However, there have been several reports of travellers contracting dengue while visiting Japan, which suggests that DENV is circulating either as silent infections and/or that allegedly imported cases are indeed autochthonous (Kojima 2015; Nakayama et al. 2016; Schmidt-Chanasit et al. 2014). While acknowledging the persistent “background” rate of likely imported dengue cases, there are clear occasions when there are aberrantly high numbers of cases, supporting a role of autochthonous transmission, but which does not then lead to an epidemic, despite permissive conditions.

The critical population size analysis clearly showed that DENV can be expected to be circulating persistently throughout the warm season in Tokyo, whether from viral importation through returning tourists or visitors, or subsequent autochthonous transmission. Epidemic alerts based on geographical clustering are useful in targeting the potential reservoir (Stoddard et al. 2014), as was carried out for the Yoyogi Park epidemic, but will, as elsewhere, likely be too late in stopping the spread of the virus beyond the site (Reiter and Gubler 1997). Indeed, viral spread from Yoyogi Park was confirmed in the satellites park with cases and in Shinjuku Gyoen Park in adult

mosquitos and may have been implicated in a dengue case in an international student residing adjacent to Yoyogi Park and falling ill upon return to the UK (Kojima 2015).

Diagnosis of imported dengue cases based on a recent history of travel may be misleading. For example, a dengue patient in Hyogo during the 2016 epidemic had stayed in Malaysia for 12–14 days before onset of symptoms, but also had recollection of mosquito bites six days before onset in Hyogo and the virus strain 100% matched with the Yoyogi strain. Unusual above-threshold incidences of dengue may provide an additional criterion for differentiation. Although no official epidemic occurred during the time of disease onset of the German traveller (Schmidt-Chanasit et al. 2014), our alert estimation based on the baseline threshold method did pinpoint to this period as being aberrant. Importantly, while unusually high “above-threshold” dengue incidences were noted during several time periods, there was never any subsequent progression into an epidemic, although the lengthy period above the alert threshold in 2019 is concerning. The recurrent conclusion from our estimations and observations, including the failure of the satellite parks near to Yoyogi Park and Shinjuku Gyoen to progress into comparable epidemics, is that there is substantial stochastic die-out of circulating DENV, despite permissive temperatures. Thus, while there may be significant viral import and climatic conditions highly permissive to transmission, societal factors may be overwhelmingly important and significantly have a negative impact upon viral spread through the population. This notwithstanding, the majority of infections, especially being primary infections, will likely go unnoticed and that the actual spread of DENV may be greater than we realize from surveillance data. Indeed, active serological and behavioural studies were conducted by the NIID on the 375 individuals who frequented Yoyogi Park and its vicinity (National Institute of Infectious Diseases 2021d: www.nih.go.jp/niid/ja/id/693-disease-based/ta/dengue/idsc/iasr-news/5754-pr4252.html). From the serological dengue data obtained from 207 individuals, ten individuals were seropositive for DENV without any travel history and five cases were completely asymptomatic. The comparison between seropositive and seronegative individuals revealed that seropositive individuals were significantly associated with increased length of stay in the park, but not with the individual mosquito prevention efforts. Further seroprevalence studies in and around cases would enable us to understand whether Yoyogi Park was an exception or whether there has been extensive silent DENV transmission.

The added utility of using a threshold approach to detecting aberrant incidence rates for public health activities remains to be developed, but could at least provide a basis for performing seroprevalence studies in and around cases detected during such high incidence weeks. Likewise, the choice of surveillance scale needs to be addressed. Greater Tokyo was sensitive to detecting outliers, but which may be a consequence of aggregating lower incidence prefectures with Tokyo. Insofar as public health decisions are taken at the prefecture level, establishing threshold levels at this scale may be more practical and appropriate.

In conclusion, while increased human movement and permissive temperatures do pose a threat for DENV invasion, evidence suggests that thus far Yoyogi was an exception and that a considerable viral biomass following repeated introduction may

be required for successful viral implantation. Seroprevalence studies targeting areas with apparently unusual dengue incidences would go a long way in establishing the extent of the problem, at least for the present.

References

- Alves MJ, Fernandes PL, Amaro F, et al (2013) Clinical presentation and laboratory findings for the first autochthonous cases of dengue fever in Madeira island, Portugal, October 2012. *Euro Surveill* 18:ii 20398
- Bhatt S, Gething P, Brady O et al (2013) The global distribution and burden of dengue. *Nature* 496:504–507. <https://doi.org/10.1038/nature12060>
- Chan M, Johansson MA (2012) The incubation periods of dengue viruses. *PLoS ONE* 7(11), e50972
- Chen LH, Wilson ME (2008) The role of the traveler in emerging infections and magnitude of travel. *Med Clin N Am* 92:1409–1432. <https://doi.org/10.1016/j.mcna.2008.07.005>
- Duong V, Lambrechts L, Paul RE, et al (2015) Asymptomatic humans transmit dengue virus to mosquitoes. *Proc Natl Acad Sci U S A*, pp ii: 201508114
- Effler PV, Pang L, Kitsutani P et al (2005) Dengue fever, Hawaii, 2001–2002. *Emerg Infect Dis* 11:742–749
- GenStat for Windows 15th Edition. Hemel Hempstead, UK: VSN International Ltd.
- Geospatial Information Authority of Japan (2021) Map of geospatial information authority of Japan. <http://maps.gsi.go.jp/>. Accessed May 3 2021
- Grange L, Simon-Loriere E, Sakuntabhai A, et al (2014) Epidemiological risk factors associated with high global frequency of inapparent dengue virus infections. *Front Immunol*, 5:280. 10.3389
- Gubler D (2002) Epidemic dengue/dengue hemorrhagic fever as a public health, social and economic problem in the 21st century. *Trends Microbiol* 10:100–103
- Gubler D, Kuno G (1997) Dengue and dengue hemorrhagic fever. CAB International, Wallingford
- Hales S, de Wet N, Maingdonald J et al (2002) Potential effect of population and climate changes on global distribution of dengue fever: an empirical model. *Lancet* 360:830–834
- Halstead SB (2007) Dengue. *Lancet* 370:1644–1652
- JTB Tourism Research & Consulting Co. (2021) Japanese outbound tourists statistics. www.tourism.jp/en/tourism-database/stats/outbound/#annual. Accessed 3 May 2021
- Kojima G (2015) Autochthonous dengue fever imported to England from Japan, 2014. *Emerg Infect Dis* 21:182–184. <https://doi.org/10.3201/eid2101.141581>
- Kutsuna S, Kato Y, Moi ML et al (2014) (2015) Autochthonous dengue fever, Tokyo, Japan. *Emerg Infect Dis* 21(3):517–520. <https://doi.org/10.3201/eid2103/141662>
- La Roche G, Souarès Y, Armengaud A, et al (2010) First two autochthonous dengue virus infections in metropolitan France, Sept 2010. *Euro Surveill* 15:ii19676
- Lambrechts L, Scott TW, Gubler DJ (2010) Consequences of the expanding global distribution of *Aedes albopictus* for dengue virus transmission. *PLoS Negl Trop Dis* 4, e646. <https://doi.org/10.1371/journal.pntd.0000646>
- Ministry of Health, Labour and Welfare (2011) Case definition of Dengue. www.mhlw.go.jp/bunya/kenkou/kekaku-kansenshou11/01-04-19.html. Accessed 3 May 2021
- Ministry of Health, Labour and Welfare (2018) Infectious Disease Surveillance System in Japan. www.niid.go.jp/niid/images/epi/nesid/nesid_en.pdf. Accessed 3 May 3 2021
- Misslin R, Telle O, Daudé E et al (2016) Urban climate versus global climate change—what makes the difference for dengue? *Ann NY Acad Sci*. <https://doi.org/10.1111/nyas.13084>
- Murray KO, Rodriguez LF, Herrington E et al (2013) Identification of dengue fever cases in Houston, Texas, with evidence of autochthonous transmission between 2003 and 2005. *Vector Borne Zoonotic Dis* 13:835–845. <https://doi.org/10.1089/vbz.2013.1413>

- Nakayama E, Kotaki A, Tajima S et al (2016) Two different dengue virus strains in the Japanese epidemics of 2014. *Virus Genes* 52(5):722–726. <https://doi.org/10.1007/s11262-016-1356-4>
- National Institute of Infectious Diseases (2021) Annual report of Infectious Diseases Weekly Report. www.niid.go.jp/niid/ja/allarticles/surveillance/2270-idwr/nenpo/10115-idwr-nenpo2019.html. Accessed 3 May 2021
- National Institute of Infectious Diseases (2021) Infectious Diseases Weekly Report. www.nih.go.jp/niid/ja/idwr.html. Accessed 3 May 2021
- National Institute of Infectious Diseases (2021) Notification Trends Among Imported Dengue Cases in Japan. www.nih.go.jp/niid/ja/id/690-disease-based/ta/dengue/idsc/6663-dengue-imported.html. Accessed 3 May 2021
- National Institute of Infectious Diseases (2021) Report on the results of active epidemiological investigation of dengue autochthonous infection cases, Infectious Diseases Weekly Report. www.nih.go.jp/niid/ja/id/693-disease-based/ta/dengue/idsc/iasr-news/5754-pr4252.html. Accessed 3 May 2021
- Quam MB, Sessions O, Kamaraj US et al (2016) Dissecting Japan's dengue outbreak in 2014. *Am J Trop Med Hyg* 94(2):409–412. <https://doi.org/10.4269/ajtmh.15-0468>
- Reiter P, Gubler DJ (1997) Surveillance and control of urban dengue vectors. In: Gubler DJ, Kuno G (eds) *Dengue and dengue hemorrhagic fever*. CAB International, Oxford, pp 425–462
- Schmidt-Chanasit J, Emmerich P, Tappe D, et al (2014) Autochthonous dengue virus infection in Japan imported into Germany, Sept 2013. *Euro Surveill* 19(3):ii 20681
- Seki N, Iwashita Y, Moto R, et al (2015) An autochthonous outbreak of dengue type 1 in Tokyo, Japan 2014. *Nihon Koshu Eisei Zasshi*, 62(5):238–250. Japanese. https://doi.org/10.11236/jph.62.5_238
- Senda A, Sakuntabhai A, Inaida S et al (2018) Estimating frequency of probable autochthonous cases of dengue Japan. *Emerg Infect Dis* 24(9):1705–1708. <https://doi.org/10.3201/eid2409.170408>
- Statistics Bureau, Ministry of Internal Affairs and Communications (2017) The results of national census 2015. www.stat.go.jp/data/kokusei/2015/kekka.html. Accessed 3 May 2021
- Stoddard ST, Wearing HJ, Reiner RC Jr, et al (2014) Long-term and seasonal dynamics of dengue in Iquitos, Peru. *PLoS Negl Trop Dis*. <https://doi.org/10.1371/journal.pntd.0003003>
- Sukehiro N, Kida N, Umezawa M, et al (2013) First report on invasion of yellow fever mosquito, *Aedes aegypti*, at Narita International Airport, Japan in August 2012. *Japanese J Infect Dis* 66(3):189–194. <https://doi.org/10.7883/yoken.66.189>
- Taniguchi K, Yoshida M, Sunagawa T et al (2008) Imported infectious diseases and surveillance in Japan. *Travel Med Infect Dis* 6(6):349–354. <https://doi.org/10.1016/j.tmaid.2008.07.001>
- Teissier Y, Paul R, Aubry M, et al (2020) Long-term persistence of monotypic dengue transmission in small size isolated populations, French Polynesia, 1978–2014, *PLoS Negl Trop Dis*. 6 14(3):e0008110. <https://doi.org/10.1371/journal.pntd.0008110>
- Thai KT, Anders KL (2011) The role of climate variability and change in the transmission dynamics and geographic distribution of dengue. *Exp Biol Med* 236944–54. <https://doi.org/10.1258/ebm.2011.010402>
- Tuberculosis and Infectious Disease Control Division, Health Service Bureau, Ministry of Health, Labour and Welfare (2016) Clinical guideline of mosquito-borne diseases. <http://www.mhlw.go.jp/file/06-Seisakujouhou-10900000-Kenkoukyoku/0000112494.pdf>. Accessed 3 May 2021
- WHO (2015) Dengue and dengue hemorrhagic fever, fact sheet 117. World Health Organization. <http://www.who.int/mediacentre/factsheets/fs117/en/>. Accessed 5 May 2021

Akiyoshi Senda M.D., is a senior resident doctor of Department of Dermatology at Kyoto University Hospital. He graduated from Faculty of Medicine, Kyoto University with a publication on an international journal based on the joint research of Dengue fever at Functional Genetics of Infectious Diseases, Institut Pasteur, Paris and Center for Genomic Medicine, Kyoto University. His current main interests are infectious diseases and human immunity.

Anavaj Sakuntabhai M.D., DPhil is a medical doctor from Thailand. After his PhD on human molecular genetics at the Wellcome Trust Centre for Human Genetics, University of Oxford in 2000, he joined the Institut Pasteur to develop a programme on genetics of infectious diseases. He created the research unit of Functional Genetics of Infectious Diseases at Institut Pasteur in 2010 focusing on genetic susceptibility to dengue infection. He received Prix Dusquense in 2016 and i-Lab Grand Prix award from the French national challenge of innovation organized by the French Ministry of research in 2020 for development of new pentavalent dengue and Zika T cell vaccine. He coordinated the European FP7 project on Dengue Framework for Resisting Epidemics in Europe (DENFREE). He was involved in investigating two recent global outbreaks of infectious diseases, Ebola and Zika. Currently, he is a coordinator of the Pasteur International Center for Research on Emerging Infectious Diseases (PICREID)—supported by the NIH. The project is implemented west, central Africa and southeast Asia, linking large observational multi-centre cohort studies with basic scientific research and leading to increased preparedness for new epidemic threats in the region. Recently, he was appointed as the director of Institut Pasteur Japan office to establish transdisciplinary network on emerging infectious diseases between Japan, France, and countries in the Indo-Pacific region.

Fumihiko Matsuda obtained his PhD from Kyoto University Graduate School of Medicine in 1990 under Professor Tasuku Honjo and continued his research with him until 1998. Throughout this period, his work is the organization of the human immunoglobulin heavy-chain variable-region (VH) gene locus. In 1998, he joined Centre National de Genotypage (CNG) in Evry, France, as the head of gene identification. During his stay at CNG for ten years, he played a significant role in numerous comprehensive genetic analyses of multigenetic disorders. Since holding a joint appointment as a Professor of the Center for Genomic Medicine at Kyoto University in 2003, he focused on the trans-ethnic genetic studies of human diseases. Since 2012, he has led an international collaboration with McGill University in genomics and contributed to establishing an International Joint Degree Programme in Genomic Medicine between Kyoto and McGill. The programme was initiated in April 2018. He is currently the Dean of Kyoto-McGill International Collaborative School of Genomic Medicine. Since 2017, he has served as the research director of RADDAR-J, a nationwide rare disease platform programme in Japan supported by AMED.

Professor Matsuda has consistently devoted himself to researching human genetics and genomics by integrated omics analysis of human disorders through various positions he has engaged. He has experience working in France for ten years with international collaborators. He is also promoting international collaborations with Asian countries, including China, Korea, and Thailand, as well as with France, Canada, and the UK.

Professor Matsuda is Chevalier de l'Ordre National du Mérite.

Richard Paul DPhil, is an infectious diseases epidemiologist specializing in mosquito-borne diseases. He did his Bachelor's degree in Zoology at Oxford University (1984–1987) and then undertook a Master's degree in Pest Management (Applied Entomology) at Imperial College London (1989–1990). In 1992 he started his doctorate (DPhil) on the molecular epidemiology of malaria (in Papua New Guinea and Thailand) at Oxford University, completing it in 1996. During his DPhil he revealed how malaria parasites undergo varying degrees of self-fertilization depending on the parasite prevalence in human populations, which has significant impact on the capacity of the parasite to evolve, an important point for the development of drug resistance. In 1997 he came to the Institut Pasteur in Paris, France for post-doctoral studies where he showed how malaria parasites change their sex ratios over the course of an infection to overcome the human immune response and maintain their transmissibility to mosquitoes. In 2000 he became a permanent research scientist at Institut Pasteur and continued to work on malaria transmission, with several years' expatriation in Senegal to perform human cohort studies on the immune-epidemiology of malaria transmission. Following this he coordinated a large public health programme to assess the health impacts of hydro-electric dams. Since then, he has

expanded his research domain to viruses transmitted by mosquitoes, notably dengue, coordinating large field cohorts and clinical trials to test novel methods for controlling mosquitoes in the urban environment and reduce the burden of dengue disease.

Open Access This chapter is licensed under the terms of the Creative Commons Attribution-NonCommercial-NoDerivatives 4.0 International License (<http://creativecommons.org/licenses/by-nc-nd/4.0/>), which permits any noncommercial use, sharing, distribution and reproduction in any medium or format, as long as you give appropriate credit to the original author(s) and the source, provide a link to the Creative Commons license and indicate if you modified the licensed material. You do not have permission under this license to share adapted material derived from this chapter or parts of it.

The images or other third party material in this chapter are included in the chapter's Creative Commons license, unless indicated otherwise in a credit line to the material. If material is not included in the chapter's Creative Commons license and your intended use is not permitted by statutory regulation or exceeds the permitted use, you will need to obtain permission directly from the copyright holder.

