



HAL
open science

Therapeutic antibodies – natural and pathological barriers and strategies to overcome them

Yara Al Ojaimi, Timothée Blin, Juliette Lamamy, Matthieu Gracia, Aubin Pitiot,
Caroline Denevault-Sabourin, Nicolas Joubert, Jean-Pierre Pouget, Valérie
Gouilleux-Gruart, Nathalie Heuzé-Vourc'H, et al.

► To cite this version:

Yara Al Ojaimi, Timothée Blin, Juliette Lamamy, Matthieu Gracia, Aubin Pitiot, et al.. Therapeutic antibodies – natural and pathological barriers and strategies to overcome them. *Pharmacology & Therapeutics*, 2021, pp.108022. <10.1016/j.pharmthera.2021.108022>. <hal-03531953>

HAL Id: hal-03531953

<https://hal.science/hal-03531953v1>

Submitted on 22 Jul 2024

HAL is a multi-disciplinary open access archive for the deposit and dissemination of scientific research documents, whether they are published or not. The documents may come from teaching and research institutions in France or abroad, or from public or private research centers.

L'archive ouverte pluridisciplinaire **HAL**, est destinée au dépôt et à la diffusion de documents scientifiques de niveau recherche, publiés ou non, émanant des établissements d'enseignement et de recherche français ou étrangers, des laboratoires publics ou privés.



Distributed under a Creative Commons CC BY-NC 4.0 - Attribution - Non-commercial use - International License

Therapeutic antibodies – natural and pathological barriers and strategies to overcome them.

Yara Al Ojaimi ^{1,2*}, Timothée Blin ^{2,3*}, Juliette Lamamy ^{2,4*}, Matthieu Gracia ^{5*}, Aubin Pitiot ^{2,3},
Caroline Denevault-Sabourin ^{2,4}, Nicolas Joubert ^{2,4}, Jean-Pierre Pouget ⁵, Valérie Gouilleux-Gruart ^{2,4},
Nathalie Heuzé-Vourc'h ^{2,3,#}, Débora Lanznaster ^{1,2,**}, Sophie Poty ^{5**}, Thomas Sécher ^{2,3,**}.

1. UMR 1253, iBrain, Inserm, 37000 Tours, France.

2. University of Tours, 37000 Tours, France

3. UMR 1100, CEPR, Inserm, 37000 Tours, France

4. GICC, EA7501, 37000 Tours, France.

5. Institut de Recherche en Cancérologie de Montpellier (IRCM), Inserm U1194, Université de Montpellier, Institut Régional du Cancer de Montpellier (ICM), Montpellier, F-34298, France

*equally contributed to manuscript writing

**equally contributed to manuscript conception, writing and reviewing

#corresponding author

List of abbreviations

A β : amyloid- β ; AD: Alzheimer's disease; ADC: antibody-drug conjugate; BBB: blood-brain barrier; CNS: central nervous system; ECM: extracellular matrix; EU: European union; Fab: fragment antigen-binding; Fc: fragment crystallizable; FcRn: neonatal Fc receptor; FDA: Food and Drug Administration; GI: gastrointestinal; HER2: human epidermal growth factor receptor 2; IA: intra-articular; IdeS: bacteria secreted proteases; IFP: interstitial fluid pressure; IgG: immunoglobulin G; IVIg: intravenous immunoglobulin; mAb: monoclonal antibody; MMP: matrix metalloproteinase; PD: pharmacodynamics; pI: isoelectric point; PK: pharmacokinetic; scFv: single-chain variable fragment; TNF: tumour necrosis factor; VEGF: vascular endothelial growth factor; US: United States.

Abstract

Antibody-based therapeutics have become a major class of therapeutics with over 120 recombinant antibodies approved or under review in the EU or US. This therapeutic class has experienced a remarkable expansion with an expected acceleration in 2021-2022 due to the extraordinary global response to SARS-CoV2 pandemic and the public disclosure of over a hundred anti-SARS-CoV2 antibodies. Mainly delivered intravenously, alternative delivery routes have emerged to improve antibody therapeutic index and patient comfort. A major hurdle for antibody delivery and efficacy as well as the development of alternative administration routes, is to understand the different natural and pathological barriers that antibodies face as soon as they enter the body up to the moment they bind to their target antigen. In this review, we discuss the well-known and more under-investigated extracellular and cellular barriers faced by antibodies. We also discuss some of the strategies developed in the recent years to overcome these barriers and increase antibody delivery to its site of action. A better understanding of the biological barriers that antibodies have to face will allow the optimization of antibody delivery near its target. This opens the way to the development of improved therapy with less systemic side effects and increased patients' adherence to the treatment.

Key words: antibodies, biological barriers, pathological barriers, therapeutic strategies

1. Introduction

Today, recombinant antibodies represent an important therapeutic class in the armamentarium of clinicians, with some products standing as first-line standard of care. Recombinant antibodies exist in diverse forms, whether they are monoclonal or multivalent, full-length IgG or Ab fragments, first-in-class molecule or biosimilar, naked or conjugated to cytotoxic agents (antibody drug conjugate; ADC) (Elshiaty, Schindler, & Christopoulos, 2021). In fact, there are more than 120 molecules approved or in review in the EU and US, most of them being full-length unconjugated mAb from the IgG1, IgG2 and IgG4 subclasses (Vukovic, van Elsas, Verbeek, & Zaiss, 2021). Since 2014, six to twelve new recombinant antibodies are granted first approval (in either the US or EU) each year (<https://www.antibodysociety.org/resources/approved-antibodies/>). Recombinant antibodies constitute a thriving focus of research in oncology and non-cancer diseases (autoimmune, infectious diseases, ophthalmic, dermatologic, respiratory disorders), as they have already proven their efficiency in a variety of diseases, ranging from small patient populations with orphan diseases to hundreds of thousands of patients. The success of recombinant antibodies relies on: (i) a unique and complex pharmacokinetic profile, with full-length IgG exhibiting long half-lives, (ii) a multifaceted pharmacodynamics (PD) with multiple modes of action, and (iii) a good safety profile, generally well tolerated and with a low risk of unexpected side effects in humans. These qualities often provide a first-to-market advantage, as antibodies can move rapidly from proof-of-concept studies towards commercialization.

The therapeutic response to antibodies relies on their interdependent PK and PD, with PK influencing the magnitude and duration of antibody PD, and PK being influenced by the biology of the target antigen, a concept known as target-mediated drug disposition. PK is characterized by antibody absorption, distribution, metabolism and elimination (Kamath, 2016). Antibody absorption depends mainly on the route of administration. While intravenous injection remains the most commonly used administration route for Ab, there has been an increasing trend towards the development of alternative delivery modalities to treat patients with chronic diseases. This should enable self-administration or caregiver-supported dosing at home in order to reduce hospital/clinical cost while improving patients' quality of life and treatment (Sanchez-Felix, Burke, Chen, Patterson, & Mittal, 2020). It should also improve antibody therapeutic index when the intravenous injection is not adapted to achieve high Ab concentration at the site of action and/or results in undesirable on-target/off-tissue side effects. Since 2009, the subcutaneous route has shown a marked interest. With a third antibody approved in the US, this route is the predominant alternative delivery route, and commonly used to treat immunological chronic diseases, such as asthma, rheumatoid arthritis and psoriasis (Matucci, Vultaggio, & Danesi, 2018). Other administration routes of marketed Ab include intravitreal for anti-vascular endothelial growth factor (VEGF) in ophthalmic disorders, inhalation, oral and intra-articular delivery which constitute a growing focus of research for local-acting antibodies, with several molecules being

evaluated in clinical trials (inhalation: NCT04631705, NCT04894474, NCT01818024; oral: NCT01205087, NCT01459419; intra-articular: NCT00819572, NCT04731675, NCT04814368). The distribution and subsequent binding of the Ab to its target antigen depends on its partitioning properties in the different body compartments, and are directly impacted by the antibody format, the expression/concentration of the target antigen, the route of administration and biological barriers associated to the physio-pathological conditions. Metabolism of intravenous IgG mainly occurs in the vascular endothelium, following saturation of the FcRn receptor, which is known to rescue IgG Ab from intracellular catabolism. Once in the tissue, antibodies catabolism may take place after interaction with the target antigen (target-mediated drug disposition) or by non-specific mechanisms (Glassman, Abuqayyas, & Balthasar, 2015).

Here, we comprehensively review the different biological barriers that recombinant antibodies must overcome to access their target antigen, associated either to physiological or pathological conditions and encountered depending on the route of administration. Understanding the influence of these biological barriers on the kinetics and partitioning of antibody distribution is necessary for accurate predictions of antibody PK and ultimately therapeutic response. **In addition**, we describe strategies recently developed to overcome these barriers and improve the efficacy of antibody-based therapeutics.

2. Extracellular barriers

a. Extracellular matrix

i. Structure and functions of the extracellular matrix

In normal and malignant tissues, the extracellular matrix (ECM) is defined as a non-cellular component that provides biochemical and structural support for its cellular constituents (Walker, Mojares, & Del Rio Hernandez, 2018) (**Figure 1**). Two main ECM structures can be found: (i) the basement membrane, a very compact ECM found in both epithelial and endothelial tissues (Kruegel & Miosge, 2010); and (ii) the interstitial matrix, a looser matrix found **below** the basement membrane as well as between connective tissues. Structurally, the ECM core components are collagens, fibronectins, laminins, proteoglycans, hyaluronan, and other (glyco)proteins such as matricellular proteins (Theocharis, Manou, & Karamanos, 2019). Collagens are the most abundant structural proteins of the ECM **and are** produced by fibroblasts, endothelial and epithelial cells. They are found mainly in the ECM of connective tissues, providing tensile strength. Collagens have been shown to be involved in cell adhesion and migration. Fibronectins are located within the basement membrane and arranged into a mesh of fibrils similar to collagens. They are linked to cell surface receptors (integrins) and play a key role in cell adhesion, embryonic development and wound healing processes. Laminins are important components of the basement membrane that create a network with collagens by bridging

molecules such as perlecan. They interact with epithelial cells via surface cell receptors such as integrins or cell surface proteoglycans. Laminins are involved in cell adhesion and play a pivotal role in cell differentiation and migration. Proteoglycans are core proteins onto which a few to hundreds of glycosaminoglycans (e.g., hyaluronan, heparan sulphate) side chains are **linked**. They are scattered among collagen fibrils. Proteoglycans sequester water within tissues, conferring to them hydration functions. Glycosaminoglycans also bind many growth factors, sequestering them in the ECM. Matricellular proteins are non-structural proteins that encompass thrombospondins, tenascins, fibulins, osteonectin, osteopontin, or periostin. Secreted in the ECM, they can interact with matrix proteins, growth factors and several cell surface receptors. They play a major role in cell-matrix communication. These components are organised in a structural meshwork that interacts with host cells through surface receptors including integrins, discoidin domain receptors, cell surface proteoglycans, or hyaluronic acid receptors such as CD44. The ECM does not only supply cells with a physical structure, but also provides chemical and mechanical signals known to regulate migration, proliferation, survival, as well as differentiation to maintain homeostasis (Koohestani, et al., 2013; Pickering, 2001; Quaranta, 2000). The ECM is a highly dynamic structure that goes through continuous remodelling under normal (e.g., wound healing) or pathological conditions. ECM originates from a broad range of cells, but fibroblasts are the major source of ECM during remodelling (Bonnans, Chou, & Werb, 2014). Notably, ECM remodelling occurs after matrix degradation and is critical for the regulation of ECM abundance, composition, structure, as well as the release of biologically active molecules such as growth factors. Matrix-degrading enzymes include matrix metalloproteinases (MMPs), adamalysins (e.g., a-disintegrin and metalloproteinases, ADAMs; and ADAMs with thrombospondin motifs, ADAMTS), meprins, plasminogen activators, and extracellular proteases such as serine proteases, cathepsins and granzymes (Bonnans, et al., 2014) (see Section 2.b.). Non-proteolytic enzymes involved in ECM remodelling include hyaluronidases and heparanase (Bonnans, et al., 2014). It is noteworthy that aberrant ECM remodelling is at the origin of various pathologies. For example, abnormally high ECM breakdown is observed in cardiomyopathy or osteoarthritis (Maldonado & Nam, 2013; Silva, Pereira, Fonseca, Pinto-do, & Nascimento, 2020). On the contrary, excessive ECM production and deposition without balanced degradation can lead to fibrosis in the context of chronic or severe tissue injuries (Herrera, Henke, & Bitterman, 2018). Finally, tumorigenesis **is highly associated with alteration** of ECM structure, composition, and remodelling.

ii. The ECM as a barrier for antibody delivery and therapeutic efficacy in the context of cancer

In cancers, the ECM differs significantly from that of normal tissues as well as between molecular tumours subtypes (**Figure 1**). Many solid tumours demonstrate high expression of ECM proteins such as collagens, fibronectin, elastin or laminins. Moreover, a hyaluronic acid-rich ECM

characterizes few cancer types, such as pancreatic ductal adenocarcinoma (Hessmann, et al., 2020). The ECM is a major component of the tumour microenvironment, accounting for up to 60% of the tumour mass. Tumour cells are themselves the source of ECM, and to an even greater extent cancer-associated fibroblasts. This desmoplastic reaction is linked to poor patient prognosis and described as a major driver of cancer therapy resistance.

The excessive accumulation of dense and rigid ECM results in the encapsulation of tumour cell clusters, acting as a physical barrier for the diffusion of therapeutic agents. The role of ECM composition and organization on IgG penetration was assessed *in vivo* in xenograft tumour models (Netti, Berk, Swartz, Grodzinsky, & Jain, 2000). Netti et al. also showed that resistance to IgG penetration is related to tumour rigidity and collagen organization. An inverse correlation between sulphated glycosaminoglycans and IgG penetration was later reported (Davies Cde, Berk, Pluen, & Jain, 2002). 3D *in vitro* co-culture cancer models were recently developed to assess IgG distribution within the ECM (Estrada, et al., 2016; Rebelo, et al., 2018) and a computational (*in silico*) model was calibrated based on these data (Cartaxo, et al., 2020). Such models offer a valuable and modular tool to study the influence of different components of the ECM on antibody transport without the need for *in vivo* models. The ECM barrier impairs the diffusion of oxygen, leading to highly hypoxic regions in the tumour mass. Histological analysis of tumour samples from patients highlighted that hypoxia results in increased collagen deposition and fibrosis in hypoxic regions (Shekhar, Pauley, & Heppner, 2003). The low microvessel density observed in tumours with high ECM deposition further aggravates hypoxia (Edgar, Underwood, Guilkey, Hoying, & Weiss, 2014). This hypoxia factor was used for the activation of prodrugs (Zhou, et al., 2019) and the cleavage of ADC linkers (Staudacher & Brown, 2017), but can also confer resistance to ADCs. This was recently showed for trastuzumab-emtansine (T-DM1) in HER2+ breast cancer cells. Indeed, Chandran et al. demonstrated that trastuzumab internalization was reduced in hypoxic conditions due to a redistribution of phosphorylated caveolin-1 from vesicular membrane raft to the plasma membrane (Indira Chandran, et al., 2020). Hypoxia is also linked to radiotherapy resistance through different mechanisms such as reduced production of oxygen radical species, reduced fixation of oxygen on DNA radical preventing its repair, or production of hypoxia-inducible factor (HIF-1) that will increase the production of antioxidant and thus buffer radiation-induced reactive oxygen species (Pouget, Georgakilas, & Ravanat, 2018; Pouget, Lozza, Deshayes, Boudousq, & Navarro-Teulon, 2015). Therefore, combating tumour hypoxia is considered as an approach to improve radio-immunotherapy effect (Boreel, Span, Heskamp, Adema, & Bussink, 2021).

Cancer immunotherapy using inhibitory Ab against the cytotoxic T-lymphocyte-associated protein 4 (CTLA4), and the programmed cell death ligand and protein 1 (PD-L1/PD-1) attracted a lot of attention due to the outstanding therapeutic response observed in patients with melanoma or non-small cell lung cancer. However, most cancers remain refractory to this approach. A major limitation

of immunotherapy approaches is the need to get both drug and T cells through the ECM to reach tumour cells in order to be effective. Immune cells attracted by tumour-induced cytokine gradient are redirected when confronted with the rigid ECM that surrounds tumour cells clusters. Upon contact with the rigid ECM, lymphocytes will migrate along the fields of elevated rigidity (haptotaxis) (Hallmann, et al., 2015). Salmon et al. demonstrated that in human lung tumour samples, the distribution of T cells is dictated by the aligned collagen fibres surrounding tumour islets (Salmon, et al., 2012). Therefore, the reduced diffusion of antibody and immune cells throughout the ECM highly contributes to the low response of ECM-rich tumours to immunotherapy treatment.

Delivery through cancer ECM: overcoming strategies

Tumour ECM ostensibly contributes to transport resistance, and diffusion coefficient correlates inversely to the molecular hydrodynamic radius of any therapeutics (Xenaki, Oliveira, & van Bergen En Henegouwen, 2017; Yokota, Milenic, Whitlow, & Schlom, 1992). Diffusivity assays with dextrans of molecular weights ranging from 4 to 70 kDa showed a decrease of diffusion throughout the ECM for molecules with high molecular weight (Galgoczy, et al., 2014). One could extrapolate this conclusion and hypothesise that antibody fragments should better diffuse in the ECM as compared to full-length IgG, however, there is a current lack of comparative studies to prove this hypothesis. Remodelling the extracellular matrix appears also as an evident strategy to improve the therapeutic efficacy of full-length antibody, ADC or radio-immunoconjugates. Eikenes et al. showed that collagenase treatment in a human osteosarcoma xenograft model resulted in a 2-fold increase in tumour uptake and improved distribution of a specific mAb (Eikenes, Bruland, Brekken, & Davies Cde, 2004). Depletion of hyaluronic acid using a pegylated recombinant human PH20 (PEGPH20) resulted in an increase in natural killer cell access to high-hyaluronic tumour cells, and enhanced antibody-dependent cellular cytotoxicity (ADCC) effect of both trastuzumab and cetuximab *in vitro* (Singha, et al., 2015). This approach was translated *in vivo* and resulted in the further inhibition of tumour growth in tumour-bearing mice upon combined treatment of trastuzumab, PEGPH20 and natural killer cells when compared to control groups. Depletion of hyaluronic acid was further assessed for the unmasking of the HER2. Trastuzumab-resistant JIMT1 breast cancer cells were treated with hyaluronidase and 4-methylumbelliferone. Degradation of hyaluronan and inhibition of its synthesis were achieved by treating trastuzumab-resistant JIMT1 breast cancer cells with hyaluronidase and 4-methylumbelliferone to degrade hyaluronan and inhibit its synthesis. This combined treatment resulted in the increased uptake of a radiolabelled trastuzumab conjugate ($[^{89}\text{Zr}]\text{Zr}$ -trastuzumab) and the enhanced efficacy of trastuzumab in JIMT1 xenografts (Pereira, et al., 2020).

Numerous ECM targets have been evaluated for the development of therapeutic antibodies, and especially ADCs, with the aim of overcoming ECM pitfalls by exploiting its specific features for the

efficient release of the payload. Matsumura and his team described an innovative ADC that targets specifically cancer-associated fibrin using a chimeric mAb (Matsumura, 2012; M. Yasunaga, Manabe, & Matsumura, 2011; M. Yasunaga, Manabe, Tarin, & Matsumura, 2011). This chimeric ADC, targeting ECM fibrin, comprised the conjugation of the active metabolite of irinotecan (SN-38) through an acid-labile linker (ester), sensitive to the acidic tumoral microenvironment. This results in a potent antitumor activity by damaging both cancer cells and tumour vasculature (M. Yasunaga, Manabe, & Matsumura, 2011). In a comparable approach, the same group designed a similar ADC targeting collagen IV in the ECM (Masahiro Yasunaga, Manabe, & Matsumura, 2013). Non-structural ECM proteins, such as Tenascin-C or fibronectin, overexpressed in various human cancers (e.g., epidermoid carcinoma, glioblastoma, non-small cell lung cancer, head and neck cancers and triple negative breast cancers), were further investigated for ADC development. A site-specific ADC was produced from a mAb targeting a splice form of tenascin C, conjugated with monomethyl auristatin E (MMAE) through a protease-sensitive linker. This linker is cleaved by proteases such as cathepsin B, which activity is increased in the tumour microenvironment. Furthermore, the acidic tumour microenvironment may facilitate the extracellular activation of these hydrolytic enzymes. Complete tumour regression was observed in 3 out of 5 mice after 4 administrations of the ADC (7 mg/kg every 3 days) in A431 human epidermoid carcinoma xenografted-BALB/c nude mice (Dal Corso, Cazzamalli, Gebleux, Mattarella, & Neri, 2017). A smaller ADC based on a small immune protein, consisting of a scFv fragment fused to the human IgE ϵ CH4 domain, was developed to target the alternatively spliced Extra Domain A (EDA) of fibronectin (Casi & Neri, 2012, 2015; Gebleux, Wulhfard, Casi, & Neri, 2015; Perrino, et al., 2014). This small immune protein was conjugated to two emtansine (DM1) molecules that can be cleaved by the high level of extracellular glutathione in the tumour microenvironment. The resulting ADC led to total remission of tumour mass in 4 out of 5 mice (5 injections at 5 mg/kg), whereas no effect was observed with the control IgG drug conjugate. In the context of refractory and ECM-rich cancers, these studies highlight that the ECM diffusion barrier can be overcome by targeting ECM non-internalising targets and taking advantage of ECM extracellular stimuli for a sustained ADC payload release (Joubert, Beck, Dumontet, & Denevault-Sabourin, 2020; Joubert, Denevault-Sabourin, Bryden, & Viaud-Massuard, 2017).

iii. ECM and administration of antibody through the skin

The skin is composed of an outer avascular layer - the epidermis - a core connective tissue layer - the dermis - and finally a subcutaneous layer - the hypodermis (Arda, Goksugur, & Tuzun, 2014). Antibodies exhibit low skin permeability when applied topically (B. J. Bruno, Miller, & Lim, 2013). It may be explained by the hydrophobic nature of the keratin, contrasting with the hydrophilic and polar features of antibodies, limiting their diffusivity through the skin. In addition, antibodies exhibit low cellular and transcellular diffusion capabilities. Thus, high doses of antibody may be required by the trans-appendageal route to achieve local therapeutic response. Additional hurdle

comprises the nature of products for topical delivery - gel or cream are often intended for topical skin application -, which will require complex formulation engineering to maintain antibodies stability (Stevens & Cowin, 2017). Overall, antibody treatment of lesions with intact skin epithelium remains challenging. New technologies investigate cell-penetrating peptides, physical penetration enhancer or injection with microneedles to help antibody cross the skin barrier (Francis & Thomas, 2017; Gautam, et al., 2016; Geh, et al., 2019; Lee, Park, & Kim, 2018; Oberli, Schoellhammer, Langer, & Blankschtein, 2014), but none of them already achieved clinical success.

Subcutaneous injection of antibody is particularly attractive, as it has been shown to be safe and valuable for both patients and healthcare workers (Sanchez-Felix, et al., 2020). Currently, at least one-third of FDA-approved recombinant antibodies are administered by subcutaneous injection and therefore face this barrier for Ab distribution and efficacy (Viola, et al., 2018). The subcutaneous injection of antibodies is predominantly used in immunology for the treatment of chronic diseases such as rheumatoid arthritis or plaque psoriasis, targeting interleukins and their receptors, thus the subcutaneous route is mostly intended for antibody with a systemic action (Sanchez-Felix, et al., 2020). When considering a subcutaneous administration, the formulated drug is delivered into the hypodermis interstitial space. The hypodermis is composed of adipose tissue, unevenly distributed blood and lymph vessels, fibroblasts, macrophages and an ECM network rich in collagen, elastin and glycosaminoglycans (Arda, et al., 2014). In this context, the ECM constitutes the first physical barrier for subcutaneous delivery, as Ab must pass the ECM to reach the vascular compartment (Viola, et al., 2018). Collagen fibrils are positively charged at physiological pH while hyaluronic acid and chondroitin sulfate, two major glycosaminoglycans of the hypodermis ECM, are negatively charged. Despite collagen and glycosaminoglycans having opposite charges, the hypodermis interstitial space is negatively charged due to the presence of negatively charged proteoglycans, rendering the transport of negatively charged drug more rapid thanks to electrostatic repulsion (Viola, et al., 2018). One should note that most mAb have an isoelectric point (pI) between 7 and 9, meaning that mAbs are generally positively charged at physiological pH. Bumbaca Yadav et al. evaluated the impact of the variable region charge (+3/+5 versus -4) on mAb subcutaneous bioavailability in *Cynomolgus* monkeys. They reported that positively charged mAb present a reduced subcutaneous bioavailability by 31%, while their negatively charged counterpart demonstrates enhanced subcutaneous bioavailability up to 70% (Bumbaca Yadav, et al., 2015). Furthermore, positively charged mAb (pI = 7.3; 9.1) showed electrostatic interaction with negatively charged ECM components in another study, leading to 50-60% unrecoverable/tissue bound mAb. Co-injection with hyaluronic acid resulted in the recovery of 70% of soluble Ab, highlighting that hyaluronic acid does compete with mAb binding sites and that such formulation strategy enhances the subcutaneous bioavailability of positively charged mAb (Mach, et al., 2011). The ECM negative charges are also responsible for interaction with water

molecules and consequently impacts the ECM hydraulic conductivity and interstitial fluid. Because of the latter, subcutaneous injection volume is limited to 2 mL in humans.

Subcutaneous delivery: overcoming strategies

To facilitate subcutaneous bulk fluid flow and increase the dispersion and absorption of drugs, a recombinant human hyaluronidase PH20 (rHuPH20) was used to locally and transiently degrade hyaluronan (Locke, Maneval, & LaBarre, 2019). Clinical studies confirmed the potential of this approach to improve the pharmacokinetic profiles of co-administered mAb (e.g. rituximab, trastuzumab, cetuximab) compared to subcutaneous injection without rHuPH20 (Printz, et al., 2020; Shpilberg & Jackisch, 2013; Styles, et al., 2019). Another study achieved a comparable body exposure to trastuzumab after subcutaneous injection at 8 mg/kg as compared to intravenous injection at 6 mg/kg (Wynne, et al., 2013). These studies led to the FDA approvals of rHuPH20 in combination with rituximab in 2017, trastuzumab in 2019 (Locke, et al., 2019), and trastuzumab plus pertuzumab in 2021 (Tan, et al., 2021). The hypodermis interstitial fluid is mostly composed of plasma water with only about 50% of its protein content. Among these proteins, proteases play a major role in antibody catabolism and therefore reduces antibody subcutaneous bioavailability (see Section 2.b). Once in the hypodermis interstitial space, antibody will be absorbed by convection into lymphatic vessels as their large size prevents them from diffusing directly into the bloodstream. Such knowledge further underlines the relevance of subcutaneous injection for antibody targeting the lymphatic system like interferons or interleukins.

iv. ECM and retinal/eyes delivery of antibody

The prevalence of age-related posterior eye diseases, which most frequent example being age-related macular degeneration, will reach several hundred billion in the next decades (Wong, et al., 2014). The delivery of drugs to targets in the retina is challenging and various routes of administration have been considered and investigated to circumvent the complexity of ocular anatomy and physiology.

The anterior part of the eye comprises the cornea, conjunctiva, anterior chamber, ciliary body, aqueous humour, lens and the lachrymal system, which forms a static and dynamic barrier to efficiently prevent foreign particles getting access into the eyes. As a result, non-invasive topical application, mainly through eye drops, leads to a low bioavailability with less than 3% of topically administered drug reaching the vitreous humour and even less in the posterior part of the eye (Boddu, Gupta, & Patel, 2014; Hughes, Olejnik, Chang-Lin, & Wilson, 2005). Several mAbs have been considered for local ocular application (Hu & Koevary, 2016; Ottiger, Thiel, Feige, Lichtlen, & Urech, 2009), with a clinical translation to humans that remains elusive and may require the use of penetration enhancers (see Section 3.b) (Thareja, Hughes, Alvarez-Lorenzo, Hakkarainen, & Ahmed, 2021). The posterior part is composed of the vitreous humour, retina, sclera and choroid. The cornea is

the transparent front part of the eye, continuous with the sclera, which is composed of five layers comprising epithelium, stroma and endothelium. Since the cornea is negatively charged, it represents a primary barrier to topical administration using eye drops, especially for negatively charged drugs (Y. C. Kim, Chiang, Wu, & Prausnitz, 2014). The other external parts of the eye, including conjunctival epithelium, sclera and chorio-capillaries, represent absorption barriers for macromolecules coming from the systemic circulation with permeability dropping significantly for high-molecular weight drugs. In addition, the intra-ocular environment is protected from the outside by the blood-aqueous barrier and blood-retinal barrier. The blood-aqueous barrier is composed of the iris epithelium, iridial capillaries, ciliary muscle capillaries, and non-pigmented ciliary epithelium while the blood-retinal barrier located in the posterior part of the eye consists of retinal pigment epithelium and the endothelium of the retinal vessels. The two barriers comprise inter-cellular tight junctions restricting drug transfer between the eye and blood circulation (see Section 3.c) (Del Amo, et al., 2017; Thrimawithana, Young, Bunt, Green, & Alany, 2011), especially of proteins and other large molecules.

Delivery to the eyes: overcoming strategies

A major step forward in the treatment of retinal diseases was local delivery of antibodies, mainly targeting VEGF, in the internal parts of the eye, by intravitreal injection. It provides a high amount of antibody in the retina and vitreous compartments, while partly protecting the eyes and the rest of the body from antibody exposure. However, the volume of such injection should not exceed 0.1 or 0.2 mL in the anterior chamber or vitreal body, respectively, necessitating specific antibody formulation. Once injected, antibody diffusion is conditioned by the intrinsic characteristics of the vitreous humour, which is mainly composed by a hydrophilic matrix made of water, collagen and hyaluronic acid. The latter being negatively charged, it will restrict the diffusion of positively charged molecules (Q. Xu, et al., 2013) (see Section 2.a.ii). Bevacizumab (full-length IgG1) and ranibizumab (Fab fragment), two approved therapeutic mAb against age-related macular degeneration are both negatively charged under physiological conditions and will diffuse slowly through the vitreous cavity because of their molecular weight (Crowell, et al., 2019). On the contrary, aflibercept (a fusion protein) which has a mild positive charge, will exhibit altered pharmacokinetic properties (Holash, et al., 2002). The rheological properties of the vitreous humour are not homogeneous. Changes in the composition occur according to the position in the orbital cavity; the posterior part of the vitreous humour in contact with the retina has more collagen and hyaluronic acid that makes it less fluid-like. Age-related liquefaction of vitreous humour will also affect drug diffusion, especially for those of high molecular weight (Laude, et al., 2010). Elimination of drugs after intravitreal injection might occur either by metabolism or by excretion through the systemic circulation. Anti-VEGF mAbs appear preserved from metabolism or degradation in the orbital cavity (Del Amo, et al., 2017), but will be eliminated through diffusion to the aqueous chamber (Gal-Or, et al., 2016) or the retinal pigment

epithelium (Del Amo, et al., 2017). Blood-ocular barrier does not allow permeation of antibodies from the systemic circulation, making the intravitreal injection a standard treatment achieving therapeutic drug levels in the retina. However, this invasive route of administration is associated with specific challenges including the crucial necessity to guarantee the absence of ocular toxicity. This requires the development of specific formulations (Elsaid, Jackson, Elsaid, Alqathama, & Somavarapu, 2016), which will allow prolonged action, eventually reducing injection regimen and improving tolerability.

v. ECM and intra-articular (IA) delivery of antibody

Joint inflammation is one of the leading causes for progressive motor disability. Osteoarthritis and rheumatoid arthritis are the most common forms of joint degeneration with high incidence requiring long-term therapeutic care (Lawrence, et al., 1998). The main symptoms of these diseases are joint inflammation, pain and cartilage destruction. Standard care includes systemic administration of analgesic and anti-inflammatory agents, including anti-TNF α antibody (infliximab, etanercept, adalimumab) and anti-IL1 β mAb (canakinumab). However, their chronic systemic administration regimen is frequently associated with substantial side effects (Tarnier & Muller-Ladner, 2008). Synovial joints, most often affected by osteoarthritis and rheumatoid arthritis, are delimited by a fibrous capsule and ligaments. They comprised bone endings covered by hyaline cartilage. The cartilage is an avascular tissue, composed of chondrocytes embedded in a highly anionic ECM, which is impermeable to molecules with a molecular weight >50 kDa, depending upon their charge and con-formation (Foy & Blake, 2001). Because cartilage is avascular, it is inefficiently targeted by drugs administered systemically that must first reach the synovial fluid and then diffuse through the cartilaginous ECM. The synovial fluid mediates the supply of nutrients to the cartilage. Synovial fluid is mainly composed of hyaluronic acid and lubricin providing lubricating and frictionless mobility of the joint. To enter the joint from the systemic vasculature, a drug must pass through the capillary endothelium of the synovium, the ECM of the synovial intima and the macrophage-like synoviocytes composing the synovial membrane. Both cellular layers are highly fenestrated facilitating the directed exit of drug from the capillaries and the entry into the synovial fluid cavity. The consequence of this small diffusion barrier is a high synovial diffusion of molecules with a molecular weight <10 kDa. For larger molecules, fenestration will dictate a size-dependent restriction on the rate of passage that is 10 times less for IgG as compared to the one of albumin (Kushner & Somerville, 1971). During inflammation, capillary and synovial membrane permeabilities will increase, enhancing the entry of macromolecules in the synovial joint. This is exemplified by the increase in protein content in the synovial fluid from rheumatoid arthritis patients (Furst, et al., 1999). The duration of residency in the joint of a therapeutic agent is dictated by the equilibrium between the rate at which the drug reaches and is cleared from the synovial fluid. On the contrary, the removal of macromolecules from joints, mainly driven by lymphatic drainage, is independent of size. Several studies tried to evaluate half-lives of various macromolecules including antibodies within the joints. Values reported ranged from 1-13h

for albumin, more than 25h for hyaluronic acid, 72h for gamma-globulin and 8-12h for unspecified IgG (Scully, et al., 2009). Joint inflammation will accelerate synovial clearance rate (Weinberger & Simkin, 1989). Indeed, for anti-inflammatory antibody, clinical PK data revealed half-lives of approximately 2-4 h (Evans, Kraus, & Setton, 2014).

Delivery to the joints: overcoming strategies

The IA administration is attracting as point-of-care therapy from both economics and patient's perspectives. It will achieve high drug concentration in the diseased area while limiting systemic exposure. Eventually, this will lead to a dose reduction and therefore minimization of costs and side effects. Despite these promising features, IA delivery for recombinant antibodies is rare; specific inhibition of the pro-inflammatory cytokines IL-1 β and TNF α using anakinra, canakinumab or infliximab (both full-length and scFv fragment) delivered by IA have been clinically tested without conclusive results – which can be explained by the specific prevailing physiologic and anatomic conditions of the joint. The rapid clearance of antibody from the inflamed joint is a major limitation for therapeutics, requiring frequent injections that may be associated with unwanted side effects, patient discomfort and even morbidity. Specific formulations enabling controlled release over time are under consideration for injectable antibody in the joint. These include mainly natural polymers/lipids formulated as hydrogels as described for the anti-TNF α infliximab (W. Chen, et al., 2020) and micro/nano particles (Eswaramoorthy, et al., 2012) or *in situ* implants (Lambert & Peck, 1995), which have been used for other therapeutic proteins. However, such strategies do not come without disadvantage; indeed, controlled release formulations are associated with loss of bioactivity mainly due to stability issues (Koerselman, et al., 2020). Finally, depending on their size, nanospheres might induce inflammatory reaction that may ultimately accelerate cartilage injury and even induce fibrotic processes (Kang & Im, 2014).

b. Proteases

Proteases are catalytic enzymes promoting peptide cleavage of proteins necessary for protein maturation, catabolism and the generation of amino acids. Their molecular pattern encompasses small enzymes (20-30 kDa) to sophisticated protein complexes, like proteasomes (0.7-6 MDa) (Lopez-Otin & Bond, 2008). Proteases are distributed in all living organisms including plants, animals and microorganisms such as bacteria and viruses. In humans, they constitute one of the largest families of enzymes with 2% of the genome encoding proteases. Proteases are classified into six different groups based on the specificity of their active site: aspartate-, cysteine-, glutamate-, metallo-, serine- and threonine-proteases. They can be found in all tissues with both intra- and extra-cellular site of action. At physiological state, these enzymes are critically involved in the control of multiple biological processes including digestion, cellular communication and proliferation, haemostasis, immunity, wound healing and apoptosis. According to the irrevocability of their mode of action and the

pleiotropic functions in which they are involved, proteases need to be tightly regulated. Several mechanisms control their production and secretion, including regulation of biosynthesis, activation of inactive precursors known as pro-enzymes or zymogens, and the binding of endogenous inhibitors and cofactors (Vasiljeva, Menendez, Nguyen, Craik, & Michael Kavanaugh, 2020). This allows the protease/anti-protease balance to be neutral, except in the gastro-intestinal tract where proteases participate to nutrients digestion, requiring sustained activation. The activation of resident immune cells and the recruitment of leukocytes generate tissue damage and extracellular matrix destruction resulting in a dysregulation of protease homeostasis. Imbalance in the regulation of proteases/proteases inhibitors plays a major role in the development of pathological conditions such as cancer, inflammatory, cardiovascular, neurodegenerative, bacterial, viral and parasitic diseases (Lopez-Otin & Bond, 2008). For example, in inflammatory bowel diseases, inflammation characterized in particular by a neutrophilic and macrophages infiltrate, leads to a highly proteolytic mucosal microenvironment. Neutrophil proteases (elastase and cathepsin G) and metalloproteinases (MMP3, MMP12, and MMP9) are highly up regulated in the inflamed gut (Baugh, et al., 1999). In acute respiratory distress syndrome, significant elastase levels have been reported (Hashimoto, et al., 2008). In chronic obstructive pulmonary disease (Pandey, De, & Mishra, 2017; Thulborn, et al., 2019) and cystic fibrosis (Oriano, et al., 2019; Witko-Sarsat, et al., 1999), an increase in neutrophil-related proteases activity is observed and more particularly during infectious exacerbations contributing to the decline of respiratory function (Chalmers, et al., 2017). In cancer, protracted activation of extracellular proteases, with MMPs representing the most prominent family associated with tumorigenesis, provides additional survival advantages to cancer cells (Kessenbrock, Plaks, & Werb, 2010). Proteases promote angiogenesis, impair anticancer lymphocytes functions and facilitate metastasis through tissue remodelling.

Proteases may be considered as a biological barrier complicating the administration of therapeutic proteins especially in disease conditions. Extracellular proteases such as neutrophil proteases, MMPs or bacteria secreted proteases (Dunnhaupt, Kammona, Waldner, Kiparissides, & Bernkop-Schnurch) have the ability to cleave endogenous immunoglobulins (Brezski & Jordan, 2010; von Pawel-Rammingen, Johansson, & Bjorck, 2002). Several studies have demonstrated such proteolysis both *in vitro* and *in vivo*, hypothesizing that bacterial-secreted or tumour-associated proteases may act as virulence factors to escape the immune response (Plaut, Wistar, & Capra, 1974; Ryan, et al., 2008; Senior & Woof, 2005). The proteolytic inactivation of therapeutic antibodies is under-appreciated as a contributor to therapeutic response evasion, but several studies highlighted the critical role of proteases on mAb PD. Proteases (MMP-3, MMP-12 and HNE) affect the integrity of anti-TNF α mAb and compromise their therapeutic capacities in comparison with intact mAb (Biancheri, et al., 2015; Curciarello, et al., 2020). Proteolysis of mAbs (IgG1 and 4) by MMPs (MMP-12) and IdeS has been shown to be dependent on the incubation time (Deveuve, Lajoie, Barrault, &

Thibault, 2020), with long time exposition to proteases being responsible for a decreased efficacy of the anti-HER2 antibody pertuzumab (Hsiao, Fan, Jordan, Zhang, & An, 2018; Kinder, et al., 2013). A single proteolytic cleavage in the lower hinge of a humanized IgG1, trastuzumab, or pertuzumab, by MMP-12 also led to a loss of one of the Fc fractions, reducing its effector activity via the immune system and therefore its anti-tumour efficacy *in vivo* (Fan, et al., 2012; Hsiao, et al., 2018; N. Zhang, et al., 2015).

Proteases: overcoming strategies

The identification of proteolytic cleavage sites could allow the development of mutant antibodies protected against proteases. Indeed, the fact that IgG2 are resistant to MMPs contrary to IgG1 has been associated with differences in amino-acid sequence of the lower hinge region. Specific mutations in the CH2 domain result in resistance to MMPs with restored *in vitro* complement-dependent cytotoxicity and antibody-dependent cellular phagocytosis activities. Thus, engineered antibodies that are resistant to hinge proteolysis hold promise to maintain potent effector functions (Kinder, et al., 2013). Another strategy would rely on the use of rescuing antibodies, which bind to hinge neo-epitope generated after proteolytic cleavage and restore the effector functions of the protease-sensitive antibody. This was elegantly demonstrated by Fan et al. with an antibody targeting the hinge neo-epitope of trastuzumab generated by MMP or IdeS proteolysis. Fan et al. demonstrated both *in vitro* and *in vivo* that the rescuing antibody restored antibody-dependent cellular cytotoxicity function of trastuzumab as well as the recruitment of immune effector cells into the tumour microenvironment (Fan, et al., 2015). *In vitro*, co-incubation with specific protease inhibitors inhibits antibody proteolysis (Curciarello, et al., 2020). *Ex vivo*, TNF α -neutralizing function was restored after incubation of anti-TNF α mAb (infliximab and adalimumab) with MMP inhibitors in the sera from patients with inflammatory bowel disease (Biancheri, et al., 2015). These co-treatment strategies with protease inhibitors may represent an interesting way to maintain the antibody functionality in inflammatory contexts. However, numerous proteases coexist in tumour/inflammatory/infected microenvironments complicating the choice of inhibitors as well as their optimal concentration that would need to be defined and adjusted to each pathological context.

c. Other extracellular barriers

i. Mucus and oral or airway administration of antibody

Mucus is a viscoelastic hydrogel located in the airways, the eyes, the gastrointestinal, urogenital and reproductive tracts, and the peritoneal surface of intra-abdominal organs. Continuously produced and secreted by mucous cells, it coats the luminal surface of these different compartments acting as a lubricant and maintains a hydrated layer above the epithelial cells (Leal, Smyth, & Ghosh, 2017). On exposed surfaces, mucus also provides a barrier to pathogens and foreign substances including environmental particles (Lai, Wang, Wirtz, & Hanes, 2009). Mucus is mainly composed of

water (>95%), mucins, proteins, DNA, cells and cellular debris (Leal, et al., 2017). Mucins are the primary non-aqueous component of mucus. They give to the mucus its three-dimensional mesh network structure mainly stabilized by covalent and noncovalent interactions, including hydrophobic, electrostatic, hydrogen bonds, or other specific binding interactions (Creeth, 1978; Lieleg & Ribbeck, 2011). The homeostasis of its components is highly interdependent and govern mucus main physicochemical properties, as pore size, viscoelasticity, pH, ionic strength and charge (Leal, et al., 2017). For example, viscosity may be modified by the hydration, pH level and salt, proteins and ionic concentration (Frohlich & Roblegg, 2014).

It is obvious to imagine mucus acting as a barrier to the transport of drugs and therapeutic molecules administered through oral or inhaled route (Bansil & Turner, 2006; Leal, et al., 2017). However, several studies described endogenous immunoglobulins behaviour in respiratory, GI and cervico-vaginal homeostatic mucus suggesting that their diffusion was barely altered in mucus (Olmsted, et al., 2001). Intriguingly, the mucus-antibody interplay at mucosal surfaces also acts as a new defence mechanism of antibody during infections. Indeed, pathogen-coated antibodies form weak and transient Fc-mucins bonds – via sugars- and trap pathogens, thereby preventing pathogens to infect epithelial cells and facilitating their physical elimination through mucociliary clearance (Schaefer & Lai, 2021; Y. Y. Wang, et al., 2017; B. Yang, et al., 2018). The “muco-trapping function” of antibodies-coated to pathogens has been nicely exemplified with virus-like particles (VLP) of influenza-binding IgG, and the anti-Ebola antibody cocktail ZMapp bound to Ebola VLP in fresh airway mucus from healthy adult. Overall, “muco-trapping” function of antibody appears as a universal effector function for IgG in major mucus and apply to other immunoglobulin subclasses and extracellular matrix. However, muco-trapping property of antibody implies on a subtle balance partly depending on the rapid IgG diffusion within mucus and binding to pathogen. To date, the capacity of antibody Fc-mucin to crosslink and immobilize pathogen has never been studied in pathological conditions, when mucus is altered. Indeed, in broncho-obstructive diseases such as cystic fibrosis and chronic obstructive pulmonary disease, overproduction of mucus is associated with dehydration and a shrinkage of pore size (Duncan, et al., 2016). In cancers, mucins overproduction and heterogeneity has been associated to tumour progression (Hukill & Vidone, 1965). This resulted in modifications of architectural structure and viscoelasticity of the mucus present in the cancer microenvironment and has been described in the context of colonic and gastric adenocarcinoma (Hollingsworth & Swanson, 2004). Inflammatory disorders such as inflammatory bowel disease may also impact mucus architecture secondary to a modification of mucins’ glycosylation changing viscoelastic properties, resistance to bacterial degradation, and adhesion (Corfield, Carroll, Myerscough, & Probert, 2001). In summary, mucus structure is often abnormal in various pathological conditions and may impair antibody diffusivity, as previously described for other therapeutics (Braeckmans, Peeters, Sanders, De Smedt, & Demeester, 2003; Ensign, Tang, et al., 2012; Maisel, et al., 2016).

Mucus: overcoming strategies

The development of antibodies able to diffuse through the mucus requires an exhaustive knowledge of its structure and its physicochemical properties both in physiological and pathological contexts. Depending on the location of the antibody target, it may be necessary to explore the impact of formulations or co-administrated treatments to improve their deposition and define their efficacy after administration in the nasal, lung and oral mucosa. When the target is located into the mucus or in the organ lumen, formulations conferring mucoadhesive properties on the treatment and prolonging its local stability may be preferred. For example, encapsulation with polymeric non-charged and lipophilic nanoparticles optimizes mucoadhesion, cellular uptake, immune system interactions and cell targeting (Ensign, Cone, & Hanes, 2012). Conversely, when the target is located under the layer of mucus, strategies improving mucosal permeability of drugs must be favoured. These strategies may include the use of mucolytic treatments such as recombinant human deoxyribonuclease (rhDNase) (Macierzanka, et al., 2014; Sanders, et al., 2000) or N-Acetyl cysteine (Suk, et al., 2011; Vukosavljevic, et al., 2017) as co-treatments. Nanoparticle-based systems may also be of particular interest allowing protection of drug from degradation mechanisms and the control of surface properties to avoid adhesion or steric hindrance (Dunnhaupt, et al., 2015; Ensign, Cone, et al., 2012; Lai, Wang, & Hanes, 2009). Poly(lactic-co-glycolic acid) PLGA or poly(ethylene glycol) PEGylation have shown their effectiveness to enhance mucus transport of drugs in gastric, intestinal, vaginal, cervicovaginal, respiratory animal mucus and in CF sputum (Suk, et al., 2009; Tang, et al., 2009; Y. Y. Wang, et al., 2008; T. Yu, et al., 2012). Chitosan, a cationic polymer, is also used for oral and nasal drug applications in particular to improve the administration of nasal vaccines (Csaba, Garcia-Fuentes, & Alonso, 2009). Presently, we do not know if it would be relevant to investigate such strategies, since the impact of the pathological context on antibody diffusivity and muco-trapping function of mAb in the mucus remains unknown.

ii. pH and oral administration of antibody

The gastrointestinal tract is essential in digestion and absorption of nutrients while, as other mucosae, it must defend the host against exogenous materials and microorganisms. Consequently, it harbours several non-cellular barriers, which renders oral administration of antibody challenging. After oral administration, drugs are conducted from the mouth to stomach, small intestine and finally conveyed to the colon and expelled into faeces. Each gastrointestinal segments exhibit specific environmental conditions, which may alter antibody efficacy. In the stomach, antibody is subjected to degradation by pepsin, which is activated by the acidic pH (pH=2). The acidic pH will also promote irreversible changes in protein conformation (Lopez, et al., 2019). In the small intestine, antibody will be exposed to proteases activated by pH ranging between 6.0-7.3 like trypsin, chymotrypsin, carboxypeptidase, and elastase (See section 2.b).

Oral delivery: overcoming strategies

Therapeutic proteins and peptides are poorly resistant to the acidic and proteolytic content of the stomach, thus protection strategies have been envisioned to overcome these barriers and include enteric coating (Crowe, et al., 2019) and encapsulation in nanoparticles (Tashima, 2021). Interestingly, formulations based on coated mini capsules were engineered for the local treatment of inflammatory bowel disease with anti-TNF α antibody and led to high intestinal and colon concentrations with limited systemic exposure (Crowe, et al., 2019). Thus, mini capsules may have a huge potential to improve the management of inflammatory bowel disease, which currently require chronic parenteral administration associated with deleterious systemic side effects. Omeprazole, a well-known proton pump inhibitor neutralizing stomach acidity, has been proposed in combination with anti-CD3 mAb foralumab and muromomab, in the treatment of type 2 diabetes and ulcerative colitis, respectively (Boden, et al., 2019). Larger studies are required to confirm the benefits of the combination.

iii. Biofilm and anti-infectious antibody

A key virulence factor associated with the development of chronic infections is the ability of pathogens to build organized cells communities (Costerton, et al., 2003; Hoiby, Ciofu, & Bjarnsholt, 2010). Biofilms are three-dimensional structured communities of pathogens encased in a self-produced extracellular matrix (Neu, et al., 2010), which can adhere on both inert and biotic surfaces (Bowen, 2016; Veerachamy, Yarlagadda, Manivasagam, & Yarlagadda, 2014). Biofilms are mainly composed of an extracellular polymeric substance (del Aguila, Longstreth, McGuire, Koepsell, & van Belle, 2003) including exopolysaccharide (Ciornei, et al., 2010), extracellular proteins (Fong, Karplus, Schoolnik, & Yildiz, 2006; Tielker, et al., 2005) and extracellular DNA (eDNA) (Montanaro, et al., 2011). The importance of the structural biofilm complexity as pathological obstacle to antimicrobial therapeutics is now widely recognized. This recalcitrance is a direct consequence of the physical and biological properties of biofilm. Exopolysaccharides represent 90% of biofilm's biomass, which composition is continuously evolving and differs depending on the bacteria species, and form a diffusion-limiting barrier impairing the penetrance of therapeutics and binding to their respective targets. Thanks to an electrostatically charged net, biofilm is also able to either repulse or trap antimicrobial peptides and proteins (Anaya-Lopez, Lopez-Meza, & Ochoa-Zarzosa, 2013) contributing to its antimicrobial resilience (Koo, Allan, Howlin, Stoodley, & Hall-Stoodley, 2017). Furthermore, a large array of molecules released near the biofilm enable chemical inactivation or degradation of anti-microbial agents (Hall & Mah, 2017; Lewenza, 2013; Stewart & Franklin, 2008). Biofilm also reduces the efficiency of the immune response, especially phagocytosis mediated by macrophages or neutrophils. Target-mediated recognition of microbial molecular pattern by Ig activates phagocytes, which have been recruited to the site of infection, in a phenomenon referred as opsonophagocytosis. However, the steric hindrance induced by exopolysaccharide limits the

engulfment of pathogens by phagocytes, thus impeding microbial clearance (Campoccia, Mirzaei, Montanaro, & Arciola, 2019). Therefore, bacteria embedded in biofilm are protected against endogenous antibody-mediated opsonophagocytosis. Finally, in addition to its role as a barrier for penetration, reduced efficacy of antimicrobial treatment against biofilm is also due to the status of cells present inside the biofilm: a large proportion is in a status of reduced metabolism (Wood, Knabel, & Kwan, 2013) whereas most anti-microbial agents target active cellular processes, including cell wall formation, virulence factors expression, translation or transcription (Mah & O'Toole, 2001). Altogether, these processes, associated with an important heterogeneity of phenotype and genotype of cells embedded in biofilms (Becker, Hufnagle, Peters, & Herrmann, 2001; Besharova, Suchanek, Hartmann, Drescher, & Sourjik, 2016; K. H. Cho & Caparon, 2005; Stewart & Franklin, 2008), promote the development of resilient pathogenic populations (Crabbe, Jensen, Bjarnsholt, & Coenye, 2019). Up to now, no demonstration has been provided on the impact of biofilm on antibody ability to reach their pathogenic target. It would be important to take into account the biofilm barrier in the development of anti-infectious antibody.

iv. Tumour blood flow and interstitial pressure

Role of branching and expansion of blood vessels in tumour growth do not need to be proved any longer. However, rapid growth of tumour cells is often unsynchronised from effective vasculature growth, which results in non-vascularised tumour areas (Durand & Aquino-Parsons, 2001). This lack of tumour blood flow near new tumour areas can hinder drug delivery and in particular therapeutic antibodies as the majority of immunotherapies are administered systemically. Thurber and Weissleder in 2011 (Thurber & Weissleder, 2011) have shown that antibody uptake depends on both tumour vasculature and blood flow using sub-saturating antibody concentrations, and on the number of receptors using saturating antibody concentrations. Decrease in vessel diameters, as branching progresses, induces a decrease of blood pressure and blood flow. Moreover, unorganised vessel structure in the tumour microenvironment is associated with blood flow resistance due to vessels tortuosity (irregular network structure), loose of fluidity for red blood cell (hypoxia, acidosis) and retrograde or intermittent blood flow due to anarchic vessel growth. Drug transport by the systemic route is, as a result, considerably impeded (Jain, 1988). A normalization of the blood flow velocity may help to recover a “normal” diffusion. Gao and his team (Gao, et al., 2020) have shown that an increase of blood flow velocity enhanced pressure gradient between vessels and interstitial tissue, thereby promoting diffusion of nanoparticles from the blood to the interstitial domain. On the opposite, interstitial fluid pressure in tumour microenvironment is higher than in normal tissue (Gao, et al., 2020; Wu, et al., 2014). Indeed, an easy transfer of macromolecules from the blood to the interstitial space due to fewer tight junctions and lack of pericyte coverage lead to high pressure (Kerbel, 2006). In addition, a lack of lymphatic function in tumour system reduces the expulsion of fluid and result in high pressure (Padera, et al., 2002). In addition to the defective blood and lymph

vessels, the increased contractility of cancer-associated fibroblasts and a dense ECM compartment both contribute to the increase and persistence of high interstitial fluid pressure in tumours (Eikenes, Tari, Tufto, Bruland, & de Lange Davies, 2005; Heldin, Rubin, Pietras, & Ostman, 2004). In the context of pancreatic adenocarcinoma, high hyaluronic acid content in the microenvironment has been correlated to increased water molecules retention in the stroma and increased interstitial fluid pressure (Jacobetz, et al., 2013). Interstitial fluid pressure further inhibits the transport of drugs from the blood vessels (Ferretti, Allegrini, Becquet, & McSheehy, 2009). Heine et al. (2012) reported a heterogeneous distribution of an anti-EpCAM MOC31 mAb in subcutaneous xenografts with only few regions in the vicinity of perfused blood vessels positive for the mAb. The reduced penetration was correlated to the observation of immature blood vessels together with sparsely existing lymph vessels and an elevated interstitial fluid pressure (three time higher as compared to normal tissue).

Blood flow and interstitial pressure: overcoming strategies

Strategies to lower tumour interstitial fluid pressure and regulate blood flow should be considered in order to improve antibody distribution and therapeutic effectiveness. Actually, antiangiogenic mAbs (anti-VEGF or anti- VEGFR2) were used to restore interstitial fluid pressure and normalize anarchic blood vessels growth in order to enhanced small-drug penetration in tumour (Jain, Tong, & Munn, 2007; Tong, et al., 2004). The relevance of this strategy in the improvement of anti-cancerous mAb remains to be clinically evaluated.

3. FcRn and cellular barriers

a. The role of FcRn

Recombinant antibodies need to cross different cellular barriers to reach the organs in which their target is expressed. All these barriers have in common the expression of the neonatal Fc receptor (FcRn) described by Brambell in 1964 (Brambell, Hemmings, & Morris, 1964) and known since then as a major player in IgG half-life and biodistribution. By analogy to IgG, mAb (and Fc-conjugated protein) PK/PD is also submitted to FcRn control. FcRn is composed of a heavy chain in non-covalent association with β 2-microglobulin. The heavy chain is made up of 3 extracellular domains (α 1, α 2 and α 3), a transmembrane domain and an intracellular tail. FcRn is an intracellular receptor (over 90%) expressed in the cellular early endosomes (Antohe, Radulescu, Gafencu, Ghetie, & Simionescu, 2001; Ober, Martinez, Vaccaro, Zhou, & Ward, 2004). It is transiently expressed on the cell surface during endosome fusion to the membrane. Indeed, only about 4% of the FcRn pool is expressed at the surface with 2% FcRn non-internalisable by cells (D'Hooghe, Chalmers, Heywood, & Whitley, 2017). FcRn allows the recycling of its two ligands, IgG and albumin, in order to prolong their half-life in blood and tissues. Following their entry into the cell by pinocytosis, monomeric IgG (comprising mAb) and albumin bind to FcRn in a pH-dependent manner, at acidic pH (6.0-6.5) in early endosomes. This pH-

dependent binding is mediated by the interaction of the FcRn with residues located in the CH2-CH3 hinge region of the IgG (J. K. Kim, et al., 1999; Oganesyanyan, et al., 2014; Raghavan, Bonagura, Morrison, & Bjorkman, 1995). IgG are then released at neutral pH into the circulation (Ober, et al., 2004). This phenomenon confers protection of IgG from lysosomal degradation and prolongs their half-life (Ko, Jo, & Jung, 2021). The same mechanism is also involved in FcRn-dependent IgG transcytosis in polarized cells or across various tissues (Antohe, et al., 2001; Dickinson, et al., 1999; J. K. Kim, et al., 1999).

Interestingly, polymorphism of the FcRn gene may influence the PK/PD of IgG, including therapeutic mAb. FcRn polymorphism, consisting in variable number of tandem repeats (VNTR, five different alleles VNTR1-VNTR5) within the *FCGRT* promoter, influences the quantity of FcRn transcripts (Sachs, et al., 2006). Indeed, VNTR3/3 homozygous individuals express more FcRn transcript than VNTR2/3 heterozygous individuals. Finally, VNTR3/3 polymorphism leads to better management of IgG in monocytes due to an increase binding of IgG (Sachs, et al., 2006). In this context, Passot et al. showed that VNTR polymorphism was associated with variations in cetuximab PK parameters. Indeed, VNTR3 homozygote patients (high level of FcRn transcripts) had a lower cetuximab distribution clearance than VNTR2/VNTR3 (low level of FcRn transcript) and VNTR3/VNTR4 patients (Passot, et al., 2013). VNTR in FcRn promoter also influences the PK of intravenous Ig (IVIg) in patients with Guillain-Barré Syndrome (GBS) or IVIg efficiency in Common-Variable-Immunodeficiency (CVID) patients (Fokkink, et al., 2016; Gouilleux-Gruart, et al., 2013).

FcRn is a receptor found in a large variety of epithelial cell types such as hepatocytes, enterocytes, thyrocytes and podocytes. FcRn is also expressed in endothelial and hematopoietic cells (Akilesh, Christianson, Roopenian, & Shaw, 2007; Borvak, et al., 1998; Haymann, et al., 2000; Israel, et al., 1997; Latvala, Jacobsen, Otteneder, Herrmann, & Kronenberg, 2017; Montoyo, et al., 2009). This wide cellular expression leads to its ubiquitous presence in organs all over the body, consistent with the functions attributed to FcRn regarding therapeutic antibodies and with its role in overcoming cellular barriers. Its function in each specific tissue will be discussed in the sessions below.

b. Epithelial barrier and mucosal delivery of antibody

Non-invasive routes have been investigated for therapeutic antibodies using delivery through mucosa including nasal (Rohrer, Lupo, & Bernkop-Schnurch, 2018), lung (Respaud, Vecellio, Diot, & Heuze-Vourc'h, 2015), buccal (Montenegro-Nicolini & Morales, 2017) and oral mucosa (Vilasaliu, Thanou, Stolnik, & Fowler, 2018) for either topic or systemic-acting drugs. Mucosal surfaces represent an extensive area that face the external environment, require the establishment of anatomic and physiologic barriers, and prevent pathogens and macromolecules from reaching the internal surfaces of the body.

The epithelium represents a barrier for both locally and systemically acting antibody, depending on the antigen target location and route of administration (Ferrati, Wu, Kanapuram, & Smyth, 2018; Homayun, Lin, & Choi, 2019). Mucosal epithelium, which is almost a non-keratinized epithelium (except in specific areas of the oral cavity), is a critical barrier that provides protection for pathogens entering the body. The regulation and exchange of molecules between the environment and the underlying tissues by epithelium is exemplified by nutrient absorption in the gastro-intestinal tract (Turner, 2009) and gas exchange in the airways (Hellings & Steelant, 2020). Directional transport across the epithelium is provided by cellular polarity featuring apical and basolateral domains that are asymmetrical in structure and functions (Farquhar & Palade, 1963). From the apical to basolateral side, the apical junctional complex is composed of tight junctions, adherent junctions, gap junctions and desmosomes (**Figure 2**). It is the main regulator of molecular transport across the epithelium. Indeed, epithelium tight junctions dictate the characteristics of paracellular permeability that accepts, with high capacity, molecules with molecular mass <600 Da and size in the range of 8-9 Å in diameter (Watson, Rowland, & Warhurst, 2001). During transient alterations of the epithelium, a leak pathway has also been characterized, allowing less restrictive, low capacity and size-independent transportation (Buschmann, et al., 2013; Turner, 2009). Due to their large molecular size and high polarity, paracellular transportation of full-length (Guilleminault, et al., 2014) and fragments antibodies (Patil, et al., 2018) is estimated low or negligible. Besides paracellular transportation, transcellular transport of larger molecules can occur at the mucosal surface. Macromolecules localised in the lumen can access the lamina propria by specialised cells including microfold cells (in the gastrointestinal tract) and dendritic cells (Kimura, 2018) or by unspecific endocytosis through epithelial cells. Endocytosis may result in partial or total degradation of proteins in acidic and lysosomal compartments (Heyman, Ducroc, Desjeux, & Morgat, 1982). Transcellular transport of antibody (with an Fc domain) mainly occurs through receptor-mediated mechanisms involving FcRn (see section 3.a). In lung mucosa, FcRn is expressed in bronchial and alveolar epithelial cells (Akilesh, et al., 2007; Latvala, et al., 2017; Sakagami, et al., 2006; Spiekermann, et al., 2002) where it maintains homeostatic IgG levels (Vogelzang, et al., 2016) and allows IgG transcytosis across the mucosal surface (Spiekermann, et al., 2002). For inhaled antibodies, FcRn contributes to mAb biodistribution via recycling and transcytosis in the airways (Guilleminault, et al., 2014). FcRn is also expressed in human nasal epithelium (Campanari, Bourefis, & Kabashi, 2019) and may mediate transcytosis of mAb across this tissue after nasal administration (Bequignon, et al., 2019).

Epithelial barrier: overcoming strategies

According to the target localisation, several strategies have been designed to interface with mucosal surfaces in an attempt to improve or reduce penetration of antibody through the epithelial barrier. Structural simplification of antibody architecture has proven to improve *in vivo* delivery after inhalation. Indeed, anti-IL-13, anti-TNFR1 or anti-RSV F protein antibody fragments display

improved tissue penetration and biodistribution after inhalation (Bertok, et al., 2012; Detalle, et al., 2016; Hacha, et al., 2012). Several studies describe the use of delivery carrier systems to overcome the epithelial barrier for proteinaceous drugs. This includes permeation enhancers that will temporarily weaken tight junctions enhancing paracellular permeability (Maher, Mrsny, & Brayden, 2016). They have been successfully used for insulin, liposomes and nanoparticles, but only one study reported a positive impact on IgG delivery. The concomitant intranasal administration of (¹²⁵I)-IgG and MMP-9 significantly improved the uptake of antibody into the brain as compared to unformulated antibody (Kumar, et al., 2018). However, permeability enhancers should be used with caution as mucosal irritation and toxicity has been reported (Maher, et al., 2016; Marttin, et al., 1997). Another method consists in improving transcellular transport using cell-penetrating peptides: short-length (5-30 amino-acids) peptides, rich in positive charges and containing hydrophobic tryptophan residues may help translocation across epithelium. This technology has been successfully used mainly for nanotechnologies (Jin, et al., 2012; Porsio, Craparo, Mauro, Giammona, & Cavallaro, 2018) and is currently under investigation for antibody delivery across the mucosal epithelium (J. F. Zhang, et al., 2018; Zhao, Brown, Kohler, & Muller, 2003). When aiming luminal target, prolonging antibody retention may be of particular interest. Conjugation of polyethylene glycol (PEG) chains to antibody will increase the molecular weight lowering transcytosis to the systemic circulation (Patil, et al., 2018) by inhibiting its binding to FcRn, as demonstrated for the certolizumab pegol (Mariette, et al., 2018). In addition, it will enhance stability and mucoadhesion, while avoiding the uptake by phagocytes (see section 4) improving antibody PK profile (Koussoroplis, et al., 2014). When considering the mucosal route of administration to deliver a drug acting at the systemic level, it would be beneficial to use the FcRn-mediated transcytosis. Indeed Fc-conjugated drugs, like Epo-, IFN β - or FSH-Fc have shown both improved transepithelial transport or half-life in the airways and in the plasma (Rath, et al., 2015). However, it is noteworthy that antibody epithelium-to-endothelium diffusion after inhalation delivery is slow, indicating that other parameters may contribute to airway-blood passage (Guilleminault, et al., 2014; Respaud, et al., 2016).

c. Endothelial barrier and systemic delivery of antibody

The endothelium is a cell monolayer lining blood vessel walls that not only controls the vascular tone, haemostasis and angiogenesis but also cell behaviour, innate immunity, cell-cell interactions, and cell metabolism in the vessel wall (S. Xu, et al., 2021). Vascular endothelium cells act like a gatekeeper controlling the flow of molecules and fluid into and out of a tissue. In this section, we will discuss how vascular endothelium and more specifically the blood-brain barrier (BBB) limit antibody delivery.

i. Structure of blood vessels

The structure of blood vessels is commonly described with three tunicae characterised by morphological differences: intima, media and adventitia (from the most internal to the most external tunic). Microvasculature, the main place for exchanges, is composed by intima tunica with endothelial cells for the most important part and pericytes localized at the outside with basal membrane. The growth of this network is dependent of angiogenesis phenomenon, which allows neo-vessels growth from pre-existing structures (one of the ways used by tumour cells to increase neo-vessels proliferation) (Raza, Franklin, & Dudek, 2010; Tennant & McGeachie, 1990). Blood vessels are essential to protect tissues from molecules present in the bloodstream circulation. Nevertheless, a non-negligible proportion of drugs must diffuse through the micro-vessel wall to reach their targets. Drug diffusion depends both on micro-vessel structure and on drug diffusion abilities. Due to their features (hydrophilicity and large size), antibodies are restricted in their ability to pass through endothelial vessel cells. Studies in mice have shown that FcRn is expressed in the endothelium of small arterioles and capillaries, but not in larger vessels like central vein and portal vasculature (Borvak, et al., 1998). FcRn is expressed on the walls of endothelial cell endocytosis vesicles (pinocytosis) in the human vascular endothelium (Paintaud, 2009). After membrane invagination, mAb bind this specific receptor. FcRn expression in blood vessels leads to sustainable IgG serum half-life by recycling them to the blood, including mAb (Pyzik, et al., 2019). For tumour vasculature, there is a paradoxical situation. On the one hand, the inflamed environment combined with the rapid tumour vasculature growth induce an increase in the number and size of gaps, a decrease in the quality of basal membrane and a reduced number of pericytes that facilitates diffusion through intima tunica of tumour microenvironment capillaries (Azzi & Gavard, 2014; Ribatti, et al., 2005). On the other hand, tumour vasculature tortuosity and unorganised microcirculation structure decreases diffusion capacity by flow resistance mechanism. In fact, even if the vascular density is high in tumour microenvironment, thanks to hypersecretion of growth factor (VEGF for example), the unstructured network could be an important obstacle for drugs delivery (Dewhirst & Secomb, 2017), as illustrated in section 2.c.iv for antibodies.

ii. The blood-brain barrier (BBB): the wall between the blood and the Central Nervous System (CNS)

The CNS is protected by three main barriers that separate it from the rest of the body: the BBB, the blood-cerebrospinal fluid barrier, and the arachnoid barrier. The BBB is found at the interface between the cerebral systemic circulation and the brain (Wolburg, Noell, Mack, Wolburg-Buchholz, & Fallier-Becker, 2009; Zlokovic, 2008). Given the high sensitivity of neurons to changes in their microenvironment and the low regenerative capacity of the nervous system, a disruption of the BBB can have detrimental effects on the CNS. The BBB strictly modulates the passage of molecules into and from the brain parenchyma. This barrier is mainly made up of specialised endothelial cells characterised by the lack of fenestrae, reduced pinocytosis and transcytosis, the expression of specific metabolising enzymes, and the presence of energy-dependent efflux transporters, such as the FcRn,

ATP-binding cassette transporters and low-density lipoprotein receptor-related protein 1 (LRP1) (Deane, et al., 2004; Higgins, 2001; Salameh & Banks, 2014). Therefore, these cells demonstrate a high transendothelial electrical resistance, coupled with low paracellular and transcellular permeability (Maherally, et al., 2018). This electrical resistance is largely due to the presence of continuous junctional complexes, and particularly tight junctions between endothelial cells (Bazzoni & Dejana, 2004). Tight junctions enhance the selective transport of molecules across the BBB through two main mechanisms: (i) conferring endothelial cells their polarity by separating their apical and basolateral surfaces, each of which has a different expression of transporters, and (ii) restricting paracellular transport pathways and forcing molecules to move transcellularly through specific transporters (Tsukita, Furuse, & Itoh, 2001). The BBB endothelial cells are surrounded by pericytes and perivascular astrocytic end-feet. Pericytes share the basal lamina of endothelial cells and act like vascular smooth muscle cells to regulate blood flow through BBB capillaries (Jespersen & Ostergaard, 2012). They also release signalling molecules that modulate tight junctions' density and astrocytic end-feet polarisation (Armulik, et al., 2010) (**Figure 3**). The basal lamina is in turn composed of a mixture of laminin, fibronectin, type IV collagen, and heparin sulphate, which further regulate the permeability of the BBB (See Section 2.a.i) (Milner, et al., 2008). The BBB is not static and is finely modulated in both healthy and disease conditions. Its permeability is influenced by several cell types including endothelial cells, pericytes, astrocytes, microglia, and neurons, which morphologically and molecularly interact together to form the functional neurovascular unit (Luissint, Artus, Glacial, Ganeshamoorthy, & Couraud, 2012).

It is estimated that less than 0.1% of systematically administered antibody enter the CNS through nonspecific pathways (Atwal, et al., 2011; Poduslo, Curran, & Berg, 1994). An even lower amount of 0.009% of the injected dose reaches the cortex (St-Amour, et al., 2013). This may be partly attributable to the presence of FcRn (Cooper, et al., 2013). In the BBB, FcRn is expressed in microvascular endothelium and in choroid plexus epithelium that constitute the BBB (Schlachetzki, Zhu, & Pardridge, 2002), but not in neurons, astrocytes, or microglia (Akilesh, et al., 2007; Stamou, Grodzki, van Oostrum, Wollscheid, & Lein, 2018). FcRn in the brain is involved in reverse transcytosis of IgG across the BBB by a rapid efflux of IgG secreted in the brain to blood direction (Cooper, et al., 2013; Schlachetzki, et al., 2002). However, despite numerous studies in brain endothelial cells, the role of FcRn in IgG recycling and transcytosis from blood to brain has not yet been clearly demonstrated (Abuqayyas & Balthasar, 2013; X. Chen, et al., 2014; Deane, et al., 2005; Yip, et al., 2014). For example, it was reported that systemically injected Ab in FcRn knockout mice presented similar plasma to brain ratio compared to wild-type mice (Garg & Balthasar, 2009). More recently, a study performed in brain endothelial-like cells derived from human induced pluripotent stem cells showed that transcytosis occurs independently of FcRn, as IgGs lacking human FcRn recognition presented the same permeability as a full-length control IgG (Ruano-Salguero & Lee,

2020). Even if several studies demonstrated that FcRn rapidly promotes efflux of therapeutic antibody and hamper their therapeutic potential, studies performed in Alzheimer's disease models suggest that FcRn can actually improve the therapeutic effect of antibodies targeting amyloid- β (A β) plaques by promoting the efflux of anti-A β antibody/A β immune complexes (Deane, Bell, Sagare, & Zlokovic, 2009; Deane, et al., 2005). **Intriguingly, studies performed in a transgenic AD mouse model suggested that FcRn expression decreases with age (Deane, et al., 2005). The putative occurrence of such decrease in the human ageing brain suggests two scenarios: (i) Ab administered at the periphery would present a lower efflux ratio than described so far; or (ii) Ab/antigen complexes would be trapped in the CNS thus preventing any therapeutic effect induced by immunotherapy.**

Disruptions in the BBB have been reported in several pathological conditions (Zlokovic, 2008), involving several cellular and molecular actors, like proteases (Y. Yang & Rosenberg, 2011), ultimately resulting in the increased permeability of the BBB (**Figure 3**), associated to the disruption of tight junctions (Gaillard, de Boer, & Breimer, 2003) and **changes in pericytes (Bohannon, et al., 2020)**. Studies also reported an age-associated increase in the BBB permeability, which implies a potential age- and disease-induced increase in the antibody uptake (Bell, et al., 2010; Erickson & Banks, 2019; Popescu, et al., 2009). Among the consequences of increased BBB permeability is the leakage of serum proteins including antibodies (Gray & Woulfe, 2015; Nelson, Sweeney, Sagare, & Zlokovic, 2016; Wenting, et al., 2020; Zamudio, et al., 2020) and the infiltration of peripheral cells such as T cells, macrophages, neutrophils, and red blood cells (Blair, et al., 2015; Zamudio, et al., 2020). These changes lead to the activation of microglia and astrocytes, and an inflammatory cascade exacerbating the condition and leading to a vicious cycle whereby the BBB disruption causes an inflammatory response, which in turn disrupts the integrity of the BBB (Chan-Ling, et al., 2007; Oksanen, et al., 2019; Tuppo & Arias, 2005). Studies on neurodegenerative diseases reported an enhanced uptake of drugs that usually are unable to cross the BBB (Kortekaas, et al., 2005). For example, trastuzumab uptake increased by 18-fold in metastatic brain lesions once the tumour size was superior to 0.5 mm (Dijkers, et al., 2010), which is enough to cause a disruption of the BBB (Ni, Chen, & Lu, 2018). Other antibodies have also been successfully delivered to ischemic brain regions following a stroke-induced BBB opening and showed significant therapeutic and prognostic results (Irving, et al., 2005; Macrez, et al., 2011; Rust, et al., 2019). However, alterations in the BBB permeability in CNS disorders do not always favour an increased permeability for peripheral antibodies (Bien-Ly, et al., 2015; Wahl, et al., 2020).

Despite promising results in experimental models of CNS diseases, where peripherally administered antibodies were able to reduce symptoms (Atwal, et al., 2011; Bard, et al., 2000; Buttini, et al., 2005; Masliah, et al., 2011), there seems to be many difficulties to translate them in humans. Several clinical trials involving anti-A β mAbs were terminated after interim analysis indicating that systemically administered mAbs were unlikely to meet their primary endpoint (Blennow, et al., 2012;

Doody, et al., 2014; Ostrowitzki, et al., 2017; Rinne, et al., 2010; Salloway, et al., 2021). One of the reasons why these mAbs failed in clinical trials is the need to administer large mAb doses to achieve a therapeutic effect in the CNS, which increases the risk of side effects. Recently, Aducanumab became the first anti-A β mAb to be approved by the FDA for the management of Alzheimer's disease. However, the effectiveness of this intravenously administered mAb is still controversial and its approval debatable due to its considerable side effects and unproven therapeutic potential (Mullard, 2021).

Blood-brain barrier: overcoming strategies

Since peripherally administrated mAbs that target the CNS have been facing lack of success, several strategies have been evaluated to overcome the BBB and are reviewed below.

Direct delivery into the CNS: Direct antibody delivery into the brain and therapeutic effects were successfully achieved after intracerebroventricular injection (Cheng, et al., 2017; Du, et al., 2020; Gros-Louis, Soucy, Lariviere, & Julien, 2010; Klyubin, et al., 2005; Qiang, et al., 2018; Thakker, et al., 2009; Yadav, et al., 2017), intracerebral injection (Brendza, et al., 2005; Grossi, et al., 2003; Lombardo, et al., 2003; Wilcock, et al., 2003) and convection-enhanced delivery (Nwagwu, Immidisetti, Bukanowska, Vogelbaum, & Carbonell, 2020; Shoji, et al., 2016; Souweidane, et al., 2018). Although potentially effective, such neurosurgical methods are technically challenging, highly invasive, and raise serious safety concerns (Cohen-Pfeffer, et al., 2017; Pardridge, 2007). In addition, such techniques show limited diffusion and distribution capacities of the antibody in the brain parenchyma (Nagaraja, et al., 2005; Salvatore, et al., 2006; Yan, et al., 1994).

Antibody engineering: In an attempt to increase the uptake of peripherally injected antibody by the CNS, bispecific antibodies have been developed. As their name imply, they are capable of simultaneously recognizing two different epitopes or antigens. To improve BBB crossing, one antibody-binding site would recognise an endogenous BBB receptor and therefore acting as a Trojan horse, while the other site would recognise a therapeutic target inside the CNS. The ideal target receptor for this receptor-mediated transcytosis across the BBB needs to be highly and specifically expressed on brain endothelial cells (Choudhari, et al., 2021; Pardridge, 2017). Several receptors for receptor-mediated transcytosis across the BBB have been considered so far as antigen for bispecific antibodies, such as the insulin receptor, LRP1 and LRP2 CD98hc (Zuchero, et al., 2016), but the transferrin receptor remains the most widely targeted delivery system (Tashima, 2020) with promising results in Alzheimer's disease models (Y. J. Yu, et al., 2014).

Artificial ways to reversibly increase the permeability of BBB: Other techniques can be used in combination to intravenously administered antibodies with the aim to reversibly increase BBB permeability. Recently, Lesniak and co-workers reported a high brain uptake of bevacizumab following intra-arterial administration and mannitol-induced BBB opening (Lesniak, et al., 2019). This

old technique is resurfacing for the delivery of antibody to the brain and is currently being tested in three clinical trials (NCT02861898, NCT02800486, NCT01269853).

A new technique, which uses brain-focused ultrasound (FUS) (Costa, Joaquim, Forlenza, Talib, & Gattaz, 2019) to sonicate systematically administered microbubbles, can reversibly and locally disrupt tight junctions (Shang, Wang, Liu, Zhang, & Xue, 2011; Sheikov, McDannold, Sharma, & Hynynen, 2008) and increase active transcytosis in the BBB (Sheikov, et al., 2006), allowing antibody transport from the blood to specific brain regions. This method was found to be safe in non-human primates (McDannold, Arvanitis, Vykhodtseva, & Livingstone, 2012; Nwagwu, et al., 2020), and recently in humans (Abrahamo, et al., 2019; Carpentier, et al., 2016). In addition, brain-focused ultrasound was found to downregulate the efflux transporter, P-glycoprotein, in the targeted brain regions (H. Cho, et al., 2016). Since 2004, when Sheikov and his colleagues demonstrated for the first time that brain-focused ultrasound allowed BBB permeabilization to molecules as large as IgG (Sheikov, McDannold, Vykhodtseva, Jolesz, & Hynynen, 2004), there has been several studies demonstrating the relevance of brain-focused ultrasound to improve the delivery of systematically administered antibody into specific brain areas, particularly in tumours and Alzheimer's disease (Dubey, et al., 2020; Janowicz, Leinenga, Gotz, & Nisbet, 2019; Jordao, et al., 2010; Kinoshita, McDannold, Jolesz, & Hynynen, 2006; Kobus, Zervantonakis, Zhang, & McDannold, 2016; Leinenga, Bodea, Koh, Nisbet, & Gotz, 2020; Liu, et al., 2016; Park, Zhang, Vykhodtseva, & McDannold, 2012; Raymond, et al., 2008; Sheybani, et al., 2021). Overall, brain-focused ultrasound seems to be a promising technique to deliver antibody to targeted areas in the CNS, but the secondary effects of this technique on the brain still need to be further assessed (Todd, et al., 2020).

Bypassing the BBB: Finally, intracerebral drug delivery through the nasal interface (“Nose-to-brain”) is a way to bypass the BBB. Drugs are deposited in the olfactory region of the nares where, after crossing the olfactory epithelium, they travel to the brain via mechanisms that still need to be fully determined. Disorders that may benefit from this novel route of administration include neurodegenerative diseases, post-traumatic stress disorder, pain and glioblastoma. In an *ex vivo* porcine model, endogenous Ig as well as various mAb were shown to diffuse through the nasal mucosa in an FcRn-dependent mechanism (see Section 3.a) (Ladel, et al., 2018). In a murine model, administration of anti-A β mAb by intranasal route allowed a better intracerebral bioavailability than the intraperitoneal route (Chauhan & Chauhan, 2015), while maintaining its therapeutic properties (Cattepoel, Hanenberg, Kulic, & Nitsch, 2011). This has motivated the EU to launch the N2B-patch program in 2017 aiming at developing a mAb for the treatment of multiple sclerosis through the nose-to-brain route (<https://cordis.europa.eu/project/id/721098>). In 2021, another program, Bio2Brain, was also launched by the EU to enhance the bioavailability of mAb targeting the CNS (<https://cordis.europa.eu/project/id/956977>). Even if promising, this groundwork on nose-to-brain delivery still exposes mAb to the cellular and extracellular barriers of the nasal mucosa (see Section

2). Lately, a combination of brain-focused ultrasound and intranasal drug administration was found to enhance the delivery of antibodies to gliomas in mice (Ye, Yuan, Yue, Rubin, & Chen, 2021). Ferreira and her colleagues also showed that nanoparticles coated with a mAb targeting EGFR were successfully delivered to glioblastoma following intranasal administration (Ferreira, et al., 2021). Further optimisation is needed to increase the retention time at the nasal surface and to enhance the penetration of the nasal epithelium.

4. Immune barrier and antibody clearance

Among the different types of cells engaged in the immune responses, macrophages are at the crossroad between innate and adaptive immunity. Tissue-resident macrophages are found in various tissues through the body, like Kupffer cells in the liver, microglia in the brain, osteoclasts in bones, or alveolar macrophages in the lungs. Some tissue-resident macrophages are known to have a major role in IgG transport, biodistribution or metabolism and may be considered as an immune barrier against recombinant antibodies.

Only antibody fragments (Waldmann, Strober, & Mogelnicki, 1972), which have low-molecular weight as compared to full-length IgG/mAb above the glomerular cut-off threshold can be filtered by the kidneys. Consequently, antibody clearance occurs mainly through intracellular catabolism, which includes upstream engulfment of antibody through non-specific pinocytosis, target-mediated or Fc γ R-mediated endocytosis (W. Wang, Wang, & Balthasar, 2008). This latter process is mediated through binding of IgG Fc region or immune-complexes to Fc γ R-expressing cells such as phagocytes from mononuclear phagocytic system, including notably Kupffer cells, Langherans cells in the skin and alveolar macrophages. This binding will result in antibody lysosomal proteolysis. Kupffer cells represent the largest population of tissue macrophages (Nguyen-Lefebvre & Horuzsko, 2015). They are mainly found in the lumen of hepatic sinusoids and exhibit endocytic activity against blood material entering the liver (Naito, Hasegawa, Ebe, & Yamamoto, 2004) including immune-complexes via Fc γ R-dependent uptake (Johansson, et al., 2002). Similarly, there is evidence indicating that alveolar macrophages are involved in IgG catabolism. Indeed, Lombry et al. showed that clodronate-treated mice where alveolar macrophages were depleted, exhibited several-fold enhancement in systemic absorption of intratracheally-administered IgG (Lombry, Edwards, Preat, & Vanbever, 2004). Antibodies are supposed to cross slowly the epithelial-capillary barrier and consequently can remain within parenchyma for prolonged period as compared to small molecules, giving more time to resident phagocytes to engulf them. Fc γ R binding alone is not expected to have a major impact on IgG PK. Indeed, studies with Fc γ R $^{-/-}$ mice showed that Fc γ R-mediated clearance played only a minor role (Abuqayyas & Balthasar, 2012). However, in some circumstances antibody binding to Fc γ R may limit its bioavailability, for example: (i) when phagocyte infiltration is increased due to inflammatory or infectious triggers, (ii) when considering larger antibody structure, like ADC that tend to have a better

binding to Fc γ R (Lux, Yu, Scanlan, & Nimmerjahn, 2013), and (iii) when considering engineered antibody with improved affinity to Fc γ R. Preclinical studies reported a contribution of Fc–Fc γ R interactions between ADCs and tumour-associated macrophages, suggesting that they can contribute to ADC processing through Fc γ R interaction and may induce off target cytotoxicity (Li, et al., 2017). It has been showed that trastuzumab emtansine exhibited faster clearance in mice and humans compared to native antibody; this was suggested to be attributable to a better recognition and internalisation of antibody by Fc γ R-expressing phagocytes from the mononuclear phagocytic system (Burris, et al., 2011; Leyland-Jones, et al., 2003). Other factors like larger patient body mass or tumour burden, associated with increased mononuclear phagocytic system function, may accelerate antibody clearance (R. Bruno, et al., 2005; Quartino, et al., 2016). This should be put into perspective with the fact that for complex antibody-like structures like bispecific antibodies, rapid clearance was not attributable to target binding nor involved mononuclear phagocytic system but to binding with liver sinusoidal endothelial cells (Datta-Mannan, et al., 2016). Overall, the exact contribution of Fc γ R-expressing phagocytes to antibody elimination remains not fully understood.

In addition, many immune cells express FcRn: myeloid lineage such as dendritic cells, monocytes/macrophages and neutrophils (Akilesh, et al., 2007; Zhu, et al., 2001) mainly express FcRn while it is detected at a lower level in lymphoid cells (T and B lymphocytes) (van Bilsen, et al., 2010). In bone marrow chimera experiments using FcRn wild-type and knockout mice, Akilesh et al. showed that FcRn expression in bone marrow-derived cells plays a significant role in regulating IgG serum half-life and homeostasis (Akilesh, et al., 2007). Nevertheless, the loss of FcRn expression in B cells and dendritic cells had no significant effect on IgG homeostasis, in mice. The role of macrophages in the recycling and homeostasis of IgG (Challa, et al., 2019) may be more prominent as they express Fc γ R and the highest level of FcRn. Additional factors including antibody glycosylation, aggregation, and sensitivity to proteolysis, (Jiang, et al., 2011) may be involved in phagocyte-mediated clearance and further studies are warranted to better understand and delineate the contribution of immune cells in antibody homeostasis.

Immune barrier: overcoming strategies

The dual role of FcR in IgG catabolism and PK/PD makes any modifications of IgG affinity to Fc γ R or FcRn susceptible to ultimately alter mAb efficacy. Thus, protein engineering in the Fc domain of IgG must be considered with caution, depending on the target localization and pathological context, which will profoundly affect the nature and the magnitude of the immune cell populations encountered by mAb. Interestingly, a recent study took the advantage of the phagocytic pathways to achieve therapeutic efficacy. Kasturirangan et al. showed that a bispecific/biparatopic antibody construct generated with two antibodies targeting different epitopes of IL-6 was much rapidly internalised and

degraded by Kupffer cells as compared to parental antibodies. This describing novel approach will both promote neutralisation but also clearance of soluble targets (Kasturirangan, et al., 2017).

5. Conclusion

In most cases, antibodies have to face several cellular and non-cellular barriers after entering the human body to reach their target antigens. The barriers that antibody may encounter depends on:

- i) the delivery route. Although, the intravenous route may not be optimal to efficiently deliver antibody to specific organ or tissues, like the brain, lungs, gastro-intestinal tract, eye or the joints, exposing antibody to low-permeable barriers, antibody delivered by alternative routes are also confronted with cellular and non-cellular barriers, which should be considered during antibody-drug development.
- ii) the antibody format/structure, which confers different partitioning properties in the different body compartment parts. Although IgG may benefit from FcRn uptake for transcytosis, their high molecular weight may be detrimental for diffusion across non-cellular barriers as compared to antibody fragments. More comparative studies addressing the impact of antibody format/structure on barrier crossing would be valuable but difficult to implement since the format/structure is also modifying antibody half-life.
- iii) the pathological conditions and inter-individual variability response to disease. As oncology is a major medical application field for recombinant antibody, the impact of tumour stroma on antibody diffusion has constituted a thriving focus of research. In contrast other barriers, which can be altered in non-cancerous pathological conditions, such as proteases, mucus, biofilm have driven lower attention so far and should be taken into consideration to avoid antibody clinical failure.
- iv) aging, which is certainly an under-appreciated parameter in antibody response. The present review briefly mentioned the impact of aging on the decreased function of organs, like the brain, as well as the significant decline in the efficacy of the immune system that may ultimately leads to age-associated diseases (Erdo, Denes, & de Lange, 2017; Owyong, et al., 2018). The influence of ageing on the nature and magnitude of the biological barriers and response to antibodies has been poorly characterized so far and may certainly require more attention especially with the increased ageing of populations and the relevance of antibodies in the treatment of age-associated diseases.

As illustrated (**Figure 4**), many strategies have been or can be investigated to overcome both natural and pathological barriers to improve antibody distribution and ultimately their therapeutic response.

However, few of them have **been materialised in the clinic successfully (Table 1)**. A better understanding of the consequences of each barrier/barrier component on antibody partitioning will be required to help develop antibodies with novel clinical applications or delivery routes.

References

- <https://www.antibodysociety.org/resources/approved-antibodies/>. Antibody therapeutics approved or in regulatory review in the EU or US. The Antibody Society, 2021 (accessed on July 13, 2021).
- <https://cordis.europa.eu/project/id/721098/en>. Nose to Brain Delivery of Antibodies via the Olfactory Region for the Treatment of Multiple Sclerosis Using Novel Multi-functional Biomaterials Combined with a Medical Device. Cordis European Commission, 2021 (accessed on July 20, 2021).
- Abraham, A., Meng, Y., Llinas, M., Huang, Y., Hamani, C., Mainprize, T., Aubert, I., Heyn, C., Black, S. E., Hynynen, K., Lipsman, N., & Zinman, L. (2019). First-in-human trial of blood-brain barrier opening in amyotrophic lateral sclerosis using MR-guided focused ultrasound. *Nat Commun*, *10*, 4373.
- Abuqayyas, L., & Balthasar, J. P. (2012). Application of knockout mouse models to investigate the influence of FcγR2b on the tissue distribution and elimination of 8C2, a murine IgG1 monoclonal antibody. *Int J Pharm*, *439*, 8-16.
- Abuqayyas, L., & Balthasar, J. P. (2013). Investigation of the role of FcγR2b and FcRn in mAb distribution to the brain. *Mol Pharm*, *10*, 1505-1513.
- Akilesh, S., Christianson, G. J., Roopenian, D. C., & Shaw, A. S. (2007). Neonatal FcR expression in bone marrow-derived cells functions to protect serum IgG from catabolism. *J Immunol*, *179*, 4580-4588.
- Anaya-Lopez, J. L., Lopez-Meza, J. E., & Ochoa-Zarzosa, A. (2013). Bacterial resistance to cationic antimicrobial peptides. *Crit Rev Microbiol*, *39*, 180-195.
- Antohe, F., Radulescu, L., Gafencu, A., Ghetie, V., & Simionescu, M. (2001). Expression of functionally active FcRn and the differentiated bidirectional transport of IgG in human placental endothelial cells. *Hum Immunol*, *62*, 93-105.
- Arda, O., Goksugur, N., & Tuzun, Y. (2014). Basic histological structure and functions of facial skin. *Clin Dermatol*, *32*, 3-13.
- Armulik, A., Genove, G., Mae, M., Nisancioglu, M. H., Wallgard, E., Niaudet, C., He, L., Norlin, J., Lindblom, P., Strittmatter, K., Johansson, B. R., & Betsholtz, C. (2010). Pericytes regulate the blood-brain barrier. *Nature*, *468*, 557-561.
- Atwal, J. K., Chen, Y., Chiu, C., Mortensen, D. L., Meilandt, W. J., Liu, Y., Heise, C. E., Hoyte, K., Luk, W., Lu, Y., Peng, K., Wu, P., Rouge, L., Zhang, Y., Lazarus, R. A., Scearce-Levie, K., Wang, W., Wu, Y., Tessier-Lavigne, M., & Watts, R. J. (2011). A therapeutic antibody targeting BACE1 inhibits amyloid-beta production in vivo. *Sci Transl Med*, *3*, 84ra43.
- Azzi, S., & Gavard, J. (2014). [Blood vessels in cancer: can't stop whispering]. *Med Sci (Paris)*, *30*, 408-414.
- Bansil, R., & Turner, B. (2006). Mucin structure, aggregation, physiological functions and biomedical applications. *Current Opinion in Colloid and Interface Science*, *11*, 164-170.
- Bard, F., Cannon, C., Barbour, R., Burke, R. L., Games, D., Grajeda, H., Guido, T., Hu, K., Huang, J., Johnson-Wood, K., Khan, K., Kholodenko, D., Lee, M., Lieberburg, I., Motter, R., Nguyen, M., Soriano, F., Vasquez, N., Weiss, K., Welch, B., Seubert, P., Schenk, D., & Yednock, T. (2000). Peripherally administered antibodies against amyloid beta-peptide enter the central nervous system and reduce pathology in a mouse model of Alzheimer disease. *Nat Med*, *6*, 916-919.
- Baugh, M. D., Perry, M. J., Hollander, A. P., Davies, D. R., Cross, S. S., Lobo, A. J., Taylor, C. J., & Evans, G. S. (1999). Matrix metalloproteinase levels are elevated in inflammatory bowel disease. *Gastroenterology*, *117*, 814-822.
- Bazzoni, G., & Dejana, E. (2004). Endothelial cell-to-cell junctions: molecular organization and role in vascular homeostasis. *Physiol Rev*, *84*, 869-901.
- Becker, P., Hufnagle, W., Peters, G., & Herrmann, M. (2001). Detection of differential gene expression in biofilm-forming versus planktonic populations of *Staphylococcus aureus* using micro-representational-difference analysis. *Appl Environ Microbiol*, *67*, 2958-2965.

- Bell, R. D., Winkler, E. A., Sagare, A. P., Singh, I., LaRue, B., Deane, R., & Zlokovic, B. V. (2010). Pericytes control key neurovascular functions and neuronal phenotype in the adult brain and during brain aging. *Neuron*, *68*, 409-427.
- Bequignon, E., Dhommee, C., Angely, C., Thomas, L., Bottier, M., Escudier, E., Isabey, D., Coste, A., Louis, B., Papon, J. F., & Gouilleux-Gruart, V. (2019). FcRn-Dependent Transcytosis of Monoclonal Antibody in Human Nasal Epithelial Cells In Vitro: A Prerequisite for a New Delivery Route for Therapy? *Int J Mol Sci*, *20*.
- Bertok, S., Wilson, M. R., Morley, P. J., de Wildt, R., Bayliffe, A., & Takata, M. (2012). Selective inhibition of intra-alveolar p55 TNF receptor attenuates ventilator-induced lung injury. *Thorax*, *67*, 244-251.
- Besharova, O., Suchanek, V. M., Hartmann, R., Drescher, K., & Sourjik, V. (2016). Diversification of Gene Expression during Formation of Static Submerged Biofilms by *Escherichia coli*. *Front Microbiol*, *7*, 1568.
- Biancheri, P., Brezski, R. J., Di Sabatino, A., Greenplate, A. R., Soring, K. L., Corazza, G. R., Kok, K. B., Rovedatti, L., Vossenkamper, A., Ahmad, N., Snoek, S. A., Vermeire, S., Rutgeerts, P., Jordan, R. E., & MacDonald, T. T. (2015). Proteolytic cleavage and loss of function of biologic agents that neutralize tumor necrosis factor in the mucosa of patients with inflammatory bowel disease. *Gastroenterology*, *149*, 1564-1574 e1563.
- Bien-Ly, N., Boswell, C. A., Jeet, S., Beach, T. G., Hoyte, K., Luk, W., Shihadeh, V., Ulufatu, S., Foreman, O., Lu, Y., DeVoss, J., van der Brug, M., & Watts, R. J. (2015). Lack of Widespread BBB Disruption in Alzheimer's Disease Models: Focus on Therapeutic Antibodies. *Neuron*, *88*, 289-297.
- Blair, L. J., Frauen, H. D., Zhang, B., Nordhues, B. A., Bijan, S., Lin, Y. C., Zamudio, F., Hernandez, L. D., Sabbagh, J. J., Selenica, M. L., & Dickey, C. A. (2015). Tau depletion prevents progressive blood-brain barrier damage in a mouse model of tauopathy. *Acta Neuropathol Commun*, *3*, 8.
- Blennow, K., Zetterberg, H., Rinne, J. O., Salloway, S., Wei, J., Black, R., Grundman, M., Liu, E., & Investigators, A. A. B. (2012). Effect of immunotherapy with bapineuzumab on cerebrospinal fluid biomarker levels in patients with mild to moderate Alzheimer disease. *Arch Neurol*, *69*, 1002-1010.
- Boddu, S. H., Gupta, H., & Patel, S. (2014). Drug delivery to the back of the eye following topical administration: an update on research and patenting activity. *Recent Pat Drug Deliv Formul*, *8*, 27-36.
- Boden, E. K., Canavan, J. B., Moran, C. J., McCann, K., Dunn, W. A., Farraye, F. A., Ananthakrishnan, A. N., Yajnik, V., Gandhi, R., Nguyen, D. D., Bhan, A. K., Weiner, H. L., Korzenik, J. R., & Snapper, S. B. (2019). Immunologic Alterations Associated With Oral Delivery of Anti-CD3 (OKT3) Monoclonal Antibodies in Patients With Moderate-to-Severe Ulcerative Colitis. *Crohns Colitis* *360*, *1*, otz009.
- Bohannon, D. G., Okhravi, H. R., Kim, J., Kuroda, M. J., Didier, E. S., & Kim, W. K. (2020). A subtype of cerebrovascular pericytes is associated with blood-brain barrier disruption that develops during normal aging and simian immunodeficiency virus infection. *Neurobiol Aging*, *96*, 128-136.
- Bonnans, C., Chou, J., & Werb, Z. (2014). Remodelling the extracellular matrix in development and disease. *Nat Rev Mol Cell Biol*, *15*, 786-801.
- Boreel, D. F., Span, P. N., Heskamp, S., Adema, G. J., & Bussink, J. (2021). Targeting Oxidative Phosphorylation to Increase the Efficacy of Radio- and Immune-Combination Therapy. *Clin Cancer Res*, *27*, 2970-2978.
- Borvak, J., Richardson, J., Medesan, C., Antohe, F., Radu, C., Simionescu, M., Ghetie, V., & Ward, E. S. (1998). Functional expression of the MHC class I-related receptor, FcRn, in endothelial cells of mice. *Int Immunol*, *10*, 1289-1298.
- Bowen, W. H. (2016). Dental caries - not just holes in teeth! A perspective. *Mol Oral Microbiol*, *31*, 228-233.
- Braeckmans, K., Peeters, L., Sanders, N. N., De Smedt, S. C., & Demeester, J. (2003). Three-dimensional fluorescence recovery after photobleaching with the confocal scanning laser microscope. *Biophys J*, *85*, 2240-2252.

- Brambell, F. W., Hemmings, W. A., & Morris, I. G. (1964). A Theoretical Model of Gamma-Globulin Catabolism. *Nature*, *203*, 1352-1354.
- Brendza, R. P., Bacsikai, B. J., Cirrito, J. R., Simmons, K. A., Skoch, J. M., Klunk, W. E., Mathis, C. A., Bales, K. R., Paul, S. M., Hyman, B. T., & Holtzman, D. M. (2005). Anti-Abeta antibody treatment promotes the rapid recovery of amyloid-associated neuritic dystrophy in PDAPP transgenic mice. *J Clin Invest*, *115*, 428-433.
- Brezski, R. J., & Jordan, R. E. (2010). Cleavage of IgGs by proteases associated with invasive diseases: an evasion tactic against host immunity? *MAbs*, *2*, 212-220.
- Bruno, B. J., Miller, G. D., & Lim, C. S. (2013). Basics and recent advances in peptide and protein drug delivery. *Ther Deliv*, *4*, 1443-1467.
- Bruno, R., Washington, C. B., Lu, J. F., Lieberman, G., Banken, L., & Klein, P. (2005). Population pharmacokinetics of trastuzumab in patients with HER2+ metastatic breast cancer. *Cancer Chemother Pharmacol*, *56*, 361-369.
- Bumbaca Yaday, D., Sharma, V. K., Boswell, C. A., Hotzel, I., Tesar, D., Shang, Y., Ying, Y., Fischer, S. K., Grogan, J. L., Chiang, E. Y., Urban, K., Ulufatu, S., Khawli, L. A., Prabhu, S., Joseph, S., & Kelley, R. F. (2015). Evaluating the Use of Antibody Variable Region (Fv) Charge as a Risk Assessment Tool for Predicting Typical Cynomolgus Monkey Pharmacokinetics. *J Biol Chem*, *290*, 29732-29741.
- Burris, H. A., 3rd, Rugo, H. S., Vukelja, S. J., Vogel, C. L., Borson, R. A., Limentani, S., Tan-Chiu, E., Krop, I. E., Michaelson, R. A., Girish, S., Amler, L., Zheng, M., Chu, Y. W., Klencke, B., & O'Shaughnessy, J. A. (2011). Phase II study of the antibody drug conjugate trastuzumab-DM1 for the treatment of human epidermal growth factor receptor 2 (HER2)-positive breast cancer after prior HER2-directed therapy. *J Clin Oncol*, *29*, 398-405.
- Buschmann, M. M., Shen, L., Rajapakse, H., Raleigh, D. R., Wang, Y., Wang, Y., Lingaraju, A., Zha, J., Abbott, E., McAuley, E. M., Breskin, L. A., Wu, L., Anderson, K., Turner, J. R., & Weber, C. R. (2013). Occludin OCEL-domain interactions are required for maintenance and regulation of the tight junction barrier to macromolecular flux. *Mol Biol Cell*, *24*, 3056-3068.
- Buttini, M., Masliah, E., Barbour, R., Grajeda, H., Motter, R., Johnson-Wood, K., Khan, K., Seubert, P., Freedman, S., Schenk, D., & Games, D. (2005). Beta-amyloid immunotherapy prevents synaptic degeneration in a mouse model of Alzheimer's disease. *J Neurosci*, *25*, 9096-9101.
- Campanari, M. L., Bourefis, A. R., & Kabashi, E. (2019). Diagnostic Challenge and Neuromuscular Junction Contribution to ALS Pathogenesis. *Front Neurol*, *10*, 68.
- Campoccia, D., Mirzaei, R., Montanaro, L., & Arciola, C. R. (2019). Hijacking of immune defences by biofilms: a multifront strategy. *Biofouling*, *35*, 1055-1074.
- Carpentier, A., Canney, M., Vignot, A., Reina, V., Beccaria, K., Horodyckid, C., Karachi, C., Leclercq, D., Lafon, C., Chapelon, J. Y., Capelle, L., Cornu, P., Sanson, M., Hoang-Xuan, K., Delattre, J. Y., & Idbaih, A. (2016). Clinical trial of blood-brain barrier disruption by pulsed ultrasound. *Sci Transl Med*, *8*, 343re342.
- Cartaxo, A. L., Almeida, J., Gualda, E. J., Marsal, M., Loza-Alvarez, P., Brito, C., & Isidro, I. A. (2020). A computational diffusion model to study antibody transport within reconstructed tumor microenvironments. *BMC Bioinformatics*, *21*, 529.
- Casi, G., & Neri, D. (2012). Antibody-drug conjugates: basic concepts, examples and future perspectives. *J Control Release*, *161*, 422-428.
- Casi, G., & Neri, D. (2015). Noninternalizing targeted cytotoxics for cancer therapy. *Mol Pharm*, *12*, 1880-1884.
- Cattepoel, S., Hanenberg, M., Kulic, L., & Nitsch, R. M. (2011). Chronic intranasal treatment with an anti-Abeta(30-42) scFv antibody ameliorates amyloid pathology in a transgenic mouse model of Alzheimer's disease. *PLoS One*, *6*, e18296.
- Challa, D. K., Wang, X., Montoyo, H. P., Velmurugan, R., Ober, R. J., & Ward, E. S. (2019). Neonatal Fc receptor expression in macrophages is indispensable for IgG homeostasis. *MAbs*, *11*, 848-860.
- Chalmers, J. D., Moffitt, K. L., Suarez-Cuartin, G., Sibila, O., Finch, S., Furrie, E., Dicker, A., Wrobel, K., Elborn, J. S., Walker, B., Martin, S. L., Marshall, S. E., Huang, J. T., & Fardon, T. C. (2017). Neutrophil Elastase Activity Is Associated with Exacerbations and Lung Function Decline in Bronchiectasis. *Am J Respir Crit Care Med*, *195*, 1384-1393.

- Chan-Ling, T., Hughes, S., Baxter, L., Rosinova, E., McGregor, I., Morcos, Y., van Nieuwenhuyzen, P., & Hu, P. (2007). Inflammation and breakdown of the blood-retinal barrier during "physiological aging" in the rat retina: a model for CNS aging. *Microcirculation*, *14*, 63-76.
- Chauhan, M. B., & Chauhan, N. B. (2015). Brain Uptake of Neurotherapeutics after Intranasal versus Intraperitoneal Delivery in Mice. *J Neurol Neurosurg*, *2*.
- Chen, W., Li, Z., Wang, Z., Gao, H., Ding, J., & He, Z. (2020). Intraarticular Injection of Infliximab-Loaded Thermosensitive Hydrogel Alleviates Pain and Protects Cartilage in Rheumatoid Arthritis. *J Pain Res*, *13*, 3315-3329.
- Chen, X., Guo, X., Huang, R., Zheng, Z., Chen, Y., & Shang, H. F. (2014). An exploratory study of serum creatinine levels in patients with amyotrophic lateral sclerosis. *Neurol Sci*, *35*, 1591-1597.
- Cheng, L., Zhang, J., Li, X. Y., Yuan, L., Pan, Y. F., Chen, X. R., Gao, T. M., Qiao, J. T., & Qi, J. S. (2017). A novel antibody targeting sequence 31-35 in amyloid beta protein attenuates Alzheimer's disease-related neuronal damage. *Hippocampus*, *27*, 122-133.
- Cho, H., Lee, H. Y., Han, M., Choi, J. R., Ahn, S., Lee, T., Chang, Y., & Park, J. (2016). Localized Down-regulation of P-glycoprotein by Focused Ultrasound and Microbubbles induced Blood-Brain Barrier Disruption in Rat Brain. *Sci Rep*, *6*, 31201.
- Cho, K. H., & Caparon, M. G. (2005). Patterns of virulence gene expression differ between biofilm and tissue communities of *Streptococcus pyogenes*. *Mol Microbiol*, *57*, 1545-1556.
- Choudhari, M., Hejmady, S., Narayan Saha, R., Damle, S., Singhvi, G., Alexander, A., Kesharwani, P., & Kumar Dubey, S. (2021). Evolving new-age strategies to transport therapeutics across the blood-brain-barrier. *Int J Pharm*, *599*, 120351.
- Ciornei, C. D., Novikov, A., Beloin, C., Fitting, C., Caroff, M., Ghigo, J. M., Cavaillon, J. M., & Adib-Conquy, M. (2010). Biofilm-forming *Pseudomonas aeruginosa* bacteria undergo lipopolysaccharide structural modifications and induce enhanced inflammatory cytokine response in human monocytes. *Innate Immun*, *16*, 288-301.
- Cohen-Pfeffer, J. L., Gururangan, S., Lester, T., Lim, D. A., Shaywitz, A. J., Westphal, M., & Slavic, I. (2017). Intracerebroventricular Delivery as a Safe, Long-Term Route of Drug Administration. *Pediatr Neurol*, *67*, 23-35.
- Cooper, P. R., Ciambone, G. J., Kliwinski, C. M., Maze, E., Johnson, L., Li, Q., Feng, Y., & Hornby, P. J. (2013). Efflux of monoclonal antibodies from rat brain by neonatal Fc receptor, FcRn. *Brain Res*, *1534*, 13-21.
- Corfield, A. P., Carroll, D., Myerscough, N., & Probert, C. S. (2001). Mucins in the gastrointestinal tract in health and disease. *Front Biosci*, *6*, D1321-1357.
- Costa, A. C., Joaquim, H. P. G., Forlenza, O., Talib, L. L., & Gattaz, W. F. (2019). Plasma lipids metabolism in mild cognitive impairment and Alzheimer's disease. *World J Biol Psychiatry*, *20*, 190-196.
- Costerton, W., Veeh, R., Shirtliff, M., Pasmore, M., Post, C., & Ehrlich, G. (2003). The application of biofilm science to the study and control of chronic bacterial infections. *J Clin Invest*, *112*, 1466-1477.
- Crabbe, A., Jensen, P. O., Bjarnsholt, T., & Coenye, T. (2019). Antimicrobial Tolerance and Metabolic Adaptations in Microbial Biofilms. *Trends Microbiol*, *27*, 850-863.
- Creeth, J. M. (1978). Constituents of mucus and their separation. *Br Med Bull*, *34*, 17-24.
- Crowe, J. S., Roberts, K. J., Carlton, T. M., Maggiore, L., Cubitt, M. F., Ray, K. P., Donnelly, M. C., Wahlich, J. C., Humphreys, J. I., Robinson, J. R., Whale, G. A., & West, M. R. (2019). Oral delivery of the anti-tumor necrosis factor alpha domain antibody, V565, results in high intestinal and fecal concentrations with minimal systemic exposure in cynomolgus monkeys. *Drug Dev Ind Pharm*, *45*, 387-394.
- Crowell, S. R., Wang, K., Famili, A., Shatz, W., Loyet, K. M., Chang, V., Liu, Y., Prabhu, S., Kamath, A. V., & Kelley, R. F. (2019). Influence of Charge, Hydrophobicity, and Size on Vitreous Pharmacokinetics of Large Molecules. *Transl Vis Sci Technol*, *8*, 1.
- Csaba, N., Garcia-Fuentes, M., & Alonso, M. J. (2009). Nanoparticles for nasal vaccination. *Adv Drug Deliv Rev*, *61*, 140-157.
- Curciarello, R., Sobande, T., Jones, S., Giuffrida, P., Di Sabatino, A., Docena, G. H., MacDonald, T. T., & Kok, K. (2020). Human Neutrophil Elastase Proteolytic Activity in Ulcerative Colitis

- Favors the Loss of Function of Therapeutic Monoclonal Antibodies. *J Inflamm Res*, 13, 233-243.
- D'Hooghe, L., Chalmers, A. D., Heywood, S., & Whitley, P. (2017). Cell surface dynamics and cellular distribution of endogenous FcRn. *PLoS One*, 12, e0182695.
- Dal Corso, A., Cazzamalli, S., Gebleux, R., Mattarella, M., & Neri, D. (2017). Protease-Cleavable Linkers Modulate the Anticancer Activity of Noninternalizing Antibody-Drug Conjugates. *Bioconjug Chem*, 28, 1826-1833.
- Datta-Mannan, A., Croy, J. E., Schirtzinger, L., Torgerson, S., Breyer, M., & Wroblewski, V. J. (2016). Aberrant bispecific antibody pharmacokinetics linked to liver sinusoidal endothelium clearance mechanism in cynomolgus monkeys. *MAbs*, 8, 969-982.
- Davies Cde, L., Berk, D. A., Pluen, A., & Jain, R. K. (2002). Comparison of IgG diffusion and extracellular matrix composition in rhabdomyosarcomas grown in mice versus in vitro as spheroids reveals the role of host stromal cells. *Br J Cancer*, 86, 1639-1644.
- Deane, R., Bell, R. D., Sagare, A., & Zlokovic, B. V. (2009). Clearance of amyloid-beta peptide across the blood-brain barrier: implication for therapies in Alzheimer's disease. *CNS Neurol Disord Drug Targets*, 8, 16-30.
- Deane, R., Sagare, A., Hamm, K., Parisi, M., LaRue, B., Guo, H., Wu, Z., Holtzman, D. M., & Zlokovic, B. V. (2005). IgG-assisted age-dependent clearance of Alzheimer's amyloid beta peptide by the blood-brain barrier neonatal Fc receptor. *J Neurosci*, 25, 11495-11503.
- Deane, R., Wu, Z., Sagare, A., Davis, J., Du Yan, S., Hamm, K., Xu, F., Parisi, M., LaRue, B., Hu, H. W., Spijkers, P., Guo, H., Song, X., Lenting, P. J., Van Nostrand, W. E., & Zlokovic, B. V. (2004). LRP/amyloid beta-peptide interaction mediates differential brain efflux of Abeta isoforms. *Neuron*, 43, 333-344.
- del Aguila, M. A., Longstreth, W. T., Jr., McGuire, V., Koepsell, T. D., & van Belle, G. (2003). Prognosis in amyotrophic lateral sclerosis: a population-based study. *Neurology*, 60, 813-819.
- Del Amo, E. M., Rimpela, A. K., Heikkinen, E., Kari, O. K., Ramsay, E., Lajunen, T., Schmitt, M., Pelkonen, L., Bhattacharya, M., Richardson, D., Subrizi, A., Turunen, T., Reinisalo, M., Itkonen, J., Toropainen, E., Casteleijn, M., Kidron, H., Antopolsky, M., Vellonen, K. S., Ruponen, M., & Urtti, A. (2017). Pharmacokinetic aspects of retinal drug delivery. *Prog Retin Eye Res*, 57, 134-185.
- Detalle, L., Stohr, T., Palomo, C., Piedra, P. A., Gilbert, B. E., Mas, V., Millar, A., Power, U. F., Stortelers, C., Allosery, K., Melero, J. A., & Depla, E. (2016). Generation and Characterization of ALX-0171, a Potent Novel Therapeutic Nanobody for the Treatment of Respiratory Syncytial Virus Infection. *Antimicrob Agents Chemother*, 60, 6-13.
- Deveuve, Q., Lajoie, L., Barrault, B., & Thibault, G. (2020). The Proteolytic Cleavage of Therapeutic Monoclonal Antibody Hinge Region: More Than a Matter of Subclass. *Front Immunol*, 11, 168.
- Dewhirst, M. W., & Secomb, T. W. (2017). Transport of drugs from blood vessels to tumour tissue. *Nat Rev Cancer*, 17, 738-750.
- Dickinson, B. L., Badizadegan, K., Wu, Z., Ahouse, J. C., Zhu, X., Simister, N. E., Blumberg, R. S., & Lencer, W. I. (1999). Bidirectional FcRn-dependent IgG transport in a polarized human intestinal epithelial cell line. *J Clin Invest*, 104, 903-911.
- Dijkers, E. C., Oude Munnink, T. H., Kosterink, J. G., Brouwers, A. H., Jager, P. L., de Jong, J. R., van Dongen, G. A., Schroder, C. P., Lub-de Hooge, M. N., & de Vries, E. G. (2010). Biodistribution of ⁸⁹Zr-trastuzumab and PET imaging of HER2-positive lesions in patients with metastatic breast cancer. *Clin Pharmacol Ther*, 87, 586-592.
- Doody, R. S., Thomas, R. G., Farlow, M., Iwatsubo, T., Vellas, B., Joffe, S., Kieburtz, K., Raman, R., Sun, X., Aisen, P. S., Siemers, E., Liu-Seifert, H., Mohs, R., Alzheimer's Disease Cooperative Study Steering, C., & Solanezumab Study, G. (2014). Phase 3 trials of solanezumab for mild-to-moderate Alzheimer's disease. *N Engl J Med*, 370, 311-321.
- Du, B., Liang, M., Zheng, H., Fan, C., Zhang, H., Lu, X., Du, Z., Lian, Y., Zhang, Y., & Bi, X. (2020). Anti-mouse CX3CR1 Antibody Alleviates Cognitive Impairment, Neuronal Loss and Myelin Deficits in an Animal Model of Brain Ischemia. *Neuroscience*, 438, 169-181.

- Dubey, S., Heinen, S., Krantic, S., McLaurin, J., Branch, D. R., Hynynen, K., & Aubert, I. (2020). Clinically approved IVIg delivered to the hippocampus with focused ultrasound promotes neurogenesis in a model of Alzheimer's disease. *Proc Natl Acad Sci U S A*, *117*, 32691-32700.
- Duncan, G. A., Jung, J., Joseph, A., Thaxton, A. L., West, N. E., Boyle, M. P., Hanes, J., & Suk, J. S. (2016). Microstructural alterations of sputum in cystic fibrosis lung disease. *JCI Insight*, *1*, e88198.
- Dunnhaupt, S., Kammona, O., Waldner, C., Kiparissides, C., & Bernkop-Schnurch, A. (2015). Nano-carrier systems: Strategies to overcome the mucus gel barrier. *Eur J Pharm Biopharm*, *96*, 447-453.
- Durand, R. E., & Aquino-Parsons, C. (2001). Clinical relevance of intermittent tumour blood flow. *Acta Oncol*, *40*, 929-936.
- Edgar, L. T., Underwood, C. J., Guilkey, J. E., Hoying, J. B., & Weiss, J. A. (2014). Extracellular matrix density regulates the rate of neovessel growth and branching in sprouting angiogenesis. *PLoS One*, *9*, e85178.
- Eikenes, L., Bruland, O. S., Brekken, C., & Davies Cde, L. (2004). Collagenase increases the transcapillary pressure gradient and improves the uptake and distribution of monoclonal antibodies in human osteosarcoma xenografts. *Cancer Res*, *64*, 4768-4773.
- Eikenes, L., Tari, M., Tufto, I., Bruland, O. S., & de Lange Davies, C. (2005). Hyaluronidase induces a transcapillary pressure gradient and improves the distribution and uptake of liposomal doxorubicin (Caelyx) in human osteosarcoma xenografts. *Br J Cancer*, *93*, 81-88.
- Elsaid, N., Jackson, T. L., Elsaid, Z., Alqathama, A., & Somavarapu, S. (2016). PLGA Microparticles Entrapping Chitosan-Based Nanoparticles for the Ocular Delivery of Ranibizumab. *Mol Pharm*, *13*, 2923-2940.
- Elshiaty, M., Schindler, H., & Christopoulos, P. (2021). Principles and Current Clinical Landscape of Multispecific Antibodies against Cancer. *Int J Mol Sci*, *22*.
- Ensign, L. M., Cone, R., & Hanes, J. (2012). Oral drug delivery with polymeric nanoparticles: the gastrointestinal mucus barriers. *Adv Drug Deliv Rev*, *64*, 557-570.
- Ensign, L. M., Tang, B. C., Wang, Y. Y., Tse, T. A., Hoen, T., Cone, R., & Hanes, J. (2012). Mucus-penetrating nanoparticles for vaginal drug delivery protect against herpes simplex virus. *Sci Transl Med*, *4*, 138ra179.
- Erdo, F., Denes, L., & de Lange, E. (2017). Age-associated physiological and pathological changes at the blood-brain barrier: A review. *J Cereb Blood Flow Metab*, *37*, 4-24.
- Erickson, M. A., & Banks, W. A. (2019). Age-Associated Changes in the Immune System and Blood(-)Brain Barrier Functions. *Int J Mol Sci*, *20*.
- Estrada, M. F., Rebelo, S. P., Davies, E. J., Pinto, M. T., Pereira, H., Santo, V. E., Smalley, M. J., Barry, S. T., Gualda, E. J., Alves, P. M., Anderson, E., & Brito, C. (2016). Modelling the tumour microenvironment in long-term microencapsulated 3D co-cultures recapitulates phenotypic features of disease progression. *Biomaterials*, *78*, 50-61.
- Eswaramoorthy, R., Chang, C. C., Wu, S. C., Wang, G. J., Chang, J. K., & Ho, M. L. (2012). Sustained release of PTH(1-34) from PLGA microspheres suppresses osteoarthritis progression in rats. *Acta Biomater*, *8*, 2254-2262.
- Evans, C. H., Kraus, V. B., & Setton, L. A. (2014). Progress in intra-articular therapy. *Nat Rev Rheumatol*, *10*, 11-22.
- Fan, X., Brezski, R. J., Deng, H., Dhupkar, P. M., Shi, Y., Gonzalez, A., Zhang, S., Ryczyn, M., Strohl, W. R., Jordan, R. E., Zhang, N., & An, Z. (2015). A novel therapeutic strategy to rescue the immune effector function of proteolytically inactivated cancer therapeutic antibodies. *Mol Cancer Ther*, *14*, 681-691.
- Fan, X., Brezski, R. J., Fa, M., Deng, H., Oberholtzer, A., Gonzalez, A., Dubinsky, W. P., Strohl, W. R., Jordan, R. E., Zhang, N., & An, Z. (2012). A single proteolytic cleavage within the lower hinge of trastuzumab reduces immune effector function and in vivo efficacy. *Breast Cancer Res*, *14*, R116.
- Farquhar, M. G., & Palade, G. E. (1963). Junctional complexes in various epithelia. *J Cell Biol*, *17*, 375-412.
- Ferrati, S., Wu, T., Kanapuram, S. R., & Smyth, H. D. C. (2018). Dosing considerations for inhaled biologics. *Int J Pharm*, *549*, 58-66.

- Ferreira, N. N., de Oliveira Junior, E., Granja, S., Boni, F. I., Ferreira, L. M. B., Cury, B. S. F., Santos, L. C. R., Reis, R. M., Lima, E. M., Baltazar, F., & Gremiao, M. P. D. (2021). Nose-to-brain co-delivery of drugs for glioblastoma treatment using nanostructured system. *Int J Pharm*, *603*, 120714.
- Ferretti, S., Allegrini, P. R., Becquet, M. M., & McSheehy, P. M. (2009). Tumor interstitial fluid pressure as an early-response marker for anticancer therapeutics. *Neoplasia*, *11*, 874-881.
- Fokkink, W. J., Haarman, A. E., Tio-Gillen, A. P., van Rijs, W., Huizinga, R., van Doorn, P. A., & Jacobs, B. C. (2016). Neonatal Fc receptor promoter gene polymorphism does not predict pharmacokinetics of IVIg or the clinical course of GBS. *Ann Clin Transl Neurol*, *3*, 547-551.
- Fong, J. C., Karplus, K., Schoolnik, G. K., & Yildiz, F. H. (2006). Identification and characterization of RbmA, a novel protein required for the development of rugose colony morphology and biofilm structure in *Vibrio cholerae*. *J Bacteriol*, *188*, 1049-1059.
- Foy, B. D., & Blake, J. (2001). Diffusion of paramagnetically labeled proteins in cartilage: enhancement of the 1-D NMR imaging technique. *J Magn Reson*, *148*, 126-134.
- Francis, D. M., & Thomas, S. N. (2017). Progress and opportunities for enhancing the delivery and efficacy of checkpoint inhibitors for cancer immunotherapy. *Adv Drug Deliv Rev*, *114*, 33-42.
- Frohlich, E., & Roblegg, E. (2014). Mucus as barrier for drug delivery by nanoparticles. *J Nanosci Nanotechnol*, *14*, 126-136.
- Furst, D. E., Lindsley, H., Baethge, B., Botstein, G. R., Caldwell, J., Dietz, F., Ettliger, R., Golden, H. E., McLaughlin, G. E., Moreland, L. W., Roberts, W. N., Rooney, T. W., Rothschild, B., Sack, M., Sebba, A. I., Weisman, M., Welch, K. E., & Yocum, D. (1999). Dose-loading with hydroxychloroquine improves the rate of response in early, active rheumatoid arthritis: a randomized, double-blind six-week trial with eighteen-week extension. *Arthritis Rheum*, *42*, 357-365.
- Gaillard, P. J., de Boer, A. B., & Breimer, D. D. (2003). Pharmacological investigations on lipopolysaccharide-induced permeability changes in the blood-brain barrier in vitro. *Microvasc Res*, *65*, 24-31.
- Gal-Or, O., Dotan, A., Dachbash, M., Tal, K., Nisgav, Y., Weinberger, D., Ehrlich, R., & Livnat, T. (2016). Bevacizumab clearance through the iridocorneal angle following intravitreal injection in a rat model. *Exp Eye Res*, *145*, 412-416.
- Galgoczy, R., Pastor, I., Colom, A., Gimenez, A., Mas, F., & Alcaraz, J. (2014). A spectrophotometer-based diffusivity assay reveals that diffusion hindrance of small molecules in extracellular matrix gels used in 3D cultures is dominated by viscous effects. *Colloids Surf B Biointerfaces*, *120*, 200-207.
- Gao, Y., Shi, Y., Fu, M., Feng, Y., Lin, G., Kong, D., & Jiang, B. (2020). Simulation study of the effects of interstitial fluid pressure and blood flow velocity on transvascular transport of nanoparticles in tumor microenvironment. *Comput Methods Programs Biomed*, *193*, 105493.
- Garg, A., & Balthasar, J. P. (2009). Investigation of the influence of FcRn on the distribution of IgG to the brain. *AAPS J*, *11*, 553-557.
- Gautam, A., Nanda, J. S., Samuel, J. S., Kumari, M., Priyanka, P., Bedi, G., Nath, S. K., Mittal, G., Khatri, N., & Raghava, G. P. (2016). Topical Delivery of Protein and Peptide Using Novel Cell Penetrating Peptide IMT-P8. *Sci Rep*, *6*, 26278.
- Gebleux, R., Wulhfard, S., Casi, G., & Neri, D. (2015). Antibody Format and Drug Release Rate Determine the Therapeutic Activity of Noninternalizing Antibody-Drug Conjugates. *Mol Cancer Ther*, *14*, 2606-2612.
- Geh, K. J., Stelzl, A., Grone, A., Wagner, L., Forster, B., & Winter, G. (2019). Development of a sprayable hydrogel formulation for the skin application of therapeutic antibodies. *Eur J Pharm Biopharm*, *142*, 123-132.
- Glassman, P. M., Abuqayyas, L., & Balthasar, J. P. (2015). Assessments of antibody biodistribution. *J Clin Pharmacol*, *55 Suppl 3*, S29-38.
- Gouilleux-Gruart, V., Chapel, H., Chevret, S., Lucas, M., Malphettes, M., Fieschi, C., Patel, S., Boutboul, D., Marson, M. N., Gerard, L., Lee, M., Watier, H., Oksenhendler, E., & group, D. s. (2013). Efficiency of immunoglobulin G replacement therapy in common variable immunodeficiency: correlations with clinical phenotype and polymorphism of the neonatal Fc receptor. *Clin Exp Immunol*, *171*, 186-194.

- Gray, M. T., & Woulfe, J. M. (2015). Striatal blood-brain barrier permeability in Parkinson's disease. *J Cereb Blood Flow Metab*, *35*, 747-750.
- Gros-Louis, F., Soucy, G., Lariviere, R., & Julien, J. P. (2010). Intracerebroventricular infusion of monoclonal antibody or its derived Fab fragment against misfolded forms of SOD1 mutant delays mortality in a mouse model of ALS. *J Neurochem*, *113*, 1188-1199.
- Grossi, P. M., Ochiai, H., Archer, G. E., McLendon, R. E., Zalutsky, M. R., Friedman, A. H., Friedman, H. S., Bigner, D. D., & Sampson, J. H. (2003). Efficacy of intracerebral microinfusion of trastuzumab in an athymic rat model of intracerebral metastatic breast cancer. *Clin Cancer Res*, *9*, 5514-5520.
- Guilleminault, L., Azzopardi, N., Arnoult, C., Sobilo, J., Herve, V., Montharu, J., Guillon, A., Andres, C., Herault, O., Le Pape, A., Diot, P., Lemarie, E., Paintaud, G., Gouilleux-Gruart, V., & Heuze-Vourc'h, N. (2014). Fate of inhaled monoclonal antibodies after the deposition of aerosolized particles in the respiratory system. *J Control Release*, *196*, 344-354.
- Hacha, J., Tomlinson, K., Maertens, L., Paulissen, G., Rocks, N., Foidart, J. M., Noel, A., Palframan, R., Gueders, M., & Cataldo, D. D. (2012). Nebulized anti-IL-13 monoclonal antibody Fab' fragment reduces allergen-induced asthma. *Am J Respir Cell Mol Biol*, *47*, 709-717.
- Hall, C. W., & Mah, T. F. (2017). Molecular mechanisms of biofilm-based antibiotic resistance and tolerance in pathogenic bacteria. *FEMS Microbiol Rev*, *41*, 276-301.
- Hallmann, R., Zhang, X., Di Russo, J., Li, L., Song, J., Hannocks, M. J., & Sorokin, L. (2015). The regulation of immune cell trafficking by the extracellular matrix. *Curr Opin Cell Biol*, *36*, 54-61.
- Hashimoto, S., Okayama, Y., Shime, N., Kimura, A., Funakoshi, Y., Kawabata, K., Ishizaka, A., & Amaya, F. (2008). Neutrophil elastase activity in acute lung injury and respiratory distress syndrome. *Respirology*, *13*, 581-584.
- Haymann, J. P., Levraud, J. P., Bouet, S., Kappes, V., Hagege, J., Nguyen, G., Xu, Y., Rondeau, E., & Sraer, J. D. (2000). Characterization and localization of the neonatal Fc receptor in adult human kidney. *J Am Soc Nephrol*, *11*, 632-639.
- Heine, M., Freund, B., Nielsen, P., Jung, C., Reimer, R., Hohenberg, H., Zangemeister-Wittke, U., Wester, H. J., Luers, G. H., & Schumacher, U. (2012). High interstitial fluid pressure is associated with low tumour penetration of diagnostic monoclonal antibodies applied for molecular imaging purposes. *PLoS One*, *7*, e36258.
- Heldin, C. H., Rubin, K., Pietras, K., & Ostman, A. (2004). High interstitial fluid pressure - an obstacle in cancer therapy. *Nat Rev Cancer*, *4*, 806-813.
- Hellings, P. W., & Steelant, B. (2020). Epithelial barriers in allergy and asthma. *J Allergy Clin Immunol*, *145*, 1499-1509.
- Herrera, J., Henke, C. A., & Bitterman, P. B. (2018). Extracellular matrix as a driver of progressive fibrosis. *J Clin Invest*, *128*, 45-53.
- Hessmann, E., Buchholz, S. M., Demir, I. E., Singh, S. K., Gress, T. M., Ellenrieder, V., & Neesse, A. (2020). Microenvironmental Determinants of Pancreatic Cancer. *Physiol Rev*, *100*, 1707-1751.
- Heyman, M., Ducroc, R., Desjeux, J. F., & Morgat, J. L. (1982). Horseradish peroxidase transport across adult rabbit jejunum in vitro. *Am J Physiol*, *242*, G558-564.
- Higgins, C. F. (2001). ABC transporters: physiology, structure and mechanism--an overview. *Res Microbiol*, *152*, 205-210.
- Hoiby, N., Ciofu, O., & Bjarnsholt, T. (2010). Pseudomonas aeruginosa biofilms in cystic fibrosis. *Future Microbiol*, *5*, 1663-1674.
- Holash, J., Davis, S., Papadopoulos, N., Croll, S. D., Ho, L., Russell, M., Boland, P., Leidich, R., Hylton, D., Burova, E., Ioffe, E., Huang, T., Radziejewski, C., Bailey, K., Fandl, J. P., Daly, T., Wiegand, S. J., Yancopoulos, G. D., & Rudge, J. S. (2002). VEGF-Trap: a VEGF blocker with potent antitumor effects. *Proc Natl Acad Sci U S A*, *99*, 11393-11398.
- Hollingsworth, M. A., & Swanson, B. J. (2004). Mucins in cancer: protection and control of the cell surface. *Nat Rev Cancer*, *4*, 45-60.
- Homayun, B., Lin, X., & Choi, H. J. (2019). Challenges and Recent Progress in Oral Drug Delivery Systems for Biopharmaceuticals. *Pharmaceutics*, *11*.

- Hsiao, H. C., Fan, X., Jordan, R. E., Zhang, N., & An, Z. (2018). Proteolytic single hinge cleavage of pertuzumab impairs its Fc effector function and antitumor activity in vitro and in vivo. *Breast Cancer Res*, 20, 43.
- Hu, S., & Koevary, S. (2016). Efficacy of Antibody Delivery to the Retina and Optic Nerve by Topical Administration. *J Ocul Pharmacol Ther*, 32, 203-210.
- Hughes, P. M., Olejnik, O., Chang-Lin, J. E., & Wilson, C. G. (2005). Topical and systemic drug delivery to the posterior segments. *Adv Drug Deliv Rev*, 57, 2010-2032.
- Hukill, P. B., & Vidone, R. A. (1965). Histochemistry of mucus and other polysaccharides in tumors. I. Carcinoma of the bladder. *Lab Invest*, 14, 1624-1635.
- Indira Chandran, V., Mansson, A. S., Barbachowska, M., Cerezo-Magana, M., Nodin, B., Joshi, B., Koppada, N., Saad, O. M., Gluz, O., Isaksson, K., Borgquist, S., Jirstrom, K., Nabi, I. R., Jernstrom, H., & Belting, M. (2020). Hypoxia Attenuates Trastuzumab Uptake and Trastuzumab-Emtansine (T-DM1) Cytotoxicity through Redistribution of Phosphorylated Caveolin-1. *Mol Cancer Res*, 18, 644-656.
- Irving, E. A., Vinson, M., Rosin, C., Roberts, J. C., Chapman, D. M., Facci, L., Virley, D. J., Skaper, S. D., Burbidge, S. A., Walsh, F. S., Hunter, A. J., & Parsons, A. A. (2005). Identification of neuroprotective properties of anti-MAG antibody: a novel approach for the treatment of stroke? *J Cereb Blood Flow Metab*, 25, 98-107.
- Israel, E. J., Taylor, S., Wu, Z., Mizoguchi, E., Blumberg, R. S., Bhan, A., & Simister, N. E. (1997). Expression of the neonatal Fc receptor, FcRn, on human intestinal epithelial cells. *Immunology*, 92, 69-74.
- Jacobetz, M. A., Chan, D. S., Neesse, A., Bapiro, T. E., Cook, N., Frese, K. K., Feig, C., Nakagawa, T., Caldwell, M. E., Zecchini, H. I., Lolkema, M. P., Jiang, P., Kultti, A., Thompson, C. B., Maneval, D. C., Jodrell, D. I., Frost, G. I., Shepard, H. M., Skepper, J. N., & Tuveson, D. A. (2013). Hyaluronan impairs vascular function and drug delivery in a mouse model of pancreatic cancer. *Gut*, 62, 112-120.
- Jain, R. K. (1988). Determinants of tumor blood flow: a review. *Cancer Res*, 48, 2641-2658.
- Jain, R. K., Tong, R. T., & Munn, L. L. (2007). Effect of vascular normalization by antiangiogenic therapy on interstitial hypertension, peritumor edema, and lymphatic metastasis: insights from a mathematical model. *Cancer Res*, 67, 2729-2735.
- Janowicz, P. W., Leinenga, G., Gotz, J., & Nisbet, R. M. (2019). Ultrasound-mediated blood-brain barrier opening enhances delivery of therapeutically relevant formats of a tau-specific antibody. *Sci Rep*, 9, 9255.
- Jespersen, S. N., & Ostergaard, L. (2012). The roles of cerebral blood flow, capillary transit time heterogeneity, and oxygen tension in brain oxygenation and metabolism. *J Cereb Blood Flow Metab*, 32, 264-277.
- Jiang, X. R., Song, A., Bergelson, S., Arroll, T., Parekh, B., May, K., Chung, S., Strouse, R., Mire-Sluis, A., & Schenerman, M. (2011). Advances in the assessment and control of the effector functions of therapeutic antibodies. *Nat Rev Drug Discov*, 10, 101-111.
- Jin, Y., Song, Y., Zhu, X., Zhou, D., Chen, C., Zhang, Z., & Huang, Y. (2012). Goblet cell-targeting nanoparticles for oral insulin delivery and the influence of mucus on insulin transport. *Biomaterials*, 33, 1573-1582.
- Johansson, A., Erlandsson, A., Eriksson, D., Ullen, A., Holm, P., Sundstrom, B. E., Roux, K. H., & Stigbrand, T. (2002). Idiotypic-anti-idiotypic complexes and their in vivo metabolism. *Cancer*, 94, 1306-1313.
- Jordao, J. F., Ayala-Grosso, C. A., Markham, K., Huang, Y., Chopra, R., McLaurin, J., Hynynen, K., & Aubert, I. (2010). Antibodies targeted to the brain with image-guided focused ultrasound reduces amyloid-beta plaque load in the TgCRND8 mouse model of Alzheimer's disease. *PLoS One*, 5, e10549.
- Joubert, N., Beck, A., Dumontet, C., & Denevault-Sabourin, C. (2020). Antibody-Drug Conjugates: The Last Decade. *Pharmaceuticals (Basel)*, 13.
- Joubert, N., Denevault-Sabourin, C., Bryden, F., & Viaud-Massuard, M. C. (2017). Towards antibody-drug conjugates and prodrug strategies with extracellular stimuli-responsive drug delivery in the tumor microenvironment for cancer therapy. *Eur J Med Chem*, 142, 393-415.

- Kamath, A. V. (2016). Translational pharmacokinetics and pharmacodynamics of monoclonal antibodies. *Drug Discov Today Technol*, 21-22, 75-83.
- Kang, M. L., & Im, G. I. (2014). Drug delivery systems for intra-articular treatment of osteoarthritis. *Expert Opin Drug Deliv*, 11, 269-282.
- Kasturirangan, S., Rainey, G. J., Xu, L., Wang, X., Portnoff, A., Chen, T., Fazenbaker, C., Zhong, H., Bee, J., Zeng, Z., Jenne, C., Wu, H., & Gao, C. (2017). Targeted Fcγ Receptor (FcγR)-mediated Clearance by a Biparatopic Bispecific Antibody. *J Biol Chem*, 292, 4361-4370.
- Kerbel, R. S. (2006). Antiangiogenic therapy: a universal chemosensitization strategy for cancer? *Science*, 312, 1171-1175.
- Kessenbrock, K., Plaks, V., & Werb, Z. (2010). Matrix metalloproteinases: regulators of the tumor microenvironment. *Cell*, 141, 52-67.
- Kim, J. K., Firan, M., Radu, C. G., Kim, C. H., Ghetie, V., & Ward, E. S. (1999). Mapping the site on human IgG for binding of the MHC class I-related receptor, FcRn. *Eur J Immunol*, 29, 2819-2825.
- Kim, Y. C., Chiang, B., Wu, X., & Prausnitz, M. R. (2014). Ocular delivery of macromolecules. *J Control Release*, 190, 172-181.
- Kimura, S. (2018). Molecular insights into the mechanisms of M-cell differentiation and transcytosis in the mucosa-associated lymphoid tissues. *Anat Sci Int*, 93, 23-34.
- Kinder, M., Greenplate, A. R., Grugan, K. D., Soring, K. L., Heeringa, K. A., McCarthy, S. G., Bannish, G., Perpetua, M., Lynch, F., Jordan, R. E., Strohl, W. R., & Brezski, R. J. (2013). Engineered protease-resistant antibodies with selectable cell-killing functions. *J Biol Chem*, 288, 30843-30854.
- Kinoshita, M., McDannold, N., Jolesz, F. A., & Hynynen, K. (2006). Noninvasive localized delivery of Herceptin to the mouse brain by MRI-guided focused ultrasound-induced blood-brain barrier disruption. *Proc Natl Acad Sci U S A*, 103, 11719-11723.
- Klyubin, I., Walsh, D. M., Lemere, C. A., Cullen, W. K., Shankar, G. M., Betts, V., Spooner, E. T., Jiang, L., Anwyl, R., Selkoe, D. J., & Rowan, M. J. (2005). Amyloid beta protein immunotherapy neutralizes Abeta oligomers that disrupt synaptic plasticity in vivo. *Nat Med*, 11, 556-561.
- Ko, S., Jo, M., & Jung, S. T. (2021). Recent Achievements and Challenges in Prolonging the Serum Half-Lives of Therapeutic IgG Antibodies Through Fc Engineering. *BioDrugs*, 35, 147-157.
- Kobus, T., Zervantonakis, I. K., Zhang, Y., & McDannold, N. J. (2016). Growth inhibition in a brain metastasis model by antibody delivery using focused ultrasound-mediated blood-brain barrier disruption. *J Control Release*, 238, 281-288.
- Koerselman, M., Warmink, K., Korthagen, N. M., van Midwoud, P., Verrips, T., Weinans, H. H., & Karperien, M. (2020). Intra-articular drug depots for controlled release of heavy chain only antibodies blocking joint inflammation. In *2020 OARSI World Congress on Osteoarthritis* (Vol. 28, pp. S37). Messe Wien Exhibition & Congress Center, Vienna, Austria: Elsevier.
- Koo, H., Allan, R. N., Howlin, R. P., Stoodley, P., & Hall-Stoodley, L. (2017). Targeting microbial biofilms: current and prospective therapeutic strategies. *Nat Rev Microbiol*, 15, 740-755.
- Koohestani, F., Braundmeier, A. G., Mahdian, A., Seo, J., Bi, J., & Nowak, R. A. (2013). Extracellular matrix collagen alters cell proliferation and cell cycle progression of human uterine leiomyoma smooth muscle cells. *PLoS One*, 8, e75844.
- Kortekaas, R., Leenders, K. L., van Oostrom, J. C., Vaalburg, W., Bart, J., Willemsen, A. T., & Hendrikse, N. H. (2005). Blood-brain barrier dysfunction in parkinsonian midbrain in vivo. *Ann Neurol*, 57, 176-179.
- Koussoroplis, S. J., Paulissen, G., Tyteca, D., Goldansaz, H., Todoroff, J., Barilly, C., Uyttenhove, C., Van Snick, J., Cataldo, D., & Vanbever, R. (2014). PEGylation of antibody fragments greatly increases their local residence time following delivery to the respiratory tract. *J Control Release*, 187, 91-100.
- Kruegel, J., & Miosge, N. (2010). Basement membrane components are key players in specialized extracellular matrices. *Cell Mol Life Sci*, 67, 2879-2895.
- Kumar, N. N., Lochhead, J. J., Pizzo, M. E., Nehra, G., Boroumand, S., Greene, G., & Thorne, R. G. (2018). Delivery of immunoglobulin G antibodies to the rat nervous system following

- intranasal administration: Distribution, dose-response, and mechanisms of delivery. *J Control Release*, 286, 467-484.
- Kushner, I., & Somerville, J. A. (1971). Permeability of human synovial membrane to plasma proteins. Relationship to molecular size and inflammation. *Arthritis Rheum*, 14, 560-570.
- Ladel, S., Flamm, J., Zadeh, A. S., Filzwieser, D., Walter, J. C., Schlossbauer, P., Kinscherf, R., Lischka, K., Luksch, H., & Schindowski, K. (2018). Allogenic Fc Domain-Facilitated Uptake of IgG in Nasal Lamina Propria: Friend or Foe for Intranasal CNS Delivery? *Pharmaceutics*, 10.
- Lai, S. K., Wang, Y. Y., & Hanes, J. (2009). Mucus-penetrating nanoparticles for drug and gene delivery to mucosal tissues. *Adv Drug Deliv Rev*, 61, 158-171.
- Lai, S. K., Wang, Y. Y., Wirtz, D., & Hanes, J. (2009). Micro- and macrorheology of mucus. *Adv Drug Deliv Rev*, 61, 86-100.
- Lambert, W. J., & Peck, K. D. (1995). Development of an in situ forming biodegradable poly-lactide-coglycolide system for the controlled release of proteins. *J of Controlled Release*, 33, 189-195.
- Latvala, S., Jacobsen, B., Otteneder, M. B., Herrmann, A., & Kronenberg, S. (2017). Distribution of FcRn Across Species and Tissues. *J Histochem Cytochem*, 65, 321-333.
- Laude, A., Tan, L. E., Wilson, C. G., Lascaratos, G., Elashry, M., Aslam, T., Patton, N., & Dhillon, B. (2010). Intravitreal therapy for neovascular age-related macular degeneration and inter-individual variations in vitreous pharmacokinetics. *Prog Retin Eye Res*, 29, 466-475.
- Lawrence, R. C., Helmick, C. G., Arnett, F. C., Deyo, R. A., Felson, D. T., Giannini, E. H., Heyse, S. P., Hirsch, R., Hochberg, M. C., Hunder, G. G., Liang, M. H., Pillemer, S. R., Steen, V. D., & Wolfe, F. (1998). Estimates of the prevalence of arthritis and selected musculoskeletal disorders in the United States. *Arthritis Rheum*, 41, 778-799.
- Leal, J., Smyth, H. D. C., & Ghosh, D. (2017). Physicochemical properties of mucus and their impact on transmucosal drug delivery. *Int J Pharm*, 532, 555-572.
- Lee, H., Park, J., & Kim, Y. C. (2018). Enhanced transdermal delivery with less irritation by magainin pore-forming peptide with a N-lauroylsarcosine and sorbitan monolaurate mixture. *Drug Deliv Transl Res*, 8, 54-63.
- Leinenga, G., Bodea, L. G., Koh, W. K., Nisbet, R. M., & Gotz, J. (2020). Delivery of Antibodies into the Brain Using Focused Scanning Ultrasound. *J Vis Exp*.
- Lesniak, W. G., Chu, C., Jablonska, A., Du, Y., Pomper, M. G., Walczak, P., & Janowski, M. (2019). A Distinct Advantage to Intraarterial Delivery of (89)Zr-Bevacizumab in PET Imaging of Mice With and Without Osmotic Opening of the Blood-Brain Barrier. *J Nucl Med*, 60, 617-622.
- Lewenza, S. (2013). Extracellular DNA-induced antimicrobial peptide resistance mechanisms in *Pseudomonas aeruginosa*. *Front Microbiol*, 4, 21.
- Leyland-Jones, B., Gelmon, K., Ayoub, J. P., Arnold, A., Verma, S., Dias, R., & Ghahramani, P. (2003). Pharmacokinetics, safety, and efficacy of trastuzumab administered every three weeks in combination with paclitaxel. *J Clin Oncol*, 21, 3965-3971.
- Li, F., Ulrich, M., Jonas, M., Stone, I. J., Linares, G., Zhang, X., Westendorf, L., Benjamin, D. R., & Law, C. L. (2017). Tumor-Associated Macrophages Can Contribute to Antitumor Activity through FcγR-Mediated Processing of Antibody-Drug Conjugates. *Mol Cancer Ther*, 16, 1347-1354.
- Lieleg, O., & Ribbeck, K. (2011). Biological hydrogels as selective diffusion barriers. *Trends Cell Biol*, 21, 543-551.
- Liu, H. L., Hsu, P. H., Lin, C. Y., Huang, C. W., Chai, W. Y., Chu, P. C., Huang, C. Y., Chen, P. Y., Yang, L. Y., Kuo, J. S., & Wei, K. C. (2016). Focused Ultrasound Enhances Central Nervous System Delivery of Bevacizumab for Malignant Glioma Treatment. *Radiology*, 281, 99-108.
- Locke, K. W., Maneval, D. C., & LaBarre, M. J. (2019). ENHANZE((R)) drug delivery technology: a novel approach to subcutaneous administration using recombinant human hyaluronidase PH20. *Drug Deliv*, 26, 98-106.
- Lombardo, J. A., Stern, E. A., McLellan, M. E., Kajdasz, S. T., Hickey, G. A., Bacskai, B. J., & Hyman, B. T. (2003). Amyloid-beta antibody treatment leads to rapid normalization of plaque-induced neuritic alterations. *J Neurosci*, 23, 10879-10883.

- Lombry, C., Edwards, D. A., Preat, V., & Vanbever, R. (2004). Alveolar macrophages are a primary barrier to pulmonary absorption of macromolecules. *Am J Physiol Lung Cell Mol Physiol*, *286*, L1002-1008.
- Lopez-Otin, C., & Bond, J. S. (2008). Proteases: multifunctional enzymes in life and disease. *J Biol Chem*, *283*, 30433-30437.
- Lopez, E., Scott, N. E., Wines, B. D., Hogarth, P. M., Wheatley, A. K., Kent, S. J., & Chung, A. W. (2019). Low pH Exposure During Immunoglobulin G Purification Methods Results in Aggregates That Avidly Bind Fcγ Receptors: Implications for Measuring Fc Dependent Antibody Functions. *Front Immunol*, *10*, 2415.
- Luissint, A. C., Artus, C., Glacial, F., Ganeshamoorthy, K., & Couraud, P. O. (2012). Tight junctions at the blood brain barrier: physiological architecture and disease-associated dysregulation. *Fluids Barriers CNS*, *9*, 23.
- Lux, A., Yu, X., Scanlan, C. N., & Nimmerjahn, F. (2013). Impact of immune complex size and glycosylation on IgG binding to human FcγRs. *J Immunol*, *190*, 4315-4323.
- Mach, H., Gregory, S. M., Mackiewicz, A., Mittal, S., Lalloo, A., Kirchmeier, M., & Shameem, M. (2011). Electrostatic interactions of monoclonal antibodies with subcutaneous tissue. *Ther Deliv*, *2*, 727-736.
- Macierzanka, A., Mackie, A. R., Bajka, B. H., Rigby, N. M., Nau, F., & Dupont, D. (2014). Transport of particles in intestinal mucus under simulated infant and adult physiological conditions: impact of mucus structure and extracellular DNA. *PLoS One*, *9*, e95274.
- Macrez, R., Obiang, P., Gauberti, M., Roussel, B., Baron, A., Parcq, J., Casse, F., Hommet, Y., Orset, C., Agin, V., Bezin, L., Berrocoso, T. G., Petersen, K. U., Montaner, J., Maubert, E., Vivien, D., & Ali, C. (2011). Antibodies preventing the interaction of tissue-type plasminogen activator with N-methyl-D-aspartate receptors reduce stroke damages and extend the therapeutic window of thrombolysis. *Stroke*, *42*, 2315-2322.
- Mah, T. F., & O'Toole, G. A. (2001). Mechanisms of biofilm resistance to antimicrobial agents. *Trends Microbiol*, *9*, 34-39.
- Maher, S., Mrsny, R. J., & Brayden, D. J. (2016). Intestinal permeation enhancers for oral peptide delivery. *Adv Drug Deliv Rev*, *106*, 277-319.
- Maherally, Z., Fillmore, H. L., Tan, S. L., Tan, S. F., Jassam, S. A., Quack, F. I., Hatherell, K. E., & Pilkington, G. J. (2018). Real-time acquisition of transendothelial electrical resistance in an all-human, in vitro, 3-dimensional, blood-brain barrier model exemplifies tight-junction integrity. *FASEB J*, *32*, 168-182.
- Maisel, K., Reddy, M., Xu, Q., Chattopadhyay, S., Cone, R., Ensign, L. M., & Hanes, J. (2016). Nanoparticles coated with high molecular weight PEG penetrate mucus and provide uniform vaginal and colorectal distribution in vivo. *Nanomedicine (Lond)*, *11*, 1337-1343.
- Maldonado, M., & Nam, J. (2013). The role of changes in extracellular matrix of cartilage in the presence of inflammation on the pathology of osteoarthritis. *Biomed Res Int*, *2013*, 284873.
- Mariette, X., Forger, F., Abraham, B., Flynn, A. D., Molto, A., Flipo, R. M., van Tubergen, A., Shaughnessy, L., Simpson, J., Teil, M., Helmer, E., Wang, M., & Chakravarty, E. F. (2018). Lack of placental transfer of certolizumab pegol during pregnancy: results from CRIB, a prospective, postmarketing, pharmacokinetic study. *Ann Rheum Dis*, *77*, 228-233.
- Marttin, E., Verhoef, J. C., Cullander, C., Romeijn, S. G., Nagelkerke, J. F., & Merkus, F. W. (1997). Confocal laser scanning microscopic visualization of the transport of dextrans after nasal administration to rats: effects of absorption enhancers. *Pharm Res*, *14*, 631-637.
- Masliah, E., Rockenstein, E., Mante, M., Crews, L., Spencer, B., Adame, A., Patrick, C., Trejo, M., Ubhi, K., Rohn, T. T., Mueller-Stainer, S., Seubert, P., Barbour, R., McConlogue, L., Buttini, M., Games, D., & Schenk, D. (2011). Passive immunization reduces behavioral and neuropathological deficits in an alpha-synuclein transgenic model of Lewy body disease. *PLoS One*, *6*, e19338.
- Matsumura, Y. (2012). Cancer stromal targeting (CAST) therapy. *Adv Drug Deliv Rev*, *64*, 710-719.
- Matucci, A., Vultaggio, A., & Danesi, R. (2018). The use of intravenous versus subcutaneous monoclonal antibodies in the treatment of severe asthma: a review. *Respir Res*, *19*, 154.

- McDannold, N., Arvanitis, C. D., Vykhodtseva, N., & Livingstone, M. S. (2012). Temporary disruption of the blood-brain barrier by use of ultrasound and microbubbles: safety and efficacy evaluation in rhesus macaques. *Cancer Res*, *72*, 3652-3663.
- Milner, R., Hung, S., Wang, X., Berg, G. I., Spatz, M., & del Zoppo, G. J. (2008). Responses of endothelial cell and astrocyte matrix-integrin receptors to ischemia mimic those observed in the neurovascular unit. *Stroke*, *39*, 191-197.
- Montanaro, L., Poggi, A., Visai, L., Ravaioli, S., Campoccia, D., Speziale, P., & Arciola, C. R. (2011). Extracellular DNA in biofilms. *Int J Artif Organs*, *34*, 824-831.
- Montenegro-Nicolini, M., & Morales, J. O. (2017). Overview and Future Potential of Buccal Mucoadhesive Films as Drug Delivery Systems for Biologics. *AAPS PharmSciTech*, *18*, 3-14.
- Montoyo, H. P., Vaccaro, C., Hafner, M., Ober, R. J., Mueller, W., & Ward, E. S. (2009). Conditional deletion of the MHC class I-related receptor FcRn reveals the sites of IgG homeostasis in mice. *Proc Natl Acad Sci U S A*, *106*, 2788-2793.
- Mullard, A. (2021). Landmark Alzheimer's drug approval confounds research community. *Nature*, *594*, 309-310.
- Nagaraja, T. N., Patel, P., Gorski, M., Gorevic, P. D., Patlak, C. S., & Fenstermacher, J. D. (2005). In normal rat, intraventricularly administered insulin-like growth factor-1 is rapidly cleared from CSF with limited distribution into brain. *Cerebrospinal Fluid Res*, *2*, 5.
- Naito, M., Hasegawa, G., Ebe, Y., & Yamamoto, T. (2004). Differentiation and function of Kupffer cells. *Med Electron Microsc*, *37*, 16-28.
- Nelson, A. R., Sweeney, M. D., Sagare, A. P., & Zlokovic, B. V. (2016). Neurovascular dysfunction and neurodegeneration in dementia and Alzheimer's disease. *Biochim Biophys Acta*, *1862*, 887-900.
- Netti, P. A., Berk, D. A., Swartz, M. A., Grodzinsky, A. J., & Jain, R. K. (2000). Role of extracellular matrix assembly in interstitial transport in solid tumors. *Cancer Res*, *60*, 2497-2503.
- Neu, T. R., Manz, B., Volke, F., Dynes, J. J., Hitchcock, A. P., & Lawrence, J. R. (2010). Advanced imaging techniques for assessment of structure, composition and function in biofilm systems. *FEMS Microbiol Ecol*, *72*, 1-21.
- Nguyen-Lefebvre, A. T., & Horuzsko, A. (2015). Kupffer Cell Metabolism and Function. *J Enzymol Metab*, *1*.
- Ni, W., Chen, W., & Lu, Y. (2018). Emerging findings into molecular mechanism of brain metastasis. *Cancer Med*, *7*, 3820-3833.
- Nwagwu, C. D., Immidisetti, A. V., Bukanowska, G., Vogelbaum, M. A., & Carbonell, A. M. (2020). Convection-Enhanced Delivery of a First-in-Class Anti-beta1 Integrin Antibody for the Treatment of High-Grade Glioma Utilizing Real-Time Imaging. *Pharmaceutics*, *13*.
- Ober, R. J., Martinez, C., Vaccaro, C., Zhou, J., & Ward, E. S. (2004). Visualizing the site and dynamics of IgG salvage by the MHC class I-related receptor, FcRn. *J Immunol*, *172*, 2021-2029.
- Oberli, M. A., Schoellhammer, C. M., Langer, R., & Blankschtein, D. (2014). Ultrasound-enhanced transdermal delivery: recent advances and future challenges. *Ther Deliv*, *5*, 843-857.
- Oganessian, V., Damschroder, M. M., Cook, K. E., Li, Q., Gao, C., Wu, H., & Dall'Acqua, W. F. (2014). Structural insights into neonatal Fc receptor-based recycling mechanisms. *J Biol Chem*, *289*, 7812-7824.
- Oksanen, M., Lehtonen, S., Jaronen, M., Goldsteins, G., Hamalainen, R. H., & Koistinaho, J. (2019). Astrocyte alterations in neurodegenerative pathologies and their modeling in human induced pluripotent stem cell platforms. *Cell Mol Life Sci*, *76*, 2739-2760.
- Olmsted, S. S., Padgett, J. L., Yudin, A. I., Whaley, K. J., Moench, T. R., & Cone, R. A. (2001). Diffusion of macromolecules and virus-like particles in human cervical mucus. *Biophys J*, *81*, 1930-1937.
- Oriano, M., Terranova, L., Sotgiu, G., Saderi, L., Bellofiore, A., Retucci, M., Marotta, C., Gramegna, A., Miglietta, D., Carnini, C., Marchisio, P., Chalmers, J. D., Aliberti, S., & Blasi, F. (2019). Evaluation of active neutrophil elastase in sputum of bronchiectasis and cystic fibrosis patients: A comparison among different techniques. *Pulm Pharmacol Ther*, *59*, 101856.
- Ostrowitzki, S., Lasser, R. A., Dorflinger, E., Scheltens, P., Barkhof, F., Nikolcheva, T., Ashford, E., Retout, S., Hofmann, C., Delmar, P., Klein, G., Andjelkovic, M., Dubois, B., Boada, M.,

- Blennow, K., Santarelli, L., Fontoura, P., & Investigators, S. C. R. (2017). A phase III randomized trial of gantenerumab in prodromal Alzheimer's disease. *Alzheimers Res Ther*, 9, 95.
- Ottiger, M., Thiel, M. A., Feige, U., Lichtlen, P., & Urech, D. M. (2009). Efficient intraocular penetration of topical anti-TNF-alpha single-chain antibody (ESBA105) to anterior and posterior segment without penetration enhancer. *Invest Ophthalmol Vis Sci*, 50, 779-786.
- Owyong, M., Efe, G., Owyong, M., Abbasi, A. J., Sitarama, V., & Plaks, V. (2018). Overcoming Barriers of Age to Enhance Efficacy of Cancer Immunotherapy: The Clout of the Extracellular Matrix. *Front Cell Dev Biol*, 6, 19.
- Padera, T. P., Kadambi, A., di Tomaso, E., Carreira, C. M., Brown, E. B., Boucher, Y., Choi, N. C., Mathisen, D., Wain, J., Mark, E. J., Munn, L. L., & Jain, R. K. (2002). Lymphatic metastasis in the absence of functional intratumor lymphatics. *Science*, 296, 1883-1886.
- Paintaud, G. (2009). [Pharmacokinetics (PK) of mAbs]. *Med Sci (Paris)*, 25, 1057-1062.
- Pandey, K. C., De, S., & Mishra, P. K. (2017). Role of Proteases in Chronic Obstructive Pulmonary Disease. *Front Pharmacol*, 8, 512.
- Pardridge, W. M. (2007). Blood-brain barrier delivery. *Drug Discov Today*, 12, 54-61.
- Pardridge, W. M. (2017). Delivery of Biologics Across the Blood-Brain Barrier with Molecular Trojan Horse Technology. *BioDrugs*, 31, 503-519.
- Park, E. J., Zhang, Y. Z., Vykhodtseva, N., & McDannold, N. (2012). Ultrasound-mediated blood-brain/blood-tumor barrier disruption improves outcomes with trastuzumab in a breast cancer brain metastasis model. *J Control Release*, 163, 277-284.
- Passot, C., Azzopardi, N., Renault, S., Baroukh, N., Arnoult, C., Ohresser, M., Boisdron-Celle, M., Gamelin, E., Watier, H., Paintaud, G., & Gouilleux-Gruart, V. (2013). Influence of FCGRT gene polymorphisms on pharmacokinetics of therapeutic antibodies. *MAbs*, 5, 614-619.
- Patil, H. P., Freches, D., Karmani, L., Duncan, G. A., Ucar, B., Suk, J. S., Hanes, J., Gallez, B., & Vanbever, R. (2018). Fate of PEGylated antibody fragments following delivery to the lungs: Influence of delivery site, PEG size and lung inflammation. *J Control Release*, 272, 62-71.
- Pereira, P. M. R., Ragupathi, A., Shmuel, S., Mandleywala, K., Viola, N. T., & Lewis, J. S. (2020). HER2-Targeted PET Imaging and Therapy of Hyaluronan-Masked HER2-Overexpressing Breast Cancer. *Mol Pharm*, 17, 327-337.
- Perrino, E., Steiner, M., Krall, N., Bernardes, G. J., Pretto, F., Casi, G., & Neri, D. (2014). Curative properties of noninternalizing antibody-drug conjugates based on maytansinoids. *Cancer Res*, 74, 2569-2578.
- Pickering, J. G. (2001). Regulation of vascular cell behavior by collagen : form is function. *Circ Res*, 88, 458-459.
- Plaut, A. G., Wistar, R., Jr., & Capra, J. D. (1974). Differential susceptibility of human IgA immunoglobulins to streptococcal IgA protease. *J Clin Invest*, 54, 1295-1300.
- Poduslo, J. F., Curran, G. L., & Berg, C. T. (1994). Macromolecular permeability across the blood-nerve and blood-brain barriers. *Proc Natl Acad Sci U S A*, 91, 5705-5709.
- Popescu, B. O., Toescu, E. C., Popescu, L. M., Bajenaru, O., Muresanu, D. F., Schultzberg, M., & Bogdanovic, N. (2009). Blood-brain barrier alterations in ageing and dementia. *J Neurol Sci*, 283, 99-106.
- Porsio, B., Craparo, E. F., Mauro, N., Giammona, G., & Cavallaro, G. (2018). Mucus and Cell-Penetrating Nanoparticles Embedded in Nano-into-Micro Formulations for Pulmonary Delivery of Ivacaftor in Patients with Cystic Fibrosis. *ACS Appl Mater Interfaces*, 10, 165-181.
- Pouget, J. P., Georgakilas, A. G., & Ravanat, J. L. (2018). Targeted and Off-Target (Bystander and Abscopal) Effects of Radiation Therapy: Redox Mechanisms and Risk/Benefit Analysis. *Antioxid Redox Signal*, 29, 1447-1487.
- Pouget, J. P., Lozza, C., Deshayes, E., Boudousq, V., & Navarro-Teulon, I. (2015). Introduction to radiobiology of targeted radionuclide therapy. *Front Med (Lausanne)*, 2, 12.
- Printz, M. A., Dychter, S. S., DeNoia, E. P., Harrigan, R., Sugarman, B. J., Zepeda, M., Souratha, J., Kang, D. W., & Maneval, D. C. (2020). A Phase I Study to Evaluate the Safety, Tolerability, Pharmacokinetics, and Pharmacodynamics of Recombinant Human Hyaluronidase PH20 Administered Intravenously in Healthy Volunteers. *Curr Ther Res Clin Exp*, 93, 100604.

- Pyzik, M., Sand, K. M. K., Hubbard, J. J., Andersen, J. T., Sandlie, I., & Blumberg, R. S. (2019). The Neonatal Fc Receptor (FcRn): A Misnomer? *Front Immunol*, *10*, 1540.
- Qiang, M., Dong, X., Zha, Z., Zuo, X. K., Song, X. L., Zhao, L., Yuan, C., Huang, C., Tao, P., Hu, Q., Li, W. G., Hu, W., Li, J., Nie, Y., Buratto, D., Zonta, F., Ma, P., Yu, Z., Liu, L., Zhang, Y., Yang, B., Xie, J., Xu, T. L., Qu, Z., Yang, G., & Lerner, R. A. (2018). Selection of an ASIC1a-blocking combinatorial antibody that protects cells from ischemic death. *Proc Natl Acad Sci U S A*, *115*, E7469-E7477.
- Quaranta, V. (2000). Cell migration through extracellular matrix: membrane-type metalloproteinases make the way. *J Cell Biol*, *149*, 1167-1170.
- Quartino, A. L., Hillenbach, C., Li, J., Li, H., Wada, R. D., Visich, J., Li, C., Heinzmann, D., Jin, J. Y., & Lum, B. L. (2016). Population pharmacokinetic and exposure-response analysis for trastuzumab administered using a subcutaneous "manual syringe" injection or intravenously in women with HER2-positive early breast cancer. *Cancer Chemother Pharmacol*, *77*, 77-88.
- Raghavan, M., Bonagura, V. R., Morrison, S. L., & Bjorkman, P. J. (1995). Analysis of the pH dependence of the neonatal Fc receptor/immunoglobulin G interaction using antibody and receptor variants. *Biochemistry*, *34*, 14649-14657.
- Rath, T., Baker, K., Dumont, J. A., Peters, R. T., Jiang, H., Qiao, S. W., Lencer, W. I., Pierce, G. F., & Blumberg, R. S. (2015). Fc-fusion proteins and FcRn: structural insights for longer-lasting and more effective therapeutics. *Crit Rev Biotechnol*, *35*, 235-254.
- Raymond, S. B., Treat, L. H., Dewey, J. D., McDannold, N. J., Hynynen, K., & Bacskai, B. J. (2008). Ultrasound enhanced delivery of molecular imaging and therapeutic agents in Alzheimer's disease mouse models. *PLoS One*, *3*, e2175.
- Raza, A., Franklin, M. J., & Dudek, A. Z. (2010). Pericytes and vessel maturation during tumor angiogenesis and metastasis. *Am J Hematol*, *85*, 593-598.
- Rebelo, S. P., Pinto, C., Martins, T. R., Harrer, N., Estrada, M. F., Loza-Alvarez, P., Cabecadas, J., Alves, P. M., Gualda, E. J., Sommergruber, W., & Brito, C. (2018). 3D-3-culture: A tool to unveil macrophage plasticity in the tumour microenvironment. *Biomaterials*, *163*, 185-197.
- Respaud, R., Marchand, D., Pelat, T., Tchou-Wong, K. M., Roy, C. J., Parent, C., Cabrera, M., Guillemain, J., Mac Loughlin, R., Levacher, E., Fontayne, A., Douziech-Eyrolles, L., Junqua-Moulet, A., Guillemainault, L., Thullier, P., Guillot-Combe, E., Vecellio, L., & Heuze-Vourc'h, N. (2016). Development of a drug delivery system for efficient alveolar delivery of a neutralizing monoclonal antibody to treat pulmonary intoxication to ricin. *J Control Release*, *234*, 21-32.
- Respaud, R., Vecellio, L., Diot, P., & Heuze-Vourc'h, N. (2015). Nebulization as a delivery method for mAbs in respiratory diseases. *Expert Opin Drug Deliv*, *12*, 1027-1039.
- Ribatti, D., Nico, B., Floris, C., Mangieri, D., Piras, F., Ennas, M. G., Vacca, A., & Sirigu, P. (2005). Microvascular density, vascular endothelial growth factor immunoreactivity in tumor cells, vessel diameter and intussusceptive microvascular growth in primary melanoma. *Oncol Rep*, *14*, 81-84.
- Rinne, J. O., Brooks, D. J., Rossor, M. N., Fox, N. C., Bullock, R., Klunk, W. E., Mathis, C. A., Blennow, K., Barakos, J., Okello, A. A., Rodriguez Martinez de Liano, S., Liu, E., Koller, M., Gregg, K. M., Schenk, D., Black, R., & Grundman, M. (2010). 11C-PiB PET assessment of change in fibrillar amyloid-beta load in patients with Alzheimer's disease treated with bapineuzumab: a phase 2, double-blind, placebo-controlled, ascending-dose study. *Lancet Neurol*, *9*, 363-372.
- Rohrer, J., Lupo, N., & Bernkop-Schnurch, A. (2018). Advanced formulations for intranasal delivery of biologics. *Int J Pharm*, *553*, 8-20.
- Ruano-Salguero, J. S., & Lee, K. H. (2020). Antibody transcytosis across brain endothelial-like cells occurs nonspecifically and independent of FcRn. *Sci Rep*, *10*, 3685.
- Rust, R., Gronnert, L., Gantner, C., Enzler, A., Mulders, G., Weber, R. Z., Siewert, A., Limasale, Y. D. P., Meinhardt, A., Maurer, M. A., Sartori, A. M., Hofer, A. S., Werner, C., & Schwab, M. E. (2019). Nogo-A targeted therapy promotes vascular repair and functional recovery following stroke. *Proc Natl Acad Sci U S A*, *116*, 14270-14279.
- Ryan, M. H., Petrone, D., Nemeth, J. F., Barnathan, E., Bjoreck, L., & Jordan, R. E. (2008). Proteolysis of purified IgGs by human and bacterial enzymes in vitro and the detection of specific

- proteolytic fragments of endogenous IgG in rheumatoid synovial fluid. *Mol Immunol*, 45, 1837-1846.
- Sachs, U. J., Socher, I., Braeunlich, C. G., Kroll, H., Bein, G., & Santoso, S. (2006). A variable number of tandem repeats polymorphism influences the transcriptional activity of the neonatal Fc receptor alpha-chain promoter. *Immunology*, 119, 83-89.
- Sakagami, M., Omidi, Y., Campbell, L., Kandalaft, L. E., Morris, C. J., Barar, J., & Gumbleton, M. (2006). Expression and transport functionality of FcRn within rat alveolar epithelium: a study in primary cell culture and in the isolated perfused lung. *Pharm Res*, 23, 270-279.
- Salameh, T. S., & Banks, W. A. (2014). Delivery of therapeutic peptides and proteins to the CNS. *Adv Pharmacol*, 71, 277-299.
- Salloway, S., Farlow, M., McDade, E., Clifford, D. B., Wang, G., Llibre-Guerra, J. J., Hitchcock, J. M., Mills, S. L., Santacruz, A. M., Aschenbrenner, A. J., Hassenstab, J., Benzinger, T. L. S., Gordon, B. A., Fagan, A. M., Coalier, K. A., Cruchaga, C., Goate, A. A., Perrin, R. J., Xiong, C., Li, Y., Morris, J. C., Snider, B. J., Mummery, C., Surti, G. M., Hannequin, D., Wallon, D., Berman, S. B., Lah, J. J., Jimenez-Velazquez, I. Z., Roberson, E. D., van Dyck, C. H., Honig, L. S., Sanchez-Valle, R., Brooks, W. S., Gauthier, S., Galasko, D. R., Masters, C. L., Brosch, J. R., Hsiung, G. R., Jayadev, S., Formaglio, M., Masellis, M., Clarnette, R., Pariente, J., Dubois, B., Pasquier, F., Jack, C. R., Jr., Koeppe, R., Snyder, P. J., Aisen, P. S., Thomas, R. G., Berry, S. M., Wendelberger, B. A., Andersen, S. W., Holdridge, K. C., Mintun, M. A., Yaari, R., Sims, J. R., Baudler, M., Delmar, P., Doody, R. S., Fontoura, P., Giacobino, C., Kerchner, G. A., Bateman, R. J., & Dominantly Inherited Alzheimer Network-Trials, U. (2021). A trial of gantenerumab or solanezumab in dominantly inherited Alzheimer's disease. *Nat Med*, 27, 1187-1196.
- Salmon, H., Franciszkiewicz, K., Damotte, D., Dieu-Nosjean, M. C., Validire, P., Trautmann, A., Mami-Chouaib, F., & Donnadieu, E. (2012). Matrix architecture defines the preferential localization and migration of T cells into the stroma of human lung tumors. *J Clin Invest*, 122, 899-910.
- Salvatore, M. F., Ai, Y., Fischer, B., Zhang, A. M., Grondin, R. C., Zhang, Z., Gerhardt, G. A., & Gash, D. M. (2006). Point source concentration of GDNF may explain failure of phase II clinical trial. *Exp Neurol*, 202, 497-505.
- Sanchez-Felix, M., Burke, M., Chen, H. H., Patterson, C., & Mittal, S. (2020). Predicting bioavailability of monoclonal antibodies after subcutaneous administration: Open innovation challenge. *Adv Drug Deliv Rev*, 167, 66-77.
- Sanders, N. N., De Smedt, S. C., Van Rompaey, E., Simoens, P., De Baets, F., & Demeester, J. (2000). Cystic fibrosis sputum: a barrier to the transport of nanospheres. *Am J Respir Crit Care Med*, 162, 1905-1911.
- Schaefer, A., & Lai, S. K. (2021). The biophysical principles underpinning muco-trapping functions of antibodies. *Hum Vaccin Immunother*, 1-10.
- Schlachetzki, F., Zhu, C., & Pardridge, W. M. (2002). Expression of the neonatal Fc receptor (FcRn) at the blood-brain barrier. *J Neurochem*, 81, 203-206.
- Scully, M., Soderman, A., Schneider, M., Makropoulos, D., Blake, S., Picha, K., & Ort, T. (2009). PHARMACOKINETICS OF AN ANTIBODY FOLLOWING INTRA-ARTICULAR AND SYSTEMIC DELIVERY IN RODENTS. In *Osteoarthritis and Cartilage* (Vol. 17, pp. S61-S62): Elsevier.
- Senior, B. W., & Woof, J. M. (2005). Effect of mutations in the human immunoglobulin A1 (IgA1) hinge on its susceptibility to cleavage by diverse bacterial IgA1 proteases. *Infect Immun*, 73, 1515-1522.
- Shang, X., Wang, P., Liu, Y., Zhang, Z., & Xue, Y. (2011). Mechanism of low-frequency ultrasound in opening blood-tumor barrier by tight junction. *J Mol Neurosci*, 43, 364-369.
- Sheikov, N., McDannold, N., Jolesz, F., Zhang, Y. Z., Tam, K., & Hynynen, K. (2006). Brain arterioles show more active vesicular transport of blood-borne tracer molecules than capillaries and venules after focused ultrasound-evoked opening of the blood-brain barrier. *Ultrasound Med Biol*, 32, 1399-1409.

- Sheikov, N., McDannold, N., Sharma, S., & Hynynen, K. (2008). Effect of focused ultrasound applied with an ultrasound contrast agent on the tight junctional integrity of the brain microvascular endothelium. *Ultrasound Med Biol*, *34*, 1093-1104.
- Sheikov, N., McDannold, N., Vykhodtseva, N., Jolesz, F., & Hynynen, K. (2004). Cellular mechanisms of the blood-brain barrier opening induced by ultrasound in presence of microbubbles. *Ultrasound Med Biol*, *30*, 979-989.
- Shekhar, M. P., Pauley, R., & Heppner, G. (2003). Host microenvironment in breast cancer development: extracellular matrix-stromal cell contribution to neoplastic phenotype of epithelial cells in the breast. *Breast Cancer Res*, *5*, 130-135.
- Sheybani, N. D., Breza, V. R., Paul, S., McCauley, K. S., Berr, S. S., Miller, G. W., Neumann, K. D., & Price, R. J. (2021). ImmunopET-informed sequence for focused ultrasound-targeted mCD47 blockade controls glioma. *J Control Release*, *331*, 19-29.
- Shoji, T., Saito, R., Chonan, M., Shibahara, I., Sato, A., Kanamori, M., Sonoda, Y., Kondo, T., Ishii, N., & Tominaga, T. (2016). Local convection-enhanced delivery of an anti-CD40 agonistic monoclonal antibody induces antitumor effects in mouse glioma models. *Neuro Oncol*, *18*, 1120-1128.
- Shpilberg, O., & Jackisch, C. (2013). Subcutaneous administration of rituximab (MabThera) and trastuzumab (Herceptin) using hyaluronidase. *Br J Cancer*, *109*, 1556-1561.
- Silva, A. C., Pereira, C., Fonseca, A., Pinto-do, O. P., & Nascimento, D. S. (2020). Bearing My Heart: The Role of Extracellular Matrix on Cardiac Development, Homeostasis, and Injury Response. *Front Cell Dev Biol*, *8*, 621644.
- Singha, N. C., Nekoroski, T., Zhao, C., Symons, R., Jiang, P., Frost, G. I., Huang, Z., & Shepard, H. M. (2015). Tumor-associated hyaluronan limits efficacy of monoclonal antibody therapy. *Mol Cancer Ther*, *14*, 523-532.
- Souweidane, M. M., Kramer, K., Pandit-Taskar, N., Zhou, Z., Haque, S., Zanzonico, P., Carrasquillo, J. A., Lyashchenko, S. K., Thakur, S. B., Donzelli, M., Turner, R. S., Lewis, J. S., Cheung, N. V., Larson, S. M., & Dunkel, I. J. (2018). Convection-enhanced delivery for diffuse intrinsic pontine glioma: a single-centre, dose-escalation, phase 1 trial. *Lancet Oncol*, *19*, 1040-1050.
- Spiekermann, G. M., Finn, P. W., Ward, E. S., Dumont, J., Dickinson, B. L., Blumberg, R. S., & Lencer, W. I. (2002). Receptor-mediated immunoglobulin G transport across mucosal barriers in adult life: functional expression of FcRn in the mammalian lung. *J Exp Med*, *196*, 303-310.
- St-Amour, I., Pare, I., Alata, W., Coulombe, K., Ringuette-Goulet, C., Drouin-Ouellet, J., Vandal, M., Soulet, D., Bazin, R., & Calon, F. (2013). Brain bioavailability of human intravenous immunoglobulin and its transport through the murine blood-brain barrier. *J Cereb Blood Flow Metab*, *33*, 1983-1992.
- Stamou, M., Grodzki, A. C., van Oostrum, M., Wollscheid, B., & Lein, P. J. (2018). Fc gamma receptors are expressed in the developing rat brain and activate downstream signaling molecules upon cross-linking with immune complex. *J Neuroinflammation*, *15*, 7.
- Staudacher, A. H., & Brown, M. P. (2017). Antibody drug conjugates and bystander killing: is antigen-dependent internalisation required? *Br J Cancer*, *117*, 1736-1742.
- Stevens, N. E., & Cowin, A. J. (2017). Overcoming the challenges of topical antibody administration for improving healing outcomes: a review of recent laboratory and clinical approaches. *Wound Practice and Research*, *25*.
- Stewart, P. S., & Franklin, M. J. (2008). Physiological heterogeneity in biofilms. *Nat Rev Microbiol*, *6*, 199-210.
- Styles, I. K., Feeney, O. M., Nguyen, T. H., Brundel, D. H. S., Kang, D. W., Clift, R., McIntosh, M. P., & Porter, C. J. H. (2019). Removal of interstitial hyaluronan with recombinant human hyaluronidase improves the systemic and lymphatic uptake of cetuximab in rats. *J Control Release*, *315*, 85-96.
- Suk, J. S., Lai, S. K., Boylan, N. J., Dawson, M. R., Boyle, M. P., & Hanes, J. (2011). Rapid transport of muco-inert nanoparticles in cystic fibrosis sputum treated with N-acetyl cysteine. *Nanomedicine (Lond)*, *6*, 365-375.
- Suk, J. S., Lai, S. K., Wang, Y. Y., Ensign, L. M., Zeitlin, P. L., Boyle, M. P., & Hanes, J. (2009). The penetration of fresh undiluted sputum expectorated by cystic fibrosis patients by non-adhesive polymeric nanoparticles. *Biomaterials*, *30*, 2591-2597.

- Tan, A. R., Im, S. A., Mattar, A., Colomer, R., Stroyakovskii, D., Nowecki, Z., De Laurentiis, M., Pierga, J. Y., Jung, K. H., Schem, C., Hoge, A., Badovinac Crnjevic, T., Heeson, S., Shivhare, M., Kirschbrown, W. P., Restuccia, E., Jackisch, C., & FeDeriCa study, g. (2021). Fixed-dose combination of pertuzumab and trastuzumab for subcutaneous injection plus chemotherapy in HER2-positive early breast cancer (FeDeriCa): a randomised, open-label, multicentre, non-inferiority, phase 3 study. *Lancet Oncol*, 22, 85-97.
- Tang, B. C., Dawson, M., Lai, S. K., Wang, Y. Y., Suk, J. S., Yang, M., Zeitlin, P., Boyle, M. P., Fu, J., & Hanes, J. (2009). Biodegradable polymer nanoparticles that rapidly penetrate the human mucus barrier. *Proc Natl Acad Sci U S A*, 106, 19268-19273.
- Turner, I. H., & Muller-Ladner, U. (2008). Drug delivery systems for the treatment of rheumatoid arthritis. *Expert Opin Drug Deliv*, 5, 1027-1037.
- Tashima, T. (2020). Smart Strategies for Therapeutic Agent Delivery into Brain across the Blood-Brain Barrier Using Receptor-Mediated Transcytosis. *Chem Pharm Bull (Tokyo)*, 68, 316-325.
- Tashima, T. (2021). Delivery of Orally Administered Digestible Antibodies Using Nanoparticles. *Int J Mol Sci*, 22.
- Tennant, M., & McGeachie, J. K. (1990). Blood vessel structure and function: a brief update on recent advances. *Aust N Z J Surg*, 60, 747-753.
- Thakker, D. R., Weatherspoon, M. R., Harrison, J., Keene, T. E., Lane, D. S., Kaemmerer, W. F., Stewart, G. R., & Shafer, L. L. (2009). Intracerebroventricular amyloid-beta antibodies reduce cerebral amyloid angiopathy and associated micro-hemorrhages in aged Tg2576 mice. *Proc Natl Acad Sci U S A*, 106, 4501-4506.
- Thareja, A., Hughes, H., Alvarez-Lorenzo, C., Hakkarainen, J. J., & Ahmed, Z. (2021). Penetration Enhancers for Topical Drug Delivery to the Ocular Posterior Segment-A Systematic Review. *Pharmaceutics*, 13.
- Theocharis, A. D., Manou, D., & Karamanos, N. K. (2019). The extracellular matrix as a multitasking player in disease. *FEBS J*, 286, 2830-2869.
- Thrimawithana, T. R., Young, S., Bunt, C. R., Green, C., & Alany, R. G. (2011). Drug delivery to the posterior segment of the eye. *Drug Discov Today*, 16, 270-277.
- Thulborn, S. J., Mistry, V., Brightling, C. E., Moffitt, K. L., Ribeiro, D., & Bafadhel, M. (2019). Neutrophil elastase as a biomarker for bacterial infection in COPD. *Respir Res*, 20, 170.
- Thurber, G. M., & Weissleder, R. (2011). Quantitating antibody uptake in vivo: conditional dependence on antigen expression levels. *Mol Imaging Biol*, 13, 623-632.
- Tielker, D., Hacker, S., Loris, R., Strathmann, M., Wingender, J., Wilhelm, S., Rosenau, F., & Jaeger, K. E. (2005). Pseudomonas aeruginosa lectin LecB is located in the outer membrane and is involved in biofilm formation. *Microbiology (Reading)*, 151, 1313-1323.
- Todd, N., Angolano, C., Ferran, C., Devor, A., Borsook, D., & McDannold, N. (2020). Secondary effects on brain physiology caused by focused ultrasound-mediated disruption of the blood-brain barrier. *J Control Release*, 324, 450-459.
- Tong, R. T., Boucher, Y., Kozin, S. V., Winkler, F., Hicklin, D. J., & Jain, R. K. (2004). Vascular normalization by vascular endothelial growth factor receptor 2 blockade induces a pressure gradient across the vasculature and improves drug penetration in tumors. *Cancer Res*, 64, 3731-3736.
- Tsukita, S., Furuse, M., & Itoh, M. (2001). Multifunctional strands in tight junctions. *Nat Rev Mol Cell Biol*, 2, 285-293.
- Tuppo, E. E., & Arias, H. R. (2005). The role of inflammation in Alzheimer's disease. *Int J Biochem Cell Biol*, 37, 289-305.
- Turner, J. R. (2009). Intestinal mucosal barrier function in health and disease. *Nat Rev Immunol*, 9, 799-809.
- van Bilsen, K., Bastiaans, J., Dik, W. A., De Haas, E. F., Baarsma, S. G., Kuipers, R. W., & van Hagen, P. M. (2010). The neonatal Fc receptor is expressed by human lymphocytes. *J Transl Med*, 8, P1.
- Vasiljeva, O., Menendez, E., Nguyen, M., Craik, C. S., & Michael Kavanaugh, W. (2020). Monitoring protease activity in biological tissues using antibody prodrugs as sensing probes. *Sci Rep*, 10, 5894.

- Veerachamy, S., Yarlagadda, T., Manivasagam, G., & Yarlagadda, P. K. (2014). Bacterial adherence and biofilm formation on medical implants: a review. *Proc Inst Mech Eng H*, 228, 1083-1099.
- Viola, M., Sequeira, J., Seica, R., Veiga, F., Serra, J., Santos, A. C., & Ribeiro, A. J. (2018). Subcutaneous delivery of monoclonal antibodies: How do we get there? *J Control Release*, 286, 301-314.
- Villasaliu, D., Thanou, M., Stolnik, S., & Fowler, R. (2018). Recent advances in oral delivery of biologics: nanomedicine and physical modes of delivery. *Expert Opin Drug Deliv*, 15, 759-770.
- Vogelzang, A., Lozza, L., Reece, S. T., Perdomo, C., Zedler, U., Hahnke, K., Oberbeck-Mueller, D., Dorhoi, A., & Kaufmann, S. H. (2016). Neonatal Fc Receptor Regulation of Lung Immunoglobulin and CD103+ Dendritic Cells Confers Transient Susceptibility to Tuberculosis. *Infect Immun*, 84, 2914-2921.
- von Pawel-Rammingen, U., Johansson, B. P., & Bjorck, L. (2002). IdeS, a novel streptococcal cysteine proteinase with unique specificity for immunoglobulin G. *EMBO J*, 21, 1607-1615.
- Vukosavljevic, B., Murgia, X., Schwarzkopf, K., Schaefer, U. F., Lehr, C. M., & Windbergs, M. (2017). Tracing molecular and structural changes upon mucolysis with N-acetyl cysteine in human airway mucus. *Int J Pharm*, 533, 373-376.
- Vukovic, N., van Elsas, A., Verbeek, J. S., & Zaiss, D. M. W. (2021). Isotype selection for antibody-based cancer therapy. *Clin Exp Immunol*, 203, 351-365.
- Wahl, A. S., Correa, D., Imobersteg, S., Maurer, M. A., Kaiser, J., Augath, M. A., & Schwab, M. E. (2020). Targeting Therapeutic Antibodies to the CNS: a Comparative Study of Intrathecal, Intravenous, and Subcutaneous Anti-Nogo A Antibody Treatment after Stroke in Rats. *Neurotherapeutics*, 17, 1153-1159.
- Waldmann, T. A., Strober, W., & Mogielnicki, R. P. (1972). The renal handling of low molecular weight proteins. II. Disorders of serum protein catabolism in patients with tubular proteinuria, the nephrotic syndrome, or uremia. *J Clin Invest*, 51, 2162-2174.
- Walker, C., Mojares, E., & Del Rio Hernandez, A. (2018). Role of Extracellular Matrix in Development and Cancer Progression. *Int J Mol Sci*, 19.
- Wang, W., Wang, E. Q., & Balthasar, J. P. (2008). Monoclonal antibody pharmacokinetics and pharmacodynamics. *Clin Pharmacol Ther*, 84, 548-558.
- Wang, Y. Y., Harit, D., Subramani, D. B., Arora, H., Kumar, P. A., & Lai, S. K. (2017). Influenza-binding antibodies immobilise influenza viruses in fresh human airway mucus. *Eur Respir J*, 49.
- Wang, Y. Y., Lai, S. K., Suk, J. S., Pace, A., Cone, R., & Hanes, J. (2008). Addressing the PEG mucoadhesivity paradox to engineer nanoparticles that "slip" through the human mucus barrier. *Angew Chem Int Ed Engl*, 47, 9726-9729.
- Watson, C. J., Rowland, M., & Warhurst, G. (2001). Functional modeling of tight junctions in intestinal cell monolayers using polyethylene glycol oligomers. *Am J Physiol Cell Physiol*, 281, C388-397.
- Weinberger, A., & Simkin, P. A. (1989). Plasma proteins in synovial fluids of normal human joints. *Semin Arthritis Rheum*, 19, 66-76.
- Wenting, Z., Ling, Z., Chengrui, A., Rongrong, W., Liqun, Y., Weifeng, Y., Peiying, L., & Yanqin, G. (2020). The blood brain barrier in cerebral ischemic injury – Disruption and repair. *Brain Hemorrhages*, 1, 34-53.
- Wilcock, D. M., DiCarlo, G., Henderson, D., Jackson, J., Clarke, K., Ugen, K. E., Gordon, M. N., & Morgan, D. (2003). Intracranially administered anti-Abeta antibodies reduce beta-amyloid deposition by mechanisms both independent of and associated with microglial activation. *J Neurosci*, 23, 3745-3751.
- Witko-Sarsat, V., Halbwachs-Mecarelli, L., Schuster, A., Nusbaum, P., Ueki, I., Canteloup, S., Lenoir, G., Descamps-Latscha, B., & Nadel, J. A. (1999). Proteinase 3, a potent secretagogue in airways, is present in cystic fibrosis sputum. *Am J Respir Cell Mol Biol*, 20, 729-736.
- Wolburg, H., Noell, S., Mack, A., Wolburg-Buchholz, K., & Fallier-Becker, P. (2009). Brain endothelial cells and the glio-vascular complex. *Cell Tissue Res*, 335, 75-96.

- Wong, W. L., Su, X., Li, X., Cheung, C. M., Klein, R., Cheng, C. Y., & Wong, T. Y. (2014). Global prevalence of age-related macular degeneration and disease burden projection for 2020 and 2040: a systematic review and meta-analysis. *Lancet Glob Health*, 2, e106-116.
- Wood, T. K., Knabel, S. J., & Kwan, B. W. (2013). Bacterial persister cell formation and dormancy. *Appl Environ Microbiol*, 79, 7116-7121.
- Wu, M., Frieboes, H. B., Chaplain, M. A., McDougall, S. R., Cristini, V., & Lowengrub, J. S. (2014). The effect of interstitial pressure on therapeutic agent transport: coupling with the tumor blood and lymphatic vascular systems. *J Theor Biol*, 355, 194-207.
- Wynne, C., Harvey, V., Schwabe, C., Waaka, D., McIntyre, C., & Bittner, B. (2013). Comparison of subcutaneous and intravenous administration of trastuzumab: a phase I/IIb trial in healthy male volunteers and patients with HER2-positive breast cancer. *J Clin Pharmacol*, 53, 192-201.
- Xenaki, K. T., Oliveira, S., & van Bergen En Henegouwen, P. M. P. (2017). Antibody or Antibody Fragments: Implications for Molecular Imaging and Targeted Therapy of Solid Tumors. *Front Immunol*, 8, 1287.
- Xu, Q., Boylan, N. J., Suk, J. S., Wang, Y. Y., Nance, E. A., Yang, J. C., McDonnell, P. J., Cone, R. A., Duh, E. J., & Hanes, J. (2013). Nanoparticle diffusion in, and microrheology of, the bovine vitreous ex vivo. *J Control Release*, 167, 76-84.
- Xu, S., Ilyas, I., Little, P. J., Li, H., Kamato, D., Zheng, X., Luo, S., Li, Z., Liu, P., Han, J., Harding, I. C., Ebong, E. E., Cameron, S. J., Stewart, A. G., & Weng, J. (2021). Endothelial Dysfunction in Atherosclerotic Cardiovascular Diseases and Beyond: From Mechanism to Pharmacotherapies. *Pharmacol Rev*, 73, 924-967.
- Yadav, D. B., Maloney, J. A., Wildsmith, K. R., Fuji, R. N., Meilandt, W. J., Solanoy, H., Lu, Y., Peng, K., Wilson, B., Chan, P., Gadkar, K., Kosky, A., Goo, M., Daugherty, A., Couch, J. A., Keene, T., Hayes, K., Nikolas, L. J., Lane, D., Switzer, R., Adams, E., Watts, R. J., Scearce-Levie, K., Prabhu, S., Shafer, L., Thakker, D. R., Hildebrand, K., & Atwal, J. K. (2017). Widespread brain distribution and activity following i.c.v. infusion of anti-beta-secretase (BACE1) in nonhuman primates. *Br J Pharmacol*, 174, 4173-4185.
- Yan, Q., Matheson, C., Sun, J., Radeke, M. J., Feinstein, S. C., & Miller, J. A. (1994). Distribution of intracerebral ventricularly administered neurotrophins in rat brain and its correlation with trk receptor expression. *Exp Neurol*, 127, 23-36.
- Yang, B., Schaefer, A., Wang, Y. Y., McCallen, J., Lee, P., Newby, J. M., Arora, H., Kumar, P. A., Zeitlin, L., Whaley, K. J., McKinley, S. A., Fischer, W. A., 2nd, Harit, D., & Lai, S. K. (2018). ZMapp Reinforces the Airway Mucosal Barrier Against Ebola Virus. *J Infect Dis*, 218, 901-910.
- Yang, Y., & Rosenberg, G. A. (2011). Blood-brain barrier breakdown in acute and chronic cerebrovascular disease. *Stroke*, 42, 3323-3328.
- Yasunaga, M., Manabe, S., & Matsumura, Y. (2011). New concept of cytotoxic immunoconjugate therapy targeting cancer-induced fibrin clots. *Cancer Sci*, 102, 1396-1402.
- Yasunaga, M., Manabe, S., & Matsumura, Y. (2013). Tumor stromal barrier and cancer stromal targeting therapy. *Microvascular Reviews and Communications*, 6, 2-8.
- Yasunaga, M., Manabe, S., Tarin, D., & Matsumura, Y. (2011). Cancer-stroma targeting therapy by cytotoxic immunoconjugate bound to the collagen 4 network in the tumor tissue. *Bioconjug Chem*, 22, 1776-1783.
- Ye, D., Yuan, J., Yue, Y., Rubin, J. B., & Chen, H. (2021). Focused Ultrasound-Enhanced Delivery of Intranasally Administered Anti-Programmed Cell Death-Ligand 1 Antibody to an Intracranial Murine Glioma Model. *Pharmaceutics*, 13.
- Yip, V., Palma, E., Tesar, D. B., Mundo, E. E., Bumbaca, D., Torres, E. K., Reyes, N. A., Shen, B. Q., Fielder, P. J., Prabhu, S., Khawli, L. A., & Boswell, C. A. (2014). Quantitative cumulative biodistribution of antibodies in mice: effect of modulating binding affinity to the neonatal Fc receptor. *MAbs*, 6, 689-696.
- Yokota, T., Milenic, D. E., Whitlow, M., & Schlom, J. (1992). Rapid tumor penetration of a single-chain Fv and comparison with other immunoglobulin forms. *Cancer Res*, 52, 3402-3408.
- Yu, T., Wang, Y. Y., Yang, M., Schneider, C., Zhong, W., Pulicare, S., Choi, W. J., Mert, O., Fu, J., Lai, S. K., & Hanes, J. (2012). Biodegradable mucus-penetrating nanoparticles composed of

- diblock copolymers of polyethylene glycol and poly(lactic-co-glycolic acid). *Drug Deliv Transl Res*, 2.
- Yu, Y. J., Atwal, J. K., Zhang, Y., Tong, R. K., Wildsmith, K. R., Tan, C., Bien-Ly, N., Hersom, M., Maloney, J. A., Meilandt, W. J., Bumbaca, D., Gadkar, K., Hoyte, K., Luk, W., Lu, Y., Ernst, J. A., Scarce-Levie, K., Couch, J. A., Dennis, M. S., & Watts, R. J. (2014). Therapeutic bispecific antibodies cross the blood-brain barrier in nonhuman primates. *Sci Transl Med*, 6, 261ra154.
- Zamudio, F., Loon, A. R., Smeltzer, S., Benyamine, K., Navalpur Shanmugam, N. K., Stewart, N. J. F., Lee, D. C., Nash, K., & Selenica, M. B. (2020). TDP-43 mediated blood-brain barrier permeability and leukocyte infiltration promote neurodegeneration in a low-grade systemic inflammation mouse model. *J Neuroinflammation*, 17, 283.
- Zhang, J. F., Xiong, H. L., Cao, J. L., Wang, S. J., Guo, X. R., Lin, B. Y., Zhang, Y., Zhao, J. H., Wang, Y. B., Zhang, T. Y., Yuan, Q., Zhang, J., & Xia, N. S. (2018). A cell-penetrating whole molecule antibody targeting intracellular HBx suppresses hepatitis B virus via TRIM21-dependent pathway. *Theranostics*, 8, 549-562.
- Zhang, N., Deng, H., Fan, X., Gonzalez, A., Zhang, S., Brezski, R. J., Choi, B. K., Ryczyn, M., Strohl, W., Jordan, R., & An, Z. (2015). Dysfunctional Antibodies in the Tumor Microenvironment Associate with Impaired Anticancer Immunity. *Clin Cancer Res*, 21, 5380-5390.
- Zhao, Y., Brown, T. L., Kohler, H., & Muller, S. (2003). MTS-conjugated-antiactive caspase 3 antibodies inhibit actinomycin D-induced apoptosis. *Apoptosis*, 8, 631-637.
- Zhou, F., Fu, T., Huang, Q., Kuai, H., Mo, L., Liu, H., Wang, Q., Peng, Y., Han, D., Zhao, Z., Fang, X., & Tan, W. (2019). Hypoxia-Activated PEGylated Conditional Aptamer/Antibody for Cancer Imaging with Improved Specificity. *J Am Chem Soc*, 141, 18421-18427.
- Zhu, X., Meng, G., Dickinson, B. L., Li, X., Mizoguchi, E., Miao, L., Wang, Y., Robert, C., Wu, B., Smith, P. D., Lencer, W. I., & Blumberg, R. S. (2001). MHC class I-related neonatal Fc receptor for IgG is functionally expressed in monocytes, intestinal macrophages, and dendritic cells. *J Immunol*, 166, 3266-3276.
- Zlokovic, B. V. (2008). The blood-brain barrier in health and chronic neurodegenerative disorders. *Neuron*, 57, 178-201.
- Zuchero, Y. J., Chen, X., Bien-Ly, N., Bumbaca, D., Tong, R. K., Gao, X., Zhang, S., Hoyte, K., Luk, W., Huntley, M. A., Phu, L., Tan, C., Kallop, D., Weimer, R. M., Lu, Y., Kirkpatrick, D. S., Ernst, J. A., Chih, B., Dennis, M. S., & Watts, R. J. (2016). Discovery of Novel Blood-Brain Barrier Targets to Enhance Brain Uptake of Therapeutic Antibodies. *Neuron*, 89, 70-82.

Acknowledgements

This work was supported by the French National Research Agency as part of the “Investissements d’Avenir” program (LabEx MAbImprove, ANR-10-LABX-53-01). Figures were created in BioRender.com.

Conflict of interest

YA, TB, JL, MG, AP, CDS, NJ, JPP, VGG, DL, SP, TS, have nothing to declare. NHV is co-founder and scientific expert for Cynbiose Respiratory. In the past two years, she received consultancy fees from Eli Lilly, Argenx, Novartis and research support from Sanofi and Aerogen Ltd.

Figure legends

1. Schematic representation of the extracellular matrix in healthy condition and in the tumour microenvironment as a barrier to antibodies.

A healthy ECM (left panel), located under the epithelium, consists in two distinct structures. The basement membrane (1) is composed of a very compact network of collagen fibrils and laminins that can self-associate to form a secondary network; perlecan further bridge these networks. The interstitial matrix is a looser matrix mainly composed of collagen fibrils assembled through the participation of fibronectin. Other components, including elastin, proteoglycans, and hyaluronan, contribute to the ECM organisation. Stromal cells present in the interstitial matrix interact with ECM components and growth factors. In cancers (right panel), tumour cells and cancer-associated fibroblast secrete a plethora of ECM proteins (such as collagens, fibronectin, elastin, or laminins), proteoglycans, cytokines, and growth factors. This ECM differs significantly in conformation and composition from that of normal tissues. The excessive accumulation of dense and rigid ECM results in the encapsulation of tumour cell clusters, acting as a physical barrier for antibody diffusion (3) (4). The acidic microenvironment associated with increased concentration of proteases within the ECM (5) represents a biochemical barrier degrading antibodies and reducing ADC efficacy. The increase interstitial pressure contributes to repelling antibodies (6). Finally, ECM-mediated hypoxia and low immune cell infiltrate (7) reduces antibody effectiveness and especially immunotherapy treatments. Strategies to overcome the ECM barrier (lower panel) and increase antibodies distribution and diffusion in the vicinity of the mAb target have been developed. Alternative administration routes have been considered (e.g. subcutaneous, intravitreal, or intra-articular) (8). Antibody fragments exhibit higher diffusion rate through the stroma as compared to full length antibodies (9). ADCs have been specifically designed to manipulate ECM acidic pH and high protease concentration for the efficient release of their payload (10). Combination of mAb with pH pump inhibitors or proteases inhibitors can also be considered to lower ECM-associated biochemical barrier (11). ECM remodelling strategies have been evaluated to increase antibodies diffusion and therapeutic efficacy (12). Finally, antiangiogenic mAbs can be used to restore interstitial fluid pressure and normalize anarchic blood vessels growth in order to enhance antibody delivery (13).

2. Schematic representation of epithelial barriers to antibodies in healthy and disease conditions.

At steady state (left panel), mAbs present in the lumen may encounter biological barriers at the mucosal surface limiting their bioavailability. Resident macrophages (1) patrolling the mucosa could phagocytose mAbs leading to their degradation or denaturation. The mucus (2) covering the epithelium can partly repel Abs. In homeostatic conditions, balance between proteases and anti-proteases is neutral (3), except in the gastro-intestinal tract where the acidic pH will activate specific proteases and alter mAb conformation. Once the epithelium is reached, tight junctions between

epithelial cells (4) prevent paracellular transport of mAb. mAbs can cross the epithelial surface by transcytosis, mainly through their binding with FcRn (5) resulting in improvement or decrease in the mAb bioavailability depending on the location of its target. In inflammatory conditions (right panel), mucus structure and composition are altered (6) with thicker layer and tighter pores decreasing the diffusion of mAbs. The activation of resident immune cells and the recruitment of leukocytes generate a dysregulation of proteases / protease-inhibitors balance (7) leading to a proteolytic environment favoring mAb proteolysis. Local inflammation leads to cellular damage and epithelial apoptosis promoting para- and trans-cellular leakage of mAbs (8). Several strategies have been investigated trying to solve mucosal barrier problems. In order to circumvent epithelium impermeability, cell-penetrating or permeation enhancer strategies have been considered as well as reducing mAb size, using small fragments, in order to improve mAb trans-epithelial passage (9). The use of protease inhibitors, proton-pump inhibitors or rescuing mAb may protect from degradation and denaturation (10). When considering local target, mAb-pegylation will lower transcytosis and increase mAb retention within mucosa (11). In order to improve mAb diffusion through the mucus, the addition of mucolytics (12), the encapsulation of mAb in nanovectors or the use of small fragments have been investigated (13).

3. Schematic representation of the blood-brain barrier (BBB) to antibodies in healthy and disease conditions, and the strategies developed to overcome this barrier.

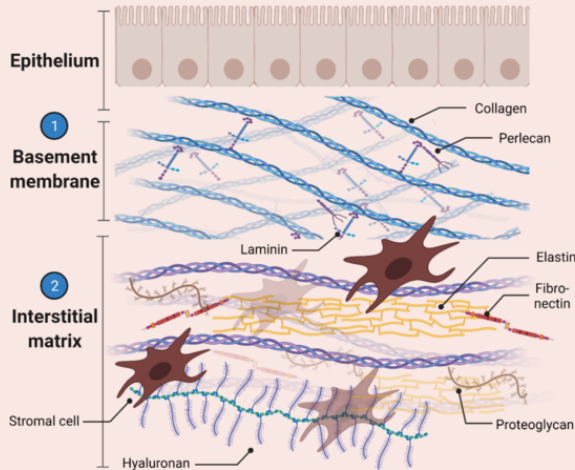
A healthy BBB (left panel) is composed of endothelial cells that are tightly sealed by tight junctions (1) and prevent paracellular transport, hindering antibodies from reaching the CNS. Pericytes (2), which share the basal lamina with endothelial cells, help maintain the BBB and regulate blood flow through the capillaries. Astrocytes interact with BECs through their end-feet (3) and contribute to the maintenance of the BBB integrity. Resting microglia (4) are motile and highly ramified surveillant cells that are constantly scanning the brain environment to maintain its homeostasis. In pathological conditions (middle panel), the BBB becomes hyper-permeable to blood-born cells and molecules, including antibodies. Tight junctions between endothelial cells are disrupted (5), leading to a loss of endothelial cell polarity and uncontrolled paracellular transport. Pericytes are lost and detach from endothelial cells (6). Activated microglia (7) and reactive astrocytes (8) undergo molecular and morphological changes and adopt a pro-inflammatory phenotype. Studies suggest that BBB permeability increases with age, therefore increasing the passage of antibodies from the periphery to the CNS. Strategies to overcome the BBB (right panel) and increase antibodies distribution into the CNS were developed, including brain-focused ultrasound (FUS) combined with administration of microbubbles that open reversibly the BBB (9); bispecific antibodies (10) that target endogenous receptors expressed in the BBB and facilitate transcytosis; invasive, direct injection to the

brain (11) via intra-cerebroventricular or intra-cerebral administrations; and nose-to-brain delivery (12), where antibodies are delivered to the nose and cross the olfactory epithelium, reaching the brain.

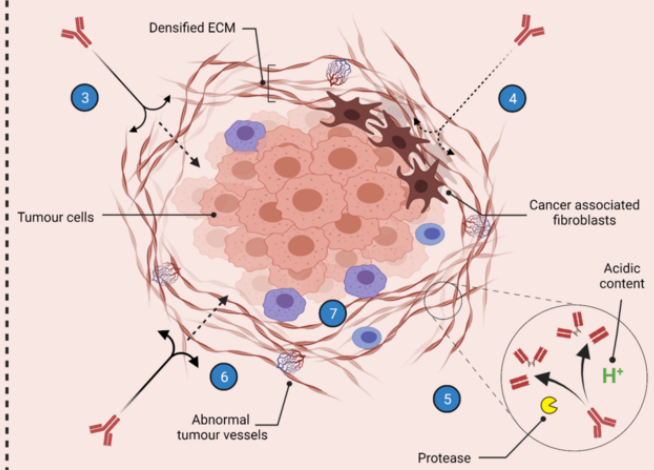
4. Therapeutic strategies to overcome barriers to antibodies.

Depending on its location, different therapeutic strategies have been developed or are under consideration to help mAb reaching their target through the modulation of biological barriers. The choice of the mode of administration or specific tools and devices may allow a direct access to the target location. mAb engineering and/or formulation will help lowering the detrimental impact of barrier components. Finally, the administration of mAb in combination with a co-treatment will either destroy the barrier or improve mAb stability, favouring its access to its target.

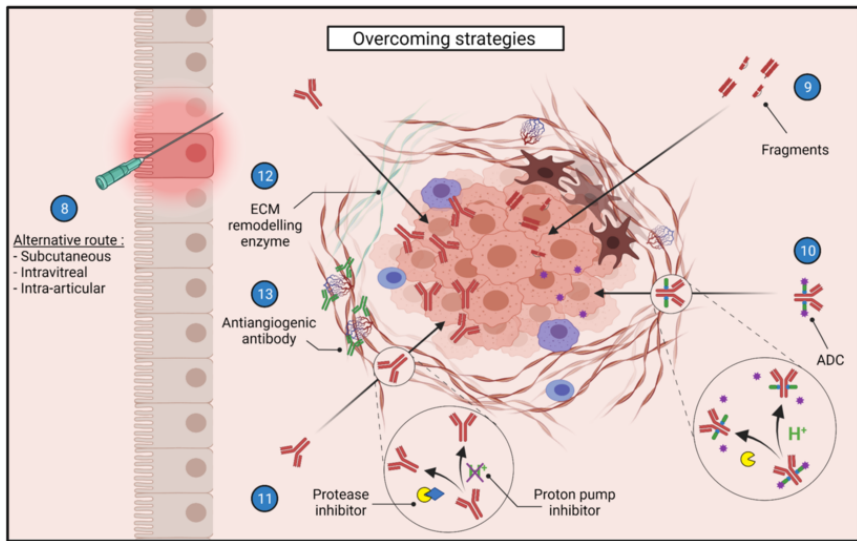
Healthy ECM

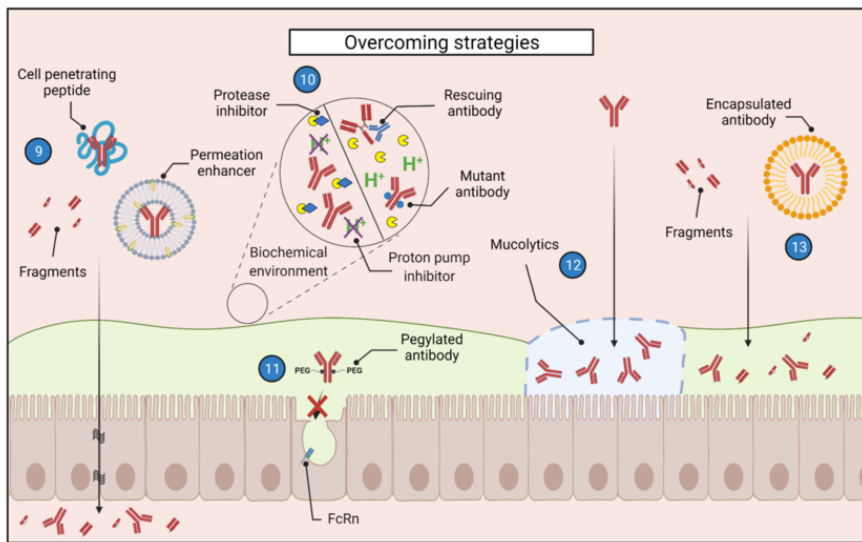
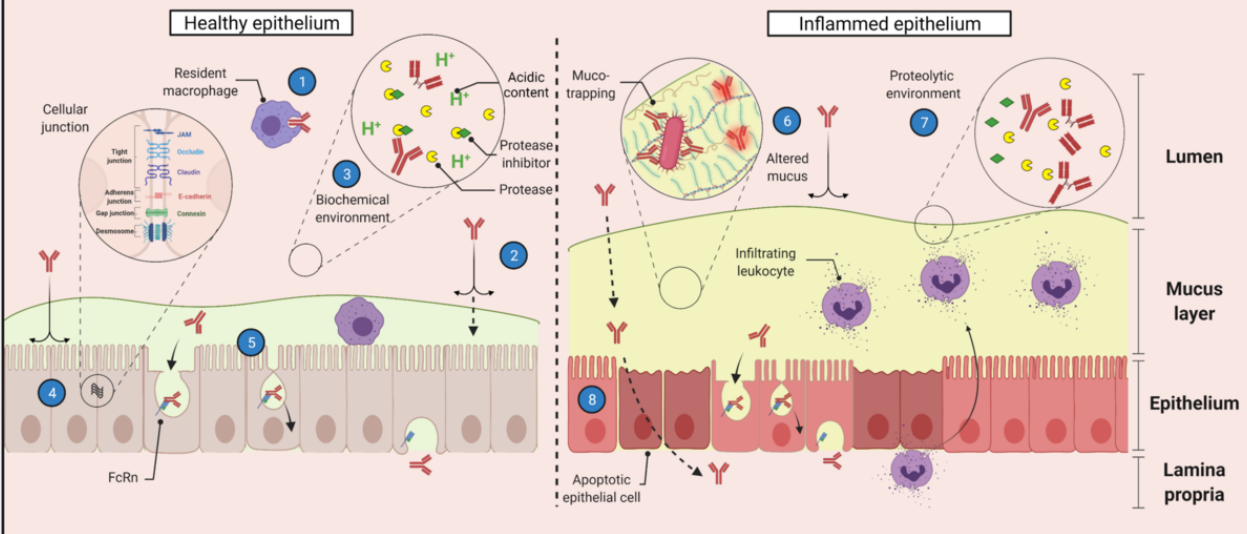


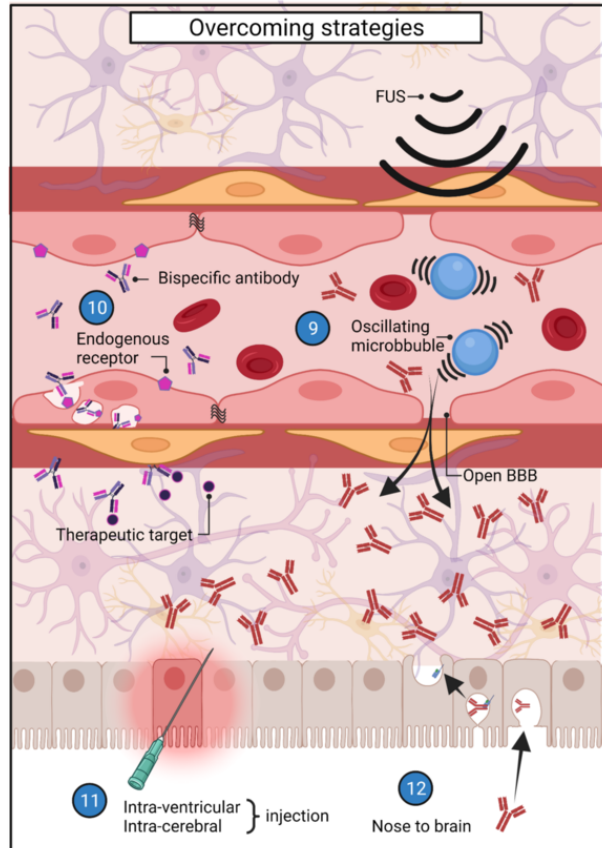
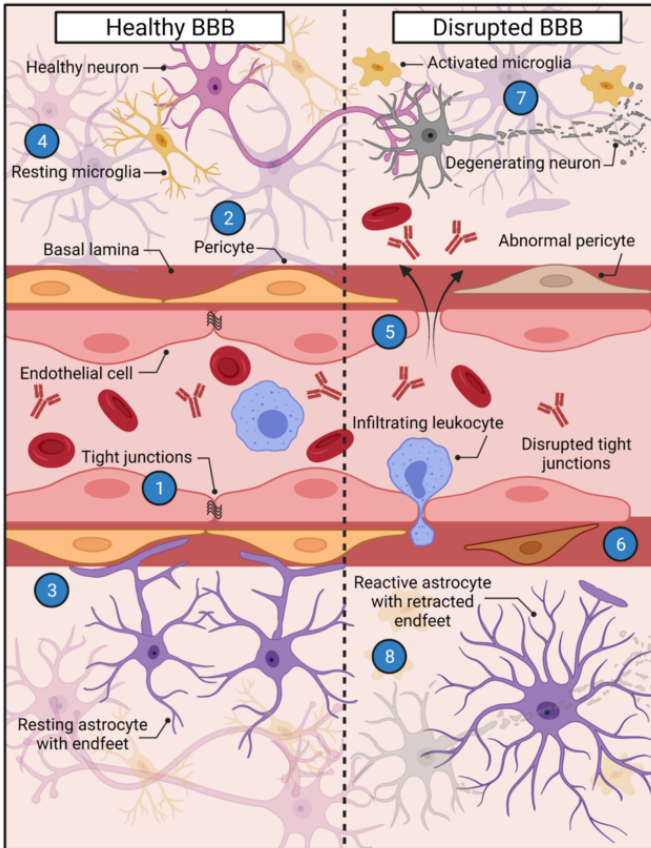
Tumour-associated ECM



Overcoming strategies









Mode of administration



Conventional route

- **Intravenous**

Alternative route

- Intra-pulmonary
- Intra-articular
- **Intra-vitrear**
- Intra-nasal / Nose-to-brain
- **Subcutaneous**



Antibody engineering



- **ADC, small fragments** (scFv, Fab), bispecific, **pegylated Ab**
- Mutated Ab (FcRn/FcγR binding)
- Mutated Ab (protease cleavage)
- Glycosylation (FcγR binding)



Combination therapy



Barrier destruction

- Enzymes (collagenase, **hyaluronidase...**)
- Proteases or protease inhibitors
- Others (manitol, hyaluronan,...)

Antibody optimization

- Ab anti-cleaved Ab
- Anti-angiogenic Ab



Formulation / Devices



- Encapsulation
- Implants
- Focused ultrasound



Biological barrier to antibodies



Target



Strategy used in clinical practice

Table 1 :

Approved strategies to overcome biologicals barriers for therapeutic antibodies

Indication	Generic name (Trade name)	Sponsoring company	Antibody target	Antibody format	Combined molecule	Date of approval	Route of administration
HER2+ metastatic breast cancer	Herceptin	Roche	HER2	Full-length		2013	
Primary immunodeficiency	HYQVIA	Shire Pharmaceuticals	IgG replacement	Full-length	rHuPH20	2013	subcutaneous
HER2+ early/metastatic breast cancer	Phesgo	Roche	HER2	Full-length		2021	
Non-Hodgkin lymphoma	Rituxan Hycela / Rituxan SC / MabThera SC	Roche	CD20	Full-length		2014	
	Avastin	Genentech	VEGF	Full-length		off-label use	
Age-related macular degeneration	Eylea	Regeneron Pharmaceuticals	VEGF/PIGF	Full-length	-	2011	intravitreal
	Lucentis	Genentech	VEGF	Fab		2006	
Rheumatoid arthritis / Crohn disease / Psoriasis	Cimzia	UCB Pharma	TNF	Fab	PEG	2008	
Hodgkin lymphoma	Adcetris	Seagen (Seattle Genetics)	CD30	ADC, protease sensitive linker	MMAE	2011	
HER2+ metastatic breast cancer	Enhertu	Daiichi Sankyo	HER2	ADC, protease sensitive linker	DXd	2019	
Urotelial cancer	Padcev	Astellas	Nectin-4	ADC, protease sensitive linker	MMAE	2019	
Diffuse large B-cell lymphoma	Polivy	Roche	CD79b	ADC, protease sensitive linker	MMAE	2019	
Cervical cancer	Tivdak	Genmab	Tissue Factor	ADC, protease sensitive linker	MMAE	2021	intravenous
Diffuse large B-cell lymphoma	Zynlonta	ADC Therapeutics	CD19	ADC, protease sensitive linker	PBD	2021	
Acute lymphoblastic leukemia	Besponsa	Pfizer	CD22	ADC, pH-sensitive linker	Calicheamicin	2017	
Triple-negative breast cancer	Trodelvy	Immunomedics	TROP-2	ADC, pH-sensitive linker	SN38	2020	
Acute myeloid leukemia	Mylotarg	Pfizer	CD33	ADC, pH-sensitive linker	Calicheamicin	2017	

ADC, antibody-drug conjugate; DXd, topoisomerase I inhibitor; in.v, intravitreal; i.v, intravenous; MMAE, Monomethyl auristatin E; MMAF, Monomethyl auristatin F; PBD, pyrrolbenzodiazepine; PEG, polyethylene glycol; rHUPH20, hyaluronidase; SN38, irinotecan.