



HAL
open science

On the energy budget of a low-Arctic snowpack

Georg Lackner, Florent Domine, Daniel F Nadeau, Annie-Claude Parent,
François Anctil, Matthieu Lafaysse, Marie Dumont

► **To cite this version:**

Georg Lackner, Florent Domine, Daniel F Nadeau, Annie-Claude Parent, François Anctil, et al.. On the energy budget of a low-Arctic snowpack. *The Cryosphere*, 2022, 16 (1), pp.127 - 142. 10.5194/tc-16-127-2022 . hal-03529922

HAL Id: hal-03529922

<https://hal.science/hal-03529922v1>

Submitted on 17 Jan 2022

HAL is a multi-disciplinary open access archive for the deposit and dissemination of scientific research documents, whether they are published or not. The documents may come from teaching and research institutions in France or abroad, or from public or private research centers.

L'archive ouverte pluridisciplinaire **HAL**, est destinée au dépôt et à la diffusion de documents scientifiques de niveau recherche, publiés ou non, émanant des établissements d'enseignement et de recherche français ou étrangers, des laboratoires publics ou privés.



On the energy budget of a low-Arctic snowpack

Georg Lackner^{1,2,3,4}, Florent Domine^{2,3,5}, Daniel F. Nadeau^{1,4}, Annie-Claude Parent¹, François Anctil^{1,4},
Matthieu Lafaysse⁶, and Marie Dumont⁶

¹Department of Civil and Water Engineering, Université Laval, Québec, Canada

²Takuvik Joint International Laboratory, Université Laval (Canada) and CNRS-INSU (France), Québec, Canada

³Centre d'Études Nordiques, Université Laval, Québec, Canada

⁴CentrEau – Water Research Center, Université Laval, Québec, Canada

⁵Department of Chemistry, Université Laval, Québec, Canada

⁶Univ. Grenoble Alpes, Université de Toulouse, Météo-France, CNRS, CNRM,
Centre d'Études de la Neige, 38000 Grenoble, France

Correspondence: Georg Lackner (georg.lackner@mailbox.org)

Received: 20 August 2021 – Discussion started: 25 August 2021

Revised: 3 December 2021 – Accepted: 3 December 2021 – Published: 13 January 2022

Abstract. Arctic landscapes are covered in snow for at least 6 months of the year. The energy balance of the snow cover plays a key role in these environments, influencing the surface albedo, the thermal regime of the permafrost, and other factors. Our goal is to quantify all major heat fluxes above, within, and below a low-Arctic snowpack at a shrub tundra site on the east coast of Hudson Bay in eastern Canada. The study is based on observations from a flux tower that uses the eddy covariance approach and from profiles of temperature and thermal conductivity in the snow and soil. Additionally, we compared the observations with simulations produced using the Crocus snow model. We found that radiative losses due to negative longwave radiation are mostly counterbalanced by the sensible heat flux, whereas the latent heat flux is minimal. At the snow surface, the heat flux into the snow is similar in magnitude to the sensible heat flux. Because the snow cover stores very little heat, the majority of the upward heat flux in the snow is used to cool the soil. Overall, the model was able to reproduce the observed energy balance, but due to the effects of atmospheric stratification, it showed some deficiencies when simulating turbulent heat fluxes at an hourly timescale.

1 Introduction

The Arctic winter, characterized by low solar radiation and air temperatures below 0 °C, presents extreme conditions to which local populations, flora, and fauna are adapting. Climate change imposes additional challenges. Indeed, recent studies have shown that the warming in the Arctic is most pronounced during the cold season (Graversen et al., 2008; Boisvert and Stroeve, 2015), and winter warm spells are becoming more frequent (Graham et al., 2017). This warming, both episodic and perennial, alters the properties of seasonal snow. Since snow is a highly reflective medium with low thermal conductivity, it impacts the entire energy balance at the Earth's surface and leads to repercussions for many fields such as hydrology, permafrost modeling, weather forecasting, and climate modeling (Meredith et al., 2019).

The energy budget can be calculated at the snow surface using a control surface approach or by considering the snowpack as a whole and therefore relying on a control volume. Using the control surface approach, incoming heat fluxes at the snow surface are counterbalanced by the outgoing fluxes, such that

$$Q_* + Q_H + Q_E + Q_s + Q_A = 0, \quad (1)$$

where Q_* is the net radiation, Q_H is the sensible heat flux, Q_E is the latent heat flux, Q_A is the flux of advected energy (e.g., by rain falling on the snowpack), and Q_s is the snow heat flux, all in watts per square meter (W m^{-2}). The fluxes

are considered to be positive if directed towards the surface and negative if directed away from the surface. When taking the snowpack as a whole, considering a control volume applied to a horizontally homogeneous snow cover, the energy balance takes the form

$$\frac{dU}{dt} = Q_* + Q_H + Q_E + Q_A + Q_G, \quad (2)$$

where dU/dt is the rate of change of internal energy of the snow and Q_G is the ground heat flux at the snow–soil interface. Each alternative (Eqs. 1 and 2) has its strengths and weaknesses when it comes to monitoring the energy balance in the field. For example, Eq. (1) requires less instrumentation but delivers no information on how the energy is distributed between the snowpack and the ground, while Eq. (2) does provide these details, which are key to permafrost studies. However, this equation requires more instrumentation, which makes it more prone to error.

Measuring all constituents of Eqs. (1) and (2) in Arctic and subarctic regions involves many challenges related to field conditions. For instance, the remote locations of the sites greatly complicate maintenance operations, the low solar radiation limits the amount of energy available for stations powered by solar panels, and harsh meteorological conditions (rime, blizzards, etc.) can alter the performance of the instruments. For all these reasons, data for in situ snowpack energy balance in high-latitude environments are very sparse. Moreover, these data tend to suffer from an unclosed energy budget, meaning that the available energy from net radiation is not equal to the sum of all recorded heat fluxes, and therefore a residual term remains. This phenomenon occurs for almost all energy budget studies and is not restricted to Arctic environments or winter conditions (Foken, 2008).

Of the few existing studies on the winter energy budget in cold regions, a study by Langer et al. (2011) at a polygonal tundra site in northern Siberia found that longwave radiation was the dominant term in the surface energy budget. Langer et al. (2011) found that 60% of the radiative losses were counterbalanced by the ground heat flux, and the remainder was counterbalanced by the sensible heat flux. Contributions of the latent heat flux were small. They identified cloudiness as the main controlling factor of the surface energy budget. Westermann et al. (2009) reported similar results at a high-Arctic permafrost site and found latent heat fluxes to be insignificant for the average energy balance. They also characterized atmospheric stratification and found it to range from mostly stable to near neutral. Lund et al. (2017) measured the energy balance over different surfaces, such as wet and dry tundra and a glacier, and found only small differences in components of the surface energy budget between the surface types. That study also found that radiation was predominantly balanced by sensible and ground heat fluxes.

The above-mentioned studies all show the small contribution of latent heat fluxes to the overall energy budget in the presence of snow. However, according to Liston and Sturm

(2004), sublimation losses in the Arctic can deplete as much as 50% of the total winter precipitation. A great deal of uncertainty surrounds this percentage, given the difficulty of measuring both sublimation and solid precipitation, not to mention the large spatiotemporal variation of sublimation in response to varying weather and geographic conditions, such as proximity to water bodies. During blowing snow events, Pomeroy and Essery (1999) reported sublimation rates as high as 0.075 mm water equivalent per hour in the Canadian Prairies. The high rates might explain the high fractions of sublimation of the total winter precipitation reported by Liston and Sturm (2004).

Data on the thermal regime of the snowpack are even more scarce. One of the only studies covering this topic was conducted in the Canadian Prairies by Helgason and Pomeroy (2012). This study found that the measured rate of change of internal energy of the snowpack was systematically lower than the residual of the other energy budget terms (right-hand side of Eq. 2). Thus, Helgason and Pomeroy (2012) were not able to close the energy budget and attributed the remaining energy to “an unmeasured exchange of sensible heat [...] from the atmosphere to the snowpack”.

Sophisticated snow models such as Crocus (Vionnet et al., 2012) are occasionally used for climate studies in the Arctic (e.g., Gascon et al., 2014; Sauter and Obleitner, 2015; Royer et al., 2021) and the Antarctic (Libois et al., 2015). The accuracy of these models at high latitudes has not been evaluated, though large-scale bulk properties such as snow depth seem to be simulated fairly well (Brun et al., 2013). However, studies focusing on the ability of these models to simulate the internal physical properties of snow from Barrere et al. (2017) (using Crocus) and Gouttevin et al. (2018) (using the model SNOWPACK; Bartelt and Lehning, 2002) at Arctic polygon tundra sites found that the observed vertical profiles of snow density and thermal conductivity were not well reproduced by the models. Studies that focus on the performance of these sophisticated snow models when simulating the surface energy budget at point scale are rare. The only studies we found were conducted in alpine regions (Martin and Lejeune, 1998). More generally, very few studies evaluating the turbulent fluxes simulated by snow models are available, despite this process being identified as one of the major sources of uncertainty in snow cover modeling (Menard et al., 2021; Lafaysse et al., 2017).

Here, we measure all components of the snowpack energy budget at a low-Arctic site and compare the observations with simulations from the snow model Crocus. We (i) explore the radiation budget, (ii) compare 3 years of turbulent heat flux data to examine inter-annual trends and dependencies on meteorological conditions, (iii) compare those observations with model outputs from Crocus, (iv) establish the full energy budget at the snow surface using observations as well as model outputs to assess the relative importance of its components, and (v) assemble the energy budget of the entire snow cover.

2 Methods

2.1 Study site

Our study site was located in the Tasiapik valley near the village of Umiujaq, Quebec, Canada ($56^{\circ}33'31''\text{N}$, $76^{\circ}28'56''\text{W}$), on the eastern shore of Hudson Bay. The climate is subarctic with a mean annual temperature of -4.0°C and a mean annual precipitation of between 800 and 1000 mm (Lackner et al., 2021). The vegetation at the site consists of a mixture of lichen (*Cladonia* sp. mostly *C. stellaris* and *C. rangiferina*) and shrub tundra with dwarf birch (*Betula glandulosa*) and other shrub species (*Vaccinium* sp., *Alnus viridis* subsp. *crispa* and *Salix planifolia*) that range from 0.2 to 1 m tall in the upper part of the valley, and it turns into a forest tundra populated by black spruce (*Picea mariana*) towards the lower part of the valley. In the study area, the vegetation consists of 20%–30% pure lichen-covered surface, with the rest being small shrubs (mostly dwarf birch) with a lichen or moss understory. Permafrost is discontinuous to sparse and is rapidly degrading (Fortier et al., 2011). At the precise location of the experimental setup, no permafrost was present. In the area surrounding the study site, the soil consists mainly of sand topped by a thin organic litter. The soil organic content varies between 1.4 and 4.3 kg m^{-3} (Gagnon et al., 2019). A more detailed description of the site can be found in Lackner et al. (2021).

2.2 Instrumental setup

A photo of the experimental setup is shown in Fig. 1. The setup included a 10 m flux tower equipped with a sonic anemometer and a $\text{CO}_2/\text{H}_2\text{O}$ gas analyzer located 4.2 m above ground (IRGASON, Campbell Scientific, USA) on a 5° slope with a SE aspect. Due to the open-path nature of the eddy covariance (EC) sensor, it was subject to interference in the presence of precipitation and during blowing snow events. The tower also featured sensors for temperature, humidity (model HMP45, Vaisala, Finland), and wind speed and direction (model 05103, R.M. Young, USA). Total precipitation was measured with a T200B gauge (GEONOR, USA) equipped with a single Alter shield. Approximately 10 m west of the flux tower, a second station was equipped with a four-component radiometer (CNR4, Kipp and Zonen, the Netherlands) and an SR50 snow depth sensor (Campbell Scientific, USA).

The snow heat flux was computed using observations collected on a 1 m pole equipped with 18 T-type thermocouples deployed from ground level up to a height of 0.82 m (see inset in Fig. 1). The thermocouples were unequally spaced, with separations ranging from 2.5 to 10 cm. To avoid disturbing the snowpack in cases where the spacing was small, some thermocouples were deployed with a 90° deviation from the main axis. Four TP08 heated needle probes (Hukseflux, the Netherlands) were deployed at heights of 7, 27,

47, and 67 cm above ground. These probes recorded temperature and effective thermal conductivity according to the measurement principle and data treatment detailed in Morin et al. (2010) and Domine et al. (2015, 2016). In short, the needle is heated at a constant power (0.4 W m^{-1} in our case), while a thermistor in the shaft serves as a reference temperature. The temperature difference between these two parts can then be plotted against a logarithm of the time. The effective snow thermal conductivity k_{eff} is inversely proportional to the slope that is obtained. In our study, the needles were heated every 2 d in a 100 s heating cycle, provided that the snow was below -2.5°C to avoid melting and irreversible alterations of the snow structure. Snow temperatures were measured every 5 min (see Supplement Fig. S1). The pole also had two thermocouples below the surface of the ground, at depths of 4 and 14 cm, to compute the ground heat flux. The pole was installed on a patch of *Cladonia* (5 to 10 cm thick yellowish lichen), and data were collected during the winters of 2018–2019 and 2019–2020.

In addition to the automatic measurements, snow field surveys were conducted in April 2018 and March 2019. In both cases, three snow pits were dug at different locations in the vicinity of the experimental setup to capture the spatial variability of the snow cover. Snow pit data from previous campaigns (Domine et al., 2015) were also included in the analysis. In each snow pit, the stratigraphy was analyzed, and profiles of density, temperature, and thermal conductivity were collected. Thermal conductivity was measured with a portable instrument featuring a TP02 heated needle, while density was measured with a 100 cm^3 box cutter (Conger and McClung, 2009) and a field scale. Monitoring and maintenance of the instruments was done during field trips in winter and every summer. No field trips to the site were possible in 2020 due to the COVID-19 pandemic.

Our study focuses on the winters 2017–2018, 2018–2019, and 2019–2020 for evaluating the performance of the Crocus model using observations, and on the last two winters for examining the observed surface energy balance.

2.3 Data processing

2.3.1 Turbulent heat flux

A detailed explanation of the procedure for obtaining the turbulent heat fluxes from raw eddy covariance data is provided by Lackner et al. (2021). In short, turbulence data were processed using EddyPro[®] (version 7.0.3; LI-COR Biosciences, USA), a software package that computes fluxes from raw 10 Hz data, while accounting for several corrections, including the application of a double rotation on the raw data to align the coordinate system with the current snow surface. EddyPro also includes a thorough QA/QC procedure. A program called PyFluxPro (Isaac et al., 2017) was also used to remove spikes and erroneous data that persisted despite the EddyPro[®] processing. Data gaps were filled using ERA5

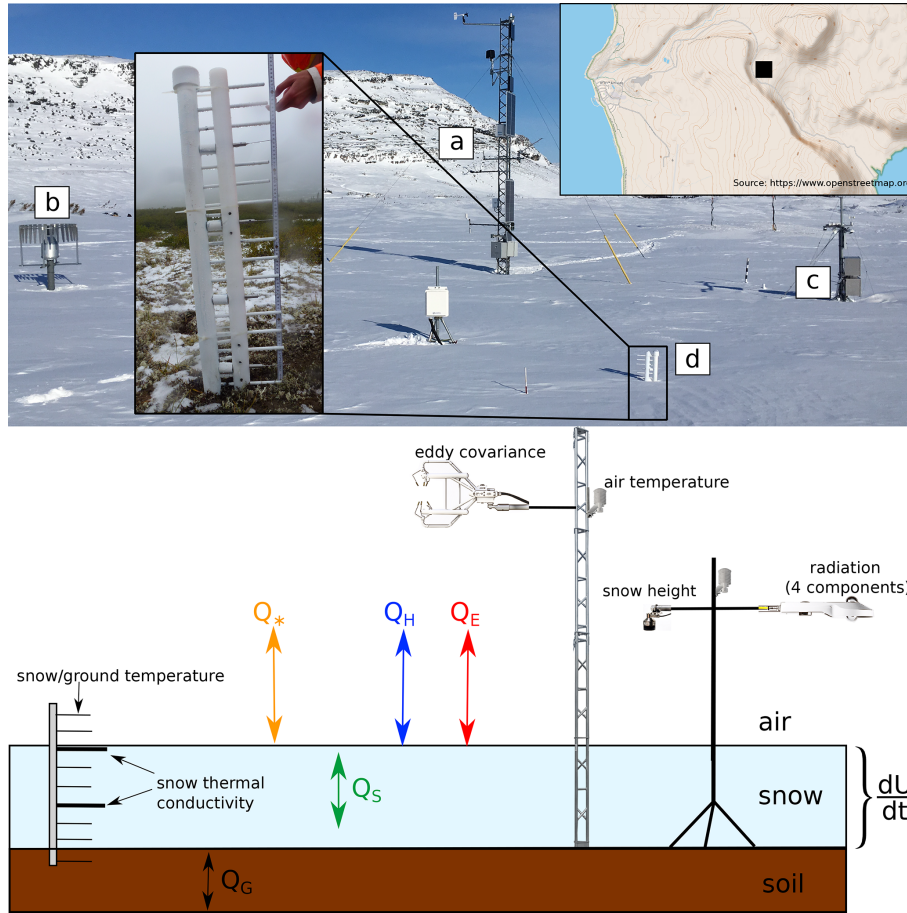


Figure 1. Upper panel: study site with (a) the main 10 m flux tower with the eddy covariance setup, (b) a precipitation gauge, (c) a 2.3 m high mast hosting the four-component radiometer, and (d) a vertical pole holding an array of thermocouples and heated needles. The inset map shows the location of the site in the Tasiapik valley, some 4 km east of Hudson Bay. Lower panel: schematic of the study site illustrating the main instruments monitoring energy balance terms. The whole experimental setup is contained within 20 m.

(Hersbach et al., 2020) reanalysis data and an artificial neural network procedure (Hsu et al., 2002) with radiation, air temperature and humidity, and the soil temperature as the driving data. Including longer power outages, gaps were present for 44 % of the study period for sensible heat fluxes and 61 % for latent heat fluxes. Mauder et al. (2013) reported errors of 10 %–15 % for the processed flux data.

2.3.2 Snow heat flux and internal energy

The heat flux Q_s (in W m^{-2}) within the snowpack can be calculated using the measured effective snow thermal conductivity k_{eff} (in $\text{W m}^{-1} \text{K}^{-1}$) from the heated needles and temperatures from the two adjacent thermocouples using Fourier’s law:

$$Q_s = -k_{\text{eff}} \frac{\partial T}{\partial z}, \tag{3}$$

where the vertical temperature gradient $\partial T/\partial z$ is evaluated using a central finite difference ($\approx \Delta T/\Delta z$). As both k_{eff} and

ΔT are measured automatically, a continuous time series is obtained. We multiplied k_{eff} by 1.2 to correct for the underestimation of k_{eff} by the needle probe method as reported by Riche and Schneebeli (2013). This method was also used to estimate the ground heat flux Q_G , but since soil thermal conductivity was not available, it was taken as $1 \text{ W m}^{-1} \text{K}^{-1}$ (Lu et al., 2018) for the frozen soil given its sandy texture. Note that we compared the resulting ground heat flux to measurements of the snow heat flux 7 cm above the soil to validate this value of thermal conductivity (see Supplement Fig. S3).

Neglecting any melt or freeze-related processes and assuming a dry snowpack, the rate of change of the snowpack internal energy U is given by

$$\frac{dU}{dt} = \int_0^h \frac{d [T_{\text{snow}}(z) \rho_{\text{snow}}(z) c_{p,\text{ice}}]}{dt} dz, \tag{4}$$

where h is the snow height (in m), $T_{\text{snow}}(z)$ is the snow temperature at height z (in K), $\rho_{\text{snow}}(z)$ is the snow density at

height z (in kg m^{-3}), and $c_{p,ice}$ is the thermal capacity of ice (in $\text{J kg}^{-1} \text{K}^{-1}$). In Eq. (4), internal energy changes associated with fluctuations in the air temperature contained in the snowpack pore space are neglected. As frequent sampling of the snow cover was not feasible, we used the density profile obtained from a snow pit dug once a year and assumed that it remained constant (see Supplement Fig. S2), knowing that this is a very rough approximation. To calculate the rate of change of the internal energy, we discretized the snowpack into 5 cm thick layers, corresponding to the mean separation of the thermocouples. Each layer was approximated as isothermal, with a temperature equal to that measured at its center. Under these assumptions, Eq. (4) then simplifies to

$$\frac{dU}{dt} = \sum_{i=1}^N \frac{\Delta T_{\text{snow},i} \rho_{\text{snow},i} c_{p,ice}}{\Delta t} \Delta z, \quad (5)$$

where N denotes the number snow layers, $\Delta T_{\text{snow},i}$ is the temperature difference between two subsequent measurements of the i th layer, $\rho_{\text{snow},i}$ is the density of the i th layer, and Δt is the time step, which in our case was 5 min.

The error of the thermal conductivity can be as high as 29 % according to Domine et al. (2016), while the temperature measurements of the type-T thermocouples have an accuracy of 0.5 °C in the temperature range under study.

2.4 ISBA-Crocus simulations

2.4.1 Model description

Crocus (Vionnet et al., 2012) and ISBA (Noilhan and Planton, 1989; Noilhan and Mahfouf, 1996) are part of SURFEX version 8.1 (SURFace EXternalisée, Masson et al., 2013), a modeling platform used by Météo-France (<http://www.umr-cnrm.fr/surfex/>, last access: 15 August 2021) to simulate water and energy exchanges between the Earth's surface and the atmosphere in both coupled (numerical weather prediction, climate modeling) and offline (avalanche hazard forecasting, hydrology, surface reanalyses) applications.

The soil and vegetation model ISBA is coupled to Crocus and simulates all water and energy exchanges between the different soil layers and with the snowpack above the ground. For this purpose, the one-dimensional Fourier law and a mixed form of the Richards equation are solved explicitly (Boone et al., 2000; Decharme et al., 2011). The characteristics of the vegetation are selected from a list containing 19 different vegetation types (ECOCLIMAP; <https://opensource.umr-cnrm.fr/projects/ecoclimap-sg/wiki>, last access: 15 August 2021) using the site coordinates, or alternatively they can be specified by the user. In this study, the latter option was used.

Crocus simulates the snowpack using up to 50 snow layers each defined by thickness, temperature, density, liquid water content, age, and two micro-structural properties (optical diameter and sphericity, Carmagnola et al., 2014). These properties evolve according to the physical processes that take

place in the snowpack, such as heat exchanges, snow metamorphisms, and snow compaction. Crocus also simulates the radiation budget at the snow surface and the heat exchanges with the atmosphere above the snowpack. The heat flux into the snow cover is the remainder of the turbulent heat fluxes subtracted from the net radiation.

2.4.2 Forcing variables and model setup

The ISBA-Crocus model was run in offline mode, meaning it was not coupled to an atmospheric model. Instead, the model was driven by local observations of the following meteorological variables: air temperature, specific humidity, wind speed, incoming shortwave and longwave radiation, atmospheric pressure, and (solid and liquid) precipitation rates. These observations have been collected at the study site since 2012, except for atmospheric pressure, for which data are available from June 2017 onwards. Data from ERA5 were used to fill this gap by correcting for any bias based on the period when both ERA5 and the observations were available. Note that the sensitivity of the model to atmospheric pressure is known to be very low. Shortwave and longwave downwelling radiation between mid-December 2019 and mid-February 2020 had to be replaced by ERA5 data due to a malfunction of the radiometer. Errors of the forcing data vary between 1 %–3 % for temperature and humidity data and up to 10 % for radiation data. Precipitation data were corrected for undercatch of solid hydrometeors using the transfer function of Kochendorfer et al. (2017), which depends on wind speed and air temperature. The error of the precipitation data is hard to quantify and likely depends on the wind speed. Kochendorfer et al. (2018) reported a root mean squared error of 0.25 mm for hourly values for the precipitation gauge used here.

A soil column of 12 m was defined and divided into 20 layers of increasing depth. Following the soil water content analysis from Lackner et al. (2021), we also adjusted two soil hydraulic parameters – the saturated soil water content and the field capacity – to better match soil moisture observations. The soil composition was set to 95 % sand and 5 % silt (Gagnon et al., 2019), and the vegetation was set to 100 % shrubs with heights of 40 cm, as this is the dominant vegetation type in the area. To ensure the equilibrium of soil moisture and temperatures, we initialized the model with a spin-up of 5 years (2012–2017). Since observations of precipitation were not available before 2015, ERA5 data had to be used for the 2012–2015 period. The default version of ISBA-Crocus was used for this study, so no interaction between the low vegetation and snow was implemented as suggested by some studies (Barrere et al., 2017; Gouttevin et al., 2018). We also used the option in Crocus that allows for the surface to be 100 % covered with snow once the snow height exceeds 1 cm. This was done to ensure that only contributions from snow–atmosphere interactions were considered. Lastly, we chose not to apply the option that emulates drifting snow.

Similar to previous studies where Crocus was deployed in an Arctic setting (Barrere et al., 2017; Royer et al., 2021), the density profile simulated by the model did not match the observed one. Whereas the observed vertical snow density profile was rather constant, Crocus showed a strong decreasing trend towards the snow surface (see Supplement Fig. S1).

2.4.3 Calculation of the turbulent heat fluxes

In Crocus, the sensible heat flux Q_H is calculated using the aerodynamic approach. As such, it depends on the temperature difference between the surface T_s and the air T_a , the wind speed U , and the turbulent exchange coefficient C_H , as shown below:

$$Q_H = \rho_a c_p C_H U \frac{T_s - T_a}{\Pi_s - \Pi_a}, \quad (6)$$

where ρ_a is the air density (in kg m^{-3}), c_p is the specific heat of air (in $\text{J kg}^{-1} \text{K}^{-1}$), and Π_s and Π_a are the Exner functions for the surface and the atmosphere, respectively.

The latent heat flux follows a similar approach:

$$Q_E = (\chi L_f + L_v) \rho_a C_H U [q_{\text{sat}}(T_s) - q_a], \quad (7)$$

where L_f and L_v are the latent heat of fusion and vaporization (in J kg^{-1}), respectively, $q_{\text{sat}}(T_s)$ is the saturation specific humidity above a flat ice surface at temperature T_s (in kg kg^{-1}), q_a is the atmospheric specific humidity (in kg kg^{-1}), and χ is the ratio between the solid and liquid phases of the turbulent mass exchange between the snow surface and the atmosphere.

The turbulent exchange coefficient C_H is discussed in detail in Vionnet et al. (2012) and Noilhan and Mahfouf (1996). In short, this value depends on atmospheric stability, represented by the bulk Richardson number, following the parametrization of Louis (1979).

Lafaysse et al. (2017) details several available parametrizations in Crocus. These were introduced to handle turbulent fluxes under stable atmospheric conditions. According to Lafaysse et al. (2017), the parametrization of Louis (1979) tends to minimize the fluxes under very stable conditions. To address this issue, a threshold on the Richardson number was implemented to maintain a certain level of turbulence in such circumstances. The option of a threshold was initially proposed by Martin and Lejeune (1998) and was used for the simulations performed here, a choice identical to the currently operational model configuration in French mountains.

3 Results

3.1 Meteorological conditions

Air temperature, wind speed, and snow height during the three winters are shown in Fig. 2. In the fall, the daily mean

air temperature is around -10°C and drops progressively until January, where it typically varies between -20 and -30°C . Starting at the end of February, the air temperatures rise and the first days of positive daily temperatures usually occur around mid-May. For the three winters studied, hourly air temperature excursions above 0°C occurred as early as March and consistently from mid-April. Periods of warmer temperature ($\geq 10^\circ\text{C}$) were occasionally observed in mid-winter. The 2019–2020 winter period was marked by more frequent warm spells, making it the warmest of the three winters, with a mean temperature of -14.3°C (2017–2018: -15.7°C ; 2018–2019: -14.9°C). Hourly temperatures rarely dropped below -35°C , and the minimal temperature recorded was -37.1°C .

Wind speed shows a similar pattern from one winter to another. In the fall, wind speeds are generally higher due to the temperature gradient between the unfrozen and thus warmer Hudson Bay to the west and the colder surrounding land surfaces. Once Hudson Bay freezes around mid-December, wind speeds drop and display a local minimum in early January. Wind speeds then increase later in the season to values that are usually lower than in the fall. Only spring 2020 was very windy, with three high-wind events in March and April.

Snow usually accumulates quickly in the fall as precipitation events are more frequent due to the large low-pressure systems which are prevalent at that time of year. Just as for the wind speed, precipitation rates are presumably also influenced by Hudson Bay and drop at the end of December. They remain rather low until March, resulting in no substantial changes in the snow height. In the spring, precipitation increases again slightly, leading to a steady increase in snow height so that the maximum values ($\lesssim 1.2$ m) are mostly observed in April.

3.2 Surface energy budget at the snow–atmosphere interface

3.2.1 Observations

Radiation budget

Radiation is the most important component of the energy budget and is highly influenced by the presence of snow. The short and the longwave components are shown in Fig. 3, together with the net radiation.

The shortwave radiation depicted in the upper panel in Fig. 3 shows one of the most important properties of snow: its high albedo. This results in net shortwave radiation values close to zero throughout mid-winter, which then started to increase at the end of January. However, the net shortwave radiation remained low at the end of winter, with maximum daily means of around 50 W m^{-2} . The associated albedo varied between 0.82 and 0.92.

The longwave radiation exhibits variations similar to the air temperature variations over the winter, with minimums

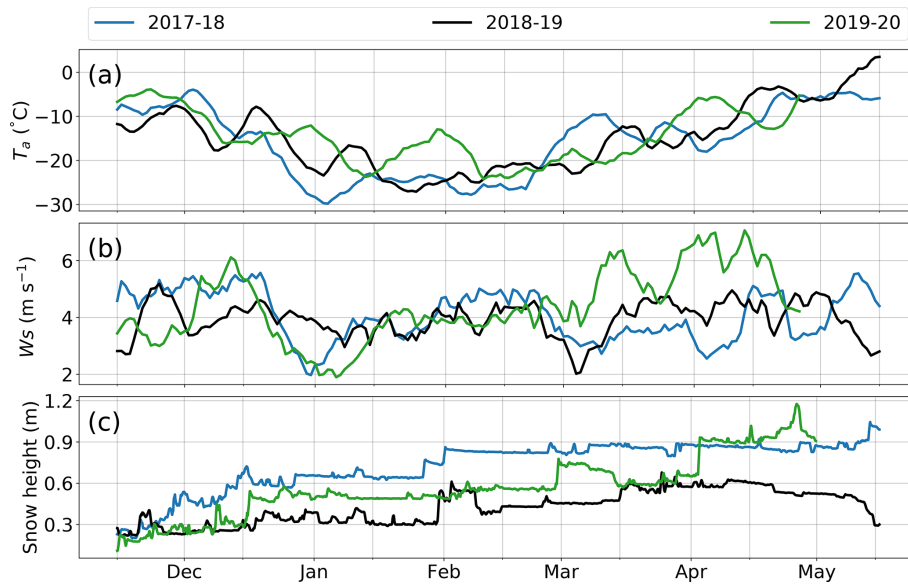


Figure 2. Rolling mean of daily air temperature (T_a), wind speed (W_s), and snow height for three consecutive winters. Labeled tick marks on the x axis indicate the start of each month.

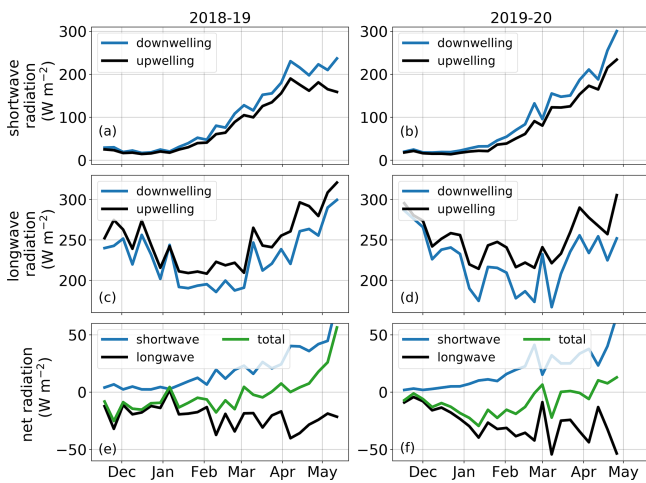


Figure 3. Measured radiation budget during the winters of 2018–2019 (a, c, e) and 2019–2020 (b, d, f). The upper panels (a, b) show the upwelling and downwelling shortwave radiation; the middle panels (c, d) show the corresponding longwave components; and the lower panels (e, f) show the short, long, and total net radiation. Labeled tick marks on the x axis indicate the start of each month.

for both upwelling and downwelling radiation in January and February. However, the difference between upwelling and downwelling fluxes remained similar, meaning that the resulting net longwave radiation is more constant than its shortwave counterpart. Furthermore, the net longwave radiation was negative, as the upwelling flux exceeded the downwelling flux.

Overall, the longwave radiation dominated the radiation budget in mid-winter and was gradually counterbalanced by an increase in shortwave radiation towards spring. As a result, the total net radiation was mostly negative in the winter and thus removed energy from the snowpack. From early April, the net radiation became positive and thus provided energy to the snowpack.

Turbulent heat fluxes

Figure 4 shows the sensible Q_H and latent Q_E heat fluxes for the three winters examined in our study. Both exhibited some short-lived fluctuations, depending on the prevailing meteorological conditions and similar seasonal patterns. Q_H was positive throughout winter, indicating downward fluxes, except for some brief periods where it was negative at the end of the season. Typically, Q_H varied between 5 and 15 $W m^{-2}$ from mid-November to mid-March and then slowly decayed until the end of winter, denoting weak downward fluxes. In addition to the general trend of decreasing sensible heat fluxes towards the end of winter, larger variations are particularly visible during this period. These fluctuations can be mainly explained by variations in incoming shortwave radiation and wind speed.

The evolution of Q_E differs from that of Q_H as it shows an increase in fall from weak upward fluxes to fluxes near zero, remains close to zero in mid-winter with regular occurrences of condensation events (for hourly values), and starts to decrease in March towards weak upward fluxes. Thus, from January to early April, Q_E has a negligible contribution to the surface energy budget. Given that Q_E can be translated to sublimation ($Q_E = L_s E$, where L_s is the latent heat of subli-

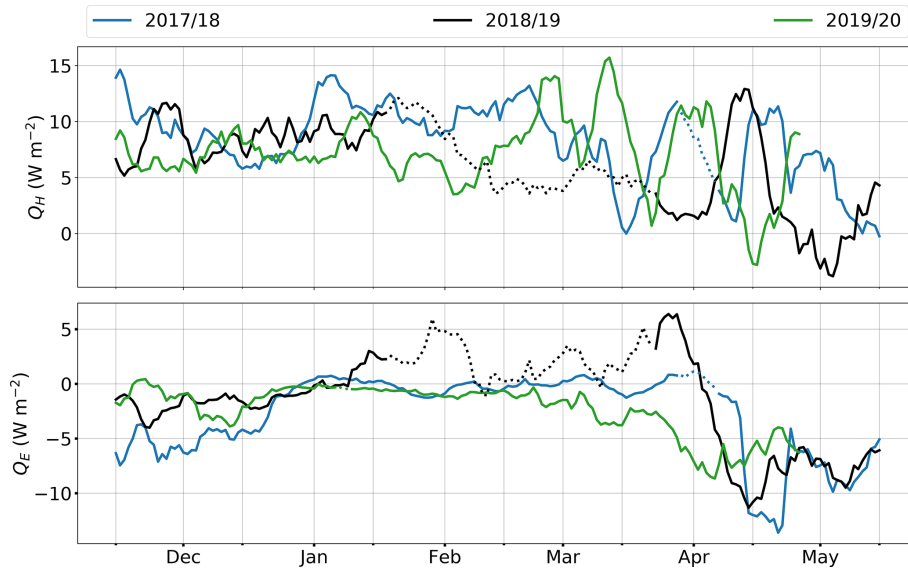


Figure 4. Rolling mean of measured daily sensible heat flux (Q_H) and latent heat flux (Q_E) for the study period. Dotted lines indicate periods of instrument failure which have been gap-filled.

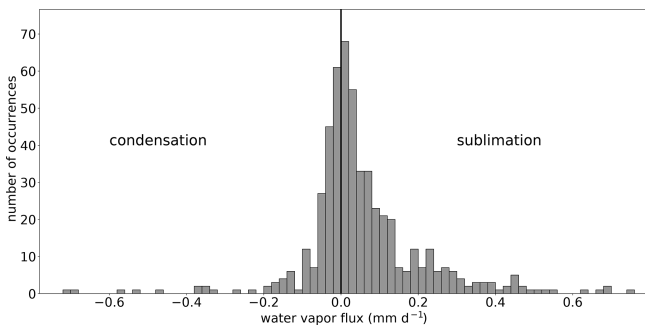


Figure 5. Histogram of daily water vapor flux (values > 0 indicate sublimation and values < 0 indicate condensation) for all three winters.

mation and E is the water vapor mass flux), very little snow is lost due to sublimation during this period. In the fall and spring, the sublimation rates were higher ($> 0.15 \text{ mm d}^{-1}$) but still rather low, resulting in an average of only 5 % of the precipitation being sublimated in the three winters.

Figure 5 presents the sublimation and condensation rates for all three winters examined in this study. Positive values correspond to sublimation, while negative values indicate condensation. The rates are mostly very low and close to zero. Only about 14 % of the days had sublimation rates higher than 0.2 mm d^{-1} . Condensation occurred regularly, but values were generally below 0.2 mm d^{-1} , with only a few exceptions.

As indicated by Eqs. (6) and (7), when typical modeling approaches are used, both Q_H and Q_E values are expected to be affected by wind speed, but while Q_H is additionally dependent on the temperature difference between the air and

the surface, Q_E depends on the vapor pressure deficit. In order to gain insight into the processes that control turbulent heat fluxes, the dependence of Q_H and Q_E on these variables is depicted in Fig. 6.

Both Q_H and Q_E show a rather linear dependence on wind speed. However, while the scatter around the regression line is more limited for Q_H , for Q_E , the scatter increases with wind speed. Above $\approx 6 \text{ m s}^{-1}$, the dispersion is clearly more pronounced, which is the signature of blowing snow events, as confirmed by visual inspection of time-lapse images. As expected, Q_H decreases with higher temperature differences between the surface and the air. However, the lowest values are not observed for the highest temperature differences.

Another important controlling variable for Q_E is the vapor pressure deficit, which states the difference between the amount of water vapor the air currently holds and the amount it can contain when it is saturated. The relationship between Q_E and VPD (vapor pressure deficit) is more complex than for the previously examined quantities. High VPDs do not necessarily result in high Q_E , but the VPD clearly acts as a lower boundary for Q_E , as condensation does not occur for higher VPD values. As expected, we notice that condensation episodes ($Q_E > 0$) occur when the air is close to saturation ($\text{VPD} \lesssim 0.2 \text{ kPa}$).

3.2.2 Modeling

Turbulent heat fluxes and radiation

Daily means of the turbulent heat fluxes Q_H , Q_E , and the net radiation Q_* time series simulated by ISBA-Crocus are compared to observations in Fig. 7. Both Q_H and Q_E show considerable scatter that is reflected in a relatively small Pearson

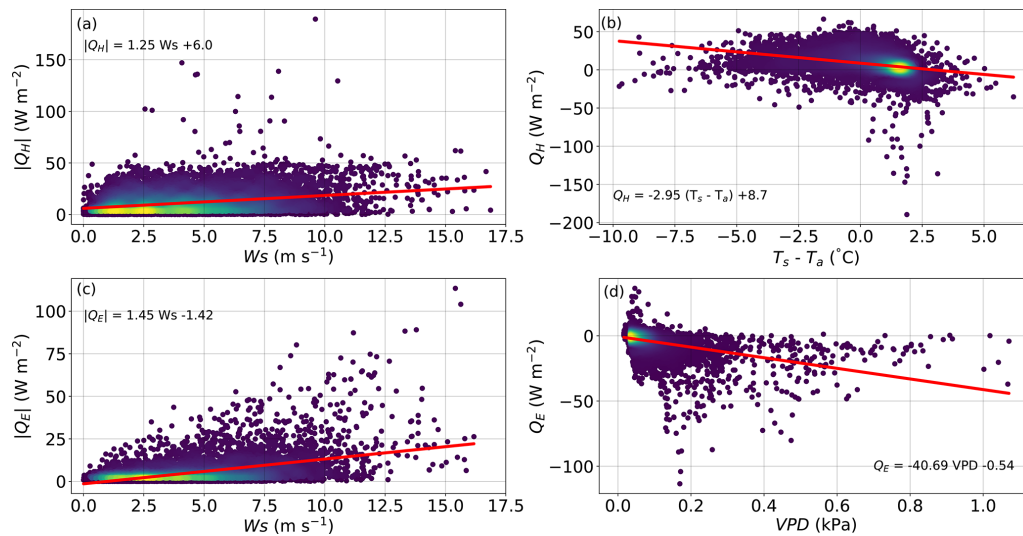


Figure 6. Scatter plot of hourly values of sensible (Q_H , upper row) and latent (Q_E , lower row) heat fluxes against some key meteorological variables: (a, c) wind speed, (b) temperature difference between the air and the snow surface, and (d) vapor pressure deficit. The color code indicates the density of points, where yellow represents high density and blue low density. The red line shows a linear regression.

correlation of 0.67 for Q_H and 0.72 for Q_E . The mean bias is rather small, with 2.9 W m^{-2} for Q_H and 4.2 W m^{-2} for Q_E . The q - q plot for Q_H reveals some discrepancies for high and low values, which are over- and underestimated, respectively. For observations in the interdecile range, only a slight overestimation is detectable. The model underestimates Q_E on all the observed values and more markedly at both ends of the distribution. Q_* is accurately simulated along most of the range of observed values. Only minor deviations are observed for very low and very high observed values. The correlation between simulated and observed Q_* of 0.73 is slightly better than Q_H and Q_E , just as the mean bias, which is 1.6 W m^{-2} .

The Pearson correlation between the modeled and observed turbulent heat fluxes is sensitive to the averaging time used. While it drops for Q_H and Q_E when the averaging time is decreased from daily to hourly means (0.53 for Q_H and 0.64 for Q_E), it stays constant at 0.73 for Q_* (see Supplement Fig. S3).

Surface energy budget

A comparison between model outputs and observations for all constituents of the surface energy budget using a control surface framework (Eq. 1) for a 9 d period is presented in Fig. 8. This period was chosen carefully to ensure quality data. All instruments functioned properly, and the snow cover height was relatively stable at around 55 cm, with one thermal conductivity sensor and two temperature sensors very close to the snow surface (at heights of 47, 49.5, and 52 cm, respectively). The residual snow heat flux in Fig. 8 is obtained by subtracting the heat fluxes from the radiation.

At the surface, net radiation is mainly counterbalanced by Q_H , as Q_E is negligible in mid-winter. The diurnal cycle of Q_S very closely follows Q_* (except 17 March). The transition from positive to negative values corresponds to increases in snow temperature, which were highly variable in the period shown (see Supplement Fig. S4). The snow heat flux mostly follows the residual within about 15 W m^{-2} except at the end of the period shown in Fig. 8. During that period, the differences become larger, up to about 40 W m^{-2} . At certain moments, a few hours of phase shifting between the residual and the snow heat flux can be observed, which might be due to an inaccurate simulation of the snow thermal conductivity. The deviation between the measured snow heat flux and the residual snow heat flux could not be associated with any change in the meteorological conditions, and its source thus remains unclear. The mean difference between the residual and measured snow heat flux is 7.7 W m^{-2} .

Although Fig. 8 represents a short time period, it allows for the visualization of the behavior of the model on an hourly scale. There is a good agreement between modeled and observed Q_* , except for the last 2 d, where a deviation of 10 to 50 W m^{-2} separates both curves. Q_H is well simulated at times, but there are periods during which the discrepancy between the simulated and direct observations is larger (up to 30 W m^{-2}) and even includes an error in the sign of the flux (18 March). Q_E is also very well simulated but with very little variations during this period, while the mean observed deviation for Q_S is 3 W m^{-2} . During the period shown in Fig. 8 and throughout the study period, the modeled albedo was always in the same range as observations (differences < 0.05). The mean modeled albedo was 0.01 greater than observations.

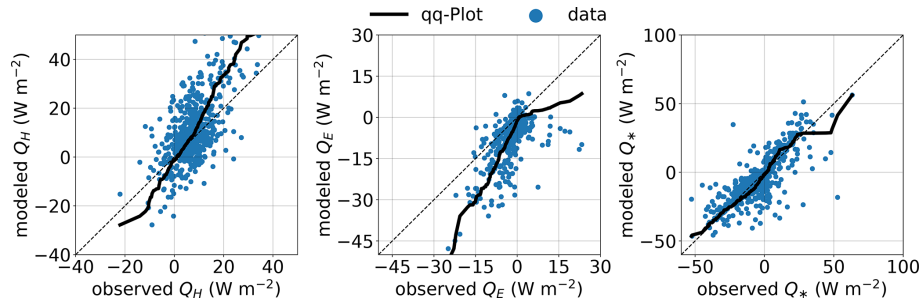


Figure 7. Comparison between daily means of modeled and observed Q_H , Q_E , and Q_* for all three study winters. Overlain is a quantile–quantile plot.

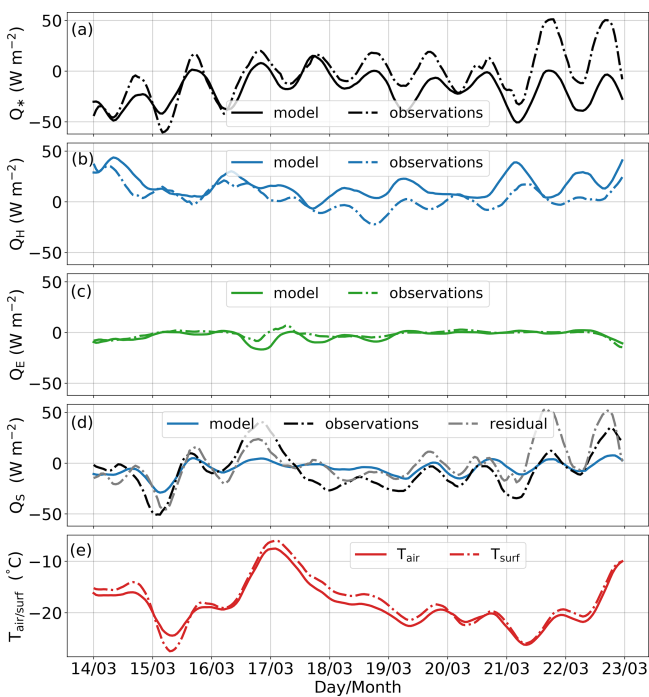


Figure 8. Comparison between observed and modeled hourly means of all constituents of the energy budget at the snow surface from 14 to 23 March 2020. The residual snow heat flux is obtained by subtracting the turbulent heat fluxes from the net radiation. Also shown are the air and surface temperatures during this period.

Energy budget of the snowpack

The energy budget at the snow surface can only be analyzed when thermal conductivity and snow temperature measurements are available very close ($\lesssim 10$ cm) to the surface. As these periods are rather limited, we present the analysis of the energy budget over the whole snowpack in Fig. 9 for both the observations and simulations, over a period of 100 d. The observed residual in Fig. 9 is calculated using only radiation, turbulent heat fluxes, the ground heat flux, and the internal energy of the snowpack according to the equation

$$dU/dt = Q_* + Q_H + Q_E + Q_A^0 + Q_G + \text{Res},$$

where the advective heat input Q_A is neglected.

On the observation side (Fig. 9a), as noted in Fig. 3, net radiation is negative during the first few months of the winter. We note that these radiative losses are largely compensated for by sensible energy input from the atmosphere and heat flux from the ground. The latent heat flux plays a very modest role in snowpack energy exchange, alternating between periods of heat input through condensation and periods of heat loss through sublimation. Periods of low net radiation are associated with times when the residual is significant. Finally, the rate of change of the snow internal energy is low, indicating periods of warming and cooling of the snowpack, with no clear trend over the period examined. The ground heat flux Q_G represents a substantial part of the energy budget of the snowpack. In early winter, it is the second largest energy flux after Q_H , but towards spring, Q_G gradually increases and becomes the most important flux, counterbalancing Q_* .

The rate of change of internal energy remains very small all throughout the study period and is not equal to the energy remaining after subtracting the turbulent and ground heat fluxes from the net radiation. Thus, the unexplained residual constitutes a significant proportion of the energy balance, with a mean of 6.8 W m^{-2} for the entire period and with maxima of up to 20 W m^{-2} . From mid-November until the end of December, during which the agreement is better, the mean residual is 3.8 W m^{-2} .

The simulated energy budget in Fig. 9b) compares very well to the observed budget in Fig. 9a). The model accurately simulates the main temporal patterns and, in general, follows the observed flux partitioning. As we saw earlier (Fig. 7), Q_* is well simulated, but this is less true for Q_H and Q_E . The model overestimates Q_H especially during the first and last months under study. However, Q_E is almost always negative (sublimation) according to the model, while 47 % of the days still show a positive Q_E (condensation). Another striking difference is the role of Q_G in the energy balance. The contribution of Q_G is much smaller in the model (31 % of Q_* on average) than in the observations (47 % of Q_*).

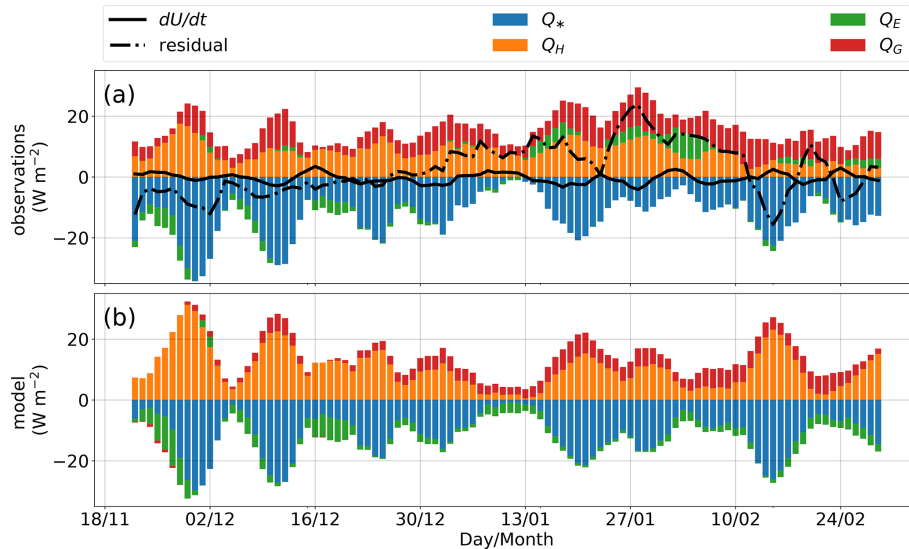


Figure 9. (a) Observed and (b) simulated daily snowpack energy budget terms comprising sensible (Q_H) and latent heat fluxes (Q_E), net radiation (Q_*), ground heat flux (Q_G), and the change in the internal energy of the snowpack dU/dt , during the first half of winter 2018/19. The modeled ground heat flux also includes the heat storage change dU/dt in the snowpack. The modeled snow enthalpy change is not shown because it includes changes due to precipitation and is therefore not comparable to observations.

4 Discussion

4.1 Turbulent heat fluxes and radiation

The sensible heat flux exhibited a consistent seasonal pattern during all 3 years (Fig. 4) despite varying meteorological conditions. This suggests that there is a consistent limiting factor that prevents large sensible heat fluxes. The energy input would allow for greater Q_H as the site is located south of the polar circle ($56^{\circ}33'N$) where there is no polar night. At sites at much higher latitudes in Siberia ($72^{\circ}22'N$) (Westermann et al., 2009) and Svalbard ($78^{\circ}55'N$) (Langer et al., 2011), the average sensible heat fluxes were found to have a similar range (between 5 and 15 W m^{-2}) to the one identified in this study.

In order to better understand the magnitude of the sensible heat flux, we examine atmospheric stratification, which is usually divided into three turbulence regimes (Steenefeld, 2014; Mahrt, 2014). First, in a very stable boundary layer, turbulence is relatively weak and intermittent, and the flow is dominated by drainage winds and other mesoscale motions. Second, in a weakly stable boundary layer, the atmosphere remains stably stratified (the potential temperature increases with height), but turbulence becomes the dominant type of transport. Thirdly, in an unstable boundary layer, the potential temperature decreases with height and turbulence is fully developed. We calculated the bulk Richardson number Ri_b between the snow surface and the measurement level of the eddy covariance (Table 1) to identify the dominant atmospheric regimes at our site. The stratification was found to be mostly weakly stable ($0 \leq Ri_b \leq 0.25$) or stable

Table 1. Distribution of atmospheric stability based on the bulk Richardson number Ri_b , where $Ri_b < 0$ indicates unstable conditions, $0 \leq Ri_b \leq 0.25$ implies weakly stable conditions, and $Ri_b > 0.25$ indicates stable conditions.

Unstable	Weakly stable	Stable
22.1 %	66.5 %	11.4 %

($Ri_b > 0.25$), with unstable stratification ($Ri_b < 0$) making up only 22.1 %. For 66 % of the time, the boundary layer is weakly stably stratified, meaning that buoyancy acts to limit the magnitude of the turbulent fluxes.

Atmospheric stratification likely influences the capacity of the model to simulate the turbulent heat fluxes. The model accurately reproduced the observed turbulent heat fluxes on large timescales (daily and longer periods) while showing larger errors for sub-daily periods. The most probable reason for the degradation associated with shorter timescales is the increasing influence of atmospheric stability on the heat fluxes. Modeling turbulent heat fluxes under stable atmospheric conditions is thus clearly more complex. There are three parametrizations available (Lafaysse et al., 2017) in Crocus that handle atmospheric stability. One of these sets a limit to the bulk Richardson number and thereby maintains a minimum level of turbulent mixing even for stable conditions. In this study, we noticed only small differences between these three options ($< 1 \text{ W m}^{-2}$ at the daily scale), whereas major differences were reported from Col de Porte, France, as well as at almost all the sites in the ESM-SnowMIP dataset (Ménard et al., 2019). This is probably be-

cause our site is windy, which helps to keep Ri_b low and away from the very stable conditions that are more difficult to handle. Nevertheless, our results objectively confirm the statement of Menard et al. (2021) that turbulent fluxes are by far the most uncertain component of the energy balance simulation in snow cover modeling. We therefore highly recommend future complementary evaluations of turbulent fluxes of snow cover models, as was done in this paper for various climate and environments. Meanwhile, further studies are underway at the site targeted in this study to evaluate optimal turbulent heat flux parametrizations, particularly for sub-daily timescales.

In addition to the atmospheric stratification, VPD is another important factor impacting Q_E . At our site, we observed very low Q_E values, coinciding with periods of intense cold ($\lesssim -15^\circ\text{C}$) when the atmosphere can accommodate a very limited amount of water vapor. We hypothesize that moist air advected from Hudson Bay might further reduce the VPD and thus Q_E , as westerly winds were frequently observed and Hudson Bay remains unfrozen until mid- to late December. These two factors, combined with the prevalence of stable atmospheric conditions, likely explain the fact that sublimation losses represent only 5% of winter snowfall, while other studies (Pomeroy and Essery, 1999; Liston and Sturm, 2004) have reported much higher percentages (10%–50%) in other locations in the Canadian Arctic. On the other hand, the winter precipitation is quite high at our site, which naturally decreases the fraction of sublimation losses to precipitation. Furthermore, sublimation during blowing snow events, which frequently occur at the site (observed several times per week on time-lapse images), could be substantially underestimated for two reasons. First, snow particles can obstruct the optical path of the infrared gas analyzer and cause a malfunction. Thus, Q_E observations during these events are marked by greater uncertainty. Second, snow particles during blowing snow events can be lifted several meters in the air and thereby above the eddy covariance system, which is installed at 4.2 m above the ground. Snow particles that sublimate above the instrument cannot be measured, which then leads to an underestimation of the total sublimation rate. Yet, Mann et al. (2000) measured snow particle density profiles during blowing snow events in Antarctica and showed that the decrease in snow particle density can be approximated by a power law. This suggests that the fraction of blowing snow sublimation above the flux system is most likely rather small. The authors also showed that the air can become almost fully saturated within several meters above the surface, which then acts to reduce the sublimation rate during blowing snow events. Altogether, there are still many unknowns with snow sublimation measurements, and these unknowns may be the source of many possible errors. Therefore, there is considerable inherent uncertainty associated with measurements of the total amount of snow that is sublimated in a winter.

Although it suffers from a lack of evaluation, a parametrization of the sublimation of blowing snow from Gordon et al. (2006) was implemented in Crocus by Vionnet et al. (2012). However, we did not apply this option, and thus the simulations from Crocus only include the sublimation from the surface. We chose to omit the blowing snow simulation because most occurrences of blowing snow coincided with instrument malfunctions and no measurements were recorded.

Similar to other sites with comparable climate conditions, longwave radiation was the main component of the radiation budget, with shortwave radiation becoming more substantial in spring. The mean albedo of 0.85 was also in the expected range of what is typically found for snow that is largely free of surface impurities (Warren, 1982; Gardner and Sharp, 2010).

4.2 Energy budget

Over a short period of 9 d (Fig. 8), the snow heat flux was found to be of the same order of magnitude as the turbulent fluxes and thus plays a vital role in the surface energy budget. Meaningful measurements of the snow heat flux are difficult to obtain, as various limitations of the measurements have to be overcome, including the limited spatial representativity of the snow thermal measurements and the frequent high winds which erode and accumulate snow, resulting in rapid spatial changes in snow height. Furthermore, wind pumping, the forced airflow through the upper layers of the snowpack (Colbeck, 1997), and solar radiation can disturb snow heat flux measurements. Thus, we advocate that the control surface approach should be restricted to short-term studies but under favorable conditions (stable snow height and less stable atmospheric conditions). The measured snow heat flux has the same magnitude as the residual snow heat flux, thereby confirming that no major energy flux is missing.

For a long-term energy budget study, the control volume is better suited as it does not require thermal conductivity close to the surface. However, the closure issue is worse. Firstly, this method requires temperatures to be measured close to the surface and thus comes with the same challenges mentioned above. Secondly, the method relies on the snow density profile, which could not be regularly measured in this study (only once per year towards the end of winter), as the site is very remote. Additionally, the density profile is spatially variable. We however estimate that the error for density is not very large ($\lesssim 50\text{ kg m}^{-3}$) based on density measurements from earlier in the winter in previous years. Assuming this error in our calculations, the corresponding error in the heat change is presumably less than 0.5 W m^{-2} per 5 cm layer. Thus, inaccurate density estimates very likely contribute to the energy imbalance, but they cannot be the main cause. Modeled density profiles from Crocus were tested, but the error for density, particularly in the upper part of the snow cover, exceeded those taking a constant profile. Helgason

and Pomeroy (2012) attributed part of their residual to the fact that the boundary layer might have decoupled from the surface, thereby “rendering the measured eddy-covariance fluxes unrepresentative of the true surface heat fluxes”. Although this might be true for some of the measurements presented in our study, based on the fact that snow heat fluxes and residuals are of the same magnitude when looking only at the surface energy budget, we believe that the residual is mostly due to measurement uncertainties.

The ground heat flux is also likely to contribute to the unbalanced energy budget because unfortunately our measurement setup did not allow us to calculate the storage of heat in the top layer of the soil (≈ 4 cm). However, the heat flux at the bottom of the snowpack (≈ 7 cm) was measured using the same principles as the heat fluxes at the surface, and the agreement between this flux and the ground heat flux increases our confidence that the measured ground heat flux does not have substantial errors. As the heat change of the snowpack is very small, the majority of the radiation that is not counterbalanced by the turbulent heat fluxes above the snow surface is used to cool the soil.

Simulations of Q_H and Q_E greatly affect the simulated heat fluxes into the snow and ground because heat fluxes into the snow are calculated as a residual in the model. This can be seen in Fig. 9, at the beginning of the period illustrated until approximately the end of December, when Q_H is overestimated and, consequently, Q_G is underestimated. In the second half of the period, the situation changes, and Q_H in the simulation has a similar magnitude as in the observations, and the estimates of Q_G become closer to that of the observations. For this reason, a proper simulation of Q_H and therefore also of the atmospheric stability is crucial for the simulation of ground temperature and permafrost melt.

4.2.1 Comparison to previous modeling attempts

Studies comparing the full simulated and observed energy balance of an Arctic snowpack are sparse. Westermann et al. (2016) used CryoGrid 3 (<https://github.com/CryoGrid>, last access: 15 August 2021) to simulate the energy budget of a polygon tundra site in Siberia. They reported that the model satisfactorily reproduced the winter energy balance but also found that it underestimated all heat fluxes. Helgason and Pomeroy (2012) used the SNTHERM model in the central Canadian Prairies. They found that the latent heat flux and dU/dt were well simulated, while the sensible heat flux was overestimated. However, they concluded that the sensible heat flux was undermeasured and that the modeled flux was more applicable.

5 Conclusions

In this study, we investigated the energy budget of a low-Arctic snowpack over three winters. Firstly, we analyzed the

evolution and inter-annual changes of its constituents, which mainly consisted of radiation and turbulent heat fluxes. We then compared observations with the simulated time series from the ISBA-Crocus land surface model. Secondly, during two selected periods, we compared observed and modeled fluxes using a control surface at the snow–atmosphere interface and a control volume that encompassed the snowpack.

In line with previous studies, we found that the sensible heat flux was far superior to the latent heat flux and provided heat to the snowpack during most of the winters. The sublimation rates were rather low ($< 0.4 \text{ mm d}^{-1}$) and made up only around 5 % of the winter precipitation, which is low compared to some studies that have reported up to 30 % and more. We hypothesize that this is mainly due to cold air and that the associated low vapor pressure deficit and sublimation during blowing snow events are possibly undermeasured.

At the surface, net radiation was counterbalanced about equally by the sensible heat flux and the heat flux in the snow. For the control volume, the ground heat flux was found to be the most important heat flux after the sensible heat flux, meaning that there is little energy stored in the snowpack. The imbalance of the energy budget was more apparent when considering the whole snowpack, so we concluded that a large portion of the imbalance was due to errors associated with the heat fluxes in the snowpack.

Overall ISBA-Crocus was able to simulate the main components of the energy budget reasonably well, especially considering their small magnitudes. The turbulent fluxes had much larger errors than the radiative fluxes. The model showed a particular weakness when simulating fluxes under stable atmospheric conditions, which resulted in a decrease in performance from a daily to hourly scale.

Code availability. The source files of SURFEX code are provided at the Git repository (http://git.umr-cnrm.fr/git/Surfex_Git2.git, last access: 20 June 2021, Masson et al., 2013) with several code management tools (history management, bug fixes, documentation, interface for technical support, etc.). Registration is required; a description of the procedure is described at https://opensource.cnrm-game-meteo.fr/projects/snowtools/wiki/Procedure_for_new_users (last access: 25 July 2021). EddyPro[®] is available on the LI-COR website (<https://www.licor.com/env/support/EddyPro/software.html>, Fratini and Mauder, 2014) together with the corresponding manual.

PyFluxPro is provided in the Git repository of OzFlux (<https://github.com/OzFlux/PyFluxPro>; last access: 25 July 2021). The different levels are described by Isaac et al. (2017).

Data availability. Data are available upon request from the authors.

Supplement. The supplement related to this article is available online at: <https://doi.org/10.5194/tc-16-127-2022-supplement>.

Author contributions. GL, DFN, and FD designed research. GL, DFN, and ACP deployed and maintained instruments. GL and FD performed the field work. GL analyzed data with inputs from DFN and FD. GL set up the snow model Crocus with help from ML and MD. GL wrote the paper with inputs from DFN and FD and comments from FA, MD, and ML.

Competing interests. At least one of the (co-)authors is a member of the editorial board of *The Cryosphere*. The peer-review process was guided by an independent editor, and the authors also have no other competing interests to declare.

Disclaimer. Publisher's note: Copernicus Publications remains neutral with regard to jurisdictional claims in published maps and institutional affiliations.

Acknowledgements. We are grateful to Denis Sarrazin for technical support of the CEN weather stations and the community of Umiujaq for granting permission to conduct our research.

Financial support. This study was funded by Sentinel North, a Canada First Research Excellence Fund, under the theme 1 project titled "Complex systems: structure, function and interrelationships in the North". This research has also been supported by the (Discovery Grant), the French Polar Institute (IPEV) (grant no. 1042), and the Horizon 2020 program of the European Commission (INTAROS; grant no. 727890). CNRM/CEN is part of Labex OSUG@2020 (ANR-10-LABX-0056).

Review statement. This paper was edited by Chris Derksen and reviewed by three anonymous referees.

References

- Barrere, M., Domine, F., Decharme, B., Morin, S., Vionnet, V., and Lafaysse, M.: Evaluating the performance of coupled snow–soil models in SURFEXv8 to simulate the permafrost thermal regime at a high Arctic site, *Geosci. Model Dev.*, 10, 3461–3479, <https://doi.org/10.5194/gmd-10-3461-2017>, 2017.
- Bartelt, P. and Lehning, M.: A physical SNOWPACK model for the Swiss avalanche warning: Part I: numerical model, *Cold Reg. Sci. Technol.*, 35, 123–145, [https://doi.org/10.1016/S0165-232X\(02\)00074-5](https://doi.org/10.1016/S0165-232X(02)00074-5), 2002.
- Boisvert, L. N. and Stroeve, J. C.: The Arctic is becoming warmer and wetter as revealed by the Atmospheric Infrared Sounder, *Geophys. Res. Lett.*, 42, 4439–4446, <https://doi.org/10.1002/2015GL063775>, 2015.
- Boone, A., Masson, V., Meyers, T., and Noilhan, J.: The Influence of the Inclusion of Soil Freezing on Simulations by a Soil–Vegetation–Atmosphere Transfer Scheme, *J. Appl. Meteorol.*, 39, 1544–1569, [https://doi.org/10.1175/1520-0450\(2000\)039<1544:TIO>2.0.CO;2](https://doi.org/10.1175/1520-0450(2000)039<1544:TIO>2.0.CO;2), 2000.
- Brun, E., Vionnet, V., Boone, A., Decharme, B., Peings, Y., Valette, R., Karbou, F., and Morin, S.: Simulation of northern Eurasian local snow depth, mass, and density using a detailed snowpack model and meteorological reanalyses, *J. Hydrometeorol.*, 14, 203–219, <https://doi.org/10.1175/JHM-D-12-012.1>, 2013.
- Carmagnola, C. M., Morin, S., Lafaysse, M., Domine, F., Lesaffre, B., Lejeune, Y., Picard, G., and Arnaud, L.: Implementation and evaluation of prognostic representations of the optical diameter of snow in the SURFEX/ISBA-Crocus detailed snowpack model, *The Cryosphere*, 8, 417–437, <https://doi.org/10.5194/tc-8-417-2014>, 2014.
- Colbeck, S. C.: Model of wind pumping for layered snow, *J. Glaciol.*, 43, 60–65, <https://doi.org/10.3189/S00221430000280X>, 1997.
- Conger, S. and McClung, D.: Instruments and methods comparison of density cutters for snow profile observations, *J. Glaciol.*, 55, 163–169, <https://doi.org/10.3189/002214309788609038>, 2009.
- Decharme, B., Boone, A., Delire, C., and Noilhan, J.: Local evaluation of the Interaction between Soil Biosphere Atmosphere soil multilayer diffusion scheme using four pedotransfer functions, *J. Geophys. Res.-Atmos.*, 116, D20126, <https://doi.org/10.1029/2011JD016002>, 2011.
- Domine, F., Barrere, M., Sarrazin, D., Morin, S., and Arnaud, L.: Automatic monitoring of the effective thermal conductivity of snow in a low-Arctic shrub tundra, *The Cryosphere*, 9, 1265–1276, <https://doi.org/10.5194/tc-9-1265-2015>, 2015.
- Domine, F., Barrere, M., and Sarrazin, D.: Seasonal evolution of the effective thermal conductivity of the snow and the soil in high Arctic herb tundra at Bylot Island, Canada, *The Cryosphere*, 10, 2573–2588, <https://doi.org/10.5194/tc-10-2573-2016>, 2016.
- Foken, T.: The energy balance closure problem: an overview, *Ecol. Appl.*, 18, 1351–1367, <https://doi.org/10.1890/06-0922.1>, 2008.
- Fortier, R., LeBlanc, A.-M., and Yu, W.: Impacts of permafrost degradation on a road embankment at Umiujaq in Nunavik (Quebec), Canada, *Can. Geotechn. J.*, 48, 720–740, <https://doi.org/10.1139/t10-101>, 2011.
- Fratini, G. and Mauder, M.: Towards a consistent eddy-covariance processing: an intercomparison of EddyPro and TK3, *Atmos. Meas. Tech.*, 7, 2273–2281, <https://doi.org/10.5194/amt-7-2273-2014>, 2014.
- Gagnon, M., Domine, F., and Boudreau, S.: The carbon sink due to shrub growth on Arctic tundra: a case study in a carbon-poor soil in eastern Canada, *Environ. Res. Commun.*, 1, 091001, <https://doi.org/10.1088/2515-7620/ab3cdd>, 2019.
- Gardner, A. S. and Sharp, M. J.: A review of snow and ice albedo and the development of a new physically based broadband albedo parameterization, *J. Geophys. Res.-Earth*, 115, F01009, <https://doi.org/10.1029/2009JF001444>, 2010.
- Gascon, G., Sharp, M., Burgess, D., Bezeau, P., Bush, A. B. G., Morin, S., and Lafaysse, M.: How well is firn densification represented by a physically based multilayer model? Model evaluation for Devon Ice Cap, Nunavut, Canada, *J. Glaciol.*, 60, 694–704, <https://doi.org/10.3189/2014JG13J209>, 2014.
- Gordon, M., Simon, K., and Taylor, P. A.: On snow depth predictions with the Canadian land surface scheme including a parametrization of blowing snow sublimation, *Atmos.-Ocean*, 44, 239–255, <https://doi.org/10.3137/ao.440303>, 2006.
- Gouttevin, I., Langer, M., Löwe, H., Boike, J., Proksch, M., and Schneebeli, M.: Observation and modelling of snow

- at a polygonal tundra permafrost site: spatial variability and thermal implications, *The Cryosphere*, 12, 3693–3717, <https://doi.org/10.5194/tc-12-3693-2018>, 2018.
- Graham, R. M., Cohen, L., Petty, A. A., Boisvert, L. N., Rinke, A., Hudson, S. R., Nicolaus, M., and Granskog, M. A.: Increasing frequency and duration of Arctic winter warming events, *Geophys. Res. Lett.*, 44, 6974–6983, <https://doi.org/10.1002/2017GL073395>, 2017.
- Graversen, R. G., Mauritsen, T., Tjernström, M., Källén, E., and Svensson, G.: Vertical structure of recent Arctic warming, *Nature*, 451, 53–56, <https://doi.org/10.1038/nature06502>, 2008.
- Helgason, W. and Pomeroy, J.: Problems closing the energy balance over a homogeneous snow cover during midwinter, *J. Hydrometeorol.*, 13, 557–572, <https://doi.org/10.1175/JHM-D-11-0135.1>, 2012.
- Hersbach, H., Bell, B., Berrisford, P., Hirahara, S., Horányi, A., Muñoz-Sabater, J., Nicolas, J., Peubey, C., Radu, R., Schepers, D., Simmons, A., Soci, C., Abdalla, S., Abellan, X., Balsamo, G., Bechtold, P., Biavati, G., Bidlot, J., Bonavita, M., De Chiara, G., Dahlgren, P., Dee, D., Diamantakis, M., Dragani, R., Flemming, J., Forbes, R., Fuentes, M., Geer, A., Haimberger, L., Healy, S., Hogan, R. J., Hólm, E., Janisková, M., Keeley, S., Laloyaux, P., Lopez, P., Lupu, C., Radnoti, G., de Rosnay, P., Rozum, I., Vamborg, F., Villaume, S., and Thépaut, J.-N.: The ERA5 global reanalysis, *Q. J. Roy. Meteor. Soc.*, 146, 1999–2049, <https://doi.org/10.1002/qj.3803>, 2020.
- Hsu, K.-l., Gupta, H. V., Gao, X., Sorooshian, S., and Imam, B.: Self-organizing linear output map (SOLO): An artificial neural network suitable for hydrologic modeling and analysis, *Water Resour. Res.*, 38, 38–1–38–17, <https://doi.org/10.1029/2001WR000795>, 2002.
- Isaac, P., Cleverly, J., McHugh, I., van Gorsel, E., Ewenz, C., and Beringer, J.: OzFlux data: network integration from collection to curation, *Biogeosciences*, 14, 2903–2928, <https://doi.org/10.5194/bg-14-2903-2017>, 2017.
- Kochendorfer, J., Nitu, R., Wolff, M., Mekis, E., Rasmussen, R., Baker, B., Earle, M. E., Reverdin, A., Wong, K., Smith, C. D., Yang, D., Roulet, Y.-A., Buisan, S., Laine, T., Lee, G., Aceituno, J. L. C., Alastrué, J., Isaksen, K., Meyers, T., Brækkan, R., Landolt, S., Jachcik, A., and Poikonen, A.: Analysis of single-Alter-shielded and unshielded measurements of mixed and solid precipitation from WMO-SPICE, *Hydrol. Earth Syst. Sci.*, 21, 3525–3542, <https://doi.org/10.5194/hess-21-3525-2017>, 2017.
- Kochendorfer, J., Nitu, R., Wolff, M., Mekis, E., Rasmussen, R., Baker, B., Earle, M. E., Reverdin, A., Wong, K., Smith, C. D., Yang, D., Roulet, Y.-A., Meyers, T., Buisan, S., Isaksen, K., Brækkan, R., Landolt, S., and Jachcik, A.: Testing and development of transfer functions for weighing precipitation gauges in WMO-SPICE, *Hydrol. Earth Syst. Sci.*, 22, 1437–1452, <https://doi.org/10.5194/hess-22-1437-2018>, 2018.
- Lackner, G., Nadeau, D. F., Domine, F., Parent, A.-C., Leonardini, G., Boone, A., Anctil, F., and Fortin, V.: The Effect of Soil on the Summertime Surface Energy Budget of a Humid Subarctic Tundra in Northern Quebec, Canada, *J. Hydrometeorol.*, 22, 2547–2564, <https://doi.org/10.1175/JHM-D-20-0243.1>, 2021.
- Lafaysse, M., Cluzet, B., Dumont, M., Lejeune, Y., Vionnet, V., and Morin, S.: A multiphysical ensemble system of numerical snow modelling, *The Cryosphere*, 11, 1173–1198, <https://doi.org/10.5194/tc-11-1173-2017>, 2017.
- Langer, M., Westermann, S., Muster, S., Piel, K., and Boike, J.: The surface energy balance of a polygonal tundra site in northern Siberia – Part 2: Winter, *The Cryosphere*, 5, 509–524, <https://doi.org/10.5194/tc-5-509-2011>, 2011.
- Libois, Q., Picard, G., Arnaud, L., Dumont, M., Lafaysse, M., Morin, S., and Lefebvre, E.: Summertime evolution of snow specific surface area close to the surface on the Antarctic Plateau, *The Cryosphere*, 9, 2383–2398, <https://doi.org/10.5194/tc-9-2383-2015>, 2015.
- Liston, G. and Sturm, M.: The role of winter sublimation in the Arctic moisture budget, *Hydrol. Res.*, 35, 325–334, <https://doi.org/10.2166/nh.2004.0024>, 2004.
- Louis, J.-F.: A parametric model of vertical eddy fluxes in the atmosphere, *Bound.-Lay. Meteorol.*, 17, 187–202, <https://doi.org/10.1007/BF00117978>, 1979.
- Lu, Y., Yu, W., Hu, D., and Liu, W.: Experimental study on the thermal conductivity of aeolian sand from the Tibetan Plateau, *Cold Reg. Sci. Technol.*, 146, 1–8, <https://doi.org/10.1016/j.coldregions.2017.11.006>, 2018.
- Lund, M., Stiegler, C., Abermann, J., Citterio, M., Hansen, B. U., and van As, D.: Spatiotemporal variability in surface energy balance across tundra, snow and ice in Greenland, *Ambio*, 46, 81–93, <https://doi.org/10.1007/s13280-016-0867-5>, 2017.
- Mahrt, L.: Stably stratified atmospheric boundary layers, *Annu. Rev. Fluid Mech.*, 46, 23–45, <https://doi.org/10.1146/annurev-fluid-010313-141354>, 2014.
- Mann, G. W., Anderson, P. S., and Mobbs, S. D.: Profile measurements of blowing snow at Halley, Antarctica, *J. Geophys. Res.-Atmos.*, 105, 24491–24508, <https://doi.org/10.1029/2000JD900247>, 2000.
- Martin, E. and Lejeune, Y.: Turbulent fluxes above the snow surface, *Ann. Glaciol.*, 26, 179–183, <https://doi.org/10.3189/1998AoG26-1-179-183>, 1998.
- Masson, V., Le Moigne, P., Martin, E., Faroux, S., Alias, A., Alkama, R., Belamari, S., Barbu, A., Boone, A., Bouyssel, F., Brousseau, P., Brun, E., Calvet, J.-C., Carrer, D., Decharme, B., Delire, C., Donier, S., Essaouini, K., Gibelin, A.-L., Giordani, H., Habets, F., Jidane, M., Kerdraon, G., Kourzeneva, E., Lafaysse, M., Lafont, S., Lebeaupin Brossier, C., Lemonsu, A., Mahfouf, J.-F., Marguinaud, P., Mokhtari, M., Morin, S., Pigeon, G., Salgado, R., Seity, Y., Taillefer, F., Tanguy, G., Tulet, P., Vincendon, B., Vionnet, V., and Voltaire, A.: The SURFEXv7.2 land and ocean surface platform for coupled or offline simulation of earth surface variables and fluxes, *Geosci. Model Dev.*, 6, 929–960, <https://doi.org/10.5194/gmd-6-929-2013>, 2013.
- Mauder, M., Cuntz, M., Drüe, C., Graf, A., Rebmann, C., Schmid, H. P., Schmidt, M., and Steinbrecher, R.: A strategy for quality and uncertainty assessment of long-term eddy-covariance measurements, *Agr. Forest Meteorol.*, 169, 122–135, <https://doi.org/10.1016/j.agrformet.2012.09.006>, 2013.
- Menard, C., Essery, R., Krinner, G., Arduini, G., Bartlett, P., Boone, A., Brutel-Vuilmet, C., Burke, E., Cuntz, M., Dai, Y., Decharme, B., Dutra, E., Fang, X., Fierz, C., Gusev, Y., Hagemann, S., Haverd, V., Kim, H., Lafaysse, M., and Yuan, H.: Scientific and human errors in a snow model intercomparison, *B. Am. Meteorol. Soc.*, 102, <https://doi.org/10.1175/BAMS-D-19-0329.1>, 2021.
- Ménard, C. B., Essery, R., Barr, A., Bartlett, P., Derry, J., Dumont, M., Fierz, C., Kim, H., Kontu, A., Lejeune, Y., Marks, D., Ni-

- wano, M., Raleigh, M., Wang, L., and Wever, N.: Meteorological and evaluation datasets for snow modelling at 10 reference sites: description of in situ and bias-corrected reanalysis data, *Earth Syst. Sci. Data*, 11, 865–880, <https://doi.org/10.5194/essd-11-865-2019>, 2019.
- Meredith, M., Sommerkorn, M., Cassotta, S., Derksen, C., Ekaykin, A., Hollowed, A., Kofinas, G., Mackintosh, A., Melbourne-Thomas, J., Muelbert, M., Ottersen, G., Pritchard, H., and Schuur, E.: Polar Regions, in: *IPCC Special Report on the Ocean and Cryosphere in a Changing Climate*, edited by: Pörtner, H.-O., Roberts, D. C., Masson-Delmotte, V., Zhai, P., Tignor, M., Poloczanska, E., Mintenbeck, K., Alegria, A., Nicolai, M., Okem, A., Petzold, J., Rama, B., and Weyer, N. M., available at: <https://www.ipcc.ch/srocc/> (last access: 1 December 2021), 2019.
- Morin, S., Domine, F., Arnaud, L., and Picard, G.: In-situ monitoring of the time evolution of the effective thermal conductivity of snow, *Cold Reg. Sci. Technol.*, 64, 73–80, <https://doi.org/10.1016/j.coldregions.2010.02.008>, 2010.
- Noilhan, J. and Mahfouf, J.-F.: The ISBA land surface parameterisation scheme, *Global Planet. Change*, 13, 145–159, [https://doi.org/10.1016/0921-8181\(95\)00043-7](https://doi.org/10.1016/0921-8181(95)00043-7), 1996.
- Noilhan, J. and Planton, S.: A simple parameterization of land surface processes for meteorological models, *Mon. Weather Rev.*, 117, 536–549, [https://doi.org/10.1175/1520-0493\(1989\)117<0536:ASPOLS>2.0.CO;2](https://doi.org/10.1175/1520-0493(1989)117<0536:ASPOLS>2.0.CO;2), 1989.
- Pomeroy, J. W. and Essery, R. L. H.: Turbulent fluxes during blowing snow: Field tests of model sublimation predictions, *Hydrol. Process.*, 2975, 2963–2975, [https://doi.org/10.1002/\(SICI\)1099-1085\(19991230\)13:18<2963::AID-HYP11>3.0.CO;2-9](https://doi.org/10.1002/(SICI)1099-1085(19991230)13:18<2963::AID-HYP11>3.0.CO;2-9), 1999.
- Riche, F. and Schneebeli, M.: Thermal conductivity of snow measured by three independent methods and anisotropy considerations, *The Cryosphere*, 7, 217–227, <https://doi.org/10.5194/tc-7-217-2013>, 2013.
- Royer, A., Picard, G., Vargel, C., Langlois, A., Gouttevin, I., and Dumont, M.: Improved simulation of Arctic circumpolar land area snow properties and soil temperatures, *Front. Earth Sci.*, 9, 515, <https://doi.org/10.3389/feart.2021.685140>, 2021.
- Sauter, T. and Obleitner, F.: Assessing the uncertainty of glacier mass-balance simulations in the European Arctic based on variance decomposition, *Geosci. Model Dev.*, 8, 3911–3928, <https://doi.org/10.5194/gmd-8-3911-2015>, 2015.
- Steenefeld, G.-J.: Current challenges in understanding and forecasting stable boundary layers over land and ice, *Front. Environ. Sci.*, 2, 41, <https://doi.org/10.3389/fenvs.2014.00041>, 2014.
- Vionnet, V., Brun, E., Morin, S., Boone, A., Faroux, S., Le Moigne, P., Martin, E., and Willemet, J.-M.: The detailed snowpack scheme Crocus and its implementation in SURFEX v7.2, *Geosci. Model Dev.*, 5, 773–791, <https://doi.org/10.5194/gmd-5-773-2012>, 2012.
- Warren, S. G.: Optical properties of snow, *Rev. Geophys.*, 20, 67–89, <https://doi.org/10.1029/RG020i001p00067>, 1982.
- Westermann, S., Lüers, J., Langer, M., Piel, K., and Boike, J.: The annual surface energy budget of a high-arctic permafrost site on Svalbard, Norway, *The Cryosphere*, 3, 245–263, <https://doi.org/10.5194/tc-3-245-2009>, 2009.
- Westermann, S., Langer, M., Boike, J., Heikenfeld, M., Peter, M., Eitzelmüller, B., and Krinner, G.: Simulating the thermal regime and thaw processes of ice-rich permafrost ground with the land-surface model CryoGrid 3, *Geosci. Model Dev.*, 9, 523–546, <https://doi.org/10.5194/gmd-9-523-2016>, 2016.