



**HAL**  
open science

## **Social Vulnerability Assessment for Landslide Hazards in Malaysia: A Systematic Review Study**

Mohd Idris Nor Diana, Nurfashareena Muhamad, Mohd Raihan Taha, Ashraf  
Osman, Md. Mahmudul Alam

► **To cite this version:**

Mohd Idris Nor Diana, Nurfashareena Muhamad, Mohd Raihan Taha, Ashraf Osman, Md. Mahmudul Alam. Social Vulnerability Assessment for Landslide Hazards in Malaysia: A Systematic Review Study. *Land*, 2021, 10 (3), pp.315. 10.3390/land10030315 . hal-03520181

**HAL Id: hal-03520181**

**<https://hal.science/hal-03520181>**

Submitted on 10 Jan 2022

**HAL** is a multi-disciplinary open access archive for the deposit and dissemination of scientific research documents, whether they are published or not. The documents may come from teaching and research institutions in France or abroad, or from public or private research centers.

L'archive ouverte pluridisciplinaire **HAL**, est destinée au dépôt et à la diffusion de documents scientifiques de niveau recherche, publiés ou non, émanant des établissements d'enseignement et de recherche français ou étrangers, des laboratoires publics ou privés.

**Social Vulnerability Assessment for Landslide Hazards in Malaysia:  
A Systematic Review Study**

**Mohd Idris Nor Diana \***

Institute for Environment and Development (LESTARI)  
Universiti Kebangsaan Malaysia  
UKM Bangi, Selangor Darul Ehsan 43600, Malaysia  
Email: [nordiana@ukm.edu.my](mailto:nordiana@ukm.edu.my)

**Nurfashareena Muhamad**

Institute for Environment and Development (LESTARI)  
Universiti Kebangsaan Malaysia  
UKM Bangi, Selangor Darul Ehsan 43600, Malaysia  
Email: [fasha@ukm.edu.my](mailto:fasha@ukm.edu.my)

**Mohd Raihan Taha**

Department of Civil Engineering  
Universiti Kebangsaan Malaysia  
Bangi 43600, Selangor, Malaysia  
Email: [profraihan@ukm.edu.my](mailto:profraihan@ukm.edu.my)

**Ashraf Osman**

Department of Engineering, The Palatine Centre  
Durham University  
Stockton Road, Durham DH1 3LE, UK  
Email: [ashraf.osman@durham.ac.uk](mailto:ashraf.osman@durham.ac.uk)

**Md. Mahmudul Alam**

School of Economics, Finance and Banking  
Universiti Utara Malaysia  
Sintok, 06010, Malaysia  
Email: [mahmudul@uum.edu.my](mailto:mahmudul@uum.edu.my)

\* Corresponding author

**Citation Reference:**

Nor Diana, M.I., Muhamad, N., Taha, M.R., Osman, A. & Alam, M.M. (2021). Social Vulnerability Assessment for Landslide Hazards in Malaysia: A Systematic Review Study. *Land*, 10(3), 315. (online) <https://doi.org/10.3390/land10030315>

This is a pre-publication copy.

The published article is copyrighted by the publisher of the journal.

# Social Vulnerability Assessment for Landslide Hazards in Malaysia: A Systematic Review Study

## Abstract

Landslides represent one of the world's most dangerous and widespread risks, annually causing thousands of deaths and billions of dollars worth of damage. Building on and around hilly areas in many regions has increased, and it poses a severe threat to the physical infrastructure and people living within such zones. Quantitative assessment of social vulnerability in Malaysia is worrying because it has been given less attention than hazard-related studies. Therefore, this study's objective is to find out the indicators used for social vulnerability assessment in the context of a landslide in Malaysia. The analysis is critical for understanding the measures of social vulnerability, given that the incorporation of climate change and disaster risk mitigation issues in urban planning and management are considered priorities in ensuring a stable population growth and avoiding economic disruption. A systematic study on the Scopus and Web of Science repositories was conducted based on the PRISMA Report analysis method. This article concluded that there are six important indicators of social vulnerability in the context of landslide in Malaysia.

**Keywords:** *social vulnerability assessment; landslide; social indicator; disaster risk reduction; Malaysia*

## 1. Introduction

In recent years, extreme events have increased in intensity and frequency globally, leading to rising economic losses and casualties. It is believed that these events will continue to accelerate in future climate scenarios. An accurate understanding of the physical and socioeconomic drivers of these extreme events is crucial and can ultimately enhance adaptive strategies. The frequency and intensity of geophysical events is increasing. This is the result of the interaction between humans and the environment. Climate change and increasingly aggressive human activities contribute to the vulnerability of catastrophic hazards to humans, their infrastructure, and the environment [1]. Faced with ever-increasing societal impacts arising from such events, a wealth of research and analysis has focused on understanding causal processes and outcomes [2]. Landslides are a type of geophysical event that plays a significant role in the evolution of a landscape [3]. However, landslides do pose a serious threat to local populations given that these events are being triggered increasingly by a changing climate and more unpredictable weather patterns. In recent years, it has become clear from previous research that the location, abundance, activity, frequency of landslides as well as the social and economic consequences are increasing over time and more people are exposed to the risks [4–10]. It was reported in [11] that geophysical disasters such as landslides are the deadliest. The presence of humans, infrastructure, and other forms of vulnerabilities in one location will make things worse.

Historically, efforts to reduce landslides are physically oriented resulting in a proliferation of technocratic approaches in the literature, while financial losses and social vulnerability from the geophysical events continue to increase. Over time, this gave rise to an alternative explanation that mounting losses are related less to the dynamics of the events but more to the vulnerability of exposed human populations [2]. Although assessing the magnitude and intensity of disasters is critical, the nature of population demographics and various socioeconomic contexts may also lead to a greater risk of disasters. Understanding the complexities of vulnerability to disasters, including those caused by geophysical events, is at the heart of disaster risk reduction. Efforts to reduce disaster risk involve various disciplines and should be viewed from

numerous perspectives to provide long-term benefits. A comprehensive disaster risk reduction strategy that incorporates physical and socio-economic aspects is the key determinant of vulnerability.

In spite of very high importance of socioeconomic data to assess landslide vulnerability, there are lack of social data documented for analysis and mapping in Malaysia. Therefore, the objective of this study is to find out the indicators that are used for social vulnerability assessment in the context of landslides in Malaysia. The analysis is critical for understanding the measures of social vulnerability, since the incorporation of climate change and disaster risk mitigation issues in urban planning and management are a priority for ensuring stable population growth and evading economic disruption.

## **2. Literature Review**

The definition of vulnerability is “the quality of being vulnerable (able to be easily hurt, influenced, or attacked), or something that is vulnerable” [12]. Vulnerability means the risk of being vulnerable or easily hurt by something or someone. Vulnerability is a concept that has been used over a long period of time, and it has been recognised in much research covering various fields of endeavour [13], for instance, the social sciences, economics, psychology, and engineering. It should be noted that there is no consensus regarding how vulnerability is defined [14]. It has, in fact, been interpreted in many ways according to the subject area being investigated.

According to [15], vulnerability refers to situations where individuals and societies are exposed to social, economic, and cultural risks and in essence the dangers posed by harm to them. All people and all communities at some point cannot avoid risk or harm, so at best each individual needs to prepare for every situation. Moreover, stress that social vulnerability is partly the result of social difference or social inequality, which affects or forms the susceptibility of different groups to harm or at risk and regulates their capacity to react to a certain situation [16]. There is inequality in every society and the unequal distribution of wealth and resources is something that has permeated all of human history. For instance, in a farmer’s perspective, inequality can take many forms such as unequal distribution of wealth, water allocation, rights to land and water, taxation inequity, economic poverty, land tenure issues, and much more. The definition of climate vulnerability according to the Intergovernmental Panel on Climate Change (IPCC) is “... the degree to which geophysical, biological and socio-economic systems are susceptible to, and unable to cope with, adverse impacts of climate change” [17]. The concept of vulnerability has been refined over the decades so that people understand the disasters and hazards that occur in communities susceptible to this kind of situation. Vulnerability is something that can help people achieve a level of sustainable development realistically. Economic development or progress should be engaged with as long as the natural environment in which they occur can be sustained.

For this reason, vulnerability can be defined as individuals, households, or communities that are dealing with external shock from the outside and are unexpected [18]. Vulnerability is present in both internal and external factors that influence the lives of individuals and communities. Furthermore, vulnerability can be understood as the capacity of individuals, groups or communities to reciprocate, cooperate, survive, and recover from the impact of environmental events that have happened around them [19]. Landslides are very indicative of how the characteristics of a social group can overcome this kind of disaster but also reflect the harsh realities of social vulnerability to natural events.

### *2.1. Social Vulnerability to Disaster*

Vulnerability is broadly defined as the potential to suffer loss or harm. The theory includes structural vulnerability of buildings, physical exposure of people, and places to natural events, while social vulnerability describes different kinds of susceptibility based on social, economic, and political factors [20,21]. Vulnerability and exposure are dynamic, varying in temporal and spatial scales, and depend on economic, social, geographical, demographic, cultural, institutional, governance, and environmental variables [22]. Analyses of vulnerability in the engineering context of landslide or slope (or any disaster) are quite common [23,24]. The study by [25] has described vulnerability as the characteristic of a person or group and their situation that influences their capacity to anticipate, cope with, resist, and recover from the impact of a natural hazard (an extreme natural event or process). Despite its importance in disaster risk reduction, there is still a lack of approaches that contribute to a better understanding of social vulnerability hidden in dynamic contextual conditions [26].

The definition of social vulnerability within the disaster framework was introduced in the 1970s when researchers realised that exposure included socioeconomic factors affecting group resilience [27,28]. Social vulnerability is useful as an indicator in determining the differential recovery potential from disasters. Social vulnerability normally employed individual characteristics of people such as age, race, health, income, type of dwelling unit, and employment [29]. Social vulnerability is a concept that can explain social imbalances that are happening in society in some parts of the world. It is one of the results of social inequalities that occur in many communities. Factors affecting social disparities evident in a society include: lack of resources such as information, knowledge, and technology; limited access to political power or representation; social capital; social networks and connections; beliefs and customs; building stock and age of infrastructure; and type and density of infrastructure and lifelines [30]. Next, the 18 social vulnerability indicators was introduced as follows: socioeconomic status (income, political power, and prestige), gender, race and ethnicity, age, commercial and industrial development, employment loss, rural/urban, residential property, infrastructure and lifelines, renters, occupation, family structure, education, population growth, medical services, social dependence, and social needs population [16].

The design of these indicators depends on their expected use, and it must be relevant to the hazard context, methodologies, and data availability [31]. However, social vulnerability exists based on the underlying characteristic of a population, and it does not rely on the hazard or susceptibility of an area. Apart from indicators, numerous indices have been developed in order to measure social vulnerability. Many pioneer researchers have devoted much effort to formulating the concept of social vulnerability. Social Vulnerability Index (SoVI) was introduced [32] to quantify social vulnerability through an empirical basis to compare social differences within a community regarding social variables selected to mitigate the disadvantageous effects of certain events. It was asserted that socially vulnerable communities are more likely to be adversely affected in disaster events because they are much less likely to recover from them and more likely to die [33]. Even though the SoVI was devised with the United States in mind, many studies have adapted SoVI for a variety of contexts, no matter the nature of the population or places being investigated.

## *2.2. Landslides: Malaysia's Experience*

Malaysia is located in the south-east of Asia. It is divided into two archipelagos, Peninsular Malaysia and Borneo Island. Malaysia is a tropical country with a warm and humid climate throughout the year. Over a recent 20-year period (1998–August 2018), Malaysia has witnessed 51 disaster events [34–43]. During that time, 281 people died, more than 3 million people were affected, and disasters caused nearly US\$2 billion in damage [44]. Flood, landslides, drought, and forest fires are common in Malaysia, while the annual rainfall is the main contributor due

to two monsoon periods, i.e., South West (SW) and North East (NE) occurring between April and October and from November to March, respectively. These monsoons contribute to high annual rainfalls amounting to 2000–4000 mm with a maximum of about 200 rainy days [45]. The amount of rainfall varies from one rainy day to the next [46]. The rain and consistently high temperatures throughout the year lead to intensive and extensive weathering of features on the ground. These combinations of climate and geological conditions together with other causative factors such as slope angle, drainage conditions, geological boundaries, etc. [47] have led to landslides becoming one of Malaysia’s most common natural disasters.

The most common trigger for landslides is heavy or prolonged rainfall, but seismicity, river undercutting, freeze-thawing cycles, and human activity may also cause substantial and destructive landslides. As reported [48], Malaysia recorded 171 landslides between 2007 and March 2016, according to data from the US National Aeronautics Space Administration (NASA), making the country the world’s 10th highest in terms of landslide frequencies. In recent years, Malaysia has experienced several landslides resulting from extreme tropical rainfall. Landslides have occurred in several parts of the country, such as Paya Terubong (Penang), Highland Towers (Kuala Lumpur), Hulu Langat, and Pos Dipang (Perak). These landslides incur significant property loss and hundreds of lives. In 2017, 6000, people were severely affected by a flash flood and landslide in the Kundang, Selangor area, which left many stretches of roads, infrastructure, and assets badly damaged [49]. When the population density of towns increases, highland or hilly terrain development also increases and this puts more stress on the natural environment. Urban areas are then exposed to a high risk of landslides [50]. Significant landslides in Malaysia were recorded from 1993 to 2020 (see Table 1).

**Table 1.** Series of significant landslide occurrences in Malaysia.

No.	Year	Location	Consequences
1	1993	Highland Tower, Ulu Klang, Selangor	48 deaths and 2 injuries. One building collapsed.
2	1993	Pinggiran Bukit Segar, Kuala Lumpur	One family evacuated their house
2	1993	Pantai Remis, Perak	No record
4	1994	Taman Puchong Perdana, Puchong, Selangor	10 families evacuated
5	1995	Taman Keramat Permai, Ampang, Selangor	No damage recorded
6	1995	Kuala Lumpur—Karak Highway	20 deaths, 22 injuries, and ten cars damaged
7	1996	North-South Expressway (NSE) near Gua Tempurung, Perak	No record
8	1996	Pos Dipang, Kampar, Perak	44 people were killed
9	1996	Ampang Jaya, Selangor	No record
10	1999	Puncak Athenaeum Condominium, Ampang, Selangor	Minor landslide, road access to the hilly residential area affected
11	1999	Mutiara Condominium, Ampang, Selangor	No record
12	1999	North-South Expressway, Kuang, Selangor	Thousands of vehicles stranded. Road closure lasting one day
13	2000	Jalan Bukit Antarabangsa, Ampang, Selangor	No record
14	2001	Kampung Sungai Chinchin, Gombak, Selangor	A house partly destroyed
15	2002	Jalan Ipoh, Kuala Lumpur	Covering three-lane road leading from Selayang to Rawang
16	2002	Taman Hillview, Ampang, Selangor	Eight deaths and five injuries
17	2003	Taman Bukit Jaya, Ampang, Selangor	No fatalities
18	2004	Taman Melati, Gombak, Selangor	1 death
19	2004	Jalan Seri Penchala 1, Kuala Lumpur	24 houses evacuated
20	2006	Taman Zooview, Ampang, Selangor	Four deaths

21	2006 Taman Bukit Serdang, Seri Kembangan, Selangor	Damaged section of the road measured 50 m × 25 m
22	2006 Bukit Tunku, Kuala Lumpur	No record
23	2006 Taman Esplanad, Kuala Lumpur	Two houses damaged
24	2008 Taman Bukit Mewah, Ampang, Selangor	4 deaths
25	2008 Ulu Kelang, Selangor	Four deaths and 15 injuries
26	2008 Kuala Kubu Bharu, Batang Kali, Selangor	Two sisters were buried alive when a landslide hit a bungalow
27	2008 Kemensah Heights, Ampang, Selangor	No fatalities
28	2008 Bukit Ceylon, Kuala Lumpur	One worker killed
29	2008 Pantai Dalam, Kuala Lumpur	One killed, 4 injured, and 19 families evacuated
30	2009 Taman Cheras Awana, Cheras, Selangor	Destroyed 3 cars and a motorcycle, 10 families evacuated
31	2010 Ukay Perdana, Ampang, Selangor	No fatalities
32	2010 Taman Bukit Mulia, Ampang, Selangor	No fatalities
33	2011 Puncak Setiawangsa, Kuala Lumpur	88 residents of bungalows, shop houses, and double-storey terrace houses ordered to move out
34	2011 Jalan Semantan, Kuala Lumpur	Six cars were buried and five vehicles were damaged
35	2011 Pekan Batu 14 Hulu Langat, Selangor	16 deaths
36	2011 Kampung Tengah, Puchong, Selangor	5 houses affected
37	2012 Taman Desa Sentosa, Hulu Langat, Selangor	Endangered four occupants of the Perkid Welfare Home for girls
38	2012 Taman Mulia Jaya, Ampang, Selangor	Water seeped through the sewerage system.
39	2013 Putra Heights, Subang Jaya, Selangor	Several vehicles submerged in mud
40	2015 KM 52.4 of the Kuala Lumpur-Karak Expressway between Lentang and Bukit Tinggi, Pahang and Gombak-Bentong old roads	Lentang-Bukit Tinggi stretch of the expressway was closed to traffic
41	2016 Karak Highway	Blocked all lanes in both directions on the highway and four vehicles were trapped in the landslide
42	2016 Bau-Puncak Borneo, Sarawak	Comprising mainly Bidayuh settlements and Padawan Ring Road critically affected
43	2017 Tanjung Bungah, Penang Island	Killed 11 construction workers
44	2018 Jalan Bukit Kukus, Georgetown, Penang Island	Killed nine construction workers
45	2019 Taman Batu Permai	No record
46	2019 Jalan Lee Woon, Ampang, Selangor	A house evacuated
47	2019 Genting Highland, Pahang	Affected a portion of the Jalan Genting-Amber Court slip road and no access to the resort
48	2020 Taman Kelab Ukay, Bukit Antarabangsa	40 residents were ordered to leave their homes
49	2020 Taman Silibin Indah, Ipoh	Killed one construction worker
50	2020 Sungai Penchala, Kuala Lumpur	3 families ordered to leave their homes
51	2020 Jalan Gombak to Genting Highland	The main road was closed for repairs
52	2020 Ulu Beram, Jalan Lapok	Residents cut off due to damaged roads
53	2020 Tapah to Ringlet	Fallen trees blocked the main road
54	2020 Tapah to Cameron Highland	Fallen trees blocked the main road
55	2020 Jalan Simpang Pulai to Cameron Highland	The retaining wall suffered damage and part of the structure collapsed

56	2020 The Banjaran Hotspring Retreat, Tambun	Killed 2 guest house
57	2020 Jalan Lojing-Gua Musang	Closed half of main road
58	2020 Jalan Keningau-Kimanis, Sabah	Two houses were damaged and no casualties
	2021 Jalan Raub-Bukit Fraser	Road closed and 13 vehicles trapped
59	2021 Taman Bukit Kempas, Johor	Tank water pipe broke, and 42 people vacated the residence
60	2021 Kemaman, Terengganu	The restaurant was hit by a rock, no casualties
61	2021 Jalan raya Timur Barat, Ipoh	One hallway closed
62	2021 Kampung Garong, Padawan, Sarawak	2 houses were damaged, and a house half buried in the ground
64	2021 Kota Kinabalu	10 landslides were reported in seven villages, involving four districts, namely, Kota Kinabalu, Kota Marudu, Pitas, and Kudat. No casualties

Source: [51–60].

In Malaysia, there have been numerous landslide events in the mountains, along the valleys, rivers, and coastal regions [61,62] but the most massive have generally been associated with rivers. Findings from the literature have shown that landslides occur frequently along hilly areas in the rainy season. There is a strong correlation between the density of drainage and distance to the river due to landslides in the mountainous region being triggered by erosion-related phenomena [63]. Development on hilly areas in Malaysia has increased the risk and likelihood of landslides [64]. Hilly areas are attractive for building residential areas, hotels, or resorts. This poses a severe threat to the physical infrastructure and population living within that area. This situation will lead to many casualties and significant financial losses if these hilly regions are struck by landslides [65].

Global landslides cause billions of dollars' worth of infrastructure damage and thousands of deaths annually. The estimated number of deaths is 1000 per year and destruction of property amounting to approximately US\$4 billion [66]. Meanwhile, losses due to landslides in Malaysia have cost more than US\$1 billion since 1973 [67]. Emergency preparedness plays a part in reducing the effects of disasters. The most effective preparedness at the initial stage was to make the right decision to reduce the number of deaths and damage to property in communities. The rescue team provided some emergency response and preparedness training for each member of the community so that their reactions were practical. In Malaysia, there are several agencies involved in dealing with landslides such as Malaysia Civil Defence Force (MCDF), Fire and Rescue Department of Malaysia, National Disaster Management Agency (NADMA), and others. Furthermore, the Ministry of Housing and Local Government has issued a guideline for any physical development on the hilly terrain area in Malaysia. Table 2 summarises the criteria of the biological effect based on the slope gradient, slope classification for engineering work, and the description of development activities.

**Table 2.** Malaysian Guideline on physical development in hilly terrains.

Slope Gradient ( $\alpha$ )	Slope Classification For Engineering Work	Description
Below 15°	Class 1	Compliance with: Development Guidelines in Hill Areas 1997 (issued by the local government) Erosion and Dirt Control Guidelines, 1996 (issued by the Department of Environment)



		Environmentally Friendly Drainage Manual 2000 (issued by the Department of Irrigation and Drainage)
15–25°	Class 2	EIA report prepared by EIA consultants registered with the Department of Environment for development exceeding 50 ha. For class 1 and II development projects only subject to section 34A, the Environmental Quality Act 1974 must be provided EIA.
25–35°	Class 3	Requires an additional environmental impact assessment study. Proposes the conduct of landslide vulnerability assessment, which may serve as an alternative tool to establish a sustainable development environment.
Above 35°	Class 4	Development projects within this area are not permitted at all, except for road construction, which is inevitable. However, an environmental impact assessment is required. Proposes the conduct of landslide vulnerability assessment, which may serve as an alternative tool to establish a sustainable development environment data

Source: [68].

Malaysia has its share of landslides and most of the landslide studies conducted focus on the engineering perspective. Socioeconomic aspects should be taken into account to evaluate the vulnerability of the community, especially one at high risk of experiencing such catastrophic effects, but previous research concentrated more on describing the disaster types [61,69], susceptibility, and risk assessment [70,71]. The level of quantitative evaluation of social vulnerability in Malaysia is worrying due to the lack of social data documented for analysis and mapping. Therefore, the objective of this study is to find out indicators that are used for social vulnerability assessment in the context of a landslide in Malaysia. The analysis is critical for understanding the measures of social vulnerability, since the incorporation of climate change and disaster risk mitigation issues in urban planning and management are a priority for ensuring stable population growth and evading economic disruption.

The representativeness of Malaysia as an important case for research, though can be critical in other cases, is not an issue for his study. What we are trying to demonstrate is that in analysing landslide risk, the human part is an integral part and should be incorporated as detailed in this study. The methodology used in this study is a pioneer for landslide risk assessment. Assessing the landslide risk with the proposed methodology can be a crucial tool for engineers and policy-makers in developing a site, particularly in hilly areas, for population development. Thus, it must be done at its locality, per se, in order to assess the real risk of landslide. More importantly this methodology can serve to highlight the importance of public education to increase the level of knowledge of the population on the hazard and mitigation of possible landslide events in their area. Limited literature found on social vulnerability mapping to climate-driven disasters in the country. The socio-economic aspect is the most apparent after disasters as different patterns of damages, losses, and suffering maybe experience differently by certain groups of the population.

### 3. Materials and Methods

This section incorporates five significant sub-sections that explain the following: PRISMA, resources, inclusion and exclusion criteria, systematic review procedure, and data extraction and interpretation. The methodology technique to retrieved articles is the one suggested by [72].

### 3.1. PRISMA

The systematic review in this article was guided by the PRISMA method, and this abbreviation stands for “Preferred Reporting Items for Systematic Reviews and Meta-Analyses.” PRISMA has mainly been utilised by healthcare personnel create systematic reviews and meta-analyses. As well as the medical field, PRISMA has been employed by environmental management experts to undertake systematic reviews.

### 3.2. Resources

This study used two primary journal databases, specifically Scopus and Web of Science (WoS). Scopus is a bibliographic database for journal articles and consists of abstract and citation sources. This database covers journals from scientific, technical, medical and social sciences and currently has more than 5000 publishers worldwide and more than 22,000 titles. Web of Science (WoS) is a database producing Clarivate Analytics, which includes articles from 256 disciplines such as science, social science, arts, humanities, etc. WoS offers full-text articles, reviews, editorials, abstracts, proceedings and book chapters. WoS includes more than 33,000 journals published from the year 1900 to the present day. Other databases like JSTOR and Google Scholar were considered for this research.

### 3.3. Systematic Review Process

The systematic review process includes four main stages to acquire relevant: identification, screening, eligibility, and data extraction.

#### 3.3.1. Identification

The first process of undertaking systematic reviews is identification. Identification means finding the most relevant studies, using keywords, dictionary terms, thesaurus, encyclopaedias, etc. The keywords used help to build the “search string” for the research (Table 3). Subsequently, 13 articles were found in JSTOR using the term “social vulnerability index.” From the Scopus database, in total, 147 articles related to the search string were discovered while a total of 69 items emerged from Web of Science (WoS). Meanwhile, 29 studies were found in Google Scholar search engine, where the data covers a huge range of subjects and is essentially a superset of WoS and Scopus [73].

**Table 3.** Search string.

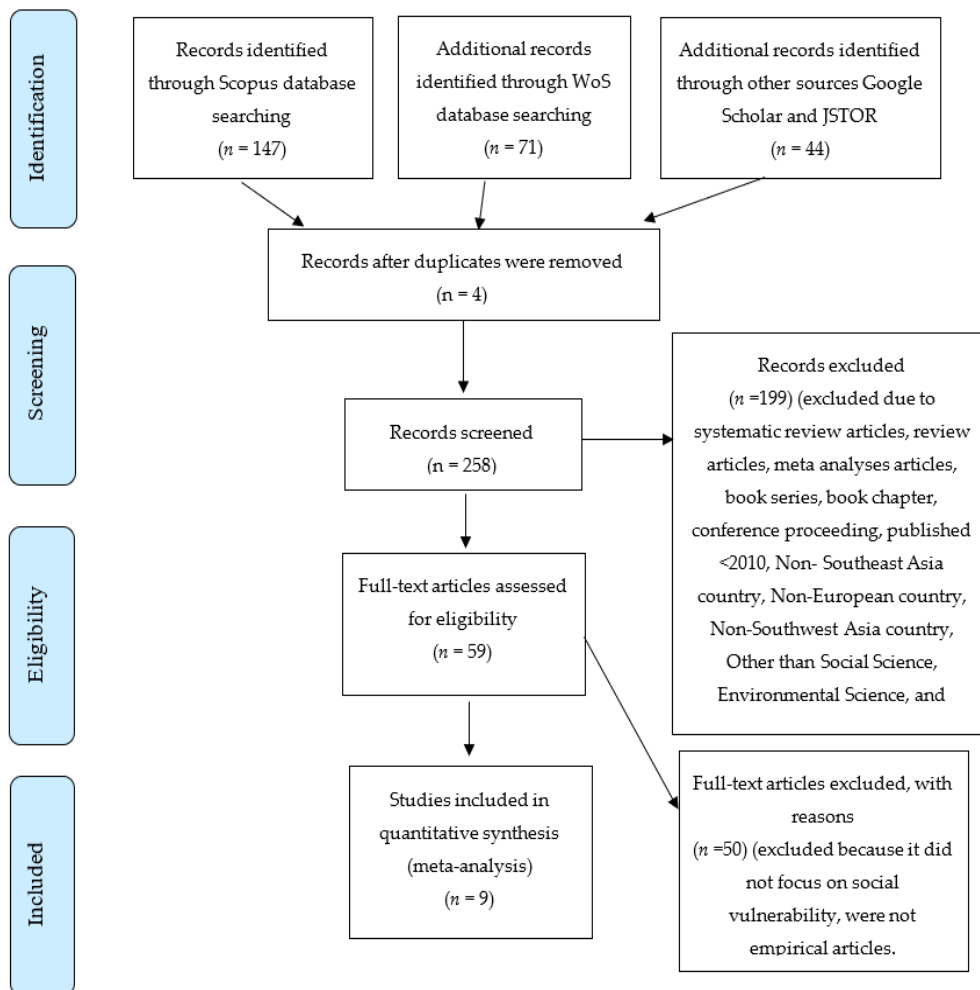
Databases	Keyword Used
Scopus	TITLE-ABS-KEY (“social* vulnerabilit* inde*” OR “soci* economi* vulnerabilit* inde*” OR “soci* vulnerabilit* inde*” OR “social* vulnerabilit*” OR “SoVI” OR “SeVI” OR “SVI”)) AND (landslid* OR rockslid* OR earthfal*)
Web of Science (WoS)	TS = (“social* vulnerabilit* inde*” OR “soci* economi* vulnerabilit* inde*” OR “soci* vulnerabilit* inde*” OR “social* vulnerabilit*” OR “SoVI” OR “SeVI” OR “SVI”) AND (landslid* OR rockslid* OR earthfal*)
JSTOR	(((((“social* vulnerabilit* inde*” OR “soci* economi* vulnerabilit* inde*”)) OR (“soci* vulnerabilit* inde*”)) OR (“social* vulnerabilit*”) OR (“SoVI”)) OR (“SeVI”)) AND (“landslide”))
Google Scholar	(“social vulnerability”) (“social vulnerability index”) (“socio economic vulnerability index”) (landslide)

### 3.3.2. Screening

The second part of the systematic review process is screening. Here, it is necessary to gather all the articles related to the study topic and exclude all irrelevant items. Table 4 shows the inclusion and exclusion criteria that need to be followed in finding related articles. The total of 258 articles was screened using the inclusion and exclusion criteria including literature type, language, timeline, countries and territories, and the subject area. For the first criterion of the literature type, this study decided to focus on journal research articles and excluded papers resembling review articles, book chapters, and conference proceedings. Meanwhile, for language, the chosen one was English, and all other non-English articles were excluded. The criterion for publication was the period from 2010 to 2020 only, and the geographical criterion was Southeast Asia, Southwest Asia and Europe. Lastly, for the subject area, this study only chooses articles from social sciences, environmental science, science, and agriculture. From the inclusion and exclusion criteria, the number of articles that have been excluded is 199, in total (Figure 1).

Table 4 Inclusion and Exclusion criteria

<b>Criterion</b>	<b>Eligibility</b>	<b>Exclusion</b>
<b>Literature type</b>	Journal (Research articles)	Journals (review article), book chapter, conference proceeding
<b>Language</b>	English	Non- English
<b>Timeline</b>	2010 to 2020	<2010
<b>Countries and territories</b>	Southeast Asia, Southwest Asia and Europe countries	Non-Southeast Asia, non-Southwest Asia and Non-Europe country
<b>Subject Area</b>	Social Science, Environmental Science, Agricultural	Other than Social Science, Environmental Science, Agricultural



**Figure 1.** Literature searches based on Preferred Reporting Items for Systematic Reviews and Meta-Analyses (PRISMA) is guidelines (adapted from [74]).

### 3.3.3. Eligibility

For the third stage eligibility, a total of 59 articles were used. Title, abstract, and the content of each paper are important and need to be examined thoroughly to make sure it fulfils the inclusion criteria and review objective. In total 50 articles have been excluded because they did not fit this criterion. Therefore, the criteria of selected articles to be analysed is focus on the social vulnerability study and the empirical articles. It is because the purpose of this study is to define the indicators used to assess social vulnerability in the context of landslides in Malaysia. The research is important for understanding social vulnerability interventions, as the inclusion of climate change and disaster risk mitigation problems in urban/rural planning and management. More specifically, this approach will help to illustrate the value of public education in growing the population's level of awareness about the risk and mitigation of potential landslide events in their area. Even though the occurrence of landslides is different due to the climatic conditions among the countries for article analysis, however, due to the lack of research on the formation of social vulnerability indicators in Southeast Asian countries, alternatively, this study has expanded its study to Southwest Asian and European countries.

### 3.3.4. Data Extraction

After the remaining articles were assessed and analysed, the researcher started to extract the data. First, this was done by reading the abstract of the article, and then the researcher read the full text to start identifying themes and sub-themes related to the objective. After that, themes and sub-themes were organised to establish a typology for the article.

#### 4. Results

According to the results shown in Table 5, in total, 9 articles were chosen for this study. The nine authors of the articles include [75–83] in this study. Besides, the selected articles were published in the years ranging from 2011 to 2020. It aims to identify research trends on social indicators that are constantly being studied and considered for the purpose of forming a social vulnerability index for certain area and community. Next, with reference to countries covered, two studies are from Nepal, and the rest are one study each from Portugal, England, Italy, Pakistan, India, China, and Indonesia. It comprises the name of authors, the country of studies, title of articles, and the objective of the studies by scholars.

**Table 5.** List of articles analysed for systematic review.

Author	Country	Year	Title	Objective
[75]	Nepal	2020	A geospatial analysis of multi-hazard risk in Dharan, Nepal	Produce individual hazard assessment for the rapidly growing city of Dharam city and calculate its level of social vulnerability
[76]	Nepal	2019	An analysis of social vulnerability to natural hazards in Nepal using a modified social vulnerability index	To quantify social exposure at the local level using indicators relevant to Nepal's distinct social and physical landscape
[77]	Portugal	2015	Application of social vulnerability (SoVI) and delineation of natural risk	To go further into the biological risk analysis in the Greater Lisbon area using a multi-hazard approach
[78]	England	2019	Evaluation of social vulnerability to natural hazards: A case of Barton on Sea, England	The current study examines the social vulnerability of Barton-on-Sea by conducting a survey-based analysis
[79]	Italy	2016	Mapping social vulnerability to natural hazards in Italy: A suitable tool for risk mitigation strategies	The study aims to define a social vulnerability index (SVI) for Italy by applying an inductive approach
[80]	Pakistan	2018	Socioeconomic determinants of landslide risk perception in Murree hills of Pakistan	The aim is to assess the determinants of landslide risk perceptions in the Murree Hills of Pakistan
[81]	India	2020	Study of integrated social vulnerability index SoVLint of the hilly region of Uttarakhand, India	This study focuses on producing a map for the hilly district of Uttarakhand showing the vulnerabilities measured by natural, social, and economic indicators
[82]	China	2011	Social vulnerability assessment of natural hazards on county-scale using high spatial resolutions satellite imagery: A case study in the Luogang district of Guangzhou, South China	This study examines the social vulnerability assessment of natural hazards on a county-scale using high spatial resolutions satellite imagery
[83]	Indonesia	2018	Quantitative assessment of social vulnerability for landslide disaster risk reduction using GIS approach (Case study: Cilacap Regency, Province of Central Java Indonesia)	To examine social exposure for landslide disaster risk reduction using a GIS approach

Sources: Author analysis, 2020.

##### 4.1. Indicators Used to Measure Social Vulnerability in a Landslide

There are 14 indicators serving to measure social vulnerability when a landslide occurs. Included here are age, gender, ethnicity, built environment, income, family structure, education, employment, occupation, urban or rural, disability, migration, medical, and population (Table 6).

**Table 6.** List of indicators use as social vulnerability index.

<b>Indicators</b>	<b>Variables</b>	<b>Reference</b>
Age	The elderly population (>65 years), children under 5 years old, dependency ratio, elderly index, resident population aged 5–14, resident population aged 15–19, mean age (years) of the resident population	[77,79,80,82,83]
Gender	Females, a household that is run by a woman, a household with land owned by females	[75,77]
Ethnicity	Population by ethnic, minority population	[75–77]
Built Environment	A household without piped water connection, electricity, reinforced cement concrete (RCC) foundation, sewage water, and the population lived in a home with quality external walls.	[76]
Income	The income per capita, the ratio of high income to low income	[80]
Family structure	Female-headed household, the average number of people per household	[75,78]
Education	People cannot read and write, high level of education, low level of education	[76–81,83]
Employment	Female labour force employed, labour force employed, unemployment rate	[78,81,83]
Occupation	Employed in agriculture, forestry, fishing, mining and quarrying; employed in manufacturing and construction; employed in transportation, communication and other public utilities; employed in accommodation and food services	[75]
Urban/Rural	Population density	[77]
Special Needs Population	Population with disabled person (auditory, visual, motor, or mental disability), the person who is disabled and/or unemployed or without any economic activity, a person with disability that is more than 60%, a person who is disabled, and under 4 or above 65 years of age, permanently disabled and unable to work	[75–77]
Migration	Foreign population, absentee population	[77,81]
Health	Medical services, health problems, distance from the hospital	[77,81,82]
Population	Population growth	[79,83]

Sources: Author analysis, 2020.

In this study, there are five main indicators that are focused on, these being age, ethnicity, education, disability, and health. These are the variables that most scholars measure when investigating landslides. They are explained in more detail below.

#### 4.1.1. Age

The first component that has been discussed in [77] is “urban, age (elderly), and gender.” Variable for age includes the proportion of resident population aged 65 and over, proportion of resident population aged 4 and younger, proportion of residents aged 5–14, and proportion of resident population aged 15–19. The study shows a negative result for elderly people, which means they are more susceptible to vulnerability. There was reported [79] that focuses more on four component indicators—age, employment, population growth, and education. He also stated that aging index is one component that represents the age indicator.

The variables include population of people aged 65 and above and those aged 15 and younger. The aging phenomenon that is very evident in Italy has resulted from the depopulation of people in mountain areas, people leaving the land, migration, and the lure of promising jobs in the industrial and service sectors. Italy’s people are generally living longer and the average birth rate has declined. According to the study by [80] there are five main indicators affecting

the landslide risk perception: age, income, education level, location, and experience. In addition, the study shows that age of respondent wields an effect on the perception of landslides.

#### 4.1.2. Ethnicity

According to [76], the ethnicity indicators focus on the Dalit population and minority population such as Muslims and Sikhs/Punjabis. They found that this group was less than 5% of the total population in Nepal, and it is considering as disadvantage groups. In [77], “nationality and ethnicity” is one of the five main indicators in that particular study. The variables for ethnicity indicator include person of African origin living in the country, foreign nationality, and resident who was born outside the country as a marginal group. Like age, ethnicity can be an indicator in the social vulnerability index and help assess what is happening in a given society.

#### 4.1.3. Education

Education has always been regarded as one of the key vulnerabilities all communities have to deal with. Educated people are more likely to have advantages in everything they do compared to people without or with little education. There are three main variables relating to education as follows [75]: percentage of the population who can read and write, percentage who completed school certificate (SLC), and percentage who completed a college or university degree. In the study by [77], one of the indicators “development and education” included variables such as the proportion of illiterate people. The community can be very vulnerable when the proportions of literate and illiterate are dangerously disproportionate.

Furthermore, the level of education and qualification can affect vulnerability in one community. The higher the qualification in education that someone has, the more unlikely it is that they will experience vulnerability from any hazards. According to [78], an individual who has enough education and knowledge regarding about a certain issue will generally better understand the nature of a hazard and its likely effect on them. Not only can education affect individuals’ knowledge of certain issues but it also helps to reduce poverty, improve health, get more and better job opportunities, higher salaries, etc.

#### 4.1.4. Special Need Population

The population with special needs is usually much more vulnerable than people without a disability. Disability can be a huge factor for assessing vulnerabilities, especially when disasters or hazards occur. As mentioned by [76], this factor is closely linked to socioeconomic status, education and built environment, and ethnicity—all components of vulnerability assessment. It is shown by the variance for socioeconomic status (45.12%), education and built environment (19.74%), ethnicity (10.98%), and disability (10.78%).

#### 4.1.5. Health

Health is one of the major indicators of this study. Variables such as medical services, health problems, and distance from the hospital are important factors of measuring social vulnerability as mentioned by [77,81,82]. Being healthy and having a good public healthcare system is important for communities that are more vulnerable to a disaster or hazard. Poor public health systems can simply make problems worse, and lead to more accidents and disruptions.

## 5. Discussion

There are not many studies concerning the Social Vulnerability Index (SoVI) with reference to landslides. Based on the research undertaken, articles regarding landslide in the context of social vulnerability index usually consider other types of hazard or where landslides are bracketed with other natural disasters. Articles based only on social vulnerability and landslides are difficult to locate. Social vulnerability or the social vulnerability index has many types—not only SoVI but also referred to as SEVI or SVI. Even though the focus is only on SoVI in this paper, the researcher has taken note of other types of social vulnerability index.

There are 14 indicators that have been employed to measure social vulnerability in the context of landslide including (see Table 5): age, gender, ethnicity, built environment, income, family structure, education, employment, occupation, urban or rural, disability, migration, medical, and population. Based on the analysis, the researcher only focuses on five main indicators that have been used by many scholars: age, ethnicity, education, special needs population, and health. These were chosen because they are very relevant to the more vulnerable in society, especially where inequalities and imperiled areas are very evident.

### *5.1. Education*

There are a few factors that affect social vulnerability including lack of access to: resources such as information, knowledge, and technology; social networks and connections with other individuals; social capital; and infrastructure [83]. In this study, education emerges as a major indicator employed in other studies regarding social vulnerability and landslides. Education is a bridge to success for many people, and it can refer to both formal and informal education. Education can also mean information, knowledge, and technology regarding the scope of discussion. The importance of education is to help people achieve more success and status in society, get a better job and understand the issues involved in a hazard or disaster. Furthermore, it helps individuals to be prepared for any circumstances. According to [84], people who have better response mechanisms, always prepare and constantly recover from a disaster, and this is certainly the case for those individuals, households, and societies with better and more widespread higher education outcomes compared to others.

### *5.2. Age*

Indicators such as age can also mean susceptibility to social vulnerability. Older and very young people are more vulnerable to hazards and disasters than people in the middle. A higher proportion of senior citizens means that a society is at greater risk of disaster and the strategies needed to repair any given situation, simply because older people are more vulnerable to hazards than other age groups. Older people normally need a lot of physical and emotional care and support services. They can also be more disadvantaged compared to other age groups. The indicators that have been collected from previous studies do not represent the population or the place.

### *5.3. Ethnicity*

Racism or ethnic discord is one of the factors of disaster risk, and especially for minority groups such as migrants and/or non-residents in a given location [85]. They are also known as marginalised groups, considered to be inferior in terms of their economic status, health, social relationships, and environment. If this situation continues, it will result in lasting social, political, and economic losses [86]. Although a mixture of socio-spatial and biophysical influences forms people's susceptibility to environmental hazards, race/ethnicity, and class have been central to understanding social dynamics during hazard events [87].



#### *5.4. Special Needs Population*

Special needs populations such as people with a disability are the most-at-risk persons when a disaster occurs. Disability means that the person with a physical or mental condition has limited movements, senses, or ability to participate in activities. Characteristics that are considered to be a disability are deafness, blindness, diabetes, autism, epilepsy, depression, and HIV. According to [88], disability emerges from the connection between people with health problems, such as cerebral palsy, Down syndrome, depression, as well as personal and environmental influences, including negative attitudes, limited transport facilities, public service facilities, and insufficient social support systems. They are generally the first victims of natural disasters. Indeed, early warning systems that alert the public may not actually reach the disabled individuals in time. The death toll from a disaster is two to four times larger than for those who are not disabled [89].

#### *5.5. Healthcare Accessibility*

Those with health problems are particularly vulnerable to landslides. They require constant attention and healthcare services to ensure their safety and good health. Therefore, access to health services such as hospitals, healthcare clinics, and pharmacies is an important need for this community. One of the principal components of emergency management is healthcare management to cope with disasters [90]. In disaster prevention activities, well targeted healthcare supply chain management can function effectively and efficiently. A substantial number of disaster casualties or even fatalities could be absorbed as long as healthcare services are up and running when a disaster occurs [91].

All the variables are listed above give an essential role in determining the security of a community based on social inductors. However, the results of the author's study found that income indicators and social capital are less emphasised. Income indicators referring to those with low incomes and belonging to the group below 40% of Malaysia's income are very vulnerable to disasters. For example, the floods that occur every year have caused suffering because they cannot work, and the worst consequences, they will lose their jobs. The study [92] found that the income sub-domain is the largest contributor and gives high value to the index of endangered livelihoods of rural communities in Pahang in 2014. Low-income conditions will also affect the period for them to recover after a catastrophic event. The results of the author's research found that there are no studies that explore social asset indicators. Social assets carry meaning as resources available to individuals and groups through membership in social networks. If the household has a higher position in a group or social institution, he or she will produce higher social strengths and resources [93]. Longer membership history as well as more participation in other social groups make it easier for access to information, business opportunities, social strength, and influence. The ability to access other assets is also simpler [94]. The evolution of social capital through the interaction of relationships between people and groups in community social networks [96]. Social networking means the interaction of an individual with other individuals, organisations, and groups to obtain information and assistance on something related to their livelihood [96,97]. The lack and absence of these elements within the social life environment of an individual will contribute to their vulnerability factors, as emphasised by [98,99]. Social capital influences, the sustainable life they possess significantly to strengthen the ability to develop a network of cooperation between groups both internally and externally and through enhancing the institutional capacity of community groups to improve the well-being of society.

State government agencies, local governments, and community leaders are the most familiar with the people in their communities. The social vulnerability index's importance is design to assist them in ensuring the security and well-being of their population. The SVI components can help the state and local people involved in all phases of the disaster sequence, in particular, landslides. Knowledge of locations and community information that is vulnerable to landslides can help planners in identifying target groups and accelerating assistance in efforts to reduce and impact property damage and loss of life, as well as prepare for disaster events. The stakeholders and management planners can setting the evacuation centre to places in secure condition to those are needs emergency assistances such as elderly people, single mothers with kids and infants, no transportations people and migrants whose are not influent in local language. In the recovery process, local governments may recognise communities that may require additional funding for human services or as a mitigation gauge to avoid a need for more costs due to the post support [100]. The slower to recover are those with the socioeconomically low-income community with hazardous areas of landslide occurrence. Therefore, the analysis results show that there are seven indicators as outlined that should be used as a social vulnerability index in measuring the level of susceptibility of landslides events. It consisted of education, age, ethnicity, special need population, healthcare accessibility, income, and social asset indicators. Future research will examine how SoVI can be used in the planning and mitigation processes to help target disaster management interventions as part of the system. Besides, the SoVI outcome can lead to geological mapping of disaster risk management in Malaysia's decision-making systems based on specific zones.

## **6. Conclusions**

In this study, we have reviewed a selection of socioeconomic vulnerability components. At the searching stage, 258 articles were found in key databases, and after inclusion and exclusion criteria using the PRISMA guideline, only nine articles were chosen as being valid to this research. Fourteen variables were listed, and five variables of social vulnerability, which were typically used by scholars, proved to be relevant to Malaysia. Not all places or locations have the same experiences of landslides, and so the level of social vulnerability will differ and how these are measured. Although people may experience the same hazard or disaster, it does not mean that all individuals go through the same processes of destruction, recovery, evaluation, etc., as others. There are individuals who experience much higher social vulnerability than others, and it depends on which indicators are employed. As a climatic condition and the landslides occurrences in Malaysian context, there are seven indicators underlined which are education, age, ethnicity, special needs population, health accessibility, income, and social capital. These are the important indicator to measure the social vulnerability index to the high-risk communities towards landslide hazard. The result of these indicator measurement should be useful to authorities to include it as a complementary data to their geological mapping of disaster risk management based on the location of the landslide events. Furthermore, that is why, this study is important for understanding the social vulnerability index in the context of landslides in Malaysia.

## **Acknowledgments**

The authors acknowledged the technical support by Nurul Atikah Zulkepli and Siti Nursakinah Selamat for the searching material of this study and this research was funded by Dana Padanan Antarabangsa—(MyPAIR)—Natural Environment Research Council (NERC), grant number NEWTON/1/2018/TK01/UKM/2.

## **References**

1. Peduzzi, P. The Disaster Risk, Global Change, and Sustainability Nexus. *Sustainability* **2019**, *11*, 957, doi:10.3390/su11040957.
2. Burton, C.; Betts, R.A.; Jones, C.D.; Williams, K. Will fire danger be reduced by using Solar Radiation Management to limit global warming to 1.5 °C compared to 2.0 °C? *Geophys. Res. Lett.* **2018**, *45*, 3644–3652, doi:10.1002/2018GL077848.
3. Parker, R.N.; Densmore, A.L.; Rosser, N.J.; de Michele, M.; Li, Y.; Huang, R.; Whadcoat, S.; Petley, D.N. Mass wasting triggered by the 2008 Wenchuan earthquake is greater than orogenic growth. *Nat. Geosci.* **2011**, *4*, 449–452, doi:10.1038/ngeo1154.
4. Sultana, N. Analysis of Landslide-induced Fatalities and Injuries in Bangladesh: 2000–2018. *Cogent Soc. Sci.* **2020**, *6*, 1737402.
5. Dai, F.C.; Lee, C.F.; Ngai, Y.Y. Landslide risk assessment and management: An overview. *Eng. Geol.* **2002**, *64*, 65–87, doi:10.1016/S0013-7952(01)00093-X.
6. Guzzetti, F. Landslide fatalities and the evaluation of landslide risk in Italy. *Eng. Geol.* **2000**, *58*, 89–107, doi:10.1016/S0013-7952(00)00047-8.
7. Haque, U.; da Silva, P.F.; Devoli, G.; Pilz, J.; Zhao, B.; Khaloua, A.; Wilopo, W.; Andersen, P.; Lu, P.; Lee, J.; et al. The human cost of global warming: Deadly landslides and their triggers (1995–2014). *Sci. Total Environ.* **2019**, *682*, 673–684, doi:10.1016/j.scitotenv.2019.03.415.
8. Keefer, D.K.; Larsen, M.C. Assessing Landslide Hazards. *Science* **2007**, *316*, 1136–1138.
9. Petley, D.N.; Dunning, S.; Rosser, N.; Hungr, O. The analysis of global landslide risk through the creation of a database of worldwide landslide fatalities. In *Landslide Risk Management*; Hungr, O., Fell, R., Couture, R., Eberhardt, E., Eds.; Balkema Publishers: Rotterdam, The Netherlands, **2005**; pp. 367–374.
10. Schuster, R.L.; Highland, L.M. *Socioeconomic Impacts of Landslides in the Western Hemisphere*; U.S. Geological Survey: Reston, VA, USA, **2001**; p. 47.
11. CRED. Disaster Risk Profile: South East Asia-EM-DAT. The Emergency Events Database—Université catholique de Louvain (UCL). **2018**. Available online: [http://emdat.be/emdat\\_db/](http://emdat.be/emdat_db/) (accessed on 3 September 2020).
12. Vulnerability. Cambridge University Press. **2020**. Available online: <https://dictionary.cambridge.org/dictionary/english/vulnerability> (accessed on 22 February 2020).
13. Smit, B.; Wandel, J. Adaptation, adaptive capacity and vulnerability. *Glob. Environ. Chang.* **2006**, *16*, 282–292, doi:10.1016/j.gloenvcha.2006.03.008.
14. Hufschmidt, G. A comparative analysis of several vulnerability concepts. *Nat. Hazards* **2011**, *58*, 621–643, doi:10.1007/s11069-011-9823-7.
15. Bankoff, G.; Frerks, G.; Hilhorst, D. *Disasters, Development & People*; Routledge: London, UK, **2004**; pp. 1–233.
16. Cutter, S.L.; Boruff, B.J.; Shirley, W.L. Social vulnerability to environmental hazards. *Soc. Sci. Q.* **2003**, *84*, 242–261, doi:10.1111/1540-6237.8402002.
17. IPCC. *Climate Change 2007: Impacts, Adaptation, and Vulnerability*; Contribution of Working Group II to the Fourth Assessment Report of the Intergovernmental Panel on Climate Change; Parry, M.L., Canziani, O.F., Palutikof, J.P., van der Linden, P.J., Hanson, C.E., Eds.; Cambridge University Press: Cambridge, UK, **2007**.
18. Henninger, N. *Mapping and Geographic Analysis of Human Welfare and Poverty Review and Assessment*; World Resources Institute: Washington, DC, USA, **1998**.
19. Idrus, S.; Lim, C.-S.; Hadi, A.-S. Kemudahterancaman (Vulnerability) Penduduk Terhadap Perubahan Guna Tanah di Selangor. *Malays. J. Environ. Manag.* **2005**, *5*, 79–98.
20. O’Keefe, P.; Westgate, K.; Wisner, B. Taking the naturalness out of natural disasters. *Nature* **1976**, *260*, 566–567, doi:10.1038/260566a0.
21. Cutter, S.L. The secret history of natural disaster. *Glob. Environ. Change Part B Environ. Hazards* **2001**, *3*, 29, doi:10.1016/S1464-2867(01)00015-8.

22. IPCC. Summary for Policymakers. In *Managing the Risks of Extreme Events and Disasters to Advance Climate Change Adaptation*; Field, C.B., Barros, V., Stocker, T.F., Qin, D., Dokken, D.J., Ebi, K.L., Mastrandrea, M.D., Mach, K.J., Plattner, G.-K., Allen, S.K., et al.; Eds.; A Special Report of Working Groups I and II of the Intergovernmental Panel on Climate Change; Cambridge University Press: Cambridge, UK; New York, NY, USA, **2012**; pp. 3–21.
23. Roslee, R.; Jamaludin, T.A.; Simon, N. Landslide vulnerability assessment (LVAs): A case study from Kota Kinabalu, Sabah, Malaysia. *Indones. J. Geosci.* **2017**, *4*, 49–59.
24. CIDB. *Guidelines for Landslide Vulnerability Assessment and Risk Analysis for Critical Infrastructure in Malaysia*; CIDB: Kuala Lumpur, Malaysia, **2020**; 54 p.
25. Wisner, B.; Blaikie, P.; Cannon, T.; Davis, I. *At Risk: Natural Hazards, People Vulnerability and Disasters*; 2nd ed.; Routledge: London, UK, **2004**.
26. Mavhura, E.; Manyena, B.; Collins, A.E. An approach for measuring social vulnerability in context: The case of flood hazards in Muzarabani district, Zimbabwe. *Geoforum* **2017**, *86*, 103–117, doi:10.1016/j.geoforum.2017.09.008.
27. Juntunen, L. Addressing social vulnerability to hazards. *Disaster Saf. Rev.* **2006**, *4*, 3–10.
28. Emrich, C.T.; Cutter, S.L. Social vulnerability to climate-sensitive hazards in the Southern United States. *Am. Meteorol. Soc.* **2011**, *3*, 193–208.
29. Cutter, S.L.; Emrich, C.T.; Morath, D.P.; Dunning, C.M. Integrating social vulnerability into federal flood risk management planning. *J. Flood Risk Manag.* **2013**, *6*, 332–344, doi:10.1111/jfr3.12018.
30. Putnam, R.D. *Bowling Alone: Collapse and Revival of the American community*; Simon & Schuster: New York, NY, USA, **2000**.
31. Fekete, A. Social Vulnerability (Re-)Assessment in Context to Natural Hazards: Review of the Usefulness of the Spatial Indicator Approach and Investigations of Validation Demands. *Int. J. Disaster Risk Sci.* **2019**, *10*, 220–232, doi:10.1007/s13753-019-0213-1.
32. Roder, G.; Sofia, G.; Wu, Z.; Tarolli, P. Assessment of Social Vulnerability to Floods in the Floodplain of Northern Italy. *Weather Clim. Soc.* **2017**, *9*, 717–737, doi:10.2307/26389000.
33. Johnson, K. SAMHSA Disaster Technical Assistance Center Supplemental Research Bulletin Greater Impact: How Disasters Affect People of Low Socioeconomic Status. *Phys. Health Health Probl.* **2017**. Available online: [https://www.samhsa.gov/sites/default/files/programs\\_campaigns/dtac/srb-low-ses.pdf](https://www.samhsa.gov/sites/default/files/programs_campaigns/dtac/srb-low-ses.pdf) (accessed on 3 March 2021).
34. Lee, S.; Pradhan, B. Probabilistic landslide hazards and risk mapping on Penang Island, Malaysia. *J. Earth Syst. Sci.* **2006**, *115*, 661–672, doi:10.1007/s12040-006-0004-0.
35. Nhu, V.H.; Mohammadi, A.; Shahabi, H.; Ahmad, B.; Al-Ansari, N.; Shirzadi, A.; Geertsema, M.; Kress, V.R.; Karimzadeh, S.; Kamran, K.V.; et al. Landslide detection and susceptibility modeling on cameron highlands (Malaysia): A comparison between random forest, logistic regression and logistic model tree algorithms. *Forests* **2020**, *11*, 830, doi:10.3390/F11080830.
36. Ohkubo, T.; Tani, M.; Akejima, I.; Takahashi, S.; Yamakura, T.; Itoh, A.; Kanzaki, M.; Lee, H.S.; Ashton, P.S.; Ogino, K. Spatial pattern of landslides due to heavy rains in a mixed Dipterocarp forest, North-Western Borneo. *Tropics* **2007**, *16*, 59–70, doi:10.3759/tropics.16.59.
37. Sharir, K.; Roslee, R.; Ern, L.K.; Simon, N. Landslide Factors and susceptibility mapping on natural and artificial slopes in Kundasang, Sabah. *Sains Malays.* **2017**, *46*, 1531–1540, doi:10.17576/jsm-2017-4609-23.
38. Yusof, N.M.; Pradhan, B. Landslide susceptibility mapping along PLUS expressways in Malaysia using probabilistic based model in GIS. *IOP Conf. Ser. Earth Environ. Sci.* **2014**, *20*, doi:10.1088/1755-1315/20/1/012031.
39. Ya'Acob, N.; Tajudin, N.; Yusof, A.L.; Ali, D.M.; Sarnin, S.S. Rainfall thresholds for possible landslide occurrence in Ulu Kelang, Selangor, Malaysia using TRMM satellite precipitation estimates. *IOP Conf. Ser. Earth Environ. Sci.* **2018**, *169*, doi:10.1088/1755-1315/169/1/012112.

40. Alnaimat, A.; Choy, L.K.; Jaafar, M. An Assessment of Current Practices on Landslides Risk Management: A Case of Kuala Lumpur Territory. *Geogr. Malays. J. Soc. Space* **2017**, *13*, 1–12.
41. Mollae, S.; Pirasteh, S.; Ramli, M.F.; Rizvi, S.M.A. Identifying effecting factors and landslide mapping of cameron highland Malaysia. In Proceedings of the 2013 5th International Conference on Geo-Information Technologies for Natural Disaster Management, GiT4NDM **2013**, Mississauga, ON, Canada, 9–11 October 2013; pp. 73–83, doi:10.1109/GIT4NDM.2013.11.
42. Qasim, S.; Osman, S.B.S. Causal factors of Malaysian landslides: A narrative study. *Res. J. Appl. Sci. Eng. Technol.* **2013**, *5*, 2303–2308, doi:10.19026/rjaset.5.4656.
43. Sulaiman, M.S.; Nazaruddin, A.; Salleh, N.M.; Abidin, R.Z.; Miniandi, N.D.; Yusoff, A.H. Landslide occurrences in Malaysia based on soil series and lithology factors. *Int. J. Adv. Sci. Technol.* **2019**, *28*, 1–26.
44. CFE-DHMA. *Malaysia: Disaster Management Reference Handbook, Center for Excellence in Disaster Management and Humanitarian Assistance*; Pearl Harbour-Hickam: Hawaii, HI, USA, **2019**; 95p.
45. Jamaluddin, S.; Abd Aziz, J. Fitting Daily Rainfall Amount in Malaysia Using the Normal Transform Distribution. *J. Appl. Sci.* **2007**, *7*, 1880–1886.
46. Muhammad, N.S.; Julien, P.Y.; Salas, J.D. Probability structure and return period of multiday monsoon rainfall. *J. Hydrol. Eng.* **2016**, *21*, 04015048.
47. Dou, J.; Tien Bui, D.; Yunus, A.P.; Jia, K.; Song, X.; Revhaug, I. Optimization of causative factors for landslide susceptibility evaluation using remote sensing and GIS data in parts of Niigata, Japan. *PLoS ONE* **2015**, *10*, e0133262.
48. Sim, L.L.; Adrian, C.; Trisha, N. Malaysia among Countries Especially Prone to Landslides. 4 December **2018**. Available online: [https://www.thestar.com.my/news/nation/2018/12/04/msia-ranks-highly-for-landslides-country-experienced-185-occurrences-annually-in-past-10-years#:~:text=According%20to%20data%20from%20the,%20and%20China%20\(426\)](https://www.thestar.com.my/news/nation/2018/12/04/msia-ranks-highly-for-landslides-country-experienced-185-occurrences-annually-in-past-10-years#:~:text=According%20to%20data%20from%20the,%20and%20China%20(426)) (accessed on 27 February 2021).
49. Prevention Web Malaysia. Disaster Risk Reduction is Everyone’s Business. Dr Khamarrul Azahari Razak, UTM Geohazards Leader. 2 May **2019**. Available online: <https://www.preventionweb.net/news/view/65076> (accessed on 7 September 2020).
50. Rahman, H.; Mapjabil, J. Landslides disaster in Malaysia: An overview. *Health* **2017**, *8*, 58–71.
51. Majid, N.; Taha, M.; Selamat, S. Historical landslide events in Malaysia 1993–2019. *Indian J. Sci. Technol.* **2020**, *13*, 3387–3399.
52. Saadatkhah, N.; Kassim, A.; Lee, M. Spatial patterns of precipitation, altitude and monsoon directions in Hulu Kelang area, Malaysia. *EJGE C* **2014**, *19*, 521–534.
53. Syah Hairizal Kamalul Arifin. Dua Rumah Terlibat Tanah Runtuh di Lereng Bukit di Papar. 10 November **2020**. Available online: <https://www.astroawani.com/berita-malaysia/dua-rumah-terlibat-tanah-runtuh-di-lereng-bukit-di-papar-267692> (accessed on 18 February 2021).
54. Bernama. Police: 13 Vehicles Trapped by Fraser’s Hill landslides, No Injuries. 3 January **2021**. Available online: <https://www.thestar.com.my/news/nation/2021/01/03/police-13-vehicles-trapped-by-fraser039s-hill-landslides-no-injuries> (accessed on 19 February 2021).
55. Nik Nur Izzatul Hazawani Nik Adnan. Tanah Runtuh, Kedai di Medan Selera Geliga Dihempap Bongkah Batu. 4 January **2021**. Available online: <https://www.utusan.com.my/nasional/2021/01/tanah-runtuh-kedai-di-medan-selera-geliga-dihempap-bongkah-batu/> (accessed on 18 February 2021).
56. Bernama. Hujan Lebat Punca Tanah Runtuh di JRTB. 7 January **2021**. Available online: <https://www.astroawani.com/berita-malaysia/hujan-lebat-punca-tanah-runtuh-di-jrtb-276444> (accessed on 18 February 2021).

57. Khairul Mohd Ali. 42 Penduduk Kosongkan Rumah Ekoran Tanah Runtuh. Utusan Malaysia Online. 11 January **2021**. Available online: <https://www.utusan.com.my/berita/2021/01/42-penduduk-kosongkan-rumah-ekoran-tanah-runtuh/> (accessed on 18 February 2021).
58. Bernama. Jalan Bukit Fraser-Raub Ditutup. 16 January **2021**. Available online: <https://www.hmetro.com.my/mutakhir/2021/01/664819/jalan-bukit-fraser-raub-ditutup> (accessed on 18 January 2021).
59. Bernama. Banjir Sabah: 25 Jalan Terjejas, 10 Kejadian Tanah Runtuh. 9 February **2021**. Available online: <https://www.sinarharian.com.my/article/119525/BERITA/Semasa/Banjir-Sabah-25-jalan-terjejas-10-kejadian-tanah-runtuh> (accessed on 18 February 2021).
60. Bernama. Women Saves Four Grandchildren as House Collapses during Landslides in Padawan, Sarawak. 13 January **2021**. Available online: <https://www.thestar.com.my/news/nation/2021/01/13/woman-saves-four-grandchildren-as-house-collapses-during-landslide-in-padawan-sarawak> (accessed on 19 February 2021).
61. Abdul Rahman, H. An overview of environmental disaster in Malaysia and preparedness strategies. *Iran. J. Public Health* **2014**, *43*, 17–24.
62. Ahmad, J.; Lateh, H.; Saleh, S. Landslide hazards: Household vulnerability, resilience and coping in Malaysia. *J. Educ. Hum. Dev.* **2014**, *3*, 149–155.
63. Sun, X.; Chen, J.; Han, X.; Bao, Y.; Zhan, J.; Peng, W. Application of a GIS-based slope unit method for landslide susceptibility mapping along the rapidly uplifting section of the upper Jinsha River, South-Western China. *Bull. Eng. Geol. Environ.* **2020**, *79*, 533–549.
64. Soma, A.S.; Kubota, T. The Performance of Land Use Change Causative Factor on Landslide Susceptibility Map in Upper Ujung-Loe Watersheds South Sulawesi, Indonesia. *Geoplanning J. Geomat. Plan.* **2017**, *4*, 157–157, doi:10.14710/geoplanning.4.2.157-170.
65. Mukhlisin, M.; Semarang, P.N.; Nizam, K.; Maulud, A.; Taha, M.R.; Water, S.; Using, R.; Pivot, C. GIS Based Landslide Hazard Mapping Prediction in Ulu Klang, Malaysia. *ITB Sci. J. A* **2010**, *42*, 163–178, doi:10.5614/itbj.sci.2010.42.2.7.
66. Pradhan, B.; Youssef, A.M. Manifestation of remote sensing data and GIS on landslide hazard analysis using spatial-based statistical models. *Arab. J. Geosci.* **2010**, *3*, 319–326, doi:10.1007/s12517-009-0089-2.
67. Abdullah, C.H. Landslide risk management in Malaysia. *Disaster Manag. Hum. Health Risk III* **2013**, *133*, 255–265, doi:10.2495/DMAN130231.
68. Ministry of Housing and Local Government. Corporate Communications Unit, Kuala Lumpur. **2009**. Available online: [https://www.kpkt.gov.my/resources/index/user\\_1/siaran\\_media/ogos/SIARAN\\_AKHBAR\\_Garis\\_Panduan\\_Tanah\\_Tinggi09.pdf](https://www.kpkt.gov.my/resources/index/user_1/siaran_media/ogos/SIARAN_AKHBAR_Garis_Panduan_Tanah_Tinggi09.pdf) (accessed on 30 December 2020).
69. Shaluf, I.M.; Ahmadun, F.R. Disaster types in Malaysia: An overview. *Disaster Prev. Manag. Int. J.* **2006**, *15*, 286–298, doi:10.1108/09653560610659838.
70. Elmahdy, S.I.; Mostafa, M.M. Natural hazards susceptibility mapping in Kuala Lumpur, Malaysia: An assessment using remote sensing and geographic information system (GIS). *Geomat. Nat. Hazards Risk.* **2013**, *4*, 71–91, doi:10.1080/19475705.2012.6907823.
71. Jamaludin, S.; Hussein, A.N. Landslide hazard and risk assessment: The Malaysian experience. *IAEG* **2006**, *455*, 1–10.
72. Mohamed Shaffril, H.A.; Samah, A.A.; Samsuddin, S.F.; Ali, Z. Mirror-mirror on the wall, what climate change adaptation strategies are practiced by the Asian's fishermen of all? *J. Clean. Prod.* **2019**, *232*, 104–117, doi:10.1016/j.jclepro.2019.05.262.
73. Martín-Martín, A.; Orduna-Malea, E.; Thelwall, M.; López-Cózar, E.D. Google scholar, web of science, and scopus: A systematic comparison of citations in 252 subject categories. *J. Informetr.* **2018**, *12*, 1160–1177.

74. Moher, D.; Liberati, A.; Tetzlaff, J.; Altman, D.G. The Prisma Group. Preferred reporting items for systematic reviews and meta-analyses: The PRISMA statement. *PLoS Med.* **2009**, *6*, e1000097, doi:10.1371/journal.pmed1000097.
75. Aksha, S.K.; Juran, L.; Resler, L.M.; Zhang, Y. An analysis of social vulnerability to natural hazards in Nepal using a modified social vulnerability index. *Int. J. Disaster Risk Sci.* **2019**, *10*, 103–116.
76. Aksha, S.K.; Resler, L.M.; Juran, L.; Carstensen, L.W., Jr. A geospatial analysis of multi-hazard risk in Dharan, Nepal. *Geomat. Nat. Hazards Risk* **2020**, *11*, 88–111.
77. Guillard-Gonçalves, C.; Cutter, S.L.; Emrich, C.T.; Zêzere, J.L. Application of Social Vulnerability Index (SoVI) and delineation of natural risk zones in Greater Lisbon, Portugal. *J. Risk Res.* **2015**, *18*, 651–674.
78. Kantamaneni, K. Evaluation of social vulnerability to natural hazards: A case of Barton on Sea, England. *Arab. J. Geosci.* **2019**, *12*, 1–11.
79. Frigerio, I.; Amicis, M.D. Mapping social vulnerability to natural hazards in Italy: A suitable tool for risk mitigation strategies. *Environ. Sci. Policy* **2016**, *6*, 187–196.
80. Qasim, S.; Qasim, M.; Shrestha, R.P.; Khan, N. Socioeconomic determinants of landslide risk perception in Murree hills of Pakistan. *Aims Environ. Sci.* **2018**, *5*, 305–314.
81. Kumar, D.; Bhattacharjya, R.K. Study of integrated social vulnerability index SoVIint of hilly region of Uttarakhand, India. *Environ. Clim. Technol.* **2020**, *24*, 105–122.
82. Zeng, J.; Zhu, Z.Y.; Zhang, J.L.; Ouyang, T.P.; Qiu, S.F.; Zou, Y.; Zeng, T. Social vulnerability assessment of natural hazards on county-scale using high spatial resolution satellite imagery: A case study in the Lougang district of Guangzhou, South China. *Environ. Earth Sci.* **2012**, *65*, 173–182.
83. Wijaya, A.P.; Hong, J.H. Quantitative assessment of social vulnerability for landslide disaster risk reduction using GIS approach. *Int. Arch. Photogramm. Remote Sens. Spat. Inf. Sci.* **2018**, *XLII*, 703-709.
84. Blaikie, P.; Canon, T.; Davis, I.; Wisner, B. *At Risk: Natural Hazards People's Vulnerability and Disasters*; Routledge: London, UK, **1994**.
85. Elstad, J.L. Inequalities in health related to women's marital, parental, and employment status: A comparison between the early 70s and the late 80s, Norway. *Soc. Sci. Med.* **1996**, *42*, 75–89.
86. Bolin, B. Race, Class, Ethnicity, and Disaster Vulnerability. In *Handbook of Disaster Research. Handbooks of Sociology and Social Research*; Springer: New York, NY, USA, **2007**, doi:10.1007/978-0-387-32353-4\_7.
87. Winant, H. *The World Is a Ghetto. Basic Books*; Latin American Faculty of Social Sciences Ecuador Headquarters–FLACSO: New York, NY, USA, **2001**.
88. World Health Organization. Disability. **2021**. Available online: [https://www.who.int/health-topics/disability#tab=tab\\_1](https://www.who.int/health-topics/disability#tab=tab_1) (accessed on 29 January 2021).
89. Castro, C.-P.; Sarmiento, J.-P.; Edwards, R.; Hoberman, G.; Wyndham, K. Disaster risk perception in urban contexts and for people with disabilities: Case study on the city of Iquique (Chile). *Nat. Hazards* **2017**, *86*, 411–436, doi:10.1007/s11069-016-2698-x.
90. Pourhosseini, S.S.; Ardalan, A.; Mehroolhassani, M.H. Key Aspects of Providing Healthcare Services in Disaster Response Stage. *Iran. J. Public Health* **2015**, *44*, 111–118.
91. Syahrir, I.; Vanany, I. Healthcare and Disaster Supply Chain: Literature Review and Future Research. *Procedia Manuf.* **2015**, *4*, 2–9, doi:10.1016/j.promfg.2015.11.007.
92. Nurul Ashikin, A.; Nor Diana, M.I.; Siwar, C.; Alam, M.M.; Yasar, M. Community Preparation and Vulnerability Indices for Floods in Pahang State of Malaysia. *Land* **2021**, *10*, 198, doi:10.3390/land10020198.
93. Dehghani Pour, M.; Barati, A.A.; Azadi, H.; Scheffran, J. Revealing the role of livelihood assets in livelihood strategies: Towards enhancing conservation and livelihood development in

- the Hara Biosphere Reserve, Iran. *Ecol. Indic.* **2018**, *94*, 336–347, doi:10.1016/j.ecolind.2018.05.074.
94. Singgalen, Y.A.; Sasongko, G.; Wiloso, P.G. Community participation in regional tourism development: A case study in North Halmahera Regency—Indonesia. *Insights Reg. Dev.* **2019**, *1*, 318–333, doi:10.9770/ird.2019.1.4(3).
  95. Po, J.Y.T.; Hickey, G.M. Cross-scale relationships between social capital and women’s participation in decision-making on the farm: A multilevel study in semi-arid Kenya. *J. Rural Stud.* **2020**, *78*, 333–349, doi:10.1016/j.jrurstud.2020.04.024.
  96. Kumar, A.; Cabral-Pinto, M.; Kumar, A.; Kumar, M.; Dinis, P.A. Estimation of Risk to the Eco-Environment and Human Health of Using Heavy Metals in the Uttarakhand Himalaya, India. *Appl. Sci.* **2020**, *10*, 7078. <https://doi.org/10.3390/app10207078>.
  97. Kumar, A., Mishra, S., Kumar, A., Singhal, S. **2017**. Environmental quantification of soil elements in the catchment of hydroelectric reservoirs in India. *Human and Ecological Risk Assessment: An International Journal*, *23* (5), 1202-1218.
  98. Majid, N.A.; Nazi, N.M.; Idris ND, M.; Taha, M.R. GIS-based livelihood vulnerability index mapping of the socioeconomy of the Pekan community. *Sustainability* **2019**, *11*, 6935, doi:10.3390/SU11246935.
  99. Nor Diana, M.I.; Chamburi, S.; Mohd Raihan, T.; Nurul Ashikin, A. Assessing local vulnerability to climate change by using Livelihood Vulnerability Index: Case study in Pahang region, Malaysia. *IOP Conf. Ser. Mater. Sci. Eng.* **2019**, *506*, doi:10.1088/1757-899X/506/1/012059.
  100. Kumar, A.; Kumar, A.; M.M.S., C.-P.; Chaturvedi, A.K.; Shabnam, A.A.; Subrahmanyam, G.; Mondal, R.; Gupta, D.K.; Malyan, S.K.; Kumar, S.S.; A. Khan, S.; Yadav, K.K. Lead Toxicity: Health Hazards, Influence on Food Chain, and Sustainable Remediation Approaches. *Int. J. Environ. Res. Public Health* **2020**, *17*, 2179. <https://doi.org/10.3390/ijerph17072179>