



HAL
open science

Assessing the impact of climate variation on survival in vertebrate populations

Vladimir Grosbois, J.-M. Gaillard, Roger Pradel, C. Barbraud, J. Clobert, A. Møller, H. Weimerskirch, Olivier Gimenez

► To cite this version:

Vladimir Grosbois, J.-M. Gaillard, Roger Pradel, C. Barbraud, J. Clobert, et al.. Assessing the impact of climate variation on survival in vertebrate populations. *Biological Reviews*, 2008, 83 (3), pp.357-399. <10.1111/j.1469-185X.2008.00047.x>. <hal-03515165>

HAL Id: hal-03515165

<https://hal.science/hal-03515165v1>

Submitted on 6 Jan 2022

HAL is a multi-disciplinary open access archive for the deposit and dissemination of scientific research documents, whether they are published or not. The documents may come from teaching and research institutions in France or abroad, or from public or private research centers.

L'archive ouverte pluridisciplinaire **HAL**, est destinée au dépôt et à la diffusion de documents scientifiques de niveau recherche, publiés ou non, émanant des établissements d'enseignement et de recherche français ou étrangers, des laboratoires publics ou privés.



HAL Authorization

Assessing the impact of climate variation on survival in vertebrate populations

Grosbois V.^{1,2*}, Gimenez O.^{1,3}, Gaillard, J.-M.², Pradel, R.¹, Barbraud, C.⁴, Clobert, J.⁵,
Møller, A. P.⁶ and Weimerskirch, H.⁴

¹*Centre d'Ecologie Fonctionnelle et Evolutive, UMR 5175, 1919 Route de Mende, F-34293 Montpellier Cedex 5, France ;*

²*Laboratoire Biométrie et Biologie Evolutive, UMR 5558, Bat. 711. Université Claude Bernard Lyon 1, 43 Boulevard du 11 novembre 1918, F-69622 Villeurbanne Cedex, France ;*

³*University of St Andrews, the Observatory, Buchanan Gardens, St Andrews, FIFE, Scotland, KY16 9LZ.*

⁴*Centre d'Etude Biologique de Chizé, CNRS UPR 1934, F-79360 Villiers en Bois, France ;*

⁵*Laboratoire Evolution et Diversité Biologique, Station Biologique du CNRS a Moulis, Moulis, F-09200 Saint-Girons, France;*

⁶*Laboratoire de Parasitologie Evolutive, CNRS UMR 7103, Université Pierre et Marie Curie, Bâtiment A, 7ème étage, 7 quai St. Bernard, Case 237, F-75252 Paris Cedex 05, France ;*

Author for correspondence at address 2: Tel: 0033 (0)4 72 44 81 70; Fax: 0033 (0)4 72 43 13 88; E-mail: vladimirgrosbois@hotmail.com

Received 13 February 2007; revised 8 April 2008

ABSTRACT

The impact of the ongoing rapid climate change on natural systems is a major issue for human societies. An important challenge for ecologists is to identify the climatic factors that drive temporal variation in demographic parameters, and, ultimately, the dynamics of natural populations. The analysis of long-term monitoring data at the individual scale is often the only available approach to estimate reliably demographic parameters of vertebrate populations. We review statistical procedures used in these analyses to study links between climatic factors and survival variation in vertebrate populations.

We evaluated the efficiency of various statistical procedures from an analysis of survival in a population of white stork, *Ciconia ciconia*, a simulation study and a critical review of 78 papers published in the ecological literature. We identified six potential methodological problems: (i) the use of statistical models that are not well-suited to the analysis of long-term monitoring data collected at the individual scale; (ii) low ratios of number of statistical units to number of candidate climatic covariates; (iii) collinearity among candidate climatic covariates; (iv) the use of statistics, to assess statistical support for climatic covariates effects, that deal poorly with unexplained variation in survival; (v) spurious detection of effects due to the co-occurrence of trends in survival and the climatic covariate time series; and (vi) assessment of the magnitude of climatic effects on survival using measures that cannot be compared across case studies. The critical review of the ecological literature revealed that five of these six methodological problems were often poorly tackled. As a consequence we concluded that many of these studies generated hypotheses but only few did provided solid evidence for impacts of climatic factors on survival or reliable measures of the magnitude of such impacts.

We provide practical advice to solve efficiently most of the methodological problems identified. The only frequent issue that still lacks a straightforward solution was the low ratio of the number of statistical units to the number of candidate climatic covariates. In the perspective of increasing this ratio and therefore of producing more robust analyses of the links between climate and demography, we suggest leads to improve the procedures for designing field protocols and selecting a set of candidate climatic covariates. Finally, we present recent statistical methods with potential interest for assessing the impact of climatic factors on demographic parameters.

Key words: Bayesian modelling, birds, capture-mark-recapture, demography, effect size, information theory, statistics, mortality, mammals, null hypothesis testing, weather.

CONTENTS

I. Introduction

II. Objectives of investigations of climatic impacts on vertebrate survival

III. Data characteristics

(1) Survival estimated from encounter histories

(2) Climatic covariates

IV. Procedures for assessing the potential impact of climatic factors on survival

(1) Defining structural reference models

(2) Building models relating survival to climatic factors

(3) Measuring statistical support for the effect of climatic factors

(a) The null hypothesis testing approach

(i) Conceptual framework

(ii) Setting the α -level

(iii) The multiple test issue

(iv) Test statistics derived from fixed-effects models

(v) Test statistics derived from mixed-effects models

(b) Information-theoretic approach

(i) Conceptual framework

(ii) Criteria for identifying influential climatic factors

(c) Bayesian approach

(i) Conceptual framework

(ii) Criteria for identifying influential climatic factors

(d) Detecting influential climatic factors in the presence of temporal trends

(4) Performances of distinct statistical approaches for detecting potentially influential climatic factors from statistical support: a simulation study

(a) Methods

(b) Results

(c) Conclusions

(5) Measuring the magnitude of the effects of climatic factors

(a) Fraction of temporal variation accounted for by climatic factors

(b) Slopes

(c) Measures of magnitude for comparative studies

(6) Impact of climatic factors on white stork survival: conclusions

V. Discussion

(1) The limits of observational studies of impacts of climatic factors on vertebrate survival

(2) Improvement of the balance between the number of statistical units and the number of candidate climatic factors

(a) Field protocol design

(b) Selection of data sets used for documenting survival variation

(c) Selection of a set of climatic factors

(3) Better exploitation of statistical tools

(a) *A priori* power analyses

(b) Integrated modelling

(c) Cross validation

(d) Tools for addressing complex causal pathways

(e) Multi-model inference

(f) IT selection criterion for models including random effects

(g) Incorporation of prior knowledge

VI. CONCLUSIONS
VII. ACKNOWLEDGEMENTS
VIII. APPENDICES
 (1) Case studies
 (2) Bayesian modelling
IX. REFERENCES

I. INTRODUCTION

The modifications of natural systems induced by the ongoing climate change is a major issue for human societies (Easterling *et al.*, 2000; Clark *et al.*, 2001; Hulme, 2005; King, 2005; Schlesinger, 2006; IPCC, 2007). Empirical investigations of the influences of climate change during the 20th Century on extinction rates (Thomas *et al.*, 2004; Thomas, Franco & Hill, 2006), range shifts (Harrington, Woiwod & Sparks, 1999; Parmesan & Yohe, 2003; Hays, Richardson & Robinson, 2005; Thomas *et al.*, 2006), population dynamics (Balmford, Green & Jenkins, 2003; Forsman & Mönkkönen, 2003) and ecosystem functioning (Smith *et al.*, 1999; Doran *et al.*, 2002; Peñuelas, Filella & Comas, 2002; Hays *et al.*, 2005) have developed rapidly over the last 10 years and have revealed important impacts on natural systems (Walther *et al.*, 2002; Parmesan & Yohe, 2003; Böhning-Gaese & Lemoine, 2004; Hays *et al.*, 2005; Parmesan, 2006).

Under realistic socio-economic scenarios, global warming will go on, possibly at a faster pace, at least until the end of the 21st Century and will result in dramatic changes in all regional climates (Easterling *et al.*, 2000; IPCC, 2007). A major challenge for ecologists is the development of models to predict the resulting changes in species ranges and extinction risks (Clark *et al.*, 2001; Hulme, 2005; Sutherland, 2006; Jetz, Wilcove & Dobson, 2007). Until now, most predictive models have relied on a phenomenological (*i.e.* non-mechanistic) approach where the future range of a species is defined as the area(s) where climatic conditions in the future, as predicted by climate models, are similar to those prevailing in the current range of the species (Peterson *et al.*, 2002; Thomas *et al.*, 2004; Guisan & Thuiller, 2005; Hartley, Harris & Lester, 2006). However, models that explicitly integrate the processes through which climate influences population dynamics would be much more informative (Sæther, Sutherland & Engen, 2004; Hulme, 2005; Sutherland, 2006). Process-based models have already been developed for predicting the future state of the vegetation component in

terrestrial ecosystems (Kleidon & Mooney, 2000; Chuine & Beaubien, 2001; Guisan & Thuiller, 2005; Moorcroft, 2006). To our knowledge there has yet been no attempt to build range prediction models based on processes for vertebrate species. A prerequisite for their development is to achieve an understanding of the influence of climatic factors on temporal variation of the demographic parameters underlying population dynamics (Coulson *et al.*, 2001; Jenouvrier, Barbraud & Weimerskirch, 2003; Dunn, 2004; Møller & Merilä, 2004; Sæther *et al.*, 2004; Ludwig *et al.* 2006; Sutherland, 2006).

Long-term monitoring data collected at the individual scale, mainly using capture-mark-recapture (CMR) sampling either of live (Clobert, Lebreton & Allainé, 1987; Lebreton *et al.*, 1992; Sandercock, 2006) or dead individuals (Brownie *et al.*, 1985), contain information on most demographic parameters: survival (Lebreton *et al.*, 1992), transitions among reproductive states (Nichols, 1994; Viallefont, Cooke & Lebreton, 1995; Cam *et al.*, 1998), dispersal rates among study sites (Arnason, 1973; Brownie *et al.*, 1993; Schwarz, Schweigert & Arnason, 1993), recruitment rate of new breeders into a population (Clobert *et al.*, 1994; Pradel, 1996; Pradel & Lebreton, 1999, Nichols *et al.*, 2000), and frequency of reproduction in species with intermittent breeding (Cam *et al.*, 1998). Analysis of such data is an efficient, and often the only available, approach to estimate reliably demographic parameters in free-living animal populations (Nichols, 1992).

The aim of the present work is to review statistical procedures to address the impact of variation in climatic factors on survival of vertebrates through the analysis of monitoring data collected at the individual scale. We specifically focus on procedures aiming at (i) detecting relationships between patterns of temporal variation in survival and in climatic covariates; (ii). evaluating the chance that such relationships result from pure coincidence or from genuine impacts of climatic factors on survival (*i.e.* evaluating statistical support); (iii) evaluating the impact of temporal variation in climatic factors on survival in the time period

covered by the empirical data in hand (*i.e.* evaluating effect sizes). The statistical tools involved are regression-like models that in their basic form are routinely employed in ecological and evolutionary studies (Mitchell-Olds & Shaw, 1987; Sokal & Rohlf, 1995). However, their correct use is context-dependent. Relating variation in survival estimated from CMR data to variation in climatic factors implies avoiding a number of pitfalls that arise from the characteristics of these two types of data. Beyond the description of the procedures we thus aim to identify potential problems encountered in studies of climate impacts on survival and to provide practical advice to solve efficiently these problems.

We first present the objectives pursued in studies assessing the link between survival and climatic factors in vertebrate populations. Second, we summarize the properties of CMR and climatic data that must be carefully considered in order to carry out robust statistical analyses. Third, we present the main types of regression models and associated statistics that can be used to explore reliably the relationships between climatic factors and survival. In this section, results obtained from a simulation study are used to evaluate the performance of alternative procedures to assess statistical support. Fourth, we provide advice both for designing field protocols to collect survival data and for selecting sets of candidate climatic covariates. Finally, we present existing but seldom applied or recent statistical methods with potential interest for assessing the impact of climate change on demographic parameters.

Throughout the paper, the revisitation of an investigation by Kanyambwa *et al.* (1990) of the relationship between climatic factors and adult survival of white storks *Ciconia ciconia* breeding in Baden-Württemberg (Germany), and a critical review of 78 papers published from 1985 to 2006 included in ecological journals referenced in Current Contents are used for illustrative purposes. These papers that address, through analyses of monitoring data at the individual scale, the influence of climatic factors on the survival of any age class in free-ranging vertebrate were gathered from our personal bibliographical databases, and in the

course of our routine survey of the literature. Although this survey of the ecological literature is neither exhaustive nor based on rigorous bibliographical methods; it certainly constitutes a large and representative sample of the articles treating our focal subject. We evaluated this reviewed literature globally, and referred to particular studies only when they illustrated proper use of statistical methods. The 78 reviewed papers are listed in Appendix 1 which summarizes the evaluation for each paper of potential pitfalls in the analysis. We hereafter refer to this set of reviewed papers as ESR (*i.e.* ecological studies reviewed). In all the ESR, as well as in all the analyses presented, correlations between climatic factors and survival were addressed. However, the methodological problems identified and the advice expressed here are relevant to investigations of relationships between climatic factors and any demographic parameter that can be estimated through the analysis of monitoring data collected at the individual scale.

II. OBJECTIVES OF INVESTIGATIONS OF CLIMATIC IMPACTS ON VERTEBRATE SURVIVAL

In the present paper, we focus on the statistical modelling of monitoring data at the individual scale that aims ultimately at describing in the form of mathematical models the mechanisms through which climatic and other environmental and intrinsic factors generate temporal variation in survival in a focal vertebrate population (Burnham & Anderson, 2002; Ginzburg & Jensen, 2004; Johnson & Omland, 2004; Hobbs & Hilborn, 2006; Stephens, Buskirk & del Rio, 2007). Such mathematical models can then be used to evaluate the relative importance of these various factors as drivers of temporal variation in survival and to predict the impacts of changes in the distribution (mean and variance) of these factors on survival. However, the possibility of reaching these objectives depends to a large extent on the quantity

and quality of the information available on the processes generating temporal variation in survival prior to the initiation of the statistical analysis.

In roughly half of the 78 ESR, prior knowledge of the study system seemed good enough for the investigators to define *a priori* a limited set (*i.e.* less than five) of environmental (including climatic) candidate covariates that included the main drivers of temporal variation in survival (*i.e.* at least one of the models considered turned out to account for most of the variation in survival). In such situations, it is possible to evaluate the relative weight of evidence in the data for a limited number of models depicting *a priori* well-founded competing hypotheses about the processes through which temporal variation in climatic factors and other drivers induce temporal variation in survival (Burnham & Anderson, 2002; Johnson & Omland, 2004; Hobbs & Hilborn, 2006; Stephens *et al.*, 2007). Furthermore, it is possible to assess the relative importance of various drivers of variation in survival and to build predictive models with methods that account for uncertainty about processes when more than one model is strongly supported by the data (Burnham & Anderson 2002; Hobbs & Hilborn, 2006; Johnson & Omland, 2004; Stephens *et al.*, 2007). We will not focus on this type of situation because the relevant concepts and procedures have recently been described in detail (see Burnham & Anderson, 2002 for a full treatment).

In the case of white storks breeding in Baden-Württemberg, little prior information is available on the processes generating temporal variation in survival. For instance, the causes of death are unknown, and so are the time of year when the highest mortality occurs and the relative importance of alternative food resources and climatic factors likely to influence the availability of these resources. Prior knowledge is limited to a series of demographic patterns reported in this and other Western European white stork populations. Like all Western European white stork populations, the studied population has declined sharply from the 1960s to the 1990s (Kanyamibwa *et al.*, 1990). These declines have motivated investigations of the

relative impact of climate variation in the wintering areas and on the breeding grounds on white stork population dynamics (Kanyamibwa *et al.*, 1990; Schaub, Kania & Köppen, 2005; Sæther *et al.*, 2006). While the white stork population collapsed, the Sahel region experienced severe droughts (Grist & Nicholson, 2001). As for several other bird species wintering in Western Africa (Cavé, 1983; Peach, Baillie & Underhill, 1991; Cowley & Siriwardena, 2005), a relationship between rainfall in the Sahel and adult survival of white storks has been detected (Kanyamibwa *et al.*, 1990; Barbraud, Barbraud & Barbraud, 1999). Furthermore, indications have also been obtained that local climate in breeding areas could influence the demography of Western European white stork populations (Schaub *et al.*, 2005; Sæther *et al.*, 2006). Based on this limited knowledge, many climatic factors can be considered as potential covariates of adult survival of storks. In addition, the shape of the relationship linking these potential climatic covariates to survival remains to be identified. Although most studies focused on linear relationships, quadratic relationships could occur if white storks perform best under average climatic conditions. The white stork survival is an exploratory analysis in which a set of potentially influential covariates is considered rather than a study that would allow challenging cautiously designed research hypotheses on the processes (including climatic forcing) that generate temporal variation in survival (Anderson & Burnham, 2002; Robinson & Wainer, 2002; Guthery *et al.*, 2005; Stephens *et al.*, 2005; Stephens *et al.*, 2007). Our proximate aims are thus to detect relationships between patterns of temporal variation in survival and in candidate climatic covariates; to evaluate the chance that such relationships result from pure coincidence or from genuine impacts of climatic factors on survival (*i.e.* to evaluate statistical support); and to quantify, under the hypothesis of genuine effects, the impact of temporal variation in climatic factors on survival within the time period covered by the available data (*i.e.* to assess the potential biological significance). Ultimately, this type of study can help to generate hypotheses on the processes underlying the influence of climatic

factors on survival (Robinson & Wainer, 2002; Guthery *et al.*, 2005; Stephens *et al.*, 2005; Stephens *et al.*, 2007). However, further evaluation of these hypotheses would imply either specifically designed experiments or analyses of independent data sets (Robinson & Wainer, 2002; Roback & Askins, 2005; Link & Barker, 2006). In roughly half of the 78 ESR the investigators could not restrict the set of potential drivers of temporal variation in survival to less than five candidate covariates and/or failed to define a model that accounted for most of the temporal variation in survival. In the present paper, we emphasize the numerous and often poorly addressed issues arising in such exploratory studies. However, most of these issues are also relevant to situations where prior knowledge of the study system is good enough for confronting competing hypotheses about processes.

III. DATA CHARACTERISTICS

(1) Survival estimated from encounter histories

In a minority of the ESR (five out of 78), the field protocol consisted of nearly continuous monitoring of individuals by radio-tracking, and the information used in the analysis was the date of death. We will not present the statistical models for the analysis of such data but refer the reader to the excellent overview of the models and procedures for analysing continuous individual monitoring data provided in Murray (2006). In the majority (73 out of 78) of the ESR as well as in the Baden-Württemberg white stork population, one encounter history for each individual summarized the outcome (detected/not detected) of discrete capture occasions. Survival of white storks was thus estimated using specific statistical methods (hereafter referred to as CMR methods) in which the likelihood of the encounter histories of 321 individuals ringed as chicks and resighted at least once as adults was expressed as a function of survival and detection probabilities (Lebreton *et al.*, 1992; Nichols, 1992; Williams, Nichols & Conroy, 2002; Sandercock, 2006). This type of model must be used

whenever the probability of detection of marked individuals is lower than 1. Statistical procedures that do not account for the probability that a marked individual remains undetected were used in only seven out of the 65 ESR relying on the analysis of CMR data.

Since survival is not measured directly in CMR studies, the value of a given survival probability is almost never known with certainty (survival estimates and associated confidence intervals for the white storks are displayed in Fig. 1) and the precision with which it is estimated has to be accounted for when investigating the factors underlying its variation (Clobert & Lebreton, 1985). In only nine of the 78 ESR, was the precision of survival estimates ignored. Furthermore, survival and/or detection probabilities can vary among the individuals sampled. Heterogeneity among individuals in survival and/or detection probabilities can lead to biased survival estimates (Carothers, 1973, 1979; Buckland, 1982; Prévot-Julliard, Lebreton & Pradel, 1998; Pledger, Pollock & Norris, 2003). For instance, heterogeneity in detection probability can lead to underestimated survival, especially towards the end of the time series (Carothers, 1973, 1979) and can thus generate spurious temporal trends in survival estimates (Devineau, Choquet & Lebreton, 2006). It is thus important to address heterogeneity among individuals, in particular with goodness-of-fit tests (see below), and, if necessary, to account for such heterogeneity when assessing the impact of climatic factors on survival.

As in all ESR reviewed, the white stork data were obtained from observations rather than from a strict experimental design. As a consequence, factors that might influence survival, but whose impacts are not considered worth investigating, could not be randomised or kept constant. Given these uncontrolled conditions, observed variation in survival estimates might come from the influence of multiple factors, some unsuspected by the investigator (Burnham & Anderson, 2002; Schwarz, 2002).

As in most of the ESR (63 out of 78), the time interval between two successive encounter occasions was one year in the stork study, so that any variation in survival at finer time scales could not be measured (but see Lahti *et al.*, 1998; Lima *et al.*, 2001; Conroy, Senar & Domènech, 2002; Lima, Merrit & Bozinovic, 2002; Piper, 2002; Tavecchia *et al.*, 2002; Barbraud & Weimerskirch, 2003; Sendor & Simon, 2003; Hallet *et al.*, 2004; Schaefer *et al.*, 2006 for protocols on vertebrates permitting investigations at seasonal scales). Then, the number of points available to plot survival against climatic factors (*i.e.* the number of statistical units) is usually the number of years of monitoring. The white stork data set covered 16 years and thereby provided 16 estimates of annual survival (Fig. 1). Only six of the 78 ESR covered more than 30 years and thus provided ≥ 30 estimates of annual survival (Catchpole *et al.*, 1999; Peach, Siriwardena & Gregory, 1999; Perdeck, Visser & Van Balen, 2000; Grosbois & Thompson, 2005; Jenouvrier, Barbraud & Weimerskirch, 2005a; Altwegg *et al.*, 2006). An important limitation when investigating relationships between survival and climatic factors is thus the usually small number of years.

(2) Climatic covariates

Local climate is expected to exert a strong, relatively direct influence on survival in wild populations (Newton, 1998). Numerous covariates such as temperature, air pressure, humidity, cloudiness, precipitation, wind direction and speed are needed for a thorough description of local climate. Furthermore several distinct critical periods and seasonal or monthly covariates may be relevant (Clobert & Lebreton, 1985; Newton, Wyllie & Rothery, 1992; Franklin *et al.*, 2000; Cowley & Siriwardena, 2005; Brouwer *et al.*, 2006; Grosbois *et al.*, 2006; Nevoux & Barbraud, 2006) and local climatic factors in distinct geographic locations are important for migratory or highly mobile populations (e.g. Møller & Szep, 2005; Schaub *et al.*, 2005). Hence, assessing the relationship between local climate and survival

requires considering large sets of covariates (e.g. Hallett *et al.*, 2004; Catchpole *et al.*, 1999; Grosbois *et al.*, 2006; Kéry, Madsen & Lebreton, 2006). Accordingly five or more candidate climatic covariates were considered in 22 out of the 78 ESR. The white stork example also illustrates the issue of having to deal with many candidate covariates. Based on results reported in the literature (Kanyamibwa *et al.*, 1990; Barbraud *et al.*, 1999; Schaub *et al.*, 2005; Sæther *et al.*, 2006), two geographic locations (the wintering and the breeding areas) and three periods of year (the wintering, the pre-breeding, and the breeding periods) have to be considered for a complete investigation of the influence of climatic factors on adult survival of white storks. Moreover, the wintering area (defined by the location of recoveries of dead white storks; Kanyamibwa *et al.*, 1990) covers a wide area (10°N-17°N 15°W-10°E) so that rainfall obtained from 15 weather stations needs to be considered. Finally, whereas rainfall is likely to be the most influential climatic factor in the Sahel area, we could not identify *a priori* the climatic covariate that was likely to be the most influential in the breeding area. As a consequence our initial set of covariates included 15 time series of rainfall for the Sahel region (see Table 1 for a list of the corresponding weather stations), two series (one for the pre-breeding period: March to May; and one for the breeding period: June to August) for rainfall in the breeding area (*i.e.* 6°50'-9°50' E / 46°50'-48°50'N) and two series for temperature in the breeding area.

Teleconnection (*i.e.* remote connection) indices capture large spatial-scale patterns in climatic factors that result from global atmospheric and oceanic circulation phenomena (Hurrell, 1995; Holmgren *et al.*, 2001; Ottersen *et al.*, 2001; Stenseth *et al.*, 2002, 2003). They are increasingly used in ecological studies as integrative proxies for local climate.

Teleconnection indices have been considered as candidate covariates in 21 of the 78 ESR (Appendix 1). Such indices are correlated with numerous local climatic covariates over large geographic areas, although in different ways for different sites. Teleconnection indices are

often noisy representations of the actual causal factors (Almaraz & Amat, 2004), as also are local climatic covariates when they influence survival indirectly, e.g. through resource availability (Montevecchi & Myers, 1997; Sæther, 1997; Durant, Anker-Nilssen & Stenseth, 2003). To deal with the large uncertainty about which climatic factor was likely to be the most influential on breeding grounds for white stork survival, we included the pre-breeding season (*i.e.* March through May) and the breeding seasons (*i.e.* June through August) north Atlantic oscillation (NAO) in the set of candidate covariates. We also included December through March NAO (hereafter referred to as WNAO) because, with its large geographic coverage and its integrative nature, it was likely to reflect the climatic conditions encountered during the return trip from the wintering grounds.

Although interdependency among candidate climatic covariates is to be expected, it is not systematically addressed in ecological studies. It has indeed been investigated in only 19 of the 62 ESR where several climatic covariates have been considered. In more than half of these studies, relationships among covariates have been detected (e.g. Clobert & Lebreton, 1985; Newton *et al.*, 1992; Catchpole *et al.*, 1999, 2000; Loison, Jullien & Menaut, 1999; Franklin *et al.*, 2000; Loison *et al.*, 2002; Tavecchia *et al.*, 2002; Grosbois *et al.*, 2006; Jenouvrier, Barbraud & Weimerskirch, 2006; Kéry *et al.*, 2006; Traylor & Alisauskas, 2006). In the white stork study case, we detected substantial correlations among rainfall records from the different meteorological stations in the Sahel region [Pearson correlation coefficient (r): mean for 105 pairs of rainfall time series: 0.34, for 24 out of 105 pairs $r > 0.50$] suggesting that the mechanisms that drive interannual fluctuations of rainfall operate at large spatial scales. Furthermore, the three factors reflecting climatic conditions during both pre-breeding and breeding periods in the white stork study were intercorrelated (Table 2). Such correlations among distinct local climatic covariates in a same location reflect to some extent the

occurrence of different types of weather (e.g. in the white stork study: warm, dry and high NAO versus cold, wet and low NAO).

At this stage of the white stork study, we are confronted with a typical situation in empirical studies of climate influences on demography in free-ranging vertebrate populations. Limited knowledge of the system did not allow us to identify a limited set of candidate climatic factors, so we were left with 22 different covariates, some of which were strongly intercorrelated. Using the whole set of candidate covariates cannot be recommended for two reasons. First, the large number of covariates ($J = 22$) raises the classical multiple test problem leading to an inflated probability of detecting spurious correlations (Type I error) (Garcia, 2004; Rice, 1989; Roback & Askins, 2005). Second, the interdependence among explanatory covariates (hereafter referred to as multi-collinearity) is known to hamper model selection, parameter estimation, and the interpretation of results in regression analyses (Draper & Smith, 1981, pp. 327-332; Graham, 2003; Neter *et al.*, 1996). Several measures exist to assess the degree to which multi-collinearity affects parameter estimates (Neter *et al.*, 1996), and once the problem has been detected a strategy is required to cope properly with this issue. It is possible to address simultaneously the multiple test and the multi-collinearity issues by building packages combining several intercorrelated climatic variables. Such integrative measures have been used in few of the ESR. However, whenever this has been done, the detection and the quantification of the impacts of climatic fluctuation on survival have been thoroughly achieved (see e.g. Gaillard *et al.*, 1997; Jorgenson *et al.*, 1997; Singer *et al.*, 1997; Loison & Langvatn, 1998; Loison *et al.*, 1999; Garel *et al.*, 2004; Grosbois *et al.*, 2006; Gunnarsson *et al.*, 2006; Jenouvrier *et al.*, 2006; Kéry *et al.*, 2006; Traylor & Alisauskas, 2006). For the white stork survival analysis, we combined intercorrelated climatic variables by performing three distinct Principal Component Analyses (PCA), one on the 15 Sahel rainfall time series, one on the three climatic factors for the pre-breeding season and

one on the three climatic factors for the breeding season. Principal Components (PC) are uncorrelated linear combinations of the original covariates that can be interpreted as synthetic climatic covariates (Draper & Smith, 1981, pp. 327-332; Graham, 2003). Here, we retained the first and second PCs for Sahel rainfall which accounted for 42% and 12% of the variation recorded at the 15 stations, respectively; and the first PC for the pre-breeding and breeding seasons, which accounted for 66 and 68 % of the variation in the corresponding original climatic covariates. The first Sahel rainfall PC was positively correlated with rainfall for all the stations considered but the two southernmost ones, while the second PC was correlated positively with rainfall in the two southernmost stations (Fig. 2A). Although the second PC accounted for a relatively low fraction of total variation in the Sahel rainfall series, we retained it for rainfall in the two southernmost Sahel stations to be represented in the set of candidate climatic covariates. Indeed, when using PCA-derived indices, variables that could be of biological importance may not be well accounted for by the first component (*i.e.* the component that contribute the most to total variation). It is thus important to select candidate covariates among PCs not only based on their contribution to total variation but also in such a way that all original covariates are well represented in the set of candidate covariates. The two PCs derived from the analysis of the Sahel rainfall series will hereafter be referred to as CNSRF (central and northern Sahel rainfall) and SSRF (southern Sahel rainfall), respectively. The PCs retained for the pre-breeding season and breeding seasons both correlated positively with temperature and NAO and negatively with rainfall (Fig. 2B, C). These two PCs thus reflected the occurrence in the breeding area of years with warm and dry local conditions associated with high NAO and of years with cold and wet conditions associated with low NAO. They will hereafter be referred to as PBSC (pre-breeding season climate) and BSC (breeding season climate). In this example, PCA applied to a large set of interdependent variables generated few easily interpretable and uncorrelated integrative covariates (Table 2;

Fig. 2). Non-weighted sums or averages over sets of climatic variables have sometimes been used in ecological studies as synthetic climatic covariates (e.g. Gunnarsson *et al.*, 2006). However, unlike PCA, such procedures do not generate a set of independent (uncorrelated) synthetic covariates. Furthermore, as illustrated with the white stork example, PCA allows combining variables of different nature (here temperature, rainfall and NAO; Fig. 2B, C) that would be difficult to sum or average otherwise. We thus advocate using PCA analyses as a more efficient way of combining climatic variables than simply summing or averaging them.

A last characteristic of climatic variables that deserves caution and that results from natural patterns of variability as well as from greenhouse effect forcing is that they often present marked linear or quadratic temporal trends over time series covering a few decades within the 20th Century (Stenseth *et al.*, 2003). Such trends have been addressed in only 12 out of the 78 ESR and detected in at least four of these (e.g. Kanyamibwa *et al.*, 1990; Grosbois & Thompson, 2005; Chamaillé-Jammes *et al.*, 2006; Nevoux & Barbraud, 2006). Within the set of candidate climatic covariates retained as potentially influencing white stork survival, CNSRF showed a marked decreasing trend over the study period (Table 3, Fig. 3).

IV. PROCEDURES FOR ASSESSING THE POTENTIAL IMPACT OF CLIMATIC FACTORS ON SURVIVAL

Once a set of candidate covariates has been defined, the investigation of temporal variation in survival and of the factors underlying it can be initiated. In a first step, structural models, *i.e.* models that do not include any external covariate, are explored with the aim of defining one or a few reference models that describe satisfactorily temporal variation in survival without any hypothesis about the factors underlying it. These reference models can be used to quantify temporal variation in survival. Furthermore, the models considered in subsequent steps of the analysis will be evaluated against the reference models. In a second step, ultra-

structural models where variation in survival is related to climatic drivers are built. Finally, both the structural reference models and the ultra-structural models including covariate effects are used to identify the climatic factors that potentially influence survival and to quantify their potential impact. Two important, complementary criteria are involved in this final step of the analysis: the statistical support for an effect of a climatic factor on survival and the estimated magnitude of this effect (Yoccoz, 1991; Nakagawa & Cuthill, 2007). Below, we use the white stork survival analysis and a simulation study to describe and evaluate the models, procedures and statistics involved in each of these three steps.

(1) Defining structural reference models

The first step in investigating variation in survival of white storks involved selecting a structural model as parsimonious as possible and still providing an adequate description of the pattern of temporal variation in survival. The appropriate CMR methods are now well-known (Lebreton *et al.*, 1992; Williams *et al.*, 2002; Sandercock, 2006). Furthermore, these methods are implemented in user-friendly programs such as MARK (White & Burnham, 1999) and M-SURGE (Choquet *et al.*, 2004). As a consequence, methods applied for building CMR models in ecological studies are most often correct (this was the case in 65 of the 73 ESR where CMR data were analysed). We thus provide a minimal description of these methods below and refer readers to Lebreton *et al.* (1992), Williams *et al.* (2002), and Sandercock (2006) for more details. Observed numbers of all possible individual histories are assumed to be observations from multinomial distributions with cell probabilities depending on survival and detection parameters (denoted ϕ and p , respectively). A model is defined that relates, *via* a link function denoted f , the variation in survival and detection parameters to variation in categorical factors and/or continuous covariates. Once a model has been defined, survival and detection parameters are estimated by maximizing the likelihood under the constraints

imposed by this model. Let us denote this likelihood $L(\underline{\varrho} | IM_data)$ where $\underline{\varrho}$ represents the vector of parameters in the model, and IM_data the individual monitoring data. Reliable inference can be drawn from a model only if a number of assumptions of homogeneity within and among encounter histories are verified (Lebreton *et al.*, 1992). Goodness-of-fit tests (hereafter referred to as GOF tests) implemented in programs such as MARK (White & Burnham, 1999) and U-CARE (Choquet *et al.*, 2005) allow checking that these assumptions are met. Along with each model comes its relative deviance: $Dev = -2 \log L(\underline{\varrho} | IM_data)$; an important statistic that measures the discrepancy between the predictions of the model and the observations. The lower the Dev , the lower the discrepancy. Other useful statistics are the Akaike Information Criterion ($AIC = Dev + 2K$ where K is the number of estimable parameters in the model, and its variants (*i.e.* $AICc$, $QAIC$ and $QAICc$; Burnham & Anderson, 2002). AIC is used in the information theoretic approach to quantify the adequacy of a model in terms of an optimal compromise between prediction bias and parameter uncertainty (Burnham & Anderson, 2002, p. 62; see below). The lower the AIC of a model, the better the compromise.

Using the methods briefly presented above, we defined a starting model to describe variation in white stork survival and detection probability that was general enough for the assumptions underlying CMR models to be met (Lebreton *et al.*, 1992). We chose the logit link function because it ensures obtaining survival estimates in the interval [0; 1]. The Cormack-Jolly-Seber model [$\phi(F_t); p(F_t)$; see Table 4 for a description] including fully time-dependent survival and recapture probabilities (Lebreton *et al.*, 1992) did not significantly depart from the assumptions underlying CMR models ($\chi^2_{42} = 38.2, P = 0.64$). This model was thus used as a starting point (Tables 4, 5). Then, using $AICc$ (*i.e.* the small-sample-corrected version of the AIC), this starting model was compared to models where recapture probability and/or survival were constant [$p(F_{cst})$ or $\phi(F_{cst})$] and to models where survival varied through

time according to a linear or a quadratic trend [hereafter denoted as $\phi(F_T)$ and $\phi(F_{T-q})$; Tables 4, 5]. The model including constant recapture probability and time-dependent survival had the lowest $AICc$ (model $\phi(F_t); p(F_{cst})$; Table 5, Fig. 1). In all subsequent models recapture probability was therefore kept constant and the model where survival was time-dependent (model F_t) was subsequently used as a reference model. Models $\phi(F_T); p(F_{cst})$ and $\phi(F_{T-q}); p(F_{cst})$ had relatively large $AICc$ as compared to that of model $\phi(F_t); p(F_{cst})$. This indicates that survival of white storks did not show any clear linear or quadratic trend over time. In the reference model F_t , time appears as a fixed effect in the sense that a distinct parameter a_i is estimated for each time interval. This type of fixed time effect model was the most often employed in the ESR to characterize temporal variation in survival (66 out of 78 studies). Alternatively, in a less often used type of model (12 out of the 78 studies), time was treated as a random effect ε_i (model denoted as R_t ; Table 4), which is assumed to follow a normal distribution on a logit scale with mean 0 and variance σ^2 (e.g. Milner, Elston & Albon, 1999; Franklin *et al.*, 2000; Loison *et al.*, 2002; Harris *et al.*, 2005; Jenouvrier *et al.*, 2005a, 2006; Sandvik *et al.*, 2005; Schaub *et al.*, 2005). The parameters of interest are now the mean of $f(\phi_i)$: a ; and the temporal process variance in $f(\phi_i)$: σ^2 (Gould & Nichols, 1998; Burnham & White, 2002). The estimates \hat{a} and $\hat{\sigma}^2$ can be obtained using procedures for building Generalized Linear Mixed Models (GLMM) in a frequentist framework (McCullagh & Nelder, 1989; Gould & Nichols, 1998; Burnham & White, 2002). Alternatively, estimates can also be derived using a Bayesian framework where survival for a given interval is explicitly considered as a realization of a random process (Barry *et al.*, 2003; Link & Barker, 2004; Gimenez *et al.*, 2008). None of the ESR used this last option.

(2) Building models relating survival to climatic factors

In nine of the 78 ESR, survival estimates from structural CMR models such as model F_t were treated as quantities known with certainty and used in linear regression models to assess relationships with climatic covariates. Such a procedure, that consists in doing statistics on statistics, is misleading because it fails to account adequately for the sampling variability of the survival estimates (Clobert & Lebreton, 1985; Link & Barker, 2004). A better and actually much more often used approach is to build and fit ultrastructural CMR models relating variation in survival to that of climatic or other continuous covariates. Two types of model can be fitted. Fixed-effects models of type F_{co} (Table 4) are the most often used (68 out of 78 ESR). In such models, $f(\phi_i)$ in the time interval i is related to the value x_i of the climatic covariate x . Two (or three for quadratic relationships) parameters denoted a , b (and c) are required in model F_{co} to describe the relationship between survival and the climatic covariate x . In model F_{co} , it is implicitly assumed that survival variation over time is entirely determined by the variation observed in the climatic covariate. In a less often used alternative to model F_{co} (11 out of 78 ESR), this assumption is relaxed and time variation in $f(\phi_i)$ not accounted for by the fixed effect of the climatic covariate x is accounted for by a random effect ε_i (model R_{co} ; Table 4) which follows a normal distribution $N(0, \sigma^2)$ (e.g. Franklin *et al.*, 2000; Gauthier *et al.*, 2001; Loison *et al.*, 2002; Altwegg *et al.*, 2003, 2006; Schaub *et al.*, 2005; Sandvik *et al.*, 2005). σ^2 is the residual process variance reflecting variation over time in $f(\phi_i)$ that is not accounted for by the relationship with the climatic covariate. As for the random-effects model R_t , the estimates \hat{a} , \hat{b} , \hat{c} and $\hat{\sigma}^2$ can either be approximated using a frequentist framework (Gould & Nichols, 1998; Mc-Culloch & Searle, 2001) or derived in a Bayesian framework (Brooks *et al.*, 2002; Barry *et al.*, 2003; Link & Barker, 2004; Gimenez *et al.*, 2008). However, the Bayesian technique is still underused in ecological studies (none of the 78 ESR).

In our analysis of white stork survival, we built and fitted all models of type F_{co} and R_{co} including only the linear or the quadratic effect of one of the five candidate climatic covariates at a time. Each candidate covariate was standardized so that the mean and variance over its time series were set to 0 and 1, respectively. We used the program MARK (White & Burnham, 1999) to fit all models required but the models built in a Bayesian framework, which were implemented using Markov chain Monte Carlo (MCMC) methods with program WinBUGS (Spiegelhalter *et al.*, 2002; see Appendix 2 for details). Note that program M-SURGE (Choquet *et al.*, 2004) could also be used. Parameter estimates obtained in the white stork survival analysis for the models introduced above are displayed in Table 6.

(3) Measuring statistical support for the effect of climatic factors

In studies of climate impacts on vertebrate survival, the identification of factors that might noticeably influence survival is most often undertaken based on various measures of statistical support (*i.e.* probabilities involving the data in hand and hypotheses). This was the case in 73 of the 78 ESR. In the five remaining studies the identification of potentially influential covariates has been undertaken on the grounds of estimated effect sizes. Two inferential approaches have so far been adopted in the ecological literature to assess statistical support: null hypothesis testing (in 40 out of 73 studies) and information theory (in 33 out of 73 studies). Bayesian inference provides a third approach that has great potential but has been applied in none of the 78 ESR. These approaches differ with respect to the probabilities that are considered in order to identify influential climatic covariates. However, irrespective of the chosen approach, the objective pursued is always to maximize the probability of identifying covariates that actually exert a genuine influence on survival (*i.e.* to maximize statistical power) while minimizing the probability of concluding that a covariate influences survival when it actually has no effect (*i.e.* minimizing type I error). In what follows we present, for

each of the three approaches, the underlying conceptual framework and their application. Then we present the results of a simulation study where the performance of these distinct approaches in terms of maximization of the statistical power and minimization of type I error is evaluated.

(a) The null hypothesis testing approach

(i) Conceptual framework

In the null hypothesis testing approach (hereafter referred to as the NHT approach), a so-called null hypothesis (hereafter referred to as H_0) is first defined. This hypothesis stipulates that the focal climatic covariate has no effect on survival. Then, the value of a test statistic of known distribution under H_0 is computed for the data in hand. The probability under H_0 of a data set yielding a value of the test statistic as extreme as or more extreme than the one obtained with the data in hand is computed from the known distribution of the test statistics. This probability corresponds to the probability of the data in hand or of even more extreme events if the null hypothesis is true. It is referred to as the observed P -value, and is compared to a predefined threshold (referred to as the α -level), usually set at 0.05. If the observed P -value is lower than the α -level, the null hypothesis that the focal climatic covariate has no influence on survival is rejected with the probability that this hypothesis is indeed correct being equal to α . Although it is conceptually incorrect to do so (e.g. Cohen, 1994; Anderson, Burnham & Thompson, 2000), this outcome is always interpreted in ecological studies as tacit support for the alternative hypothesis that the focal climatic covariate influences survival. If the observed P -value is higher than the α -level, no conclusion can be drawn. The pitfalls associated with the application of this procedure have been the subject of extensive discussions and we refer readers to the literature for presentations of these issues [e.g. Yoccoz, 1991; Cohen, 1994; Anderson *et al.*, 2000; Johnson, 2002; Robinson & Wainer,

2002; Stephens *et al.*, 2005; Hobbs & Hilborn, 2006; a list of more than 400 references can also be found at <http://warnercnr.colostate.edu/~anderson/thompson1.html> (accessed 18 February 2008)].

(ii) Setting the α -level

In almost all of the 40 ESR studies using the NHT, no α -level was explicitly determined *a priori*. Most often, observed P -values were confronted to a conventional interpretation scale: it was usually considered that $P > 0.1$ indicates non significant effects; $0.1 > P > 0.05$ indicates nearly significant effects; $0.05 > P > 0.01$ significant effects and $P < 0.01$ highly significant effects. This approach stems from the initial conception of the NHT procedure as an exploratory tool (Stephens *et al.*, 2007; Robinson & Wainer, 2002; Garcia, 2004; Roback & Askins, 2005). Relying on mere convention for the interpretation of the outcome of a null hypothesis test is not a major drawback as long as one considers that truly solid knowledge comes from repeated confirmation from numerous studies. From this point of view, the objective pursued in the NHT approach is to decide whether or not further experiments intending at falsifying the null hypothesis are worth undertaking. However, as pointed out by many authors (e.g. Yoccoz, 1991; Anderson *et al.*, 2000), the explicit definition of an α -level is necessary for a rigorous application of the NHT and deserves careful consideration, even in exploratory contexts. The conclusion of a null hypothesis test is extremely sensitive to the choice of the α -level. The decision regarding the value to which it is set is consequently crucial (Field *et al.*, 2004). The probability of a type I error and the statistical power (*i.e.* the probability of rejecting H_0 when it is indeed false) are linked by a trade-off. As a consequence, setting α to an extremely low value and thereby insuring an extremely low risk of making type I errors results in decreasing considerably the statistical power for detecting genuine climatic effects. Furthermore, the power for detecting a genuine climatic effect of a

given magnitude decreases as the size of the sample (usually the number of study years in analyses of climate impact on survival of vertebrates) decreases. Small sample sizes (*i.e.* low number of study years) should thus motivate researchers to set α to a relatively large value (Yoccoz, 1991; Lebreton *et al.*, 1992; Field *et al.*, 2004). Finally, in exploratory and descriptive studies, achieving a relatively high power should be considered as more important than keeping at a low level the risk of concluding mistakenly that a covariate influences survival. After all, exploratory analyses aim at generating working hypotheses that should anyway be later evaluated, either experimentally or based on the analysis of independent empirical data, for a robust conclusion to be drawn (Robinson & Wainer, 2002; Roback & Askins, 2005; Link & Barker, 2006). So it is not of prime importance that all hypotheses generated in an exploratory analysis get strong statistical support. Given the low sample size in the white stork data set and the exploratory character of the study, we thus set α to 0.20 instead of the conventional level of 0.05.

(iii) The multiple test issue

In 49 of the 78 ESR, several candidate climatic variables were considered. When a dependent variable such as survival is subjected to a series of null hypothesis tests each of which intends at detecting the effect of a distinct climatic covariate, the probability of erroneously rejecting at least one null hypothesis exceeds the α -level and increases as the number of tests increases (Rice, 1989). Although this inflation of type I error and the procedures to prevent it are well known (Moran, 2003; Garcia, 2004; Roback & Askins, 2005), such procedures have been applied in only two of the 49 ESR considering several candidate covariates (Jenouvrier *et al.*, 2003; Hallet *et al.*, 2004). The issue has been mentioned but not dealt with in an additional six ESR (Clobert *et al.*, 1988; Newton *et al.*, 1992; Catchpole *et al.*, 2000; Jones, Hunter & Robertson, 2002; Grosbois *et al.*, 2006; Møller & Szep, 2005). In these studies the authors

mentioned that due to the absence of correction for multiple tests the climate impacts detected should be considered with caution.

In the analysis of white stork survival we applied the procedure that sets at the α -level the expected proportion of erroneously rejected null hypotheses among all the rejected null hypotheses (*i.e.* it controls the false discovery rate; Benjamini & Hochberg, 1995). We chose this procedure rather than the well-known sequential Bonferroni approach because it incurs a less dramatic loss of statistical power (Moran, 2003; Garcia, 2004; Roback & Askins, 2005). As proposed by Wright (1992) we corrected the observed P -values and compared these corrected values to 0.20, the α -level we chose.

(iv) Test statistics derived from fixed-effects models

When, as in the white stork survival analysis, model F_t satisfactorily fits the data, statistical support for the effect of a covariate can be assessed by comparing deviances among fixed-effects models F_{cst} , F_{co} , F_t [see Lebreton *et al.* (1992) for situations where model F_t shows lack of fit]. The likelihood ratio test (LRT) allows assessing the fit of the covariate model relative to that of the time-dependent model:

$$LRT_{co/t} = Dev(F_{co}) - Dev(F_t) \quad (1)$$

$LRT_{co/t}$ tests the null hypothesis of absence of variation in survival over time unexplained by the effect of the climatic covariate in F_{co} . It follows asymptotically under H_0 a chi-squared distribution with $n-J$ degrees of freedom where n is the number of survival estimates obtained from model F_t and J the number of parameters required to describe the relationship between survival and the focal climatic covariate. Whatever the covariate and shape considered, residual unexplained variation was detected by $LRT_{co/t}$ in the white stork survival analysis (Table 7)

Had the examination of $LRT_{co/t}$ revealed the absence of residual unexplained variation in a model of type F_{co} , LRT between that model and the constant model F_{cst} could have been used to assess the statistical support for the effect of the climatic covariate in F_{co} (Lebreton *et al.*, 1992):

$$LRT_{cst/co} = Dev(F_{cst}) - Dev(F_{co}) \quad (2)$$

$LRT_{cst/co}$ tests the null hypothesis H_0 that the climatic covariate in F_{co} has no effect on survival. It follows asymptotically under H_0 a chi-squared distribution with $J-1$ degrees of freedom.

In the analysis of stork survival, the presence of residual unexplained variation in survival after accounting for the effects of climatic covariates prevented us from using this statistic. Instead, the assessment of the fit of the covariate model relative to that of both the constant and the time-dependent models was required (Skalski, Hoffmann & Smith, 1993; Skalski, 1996). The method used to derive this statistic is referred to as *ANODEV* by analogy to *ANOVA*. The statistics $Ftest_{cst/co/t}$:

$$Ftest_{cst/co/t} = \frac{\left(\frac{Dev(F_{cst}) - Dev(F_{co})}{J-1} \right)}{\hat{c}} \quad (3)$$

where $\hat{c} = \frac{Dev(F_{co}) - Dev(F_t)}{n-J}$ is an estimate of variance inflation in model F_{co} , tests the null hypothesis H_0 that the climatic covariate in F_{co} has no effect on survival. It follows under H_0 a Fisher-Snedecor distribution with $J-1$ and $n-J$ degrees of freedom. Using the statistics $Ftest_{cst/co/t}$ in the white stork survival analysis and applying the procedure proposed by Benjamini & Hochberg (1995) for dealing with the multiple tests issue, none of the null hypotheses could be rejected at the false discovery rate of 20% (Table 7).

In 16 of the 40 ESR using the NHT approach, no residual temporal variation in survival was detected, so that $LRT_{cst/co}$ or $Ftest_{cst/co/t}$ could indifferently be used to assess the

statistical support for the covariates in model F_{co} . In the 24 other studies, residual variation was either detected (five instances) or not investigated (19 instances) so that $F_{test_{est/co/t}}$ would have been required to assess the statistical support for the covariates in model F_{co} . In five of these 24 studies, $LRT_{est/co}$ was used instead, which can lead to a high probability of selecting spurious effects (Skalski *et al.*, 1993; Skalski, 1996).

(v) Test statistics derived from mixed-effects models

Although it is uncommon to do so (this option was adopted in only one out of the 78 ESR; Milner *et al.* 1999), the statistical support for the linear effect of a climatic covariate can be assessed using the mixed-effects model of type R_{co} : \hat{b} , the normally distributed estimator of the slope of the relationship with the climatic covariate and, $\hat{\sigma}(\hat{b})$, its estimated standard error can be used to build a test statistic under Wald's procedure (Mc-Culloch & Searle, 2001, p. 24). The statistic:

$$W(R_{co}) = \left(\frac{\hat{b}}{\hat{\sigma}(\hat{b})} \right)^2 \quad (4)$$

tests the null hypothesis $H_0: b = 0$. It follows under H_0 a Fisher-Snedecor distribution with 1 and $n-2$ degrees of freedom (Mc-Culloch & Searle, 2001, p. 24). Note that the square root of $W(R_{co})$ follows under H_0 a Student's t-distribution with $n-2$ degrees of freedom. Using the statistics $W(R_{co})$ and applying the Benjamini & Hochberg's procedure, none of the null hypotheses of absence of linear relationships could be rejected at the false discovery rate of 20% in the white stork survival analysis (Table 7). Unfortunately, we could not apply the same procedure for quadratic relationships because a statistical tool is lacking to assess the statistical support for a quadratic relationship between survival and a climatic covariate from a mixed-effects model of type R_{co} .

(b) Information-theoretic approach

(i) Conceptual framework

While the NHT approach focuses on the evaluation of dichotomous hypotheses, the information-theoretic approach (hereafter referred to as the IT approach) allows simultaneous comparisons of a multitude of models within an *a priori* defined candidate set (Burnham & Anderson, 2002). Several criteria are available for ranking models in the IT approach (Link & Barker, 2006; Buckland, Burnham & Augustin, 1997). The Akaike Information Criterion ($AIC = Dev + 2K$ where K is the number of estimable parameters in the model, see Burnham & Anderson, 2002) assumes that ‘truth’ is high-dimensional and thus impossible to depict with a mathematical model (Anderson & Burnham, 2002), which is pertinent in the context of demographic studies in free-ranging vertebrate populations. Indeed, AIC has been used in all of the 33 ESR using the IT approach. AIC allows ranking competing models by measuring the quality of a model in terms of an optimal compromise between prediction bias and parameter uncertainty, or, equivalently, between underfitting and overfitting (Burnham & Anderson, 2002, p. 62). The lower the AIC of a model is, the closer to optimality is this compromise, and the better is the approximation provided by the model of the high-dimensional reality (Burnham & Anderson, 2002, p. 62). Differences in AIC among models are usually used as criteria for model selection. Accordingly, these statistics have been used to identify potentially influential climatic covariates in 30 out of the 33 ESR using the IT approach. A simple and widely used rule of thumb has been proposed by Burnham & Anderson (2002, pp. 70-72) and allows interpreting the difference in AIC between two models in terms of relative support in the data for each of these two models. If two models differ by less than two AIC points, they can be considered as getting roughly identical support from the data. On the other hand, the lower AIC model can be considered as clearly better supported by the data when the AIC difference is greater than two points. Although this rule of thumb is somewhat arbitrary,

it has been shown to perform satisfactorily for model and covariate selection (Richards, 2005) and it has been used in most of the ESR using *AIC* differences (20 out of 30 ESR; the 10 other studies used minimum *AIC* as a covariate selection criterion). We thus applied this criterion for the identification of potentially influential climatic covariates in the white stork survival analysis (see below).

Another useful statistic derived from *AIC*, introduced by Buckland *et al.* (1997) and evaluated by Richards (2005) and Link & Barker (2006) is the *AIC* weight of a model (see also Burnham & Anderson, 2002, p. 75). It quantifies the strength of evidence in the data for that model relatively to that of all the other models in the candidate set (*i.e.* the sum of weights over a set of candidate models is 1). It is proportional to the probability of the model given the data. It is consequently considered as useful, especially for producing multi-model inferences that account for model selection uncertainty. It can also be used to evaluate the evidence ratio of two alternative models. Although *AIC* weights were provided for illustrative purposes in some of the studies we reviewed, they have so far rarely been used as a decisive criterion for the identification of potentially influential climatic covariates in studies of survival in vertebrate populations (only three out of the 33 ESR using the IT approach; Piper, 2002; Barbraud & Weimerskirch, 2003; Traylor & Alisauskas, 2006). Furthermore their performances for model selection are in need of evaluation (e.g. Richards, 2005; Link & Barker, 2006). We thus did not use *AIC* weights as decisive criteria for the identification of potentially influential climatic covariates in the white stork survival analysis. However, we computed the evidence ratio relative to the constant survival model F_{cst} for each candidate covariate model considered.

(ii) Criteria for identifying influential climatic factors

As in most of the ESR using the IT approach, we considered the effect of a focal climatic covariate on white stork survival as statistically supported when the model F_{co} was at least as well supported as the general model F_t and better supported than the baseline model F_{cst} (Anderson & Burnham, 2002; Burnham & Anderson, 2002; Guthery *et al.*, 2005). Assuming that two models can be considered as differently supported by the data when their AIC differs by more than two points (see above), we considered that the effect of the climatic covariate included in the model F_{co} was statistically supported if $\Delta_{co/cst} < -2$ and $\Delta_{co/t} \leq 2$ where $\Delta_{co/cst} = AICc(F_{co}) - AICc(F_{cst})$ and $\Delta_{co/t} = AICc(F_{co}) - AICc(F_t)$. Furthermore, we considered that quadratic effects were statistically supported when the inclusion of the quadratic term to a model including the linear term for the same candidate covariate resulted in a drop in $AICc$ of at least two points. Applying these criteria in the white stork example resulted in concluding that the linear effect of CNSRF and the quadratic effect of PBSC were statistically supported (Table 7).

(c) Bayesian approach

(i) Conceptual framework

While the classical approach assumes that the parameters are fixed and have unknown values to be estimated, Bayesian inference relies on the *a posteriori* distribution of the parameters. This distribution is obtained *via* the Bayes' theorem, through a process updating the *a priori* distribution of the parameters, using the information in the data, which is summarized by the likelihood. The prior distribution captures the expert's knowledge about the system before collecting data. If there is no strong prior information on the parameters, vague priors are usually assigned to the parameters, such as uniform distributions between 0 and 1 for probabilities. Because mark-recapture models often have many parameters, the joint posterior distribution is high-dimensional and cannot be easily displayed. Therefore we need to

summarize this information under the form of interpretable point estimates (posterior means or medians) and uncertainty intervals (credibility intervals). This process involves calculating multi-dimensional integrals, which is circumvented by using Markov chain Monte Carlo (MCMC) simulations. This class of algorithms is based on building a Markov chain with stationary distribution equal to the posterior distribution of interest. Once the chain has converged, its realisations can be regarded as a dependent sample from the posterior distribution, and standard Monte Carlo integration can be carried out to obtain numerical summaries of focal parameters.

The development of the MCMC machinery along with the availability of powerful personal computers has led to an increasing number of Bayesian applications in ecology (Ellison, 2004; Clark, 2005; McCarthy, 2007), the analysis of mark-recapture data making no exception (Link & Barker, 2004; Gimenez *et al.*, 2008). Besides, flexible and reliable software applications are now available allowing relatively easy implementation of complex models. Here we use the program WinBUGS (Spiegelhalter *et al.*, 2002), which implements up-to-date and powerful MCMC algorithms. It is freely available at <http://www.mrc-bsu.cam.ac.uk/bugs/>.

(ii) Criteria for identifying influential climatic factors

The issue of model selection in a Bayesian framework is not easy to deal with. There is a myriad of procedures, and none of them seems to be as consensual as NHT and IT are in the population ecology literature. Several methods produce a value for each candidate model to be compared among a set of pre-selected models [Bayes factor – Kass & Raftery, 1995; mean square predictive error – e.g. Ghosh & Norris, 2005; deviance information criterion (DIC) – Spiegelhalter *et al.*, 2002; Bayesian information criterion (BIC) – e.g. Link & Barker, 2006]. These methods are popular but are sometimes difficult to implement due to theoretical and

computational difficulties (Gelman *et al.*, 2003). Recently, extensions of standard MCMC algorithms have been developed, which perform an automatic exploration of the model space (Gibbs variable selection – George & McCulloch, 1993; Reversible Jump MCMC – Green, 1995). One may feel uneasy about exploring hundreds of potential models as it might look like data dredging, but in the case of variable selection, we have found that Reversible Jump MCMC in particular is relevant to determine the best combination of covariates (Gimenez *et al.*, 2008). Interestingly, these methods can all be implemented in WinBUGS, pending some effort though.

Given so many procedures, the issue of choosing the right method is of particular concern for the user, e.g. the biologist (Gimenez, 2008). This open question would deserve a proper treatment in itself and is therefore beyond the scope of this paper. Besides, none of the ESR has used a Bayesian model selection method. For the white stork survival analysis, we based our conclusions on the statistical support for climatic covariate effects on the examination of the 95% credible interval of the parameters involved. Note that Bayesian credible intervals and frequentist confidence intervals are inherently different and may lead to contrasting conclusions (McCarthy, 2007). A 95% credible interval provides a 0.95 probability that the true value of the parameter is within that interval, whereas a 95% confidence interval gives, if the sampling is repeated many times, a proportion equal to 0.95 of confidence intervals built from each sample that contain the true value of the parameter. We considered a linear effect of a climatic covariate upon white stork survival as statistically supported when 0 was outside the 95% credible interval of the posterior mean of the slope of the relationship. We considered the quadratic effect as statistically supported when the 95% credible region of posterior means of the slopes of linear and quadratic terms did not include [0; 0]. Using these criteria resulted in concluding that the linear effect of CNSRF and the quadratic effect of PBSC were statistically supported (Table 7; Fig. 4).

(d) Detecting influential climatic factors in the presence of temporal trends

The situation where survival time series show a trend over time deserves further comment. In order to address linear or quadratic trends in survival time series, it is necessary to build models of the type F_T or $F_{T,q}$, respectively (Table 4). Investigation of trends can then be undertaken with the statistics introduced above to assess the statistical support for the effect of a covariate (e.g. F_{tests} or AIC differences). As already mentioned in Section IV.1, neither a linear nor a quadratic trend were detected in the white stork survival time series (the P -values associated with $F_{test_{cst/T/t}}$ and $F_{test_{cst/T_q/t}}$ were 0.59 and 0.33, respectively, and, $\Delta_{T/t}$ and $\Delta_{T_q/t}$ were equal to 7.64 and 6.03, respectively; see also Table 5). Furthermore, it is difficult to evaluate how often survival time series of vertebrates show temporal trends because these are not systematically addressed (only 17 out of the 78 ESR). Let us nonetheless consider a situation where, for instance, a linear trend is detected (see e.g. Newton *et al.*, 1992; Grosbois & Thompson, 2005; Kéry *et al.*, 2006). In such a situation a relationship between survival and a climatic covariate can be detected only because this covariate also exhibits a linear trend over time. Such a relationship, that results solely from the co-occurrence of a trend, is particularly likely spurious for two reasons. First, the trend in the time series of survival can be an artefact resulting from the presence of heterogeneity in the survival and/or the detection parameters (Carothers, 1973, 1979; Buckland, 1982; Pledger *et al.*, 2003; Devineau *et al.*, 2006). Second, assuming that the survival time series shows a genuine trend, it is difficult to rule out the possibility that this trend results from a relationship with some overlooked causal factor that would also exhibit a trend, rather than from a causal relationship with the focal climatic covariate (see Coulson, 2001, for an example on density dependence). Our advice, when the survival time series and the focal climatic covariate both show a trend is to test whether the climatic covariate considered accounts for a significant fraction of the variation in

survival about the trend. This can be done using the residual regression technique (Graham, 2003). The first step is to remove the temporal trend from the climate covariate x . Let us refer to this de-trended covariate as x_d . The value of x_d at each date i can be worked out as

$x_{d,i} = x_i - (\hat{\alpha} + \hat{\beta}T_i)$; where $\hat{\alpha}$ and $\hat{\beta}$ are the estimates, obtained from a linear regression model, of the parameters of the relationship between the climatic covariate x_i and a linear trend T_i . In a second step the following model is built:

$$f(\phi_i) = a + b_1T_i + b_2x_{d,i} : \text{model } F_{T+dco} \quad (5)$$

$F_{test_{T/T+dco/t}}$ allows testing the null hypothesis $H_0: b_2 = 0$. This null hypothesis states that there is no relationship between the variation in survival about a trend and the variation in the climatic covariate about a trend. Under an IT approach, the evidence for such a relationship should be obtained by examining $\Delta_{T+dco/T}$ and $\Delta_{T+dco/t}$.

Exploration of the relationship between the variation in survival and the variation of a climatic covariate in presence of a trend has been undertaken in only three of the ESR (Newton *et al.*, 1992; Grosbois & Thompson, 2005; Kéry *et al.*, 2006). In two of these studies, the authors concluded that the effect of a time-varying covariate could not be differentiated from that of a simple trend (Newton *et al.*, 1992; Grosbois & Thompson, 2005). Because in most ESR the presence of temporal trends in the survival and climatic covariates was simply not addressed, it is difficult to assess how often effects of climatic factors could have been detected because of the co-occurrence of trends in survival and in the candidate climatic covariates. We believe that this issue should be examined on a more systematic basis in the future.

(4) Performances of distinct statistical approaches for detecting potentially influential climatic factors from statistical support: a simulation study

Different conclusions as to which climatic covariates influenced white stork survival were reached when different statistical procedures were used. Such a discrepancy could be expected for at least two reasons. First, in only one of the statistical approaches (*i.e.* the NHT) was a procedure for controlling the false discovery rate applied. Not surprisingly, because procedures that control type I error incur a decrease of statistical power (Moran, 2003; Garcia, 2004; Roback & Askins, 2005), none of the candidate climatic covariates could be considered as potentially influential according to the NHT procedure. By contrast, two climatic covariates were detected as potentially influential when the IT or the Bayesian approaches were adopted. However, with the latter approaches, the risk of type I error was not controlled and might be high when large numbers of candidate covariates are considered (Burnham & Anderson, 2002, pp. 37-43, 244-248; Stephens *et al.* 2005). Second, as stated above, the concepts underlying statistical support differed among the procedures used (Stephens *et al.*, 2005; Hobbs & Hilborn, 2006; Stephens *et al.*, 2007). In the NHT, influential climatic covariates are identified based on the probability of the data or of more extreme data if the null hypothesis of no climatic influence on survival is true. In the Bayesian approach, influential climatic covariates are identified by examination of the posterior distribution of the parameters describing the relationship between survival and climatic covariates. With the IT approach, influential climatic covariates are detected based on an evaluation of the relative quality of the approximation of the complex reality provided by models. Although these conceptual differences are understood, no clear guideline has yet emerged about which paradigm is better adapted to a given case study. Below, we present the results of a simulation study where the performance of these distinct approaches is evaluated in terms of maximization of the statistical power and minimization of type I error. In order to rule out the multiple test issue, the influence of only one virtual climatic covariate was included in this simulation study.

(a) *Methods*

We addressed two characteristics of statistical criteria introduced above for detecting potentially influential covariates. These characteristics were the probability of considering as statistically supported an effect that does not exist (test level or type I error in the NHT approach), and the probability of considering as statistically supported an effect that does exist (test power in the NHT approach; it is also the complement to one of type II error). For each of 36 possible scenarios of variation in survival over years, we simulated 500 CMR data sets with 17 capture occasions and 50 newly marked individuals released at each occasion (these features were comparable to those of the white stork data). The scenarios differed with respect to the slope, b , of the linear relationship between survival (on a logit scale) and a virtual climatic covariate in which values over the 16 time intervals were drawn from a normal distribution with a mean of 0 and a variance of 1 (a distinct set of values was drawn for each simulated data set). Six values of b were considered ranging from 0 (no influence of the covariate) to 0.5. This range was centred on the estimate of b obtained in the white stork example for the linear effect of CNSRF (≈ 0.25). Translated in terms of the size of the effect, the maximum value considered for the slope ($b = 0.5$) generated, for a decrease in the virtual climatic covariate by one and two standard deviation units, a reduction in survival odd ratio of about 40% and 60%, respectively. The scenarios also differed with respect to the residual process temporal variance in survival (σ^2 of model R_{co}) that ranged from 0 (no residual process variance) to 0.3. This range was similar to that used by Burnham & White (2002) introducing random-effects models for the analysis of survival and included the estimate of σ^2 obtained in the white stork survival analysis (≈ 0.1). Furthermore, it covered the range of process temporal variance of adult and juvenile survival reported for birds (Sæther & Bakke, 2000) and for large mammals (Gaillard & Yoccoz, 2003). The data sets were generated under the hypothesis of constant recapture probability ($p = 0.9$ as estimated in the white stork

analysis). The computation of survival used to simulate a data set was performed in two steps: the 16 survival values given by the linear relationship with the virtual climatic covariate were first computed; random numbers drawn from a normal distribution with a mean of 0 and a variance σ^2 were then added to each of these 16 survival values. For each of the 500 CMR data sets generated, models F_{cst} , F_{co} , F_t were fitted by maximum likelihood and R_{co} was fitted using the method of moments (Burnham & White, 2002) and a Bayesian approach. Although the maximum likelihood method (Lebreton *et al.*, 1992) and the method of moments (Burnham & White, 2002) are available on standard softwares such as MARK, we implemented them in Matlab® to allow looping over the 500 simulated data sets. Coherence between estimates obtained using Matlab® with those obtained using MARK was checked for the white stork data set. We used the software WinBUGS (Spiegelhalter *et al.*, 2002) to implement the Bayesian approach (MCMC method) for building model R_{co} (see Appendix 2 for details) by calling it from software R through the package R2WinBUGS (Sturtz, Ligges & Gelman, 2005). Priors and likelihood are specified within WinBUGS, while managing the simulated data, setting initial values, and post-processing the results appears easier in practice using R. The results obtained on the 500 simulated data with fixed-, random- and mixed-effects models were then used to estimate the distribution of the various statistics used to assess the statistical support for an effect of a virtual climatic covariate for each of the 36 scenarios. For tests, the α -level was set at 0.05, the most commonly used value in the ecological literature

(b) Results

Using either $Ftest_{cst/co/t}$ or $LRT_{cst/co}$ according to whether significant residual variation was detected or not, the probability of detecting spurious effects of climatic covariates was close to the α -level (= 0.05) for most levels of residual process variance, σ^2 , although it slightly

exceeded it for intermediate levels ($P = 0.08, 0.07$ and 0.06 for $\sigma^2 = 0.03, 0.05$ and 0.1 , respectively; line in Table 8A with $b = 0$). In this respect, the systematic use of $Ftest_{cst/co/t}$ instead of using it only when residual process variance was detected ensured that the probability of detecting spurious effects of climatic covariates never exceeded the α -level (line in Table 8B with $b = 0$). However, the probabilities of detecting genuine effects of climatic covariates were slightly higher when the procedure involving the use of either $Ftest_{cst/co/t}$ or $LRT_{cst/co}$ was preferred over the systematic use of $Ftest_{cst/co/t}$.

The statistical performance of $W(R_{co})$ derived from estimates obtained from a mixed-effects model built using the method of moments were very similar to those of $Ftest_{cst/co/t}$ (Table 8C).

The Bayesian procedure presented the advantage that probabilities of detecting genuine effects of climatic covariates were high relative to that achieved with other approaches. However an important drawback was that probabilities of detecting spurious effects were high especially for high process variance (Table 8D where $b = 0$ and $\sigma^2 > 0.01$).

The IT approach was best adapted to situations where the level of residual process variance was low. In these situations, the probabilities of detecting spurious and genuine effects of climatic covariates were relatively low and high, respectively (columns in Table 8E where $\sigma^2 < 0.03$). However, the IT approach performed poorly when the residual process variance was high: the probabilities of detecting spurious and genuine effects were then relatively high and low, respectively (columns in Table 8E where $\sigma^2 > 0.01$).

(c) Conclusions

The simulation study has shown that all procedures perform well (*i.e.* incur low probabilities of retaining spurious effects and provide relatively high probabilities of detecting genuine effects) in situations where the unexplained process variance σ^2 is low. Such situations are

likely to occur when variation in survival is low and/or when prior knowledge on the study population is good enough for defining models including climatic factors that account for most of the temporal variation observed in survival. However, as in the white stork example, data are usually collected in wild populations in which survival is most likely influenced by multiple factors (Burnham & Anderson, 2002; Schwarz, 2002). In this context, relatively large variation in survival is expected, and the definition of a model accounting for most of the temporal variation in survival through relationships with climatic or other covariates cannot always be achieved. For instance, residual variation in survival after the effect of climatic covariates had been accounted for was detected in 15 of the 53 ESR in which it was addressed. The results of the simulation study showed that in such situations the NHT approach provides statistics such as $F_{test_{cst/co/t}}$ and $W(R_{co})$ that allow testing effects of climatic covariates with reasonable statistical power and limited risks of retaining spurious effects. Such statistics were used in four of the 15 studies mentioned above while in 10 other studies, the IT approach was used to assess the statistical support for climatic covariates. The results of our simulation study suggest that comparison among fixed-effects models using the IT procedure is inefficient in such situations. In our understanding this poor performance of the IT approach makes sense. When variation in survival is large and prior knowledge on the study population is limited, there is a risk that among the set of candidate models that relate variation in survival to variation in climatic factors none describes the data satisfactorily (Burnham & Anderson, 2002, p. 62, pp. 310-317; Guthery *et al.*, 2005; Stephens *et al.*, 2005; Hobbs & Hilborn, 2006). In such situations the only candidate model describing satisfactorily survival variation will often be a structural model with many parameters, such as model F_t , that brings little insight into the ecological factors underlying survival variation (Burnham & Anderson, 2002, pp. 328-330). Still, according to model selection criteria such as AIC , F_t will often outperform models including effects of climatic factors that account for a fraction of the

observed variation in survival, but that fail to account for most of it. In such situations *AIC* comparison among fixed-effects models is thus not an efficient procedure for identifying effects of climatic covariates (Anderson & Burnham, 2002; Burnham & Anderson, 2002, pp. 328-330; Stephens *et al.*, 2005).

With a relatively large estimate of the unexplained process variance, σ^2 , around 0.1, the white stork example perfectly illustrates the situation in which the hypothesis testing approach was best adapted and the statistics $F_{test_{est/co/t}}$ or $W(R_{co})$ should be used. Using these statistics and applying the correction for multiple tests, none of the relationships considered was statistically supported (Table 7).

(5) Measuring the magnitude of the effects of climatic factors

To our knowledge, no survey of statistical power in demographic studies of vertebrate populations has so far been undertaken. However, this has been done in the field of behavioural ecology by Jennions & Møller (2003) who concluded that statistical power was low in a large majority of studies. Because empirical studies of climate impacts on vertebrate survival, as illustrated by the analysis of white stork survival, are almost always characterized by low sample sizes, poor prior knowledge of the underlying processes, and high variability, we can confidently claim that the statistical power to detect effects of climatic factors should often be dramatically low. This is especially true when, as in the application of the NHT paradigm on the white stork survival analysis, one applies procedures that control the risk of type I error. For this reason, we suggest that in the context of exploratory analyses the estimated magnitude of an effect could be used as the decisive criterion for identifying within a set of candidate climatic factors those that might influence survival (Yoccoz, 1991; Nakagawa & Cuthill, 2007; Stephens *et al.*, 2007). Statistical support should nonetheless be provided along with estimated magnitude as an indication of the confidence in the effect of

the covariate being genuine, but not as a decisive criterion. Conversely, when, as is almost always the case in ecological studies, statistical support is used as a decisive criterion to identify potentially influential covariates, the magnitude of their potential effect should always be estimated and presented because it is the proper measure of their potential biological importance (Yoccoz, 1991; Nakagawa & Cuthill, 2007).

When measuring such a magnitude, one has to keep in mind that climate impacts on survival in a given species should ideally be addressed at large spatial scales in order to document its potential geographic variation (Newton *et al.*, 1992; Gaillard *et al.*, 1997; Loison *et al.*, 1999; Tavecchia *et al.*, 2002; Parmesan & Yohe, 2003; Altwegg *et al.*, 2005; Harris *et al.*, 2005; Schaub *et al.*, 2005; Grosbois *et al.*, 2006). It could also be useful to conduct analyses of climate impacts across species in order to identify specific characteristics (life history, habitat type, diet type, *etc.*.....) that modulate the magnitude of climate impacts on survival (see e.g. Jenouvrier *et al.*, 2005a; Sandvik *et al.*, 2005). In these respects, meta-analyses combining results obtained in specific studies of one population of a single species are extremely valuable (Arnqvist & Wooster, 1995; Parmesan & Yohe, 2003; Sæther *et al.*, 2003, 2006; Both *et al.*, 2004). This approach is more efficient if standardization of the measures of climate impacts on ecological processes is achieved across specific studies (Parmesan & Yohe, 2003. Nakagawa & Cuthill, 2007). It is thus important to choose measures of the impacts of climatic factors that can be compared across studies. Below we present several types of statistics that reflect to some extent the magnitude of the impact of climatic factors and discuss their usefulness for studies extended at the multi-population or inter-specific scale.

(a) *Fraction of temporal variation accounted for by climatic factors*

The most common way of characterizing the impact of a covariate in linear regressions is the fraction of the dependent variable accounted for by its effect (Nakagawa & Cuthill, 2007). It quantifies the relative importance of the focal covariate as compared to other drivers in generating variation in the dependent variable. This type of standardised effect size measure was used for evaluating the impact of climatic covariates on survival in roughly half of the ESR (*i.e.* 41 out of 78). Procedures to derive this type of statistic from CMR models have been developed. The most often used statistic is derived from fixed-effects models (Skalski, 1996):

$$R^2_{Dev} = \frac{Dev(F_{cst}) - Dev(F_{co})}{Dev(F_{cst}) - Dev(F_t)} \quad (6)$$

A much less often used statistic can be derived from models R_{co} and R_t that contain random effects (but see e.g. Franklin *et al.*, 2000; Gauthier *et al.*, 2001; Loison *et al.*, 2002; Altwegg *et al.*, 2003, 2006; Schaub *et al.*, 2005; Sandvik *et al.*, 2005):

$$R^2_{Var} = \frac{\hat{\sigma}^2(R_t) - \hat{\sigma}^2(R_{cov})}{\hat{\sigma}^2(R_t)} \quad (7)$$

R^2_{Dev} and R^2_{Var} can be viewed as equivalents of the coefficient of determination, *i.e.* the proportion of deviance and variance explained, respectively. Using these statistics as a covariate selection criterion in the white stork survival data, we considered that covariates for which R^2_{Dev} or R^2_{Var} exceeded 0.20, implying that these were likely to account for more than 20% of temporal variation in survival, could be considered as potentially influential. We computed the statistics R^2_{Dev} and R^2_{Var} for the linear and quadratic relationships between white stork survival and the five candidate climatic covariates (Fig. 5). The linear and quadratic effects of CNSRF and the quadratic effect of PBSC accounted for more than 20% of the variation according to both statistics and were thus considered as influential (Fig. 5). However, the inclusion of the quadratic term for the effect of CNSRF did not result in a substantial increase of the fraction of temporal variation accounted for as compared to a linear

effect only (Fig. 5). Accordingly we considered the linear relationship with CNSRF and the quadratic relationship with PBSC as the only supported effects. This conclusion had to be attenuated because the risk of type I error exceeded 20% for both relationships (see above; and Table 7). Examination of the figures obtained for the ten relationships considered revealed that R^2_{Dev} was lower than R^2_{Var} for relationships accounting for a large fraction of the variation (Fig. 5). This was expected because R^2_{Dev} expresses the amount of temporal process variance in survival accounted for by the relationship with the climatic covariate relative to a variance quantity that includes sampling variance in addition to total temporal process variance. In this respect, it is better to use R^2_{Var} because it expresses the amount of temporal process variance in survival accounted for by the relationship with the climatic covariate relative to the total temporal process variance only. However, R^2_{Var} was lower than R^2_{Dev} , and was actually often negative for relationships accounting for a small fraction of the variation (Fig. 5). As already noticed by e.g. Altwegg *et al.* (2003), R^2_{Var} evaluated from models built with the method of the moments was not a satisfactory measure of magnitude for small effects. Although the method of the moments is well founded (McCullagh & Nelder, 1989; Gould & Nichols, 1998; Burnham & White, 2002), its performance in the analysis of empirical data is still debated. For the time being, we believe that it is preferable to use R^2_{Dev} especially for evaluating the magnitude of small effects.

It is not clear whether coefficients of determination can or cannot be compared safely among case studies considering different populations of a species or even populations of different species (Nakagawa & Cuthill, 2007). Actually, coefficients of determination often suffer from substantial biases, especially when they are obtained from multiple regression models with many predictors. Although unbiased estimates have been developed for linear regressions (Nakagawa & Cuthill, 2007), no equivalent statistics has to our knowledge yet been proposed in the context of CMR models. Furthermore, one drawback of coefficients of

determination is that no method has so far been proposed to determine their standard error in the context of CMR models. No confidence interval can thus be obtained for them. For this reason, whenever the size of an effect is evaluated with R^2_Var or R^2_Dev , a measure of the statistical support for the existence of this effect should also be provided.

(b) Slopes

Estimates of the parameters describing the relationship between survival and climatic factors can be considered as un-standardised effect size statistics. They allow assessing differences in survival between extreme values of climatic factors, and are thus useful measures of the absolute magnitude of their effects. This type of effect size measure was provided in almost all the ESR. Parameter estimates for the logit-linear and –quadratic relationship between white stork survival and CNSRF and PBSC, respectively, are displayed in Table 6. Note that we included in Table 6 only the relationships that were statistically supported. It could be preferable to provide parameter estimates for all the relationships examined in the analysis (*i.e.* ten relationships in the white stork survival example). Actually, in the perspective of undertaking robust meta-analyses, parameter estimates of relationships that are weakly supported on the grounds of statistical significance should ideally be provided in tables of results (Jennions & Møller, 2002).

In the white stork example, the point estimates of the parameters describing the relationship between survival and climatic factors (the intercepts: \hat{a} ; and the slopes \hat{b} and \hat{c} for the linear and quadratic terms, respectively) did not differ according to the type of model used (F_{co} or R_{co} ; Table 6). However, the confidence intervals for the parameter estimates obtained from the model F_{co} were narrow as compared to those obtained from model R_{co} (Table 6). Indeed, the standard errors of the slope estimates obtained from the fixed-effects model F_{co} are underestimated when a large residual temporal variation remains (*i.e.* when the

model F_{co} shows a lack of fit). In these situations the standard errors of the slope estimates

should be multiplied by the scale parameter estimate $\sqrt{\hat{c}} = \sqrt{\frac{Dev(F_{co}) - Dev(F_t)}{n - J}}$, and

confidence intervals should be based on a student distribution with $n - J$ degrees of freedom

rather than on the normal distribution (Lebreton *et al.*, 1992). Accordingly the discrepancy

among slope estimate standard errors vanished after correction by the scale parameter $\sqrt{\hat{c}}$

(Table 6). If appropriate scaling is applied to the standard errors of estimates obtained from

fixed-effects models when needed (*i.e.* when there is residual unexplained variation), these

then compare well with the estimates of slopes and associated standard errors obtained from

mixed-effects models (Breslow, 1990). However, appropriate correction of standard errors

was applied in only two of the 15 ESR where residual temporal variation was detected

(Julliard *et al.*, 1999; Milner *et al.*, 1999).

The estimates of the parameters describing the relationship between survival and climatic factors can differ widely according to the link function chosen for the survival and to the possible transformations that can be applied to the focal climatic covariate before entering it in the regression model. The choice of the link function conditions the shape of the modelled response of survival to variation in the climatic covariate (Lebreton *et al.*, 1992; Skalski *et al.*, 1993). In order to figure out clearly the type of relationship modelled with different link functions one has to determine how a change of δ units in the climatic covariate translates into survival variation. With the identity function, a δ units change in the climatic covariate has an additive effect equal to $b\delta$ on survival (Draper & Smith, 1981). Using a logit scale for survival, a δ units change in the climatic covariate has a multiplicative effect equal to the $\exp(b\delta)$ on the odds ratio of survival (Hosmer & Lemeshow, 1989). Using the log-log link function, so that survival is expressed as instantaneous mortality rate, a δ units change in the climatic covariate has an additive effect equal to the $\exp(b\delta)$ on the instantaneous mortality

rate (Cox & Oakes, 1984). Finally with the log link function, often used in CMR data when the length of time intervals vary, a δ units change in the climatic covariate has a multiplicative effect equal to $\exp(b\delta)$ on survival (McCullagh & Nelder, 1989). Whatever the practical or biological reasons involved in the choice of a link function, it is thus clear that slope estimates obtained with different link functions cannot be easily compared.

The value obtained for the slope of the relationship between survival and a climatic covariate is also sensitive to possible transformations that can be applied to the climatic covariate before including it in the regression model. The climatic covariate can be included in the regression model as such. The slope then expresses the change in $f(\phi)$ expected when the climatic covariate changes by one unit. In that case the interpretation of the slope is straightforward. The climatic covariate can also be centred and standardized, as was done in the white stork survival analysis. The variation in the climatic covariate is then expressed in terms of anomaly relative to the pattern of variability observed in the time series and the slope of the relationship with $f(\phi)$, sometimes referred to as the standardized slope, expresses the change in $f(\phi)$ expected when the climatic covariate changes by one standard deviation unit. Provided that the same link function f is used, the slope of the relationship expressed in terms of variation in $f(\phi)$ per standard deviation unit of the climatic covariate presents the important advantage of allowing comparisons of the magnitude of the impact of distinct climatic factors such as temperature and precipitation on survival. It can also be useful to compare the magnitude of the impact of climatic factors across case studies. However, such comparisons can be drawn only within a type of relationship. For instance, although CNSRF and PBSC have been standardized, comparing the slope of the linear relationship between survival and CNSRF with the slope for the linear term of the quadratic relationship between survival and PBSC makes no sense. It would then often be difficult to compare slope estimates obtained from distinct study cases.

(c) Measures of magnitude for comparative studies

In an outstanding review of effect size statistics, Nakagawa & Cuthill (2007) argue that standardized effect size statistics or the information necessary to derive such statistics should be provided in any biological study because meta-analyses are needed in order to test many ecological and/or evolutionary theories as well as to evaluate the generality of findings from small-scale studies (Arnqvist & Wooster, 1995). Nakagawa & Cuthill (2007) point out that the correlation coefficient, that measures the strength of association between two variables, is the standardized effect size used in the standard statistical models for meta-analyses when the dependent and independent variables are continuous. Indeed, the correlation coefficient seems to be a more robust standardized effect size statistic than the coefficient of determination or the standardised slope. It is striking that attempts at obtaining estimates of the correlation coefficient in the context of CMR models could be found in none of the papers from the ecological or the biostatistical literature that we reviewed. We believe that this is a major gap in CMR modelling techniques. However, Nakagawa & Cuthill (2007) also provide a comprehensive overview of the links existing among the various effect size measures and list the equations that allow converting one measure of effect size into another. It is not yet clear to us whether or not these equations apply in the context of CMR models. However we believe that published empirical studies of climatic impact on the survival of vertebrates should systematically report slope estimates with standard errors that account for all the sources of over-dispersion (see above), variances in the time series of the covariates, estimates of the process temporal variance in survival probability (with their standard errors and/or confidence or credible intervals), and estimates of the coefficients of determination, so that proper standardized effect size statistics for meta-analyses could be easily derived *a posteriori*.

(6) Impact of climatic factors on white stork survival: conclusions

The exploratory analysis of white stork survival has generated two hypotheses on the influence of climatic factors. The correlation pattern examined suggests that Baden-Württemberg white storks could be sensitive to rainfall in their wintering ground and to climatic conditions in their breeding grounds from their arrival there back from wintering to the onset of the breeding period. White storks may survive poorly in years when rainfall is low in the Sahel region (Fig. 6) and in years when extreme climatic conditions (either, high NAO, high temperature and low rainfall, or, low NAO, low temperature and high rainfall) occur in the breeding area during the pre-breeding season (Fig. 6). Furthermore, assuming that these climatic factors exert a genuine influence on survival, the magnitude of their impact is likely to be large. Each could account for up to 30% of the temporal variation in survival (Fig. 5). However the risk of these preliminary conclusions being false exceeded 20% (Table 7), a high level as compared to the standard of 5% usually retained in ecological studies. This situation of detection of potentially strong effects associated with low confidence for these effects being genuine was a consequence of the high number of candidate climatic factors initially considered as potentially influential which, in turn, stemmed from poor prior knowledge of the study system. The next step in the investigation of the impact of climatic factors on Baden-Württemberg white storks would be to challenge these hypotheses. So additional CMR data covering a different time window have to be gathered and used for evaluating hypotheses. Initiating longitudinal monitoring of physiological and/or behavioural traits and of the abundance of important food resources would also be necessary in order to uncover the mechanisms through which Sahel rainfall and climatic conditions in the breeding grounds affect survival of white stork.

V. DISCUSSION

In Table 9 we summarize the points developed in earlier sections of this paper. We listed the specificities of climatic covariates and survival estimates derived from analyses of long-term data collected at the individual scale. We also listed the implications of these specificities for the analysis of the impact of climate on survival, advice for avoiding the resulting pitfalls, and the frequency with which these pitfalls were poorly dealt with in the ESR. Although we presented procedures to attenuate some of the problems identified (Table 9 and see Section III), we believe that these problems are partly inherent to the observational nature of the studies we focus on. Below we first point out the limits of observational studies. We then provide recommendations and point to future research directions that could produce stronger inference from empirical studies on climatic impacts on vertebrate survival. Robustness improvement in most of the ESR undoubtedly implies an increase in the number of statistical units and/or a reduction in the number of candidate climatic covariates (Table 9.B). This can be achieved mainly at three stages of a study: field protocol design, selection of the data sets used for documenting survival variations and selection of the climatic covariates. Furthermore better exploitation of existing statistical tools would result in stronger inference.

(1) The limits of observational studies of impacts of climatic factors on vertebrate survival

The most rigorous conception for acquiring scientific knowledge is the strong inference procedure (Quinn & Dunham, 1983). This procedure first implies that a theory concerning the processes that generate a particular pattern in natural systems has to be evaluated. One or several experiments should be designed, with possible outcomes that allow users to exclude unequivocally one or several of the stipulated hypotheses. The experiment should then be carried out. The statistical procedure used in order to evaluate the outcome of the experiment

is the NHT, which allows falsifying a hypothesis of interest. Application of the strong inference procedure brings about deductive inference that can be considered as true.

The strong inference procedure can usually not be applied in the context of the studies reviewed here, and more generally of ecological studies (Quinn & Dunham, 1983; Guthery *et al.*, 2005). First, alternatives regarding which climatic factor should influence survival and what impacts they are expected to exert do not stem from sound ecological theory. Instead, empirical observations and basic knowledge from research fields such as physiology or ethology strongly suggest that climatic factors are amongst the numerous factors (e.g. density dependence, resource availability, biotic interactions with competitors and predators) that influence survival in free-ranging populations. Second, experiments allowing the rejection of the hypothesis that a given climatic factor influences survival in a population are often unfeasible. Third, the data used in the type of studies we reviewed were most often not collected for the specific purpose of studying the processes through which climatic factors influence survival. These are often survey data that are primarily collected for the purpose of documenting variation in survival and that serve secondarily for exploring the relative importance of a series of putative factors in generating this variation. Finally, the strong inference approach hardly applies in studies of biological systems because these systems are so complex that the putative processes structuring them and driving their dynamics cannot be reduced to a series of dichotomous mutually exclusive alternatives.

Observational studies of climate impacts on survival can thus only bring about inductive inference. Inductive inference produces more or less strong support for processes that presumably influence the focal ecological phenomenon, but is never sufficient to validate or invalidate them (Quinn & Dunham, 1983; Robinson & Wainer, 2002; Roback & Askins, 2005; Link & Barker, 2006). For instance, in the correlative studies considered herein, the detection of a relationship between a climatic factor and survival cannot be considered as a

demonstration of a direct influence of this climatic factor on demography. It can indeed reflect an indirect influence of the climatic factor implying a chain of causation, or even the direct or indirect influence of a confounding factor (especially, as mentioned above, in situations where a detected relationship results solely from the co-occurrence of trends in the survival and climatic factor time series). Although this type of study constitutes a major step towards reaching the ultimate goals of identifying the processes through which climate influences survival, it does not allow doing so as such.

The strength of the conclusions obtained in an investigation of a scientific question through inductive inference depends to a large extent on the number of competing hypotheses that are necessary to represent the whole range of putative processes (Burnham & Anderson 2002; Johnson & Omland, 2004; Hobbs & Hilborn, 2006; Stephens *et al.*, 2007) and on the number of parameters that are necessary to depict each of these competing hypotheses with a mathematical model (Ginzburg & Jensen, 2004). These characteristics depend in turn to a large extent on the quantity and quality of prior knowledge about the focal ecological system. When prior knowledge of the system is good, the number of competing hypotheses and the main drivers of the focal ecological phenomenon under each of the competing hypotheses are well identified *a priori*. The IT procedure can then be used to obtain relatively strong but still inductive inference about processes (Anderson & Burnham, 2002; Burnham & Anderson, 2002; Ginzburg & Jensen, 2004; Johnson & Omland, 2004; Hobbs & Hilborn, 2006; Stephens *et al.*, 2007). When prior knowledge is poor, too many hypotheses are necessary in order to cover the full range of competing putative processes (Anderson & Burnham, 2002; Robinson & Wainer, 2002; Guthery *et al.* 2005; Stephens *et al.*, 2005, 2007), some of which imply far too many possible drivers for the focal ecological phenomenon (Ginzburg & Jensen, 2004). We believe that this was the case in most of the empirical studies of impacts of climatic

factors on vertebrate survival we reviewed (Table 9.B; 9.D) as well as in our investigation of variation in white stork survival.

In such situations, it is necessary to admit that the study aims at generating hypotheses regarding the climatic covariates that potentially have an impact on survival and that further evaluation of these hypotheses would imply either experiments specifically designed or analyses of independent data sets (Robinson & Wainer, 2002; Roback & Askins, 2005; Link & Barker, 2006). The IT approach seems at first sight well adapted for such exploratory studies because it relies on probabilities that the hypotheses of interest are true given the data in hand. However, Burnham & Anderson (2002) and our simulation study suggest that the IT approach entails high and uncontrolled risks of spurious findings in exploratory situations (Table 9.D). On the other hand, many authors consider that the NHT approach suffers from severe flaws that severely limit its potential for producing strong inductive inference (e.g. Yoccoz, 1991; Cohen, 1994; Johnson, 2002; Robinson & Wainer, 2002; Hobbs & Hilborn, 2006; Stephens *et al.*, 2007) With the NHT approach, the actual hypothesis of interest that a focal climatic covariate influences survival, is accepted in the sense that its complement (the null hypothesis) is rejected. This approach thus does not focus explicitly on the hypothesis of interest. Furthermore, what is evaluated is the probability with which the data in hand or more extreme data could have been obtained if the null hypothesis were true, rather than the probability that the null hypothesis is true given the data in hand. However, the results of our simulation study suggest that hypothesis testing can be useful in exploratory analyses (Guthery *et al.* 2005; Robinson & Wainer, 2002; Stephens *et al.*, 2005), especially if effect size statistics are provided along with measures of statistical significance (Yoccoz, 1991).

(2) Improvement of the balance between the number of statistical units and the number of candidate climatic factors

(a) Field protocol design

In 63 of the 78 ESR, CMR protocols consisted of one session per year taking place during the breeding season of the focal species. The inter-annual time scale is a natural one, especially in the highly seasonal environments of temperate zones where most long-term demographic monitoring programs are maintained, because one time unit matches the complete seasonal cycle that constrains the pace of vital activities of any organism. However, the inter-annual time scale does not allow to infer directly from survival estimates the time of year when most mortality occurs and, as a consequence, when environmental conditions (including climatic conditions) are particularly critical. In the few ESR where several sessions per year have been carried out (Singer *et al.*, 1997; Julliard *et al.*, 1999; Hoyle, Pople & Toop, 2001; Conroy *et al.*, 2002; Piper, 2002; Tavecchia *et al.*, 2002; Barbraud & Weimerskirch, 2003; Garel *et al.*, 2004; Hallet *et al.*, 2004; Schaefer *et al.*, 2006), a scale was added to the characterization of temporal variation in survival. The first advantage was an increase in the number of statistical units available for documenting temporal variation in survival. A second advantage was that critical periods within a year could be identified more precisely and the number of candidate climatic covariates could be considerably reduced.

(b) Selection of data sets used for documenting survival variation

CMR protocols most often focus on a single population or even a single sub-population of the focal species. In only eight ESR were CMR data from several populations analysed simultaneously (Newton *et al.*, 1992; Gaillard *et al.*, 1997; Loison *et al.*, 1999; Tavecchia *et al.*, 2002; Altwegg *et al.*, 2005; Harris *et al.*, 2005; Schaub *et al.*, 2005; Grosbois *et al.*, 2006).

Addressing the impact of climatic factors on survival with such multi-population data sets is particularly valuable for two reasons. First, the number of statistical units available for documenting temporal variation in survival is increased: indeed, the detection of correlations of survival with the same climatic factor in several populations of a given species is very convincing evidence that this factor has an impact on survival (e.g. Newton *et al.*, 1992; Gaillard *et al.*, 1997; Tavecchia *et al.*, 2002; Harris *et al.*, 2005; Schaub *et al.*, 2005; Grosbois *et al.*, 2006). Second, using multi-population data sets allows investigators to document geographic variation in influences of climatic factors and to make predictions about the impact of various climate change scenarios in terms of changes in species abundance over the entire distribution range. Although logistic problems usually prevent one research team from simultaneously monitoring several populations of the same species in distant locations, there is undoubtedly a large number of seabirds, passerines, small mammals and large herbivores for which multi-population CMR data sets could be assembled through collaborations among researchers. Such collaborations have already been established for landbirds (Sæther *et al.*, 2003, 2006; Both *et al.*, 2004; Schaub *et al.*, 2005; Grosbois *et al.*, 2006), and seabirds (Harris *et al.*, 2005), and the results obtained illustrate the potential of such approaches for documenting geographical variation in the impact of climatic factors. This type of approach will hopefully develop in the near future. Moreover, the analysis of multiple population data sets allows investigators to assess both the magnitude of co-variation (*i.e.* of synchrony over time) in survival of different populations and the role of climatic factors in generating co-variation in survival among populations (Schaub *et al.*, 2005; Sæther *et al.*, 2006). The most direct way to get estimates of the process covariance among survival estimates from several populations involves variants of mixed-effects models which are currently being developed.

(c) Selection of a set of climatic factors

The definition of a relatively small set of non-redundant candidate climatic covariates is probably the most problematic issue (Table 9.B; 9C). The number of candidate covariates depends to a large extent on the level of uncertainty with which the mechanisms through which climate influences survival are known. In some rare instances, eco-physiological and/or behavioural studies have provided sufficient information on these mechanisms so this uncertainty is low (e.g. in large herbivore species: Sæther, 1997; Gaillard, Festa-Bianchet & Yoccoz, 1998). However, the investigator often has to deal with a poor knowledge of such mechanisms. In these situations defining a small set of potentially relevant candidate climatic covariates can be extremely difficult for several reasons. As mentioned previously, monitoring programs at the individual level are most often carried out at the inter-annual time scale so that critical times of the year cannot be determined directly. Furthermore, climatic covariates can influence survival with time lags. For example, the effect of climatic conditions experienced in early stages of life can persist for many years (Albon, Clutton-Brock & Guinness, 1987; Gaillard *et al.*, 1997). In the case of resident populations of low-mobility species, the geographic area where the potentially critical climatic covariates have to be measured is most often restricted and well defined. However, in other instances, the definition of this geographic area is less straightforward. Examples include long-distance migratory species (Sillett, Holmes & Sherry, 2000; Møller & Szep, 2005; Stokke *et al.*, 2005; Sæther *et al.*, 2006), and highly mobile species such as pelagic seabirds relying on resources that are themselves highly mobile (Barbraud & Weimerskirch, 2005; Grosbois & Thompson, 2005; Crespin *et al.*, 2006; Nevoux & Barbraud, 2006; Votier *et al.*, 2005). Finally, local climate can influence survival indirectly through variation in abundance of food (Frederiksen *et al.*, 2004; Sandvik *et al.*, 2005). The complexity of climate influences on survival in such

cases generally hampers identification of a small set of potentially relevant climatic covariates.

Selecting all local climatic covariates that are potentially relevant when uncertainty about the mechanisms is important often results in too large a set of candidate covariates. When this option is nonetheless preferred, we strongly advise against the inclusion of several highly correlated covariates in the set of candidate covariates. We believe that using local weather packages (obtained for instance from multivariate analyses such as PCA) is a powerful way of achieving a reasonable balance between relevance and parsimony during the stage of selection of candidate climatic covariates (Loison *et al.*, 1999; Grosbois *et al.*, 2006; Jenouvrier *et al.*, 2006; Kéry *et al.*, 2006; Traylor & Alisauskas, 2006 among the papers reviewed here and Moss, Oswald & Baines, 2001; Sirabella *et al.*, 2001; Beaugrand & Reid, 2003; Forsman & Mönkkönen, 2003; for other types of demographic studies). Collaborations with climatologists could facilitate defining such local weather packages.

Another way to deal with high levels of uncertainty about which local climatic covariates could influence survival involves using large-scale teleconnection indices such as NAO or the southern oscillation index (Holmgren *et al.*, 2001; Ottersen *et al.*, 2001; Stenseth *et al.*, 2003). However, large-scale teleconnection indices are likely to influence survival through a complex causal pathway. The teleconnection index is then just a surrogate or proxy for an unknown variable that is supposed to influence survival directly (Almaraz & Amat, 2004) and the detection of a relationship between it and survival brings about little information on the mechanisms through which climatic factors influence demography.

(3) Better exploitation of statistical tools

(a) *A priori power analyses*

In the ESR the power to detect effects of climatic factors was not assessed before the investigation of potentially influential factors. Yet, the procedures for evaluating *a priori* statistical power in CMR analyses have been described and applied in few studies (Lebreton *et al.*, 1992; Devineau *et al.*, 2006). We believe that *a priori* power evaluation would provide important information for setting the α -level when the NHT procedure is used and for defining a reasonable size for the set of candidate covariates (*i.e.* a size with which covariate effects can be evaluated with reasonable power when corrections for multiple tests are applied). However, one important change in current practice is required before power analyses can be undertaken. In none of the ESR were precise alternative hypotheses explicitly formulated. Instead, it was implicitly assumed that the alternative hypotheses were just the counterpart of the null hypotheses (the parameters of the relationships between survival and the focal climate covariate are different from zero or, equivalently, the fraction of the temporal variation in adult survival accounted for by the effect of the focal climate covariate is more than zero). We believe that the formulation of precise alternative hypotheses would contribute to obtaining more robust analyses. It would allow evaluation of statistical power and more meaningful conclusions (Field *et al.*, 2004; Devineau *et al.*, 2006).

(b) Integrated modelling

Combining several sources of information on survival can greatly reduce estimation uncertainties and thereby increase statistical power for detecting climatic effects. Integrated modelling tools are currently being developed to draw inferences based on the simultaneous analysis of different types of data. Attempts at evaluating the influence of climatic factors on survival using integrated modelling of live recaptures and dead recoveries have already been performed (Catchpole *et al.*, 2000; Blums *et al.*, 2002; Altwegg *et al.*, 2003; Schaub *et al.*, 2005). In its most elaborate version such integrated modelling could combine monitoring data

at the population and individual levels for building statistical models with a structure that includes explicit descriptions of the link between demographic parameters and population dynamics. Such integrated models certainly have a great potential for investigating the influence of climate change on population dynamics (Besbeas, Freeman & Morgan, 2005). They are currently being developed but have seldom been used so far for evaluating the influence of climatic factors on survival and population dynamics (but see Besbeas *et al.*, 2002).

(c) Cross validation

Two important components need to be evaluated for assessing the validity of a statistical model. Internal validity is the ability of the model to describe the variation in the focal dependent variable in the population where, and over the time period when, the data used to build the model have been collected. External validity is the ability to predict variation in the dependent variable in other populations and/or over other time periods where and when the same processes are supposedly acting.

An important risk incurred when exploring the potential influence on survival of many climatic factors by analysing short time series is that of coming up with a model performing well in terms of internal validity but poorly in terms of external validity. This risk further increases when the multiple test issue is ignored. For these reasons, we believe that although the statistical models produced in many of the ESR represent valuable hypotheses, their external validity still needs to be evaluated before they can be used for the ultimate aim of predicting survival under future climatic conditions.

In our opinion, the best approach to evaluate the external validity of a model obtained from the analysis of data collected in a given population over a given time period, is to assess its predictive performance on a data set collected in a different population and over a distinct

time period. We thus believe that undertaking multi-population and multi-species investigations is the best approach to produce predictive models with high external validity. However, generating hypotheses and evaluating their external validity simultaneously on a single data set is to a certain extent possible with cross-validation procedures. Such procedures, where the data set is iteratively split into a fitting and a validation subset, have been used in investigations of climatic impacts in time series of abundance (e.g. Turchin, 2003; Corani & Gatto, 2007) and for producing predictive models of species distribution ranges through the analysis of climatic niches (e.g. Broennimann *et al.*, 2007, Dormann *et al.*, 2008). Although it has to our knowledge never been applied in empirical studies of impacts of climatic factors on survival of vertebrate populations, cross validation would clearly improve the robustness of the results obtained in such studies.

(d) Tools for addressing complex causal pathways

While the regression models presented here are efficient tools for detecting correlations, they hardly provide information on the type (direct or indirect) of the relationships detected, nor account for relationships among explanatory covariates. Modelling tools have recently been introduced in the field of ecology (e.g. structural equation modelling; Bollen, 1989) to state explicitly through flow charts the existence of relationships among explanatory environmental covariates and the type (direct or indirect) of relationship linking survival to the explanatory environmental covariates (Graham, 2003; see Almaraz & Amat, 2004 for an application in the field of population biology). Adaptation of this type of modelling tool to the analysis of temporal variation in survival is desirable. It could be used to infer complex causal pathways linking survival to several inter-related climatic and biotic covariates. This type of complex pathway is suspected to underlie relationships between survival of pelagic seabirds and fluctuation of large-scale climatic indices (Jenouvrier *et al.*, 2005b; Sandvik *et al.*, 2005).

Furthermore, from a methodological point of view, the application of this type of modelling tool would to some extent tackle the multi-collinearity issue (Graham, 2003).

Complex causal pathways also imply that a candidate climatic covariate may not be the actual causal factor but may nonetheless reflect imperfectly temporal variation in this causal factor because it is causally connected to it. This is obvious when large-scale integrative climatic indices such as the NAO are considered in the set of covariates. In this context, regression models that integrate explicitly measurement errors in predictors could be useful. Such models have already been used in the field of population biology (e.g. Solow, 1998; Almaraz & Amat, 2004) and in the CMR context to study density-dependence (Barker, Fletcher & Scofield, 2002). To our knowledge they have never been applied in the context of investigation of the relationship between climate and survival.

Lastly, causal pathways can generate non-linear relationships among climate indices (Mysterud *et al.*, 2001; Lima *et al.*, 2002). The recent development of non-parametric models in a statistical framework adapted to the analysis of monitoring data at the individual level now allows investigators to model with maximum flexibility such non-linear relationships (Gimenez *et al.*, 2006).

(e) Multi-model inference

In the ESR, the IT procedure was often chosen as a statistical framework. However, it was used as a tool for identifying among a set of climatic factors those that might noticeably influence survival. As discussed above, we believe that the IT procedure is not superior to the NHT procedure when used for such exploratory investigations. On the other hand, when prior knowledge of the system is good enough for building a limited number of relevant models, the IT procedure offers interesting possibilities. In particular, *AIC* weights can be used to draw inductive inference, such as the estimation of the impact of a climatic factor, from

several models (Buckland *et al.*, 1997). Such multi-model inference is extremely valuable because it accounts for uncertainty in model selection. However, the possibility offered by the IT procedure to draw multi-model inference has been exploited in only two of the 78 ESR (Beauplet *et al.*, 2005; Traylor & Alisauskas, 2006; see also Hartley *et al.*, 2006; Dormann *et al.*, 2008 for the inclusion of model selection uncertainty in inferences on biodiversity and species ranges).

f) IT selection criterion for models including random effects

Our evaluation of the performances of statistical procedures for identifying influential climatic factors suggests that the IT procedure does not perform well in situations where prior knowledge of the system is poor. In our opinion such a poor performance arises from the impossibility of defining a model that explains most of the temporal variation in survival through relationships with biologically relevant predictors. We suggest that introducing in the set of candidate models mixed effect models of the type of R_t and R_{co} that account parsimoniously for unexplained process variation would most likely improve the statistical performance of the IT approach when prior knowledge is poor (Burnham & Anderson, 2002, pp. 310-317). Although methods for deriving AIC for CMR models including random effects have been proposed (Burnham & White, 2002; Vaida & Blanchard, 2005), their efficiency has so far received little evaluation and they have to our knowledge never been applied in analyses of field CMR data. Procedures based on AIC comparisons within sets of candidate models including fixed- and mixed-effects models have undoubtedly great potential for addressing the impact of climatic factors on survival.

(g) Incorporation of prior knowledge

In a CMR context, the possibility of incorporating prior knowledge of the system in the analysis has rarely been exploited (but see McCarthy & Masters, 2005), and never with the aim to demonstrate the impact of climatic factors on demographic parameters. In the white stork example, the positive effect on survival of rainfall at wintering sites was demonstrated several times in the literature, whereas that of climatic conditions at breeding sites was unknown prior to this study. One way of incorporating this prior information would be to assign a positive distribution to the regression parameter representing the impact of rainfall on survival, and a vague prior such as a normal distribution with large variance for the parameter standing for the impact of climatic conditions at breeding sites which was poorly documented prior to this analysis. By doing so, the use of information in the data will be focused on investigating a potential effect of climatic conditions at breeding sites.

VI. CONCLUSIONS

- (1) Although a noticeably large number of ecological studies have detected impacts of climatic factors on survival in populations of vertebrates, many of these results should be considered with caution.
- (2) We identified three statistical problems that were often quite poorly dealt with in the 78 case studies we reviewed (Table 9). First, the evidence for impact of climatic factors on survival has been obtained from analyses where multiple correlated climatic covariates were considered without tackling the multiple test and multi-collinearity problems (Table 9.B; 9.C). Second, in the studies where large variation in survival was observed, and where climatic and other time-varying covariates did not account for most of this variation, statistical support for the effect of climatic covariates was often assessed using statistics that poorly accounted for unexplained variation (Table 9.D). Finally most of the studies we reviewed did not address the potential co-occurrence of temporal trends in the survival and climatic covariates despite

such co-occurrence easily resulting in spurious detections of climate effects (Table 9.E). We suggest that the two last issues are relatively easy to deal with because data can simply be re-analysed using more robust statistical methods such as those reviewed here.

(3) In our opinion, the most problematic issue is the low ratio between the number of statistical units available for documenting time variation in survival and the number of climatic covariates considered as potentially influential (Table 9.B). Indeed, we believe that this issue is inherent to observational studies where prior knowledge of the system is too poor for a limited set of potential drivers of survival to be defined. More robust results could be obtained by improving procedures used at early stages of investigations (e.g. field protocol design allowing investigations at infra-annual scales and selection of multi-population data sets) as well as at the final stage of data analysis (*i.e.* better exploitation of the possibilities offered by existing statistical tools).

(4) We are convinced that major findings regarding the influence of climatic factors on demographic processes, on the dynamics of distribution ranges or on the structure of communities can be expected from investigations at multi-population and multi-specific levels.

(5) We urge population ecologists to consider our recommendations because results obtained in investigations of demographic processes in single populations and species can be integrated in meta-analyses or used as pieces of prior knowledge for other investigations only if they are obtained with robust and standardized statistical methods.

VII. ACKNOWLEDGEMENTS

The authors would like to thank Jean-Dominique Lebreton for his conceptual contribution to this paper. We also thank Marc Kéry, and Charles G. M. Paxton for their comments on early drafts of the manuscript. We are grateful to Tim Coulson and Nigel Yoccoz for having

reviewed the paper. This project and V. G.'s research were supported by grants from the Centre National de la Recherche Scientifique (ACI CLIM-POP), the Ministère de l'Ecologie et du Développement Durable and the Institut Français de la Biodiversité (program GICC and GICC2). O. G.'s research was supported by a Marie-Curie Intra-European Fellowship within the Sixth European Community Framework Programme.

VIII. APPENDICES

(1) **Case studies** where climate impacts on survival of vertebrates have been addressed using capture-mark-recapture data (papers from 1985 to 2006 from journals referenced in *Current Contents*). F_{cst} , F_t , F_{co} , F_l , F_T , F_{T-q} , R_t , R_{co} are different types of CMR models for describing survival (Table 4). $LRT_{x/y}$, $\Delta_{x/y}$, $Ftest_{x/y/z}$, $W(R_{co})$ are statistics to assess statistical support (Table 7 and Sections IV.1-IV.3). R^2_{Dev} , R^2_{Var} are effect size statistics (Sections IV.5). GOF: Goodness of fit test. CI: confidence interval.

Reference	Species	Study site	Time series duration; y, years; s, seasons; m, months; biw, biweekly; w, weeks; *, by	Number of time varying covariates [climate (other)]	Teleconnection indices	Relationship among time varying covariates	Reference model NT: not tested against other models	Type of regression model CMR: CMR model LR: linear regression LGR: logistic regression KM: Kaplan Meyer KF: known fate model CR: Cox regression	Variation unexplained by the climatic covariates (test statistics) NT: not tested NS: not significant S: significant	Statistics for statistical support for covariate effect UC: unsupported conclusion	Correction for multiple tests M: mentioned but not applied	Coefficient of determination R^2_{LR} : from linear regression $R^2_{?}$: method not mentioned	Trends (S= survival; C=climate)
1	Tundra vole <i>Microtus oeconomus</i>	Norway	4y	1			F_t (NT)	LR on survival estimates derived from a LGR	NT	F-LR		Pearson correlation coefficient	
2	Red deer <i>Cervus elaphus</i>	Isle of Rum Scotland	10 y	≥ 2 (1)		N	F_t or F_{cst} depending on sex and age ($LRT_{cst/t}$)	LR on the rate of number known alive at t+1 among those seen at t.	NT	F-LR	N		

3	Asp viper <i>Vipera aspis</i>	Switzerland	14 y	3		Y	$F_{cst} (\Delta_{cst/t})$	CMR	NS ($\Delta_{cst/t}$)	$\Delta_{cst/co}$	N		
4	Barn owl <i>Tito alba</i>	Switzerland	12 y	3 (1)		N	$F_t (\Delta_{cst/t})$	CMR	S ($\Delta_{co/t}$)	$\Delta_{co/t}$ $\Delta_{cst/co}$ UC (based on R^2)	N	R^2_{Dev} R^2_{Var}	
5	Barn owl <i>Tito alba</i>	Switzerland	68 y	1			$F_t (\Delta_{cst/t})$	CMR	S ($\Delta_{co/t}$)	$Ftest_{cst/co/t}$		R^2_{Var}	
6	Emperor penguin <i>Aptenodytes forsteri</i>	Terre Adélie (Antarctica)	19 y	3		N	$F_t (LRT_{cst/t})$	CMR	NS ($LRT_{co/t}$)	$LRT_{co/t}$	N	R^2_{Var}	
7	Blue petrel <i>Halobaena caerulea</i>	Kerguelen archipelago	12 y	2 (1)	Y	Y	$F_t (\Delta_{cst/t})$	CMR	NS ($\Delta_{co/t}$)	AIC weights $\Delta_{cst/co}$	N	R^2_{Dev} R^2_{Var}	
8	Blue petrel <i>Halobaena caerulea</i>	Kerguelen archipelago	10 y	1 (1)		N	$F_t (\Delta_{cst/t})$	CMR	NS ($\Delta_{co/t}$)	$\Delta_{co/t}$ $\Delta_{cst/co}$	N	R^2_{Dev}	
9	Snow petrel <i>Pagodroma nivea</i>	Terre Adélie	16 y	24		N	$F_t (LRT_{cst/t})$	CMR	NS ($LRT_{co/t}$)	$LRT_{cst/co}$	N	R^2_{Dev}	
10	Subantarctic fur seal <i>Arctocephalus tropicalis</i>	Amsterdam island	6 y	1			$F_{cst} (\Delta_{cst/t})$ or F_t (NT) depending on age	Depending on age, CMR or Spearman rank correlation on estimates derived from age class size and survival estimates	NS ($\Delta_{cst/t}$) or NT depending on age	Spearman rank correlation test		Spearman rank correlation coefficient	
11	Cassin's auklet <i>Ptychoramphus aleuticus</i>	Triangle and Frederick's islands (British Columbia)	5 y	1	Y		$F_{cst} (\Delta_{cst/t})$	CMR	NS ($\Delta_{cst/t}$)	$\Delta_{cst/co}$			
12	Three duck species	Latvia	17-21 y	1			F_{cst} or F_t depending on	CMR	NS ($\Delta_{co/t}$)	$\Delta_{cst/co}$ $\Delta_{co/t}$			

							species ($\Delta_{cst/t}$)			UC in one species ($\Delta_{cst/co} = -0.72$)			
13	Northern red-backed vole <i>Clethrionomys rutilus</i>	Yukon (Canada)	10 y	>1(>1)		N	F_t (NT)	LR on survival estimates derived from population size estimates	NT	F -LR	N	R^2 _LR	
14	Seychelles warbler <i>Acrocephalus sechellensis</i>	Cousin Island (Seychelles)	18 y	5 (1)		N	F_t ($\Delta_{cst/t}$)	CMR	S ($\Delta_{co/t}$)	$\Delta_{cst/co}$ $\Delta_{co/t}$	N		C
15	Common lizard <i>Lacerta vivipara</i>	France	13 y	3		Y	F_t or F_{cst} ($\Delta_{cst/t}$) depending on sex	CMR	NS ($\Delta_{co/t}$)	$\Delta_{cst/co}$ $\Delta_{co/t}$	N		S C
16	Soay sheep <i>Ovis aries</i>	St Kilda (Scotland)	10 y	4 (1)	Y	Y	F_t ($\Delta_{cst/t}$)	CMR	S ($\Delta_{co/t}$)	$\Delta_{co/t}$ $\Delta_{cst/co}$ UC (based on uncorrected CI)	M		
17	Lapwing <i>Vanellus vanellus</i>	UK	29 y	13		Y	F_{cst} ($\Delta_{cst/t}$)	CMR	NS ($\Delta_{cst/t}$)	$\Delta_{co/t}$ $\Delta_{cst/co}$	N		S C
18	Coot <i>Fulica atra</i>	Netherlands	15 y	1 (1)		N	F_t (NT)	LR on F_t estimates (log transformed)	NT	F -LR	N		
19	Starling <i>Sturnus vulgaris</i>	Belgium	6 y	1			F_t ($LRT_{cst/t}$)	CMR	NS ($LRT_{co/t}$)	$LRT_{cst/co}$			
20	Great tit <i>Parus major</i>	England	20 y	5 (6)		Y	F_t ($LRT_{cst/t}$)	CMR	NS (GOF F_{co})	$LRT_{cst/co}$	M		
21	Serin <i>Serinus serinus</i>	Spain	15y*2s	3 (1)		N	F_t ($\Delta_{cst/t}$)	CMR	S ($\Delta_{co/t}$)	$\Delta_{co/t}$ $\Delta_{cst/co}$	N		

22	Sand martin <i>Riparia riparia</i>	Breeding in Nottinghamshire (UK) wintering in West Africa	23 y	3		N	$F_t (\Delta_{cst/t})$	CMR	S ($\Delta_{co/t}$)	$Ftest_{cst/co/t}$	N		S
23	Common guillemot <i>Cephus grylle</i>	Isle of May (Scotland)	10y	4	Y	N	$F_t (\Delta_{cst/t})$	CMR	S ($\Delta_{co/t}$)	$Ftest_{cst/co/t}$	N	R^2_{Dev}	
24	Four resident forest bird species: <i>Baeolophus bicolor</i> , <i>Picoides pubescens</i> , <i>Poecile carolinensis</i> , <i>Sitta carolinensis</i>	Ohio (USA)	5 y	1			$F_{cst} (\Delta_{cst/t})$	CMR	NS ($\Delta_{cst/t}$)	$LRT_{cst/co}$			
25	Soay sheep <i>Ovis aries</i>	St Kilda (Scotland)	13 y	1 (1)	Y	N	$F_t (LRT_{cst/t})$	LGR (no detection parameter)	NT	$LRT_{cst/co}$	N	R^2_{Dev}	
26	Northern spotted owl <i>Strix occidentalis</i>	California (USA)	9 y	10		N	$F_t (\Delta_{cst/t})$	CMR	NS ($\Delta_{co/t}$)	$\Delta_{co/t}$ $\Delta_{cst/co}$	N	R^2_{Var}	
27	Black-legged kittiwake <i>Rissa tridactyla</i>	Isle of May (Scotland)	16 y	4 (2)	Y	N	$F_{T-q} > F_{cst} > F_t$ ($\Delta_{cst/t}$; $\Delta_{cst/T-q}$; $\Delta_{T-q/t}$) ²	CMR	NS ($\Delta_{cst/t}$)	$LRT_{cst/co}$	N	R^2_{Var}	S
28	Desert tortoise <i>Gopherus agassizii</i>	California (USA)	5 y	1			$F_t (\Delta_{cst/t})$	CMR	NS ($\Delta_{co/t}$)	$\Delta_{co/t}$ $\Delta_{cst/co}$			
29	Roe deer <i>Capreolus capreolus</i>	France	10y	2 (2)		N	$F_t (LRT_{cst/t})$	CMR	NS ($LRT_{co/t}$)	$LRT_{cst/co}$	N	R^2_{Dev}	
30	Mouflon <i>Ovis</i>	Southern	9 biw	12		N	$F_t (\Delta_{cst/t})$	CMR	NS ($\Delta_{co/t}$)	$\Delta_{co/t}$	N		

	<i>aries</i>	France								$\Delta_{cst/co}$			
31	Blue tit <i>Cyanistes caeruleus</i>	France (mainland and Corsica)	6-13 y	9	Y	Y	$F_t (\Delta_{cst/t})$	CMR	NT	$F_{test_{cst/co/t}}$	M	R^2_{Dev}	
32	Northern fulmar <i>Fulmarus glacialis</i>	Orkneys (Scotland)	34 y	2 (1)	Y	Y	$F_T > F_{cst} > F_t$ $F_{cst} > F_T > F_t$ depending on sex ($\Delta_{cst/t}$; $\Delta_{cst/T}$; $\Delta_{T/t}$)	CMR	NS ($\Delta_{cst/t}$)	$LRT_{cst/co}$ $LRT_{T/co+T}$	N	R^2_{Dev}	S C
33	Mallard <i>Anas platyrhynchos</i>	Sweden	2 y * 16	1			F_{cst}	KF	NT	$\Delta_{cst/co}$			S
34	Soay sheep <i>Ovis aries</i>	St Kilda (Scotland)	8 y * 18w	9		N	F_t (NT)	LR on number of deaths	NT	F-LR	Y	R^2_{Dev}	
35	Atlantic puffin <i>Fratercula arctica</i>	North eastern Atlantic	11-17 y	6	Y	Y	F_t or F_{cst} depending on colony ($\Delta_{cst/t}$)	CMR	NT	$F_{test_{cst/co/t}}$	N	R^2_{Dev}	
36	Atlantic puffin <i>Fratercula arctica</i>	Scotland	21 y	4 (7)		N	F_t ($LRT_{cst/t}$)	LR on F_t estimates	NS ($LRT_{co/t}$)	F-LR	N		S
37	Ghost bat <i>Macroderma gigas</i>	Australia	5y*4s	4		N	F_t ($\Delta_{cst/t}$)	CMR	NS ($\Delta_{co/t}$)	$\Delta_{co/t}$ $\Delta_{cst/co}$	N		
38	Southern fulmar <i>Fulmarus glacialoides</i>	Terre Adélie	38 y	12		N	F_{cst} ($\Delta_{cst/t}$)	CMR	NS ($\Delta_{cst/t}$)	$\Delta_{co/t}$ $\Delta_{cst/co}$ UC (based on $\Delta_{cst/co} = -0.39$)	Y	R^2_{Dev}	
39	Emperor penguin <i>Aptenodytes forsteri</i> , snow petrel <i>Pagodroma nivea</i>	Terre Adélie	31-34y	13	Y	N	F_{cst} or F_t depending on sex and species ($\Delta_{cst/t}$)	CMR	NS or S depending on sex and species ($\Delta_{co/t}$)	$\Delta_{co/t}$ $\Delta_{cst/co}$	N	R^2_{Dev}	

40	Adélie penguins <i>Pygoscelis adeliae</i>	Terre Adélie	8 y	7	Y	Y	$F_t (\Delta_{cst/t})$	CMR	NS ($\Delta_{co/t}$)	$\Delta_{co/t}$ $\Delta_{cst/co}$	N	R^2_{Dev}	
41	Least auklet <i>Aethia pusilla</i>	North Pacific	10 y	3	Y	N	$F_{cst} (\Delta_{cst/t})$	CMR	NS ($\Delta_{cst/t}$)	$\Delta_{cst/co}$	M		
42	Bighorn sheep <i>Ovis canadensis</i>	Alberta, (Canada)	18y	1 (1)		N	$F_{cst} (\Delta_{cst/t})$	CMR	NS ($\Delta_{cst/t}$)	$\Delta_{cst/co}$	N		
43	African multimammate rat <i>Mastomys natalensis</i>	Tanzania	24 m	2 (1)		Y	$F_t (LRT_{cst/t})$	CMR	NT	$Ftest_{cst/co/t}$	N	R^2_{Dev}	
44	White stork <i>Ciconia ciconia</i>	Alsace (breeding)	20 y	7		N	$F_{cst} (LRT_{cst/t})$	CMR	NS ($LRT_{cst/t}$)	$LRT_{cst/co}$	N		C
45	Svalbard pink-footed goose <i>Anser brachyrhynchus</i>	Svalbard (arctic) in summer, Denmark and Netherlands in winter	13 y	2 (3)	Y	Y	$F_t (\Delta_{cst/t})$	CMR	S ($LRT_{co/t}$)	$Ftest_{cst/co/t}$	N	R^2_{Dev}	S C
46	Willow tit <i>Poecile montana</i>	Finland	3 y*9m	2		N	F_t or F_{cst} for seasonal variation, depending on year ($LRT_{cst/t}$)	LR on F_t estimates	NT	F-LR	N	R^2_{LR}	
47	Manatee <i>Trichechus manatus</i>	Florida (USA)	15 y	1			$F_t (\Delta_{cst/t})$	CMR	NT	$Ftest_{cst/co/t}$		R^2_{Dev}	
48	Leaf-eared mice <i>Phyllotis darwini</i>	Central Chile	12 y * 4 s	2 (3)	Y	N	$F_t (\Delta_{cst/t})$	CMR	S ($\Delta_{co/t}$)	$\Delta_{co/t}$ $\Delta_{cst/co}$	N	R^2_{Dev}	
49	Short-tailed shrew <i>Blarina brevicauda</i>	Pennsylvania (USA)	20 y * 12m	3 (1)	Y	N	$F_t (LRT_{cst/t})$	CMR	NS and S depending on age ($\Delta_{co/t}$)	$\Delta_{co/t}$ $\Delta_{cst/co}$	N	R^2_{Dev}	

50	Chamois, isard <i>Rupicapra rupicapra</i>	French Alps and Pyrenees	12 y	15	Y	Y	$F_t (\Delta_{cst/t})$	CMR	NS and S depending on population	$LRT_{cst/co}$	N	R^2_Dev	
51	Red deer <i>Cervus elaphus</i>	Norway	19 y	2		Y	F_t or F_{cst} depending on age ($\Delta_{cst/t}$)	CMR	NT	$LRT_{cst/co}$	N		S C
52	European dipper <i>Cinclus cinclus</i>	Norway	18 y	3 (1)	Y	Y	$F_t (\Delta_{cst/t})$	CMR	NS and S depending on age ($\Delta_{co/t}$)	$\Delta_{co/t}$ $\Delta_{cst/co}$ UC (based on R^2)	N	R^2_Dev R^2_Var	
53	Soay sheep <i>Ovis aries</i>	St Kilda (Scotland)	9 y	1 (1)	Y	N	R_t (NT)	Mixed LGR (no detection parameter)	NT	$W(R_{co})$ and $Ftest_{cst/co/t}$	N		
54	Moose <i>Alces alces</i>	Alaska	11 y*3s	1			F_t ; homogeneity test	KM	NS; homogeneity test among normal snow years	Homogeneity test between years with different climatic conditions			
55	Barn swallow <i>Hirundo rustica</i>	Denmark (breeding)	18 y	7		N	$F_t (\Delta_{cst/t})$	CMR	NS($\Delta_{co/t}$)	$Ftest_{cst/co/t}$	M	$R^2_?$	
56	Sparrowhawk <i>Accipiter nisus</i>	UK	9-15y	≥ 15 (1)		N	F_t or F_{cst} depending on site ($LRT_{cst/t}$)	CMR	NT	$LRT_{cst/co}$	M		S C
57	Thin-billed prion <i>Pachyptila belcheri</i>	Kerguelen Islands	14 y	>500	Y	N	$F_{cst} (\Delta_{cst/t})$	CMR	NS ($\Delta_{cst/t}$)	$\Delta_{cst/co}$	N		S C
58	Mauritius kestrel <i>Falco punctatus</i>	Mauritius island (Indian ocean)	15y	2 (2)		N	F_t or F_{cst} depending on age ($\Delta_{cst/t}$)	CMR	NS($\Delta_{co/t}$)	$\Delta_{co/t}$ $\Delta_{cst/co}$	N	R^2_Dev	
59	Kudu <i>Tragelaphus</i>	Kruger Park (South)	11y	2 (1)		N	F_t (NT)	LR on number alive at $i+1$ among those	NT	F -LR	N	R^2_LR	C

	<i>strepsiceros</i>	Africa)						seen at <i>i</i>					
60	Sedge warbler <i>Acrocephalus schoenobaenus</i>	Britain	16y	1			F_t ($LRT_{cst/t}$)	CMR	NS ($LRT_{co/t}$)	$LRT_{cst/co}$		R^2_Var	S C
61	Reed bunting <i>Emberiza schoeniclus</i>	England	28y	1			F_t ($LRT_{cst/t}$)	CMR	NT	$LRT_{cst/co}$			S C
62	Lapwing <i>Vanellus vanellus</i>	Great Britain	20-50y	35		Y	F_t (GOF of F_t and F_{cst})	LR on F_t estimates	NT	F -LR	N	R^2_Var	
63	Great tit <i>Parus major</i>	Netherlands	35y	1 (3)		N	F_t (NT)	LR on F_t estimates (arcsine transformed)	NT	F -LR	N	R^2_LR	
64	Longtailed wagtail <i>Motacilla clara</i>	South Africa	20y*4s	6 (2)		N	F_t ($\Delta_{cst/t}$)	CMR	S ($\Delta_{co/t}$)	AIC weights	N		S
65	New Zealand long-tailed bats <i>Chalinolobus tuberculatus</i>	New Zealand	9 y	1 (1)		N	F_{cst} ($\Delta_{cst/t}$)	CMR	NS ($\Delta_{cst/t}$)	$LRT_{cst/co}$	N		
66	Song thrush <i>Turdus philomelos</i>	Britain	32 y	2		N	F_{cst} ($\Delta_{cst/t}$)	CMR	NS ($\Delta_{cst/t}$)	$LRT_{cst/co}$	N		
67	5 seabird species: <i>Uria aalge</i> , <i>Uria lomvia</i> , <i>Alca torda</i> , <i>Fratercula arctica</i> , <i>Rissa tridactyla</i>	Barents Sea	14 y	16 (3)	Y	N	F_{cst} , F_T or F_t depending on species ($\Delta_{cst/t}$, $\Delta_{cst/T}$, $\Delta_{T/t}$)	CMR	NS or S depending on species ($\Delta_{co/t}$)	Δ_{cot} $\Delta_{cst/co}$ UC in two species ($\Delta_{cst/co} = -0.73$ and $\Delta_{cst/co} = 1.22$)	N	R^2_Dev	S
68	Guanaco <i>Lama guanicoe</i>	Chile	5y	1 (1)		Y	F_t ; homogeneity test Kaplan-Meyer model	CR	NT	Wald	N		
69	Two African	Kenya	22 m	8		N	F_{cst} ($\Delta_{cst/t}$)	CMR	NS ($\Delta_{co/t}$)	$\Delta_{cst/co}$	N		

	warbler species <i>Sylvia Boehmi</i> , <i>Sylvia lugens</i>												
70	White stork <i>Ciconia ciconia</i>	Germany, Poland (breeding)	19 y	1 (3)		Y	$F_t (\Delta_{cst/t})$ and quantified from R_t	CMR	NT but Quantified from R_{co}	Not assessed	N	R^2_Var	
71	Pipistrelle bat <i>Pipistrellus pipistrellus</i>	Hesse (Germany)	3 y*2s	2		N	$F_t (\Delta_{cst/t})$	CMR	S ($\Delta_{co/t}$)	$\Delta_{co/t}$ $\Delta_{cst/co}$	N		
72	Black-throated blue warbler <i>Dendroica caerulescens</i>	New Hampshire (USA)	11y	1	Y		F_t or F_{cst} depending on site ($\Delta_{cst/t}$)	CMR	NS ($\Delta_{co/t}$)	$\Delta_{co/t}$ $\Delta_{cst/co}$			
73	Elk <i>Cervus elaphus</i>	Yellowstone (USA)	3 y	4		N	F_t (NT)	LGR	NT	$LRT_{cst/co}$	N	R^2_Dev	
74	Common house martin <i>Delichon urbicum</i>	Germany	8 y	10		N	$F_t (\Delta_{cst/t})$	CMR	S ($\Delta_{co/t}$)	Not assessed	N	R^2_Var	
75	Eurasian woodcock <i>Scolopax rusticola</i>	France	7-14y	2		Y	F_t or F_{cst} depending on area ($\Delta_{cst/t}$)	CMR	NS or S depending on area ($\Delta_{co/t}$)	$\Delta_{co/t}$ $\Delta_{cst/co}$ UC in one area out of three	N	R^2_Dev	
76	White-winged scoter <i>Melanitta fusca</i>	Canada	15 bidaily intervals	1			F_{cst} (NT)	CMR	NT	AIC weights			
77	Common guillemot <i>Cephus grylle</i>	Skomer Island (UK)	18 y	2 (2)	Y	Y	$F_{cst} (\Delta_{cst/t})$	CMR	NS ($\Delta_{cst/t}$)	$\Delta_{cst/co}$	N	R^2_Dev	
78	Northern Goshawk <i>Accipiter gentilis</i>	Arizona (USA)	4 y	1 (1)		N	$F_t (\Delta_{cst/t})$	KF	NS ($\Delta_{co/t}$)	$Ftest_{cst/co/t}$	N	R^2_Dev	

1, Aars & Ims (2002); 2, Albon *et al.* (1987); 3, Altwegg *et al.* (2005); 4. Altwegg *et al.* (2003); 5, Altwegg *et al.* (2006); 6, Barbraud & Weimerskirch (2001); 7, Barbraud & Weimerskirch (2003); 8. Barbraud & Weimerskirch (2005); 9, Barbraud *et al.* (2000); 10, Beauplet *et al.* (2005); 11, Bertram *et al.* (2005); 12, Blums *et al.* (2002); 13, Boonstra & Krebs (2006); 14, Brouwer *et al.* (2006); 15, Chamaillé-Jammes *et al.* (2006); 16, Catchpole *et al.* (2000); 17, Catchpole *et al.* (1999); 18, Cavé & Visser (1985); 19, Clobert & Lebreton (1985); 20, Clobert *et al.* (1988); 21, Conroy *et al.* (2002); 22, Cowley & Siriwardena (2005); 23, Crespín *et al.* (2006); 24, Doherty & Grubb (2002); 25, Forchhammer *et al.* (2001); 26, Franklin *et al.* (2000); 27, Frederiksen *et al.* (2004); 28, Freilich *et al.* (2000); 29, Gaillard *et al.* (1997); 30, Garel *et al.* (2004); 31, Grosbois *et al.* (2006); 32, Grosbois & Thompson (2005); 33, Gunnarsson *et al.* (2006); 34, Hallet *et al.* (2004); 35. Harris *et al.* (2005); 36, Harris *et al.* (1997); 37, Hoyle *et al.* (2001); 38, Jenouvrier *et al.* (2003); 39, Jenouvrier *et al.* (2005); 40, Jenouvrier *et al.* (2006); 41, Jones *et al.* (2002); 42, Jorgenson *et al.* (1997); 43, Julliard *et al.* (1999); 44, Kanyamibwa *et al.* (1990); 45, Kery *et al.* (2006); 46. Lahti *et al.* (1998); 47, Langtimm & Beck (2003); 48, Lima *et al.* (2001); 49, Lima *et al.* (2002); 50, Loison *et al.* (1999); 51, Loison & Langvatn (1998); 52, Loison *et al.* (2002); 53, Milner *et al.* (1999); 54, Modafferi & Becker (1997); 55, Møller & Szep (2005); 56, Newton *et al.* (1992); 57, Nevoux & Barbraud (2006); 58, Nicoll, Jones & Norris (2003); 59, Owen-Smith (1990); 60, Peach *et al.* (1991); 61, Peach *et al.* (1999); 62, Peach *et al.* (1994); 63, Perdeck *et al.* (2000); 64, Piper (2002); 65, Pryde *et al.* (2005); 66, Robinson *et al.* (2004); 67, Sandvik *et al.* (2005); 68. Sarno *et al.* (1999); 69, Schaefer *et al.* (2006); 70, Schaub *et al.* (2005); 71, Sendor & Simon (2003); 72, Sillet *et al.* (2000); 73, Singer *et al.* (1997); 74, Stokke *et al.* (2005); Tavecchia *et al.* (2002); 76, Traylor & Alisauskas (2006); 77, Voitier *et al.* (2005); 78, Wiens *et al.* (2006).

(2) Bayesian modelling

To specify the Bayesian model R_{co} for the analysis of the white stork and 500 simulated data sets, all priors were selected as sufficiently vague in order to induce little prior knowledge. Generally, if the data are sufficiently informative, the likelihood dominates the non-informative priors and the posterior summaries using MCMC samples are close to the results of a frequentist analysis. Specifically, we chose uniform distributions on $[0,1]$ for the detection probabilities, normal distributions with mean 0 and variances 1,000,000 for the b 's, and an inverse-gamma with both parameters equal to 0.001 for σ^2 . We used software WinBUGS (Spiegelhalter *et al.*, 2002) to implement our approach. For applications of this program in wildlife (Link *et al.*, 2002) and for fisheries see Meyer & Millar (1999). We generated three chains of length 15,000, discarding the first 5,000 as burn-in. These simulations lasted a few seconds on a PC (512Mo RAM, 2.6GHz CPU). Convergence was assessed using the Gelman and Rubin statistic, also called the potential scale reduction, which compares the within to the between variability of chains started at different initial values (Gelman, Meng & Stern, 1996). Note that the covariate was first standardized in order to avoid numerical instabilities and to improve MCMC mixing. We found that the Markov chains exhibit moderate autocorrelation and good mixing regarding all parameters. In order to check for the robustness of our results, we ran our model using different priors during a sensitivity analysis, and in all cases there were only minimal changes. The codes used for fitting random- and fixed-effects models in a Bayesian framework for the analysis of white stork survival can be obtained from the first author on request.

1 **IX. REFERENCES**

- 2 AARS, J. & IMS, R. A. (2002). Intrinsic and climatic determinants of population demography:
3 the winter dynamics of tundra voles. *Ecology* **83**, 3449-3456.
- 4 ALBON, S. D., CLUTTON-BROCK, T. H. & GUINNESS, F. E. (1987). Early development and
5 population dynamics in red deer. II. Density independent effects and cohort variation.
6 *Journal of Animal Ecology* **56**, 69-81.
- 7 ALMARAZ, P. & AMAT, J., A. (2004). Complex structural effects of two hemispheric climatic
8 oscillators on the regional spatio-temporal expansion of a threatened bird. *Ecology*
9 *Letters* **7**, 547-556.
- 10 ALTWEGG, R., DUMMERMUTH, S., ANHOLT, B. R. & FLATT, T. (2005). Winter weather affects
11 asp viper *Vipera aspis* population dynamics through susceptible juveniles. *Oikos* **110**,
12 55-66.
- 13 ALTWEGG, R., ROULIN, A., KESTENGOLZ, M. & JENNI, L. (2003). Variation and covariation in
14 survival, dispersal, and population size in barn owls *Tyto alba*. *Journal of Animal*
15 *Ecology* **72**, 391-399.
- 16 ALTWEGG, R., ROULIN, A., KESTENGOLZ, M. & JENNI, L. (2006). Demographic effects of
17 extreme winter weather in the barn owl. *Oecologia* **149**, 44-51
- 18 ANDERSON, D. R. & BURNHAM, K. R. (2002). Avoiding pitfalls when using information-
19 theoretic methods. *Journal of Wildlife Management* **66**, 912-918.
- 20 ANDERSON, D. R., BURNHAM, K. P. & THOMPSON, W. L. (2000). Null hypothesis testing:
21 Problems, prevalence, and an alternative. *Journal of Wildlife Management* **64**, 912-923.
- 22 ARNASON, A. N. (1973). The estimation of population size, migration rates and survival in a
23 stratified population. *Researches on Population Ecology* **15**, 1-8.
- 24 ARNQVIST, G., WOOSTER, D. (1995). Meta-analysis: synthesizing research findings in ecology
25 and evolution. *Trends in Ecology & Evolution* **10**, 236-240.

- 1 BALMFORD, A., GREEN, R. E. & JENKINS, M. (2003). Measuring the changing state of nature.
2 *Trends in Ecology and Evolution* **18**, 326-330.
- 3 BARBRAUD, C., BARBRAUD, J. C. & BARBRAUD, M. (1999). Population dynamics of the white
4 stork *Ciconia ciconia* in western France. *Ibis* **141**, 469-479.
- 5 BARBRAUD, C. & WEIMERSKIRCH, H. (2001). Emperor penguins and climate change. *Nature*
6 **411**, 183-186.
- 7 BARBRAUD, C. & WEIMERSKIRCH, H. (2003). Climate and density shape population dynamics of
8 a marine top predator. *Proceedings of The Royal Society of London B.* **270**, 2111-2116.
- 9 BARBRAUD, C. & WEIMERSKIRCH, H. (2005). Environmental conditions and breeding
10 experience affect costs of reproduction in blue petrels. *Ecology* **86**, 682-692.
- 11 BARBRAUD, C., WEIMERSKIRCH, H., GUINET, C. & JOUVENTIN, P. (2000). Effect of sea-ice
12 extent on adult survival of an Antarctic top predator: the snow petrel *Pagodroma nivea*.
13 *Oecologia* **125**, 483-488.
- 14 BARKER, R., FLETCHER, D. & SCOFIELD, P. (2002). Measuring density dependence in survival
15 from mark-recapture data. *Journal of Applied Statistics* **29**, 305-313.
- 16 BARRY, S. C., BROOKS, S. P., CATCHPOLE, E. A. & MORGAN, B. J. T. (2003). The analysis of
17 ring-recovery data using random effects. *Biometrics* **59**, 54-65.
- 18 BEAUGRAND, G. & REID, P. C. (2003). Long-term changes in phytoplankton, zooplankton and
19 salmon related to climate. *Global Change Biology* **9**, 801-817.
- 20 BEAUPLET, G., BARBRAUD, C., CHAMBELLANT, M. & GUINET, C. (2005). Interannual variation
21 in the post-weaning and juvenile survival of subantarctic fur seals: influence of pup sex,
22 growth rate and oceanographic conditions. *Journal of Animal Ecology* **74**, 1160-1172.
- 23 BENJAMINI, Y. & HOCHBERG, Y. (1995). Controlling the false discovery rate – a practical and
24 powerful approach to multiple testing. *Journal of the Royal Statistical Society Series B-*
25 *Methodological* **57**, 289-300.

- 1 BERTRAM, D. F., HARFENIST, A. & SMITH, B. D. (2005). Ocean climate and El Nino impacts on
2 survival of Cassin's auklets from upwelling and downwelling domains of British
3 Columbia. *Canadian Journal of Fisheries and Aquatic Sciences* **62**, 2841-2853.
- 4 BESBEAS, P., FREEMAN, S. N. & MORGAN, B. J. T. (2005). The potential of integrated
5 population modelling *Australian & New Zealand Journal of Statistics* **47**, 35-48.
- 6 BESBEAS, P., FREEMAN, S. N., MORGAN, B. J. T. & CATCHPOLE, E. A. (2002). Integrating mark-
7 recapture-recovery and census data to estimate animal abundance and demographic
8 parameters. *Biometrics* **58**, 540-547.
- 9 BLUMS, P., NICHOLS, J. D., HINES, J. E. & MEDNIS, A. (2002). Sources of variation in survival
10 and breeding site fidelity in three species of European ducks. *Journal of Animal*
11 *Ecology* **71**, 438-450.
- 12 BÖHNING-GAESE, K. & LEMOINE, N. (2004). Importance of climate change for the ranges,
13 communities and conservation of birds. *Advances in Ecological Research* **35**, 211-236.
- 14 BOLLEN, K. A. (1989). *Structural equations with latent covariates*. John Wiley and Sons, New
15 York, NY.
- 16 BOONSTRA, R. & KREBS, C. J. (2006). Population limitation of the northern red-backed vole in
17 the boreal forests of northern Canada. *Journal of Animal Ecology* **75**, 1269-1284.
- 18 BOTH, C., ARTEMYEV, A. V., BLAAUW, B., COWIE, R. J., DEKHUIZEN, A. J., EEVA, T., ENEMAR,
19 A., GUSTAFSSON, L., IVANKINA, E. V., JARVINEN, A., METCALFE, N. B., NYHOLM, N. E.
20 I., POTTI, J., RAVUSSIN, P. A., SANZ, J. J., SILVERIN, B., SLATER, F. M., SOKOLOV, L. V.,
21 TÖRÖK, J., WINKEL, W., WRIGHT, J., ZANG, H. & VISSER, M. E. (2004). Large-scale
22 geographical variation confirms that climate change causes birds to lay earlier.
23 *Proceedings of the Royal Society of London B* **271**, 1657-1662.
- 24 BRESLOW, N. (1990). Tests of hypotheses in overdispersed Poisson regression and other quasi-
25 likelihood models. *Journal of the American Statistical Association* **85**, 565-571.

- 1 BROENNIMANN, O., TREIER, U. A., MÜLLER-SCHÄRER, H., THULLER, W., PETERSON, A. T. &
2 GUISAN, A. (2007). Evidence of climatic niche shift during biological invasion. *Ecology*
3 *Letters* **10**, 701-709
- 4 BROOKS, S. P., CATCHPOLE, E. A., MORGAN, B. J. T. & HARRIS, M. P. (2002). Bayesian methods
5 for analysing ringing data. *Journal of Applied Statistics* **29**, 187-206.
- 6 BROUWER, L., RICHARDSON, D. S., EIKENAAR, C. & KOMDEUR, J. (2006). The role of group size
7 and environmental factors on survival in a cooperatively breeding tropical passerine.
8 *Journal of Animal Ecology* **75**, 1321-1329.
- 9 BROWNIE, C., ANDERSON, D., BURNHAM, K. P. & ROBSON, D. S. (1985). *Statistical inference*
10 *from band recovery data - a handbook. Second edition.* United States Department of the
11 Interior Fish and Wildlife Service., Washington, D.C.
- 12 BROWNIE, C., HINES, J. E., NICHOLS, J. D., POLLOCK, K. H. & HESTBECK, J. B. (1993). Capture-
13 recapture studies for multiple strata including non-Markovian transitions. *Biometrics*
14 **49**, 1173-1187.
- 15 BUCKLAND, S. T. (1982). A mark-recapture survival analysis. *Journal of Animal Ecology* **51**,
16 833-847.
- 17 BUCKLAND, S. T., BURNHAM, K. P. & AUGUSTIN, N. H. (1997). Model selection: An integral part
18 of inference. *Biometrics* **53**, 603-618.
- 19 BURNHAM, K. P. & ANDERSON, D. R. (2002). *Model selection and Multi-Model Inference, a*
20 *practical information-theoretic approach.* Second edition. Springer, New York, NY.
- 21 BURNHAM, K. P. & WHITE, G. C. (2002). Evaluation of some random effects methodology
22 applicable to bird ringing data. *Journal of applied statistics* **29**, 245-264.
- 23 CAM, E., HINES, J. E., MONNAT, J.-Y., NICHOLS, J. D. & DANCHIN, E. (1998). Are adult
24 nonbreeders prudent parents? The kittiwake model. *Ecology* **79**, 2917-2930.
- 25 CAROTHERS, A. D. (1973). Effects of unequal catchability on Jolly-Seber estimates. *Biometrics*

- 1 **29**, 79-100.
- 2 CAROTHERS, A. D. (1979). Quantifying unequal catchability and its effect on survival estimates
3 in an actual population. *Journal of Animal Ecology* **48**, 863-869.
- 4 CATCHPOLE, E. A., MORGAN, B. J. T., COULSON, T. N., FREEMAN, S. N. & ALBON, S. D. (2000).
5 Factors influencing Soay sheep survival. *Applied Statistics* **49**, 453-472.
- 6 CATCHPOLE, E. A., MORGAN, B. J. T., FREEMAN, S. N. & PEACH, W. J. (1999). Modelling the
7 survival of British lapwings *Vanellus vanellus* using ring-recovery data and weather
8 covariates. *Bird Study* **46**, S5-S13.
- 9 CAVÉ, A. J. (1983). Purple heron survival and drought in tropical West-Africa. *Ardea* **71**, 217-
10 224.
- 11 CAVÉ, A. J. & VISSER, J. (1985). Winter severity and breeding bird numbers in a coot
12 population. *Ardea* **73**, 129-138.
- 13 CHAMAILLÉ-JAMMES, S., MASSOT, M., ARAGON, P. & CLOBERT, J. (2006). Global warming and
14 positive fitness response in mountain populations of common lizards *Lacerta vivipara*.
15 *Global Change Biology* **12**, 392-402.
- 16 CHOQUET, R., REBOULET, A.-M., PRADEL, R., GIMENEZ, O. & LEBRETON, J.-D. (2004). M-
17 SURGE: new software specifically designed for multistate capture–recapture models.
18 *Animal Biodiversity and Conservation* **27**, 207-215.
- 19 CHOQUET, R., REBOULET, A.-M, LEBRETON, J.-D., GIMENEZ, O. & PRADEL, R (2005). U-
20 CARE user’s guide, Version 2.2. CEFE/CNRS, Montpellier
21 (<ftp://ftp.cefe.cnrs.fr/biom/Soft-CR>)
- 22 CHUINE, I. & BEAUBIEN, E. G. (2001). Phenology is a major determinant of tree species range.
23 *Ecology Letters* **4**, 500-510.
- 24 CLARK, J. S. (2005). Why environmental scientists are becoming Bayesians. *Ecology Letters* **8**,
25 2-14.

- 1 CLARK, J. S., CARPENTER, S. R., BARBER, M., COLLINS, S., DOBSON, A., FOLEY, J. A., LODGE,
2 D., PASCUAL, M., PIELKE, R. J., PIZER, W., PRINGLE, C., REID, W. V., ROSE, K. A.,
3 SALA, O., SCHLESINGER, W. H., WALL, D. H. & WEAR, D. (2001). Ecological forecasts:
4 an emerging imperative. *Science* **293**, 657-660.
- 5 CLOBERT, J. & LEBRETON, J. -D. (1985). Dépendance de facteurs de milieu dans les estimations
6 de taux de survie par capture-recapture. *Biometrics* **41**, 1031-1037.
- 7 CLOBERT J., LEBRETON, J. D. & ALLAINE, D. (1987). A general approach to survival rate
8 estimation by recaptures or resightings of marked birds. *Ardea* **75**, 133-142.
- 9 CLOBERT J., LEBRETON, J. D. & ALLAINE, D., & GAILLARD, J. M. (1994). The estimation of
10 age- specific breeding probabilities from recaptures or resightings in vertebrate
11 populations. 2. Longitudinal models. *Biometrics* **50**, 375-387.
- 12 CLOBERT, J., PERRINS, C. M., MC-CLEERY, R. H. & GOSLER, G. (1988). Survival rate in the
13 great tit *Parus major* in relation to sex, age and immigration status. *Journal of Animal*
14 *Ecology* **57**, 287-306.
- 15 COHEN, J. (1994). The earth is round ($P < 0.05$). *American Psychologist* **49**, 997-1003.
- 16 CONROY, M. J., SENAR, J. C. & DOMÈNECH, J. (2002). Analysis of individual- and time-specific
17 covariate effects on survival of *Serinus serinus* in north-eastern Spain. *Journal of*
18 *Applied Statistics* **29**, 125-142.
- 19 CORANI, G. & GATTO, M. (2007). Structural risk minimization : a robust method for density-
20 dependence detection and model selection. *Ecography*. **30**, 400-416.
- 21 COULSON, J. C. (2001). Does density-dependent mortality occur in wintering Eurasian
22 Oystercatchers *Haematopus ostralegus* and breeding adult Black-legged Kittiwakes
23 *Rissa tridactyla*? *Ibis* **143**, 500-502.

- 1 COULSON, T., CATCHPOLE, E. A., ALBON, S. D., MORGAN, B. J. T., PEMBERTON, J. M.,
2 CLUTTON-BROCK, T. H., CRAWLEY, M. J. & GRENFELL, B. T. (2001). Age, sex, density,
3 winter weather, and population crashes in Soay sheep. *Science* **292**, 1528-1531.
- 4 COWLEY, E. & SIRIWARDENA, G. M. (2005). Long-term variation in survival rates of Sand
5 Martins *Riparia riparia*: dependence on breeding and wintering ground weather, age
6 and sex, and their population consequences. *Bird Study* **52**, 237-251.
- 7 COX, D. R. & OAKES, D. (1984). *Analysis of survival data*. Chapman and Hall, London, U.K..
- 8 CRESPIN, L., HARRIS, M. P., LEBRETON, J. -D., FREDERIKSEN, M. & WANLESS, S. (2006).
9 Recruitment to a seabird population depends on environmental factors and on
10 population size. *Journal of Animal Ecology* **75**, 228-238.
- 11 DEVINEAU, O., CHOQUET, R. & LEBRETON, J. D. (2006). Planning capture-recapture studies:
12 Straightforward precision, bias, and power calculations. *Wildlife Society Bulletin* **34**,
13 1028-1035.
- 14 DOHERTY, P. F. & GRUBB, T. C. (2002). Survivorship of permanent-resident birds in a
15 fragmented forested landscape. *Ecology* **83**, 844-857.
- 16 DORAN, P. T., PRISCU, J. C., BERRY LYONS, W., WALSH, J. E., FOUNTAIN, A. G., MC-KNIGHT,
17 D. M., MOORHEAD, D. L., VIRGINIA, R. A., WALL, D. H., CLOW, G. D., FRITSEN, C. H.,
18 MC-KAY, C. P. & PARSONS, A. N. (2002). Antarctic climate cooling and terrestrial
19 ecosystem response. *Nature* **415**, 517-520.
- 20 DORMANN, C. F., SCHWEIGER, O., ARENS, P., AUGENSTEIN, I., AVIRON, S., BAILEY, D., BAUDRY, J.,
21 BILLETER, R., BUGTER, R., BUKACEK, R., BUREL, F., CERNY, M., DE COCK, R., DE BLUST,
22 G., DEFILIPPI, R., DIEKOTTER, T., DIRKSEN, J., DURKA, W., EDWARDS, P. J., FRENZEL, M.,
23 HAMERSKY, R., HENDRICKX, F., HERZOG, F., KLOTZ, S., KOOLSTRA, B., LAUSCH, A., LE
24 CŒUR, D., LIRA, J., MAELFAIT, J. P., OPDAM, P., ROUBALOVA, M., SCHERMANN-
25 LEGIONNET, A., SCHERMANN, N., SCHMIDT, T., SMULDERS, M. J. M., SPEELMANS, M.,

- 1 SIMOVA, P., VERBOOM, J., VAN WINGERDEN, W. & ZOBEL, M. (2008). Prediction
2 uncertainty of environmental change effects on temperate European biodiversity.
3 *Ecology Letters* **11**, 235-244.
- 4 DRAPER, N. R. & SMITH, H. (1981a). *Applied regression analysis, Second Edition*. John Wiley
5 & Sons, Inc., New York, NY.
- 6 DUNN, P. (2004). Breeding dates and reproductive performance. *Advances in Ecological
7 Research* **35**, 69-87.
- 8 DURANT, J., ANKER-NILSSEN, T. & STENSETH, N. C. (2003). Trophic interactions under climate
9 fluctuations: the Atlantic puffin as an example. *Proceedings of the Royal Society of
10 London B* **270**, 1461-1466.
- 11 EASTERLING, D. R., MEEHL, G. A., PARMESAN, C., CHANGNON, S. A., KARL, T. R. & MEARNES,
12 L. O. (2000). Climate extremes: observations, modelling, and impacts. *Science* **289**,
13 2068-2074.
- 14 ELLISON, A. M. (2004). Bayesian inference in ecology. *Ecology Letters* **7**, 509-520.
- 15 FIELD, S. A., TYRE, A. J., JONZEN, N., RHODES, J. R. & POSSINGHAM, H. P. (2004). Minimizing the
16 cost of environmental management decisions by optimizing statistical thresholds.
17 *Ecology Letters* **7**, 669-675.
- 18 FORCHHAMMER, M. C., CLUTTON-BROCK, T. H., LINDSTRÖM, J. & ALBON, S. D. (2001).
19 Climate and population density induce long-term cohort variation in a northern
20 ungulate. *Journal of Animal Ecology* **70**, 721-729.
- 21 FORSMAN, J. T. & MÖNKKÖNEN, M. (2003). The role of climate in limiting European resident
22 bird populations. *Journal of Biogeography* **30**, 55-70.
- 23 FRANKLIN, A. B., ANDERSON, D. R., GUTIÉRREZ, R. J. & BURNHAM, K. P. (2000). Climate,
24 habitat quality, and fitness in northern spotted owl populations in northwestern
25 California. *Ecological Monographs* **70**, 539-590.

- 1 FREDERIKSEN, M., WANLESS, S., ROTHERY, P. & WILSON, L. J. (2004). The role of industrial
2 fisheries and oceanographic change in the decline of North Sea black-legged kittiwakes.
3 *Journal of Applied Ecology* **41**, 1129-1139.
- 4 FREILICH, J. E., BURNHAM, K. P., COLLINS, C. M. & GARRY, C. A. (2000). Factors affecting
5 population assessments of desert tortoises. *Conservation Biology* **14**, 1479-1489.
- 6 GAILLARD, J.-M., BOUTIN, J.-M., DELORME, D., VAN LAERE, G., DUNCAN, P. & LEBRETON, J. -
7 D. (1997). Early survival in roe deer: causes and consequences of cohort variation in
8 two contrasted populations. *Oecologia* **112**, 502-513.
- 9 GAILLARD, J.-M., FESTA-BIANCHET, M. & YOCCOZ, N. G. (1998). Population dynamics of large
10 herbivores: covariate recruitment with constant adult survival. *Trends in Ecology and*
11 *Evolution* **13**, 58-63.
- 12 GAILLARD, J. M. & YOCCOZ, N. G. (2003). Temporal variation in survival of mammals: A case
13 of environmental canalization? *Ecology* **84**, 3294-3306.
- 14 GARCIA, L. V. (2004). Escaping the Bonferroni iron claw in ecological studies. *Oikos* **105**, 657-
15 663.
- 16 GAREL, M., LOISON, A., GAILLARD, J. -M., CUGNASSE, J. M. & MAILLARD, D. (2004). The
17 effects of a severe drought on mouflon lamb survival. *Proceedings of the Royal Society*
18 *of London B* **271**, S471-S473.
- 19 GAUTHIER, G., PRADEL, R., MENU, S. & LEBRETON, J. -D. (2001). Seasonal survival of greater
20 snow geese and effect of hunting under dependence in sighting probability. *Ecology* **82**,
21 3105-3119.
- 22 GELMAN, A., CARLIN, J. B., STERN, H. S. & RUBIN, D. B. (2003). *Bayesian Data Analysis*,
23 *Second Edition*. Chapman & Hall. London.
- 24 GELMAN, A., MENG, X. L. & STERN, H. (1996). Posterior predictive assessment of model
25 fitness via realized discrepancies. *Statistica Sinica* **6**, 733-760.

- 1 GEORGE, E. I. & McCULLOCH, R. E. (1993). Variable Selection via Gibbs Sampling. *Journal of*
2 *the American Statistical Association* **88**, 881–889.
- 3 GHOSH, S. K. & NORRIS, J. L. (2005). Bayesian capture-recapture analysis and model selection
4 allowing for heterogeneity and behavioral effects. *Journal of Agricultural, Biological,*
5 *and Environmental Statistics* **10**, 35-49.
- 6 GIMENEZ, O. (2008). Towards a Bayesian analysis template? A comment on Article by
7 Muthukumarana, Schwarz & Swartz 2007. *Canadian Journal of Statistics*. In press.
- 8 GIMENEZ, O., BONNER, S., KING, R., PARKER, R. A., BROOKS, S. P., JAMIESON, L. E., GROSBOIS,
9 V., MORGAN, B. J. T. & THOMAS, L. (2008). WinBUGS for population ecologists:
10 Bayesian modeling using Markov Chain Monte Carlo methods. *Environmental and*
11 *Ecological Statistics*. In press.
- 12 GIMENEZ, O., CRAINICEANU, C., BARBRAUD, C., JENOUVRIER, S. & MORGAN, B. J. T. (2006).
13 Semiparametric regression in capture-recapture modelling. *Biometrics* **62**, 691-698.
- 14 GINZBURG, L. R. & JENSEN, C. X. J. (2004). Rules of thumb for judging ecological theories.
15 *Trends in Ecology & Evolution* **19**, 121-126.
- 16 GOULD, W. R. & NICHOLS, J. D. (1998). Estimation of temporal variability of survival in
17 animal populations. *Ecology* **79**, 2531-2538.
- 18 GRAHAM, M. H. (2003). Confronting multicollinearity in ecological multiple regression.
19 *Ecology* **84**, 2809-2815.
- 20 GREEN, P. (1995). Reversible Jump Markov Chain Monte Carlo Computation and Bayesian
21 Model Determination. *Biometrika* **82**, 711-732.
- 22 GRIST, J. P. & NICHOLSON, S. E. (2001). A study of the dynamic factors influencing the rainfall
23 variability in the West African Sahel. *Journal of Climate* **14**, 1337-1359.

- 1 GROSBOIS, V., HENRY, P.-Y., BLONDEL, J., PERRET, P., LEBRETON, J.-D., THOMAS, D. W. &
2 LAMBRECHTS, M. M. (2006). Climate impacts on Mediterranean blue tit survival: an
3 investigation across seasons and spatial scales. *Global Change Biology* **12**, 2235-2249.
- 4 GROSBOIS, V. & THOMPSON, P. M. (2005). North Atlantic climate variation influences survival
5 in adult fulmars. *Oikos* **109**, 273-290.
- 6 GUISAN, A. & THUILLER, W. (2005). Predicting species distribution: offering more than simple
7 habitat models. *Ecology Letters* **8**, 993-1009.
- 8 GUNNARSON, G., ELMBERG, J., SJÖBERG, K., PÖYSÄ, H. & NUMMI, P. (2006). Experimental
9 evidence for density-dependent survival in mallard (*Anas platyrhynchos*) ducklings.
10 *Oecologia* **149**, 203-213.
- 11 GUTHERY, F. S., BRENNAN, L. A., PETERSON, M. J. & LUSK, J. J. (2005). Information theory in
12 wildlife science: Critique and viewpoint. *Journal of Wildlife Management* **69**, 457-465.
- 13 HALLET, T. B., COULSON, T., PILKINGTON, J. G., CLUTTON-BROCK, T. H., PEMBERTON, J. M. &
14 GRENFELL, B. T. (2004). Why large-scale climate indices seem to predict ecological
15 processes better than local weather. *Nature* **430**, 71-75.
- 16 HARRINGTON, R., WOIWOD, I. & SPARKS, T. (1999). Climate change and trophic interactions.
17 *Trends in Ecology and Evolution* **14**, 146-150.
- 18 HARRIS, M. P., ANKER-NILSSEN, T., MC-CLEERY, R. H., ERIKSTAD, K. E., SHAW, D. N. &
19 GROSBOIS, V. (2005). Effect of wintering area and climate on the survival of adult
20 Atlantic puffins *Fratercula arctica* in the eastern Atlantic. *Marine Ecology Progress*
21 *Series* **297**, 283-296.
- 22 HARRIS, M. P., FREEMAN, S. N., WANLESS, S., MORGAN, B. J. T. & WERNHAM, C. V. (1997).
23 Factors influencing the survival of Puffins *Fratercula arctica* at a North Sea colony
24 over a 20-year period. *Journal of Avian Biology* **28**, 287-295.
- 25 HARTLEY, S., HARRIS, R. & LESTER, P. J. (2006). Quantifying uncertainty in the potential

- 1 distribution of an invasive species: climate and the Argentine ant. *Ecology Letters* **9**,
2 1068-1079.
- 3 HAYS, G. C., RICHARDSON, A. J. & ROBINSON, C. (2005). Climate change and marine plankton.
4 *Trends in Ecology & Evolution* **20**, 337-344.
- 5 HOBBS, N. T. & HILBORN, R. (2006). Alternatives to statistical hypothesis testing in ecology: a
6 guide to self teaching. *Ecological Applications* **16**, 5-19.
- 7 HOLMGREN, M., SCHEFFER, M., EZCURRA, E., GUTIERREZ, J. R. & MOHREN, G. M. J. (2001). El
8 Niño effects on the dynamics of terrestrial ecosystems. *Trends in Ecology & Evolution*
9 **16**, 89-94.
- 10 HOSMER, D. W. & LEMESHOW, S. (1989). *Applied logistic regression*. Wiley, New York, NY.
- 11 HOYLE, S. D., POPLE, A. R. & TOOP, G. J. (2001). Mark-recapture may reveal more about
12 ecology than about population trends: demography of a threatened ghost bat
13 (*Macroderma gigas*) population. *Austral Ecology* **26**, 80-92.
- 14 HULME, P. E. (2005). Adapting to climate change: is there scope for ecological management in
15 the face of a global threat? *Journal of Applied Ecology* **42**, 784-794.
- 16 HURRELL, J. W. (1995). Decadal trends in the North Atlantic Oscillation and relationships to
17 regional temperature and precipitation. *Science* **269**, 676-679.
- 18 IPCC (2007). *Climate Change 2007: synthesis report. Contribution of working groups I, II and*
19 *III to the fourth assessment report of the Intergovernmental Panel on Climate Change*.
20 IPCC, Geneva, Switzerland
- 21 JENNIONS, M. D. & MØLLER, A. P. (2002). Publication bias in ecology and evolution: an
22 empirical assessment using the 'trim and fill' method. *Biological Reviews* **77**, 211-222.
- 23 JENNIONS, M. D. & MØLLER, A. P. (2003). A survey of the statistical power of research in
24 behavioral ecology and animal behavior. *Behavioral Ecology* **14**, 438-445.

- 1 JENOUVRIER, S., BARBRAUD, C. & WEIMERSKIRCH, H. (2003). Effects of climate variability on
2 the temporal population dynamics of southern fulmars. *Journal of Animal Ecology* **72**,
3 576-587.
- 4 JENOUVRIER, S., BARBRAUD, C. & WEIMERSKIRCH, H. (2005). Long-term contrasted responses
5 to climate of two antarctic seabird species. *Ecology* **86**, 2889-2903.
- 6 JENOUVRIER, S., BARBRAUD, C. & WEIMERSKIRCH, H. (2006). Sea ice affects the population
7 dynamics of Adélie penguins in Terre Adélie. *Polar Biology* **29**, 413-423.
- 8 JENOUVRIER, S., WEIMERSKIRCH, H., BARBRAUD, C., PARK, Y. H. & CAZELLES, B. (2005).
9 Evidence of a shift in the cyclicity of Antarctic seabird dynamics linked to climate.
10 *Proceedings of the Royal Society B* **272**, 887-895.
- 11 JETZ, W., WILCOVE, D. S. & DOBSON, A. P. (2007). Projected impacts of climate and land-use
12 change on the global diversity of birds. *Plos Biology* **5**, 1211-1219.
- 13 JOHNSON, D. H. (2002). The role of hypothesis testing in wildlife science. *Journal of Wildlife*
14 *Management* **66**, 272-276.
- 15 JOHNSON, J. B. & OMLAND, K. S. (2004). Model selection in ecology and evolution. *Trends in*
16 *Ecology & Evolution* **19**, 101-108.
- 17 JONES, I. L., HUNTER, F. M. & ROBERTSON, G. J. (2002). Annual adult survival of least auklets
18 (Aves, Alcidae) varies with large-scale climatic conditions of the North Pacific Ocean.
19 *Oecologia* **133**, 38-44.
- 20 JORGENSON, J. T., FESTA-BIANCHET, M., GAILLARD, J. -M. & WISHART, W. D. (1997). Effects
21 of age, sex, disease, and density on survival of bighorn sheep. *Ecology* **78**, 1019-1032.
- 22 JULLIARD, R., LEIRS, H., STENSETH, N. C., YOCOZ, N. G., PRÉVOT-JULLIARD, A. C.,
23 VERHAGEN, R. & VERHEYEN, W. (1999). Survival-variation within and between
24 functional categories of the African multimammate rat. *Journal of Animal Ecology* **68**,
25 550-561.

- 1 KASS, R. E. & RAFTERY, A. E. (1995). Bayes factor. *Journal of the American Statistical*
2 *Association* **90**, 773-795.
- 3 KANYAMIBWA, S., SCHIERER, A., PRADEL, R. & LEBRETON, J. -D. (1990). Changes in adult
4 survival rates in a western European population of the white stork *Ciconia ciconia*. *Ibis*
5 **132**, 27-35.
- 6 KÉRY, M., MADSEN, J. & LEBRETON, J. -D. (2006). Survival of Svalbard pink-footed geese
7 *Anser brachyrhynchus* in relation to winter climate, density and land-use. *Journal of*
8 *Animal Ecology* **75**, 1172-1181.
- 9 KING, D. (2005). Climate change: the science and the policy. *Journal of Applied Ecology* **42**,
10 779-783.
- 11 KLEIDON, A. & MOONEY, H. A. (2000). A global distribution of biodiversity inferred from
12 climatic constraints: results from a process-based modelling study. *Global Change*
13 *Biology* **6**, 507-523.
- 14 LAHTI, K., ORELL, M., RYTKÖNEN, S. & KOIVULA, K. (1998). Time and food dependence in
15 willow tit winter survival. *Ecology* **79**, 2904-2916.
- 16 LANGTIMM, C. A. & BECK, C. A. (2003). Lower survival probabilities for adult florida
17 manatees in years with intense coastal storms. *Ecological Applications* **13**, 257-268.
- 18 LEBRETON, J.-D., BURNHAM, K. P., CLOBERT, J. & ANDERSON, D. R. (1992). Modelling
19 survival and testing biological hypothesis using marked animals: a unified approach
20 with case studies. *Ecological Monographs* **62**, 67-118.
- 21 LIMA, M., JULLIARD, R., STENSETH, N. C. & JAKSIC, F. M. (2001). Demographic dynamics of a
22 Neotropical small rodent (*Phyllotis darwini*): feedback structure, predation and climatic
23 factors. *Journal of Animal Ecology* **70**, 761-775.

- 1 LIMA, M., MERRIT, J., F. & BOZINOVIC, F. (2002). Numerical fluctuations in the northern short-
2 tailed shrew: evidence of non-linear feedback signatures on population dynamics and
3 demography. *Journal of Animal Ecology* **71**, 159-172.
- 4 LINK, W. A. & BARKER, R. J. (2004). Hierarchical mark-recapture models: a framework for
5 inference about demographic processes. *Animal Biodiversity and Conservation* **27**, 441-
6 449.
- 7 LINK, W. A. & BARKER, R. J. (2006). Model weights and the foundations of multimodel
8 inference. *Ecology* **87**, 2626-2635.
- 9 LINK, W. A., CAM, E., NICHOLS, J. D. & COOCH, E. G. (2002). Of BUGS and birds: Markov
10 chain Monte Carlo for hierarchical modeling in wildlife research. *Journal of Wildlife*
11 *Management* **66**, 277-291.
- 12 LOISON, A., JULLIEN, J. -M. & MENAUT, P. (1999). Relationship between chamois and isard
13 survival and variation in global and local climate regimes: contrasting examples from
14 the Alps and Pyrenees. *Ecological Bulletins* **47**, 126-136.
- 15 LOISON, A. & LANGVATN, R. (1998). Short- and long-term effects of winter and spring weather
16 on growth and survival of red deer in Norway. *Oecologia* **116**, 489-500.
- 17 LOISON, A., SÆTHER, B.-E., JERSTAD, K. & RØSTAD, O. W. (2002). Disentangling the sources
18 of variation in the survival of the European dipper. *Journal of Applied Statistics* **29**,
19 289-304.
- 20 LUDWIG, G. X., ALATALO, R. V., HELLE, P., LINDEN, H., LINDSTROM, J. & SIITARI, H. (2006).
21 Short- and long-term population dynamical consequences of asymmetric climate
22 change in black grouse. *Proceedings of the Royal Society B-Biological Sciences* **273**,
23 2009-2016.
- 24 MCCARTHY, M. A. & MASTERS, P. (2005). Profiting from prior information in Bayesian
25 analyses of ecological data. *Journal of Applied Ecology* **42**, 1012--1019.

- 1 MCCARTHY, M. A. (2007). *Bayesian methods for ecology*. Cambridge University Press.
2 Cambridge.
- 3 MCCULLAGH, P. & NELDER, J. A. (1989). *Generalized linear models*. Chapman and Hall,
4 London, U. K.
- 5 MC-CULLOCH, C. E. & SEARLE, S. R. (2001). *Generalized, linear, and mixed models*. John
6 Wiley & Sons, Inc., New York, NY.
- 7 MEYER, R. & MILLAR, R. B. (1999). BUGS in Bayesian stock assessments. *Canadian Journal*
8 *of Fisheries and Aquatic Sciences* **56**, 1078-1087.
- 9 MILNER, J. M., ELSTON, D. A. & ALBON, S. D. (1999). Estimating the contribution of
10 population density and climatic fluctuations to interannual variation in survival of Soay
11 sheep. *Journal of Animal Ecology* **68**, 1235-1247.
- 12 MITCHELL-OLDS, T. & SHAW, R. G. (1987). Regression analysis of natural selection statistical
13 inference and biological interpretation. *Evolution* **41**, 1149-1161.
- 14 MODAFFERI, R. D. & BECKER, E. F. (1997). Survival of radiocollared adult moose in lower
15 Susitna River Valley, southcentral Alaska. *Journal of Wildlife Management* **61**, 540-
16 549.
- 17 MØLLER, A. P. & MERILÄ, J. (2004). Analysis and interpretation of long-term studies
18 investigating responses to climate change. *Advances in Ecological Research* **35**, 111-
19 130.
- 20 MØLLER, A. P. & SZEP, T. (2005). Rapid evolutionary change in a secondary sexual character
21 linked to climatic change. *Journal of Evolutionary Biology* **18**, 481-495.
- 22 MONTEVECCHI, W. A. & MYERS, R. A. (1997). Centurial and decadal oceanographic influences
23 on changes in northern gannet populations and diets in the north-west Atlantic:
24 implications for climate change. *ICES Journal of Marine Science* **54**, 608-614.
- 25 MOORCROFT, P. R. (2006). How close are we to a predictive science of the biosphere? *Trends in*

- 1 *Ecology & Evolution* **21**, 400-407.
- 2 MORAN, M., R. (2003). Arguments for rejecting the sequential Bonferroni in ecological studies.
- 3 *Oikos* **100**, 403-405.
- 4 MOSS, R., OSWALD, J. & BAINES, D. (2001). Climate change and breeding success: decline of
- 5 the capercaillie in Scotland. *Journal of Animal Ecology* **70**, 47-61.
- 6 MURRAY, D. L. (2006). On improving telemetry-based survival estimation. *Journal of Wildlife*
- 7 *Management* **70**, 1530-1543.
- 8 MYSTERUD, A., STENSETH, N. C., YOCCOZ, N. G., LANGVATN, R. & STEINHEIM, G. (2001).
- 9 Nonlinear effects of large-scale climatic variability on wild and domestic herbivores.
- 10 *Nature* **410**, 1096-1099.
- 11 NAKAGAWA, S. & CUTHILL, I. C. (2007). Effect size, confidence interval and statistical
- 12 significance: a practical guide for biologists. *Biological Reviews* **82**, 591-605.
- 13 NETER, J., KUTNER, M. H., NACHTSHEIM, C. J. & WASSERMAN, W. (1996). *Applied linear*
- 14 *statistical models*. Irwin, Chicago, Illinois, USA.
- 15 NEVOUX, M. & BARBRAUD, C. (2006). Relationships between sea ice concentration, sea surface
- 16 temperature and demographic traits of thin-billed prions. *Polar Biology* **29**, 445-453.
- 17 NEWTON, I. (1998). *Population limitation in birds*. Academic Press, London, U. K.
- 18 NEWTON, I., WYLLIE, I. & ROTHERY, P. (1992). Annual survival of sparrowhawks *Accipiter*
- 19 *nisus* breeding in three areas of Britain. *Ibis* **135**, 49-60.
- 20 NICHOLS, J. D. (1992). Capture-recapture models: using marked animals to study population
- 21 dynamics. *BioScience* **42**, 94-102.
- 22 NICHOLS, J. D. (1994). Estimating breeding proportions and testing hypotheses about costs of
- 23 reproduction with capture-recapture data. *Ecology* **75**, 2052-2065.
- 24 NICHOLS, J. D., HINES, J. E., LEBRETON, J. D. & PRADEL, R. (2000). Estimation of contributions to
- 25 population growth: A reverse-time capture-recapture approach. *Ecology* **81**, 3362-3376.

- 1 NICOLL, M. A. C., JONES, C. G. & NORRIS, K. (2003). Declining survival rates in a reintroduced
2 population of the Mauritius kestrel: evidence for non-linear density dependence and
3 environmental stochasticity. *Journal of Animal Ecology* **72**, 917-926.
- 4 OTTERSEN, G., PLANQUE, B., BELGRANO, A., POST, E. & STENSETH, N. C. (2001). Ecological
5 effects of the North Atlantic Oscillation. *Oecologia* **128**, 1-14.
- 6 OWEN-SMITH, N. (1990). Demography of a large herbivore, the Greater kudu *Tragelaphus*
7 *Strepsiceros*, in relation to rainfall. *Journal of Animal Ecology* **59**, 893-913.
- 8 PARMESAN, C. (2006). Ecological and evolutionary responses to recent climate change. *Annual*
9 *Review of Ecology Evolution and Systematics* **37**, 637-669.
- 10 PARMESAN, C. & YOHE, G. (2003). A globally coherent fingerprint of climate change impacts
11 across natural systems. *Nature* **421**, 37-42.
- 12 PEACH, W., BAILLIE, S. & UNDERHILL, L. (1991). Survival of British sedge warblers
13 *Acrocephalus schoenobaenus* in relation to west African rainfall. *Ibis* **133**, 300-305.
- 14 PEACH, W. J., SIRIWARDENA, G. M. & GREGORY, R. D. (1999). Long-term changes in over-
15 winter survival rates explain the decline of reed buntings *Emberiza schoeniclus* in
16 Britain. *Journal of Applied Ecology* **36**, 798-811.
- 17 PEACH, W. J., THOMPSON, P. S. & COULSON, J. C. (1994). Annual and long-term variation in the
18 survival rates of British lapwings *Vanellus vanellus*. *Journal of Animal Ecology* **63**, 60-
19 70.
- 20 PEÑUELAS, J., FILELLA, I. & COMAS, P. (2002). Changed plant and animal life cycles from 1952
21 to 2000 in the Mediterranean region. *Global Change Biology* **8**, 531-544.
- 22 PERDECK, A. C., VISSER, M. E. & VAN BALEN, J. H. (2000). Great tit *Parus major* survival and
23 the beech-crop index. *Ardea* **99**, 99-108.

- 1 PETERSON, T. A., ORTEGA-HUERTA, M. A., BARTLEY, J., SANCHEZ-CORDERO, V., SOBERON, J.,
2 BUDDEMEIER, R. H. & STOCKWELL, D. R. B. (2002). Future projections for Mexican
3 faunas under global climate change scenarios. *Nature* **416**, 626-629.
- 4 PIPER, S. E. (2002). Survival of adult, territorial longtailed wagtails *Motacilla clara*: the effects
5 of environmental factors and individual covariates. *Journal of Applied Statistics* **29**,
6 107-124.
- 7 PLEDGER, S., POLLOCK, K. H. & NORRIS, J. L. (2003). Open capture-recapture models with
8 heterogeneity: I. Cormack-Jolly-Seber model. *Biometrics* **59**, 786-794.
- 9 PRADEL, R. (1996). Utilization of capture-mark-recapture for the study of recruitment and
10 population growth rate. *Biometrics* **52**, 703-709.
- 11 PRADEL, R. & LEBRETON, J.-D. (1999). Comparison of different approaches to the study of
12 local recruitment of breeders. *Bird Study* **46**, 74-81.
- 13 PRÉVOT-JULLIARD, A. C., LEBRETON, J. -D. & PRADEL, R. (1998). Re-evaluation of adult
14 survival of black-headed gulls (*Larus ridibundus*) in presence of recapture
15 heterogeneity. *Auk* **115**, 85-95.
- 16 PRYDE, M. A., O'DONNELL, C. F. J. & BARKER, R. J. (2005). Factors influencing survival and
17 long-term population viability of New Zealand long-tailed bats (*Chalinolobus*
18 *tuberculatus*): Implications for conservation. *Biological Conservation* **126**, 175-185.
- 19 QUINN, J. F., DUNHAM, A. (1983). On hypothesis testing in ecology and evolution. *The*
20 *American Naturalist* **122**, 602-617.
- 21 RICE, W. R. (1989). Analyzing tables of statistical tests. *Evolution* **43**, 223-225.
- 22 RICHARDS, S. A. (2005). Testing ecological theory using the information-theoretic approach:
23 Examples and cautionary results. *Ecology* **86**, 2805-2814.
- 24 ROBACK, P. J. & ASKINS, R. A. (2005). Judicious use of multiple hypothesis tests. *Conservation*
25 *Biology* **19**, 261-267.

- 1 ROBINSON, R. A., GREEN, R. E., BAILLIE, S. R., PEACH, W. J. & THOMSON, D. L. (2004).
2 Demographic mechanisms of the population decline of the song thrush *Turdus*
3 *philomelos* in Britain. *Journal of Animal Ecology* **73**, 670-682.
- 4 ROBINSON, D. H. & WAINER, H. (2002). On the past and future of null hypothesis significance
5 testing. *Journal of Wildlife Management* **66**, 263-271.
- 6 SÆTHER, B.-E. (1997). Environmental stochasticity and population dynamics of large
7 herbivores: a search for mechanisms. *Trends in Ecology and Evolution* **12**, 143-149.
- 8 SÆTHER, B. E. & BAKKE, O. (2000). Avian life history variation and contribution of
9 demographic traits to the population growth rate. *Ecology* **81**, 642-653.
- 10 SÆTHER, B.-E., ENGEN, S., MØLLER, A. P., MATTHYSEN, E., ADRIAENSEN, F., FIEDLER, W.,
11 LEIVITS, A., LAMBRECHTS, M. M., VISSER, M. E., ANKER-NILSSEN, T., BOTH, C.,
12 DHONDT, A. A., MC-CLEERY, R. H., MC-MEEKING, J., POTTI, J., RØSTAD, O. W. &
13 THOMPSON, D. (2003). Climate variation and regional gradients in population dynamics
14 of two hole-nesting passerines. *Proceedings of the Royal Society of London B* **270**,
15 2397-2404.
- 16 SÆTHER, B.-E., GRØTAN, V., TRYJANOWSKI, P., BARBRAUD, C., ENGEN, S. & FULIN, M. (2006).
17 Climate and spatio-temporal variation in the population dynamics of a long distance
18 migrant, the white stork. *Journal of Animal Ecology* **75**, 80-90.
- 19 SÆTHER, B.-E., SUTHERLAND, W. J. & ENGEN, S. (2004). Climate influences on avian
20 population dynamics. *Advances in Ecological Research* **35**, 185-209.
- 21 SANDERCOCK, B. K. (2006). Estimation of demographic parameters from live-encounter data: a
22 summary review. *Journal of Wildlife Management* **70**, 1504-1520.
- 23 SANDVIK, H., ERIKSTAD, K. E., BARRETT, R. T. & YOCCOZ, N. G. (2005). The effect of climate
24 on adult survival in five species of North Atlantic seabirds. *Journal of Animal Ecology*
25 **74**, 817-831.

- 1 SARNO, R. J., CLARK, W. R., BANK, M. S., PREXL, W. S., BEHL, M. J., JOHNSON, W. E. &
2 FRANKLIN, W. L. (1999). Juvenile guanaco survival: management and conservation
3 implications. *Journal of Applied Ecology* **36**, 937-945.
- 4 SCHAEFER, H. C., ESHIAMWATA, G. W., MUNYEKENYE, F. B., GRIEBELER, E. M. & BÖHNING-
5 GEASE, K. (2006). Monthly survival of African Sylvia warblers in a seasonally arid
6 tropical environment. *Ibis* **148**, 411-424.
- 7 SCHAUB, M., KANIA, W. & KÖPPEN, U. (2005). Variation of primary production during winter
8 induces synchrony in survival rates in migratory white storks *Ciconia ciconia*. *Journal*
9 *of Animal Ecology* **74**, 656-666.
- 10 SCHLESINGER, W. H. (2006). Global change ecology. *Trends in Ecology & Evolution* **21**, 348-
11 351.
- 12 SCHWARZ, C. J. (2002). Real and quasi-experiments in capture-recapture studies. *Journal of*
13 *Applied Statistics* **29**, 459-473.
- 14 SCHWARZ, C. J., SCHWEIGERT, J. F. & ARNASON, A. N. (1993). Estimating migration rates using
15 tag-recovery data. *Biometrics* **49**, 177-193.
- 16 SENDOR, T. & SIMON, M. (2003). Population dynamics of the pipistrelle bat: effects of sex, age
17 and winter weather on seasonal survival. *Journal of Animal Ecology* **72**, 308-320.
- 18 SILLETT, T. S., HOLMES, R. T. & SHERRY, T. W. (2000). Impacts of global climate cycle on
19 population dynamics of a migratory songbird. *Science* **288**, 2040-2042.
- 20 SINGER, F. J., HARTING, A., SYMONDS, K. K. & COUGHENOUR, M. B. (1997). Density
21 dependence, compensation, and environmental effects on elk calf mortality in
22 Yellowstone National Park. *Journal of Wildlife Management* **61**, 12-25.
- 23 SIRABELLA, P., GUILIANI, A., COLOSIMO, A. & DIPPNER, J. (2001). Breaking down the climate
24 effects on cod recruitment by principal component analysis and canonical correlation.
25 *Marine Ecology Progress Series* **216**, 213-222.

- 1 SKALSKI, J. R. (1996). Regression of abundance estimates from mark-recapture surveys against
2 environmental covariates. *Canadian Journal of Fisheries and Aquatic Sciences* **53**, 196-
3 204.
- 4 SKALSKI, J. R., HOFFMANN, A. & SMITH, S. G. (1993). Testing the significance of individual-
5 and cohort-level covariates in animal survival studies. In *Marked individuals in the*
6 *study of bird population*. (eds. J. -D. Lebreton and P. M. North), pp. 9-28. Birkhäuser
7 Verlag, Basel, Switzerland.
- 8 SMITH, R. C., AINLEY, D., BAKER, K., DOMACK, E., EMSLIE, S., FRASER, B., KENNET, J.,
9 LEVENTER, A., MOSLEY-THOMPSON, E., STAMMERJOHN, S. & VERNET, M. (1999).
10 Marine ecosystem sensitivity to climate change. *BioScience* **49**, 393-404.
- 11 SOKAL, R. R. & ROHLF, F. J. (1995). *Biometry*. Third edition. W. H. Freeman and Company,
12 New York, NY.
- 13 SOLOW, A. R. (1998). On fitting a population model in the presence of measurement error.
14 *Ecology* **79**, 1463 – 1467
- 15 SPIEGELHALTER, D. J., BEST, N. G., CARLIN, B. P. & VAN DER LINDE, A. (2002). Bayesian
16 measures of model complexity and fit (with discussion). *Journal of the Royal Statistical*
17 *Society, Series B* **64**, 583-639.
- 18 SPIEGELHALTER, D. J., THOMAS, A., BEST, N. G. & LUNN, D. (2003). WinBUGS User Manual
19 (Version 1.4). Cambridge: MRC Biostatistics Unit, www.mrc-bsu.cam.ac.uk/bugs/.
- 20 STENSETH, N. C., MYSTERUD, A., OTTERSEN, G., HURREL, J. W., CHAN, K.-S. & LIMA, M.
21 (2002). Ecological effects of climate fluctuations. *Science* **297**, 1292-1296.
- 22 STENSETH, N. C., OTTERSEN, G., HURREL, J. W., MYSTERUD, A., LIMA, M., CHAN, K.-S.,
23 YOCCOZ, N. G. & ÅDLANDSVIK, B. (2003). Studying climate effects on ecology through
24 the use of climate indices: the North Atlantic Oscillation, El Niño Southern Oscillation
25 and beyond. *Proceedings of the Royal Society of London B* **270**, 2087-2096.

- 1 STEPHENS, P. A., BUSKIRK, S. W. & DEL RIO, C. M. (2007). Inference in ecology and evolution.
2 *Trends in Ecology & Evolution* **22**, 192-197.
- 3 STEPHENS, P. A., BUSKIRK, S. W., HAYWARD, G. D. & DEL RIO, C. M. (2005). Information
4 theory and hypothesis testing: a call for pluralism. *Journal of Applied Ecology* **42**, 4-12.
- 5 STOKKE, B. G., MØLLER, A. P., SÆTHER, B. E., RHEINWALD, G. & GUTSCHER, H. (2005).
6 Weather in the breeding area and during migration affects the demography of a small
7 long-distance passerine migrant. *Auk* **122**, 637-647.
- 8 STURTZ, S., LIGGES, U. & GELMAN, A. (2005). R2WinBUGS: A Package for Running
9 WinBUGS from R. *Journal of Statistical Software* **12**, 1-16.
- 10 SUTHERLAND, W. J. (2006). Predicting the ecological consequences of environmental change: a
11 review of the methods. *Journal of Applied Ecology* **43**, 599-616.
- 12 TAVECCHIA, G., PRADEL, R., GOSSMANN, F., BASTAT, C., FERRAND, Y. & LEBRETON, J. -D.
13 (2002). Temporal variation in annual survival probability of the Eurasian woodcock
14 *Scolopax rusticola* wintering in France. *Wildlife Biology* **8**, 39-48.
- 15 THOMAS, C. D., CAMERON, A., GREEN, R., E. G., BAKKENES, M., BEAUMONT, L. J.,
16 COLLINGHAM, Y. C., ERASMUS, B. F. N., DE SIQUEIRA, M. F., GRAINGER, A., HANNAH,
17 L., HUGUES, L., HUNTLEY, B., VAN JAARSVELD, A. S., MIDGLEY, G. F., MILES, L.,
18 ORTEGA-HUERTA, M. A., PETERSON, A. T., PHILLIPS, O. L. & WILLIAMS, S. (2004).
19 Extinction risk from climate change. *Nature* **427**, 145-148.
- 20 THOMAS, C. D., FRANCO, A. M. A. & HILL, J. K. (2006). Range retractions and extinction in the
21 face of climate warming. *Trends in Ecology & Evolution* **21**, 415-416.
- 22 TRAYLOR, J. J. & ALISAUSKAS, R. T. (2006). Effects of intrinsic and extrinsic factors on
23 survival of white-winged scoter (*Melanitta fusca deglandi*) ducklings. *Auk* **123**, 67-81.
- 24 TURCHIN, P. (2003). *Complex population dynamic*. Princeton University Press, Princeton, NJ,
25 and Oxford, UK.

- 1 VIALLEFONT, A., COOKE, F. & LEBRETON, J.-D. (1995). Age-specific costs of first-time
2 breeding. *Auk* **112**, 67-76.
- 3 VAIDA, F. & BLANCHARD, S. (2005). Conditional Akaike information for mixed-effects models.
4 *Biometrika* **92**, 351-370.
- 5 VOTIER, S. C., HATCHWELL, B. J., BECKERMAN, A., MC-CLEERY, R. H., HUNTER, F. M.,
6 PELIATT, J., TRINDER, M. & BIRKHEAD, T. R. (2005). Oil pollution and climate have
7 wide-scale impacts on seabird demographics. *Ecology Letters* **8**, 1157-1164.
- 8 WALTHER, G.-R., POST, E., CONVEY, P., MENZEL, A., PARMESAN, C., BEEBEE, T. J. C.,
9 FROMENTIN, J.-M., HOEG-GULDBERG, O. & BAIRLEIN, F. (2002). Ecological responses
10 to recent climate change. *Nature* **416**, 389-395.
- 11 WHITE, G. C. & BURNHAM, K. P. (1999). Program MARK: survival estimation from
12 populations of marked animals. *Bird Study* **46 (suppl.)**, 120-129.
13 <http://www.cnr.colostate.edu/~gwhite/software.html>.
- 14 WIENS, J. D., NOON, B. R. & REYNOLDS, R. T. (2006). Post-fledging survival of northern
15 goshawks: The importance of prey abundance, weather, and dispersal. *Ecological*
16 *Applications* **16**, 406-418.
- 17 WILLIAMS, B. K., NICHOLS, J. D. & CONROY, M. J. (2002). *Analysis and management of animal*
18 *populations*. Academic Press, Sand Diego, CA.
- 19 WRIGHT, S. P. (1992). Adjusted P-values for simultaneous inference. *Biometrics* **48**, 1005-
20 1013.
- 21 YOCCOZ, N. G. (1991). Use, overuse, and misuse of significance tests in evolutionary biology
22 and ecology. *Bulletin of the Ecological Society of America* **72**, 106-111.
- 23

1 **Table 1.** Meteorological stations in the Sahel region where rainfall data used in the white stork
 2 *Ciconia ciconia* survival analysis were collected.

3

Station	N latitude	E longitude	Label
Dakar	14.7	-17.5	Dak
Diourbel	14.7	-16.2	Dio
Gao	16.3	-0.1	Gao
Kandi	11.1	2.9	Kan
Kayes	14.4	-11.4	Kay
Kita	13.1	-9.5	Kit
Koutiala	12.4	-5.5	Kou
Maradi	13.5	7.1	Mar
Mopti	14.5	-4.1	Mop
Na Titingou	10.3	1.4	Na
Ouahigouya	13.6	-2.4	Oua
Sikasso	11.4	-5.7	Sik
Ségou	13.4	-6.2	Seg
Tahoua	14.9	5.3	Tah
Tombouctou	16.7	-3	Tom

4

1 **Table 2.** Correlations among climatic covariates.

Climatic covariate	Label	Correlation pattern (Pearson's r below the diagonal; P -value of a t -test for $H_0: r=0$ above the diagonal)										
		WNAO	PBST	PBSRF	PBSNAO	PBSC	BST	BSRF	BSNAO	BSC	CNSRF	SSRF
North Atlantic oscillation, December-February	WNAO		0.82	0.64	0.63	0.64	0.71	0.07	0.57	0.25	0.45	0.06
Temperature anomaly, breeding region, March-May	PBST	0.06		0.01	0.07	<0.001	0.89	0.32	0.08	0.26	0.71	0.88
Rainfall anomaly, breeding region, March-May	PBSRF	-0.13	-0.63		0.13	<0.001	0.36	0.96	0.91	0.73	0.92	0.41
North Atlantic oscillation, March-May	PBSNAO	0.13	0.46	-0.4		0.001	0.56	0.64	0.41	0.79	0.53	0.98
Integrative climatic index, breeding region, March-May	PBSC	0.13	0.87	-0.84	0.73		0.59	0.57	0.27	0.67	0.91	0.42
Temperature anomaly, breeding region, June-August	BST	-0.1	-0.04	-0.25	0.16	0.15		0.005	0.19	<0.001	0.60	0.35
Rainfall anomaly, breeding region, June-August	BSRF	0.47	0.26	0.01	0.13	0.15	-0.66		0.03	<0.001	0.95	0.32
North Atlantic oscillation, June-August	BSNAO	-0.16	-0.46	0.03	-0.22	-0.29	0.34	-0.55		<0.001	0.28	0.98
Integrative climatic index, breeding region, June-August	BSC	-0.3	-0.3	-0.09	-0.07	-0.12	0.82	-0.91	0.74		0.88	0.42
Central and northern Sahel rainfall index	CNSRF	0.2	0.1	0.03	-0.17	-0.03	0.14	-0.02	-0.29	-0.04		0.45
Southern Sahel rainfall index	SSRF	-0.48	-0.04	-0.22	-0.01	0.07	0.25	-0.27	-0.01	0.22	-0.21	

2

3 The two shaded areas highlight two sets of intercorrelated covariates: those describing climatic conditions in the breeding area during the pre-

4 breeding period and during the breeding period, respectively. Bold type highlights the covariates retained for the analysis of white stork *Ciconia*

- 1 *ciconia* survival and the correlations among them. To avoid overloading the table, the 15 Sahel rainfall original covariates are not included here.
- 2 Instead, we only included the two Sahel rainfall integrative covariates (CNSRF and SRF).
- 3

1 **Table 3.** Analysis of trends over time (linear and quadratic) in climatic factors

2

Covariate	Linear trends		Quadratic trends	
	R^2_{LR}	P -value	R^2_{LR}	P -value
WNAO	0.077	0.299	0.192	0.25
CNSRF	0.573	0.001	0.603	0.003
SSRF	0.004	0.81	0.065	0.65
PBSC	0.002	0.89	0.012	0.92
BSC	0.153	0.135	0.167	0.306

6

7 Statistics were obtained from linear regression models with the focal climatic factor as the
 8 dependent variable and a linear temporal trend and, for quadratic temporal trend, that linear
 9 trend squared, as predictors. P -values were obtained from an F -test of the hypothesis that the
 10 slope(s) of the relationship(s) with the predictor(s) equal zero. R^2 -LR is the coefficient of
 11 determination of the linear regression model. Covariate abbreviations are defined in table 2.

12

1 **Table 4.** Models used for describing survival [$f(\phi_i)$]

Label	Formulation	Description	Parameters to be estimated
F_{cst}	$f(\phi_i) = a$	Survival is constant over years	- One constant parameter: a
F_t	$f(\phi_i) = a_i$	Survival varies over years	- One distinct parameter, a_i , for each time interval i in the time series
F_T (F_{T_q})	$f(\phi_i) = a + bT_i (+cT_i^2)$	Survival varies according to a linear (or quadratic) trend	- One parameter, a , for the intercept - One (or two) parameter(s), b (and c), for slopes of the linear (T_i) [and quadratic (T_i^2)] trend terms
R_t	$f(\phi_i) = a + \varepsilon_i$	Survival shows stochastic variation over years around a mean	- One parameter, a , for the mean - One parameter for the variance σ^2 of the random term ε_i that describes stochastic variation over years around the mean
F_{co}	$f(\phi_i) = a + b_j x_{ji} (+c_j x_{ji}^2)$	Survival is totally determined by a linear (or quadratic) relationship with the covariate j	- One parameter a for the intercept - One (or two) parameter(s) b_j , (and c_j) for the relationship with covariate x_j
R_{co}	$f(\phi_i) = a + b_j x_{ji} (+c_j x_{ji}^2) + \varepsilon_i$	Survival is totally determined by a linear (or quadratic) relationship with the covariate j . The variation over years that remains unexplained is stochastic	- One parameter a for the intercept - One (or two) parameter(s) b_j , (and c_j) for the relationship with covariate x_j - One parameter for the variance σ^2 of the random term ε_i that describes stochastic variations over years unexplained by the climatic covariates

2

3 F refers to models including only fixed effects. R refers to models including random effects. Subscripts cst , t , T , T_q , co , refer to constant, time

4 dependent, linear trend, quadratic trend, covariate respectively.

Table 5. Selection of a reference model for the analysis of white stork adult survival.

Survival	Recapture	<i>Dev</i>	<i>K</i>	<i>AICc</i>
Time dependent (F_t)	Constant (F_{cst})	249.28	17	1349.50
Linear trend (F_T)	Constant (F_{cst})	284.1	3	1355.61
Constant (F_{cst})	Constant (F_{cst})	286.60	2	1356.10
Quadratic trend (F_{T-q})	Constant (F_{cst})	283.51	4	1357.03
Linear trend (F_T)	Time dependent (F_t)	273.11	18	1375.41
Time dependent (F_t)	Time dependent (F_t)	241.58	31	1371.5
Constant (F_{cst})	Time dependent (F_t)	276.09	17	1376.30
Quadratic trend (F_{T-q})	Time dependent (F_t)	273.04	19	1377.43

F : refers to models including only fixed effects. Subscripts cst , t , T , $T-q$, and co refer to constant, time dependent, linear trend, quadratic trend and covariate, respectively (see also Table 4). *Dev*: deviance; *K*: number of parameters; *AICc*: Akaike Information Criterion corrected for small sample sizes.

Table 6. Estimates obtained from random-, fixed- and mixed-effects models of the relationship between climatic covariates and white stork *Ciconia ciconia* survival.

	Fixed-effects model			Mixed-effects model (Method of moments)			Mixed-effects model (Bayesian)		
	est	coi-	coi+	est	coi-	coi+	Est	cri-	cri+
	Model F_{cst}			Model R_t			Model R_t		
Intercept	0.68	0.54 (0.44*)	0.82 (0.92*)	0.69	0.46	0.93	0.72	0.50	0.98
Process variance				0.14	0.02	0.51	0.16	0.02	0.42
	Model F_{co}			Model R_{co}			Model R_{co}		
<u>Linear effect of CNSRF</u>									
Intercept	0.66	0.52 (0.44*)	0.81(0.88*)	0.68	0.46	0.89	0.70	0.49	0.93
Slope	0.23	0.08 (-0.01*)	0.39 (0.47*)	0.23	0.01	0.45	0.24	0.01	0.46
Residual process variance				0.09	0.00	0.43	0.12	0.01	0.36
Coefficient of determination		0.23			0.33			0.29	
<u>Quadratic effect of PBSC</u>									
Intercept	1.08	0.82 (0.69*)	1.35 (1.47*)	1.05	0.68	1.42	1.09	0.73	1.45
Slope linear term	-0.17	-0.35 (-0.44*)	0.02 (0.10*)	-0.17	-0.43	0.10	0.17	-0.11	0.46
Slope quadratic term	-0.35	-0.54(-0.63*)	-0.16(-0.07*)	-0.34	-0.61	-0.06	-0.34	-0.60	-0.07
Residual process variance				0.08	0.00	0.41	0.10	0.01	0.38
Coefficient of determination		0.38			0.39			0.38	

F_{cst} , F_{co} , R_t , R_{co} are different types of CMR models for describing survival (Table 4). CNSRF, central and northern Sahel rainfall; PBSC, pre-breeding season climate; coi- and coi+: lower and upper 95% confidence intervals respectively; cri- and cri+: lower and upper credibility

intervals, respectively; est: parameter estimate (posterior median in the Bayesian analysis). Coefficients of determination were estimated by R^2_{Dev} , based on analysis of deviance, for fixed-effects models and by R^2_{Var} , based on analysis of variance, for mixed-effects models (see equations 6 and 7 in Section IV.5.a). * indicates that confidence interval limits were corrected by the scale parameter $\sqrt{\hat{c}}$ for over-dispersion due to the presence of residual process variation in models F_{cst} and F_{co} and based on a student distribution with 16, 15 and 14 degrees of freedom, depending on the number of parameters in the model.

Table 7. Statistics used to address the statistical support for the effect of climatic covariates on white *Ciconia ciconia* stork adult survival

	Model statistical characteristics			NHT approach fixed-effects models		NHT approach mixed-effects models	Bayesian approach		IT approach		
	<i>Dev</i>	<i>K</i>	<i>AICc</i>	<i>P</i> -value <i>LRT_{co/t}</i>	<i>Corrected P</i> -value <i>Ftest_{cst/co/t}</i> (uncorrected)	<i>Corrected P</i> -value <i>W(R_{co})</i> (uncorrected)	95% credible region		<i>AICc</i> differences		<i>Evidence ratio</i>
									$\Delta_{co/cst}$	$\Delta_{co/t}$	w_{co}/w_{cst}
Time dependent (F_t)	249.28	17	1349.5								
Constant (F_{cst})	286.60	2	1356.1								
Covariate models (F_{co})											
PBSC_q	275.44	4	1348.96	0.0382	0.468 (0.047)		[0; 0] excluded		-9.99	-3.39	147.78
CNSRF	277.93	3	1349.44	0.0116	0.293 (0.059)	0.305 (0.061)	0.01 0.46		-6.66	-0.06	27.9
CNSRF_q	286.53	4	1360.06	0.0162	0.33 (0.099)		[0; 0] included		-7.14	-0.54	35.45
WNAO	286.58	3	1358.09	0.0016	0.837 (0.335)	1.259 (0.503)	-0.34 0.16		-0.47	6.13	1.26
WNAO_q	272.58	4	1346.11	0.0009	1.259 (0.629)		[0; 0] included		1.47	8.07	0.48
PBSC	286.08	3	1357.59	0.0008	1.106 (0.664)	1.271 (0.762)	-0.32 0.21		1.5	8.1	0.47
BS	285.61	4	1359.14	0.0007	1.149 (0.804)	0.944 (0.661)	-0.34 0.21		3.04	9.64	0.22
BS_q	286.43	3	1357.94	0.0005	1.049 (0.839)		[0; 0] included		1.84	8.44	0.4
SSRF	284.04	4	1357.56	0.0007	1.032 (0.929)	1.005 (0.905)	-0.33 0.23		1.99	8.59	0.37
SSRF_q	284.12	3	1355.63	0.0004	0.988 (0.988)		[0; 0] included		3.96	10.56	0.14

NHT, null hypothesis testing; IT, information theoretic; *Dev*, deviance; *AICc*, Akaike information criterion corrected for small sample sizes; *K*, number of parameters;. *LRT_{co/t}* tests for variation unexplained by the climatic covariates in model F_{co} . The threshold *P*-value for this test was set at 0.05. *Ftest_{cst/co/t}* and *W(R_{co})* test the null hypothesis that the focal climatic covariate has no effect on survival. The threshold *P*-value used for these tests is 0.20 and the observed *P*-values have been corrected so that the false discovery rate is maintained at 0.20. Uncorrected observed *P*-

values are also provided between brackets. The criterion for covariate selection considered in the IT approach was $\Delta_{co/cst} < -2$ and, $\Delta_{co/t} < 2$ where $\Delta_{co/cst} = AICc(F_{co}) - AICc(F_{cst})$ and $\Delta_{co/t} = AICc(F_{co}) - AICc(F_t)$. w_{co}/w_{cst} is the evidence ratio for the focal covariate model (F_{co}) as compared to the constant survival model (F_{cst}). $_q$ indicates a quadratic relationship between survival and the focal covariate. See Table 2 for climatic covariate definitions. See Table 4 for model descriptions.

Table 8. Performance of statistical procedures used to assess statistical support for effects of climatic covariates.

		Residual process variance over years (σ^2)					
		0	0.01	0.03	0.05	0.1	0.3
Slope (b)							
		A) NHT, fixed-effects models Pr(rejection of $H_0: b = 0$, by $LRT_{cst/co}$ if $LRT_{co/t}$ NS and by $Ftest_{cst/co/t}$ if $LRT_{co/t}$ S)					
0	L	0.04	0.05	0.08	0.07	0.06	0.05
0.1	Pw	0.45	0.39	0.32	0.30	0.16	0.11
0.15	Pw	0.77	0.72	0.55	0.42	0.32	0.17
0.2	Pw	0.92	0.89	0.74	0.71	0.45	0.20
0.3	Pw	1.00	0.99	0.95	0.90	0.76	0.46
0.5	Pw	1.00	1.00	1.00	1.00	0.98	0.84
		B) NHT, fixed-effects models: Pr(rejection of $H_0: b = 0$ by $Ftest_{cst/co/t}$)					
0	L	0.05	0.05	0.06	0.05	0.05	0.05
0.1	Pw	0.40	0.35	0.26	0.26	0.15	0.11
0.15	Pw	0.71	0.66	0.50	0.39	0.31	0.17
0.2	Pw	0.89	0.87	0.71	0.68	0.44	0.20
0.3	Pw	0.99	0.98	0.95	0.89	0.76	0.46
0.5	Pw	1.00	1.00	1.00	1.00	0.98	0.84
		C) NHT, mixed-effects models: Pr(rejection of $H_0: b = 0$ by $W(R_{co})$)					
0	L	0.04	0.04	0.06	0.05	0.05	0.06
0.1	Pw	0.38	0.33	0.28	0.21	0.17	0.10
0.15	Pw	0.70	0.62	0.48	0.41	0.28	0.14
0.2	Pw	0.90	0.84	0.75	0.59	0.46	0.19
0.3	Pw	0.98	0.99	0.95	0.91	0.77	0.41
0.5	Pw	1	1	1	1	0.97	0.80
		D) B: Pr(0 is not in the 95% credible interval)					
0		0.03	0.04	0.09	0.09	0.11	0.19
0.1		0.36	0.39	0.32	0.28	0.26	0.27
0.15		0.71	0.66	0.53	0.49	0.4	0.32
0.2		0.89	0.86	0.81	0.66	0.59	0.37
0.3		0.99	0.97	0.96	0.94	0.85	0.63
0.5		1.00	1.00	1.00	1.00	1.00	0.89
		E) IT: Pr($\Delta_{co/cst} < -2$ and, $\Delta_{co/t} < 2$)					
0		0.04	0.05	0.11	0.11	0.04	0.00
0.1		0.46	0.42	0.32	0.24	0.08	0.00
0.15		0.74	0.73	0.54	0.35	0.10	0.01
0.2		0.92	0.89	0.65	0.49	0.12	0.00
0.3		0.98	0.95	0.72	0.48	0.15	0.00
0.5		1.00	0.97	0.74	0.56	0.18	0.00

NHT, null hypothesis testing; B, Bayesian; IT, information theory; L, level; Pw, power; Pr, probability; H_0 , null hypothesis; NS, non significant; S, significant . $LRT_{x/y}$, $\Delta_{x/y}$, $Ftest_{x/y/z}$, $W(R_{co})$ are statistics to assess statistical support (Table 7 and Sections IV.1-IV.3).

Table 9. Pitfalls in studies of the impact of climatic factor on survival. ESR, ecological studies reviewed; PCA, principal component analysis.

Characteristics of survival estimates and climatic covariates	Associated methodological problem (CS = case studies)	Detrimental consequences	Advice
<p>A Survival probabilities are not measured directly, but inferred from monitoring data at the individual scale.</p>	<p>-Survival estimated from models that do not account for detection probability (7/78). -Annual survival estimates derived from model F_t (see Table 4) used in standard regression models. Sampling variance-covariance structure of estimates ignored (9/78).</p>	<p>Survival estimates may be biased and the bias can differ among years because of variation among years in detection probability. High probability of detecting spurious effects.</p>	<p>Use a statistical framework specific to the analysis of monitoring data collected at the individual scale.</p>
<p>B Monitoring programs at the individual scale usually cover less than 30 years and most often do not allow studying survival variation at infra-annual time scales. Numerous covariates are needed in order to describe fully local climatic conditions.</p>	<p>Ratio of number of statistical units to number of candidate time-varying covariates $\leq 5/1$ (49/78). Correction for multiple tests applied in 2/49 ESR where multiple time-varying covariates considered (mentioned in 6 others).</p>	<p>If proper correction of the threshold P-value for multiple tests is not applied, the probability of detecting spurious climatic covariates effects is high. If correction for multiple tests: low statistical power.</p>	<p>Keep the ratio climatic covariates to statistical units low. Apply corrections for multiple tests. Combine candidate covariates (for example using PCA) to generate integrative indices.</p>
<p>C Covariates describing local climatic conditions are often inter-correlated (i.e. collinearity among explanatory covariates).</p>	<p>Relationship among climatic covariates not examined (43/62 ESR where effect of several time-varying covariates addressed).</p>	<p>-Selection among regression models including highly correlated covariates is problematic. -Spurious estimates can be obtained from multiple regression models including highly correlated covariates. -Simple regression models with distinct correlated covariates may not reflect distinct causal relationships.</p>	<p>Select non-redundant candidate covariates. Combine candidate covariates (for example using PCA) to generate few independent integrative indices from a large number of interdependent covariates.</p>

Characteristics of survival and climatic covariates	Associated methodological problem	Detrimental consequences	Advice
<p>D</p> <p>Variation in survival arise from the influence of multiple factors, some of which might be unsuspected by the investigator.</p> <p style="text-align: center;">+</p> <p>Relationships between survival and candidate climatic covariates are often indirect (climatic covariates are proxies).</p> <p style="text-align: center;">=</p> <p>Covariate models unlikely to explain most variation in survival.</p>	<p>-In 10/15 CS where residual variation in survival was detected, the information-theoretic approach that deals poorly with unexplained variation was adopted. In 7 of these 10, conclusion on climate effect based on misleading criteria.</p> <p>- The hypothesis testing approach was adopted but statistical support for climatic covariate effects was assessed using statistics that deal poorly with unexplained variation (5/24 CS where the hypothesis testing approach was adopted and where unexplained variation was detected or not tested).</p>	<p>Spurious climatic covariate effects can be detected and/or probability of detection of genuine climatic covariate effects can be low.</p> <p>Spurious climatic covariate effects can be detected.</p>	<p>Favour the hypothesis testing approach over the information-theoretic approach when variation in survival is large.</p> <p>When the hypothesis testing approach is adopted and significant unexplained variation is detected, use test statistics that account for this unexplained variation.</p>
<p>E</p> <p>Heterogeneity among individuals in survival and/or detection parameters generates spurious trends in time series of survival estimates.</p> <p>Time series of climatic covariates do often exhibit trends.</p>	<p>Trends in survival were not investigated (61/78).</p> <p>Trends in the climatic covariates were not investigated (66/78).</p>	<p>Spurious effects resulting from the co-occurrence of trends in survival and the climatic covariate time series can be wrongly interpreted as causal relationships.</p>	<p>Test for the effects of trends in the climatic covariate and the survival time series. If trends are detected, use statistics that assess the fraction of the variation in the demographic parameter about the trend.</p>
<p>F</p> <p>The slope estimates from regression models are sensitive to the link function chosen for survival and to the possible transformations that can be applied to the climatic covariates.</p>	<p>The only measure of the impact of climatic covariates provided were slope estimates (35/78).</p>	<p>Results cannot be used in meta-analyses addressing general issues on the impact of climate on ecological systems.</p>	<p>Assess the fraction of temporal variation in survival explained by climatic covariates.</p>

FIGURE LEGENDS

Fig. 1. Yearly estimates of adult survival for Baden-Württemberg white storks *Ciconia ciconia*. Error bars indicate 95% confidence intervals.

Fig. 2. Correlation circles of the principal components analyses (PCA) for building integrative climatic indices. The fifteen meteorological stations plotted in A are identified in Table 1. Climate covariate abbreviations are as in Table 2.

Fig. 3. Time series for integrative climatic indices considered as candidate covariates in the analysis of adult survival of Baden-Württemberg white storks.

Fig. 4. 95% joint credible region obtained with a Bayesian approach for the slopes of the linear and quadratic terms in relationships between white stork *Ciconia ciconia* survival and five climatic covariates. For descriptions of climatic covariates see Table 2 and Fig. 2.

Fig. 5. Estimation of the fraction of temporal variation in the adult survival of Baden-Württemberg white storks *Ciconia ciconia* accounted for by candidate climatic covariates based on analysis of deviance (R^2_{Dev} ; see equations 6 in Section IV.5.a), or on analysis of variance (R^2_{Var} ; see equation 7 in Section IV.5.a). Climatic covariate abbreviations are as in Table 2. $_q$ indicates a quadratic relationship between survival and the focal covariate.

Fig. 6. Relationships detected between climatic indices and adult survival of white storks *Ciconia ciconia* breeding in Baden-Württemberg. NAO, north Atlantic oscillation, PBSC, pre-breeding climatic index, CNSRF, central and northern Sahel rainfall index.

Figure 1

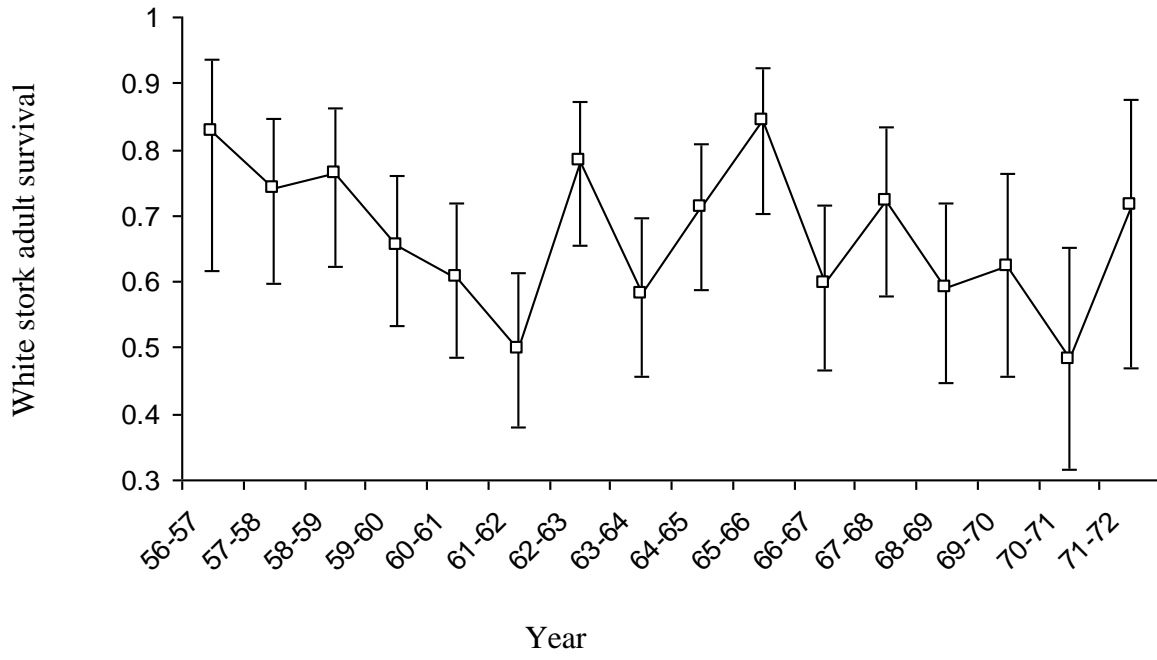


Figure 2

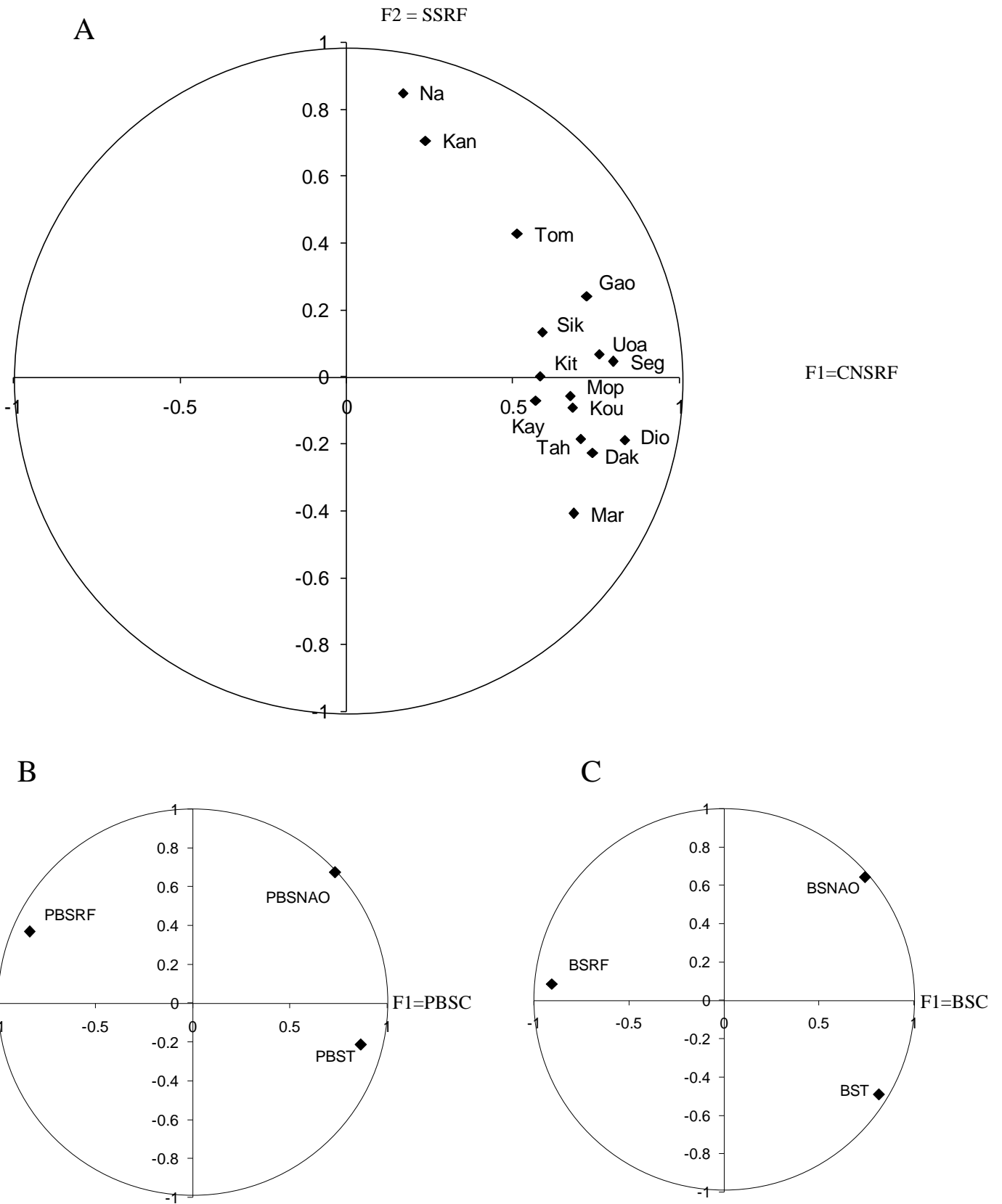


Figure 3

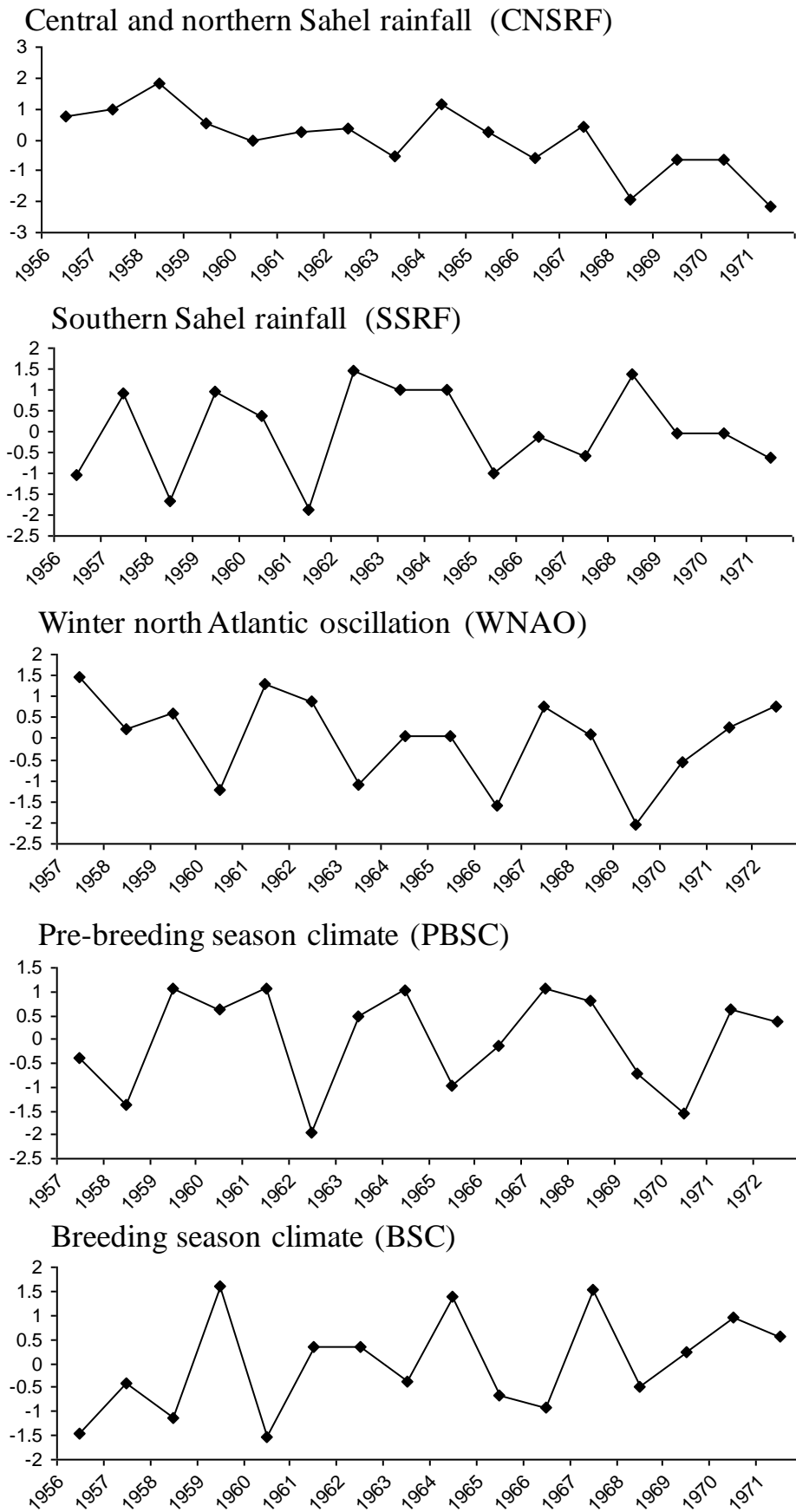


Figure 4

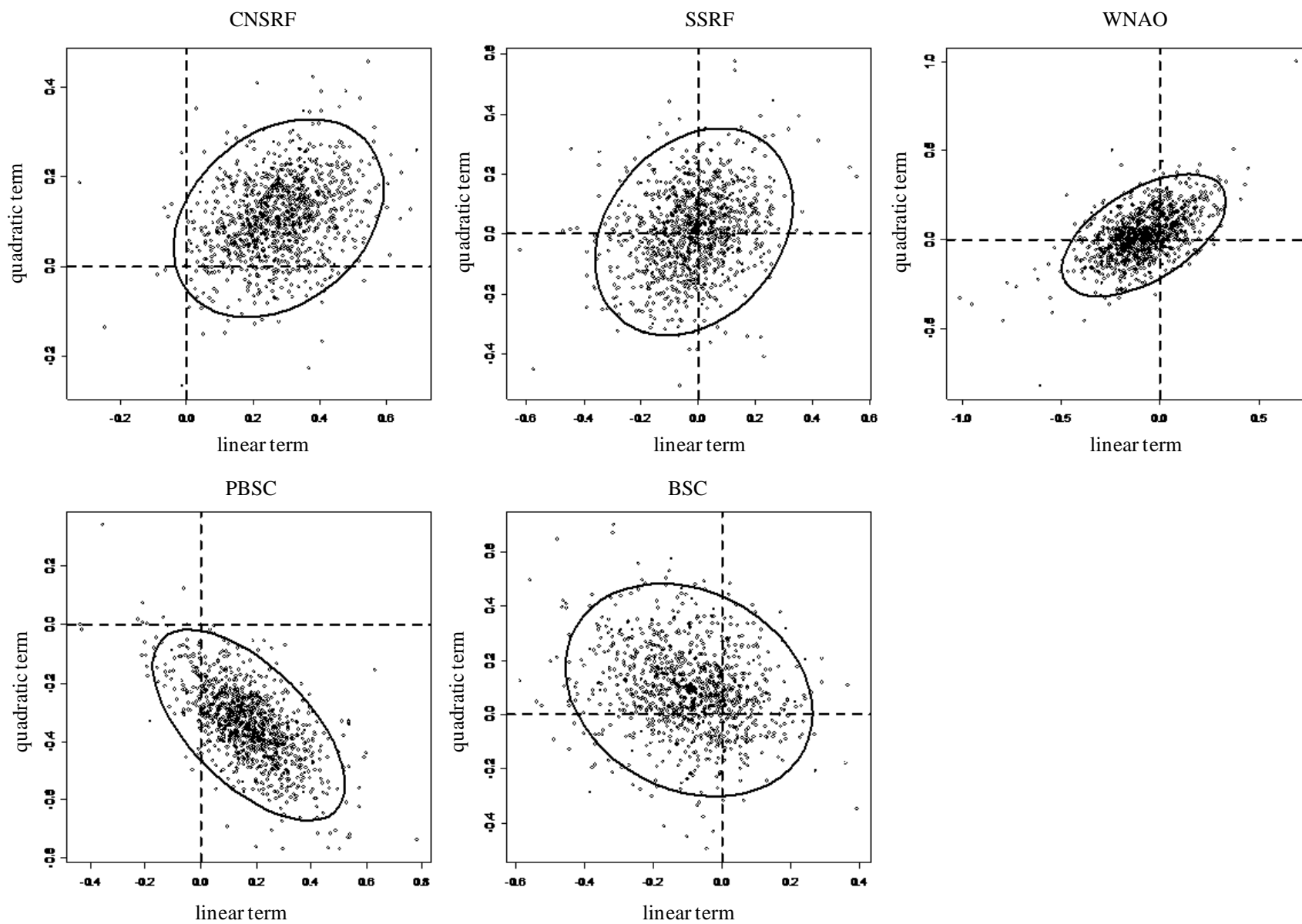


Figure 5

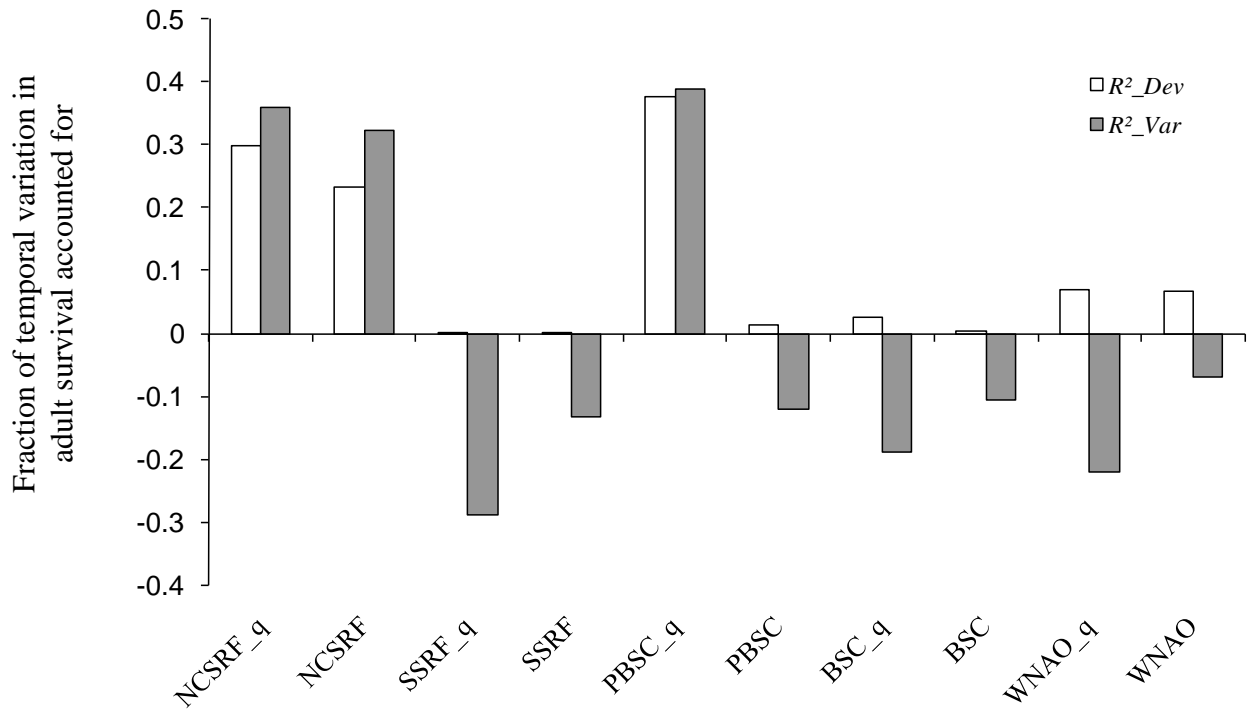


Figure 6

