



**HAL**  
open science

## Do age-specific survival patterns of wild boar fit current evolutionary theories of senescence?

Marlène Gamelon, Stefano Focardi, Jean-Michel Gaillard, Olivier Gimenez, Christophe Bonenfant, Barbara Franzetti, Rémi Choquet, Francesca Ronchi, Eric Baubet, Jean-François Lemaître

### ► To cite this version:

Marlène Gamelon, Stefano Focardi, Jean-Michel Gaillard, Olivier Gimenez, Christophe Bonenfant, et al.. Do age-specific survival patterns of wild boar fit current evolutionary theories of senescence?. *Evolution Agricole*, 2014, 68 (12), pp.3636-3643. 10.1111/evo.12519 . hal-03515114

**HAL Id: hal-03515114**

**<https://hal.science/hal-03515114>**

Submitted on 6 Jan 2022

**HAL** is a multi-disciplinary open access archive for the deposit and dissemination of scientific research documents, whether they are published or not. The documents may come from teaching and research institutions in France or abroad, or from public or private research centers.

L'archive ouverte pluridisciplinaire **HAL**, est destinée au dépôt et à la diffusion de documents scientifiques de niveau recherche, publiés ou non, émanant des établissements d'enseignement et de recherche français ou étrangers, des laboratoires publics ou privés.

1 **Do age-specific survival patterns of wild boar fit current evolutionary**  
2 **theories of senescence?**

3 Marlène Gamelon<sup>1,2,3,4</sup>, Stefano Focardi<sup>5</sup>, Jean-Michel Gaillard<sup>1</sup>, Olivier Gimenez<sup>3</sup>,  
4 Christophe Bonenfant<sup>1</sup>, Barbara Franzetti<sup>6</sup>, Rémi Choquet<sup>3</sup>, Francesca Ronchi<sup>6</sup>, Eric Baubet<sup>2</sup>,  
5 Jean-François Lemaître<sup>1</sup>

6

7 <sup>1</sup>CNRS, UMR 5558, Laboratoire de Biométrie et Biologie Évolutive, F-69622, Villeurbanne,  
8 France.

9 <sup>2</sup>Office National de la Chasse et de la Faune Sauvage, 2 Bis Rue des Religieuses, BP 19,  
10 52120 Châteauvillain, France.

11 <sup>3</sup>Centre d'Écologie Fonctionnelle et Évolutive, UMR 5175, campus CNRS, 1919 route de  
12 Mende, 34293 Montpellier Cedex 5, France.

13 <sup>4</sup>E-mail: marlene.gamelon@gmail.com; corresponding author

14 <sup>5</sup>Istituto per i Sistemi Complessi, CNR, via Madonna del Piano 10, 50019 Sesto Fiorentino,  
15 Italy.

16 <sup>6</sup>Istituto Superiore per la Protezione e la Ricerca Ambientale, Via Ca' Fornacetta 9, 40064  
17 Ozzano dell'Emilia, Bologna, Italy.

18

19 **KEY WORDS:** ageing, capture-mark-recapture, fertility, life history, mortality, *Sus scrofa*

20

21 **RUNNING TITLE:** Does wild boar fit the theories of senescence?

22 **NUMBER OF WORDS:** 2739

23 **NUMBER OF TABLES:** 1

24 **NUMBER OF FIGURES:** 3

25 Actuarial senescence is an inevitable outcome of evolution in age-structured populations. In  
26 growing populations, the progressive decline of Hamiltonian forces of selection with age  
27 leads to decreasing survival. As actuarial senescence is over-compensated by a high fertility,  
28 actuarial senescence should be more intense in species with high reproductive effort, a  
29 theoretical prediction that has not been yet explicitly tested across species. Wild boar (*Sus*  
30 *scrofa*) has an unusual life-history strategy among large mammals by associating both early  
31 and high reproductive effort with potentially long lifespan. Therefore, wild boar should show  
32 stronger actuarial senescence than similar-sized related mammals. Moreover, being  
33 polygynous and much larger than females, males should display higher senescence rates than  
34 females. From a long-term monitoring of 1,783 individuals, we tested these predictions. We  
35 provided clear evidence of actuarial senescence in both sexes. Wild boar females had earlier  
36 but not stronger actuarial senescence than similar-sized ungulates and both sexes displayed  
37 similar senescence rates. Our study indicates that the timing of senescence, not the tempo, is  
38 associated with the magnitude of fertility in ungulates. This demonstrates the importance of  
39 including the timing of senescence in addition to its rate to understand variation in senescence  
40 patterns in wild populations.

41

42

43

44

45

46

47

48

49 Actuarial senescence (hereafter senescence) defined as the decline of survival with  
50 increasing age, has been repeatedly documented in wild species of vertebrates (see Nussey et  
51 al. 2013 for a review). However, empirical evidence has increased only recently,  
52 thanks to the development of long-term individual monitoring of known-aged animals  
53 (Clutton-Brock and Sheldon 2010). William D. Hamilton already demonstrated nearly fifty-  
54 years ago (Hamilton 1966) that senescence was an inevitable outcome of evolution in age-  
55 structured populations. More specifically, based on the decline of the forces of natural  
56 selection with age in growing age-structured populations (Medawar 1952), Hamilton  
57 predicted that an increase in fertility should be selected at the costs of a survival decrease at  
58 old ages. In other words, high fertility should be associated with high rates of senescence  
59 (Hamilton 1966). Until now, intraspecific studies have provided good evidence for a  
60 relationship between early allocation to reproduction and fitness-related traits, such as  
61 survival (Hammers et al. 2013) and components of reproductive success (Nussey et al. 2006)  
62 in late life, in line with the disposable soma theory of ageing (Kirkwood 1977; Kirkwood and  
63 Austad 2000). On the other hand, while some recent comparative studies have revealed an  
64 association between intensity of actuarial senescence and pace of life across species within  
65 and among classes of vertebrates (Jones et al. 2008, Péron et al. 2010, Lemaître and Gaillard  
66 2013), no study has tested yet the exact Hamilton's prediction of a direct link between  
67 fecundity and intensity of actuarial senescence across species.

68

69 Moreover, while empirical evidence that females live much longer than males in most  
70 mammals studied so far is compelling (Carey and Judge 2000), whether and how age-specific  
71 trajectories differ between sexes remains an open question (Nussey et al. 2013, Maklakov and  
72 Lummaa 2013), although the theoretical basis for such sex differences has been established  
73 for a long time (Williams 1957). Hamiltonian forces of selection again provide the

74 explanation for more intense senescence in males when these latter suffer from higher  
75 mortality during the prime-age stage. Starvation and antagonist contests during the mating  
76 season are likely to cause increased mortality rates in males compared to females in  
77 polygynous species (Bonduriansky et al. 2008), especially when environmental conditions are  
78 harsh (Toïgo and Gaillard 2003). Thus, under current life history theory, males from highly  
79 polygynous and dimorphic species should exhibit a 'live fast, die young' life history strategy  
80 (Vinogradov 1998, Bonduriansky et al. 2008, Festa-Bianchet 2013) and should therefore have  
81 higher senescence rate than females.

82

83         Using a 17 year-long monitoring of an Italian population of wild boar (*Sus scrofa*), we  
84 filled these gaps by investigating the pattern of actuarial senescence for this large mammal  
85 characterized by a unusual association between high fertility and high sexual size dimorphism  
86 (Carranza 1996). Indeed, compared to similar-sized related species, wild boar females give  
87 birth for the first time earlier (1 vs. 2-3 years of age, Servanty et al. 2009), at a lower body  
88 mass (40% vs. 80% of adult body mass, Servanty et al. 2009), and produce larger litters (>3  
89 vs. 1 or 2, Gamelon et al. 2013). By allocating early and heavily to reproduction, wild boar  
90 females have an unusual life-history strategy among large mammals (Focardi et al. 2008).  
91 Therefore, in accordance with Hamilton's theory, wild boar females should show faster  
92 senescence than reported for similar-sized ungulates. Moreover, as wild boar males are  
93 markedly heavier than females (90 vs. 70 kg for males and females, respectively, Gaillard et  
94 al. 1992) and are highly polygynous (Delgado et al. 2008), they should suffer from more  
95 intense senescence than females.

96

97

98

## 99 **Materials and methods**

### 100 **STUDY SITE AND DATA COLLECTION**

101

102 We studied a weakly hunted and growing wild boar population in the fenced 6,000 ha  
103 preserve of Castelporziano (41°44'N, 12°24'E) in Italy (Focardi et al. 2008). From 1995 to  
104 2012, a total of 1,783 juvenile (< 1 year of age) and yearling (1 to 2 years old) wild boars  
105 were marked with numbered and colored ear tags and released after handling. Between July  
106 and September, wild boars were artificially fed three to six times per week on 80-88 feeding  
107 sites (Franzetti et al. 2012) to allow counts and identification of marked animals from year to  
108 year.

109

### 110 **ESTIMATING AGE-SPECIFIC SURVIVAL, RATE AND ONSET OF SENESCENCE** 111 **IN MALE AND FEMALE WILD BOAR**

112

113 We estimated natural survival rates of marked individuals using Capture-Mark-  
114 Recapture analyses (Lebreton et al. 1992) of both recaptures and resightings. Animals  
115 removed under population control plans were right-censored to allow estimating natural  
116 survival. As the preserve was fenced, no dispersal occurred so that true survival was  
117 estimated.

118 We first tested the goodness-of-fit (GOF) (Pradel et al. 2005) of the survival models  
119 using U-CARE (Choquet et al. 2009a). We accounted for heterogeneity in the detection  
120 process of juveniles (see Results) by modelling two different recapture probabilities according  
121 to whether an individual was previously detected (trap-dependence: Gimenez et al. 2003;  
122 Pradel and Sanz-Aguilar 2012). As capture effort varied among years (Focardi et al. 2008), we  
123 included time-dependence in recapture probabilities. For survival probabilities, we fitted both  
124 a model without any effect of age and the full age-dependent model. From the latter, the rate  
125 of senescence was measured as the slope of the regression of log-transformed age-specific

126 mortality rates on age to compare with senescence rates previously reported in ungulates  
127 (Gaillard et al. 2003). To avoid confounding effects of growth or reproduction, we analyzed  
128 mortality rates from 2 years of age onward, when growth has been completed.

129 To estimate the age at the onset of senescence, we constrained survival to vary linearly  
130 on the logit scale over different ranges of ages (ages 1, 2, 3, 4, 5, or 6; see Nichols et al. 1997  
131 for a similar approach and table 1). The age at onset of senescence was defined as the age  
132 when survival started to decline as assessed from the selected model. We thus fitted age-  
133 specific survival models while testing for between-sex differences in age-specific survival and  
134 rate of senescence. We used the Akaike's Information Criterion for model selection (Burnham  
135 and Anderson 2002), selecting the model with the lowest AIC. All analyses were implemented  
136 in E-SURGE (Choquet et al. 2009b).

137

## 138 **SURVIVAL PATTERNS OF WILD BOAR COMPARED TO SIMILAR-SIZED** 139 **UNGULATES** 140

141 To test whether wild boar females show faster and/or earlier senescence than reported  
142 for similar-sized ungulates, we accounted for the confounding effect of body mass (Calder  
143 1984). Indeed, it is well-established that the pace of life decreases with increasing mass  
144 (Gaillard et al. 2005), leading large species to exhibit later onset and smaller rate of  
145 senescence than small ones (Jones et al. 2008, Péron et al. 2010, Ricklefs 2010). We thus  
146 assessed the relationship between senescence rate (on a log-scale) and female body mass (on a  
147 log-scale) as well as the relationship between onset of senescence (on a log-scale) and female  
148 body mass (on a log-scale) of similar-sized ungulates. Females of 9 intensively monitored  
149 populations belonging to 7 different ungulate species were included in the analysis, namely  
150 pronghorn (*Antilocapra americana*), Alpine ibex (*Capra ibex*), roe deer (*Capreolus*  
151 *capreolus*), mountain goat (*Oreamnos americanus*), bighorn sheep (*Ovis canadensis*), red deer

152 (*Cervus elaphus*) and Pyrenean chamois (*Rupicapra pyrenaica*). Senescence rates were  
153 extracted from Gaillard et al. (2003)'s study and onsets of senescence from Péron et al.  
154 (2010)'s study.

155       Patterns of senescence across species might be not independent as a result of common  
156 ancestry (Harvey and Pagel 1991). We thus controlled for this non-independence by using  
157 Phylogenetic Generalized Least-Squares models (PGLS) that provide an index of the  
158 phylogenetic signal called  $\lambda$ , varying in most of the cases between 0 (corresponding to the  
159 complete absence of phylogenetic structure) and 1 (observed pattern predicted by the  
160 phylogeny; see Freckleton et al. 2002). This parameter  $\lambda$  was then introduced in the model to  
161 control for the phylogenetic effect (Freckleton et al. 2002). We used the phylogeny derived  
162 from the phylogenetic supertree of mammals, which provides information on both topology  
163 and branch length (Bininda-Emonds et al. 2007). However, in the models linking rate and  
164 onset of senescence (on a log-scale) to body mass (on a log-scale) in similar-sized ungulates,  
165 the phylogenetic signal ( $\lambda$ ) did not differ from 0 ( $\lambda_{\text{rate}} < 0.0001$  and  $\lambda_{\text{onset}} < 0.0001$ ), meaning  
166 that there was no detectable phylogenetic signal in both rate and onset of senescence.  
167 Therefore, we conducted inter-specific analyses linking senescence rate and onset of  
168 senescence to female body mass, using standard linear models (i.e. without any correction for  
169 phylogeny) to avoid biased estimates (Revell 2010). From these linear models, expected rate  
170 and onset of senescence of wild boar females were estimated and compared with rates and  
171 onsets found in populations of similar-sized ungulates. All analyses were performed with the  
172 R software (R Development Core Team 2012).

173

174

175

## 176 **Results**

177



178 **ESTIMATING AGE-SPECIFIC SURVIVAL, RATE AND ONSET OF SENESCENCE**  
179 **IN MALE AND FEMALE WILD BOAR**  
180

181 By only including individuals first captured as juveniles, the GOF test indicated some  
182 lack of fit for both sexes (global test: for male juveniles:  $\chi^2(61) = 102.743$ ,  $P < 0.0001$ ; for  
183 female juveniles:  $\chi^2(72) = 128.411$ ,  $P < 0.0001$ ). More precisely, trap-dependence was  
184 detected for both sexes and accounted for in the model. On the contrary, the GOF test  
185 indicated no lack of fit for individuals first captured as yearlings (global test: for males:  $\chi^2$   
186  $(27) = 31.273$ ,  $P = 0.260$ ; for females:  $\chi^2(33) = 27.575$ ,  $P = 0.734$ ). Tested models thus  
187 satisfactorily fitted data when trap-dependence was included in capture probabilities of  
188 juveniles.

189 The best model included marked between-sex differences at age 2 (Fig. 1), a linear  
190 relationship between survival and age from 3 years old onwards, and year-dependent capture  
191 probabilities (table 1, appendix S1). Males and females had same survival at age 1 ( $\Phi_{age1} =$   
192  $0.68 [0.64; 0.72]$ ), but males survived a bit less than females at 2 years old ( $\Phi_{age2\ male} = 0.57$   
193  $[0.50; 0.64]$ ,  $\Phi_{age2\ female} = 0.85 [0.77; 0.91]$ ). From 3 years old onwards, males consistently  
194 had lower survival than females (Fig. 1) but both sexes had similar senescence rates (slope on  
195 the logit scale =  $-0.15 [-0.23; -0.08]$ ).

196 To compare senescence rates between wild boar and similar-sized ungulates,  
197 senescence rates were re-estimated using the linear regression between mortality rates (on a  
198 log scale) and age. These rates exactly correspond to the Gompertz rates (i.e. the exponential  
199 rate of increasing mortality with age) and slightly differ from the rates estimated directly from  
200 analyses provided above (which do not exactly correspond to Gompertz rates, Loison et al.  
201 1999). After removing survival rates at 10 and 12 years old for males and females,  
202 respectively, estimated on the bounds of the interval  $[0, 1]$  (see Fig. 1), we found evidence of  
203 actuarial senescence in both sexes (rates of 0.11 (SE: 0.04) for males (Wald test: 9.7,  $df = 1$ , p-

204 value = 0.002) and 0.14 (SE: 0.04) for females (Wald test: 16.0, df = 1, p-value < 0.0001),  
205 Fig. 2).

206

207 **SURVIVAL PATTERNS OF WILD BOAR COMPARED TO SIMILAR-SIZED**  
208 **UNGULATES**  
209

210 As expected, across ungulate species, the senescence rate tended to decrease (slope: -  
211 0.11, SE: 0.18) and the onset of senescence to be delayed (slope: 0.17, SE: 0.12) when body  
212 mass increased (Fig. 3). From the relationship between senescence rate and body mass (on a  
213 log-log scale) performed using 9 populations belonging to 7 different species, the expected  
214 rate of senescence for wild boar females was similar to the expectation (expected value of  
215 0.16 vs. observed value of 0.14, Fig. 3a). On the other hand, the onset of senescence was  
216 much earlier than expected. From the relationship between the onset of senescence and body  
217 mass (on a log-log scale), the expected value was 8.56 years, whereas it was estimated to only  
218 3 years in our analysis (Fig. 3b). Wild boar females had thus markedly earlier, but not stronger  
219 senescence (Fig. 3) for their body size compared to other ungulates.

220

221

222

223

224

225

226

227

228

229 **Discussion**

230

231 Our results provide clear evidence for actuarial senescence in male and female wild  
232 boar and add to the spate of studies that have recently found senescence in free-living  
233 vertebrates (Nussey et al. 2013). More importantly, using a pioneering inter-specific test of the  
234 Hamilton's prediction of a link between fecundity and intensity of actuarial senescence, our  
235 findings show that wild boar females have earlier, but not stronger senescence than related  
236 species once the confounding effects of body size has been accounted for. Indeed, our  
237 findings emphasize that the high reproductive output of wild boars (with litter size up to 14,  
238 Servanty et al. 2007) is associated with earlier, but not stronger decline in survival with age.  
239 As Hamilton's theory was strictly focused on senescence rates, our study did not provide a  
240 direct support for it. However, we show that actuarial senescence occurred much earlier in  
241 wild boar females than in other ungulates. High and early fertility in wild boar females during  
242 the prime-age stage might advance the decline of the forces of natural selection, which  
243 indicates that the timing of senescence, in addition to the rate, constitutes a key component of  
244 Hamilton's theory of senescence. We thus propose to expand Hamilton's theory to include  
245 potential responses of the timing of senescence to increased fertility, by considering both the  
246 timing and the intensity of senescence patterns to test reliably evolutionary theories of ageing.  
247

248 When looking at sex-differences in senescence patterns, we did not detect any  
249 difference in the rate of senescence between male and female wild boar. This finding contrasts  
250 with a few studies that reported greater actuarial senescence in males compared to females in  
251 large herbivores (Gaillard et al. 2003; Lemaître and Gaillard 2013), a pattern that is generally  
252 attributed to the polygynous mating system of these species (Clutton-Brock and Isvaran 2007,  
253 Bonduriansky et al. 2008). The red deer (*Cervus elaphus*) case study provides a striking  
254 example of higher senescence rates (but not earlier onset) in males than in females (Catchpole  
255 et al. 2004). Our results are thus particularly surprising from both empirical (Loison et al.

256 1999, Lemaître and Gaillard 2013) and theoretical (Williams 1957) viewpoints. Indeed,  
257 because males had higher mortality rates at all ages from 2 years old onwards than females,  
258 they were expected to show greater actuarial senescence (Williams 1957, Hamilton 1966).  
259 The higher mortality rates of male wild boar during the whole adult stage might be due to sex-  
260 specific reproductive tactics and associated mortality risks (Bonduriansky et al. 2008, Festa-  
261 Bianchet 2013) or to the occurrence of harsh environmental conditions in the study site.  
262 Indeed, harsh environments are more likely to influence male than female survival (Toigo and  
263 Gaillard 2003). In wild boar, the differential mortality suffered by males do not translate into  
264 stronger senescence. Although the causes of similar senescence rates in both sexes despite  
265 higher mortality rates in male wild boar remain unknown, it is interesting to notice that  
266 similar patterns have been reported in humans (Austad 2011). In both wild boar and humans,  
267 the between-sex differences in adult mortality was quite low (about 10%), which might be not  
268 enough to trigger substantial between-sex differences in the decline of Hamilton's forces of  
269 selection with age. Simulation studies will be required to test this hypothesis.

270

271         Alternatively, differential sources of mortality between sexes could account for the  
272 absence of sex differences in actuarial senescence we reported in wild boar. Indeed, recent  
273 laboratory experiments have demonstrated that the cause of mortality at early ages can  
274 modulate senescence patterns (Chen and Maklakov 2012, Chen et al. 2013). Basically, when  
275 the source of mortality is random, all animals in the population have the same probability of  
276 dying, independently of their individual phenotype. On the contrary, when mortality is  
277 condition-dependent, the probability of dying acts as a filter in the population by removing  
278 weakest individuals, which ultimately decreases the intensity of senescence at the population  
279 level (Vaupel et al. 1979). In support, an experiment on wild type derived nematodes  
280 (*Caenorhabditis remanei*) has shown high rates of condition-dependent mortality promotes a

281 deceleration of ageing, independently of sex, within only 12 generations (Chen et al. 2013). In  
282 wild boar, differential sources of mortality between sexes could explain our findings in wild  
283 boar if condition-dependent mortality only occurs in males. The twofold higher mortality rate  
284 of male wild boar at 2 years compared to females might provide the potential filter to keep the  
285 best phenotypes at old ages. However, whether mortality at 2 years of age is condition-  
286 dependent in males remains to be explored.

287

## 288 **ACKNOWLEDGMENTS**

289 We thank the Segretariato per la Presidenza della Repubblica for allowing the study at  
290 Castelporziano, for its financial support and the data availability.

291

292

293

294

295

296

297

298

299

300

301

302

## 303 **LITERATURE CITED**

304 Austad, S.N. 2011. Handbook of the biology of aging. Academic press, Ed: Masoro, E.J., and  
305 S.N. Austad.

306 Bininda-Emonds, O.R.P., M. Cardillo, K.E. Jones, R.D.E. MacPhee, R.M.D. Beck, R.  
307 Grenyer, S.A. Price, R.A. Vos, J.L. Gittleman, and A. Purvis. 2007. The delayed rise of  
308 present-day mammals. *Nature* 446:507–512.

309 Bonduriansky, R., A. Maklakov, F. Zajitschek, and R. Brooks. 2008. Sexual selection, sexual  
310 conflict and the evolution of ageing and life span. *Funct. Ecol.* 22:443-453.

311 Burnham, K.P., and D.R. Anderson. 2002. Model selection and multimodel inference: a  
312 practical information-theoretic approach. 2<sup>nd</sup> edition. Springer Verlag, New-York,  
313 USA.

314 Calder, W.A. 1984. Size, function, and life history. Harvard University Press, Cambridge,  
315 MA.

316 Carey, J.R., and D.S. Judge. 2000. Longevity records: life spans of mammals, birds,  
317 amphibians, reptiles and fish. Odense University Press, Odense.

318 Carranza, J. 1996. Sexual selection for male body mass and the evolution of litter size in  
319 mammals. *Am. Nat.* 148:81-100.

320 Catchpole, Y.F., B.J.T. Morgan, T.H. Clutton-Brock, and T. Coulson. 2004. Dimorphism,  
321 survival and dispersal in red deer. *JABES* 9:1-26.

322 Chen, H., and A.A. Maklakov. 2012. Longer life span evolves under high rates of condition-  
323 dependent mortality. *Current Biology* 22:2140-2143.

324 Chen, H., F. Zajitschek, and A.A. Maklakov. 2013. Why ageing stops: heterogeneity explains  
325 late-life mortality deceleration in nematodes. *Biol. Lett.* 9:20130217.

326 Choquet, R., J.D. Lebreton, O. Gimenez, A.M. Reboulet, and R. Pradel. 2009a. U-CARE:  
327 Utilities for performing goodness of fit tests and manipulating CAPture-REcapture  
328 data. *Ecography* 32:1071-1074.

- 329 Choquet, R., L. Rouan, and R. Pradel. 2009b. Program E-Surge: a software application for  
330 fitting multievent models. Pages 845-865 in D. L. Thomson, E. G. Cooch, and M. J.  
331 Conroy, eds. Modeling Demographic Processes In Marked Populations. Volume 3.  
332 Springer-Verlag, New York.
- 333 Clutton-Brock, T.H., and B.C. Sheldon. 2010. Individuals and populations: the role of long-  
334 term, individual-based studies of animals in ecology and evolutionary biology. TREE  
335 25:562-573.
- 336 Clutton-Brock, T. H., and K. Isvaran. 2007. Sex differences in ageing in natural populations of  
337 vertebrates. Proc. R. Soc. B. 274:3097-3104.
- 338 Delgado, R., P. Fernandez-Llario, M. Azevedo, A. Beja-Pereira, and P. Santos. 2008. Paternity  
339 assessment in free-ranging wild boar (*Sus scrofa*) – Are littermates full-sibs? Mamm.  
340 Biol. 73:169-176.
- 341 Festa-Bianchet, M. 2013. Human-induced reversal of fortunes for migratory ungulates?  
342 Ecology 94:1243-1244.
- 343 Focardi, S., J.M. Gaillard, F. Ronchi, and S. Rossi, S. 2008. Survival of wild boars in a  
344 variable environment: unexpected life-history variation in an unusual ungulate. J.  
345 Mamm. 89:1113-1123.
- 346 Franzetti, B., F. Ronchi, F. Marini, M. Scacco, R. Calmanti, A. Calabrese, A. Paola, M. Paolo,  
347 and S. Focardi. 2012. Nocturnal line transect sampling of wild boar (*Sus scrofa*) in a  
348 Mediterranean forest: long-term comparison with capture-mark-resight population  
349 estimates. Eur. J. Wild. Res. 58:385-402.
- 350 Freckleton, R., P. Harvey, and M. Pagel. 2002. Phylogenetic analysis and comparative data: A  
351 test and review of evidence. Am. Nat. 160:712–726.
- 352 Gaillard, J.M., D. Pontier, S. Brandt, J.M. Jullien, and D. Allaine. 1992. Sex differentiation in  
353 postnatal growth rate: a test in a wild boar population. Oecologia 90:167-171.

354 Gaillard, J.M., A. Loison, M. Festa-Bianchet, N.G. Yoccoz, and E. Solberg. 2003. Ecological  
355 correlates of lifespan in populations of large herbivorous mammals. From: Carey,  
356 James R. and Shripad Tuljapurkar (eds.) *Life Span: Evolutionary, Ecological, and*  
357 *Demographic Perspectives*, Supplement to *Population and Development Review*, 29:  
358 2003. New York: Population Council.

359 Gaillard, J.M., N.G. Yoccoz, J.D. Lebreton, C. Bonenfant, S. Devillard, A. Loison, D. Pontier,  
360 and D. Allainé. 2005. Generation time: a reliable metric to measure life-history  
361 variation among mammalian populations. *Am. Nat.* 166:119-123.

362 Gamelon, M., J.M. Gaillard, E. Baubet, S. Devillard, L. Say, S. Brandt, and O. Gimenez.  
363 2013. The relationship between phenotypic variation among offspring and mother  
364 body mass in wild boar: Evidence of coin-flipping? *J. Anim. Ecol.* 82:937-945.

365 Gimenez O., R. Choquet, and J.D. Lebreton. 2003. Parameter redundancy in multistate  
366 capture-recapture models. *Biometrical J.* 45:704-722.

367 Hamilton, W.D. 1966. The moulding of senescence by natural selection. *J. Theor. Biol.* 12:12-  
368 45.

369 Hammers, M., D.S. Richardson, T. Burke, and J. Komdeur. 2013. The impact of reproductive  
370 investment and early-life environmental conditions on senescence: support for the  
371 disposable soma hypothesis. *J. Evol. Biol.* 26:1999-2007.

372 Harvey, P.H., and M.D. Pagel. 1991. *The Comparative Method in Evolutionary Biology*. 1<sup>st</sup>  
373 ed. Oxford University Press, USA.

374 Jones, O.R., J.M. Gaillard, S. Tuljapurkar, J.S. Alho, K.B. Armitage, P.H. Becker et al. 2008.  
375 Senescence rates are determined by ranking on the fast–slow life-history continuum.  
376 *Ecol. Lett.* 11:664-673.

377 Kirkwood, T.B.L. 1977. Evolution of ageing. *Nature* 270:301-304.

378 Kirkwood, T.B.L. and S.N. Austad. 2000. Why do we age? *Nature* 408:233-238.



379 Lebreton, J.-D., K.P. Burnham, J. Clobert, and D.R. Anderson. 1992. Modeling survival and  
380 testing biological hypotheses using marked animals: a unified approach with case  
381 studies. *Ecol. Monogr.* 62:67-118.

382 Lemaître, J.F. and J.M. Gaillard. 2013. Male survival patterns do not depend on male  
383 allocation to sexual competition in large herbivores. *Behav. Ecol.* 24:421-428.

384 Loison, A., M. Festa-Bianchet, J.M. Gaillard, J.T. Jorgenson, and J.M. Jullien. 1999. Age-  
385 specific survival in five populations of ungulates: evidence of senescence. *Ecology*  
386 80:2539-2554.

387 Maklakov, A.A., and V. Lummaa. 2013. Evolution of sex differences in lifespan and aging:  
388 causes and constraints. *Bioessays* 35:717-724.

389 Medawar, P. B. 1952. *An Unsolved Problem of Biology* (Lewis, London 1952).

390 Nichols, J.D., J.E. Hines, and P. Blums. 1997. Tests for senescent decline in annual survival  
391 probabilities of common pochards, *Aythya ferina*. *Ecology* 78:1009-1018.

392 Nussey, D.H., L.E.B. Kruuk, A. Donald, M. Fowlie, and T.H. Clutton-Brock. 2006. The rate  
393 of senescence in maternal performance increases with early-life fecundity in red deer.  
394 *Ecol. Lett.* 9:1342-1350.

395 Nussey, D.H., H. Froy, J.F. Lemaître, J.M. Gaillard, and S.N. Austad. 2013. Senescence in  
396 natural populations of animals: Widespread evidence and its implications for bio-  
397 gerontology. *Ageing Res. Rev.* 12:214-225.

398 Péron, G., O. Gimenez, A. Charmantier, J.M. Gaillard and P.A. Crochet. 2010. Age at onset of  
399 senescence in birds and mammals is predicted by early-life performance. *Proc. R. Soc.*  
400 *B.* 277:2849-2856.

401 Pradel, R., O. Gimenez, and J.D. Lebreton. 2005. Principles and interest of GOF tests for  
402 multistate capture-recapture models. *Anim. Biodivers. Conserv.* 28:189-204.

403 Pradel, R. and A. Sanz-Aguilar. 2012. Modeling trap-awareness and related phenomena in  
404 capture-recapture studies. *PlosOne*. 7:e32666.

405 R Development Core Team. 2012. R: A Language and Environment for Statistical  
406 Computing. R Foundation for Statistical Computing, Vienna, Austria.

407 Revell, L.J. 2010. Phylogenetic signal and linear regression on species data. *Methods in Ecol.*  
408 *Evol.* 1:319-329.

409 Ricklefs, R.E. 2010. Life-history connections to rates of aging in terrestrial vertebrates. *PNAS*  
410 107:10314-10319.

411 Servanty, S., J.M. Gaillard, D. Allainé, S. Brandt, and E. Baubet. 2007. Litter size and fetal  
412 sex ratio adjustment in a highly polytocous species: the wild boar. *Behav. Ecol.*  
413 18:427-432.

414 Servanty, S., J.M. Gaillard, C. Toïgo, S. Brandt, and E. Baubet. 2009. Pulsed resources and  
415 climate-induced variation in the reproductive traits of wild boar under high hunting  
416 pressure. *J. Anim. Ecol.* 78:1278-1290.

417 Toïgo, C. and J.M. Gaillard. 2003. Causes of sex-biased adult survival in ungulates: sexual  
418 size dimorphism, mating tactic or environment harshness? *Oikos* 101:376-384.

419 Vaupel, J.W., K.G. Manton, and E. Stallard. Impact of heterogeneity in individual frailty on  
420 the dynamics of mortality. *Demography* 16:439-454.

421 Vinogradov, A.E. 1998. Male reproductive strategy and decrease longevity. *Acta Biotheor.*  
422 46:157-160.

423 Williams, G.C. 1957. Pleiotropy, natural selection, and the evolution of senescence. *Evolution*  
424 11:398-411.

425

426

427  
428  
429  
430  
431  
432  
433  
434  
435  
436  
437  
438  
439  
440  
441  
442  
443  
444  
445  
446

447 **Table 1.** Model selection for age-specific survival patterns in the wild boar population of  
448 Castelporziano, Italy.  $\Phi_{a(x-13)}$  corresponds to a linear relationship (on a logit-scale) between  
449 age and survival from x year of age. Displayed are the number of parameters (Np), the AIC of  
450 the 10 best models and the difference between each tested model and the best one ( $\Delta$ AIC).

---

<b>Model notation</b>	<b>Np</b>	<b>AIC</b>	<b><math>\Delta</math>AIC</b>
-----------------------	-----------	------------	-------------------------------

---

---

$\Phi_1[\Phi_2].\text{Sex } [\Phi_{a(3-13)}]+\text{Sex}$	25	6422.88	0.00
$[\Phi_1\Phi_2].\text{Sex } [\Phi_{a(3-13)}]+\text{Sex}$	26	6423.06	0.18
$\Phi_1[\Phi_2 \Phi_{a(3-13)}].\text{Sex}$	26	6424.74	1.86
$[\Phi_1\Phi_2\Phi_{a(3-13)}].\text{Sex}$	27	6424.94	2.06
$\Phi_1[\Phi_2].\text{Sex } \Phi_3[\Phi_{a(4-13)}]+\text{Sex}$	26	6425.24	2.36
$[\Phi_1\Phi_2].\text{Sex } \Phi_3[\Phi_{a(4-13)}]+\text{Sex}$	27	6425.35	2.47
$\Phi_1[\Phi_2].\text{Sex } \Phi_3[\Phi_{a(4-13)}].\text{Sex}$	27	6426.61	3.73
$\Phi_1[\Phi_2\Phi_3].\text{Sex } [\Phi_{a(4-13)}]+\text{Sex}$	27	6426.81	3.93
$[\Phi_1\Phi_2\Phi_3].\text{Sex } [\Phi_{a(4-13)}]+\text{Sex}$	28	6427.46	4.58
$\Phi_1[\Phi_2\Phi_3\Phi_{a(4-13)}].\text{Sex}$	28	6428.38	5.50

---

451

452 **Figure legends**

453 **Figure 1.** Age-specific survival for the wild boar population of Castelporziano, Italy (grey for  
454 females, black for males). Filled circles display the estimates from the full age-dependent  
455 model (with standard errors). The line corresponds to the selected model involving a linear  
456 decrease (on a logit-scale) of survival from 3 years old onwards. Numbers denote wild boars  
457 captured for last time in each age class.

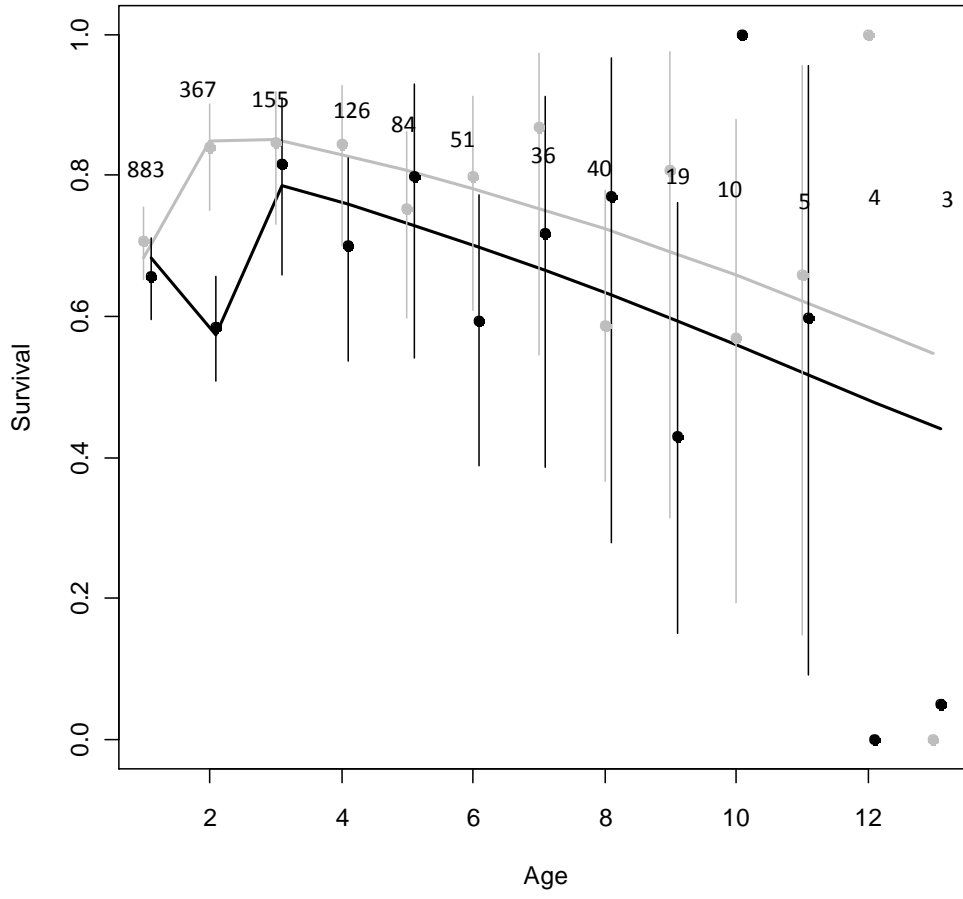
458

459 **Figure 2.** Relationship between log-transformed mortality rates and age in the wild boar  
460 population of Castelporziano, Italy (grey for females, black for males).

461

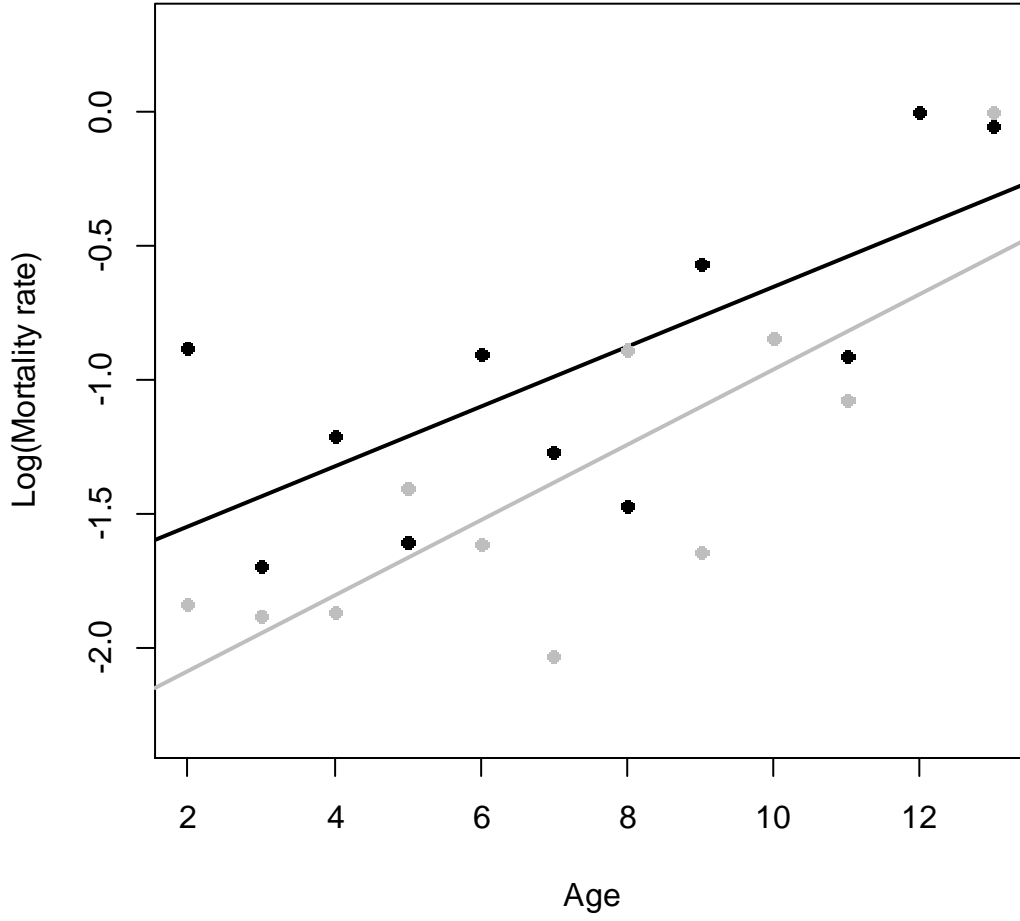
462 **Figure 3.** Relationships **(a)** between senescence rates and body mass (in g) (on a log-log  
463 scale) and **(b)** between onsets of senescence (in years) and body mass (in g) (on a log-log  
464 scale) for females in populations belonging to 7 different ungulate species (values obtained  
465 from Gaillard et al. 2003 and Péron et al. 2010) for 1- *Antilocapra americana* at Montana  
466 (USA), 2- *Capra ibex*, at Belledone (France), 3- *Capreolus capreolus* at Trois-Fontaines  
467 (France), 4- *Capreolus capreolus* at Chizé (France), 5- *Oreamnos americanus* at Caw Ridge  
468 (Canada), 6- *Ovis canadensis* at Sheep River (Canada), 7- *Ovis canadensis* at Ram Mountain  
469 (Canada), 8- *Cervus elaphus* at Rum (Scotland), 9- *Rupicapra pyrenaica* at Orly (France). The  
470 observed values for wild boar females (from this study, red circle, not included in the  
471 allometric relationship) and the expected values for wild boar from the allometric relationship  
472 (red square) are displayed. The comparison shows that wild boar females have a rate of  
473 senescence close to the expectation, but a much earlier onset of senescence.

474 **Figure 1.**



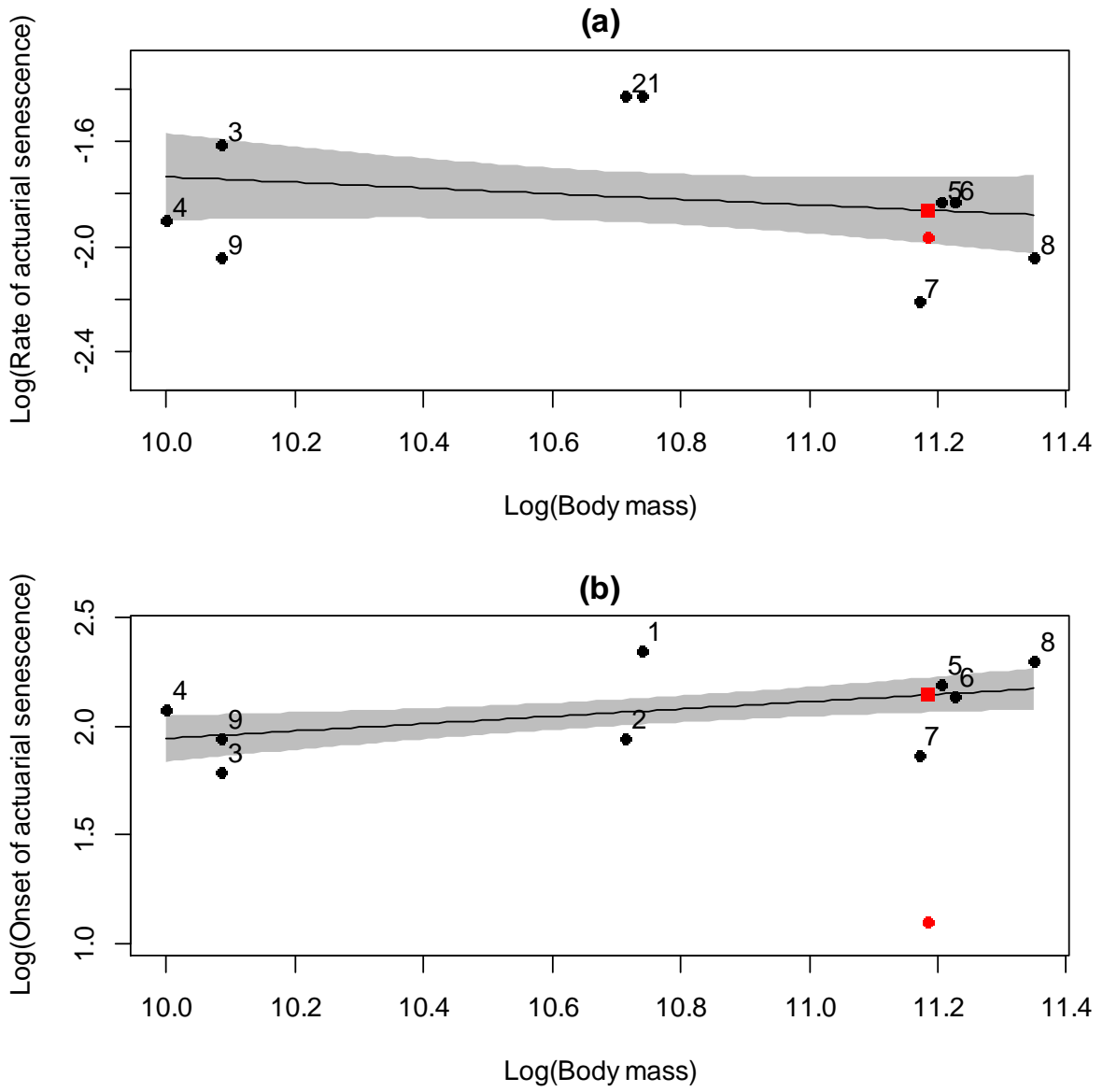
475

476 **Figure 2.**



477

478 **Figure 3.**



479

480