



HAL
open science

Social, political, and technological dimensions of the sustainability evaluation of a recycling network. A literature review

Pavlo Santander, Fabio Cruz, Hakim Boudaoud, Mauricio Camargo

► To cite this version:

Pavlo Santander, Fabio Cruz, Hakim Boudaoud, Mauricio Camargo. Social, political, and technological dimensions of the sustainability evaluation of a recycling network. A literature review. *Cleaner Engineering and Technology*, 2022, pp.100397. 10.1016/j.clet.2022.100397. hal-03511688

HAL Id: hal-03511688

<https://hal.science/hal-03511688v1>

Submitted on 5 Jan 2022

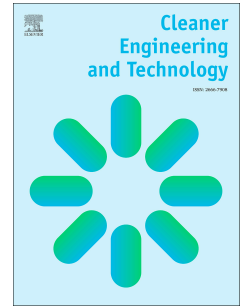
HAL is a multi-disciplinary open access archive for the deposit and dissemination of scientific research documents, whether they are published or not. The documents may come from teaching and research institutions in France or abroad, or from public or private research centers.

L'archive ouverte pluridisciplinaire **HAL**, est destinée au dépôt et à la diffusion de documents scientifiques de niveau recherche, publiés ou non, émanant des établissements d'enseignement et de recherche français ou étrangers, des laboratoires publics ou privés.

Journal Pre-proof

Social, political, and technological dimensions of the sustainability evaluation of a recycling network. A literature review

Pavlo Santander, Fabio Cruz, Hakim Boudaoud, Mauricio Camargo



PII: S2666-7908(22)00002-7

DOI: <https://doi.org/10.1016/j.clet.2022.100397>

Reference: CLET 100397

To appear in: *Cleaner Engineering and Technology*

Received Date: 9 May 2021

Revised Date: 26 December 2021

Accepted Date: 31 December 2021

Please cite this article as: Santander, P., Cruz, F., Boudaoud, H., Camargo, M., Social, political, and technological dimensions of the sustainability evaluation of a recycling network. A literature review, *Cleaner Engineering and Technology* (2022), doi: <https://doi.org/10.1016/j.clet.2022.100397>.

This is a PDF file of an article that has undergone enhancements after acceptance, such as the addition of a cover page and metadata, and formatting for readability, but it is not yet the definitive version of record. This version will undergo additional copyediting, typesetting and review before it is published in its final form, but we are providing this version to give early visibility of the article. Please note that, during the production process, errors may be discovered which could affect the content, and all legal disclaimers that apply to the journal pertain.

© 2022 Published by Elsevier Ltd.

1 Words from title to conclusion: 14625
2 Total words of the document: 29426
3

4 Social, political, and technological dimensions of the 5 sustainability evaluation of a recycling network. A 6 literature review.

7 Pavlo Santander; Fabio Cruz; Hakim Boudaoud; Mauricio Camargo
8 *Université de Lorraine, ERPI, F-54000 Nancy, France*

9 **Abstract**

10 The development and implementation of recycling networks seems to be a promising way to
11 cope with and mitigate the environmental problems of waste. As a mandatory condition,
12 recycling networks must guarantee the achievement of sustainability requirements. Since the
13 first proposal of the TBL (Triple Bottom Line) in the early 1990s, some authors have suggested
14 that this model should be extended to include more dimensions. Recent studies have proposed
15 that for a system to be sustainable, it should not only include the economic, environmental, and
16 social dimensions but must also consider technological and political aspects and their
17 subsequent sustainability indicators for their evaluation. In regard to recycling networks,
18 however, social, technological, and political dimensions are still to be formalized to facilitate
19 their use when designing recycling networks or evaluating their impact. In order to understand
20 how these social, political, and technological dimensions should be integrated into the
21 sustainability evaluation process of a potential recycling network, a systematic literature review
22 has been conducted. A total of 160 journal articles were selected and analyzed. Information was
23 identified on the problem addressed, the recycling domain, the methodologies used, and the
24 social, technological, and political aspects under consideration. A set of social, political, and
25 technological indicators to be considered for the main recycling network problems (design and
26 planning, decision-making and performance evaluation, provider selection, price, and
27 coordination) is then proposed. The main contribution of this work lies in the understanding for
28 future research of how to consider social, political, and technological aspects taking into account
29 the most common problems addressed in a recycling network. At the same time, findings and
30 research gaps have been derived from these results. This study provides a basis for future work
31 oriented toward the holistic evaluation of sustainable recycling networks.

32 *Keywords:* Recycling, Closed Loop Supply Chain, Reverse Supply Chain, Reverse Logistics,
33 Sustainability indicators, Social dimension, Technological dimension, Political dimension
34

35 **1. Introduction**

36

37 Over the last 25 years, supply chain management has undergone many changes. At its earliest
38 stages, supply chain networks were structured in a linear manner, products were manufactured
39 and distributed to the consumer through the supply chain and then discarded once consumed.
40 This type of supply chain is defined by different authors as a “forward supply chain” (FSC) (see
41 Battini et al. (2017) and Govindan et al. (2015) through a literature review; Haddadsisakht and

1 Ryan (2018) for supply chains under uncertainty; Kannan et al. (2010) for the case of battery
2 recycling; Östlin et al. (2008) in product remanufacturing; Sahebjamnia et al. (2018) for large
3 scale supply chain network design). However, the need for and social challenge of coping with
4 the environmental impacts generated by the linear manufacture-consumption-disposal model
5 led to questions of how to recover the value of discarded products in order to mitigate their
6 environmental impacts. In this way, reverse supply chains (RSC) and reverse logistics networks
7 (RL) emerged, later giving rise to closed loop supply chains (CLSC) as a response to this societal
8 challenge. Different authors have defined a RSC-RL as the network for the recovery of discarded
9 products for recycling or reuse in other products, while a CLSC network emerges as an
10 integrative network where forward and reverse supply chains act at the same time (see Bai and
11 Sarkis (2019), Govindan et al. (2015), Haddadsisakht and Ryan (2018), Kannan et al. (2010),
12 Östlin et al. (2008), Yu and Solvang (2016a)). Therefore, a recycling network structure can be
13 present in these two types of supply chain structures.

14 Today, to address the environmental problems of waste, there is significant interest in the
15 development and implementation of these types of supply chain networks that consider
16 recycling as a recovery activity (Pavlo et al., 2018; Santander et al., 2020). However, the
17 evaluation of different networks should be oriented toward sustainable development. A
18 network is sustainable if it integrates the economic, environmental, and social dimensions,
19 traditionally referred to as the three pillars of sustainability (triple bottom lines - TBL)
20 (Elkington's, 1997; Hacking and Guthrie, 2008). However, some studies suggest that new
21 dimensions need to be integrated in order to address the sustainability approach. For example,
22 Fritz and Silva (2018) suggest the integration of institutional and cultural dimensions. On the
23 other hand, Bautista et al. (2016) argue that while political and technological aspects are of great
24 importance in the system to evaluate, they should also be considered in the sustainability
25 evaluation (TBL+). In the context of general recycling, Islam and Huda (2018) proposed the
26 incorporation of these two dimensions (political and technological) into the analysis of RL and
27 CLSC of electronic waste, with the purpose to obtain a more holistic vision of the system from
28 the sustainability perspective. This holistic vision involves sustainability in waste management
29 at the micro, meso, and macro levels (Mahmoudi et al., 2021). From a political aspect, there is
30 great interest among authorities in increasing the recycling rates of products and achieving a
31 Circular Economy through recycling (European Commission, 2019). This interest can be clearly
32 seen, for example, in the case of plastic recycling, where China was the largest recycler of plastics
33 globally before that country passed its waste embargo. As a consequence, the whole supply
34 chain has been reshaped, and plastic exporting countries must rethink the way they manage
35 their plastic waste in a sustainable way (Simon, 2019; Wen et al., 2021). One option would be
36 promoting a new global and sustainable recycling network. Other options would be to promote
37 sustainable recycling networks at national, regional, or local scale. These new approaches to
38 recycling pose new challenges for industry and academia from the point of view of conception,
39 design, and implementation of these recycling network. From a technological perspective, the
40 technologies associated with the specific recycling process are key elements in the global
41 sustainability of the process. For example, in the case of plastic recycling, the economic
42 efficiency of the recycling process greatly depends on the technology that is used (Simon, 2019).
43 Indeed, some research proposes distributed and local plastic recycling using open-source
44 technologies in order to reduce costs and mitigate environmental impacts (Cruz Sanchez et al.,
45 2020). On WEEE, Islam and Huda (2018) highlighted the use of the Internet of Things in inventory
46 management and product-recovery information management for "resource savings at low
47 cost." Therefore, similarly to the political aspects, new approaches of recycling derived from

1 technological changes and developments imply new challenges for industry and academia from
2 the point of view of conception, design, and implementation of these recycling networks. In
3 conclusion, political and technological aspects can highly affect or change the way in which
4 recycling networks should be conceived and designed, which has economic, environmental, and
5 social implications from the sustainability perspective.

6 Different literature reviews have been conducted on sustainability in CLSC and RSC-RL
7 networks considering different contexts and problems, such as, company context (Fernandes et
8 al., 2017), sustainable inventory routing problems (Malladi and Sowlati, 2018), network design
9 problems (Moreno-Camacho et al., 2019), Game theory problems (Shekarian, 2020), textile and
10 apparel industry (Jia et al., 2020), and WEEE/E-waste (Islam and Huda, 2018). However, the
11 question of how the impacts of a recycling network should be evaluated bearing in mind the five
12 dimensions of sustainability remains open. This question could be answered by including
13 sustainability assessments in the context of forward supply chains. However, previous literature
14 reviews highlight: (1) the scant consideration of social, technological and political aspects in
15 sustainability assessments (Espinoza Pérez et al., 2017; Fonseca et al., 2019), and (2) the major
16 focus on economic and environmental aspects (Espinoza Pérez et al., 2017; Fonseca et al., 2019;
17 Moreno-Camacho et al., 2019). On the one hand, economic and environmental aspects are
18 generally represented by costs and air pollution, which can be applied to the recycling network
19 context (Moreno-Camacho et al., 2019). On the other hand, although recent efforts to highlight
20 the social, political and technological dimensions in supply chains have been conducted in the
21 literature (see Badri Ahmadi et al. (2017), Espinoza Pérez et al. (2017), Fonseca et al. (2019),
22 Moreno-Camacho et al. (2019), Yawar and Seuring (2017)) the manner how social, technological
23 and political aspects should be taken into account in a recycling network is not clear for the
24 scientific community and public actors. A clear vision of how to account for these dimensions in
25 the context of recycling would potentially assist policy-makers, stakeholders, and researchers in
26 the sustainability evaluation process of future emerging recycling networks, such as distributed
27 recycling networks (Cruz Sanchez et al., 2020; Kerdlap et al., 2021). In order to tackle this issue,
28 the purpose of this article is to map the way in which social, political, and technological aspects
29 have been considered in the evaluation of recycling networks. Firstly, this analysis will provide a
30 basis for how these dimensions should be considered in future research. Secondly, research gaps
31 will be identified upon consideration of these aspects in the evaluation of recycling networks,
32 keeping in mind that the evaluation should be as holistic as possible from a sustainability
33 perspective. Formally, this paper seeks to provide answers to the following research questions:
34 How should social, technological, and political aspects be taken into account in the evaluation
35 of a sustainable recycling network? What are the criteria or aspects to be considered for these
36 dimensions during sustainability evaluations? Are these criteria usable in all recycling domains?

37 This article aims to address this research gap by means of a bibliographic analysis of a set of
38 articles about recycling networks with a sustainability orientation. The bibliographic analysis is
39 carried out through a systematic literature review. The originality of this research lies in the way
40 it seeks to understand how social, technological, and political dimensions or aspects have been
41 included in the sustainability evaluation of recycling networks, identifying the main problems
42 addressed, along with the factors and methodologies in the literature. The understanding and
43 establishment of a pertinent set of criteria for each of these dimensions allows researchers,
44 practitioners, and policy-makers to conduct a more holistic evaluation of the sustainability of
45 the recycling network studied.

This article is structured as follows. Section 2 presents this literature review's positioning in the literature. Section 3 presents the methodology used for article selection. Section 4 presents the results obtained for each sustainability dimension, along with a quantitative and qualitative analysis. Section 5 discusses the results. Finally, Section 6 presents conclusions and perspectives.

2. Positioning in the literature

As mentioned in the introduction, various literature reviews have been carried out on sustainability in CLSC and RL-RSC networks. Table 1 presents a summary of the literature reviews found that explore sustainability analysis in CLSC and RL-RSC networks.

Table 1. Positioning in the literature

Author	Scope	Sustainability dimensions				
		Economic	Environmental	Social	Political	Technological
(Fernandes et al., 2017)	Performance indicators of RL in the context of a company.	x	x	x		
(Malladi and Sowlati, 2018)	Sustainable inventory routing models in the context of CLSC and RL networks.	x	x	x		
(Moreno-Camacho et al., 2019)	Supply chain network design problems.	x	x	x		
(Jia et al., 2020)	Sustainable performance for applying Circular Economy in the textile and apparel industry.	x	x	x		
(Shekarian, 2020)	Game theory applied to CLSC networks	x	x	x	x	x
(Islam and Huda, 2018)	RL and CLSC networks in WEEE/E-waste.	x	x	x		
This literature review	RL and CLSC networks for recycling			x	x	x

As shown in Table 1, six previous literature reviews have looked at sustainability evaluation in RSC-RL or CLSC networks in their analysis. Fernandes et al. (2017) carried out an analysis of the literature on performance indicators for RL in the context of a company. The analysis identified indicators related to economic, consumer, internal operations, learning and growth, social, environmental, and supplier aspects. Malladi and Sowlati (2018) carried out a literature review on sustainable inventory routing models in the context of CLSC and RL networks. They identified the way in which economic, environmental, and social objectives are considered in this type of problem. Moreno-Camacho et al. (2019) conducted a literature analysis on the way in which economic, social, and environmental aspects are included in supply chain network design problems. In the analysis, they considered FSC, RSC, and CLSC networks. Jia et al. (2020) conducted a literature review in order to identify the drivers, barriers, practices, and indicators of sustainable performance applied to the circular economy in the textile and apparel industry. From the point of view of indicators, they found that the literature in this industry has been focused on the measurement of economic and environmental aspects, without measuring social factors. Shekarian (2020) analyzed the aspects related to game theory applied to CLSC networks. In his analysis he explored economic, environmental, political (subsidy, reward-penalty), technological (inventory systems, information systems and quality considerations, e-tails, and online operations), and social (trade-in or subsidy to the customer per returned product) aspects. Islam and Huda (2018) conducted a literature review on RL and CLSC in WEEE/e-waste,

1 analyzing the main research problems in the field of RL and CLSC (design and planning of reverse
2 distribution, decision-making and performance evaluation, conceptual framework, and
3 qualitative studies). As regards sustainability dimensions, their results show a strong focus on
4 economic and environmental aspects and a lack of consideration of social aspects in these types
5 of problems.

6 These literature reviews address the problem of sustainability assessment in CLSC or RSC-RL
7 networks. Considering the sustainability dimensions, Table 1 shows that regarding the
8 economic, environmental and social dimensions, all the documents analyzed address these
9 three dimensions taking into account different network types (CLSC and RL-RSC) and products
10 (WEEE/E-waste, textile and apparel industry). However, only one review addresses all
11 dimensions, although this review is limited only to the application of game theory problems in
12 CLSC networks (Shekarian, 2020). Another important conclusion is the lack of consideration of
13 social aspects as mentioned in the literature reviews of Fernandes et al. (2017), Islam and Huda,
14 (2018), Jia et al. (2020), Malladi and Sowlati (2018) and Moreno-Camacho et al. (2019). For
15 example, the results of Fernandes et al. (2017) showed a lack of consideration of the social
16 performance of reverse logistics in the context of a company. The work of Islam and Hud (2018)
17 demonstrated a lack of consideration of social aspects in RL and CLSC networks of WEEE/E-
18 waste, suggesting the inclusion of the three dimensions (economic, environmental and social)
19 in further research. The literature review of Jia et al. (2020) about Circular Economy in the textile
20 and apparel industry, showed the need to explore how social factors influence the application
21 and performance of companies' CE implementation. The results of Malladi and Sowlati (2018)
22 evidenced that the social impacts of Inventory Routing problems have been considered in a
23 limited number of studies. Finally, the results of the literature review conducted by Moreno-
24 Camacho et al. (2019) on supply chain network design problems showed that economic and
25 environmental aspects have received more attention than social aspects. They also mentioned
26 that social aspects are becoming a relevant topic of study in the context of supply chain design.
27 Moreover, although these reviews include recycling in their analysis, these reviews are not
28 totally focused on recycling networks and are limited by the product under consideration (Islam
29 and Huda, 2018; Jia et al., 2020).

30 In conclusion, we can say that to the best of our knowledge, no specific literature review has
31 been found on the topic of recycling in RSC-RL and CLSC networks considering the understanding
32 of the social, political, and technological dimensions. Our research addresses this research gap
33 by providing a literature review on the inclusion of social, political, and technological aspects in
34 the sustainability evaluation of RL-RSC and CLSC networks for recycling.

35

36 **3. Methodology and data selection**

37

38 In this research, a systematic literature review is carried out based on the guidelines of
39 Siddaway et al. (2019). Table 2 details the steps followed for article selection. Next, a systematic
40 selection of the literature is performed. The article selection procedure is shown in Figure 1.

41

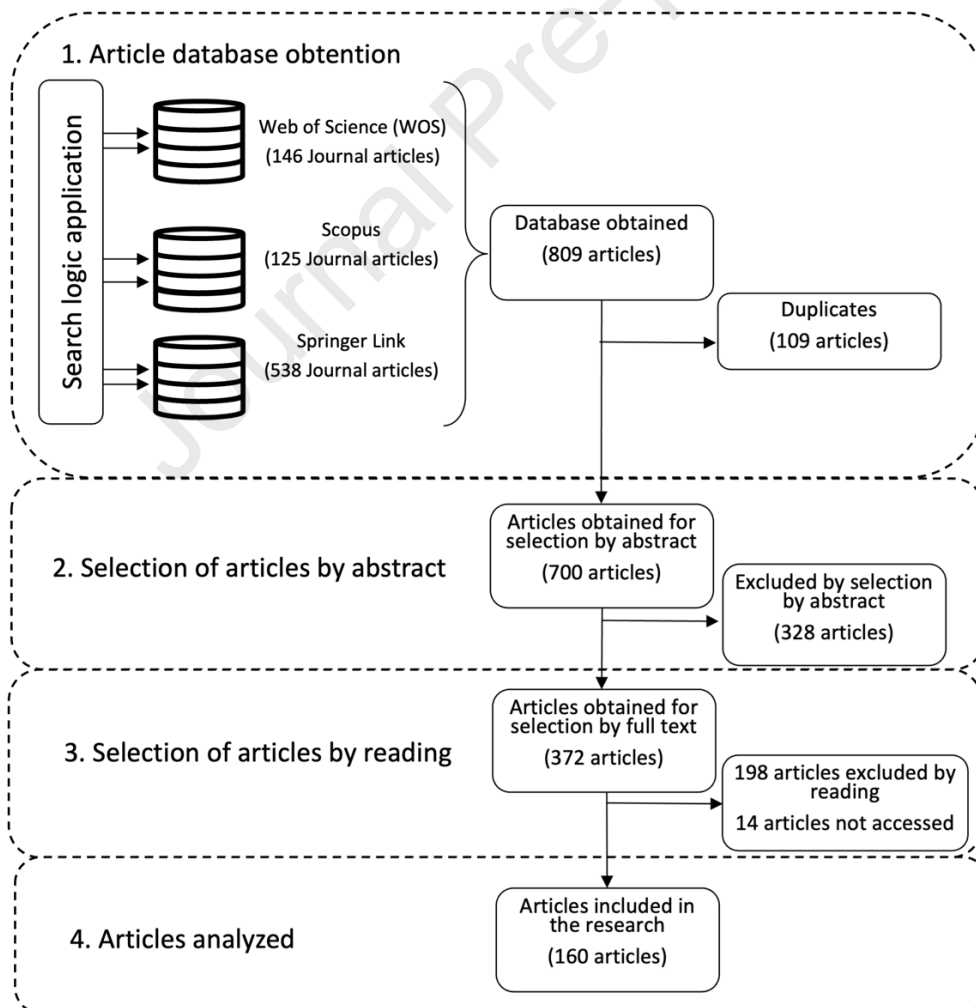
42

1

Table 2. Systematic literature review protocol

Stage	Principle	Description
Search strategy	Type of studies	Journals, papers
	Keywords	Closed-loop supply chains, Reverse logistics, Reverse supply chains, Recycling, Sustainable, Political dimension, Technological dimension, Social dimension
	Search equation	("Closed-loop supply chain*" OR "Closed loop supply chain*" OR "Reverse Logistic*" OR "Reverse supply chain*") AND (recycl*) AND (sustainab*) AND (social* OR (politic* OR polic*) OR technolog*)
	Period of time	Until December 2020
	Databases	Scopus, Springer, and Web of Science
Study selection	Criteria	1) Articles related to the analysis or evaluation of recycling networks (for selection by abstract). 2) Articles that consider the social, technological, or political dimensions of sustainability (for selection by reading).
	Procedure	1) Title, abstract, and keywords are screened 2) Full article is reviewed 3) Selection is made based on selection criteria
Data extraction	Social, political and technological dimensions	Problem addressed, methodology, domain/application, criteria and indicators considered for each dimension

2



3

4

5

Figure 1. Systematic article selection

1 As shown in Table 2, the search was conducted on the keywords “Closed-loop supply chains,”
2 “Reverse Logistics,” “Reverse supply chains,” “Recycling,” “Sustainable,” “Political dimension,”
3 “Technological dimension,” and “Social dimension.” “Closed-loop supply chains,” “Reverse
4 Logistics,” and “Reverse supply chains” were included because, from a structural point of view,
5 recycling activity can be present in these two types of supply chains. The keyword “recycling”
6 was included to obtain documents that necessarily consider recycling as an activity in the supply
7 chain. Finally, the keywords “Sustainable,” “Political dimension,” “Technological dimension,”
8 and “Social dimension” were included to obtain studies that address sustainability in recycling
9 supply chains with at least one of the three sustainability dimensions specified. As for the
10 databases, Springer, Web of Science, and Scopus were used. The search equation indicated in
11 Table 2 was applied to the Title, Abstract, and Keywords. From the search in these databases, a
12 total of 809 studies written in English were identified. Among the studies identified, 109
13 correspond to duplicate studies, leaving a total of 700 articles to be selected. Next, a selection
14 by abstract was carried out, leaving only those articles related to the analysis or evaluation of
15 recycling networks. Only 372 articles passed this filter. Finally, a selection by reading was carried
16 out, selecting only those articles that consider at least one of the three dimensions of
17 sustainability studied in this research (social, political, and technological). The social dimension
18 is understood as the (positive or negative) impacts on society of the implementation of the
19 recycling system (Bautista et al., 2016; Espinoza Pérez et al., 2017). The political dimension is
20 understood as the influence of governmental/legal policies (for example, taxes and subsidies or
21 other types of incentives/penalties) on the recycling system (Bautista et al., 2016; Espinoza Pérez
22 et al., 2017). Finally, the technological dimension is understood as the influence on the system
23 exerted by the technological constraints as well as by the development of the technologies used
24 in the system (Bautista et al., 2016; Espinoza Pérez et al., 2017). As a result of the literature
25 selection methodology used, 160 articles were selected for this research.

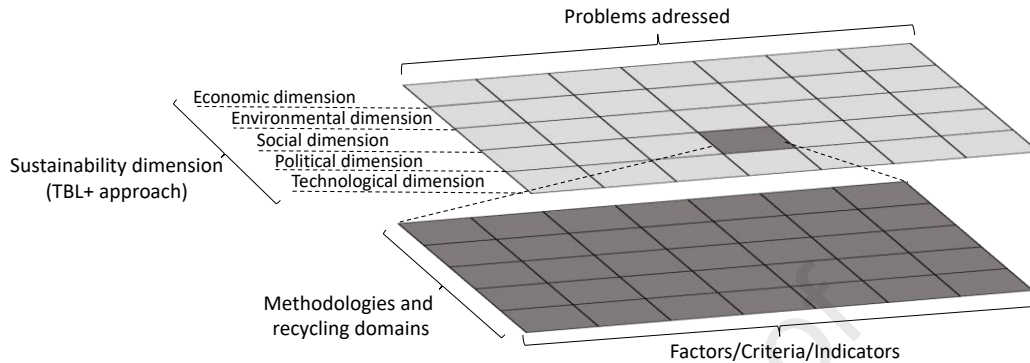
26 In order to answer the research questions relating to social, technological, and political
27 dimensions in the sustainability evaluation of recycling networks, the data extracted from the
28 selected documents correspond to: (1) sustainability dimensions considered and how they have
29 been considered, (2) the problem addressed, (3) the domain/application of the recycling
30 network and (4) the methodology used for the integration of sustainability dimensions. The
31 results obtained are presented in the next section.

32

1 4. Results

2

3 Table 3 presents a detailed description of the set of 160 studies considered in this review.
 4 Figure 2 schematizes the conducted analysis.



5

6

7

Figure 2. Conceptual diagram of the analyzed information (Example of analysis of documents addressing political aspects).

8

9

10

11

As can be observed in Figure 2, the selected documents were analyzed based on the sustainability dimensions (economic, environmental, social, political and technological) in order to identify which ones were included, and how. The type of problem addressed was also analyzed by classifying it according to the characteristics described by (Govindan et al., 2015):

12

13

14

15

16

17

18

19

20

21

22

23

24

25

26

27

- Design and planning: This type of problem addresses strategic and tactical decisions, e.g., location of recycling facilities (design) and the flow of material between them (planning).
- Price and coordination: This type of problem deals with coordination decisions between actors in the recycling chain; for example, decisions regarding prices for the purchase and sale of materials.
- Decision-making and performance evaluation: These studies address the evaluation of different types of recycling options in order to support the decision-making process.
- 3PRLP selection: These problems address the criteria and methodologies for the selection of a Third Party Reverse Logistic Provider (3PRLP) who will carry out the recovery process.
- Vehicle routing problem: These studies address the problem of collection of wastes to be treated.
- Other studies: This group contains those problems not classified in the previous groups.

28

29

30

31

32

33

For each sustainability dimension and problem addressed, the aspects considered (criteria and indicators) and the methodology used to integrate the sustainability dimensions (and their identified criteria) were also analyzed. Finally, the specific domain/application of the recycling network studied (where "general" means that the domain/application is not specified/limited in the study) was also analyzed in order to define whether the identified criteria are applicable transversally given the product/material treated in the recycling network.

34

35

This analysis will identify (1) the most commonly used criteria in the context of recycling networks for each sustainability dimension studied, (2) the type of problem in which they have

1 been used, (3) whether these criteria are usable independently of the material/product to be
2 treated and (4) how the criteria are integrated, from a methodological point of view.

3 Table 3 summarizes the results obtained from the analysis of the 160 selected articles. The
4 articles have been ordered according to the problem addressed, number of dimensions
5 considered (between social, technological, and political dimensions), methodology, and finally
6 by type of domain/application. The following subsections present the results obtained from the
7 analysis. First, a quantitative analysis is presented in section 4.1, statistically showing the
8 information obtained from the documents (problems, sustainability dimensions, methodologies
9 and domains/application). Then, a qualitative analysis is presented in section 4.2 showing the
10 social, political and technological aspects present in the selected documents.

11

12

Table 3. Analysis of the 160 publications selected in this study.

Article	Problem						Sustainability dimensions					Methods					Domain/Application
	SPRL provider selection	Design and planning	Decision-making and performance evaluation	Price and coordination	Vehicle routing problems	Other studies	Social	Technological	Political	Economic	Environmental	Optimization	Game theory	Multi-criteria decision-making	System dynamics	Others	
(Govindan et al., 2019)	x						x	x	x	x	x	x	x				E-waste
(Govindan et al., 2013)	x						x	x		x				x			Automotive industry
(Kafa et al., 2018)	x						x	x		x	x			x			Household waste and Municipal solid waste
(Mavi et al., 2017)	x						x		x	x	x	x		x			Plastic
(Rani et al., 2020)	x						x			x	x			x			General
(Kara, 2011)	x							x		x				x			E-waste
(Darbari et al., 2019)	x						x	x	x	x	x	x		x			E-waste
(Yang and Chen, 2020)	x						x	x	x	x	x	x		x			General
(Kumar et al., 2020)	x						x	x	x	x	x	x					Automotive industry
(Bal and Satoglu, 2018)	x						x	x	x	x	x	x					E-waste
(Safdar et al., 2020)	x						x	x	x	x	x	x					E-waste
(Garai and Roy, 2020)	x						x	x	x	x		x					General
(Ferri et al., 2015)	x						x	x	x	x		x					Household waste and Municipal solid waste
(Feitó-Cespón et al., 2017)	x						x	x		x	x	x			x		Plastic
(A. Liu et al., 2019)	x						x	x		x	x	x		x			Bicycles
(A. Liu et al., 2020)	x						x	x		x	x	x		x			General
(Sahebjamnia et al., 2018)	x						x	x		x	x	x					Automotive industry
(Jafari and Kazemi Abharian, 2020)	x						x	x		x	x	x					Automotive industry
(Fazli-Khalaf et al., 2020)	x						x	x		x	x	x					Automotive industry
(Rahimi and Ghezavati, 2018)	x						x	x		x	x	x					Construction and demolition wastes
(Shokohyar and Mansour, 2013)	x						x	x		x	x	x					E-waste
(Ramos et al., 2014)	x						x	x		x	x	x					E-waste
(Aalirezai and Shokouhyar, 2017)	x						x	x		x	x	x					E-waste
(Temur and Bolat, 2017)	x						x	x		x	x	x					E-waste
(Budak, 2020)	x						x	x		x	x	x					E-waste
(Fattahi and Govindan, 2017)	x						x	x		x		x					General
(Rezaei and Kheirkhah, 2018)	x						x	x		x	x	x					General
(Masoudipour et al., 2020)	x						x	x		x	x	x					General
(Pourjavad and Mayorga, 2019)	x						x	x		x	x	x					General
(Sajedi et al., 2020)	x						x	x		x	x	x					General
(Dutta et al., 2020)	x						x	x		x	x	x					General
(Zarbakhshnia et al., 2020)	x						x	x		x	x	x					General

(Hajiaghahi-Keshteli and Fathollahi Fard, 2019)	X	x	x	x	x	x	Glass
(Saeidi et al., 2020)	X	x	x	x	x	x	Hazardous waste
(Niranjan et al., 2019)	X	x	x	x	x	x	Household waste and Municipal solid waste
(Taleizadeh et al., 2019)	X	x	x	x	x	x	Household waste and Municipal solid waste
(Edalatpour et al., 2018)	X	x	x	x	x	x	Household waste and Municipal solid waste
(Govindan et al., 2016)	X	x	x	x	x	x	Medical waste
(Homayouni and Pishvae, 2020)	X	x	x	x	x	x	Medical waste
(Jin et al., 2018)	X	x	x	x	x	x	Metals
(Mohammadi et al., 2020)	X	x	x	x	x	x	Plastic
(Ng and Wang, 2017)	X	x		x			Biorefinery/Biomass
(Saxena et al., 2018)	X		x	x	x	x	Automotive industry
(Capraz et al., 2015)	X		x	x	x		E-waste
(Gao and Ryan, 2014)	X		x	x	x	x	General
(Yu and Solvang, 2017a)	X		x	x	x	x	General
(Porkar et al., 2018)	X		x	x	x	x	General
(Aljuneidi and Bulgak, 2020)	X		x	x	x	x	General
(Ansbro and Wang, 2013)	X		x	x	x		Metals
(Çalik, 2020)	X		x	x	x	x	General
(Ghasemzadeh et al., 2020)	X		x	x	x	x	x Automotive industry
(Wang et al., 2019)	X		x	x	x	x	x Medical waste
(Kannegiesser and Günther, 2014)	X		x	x	x	x	Automotive industry
(Hoyer et al., 2015)	X		x	x	x		Automotive industry
(Phuc et al., 2017)	X		x	x	x		Automotive industry
(Tadaros et al., 2020)	X		x		x	x	Automotive industry
(Liang and Lee, 2018)	X		x		x	x	Construction and demolition wastes
(Dong et al., 2017)	X		x	x	x	x	Construction and demolition wastes
(Dubey et al., 2015)	X		x	x		x	E-waste
(Gholizadeh et al., 2020)	X		x	x		x	E-waste
(John et al., 2018)	X		x			x	E-waste
(Ali et al., 2020)	X		x	x	x	x	E-waste
(Moslehi et al., 2020)	X		x	x	x	x	E-waste
(Khorshidian et al., 2019)	X		x	x		x	Food industry
(Accorsi et al., 2020)	X		x	x		x	Food industry
(Wang and Hsu, 2012)	X		x	x		x	General
(Altmann and Bogaschewsky, 2014)	X		x	x	x	x	General
(Faccio et al., 2014)	X		x	x		x	General
(Yu and Solvang, 2016)	X		x	x	x	x	General
(Zandieh and Chensebli, 2016)	X		x	x		x	General
(Sarkar et al., 2017)	X		x	x	x	x	General
(Rezaei and Kheirkhah, 2017)	X		x	x		x	General
(Benaissa et al., 2018)	X		x	x		x	General
(Shahparvari et al., 2018)	X		x	x		x	General
(Ren et al., 2020)	X		x	x	x	x	General
(Guo et al., 2017)	X		x	x		x	Household waste and Municipal solid waste
(Yu and Solvang, 2017b)	X		x	x	x	x	Household waste and Municipal solid waste
(Couto et al., 2017)	X		x	x		x	Household waste and Municipal solid waste
(Bing et al., 2014)	X		x	x	x	x	Plastic
(S. Han et al., 2020)	X		x			x	Plastic
(Papen and Amin, 2019)	X		x	x	x	x	Plastic
(Hassanzadeh Amin et al., 2018)	X		x	x		x	Plastic
(Valizadeh et al., 2020)	X		x	x	x	x	Plastic
(Choi and Fthenakis, 2014)	X		x	x		x	Solar energy industry
(Chen et al., 2017)	X		x	x	x	x	Solar energy industry
(Son et al., 2018)	X			x	x	x	Metals
(Bing et al., 2015)	X			x	x	x	Plastic
(Nidhi and Pillai, 2019)	X	x	x	x	x	x	Medical waste
(Agrawal et al., 2016a)	X	x	x	x	x	x	E-waste

(Pongeluppe Wadhy Rebehy et al., 2017)	X		X	X	X	X	X		X	Household waste and Municipal solid waste
(Chavez and Sharma, 2018)	X		X	X	X	X	X		X	Plastic
(Georgiadis and Besiou, 2008)	X		X	X	X		X		X	E-waste
(Georgiadis and Besiou, 2010)	X		X	X	X	X	X		X	E-waste
(Besiou et al., 2012)	X		X	X	X	X	X		X	E-waste
(Ghisolfi et al., 2017)	X		X	X	X		X		X	E-waste
(Beiler et al., 2020)	X		X	X	X	X	X		X	Glass
(Ahmed et al., 2016b)	X		X	X		X	X		X	Automotive industry
(Ahmed et al., 2016a)	X		X	X		X	X		X	Automotive industry
(Jindal and Sangwan, 2016)	X		X	X		X	X		X	E-waste
(Awan and Ali, 2019)	X		X	X		X	X		X	Household waste and Municipal solid waste
(de Oliveira et al., 2020)	X		X	X		X	X		X	Household waste and Municipal solid waste
(Chaudhary and Vrat, 2020)	X		X	X		X	X		X	Metals
(Agarwal et al., 2016)	X		X		X	X	X	X	X	E-waste
(Agrawal et al., 2016b)	X		X		X	X	X	X	X	E-waste
(Santos and Magrini, 2018)	X		X		X	X			X	Biorefinery/Biomass
(de Souza et al., 2016)	X		X		X	X			X	E-waste
(Slomski et al., 2018)	X		X		X	X			X	E-waste
(Ottoni et al., 2020)	X		X		X	X			X	E-waste
(Mutingi et al., 2014)	X		X		X	X			X	General
(Motevali Haghighi et al., 2016)	X		X		X	X			X	Plastic
(Xin Tong et al., 2018)	X			X	X	X			X	E-waste
(Mohan and Amit, 2020)	X			X		X			X	Automotive industry
(Jia et al., 2018)	X			X	X				X	Construction and demolition wastes
(Azevedo et al., 2017)	X			X	X	X			X	E-waste
(Ghalekhondabi and Ardjmand, 2020)	X		X	X	X	X	X		X	E-waste
(Saha et al., 2019)	X		X	X	X	X			X	General
(H. Wu et al., 2019)	X		X	X	X	X			X	General
(Mondal and Giri, 2020)	X		X	X	X	X	X		X	General
(Allevi et al., 2018)	X		X	X	X	X	X		X	General
(Ma and Huang, 2019)	X		X	X	X		X		X	General
(Mondal et al., 2020)	X		X	X			X		X	General
(Xiang and Xu, 2020)	X		X	X		X			X	General
(Yu et al., 2020)	X		X		X	X			X	Automotive industry
(X. Han et al., 2020)	X		X		X	X	X		X	General
(Duan et al., 2019)	X		X		X	X			X	General
(Rezaei and Maihami, 2020)	X		X		X	X	X		X	General
(Kim et al., 2020)	X		X		X	X	X		X	General
(Song et al., 2020)	X		X		X	X			X	General
(W. Liu et al., 2020)	X		X		X	X			X	Medical waste
(Johari and Hosseini-Motlagh, 2019)	X		X		X	X			X	Automotive industry
(Li et al., 2017)	X		X		X		X		X	E-waste
(Modak et al., 2019a)	X		X		X		X		X	General
(Ma et al., 2019)	X		X		X		X		X	General
(Modak et al., 2019b)	X		X		X		X		X	Plastic, glass and metal
(T. Liu et al., 2019)	X			X	X	X			X	Food industry
(Yue Tan and Guo, 2019)	X			X	X	X			X	General
(Liu et al., 2016)	X			X	X	X			X	E-waste
(Chen et al., 2018)	X			X		X			X	E-waste
(Huang et al., 2020)	X				X	X			X	General
(J. Wu et al., 2019)	X				X	X			X	Solar energy industry
(Rahimi et al., 2016)		X	X	X	X	X	X		X	Food industry
(Farrokhi-Asl et al., 2020)		X	X	X	X	X	X		X	Hazardous waste
(le Blanc et al., 2006)		X	X		X		X		X	Automotive industry
(Aksen et al., 2012)		X	X		X		X		X	Food industry
(Bányai et al., 2019)		X	X			X	X		X	Household waste and Municipal solid waste
(Kızıldağ et al., 2020)		X	X			X	X		X	Household waste and Municipal solid waste
(Mangla et al., 2012)			X	X	X	X	X		X	Paper
(Lapko et al., 2019)			X	X	X	X	X		X	Solar energy industry

(Uriarte-Miranda et al., 2018)	x	x	x			x	Automotive industry
(Agrawal and Singh, 2019)	x	x	x	x	x		E-waste
(Sarkis et al., 2010)	x	x					General
(Lai et al., 2013)	x	x		x	x		General
(Abdullah and Yaakub, 2014)	x	x		x			General
(Murakami et al., 2015)	x		x	x	x		General
(Yang et al., 2016)	x		x	x	x	x	E-waste
(Prasad et al., 2018)	x		x	x			Metals
(Bai et al., 2020)	x			x	x	x	General
(Zoeteman et al., 2010)	x		x				E-waste
(Nambu and Murakami-Suzuki, 2016)	x		x	x			E-waste
(Shi et al., 2010)	x		x	x		x	General

1

2

3

4.1 Quantitative Analysis

4

5

6

7

8

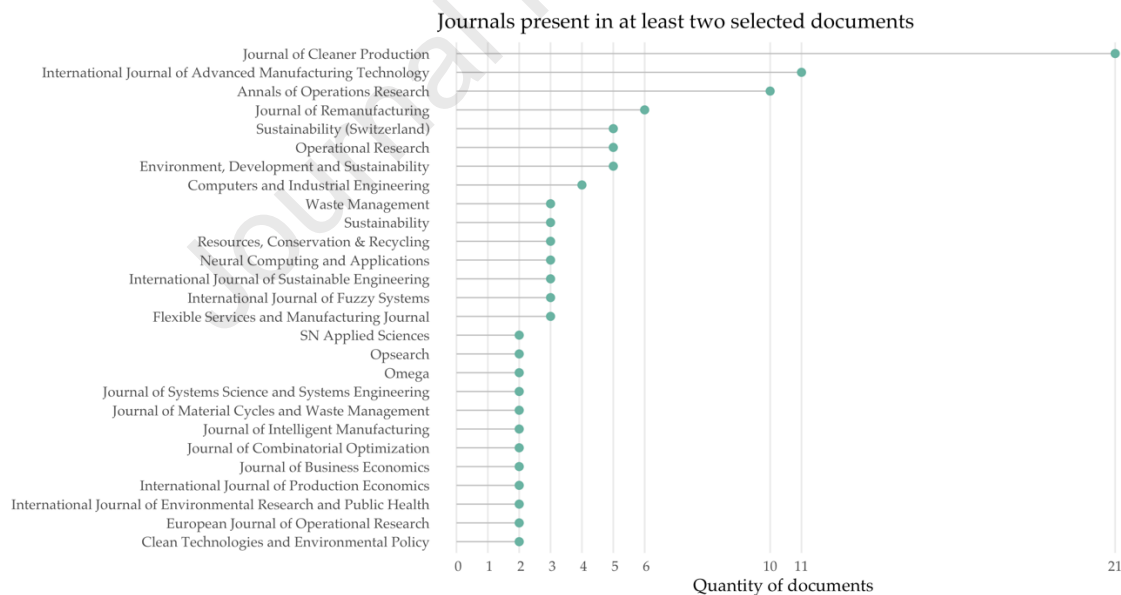
9

10

11

12

Figure 3 shows the ranking of journals with at least three documents included in this review. *Journal of Cleaner Production* is the most representative in the databases. As regards the profile of journals, two types of journals are observed. The first one is oriented toward environmental aspects and sustainable development. For example, *Journal of Cleaner Production*, *Waste Management, Sustainability*, and *Resources, Conservation & Recycling*. On the other hand, many journals have an operational or manufacturing profile. For example, *International Journal of Advanced Manufacturing Technology*, *Annals of Operations Research*, *Journal of Remanufacturing*, *Operational Research*.



13

14

Figure 3. Descriptive analysis of selected article (total number of documents: 160).

15

16

17

18

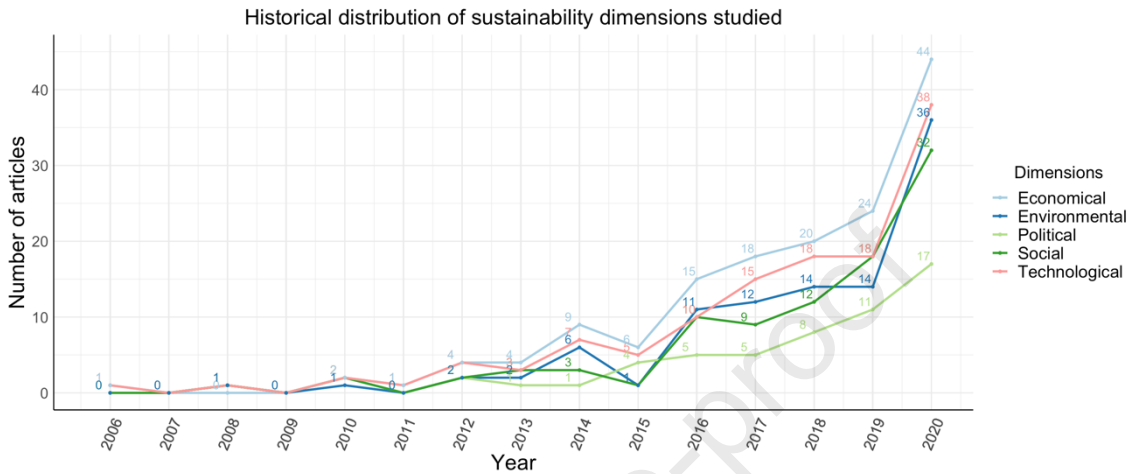
19

20

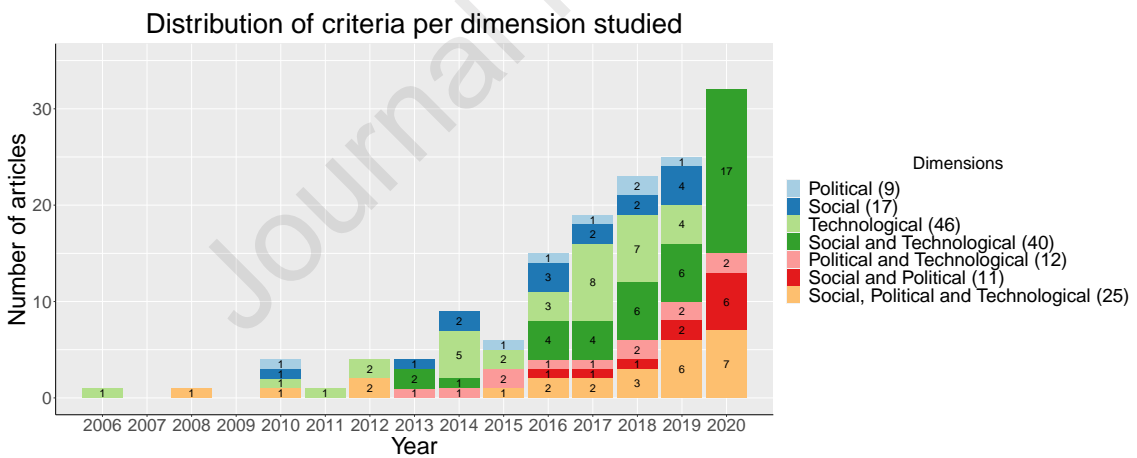
21

Figure 4 shows the temporal distribution of the articles addressing the dimensions studied in this research. As in other literature reviews, Figure 4 shows that economic and environmental dimensions are frequently addressed. In addition, Figure 4 confirms an interest in the social, political, and technological dimensions, interest which has been growing since 2016. In comparing the three dimensions, we can see that the technological dimension has been the most widely studied. On the other hand, the political dimension has been addressed the least.

1 Figure 5 shows the temporal distribution of the dimensions in terms of integration. This figure
 2 shows the growing interest in recent years in the technological dimension as well as the
 3 integration of the social and technological dimensions. It also confirms an increased integration
 4 of all three dimensions (social, political, and technological) since 2016. Regarding the political
 5 dimension, Figure 5 shows an interest in its integration since 2016.
 6



7
 8 Figure 4. Historical integration of dimensions (total number of documents: 160).
 9



10
 11 Figure 5. Historical distribution of integrated dimensions (total number of documents: 160).
 12

13 Additionally, Figure 6 presents the methodology used to address the different problems
 14 identified. As can be observed, 3PRL provider selection problems have been addressed mainly
 15 by means of multi-criteria methods. Decision-making and performance evaluation problems
 16 have been addressed mainly by means of system dynamics and multi-criteria methods. Design
 17 and planning problems have been addressed by means of optimization modeling. Finally, the
 18 problems of price and coordination of a recycling network have been addressed mainly by
 19 means of game theory.
 20

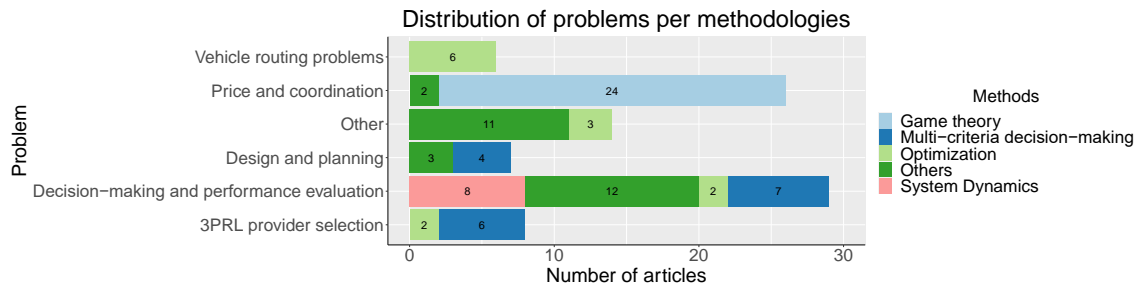


Figure 6. Distribution of problems by methodology (total number of articles: 160).

Figure 7 shows the distribution of the identified criteria in terms of their dimension, type of indicator (if the criterion was measured qualitatively or quantitatively, or if it has no indicator or has been included indirectly), and the methodology used. An indicator is defined in an indirect way if the criterion has been considered by means of social, political, or technological scenarios to be evaluated. As can be observed in Figure 7, the criteria associated with the social dimension have been measured using both qualitative and quantitative indicators in almost equal numbers. On the other hand, most of the criteria associated with the technological and political dimensions have been measured using mostly quantitative indicators. From the methodological point of view, the criteria associated with quantitative indicators have been integrated using optimization, game theory, or systems dynamics. Conversely, most of the criteria associated with qualitative indicators have been integrated by means of multi-criteria methods.

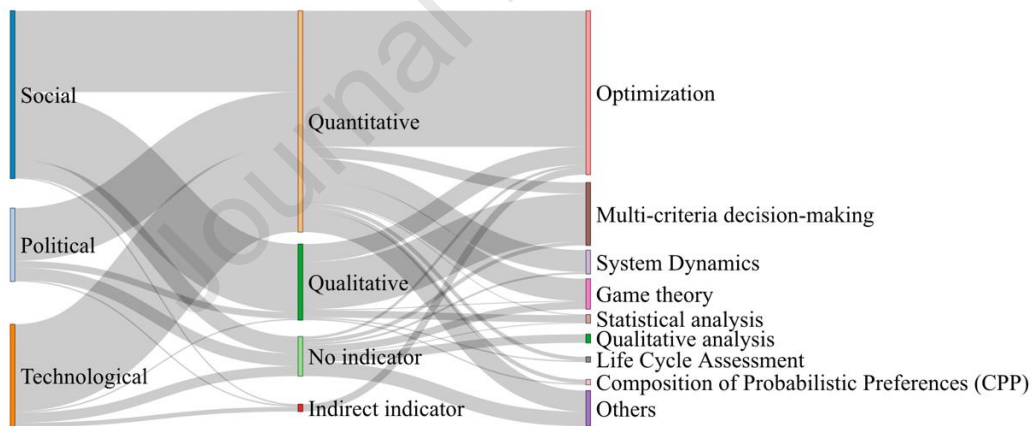


Figure 7. Distribution of criteria, indicators, and methodologies (total number of indicators = 521 indicators considering methodologies and references). "Others" include: Variational inequality, Survey analysis, PESTLE analysis, Interpretive Structural Modeling (ISM), Discounted cash flow, Quality-based price competition model, Hybrid BSC-DEA (balanced scorecard - data envelopment analysis), Case study analysis, Grey model theory, Discrete event simulation, Action research, Theoretical model, Scenario analysis and quantification, Financial analysis, Cost analysis, and Grey prediction model.

Finally, Figure 8 shows the distribution of the selected literature according to the domain/application considered. This figure shows that the articles selected in the research concentrate on recycling networks applied to products "in general" and recycling networks applied to e-waste, the automotive industry, and household and municipal waste. It should be mentioned that "general" corresponds to those recycling networks which are not limited to one type of product, or when the domain has not been specified in the document.

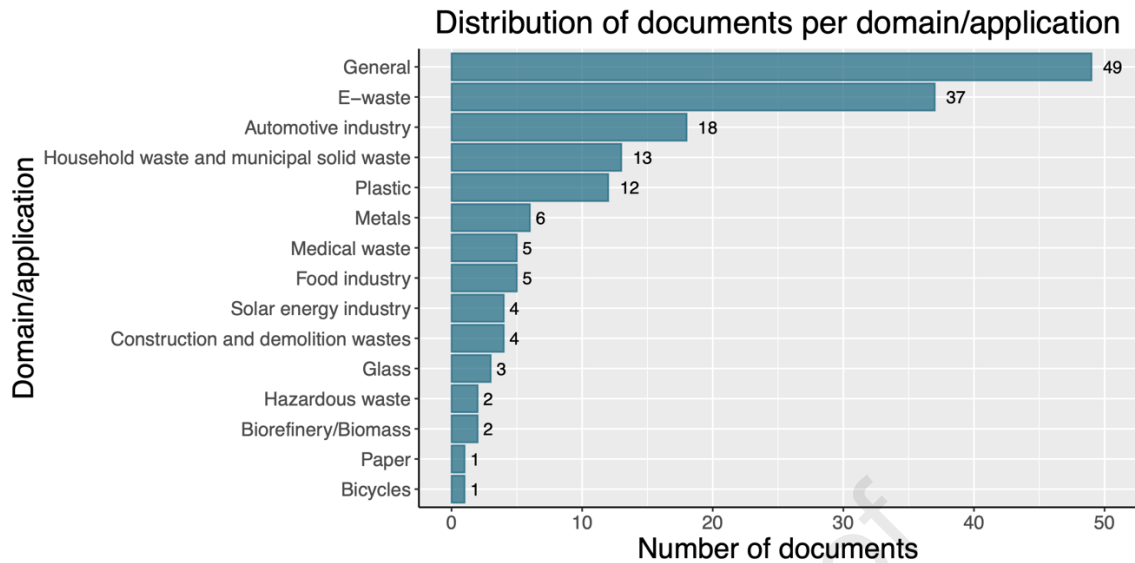


Figure 8. Distribution of the selected literature according to the domain considered (total number of documents: 160).

4.2 Qualitative Analysis

The following subsections present a detailed qualitative analysis of how sustainability-oriented recycling networks include social, political, and technological dimensions. First, an analysis of the social dimension is presented in Section 4.2.1. Next, an analysis of the political dimension is presented in Section 4.2.2. The technological dimension is presented in Section 4.2.3. Finally, a transversal analysis is presented in Section 4.2.4.

4.2.1 Social Dimension

As regards the social dimension, a total of 90 aspects were identified in 93 of the 160 documents selected from the literature. To enable a better understanding, the identified aspects of the social dimension were divided into five types of perspectives regarding the stakeholders toward which each criterion was oriented: 1) the worker, 2) the customers, 3) the community, 4) the company, and 5) other social aspects. In the worker's perspective, we identified those criteria that relate to the impact on workers who are active in the recycling field. In the customers' perspective, we identified those criteria that relate to the impact of the recycled product on customers or their preferences. In the community perspective, we identified those criteria that relate to the impact of the recycling activity on the community. In the company perspective, we identified those criteria that relate to the impact of the recycling activity on the social performance/image of the company. Finally, the fifth category grouped certain social factors that are not classified in some of the perspectives already mentioned. Figure 9 presents the distribution of the criteria in each defined group.

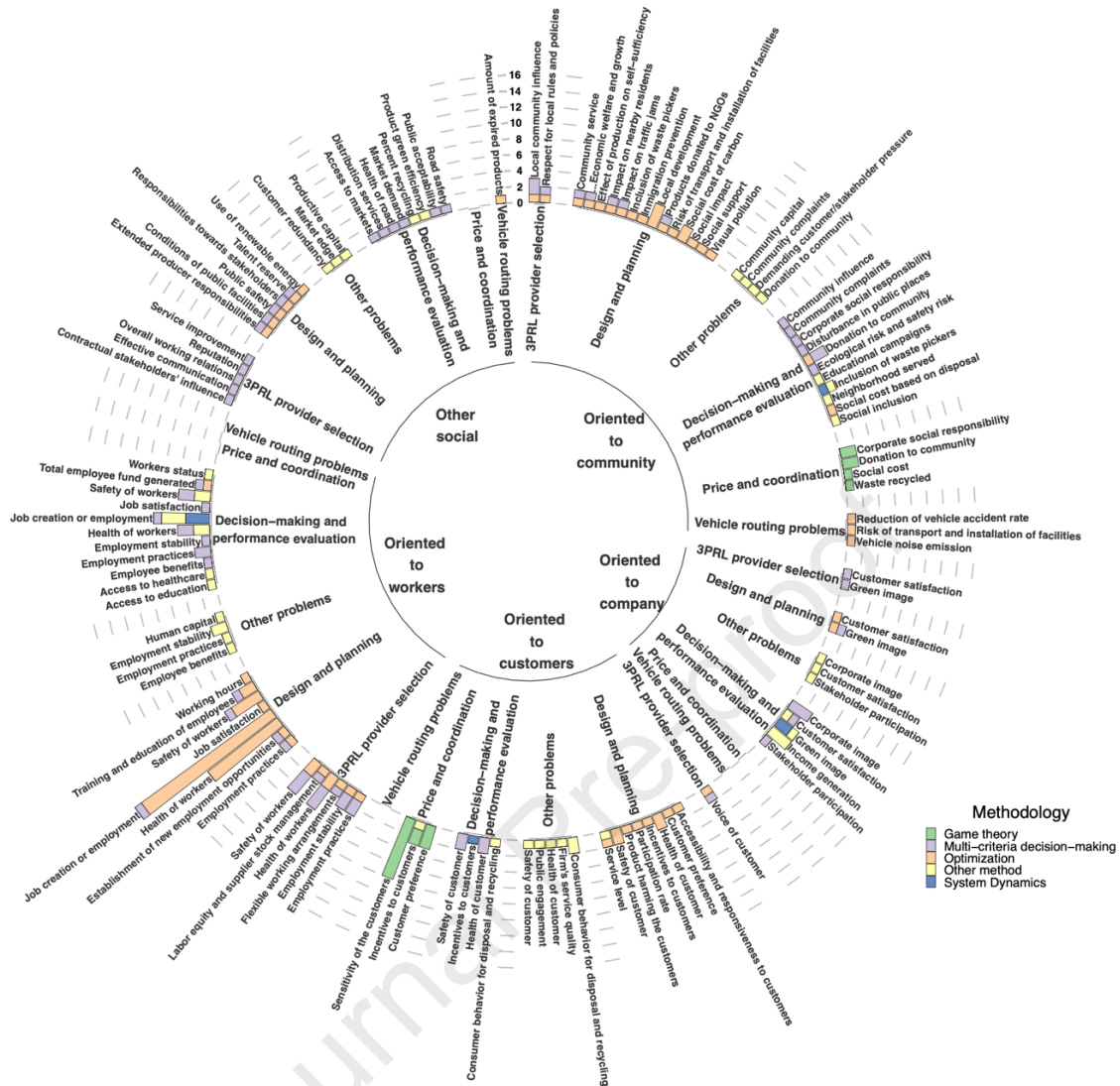


Figure 9. Occurrences of identified social aspects of the sustainability evaluation of recycling networks

4.2.1.1 Worker-oriented

From the literature selected and analyzed, a total of 42 documents (26%) considered this type of orientation, where 22 documents address design and planning problems, four documents address 3PRL provider selection problems and 13 documents address decision-making and performance evaluation problems. As can be observed in Figure 9, a total of 17 worker-oriented social criteria were identified from these documents. Table A.1 details the problem, criteria, the indicators and the methodologies in which the criterion was used.

One main result found is that **job creation, worker health, and safety** are the three most considered worker-oriented social aspects in the context literature of recycling networks. These three aspects were considered to address design and planning problems, 3PRL provider selection problems, and decision-making and performance evaluation problems, as can be observed in Figure 9. **Job creation or employment** is related to the number of jobs created or the number of employees involved in the implementation of a recycling network or new

1 facilities. From a design and planning problems perspective, this criterion has been used
2 mainly by means of optimization models. For example, Taleizadeh et al. (2019), in their study of
3 a sustainable CLSC problem with pricing decisions and discount on returned product, considered
4 the number of created jobs installing facilities. Sahebjamnia et al. (2018) presented a multi-
5 objective MILP model for the design of a sustainable tire CLSC network. In their model, they
6 considered the fixed and variable job opportunities created in the network.

7 Similarly, the aspects regarding **Safety of workers** and **Health of workers** were identified as
8 frequently considered in the design and planning perspective. Both criteria are focused on the
9 operations in the recycling network, in which the use of indicators such as lost days enabled a
10 quantitative description. For example, in the sustainable CLSC problem with pricing decisions
11 and discount on returned product studied by Taleizadeh et al. (2019), they considered the lost
12 working days due to employees sickness and accidents to measure the labor health and safety.

13 Concerning decision-making and performance evaluation problems, **job creation** was
14 evaluated mainly by means of system dynamics (SD) (Beiler et al., 2020; Besiou et al., 2012;
15 Chaudhary and Vrat, 2020). For example, Beiler et al. (2020) considered job creation ratio as
16 social indicator in their analysis of a RL system of a Brazilian beverage company. Besiou et al.
17 (2012) studied the impact of informal recycling of WEEE. In their study, they considered the
18 number of unemployed scavengers as social indicator. Chaudhary and Vrat (2020) studied a
19 circular economy model of gold recovery, where they considered the job creation per ton of
20 waste recycled. On the other hand, the **health and safety of workers** was
21 evaluated principally using multi-criteria method, where Ahmed et al. (2016a) and Ahmed et al.,
22 (2016b) considered these criteria to analyze sustainable management options of end-of-life
23 vehicles. This is important to know because SD enables analysis of recycling system performance
24 (Beiler et al., 2020; Besiou et al., 2012; Chaudhary and Vrat, 2020) while multi-criteria methods
25 are better suited to decision-making with respect to the management option (Ahmed et al.,
26 2016a, 2016b).

27 Regarding 3PRL provider selection problems, the **health and safety** of
28 workers were the most used criteria, in which multi-criteria methods have been mainly
29 considered in order to qualitatively measure these aspects in the 3PRL provider selection
30 process. Examples of this are the works developed by Govindan et al. (2019), Kafa et al. (2018)
31 and Mavi et al. (2017).

32 Finally, some documents were found to consider worker-oriented aspects in other subjects,
33 such as employment stability to analyze disposition decisions (Agrawal and Singh, 2019) and
34 reverse logistic practices (Sarkis et al., 2010), employee benefits to analyze disposition decisions
35 (Agrawal and Singh, 2019), and employment practices and human capital to analyze reverse
36 logistic practices (Sarkis et al., 2010).

37 38 4.2.1.2 Customer-oriented 39

40 Looking at the customer-oriented social criteria, a total of 32 documents (20%) considered
41 this type of orientation, where 14 documents address price and coordination problems, eight
42 documents address design and planning problems, one document address 3PRL provider
43 selection problems and four documents address decision-making and performance evaluation

1 problems. A total of 13 customer-oriented aspects were identified, as displayed in Figure 9.
2 Table A.2 details the problem, criteria, the indicators, and the methodologies in which the
3 criterion was used.

4 One can highlight that the **sensitivity of the customers**, the **incentive to customers**,
5 **customer preference**, and the **health and safety of customers** correspond to the most
6 considered customer-oriented aspects in the analyzed literature. Regarding the problems in
7 which they have been considered, **customer sensitivity**, **customer incentive**, and **customer**
8 **preference** have been considered mainly in price and coordination problems using game theory
9 models. On the other hand, **health and safety of customers** have been considered mainly in
10 design and planning problems, and decision-making and performance evaluation problems.

11 Regarding price and coordination problems, the **sensitivity of customers** represents
12 customer preference for a product according to its characteristics (whether the product is
13 manufactured from recycled or non-recycled materials, or its level of quality and sustainability).
14 For example, Ghalekhondabi and Ardjmand (2020) studied, using game theory models, an e-
15 waste supply chain considering customer sensitivity for price and sustainability of products, and
16 government intervention. Rezaei and Maihami (2020) presented a two-period game-theoretic-
17 based model to study the sustainable decision in a CLSC. In their model, they considered the
18 sustainability sensitivity of then consumers per product as parameter. Manufacturers'
19 characteristics can also affect this sensitivity (e.g., level of green innovation) (Ma and Huang,
20 2019; Mondal et al., 2020). **Customer preference** and the **incentive to customers** are other
21 customer-oriented aspects frequently considered in this type of problems. On the one hand,
22 **customer preference** is defined as the preference for recycled or green products ((Duan et al.,
23 2019; X. Han et al., 2020; H. Wu et al., 2019). For example, Duan et al. (2019) and X. Han et al.
24 2020) considered the consumers preference in the on the optimization models, for supply chain
25 design, developed in their studies. Another form of customer preference was included in the
26 work of Niranjana et al. (2019), which considers customer preference for online or offline sales
27 channels in a CLSC. On the other hand, **incentives to customers** refer to monetary incentives to
28 customers in order to foster the return of discarded products for proper treatment (e.g., Fattahi
29 and Govindan (2017); Allevi et al. (2018)).

30 Concerning decision-making and performance evaluation problems, the **health of customers**
31 and **safety of customers** correspond to the most used customer-oriented social criteria. The
32 **health of customers** and **safety of customers** refer to safety and health related to the use of
33 products obtained from the recycling of waste. As can be observed in Figure 9, these criteria
34 have been used qualitatively in multi-criteria methods to evaluate RL networks (e.g., Agrawal et
35 al. (2016b); Agrawal et al. (2016a)).

36 Considering design and planning problems, similarly to the decision-making and performance
37 evaluation problems, the **health of customers** and **safety of customers** correspond to the most
38 used customer-oriented social criteria. However, in those problems, these aspects have been
39 considered quantitatively (e.g., fraction of potentially perilous/harmful products) using
40 optimization models (e.g., Taleizadeh et al. (2019)).

41 Finally, regarding 3PRL provider selection problems, the **voice of customers** regarding the
42 potential third-party reverse logistic provider, corresponds to the only customer-oriented
43 criterion identified (Mavi et al., 2017).

44

1 4.2.1.3 Community-oriented

2
3 Regarding community-oriented social criteria, a total of 40 documents (25%) considered this
4 type of orientation, where 15 documents address design and planning problems, three
5 documents address 3PRL provider selection problems, 11 documents address decision-making
6 and performance evaluation problems, six documents address price and coordination problems
7 and two documents address vehicle routing problems. As can be observed in Figure 9, a total of
8 32 community-oriented aspects were identified. Table A.3 details the problem, criteria, the
9 indicators and the methodologies in which the criterion was used.

10 There have been different community-oriented criteria depending on the problem
11 addressed. Particularly, considering the problems that most consider these aspects, **local**
12 **development** and the **social cost of carbon** correspond to the most considered criteria in design
13 and planning problems. On the other hand, the **donation to the community** and the **inclusion**
14 **of waste pickers** have been aspects considered in decision-making and performance evaluation
15 problems. Specifically, **donation to the community** has also been considered in price and
16 coordination problems.

17 The **local development** and the **social cost of carbon** community-oriented social criteria are
18 those most considered in the design and planning problems. **Local development** refers to the
19 development of the community by the installation of network facilities (Aalirezai and
20 Shokouhyar, 2017; Mohammadi et al., 2020; Shokouhyar and Mansour, 2013). For example, in
21 their optimization model for the design and planning of an e-waste recovery network, Aalirezai
22 and Shokouhyar (2017) consider that the installation of facilities in less developed areas
23 stimulates local development. Local development has also been in the stochastic model of
24 Mohammadi et al. (2020) for supply chain network design. Similarly, the **social cost of carbon**
25 represents monetarily the social benefits/impacts of the implementation of the network
26 (Edalatpour et al., 2018; Saxena et al., 2018). Both aspects have been considered quantitatively
27 in studies of supply chain planning using optimization models.

28 With respect to decision-making and performance evaluation problems, **donation to**
29 **community** and **inclusion of waste pickers** are predominant community-oriented social criteria
30 in the evaluation. **Donation to community** refers to monetary assistance for social work. This
31 criterion has been qualitatively measured using multi-criteria methods (e.g., Agrawal et al.
32 (2016b)). On the other hand, the **inclusion of waste pickers** refers to the inclusion of non-formal
33 collectors in a recycling network. This aspect has been explored in decision-making and
34 performance evaluation problems. For example, Ghisolfi et al. (2017) considered this aspect
35 quantitatively as a ratio of formalization of waste pickers in a CLSC of desktops and laptops. For
36 their part, Pongeluppe Wadhy Rebehy et al. (2017) studied a network based on the integration
37 of waste pickers for municipal solid waste.

38 Regarding price and coordination problems, **corporate social responsibility** and **donation to**
39 **community** appear to be the most studied. On the one hand, **corporate social responsibility**
40 refers to the company's commitment to social impacts (Jindal and Sangwan, 2016; Johari and
41 Hosseini-Motlagh, 2019; Modak et al., 2019b). For example, Modak et al. (2019b) studied the
42 effects of manufacturers' corporate social responsibility on the amount of product that is
43 collected and recycled by the network. Jindal and Sangwan (2016) considered the corporate
44 social responsibility as evaluation criteria for product recovery process selection. Finally, Johari

1 and Hosseini-Motlagh (2019) studied a competitive sustainable CLSC considering corporate
 2 social responsibility. On the other hand, **donation to community** has been considered by Song
 3 et al. (2020) and Modak et al. (2019b) as a monetary amount donated per unit sell. Both aspects
 4 have been considered quantitatively using game theory models.

5 Concerning 3PRL provider selection problems, **local community influence** and **respect for**
 6 **local rules and policies** correspond to the identified criteria. **Local community influence** refers
 7 to cultural support and activities in the community (Govindan et al., 2019; Kafa et al., 2018). On
 8 the other hand, **respect for local rules and policies** has been used by Mavi et al. (2017) for 3PRLP
 9 selection. These aspects have been considered mainly by means of multi-criteria methods.

10 Finally, the **reduction of vehicle accident rate**, **vehicle noise emission**, and **risk of transport**
 11 **and installation of facilities** were aspects identified in vehicle routing problems. **Reduction of**
 12 **vehicle accident rate** and **vehicle noise emission have been** used by Rahimi et al. (2016) to
 13 evaluate sustainable inventory routing problems in the context of perishable products. On the
 14 other hand, **risk of transport and installation of facilities** has been used by Farrokhi-Asl et al.
 15 (2018) for the collection of hazardous wastes.

16 4.2.1.4 Company-oriented

17
 18
 19 Looking at company-oriented social criteria, a total of 19 documents (12%) considered this
 20 type of orientation, where two documents address design and planning problems, two
 21 documents address 3PRL provider selection problems, and 12 document address decision-
 22 making and performance evaluation problems. A total of five company-oriented aspects were
 23 identified, as evidenced in Figure 9. Table A.4 details the problem, criteria, the indicators and
 24 the methodologies in which the criterion was used.

25 For company-oriented perspective, the social aspects that have been considered mainly in
 26 decision-making and performance evaluation problems were **corporate image/green image** and
 27 **customer satisfaction**.

28 Regarding decision-making and performance evaluation problems, **corporate image**, **green**
 29 **image**, **income generation**, and **customer satisfaction** correspond to the most considered
 30 company-oriented social criteria. **Corporate image** considers the reputation of the company in
 31 the eyes of the public after the implementation of the network. This criterion has been
 32 measured qualitatively in the literature using MCDM methods (Agrawal et al., 2016a; Ahmed et
 33 al., 2016b, 2016a). For example, Ahmed et al. (2016a) and Ahmed et al. (2016b) considered this
 34 aspect to analyze sustainable management options of end-of-life vehicles. Agrawal et al. (2016a)
 35 considered corporate image in their study about outsourcing decisions in reverse logistics.
 36 Similarly, **green image** is related to the image of the company in the eyes of consumers or society
 37 when the company carries out recycling activities. This factor has been considered quantitatively
 38 in system dynamics for CLSC network evaluation (Georgiadis and Besiou, 2008, 2010). **Income**
 39 **generation** represents the generation of monetary income by new actors integrated in the
 40 recycling network (collector or contracted company) (de Oliveira et al., 2020; de Souza et al.,
 41 2016; Slomski et al., 2018). For example, de Oliveira et al. (2020) considered the income
 42 generation of collectors as social indicator in their evaluation of municipal solid waste (MSW)
 43 management schemes. de Souza et al. (2016) studied and evaluated the sustainability of
 44 different alternatives of e-waste management in Brazil, where the average income of e-waste

workers was considered as social criterion. Finally, **customer satisfaction** refers to conformity to customer expectations of the product or service provided by the company (Ahmed et al., 2016a; Garai and Roy, 2020; Mangla et al., 2012; Rani et al., 2020). For example, Ahmed et al. (2016a) considered this aspect in their study about end-of-life vehicle management selection. Garai and Roy (2020) proposed a cost-effective and customer-centric CLSC management model, where customer satisfaction is one of the indicators considered in the optimization model. Rani et al. (2020) proposed customer satisfaction as social criterion in their study about sustainable recycling partner selection.

Concerning 3PRL provider selection problem and design and planning problems, it is possible to observe that **corporate image** and **green image** have been considered in design and planning problems and in 3PRL provider selection problems. In the case of 3PRL provider selection, these have been considered qualitatively using multi-criteria methods. For design and planning problems, **customer satisfaction** has been considered as the percentage of demand satisfied (Garai and Roy, 2020), and **green image** has been qualitatively considered using optimization models and multi-criteria methods (A. Liu et al., 2019).

4.2.1.5 Other social aspects

A total of 21 identified social criteria have been grouped as others social aspects. Table A.5 presents the problem, criteria, the indicators and the methodologies in which the criterion was used. As can be evidenced in Figure 9, these criteria seem infrequently studied in the selected literature as most were included in one document.

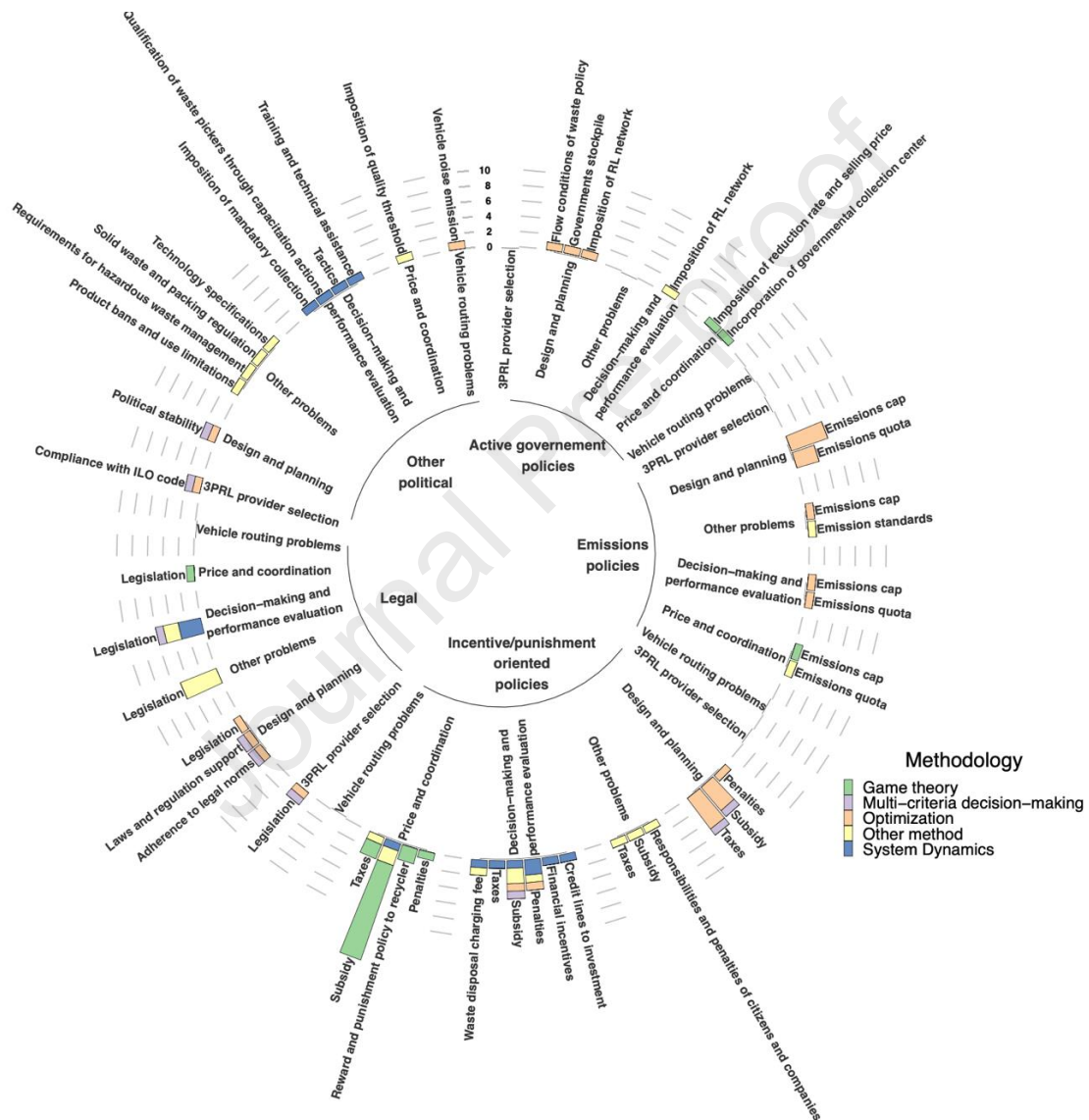
Aspects such as **safety/health of road**, **distribution services**, and **market access/demands** for recovery selection were identified (Awan and Ali, 2019; Jindal and Sangwan, 2016), as well as **Amount of expired products** for sustainable inventory routing problems of perishable products (Rahimi et al., 2016); **Productive capital**, which refers to the service infrastructure available to collect and recycle (Sarkis et al., 2010); **Contractual stakeholder influence** and **Reputation** for 3PRLP provider selection (Kafa et al., 2018); **Percent recycling** and **Product green efficiency** for performance evaluation of RL (Mutingi et al., 2014); **Effective communication**, **Service improvement**, and **Overall working relations** for 3PRLP selection (Govindan et al., 2013); **Public acceptability** for sustainable alternative selection management (Ahmed et al., 2016b); **Market edge** and **Customer redundancy** for a product recovery system (Mangla et al., 2012); and **Extended producer responsibilities** (A. Liu et al., 2020), **Responsibilities towards stakeholders** (A. Liu et al., 2020), **Public facilities conditions** (Yang and Chen, 2020), **Public safety** (Yang and Chen, 2020), **Talents reserve** (Yang and Chen, 2020), and **Use of renewable energy** (Fazli-Khalaf et al., 2020) for CLSC network design and planning.

4.2.2 Political Dimension

Regarding the political dimension, a total of 31 criteria were identified in 57 of the 160 documents selected from the literature. To enable better understanding, the identified political criteria were divided into four groups: 1) incentive/punishment-oriented policies, 2) Active

1 government policies, 3) Emission policies and 4) Legal policies. In terms of
 2 Incentive/punishment-oriented policies, we identified those that are directly focused on
 3 recycling. Among active government policies we identified those policies in which the
 4 government actively participates. Among emission policies, we identified those related to
 5 emissions generated by recycling activity. Regarding legal policies, we identified the legal
 6 context of the recycling activity. Finally, a fifth category was created to group together certain
 7 political factors that are not classified in the groups mentioned. Figure 10 presents the
 8 distribution of the criteria in each defined group.

9



10

11

Figure 10. Occurrences of identified political aspects for the sustainability evaluation of recycling networks

12

13

4.2.2.1 Incentive/punishment-oriented policies

14

15

A total of 35 documents (22%) considered this incentive/punishment orientation, where nine documents address design and planning problems, six documents address decision-making and

16

1 performance evaluation problems, and 16 documents address price and coordination problems.
 2 In summary, eight incentive/punishment-oriented political aspects were identified. Table B.1
 3 details the problem, criteria, the indicators and the methodologies in which the criterion was
 4 used.

5 The **subsidies**, **penalties**, and **taxes** correspond to the incentive/punishment-oriented
 6 policies most considered in the selected literature. These three aspects have been considered
 7 in price and coordination problems, design and planning problems, and decision-making and
 8 performance evaluation problems.

9 Regarding price and coordination problems, the **subsidy** and **taxes** correspond to the most
 10 considered political aspect. On the one hand, subsidies have been addressed in three main ways:
 11 subsidy for investment (e.g., Saha et al. (2019)), subsidy for products (e.g., Duan et al. (2019)),
 12 and subsidy to consumers (e.g., Saha et al. (2019)), where the impact of **subsidy** in the price and
 13 coordination of the network is analyzed using game theory models. In relation to the **taxes**
 14 dimension, these have been considered by product (Ghalekhondabi and Ardjmand, 2020; W.
 15 Liu et al., 2020) or by emissions (Allevi et al., 2018).
 16

17 Concerning decision-making and performance evaluation problems, **subsidy** and **penalties**
 18 correspond to the most considered political aspect. Similarly to price and coordination
 19 problems, **subsidy** for products has been considered (Agarwal et al., 2016; Jia et al., 2018; X Tong
 20 et al., 2018). However, **penalties** represent additional costs due to regulations. These **penalties**
 21 can be applied to different aspects. For example, Georgiadis and Besiou (2010) looked at a
 22 penalty cost per unit due to non-compliance with regulations. Ghalekhondabi and Ardjmand
 23 (2019) considered penalty a cost due to emissions. Jia et al. (2018) studied a penalty for illegally
 24 dumped waste. Nidhi and Pillai (2019) addressed a penalty for non-recyclable product disposed
 25 as landfill.
 26

27 Finally, likewise to price and coordination problems, **subsidy** and **taxes** correspond to the
 28 most considered political aspect for design and planning problems, and they have been
 29 quantitatively considered using optimization models (e.g., Darbari et al., (2019)).
 30

31 4.2.2.2 Emission policies

32
 33 Regarding emissions policies, a total of 10 documents (6%) considered this type of
 34 orientation, where six documents address design and planning problems, one document
 35 addresses decision-making and performance evaluation problems, and two documents address
 36 price and coordination problems. Figure 10 shows that three emissions policies have been
 37 identified in the literature. Table B.2 details the problem, criteria, the indicators and the
 38 methodology in which the criterion was used. In this group, **Emission quota** and **Emission cap**
 39 are the most widely addressed policies (nine documents). The **Emission quota** represents a way
 40 of trading the carbon emissions allowed by a company (e.g., Bing et al. (2015)), and the **Emission**
 41 **cap** corresponds to a limit on permitted emissions (e.g., Yu and Solvang (2017a)). For the case
 42 of **emissions cap**, these limits are generally considered as constraints in optimization models
 43 used in design and planning problems. For example, these types of constraints have been
 44 considered in the work of Bing et al. (2015), Yu and Solvang (2017a) and Gao and Ryan (2014),
 45 among others. In the case of **emission quota**, these are considered as costs of emission trading
 46 in optimization models for design and planning problems. This type of policy has been
 47 considered, for example, in the works of Bing et al. (2015) and Gao and Ryan (2014), among

1 others. Regarding the problem addressed, Figure 10 shows that these criteria have been
2 considered mainly in design and planning problems, but have also been considered in price and
3 coordination problems and decision-making and performance evaluation problems.

4 5 4.2.2.3 Legal aspects

6
7 From the legal perspective, a total of 17 documents (11%) considered this type of orientation,
8 where three documents address design and planning problems, six documents address decision-
9 making and performance evaluation problems, two documents address 3PRL provider selection,
10 and one document addresses price and coordination problems. Figure 10 shows that only three
11 aspects have been identified. Table B.3 details the problem, criteria, the indicators and the
12 methodology in which the criterion was used. **Legislation** has been frequently addressed in the
13 literature (14 documents). This aspect encompasses the legislative environment with respect to
14 the operation and treatment of waste. For example, Chavez and Sharma (2018) evaluated, using
15 PESTLE analysis, the profitability and environmental friendliness of a CLSC for PET (Polyethylene
16 terephthalate) in Mexico, where the legal context has been considered in the evaluation. For
17 their part, Lapko et al. (2019) studied the factors influencing CLSC for CRM (Critical raw
18 materials) development in photovoltaic panels and wind turbine technologies. In its study, the
19 legal context has been a factor considered. The legal aspects can also quantitatively include
20 limits on waste treatment. Examples are the legal limits considered in different system dynamics
21 models developed for recycling systems, such as, minimum recycling percentage and minimum
22 collection percentage (Besiou et al., 2012; Georgiadis and Besiou, 2008, 2010), minimum
23 recyclability of product (Georgiadis and Besiou, 2008, 2010), minimum recycled content
24 (Georgiadis and Besiou, 2010), or minimum amount of waste to be submitted (T. Liu et al., 2019).
25 Some works have qualitatively considered this aspect by means of multi-criteria methods
26 (Agrawal et al., 2016b, 2016a; Mavi et al., 2017). For example, Agrawal et al. (2016a) considered
27 the Regulatory Satisfaction as an attribute for outsourcing decisions in RL. For their part, Mavi
28 et al. (2017) in their study about 3PRL provider selection, considered the respect for the local
29 rules and policies as an evaluation criterion. Finally, in general, Figure 10 shows that aspects
30 related to legislation have been mainly addressed in decision-making and performance
31 evaluation problems (see Agrawal et al. (2016a); Besiou et al. (2012), Chavez and Sharma (2018);
32 Georgiadis and Besiou (2008, 2010); Pongeluppe Wadhy Rebehy et al. (2017)).

33 34 4.2.2.4 Active government policies

35
36 From the point of view of government participation, a total of four documents (3%)
37 considered this type of orientation, where two documents address design and planning
38 problems, one document addresses decision-making and performance evaluation problems,
39 and one document addresses price and coordination problems. Figure 10 shows that five policies
40 related to active government participation have been identified. Table B.4 details the problem,
41 criteria, the indicators and the methodology in which the criterion was used. The most widely
42 studied active policies include **imposition of the RL network** (two documents), where the
43 government determines or proposes a network or conditions for the network (Azevedo et al.,

1 2017; Ferri et al., 2015). The imposition of **Flow conditions of waste policy** has also been
 2 addressed (Ferri et al., 2015). These two policies were found in the context of e-waste (Azevedo
 3 et al., 2017) and municipal solid waste (Ferri et al., 2015) in Brazil.

4 Another policy studied in the literature is the **Government's stockpile**, where the
 5 government maintains a stock of raw materials to regulate the Korean market (Son et al., 2018).
 6 **Incorporation of governmental collection centers** and **Imposition of reduction rate and selling**
 7 **price of the product** are two other policies studied in the work of Rezaei and Maihami (2020).
 8 In general, active government policies have been addressed in design and planning problems,
 9 decision-making and performance evaluation problems, and price and coordination problems.

10

11 4.2.2.5 Other political aspects

12

13 Finally, a total of 11 identified political aspects were considered under "others." The main
 14 reason for this was that little evidence was found to be addressed in the selected literature;
 15 mainly in one article, as can be seen from Figure 10. Table B.5 details the problem, criteria, the
 16 indicators and the methodology in which the criterion was used.

17 Several aspects, such as **imposition of mandatory collection, qualification of waste pickers**
 18 **through capacitation actions**, and **training and technical assistance** were reported by Ghisolfi
 19 et al. (2017) to analyze the inclusion of informal collectors in a CLSC of desktops and laptops. In
 20 the same way, the **imposition of quality threshold** was explored by Liu et al. (2016) in their
 21 analysis of a dual-channel (informal and formal sectors) RL network. On the other hand,
 22 **technology specifications, product bans and use limitations, requirements for hazardous**
 23 **waste management**, and **solid waste and packing regulation** were studied by Murakami et al.
 24 (2015) as policies to encourage recycling.

25 In decision-making and performance evaluation problems, another policy considered was
 26 **tactics**, which refers to the behavior of legislators with respect to environmental policies. This
 27 political aspect has been explored by Georgiadis and Besiou (2010) for the sustainability
 28 evaluation of electronic waste in CLSC networks.

29 In relation to 3PRL provider selection problems, the potential provider's **compliance with**
 30 **international labor organization codes** has been considered by Govindan et al. (2019).

31 For the design and planning problem, the **political stability** of the potential location of
 32 facilities has been considered by Yang and Chen (2020) for the location facility decision in CLSC
 33 design.

34 Finally, a maximum allowed **vehicle noise emission** has been used by Rahimi et al. (2016) to
 35 evaluate sustainable inventory routing problems.

36

37 4.2.3 Technological dimension

38

39 Regarding the technological dimension, a total of 45 criteria were identified in 123 of the 160
 40 documents selected from the literature. The criteria identified for the technological dimension

1 were separated into five perspectives: 1) process-oriented technological factors, 2) transport, 3)
 2 product design, 4) technology and experience level, and 5) other technological aspects. The
 3 process-oriented perspective encompasses those aspects related to material transformation.
 4 The transport perspective refers to technological aspects related to means of transport. Product
 5 design considers technological aspects in relation to the design of products and their recovery
 6 process. The technology and experience level addresses aspects regarding the technological
 7 infrastructure and experience. Finally, the other technological dimension aspects group
 8 together the criteria that are not classified in the perspectives defined. Figure 11 presents the
 9 distribution of the criteria in each defined group.

10



11

12

Figure 11. Occurrences of identified technological aspects of the sustainability evaluation of recycling networks

13

14

15

16

4.2.3.1 Process-oriented

Looking at the process-oriented technological aspect, a total of 103 documents (64%) considered this type of orientation, where 77 documents address design and planning problems, two documents address 3PRL provider selection problems, 11 documents address decision-making and performance evaluation problems, and six documents address price and coordination problems. A total of 17 criteria were identified as process-oriented. Table C.1 details the problem, criteria, the indicators and the methodology in which the criterion was used.

As can be observed in Figure 11, the **capacity of facilities** corresponds to the most considered process-oriented technological aspect in the selected literature. This aspect has been considered in design and planning problems, decision-making and performance evaluation problems, 3PRL provider selection problems, price and coordination problems, and vehicle routing problems. **Recycling rate** is another process-oriented technological aspect frequently considered. However, this factor has been considered only in design and planning problems, and in decision-making and performance evaluation problems.

Regarding design and planning problems, **capacity of facilities** has been identified as the most widely used factor. **Capacity of facilities** refers to a maximum amount of material/product that can be processed by the facilities of the recycling network. This factor has generally been considered as a constraint in the design and planning of networks used in optimization models (e.g., Pourjavad and Mayorga (2019); Hajiaghahi-Keshteli and Fathollahi Fard (2019)). **Technology selection** and **recycling rate** are other process-oriented technological aspects widely considered in design and planning of recycling networks. **Technology selection** refers to decisions regarding the technology to be used in the process. For example, Chen et al. (2017) considered, in their optimization model, the decision of capacity expansion selecting a technology type. For their part, Rezaei and Kheirkhah (2018) developed an optimization model for the design of a sustainable CLSC network. In their model, they considered the quantity of product manufactured per technology type as decision variable. Finally, Valizadeh et al. (2020) considered, in their optimization model for CLSC design, the recycling rate of using a technology type in recycling centers of the network. On the other hand, **Recycling rate** represents the fraction of a product that is recycled. These aspects have been considered mainly by means of optimization models. Examples are the work of Moslehi et al. (2020) and Valizadeh et al. (2020), who developed optimization models for supply chain design.

Concerning decision-making and performance evaluation problems, similarly to design and planning problems, the **capacity of facilities** and **recycling rate** are the most considered factors. However, these are mainly considered by means of system dynamics models for the sustainability evaluation of recycling systems (e.g., Chaudhary and Vrat (2020); Besiou et al. (2012)). **Recovery option** is another technological decision frequently considered in this type of problems. **Recovery option or selection** represents decisions about the alternatives to recovery (incineration, recycling, remanufacturing, etc.) (e.g., Awan and Ali (2019)). This technological aspect has been mainly considered using multicriteria methods (e.g., Awan and Ali (2019); Jindal and Sangwan (2016)).

With respect to price and coordination problems, **capacity of facilities** and **quality of returned product** correspond to the most considered process-oriented technological factors

1 identified. Similarly to the previous problems, **capacity of facilities** refers to a maximum amount
 2 of material/product that can be processed by the recycling facilities (Allevi et al., 2018; T. Liu et
 3 al., 2019). On the other hand, **quality of recycling** refers to the quality of the product obtained
 4 after the recycling process (Liu et al., 2016; Y Tan and Guo, 2019).

5 Finally, regarding 3PRL provider selection problems and vehicle routing problems, **capacity**
 6 **of facilities** correspond to the most considered process-oriented technological aspect (Bányai et
 7 al., 2019; Farrokhi-Asl et al., 2020; Govindan et al., 2019; Shi et al., 2010).

8 9 4.2.3.2 Transport

10
11 Regarding transport-oriented technological aspect, a total of 31 documents (19%) considered
 12 this type of orientation, where 20 document address design and planning problems, one
 13 document addresses 3PRL provider selection problems, two documents address decision-
 14 making and performance evaluation problems, two documents address price and coordination
 15 problems, and six documents address vehicle routing problems. As can be observed in Figure
 16 11, a total of four criteria were identified as transport-oriented technological criteria. Table C.2
 17 details the problems, criteria, the indicators and the methodology in which the criterion was
 18 used.

19 In general, Figure 11 shows that the **capacity of vehicles** corresponds to the most studied
 20 factor in this group (28 documents). **Capacity of vehicles** refers to the limits on transport
 21 capacity depending on the type of vehicle used. This aspect has mainly been used in optimization
 22 models for design and planning problems (e.g., Rezaei and Kheirkhah (2018); Masoudipour et al.
 23 (2019); Zarbakhshnia et al. (2020)) or in vehicle routing problems (e.g., Kızıldağ et al. (2020);
 24 Rahimi et al., 2016)).

25 26 4.2.3.3 Technology and experience level

27
28 Regarding the technological factor classified as related to the technology and experience
 29 level, a total of 17 documents (11%) considered this type of perspective, where one document
 30 addresses design and planning problems, four documents address 3PRL provider selection
 31 problems, four documents address decision-making and performance evaluation problems, and
 32 eight documents address price and coordination problems. As can be observed in Figure 11, a
 33 total of 19 criteria were identified in this group. Table C.3 details the problem, criteria, the
 34 indicators and the methodology in which the criterion was used.

35 Concerning the problem addressed, it is observed that the factors in this group have mainly
 36 been used in price and coordination problems and in decision-making and performance
 37 evaluation problems. For example, in decision-making and performance evaluation problems,
 38 **green technology innovation** and **technology transfer** correspond to the most considered
 39 technological aspect. **Green technology** has been defined as the investment made in order to
 40 improve the environmental performance of the technology used (e.g., Mondal et al. (2019);
 41 Ahmed et al. (2016a)). On the other hand, **Technology transfer** has been used by Ahmed et al.
 42 (2016a) and Ahmed et al. (2016b) to refer to the technological flexibility, capability, and

1 availability of waste management. Regarding price and coordination problems, **green**
 2 **technology innovation** has also been used. Another technological aspect considered in these
 3 problems is **green innovation**, which refers to the innovations made in the supply chain in order
 4 to reduce the consumption of resources in the production process and achieve greener products
 5 (Ma and Huang, 2019; Mondal and Giri, 2020).

6 Finally, regarding 3PRL provider selection problems, technological aspects such as
 7 **Technological expertise** (Govindan et al., 2019), **Specialized infrastructure** (Kafa et al., 2018),
 8 **Warehouse management, Inventory management, JIT philosophy, Information technology (IT)**
 9 and **Demand forecasting** (Govindan et al., 2013), and **Capability of disassembly infrastructure**
 10 (Kara, 2011) have been considered.

11 In conclusion, a wide variety of aspects have been identified in this group for each problem.
 12 In general, aspects related to technological and supply chain innovations, such as **green**
 13 **innovation** and **green technology innovation**, have been considered in different studies in order
 14 to achieve more environmentally friendly systems.

15 16 4.2.3.4 Product design

17
18 Looking at the product design-oriented technological factor, a total of three documents (2%)
 19 considered this type of perspective, where the three documents address decision-making and
 20 performance evaluation problems. As can be observed in Figure 11, only two aspects have been
 21 classified in this group. Table C.4 details the problem, criteria, the indicators and the
 22 methodology in which the criterion was used. On the one hand, **design for environment**
 23 **products** has been studied by Georgiadis and Besiou (2008, 2010) in the sustainability evaluation
 24 of electronic waste in CLSC networks. This aspect refers to whether the manufactured product
 25 has been designed with its recovery process (recycling) in mind once it is discarded. On the other
 26 hand, **research and development for new products** has been used by Ahmed (2016a) for end-
 27 of-life vehicle management selection, which represents the capacity and availability of R&D
 28 given the management options.

29 30 4.2.3.5 Other technological aspects

31
32 A total of three identified technological criteria have not been classified in this group. Table
 33 C.5 details the criteria, the indicators, and the methodology in which the criterion was used. The
 34 **use of new technologies** in recycling networks corresponds to the third most studied aspect in
 35 this group. This aspect has been used by Chen et al. (2018) to analyze game theory, the impact
 36 of the internet as a new channel of location, collection and negotiation of products/waste. Tong
 37 et al. (2018) used this aspect to study the performance of business models based on information
 38 technologies as new ways of collecting waste or products. The use of technology 4.0 (Bányai et
 39 al., 2019) and data marketing (Xiang and Xu, 2020) have also been explored. **Capacity utilization**
 40 has been addressed by Mangla et al. (2012) in the performance evaluation of product recovery
 41 systems and by Kara (2011) for 3PRLP selection. Finally, **sell options of discarded product** have
 42 been considered by Chavez and Sharma (2018) for the evaluation of CLSC networks.

1 4.2.4 Transversal analysis

2

3 Figure 12 shows the domains in which the main factors (those present in at least two
4 documents) of each dimension-orientation have been applied. This analysis is performed in
5 order to define those factors applicable to different recycling domains. One of the main remarks
6 among the factors associated with the social dimension, is that **employee benefits** (worker-
7 oriented social factor), **stakeholder participation** (company-oriented social factor), and **social**
8 **community complaints** (community-oriented social factors) are the only social factors to have
9 been studied in one domain. Regarding the technological dimension, we observe that **design for**
10 **environment** (factor associated with product design) and **technology transfer** (factor associated
11 with the technological level) are the only technological factors to have been applied in only one
12 domain (e-waste and automotive industry, respectively). Finally, with regard to the political
13 dimension, all the main criteria identified have been used in more than two different recycling
14 domains, especially in the e-waste and general domains.

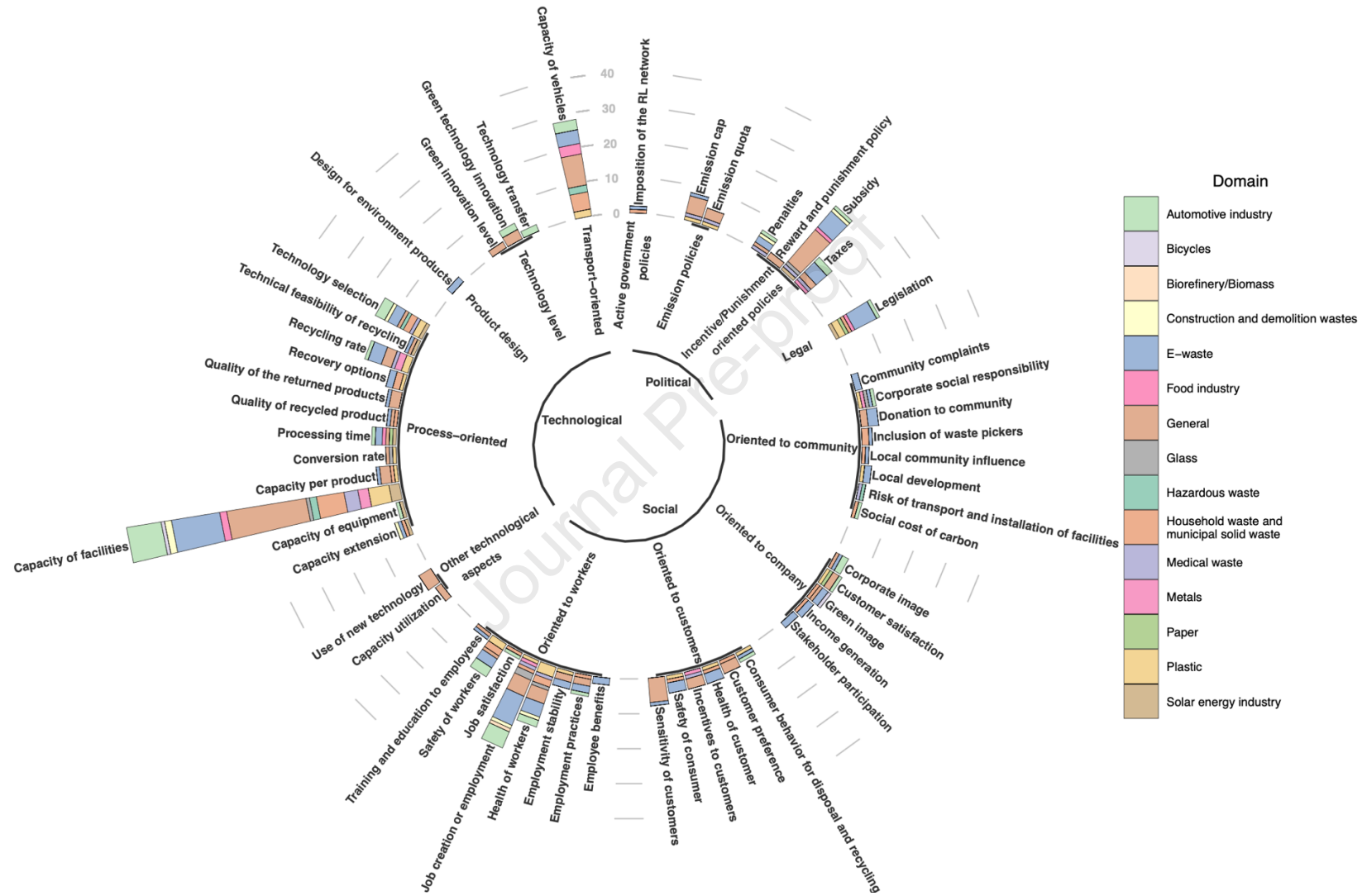


Figure 12. Global analysis of main criteria and application domains per dimension-orientation

5. Discussion

Recycling networks such as CLSC and RL-RSC have recently attracted a lot of attention in the literature. In particular, the evaluation of these networks including sustainability aspects has been approached in different reviews from different points of view. However, a common conclusion in the literature on sustainability in supply chain networks is the lack of consideration of social, political, and technological aspects (Espinoza Pérez et al., 2017; Fonseca et al., 2019; Moreno-Camacho et al., 2019). As mentioned in the introduction section, the evaluation of the sustainability of recycling networks strongly depends on the technological development and the political context in which the system is immersed. This is the reason why, in this study, a systematic analysis of the literature was made in order to include the social, political, and technological (SPT) aspects in the evaluation of recycling networks. Moreover, to articulate the SPT dimensions, we mapped four types of general problems in the supply chain field (Govindan et al., 2015), identifying the methodologies associated for each criterion/indicator.

From the analysis of the results, it is possible to observe in the literature a growing interest in integrating SPT dimensions since 2016. In particular, SPT dimensions has been integrated from different perspectives in the sustainability evaluation of recycling networks. The main findings for each dimension are detailed below.

- Considering the social dimension, all the identified criteria have been classified into five perspectives: (1) worker-oriented, (2) community-oriented, (3) customer-oriented, (4) company-oriented, and (5) other social aspects. The results presented in Figure 12 have shown that, regarding the social arena, the literature on sustainability evaluation of recycling networks is mostly focused on worker-oriented social aspects. Specifically, the criteria **job creation** and the **health and safety of workers** are by far the most relevant indicators that the literature has considered in a design phase or planning phase. These results are consistent with those found by Moreno-Camacho et al. (2019) in the supply chain design context, and the social issues identified in the works of Badri Ahmadi et al. (2017) and Yawar and Seuring (2017) for companies' supply chains. However, additional and less addressed socially oriented aspects, such as community-oriented and company-oriented ones, have been found in this research for the context of recycling networks. Those aspects should be further addressed by the scientific community in the years to come.
- Regarding the technological dimension, the concerned set of criteria has been classified into (1) process-oriented technological factors, (2) transport, (3) product design, and (4) technology and experience level. The results presented in Figure 12 have shown that, for the technological dimension, the literature on sustainability evaluation of recycling networks is concentrated on process-oriented technological aspects. Among them, the literature has mainly addressed the consideration of the **capacity of facilities, technologies and equipment**, the decision regarding the **technology to be used in the facilities**, and the consideration of **recycling rates** of materials/products. With respect to the other orientations, aspects such as **vehicle capacity** have been considered for transport-oriented technological aspects. Other important and considerably less addressed technological aspects include the **Design for environment** (for product-design oriented technological aspects), and aspects such as **green technology innovation** and **green innovation** (for technological level-oriented aspects). Future research could consider these aspects. From the product

1 perspective, product design is very important in the sustainability of the supply chain
2 (design for sustainability) (Arnette et al., 2014). From the technological level
3 perspective, innovations in recycling technologies for sustainability purposes play an
4 important role, as shown by the recent efforts made by the UNESCO chair in the
5 context of wastewater recycling (Sepehri et al., 2020; Sepehri and Sarrafzadeh,
6 2018).

- 7 • With respect to the political dimension, it has been possible to identify four types of
8 policies: (1) incentive/punishment-oriented, (2) legal policies, (3) emissions policies,
9 and (4) active government policies. Globally, aspects related to subsidies, penalties,
10 taxes, minimum legal limits, and emission quota/limits have been the most
11 considered in the literature. This confirms the statement of the seminal work of
12 Meadowcroft (2009) “the irreducibly political character of governance for
13 sustainable development”. These aspects play a fundamental role on the feasibility
14 of the future recycling activity. Considering the political efforts of the European
15 Union (Hartley et al., 2020) and China (Zhu et al., 2019) for a transition to a circular
16 economy, these results could be used in future research on recycling networks for a
17 circular economy.

18 Based on an analysis of these aspects according to the problem addressed and the
19 application domain of the recycling network, a set of factors to be considered for each
20 dimension-orientation and problem has been obtained. Table 4 summarizes the factors
21 obtained for each dimension-orientation and problem. These factors have been studied in more
22 than one domain of recycling. As evidenced in Table 4, there are some problems that have not
23 been yet addressed in their important social, political, and technological aspects. Specifically, in
24 design and planning problems, technological aspects related to product design and the
25 technological level of installations could be addressed. For decision-making and performance
26 evaluation problems, aspects related to transportation and product design could be integrated.
27 For 3PRL provider selection problems, social aspects associated with customers, political aspects
28 related to incentive/punishment and emissions, and technological aspects related to
29 transportation, product design and the technology level could be integrated. And, finally, for
30 price and coordination problems, social aspects related to workers, companies, political aspects
31 such as government policies, and technological aspects associated with product design could be
32 integrated.

33 Considering the aforementioned findings, and in order to carry out a more holistic (integral)
34 evaluation of the recycling networks, future research could address social, political, and
35 technological aspects that have not been addressed in the various problems analyzed in this
36 research. For example, although design-for-environment products have been considered in
37 sustainability assessments of e-waste recycling systems (Georgiadis and Besiou, 2008, 2010),
38 this aspect could also be addressed in other types of problems and products. Specifically, the
39 design of the closed loop or reverse supply chain depends on the product design. At the same
40 time, the 3PRL providers and the decisions made in the chain (price and coordination problems)
41 depend on the product design. In addition, technology maturity/coherence of the entire
42 recycling system could be another aspect to explore. Further research could be carried out in
43 order to define how the missing aspects of each problem could be addressed having sustainable
44 development in mind, since, as this research has shown, in the literature on recycling networks
45 there is no single way of addressing social aspects and the implications of political and
46 technological aspects in the sustainability assessment of recycling networks. Moreover, linking

1 technological and social innovation is required in designing such recycling systems, because both
2 sorts of change are necessary if society is to move on to a more sustainable pathway.

3 Although these findings are obtained from a literature review, they could be useful as a
4 contrast with the aspects that are considered in practice by recycling companies or territorial
5 stakeholders. More research is needed with different stakeholders in real cases in order to
6 validate and complete the proposition made in this article.

7 The evaluation of recycling networks from a sustainability point of view is a requirement
8 today. Economic and environmental aspects in supply networks have been widely studied.
9 However, it is not very clear in the literature how social, technological, and political aspects of
10 sustainability should be included, especially in the recycling literature. From the management
11 point of view, this research provides a basis for the social, political, and technological factors
12 and indicators used in the literature on sustainable recycling networks considering the problem
13 addressed. These aspects can be used in future research and conception/evaluations of
14 recycling networks in order to produce 1) a more holistic sustainable evaluation and 2) the
15 appropriate factors for each decision-maker involved in the evaluation process. Finally, it should
16 be mentioned that the literature analysis carried out in this research corresponds only to the
17 evaluation of CLSC-RL networks that involve recycling activity. Therefore, the sustainability
18 aspects suggested are limited to this context.

19

Table 4. Summary of results

Dimensions	Orientations	Factor/Criteria	Problems			
			Design and planning	Decision-making and performance evaluation	3PRL provider selection problems	Price and coordination problems
Social	Oriented to workers	Job creation or employment	x	x		(not addressed)
		Health and safety of workers	x	x	x	
		Employment stability		x	x	
		Employment practices		x	x	
		Job satisfaction	x	x		
	Training and education of employees	x				
	Oriented to customers	Health and safety of customers	x	x		
		Incentives to customers	x	x		x
Customer preference		x		(not addressed)	x	
Sensitivity of customers					x	
Oriented to community	Customer behavior		x			
	Donation to community		x		x	
	Corporate social responsibility		x		x	
	Social cost of carbon	x				
	Local development	x				
Oriented to company	Local community influence			x		
	Inclusion of waste pickers	x	x			
	Risk of transport and installation of facilities	x				
	Customer satisfaction	x	x	x		
	Green image	x	x	x	(not addressed)	
Political	Incentive / Punishment oriented	Corporate image		x		
		Income generation of actors		x		
		Subsidies	x	x		x
		Penalties	x	x	(not addressed)	x
	Emission policies	Taxes	x	x		x
		Reward and punishment policy				x
	Legal	Emissions quota	x	x	(not addressed)	x
Emissions cap		x	x			
Active government policies	Legal limits (collected, recycled, etc.)	x	x	x	x	
Technological	Process oriented	Network imposition	x	x	(not addressed)	(not addressed)
		Capacity of facilities	x	x	x	x
		Capacity extension	x			
		Capacity of equipment	x			
		Capacity per product	x			

		Conversion rate	x			
		Recycling rate	x	x		x
		Quality of returned products	x			x
		Quality of recycled product			x	x
		Technical feasibility of recycling		x		
		Recovery selection	x	x		
		Technology selection	x	x		
		Processing time	x	x		
	Transport oriented	Capacity of vehicles	x	(not addressed)	(not addressed)	x
	Product design oriented		(not addressed)	(not addressed)	(not addressed)	(not addressed)
	Technological level oriented	Green technology innovation		x		x
		Green innovation level	(not addressed)		(not addressed)	x

6. Conclusions and perspectives

In this article a systematic literature review was performed on social, political, and technological dimensions in order to understand how these dimensions should be included in the sustainable recycling network evaluation process. A total of 160 journal articles were selected and analyzed.

This is the first literature review on the sustainability evaluation of recycling networks to include these three dimensions (social, technological, and political) proposed in the literature. A set of criteria was identified and analyzed for each of these three dimensions in the literature on the problem addressed and the recycling domain. Based on the results, the conclusion is that, from the quantitative point of view, political and technological aspects have been little explored. From the qualitative point of view, the conclusion is that these dimensions are studied from different orientations/perspectives. With regard to the social dimension, the criteria found were classified into five perspectives: worker-oriented, community-oriented, customer-oriented, company-oriented, and others. The technological dimension was classified into process-oriented technological factors, transport, product design, technology, and experience level. Finally, among the articles analyzed addressing the political dimension, four types of policies were identified: incentive/punishment oriented, legal policies, emissions policies, and active government policies. Based on this classification, a set of social, political, and technological aspects addressed in the literature on sustainability evaluation in recycling networks was associated with the main problems addressed in this topic (design and planning, decision-making and performance evaluation, price and coordination, and 3PRL provider selection).

The main contribution of this work lies in the understanding of how to consider social, political, and technological aspects taking into account the most common problems addressed in a recycling network. At the same time, this analysis of the results has identified research gaps (presented in the discussion section) in the aspects considered for each problem, which could be addressed by future research.

Social, political, and technological dimensions need to be studied in future research in order to develop a holistic evaluation. Based on the results of this article, a set of criteria to be considered for each dimension-orientation and problem have been suggested for this purpose. The results obtained in this research can serve as a basis for future studies and evaluations of sustainable recycling networks. In addition, the classification of the dimensions according to different perspectives can serve to pinpoint the appropriate criteria not only from the point of view of sustainability, but also from the point of view of each of the decision-makers and actors who participate in the evaluation process.

Finally, as perspectives of this research, the sustainability criteria and indicators found in this literature review could be contrasted with territorial actors in the recycling industry.

1 **Highlights**

- 2
- 3 • First literature review on the integration of the social, political, and technological
 - 4 dimensions of sustainability in the evaluation of recycling networks.
 - 5 • Social, political, and technological aspects have been considered from different
 - 6 perspectives in the sustainability evaluation of recycling networks.
 - 7 • Social aspects have been addressed mainly with worker-oriented aspects, with job
 - 8 creation being the most considered.
 - 9 • The technological aspects considered in the literature have been mainly process
 - 10 oriented, where the capacity of facility corresponds to the most considered.
 - 11 • The political aspects addressed in the literature correspond to policies to stimulate
 - 12 recycling, such as subsidies, penalties, taxes, and emissions policies.
 - 13 • A set of factors to be considered are proposed for each dimension and problem
 - 14 addressed, which can be used independently of the product/material to be treated.

15

16 **References**

- 17
- 18 Aalirezaei, A., Shokouhyar, S., 2017. Designing a sustainable recovery network for waste from
 19 electrical and electronic equipment using a genetic algorithm. *Int. J. Environ. Sustain. Dev.*
 20 16, 60. <https://doi.org/10.1504/IJESD.2017.10001371>
- 21 Abdullah, N.A.H.N., Yaakub, S., 2014. Reverse logistics: Pressure for adoption and the impact on
 22 firm's performance. *Int. J. Bus. Soc.* 15, 151–170.
- 23 Accorsi, R., Baruffaldi, G., Manzini, R., 2020. A closed-loop packaging network design model to
 24 foster infinitely reusable and recyclable containers in food industry. *Sustain. Prod. Consum.*
 25 24, 48–61. <https://doi.org/10.1016/j.spc.2020.06.014>
- 26 Agarwal, V., Govindan, K., Darbari, J.D., Jha, P.C., 2016. An optimization model for sustainable
 27 solutions towards implementation of reverse logistics under collaborative framework. *Int.*
 28 *J. Syst. Assur. Eng. Manag.* 7, 480–487. <https://doi.org/10.1007/s13198-016-0486-3>
- 29 Agrawal, S., Singh, R.K., 2019. Analyzing disposition decisions for sustainable reverse logistics:
 30 Triple Bottom Line approach. *Resour. Conserv. Recycl.* 150, 104448.
 31 <https://doi.org/10.1016/j.resconrec.2019.104448>
- 32 Agrawal, S., Singh, R.K., Murtaza, Q., 2016a. Outsourcing decisions in reverse logistics:
 33 Sustainable balanced scorecard and graph theoretic approach. *Resour. Conserv. Recycl.*
 34 108, 41–53. <https://doi.org/10.1016/j.resconrec.2016.01.004>
- 35 Agrawal, S., Singh, R.K., Murtaza, Q., 2016b. Triple bottom line performance evaluation of
 36 reverse logistics. *Compet. Rev.* 26, 289–310. <https://doi.org/10.1108/CR-04-2015-0029>
- 37 Ahmed, Shameem, Ahmed, Shamsuddin, Shumon, M.R.H., Falatoonitoosi, E., Quader, M.A.,
 38 2016a. A comparative decision-making model for sustainable end-of-life vehicle
 39 management alternative selection using AHP and extent analysis method on fuzzy AHP.
 40 *Int. J. Sustain. Dev. World Ecol.* 23, 83–97.
 41 <https://doi.org/10.1080/13504509.2015.1062814>
- 42 Ahmed, Shameem, Ahmed, Shamsuddin, Shumon, M.R.H., Quader, M.A., Cho, H.M., Mahmud,

- 1 M.I., 2016b. Prioritizing Strategies for Sustainable End-of-Life Vehicle Management Using
2 Combinatorial Multi-Criteria Decision Making Method. *Int. J. Fuzzy Syst.* 18, 448–462.
3 <https://doi.org/10.1007/s40815-015-0061-0>
- 4 Aksen, D., Kaya, O., Salman, F.S., Akça, Y., 2012. Selective and periodic inventory routing problem
5 for waste vegetable oil collection. *Optim. Lett.* 6, 1063–1080.
6 <https://doi.org/10.1007/s11590-012-0444-1>
- 7 Ali, S.S., Paksoy, T., Torğul, B., Kaur, R., 2020. Reverse logistics optimization of an industrial air
8 conditioner manufacturing company for designing sustainable supply chain: a fuzzy hybrid
9 multi-criteria decision-making approach. *Wirel. Networks* 6.
10 <https://doi.org/10.1007/s11276-019-02246-6>
- 11 Aljuneidi, T., Bulgak, A.A., 2020. Carbon footprint for designing reverse logistics network with
12 hybrid manufacturing-remanufacturing systems. *J. Remanufacturing* 10, 107–126.
13 <https://doi.org/10.1007/s13243-019-00076-5>
- 14 Allevi, E., Gnudi, A., Konnov, I. V., Oggioni, G., 2018. Evaluating the effects of environmental
15 regulations on a closed-loop supply chain network: a variational inequality approach. *Ann.*
16 *Oper. Res.* 261, 1–43. <https://doi.org/10.1007/s10479-017-2613-1>
- 17 Altmann, M., Bogaschewsky, R., 2014. An environmentally conscious robust closed-loop supply
18 chain design. *J. Bus. Econ.* 84, 613–637. <https://doi.org/10.1007/s11573-014-0726-4>
- 19 Ansbro, D., Wang, Q., 2013. A facility location model for socio-environmentally responsible
20 decision-making. *J. Remanufacturing* 3, 5. <https://doi.org/10.1186/2210-4690-3-5>
- 21 Arnette, A.N., Brewer, B.L., Choal, T., 2014. Design for sustainability (DFS): The intersection of
22 supply chain and environment. *J. Clean. Prod.* 83, 374–390.
23 <https://doi.org/10.1016/j.jclepro.2014.07.021>
- 24 Awan, M.A., Ali, Y., 2019. Sustainable modeling in reverse logistics strategies using fuzzy MCDM
25 Case of China Pakistan Economic Corridor. *Manag. Environ. Qual.* 30, 1132–1151.
26 <https://doi.org/10.1108/MEQ-01-2019-0024>
- 27 Azevedo, L.P., da Silva Araújo, F.G., Lagarinhos, C.A.F., Tenório, J.A.S., Espinosa, D.C.R., 2017. E-
28 waste management and sustainability: a case study in Brazil. *Environ. Sci. Pollut. Res.* 24,
29 25221–25232. <https://doi.org/10.1007/s11356-017-0099-7>
- 30 Badri Ahmadi, H., Kusi-Sarpong, S., Rezaei, J., 2017. Assessing the social sustainability of supply
31 chains using Best Worst Method. *Resour. Conserv. Recycl.* 126, 99–106.
32 <https://doi.org/10.1016/j.resconrec.2017.07.020>
- 33 Bai, C., Sarkis, J., 2019. Integrating and extending data and decision tools for sustainable third-
34 party reverse logistics provider selection. *Comput. Oper. Res.* 110, 188–207.
35 <https://doi.org/10.1016/j.cor.2018.06.005>
- 36 Bai, Q., Xu, J., Zhang, Y., 2020. The distributionally robust optimization model for a
37 remanufacturing system under cap-and-trade policy: a newsvendor approach. *Ann. Oper.*
38 *Res.* <https://doi.org/10.1007/s10479-020-03642-4>
- 39 Bal, A., Satoglu, S.I., 2018. A goal programming model for sustainable reverse logistics operations
40 planning and an application. *J. Clean. Prod.* 201, 1081–1091.
41 <https://doi.org/10.1016/j.jclepro.2018.08.104>
- 42 Bányai, T., Tamás, P., Illés, B., Stankevičiūtė, Ž., Bányai, Á., 2019. Optimization of Municipal
43 Waste Collection Routing: Impact of Industry 4.0 Technologies on Environmental

- 1 Awareness and Sustainability. *Int. J. Environ. Res. Public Health* 16, 634.
2 <https://doi.org/10.3390/ijerph16040634>
- 3 Battini, D., Bogataj, M., Choudhary, A., 2017. Closed Loop Supply Chain (CLSC): Economics,
4 Modelling, Management and Control. *Int. J. Prod. Econ.* 183, 319–321.
5 <https://doi.org/10.1016/j.ijpe.2016.11.020>
- 6 Bautista, S., Narvaez, P., Camargo, M., Chery, O., Morel, L., 2016. Biodiesel-TBL+: A new
7 hierarchical sustainability assessment framework of PC&I for biodiesel production –
8 Part I. *Ecol. Indic.* 60, 84–107. <https://doi.org/10.1016/j.ecolind.2015.06.020>
- 9 Beiler, B.C., Ignácio, P.S. de A., Pacagnella Júnior, A.C., Anholon, R., Rampasso, I.S., 2020. Reverse
10 logistics system analysis of a Brazilian beverage company: An exploratory study. *J. Clean.*
11 *Prod.* 274. <https://doi.org/10.1016/j.jclepro.2020.122624>
- 12 Benaissa, M., Slama, I., Dhiaf, M.M., 2018. Reverse logistics network problem using simulated
13 annealing with and without priority-algorithm. *Arch. Transp.* 46, 7–17.
14 <https://doi.org/10.5604/01.3001.0012.6503>
- 15 Besiou, M, Georgiadis, P., Van Wassenhove, L.N., 2012. Official recycling and scavengers:
16 Symbiotic or conflicting? *Eur. J. Oper. Res.* 218, 563–576.
17 <https://doi.org/10.1016/j.ejor.2011.11.030>
- 18 Bing, X., Bloemhof-Ruwaard, J., Chaabane, A., Van Der Vorst, J., 2015. Global reverse supply
19 chain redesign for household plastic waste under the emission trading scheme. *J. Clean.*
20 *Prod.* 103, 28–39. <https://doi.org/10.1016/j.jclepro.2015.02.019>
- 21 Bing, X., Bloemhof-Ruwaard, J.M., van der Vorst, J.G.A.J., 2014. Sustainable reverse logistics
22 network design for household plastic waste. *Flex. Serv. Manuf. J.* 26, 119–142.
23 <https://doi.org/10.1007/s10696-012-9149-0>
- 24 Budak, A., 2020. Sustainable reverse logistics optimization with triple bottom line approach: An
25 integration of disassembly line balancing. *J. Clean. Prod.* 270.
26 <https://doi.org/10.1016/j.jclepro.2020.122475>
- 27 Çalık, A., 2020. An integrated open-loop supply chain network configuration model with
28 sustainable supplier selection: fuzzy multi-objective approach. *SN Appl. Sci.* 2, 1–15.
29 <https://doi.org/10.1007/s42452-020-2200-y>
- 30 Capraz, O., Polat, O., Gungor, A., 2015. Planning of waste electrical and electronic equipment
31 (WEEE) recycling facilities: MILP modelling and case study investigation. *Flex. Serv. Manuf.*
32 *J.* 27, 479–508. <https://doi.org/10.1007/s10696-015-9217-3>
- 33 Chaudhary, K., Vrat, P., 2020. Circular economy model of gold recovery from cell phones using
34 system dynamics approach: a case study of India. *Environ. Dev. Sustain.* 22, 173–200.
35 <https://doi.org/10.1007/s10668-018-0189-9>
- 36 Chavez, R., Sharma, M., 2018. Profitability and environmental friendliness of a closed-loop
37 supply chain for PET components: A case study of the Mexican automobile market. *Resour.*
38 *Conserv. Recycl.* 135, 172–189. <https://doi.org/10.1016/j.resconrec.2017.10.038>
- 39 Chen, J., Wu, D., Li, P., 2018. Research on the Pricing Model of the Dual-Channel Reverse Supply
40 Chain Considering Logistics Costs and Consumers' Awareness of Sustainability Based on
41 Regional Differences. *Sustainability* 10, 2229. <https://doi.org/10.3390/su10072229>
- 42 Chen, Y.-W., Wang, L.-C., Wang, A., Chen, T.-L., 2017. A particle swarm approach for optimizing
43 a multi-stage closed loop supply chain for the solar cell industry. *Robot. Comput. Integr.*

- 1 Manuf. 43, 111–123. <https://doi.org/10.1016/j.rcim.2015.10.006>
- 2 Choi, J.-K., Fthenakis, V., 2014. Crystalline silicon photovoltaic recycling planning: macro and
3 micro perspectives. *J. Clean. Prod.* 66, 443–449.
4 <https://doi.org/10.1016/j.jclepro.2013.11.022>
- 5 Couto, M.C.L., Lange, L.C., Rosa, R. de A., Couto, P.R.L., 2017. Planning the location of facilities
6 to implement a reverse logistic system of post-consumer packaging using a location
7 mathematical model. *Waste Manag. Res. J. a Sustain. Circ. Econ.* 35, 1254–1265.
8 <https://doi.org/10.1177/0734242X17730431>
- 9 Cruz Sanchez, F.A., Boudaoud, H., Camargo, M., Pearce, J.M., 2020. Plastic recycling in additive
10 manufacturing: A systematic literature review and opportunities for the circular economy.
11 *J. Clean. Prod.* 264, 121602. <https://doi.org/10.1016/j.jclepro.2020.121602>
- 12 Darbari, J.D., Kannan, D., Agarwal, V., Jha, P.C., 2019. Fuzzy criteria programming approach for
13 optimising the TBL performance of closed loop supply chain network design problem. *Ann.*
14 *Oper. Res.* 273, 693–738. <https://doi.org/10.1007/s10479-017-2701-2>
- 15 de Oliveira, R.L., Fagundes, L.D., da Silva Lima, R., Montañó, M., 2020. Discrete event simulation
16 to aid decision-making and mitigation in solid waste management. *Mitig. Adapt. Strateg.*
17 *Glob. Chang.* 25, 67–85. <https://doi.org/10.1007/s11027-019-09859-4>
- 18 de Souza, R.G., Clímaco, J.C.N., Sant’Anna, A.P., Rocha, T.B., do Valle, R. de A.B., Quelhas, O.L.G.,
19 2016. Sustainability assessment and prioritisation of e-waste management options in
20 Brazil. *Waste Manag.* 57, 46–56. <https://doi.org/10.1016/j.wasman.2016.01.034>
- 21 Dong, P.A.V., Azzaro-Pantel, C., Boix, M., Jacquemin, L., Cadène, A.-L., 2017. A Bicriteria
22 Optimisation Approach for Waste Management of Carbon Fibre Reinforced Polymers Used
23 in Aerospace Applications: Application to the Case Study of France. *Waste and Biomass*
24 *Valorization* 8, 2187–2208. <https://doi.org/10.1007/s12649-016-9669-z>
- 25 Duan, C., Xiu, G., Yao, F., 2019. Multi-period E-closed-loop supply chain network considering
26 consumers’ preference for products and AI-push. *Sustain.* 11.
27 <https://doi.org/10.3390/su11174571>
- 28 Dubey, R., Gunasekaran, A., Childe, S.J., 2015. The design of a responsive sustainable supply
29 chain network under uncertainty. *Int. J. Adv. Manuf. Technol.* 80, 427–445.
30 <https://doi.org/10.1007/s00170-015-6967-8>
- 31 Dutta, P., Mishra, A., Khandelwal, S., Katthawala, I., 2020. A multiobjective optimization model
32 for sustainable reverse logistics in Indian E-commerce market. *J. Clean. Prod.* 249, 119348.
33 <https://doi.org/10.1016/j.jclepro.2019.119348>
- 34 Edalatpour, M.A., Al-e-hashem, S.M.J.M., Karimi, B., Bahli, B., 2018. Investigation on a novel
35 sustainable model for waste management in megacities: A case study in tehran
36 municipality. *Sustain. Cities Soc.* 36, 286–301. <https://doi.org/10.1016/j.scs.2017.09.019>
- 37 Elkington’s, J., 1997. *Cannibals with forks-The triple bottom line of the 21th century.* Capstone
38 Publishing Ltd, Oxford.
- 39 Espinoza Pérez, A.T., Camargo, M., Narváez Rincón, P.C., Alfaro Marchant, M., 2017. Key
40 challenges and requirements for sustainable and industrialized biorefinery supply chain
41 design and management: A bibliographic analysis. *Renew. Sustain. Energy Rev.* 69, 350–
42 359. <https://doi.org/10.1016/j.rser.2016.11.084>
- 43 European Commission, 2019. Report from the commission to the European Parliament, the

- 1 council, the European Economic and Social Committee and the Committee of the regions
2 on the implementation of the Circular Economy Action Plan.
- 3 Faccio, M., Persona, A., Sgarbossa, F., Zanin, G., 2014. Sustainable SC through the complete
4 reprocessing of end-of-life products by manufacturers: A traditional versus social
5 responsibility company perspective. *Eur. J. Oper. Res.* 233, 359–373.
6 <https://doi.org/10.1016/j.ejor.2013.03.027>
- 7 Farrokhi-Asl, H., Makui, A., Jabbarzadeh, A., Barzinpour, F., 2020. Solving a multi-objective
8 sustainable waste collection problem considering a new collection network. *Oper. Res.* 20,
9 1977–2015. <https://doi.org/10.1007/s12351-018-0415-0>
- 10 Fattahi, M., Govindan, K., 2017. Integrated forward/reverse logistics network design under
11 uncertainty with pricing for collection of used products. *Ann. Oper. Res.* 253, 193–225.
12 <https://doi.org/10.1007/s10479-016-2347-5>
- 13 Fazli-Khalaf, M., Naderi, B., Mohammadi, M., Pishvae, M.S., 2020. The design of a resilient and
14 sustainable maximal covering closed-loop supply chain network under hybrid
15 uncertainties: a case study in tire industry. *Environ. Dev. Sustain.*
16 <https://doi.org/10.1007/s10668-020-01041-0>
- 17 Feitó-Cespón, M., Sarache, W., Piedra-Jimenez, F., Cespón-Castro, R., 2017. Redesign of a
18 sustainable reverse supply chain under uncertainty: A case study. *J. Clean. Prod.* 151, 206–
19 217. <https://doi.org/10.1016/j.jclepro.2017.03.057>
- 20 Fernandes, S.M., Rodriguez, C.M.T., Bornia, A.C., Trierweiller, A.C., Silva, S.M. da, Freire, P. de S.,
21 2017. Systematic literature review on the ways of measuring the of reverse logistics
22 performance. *Gestão & Produção* 25, 175–190. <https://doi.org/10.1590/0104-530x3177-16>
- 24 Ferri, G.L., Diniz Chaves, G. de L., Ribeiro, G.M., 2015. Reverse logistics network for municipal
25 solid waste management: The inclusion of waste pickers as a Brazilian legal requirement.
26 *Waste Manag.* 40, 173–191. <https://doi.org/10.1016/j.wasman.2015.02.036>
- 27 Fonseca, J.D., Camargo, M., Commenge, J.-M., Falk, L., Gil, I.D., 2019. Trends in design of
28 distributed energy systems using hydrogen as energy vector: A systematic literature
29 review. *Int. J. Hydrogen Energy* 44, 9486–9504.
30 <https://doi.org/10.1016/j.ijhydene.2018.09.177>
- 31 Gao, N., Ryan, S.M., 2014. Robust design of a closed-loop supply chain network for uncertain
32 carbon regulations and random product flows. *EURO J. Transp. Logist.* 3, 5–34.
33 <https://doi.org/10.1007/s13676-014-0043-7>
- 34 Garai, A., Roy, T.K., 2020. Multi-objective optimization of cost-effective and customer-centric
35 closed-loop supply chain management model in T-environment. *Soft Comput.* 24, 155–178.
36 <https://doi.org/10.1007/s00500-019-04289-5>
- 37 Georgiadis, P., Besiou, M., 2010. Environmental and economical sustainability of WEEE closed-
38 loop supply chains with recycling: a system dynamics analysis. *Int. J. Adv. Manuf. Technol.*
39 47, 475–493. <https://doi.org/10.1007/s00170-009-2362-7>
- 40 Georgiadis, P., Besiou, M., 2008. Sustainability in electrical and electronic equipment closed-
41 loop supply chains: A System Dynamics approach. *J. Clean. Prod.* 16, 1665–1678.
42 <https://doi.org/10.1016/j.jclepro.2008.04.019>
- 43 Ghalekhondabi, I., Ardjmand, E., 2020. Sustainable E-waste supply chain management with
44 price/sustainability-sensitive demand and government intervention. *J. Mater. Cycles*

- 1 Waste Manag. 22, 556–577. <https://doi.org/10.1007/s10163-019-00952-z>
- 2 Ghasemzadeh, Z., Sadeghieh, A., Shishebori, D., 2020. A stochastic multi-objective closed-loop
3 global supply chain concerning waste management: a case study of the tire industry.
4 Environ. Dev. Sustain. 23, 5794–5821. <https://doi.org/10.1007/s10668-020-00847-2>
- 5 Ghisolfi, V., Diniz Chaves, G. de L., Ribeiro Siman, R., Xavier, L.H., 2017. System dynamics applied
6 to closed loop supply chains of desktops and laptops in Brazil: A perspective for social
7 inclusion of waste pickers. Waste Manag. 60, 14–31.
8 <https://doi.org/10.1016/j.wasman.2016.12.018>
- 9 Gholizadeh, H., Tajdin, A., Javadian, N., 2020. A closed-loop supply chain robust optimization for
10 disposable appliances. Neural Comput. Appl. 32, 3967–3985.
11 <https://doi.org/10.1007/s00521-018-3847-9>
- 12 Govindan, K., Agarwal, V., Darbari, J.D., Jha, P.C., 2019. An integrated decision making model for
13 the selection of sustainable forward and reverse logistic providers. Ann. Oper. Res. 273,
14 607–650. <https://doi.org/10.1007/s10479-017-2654-5>
- 15 Govindan, K., Paam, P., Abtahi, A.-R., 2016. A fuzzy multi-objective optimization model for
16 sustainable reverse logistics network design. Ecol. Indic. 67, 753–768.
17 <https://doi.org/10.1016/j.ecolind.2016.03.017>
- 18 Govindan, K., Sarkis, J., Palaniappan, M., 2013. An analytic network process-based multicriteria
19 decision making model for a reverse supply chain. Int. J. Adv. Manuf. Technol. 68, 863–880.
20 <https://doi.org/10.1007/s00170-013-4949-2>
- 21 Govindan, K., Soleimani, H., Kannan, D., 2015. Reverse logistics and closed-loop supply chain: A
22 comprehensive review to explore the future. Eur. J. Oper. Res. 240, 603–626.
23 <https://doi.org/10.1016/j.ejor.2014.07.012>
- 24 Guo, J., Liu, X., Jo, J., 2017. Dynamic joint construction and optimal operation strategy of multi-
25 period reverse logistics network: a case study of Shanghai apparel E-commerce
26 enterprises. J. Intell. Manuf. 28, 819–831. <https://doi.org/10.1007/s10845-015-1034-8>
- 27 Hacking, T., Guthrie, P., 2008. A framework for clarifying the meaning of Triple Bottom-Line,
28 Integrated, and Sustainability Assessment. Environ. Impact Assess. Rev. 28, 73–89.
29 <https://doi.org/10.1016/j.eiar.2007.03.002>
- 30 Haddadsisakht, A., Ryan, S.M., 2018. Closed-loop supply chain network design with multiple
31 transportation modes under stochastic demand and uncertain carbon tax. Int. J. Prod.
32 Econ. 195, 118–131. <https://doi.org/10.1016/j.ijpe.2017.09.009>
- 33 Hajiaghaei-Keshteli, M., Fathollahi Fard, A.M., 2019. Sustainable closed-loop supply chain
34 network design with discount supposition. Neural Comput. Appl. 31, 5343–5377.
35 <https://doi.org/10.1007/s00521-018-3369-5>
- 36 Han, S., Jiang, Y., Zhao, L., Leung, S.C.H., Luo, Z., 2020. Weight reduction technology and supply
37 chain network design under carbon emission restriction. Ann. Oper. Res. 290, 567–590.
38 <https://doi.org/10.1007/s10479-017-2696-8>
- 39 Han, X., Shen, Y., Bian, Y., 2020. Optimal recovery strategy of manufacturers: Remanufacturing
40 products or recycling materials? Ann. Oper. Res. 290, 463–489.
41 <https://doi.org/10.1007/s10479-018-2929-5>
- 42 Hartley, K., van Santen, R., Kirchherr, J., 2020. Policies for transitioning towards a circular
43 economy: Expectations from the European Union (EU). Resour. Conserv. Recycl. 155,

- 1 104634. <https://doi.org/10.1016/j.resconrec.2019.104634>
- 2 Hassanzadeh Amin, S., Wu, H., Karaphillis, G., 2018. A perspective on the reverse logistics of
3 plastic pallets in Canada. *J. Remanufacturing* 8, 153–174. [https://doi.org/10.1007/s13243-](https://doi.org/10.1007/s13243-018-0051-0)
4 [018-0051-0](https://doi.org/10.1007/s13243-018-0051-0)
- 5 Homayouni, Z., Pishvae, M.S., 2020. A bi-objective robust optimization model for hazardous
6 hospital waste collection and disposal network design problem. *J. Mater. Cycles Waste*
7 *Manag.* 22, 1965–1984. <https://doi.org/10.1007/s10163-020-01081-8>
- 8 Hoyer, C., Kieckhäfer, K., Spengler, T.S., 2015. Technology and capacity planning for the recycling
9 of lithium-ion electric vehicle batteries in Germany. *J. Bus. Econ.* 85, 505–544.
10 <https://doi.org/10.1007/s11573-014-0744-2>
- 11 Huang, Y., Zheng, B., Wang, Z., 2020. Advertisement vs. Monetary Subsidy: Which is Better for
12 Remanufacturing? *J. Syst. Sci. Syst. Eng.* 29, 344–359. [https://doi.org/10.1007/s11518-](https://doi.org/10.1007/s11518-019-5447-3)
13 [019-5447-3](https://doi.org/10.1007/s11518-019-5447-3)
- 14 Islam, M.T., Huda, N., 2018. Reverse logistics and closed-loop supply chain of Waste Electrical
15 and Electronic Equipment (WEEE)/E-waste: A comprehensive literature review. *Resour.*
16 *Conserv. Recycl.* 137, 48–75. <https://doi.org/10.1016/j.resconrec.2018.05.026>
- 17 Jafari, H.R., Kazemi Abharian, A., 2020. Sustainable closed-loop supply chain design for the car
18 battery industry with taking into consideration the correlated criteria for supplier selection
19 and uncertainty conditions. *Rev. Gestão Tecnol.* 20, 3–29. [https://doi.org/10.20397/2177-](https://doi.org/10.20397/2177-6652/2020.v20i0.1749)
20 [6652/2020.v20i0.1749](https://doi.org/10.20397/2177-6652/2020.v20i0.1749)
- 21 Jia, F., Yin, S., Chen, L., Chen, X., 2020. The circular economy in the textile and apparel industry:
22 A systematic literature review. *J. Clean. Prod.* 259, 120728.
23 <https://doi.org/10.1016/j.jclepro.2020.120728>
- 24 Jia, S., Liu, X., Yan, G., 2018. Dynamic analysis of construction and demolition waste management
25 model based on system dynamics and grey model approach. *Clean Technol. Environ. Policy*
26 20, 2089–2107. <https://doi.org/10.1007/s10098-018-1594-3>
- 27 Jin, H., Song, B.D., Yih, Y., Sutherland, J.W., 2018. Sustainable Value Recovery of NdFeB Magnets:
28 A Multi-Objective Network Design and Genetic Algorithm. *ACS Sustain. Chem. Eng.* 6,
29 4767–4775. <https://doi.org/10.1021/acssuschemeng.7b03933>
- 30 Jindal, A., Sangwan, K.S., 2016. A fuzzy-based decision support framework for product recovery
31 process selection in reverse logistics. *Int. J. Serv. Oper. Manag.* 25, 413.
32 <https://doi.org/10.1504/IJSOM.2016.10000346>
- 33 Johari, M., Hosseini-Motlagh, S.-M., 2019. Coordination of social welfare, collecting, recycling
34 and pricing decisions in a competitive sustainable closed-loop supply chain: a case for lead-
35 acid battery. *Ann. Oper. Res.* <https://doi.org/10.1007/s10479-019-03292-1>
- 36 John, S.T., Sridharan, R., Ram Kumar, P.N., 2018. Reverse logistics network design: a case of
37 mobile phones and digital cameras. *Int. J. Adv. Manuf. Technol.* 94, 615–631.
38 <https://doi.org/10.1007/s00170-017-0864-2>
- 39 Kafa, N., Hani, Y., El Mhamedi, A., 2018a. Evaluating and selecting partners in sustainable supply
40 chain network: a comparative analysis of combined fuzzy multi-criteria approaches.
41 *OPSEARCH* 55, 14–49. <https://doi.org/10.1007/s12597-017-0326-5>
- 42 Kannan, G., Sasikumar, P., Devika, K., 2010. A genetic algorithm approach for solving a closed
43 loop supply chain model: A case of battery recycling. *Appl. Math. Model.* 34, 655–670.

- 1 <https://doi.org/10.1016/j.apm.2009.06.021>
- 2 Kannan Govindan, H.S., 2017. A review of Reverse Logistics and Closed-Loop Supply Chains: A
3 Journal of Cleaner Production Focus. <https://doi.org/10.1016/j.jss.2009.11.004>
- 4 Kannegiesser, M., Günther, H.-O., 2014. Sustainable development of global supply chains—part
5 1: sustainability optimization framework. *Flex. Serv. Manuf. J.* 26, 24–47.
6 <https://doi.org/10.1007/s10696-013-9176-5>
- 7 Kara, S.S., 2011. Evaluation of outsourcing companies of waste electrical and electronic
8 equipment recycling. *Int. J. Environ. Sci. Technol.* 8, 291–304.
9 <https://doi.org/10.1007/BF03326217>
- 10 Kerdlap, P., Purnama, A.R., Low, J.S.C., Tan, D.Z.L., Barlow, C.Y., Ramakrishna, S., 2021.
11 Comparing the environmental performance of distributed versus centralized plastic
12 recycling systems: Applying hybrid simulation modeling to life cycle assessment. *J. Ind.*
13 *Ecol. jiec.13151.* <https://doi.org/10.1111/jiec.13151>
- 14 Khorshidian, H., Akbarpour Shirazi, M., Fatemi Ghomi, S.M.T., 2019. An intelligent truck
15 scheduling and transportation planning optimization model for product portfolio in a cross-
16 dock. *J. Intell. Manuf.* 30, 163–184. <https://doi.org/10.1007/s10845-016-1229-7>
- 17 Kilic, H.S., Cebeci, U., Ayhan, M.B., 2015. Reverse logistics system design for the waste of
18 electrical and electronic equipment (WEEE) in Turkey. *Resour. Conserv. Recycl.* 95, 120–
19 132. <https://doi.org/10.1016/j.resconrec.2014.12.010>
- 20 Kim, S., Shin, N., Park, S., 2020. Closed-loop supply chain coordination under a reward–penalty
21 and a manufacturer’s subsidy policy. *Sustain.* 12, 1–28.
22 <https://doi.org/10.3390/su12229329>
- 23 Kızıldaş, Ş., Alakaş, H.M., Eren, T., 2020. Collection of recyclable wastes within the scope of the
24 Zero Waste project: heterogeneous multi-vehicle routing case in Kirikkale. *Environ. Monit.*
25 *Assess.* 192. <https://doi.org/10.1007/s10661-020-08455-3>
- 26 Kumar, L., Jain, P.K., Sharma, A.K., 2020. A fuzzy goal programme–based sustainable Greenfield
27 supply network design for tyre retreading industry. *Int. J. Adv. Manuf. Technol.* 108, 2855–
28 2880. <https://doi.org/10.1007/s00170-020-05140-0>
- 29 Lai, K., Wu, S.J., Wong, C.W.Y., 2013. Did reverse logistics practices hit the triple bottom line of
30 Chinese manufacturers? *Int. J. Prod. Econ.* 146, 106–117.
31 <https://doi.org/10.1016/j.ijpe.2013.03.005>
- 32 Lapko, Y., Trianni, A., Nuur, C., Masi, D., 2019. In Pursuit of Closed-Loop Supply Chains for Critical
33 Materials: An Exploratory Study in the Green Energy Sector. *J. Ind. Ecol.* 23, 182–196.
34 <https://doi.org/10.1111/jiec.12741>
- 35 le Blanc, I., van Krieken, M., Krikke, H., Fleuren, H., 2006. Vehicle routing concepts in the closed-
36 loop container network of ARN—a case study. *OR Spectr.* 28, 53–71.
37 <https://doi.org/10.1007/s00291-005-0003-6>
- 38 Li, J., Wang, Z., Jiang, B., 2017. Managing economic and social profit of cooperative models in
39 three-echelon reverse supply chain for waste electrical and electronic equipment. *Front.*
40 *Environ. Sci. Eng.* 11, 12. <https://doi.org/10.1007/s11783-017-0999-2>
- 41 Liang, C.-C., Lee, J.-P., 2018. Carbon footprint model for reverse logistics of waste disposal in
42 interior design industry. *ASIA PACIFIC J. Mark. Logist.* 30, 889–906.
43 <https://doi.org/10.1108/APJML-01-2018-0035>

- 1 Liu, A., Ji, X., Xu, L., Lu, H., 2019. Research on the recycling of sharing bikes based on time
2 dynamics series, individual regrets and group efficiency. *J. Clean. Prod.* 208, 666–687.
3 <https://doi.org/10.1016/j.jclepro.2018.10.146>
- 4 Liu, A., Zhang, Y., Luo, S., Miao, J., 2020. Dual-Channel Global Closed-Loop Supply Chain Network
5 Optimization Based on Random Demand and Recovery Rate. *Int. J. Environ. Res. Public*
6 *Health* 17, 8768. <https://doi.org/10.3390/ijerph17238768>
- 7 Liu, H., Lei, M., Deng, H., Keong Leong, G., Huang, T., 2016. A dual channel, quality-based price
8 competition model for the WEEE recycling market with government subsidy. *Omega* 59,
9 290–302. <https://doi.org/10.1016/j.omega.2015.07.002>
- 10 Liu, T., Liu, Y., Luo, E., Wu, Y., Li, Y., Wu, S., 2019. Who is the most effective stakeholder to incent
11 in the waste cooking oil supply chain? A case study of Beijing, China. *Energy, Ecol. Environ.*
12 4, 116–124. <https://doi.org/10.1007/s40974-019-00118-5>
- 13 Liu, W., Wan, Zhaoman, Wan, Zhong, Gong, B., 2020. Sustainable recycle network of
14 heterogeneous pharmaceuticals with governmental subsidies and service-levels of third-
15 party logistics by bi-level programming approach. *J. Clean. Prod.* 249, 119324.
16 <https://doi.org/10.1016/j.jclepro.2019.119324>
- 17 Ma, C., Huang, D., 2019. Research on the impact of green innovation alliance mode on decision-
18 making of two-cycle closed-loop supply chain. *J. Comb. Optim.*
19 <https://doi.org/10.1007/s10878-019-00496-w>
- 20 Ma, J., Zhu, L., Guo, Y., 2019. Strategies and stability study for a triopoly game considering
21 product recovery based on closed-loop supply chain. *Oper. Res.*
22 <https://doi.org/10.1007/s12351-019-00509-w>
- 23 Mahmoudi, S., Huda, N., Behnia, M., 2021. Multi-levels of Photovoltaic Waste Management: A
24 Holistic Framework. *J. Clean. Prod.* 294, 126252.
25 <https://doi.org/10.1016/j.jclepro.2021.126252>
- 26 Malladi, K.T., Sowlati, T., 2018. Sustainability aspects in Inventory Routing Problem: A review of
27 new trends in the literature. *J. Clean. Prod.* 197, 804–814.
28 <https://doi.org/10.1016/j.jclepro.2018.06.224>
- 29 Mangla, S., Madaan, J., Chan, F.T.S., 2012. Analysis of performance focused variables for multi-
30 objective flexible decision modeling approach of product recovery systems. *Glob. J. Flex.*
31 *Syst. Manag.* 13, 77–86. <https://doi.org/10.1007/S40171-012-0007-4>
- 32 Masoudipour, E., Jafari, A., Amirian, H., Sahraeian, R., 2020. A novel transportation location
33 routing network for the sustainable closed-loop supply chain considering the quality of
34 returns. *J. Remanufacturing* 10, 79–106. <https://doi.org/10.1007/s13243-019-00075-6>
- 35 Mavi, R.K., Goh, M., Zarbakhshnia, N., 2017. Sustainable third-party reverse logistic provider
36 selection with fuzzy SWARA and fuzzy MOORA in plastic industry. *Int. J. Adv. Manuf.*
37 *Technol.* 91, 2401–2418. <https://doi.org/10.1007/s00170-016-9880-x>
- 38 Meadowcroft, J., 2009. What about the politics? Sustainable development, transition
39 management, and long term energy transitions. *Policy Sci.* 42, 323–340.
40 <https://doi.org/10.1007/s11077-009-9097-z>
- 41 Modak, N.M., Kazemi, N., Eduardo Cardenas-Barron, L., 2019a. Investigating structure of a two-
42 echelon closed-loop supply chain using social work donation as a Corporate Social
43 Responsibility practice. *Int. J. Prod. Econ.* 207, 19–33.
44 <https://doi.org/10.1016/j.ijpe.2018.10.009>

- 1 Modak, N.M., Sinha, S., Panda, S., Kazemi, N., 2019b. Analyzing a socially responsible closed-
2 loop distribution channel with recycling facility. *SN Appl. Sci.* 1.
3 <https://doi.org/10.1007/s42452-019-1173-1>
- 4 Mohammadi, A.S., Alemtabriz, A., Pishvae, M.S., Zandieh, M., 2020. A multi-stage stochastic
5 programming model for sustainable closed-loop supply chain network design with financial
6 decisions: A case study of plastic production and recycling supply chain. *Sci. Iran.* 27, 377–
7 395. <https://doi.org/10.24200/SCI.2019.21531>
- 8 Mohan, T.V.K., Amit, R.K., 2020. Dismantlers' dilemma in end-of-life vehicle recycling markets:
9 a system dynamics model. *Ann. Oper. Res.* 290, 591–619. [https://doi.org/10.1007/s10479-](https://doi.org/10.1007/s10479-018-2930-z)
10 [018-2930-z](https://doi.org/10.1007/s10479-018-2930-z)
- 11 Mondal, C., Giri, B.C., 2020. Retailers' competition and cooperation in a closed-loop green supply
12 chain under governmental intervention and cap-and-trade policy, *Operational Research.*
13 Springer Berlin Heidelberg. <https://doi.org/10.1007/s12351-020-00596-0>
- 14 Mondal, C., Giri, B.C., Maiti, T., 2020. Pricing and greening strategies for a dual-channel closed-
15 loop green supply chain. *Flex. Serv. Manuf. J.* 32, 724–761.
16 <https://doi.org/10.1007/s10696-019-09355-6>
- 17 Moreno-Camacho, C.A., Montoya-Torres, J.R., Jaegler, A., Gondran, N., 2019. Sustainability
18 metrics for real case applications of the supply chain network design problem: A systematic
19 literature review. *J. Clean. Prod.* 231, 600–618.
20 <https://doi.org/10.1016/j.jclepro.2019.05.278>
- 21 Moslehi, M.S., Sahebi, H., Teymouri, A., 2020. A multi-objective stochastic model for a reverse
22 logistics supply chain design with environmental considerations. *J. Ambient Intell.*
23 *Humaniz. Comput.* <https://doi.org/10.1007/s12652-020-02538-2>
- 24 Motevali Haghighi, S., Torabi, S.A., Ghasemi, R., 2016. An integrated approach for performance
25 evaluation in sustainable supply chain networks (with a case study). *J. Clean. Prod.* 137,
26 579–597. <https://doi.org/10.1016/j.jclepro.2016.07.119>
- 27 Murakami, F., Sulzbach, A., Pereira, G.M., Borchardt, M., Sellitto, M.A., 2015. How the Brazilian
28 government can use public policies to induce recycling and still save money? *J. Clean. Prod.*
29 96, 94–101. <https://doi.org/10.1016/j.jclepro.2014.03.083>
- 30 Mutingi, M., Mapfira, H., Monageng, R., 2014. Developing performance management systems
31 for the green supply chain. *J. Remanufacturing* 4, 6. [https://doi.org/10.1186/s13243-014-](https://doi.org/10.1186/s13243-014-0006-z)
32 [0006-z](https://doi.org/10.1186/s13243-014-0006-z)
- 33 Nambu, K., Murakami-Suzuki, R., 2016. Greening policy of production and recycling in Taiwan.
34 *Int. J. Econ. Policy Stud.* 11, 25–42. <https://doi.org/10.1007/BF03405764>
- 35 Ng, T.S., Wang, S., 2017. Recycling systems design using reservation incentive data. *J. Oper. Res.*
36 *Soc.* 68, 1236–1258. <https://doi.org/10.1057/s41274-016-0018-1>
- 37 Nidhi, M.B., Pillai, V.M., 2019. Product disposal penalty: Analysing carbon sensitive sustainable
38 supply chains. *Comput. Ind. Eng.* 128, 8–23. <https://doi.org/10.1016/j.cie.2018.11.059>
- 39 Niranjan, T., Parthiban, P., Sundaram, K., Jeyaganesan, P.N., 2019. Designing a omnichannel
40 closed loop green supply chain network adapting preferences of rational customers.
41 *Sādhanā* 44, 60. <https://doi.org/10.1007/s12046-018-1038-0>
- 42 Östlin, J., Sundin, E., Björkman, M., 2008. Importance of closed-loop supply chain relationships
43 for product remanufacturing. *Int. J. Prod. Econ.* 115, 336–348.

- 1 <https://doi.org/10.1016/j.ijpe.2008.02.020>
- 2 Ottoni, M., Dias, P., Xavier, L.H., 2020. A circular approach to the e-waste valorization through
3 urban mining in Rio de Janeiro, Brazil. *J. Clean. Prod.* 261, 120990.
4 <https://doi.org/10.1016/j.jclepro.2020.120990>
- 5 Papen, P., Amin, S.H., 2019. Network configuration of a bottled water closed-loop supply chain
6 with green supplier selection. *J. Remanufacturing* 9, 109–127.
7 <https://doi.org/10.1007/s13243-018-0061-y>
- 8 Pavlo, S., Fabio, C., Hakim, B., Mauricio, C., 2018. 3D-Printing Based Distributed Plastic Recycling:
9 A Conceptual Model for Closed-Loop Supply Chain Design, in: 2018 IEEE International
10 Conference on Engineering, Technology and Innovation (ICE/ITMC). IEEE, pp. 1–8.
11 <https://doi.org/10.1109/ICE.2018.8436296>
- 12 Phuc, P.N.K., Yu, V.F., Tsao, Y.-C., 2017. Optimizing fuzzy reverse supply chain for end-of-life
13 vehicles. *Comput. Ind. Eng.* 113, 757–765. <https://doi.org/10.1016/j.cie.2016.11.007>
- 14 Pongeluppe Wadhy Rebehy, P.C., Costa, A.L., Campello, C.A.G.B., Espinoza, D. de F., Neto, M.J.,
15 2017. Innovative social business of selective waste collection in Brazil: Cleaner
16 production and poverty reduction. *J. Clean. Prod.* 154, 462–473.
17 <https://doi.org/10.1016/j.jclepro.2017.03.173>
- 18 Porkar, S., Mahdavi, I., Maleki Vishkaei, B., Hematian, M., 2018. Green supply chain flow analysis
19 with multi-attribute demand in a multi-period product development environment. *Oper.*
20 *Res.* 1–31. <https://doi.org/10.1007/s12351-018-0382-5>
- 21 Pourjavad, E., Mayorga, R. V., 2019. Multi-objective Fuzzy Programming of Closed-Loop Supply
22 Chain Considering Sustainable Measures. *Int. J. Fuzzy Syst.* 21, 655–673.
23 <https://doi.org/10.1007/s40815-018-0551-y>
- 24 Prasad, D.S., Pradhan, R.P., Gaurav, K., Chatterjee, P.P., Kaur, I., Dash, S., Nayak, S., 2018.
25 Analysing the critical success factors for implementation of sustainable supply chain
26 management: an Indian case study. *DECISION* 45, 3–25. [https://doi.org/10.1007/s40622-](https://doi.org/10.1007/s40622-017-0171-7)
27 [017-0171-7](https://doi.org/10.1007/s40622-017-0171-7)
- 28 Rahimi, M., Baboli, A., Rekik, Y., 2016. Sustainable Inventory Routing Problem for Perishable
29 Products by Considering Reverse Logistic. *IFAC-PapersOnLine* 49, 949–954.
30 <https://doi.org/10.1016/j.ifacol.2016.07.898>
- 31 Rahimi, M., Ghezavati, V., 2018. Sustainable multi-period reverse logistics network design and
32 planning under uncertainty utilizing conditional value at risk (CVaR) for recycling
33 construction and demolition waste. *J. Clean. Prod.* 172, 1567–1581.
34 <https://doi.org/10.1016/j.jclepro.2017.10.240>
- 35 Ramos, T.R.P., Gomes, M.I., Barbosa-Póvoa, A.P., 2014. Planning a sustainable reverse logistics
36 system: Balancing costs with environmental and social concerns. *Omega (United Kingdom)*
37 48, 60–74. <https://doi.org/10.1016/j.omega.2013.11.006>
- 38 Rani, P., Mishra, A.R., Rezaei, G., Liao, H., Mardani, A., 2020. Extended Pythagorean Fuzzy TOPSIS
39 Method Based on Similarity Measure for Sustainable Recycling Partner Selection. *Int. J.*
40 *Fuzzy Syst.* 22, 735–747. <https://doi.org/10.1007/s40815-019-00689-9>
- 41 Ren, Y., Wang, C., Li, B., Yu, C., Zhang, S., 2020. A genetic algorithm for fuzzy random and low-
42 carbon integrated forward/reverse logistics network design. *Neural Comput. Appl.* 32,
43 2005–2025. <https://doi.org/10.1007/s00521-019-04340-4>

- 1 Rezaei, S., Kheirkhah, A., 2018. A comprehensive approach in designing a sustainable closed-
2 loop supply chain network using cross-docking operations. *Comput. Math. Organ. Theory*
3 24, 51–98. <https://doi.org/10.1007/s10588-017-9247-3>
- 4 Rezaei, S., Kheirkhah, A., 2017. Applying forward and reverse cross-docking in a multi-product
5 integrated supply chain network. *Prod. Eng.* 11, 495–509. <https://doi.org/10.1007/s11740-017-0743-6>
- 7 Rezaei, S., Maihami, R., 2020. Optimizing the sustainable decisions in a multi-echelon closed-
8 loop supply chain of the manufacturing/remanufacturing products with a competitive
9 environment. *Environ. Dev. Sustain.* 22, 6445–6471. <https://doi.org/10.1007/s10668-019-00491-5>
- 11 Saeidi, A., Aghamohamadi-Bosjin, S., Rabbani, M., 2020. An integrated model for management
12 of hazardous waste in a smart city with a sustainable approach. *Environ. Dev. Sustain.*
13 <https://doi.org/10.1007/s10668-020-01048-7>
- 14 Safdar, N., Khalid, R., Ahmed, W., Imran, M., 2020. Reverse logistics network design of e-waste
15 management under the triple bottom line approach. *J. Clean. Prod.* 272, 122662.
16 <https://doi.org/10.1016/j.jclepro.2020.122662>
- 17 Saha, S., Nielsen, I.E., Majumder, S., 2019. Dilemma in two game structures for a closed-loop
18 supply chain under the influence of government incentives. *J. Ind. Eng. Int.* 15, 291–308.
19 <https://doi.org/10.1007/s40092-019-00333-z>
- 20 Sahebjamnia, N., Fathollahi-Fard, A.M., Hajiaghaei-Keshteli, M., 2018. Sustainable tire closed-
21 loop supply chain network design: Hybrid metaheuristic algorithms for large-scale
22 networks. *J. Clean. Prod.* 196, 273–296. <https://doi.org/10.1016/j.jclepro.2018.05.245>
- 23 Sajedi, S., Sarfaraz, A.H., Bamdad, S., Damghani, K.K., 2020. Designing a Sustainable Reverse
24 Logistics Network Considering the Conditional Value at Risk and Uncertainty of Demand
25 under Different Quality and Market Scenarios. *Int. J. Eng. Trans. B Appl.* 33, 2252–2271.
26 <https://doi.org/10.5829/ije.2020.33.11b.17>
- 27 Santander, P., Cruz Sanchez, F.A., Boudaoud, H., Camargo, M., 2020. Closed loop supply chain
28 network for local and distributed plastic recycling for 3D printing: a MILP-based
29 optimization approach. *Resour. Conserv. Recycl.* 154, 104531.
30 <https://doi.org/10.1016/j.resconrec.2019.104531>
- 31 Santos, V.E.N., Magrini, A., 2018. Biorefining and industrial symbiosis: A proposal for regional
32 development in Brazil. *J. Clean. Prod.* 177, 19–33.
33 <https://doi.org/10.1016/j.jclepro.2017.12.107>
- 34 Sarkar, B., Ullah, M., Kim, N., 2017. Environmental and economic assessment of closed-loop
35 supply chain with remanufacturing and returnable transport items. *Comput. Ind. Eng.* 111,
36 148–163. <https://doi.org/10.1016/j.cie.2017.07.003>
- 37 Sarkis, J., Helms, M.M., Hervani, A.A., 2010. Reverse Logistics and Social Sustainability. *Corp. Soc.*
38 *Responsib. Environ. Manag.* 17, 337–354. <https://doi.org/10.1002/csr.220>
- 39 Saxena, L.K., Jain, P.K., Sharma, A.K., 2018. Tactical supply chain planning for tyre
40 remanufacturing considering carbon tax policy. *Int. J. Adv. Manuf. Technol.* 97, 1505–1528.
41 <https://doi.org/10.1007/s00170-018-1972-3>
- 42 Sepehri, A., Sarrafzadeh, M.H., 2018. Effect of nitrifiers community on fouling mitigation and
43 nitrification efficiency in a membrane bioreactor. *Chem. Eng. Process. - Process Intensif.*
44 128, 10–18. <https://doi.org/10.1016/j.cep.2018.04.006>

- 1 Sepehri, A., Sarrafzadeh, M.H., Avateffazeli, M., 2020. Interaction between *Chlorella vulgaris* and
2 nitrifying-enriched activated sludge in the treatment of wastewater with low C/N ratio. *J.*
3 *Clean. Prod.* 247, 119164. <https://doi.org/10.1016/j.jclepro.2019.119164>
- 4 Shahparvari, S., Chhetri, P., Chan, C., Asefi, H., 2018. Modular recycling supply chain under
5 uncertainty: a robust optimisation approach. *Int. J. Adv. Manuf. Technol.* 96, 915–934.
6 <https://doi.org/10.1007/s00170-017-1530-4>
- 7 Shekarian, E., 2020. A review of factors affecting closed-loop supply chain models. *J. Clean. Prod.*
8 253, 119823. <https://doi.org/10.1016/j.jclepro.2019.119823>
- 9 Shi, J., Zhang, G., Sha, J., Amin, S.H., 2010. Coordinating production and recycling decisions with
10 stochastic demand and return. *J. Syst. Sci. Syst. Eng.* 19, 385–407.
11 <https://doi.org/10.1007/s11518-010-5147-5>
- 12 Shokohyar, S., Mansour, S., 2013. Simulation-based optimisation of a sustainable recovery
13 network for Waste from Electrical and Electronic Equipment (WEEE). *Int. J. Comput. Integr.*
14 *Manuf.* 26, 487–503. <https://doi.org/10.1080/0951192X.2012.731613>
- 15 Simon, B., 2019. What are the most significant aspects of supporting the circular economy in the
16 plastic industry? *Resour. Conserv. Recycl.* 141, 299–300.
17 <https://doi.org/10.1016/j.resconrec.2018.10.044>
- 18 Slomski, V., Slomski, V.G., Valim, G.G., Vasconcelos, A.L.F.D.S., 2018. A disclosure of social and
19 environmental results/economy resulting from the implementation of reverse logistics and
20 final disposal of the post-consumption product: The case of computer peripherals industry.
21 *Environ. Qual. Manag.* 27, 73–87. <https://doi.org/10.1002/tqem.21530>
- 22 Son, D., Kim, S., Park, H., Jeong, B., 2018. Closed-Loop Supply Chain Planning Model of Rare
23 Metals. *Sustainability* 10, 1061. <https://doi.org/10.3390/su10041061>
- 24 Song, L., Yan, Y., Yao, F., 2020. Closed-loop supply chain models considering government subsidy
25 and corporate social responsibility investment. *Sustain.* 12.
26 <https://doi.org/10.3390/su12052045>
- 27 Tadaros, M., Migdalas, A., Samuelsson, B., Segerstedt, A., 2020. Location of facilities and
28 network design for reverse logistics of lithium-ion batteries in Sweden. *Oper. Res.*
29 <https://doi.org/10.1007/s12351-020-00586-2>
- 30 Taleizadeh, A.A., Haghghi, F., Niaki, S.T.A., 2019. Modeling and solving a sustainable closed loop
31 supply chain problem with pricing decisions and discounts on returned products. *J. Clean.*
32 *Prod.* 207, 163–181. <https://doi.org/10.1016/j.jclepro.2018.09.198>
- 33 Tan, Yue, Guo, C., 2019. Research on Two-Way Logistics Operation with Uncertain Recycling
34 Quality in Government Multi-Policy Environment. *Sustainability* 11, 882.
35 <https://doi.org/10.3390/su11030882>
- 36 Temur, G.T., Bolat, B., 2017. Evaluating efforts to build sustainable WEEE reverse logistics
37 network design: comparison of regulatory and non-regulatory approaches. *Int. J. Sustain.*
38 *Eng.* 10, 358–383. <https://doi.org/10.1080/19397038.2017.1379572>
- 39 Tong, Xin, Tao, D., Lifset, R., 2018. Varieties of business models for post-consumer recycling in
40 China. *J. Clean. Prod.* 170, 665–673. <https://doi.org/10.1016/j.jclepro.2017.09.032>
- 41 Uriarte-Miranda, M.-L., Caballero-Morales, S.-O., Martinez-Flores, J.-L., Cano-Olivos, P., Akulova,
42 A.-A., 2018. Reverse Logistic Strategy for the Management of Tire Waste in Mexico and
43 Russia: Review and Conceptual Model. *Sustainability* 10, 3398.

- 1 <https://doi.org/10.3390/su10103398>
- 2 Valizadeh, J., Sadeh, E., Amini Sabegh, Z., Hafezalkotob, A., 2020. Robust optimization model for
3 sustainable supply chain for production and distribution of polyethylene pipe. *J. Model.*
4 *Manag.* 15, 1613–1653. <https://doi.org/10.1108/JM2-06-2019-0139>
- 5 Wang, H.-F., Hsu, H.-W., 2012. A possibilistic approach to the modeling and resolution of
6 uncertain closed-loop logistics. *Fuzzy Optim. Decis. Mak.* 11, 177–208.
7 <https://doi.org/10.1007/s10700-012-9120-2>
- 8 Wang, Z., Huang, L., He, C.X., 2019. A multi-objective and multi-period optimization model for
9 urban healthcare waste's reverse logistics network design. *J. Comb. Optim.*
10 <https://doi.org/10.1007/s10878-019-00499-7>
- 11 Wen, Z., Xie, Y., Chen, M., Dinga, C.D., 2021. China's plastic import ban increases prospects of
12 environmental impact mitigation of plastic waste trade flow worldwide. *Nat. Commun.* 12,
13 1–9. <https://doi.org/10.1038/s41467-020-20741-9>
- 14 Wu, H., Xu, B., Zhang, D., 2019. Closed-loop supply chain network equilibrium model with
15 subsidy on green supply chain technology investment. *Sustain.* 11.
16 <https://doi.org/10.3390/su11164403>
- 17 Wu, J., Zhang, Q., Xu, Z., 2019. Research on China's photovoltaic modules recycling models under
18 extended producer responsibility. *Int. J. Sustain. Eng.* 12, 423–432.
19 <https://doi.org/10.1080/19397038.2019.1674940>
- 20 Xiang, Z., Xu, M., 2020. Dynamic game strategies of a two-stage remanufacturing closed-loop
21 supply chain considering Big Data marketing, technological innovation and overconfidence.
22 *Comput. Ind. Eng.* 145, 106538. <https://doi.org/10.1016/j.cie.2020.106538>
- 23 Yang, C., Chen, X., 2020. A novel approach integrating FANP and MOMILP for the collection
24 centre location problem in closed-loop supply chain. *Int. J. Sustain. Eng.* 13, 171–183.
25 <https://doi.org/10.1080/19397038.2019.1644388>
- 26 Yang, S.S., Nasr, N., Ong, S.K., Nee, A.Y.C., 2016. A holistic decision support tool for
27 remanufacturing: end-of-life (EOL) strategy planning. *Adv. Manuf.* 4, 189–201.
28 <https://doi.org/10.1007/s40436-016-0149-2>
- 29 Yawar, S.A., Seuring, S., 2017. Management of Social Issues in Supply Chains: A Literature Review
30 Exploring Social Issues, Actions and Performance Outcomes. *J. Bus. Ethics* 141, 621–643.
31 <https://doi.org/10.1007/s10551-015-2719-9>
- 32 Yu, H., Solvang, W., 2016a. A Stochastic Programming Approach with Improved Multi-Criteria
33 Scenario-Based Solution Method for Sustainable Reverse Logistics Design of Waste
34 Electrical and Electronic Equipment (WEEE). *Sustainability* 8, 1331.
35 <https://doi.org/10.3390/su8121331>
- 36 Yu, H., Solvang, W.D., 2017a. A carbon-constrained stochastic optimization model with
37 augmented multi-criteria scenario-based risk-averse solution for reverse logistics network
38 design under uncertainty. *J. Clean. Prod.* 164, 1248–1267.
39 <https://doi.org/10.1016/j.jclepro.2017.07.066>
- 40 Yu, H., Solvang, W.D., 2017b. A multi-objective location-allocation optimization for sustainable
41 management of municipal solid waste. *Environ. Syst. Decis.* 37, 289–308.
42 <https://doi.org/10.1007/s10669-017-9632-y>
- 43 Yu, H., Solvang, W.D., 2016b. A general reverse logistics network design model for product reuse

- 1 and recycling with environmental considerations. *Int. J. Adv. Manuf. Technol.* 87, 2693–
2 2711. <https://doi.org/10.1007/s00170-016-8612-6>
- 3 Yu, Z., Tianshan, M., Rehman, S.A., Sharif, A., Janjua, L., 2020. Evolutionary game of end-of-life
4 vehicle recycling groups under government regulation. *Clean Technol. Environ. Policy.*
5 <https://doi.org/10.1007/s10098-020-01898-9>
- 6 Zandieh, M., Chensebli, A., 2016. Reverse logistics network design: a water flow-like algorithm
7 approach. *OPSEARCH* 53, 667–692. <https://doi.org/10.1007/s12597-016-0250-0>
- 8 Zarbakhshnia, N., Kannan, D., Kiani Mavi, R., Soleimani, H., 2020. A novel sustainable multi-
9 objective optimization model for forward and reverse logistics system under demand
10 uncertainty. *Ann. Oper. Res.* 295, 843–880. <https://doi.org/10.1007/s10479-020-03744-z>
- 11 Zhu, J., Fan, C., Shi, H., Shi, L., 2019. Efforts for a Circular Economy in China: A Comprehensive
12 Review of Policies. *J. Ind. Ecol.* 23, 110–118. <https://doi.org/10.1111/jiec.12754>
- 13 Zoeteman, B C J, Krikke, H.R., Venselaar, J., 2010. Handling WEEE waste Hows: On the
14 effectiveness of producer responsibility in a globalizing world. *Int. J. Adv. Manuf. Technol.*
15 47, 415–436. <https://doi.org/10.1007/s00170-009-2358-3>
- 16
17
18
19
20
21
22

Appendix A. Social dimension

Table A.1. Workers-oriented social criteria

Factor	Number of articles	General description	Problem	Type of indicator	Indicator	Method	Domain/Application	References
Job creation or employment	27	Number of jobs created or number of employees by the implementation of a recycling network	Design and planning	Quantitative	Employment score of facilities	Optimization	E-waste	(Alirezai and Shokouhyar, 2017; Shokohyar and Mansour, 2013)
					Increase/decrease of qualified/non-qualified labor force of opening/close facilities	Optimization	E-waste	(Temur and Bolat, 2017)
					Number of created jobs (opportunities) opening facilities	Multi-criteria decision-making and Optimization	E-waste	(Darbari et al., 2019)
						Optimization	Automotive industry	(Fazli-Khalaf et al., 2020; Sahebjamnia et al., 2018)
							Construction and demolition wastes	(Rahimi and Ghezavati, 2018)
							General	(Dutta et al., 2020; Pourjavad and Mayorga, 2019; Rezaei and Kheirkhah, 2018; Sajedi et al., 2020; Zarbakhshnia et al., 2020)
							Glass	(Hajiaghaei-Keshteli and Fathollahi Fard, 2019)
							Household waste and municipal solid waste	(Talezadeh et al., 2019)
					Medical waste		(Govindan et al., 2016)	
					Plastic	(Mohammadi et al., 2020)		
					Number of jobs created at transport level	Optimization	E-waste	(Safdar et al., 2020)
					Number of people targeted to be employed at facility	Optimization	E-waste	(Bal and Satoglu, 2018)
			Variable job creation per product	Multi-criteria decision-making and Optimization	E-waste	(Darbari et al., 2019)		
				Optimization	Automotive industry	(Jafari and Kazemi Abharian, 2020; Kumar et al., 2020)		
					General	(Pourjavad and Mayorga, 2019; Rezaei and Kheirkhah, 2018)		
					Glass	(Hajiaghaei-Keshteli and Fathollahi Fard, 2019)		
Decision-making and performance evaluation	Qualitative	Relative weight of social performance criteria	Multi-criteria decision-making	Automotive industry	(Ahmed et al., 2016b)			
	Quantitative	Jobs creation ratio	System Dynamics	Glass	(Beiler et al., 2020)			
		Number of created jobs (opportunities) opening facilities	Other method	Biorefinery/Biomass	(Santos and Magrini, 2018)			
		Number of formal e-waste workers	Other method	E-waste	(de Souza et al., 2016)			

					Number of workers involved in each route	Other method	E-waste	(Otonni et al., 2020)		
					Unemployed people	System Dynamics	E-waste	(Besiou et al., 2012)		
					Variable job creation per product	System Dynamics	Metals	(Chaudhary and Vrat, 2020)		
Health of workers	18	Health of workers during operations in the recycling network	3PRL provider selection	Qualitative	Relative weight of Health and safety criteria	Multi-criteria decision-making and Optimization	E-waste	(Govindan et al., 2019)		
						Multi-criteria decision-making	Plastic	(Mavi et al., 2017)		
			Design and planning	Quantitative	Lost days	Optimization	Average of annual vehicle accidents	Optimization	Household waste and municipal solid waste	(Kafa et al., 2018)
							Damage to workers score of facilities	Optimization	Plastic	(Mohammadi et al., 2020)
							Optimization	Construction and demolition wastes	(Aalirezaei and Shokouhyar, 2017; Shokohyar and Mansour, 2013)	
								General	(Rahimi and Ghezavati, 2018)	
								Glass	(Dutta et al., 2020; Rezaei and Kheirkhah, 2018; Sajedi et al., 2020; Zarbakhshnia et al., 2020)	
								Household waste and Municipal solid waste	(Hajiaghahi-Keshteli and Fathollahi Fard, 2019)	
								Medical waste	(Taleizadeh et al., 2019)	
								Plastic	(Govindan et al., 2016)	
Decision-making and performance evaluation	Qualitative	Relative weight of Health and safety criteria	Multi-criteria decision-making	Automotive industry	(Ahmed et al., 2016a, 2016b)					
		Relative weight of Health risks and working conditions criteria	Other method	E-waste	(de Souza et al., 2016)					
			Quantitative	Number of employees who work under safe conditions	Other method	Plastic	(Motevali Haghighi et al., 2016)			
Safety of worker	11	Safety of workers during operations in the recycling network	3PRL provider selection	Qualitative	Relative weight of Health and safety criteria	Multi-criteria decision-making and Optimization	E-waste	(Govindan et al., 2019)		
						Multi-criteria decision-making	Plastic	(Mavi et al., 2017)		
			Design and planning	No indicator	Without indicator	Multi-criteria decision-making and Optimization	Household waste and Municipal solid waste	(Kafa et al., 2018)		
					Quantitative	Average accident at work per worker	Optimization	E-waste	(Darbari et al., 2019)	
				Optimization	Lost days	Optimization	General	(Zarbakhshnia et al., 2020)		
					Automotive industry	(Sahebjamnia et al., 2018)				
			Decision-making and performance evaluation	Qualitative	Relative weight of Health and safety criteria	Multi-criteria decision-making	Household waste and Municipal solid waste	(Taleizadeh et al., 2019)		
					Relative weight of Health risks and working conditions criteria	Other method	Automotive industry	(Ahmed et al., 2016a, 2016b)		
				Quantitative	Number of employees who work under safe conditions	Other method	E-waste	(de Souza et al., 2016)		
					Plastic	(Motevali Haghighi et al., 2016)				
Employment practices	6	Effects on workers in terms of disciplinary and security practices, employee contracts,	3PRL provider selection	Qualitative	Relative weight Equity labor sources criteria	Multi-criteria decision-making and Optimization	E-waste	(Govindan et al., 2019)		

		equity labor sources, job creation, job satisfaction, wages, employee training, etc.			Relative weight of Employment practices criteria	Multi-criteria decision-making	Household waste and Municipal solid waste	(Kafa et al., 2018)
					Relative weight Staff training criteria	Multi-criteria decision-making and Optimization	E-waste	(Govindan et al., 2019)
			Design and planning	Qualitative	Index and relative weight of employment practices criteria	Multi-criteria decision-making and Optimization	General	(A. Liu et al., 2020)
			Other problem	No indicator	Without indicator	Other method	General	(Sarkis et al., 2010)
			Decision-making and performance evaluation	Qualitative	Relative weight of Employee training criteria	Multi-criteria decision-making	Automotive industry	(Ahmed et al., 2016a)
		Relative weight of Employment opportunities & job satisfaction criteria			Multi-criteria decision-making	Automotive industry	(Ahmed et al., 2016a)	
		Relative weight of Employment practices criteria			Multi-criteria decision-making	E-waste	(Agrawal et al., 2016a)	
Employment stability	5	Variations in the number of employees of the recycling network, mainly due to the uncertainty in which these networks are involved with respect to the collection of waste or discarded products.	3PRL provider selection	Qualitative	Relative weight Employee turnover rate criteria	Multi-criteria decision-making	General	(Rani et al., 2020)
					Relative weight of Employment stability criteria	Multi-criteria decision-making and Optimization	Plastic	(Mavi et al., 2017)
			Other problem	No indicator	Without indicator	Other method	General	(Sarkis et al., 2010)
			Decision-making and performance evaluation	Qualitative	Likert scale of Employment stability criteria	Other method	E-waste	(Agrawal and Singh, 2019)
Employee benefits	2	Wages level received by employees	Other problem	Qualitative	Likert scale of Employee Benefit criteria	Other method	E-waste	(Agrawal and Singh, 2019)
			Decision-making and performance evaluation	Qualitative	Relative weight of Employee Benefit criteria	Multi-criteria decision-making	E-waste	(Agrawal et al., 2016b)
Job satisfaction	2	Labor wages, benefits, and security	Design and planning	Quantitative	Amount of job satisfaction created by employee support	Optimization	Household waste and Municipal solid waste	(Taleizadeh et al., 2019)
			Decision-making and performance evaluation	Qualitative	Relative weight of Employment opportunities & job satisfaction criteria	Multi-criteria decision-making	Automotive industry	(Ahmed et al., 2016a)
Training and education of employees	2	Courses and training classes to use a specific technology	Design and planning	Quantitative	Average courses and training classes held in facilities	Optimization	General	(Zarbakhshnia et al., 2020)
					Training hours for skilled staff	Multi-criteria decision-making and Optimization	E-waste	(Darbari et al., 2019)
Access to education	1	Number of e-waste workers and relatives with high level of education	Decision-making and performance evaluation	Quantitative	Number of e-waste workers and relatives with high level of education	Other method	E-waste	(de Souza et al., 2016)
Access to healthcare	1	Number of e-waste workers and their relatives provided with health insurance	Decision-making and performance evaluation	Quantitative	Number of e-waste workers and their relatives provided with health insurance	Other method	E-waste	(de Souza et al., 2016)
Establishment of new employment opportunities	1	Employment opportunities for workers and drivers	Design and planning	Quantitative	Number of drivers hired for transportation	Multi-criteria decision-making and Optimization	E-waste	(Darbari et al., 2019)
Flexible working arrangements	1	Flexible working arrangements of the third-party reverse logistic provider	3PRL provider selection	Qualitative	Relative weight of flexible working arrangements criteria	Multi-criteria decision-making and Optimization	Plastic	(Mavi et al., 2017)
Human capital	1	Generation of low-skilled jobs	Other problem	No indicator	Without indicator	Other method	General	(Sarkis et al., 2010)
Labor equity and supplier stock management	1	Labor equity and supplier stock management of the third-party reverse logistic provider	3PRL provider selection	Qualitative	Relative weight of labor equity and supplier stock management criteria	Multi-criteria decision-making and Optimization	Plastic	(Mavi et al., 2017)
Total employee fund generated	1	Total employee fund generated in the facilities	Decision-making and performance evaluation	Quantitative	Fund allocation per employee	Multi-criteria decision-making and Optimization	E-waste	(Agarwal et al., 2016)

Worker's status	1	Change of status of waste pickers to formal workers	Decision-making and performance evaluation	No indicator	Without indicator	Other method	Household waste and Municipal solid waste	(Pongeluppe Wadhy Rebehy et al., 2017)
Working hours	1	Working hours during operations	Design and planning	Quantitative	Total hour of work per worker	Optimization	E-waste	(Ramos et al., 2014)

Table A.2. Customer-oriented social criteria

Factor	Number of articles	General description	Problem	Type of indicator	Indicator	Method	Domain/Application	References
Sensitivity of customers	8	Customers preference for a product considering its characteristics	Price and coordination	No indicator	Without indicator	Game theory	General	(Kim et al., 2020; Ma and Huang, 2019; Mondal et al., 2020; Mondal and Giri, 2020; Rezaei and Maihami, 2020; Song et al., 2020; Xiang and Xu, 2020)
							E-waste	(Ghalekhondabi and Ardjmand, 2020)
Health of customer	5	Health of customers regarding to the use of products obtained from the recycling of waste	Design and planning	Quantitative	Fraction of potentially harmful products which harm the consumer	Optimization	Plastic	(Mohammadi et al., 2020)
					Fraction of potentially perilous products	Optimization	Household waste and Municipal solid waste	(Taleizadeh et al., 2019)
			Other problem	Qualitative	Likert scale of Health and safety criteria	Other method	E-waste	(Agrawal and Singh, 2019)
			Decision-making and performance evaluation	Qualitative	Relative weight of Health and safety criteria	Multi-criteria decision-making	E-waste	(Agrawal et al., 2016b, 2016a)
Incentives to customers	5	Monetary incentives to consumers to motivate the return of discarded products for proper treatment	Design and planning	Quantitative	Offered acquisition prices to customer	Optimization	General	(Fattahi and Govindan, 2017)
			Decision-making and performance evaluation	Quantitative	Percentage of product	System Dynamics	Metals	(Chaudhary and Vrat, 2020)
			Price and coordination	Quantitative	Offered acquisition prices to customer	Game theory	General	(Ma et al., 2019)
						Other method	Medical waste	(W. Liu et al., 2020)
Safety of customer	5	Safety due to the use of products obtained from the recycling of waste	Design and planning	Quantitative	Fraction of potentially harmful products which harm the consumer	Optimization	Plastic	(Mohammadi et al., 2020)
					Fraction of potentially perilous products	Optimization	Household waste and Municipal solid waste	(Taleizadeh et al., 2019)
			Other problem	Qualitative	Likert scale of Health and safety criteria	Other method	E-waste	(Agrawal and Singh, 2019)
			Decision-making and performance evaluation	Qualitative	Relative weight of Health and safety criteria	Multi-criteria decision-making	E-waste	(Agrawal et al., 2016b, 2016a)
Customer preference	4	Customer preference for recycled products or service	Design and planning	Indirect indicator	Without indicator	Optimization	Household waste and Municipal solid waste	(Niranjan et al., 2019)
			Price and coordination	Quantitative	Degree of preference (Number between 0 and 1)	Game theory	General	(Duan et al., 2019; X. Han et al., 2020; H. Wu et al., 2019)
Consumer behavior for disposal and recycling	3	Behavior of consumers in terms of how they dispose their product	Other problem	No indicator	Without indicator	Other method	Automotive industry	(Uriarte-Miranda et al., 2018)
				Qualitative	Likert scale of Consumer behavior criteria	Other method	E-waste	(Agrawal and Singh, 2019)
			Decision-making and performance evaluation	No indicator	Without indicator	Other method	Plastic	(Chavez and Sharma, 2018)
Accessibility and responsiveness to customers	1	Distances from the facilities/distributers to the customers for better accessibility and responsiveness.	Design and planning	Quantitative	Distances from the facilities/distributers to the customers	Optimization	General	(Masoudipour et al., 2020)

Firms' service quality	1	Improvement of firms' service quality adopting RL	Other problem	Qualitative	Likert scale of Improve our firm's service quality criteria	Other method	General	(Lai et al., 2013)
Participation rate	1	Participation of sectors in a recycling network	Design and planning	Quantitative	Function of incentive rate	Optimization	Biorefinery/Biomass	(Ng and Wang, 2017)
Product harming the customers	1	Damages caused to consumers due to certain products, which are made from recycled material	Design and planning	Quantitative	Percentage of the products harming the customers	Optimization	General	(Rezaei and Kheirkhah, 2018)
Public engagement	1	Awareness and participation of consumers in relation to recycling	Other problem	No indicator	Without indicator	Other method	Solar energy industry	(Lapko et al., 2019)
Service level	1	Quantity of recycled material sent to the consumer	Design and planning	Quantitative	Amount of product transported to customer	Optimization and LCA	Plastic	(Feitó-Cespón et al., 2017)
Voice of customer	1	Voice of customer about the third-party reverse logistic provider	3PRL provider selection	Qualitative	Relative weight of Voice of customer criteria	Multi-criteria decision-making and Optimization	Plastic	(Mavi et al., 2017)

Table A.3. Community-oriented social criteria

Factor	Number of articles	General description	Problem	Type of indicator	Indicator	Method	Domain/Application	References
Donation to community	5	Monetary donation for social work	Other problem	Qualitative	Likert scale of Donation to community criteria	Other method	E-waste	(Agrawal and Singh, 2019)
			Decision-making and performance evaluation	Qualitative	Relative weight of Donation to community criteria	Multi-criteria decision-making	E-waste	(Agrawal et al., 2016b)
				Quantitative	NGO fund allocation	Multi-criteria decision-making and Optimization	E-waste	(Agarwal et al., 2016)
			Price and coordination	Quantitative	Amount of direct donation Monetary amount for per unit sells	Game theory	General	(Song et al., 2020) (Modak et al., 2019a)
Corporate social responsibility	3	Company's commitment to social impacts	Decision-making and performance evaluation	Qualitative	Relative weight of Corporate social responsibility criteria	Multi-criteria decision-making	E-waste	(Jindal and Sangwan, 2016)
			Price and coordination	Qualitative	Degree of CSR (Corporate social responsibility)	Game theory	Automotive industry	(Johari and Hosseini-Motlagh, 2019)
				Quantitative	Fraction of CSR	Game theory	Plastic, glass, and metal	(Modak et al., 2019b)
Inclusion of waste pickers	3	Inclusion of non-formal collectors in a recycling network	Design and planning	Indirect indicator	Without indicator	Optimization	Household waste and Municipal solid waste	(Ferri et al., 2015)
			Decision-making and performance evaluation	No indicator	Without indicator	Other method	Household waste and Municipal solid waste	(Pongeluppe Wadhy Rebehy et al., 2017)
				Quantitative	Formalization rate	System Dynamics	E-waste	(Ghisolfi et al., 2017)
Local development	3	Development of the community by the installation of network facilities	Design and planning	Qualitative	Local development score of facilities	Optimization	E-waste	(Aalirezai and Shokouhyar, 2017; Shokouhyar and Mansour, 2013)
				Quantitative	Importance rate of location in the region	Optimization	Plastic	(Mohammadi et al., 2020)
Community complaints	2	Number of complaints received, and the number of complaints resolved to the satisfaction of the complainants	Other problem	Qualitative	Likert scale of Community complaints criteria	Other method	E-waste	(Agrawal and Singh, 2019)
			Decision-making and performance evaluation	Qualitative	Relative weight of Community complaints criteria	Multi-criteria decision-making	E-waste	(Agrawal et al., 2016b)

Local community influence	2	Promotion of activities for the betterment of the society	3PRL provider selection	Qualitative	Relative weight Local community influence criteria	Multi-criteria decision-making and Optimization	E-waste	(Govindan et al., 2019)
						Multi-criteria decision-making	Household waste and Municipal solid waste	(Kafa et al., 2018)
Risk of transport and installation of facilities	2	Risk due to the treatment and transport of waste	Design and planning	Quantitative	Transport risk between facilities and operational risk at facilities	Optimization	Medical waste	(Homayouni and Pishvae, 2020)
			Vehicle routing problems	Quantitative	Number of people around the route and facility	Optimization	Hazardous waste	(Farrokhi-Asl et al., 2020)
Social cost of carbon	2	Social benefits/impacts for the implementation of the network (in terms of carbon emissions)	Design and planning	Quantitative	Cost of emitting one extra ton of carbon	Optimization	Automotive industry	(Saxena et al., 2018)
					Estimate of the damages associated with a small increase in carbon dioxide emissions (ton/year)	Optimization	Household waste and Municipal solid waste	(Edalatpour et al., 2018)
Community Influence	1	Impacts on the community (Health, education, service infrastructure, etc.)	Decision-making and performance evaluation	Qualitative	Relative weight of Communities Influence criteria	Multi-criteria decision-making	E-waste	(Agrawal et al., 2016a)
Community capital	1	Impacts on the community in terms of food and health security, economic security, etc.	Other problem	No indicator	Without indicator	Other method	General	(Sarkis et al., 2010)
Community service	1	Hours dedicated for community service per facility	Design and planning	Quantitative	Hours dedicated for community service	Multi-criteria decision-making and Optimization	E-waste	(Darbari et al., 2019)
Demanding customer/Stakeholder pressure	1	Demanding customer/stakeholder pressure to implement RL	Other problem	No indicator	Without indicator	Other method	General	(Abdullah and Yaakub, 2014)
Disturbance in public places	1	Disturbance in public areas due to recovery option adoption	Decision-making and performance evaluation	Qualitative	Fuzzy weights of Disturbance in public places criteria	Multi-criteria decision-making	Household waste and Municipal solid waste	(Awan and Ali, 2019)
Ecological risk and safety risk	1	Ecological risk and safety risk of a waste management option	Decision-making and performance evaluation	Qualitative	Relative weight of Ecological risk and safety risk criteria	Multi-criteria decision-making	Automotive industry	(Ahmed et al., 2016a)
Economic welfare and growth	1	Economic impact of the system including the impact on local education concepts, employment concepts, and the impact on the lives of surrounding residents	Design and planning	Qualitative	Index and relative weight of Economic welfare and growth criteria	Multi-criteria decision-making and Optimization	General	(A. Liu et al., 2020)
Educational campaigns	1	Number of annual campaigns to increase participation of local residents with the disposal of their e-waste	Decision-making and performance evaluation	Quantitative	Number of annual campaigns to increase participation of local residents with the disposal of their e-waste	Other method	E-waste	(Ottoni et al., 2020)
Effect of production on self-sufficiency	1	Impact of the amount of production on the self-sufficiency of the country's economy due to the implementation of a CLSC network	Design and planning	Quantitative	Coefficient of production effect on self-sufficiency	Optimization	Household waste and Municipal solid waste	(Taleizadeh et al., 2019)
Impact on nearby residents	1	Impact of facilities on the community	Design and planning	Qualitative	Penalty coefficient	Multi-criteria decision-making and Optimization	General	(Yang and Chen, 2020)
Impact on traffic jams	1	Impact of facilities on traffic	Design and planning	Qualitative	Penalty coefficient	Multi-criteria decision-making and Optimization	General	(Yang and Chen, 2020)
Immigration prevention	1	Immigration prevention via opening facilities in divergent locations	Design and planning	Quantitative	Immigration rate	Optimization	Automotive industry	(Fazli-Khalaf et al., 2020)
Neighborhood server by each collection	1	Number of neighborhoods served by each collection route	Decision-making and performance evaluation	Quantitative	Number of neighborhoods served by each collection	Other method	E-waste	(Ottoni et al., 2020)

Products donated to NGOs	1	Number of products donated to NGOs	Design and planning	Quantitative	Number of products donated to NGOs	Multi-criteria decision-making and Optimization	E-waste	(Darbari et al., 2019)
Reduction of vehicle accident rate	1	Rate of accident during distribution products and gathering the expired products	Vehicle routing problems	Quantitative	Vehicle accident rate proposed as a function	Optimization	Food industry	(Rahimi et al., 2016)
Respect for the local rules and policies	1	Respect for the local rules and policies of the third-party reverse logistic provider	3PRL provider selection	Qualitative	Relative weight of Respect for the local rules and policies criteria	Multi-criteria decision-making and Optimization	Plastic	(Mavi et al., 2017)
Social cost	1	Social cost of illegal recycling, such as pollution and traffic accident	Price and coordination	Quantitative	Average negative social cost	Game theory	Automotive industry	(Yu et al., 2020)
Social cost based on disposal	1	Economical representation of the social impact due to the use of landfill	Decision-making and performance evaluation	Quantitative	Cost per unit quantity disposed to environment	Optimization	Medical waste	(Nidhi and Pillai, 2019)
Social impact	1	Social impact by opening facilities to socially underdeveloped areas in terms of GDP (Gross domestic product) level	Design and planning	Quantitative	Social utility factor	Optimization	E-waste	(Budak, 2020)
Social inclusion	1	Social integration of workers that come from groups such as: women, informality, prison, slums, alcoholism, drug addiction, crime, physical and mental disabilities	Decision-making and performance evaluation	Quantitative	Number of new e-waste workers that come from specific groups	Other method	E-waste	(de Souza et al., 2016)
Social support	1	New business opportunity (workforce, education, and business friendliness) due to the implementation of the network	Design and planning	Quantitative	Level of social support of facility	Optimization	Metals	(Jin et al., 2018)
Vehicle noise emissions	1	Total vehicle noise emissions per route	Vehicle routing problems	Quantitative	Amount of vehicle noise emission function	Optimization	Food industry	(Rahimi et al., 2016)
Visual pollution	1	Visual pollution factor of transport and facility location	Design and planning	Quantitative	Visual pollution factor of transport and facility location	Optimization	Hazardous waste	(Saeidi et al., 2020)
Waste recycled	1	Social benefit in a reverse supply chain derived from the maximization of the amount of waste recycled	Price and coordination	Quantitative	Quantity of WEEE recycled	Game theory	E-waste	(Li et al., 2017)

Table A.4. Company-oriented social criteria

Factor	Number of articles	General description	Problem	Type of indicator	Indicator	Method	Domain/Application	References
Customer satisfaction	5	Conformity to customer expectations of the product or service provided by the company	3PRL provider selection	Qualitative	Relative weight of Brand image & customer satisfaction criteria	Multi-criteria decision-making	General	(Rani et al., 2020)
			Design and planning	Quantitative	Percentage of demand satisfied	Optimization	General	(Garai and Roy, 2020)
			Other problem	No indicator	Without indicator	Other method	Paper	(Mangla et al., 2012)
			Decision-making and performance evaluation	Qualitative	Relative weight of Brand image & customer satisfaction criteria	Multi-criteria decision-making	Automotive industry	(Ahmed et al., 2016a)
				Quantitative	Percentage of customers who are satisfied with the final products	Other method	Plastic	(Motevali Haghghi et al., 2016)
Green image	5	Image of the company in the eyes of consumers or society, when the company carries out recycling activities	3PRL provider selection	Qualitative	Relative weight of Green Image criteria	Multi-criteria decision-making	Household waste and Municipal solid waste	(Kafa et al., 2018)
			Design and planning	No indicator	Without indicator	Multi-criteria decision-making and Optimization	Bicycles	(A. Liu et al., 2019)

			Decision-making and performance evaluation	Quantitative	Increase in customer goodwill due to greening activities	Other method	General	(Mutingi et al., 2014)
			Decision-making and performance evaluation	Quantitative	Percentage with respect to reuse index and market behavior	System Dynamics	E-waste	(Georgiadis and Besiou, 2010)
			Decision-making and performance evaluation	Quantitative	Relation between "Market behavior" and "reuse index"	System Dynamics	E-waste	(Georgiadis and Besiou, 2008)
Corporate image	4	Reputation of the company in the eyes of the public after the implementation of the network	Other problem	Qualitative	Likert Scale of Corporate Image criteria	Other method	General	(Lai et al., 2013)
			Decision-making and performance evaluation	Qualitative	Relative weight of Brand image & customer satisfaction criteria	Multi-criteria decision-making	Automotive industry	(Ahmed et al., 2016a)
					Relative weight of Corporate image criteria	Multi-criteria decision-making	E-waste	(Agrawal et al., 2016a)
			Decision-making and performance evaluation	Qualitative	Relative weight of Social performance criteria	Multi-criteria decision-making	Automotive industry	(Ahmed et al., 2016b)
Income generation	3	Generation of monetary incomes by new actors integrated in the recycling network (collector or contracted company)	Decision-making and performance evaluation	Quantitative	Monetary incomes	Other method	E-waste	(de Souza et al., 2016; Slomski et al., 2018)
					Monetary incomes	Other method	Household waste and Municipal solid waste	(de Oliveira et al., 2020)
Stakeholder participation	2	Stakeholders' engagement with the network	Other problem	Qualitative	Likert scale of Stakeholders participation criteria	Other method	E-waste	(Agrawal and Singh, 2019)
			Decision-making and performance evaluation	Qualitative	Relative weight of Stakeholders participation criteria	Multi-criteria decision-making	E-waste	(Agrawal et al., 2016b)

Table A.5. Other social criteria

Factor	Number of articles	General description	Problem	Type of indicator	Indicator	Method	Domain/Application	References
Road safety	1	Impact on road safety due to recovery option adoption	Decision-making and performance evaluation	Qualitative	Fuzzy weights of Road safety criteria	Multi-criteria decision-making	Household waste and Municipal solid waste	(Awan and Ali, 2019)
Health of road	1	Impact on health of road due to recovery option adoption	Decision-making and performance evaluation	Qualitative	Fuzzy weights of Health of road criteria	Multi-criteria decision-making	Household waste and Municipal solid waste	(Awan and Ali, 2019)
Distribution Services	1	Impact on distribution services due to recovery option adoption	Decision-making and performance evaluation	Qualitative	Fuzzy weights of Distribution Services criteria	Multi-criteria decision-making	Household waste and Municipal solid waste	(Awan and Ali, 2019)
Access to markets	1	Impact on access to markets due to recovery option adoption	Decision-making and performance evaluation	Qualitative	Fuzzy weights of Access to markets criteria	Multi-criteria decision-making	Household waste and Municipal solid waste	(Awan and Ali, 2019)
Amount of expired products	1	Minimization of the amount of expired products which should be recycled	Vehicle routing problems	Quantitative	Age and price policy in the model	Optimization	Food industry	(Rahimi et al., 2016)
Market demand	1	Demand of the recycled product or the other recovery options	Decision-making and performance evaluation	Qualitative	Relative weight of Market demand criteria	Multi-criteria decision-making	E-waste	(Jindal and Sangwan, 2016)
Productive capital	1	Service infrastructure available to collect and recycle consumer-generated waste.	Other problem	No indicator	Without indicator	Other method	General	(Sarkis et al., 2010)
Contractual stakeholders' influence	1	Flexibility of partnership standards, enterprise alliances, and stakeholders' engagement	3PRL provider selection	Qualitative	Relative weight of Contractual stakeholder's influence criteria	Multi-criteria decision-making	Household waste and Municipal solid waste	(Kafa et al., 2018)
Reputation	1	Reputation of the potential partner	3PRL provider selection	Qualitative	Relative weight of Reputation criteria	Multi-criteria decision-making	Household waste and Municipal solid waste	(Kafa et al., 2018)
Percent recycling	1	Increase in recycled material compared to material disposal	Decision-making and performance evaluation	Quantitative	Increase in recycled material compared to material disposal	Other method	General	(Mutingi et al., 2014)
Product green efficiency	1	Increase of green design features in a product, number of parts, etc.	Decision-making and performance evaluation	Quantitative	Increase of green design features in a product, number of parts, etc.	Other method	General	(Mutingi et al., 2014)

Effective communication (EC)	1	Effective communication of the third-party reverse logistic provider	3PRL provider selection	Qualitative	Relative weight of Effective communication criteria	Multi-criteria decision-making	Automotive industry	(Govindan et al., 2013)
Service improvement	1	Service improvement of the third-party reverse logistic provider	3PRL provider selection	Qualitative	Relative weight of Service improvement criteria	Multi-criteria decision-making	Automotive industry	(Govindan et al., 2013)
Overall working relations	1	Overall working relations of the third-party reverse logistic provider	3PRL provider selection	Qualitative	Relative weight of Overall working relations criteria	Multi-criteria decision-making	Automotive industry	(Govindan et al., 2013)
Public acceptability	1	Public acceptability adopting waste management option	Decision-making and performance evaluation	Qualitative	Relative weight social performance criteria	Multi-criteria decision-making	Automotive industry	(Ahmed et al., 2016b)
Market edge	1	Market edge adopting product recovery system	Other problem	No indicator	Without indicator	Other method	Paper	(Mangla et al., 2012)
Customer redundancy	1	Customer redundancy adopting product recovery system	Other problem	No indicator	Without indicator	Other method	Paper	(Mangla et al., 2012)
Extended producer responsibilities	1	Series of measures taken by producers to promote product collection	Design and planning	Qualitative	Index and relative weight of extended producer responsibilities criteria	Multi-criteria decision-making and Optimization	General	(A. Liu et al., 2020)
Responsibilities towards stakeholders	1	Tasks performed by internal members of the system to maintain system operation and stability	Design and planning	Qualitative	Index and relative weight of Responsibilities towards stakeholders' criteria	Multi-criteria decision-making and Optimization	General	(A. Liu et al., 2020)
Conditions of public facilities	1	Impact of the public facilities conditions on the facility location	Design and planning	Qualitative	Penalty coefficient	Multi-criteria decision-making and Optimization	General	(Yang and Chen, 2020)
Public safety	1	Impact of safety on the facility location	Design and planning	Qualitative	Penalty coefficient	Multi-criteria decision-making and Optimization	General	(Yang and Chen, 2020)
Talent reserve	1	Impact of talent reserve on the facility location	Design and planning	Qualitative	Penalty coefficient	Multi-criteria decision-making and Optimization	General	(Yang and Chen, 2020)
Use of renewable energy	1	Use of renewable energy via opening facilities in divergent locations	Design and planning	Quantitative	Rate of available renewable energies	Optimization	Automotive industry	(Fazli-Khalaf et al., 2020)

Appendix B. Political dimension

Table B.1. Incentive/punishment-oriented policies

Factor	Number of articles	General description	Problem	Type of indicator	Indicator	Method	Domain/Application	References	
Subsidy	24	Monetary incomes to promote recovery/recycling	Design and planning	Quantitative	Percentage of subsidy earned from the government for training employees	Multi-criteria decision-making and Optimization	E-waste	(Darbari et al., 2019)	
					The subsidy per unit collected/recovered/produced	Optimization	E-waste General	(Capraz et al., 2015) (Garai and Roy, 2020; Yu and Solvang, 2017a)	
			Other problem	Quantitative	The subsidy per unit collected/recovered/produced	Other method	E-waste	(Nambu and Murakami-Suzuki, 2016)	
			Decision-making and performance evaluation	No indicator	Subsidy and incentive to reusable material procurement	System Dynamics	Glass	(Beiler et al., 2020)	
					Quantitative	The subsidy per unit collected/recovered/produced	Multi-criteria decision-making and Optimization	E-waste	(Agarwal et al., 2016)
				Other method			E-waste	(Xin Tong et al., 2018)	
			Price and coordination	Quantitative	The subsidy per unit collected/recovered/produced	Degree of subsidy for remanufacturing technology	Game theory	General	(Yue Tan and Guo, 2019; H. Wu et al., 2019)
						Subsidy to investment	Game theory	General	(Kim et al., 2020; Saha et al., 2019)
						Subsidy to the consumer (price)	Game theory	General	(Saha et al., 2019)
						Game theory	Automotive industry	(Yu et al., 2020)	
							Food industry	(T. Liu et al., 2019)	
							General	(Duan et al., 2019; X. Han et al., 2020; Huang et al., 2020; Mondal and Giri, 2020; Song et al., 2020)	
							Medical waste	(W. Liu et al., 2020)	
			Other method	Solar energy industry	(H. Wu et al., 2019)				
E-waste	(Liu et al., 2016)								
Taxes	10	Additional costs imposed by the government to control carbon emissions or promote recycling	Design and planning	Quantitative	Carbon tax (tax per carbon emission)	Optimization	Automotive industry	(Kumar et al., 2020; Saxena et al., 2018)	
					Landfill tax	Optimization	Metals	(Gao and Ryan, 2014)	
					Per unit tax credit from donation of returns	Multi-criteria decision-making and Optimization	E-waste	(Darbari et al., 2019)	
			Other problem	Quantitative	Tax to new product (recycling fee per product)	Other method	E-waste	(Nambu and Murakami-Suzuki, 2016)	

			Decision-making and performance evaluation	Quantitative	Tax for scavengers' uncontrollable disposal	System Dynamics	E-waste	(Besiou et al., 2012)
			Decision-making and performance evaluation	Quantitative	Tax if the firm does not comply with the legislative recycling percentage	System Dynamics	E-waste	(Besiou et al., 2012)
			Decision-making and performance evaluation	Quantitative	Tax in case the firm does not comply with the legislative collection percentage	System Dynamics	E-waste	(Besiou et al., 2012)
			Price and coordination	Quantitative	Carbon tax (tax per carbon emission)	Other method	General	(Allevi et al., 2018)
			Price and coordination	Quantitative	Recovery taxes (monetary unit/per pound)	Game theory	E-waste	(Ghalekhondabi and Ardjmand, 2020)
			Price and coordination	Quantitative	Tax deduction per donated product	Game theory	Medical waste	(A. Liu et al., 2020)
			Design and planning	Quantitative	Penalty cost by use of paper or plastic in packaging	Optimization	General	(Porkar et al., 2018)
			Decision-making and performance evaluation	Quantitative	Cost per item due to regulatory non-compliance	System Dynamics	E-waste	(Georgiadis and Besiou, 2010)
			Decision-making and performance evaluation	Quantitative	Penalty for non-recyclable product disposed as landfill	Optimization	Medical waste	(Nidhi and Pillai, 2019)
			Decision-making and performance evaluation	Quantitative	Penalty for illegally dumped waste	System Dynamics and Grey Model Theory	Construction and demolition wastes	(Jia et al., 2018)
			Price and coordination	Quantitative	Emission penalties (unit emission social responsibility cost for the government)	Game theory	E-waste	(Ghalekhondabi and Ardjmand, 2020)
			Price and coordination	Quantitative	Penalty (reward) for not adopting a legal recycling strategy	Game theory	Automotive industry	(Yu et al., 2020)
			Price and coordination	Quantitative	Rewards and punishment to collection rate limit	Game theory	General	(Kim et al., 2020)
			Price and coordination	Quantitative	Rewards and punishment to recovery rate limit	Game theory	General	(Yue Tan and Guo, 2019)
Reward and punishment policy	2	Imposition of minimum recovery/collection rates for the application of reward and punishment with respect to it	Price and coordination	Quantitative	Rewards and punishment to collection rate limit	Game theory	General	(Kim et al., 2020)
Credit lines to investment	1	Credit lines given by government to promote recycling	Decision-making and performance evaluation	Quantitative	Formalization ratio due to environmental policies	System Dynamics	E-waste	(Ghisolfi et al., 2017)
Financial incentives	1	Financial incentives to projects related to the responsibility for the life cycle of products,	Decision-making and performance evaluation	Quantitative	Formalization ratio due to environmental policies	System Dynamics	E-waste	(Ghisolfi et al., 2017)
Responsibilities and penalties (sanctions) of citizens and companies	1	Responsibilities and penalties (sanctions) imposed for citizens and companies	Other problem	No indicator	Without indicator	Other method	General	(Murakami et al., 2015)
Waste disposal charging fee	1	Cost imposed due to the use of landfills for waste management	Decision-making and performance evaluation	Quantitative	Waste disposal charging fee per product	System Dynamics and Grey Model Theory	Construction and demolition wastes	(Jia et al., 2018)

Table B.2. Emission policies

Factor	Number of articles	General description	Problem	Type of indicator	Indicator	Method	Domain/Application	References
Emissions cap	8	Limit on permitted emissions	Design and planning	Quantitative	Maximum amount of a particular pollutant which can be produced	Optimization	E-waste	(Safdar et al., 2020)
							General	(Aljuneidi and Bulgak, 2020; Gao and Ryan, 2014; Yu and Solvang, 2017a)
							Plastic	(Bing et al., 2015)
			Other problem	Quantitative	Maximum amount of a particular pollutant which can be produced	Optimization	General	(Bai et al., 2020)
			Decision-making and performance evaluation	Quantitative	Maximum amount of a particular pollutant which can be produced	Optimization	Medical waste	(Nidhi and Pillai, 2019)
Price and coordination	Quantitative	Maximum amount of a particular pollutant which can be produced	Game theory	General	(Mondal and Giri, 2020)			
Emissions quota	5	Amount of carbon emissions traded by a company	Design and planning	Quantitative	Quantity of emissions	Optimization	General	(Gao and Ryan, 2014; Yu and Solvang, 2017a)
							Plastic	(Bing et al., 2015)
			Decision-making and performance evaluation	Quantitative	Quantity of emissions	Optimization	Medical waste	(Nidhi and Pillai, 2019)
Price and coordination	Quantitative	Quantity of emissions	Other method	General	(Allewi et al., 2018)			
Emission standards	1	Emission standards imposed	Other problem	No indicator	Without indicator	Other method	General	(Murakami et al., 2015)

Table B.3. Legal criteria

Factor	Number of articles	General description	Problem	Type of indicator	Indicator	Method	Domain/Application	References
Legislation	15	Legislative environment with respect to the operation and treatment of waste	3PRL provider selection	Qualitative	Relative weight of respect for the local rules and policies criteria	Multi-criteria decision-making and Optimization	Plastic	(Mavi et al., 2017)
			Design and planning	Quantitative	Legal collection goal (percentage at which product should be collected)	Optimization	E-waste	(Bal and Satoglu, 2018)
			Other problem	No indicator	Without indicator	Other method	Automotive industry	(Uriarte-Miranda et al., 2018)
							E-waste	(Zoeteman et al., 2010)
							Paper	(Mangla et al., 2012)
						Solar energy industry	(Lapko et al., 2019)	
				Qualitative	Likert scale of Government rules and regulation criteria	Other method	E-waste	(Agrawal and Singh, 2019)
Decision-making and performance evaluation	No indicator	Without indicator	Other method	Household waste and Municipal solid waste	(Pongeluppe Wadhy Rebehy et al., 2017)			
				Plastic	(Chavez and Sharma, 2018)			
	Qualitative	Relative weight of Regulatory satisfaction criteria	Multi-criteria decision-making	E-waste	(Agrawal et al., 2016a)			

				Quantitative	Minimum legislative collection percentage (fraction of collected products vs used products)	System Dynamics	E-waste	(Besiou et al., 2012; Georgiadis and Besiou, 2008, 2010)
				Quantitative	Minimum legislative limit of recyclability (recyclable percentage of the product)	System Dynamics	E-waste	(Georgiadis and Besiou, 2008, 2010)
				Quantitative	Minimum legislative limit of recycled content (use of recycled material in production)	System Dynamics	E-waste	(Georgiadis and Besiou, 2010)
				Quantitative	Minimum legislative recycling percentage (product accepted for recycling vs collected)	System Dynamics	E-waste	(Besiou et al., 2012; Georgiadis and Besiou, 2008, 2010)
			Price and coordination	Quantitative	Legal minimum amount of waste to be submitted	Game theory	Food industry	(T. Liu et al., 2019)
Adherence to legal norms	1	Adherence to legal norms of the designed recycling network	Design and planning	No indicator	Without indicator	Multi-criteria decision-making and Optimization	E-waste	(Darbari et al., 2019)
Compliance with International Labor Organization (ILO) code	1	Compliance with various laws related to the welfare of the laborer's	3PRL provider selection	Qualitative	Relative weight of compliance with International Labor Organization criteria	Multi-criteria decision-making and Optimization	E-waste	(Govindan et al., 2019)
Laws and regulation support	1	Laws and regulation support for the location of facilities	Design and planning	Qualitative	Penalty coefficient	Multi-criteria decision-making and Optimization	General	(Yang and Chen, 2020)

Table B.4. Active government policies

Factor	Number of articles	General description	Problem	Type of indicator	Indicator	Method	Domain/Application	References
Imposition of the RL network	2	Imposition of the government regarding a network structure or conditions for the network	Design and planning	Indirect indicator	Without indicator	Optimization	Household waste and Municipal solid waste	(Ferri et al., 2015)
			Decision-making and performance evaluation	No indicator	Without indicator	Other method	E-waste	(Azevedo et al., 2017)
Flow conditions of waste policy	1	Imposition of flow of waste considering formal and informal collectors	Design and planning	Indirect indicator	Without indicator	Optimization	Household waste and Municipal solid waste	(Ferri et al., 2015)
Imposition of reduction rate and selling price of product	1	Minimum unit reduction rate of carbon emissions and maximum unit selling price of remanufactured products proposed by governmental collection center	Price and coordination	No indicator	Without indicator	Game theory	General	(Rezaei and Maihami, 2020)
Government's stockpile	1	Government maintains a stock of raw materials (including recycled material) to regulate the market	Design and planning	Quantitative	Stockpile amount of product	Optimization	Metals	(Son et al., 2018)
Incorporation of Governmental collection center	1	Incorporation of governmental collection center in the recycling network	Price and coordination	No indicator	Without indicator	Game theory	General	(Rezaei and Maihami, 2020)

Table B.5. Other policies

Factor	Number of articles	General description	Problem	Type of indicator	Indicator	Method	Domain/Application	References
Imposition of mandatory collection	1	Mandatory collection of waste by means of waste pickers inclusion	Decision-making and performance evaluation	No indicator	Without indicator	System Dynamics	E-waste	(Ghisolfi et al., 2017)
Imposition of quality threshold	1	Quality threshold imposed by government to reuse waste	Price and coordination	Quant	Minimum quality threshold of reusing (number between 0 and 1)	Other method	E-waste	(Liu et al., 2016)
Political stability	1	Political stability for the location of facilities	Design and planning	Qualitative	Penalty coefficient	Multi-criteria decision-making and Optimization	General	(Yang and Chen, 2020)
Product bans and use limitations	1	imposition of product bans	Other problem	No indicator	Without indicator	Other method	General	(Murakami et al., 2015)
Qualification of waste pickers through capacitation actions	1	Qualification of waste pickers through capacitation actions to promote the integration of waste pickers	Decision-making and performance evaluation	Quantitative	Formalization ratio due to environmental policies	System Dynamics	E-waste	(Ghisolfi et al., 2017)
Requirements for the hazardous waste management	1	Requirements imposed for the hazardous waste management	Other problem	No indicator	Without indicator	Other method	General	(Murakami et al., 2015)
Solid waste and packing regulation	1	Imposition of solid waste and packing regulation	Other problem	No indicator	Without indicator	Other method	General	(Murakami et al., 2015)
Tactics	1	Behavior of legislators with respect to environmental policies	Decision-making and performance evaluation	Quantitative	Mathematical relationship between desired collection and sustain product	System Dynamics	E-waste	(Georgiadis and Besiou, 2010)
Technology specifications	1	Technology specification imposed	Other problem	No indicator	Without indicator	Other method	General	(Murakami et al., 2015)
Training and technical assistance	1	Training and technical assistance to promote the integration of waste pickers	Decision-making and performance evaluation	Quantitative	Formalization ratio due to environmental policies	System Dynamics	E-waste	(Ghisolfi et al., 2017)
Vehicle noise emission	1	Imposition of maximum allowed vehicle noise emission	Vehicle routing problems	Quantitative	Maximum allowed vehicle noise emission	Optimization	Food industry	(Rahimi et al., 2016)

Appendix C. Technological dimension

Table C.1. Process-oriented technological criteria

Factor	Number of articles	General description	Problem	Type of indicator	Indicator	Method	Domain/Application	References
Capacity of facilities	79	Maximum amount of material/product that can be processed by the facilities of the recycling network.	3PRL provider selection	Quantitative	Amount of product	Multi-criteria and Optimization	E-waste	(Govindan et al., 2019)
			Design and planning	Quantitative	Amount of product	Grey prediction model and Optimization	Medical waste	(Wang et al., 2019)
						Multi-criteria decision-making and Optimization	Bicycles	(A. Liu et al., 2019)
							E-waste	(Darbari et al., 2019)
							General	(Çalık, 2020)
						Optimization	Automotive industry	(Fazli-Khalaf et al., 2020; Jafari and Kazemi Abharian, 2020; Kannegiesser and Günther, 2014; Kumar et al., 2020; Phuc et al., 2017; Sahebjamnia et al., 2018; Saxena et al., 2018; Tadaros et al., 2020)
							Construction and demolition wastes	(Dong et al., 2017; Liang and Lee, 2018)
							E-waste	(Bal and Satoglu, 2018; Budak, 2020; Capraz et al., 2015; Dubey et al., 2015; Gholizadeh et al., 2020; John et al., 2018; Moslehi et al., 2020; Safdar et al., 2020; Shokohyar and Mansour, 2013; Temur and Bolat, 2017)
							Food industry	(Accorsi et al., 2020)
						General	(Altmann and Bogaschewsky, 2014; Benaissa et al., 2018; Dutta et al., 2020; Faccio et al., 2014; Fattahi and Govindan, 2017; Gao and Ryan, 2014; Garai and Roy, 2020; Masoudipour et al., 2020; Porkar et al., 2018; Pourjavad and Mayorga,	

								2019; Ren et al., 2020; Rezaei and Kheirkhah, 2017, 2018; Sajedi et al., 2020; Shahparvari et al., 2018; Wang and Hsu, 2012; Yu and Solvang, 2016, 2017a; Zandieh and Chensebli, 2016; Zarbakhshnia et al., 2020)
								Glass (Hajiaghaei-Keshteli and Fathollahi Fard, 2019)
								Hazardous waste (Saeidi et al., 2020)
								Household waste and Municipal solid waste (Couto et al., 2017; Edalatpour et al., 2018; Ferri et al., 2015; Guo et al., 2017; Niranjani et al., 2019; Taleizadeh et al., 2019; Yu and Solvang, 2017b)
								Medical waste (Govindan et al., 2016; Homayouni and Pishvae, 2020)
								Metals (Ansbro and Wang, 2013; Jin et al., 2018)
								Plastic (S. Han et al., 2020; Hassanzadeh Amin et al., 2018; Mohammadi et al., 2020; Papen and Amin, 2019)
								Solar energy industry (Chen et al., 2017; Choi and Fthenakis, 2014)
						Optimization and LCA	Automotive industry (Ghasemzadeh et al., 2020)	
							Plastic (Feitó-Cespón et al., 2017)	
			Other problem	Quantitative	Amount of product	Optimization	General (Shi et al., 2010)	
				No indicator	Without indicator	Other method	Solar energy industry (Lapko et al., 2019)	
				No indicator	Without indicator	Other method	Plastic (Chavez and Sharma, 2018)	
			Decision-making and performance evaluation	Quantitative	Amount of product	Optimization	Medical waste (Nidhi and Pillai, 2019)	
						System Dynamics	Automotive industry (Mohan and Amit, 2020)	
							E-waste (Besiou et al., 2012; Ghisolfi et al., 2017)	
							Metals (Chaudhary and Vrat, 2020)	
			Price and coordination	Quantitative	Amount of product	Game theory	Food industry (T. Liu et al., 2019)	
						Other method	General (Allevi et al., 2018)	
			Vehicle routing problems	Quantitative	Amount of product	Optimization	Hazardous waste (Farrokhi-Asl et al., 2020)	
							Household waste and Municipal solid waste (Bányai et al., 2019)	
Technology selection	15	Decisions regarding the technology to be used in the process	Design and planning	indirect indicator	Without indicator	Optimization	Automotive industry (Sahebjamnia et al., 2018; Saxena et al., 2018)	
							Medical waste (Govindan et al., 2016)	
							Plastic (Mohammadi et al., 2020; Valizadeh et al., 2020)	
				Quantitative	Capacity level using technology type	Optimization	Automotive industry (Hoyer et al., 2015)	

							Construction and demolition wastes	(Rahimi and Ghezavati, 2018)
							E-waste	(Aalirezaei and Shokouhyar, 2017; Ali et al., 2020; Shokohyar and Mansour, 2013)
							General	(Rezaei and Kheirkhah, 2018)
							Solar energy industry	(Chen et al., 2017)
					Number of products to be manufactured using technology	Optimization	Household waste and Municipal solid waste	(Taleizadeh et al., 2019)
			Decision-making and performance evaluation	No indicator	Without indicator	Other method	Household waste and Municipal solid waste	(Pongeluppe Wadhy Rebehy et al., 2017)
			Vehicle routing problems	Quantitative	Capacity level using technology type	Optimization	Hazardous waste	(Farrokhi-Asl et al., 2020)
Recycling rate	13	Fraction of a product that can be recycled	Design and planning	Quantitative	Recycling rate of product	Optimization	Automotive industry	(Hoyer et al., 2015)
							E-waste	(Gholizadeh et al., 2020; Moslehi et al., 2020)
							General	(Benaissa et al., 2018; Pourjavad and Mayorga, 2019)
							Plastic	(S. Han et al., 2020; Valizadeh et al., 2020)
			Other problem	Quantitative	Recycling rate of product	Other method	Metals	(Prasad et al., 2018)
			Decision-making and performance evaluation	Quantitative	Recycling rate of product	Optimization	Medical waste	(Nidhi and Pillai, 2019)
Processing time	7	Time required to process a waste unit or product	Design and planning	Quantitative	Processing time per unit of product	Optimization	Automotive industry	(Jafari and Kazemi Abharian, 2020)
							E-waste	(Capraz et al., 2015)
							Food industry	(Khorshidian et al., 2019)
							General	(Zarbakhshnia et al., 2020)
			Other problem	No indicator	Without indicator	Other method	Paper	(Mangla et al., 2012)
			Decision-making and performance evaluation	Quantitative	Processing time per unit of product	System Dynamics	E-waste	(Ghisolfi et al., 2017)
Capacity per product	6	Maximum amount of material/product that can be processes considering each product	Design and planning	Quantitative	Amount of product	Multi-criteria decision-making and Optimization	General	(A. Liu et al., 2020; Yang and Chen, 2020)
							E-waste	(Ali et al., 2020)
						Optimization	General	(Aljuneidi and Bulgak, 2020)
							Household waste and Municipal solid waste	(Couto et al., 2017)
Recovery options	5	Decisions about the alternatives to recovery (incineration, recycling, remanufacturing, etc.)	Design and planning	Indirect indicator	Without indicator	Optimization	Plastic	(Bing et al., 2014)
			Other problem	Indirect indicator	Without indicator	Optimization	E-waste	(Yang et al., 2016)
				No indicator	Without indicator		E-waste	(Jindal and Sangwan, 2016)

			Decision-making and performance evaluation			Multi-criteria decision-making	Household waste and Municipal solid waste	(Awan and Ali, 2019)
						Other method	Household waste and Municipal solid waste	(de Oliveira et al., 2020)
Capacity extension	4	Decision regarding the expansion of the capacity defined for the facilities	Design and planning	Quantitative	Quantity of expanding capacity level	Optimization	Construction and demolition wastes	(Rahimi and Ghezavati, 2018)
							E-waste	(Dubey et al., 2015)
							Household waste and Municipal solid waste	(Taleizadeh et al., 2019)
							Solar energy industry	(Chen et al., 2017)
Quality of the returned products	4	Decision regarding whether the product is recycled or not	Design and planning	No indicator	Without indicator	Multi-criteria decision-making and Optimization	General	(A. Liu et al., 2020)
				Quantitative	Number between 0 and 1	Optimization	General	(Sarkar et al., 2017; Yu and Solvang, 2017a)
			Price and coordination	Quantitative	Number between 0 and 1	Other method	E-waste	(Liu et al., 2016)
Conversion rate	3	Amount of material needed to produce the product	Design and planning	Quantitative	Conversion coefficient from chips to a bottle	Optimization	Plastic	(S. Han et al., 2020)
			Decision-making and performance evaluation	No indicator	Conversion rate of repaired or recycled products	Optimization	General	(Yu and Solvang, 2016)
				No indicator	Loss of material in processing	System Dynamics	Glass	(Beiler et al., 2020)
Quality of recycled product	3	Quality of the product obtained after the recycling process	3PRL provider selection	Qualitative	Relative weight of Quality of product criteria	Multi-criteria decision-making	Household waste and Municipal solid waste	(Kafa et al., 2018)
			Price and coordination	Quantitative	Number between 0 and 1	Other method	E-waste	(Liu et al., 2016)
					Quality factor of recycled product	Game theory	General	(Yue Tan and Guo, 2019)
Technical feasibility of recycling	3	Complexity of recycling the materials that compose the products and their access to them	Other problem	No indicator	Without indicator	Other method	General	(Murakami et al., 2015)
			Decision-making and performance evaluation	Qualitative	Relative weight of Technical/operational feasibility criteria	Multi-criteria decision-making	Solar energy industry	(Lapko et al., 2019)
							E-waste	(Jindal and Sangwan, 2016)
Capacity of equipment	2	Maximum amount of material/product that can be processed by the equipment	Design and planning	Quantitative	Amount of product	Optimization	Automotive industry	(Hoyer et al., 2015)
							Solar energy industry	(Choi and Fthenakis, 2014)
Capacity using recycling technique	1	Maximum amount of material/product that can be processed using a specific recycling technique	Design and planning	Quantitative	Amount of product	Optimization	Construction and demolition wastes	(Dong et al., 2017)
Compatibility between wastes and applied technology in the facility	1	Parameter defined to determine the amount of waste to be sent to the facility that will be associated with that technology	Vehicle routing problems	Quantitative	Binary parameter (yes, no)	Optimization	Hazardous waste	(Farrokhi-Asl et al., 2020)
Difficulty coefficient of recycling worn-out products	1	Difficulty of recycling worn-out products for a third-party recycler	Price and coordination	No indicator	Without indicator	Game theory	General	(Ma and Huang, 2019)
Necessary technology of the recovery centers	1	Availability of the necessary technology to carry out the specific recycling process	Decision-making and performance evaluation	No indicator	Without indicator	Other method	Plastic	(Chavez and Sharma, 2018)
Technical capacity	1	Technical capacity for reusable materials	Decision-making and performance evaluation	No indicator	No specified	System Dynamics	Glass	(Beiler et al., 2020)

Table C.2. Transport

Factor	Number of articles	General description	Problem	Type of indicator	Indicator	Method	Domain/Application	References
Capacity of vehicles	28	Limits on transport capacity depending on the type of vehicle used.	Design and planning	Quantitative	Amount of product	Multi-criteria decision-making and Optimization	E-waste	(Darbari et al., 2019)
							General	(Çalik, 2020)
						Optimization	Automotive industry	(Kannegiesser and Günther, 2014)
							E-waste	(Gholizadeh et al., 2020; Ramos et al., 2014; Safdar et al., 2020)
							Food industry	(Khorshidian et al., 2019)
							General	(Faccio et al., 2014; Masoudipour et al., 2020; Ren et al., 2020; Rezaei and Kheirkhah, 2018, 2017; Zarbakhshnia et al., 2020)
			Hazardous waste	(Saeidi et al., 2020)				
			Optimization and LCA	Household waste and Municipal solid waste	(Niranjan et al., 2019; Taleizadeh et al., 2019; Yu and Solvang, 2017b)			
				Plastic	(Valizadeh et al., 2020)			
			Game theory	Automotive industry	(Ghasemzadeh et al., 2020)			
			Other method	Plastic	(Feitó-Cespón et al., 2017)			
				General	(H. Wu et al., 2019)			
Price and coordination	Quantitative	Amount of product	Other method	General	(Allevi et al., 2018)			
				Optimization	Automotive industry	(le Blanc et al., 2006)		
					Food industry	(Aksen et al., 2012; Rahimi et al., 2016)		
					Hazardous waste	(Farrokhi-Asl et al., 2020)		
Vehicle routing problems	Quantitative	Amount of product	Optimization	Household waste and Municipal solid waste	(Bányai et al., 2019; Kızıldağ et al., 2020)			
Means of transport for waste	1	Means of transport available for the transport of waste	Decision-making and performance evaluation	No indicator	Without indicator	Other method	Plastic	(Chavez and Sharma, 2018)
Transport efficiency	1	Internal transport efficiency for waste collection	Decision-making and performance evaluation	No indicator	No specified	System Dynamics	Glass	(Beiler et al., 2020)
Transportation management	1	Transportation management of the third-party reverse logistic provider	3PRL provider selection	Qualitative	Relative weight of Transportation management criteria	Multi-criteria decision-making	Automotive industry	(Govindan et al., 2013)

Table C.3 Technology level and experience level

Factor	Number of articles	General description	Problem	Type of indicator	Indicator	Method	Domain/Application	References
Green technology innovation	5	Investment made to improve the environmental performance of the technology used	Decision-making and performance evaluation	Qualitative	Relative weigh of green technology innovation criteria	Multi-criteria decision-making	Automotive industry	(Ahmed et al., 2016a, 2016b)
				Quantitative	Level of green innovation	Game theory	General	(Mondal et al., 2020; Saha et al., 2019)
					Technological innovation cost coefficient	Game theory	General	(Xiang and Xu, 2020)
Green innovation level	2	innovations made in the supply chain to reduce the consumption of resources in the production process and achieve greener products	Price and coordination	No indicator	Without indicator	Game theory	General	(Ma and Huang, 2019; Mondal and Giri, 2020)
Technology transfer	2	Technological flexibility, capability, and availability for waste management	Decision-making and performance evaluation	Qualitative	Relative weigh of Technology transfer criteria	Multi-criteria decision-making	Automotive industry	(Ahmed et al., 2016a, 2016b)
Capability of disassembly infrastructure	1	infrastructure available by the partner for dismantling according to the needs of the company	3PRL provider selection	Qualitative	Relative weight of Capability of disassembly infrastructure criteria	Multi-criteria decision-making	E-waste	(Kara, 2011)
Clean and upgraded technology	1	Clean and upgraded technology to be used in the designed recycling network	Design and planning	No indicator	Without indicator	Multi-criteria decision-making and Optimization	E-waste	(Darbari et al., 2019)
Communication Systems	1	EDI capacity and IT level of outsourcing option	Decision-making and performance evaluation	Qualitative	Relative weight of Communication Systems criteria	Multi-criteria decision-making	E-waste	(Agrawal et al., 2016a)
Demand forecasting	1	Demand forecasting of the 3PRL provider	3PRL provider selection	Qualitative	Relative weight of Demand forecasting criteria	Multi-criteria decision-making	Automotive industry	(Govindan et al., 2013)
Effort to improve the level of technology	1	Efforts of the company to invest in the improvement of its technology	Price and coordination	Quantitative	Effort cost to improve the level of technology	Game theory	General	(Yue Tan and Guo, 2019)
Expert decision and skill manpower	1	Technological availability to make decisions on waste disposal and waste treatment manpower	Decision-making and performance evaluation	Qualitative	Relative weigh of Expert decision and skill manpower criteria	Multi-criteria decision-making	Automotive industry	(Ahmed et al., 2016a)
Green rate	1	Rate of energy saved and resources due to recycling implementation	Price and coordination	Quantitative	Rate of energy saved and resources	Game theory	General	(H. Wu et al., 2019)
Information technology (IT)	1	Information technology of the third-party reverse logistic provider	3PRL provider selection	Qualitative	Relative weight of Information technology (IT) criteria	Multi-criteria decision-making	Automotive industry	(Govindan et al., 2013)
Inventory management	1	Inventory management of the third-party reverse logistic provider	3PRL provider selection	Qualitative	Relative weight of Inventory management criteria	Multi-criteria decision-making	Automotive industry	(Govindan et al., 2013)
Investment to sustainably improve recovery technology	1	Investment needed to improve the technology recovery of the recycling center and achieve the level of sustainability decided	Price and coordination	No indicator	Without indicator	Game theory	E-waste	(Ghalekhondabi and Ardjmand, 2020)
JIT philosophy	1	JIT philosophy of the third-party reverse logistic provider	3PRL provider selection	Qualitative	Relative weight of JIT philosophy criteria	Multi-criteria decision-making	Automotive industry	(Govindan et al., 2013)
Resource Capacity	1	Technological and human capacity or resources available	Decision-making and performance evaluation	Qualitative	Relative weight of Relative weight of Resource Capacity criteria	Multi-criteria decision-making	E-waste	(Agrawal et al., 2016a)
Specialized infrastructures	1	Technological and engineering capacity of the partner to carry out the process	3PRL provider selection	Qualitative	Relative weight of Specialized infrastructures criteria	Multi-criteria decision-making	Household waste and Municipal solid waste	(Kafa et al., 2018)
Technological expertise	1	Level of knowledge and experience of the partner to carry out the recovery process	3PRL provider selection	Qualitative	Relative weight of Technological expertise criteria	Multi-criteria decision-making and Optimization	E-waste	(Govindan et al., 2019)

Technological level at each stage of network	1	Level of technology in each facility to perform each of the recycling activities	Other	No indicator	No indicator	Other method	Solar energy industry	(Lapko et al., 2019)
--	---	--	-------	--------------	--------------	--------------	-----------------------	----------------------

Table C.4. Product design

Factor	Number of articles	General description	Problem	Type of indicator	Indicator	Method	Domain/Application	References
Design for environment products	2	Design of products with its recovery process (recycling) in mind once it is discarded.	Decision-making and performance evaluation	Quantitative	Design for environment products ratio (firms' reaction)	System Dynamics	E-waste	(Georgiadis and Besiou, 2008)
					Minimum Limit of Recyclability (percentage)	System Dynamics	E-waste	(Georgiadis and Besiou, 2010)
Research and development for new products	1	Capacity and availability of R&D given the management options.	Decision-making and performance evaluation	Qualitative	Relative weigh of Research and development for new products criteria	Multi-criteria decision-making	Automotive industry	(Ahmed et al., 2016a)

Table C.5. Other technological aspects

Factor	Number of articles	General description	Problem	Type of indicator	Indicator	Method	Domain/Application	References
Use of new technology	4	Use of new technologies such as information technologies, internet, big data marketing, etc. In the recycling activity	Decision-making and performance evaluation	No indicator	Without indicator	Other method	E-waste	(Xin Tong et al., 2018)
			Price and coordination	No indicator	Without indicator	Game theory	General	(Xiang and Xu, 2020)
			Vehicle routing problems	Indirect indicator	Without indicator		Optimization	E-waste
Capacity utilization	2	Capacity that the company can assign to each process	3PRL provider selection	Qual	Relative weight of Capacity utilization criteria	Multi-criteria decision-making	Household waste and Municipal solid waste	(Bányai et al., 2019)
			Other	No indicator	Without indicator	Other method	E-waste	(Kara, 2011)
Sells options of discarded product (collect)	1	Options that consumers have to dispose or sell the waste	Decision-making and performance evaluation	No indicator	Without indicator	Other method	Paper	(Mangla et al., 2012)
							Plastic	(Chavez and Sharma, 2018)

Declaration of interests

The authors declare that they have no known competing financial interests or personal relationships that could have appeared to influence the work reported in this paper.

The authors declare the following financial interests/personal relationships which may be considered as potential competing interests:

Journal Pre-proof