

## Supporting Information

# A bad start in life? Maternal transfer of mercury, legacy and emerging poly- and perfluoroalkyl substances in an Arctic seabird

*William Jouanneau<sup>1,2,\*</sup>, Don-Jean Léandri-Breton<sup>1,3</sup>, Alexandre Corbeau<sup>4</sup>, Dorte Herzke<sup>5</sup>, Børge Moe<sup>6</sup>, Vladimir A. Nikiforov<sup>5</sup>, Geir W. Gabrielsen<sup>2</sup>, Olivier Chastel<sup>1</sup>*

<sup>1</sup> Centre d'Etudes Biologiques de Chizé (CEBC), UMR 7372 CNRS - La Rochelle Université, 17031 La Rochelle, France

<sup>2</sup> Norwegian Polar Institute, Fram Centre, NO-9296 Tromsø, Norway

<sup>3</sup> Department of Natural Resource Sciences, McGill University, Ste Anne-de-Bellevue, QC H9X 3V9, Canada

<sup>4</sup> ECOBIO (Ecosystèmes, biodiversité, évolution), UMR 6553 CNRS - Université de Rennes, 35000 Rennes, France

<sup>5</sup> NILU – Norwegian Institute for Air Research, Fram Centre, NO-9296 Tromsø, Norway

<sup>6</sup> NINA – Norwegian Institute for Nature Research, Fram Centre, NO-7485 Trondheim, Norway

\*Corresponding authors:

E-mail: [w.jouanneau@gmail.com](mailto:w.jouanneau@gmail.com)

Number of Pages: 16

Number of Figures: 1

Number of Tables: 5

### **Internal standards used in PFAS analyses**

Perfluoro-n-[2,3,4-<sup>13</sup>C<sub>3</sub>]butanoic acid

Perfluoro-n-[<sup>13</sup>C<sub>5</sub>]pentanoic acid

Perfluoro-n-[1,2,3,4,6-<sup>13</sup>C<sub>5</sub>]hexanoic acid

Perfluoro-n-[1,2,3,4-<sup>13</sup>C<sub>4</sub>]heptanoic acid

Perfluoro-n-[<sup>13</sup>C<sub>8</sub>]octanoic acid

Perfluoro-n-[<sup>13</sup>C<sub>9</sub>]nonanoic acid

Perfluoro-n-[1,2,3,4,5,6-<sup>13</sup>C<sub>6</sub>]decanoic acid

Perfluoro-n-[1,2,3,4,5,6,7-<sup>13</sup>C<sub>7</sub>]undecanoic acid

Perfluoro-n-[1,2-<sup>13</sup>C<sub>2</sub>]dodecanoic acid

Perfluoro-n-[1,2-<sup>13</sup>C<sub>2</sub>]tetradecanoic acid

Sodium perfluoro-1-[2,3,4-<sup>13</sup>C<sub>3</sub>]butanesulfonate

Sodium perfluoro-1-[1,2,3-<sup>13</sup>C<sub>3</sub>]hexanesulfonate

Sodium perfluoro-1-[<sup>13</sup>C<sub>8</sub>]octanesulfonate

Perfluoro-1-[<sup>13</sup>C<sub>8</sub>]octanesulfonamide

Sodium 1H,1H,2H,2H-perfluoro-1-[1,2-<sup>13</sup>C<sub>2</sub>]-octane sulfonate

Sodium 1H,1H,2H,2H-perfluoro-1-[1,2-<sup>13</sup>C<sub>2</sub>]-decane sulfonate

**Table S1.** List of targeted poly- and perfluoroalkyl substances (PFAS): their groups, abbreviations, chemical names, detection rates in females and eggs of black-legged kittiwakes, limits of detection in plasma and yolk and descriptive statistics (mean  $\pm$  standard deviation *SD*; values <LOD not replaced by 1/2 LOD). Selected PFAS (i.e. detected in more than 70% of both samples and therefore used in analyses) are stressed in bold. PFAS considered as legacy compounds are in black, those considered as emerging are in grey.

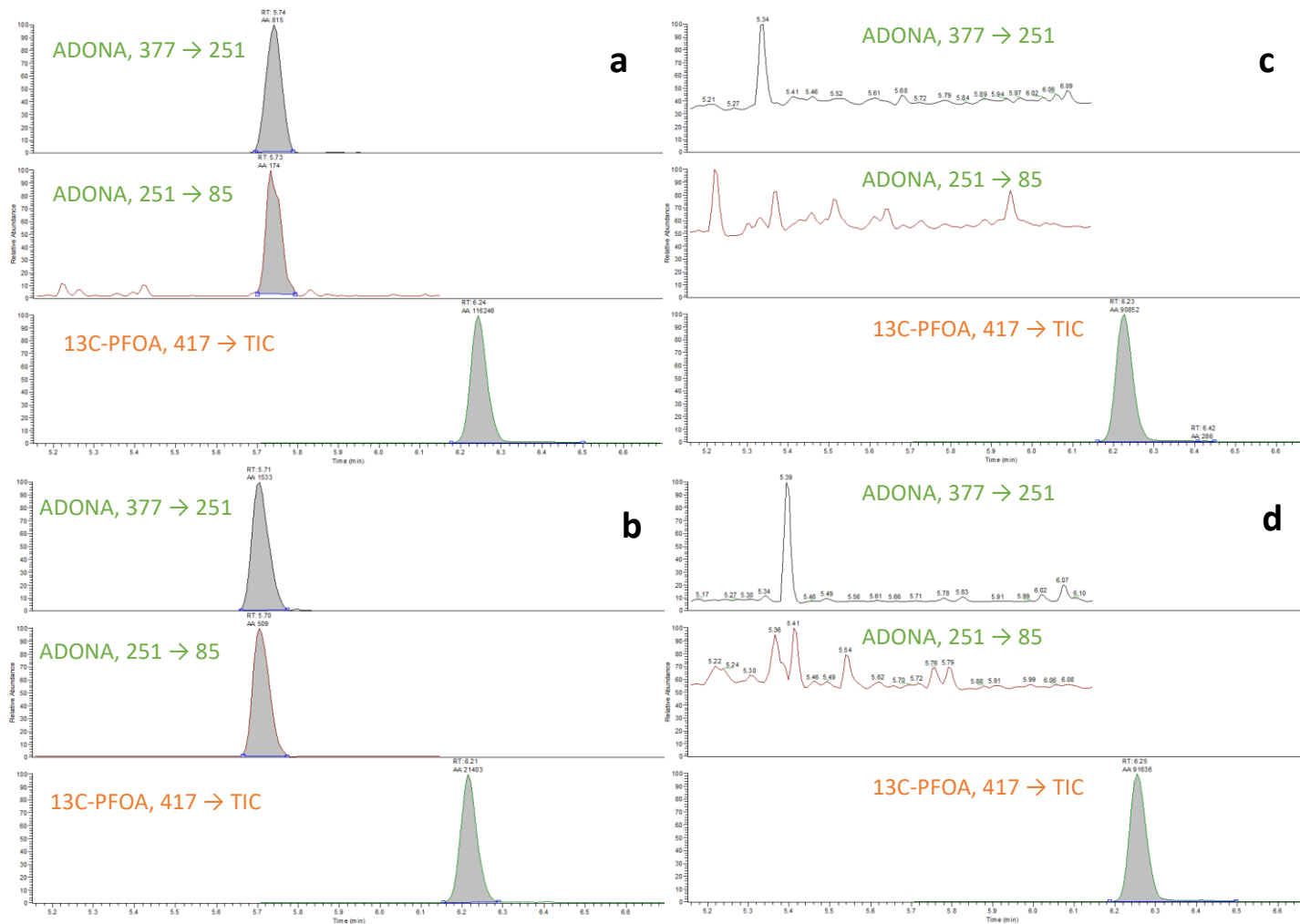
Group	Abbreviation	Chemical name	Detection rate		Limit of detection (ng g <sup>-1</sup> ww)	Mean $\pm$ <i>SD</i>	
			Females	Eggs		Females	Eggs
Perfluoroalkane sulfonic acids	PFBS	perfluorobutanesulfonic acid	0.0%	0.0%	0.10	na	na
	PFPS	perfluoropentanesulfonic acid	0.0%	0.0%	0.05	na	na
	<b>PFHxS</b>	<b>perfluorohexanesulfonic acid</b>	<b>100.0%</b>	<b>100.0%</b>	<b>0.05</b>	<b>0.23 <math>\pm</math> 0.09</b>	<b>0.24 <math>\pm</math> 0.12</b>
	PFHpS	perfluoroheptanesulfonic acid	0.0%	44.0%	0.08	na	0.10 $\pm$ 0.03
	<b>brPFOS</b>	<b>branched perfluorooctanesulfonic acid</b>	<b>85.7%</b>	<b>100.0%</b>	<b>0.06</b>	<b>0.95 <math>\pm</math> 0.32</b>	<b>2.53 <math>\pm</math> 1.04</b>
	<b>linPFOS</b>	<b>linear perfluorooctanesulfonic acid</b>	<b>100.0%</b>	<b>100.0%</b>	<b>0.072</b>	<b>10.8 <math>\pm</math> 4.70</b>	<b>25.4 <math>\pm</math> 9.88</b>
	PFNS	perfluorononanesulfonic acid	0.0%	0.0%	0.06	na	na
	PFDCS	perfluorodecanesulfonic acid	23.8%	84.0%	0.10	0.12 $\pm$ 0.02	0.28 $\pm$ 0.14
Perfluoroalkyl carboxylic acids	PFBA	perfluorobutanoic acid	0.0%	0.0%	0.08	na	na
	PFPA	perfluoropentanoic acid	0.0%	0.0%	0.08	na	na
	PFHxA	perfluorohexanoic acid	0.0%	4.0%	0.08	na	0.08 $\pm$ na
	PFHpA	perfluoroheptanoic acid	9.5%	24.0%	0.04	0.06 $\pm$ 0.00	0.07 $\pm$ 0.02
	<b>PFOA</b>	<b>perfluorooctanoic acid</b>	<b>71.4%</b>	<b>96.0%</b>	<b>0.08</b>	<b>0.19 <math>\pm</math> 0.13</b>	<b>0.23 <math>\pm</math> 0.10</b>
	<b>PFNA</b>	<b>perfluorononanoic acid</b>	<b>100.0%</b>	<b>100.0%</b>	<b>0.03</b>	<b>1.06 <math>\pm</math> 0.61</b>	<b>1.88 <math>\pm</math> 0.95</b>
	<b>PFDA</b>	<b>perfluorodecanoic acid</b>	<b>100.0%</b>	<b>100.0%</b>	<b>0.03</b>	<b>1.71 <math>\pm</math> 0.89</b>	<b>3.39 <math>\pm</math> 1.67</b>
	<b>PFUnA</b>	<b>perfluoroundecanoic acid</b>	<b>100.0%</b>	<b>100.0%</b>	<b>0.06</b>	<b>6.88 <math>\pm</math> 3.21</b>	<b>16.2 <math>\pm</math> 5.53</b>
	<b>PFDoA</b>	<b>perfluorododecanoic acid</b>	<b>95.2%</b>	<b>100.0%</b>	<b>0.03</b>	<b>1.81 <math>\pm</math> 0.89</b>	<b>5.33 <math>\pm</math> 1.57</b>
	<b>PFTriA</b>	<b>perfluorotridecanoic acid</b>	<b>100.0%</b>	<b>100.0%</b>	<b>0.07</b>	<b>7.80 <math>\pm</math> 3.35</b>	<b>28.9 <math>\pm</math> 7.99</b>
	<b>PFTeA</b>	<b>perfluorotetradecanoic acid</b>	<b>100.0%</b>	<b>100.0%</b>	<b>0.08</b>	<b>0.14 <math>\pm</math> 0.60</b>	<b>5.80 <math>\pm</math> 1.80</b>
	PFHxDA	perfluorohexadecanoic acid	0.0%	84.0%	0.12	na	0.24 $\pm$ 0.08

Perfluoroalkane sulfonamido substances	MeFHxSA	methyl perfluorohexane sulphonamide	0.0%	0.0%	0.05	na	na
	FOSA	perfluorooctane sulfonamide	0.0%	0.0%	0.05	na	na
	MeFOSA	methylperfluorooctane sulfonamide	0.0%	0.0%	0.10	na	na
	EtFOSA	ethylperfluorooctane sulphonamide	0.0%	0.0%	0.10	na	na
	FOSAA	perfluorooctanesulfonamidoacetic acid	0.0%	0.0%	0.10	na	na
	MeFOSAA	methyl perfluorooctane sulfonamidoacetic acid	0.0%	0.0%	0.10	na	na
	EtFOSAA	ethyl perfluorooctane sulfonamidoacetic acid	0.0%	0.0%	0.10	na	na
fluorotelo mer sulfonic acid	4:2 FTS	4:2 fluorotelomer sulfonic acid	0.0%	0.0%	0.05	na	na
	6:2 FTS	6:2 fluorotelomer sulfonic acid	0.0%	0.0%	0.05	na	na
	8:2 FTS	8:2 fluorotelomer sulfonic acid	0.0%	0.0%	0.10	na	na
	10:2 FTS	10:2 fluorotelomer sulfonic acid	0.0%	0.0%	1.00	na	na
fluoro elomer carbox ylic	3:3 FTCA	3:3 fluorotelomer carboxylic acid	0.0%	0.0%	0.50	na	na
	5:3 FTCA	5:3 fluorotelomer carboxylic acid	0.0%	0.0%	0.10	na	na
	7:3 FTCA	7:3 fluorotelomer carboxylic acid	0.0%	84.0%	0.10	na	0.21 ± 0.09
Fluoro alkylet her compo	F-53B	6:2 and 8:2 chlorinated polyfluorinated ether sulfonate	0.0%	0.0%	0.10	na	na
	ADONA	dodecafluoro-3H-4,8-dioxanonoate	0.0%	4.0%	0.10	na	0.11 ± na
	Gen-X	hexafluoropropylene oxide dimer acid	0.0%	0.0%	1.00	na	na

**Table S2.** Descriptive statistics (mean  $\pm$  standard deviation *SD*, median and range *min-max*) for PFAS detected in more than 70% of the samples concentrations in eggs only (ng g<sup>-1</sup> ww) in plasma and egg yolk and albumen of black-legged kittiwakes from Svalbard.

	<b>First laid eggs</b>			<b>Second laid eggs</b>		
	<b>Mean <math>\pm</math> SD</b>	<b>Median</b>	<b>Min-max</b>	<b>Mean <math>\pm</math> SD</b>	<b>Median</b>	<b>Min-max</b>
PFDcS	0.32 $\pm$ 0.15	0.26	0.13 - 0.64	0.22 $\pm$ 0.08	0.2	0.11 - 0.37
PFHxDA	0.29 $\pm$ 0.07	0.29	0.16 - 0.38	0.19 $\pm$ 0.04	0.2	0.13 - 0.24
7:3 FTCA	0.25 $\pm$ 0.09	0.23	0.11 - 0.42	0.16 $\pm$ 0.05	0.15	0.10 - 0.25

**Figure S1.** Chromatograms of the sample (a), the standard (b), the blank (c) and the standard reference material (d) for the measurement of ADONA in black-legged kittiwake eggs; two ion traces are provided for ADONA and one for the internal standard ( $^{13}\text{C}$ -PFOA).



**Table S3.** Model selections for the relationship between PFAS and biological variables in black-legged kittiwake eggs, based on the lowest second-order Akaike’s Information Criterion corrected for small sample sizes (AICc); the predicting variables were the laying date, the egg mass, the rank of the eggs in the laying order (Egg number) as well as both interactions between the laying date or the egg mass and the egg number. The most parsimonious model is given in bold. AICcwt: Akaike’s weight;  $\Delta$ AICc: difference between the model with the smallest AICc-value and the model of interest (*i*).

PFHxS									
	Laying date	Egg mass	Egg number	Laying date : Egg number	Egg mass : Egg number	K	AICc	AICcwt	$\Delta$ AICc
<b>mod13</b>						<b>3</b>	<b>-37.53</b>	<b>0.26</b>	<b>0.00</b>
mod10	X					4	-37.24	0.22	0.29
mod5	X		X	X		6	-37.12	0.21	0.41
mod12			X			4	-35.22	0.08	2.31
mod11		X				4	-34.82	0.07	2.71
mod8	X		X			5	-34.23	0.05	3.30
mod7	X	X				5	-34.09	0.05	3.44
mod2	X	X	X	X		7	-33.53	0.03	4.00
mod9		X	X			5	-32.07	0.02	5.46
mod4	X	X	X			6	-30.74	0.01	6.79
mod1	X	X	X	X	X	8	-29.54	0.00	7.99
mod6		X	X		X	6	-28.56	0.00	8.97
mod3	X	X	X		X	7	-26.81	0.00	10.71

**brPFOS**

	Laying date	Egg mass	Egg number	Laying date : Egg number	Egg mass : Egg number	K	AICc	AICcwt	$\Delta$ AICc
<b>mod12</b>			X			<b>4</b>	<b>62.22</b>	<b>0.59</b>	<b>0.00</b>
mod8	X		X			5	64.79	0.16	2.57
mod9		X	X			5	65.05	0.14	2.83
mod5	X		X	X		6	67.60	0.04	5.37
mod4	X	X	X			6	68.18	0.03	5.96
mod6		X	X		X	6	68.55	0.02	6.32
mod2	X	X	X	X		7	71.25	0.01	9.03
mod3	X	X	X		X	7	72.09	0.00	9.87
mod1	X	X	X	X	X	8	75.57	0.00	13.35
mod7	X	X				5	76.97	0.00	14.75
mod13						3	78.49	0.00	16.27
mod11		X				4	80.52	0.00	18.30
mod10	X					4	80.64	0.00	18.42

**linPFOS**

	Laying date	Egg mass	Egg number	Laying date : Egg number	Egg mass : Egg number	K	AICc	AICcwt	$\Delta$ AICc
<b>mod12</b>			<b>X</b>			<b>4</b>	<b>170.51</b>	<b>0.54</b>	<b>0.00</b>
mod8	X		X			5	172.15	0.24	1.64
mod9		X	X			5	173.67	0.11	3.16
mod4	X	X	X			6	175.64	0.04	5.13
mod5	X		X	X		6	175.65	0.04	5.14
mod6		X	X		X	6	177.17	0.02	6.66
mod3	X	X	X		X	7	179.56	0.01	9.04
mod2	X	X	X	X		7	179.56	0.01	9.05
mod1	X	X	X	X	X	8	183.96	0.00	13.45
mod13						3	188.70	0.00	18.19
mod7	X	X				5	189.17	0.00	18.65
mod11		X				4	189.45	0.00	18.94
mod10	X					4	190.43	0.00	19.92



**PFOA**

	Laying date	Egg mass	Egg number	Laying date : Egg number	Egg mass : Egg number	K	AICc	AICcwt	$\Delta$ AICc
<b>mod13</b>						<b>3</b>	<b>-46.46</b>	<b>0.23</b>	<b>0.00</b>
mod4	X	X	X			6	-46.39	0.22	0.06
mod12			X			4	-45.16	0.12	1.30
mod8	X		X			5	-44.78	0.10	1.68
mod9		X	X			5	-44.65	0.09	1.81
mod11		X				4	-43.92	0.06	2.54
mod10	X					4	-43.66	0.06	2.80
mod2	X	X	X	X		7	-42.53	0.03	3.93
mod3	X	X	X		X	7	-42.47	0.03	3.98
mod5	X		X	X		6	-41.28	0.02	5.18
mod6		X	X		X	6	-41.17	0.02	5.29
mod7	X	X				5	-40.82	0.01	5.64
mod1	X	X	X	X	X	8	-38.13	0.00	8.33

**PFNA**

	Laying date	Egg mass	Egg number	Laying date : Egg number	Egg mass : Egg number	K	AICc	AICcwt	$\Delta$ AICc
<b>mod12</b>			X			<b>4</b>	<b>60.17</b>	<b>0.41</b>	<b>0.00</b>
mod13						3	62.66	0.12	2.49
mod8	X		X			5	62.85	0.11	2.68
mod9		X	X			5	63.30	0.09	3.14
mod11		X				4	63.48	0.08	3.31
mod10	X					4	63.81	0.07	3.65
mod5	X		X	X		6	64.39	0.05	4.22
mod7	X	X				5	65.35	0.03	5.18
mod4	X	X	X			6	66.33	0.02	6.17
mod6		X	X		X	6	66.54	0.02	6.37
mod2	X	X	X	X		7	68.30	0.01	8.14
mod3	X	X	X		X	7	70.04	0.00	9.87
mod1	X	X	X	X	X	8	71.96	0.00	11.79

**PFDcA**

	Laying date	Egg mass	Egg number	Laying date : Egg number	Egg mass : Egg number	K	AICc	AICcwt	$\Delta$ AICc
<b>mod12</b>			<b>X</b>			<b>4</b>	<b>82.43</b>	<b>0.54</b>	<b>0.00</b>
mod9		X	X			5	85.26	0.13	2.84
mod8	X		X			5	85.32	0.13	2.89
mod5	X		X	X		6	86.51	0.07	4.09
mod10	X					4	88.61	0.02	6.18
mod4	X	X	X			6	88.62	0.02	6.19
mod6		X	X		X	6	88.72	0.02	6.30
mod7	X	X				5	89.03	0.02	6.60
mod11		X				4	89.93	0.01	7.50
mod2	X	X	X	X		7	90.23	0.01	7.80
mod13						3	92.19	0.00	9.76
mod3	X	X	X		X	7	92.49	0.00	10.07
mod1	X	X	X	X	X	8	94.27	0.00	11.85

**PFUnA**

	Laying date	Egg mass	Egg number	Laying date : Egg number	Egg mass : Egg number	K	AICc	AICcwt	$\Delta$ AICc
<b>mod12</b>			<b>X</b>			<b>4</b>	<b>138.50</b>	<b>0.43</b>	<b>0.00</b>
mod8	X		X			5	139.42	0.27	0.92
mod9		X	X			5	140.80	0.14	2.30
mod4	X	X	X			6	142.39	0.06	3.89
mod5	X		X	X		6	142.84	0.05	4.34
mod6		X	X		X	6	144.31	0.02	5.81
mod2	X	X	X	X		7	146.17	0.01	7.67
mod3	X	X	X		X	7	146.30	0.01	7.80
mod1	X	X	X	X	X	8	150.55	0.00	12.05
mod7	X	X				5	156.77	0.00	18.27
mod11		X				4	158.30	0.00	19.80
mod13						3	159.50	0.00	21.00
mod10	X					4	160.91	0.00	22.41

**PFD<sub>oA</sub>**

	Laying date	Egg mass	Egg number	Laying date : Egg number	Egg mass : Egg number	K	AICc	AIC <sub>cwt</sub>	ΔAICc
mod8	X		X			5	78.49	0.51	0.00
<b>mod12</b>			<b>X</b>			<b>4</b>	<b>80.36</b>	<b>0.20</b>	<b>1.86</b>
mod5	X		X	X		6	81.47	0.11	2.97
mod4	X	X	X			6	81.99	0.09	3.49
mod9		X	X			5	83.45	0.04	4.96
mod3	X	X	X		X	7	84.97	0.02	6.47
mod2	X	X	X	X		7	85.38	0.02	6.89
mod6		X	X		X	6	86.03	0.01	7.53
mod1	X	X	X	X	X	8	88.38	0.00	9.88
mod13						3	99.39	0.00	20.89
mod11		X				4	101.16	0.00	22.66
mod10	X					4	102.08	0.00	23.58
mod7	X	X				5	104.21	0.00	25.71

**PFTriA**

	Laying date	Egg mass	Egg number	Laying date : Egg number	Egg mass : Egg number	K	AICc	AIC <sub>cwt</sub>	ΔAICc
mod8	X		X			5	161.79	0.37	0.00
<b>mod12</b>			<b>X</b>			<b>4</b>	<b>162.14</b>	<b>0.31</b>	<b>0.35</b>
mod5	X		X	X		6	164.45	0.10	2.65
mod9		X	X			5	164.73	0.09	2.94
mod4	X	X	X			6	165.12	0.07	3.33
mod6		X	X		X	6	167.57	0.02	5.78
mod2	X	X	X	X		7	168.12	0.02	6.32
mod3	X	X	X		X	7	168.39	0.01	6.60
mod1	X	X	X	X	X	8	171.35	0.00	9.56
mod13						3	180.97	0.00	19.18
mod11		X				4	182.00	0.00	20.21
mod10	X					4	183.82	0.00	22.03
mod7	X	X				5	184.66	0.00	22.87

PFTeA

	Laying date	Egg mass	Egg number	Laying date : Egg number	Egg mass : Egg number	K	AICc	AICcwt	$\Delta$ AICc
<b>mod12</b>			<b>X</b>			<b>4</b>	<b>89.20</b>	<b>0.44</b>	<b>0.00</b>
mod8	X		X			5	90.17	0.27	0.97
mod9		X	X			5	92.15	0.10	2.95
mod5	X		X	X		6	92.52	0.08	3.32
mod4	X	X	X			6	93.64	0.05	4.44
mod6		X	X		X	6	94.83	0.03	5.63
mod2	X	X	X	X		7	96.37	0.01	7.17
mod3	X	X	X		X	7	96.73	0.01	7.54
mod1	X	X	X	X	X	8	99.18	0.00	9.98
mod13						3	106.09	0.00	16.89
mod11		X				4	106.72	0.00	17.52
mod10	X					4	108.61	0.00	19.41
mod7	X	X				5	108.64	0.00	19.44

**Table S4.** Model selections for maternal transfer ratios of PFAS in black-legged kittiwakes, based on the lowest second-order Akaike’s Information Criterion corrected for small sample sizes (AICc); the predicting variables were the carbon chain length of PFCA compounds, the rank of the eggs in the laying order (Egg number) as well as the interaction between these variables; see Table S3 for additional information.

	<b>Carbon chain length</b>	<b>Egg number</b>	<b>Carbon chain length : Egg number</b>	<b>K</b>	<b>AICc</b>	<b>AICcwt</b>	<b>ΔAICc</b>
<b>mod1</b>	<b>X</b>	<b>X</b>	<b>X</b>	<b>6</b>	<b>130.12</b>	<b>0.98</b>	<b>0.00</b>
mod2	X	X		5	138.39	0.02	8.27
mod3	X			4	165.48	0.00	35.36
mod4		X		4	254.96	0.00	124.84
mod5				3	267.96	0.00	137.85

**Table S5.** Model selections for maternal transfer of PFAS in black-legged kittiwakes, based on the lowest second-order Akaike's Information Criterion corrected for small sample sizes (AICc); the predicting variables were the female contamination and the number of the eggs in the laying order (Egg number); see Table S3 for additional information.

<b>PFHxS</b>						
	<b>Females contamination</b>	<b>Egg number</b>	<b>K</b>	<b>AICc</b>	<b>AICcwt</b>	<b>ΔAICc</b>
<b>mod2</b>	<b>X</b>		<b>4</b>	<b>-44.55</b>	<b>0.77</b>	<b>0.00</b>
mod1	X	X	5	-45.12	0.23	2.43
mod4			3	-37.53	0.01	10.03
mod3		X	4	-35.22	0.00	12.33
<b>brPFOS</b>						
	<b>Females contamination</b>	<b>Egg number</b>	<b>K</b>	<b>AICc</b>	<b>AICcwt</b>	<b>ΔAICc</b>
<b>mod1</b>	<b>X</b>	<b>X</b>	<b>5</b>	<b>56.07</b>	<b>0.96</b>	<b>0.00</b>
mod3		X	4	62.22	0.04	6.15
mod2	X		4	71.59	0.00	15.52
mod4			3	78.49	0.00	22.42
<b>linPFOS</b>						
	<b>Females contamination</b>	<b>Egg number</b>	<b>K</b>	<b>AICc</b>	<b>AICcwt</b>	<b>ΔAICc</b>
<b>mod1</b>	<b>X</b>	<b>X</b>	<b>5</b>	<b>162.91</b>	<b>0.98</b>	<b>0.00</b>
mod3		X	4	170.51	0.02	7.60
mod2	X		4	182.11	0.00	19.20
mod4			3	188.70	0.00	25.79

**PFOA**

	<b>Females contamination</b>	<b>Egg number</b>	<b>K</b>	<b>AICc</b>	<b>AICcwt</b>	<b>ΔAICc</b>
<b>mod4</b>			<b>3</b>	<b>-46.46</b>	<b>0.35</b>	<b>0.00</b>
mod2	X		4	-46.34	0.33	0.12
mod3		X	4	-45.16	0.18	1.30
mod1	X	X	5	-44.76	0.15	1.70

**PFNA**

	<b>Females contamination</b>	<b>Egg number</b>	<b>K</b>	<b>AICc</b>	<b>AICcwt</b>	<b>ΔAICc</b>
<b>mod1</b>	<b>X</b>	<b>X</b>	<b>5</b>	<b>52.93</b>	<b>0.78</b>	<b>0.00</b>
mod2	X		4	55.76	0.19	2.84
mod3		X	4	60.17	0.02	7.24
mod4	X	X	3	62.66	0.01	9.73

**PFDeA**

	<b>Females contamination</b>	<b>Egg number</b>	<b>K</b>	<b>AICc</b>	<b>AICcwt</b>	<b>ΔAICc</b>
<b>mod1</b>	<b>X</b>	<b>X</b>	<b>5</b>	<b>73.19</b>	<b>0.99</b>	<b>0.00</b>
mod3		X	4	82.43	0.01	9.23
mod2	X		4	83.05	0.00	10.76
mod4			3	92.19	0.00	19.00

**PFUnA**

	<b>Females contamination</b>	<b>Egg number</b>	<b>K</b>	<b>AICc</b>	<b>AICcwt</b>	<b>ΔAICc</b>
<b>mod1</b>	<b>X</b>	<b>X</b>	<b>5</b>	<b>136.09</b>	<b>0.77</b>	<b>0.00</b>
mod3		X	4	138.50	0.23	2.41
mod2	X		4	158.19	0.00	22.10
mod4			3	159.50	0.00	23.41

**PFD<sub>o</sub>A**

	<b>Females contamination</b>	<b>Egg number</b>	<b>K</b>	<b>AICc</b>	<b>AIC<sub>cwt</sub></b>	<b>ΔAICc</b>
mod1	X	X	5	80.30	0.51	0.00
<b>mod3</b>		<b>X</b>	<b>4</b>	<b>80.36</b>	<b>0.49</b>	<b>0.06</b>
mod4			3	99.39	0.00	19.09
mod2	X		4	99.77	0.00	19.48

**PFTriA**

	<b>Females contamination</b>	<b>Egg number</b>	<b>K</b>	<b>AICc</b>	<b>AIC<sub>cwt</sub></b>	<b>ΔAICc</b>
<b>mod1</b>	<b>X</b>	<b>X</b>	<b>5</b>	<b>157.85</b>	<b>0.90</b>	<b>0.00</b>
mod3		X	4	162.14	0.10	4.29
mod2	X		4	179.73	0.00	21.88
mod4			3	180.97	0.00	23.12

**PFTeA**

	<b>Females contamination</b>	<b>Egg number</b>	<b>K</b>	<b>AICc</b>	<b>AIC<sub>cwt</sub></b>	<b>ΔAICc</b>
<b>mod1</b>	<b>X</b>	<b>X</b>	<b>5</b>	<b>86.33</b>	<b>0.81</b>	<b>0.00</b>
mod3		X	4	89.20	0.19	2.87
mod2	X		4	104.74	0.00	18.41
mod4			3	106.09	0.00	19.77