



HAL
open science

Optical Modeling of Spectral Backscattering and Remote Sensing Reflectance From *Emiliana huxleyi* Blooms

Griet Neukermans, Georges Fournier

► To cite this version:

Griet Neukermans, Georges Fournier. Optical Modeling of Spectral Backscattering and Remote Sensing Reflectance From *Emiliana huxleyi* Blooms. *Frontiers in Marine Science*, 2018, 5, pp.e146. <10.3389/fmars.2018.00146>. <hal-03505063>

HAL Id: hal-03505063

<https://hal.science/hal-03505063v1>

Submitted on 31 Dec 2021

HAL is a multi-disciplinary open access archive for the deposit and dissemination of scientific research documents, whether they are published or not. The documents may come from teaching and research institutions in France or abroad, or from public or private research centers.

L'archive ouverte pluridisciplinaire HAL, est destinée au dépôt et à la diffusion de documents scientifiques de niveau recherche, publiés ou non, émanant des établissements d'enseignement et de recherche français ou étrangers, des laboratoires publics ou privés.



Distributed under a Creative Commons CC BY 4.0 - Attribution - International License



Optical Modeling of Spectral Backscattering and Remote Sensing Reflectance From *Emiliana huxleyi* Blooms

Griet Neukermans^{1*} and Georges Fournier²

¹ Laboratoire d'Océanographie de Villefranche, Sorbonne Université, Centre National de la Recherche Scientifique, Paris, France, ² DRDC, Valcartier Research Laboratory, Valcartier, QC, Canada

OPEN ACCESS

Edited by:

Astrid Bracher,
Alfred Wegener Institut Helmholtz
Zentrum für Polar und
Meeresforschung, Germany

Reviewed by:

Guangming Zheng,
National Oceanic and Atmospheric
Administration (NOAA), United States
Michael Twardowski,
Florida Atlantic University,
United States
Martin Hieronymi,
Helmholtz-Zentrum Geesthacht
Zentrum für Material- und
Küstenforschung, Germany

*Correspondence:

Griet Neukermans
griet.neukermans@obs-vlfr.fr

Specialty section:

This article was submitted to
Ocean Observation,
a section of the journal
Frontiers in Marine Science

Received: 10 February 2018

Accepted: 10 April 2018

Published: 07 May 2018

Citation:

Neukermans G and Fournier G (2018)
Optical Modeling of Spectral
Backscattering and Remote Sensing
Reflectance From *Emiliana huxleyi*
Blooms. *Front. Mar. Sci.* 5:146.
doi: 10.3389/fmars.2018.00146

In this study we develop an analytical model for spectral backscattering and ocean color remote sensing of blooms of the calcifying phytoplankton species *Emiliana huxleyi*. Blooms of this coccolithophore species are ubiquitous and particularly intense in temperate and subpolar ocean waters. We first present significant improvements to our previous analytical light backscattering model for *E. huxleyi* coccoliths and coccospheres by accounting for the elliptical shape of coccoliths and the multi-layered coccosphere architecture observed on detailed imagery of *E. huxleyi* liths and coccospheres. Our new model also includes a size distribution function that closely matches measured *E. huxleyi* size distributions. The model for spectral backscattering is then implemented in an analytical radiative transfer model to evaluate the variability of spectral remote sensing reflectance with respect to changes in the size distribution of the coccoliths and during a hypothetical *E. huxleyi* bloom decay event in which coccospheres shed their liths. Our modeled remote sensing reflectance spectra reproduced well the bright milky turquoise coloring of the open ocean typically associated with the final stages of *E. huxleyi* blooms, with peak reflectance at a wavelength of 0.49 μm . Our results also show that the magnitude of backscattering from coccoliths when attached to or freed from the coccosphere does not differ much, contrary to what is commonly assumed, and that the spectral shape of backscattering is mainly controlled by the size and morphology of the coccoliths, suggesting that they may be estimated from spectral backscattering.

Keywords: coccolithophores, optical model, coccolith morphology, backscattering coefficient, backscattering efficiency, size distribution, ocean color remote sensing, hyperspectral

INTRODUCTION

Coccolithophores are phytoplankton that form an exoskeleton of calcite scales called coccoliths (Figure 1). They are major oceanic calcite producers and carbon exporters in the ocean (Iglesias-Rodríguez et al., 2002; Broecker and Clark, 2009). The cosmopolitan coccolithophore species *Emiliana huxleyi* (Lohmann) Hay & Mohler thrives from tropical to subpolar oceans and forms large-scale, intense blooms particularly in temperate waters (Tyrrell and Merico, 2004). In the later bloom stages *E. huxleyi* overproduces and sheds coccoliths, giving the ocean a bright milky-turquoise appearance, which makes these blooms easily discernible from optical satellites

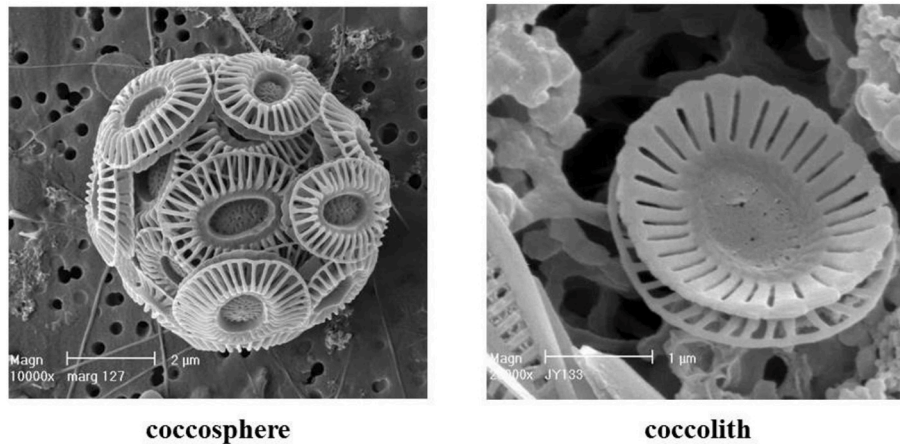


FIGURE 1 | Scanning Electron Micrograph of *Emiliana huxleyi* (Dr. Jeremy Young, University College London, London, with permission).

(Groom and Holligan, 1987; Holligan et al., 1993; Brown and Yoder, 1994), especially ocean color satellites (Gordon et al., 2001; Balch et al., 2005). The backscattering of light by coccoliths and coccospheres forms the basis of the remote sensing algorithm for the retrieval of the concentration of particulate inorganic carbon, PIC (see **Table 1** for a list of symbols and abbreviations), or calcite (Gordon et al., 2001; Balch et al., 2005). Remotely sensed PIC has been widely used to study coccolithophore bloom extent, occurrence, and timing in the global ocean (Balch et al., 2011; Hopkins et al., 2015), as well as their poleward expansion in response to climate change (Winter et al., 2014; Neukermans et al., 2018).

In situ and laboratory observations show that the relationship between light backscattering and PIC may vary, however, and the causes for this variability are poorly understood (e.g., Balch et al., 1991). While it is commonly assumed that PIC-specific light backscattering (=backscattering per unit PIC) is orders of magnitude higher for detached coccoliths than for coccospheres (Balch et al., 1991, 1996), Gordon et al. (2009) suggested that this would not be so based on a comparison of an optical model and *in situ* measurements in a coccolithophore bloom. Optical models are indeed useful to investigate variations in light backscattering due to changes in size and morphology of coccoliths and coccospheres, but investigations have been limited due to the computational demand of commonly used optical models suitable for light backscattering such as the discrete dipole approximation (Gordon and Du, 2001; Gordon, 2006; Zhai et al., 2013). Recently, however, Fournier and Neukermans (2017) developed an analytical optical model for light backscattering from coccoliths and coccolithophores of *E. huxleyi*. Our previous model closely matched results obtained from the discrete dipole approximation computations of Zhai et al. (2013) in which *E. huxleyi* coccoliths were represented as two thin circular disks attached together by a tube and perforated by a set of wedge shaped openings.

In the present paper we first improve our previous analytical optical model to account for a more realistic representation

of the morphology of *E. huxleyi* coccoliths and coccospheres. More specifically we account for (i) the fact that coccoliths are elliptical in shape with triangularly shaped wedge openings (**Figure 1**), and (ii) detailed coccosphere architecture with interlocking coccoliths as obtained from three dimensional electron microscopy observations of *E. huxleyi* coccolithophores (Hoffmann et al., 2015). We then improve our previous size distribution model based on detailed analyses of observed coccolith size distributions (Young et al., 2014). Using our new coccolithophore and coccolith backscattering model and an algebraic radiative transfer model we investigate the variability in spectral backscattering and ocean color remote sensing reflectance (i) due to changes in *E. huxleyi* coccolith size distribution and morphology, (ii) due to changes in the ratio of free to attached coccoliths, and (iii) during a hypothetical bloom decay event in which *E. huxleyi* sheds its attached liths. Programming codes for all computations in this paper are provided in Neukermans and Fournier (2018), including future releases.

METHODS

The light backscattering coefficient of calcite particles suspended in seawater, b_{bpic} (in m^{-1} , see **Table 1** for a list of symbols and units), can be partitioned in its contributions from liths and coccospheres, represented by b_{bl} and b_{bc} , respectively:

$$b_{bpic} = b_{bl} + b_{bc} \quad (1)$$

For populations of identical coccoliths and coccospheres we can write:

$$b_{bpic} = N_l \sigma_{bbl} + N_{cc} \sigma_{bbs} \quad (2)$$

where N_l and N_{cc} are the number concentrations of coccoliths and coccospheres (in m^{-3}), respectively, and σ_{bbl} and σ_{bbs} are the corresponding backscattering cross-sections for individual

TABLE 1 | List of abbreviations, symbols, definitions, and units.

Symbol or abbreviation	Definition, units
a	Semi-major axis of elliptical coccolith, μm
a_o, a_r, a_w, a_t	Components of a , μm (see Figure 2)
a_{om}	Minimum semi-major axis length for a distribution of coccoliths, μm
a_{peak}	Location of the peak value of the shifted gamma particle size distribution, μm
a_c	Critical semi-major axis, μm
$a(\lambda)$	Total absorption coefficient, m^{-1}
$a_{cc}(\lambda)$	Absorption coefficient of coccolithophore cores, m^{-1}
$a_{cdom}(\lambda)$	Absorption coefficient of colored dissolved organic matter, m^{-1}
$a_{ph}(\lambda)$	Absorption coefficient of phytoplankton other than coccolithophores, m^{-1}
$a_w(\lambda)$	Absorption coefficient of pure seawater, m^{-1}
$a_{cc}^*(\lambda)$	Absorption coefficient per particle, $\text{m}^{-2}/\text{particle}$
b	Semi-minor axis of elliptical coccolith, μm
b_o, b_r, b_w, b_t	Components of b , μm (see Figure 2 , analogous to a_o, a_r, a_w, a_t .)
b_c	Critical semi-minor axis, μm
$b_{bpic}(\lambda)$	Backscattering coefficient of calcite particles, m^{-1}
$b_{bw}(\lambda)$	Backscattering coefficient of pure seawater, m^{-1}
$b_{bl}(\lambda)$	Backscattering coefficient of coccoliths, m^{-1}
$b_{bc}(\lambda)$	Backscattering coefficient of coccospheeres, m^{-1}
β	Parameter describing the second-order shifted Gamma distribution function, μm^{-2}
CDOM	Colored Dissolved Organic Matter
Δr_s	Increase in coccosphere radius by adding one layer of coccoliths, μm
$\Delta s_g, \Delta s_{gmin}, \Delta s_{gmax}$	Width of the gap between the wedges of the coccolith, with minimum and maximum values, μm
$\Delta s_{pmin}, \Delta s_{pmax}$	Minimum and maximum width of the wedges (pillars), μm
f_t	Exclusion factor describing the ratio of the number of liths accommodated by the interlocking and stacked liths model, dimensionless
f_d	Elliptical disk thickness t_d relative to a , dimensionless
f_{pb}	Ratio of maximum to minimum pillar width, dimensionless
F_{rg}	Maximum fraction of the projected area of the coccolith that can become rough, dimensionless
F_{nc}	Ratio of number of naked cores to total number of cores, dimensionless
F_{sc}	Fraction of absorbing cores that remain while shedding their coccoliths, dimensionless
$k(\lambda)$	Imaginary part of the index of refraction of the coccolithophore core, dimensionless
λ_w	Light wavelength in water, μm
λ	Light wavelength in air = $n_w \times \lambda_w$, μm
μ	Mean of the size distribution of a population of coccoliths, μm
n_w	Refractive index of seawater, dimensionless
N	Number of liths covering the coccosphere
N_{il}	Number of coccoliths covering the coccosphere for a coccosphere with interlocking liths
N_{sl}	Number of coccoliths covering the coccosphere for a coccosphere with stacked liths
N_p	Number of pillars around the circumference of the elliptical coccolith
N_{cc}	Number concentration of coccospheeres, m^{-3}
N_l	Number concentration of coccoliths, m^{-3}
N_{ltot}	Number concentration of all coccoliths in a coccolithophore bloom either attached to are freed from the coccosphere, m^{-3}
O_{vl}	Number of layers of coccoliths on a coccosphere
ω_{bsm}	Specular reflection component coming from the smooth part of the particle, dimensionless
ω_{brg}	Diffuse reflection component originating from the rough part of the particle, dimensionless
PIC	Particulate Inorganic Carbon concentration, mol C m^{-3}
$P(a_o)$	Second-order shifted Gamma distribution function
$P_e(a, b)$	Perimeter of ellipse with semi-major axis a and semi-minor axis b , μm
P_n	Dimensionless form of perimeter of ellipse
$Q_{as}(k, 2r_c)$	Two-way absorption efficiency of light going through an absorbing coccosphere, dimensionless
Q_{bb}	Efficiency factor for backscattering of a particle, dimensionless

(Continued)

TABLE 1 | Continued

Symbol or abbreviation	Definition, units
Q_{bbi}, Q_{bbc}	Efficiency factor for backscattering of a coccolith or coccosphere, dimensionless
$\langle Q_{bbi}(\lambda) \rangle$	Mean backscattering efficiency factor for a population of elliptical coccoliths, dimensionless
r	Aspect ratio of ellipse = a/b , dimensionless
r_c	Inner radius of the coccosphere, μm
r_{pg}	Ratio of minimum pillar width to the maximum gap width, dimensionless
r_{sh}	Ratio of minimum to maximum gap width, dimensionless
r_s	Outer radius of the coccosphere, μm
RF_{rg}	Actual fraction of the area of the coccolith particle that contributes to rough scattering
$R_{rs\infty}(\lambda)$	Deep-water reflectance, sr^{-1}
$R_{rs}(\lambda)$	Remote sensing reflectance, sr^{-1}
σ	Standard deviation of the size distribution of a population of coccoliths, μm
$\sigma_{bbi}, \sigma_{bbs}$	Backscattering cross-section for an individual coccolith or coccosphere, m^2
σ_{bbNl}	Backscattering cross-section for N coccoliths, where N is the number of coccoliths covering a coccosphere, m^2
σ_{bbtot}	Total backscattering cross-section at any given point during the bloom decay event, m^2
$\langle \sigma_{bbi}(\lambda) \rangle$	Mean backscattering cross-section for a population of elliptical coccoliths, m^2
σ_g	Geometric cross-section of a particle, m^2
σ_{gl}, σ_{gs}	Geometric cross-section of a coccolith or coccosphere, m^2
$\langle \sigma_{gl} \rangle$	Geometric cross-section averaged over the coccolith size distribution, m^2
τ_l	Thickness of the elliptical coccolith, μm
τ_n	Dimensionless thickness parameter of the elliptical coccolith
w_r, w_w, w_t	Width of rings comprising the elliptical coccolith, μm (see Figure 2)
w_c	Critical width of the ring where the gap between the pillars of the coccolith becomes equal to $\lambda_w/4$, μm
$x(\lambda)$	Backscattering albedo, dimensionless
ξ	Dimensionless spectral slope parameter of $b_{bp}(\lambda)$

coccoliths and coccospheres (in m^2). The backscattering cross-section is defined as the product of the geometric cross-section of the calcite particle σ_g (in m^2) and the dimensionless efficiency factor for backscattering of the particle Q_{bb} so that:

$$\sigma_{bbi} = Q_{bbi}\sigma_{gl} \quad \text{and} \quad \sigma_{bbs} = Q_{bbs}\sigma_{gs} \quad (3)$$

where the efficiency factor Q_{bb} is the ratio of radiant power backscattered by the particle to radiant power intercepted by the geometric cross-section of the particle (e.g., Morel and Bricaud, 1986).

The underlying assumptions to Equation (3) are, first, that coccoliths and coccolithophores are randomly oriented with respect to the direction of incident light. This allows us to evaluate σ_g through the theorem of Cauchy (1850) which states that the average σ_g of a randomly oriented particle of convex shape is equal to a quarter of its surface area. Second, for coccolithophores and coccoliths made of high refractive index calcite material, the backscattering efficiency Q_{bb} is dominated by the contribution of reflection from the particle surface (Fournier and Neukermans, 2017). For an ensemble of randomly oriented reflecting surfaces the theorem of van de Hulst (1957) formally states that: “the [angular] scattering pattern caused by reflection on large convex particles with random orientation is identical with the [angular] scattering pattern of a large sphere made of the same material and with the same surface condition.” This equivalence is a direct consequence of the

angular averaging procedure, which holds for randomly oriented surfaces. Therefore, it follows that the unity-normalized angular distribution of reflection from a randomly oriented convex body is shape-independent and can be characterized by a single scattering phase function in the back-direction. This allows us to treat orientation averages of the scattering efficiency factor and the geometric cross-section separately, which is implicitly assumed in Equation (3). In short, for randomly oriented highly reflective particles such as coccoliths and coccolithophores, the average σ_{bb} can be obtained by multiplying σ_g with Q_{bb} .

In what follows we first develop expressions for σ_{bbi} for single coccoliths (section Model for the Backscattering Cross-Section of an Elliptical Coccolith) as a function of lith size, shape, and morphology. We thereby build on our previous modeling work (Fournier and Neukermans, 2017) which relies on the fundamental hypothesis that for particles large compared to the wavelength of light, the backscattering is dominated by the reflection from the surfaces of the particles. This approximation holds particularly well for coccoliths because they are made of calcite, a material with a refractive index of 1.2 relative to water and therefore a high reflection coefficient. The reflection from the four calcite surfaces which comprise the coccolith particle is considered to be specular, and the surfaces are assumed smooth when the surface roughness features are smaller than a quarter of the light wavelength in water, λ_w . If the surface roughness features become larger than $\lambda_w/4$, light is reflected diffusely. This is represented in our previously derived formula for the

backscattering efficiency of a single circular coccolith particle:

$$Q_{bbl} = \omega_{bsm} (1 - RF_{rg}) + \omega_{brg} RF_{rg} \quad (4)$$

where F_{rg} is the maximum fraction of the projected area of the particle that can become rough, RF_{rg} is the actual fraction of the area of the particle that contributes to rough scattering, ω_{bsm} represents the specular reflection component coming from the smooth part of the particle surface and ω_{brg} is a diffuse reflection component originating from the rough part of the particle surface. Expressions for ω_{brg} and ω_{bsm} as functions of the refractive index are derived in Fournier and Neukermans (2017).

Model for the Backscattering Cross-Section of an Elliptical Coccolith

To model the light backscattering cross-section of an elliptical coccolith of *E. huxleyi* we need to derive Q_{bbl} and σ_{gl} (Equation 3) and therefore we need to consider the detailed geometry of a coccolith (Young et al., 2014) which is schematically depicted in **Figure 2**. The semi-major axis a is $\frac{1}{2}$ the coccolith length while the semi-minor axis b is $\frac{1}{2}$ the coccolith width. As indicated in **Figure 2**, the structure of the coccolith can be accurately represented by a set of four ellipses separated by three rings of fixed width. We have an outermost ellipse separated by a thin ring of width w_r from the ellipse which marks the beginning of the zone with the open wedges. This ellipse is in turn separated by a ring of width w_w from an inner ellipse. These ellipses define the boundaries of the lith area containing the wedged openings. The inner ellipse is separated from a center ellipse by a width w_t that represents the boundaries of the inner tube joining the distal and proximal sheets.

The average geometric cross-section of a randomly oriented elliptical coccolith is derived in Supplementary Information section 1.1 (based on Cauchy, 1850's theorem) and repeated here for convenience:

$$\sigma_{gl} = \left(\frac{1}{4}\right) [2\pi (ab) + \tau_l P_e (a, b)] \quad (5)$$

where τ_l is the thickness of the elliptical disk and $P_e (a, b)$ its perimeter with equations given in Supplementary Information section 1.1.

We can represent the proportional relations between the various ellipse parameters (a_o, a_r, a_w, a_t) and (b_o, b_r, b_w, b_t) as follows (**Figure 2**):

$$\begin{aligned} \frac{a_r}{a_o} &= \left[1 - \frac{w_r}{a_o}\right] \text{ and } \frac{b_r}{b_o} = \left[1 - \left(\frac{a_o}{b_o}\right) \frac{w_r}{a_o}\right] \\ \frac{a_w}{a_o} &= \left[1 - \frac{(w_r + w_w)}{a_o}\right] \text{ and } \frac{b_w}{b_o} = \left[1 - \left(\frac{a_o}{b_o}\right) \frac{(w_r + w_w)}{a_o}\right] \\ \frac{a_t}{a_o} &= \left[1 - \frac{(w_r + w_w + w_t)}{a_o}\right] \text{ and } \frac{b_t}{b_o} = \left[1 - \left(\frac{a_o}{b_o}\right) \frac{(w_r + w_w + w_t)}{a_o}\right] \end{aligned} \quad (6)$$

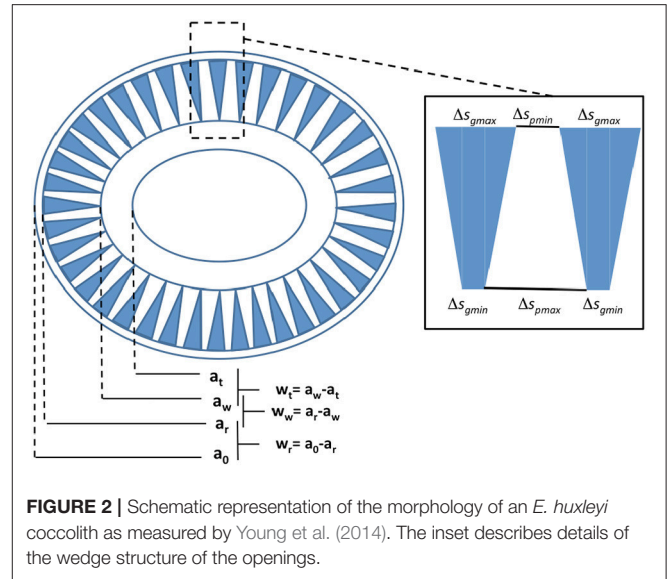


FIGURE 2 | Schematic representation of the morphology of an *E. huxleyi* coccolith as measured by Young et al. (2014). The inset describes details of the wedge structure of the openings.

For the coccolith in **Figure 1**, with major axis in μm of $a_o = 1.8688$, we have the following proportionalities:

$$\begin{aligned} \frac{a_o}{b_o} &= r_o = 1.20 \\ \frac{w_r}{a_o} &= 0.0439 \\ \frac{w_w}{a_o} &= 0.3158 \\ \frac{w_t}{a_o} &= 0.1688 \end{aligned}$$

The maximum fraction of the surface area of the coccolith that can become rough F_{rg} lies between ellipses with parameters (a_r, a_w) and (b_r, b_w) so we can write:

$$F_{rg} = \left[\frac{a_r b_r}{a_o b_o} - \frac{a_w b_w}{a_o b_o} \right] \quad (7)$$

which gives $F_{rg} = 0.5418$ for the coccolith in **Figure 2**.

We will now analyze more closely the structure of wedges and pillars. The structure of the wedges and pillars in the zone between a_r and a_w can be represented as a set of gaps with maximum widths Δs_{gmax} and minimum pillar width Δs_{pmin} respectively along the elliptical boundary at a_r and minimum widths Δs_{gmin} and maximum pillar width Δs_{pmax} . The gap width narrows down to Δs_{gmin} on the elliptical boundary at a_w while the pillar width grows to fill the empty space. Given N_p pillars around the circumference of the ellipse at a_r we have:

$$\begin{aligned} N_p (\Delta s_{gmax} + \Delta s_{pmin}) &= P_e (a_r, b_r) \\ N_p (\Delta s_{gmin} + \Delta s_{pmax}) &= P_e (a_w, b_w) \end{aligned} \quad (8)$$

Defining the ratio of the minimum pillar width to the maximum gap width, r_{pg} , and the ratio of minimum to maximum gap width,

r_{sh} , as:

$$r_{pg} = \frac{\Delta s_{pmin}}{\Delta s_{gmax}} \quad \text{and} \quad r_{sh} = \frac{\Delta s_{gmin}}{\Delta s_{gmax}} \quad (9)$$

we obtain the following expression for Δs_{gmax}

$$\Delta s_{gmax} = \frac{P_e(a_r, b_r)}{N_p(1+r_{pg})} = \frac{2\pi a_0 P_n\left(\frac{a_r}{a_0}, \frac{b_r}{a_0}\right)}{N_p(1+r_{pg})} \quad (10)$$

where P_n is the dimensionless ellipse perimeter given in Equation (S13). As we proceed from the ellipse at a_r to the ellipse at a_w the gap Δs_g narrows from Δs_{gmax} to Δs_{gmin} as w goes from 0 to w_w

$$\Delta s_g = \Delta s_{gmax} \left[1 - (1 - r_{sh}) \frac{w}{w_w} \right] \quad (11)$$

To determine where the backscattering becomes rough we need to compute at what value of a the gap Δs_g becomes equal to 1/4 of λ_w (Gordon, 2006; Fournier and Neukermans, 2017). We define w_c as the critical width where the gap becomes equal to $\lambda_w/4$, then Equation (11) gives:

$$\frac{\lambda_w}{4} = \Delta s_{gmax} \left[1 - (1 - r_{sh}) \frac{w_c}{w_w} \right] \quad (12)$$

The corresponding critical semi-major axis a_c and semi-minor axis b_c are given by:

$$a_c = a_o - (w_r + w_c) \quad \text{or} \quad \frac{a_c}{a_o} = \left[1 - \frac{(w_r + w_c)}{a_o} \right] \quad (13)$$

$$b_c = b_o - (w_r + w_c) \quad \text{or} \quad \frac{b_c}{b_o} = \left[1 - \left(\frac{a_o}{b_o} \right) \frac{(w_r + w_c)}{a_o} \right] \quad (14)$$

As long as the gap Δs_g is smaller than Δs_{gmax} and larger than $\lambda_w/4$ we can compute the critical width as:

$$w_c = w_w \frac{\left(1 - \frac{\lambda_w/4}{\Delta s_{gmax}} \right)}{(1 - r_{sh})} \quad \text{for} \quad \frac{\lambda_w}{(4\Delta s_g)} \leq 1 \quad (15)$$

When Δs_g is smaller than $\frac{\lambda_w}{4}$ we must set w_c to 0 and on the high side as the wavelength gets smaller we must limit w_c to a maximum value of w_w :

$$w_c = 0 \quad \text{for} \quad \frac{\lambda_w/4}{\Delta s_g} > 1 \quad \text{and} \quad w_c = w_w \quad \text{for} \quad \frac{\left(1 - \frac{\lambda_w/4}{\Delta s_{gmax}} \right)}{(1 - r_{sh})} > 1 \quad (16)$$

We can then proceed to compute the ratio $\frac{w_c}{a_o}$ which is required to evaluate the fraction of rough surface of the coccolith using Equations (15) and (10).

$$\begin{aligned} \frac{w_c}{a_o} &= \frac{w_w}{a_o} \left(\frac{1}{1 - r_{sh}} \right) \left(1 - \frac{\lambda_w/4}{\Delta s_{gmax}} \right) \\ &= \frac{w_w}{a_o} \left(\frac{1}{1 - r_{sh}} \right) \left[1 - \left(\frac{\lambda_w}{4\pi a_o} \right) \frac{N_p(1+r_{pg})}{P_n\left(\frac{a_r}{a_o}, \frac{b_r}{a_o}\right)} \right] \end{aligned} \quad (17)$$

Substituting this expression in Equations (13) and (14) we obtain directly the fraction of the elliptical surface of the coccolith that is rough:

$$RF_{rg}(a_o, \lambda) = \frac{\pi a_r b_r - \pi a_c b_c}{\pi a_o b_o} = \left[\frac{a_r}{a_o} \frac{b_r}{b_o} - \frac{a_c}{a_o} \frac{b_c}{b_o} \right] \quad (18)$$

The only variable determining the behavior of RF_{rg} is the ratio of the wavelength in water λ_w to the major axis a_o of the elliptical coccolith. The rest of the elements are fixed by the proportionality factors dictated by the assumed shape of the coccolith.

Combining Equations (8) and (9) we find for the ratio of circumferences of the outer and inner ellipse where the wedges and pillars occur:

$$\frac{P_e(a_w, b_w)}{P_e(a_r, b_r)} = \frac{1}{1+r_{pg}} \left(r_{sh} + \frac{\Delta s_{pmax}}{\Delta s_{gmax}} \right) = \frac{1}{1+r_{pg}} \left(r_{sh} + f_{pb} r_{pg} \right) \quad (19)$$

where

$$f_{pb} = \Delta s_{pmax} / \Delta s_{pmin} \quad (20)$$

is the ratio of maximum to minimum pillar width. For triangularly shaped wedges such as those measured by Young et al. (2014) $\Delta s_{gmin} = 0 = r_{sh}$ and using Equation (S13) for a non-dimensional version of the perimeter ratio, P_n , we find:

$$\frac{P_e(a_w, b_w)}{P_e(a_r, b_r)} = \frac{P_n(a_w/a_o, b_w/a_o)}{P_n(a_r/a_o, b_r/a_o)} \quad (21)$$

Equation (19) then simplifies to:

$$\frac{P_n(a_w/a_o, b_w/a_o)}{P_n(a_r/a_o, b_r/a_o)} = \frac{f_{pb} r_{pg}}{1+r_{pg}} \quad (22)$$

For the coccolith morphology studied by Young et al. (2014) and shown in **Figure 1** we have $r_{pg} = 0.666$ and $f_{pb} = 1.602$ which means that the base of the pillar Δs_{pmax} is almost as wide as the wedge opening at the top Δs_{gmax} . We will use these values in the present work as it gives the best fit to the structure of the coccolith pillars of the distal sheet.

Backscattering Cross-Section for a Population of Elliptical Coccoliths

To evaluate the geometric cross-section averaged over a size distribution we rewrite Equation (5) in a non-dimensional form (derived in Supplementary Information section 1.1, Equation S14):

$$\begin{aligned} \sigma_{gl} &= \left(\frac{1}{4} \right) \left[2\pi (a_o b_o) + \tau_l \pi a_o P_n \left(\frac{a_o}{a_o}, \frac{b_o}{a_o} \right) \right] \\ &= \left(\frac{\pi a_o b_o}{2} \right) \left[1 + \frac{\tau_l}{2b_o} P_n \left(1, \frac{b_o}{a_o} \right) \right] \end{aligned} \quad (23)$$

with P_n the dimensionless ellipse perimeter defined in Equation (S13). We can then obtain the resulting mean backscatter cross section by multiplying with the backscatter efficiency, as in

Equation (3). For convenience we define the thickness parameter as a non-dimensional proportionality:

$$\tau_n = \frac{1}{2} \left(\frac{a_o}{b_o} \right) \frac{\tau_l}{a_o} \quad (24)$$

which gives

$$\sigma_{gl} = \left(\frac{\pi a_o b_o}{2} \right) \left[1 + \tau_n P_n \left(1, \frac{b_o}{a_o} \right) \right]$$

or

$$\sigma_{gl} = \left(\frac{\pi a_o^2}{2} \right) \left(\frac{b_o}{a_o} \right) \left[1 + \tau_n P_n \left(1, \frac{b_o}{a_o} \right) \right] \quad (25)$$

In our previous work (Fournier and Neukermans, 2017) we assumed a first-order shifted gamma size distribution $P(a_o)$ of coccoliths. Detailed analyses of the shape of measured coccolith size distributions (Young et al., 2014), however, show that these are better approximated by a second-order shifted Gamma function (Supplementary Information section 1.2) of the following form:

$$P(a_o) = \frac{4\beta^{3/2}}{\sqrt{\pi}} (a_o - a_{om})^2 e^{-\beta(a_o - a_{om})^2} \rightarrow a_o \geq a_{om} \quad (26)$$

where a_{om} is the minimum size of the coccoliths. The following relations can be used to express the parameters in terms of the measured mean μ and standard deviation σ of the coccolith populations:

$$\beta = \frac{(3\pi - 8)}{2\pi \sigma^2}, \quad a_{om} = \mu - \frac{\sigma}{\sqrt{\frac{(3\pi - 8)}{8}}}, \quad a_{peak} = \mu - \frac{\sigma}{\sqrt{\frac{(3\pi - 8)}{2\pi}}} \quad (27)$$

where a_{peak} is the location of the peak value of the distribution. Using Equation (25), the geometric cross-section averaged over the coccolith size distribution, $\langle \sigma_{gl} \rangle$, is therefore:

$$\langle \sigma_{gl} \rangle = \frac{\pi}{2} \left(\frac{a_o}{b_o} \right) \left[1 + \tau_n P_n \left(1, \frac{b_o}{a_o} \right) \right] \int_{a_{om}}^{\infty} a_o^2 P(a_o) da_o \quad (28)$$

or

$$\langle \sigma_{gl} \rangle = \frac{\pi}{2} \left(\frac{a_o}{b_o} \right) \left[1 + \tau_n P_n \left(1, \frac{b_o}{a_o} \right) \right] \left[a_{om}^2 + 4a_{om} \frac{1}{\sqrt{\pi} \beta} + \frac{3}{2\beta} \right] \quad (29)$$

The mean backscattering cross-section and backscattering efficiency factor for a population of elliptical coccoliths are then given by, respectively:

$$\begin{aligned} \langle \sigma_{bbl}(\lambda) \rangle &= \int_{a_{om}}^{\infty} Q_{bbl} \left(\frac{\lambda}{a_o} \right) \sigma_{gl}(a_o) P(a_o) da_o \\ \langle Q_{bbl}(\lambda) \rangle &= \int_{a_{om}}^{\infty} Q_{bbl} \left(\frac{\lambda}{a_o} \right) P(a_o) da_o \end{aligned} \quad (30)$$

Note that $P(a_o)$ can now be expressed as a pure function of measured mean μ and standard deviation σ by using the relations in Equation (27):

$$P(\mu, \sigma, a_o) = \frac{4\beta(\sigma)^{3/2}}{\sqrt{\pi}} (a_o - a_{om}(\mu, \sigma))^2 e^{-\beta(a_o - a_{om}(\mu, \sigma))^2} \rightarrow a_o \geq a_{om} \quad (31)$$

Coccolithophore Architecture

To address whether light backscattering from *E. huxleyi* coccospheres differs in any way from the backscattering by the sum of its individual coccoliths we need to look into the details of coccolithophore architecture. In our previous work (Fournier and Neukermans, 2017) we assumed that coccospheres were composed of coccoliths which completely cover the sphere in multiple layers attached on top of the core and on top of one another. This determined the number of coccoliths attached to a given core for a given number of layers. Three dimensional electron microscopy observations of coccolithophores (Hoffmann et al., 2015), however, suggest an entirely different layering of coccoliths on coccospheres, which we expect to impact the light scattering properties of coccolithophores and the number of liths comprising the coccolithophore, and by consequence the difference in backscattering from attached vs. free liths. We will first present the coccosphere model proposed in our earlier work (Fournier and Neukermans, 2017), referred to as the stacked liths coccosphere model, and next present an improved coccosphere architecture model, referred to as the interlocking liths coccosphere model.

Stacked Liths Coccosphere Model

In our previous work we assumed that *E. huxleyi* coccolithophores were built up of coccoliths which completely cover the coccosphere in multiple layers with liths stacked on top of one another as shown in **Figure 3A**. As per Equation (3), we examine the geometric-cross sections corresponding to *E. huxleyi* coccoliths when attached to and freed from the coccosphere. As the average geometric cross-section of any

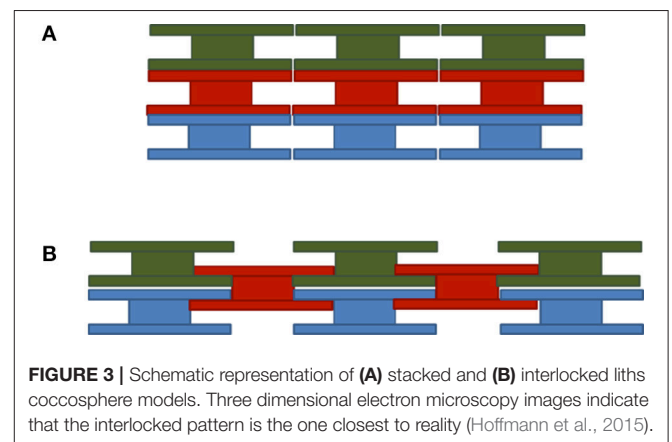


FIGURE 3 | Schematic representation of **(A)** stacked and **(B)** interlocked liths coccosphere models. Three dimensional electron microscopy images indicate that the interlocked pattern is the one closest to reality (Hoffmann et al., 2015).

randomly oriented convex shape is equal to $\frac{1}{4}$ of its surface area (Cauchy, 1850) we find for a coccosphere of radius r_s that

$$\sigma_{gs} = \left(\frac{1}{4}\right) 4\pi r_s^2 = \pi r_s^2 \tag{32}$$

For a randomly oriented elliptical disk of semi-major axis a , semi-minor axis b , aspect ratio $r = a/b$, and thickness τ_d , the mean geometric cross-section is:

$$\begin{aligned} \sigma_{gl} &= \left(\frac{1}{4}\right) [2\pi(ab) + \pi(a+b)\tau_d] = \frac{\pi a^2}{2r} \left[1 + \frac{(1+r)\tau_d}{a}\right] \\ &= \frac{\pi a^2}{2r} \left[1 + \frac{(1+r)}{2r} f_d\right] \end{aligned} \tag{33}$$

where $f_d = \tau_d/a$, the disk thickness relative to a . Note that we have used the first order approximation $\pi(a+b)$ for the outer perimeter of the ellipse $P_e(a,b)$ as this keeps the algebra simple and is accurate enough for coccoliths who are nearly spherical ($r = 1.2$) (see Equation S7 in the Supplementary Notes). Based on Paasche (2001), we assume that in the first layer the coccoliths' proximal sheets are attached to the core and completely cover it, which gives the following equality:

$$N\pi ab = N\frac{\pi a^2}{r} = 4\pi r_c^2 \tag{34}$$

where N is the number of liths covering the sphere. Note that the simple elliptical disk model implies that the surface of the proximal and distal sheets is the same.

If the **core of the sphere is not absorbing**, the liths on both the front and back surfaces of the sphere contribute to the backscattering, i.e., $Q_{bbs} = 2Q_{bbl}$, and the total backscattering cross-section of the coccosphere is given by:

$$\sigma_{bbs} = 2Q_{bbl}\pi r_s^2 = Q_{bbl} \left[N\frac{\pi a^2}{2r} \right] \tag{35}$$

Using Equations (33) and (34), the backscattering cross-section for N disks, σ_{bbNI} , is given by:

$$\begin{aligned} \sigma_{bbNI} &= Q_{bbl} \left[\frac{N\pi a^2 \left(1 + \frac{(1+r)}{2r} f_d\right)}{2r} \right] \\ &= Q_{bbl} \left[\frac{4\pi r_s^2 \left(1 + \frac{(1+r)}{2r} f_d\right)}{2} \right] \end{aligned} \tag{36}$$

which can be simplified to:

$$\sigma_{bbNI} = Q_{bbl} \left[2\pi r_s^2 \left(1 + \frac{(1+r)}{2r} f_d\right) \right] \tag{37}$$

From Equations (35) and (37), we thus find that for a non-absorbing coccosphere covered with a single layer of N liths the

ratio of the backscattering cross-section for free liths to that of the coated coccosphere is:

$$\frac{\sigma_{bbNI}}{\sigma_{bbs}} = 1 + \frac{(1+r)}{2r} f_d \tag{38}$$

This expression is near unity for thin disks ($f_d \approx 0$).

To account for the multi-layered structure of the coccosphere, let O_{vl} be the number of layers. Adding $(O_{vl} - 1)$ additional layers of coccoliths attached by their proximal sheets to the distal sheets of the coccoliths on the layer beneath them we have:

$$r_s^2 = (r_c + (O_{vl} - 1) \Delta r_s)^2 \tag{39}$$

where Δr_s is the sphere radius increase due to each layer of liths. If the N proximal sheets also completely cover each upper layer we obtain the following general formula for the ratio of the backscattering cross-section for free liths to that of the coccosphere with O_{vl} number of layers:

$$\frac{\sigma_{bbNI}}{\sigma_{bbs}} = \frac{2\pi r_s^2 \left(1 + \frac{(1+r)}{2r} f_d\right)}{2\pi r_s^2} = 1 + \frac{(1+r)}{2r} f_d \tag{40}$$

We thus find that the backscattering from non-absorbing coccospheres with coccoliths attached is only slightly smaller than the backscattering from all its individual liths at any given wavelength. This near-equality is due the fact that the geometric cross-sections of randomly oriented disks covering a sphere and of the covered sphere are equal if one assumes the sphere is transparent and the reflections from both the front and back layers are the dominant contributors to the backscattering as is the case for calcite coccoliths with their high index of refraction.

When the **core of the coccosphere is absorbing**, the area from the back surface shadowed by the core no longer contributes to the backscattering from the coated coccosphere and we have: (Fournier and Neukermans, 2017):

$$\frac{\sigma_{bbNI}}{\sigma_{bbs}} = \frac{2 \left(1 + \frac{(1+r)}{2r} f_d\right)}{\left[1 + \left(1 - Q_{as}(k, 2r_c) \frac{r_c^2}{r_s^2}\right)\right]} \tag{41}$$

Where $Q_{as}(k, 2r_c)$ is the two-way absorption efficiency, i.e., the absorption efficiency for light going to the back surface and coming back toward the front of the core after reflection from the back surface. Using the anomalous diffraction approximation for spheres the two-way absorption efficiency of the spherical core is (Fournier and Neukermans, 2017):

$$Q_{as}(k, 2r_c) = 2 \left[\frac{1}{2} + \frac{e^{-\delta 2 r_c}}{\delta 2 r_c} + \frac{(e^{-\delta 2 r_c} - 1)}{(\delta 2 r_c)^2} \right] \text{ with } \delta = 4k \frac{2\pi}{\lambda} \tag{42}$$

To evaluate $Q_{as}(k, 2r_c)$ we use the spectral coccolithophore core absorption k values obtained by

Stramski et al. (2001) and Neeley et al. (2015). Using Equation (39), we can now rewrite Equation (41) as a function of O_{vl} :

$$\frac{\sigma_{bbNI}}{\sigma_{bbs}} = \frac{2 \left(1 + \frac{(1+r)}{2r} f_d \right)}{\left[1 + \left(1 - Q_{as}(k, 2r_c) \frac{1}{(1+O_{vl} \frac{\Delta r_s}{r_c})^2} \right) \right]} \quad (43)$$

$$\frac{\sigma_{bbNI}}{\sigma_{bbs}} = \frac{2 \left(1 + \frac{(1+r)}{2r} f_d \right)}{\left[2 - Q_{as}(k, 2r_c) \frac{1}{(1+O_{vl} \frac{\Delta r_s}{r_c})^2} \right]} \quad (44)$$

So in the case of thin liths ($f_d \approx 0$) and layers ($r_s \approx 0$) and a fully absorbing core ($Q_{as}(k, 2r_c) \approx 1$) this would imply that the scattering from the free liths would be twice as much as the scattering from the coated coccosphere:

$$\frac{\sigma_{bbNI}}{\sigma_{bbs}} \approx 2 \quad (45)$$

We thus find that backscattering from fully absorbing coccospheres with coccoliths attached is at least half as much as the backscattering from all its individual liths. Therefore, at wavelengths where the core absorbs most, i.e., in the chlorophyll-*a* absorption peaks at 0.44 and 0.68 μm , the ratio in Equation (44) will be higher, but will not reach 2 as *E. huxleyi* cells are not perfect black bodies (Morel and Bricaud, 1981).

Interlocking Liths Coccosphere Model

Three-dimensional ion beam microscopy images of *E. huxleyi* coccolithophores indicate that coccoliths are actually interlocking so that the central tube of the coccolith penetrates through the layer below, such as shown in **Figure 3B** (Hoffmann et al., 2015). The distal sheets completely cover the outer surface of every lith layer and the proximal sheets overlap thus reducing the area available and the number of coccoliths that can be accommodated per layer. A further implication is that, to first order, each layer of coccoliths contains about the same number of liths.

How many liths can be accommodated on a coccosphere by the interlocked liths model and how does this compare to the amount accommodated by the stacked liths model? Accounting for the fraction of the space occupied by the coccolith tube structure which has a semi-major axis a_w , we find the following equality:

$$N_{il} \pi \frac{a_0^2}{r} \left(1 - \frac{a_w b_w}{a_0 b_0} \right) = N_{sl} \pi \frac{a_0^2}{r} (1 - f_t^2) = 4\pi r_c^2 \quad (46)$$

where a_0 is the semi-major axis of the outer part of the coccolith, r_c is the radius of the coccolithophore core, and N_{il} is the number of coccoliths on the first layer. Using Equation (34) to determine the number of liths per layer that can be accommodated by the stacked liths model, N_{sl} , we find the ratio of the number of liths per layer for the two models:

$$\frac{N_{il}}{N_{sl}} = (1 - f_t^2) \quad (47)$$

Expressing the exclusion factor f_t^2 in terms of the geometry of the coccolith we have:

$$f_t^2 = \frac{a_w b_w}{a_0 b_0} = \left[1 - \frac{(w_r + w_w)}{a_0} \right] \left[1 - r \frac{(w_r + w_w)}{a_0} \right] \quad (48)$$

For liths with the morphology measured by Young et al. (2014) we have

$$f_t^2 = 0.3635$$

and therefore

$$\frac{N_{il}}{N_{sl}} = 0.6365 \quad (49)$$

Measurements on cultured *E. huxleyi* cells give typical values for the mean core radius r_c of 2.2 μm and the mean semi-major axis a_0 of 1.25 μm (Hoffmann et al., 2015), which are at the lower end of the values measured *in situ* (Young et al., 2014). The ratio a_0/r_c of 0.56, however, is close to the value of 0.46 used by Zhai et al. (2013) and us (Fournier and Neukermans, 2017) in our model studies for circular coccoliths. Accounting for the elliptical shape of coccoliths using the equivalent radius a_{eq} :

$$a_{eq} = \sqrt{a_0 b_0} = \sqrt{1.25 \times 1.25 / 1.2} \approx 1.14$$

we find that a_{eq}/r_c is 0.52, which brings the coccolithophore model of Zhai et al. (2013) even closer to the experimental architecture of *E. huxleyi* coccospheres and liths observed by Hoffmann et al. (2015). We will therefore use the same proportions here as found in the model of Zhai et al. (2013) for the various other parameters of the liths such as distal and proximal sheet thicknesses ($\tau_l/r_c = 0.07$), the separation between the sheets ($d_h/r_c = 0.18$), and the tube width ($a_t/r_c = 0.18$).

Solving Equation (34) for N_{sl} we find:

$$N_{sl} = 4 r \frac{r_s^2}{a_0^2} = 4 \times 1.2 \times \left(\frac{2.2}{1.25} \right)^2 = 14.87 \approx 15$$

And using Equation (49) we have

$$N_{il} = 0.6365 \times 15 = 9.46 \approx 9$$

To determine the number of coccoliths attached on additional layers of the coccosphere, we use the measurements of diameter increment per layer obtained from laboratory cultures, which are on the order of 1.0 μm (Hoffmann et al., 2015). For the stacked liths coccosphere model this increase in diameter per layer should be larger by twice the sum of the thicknesses of the proximal and distal sheets of the coccolith. Using the same geometry as in our previous paper (Fournier and Neukermans, 2017), this implies that the diameter increase per layer, Δr_s , should be 1.53 μm . For l layers this gives

$$N_{sl} = 4 r \frac{(r_c + l \Delta r_s)^2}{a_0^2} \quad (50)$$

Table 2 compares the number of liths for multilayered coccospheres between both coccosphere models. We

immediately see that the interlocked liths model gives rise to many less liths being attached to a given core for the same number of layers, which is more consistent with experimental measurements (Hoffmann et al., 2015) than what we obtain from the stacked liths model.

The analysis of the ratio of the backscattering cross-section for free liths to that of the coated coccosphere with interlocked liths is similar to that for the stacked liths model. The total area of the core covered by the liths stays the same for all layers and therefore the total lith area is:

$$2\pi r_c^2 (1 - f_t^2) O_{vl} \tag{51}$$

We thus find the following ratio for a non-absorbing core:

$$\frac{\sigma_{bbNI}}{\sigma_{bbs}} = \frac{Q_{bbl} 2\pi r_c^2 (1 - f_t^2) O_{vl} \left(1 + \frac{(1+r)}{2r} f_d\right)}{Q_{bbl} 2\pi r_c^2 (1 - f_t^2) O_{vl}} = 1 + \frac{(1+r)}{2r} f_d \tag{52}$$

which is exactly the same as for the stacked liths model given in Equation (40). For an absorbing core, we also find the same ratio as for the stacked liths model:

$$\frac{\sigma_{bbNI}}{\sigma_{bbs}} = \frac{2 \left(1 + \frac{(1+r)}{2r} f_d\right)}{\left[2 - Q_{as}(k, 2r_c) \frac{1}{(1 + O_{vl} \frac{\Delta r_s}{r_c})^2}\right]} \tag{53}$$

Only the absolute magnitudes of the cross-sections between both models are different since for the first layer we have:

$$r_s^2 = (r_c + \Delta r_s)^2$$

Based on the coccolithophore structure measured by Hoffmann et al. (2015), the lith morphology obtained by Young et al. (2014), and our previous results we determine the following general values for the key parameters in Equation (53):

$$f_d = \frac{1}{4}, \frac{\Delta r_s}{r_c} = \frac{1}{5}, r = 1.2$$

In summary, no matter which coccosphere architecture model we use, we get the fundamental result that backscattering

from detached coccoliths is not so much greater than the backscattering from the coccolithophore with its coccoliths attached, which confirms the suggestion of Gordon et al. (2009), and that the difference in backscattering is governed by the absorption of the core which has a spectral signature.

Changes in Light Backscattering and Remote Sensing Reflectance During *E. Huxleyi* Bloom Decay

We simulate changes in spectral backscattering during a hypothetical *E. huxleyi* bloom decay phase in which *E. huxleyi* sheds all its attached liths. We will account for two possibilities for the fate of the *E. huxleyi* cores; they either die during bloom decay (for example due to viral lysis), or they remain without liths (Balch et al., 1993). Their presence only affects light absorption (and by consequence remote sensing reflectance) as we assume that the calcite material dominates the backscattering coefficient, in agreement with observations in natural *E. huxleyi* blooms. These bloom dynamics scenarios are based on observations of bloom decay in laboratory experiments and *in situ* (Balch et al., 1993) with the following simplifications: (i) coccolith production stops when shedding begins so that the number of liths remains constant during the process and none are detached at the beginning, and (ii) dead *E. huxleyi* cores do not absorb light and the light absorption properties of the cores that remain without liths remain constant throughout the bloom event. Thus, initially we have a suspension of living *E. huxleyi* cells, coccospheres with absorbing cores and with all N_{tot} liths attached. This suspension then gradually transforms into a suspension comprised of free liths with a certain fraction of surviving absorbing cores left, F_{sc} , which varies between 0 and 1.

If we define F_{nc} as the ratio of cores that have shed their liths to the total initial number of coated cores ($F_{nc} = \text{number of naked cores}/N_{cc}$), which varies from 0 to 1 during the coccolith shedding event, we can express the total backscattering cross-section σ_{bbtot} at any given point during the event as follows:

$$\sigma_{bbtot} = F_{nc} \sigma_{bbNI} + (1 - F_{nc}) \sigma_{bbs} \tag{54}$$

with

$$\sigma_{bbNI} = Q_{bbl} 2\pi r_c^2 (1 - f_t^2) O_{vl} \left(1 + \frac{(1+r)}{2r} f_d\right) \tag{55}$$

the backscattering cross-section of the free liths when detached from a single coccolithophore, and

$$\sigma_{bbs} = \sigma_{bbNI} \frac{\left[2 - Q_{as}(k, 2r_c) \frac{1}{(1 + O_{vl} \frac{\Delta r_s}{r_c})^2}\right]}{2 \left(1 + \frac{(1+r)}{2r} f_d\right)} \tag{56}$$

TABLE 2 | Comparison of the number of coccoliths, N_l , attached to a coccosphere of radius 3.7 μm for 1–4 layers for stacked and interlocked liths of semi-major axis length 1.7 μm and as observed on 3D imagery of coccospheres by Hoffmann et al. (2015).

Layer	N_l	N_l	Total N_l	Total N_l	Total N_l 3D-imagery
	stacked model	interlocked model	stacked model	interlocked model	
1	15	9	15	9	6
2	27	9	42	18	18
3	43	9	85	27	28
4	62	9	147	36	40

$$\sigma_{bbs} = Q_{bbi} \pi r_c^2 (1 - f_t^2) O_{vl} \left[2 - Q_{as}(k, 2r_c) \frac{1}{\left(1 + O_{vl} \frac{\Delta r_s}{r_c}\right)^2} \right] \quad (57)$$

the backscattering cross-section of a coated coccolithophore.

Algebraic Radiance Model

To evaluate variability in ocean color remote sensing due to changes in the size distribution of *E. huxleyi* coccoliths and during bloom decay, we develop an algebraic remote sensing reflectance model. The model is based on the work of Albert and Mobley (2003), which provides a polynomial parameterization of the deep water reflectance $R_{rs\infty}(\lambda)$ (units: sr^{-1}) in terms of the dimensionless backscattering albedo $x(\lambda)$:

$$R_{rs\infty}(\lambda) = p_1 x(\lambda) (1 + p_2 x(\lambda) + p_3 x(\lambda)^2 + p_4 x(\lambda)^3) \left(1 + p_5 \frac{1}{\cos \theta_s}\right) \left(1 + p_7 \frac{1}{\cos \theta_v}\right) (1 + p_6 u) \quad (58)$$

with coefficients $p_1 = 0.0512 \text{ sr}^{-1}$, $p_2 = 4.6659 \text{ sr}^{-1}$, $p_3 = -7.8387 \text{ sr}^{-1}$, $p_4 = 5.4571 \text{ sr}^{-1}$, $p_5 = 0.1098 \text{ sr}^{-1}$, $p_6 = -0.0044 \text{ s m}^{-1}$, and $p_7 = 0.4021 \text{ sr}^{-1}$. θ_s is the zenith angle of the sun under the water surface and θ_v is the sensor viewing angle also below the water surface, and u is the mean wind speed. We used a mean value over the world's oceans of $u = 6.9 \text{ m s}^{-1}$, $\theta_s = 29^\circ$, typical for summer at temperate latitudes (40–60°N). The model is valid even in turbid water with large backscattering albedo, which is given by:

$$x(\lambda) = \frac{b_b(\lambda)}{b_b(\lambda) + a(\lambda)} \quad (59)$$

with total absorption coefficient, $a(\lambda)$ (in m^{-1}), composed as follows

$$a(\lambda) = a_w(\lambda) + a_{cc}(\lambda) + a_{cdom}(\lambda) + a_{ph}(\lambda) \quad (60)$$

where $a_w(\lambda)$, $a_{cc}(\lambda)$, $a_{cdom}(\lambda)$, and $a_{ph}(\lambda)$ are the respective contributions from pure seawater, coccolithophore cores, colored dissolved organic matter (CDOM), and phytoplankton other than coccolithophores. To focus on the effect of coccolithophores, we assumed $a_w(\lambda)$, $a_{cdom}(\lambda)$, and $a_{ph}(\lambda)$ to be constant. We fixed the chlorophyll-a concentration from other phytoplankton to a value of 0.6 mg m^{-3} and set $a_{cdom} = 0.02$ at a wavelength of $0.443 \mu\text{m}$ with a spectral slope of 0.0172 nm^{-1} , corresponding to average values for the Atlantic (Babin et al., 2003). See Supplementary Materials for more details on the calculation of $a(\lambda)$.

The total backscattering coefficient $b_b(\lambda)$ is partitioned as follows:

$$b_b(\lambda) = b_{bw}(\lambda) + b_{bpic}(\lambda) \quad (61)$$

where $b_{bw}(\lambda)$ is the backscattering coefficient of pure water and $b_{bpic}(\lambda)$ is the backscattering coefficient of the coccolith-coccosphere mixture as in Equation (1). We note that we

have assumed negligible contribution to backscattering from the organic part of the coccolithophore as the refractive index of the organic part of the coccolithophore is estimated to be 1.06 relative to water (Aas, 1996), much smaller than the refractive index of its calcite coccosphere, which is 1.20 relative to water. Further details of the model can be found in Supplementary Information section 1.3.

As derived in Supplementary Information section 1.3, the coccolith core absorption term is given by

$$a_{cc}(\lambda) = N_{cc} a_{cc}^*(\lambda) \quad (62)$$

where N_{cc} is the number concentration of coccospheres (in m^{-3}) and $a_{cc}^*(\lambda)$ is the coccosphere-specific absorption coefficient (in m^{-2} per coccosphere) resulting from an integral over the size distribution of the cores:

$$a_{cc}^*(\lambda) = \int_0^\infty P(\mu, \sigma, a_0) Q_a(k, r_c) \pi r_c^2 da_0 \quad (63)$$

We note that if we neglect the backscatter loss from the front surfaces which we can do to first order, the absorption by the cores is independent of whether they are coated or not. We can thus write:

$$a_{cc}(\lambda) = N_{cc} [F_{sc} F_{nc} + (1 - F_{nc})] a_{cc}^*(\lambda) \quad (64)$$

where F_{nc} is the proportion of naked cores and F_{sc} is the fraction of naked cores that remain in the surface after their liths have been shed ($F_{sc} = \text{number of surviving naked cores} / N_{cc}$). The first term represents the absorption from the naked cores left in the surface layer after lith shedding, while the second term represents the absorption from the coated cores in the bloom.

The backscattering term results from Equation (54):

$$b_{bpic}(\lambda) = N_{cc} [(1 - F_{nc}) \sigma_{bbs}(\lambda) + F_{nc} \sigma_{bbnl}(\lambda)] \quad (65)$$

Even though cell densities in bloom conditions for *E. huxleyi* are somewhat arbitrary, a minimal value of $10^9 \text{ cells m}^{-3}$ has been suggested (Tyrrell and Merico, 2004), with cell concentration exceeding $10^{11} \text{ cells m}^{-3}$ in the most intense blooms observed in Norwegian fjords (Tyrrell and Merico, 2004). Therefore, a realistic range for initial coccolithophore concentrations would be between $N_{cc} = 10^9$ and $2 \times 10^{10} \text{ cells m}^{-3}$ in open ocean waters, which we will use to simulate changes in remote sensing reflectance.

RESULTS

Spectral Backscattering Efficiency for a Single Coccolith as a Function of Size, Shape, and Morphology

The refractive index of calcite does not vary significantly over the wavelength range and can be represented by an average value of 1.2, which gives ω_{brg} and ω_{bsm} (Fournier and Neukermans, 2017), so that Q_{bbi} is only a function of λ_w/a_o , as shown in **Figure 4**. For

a coccolith with semi-major axis length a_o , in the long wavelength limit the entire surface of the particle appears perfectly smooth since asperities or holes will be smaller than $\lambda_w/4$, and $Q_{bbl} = \omega_{bsm} (1 - RF_{rg})$. As the wavelength gets shorter, parts of the surface will start to appear as rough and Q_{bbl} will increase rapidly to reach a maximum value of $Q_{bbl} = \omega_{brg}F_{rg} + \omega_{bsm} (1 - F_{rg})$ when all asperities and holes are larger than $\lambda/4$. This is very similar to the result obtained when modeling circular coccoliths with the morphology described by Zhai et al. (2013).

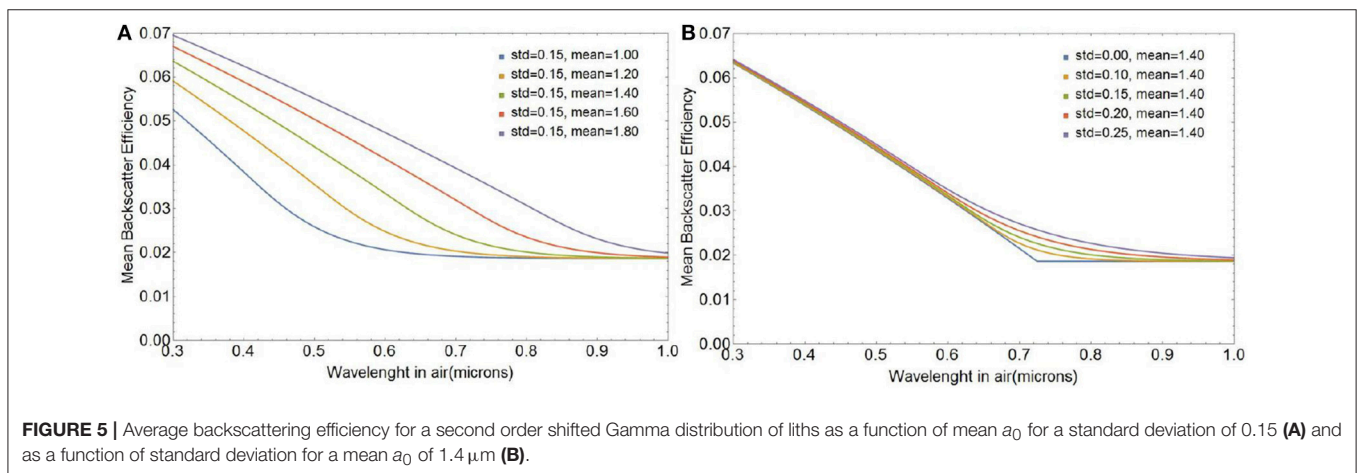
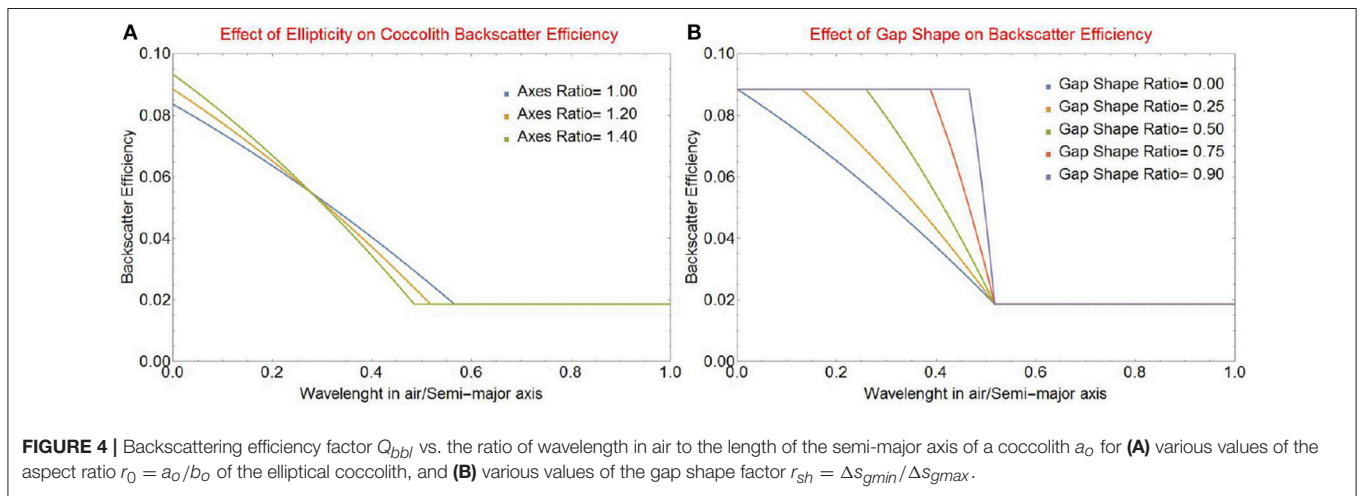
The backscattering efficiency for an elliptical coccolith with various aspect ratios $r_0 = a_o/b_o$ is shown in **Figure 4A**. The change seen in the onset wavelength is due to the reduction in the maximum gap width as the overall perimeter of the lith is reduced because the axis ratio increases. The accompanying change in the maximum value of the backscattering efficiency is due to the increase in the maximum fraction F_{rg} of rough area to total area because of the increasingly elliptical shape. The effect of the gap shape factor r_{sh} (defined in Equation 9) is shown in **Figure 4B** for an elliptical axis ratio r_0 of 1.2. This factor is a significant determinant of the spectral shape of light backscattering. In the limiting case of a constant gap width ($r_{sh} \approx 1$) the complete change from smooth to rough backscatter will

occur in a very narrow wavelength range. As the wedge gap narrows to a triangular shape ($r_{sh} \approx 0$) the change will become more gradual. As this triangular shape is the one observed by Young et al. (2014), we will use it in the rest of this paper.

Spectral Backscattering Efficiency for Populations of Elliptical Coccoliths

Figure 5 shows the spectral shape of backscattering efficiency for various coccolith size distributions modeled as a second order shifted Gamma function with five different mean semi-major axes μ and five standard deviations σ as defined in Equation (27). Not surprisingly, the sharp spectral features observed for a single coccolith particle in **Figure 4** are smoothed when averaged over the size distribution. **Figure 5** shows that the spectral shape of backscattering is largely controlled by variations in mean size of the coccolith population, whereas the standard deviation is a secondary factor merely broadening the transition zone from smooth to rough scattering as the standard deviation increases.

Differences in $\langle \sigma_{bbl}(\lambda) \rangle$ between the first order gamma function used in our original work the second-order gamma models for coccolith size distributions are very small because the Gamma functions have the same mean and standard



deviation. However, in what follows, we will use the second-order Gamma function to represent the coccolith size distribution as it matches the experimental size distributions more closely (see Supplementary Information section 1.2).

The changes in the spectral shape of light backscattering efficiency as the mean lith size changes are due to the fact that the transition from smooth to rough backscattering occurs at longer wavelengths as the size of the gap increases, which corresponds to an increase in coccolith size for a fixed coccolith morphology. The effect is shown in **Figure 5A** for a change in mean coccolith major axis of 2.0 to 3.6 μm , which corresponds to the range observed in the lab and the field.

Differences in Spectral Light Backscattering Between Free and Attached Coccoliths

Figure 6A depicts variations in the spectral behavior of the ratio $\sigma_{bbNI}/\sigma_{bbs}$ for a coccolithophore with a single layer of liths and core radius r_c ranging between 2.75 and 3.2 μm which matches the ranges observed by Young et al. (2014). At wavelengths shorter than 0.5 μm , backscattering from free liths is 40–60% higher than backscattering from coated spheres and about 30% higher at larger wavelengths. Increasing the number of coccolith layers reduces the region where the core is absorbing and leads to smaller differences in backscattering cross-section between free and attached liths as can be seen in **Figure 6B**. We used a core radius of 3.0 μm which corresponds to a mean lith major axis value of 3.3 μm (Zhai et al., 2013), close to those measured by Young et al. (2014). For four layers of coccoliths, the total number of coccoliths on the coccosphere is 40. For that many layers the coated coccolithophores are nearly spectrally indistinguishable from the free liths and backscattering from free liths is at most 35% higher than backscattering from coated spheres.

Note that for a single layer of interlocked liths the first surface could simply be completely covered. If there are multiple layers however, all the layers must have about the same number of coccoliths per layer. The interlocked liths model leads to

substantially smaller number of liths for a given number of layers and reduces further the difference between the backscattering from the sum of the free coccoliths and from the fully coated coccolithophore cores.

Changes in Spectral Light Backscattering During *E. huxleyi* Coccolith Shedding Event

Figure 7 shows changes in the magnitude and spectral shape of the backscattering cross section $\sigma_{bbtot}(\lambda)$ for a coccolithophore with a core radius of 3.7 μm , shedding four layers of liths with mean a_o of 1.7 μm and standard deviation of 0.15 μm , obtained through integration of expressions in Equations (55) and (57). Note that the particulate backscattering coefficient $b_{bp}(\lambda)$ can be obtained by multiplication of $\sigma_{bbtot}(\lambda)$ with the initial number concentration of coated cores, N_{cc} . The size of the coccosphere (which also fixes the size of the liths) and number of coccolith layers chosen for this simulation corresponds to a coating of the coccosphere with 36 liths (**Table 1**). This gives a coccolith-to-cell ratio of 36, on the lower range of what has been observed for coccolith-to-cell ratios in natural and laboratory *E. huxleyi* blooms, which vary between 45 and 400 liths per cell (e.g., Balch et al., 1991, 1993; Gordon et al., 2009). Potential causes for a lower coccolith-to-cell ratio than observed in laboratory experiments and in the field are: (i) *E. huxleyi*'s continued calcification during the coccolith shedding phase, (ii) the presence of detached coccoliths before the shedding begins (Balch et al., 1993), and (iii) the preferential sinking of coccospheres out of the surface layer due to their larger size, but see Monteiro et al. (2016).

The spectral shape of $b_{bp}(\lambda)$ is commonly described by the relationship (Gordon and Morel, 1983):

$$b_{bp}(\lambda) = b_{bp}(\lambda_0) (\lambda/\lambda_0)^\xi \quad (66)$$

where λ_0 is a reference wavelength and ξ represents the dimensionless spectral slope parameter of $b_{bp}(\lambda)$. Calculated over the 0.4–0.7 μm wavelength range, ξ changes from -0.77 to -0.94 for coated spheres to free liths (**Figure 7B**). Even though not strictly quantitatively comparable, our results are consistent

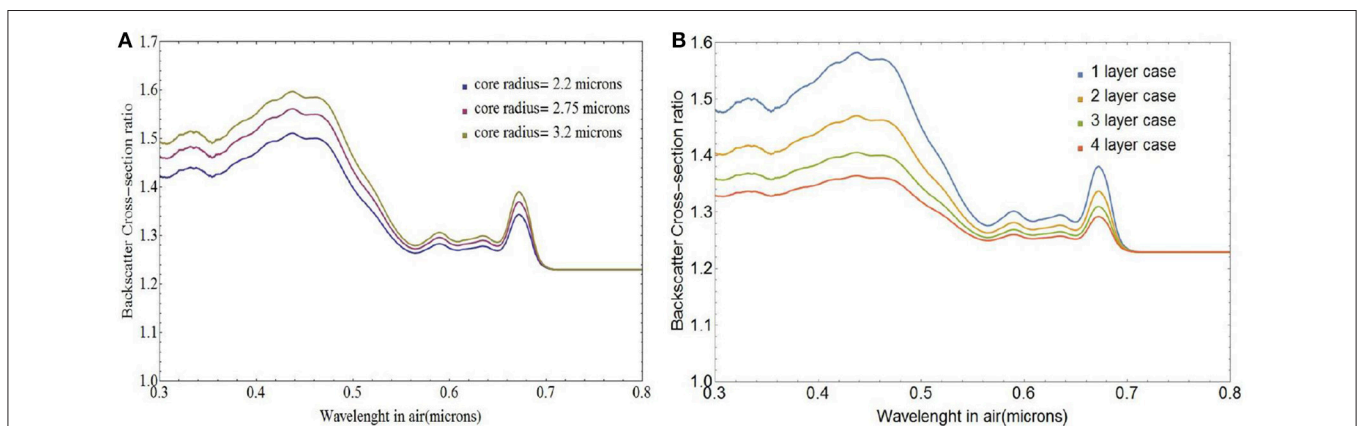
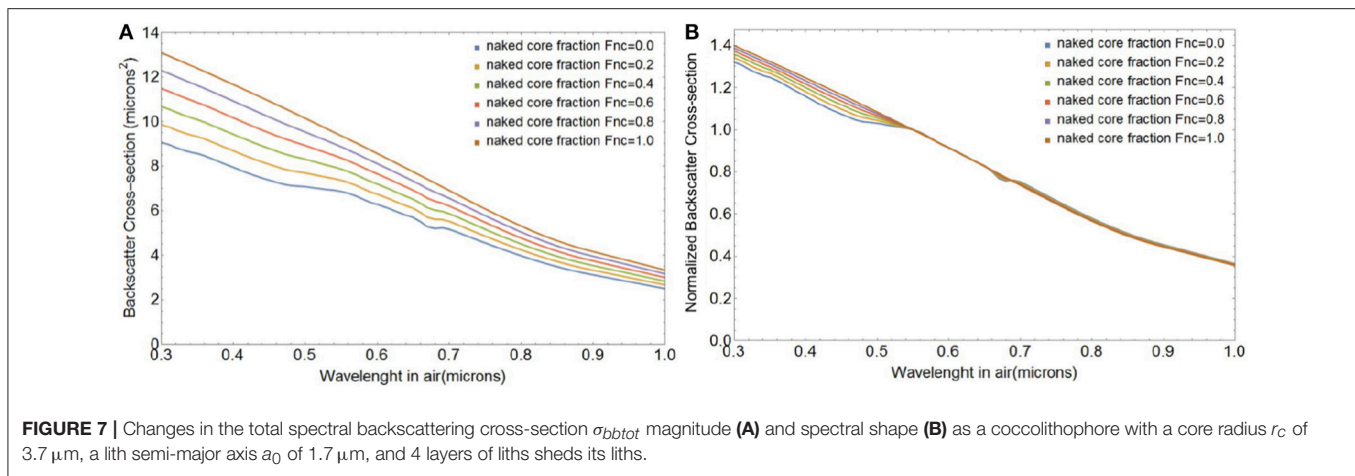


FIGURE 6 | Ratio of free coccolith to coated coccolithophore backscattering cross-section $\sigma_{bbNI}/\sigma_{bbs}$, for **(A)** single-layer coated coccospheres of varying core radii and **(B)** coccospheres with varying number of coccolith layers and a core radius of 3.0 μm .



with multispectral $b_{bp}(\lambda)$ measurements in *E. huxleyi* cultures who reported a steepening of the spectral slope of $b_{bp}(\lambda)$ for suspensions of free liths compared to coccospheres (Voss et al., 1998), from $\xi = -1.2$ to $\xi = -1.4$. We note that the experimental error on the slopes calculated by Voss et al. (1998) were large and that the morphology of *E. huxleyi* was not determined. A change to the shape or size of the openings will lead to a change of slope as shown in **Figure 4** for a single lith.

Ocean Color Remote Sensing Reflectance for *E. huxleyi* Populations of Different Size Distribution and Bloom Stage

Implementing our optical model for light backscattering from *E. huxleyi* coccoliths and coccospheres into the analytical radiance model presented in section Algebraic Radiance Model, we can investigate the variability in ocean color remote sensing reflectance for blooms of different magnitudes, with different lith size distributions, and during different stages.

The variability in magnitude and spectral shape of the above-water remote sensing reflectance $R_{rs}(\lambda)$ (in sr^{-1}) during a lith shedding event of *E. huxleyi* blooms with initial coccolithophore concentrations ranging between $N_{cc} = 10^9$ and 2×10^{10} cells m^{-3} is depicted in **Figure 8**. We assumed a coccolith size distribution with a mean a_0 of $1.7 \mu\text{m}$ and standard deviation of $0.15 \mu\text{m}$ and coccospheres with four layers of liths, totaling 36 coccoliths per coccosphere for all our simulations, unless noted otherwise. **Figures 8A,B** shows the magnitude and spectral shape of $R_{rs}(\lambda)$ at the initial stage with all liths attached ($F_{nc} = 0$) and **Figures 8C,D** shows the final stage with all liths shed ($F_{nc} = 1$) and no living cores remaining ($F_{sc} = 0$). Before the onset of lith shedding, the absorption features of the cores clearly influence $R_{rs}(\lambda)$ by reducing reflectance in blue wavelengths ($\sim 0.4 - 0.47 \mu\text{m}$), resulting in peak $R_{rs}(\lambda)$ at green wavelengths ($\sim 0.50 - 0.55 \mu\text{m}$). When the liths are freed and no cores are left to absorb light, $R_{rs}(\lambda)$ increases by a factor of up to four and the peak in $R_{rs}(\lambda)$ shifts toward blue-turquoise wavelengths ($\sim 0.40 - 0.49 \mu\text{m}$), where $R_{rs}(\lambda)$ shows little spectral variation. This gives a bright milky turquoise coloring of the ocean, typically associated with *E. huxleyi* blooms. Our modeled $R_{rs}(\lambda)$ spectra

are also quantitatively consistent with multispectral ocean color satellite observations of $R_{rs}(\lambda)$ in coccolithophore blooms which have been shown to peak at $0.49 \mu\text{m}$ (Moore et al., 2012).

Next we investigate the influence of changes in the fraction of naked cores (F_{nc}) or surviving cores (F_{sc}) on $R_{rs}(\lambda)$ during different stages of a bloom with initial *E. huxleyi* coccolithophore concentration of 10^9 cells m^{-3} . **Figures 9A,B** shows how $R_{rs}(\lambda)$ changes when the coated cores shed their liths and they die after shedding, i.e., $F_{sc} = 0$. Even though there are significant changes in the magnitude of $R_{rs}(\lambda)$, the spectral variability is clearly small, and appears to be too small to be detectable from satellite ocean color observations which typically have uncertainties around 5% at visible wavelengths. The change in spectral shape of $R_{rs}(\lambda)$ due to lith shedding will, however, be more pronounced for larger cell concentrations. **Figures 9C,D** illustrates variability in $R_{rs}(\lambda)$ due to changes in the fraction of cores that remain in the surface after lith shedding (F_{sc} from 0 to 1 when $F_{nc} = 1$). Such changes result in much stronger spectral variability in $R_{rs}(\lambda)$ by virtue of their absorption features (**Figures 9C,D**).

Lastly, **Figure 10** illustrates how changes in the mean size of free liths impact the magnitude and spectral shape of $R_{rs}(\lambda)$. The magnitude of $R_{rs}(\lambda)$ increases with increasing mean size mostly due to increases in the geometric cross section. The spectral shape of $R_{rs}(\lambda)$ varies significantly over the wavelength range considered: smaller-sized coccoliths produce stronger relative reflection at shorter wavelengths, which offers the potential for ocean color remote sensing of coccolith size distribution.

DISCUSSION

Our model results indicate that light backscattering from detached *E. huxleyi* coccoliths is at most twice as large as the backscattering from the same liths when arranged in a coccosphere. This result is consistent with the suggestion of Gordon et al. (2009), but may come as a surprise as it has been commonly assumed that the backscattering from coccoliths would be orders of magnitude higher than for coccospheres. The implication of this result is that the calcite-specific backscattering

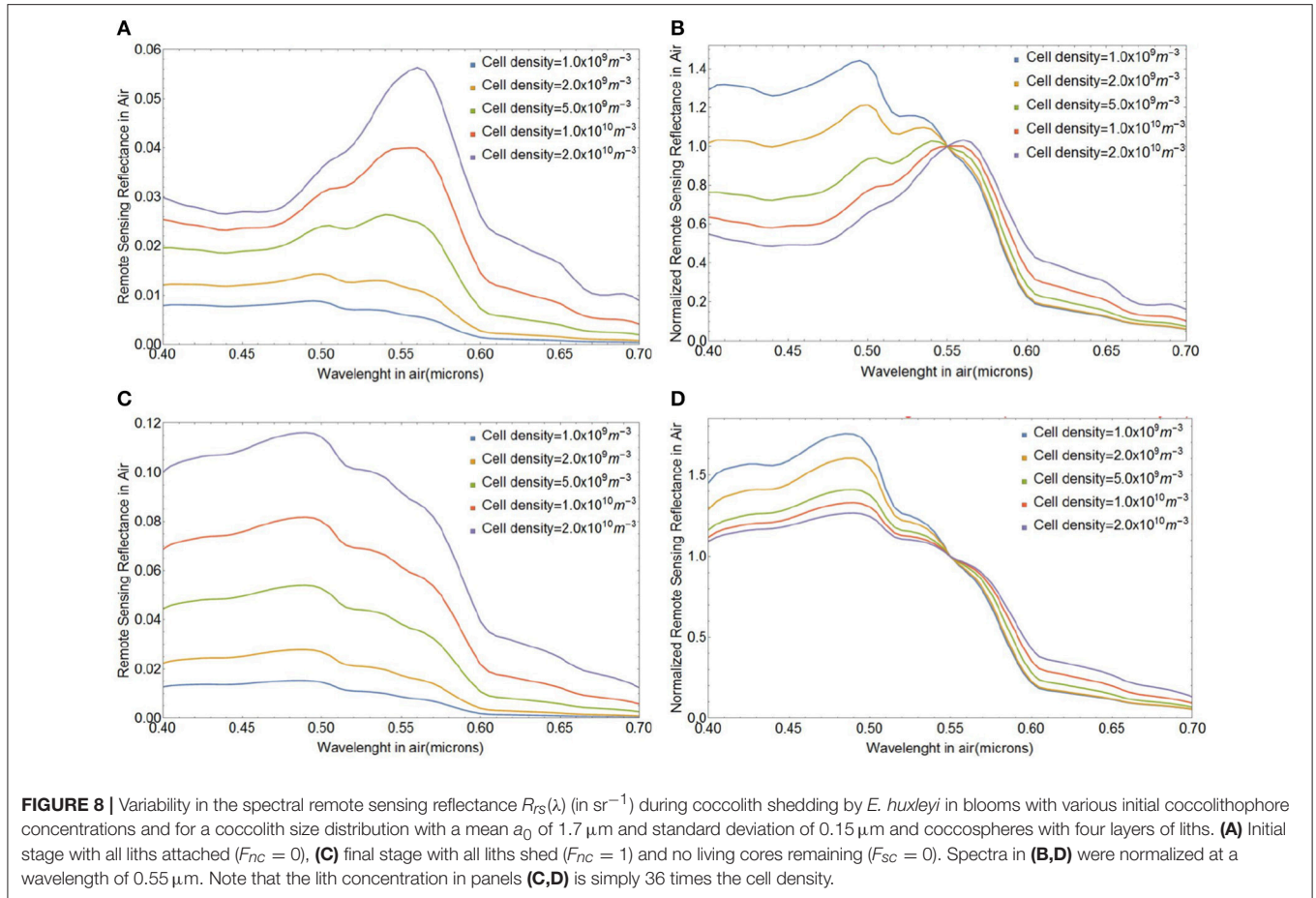


FIGURE 8 | Variability in the spectral remote sensing reflectance $R_{rs}(\lambda)$ (in sr^{-1}) during coccolith shedding by *E. huxleyi* in blooms with various initial coccolithophore concentrations and for a coccolith size distribution with a mean a_0 of $1.7 \mu m$ and standard deviation of $0.15 \mu m$ and coccosphears with four layers of liths. **(A)** Initial stage with all liths attached ($F_{NC} = 0$), **(C)** final stage with all liths shed ($F_{NC} = 1$) and no living cores remaining ($F_{SC} = 0$). Spectra in **(B,D)** were normalized at a wavelength of $0.55 \mu m$. Note that the lith concentration in panels **(C,D)** is simply 36 times the cell density.

coefficient, b_{bp}/PIC , for *E. huxleyi* coccoliths of a given size and morphology varies by at most a factor of two between coated cores and free liths. For *E. huxleyi* coccolith populations of a given size and morphology, light backscattering is thus a good proxy for calcite mass concentration, regardless of whether coccoliths are attached to or freed from the core. The difference between scattering from free and attached liths is smallest in regions of the spectrum where absorption of the core is minimal, i.e., between 0.54 and $0.66 \mu m$ and wavelengths larger than $0.7 \mu m$. Another implication is that the order of magnitude increase in backscattering frequently observed at the final bloom stages is likely mostly due to the excess production of coccoliths and only a small part of this increase is due to the shedding of the attached liths.

We have demonstrated that the magnitude and spectral shape of light backscattering by coccoliths are strongly sensitive to coccolith size and morphology, which suggests that information on the size and morphology are potentially amenable from hyperspectral backscattering measurements. In what follows, we describe a potential avenue for estimating coccolith size from $b_{bp}(\lambda)$. The spectral shape of $b_{bp}(\lambda)$ from a single coccolith is characterized by the onset of a sharp increase at a definite wavelength due to a transition from smooth to rough scattering. This onset wavelength in air, λ_{onset} , is determined by the gap

width at the outer perimeter from Equation (10) as follows:

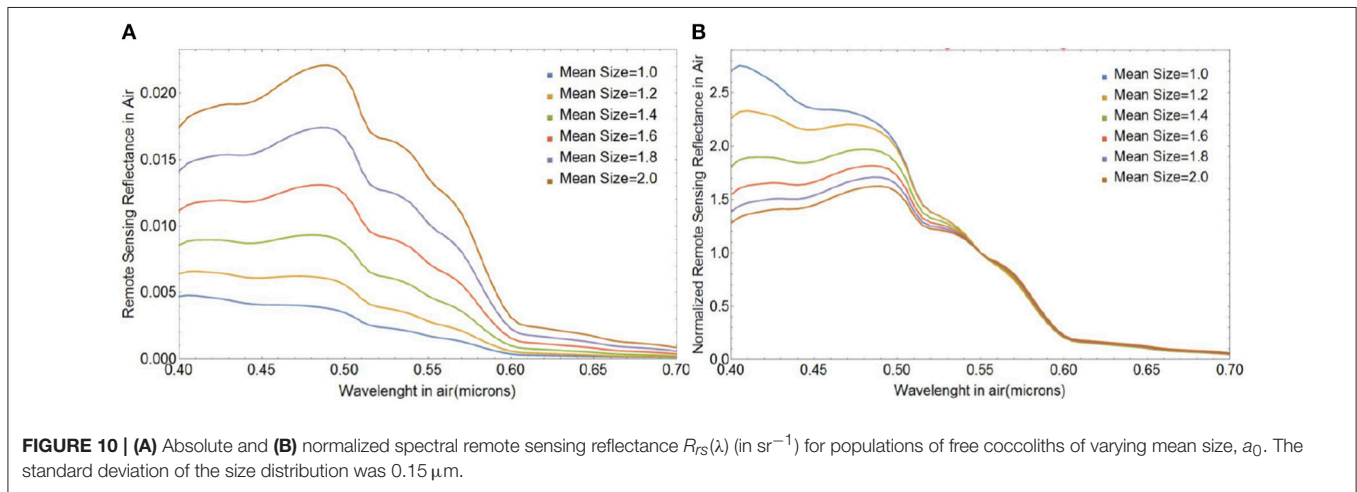
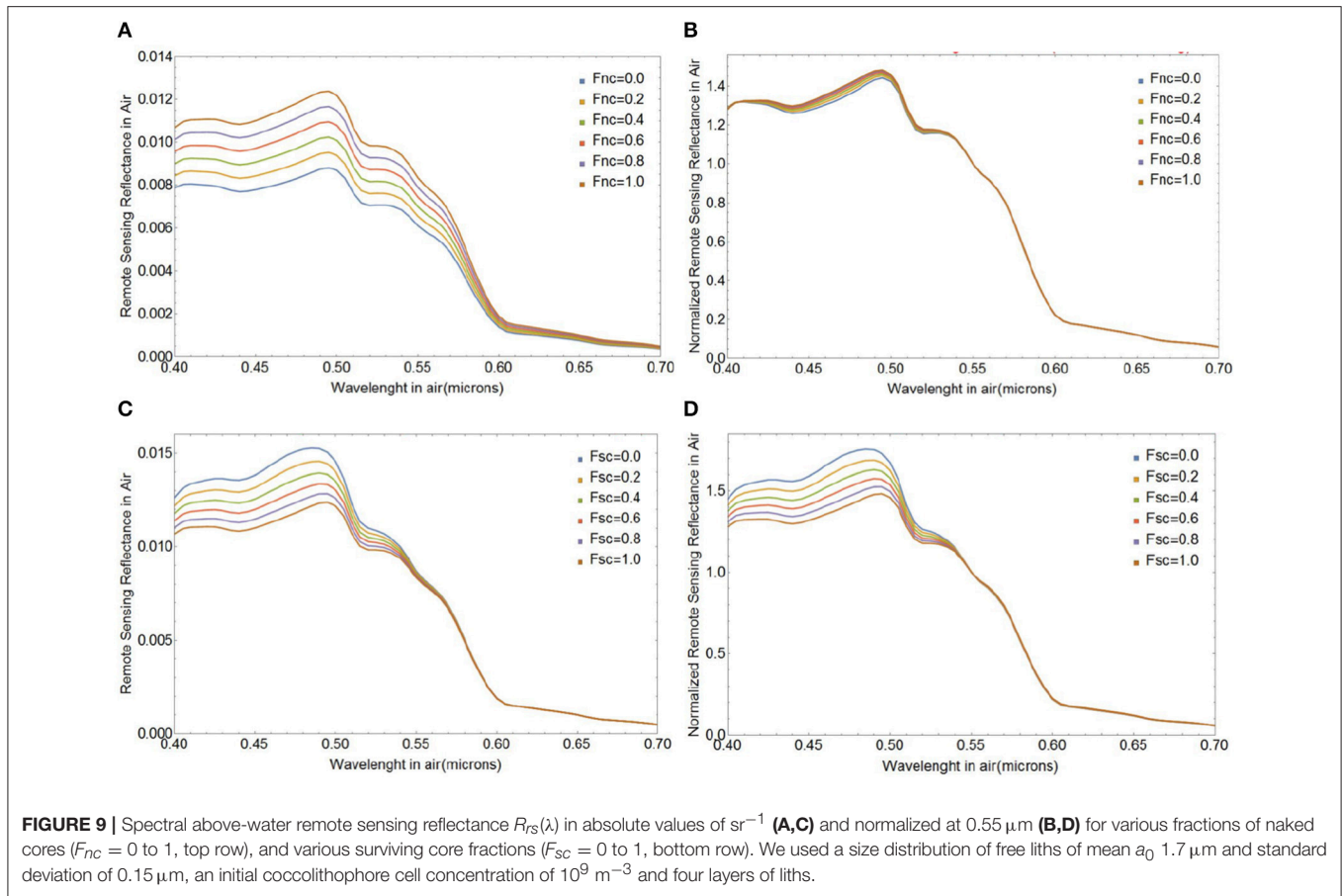
$$\lambda_{onset} = n_w 4 \Delta s_{gmax} = n_w 4 \frac{2\pi a_0 P_n \left(\frac{a_r}{a_0}, \frac{b_r}{a_0} \right)}{N(1 + r_{pg})},$$

$$Q_{bbl}(\lambda_{onset}) = \omega_{bsm} \quad (67)$$

where N is the number of gaps, r_{pg} is the pillar to gap ratio defined in Equation (9), n_w is the refractive index of seawater, and P_n is the non-dimensional form of the perimeter of the lith defined in Equation (S13). For a given lith morphology, which fixes the values of N , r_{pg} , a_r/a_0 , and b_r/a_0 , the lith size a_0 can thus be estimated. Equation (67) expresses the condition that at the transition from smooth to rough backscattering, the gap width is equal to a quarter of the wavelength in water. As the wavelength gets shorter the backscattering efficiency increases from a value of ω_{bsm} to a maximum value of:

$$Q_{bbl}(\lambda \rightarrow 0) = \omega_{brg} F_{rg} + \omega_{bsm} (1 - F_{rg}) \quad (68)$$

where F_{rg} is the fraction of the surface of the lith which is composed of gaps and pillars and which obviously depends on the assumed morphology (see Equation 7), and ω_{brg} and ω_{bsm} are respectively the rough and smooth reflectivities of the lith



surfaces and only depend on the index of refraction of the calcite material of the lith, which is 1.2.

In the simple case of a population of coccoliths of fixed morphology, the parameters that directly control the spectral shape of $b_{bp}(\lambda)$ are F_{rg} and F_{sc} . Our results suggest that the mean lith size of the population may be obtained from the spectral shape of $b_{bp}(\lambda)$ assuming a functional form for the size distribution of

liths expressed in terms of a mean particle size μ and standard deviation σ . To help solve for the size distribution parameters, it would be advantageous if a relationship between μ and σ could be established. From proportionality arguments one would expect a linear relationship to apply to first order. Such a fit applied to the data of Young et al. (2014) gives $\sigma \approx 0.11\mu$. However, because of the small range of sizes and the significant

spread of σ the R^2 coefficient of determination is only 0.25. More particle size distribution measurements over larger size ranges will be needed to improve solving for mean population size.

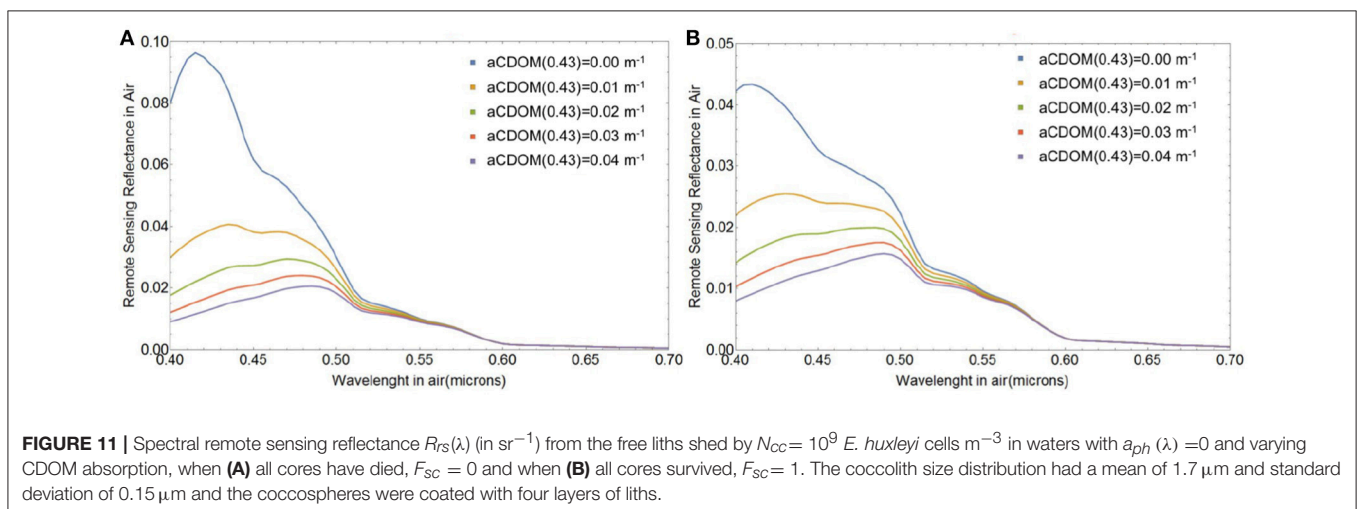
All the above relies on an assumed lith morphology, which is known to vary among morphotypes of *E. huxleyi* (Young et al., 2003; Cook et al., 2011; Hagino et al., 2011). The coccolith morphology and size range assumed in this paper are based on the work of Young et al. (2014) for *E. huxleyi* of morphotype A. Optical models for different morphotypes of *E. huxleyi* could be set up for example by adjusting the proportionalities in Equations (6) and (9). The corresponding inversion algorithms to estimate lith size from $b_{bp}(\lambda)$ would thus also be morphotype-specific. Of primary importance in these efforts is the relationship between the gap width and the lith size, as this forms the basis of the size estimation. As pointed out earlier, an assessment of the relationships between statistical parameters of the size distribution, such as the standard deviation and mean, would also be desirable.

Our model further illustrates that when a population of *E. huxleyi* sheds its liths, the spectral shape and magnitude of $b_{bp}(\lambda)$ change surprisingly little. This is due to the quasi-equality of the backscattering cross-sections of the same amount of liths when free or arranged in a coccosphere. The subtle changes in $b_{bp}(\lambda)$ are due to the increase in backscattering by the free liths that are no longer obscured by the core absorption. Nevertheless, our results suggest that estimation of the fraction of cores that have shed their liths (F_{nc}) appears to be feasible if accurate measurements of the spectral slope of $b_{bp}(\lambda)$ can be obtained. This information may be exploited to develop approaches to determine the proportional contribution of coccoliths and coccolithophores to total calcite, which may be of interest in biogeochemical and ecological studies of coccolithophores. While coccolithophores are marine microalgae which contribute to primary production, calcification (Monteiro et al., 2016), and the production of dimethylsulfoniopropionate (Matrai and Keller, 1993), coccoliths are dead material thought to enhance the flux of organic carbon to the deep ocean by providing ballast material (Armstrong et al., 2001; Riebesell et al., 2016).

We have also modeled the remote sensing reflectance $R_{rs}(\lambda)$ during various stages of hypothetical *E. huxleyi* blooms in which coccoliths are shed and the naked cores either die or survive. This allows us to investigate which characteristics of *E. huxleyi* bloom state are potentially resolvable from hyperspectral ocean color remote sensing. As expected from the subtlety of changes in spectral $b_{bp}(\lambda)$ when coccolithophores shed their liths and naked cores die, changes in spectral $R_{rs}(\lambda)$ are similarly small and therefore unlikely to be detectable from space. In a population of free liths at the end of a shedding event, the fraction of surviving cores had a much more pronounced effect on $R_{rs}(\lambda)$ by virtue of their absorption. However, similar effects on $R_{rs}(\lambda)$ can be expected from changes in the absorption of phytoplankton other than coccolithophores, which is assumed constant in our simulations. Therefore, the potential to estimate naked *E. huxleyi* cells depends on how different their absorption features are from other types of phytoplankton.

Our modeled $R_{rs}(\lambda)$ were produced assuming a constant background of absorption by CDOM and chlorophyll-a from phytoplankton other than *E. huxleyi*, as well as negligible contribution to backscattering from particles other than *E. huxleyi* coccoliths and coccospheres. This is obviously an overly simplified representation of real bloom conditions. The assumption of constant non-zero CDOM absorption was essential to obtain the spectral shape of $R_{rs}(\lambda)$ typically associated with *E. huxleyi* blooms, i.e., one that produces a turquoise hue with peak reflectance at $0.49 \mu\text{m}$ (Moore et al., 2012). This is because CDOM absorbs strongly in violet-blue wavelengths. If CDOM absorption is not included in the background, $R_{rs}(\lambda)$ would peak at violet wavelengths and the magnitude of $R_{rs}(\lambda)$ would be much more intense than observed from ocean color satellites and in the field. The impact of CDOM absorption on reflectance from a suspension of $3.6 \times 10^{10} \text{ m}^{-3}$ free coccoliths and no absorption due to chlorophyll-a is demonstrated in **Figure 11A**, whereas **Figure 11B** also includes the absorption effect of 10^9 m^{-3} *E. huxleyi* cores.

In coccolithophore blooms characterized by high concentrations of PIC ($>0.003 \text{ mol C m}^{-3}$) the ocean color



remote sensing algorithm of Gordon et al. (2001) is used to derive PIC. Because bands at shorter wavelengths often saturate in these bloom conditions, the algorithm uses $R_{rs}(\lambda)$ in three bands in the red and near-infrared (0.670, 0.765, and 0.865 μm) to estimate b_b from R_{rs} at 0.670 μm assuming $R_{rs} = 0$ in the 0.765 and 0.865 μm bands to perform the aerosol scattering correction. From the range of coccolith concentrations used in **Figure 8C** we find R_{rs} at 0.765 and 0.865 μm much lower than R_{rs} at 0.670 μm , thereby providing support for the atmospheric correction approach of Gordon et al. (2001). We suggest that our model may be used to improve on the atmospheric correction approach of Gordon et al. (2001).

We have assumed throughout this work that the detached coccoliths are randomly oriented with respect to incident light, which allows us to apply the theorem of Cauchy (1850) to calculate the average geometric cross-section via Equation 3. However, it has recently been shown that large phytoplankton cells and marine aggregates have a tendency to orient horizontally in natural waters (Nayak et al., 2018). If coccoliths, even though much smaller in size, have just a slight tendency to orient horizontally with respect to incident light, the influence on backscattering will be significant, because light is scattered off a larger surface. As a consequence the difference in backscattering between oriented coccoliths and coccolithophores will be much larger. We can estimate the limits of this effect by taking the ratio of the randomly oriented liths surface to the surface at normal incidence.

$$R_{ori} \approx \frac{\pi ab}{\left[\frac{2\pi ab + 2\pi(a+b)\tau_l}{4} \right]} = \frac{2}{1 + (1+r)\left(\frac{\tau_l}{a}\right)} \quad (69)$$

For completely oriented very thin liths the cross-section is therefore approximately twice that of randomly oriented liths. To distinguish this orientation effect in natural waters, new observational approaches such as circular polarization will be needed to study preferential particle orientation.

Besides the assumption of random orientation of the coccoliths and coccolithophores, our approach is also based on the assumption that the unity-normalized angular distribution of reflection from any randomly oriented convex body is independent of shape and size (van de Hulst, 1957), implicit in Equation (3). When backscattering is dominated by reflection, such as for high refractive index coccoliths and coccolithophores, this implies that the scattering efficiency Q_{bb} is independent of shape and size and only dependent on the relative amount of rough and smooth surfaces comprising the particle. This angular constancy is the physical underpinning of our analytical light

backscattering model and also allows us to carry out the averaging of Q_{bb} over a size distribution. The fact that our modeled backscattering cross-sections for circular disk-like coccoliths compared successfully with exact scattering solutions from the discrete dipole approximation (Fournier and Neukermans, 2017) provides general support to our assumptions. We expect the validity of the angular constancy assumption to break down as the particle shapes become more complex and self-shadowing (non-convexity) becomes significant, which can be investigated using exact light scattering codes such as discrete dipole approximation, T-Matrix, or Finite Difference Time Domain (FDTD) approaches (e.g., Gordon and Du, 2001; Hedley, 2012; Zhai et al., 2013).

A thorough validation of our light scattering model for *E. huxleyi* requires simultaneous measurements of *E. huxleyi* coccolith morphology, size distribution, and spectral light backscattering, which can be obtained in laboratory cultures. Further validation work will also entail conjunct *in situ* observations of (hyperspectral) remote sensing reflectance, inherent optical properties, *E. huxleyi* coccoliths and coccolithophore size distribution and morphology, and characterization of other optically active constituents during *E. huxleyi* blooms. Such measurements in the laboratory and in natural waters are essential to the evaluation of the current model and will inform on potential modeling improvements.

AUTHOR CONTRIBUTIONS

GN and GF conceptualized the study; GF developed the model. Both authors discussed results and wrote the manuscript.

FUNDING

GN is supported by a European Union's Horizon 2020 Marie Skłodowska-Curie grant (no. 749949).

ACKNOWLEDGMENTS

We would like to thank Dariusz Stramski and Aimee Neeley for providing the spectral absorption coefficient for an *Emiliania huxleyi* culture.

SUPPLEMENTARY MATERIAL

The Supplementary Material for this article can be found online at: <https://www.frontiersin.org/articles/10.3389/fmars.2018.00146/full#supplementary-material>

REFERENCES

- Aas, E. (1996). Refractive index of phytoplankton derived from its metabolite composition. *J. Plankton Res.* 18, 2223–2249. doi: 10.1093/plankt/18.12.2223
- Albert, A., and Mobley, C. (2003). An analytical model for subsurface irradiance and remote sensing reflectance in deep and shallow case-2 waters. *Opt. Exp.* 11:2873. doi: 10.1364/OE.11.002873
- Armstrong, R. A., Lee, C., Hedges, J. I., Honjo, S., and Wakeham, S. G. (2001). A new, mechanistic model for organic carbon fluxes in the ocean based on the quantitative association of POC with ballast minerals. *Deep Sea Res. Part II Top. Stud. Oceanogr.* 49, 219–236. doi: 10.1016/S0967-0645(01)00101-1
- Babin, M., Stramski, D., Ferrari, G. M., Claustre, H., Bricaud, A., Obolensky, G., et al. (2003). Variations in the light absorption coefficients of phytoplankton, nonalgal particles, and dissolved organic matter in coastal

- waters around Europe. *J. Geophys. Res.* 108:3211. doi: 10.1029/2001JC000882
- Balch, W. M., Drapeau, D. T., Bowler, B. C., Lyczkowski, E., Booth, E. S., and Alley, D. (2011). The contribution of coccolithophores to the optical and inorganic carbon budgets during the southern ocean gas exchange experiment: new evidence in support of the “great calcite belt” hypothesis. *J. Geophys. Res.* 116:C00F06. doi: 10.1029/2011JC006941
- Balch, W. M., Gordon, H. R., Bowler, B. C., Drapeau, D. T., and Booth, E. S. (2005). Calcium carbonate measurements in the surface global ocean based on moderate-resolution imaging spectroradiometer data. *J. Geophys. Res.* 110:C07001. doi: 10.1029/2004JC002560
- Balch, W. M., Holligan, P. M., Ackleson, S. G., and Voss, K. J. (1991). Biological and optical properties of mesoscale coccolithophore blooms in the Gulf of Maine. *Limnol. Oceanogr.* 36, 629–643. doi: 10.4319/lo.1991.36.4.0629
- Balch, W. M., Kilpatrick, K. A., Holligan, P., Harbour, D., and Fernandez, E. (1996). The 1991 coccolithophore bloom in the central North Atlantic. 2. Relating optics to coccolith concentration. *Limnol. Oceanogr.* 41, 1684–1696. doi: 10.4319/lo.1996.41.8.1684
- Balch, W. M., Kilpatrick, K., Holligan, P. M., and Cucci, T. (1993). Coccolith production and detachment by *Emiliana huxleyi* (Prymnesiophyceae). *J. Phycol.* 29, 566–575. doi: 10.1111/j.0022-3646.1993.00566.x
- Broecker, W., and Clark, E. (2009). Ratio of coccolith CaCO_3 to foraminifera CaCO_3 in late Holocene deep sea sediments. *Paleoceanography* 24:PA3205. doi: 10.1029/2009PA001731
- Brown, C. W., and Yoder, J. A. (1994). Coccolithophorid blooms in the global ocean. *J. Geophys. Res.* 99:7467. doi: 10.1029/93JC02156
- Cauchy, A.-L. (1850). *Mémoire sur la Rectification des Courbes et la Quadrature des Surfaces Courbes. Mémoires l'académie des Sci.* tome XXII, 167–177. Available online at: <http://gallica.bnf.fr/ark:/12148/bpt6k901828/f173> (Accessed March 26, 2018).
- Cook, S. S., Whittock, L., Wright, S. W., and Hallegraef, G. M. (2011). Photosynthetic pigment and genetic differences between two Southern Ocean morphotypes of *Emiliana huxleyi* (haptophyta). *J. Phycol.* 47, 615–626. doi: 10.1111/j.1529-8817.2011.00992.x
- Fournier, G., and Neukermans, G. (2017). An analytical model for light backscattering by coccoliths and coccospheres of *Emiliana huxleyi*. *Opt. Express* 25:14996. doi: 10.1364/OE.25.014996
- Gordon, H. R. (2006). Backscattering of light from disklike particles: is fine-scale structure or gross morphology more important? *Appl. Opt.* 45:7166. doi: 10.1364/AO.45.007166
- Gordon, H. R., Boynton, G. C., Balch, W. M., Groom, S. B., Harbour, D. S., and Smyth, T. J. (2001). Retrieval of coccolithophore calcite concentration from SeaWiFS Imagery. *Geophys. Res. Lett.* 28, 1587–1590. doi: 10.1029/2000GL012025
- Gordon, H. R., and Du, T. (2001). Light scattering by nonspherical particles: application to coccoliths detached from *Emiliana huxleyi*. *Limnol. Oceanogr.* 46, 1438–1454. doi: 10.4319/lo.2001.46.6.1438
- Gordon, H. R., and Morel, A. Y. (1983). *Remote Assessment of Ocean Color for Interpretation of Satellite Visible Imagery: A Review*. Washington, DC: American Geophysical Union.
- Gordon, H. R., Smyth, T. J., Balch, W. M., Boynton, G. C., and Tarran, G. A. (2009). Light scattering by coccoliths detached from *Emiliana huxleyi*. *Appl. Opt.* 48:6059. doi: 10.1364/AO.48.006059
- Groom, S. B., and Holligan, P. M. (1987). Remote sensing of coccolithophore blooms. *Adv. Sp. Res.* 7, 73–78. doi: 10.1016/0273-1177(87)90166-9
- Hagino, K., Bendif, E. M., Young, J. R., Kogame, K., Probert, I., Takano, Y., et al. (2011). New evidence for morphological and genetic variation in the cosmopolitan coccolithophore *Emiliana huxleyi* (prymnesiophyceae) from the COX1b-ATP4 genes. *J. Phycol.* 47, 1164–1176. doi: 10.1111/j.1529-8817.2011.01053.x
- Hedley, J. (2012). Modelling the optical properties of suspended particulate matter of coral reef environments using the finite difference time domain (FDTD) method. *Geo-Mar. Lett.* 32, 173–182. doi: 10.1007/s00367-011-0265-8
- Hoffmann, R., Kirchlechner, C., Langer, G., Wochnik, A. S., Griesshaber, E., Schmahl, W. W., et al. (2015). Insight into *Emiliana huxleyi* coccospheres by focused ion beam sectioning. *Biogeosciences* 12, 825–834. doi: 10.5194/bg-12-825-2015
- Holligan, P. M., Fernández, E., Aiken, J., Balch, W. M., Boyd, P., Burkill, P. H., et al. (1993). A biogeochemical study of the coccolithophore, *Emiliana huxleyi*, in the North Atlantic. *Glob. Biogeochem. Cycles* 7, 879–900. doi: 10.1029/93GB01731
- Hopkins, J., Henson, S. A., Painter, S. C., Tyrrell, T., and Poulton, A. J. (2015). Phenological characteristics of global coccolithophore blooms. *Glob. Biogeochem. Cycles* 29, 239–253. doi: 10.1002/2014GB004919
- Iglesias-Rodríguez, M. D., Brown, C. W., Doney, S. C., Kleypas, J., Kolber, D., Kolber, Z., et al. (2002). Representing key phytoplankton functional groups in ocean carbon cycle models: Coccolithophorids. *Glob. Biogeochem. Cycles* 16, 47–1–47–20. doi: 10.1029/2001GB001454
- Matrai, P. A., and Keller, M. D. (1993). Dimethylsulfide in a large-scale coccolithophore bloom in the Gulf of Maine. *Cont. Shelf Res.* 13, 831–843. doi: 10.1016/0278-4343(93)90012-M
- Monteiro, F. M., Bach, L. T., Brownlee, C., Bown, P., Rickaby, R. E., Poulton, A. J., et al. (2016). Why marine phytoplankton calcify. *Sci. Adv.* 2:e1501822. doi: 10.1126/sciadv.1501822
- Moore, T. S., Dowell, M. D., and Franz, B. A. (2012). Detection of coccolithophore blooms in ocean color satellite imagery: a generalized approach for use with multiple sensors. *Remote Sens. Environ.* 117, 249–263. doi: 10.1016/j.rse.2011.10.001
- Morel, A., and Bricaud, A. (1981). Theoretical results concerning light absorption in a discrete medium, and application to specific absorption of phytoplankton. *Deep Sea Res. Part A. Oceanogr. Res. Pap.* 28, 1375–1393. doi: 10.1016/0198-0149(81)90039-X
- Morel, A., and Bricaud, A. (1986). Inherent optical properties of algal cells, including picoplankton. Theoretical and experimental results. *Can. Bull. Fish. Aquat. Sci.* 214, 521–559.
- Nayak, A. R., McFarland, M. N., Sullivan, J. M., and Twardowski, M. S. (2018). Evidence for ubiquitous preferential particle orientation in representative oceanic shear flows. *Limnol. Oceanogr.* 63, 122–143. doi: 10.1002/lno.10618
- Neeley, A. R., Freeman, S. A., and Harris, L. A. (2015). Multi-method approach to quantify uncertainties in the measurements of light absorption by particles. *Opt. Express* 23:31043. doi: 10.1364/OE.23.031043
- Neukermans, G., and Fournier, G. (2018). “Rrs_bbp_Ehux: analytical model for remote sensing reflectance and backscattering coefficient from *Emiliana huxleyi* blooms,” *GitHub*. doi: 10.5281/zenodo.1222124
- Neukermans, G., Oziel, L., and Babin, M. (2018). Increased intrusion of warming Atlantic water leads to rapid expansion of temperate phytoplankton in the Arctic. *Glob. Chang. Biol.* doi: 10.1111/gcb.14075. [Epub ahead of print].
- Paasche, E. (2001). A review of the coccolithophorid *Emiliana huxleyi* (Prymnesiophyceae), with particular reference to growth, coccolith formation, and calcification-photosynthesis interactions. *Phycologia* 40, 503–529. doi: 10.2216/i0031-8884-40-6-503.1
- Riebesell, U., Bach, L. T., Bellerby, R. G. J., Monsalve, J. R. B., Boxhammer, T., Czerny, J., et al. (2016). Competitive fitness of a predominant pelagic calcifier impaired by ocean acidification. *Nat. Geosci.* 10, 19–23. doi: 10.1038/ngeo2854
- Stramski, D., Bricaud, A., and Morel, A. (2001). Modeling the inherent optical properties of the ocean based on the detailed composition of the planktonic community. *Appl. Opt.* 40:2929. doi: 10.1364/AO.40.002929
- Tyrrell, T., and Merico, A. (2004). “*Emiliana huxleyi*: bloom observations and the conditions that induce them,” in *Coccolithophores*, eds H. R. Thierstein and J. R. Young (Berlin; Heidelberg: Springer), 75–97.
- van de Hulst, H. C. (1957). *Light Scattering by Small Particles, 1st edn*. New York, NY: John Wiley and Sons.
- Voss, K. J., Balch, W. M., and Kilpatrick, K. A. (1998). Scattering and attenuation properties of *Emiliana huxleyi* cells and their detached coccoliths. *Limnol. Oceanogr.* 43, 870–876. doi: 10.4319/lo.1998.43.5.0870
- Winter, A., Henderiks, J., Beaufort, L., Rickaby, R. E. M., and Brown, C. W. (2014). Poleward expansion of the coccolithophore *Emiliana huxleyi*. *J. Plankton Res.* 36, 316–325. doi: 10.1093/plankt/fbt110

- Young, J., Geisen, M., Cros, L., Kleijne, A., Sprengel, C., Probert, I., et al. (2003). A guide to extant coccolithophore taxonomy. *J. Nanoplankt. Res. Spec. Issue*. Available at: <http://img.algaebase.org/pdf/0AC815A50cb2e16CA4NsK420A55E/35021.pdf> [Accessed February 5, 2018].
- Young, J. R., Poulton, A. J., and Tyrrell, T. (2014). Morphology of *Emiliana huxleyi* coccoliths on the northwestern European shelf – is there an influence of carbonate chemistry? *Biogeosciences* 11, 4771–4782. doi: 10.5194/bg-11-4771-2014
- Zhai, P.-W., Hu, Y., Trepte, C. R., Winker, D. M., Josset, D. B., Lucker, P. L., et al. (2013). Inherent optical properties of the coccolithophore: *Emiliana huxleyi*. *Opt. Express* 21:17625. doi: 10.1364/OE.21.017625

Conflict of Interest Statement: The authors declare that the research was conducted in the absence of any commercial or financial relationships that could be construed as a potential conflict of interest.

Copyright © 2018 Neukermans and Fournier. This is an open-access article distributed under the terms of the Creative Commons Attribution License (CC BY). The use, distribution or reproduction in other forums is permitted, provided the original author(s) and the copyright owner are credited and that the original publication in this journal is cited, in accordance with accepted academic practice. No use, distribution or reproduction is permitted which does not comply with these terms.