



HAL
open science

A new 3D Slicer plug-in for the interactive annotation and segmentation of liver anatomy

Jonas Lamy, Thibault Pelletier, Guillaume Lienemann, Benoît Magnin, Bertrand Kerautret, Nicolas Passat, Julien Finet, Antoine Vacavant

► **To cite this version:**

Jonas Lamy, Thibault Pelletier, Guillaume Lienemann, Benoît Magnin, Bertrand Kerautret, et al.. A new 3D Slicer plug-in for the interactive annotation and segmentation of liver anatomy. EASL Liver Cancer Summit (LCS), 2022, En ligne, France. <hal-03503706>

HAL Id: hal-03503706

<https://hal.science/hal-03503706v1>

Submitted on 31 Jan 2022

HAL is a multi-disciplinary open access archive for the deposit and dissemination of scientific research documents, whether they are published or not. The documents may come from teaching and research institutions in France or abroad, or from public or private research centers.

L'archive ouverte pluridisciplinaire **HAL**, est destinée au dépôt et à la diffusion de documents scientifiques de niveau recherche, publiés ou non, émanant des établissements d'enseignement et de recherche français ou étrangers, des laboratoires publics ou privés.



HAL Authorization

A new 3D Slicer plug-in for the interactive annotation and segmentation of liver anatomy

J. LAMY¹, T. PELLETIER², G. LIENEMANN³, B. MAGNIN³, B. KERAUTRET¹, N. PASSAT⁴, J. FINET² and A. VACAANT³

¹Université Lyon 2, LIRIS (UMR 5205) Lyon, France

²Kitware SAS, Villeurbanne, France

³Université Clermont Auvergne, CNRS, SIGMA Clermont, Institut Pascal, F-63000, Clermont-Ferrand, France

⁴Université de Reims Champagne Ardenne, CRéSTIC, EA 3804, 51100 Reims, France



Background & Aim

Annotation plays a key role in the creation of reference datasets that are useful to evaluate medical image processing algorithms and to train machine learning based architectures.

RVXLiverSegmentation is a 3D Slicer plug-in aiming at speeding-up the interactive annotation and segmentation of liver anatomy from medical images (e.g. CT or MRI).

Method

RVXLiverSegmentation provides 7 main tabs:

- loading and managing medical imaging data;
- liver segmentation;
- annotation of portal veins and segmentation;
- editing portal veins segmentation;
- annotation of hepatic veins and inferior vena cava and segmentation;
- editing hepatic veins and inferior vena cava segmentation;
- tumor segmentation.

Once the medical image data is loaded into 3D Slicer:

- the liver can be segmented either by interactive tools or by automatic a MONAI deep learning-based algorithm (CT only);
- the user places the nodes of important branches and bifurcations;
- reconstructions of hepatic vessels are based on graph structures built from those nodes;
- a VMTK (Vascular Modeling Tool Kit) module segments the vessels by using graphs as initialization;
- the user can edit this segmentation;
- the last tab allows the user to segment interactively possible tumors with dedicated tools and export the scene.

Conclusions

RVXLiverSegmentation is a promising tool for the creation of annotated datasets, and the faithful 3D reconstruction of liver anatomy from medical images.

We first would like to integrate **advanced deep learning models for liver and hepatic vessels segmentation into our RVXLiverSegmentation plug-in**, in order to provide automatic reconstructions that can be then edited by the user. Another important work concerns **the VMTK module, which needs more adaptations for MRI processing**. Finally, a more complete evaluation protocol will be conducted by considering larger patient cohorts.

Acknowledgements

This work was funded by the French Agence Nationale de la Recherche (grant ANR-18-CE45-0018, project R-Vessel-X), <http://tqi.ip.uca.fr/r-vessel-x>

References

- R. Kikinis et al. (2014) **3D Slicer: a platform for subject-specific image analysis, visualization, and clinical support**. In F.A. Jolesz, editor, Intraoperative Imaging Image-Guided Therapy, pages 277–289. 2014.
- J. Lamy et al. (2020) **Preliminary results with a new annotation tool for liver volume and inner vessels from DCE-MRI data**. In VPH 2020, Paris, France, 2020.

Contact information

Antoine Vacavant, antoine.vacavant@uca.fr

Results

We compared the time of segmentations obtained by

- RVXLiverSegmentation plug-in;
- embedded image processing General Electric AW solution (Server 3.2).

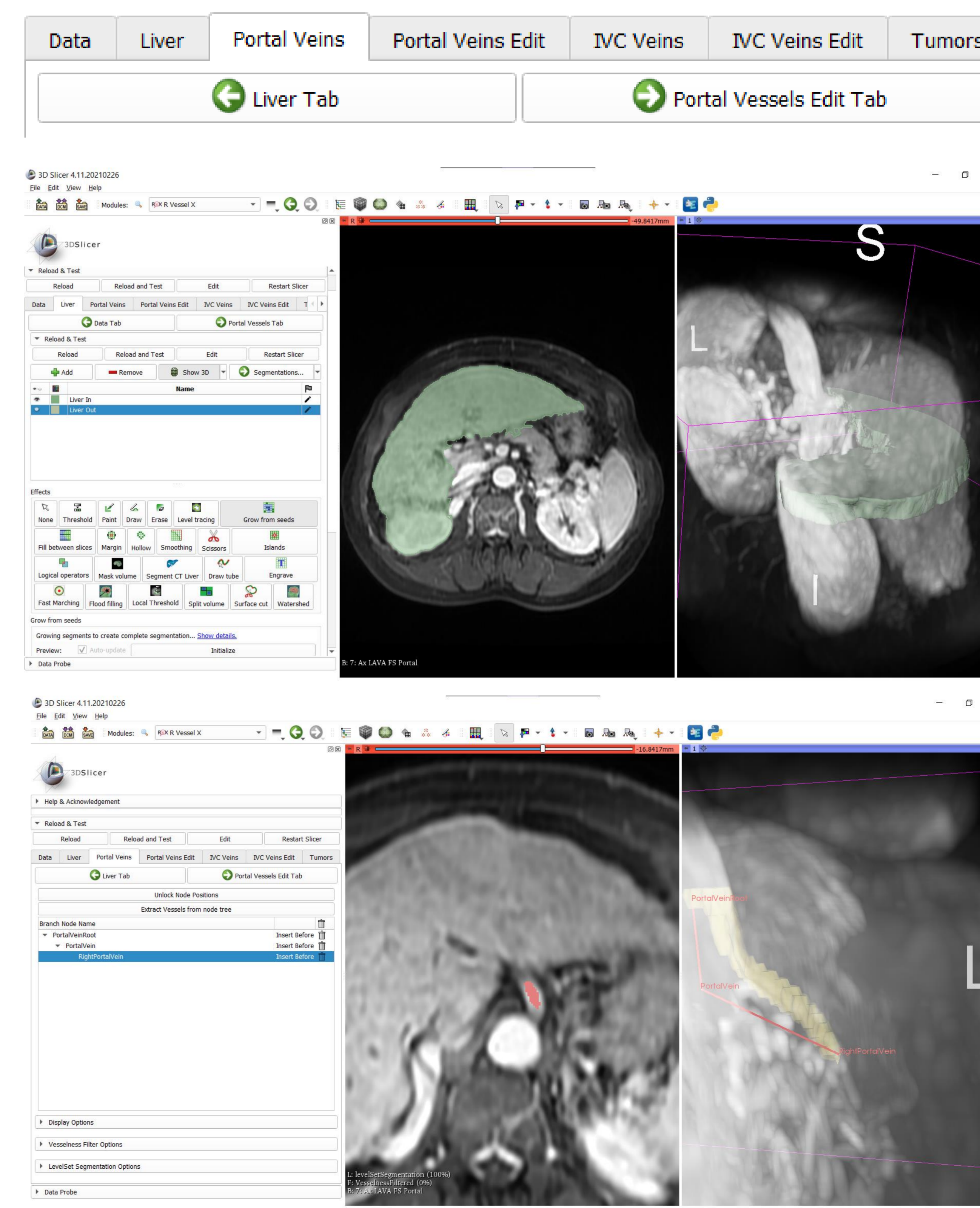
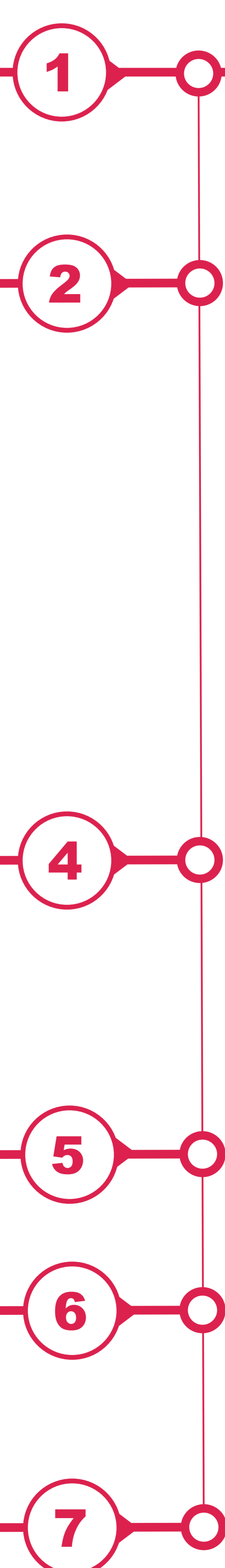
Our cohort was composed of T1 at portal venous phase MR acquisitions of:

- G1:** 6 non cirrhotic patients;
- G2:** 4 patients with cirrhosis and HCC.

Segmentations (G1)	GE AW	Our plug-in
Liver	10 ± 5 min	3 ± 2 min
Vessels	30 ± 10 min	5 ± 3 min
Total	40 ± 15 min	8 ± 5 min

Segmentations (G2)	GE AW	Our plug-in
Liver	15 ± 10 min	4 ± 2 min
Vessels	35 ± 15 min	7 ± 4 min
Total	50 ± 25 min	11 ± 6 min

Segmentation times for G1 (top) and G2 groups (bottom).



The 7 tabs of the plug-in

Tabs for annotation and segmentation of the liver (top) and vessels (bottom).



Github project