



**HAL**  
open science

## Temperature affects the early life history stages of corals more than near future ocean acidification

Chia Miin Chua, William Leggat, Aurelie Moya, Andrew H. Baird

### ► To cite this version:

Chia Miin Chua, William Leggat, Aurelie Moya, Andrew H. Baird. Temperature affects the early life history stages of corals more than near future ocean acidification. *Marine Ecology Progress Series*, 2013, 475, pp.85-92. 10.3354/meps10077 . hal-03502651

**HAL Id: hal-03502651**

**<https://hal.science/hal-03502651>**

Submitted on 26 Dec 2021

**HAL** is a multi-disciplinary open access archive for the deposit and dissemination of scientific research documents, whether they are published or not. The documents may come from teaching and research institutions in France or abroad, or from public or private research centers.

L'archive ouverte pluridisciplinaire **HAL**, est destinée au dépôt et à la diffusion de documents scientifiques de niveau recherche, publiés ou non, émanant des établissements d'enseignement et de recherche français ou étrangers, des laboratoires publics ou privés.



Distributed under a Creative Commons Attribution 4.0 International License

# Temperature affects the early life history stages of corals more than near future ocean acidification

Chia Miin Chua<sup>1,\*</sup>, William Leggat<sup>1,2</sup>, Aurelie Moya<sup>1,3,4</sup>, Andrew H. Baird<sup>1</sup>

<sup>1</sup>ARC Centre of Excellence for Coral Reef Studies and <sup>2</sup>School of Pharmacy and Molecular Sciences, James Cook University, Townsville, Queensland, 4811, Australia

<sup>3</sup>INSU-CNRS, Laboratoire d'Océanographie de Villefranche, B.P. 28, 06234 Villefranche-sur-mer Cedex, France

<sup>4</sup>UPMC University of Paris 06, Observatoire Océanologique de Villefranche, 06230 Villefranche-sur-mer, France

**ABSTRACT:** Climate change is projected to increase ocean temperatures by at least 2°C, and levels of pH by ~0.2 units (ocean acidification, OA) by the end of this century. While the effects of these stressors on marine organisms have been relatively well explored in isolation, possible interactions between temperature and OA have yet to be thoroughly investigated. OA at levels projected to occur within this century has few direct ecological effects on the early life history stages of corals. In contrast, temperature has pronounced effects on many stages in the early life history of corals. Here, we test whether temperature might act in combination with OA to produce a measurable ecological effect on fertilization, development, larval survivorship or metamorphosis of 2 broadcast spawning species, *Acropora millepora* and *A. tenuis*, from the Great Barrier Reef. We used 4 treatments: control, high temperature (+2°C), high partial pressure of CO<sub>2</sub> (pCO<sub>2</sub>) (700 µatm) and a combination of high temperature and high pCO<sub>2</sub>, corresponding to the current levels of these variables and the projected values for the end of this century under the IPCC A2 scenario. We found no consistent effect of elevated pCO<sub>2</sub> on fertilization, development, survivorship or metamorphosis, neither alone nor in combination with temperature. In contrast, a 2°C rise in temperature increased rates of development, but otherwise had no consistent effect on fertilization, survivorship or metamorphosis. We conclude that OA is unlikely to be a direct threat to the early life history stages of corals, at least in the near future. In contrast, rising sea temperatures are likely to affect coral population dynamics by increasing the rate of larval development with resulting changes in patterns of connectivity.

**KEY WORDS:** Coral reefs · Climate change · Connectivity · Development · Larval ecology · Survivorship · Settlement

— Resale or republication not permitted without written consent of the publisher —

## INTRODUCTION

Increasing carbon dioxide (CO<sub>2</sub>) concentrations in the atmosphere are causing the oceans to warm. Sea surface temperatures have risen by a global average of 0.7°C since the industrial revolution (Feely et al. 2009) and are predicted to rise by a further 2 to 3°C by the end of the century under the IPCC A2 scenario (Bindoff et al. 2007). In addition, the absorption of atmospheric CO<sub>2</sub> is changing ocean chemistry, decreasing seawater pH and reducing the availability of carbonate ions (CO<sub>3</sub><sup>2-</sup>). Ocean pH has decreased

by 0.1 units since the 1950s and is projected to decrease by a further 0.2 to 0.3 units by the end of the century (Feely et al. 2009).

The effects of rising sea surface temperature on marine organisms are well documented. Symbiotic organisms, such as corals, seem particularly sensitive to elevated temperatures (Baird et al. 2009), and the resulting coral bleaching has a range of ecological effects from reductions in growth, reproduction and competitive ability to high mortality of individuals over large spatial scales (see review in McClanahan et al. 2009). In contrast, the effects of ocean acidi-

\*Email: [chiamiin.chua@my.jcu.edu.au](mailto:chiamiin.chua@my.jcu.edu.au)

fication (OA) are less obvious, in part because the effects are often sub-lethal (Fabricius et al. 2011). Early experiments suggested a linear decline in calcification in response to a declining aragonite saturation state (Langdon & Atkinson 2005); however, more recent work indicates that the response is highly variable among species and dependent upon experimental techniques (see review in Pandolfi et al. 2011).

The effects of temperature on the early life history stages of coral are also well documented. For example, temperature increases of 1 to 2°C above ambient levels result in high numbers of abnormally developed larvae (Bassim et al. 2002, Negri et al. 2007). Similarly, high temperatures reduce larval survivorship (Baird et al. 2006), particularly in larvae that contain symbiotic algae (Yakovleva et al. 2009, Nesa et al. 2012). In contrast, the effects of OA on coral larval ecology are much more variable and direct effects are only evident at very high partial pressure of CO<sub>2</sub> (pCO<sub>2</sub>) levels or when gametes and larvae are past their peak (see review in Dufault et al. 2012).

In the wild, these 2 stressors clearly act on organisms simultaneously; however, there have been very few experiments that explore the combined effects of high pCO<sub>2</sub> and temperature. The general assumption is that the effect of OA and temperature will be additive. Indeed, high pCO<sub>2</sub> in combination with high temperature lowers thermal bleaching thresholds in corals and crustose coralline algae (Anthony et al. 2008). Similarly, growth rates of *Porites panamensis* juveniles were lowest in a combined high pCO<sub>2</sub> and high temperature treatment (Anlauf et al. 2011). However, the interaction could be antagonistic because temperature increases metabolism (O'Connor et al. 2009), and high pCO<sub>2</sub> reduces it (Pörtner et al. 2004). In another example, high temperatures can compensate for dwarfism that would otherwise eventuate due to reduced calcification in acidified sea water, as in *Tripneustes gratilla* larvae (Sheppard Brennan et al. 2010).

In this study, we tested the combined effects of elevated temperature and elevated pCO<sub>2</sub> on the early life history stages of 2 common spawning acroporids of the northern Great Barrier Reef region.

## MATERIALS AND METHODS

### Collection of mature colonies

Six mature colonies of *Acropora tenuis* and *A. millepora* were collected at Magnetic Island (19° 9' S, 146° 50' E) and a second batch of 6 *A. millepora* colonies were collected from Orpheus Island (18° 35' S,

146° 29' E), a few days prior to the predicted spawning period in 2010. They were transported to James Cook University and maintained in outdoor aquaria (GBRMPA permit: G10/33174.1). *A. tenuis* spawned on the night of 28 October 2010; *A. millepora* from Magnetic Island spawned on the nights of 1 and 2 November 2010. *A. millepora* colonies from Orpheus Island spawned on 22 and 30 November 2010. Consequently, 6 cohorts of larvae were available for the experiments: *A. tenuis*, *A. millepora* Nov\_1, *A. millepora* Nov\_2, *A. millepora* Nov\_22 and *A. millepora* Nov\_30. However, not all response variables were tested in each of these cohorts.

### Experiments on ocean acidification and warming

The CO<sub>2</sub> tanks were located in a temperature controlled room (27°C). Two levels of CO<sub>2</sub> concentration (ambient and elevated pCO<sub>2</sub>) and 2 levels of temperature (ambient 27°C and 29°C) were selected as recommended by the European Project on Ocean Acidification (EPOCA) protocol (Barry et al. 2010). The 4 treatments were (1) ambient temperature + ambient pCO<sub>2</sub>, (2) ambient temperature + high pCO<sub>2</sub>, (3) high temperature + ambient pCO<sub>2</sub>, (4) high temperature + high pCO<sub>2</sub> (see Table 1 for mean values of each level of each factor used in the experiments).

Experimental temperatures were maintained using aquarium heaters (Eheim Jäger 300W placed in water baths and bath temperatures were measured twice daily. The desired pCO<sub>2</sub> level in the sea water was produced using a CO<sub>2</sub> mixing system developed by Munday et al. (2009) and the pCO<sub>2</sub> concentration was measured in ppm units using a CO<sub>2</sub> gas probe (Vaisala®). The mixed gases were bubbled through 250 l sump tanks and water chemistry parameters and corresponding total alkalinity (TA) were measured for each treatment throughout the experiment (Table 1) by using a fixed end point titration method. Experimental calcite ( $\Omega_{\text{calc}}$ ) and aragonite saturations ( $\Omega_{\text{arag}}$ ), as well as actual pCO<sub>2</sub> ( $\mu\text{atm}$ ) were calculated from average total alkalinity data (TA), salinity, temperature and pH<sub>NBS</sub> using CO<sub>2</sub>SYN with dissociation constants of Mehrbach et al. (1973) as refitted by Dickson & Millero (1987) (Pierrot et al. 2006). Dissolved oxygen (DO% saturated) was measured daily to ensure sufficient oxygen flow in the treatment tanks.

### The effect of temperature and pCO<sub>2</sub> on fertilization

Egg and sperm bundles were collected from individual colonies, mixed and then gently agitated to

Table 1. Water chemistry parameters (means  $\pm$  SE) for experiments with (1) *Acropora tenuis*, *A. millepora* Nov\_01 and *A. millepora* Nov\_02, and (2) with *A. millepora* Nov\_22 and *A. millepora* Nov\_30. Saturation values of aragonite ( $\Omega_{\text{arag}}$ ) and calcite ( $\Omega_{\text{calc}}$ ) and actual saturated values of pCO<sub>2</sub> in treatments tanks calculated using CO2SYS (Pierrot et al. 2006)

Treatment	pH	Total alkalinity ( $\mu\text{mol kg}^{-1}$ as CaCO <sub>3</sub> )	Temp ( $^{\circ}\text{C}$ )	$\Omega_{\text{calc}}$	$\Omega_{\text{arag}}$	pCO <sub>2</sub> calculated ( $\mu\text{atm}$ )
<b>(1) <i>A. tenuis</i>, <i>A. millepora</i> Nov_01 and <i>A. millepora</i> Nov_02</b>						
Ambient temp + Ambient pCO <sub>2</sub>	8.17 $\pm$ 0.01	2205 $\pm$ 19	25.7 $\pm$ 0.13	4.8 $\pm$ 0.1	3.2 $\pm$ 0.1	421 $\pm$ 10
High temp + Ambient pCO <sub>2</sub>	8.18 $\pm$ 0.01	2232 $\pm$ 9	28.5 $\pm$ 0.10	4.7 $\pm$ 0.1	3.2 $\pm$ 0.1	499 $\pm$ 9
Ambient temp + High pCO <sub>2</sub>	8.06 $\pm$ 0.02	2111 $\pm$ 44	25.6 $\pm$ 0.12	3.3 $\pm$ 0.1	2.2 $\pm$ 0.1	655 $\pm$ 41
High temp + High pCO <sub>2</sub>	8.06 $\pm$ 0.01	2162 $\pm$ 54	28.9 $\pm$ 0.01	2.8 $\pm$ 0.3	1.9 $\pm$ 0.2	663 $\pm$ 20
<b>(2) <i>A. millepora</i> Nov_22 and <i>A. millepora</i> Nov_30</b>						
Ambient temp + Ambient pCO <sub>2</sub>	8.12 $\pm$ 0.01	1947 $\pm$ 14	26.5 $\pm$ 0.11	3.7 $\pm$ 0.2	2.4 $\pm$ 0.1	474 $\pm$ 34
High temp + Ambient pCO <sub>2</sub>	8.12 $\pm$ 0.01	1955 $\pm$ 21	28.9 $\pm$ 0.03	3.7 $\pm$ 0.2	2.5 $\pm$ 0.1	521 $\pm$ 43
Ambient temp + High pCO <sub>2</sub>	7.98 $\pm$ 0.02	1920 $\pm$ 25	26.7 $\pm$ 0.09	2.7 $\pm$ 0.2	1.8 $\pm$ 0.1	699 $\pm$ 34
High temp + High pCO <sub>2</sub>	8.01 $\pm$ 0.01	1911 $\pm$ 22	29.2 $\pm$ 0.11	2.8 $\pm$ 0.3	1.9 $\pm$ 0.2	759 $\pm$ 70

break up the bundles. Buoyant eggs were then separated from the sperm and a stock of sperm solution was prepared. We counted 20 eggs into each of 12 replicates of 25 ml glass jars (6 with high pCO<sub>2</sub> and 6 with ambient pCO<sub>2</sub> seawater) and an equal quantity of sperm was introduced into each jar to produce a final concentration of 10<sup>6</sup> sperm ml<sup>-1</sup> to maximize the fertilization rate (Oliver & Babcock 1992). Gametes were mixed within 30 min of spawning. The volume of sperm solution added was <1 ml and, therefore, unlikely to have influenced the pH levels in the jars. Then, 3 jars were placed in each of the 2 water baths containing heated water and 6 were kept at ambient temperature, resulting in 3 replicate jars in each of the 4 treatments. The number of cleaved embryos was quantified 2 h after the gametes were mixed to estimate fertilization rates. The cohorts used in these experiments are listed in the legend of Fig. 1.

### Effect of temperature and pCO<sub>2</sub> on development

Once cleavage was observed, embryos were washed 3 times in 0.2  $\mu\text{m}$  filtered sea water to remove excess sperm, which can cause cultures to deteriorate. Then, ~1000 embryos were placed in each of 12 replicate 3.5 l plastic jars, 3 jars per treatment, with 0.2  $\mu\text{m}$  filtered seawater at a flow rate of 1.5 to 2 l h<sup>-1</sup>. At 12, 18, 24, 36, 48, 72 and 96 h after the gametes were mixed, 20 propagules were pipetted from each jar and the number of propagules in each of the following 5 development stages were identified (following Ball et al. 2002): (1) 4-cell blastula, (2) multiple cell blastula, (3) early gastrula, (4) gastrula and (5) planulae (motile stage). The cohorts used in these experiments are listed in the legend to Fig. 2.

To test for differences in development time between treatments, the average time ( $\bar{X}$ ) for propagules to reach a certain stage of development was estimated as follows:

$$\bar{X} = \frac{\sum \text{Time (h)} \times \text{No. of propagules to reach stage}}{(\text{Total no. of propagules})^{-1}} \quad (1)$$

### Effect of temperature and pCO<sub>2</sub> on larval survival

Fifty motile larvae (4 d old) were placed in each of 3 replicate jars with plankton mesh lids and immersed in the treatment tanks. Surviving larvae were counted every 4 h. This period is sufficient for dead larvae to lyse and disappear from the jars (Baird et al. 2006). Larval survival was followed for up to 14 d in each treatment. The cohorts used in these experiments are listed in the legend of Fig. 4.

### Effect of temperature and pCO<sub>2</sub> on metamorphosis

Metamorphosis of *Acropora* larvae typically peaks between 6 and 10 d after spawning (Connolly & Baird 2010). Consequently, 7 d old larvae were used to test for differences in metamorphosis between treatments. Ten to 20 larvae were pipetted from each of the 12 replicate plastic jars and placed into each well of a 6-well cell culture plate. Consequently, there were 3 replicate 6-well plates in each treatment with a total of 180 or 360 larvae per treatment. A 2  $\times$  2 mm chip of live crustose coralline algae (CCA) (*Titanoderma* sp.) was placed in each well to induce metamorphosis (Harrington et al. 2004) and the plates were then immersed in the treatments. The lids of the

6-well plates were modified with plankton mesh to allow treated seawater to mix with the water in the wells. The number of larvae that completed metamorphosis was assessed after 24 h under a dissecting microscope (10×). Metamorphosis was defined as the deposition of a basal disc, which is generally visible through the juvenile coral tissue (Babcock et al. 2003, Baird & Babcock 2000). The cohorts used in these experiments are listed in the legend of Fig. 5.

### Data analysis

Mean differences among the 4 treatments in the proportion of eggs fertilized, time to complete gastrulation, time to motility, and the number of larvae completing metamorphosis were tested with a fully orthogonal 2-way ANOVA. The factors were Temperature (fixed, 2 levels: 27 and 29°C) and pCO<sub>2</sub> (fixed, 2 levels: ambient and elevated pCO<sub>2</sub>). Each assay was analyzed independently (i.e. 2 to 4 assays representing the different cohorts of larvae depending on the response variable). A Bonferroni correction was used to adjust the probability of type I error (i.e. probability was considered significant when  $\beta < \alpha/n$ , where  $\beta$  equals the Bonferroni corrected probability,  $\alpha = 0.05$  and  $n =$  the number

of assays run for the specific response variable). Any bias in these data was explored by residual analysis. Response variables were transformed as follows: percent fertilization – no transformation necessary; time to gastrulation and motility –  $\log_{10}$  transformed; proportion metamorphosis – arcsine transformed. Differences in the median survival time among treatments for each assay were tested using Kaplan-Meier survival analysis. All statistical analyses were performed using SPSS 16®.

### RESULTS

The mean proportion of eggs completing fertilization was not affected by either temperature or pCO<sub>2</sub> in 3 of the 4 assays. In all these assays, fertilization success was uniformly high (Fig 1A–C). In the *Acropora millepora* Nov\_22 assay, the proportion (mean  $\pm$  SE) of eggs fertilized was significantly lower at high temperatures ( $F_{(1,20)} = 10.376$ ,  $p = 0.005$ ): 100% fertilized eggs at 27°C versus  $89.5 \pm 3.8$  at 29°C (Fig. 1D).

The effects of temperature and pCO<sub>2</sub> on time to complete gastrulation were variable. In all but one cohort, *Acropora millepora* Nov\_22, embryos completed gastrulation more rapidly at high temperature

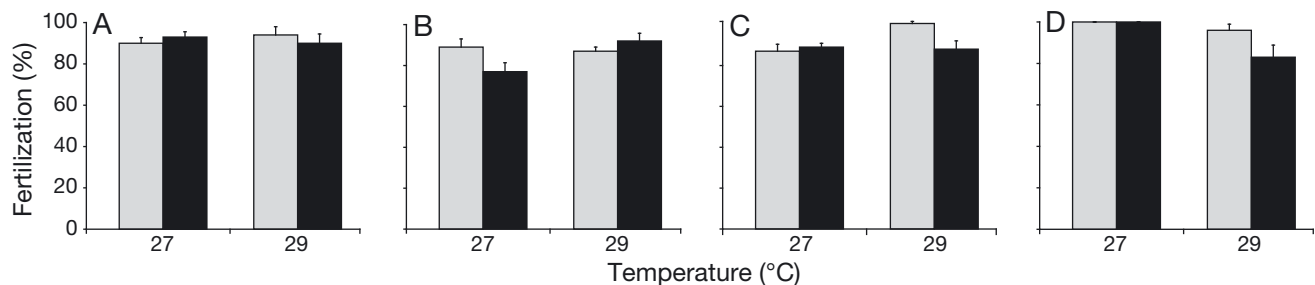


Fig. 1. Fertilization (mean percent  $\pm$  1 SE) in 4 combinations of temperature and pCO<sub>2</sub>. (A) *Acropora tenuis*, (B) *A. millepora* Nov\_01, (C) *A. millepora* Nov\_02, (D) *A. millepora* Nov\_22. Bars: grey: ambient pCO<sub>2</sub>, black: high pCO<sub>2</sub> (values for the levels of each factor are listed in Table 1)

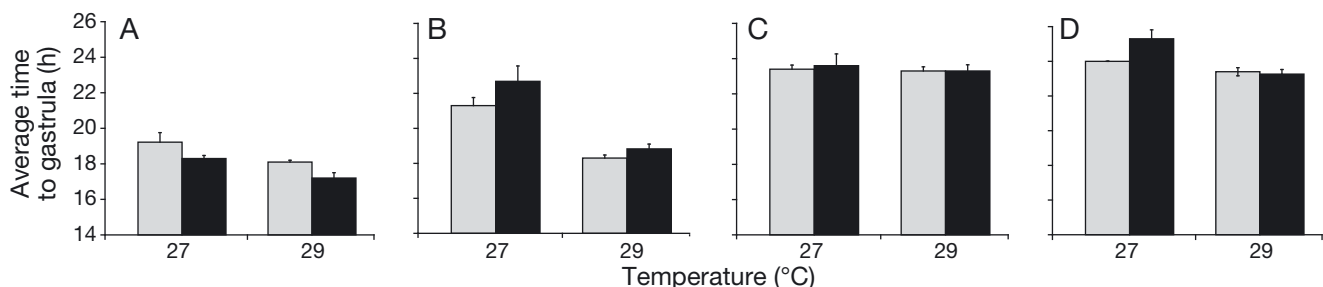


Fig. 2. Time to gastrula stage (mean  $\pm$  1 SE) in 4 combinations of temperature and pCO<sub>2</sub>. (A) *Acropora tenuis*, (B) *A. millepora* Nov\_01, (C) *A. millepora* Nov\_22, (D) *A. millepora* Nov\_30. For details, see Fig. 1 legend

Table 2. Two-way ANOVA testing for difference among treatments in the mean time for embryos to develop to the gastrula stage. Data were  $\log_{10}$  transformed. Bonferroni corrected probability = 0.013

Cohorts	n	df	F	p
<b><i>A. tenuis</i></b>	238			
Temp		1	14.475	<0.001
pCO <sub>2</sub>		1	10.067	0.002
Temp × pCO <sub>2</sub>		1	0.696	0.405
<b><i>A. millepora</i> Nov_01</b>	232			
Temp		1	50.353	<0.001
pCO <sub>2</sub>		1	2.525	0.113
Temp × pCO <sub>2</sub>		1	0.157	0.692
<b><i>A. millepora</i> Nov_22</b>	240			
Temp		1	0.090	0.765
pCO <sub>2</sub>		1	0.050	0.823
Temp × pCO <sub>2</sub>		1	0.090	0.765
<b><i>A. millepora</i> Nov_30</b>	237			
Temp		1	18.846	<0.001
pCO <sub>2</sub>		1	2.143	0.145
Temp × pCO <sub>2</sub>		1	3.993	0.047

Table 3. Two-way ANOVA testing for difference among treatments in the mean time for embryos to reach motility. Data were  $\log_{10}$  transformed. Bonferroni corrected probability = 0.013

Cohorts	n	df	F	p
<b><i>A. tenuis</i></b>	142			
Temp		1	323.125	<0.001
pCO <sub>2</sub>		1	4.935	0.028
Temp × pCO <sub>2</sub>		1	44.796	<0.001
<b><i>A. millepora</i> Nov_01</b>	218			
Temp		1	53.519	<0.001
pCO <sub>2</sub>		1	10.597	0.001
Temp × pCO <sub>2</sub>		1	17.654	<0.001
<b><i>A. millepora</i> Nov_22</b>	142			
Temp		1	3.015	0.085
pCO <sub>2</sub>		1	10.101	0.002
Temp × pCO <sub>2</sub>		1	3.622	0.059
<b><i>A. millepora</i> Nov_30</b>	210			
Temp		1	13.202	<0.001
pCO <sub>2</sub>		1	0.070	0.792
Temp × pCO <sub>2</sub>		1	0.587	0.444

(Fig. 2, Table 2). For example, the average time to complete gastrulation in *A. millepora* Nov\_01 was  $22.0 \pm 0.49$  h at 27°C, compared to  $18.6 \pm 0.16$  h at 29°C. In the *A. tenuis* cohort pCO<sub>2</sub> also had an effect, with embryos in high pCO<sub>2</sub> completing gastrulation more quickly ( $17.8 \pm 0.18$  h) than those at ambient pCO<sub>2</sub> ( $18.7 \pm 0.28$  h) (Fig. 2A, Table 2). No cohort showed any interaction between temperature and pCO<sub>2</sub> (Table 2). Similarly, the effects of temperature and pCO<sub>2</sub> on time to motility were variable. In all but one cohort, *A. millepora* Nov\_22, motility was achieved more rapidly at higher temperatures (Fig. 3, Table 3); however, 2 cohorts showed an interaction between temperature and pCO<sub>2</sub>. In *A. tenuis*, there was no difference between the pCO<sub>2</sub> treatments at 27°C; however, at 29°C motility was reached more rapidly in the high pCO<sub>2</sub> treatment (Fig. 3A). In *A. millepora* Nov\_01, there was no difference between the pCO<sub>2</sub> treatments at 29°C; however, at 27°C,

embryos in the high pCO<sub>2</sub> treatment became motile more quickly (Fig. 3B). In only one instance there was an effect of just pCO<sub>2</sub>. In *A. millepora* Nov\_22 motility was reached more rapidly at high pCO<sub>2</sub> (Fig. 3C, Table 3) than at ambient pCO<sub>2</sub> ( $59.2 \pm 1.7$  h vs.  $66.8 \pm 2.84$  h) (Fig. 3C, Table 3).

The effects of temperature and pCO<sub>2</sub> on larval survivorship were also variable. In *Acropora tenuis*, median survivorship was significantly lower in the high temperature + ambient pCO<sub>2</sub> treatment, but did not vary among the other 3 treatments as indicated by the overlap in the 95% CIs (Fig. 4A). In *A. millepora* Nov\_22, median survivorship was lower in the high temperature and the combined high temperature high pCO<sub>2</sub> treatment when compared to ambient temperature + ambient pCO<sub>2</sub> (Fig. 4B); however, there was no significant difference in median survivorship between the high pCO<sub>2</sub> treatment and any other treatment (Fig. 4B).

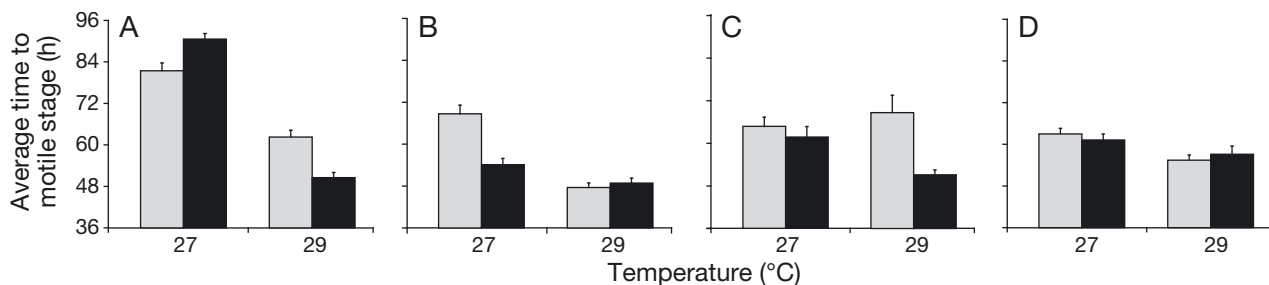


Fig. 3. Time to motile stage (mean +1 SE) in 4 combinations of temperature and pCO<sub>2</sub>. (A) *Acropora tenuis*, (B) *A. millepora* Nov\_01, (C) *A. millepora* Nov\_22, (D) *A. millepora* Nov\_30. For details, see Fig. 1 legend



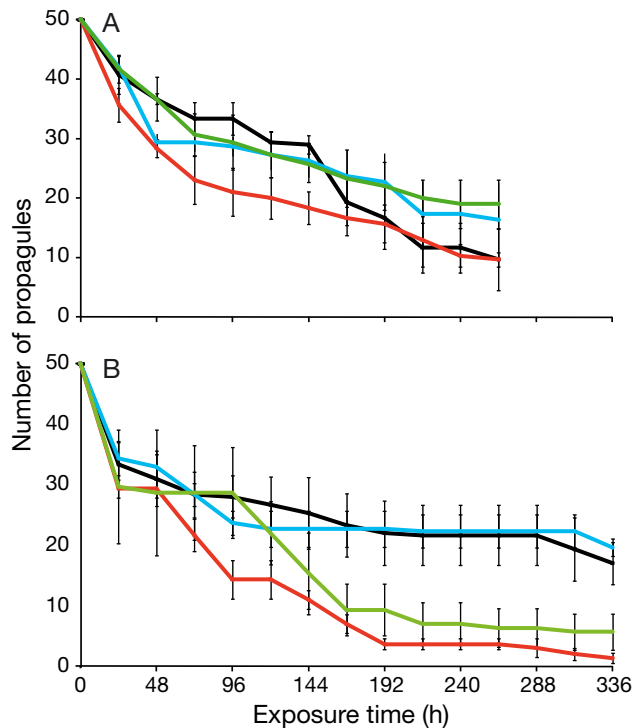


Fig. 4. Number of surviving propagules (median  $\pm$  95% CI) estimated using Kaplan-Meier analysis in 4 combinations of temperature and pCO<sub>2</sub>. (A) *Acropora tenuis*, (B) *A. millepora* Nov\_22. Black lines: ambient temperature + ambient pCO<sub>2</sub>; red lines: high temperature + ambient pCO<sub>2</sub>; blue lines: high pCO<sub>2</sub> + ambient temperature; green lines: high temperature + high pCO<sub>2</sub> (details on experimental parameters in Table 1)

The effects of temperature and pCO<sub>2</sub> on larval metamorphosis were also variable. In *A. tenuis*, metamorphosis was significantly higher at 29°C (55.1  $\pm$  4.5% vs. 70.3  $\pm$  2.5%) ( $F_{(1,72)} = 7.30$ ,  $p = 0.009$ ; Fig. 5A). In contrast, metamorphosis was lower at 29°C in *Acropora millepora* Nov\_22 (54.9%  $\pm$  3.0 vs. 40.2%  $\pm$  4.5) ( $F_{(1,72)} = 7.24$ ,  $p = 0.009$ ; Fig. 5B). pCO<sub>2</sub> did not have any effect on metamorphosis, either on its own, or in combination with high temperature.

## DISCUSSION

Increased temperature (by +2°C) more consistently affected the early life stages of corals in comparison to elevated pCO<sub>2</sub> (~215  $\mu$ atm above ambient). In general, rates of development were faster at high temperature, as predicted by metabolic theory (Gillooly et al. 2001). In contrast, elevated pCO<sub>2</sub> rarely affected development and, with one exception, only in combination with temperature. However, the effect was contrary to what is generally predicted. In both assays where an interaction was

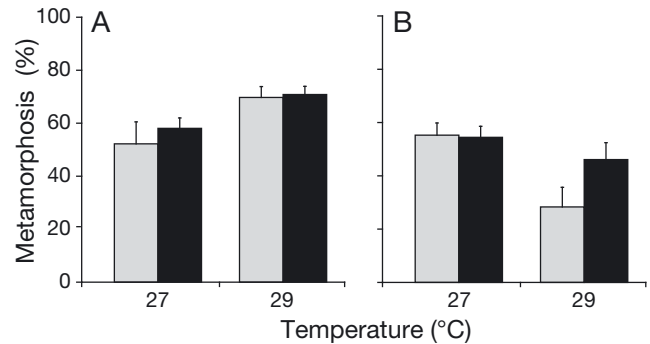


Fig. 5. Percentage of metamorphosis (mean  $\pm$  1 SE) in 4 combinations of temperature and pCO<sub>2</sub>. (A) *Acropora tenuis*, (B) *A. millepora* Nov\_22. For details, see Fig. 1 legend

detected (Fig. 3A,B, Table 3), high pCO<sub>2</sub> decreased the time to motility, whereas elevated pCO<sub>2</sub> would be expected to slow rates of development (Pörtner et al. 2004). Similarly, in the only assay where elevated pCO<sub>2</sub> had a significant effect on development rates, time to motility was faster in high pCO<sub>2</sub> treatments. Neither temperature, elevated pCO<sub>2</sub> nor the combination of these variables affected fertilization, larval survivorship or metamorphosis in any consistent or predictable way. We conclude that the changes in temperature and elevated pCO<sub>2</sub> projected for this century are unlikely to have major ecological effects on the early life history of corals, either alone or in combination, except that temperature will speed up rates of larval development.

Fertilization was robust to both elevated pCO<sub>2</sub> and temperature within the range of variables used in the experiments. This result is in good agreement with most previous work with marine invertebrate larvae (reviewed in Byrne 2011), the exception being Albright et al. (2010) who reported a 64% decrease in fertilization rates at similar levels of OA, but only when sperm concentration was low. In general, fertilization rates in corals are only reduced at +4°C (e.g. Negri et al. 2007). Similarly, sea urchin fertilization is robust to these levels of elevated pCO<sub>2</sub> and temperature (Sheppard Brennan et al. 2010, Byrne 2011). Indeed, marine invertebrate fertilization is generally robust to acidity and minor increases in temperature because the propagules are often equipped with cellular defense mechanisms. These are present in the egg before fertilization (Hamdoun & Epel 2007, Portune et al. 2010), probably because the gametes are regularly exposed to fluctuating temperature and pCO<sub>2</sub> in the water column (Gagliano et al. 2010).

Consistent with the literature (Byrne 2011, Chua 2012), and to be expected on the basis of metabolic theory, rates of development were predictably in-

creased by temperature. However, it was surprising that elevated pCO<sub>2</sub> also on occasion increased rates of development, both on its own and in combination with high temperature, in contrast to a prediction of reduced metabolism from hypercapnia.

Metamorphosis was affected by temperature but not elevated pCO<sub>2</sub>; however, the temperature effect was inconsistent. Again, these results are generally consistent with the literature (see Chua 2012). Temperatures of +2°C above ambient levels have little effect on metamorphosis, and both increases (Coles 1985) or decreases (Randall & Szmant 2009) are evident at temperature elevations >+2°C. Metamorphosis is rarely directly affected by elevated pCO<sub>2</sub> (Albright et al. 2010, 2011); indeed, Nakamura et al. (2011) reported a direct effect only for larvae that have passed peak metamorphosis. The effect of elevated pCO<sub>2</sub> on metamorphosis, if any, is indirect and mediated through elevated pCO<sub>2</sub> induced changes in the composition of the substratum, in particular the health of crustose coralline algae that are often required to induce metamorphosis in coral (Albright et al. 2010, Doropoulos et al. 2012). In the only other study on a synergistic effect between these stressors, metamorphosis was not affected (Anlauf et al. 2011).

Survivorship was not consistently affected by elevated pCO<sub>2</sub> or temperature. The temperature result is perhaps surprising because most previous experiments report an affect for an elevation of +2°C (e.g. Coles 1985, Bassim & Sammarco 2003, but see Yakovleva et al. 2009). In contrast, larval survivorship is rarely affected by elevated pCO<sub>2</sub> (Suwa et al. 2010, Nakamura et al. 2011). This suggests that some coral species are more susceptible to temperature and elevated pCO<sub>2</sub> stress than others (Fabricius et al. 2011).

In conclusion, the effects of a +2°C increase in temperature were relatively minor and had no effect on fertilization, and mixed effects on larval survivorship and metamorphosis. The only consistent effect was on rates of development, which were typically more rapid at high temperature. The effects of increased rates of development on coral demography are difficult to predict. If larvae develop competence more quickly, average dispersal distance should decrease which is, therefore, likely to reduce levels of reef connectivity (Heyward & Negri 2010). However, greater levels of retention are also likely to increase the rates of recruitment. Consequently, the effect of more rapid rates of development in response to increasing temperatures are likely to be highly dependent on local conditions such as reef density and hydrodynamics. In contrast to temperature, ele-

vated pCO<sub>2</sub> had no predictable or consistent effect, either alone, or in combination with temperature. We conclude, that temperature increases associated with global warming are more likely to have ecological consequences than OA at least in the near-future (see also Cooper et al. 2012).

*Acknowledgements.* We thank P. Munday for the original design of the CO<sub>2</sub> manipulation system and JCU Marine and Freshwater Aquarium research assistants for technical assistance. We thank E. Woolsey, L. Huisman, P. Cross and G. Torda for field assistance and L. Harrington for CCA identification. This project was funded by ARC grants to W.L. and A.H.B. and the Ministry of Higher Education of Malaysia funded the PhD scholarship to C.M.C.

#### LITERATURE CITED

- Albright R, Mason B, Miller M, Langdon C (2010) Ocean acidification compromises recruitment success of the threatened Caribbean coral *Acropora palmata*. *Proc Natl Acad Sci USA* 107:20400–20404
- Albright R (2011) Reviewing the effects of ocean acidification on sexual reproduction and early life history stages of reef-building corals. *J Mar Biol* 2011:473615
- Anlauf H, D'Croz L, O'Dea A (2011) A corrosive concoction: the combined effects of ocean warming and acidification on the early growth of a stony coral are multiplicative. *J Exp Mar Biol Ecol* 397:13–20
- Anthony KRN, Kline DI, Diaz-Pulido G, Dove S, Hoegh-Guldberg O (2008) Ocean acidification causes bleaching and productivity loss in coral reef builders. *Proc Natl Acad Sci USA* 105:17442–17446
- Babcock RC, Baird AH, Piromvaragorn S, Thomson DP, Willis BL (2003) Identification of scleractinian coral recruits from Indo-Pacific reefs. *Zool Stud* 42:211–226
- Baird AH, Babcock RC (2000) Morphological differences among three species of newly settled pocilloporid coral recruits. *Coral Reefs* 19:179–183
- Baird AH, Gilmour JP, Kamiki TM, Nonaka M, Pratchett MS, Yamamoto HH, Yamasaki H (2006) Temperature tolerance of symbiotic and non-symbiotic coral larvae. *Proc 10th Int Coral Reef Symp, Okinawa*, p 38–42
- Baird AH, Bhagooli R, Ralph PJ, Takahashi S (2009) Coral bleaching: the role of the host. *Trends Ecol Evol* 24:16–20
- Ball EE, Hayward DC, Reece-Hoyes JS, Hislop NR and others (2002) Coral development: from classical embryology to molecular control. *Int J Dev Biol* 46:671–678
- Barry JP, Tyrell T, Hansson L, Plattner GK, Gattuso JP (2010) Atmospheric CO<sub>2</sub> targets for ocean acidification perturbation experiments. In: Riebesell U, Fabry VJ, Hansson L, Gattuso JP (eds) *Guide to best practices for ocean acidification research and data reporting European project on ocean acidification*. Publication Office of the European Union, Luxembourg, p 53–64
- Bassim KM, Sammarco PW (2003) Effects of temperature and ammonium on larval development and survivorship in a scleractinian coral (*Diploria strigosa*). *Mar Biol* 142: 241–252
- Bassim KM, Sammarco PW, Snell TL (2002) Effects of temperature on success of (self and non-self) fertilization and embryogenesis in *Diploria strigosa* (Cnidaria, Sclerac-



- tinia). *Mar Biol* 140:479–488
- Bindoff NL, Willebrand J, Artale V, Cazenave A and others (2007) Observations: oceanic climate change and sea level. Intergovernmental Panel on Climate Change. Cambridge University Press, Cambridge
- Byrne M (2011) Impact of ocean warming and ocean acidification on marine invertebrate life history stages: vulnerabilities and potential for persistence in a changing ocean. *Oceanogr Mar Biol Annu Rev* 49:1–42
- Chua CM (2012) Effects of ocean acidification and warming on the early life history stages of corals. PhD thesis, James Cook University, Townsville
- Coles SL (1985) The effects of elevated temperature on reef coral planula settlement as related to power station entrainment. *Proc 5th Int Coral Reef Congr, Tahiti* 4: 171–176
- Connolly SR, Baird AH (2010) Estimating dispersal potential for marine larvae: dynamic models applied to scleractinian corals. *Ecology* 91:3572–3583
- Cooper TF, O’Leary RA, Lough JM (2012) Growth of western Australian corals in the anthropocene. *Science* 335: 593–596
- Dickson AG, Millero FJ (1987) A comparison of the equilibrium constants for the dissociation of carbonic acid in seawater media. *Deep Sea Res A* 34:1733–1743
- Doropoulos C, Ward S, Diaz-Pulido G, Hoegh-Guldberg O, Mumby PJ (2012) Ocean acidification reduces coral recruitment by disrupting intimate larval-algal settlement interactions. *Ecol Lett* 15:338–346
- Dufault AM, Cumbo VR, Fan TY, Edmunds PJ (2012) Effects of diurnally oscillating pCO<sub>2</sub> on the calcification and survival of coral recruits. *Proc R Soc Lond B Biol Sci* 279: 2951–2958
- Fabricius KE, Langdon C, Uthicke S, Humphrey C and others (2011) Losers and winners in coral reefs acclimatized to elevated carbon dioxide concentrations. *Nature Clim Change* 1:165–169
- Feely R, Orr J, Fabry V, Kleypas J, Sabine C, Langdon C (2009) Present and future changes in seawater chemistry due to ocean acidification. In: McPherson B, Sundquist E (eds) Carbon sequestration and its role in the global carbon cycle. *Geophys Monogr Ser, Vol 183*. AGU, p 175–188
- Gagliano M, McCormick MI, Moore JA, Depczynski M (2010) The basics of acidification: baseline variability of pH on Australian coral reefs. *Mar Biol* 157:1849–1856
- Gillooly JF, Brown JH, West GB, Savage VM, Charnov EL (2001) Effects of size and temperature on metabolic rate. *Science* 293:2248–2251
- Hamdoun A, Epel D (2007) Embryo stability and vulnerability in an always changing world. *Proc Natl Acad Sci USA* 104:1745–1750
- Harrington L, Fabricius K, De’Ath G, Negri A (2004) Recognition and selection of settlement substrata determine post-settlement survival in corals. *Ecology* 85:3428–3437
- Heyward AJ, Negri AP (2010) Plasticity of larval pre-competency in response to temperature: observations on multiple broadcast spawning coral species. *Coral Reefs* 29: 631–636
- Langdon C, Atkinson MJ (2005) Effect of elevated pCO<sub>2</sub> on photosynthesis and calcification of corals and interactions with seasonal change in temperature/irradiance and nutrient enrichment. *J Geophys Res* 110:C09S07, doi:10.1029/2004JC002576
- McClanahan TR, Weil E, Cortés J, Baird AH, Ateweberhan M (2009) Consequences of coral bleaching for sessile reef organisms. In: van Oppen MJH, Lough JM (eds) *Coral bleaching*. Springer, Berlin, p 121–138
- Mehrbach C, Culbertson CH, Hawley JE, Pytkowicz RM (1973) Measurement of the apparent dissociation constants of carbonic acid in seawater at atmospheric pressure. *Limnol Oceanogr* 18:897–907
- Munday PL, Dixon DL, Donelson JM, Jones GP, Pratchett MS, Devitsina GV, Døving KB (2009) Ocean acidification impairs olfactory discrimination and homing ability of a marine fish. *Proc Natl Acad Sci USA* 106:1848–1852
- Nakamura M, Ohki S, Suzuki A, Sakai K (2011) Coral larvae under ocean acidification: survival, metabolism, and metamorphosis. *PLoS ONE* 6:e14521
- Negri AP, Marshall PA, Heyward AJ (2007) Differing effects of thermal stress on coral fertilization and early embryogenesis in four Indo Pacific species. *Coral Reefs* 26: 759–763
- Nesa B, Baird AH, Harii S, Yakovleva I, Hidaka M (2012) Algal symbionts increase DNA damage in coral planulae exposed to sunlight. *Zool Stud* 51:12–17
- O’Connor MI, Piehler MF, Leech DM, Anton A, Bruno JF (2009) Warming and resource availability shift food web structure and metabolism. *PLoS Biol* 7:e1000178
- Oliver J, Babcock R (1992) Aspects of fertilization ecology of broadcast spawning corals—sperm dilution effects and *in-situ* measurements of fertilization. *Biol Bull* 183: 409–417
- Pandolfi JM, Connolly SR, Marshall DJ, Cohen AL (2011) Projecting coral reef futures under global warming and ocean acidification. *Science* 333:418–422
- Pierrot D, Lewis E, Wallace D (2006) MS Excel program developed for CO<sub>2</sub> systems calculations. Carbon Dioxide Information Analysis Center, Oak Ridge National Laboratory, US Department of Energy, Oak Ridge, TN
- Pörtner HO, Langenbuch M, Reipschlag A (2004) Biological impact of elevated ocean CO<sub>2</sub> concentrations: lessons from animal physiology and earth history. *J Oceanogr* 60: 705–718
- Portune KJ, Voolstra CR, Medina M, Szmant AM (2010) Development and heat stress-induced transcriptomic changes during embryogenesis of the scleractinian coral *Acropora palmata*. *Mar Genomics* 3:51–62
- Randall C, Szmant A (2009) Elevated temperature reduces survivorship and settlement of the larvae of the Caribbean scleractinian coral, *Favia fragum* (Esper). *Coral Reefs* 28:537–545
- Sheppard Brennan H, Soars N, Dworjanyn SA, Davis AR, Byrne M (2010) Impact of ocean warming and ocean acidification on larval development and calcification in the sea urchin *Tripneustes gratilla*. *PLoS ONE* 5:e11372
- Suwa R, Nakamura M, Morita M, Shimada K, Iguchi A, Sakai K, Suzuki A (2010) Effects of acidified seawater on early life stages of Scleractinian corals (genus *Acropora*). *Fish Sci* 76:93–99
- Yakovleva IM, Baird AH, Yamamoto HH, Bhagooli R, Nonaka M, Hidaka M (2009) Algal symbionts increase oxidative damage and death in coral larvae at high temperatures. *Mar Ecol Prog Ser* 378:105–112