



HAL
open science

Prevalence of canine hip dysplasia in 17 breeds in France, a retrospective study of the 1993–2019 radiographic screening period

J.-P. Genevois, A. Baldinger, Pierre Moissonnier, Anthony Barthélemy, C. Carozzo, E. Viguier, Thibaut Cachon

► To cite this version:

J.-P. Genevois, A. Baldinger, Pierre Moissonnier, Anthony Barthélemy, C. Carozzo, et al.. Prevalence of canine hip dysplasia in 17 breeds in France, a retrospective study of the 1993–2019 radiographic screening period. *Revue Vétérinaire Clinique*, 2020, 55, pp.123 - 146. 10.1016/j.anicom.2020.09.003 . hal-03493735

HAL Id: hal-03493735

<https://hal.science/hal-03493735>

Submitted on 21 Nov 2022

HAL is a multi-disciplinary open access archive for the deposit and dissemination of scientific research documents, whether they are published or not. The documents may come from teaching and research institutions in France or abroad, or from public or private research centers.

L'archive ouverte pluridisciplinaire **HAL**, est destinée au dépôt et à la diffusion de documents scientifiques de niveau recherche, publiés ou non, émanant des établissements d'enseignement et de recherche français ou étrangers, des laboratoires publics ou privés.



Distributed under a Creative Commons Attribution - NonCommercial 4.0 International License

Original Article

Prevalence of canine hip dysplasia in 17 breeds in France, a retrospective study of the 1993-2019 radiographic screening period

J-P. Genevois^{1,2&}, A. Baldinger^{1,2*&}, P. Moissonnier^{1,2}, A. Barthélemy³, C. Carozzo^{1,2}, É. Viguié^{1,2} and T. Cachon^{1,2&}

¹Surgery Unit, Lyon Veterinary Teaching Hospital, Université de Lyon, VetAgro Sup, Marcy l'Etoile, France

²Research Unit ICE, UPSP A104-2016, Université de Lyon, VetAgro Sup, Marcy l'Etoile, France

³Intensive Care Unit (SIAMU), Université de Lyon, VetAgro Sup, Marcy l'Etoile, APCSe, France

*Corresponding author

Email: jp.genevois@free.fr Tel: +33661181769

Line 116: XXX stands for JPG

&These authors contributed equally to this work

1 **Prevalence of canine hip dysplasia in 17 breeds in France, a**
2 **retrospective study of the 1993-2019 radiographic screening**
3 **period**

4
5 **Summary**

6 Canine hip dysplasia is a complex developmental disease of the coxo-femoral joint and one of
7 the most common orthopedic conditions in dogs. Due to the genetic contribution, most of the
8 programs fighting against hip dysplasia recommend selective breeding that excludes affected
9 dogs. In France, the phenotypic screening of coxo-femoral joint conformation remains a
10 strategy for breeders to establish selection decisions.

11 We compared the hip dysplasia prevalence in affected breeds over several periods of time to
12 evaluate the effectiveness of the hip dysplasia control program in France.

13 17 breeds were studied, based on the assessment of 8022 dogs, during the 1993-2019
14 screening period, which was divided into several intervals for analysis.

15 The prevalence varied widely from 8.8% (Hovawart) to 49.2% (American Staffordshire
16 Terrier). It decreased over time in 10 breeds, the decrease being significant in the Picardy
17 shepherd dog. An increase in prevalence was noted in 7 breeds, although the differences were
18 not statistically significant.

19 Our results are in accordance with several recent studies showing that long-term selection
20 policies may help decreasing the hip dysplasia prevalence in some breeds. The
21 complementary use of more recent tools such as estimated breeding values and genomics
22 would probably help breeders achieve more substantive results.

23

24 **Keywords:** Hip dysplasia, dog, phenotypic screening

25

26 **Résumé**

27 La dysplasie de hanche est une affection complexe de l'articulation coxo-fémorale
28 particulièrement courante chez le chien. Compte tenu de l'héritabilité de l'affection, la plupart
29 des programmes de lutte contre l'affection recommandent d'exclure les chiens affectés de la
30 reproduction. En France, le dépistage phénotypique de la dysplasie de hanche est utilisé par
31 les éleveurs dans leurs plans de sélection.

32 Afin d'évaluer l'efficacité du programme de contrôle de la dysplasie de hanche en France,
33 nous avons étudié l'évolution de la prévalence de l'affection chez 17 races, sur la base de
34 l'évaluation radiographique de 8022 chiens, au cours de la période 1993-2019 (divisée en
35 plusieurs intervalles pour l'analyse).

36 La prévalence de la dysplasie de hanche varie de 8,8% (Hovawart) à 49,2% (American
37 Staffordshire Terrier). Pour 10 races, elle a diminué au fil du temps, la diminution étant
38 statistiquement significative chez le Picardy shepherd dog. Une augmentation de prévalence
39 est observée pour 7 races, mais les différences ne sont pas statistiquement significatives.

40 Nos résultats sont conformes à plusieurs études récentes qui montrent que la politique de
41 sélection des reproducteurs permet de diminuer la prévalence de la dysplasie de hanche dans
42 un certain nombre de races. L'utilisation complémentaire d'outils plus récents tels que les
43 valeurs estimées de reproduction et la génomique permettrait probablement d'obtenir des
44 résultats plus conséquents.

45

46

47

48

50 **Introduction**

51 Canine hip dysplasia (HD) is a complex developmental disease of the coxo-femoral joint and
52 is one of the most common orthopedic conditions in dogs [1].

53 Osteoarthritis results from the varying degree of hip laxity of the coxo-femoral joint leading
54 to subluxation of the femoral head, a shallow acetabulum and flattening of the femoral head
55 [2]. These anatomical abnormalities lead to an inflammatory reaction with secondary
56 degenerative joint disease associated with pain and lameness ranging from mild to severe
57 [1,3]. The multifactorial characteristics of this medical condition are the results of genetic and
58 environmental contributions (nutrition, growth rate, overall body weight). Studies have shown
59 that the degree of heritability varies from 0.11 to 0.68 among different dog breeds [4].

60 Due to the genetic predisposition, excluding affected dogs from breeding has been shown to
61 reduce the prevalence of HD [5]. The heritability of HD and the response to selection is
62 however breed dependent. The higher the heritability, the greater is the expected genetic
63 improvement over time when selective breeding is practiced [6].

64 In France, a program intending to reduce HD prevalence was introduced in 1971 under the
65 responsibility of each breed club and supervised by the French Kennel Club (SCC: Société
66 Centrale Canine) [7]. Currently, phenotypic screening for coxo-femoral joint conformation
67 remains a strategy for breeders for making selection decisions [8]. Radiographic screening for
68 HD is based on a conventional ventrodorsal hip extended radiograph in anaesthetized or
69 deeply sedated dogs. According to the Fédération Cynologique Internationale (FCI), a five-
70 class system is used in continental Europe, Asia, Russia and parts of South America (Table 1).
71 The grades are defined descriptively based on the size of the Norberg angle (NA), depth of the
72 acetabulum, degree of subluxation and signs of secondary joint disease [9].

73

74 The minimum age for official screening is 12 months, except in large and giant breeds, in
75 which it is 18 months [7]. For each breed, an official reader is appointed by the breed club to
76 analyse the radiographs. Several control programs have been conducted in different countries
77 over the last 25 years, and their ability to reduce hip dysplasia has shown variable results.
78 While several reports identified a decrease in HD prevalence [5,7,10-16], others failed to
79 identify any significant progress [17-20].

80 The aim of our observational study was to compare the HD prevalence in affected breeds over
81 several periods of time to evaluate the effectiveness of the hip dysplasia control program in
82 France. This study is complementary of a first one [16], which was recently published and
83 related to 10 other breeds, over the 1997-2017 screening period.

84

85

86

87

88

89

90

91

92

93

94 **Materials and methods**

95 **Data**

96 From 1993 to 2019, 50955 standard radiographs of extended hindlimbs submitted by breeders or
97 owners were evaluated independently by the same examiner (XXX) for HD assessment. All the
98 data were computerized and recorded in a single electronic database to allow further analysis.
99 For the present study, and for each selected breed, the incidence of each of the 5 scoring classes
100 (Table 1) was extracted from the database for each year covered in this retrospective study.
101 Breeds were excluded if the single panelist changed before the end (2019) of the study period, or
102 if the total number of radiographs read per breed was insufficient (i.e. <200).

103

104 **Scoring protocol**

105 All dogs were scored according to the FCI 5 class grading scale (Table 1). Each joint was
106 assigned to one of five grades (A-E) that are defined descriptively; the final grade refers to the
107 worst joint. A and B are considered as normal joints (non-dysplastic), and grades C, D and E
108 represent mild, moderate and severe dysplasia, respectively. To evaluate and compare the HD
109 prevalence over time, each breed was divided into 2 cohorts, depending on the length of their
110 screening period.

111

112 **Statistical analysis**

113 For each breed and each period, HD prevalence (expressed as %) was obtained by dividing
114 the number of dogs that scored C-D and E by the total number of dogs evaluated for the
115 breed.

116 Within each breed, HD prevalence was compared among the periods using their 95%
117 confidence interval (95% CI) calculated by the Wilson/Brown method. The 95% CI assumes

118 binomial data. Statistical analyses were performed by one author (AB) using a commercial
119 software program (Prism 6, GraphPad Software, La Jolla, USA, CA).

120 **Results**

121 Overall, 8022 records for 17 breeds were included in the study : American Akita,
122 Altdeutscher Schaferhund, American Cocker Spaniel, American Staffordshire Terrier, Picardy
123 shepherd dog, French pointer, Chow Chow, Czechoslovakian Wolfdog, Dalmatian, English
124 Springer Spaniel, Blue Picardy spaniel, Picardy spaniel, Hovawart, Rhodesian Ridgeback,
125 Giant Schnauzer, Schnauzer and Irish Setter.

126 The overall prevalence of HD was evaluated in each breed mentioned above. The study period
127 extended from 1993 to 2019 for 8 breeds. For the remaining 9 breeds, the official panelist
128 changed during the screening period, and the study period was therefore shorter, as listed in
129 Table 2.

130
131 The different periods of screening used to evaluate and compare HD prevalence over time in
132 each breed are listed in Table 3.

133 The HD prevalence for each breed varied from 8.8% (Hovawart) to 49.2% (American
134 Staffordshire Terrier). The overall HD prevalence associated with the FCI 5-class grading
135 scale in all breeds is listed in Table 4. The overall HD prevalence is presented in Fig 1.

136 The prevalence of the different grades according to the FCI scale and prevalence of HD over
137 the different periods of time are shown for each breed in Figs 2-18.

138
139 A diminishing prevalence of HD was noted in 10 breeds in this study (Picardy shepherd dog,
140 Blue Picardy spaniel, Czechoslovakian Wolfdog, Giant Schnauzer, American Akita,
141 American Cocker Spaniel, Irish Setter, French pointer, Rhodesian Ridgeback, and Hovawart).

142 The decrease in HD prevalence (Table 5) was significant in the Picardy shepherd dog. In this
143 breed, between 1993 and 2019, the HD prevalence dropped from 39.9% to 25.1%.

144

145 For all 10 breeds with a decrease in HD prevalence, a marked decrease in the D-E grades was
146 noted, except for the Hovawart in which the C and D grades decreased (no E grade remained
147 stable. For the Rhodesian Ridgeback, a decrease in the C grade in association with the D and
148 grades was noted. For the American Akita, it was a decrease in C and E grades.

149

150 A non-significant increase in HD prevalence was observed in 7 breeds (American
151 Staffordshire Terrier, Chow Chow, English Springer Spaniel, Schnauzer, Altdeutscher
152 Schaferhund; Table 5).

153 In 3 of these 7 breeds with an increased HD prevalence, there was an increase in the C grade
154 associated with a decrease in D grade (Altdeutscher Schaferhund, English Springer Spaniel,
155 American Staffordshire Terrier).

156 A stable HD prevalence was observed for the Picardy spaniel and for the Dalmatian (for
157 which it remains rather low).

158

159

160

161

162

163

164

165

166 **Discussion**

167 A diminishing prevalence of HD was noted in 10 breeds in this study. Among them, the
168 Picardy shepherd dog showed a significant change in HD prevalence over the study period.
169 These results support the fact that a long-term purely phenotypic selection mode against hip
170 dysplasia based on radiographic screening control might be efficient in decreasing the HD
171 prevalence.

172 The increase in the C grade noted in 3 breeds (Altdeutscher Schaferhund, English Springer
173 Spaniel, American Staffordshire Terrier) with an increased HD prevalence is difficult to
174 explain, and the situation is most likely different from breed to breed. The altdeutscher
175 schaferhund breed club forbids mating D or E scored individuals and strongly recommends,
176 when using a C scored dog for breeding, to mate it with an A. As for the other breed clubs,
177 there are no special breeding recommendations on their website, but the clubs try to promote
178 both hip radiographic screening and using best scored dogs for breeding through selection
179 grids, in accordance with the French Kennel Club.

180 We may consider that, for a while, the selection was potentially not strong enough in some
181 breeds. We could also assume that, for the English Springer Spaniel, for instance, the increase
182 in the B grade led to an increase in B to B mating (instead of A to A or A to B mating), which,
183 due to the genetic recombination, could result in an increased risk of obtaining C scoring dogs
184 in the offspring. However, the variation between the initial and final period in terms of HD
185 prevalence noted in these breeds was 3%, except in the American Staffordshire Terrier (7%
186 variation). Yet, this increase among the several periods remained slight and not significant.

187 A previous study demonstrated that when all dogs in a breed have nearly the same hip
188 phenotype, almost no selection pressure can be applied to improve hip quality based on hip
189 radiograph screening [14]. According to the results of the present study, this was potentially
190 the case for the Picardy spaniel and the Dalmatian, which demonstrated slight changes in HD
191 prevalence.

192 Overall, 12 breeds had a prevalence of moderate and severe HD (D-E grades) lower than 10%
193 which is consistent with the results of a recent survey [21]. Five breeds (Picardy shepherd
194 dog, Blue Picardy spaniel, Picardy spaniel, Chow Chow and American Staffordshire Terrier)
195 had a prevalence of D-E grades lower than 25%. In these breeds, there is still a margin for
196 improvement, though in the Picardy shepherd dog, Blue Picardy spaniel and Picardy spaniel
197 the situation is not easy to handle because these breeds have a reduced number of individuals
198 and breeders and thus a limited number of annual births. As for the Picardy shepherd dog for
199 example [22], just after World War II, the breed was restored using some well typed
200 individuals, crossbred with bouvier des Flandres. Two subjects issued from this selection can
201 be found in the ancestry of current registred dogs [23]. Therefore it most likely that there is
202 only a very slight genetic diversity in the small number of bergers picards. The total
203 population was estimated around 1200 registred dogs in the 1990s. The number of annual
204 births, these last 5 years, was between 138 and 210, averaging 5-6 puppies per letter.

205
206 These results are consistent with previous studies indicating that selective breeding using
207 classifications of hip joint phenotypes might improve hip conformation in several breeds of
208 dogs [5,7,10-16], although other studies showed different findings, and the efficiency of using
209 screening programs to reduce the prevalence of HD has been questioned [17-20].

210 These results must be interpreted with caution since the evaluation of coxo-femoral joint
211 status is not mandatory for breeding in France [7]. In a 1993-2002 survey [24], it was

212 demonstrated that in France, only 2 to 19% of the dogs were screened for HD. Although the
213 number of screened dogs has increased since this period, it is likely that, depending on the
214 breed, a small fraction of all breeding dogs undergo a hip radiograph. Moreover, there is an
215 unknown proportion of veterinarian (or owner) prescreening of the radiographs with obvious
216 hip dysplasia, leading to the lack of presentation of the “worst” radiographs for official
217 screening. Therefore, our data reflect only those dogs whose owners and breeders submitted
218 radiographs for analysis. This proportion varies from 20 to 40% in Switzerland [25]. In
219 Scandinavian countries, all breeding animals in control-program breeds are screened, and both
220 dam and sire hip radiographs need to be submitted for screening to be registered by the
221 Kennel Club [13,17,18]. In these countries, an HD control program gives a good overall
222 prevalence for each breed. A study demonstrated that an improvement in hip quality can be
223 achieved by selection based on the subjective scoring of radiographs when all dogs of a breed
224 are evaluated [14].

225 Therefore, the lack of breeding restrictions in France and other countries [5] (United
226 Kingdom, United States of America) and the associated lower scoring rate might explain the
227 smaller degree of progress for some breeds. As previously mentioned, the true prevalence of
228 HD could be higher than that depicted by our results because they reflect only the results of
229 the radiographs submitted for official screening [7].

230 Most of the French breed clubs that are involved in a HD control program encourage breeders
231 to have their breeding stock and offspring radiographed through a scoring grid which takes
232 into account the fact that the dog and/or some of its offspring have been submitted to
233 radiographic hip scoring and the results of the scoring. Every result from an official hip
234 scoring that is communicated by the breed club to the French Kennel Club (SCC) is
235 mentioned on the dog’s pedigree, which is now a 5-generation pedigree document. The result
236 is also registered on an open access internet portal created by the SCC named LOF Select.

237 This portal enables breeders to access the characteristics of every registered dog, look for a
238 breeding dog, and create virtual matings. Furthermore, the SCC is involved in a program to
239 calculate and set up estimated breeding values, to help breeders choose their breeding stock.
240 A project to create a reproductive ability certification, which would involve health
241 characteristics (including hip status) is under study. It would undoubtedly increase the number
242 of radiographed dogs.

243 The HD screening system is based on a subjective evaluation of radiographic findings.
244 Panelist dependent variation is possible, and it has been demonstrated that significant intra-
245 and inter-observer variation in classification may occur [26]. In our study, all breeds were
246 evaluated by the same single panelist, which avoided interobserver variability, yet an
247 intraobserver variability over the long study period cannot be totally excluded.

248 In our study, multiple anesthesia/sedation protocols were used. No standardized protocols
249 have been proposed for performing hip radiographs, as it has been decided that, for security
250 reasons, the best protocol is the one the veterinarian is comfortable using. A Scandinavian
251 study [27] showed that acepromazine should not be used for sedation because it causes a very
252 poor myoresolution. A study concerning the type of chemical restraint used by French
253 veterinarians performing HD screening radiographs [28,29] showed that these protocols are
254 acceptable based on the FCI standard requirements for HD screening.

255 A study demonstrated a strong association between the radiographic scoring of hip status and
256 subsequent incidence of veterinary care and mortality related to HD in five breeds of dogs. It
257 demonstrated that the selection of breeding stock based on the screening results with regard to
258 hip status can be expected to reduce the risk of clinical problems related to HD [30] which
259 also emphasizes the interest in and effect of selection based on hip radiograph screening to
260 reduce the HD prevalence.

261 It is, however, unlikely that the HD prevalence can be reduced much further based only on the
262 radiographic screening control. Several other approaches to assessing the coxo-femoral joint
263 status have been proposed, such as hip joint laxity measurements (distraction methods,
264 distraction Norberg angle) and the use of estimated breeding values.

265 Distraction methods were first described by the PennHip organization [31] and have been
266 shown to be reliable screening methods for predicting hip joint degeneration [32]. A recent
267 study [33] evaluated the correlation between the distraction angle (DI) and the distraction
268 Norberg angle measured at 4 months of age, and the official FCI hip score determined at 12
269 months of age. It was shown that the distraction Norberg angle had a fair correlation with the
270 DI at 4 months and therefore reflects hip passive laxity. It also demonstrated that 98% of hips
271 with a distraction Norberg angle higher than 85° at 4 months had an A, B or C FCI score at 12
272 months of age. D and E FCI scores at 12 months cannot be reliably predicted from the 4-
273 month value of DI or distraction Norberg angle.

274 To reduce the incidence of HD, many researchers have recommended the use of estimated
275 breeding values (EBV) to improve the rate of genetic progress in terms of selection against
276 HD [17,34,35,37].

277 A study showed that the EBV is more accurate and abundant than the phenotype [34] and
278 provides more reliable information on the genetic risk of disease for a greater proportion of
279 the population. An efficient selection mode is to include information about the hip status of
280 relatives because the inheritance of HD is still unclear, and dogs with phenotypic normal hip
281 joints may carry genes leading to HD in their offspring [36]. A recent study confirmed that
282 using phenotypic health information and selecting sires and dams from pedigrees free from
283 HD improves hip joint health and therefore reduces the HD prevalence [37,38].

284 There is a great deal of research based on genomics and distraction Norberg angle testing
285 related to canine HD [39-42], some of which is linked to similar human pathology [43]. It is

286 beyond the scope of this study to address this very specific research area, but it is likely that,
287 in the foreseeable future, new tools will complement radiographic examination of the coxo-
288 femoral joint in order to prevent canine HD.

289

290

291

292

293

294

295

296

297

298

299

300

301

302 **Conclusions**

303 This study confirms that long-term selection based on hip radiograph screening can be
304 expected to reduce the HD prevalence in some breeds and that phenotypic selection for hip
305 conformation may be effective, although it is dependent on the voluntary participation of
306 breeders and owners. The true prevalence of HD in the breeds presented in this study is
307 probably higher than those reported in our results. To achieve a further decrease in the HD
308 prevalence, the use of EBV and genomic selection should be considered.

309

310

311

312 **Acknowledgement**

313 The authors want to thank Dr. Thomas Lecoq for his assistance with this manuscript.

314

315 **Conflicts of interest**

316 The authors declare no potential conflicts of interest with respect to the research, authorship,
317 and/or publication of this article.

318

319 **Funding**

320 The authors received no financial support for the research, authorship, and/or publication of
321 this article.

322

323

324

325

326

327

328

329

330

331

332

333

334

335 **References**

336 Due to the large number of references about canine hip dysplasia, this review references are
337 limited to the most appropriate to our study.

- 338 1. Riser WH. The dysplastic hip joint: radiologic and histologic development. *Veterinary*
339 *Pathology*. 1975; 12:279–305.
- 340 2. Henricson B, Norberg I, Olsson SE. On the etiology and pathogenesis of hip dysplasia:
341 a comparative review. *Journal of Small Animal Practice*. 1966; 7:673–88.
- 342 3. Ginja M, Silvestre A, Gonzalo-Orden J, Ferreira A. Diagnosis, genetic control and
343 preventive management of canine hip dysplasia: a review. *The Veterinary Journal*.
344 2010; 184(3):269–76.
- 345 4. Breur GJ, Lust G, Todhunter RJ. Genetics of canine hip dysplasia and other
346 orthopaedic traits. *The Genetics of the Dog* Ruvinsky A and Sampson J, ed CABI Publ,
347 Wallingford, UK. 2001:267–98.
- 348 5. Ohlerth S, Geiser B, Flückiger M, Geissbühler U. Prevalence of canine hip dysplasia in
349 Switzerland between 1995 and 2006 – A retrospective study in 5 common large Breeds.
350 *Frontiers in Veterinary Science*. 2019; 6:378 doi: 10.3389/fvets.2019.00378
- 351 6. King MD. Etiopathogenesis of canine hip dysplasia, prevalence and genetics.
352 *Veterinary Clinics of North America: Small Animal Practice*. 2017; 47:753–67 doi:
353 10.1016/j.cvsm.2017.03.001
- 354 7. Genevois JP, Remy D, Viguier E, Carozzo C, Collard F, Cachon T, et al. Prevalence of
355 hip dysplasia according to official radiographic screening, among 31 breeds of dogs in
356 France. *Veterinary and Comparative Orthopaedics and Traumatology*. 2008; 21:21-24

- 357 8. Korec E, Hancl M, Bydzovska M, Chalupa O, Korcova J. Segregation analysis of
358 canine hip dysplasia in Cane Corso Italiano dogs. *Approaches in Poultry, Dairy and*
359 *Veterinary Sciences*. 2018; 2: 1-3 DOI: 10.31031/APDV.2018.02.000539
- 360 9. Flückiger M. Scoring radiographs for canine hip dysplasia – the big three organisations
361 in the world. *European Journal of Companion Animal Practice*. 2007; 17:135-140
- 362 10. Janutta V, Hamann H, Distl O. Genetic and phenotypic trends in canine hip dysplasia
363 in the German population of German shepherd dogs. *Berliner und Münchener*
364 *tierärztliche Wochenschrift*. 2008 ; 121:102–9
- 365 11. Hou Y, Wang Y, Lust G, Zhu L, Zhang Z, Todhunter RJ. Retrospective analysis for
366 genetic improvement of hip joints of cohort labrador retrievers in the United States:
367 1970–2007. *PLoS ONE*. 2010 ; 5:e9410. doi: 10.1371/journal.pone.0009410
- 368 12. Swenson L, Audell L, Hedhammar A. Prevalence and inheritance of
369 and selection for hip dysplasia in seven breeds of dogs in Sweden and benefit: cost
370 analysis of a screening and control program. *Journal of the American Veterinary*
371 *Medical Association*. 1997; 210: 207-14
- 372 13. Kaneene JB, Mostosky UV, Padgett GA. Retrospective cohort study of changes
373 in hip joint phenotype of dogs in the United States. *Journal of the American Veterinary*
374 *Medical Association*. 1997; 211: 1542-4
- 375 14. Leighton EA, Holle D, Biery DN, Gregor TP, McDonald-Lynch MB, Wallace ML,
376 Reagan JK, Smith GK. Genetic improvement of hip-extended scores in 3 breeds of
377 guide dogs using estimated breeding values: Notable progress but more improvement is
378 needed. *PLOS ONE*. 2019; 14 e0212544. doi: 10.1371/journal.pone.0212544
- 379 15. James HK, McDonnell F, Lewis TW. Effectiveness of canine hip dysplasia and elbow
380 dysplasia improvement programs in six UK Pedigree Breeds. *Frontiers in Veterinary*
381 *Science*. 2020; 6:490 doi: 10.3389/fvets.2019.00490

382

- 383 16. Baldinger A, Genevois JP, Moissonnier P, Barthélemy A, Carozzo C, Viguier E,
384 Cachon T. Prevalence of canine hip dysplasia in 10 breeds in France, a retrospective
385 study of the 1997-2017 radiographic screening period. *Plos One* 2020. 15(7):
386 e0235847. <https://doi.org/10.1371/journal.pone.0235847>
- 387 17. Leppanen M, Mäki K, Juga J, Saloniemi H. Factors affecting hip dysplasia in German
388 shepherd dogs in Finland: efficacy of the current improvement programme. *Journal Of*
389 *Small Animal Practice*. 2000; 41:19–23. doi: 10.1111/j.1748-5827.2000.tb03130.x
- 390 18. Leppanen M, Saloniemi H. Controlling canine hip dysplasia in Finland. *Preventive*
391 *Veterinary Medicine*. 1999; 42: 121-131. doi : 10.1016/s0167-5877(99)00059-8
- 392 19. Mäki K, Groen AF, Liinamo AE, Ojala M. Genetic variances, trends and mode of
393 inheritance for hip and elbow dysplasia in Finnish dog populations. *Animal Science*.
394 2002; 75:197–207. doi: 10.1017/S1357729800052966
- 395 20. Willis MB: A review of the progress in canine hip-dysplasia control in Britain. *Journal*
396 *of the American Veterinary Medical Association*. 1997; 210: 1480-2
- 397 21. Hedhammar A. Swedish experiences from 60 years of screening and breeding
398 programs for hip dysplasia – Research, success and challenges. *Frontiers*. 2020; 7: 228
399 doi: 10.3389/fvets.2020.00228
- 400 22. Clerc B, de Geyer G, Laforge H, Maisonneuve P, Michaud B, Quignon P, et al. La
401 rétinopathie du Berger de Picardie dans la population canine française : état des
402 connaissances *Rev Vét Clin* 2020;55:11-29.
- 403 23. Pêcheur C. Contribution à l'étude des rétinopathies chez le Berger picard. Université
404 Cl. Bernard-Lyon 1(médecine, pharmacie); 1990.
- 405 24. Genevois JP, Fau D, Carozzo C, Chanoit G, Viguier E, Remy D. Dépistage officiel de
406 la dysplasie coxo-fémorale : détermination, au sein de 16 races canines en France, de la

- 407 population faisant l'objet d'un dépistage radiographique systématique. Etude
408 rétrospective sur la période 1993-2002. *Revue de médecine vétérinaire*. 2005; 156 :
409 299-300.
- 410 25. Flückiger M, Friedrich GA, Binder H. A radiographic stress technique for evaluation of
411 coxofemoral joint laxity in dogs. *Veterinary Surgery*. 1999; 28: 1-9. doi:
412 10.1053/jvet.1999.0001
- 413 26. Smith GK, Lafond E, Gregor T, Lawler D, Nie R. Within- and between- examiner
414 repeatability of distraction indices of the hip joints in dog. *American Journal of*
415 *Veterinary Research*. 1997; 58: 1076-7
- 416 27. Malm S, Strandberg E, Danell B, Audell L, Swenson L, Hedhammar A. Impact of
417 sedation method on the diagnosis of hip and elbow dysplasia in Swedish dogs.
418 *Preventive Veterinary Medicine*. 2007; 78: 196-209. doi:
419 10.1016/j.prevetmed.2006.10.005
- 420 28. Genevois JP, Chanoit G, Carozzo C, Remy D, Fau D, Viguier E. Influence of
421 anaesthesia on canine hip dysplasia score. *Journal of veterinary medicine. A,*
422 *Physiology, pathology, clinical medicine*. 2006 ; 53 :415-417. doi : 10.1111/j.1439-
423 0442.2006.00845.
- 424 29. Maitre P, Genevois JP, Remy D, Carozzo C, Arnault F, Buttin P et al. Description of
425 the type of chemical restraint used by French veterinarians to perform hip dysplasia
426 screening radiographs. *Veterinary and Comparative Orthopaedics and Traumatology*.
427 2010; 23:245-249. doi: 10.3415/VCOT-10-01-0004
- 428 30. Malm M, Fikse F, Egenvall A, Bonnett BN, Gunnarsson L, Hedhammar A. Association
429 between radiographic assessment of hip status and subsequent incidence of veterinary
430 care and mortality related to hip dysplasia in insured Swedish dogs. *Preventive*
431 *Veterinary Medicine*. 2010; 93: 222-232. doi:10.1016/j.prevetmed.2009.09.017

- 432 31. Powers MY, Karbe GT, Gregor TP, McKelvie P, Culp WT, Fordyce HH, Smith GK.
433 Evaluation of the relationship between Orthopedic Foundation for Animals' hip joint
434 scores and PennHIP distraction index values in dogs. *Journal of the American*
435 *Veterinary Medical Association*. 2010; 1: 532-41. doi: 10.2460/javma.237.5.532.
- 436 32. Smith GK, Gregor TP, Rhodes WH, Biery DN. Coxofemoral
437 joint laxity from distraction radiography and its contemporaneous and prospective
438 correlation with laxity, subjective score, and evidence of degenerative joint disease
439 from conventional hip-extended radiography in dogs. *American Journal of Veterinary*
440 *Research*. 1993; 54: 1021-42
- 441 33. Taroni M, Genevois JP, Viguier E, Pillard P, Livet V, Cachon T, et al. Comparison of
442 early measurements of the distraction index, Norberg Angle on distracted view and the
443 official radiographic evaluation of the hips of 215 dogs from two guide dog training
444 schools. *Veterinary and Comparative Orthopaedics and Traumatology*. 2018; 31:445-
445 451. doi: 10.1055/s-0038-1668087
- 446 34. Lewis TW, Blott SC, Wooliams JA. Comparative analyses of genetic trends and
447 prospects for selection against hip and elbow dysplasia in 15 UK dog breeds. *BMC*
448 *Genetics*. 2013; 14: 16. doi: 10.1186/1471-2156-14-16.
- 449 35. Ginja MMD, Silvestre AM, Gonzalo-Orden JM, Ferreira AJA. Diagnosis genetic
450 control and preventive management of canine hip dysplasia: a review. *Veterinary*
451 *Journal*. 2010; 184:269-76. doi:10.1016/j.tvjl.2009.04.009
- 452 36. Dennis R. Interpretation and use of BVA/KC hip scores in dogs. *Companion Animal*
453 *Practice*. 2012. 34:178-94. doi: 10.1136/inp.e2270
- 454 37. Oberbauer AM, Keller GG, Famula TR. Long-term genetic selection reduced
455 prevalence of hip and elbow dysplasia in 60 dog breeds. *PLOS ONE*. 2017, 12
456 e0172918. doi: 10.1371/journal.pone.0172918

- 457 38. Wang S, Strandberg E, Viklund A, Windig JJ, Malm S, Lewis T et al. Genetic
458 improvement of canine hip dysplasia through sire selection across countries. *The*
459 *Veterinary Journal*. 2019, 248:18-24. doi: 10.1016/j.tvjl.2019.03.009
- 460 39. Guo G, Zhou Z, Wang Y, Zhao K, Zhu L, Lust G et al. Canine hip dysplasia is
461 predictable by genotyping. *Osteoarthritis Cartilage*. 2011; 19:420-9. doi:
462 10.1016/j.joca.2010.12.011
- 463 40. Mikkola L, Holopainen S, Pessa-Morikawa T, Lappalainen AK, Hytonen MK, Lohi H,
464 et al. Genetic dissection of canine hip dysplasia phenotypes and osteoarthritis reveals
465 three novel loci. *BMC Genomics*. 2019; 20:1027. doi: 10.1186/s12864-019-6422-6
- 466 41. Bartolomé N, Segarra S, Artieda M, Francino O, Sanchez E, Szczypiorska M, et al. A
467 Genetic Predictive Model for Canine Hip Dysplasia: Integration of Genome Wide
468 Association Study (GWAS) and Candidate Gene Approaches. *PLOS ONE*. 2015; 10
469 doi:10.1371/journal.pone.0122558
- 470 42. Manz E, Tellhelm B, Krawczak M. Propective evaluation of a patented DNA test for
471 canine hip dysplasia (CHD). *PLOS ONE*. 2017; 12 doi: 10.1371/journal.pone.0182093
- 472 43. André C, Guaguère E, Chaudieu G, Genevois JP, Devauchelle P. The importance of
473 dogs for comparative pathology and genetics: Examples of shared resources and
474 programmes. 2017; 52: 55-70. doi :10.1016/j.anicom.2017.07.002

475

476

477

478

479

480

481

482

483

484 Tables:

485 Table 1. FCI (Fédération Cynologique Internationale) five-class grading scale system for hip
486 dysplasia

487 Table 2. Hip dysplasia screening period for 9 breeds

488 Table 3. Division of each period of time to create cohorts for each breed

489 Table 4. Number of evaluated dogs (N) for the 17 breeds with HD prevalence (C+D+E)
490 associated with FCI 5 class grading scale

491 Table 5. HD prevalence over several periods of time compared within each period using their
492 95% confidence intervals (upper and lower limits). Bold italic results are statistically
493 significant. A+B = nondysplastic, C+D+E = dysplastic

494

495 Figures:

496 Fig 1. Hip dysplasia prevalence (C-D-E grades) in 17 dog breeds

497 Fig 2. Distribution of 5 classes (A) and prevalence of HD (B) in the American Staffordshire
498 Terrier from 2011 to 2019.

499 Fig 3. Distribution of 5 classes (A) and prevalence of HD (B) in the Picardy spaniel from
500 1993 to 2019.

501 Fig 4. Distribution of 5 classes (A) and prevalence of HD (B) in the Picardy shepherd dog
502 from 1993 to 2019.

503 Fig 5. Distribution of 5 classes (A) and prevalence of HD (B) in the Chow Chow from 1993 to
504 2019.

505 Fig 6. Distribution of 5 classes (A) and prevalence of HD (B) in the Blue Picardy spaniel from
506 1993 to 2019.

507 Fig 7. Distribution of 5 classes (A) and prevalence of HD (B) in the Czechoslovakian
508 Wolfdog from 2005 to 2019.

509 Fig 8. Distribution of 5 classes (A) and prevalence of HD (B) in the English Springer Spaniel
510 from 1993 to 2019.

511 Fig 9. Distribution of 5 classes (A) and prevalence of HD (B) in the Giant Schnauzer from
512 1993 to 2019.

513 Fig 10. Distribution of 5 classes (A) and prevalence of HD (B) in the Altdeutscher
514 Schaferhund from 2013 to 2019.

515 Fig 11. Distribution of 5 classes (A) and prevalence of HD (B) in the American Akita from
516 2003 to 2019.

517 Fig 12. Distribution of 5 classes (A) and prevalence of HD (B) in the American Cocker
518 Spaniel from 2000 to 2019.

519 Fig 13. Distribution of 5 classes (A) and prevalence of HD (B) in the Schnauzer from 1993 to
520 2019.

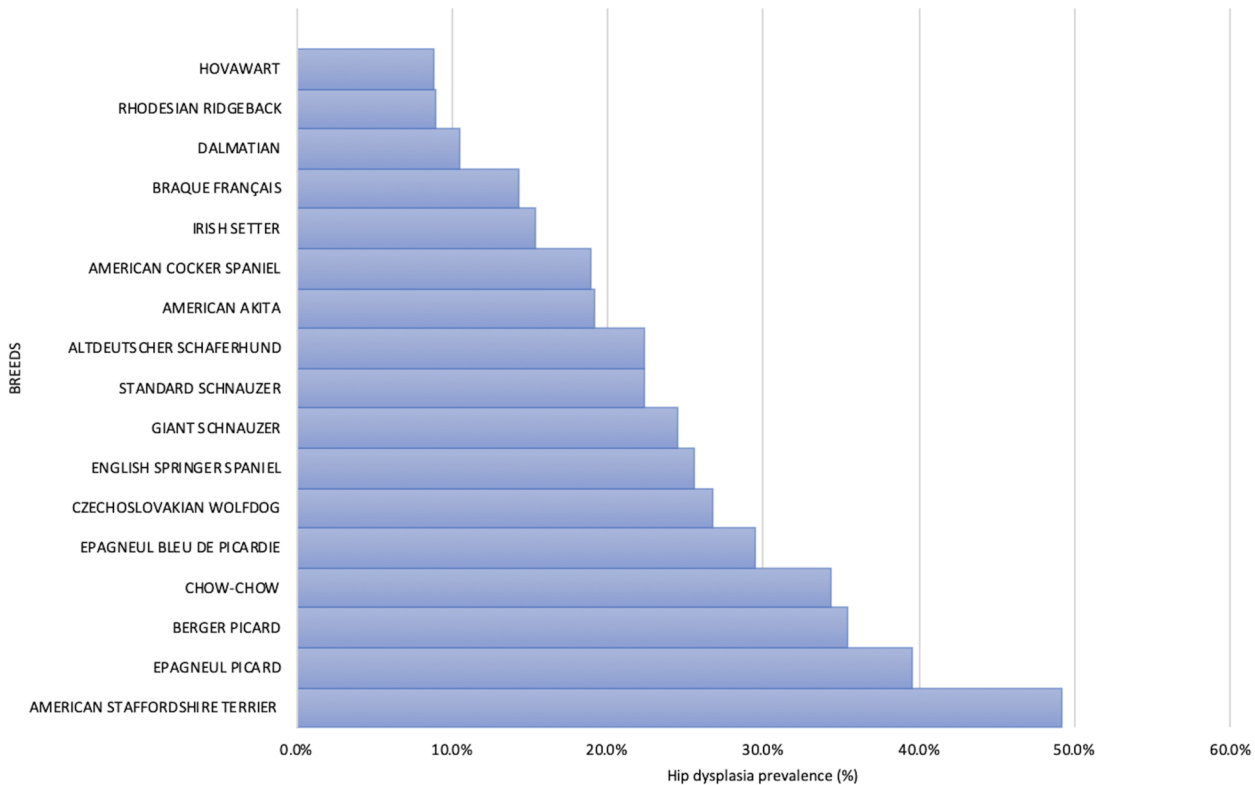
521 Fig 14. Distribution of 5 classes (A) and prevalence of HD (B) in the Irish Setter from 1998 to
522 2019.

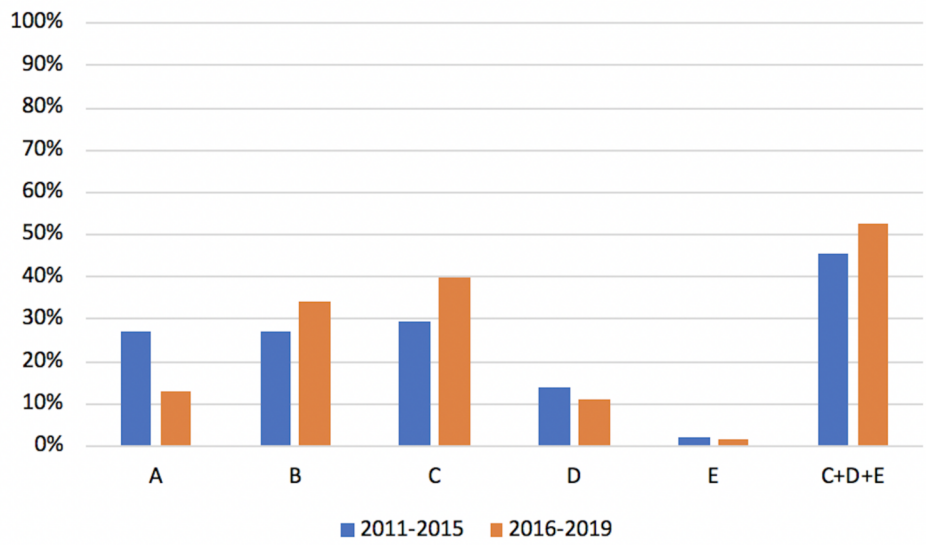
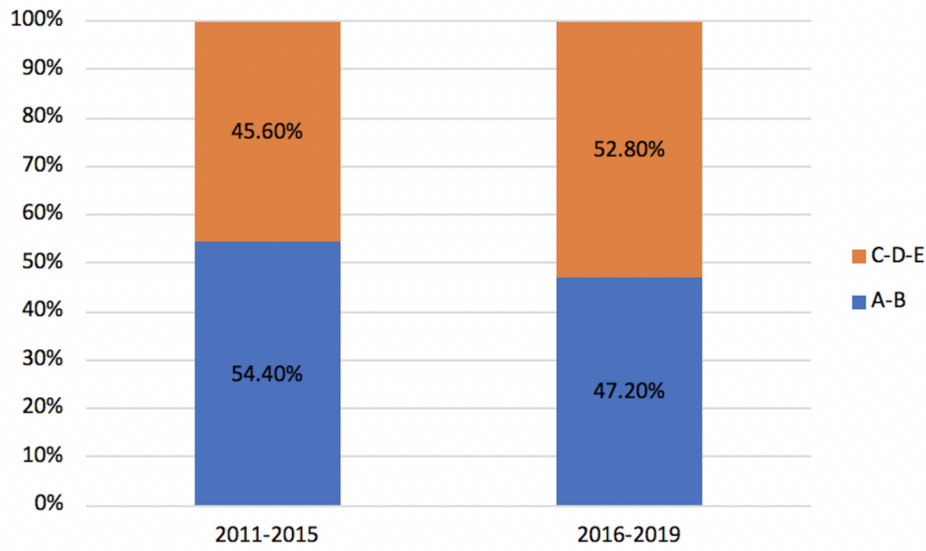
523 Fig 15. Distribution of 5 classes (A) and prevalence of HD (B) in the French pointer from
524 1993 to 2019.

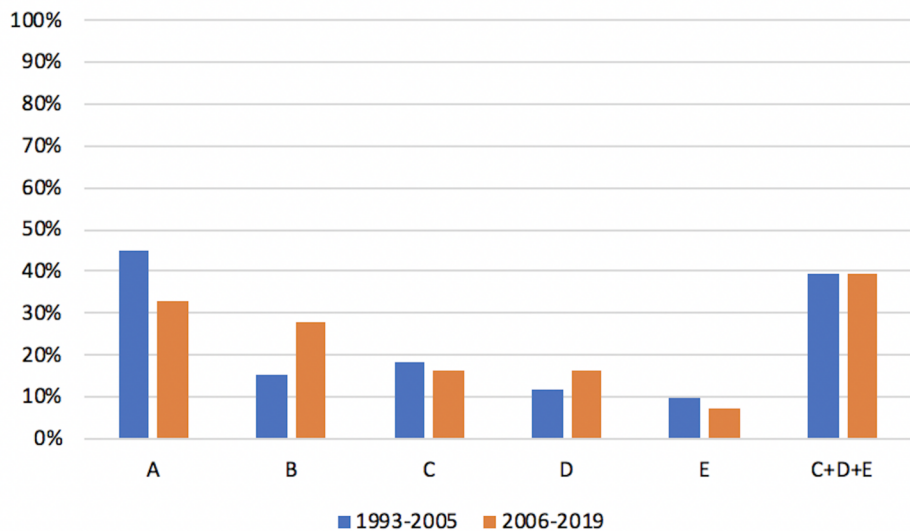
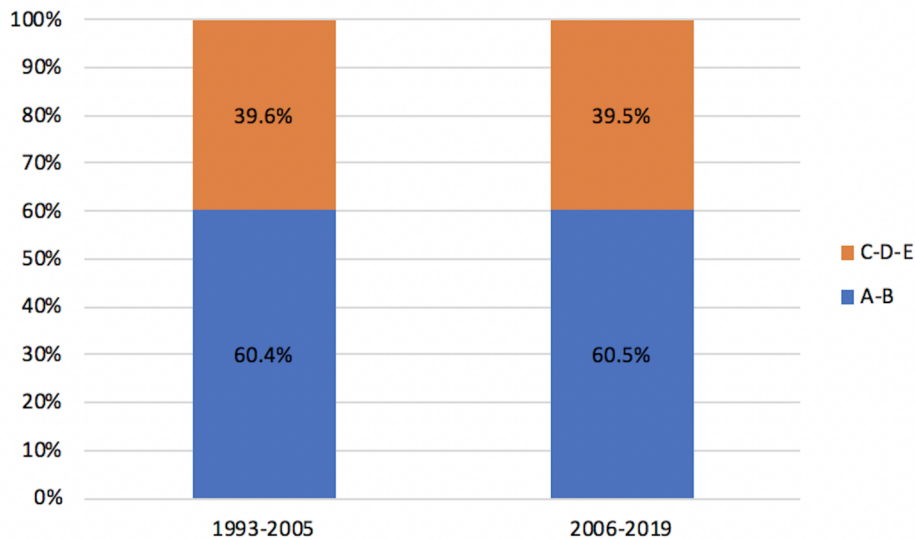
525 Fig 16. Distribution of 5 classes (A) and prevalence of HD (B) in the Dalmatian from 2003 to
526 2019.

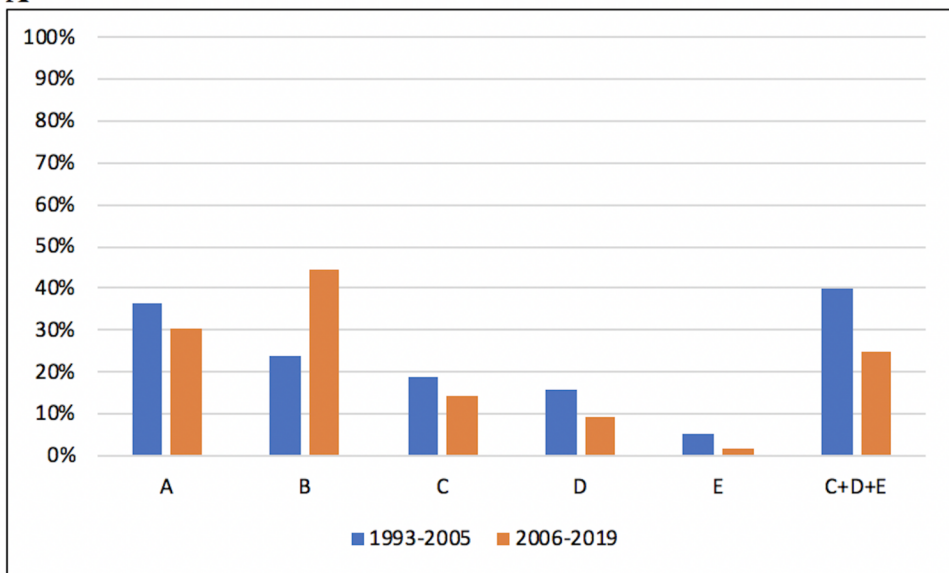
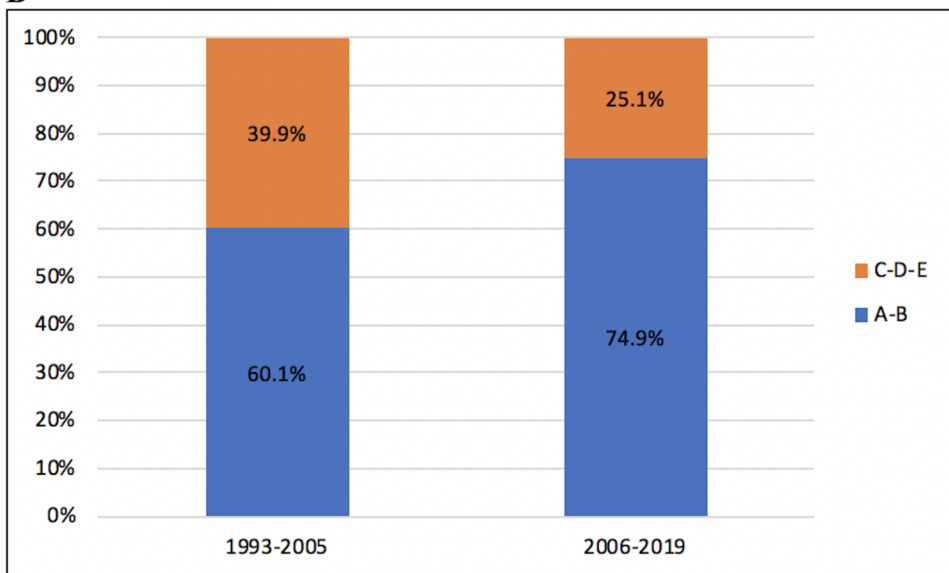
527 Fig 17. Distribution of 5 classes (A) and prevalence of HD (B) in the Hovawart from 2010 to
528 2019.

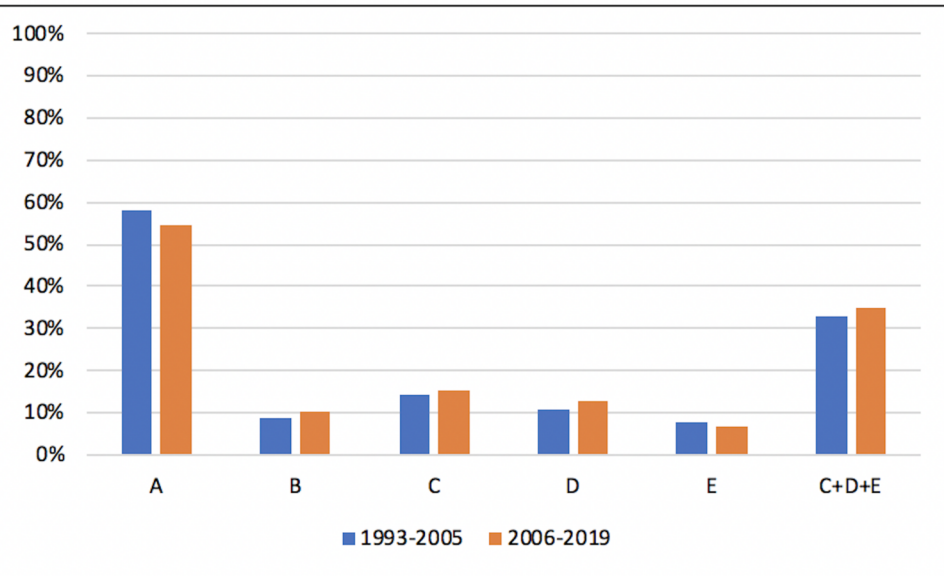
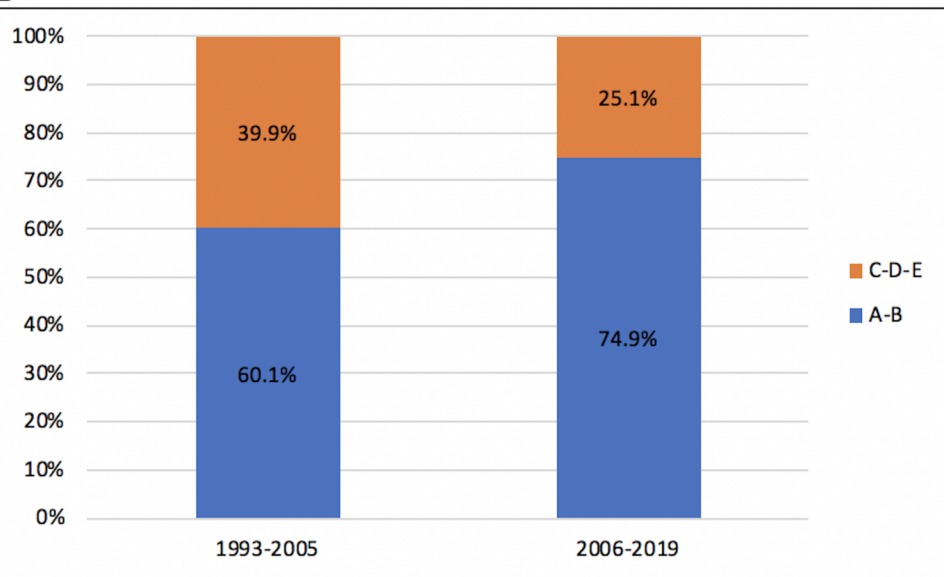
529 Fig 18. Distribution of 5 classes (A) and prevalence of HD (B) in the Rhodesian Ridgeback
530 from 1997 to 2019.

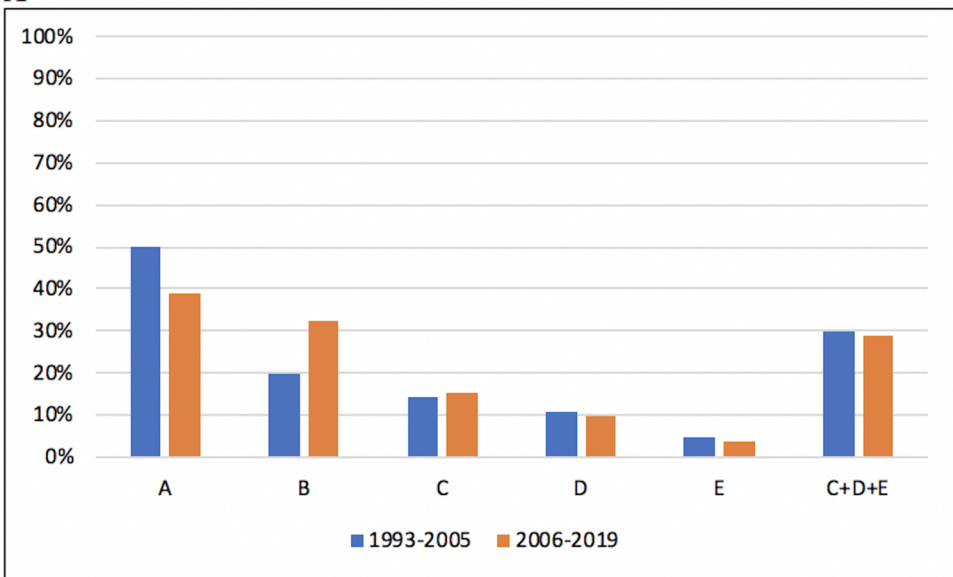
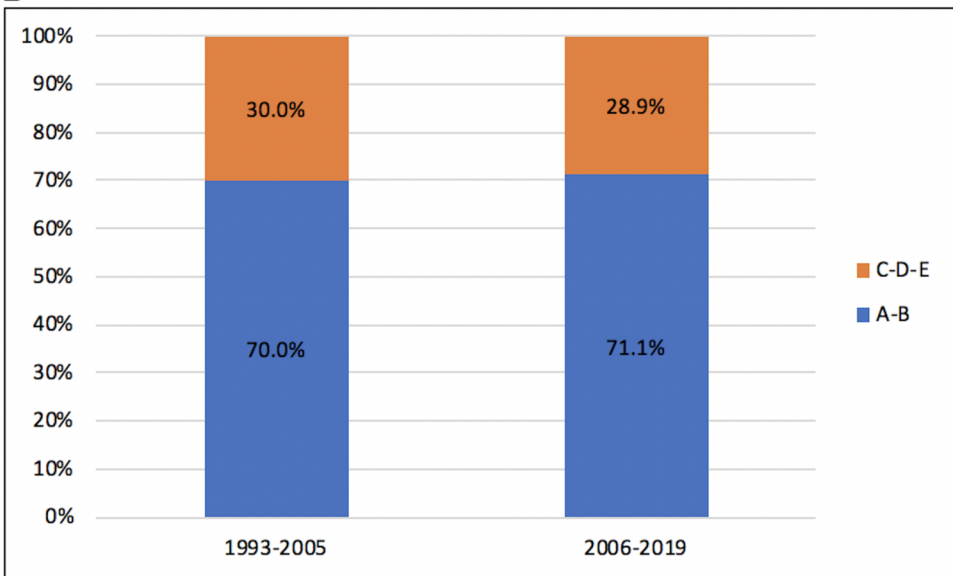


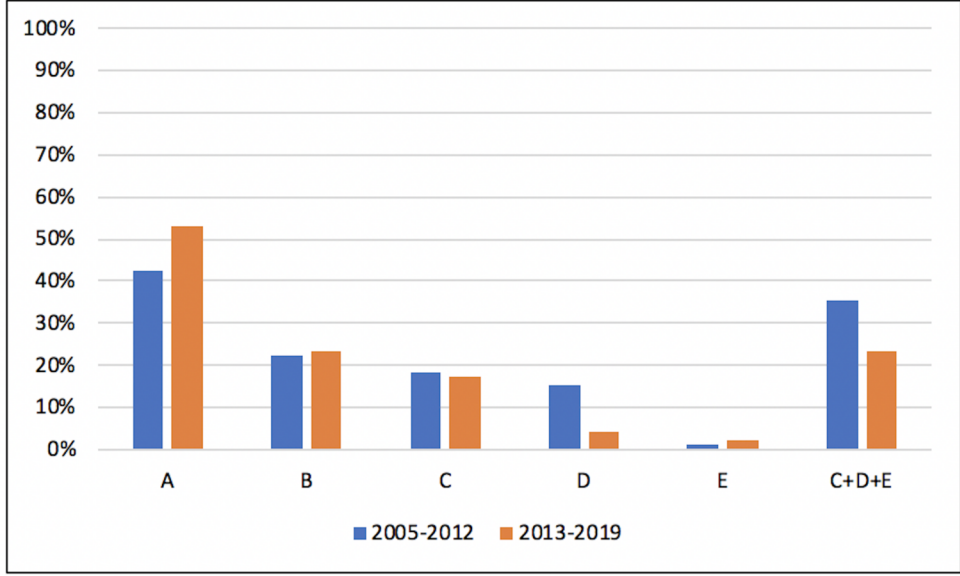
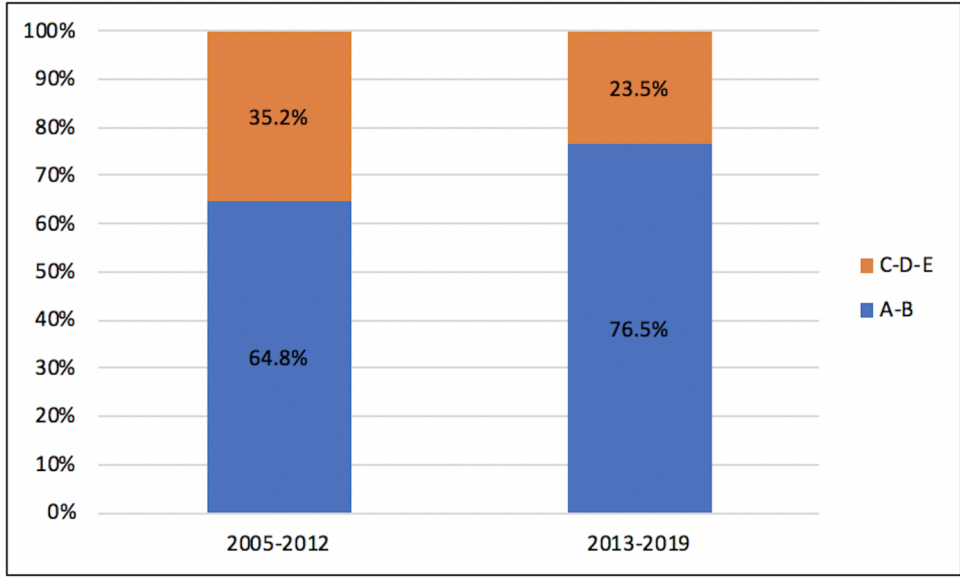
A**B**

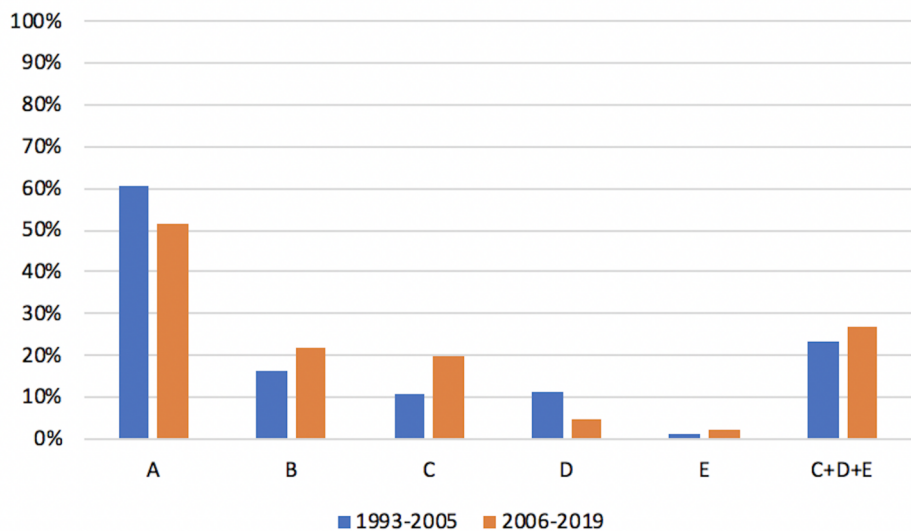
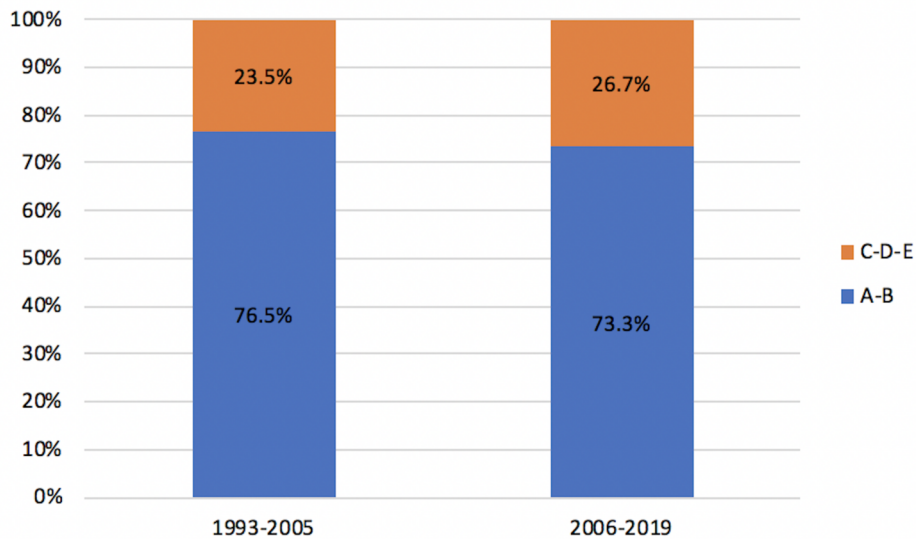
A**B**

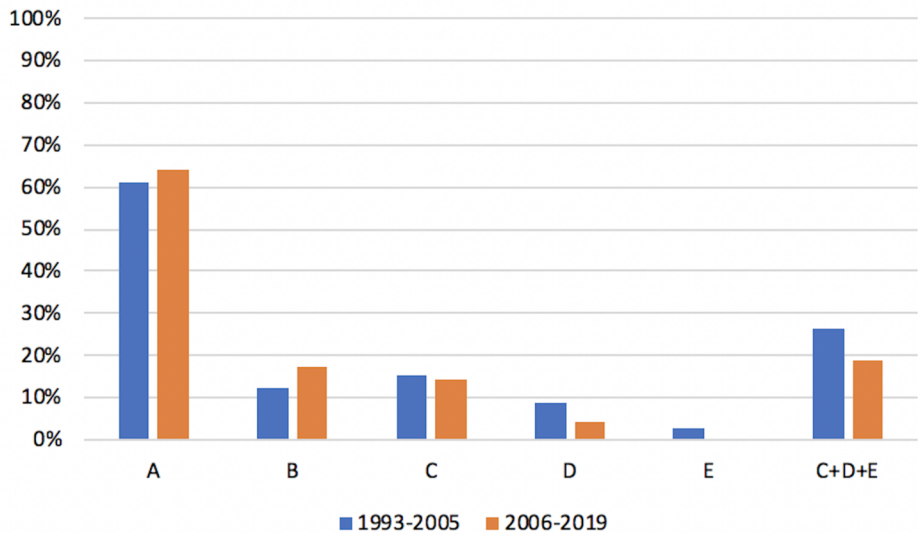
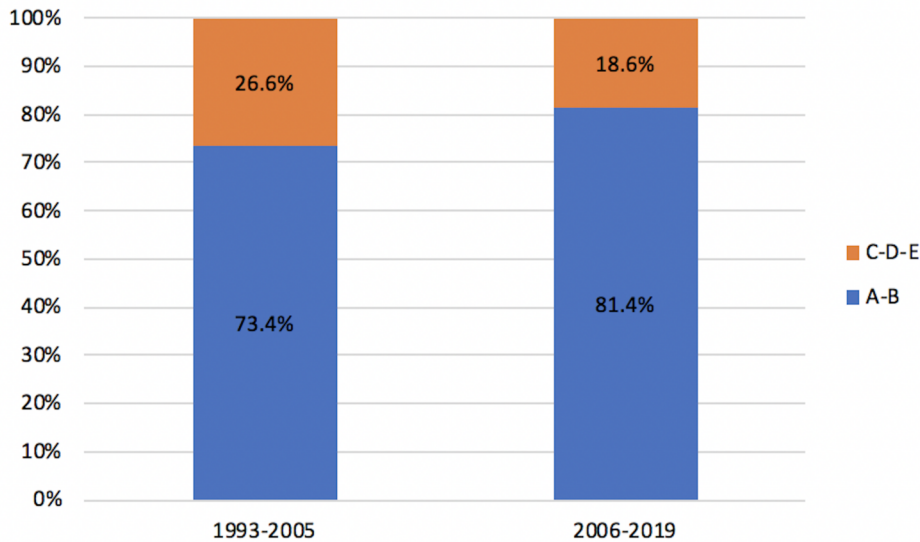
A**B**

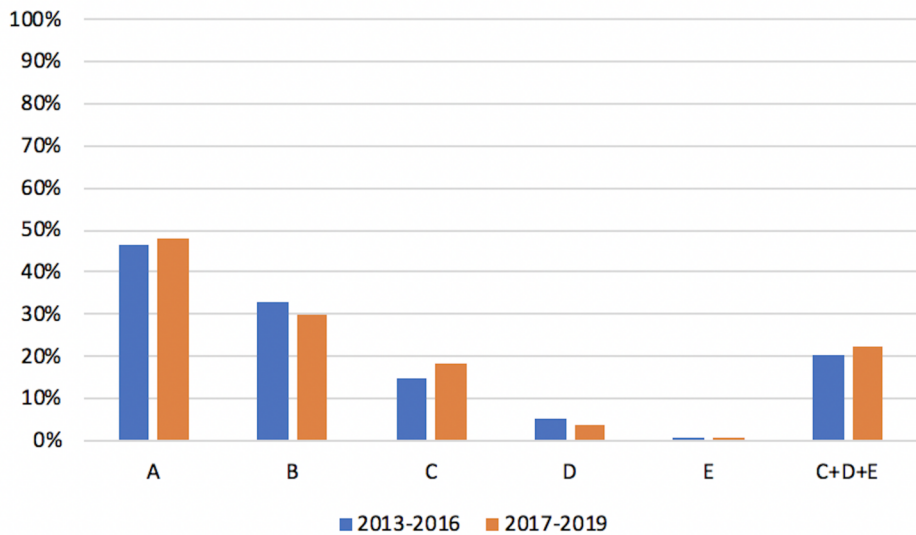
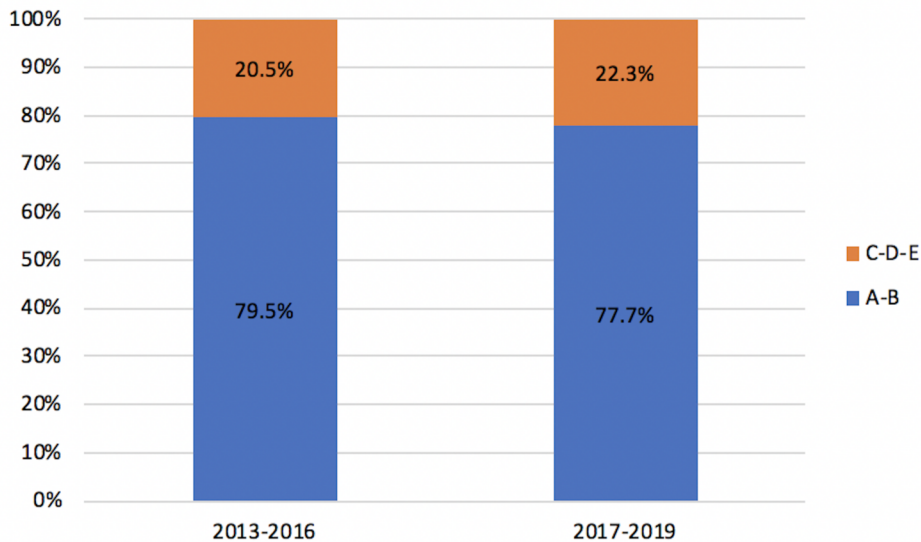
A**B**

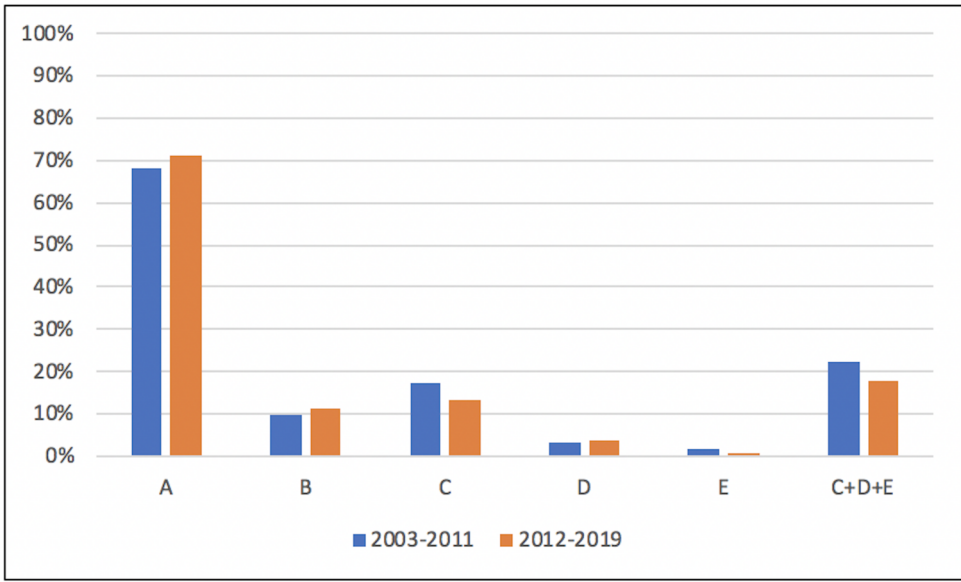
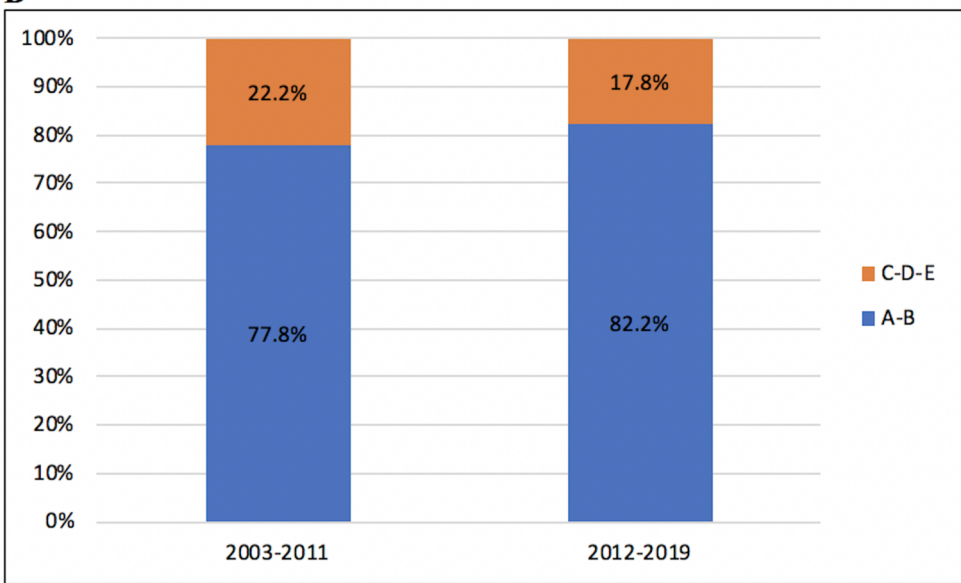
A**B**

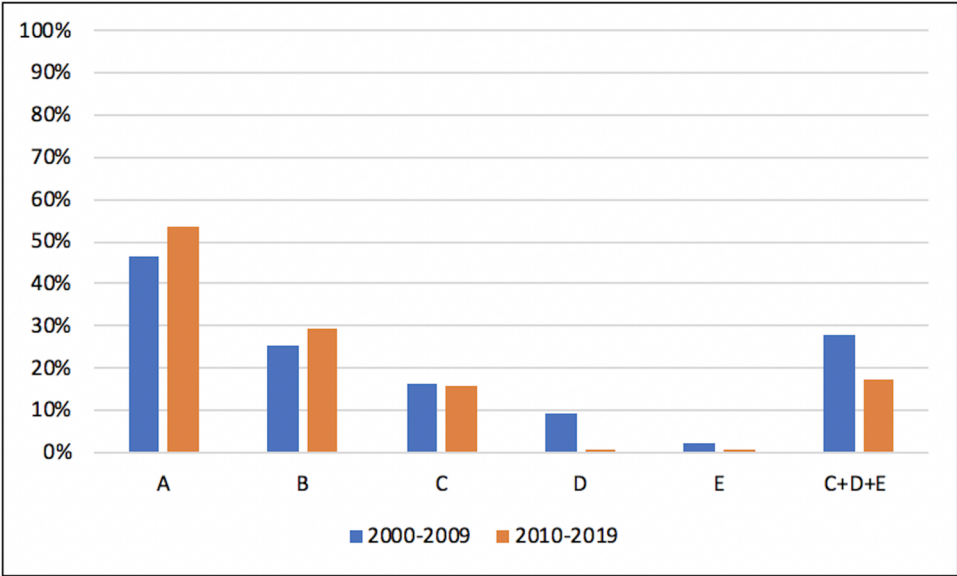
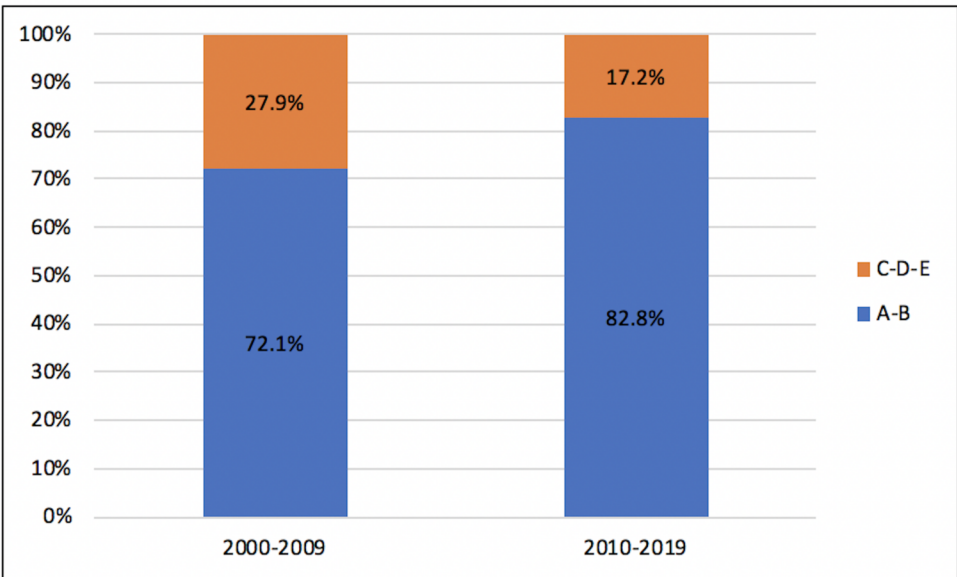
A**B**

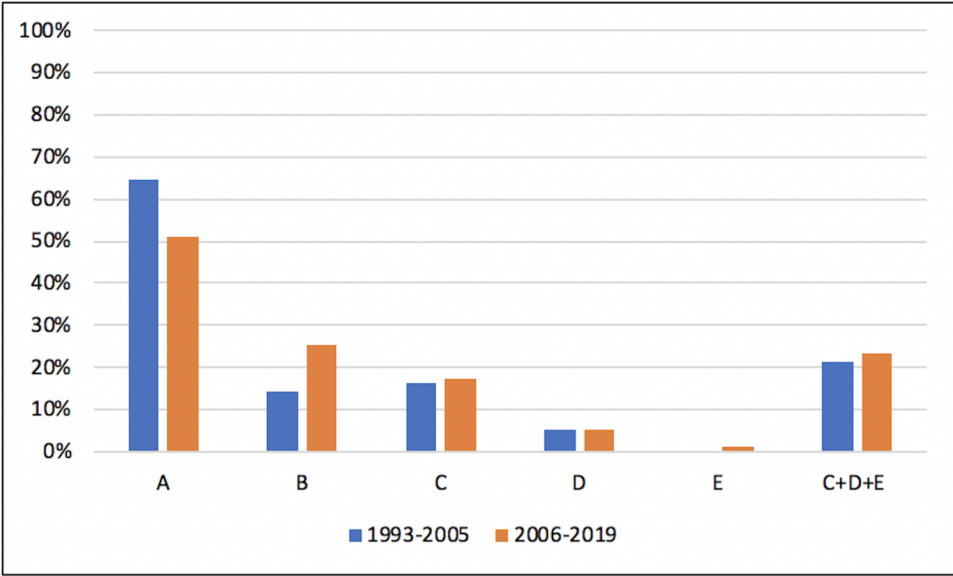
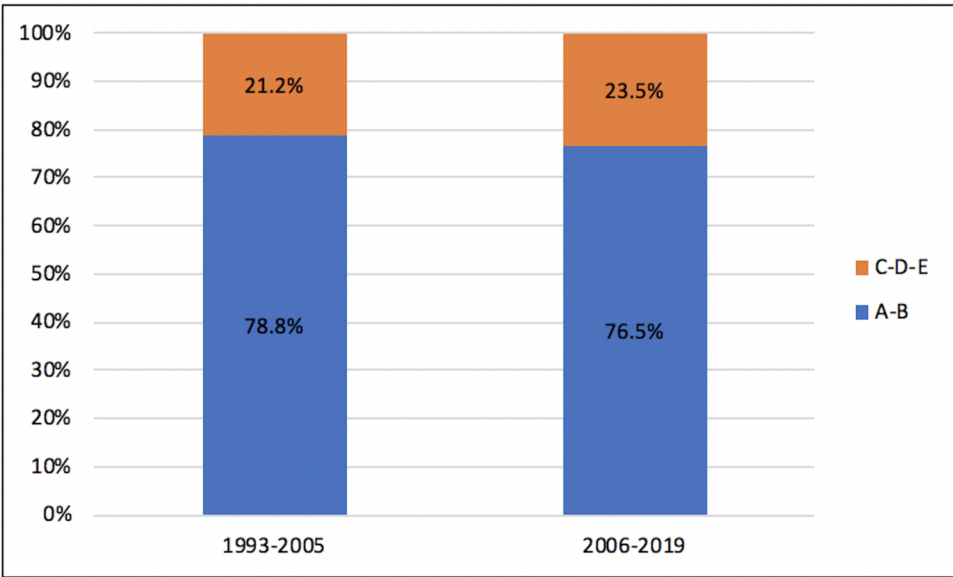
A**B**

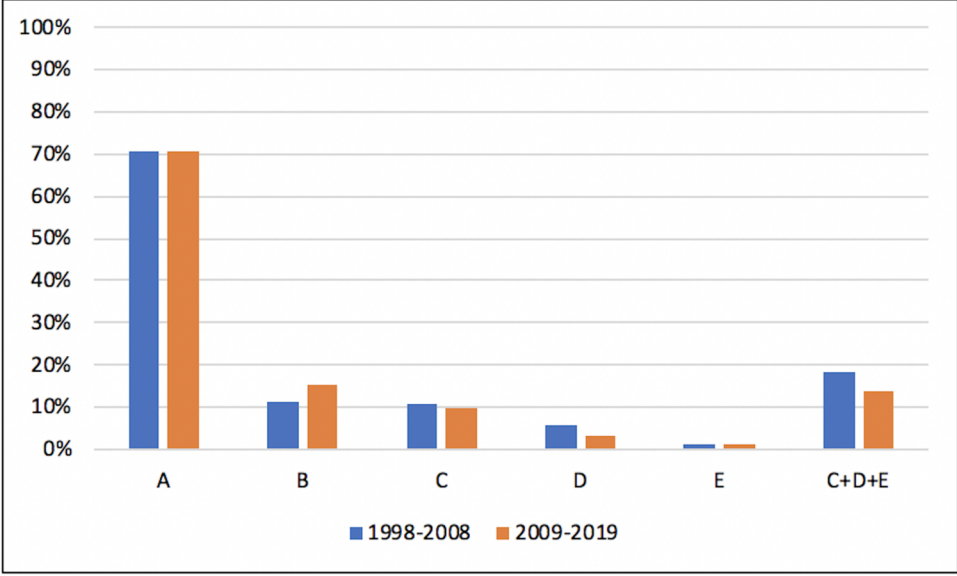
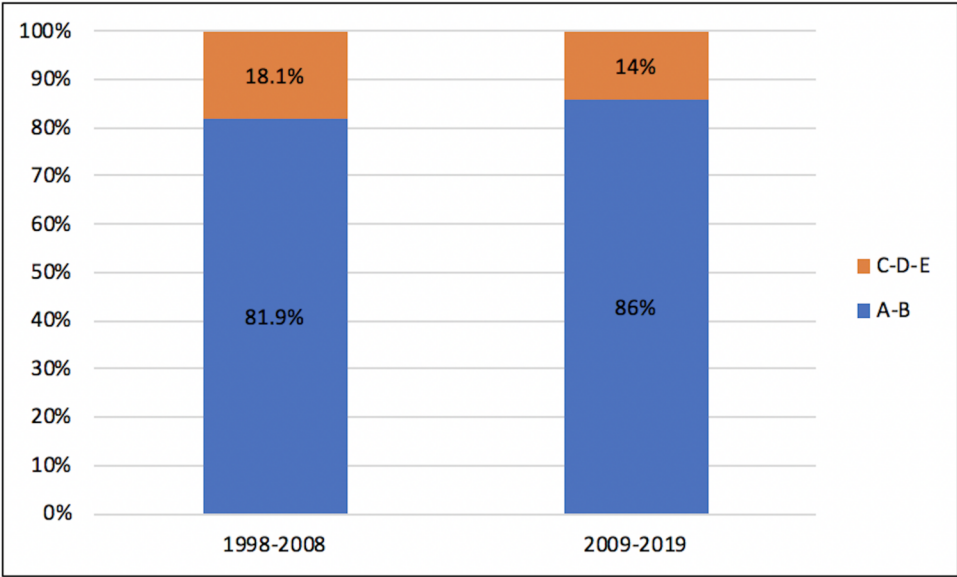
A**B**

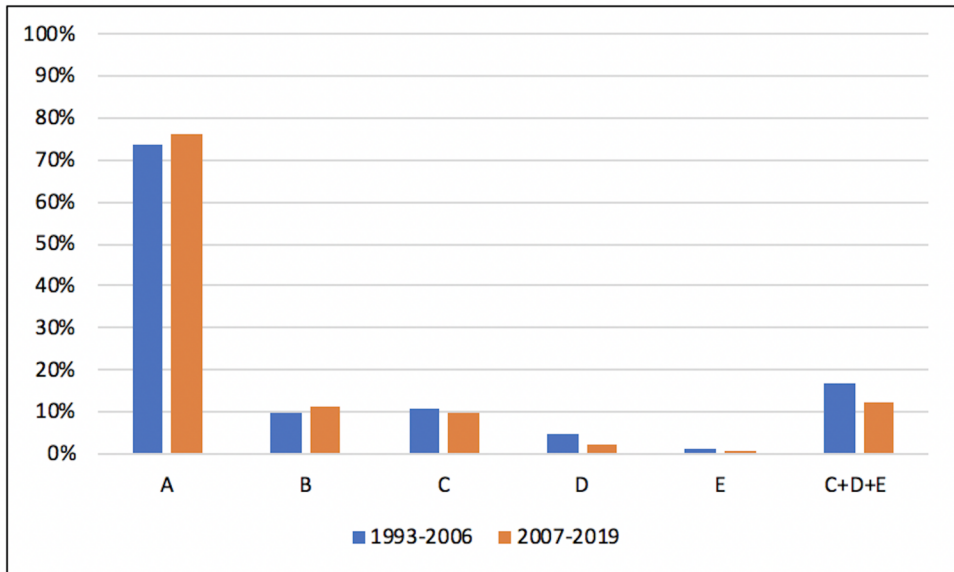
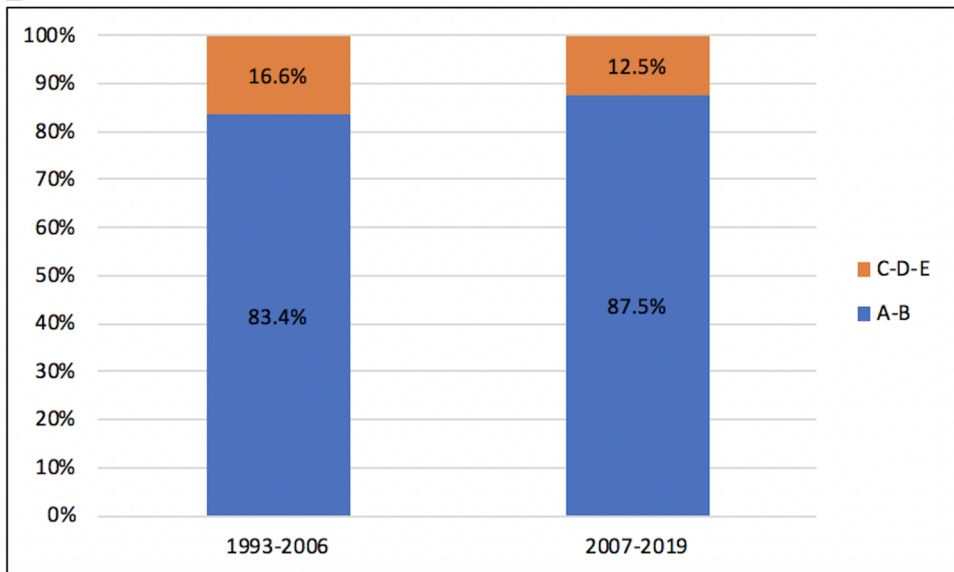
A**B**

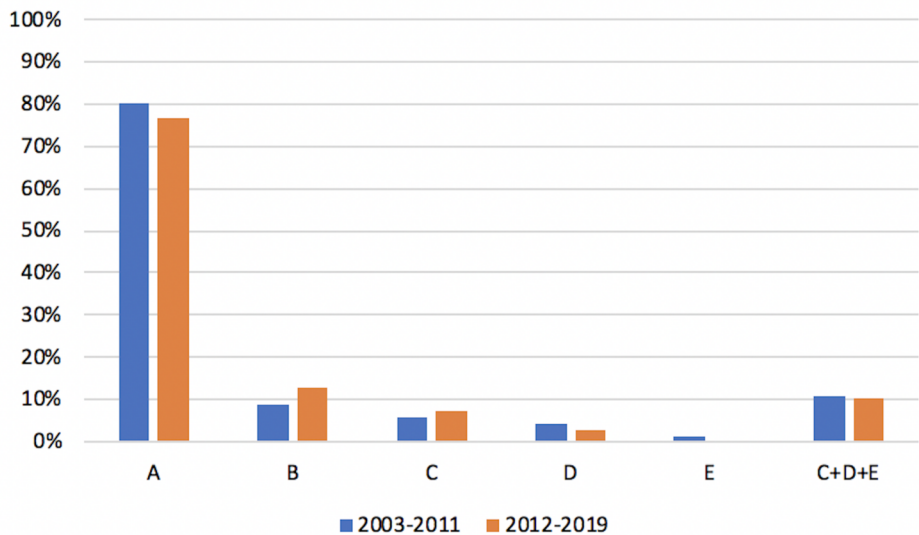
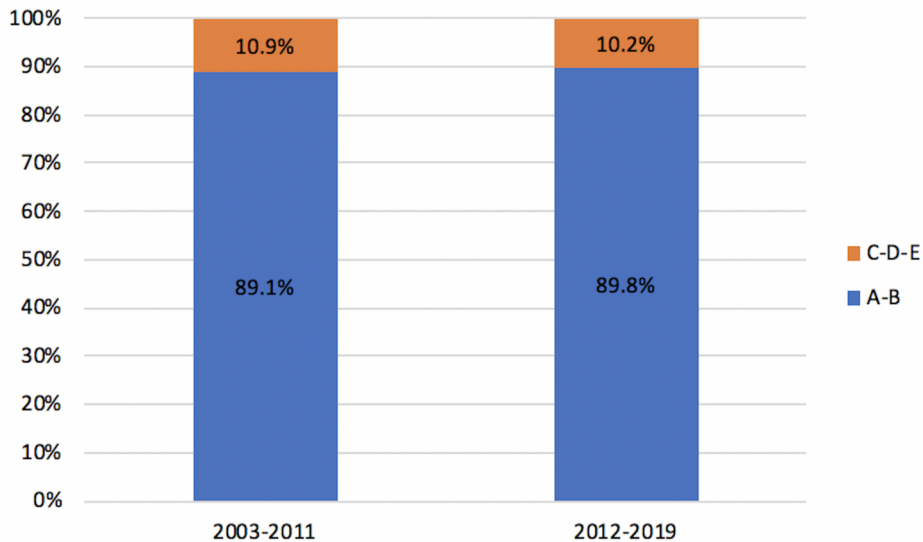
A**B**

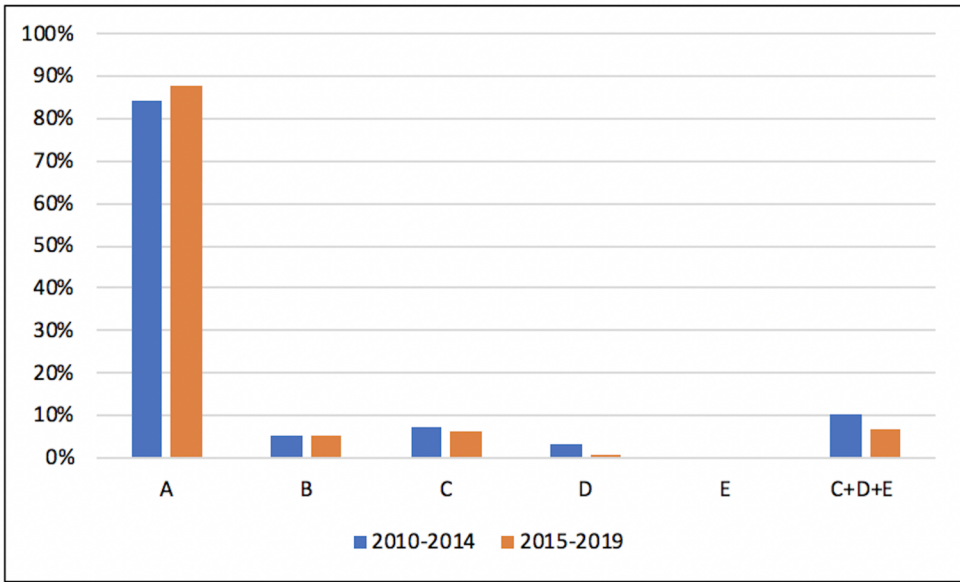
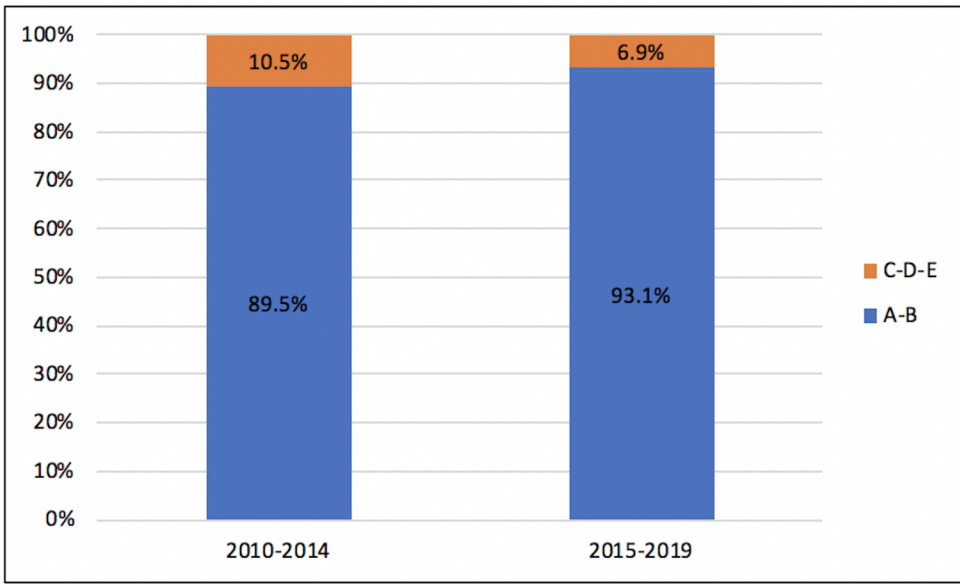
A**B**

A**B**

A**B**

A**B**

A**B**

A**B**

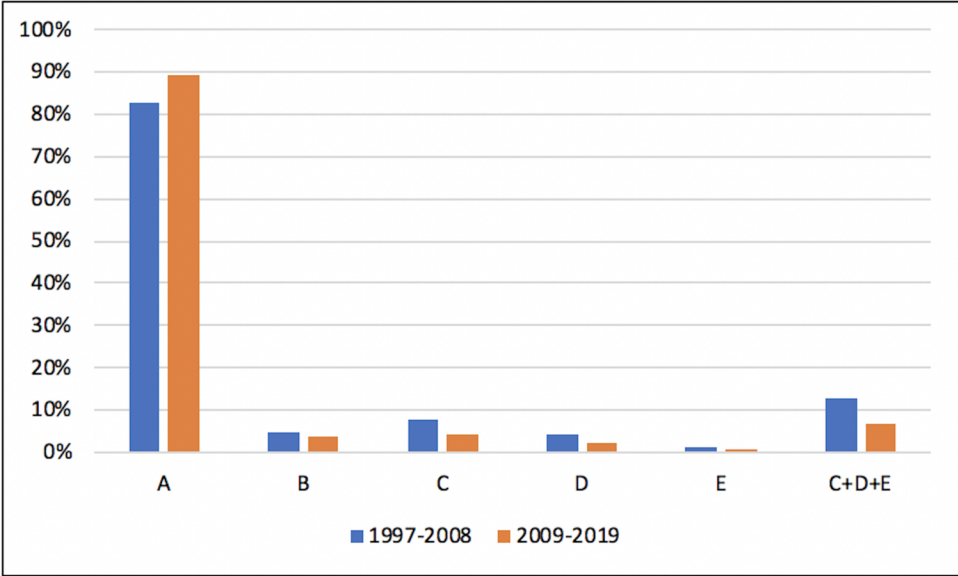
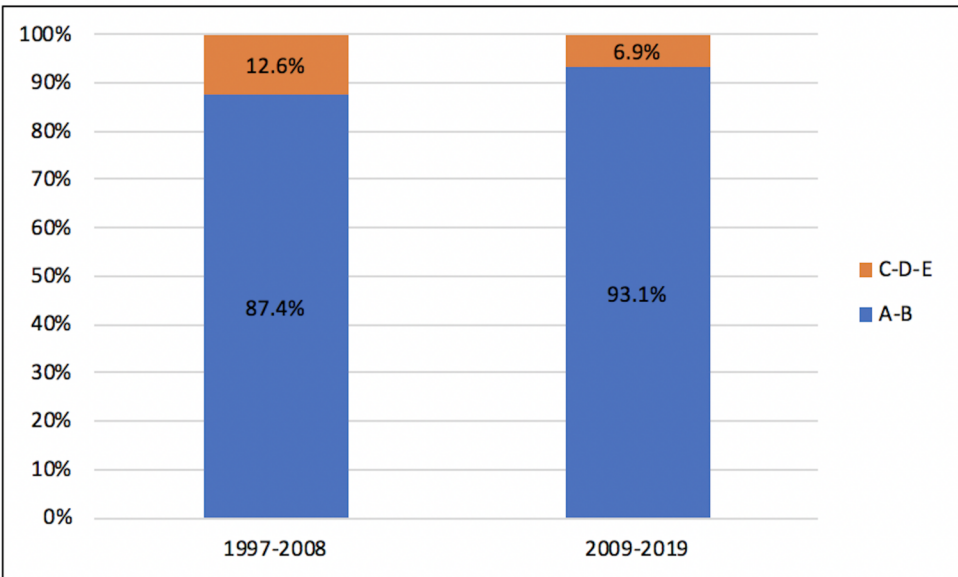
A**B**

Table 1. FCI (Fédération Cynologique Internationale) five-class grading scale system for hip dysplasia

| Grade | Interpretation |
|--------------|---------------------------|
| A | No signs of hip dysplasia |
| B | Near normal hip joints |
| C | Mild hip dysplasia |
| D | Moderate hip dysplasia |
| E | Severe hip dysplasia |

Table 2. Hip dysplasia screening period for 9 breeds

| Breed | Screening period for hip dysplasia |
|---------------------------------------|---|
| Altdeutscher Schaferhund | 2013-2019 |
| American Akita | 2003-2019 |
| American Cocker Spaniel | 2000-2019 |
| American Staffordshire Terrier | 2011-2019 |
| Czechoslovakian Wolfdog | 2005-2019 |
| Dalmatian | 2003-2019 |
| Irish Setter | 1998-2019 |
| Hovawart | 2010-2019 |
| Rhodesian Ridgeback | 1997-2019 |

Table 3. Division of each period of time to create cohorts for each breed

| Breeds | Periods of time | |
|--------------------------------|-----------------|-----------|
| Altdeutscher Schaferhund | 2013-2016 | 2017-2019 |
| American Akita | 2003-2011 | 2012-2019 |
| American Cocker Spaniel | 2000-2009 | 2010-2019 |
| American Staffordshire Terrier | 2011-2015 | 2016-2019 |
| French pointer | 1993-2006 | 2007-2019 |
| Picardy shepherd dog | 1993-2005 | 2006-2019 |
| Chow Chow | 1993-2005 | 2006-2019 |
| Czechoslovakian Wolfdog | 2005-2012 | 2013-2019 |
| Dalmatian | 2003-2011 | 2012-2019 |
| English Springer Spaniel | 1993-2005 | 2006-2019 |
| Picardy spaniel | 1993-2005 | 2006-2019 |
| Blue Picardy spaniel | 1993-2005 | 2006-2019 |
| Giant Schnauzer | 1993-2005 | 2006-2019 |
| Hovawart | 2010-2014 | 2015-2019 |
| Irish Setter | 1998-2008 | 2009-2019 |
| Rhodesian Ridgeback | 1997-2008 | 2009-2019 |
| Schnauzer | 1993-2005 | 2006-2019 |

Table 4. Number of evaluated dogs (N) for the 17 breeds with HD prevalence (C+D+E) associated with FCI 5 class grading scale

| Breed | N | A | B | C | D | E | HD Prevalence (C+D+E) |
|--------------------------------|-----|-------|-------|-------|-------|------|-----------------------|
| American Staffordshire Terrier | 436 | 20.2% | 30.6% | 34.6% | 12.6% | 2.0% | 49.2% |
| Picardy spaniel | 350 | 37.9% | 22.6% | 16.9% | 14.3% | 8.3% | 39.5% |
| Picardy shepherd dog | 715 | 34.4% | 30.2% | 17.2% | 14.0% | 4.2% | 35.4% |
| Chow Chow | 728 | 55.8% | 9.9% | 15.0% | 12.5% | 6.8% | 34.3% |
| Blue Picardy spaniel | 262 | 43.5% | 27.0% | 14.8% | 10.5% | 4.2% | 29.5% |
| Czechoslovakian Wolfdog | 250 | 50.0% | 23.2% | 17.5% | 7.3% | 2.0% | 26.8% |
| English Springer Spaniel | 673 | 54.5% | 20.0% | 16.7% | 6.8% | 2.0% | 25.5% |
| Giant Schnauzer | 648 | 62.0% | 13.5% | 15.0% | 7.5% | 2.0% | 24.5% |
| Altdeutscher Schaferhund | 500 | 46.6% | 31.2% | 16.8% | 4.8% | 0.6% | 22.2% |
| American Akita | 453 | 70.2% | 10.7% | 14.5% | 3.6% | 1.0% | 19.1% |
| American Cocker Spaniel | 263 | 52.5% | 28.6% | 15.5% | 2.3% | 1.1% | 18.9% |
| Schnauzer | 217 | 58.2% | 19.5% | 16.7% | 5.1% | 0.5% | 22.3% |
| Irish Setter | 802 | 70.9% | 13.7% | 10.2% | 4.0% | 1.2% | 15.4% |
| French pointer | 617 | 75.0% | 10.7% | 10.5% | 3.2% | 0.6% | 14.3% |
| Dalmatian | 248 | 78.0% | 11.5% | 6.9% | 3.2% | 0.4% | 10.5% |
| Rhodesian Ridgeback | 575 | 87.1% | 4.0% | 5.6% | 2.8% | 0.5% | 8.9% |
| Hovawart | 285 | 85.8% | 5.4% | 6.7% | 2.1% | 0.0% | 8.8% |

Table 5. HD prevalence over several periods of time compared within each period using their 95% confidence intervals (upper and lower limits). Bold italic results are statistically significant. A+B = nondysplastic, C+D+E = dysplastic

| Breed | Grade scale | Period 1 | | | Period 2 | | |
|--------------------------------|----------------|--------------------------|----------------|----------------|-------------|----------------|----------------|
| | | 95% confidence intervals | | | | | |
| | | Mean (%) | Upper limit | Lower limit | Mean (%) | Upper limit | Lower limit |
| American Staffordshire Terrier | A+B | 54.4 | 60.8 | 47.7 | 47.2 | 53.6 | 40.5 |
| | C+D+E | 45.6 | 52.3 | 39.2 | 52.8 | 59.5 | 46.4 |
| Picardy spaniel | A+B | 60.4 | 68.0 | 52.3 | 60.5 | 67.1 | 53.9 |
| | C+D+E | 39.6 | 47.7 | 32.0 | 39.5 | 46.1 | 32.9 |
| Picardy shepherd dog | A+B | 60.1 | 64.3 | 55.7 | 74.9 | 80.2 | 68.7 |
| | C+D+E | 39.9 | 44.3 | 35.7 | 25.1 | 31.3 | 19.8 |
| Chow Chow | A+B | 67.0 | 72.6 | 60.7 | 65.2 | 69.3 | 60.9 |
| | C+D+E | 33.0 | 39.3 | 27.4 | 34.8 | 39.1 | 30.7 |
| Blue Picardy spaniel | A+B | 70.0 | 77.8 | 60.9 | 71.1 | 77.7 | 63.4 |
| | C+D+E | 30.0 | 39.1 | 22.2 | 28.9 | 36.6 | 22.3 |
| Czechoslovakian Wolfdog | A+B | 64.8 | 74.4 | 52.9 | 76.5 | 81.9 | 69.5 |
| | C+D+E | 35.2 | 47.1 | 25.6 | 23.5 | 30.5 | 18.1 |
| English Springer Spaniel | A+B | 76.5 | 81.4 | 70.4 | 73.3 | 77.2 | 69.0 |
| | C+D+E | 23.5 | 29.6 | 18.6 | 26.7 | 31.0 | 22.8 |
| Giant Schnauzer | A+B | 73.4 | 77.1 | 69.3 | 81.4 | 86.6 | 74.9 |
| | C+D+E | 26.6 | 30.7 | 22.9 | 18.6 | 25.1 | 13.4 |
| Schnauzer | A+B | 78.8 | 85.2 | 70.6 | 76.5 | 84.0 | 67.5 |
| | C+D+E | 21.2 | 29.4 | 14.8 | 23.5 | 32.5 | 16.0 |
| Altdeutscher Schaferhund | A+B | 79.5 | 84.7 | 73.3 | 77.7 | 81.9 | 72.4 |
| | C+D+E | 20.5 | 26.7 | 15.3 | 22.3 | 27.6 | 18.1 |
| American Akita | A+B | 77.8 | 84.2 | 69.8 | 82.2 | 86.0 | 77.8 |
| | C+D+E | 22.2 | 30.2 | 15.8 | 17.8 | 22.2 | 14.0 |
| American Cocker Spaniel | A+B | 72.1 | 83.4 | 59.0 | 82.8 | 87.2 | 77.2 |
| | C+D+E | 27.9 | 41.0 | 16.6 | 17.2 | 22.8 | 12.8 |
| Irish Setter | A+B | 81.9 | 86.0 | 77.1 | 86.0 | 88.7 | 82.7 |
| | C+D+E | 18.1 | 22.9 | 14.0 | 14.0 | 17.3 | 11.3 |
| French pointer | A+B | 83.4 | 87.3 | 78.4 | 87.5 | 90.6 | 83.7 |
| | C+D+E | 16.6 | 21.6 | 12.7 | 12.5 | 16.3 | 9.4 |
| Dalmatian | A+B | 89.1 | 93.8 | 81.5 | 89.8 | 93.7 | 83.8 |
| | C+D+E | 10.9 | 18.5 | 6.2 | 10.2 | 16.2 | 6.3 |
| Rhodesian Ridgeback | A+B | 87.4 | 91.2 | 82.1 | 93.1 | 95.4 | 90.2 |
| | C+D+E | 12.6 | 17.9 | 8.8 | 6.9 | 9.8 | 4.6 |
| Hovawart | A+B | 89.5 | 93.5 | 83.8 | 93.1 | 96.9 | 93.0 |
| | C+D+E | 10.5 | 16.2 | 6.5 | 6.9 | 7.0 | 3.1 |