



Natural distribution of pure and hybrid *Mytilus* sp. along the south Mediterranean and North-east Atlantic coasts and sensitivity of D-larvae stages to temperature increases and metal pollution

Khouloud Boukadida, Rania Mlouka, Christelle Clerandeanu, Mohamed Banni, Jérôme Cachot

► To cite this version:

Khouloud Boukadida, Rania Mlouka, Christelle Clerandeanu, Mohamed Banni, Jérôme Cachot. Natural distribution of pure and hybrid *Mytilus* sp. along the south Mediterranean and North-east Atlantic coasts and sensitivity of D-larvae stages to temperature increases and metal pollution. Science of the Total Environment, 2021, 756, pp.143675 -. 10.1016/j.scitotenv.2020.143675 . hal-03493541

HAL Id: hal-03493541

<https://hal.science/hal-03493541>

Submitted on 15 Dec 2022

HAL is a multi-disciplinary open access archive for the deposit and dissemination of scientific research documents, whether they are published or not. The documents may come from teaching and research institutions in France or abroad, or from public or private research centers.

L'archive ouverte pluridisciplinaire **HAL**, est destinée au dépôt et à la diffusion de documents scientifiques de niveau recherche, publiés ou non, émanant des établissements d'enseignement et de recherche français ou étrangers, des laboratoires publics ou privés.



Distributed under a Creative Commons Attribution - NonCommercial 4.0 International License

Natural distribution of pure and hybrid *Mytilus sp* along the south Mediterranean and North-east Atlantic coasts and sensitivity of D-larvae stages to temperature increases and metal pollution

Khouloud BOUKADIDA^{1,2}, Rania MLOUKA^{1,2}, Christelle CLERANDEAU¹, Mohamed BANNI^{2,3,*}, Jérôme CACHOT^{1*}

(1) University of Bordeaux, Laboratory of Oceanic and Continental Environments and Paleoenvironments, EPOC, UMR5805CNRS, University of Bordeaux and EPHE, F-33600 Pessac, France

(2) Laboratory of Biochemistry and Environmental Toxicology, ISA, Chott-Mariem, 4042 Sousse, Tunisia

(3) Higher Institute of Biotechnology, University of Monastir, Tunisia

*Corresponding authors:

Pr Mohamed Banni,

Email: m_banni@yahoo.fr

Pr Jérôme CACHOT

Email: jerome.cachot@u-bordeaux.f

Abstract:

The distribution of the Mediterranean mussel *Mytilus galloprovincialis* extends more and more northwards in the Atlantic. Crossings are frequently observed with the blue mussel *Mytilus edulis* along the French and English coasts. The aim of this study is firstly to identify the co-presence of *M.galloprovincialis*, *M.edulis*, and their hybrids in different sites of the Mediterranean and Atlantic coasts, and to provide insights for the thermal tolerance and toxicant susceptibility of *Mytilus edulis*, *Mytilus galloprovincialis* and their hybrids. Mussels were collected from the shore at 20 sampling sites in Europe and Tunisia and identified using 15/16 primers targeting the adhesive protein gene sequence. Samples were screened for the presence of *Mytilus edulis*, *Mytilus galloprovincialis*, and hybrids alleles using PCR. To get more information on hybrids sensitivities to temperature and metals, freshly fertilized eggs of the two species and their hybrids were reared at four temperatures 18, 20, 22, and 24 °C and exposed to concentrations of Cu, Ag, and a mixture of both metals. Arrests of development and malformations were recorded after 48 hours of exposure. The genotypic identification of the two species on 20 sites of the Mediterranean and Atlantic coasts carried out during this study confirms the presence of pure and hybrid species of mussel. Our results highlighted that hybrid larvae from a female of *M. galloprovincialis* are significantly more tolerant to temperature increases than pure larvae of *M. galloprovincialis* and pure and hybrid larvae of *M. edulis*. No significant interspecies-differences of sensitivity were noted for metal exposure alone. However, a co-exposure of larvae to both metal and high temperature highlighted the higher tolerance of hybrid larvae from a female of *M.galloprovincialis* to both stresses. The overall results could allow the prediction of the future evolution of mussel populations facing environmental changes.

Keywords: *Mytilus sp*; early life stages; hybrids; thermal stress; metal pollution.

1. Introduction

Several species, despite their close relatives and morphological similarities, are physiologically distinct, resulting in different but overlapping distributions (Parmesan and Yohe, 2003; Root et al., 2003). This is the case for *Mytilus galloprovincialis* and *Mytilus edulis*. These two species (or subspecies) seem to occupy the same biogeographical area in the Atlantic Ocean. *M. edulis* and *M. Galloprovincialis* are ecologically and commercially important and are bred along most of European coasts (Smaal, 2002). The Mediterranean mussel, *M. galloprovincialis*, is a warm water species, found mainly in the Mediterranean, extending northwards to the Atlantic coasts of France (Gosling, 1992; McDonald et al., 1991; Skibinski et al., 1983). The blue mussel, *M. Edulis*, is distributed in temperate and cold regions along the European Atlantic coasts from northern Europe to the French-Spanish border in the Bay of Biscay (Hilbish et al., 2012). The overlap of the distribution areas of the two sister species has created a large hybridization zone extended from the Bay of Biscay to northern Scotland, with alternating hybrid populations and pure parental populations (Bierne et al., 2003; Coustau et al., 1991; Hilbish et al., 2012). Inside this hybridization zone, the frequency of hybridization can range from low to very high levels (Dias et al., 2009).

Studies on mussel hybrids have focused to date on hybridization zone delimitation, mechanisms and evolution of reproductive isolation, and genetic exchange between hybrid populations (Arnold, 1997, 1992; Bierne et al., 2003; Coustau et al., 1991; Mallet, 2005). However, the effects of environmental factors on hybridization efficiency and hybrid selection have, for the most part, been ignored. Environmental factors are powerful selective agents for the evolution of living organisms (MacColl, 2011). It is not surprising that hybridization between two species with different histories of interactions with environmental factors can modify their sensitivity to physicochemical factors. Several factors can influence

the extent of this hybridization zone, such as spawning timing (Toro et al., 2002) and environmental conditions (Riginos and Cunningham, 2005).

Sea surface temperature (SST) is recognized as one of the most important determinants of geographic distributions of mussel species (Seed, 1976; Suchanek et al., 1997). Global warming is set to speed up in the coming century (IPCC, 2014) and its effects on aquatic organisms are worrying (Byrne, 2011). Following increases in sea surface temperatures, the range of cold-adapted species tends to shrink more and more while heat-adapted species tend to expand to the pole (Helmuth et al., 2006; Herbert et al., 2007; Root et al., 2003; Wetthey et al., 2011). Mussel distribution areas are also under a consistent increase in temperature. In the Mediterranean Sea, a consistent warming trend for SST has been found in the 1982-2016 period with a mean total increase of 1.27 ± 0.12 °C (Pastor et al., 2018). On a seasonal scale, the Mediterranean SST differs significantly with an interval going from 9.7-17.7°C in winter, 15.8-22.1°C in spring, 20.8-28.3°C in summer, and 15.1-23.4°C in autumn (Shaltout and Omstedt, 2014). The North Atlantic Ocean has also been warming over the past 30 years (Knight et al., 2006; Ting et al., 2009). Dye et al., (2013) studied the changes in SST of the North Atlantic, around Ireland, and the UK during the last three decades (1982-2010) and results showed that they warmed rapidly by 0.1 to 0.5 °C per decade.

Coastal ecosystems, such as Mediterranean and Atlantic coastal ecosystems, are experiencing the synergistic effects of multiple environments and anthropogenic stressors such as metal pollution (Cabral et al., 2019; Lu et al., 2018a, 2018b; Prada et al., 2019). Metal pollution has greatly accelerated since the industrial revolution (Förstner and Prosi, 1979) and has severely degraded the quality of coastal marine waters over the past 30 years. Consequently, metallic contamination of aquatic environments exerts a diffuse and chronic pressure on living organisms, resulting in modifications of biodiversity and disturbances of environmental processes (Roussel et al., 2008). Among the large variety of metal pollutants

that can contribute to aquatic pollution, copper (Cu) and silver (Ag) have been widely recorded on the Mediterranean and Atlantic coastal waters. Copper and silver are among the most toxic metals to aquatic species (Ratte, 1999). Copper, although an essential trace element (Szczypkas et al., 1994), can be toxic at high doses of exposure (Negri et al., 2013); silver is toxic even at low doses (Tappin et al., 2010). Copper is currently used throughout the world in antifouling paint (Liu et al., 2017; Schiff et al., 2004) and as a fungicide (Bisson et al., 2005). Silver and copper have been widely used in bimetallic combination Cu-Ag as bactericidal agents (Valodkar et al., 2011). The Cu mean concentration in seawater of the Bay of Biscay has an average of 0.12 to 0.15 $\mu\text{g/L}$. In the coastal waters of Brittany, the copper concentrations were around 0.16 $\mu\text{g/L}$ for salinities of 35 to 35.5‰. In the outer estuary of the Loire, the dissolved copper concentrations are around 0.7 $\mu\text{g/L}$. In Portuguese estuarine waters, copper concentrations ranged from 2 $\mu\text{g/L}$ in the Ria Formosa to 6 $\mu\text{g/L}$ in the Sado estuary (OSPAR Commission, 2000). Ag is mainly used in metallurgy, electroplating, electronics, and until very recently, in photography and therefore in radiology (Maillard and Hartemann, 2012). The Ag contamination in La Corogne was around 61.6 ng/L (Tappin et al., 2010) and in Galveston Bay (USA) it reached 8.9 $\mu\text{g/L}$ (Howe and Dobson, 2002). Previous studies have shown an additive effect of Cu and Ag in combination on the early stages of bivalve development (Boukadida et al., 2016; Coglianese and Martin, 1981). Cu and Ag ions appear to act in the same way by affecting membrane permeability and ion channels (Coskun et al., 2012).

In most marine bivalves, the life cycle is characterized by a sessile adult phase, high fecundity, external fertilization, and extensive larval dispersal. The early stages of development are the most vulnerable in the life cycle of bivalves (Pechenik, 1999). Exposure to pollutants during this period of development can be particularly damaging to the organism (Gilbert, 2003). Thermal tolerance can vary significantly between the different life stages of

99 the same species of marine invertebrates (Mestre et al., 2009). The temperature may either
100 accelerate or slow down the metabolic rate, thus affecting the spawning, the growth,
101 development, and the survival of organisms (Clarke, 2003). Assessing the impact of
102 environmental factors on larval performance of hybrids versus pure species is crucial to
103 understand the dynamics of hybridizing species. This makes it possible to assess the potential
104 selective pressures that favor or disadvantage hybridization (Bierne et al., 2003). In this
105 context, the purpose of the present study was firstly to investigate the spatial distribution of *M.*
106 *galloprovincialis*, *M. edulis*, and their hybrids in 20 sampling sites between Tunisia, Portugal,
107 France, and the South of the United Kingdom and secondly to assess the sensitivity of hybrid
108 and pure larvae of *Mytilus edulis* and *M. galloprovincialis* to heat stress along with Cu and Ag
109 exposure.

2. Material and methods

2.1. Study site and sampling

This study was carried out at 20 different sites: 4 in Tunisia, 14 in France, 1 in Portugal, and 1 in the South of the United Kingdom (Table 1). Twenty individuals of *Mytilus* sp. adult mussels were collected from the shore at the 20 sampling sites. Sampling was stratified by size to ensure that sufficient numbers of mature individuals of each genotype were obtained for the reproductive analysis. The samples were transported to the laboratory in identified plastic storage bags (collection site, number of mussels collected, and date of collection) and kept wet in a cooler at 4 °C to prevent drying. Back in the laboratory, the soft body of the mussels was dissected and the gills were removed and stored in 1 ml of 100% ethanol at -20 °C until genotype analysis.

2.2. Chemicals and seawater

Reference contaminants ($\text{CuSO}_4 \cdot 5\text{H}_2\text{O}$ and AgNO_3) were analytical grade and were purchased from Sigma-Aldrich (St. Quentin Fallavier, France). Reference seawater was collected from “Banc d'Arguin” (Arcachon Bay, SW of France). This site is a natural reserve and it is considered as a reference site because of the very low concentrations of chemicals and was already used to furnish water for multiple mussel experimentations (Boukadida et al., 2019, 2017, 2016). Immediately after sampling, seawater was filtered using a filter system equipped with three filtration membranes 5, 1, and 0.2 μm . The filtered seawater (FSW) was stored at 4 °C in the dark.

2.3. Metal solutions

Stock solutions of copper (250 mg/L) and silver (100 mg/L) were prepared in pure Milli-Q water (Millipore). Working solutions were then obtained by diluting the stock solutions in FSW. The experimental concentrations of copper and silver were chosen based on preliminary studies (Boukadida et al., 2016). Three concentrations of exposure were selected for metals:

one concentration of copper ($EC_{50} = 17.6 \mu\text{g/L}$), silver ($EC_{50} = 6.58 \mu\text{g/L}$) and the mixture of both metals ($Cu EC_{25} = 10.83 \mu\text{g/L}$ and $Ag EC_{25} = 3.11 \mu\text{g/L}$). These concentrations were chosen to compare the sensitivity of hybrid and pure mussels to metals relative to the *M. galloprovincialis* species. The choice of concentrations for the mixture effects was based on a previous study about the sensitivity of *M. galloprovincialis* to both metals (Boukadida et al., 2016).

2.4. Mussel species genotyping

In this study, two types of genotyping were carried out, the first to verify the percentages of pure and hybrid mussels in the wild in the different study sites and the second to confirm the species used during cross-breeding carried out in the laboratory.

In both cases, a piece of gill was collected from each mussel and stored at -20°C until analysis. Genomic DNA was extracted from gill tissue using the NucleoSpin® Tissue according to the manufacturer instructions. DNA was then quantified by spectrophotometry and $5 \mu\text{g}$ was used for PCR. Me15 and Me16 primers were used to amplify a highly variable region of the Glu-5' gene (GenBank accession no D63778) that encodes the polyphenolic adhesive protein. This locus was previously validated as a genetic marker for the identification of three morphologically similar species within the *Mytilus* genus including *M. edulis* and *M. galloprovincialis* (Inoue et al., 1995; Kijewski et al., 2011). After electrophoresis, gels were scanned in the Zoom BrowserX imaging system. Me15/Me16 PCR bands were identified on 2 % agarose gels. PCR fragments vary in length from 180 base pairs (bp) for *M. edulis* and 126 bp for *M. galloprovincialis*.

2.5. Embryotoxicity assay

Mature mussels used for embryotoxicity assays were purchased from Spain for *M. galloprovincialis* and from Ireland for *M. edulis*. In the laboratory, spawning was carried out

159 by thermal stimulation, mature mussels were placed separately and alternately in FSW at 15
160 and 20 °C for 30 min each. Upon the release of their gametes, each spawning male and female
161 was isolated in beakers containing 250 mL of FSW. Gamete quality (regular round-shaped
162 oocytes and mobile and dense spermatozoa) was checked under a microscope at 200 ×
163 magnification. The solution containing the oocytes was then filtered using a 100µm sieve and
164 the sperm solution on a 50µm sieve. Egg suspension was fertilized by sperm suspension in the
165 ratio of approximately 1:10. Four different matings were carried out:

166 (i) Female *M. galloprovincialis* × Male *M. galloprovincialis*

167 (ii) Female *M. edulis* × Male *M. edulis*

168 (iii) Female *M. galloprovincialis* × Male *M. edulis*

169 (iv) Female *M. edulis* × Male *M. galloprovincialis*

170 Fertilization success was checked briefly under a microscope. Approximately sixteen minutes
171 after fertilization, fertilized eggs (250 to 300 eggs) were transferred into microplates of 24
172 wells (Cellstar, GreinerBio-one) containing 2 ml of the contaminant solution. The number of
173 exploitable pairs for each mating is shown in Table 2. The embryotoxicity assay used in the
174 present study was described in detail by His et al., (1999), Quiniou et al., (2005) AFNOR,
175 (2009). Fertilized eggs were incubated for 48h with the different contaminants to be tested at
176 different temperatures (18, 20, 22, and 24 °C) in thermo-regulated chambers in the dark until
177 reaching the D-larvae stage. These temperatures have previously been tested on the larvae of
178 the Mediterranean mussel *M. galloprovincialis* (Boukadida et al., 2016). After 48h of
179 incubation, 25 µL of 37% formalin was added to each microwell to stop development. The
180 analysis of malformed larvae can be done immediately or later provided that the microplates
181 are stored at 4 °C. The percentage of abnormal D-larvae was determined for each mating by
182 observation and direct count of 100 larvae under an inverted microscope at 400X

magnification equipped with a digital camera and image acquisition software (Nikon, Inverted Eclips Microscope, TS 100 / TS100-F, TS100LED MV / TS100 LED-F MV). In our analysis, both mantle and shell malformations and arrest of development were recorded. Examples of embryo-larval anomalies observed throughout this study are shown in Table 3.

2.6. Statistical analysis

All data were processed statistically using the R software (<https://cran.r-project.org/>). The results (percentages of abnormal larvae) were first tested for normality (Shapiro-Wilk residue test with 1% risk) and variance equality (Levene residue test, 5% risk). Since data were not normally distributed ($p > 0.05$), statistical analysis was performed by the nonparametric Kruskal-Wallis test. Differences between paired conditions were then tested using the Kruskal post hoc test (equivalent to the Tuckey HSD test for non-parametric data). The differences were considered significant when $p < 0.05$.

3. Results

3.1. Genotyping of mussel species

PCR amplification using Me15 and Me16 primers produced a unique band of 180bp, for *Mytilus edulis* and 126 bp for *Mytilus galloprovincialis*. The size of the bands is consistent with that obtained for these two species by Inoue et al. (1995).

For the wild mussels collected along the Mediterranean and the Atlantic coasts, a representative example of an electrophoresis gel with Me15/Me16 PCR products is presented in Figure 1. This analysis shows that the hybrids have only been identified at the Saint Nazaire and Brest sites. The co-presence of *M. galloprovincialis* and *M. edulis* was observed in the population of mussels collected in the Arcachon Bay, the Bay of Saint Briec, and in the Bay of Seine (Le Havre). The gel separation also indicates that the mussels population of the four Tunisian sites, Aveiro in Portugal and the Bay of Saint-Jean-de-Luz in France had only alleles of *M. Galloprovincialis* while the mussels sampled in Plymouth (England) contained only alleles of *M. edulis* (Table 4).

For farmed mussels used for the embryo-larval assay, a single Me15/Me16 PCR product was obtained for each individual that is consistent with pure species. Also, the size of the PCR product was in agreement with the origin of the mussels, i.e. *M. edulis* for Ireland and *M. galloprovincialis* for Spain (supplementary figure1).

3.2. Inter-individual variability between different pairs of the same species

Microscopic observation revealed very high levels of fertilization of eggs ($\geq 90\%$) and 48h after fertilization, most of the embryos reach the larva-D stage. For all spawner couples, an important inter-spawners variability was shown (supplementary figures 2; 3; 4 and 5). For pairs of *M. galloprovincialis*, the percentage of abnormal larvae at 18 °C was systematically below 20% following the ISO guidelines for bivalve embryo-larval assay (ISO, 2015). Since

one of the objectives of this study is to evaluate the effect of temperature increase on mussel development, even conditions leading to more than 20% malformations were considered.

3.3. Comparison of inter-species sensitivity to temperature

The embryo-larval sensitivity to temperature was evaluated for the 4 intraspecific and interspecific matings. The development of mussel larvae at 18 °C is presented in Figure 2. Our results show that *M. edulis* larvae were more sensitive to this temperature than *M. galloprovincialis* larvae with respectively a mean percentage of malformed larvae of $37.1 \pm 9.6\%$ and $15.8 \pm 2.7\%$. Mating female *M. Galloprovincialis* and male *M. Edulis* resulted in $12 \pm 3.8\%$ abnormal larvae, while hybrid larvae from female *M. Edulis* and male *M. galloprovincialis* larvae had $44.2 \pm 19.4\%$ of abnormality. Our results showed no significant difference between pure *M. edulis* larvae and hybrid larvae of a female *M. edulis* with a male *M. galloprovincialis*.

Incubation at 20°C increased the percentage of abnormal larvae for all matings in comparison to 18 °C (Figure S6). No significant differences of development were found between pure *M. galloprovincialis* larvae and hybrid larvae from *M. galloprovincialis* female and between pure *M. edulis* larvae and hybrid larvae from *M. edulis* female. In contrast, there was a significant difference in the malformation rate between pure *M. galloprovincialis* and *M. Edulis* larvae with respectively $17.4 \pm 1.7\%$ and $45.3 \pm 2.8\%$. Besides, there was a significant difference between hybrid larvae derived from female *M. galloprovincialis* ($18.8 \pm 1.4\%$) and those from a female *M. edulis* ($52.7 \pm 14.8\%$).

Incubation at 22 °C had a significant impact on embryo-larval development for all matings (Figure S7). A 100% abnormal larvae including 93.4% developmental arrests was recorded in hybrid larvae from a female *M. edulis*. A significant difference in malformation rate was noted between pure larvae of *M. galloprovincialis* ($66.9 \pm 11.8\%$) and *M. Edulis* ($98.5 \pm$

2.7%). Furthermore, there was also a significant and marked difference of malformation rate between hybrid larvae from a female *M. galloprovincialis* ($39.6 \pm 7.5\%$) and those from a female *M. edulis* (100%).

Finally, incubation at 24 °C prevented the development of larvae from for all matings (Figure 3). Malformation rate reached a maximum and no significant difference between pure larvae from *M. galloprovincialis* (99%) and *M. edulis* (100%) and hybrid larvae from *M. edulis* (100%). In contrast, there were significantly less malformed larvae in hybrids from a female *M. galloprovincialis* ($57.4 \pm 16\%$).

3.4. Comparison of inter-species sensitivity to metals with or without temperature increase

The effects of copper, silver, and Cu-Ag mixture exposures at 18 °C on the larval development of mussels are presented in Figure 4. Our results showed no significant difference between larvae from different mating pairs, whatever the metal considered, except for hybrid larvae from female *M. galloprovincialis* exposed to silver. The latter ones were significantly less sensitive to silver compared to the other three mating pairs. It was noted that the % of deformed larvae for hybrids from female *M. Galloprovincialis* was generally lower than for other cases of mating regardless of the contaminant used.

The combined effects of temperature and metals on the embryo-larval development of mussels are shown in Figure 5. Combined exposure to copper and a high temperature of 22 °C resulted in a lower percentage of malformations in hybrid larvae from *M. Galloprovincialis* female ($61.4 \pm 9.7\%$) in comparison with other mating pairs. For silver or Cu-Ag mixture, no significant difference was observed between pure *M. edulis* larvae and hybrid larvae of a female *M. edulis*. The percentages of malformations in pure *M. edulis* larvae and hybrid larvae from a female *M. edulis* were significantly higher than those obtained for pure *M.*

267 *galloprovincialis* larvae. Hybrid larvae from a female *M. galloprovincialis* had a lower
268 percentage of malformed larvae than those from *M. galloprovincialis* but this difference was
269 only significant for Cu exposure with a malformation rate reaching $61.4 \pm 9.6\%$.

270

4. Discussion

The genotypic identification of the two species *M. galloprovincialis* and *M. edulis* on 20 sites of the Mediterranean and Atlantic coasts carried out during this study confirms the presence of pure and hybrid species of mussel along the French Atlantic coast. The co-presence of *M. galloprovincialis* and *M. edulis* was observed in the Arcachon Bay, the Bay of Saint Brieuc, and the Bay of Seine (Le Havre). Our results also indicate that the mussel population of the four Tunisian sites, Aveiro in Portugal and the Bay of Saint-Jean-de-Luz in France, had only alleles of *M. galloprovincialis*. While the mussels sampled on the south side of England, in Plymouth, showed only alleles of *M. edulis*. Both species were encountered on the French Atlantic coasts and hybridizations were observed where their distributions overlap in particular in the Bay of Biscay. *Mytilus edulis* is probably the most abundant mussel species along the European coasts and in the North Atlantic. *M. galloprovincialis* is native to the Mediterranean Sea and its distribution extends north along the Atlantic coast to Scotland (Beaumont et al., 2008; Hilbish et al., 2012). The shift in *M. Galloprovincialis* spatial distribution was likely favored by the rise in surface water temperatures. The study of species hybridization is essential to understand the dynamic of evolution of species distribution as well as the ecological responses of marine organisms in the context of climate change (Taylor et al., 2015, 2014). Environmental variations are probably the main driver of biological evolution since organisms must continuously adapt to these changes for survival. But today the amplitude of variations imposed by man on the environment is much more marked and deeply influences the structure of biological communities, in particular by modifications of the distribution area of many marine species. Besides, human plays a central role in the introduction of non-native species into the marine environment (Pysek et al., 2010; Taylor and Irwin, 2004). This is done either directly and voluntarily through cultivation, trade, and breeding, or indirectly and involuntarily through ballast water discharges, fouling, and the

escape of aquaculture species. In most cases, these non-native species adapt poorly to their new environment and disappear quickly. Sometimes, if conditions are favorable and species are tolerant, these species can survive, reproduce, and settle. Foreign species can compete with native species and harm ecosystem functioning, habitats, and local biodiversity and can transfer certain diseases and parasites with negative consequences on the ecosystem and/or socio-economic and/or health (Bax et al., 2003; Mellin et al., 2016; Pyšek et al., 2009). Hybridization modifies in a complex way the genetic architecture of species and can produce hybrid offsprings likely to be better adapted than their parents (Breusing et al., 2017; Mallet, 2005). According to Barton and Hewitt (1985), the term "hybrid zones" designates the narrow regions within which genetically distinct species meet, reproduce with each other, and produce hybrids. In the context of current climate change, and the change in the range of species, the displacement of hybrid zones under the effect of environmental changes (mainly anthropogenic pressures and global warming) affects the structure of biological communities and the adaptive capacities of species.

The second part of this work was undertaken to provide clues about the sensitivity of *M. galloprovincialis*, *M. edulis*, and their hybrids to temperature increase along with pollution. Indeed, thermal stress and contamination by heavy metals is an environmentally realistic scenario and their interactions can strongly affect physiological tolerance, limit survival, and change the distribution of ectothermic species, in particular mussels.

The results of this study confirm that hybridization between *M. edulis* and *M. galloprovincialis* produces normal D-larvae that survive at least 48 hours after fertilization. This is consistent with the widespread hybridizations observed between these species in the wild (Coustau et al., 1991; Wilhelm and Hilbish, 1998). Our results support those of Bierne et al. (2002) and Beaumont et al. (2004) who have successfully produced viable mussel

320 hybridsby mating *Mytilus edulis* and *Mytilus galloprovincialis* in controlled laboratory
321 conditions.

322 The results of this study showed inter-spawners variability for the different species studied.
323 Variation of reproduction success between couples is a well-known phenomenon in the living
324 world. According toToonen and Pawlik (2001), larvae are not all created equal. The fitness of
325 certain organisms depends on particular environmental conditions, resulting in higher
326 survival, growth, or reproduction (Koolhaas et al., 2010).

327 Environmental factors, including temperature, endured by early life stages have the potential
328 to affect development causing irreversible phenotypic changesfrequently affecting organism
329 performances (Burton and Metcalfe, 2014). This study hypothesizes that the survival, growth,
330 and development of mussel larvae vary according to species and environmental conditions.
331 Our results support this hypothesis and suggest that the thermal tolerance but not the metal
332 tolerance of mussel larvae arespecies-specific.

333 Our results show that *M. edulis* larvae are more sensitive to temperature increasesthan *M.*
334 *galloprovincialis* larvae. This is in accordance with the spatial distribution of both species.
335 Brenko and Calabrese (1969), showed that the survival of *M. edulis* larvae was optimal at 10
336 °C and 40‰ salinity and that larval growth was faster at 15 °C in a salinity range of 25-35‰.
337 Bayne (1965), reported that *M. edulis* larvae can survive at 16 °C for 26 days without food.
338 Ruiz et al. (2008), reported a significant increase in the growth rate of *M. galloprovincialis*
339 larvae at temperatures between 16 and 20 °C. Several studies confirm that 18 °C is an
340 optimum temperature for the embryonic development of this latter species (His et al., 1997;
341 Boukadida et al., 2016). Our results indicated that the larval malformation ratereached a
342 maximum for both species when temperatures reach 24 °C. It seems likely that at 24 °C, the
343 effect on survival is the combined result of a decrease in larval viability and increased
344 proliferation of bacteriae.

Data from this study show that hybrids from an *M. Galloprovincialis* female and hybrids from an *M. Edulis* female display different sensitivities to temperature. Indeed, hybrids derived from a female of *M. galloprovincialis* were more resistant to temperature than hybrids derived from a female of *M. edulis*. Works on hybrid mussel larvae in laboratories are still very limited. Beaumont et al. (2004), performed studies on pure mussel species as well as their hybrids crossed in laboratories. They reported that hybrid larvae from an *M. Edulis* female incubated for 72 h at 14 °C had a significantly low percentage of abnormal larvae (36.3 to 66.1%) than pure larvae of *M. galloprovincialis* (48.9 to 75%). At the same temperature, the malformation rate ranged from 53.4 to 60.9 % for hybrid larvae of a female *M. galloprovincialis*. We assume that the significant differences between these two species concerning temperature are the result of genetic variations between individuals. However, this can also be due to maternal effects. Maternal effects can include both transient modifications of development e.g. morphological and behavioral changes, etc. and permanent changes e.g. resistance to pollution, epigenetic modifications of gene expression, etc. (Uller, 2008). Mussels of the genus *Mytilus spp* exhibit an unusual mode of transmission of mitochondrial DNA (mtDNA) called doubly uni-parental inheritance and present two types of mitochondrial genomes. Females are homoplasmic for the maternal genome (F), while males are heteroplasmic for the paternal genome (M) (Skibinski et al., 1994; Zouros et al., 1994).

Adaptive responses of organisms to extreme temperatures may range from phenotypic changes to long-term evolutionary adaptation (Fischer and Karl, 2010). In a short time, ectothermic species can improve their thermal tolerance when exposed to sublethal temperatures (Angilletta, Jr. et al., 2010; Chown and Nicolson, 2004). A study by Hilbish et al. (2012), predicted that the population of *M. edulis* in the Bay of Biscay will disappear by 2050 and that the entire region will be occupied by *M. galloprovincialis* or hybrid mussels dominated by a high frequency of alleles of *M. galloprovincialis*, such as that currently

370 observed along the western margins of Ireland and the United Kingdom (Skibinski and
371 Roderick, 1991).

372 Early life stages of bivalves are particularly sensitive to pollutants, especially heavy
373 metals (Boukadida et al., 2016, 2017; Gamain et al., 2016, 2017; Mai et al., 2012; Nadella et
374 al., 2009; Prato and Biandolino, 2010). In the present study, mussel larvae were exposed to
375 copper an essential metal, and to silver a non-essential one. The main contribution of copper
376 in waters is soil erosion (Georgopoulos et al., 2001). Cu also comes from copper sulfate used
377 as a fungicide in agriculture and also for wastewater discharges (Bisson et al., 2005). In
378 aquatic ecosystems, Cu concentration varies depending on the compartment and the location:
379 for example in oysters from the Arcachon Bay its concentration is 400 mg/kg d.w. (Ifremer,
380 2014), in waters from the Bay of Biscay it ranges between 0.12 and 0.15 µg/L (OSPAR
381 Commission, 2000) and in the superficial sediments of the Bizerte lagoon it ranges from 1 to
382 67.4 mg/kg (BenGarali et al., 2010). The ROCCH monitored the concentration of copper
383 accumulated in mussels and oysters for the period 2003-2007. The data showed high
384 concentrations of copper on the entire French coasts with the significant contamination
385 recorded at the mouth of the Gironde estuary (up to 7.26 times the national median). Ag⁺ is
386 one of the most toxic heavy metals for aquatic invertebrates (Lam and Wang, 2006). The
387 concentration of silver in water ranges between 0.01 µg/L in unpolluted areas and 0.01-0.1
388 µg/L in urban and industrialized areas. For example, the concentration of silver in seawater is
389 1.73 ng/L at Gullmar Fjord (Sweden) and 61.6 ng/L at Coruña (Tappin et al., 2010). In the
390 Basque Country, the concentration of Ag is 1.84 mg/kg d.w. in mussels and 6.3 mg/kg d.w. in
391 oysters (Borja A and Collin, 2004). The results reported in this work have highlighted the
392 effects of copper and silver on the embryo-larval development of *M. edulis* and *M.*
393 *Galloprovincialis* and their hybrids. Our results show no significant difference of sensitivity
394 between species regardless of the metal used, except for silver tolerance for hybrid larvae

from an *M. Galloprovincialis* female. These hybrid larvae appeared to be significantly more tolerant to silver compared to other larvae whatever the temperature tested. It was also noted that for hybrids derived from females of *M. galloprovincialis*, the percentages of malformed larvae are generally lower compared to other larvae regardless of the contaminant. Martin et al. (1981), exposed *M. edulis* embryos to various metals and reported an EC50 of 5.8 µg/L for Cu and 14 µg/L for Ag at 17 °C. Boukadida et al. (2016), performed the same assay with *M. galloprovincialis* embryos and obtained an EC50 of 17.6 µg/L for Cu and 6.6 µg/L for Ag at 18 °C. To our knowledge, no studies have been conducted on the toxicity of metals on mussel hybrids.

Despite the effects of climate change on the distribution of species and the extent of hybridization areas have been demonstrated, it is unlikely that isolated factors are the only factors involved (Helmuth et al., 2006). The combination of stressors may have antagonistic, synergistic, and additive effects (Coors and De Meester, 2008), making predictions from single-stress studies difficult for the effects of climate change. The effects of temperature variations on the sensitivity of aquatic organisms to pollutants have already been documented in an ecotoxicological context (Attig et al., 2014; Boukadida et al., 2017, 2016; Cairns et al., 1975; Tomanek and Zuzow, 2010). However, only a few studies have described the interactive effects of temperature and trace metals on the early life stage of bivalves. Our previous studies reported that a small increase in water temperature significantly increases the toxicity of metals on *M. galloprovincialis* larvae (Boukadida et al., 2017, 2016). The present study shows a significant difference in metal embryotoxicity between species reared at 22 °C with a lower percentage of malformations in hybrids from females of *M. galloprovincialis*. The percentages of malformations in pure *M. edulis* larvae and hybrid larvae of *M. Edulis* female were significantly higher than those recorded in *M. galloprovincialis* larvae. Hybrid larvae from a female of *M. galloprovincialis* had a lower rate of malformations than pure

larvae of *M. galloprovincialis*, although it was not significant. These results highlight the greater resistance of the hybrid larvae of a female *M. galloprovincialis* to temperature increase. On the other hand, the larvae from the crossing of a male *M. galloprovincialis* and a female *M. edulis* show a temperature sensitivity comparable to that of a pure *M. edulis* larvae. We hypothesized that there is a maternal transmission via the oocyte of a pool of proteins (e.g. HSP) for hybrids derived from a female of *M. galloprovincialis* which could confer greater resistance to increases of temperature.

5. Conclusion

The results of this study confirm the successful hybridization in controlled laboratory conditions between *M. edulis* and *M. galloprovincialis*. Hybrid embryos survived and developed normally at 18 °C at least for the first 48 h after fertilization. It has also been shown that the larvae of *M. galloprovincialis*, *M. edulis*, and hybrids have different sensitivity levels to temperature and in a lesser extent to metals. Our study also ranked the sensitivity of *Mytilus* sp to temperature and Cu and Ag as follows: hybrid from a female *M. edulis* and a male *M. galloprovincialis* = pure *M. edulis* > pure *M. galloprovincialis* > hybrid from a female *M. galloprovincialis* and a male *M. edulis*.

Acknowledgments

Khouloud Boukadida was supported by the European Union in the framework of the Erasmus Mundus EU Metallic II Program. The authors gratefully recognize the staff of the SEPANSO for their help in obtaining reference seawater. This work was part of the LABEX COTE cluster of excellence “Continental to coastal Ecosystems: evolution, adaptability, and governance”.

References

- AFNOR XPT, 2009. Water quality - Bioindicator of potential toxicity in aqueous media - Determination of the potential toxicity of aqueous samples on bivalves embryo-larval development.
- Angilletta, Jr., M.J., Huey, R.B., Frazier, M.R., 2010. Thermodynamic effects on organismal performance: Is hotter better? *Physiol. Biochem. Zool.* 83, 197–206.
<https://doi.org/10.1086/648567>
- Arnold, M.L., 1997. Natural hybridization and evolution, *Journal of Chemical Information and Modeling*. <https://doi.org/10.1017/CBO9781107415324.004>
- Arnold, M.L., 1992. Natural Hybridization as an Evolutionary Process. *Annu. Rev. Ecol. Syst.* 23, 237–261. <https://doi.org/10.1146/annurev.es.23.110192.001321>
- Attig, H., Kamel, N., Sforzini, S., Dagnino, A., Jamel, J., Boussetta, H., Viarengo, A., Banni, M., 2014. Effects of thermal stress and nickel exposure on biomarkers responses in *Mytilus galloprovincialis* (Lam). *Mar. Environ. Res.* 94, 65–71.
<https://doi.org/10.1016/j.marenvres.2013.12.006>
- Barton, N.H., Hewitt, G.M., 1985. Analysis of hybrid zones. *Annu. Rev. Ecol. Syst.* Vol. 16 113–148. <https://doi.org/10.1146/annurev.es.16.110185.000553>
- Bax, N., Williamson, A., Agüero, M., Gonzalez, E., Geeves, W., 2003. Marine invasive alien species: A threat to global biodiversity. *Mar. Policy* 27, 313–323.
[https://doi.org/10.1016/S0308-597X\(03\)00041-1](https://doi.org/10.1016/S0308-597X(03)00041-1)
- Bayne, B.L., 1965. Growth and the delay of metamorphosis of the larvae of *Mytilus edulis* (L.). *Ophelia* 2, 1–47. [https://doi.org/10.1016/0011-7471\(66\)90021-0](https://doi.org/10.1016/0011-7471(66)90021-0)
- Beaumont, A.R., Hawkins, M.P., Doig, F.L., Davies, I.M., Snow, M., 2008. Three species of *Mytilus* and their hybrids identified in a Scottish Loch: natives, relicts and invaders? *J. Exp. Mar. Bio. Ecol.* 367, 100–110. <https://doi.org/10.1016/j.jembe.2008.08.021>
- Beaumont, A.R., Turner, G., Wood, A.R., Skibinski, D.O., 2004. Hybridisations between *Mytilus edulis* and *Mytilus galloprovincialis* and performance of pure species and hybrid veliger larvae at different temperatures. *J. Exp. Mar. Bio. Ecol.* 302, 177–188.
<https://doi.org/10.1016/j.jembe.2003.10.009>

472 BenGarali, A., Ouakad, M., Gueddari, M., 2010. Contamination of superficial sediments by
 473 heavy metals and iron in the Bizerte lagoon, northern Tunisia. Arab. J. Geosci. 3, 295–
 474 306. <https://doi.org/10.1007/s12517-009-0082-9>

475 Bierne, N., Borsa, P., Daguin, C., Jollivet, D., Viard, F., Bonhomme, F., David, P., 2003.
 476 Introgression patterns in the mosaic hybrid zone between *Mytilus edulis* and *M.*
 477 *galloprovincialis*. Mol. Ecol. 12, 447–461. [https://doi.org/10.1046/j.1365-](https://doi.org/10.1046/j.1365-294X.2003.01730.x)
 478 294X.2003.01730.x

479 Bierne, N., David, P., Boudry, P., Bonhomme, F., 2002. Assortative fertilization and selection
 480 at larval stage in the mussels *Mytilus edulis* and *M. galloprovincialis*. Evolution (N. Y).
 481 56, 292–298. <https://doi.org/10.1111/j.0014-3820.2002.tb01339.x>

482 Bisson, M., Houeix, N., Gay, G., Lacroix, G., Lefevre, J., Magaud, H., Migne, V., Morin, A.,
 483 Tissot, S., Gillet, C., 2005. Fiche de données toxicologiques et environnementales des
 484 substances chimiques - Cuivre et ses dérivés. Ineris 1–66.

485 Borja A, Collin, M., 2004. Oceanography and Marine Environment of the Basque Country.
 486 Elsevier Science, Amsterdam.

487 Boukadida, K., Banni, M., Gourves, P.Y., Cachot, J., 2016. High sensitivity of embryo-larval
 488 stage of the Mediterranean mussel, *Mytilus galloprovincialis* to metal pollution in
 489 combination with temperature increase. Mar. Environ. Res. 122, 59–66.
 490 <https://doi.org/10.1016/j.marenvres.2016.09.007>

491 Boukadida, K., Cachot, J., Clérandaux, C., Gourves, P.Y., Banni, M., 2017. Early and
 492 efficient induction of antioxidant defense system in *Mytilus galloprovincialis* embryos
 493 exposed to metals and heat stress. Ecotoxicol. Environ. Saf. 138, 105–112.
 494 <https://doi.org/10.1016/j.ecoenv.2016.12.021>

495 Boukadida, K., Cachot, J., Morin, B., Clerandau, C., Banni, M., 2019. Moderate temperature
 496 elevation increase susceptibility of early-life stage of the Mediterranean mussel, *Mytilus*
 497 *galloprovincialis* to metal-induced genotoxicity. Sci. Total Environ. 663.
 498 <https://doi.org/10.1016/j.scitotenv.2019.01.215>

499 Brenko, M., Calabrese, a., 1969. The combined effects of salinity and temperature on larvae
 500 of the mussel *Mytilus edulis*. Mar. Biol. 4, 224–226. <https://doi.org/10.1007/BF00393897>

501 Breusing, C., Vrijenhoek, R.C., Reusch, T.B.H., 2017. Widespread introgression in deep-sea

502 hydrothermal vent mussels. BMC Evol. Biol. 17, 1–10. <https://doi.org/10.1186/s12862->
503 016-0862-2

504 Burton, T., Metcalfe, N.B., 2014. Can environmental conditions experienced in early life
505 influence future generations? Proceedings. Biol. Sci. 281, 20140311.
506 <https://doi.org/10.1098/rspb.2014.0311>

507 Byrne, M., 2011. Impact of ocean warming and ocean acidification on marine invertebrate life
508 history stages: vulnerabilities and potential for persistence in a changing ocean.
509 Oceanogr. Mar. Biol. An Annu. Rev. 49, 1–42.
510 <https://doi.org/10.1016/j.marenvres.2011.10.00>

511 Cabral, H., Fonseca, V., Sousa, T., Leal, M.C., 2019. Synergistic effects of climate change
512 and marine pollution: An overlooked interaction in coastal and estuarine areas. Int. J.
513 Environ. Res. Public Health 16, 1–17. <https://doi.org/10.3390/ijerph16152737>

514 Cairns, J., Heath, A.G., Parker, B.C., 1975. The effects of temperature upon the toxicity of
515 chemicals to aquatic organisms. Hydrobiologia 47, 135–171.
516 <https://doi.org/10.1007/BF00036747>

517 Chown, S.L., Nicolson, S., 2004. Insect Physiological Ecology: Mechanisms and Patterns.
518 Biology (Basel). 254. <https://doi.org/10.3987/Contents-12-85-7>

519 Clarke, A., 2003. Costs and consequences of evolutionary temperature adaptation. Trends
520 Ecol. Evol. 18, 573–581. <https://doi.org/10.1016/j.tree.2003.08.007>

521 Coors, A., De Meester, L., 2008. Synergistic, antagonistic and additive effects of multiple
522 stressors: predation threat, parasitism and pesticide exposure in *Daphnia magna*. J. Appl.
523 Ecol. 45, 1820–1828. <https://doi.org/10.1111/j.1365-2664.2008.01566.x>

524 Coustau, C., Renaud, F., Delay, B., 1991. Genetic characterization of the hybridization
525 between *Mytilus edulis* and *M. galloprovincialis* on the Atlantic coast of France. Mar.
526 Biol. 111, 87–93. <https://doi.org/10.1007/BF01986350>

527 Dias, M.I., Prudencio, M.I., Gouveia, M.A., Trindade, M.J., Marques, R., Franco, D., Raposo,
528 J., Fabiao, C.S., Guerra, A., 2009. Chemical tracers of Lusitanian amphorae kilns from
529 the Tagus estuary (Portugal). J. Archaeol. Sci. 37, 784–798.
530 <https://doi.org/10.1016/j.jas.2009.11.008>

531 Dye, S.R., Hughes, S.L., Tinker, J., Berry, D.I., Holliday, N.P., Kent, E.C., Kennington, K.,

532 Inall, M., Smyth, T., Nolan, G., Lyons, K., Andres, O., Beszczynska-Möller, A., 2013.
 533 Impacts of climate change on temperature (air and sea). MCCIP Sci. Rev. 1–12.
 534 <https://doi.org/10.14465/2013.arc01.001-012>

535 Fischer, K., Karl, I., 2010. Exploring plastic and genetic responses to temperature variation
 536 using copper butterflies. Clim. Res. 43, 17–30. <https://doi.org/10.3354/cr00892>

537 Förstner, U., Prosi, F., 1979. Heavy Metal Pollution in Freshwater Ecosystems, Biological
 538 Aspects of Freshwater Pollution. ECSC, EEC, EAEC Luxembourg.
 539 <https://doi.org/10.1016/b978-0-08-023442-7.50011-6>

540 Gamain, P., Gonzalez, P., Cachot, J., Clérendean, C., Mazella, N., Gourves, P.Y., Morin, B.,
 541 2016a. Combined effects of temperature and copper and S-metolachlor on embryo-larval
 542 development of the Pacific oyster, *Crassostrea gigas*.
 543 <https://doi.org/10.1016/j.marpolbul.2016.12.018>

544 Gamain, P., Gonzalez, P., Cachot, J., Pardon, P., Tapie, N., Gourves, P.Y., Budzinski, H.,
 545 Morin, B., 2016b. Combined effects of pollutants and salinity on embryo-larval
 546 development of the Pacific oyster, *Crassostrea gigas*. Mar. Environ. Res. 113, 31–8.
 547 <https://doi.org/10.1016/j.marenvres.2015.11.002>

548 Georgopoulos, P.G., Roy, A., Opiekun, R.E., Liroy, P.J., 2001. Copper: Environmental
 549 dynamics and human exposure issues. J Toxicol Env. Heal. 4, 341–394.
 550 <https://doi.org/10.1080/109374001753146207>

551 Gilbert, S.F., 2003. Developmental biology, Seventh edition 784.

552 Gosling, E., 1992. The mussel *Mytilus*: ecology, physiology, genetics and culture.
 553 Developments in aquaculture and fisheries science, 25. Elsevier: Amsterdam.

554 Helmuth, B., Broitman, B.R., Blanchette, C.A., Gilman, S.E., Halpin, P., Harley, C.D.G.,
 555 O'Donnell, M.J., Hofmann, G.E., Menge, B., Strickland, D., 2006. Mosaic patterns of
 556 thermal stress in the rocky intertidal zone: Implications for climate change. Ecol.
 557 Monogr. 76, 461–479. [https://doi.org/10.1890/0012-](https://doi.org/10.1890/0012-9615(2006)076[0461:Mpotsi]2.0.Co;2)
 558 [9615\(2006\)076\[0461:Mpotsi\]2.0.Co;2](https://doi.org/10.1890/0012-9615(2006)076[0461:Mpotsi]2.0.Co;2)

559 Herbert, R.J.H., Southward, A.J., Shearer, M., Hawkins, S.J., 2007. Influence of recruitment
 560 and temperature on distribution of intertidal barnacles in the English Channel. J. Mar.
 561 Biol. Assoc. United Kingdom 87, 487–499. <https://doi.org/10.1017/S0025315407052745>

562 Hilbish, T.J., Lima, F.P., Brannock, P.M., Fly, E.K., Rognstad, R.L., Wetthey, D.S., 2012.
 563 Change and stasis in marine hybrid zones in response to climate warming. *J. Biogeogr.*
 564 39, 676–687. <https://doi.org/10.1111/j.1365-2699.2011.02633.x>

565 His, E., Beiras, R., Seaman, M.N.L., 1999. The Assessment of Marine Pollution - Bioassays
 566 with Bivalve Embryos and Larvae, in: *Advances in Marine Biology*. pp. 1–178.
 567 [https://doi.org/10.1016/S0065-2881\(08\)60428-9](https://doi.org/10.1016/S0065-2881(08)60428-9)

568 His, E., Seaman, M.N.L., Beiras, R., 1997. A simplification the bivalve embryogenesis and
 569 larval development bioassay method for water quality assessment. *Water Res.* 31, 351–
 570 355. [https://doi.org/10.1016/S0043-1354\(96\)00244-8](https://doi.org/10.1016/S0043-1354(96)00244-8)

571 Howe, P., Dobson, S., 2002. Silver and silver compounds: environmental aspects, Geneva:
 572 World Health Organization.

573 Ifremer, 2014. Qualité du Milieu Marin Littoral - Bulletin de la surveillance - Edition 2014.

574 Inoue, S.B., Takewaki, N., Takasuka, T., Mio, T., Adachi, M., Fujii, Y., Miyamoto, C.,
 575 Arisawa, M., Furuichi, Y., Watanabe, T., 1995. Characterization and gene cloning of 1,3-
 576 beta-D-glucan synthase from *Saccharomyces cerevisiae*. *Eur J Biochem* 231, 845–854.
 577 <https://doi.org/10.1111/j.1432-1033.1995.0845d.x>

578 IPCC, 2014. Summary for Policymakers, *Climate Change 2014: Synthesis Report*.
 579 Contribution of Working Groups I, II and III to the Fifth Assessment Report of the
 580 Intergovernmental Panel on Climate Change.
 581 <https://doi.org/10.1017/CBO9781107415324>

582 ISO, 2015. Water quality — Determination of the toxicity of water samples on the embryo-
 583 larval development of Japanese oyster (*Crassostrea gigas*) and mussel (*Mytilus edulis* or
 584 *Mytilus galloprovincialis*). ISO 17244:2015.

585 Kijewski, T., Śmietanka, B., Zbawicka, M., Gosling, E., Hummel, H., Wenne, R., 2011.
 586 Distribution of *Mytilus* taxa in European coastal areas as inferred from molecular
 587 markers. *J. Sea Res.* 65, 224–234. <https://doi.org/10.1016/J.SEARES.2010.10.004>

588 Knight, J.R., Folland, C.K., Scaife, A.A., 2006. Climate impacts of the Atlantic multidecadal
 589 oscillation. *Geophys. Res. Lett.* 33, 2–5. <https://doi.org/10.1029/2006GL026242>

590 Koolhaas, J.M., de Boer, S.F., Coppens, C.M., Buwalda, B., 2010. Neuroendocrinology of
 591 coping styles: Towards understanding the biology of individual variation. *Front.*

592 Neuroendocrinol. <https://doi.org/10.1016/j.yfrne.2010.04.001>

593 Lam, I.K.S., Wang, W.-X., 2006. Accumulation and elimination of aqueous and dietary silver
594 in *Daphnia magna*. Chemosphere 64, 26–35.
595 <https://doi.org/10.1016/j.chemosphere.2005.12.023>

596 Liu, Y., Suo, X., Wang, Z., Gong, Y., Wang, X., Li, H., 2017. Developing polyimide-copper
597 antifouling coatings with capsule structures for sustainable release of copper. Mater. Des.
598 130, 285–293. <https://doi.org/10.1016/j.matdes.2017.05.075>

599 Lu, Y., Wang, R., Shi, Y., Su, C., Yuan, J., Johnson, A.C., Jenkins, A., Ferrier, R.C., Chen,
600 D., Tian, H., Melillo, J., Song, S., Ellison, A.M., 2018a. Interaction between pollution
601 and climate change augments ecological risk to a coastal ecosystem. Ecosyst. Heal.
602 Sustain. 4, 161–168. <https://doi.org/10.1080/20964129.2018.1500428>

603 Lu, Y., Yuan, J., Lu, X., Su, C., Zhang, Y., Wang, C., Cao, X., Li, Q., Su, J., Ittekkot, V.,
604 Garbutt, R.A., Bush, S., Fletcher, S., Wagey, T., Kachur, A., Sweijid, N., 2018b. Major
605 threats of pollution and climate change to global coastal ecosystems and enhanced
606 management for sustainability. Environ. Pollut. 239, 670–680.
607 <https://doi.org/10.1016/j.envpol.2018.04.016>

608 MacColl, A.D.C., 2011. The ecological causes of evolution. Trends Ecol. Evol. 26, 514–522.
609 <https://doi.org/10.1016/j.tree.2011.06.009>

610 Mai, H., Cachot, J., Brune, J., Geffard, O., Belles, A., Budzinski, H., Morin, B., 2012.
611 Embryotoxic and genotoxic effects of heavy metals and pesticides on early life stages of
612 Pacific oyster (*Crassostrea gigas*). Mar. Pollut. Bull. 64, 2663–70.
613 <https://doi.org/10.1016/j.marpolbul.2012.10.009>

614 Maillard, J.-Y., Hartemann, P., 2012. Silver as an antimicrobial: Facts and gaps in knowledge.
615 Crit. Rev. Microbiol. 39, 1–11. <https://doi.org/10.3109/1040841X.2012.713323>

616 Mallet, J., 2005. Hybridization as an invasion of the genome. Trends Ecol. Evol.
617 <https://doi.org/10.1016/j.tree.2005.02.010>

618 Martin, M., Osborn, K.E., Billig, P., Glickstein, N., 1981. Toxicities of ten metals to
619 *Crassostrea gigas* and *Mytilus edulis* embryos and *Cancer magister* larvae. Mar. Pollut.
620 Bull. 12, 305–308. [https://doi.org/10.1016/0025-326X\(81\)90081-3](https://doi.org/10.1016/0025-326X(81)90081-3)

621 McDonald, P., Henderson, A.R., Heron, S.J.E., 1991. The biochemistry of silage. Chalcombe

622 Publications, London.

623 Mellin, C., Lurgi, M., Matthews, S., MacNeil, M.A., Caley, M.J., Bax, N., Przeslawski, R.,
624 Fordham, D.A., 2016. Forecasting marine invasions under climate change: Biotic
625 interactions and demographic processes matter. *Biol. Conserv.* 204, 459–467.
626 <https://doi.org/10.1016/j.biocon.2016.11.008>

627 Mestre, N.C., Thatje, S., Tyler, P.A., 2009. The ocean is not deep enough: pressure tolerances
628 during early ontogeny of the blue mussel *Mytilus edulis*. *Proc. R. Soc. London B Biol.*
629 *Sci.* 276, 717–726. <https://doi.org/10.1098/rspb.2008.1376>

630 Nadella, S.R., Fitzpatrick, J.L., Franklin, N., Bucking, C., Smith, S., Wood, C.M., 2009.
631 Toxicity of dissolved Cu, Zn, Ni and Cd to developing embryos of the blue mussel
632 (*Mytilus trossolus*) and the protective effect of dissolved organic carbon. *Comp.*
633 *Biochem. Physiol. Part C Toxicol. Pharmacol.* 149, 340–348.
634 <https://doi.org/10.1016/j.cbpc.2008.09.001>

635 OSPAR Commission, 2000. Quality Status Report 2000: Region IV–Bay of Biscay and
636 Iberian Coast. OSPAR Comm. London 134.

637 Parmesan, C., Yohe, G., 2003. A globally coherent fingerprint of climate change impacts
638 across natural systems. *Nature* 421, 37–42. <https://doi.org/10.1038/nature01286>

639 Pastor, F., Valiente, J.A., Palau, J.L., 2018. Sea Surface Temperature in the Mediterranean:
640 Trends and Spatial Patterns (1982–2016). *Pure Appl. Geophys.* 175, 4017–4029.
641 <https://doi.org/10.1007/s00024-017-1739-z>

642 Pechenik, J.A., 1999. On the advantages and disadvantages of larval stages in benthic marine
643 invertebrate life cycles. *Mar. Ecol. Prog. Ser.* 177, 269–297.
644 <https://doi.org/10.3354/meps177269>

645 Prada, F., Musco, L., Alagna, A., Agnetta, D., Beccari, E., D’Anna, G., Giacalone, V.M.,
646 Pipitone, C., Vega Fernández, T., Goffredo, S., Badalamenti, F., 2019. Anthropogenic
647 impact is negatively related to coral health in Sicily (Mediterranean Sea). *Sci. Rep.* 9, 1–
648 14. <https://doi.org/10.1038/s41598-019-49713-w>

649 Prato, E., Biandolino, F., 2010. Combined toxicity of mercury, copper and cadmium on
650 embryogenesis and early larval stages of the *Mytilus galloprovincialis*. *Environ. Technol.*
651 28, 915–20. <https://doi.org/10.1080/09593332808618851>

652 Pyšek, P., Jarosík, V., Hulme, P.E., Kühn, I., Wild, J., Arianoutsou, M., Bacher, S., Chiron,
653 F., Didziulis, V., Essl, F., Genovesi, P., Gherardi, F., Hejda, M., Kark, S., Lambdon,
654 P.W., Desprez-Loustau, M.-L., Nentwig, W., Pergl, J., Poboljsaj, K., Rabitsch, W.,
655 Roques, A., Roy, D.B., Shirley, S., Solarz, W., Vilà, M., Winter, M., 2010.
656 Disentangling the role of environmental and human pressures on biological invasions
657 across Europe. *Proc. Natl. Acad. Sci. U. S. A.* 107, 12157–62.
658 <https://doi.org/10.1073/pnas.1002314107>

659 Pyšek, P., Jarošík, V., Pergl, J., Randall, R., Chytrý, M., Kühn, I., Tichý, L., Danihelka, J.,
660 Chrtěk, J., Sádlo, J., 2009. The global invasion success of Central European plants is
661 related to distribution characteristics in their native range and species traits. *Divers.*
662 *Distrib.* 15, 891–903. <https://doi.org/10.1111/j.1472-4642.2009.00602.x>

663 Quiniou, F., His, E., Delesmont, R., Caisey, X., Grouhel, A., Thébaud, M.-J., 2005. Bio-
664 indicateur de la toxicité potentielle de milieux aqueux : bio-essai « Développement
665 embryon-larvaire de bivalve ». Éd. Ifremer, Méthodes d'analyse en milieu Mar.

666 Riginos, C., Cunningham, C.W., 2005. Local adaptation and species segregation in two
667 mussel (*Mytilus edulis* x *Mytilus trossulus*) hybrid zones. *Mol. Ecol.* 14, 381–400.
668 <https://doi.org/10.1111/j.1365-294X.2004.02379.x>

669 Root, T., Price, J., Hall, K., Schneider, S., 2003. Fingerprints of global warming on wild
670 animals and plants. *Nature* 421, 57–60. <https://doi.org/10.1038/nature01309.1>.

671 Roussel, E.G., Bonavita, M.-A.C., Querellou, J., Cragg, B.A., Webster, G., Prieur, D., Parkes,
672 R.J., 2008. Extending the Sub-Sea-Floor Biosphere. *Science* (80-). 320, 1046–1046.
673 <https://doi.org/10.1126/science.1154545>

674 Ruiz, M., Tarifeño, E., Llanos-rivera, A., Padget, C., Campos, B., 2008. Efecto de la
675 temperatura en el desarrollo embrionario y larval del mejillón , *Mytilus galloprovincialis*
676 (Lamarck , 1819) Introducción. *Rev. Biol. Mar. Oceanogr.* 43, 51–61.

677 Schiff, K., Diehl, D., Valkirs, A., 2004. Copper emissions from antifouling paint on
678 recreational vessels. *Mar. Pollut. Bull.* 48, 371–377.
679 <https://doi.org/10.1016/j.marpolbul.2003.08.016>

680 Seed, R., 1976. In: Bayne, B.L., Ed., *Marine Mussels: Their Ecology and Physiology,*
681 *Ecology.* ed. Cambridge University Press, Cambridge.

682 Shaltout, M., Omstedt, A., 2014. Recent sea surface temperature trends and future scenarios
683 for the Mediterranean Sea. *Oceanologia* 56, 411–443. <https://doi.org/10.5697/oc.56->
684 3.411

685 Skibinski, D.O., Gallagher, C., Beynon, C.M., 1994. Sex-limited mitochondrial DNA
686 transmission in the marine mussel *Mytilus edulis*. *Genetics* 138, 801–9.

687 Skibinski, D.O.F., Beardmore, J. a, Cross T.F., 1983. Aspects of the population genetics of
688 *Mytilus* (Mytilidae; Mollusca) in the British Isles. *Biol. J. Linn. Soc.* 19, 137–183.

689 Skibinski, D.O.F., Roderick, E.E., 1991. Evidence of selective mortality in favour of the
690 *Mytilus galloprovincialis* Lmk phenotype in British mussel populations. *Biol. J. Linn.*
691 *Soc.* 42, 351–366. <https://doi.org/10.1111/j.1095-8312.1991.tb00568.x>

692 Smaal, A.C., 2002. European mussel cultivation along the Atlantic coast: production status,
693 problems and perspectives. *Hydrobiologia* 484, 89–98.

694 Suchanek, T.H., Geller, J.B., Kreiser, B.R., Mitton, J.B., 1997. Zoogeographic distributions of
695 the sibling species *Mytilus galloprovincialis* and *M. trossulus* (Bivalvia: Mytilidae) and
696 their hybrids in the North Pacific. *Biol. Bull.* 193, 187–194.
697 <https://doi.org/10.2307/1542764>

698 Tappin, A.D., Barriada, J.L., Braungardt, C.B., Evans, E.H., Patey, M.D., Achterberg, E.P.,
699 2010. Dissolved silver in European estuarine and coastal waters. *Water Res.* 44, 4204–
700 4216. <https://doi.org/10.1016/j.watres.2010.05.022>

701 Taylor, B.W., Irwin, R.E., 2004. Linking economic activities to the distribution of exotic
702 plants. *Proc. Natl. Acad. Sci.* 101, 17725–17730.
703 <https://doi.org/10.1073/PNAS.0405176101>

704 Taylor, S.A., Curry, R.L., White, T.A., Ferretti, V., Lovette, I., 2014. Spatiotemporally
705 consistent genomic signatures of reproductive isolation in a moving hybrid zone.
706 *Evolution* (N. Y). 68, 3066–3081. <https://doi.org/10.1111/evo.12510>

707 Taylor, S.A., Larson, E.L., Harrison, R.G., 2015. Hybrid zones: Windows on climate change.
708 *Trends Ecol. Evol.* 30, 398–406. <https://doi.org/10.1016/j.tree.2015.04.010>

709 Ting, M., Kushnir, Y., Seager, R., Li, C., 2009. Forced and internal twentieth-century SST
710 trends in the North Atlantic. *J. Clim.* 22, 1469–1481.
711 <https://doi.org/10.1175/2008JCLI2561.1>

712 Tomanek and Zuzow, 2010. The proteomic response of the mussel congeners *Mytilus*
713 *galloprovincialis* and *M. trossulus* to acute heat stress: implications for thermal tolerance
714 limits and metabolic costs of thermal stress. J. Exp. Biol. 213, 3559–74.
715 <https://doi.org/10.1242/jeb.041228>

716 Toonen, R.J., Pawlik, J.R., 2001. Foundations of gregariousness: A dispersal polymorphism
717 among the planktonic larvae of a marine invertebrate. Evolution (N. Y). 55, 2439–2454.

718 Uller, T., 2008. Developmental plasticity and the evolution of parental effects. Trends Ecol.
719 Evol. 23, 432–438. <https://doi.org/10.1016/j.tree.2008.04.005>

720 Wethey, D.S., Woodin, S.A., Hilbish, T.J., Jones, S.J., Lima, F.P., Brannock, P.M., 2011.
721 Response of intertidal populations to climate: Effects of extreme events versus long term
722 change. J. Exp. Mar. Bio. Ecol. 400, 132–144.
723 <https://doi.org/10.1016/j.jembe.2011.02.008>

724 Wilhelm, R., Hilbish, T.J., 1998. Assessment of natural selection in a hybrid population of
725 mussels: Evaluation of exogenous vs endogenous selection models. Mar. Biol. 131, 505–
726 514. <https://doi.org/10.1007/s002270050342>

727 Zouros, E., Oberhauser Ball, A., Saavedra, C., Freeman, K.R., 1994. An unusual type of
728 mitochondrial DNA inheritance in the blue mussel *Mytilus*. Proc. Natl. Acad. Sci. U. S.
729 A. 91, 7463–7.

730

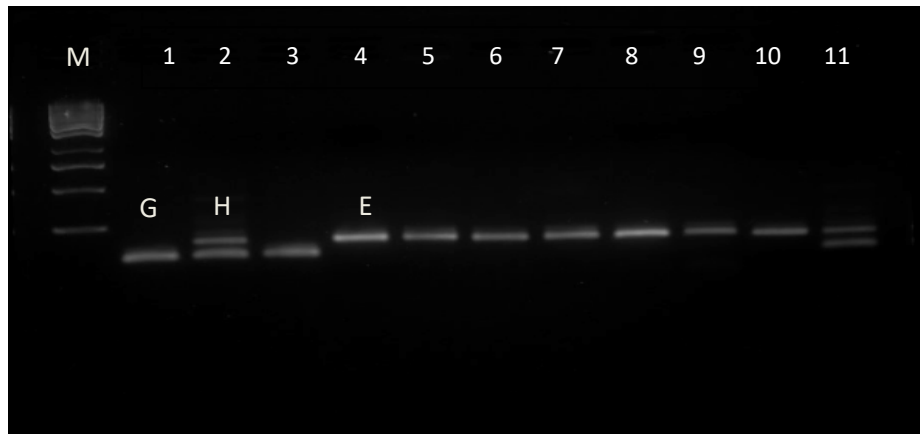


Figure 1: Separation on agarose gel (2%) and ethidium bromide coloration of the PCR amplification products of the DNA of the *Mytilus sp.* Collected from 11 different sampling sites using primers Me15 / Me16 (N = 20) for each site.

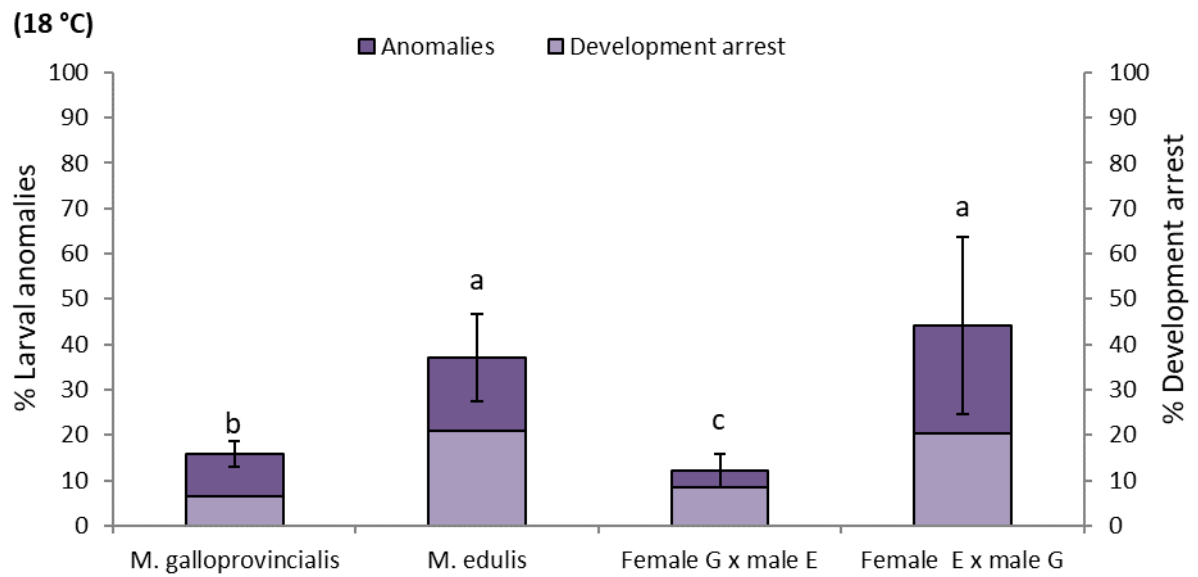


Figure 2: Developmental defects of D-larvae of *M. galloprovincialis*, *M. edulis*, and hybrids of both species at 18 °C for 48h. Different letters indicate significant differences ($p < 0.05$) between different pairings (Mean \pm standard deviation, Tukey post-hoc test, For *M. galloprovincialis* N= 9, *M. edulis* N= 7, Female G x male E N= 7, Female E x male G N= 7).

(24 °C)

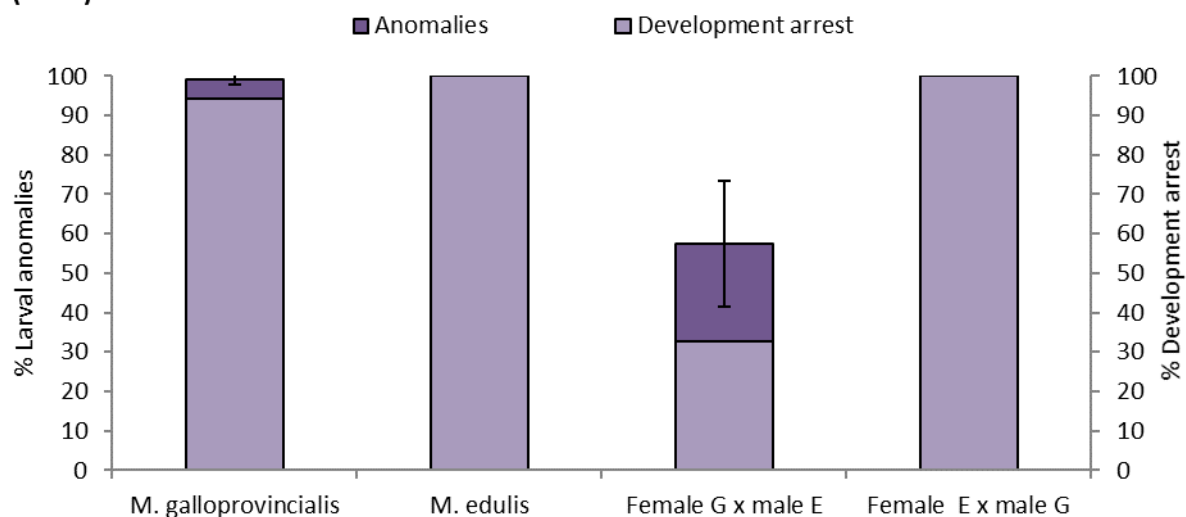


Figure 3: Developmental defects of D-larvae of *M. galloprovincialis*, *M. edulis*, and hybrids of both species at 24 °C for 48h. Different letters indicate significant differences ($p < 0.05$) between different pairings (Mean \pm standard deviation, Tukey post-hoc test, For *M. galloprovincialis* N= 9, *M. edulis* N= 4, Female G x male E N= 7, Female E x male G N= 4).

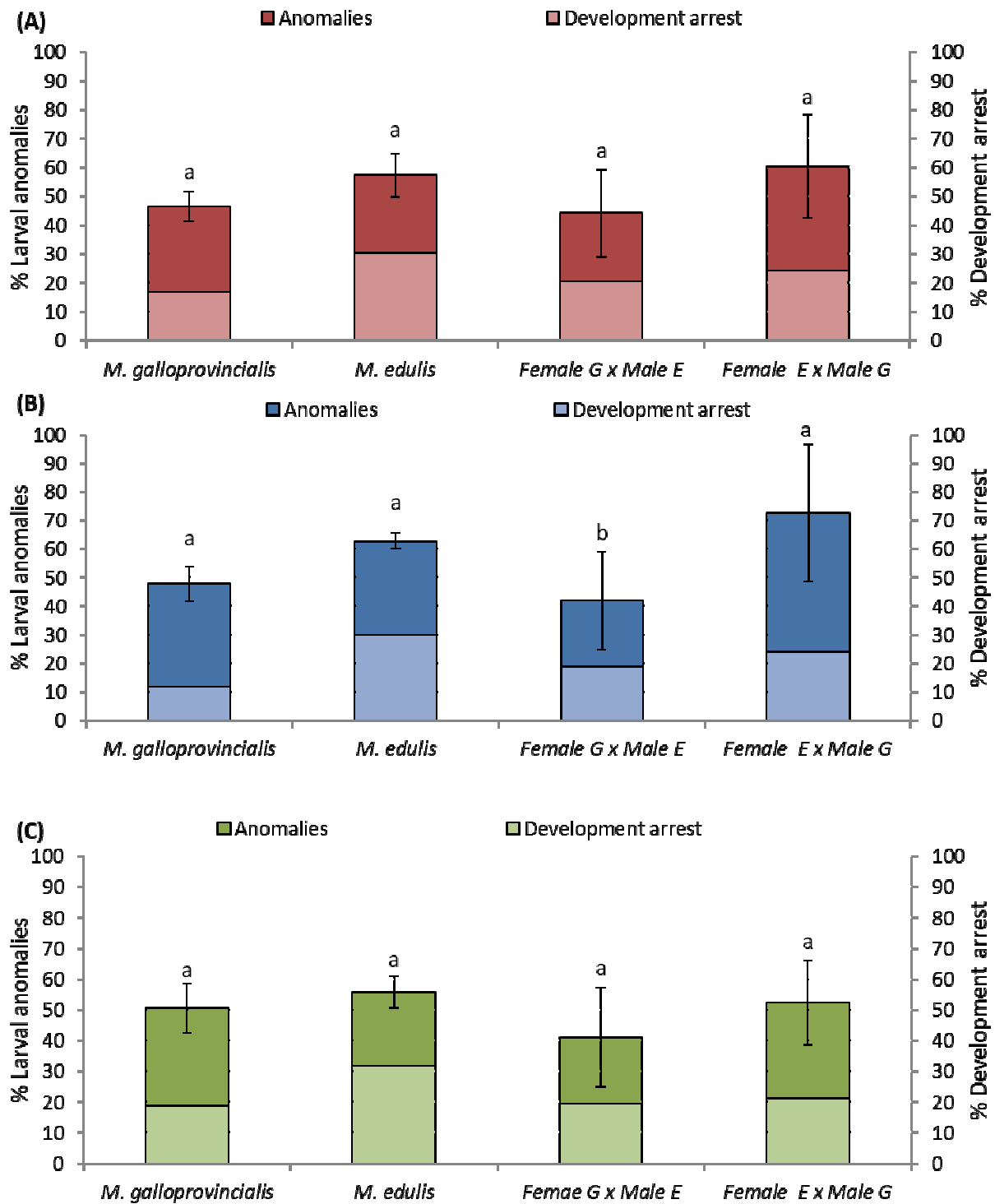


Figure 4: Toxicity of copper (A), silver (B), and a mixture of both metals (C) on the embryo-larval development of mussels *M. galloprovincialis*, *M. edulis*, and hybrids of both species at 18 ° C for 48h. Different letters indicate significant differences ($p < 0.05$, Tukey post-hoc test) between different pairings (Mean \pm standard deviation).

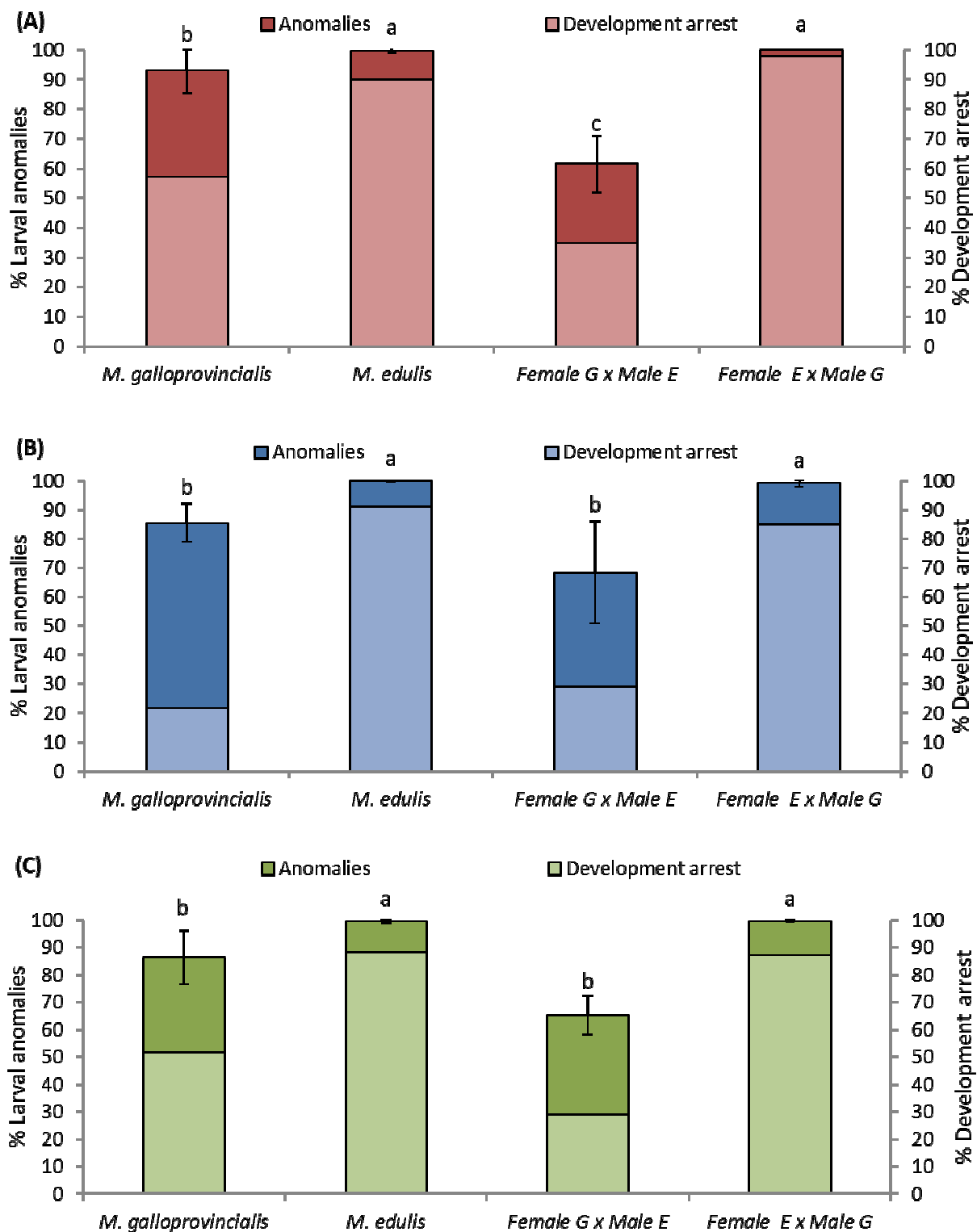


Figure 5: Toxicity of copper (A), silver (B), and a mixture of both metals (C) on the embryo-larval development of mussels *M. galloprovincialis*, *M. edulis*, and hybrids of both species at 22 °C for 48h. Different letters indicate significant differences ($p < 0.05$, Tukey post-hoc test) between different pairings (Mean \pm standard deviation).

Table 1: Geographic coordinates of sampling sites

Sites	Country	Study sites	Sampling sites	Latitude	Longitude
T 1	Tunisia	Beni khiar	-	36°26'56.34"N	10°46'50.77"E
T 2		Rimmel	-	37°15'19.39"N	9°55'33.39"E
T 3		Lagune de Bizerte I	-	37°11'31.84"N	9°52'6.93"E
T 4		Lagune de Bizerte II	-	37°14'18.98"N	9°48'42.33"E
F 1	France	Bay of Saint-Jean-de-Luz	Socoa port (inside)	43°23'36.09"N	1°40'57.13"O
			Socoa port (outside)	43°24'2.13"N	1°40'37.02"O
F 2		Arcachon Bay	Le Mouleaux	44°38'24.39"N	1°12'10.40"O
			Arcachon city (Jetée d'Eyrac)	44°39'48.94"N	1° 9'49.41"O
F 3		Saint-Nazaire	Loire estuary	47°16'22.84"N	2°12'5.72"O
			La Grande Plage	47°16'13.59"N	2°12'24.68"O
F 4		Rade de Brest	Le Conquet	48°21'28.47"N	4°46'54.12"O
			Le Moulin Blanc	48°23'46.79"N	4°25'42.18"O
F 5		Saint-Brieuc	Saint-Brieuc Bay	48°38'43.84"N	2°40'8.35"O
			Le Plein (Port)	48°31'25.79"N	2°44'52.24"O
F 6		Le Havre	Port (outside)	49°28'53.88"N	0° 5'51.96"E
			Port (inside)	49°28'14.48"N	0° 8'49.60"E
F 7		Boulogne	Port (outside)	50°36'58.48"N	1°33'55.24"E
F 8		Wimereux	beach	50°46'13.59"N	1°36'15.32"E
P	Portugal	Aveiro	Paredão beach	40°38'26.14"N	8°45'3.40"O
MF	England	Plymouth	May Flower Marina	50°21'52.00"N	4°10'10.00"O

Table 2: Number of exploitable pairs for each crossing and percentage of abnormal larvae at 18 °C

Crossings	Abnormal larvae at 18 °C (%)	Pair number at			
		18 °C	20 °C	22 °C	24°C
<i>Pure M. galloprovincialis</i>	15.8 ± 2.7	9	9	9	9
<i>Pure M. edulis</i>	37.1 ± 9.6	7	4	7	4
Female G x male E	12.0 ± 3.8	7	7	7	7
Female E x male G	44.2 ± 19.4	7	4	7	4

E: *Mytilus edulis*, G: *Mytilus galloprovincialis*

Table 3: Examples of embryo/larval anomalies observed throughout this study

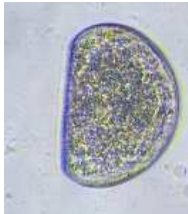
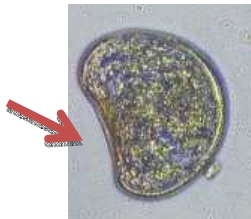
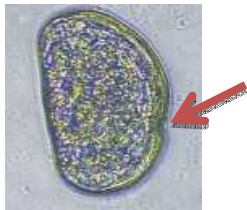
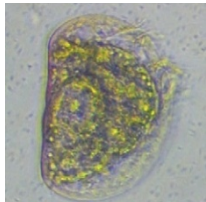

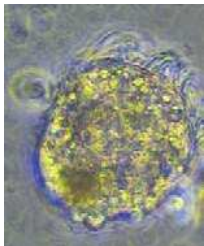
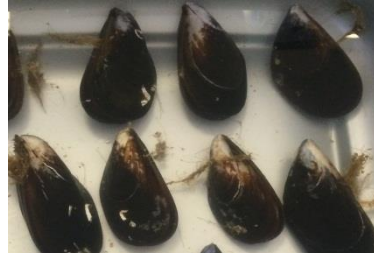
Descriptions		Observations
Normal D-Larva		
Shell anomalies	Concave hinge	
	Slitting	
Mantle anomalies	Mantle retracted	
	Hypertrophy with expulsion	
Development arrest		

Table 4: Distribution of the different species identified (in %), (n = 20).

Sites	Country	Study sites	Sampling sites	Identified species (%)
T 1	Tunisia	Beni khiar	-	100% <i>M. galloprovincialis</i>
T 2		Rimmel	-	100% <i>M. galloprovincialis</i>
T 3		Lagune de Bizerte I	-	100% <i>M. galloprovincialis</i>
T 4		Lagune de Bizerte II	-	100% <i>M. galloprovincialis</i>
F 1	France	Bay of Saint-Jean-de-Luz	Socoa port (inside)	100% <i>M. galloprovincialis</i>
			Socoa port (outside)	100% <i>M. galloprovincialis</i>
Arcachon Bay		Le Mouleaux	60% <i>M. galloprovincialis</i> 40% <i>M. edulis</i>	
		Arcachon city (Jetée d'Eyrac)	100% <i>M. galloprovincialis</i>	
Saint-Nazaire		Loire estuary	100% Hybrid	
		La Grande Plage	100% <i>M. edulis</i>	
F 4		Rade de Brest	Le Conquet	35% <i>M. galloprovincialis</i> 25% <i>M. edulis</i> 40% Hybrid
			Le Moulin Blanc	75% <i>M. galloprovincialis</i> 25% Hybrid
F 5		Saint-Brieuc	Saint-Brieuc Bay	100% <i>M. galloprovincialis</i>
			Le Plein (Port)	65% <i>M. galloprovincialis</i> 35% <i>M. edulis</i>
F 6		Le Havre	Port (outside)	55% <i>M. galloprovincialis</i> 45% <i>M. edulis</i>
			Port (inside)	100% <i>M. galloprovincialis</i>
F 7		Boulogne	Port (outside)	100% <i>M. edulis</i>
F 8		Wimereux	beach	100% <i>M. edulis</i>
P	Portugal	Aveiro	Paredão beach	100% <i>M. galloprovincialis</i>
MF	England	Plymouth	May Flower Marina	100% <i>M. edulis</i>



Mussel sampling
and genotyping

Pure species

Hybrids

- (i) Female *M. galloprovincialis* × Male *M. galloprovincialis*
- (ii) Female *M. edulis* × Male *M. edulis*

- (iii) Female *M. galloprovincialis* × Male *M. edulis*
- (iv) Female *M. edulis* × Male *M. galloprovincialis*

Crossings

Embryos exposure for 48h

18 °C

20 °C

22 °C

24 °C

Ag

Cu

18 °C

Cu + Ag

22 °C

D-Larvae

Developmental arrests
Malformations