



HAL
open science

Filling the gaps on stroke research: Focus on inflammation and immunity

Damien Levard, Izaskun Buendia, Anastasia Lanquetin, Martina Glavan,
Denis Vivien, Marina Rubio

► To cite this version:

Damien Levard, Izaskun Buendia, Anastasia Lanquetin, Martina Glavan, Denis Vivien, et al.. Filling the gaps on stroke research: Focus on inflammation and immunity. *Brain, Behavior, and Immunity*, 2021, 91, pp.649 - 667. 10.1016/j.bbi.2020.09.025 . hal-03492666

HAL Id: hal-03492666

<https://hal.science/hal-03492666>

Submitted on 16 Dec 2022

HAL is a multi-disciplinary open access archive for the deposit and dissemination of scientific research documents, whether they are published or not. The documents may come from teaching and research institutions in France or abroad, or from public or private research centers.

L'archive ouverte pluridisciplinaire **HAL**, est destinée au dépôt et à la diffusion de documents scientifiques de niveau recherche, publiés ou non, émanant des établissements d'enseignement et de recherche français ou étrangers, des laboratoires publics ou privés.



Distributed under a Creative Commons Attribution - NonCommercial 4.0 International License

1 **Filling the gaps on stroke research: focus on inflammation and immunity**

2

3 Damien Levard*¹, Izaskun Buendia*¹, Anastasia Lanquetin¹, Martina Glavan¹, Denis Vivien^{1,2}, Marina
4 Rubio^{1a}

5

6

7

8 **Affiliations:**

9

10 ¹ Normandie Univ, UNICAEN, INSERM, GIP Cyceron, Institut Blood and Brain @Caen-Normandie (BB@C),
11 UMR-S U1237, Physiopathology and Imaging of Neurological Disorders (PhIND), Caen, FRANCE.

12 ² CHU Caen, Department of Clinical Research, Caen University Hospital, Avenue de la Côte de Nacre,
13 Caen, FRANCE.

14

15 *These co-authors equally contributed to this work.

16

17 ^a To whom correspondence should be addressed: rubio@cyceron.fr; ORCID ID: 0000-0002-6120-4053;
18 Phone number: 0033231470155

19

20

21

1 **ABSTRACT**

2 For the last two decades, researchers have placed hopes in a new era in which a combination of
3 reperfusion and neuroprotection would revolutionize the treatment of stroke. Nevertheless, despite the
4 thousands of papers available in the literature showing positive results in preclinical stroke models,
5 randomized clinical trials have failed to show efficacy. It seems clear now that the existing data obtained
6 in preclinical research have depicted an incomplete picture of stroke pathophysiology. In order to
7 ameliorate bench-to-bed translation, in this review we first describe the main actors on stroke
8 inflammatory and immune responses based on the available preclinical data, highlighting the fact that
9 the link between leukocyte infiltration, lesion volume and neurological outcome remains unclear. We
10 then describe what is known on neuroinflammation and immune responses in stroke patients, and
11 summarize the results of the clinical trials on immunomodulatory drugs. In order to understand the gap
12 between clinical trials and preclinical results on stroke, we discuss in detail the experimental results that
13 served as the basis for the summarized clinical trials on immunomodulatory drugs, focusing on (i)
14 experimental stroke models, (ii) the timing and selection of outcome measuring, (iii) alternative entry
15 routes for leukocytes into the ischemic region, and (iv) factors affecting stroke outcome such as gender
16 differences, ageing, comorbidities like hypertension and diabetes, obesity, tobacco, alcohol
17 consumption and previous infections like Covid-19.

18 We can do better for stroke treatment, especially when targeting inflammation following stroke. We
19 need to re-think the design of stroke experimental setups, notably by (i) using clinically relevant models
20 of stroke, (ii) including both radiological and neurological outcomes, (iii) performing long-term follow-up
21 studies, (iv) conducting large-scale preclinical stroke trials, and (v) including stroke comorbidities in
22 preclinical research.

23

24

25 **Keywords:** ischemic stroke, inflammation, immune response, clinical trials, translational research,
26 experimental models.

1 **1. Introduction**

2 Stroke is the second leading cause of death for people older than 60 years and the first cause of
3 disability. It is estimated that by 2050, more than 1.5 billion people will be over 65, increasing therefore
4 stroke prevalence (Krishnamurthi et al., 2013). Taking into account the tremendous socio-economic
5 impact of this fact, the better understanding of the pathophysiology in order to finally develop new
6 treatments for patients is crucial. This is especially important considering that for the moment there are
7 only two approved treatments for acute ischemic stroke (AIS): (i) clot thrombolysis through the
8 intravenous administration of tissue plasminogen activator (tPA, Actilyse), which is limited in clinical
9 practice due to a short therapeutic window (4.5 hours) and a risk of intracerebral hemorrhage; and (ii)
10 clot removal by endovascular thrombectomy up to 24 hours after stroke onset depending on imaging
11 criteria (Casetta et al., 2020) (Thomalla and Gerloff, 2019). Additional agents to combine with tPA
12 administration and/or thrombectomy to enlarge the therapeutic window of the current therapies,
13 enhance their efficacy and improve outcomes associated with stroke are needed.

14 Insights into the consequences of glucose and oxygen deprivation concerning oxidative,
15 excitotoxic and microvasculature injuries, blood brain barrier (BBB) disruption, oedema and neuronal
16 death have been possible thanks to the efforts of hundreds of research groups that have dedicated the
17 past decades to the better understanding of the mechanisms underlying stroke. However, there are two
18 more recently described key players, which will be the focus of this review: neuroinflammation and
19 immune responses to stroke. Neuroinflammation is defined as an inflammatory response within the
20 central nervous system (CNS), thus, the brain or spinal cord. This process is due to the production of
21 different mediators such as cytokines, chemokines, reactive oxygen species, and secondary messengers
22 by resident CNS glia, endothelial cells, and peripherally derived immune cells. On the other hand,
23 immune response combines the terms of innate and adaptive immune responses, involved in regular
24 brain development but also in different pathologic conditions, such as neurodegenerative diseases or
25 stroke (Ransohoff et al., 2015) . Briefly, immune cells classically involved in innate responses include
26 natural killer cells, neutrophils, dendritic cells and macrophages that participate in the selective
27 recognition and the clearance of pathogens and toxic cell debris during infection or tissue injury
28 (Medzhitov and Janeway, 2002). However, it is now evident that resident cells, glial cells, ependymal
29 cells and even neurons are capable of mounting innate immune responses on their own (Nguyen et al.,
30 2002) (Ransohoff et al., 2015).

31 Although many aspects of postischemic inflammation, that is, the response of the immune
32 system to disruption of tissue homeostasis, manifest themselves days and weeks after the event, the
33 inflammatory cascade is activated immediately after the vessel occlusion (Anrather and Iadecola, 2016).
34 A secondary huge cascade of inflammatory responses is orchestrated within minutes and persists among
35 days or even weeks after. This process, especially during the first 48h hours after stroke onset, has been
36 deeply studied and reviewed during the last decades (Anrather and Iadecola, 2016) (Shi et al., 2019)
37 (Chamorro et al., 2016) (Drieu et al., 2018). The immune response is initiated immediately after the cell
38 injury, by the release of different damage-associated molecular patterns (DAMPs), such as heat shock
39 proteins, high mobility group box 1 and interleukin-33, purines (ATP, UTP, and their catabolites),
40 peroxiredoxins, and mitochondrial-derived N-formyl peptides. These molecules activate pattern
41 recognition receptors on microglia, the brain resident immune cells, and astrocytes. Later on, activation
42 of endothelial cells aggravates the BBB breakdown allowing peripheral leukocytes to arrive to the
43 injured area (Gadani et al., 2015) (Shi et al., 2019). Due to the disruption of the BBB, cytokines and

1 DAMPs enter the circulation and induce a systemic immune response, with an increase in pro-
2 inflammatory cytokines and circulating leukocytes during the first hours after stroke (Anrather and
3 Iadecola, 2016). However, after this early activation of the immune system, a state of systemic
4 immunodepression that predisposes to poststroke infections occurs. Indeed, complications from
5 pulmonary or urinary tract infections have been observed in ~20 % of patients with stroke (Meisel et al.,
6 2005) (Prass et al., 2003) (Langhorne et al., 2000). Thus, an ambition to understand the role of the
7 immune system and the potential of immunomodulatory drugs to act as a treatment for the stroke,
8 have been a driving force for the extensive research in the past decade.

9 After a brief description of the main actors of the inflammatory/immune responses after stroke,
10 in this review we will first focus on clinical data, obtained in stroke patients and randomized clinical trials
11 (RCT), and we will then compare and summarize the preclinical findings that served as a basis support
12 for clinical trials. Next, we will discuss aspects that are often neglected yet important to be considered in
13 preclinical research, in order to give light to the unfortunate bench-to-bed translational gap in ischemic
14 stroke research concerning immunomodulatory drugs. In particular, we will discuss about (i) the
15 selection of the best experimental model(s) (in terms of the nature of arterial occlusion and its potential
16 recanalization) for a given experimental design, (ii) the timing and selection of outcome measuring, (iii)
17 the existence of alternative entry routes for leukocytes into the ischemic region, and (iv) factors
18 affecting stroke outcome (gender differences, ageing, comorbidities like hypertension diabetes and
19 previous infections, and external factors related to daily life like obesity, tobacco and alcohol
20 consumption).

21

22 2. **Main actors on stroke inflammatory and immune responses**

23

24 A schematized, non-exhaustive overview of the inflammatory and immune responses after
25 stroke is depicted in Figure 1. Microglial response is one of the first steps before the innate immune
26 responses triggered after stroke. These cells can adopt a large spectrum of phenotypes ranging from
27 pro- to anti-inflammatory and are known to rapidly respond to neuronal injury in the boundary zone of
28 the infarct after stroke (Szalay et al., 2016). Due to the lack of nutrients, differences in ion gradients
29 and altered neuronal activity, microglial responses start minutes after stroke in both the core and the
30 penumbra regions. Microglial cells detect with their processes purinergic metabolites and changes in
31 ionic gradients in surrounding suffering cells (Cserep et al, Science 2020). At the acute phase after
32 stroke onset, microglial cells at the core of the lesion detect DAMPs and HMGB1 via their receptors -
33 mainly belonging to the Toll-like Receptor family (TLR). This ligand-receptor link leads to the activation
34 of the NF- κ B pathway and thus, to the activation of microglial cells. Once activated after stroke onset,
35 microglial cells increase their expression of CD11b, CD45 and CD68 corresponding to a phagocytic
36 phenotype responsible for the clearance of cellular debris, as well as TNF and the pro-inflammatory
37 interleukins IL-1 and IL-6 that exacerbate astrocyte and endothelial cell (EC) activation (Xu et al., 2020).
38 Afterwards, DAMPs and cytokines expressed during the early phase of ischemic injury can access to
39 the systemic circulation through the disrupted BBB or the cerebrospinal fluid drainage system that
40 includes venous and lymphatic outflows (Anrather and Iadecola, 2016).

41 Following ischemia and lasting from hours to weeks after, astrocytes are other key players. It is
42 well-known that cytokines from neurons and glial cells lead to astrocyte reactivity hyperplasia.

1 Astrocytes endfeet are in close interaction with brain capillary endothelial cells and pericytes that form
2 BBB. During ischemia, MMP-9 disrupts the connection between astrocyte endfeet and endothelial cells
3 by degrading basal lamina (del Zoppo, 2010). Astrocyte proliferation results in the synthesis of
4 inflammatory factors such as monocyte chemoattractant protein-1, IL-1 β , glial fibrillary acidic protein (GFAP),
5 vimentin, and nestin that can lead to reactive gliosis and later scar formation (Jayaraj et al., 2019).
6 Hence, it has been classically assumed that the ruptured BBB acts as a major gateway for the invasion of
7 peripheral leukocytes through their transendothelial migration. As discussed afterwards, alternative
8 entry routes for leukocytes have been described in recent years.

9 Activated cerebral microvessels become more permeable to molecules that are normally
10 prevented from crossing the blood–brain barrier. In particular, the immunological BBB is substantially
11 altered after ischemia. Together with the secretion of chemokines, the successive entry of systemic
12 leukocytes including neutrophils, macrophages, and lymphocytes is promoted (Veltkamp and Gill, 2016).
13 Corresponding to the upregulation of adhesion molecules on EC, integrins exhibit similar functions on
14 activated leukocytes. Leukocytes start to roll on the vessel wall with the help of selectins expressed by
15 activated EC. After rolling, leukocytes adhere to the vessel wall by strong links with intercellular
16 adhesion molecule-1 (ICAM-1) and vascular cell adhesion molecule-1 (VCAM-1). Similar to other
17 inflammatory cells, leukocytes release proinflammatory factors in the ischemic region of the brain.
18 Leukocytosis has been described as a marker of inflammatory response after stroke. Neutrophils are the
19 first bloodborne immune cells to invade the ischemic tissue, followed by monocytes. The sequence of
20 leukocyte recruitment into the brain after experimental stroke has been well characterized (Gelderblom
21 et al., 2009) (Drieu et al., 2020), whereas the temporal and spatial profile of the immune cell
22 recruitment after stroke in humans requires better characterization (Veltkamp and Gill, 2016).

23 Neutrophils enhance leukocyte recruitment by degranulation of their content, rich in
24 cytokines/chemokines, proteolytic enzymes and activated-complement system (Mayadas et al., 2014).
25 In addition to this, neutrophils could contribute to brain injury after ischemic stroke by obstructing
26 microvessel circulation, damaging EC and extracellular matrix by hydrolytic enzymes and free radicals,
27 promoting intravascular thrombus formation together with platelet activation, and releasing cytokines
28 and chemotactic factors that could promote extension of the inflammatory response. Moreover,
29 neutrophil extracellular traps (NETs) (networks of DNA, histones and proteolytic enzymes) secreted by
30 neutrophils are capable of activating platelets and contribute to the thrombotic processes (Rayasam et
31 al., 2018). Clinical data and experimental models of stroke have shown that neutrophils infiltrate the
32 brain parenchyma within hours of stroke onset (Gelderblom et al., 2009) (Drieu et al., 2020) (Cai et al.,
33 2020). Furthermore, clinical studies demonstrated that the neutrophil-to-lymphocyte ratio might be a
34 strong prognostic marker in acute ischemic stroke (Xue et al., 2017) and that the NETs are increased in
35 patients with stroke (Vallés et al., 2017).

36 The consequences of the adaptive immune response on ischemic stroke are still debated, as
37 both beneficial and deleterious results have been reported depending on the type of lymphocyte
38 subpopulation. Infiltrating $\gamma\delta$ T, CD8⁺ T, and NK cells contribute to the acute brain injury after stroke
39 onset, while regulatory T and B cells are reported to be protective (Feng et al., 2017). Experimental
40 models of stroke have shown that lymphocyte infiltration into the ischemic tissue comes later after
41 stroke onset, starting at day 3 (Drieu et al., 2020). Postmortem human samples have shown that
42 lymphocyte infiltration into the ischemic area occurs from day 3 and can be present up to 53 years after
43 stroke (Mena et al., 2004).

1 Neuroinflammation is also considered necessary for the reparation phase that persists after the
2 initial brain insult. Initial inflammation is self-limiting and ultimately gives a way to structural remodeling
3 and functional reorganization. After the acute phase of ischemic stroke, the inflammatory response
4 gradually decreases, and ischemic stroke enters another stage during which tissue repair dominates the
5 infarction region (Xu et al., 2020). The end of the acute phase is characterized by removal of dead
6 cells/tissue debris, creation of an anti-inflammatory milieu and production of pro-survival factors
7 (Malone et al., 2019). This phase aims to restore tissue integrity and involves matrix remodeling,
8 neurogenesis, axon sprouting, dendritogenesis and oligodendrogenesis (Peruzzotti-Jametti et al., 2014)
9 carried out in concert by many cell types, ranging from immune cells to neurons and astrocytes.
10 Together, these cells produce growth factors and proteases, allowing the remodeling of the ischemic
11 site (Iadecola and Anrather, 2011).

12

13 3. What do we know about neuroinflammation and immune responses in stroke patients?

14

15 Unfortunately, due to the lack of specificity of biomarkers for imaging patients *in vivo* and the
16 reduced number of *post-mortem* analyses, studying inflammation/immune responses in humans is
17 limited. As aforementioned, glial cells are one of the main key players in the inflammatory responses
18 triggered after ischemic stroke. Long-term imaging or additional *post-mortem* pathological studies
19 would be crucial to definitely confirm whether global glial activation after stroke is persistent in humans
20 (Shi et al., 2019). However, different groups have been able to perform short term studies by using *in*
21 *vivo* imaging techniques. Focusing on microglial cells, by using the PK11195-PET radioactive ligand of the
22 translocator protein, highly expressed by activated microglia, and diffusion tensor imaging MRI, the
23 involvement of this cell-type is clearer. In this manner, activated microglia have demonstrated to
24 accumulate focally within a week after stroke and can be detected in distal regions several months after
25 (Gerhard et al., 2005) (Thiel et al., 2010) (Radlinska et al., 2009). In addition, in another study positive
26 signals have been observed in the subacute phase (6 to 21 weeks after the lesion) in non-infarcted
27 ipsilateral areas (Morris et al., 2018).

28 However, it is worth to mention that translocator protein is also expressed by monocytes or
29 macrophages and to a lesser extent, by astrocytes, reducing the specificity of the technique (Dupont et
30 al., 2017). Furthermore, the absence of a specific astrocyte biomarker feasible for *in vivo* imaging in
31 patients leads to a tremendous gap in clinical evidence supporting a role for astrocytes in brain
32 inflammation after stroke. Therefore, it becomes crucial to improve and to develop these techniques for
33 the future.

34 In addition, clinical evidences regarding peripheral immune cells mobilization and vascular
35 inflammation are scarce (Shi et al., 2019). We encourage researchers within the field to increase the
36 clinical research, so the prompting results obtained in preclinical models aforementioned can be
37 confirmed and better therapeutic targets/manipulations can be suggested.

38

39

40

4. Results of the clinical trials on immunomodulatory agents

Given that mechanisms of immune-mediated neuronal injury have relatively recently gained increasing attention, few drugs with the primary aim of modulating inflammatory/immune pathways have reached the Phase II or Phase III RCT stage in acute stroke. In this review, we will focus on RCT aiming to address neuroinflammation/immunomodulation, setting aside any RCT involving tPA or thrombectomy by itself (see (Chamorro et al., 2016) (Smith et al., 2015). A schematic view of the immunomodulatory drug targets tested in clinical trials is shown in Figure 1.

There have been several RCT pursuing the modulation of proinflammatory cytokine interleukin-1, by the use of recombinant interleukin-1 receptor antagonist (IL-1Ra) (**Anakinra**). This compound, historically used to treat rheumatoid arthritis and similar inflammatory diseases, showed a good safety profile. Besides the promising results obtained in preclinical studies, in human studies, a phase II trial in 2005 showed Anakinra to be safe and well tolerated in AIS patients (Emsley et al., 2005). With the replacement of the intravenous formulation by a subcutaneous injection, the effects of the drug have been re-investigated at a twice-daily dose since (Sobowale et al., 2016). However, even though Anakinra significantly decreased plasma levels of pro-inflammatory IL-6 and C-reactive protein, patients did not show a reduction in disability levels at 3 months compared to placebo. A possible negative interaction between IL-1Ra and tPA has been revealed (Smith et al., 2015) and has been suggested to mask the potential beneficial effect of Anakinra. Thus, further preclinical and clinical studies are required to confirm its use as stroke treatment.

Minocycline, a tetracycline derivative, is a well-documented protective compound in preclinical stroke models. It exerts anti-inflammatory properties by inhibiting the expression of polyadenosine diphosphate ribose polymerase 1 and matrix metalloproteinases, and inhibiting microglial activation. It has shown an acceptable safety profile in an open-label, dose-escalation study in patients treated within 6 h after the symptoms onset, including a subset of patients who also received alteplase. A small pilot study confirmed the safety of intravenous minocycline administered within 24 h of stroke onset, but did not show efficacy of the drug by improving the proportion of patients free of disability at 90 days (Kohler et al., 2013). However, the meta-analysis of previous RCT demonstrated the efficacy and minocycline has been suggested as a promising neuroprotective agent in AIS patients (Malhotra et al., 2018).

Several options have been followed pursuing the avoidance of invasion of peripheral cells to the CNS. Among them, we can find **Natalizumab**, a humanized CD49d antibody that blocks α 4-integrin, attenuating leucocytic infiltration. Promising results were obtained in animal and in a first clinical trial in which Natalizumab did not have an effect on the infarct volume growth on brain MRI at day 5 (primary outcome), but the therapy was safe and provided global clinical gains on the Stroke Clinical Impact-16 scale and in cognitive function at 90 days (Elkins et al., 2017). Disappointingly, the follow-up phase IIb trial ("ACTION2") did not meet its primary or secondary endpoints. As a result, further development of Natalizumab in AIS will not be pursued (Malone et al., 2019).

A role of the endothelial β 2-integrin ligand ICAM-1 in neutrophil recruitment across the BBB in stroke was proposed as an alternative pharmacological target. Although positive results were obtained in preclinical research, a phase III clinical trial of anti-ICAM-1 antibody **Enlimomab**, failed to replicate these results, with the antibody-treated group reporting higher mortality (Enlimomab Acute Stroke Trial Investigators, 2001).

1 **Fingolimod** is a high-affinity agonist for several of the sphingosine-1-phosphate receptors that
2 prevents the egress of lymphocytes from lymph nodes, limiting the infiltration of lymphocytes into the
3 brain, and inhibiting local activation of microglia and macrophages. Preclinical studies using several
4 rodent models of brain ischemia have shown that Fingolimod can reduce infarct size, neurological
5 deficit, oedema, and the number of dying cells in the core and peri-infarct area (Liu et al., 2013). In
6 stroke patients, when administered within 72 h after stroke onset, oral Fingolimod caused no severe
7 adverse effects and had efficacy in limiting secondary tissue injury, in decreasing microvascular
8 permeability, attenuating neurological deficits, and in promoting recovery (Zhang et al., 2017). In
9 addition to this, the combination of Fingolimod with alteplase resulted in fewer circulating lymphocytes,
10 smaller lesion volumes, less hemorrhages, and attenuated neurological deficits (Zhu et al., 2015) (Zhang
11 et al., 2017). However, while Fngolimod remains one of the most compelling stroke immunotherapies,
12 further large-scale clinical trials are required (Malone et al., 2019).

13

14 **5. Experimental basis for the clinical trials on immunomodulatory drugs: Translational gaps on**
15 **stroke.**

16 The existing preclinical data on immunomodulatory drugs discussed in this review is summarized
17 in Table 1. As aforementioned, in spite of the beneficial effects shown in preclinical research, RCT have
18 shown disappointing results. To overcome this gap, the Stroke Therapy Academic Industry Roundtable
19 (STAIR) recommendations and guidelines have been proposed. However, there are still some important
20 factors which are often neglected, that could explain -at least in part- the bench to bedside translational
21 failure. We will particularly focus here on (i) the characteristics of the arterial recanalization process and
22 its derived inflammatory responses, which are extremely dependent on the experimental model used,
23 (ii) alternative entry routes for leucocytes to the brain parenchyma, (iii) the appropriate timing of
24 measurements in preclinical models and (iv) the vital importance of concomitant factors affecting stroke
25 that needs to be taken into account.

26 i) Characteristics of the arterial occlusion and recanalization processes: the importance of
27 choosing the appropriate experimental model

28 Preclinical models of ischemic stroke are necessary for investigating pathogenic processes
29 triggered after the ischemic insult, as well as to screen for candidate therapeutic strategies. This section
30 aims to highlight the importance of an element that could partially explain the translational gap in
31 stroke research in general and in the neuroinflammation domain in particular, as is the choice of
32 clinically relevant experimental models. We will briefly discuss the main models of middle cerebral
33 artery occlusion (MCAO) used in preclinical research (mechanical occlusion by an intraluminal filament,
34 permanent electrocoagulation, photothrombosis and thromboembolic models). Attention should be
35 paid on the selection of the most adapted experimental model and the best combination of models for
36 future studies, not only when testing new anti-inflammatory/immunomodulatory drugs, but also in the
37 description of the cellular and molecular mechanisms involved in the pathogenesis of stroke. Each
38 stroke model has experimental advantages and disadvantages, and shows more or less resemblance to
39 the clinical reality, which have been resumed in Table 2. A descriptive scheme comparing the blockade
40 of the MCA in patients (the MCA being the most common occlusion site in AIS patients) and in
41 experimental models of stroke discussed in this review, as well as the comparison of the corresponding
42 ischemic lesions visualized by MRI, are shown in Figure 2. In our opinion, and following the STAIR

1 recommendations, the use of several clinically relevant experimental models for a given drug is one of
2 the critical improvements that researchers can implement to ameliorate the translation between
3 preclinical and clinical stroke research.

4 **Mechanical MCAO by an intraluminal filament**

5 The most frequently used experimental model of ischemic stroke in rodents is the
6 intraluminal filament model (Sommer, 2017). To induce MCAO, a nylon filament is introduced into the
7 internal carotid artery and advanced until the origin of the MCA, occluding the blood flow. The filament
8 model does not require craniotomy and can be used to either model permanent ischemia (Chu et al.,
9 2014) (Pedragosa et al., 2018) or transient ischemia by withdrawal of the filament, allowing reperfusion
10 at different time points, from 30 min to 120 min (Yan et al., 2015) (Buscemi et al., 2019). This model is
11 characterized by a large infarct volume, and longer durations of occlusion usually resulting in larger
12 infarcts involving both the cortex and striatum, and may be associated with some mortality (Hata et al.,
13 2000). It often induces hypothalamus damage that rarely occurs in human stroke (Uzdensky, 2018).
14 While researchers see fewer infiltrating leukocytes in general after transient MCAO in compared with
15 some permanent models of occlusion (Zhou et al., 2013), the inflammatory response, especially once
16 BBB injury occurs is substantial in this model and includes excessive leukocyte recruitment and
17 production of inflammatory cytokines. Thousands of anti-inflammatory molecules have been tested in
18 this model and have shown beneficial effects on ischemic volume and/or neurological outcome.
19 Unfortunately, very few, if any, have so far shown real clinical benefit so far.

20 This model typically shows a prompt recovery of a primary core, whereas a sudden and rapid
21 reperfusion results in a secondary, delayed injury, known as “ischemia-reperfusion injury”. Indeed, it has
22 been shown that 70% of the lesion volume in this experimental model is in fact due to the formation of
23 microthrombi after to the withdrawal of the filament (Gauberti et al., 2014). This delayed injury evolves
24 after a free interval of as long as 6 to 12 hours, which confers to this experimental setup a longer
25 therapeutic window compared to the human pathophysiology or to other experimental stroke models.

26 The prompt reperfusion of the MCA after the removal of the filament contrasts with the gradual
27 reperfusion occurs in many non-treated human ischemic stroke (Hossmann, 2012); however, even after
28 mechanical thrombectomy the secondary damage has not been observed in patients. Using the data
29 from one randomized trial, Gauberti et al. (Gauberti et al., 2018) measured the impact of abrupt
30 reperfusion on infarct growth in patients that benefited from mechanical thrombectomy. No growth in
31 ischemic lesion after abrupt reperfusion was observed. Moreover, in most of the patients the impact of
32 ischemia-reperfusion injury on the lesion growth was limited during the first 24 hours. Considering that,
33 reperfusion injury plays a prominent role in the mechanical MCAO models; this discovery questions the
34 relevance of such models as well as the current understanding of the human stroke pathophysiology.

35 **MCAO by electrocoagulation**

36 The MCAO by electrocoagulation is another of the most frequently used stroke models (Howells
37 et al., 2010). This model consists of the permanent occlusion of the MCA using electrical stimulation,
38 which induces the coagulation of the artery. It is usually followed by the dissection of the artery to avoid
39 any risk of recanalization. A craniotomy is necessary in order to access the MCA. This experimental
40 model does not induce the presence of a penumbra area. The lesion is smaller than in the monofilament

1 model and is confined to the cortical area. The resulting infarct volume and localization after permanent
2 MCA coagulation corresponds to ischemic brain lesions in the majority of human strokes in proportion
3 to brain size (Llovera et al., 2014).

4 The inflammatory reaction described in this model is greater than in the filament model,
5 although it could be overestimated due to the confounding effects of electrocoagulation. The microglial
6 activation is more important, as is leukocyte infiltration. This inflammatory response is also exacerbated
7 in terms of pro-inflammatory cytokines and adhesion molecules expression (Zhou et al., 2013).
8 However, only minor behavioral deficits can be detected in behavioral tests and functional recovery
9 appears within the first days after stroke. That makes it difficult to assess long-term functional outcome
10 in this model (Llovera et al., 2014).

11 **Photothrombosis model**

12 Photothrombosis stroke model involves the focal illumination of cerebral vessels through the
13 skull after intravenous injection of a photosensitive dye (Watson et al., 1985). The photosensitive dye
14 (Rose Bengal or erythrosin B) is first administered intraperitoneally in mice or intravenously in rats.
15 Then, photo activation of the dye leads to formation of oxygen free radicals, such as singlet oxygen and
16 superoxide, resulting in endothelial damage and platelet activation and aggregation in all the vessels
17 within the illuminated area (Kim et al., 2000). This model does not require a craniotomy, since the light
18 source can be applied directly and passes through the skull. It produces a small-size and well-defined
19 cortical lesion (Labat-gest and Tomasi, 2013). Moreover, it does not require mechanical manipulations
20 with blood vessel such as ligation or filament insertion, which carry the risk of side lesions.

21 It was shown in this model microglial activation, lymphocyte infiltration and an increase in the
22 level of pro-inflammatory cytokines up to 14 days after the occurrence of ischemic stroke (Feng et al.,
23 2017). Moreover, this model induces long-term sensorimotor deficits with high survival (Lunardi
24 Baccetto and Lehmann, 2019), which may be useful to study late inflammatory process involved in
25 recovery and regeneration after stroke.

26 However, disadvantages of this stroke model are major differences from the ischemic stroke
27 pathology. The injury caused by photothrombosis presents simultaneously early acute cytotoxic and
28 vasogenic edema, microvascular injury and blood–brain barrier breakdown (Lee et al., 1996).
29 Additionally, this model causes well-defined ischemic lesion without the penumbra area typically
30 present in stroke pathology.

31 **Thromboembolic models**

32 Several thromboembolic models exist. A previously formed clot (by autologous or heterologous
33 blood) can be directed to the base of the MCA (Ansar et al., 2014). A clot can also be created by the
34 application of iron or aluminum chloride to the artery (Bonnard and Hagemeyer, 2015). Another model
35 of thromboembolic stroke consists in injecting thrombin directly into the MCA by using a micropipette,
36 which causes the *in situ* formation of a fibrin-rich clot (Orset et al., 2007, Le Behot et al., 2014). These
37 fibrin-rich clots may be spontaneously lysed (partially or completely), as occurs in non-treated patients
38 (Drieu et al., 2020). Infarct volume and localization after both ferric chloride and thrombin models
39 correspond to ischemic brain lesions in the majority of human strokes in proportion to brain size. As in
40 humans, the lesion is mostly cortical and well defined, with the presence of a peri-lesional area that can

1 be saved by early-tPA fibrinolysis in the thrombin-induced thromboembolic model (Orset et al., 2007,
2 Macrez et al., 2011, Orset et al., 2016). The thrombin model is the only one to have shown a similar
3 profile of time-to-treatment-related benefit after tPA administration (Orset et al., 2007) (Macrez et al.,
4 2011) (Orset et al., 2016). By contrast, clots formed by the ferric chloride thromboembolic model are
5 platelet-rich and cannot be lysed by tPA (Martinez de Lizarrondo et al., 2017).

6 We have recently provided a detailed longitudinal description of the inflammatory response
7 following the thrombin-induced stroke experimental model consisting in an early myeloid response
8 peaking at 48h after stroke onset and still present (although to a lesser extent) 5 days after stroke onset.
9 T-lymphocytes infiltrate later on (from 48h after stroke onset). These cellular responses are
10 accompanied by EC activation at 24h-48h that is not present later on (5 days after stroke onset).
11 Whereas ischemic lesions are maximal at 24-48h after stroke onset, BBB leakage progressively increases
12 with time, being maximal at 5 days after stroke (Drieu et al., 2020).

13 Regarding translational issues, thromboembolic models are, in many aspects, closer to the
14 human pathophysiology (see table 2) and may thus provide an opportunity to investigate not only
15 fibrinolytic drugs but also strategies targeting inflammation and immune responses triggered after
16 stroke onset. In this regard, the thrombin-induced stroke model has shown similarities with the results
17 obtained in several RCT. In addition to the aforementioned results on tPA, Natalizumab, which has
18 shown its effectiveness in several other models before failing in the clinic, is not beneficial in the
19 thrombin model of stroke (Drieu et al., 2020), but minocycline has shown promising results (Drieu et al.,
20 2020) as in humans (Malhotra et al., 2018). Apart from this, there is not hindsight enough on the use of
21 the thrombin model to demonstrate a better translation into the clinic compared to other experimental
22 models. For this reason, and as recommended by the STAIR roundtable, several stroke models should be
23 tested in multicenter studies for a given drug before its translation into randomized clinical trials.

24 Similar to the electrocoagulation model, one drawback of these models is the low behavioral
25 deficits. Only minor behavioral deficits can be detected in the first days after stroke with behavioral
26 tests and functional recovery appears after few days. This currently makes it difficult to assess long-term
27 functional results. It would be necessary to further characterize the functional deficits of this model over
28 the long term, especially in the context of the study of late inflammatory response and recovery.

29

30 ii) Timing and selection of outcome measuring:

31 The timing of outcome assessment is another factor that contributes to contradictory results
32 between mouse and human studies. While in most clinical studies the neurological outcome is
33 measured in patients up to several months after the stroke (usually 90 days), a vast majority of
34 preclinical studies in mice focus only on the first days after the stroke (Veltkamp and Gill, 2016)
35 (Dreikorn et al., 2018).

36 The inflammatory reaction participates in each stage of stroke pathophysiology. It takes place
37 from the first minutes after occlusion and lasts until the late phase, including the recovery and
38 regeneration processes. This is why we should use behavioral tests, which measure functional recovery
39 at longer time points, if we want preclinical studies to be more transposable to the clinic. As
40 aforementioned, the main obstacle is that in mice it is difficult to obtain observable neurological deficits
41 for a long time, in models with young animals with cortical well-standardized lesions. Furthermore,

1 while recovery processes in rodents can be completed 4 weeks post-stroke, in humans they occur within
2 about 3 months and may continue for years (Sommer, 2017) (Cassidy and Cramer, 2017).

3
4 In spite of these difficulties, recent studies have shown encouraging results for mouse to human
5 translation. For example, Sadler and collaborators (Sadler et al., 2020) have demonstrated the impact of
6 short-chain fatty acids on microglial activation, which depended on the recruitment of T cells to the
7 infarcted brain. Using an automated task for the training and assessment of distal forelimb function
8 (Becker et al., 2016) in a mouse model of photothrombotic stroke, differences in motor deficit were
9 observed up to 56 days after stroke onset. Another study has recently shown that targeting integrin
10 alpha-9-beta-1 (highly expressed on activated neutrophils during ischemic stroke) significantly improved
11 short and long-term functional outcomes (up to 4 weeks) in two different stroke models with pre-
12 existing comorbidity (Dhanesha et al., 2020).

13 This being said, the STAIR X recommendations have highlighted that the time point of the
14 standard 90-day functional outcome may be reconsidered for different reasons. First, it may result in
15 enrollment bias, as socioeconomic and other factors may involve recruitment of only certain individuals
16 into prospective trials. Furthermore, evaluation at later time points exclude patients that might succumb
17 due to the other illnesses. Also, the impact of acute stroke interventions may be more efficiently
18 revealed by early improvements in clinical deficits. Early National Institutes of Health Stroke Scale
19 improvement or the serial change in neurological deficits from baseline to 24 hours provides an early
20 indication of what might ensue at 90 days, although early evaluation may raise challenges in some cases,
21 as intubated or other patients may not be evaluable (Liebeskind et al., 2018).

22 An additional issue on the translation between preclinical and clinical studies is to deal with the
23 discrepancies between the very specific and sensitive outcome measurements (histological, different
24 imaging techniques and/or specific and sophisticated behavior tests) in preclinical research versus the
25 well-established but yet less sensitive standardized clinical scores (composite scores, mRS, etc). In fact, it
26 is possible that some of the positive results found in preclinical research are not strong enough to be
27 detected in the neurological or functional outcome measurements in clinical practice. This is why it is
28 important, in our opinion, to perform several outcome measurements for every drug tested. In addition,
29 multicenter studies may help to increase the relevance of the preclinical results.

30 31 iii) Entry routes for leukocytes into the ischemic region.

32 In the past few years, research on anti-inflammatory strategies for stroke has focused on limiting
33 the transendothelial migration of peripheral immune cells into the brain parenchyma, aiming to reduce
34 stroke severity. These studies are based on the idea of endothelial transmigration of peripheral immune
35 cells through the BBB, but new evidence suggests that there are other pathways at least just as
36 important (if not more): migration through the meninges and choroid plexus (ChP), (for a complete
37 review, see (Benakis et al., 2018).

38 The ChP is originally known as the main producer of CSF, which fills all brain ventricles,
39 subarachnoid spaces and perivascular spaces and thereby reaches a large surface area of the CNS. This
40 highly vascularized brain structure resides in the brain ventricles and consists of an epithelial layer
41 forming a tight blood-cerebrospinal fluid barrier (BCSFB), which surrounds a core of fenestrated
42 capillaries and connective tissue. However, data is accumulating that CNS specific immune processes like
43 immune surveillance are regulated by the ChP (Gherzi-Egea et al., 2018). First, it has been demonstrated
44 by Ge and collaborators that ChP responds to a cortical ischemic lesion by elevated adhesion molecules
45 and chemokines, and that monocytes-derived macrophages can invade ischemic hemisphere through

1 ChP and CSF (Ge et al., 2017). Furthermore, it has been shown the ChP is a key invasion route for T-cell
2 to the cortex in a permanent electrocoagulation stroke model, via a CCR2-ligand dependent mechanism
3 (Llovera et al., 2017).

4 In addition to this, several recent studies have shown that the meninges could be a major player in
5 leukocyte infiltration into the brain parenchyma. Immunohistochemistry and flow cytometry analysis
6 revealed that $\gamma\delta T$ cells increased in the meninges early after stroke onset (Benakis et al., 2016) and
7 preceded their accumulation in the ischemic area (Gelderblom et al., 2014). Moreover, ischemic injury
8 can induce the growth of meningeal lymphatic vessels (LVs) and the absence of these LVs impact post-
9 stroke outcomes. Interestingly, only photothrombotic stroke (and not transient MCAO) induce
10 lymphangiogenesis. However, removal of meningeal lymphatics exacerbates severity of stroke, only in
11 the transient MCAO model (Yanev et al., 2020). These data indicate that the meninges could orchestrate
12 leukocyte infiltration into the brain parenchyma.

13 Taken together, these recent studies reveal the previously unrecognized diversity of selective
14 invasion routes for leukocyte subpopulations after stroke. Understanding how immune cells migrate to
15 the brain via these alternative pathways may help us to develop more effective approaches for anti-
16 inflammatory/ immunomodulatory stroke therapies. As discussed above, several clinical trials have been
17 initiated using Enlimomab (anti-ICAM-1 antibody), Natalizumab (anti-CD49d) or Fingolimod (FTY720).
18 While Fingolimod (FTY720) could reduce the infarct volume and improve recovery, Natalizumab and
19 enlimomab failed to show an effect on their primary endpoints (Fu et al., 2015) (Elkins et al., 2017)
20 (Enlimomab Acute Stroke Trial Investigators, 2001). One of the reasons for these discrepancies might be
21 due to the incomplete concept that lymphocytes infiltrate the brain mainly via the transendothelial
22 route of parenchymal capillaries, without considering the meninges and ChP. Natalizumab and
23 Enlimomab aimed to block the lymphocyte entrance to the CNS by blocking specific adhesion molecules
24 required for transendothelial migration across parenchymal vessels. However, VCAM as well as ICAM-1
25 are not expressed on ChP EC (Steffen et al., 1996). Hence, lymphocytes in the ChP vasculature have no
26 access to these adhesion molecules and blocking of these will not affect the ChP infiltration route
27 (Benakis et al., 2018). In contrast, Fingolimod works by promoting lymphocyte retention in the thymus
28 and lymph nodes (Mandala et al., 2002) and thus reduces the number of circulating lymphocytes
29 independently of adhesion molecules expression at the various migration routes, which might explain
30 why currently the only positive results on treatment efficacy are obtained with this drug in patients with
31 stroke (Benakis et al., 2018). This could also explain the promising results obtained with minocycline
32 treatment. Indeed, minocycline exerts anti-inflammatory effects on several targets, notably microglial
33 activation, which do not depend on the migration route of peripheral immune cells (Malhotra et al.,
34 2018). Thus, therapeutic targets should then be identified by focusing on compounds which act directly
35 on circulating immune cells rather than on the different adhesion molecules, to maximize effectiveness
36 across all of the entry pathways.

37

38 iv) Factors affecting stroke outcome:

39 Last, but no less important, several factors affecting stroke outcome are usually neglected in
40 stroke preclinical research from an inflammatory perspective. In this review, we are going to summarize
41 some of them: gender differences, ageing, pre-stroke infections, comorbidities such as hypertension and

1 diabetes, and external factors related to daily life e.g. obesity, tobacco and alcohol consumption. In our
2 opinion, inclusion of these comorbidities in preclinical research would increase the value, robustness
3 and translational potential of the results.

4 As can be seen in the literature reviewed in this paper, the vast majority of the preclinical data
5 has been obtained in young male mice/rats. However, while stroke in general is more common in men
6 than women within the young and middle-aged population, women have a higher lifetime risk of stroke
7 than men (20% to 21% versus 14% to 17 %) with poorer functional outcomes (Guzik and Bushnell, 2017).
8 Furthermore, the risk of stroke in women is correlated with ageing, particularly after 65 years compared
9 to men (Appelros et al., 2009). This could partially explain women having more severe ischemic stroke in
10 addition to age- related factors such as atrial fibrillation (Phan et al., 2019) (Marzona et al., 2018).

11 Regarding the preclinical data, it has been shown in rodents, that premenopausal females
12 exhibit smaller infarct sizes than age-matched males. Estrogen, the primary ovarian hormone has been
13 described as a key element as the treatment with this hormone in the male or ovariectomized animals
14 has shown to reduce infarct and neuronal death following ischemia and to decrease proinflammatory
15 cytokines (Wise et al., 2001) (Liu et al 2012; Wise et al 2001). Thus, besides the hormonal changes
16 observed with estrus cycle, evidence as well as the STAIR recommendations (Fisher and Stroke Therapy
17 Academic Industry Roundtable, 2003), indicate gender as an important biological variable to be
18 addressed in stroke research.

19 As aforementioned, most of the preclinical stroke data has been obtained in young and healthy
20 animals and to date, studies on the effectiveness of anti-inflammatory/immunomodulatory drugs in co-
21 morbid animals are limited. Concerning the drugs reviewed here (see table 1), there is only one study on
22 the effects of Anakinra in young vs aged and Corpulent rats (a model of atherosclerosis, obesity and
23 insulin resistance) (Pradillo et al., 2017), and another one on Minocycline in hypertensive rats (Yang et
24 al., 2015), and one on Natalizumab in hypertensive rats (Relton et al., 2001). These studies have been
25 performed on the transient MCAO model of stroke and have shown beneficial effects of the tested drug
26 in these co-morbid animals.

27 With the life expectancy increase of the population, ageing has become a principal risk factor for
28 ischemic stroke, with incidence rates accelerating exponentially above 70 years (Sandu et al., 2017).
29 Interestingly, the neuroprotection has been related to anti-inflammation in young brain but related to
30 proinflammation in the aged brain, with reduced microglial proliferation, attenuated macrophage
31 cytokine production, and recruitment of macrophages in ischemic injury (Kim and Cho, 2016). Ageing
32 has impact on immune cells; it is well known that aging is associated with an increase in basal
33 inflammation in the CNS, overall decline in cognitive function, and poorer recovery following injury.
34 Aged rodents had increased brain injury and increased CD8+ T cells in the aged CNS were associated
35 with compromised proinflammatory functions in microglia. The primed microglia increased the
36 inflammation and leukocyte recruitment in the brain following stroke in a gender independent manner
37 (Ritzel et al., 2016). Consistent with this evidence, several *in vivo* studies have shown that brain of aged
38 mice have increased proinflammatory and decreased anti-inflammatory profiles (Tang et al., 2014) or
39 increased numbers of M2 macrophages in lymph nodes, bone marrow and spleen (Jackaman et al.,
40 2013) (Kim and Cho, 2016).

41 Another risk factor related to stroke is infection preceding stroke. Thromboinflammatory
42 (platelet-mediated) processes beyond infection are likely to be an important contributor to stroke

1 pathophysiology. Although several infections are documented to increase stroke risk, such as *Herpes*
2 *simplex* 1 and 2, cytomegalovirus, Epstein-Barr virus, *Haemophilus influenzae*; or *Mycoplasma pneumoniae*
3 and *Helicobacter pylori*, controversial results are also found. For instance, by the results obtained in the
4 Northern Manhattan Study, it is described that patients with high chronic infectious burden showed 1.4-
5 fold increased risk of stroke (Elkind et al., 2010). However, others have not replicated the results (Palm
6 et al., 2016) (Parikh et al., 2020). More recently, although additional research is required, Covid-19
7 infection has been shown to increase the risk (or probability) of stroke as well. Several studies have been
8 conducted in China. For instance, a retrospective study of data from the Covid-19 outbreak in Wuhan,
9 China, showed that the incidence of stroke among hospitalized Covid-19 patients was approximately 5%.
10 Another retrospective study has shown that among 221 patients with Covid-19, 13 (5.9%) developed
11 cerebrovascular diseases after the infection. Out of these patients, 11 (84.6%) were diagnosed with
12 ischemic stroke. Another study has reported that cryptogenic stroke was confirmed in 32 of 3556
13 hospitalized patients with positive Covid-19 test. (Qin et al., 2020) (Oxley et al., 2020) (Mao et al., 2020).
14 Other countries have shown evidences on this line as well, like the observational study conducted in
15 New York, in which 32 (0.9%) ,out of 3556 hospitalized patients with diagnosis of Covid-19 infection, had
16 imaging-proven ischemic stroke (Yaghi et al., 2020). A retrospective cohort study from two New York
17 City academic hospitals, approximately 1.6% of adults with COVID-19 who visited the emergency
18 department or were hospitalized experienced ischemic stroke (Merkler et al., 2020). Other study
19 conducted in Italy has shown that among 388 patients with confirmed COVID-19, 9 patients experienced
20 ischemic stroke (Lodigiani et al., 2020). Data from a Spanish hospital has shown that the incidence of
21 CVD among the patients with COVID-19 infection was 1.4% of which the 73.9% were classified as
22 cerebral ischemia (Hernández-Fernández et al., 2020). Thus, even if more research in the field is needed,
23 the presence of infectious diseases seems to be a factor to be taken into account as well, while working
24 in stroke therapies.

25 Besides gender and aging, there are several modifiable comorbidities related to stroke that
26 should also be considered. For instance, hypertension is the most common modifiable risk factor for
27 stroke, affecting about one-third of US adults over 20 years. Although most of them are aware, only
28 about half have blood pressure controlled regularly (Guzik and Bushnell, 2017). Hypertension increases
29 endothelial oxidative stress and inflammation, and it leads to worse stroke outcomes and higher
30 mortality. Studies investigating the underlying pathophysiology of hypertension indicate the
31 involvement of neuroimmune interactions (Kim and Cho, 2016), but mechanisms linking the immune
32 responses to hypertension are still vague. The inclusion of rodent models of hypertension, such as
33 spontaneously hypertensive rats (SHR), salt-induced hypertension model, or Angiotensin II-induced
34 hypertension model (Lopez Gelston and Mitchell, 2017), in stroke preclinical research would help to
35 correct translation of the data to RCT.

36 Similarly, disorders of glucose metabolism are major risk factors for stroke, including type 1 and
37 type 2 diabetes mellitus (Guzik and Bushnell, 2017). These disorders are highly prevalent in patients with
38 stroke: 25 % to 45 % of the patients have diabetes mellitus (Kernan et al., 2014). Data on diabetic
39 patients in stroke clinical trials are missing. Meta-analysis of prospective studies showed a hazard ratio
40 of 2.27 for ischemic stroke in diabetics compared to non-diabetics (Emerging Risk Factors Collaboration
41 et al., 2010). Furthermore, diabetes has also shown a Hazard Ratio of 1.59 for stroke recurrence (Kaplan
42 et al., 2005). In animal models, acute hyperglycemia immediately before or during ischemia exacerbates
43 the ischemic brain injury. Elevated proinflammatory cytokines; tumor necrosis factor- α (TNF- α),

1 interleukin-1 (IL-1), interleukin-6 (IL-6), and interferon- γ (IFN- γ), as well as altered activation of
2 macrophages, T cells, natural killer cells, and other immune cell populations are associated with major
3 comorbidities (including diabetes) for stroke (Shukla et al., 2017).

4 Regarding the life style of the actual society, there are several habits that influence on stroke
5 risk from the inflammatory point of view, which cannot be neglected. Obesity, characterized by a body
6 mass index (BMI) of at least 30kg/m², is largely a consequence of fat-rich diet and physical inactivity and
7 is associated with several risk factors including inflammation, metabolic syndrome, hypertension,
8 diabetes and hypercholesterolaemia (Sandu et al., 2017). It has been demonstrated that obesity
9 increases levels of pro-inflammatory mediators such as Interleukin 6 or C-reactive protein, causing a
10 chronic inflammation, which is linked to a higher stroke risk and worse outcome (Haley and Lawrence,
11 2016). Efforts are being done to improve the stroke translational research. For instance, Pradillo et al
12 (Pradillo et al., 2017) reported the improvement of stroke outcome through the administration of the IL-
13 1Ra after stroke in control and overweight Wistar rats.

14 Other life-style risk factors are tobacco and alcohol consumption. It is well known that current
15 smokers have more than doubled risk of stroke, with an apparent dose-response relationship seen
16 (Guzik and Bushnell, 2017). Focusing on alcohol consumption, alcohol has emerged as a potentially
17 important factor with a J- or U-shaped association to stroke risk. Epidemiological studies suggest that
18 low-moderate ethanol intake lowers the incidence of ischemic stroke, reduces mortality and infarct
19 volume from ischemic stroke, whereas heavy ethanol consumption increases the incidence of ischemic
20 stroke and worsens the prognosis of ischemic stroke. Chronic ethanol consumption dose-dependently
21 affects both incidence and prognosis of stroke (Xu et al., 2019). Although the association between
22 alcohol and cardiovascular diseases has been a point of interest since 3 decades ago, there are still
23 considerable gaps in this area. Heavy alcohol consumption >2 drinks/day on average in midlife increases
24 stroke risk, especially shortly after baseline (on average 50 years) until the age of 75 years, and may
25 shorten time to stroke by \approx 5 years regardless of familial and other common confounds. Although often
26 neglected as a risk factor, heavy drinking in midlife is at least comparable with well-known risk factors of
27 stroke such as diabetes mellitus or hypertension (Kadlecová et al., 2015). Studies in animal models have
28 shown that ethanol may affect both basal and post-ischemic inflammatory profile in the brain (Drieu et
29 al., 2020). In a recent translational study, the chronic exposure to alcohol in both humans and mice has
30 shown to exacerbate ischemic lesions (Drieu et al., 2020). The preclinical results of this study have
31 shown that alcohol consumption itself provokes a neurovascular inflammatory priming. The term
32 “priming” is used to describe the propensity of a particular cell type to make an exaggerated response to
33 a secondary stimulus at the parenchymal, perivascular and vascular levels whose consequence could be
34 the exacerbated response to the ischemic injuries. In humans, chronic alcohol drinking (\geq 6 drinks/day in
35 the last 5 years) has been independently associated (a) to stroke severity baseline, (b) to early
36 neurological deterioration (END, defined as the increase of NIHSS in \geq 4 in the first 48 hours after
37 admission), and (c) to higher infarct volume in stroke patients. Beyond the significance of these results
38 on alcohol consumption and stroke outcome, these results highlight the decisive impact of the “basal”
39 inflammatory state preceding stroke.

40

41 6. Conclusions

1 We must acknowledge that we are still far from the complete understanding of the role of
2 inflammation and immune responses to stroke. Several studies have described the inflammatory and
3 immune responses after stroke in different experimental models (Gelderblom et al., 2009; Zhou et al.
4 2013, Drieu et al., 2020) and humans and it is undeniable that neuroinflammation and immune
5 responses are present minutes after stroke onset and last for months or even years. Moreover, anti-
6 inflammatory and immunomodulatory therapies have shown beneficial effects in some of the
7 experimental models (in particular, in the intraluminal filament model). Some of these molecules have
8 been tested in RCT but have failed to show positive results in stroke patients. This fact suggests that the
9 mechanisms through which inflammatory processes contribute to injury after stroke are not well
10 understood and could reflect a mismatch between the burden of inflammation in these particular
11 experimental models and in stroke patients. It is also possible that the different experimental
12 approaches actually model different aspects of the disease, which highlights the importance of testing
13 drugs in several clinically relevant experimental models before their translation to clinical trials. In the
14 past years, several studies have followed this guideline (Martinez de Lizarrondo et al., 2017; Llovera et
15 al., 2015). Furthermore, the development of multicenter preclinical studies would help to definitely
16 confirm the potential preclinical positive results before proceeding to clinical trials. Moreover, the
17 burden of comorbidities (ageing, inflammatory states preceding stroke, etc) is often neglected in
18 experimental studies and, thus, far from the clinical reality of stroke patients. Therefore, we encourage
19 scientists to increase the knowledge in this field, before going ahead to clinical research.

20 We need to better understand the involvement of inflammation/ immune system in stroke with
21 the final aim of modulating it and improving the pharmacological approaches available. For this, the
22 choice of clinically relevant experimental models of stroke; the inclusion of measurements including
23 acute but also long-term quantification of infarct volume and behavioral outcome; performing
24 multicenter studies; and the inclusion of coexisting risk factors, are mandatory before considering the
25 translation of a new stroke therapy into randomized clinical trials. In conclusion, in our opinion, as well
26 as other authors', (Chamorro et al., 2016) (Shi et al., 2019), all the above-mentioned parameters should
27 be considered when working in the stroke preclinical and clinical research field. This will improve the
28 liability and translational strength of the results.

29

30

1
2
3
4
5
6
7
8
9
10
11
12
13
14
15

Acknowledgements

MG is a PhD student from the European Union’s Horizon 2020 research and innovation programme under the Marie Skłodowska-Curie grant agreement No. 813294. DL and AL are PhD students from the Region Normandie.

1 7. Bibliographic references
2

- 3 Anrather, J., Iadecola, C., 2016. Inflammation and Stroke: An Overview. *Neurother. J. Am. Soc.*
4 *Exp. Neurother.* 13, 661–670. <https://doi.org/10.1007/s13311-016-0483-x>
- 5 Ansar, S., Chatzikonstantinou, E., Wistuba-Schier, A., Mirau-Weber, S., Fatar, M., Hennerici,
6 M.G., Meairs, S., 2014. Characterization of a new model of thromboembolic stroke in
7 C57 black/6J mice. *Transl. Stroke Res.* 5, 526–533. [https://doi.org/10.1007/s12975-013-](https://doi.org/10.1007/s12975-013-0315-9)
8 0315-9
- 9 Appelros, P., Stegmayr, B., Terént, A., 2009. Sex differences in stroke epidemiology: a
10 systematic review. *Stroke* 40, 1082–1090.
11 <https://doi.org/10.1161/STROKEAHA.108.540781>
- 12 Aras, M., Urfalı, B., Serarslan, Y., Ozgür, T., Ulutaş, K.T., Urfalı, S., Altaş, M., Yılmaz, N.,
13 2013. Protective effects of minocycline against short-term ischemia-reperfusion injury in
14 rat brain. *Pediatr. Neurosurg.* 49, 172–178. <https://doi.org/10.1159/000362202>
- 15 Becker, A.M., Meyers, E., Sloan, A., Rennaker, R., Kilgard, M., Goldberg, M.P., 2016. An
16 automated task for the training and assessment of distal forelimb function in a mouse
17 model of ischemic stroke. *J. Neurosci. Methods* 258, 16–23.
18 <https://doi.org/10.1016/j.jneumeth.2015.10.004>
- 19 Becker, K., Kindrick, D., Relton, J., Harlan, J., Winn, R., 2001. Antibody to the alpha4 integrin
20 decreases infarct size in transient focal cerebral ischemia in rats. *Stroke* 32, 206–211.
21 <https://doi.org/10.1161/01.str.32.1.206>
- 22 Benakis, C., Brea, D., Caballero, S., Faraco, G., Moore, J., Murphy, M., Sita, G., Racchumi, G.,
23 Ling, L., Pamer, E.G., Iadecola, C., Anrather, J., 2016. Commensal microbiota affects
24 ischemic stroke outcome by regulating intestinal $\gamma\delta$ T cells. *Nat. Med.* 22, 516–523.
25 <https://doi.org/10.1038/nm.4068>
- 26 Benakis, C., Llovera, G., Liesz, A., 2018. The meningeal and choroidal infiltration routes for
27 leukocytes in stroke. *Ther. Adv. Neurol. Disord.* 11, 1756286418783708.
28 <https://doi.org/10.1177/1756286418783708>
- 29 Bonnard, T., Hagemeyer, C.E., 2015. Ferric Chloride-induced Thrombosis Mouse Model on
30 Carotid Artery and Mesentery Vessel. *J. Vis. Exp. JoVE* e52838.
31 <https://doi.org/10.3791/52838>
- 32 Brunkhorst, R., Kanaan, N., Koch, A., Ferreirós, N., Mirceska, A., Zeiner, P., Mittelbronn, M.,
33 Derouiche, A., Steinmetz, H., Foerch, C., Pfeilschifter, J., Pfeilschifter, W., 2013.
34 FTY720 treatment in the convalescence period improves functional recovery and reduces
35 reactive astrogliosis in photothrombotic stroke. *PloS One* 8, e70124.
36 <https://doi.org/10.1371/journal.pone.0070124>
- 37 Buscemi, L., Price, M., Bezzi, P., Hirt, L., 2019. Spatio-temporal overview of
38 neuroinflammation in an experimental mouse stroke model. *Sci. Rep.* 9, 507.
39 <https://doi.org/10.1038/s41598-018-36598-4>
- 40 Buslovich, S., Hines, G.L., 2011. Spontaneous recanalization of chronic internal carotid artery
41 occlusions: report of 3 cases. *Vasc. Endovascular Surg.* 45, 93–97.
42 <https://doi.org/10.1177/1538574410380792>
- 43 Cai, A., Schlunk, F., Bohmann, F., Kashfiolasl, S., Brunkhorst, R., Foerch, C., Pfeilschifter, W.,
44 2013. Coadministration of FTY720 and rt-PA in an experimental model of large
45 hemispheric stroke-no influence on functional outcome and blood-brain barrier
46 disruption. *Exp. Transl. Stroke Med.* 5, 11. <https://doi.org/10.1186/2040-7378-5-11>

- 1 Cai, W., Liu, S., Hu, M., Huang, F., Zhu, Q., Qiu, W., Hu, X., Colello, J., Zheng, S.G., Lu, Z.,
2 2020. Functional Dynamics of Neutrophils After Ischemic Stroke. *Transl. Stroke Res.* 11,
3 108–121. <https://doi.org/10.1007/s12975-019-00694-y>
- 4 Cai, Z., Lin, S., Fan, L.-W., Pang, Y., Rhodes, P.G., 2006. Minocycline alleviates hypoxic-
5 ischemic injury to developing oligodendrocytes in the neonatal rat brain. *Neuroscience*
6 137, 425–435. <https://doi.org/10.1016/j.neuroscience.2005.09.023>
- 7 Cai, Z.-Y., Yan, Y., Chen, R., 2010. Minocycline reduces astrocytic reactivation and
8 neuroinflammation in the hippocampus of a vascular cognitive impairment rat model.
9 *Neurosci. Bull.* 26, 28–36. <https://doi.org/10.1007/s12264-010-0818-2>
- 10 Cai, Z.-Y., Yan, Y., Sun, S.-Q., Zhang, J., Huang, L.-G., Yan, N., Wu, F., Li, J.-Y., 2008.
11 Minocycline attenuates cognitive impairment and restrains oxidative stress in the
12 hippocampus of rats with chronic cerebral hypoperfusion. *Neurosci. Bull.* 24, 305–313.
13 <https://doi.org/10.1007/s12264-008-0324-y>
- 14 Campos, F., Qin, T., Castillo, J., Seo, J.H., Arai, K., Lo, E.H., Waeber, C., 2013. Fingolimod
15 reduces hemorrhagic transformation associated with delayed tissue plasminogen activator
16 treatment in a mouse thromboembolic model. *Stroke* 44, 505–511.
17 <https://doi.org/10.1161/STROKEAHA.112.679043>
- 18 Cardoso, M.M., Franco, E.C.S., de Souza, C.C., da Silva, M.C., Gouveia, A., Gomes-Leal, W.,
19 2013. Minocycline treatment and bone marrow mononuclear cell transplantation after
20 endothelin-1 induced striatal ischemia. *Inflammation* 36, 197–205.
21 <https://doi.org/10.1007/s10753-012-9535-5>
- 22 Casetta, I., Fainardi, E., Saia, V., Pracucci, G., Padroni, M., Renieri, L., Nencini, P., Inzitari, D.,
23 Morosetti, D., Sallustio, F., Vallone, S., Bigliardi, G., Zini, A., Longo, M., Francalanza,
24 I., Bracco, S., Vallone, I.M., Tassi, R., Bergui, M., Naldi, A., Saletti, A., De Vito, A.,
25 Gasparotti, R., Magoni, M., Castellani, L., Serrati, C., Menozzi, R., Scoditti, U., Causin,
26 F., Pieroni, A., Puglielli, E., Casalena, A., Sanna, A., Ruggiero, M., Cordici, F., Di
27 Maggio, L., Duc, E., Cosottini, M., Giannini, N., Sanfilippo, G., Zappoli, F., Cavallini,
28 A., Cavasin, N., Critelli, A., Ciceri, E., Plebani, M., Cappellari, M., Chiumarulo, L.,
29 Petruzzellis, M., Terrana, A., Cariddi, L.P., Burdi, N., Tinelli, A., Auteri, W., Silvagni,
30 U., Biraschi, F., Nicolini, E., Padolecchia, R., Tassinari, T., Filauri, P., Sacco, S., Pavia,
31 M., Invernizzi, P., Nuzzi, N.P., Marcheselli, S., Amistà, P., Russo, M., Gallesio, I.,
32 Craparo, G., Mannino, M., Mangiafico, S., Toni, D., Italian Registry of Endovascular
33 Treatment in Acute Stroke, 2020. Endovascular Thrombectomy for Acute Ischemic
34 Stroke Beyond 6 Hours From Onset: A Real-World Experience. *Stroke* 51, 2051–2057.
35 <https://doi.org/10.1161/STROKEAHA.119.027974>
- 36 Cassidy, J.M., Cramer, S.C., 2017. Spontaneous and Therapeutic-Induced Mechanisms of
37 Functional Recovery After Stroke. *Transl. Stroke Res.* 8, 33–46.
38 <https://doi.org/10.1007/s12975-016-0467-5>
- 39 Chamorro, Á., Dirnagl, U., Urra, X., Planas, A.M., 2016. Neuroprotection in acute stroke:
40 targeting excitotoxicity, oxidative and nitrosative stress, and inflammation. *Lancet*
41 *Neurol.* 15, 869–881. [https://doi.org/10.1016/S1474-4422\(16\)00114-9](https://doi.org/10.1016/S1474-4422(16)00114-9)
- 42 Cho, K.-O., La, H.O., Cho, Y.-J., Sung, K.-W., Kim, S.Y., 2006. Minocycline attenuates white
43 matter damage in a rat model of chronic cerebral hypoperfusion. *J. Neurosci. Res.* 83,
44 285–291. <https://doi.org/10.1002/jnr.20727>
- 45 Chu, H.X., Kim, H.A., Lee, S., Moore, J.P., Chan, C.T., Vinh, A., Gelderblom, M., Arumugam,
46 T.V., Broughton, B.R.S., Drummond, G.R., Sobey, C.G., 2014. Immune cell infiltration

1 in malignant middle cerebral artery infarction: comparison with transient cerebral
2 ischemia. *J. Cereb. Blood Flow Metab. Off. J. Int. Soc. Cereb. Blood Flow Metab.* 34,
3 450–459. <https://doi.org/10.1038/jcbfm.2013.217>

4 Chu, L.-S., Fang, S.-H., Zhou, Y., Yu, G.-L., Wang, M.-L., Zhang, W.-P., Wei, E.-Q., 2007.
5 Minocycline inhibits 5-lipoxygenase activation and brain inflammation after focal
6 cerebral ischemia in rats. *Acta Pharmacol. Sin.* 28, 763–772.
7 <https://doi.org/10.1111/j.1745-7254.2007.00578.x>

8 Cook, D.J., Tymianski, M., 2011. Translating promising preclinical neuroprotective therapies to
9 human stroke trials. *Expert Rev. Cardiovasc. Ther.* 9, 433–449.
10 <https://doi.org/10.1586/erc.11.34>

11 Czech, B., Pfeilschifter, W., Mazaheri-Omrani, N., Strobel, M.A., Kahles, T., Neumann-
12 Haefelin, T., Rami, A., Huwiler, A., Pfeilschifter, J., 2009. The immunomodulatory
13 sphingosine 1-phosphate analog FTY720 reduces lesion size and improves neurological
14 outcome in a mouse model of cerebral ischemia. *Biochem. Biophys. Res. Commun.* 389,
15 251–256. <https://doi.org/10.1016/j.bbrc.2009.08.142>

16 Dávalos, A., Alvarez-Sabín, J., Castillo, J., Díez-Tejedor, E., Ferro, J., Martínez-Vila, E., Serena,
17 J., Segura, T., Cruz, V.T., Masjuan, J., Cobo, E., Secades, J.J., International Citicoline
18 Trial on acUte Stroke (ICTUS) trial investigators, 2012. Citicoline in the treatment of
19 acute ischaemic stroke: an international, randomised, multicentre, placebo-controlled
20 study (ICTUS trial). *Lancet Lond. Engl.* 380, 349–357. [https://doi.org/10.1016/S0140-6736\(12\)60813-7](https://doi.org/10.1016/S0140-6736(12)60813-7)

21

22 De Meyer, S.F., Denorme, F., Langhauser, F., Geuss, E., Fluri, F., Kleinschnitz, C., 2016.
23 Thromboinflammation in Stroke Brain Damage. *Stroke* 47, 1165–1172.
24 <https://doi.org/10.1161/STROKEAHA.115.011238>

25 del Zoppo, G.J., 2010. The neurovascular unit in the setting of stroke. *J. Intern. Med.* 267, 156–
26 171. <https://doi.org/10.1111/j.1365-2796.2009.02199.x>

27 Dhanesha, N., Jain, M., Tripathi, A., Doddapattar, P., Chorawala, M., Bathla, G., Nayak, M.K.,
28 Ghatge, M., Lentz, S.R., Kon, S., Chauhan, A.K., 2020. Targeting Myeloid-Specific
29 Integrin $\alpha 9\beta 1$ Improves Short and Long-Term Stroke Outcomes in Murine Models With
30 Preexisting Comorbidities by Limiting Thrombosis And Inflammation. *Circ. Res.*
31 <https://doi.org/10.1161/CIRCRESAHA.120.316659>

32 Dreikorn, M., Milacic, Z., Pavlovic, V., Meuth, S.G., Kleinschnitz, C., Kraft, P., 2018.
33 Immunotherapy of experimental and human stroke with agents approved for multiple
34 sclerosis: a systematic review. *Ther. Adv. Neurol. Disord.* 11, 1756286418770626.
35 <https://doi.org/10.1177/1756286418770626>

36 Drieu, A., Buendia, I., Levard, D., Hélie, P., Brodin, C., Vivien, D., Rubio, M., 2020a. Immune
37 Responses and Anti-inflammatory Strategies in a Clinically Relevant Model of
38 Thromboembolic Ischemic Stroke with Reperfusion. *Transl. Stroke Res.* 11, 481–495.
39 <https://doi.org/10.1007/s12975-019-00733-8>

40 Drieu, A., Lanquetin, A., Levard, D., Glavan, M., Campos, F., Quenault, A., Lemarchand, E.,
41 Naveau, M., Pitel, A.L., Castillo, J., Vivien, D., Rubio, M., 2020b. Alcohol exposure-
42 induced neurovascular inflammatory priming impacts ischemic stroke and is linked with
43 brain perivascular macrophages. *JCI Insight* 5. <https://doi.org/10.1172/jci.insight.129226>

44 Drieu, A., Levard, D., Vivien, D., Rubio, M., 2018. Anti-inflammatory treatments for stroke:
45 from bench to bedside. *Ther. Adv. Neurol. Disord.* 11, 1756286418789854.
46 <https://doi.org/10.1177/1756286418789854>

- 1 Dupont, A.-C., Largeau, B., Santiago Ribeiro, M.J., Guilloteau, D., Tronel, C., Arlicot, N., 2017.
2 Translocator Protein-18 kDa (TSPO) Positron Emission Tomography (PET) Imaging and
3 Its Clinical Impact in Neurodegenerative Diseases. *Int. J. Mol. Sci.* 18.
4 <https://doi.org/10.3390/ijms18040785>
- 5 Elkind, M.S.V., Ramakrishnan, P., Moon, Y.P., Boden-Albala, B., Liu, K.M., Spitalnik, S.L.,
6 Rundek, T., Sacco, R.L., Paik, M.C., 2010. Infectious burden and risk of stroke: the
7 northern Manhattan study. *Arch. Neurol.* 67, 33–38.
8 <https://doi.org/10.1001/archneurol.2009.271>
- 9 Elkins, J., Veltkamp, R., Montaner, J., Johnston, S.C., Singhal, A.B., Becker, K., Lansberg,
10 M.G., Tang, W., Chang, I., Muralidharan, K., Gheuens, S., Mehta, L., Elkind, M.S.V.,
11 2017. Safety and efficacy of natalizumab in patients with acute ischaemic stroke
12 (ACTION): a randomised, placebo-controlled, double-blind phase 2 trial. *Lancet Neurol.*
13 16, 217–226. [https://doi.org/10.1016/S1474-4422\(16\)30357-X](https://doi.org/10.1016/S1474-4422(16)30357-X)
- 14 Emerging Risk Factors Collaboration, Sarwar, N., Gao, P., Seshasai, S.R.K., Gobin, R., Kaptoge,
15 S., Di Angelantonio, E., Ingelsson, E., Lawlor, D.A., Selvin, E., Stampfer, M.,
16 Stehouwer, C.D.A., Lewington, S., Pennells, L., Thompson, A., Sattar, N., White, I.R.,
17 Ray, K.K., Danesh, J., 2010. Diabetes mellitus, fasting blood glucose concentration, and
18 risk of vascular disease: a collaborative meta-analysis of 102 prospective studies. *Lancet*
19 *Lond. Engl.* 375, 2215–2222. [https://doi.org/10.1016/S0140-6736\(10\)60484-9](https://doi.org/10.1016/S0140-6736(10)60484-9)
- 20 Emsley, H.C.A., Smith, C.J., Georgiou, R.F., Vail, A., Hopkins, S.J., Rothwell, N.J., Tyrrell,
21 P.J., Acute Stroke Investigators, 2005. A randomised phase II study of interleukin-1
22 receptor antagonist in acute stroke patients. *J. Neurol. Neurosurg. Psychiatry* 76, 1366–
23 1372. <https://doi.org/10.1136/jnnp.2004.054882>
- 24 Enlimomab Acute Stroke Trial Investigators, 2001. Use of anti-ICAM-1 therapy in ischemic
25 stroke: results of the Enlimomab Acute Stroke Trial. *Neurology* 57, 1428–1434.
26 <https://doi.org/10.1212/wnl.57.8.1428>
- 27 Faheem, H., Mansour, A., Elkordy, A., Rashad, S., Shebl, M., Madi, M., Elwy, S., Niizuma, K.,
28 Tominaga, T., 2019. Neuroprotective effects of minocycline and progesterone on white
29 matter injury after focal cerebral ischemia. *J. Clin. Neurosci. Off. J. Neurosurg. Soc.*
30 *Australas.* 64, 206–213. <https://doi.org/10.1016/j.jocn.2019.04.012>
- 31 Feng, Y., Liao, S., Wei, C., Jia, D., Wood, K., Liu, Q., Wang, X., Shi, F.-D., Jin, W.-N., 2017.
32 Infiltration and persistence of lymphocytes during late-stage cerebral ischemia in middle
33 cerebral artery occlusion and photothrombotic stroke models. *J. Neuroinflammation* 14,
34 248. <https://doi.org/10.1186/s12974-017-1017-0>
- 35 Fisher, M., Stroke Therapy Academic Industry Roundtable, 2003. Recommendations for
36 advancing development of acute stroke therapies: Stroke Therapy Academic Industry
37 Roundtable 3. *Stroke* 34, 1539–1546.
38 <https://doi.org/10.1161/01.STR.0000072983.64326.53>
- 39 Fletcher, B.D., 1978. Medial herniation of the parietal pleura: a useful sign of pneumothorax in
40 supine neonates. *AJR Am. J. Roentgenol.* 130, 469–472.
41 <https://doi.org/10.2214/ajr.130.3.469>
- 42 Fluri, F., Schuhmann, M.K., Kleinschnitz, C., 2015. Animal models of ischemic stroke and their
43 application in clinical research. *Drug Des. Devel. Ther.* 9, 3445–3454.
44 <https://doi.org/10.2147/DDDT.S56071>
- 45 Fu, Y., Liu, Q., Anrather, J., Shi, F.-D., 2015. Immune interventions in stroke. *Nat. Rev. Neurol.*
46 11, 524–535. <https://doi.org/10.1038/nrneurol.2015.144>

- 1 Fu, Y., Zhang, N., Ren, L., Yan, Y., Sun, N., Li, Y.-J., Han, W., Xue, R., Liu, Q., Hao, J., Yu,
2 C., Shi, F.-D., 2014. Impact of an immune modulator Fingolimod on acute ischemic
3 stroke. *Proc. Natl. Acad. Sci. U. S. A.* 111, 18315–18320.
4 <https://doi.org/10.1073/pnas.1416166111>
- 5 Gadani, S.P., Walsh, J.T., Lukens, J.R., Kipnis, J., 2015. Dealing with Danger in the CNS: The
6 Response of the Immune System to Injury. *Neuron* 87, 47–62.
7 <https://doi.org/10.1016/j.neuron.2015.05.019>
- 8 Garcia, J.H., Liu, K.F., Relton, J.K., 1995. Interleukin-1 receptor antagonist decreases the
9 number of necrotic neurons in rats with middle cerebral artery occlusion. *Am. J. Pathol.*
10 147, 1477–1486.
- 11 Gauberti, M., Lapergue, B., Gory, B., 2019. Response by Gauberti et al to Letter Regarding
12 Article, “Ischemia-Reperfusion Injury After Endovascular Thrombectomy for Ischemic
13 Stroke.” *Stroke* 50, e99. <https://doi.org/10.1161/STROKEAHA.118.024503>
- 14 Gauberti, M., Lapergue, B., Martinez de Lizarrondo, S., Vivien, D., Richard, S., Bracard, S.,
15 Piotin, M., Gory, B., 2018. Ischemia-Reperfusion Injury After Endovascular
16 Thrombectomy for Ischemic Stroke. *Stroke* 49, 3071–3074.
17 <https://doi.org/10.1161/STROKEAHA.118.022015>
- 18 Gauberti, M., Martinez de Lizarrondo, S., Orset, C., Vivien, D., 2014. Lack of secondary
19 microthrombosis after thrombin-induced stroke in mice and non-human primates. *J.*
20 *Thromb. Haemost. JTH* 12, 409–414. <https://doi.org/10.1111/jth.12487>
- 21 Gauberti, Maxime, Montagne, A., Quenault, A., Vivien, D., 2014. Molecular magnetic resonance
22 imaging of brain-immune interactions. *Front. Cell. Neurosci.* 8, 389.
23 <https://doi.org/10.3389/fncel.2014.00389>
- 24 Ge, R., Tornero, D., Hirota, M., Monni, E., Laterza, C., Lindvall, O., Kokaia, Z., 2017. Choroid
25 plexus-cerebrospinal fluid route for monocyte-derived macrophages after stroke. *J.*
26 *Neuroinflammation* 14, 153. <https://doi.org/10.1186/s12974-017-0909-3>
- 27 Gelderblom, M., Arunachalam, P., Magnus, T., 2014. $\gamma\delta$ T cells as early sensors of tissue
28 damage and mediators of secondary neurodegeneration. *Front. Cell. Neurosci.* 8, 368.
29 <https://doi.org/10.3389/fncel.2014.00368>
- 30 Gelderblom, M., Leypoldt, F., Steinbach, K., Behrens, D., Choe, C.-U., Siler, D.A., Arumugam,
31 T.V., Orthey, E., Gerloff, C., Tolosa, E., Magnus, T., 2009. Temporal and spatial
32 dynamics of cerebral immune cell accumulation in stroke. *Stroke* 40, 1849–1857.
33 <https://doi.org/10.1161/STROKEAHA.108.534503>
- 34 Gerhard, A., Schwarz, J., Myers, R., Wise, R., Banati, R.B., 2005. Evolution of microglial
35 activation in patients after ischemic stroke: a [^{11}C](R)-PK11195 PET study. *NeuroImage*
36 24, 591–595. <https://doi.org/10.1016/j.neuroimage.2004.09.034>
- 37 Gherzi-Egea, J.-F., Strazielle, N., Catala, M., Silva-Vargas, V., Doetsch, F., Engelhardt, B.,
38 2018. Molecular anatomy and functions of the choroidal blood-cerebrospinal fluid barrier
39 in health and disease. *Acta Neuropathol. (Berl.)* 135, 337–361.
40 <https://doi.org/10.1007/s00401-018-1807-1>
- 41 Girard, S., Murray, K.N., Rothwell, N.J., Metz, G.A.S., Allan, S.M., 2014. Long-term functional
42 recovery and compensation after cerebral ischemia in rats. *Behav. Brain Res.* 270, 18–28.
43 <https://doi.org/10.1016/j.bbr.2014.05.008>
- 44 Gladstone, D.J., Black, S.E., Hakim, A.M., Heart and Stroke Foundation of Ontario Centre of
45 Excellence in Stroke Recovery, 2002. Toward wisdom from failure: lessons from

1 neuroprotective stroke trials and new therapeutic directions. *Stroke* 33, 2123–2136.
2 <https://doi.org/10.1161/01.str.0000025518.34157.51>

3 Goyal, M., Menon, B.K., van Zwam, W.H., Dippel, D.W.J., Mitchell, P.J., Demchuk, A.M.,
4 Dávalos, A., Majoie, C.B.L.M., van der Lugt, A., de Miquel, M.A., Donnan, G.A., Roos,
5 Y.B.W.E.M., Bonafe, A., Jahan, R., Diener, H.-C., van den Berg, L.A., Levy, E.I.,
6 Berkhemer, O.A., Pereira, V.M., Rempel, J., Millán, M., Davis, S.M., Roy, D., Thornton,
7 J., Román, L.S., Ribó, M., Beumer, D., Stouch, B., Brown, S., Campbell, B.C.V., van
8 Oostenbrugge, R.J., Saver, J.L., Hill, M.D., Jovin, T.G., HERMES collaborators, 2016.
9 Endovascular thrombectomy after large-vessel ischaemic stroke: a meta-analysis of
10 individual patient data from five randomised trials. *Lancet Lond. Engl.* 387, 1723–1731.
11 [https://doi.org/10.1016/S0140-6736\(16\)00163-X](https://doi.org/10.1016/S0140-6736(16)00163-X)

12 Guzik, A., Bushnell, C., 2017. *Stroke Epidemiology and Risk Factor Management*. Contin.
13 Minneap. Minn 23, 15–39. <https://doi.org/10.1212/CON.0000000000000416>

14 Haley, M.J., Lawrence, C.B., 2016. Obesity and stroke: Can we translate from rodents to
15 patients? *J. Cereb. Blood Flow Metab. Off. J. Int. Soc. Cereb. Blood Flow Metab.* 36,
16 2007–2021. <https://doi.org/10.1177/0271678X16670411>

17 Hasegawa, Y., Suzuki, H., Altay, O., Rolland, W., Zhang, J.H., 2013. Role of the sphingosine
18 metabolism pathway on neurons against experimental cerebral ischemia in rats. *Transl.*
19 *Stroke Res.* 4, 524–532. <https://doi.org/10.1007/s12975-013-0260-7>

20 Hasegawa, Y., Suzuki, H., Sozen, T., Rolland, W., Zhang, J.H., 2010. Activation of sphingosine
21 1-phosphate receptor-1 by FTY720 is neuroprotective after ischemic stroke in rats. *Stroke*
22 41, 368–374. <https://doi.org/10.1161/STROKEAHA.109.568899>

23 Hata, R., Maeda, K., Hermann, D., Mies, G., Hossmann, K.A., 2000. Evolution of brain
24 infarction after transient focal cerebral ischemia in mice. *J. Cereb. Blood Flow Metab.*
25 *Off. J. Int. Soc. Cereb. Blood Flow Metab.* 20, 937–946.
26 <https://doi.org/10.1097/00004647-200006000-00006>

27 Hayakawa, K., Mishima, K., Nozako, M., Hazekawa, M., Mishima, S., Fujioka, M., Orito, K.,
28 Egashira, N., Iwasaki, K., Fujiwara, M., 2008. Delayed treatment with minocycline
29 ameliorates neurologic impairment through activated microglia expressing a high-
30 mobility group box1-inhibiting mechanism. *Stroke* 39, 951–958.
31 <https://doi.org/10.1161/STROKEAHA.107.495820>

32 Hernández-Fernández, F., Valencia, H.S., Barbella-Aponte, R.A., Collado-Jiménez, R., Ayo-
33 Martín, Ó., Barrena, C., Molina-Nuevo, J.D., García-García, J., Lozano-Setién, E.,
34 Alcahut-Rodríguez, C., Martínez-Martín, Á., Sánchez-López, A., Segura, T., 2020.
35 Cerebrovascular disease in patients with COVID-19: neuroimaging, histological and
36 clinical description. *Brain J. Neurol.* <https://doi.org/10.1093/brain/awaa239>

37 Higgins, S.J., Burchell, J.M., Parker, M.G., Herries, D.G., 1978. Effects of testosterone on
38 sequence complexity of polyadenylated RNA from rat seminal vesicle. *Eur. J. Biochem.*
39 91, 327–334. <https://doi.org/10.1111/j.1432-1033.1978.tb12683.x>

40 Hoda, M.N., Fagan, S.C., Khan, M.B., Vaibhav, K., Chaudhary, A., Wang, P., Dhandapani,
41 K.M., Waller, J.L., Hess, D.C., 2014. A 2 × 2 factorial design for the combination therapy
42 of minocycline and remote ischemic preconditioning: efficacy in a preclinical trial in
43 murine thromboembolic stroke model. *Exp. Transl. Stroke Med.* 6, 10.
44 <https://doi.org/10.1186/2040-7378-6-10>

1 Hossmann, K.-A., 2012. The two pathophysiologies of focal brain ischemia: implications for
2 translational stroke research. *J. Cereb. Blood Flow Metab. Off. J. Int. Soc. Cereb. Blood*
3 *Flow Metab.* 32, 1310–1316. <https://doi.org/10.1038/jcbfm.2011.186>

4 Hossmann, K.-A., 2008. Cerebral ischemia: models, methods and outcomes.
5 *Neuropharmacology* 55, 257–270. <https://doi.org/10.1016/j.neuropharm.2007.12.004>

6 Howells, D.W., Porritt, M.J., Rewell, S.S.J., O’Collins, V., Sena, E.S., van der Worp, H.B.,
7 Traystman, R.J., Macleod, M.R., 2010. Different strokes for different folks: the rich
8 diversity of animal models of focal cerebral ischemia. *J. Cereb. Blood Flow Metab. Off.*
9 *J. Int. Soc. Cereb. Blood Flow Metab.* 30, 1412–1431.
10 <https://doi.org/10.1038/jcbfm.2010.66>

11 Iadecola, C., Anrather, J., 2011. The immunology of stroke: from mechanisms to translation.
12 *Nat. Med.* 17, 796–808. <https://doi.org/10.1038/nm.2399>

13 Jackaman, C., Radley-Crabb, H.G., Soffe, Z., Shavlakadze, T., Grounds, M.D., Nelson, D.J.,
14 2013. Targeting macrophages rescues age-related immune deficiencies in C57BL/6J
15 geriatric mice. *Aging Cell* 12, 345–357. <https://doi.org/10.1111/accel.12062>

16 Jayaraj, R.L., Azimullah, S., Beiram, R., Jalal, F.Y., Rosenberg, G.A., 2019. Neuroinflammation:
17 friend and foe for ischemic stroke. *J. Neuroinflammation* 16, 142.
18 <https://doi.org/10.1186/s12974-019-1516-2>

19 Jin, Z., Liang, J., Wang, J., Kolattukudy, P.E., 2015. MCP-induced protein 1 mediates the
20 minocycline-induced neuroprotection against cerebral ischemia/reperfusion injury in
21 vitro and in vivo. *J. Neuroinflammation* 12, 39. [https://doi.org/10.1186/s12974-015-0264-](https://doi.org/10.1186/s12974-015-0264-1)
22 [1](https://doi.org/10.1186/s12974-015-0264-1)

23 Kadlecová, P., Andel, R., Mikulík, R., Handing, E.P., Pedersen, N.L., 2015. Alcohol
24 consumption at midlife and risk of stroke during 43 years of follow-up: cohort and twin
25 analyses. *Stroke* 46, 627–633. <https://doi.org/10.1161/STROKEAHA.114.006724>

26 Kahle, M.P., Bix, G.J., 2012. Successfully Climbing the “STAIRs”: Surmounting Failed
27 Translation of Experimental Ischemic Stroke Treatments. *Stroke Res. Treat.* 2012,
28 374098. <https://doi.org/10.1155/2012/374098>

29 Kaplan, R.C., Tirschwell, D.L., Longstreth, W.T., Manolio, T.A., Heckbert, S.R., Lefkowitz, D.,
30 El-Saed, A., Psaty, B.M., 2005. Vascular events, mortality, and preventive therapy
31 following ischemic stroke in the elderly. *Neurology* 65, 835–842.
32 <https://doi.org/10.1212/01.wnl.0000176058.09848.bb>

33 Kernan, W.N., Ovbiagele, B., Black, H.R., Bravata, D.M., Chimowitz, M.I., Ezekowitz, M.D.,
34 Fang, M.C., Fisher, M., Furie, K.L., Heck, D.V., Johnston, S.C.C., Kasner, S.E., Kittner,
35 S.J., Mitchell, P.H., Rich, M.W., Richardson, D., Schwamm, L.H., Wilson, J.A.,
36 American Heart Association Stroke Council, Council on Cardiovascular and Stroke
37 Nursing, Council on Clinical Cardiology, and Council on Peripheral Vascular Disease,
38 2014. Guidelines for the prevention of stroke in patients with stroke and transient
39 ischemic attack: a guideline for healthcare professionals from the American Heart
40 Association/American Stroke Association. *Stroke* 45, 2160–2236.
41 <https://doi.org/10.1161/STR.0000000000000024>

42 Khandkar, C., Vaidya, K., Patel, S., 2019. Colchicine for Stroke Prevention: A Systematic
43 Review and Meta-analysis. *Clin. Ther.* 41, 582-590.e3.
44 <https://doi.org/10.1016/j.clinthera.2019.02.003>

- 1 Khatri, R., McKinney, A.M., Swenson, B., Janardhan, V., 2012. Blood-brain barrier, reperfusion
2 injury, and hemorrhagic transformation in acute ischemic stroke. *Neurology* 79, S52-57.
3 <https://doi.org/10.1212/WNL.0b013e3182697e70>
- 4 Kim, E., Cho, S., 2016. Microglia and Monocyte-Derived Macrophages in Stroke. *Neurother. J.*
5 *Am. Soc. Exp. Neurother.* 13, 702–718. <https://doi.org/10.1007/s13311-016-0463-1>
- 6 Kim, G.W., Sugawara, T., Chan, P.H., 2000. Involvement of oxidative stress and caspase-3 in
7 cortical infarction after photothrombotic ischemia in mice. *J. Cereb. Blood Flow Metab.*
8 *Off. J. Int. Soc. Cereb. Blood Flow Metab.* 20, 1690–1701.
9 <https://doi.org/10.1097/00004647-200012000-00008>
- 10 Kohler, E., Prentice, D.A., Bates, T.R., Hankey, G.J., Claxton, A., van Heerden, J., Blacker, D.,
11 2013. Intravenous minocycline in acute stroke: a randomized, controlled pilot study and
12 meta-analysis. *Stroke* 44, 2493–2499. <https://doi.org/10.1161/STROKEAHA.113.000780>
- 13 Koistinaho, M., Malm, T.M., Kettunen, M.I., Goldsteins, G., Starckx, S., Kauppinen, R.A.,
14 Opdenakker, G., Koistinaho, J., 2005. Minocycline protects against permanent cerebral
15 ischemia in wild type but not in matrix metalloprotease-9-deficient mice. *J. Cereb. Blood*
16 *Flow Metab. Off. J. Int. Soc. Cereb. Blood Flow Metab.* 25, 460–467.
17 <https://doi.org/10.1038/sj.jcbfm.9600040>
- 18 Kraft, P., Göb, E., Schuhmann, M.K., Göbel, K., Deppermann, C., Thielmann, I., Herrmann,
19 A.M., Lorenz, K., Brede, M., Stoll, G., Meuth, S.G., Nieswandt, B., Pfeilschifter, W.,
20 Kleinschnitz, C., 2013. FTY720 ameliorates acute ischemic stroke in mice by reducing
21 thrombo-inflammation but not by direct neuroprotection. *Stroke* 44, 3202–3210.
22 <https://doi.org/10.1161/STROKEAHA.113.002880>
- 23 Krishnamurthi, R.V., Feigin, V.L., Forouzanfar, M.H., Mensah, G.A., Connor, M., Bennett,
24 D.A., Moran, A.E., Sacco, R.L., Anderson, L.M., Truelsen, T., O'Donnell, M.,
25 Venketasubramanian, N., Barker-Collo, S., Lawes, C.M.M., Wang, W., Shinohara, Y.,
26 Witt, E., Ezzati, M., Naghavi, M., Murray, C., Global Burden of Diseases, Injuries, Risk
27 Factors Study 2010 (GBD 2010), GBD Stroke Experts Group, 2013. Global and regional
28 burden of first-ever ischaemic and haemorrhagic stroke during 1990-2010: findings from
29 the Global Burden of Disease Study 2010. *Lancet Glob. Health* 1, e259-281.
30 [https://doi.org/10.1016/S2214-109X\(13\)70089-5](https://doi.org/10.1016/S2214-109X(13)70089-5)
- 31 Labat-gest, V., Tomasi, S., 2013. Photothrombotic ischemia: a minimally invasive and
32 reproducible photochemical cortical lesion model for mouse stroke studies. *J. Vis. Exp.*
33 *JoVE.* <https://doi.org/10.3791/50370>
- 34 Langhauser, F., Kraft, P., Göb, E., Leinweber, J., Schuhmann, M.K., Lorenz, K., Gelderblom,
35 M., Bittner, S., Meuth, S.G., Wiendl, H., Magnus, T., Kleinschnitz, C., 2014. Blocking of
36 $\alpha 4$ integrin does not protect from acute ischemic stroke in mice. *Stroke* 45, 1799–1806.
37 <https://doi.org/10.1161/STROKEAHA.114.005000>
- 38 Langhorne, P., Stott, D.J., Robertson, L., MacDonald, J., Jones, L., McAlpine, C., Dick, F.,
39 Taylor, G.S., Murray, G., 2000. Medical complications after stroke: a multicenter study.
40 *Stroke* 31, 1223–1229. <https://doi.org/10.1161/01.str.31.6.1223>
- 41 Lapergue, B., Blanc, R., Gory, B., Labreuche, J., Duhamel, A., Marnat, G., Saleme, S., Costalat,
42 V., Bracard, S., Desal, H., Mazighi, M., Consoli, A., Piotin, M., ASTER Trial
43 Investigators, 2017. Effect of Endovascular Contact Aspiration vs Stent Retriever on
44 Revascularization in Patients With Acute Ischemic Stroke and Large Vessel Occlusion:
45 The ASTER Randomized Clinical Trial. *JAMA* 318, 443–452.
46 <https://doi.org/10.1001/jama.2017.9644>

- 1 Le Behot, A., Gauberti, M., Martinez De Lizarrondo, S., Montagne, A., Lemarchand, E.,
2 Repesse, Y., Guillou, S., Denis, C.V., Maubert, E., Orset, C., Vivien, D., 2014. GpIb α -
3 VWF blockade restores vessel patency by dissolving platelet aggregates formed under
4 very high shear rate in mice. *Blood* 123, 3354–3363. [https://doi.org/10.1182/blood-2013-](https://doi.org/10.1182/blood-2013-12-543074)
5 [12-543074](https://doi.org/10.1182/blood-2013-12-543074)
- 6 Lee, V.M., Burdett, N.G., Carpenter, A., Hall, L.D., Pambakian, P.S., Patel, S., Wood, N.I.,
7 James, M.F., 1996. Evolution of photochemically induced focal cerebral ischemia in the
8 rat. *Magnetic resonance imaging and histology. Stroke* 27, 2110–2118; discussion 2118-
9 2119. <https://doi.org/10.1161/01.str.27.11.2110>
- 10 Li, X., Wang, M.-H., Qin, C., Fan, W.-H., Tian, D.-S., Liu, J.-L., 2017. Fingolimod suppresses
11 neuronal autophagy through the mTOR/p70S6K pathway and alleviates ischemic brain
12 damage in mice. *PloS One* 12, e0188748. <https://doi.org/10.1371/journal.pone.0188748>
- 13 Liebeskind, D.S., Derdeyn, C.P., Wechsler, L.R., STAIR X Consortium, 2018. STAIR X:
14 Emerging Considerations in Developing and Evaluating New Stroke Therapies. *Stroke*
15 49, 2241–2247. <https://doi.org/10.1161/STROKEAHA.118.021424>
- 16 Liesz, A., Sun, L., Zhou, W., Schwarting, S., Mracsko, E., Zorn, M., Bauer, H., Sommer, C.,
17 Veltkamp, R., 2011a. FTY720 reduces post-ischemic brain lymphocyte influx but does
18 not improve outcome in permanent murine cerebral ischemia. *PloS One* 6, e21312.
19 <https://doi.org/10.1371/journal.pone.0021312>
- 20 Liesz, A., Zhou, W., Mracskó, É., Karcher, S., Bauer, H., Schwarting, S., Sun, L., Bruder, D.,
21 Stegemann, S., Cerwenka, A., Sommer, C., Dalpke, A.H., Veltkamp, R., 2011b.
22 Inhibition of lymphocyte trafficking shields the brain against deleterious
23 neuroinflammation after stroke. *Brain J. Neurol.* 134, 704–720.
24 <https://doi.org/10.1093/brain/awr008>
- 25 Liu, F., Benashski, S.E., Xu, Y., Siegel, M., McCullough, L.D., 2012. Effects of chronic and
26 acute oestrogen replacement therapy in aged animals after experimental stroke. *J.*
27 *Neuroendocrinol.* 24, 319–330. <https://doi.org/10.1111/j.1365-2826.2011.02248.x>
- 28 Liu, J., Zhang, C., Tao, W., Liu, M., 2013. Systematic review and meta-analysis of the efficacy
29 of sphingosine-1-phosphate (S1P) receptor agonist FTY720 (Fingolimod) in animal
30 models of stroke. *Int. J. Neurosci.* 123, 163–169.
31 <https://doi.org/10.3109/00207454.2012.749255>
- 32 Liu, Z., Fan, Y., Won, S.J., Neumann, M., Hu, D., Zhou, L., Weinstein, P.R., Liu, J., 2007.
33 Chronic treatment with minocycline preserves adult new neurons and reduces functional
34 impairment after focal cerebral ischemia. *Stroke* 38, 146–152.
35 <https://doi.org/10.1161/01.STR.0000251791.64910.cd>
- 36 Llovera, G., Benakis, C., Enzmann, G., Cai, R., Arzberger, T., Ghasemigharagoz, A., Mao, X.,
37 Malik, R., Lazarevic, I., Liebscher, S., Ertürk, A., Meissner, L., Vivien, D., Haffner, C.,
38 Plesnila, N., Montaner, J., Engelhardt, B., Liesz, A., 2017. The choroid plexus is a key
39 cerebral invasion route for T cells after stroke. *Acta Neuropathol. (Berl.)* 134, 851–868.
40 <https://doi.org/10.1007/s00401-017-1758-y>
- 41 Llovera, G., Hofmann, K., Roth, S., Salas-Pérdomo, A., Ferrer-Ferrer, M., Perego, C., Zanier,
42 E.R., Mamrak, U., Rex, A., Party, H., Agin, V., Fauchon, C., Orset, C., Haelewyn, B., De
43 Simoni, M.-G., Dirnagl, U., Grittner, U., Planas, A.M., Plesnila, N., Vivien, D., Liesz, A.,
44 2015. Results of a preclinical randomized controlled multicenter trial (pRCT): Anti-
45 CD49d treatment for acute brain ischemia. *Sci. Transl. Med.* 7, 299ra121.
46 <https://doi.org/10.1126/scitranslmed.aaa9853>

- 1 Llovera, G., Roth, S., Plesnila, N., Veltkamp, R., Liesz, A., 2014. Modeling stroke in mice:
2 permanent coagulation of the distal middle cerebral artery. *J. Vis. Exp. JoVE* e51729.
3 <https://doi.org/10.3791/51729>
- 4 Loddick, S.A., Rothwell, N.J., 1996. Neuroprotective effects of human recombinant interleukin-
5 1 receptor antagonist in focal cerebral ischaemia in the rat. *J. Cereb. Blood Flow Metab.*
6 *Off. J. Int. Soc. Cereb. Blood Flow Metab.* 16, 932–940.
7 <https://doi.org/10.1097/00004647-199609000-00017>
- 8 Lodigiani, C., Iapichino, G., Carenzo, L., Cecconi, M., Ferrazzi, P., Sebastian, T., Kucher, N.,
9 Studt, J.-D., Sacco, C., Alexia, B., Sandri, M.T., Barco, S., Humanitas COVID-19 Task
10 Force, 2020. Venous and arterial thromboembolic complications in COVID-19 patients
11 admitted to an academic hospital in Milan, Italy. *Thromb. Res.* 191, 9–14.
12 <https://doi.org/10.1016/j.thromres.2020.04.024>
- 13 Lopez Gelston, C.A., Mitchell, B.M., 2017. Recent Advances in Immunity and Hypertension.
14 *Am. J. Hypertens.* 30, 643–652. <https://doi.org/10.1093/ajh/hpx011>
- 15 Lu, Y., Xiao, G., Luo, W., 2016. Minocycline Suppresses NLRP3 Inflammasome Activation in
16 Experimental Ischemic Stroke. *Neuroimmunomodulation* 23, 230–238.
17 <https://doi.org/10.1159/000452172>
- 18 Lunardi Baccetto, S., Lehmann, C., 2019. Microcirculatory Changes in Experimental Models of
19 Stroke and CNS-Injury Induced Immunodepression. *Int. J. Mol. Sci.* 20.
20 <https://doi.org/10.3390/ijms20205184>
- 21 Malhotra, K., Chang, J.J., Khunger, A., Blacker, D., Switzer, J.A., Goyal, N., Hernandez, A.V.,
22 Pasupuleti, V., Alexandrov, A.V., Tsivgoulis, G., 2018. Minocycline for acute stroke
23 treatment: a systematic review and meta-analysis of randomized clinical trials. *J. Neurol.*
24 265, 1871–1879. <https://doi.org/10.1007/s00415-018-8935-3>
- 25 Malone, K., Amu, S., Moore, A.C., Waeber, C., 2019. The immune system and stroke: from
26 current targets to future therapy. *Immunol. Cell Biol.* 97, 5–16.
27 <https://doi.org/10.1111/imcb.12191>
- 28 Mandala, S., Hajdu, R., Bergstrom, J., Quackenbush, E., Xie, J., Milligan, J., Thornton, R., Shei,
29 G.-J., Card, D., Keohane, C., Rosenbach, M., Hale, J., Lynch, C.L., Rupprecht, K.,
30 Parsons, W., Rosen, H., 2002. Alteration of lymphocyte trafficking by sphingosine-1-
31 phosphate receptor agonists. *Science* 296, 346–349.
32 <https://doi.org/10.1126/science.1070238>
- 33 Mao, L., Jin, H., Wang, M., Hu, Y., Chen, S., He, Q., Chang, J., Hong, C., Zhou, Y., Wang, D.,
34 Miao, X., Li, Y., Hu, B., 2020. Neurologic Manifestations of Hospitalized Patients With
35 Coronavirus Disease 2019 in Wuhan, China. *JAMA Neurol.*
36 <https://doi.org/10.1001/jamaneurol.2020.1127>
- 37 Martín, A., Boisgard, R., Kassiou, M., Dollé, F., Tavitian, B., 2011. Reduced PBR/TSPO
38 expression after minocycline treatment in a rat model of focal cerebral ischemia: a PET
39 study using [(18)F]DPA-714. *Mol. Imaging Biol.* 13, 10–15.
40 <https://doi.org/10.1007/s11307-010-0324-y>
- 41 Martinez de Lizarrondo, S., Gakuba, C., Herbig, B.A., Repessé, Y., Ali, C., Denis, C.V.,
42 Lenting, P.J., Touzé, E., Diamond, S.L., Vivien, D., Gauberti, M., 2017. Potent
43 Thrombolytic Effect of N-Acetylcysteine on Arterial Thrombi. *Circulation* 136, 646–660.
44 <https://doi.org/10.1161/CIRCULATIONAHA.117.027290>
- 45 Marzona, I., Proietti, M., Farcomeni, A., Romiti, G.F., Romanazzi, I., Raparelli, V., Basili, S.,
46 Lip, G.Y.H., Nobili, A., Roncaglioni, M.C., 2018. Sex differences in stroke and major

1 adverse clinical events in patients with atrial fibrillation: A systematic review and meta-
2 analysis of 993,600 patients. *Int. J. Cardiol.* 269, 182–191.
3 <https://doi.org/10.1016/j.ijcard.2018.07.044>

4 Matsukawa, N., Yasuhara, T., Hara, K., Xu, L., Maki, M., Yu, G., Kaneko, Y., Ojika, K., Hess,
5 D.C., Borlongan, C.V., 2009. Therapeutic targets and limits of minocycline
6 neuroprotection in experimental ischemic stroke. *BMC Neurosci.* 10, 126.
7 <https://doi.org/10.1186/1471-2202-10-126>

8 Mayadas, T.N., Cullere, X., Lowell, C.A., 2014. The multifaceted functions of neutrophils.
9 *Annu. Rev. Pathol.* 9, 181–218. <https://doi.org/10.1146/annurev-pathol-020712-164023>

10 Maysami, S., Wong, R., Pradillo, J.M., Denes, A., Dhungana, H., Malm, T., Koistinaho, J.,
11 Orset, C., Rahman, M., Rubio, M., Schwaninger, M., Vivien, D., Bath, P.M., Rothwell,
12 N.J., Allan, S.M., 2016. A cross-laboratory preclinical study on the effectiveness of
13 interleukin-1 receptor antagonist in stroke. *J. Cereb. Blood Flow Metab. Off. J. Int. Soc.*
14 *Cereb. Blood Flow Metab.* 36, 596–605. <https://doi.org/10.1177/0271678X15606714>

15 Medzhitov, R., Janeway, C.A., 2002. Decoding the patterns of self and nonself by the innate
16 immune system. *Science* 296, 298–300. <https://doi.org/10.1126/science.1068883>

17 Meisel, C., Schwab, J.M., Prass, K., Meisel, A., Dirnagl, U., 2005. Central nervous system
18 injury-induced immune deficiency syndrome. *Nat. Rev. Neurosci.* 6, 775–786.
19 <https://doi.org/10.1038/nrn1765>

20 Mena, H., Cadavid, D., Rushing, E.J., 2004. Human cerebral infarct: a proposed histopathologic
21 classification based on 137 cases. *Acta Neuropathol. (Berl.)* 108, 524–530.
22 <https://doi.org/10.1007/s00401-004-0918-z>

23 Merkler, A.E., Parikh, N.S., Mir, S., Gupta, A., Kamel, H., Lin, E., Lantos, J., Schenck, E.J.,
24 Goyal, P., Bruce, S.S., Kahan, J., Lansdale, K.N., LeMoss, N.M., Murthy, S.B., Stieg,
25 P.E., Fink, M.E., Iadecola, C., Segal, A.Z., Cusick, M., Champion, T.R., Diaz, I., Zhang,
26 C., Navi, B.B., 2020. Risk of Ischemic Stroke in Patients With Coronavirus Disease 2019
27 (COVID-19) vs Patients With Influenza. *JAMA Neurol.*
28 <https://doi.org/10.1001/jamaneurol.2020.2730>

29 Minnerup, J., Wersching, H., Schilling, M., Schäbitz, W.R., 2014. Analysis of early phase and
30 subsequent phase III stroke studies of neuroprotectants: outcomes and predictors for
31 success. *Exp. Transl. Stroke Med.* 6, 2. <https://doi.org/10.1186/2040-7378-6-2>

32 Morimoto, N., Shimazawa, M., Yamashima, T., Nagai, H., Hara, H., 2005. Minocycline inhibits
33 oxidative stress and decreases in vitro and in vivo ischemic neuronal damage. *Brain Res.*
34 1044, 8–15. <https://doi.org/10.1016/j.brainres.2005.02.062>

35 Morris, R.S., Simon Jones, P., Alawneh, J.A., Hong, Y.T., Fryer, T.D., Aigbirhio, F.I.,
36 Warburton, E.A., Baron, J.-C., 2018. Relationships between selective neuronal loss and
37 microglial activation after ischaemic stroke in man. *Brain J. Neurol.* 141, 2098–2111.
38 <https://doi.org/10.1093/brain/awy121>

39 Mulcahy, N.J., Ross, J., Rothwell, N.J., Loddick, S.A., 2003. Delayed administration of
40 interleukin-1 receptor antagonist protects against transient cerebral ischaemia in the rat.
41 *Br. J. Pharmacol.* 140, 471–476. <https://doi.org/10.1038/sj.bjp.0705462>

42 Naderi, Y., Panahi, Y., Barreto, G.E., Sahebkar, A., 2020. Neuroprotective effects of
43 minocycline on focal cerebral ischemia injury: a systematic review. *Neural Regen. Res.*
44 15, 773–782. <https://doi.org/10.4103/1673-5374.268898>

- 1 Naderi, Y., Sabetkasaei, M., Parvardeh, S., Moini Zanjani, T., 2017. Neuroprotective effects of
2 pretreatment with minocycline on memory impairment following cerebral ischemia in
3 rats. *Behav. Pharmacol.* 28, 214–222. <https://doi.org/10.1097/FBP.0000000000000297>
- 4 Nazari, M., Keshavarz, S., Rafati, A., Namavar, M.R., Haghani, M., 2016. Fingolimod (FTY720)
5 improves hippocampal synaptic plasticity and memory deficit in rats following focal
6 cerebral ischemia. *Brain Res. Bull.* 124, 95–102.
7 <https://doi.org/10.1016/j.brainresbull.2016.04.004>
- 8 Nguyen, M.D., Julien, J.-P., Rivest, S., 2002. Innate immunity: the missing link in
9 neuroprotection and neurodegeneration? *Nat. Rev. Neurosci.* 3, 216–227.
10 <https://doi.org/10.1038/nrn752>
- 11 Orset, C., Haelewyn, B., Allan, S.M., Ansar, S., Campos, F., Cho, T.H., Durand, A., El Amki,
12 M., Fatar, M., Garcia-Yébenes, I., Gauberti, M., Grudzinski, S., Lizasoain, I., Lo, E.,
13 Macrez, R., Margaille, I., Maysami, S., Meairs, S., Nighoghossian, N., Orbe, J., Paramo,
14 J.A., Parienti, J.-J., Rothwell, N.J., Rubio, M., Waeber, C., Young, A.R., Touzé, E.,
15 Vivien, D., 2016. Efficacy of Alteplase in a Mouse Model of Acute Ischemic Stroke: A
16 Retrospective Pooled Analysis. *Stroke* 47, 1312–1318.
17 <https://doi.org/10.1161/STROKEAHA.116.012238>
- 18 Orset, C., Macrez, R., Young, A.R., Panthou, D., Angles-Cano, E., Maubert, E., Agin, V.,
19 Vivien, D., 2007. Mouse model of in situ thromboembolic stroke and reperfusion. *Stroke*
20 38, 2771–2778. <https://doi.org/10.1161/STROKEAHA.107.487520>
- 21 Oxley, T.J., Mocco, J., Majidi, S., Kellner, C.P., Shoirah, H., Singh, I.P., De Leacy, R.A.,
22 Shigematsu, T., Ladner, T.R., Yaeger, K.A., Skliut, M., Weinberger, J., Dangayach, N.S.,
23 Bederson, J.B., Tuhim, S., Fifi, J.T., 2020. Large-Vessel Stroke as a Presenting Feature
24 of Covid-19 in the Young. *N. Engl. J. Med.* 382, e60.
25 <https://doi.org/10.1056/NEJMc2009787>
- 26 Palm, F., Pussinen, P.J., Aigner, A., Becher, H., Buggle, F., Bauer, M.F., Grond-Ginsbach, C.,
27 Safer, A., Urbanek, C., Grau, A.J., 2016. Association between infectious burden,
28 socioeconomic status, and ischemic stroke. *Atherosclerosis* 254, 117–123.
29 <https://doi.org/10.1016/j.atherosclerosis.2016.10.008>
- 30 Parikh, N.S., Merkler, A.E., Iadecola, C., 2020. Inflammation, Autoimmunity, Infection, and
31 Stroke: Epidemiology and Lessons From Therapeutic Intervention. *Stroke* 51, 711–718.
32 <https://doi.org/10.1161/STROKEAHA.119.024157>
- 33 Park, C.H., Shin, T.K., Lee, H.Y., Kim, S.J., Lee, W.S., 2011. Matrix metalloproteinase
34 inhibitors attenuate neuroinflammation following focal cerebral ischemia in mice. *Korean*
35 *J. Physiol. Pharmacol. Off. J. Korean Physiol. Soc. Korean Soc. Pharmacol.* 15, 115–122.
36 <https://doi.org/10.4196/kjpp.2011.15.2.115>
- 37 Park, S.I., Park, S.K., Jang, K.S., Han, Y.M., Kim, C.H., Oh, S.J., 2015. Preischemic
38 neuroprotective effect of minocycline and sodium ozagrel on transient cerebral ischemic
39 rat model. *Brain Res.* 1599, 85–92. <https://doi.org/10.1016/j.brainres.2014.12.051>
- 40 Pedragosa, J., Salas-Perdomo, A., Gallizioli, M., Cugota, R., Miró-Mur, F., Briansó, F., Justicia,
41 C., Pérez-Asensio, F., Marquez-Kisinousky, L., Urra, X., Gieryng, A., Kaminska, B.,
42 Chamorro, A., Planas, A.M., 2018. CNS-border associated macrophages respond to acute
43 ischemic stroke attracting granulocytes and promoting vascular leakage. *Acta*
44 *Neuropathol. Commun.* 6, 76. <https://doi.org/10.1186/s40478-018-0581-6>

- 1 Peruzzotti-Jametti, L., Donegá, M., Giusto, E., Mallucci, G., Marchetti, B., Pluchino, S., 2014.
2 The role of the immune system in central nervous system plasticity after acute injury.
3 *Neuroscience* 283, 210–221. <https://doi.org/10.1016/j.neuroscience.2014.04.036>
- 4 Pfeilschifter, W., Czech-Zechmeister, B., Sujak, M., Foerch, C., Wichelhaus, T.A., Pfeilschifter,
5 J., 2011. Treatment with the immunomodulator FTY720 does not promote spontaneous
6 bacterial infections after experimental stroke in mice. *Exp. Transl. Stroke Med.* 3, 2.
7 <https://doi.org/10.1186/2040-7378-3-2>
- 8 Phan, H.T., Reeves, M.J., Blizzard, C.L., Thrift, A.G., Cadilhac, D.A., Sturm, J., Otahal, P.,
9 Rothwell, P., Bejot, Y., Cabral, N.L., Appelros, P., Körv, J., Vibo, R., Minelli, C., Gall,
10 S.L., 2019. Sex Differences in Severity of Stroke in the INSTRUCT Study: a Meta-
11 Analysis of Individual Participant Data. *J. Am. Heart Assoc.* 8, e010235.
12 <https://doi.org/10.1161/JAHA.118.010235>
- 13 Pradillo, J.M., Murray, K.N., Coutts, G.A., Moraga, A., Oroz-Gonjar, F., Boutin, H., Moro,
14 M.A., Lizasoain, I., Rothwell, N.J., Allan, S.M., 2017. Reparative effects of interleukin-1
15 receptor antagonist in young and aged/co-morbid rodents after cerebral ischemia. *Brain.*
16 *Behav. Immun.* 61, 117–126. <https://doi.org/10.1016/j.bbi.2016.11.013>
- 17 Prass, K., Meisel, C., Höflich, C., Braun, J., Halle, E., Wolf, T., Ruscher, K., Victorov, I.V.,
18 Priller, J., Dirnagl, U., Volk, H.-D., Meisel, A., 2003. Stroke-induced immunodeficiency
19 promotes spontaneous bacterial infections and is mediated by sympathetic activation
20 reversal by poststroke T helper cell type 1-like immunostimulation. *J. Exp. Med.* 198,
21 725–736. <https://doi.org/10.1084/jem.20021098>
- 22 Qin, C., Zhou, L., Hu, Z., Yang, S., Zhang, S., Chen, M., Yu, H., Tian, D.-S., Wang, W., 2020.
23 Clinical Characteristics and Outcomes of COVID-19 Patients With a History of Stroke in
24 Wuhan, China. *Stroke* 51, 2219–2223.
25 <https://doi.org/10.1161/STROKEAHA.120.030365>
- 26 Radlinska, B.A., Ghinani, S.A., Lyon, P., Jolly, D., Soucy, J.-P., Minuk, J., Schirmacher, R.,
27 Thiel, A., 2009. Multimodal microglia imaging of fiber tracts in acute subcortical stroke.
28 *Ann. Neurol.* 66, 825–832. <https://doi.org/10.1002/ana.21796>
- 29 Ransohoff, R.M., Schafer, D., Vincent, A., Blachère, N.E., Bar-Or, A., 2015.
30 Neuroinflammation: Ways in Which the Immune System Affects the Brain. *Neurother. J.*
31 *Am. Soc. Exp. Neurother.* 12, 896–909. <https://doi.org/10.1007/s13311-015-0385-3>
- 32 Rayasam, A., Hsu, M., Kijak, J.A., Kissel, L., Hernandez, G., Sandor, M., Fabry, Z., 2018.
33 Immune responses in stroke: how the immune system contributes to damage and healing
34 after stroke and how this knowledge could be translated to better cures? *Immunology*
35 154, 363–376. <https://doi.org/10.1111/imm.12918>
- 36 Relton, J., 2001. Inhibition of alpha4 integrin to protect the brain against ischemic injury. *Drug*
37 *News Perspect.* 14, 346–352.
- 38 Relton, J.K., Rothwell, N.J., 1992. Interleukin-1 receptor antagonist inhibits ischaemic and
39 excitotoxic neuronal damage in the rat. *Brain Res. Bull.* 29, 243–246.
40 [https://doi.org/10.1016/0361-9230\(92\)90033-t](https://doi.org/10.1016/0361-9230(92)90033-t)
- 41 Relton, J.K., Sloan, K.E., Frew, E.M., Whalley, E.T., Adams, S.P., Lobb, R.R., 2001. Inhibition
42 of alpha4 integrin protects against transient focal cerebral ischemia in normotensive and
43 hypertensive rats. *Stroke* 32, 199–205. <https://doi.org/10.1161/01.str.32.1.199>
- 44 Rha, J.-H., Saver, J.L., 2007. The impact of recanalization on ischemic stroke outcome: a meta-
45 analysis. *Stroke* 38, 967–973. <https://doi.org/10.1161/01.STR.0000258112.14918.24>

- 1 Ritzel, R.M., Crapser, J., Patel, A.R., Verma, R., Grenier, J.M., Chauhan, A., Jellison, E.R.,
2 McCullough, L.D., 2016. Age-Associated Resident Memory CD8 T Cells in the Central
3 Nervous System Are Primed To Potentiate Inflammation after Ischemic Brain Injury. *J.*
4 *Immunol. Baltim. Md* 1950 196, 3318–3330. <https://doi.org/10.4049/jimmunol.1502021>
- 5 Sadler, R., Cramer, J.V., Heindl, S., Kostidis, S., Betz, D., Zuurbier, K.R., Northoff, B.H.,
6 Heijink, M., Goldberg, M.P., Plautz, E.J., Roth, S., Malik, R., Dichgans, M., Holdt, L.M.,
7 Benakis, C., Giera, M., Stowe, A.M., Liesz, A., 2020. Short-Chain Fatty Acids Improve
8 Poststroke Recovery via Immunological Mechanisms. *J. Neurosci. Off. J. Soc. Neurosci.*
9 40, 1162–1173. <https://doi.org/10.1523/JNEUROSCI.1359-19.2019>
- 10 Salas-Perdomo, A., Miró-Mur, F., Gallizioli, M., Brait, V.H., Justicia, C., Meissner, A., Urra, X.,
11 Chamorro, A., Planas, A.M., 2019. Role of the S1P pathway and inhibition by
12 Fingolimod in preventing hemorrhagic transformation after stroke. *Sci. Rep.* 9, 8309.
13 <https://doi.org/10.1038/s41598-019-44845-5>
- 14 Sandu, R.E., Dumbrava, D., Surugiu, R., Glavan, D.-G., Gresita, A., Petcu, E.B., 2017. Cellular
15 and Molecular Mechanisms Underlying Non-Pharmaceutical Ischemic Stroke Therapy in
16 Aged Subjects. *Int. J. Mol. Sci.* 19. <https://doi.org/10.3390/ijms19010099>
- 17 Schuhmann, M.K., Krstic, M., Kleinschnitz, C., Fluri, F., 2016. Fingolimod (FTY720) Reduces
18 Cortical Infarction and Neurological Deficits During Ischemic Stroke Through Potential
19 Maintenance of Microvascular Patency. *Curr. Neurovasc. Res.* 13, 277–282.
20 <https://doi.org/10.2174/1567202613666160823152446>
- 21 Shang, K., He, J., Zou, J., Qin, C., Lin, L., Zhou, L.-Q., Yang, L.-L., Wu, L.-J., Wang, W., Zhan,
22 K.-B., Tian, D.-S., 2020. Fingolimod promotes angiogenesis and attenuates ischemic
23 brain damage via modulating microglial polarization. *Brain Res.* 1726, 146509.
24 <https://doi.org/10.1016/j.brainres.2019.146509>
- 25 Sheng, Z., Liu, Y., Li, H., Zheng, W., Xia, B., Zhang, X., Yong, V.W., Xue, M., 2018. Efficacy
26 of Minocycline in Acute Ischemic Stroke: A Systematic Review and Meta-Analysis of
27 Rodent and Clinical Studies. *Front. Neurol.* 9, 1103.
28 <https://doi.org/10.3389/fneur.2018.01103>
- 29 Shi, K., Tian, D.-C., Li, Z.-G., Ducruet, A.F., Lawton, M.T., Shi, F.-D., 2019. Global brain
30 inflammation in stroke. *Lancet Neurol.* 18, 1058–1066. [https://doi.org/10.1016/S1474-](https://doi.org/10.1016/S1474-4422(19)30078-X)
31 [4422\(19\)30078-X](https://doi.org/10.1016/S1474-4422(19)30078-X)
- 32 Shichita, T., Sugiyama, Y., Ooboshi, H., Sugimori, H., Nakagawa, R., Takada, I., Iwaki, T.,
33 Okada, Y., Iida, M., Cua, D.J., Iwakura, Y., Yoshimura, A., 2009. Pivotal role of cerebral
34 interleukin-17-producing gammadeltaT cells in the delayed phase of ischemic brain
35 injury. *Nat. Med.* 15, 946–950. <https://doi.org/10.1038/nm.1999>
- 36 Shukla, V., Shakya, A.K., Perez-Pinzon, M.A., Dave, K.R., 2017. Cerebral ischemic damage in
37 diabetes: an inflammatory perspective. *J. Neuroinflammation* 14, 21.
38 <https://doi.org/10.1186/s12974-016-0774-5>
- 39 Slobodnick, A., Shah, B., Pillinger, M.H., Krasnokutsky, S., 2015. Colchicine: old and new. *Am.*
40 *J. Med.* 128, 461–470. <https://doi.org/10.1016/j.amjmed.2014.12.010>
- 41 Smith, C.J., Denes, A., Tyrrell, P.J., Di Napoli, M., 2015. Phase II anti-inflammatory and
42 immune-modulating drugs for acute ischaemic stroke. *Expert Opin. Investig. Drugs* 24,
43 623–643. <https://doi.org/10.1517/13543784.2015.1020110>
- 44 Sobowale, O.A., Parry-Jones, A.R., Smith, C.J., Tyrrell, P.J., Rothwell, N.J., Allan, S.M., 2016.
45 Interleukin-1 in Stroke: From Bench to Bedside. *Stroke* 47, 2160–2167.
46 <https://doi.org/10.1161/STROKEAHA.115.010001>

- 1 Soliman, S., Ishrat, T., Fouda, A.Y., Patel, A., Pillai, B., Fagan, S.C., 2015. Sequential Therapy
2 with Minocycline and Candesartan Improves Long-Term Recovery After Experimental
3 Stroke. *Transl. Stroke Res.* 6, 309–322. <https://doi.org/10.1007/s12975-015-0408-8>
- 4 Sommer, C.J., 2017. Ischemic stroke: experimental models and reality. *Acta Neuropathol. (Berl.)*
5 133, 245–261. <https://doi.org/10.1007/s00401-017-1667-0>
- 6 Steffen, B.J., Breier, G., Butcher, E.C., Schulz, M., Engelhardt, B., 1996. ICAM-1, VCAM-1,
7 and MAdCAM-1 are expressed on choroid plexus epithelium but not endothelium and
8 mediate binding of lymphocytes in vitro. *Am. J. Pathol.* 148, 1819–1838.
- 9 Stoll, G., Nieswandt, B., 2019. Thrombo-inflammation in acute ischaemic stroke - implications
10 for treatment. *Nat. Rev. Neurol.* 15, 473–481. <https://doi.org/10.1038/s41582-019-0221-1>
- 11 Szalay, G., Martinecz, B., Lénárt, N., Környei, Z., Orsolits, B., Judák, L., Császár, E., Fekete, R.,
12 West, B.L., Katona, G., Rózsa, B., Dénes, Á., 2016. Microglia protect against brain
13 injury and their selective elimination dysregulates neuronal network activity after stroke.
14 *Nat. Commun.* 7, 11499. <https://doi.org/10.1038/ncomms11499>
- 15 Tanaka, M., Ishihara, Y., Mizuno, S., Ishida, A., Vogel, C.F., Tsuji, M., Yamazaki, T., Itoh, K.,
16 2018. Progression of vasogenic edema induced by activated microglia under permanent
17 middle cerebral artery occlusion. *Biochem. Biophys. Res. Commun.* 496, 582–587.
18 <https://doi.org/10.1016/j.bbrc.2018.01.094>
- 19 Tang, X.N., Wang, Q., Koike, M.A., Cheng, D., Goris, M.L., Blankenberg, F.G., Yenari, M.A.,
20 2007. Monitoring the protective effects of minocycline treatment with radiolabeled
21 annexin V in an experimental model of focal cerebral ischemia. *J. Nucl. Med. Off. Publ.*
22 *Soc. Nucl. Med.* 48, 1822–1828. <https://doi.org/10.2967/jnumed.107.041335>
- 23 Tang, Y., Li, T., Li, J., Yang, J., Liu, H., Zhang, X.J., Le, W., 2014. Jmjd3 is essential for the
24 epigenetic modulation of microglia phenotypes in the immune pathogenesis of
25 Parkinson's disease. *Cell Death Differ.* 21, 369–380.
26 <https://doi.org/10.1038/cdd.2013.159>
- 27 Tao, T., Xu, G., Si Chen, C., Feng, J., Kong, Y., Qin, X., 2013. Minocycline promotes axonal
28 regeneration through suppression of RGMA in rat MCAO/reperfusion model. *Synap. N.*
29 *Y. N* 67, 189–198. <https://doi.org/10.1002/syn.21629>
- 30 Thiel, A., Radlinska, B.A., Paquette, C., Sidel, M., Soucy, J.-P., Schirmacher, R., Minuk, J.,
31 2010. The temporal dynamics of poststroke neuroinflammation: a longitudinal diffusion
32 tensor imaging-guided PET study with ¹¹C-PK11195 in acute subcortical stroke. *J. Nucl.*
33 *Med. Off. Publ. Soc. Nucl. Med.* 51, 1404–1412.
34 <https://doi.org/10.2967/jnumed.110.076612>
- 35 Thomalla, G., Gerloff, C., 2019. Acute imaging for evidence-based treatment of ischemic stroke.
36 *Curr. Opin. Neurol.* 32, 521–529. <https://doi.org/10.1097/WCO.0000000000000716>
- 37 Uzdensky, A.B., 2018. Photothrombotic Stroke as a Model of Ischemic Stroke. *Transl. Stroke*
38 *Res.* 9, 437–451. <https://doi.org/10.1007/s12975-017-0593-8>
- 39 Vallés, J., Lago, A., Santos, M.T., Latorre, A.M., Tembl, J.I., Salom, J.B., Nieves, C., Moscardó,
40 A., 2017. Neutrophil extracellular traps are increased in patients with acute ischemic
41 stroke: prognostic significance. *Thromb. Haemost.* 117, 1919–1929.
42 <https://doi.org/10.1160/TH17-02-0130>
- 43 Veltkamp, R., Gill, D., 2016. Clinical Trials of Immunomodulation in Ischemic Stroke.
44 *Neurother. J. Am. Soc. Exp. Neurother.* 13, 791–800. <https://doi.org/10.1007/s13311-016-0458-y>
- 45

- 1 Wacker, B.K., Park, T.S., Gidday, J.M., 2009. Hypoxic preconditioning-induced cerebral
2 ischemic tolerance: role of microvascular sphingosine kinase 2. *Stroke* 40, 3342–3348.
3 <https://doi.org/10.1161/STROKEAHA.109.560714>
- 4 Watson, B.D., Dietrich, W.D., Busto, R., Wachtel, M.S., Ginsberg, M.D., 1985. Induction of
5 reproducible brain infarction by photochemically initiated thrombosis. *Ann. Neurol.* 17,
6 497–504. <https://doi.org/10.1002/ana.410170513>
- 7 Wei, Y., Yemisci, M., Kim, H.-H., Yung, L.M., Shin, H.K., Hwang, S.-K., Guo, S., Qin, T.,
8 Alsharif, N., Brinkmann, V., Liao, J.K., Lo, E.H., Waeber, C., 2011. Fingolimod provides
9 long-term protection in rodent models of cerebral ischemia. *Ann. Neurol.* 69, 119–129.
10 <https://doi.org/10.1002/ana.22186>
- 11 Wise, P.M., Dubal, D.B., Wilson, M.E., Rau, S.W., Böttner, M., Rosewell, K.L., 2001. Estradiol
12 is a protective factor in the adult and aging brain: understanding of mechanisms derived
13 from in vivo and in vitro studies. *Brain Res. Brain Res. Rev.* 37, 313–319.
14 [https://doi.org/10.1016/s0165-0173\(01\)00136-9](https://doi.org/10.1016/s0165-0173(01)00136-9)
- 15 Xu, G., Li, C., Parsiola, A.L., Li, J., McCarter, K.D., Shi, R., Mayhan, W.G., Sun, H., 2019.
16 Dose-Dependent Influences of Ethanol on Ischemic Stroke: Role of Inflammation. *Front.*
17 *Cell. Neurosci.* 13, 6. <https://doi.org/10.3389/fncel.2019.00006>
- 18 Xu, L., Fagan, S.C., Waller, J.L., Edwards, D., Borlongan, C.V., Zheng, J., Hill, W.D.,
19 Feuerstein, G., Hess, D.C., 2004. Low dose intravenous minocycline is neuroprotective
20 after middle cerebral artery occlusion-reperfusion in rats. *BMC Neurol.* 4, 7.
21 <https://doi.org/10.1186/1471-2377-4-7>
- 22 Xu, S., Lu, J., Shao, A., Zhang, J.H., Zhang, J., 2020. Glial Cells: Role of the Immune Response
23 in Ischemic Stroke. *Front. Immunol.* 11, 294. <https://doi.org/10.3389/fimmu.2020.00294>
- 24 Xu, W.-W., Zhang, Y.-Y., Su, J., Liu, A.-F., Wang, K., Li, C., Liu, Y.-E., Zhang, Y.-Q., Lv, J.,
25 Jiang, W.-J., 2018. Ischemia Reperfusion Injury after Gradual versus Rapid Flow
26 Restoration for Middle Cerebral Artery Occlusion Rats. *Sci. Rep.* 8, 1638.
27 <https://doi.org/10.1038/s41598-018-20095-9>
- 28 Xue, J., Huang, W., Chen, X., Li, Q., Cai, Z., Yu, T., Shao, B., 2017. Neutrophil-to-Lymphocyte
29 Ratio Is a Prognostic Marker in Acute Ischemic Stroke. *J. Stroke Cerebrovasc. Dis. Off.*
30 *J. Natl. Stroke Assoc.* 26, 650–657.
31 <https://doi.org/10.1016/j.jstrokecerebrovasdis.2016.11.010>
- 32 Yaghi, S., Ishida, K., Torres, J., Mac Grory, B., Raz, E., Humbert, K., Henninger, N., Trivedi, T.,
33 Lillemoe, K., Alam, S., Sanger, M., Kim, S., Scher, E., Dehkharghani, S., Wachs, M.,
34 Tanweer, O., Volpicelli, F., Bosworth, B., Lord, A., Frontera, J., 2020. SARS-CoV-2 and
35 Stroke in a New York Healthcare System. *Stroke* 51, 2002–2011.
36 <https://doi.org/10.1161/STROKEAHA.120.030335>
- 37 Yan, T., Chopp, M., Chen, J., 2015. Experimental animal models and inflammatory cellular
38 changes in cerebral ischemic and hemorrhagic stroke. *Neurosci. Bull.* 31, 717–734.
39 <https://doi.org/10.1007/s12264-015-1567-z>
- 40 Yanev, P., Poinatte, K., Hominick, D., Khurana, N., Zuurbier, K.R., Berndt, M., Plautz, E.J.,
41 Dellinger, M.T., Stowe, A.M., 2020. Impaired meningeal lymphatic vessel development
42 worsens stroke outcome. *J. Cereb. Blood Flow Metab. Off. J. Int. Soc. Cereb. Blood*
43 *Flow Metab.* 40, 263–275. <https://doi.org/10.1177/0271678X18822921>
- 44 Yang, Yirong, Salayandia, V.M., Thompson, J.F., Yang, L.Y., Estrada, E.Y., Yang, Yi, 2015.
45 Attenuation of acute stroke injury in rat brain by minocycline promotes blood-brain

1 barrier remodeling and alternative microglia/macrophage activation during recovery. *J.*
2 *Neuroinflammation* 12, 26. <https://doi.org/10.1186/s12974-015-0245-4>
3 Yew, W.P., Djukic, N.D., Jayaseelan, J.S.P., Walker, F.R., Roos, K.A.A., Chataway, T.K.,
4 Muyderman, H., Sims, N.R., 2019. Early treatment with minocycline following stroke in
5 rats improves functional recovery and differentially modifies responses of peri-infarct
6 microglia and astrocytes. *J. Neuroinflammation* 16, 6. [https://doi.org/10.1186/s12974-](https://doi.org/10.1186/s12974-018-1379-y)
7 [018-1379-y](https://doi.org/10.1186/s12974-018-1379-y)
8 Yrjänheikki, J., Tikka, T., Keinänen, R., Goldsteins, G., Chan, P.H., Koistinaho, J., 1999. A
9 tetracycline derivative, minocycline, reduces inflammation and protects against focal
10 cerebral ischemia with a wide therapeutic window. *Proc. Natl. Acad. Sci. U. S. A.* 96,
11 13496–13500. <https://doi.org/10.1073/pnas.96.23.13496>
12 Zhang, S., Zhou, Y., Zhang, R., Zhang, M., Campbell, B., Lin, L., Shi, F.-D., Lou, M., 2017.
13 Rationale and design of combination of an immune modulator Fingolimod with Alteplase
14 bridging with Mechanical Thrombectomy in Acute Ischemic Stroke (FAMTAIS) trial.
15 *Int. J. Stroke Off. J. Int. Stroke Soc.* 12, 906–909.
16 <https://doi.org/10.1177/1747493017710340>
17 Zhao, Y., Xiao, M., He, W., Cai, Z., 2015. Minocycline upregulates cyclic AMP response
18 element binding protein and brain-derived neurotrophic factor in the hippocampus of
19 cerebral ischemia rats and improves behavioral deficits. *Neuropsychiatr. Dis. Treat.* 11,
20 507–516. <https://doi.org/10.2147/NDT.S73836>
21 Zheng, Y., Xu, L., Yin, J., Zhong, Z., Fan, H., Li, X., Chang, Q., 2013. Effect of minocycline on
22 cerebral ischemia-reperfusion injury. *Neural Regen. Res.* 8, 900–908.
23 <https://doi.org/10.3969/j.issn.1673-5374.2013.10.004>
24 Zhou, W., Liesz, A., Bauer, H., Sommer, C., Lahrmann, B., Valous, N., Grabe, N., Veltkamp, R.,
25 2013. Postischemic brain infiltration of leukocyte subpopulations differs among murine
26 permanent and transient focal cerebral ischemia models. *Brain Pathol. Zurich Switz.* 23,
27 34–44. <https://doi.org/10.1111/j.1750-3639.2012.00614.x>
28 Zhu, Z., Fu, Y., Tian, D., Sun, N., Han, W., Chang, G., Dong, Y., Xu, X., Liu, Q., Huang, D.,
29 Shi, F.-D., 2015. Combination of the Immune Modulator Fingolimod With Alteplase in
30 Acute Ischemic Stroke: A Pilot Trial. *Circulation* 132, 1104–1112.
31 <https://doi.org/10.1161/CIRCULATIONAHA.115.016371>
32
33
34

1 **Figures and table legends**

2 **Figure 1: Inflammatory/immune responses after ischemic stroke, and targets of the**
3 **immunomodulatory drugs tested on clinical trials.** In the healthy brain, three main barriers protect the
4 parenchyma from external pathogens: the blood-brain barrier (BBB) around the cerebral vessels, the
5 blood-meningeal barrier in the meninges, and the blood-CSF barrier of the choroid plexus. Immune cells
6 circulate freely in the blood, and a few lymphocytes patrol the CSF to do immunosurveillance. In the
7 brain parenchyma resting microglia survey the environment with their processes. After stroke, microglia
8 switches from a resting form to an activated state, adopting a phagocytic phenotype and secreting pro-
9 inflammatory factors. The BBB is disrupted, local ECs are activated and express CAMs. The tight
10 junctions between ECs disappear. This allows leukocyte rolling and adhesion at the luminal side of the
11 blood vessel and then transmigration from the vascular compartment to the brain parenchyma.
12 Leukocytes can also invade the brain through blood-meningeal and blood-CSF barriers. Once infiltrated
13 in the tissue, neutrophils secrete pro-inflammatory factors that will recruit monocytes/macrophages,
14 and later lymphocytes to the parenchyma. Immunomodulatory drugs tested on clinical trials and
15 discussed in this review include (i) Anakinra, an antagonist of the proinflammatory cytokine interleukin-
16 1, (ii) Natalizumab, which acts by blocking the binding of integrin $\alpha 4$ to the adhesion molecule VCAM to
17 reduce leukocyte infiltration. (iii) Enlimomab is an antibody targeting the adhesion molecule ICAM. (iv)
18 Minocycline inhibits microglial activation among other anti-inflammatory properties. (v) Fingolimod is a
19 high-affinity agonist for several of the sphingosine-1-phosphate receptors that prevents the egress of
20 lymphocytes from lymph nodes, thus limiting the infiltration of lymphocytes to the brain. BBB, blood-
21 brain barrier; CAM, cellular adhesion molecule; CSF: cerebrospinal fluid; EC, endothelial cell.

22

23 **Figure 2. Comparison of human stroke and experimental models of stroke in rodents.** a) Schematic
24 view of the human brain vasculature with one of the most frequent stroke subtypes, a
25 thrombotic/embolic occlusion of the M2 segment of the middle cerebral artery (MCA), usually included
26 in randomized clinical trials (RCT) on immunomodulatory/anti-inflammatory drugs for stroke treatment.
27 b) Schematic view of the rodent brain vasculature (lateral view). In thromboembolic and
28 electrocoagulation experimental stroke models, there is only one site of MCA occlusion, whereas in
29 regional photothrombotic stroke there are multiple occlusion sites within the area illuminated by the
30 laser. In both cases, lesions are limited to the brain cortex. The occlusion site in the monofilament
31 experimental model is located at the origin of the MCA, leading to a bigger ischemic volume including
32 both cortical and subcortical brain regions. c) Schematic view of the rodent brain vasculature (dorsal
33 view). d) Schematic view of the rodent brain vasculature (ventral view). e) Comparison of ischemic
34 lesions (delimitated area) visualized by MRI in human stroke (M1-M2 occlusion) and different
35 experimental models of stroke.

36

37

1 **Table 1: Existing preclinical data on the immunomodulatory drugs** discussed in this review: Anakinra, Natalizumab, Enlimomab, Minocycline
 2 and Fingolimod.

Drug	Experimental model	Animal species (*)	Administration route/timing	Lesion volume	Neuromotor deficit	Main results	Ref.
Anakinra	pMCAO	Rat	Central, 30' before and 10' after	24 h	No	Reduced infarct volume.	(Relton and Rothwell, 1992)
	pMCAO	Rat	Subcut., before and up to 7 days	24 h, 7days	Neurological score at 24h and 7days	Decreased the number of necrotic neurons and the number of PMN leukocytes. Improved neurological scores.	(Garcia et al., 1995)
	pMCAO	Rat	ICV, 30' after	24 h, 7 days	No	Reduced total and cortical infarct volume 24h and 7days post.	(Loddick and Rothwell, 1996)
	tMCAO (60')	Rat	ICV, 1,2 or 3h after	24 h and 48h	No	Reduced brain damage, when administered 3 h after.	(Mulcahy et al., 2003)
	tMCAO (60')	Rat	Subcut, just after and 24h after	24,48 h and 28 days	Gross neurological score and functional recovery, motor tasks, days 6-9 and 25-28	Enhanced functional recovery and protected against sociability defect and depression.	(Girard et al., 2014)
	tMCAO (70 or 90')	Rats, young and aged and Corpulent	Subcut, 3 and 6h after	24 h and 7 days	Motor, behavioral and cylinder tests, 24h and 7 days	Improved stroke outcome and promotes neurogenesis in both young and aged/co-morbid rats.	(Pradillo et al., 2017)
	tMCAO (45')	Mouse	Subc.,30' and 3h after	24 h and 7days	Bederson and Corner tets, 24h and 7days	Preclinical cross-laboratory stroke trial supporting the therapeutic potential of interleukin 1 receptor antagonist.	(Maysami et al., 2016)
	Permanent (electrocoag.)	Mouse (10 months)	Subc., 30' and 3h after	3 and 28 days	Catwalk test 3,14,21,18 days		
	Permanent (electrocoag.)	Mouse	Subc., 30' and 3h after	24 h and 7 days	Hunter and corner tests, 24 h, 2, 7 and 28 days		
	tMCAO (30')	Mouse	Subc., 30' and 3h after	24 h	Neurological Score, 24 h		
	tMCAO (Thrombin)	Mouse	Subc., 30' and 3h after	7 days	No		

	Permanent (Electrocoag.)	Mouse	Subc., 30' and 3h after	7 days	Corner test, 1,2 and 7 days		
Minocycline	tMCAO (90')	Rat	I.P, every day, up to 3	24 h	No	Decreased infarct volume and inflammation.	(Yrjänheikki et al., 1999)
	tMCAO (90')	Rat	IV, 4,5, and 6 h after	24 h	Neurological Score, 24h	Decreased infarct volume and improved neurological deficits.	(Xu et al., 2004)
	pBCCAO	Rat	I.P, just after, twice a day, up to 14 days	No	No	Decreased neuronal and myelin damage and inflammation.	(Cho et al., 2006)
	tBCCAO(30')	Rat	I.P, 12h before, just after and every 24h up to 3 days	No	No	Enhanced neuronal viability, decreased inflammation.	(Cai et al., 2006)
	tMCAO (60')	Rat	I.P, 4 days after up to 3 weeks	No	Motor function and learning and memory tests, 6 weeks after	Promoted neurogenesis, improved motor function and memory.	(Liu et al., 2007)
	tMCAO (60')	Rat	I.P, 30' and 2h after up to 3 days	3 days	Neurological deficit scores, 3 days	Improved neurological deficits, decreased infarct volume.	(Chu et al., 2007)
	pBCCAO	Female rat	Oral, once a day up to 16 weeks	No	Morris and openfield tests,4, 8, 12 and 16 weeks	Improved memory, decreased infarct volume, iNOS and inflammation.	(Cai et al., 2008)
	tMCAO(30')	Rat	I.V, 60' after	3 days	Body swing and Bederson test,3 days	Improved neurological deficits and decreased infarct volume.	(Matsukawa et al., 2009)
	tMCAO (2h)	Rat	I.V, 1h after, once per day up to 6	7 days	No	Decreased infarct volume and inflammation.	(Martín et al., 2011)
	pBCCAO	Female Wistar rat	Oral, once per day up to 16 weeks	No	No	Decreased neuroinflammation.	(Cai et al., 2010)
tBCCAO	Rat	I.P, just after and	24 h and 3	Water maze 24 h	Improved memory, decreased	(Zheng et	

			every 12h up to 3 days	days	and 3 days	infarct volume.	al., 2013)
tMCAO (2h)	Rat		I.V, just after and up to 14 days	No	Neurological severity scores and the staircase test, 2 days, 1, 2 and 4 weeks	Reduced BBB permeability and improved sensorimotor deficits.	(Tao et al., 2013)
Endothelin	Rat		I.P, twice a day up to 48h	No	Modified sticky-tape test, 24 h, 3 and 7 days	Improved sensorimotor deficits, inflammation and neuronal viability.	(Cardoso et al., 2013)
tBCCAO (20')	Rat		Oral, 48, 24h and 1h before	No	No	Reduced neuronal degeneration.	(Aras et al., 2013)
pBCCAO	Female rat		Oral, 4 days after ischemia, daily up to 4 weeks	No	Water maze 1, 2, 3, 4 and 5 days	Improved memory, enhanced neuronal plasticity.	(Zhao et al., 2015)
tMCAO (90')	Hypertens. rat		I.V, just after	48 h, 1, 2 and 4 weeks	No	Decreased infarct volume, inflammation, improved BBB permeability.	(Yang et al., 2015)
tMCAO (90')	Rat		I.V, just after	14 days	Bederson, beam walk, rotarod performance and grip test, 1, 3, 7 and 14 days	Decreased infarct volume, improved neurobehavioural and motor functions.	(Soliman et al., 2015)
tMCAO (30')	Rat		I.V, 30' before	7 days	Adhesive removal test, 1 and 7 days	Decreased infarct volume, improved neurobehavioral functions.	(Park et al., 2015)
tBCCAO (20')	Rat		I.P, once per day up to 7	No	Morris water-maze 7 days	Improved memory, enhanced neuronal viability.	(Naderi et al., 2017)
Photothromb.	Rat		I.P, 1h, 12, 24, 36 and 48h after	3 and 24h, 2, 3 and 7 days	The forelimb placing response and cylinder tests, 3 and 24h, 2, 3 and 7 days	Improved motor function and decreased phagocytic cells.	(Yew et al., 2019)
tMCAO (60')	Rat		I.V, just after	24h	No	Reduced infarct size, microglial	(Faheem et

					activation and white matter injury.	al., 2019)
pMCAO	Mouse	I.P, 60' before, 30' and 4h after	24 h	Neurological score, 24h	Decreased infarct volume, oxidative stress and improved neurological deficits.	(Morimoto et al., 2005)
pMCAO	Mouse	I.P.,12h before or 2h after	24 h and 72 h	No	Decreased infarct volume.	(Koistinaho et al., 2005)
tMCAO (45')	Mouse	I.P, 30' and 12h after, twice per day up to 7	1, 3, 7 and 30 days	Corner and ladder tests, 3, 7 and 30 days	Decreased infarct volume and improved sensorimotor deficits.	(Tang et al., 2007)
tMCAO (4h)	Mouse	I.P, once per day up to 14	24 h	Neurologic score 4 h and 1, 7, and 14 days after	Decreased infarct volume and improved neurological deficits.	(Hayakawa et al., 2008)
Photothromb.	Mouse	Subcut., 30' before and 2h after	24 h	No	Decreased infarct volume.	(Park et al., 2011)
Thromboemb.	Male and female mouse	60' after	48 h	Neurological deficit score and adhesive tape test, 48h	Decreased infarct volume and improved neurological deficits.	(Hoda et al., 2014)
tMCAO (2h)	Mouse	I.P, 12h before or after	48 h	Bederson test, 48h	Decreased infarct volume and inflammation and improved neurological deficits.	(Jin et al., 2015)
tMCAO (1h)	Mouse	I.P, 1h after, once per day up to 3days	72 h	Neurological score, 72h	Decreased infarct volume and inflammation and improved neurological deficits.	(Lu et al., 2016)
pMCAO	ICR mouse	I.P, 60' before	24 h	No	Decreased infarct volume.	(Tanaka et

							al., 2018)
	Tromboembol. (Thrombin)	Mouse	I.P, 1h or 48h after	24 h and 5 days	Grip test, 24h and 5 days	Early treatment reduced infarct volume and improved behavior	(Drieu et al., 2020a)
Natalizumab	tMCAO (3h)	Rat	I.P, 2h after	48 h after	Bederson test, 2, 3, 4, 5, 6, 24, and 48h	peripheral leukocytosis, improves neurological outcome, and decreases infarct volume.	(Becker et al., 2001)
	tMCAO (90')	Rat	I.V, just after	24 h after	No	Improved functional outcome and decreased infarct volume.	(Relton, 2001)
	tMCAO (60')	Hypertens. Rat	I.V, 24h before	24 h after	No	Decreased infarct volume.	(Relton et al., 2001)
	tMCAO (30' and 60') and pMCAO	Mouse	I.P, 24h before and 3h after	1,3 and 7 days	Corner test, 1,3 and 7 days	Improved functional outcome and decreased infarct volume.	(Liesz et al., 2011b)
	tMCAO (30') and pMCAO (electrocoag.)	Mouse	I.P, 24h before and 3h after	1 and 7 days	Bederson, grip and corner test 1 and 7 days.	No effect	(Langhause r et al., 2014)
	tMCAO (60') and pMCAO (electrocoag.)	Mouse	I.P, 3h after	7 days or 4 days	Rotarod and adhesive removal tests 1,3 and 7 days; or 2 and 4 days.	Reduced leukocyte invasion and infarct volume after pMCAO, no effect after tMCAO.	(Llovera et al., 2015)
	tMCAO (45') and pMCAO (electrocoag.)	LysM-eGFP and CXCR1-eGFP mouse	I.V, just after and 24h after	4 and 7 days	No	Reduced infarct volume and improved functional outcome.	(Llovera et al., 2015)
	Tromboembol. (Thrombin)	Mouse	I.P, 1h or 48h after	24 h and 5 days	Grip test 24h and 5 days	No effect on lesion volume or neurological deficit.	(Drieu et al., 2020a)
Fingolimod	tMCAO (2h)	Rat	I.P, just after	1 and 3 days	Neurological score, 1 and 3 days	Reduction in infarct volume and functional deficits.	(Hasegawa et al., 2010)
	tMCAO (1h)	Rat	I.P, 24h before and once daily every 2 days	7 days after	Passive avoidance test and neurological score (24h,3 and 7 days)	Reduced oedema and neurological score 24h, 3 and 7 days after.	(Nazari et al., 2016)
	tMCAO (90')	Mouse	I.P before	24 h	Neurological test, 24h	Reduction in stroke volume and functional deficits	(Czech et al., 2009)
	tMCAO (60')	Swiss-Webster ND4 mouse	I.P 30' or 48h before	24 h	Neurological test, 24h	Reduction in infarct volume and functional deficits.	(Wacker et al., 2009)
	tMCAO (60')	Mouse	I.P, 5' before and once per day for 3 days	24 h and 4 days	Neurological test, 24h and 4 days	Reduction infarct volume.	(Shichita et al., 2009)

tMCAO (90' and 3h)	Mouse	I.P 2h after	24 h	Neurological test, 24h	Reduced infarct volume	(Pfeilschifter et al., 2011)
tMCAO (60') and pMCAO	Mouse	Oral, 48h before and 3h after; and I.P once daily 48h before	24 h	Croner test, 1, 3 and 7 days	No differences.	(Liesz et al., 2011a)
tMCAO (90' and 2h) and pMCAO	Mouse and rats	I.P 30' after, 1h or 2, 24 and 48h after. 2h or 4h after in pMCAO	48 h	Wire grip test, 1, 3, 7, 10 and 14 days	Reduced infarct volume; improved neurological function.	(Wei et al., 2011)
tMCAO (30')	Mouse	I.P, before and after 2 days	1 and 7 days	Ladder rung walking test, 1 and 7 days	Reduced infarct volume and improved neurological function 1 day after.	(Schuhmann et al., 2016)
tMCAO (60 and 90')	C57 and Rag 1 ^{-/-} mouse	I.P, just before	24 h and 3 days	Bederson and grip test, 1 day	Reduced infarct size and functional improvement 1 day after	(Kraft et al., 2013)
Thromboemb. (thrombin)	Mouse	I.P 30', 24 and 48h after; I.V, 3h, 24 and 48h after	3 days	Grid and cylinder test, 3 days	Reduced infarct volume and improved functional outcome.	(Campos et al., 2013)
tMCAO (180')	Mouse	I.P, before	No	Neurological score 1 day	Higher mortality. Association with tPA performed.	(Cai et al., 2013)
Photothromb.	Mouse	I.P, twice per day beginning 3 days after up to 5 days	No	Grid and cylinder test, 7,14,21 and 31 days	Improvement in functional outcome on day 7 and day 31.	(Brunkhört et al., 2013)
Photothromb.	Mouse	I.P, 2h after and daily	1 and 3 days	Modified neurological severity scores, 7 days	Decreased infarct volume, improved neurological deficits and attenuates autophagic activity.	(Li et al., 2017)
tMCAO (45')	Mouse	I.P, after	No	Neurological test, 48h	Attenuated haemorrhagic transformation after ischemia	(Salas-Perdomo et al., 2019)
Photothromb.	Mouse	I.P, 24h after and 1, 7 or 14 days	No	Modified neurological severity score up to 14 days	Promoted angiogenesis via microglial M2 polarization and exerted neuroprotection.	(Shang et al., 2020)

(*) Unless specified, animals were young and healthy males.

Table 2: Comparison of the different experimental models of stroke in terms of (i) resemblance to human stroke usually included in randomized clinical trials on stroke, and (ii) experimental advantages and disadvantages.

	Similarities to stroke patients included in RCT*	Differences with stroke patients included in RCT*	Experimental advantages	Experimental disadvantages
Intraluminal monofilament MCAO	<ul style="list-style-type: none"> No craniotomy needed 	<ul style="list-style-type: none"> Massive ischemic lesion Localization of ischemic lesion (cortical+subcortical) High mortality No clot Reperfusion injury after filament removal Rapid, sudden recanalization after filament removal 	<ul style="list-style-type: none"> Control of the duration of the occlusion Behavioral deficits easily quantifiable 	<ul style="list-style-type: none"> Transection of the external carotid artery needed (ischemic damages in the unirrigated territories) Secondary microthrombosis after filament removal High mortality
Electrocoagulation MCAO	<ul style="list-style-type: none"> Ischemic lesion location equivalent to human stroke included in RCT No reperfusion injury 	<ul style="list-style-type: none"> Small craniotomy needed 	<ul style="list-style-type: none"> No secondary microthrombosis Low mortality 	<ul style="list-style-type: none"> Not suitable for testing thrombolytic drugs Slight behavioral deficits, not long-lasting
Thromboembolic MCAO - Thrombin injection - FeCl ₃ contact	<ul style="list-style-type: none"> Ischemic lesion location equivalent to human stroke included in RCT No reperfusion injury Real clot (fibrin-rich or platelet-rich) into the lumen of the artery Possible spontaneous recanalization within 24h after stroke onset (thrombin model) Similar time-window response to intravenous tPA (thrombin model) 	<ul style="list-style-type: none"> Small craniotomy needed 	<ul style="list-style-type: none"> Good models for testing thrombolytics No secondary microthrombosis Low mortality 	<ul style="list-style-type: none"> Possible uncontrolled early spontaneous recanalization (<i>in situ</i> thrombin injection model) Slight behavioral deficits, not long-lasting

*RCT (randomized clinical trials) on immunomodulatory/anti-inflammatory drugs; MCAO, Middle Cerebral Artery Occlusion

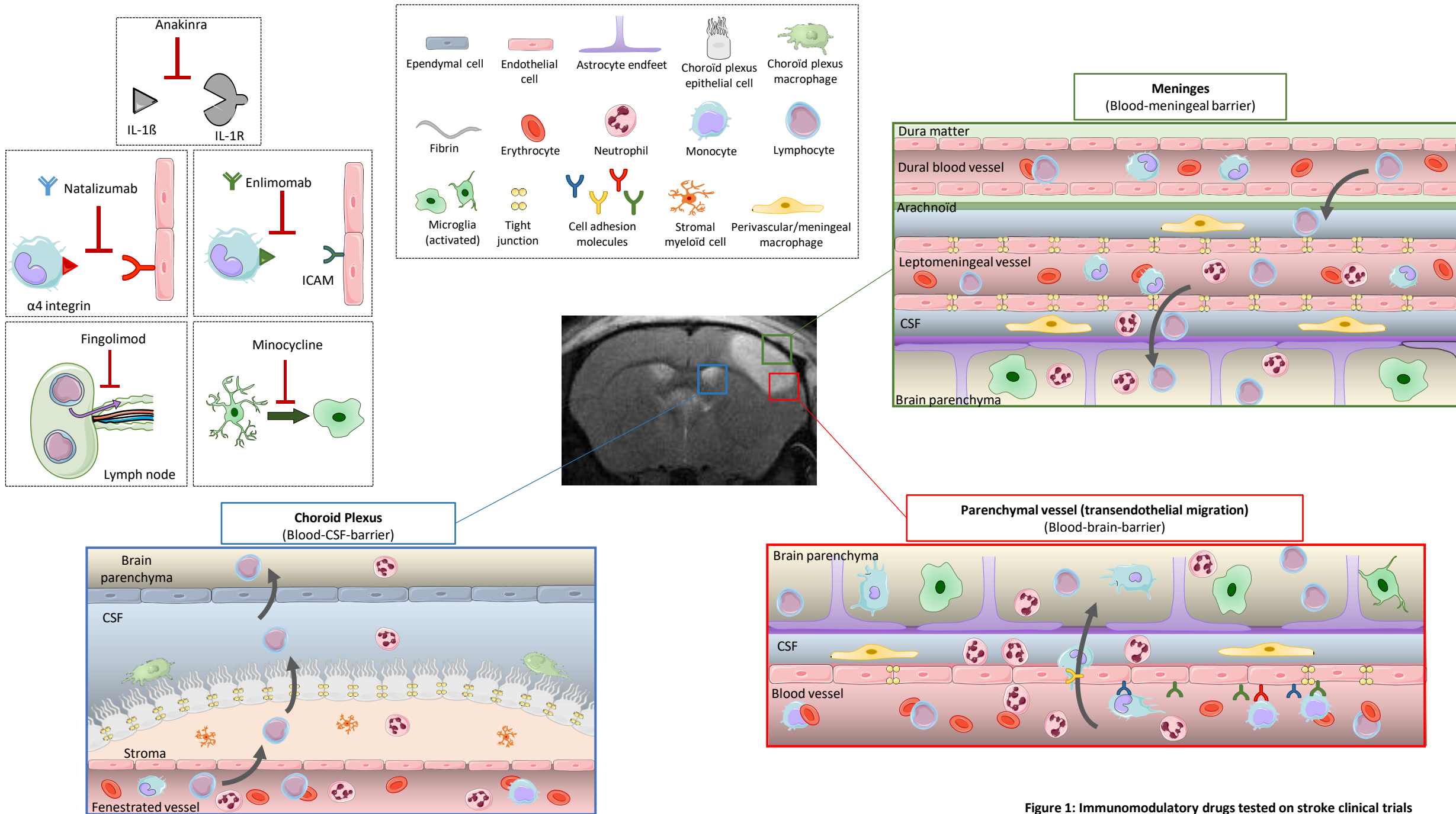


Figure 1: Immunomodulatory drugs tested on stroke clinical trials