



HAL
open science

Renewable energy homes for marine life: Habitat potential of a tidal energy project for benthic megafauna

Bastien Taormina, Martial Laurans, Martin P. Marzloff, Noémie Dufournaud, Morgane Lejart, Nicolas Desroy, Didier Leroy, Stéphane Martin, Antoine Carlier

► To cite this version:

Bastien Taormina, Martial Laurans, Martin P. Marzloff, Noémie Dufournaud, Morgane Lejart, et al.. Renewable energy homes for marine life: Habitat potential of a tidal energy project for benthic megafauna. *Marine Environmental Research*, 2020, 161, pp.105131 -. 10.1016/j.marenvres.2020.105131 . hal-03492134

HAL Id: hal-03492134

<https://hal.science/hal-03492134>

Submitted on 22 Sep 2022

HAL is a multi-disciplinary open access archive for the deposit and dissemination of scientific research documents, whether they are published or not. The documents may come from teaching and research institutions in France or abroad, or from public or private research centers.

L'archive ouverte pluridisciplinaire **HAL**, est destinée au dépôt et à la diffusion de documents scientifiques de niveau recherche, publiés ou non, émanant des établissements d'enseignement et de recherche français ou étrangers, des laboratoires publics ou privés.



Distributed under a Creative Commons Attribution - NonCommercial 4.0 International License

1 **Title**

2 **Renewable energy homes for marine life: habitat potential of a tidal energy project for**
3 **benthic megafauna**

4 **Authors**

5 Bastien Taormina^{ab}, Martial Laurans^c, Martin P. Marzloff^b, Noémie Dufournaud^c, Morgane Lejart^a,
6 Nicolas Desroy^d, Didier Leroy^c, Stéphane Martin^c, Antoine Carlier^b

7 **Affiliations**

8 **a** France Energies Marines, 525 Avenue Alexis de Rochon, 29280 Plouzané, France

9 **b** Ifremer, Centre de Bretagne, DYNECO - Laboratoire d'écologie benthique, ZI de la Pointe du Diable - CS 10070, 29280
10 Plouzané, France

11 **c** Ifremer, Centre de Bretagne, Laboratoire Ressources Halieutiques, ZI de la Pointe du Diable - CS 10070, 29280 Plouzané,
12 France

13 **d** Ifremer, Laboratoire Environnement Ressources Bretagne Nord, 38 rue du Port Blanc, 35801 Dinard, France

14 **Corresponding author**

15 Bastien Taormina, bastien.taormina@france-energies-marines.org , Ifremer, Centre de Bretagne,
16 DYNECO - Laboratoire d'écologie benthique, ZI de la Pointe du Diable - CS 10070, 29280 Plouzané,
17 France

18

19 **Abstract:**

20 An increasing number of offshore structures are being deployed worldwide to meet the growing
21 demand for renewable energy. Besides energy production, these structures can also provide new
22 artificial habitats to a diversity of fish and crustacean species. This study characterises how concrete
23 mattresses that stabilise the submarine power cable of a tidal energy test site can increase habitat capacity
24 for benthic megafauna. A five-year monitoring, which relied on both visual counts and video-based
25 surveys by divers, revealed that these mattresses provide a suitable habitat for 5 taxa of large crustaceans
26 and fish. In particular, two commercially valuable species, i.e. the edible crab *Cancer pagurus* and the
27 European lobster *Homarus gammarus*, showed a constant occupancy of these artificial habitats
28 throughout the course of the project. The shape and the number of shelters available below individual
29 mattresses largely determine potential for colonisation by mobile megafauna. Local physical
30 characteristics of the implantation site (e.g. substratum type, topography, exposition to current *etc.*)
31 significantly impact amount and type of shelters provided by the concrete mattresses. Thus, to
32 characterise habitat potential of artificial structures, it is not only essential to consider (i) the design of
33 the structures, but also to (ii) account for their interactions with local environmental conditions when
34 deployed on the seafloor.

35

36 **Keywords**

37 Artificial habitats ; Marine renewable energy ; Crustacean ; Fish ; Habitat

38

39 **Abbreviations**

40 MRE, Marine Renewable Energy; GLMM, generalised linear mixed models; LMM, linear mixed
41 models; PCA, principal component analysis; RDA, redundancy analysis

42

43 1. INTRODUCTION

44 Artificial reefs are man-made structures placed on the sea bed in aquatic habitats for different
45 purposes, for instance to mimic characteristics of natural reefs such as substrate and/or shelter provision
46 to associated organisms (Bohnsack et al., 1991; Jensen et al., 2000a; Thierry, 1988). Development of
47 artificial reefs may locally increase both hard substratum availability and habitat heterogeneity
48 (especially when deployed on soft-sediment bottoms), which can consequently lead to higher densities
49 and biomass of fish and decapods (Bohnsack et al., 1994; Bombace et al., 1994; Langhamer and
50 Wilhelmsson, 2009).

51 Enhancement of associated benthic diversity by artificial reefs depends both on reef properties
52 and on local environmental characteristics. Colonisation success depends on artificial reef shape and
53 size, constitutive material, orientation and degree of complexity, that directly determine habitat, and
54 refuge availability (Charbonnel et al., 2002; Ferreira and Coutinho, 2001; Hackradt et al., 2011; Sherman
55 et al., 2002). A range of local environmental factors (*e.g.* neighbouring habitat type, hydrological
56 features, amplitude of seasonal variation) can significantly influence the amount and the diversity of
57 colonising organisms (Bohnsack et al., 1991; Bombace et al., 1994; Godoy et al., 2002; Noh et al., 2017).
58 A long-standing scientific debate persists between two dominant theories regarding the role of artificial
59 reefs for mobile fauna: (i) the “attraction hypothesis” and (ii) the “production hypothesis” (Lima et al.,
60 2019). The first assumes that artificial reefs only attract specimens from nearby ecological communities,
61 without increasing overall biomass production (Bohnsack, 1989) while the latter advocates that artificial
62 reefs increase abundance and biomass of associated species by enhancing habitat and food availability
63 (Pickering and Whitmarsh, 1997; Polovina and Sakai, 1989). Literature shows that the two processes
64 exist, the productive potential of artificial reef is indeed reef-dependant and varies according to an
65 important number of factors (*e.g.* number and design of reef units, distance to natural reef, association
66 with protected area *etc.* ; Pickering and Whitmarsh, 1997). Nevertheless, Lima et al. (2019) highlight
67 that, despite several decades of scientific observations and experiments on the subject, separating the
68 reef effect and the effects of changing environmental and socioeconomic conditions remains complex,
69 impacting the assessment of artificial reefs performance.

70 Artificial reefs can be divided into two types: *i*) structures designed and installed specifically
71 for their reef properties (for a variety of reasons *e.g.* ecosystems conservation/restoration, fish stocks
72 enhancement, fisheries management *etc.*; Jensen, 2002) and *ii*) structures deployed for other purposes,
73 such as oil platforms, breakwaters, or marine renewable energy (MRE) facilities (Langhamer, 2012;
74 Lima et al., 2019; Wilson and Elliott, 2009). MRE facilities and associated structures (*e.g.* protection
75 structures, submarine power cables, foundations, turbines *etc.*) are not only colonised by a variety of
76 benthic organisms including algae, sessile epifauna and mobile macrofauna but also mobile megafauna
77 (*i.e.* fish and decapods). A diversity of fish and large crustaceans can settle on artificial reefs deployed
78 as part of MRE facilities (see Wilhelmsson and Langhamer, 2014 for a review). For example,
79 commercially valuable crustacean species such as the European lobster (*Homarus gammarus*) or the
80 edible crab (*Cancer pagurus*) can shelter around the foundations of offshore wind (Hooper and Austen,
81 2014; Krone et al., 2017) or wave farms (Langhamer and Wilhelmsson, 2009). Thus, such reef effects
82 can represent an ecological benefit of MRE, since artificial structures generally host higher diversity,
83 densities and biomass of benthic organisms than the surrounding soft bottoms (Broadhurst and Orme,
84 2014; Dannheim et al., 2020; Langhamer and Wilhelmsson, 2009). Wilson and Elliott (2009) estimated
85 that in the long term, a wind-turbine facility provides 2.5 times the amount of habitat relative to the
86 initial loss during the installation process, even though this new habitat may be of a different character
87 to the initial one. When their deployment requires the implementation of new exclusion areas for fishing,
88 MRE may thus act as a refuge for commercially-exploited populations, with potential spill-over benefits
89 for adjacent stocks and fisheries (Lindeboom et al., 2015, 2011). However, the long-term reef effect
90 associated with MRE facilities remains poorly characterised (Copping et al., 2016; Langhamer and
91 Wilhelmsson, 2009; Lindeboom et al., 2015), especially within high hydrodynamic energy areas (as
92 tidal energy sites; Copping et al., 2016).

93 The purpose of this study is to assess the role of habitat associated with MRE facilities using a
94 French tidal energy test site as a case study. We specifically examined the habitat capacity of concrete
95 mattresses that stabilise an unburied submarine power cable that connects the test site to the mainland.
96 Based on a 4-year monitoring of fish and crustacean abundance on these mattresses, we (1) characterise
97 the reef effect associated with MRE structures, and more specifically (2) how interactions between

98 artificial reefs and natural seafloor characteristics can determine diversity and abundance of associated
99 megafauna.

100 **2. METHODS**

101 **2.1 Study site**

102 The study area consists of a 15 km-long submarine power cable (8 MVA - 10 kVDC) laid in
103 2012 by Electricité de France (EDF) to connect the tidal test site of Paimpol-Bréhat to the mainland
104 (Brittany, France; Figure 1). Due to several setbacks in the project development, no electric current
105 transited through the cable during the course of this study. An 11 km cable portion is unburied due to
106 local seafloor characteristics (dominance of pebbles and presence of boulders; Figure 2.A) and stabilised
107 by 120 concrete mattresses to prevent any cable displacement due to high hydrodynamic conditions.
108 These mattresses are installed at depths ranging from 15 to 33 m and for the majority approximately 50
109 m apart (with some 200 m apart). The 6 m-long, 3 m-wide and 0.3 m-thick mattresses are made up of
110 73 concrete blocks linked together by an array of polypropylene rope, and a weight of ~10 t.

111 **2.2 Target species**

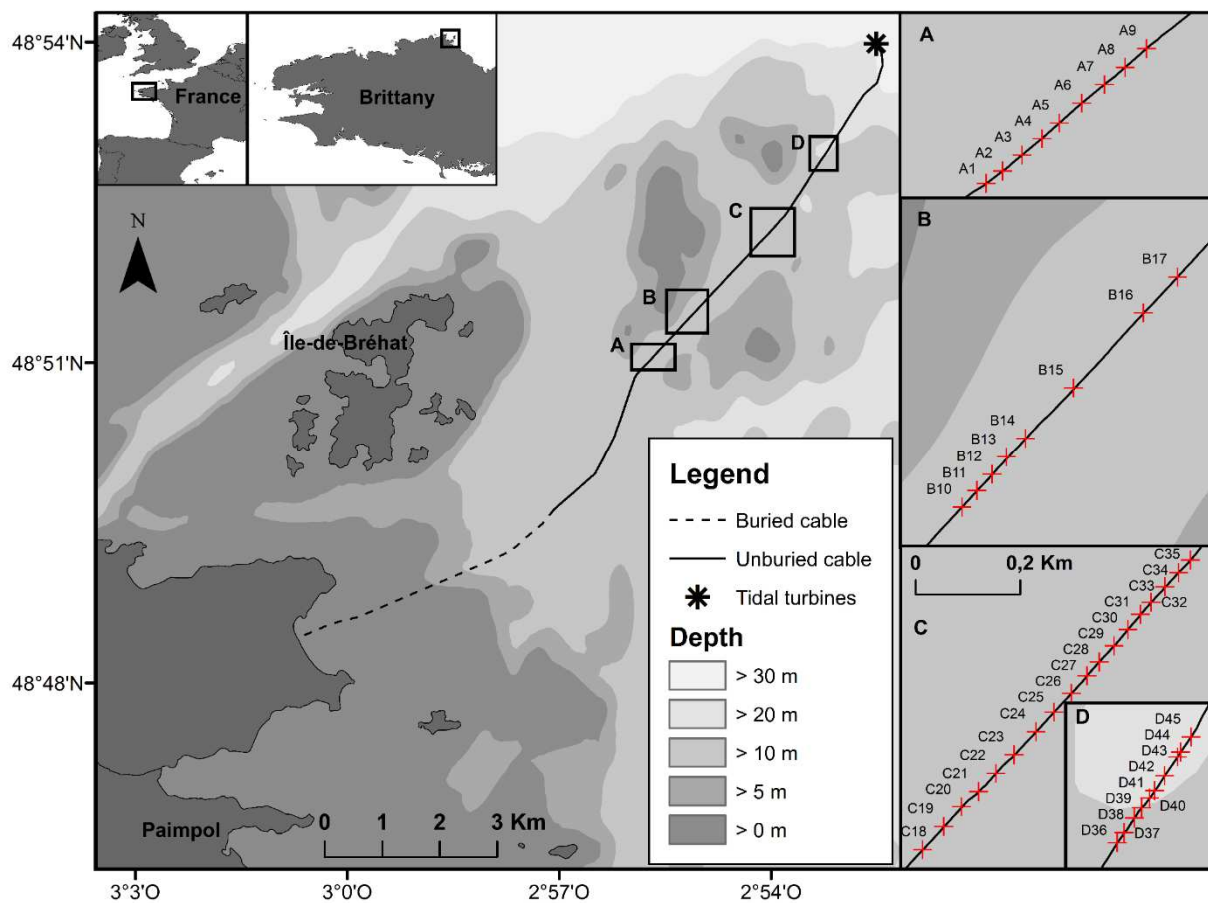


Figure 1: Map of the study area off the north coast of Brittany in Western France (top-left and top-centre panels). The thick black line represents the power cable that connects the Paimpol-Bréhat tidal test site to the mainland. Zones A, B, C and D (right) correspond to the four sites where concrete mattresses were surveyed.

112 A set of 5 benthic megafauna taxa easily recognisable by scuba-diving were surveyed: the
 113 crustaceans *Homarus gammarus* (European lobster) and *Cancer pagurus* (edible crab) and the benthic
 114 or demersal fish, *Conger conger* (European conger), *Labrus bergylta* (Ballan wrasse), and two species
 115 of the genus *Trisopterus*: *T. luscus* (whiting pout) and *T. minutus* (poor cod). These two latter species
 116 were hereafter gathered as a single taxon (*Trisopterus* spp.) since we cannot exclude that confusions of
 117 identification may have occurred.

118 2.3 Sampling strategy

119 Between June 2015 and September 2019, 45 different concrete mattresses in the 16-20 m depth
 120 range were surveyed by divers within four different zones along the cable (Zones A, B, C and D; Figure
 121 1). These selected zones are located within a channel surrounded by several rocky shelves. A total of 45
 122 mattresses were surveyed in June 2015, 30 in September 2015 (zone A, D and part of the zone C), 37 in
 123 June 2016 and 2017 (zone A, C and D); and only 20 in September 2019 (zone A and C Table 1). All
 124 surveys were performed at slack tides of neap tides and during daytime hours, *i.e.* between 8 am and 8
 125 pm. During each survey, two divers inspected each mattress: the first diver moved slowly along the
 126 entire perimeter of the mattress while examining all the cavities and counting all conspicuous individuals
 127 of the 5 target species. Simultaneously, the second diver followed the first one around the mattress and
 128 recorded a video using a GoPro Hero 4[®] camera to provide some additional observations of the mobile
 129 fauna and the environment (substratum bottom type, frequency and forms of cavities *etc.*). Hereafter, a
 130 “sample” refers to all these pieces of information recorded for a given mattress, during a given campaign.

Campaign	Number of Mattresses	Zone
June 2015	45	A-B-C-D
September 2015	30	A-C(only C25 to C35)-D
June 2016	37	A-C-D
June 2017	37	A-C-D
September 2019	20	A-C(only C25 to C35)

131
 132 *Table 1: Summary of the concrete mattresses and zones surveyed during each campaign.*

133

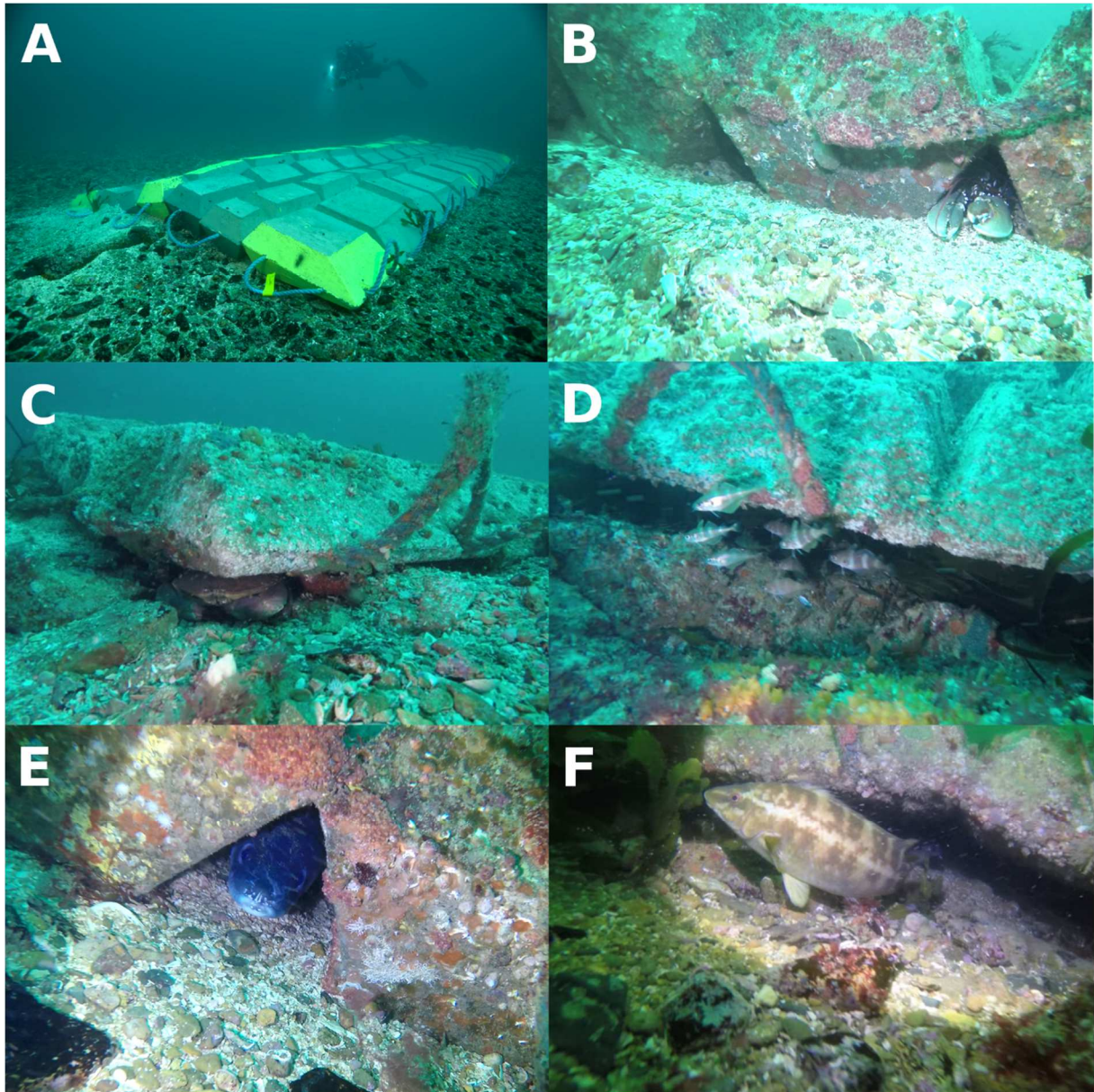


Figure 2: (A) Overall view of a concrete mattress (constituted of 73 concrete blocks) a few weeks after its installation on the power cable of the Paimpol-Bréhat tidal test site; (B) *Homarus gammarus* within a “hole”, i.e. a small ~20 cm-wide triangular cavity between two concrete blocks; (C) *Cancer pagurus* within a “cave”, i.e. a >10 cm high cavity formed below the mattress; (D) school of *Trisopterus* spp. close to a mattress “cave” ; (E) *Conger conger* within a “hole” ; (F) *Labrus bergylta* close to a mattress “cave”.

134 **2.4 Environmental variables**

135 Substratum as well as types and number of cavities associated with each mattress were estimated
 136 from the video footage: each concrete block along the mattress edges (see Figure 2A) was assigned to
 137 one of three substratum categories: sand, pebbles or boulders. For each mattress, substratum properties

138 were estimated as a proportion of these three categories across all peripheral concrete blocks (Table 2).
139 Two different types of cavity that can provide habitats to mobile fauna underneath the mattresses were
140 identified: “holes”, which correspond to small ~20 cm-wide triangular cavities between two concrete
141 blocks along the mattress width (Figure 2.B & E; Table 2); and “caves”, which correspond to larger
142 cavities formed below the mattress when it overhangs at least 10 cm above the seafloor (Figure 2.C, D
143 & F; Table 2).

144 In addition, the following environmental variables were extracted for each mattress (Table 2): (1)
145 bottom residual current velocity (computed from a 2010-2015 climatology extracted from the
146 MANGA500-MARS3D hydrodynamic model); (2) seafloor facet exposure to residual current
147 (computed using seafloor aspect and residual current direction and ranging from 0°, when the seafloor
148 is sheltered, to 180°, when it is fully exposed to dominant current) and (3) linear distances from each
149 mattress to the closest 5 m and 10 m depth isobaths. This final shortlist of environmental variables was
150 defined by removing correlated variables (> 0.7) from an original selection that only included well-
151 resolved biologically-relevant parameters.

152

153 **2.5 Biological data**

154 In addition to *in situ* abundance counts performed by divers, video counts of all visible individuals
155 were performed for the same 5 target species (Table 2). To avoid multiple counts of single individuals
156 of *Trisopterus* spp. given their high mobility, the maximum number of individuals occurring in a single
157 snapshot of the full video was recorded. In order to investigate species-specific sheltering preferences,
158 the positions of each counted individual with respect to the mattress was noted as either *i*) inside a
159 “hole”, *ii*) inside a “cave”, or *iii*) free-moving outside any cavities.

160 For *H. gammarus*, *C. pagurus* and *C. conger*, we used *in situ* counts performed by divers for
161 multivariate analyses (Table 2), since video counts underestimated the abundance of these three species
162 (SI 1) due to their cryptic behaviours. For the 2 other target taxa *L. bergylta* and *Trisopterus* spp., we
163 used video counts for multivariate analyses (Table 2) since *in situ* counts were less accurate due to the
164 high mobility of these species and the tendency to form dense schools of *Trisopterus* spp. (SI 1). All

165 video analyses were performed using the Ifremer ADELIE[®] Software V2.0 according to the
 166 methodology developed and tested by Dufournaud (2018).

	Variable	Unit	Origin	Mean	Min	Max
Biological data	<i>Homarus gammarus</i>	count	<i>in situ</i>	1.1	0	5
	<i>Cancer pagurus</i>	count	<i>in situ</i>	1.5	0	5
	<i>Conger conger</i>	count	<i>in situ</i>	1.4	0	4
	<i>Trisopterus</i> spp.	count	video	3.5	0	68
	<i>Labrus bergylta</i>	count	video	1.1	0	6
Environmental data	Sand proportion	%	video	67%	0%	100%
	Pebble proportion	%	video	27%	0%	100%
	Boulder proportion	%	video	6%	0%	89%
	Number of holes	count	video	10.2	3	12
	Number of caves	count	video	9.2	0	28
	Bottom-current velocity	m s ⁻¹	GIS	0.71	0.65	0.99
	Exposure	°	GIS	93.8	12.7	163.8
	Distance to 5 m isobath	m	GIS	500.2	149.7	791.2
	Distance to 10 m isobath	m	GIS	245.1	62	403.5

167
 168 *Table 2: Summary of all biological and environmental variables considered in this study, either*
 169 *measured in situ or from video footage, or derived from bathymetric map or from the MARS3D*
 170 *hydrodynamic model.*

171
 172 Due to poor footage quality, only 129 out of the 169 videos could be fully analysed and were used
 173 to perform multivariate analyses. To investigate specific habitat preferences, we also reported the type
 174 of cavity (either inside a “hole”, inside a “cave”, or free-moving out of any cavities) where each
 175 specimen was detected on the 129 videos.

176 **2.6 Data analysis**

177 Three main types of statistical analyses were performed, namely: *i*) generalised linear mixed
 178 models (GLMM) and linear mixed models (LMM) to explore temporal variations in megafauna
 179 abundance and diversity, *ii*) a principal component analysis (PCA) to study patterns in megafauna
 180 assemblage compositions, and *iii*) a redundancy analysis (RDA) to examine how variability in
 181 megafauna community relates to environmental conditions.

182 Using count data available for each mattress surveyed during the five campaigns, (i) GLMMs
183 were applied to study temporal variations in the abundance per mattress of each target species and the
184 total community abundance across all species (with and without *Trisopterus* spp.) per mattress; and (ii)
185 a LMM was apply to study temporal variation in species richness per mattress. As count estimates
186 correspond to repeated measures through time, mattress identity was treated as a random effect and
187 campaign date was the only categorical explanatory variable included in all models to assess temporal
188 variation. Each GLMM was fitted assuming either a Poisson distribution (for abundances of *H.*
189 *gammarus* and *C. conger*), or a negative-binomial distribution when residuals with the former were
190 overdispersed (for abundances of *C. pagurus*, *L. bergylta*, *Trisopterus* spp. and total community
191 abundance with and without *Trisopterus* spp.). For each model, significance of the factor “campaign”
192 was then assessed with Chi-Squared tests for GLMMs and F-test for LMM. When appropriate, a post-
193 hoc test using Tukey correction was performed to study pairwise differences between campaigns. We
194 then characterised variability in megafauna composition between samples using a PCA. Finally, to relate
195 community variability to changes in environmental variables (Table 2), we performed a Redundancy
196 Analysis (RDA; (Legendre and Legendre, 1998)). Using a Monte-Carlo permutation test (999
197 permutations), a forward selection process was performed to identify environmental variables that best
198 correlate to observed variability in community composition. In order to reduce the weight of abundant
199 school-forming species such as *Trisopterus* spp., a logarithmic transformation was applied to the
200 abundance data set before all multivariate analyses. Environmental variables were normalised prior to
201 RDA analysis. Data analysis was performed with Rstudio (RStudio Team, 2015) using the *vegan*
202 (Oksanen et al., 2018) and *ggplot2* (Wickham, 2016) packages.

203

204

3. RESULTS

205

3.1 Temporal variation

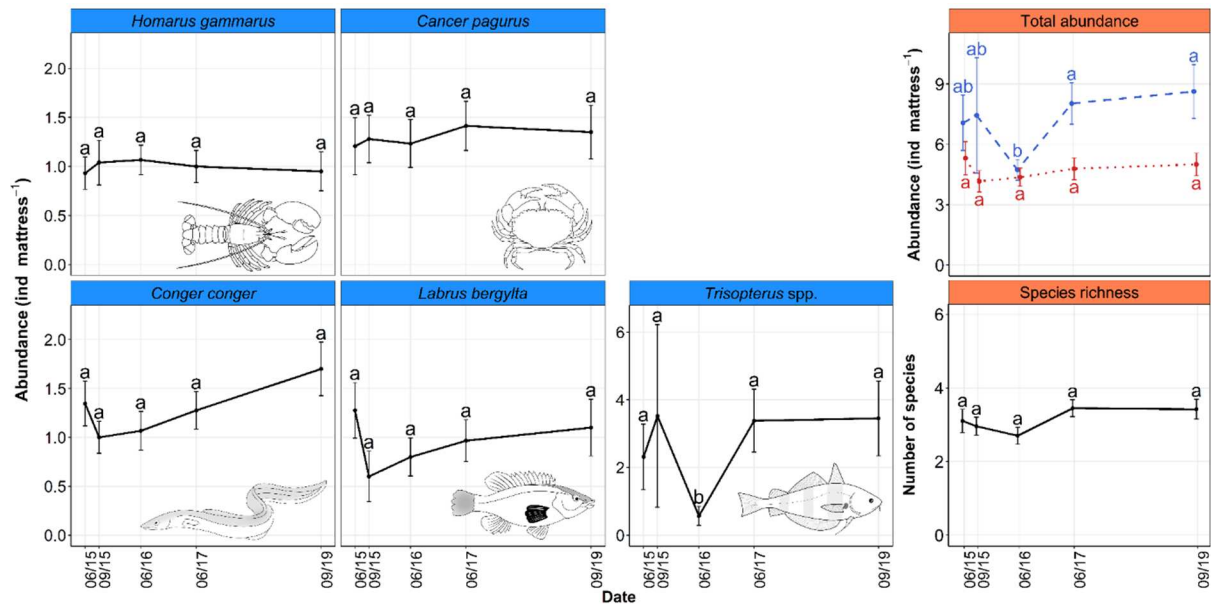


Figure 2 : Changes in mean specific abundances of the 5 target taxa (average number of individuals per mattress \pm standard errors), in mean community abundance per mattress (blue dashed line when considering all species; red dotted line when excluding highly abundant *Trisopterus* spp.) and in mean species richness per mattress. Points labelled with different letters indicate significant differences. Only the mattresses surveyed at every campaign were considered.

206

Although occupancy of individual mattresses varied slightly during the different campaigns (SI

207

2), mean abundance estimates across all mattresses did not significantly change for *H. gammarus* ($\chi^2 =$

208

0.44, df = 4, p = 0.98), *C. pagurus* ($\chi^2 = 0.6$, df = 4, p = 0.96), *C. conger* ($\chi^2 = 5.42$, df = 4, p = 0.25) and

209

L. bergylta ($\chi^2 = 5.46$, df = 4, p = 0.24, Figure 3). Only *Trisopterus* spp. displayed significant abundance

210

changes between campaigns ($\chi^2 = 26.42$, df = 4, p < 0.001; Figure 3) due to significantly lower

211

abundances in June 2016 relative to other campaigns. Total community abundance (across all five taxa)

212

per mattress significantly changed between campaigns ($\chi^2 = 14.49$, df = 4, p < 0.001; Figure 3) as total

213

abundance in June 2016 was significantly lower than in June 2017 and September 2019. This is most

214

likely due to the previously described decline in *Trisopterus* spp. abundance in June 2016. Indeed, when

215

excluding this taxon, there was no significant temporal change in total megafauna abundance ($\chi^2 = 1.91$,

216 df = 4, p = 0.75; Figure 3). Species richness per mattress did not significantly change overtime either (F
 217 = 1.78, df = 4, p = 0.14; Figure 3).

218 We sometimes observed co-occurrence within the same cavity of several individuals, either
 219 conspecific or from different species (Table 3). We did not quantify these co-occurrences, but observed
 220 *i)* that co-occurrence is more frequent within caves than within holes, *ii)* that mobile fish species (*i.e.* *L.*
 221 *bergylta* and *Trisopterus* spp.) frequently co-occurred with conspecifics and as well as other species,
 222 and *iii)* that individuals from sedentary species (*i.e.* *H. gammarus*, *C. pagurus* and *C. conger*) rarely co-
 223 occurred (Table 3).

224

225 *Table 3: Observed co-occurrence within a single cavity of individuals from the different target taxa.*
 226 *Based on video footages, the matrix reports on whether several individuals from the same or different*
 227 *species co-occurred at least one time within a hole (H), or a cave (C) cavity.*

	<i>Homarus gammarus</i>		<i>Cancer pagurus</i>		<i>Conger conger</i>		<i>Trisopterus</i> spp.		<i>Labrus bergylta</i>	
<i>Homarus gammarus</i>	-	-								
<i>Cancer pagurus</i>	-	-	-	C						
<i>Conger conger</i>	-	C	H	-	-	-				
<i>Trisopterus</i> spp.	-	C	-	C	-	C	H	C		
<i>Labrus bergylta</i>	-	-	-	-	-	-	H	C	H	C

228

229 Although we did not quantify their abundance (as they only marginally occurred), other species
 230 of benthic megafauna (including fish from the Blenniidae or Gobiidae families and other wrasses species
 231 such as *Labrus mixtus* and *Ctenolabrus rupestris*, and crustaceans like *Galathea* sp. and *Necora puber*)
 232 were also regularly observed.

233

3.2 Patterns in community composition / assemblage composition

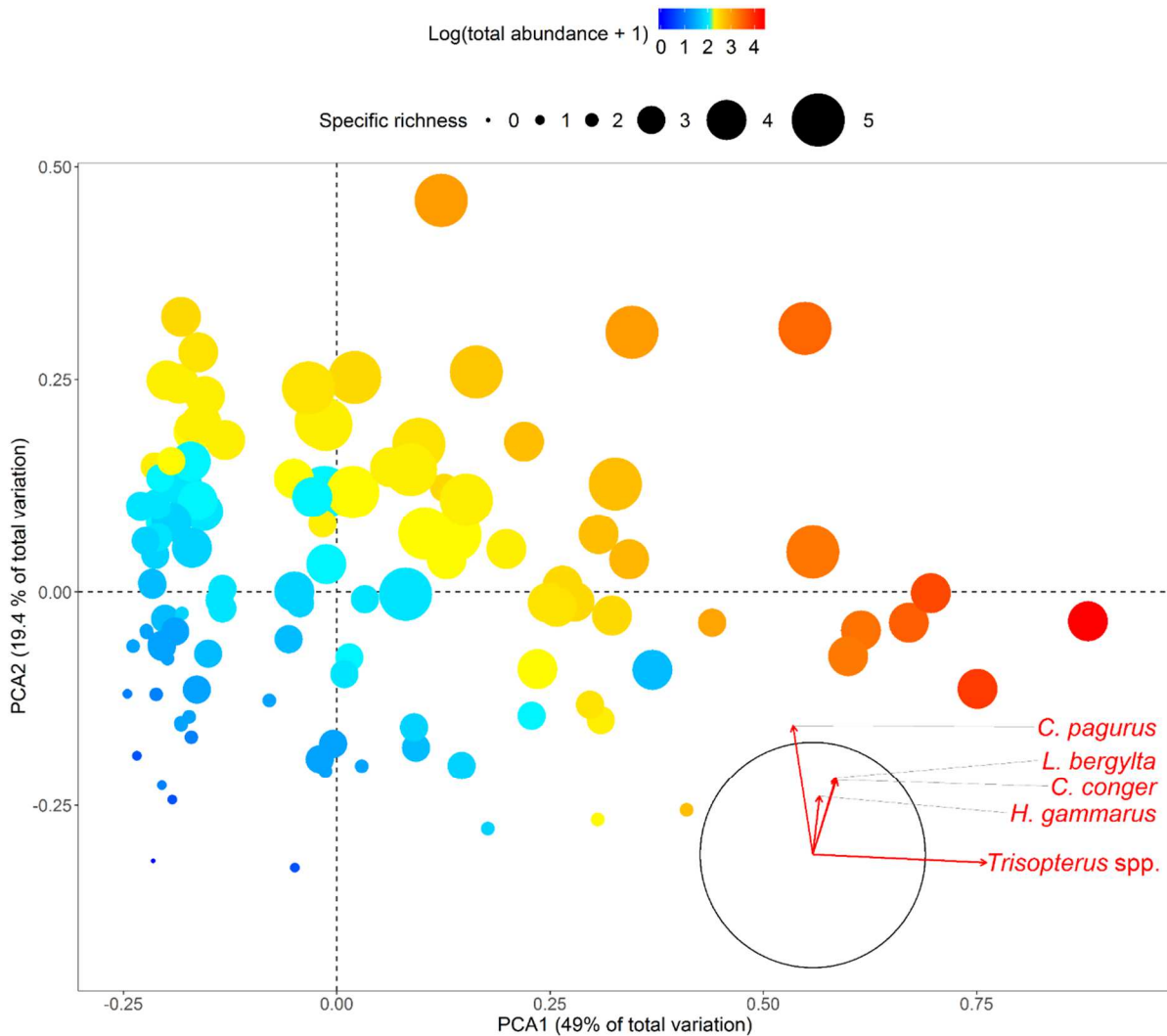


Figure 3: Principal Component Analysis (PCA) of log-transformed abundance data for the 5 target species. Each point represents a sample (i.e. a concrete mattress during a given campaign). Point size is proportional to species richness and colour indicates total megafauna abundance. Vector overlays show how species abundance correlates with the two first principal components.

235 Out of the 129 analysed samples, only 3 do not shelter any individuals of the target species.
 236 *Trisopterus spp.* is the most abundant species (448 individuals counted in total), followed by *C. pagurus*
 237 (196 individuals), *C. conger* (183 individuals), *L. bergylta* (145 individuals) and finally *H. gammarus*
 238 (141 individuals).

239 The first two PCA axes capture 68.4% of the total variation (Figure 4). Axis PCA1 (49% of
 240 total variation) is positively correlated to *Trisopterus spp.* abundance while the abundance of 4 of the 5
 241 taxa, mainly *C. pagurus* and then *L. bergylta* and *C. conger* positively correlates with axis PCA 2 (19.4%

242 of total variation; Figure 4). The colour and size codes used to visualise samples on the PCA also
 243 illustrates that both species richness and total abundance per mattress are positively correlated with the
 244 two first axes (Figure 4). PCA ordination highlights a large gradient of colonisation among samples,
 245 from low-abundance and low-richness samples (in the bottom left) to samples characterised by a high
 246 level of colonisation (in the top right of the plot).

Environmental variable	F-value	p-value	Explained		Correlation	
			λ	%	RDA1	RDA2
Cave	11.01	0.001	0.14	14%	0.77	0.33
% Boulder	8.185	0.001	0.1	10%	0.76	-0.35
Exposure	4.872	0.006	0.06	6%	0.31	-0.39
Hole	1.794	0.146	0.02	2%	0.24	0.71
% Pebble	1.541	0.193	0.02	2%	0.13	0.59
Total			0.34	34%		

247

248 *Table 4: Environmental variables selected in the RDA as well correlated to the variability in the*
 249 *abundance of the 5 target taxa colonising concrete mattresses at the Paimpol-Bréhat tidal test site cable*
 250 *(Monte Carlo permutation test in RDA with 999 permutations; $p < 0.05$). High correlation ($r > 0.5$)*
 251 *between environmental variables and the first two RDA axes are highlighted in bold.*

252

253 In the RDA (Figure 5), the environmental variables that best correlate to variability in megafauna
 254 composition are, in order of importance, number of caves, percentage of boulders, exposure to current,
 255 number of holes and finally percentage of pebbles (Table 4). These 5 variables capture 34% of the total
 256 variability in megafauna composition (Table 4; axis 1 and axis 2 explains 21.74% and 2.63% of the total
 257 variation, respectively, Figure 5). Results of the RDA (Figure 5) are consistent with those of the PCA
 258 (Figure 4). Number of caves present below the mattresses and percentage of boulders correlate positively
 259 with RDA axis 1, while number of holes and percentage of pebbles mainly correlate positively with
 260 RDA axis 2 (Figure 5, Table 4).

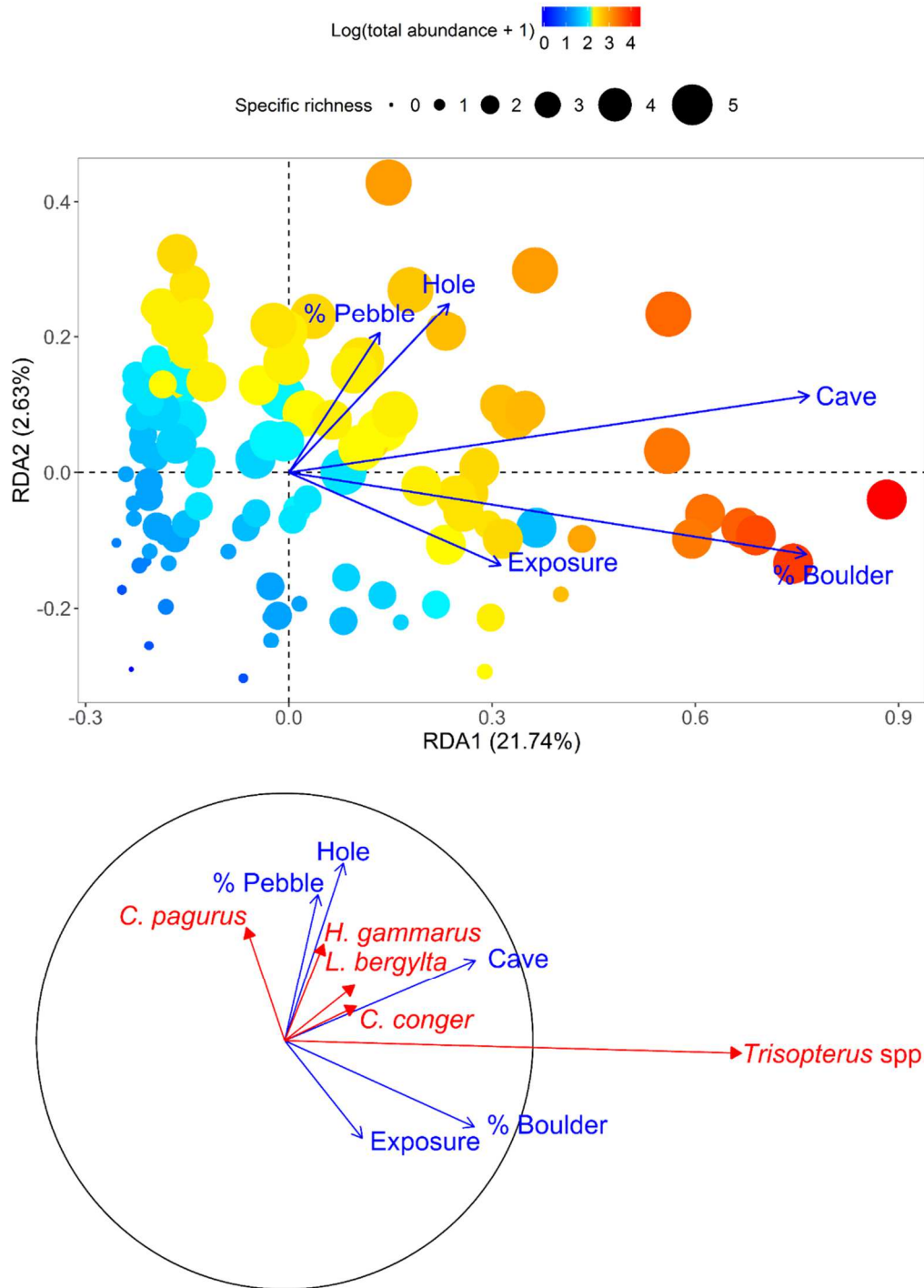


Figure 4: Redundancy analysis (RDA) ordination plots of axes 1 and 2 showing (A) samples (i.e. a concrete mattress during a given campaign, points) in relation to environmental variables (blue arrows); and (B) target megafauna species (red arrow) in relation to environmental variables (blue arrows). A different scaling was used for each panel, so environmental variables projection on the RDA should be used to reconcile both parts of the Figure. Axes 1 and 2 together explain 24.37% of the total taxonomic variation. Point size corresponds to associated species richness and point colour to associated total megafauna abundance.

262 Note that samples with high abundance of *Trisopterus* spp. (to the right of the RDA) are associated
 263 with relatively high numbers of caves and percentages of boulders (Figure 5). On the other hand, high
 264 abundances of *C. pagurus* and *H. gammarus* occur on mattresses with high numbers of holes and
 265 percentage of pebbles. *L. bergylta* and *C. conger* are correlated with high number of caves and holes
 266 (Figure 5). Finally, samples with low diversity and low total abundance exhibited relatively small
 267 numbers of both types of cavity (holes or caves) and low percentages of pebbles and boulders (Figure
 268 5).

269 3.3 Habitat preferences

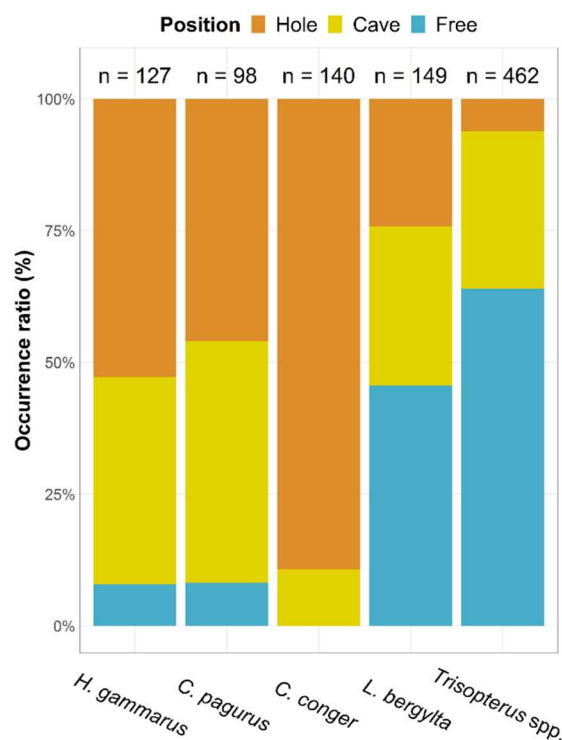


Figure 5 : Relative frequency of locations (either inside a “hole”, inside a “cave”, or free-moving out of any cavities) in which the 6 target species were detected, based on analyses of 169 video footages.

270 According to video footages, conger preferentially shelters within hole cavity (89,3% of
 271 sheltered individuals observed on videos are in holes), whereas the two species of *Trisopterus* commonly
 272 shelter within cave cavities (for sheltered individuals, 83% found in caves; Figure 6). Conversely, edible
 273 crab, European lobster and Ballan wrasse do not show any clear habitat preference as they appear to
 274 randomly shelter in either cavity types (specific proportions of individuals sheltering in caves are 50%,
 275 42.7% and 55.6%, respectively; Figure 6).

276 4. DISCUSSION

277 By combining *in situ* visual census by divers and video analysis, our results help to characterise
278 how MRE facilities can enhance benthic megafauna diversity by providing artificial reefs. Specifically,
279 our findings help: (i) characterise the habitat potential of concrete mattresses deployed to anchor an
280 unburied power cable; (ii) disentangle how interactions between artificial reef and natural substrate
281 determine the effectiveness of the ‘reef effect’ and (iii) to a lesser extent identify fine-scale habitat
282 preferences of the 5 target species.

283 **4.1 Habitat potential of cable stabilizing structures**

284 MRE structures create additional potential habitat for benthic megafauna, as shown by several
285 studies on colonisation (Krone et al., 2017; Langhamer and Wilhelmsson, 2009; Reubens et al., 2011;
286 Wilhelmsson and Langhamer, 2014). On the subsea power cable of Paimpol-Bréhat, concrete mattresses
287 offer a suitable habitat for large crustaceans and fish, at least for the 5 taxa targeted during our five-year
288 monitoring. This result corroborates with previous studies that showed that these target species are
289 known to be attracted by a number of artificial hard substrates, either associated with MRE facilities
290 (Krone et al., 2017; Langhamer and Wilhelmsson, 2009; Reubens et al., 2011) or with other types of
291 man-made structures (Castège et al., 2016; Charbonnel et al., 2000; Fabi et al., 2004; Jensen et al.,
292 2000b, 1994; Santos et al., 2005).

293 In our study, one mattress is on average inhabited by 1 to 2 individuals of *C. conger*, *H.*
294 *gammarus* and *C. pagurus*, corresponding to species-specific density of around 0.1 individuals per m².
295 By extrapolating these density estimates to all the 120 mattresses stabilising the power cable, the
296 associated populations inhabiting these structures could be up to around 125 *H. gammarus*, 162 *C.*
297 *conger*, 162 *C. pagurus*, 119 *L. bergylta* and 357 *Trisopterus* spp. These density estimates are smaller
298 than others reported in the literature. Krone et al. (2017) showed that scour protections of a wind turbine
299 foundation (1 m high and around 30 m diameters) in the German Bight (North Sea) were inhabited by
300 several thousand of *C. pagurus* individuals, *i.e.* a density of ~7 ind m². Note, however that these
301 estimates by Krone et al. (2017) include all life stages (including juveniles, which we missed in our
302 visual surveys). Similar scour protection devices were found to host dense schools of *T. luscus* on a
303 Belgian wind farm (Reubens et al., 2011). With an average density estimated at 14 ind m², total *T.*
304 *luscus* population within the windfarm was estimated at about 22,000 individuals. Langhamer and

305 Wilhelmsson (2009) highlighted colonisation of fish and crustacean on wave energy foundations (1 m
306 high and 3 m diameters) in the North Sea, with a mean density of around 5 edible crabs per foundation,
307 being ~ 0.7 ind m^{-2} . Finally, Jensen et al. (1994) estimated that within the Poole Bay artificial reef, each
308 reef unit (1 m high by 4 m of diameter) made up of several blocks (40 x 20 x 20 cm) sheltered between
309 2 and 3 *H. gammarus* individuals (*i.e.* density up to 0.25 ind m^{-2}). The fact that density values found in
310 our study are smaller than those reported in the literature may be mainly explained by differences in
311 surrounding natural habitats. In soft-sediment-dominated areas (*e.g.* the North sea), the number of
312 shelters provided by natural habitat surrounding artificial reef is very low. Thus, mobile individuals are
313 likely to find shelter in artificial reefs due to the low complexity of the natural habitat. The attraction
314 effect is therefore likely stronger on soft-sediment bottoms relative to structurally-complex seafloor. In
315 our case, natural hard substrate providing shelters are present in the wider area giving other options for
316 this species. Another point can come from the basic shape of concrete mattresses, which are less complex
317 than scour protections or wave-energy foundations.

318 It is noteworthy that target species abundance estimates were constant during our five-year
319 monitoring. This absence of temporal variation suggests that *i)* colonisation of mattresses by mobile
320 megafauna reached a plateau in less than 2 years after their deployment (first campaign was in June
321 2015 *i.e.* 2 years after the deployment of the mattresses) and *ii)* that target species may be permanent,
322 rather than temporary residents of the mattresses. Our results are consistent with earlier findings of rapid
323 colonisation of artificial reefs by megafauna: Jensen et al. (1994) showed that *H. gammarus*, *C. pagurus*,
324 *T. luscus* and different species of wrasses can colonise artificial reefs within 3 weeks of their
325 deployment. Moreover, biological traits related to mobility can to some extent support observed patterns
326 of species-specific positioning around the mattress. Concerning *H. gammarus*, two modes of behaviour
327 may exist: a mobile phase, with migration between different reefs, and a territorial phase where lobster
328 individuals stay in close proximity to a chosen site/shelter (Jensen et al., 1994). *H. gammarus* can be
329 highly loyal to its refuge, as showed by Jensen et al. (1994): 21% of lobsters caught on a reef unit stayed
330 on it for more than 100 days. *Labrus bergylta* and other *Labridae* are also territorial species dwelling in
331 the vicinity of an identified reef unit (Jensen et al., 1994; Villegas-Ríos et al., 2013). Results from a

332 mark-recapture programme suggest that a wide proportion of *Trisopterus luscus* individuals are bound
333 to the same artificial reef units, which serve as a “home reef” (Fowler et al., 1999).

334 The degree of colonisation of individual mattresses appears highly dependent on the number
335 and type of available shelters. Both these features condition how an artificial reef artificially enhances
336 the carrying capacity of the local environment (Bohnsack, 1989; Eggleston et al., 1992; Pickering and
337 Whitmarsh, 1997). As each species exhibits specific habitat preferences, the variety of shelters also
338 largely explains the species composition of artificial reefs (Anderson et al., 1989; Beets and Hixon,
339 1994; Chandler et al., 1985; Pickering and Whitmarsh, 1997; Smith et al., 1979). Optimisation of MRE
340 facilities through basic designs (*e.g.* with creation of manufactured holes of different sizes) has been
341 shown to enhance their attractivity for benthic species (Langhamer and Wilhelmsson, 2009). The
342 concrete mattresses of Paimpol-Bréhat were not designed to effectively provide additional habitat for
343 marine fauna but to stabilise the submarine power cable and prevent fishing gear hooking. The two types
344 of shelters we identified, namely holes and caves, present different physical characteristics: holes are
345 narrow (around 20 cm-wide) while caves can be much wider (around 1 m-wide for the biggest caves).
346 Total space availability likely explains why several individuals were more frequently observed to co-
347 occur within caves than within holes. Note, also, that the two different types of cavities also host distinct
348 groups of species. While *L. bergylta* shelters in both type of cavities, *Trisopterus* spp. show a clear
349 habitat preference for caves. *Trisopterus* spp. are known to colonise rocky habitats with numerous and
350 wide cavities such as caves, crevices or wrecks for shelters against tidal current (Jensen et al., 1994;
351 Krone et al., 2013). Consequently, they shelter to a limited extent in holes and favour wide caves that
352 can fit a whole school. This schooling behaviour conditions the species preference for larger caves, as
353 highlighted by the high correlation between *Trisopterus* spp. abundance and the number of caves
354 available below concrete mattresses. Our results also highlight that holes constitute the preferred habitat
355 for *C. conger*. This solitary species is known to shelter in narrow cavities, the holes of the mattress
356 constitute narrow and linear shelters which fit perfectly the shape of the adults, compared to the caves
357 which are too wide. Adult European lobster individuals use physical shelters to avoid predators and
358 being swept by strong tidal currents (Addison and Lovewell, 1991). Given the high tidal currents that
359 can occur at the Paimpol-Bréhat tidal site (up to 3 m s⁻¹), mattresses thus provide an adequate shelter to

360 lobsters. Lobsters typically select dark shelters that fit their body size closely (sometimes with physical
361 contact; Wahle et al., 2013). Although *H. gammarus* shows a subtle preference for mattresses with holes,
362 this species is found in both cavities in equal proportions, suggesting that narrow caves can also be
363 appealing to lobsters. Less information is available concerning sheltering behaviour and preferences of
364 *C. pagurus* but the species has been reported to compete with lobsters for shelter so it is likely to display
365 similar habitat preferences (Richards and Cobb, 1986). Contrastingly to the European lobster, *C.*
366 *pagurus* individuals are known to escape predators by rapidly burrowing themselves in sandy habitats
367 (Hudon and Lamarche, 1989). This burrowing behaviour may allow *C. pagurus* to colonise a wider
368 variety of mattresses relative to lobster, including those exhibiting high proportions of soft sediments.

369 Among our target species, three groups can be discerned based on their habitat use on artificial
370 reefs: (i) solitary and nocturnal species found in shelters during the day, such as *C. conger*, *H. gammarus*
371 and *C. pagurus*; (ii) solitary and diurnal species found in shelters during the night, such as *L. bergylta*;
372 and (iii) gregarious species that display a nocturnal activity, such as the two species of *Trisopterus*.
373 Because of these overlaps in their biological traits, the three solitary and nocturnal species (*i.e.* *C.*
374 *conger*, *H. gammarus* and *C. pagurus*) are likely to compete with each other for available artificial
375 shelters. Although we did not directly observed competition between them, the rare co-occurrence
376 within a single cavity of individuals from these three species could be the result of their competition for
377 similar shelters. The different diel behaviours of the target species suggest a possible day/night shift in
378 mattresses occupancy, as observed for other artificial (Santos et al., 2002) and natural reefs (Mallet et
379 al., 2016; Myers et al., 2016). This day/night shift may introduce a bias in our counting procedure.
380 Considering that all diving surveys occurred during the daytime, counts of diurnal species can be
381 underestimated due to their temporary absence in the vicinity of the mattresses during the surveys. On
382 the contrary, counts of nocturnal species are likely more accurate because individuals were mostly found
383 motionless within mattresses cavities during the day. Furthermore, *Trisopterus* spp. proceeds to tidal
384 migration in addition to day/night cycle, which may be another source of bias when evaluating its
385 occupancy rate. Schools of *T. luscus* are found to be more congregated and closer to artificial reef units
386 during high current speeds ($>0.3 \text{ m s}^{-1}$), and to be more dispersed and further from the reef during low
387 current speeds ($<0.1 \text{ m s}^{-1}$; Fowler et al., 1999). Considering that all diving surveys occurred during

388 slack tides (*i.e.* low speed currents), *Trisopterus* spp. abundance is possibly underestimated. In order to
389 study in greater detail these community changes at the mattress scale resulting from the activity rhythms
390 of the different megafauna species, the use of continuous video recording over several tide and day/night
391 cycles could be useful (Aguzzi et al., 2013; Mallet et al., 2016; Weiss et al., 2009). Furthermore, the use
392 of continuous video recording could help characterise biological interactions between the different
393 megafauna species, such as competition for shelter associated with these artificial structures (Weiss et
394 al., 2009).

395 **4.2 Interaction of artificial reef with local environment**

396 Differences in megafauna colonisation originate from the variability in local environmental
397 conditions around each mattress: interaction between mattress and heterogeneous natural bottom
398 directly influences the number and types of cavities available. Previous studies showed that
399 environmental variables, such as bottom types, depth, hydrodynamic conditions, sediment dynamics or
400 distance to natural reef, significantly impact the colonisation of artificial reefs (Ambrose and Swarbrick,
401 1989; Bohnsack et al., 1991; Bombace et al., 1994; Foster et al., 1994; Godoy et al., 2002; Noh et al.,
402 2017).

403 Our results reveal that the higher the proportion of boulders, which is positively correlated with
404 high hydrodynamic conditions, the higher the number of caves. Indeed, the presence of boulders creates
405 an irregular seafloor topography and prevent the edges of mattress from fitting flush with it, thus creating
406 overhanging space under the mattresses *i.e.* caves. Alexander et al. (2013) showed that seafloor
407 complexity underneath a flat concrete block plays an important role as it directly impacts the volume
408 available for colonisation. On the other hand, the number of holes available increases with the
409 percentage of pebbles. However, in the presence of pebbles, caves do not form under the mattresses, but
410 holes remain as open cavities between the adjacent concrete blocks. Although less colonised than
411 mattress with caves, these holes provide shelters to *C. pagurus*, *H. Gammarus*, *C. conger* and *L.*
412 *bergylta*. Finally, when the seafloor is dominated by sand and shell debris, the number of cavities is very
413 low because, *i*) the flatness of the seafloor prevents the creation of caves, and *ii*) accretion of sand and
414 shell debris caused by the presence of the mattress often fills up existing holes. To summarise, holes
415 constitute a narrow and deep cavity inherent to the way mattress is manufactured, but its availability can

416 be impacted by the degree that it is filled by the sediment, which depends on local sediment dynamics.
417 Caves constitute more or less narrow cavities with large openings, which only originate from the
418 interaction between mattress and the local topography of the site. Here, we only differentiated these two
419 types of cavities, but a more precise description of their physical features (*e.g.* through the use of
420 quantitative criteria such as depth, size and shape of the entrance) would help better quantify mattress
421 reef properties (Alexander, 2011).

422 Colonising an artificial reef also depends on distance to closest natural reefs (Ambrose and
423 Swarbrick, 1989; Jessee et al., 1985). The closer to existing natural hard habitat, the higher the
424 probability for artificial reefs to attract transient species (Campos and Gamboa, 1989; Potts and Hulbert,
425 1994). When deployed closely to existing natural reefs, artificial reefs essentially extend the amount of
426 hard habitat with direct benefits for hard-substrate species recruitment (Danner et al., 1994). In our case,
427 it is unlikely that distance to natural reefs influences mobile megafauna composition on mattresses.
428 Since mattresses are installed between large shallow rocky shelves, their distance to natural rocky habitat
429 are considered as low (less than 1km) and therefore relatively homogeneous. Computing precise
430 distances between each mattress and the nearest natural reef would be difficult due to the very complex
431 shape of the 10 m and 5 m isobaths in this area.

432 Finally, these structures associated with submarine power cables are not a classic artificial reef
433 in the sense that the current transiting through cables generates electromagnetic fields. A lack of
434 knowledge still exists concerning the impact of these anthropogenic electromagnetic fields on marine
435 fauna (Taormina et al., 2018). This can potentially impact species capable of electroreception and/or
436 magnetoreception through effects on predator/prey interactions, avoidance/attraction behaviour,
437 navigation/orientation capabilities or induce physiological and developmental effects (Copping et al.,
438 2016; Hutchison et al., 2020). Over the course of this study, no electric current transited through the
439 cable and the mattresses thus acted as a classic artificial reef, but further investigations should be
440 conducted once electrical current passes through.

441 **5. Conclusion**

442 Although the concrete mattresses deployed to anchor the submarine power cable were not
443 specifically designed to act as a refuge for marine fauna, a five-year monitoring study (*both in situ* and

444 using videos) shows that they offer a suitable and stable habitat for at least 5 benthic megafauna species.
445 Interactions between local seafloor and hydrodynamic characteristics (substratum type, topography,
446 exposition to current *etc.*) and artificial reef units directly condition the variety and the availability of
447 shelters. In our study, these two factors, *i.e.* shelters shape and availability, largely determine the degree
448 of colonisation by mobile megafauna. Consequently, in order to finely characterise the habitat potential
449 for megafauna of MRE structures, it is critical to both, optimise the design of the artificial structures,
450 and anticipate how they will interact with local environmental site characteristics.
451

452 **Acknowledgements**

453 The authors would like to thank Laura Taormina, Fernando Tempera, Natacha Go,
454 Olivier Dugornay, Xavier Caisey and Fabrice Pernet for their kind assistance.

455 **Funding**

456 This work is sponsored by the Région Bretagne, France Energies Marines and the National
457 Research Agency within the framework of Investments for the Future program under reference
458 ANR-10-IED-0006-17.

459 **BIBLIOGRAPHY**

- 460 Addison, J.T., Lovewell, S.R.J., 1991. Size composition and pot selectivity in the lobster (*Homarus*
461 *gammarus* (L.)) and crab (*Cancer pagurus* L.) fisheries on the east coast of England. *ICES J. Mar.*
462 *Sci.* 48, 79–90. doi:10.1093/icesjms/48.1.79
- 463 Aguzzi, J., Sbragaglia, V., Santamaría, G., Del Río, J., Sardà, F., Nogueras, M., Manuel, A., 2013.
464 Daily activity rhythms in temperate coastal fishes: Insights from cabled observatory video
465 monitoring. *Mar. Ecol. Prog. Ser.* 486, 223–236. doi:10.3354/meps10399
- 466 Alexander, T.J., 2013. Cryptic invertebrates on subtidal rocky reefs vary with microhabitat structure
467 and protection from fishing. *Mar. Ecol. Prog. Ser.* 481, 93–104. doi:10.3354/meps10263
- 468 Alexander, T.J., 2011. Responses of temperate mobile macroinvertebrates to reef habitat structure and
469 protection from fishing. University of Tasmania.
- 470 Ambrose, R.F., Swarbrick, S.L., 1989. Comparison of fish assemblages on artificial and natural reefs
471 off the coast of southern California. *Bull. Mar. Sci.* 44, 718–733.
- 472 Anderson, T.W., Demartini, E.E., Roberts, D.A., 1989. The relationship between habitat structure,
473 body size and distribution of fishes at a temperate artificial reef. *Bull. Mar. Sci.*
- 474 Beets, J., Hixon, M.A., 1994. Distribution, persistence, and growth of groupers (Pisces: Serranidae) on
475 artificial and natural patch reefs in the Virgin Islands. *Bull. Mar. Sci.* 55, 470–483.
- 476 Bohnsack, J.A., 1989. Are high densities of fishes at artificial reefs the result of habitat limitation or
477 behavioral preference. *Bull. Mar. Sci.* 44, 631–645. doi:March 1, 1989
- 478 Bohnsack, J.A., Harper, D.E., McClellan, D.B., Hulsbeck, M., 1994. Effects of Reef Size on
479 Colonization and assemblage structure of fishes at artificial reefs off southeastern Florida U.S.A.
480 *Bull. Mar. Sci.* 55, 796–823.
- 481 Bohnsack, J.A., Johnson, D.L., Ambrose, R.F., 1991. Ecology of Artificial Reef Habitats and Fishes,
482 in: *Artificial Habitats for Marine and Freshwater Fisheries*. ACADEMIC PRESS, INC., San
483 Diego, pp. 61–107. doi:10.1016/b978-0-08-057117-1.50009-3
- 484 Bombace, G., Fabi, G., Fiorentini, L., Speranza, S., 1994. Analysis of the efficacy of artificial reefs
485 located in five different areas of the Adriatic sea. *Bull. Mar. Sci.* 55, 559–580.
- 486 Broadhurst, M., Orme, C.D.L., 2014. Spatial and temporal benthic species assemblage responses with

487 a deployed marine tidal energy device: A small scaled study. *Mar. Environ. Res.* 99, 76–84.
488 doi:10.1016/j.marenvres.2014.03.012

489 Campos, J.A., Gamboa, C., 1989. An artificial tire-reef in a tropical marine system: a management
490 tool. *Bull. Mar. Sci.* 44, 757–766.

491 Castège, I., Milon, E., Fourneau, G., Tauzia, A., 2016. First results of fauna community structure and
492 dynamics on two artificial reefs in the south of the Bay of Biscay (France). *Estuar. Coast. Shelf*
493 *Sci.* 179, 172–180. doi:10.1016/j.ecss.2016.02.015

494 Chandler, C.R., Sanders, R.M., Landry, A.M., 1985. Effects of three substrate variables on two
495 artificial reef fish communities. *Bull. Mar. Sci.* 37, 129–142.

496 Charbonnel, E., Francour, P., Harmelin, J.G., Bachet, G., 2000. Effects of Artificial Reef Design on
497 Associated Fish assemblages in the Cote Bleue Marine Park.pdf, in: *Artificial Reefs in European*
498 *Seas*. Springer Netherlands.

499 Charbonnel, E., Serre, C., Ruitton, S., Harmelin, J., Jensen, A., 2002. Effects of increased habitat
500 complexity on fish assemblages associated with large artificial reef units (French Mediterranean
501 coast). *ICES J. Mar. Sci.* 59, S208–S213. doi:10.1006/jmsc.2002.1263

502 Copping, A., Sather, N., Hanna, L., Whiting, J., Zydlewski, G., Staines, G., Gill, A., Hutchison, I.,
503 O’Hagan, A.M., Simas, T., Bald, J., Sparkling, C., Wood, J., Masden, E., 2016. Annex IV 2016
504 State of the Science Report: Environmental Effects of Marine Renewable Energy Development
505 Around the World. doi:10.1097/JNN.0b013e3182829024

506 Danner, E.M., Wilson, T.C., Schlotterbeck, R.E., 1994. Comparison of rockfish recruitment of
507 nearshore artificial and natural reefs off the coast of central California. *Bull. Mar. Sci.* 55, 333–
508 343.

509 Dannheim, J., Bergström, L., Birchenough, S.N.R., Brzana, R., Boon, A.R., Coolen, J.W.P., Dauvin,
510 J.-C., De Mesel, I., Derweduwen, J., Gill, A.B., Hutchison, Z.L., Jackson, A.C., Janas, U.,
511 Martin, G., Raoux, A., Reubens, J., Rostin, L., Vanaverbeke, J., Wilding, T.A., Wilhelmsson, D.,
512 Degraer, S., 2020. Benthic effects of offshore renewables: identification of knowledge gaps and
513 urgently needed research. *ICES J. Mar. Sci.* 77, 1092–1108. doi:10.1093/icesjms/fsz018

514 Dufournaud, N., 2018. Apport de la vidéo sous-marine pour l’étude de la colonisation par la

515 mégafaune benthique des structures artificielles associées aux projets d'énergies marines
516 renouvelables.

517 Eggleston, D.B., Lipcius, R.N., Miller, D.L., 1992. Artificial shelters and survival of juvenile
518 Caribbean spiny lobster *Panulirus argus*: spatial, habitat, and lobster size effects. *Fish. Bull.* 90,
519 691–702.

520 Fabi, G., Grati, F., Puletti, M., Scarcella, G., 2004. Effects on fish community induced by installation
521 of two gas platforms in the Adriatic Sea. *Mar. Ecol. Prog. Ser.* 273, 187–197.

522 Ferreira, C.E.L., Coutinho, R., 2001. Community structure of fishes and habitat complexity on a tropical
523 rocky shore. *Environ. Biol. Fishes* 353–369.

524 Foster, K.L., Steimle, F.W., Muir, W.C., Kropp, R.K., Conlin, B.E., 1994. Mitigation potential of
525 habitat replacement concrete artificial reef in Delaware Bay - preliminary results. *Bull. Mar. Sci.*
526 55, 783–795.

527 Fowler, A.J., Jensen, A.C., Collins, K.J., Smith, I.P., 1999. Age structure and diel activity of pouting
528 on the Poole Bay artificial reef. *J. Fish Biol.* 54, 944–954. doi:10.1006/jfbi.1998.0918

529 Godoy, E.A.S., Almeida, T.C.M., Zalmon, I.R., 2002. Fish assemblages and environmental variables
530 on an artificial reef north of Rio de Janeiro, Brazil. *ICES J. Mar. Sci.* 59, S138–S143.
531 doi:10.1006/jmsc.2002.1190

532 Hackradt, C.W., Félix-Hackradt, F.C., García-Charton, J.A., 2011. Influence of habitat structure on
533 fish assemblage of an artificial reef in southern Brazil. *Mar. Environ. Res.* 72, 235–247.
534 doi:10.1016/j.marenvres.2011.09.006

535 Hooper, T., Austen, M., 2014. The co-location of offshore windfarms and decapod fisheries in the UK:
536 Constraints and opportunities. *Mar. Policy* 43, 295–300. doi:10.1016/j.marpol.2013.06.011

537 Hudon, C., Lamarche, G., 1989. Niche segregation between American lobster *Homarus americanus*
538 and rock crab *Cancer irroratus*. *Mar. Ecol. Prog. Ser.* 52, 155–168.

539 Hutchison, Z.L., Gill, A.B., Sigray, P., He, H., King, J.W., 2020. Anthropogenic electromagnetic
540 fields (EMF) influence the behaviour of bottom-dwelling marine species. *Sci. Rep.* 10, 1–15.
541 doi:10.1038/s41598-020-60793-x

542 Jensen, A.C., 2002. Artificial reefs of Europe: perspective and future. *ICES J. Mar. Sci.* 59, S3–S13.

543 doi:10.1006/jmsc.2002.1298

544 Jensen, A.C., Collins, K.J., Lockwood, A.P.M., 2000a. Artificial Reef In European Seas. Springer
545 Netherlands. doi:10.1007/978-94-011-4215-1

546 Jensen, A.C., Collins, K.J., Lockwood, A.P.M., Mallinson, J.J., Turnpenny, W.H., 1994. Colonization
547 and Fishery Potential of a Coal-Ash Artificial Reef, Poole Bay, United Kingdom. *Bull. Mar. Sci.*
548 55, 1263–1276.

549 Jensen, A.C., Wickins, J., Bannister, C., 2000b. The Potential Use of Artificial Reefs to Enhance
550 Lobster Habitat, in: *Artificial Reefs in European Seas*. Springer Netherlands, pp. 379–401.
551 doi:10.1007/978-94-011-4215-1_23

552 Jessee, W.N., Carpenter, A.L., Carter, J.W., 1985. Distribution patterns and density estimates of fishes
553 on a southern California artificial reef with comparisons to natural kelp- reef habitats. *Bull. Mar.*
554 *Sci.* 37, 214–226.

555 Krone, R., Dederer, G., Kanstinger, P., Krämer, P., Schneider, C., Schmalenbach, I., 2017. Mobile
556 demersal megafauna at common offshore wind turbine foundations in the German Bight (North
557 Sea) two years after deployment - increased production rate of *Cancer pagurus*. *Mar. Environ.*
558 *Res.* 123, 53–61. doi:10.1016/j.marenvres.2016.11.011

559 Krone, R., Gutow, L., Brey, T., Dannheim, J., Schröder, A., 2013. Mobile demersal megafauna at
560 artificial structures in the German Bight - Likely effects of offshore wind farm development.
561 *Estuar. Coast. Shelf Sci.* 125, 1–9. doi:10.1016/j.ecss.2013.03.012

562 Langhamer, O., 2012. Artificial Reef Effect in relation to Offshore Renewable Energy Conversion:
563 State of the Art. *Sci. World J.* 2012, e386713. doi:10.1100/2012/386713

564 Langhamer, O., Wilhelmsson, D., 2009. Colonisation of fish and crabs of wave energy foundations
565 and the effects of manufactured holes - A field experiment. *Mar. Environ. Res.* 68, 151–157.
566 doi:10.1016/j.marenvres.2009.06.003

567 Legendre, P., Legendre, L., 1998. *Numerical Ecology*. Elsevier: Amsterdam/New-York.

568 Lima, J.S., Zalmon, I.R., Love, M., 2019. Overview and trends of ecological and socioeconomic
569 research on artificial reefs. *Mar. Environ. Res.* 145, 81–96. doi:10.1016/j.marenvres.2019.01.010

570 Lindeboom, H., Degraer, S., Dannheim, J., Gill, A.B., Wilhelmsson, D., 2015. Offshore wind park

571 monitoring programmes, lessons learned and recommendations for the future. *Hydrobiologia*
572 756, 169–180. doi:10.1007/s10750-015-2267-4

573 Lindeboom, H.J., Kouwenhoven, H.J., Bergman, M.J.N., Bouma, S., Brasseur, S., Daan, R., Fijn,
574 R.C., de Haan, D., Dirksen, S., van Hal, R., Hille Ris Lambers, R., ter Hofstede, R., Krijgsveld,
575 K.L., Leopold, M., Scheidat, M., 2011. Short-term ecological effects of an offshore wind farm in
576 the Dutch coastal zone; a compilation. *Environ. Res. Lett.* 6, 1–13. doi:10.1088/1748-
577 9326/6/3/035101

578 Mallet, D., Vigliola, L., Wantiez, L., Pelletier, D., 2016. Diurnal temporal patterns of the diversity and
579 the abundance of reef fishes in a branching coral patch in New Caledonia. *Austral Ecol.* 41, 733–
580 744. doi:10.1111/aec.12360

581 Myers, E.M.V., Harvey, E.S., Saunders, B.J., Travers, M.J., 2016. Fine-scale patterns in the day, night
582 and crepuscular composition of a temperate reef fish assemblage. *Mar. Ecol.* 37, 668–678.
583 doi:10.1111/maec.12336

584 Noh, J., Ryu, J., Lee, D., Khim, J.S., 2017. Distribution characteristics of the fish assemblages to
585 varying environmental conditions in artificial reefs of the Jeju Island, Korea. *Mar. Pollut. Bull.*
586 118, 388–396. doi:10.1016/j.marpolbul.2017.02.066

587 Oksanen, J., Blanchet, F.G., Friendly, M., Kindt, R., Legendre, P., McGlinn, D., Minchin, P.R.,
588 O’Hara, R.B., Simpson, G.L., Solymos, P., Henry, M., Stevens, H., Szoecs, E., Wagner, H.,
589 2018. *vegan: Community Ecology Package*. R package version 2.4-6. [https://CRAN.R-](https://CRAN.R-project.org/package=vegan)
590 [project.org/package=vegan](https://CRAN.R-project.org/package=vegan), R package.

591 Pickering, H., Whitmarsh, D., 1997. Artificial reefs and fisheries exploitation: A review of the
592 “attraction versus production” debate, the influence of design and its significance for policy.
593 *Fish. Res.* 31, 39–59. doi:10.1016/S0165-7836(97)00019-2

594 Polovina, J.J., Sakai, I., 1989. Impacts of artificial reefs on fishery production in Shimamaki, Japan.
595 *Bull. Mar. Sci.* 44, 997–1003.

596 Potts, T.A., Hulbert, A.W., 1994. Structural influences of artificial and natural habitats on fish
597 aggregations in Onslow Bay, North Carolina. *Bull. Mar. Sci.* 55, 609–622.

598 Reubens, J.T., Degraer, S., Vincx, M., 2011. Aggregation and feeding behaviour of pouting

599 (Trisopterus luscus) at wind turbines in the Belgian part of the North Sea. *Fish. Res.* 108, 223–
600 227. doi:10.1016/j.fishres.2010.11.025

601 Richards, R.A., Cobb, J.S., 1986. Competition for Shelter Between Lobsters (*Homarus americanus*)
602 and Jonah Crabs (*Cancer borealis*): Effects of Relative Size. *Can. J. Fish. Aquat. Sci.* 43, 2250–
603 2255.

604 RStudio Team, 2015. RStudio: Integrated Development for R. RStudio, Inc., Boston.

605 Santos, M.N., Monteiro, C.C., Gaspar, M.B., 2002. Diurnal variations in the fish assemblage at an
606 artificial reef. *ICES J. Mar. Sci.* 59, 32–35. doi:10.1006/jmsc.2001.1166

607 Santos, M.N., Monteiro, C.C., Lasserre, G., 2005. Observations and trends on the intra-annual
608 variation of the fish assemblages on two artificial reefs in Algarve coastal waters (southern
609 Portugal). *Sci. Mar.* 69, 415–426.

610 Sherman, R.L., Gilliam, D.S., Spieler, R.E., 2002. Artificial reef design: Void space, complexity, and
611 attractants. *ICES J. Mar. Sci.* 59, 196–200. doi:10.1006/jmsc.2001.1163

612 Smith, G.B., Hensley, D.A., Mathews, H.H., 1979. Comparative Efficacy of Artificial and Natural
613 Gulf of Mexico Reefs as Fish Attractants, Florida Marine Research Publication. St. Petersburg,
614 Florida.

615 Taormina, B., Bald, J., Want, A., Thouzeau, G., Lejart, M., Desroy, N., Carlier, A., 2018. A review of
616 potential impacts of submarine power cables on the marine environment: Knowledge gaps,
617 recommendations and future directions. *Renew. Sustain. Energy Rev.* 96, 380–391.
618 doi:10.1016/j.rser.2018.07.026

619 Thierry, J.M., 1988. Artificial reefs in Japan - A general outline. *Aquac. Eng.* 7, 321–348.
620 doi:10.1016/0144-8609(88)90014-3

621 Villegas-Ríos, D., Mucientes, G., Saborido-Rey, F., Alós, J., March, D., Palmer, M., 2013. Home
622 range and diel behavior of the ballan wrasse, *Labrus bergylta*, determined by acoustic telemetry.
623 *J. Sea Res.* 80, 61–71. doi:10.1016/j.seares.2013.02.009

624 Wahle, R.A., Castro, K.M., Tully, O., Cobb, J.S., 2013. *Homarus*, in: *Lobsters: Biology, Management,*
625 *Aquaculture & Fisheries: Second Edition.* Wiley Blackwell, pp. 221–258.
626 doi:10.1002/9781118517444.ch8

627 Weiss, H.M., Lozano-Álvarez, E., Briones-Fourzán, P., Negrete-Soto, F., 2009. Using Red Light with
628 Fixed-site Video Cameras to Study the Behavior of the Spiny Lobster (*Panulirus argus*) and
629 Associated Animals at Night and Inside Their Shelters. *Mar. Technol. Soc. J.* 40, 86–95.
630 doi:10.4031/002533206787353213

631 Wickham, H., 2016. *ggplot2: Elegant Graphics for Data Analysis*. Springer-Verlag New York.
632 doi:10.1007/978-0-387-98141-3

633 Wilhelmsson, D., Langhamer, O., 2014. The Influence of Fisheries Exclusion and Addition of Hard
634 Substrata on Fish and Crustaceans, in: Shields, M.A., Payne, I.L.A. (Eds.), *Marine Renewable
635 Energy Technology and Environmental Interactions*. Springer, pp. 49–60.

636 Wilson, J.C., Elliott, M., 2009. The habitat-creation potential of offshore wind farms. *Wind Energy* 12,
637 203–212. doi:10.1002/we.324

638