



HAL
open science

Impact of GHGs temporal dynamics on the GWP assessment of building materials: A case study on bio-based and non-bio-based walls

Vladimir Zieger, Thibaut Lecompte, Arthur Hellouin de Menibus

► To cite this version:

Vladimir Zieger, Thibaut Lecompte, Arthur Hellouin de Menibus. Impact of GHGs temporal dynamics on the GWP assessment of building materials: A case study on bio-based and non-bio-based walls. Building and Environment, 2020, 185, pp.107210. 10.1016/j.buildenv.2020.107210 . hal-03491665

HAL Id: hal-03491665

<https://hal.science/hal-03491665>

Submitted on 21 Sep 2022

HAL is a multi-disciplinary open access archive for the deposit and dissemination of scientific research documents, whether they are published or not. The documents may come from teaching and research institutions in France or abroad, or from public or private research centers.

L'archive ouverte pluridisciplinaire **HAL**, est destinée au dépôt et à la diffusion de documents scientifiques de niveau recherche, publiés ou non, émanant des établissements d'enseignement et de recherche français ou étrangers, des laboratoires publics ou privés.



Distributed under a Creative Commons Attribution - NonCommercial 4.0 International License

Impact of GHGs temporal dynamics on the GWP assessment of building materials: a case study on bio- based and non-bio-based walls

Vladimir Zieger¹, Thibaut Lecompte^{1*}, Arthur Hellouin de Menibus^{2,3}

1 Univ. Bretagne-Sud, UMR CNRS 6027, IRDL, F-56100 Lorient,

2. Eco-Pertica, Hôtel Buissonnet, F-61340 Perche-en-Nocé

3. Association Nationale des Chanvriers en Circuits Courts, Hôtel Buissonnet, F-61340 Perche-en-Nocé
**thibaut.lecompte@univ-ubs.fr Centre de recherche C.Huygens, BP92116, 56321 Lorient Cedex*

Highlights

- Static LCA might mislead the comparison of building materials.
- The GWP should be estimated not only at 100-year but also at 500-year.
- The global warming potential indicator should be in an absolute metric.

Abstract

In a static Life Cycle Assessment (LCA), the global warming potential (GWP) is calculated assuming Green House Gas (GHG) impact to be independent of their emission or uptake timing.

This study investigates if this approach is adequate to fully capture the global warming impact (GWI) of building materials. Static LCA (sLCA) was compared to dynamic LCA (dLCA) on two case studies, a conventional wall made of concrete and mineral wool, and a bio-based wall made of wood and straw.

The main results are:

- sLCA do not allow to evaluate the real GWI of building materials. This might mislead the comparison of building materials.
- GWP indicator might be estimated at 100- and 500-year-TH to better support mitigation in the building sector;
- The relative metric in kgCO₂ equivalent misleads conclusions. Absolute global warming indicators calculated with dLCA might be fairer to compare building materials' GWI;
- sLCA with at 100 years GWP indicator and a relative metric in kgCO₂e, which is the approach currently used in the French building sector, disadvantages bio-based solutions compared to conventional ones;
- dLCA applied to an alternative functional unit — maintaining a housing function during several centuries — demonstrates that temporary carbon storage induced by bio-based materials do not lead to dramatic carbon release for future generations.

Keywords: bio-based building materials; carbon storage; dynamic life cycle assessment; global warming potential; lifespan.

1. Introduction

Today, efforts are focused to reduce the energy consumption of building during their use phase and to choose less impacting building materials and processes. Construction materials GWI need to be assessed. The most commonly used methodology is static Life Cycle Assessment (sLCA). It calculates the global warming potential (GWP) by summing up GHG emissions and uptakes linked to a production, independently of their timing. sLCA is problematic for several reasons. First, it is physically incorrect to add non-simultaneous emissions. Indeed, during the offset between them, the fraction of the first emission will have decreased due to interactions between the lower atmosphere and forests, biomass, soils and ocean. Moreover, this methodology rises some questions regarding how to consider the contribution of biogenic CO₂ included in bio-based materials. Røyne et al. (2016) analysed 101 peer-reviewed LCAs of forestry products and found that 87% of studies considered biogenic carbon as neutral. It is either counted for “0” or “-1/+1”, i.e. there is a balance between carbon sequestration and re-emission at the EoL (Gustavsson and Sathre, 2006 ; Venturini et al., 2019). But such a sLCA leads to biases in the ‘true’ values based on a complete inventory (Wiloso et al., 2016) and fails in taking into account the effect of temporary storage of carbon. Another approach is the dynamic LCA (dLCA) method (Levasseur et al. 2011, 2012 Cherubini et al., 2011; Kendall, 2012), which consists in accounting for the timing of carbon storage and emissions on a year-by-year basis. Several authors recently applied this dynamic LCA approach to building materials (Pittau et al., 2018; Liu et al., 2019; Albers et al., 2019).

In both methods, the time horizon at which a global warming indicator is calculated is critical. This aspect has been discussed in Levasseur et al. (2016). They recommend diverse metrics to compare the impact of different technical solutions on climate change (CC). However, the most common metric in LCA remains the GWP, that can be applied usually in 20, 100 and 500 years (IPCC, 2014). In the building context, GWP is usually calculated at 100 years (GWP100).

Building regulations are on the way to require the use of sLCA to evaluate the GWP100 of buildings, such as the French one called “RE2020”. Thus, there is a crucial need to evaluate if a GWP100 calculated this way is accurate enough to decide which are the building methods to promote. This is the aim of this study. This leads to highlight the fundamental difference between sLCA and dLCA on global warming estimations on two case studies: a conventional wall made of concrete and mineral wool, and a bio-based wall made of wood and straw. Different scenarios are explored by changing the building lifetime and the bio-based material end of life. To sum up, the main contribution of this paper is to investigate the impact of some key methodological aspects regarding LCA studies in the building context, to evaluate if the actual LCA method used for material in the French building sector (sLCA, 100 year horizon, global warming expressed in relative metric kgCO₂) enables a fair comparison between bio-based and non bio-based practices.

Furthermore, this paper presents three others contributions regarding:

- the question raised about the need to promote fast growing crop rather than forestry to mitigate CC. This topic was first tackled by Pittau et al. (2018). This is linked to an essential point in dynamic LCA methodology: the definition of the eco-system equilibrium that allows to state if a resource is renewable or not. This question is tackled by taking metropolitan France as a case study.
- The appropriate unit for the GWP indicator, which is usually the relative metric “equivalent kgCO₂”. Results from static and dynamic LCA at different TH, for conventional and bio-based walls are compared to analyse if equivalent CO₂ really capture the effective radiative forcing.

- The question “does temporary carbon storage in bio-based materials is a risk for future generations” ? This question is addressed with dynamic LCA and an alternative functional unit, defined as a service which is “maintaining a housing for inhabitant for several centuries” rather than a building lifetime.

2. Method

2.1. Static Life Cycle Assessment (LCA)

Standard LCA is based on the ISO standards 14040:2006 and 14044:2006. In the present study, only the climate change is evaluated. As a consequence, the inventory only concerns the greenhouse gases (GHG) related to the process.

Currently, the most common CC metric is radiative forcing: each GHG has its own radiative efficiency per unit mass, a_{GHG} . Since 1990 and the first IPCC report regarding assessment (IPCC, 1990), the most widely used metric is the GWP. It is a cumulative and relative metric. It integrates the instantaneous global warming impact (GWI_{inst}) over a period of time up to a TH, to calculate the absolute global warming potential (AGWP) due to a given mass increase of a GHG atmospheric concentration (Eq.1 and Eq.2)

The instantaneous radiative forcing, RF_{GHG} , caused by an increase in GHG atmospheric concentration depends on its radiative efficiency, a_{GHG} and on the lifetime of the given gas. It can be calculated with equations Eq.1 or more complex ones, in particular for carbon dioxide (Joos et al., 2013). This instantaneous radiative forcing of a GHG always decreases with time, due to its decay in the atmosphere by its reaction with oceans and earth soils which act as carbon sinks.

$$\text{Eq.1} \quad RF_{GHG}(t) = a_{GHG} e^{-t/\tau} \quad [\text{W.m}^{-2}.\text{kg}^{-1}]$$

The absolute global warming potential, $AGWP_{GHG}$, can be calculated as the sum of instantaneous radiative forcing up to a given time horizon, TH (Eq. 2)

$$\text{Eq.2} \quad AGWP_{GHG}(TH) = \int_0^{TH} RF_{GHG}(t) dt \quad [\text{W.yr.m}^{-2}.\text{kg}^{-1}]$$

The GWP is also a relative metric, as it normalises the AGWP due to a new emission of a given GHG by the AGWP of 1kg of CO₂ (Eq.3)

$$\text{Eq.3} \quad GWP_{GHG}(TH) = \frac{AGWP_{GHG}(TH)}{AGWP_{CO_2}(TH)} \quad [\text{kgCO}_2\text{e. kg}^{-1}]$$

Multiplying each mass of GHG by its GWP calculates its GWI, in kgCO₂e, for a given process or product. The TH can be 20, 100 or 500 years after the IPCC (Myhre et al., 2013), but it is usually 100 years. The overall impact is the sum of the GWP of each GHG. This approach does not consider the instant of a gas emission or uptake, and is then called “static” approach. Two main criticisms can be made about this approach: 1/the GWP is relative to the AGWP of CO₂, that introduces a complexity related to the real knowledge of the atmospheric CO₂ concentration, as well as the fact that the climate effect due to gas changes over time, with its overall concentration in the atmosphere (Joos et al., 2013) ; 2/as seen in Eq.1, the amount of gas in the atmosphere decreases with time. Then if a same gas is emitted at two different times, the amount of gas in the atmosphere will be less than their sum.

2.2. Dynamic LCA (dLCA)

sLCA results are usually evaluated at TH of 100 years, beyond which further impacts are no longer taken into consideration (Levasseur et al., 2011). Changing this TH will modify the GWP since greenhouse gases have different intrinsic decay times: CH₄ stays 12.4 years, N₂O 121 years. Carbon dioxide does not decay like other gases: models consider that between 20% to 40% of emitted anthropogenic CO₂ remains in the atmosphere at a 500-year-timescale (Myhre et al., 2013; Joos et al. 2013). Thus, the cumulative effective GWI due to a process that emits carbon will always increase well beyond 100 years.

The dynamic LCA approach was firstly proposed by Fearnside, Lashof and Moura-Costa (2000). They calculated the benefits implied by a delayed emission depending on the TH. This method was criticized because it still needs a TH and delaying emissions has no real advantage as it simply postpones the problem (Kirschbaum, 2006). Levasseur and her co-workers (2011, 2012) extended the approach by calculating the radiative forcing and the GWP year by year. The time-dependent curves of the impacts on global warming are simply calculated by adapting Eq.1 and Eq.2 with the approach of Levasseur et al. (2012):

The instantaneous global warming impact GWI_{inst} in W.m⁻² calculated with Eq.4 and Eq.5 :

$$\text{Eq.4} \quad DCF_{GHG}(t) = \int_{t-1}^t \alpha_{GHG} C_{GHG}(t) dt \quad [\text{W.m}^{-2}.\text{kg}^{-1}]$$

$$\text{Eq.5} \quad GWI_{inst}(t) = \sum_{GHG} \sum_{i=0}^t g_{GHG}(i) * DCF_{GHG}(t - i) \quad [\text{W.m}^{-2}]$$

where:

- $DCF_{GHG}(t)$ is the dynamic characterization factor of a specific GHG emission that occurs at time t ;
- α_{GHG} is the instantaneous radiative forcing per unit mass present in the atmosphere for a specific GHG;
- $C_{GHG}(t)$ is the mass atmospheric load of a given GHG, t years after the emission;
- $g_{GHG}(i)$ is the dynamic inventory result for a given GHG in year i .

The cumulative global warming impact GWI_{cum} in W.year.m⁻² is calculated with Eq.6 :

$$\text{Eq.6} \quad GWI_{cum}(t) = \sum_{i=0}^t GWI_{inst}(i) \quad [\text{W.year.m}^{-2}]$$

The GWI_{cum} represents an absolute GWI. It is converted into a “dynamic” GWP by comparing the GWI_{cum} of the gas with the AGWP of 1kg of CO₂ emitted in year 1. Then this dynamic GWP represents a relative radiative forcing in kgCO₂e, as seen in section 2.1.

Levasseur and coworkers (Levasseur et al., 2016, Head et al., 2020) also propose a dynamic score, DLCA, close to the static GWP100 definition, by dividing the GWI_{cum} by the cumulative radiative forcing of 1 kg of CO₂ emitted at time zero to a given TH (Eq.7):

$$\text{Eq. 7} \quad DLCA_{GHG}(TH) = \frac{GWI_{cum,GHG}(TH)}{AGWP_{1kg,CO_2}(TH)}$$

The major interest of a dynamic approach (dLCA) is to take into account the carbon sequestration, and the sequencing of GHG uptake/release due to a practice. With this approach, depending on the fixed endpoint in time (Time Horizon - TH), emissions occurring later have less impact, compared to similar emissions occurring earlier (Jørgensen and Hauschild, 2013).

2.3. How to account for timber and forestry in dynamic LCA?

In dLCA, it is essential to evaluate whether a resource is renewable or not, which depends on the resource growing duration and human practices. In the case of bio-based construction, the rate of carbon uptake has to be compared to the building lifespan, correlated to the forestry rotation time or the crop growth duration. This point has been recently focused by Pittau et al. (2019). The case of annual crop products is quite simple as plants generally grow in one year or less: crops happen one year before the building construction. The case of timber is more complex as its growth lasts from 20 years to several centuries depending on species and forestry management.

A critical point is the carbon uptake timing: should we consider the uptake during the tree growth used for building, i.e. before the construction? Or does the uptake occur during growth of the replacing tree, i.e. few years after the construction? Head et al. (2019, 2020) carried out a dLCA on wood used in Canadian buildings. They consider a landscape level: a large area where a small proportion of trees is harvested every year, plus a variable age distribution of trees. Assuming a sustainable forest management, the authors consider the carbon uptake in wood in year 0 (harvest year). They also evaluated the ecosystem carbon costs (ECC): the act of harvesting wood has a carbon cost depending on the management context, such as the forest size and the beginning of sustainable management. The ECC in Canadian Forests computed by Head et al. (2020) mainly shows a negative impact for a TH of 100 years. Thus by considering 100 years of historical forest management for 12 species, the authors take a negative pulse emission at year 0, adding the carbon uptake of wood and the ECC.

Can one also consider French timber products as sustainable? In Europe, timber harvesting is not correlated with deforestation: forest areas have increased in recent decades, even if part of the forest biomass is used as softwood lumber, paper, furniture or for energy. According to the IGN (2019), forest areas in France have increased at a rate of 0.7% per year since 1987, that is between 25 and 36 million m³ per year (IGN, 2019; IFN, 2011), even if 38.3 million tons of wood have been harvested in 2017 (AGRESTE, 2018) and of that only 32% of French forests are certified (PEFC, 2019; French Government, 2016). Sales of certified timber account only for 56% of total sales (AGRESTE, 2018) but up to 92% of the sales are to the building sector (Besozzi, 2015). Thus, it is reasonable to consider a carbon balance in French forests providing wood for the building sector: the forest is able to replace the volume of harvested timber in one year. That is why in the present study, the carbon uptake by wood was considered over one year.

From a broader viewpoint, recommendations are to maintain older, longer-rotation forests, to protect old-growth forests and to optimize forest management to fulfil different objectives: wood production, climate change mitigation and prevention of biodiversity loss (AESAC, 2017). Furthermore, the extension of sustainably managed forests may prevent land use change, a major source of GHG emissions, and may encourage afforestation of unproductive agricultural lands. Nevertheless, care must be taken with sustainable managed forests, since loss of biodiversity, monoculture, chemical inputs, degraded forest soil, and clearcutting can also be observed in some

places. The closer the origin of the wood used or assessed, the more the harvesting practices of this renewable resource are known.

Table 1 summarizes data on timber and wheat production in France. Carbon sequestration from annual crop and timber are in the same order of magnitude and resources are not scarce. Thus, there is no need to promote further annual crop production such as straw or long-term production such as wood.

Table 1: yield per hectare and carbon storage in bio-based materials used for construction in France

Material	Biomass production	Quantity of carbon permanently stored in the field or forest	Area in France	Sources
Timber	5 m ³ /ha, being around 3 t/ha (and 3 m ³ /ha harvested)	165 tC/ha (standing trees ~ 85 tC/ha Litter ~ 10 tC/ha Soil ~ 70 tC/ha)	17.106 ha	ADEME, IGN 2019 ; ADEME 2019 ; IFN 2011 ; AGRESTE 2018 ; EUROFOR 1996
Wheat	4-6 t/ha of wheat straw 7 t/ha of grain	51 tC/ha (Soil ~50 tC/ha Organic residues ~1 tC/ha)	Cereals: 9.3.106 ha (50.5% of arable land)	AGRESTE 2019 ; ADEME, IGN 2019

2.4. Which lifespan to consider for building and building materials?

Building lifespan is considered as a major factor in LCA results (Rauf & Crawford, 2015 ; Islam et al., 2015 ; Marsh et al., 2017, Goulouti et al. 2020). Currently, a 50-year-building-lifespan is chosen as a standard for LCA, without clear justifications. However, there is no consensus on buildings lifespan and other values are also found in literature, from 40 years to 100 years (Palacios-Munoz 2019). Building lifespans are hardly estimated, since they do not only depend on the ageing of the structure but also on social, regulation or aesthetic considerations.

Data from the French building context are compiled in appendix A.1. They show that the building stock will be completely renewed in 95 years, which could be considered as representative of the lifespan of a residential building. This theoretical calculus does not take into account neither future renovation regulations, nor coming methods and building processes. However, it also shows that 50 years is a short and arbitrary lifespan value. Another way to estimate the building in-service life is a durability approach. For example, Palacios-Munoz et al. (2019) used a statistical approach on reinforced concrete structures and estimated a lifespan of 94 +/- 21 years. Also, two studies conducted in Norway found a lifespan between 40 years and 300 years, a median value of 100 years and a mean of 125 years (Sartori et al., 2016 ; Bohne et al., 2006). Furthermore, the average age of existing buildings is about 50 years in France (Arnold, 2016; SDES, 2018; SOES, 2010). It support that the average lifespan of current French buildings is clearly more than 50 years.

Hence, in this study, three building lifespans will be used in assessments to cover the sensitivity due to service life duration: 50 years (usual value), 75 years (more than 80% of current buildings after Sartori et al., 2016) and 100 years (median value of Sartori et al., 2016).

During a building's lifetime, its materials are changed depending on their functions, i.e., building materials have their own in-service life. Several authors (Brand, 1994; Rauf and Crawford, 2015; Kellenberger and Althaus, 2009) proposed different order of magnitude of materials lifespans, depending on their functions:

- Structure (foundation and load-bearing elements): 30 to 300 years;
- Skin (exterior surfaces): 35 years for conventional exterior rendering, and 30 years for glass wool outside insulation ; 25 years for windows and 40 years for roof tiles.
- Space plan (interior facings and non-load-bearing partitions): 40 to 50 years for inside gypsum plaster boards, 10 years for carpets and paints

The lifespan of the component materials used in the walls studied here are inspired by these studies. The lifespans of each layer were defined as follows:

- Lifespan of the structure is the same as the building (concrete or timber beam);
- 50 years for the insulation as well as for interior gypsum plasterboards;
- 25 years for renders made of cement, lime or earth;
- 5 years for the paint.

These values are a combination of site feedbacks and literature review. They remain arbitrary and can be very variable from one building to another.

2.5. Software and databases

LCAs are based on life cycle inventory data (LCI) from the Ecoinvent 3.2 database analysed using OpenLCA 1.5 software. Standard LCA focuses on GWP values of GHG relative to CO₂ for a lifetime horizon of 100 years (i.e. GWP100) based on the IPCC 2013 impact assessment method (Moreno Ruiz et al., 2015). In construction and building, the main gases emitted are carbon dioxide (CO₂), methane (CH₄) and dinitrogen monoxide (N₂O) with GWP100 values of 1, 28 and 264.8 kgCO₂e respectively (Myhre et al., 2013). To make data as consistent with local practices as possible, the Ecoinvent 3.2 dataset was sometimes modified to fit the French or European context.

3. Description of the case studies: a conventional and a bio-based walls

3.1. Functional unit

The two exterior walls have the same functional unit (FU), in accordance with NF EN 15804 and NF EN 16783 (CSTB, 2016, 2017):

- 1 m² of wall whose main function is to form a load-bearing structure;
- Thermal resistance value (R) of 7.3 m².K.W⁻¹ (U=0.137 W.m⁻².K⁻¹), which corresponds to passive house standards;
- a lifespan of 50, 75 or 100 years.

The *conventional* wall is composed of materials commonly used in France (Table 2). It is compared to a *bio-based* wall consisting of a structural timber frame filled with straw bales (Figure 1).

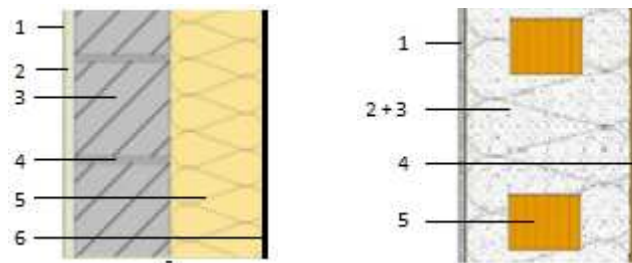


Figure 1: Composition of the walls referred to in Table 2; *conventional* wall (left), *bio-based* wall (right)

Table 2: Inventory of the materials used for the two types of wall

Ref.	Material	Density (kg.m ⁻³)	Thickness (mm)	λ (W.m ⁻¹ .K ⁻¹)	Mass (kg/FU)	Lifespan (yr)	Waste treatment
<i>Conventional</i> - Concrete with internal thermal insulation							
1	Paint	1500	-	-	0.35	15	Landfilled
2	Cement render	1900	20	1.2	30	25	Recycling potential
3	OPC concrete blocks	1000	200	1	192	100	Recycling potential
4	Cement mortar	1900	-	1.2	33.8	100	Recycling potential
5	Glass wool	25	240	0.035	6	50	Landfilled
6	Gypsum plasterboard	770	12.5	0.3	10	50	Landfilled
<i>Bio-based</i> - Timber and bales of wheat straw							
1	lime render	1400	20	0.8	28	25	Landfilled
2	Straw	100	370	0.052	37	50	Composted, incinerated
3	Wood battens	550	-	0.14	1.4	50	Landfilled, incinerated, recycled
4	Timber beam	550	-	0.14	10.9	100	
5	Clay plaster	1800	30	0.8	54	25	Landfilled

Insulator thicknesses were defined by looking for the closest wall performance between the two construction types using products available on the market. Considering the superficial convection resistances of inside (R_{si}) and outside surfaces (R_{se}) as 0.13 and 0.04 $m^2.K.W^{-1}$, the R values are 7.36 $m^2.K.W^{-1}$ for the *conventional* wall and 7.33 $m^2.K.W^{-1}$ for the *bio-based* wall.

3.2. System boundaries

The approach is from cradle to grave, i.e. from the extraction and supply of raw materials to the end of life treatment passing through construction and use stages (modules A, B and C). Benefits due to the reuse of materials (energy production, reuse, recycling) are not considered. LCI also includes biogenic to photosynthesis of bio-based materials, accounted for in module A (A1: raw materials), and carbon uptake due to carbonation of cementitious materials. Cement and lime carbonation are included in the use phase (B1: use in building) and in module C for concrete. Detailed LCI and corresponding Ecoinvent processes are provided in Appendix B and C in the supplementary material.

In dynamic LCA, the production stage accounts for year 0 for bio-based materials grown before the construction. When a material is synthetic (glass wool, concrete block, render, paint...) it is assumed to be manufactured in the year of the construction (year 1). For bio-based products, a temporary carbon storage is considered up to their EoL. A partial or total release of the stored carbon is assumed depending on the EoL scenario.

To resume, the construction stage accounts for year 1, the usage is accounted for between year 1 and year 75, and end of life from year 76 (Figure 2).

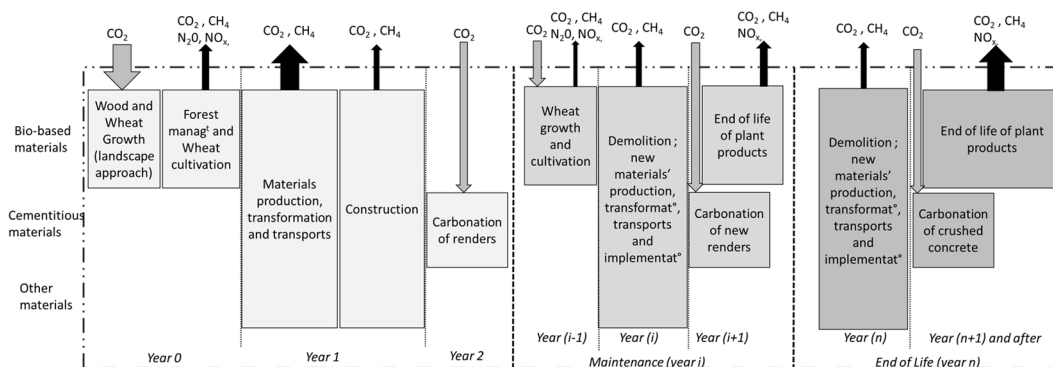


Figure 2: System boundaries, with the main carbon sinks (grey arrows) and GHG emissions (black arrows), depending on the material type and on material life cycle step.

3.3. Production and construction impacts

The impact of cement was cross-checked since it has a large influence on the impact of concrete (Tab.3 and Appendix D). The impact of growing the wheat straw was allocated assuming that that straw represents 10% of the income from the sale of wheat (Lopez and Floissac, 2016). Hence, the impact of wheat straw is 10% of the “soft wheat grain”, a process included in the French AGRIBALYSE database (Koch and Sallou, 2016). For the production of baled straw, a process was created comprising pressing, gathering and storage using diesel powered baling machines and

included fertilisers to model nutrient losses from the field caused by exported straw. These losses are 7 kg nitrogen (N), 1.2kg phosphorous (P₂O₅) and 12.3 potassium (K₂O) per ton of exported straw (RFCP, 2015). Finally, wheat straw absorbs carbon dioxide (CO₂) during plant growth due to photosynthesis. Literature data regarding straw's carbon storage are summarized in Appendix E. Here, a carbon content of 45% by mass of dry matter is considered. With 15% moisture (COOPENERGIE, 2009), this leads to a carbon storage of 1.40 kgCO₂ per kg of wet straw.

After a literature review (Appendix E), the carbon content of wood is about 50.6%, and so the carbon storage is 1.86 kgCO₂/kg of dry wood.

Table 3: Summary of used Ecoinvent data compared to data from the literature

Material (unit)	GWP100 of process in Ecoinvent 3.2 (kgCO ₂ e/unit)	Average GWP100 from literature review (kgCO ₂ e/unit)	Standard deviation on literature data	Literature sources
Cement (t)	-	838.2	60.9	Celik et al., 2015; Robayo-Salazar, 2018; Humphreys and Mahasen, 2002 ; Hendriks et al., 1998 ; Van den Heede and De Belie, 2012 ; Chen et al., 2010 ; ATILH, 2002 ; Flower and Sanjayan, 2007 ; Josa et al., 2004 ; Guo et al., 2018 ; ADEME, 2014
Aggregates (t)	-	2.87	0.52	Guo et al., 2018 ; UNPG, 2017 ; Marinkovic et al., 2010 Ecoinvent 3.2 'Quarry operation, gravel, crushed-round/sand CH
Water (kg)	-	3x10 ⁻⁴	-	Ecoinvent 3.2, 'tap water production, conventional treatment EUR'
OPC Concrete (m ³)	314.0	332.5	27.6	Robayo-Salazar et al., 2018, Guo et al., 2018, Marinković et al., 2010
Cement mortar (t)	198.6	201.7	37.2	Brás and Gomes, 2015, Teixeira et al., 2019 ; Moropoulou et al., 2011
Glass wool (kg)	1.4	1.33	0.13	Oliva and Courgey, 2010, URSA, 2017 Ecoinvent 3.2, 'glass wool production CH'
Gypsum plasterboard (kg)	0.19	0.26	0.03	Rivero et al., 2016, Fufa et al., 2018, Placo, 2010,
15% moisture wood - CO ₂ uptake (kgCO ₂ /kg of wood)	-	-1.56	0.064	Sup. doc. - Appendix E
Process of timber beam / timber battens (m ³)	44.1 / 31.7	36.6 / 31.6	16.4 / 11.4	ADEME, 2014, Fufa et al., 2018
15% moisture straw - CO ₂ uptake (kgCO ₂ /kg of straw)	-	-1.40	0.047	Sup. doc. - Appendix E
Straw baling process (kg)	0.149	0.127	0.063	Brojan et al., 2013, D'Alessandro et al., 2017, RFCP, 2015,
Lime render (kg)	0.142	0.16	0.07	Melià et al., 2014, Pretot et al., 2014
Earth plaster (kg)	0.029	0.04	-	Melià et al., 2014

For each type of wall, a 16–32 metric ton truck, EURO4, is used for transport. For the *conventional* wall, transport involves the delivery of concrete blocks from the ready-mix plant to the construction site (200 km) (BRGM, 2009) and cement mortar transported from the packing facility to the construction site, which is assumed to be 50 km (Pittau et al., 2018). Plasterboard and

wool insulation are also transported over a distance of 50 km. For the *bio-based* wall, the reference distance for French Douglas fir wood is 200 km (FCBA, 2018). Earth is assumed to be locally available, the conservative assumption that it is transported within 50 km is made. Lime is assumed to be transported over a distance of 500 km (CenC, 2015). The shipping of straw is: 50% of the straw is assumed to be transported 10km by tractor, 40% 40 km by truck and 10% 80 km by truck (Lopez and Floissac, 2016; RFCP, 2015). The electricity consumed at the building site and for the transport of the workers is not included. Details on GHG emissions (CO₂, CH₄, N₂O...) released during the production of materials are provided in Appendix F.

3.4. Use phase impacts

The carbon uptake due to cement and lime carbonation and the impact of replacement materials influence the use phase. We considered that cement and lime renders carbonate in 2 years and mortar joints carbonate at a rate of 2 mm/year (Despotou et al., 2016). Carbonation reactions are detailed in Appendix H.

Materials whose lifespan is shorter than that of the wall are replaced. Replacement is simulated using the same process as that used to produce the wall. As specified in EN 15804+A1:2014, end-of-life processes of replaced materials are also included. Transport is modelled by a 16–32 metric ton truck, EURO4. For each material, truck distances include the transport of the material supplied, plus waste disposal. As prescribed by FD norm P01-015, waste with no potential and compostable waste is landfilled at a distance of 30 km from the construction site, whereas recycled waste is treated at a distance of 100 km from the construction site (ALKERN, 2017).

3.5. End of Life impacts

Demolition of the *conventional* wall is performed by a high load diesel machine (e.g. a Volvo EC 300DL 170 kW). A 100-m²-house with 4-metre-high walls, e.g. 160 m² walls, takes 3 to 4 hours to demolish. Thus a 1-minute-operation is attributed to the FU demolition and the sorting of materials. For both construction types, waste transport is the same as in 3.3.

Glass wool is disposed of at landfill sites (KNAUF, 2017; SDES, 2018; ADEME, 2014b) along with painted gypsum plasterboard (ADEME, 2014b; Althaus et al., 2005). In France, 68% of concrete blocks are recycled and 32% are landfilled (SDES, 2018). Recycled concrete is crushed to be used as a base layer in road construction. The mortar and cement render applied to the concrete blocks are assumed to be recycled the same way. Physical allocation with the mass of used material is applied. Taken together, for the *conventional* construction mode, 173.4kg(waste)/FU are recycled, and 97.6 kg(waste)/FU are landfilled. Complete carbonation of concrete blocks can be rapid, since the blocks are in contact with air and crushed. Since mortar does not totally carbonate during the use phase, the rest is added at this stage. Total carbonation in *conventional* EoL is 8.3 kgCO_{2e}, while during the use phase, it is 10.9 kgCO_{2e}.

For the *bio-based* wall, lime carbonation is 1.56 kgCO₂ and is attributed to the use phase. The demolition is performed by a diesel power saw for 0.1 h/m² (Lopez and Floissac, 2016). In the EoL, clay plaster and lime render are landfilled. Wood beams and battens follow the mean French EoL scenario for wood building products prescribed by the French timber building sector (FCBA, 2012): 17.3% is disposed of at solid waste disposal sites, 25.5% is incinerated and 57.2% is reused as raw material by wood chip panel plants. Wheat straw can be incinerated or composted as biowaste (RFCP, 2015). Thus, there are two EoL scenarios for the *bio-based* wall:

- “composted”, meaning 100% of the straw is composted;

- “incinerated”, meaning 100% of the straw is incinerated.

Decomposition of organic material derived from biomass sources is the primary source of CO₂ released from waste (Pipatti et al. 2006a). A literature review was thus undertaken to assess the real impacts of biogenic carbon decay.

Concerning timbers’ EoL in landfill, the literature study (FCBA, 2012; Pipatti et al., 2006a, 2006b; Hermann et al., 2011) leads to the following ranges of values:

- a 15% fraction of degradable carbon;
- a carbon decomposition into the air as CO₂ (50% to 77.5% of the carbon) and as CH₄ (22.5% to 50%);
- a negligible emission of N₂O.

Concerning composted straw, 79% of the carbon is degraded during the first year to form humus. The humus degradation rate is thus set at 0.8% per year for the 100-year horizon (Hermann et al., 2011). As a result, 9.5% of the carbon content of straw remains permanently in the soil.

Based upon literature (Pipatti et al., 2006b; Hermann et al., 2011, ADEME, 2014), 97.5% to 99.9% of the degradable carbon is decomposed as CO₂ and 0.1 to 2.5% as CH₄. And 0.600 to 0.787 g of N₂O per kg of dry waste is also emitted during the first year of composting.

Hence, two emission scenarios (min and max) for composted straw and landfilled wood are used in this study to respect the broad range of GHG emission data in the literature (Table 4).

Table 4: CO₂, CH₄ and N₂O emission scenarios (min and max) for composted straw and landfilled wood, both with a 15% moisture content. Further details are in Appendix I and modified Ecoinvent processes are presented in appendix C.

	Min		Max	
	Wood	Straw	Wood	Straw
g(CO ₂)/kg	116.9	1236.9	183.3	1266.6
g(CH ₄)/kg	42.5	11.75	19.35	0.95
g(N ₂ O)/kg	0.63	0.6	0.63	0.787

3.6. Sensitive study

A quantitative fair comparison between these two walls would have taken into account as precisely as possible all the uncertainties. This is a quite difficult exercise, especially regarding the effective building lifetime and the EoL scenarios, since human-based systems evolve rapidly, are hard to predict in the coming decades. This might be tackled by sensitivity studies and a probabilistic approach (Goulouti et al., 2020).

Based on Table 3, Ecoinvent processes were assumed to be representative enough to highlight the fundamental difference between static and dynamic LCA on global warming estimations at different TH. Only the two EoL scenarios for *biobased* are specified because of a lack of literature data. As an indication, a sensitivity study made from standard deviation figures in Tab. 3 gives an uncertainty on conventional walls’ GWP equal to 8.3%. The calculus is presented in Appendix G.

4. Results

4.1. Comparison between static and dynamic LCA

The overall LCA results and impacts of materials at each stage of their life cycle are shown in Figure 3. *Conventional* LCA results give a GWP100 of 79.8 kgCO₂e. For the *bio-based* wall, GWP100 is 26.3 kgCO₂e.

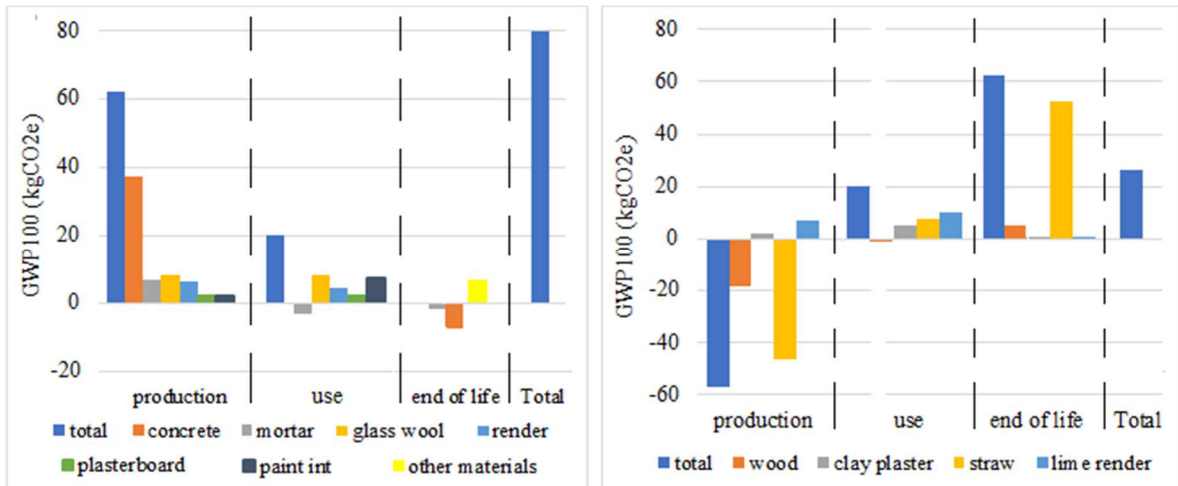


Figure 3: sLCA results for a *conventional* wall (left) and a *bio-based* wall (right) with details of materials processes impacts (for *bio-based*: straw is 50% composted-50% incinerated)

The material with the most impact in the *conventional* wall is concrete, which accounts for 35% of the overall impact, transport and carbonation included. Builders can mitigate it by choosing aerated, porous concrete blocks with optimized cement content. In our case, by selecting the 25-MPa-concrete process instead of the 35-MPa-concrete, the concrete impact in the FU drops by 15%. Nonetheless, concrete remains a source of carbon emissions higher than using wood as an alternative structural material. Glass wool and paint have a rather high impact compared to their mass in the FU.

In the *bio-based* wall, wheat straw drives both carbon uptake and carbon release and wood plays a smaller role in both scenarios (Table 5). This is specific to straw which is a rather heavy insulation material compared to other bio-based insulation materials.

Half of the lime render's impact is due to its transport. The impact of clay plaster seems overestimated. Since clay plaster might be made with local materials and needs almost no processing, the process in the Ecoinvent database is a conservative one.

Table 5: Outcome of wood and straw biogenic carbon sequestration and emission for the FU

Uptake (kgCO ₂ /FU)	Emissions (kgCO ₂ e)/FU	Biogenic carbon assessment (sum) (kgCO ₂ e)/FU
--------------------------------	------------------------------------	---

		Landfilled or composted (17% for wood and a 100% scenario for straw)	Incinerated (25% for wood and a 100% scenario for straw)	Recycled (57% for wood)	
Wood (12.3kg)	-19.5	min: 1.6 max: 3.0	4.8	0	min: -13.1 max: -11.7
Straw (37 kg)	-51.9	min: 53.8 max: 66.4	51.9	-	100% compost: [1.9 ; 14.5] 100% incineration: 0

Dynamic LCA comparison of the two types of construction is presented in Figure 4. The instantaneous impact curve shows the effects of radiative forcing on replacing materials.

Bio-based instantaneous radiative forcing curves go through negative and positive values, whereas *conventional* curve are directly positive. The cumulative impact clearly distinguishes between the two types of construction: the *conventional* wall contributes to climate change from the first year, whereas the *bio-based* wall has a cooling effect for several decades. Such information is not available from sLCA approaches.

Furthermore, the longer the TH, the greater the difference in the cumulative impact between the two types of construction. The min and max curves depend on the value taken for landfill and compost processes (Table 4). When straw is 100% composted, there is a significant influence of the min and max scenario. Interestingly, the instantaneous radiative impact shows that composting straw has a bigger impact than incinerating it, due to the significant emission of methane. However, the cumulative impact shows that composting has a higher impact in the short term but a lower impact in the long term. The long-term slope shows this difference keeps on increasing with time. This highlights the specific behaviour of carbon dioxide compared to other GHG: it does not disintegrate but interacts with the carbon cycle and remains for long time in the atmosphere whilst for example methane decay is rather fast. When carbon is emitted at year 1, estimations indicates 20% of the initially emitted carbon remains in the atmosphere after 1000 years (Straussman et al., 2018).

Table 6 shows the effect of the chosen TH on the relative GWP results. Values for the *conventional* wall keep the same order of magnitude, regardless of the TH and the method (static or dynamic). This is due to the high proportion of GHG emitted during the first year of the life cycle. For the *bio-based* wall, the “dynamic” GWP100 is lower than the “static” GWP100, and “dynamic” GWP will converge towards the “static” one over a very long TH (more than 2000 years). Bio-based solutions are penalized when using static method with a TH of 100 years if temporary carbon storage is not taken into account.

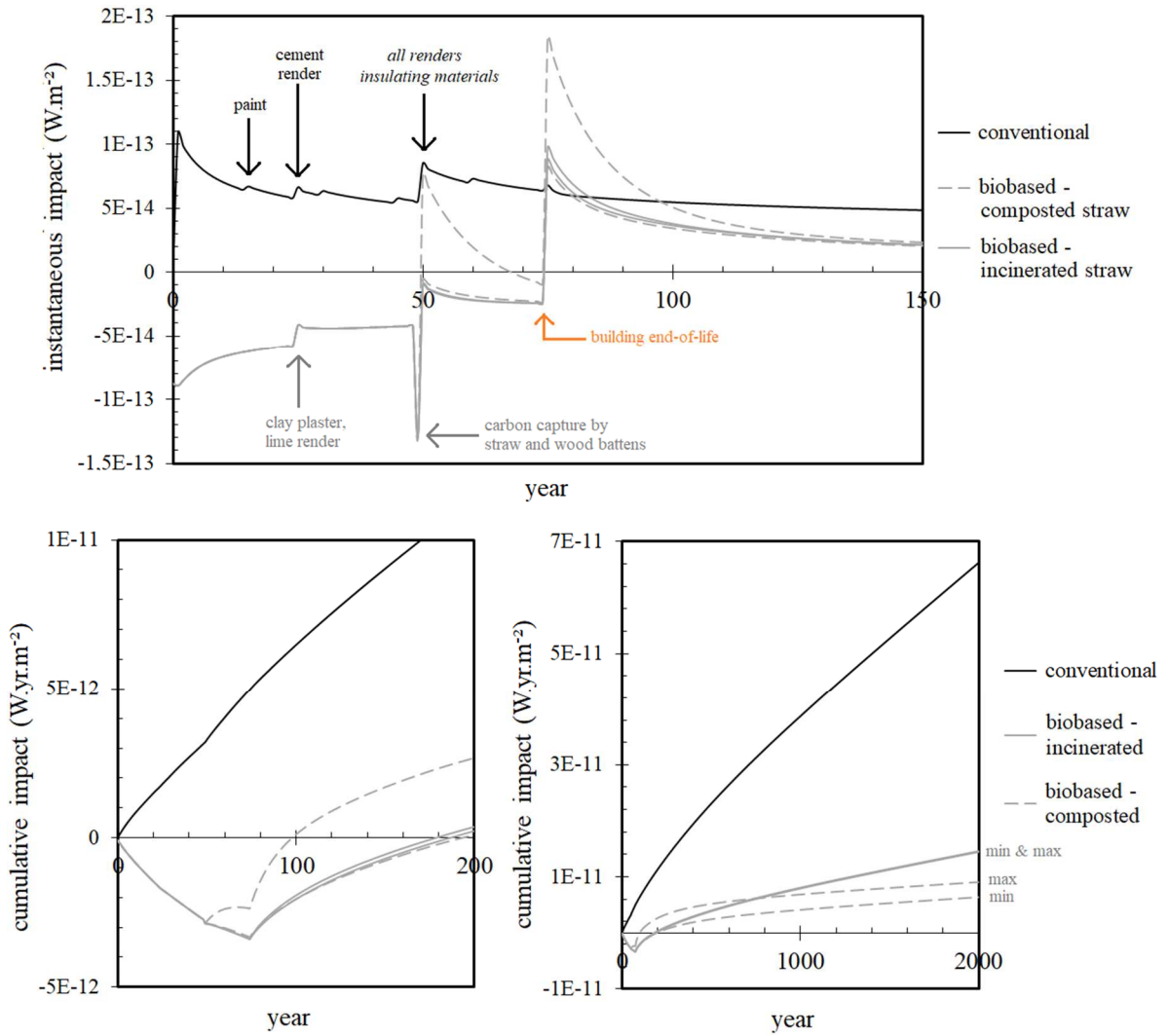


Figure 4: dLCA of bio-based and conventional scenarios from the FU

Table 6: relative Global Warming Potential calculated as “static” with LCA or “dynamic” with dLCA -75 years lifetime housing (straw’s EoL is here 50% composted - 50% incinerated).

	<i>Conventional</i> kgCO ₂ e/FU	<i>Bio-based</i> kgCO ₂ e/FU
« static » GWP100	79.8	26.3
	GHG	GHG (min /max)
« dynamic » DLCA 20	60.0	-56.5
« dynamic » DLCA 100	70.8	-22.2 / -9.8
« dynamic » DLCA 500	71.8	9.8 / 14.3
« dynamic » DLCA 1000	71.2	11.1/ 13.7

From now on, based on the cumulative impact curves, “*bio-based min*” will be the lower curve of “*bio-based - composted*”, and “*bio-based max*” will be the higher curve of “*bio-based - incinerated*”.

4.2. The drawbacks of using a relative metric equivalent CO₂ to evaluate the GWP

Interestingly, dynamic GWP100 and GWP500 of the conventional wall are similar, which suggests that GWP saturates. However, due to carbon dioxide remaining in the atmosphere, the cumulative impact induced by conventional walls keeps increasing over time in terms of radiative forcing (Figure 4).

This is an essential result: the drawback of using a relative impact indicator such as GWP in kgCO₂e instead of GWI_{cum} does not allow the evaluation of the real effect of GHG on global warming. The real construction impacts on global warming are highly dependent on the time scale regardless of the materials used.

4.3. The impact of a longer functional unit on climate change assesment

In a systemic approach, the FU needs to continue providing housing for present and future citizens. Thus, a new FU is defined, as “maintaining 1 m² of wall ($R=7.3 \text{ m}^2.K.W^{-1}$) for housing during a period of 300 years” (the 300-year value is arbitrarily defined to draw long-term trends). First, a wall is built. At the end of its lifespan, either 50 years or 100 years, the building is destroyed according to its EoL scenario. Then a new wall is built, and so on, for up to 300 years. Results are displayed in figure 5.

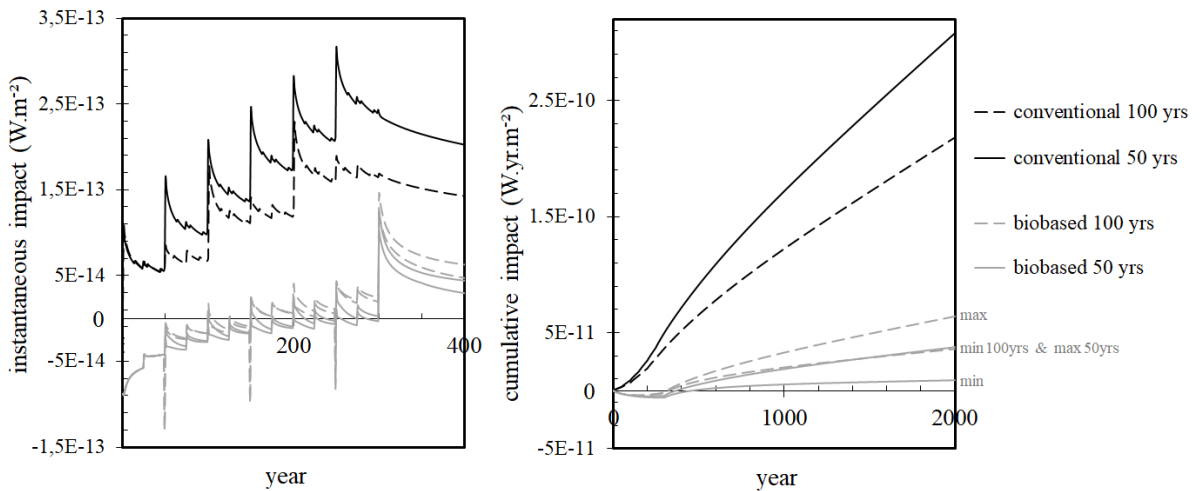


Figure 5: comparison of construction and demolition at one site of *bio-based* and *conventional* housing with a 50- or 100-year lifespan over a 300-year time period

Unsurprisingly, the longer the *conventional* wall lasts, the lower the impact. Looking at these *conventional* wall results, the instantaneous impact significantly increases every 50 years, due to the demolition and to the construction of a new house (50-year and 100-year lifespan), or due to the

maintenance (100-year lifespan). As the GHG supplementary emissions due to the previous building have not totally decayed in the atmosphere, the peak due to the new construction or maintenance is higher than the previous one. In the case of a *bio-based* wall, the uptake of bio-based materials (straw and wood) for the new building will compensate the emissions due to the EoL of the previous materials. Furthermore, in the present study wood stores more carbon than it releases, because its storage in landfill and its recycling corresponds to a permanent carbon sequestration (section 3.4). Thus, by increasing the use of timber beams, the impact is reduced. That's why, contrary to the *conventional* wall, a *bio-based* wall with a 50-year lifespan has less impact than a *bio-based* wall with a 100-year lifespan, which seems paradoxical. In fact, another study noticed a similar phenomenon (Lecompte, Levasseur & Maxime 2017): the thicker a bio-based wall, the bigger the carbon storage. In both cases, even if using a lot of biogenic materials is advantageous in terms of short-term mitigation, it is likely that long-term impacts will be increased by an increased use of materials. In addition, a broader view on environmental impacts drive a more prudent use of available resources as a key to sustainability. Thus, from a global environmental standpoint, material consumption should always be optimized to requirements, and the lifespan of the material should be as long as possible.

5. Discussion

5.1. Is it fair to use static LCA with a 100-year-time-horizon and relative metrics to compare building materials?

In the case studies of this paper, *conventional* constructions have higher GWI than constructions made with bio-based materials. *Bio-based* constructions even have a cooling effect for several decades. A similar comparison was made by Pittau et al. (2018). Their cumulative impacts on the global warming of concrete walls insulated with expandable polystyrene (EPS) range from 8×10^{-12} to 14×10^{-12} W.yr.m⁻² at a 100-year horizon. In the present study, the GWI_{cum} of *conventional* walls at a 100-year horizon is 6.5×10^{-12} W.yr.m⁻². The main difference is due to the type of insulation material used, EPS having more impact than glass wool. Otherwise, the impact of the *conventional* wall is of the same order of magnitude. Pittau et al. (2018) also studied a wall composed of light clay straw with a timber frame. Except for one scenario, these authors found a negative GWI_{cum} [-9 to -3] $\times 10^{-12}$ W.yr.m⁻² at 100 years. In this study, *bio-based* results are [-2.1 to 0.1] $\times 10^{-12}$ W.yr.m⁻² at the 100-year horizon. The straw and wood carbon content chosen are similar in the two studies, but the amounts of biodegradable matter and emitted CO₂, CH₄ and N₂O during EoL differ. The present study underlines that results are sensitive to data used for compost, landfill and incineration processes of bio-based materials.

Regarding the TH, the cumulative impact at a 100 years TH (figure 4) and the relative GWP100 (expressed in kgCO₂eq) are not sufficient to well understand and to compare “carbon emitters” and “carbon sinks”. The time at which the cumulated radiative forcing becomes positive with the very low-tech bio-based wall considered in the present study is between 300 and 400 years with a systemic FU. It suggests that a 500 years TH indicator might be useful to complement the 100 years one. This long-term indicator is useful to promote best practices at long term. A short-term TH is useful as well to lower the uncertainty level on the studied system and to evaluate the short-term impact of environmental policies.

Finally, our results highlight that the bias induced by a static approach and a GWP evaluated at 100 years does not have a similar impact on different material. sLCA is especially inappropriate when storage and emission of GHGs occur. This confirms the interest of dLCA for building assessments (Collinge et al., 2013), especially to address the biogenic carbon issue when bio-based materials are used (Lecompte et al., 2017; Fouquet et al., 2015; Peñaloz, et al., 2016). In addition, bio-based materials are more disadvantaged than conventional materials with a relative global warming metric.

5.2. Does carbon temporary storage in bio-based materials is a risk for future generations?

To tackle this point, a systemic approach is used, thanks to the FU “maintaining 1 m² of wall (R=7.3 m².K.W-1) for housing during a period of 300 years”.

Figure 6 presents the instantaneous impacts for *conventional* and *bio-based* walls which have been linearized, showing the difference between the two curves. It illustrates three essential results.

- First, only maintaining the existing housing stock increases the radiative forcing year by year, even when using bio-based materials. At long terms, sobriety in building needs and design is the best lever to mitigate climate changes, followed by material reemployment and likely very low carbon geo-based materials such as clay-based construction methods and low-tech bio-based materials. The slope of radiative forcing increase is steeper with conventional materials.
- Then, the savings made through the use of *bio-based* walls instead of *conventional* ones increase over time.
- Finally, it demonstrates that temporary carbon storage does not consist in delaying the global warming issue to future generations. On the contrary, conventional building methods induce a higher climate change whatever the timescale and thus induce a higher risk for future generations.

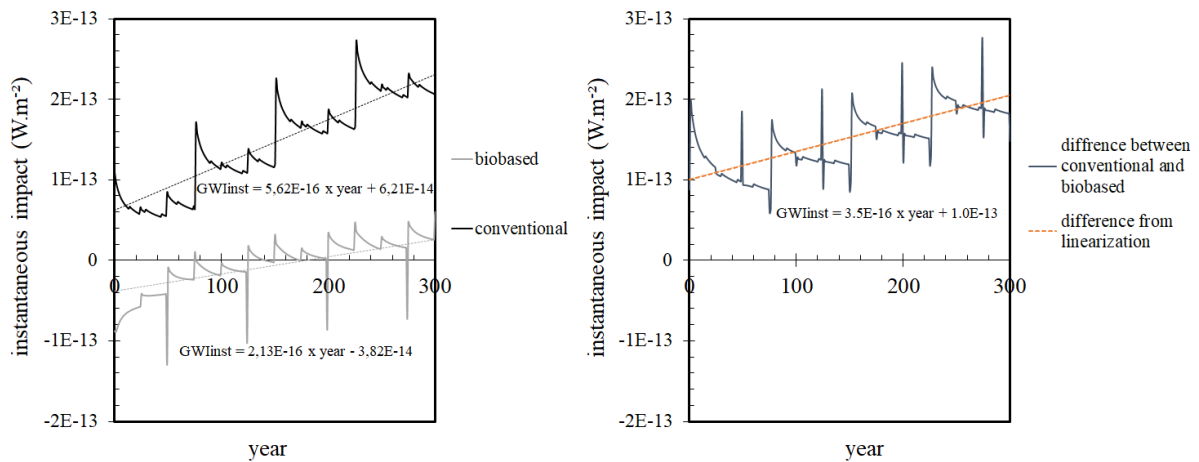


Figure 6: Instantaneous radiative forcing for *conventional* and *bio-based* walls and their linearization, over a period of 300 years (left), and the difference between the two impacts (right).

Interestingly, the conclusion that savings made by the use of bio-based building materials instead of conventional ones increase with time (figure 6-right) was also obtained with the former FU when using the radiative forcing, but not when using results expressed with the relative indicator in CO₂e (Table 7.a). With the new FU based on a systemic approach, the conclusion is valid for both indicators (Table 7.b). However, the difference is higher with the relative metric than with the absolute metric. Once again, an absolute metric should be preferred to provide meaningful interpretations on differences between bio-based and conventional materials.

This analysis by changing the FU highlights the importance of scale: national and international policies might consider a systemic LCA approach in order to set up meaningful indicators that promote good practices.

Table 7: Impact of *conventional* and *bio-based* construction in radiative forcing and in CO₂e

a) FU described in part 3.1 (data from Table 6)

	Absolute impact - GWI _{inst} (W/m ² /FU)			Relative impact - dyn GWP (CO ₂ e/FU)		
	Bio-based (mean)	Conventional	Difference	Bio-based (mean)	Conventional	Difference
at 100 years	-1.7 x 10 ⁻¹⁴	1.2 x 10 ⁻¹³	1.35 x 10 ⁻¹³	-16	71	87
at 500 years	6.8 x 10 ⁻¹⁴	3.4 x 10 ⁻¹³	2.7 x 10 ⁻¹³	12	72	60

b) new FU

	Absolute impact - GWI _{inst} (W/m ² /FU)			Relative impact - dyn GWP (CO ₂ e/FU)		
	Bio-based (mean)	Conventional	Difference	Bio-based (mean)	Conventional	Difference
at 100 years ⁷	-5.7 x 10 ⁻¹⁵	1.1 x 10 ⁻¹³	1.1 x 10 ⁻¹³	-41	89	130
at 500 years	3.4 x 10 ⁻¹⁴	1.6 x 10 ⁻¹³	1.3 x 10 ⁻¹³	21	243	222

5.3. Impact of french building sector shift towards bio-based buildings

To assess the effect of a change of practice in the building sector on a country-level a current overview of the housing stock and practices must be done. Indeed, furthest the actual situation from the generalization of a “carbon sink”, the more significant the benefits. For example, houses in North-America are mainly built in timber, whereas conventional building materials in Western and Southern Europe are mainly minerals. Some attempts summarized in Figure 7 were made to evaluate the effect of a change of practice. One can apply it on building: first, the building carbon stock will rapidly grow up and affect the radiative forcing of the earth atmosphere. After a given time, the carbon sink will tend towards a plateau, here, when the whole building stock will have changed.

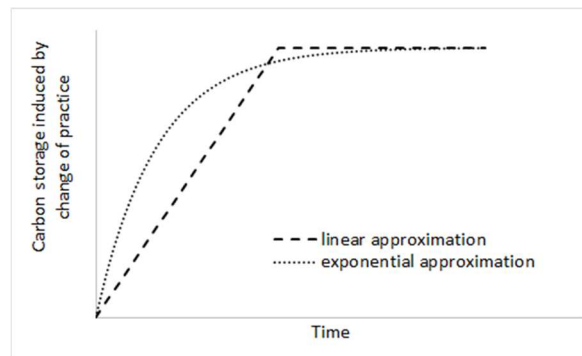


Figure 7: Theoretical evolution of carbon storage due to a change of practice (in crop, transport, building etc.) (IPCC 2014; Arrouays 2002)

An analysis of the French building sector has been made and is provided in supplementary material, Appendix A. Currently in France, the use of bio-based building materials is limited: in terms of structure, wood construction only accounts for 9% of new individual houses and 4% of new collective housing (Codifab, 2017) ; in terms of types of insulation, only 7% are bio-based while 50% are mineral wool and 40% are plastic foam. Then a massive change in practice towards bio-based materials, if better in terms of GWP, would have a significant effect in France.

The following calculus aims to get an order of magnitude due to a change towards of bio-based materials in France. The FU defined in part 3.1 is used.

Assuming that all the residential and tertiary buildings move to a *bio-based* solution, the savings at 100 years are about $2,873 \times 10^6 \text{ m}^2$ (floor surface from Appendix A, Table 1) \times 1.15 (floor to wall surface conversion) \times $1.35 \times 10^{-13} \text{ W.m}^{-2}$ (difference at 100 years, Table 8.a) = 0.45 mW.m^{-2} . Global radiative forcing estimations range from 1.1 to 3.3 W.m^{-2} , with an average value of 2.3 W.m^{-2} (Myhre et al., 2013). In 2015, France was responsible for 1% of the world's GHG radiative forcing (UN-FCCC, 2018; Crippa et al., 2019), thus about 23 mW.m^{-2} . The building sector producing about 22% of French emissions (INSEE, 2019), this leads to 5.3 mW.m^{-2} .

Thus, the order of magnitude of the radiative forcing savings made by changing just the walls from a 100% *conventional* solution to a *bio-based* one is about 8% of the building sector and 2% of the French overall contribution. This is optimistic since it is based on a 100% move to *bio-based* buildings. However, our analysis is limited to walls, but ecological practices can also be included for the whole building such as the floors, ceilings or roofs. This seems to be a small contribution in percentage due to the actual rather low energy efficiency of buildings. In 2009, carbon emissions due to house heating systems were about $20 \text{ kgCO}_2/\text{m}^2/\text{yr}$ in France (ADEME, 2013). By dividing energy consumption by five (250 to $50 \text{ kWh}/\text{m}^2/\text{yr}$), due to thermal renovation and better equipment would achieve $4 \text{ kgCO}_2/\text{m}^2/\text{yr}$. In this case, the RF savings at 100 years are about $1.5 \times 10^{-12} \text{ W.m}^{-2}$, which is about ten times higher than the shift from *conventional* to *bio-based* walls.

This put figures on an already known conclusion: improving the energy efficiency of existing buildings is the very first action to undertake. Bio-based materials would add a benefit, but it should not be detrimental to the performance. For new well-insulated buildings, reducing the radiative forcing due to material production is nevertheless a major source of savings (Breels, 2016).

Assuming that the French housing stock moved to 100% bio-based walls, it would induce about a 2%-reduction of the global French radiative forcing (about 6 to 8% of RF is due to the construction

sector). This preliminary simplified analysis is only based on walls and is not enough to consider the impact of a shift towards ecological practices in all aspects of the construction sector. Further studies could be focused on complete buildings (floors, walls, roof and equipment), taking into account their use (heating, cooling, lighting, equipment), eventually other ecological practices (per capita living space, heating temperature, bioclimatic conception at building and district level) and different scale (district, cities...).

6. Conclusion

The combination of static LCA, fixed time horizon at 100 years and relative carbon dioxide global warming potential indicator lead to misleading comparison between different building methods. Bio-based material are especially disadvantaged by not taking into account the temporary carbon storage, which has a real physical impact at a 100 years-time horizon. Moreover, considering that the functional unit is not limited to the building's lifespan, but it is to maintain the housing function on a site for several centuries, this temporary cooling effect lasts for around three centuries.

It was found that dynamic LCA provides more realistic results, since all Greenhouse Gases emissions and uptakes are taken into account with their timing. Global warming potential indicator can be expressed with absolute indicators at any time horizon.

This results also demonstrates that bio-based materials development does not induce an unmanageable transfer of a temporary stored carbon stock to future generations. On the contrary, conventional materials are riskier for future generations since just maintaining a conventional housing stock is a significant source of GHG emissions. The bio-based solution considered here is always better than the conventional one in terms of global warming potential, whatever the timescale.

On a public policy point of view, our study lead to three recommendations:

1. There is a need for a more robust and reliable methodology than static LCA to calculate building materials impact on global warming. Dynamic LCA constitute a fairer approach to account for the real impact of all materials, bio-based or not bio-based.
2. The time horizon of 100 years appears to not be sufficient to well understand and compare "carbon emitters" and "carbon sinks". Considering both 100 and a more long-term time horizon, like 500 years, is necessary.
3. The global warming potential should be analysed in absolute metrics, (here in W/m^2 or $W/yr/m^2$), rather than with relative metrics such as the equivalent CO_2 . It would prevent from misleading interpretations, in particular at long terms, where relative metrics do not indicate the dramatic impact of carbon dioxide due to its long residence time in the atmosphere.

Practically, dynamic LCA can be easily applied to building materials and buildings with the data already collected to perform static LCA.

Another result is that it may not be necessary to promote fast growing crop rather slow growing forest to mitigate climate change, especially in countries where both resources are not scarce. Such a conclusion assumes to maintain eco-systems equilibrium which is key for a sustainable development.

Acknowledgements

This study was conducted in the framework of ECO-TERRA project (development of light-earth bio-based concrete), with the support ADEME, Normandy and Brittany Regions and *Fondation de France*.

Nomenclature

CaO	Calcium oxide
CC	Climate change
CH ₄	Methane
CO	Carbon monoxide
CO ₂	Carbon dioxide
CO ₂ e	Carbon dioxide equivalent
dLCA	Dynamic life cycle assessment
DLCA	Dynamic score
DOC _f	Degradable organic carbon fraction
ECC	Ecosystem carbon costs
EoL	End of life
EPS	Expandable polystyrene
FU	Functional unit
GHG	Greenhouse gases
GW _{I_{inst}}	Instantaneous global warming impact
GW _{I_{cum}}	Cumulative global warming impact
GWP	Global warming potential
GWP100	Global warming potential at the 100-year time horizon
LCA	Life cycle assessment
LCI	Life cycle inventory data
N ₂ O	Dinitrogen oxide
R	Thermal resistance
RF	Radiative forcing
SF ₆	Sulphur hexafluoride
TH	Time horizon

References

ADEME, 2013, 'Bâtiment - Edition 2013 - Chiffres Clés', report in french from the Agence de l'Environnement et de la maitrise de l'énergie

<https://www.ademe.fr/sites/default/files/assets/documents/chiffres-cles-batiment-edition-2013-8123.pdf>

ADEME, 2014, 'Base Carbone, documentation des facteurs d'emission de la base carbone' Version 11.0.0, report in French from the Agence de l'Environnement et de la Maîtrise de l'Energie. <http://www.bilans-ges.ademe.fr/static/documents>

ADEME, 2014, 'Rapport final - Identification des gisements et valorisations des matériaux biosourcés en fin de vie en France', report in French from the Agence de l'Environnement et de la Maîtrise de l'Energie.

<https://www.ademe.fr/identification-gisements-valorisation-materiaux-biosources-fin-vie-france>

ADEME, 2019 'L'outil ALDO, pour une première estimation de la séquestration carbone dans les sols et la biomasse - ALDO_V0403029', report in French from the Agence de l'Environnement et de la Maîtrise de l'Energie

<https://www.territoires-climat.ademe.fr/actualite/loutil-aldo-pour-une-premiere-estimation-de-la-sequestration-carbone-dans-les-sols-et-la-biomasse.pdf>

ADEME, IGN, 2019, Contribution de l'IGN à l'établissement des bilans carbone des forêts des territoires (PCAET), report in French from the Agence de l'Environnement et de la Maîtrise de l'Energie and the Institut Géographique National

AESAC, 2017, 'AESAC policy report 32. - Multi-functionality and sustainability in the European Union's forests', German National Academy of Sciences Leopoldina, https://easac.eu/fileadmin/PDF_s/reports_statements/Forests/EASAC_Forests_web_complete.pdf

AGRESTE, 2018, 'Récolte de bois et production de sciages en 2017', report in French Agreste Chiffres et Données Agriculture - n° 249, <http://agreste.agriculture.gouv.fr/IMG/pdf/cd249iaaMAJdec2018.pdf>

AGRESTE, 2019 'Statistique agricole annuelle 2017-2018, Données définitives'. Report in french AGRESTE http://agreste.agriculture.gouv.fr/IMG/pdf/cd2019-16_SAA2017-2018_Donnees_definitives.pdf

Albers A, Collet P, Benoist A and Hélias A, 2019, 'Coupling partial-equilibrium and dynamic biogenic carbon models to assess future transport scenarios in France', *Applied Energy*, vol. 239, pp. 316–330. <https://doi.org/10.1016/j.apenergy.2019.01.186>

ALKERN, 2017, 'FDES Bloc Confort City'. Environmental and Health product declaration (EPD&HPD). <https://www.cerib.com/wp-content/uploads/2018/02/FDES-Confort-City-2018-01-29.pdf>

Althaus HJ, Kelleberger D, Doka G, Künniger T, 2005, 'Manufacturing and Disposal of building Materials and Inventorying Infrastructure in ecoinvent', *Int J life Cycle Assessment*, vol. 10. doi:10.1065/lca2004.11.181.4

Arrouays D, Balesdent J, Germon JC, Jayet PA, SOUSSANA JF, Stengel P, Contribution à la lutte contre l'effet de serre : Stocker du carbone dans les sols agricoles de France ?, Rapport scientifique de l'INRA, ISBN: 2-7380-1054-7, 2002.

Arnold C., 2016 'Le parc de logements en France au 1er janvier 2016 - Insee Focus - 73'. report in French from the Institut National de Statistiques et d'Etudes Economiques. <https://www.insee.fr/fr/statistiques/2533533>

ATILH, 2002, 'Environmental inventory of French cement production', Association Technique des Liants Hydrauliques (Hydraulic Binder Industries Union), Paris

Besozzi R, 2015, 'Evaluation d'opérations de construction de logements sociaux collectifs bois', report in french from Union sociale pour l'habitat, <https://www.union-habitat.org/sites/default/files/articles/documents/2018-03/>

Bohne RA, Brattebø H, Bergsdal H, Hovde PJ, 2006, 'Estimation of the Service Life of Residential Buildings, and Building Components, in Norway' Conference "Towards the city surface of tomorrow, Vienna, June 8-9, 2006

Brand S, 1994, 'How buildings learn, What happens after they're built', Penguin Books, New York. ISBN: 978-1-101-56264-2

Brás A and Gomes V, 2015, 'LCA implementation in the selection of thermal enhanced mortars for energetic rehabilitation of school buildings', *Energy and Buildings*, vol. 92. doi:[10.1016/j.enbuild.2015.01.007](https://doi.org/10.1016/j.enbuild.2015.01.007)

Breels S., 2016 'Formation Bâtiment Durable : Rénovation à haute performance énergétique : détails techniques ; Impact environnemental et choix des matériaux d'isolation en construction passive' https://environnement.brussels/sites/default/files/user_files/pres_20160301_rhpe_1_3isolp_fr.pdf

BRGM, 2009, 'Inventaire des carrières l'approvisionnement des cimenteries en France métropolitaine, rapport final', report in French from Bureau de Recherches Géologiques et Minières BRGM/RP-56986-FR. <http://infoterre.brgm.fr/rapports/RP-56986-FR.pdf>

Brojan L, Petric A, Clouston PL, 2013, 'Comparative study of brick and straw bale wall systems from environmental, economical and energy perspectives', *ARPJ Journal of Engineering and Applied Sciences*, vol. 8. ISSN 1819-6608

Celik K, Meral C, Petek Gursel A, Kumar Mehta P, Horvath A, Monteiro PJM, 2015, 'Mechanical properties, durability, and life-cycle assessment of self-consolidating concrete mixtures made with blended portland cements containing fly ash and limestone powder', *Cement and Concrete Composites*, vol. 56. doi:[10.1016/j.cemconcomp.2014.11.003](https://doi.org/10.1016/j.cemconcomp.2014.11.003)

CenC, 2015, 'FDES Structure de mur non-porteuse en béton de chanvre projeté (selon les règles professionnelles d'exécution de Construire en Chanvre', Environmental and Health product

declaration (EPD&HPD) in French, Construire en Chanvre, déclaration collective. http://www.base-inies.fr/inies/UploadedFiles/INIES_CSTR20160113_220928/150520_FDES_BetonChanvre_EN15804_vdef.pdf

Chen C, Habert G, Bouzidi Y, Jullien A, 2010, 'Environmental impact of cement production: detail of the different processes and cement plant variability evaluation', *Journal of Cleaner Production*, vol. 18, doi:[10.1016/j.jclepro.2009.12.014](https://doi.org/10.1016/j.jclepro.2009.12.014)

Cherubini F, Peters G P, Berntsen T, Strømman A H, Hertwich E, 2011, 'CO₂ emissions from biomass combustion for bioenergy: atmospheric decay and contribution to global warming'. *GCB Bioenergy* 35. <https://doi.org/10.1111/j.1757-1707.2011.01102.x>

CODIFAB, 2017, 'Enquête nationale de la construction bois, Activité 2016', report in French from CODIFAB https://www.codifab.fr/sites/default/files/synthese_enquete_construction_bois_2017_activite_2016.pdf

Collinge WO, Landis AE, Jones AK, Schaefer LA, Bilec MM, 2013 'Dynamic life cycle assessment: framework and application to an institutional building', *Int J Life Cycle Assess*, vol. 18. doi:10.1007/s11367-012-0528-2

COOPENERGIE, 2009, 'Les pailles de céréales- une solution énergétique durable, locale, renouvelable', report in French from COOPENERGIE <http://www.coopenergie.com/fichescoop/paillesdecereales.pdf>

Crippa M, Oreggioni G, Guizzardi D, Muntean M, Schaaf E, Lo Vullo E, Solazzo E, Monforti-Ferrario F, Olivier JGL, Vignati E, 2019, 'Fossil CO₂ and GHG emissions of all world countries, 2019 report' Publications Office of the European Union, Luxembourg, 2017, ISBN 978-92-79-73207-2, doi:10.2760/709792, JRC107877.

CSTB, 2016, 'NF EN 15804/CN : Contribution des ouvrages de construction au développement durable - Déclarations environnementales sur les produits - Règles régissant les catégories de produits de construction', report in French.

CSTB, 2017 'NF EN 16783 Produits isolants thermiques - Règles régissant les catégories de produits (RCP) pour les produits manufacturés et formés en place, destinées à la préparation des déclarations environnementales des produits', report in French.

D'Alessandro F, Bianchi F, Baldinelli G, Rotili A, Schiavoni S, 2017, 'Straw bale constructions: Laboratory, in field and numerical assessment of energy and environmental performance', *Journal of Building Engineering*, vol. 11. doi:[10.1016/j.jobe.2017.03.012](https://doi.org/10.1016/j.jobe.2017.03.012)

Despotou E, Shtiza A, Schlegel T, Verhelst F, 2016, 'Literature study on the rate and mechanism of carbonation of lime in mortars', *Mauerwerk*, vol. 20. doi:[10.1002/dama.201500674](https://doi.org/10.1002/dama.201500674)

EUROFOR, 1996 'L'Europe et la Forêt - Section IV.1.1 Les forêts de l'Union Européenne'. , report in French coordinated by the ONF for the European Parliament, http://www.europarl.europa.eu/workingpapers/agri/s4-1-1_fr.htm.

FCBA, 2012, 'Volet 2 – Prise en compte de la fin de vie des produits bois ; Phase 3 : Modélisation ACV et calculs d'impacts pour le recyclage matière et la réutilisation', report in French FCBA. <https://www.codifab.fr/media/download>

FCBA, 2018, 'FDES Mur ossature bois avec montant d'une largeur de 145 mm et un entraxe de 60 cm non isolé, fabriqué en France', Environmental and Health product declaration (EPD&HPD) in French. http://de-bois.fr/sites/default/files/2018_MOB_FDES.pdf

Fearnside P, Lashof DA, and Moura-Costa P, 2000, 'Accounting for time in Mitigating Global Warming through land-use change and forestry', *Mitigation and Adaptation Strategies for Global Change*, vol. 5, pp. 239–270, doi:10.1023/A:1009625122628

Fouquet M, Levasseur A, Margni M, Lebert A, Lasvaux S, Souyri B, Buhé C, Woloszyn M, 2015, 'Methodological challenges and developments in LCA of low energy buildings: Application to biogenic carbon and global warming assessment', *Building and Environment*, vol. 90. doi:10.1016/j.buildenv.2015.03.022

French Government, 2016, 'Le marché du bois en France - situation actuelle et à court terme', Commission économique pour l'Europe des Nations Unies, 74^e session COFFI, Genève, 18-20 octobre 2016, <https://www.unece.org/fileadmin/DAM/timber/country-info/statements/France2016.pdf> [Accessed: 21-01-2020]

French Government, 2019, 'Exigences réglementaires pour la construction des bâtiments'. Ministère de la Transition écologique et solidaire, <http://www.ecologique-solidaire.gouv.fr/exigences-reglementaires-construction-des-batiments>

Flower DJM and Sanjayan JG, 2007 'Green house gas emissions due to concrete manufacture', *Int J Life Cycle Assess*, vol. 12. doi:10.1065/lca2007.05.327

Fufa SM, Skaar C, Gradeci K, Labonnote N, 2018, 'Assessment of greenhouse gas emissions of ventilated timber wall constructions based on parametric LCA', *Journal of Cleaner Production*, vol. 197. doi:10.1016/j.jclepro.2018.06.006

Goulouti K., Padey P.Y., Galimshina A., Habert G., Lasvaux S.. (2020). Uncertainty of building elements' service lives in building LCA & LCC: What matters?. *Building and Environment*. 106904. doi:10.1016/j.buildenv.2020.106904.

Gustavsson L and Sathre R, 2006 'Variability in energy and carbon dioxide balances of wood and concrete building materials', *Building and Environment*, 41, no. 7, pp. 940–951. doi:10.1016/j.buildenv.2005.04.008

Guo Z, Tu A, Chen C, Lehman DE, 2018, 'Mechanical properties, durability, and life-cycle assessment of concrete building blocks incorporating recycled concrete aggregates', *Journal of Cleaner Production*, 199. doi:10.1016/j.jclepro.2018.07.069

Head M, Bernier P, Levasseur A, Beauregard R, Margni M, 2019, 'Forestry carbon budget models to improve biogenic carbon accounting in life cycle assessment', *Journal of Cleaner Production* 213, doi:10.1016/j.jclepro.2018.12.122

Head M, Levasseur A, Beauregard R, Margni M, 2020, Dynamic greenhouse gas life cycle inventory and impact profiles of wood used in Canadian buildings, *Building and Environment* 173, doi:10.1016/j.buildenv.2020.106751

Hendriks C, Worrel E, de Jager D, Blok K, 2004, 'Emission reduction of greenhouse gases from the cement industry', Proceedings of the Fourth International Conference on Greenhouse Gas Control Technologies doi:10.1016/B978-008043018-8/50150-8

Hermann BG, Debeer L, De Wilde B, Blok K, Patel MK, 2011, 'To compost or not to compost: Carbon and energy footprints of biodegradable materials' waste treatment', *Polymer Degradation and Stability*, vol. 96. doi:[10.1016/j.polymdegradstab.2010.12.026](https://doi.org/10.1016/j.polymdegradstab.2010.12.026)

Humphreys K and Mahasanen M, 2002, 'Toward a sustainable cement industry. Substudy8: climate change' Switzerland

IFN, 2011, 'l'IF n°27: Volume de bois sur pied dans les forêts françaises : 650 millions de mètres cubes supplémentaires en un quart de siècle', report in French Inventaire Forestier National, https://inventaire-forestier.ign.fr/IMG/pdf/web_IF_evol-vol.pdf [Accessed: 21-01-2020]

IGN, 2019, 'Le mémento - Inventaire forestier', rapport in French from Institut Géographique National, http://www.ign.fr/publications-de-l-ign/Institut/Publications/Autres_publications/memento_2019.pdf

INSEE, 2019 'Émissions de CO2 par activité' [Online]. Available: <https://www.insee.fr/fr/statistiques/2015759#tableau-Donnes>. [Accessed: 21-01-2020].

IPCC, 1990. 'Climate Change: The Intergovernmental Panel on Climate Change Scientific Assessment'. Cambridge University Press, Cambridge.

IPCC. 2014, 'Climate Change 2014 : Synthesis Report. Contribution of Working Groups I, II and III to the Fifth Assessment Report of the Intergovernmental Panel on Climate Change' [Core Writing Team, R.K. Pachauri and L.A. Meyer (eds.)]. IPCC, Geneva, Switzerland, 151 pp., 2014.

Islam M , Jollands S , 2015, Life cycle assessment and life cycle cost implication of residential buildings-a review, *Renew.Sustain. Energy Rev.*42, 2015, doi:10.1016/j.rser.2014.10.006.

ISO, 'Environmental management—Life cycle assessment: Principles and framework. ISO14040'. 2006.

ISO, 'Environmental management—Life cycle assessment: Requirements and Guidelines. ISO14044'. 2006.

Joos F, Roth R, Fuglestedt JS, Enting LG, von Bloh W, Brovkin V, Burke EJ, Eby M, Edwards NR, Friedrich T, Frölicher TL, Halloran PR, Holden PB, Jopnes C, Kleinen T, Mackenzie, Matsumoto K, Meinshausen M, Plattner G-K, Reisinger A, Segsneider J, Shaffer G, Steinacher M, Strassmann K, Tanaka K, Timmermann A, Weaver AJ, 2013, 'Carbon dioxide and climate impulse response functions for the computation of greenhouse gas metrics: a multi-model analysis, *Atmospheric Chemistry and Physics*', doi:10.5194/acp-13-2793-2013

Jørgensen, S.V., Hauschild, M.Z., 2013. 'Need for relevant timescales when crediting temporary carbon storage'. *Int. J. Life Cycle Assess.* 18 (4). <https://doi.org/10.1007/s11367-012-0527-3>

Josa A, Aguado A, Heino A, Byars E, Cardim A, 2004, 'Comparative analysis of available life cycle inventories of cement in the EU', *Cement and Concrete Research*, vol. 34. [doi:10.1016/j.cemconres.2003.12.020](https://doi.org/10.1016/j.cemconres.2003.12.020)

Kellenberg D, Althaus H-J, 2009, Relevance of simplifications in the LCA of building components, *Building and Environment* 44 [doi:10.1016/j.buildenv.2008.06.002](https://doi.org/10.1016/j.buildenv.2008.06.002)

Kendall A, 2012. 'Time-adjusted global warming potentials for LCA and carbonfootprints'. *Int. J. Life Cycle Assess.* 17 (8). <https://doi.org/10.1007/s11367-012-0436-5>

Kirschbaum M, 2006, 'Temporary Carbon sequestration Cannot Prevent Climate Change', *Mitigation and Adaptation Strategies for Global Change*, vol. 11, pp. 1151-1164, [doi:10.1007/s11027-006-9027-8](https://doi.org/10.1007/s11027-006-9027-8)

KNAUF 2017, 'FDES Laine de Verre ECOSE Acoustilaine 035', Environmental and Health product declaration (EPD&HPD) in French, Knauf® isolation https://pim.knaufinsulation.com/files/download/fdes_acoustilaine_035_280_mm.pdf [Accessed: 21-01-2020]

Koch P, Salou T, 2016, AGRIBALYSE®: rapport methodologique, version 1.3', ADEME report https://www.ademe.fr/sites/default/files/assets/documents/agribalyse_v1.3_rapport_methodologique.pdf [Accessed: 21-01-2020].

Lecompte T, Levasseur A, Maxime D, 2017, 'Lime and hemp concrete LCA: A dynamic approach of GHG emissions and capture', 2^d ICBBM, Clermont-Ferrand, 21-23 June 2017.

Levasseur A, Brandao M, Lesage P, Margni M, Pennington D, Clift R, and Samson R, 2011, 'Valuing temporary carbon storage', *Nature Climate Change*, vol. 2, pp. 6–8. <https://doi.org/10.1038/nclimate1335>

Levasseur A, Lesage P, Margni M, Samson R, 2012, 'Biogenic Carbon and Temporary Storage Addressed with Dynamic Life Cycle Assessment', *Journal of Industrial Ecology*, vol. 17. <https://doi.org/10.1111/j.1530-9290.2012.00503.x>

Levasseur A, Cavalett O, Fuglestvedt J S, Gasser T, Johansson D J A, Jørgensen S V, Rauegi M, Reisinger A, Schivley G, Strømman A, Tanaka K, Cherubini F, 2016, 'Enhancing life cycle impact from climate science: Review of recent findings and recommendations for application LCA', *Ecological indicators* 71. <https://doi.org/10.1016/j.ecolind.2016.06.049>

Liu W, Zhu Q, Zhou X and Peng C, 2019 'Comparative analyses of different biogenic CO2 emission accounting systems in life cycle assessment', *Science of The Total Environment*, vol. 652, pp. 1456–1462. <https://doi.org/10.1016/j.scitotenv.2018.11.039>

Lopez A and Floissac L, 2016, 'FDES Analyse de cycle de vie d'un remplissage de mur en terre-paille'. Environmental and Health product declaration (EPD&HPD) report in French

Marsh R, 2017, Building lifespan: effect on the environmental impact of building components in a Danish perspective, *Architect. Eng. Des. Manag.* 13, doi:10.1080/17452007.2016.1205471

Marinković S, Radonjanin V, [Malešev M](#), [Ignjatović I](#), 2010, 'Comparative environmental assessment of natural and recycled aggregate concrete', *Waste Management*, vol. 30. doi:10.1016/j.wasman.2010.04.012
Moreno Ruiz E, Lévová T, Bourgault G, Wernet G, 2015. 'Documentation of changes implemented inecoinvent database3.2.' Ecoinvent Centre, Zürich, Switzerland.

Melià P, Ruggieri G, Sabbadini S, Dotelli G, 2014, 'Environmental impacts of natural and conventional building materials: a case study on earth plasters', *Journal of Cleaner Production*, vol. 80. doi:10.1016/j.jclepro.2014.05.073

Moropoulou A, Koroneos C, Karoglou M, Aggelakopoulos E, 2011, 'Life cycle analysis of mortars and its environmental impact', *MRS Proceedings*, vol. 895, 2011. doi:10.1557/PROC-0895-G06-02

Myhre, G, Shindell D, Bréon F-M, Collins W, Fuglestedt J, Huang J, Koch D, Lamarque J-F, Lee D, Mendoza B, Nakajima T, Robock A, Stephens G, Takemura T and Zhang H, 2013, 'Anthropogenic and Natural Radiative Forcing. In: Climate Change 2013: The Physical Science Basis. Contribution of Working Group I to the Fifth Assessment Report of the Intergovernmental Panel on Climate Change' [Stocker, T.F., D. Qin, G.-K. Plattner, M. Tignor, S.K. Allen, J. Boschung, A. Nauels, Y. Xia, V. Bex and P.M. Midgley (eds.)]. Cambridge University Press, Cambridge, United Kingdom and New York, NY, USA

Oliva JP and Courgey S, 2010, 'L'isolation thermique écologique', Terre vivante. 2010. ISBN:2914717881

Palacios-Munoz B, Peuportier B, Gracia-Villa L, Lopez-Mesa B, 2019, Sustainability assessment of refurbishment vs. new constructions by means of LCA and durability-based estimations of buildings lifespans: A new approach, *Building and Environment* 160 doi:10.1016/j.buildenv.2019.106203

PEFC, 2019, 'Statistiques PEFC France au 30 septembre 2019' <https://www.pefc-france.org/chiffres-cles/> [Accessed: 21-01-2020], Programme for the Endorsement of Forest Certification Schemes

Peñaloza D, Erlandsson M, Falk A, 2016, 'Exploring the climate impact effects of increased use of bio-based materials in buildings', *Construction and Building Materials*, vol. 125. doi:10.1016/j.conbuildmat.2016.08.041

Pipatti R, Svardal P, Silva Alves JW, Gao Q, López Cabrera C, Mareckova K, Oonk H, Scheehle E, Sharma C, Smith A and Yamada M, 2006, 'Chapter 3: Solid Waste Disposal - IPCC Guidelines for National Greenhouse Gas Inventories'.

https://www.ipcc-nggip.iges.or.jp/public/2006gl/pdf/5_Volume5/V5_3_Ch3_SWDS.pdf

Pipatti R, Silva Alves JW, Gao Q, López Cabrera C, Mareckova K, Oonk H, Scheehle E, Sharma C, Smith A, Svardal P and Yamada M, 2006, 'Chapter 4: Biological treatment of solid waste - IPCC Guidelines for National Greenhouse Gas Inventories'.

https://www.ipcc-nggip.iges.or.jp/public/2006gl/pdf/5_Volume5/V5_4_Ch4_Bio_Treat.pdf

Pittau F, Krause F, Lumia G and Habert G, 2018, 'Fast-growing bio-based materials as an opportunity for storing carbon in exterior walls', *Building and Environment*, vol. 129, pp. 117–129. <https://doi.org/10.1016/j.buildenv.2017.12.006>

Placo, 2010, 'Placoplatre® BA13/ Plaque de plâtre 12.5mm', Environmental and Health product declaration (EPD&HPD) in French https://www.placo.fr/var/placo/storage/synchronisation/Documents_produits/Placoplatre%C2%AE%20BA%2013_FDES.pdf

Rauf, A, Crawford RH, 2015, Building service life and its effect on the life cycle embodied energy of buildings, *Energy* 79, doi:10.1016/j.energy.2014.10.093

RFCP, 2015, 'FDES Remplissage isolant en bottes de paille (issue de l'agriculture conventionnelle), conformément aux règles professionnelles de construction en paille- CP 2012' Environmental and Health product declaration (EPD&HPD) in French. https://www.rfcp.fr/wp-content/uploads/2017/02/rapportstechniques/150601_FDES_Paille_15804_vdef.pdf

Rivero AJ, Sathre R, Navarro JG, 2016, 'Life cycle energy and material flow implications of gypsum plasterboard recycling in the European Union', *Resources, Conservation and Recycling*, vol. 108. doi: [10.1016/j.resconrec.2016.01.014](https://doi.org/10.1016/j.resconrec.2016.01.014)

Robayo-Salazar R, Mejía-Arcila J, Mejía de Gutiérrez R, Martínez E, 2018, 'Life cycle assessment (LCA) of an alkali-activated binary concrete based on natural volcanic pozzolan: A comparative analysis to OPC concrete', *Construction and Building Materials*, vol. 176. doi: [10.1016/j.conbuildmat.2018.05.017](https://doi.org/10.1016/j.conbuildmat.2018.05.017)

Røyne F, Peñaloza D, Sandin G, Berlin J and Svanström M, 2016, 'Climate impact assessment in life cycle assessments of forest products: implications of method choice for results and decision-making', *Journal of Cleaner Production*, vol. 116, pp. 90–99, 2016. <https://doi.org/10.1016/j.jclepro.2016.01.009>.

Sartori I, Sandberg NH, Brattebø H., 2016, 'Dynamic building stock modelling: General algorithm and exemplification for Norway', *Energy and Buildings*, vol. 132, pp. 13–25, 2016. doi: [10.1016/j.enbuild.2016.05.098](https://doi.org/10.1016/j.enbuild.2016.05.098)

SDES, 2018, 'Le recyclage des déchets produits par l'activité de BTP en 2014', report in French from the service des données et études statistiques <https://www.statistiques.developpement-durable.gouv.fr/le-recyclage-des-dechets-produits-par-lactivite-de-btp-en-2014>

SDES, 2018 'Conjoncture de l'immobilier Résultats au quatrième trimestre 2017, Datalab Essentiel', report in French from the service des données et études statistiques <https://www.statistiques.developpement-durable.gouv.fr/sites/default/files/2019-03/datalab-essentiel-170-conjoncture-immobilier-2018-t4-mars2019.pdf>

SOES, 2010 'Travaux d'amélioration de la performance énergétique dans les bâtiments existant (2007-2009), Marché de l'entretien des bâtiments en 2007'. Etudes & Document n°29, in French. https://www.statistiques.developpement-durable.gouv.fr/sites/default/files/2018-10/E_D_29_Performance_energetique_dans_l_existant_cle1d8f67.pdf

Strassmann K., Joos F., “The Bern Simple Climate Model (BernSCM) v1.0: an extensible and fully documented open source reimplementation of the Bern reduced form model for global carbon cycle-climate simulations”, *Geosci. Model Dev.* **11** 1887–908

Su S, Li X, Zhu Y and Lin B, 2017, 'Dynamic LCA framework for environmental impact assessment of building', *Energy and Buildings* 149. <https://doi.org/10.1016/j.enbuild.2017.05.042>

Teixeira ER, Mateus R, [Camões A](#), Branco FG, 2019, ‘Quality and durability properties and life-cycle assessment of high volume biomass fly ash mortar’, *Construction and Building Materials*, vol. 197. doi: [10.1016/j.conbuildmat.2018.11.173](https://doi.org/10.1016/j.conbuildmat.2018.11.173)

UN-FCCC, 2018 ‘National greenhouse gas inventory data for the period 1990–2016’, Framework Convention on Climate Change, <https://unfccc.int/sites/default/files/resource/17e.pdf>

UNPG, 2017 ‘Module d’information environnementale de la production de granulats à partir de roches meubles’, report in French from the Union Nationale des Producteurs des Granulats. <http://www.unpg.fr/wp-content/uploads/unpg-mie-production-granulats-meubles-2017-1.pdf>

URSA, 2017 ‘FDES 3- Rouleaux et Panneaux légers nus ou revêtus en Laine de Verre liant acrylique URSA-URSA PURE 35 QP / PUO35KP 220 mm R= 6,25 m²·K/W’’, Environmental and Health product declaration (EPD&HPD) in French. https://d7rh5s3nxmpy4.cloudfront.net/CMP1520/files/DAP_PURE_35_QP_de_220mm.pdf

Van den Heede P and De Belie N, 2012, ‘Environmental impact and life cycle assessment (LCA) of traditional and “green” concretes: Literature review and theoretical calculations’, *Cement and Concrete Composites*, vol. 34. doi:[10.1016/j.cemconcomp.2012.01.004](https://doi.org/10.1016/j.cemconcomp.2012.01.004)

Venturini G, Pizzaro-Alonso A and Münster M, 2019, ‘How to maximize the value of residual biomass resources: The case of straw in Denmark’, *Applied Energy*, vol. 250, pp. 369–388. <https://doi.org/10.1016/j.apenergy.2019.04.166>

Wiloso EI, Heijungs R, Huppel G, Fang K, 2016, ‘Effect of biogenic carbon inventory on the life cycle assessment of bioenergy: challenges to the neutrality assumption’, *Journal of Cleaner Production*, vol. 125. doi:[10.1016/j.jclepro.2016.03.096](https://doi.org/10.1016/j.jclepro.2016.03.096)