



HAL
open science

COVID-19 pneumonia: A review of typical CT findings and differential diagnosis

C. Hani, N.H. Trieu, I. Saab, S. Dangeard, S. Bennani, G. Chassagnon, M.-P.
Revel

► **To cite this version:**

C. Hani, N.H. Trieu, I. Saab, S. Dangeard, S. Bennani, et al.. COVID-19 pneumonia: A review of typical CT findings and differential diagnosis. *Diagnostic and Interventional Imaging*, 2020, 101, pp.263 - 268. 10.1016/j.diii.2020.03.014 . hal-03491060

HAL Id: hal-03491060

<https://hal.science/hal-03491060v1>

Submitted on 22 Aug 2022

HAL is a multi-disciplinary open access archive for the deposit and dissemination of scientific research documents, whether they are published or not. The documents may come from teaching and research institutions in France or abroad, or from public or private research centers.

L'archive ouverte pluridisciplinaire **HAL**, est destinée au dépôt et à la diffusion de documents scientifiques de niveau recherche, publiés ou non, émanant des établissements d'enseignement et de recherche français ou étrangers, des laboratoires publics ou privés.



Distributed under a Creative Commons Attribution - NonCommercial 4.0 International License

COVID-19 pneumonia: a review of typical CT findings and differential diagnosis

Chahinez HANI^a, Nghi HOANG TRIEU^a, Inès SAAB^{a,b}, Séverine DANGEARD^a,
Souhail BENNANI^a, Guillaume CHASSAGNON^{a,b}, Marie-Pierre REVEL^{a,b*}

^a Department of Radiology, Cochin Hospital, Assistance Publique-Hopitaux de Paris, 75014 Paris, France

^b Université de Paris, Descartes-Paris 5, 75006 Paris, France

*Corresponding author: marie-pierre.revel@aphp.fr

Department of Radiology, Cochin Hospital, Assistance Publique-Hopitaux de Paris, 27 rue du
Faubourg Saint-Jacques, 75014 Paris, France

Abstract

The standard of reference for confirming COVID-19 relies on microbiological tests such as real-time polymerase chain reaction (RT-PCR) or sequencing. However, these tests might not be available in an emergency setting. Computed tomography (CT) can be used as an important complement for the diagnosis of COVID-19 pneumonia in the current epidemic context. In this review, we present the typical CT features of COVID-19 pneumonia and discuss the main differential diagnosis.

Keywords: COVID-19 pneumonia; Tomography, X-Ray Computed; Cryptogenic Organizing Pneumonia; Pneumonia.

List of abbreviations

CT: computed tomography

COVID-2019: Coronavirus disease 2019

GGO: ground glass opacities

MIP: maximum intensity projection

RT-PCR: real-time polymerase chain reaction

Introduction

Since March 11, 2020, the World Health Organization has declared Coronavirus disease 2019 (COVID-2019) caused by SARS-CoV-2 to be a pandemic and public health emergency of international concern [1]. To date, the epidemic had spread to more than 199 countries and more than 664,941 individuals have contracted the virus worldwide with 30,894 reported deaths, including 37,575 confirmed cases in France and 2,314 deaths [2]. However, these numbers are probably underestimated as not all patients are tested, especially those who are asymptomatic, or with only mild symptoms and no associated comorbidities. The standard of reference for confirming COVID-19 relies on microbiological tests such as real-time polymerase chain reaction (RT-PCR) or sequencing [3]. However, these tests might not be available in an emergency setting and their results are not immediately available. Computed tomography (CT) can be used as an important complement to RT-PCR for diagnosing COVID-19 pneumonia in the current epidemic context [4,5]. Indeed, when the viral load is

insufficient, RT-PCR can be falsely negative while chest CT shows suggestive abnormalities [4,5]. A large series based on 1014 patients reported a 97% sensitivity of chest CT for the diagnosis of COVID-19, while the mean time interval between initial negative and positive RT-PCR was approximately 5 days [5]. Thus, CT can play a pivotal role in the early detection and management of COVID-19 pneumonia [6], at least for patients who have been symptomatic for more than three days [4]. Indeed, 56% of patients imaged during the first 2 days following symptom onset may have normal CT findings [7].

Given the important role of chest CT, it is important for radiologists to become familiar with the typical CT features associated with this new infection, as well as the imaging criteria for an alternative diagnosis.

In this pictorial review, we present the typical CT features of COVID-19 pneumonia, their changes during follow-up, together with the main differential diagnosis and clues for their recognition.

Typical imaging findings

A wide variety of CT findings in COVID-19 have been reported in the different studies [8,9] [9]. However, all studies indicate that the main CT feature of COVID-19 pneumonia is the presence of ground glass opacities (GGO), typically with a peripheral and subpleural distribution (**Figure 1**). The involvement of multiple lobes, particularly the lower lobes is reported in the majority of patients with COVID-19 [10]. These areas of GGO may be admixed with areas of focal consolidation (**Figure 2**) and or associated with superimposed intralobular reticulations, resulting in a crazy paving pattern (**Figure 3**). Linear consolidations and other signs suggesting organizing pneumonia such as the reverse halo sign (i.e., areas of ground-glass surrounded by peripheral consolidation) are very frequently observed, mostly in patients several days after the onset of disease.

In the study by Salehi et al., the frequencies of the different CT abnormalities were as follows: GGO was observed in 88.0% of patients, consolidation in 31.8%, bilateral involvement in 87.5% and peripheral distribution in 76.0% of patients [8].

Various forms of severity

Patients with COVID-19 pneumonia present with variable disease extent, ranging from mild involvement, affecting less than 10% of the lung parenchyma (**Figure 4**) to severe

disease extent with a “white lung” appearance on CT (**Figure 5**). Yuan et al. evaluated imaging findings associated with mortality and reported that the frequency of consolidations as well as the median CT score were both higher in the group of patients who died at the hospital, as compared to patients who could be discharged [11]. The CT score in this study was calculated as follows: CT attenuation was graded using a 3-point scale, with 1 for normal attenuation, 2 for ground glass and 3 for consolidation. Then the degree of lung involvement was evaluated for 6 lung regions: upper, middle and lower lung on each side and graded using a 5-point scale: 0 no involvement, 1 less than 25%, 2: 25-50%, 3: 50-75% and 4 > 75%. The maximal CT score was 72. Using a cut-off value of 24.5, the CT score predicted mortality with a sensitivity of 85.6% and a specificity of 84.5% [11]. Other predictive factors for mortality included older age and higher comorbidity rate [12]. In the series by Li et al. , the incidence of consolidation, linear opacities and crazy-paving pattern in severe/critical patients was significantly higher than that observed in non-severe (e.g., ordinary) patients [13]. This series based on 83 patients also confirmed that severe /critical patients were older and with more co-morbidities [13].

Evolution during follow-up

COVID-19 pneumonia CT features change over time, with different presentations according to the phase and severity of lung infection. Pan et al. investigated lung changes by time in patients who recovered from COVID-19 [14]. They classified the evolution of lung abnormalities into four stages (early 0-4 days, progressive 5-8 days, peak 9-13 days, and absorption \geq 14 days) according to time periods. They visually quantified the extent of CT abnormalities. Each of the 5 lung lobes was visually scored from 0 to 5 as follows: 0, no involvement; 1, < 5% involvement; 2, 25% involvement; 3, 26%-49% involvement; 4, 50%-75% involvement; and 5, >75% involvement [14]. The total CT score ranged from 0 to a maximal value of 25. They found that the total CT score increased until about 10 days after symptom onset and then gradually decreased. Regarding the category of CT abnormalities, stage 2 was characterized by an increase of GGO extent, with a crazy-paving pattern more frequently observed [8]. On the opposite, in stage 3, consolidation was the main feature with a decreased GGO ratio. In a series of 919 patients, Salehi et al. confirmed this observation and reported that CT findings in the intermediate stage of the disease were characterized by an increase in the number and size of GGOs, a progressive transformation of GGO into multifocal consolidation, with septal thickening and development of a crazy-paving pattern

[8]. The transformation of GGO into linear consolidation is typical for an evolution towards organizing pneumonia, which is a nearly universal response to lung injury whether it is focal or diffuse, due to infection, radiation therapy or following drug-induced pneumonitis (**Figure 6**) [15]. Wang et al. also evaluated longitudinal changes and confirmed that pure ground glass was the most common observation after symptoms onset, whereas a mixed pattern combining ground glass with irregular linear opacity peaked on illness days 6-11 [10].

In patients with clinical worsening not explained by an extension of lung opacities on CT, pulmonary embolism should be suspected and a contrast-enhanced CT examination should be performed if possible, taking into consideration the clinical severity and the renal function. Of note, patients with severe COVID-19 pneumonia have a marked elevation of d-dimers, so that this d-dimer levels do not help identify those who have superimposed pulmonary embolism [16].

CT features suggesting pneumonia of other cause

Among differential diagnosis, one major differential is pneumonia from bacterial origin. Community-acquired pneumonia is usually characterized by an airspace consolidation in one segment or lobe, limited by the pleural surfaces. CT may additionally show ground glass attenuation, centrilobular nodules, bronchial wall thickening and mucoid impactions (**Figures 7 and 8**) [17]. COVID-19 pneumonia presentation is very different, with an absence of centrilobular nodules and no mucoid impactions in the absence of superinfection.

Pneumocystis *Jiroveci* pneumonia is another infectious cause of diffuse ground glass on CT, but occurs in immunocompromised patients. Even though GGO is the main CT feature, its distribution within the lung parenchyma is not similar to that observed in patients with COVID-19, it is more diffusely distributed with a tendency to spare the subpleural regions (**Figure 9**) [18].

It is much more difficult to distinguish COVID-19 from pneumonia due to other viral causes. CT features largely overlap, even though it has been reported that CT abnormalities in COVID-19 pneumonia more frequently exhibit a peripheral predominance, with less frequent pleural effusion and lymphadenopathy (**Figure 10**) [19]. It is mainly the high current epidemic context which suggests COVID-19 as the cause of GGO in patients with fever and respiratory symptoms.

Non-infectious causes of acute GGO

Pulmonary edema is a very common cause of diffuse GGO, but is characterized by a central predominance with sparing of the peripheral portions of the lung contrary to COVID-19. It is associated with other suggestive signs such as septal lines, pleural effusion, large pulmonary veins and mediastinal lymphadenopathy. It has been reported that COVID-19 might be responsible for acute myocarditis [20]. This diagnosis should be suspected if there are signs of interstitial pulmonary edema such as septal lines in younger patients (**Figure 11**). Intra alveolar hemorrhage due to small vessel vasculitis is also characterized by diffuse GGO, but patients usually present with mild hemoptysis and acute renal failure is associated especially in Goodpasture syndrome. There is no subpleural predominance contrary to that seen in COVID-19 (**Figure 12**) [21]. Drug-induced pneumonitis manifesting as nonspecific interstitial pneumonia is another cause of ground glass. Subpleural sparing, history of drug exposure help diagnosis. Those manifesting as organized pneumonia have similarities to COVID-19, but are associated with GGO and occur in a very different context [22].

Conclusion

In this epidemic situation, CT undoubtedly plays an important role, for early identification of COVID-19 pneumonia. Typical CT features include peripheral GGOs with multifocal distribution, and a progressive evolution towards organizing pneumonia patterns. CT may be used for prognosis purposes, with poorer outcome for patients having important disease extent and more consolidative forms and also to early detect complications in patients who require further mechanical ventilation [23]. Centrilobular nodules, mucoid impactions and unilateral segmental or lobar consolidations suggest a bacterial origin of pneumonia, or superinfection. RT-PCR remains needed for final confirmation but its positivity can be delayed, with the need to repeat the test if the CT features are suggestive.

Conflicts of interest

The authors have no conflicts of interest to disclose in relation with this article.

Author contributions

All authors attest that they meet the current International Committee of Medical Journal Editors (ICMJE) criteria for Authorship.

References

- [1] WHO Director-General's opening remarks at the media briefing on COVID-19 - 11 March 2020 n.d. <https://www.who.int/dg/speeches/detail/who-director-general-s-opening-remarks-at-the-media-briefing-on-covid-19---11-march-2020> (accessed March 22, 2020).
- [2] Coronavirus Update (Live): 629,450 Cases and 28,963 Deaths from COVID-19 Virus Outbreak - Worldometer n.d. <https://www.worldometers.info/coronavirus/> (accessed March 28, 2020).
- [3] Corman VM, Landt O, Kaiser M, Molenkamp R, Meijer A, Chu DK, et al. Detection of 2019 novel coronavirus (2019-nCoV) by real-time RT-PCR. *Eurosurveillance* 2020;25:2000045.
- [4] Fang Y, Zhang H, Xie J, Lin M, Ying L, Pang P, et al. Sensitivity of chest CT for COVID-19: comparison to RT-PCR. *Radiology* 2020;doi: 10.1148/radiol.2020200432.
- [5] Ai T, Yang Z, Hou H, Zhan C, Chen C, Lv W, et al. Correlation of chest CT and RT-PCR testing in coronavirus disease 2019 (COVID-19) in China: a report of 1014 cases. *Radiology* 2020; doi: 10.1148/radiol.2020200642.
- [6] Zu ZY, Jiang MD, Xu PP, Chen W, Ni QQ, Lu GM, et al. Coronavirus disease 2019 (COVID-19): a perspective from China. *Radiology* 2020; doi: 10.1148/radiol.2020200490.
- [7] Bernheim A, Mei X, Huang M, Yang Y, Fayad ZA, Zhang N, et al. Chest CT findings in coronavirus disease-19 (COVID-19): relationship to duration of infection. *Radiology* 2020; doi: 10.1148/radiol.2020200463.

- [8] Salehi S, Abedi A, Balakrishnan S, Gholamrezanezhad A. Coronavirus disease 2019 (COVID-19): a systematic review of imaging findings in 919 Patients. *AJR Am J Roentgenol* 2020; doi: 10.2214/AJR.20.23034.
- [9] Cheng Z, Lu Y, Cao Q, Qin L, Pan Z, Yan F, et al. Clinical features and chest CT manifestations of coronavirus disease 2019 (COVID-19) in a single-center study in Shanghai, China. *AJR Am J Roentgenol* 2020; doi: 10.2214/AJR.20.22959..
- [10] Wang Y, Dong C, Hu Y, Li C, Ren Q, Zhang X, et al. Temporal changes of CT findings in 90 patients with COVID-19 pneumonia: a longitudinal study. *Radiology* 2020; doi: 10.1148/radiol.2020200843.
- [11] Yuan M, Yin W, Tao Z, Tan W, Hu Y. Association of radiologic findings with mortality of patients infected with 2019 novel coronavirus in Wuhan, China. *PLoS One* 2020;15: e0230548.
- [12] Yang W, Cao Q, Qin L, Wang X, Cheng Z, Pan A, et al. Clinical characteristics and imaging manifestations of the 2019 novel coronavirus disease (COVID-19): a multi-center study in Wenzhou city, Zhejiang, China. *J Infect* 2020;80:388–893.
- [13] Li K, Wu J, Wu F, Guo D, Chen L, Fang Z, et al. The clinical and chest CT features associated with severe and critical COVID-19 pneumonia. *Invest Radiol* 2020; doi: 10.1097/RLI.0000000000000672.
- [14] Pan F, Ye T, Sun P, Gui S, Liang B, Li L, et al. Time course of lung changes on chest CT during recovery from 2019 novel coronavirus (COVID-19) Pneumonia. *Radiology* 2020;doi: 10.1148/radiol.2020200370.

- [15] Kligerman SJ, Franks TJ, Galvin JR. From the Radiologic Pathology Archives: Organization and fibrosis as a response to lung injury in diffuse alveolar damage, organizing pneumonia, and acute fibrinous and organizing pneumonia. *Radiographics* 2013;33:1951–1975.
- [16] Tang N, Li D, Wang X, Sun Z. Abnormal coagulation parameters are associated with poor prognosis in patients with novel coronavirus pneumonia. *J Thromb Haemost* 2020; doi: 10.1111/jth.14768.
- [17] Tanaka N, Matsumoto T, Kuramitsu T, Nakaki H, Ito K, Uchisako H, et al. High resolution CT findings in community-acquired pneumonia. *J Comput Assist Tomogr* 1996;20:600–608.
- [18] Kuhlman JE, Kavuru M, Fishman EK, Siegelman SS. *Pneumocystis carinii* pneumonia: spectrum of parenchymal CT findings. *Radiology* 1990;175:711–714.
- [19] Bai HX, Hsieh B, Xiong Z, Halsey K, Choi JW, Tran TML, et al. Performance of radiologists in differentiating COVID-19 from viral pneumonia on chest CT. *Radiology* 2020; doi: 10.1148/radiol.2020200823.
- [20] Chen C, Zhou Y, Wang DW. SARS-CoV-2: a potential novel etiology of fulminant myocarditis. *Herz* 2020.
- [21] Cordier J-F, Cottin V. Alveolar hemorrhage in vasculitis: primary and secondary. *Seminars in Respiratory and Critical Care Medicine* 2011;32:310–21.
- [22] Rossi SE, Erasmus JJ, McAdams HP, Sporn TA, Goodman PC. Pulmonary drug toxicity: radiologic and pathologic manifestations. *Radiographics* 2000;20:1245–1259.

[23] Langlet B, Dournes G, Laurent F. CT features of pulmonary interstitial emphysema. *Diagn Interv Imaging* 2019;100:825-826.

Figure legends

Figure 1. Unenhanced CT images show typical findings of COVID-19 pneumonia in a 55-year-old man. Peripheral GGO is seen in the upper portion of both lungs (a, b) (arrows), associated with linear consolidations in the lower lobes (c) (arrowhead). The results of first and second RT-PCRs were negative, with only the third test, repeated in view of CT findings, becoming positive.

Figure 2. Unenhanced CT examination performed 6 days after the onset of symptoms in a 64-year-old-man with COVID-19 pneumonia. Axial (a) and coronal (b) CT images demonstrate bilateral ground glass opacities admixed with patchy areas of consolidation (arrow) in the central and peripheral portions of the lung.

Figure 3. Unenhanced CT images of an 86-year-old woman with a crazy-paving pattern due to COVID-19 pneumonia. (a) CT examination performed 4 days after symptom onset (dry cough and chest pain) demonstrates moderate disease extent (10-25%). (b) Peripheral ground-glass opacities with superimposed intralobular reticulations (arrows) resulting in a crazy-paving pattern, are seen in both lower lobes.

Figure 4. Unenhanced CT image in a 50-year-old woman with a mild form of COVID-19. She has asthma with no respiratory symptoms except fever. Her husband has been recently diagnosed with COVID-19. CT demonstrates rounded ground-glass opacities in both upper lobes, some in the sub pleural region (arrowhead) and others more centrally distributed (arrow).

Figure 5. Unenhanced CT images of a “white lung” appearance in an 89-year-old man with respiratory distress due to COVID-19 pneumonia. Axial (a) and coronal (b) CT images, performed before admission in ICU demonstrate extensive ground glass opacities, with more than 75% of the lung involved.

Figure 6. Initial and follow-up CT images in a 71-year-old woman with COVID-19 pneumonia. Unenhanced initial CT performed before RT-PCR confirmation (a,c) shows bilateral peripheral ground-glass in the dorsal segment of upper (a) and lower lobes (c) (arrows). Contrast-enhanced CT (b,d) performed 6 days later to rule out pulmonary embolism demonstrates linear consolidations typical for an organizing pneumonia pattern (arrowheads).

Figure 7. Unenhanced CT images in a 55-year-old-patient with bacterial bronchopneumonia. Centrilobular nodules (a) with a tree-in-bud pattern better seen on MIP reformatted images (b) (arrows) are seen in the right lower lobe, together with a segmental consolidation (arrowhead) (c).

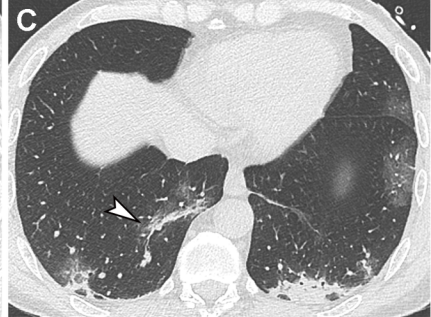
Figure 8. Unenhanced CT images of a 45-year-old man with bacterial pneumonia. Ground glass opacities (arrow) limited to the posterior and lateral segment of the right lower lobe are demonstrated (a), associated with endobronchial secretions (arrowhead) (b) more proximally.

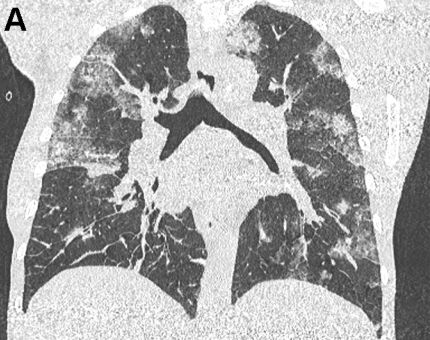
Figure 9. Unenhanced CT images of a 30-year-old man with *Pneumocystis jiroveci* infection. Bilateral ground glass opacities with right lung predominance are demonstrated. Note the relative subpleural sparing (arrows) on both axial (a) and coronal (b) CT images.

Figure 10. Unenhanced CT image in a 45-year-old-patient with Influenza virus-associated pneumonia. Bilateral diffuse ground glass opacities are demonstrated. Differential diagnosis with COVID-19 pneumonia is not possible and relies on RT-PCR results, even though peripheral predominance is less common. RT-PCR result for SARS-Cov-2 was negative but positive for influenza A.

Figure 11. Unenhanced CT images of a 64-year-old man with COVID-19 and pulmonary edema. Ground glass opacities admixed with patchy consolidation are seen in both lungs and associated with linear consolidation in the subpleural region of the left lower lobe (arrow) (a). The associated smooth thickening of the interlobular septa (b), indicating pulmonary edema, suggests left ventricular failure and potentially associated myocarditis.

Figure 12. Unenhanced CT performed in a 48-year-old woman with Goodpasture syndrome. CT image shows bilateral ground glass opacities with central predominance, associated with pleural effusion, which is very uncommon in COVID-19 pneumonia. The patient presented with mild hemoptysis related to intra alveolar hemorrhage and acute renal failure. Histopathological analysis of tissues samples obtained from renal biopsy confirmed Goodpasture syndrome.



A**B**

