



HAL
open science

Proteolytic activity of Lactobacillus strains isolated from Mongolian traditional dairy products: A multiparametric analysis

Cyril Raveschot, Benoit Cudennec, Barbara Deracinois, Marc Frémont, Maxime Vaeremans, Jamyan Dugersuren, Shirchin Demberel, Djamel Drider, Pascal Dhulster, François Coutte, et al.

► To cite this version:

Cyril Raveschot, Benoit Cudennec, Barbara Deracinois, Marc Frémont, Maxime Vaeremans, et al.. Proteolytic activity of Lactobacillus strains isolated from Mongolian traditional dairy products: A multiparametric analysis. Food Chemistry, 2020, 304, pp.125415. 10.1016/j.foodchem.2019.125415 . hal-03488186

HAL Id: hal-03488186

<https://hal.science/hal-03488186v1>

Submitted on 20 Jul 2022

HAL is a multi-disciplinary open access archive for the deposit and dissemination of scientific research documents, whether they are published or not. The documents may come from teaching and research institutions in France or abroad, or from public or private research centers.

L'archive ouverte pluridisciplinaire **HAL**, est destinée au dépôt et à la diffusion de documents scientifiques de niveau recherche, publiés ou non, émanant des établissements d'enseignement et de recherche français ou étrangers, des laboratoires publics ou privés.



Distributed under a Creative Commons Attribution - NonCommercial 4.0 International License

1 **Proteolytic activity of *Lactobacillus* strains isolated from Mongolian traditional dairy**
2 **products: a multiparametric analysis**

3

4 **Cyril Raveschot ^{ab}, Benoit Cudennec ^a, Barbara Deracinois ^a, Marc Frémont ^b, Maxime**
5 **Vaeremans^b, Jamyan Dugersuren ^c, Shirchin Demberel ^c, Djamel Drider ^a, Pascal**
6 **Dhulster ^a, François Coutte ^a, Christophe Flahaut ^a**

7

8 ^a Université Lille, INRA, ISA, Université d'Artois, Université Littoral Côte d'Opale, EA
9 7394-ICV Institut Charles Viollette, F-59000 Lille, France

10 ^b VF Bioscience, Parc Eurasanté, F-59120 Loos-lez-Lille, France

11 ^c Probiotic Research Center, Mongolian Veterinary Institute, 17024 Ulaanbaatar, Mongolia

12

13 *** Corresponding author:**

14 Dr. Christophe FLAHAUT

15 Tel.: +33 3 21 79 17 80

16 Fax: +33 3 21 79 17 00

17 E-mail address: christophe.flahaut@univ-artois.fr

18

19 **Keywords**

20 Cell envelope associated peptidases, fermented milk, *Lactobacillus*, peptides

21

22 **Abbreviations**

23 ACE: Angiotensin Converting Enzyme

24 ACN: Acetonitrile

25 CEP: Cell Envelope associated Peptidase

26 EDTA: EthyleneDiamineTetraAcetic acid

27 FA: Formic Acid

28 FC Reagent: Folin-Ciocalteu Reagent

29 FPLC: Fast Protein Liquid Chromatography

30 HMWPs: High Molecular Weight Proteins/Peptides

31 LAB: Lactic Acid Bacteria

32 LMWPs: Low Molecular Weight Peptides

33 MRS: De Man, Rogosa, Sharpe

34 NISM: Non Inoculated Skim Milk

35 OD: Optical Density

36 PCA: Principal Component Analysis

37 PCR: Polymerase Chain Reaction

38 SEC: Size Exclusion Chromatography

39 TCA: TriChloroAcetic acid

40 TFA: TriFluoroAcetic acid

41 UHT: Ultra High Temperature

42

43

44

45

46 **ABSTRACT**

47 The aim of our study was to characterize the proteolytic activity of 170 *Lactobacillus* strains
48 isolated from traditional Mongolian dairy products (yogurt and fermented milk), and to
49 investigate their capacity to generate bioactive peptides during milk fermentation. All isolates
50 were screened for proteolytic activity using skim milk agar-well diffusion test. Fifteen strains
51 (9 *Lactobacillus helveticus* and 6 *Lactobacillus delbrueckii subsp. bulgaricus*) were then
52 selected and further evaluated using an original strategy based on multiparametric analysis,
53 taking into account growth rate, acidification capacity, proteolytic activity, cell envelope
54 associated peptidase (CEP) profile and LC-MS/MS analysis of peptides. All parameters were
55 analyzed using principal component analysis (PCA). Results showed that strain growth and
56 acidification correlate with peptide production and that Mongolian *L. helveticus* strains differ
57 from Western strains in terms of CEP distribution. The PCA revealed that CEP profiles are
58 major determinants of β -casein hydrolysis patterns. Strains with distinctive proteolytic
59 activities were identified.

60

61

62

63

64

65

66

67

68 **1. Introduction**

69 Milk proteins are precursors of many different peptides, some of which display interesting
70 bioactivities: peptides with antimicrobial, antioxidant, opioid, immunostimulating or calcium
71 binding activities have already been described (Nielsen, Beverly, Qu, & Dallas, 2017;
72 Nongonierma & FitzGerald, 2015; Park & Nam, 2015). Bioactive peptides can be generated
73 from milk proteins by enzymatic hydrolysis during gastrointestinal digestion, or produced *in*
74 *vitro* with the use of commercial enzymes. However, industrial production of peptides is
75 limited by the lack of suitable large-scale technologies, and by the high cost of enzymes (Wu
76 et al., 2013).

77 Milk fermentation by *Lactobacillus* bacteria represents an inexpensive way to generate
78 bioactive peptides (Giacometti & Buretić-Tomljanović, 2017). In order to source all the
79 amino acids required for their growth, *Lactobacillus* bacteria indeed hydrolyze milk proteins
80 during fermentation, and a large variety of peptides is generated in this process. The
81 enzymatic system responsible for milk protein degradation is composed of cell envelope
82 associated peptidases (CEPs) and peptidases. The CEPs first hydrolyze proteins into peptides,
83 which are then transported into the cell by a peptide transport system; intracellular peptidases
84 finally degrade these peptides into smaller molecules and amino acids (Savijoki, Ingmer &
85 Varmanen, 2006). Only one CEP (named PrtB) has been described for *Lactobacillus*
86 *delbrueckii subsp. bulgaricus* (*L. delbrueckii*) (Hou, Liu, Ren, Han, & Du, 2015) whereas 4
87 CEPs (PrtH1, PrtH2, PrtH3 and PrtH4) can be expressed, in a strain dependent manner, by
88 *Lactobacillus helveticus* (*L. helveticus*) strains (Griffiths & Tellez, 2013). The proteolytic
89 activity of a given strain finally depends on its CEP and peptidase profiles, on gene variations,
90 and on the conditions required for optimal enzyme activity (Alcántara et al., 2016).

91

92 *L. helveticus* LBK-16H is an example of strain that generates bioactive peptides upon milk
93 fermentation: two tripeptides isoleucyl-prolyl-proline (IPP) and valyl-prolyl-proline (VPP)
94 were identified, which have been shown to act as angiotensin converting enzyme (ACE)
95 inhibitors (Narva, Halleen, Väänänen, & Korpela, 2004). Another example is the
96 antioxidative peptide present in milk fermented by *L. delbrueckii* IFO13953 (Korhonen &
97 Pihlanto, 2006).

98 This study aimed at evaluating the peptide production capacity of *Lactobacillus* strains
99 isolated in three different areas of Mongolia. Production of dairies through spontaneous milk
100 fermentation has a long history in this country. Herders use different milks (mare, cow, yak,
101 camel, sheep, goat) to produce a variety of fermented food such as yogurt, kefir, or airag
102 (fermented horse milk). These products were reported to contain a wide diversity of LAB,
103 especially *Lactobacillus* species (Watanabe et al., 2008; Yu et al., 2011). Mongolian *L.*
104 *helveticus* strains isolated from mare's fermented milk present a different CEP distribution,
105 and generate different peptides from casein hydrolysis, when compared to European and
106 North American strains (Miyamoto et al., 2015). This suggests that *Lactobacillus* species
107 from different origins could hydrolyze milk proteins in different ways, and therefore generate
108 peptides with original bioactivities. Actually, new peptides with ACE inhibitory activity have
109 been identified in milk fermented by the Mongolian strain *L. helveticus* 130B4 (Schuangquan,
110 Tsuda & Miyamoto, 2008).

111 The screening was carried on 170 *Lactobacillus* isolates, and involved a multiparametric
112 analysis based on the correlation between i) fermentation characteristics (strain growth,
113 acidification pattern), ii) CEP gene distribution and iii) peptide heterogeneity obtained after
114 milk fermentation. The study was able to distinguish strains with specific proteolytic
115 activities, generating distinct populations of peptides upon fermentation of milk.

116

117 **2. Materials and methods**

118 **2.1. Sample collection**

119 A total of 67 dairy samples were collected from three regions of Mongolia, corresponding to
120 different ecosystems and environmental conditions: Gobi desert (16 samples), Northern
121 Mongolia Hangai region (12 samples) and Altaï mountains (39 samples). Collected samples
122 included mare (*Equus caballus*) fermented milk, camel (*Camelus bactrianus*) fermented milk,
123 as well as cow (*Bos taurus*), goat (*Capra hircus*), yak (*Bos grunniens*) and hainakh (*Bos*
124 *taurus* × *Bos grunniens*) yogurts. Samples were collected in sterile containers and kept
125 refrigerated for a maximum of two days before analysis.

126

127 **2.2. Isolation and identification of LAB**

128 Samples were serially diluted in saline solution (NaCl 0.85% w/v), streaked on MRS plates,
129 incubated for 48h at 37°C under anaerobic conditions (De Man, Rogosa & Sharpe, 1960).

130 Morphologically distinct colonies were picked and streaked again until purification. Strains
131 were examined with an optical microscope for Gram staining. Catalase assay was performed
132 by application of 3 % (v/v) hydrogen peroxide solution on cultures. Bubbling indicates
133 catalase activity. A total of 170 isolates were finally retained in the collection. Strains were
134 stored in MRS media and glycerol (15% v/v final concentration) at -80°C.

135 Identification of strains was performed by 16S rDNA amplification and sequencing. Strain
136 DNA was extracted from bacterial colonies using QIAamp DNA Mini Kit (Qiagen, Hilden,
137 Germany). DNA amplification and sequencing were performed by GATC biotech (Konstanz,
138 Germany). Species were identified by comparing the 16S sequence with bacterial sequences
139 in Medline databases, a score higher than 99% was considered significant.

140

141 **2.3. Screening for proteolytic activities on skim milk agar**

142 Proteolytic activity was determined using skim milk agar medium. Strains were grown in
143 MRS at 37°C for 48h, washed twice in the same medium and adjusted to a final optical
144 density at 600 nm (OD₆₀₀) of 1. Twenty microliters of the suspension were placed in skim
145 milk agar (5% w/v) wells (diameter 4 mm) and inoculated plates were incubated at 37°C for
146 72h. Proteolysis resulted in the formation of a clear zone around the wells; diameter of this
147 clear zone was measured for proteolytic activity quantification.

148

149 **2.4. Fermentation of Ultra High Temperature (UHT) skim milk with selected strains**

150 In order to assess the strains proteolytic activity, milk cultures were prepared in a media
151 composed of 100% UHT skim milk (Cora, France). Strains were inoculated to 30 mL of UHT
152 skim milk, to reach an initial OD₆₀₀ of 0.3, and grown at 37°C for 48h without agitation.
153 Concomitantly, a non-inoculated UHT skim milk (NISM) was incubated in the same
154 conditions and served as negative control. After incubation, the pH value of culture media
155 was determined using a pH meter (Mettler Toledo, Greifensee, Swiss) and all milk cultures
156 were kept at -20°C for further analysis. Experiments were performed in triplicate and the
157 results were expressed as the mean plus standard error.

158

159 **2.4.1. Bacterial growth determination**

160 Bacterial concentration in skim milk cultures was determined as follows: a volume of culture
161 was diluted 10 times in 2% ethylenediaminetetraacetic acid (EDTA), pH 12, and then
162 centrifuged at 13,000 × g for 10 min (Abraham, De Antoni & Anon, 1993). This process was

163 repeated and the pellet was resuspended in phosphate buffer solution (PBS) at pH 7. OD of
164 the solution was measured at 600 nm.

165

166 **2.4.2. Peptide extraction and purification**

167 Proteins were precipitated from 4 mL of milk cultures by addition of a trichloroacetic acid
168 solution (TCA, 10% w/v in water) to reach a final TCA concentration of 1%. After
169 centrifugation at $10,000 \times g$ for 10 min at room temperature, the peptide-containing
170 supernatant was collected. Sugars, salt and TCA were removed from supernatant using a C₁₈
171 solid phase extraction with Bond Elut C₁₈ 1000 mg microcolumns (Agilent Technologies,
172 Santa Clara, USA). Elution of C₁₈-retained peptides was performed with 2 mL of 80% v/v
173 acetonitrile (ACN), 20% v/v water and 0.1% v/v trifluoroacetic acid (TFA).

174

175 **2.4.3. Peptide quantification**

176 After extraction and purification, the assessment of peptide concentration in milk culture was
177 performed using the Folin-Ciocalteu reagent (FC reagent – (ref F9252, Sigma-Aldrich, St
178 Quentin Fallavier, France)) (McSweeney & Fox, 1997; Lowry, Rosebrough, Farr & Randall,
179 1951). Briefly, the complexation reaction was performed in a final volume of 800 μ L
180 composed of 200 μ L of extracted peptides, 500 μ L of sodium carbonate solution (500 mM)
181 and 100 μ L of FC reagent. After incubation at 37°C for 30 min in the dark, the OD₇₅₀ was
182 measured to evaluate the peptide amount. Standard curve was established with a peptide
183 digest standard (Peptide digest assay standard, ThermoFisher Scientific, Waltham, USA).

184

185

186 **2.4.4. Molecular weight profiles of peptides obtained from milk hydrolysates**

187 Peptide content in milk hydrolysates was analyzed by size exclusion chromatography (SEC)
188 based on a fast protein liquid chromatography (FPLC) using a Superdex Peptide 10/300 GL
189 column (10 × 300-310 mm, 13 μm, GE Healthcare, Little Chalfont, UK) coupled to an AKTA
190 Protein Purification System (GE Healthcare, Little Chalfont, UK). Twenty-five microliters of
191 sample were loaded, eluted in isocratic conditions with 30% ACN, 0.1% TFA solution at a
192 flow rate of 0.5 mL.min⁻¹ for 60 minutes and monitored at 214 nm. Five substances were used
193 as internal standards to obtain a calibration curve for calculating molecular weight
194 distribution: albumin (60 kDa), cytochrome C (12,400 Da), aprotinin (6,500 Da), vitamin B12
195 (1,355 Da) and glutathione (307.3 Da). Peptide content in each sample was estimated by peak
196 area integration. Two molecular weight ranges were distinguished, one corresponding to the
197 high molecular weight proteins/peptides (HMWPs) with an apparent molecular weight higher
198 than 1,700 Da, and one corresponding to the low molecular weight peptides (LMWPs) with
199 an apparent molecular weight lower than 1,700 Da. Peptide content estimation for each range
200 was expressed either as percentage of total profile area (%HMWPs and %LMWPs) or as
201 percentage compared to non-inoculated milk sample (%HMWPs/Milk and %LMWPs/Milk).

202

203 **2.4.5. Polymerase chain reaction (PCR)-based detection of CEP genes**

204 Bacteria from milk cultures were harvested as described in the 2.4.1. section. Cellular DNA
205 was isolated using a Wizard Genomic DNA Purification Kit (Promega, Madison, USA). Each
206 strain was tested with five different primer sets corresponding to different CEP genes. The
207 primers described by Hou et al. (2015) were used for detection of *prtB* gene in *L. delbrueckii*
208 strains. The primers used for the detection of *prtH1* and *prtH2* genes of *L. helveticus* were
209 from Genay, Sadat, Gagnaire, & Lortal, (2009) and the primers for *prtH3* and *prtH4* (same

210 species) were from Broadbent et al. (2011). PCR products were detected with GelRed staining
211 after electrophoresis on a 1% w/v agarose gel. An O'GeneRuler DNA ladder Mix
212 (ThermoFisher Scientific, Waltham, USA) was used as molecular weight marker. The strain
213 CNRZ32 CIRM-BIA 103 (provided by CIRM-BIA, INRA, Rennes, France) was used as
214 control for *L. helveticus* strains.

215

216 **2.4.6. Peptides identification by UPLC-ESI-qTOF-MS/MS**

217 The peptides purified on Bond Elut C₁₈ microcolumns (section 2.4.2.) were dried by
218 centrifugal evaporation (miVac Centrifugal Vacuum Concentrators, Gene Vac, Ipswich, UK)
219 for 2h at 40°C. Dried peptides were redissolved in 100 µL H₂O, 0.1 % TFA and centrifuged
220 for 10 min at 8,000 × g. Ten µL were chromatographed on an ACQUITY UPLC system
221 (Waters, Manchester, UK) using a C₁₈-Kinetex column (150 x 4.6 mm, 2.6µ 100Å,
222 Phenomenex, Torrance, USA), a linear gradient of ACN containing 0.1% FA (5-15% ACN
223 over 30 min, 15-30% ACN over 60 min, 30-50% ACN over 10 min and 50-95% ACN over
224 10 min) and a flow rate of 500 µL.min⁻¹. The HPLC eluent was directly electrosprayed from
225 the column end at an applied voltage of 3 kV, using a desolvation gas (N₂) flow of 600 L.h⁻¹,
226 a nebulizer gas flow of 2.5 bar and desolvation temperature of 300°C, respectively. The
227 chromatography device was coupled to SYNAPT-G2-Si mass spectrometer (Waters,
228 Manchester, UK). MS analysis was performed in sensitivity, positive ions and data dependent
229 analysis (DDA) modes and MS data were collected in the 100-2000 m/z range with a scan
230 time of 0.2 s. A maximum of 15 precursor ions with an intensity threshold of 10,000 counts
231 were selected for ion trap collision-induced dissociation (CID) fragmentation and subjected to
232 a collision energy ramping from 8V to 9V for low mass and 40V to 90V for high mass. The
233 MS/MS spectra were recorded on the 100 to 2,000 m/z range with a scan time of 0.1 s. Peaks
234 were analyzed using Mass Lynx software (ver.4.1, Waters, Manchester, UK).

235 Database searches via PEAKS Studio 7.0 (Bioinformatics Solutions) were performed using
236 the UniProt databases (May 15, 2017) restricted to *Bos taurus* organism. A mass tolerance of
237 35 ppm and 3 missing cleavage sites and an MS/MS tolerance of 0.2 Da were allowed.
238 Variable methionine oxidation was also considered. The relevance of protein and peptide
239 identities was judged according to their identification generated by PEAKS Studio 7.0
240 ($p < 0.05$) and a false discovery rate $< 1\%$.

241

242 **2.4.7. β -casein heat map construction from MS analysis**

243 Heat maps were constructed from β -casein peptides. The frequency of appearance of each
244 amino acid was calculated from all identified peptides. Apparition frequency was established
245 from *in silico* approach (Lacroix & Li-Chan, 2012) using Microsoft Excel software (2013
246 version) with the following formula: $A = a/N$, where A is the apparition frequency of an amino
247 acid, a the amino acid occurrence and N the number of peptide sequences. According to
248 calculated frequency, a color was associated to each amino acid from white (no apparition
249 frequency) to dark grey (high apparition frequency).

250

251 **2.4.8. Statistical analysis and principal component analysis (PCA)**

252 All statistical differences between strains were measured using one way ANOVA and
253 Tukey's post-hoc test. Differences between means were considered significant when p value
254 < 0.05 . In order to analyze all measured variables at the same time, a first principal
255 component analysis (PCA) was performed on data corresponding to results from proteolytic
256 activity on milk agar, growth determination, pH determination and estimation of peptide
257 contents. A second PCA was conducted to compare data from MS analysis (β -casein heat
258 maps). PCA results were represented both as a variables map (correlation between studied

259 variables) and as individuals map (similarity between individuals). All statistical analyses and
260 PCA were performed on R software (FactorMineR package) (R core team, 2016, Vienna,
261 Austria).

262

263 **3. Results**

264 **3.1. Identification of *Lactobacillus* species in the collected dairy samples**

265 One hundred and seventy (170) strains of LAB were isolated from 67 dairy products
266 (fermented milks and yogurts) collected in three different regions of Mongolia: Gobi desert,
267 Hangai region, Altaï mountains. Twelve different bacterial species were represented among
268 the isolates (**Figure 1A**). Three dominant species accounted for more than 75% of the
269 isolates: *L. helveticus* (73 strains), *L. delbrueckii* (39 strains) and *L. kefiranofaciens* (29
270 strains). There were however differences between the three regions: the dominant species in
271 samples from Gobi area was *L. kefiranofaciens* (half of the isolates, retrieved in all types of
272 samples including yogurt, airag, camel fermented milk) whereas this species was virtually
273 absent in the Altaï samples (only one isolate). In the Altaï samples, the dominant species was
274 *L. helveticus*, which for instance accounted for 76% of the isolates obtained from airag. In
275 airag samples collected in the Gobi area, *L. helveticus* accounted for only 42% of all isolates.

276

277 **3.2. Selection of highly proteolytic *L. helveticus* and *L. delbrueckii* strains**

278 A standardized skim milk agar-well diffusion test was used to evaluate the proteolytic activity
279 of all 170 strains. Strains showing the highest proteolytic activity (clear zone diameter larger
280 than 28 mm, **Table 1**) belonged to the species *L. helveticus* and *L. delbrueckii*. Fifteen strains
281 (nine *L. helveticus*, six *L. delbrueckii*) were selected for the further steps of the screening

282 strategy presented in **Figure 1B**. Briefly, this strategy relies on 48h skim milk fermentations
283 with the selected strains, in order to i) follow milk acidification, ii) harvest cells to monitor
284 growth and perform PCR-based detection of peptidase genes and iii) purify and extract
285 peptides for quantification, evaluation of their apparent molecular weight distribution and
286 identification of sequences by peptidomics approach.

287

288 **3.3. Multiparametric analysis of fermented cow milk**

289 **3.3.1. Correlation between strain growth and acidification capacity in UHT skim milk**

290 Skim milk was inoculated with the selected strains; bacterial growth and pH were measured
291 after 48 hours incubation. Two clearly distinct growth behaviors were observed (**Table 1,**
292 **upper and lower parts**): *L. helveticus* strains showed a much faster growth, reaching an
293 OD₆₀₀ mean of 3.03 ± 0.322 whereas *L. delbrueckii* strains only reached a mean of $0.856 \pm$
294 0.234 .

295 Acidification capacity of the selected strains was evaluated by pH determination after 48h of
296 culture. The initial pH of NISM (control) was 6.5 and reached 6.45 ± 0.05 after 48h of
297 incubation (**Table 1**). *L. helveticus* and *L. delbrueckii* strains displayed two distinct
298 acidification capabilities. In almost all cases *L. helveticus* strains led to a pH decrease of
299 minimum 3 pH units, reaching a mean of 3.43 ± 0.08 , whereas the pH of milk inoculated with
300 *L. delbrueckii* decreased by a maximum of 2 pH units, reaching a mean of 4.57 ± 0.07 . *L.*
301 *helveticus* strains were therefore more efficient than *L. delbrueckii* strains for both bacterial
302 growth and acidification capacity. As expected, all milk fermentations led to milk protein
303 coagulation because of casein precipitation at pH lower than 4.6 (Raak, Rohm, & Jaros,
304 2017).

305

306 3.3.2. Increase of peptide concentration in inoculated UHT skim milk

307 Peptides in fermented milk were extracted by protein precipitation and purified by C₁₈ solid
308 phase extraction. Assessment of peptide concentrations using the FC reagent showed, for all
309 tested strains, an enrichment after 48h fermentation (**Table 1**). Peptide concentration in NISM
310 was 2.06 g.L⁻¹ ± 0.62 after 48h incubation while inoculated milks showed concentrations
311 higher than 4 g.L⁻¹ in all cases but one. On average, *L. helveticus* strains generate more
312 peptides than *L. delbrueckii* strains (mean 5.17 g.L⁻¹ ± 0.92 vs. 4.96 g.L⁻¹ ± 0.74). The two
313 best strains, with a final peptide concentration higher than 6 g.L⁻¹, are two *L. helveticus* (25c,
314 45a).

315 The size of the peptides generated during fermentation was analyzed by SEC. The
316 chromatogram presented (**Figure 1C**) depicts the peptide apparent molecular weight
317 distribution. Roughly, the SEC profiles showed two distinct regions: a region of high
318 molecular weight proteins/peptides (HMWPs: fermentation products with an apparent
319 molecular weight higher than 1,700 Da) and a region with low molecular weight peptides
320 (LMWPs: products with an apparent molecular weight lower than 1,700 Da). Profiles were
321 analyzed by integration of the two distinct molecular weight ranges (HMWPs, > 1700 Da and
322 LMWPs, < 1700 Da) and were expressed (**Table 1**) as % of total area or as % of control
323 (NISM). Proportions for NISM were 85.62% ± 2.72 and 14.39% ± 2.72 of HMWPs and
324 LMWPs respectively. As expected, inoculation and fermentation of milk with lactic acid
325 bacteria lead to an increase of LMWPs, and a decrease of HMWPs compared to NISM
326 (**Figure 1C**), reflecting the proteolytic activity of the strains against protein and large
327 peptides. *L. helveticus* and *L. delbrueckii* strains displayed two distinct peptide production
328 capabilities: the increase of LMWPs proportion compared to NISM was, on average, 1.5 fold
329 for *L. delbrueckii* and 4.2 fold for *L. helveticus* (**Table 1, last column**). The highest activity
330 was observed for strain 25c (% of LMWPs increased 6.7 times compared to NISM).

331

332 **3.3.3. Strain growth and acidification capacities correlate with peptide production**

333 A first PCA was applied to evaluate correlations between the following parameters:
334 proteolysis diameter on milk agar, cell growth, acidification and peptide content evaluation
335 (FC reagent-based peptide quantification, total area of SEC profiles, %HMWPs,
336 %HMWPs/NISM, %LMWPs and %LMWPs/NISM). **Figure 2A** shows the obtained variable
337 map. The principal components Dim1 and Dim2 explained 60.82% and 23.56% of the total
338 variance, respectively. A positive correlation was observed between acidification and HMWP
339 proportion (%HMWPs). Moreover strain growth was correlated with a set of variables linked
340 to peptide production (FC reagent-based peptide quantification, %LMWPs and
341 %LMWPs/NISM) and with proteolysis diameter on milk agar plates (**Table 1**). Acidification
342 and HMWP content were negatively correlated with variables such as growth, LMWP
343 proportion and skim milk agar test results. Regarding the individuals map (**Figure 2B**), all
344 tested strains were clearly separated from the NISM control. *L. delbrueckii* strains formed an
345 homogeneous group, clustered together on the negative sides of Dim1 and Dim2 whereas *L.*
346 *helveticus* strains were scattered along the positive sides of Dim1 and Dim2.

347

348 **3.4. CEP gene distribution**

349 The distribution of CEP genes was analyzed by PCR in the selected strains and in a control *L.*
350 *helveticus* strain (CNRZ32) known to possess all four *prtH* genes (*prtH1* to *prtH4*). Results
351 are shown in **Table 2**. The *prtB* gene was detected in all *L. delbrueckii* strains but not in *L.*
352 *helveticus* strains. The *prtH1* gene was detected in 6 *L. helveticus* strains (16b, 25b, 25c, 49d,
353 58b and 60b) and, as expected, in CNRZ32 control strain. Interestingly, all *L. helveticus*
354 strains presenting the *prtH1* gene were isolated from mare fermented milk. *prtH2* and *prtH3*

355 genes were detected in 3 *L. helveticus* strains (45a, 46b and 47d) and in the CNRZ32 control
356 strain. The *prtH4* gene was detected in the CNRZ32 control strain but was not found in any of
357 the Mongolian strains.

358

359 **3.5. Peptide heterogeneity in fermented milk**

360 Peptides were extracted from fermented milk by C₁₈ SPE and analyzed by peptidomics
361 approach. Analysis of the control sample (NISM) allowed defining the base level as 596
362 peptides belonging to 22 proteins. Nevertheless, after filtering compared to the cow milk
363 protein library (http://www.dallaslab.org/resources_CowMilkProteinDatabase.fasta), 12 cow
364 milk proteins (α_{S1} -casein, β -casein, α_{S2} -casein, GLYCAM1, κ -casein, BTN1A1, β -
365 lactoglobulin, FGFBP, lactoperoxidase, osteopontin, perilipin, TRIP6) were finally identified
366 in the NISM control sample. 32% of all peptides were from β -casein (data not shown). In
367 comparison, between 150 and 722 peptides were identified in milks fermented with the
368 selected strains. In these fermented milks, β -casein peptides accounted for 44 to 67% of all
369 sequences identified.

370 Because of the large proportion of β -casein peptides identified in milk cultures, and the
371 natural high abundance of β -casein in milk, we decided to focus the analysis on this protein.

372 **Figure 3** shows the heat maps obtained for two strains with different CEP profiles, 60b
373 (*prtH1*) and 47d (*prtH2/prtH3*). In such type of graphical representation, all peptides
374 identified are repositioned (multiple horizontal grey bars in the middle of Figure 3) on the β -
375 casein backbone, clearly illustrating the β -casein proteolysis patterns. Very few peptides came
376 from the β -casein N-terminal region (signal peptide excluded); the vast majority of them came
377 from a part of β -casein covering amino acids 56 to 224. The repartition of peptides on the β -
378 casein backbone defines a specific proteolysis signature. For the two strains shown as

379 examples (60b, 47d) these signatures were clearly different: the preferential areas of cleavage
380 (dark grey regions on the heat maps) were not situated in the same regions of the protein.

381

382 **3.6. β -casein heat maps are correlated with CEP gene distribution**

383 In order to compare the β -casein proteolysis signatures obtained for each of the 15 strains, a
384 second PCA was performed which included the heat map data. **Figure 4A** represents the
385 individuals map of this PCA. The principal components Dim1 and Dim2 explained 43.11%
386 and 31.43% of the total variance, respectively. The CEP gene profile of the strains is reported
387 on the figure. Interestingly, the PCA clearly grouped the strains according to their CEP gene
388 profile. As expected, NISM condition (no strain = no *prt* gene) stands apart from the other
389 points and only depends on Dim2. *L. delbrueckii* strains, which possess the *prtB* gene, were
390 grouped on the positive sides of Dim1 and Dim2. *L. helveticus* strains were scattered along
391 Dim1 and on the negative side of Dim2. Interestingly, strains harboring *prtH1* gene were
392 separated from strains harboring *prtH2* and *prtH3* genes. *prtH1* strains showed a higher
393 dispersion, one half on the negative side of Dim1 (strains 16b, 25b and 60b) and the second
394 half on its positive side (strain 25c, 49d and 58b). This dispersion may reflect the presence of
395 different *prtH1* gene variants in our isolates, which cannot be distinguished by our PCR
396 approach.

397 β -casein is composed (before physiological maturation) of 209 amino acids. The variables
398 map of the PCA (**Figure 4B**) was constructed using 209 variables corresponding to the
399 occurrence frequency of these 209 amino acids. Interestingly, the most implicated variables
400 on Dim1 and Dim2 (defined by $\cos^2 > 0.85$) were not corresponding to amino acids randomly
401 distributed in the protein. Instead, different specific regions on the β -casein sequence were
402 identified. This observation allowed to distinguish the β -casein areas that were differentially

403 hydrolyzed by the strains. Dim2 corresponded to the N_t region of β-casein (hydrophilic
404 region), whereas Dim1 corresponded to different areas spread along β-casein until the C_t
405 region (hydrophobic parts of the protein) (**Figure 4C**). *In fine*, this representation illustrates
406 the protein regions preferentially hydrolyzed during fermentation.

407

408 **4. Discussion**

409 **4.1. Strain identification and screening for proteolytic activity**

410 170 strains were isolated from various Mongolian dairy products, and identified by
411 amplification and 16S rDNA sequencing. Strain identification showed a predominance of 3
412 *Lactobacillus* species: *L. helveticus*, *L. delbrueckii* and *L. kefiranofaciens*. This observation is
413 in agreement with previous reports. Several authors have reported that *L. helveticus* was the
414 dominant LAB in mare fermented milk (airag) (Miyamoto et al., 2015; Watanabe et al.,
415 2008). Yu et al. (2011) obtained 668 isolates from different fermented milk products and
416 reported a majority of *L. delbrueckii* and *L. helveticus* strains. *L. kefiranofaciens* was also a
417 species predominantly recovered from Mongolian dairy products (Watanabe et al., 2008).
418 However, our findings show that the prevalence of these species depends on the geographical
419 area: *L. kefiranofaciens*, predominant in dairy samples collected in the Gobi desert, was not
420 found in samples from the Altai mountains. *L. helveticus* was more represented in the Altai
421 samples than in samples collected in the two other regions.

422 The proteolytic activity of the strains was screened on milk agar. *L. helveticus* strains showed
423 the highest proteolytic activity of all tested strains. Actually, *L. helveticus* is considered as the
424 species displaying the highest proteolytic activity among all *Lactobacillus* (Griffiths & Tellez,
425 2013). The other species showing a significant proteolytic activity in our study was *L.*
426 *delbrueckii*. Again this is in agreement with previous reports; *L. delbrueckii* is used as

427 fermentation starter for initiating proteolysis in yogurt production (Pailin, Kang, Schmidt, &
428 Fung, 2001). *L. kefiranofaciens* strains in our collection only displayed moderate proteolytic
429 activities (data not shown).

430 Dairy products collected in the Altaï region are therefore characterized by a more proteolytic
431 microbiota (mostly *L. helveticus*) than products from other areas. These products may
432 therefore present specific properties and potential health benefits (more bioactive peptides).
433 On the other hand, products collected in the Gobi desert are hosting a large variety of *L.*
434 *kefiranofaciens* strains, known to produce kefiran, an exopolysaccharide with beneficial
435 effects on immune system function and cardiovascular health (Maeda, Zhu, Suzuki, Suzuki &
436 Kitamura, 2004). Studies investigating the link between consumption of these products and
437 protection of the local populations against specific pathologies could be undertaken.

438

439 **4.2. Differences in fermentation capacities between *L. helveticus* and *L. delbrueckii*** 440 **strains**

441 The fermentation capacity of *L. helveticus* and *L. delbrueckii* strains was investigated by
442 measuring growth, milk acidification and peptide production 48 hours after UHT skim milk
443 inoculation. Overall, *L. helveticus* strains reached a higher cell density after fermentation than
444 *L. delbrueckii* strains. As expected, this high bacterial density resulted in a strong acidification
445 of the medium, higher than for samples inoculated with *L. delbrueckii*, which is in agreement
446 with previous reports (Gandhi & Shah, 2014).

447 A PCA was used to determine the correlations between all analyzed parameters. PCA are
448 useful to synthesize the information carried by a large number of quantitative variables
449 (Lacou, Lê, Pezennec, & Gagnaire, 2015). Bezerra et al. (2016), for instance, have used a
450 PCA to study the proteolysis occurring in goat “coalho” cheese. In our study, the variables

451 map showed that high cellular growth and high acidification capacities were linked to a more
452 abundant peptide production. Such correlation makes sense, especially in the case of *L.*
453 *helveticus* species, where the efficient proteolytic system fulfill their nitrogen requirement
454 leading to their high growth in pure milk. LAB is a heterogeneous microorganism group with
455 multiple auxotrophies for amino acids and the capacity to rapidly degrade milk proteins, and
456 thereby release these amino acids, is a major asset (Courtin, Monnet, & Rul, 2002; Griffiths &
457 Tellez, 2013; Savijoki et al., 2006).

458

459 **4.3. CEP distribution in the fifteen selected strains**

460 All *L. delbrueckii* strains were found to possess the *prtB* gene, which is so far the only CEP
461 described for this species (Hou et al., 2015). *L. helveticus* strains showed more heterogeneity,
462 being divided into two groups: 6 strains with *prtH1* gene, and 3 strains with the combination
463 *prtH2/prtH3*. The CEP profile does not seem to be related to the geographical origin of the
464 strains: among the six *prtH1* strains, one was from Gobi, two from the Hangai region, and
465 three from Altai. Rather, the CEP profiles of the strains seem to be related to the type of
466 sample from which they were isolated: all *prtH1* strains were isolated from airag samples
467 (horse milk) whereas the three strains harboring *prtH2/prtH3* were isolated from other sources
468 (yak and camel milks). The presence of *prtH1* in *L. helveticus* strains isolated from airag had
469 already been reported in another study (Miyamoto et al., 2015). However, the combination of
470 the two CEP genes *prtH2* and *prtH3* is unusual. Investigating CEP genes distribution in 50 *L.*
471 *helveticus* strains of European and North American origin, Broadbent et al. (2011) reported
472 only three strains with the same profile. This seems to confirm previous observations that
473 Mongolian *L. helveticus* strains differ from Western strains in terms of CEP gene profiles
474 (Miyamoto et al., 2015).

475 *In fine*, the *L. helveticus* species is characterized by a high intraspecific diversity of CEP
476 profiles. Fermentation of milk with different *L. helveticus* strains may therefore lead to an
477 important heterogeneity of peptides (Sadat-Mekmene, Genay, Atlan, Lortal, & Gagnaire,
478 2011a).

479

480 **4.4. Correlation between CEP profiles and β -casein cleavage patterns**

481 β -casein is the main substrate of *Lactobacillus* proteases (Jensen, Vogensen, & Ardö, 2009).
482 It is thought that different CEPs can have very different cleavage specificities (Oberg,
483 Broadbent, Strickland, & McMahon, 2002). However it is somewhat difficult to compare the
484 results of separate publications: depending on the study, caseins are indeed used either as
485 fragments, as purified forms, or as micelles in milk, and this of course may influence the
486 ability of proteases to access specific cleavage sites in the protein (Sadat-Mekmene et al.,
487 2011a). Oberg et al. (2002), who assessed the proteolytic activity of 14 *L. delbrueckii* strains
488 based on the cleavage of an α_{s1} -casein fragment, reported several distinct digestion patterns.
489 In contrast, in our study, the β -casein cleavage patterns of all *L. delbrueckii* strains revealed
490 some common cleavage sites. Our strains may be genetically closer to each other; but our
491 observation may also result from the fact that we worked with native milk β -casein (micelle
492 configuration), and not with a fragment of this protein.

493 The PCA separated *L. delbrueckii* strains from *L. helveticus* strains, indicating dissimilarities
494 on β -casein hydrolysis patterns. Sadat-Mekmene et al. (2011b) obtained similar results when
495 incubating purified β -casein with either *L. helveticus* CP790 or *L. delbrueckii* CRL581 strains
496 (Sadat-Mekmene et al., 2011b). It is notable however that three of our *L. helveticus* strains
497 (25c, 49d, 58b, all *prtH1*) were located very close to the *prtB* strains (*L. delbrueckii*). The
498 three other *prtH1* strains (16b, 25b, 60b) were located close to the *prtH2/prtH3* strains

499 **(Figure 4A)**. Therefore, it appears that *prtB* and *prtH2/prtH3* genotypes are associated with
500 clearly distinct proteolytic activities; the situation for *prtH1* is however more complex, which
501 may be related to the existence of different alleles for this gene, not differentiated by our PCR
502 (Genay et al., 2009). Interestingly, while PrtH2 and PrtH3 share 58% of amino acid strict
503 identity, PrtH1 only shares 32 and 34% of amino acid strict identities with PrtH2 and PrtH3,
504 respectively (Broadbent et al., 2011). It is remarkable that despite this high genetic variation,
505 some *prtH1* strains still display a proteolytic activity which appears very similar to the
506 activity of *prtH2/prtH3* strains.

507 As reported in section 3.6, the Dim2 of PCA depicted the hydrophilic region of β -casein while
508 Dim1 depicted the hydrophobic region of β -casein **(Figure 4)**. The selection of the most
509 implicated variables from PCA allowed to highlight the main important differences between
510 conditions. The NISM condition was used to define the basal proteolytic pattern due to
511 endogenous milk peptidases such as plasmin and cathepsin D (Dallas et al., 2016; Sadat-
512 Mekmene et al., 2011b). As previously reported for human milk (Khaldi et al., 2014), our
513 results indicate that these endogenous milk peptidases hydrolyzed the hydrophilic part (N_t
514 region) of β -casein during the our experimental conditions (37°C and 48h): the point
515 corresponding to NISM was indeed placed by the PCA right and high on the Dim2 axis
516 **(Figure 4A)**.

517 All the *L. delbrueckii* strains were closely grouped together, reflecting a high homogeneity in
518 terms of proteolytic capacities; they were placed high on Dim1 and close to 0 on the Dim2
519 axis, suggesting that hydrophobic areas along β -casein were preferentially hydrolyzed by
520 these strains. In contrast, strains of *L. helveticus* were scattered along the Dim1 axis,
521 reflecting a much higher heterogeneity; strains harboring *prtH2* and *prtH3* were located far in
522 the negative side of Dim1, showing a preferential hydrolysis of hydrophobic β -casein regions.

523 Our PCA therefore revealed the existence of different proteolytic activities, resulting in
524 different cleavage patterns of β -casein. The capacity to cleave β -casein in its more
525 hydrophobic regions, which are more difficult to access when the protein is under micellar
526 form (Dumas, Brignon, Grosclaude, & Mercier, 1972), is a significant species advantage.

527

528 **5. Conclusion**

529 In this study, we used an original approach to screen a collection of 170 *Lactobacillus* strains
530 for their ability to produce peptides derived from milk proteins. All strains had been isolated
531 from dairy products collected in three different regions of Mongolia. Fifteen strains were first
532 selected by milk agar-well diffusion test; bacterial growth, milk acidification and production
533 of peptides were then evaluated after 48h fermentation of skim milk. The CEP gene profile of
534 each strain was also determined. A multiparametric analysis demonstrated that growth and
535 milk acidification capacity correlated closely with peptide production. The CEP gene
536 distribution was different in Mongolian *L. helveticus* strains than in European and North
537 American strains, and PCA revealed that presence of specific CEPs was linked to specific β -
538 casein hydrolysis patterns. The tested strains display, at various levels, the capacity to cleave
539 β -casein on specific sites buried inside the micellar form of caseins (hydrophobic regions).
540 This multiparametric analysis allowed to select strains harboring i) distinct proteolytic
541 patterns, ii) different CEP gene profiles, iii) high growth rate in milk and iv) high acidification
542 capacity. The selected strains can be used as new fermentation starters, able to generate milk
543 peptides with potential bioactivities. The analysis of such bioactivities, using *in silico*
544 approach by comparison with milk bioactive peptide database (Nielsen et al., 2017), is
545 ongoing.

546

547 **Acknowledgements**

548 This research was supported by a grant from BPI France/Métropole Européenne de
549 Lille/Région Hauts de France (DOS0020745) and by a grant from Association Nationale
550 Recherche et Technologie (ANRT). This work was supported by the Hauts-de-France region
551 funding through the ALIBIOTECH research program. The HPLC-MS experiments were
552 performed on the REALCAT platform funded by a French governmental subsidy managed by
553 the French National Research Agency (ANR) within the frame of the “Future
554 Investments” program (ANR-11-EQPX-0037). The Hauts-de-France region and the FEDER,
555 the Ecole Centrale de Lille and the Centrale Initiatives Foundation are also warmly
556 acknowledged for their financial contributions to the acquisition of REALCAT platform
557 equipment. We are grateful to Prof. Anil Kulkarni (University of Texas Medical School,
558 Houston, USA), Dr Anarkhuu Bold-Erdene and Dr Amarbat Baatarum (National Cancer
559 Center, Ulaanbaatar, Mongolia) for their support during the initiation of the project. The in-
560 house tool used for heat maps and peptide mappings was designed by Yohan Guegaden. We
561 thank Aurélie Mateos for helpful discussions.

562

563 **Conflict of interest**

564 CR, MF and MV are affiliated with VF Bioscience SAS, France, a company commercializing
565 lactic acid bacteria strains for use as probiotics or dairy starters.

566

567 **References**

568 Abraham, A. G., Antoni, G. L., & Anon, M. C. (1993). Proteolytic activity of *Lactobacillus*
569 *bulgaricus* grown in milk. *Journal of Dairy Science*, 76(1900), 1498–1505.

570 [https://doi.org/10.3168/jds.S0022-0302\(93\)77481-0](https://doi.org/10.3168/jds.S0022-0302(93)77481-0)

571 Alcántara, C., Bäuerl, C., Revilla-Guarinos, A., Pérez-Martínez, G., Monedero, V., & Zúñiga,
572 M. (2016). Peptide and amino acid metabolism is controlled by an OmpR-family
573 response regulator in *Lactobacillus casei*. *Molecular Microbiology*, *100*(1), 25–41.
574 <https://doi.org/10.1111/mmi.13299>

575 Bezerra, T. K. A., De Araujo, A. R. R., Do Nascimento, E. S., De Matos Paz, J. E., Gadelha,
576 C. A., Gadelha, T. S., ... Madruga, M. S. (2016). Proteolysis in goat “coalho” cheese
577 supplemented with probiotic lactic acid bacteria. *Food Chemistry*, *196*, 359–366.
578 <https://doi.org/10.1016/j.foodchem.2015.09.066>

579 Broadbent, J. R., Cai, H., Larsen, R. L., Hughes, J. E., Welker, D. L., De Carvalho, V. G., ...
580 Steele, J. L. (2011). Genetic diversity in proteolytic enzymes and amino acid metabolism
581 among *Lactobacillus helveticus* strains. *Journal of Dairy Science*, *94*(9), 4313–4328.
582 <https://doi.org/10.3168/jds.2010-4068>

583 Courtin, P., Monnet, V., & Rul, F. (2002). Cell-wall proteinases PrtS and PrtB have a
584 different role in *Streptococcus thermophilus*/*Lactobacillus bulgaricus* mixed cultures in
585 milk. *Microbiology*, *148*(11), 3413–3421.

586 Dallas, D. C., Citerne, F., Tian, T., Silva, V. L. M., Kalanetra, K. M., Frese, S. A., ... Barile,
587 D. (2016). Peptidomic analysis reveals proteolytic activity of kefir microorganisms on
588 bovine milk proteins. *Food Chemistry*, *197*, 273–284.
589 <https://doi.org/10.1016/j.foodchem.2015.10.116>

590 De Man, J. C., Rogosa, M., & Sharpe, M. E. (1960). A medium used for the cultivation of
591 *Lactobacilli*. *J Appl Bacteriol*, *23*(1), 130–135.

592 Dumas, B. R., Brignon, G., Grosclaude, F., & Mercier, J.-C. (1972). Structure primaire de la

593 caseine bovine: Sequence complete. *European Journal of Biochemistry*, 25(3), 505–514.
594 <https://doi.org/10.1111/j.1432-1033.1972.tb01722.x>

595 Gandhi, A., & Shah, N. P. (2014). Cell growth and proteolytic activity of *Lactobacillus*
596 *acidophilus*, *Lactobacillus helveticus*, *Lactobacillus delbrueckii* ssp. *bulgaricus* , and
597 *Streptococcus thermophilus* in milk as affected by supplementation with peptide
598 fractions. *International Journal of Food Sciences and Nutrition*, 65(8), 937–941.
599 <https://doi.org/10.3109/09637486.2014.945154>

600 Genay, M., Sadat, L., Gagnaire, V., & Lortal, S. (2009). PrtH2, Not prtH, Is the ubiquitous
601 cell wall proteinase gene in *Lactobacillus helveticus*. *Applied and Environmental*
602 *Microbiology*, 75(10), 3238–3249. <https://doi.org/10.1128/AEM.02395-08>

603 Giacometti, J., & Buretić-Tomljanović, A. (2017). Peptidomics as a tool for characterizing
604 bioactive milk peptides. *Food Chemistry*, 230, 91–98.
605 <https://doi.org/10.1016/j.foodchem.2017.03.016>

606 Griffiths, M. W., & Tellez, a. M. (2013). *Lactobacillus helveticus*: The proteolytic system.
607 *Frontiers in Microbiology*, 4(MAR), 1–9. <https://doi.org/10.3389/fmicb.2013.00030>

608 Hou, J.-C., Liu, F., Ren, D.-X., Han, W.-W., & Du, Y.-O. (2015). Effect of culturing
609 conditions on the expression of key enzymes in the proteolytic system of *Lactobacillus*
610 *bulgaricus*. *J Zhejiang Univ-Sci B (Biomed & Biotechnol)*, 16(4), 317–326.
611 <https://doi.org/10.1631/jzus.B1400230>

612 Jensen, M. P., Vogensen, F. K., & Ardö, Y. (2009). Variation in aminopeptidase and
613 aminotransferase activities of six cheese related *Lactobacillus helveticus* strains.
614 *International Dairy Journal*, 19, 661–668. <https://doi.org/10.1016/j.idairyj.2009.09.007>

615 Khaldi, N., Vijayakumar, V., Dallas, D. C., Guerrero, A., Wickramasinghe, S., Smilowitz, J.

616 T., ... German, J. B. (2014). Predicting the important enzymes in human breast milk
617 digestion. *Journal of Agricultural and Food Chemistry*, 62(29), 7225–7232.
618 <https://doi.org/10.1021/jf405601e>

619 Korhonen, H., & Pihlanto, A. (2006). Bioactive peptides: Production and functionality.
620 *International Dairy Journal*, 16(9), 945–960.
621 <https://doi.org/10.1016/j.idairyj.2005.10.012>

622 Lacou, L., Lê, S., Pezennec, S., & Gagnaire, V. (2015). An in silico approach to highlight
623 relationships between a techno-functional property of a dairy matrix and a peptide
624 profile. *Colloids and Surfaces A: Physicochemical and Engineering Aspects*, 475(1), 44–
625 54. <https://doi.org/10.1016/j.colsurfa.2014.10.052>

626 Lacroix, I. M. E., & Li-Chan, E. C. Y. (2012). Evaluation of the potential of dietary proteins
627 as precursors of dipeptidyl peptidase (DPP)-IV inhibitors by an in silico approach.
628 *Journal of Functional Foods*, 4(2), 403–422. <https://doi.org/10.1016/j.jff.2012.01.008>

629 Lowry, O. H., Rosebrough, N. J., Farr, L. A., & Randall, R. J. (1951). Protein measurement
630 with the folin phenol reagent. *The Journal of Biological Chemistry*, 193(1), 265–275.
631 [https://doi.org/10.1016/0304-3894\(92\)87011-4](https://doi.org/10.1016/0304-3894(92)87011-4)

632 McSweeney, P. L. H., & Fox, P. F. (1997). Chemical methods for the characterization of
633 proteolysis in cheese during ripening. *Le Lait*, 77(1), 41–76.
634 <https://doi.org/10.1051/lait:199713>

635 Miyamoto, M., Ueno, H. M., Watanabe, M., Tatsuma, Y., Seto, Y., Miyamoto, T., &
636 Nakajima, H. (2015). Distinctive proteolytic activity of cell envelope proteinase of
637 *Lactobacillus helveticus* isolated from airag, a traditional Mongolian fermented mare's
638 milk. *International Journal of Food Microbiology*, 197, 65–71.
639 <https://doi.org/10.1016/j.ijfoodmicro.2014.12.012>

640 Narva, M., Halleen, J., Väänänen, K., & Korpela, R. (2004). Effects of *Lactobacillus*
641 *helveticus* fermented milk on bone cells in vitro. *Life Sciences*, *75*, 1727–1734.
642 <https://doi.org/10.1016/j.lfs.2004.04.011>

643 Nielsen, S. D., Beverly, R. L., Qu, Y., & Dallas, D. C. (2017). Milk bioactive peptide
644 database: A comprehensive database of milk protein-derived bioactive peptides and
645 novel visualization. *Food Chemistry*, *232*, 673–682.
646 <https://doi.org/10.1016/j.foodchem.2017.04.056>

647 Nongonierma, A. B., & FitzGerald, R. J. (2015). The scientific evidence for the role of milk
648 protein-derived bioactive peptides in humans: A Review. *Journal of Functional Foods*,
649 *17*, 640–656. <https://doi.org/10.1016/j.jff.2015.06.021>

650 Oberg, C. J., Broadbent, J. R., Strickland, M., & McMahon, D. J. (2002). Diversity in
651 specificity of the extracellular proteinases in *Lactobacillus helveticus* and *Lactobacillus*
652 *delbrueckii* subsp. *bulgaricus*. *Letters in Applied Microbiology*, *34*(6), 455–460.
653 <https://doi.org/10.1046/j.1472-765X.2002.01123.x>

654 Pailin, T., Kang, D. H., Schmidt, K., & Fung, D. Y. C. (2001). Detection of extracellular
655 bound proteinase in EPS-producing lactic acid bacteria cultures on skim milk agar.
656 *Letters in Applied Microbiology*, *33*(1), 45–49. [https://doi.org/10.1046/j.1472-](https://doi.org/10.1046/j.1472-765X.2001.00954.x)
657 [765X.2001.00954.x](https://doi.org/10.1046/j.1472-765X.2001.00954.x)

658 Park, Y. W., & Nam, M. S. (2015). Bioactive Peptides in Milk and Dairy Products: A
659 Review. *Korean Journal for Food Science of Animal Resources*, *35*(6), 831–840.
660 <https://doi.org/10.5851/kosfa.2015.35.6.831>

661 Raak, N., Rohm, H., & Jaros, D. (2017). Enzymatic Cross-Linking of Casein Facilitates Gel
662 Structure Weakening Induced by Overacidification. *Food Biophysics*, *12*(2), 1–8.
663 <https://doi.org/10.1007/s11483-017-9483-6>

664 Sadat-Mekmene, L., Jardin, J., Corre, C., Mollé, D., Richoux, R., Delage, M. M., ...
665 Gagnaire, V. (2011). Simultaneous presence of PrtH and PrtH2 proteinases in
666 *Lactobacillus helveticus* strains improves breakdown of the pure α s1-casein. *Applied and*
667 *Environmental Microbiology*, 77, 179–186. <https://doi.org/10.1128/AEM.01466-10>

668 Sadat-Mekmene, Leila, Genay, M., Atlan, D., Lortal, S., & Gagnaire, V. (2011). Original
669 features of cell-envelope proteinases of *Lactobacillus helveticus*. A review. *International*
670 *Journal of Food Microbiology*, 146(1), 1–13.
671 <https://doi.org/10.1016/j.ijfoodmicro.2011.01.039>

672 Savijoki, K., Ingmer, H., & Varmanen, P. (2006). Proteolytic systems of lactic acid bacteria.
673 *Applied Microbiology and Biotechnology*, 71(4), 394–406.
674 <https://doi.org/10.1007/s00253-006-0427-1>

675 Shuangquan, Tsuda, H., & Miyamoto, T. (2008). Angiotensin I-converting enzyme inhibitory
676 peptides in skim milk fermented with *Lactobacillus helveticus* 130B4 from camel milk in
677 Inner Mongolia, China. *Journal of Science of Food and Agriculture*, 88(2), 2688–2692.
678 <https://doi.org/10.1002/jsfa>

679 Watanabe, K., Fujimoto, J., Sasamoto, M., Dugersuren, J., Tumursuh, T., & Demberel, S.
680 (2008). Diversity of lactic acid bacteria and yeasts in Airag and Tarag, traditional
681 fermented milk products of Mongolia. *World Journal of Microbiology and*
682 *Biotechnology*, 24(8), 1313–1325. <https://doi.org/10.1007/s11274-007-9604-3>

683 Wu, S., Qi, W., Li, T., Lu, D., Su, R., & He, Z. (2013). Simultaneous production of multi-
684 functional peptides by pancreatic hydrolysis of bovine casein in an enzymatic membrane
685 reactor via combinational chromatography. *Food Chemistry*, 141(3), 2944–2951.
686 <https://doi.org/10.1016/j.foodchem.2013.05.050>

687 Yu, J., Wang, W. H., Menghe, B. L. G., Jiri, M. T., Wang, H. M., Liu, W. J., ... Zhang, H. P.

688 (2011). Diversity of lactic acid bacteria associated with traditional fermented dairy
689 products in Mongolia. *Journal of Dairy Science*, 94(7), 3229–3241.
690 <https://doi.org/10.3168/jds.2010-3727>

691

692 **Highlights**

- 693 • Mongolian strains show specific skim milk fermentation capacities
- 694 • Cell envelope associated peptidase genes distribution is different in Mongolian
695 *Lactobacillus helveticus* strains than in Western strains
- 696 • Peptide production is closely correlated with growth and acidification patterns
- 697 • Patterns of β -casein hydrolysis are correlated with cell envelope associated peptidase
698 genes profiles

699

700

Figure 1 :

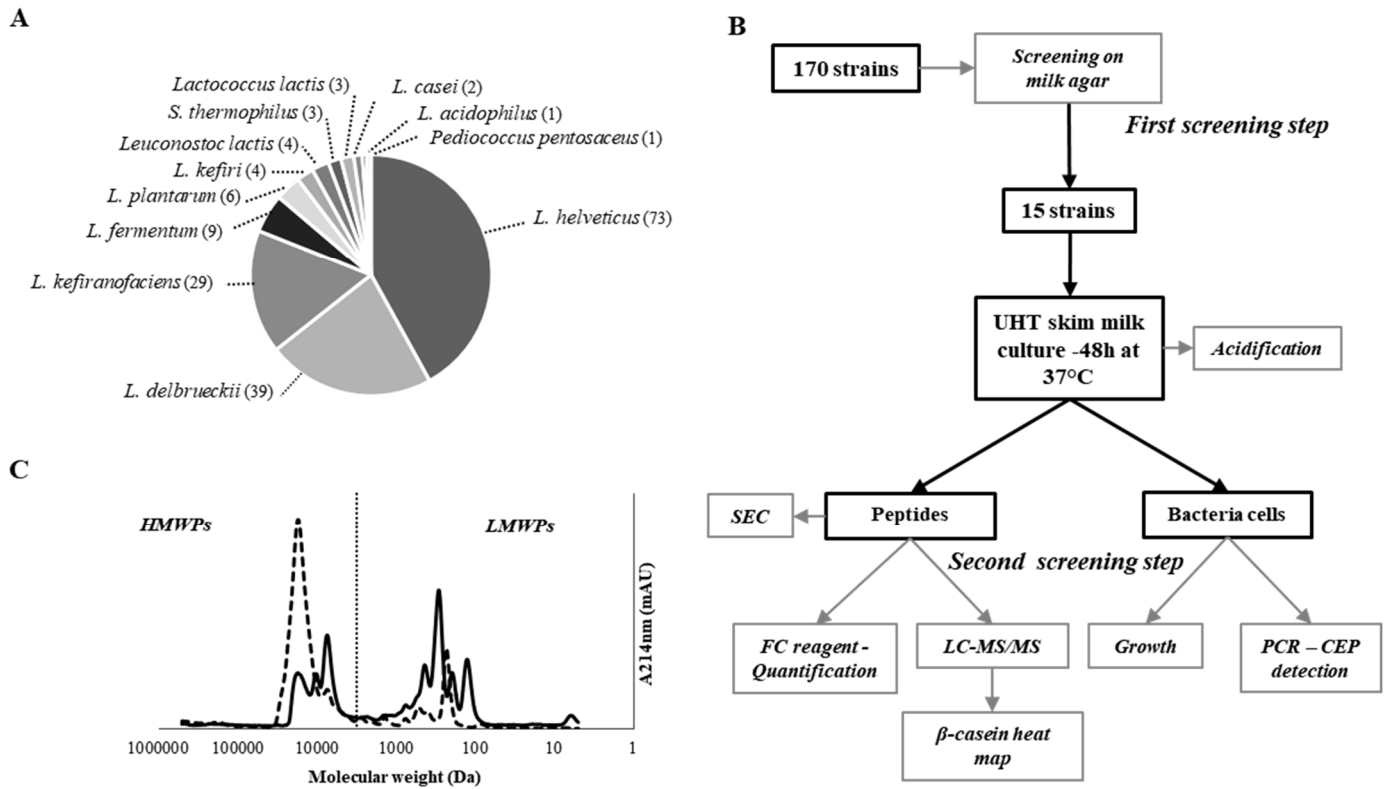


Fig. 1. (A) Relative abundance of bacterial species in the Mongolian collection identified by 16S rRNA sequencing (*L.* : *Lactobacillus*). (B) Schematic diagram of the screening strategy. A first phase of screening on milk agar was used to select 15 strains. The selected strains were then studied on UHT milk cultures. Different parameters were considered (growth, acidification, CEP gene detection, peptide identification, quantification and molecular weight profiling). (C) SEC profile of peptides extracted from non-inoculated milk (dash line) and an inoculated one (solid line) on a Superdex Peptide 10/300 GL column.

Figure 2 :

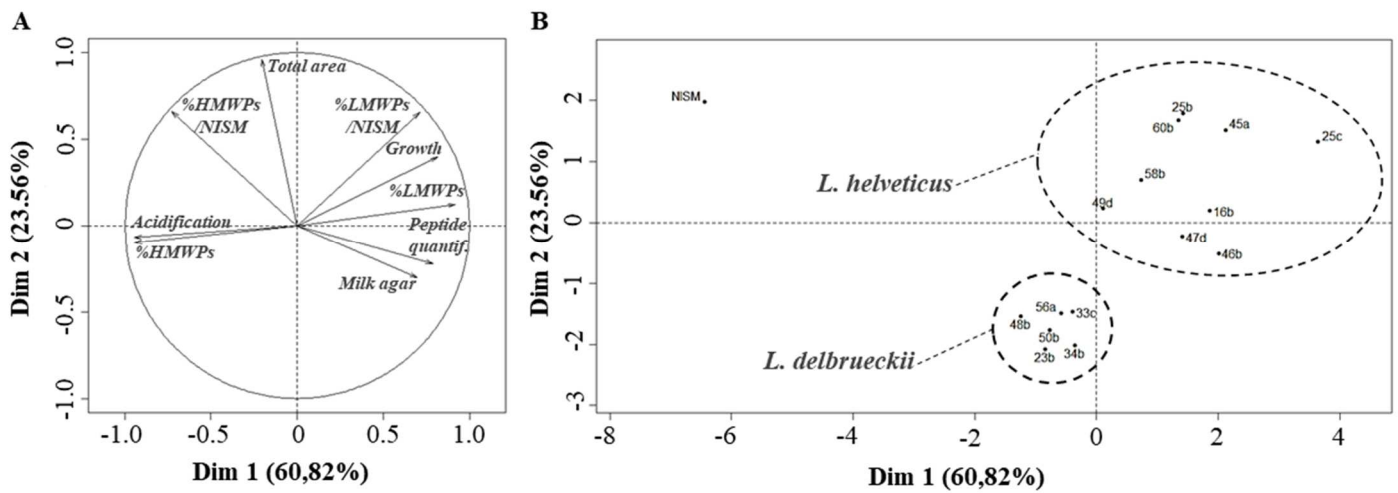


Fig. 2. Principal component analysis of variables measured after UHT skim milk fermentation for each of the 15 strains. Variables were divided into two principal components (PC1 and PC2). **(A)** Variable factor map representing correlations between parameters. **(B)** Individual factor map representing the repartition of the selected strains and NISM according to PC1 and PC2.

Figure 3:

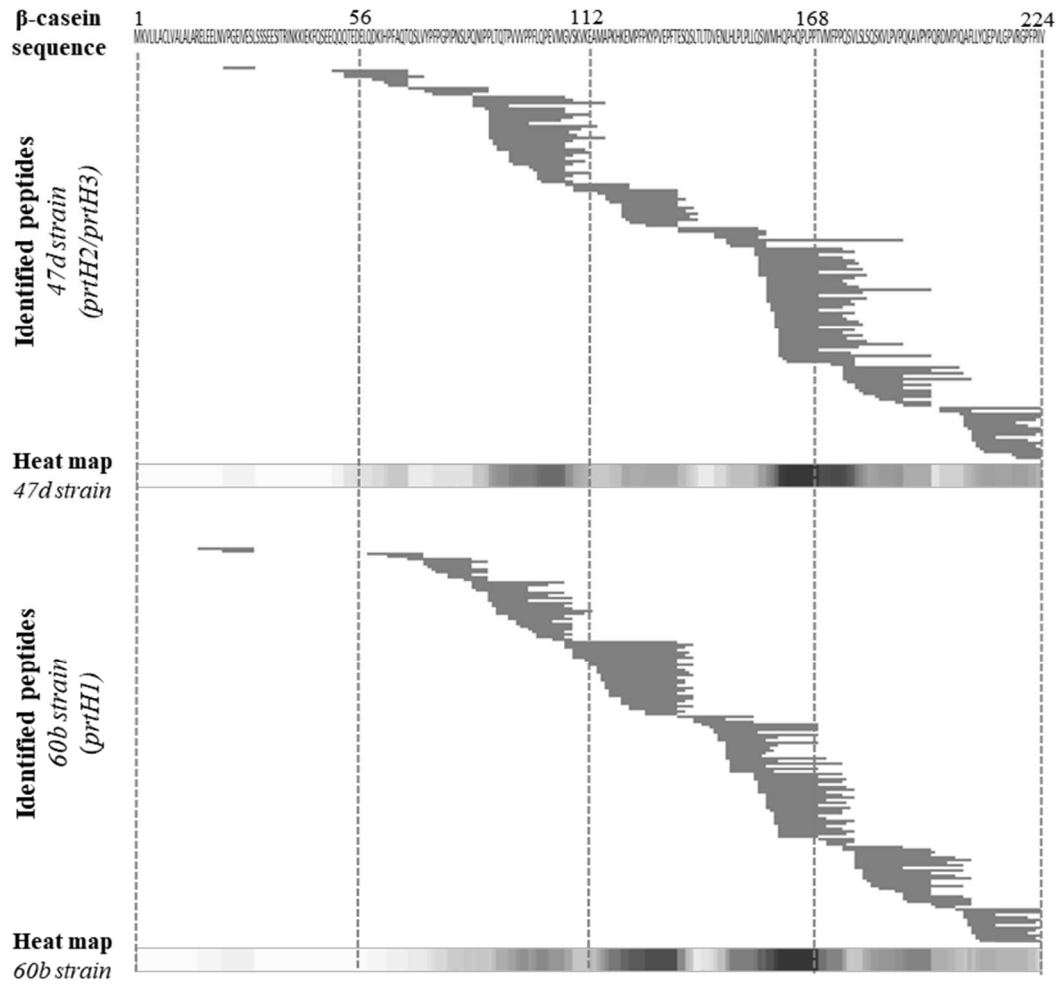


Fig. 3. β -casein heat maps construction from identified peptides by LC-MS/MS. Examples of *L. helveticus* strains 47d (harboring prtH2/prtH3 CEP genes) and 60b (harboring prtH1 CEP gene). Heat maps under the identified peptides indicate the density of the amino acids. A color was associated to each amino acid from white (no apparition frequency) to dark grey (high apparition frequency).

Figure 4:

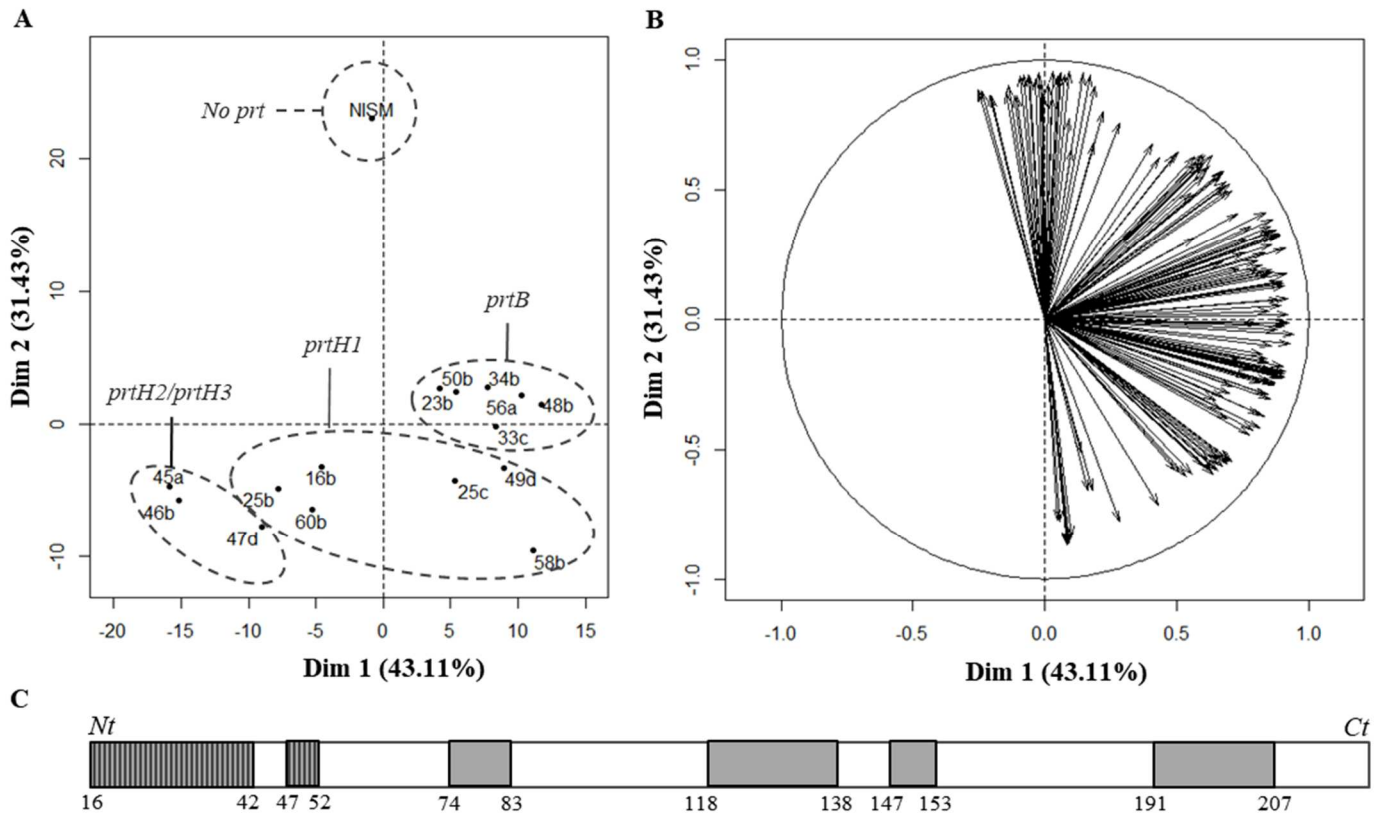


Fig. 4. Principal component analysis of β -casein heat maps constructed from identified peptides. Variables were divided into two principal components (PC1 and PC2). (A) Individual factor map representing the repartition of each selected strains according to PC1 and PC2. Results from CEP gene detection by PCR were reported on the map (circles). (B) Variable factor map representing the most implicated variables (defined by $\cos^2 > 0.85$) on the PCA. Among all variables (209 amino acids), 51 and 31 were the most implicated in PC1 and PC2 respectively. (C) Schematic representation of β -casein with highlighted areas representing the most implicated variables for PC1 (51 amino acids, grey) and for PC2 (31 amino acids, grey striped).

Table 1. Results of the strain screenings

Strain	Species	Ø milk agar (mm)	Growth (OD)	Acidification (pH)	FC reagent (g.L ⁻¹)	Total area (mAU)	%HMWPs	%LMWPs	%HMWPs/NISM	%LMWPs/NISM
NISM	×	×	×	6.45 ± 0.05 ^e	2.06 ± 0.62 ^a	347.51 ± 42.8 ^a	85.62 ± 2.72 ^g	14.39 ± 2.72 ^a	100 ^d	100 ^a
23b	<i>L. delbrueckii</i>	33 ± 3 ^{ac}	0.739 ± 0.01 ^{ac}	4.52 ± 0.02 ^c	4.86 ± 0.21 ^{ad}	101.48 ± 31.8 ^a	61.37 ± 3.44 ^{df}	40.06 ± 5.13 ^{bc}	19.74 ± 5.66 ^{ab}	123.32 ± 52.81 ^a
33c	<i>L. delbrueckii</i>	32 ± 2 ^{ac}	0.825 ± 0.126 ^{ac}	4.64 ± 0.02 ^c	5.54 ± 0.61 ^{bcd}	141.65 ± 27.2 ^a	54.83 ± 1.28 ^{cde}	45.98 ± 2.43 ^{bc}	24.69 ± 4.3 ^{ab}	194.64 ± 47.3 ^a
34b	<i>L. delbrueckii</i>	39 ± 3.5 ^c	0.987 ± 0.03 ^{bc}	4.52 ± 0.02 ^c	5.32 ± 0.21 ^{ad}	115.96 ± 4.35 ^a	59.07 ± 3.17 ^{df}	41.08 ± 3.35 ^{bc}	21.79 ± 0.37 ^{ab}	141.83 ± 16.75 ^a
48b	<i>L. delbrueckii</i>	30 ± 0 ^{ac}	0.473 ± 0.118 ^{ab}	4.68 ± 0.01 ^c	3.59 ± 0.19 ^{ad}	123.56 ± 12.3 ^a	57.26 ± 1.76 ^{de}	44.14 ± 2.52 ^{bc}	22.50 ± 1.65 ^{ab}	162.65 ± 24.69 ^a
50b	<i>L. delbrueckii</i>	30 ± 1.5 ^{ab}	0.973 ± 0.199 ^{bc}	4.51 ± 0 ^c	4.89 ± 0.3 ^{bcd}	114.70 ± 12.5 ^a	58.12 ± 6.22 ^{de}	40.90 ± 4.26 ^{bc}	21.12 ± 1.81 ^{ab}	140.37 ± 28.22 ^a
56a	<i>L. delbrueckii</i>	28 ± 1.1 ^a	1.14 ± 0.124 ^c	4.52 ± 0.01 ^c	5.58 ± 0.29 ^{bcd}	131.81 ± 35.8 ^a	58.35 ± 3.93 ^{df}	42.32 ± 5.03 ^{bc}	24.21 ± 4.98 ^{ab}	169.25 ± 65.55 ^a
Average	<i>L. delbrueckii</i>	32 ± 3.8	0.856 ± 0.234	4.57 ± 0.07	4.96 ± 0.74	121.53 ± 14.1	58.17 ± 2.1	42.4 ± 2.3	22.34 ± 1.9	155.34 ± 25.39
16b	<i>L. helveticus</i>	31 ± 1.5 ^{ab}	2.79 ± 0.03 ^{de}	3.56 ± 0.05 ^b	4.49 ± 0.02 ^{ac}	184.11 ± 46.7 ^a	34.14 ± 1.98 ^{ab}	73.24 ± 2.06 ^{de}	19.89 ± 4.18 ^{ab}	400.81 ± 103.87 ^{ab}
25b	<i>L. helveticus</i>	32 ± 1 ^{ac}	3.18 ± 0.194 ^{df}	3.48 ± 0.1 ^{ab}	4.17 ± 0.68 ^{ad}	155.52 ± 4.92 ^a	38.83 ± 2.2 ^{ab}	64.62 ± 1.89 ^{de}	15.39 ± 0.6 ^a	503.42 ± 297.66 ^{ab}
25c	<i>L. helveticus</i>	32 ± 2 ^{ac}	2.62 ± 0.138 ^d	3.45 ± 0.17 ^{ab}	6.78 ± 1.63 ^d	268.7 ± 121.8 ^a	20.13 ± 3.6 ^a	85.7 ± 7.47 ^c	16.91 ± 6.77 ^a	678.54 ± 309.89 ^b
45a	<i>L. helveticus</i>	32 ± 4 ^{ac}	3.57 ± 0.12 ^f	3.32 ± 0.04 ^a	6.16 ± 1.32 ^{bcd}	289.95 ± 52 ^a	40 ± 3.74 ^{ad}	60.1 ± 3.77 ^{cd}	37.35 ± 11.95 ^{ac}	514.7 ± 86.67 ^{ab}
46b	<i>L. helveticus</i>	35 ± 2.6 ^{ac}	3.03 ± 0.02 ^{df}	3.39 ± 0.1 ^{ab}	4.44 ± 0.17 ^{ad}	139.24 ± 6.51 ^a	37 ± 3.1 ^{abc}	74.2 ± 3.67 ^{de}	16.37 ± 0.74 ^a	307.41 ± 27.56 ^{ab}
47d	<i>L. helveticus</i>	32 ± 1 ^{ac}	3.12 ± 0.326 ^{df}	3.34 ± 0.04 ^{ab}	5.01 ± 0.8 ^{ad}	170.7 ± 52.9 ^a	44.73 ± 12.24 ^{bd}	58.91 ± 16.94 ^{cd}	23.93 ± 7.31 ^{ab}	297.41 ± 114.8 ^{ab}
49d	<i>L. helveticus</i>	35 ± 4.3 ^{ac}	2.72 ± 0.05 ^d	3.43 ± 0.01 ^{ab}	4.46 ± 0.46 ^{ad}	225.08 ± 118.3 ^a	58.56 ± 14.51 ^{ef}	42.19 ± 14.63 ^b	43.87 ± 29.24 ^{bc}	263.68 ± 77.95 ^{ab}
58b	<i>L. helveticus</i>	37 ± 1.7 ^{ab}	3.403 ± 0.394 ^{ef}	3.44 ± 0.01 ^{ab}	5.95 ± 1.36 ^{cd}	263.89 ± 21.7 ^a	59.24 ± 8.93 ^{df}	40.79 ± 8.95 ^{bc}	49.48 ± 4.74 ^c	322.98 ± 93.51 ^{ab}
60b	<i>L. helveticus</i>	35 ± 1 ^{ac}	2.81 ± 0.257 ^{de}	3.49 ± 0.11 ^{ab}	5.09 ± 0.91 ^{ad}	303.15 ± 165.9 ^a	46.4 ± 6.48 ^{bd}	59.41 ± 8.02 ^{cd}	29.10 ± 7.85 ^{ac}	526.87 ± 274.97 ^{ab}
Average	<i>L. helveticus</i>	33.4 ± 2.1	3.03 ± 0.322	3.43 ± 0.08	5.17 ± 0.92	222.26 ± 61.7	42.11 ± 12.1	62.13 ± 14.6	28.03 ± 12.8	423.98 ± 139.63

Diameters obtained on skim milk agar during the first phase of screening for the 15 selected strains. Results from the second phase of screening on the selected strains obtained after UHT skim milk fermentation at 37°C for 48h: growth, acidification, peptide quantification with FC reagent and integration results from chromatogram obtained by SEC ((high molecular weight proteins/peptides (HMWPs); low molecular weight peptides (LMWPs)). NISM: Non-Inoculated UHT Skim Milk. *Statistical analysis using one way ANOVA and Tukey's post-hoc test. Mean values in the same column with different uppercase subscripts differ significantly (p < 0.05).

Table 2. CEP gene distribution

Strain	Specie	<i>prtH1</i>	<i>prtH2</i>	<i>prtH3</i>	<i>prtH4</i>	<i>prtB</i>	Isolated from
23b	<i>L. delbrueckii</i>					+	Cow milk
33c	<i>L. delbrueckii</i>					+	Cow milk
34b	<i>L. delbrueckii</i>					+	Mare milk
48b	<i>L. delbrueckii</i>					+	Cow milk
50b	<i>L. delbrueckii</i>					+	Yak milk
56a	<i>L. delbrueckii</i>					+	Yak milk
CNRZ32	<i>L. helveticus</i>	+	+	+	+		CIRM (INRA)
16b	<i>L. helveticus</i>	+					Mare milk
25b	<i>L. helveticus</i>	+					Mare milk
25c	<i>L. helveticus</i>	+					Mare milk
49d	<i>L. helveticus</i>	+					Mare milk
58b	<i>L. helveticus</i>	+					Mare milk
60b	<i>L. helveticus</i>	+					Mare milk
45a	<i>L. helveticus</i>		+	+			Yak milk
46b	<i>L. helveticus</i>		+	+			Yak+Cow milk
47d	<i>L. helveticus</i>		+	+			Camel milk

Distribution of CEP genes detected by PCR (*prtH1*, *prtH2*, *prtH3*, *prtH4* and *prtB*) in the 15 selected strains and in the reference strain CNRZ32. Five primer set were used for the PCR.