



**HAL**  
open science

## Adipocytes orchestrate the formation of tertiary lymphoid organs in the creeping fat of Crohn's disease affected mesentery

Kevin Guedj, Yaël Abitbol, Dominique Cazals-Hatem, Marion Morvan, Léon Maggiori, Yves Panis, Yoram Bouhnik, Giuseppina Caligiuri, Olivier Corcos, Antonino Nicoletti

### ► To cite this version:

Kevin Guedj, Yaël Abitbol, Dominique Cazals-Hatem, Marion Morvan, Léon Maggiori, et al.. Adipocytes orchestrate the formation of tertiary lymphoid organs in the creeping fat of Crohn's disease affected mesentery. *Journal of Autoimmunity*, 2019, 103, pp.102281 -. 10.1016/j.jaut.2019.05.009 . hal-03487462

**HAL Id: hal-03487462**

**<https://hal.science/hal-03487462>**

Submitted on 20 Jul 2022

**HAL** is a multi-disciplinary open access archive for the deposit and dissemination of scientific research documents, whether they are published or not. The documents may come from teaching and research institutions in France or abroad, or from public or private research centers.

L'archive ouverte pluridisciplinaire **HAL**, est destinée au dépôt et à la diffusion de documents scientifiques de niveau recherche, publiés ou non, émanant des établissements d'enseignement et de recherche français ou étrangers, des laboratoires publics ou privés.



Distributed under a Creative Commons Attribution - NonCommercial 4.0 International License

1           **Adipocytes orchestrate the formation of tertiary lymphoid**  
2           **organs in the creeping fat of Crohn's disease affected**  
3           **mesentery**

4  
5   **Short title:** Mature TLOs in the mesentery of CD patients

6  
7   Kevin Guedj<sup>1,5</sup>, Yaël Abitbol<sup>1,5</sup>, Dominique Cazals-Hatem<sup>2</sup>, Marion Morvan<sup>1</sup>, Léon  
8   Maggiori<sup>3,4</sup>, Yves Panis<sup>3,4</sup>, Yoram Bouhnik<sup>4,5</sup>, Giuseppina Caligiuri<sup>1</sup>, Olivier Corcos<sup>1,4,5</sup> and  
9   Antonino Nicoletti<sup>1</sup>

10  
11   **Author Affiliation:**

12   <sup>1</sup> Université de Paris, UMRS1148, INSERM, DHU Fire, Hôpital Bichat, 46 rue Henri  
13   Huchard, 75018, Paris, France

14   <sup>2</sup> APHP, Department of Pathology, Hôpital Beaujon, 100 boulevard du Général Leclerc,  
15   92110, Clichy, France

16   <sup>3</sup> APHP, Department of Colorectal Surgery, Hôpital Beaujon, 100 boulevard du Général  
17   Leclerc, 92110, Clichy, France

18   <sup>4</sup> DHU Unity - Paris 7 Diderot University, 5 rue Thomas Mann, 75013, Paris, France

19   <sup>5</sup> APHP, Department of Gastroenterology, IBD and Intestinal Failure, Hôpital Beaujon, 100  
20   boulevard du Général Leclerc, 92110, Clichy, France

21  
22   **Corresponding author:**

23   Pr Antonino Nicoletti

24   INSERM U1148, Hôpital Bichat, 46 rue Henri Huchard, 75018, Paris, France.

25   Phone number: +33 6 60 57 15 54

26   Email address: [antonino.nicoletti@inserm.fr](mailto:antonino.nicoletti@inserm.fr)

27

## 1 ABSTRACT

2 The formation of tertiary lymphoid organs (TLOs) is orchestrated by the stromal cells of  
3 tissues chronically submitted to inflammatory stimuli, in order to uphold specific  
4 adaptive immune responses. We have recently shown that the smooth muscle cells of  
5 the arterial wall orchestrate the formation of the TLOs associated with atherosclerosis in  
6 response to the local release of TNF- $\alpha$ . Observational studies have recently documented  
7 the presence of structures resembling TLOs the creeping fat that develops in the  
8 mesentery of patients with Crohn's disease (CD), an inflammatory condition combining  
9 a complex and as yet not elucidated infectious and autoimmune responses.

10 We have performed a comprehensive analysis of the TLO structures in order to decipher  
11 the mechanism leading to their formation in the mesentery of CD patients, and assessed  
12 the effect of infectious and/or inflammatory inducers on the potential TLO-organizer  
13 functions of adipocytes.

14 Quantitative analysis showed that both T and B memory cells, as well as plasma cells,  
15 are enriched in the CD-affected mesentery, as compared with tissue from control  
16 subjects. Immunohistochemistry revealed that these cells are concentrated within the  
17 creeping fat of CD patients, in the vicinity of transmural lesions; that T and B cells are  
18 compartmentalized in clearly distinct areas; that they are supplied by post-capillary high  
19 endothelial venules and drained by lymphatic vessels indicating that these nodules are  
20 fully mature TLOs.

21 Organ culture showed that mesenteric tissue samples from CD patients contained  
22 greater amounts of adipocyte-derived chemokines and the use of the conditioned  
23 medium from these cultures in functional assays was able to actively recruit T and B  
24 lymphocytes. Finally, the production of chemokines involved in TLO formation by 3T3-  
25 L1 adipocytes was directly elicited by a combination of TNF- $\alpha$  and LPS *in vitro*.

26 We therefore propose a mechanism in which mesenteric adipocyte, through their  
27 production of key chemokines in response to inflammatory/bacterial stimuli, may  
28 orchestrate the formation of functional TLOs developing in CD-affected mesentery.

29

30

1 **Keywords:**

2 Crohn's disease, adipocytes, mesentery, chemokines, tertiary lymphoid organs.

3 **Abbreviations:**

4 CD, "Crohn's Disease"; LPS, "Lipopolysaccharide"; LTo, "Lymphoid Tissue organizer";

5 LTi, "Lymphoid Tissue inducer"; SLO, "Secondary Lymphoid Organ"; TLO, "Tertiary

6 Lymphoid Organ"; TNF, "Tumor Necrosis Factor"; VSMC, "Vascular Smooth Muscle Cell"

7

# 1. INTRODUCTION

Crohn's disease (CD) is a chronic inflammatory disease of the digestive tract, characterized by destructive lesions of variable topography, depth, and size. Interestingly, CD-related intestinal lesions are characterized by a hypertrophy of the adjoining mesenteric adipose tissue, a process called "sclerolipomatosis" or "creeping fat" [1]. This process is extremely specific to CD and is not observed in other chronic forms of enteritis. The extent of creeping fat correlates closely with transmural inflammation, fibrosis, muscularization, and stricture formation [2] and is no longer considered a passive marker of intestinal inflammation, but rather a pathogenic process supporting the release of pro-adipokines [3, 4] and local amplification of the inflammatory response in response to recurrent intestinal ulcerations ineluctably accompanied by bacterial translocation [5].

Recent reports show that lymphoid nodules resembling tertiary lymphoid organs or TLOs are found impinged on lymphatic collecting vessels that enter and exit lymph nodes in the CD-affected mesentery [6, 7]. We had previously shown that TLOs develop in the medial layer and adventitia of chronically inflamed arteries, likely due to the lymphatic drainage blockade [8]. The formation of TLOs is orchestrated by the stromal cells of tissues chronically submitted to inflammatory stimuli and, in the case of atherosclerosis, we showed that the organizer role can be undertaken by arterial smooth muscle cells, in response to the local release of TNF- $\alpha$ . For triggering the formation of CD-associated TLOs, it is plausible that pathogen-derived stimuli might act in concert with TNF- $\alpha$  as blockade of the latter, alone, is not sufficient to suppress their formation in an experimental mouse model of CD.

1 In the present study, we demonstrate that the addition of a pathogen-derived stimulus,  
2 such as bacterial LPS to TNF- $\alpha$ , is able to confer adipocytes with a phenotype that  
3 resemble the one of “lymphoid tissue organizer cells”, i.e. the stromal cells capable of  
4 orchestrating the formation of organized lymphoid structures. Our findings offer an  
5 explanation for the preferential development of striking fully mature TLOs within the  
6 hypertrophic, “creeping” adipose tissue that characterizes CD mesentery.

7

## 1 **2. MATERIAL AND METHODS**

### 2 **2.1. Selection of patients and tissue collection**

3 This prospective and monocentric cohort study was performed on resection specimens  
4 of ileum from patients (n= 8) operated for CD or from controls (n= 6) operated for right  
5 colon adenocarcinoma. All patients provided informed written consent, and the protocol  
6 was approved by a French ethics committee (Comité d'Evaluation de l'Ethique des  
7 projets de Recherche Biomédicale Paris Nord: N° 2018-014).

### 8 **2.2. Cell and tissue analyses**

9 Human tissues were characterized by immunohistochemistry. Cell suspensions were  
10 analyzed by flow cytometry. Please refer to the online-only Supplementary Data for the  
11 detailed methods.

### 12 **2.3. Chemotaxis experiment**

13 Chemotaxis assays were performed using polycarbonate filter with 5 µm pores (Neuro  
14 Probe). Please refer to the online-only Supplementary Data for the detailed methods.

### 15 **2.4. Immunodetection of chemokines**

16 Chemokine content was analyzed using the BioPlex® assay (Bio-Rad), as described in  
17 the online-only Supplementary Data.

### 18 **2.5. Gene expression analysis**

19 Total RNA was analyzed by real-time polymerase chain reaction, as described in the  
20 online-only Supplementary Data.

## 1      **2.6.    Statistical analysis**

2    The means, SEMs and p values were calculated using the software JMP®. The  
3    differences between conditions were considered statistically significant for the  
4    probability value  $<0.05$  using Student t-tests and Mann-Whitney non-parametric tests,  
5    as appropriate.

6



## 1 **3. RESULTS**

### 2 **3.1. Fully mature TLOs develop in CD mesenteric tissues**

3 Lymphoid nodules were detected in resected mesenteric tissues from CD patients, but  
4 not in control tissues (Supplementary Figure 1). These nodules were mostly located  
5 under the subserous mesentery, adjacent to the deep muscle layer, sometimes they  
6 were found deeper in the mesentery, in which case they formed along the vascular  
7 peduncle. The nodule density was particularly high in the regions of the intestine where  
8 transmuscular damages were manifest. These nodules were composed of CD3<sup>+</sup> T cells  
9 surrounding CD20<sup>+</sup> B cell clusters, with a structural organization reminiscent of that of B  
10 cell follicle and T cell areas in SLOs (Figure 1). Additionally, the mesenteric lymphoid  
11 structures were irrigated by CD31<sup>+</sup> blood vessels and were drained by a gp38<sup>+</sup>  
12 lymphatic network (Figure 1). Of note, the lymphoid nodules were not surrounded by  
13 continuous gp38<sup>+</sup> lymphatic capsules, and therefore, are not SLOs. Some of the blood  
14 vessels feeding the lymphoid structures were layered with PNAd<sup>+</sup> endothelial cells  
15 displaying a cuboidal shape, demonstrating the presence of high endothelial venules,  
16 which are known to be mandatory for the recruitment of naïve and memory cells within  
17 SLOs [9].

18 These observations were supported by flow cytometry analysis performed on cell  
19 suspensions obtained after enzymatic digestion of the human mesenteric tissues where  
20 we found that the mesentery from CD patients was enriched in leukocytes, especially T  
21 CD3<sup>+</sup> and B CD19<sup>+</sup> lymphocytes, and neutrophils, compared with mesentery from  
22 control subjects (Figure 2). These data strongly suggest that the lymphoid structures  
23 present in the mesentery of CD patients display key features of TLOs, and their spatial  
24 organization indicates a high degree of maturation.

## 3.2. Functional germinal centers are present in CD mesenteric tissues

To further analyze the composition of these lymphoid structures, we searched for the presence of cells known to support the function of germinal centers. Located within the B cell compartment of mesenteric TLOs, we found dense networks of follicular dendritic cells (FDCs) identified by their expression of CD21 (Figure 3), CD23, CD35, SSTR2A and Podoplanin (Supplementary Figure 2). In SLOs, FDCs are key cells of the germinal center reaction since they can capture and present antigens in their native forms to B cells during the selection of high affinity clones. The presence of such cells therefore suggested that mesenteric TLOs are highly mature and that they can support the local maturation, proliferation, and selection of B lymphocytes (Figure 3). This hypothesis was confirmed by the immunodetection of CD20<sup>+</sup>AID<sup>+</sup>, of CD20<sup>+</sup>Bcl6<sup>+</sup>, and of CD20<sup>+</sup>PCNA<sup>+</sup> B cells (Figure 4). Indeed, the fact that B cells expressed AID (Activation-induced cytidine deaminase, the enzyme mediating) is the demonstration that these cells are ongoing class switch recombination and somatic hypermutation of immunoglobulin genes [10] BCL6 gene expression is tightly regulated during mature B cell differentiation. The presence of BCL6 protein in B cells indicates that they are at the germinal center stage of their differentiation (ref: [11]). The detection of CD20<sup>+</sup> expressing PCNA (Proliferating cell nuclear antigen) in the TLOs is the demonstration that these B cells are undergoing proliferation. An extended flow cytometry analysis revealed an enrichment of CD19<sup>+</sup>IgD<sup>-</sup>CD27<sup>+</sup> memory B cells, CD19<sup>+</sup>IgD<sup>-</sup>CD38<sup>+</sup> plasma cells, as well as CD4<sup>+</sup>CD45RO<sup>+</sup> memory and CD3<sup>+</sup>CD4<sup>+</sup>CD127<sup>+</sup>CXCR5<sup>+</sup> follicular helper T cells in the mesentery of CD patients compared with the mesentery of the controls (Figure 5; please see Supplementary Figure 3 for the full gating strategy), thereby

1 further showing that TLOs sustain local germinal center reactions. CD4<sup>+</sup>CD127<sup>-</sup>CD25<sup>+</sup> T  
2 regulatory cells were also detected, indicating that immune responses taking place in  
3 CD's mesenteric TLOs might be, at least partially, controlled.

### 4 **3.3. The mesenteric adipose tissue as the organizer of TLOs**

5 As shown in Figure 6A, the mesenteric adipose tissue is dramatically hypertrophied in  
6 CD patients. Importantly, TLOs were located within this tissue, in close proximity with  
7 the muscular layer of the intestinal wall, with a high prevalence where transmuscular  
8 damages were observed (Figure 6B). They were also observed around the vascular  
9 peduncles spanning the mesentery. The almost systematic embedding of TLOs into the  
10 adipose tissue suggested that chemokines able to attract T and B cells were produced  
11 within this tissue. Indeed, the expression of CCL19 (P<0.05), CCL20 (trend), CCL21  
12 (trend), CXCL13 (trend), and CXCL16 (P<0.05) chemokines in mesenteric tissues  
13 adipocytes was higher in tissue from CD patients as compared to control intestinal  
14 samples (Figure 7A). In functional chemotaxis assays, we found that soluble mediators  
15 released by CD mesenteric pieces (conditioned-media) could specifically trigger the  
16 recruitment of human CD19<sup>+</sup> B cells, compared with that of conditioned-media prepared  
17 from control tissues (Figure 7B).

18 Interestingly, the chemokine-producing cells were distributed according to specific  
19 patterns, as detected by immunohistochemistry (Supplementary Figure 4). CXCL16 and  
20 CCL20 chemokines were preferentially found in the T lymphocyte zone, while CCL21  
21 and CXCL13 chemokines were restricted to the B cell area. CCL19 chemokine was found  
22 to be equally distributed in the two zones. These observations suggest that CXCL16,  
23 CCL20, CCL21, and CXCL13 play a central role in the establishment/maintenance of the  
24 B cell/T cell compartmentalization.

1 Strikingly, we also found that adipose cells proximal to the TLOs were strongly positive  
2 for the CCL20 and CXCL13 chemokine (Figure 8A), which also colocalized with  
3 intracellular actin staining (Supplementary Figure 5), thereby indicating that these  
4 stromal cells participate to the chemoattraction of B and T cells. This could explain why  
5 the mesenteric adipose tissue in CD is favorable for the development of TLOs.  
6 Additionally, this suggested that adipose cells could participate in the process of  
7 mesenteric TLO formation.

### 8 **3.4. TNF- $\alpha$ and LPS trigger the recruitment of immune cells by** 9 **mesenteric adipocytes**

10 As mentioned above, the mesenteric territory wherein TLOs develop is anatomically  
11 close to deep ulcerations and fistulae in the inflamed intestine of CD patients. Therefore,  
12 the mesenteric tissue of CD patients is in contact both with inflammatory molecules such  
13 as TNF- $\alpha$  (which is increased in the serum of patients [12]), and with bacterial  
14 components such as LPS. Of note, during lymphoid (neo)genesis, TNF- $\alpha$  confers stromal  
15 cells with a LTo potential [13, 14].

16 We therefore tested whether TNF- $\alpha$  and/or LPS could trigger the expression of  
17 chemokines in adipocytes. The expression of CCL19, CCL21, CXCL13, CCL20 and CXCL16  
18 was analyzed by RT-qPCR in murine 3T3-L1- adipocytes, stimulated or not by TNF- $\alpha$  or  
19 LPS. We found that TNF- $\alpha$  strongly induced the expression of all but one (CCL21)  
20 chemokine (Figure 8B). Besides, LPS induced a strong expression of CCL21 and CCL19.  
21 These results were corroborated by the measurement of the chemokines in the cell  
22 culture supernatants, except for CCL21 for which we failed to detect increased protein

1 levels, regardless of the culture condition (Figure 8C). The combination of LPS and TNF-  
2  $\alpha$  is therefore expected to be optimal to confer adipocytes with a full LTo cell potential.  
3 Finally, we found that the supernatant of 3T3-L1 cells stimulated with TNF- $\alpha$  and LPS  
4 induced the recruitment of several subpopulations of T and B cells, while the  
5 supernatant of unstimulated cells did not have such an effect (Figure 8D).  
6

## 1 **4. DISCUSSION**

2 Herein, we report that the mesenteric tissue of CD patients is enriched in memory  
3 lymphocytes and plasma cells, and hosts TLOs. CD mesenteric TLOs displayed  
4 compartmentalized B and T cell areas that were irrigated by blood vessels layered by  
5 PNAd<sup>+</sup> endothelial cells displaying a cuboidal shape. These vessels are likely high  
6 endothelial venules. PNAd<sup>+</sup> high endothelial venules are specialized for the recruitment  
7 of CD62L<sup>+</sup> lymphocytes in SLOs (besides spleen) and in the thymus. They likely play the  
8 same role in TLOs for the regulation of the entry of naïve and memory lymphocytes.  
9 Mesenteric TLOs in CD patients also displayed a network of CD21<sup>+</sup> FDCs, indicating  
10 ongoing local B cell responses. Indeed, FDCs have the capacity to capture and to coat  
11 their surface with antigens on which B cells can test their B cell receptors during the  
12 germinal center reaction through which the selection of high affinity B cell clones occurs  
13 [15].

14 We next tried to decipher why TLOs preferentially developed in the creeping fat of the  
15 mesentery [7], a tissue that is a deeply remodeled with a massive adipose tissue  
16 expansion in CD patients. The extent of this creeping fat (or “sclerolipomatosis”) is such  
17 that it guides the surgeon in delineating the intestinal segment that requires resection.  
18 Our data suggest that the localization of the TLOs in this tissue is due to the local high  
19 concentration of CCL19, CCL20, CCL21, CXCL13, and CXCL16 chemokines, likely  
20 produced by the adipocytes in the vicinity of TLOs, as well as by the cells comprised  
21 within the TLOs themselves, further sustaining their implantation.

22 Thus, similar to what occurs in chronically inflamed arteries [13, 14, 16, 17], where the  
23 most abundant stromal cells, the vascular smooth muscle cell, adopt the function of TLO  
24 organizer cells, in the sclerolipomatous tissue of CD patients where TLOs are embedded,

1 the most abundant stromal cell of the mesenteric fat, adipocytes appear able to  
2 orchestrate the development of fully mature TLOs. The highly plastic adipose cells were  
3 already known to be able to produce vast amounts of a large panel of cytokines [18]. It is  
4 not surprising that they can also produce chemokines.

5 While our *in vitro* experiments demonstrate that adipocytes can produce these  
6 chemokines, we recognize that the immunodetection of chemokines in adipocytes from  
7 human CD mesenteric tissue is not a definitive demonstration that they do so since these  
8 cells could have taken up these chemokines. Further investigations are required in order  
9 to rule out whether different stromal cells, other than adipocytes, could also be endowed  
10 with lymphoid tissue-organizer capacities in CD mesenteric tissue.

11 Stimulation with TNF- $\alpha$  alone however does not seem to be sufficient to trigger the  
12 organizer cell function of adipocytes, the addition of LPS was necessary in order to  
13 produce the full panel of chemokines required to recruit the different cell populations  
14 that form TLOs. This finding may explain why CD-associated TLO develop close to the  
15 sites of lesions of the intestinal barrier, where bacterial-derived inflammatory stimuli  
16 can act in a synergistic manner with the TNF released by the damaged tissue to trigger  
17 the production of homeostatic chemokines by the local adipocytes.

18 CD is not the sole intestinal pathological condition associated with an alteration of the  
19 intestinal barrier. Indeed, the translocation of bacterial components can be observed in  
20 other enteritis such as radiation enteritis, tuberculosis enteritis and ischemic enteritis.  
21 Thus, the “mesenteric inflammatory environment” is not specific to CD. At variance, the  
22 sclerolipomatosis is pathognomonic of CD. The presence of the wrapping fat subjected in  
23 an inflammatory environment triggered by an altered epithelial barrier would therefore

1 constitute the key combination for the development of TLOs specifically in the  
2 mesentery of CD patients.

3 Concerning the impact of mesenteric TLOs, whether they are solely protective structures  
4 restraining the bacterial entry across the damaged intestinal epithelium or instead play  
5 a role in the perpetuation of the intestinal damage will require further studies. It is  
6 worth mentioning that immune responses mounted in TLOs develop in the inflamed  
7 tissue and outside of controlled lymphoid organs. As a consequence, stochastic and  
8 potentially harmful immune responses emerge from TLOs [19]. We however found  
9 Tregs cells the mesentery of CD patients indicating that the local immune responses may  
10 be regulated to some extent. This regulation might be insufficient and TLOs could play  
11 deleterious role in CD since we found that the mesenteric lymphoid structures were  
12 associated with a more severe phenotype of CD (a study that is currently submitted).

13 As a perspective to our findings, monitoring the formation and/or the expansion of TLOs  
14 in longitudinal studies (by cellular/molecular imaging of B cells or other TLO-specific  
15 molecules) should be considered for clinical staging of CD. Finally, targeting the  
16 formation of TLOs and/or the function of the immune effectors generated locally  
17 appears as a new promising strategy to impact on the pathologic process of CD. An  
18 additional way to impact on mesenteric TLOs is the resection of the mesentery support  
19 tissue. Indeed, it was recently shown that removing the mesentery during ileocolic  
20 resection in CD patients reduced post-operative recurrence [20]. This lends support to  
21 our idea that the mesentery and the immune response that it hosts play a crucial role in  
22 the pathophysiology of CD.



## 1 **ACKNOWLEDGMENT**

2 This work was supported by the Institut National de la Santé et de la Recherche  
3 Médicale (INSERM), the Assistance Publique-Hôpitaux de Paris (AP-HP) and by the MSD  
4 Avenir fondation.

5

## 1 REFERENCES

- 2 [1] T. Kruis, A. Batra, B. Siegmund. Bacterial translocation - impact on the adipocyte  
3 compartment. *Front Immunol*, 2014;4:510.
- 4 [2] A. L. Sheehan, B. F. Warren, M. W. Gear, N. A. Shepherd. Fat-wrapping in Crohn's  
5 disease: pathological basis and relevance to surgical practice. *Br J Surg*, 1992;79:955-8.
- 6 [3] P. Desreumaux, O. Ernst, K. Geboes, L. Gambiez, D. Berrebi, H. Muller-Alouf *et al.*  
7 Inflammatory alterations in mesenteric adipose tissue in Crohn's disease.  
8 *Gastroenterology*, 1999;117:73-81.
- 9 [4] B. Siegmund. Mesenteric fat in Crohn's disease: the hot spot of inflammation? *Gut*,  
10 2012;61:3-5.
- 11 [5] L. Peyrin-Biroulet, F. Gonzalez, L. Dubuquoy, C. Rousseaux, C. Dubuquoy, C.  
12 Decourcelle *et al.* Mesenteric fat as a source of C reactive protein and as a target for  
13 bacterial translocation in Crohn's disease. *Gut*, 2012;61:78-85.
- 14 [6] R. Sura, J. F. Colombel, H. J. Van Kruiningen. Lymphatics, tertiary lymphoid organs  
15 and the granulomas of Crohn's disease: an immunohistochemical study. *Aliment*  
16 *Pharmacol Ther*, 2011;33:930-9.
- 17 [7] G. J. Randolph, S. Bala, J. F. Rahier, M. W. Johnson, P. L. Wang, I. Nalbantoglu *et al.*  
18 Lymphoid Aggregates Remodel Lymphatic Collecting Vessels that Serve Mesenteric  
19 Lymph Nodes in Crohn Disease. *Am J Pathol*, 2016;186:3066-73.
- 20 [8] O. Thauinat, D. Kerjaschki, A. Nicoletti. Is defective lymphatic drainage a trigger  
21 for lymphoid neogenesis? *Trends Immunol*, 2006;27:441-5.
- 22 [9] N. H. Ruddle. High Endothelial Venules and Lymphatic Vessels in Tertiary  
23 Lymphoid Organs: Characteristics, Functions, and Regulation. *Front Immunol*,  
24 2016;7:491.
- 25 [10] M. Muramatsu, K. Kinoshita, S. Fagarasan, S. Yamada, Y. Shinkai, T. Honjo. Class  
26 switch recombination and hypermutation require activation-induced cytidine  
27 deaminase (AID), a potential RNA editing enzyme. *Cell*, 2000;102:553-63.
- 28 [11] K. Basso, R. Dalla-Favera. Roles of BCL6 in normal and transformed germinal  
29 center B cells. *Immunol Rev*, 2012;247:172-83.
- 30 [12] M. Maeda, N. Watanabe, H. Neda, N. Yamauchi, T. Okamoto, H. Sasaki *et al.* Serum  
31 tumor necrosis factor activity in inflammatory bowel disease. *Immunopharmacol*  
32 *Immunotoxicol*, 1992;14:451-61.
- 33 [13] K. Guedj, J. Khallou-Laschet, M. Clement, M. Morvan, A. T. Gaston, G. Fornasa *et al.*  
34 M1 macrophages act as LTbetaR-independent lymphoid tissue inducer cells during  
35 atherosclerosis-related lymphoid neogenesis. *Cardiovasc Res*, 2014;101:434-43.
- 36 [14] K. Guedj, J. Khallou-Laschet, M. Clement, M. Morvan, S. Delbosc, A. T. Gaston *et al.*  
37 Inflammatory micro-environmental cues of human atherothrombotic arteries confer to  
38 vascular smooth muscle cells the capacity to trigger lymphoid neogenesis. *PLoS One*,  
39 2014;9:e116295.
- 40 [15] N. S. De Silva, U. Klein. Dynamics of B cells in germinal centres. *Nat Rev Immunol*,  
41 2015;15:137-48.

- 1 [16] R. Grabner, K. Lotzer, S. Dopping, M. Hildner, D. Radke, M. Beer *et al.* Lymphotoxin  
2 beta receptor signaling promotes tertiary lymphoid organogenesis in the aorta  
3 adventitia of aged ApoE<sup>-/-</sup> mice. *J Exp Med*, 2009;206:233-48.
- 4 [17] K. Lotzer, S. Dopping, S. Connert, R. Grabner, R. Spanbroek, B. Lemser *et al.* Mouse  
5 aorta smooth muscle cells differentiate into lymphoid tissue organizer-like cells on  
6 combined tumor necrosis factor receptor-1/lymphotoxin beta-receptor NF-kappaB  
7 signaling. *Arterioscler Thromb Vasc Biol*, 2010;30:395-402.
- 8 [18] G. Fantuzzi. Adipose tissue, adipokines, and inflammation. *J Allergy Clin Immunol*,  
9 2005;115:911-9; quiz 20.
- 10 [19] O. Thaunat, S. Graff-Dubois, S. Brouard, C. Gautreau, A. Varthaman, N. Fabien *et al.*  
11 Immune responses elicited in tertiary lymphoid tissues display distinctive features. *PLoS*  
12 *One*, 2010;5:e11398.
- 13 [20] C. J. Coffey, M. G. Kiernan, S. M. Sahebally, A. Jarrar, J. P. Burke, P. A. Kiely *et al.*  
14 Inclusion of the Mesentery in Ileocolic Resection for Crohn's Disease is Associated With  
15 Reduced Surgical Recurrence. *J Crohns Colitis*, 2018;12:1139-50.
- 16 [21] M. W. Pfaffl. A new mathematical model for relative quantification in real-time  
17 RT-PCR. *Nucleic Acids Res*, 2001;29:e45.

18

19

## 1 **FIGURE LEGENDS**

### 2 **Figure 1: B cell follicles develop in the mesentery of human CD**

3 Representative staining of DAPI, CD20, CD3, PNAd, and gp38 performed on human  
4 intestinal wall cross-sections from CD patients. The asterisk and the dashed boxes  
5 represent the magnified area, indicated by the arrow.

### 6 **Figure 2: Increased inflammatory infiltrate in the mesentery of CD**

7 Representative diagrams showing flow cytometry analysis of CD3<sup>+</sup>CD4<sup>+</sup> T lymphocytes,  
8 CD19<sup>+</sup>HLA-DR<sup>+</sup> B lymphocytes and neutrophils among CD45<sup>+</sup> Live/Dead<sup>-</sup> alive  
9 leukocytes, performed on mesenteric digests from either CD patients or control patients  
10 (right colic adenocarcinoma).

### 11 **Figure 3: CD-associated lymphoid structures contain germinal centers**

12 At the upper-left corner, hematoxylin-eosin staining performed on human intestinal wall  
13 cross-sections from CD patients. The dashed box represents the area that is magnified in  
14 the picture at the upper-right corner. At the upper-right corner, staining of CD21, CD20,  
15 and DAPI was performed on adjacent cross-sections. The boxes "1", "2", and "3" indicate  
16 representative mesenteric TLOs, which are magnified below.

### 17 **Figure 4: CD-associated GCs present key features of selection, maturation** 18 **and proliferation**

19 Representative staining of CD20, AID, Bcl6, and PCNA performed on human intestinal  
20 wall cross-sections from CD patients at the site of supposed CD-associated mesenteric  
21 germinal centers.

1 **Figure 5: Specific leukocyte populations in the mesentery of CD patients**

2 Cytometric analysis showing the percentage of of CD4<sup>+</sup>, CD127<sup>-</sup>CD25<sup>+</sup> Treg, CD127<sup>-</sup>  
3 CXCR5<sup>+</sup> Tfh, CD45RO<sup>+</sup> and CD45RO<sup>-</sup> memory and naïve cells, within T lymphocytes, and  
4 of IgD<sup>-</sup>CD27<sup>+</sup> memory B lymphocyte and CD38<sup>+</sup>IgD<sup>-</sup> plasma cells (among CD45<sup>+</sup>Live-  
5 Dead<sup>neg</sup> cells) was performed on 1 mg of digested surgical human mesenteric pieces  
6 from CD patients and from controls.

7 **Figure 6: Mesenteric TLOs are systematically embedded in hypertrophic**  
8 **adipose tissue**

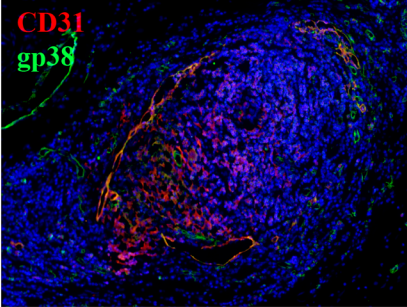
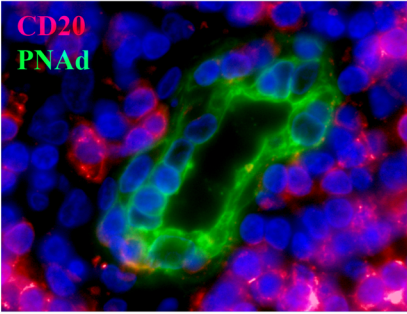
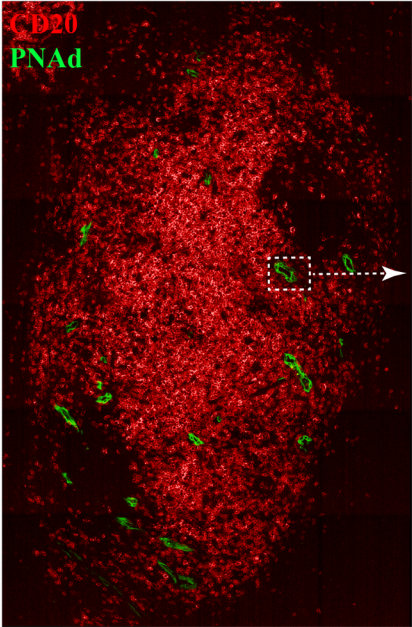
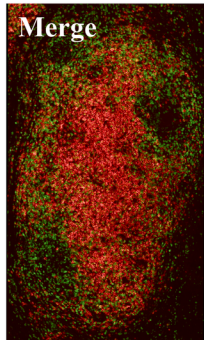
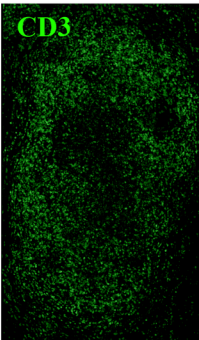
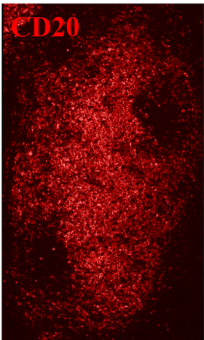
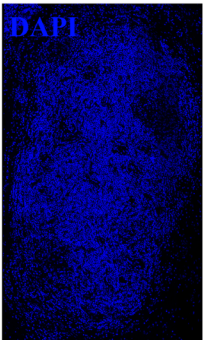
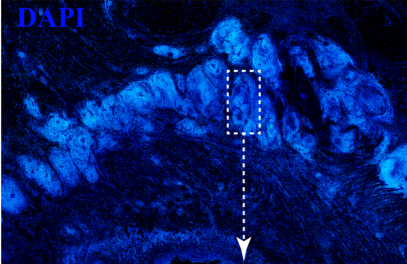
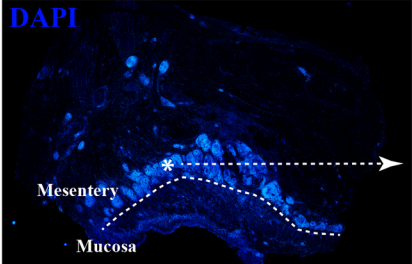
9 **(A)** On the left side, macroscopic picture of an intestinal segment after resection in a  
10 patient with CD, showing hypertrophic adipose tissue (asterisks). On the right side,  
11 hematoxylin-eosin staining performed on human intestinal wall cross-sections from CD  
12 patients, showing perforation of the intestinal wall (arrowheads). **(B)** Hematoxylin-  
13 eosin staining performed on human intestinal wall cross-sections from CD patients  
14 showing the ubiquitous embedment of mesenteric TLOs within the adipose tissue.

15 **Figure 7: The mesentery in CD produces specific chemokines capable of**  
16 **triggering the recruitment of leukocytes**

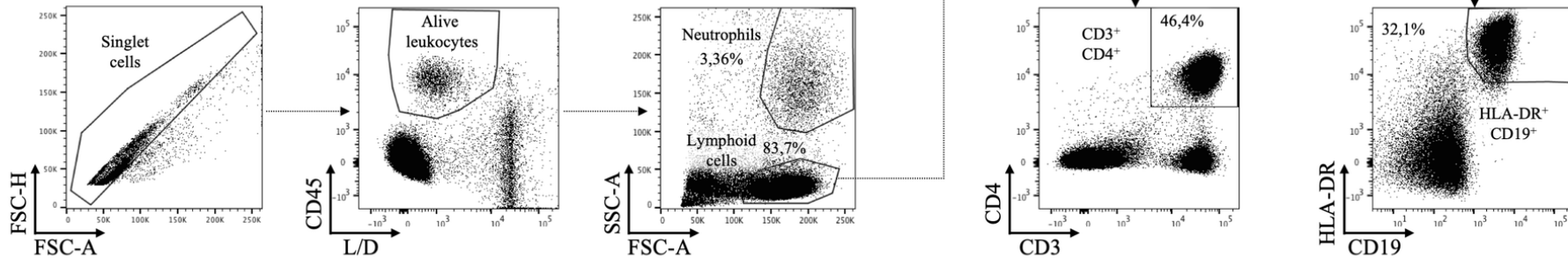
17 **(A)** The expression level of chemokines was analyzed in whole human mesenteric  
18 surgical pieces from CD patients and from controls by RT-qPCR on extracted RNA. Data  
19 were analyzed using the  $2^{-\Delta\Delta C_t}$  Pfaffl formula [21], in which  $C_t$  values from control  
20 patients were compared with those from CD patients and normalized to the  $C_t$  values of  
21 ACTB. **(B)** Chemotaxis assay on conditioned-media prepared from human mesenteric  
22 surgical pieces of CD patients and from controls. Plotted is the number of CD19<sup>+</sup> B cells  
23 that have migrated toward the wells containing the conditioned-media. \*p<0.05.

1 **Figure 8: Adipocytes play a central role in mesenteric lymphoid neogenesis**

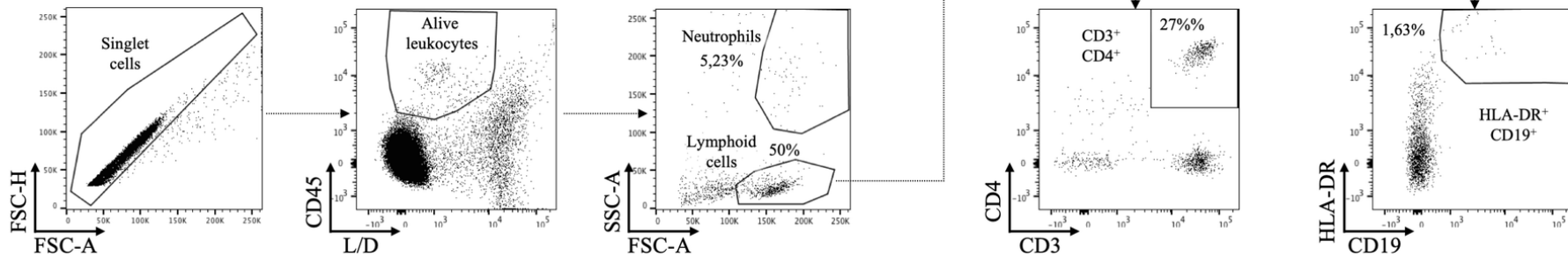
2 **(A)** Representative staining of DAPI, CD20, and chemokines performed on human  
3 intestinal wall cross-sections from CD patients showing the expression of chemokines in  
4 mesenteric adipocytes localized at the vicinity of TLOs. **(B, C, D)** Murine 3T3-L1 cells  
5 were stimulated for 15 hours with rTNF- $\alpha$  and LPS. **(B)** The expression levels of  
6 chemokines were determined by RT-qPCR on extracted RNA. Data were analyzed using  
7 the  $2^{-\Delta\Delta C_t}$  Pfaffl formula [21], in which  $C_t$  values from stimulated adipocytes were  
8 compared with those from unstimulated cells and normalized to the  $C_t$  values of HPRT.  
9 **(C)** The concentrations of chemokines were assessed using cytometric beads on the  
10 supernatant of stimulated and unstimulated cells. **(D)** Chemotaxis assay of the  
11 supernatant of 3T3-L1 cells stimulated for 15 hours with rTNF- $\alpha$  + LPS. Plotted is the  
12 relative number of CD45<sup>+</sup> hematopoietic cells, CD3<sup>+</sup>CD4<sup>+</sup> and CD3<sup>+</sup>CD8<sup>+</sup> helper and  
13 cytotoxic T lymphocytes, CD19<sup>+</sup> B lymphocytes, and monocytes that have migrated  
14 toward the well. \*p<0.05, \*\*p<0.01, \*\*\*p<0.001.



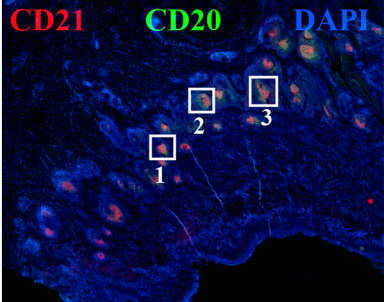
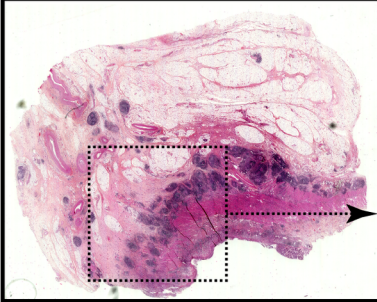
## CD PATIENT



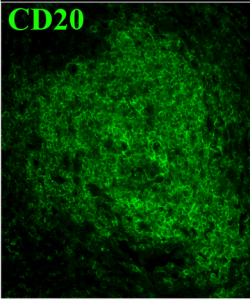
## CONTROL PATIENT



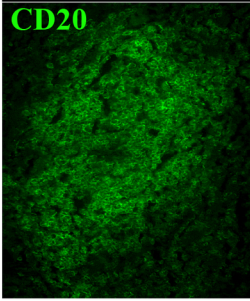




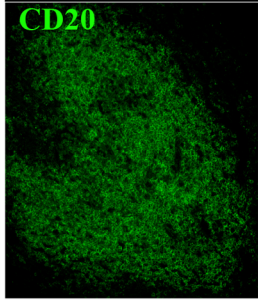
**1**



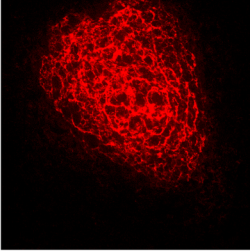
**2**



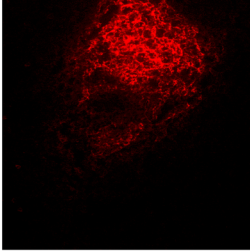
**3**



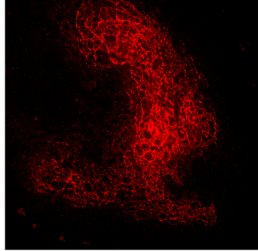
**CD21**



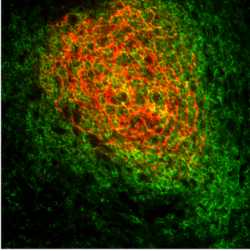
**CD21**



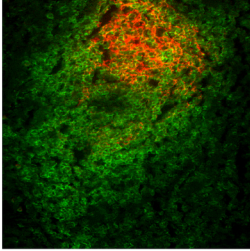
**CD21**



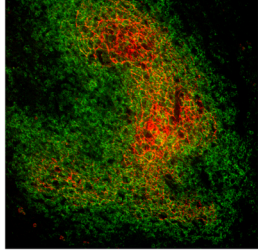
**Merge**



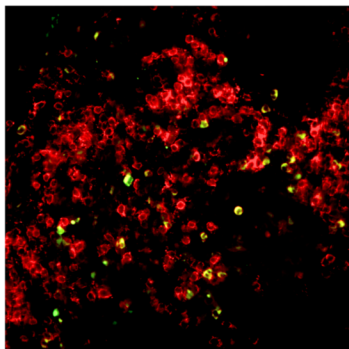
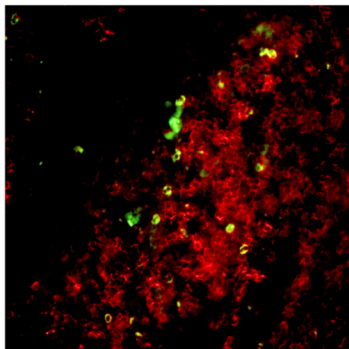
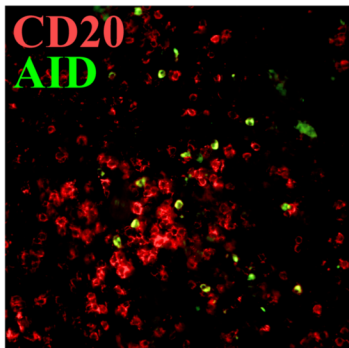
**Merge**



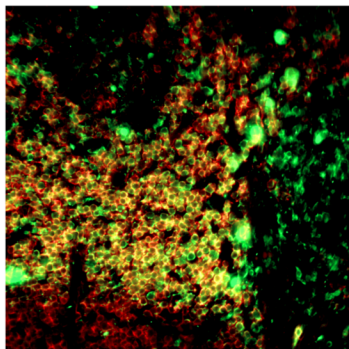
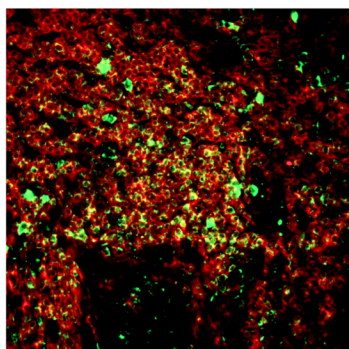
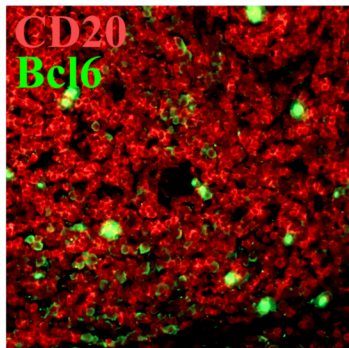
**Merge**



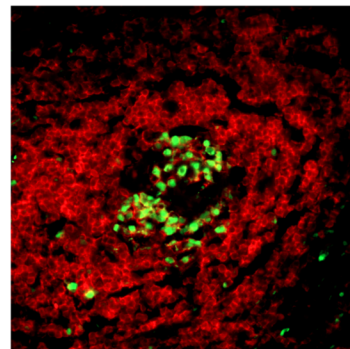
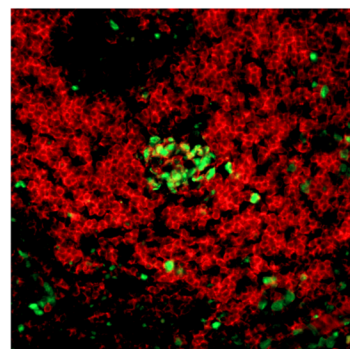
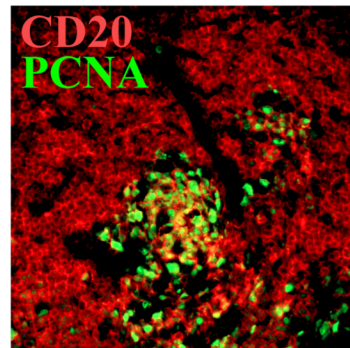
## Selection

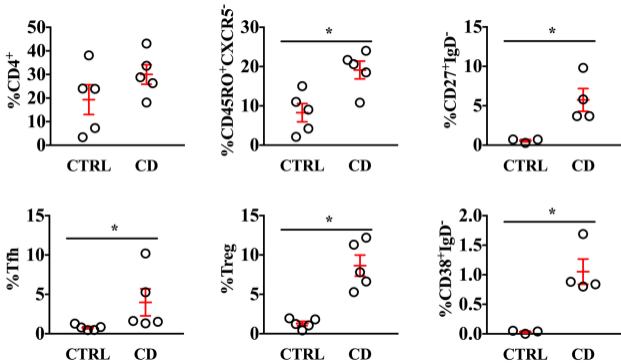


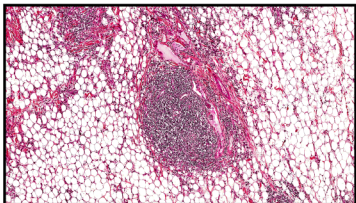
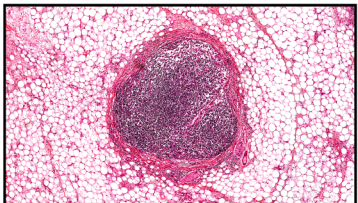
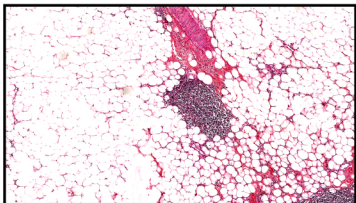
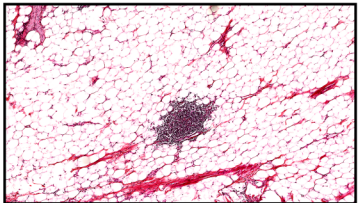
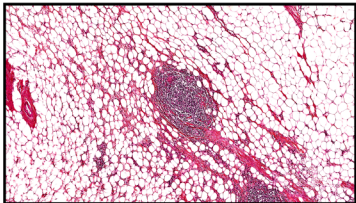
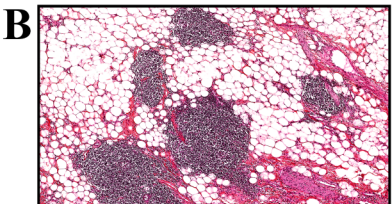
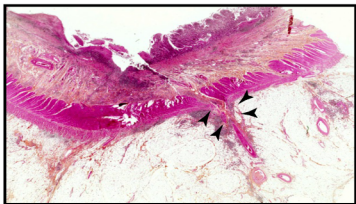
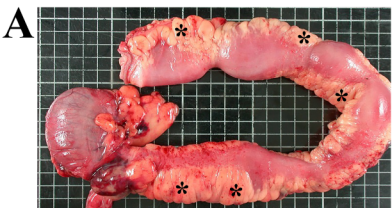
## Maturation



## Proliferation

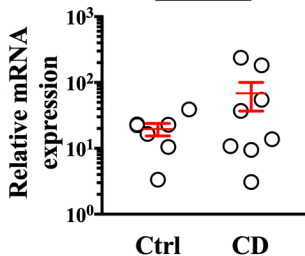
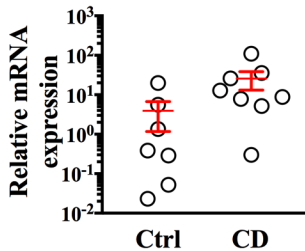
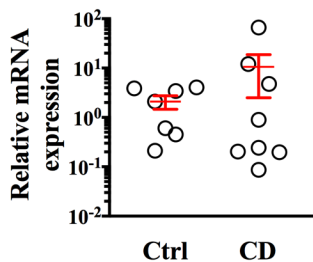
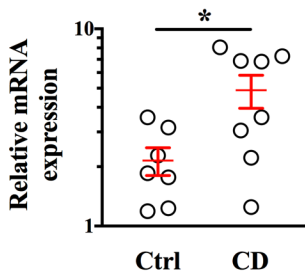
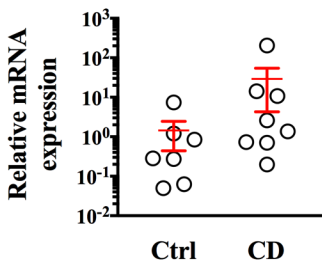
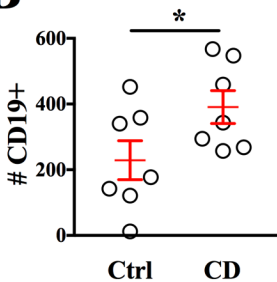


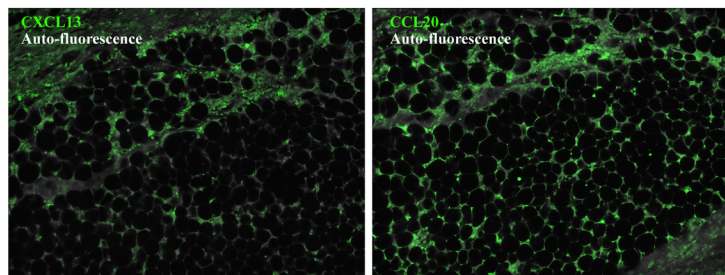
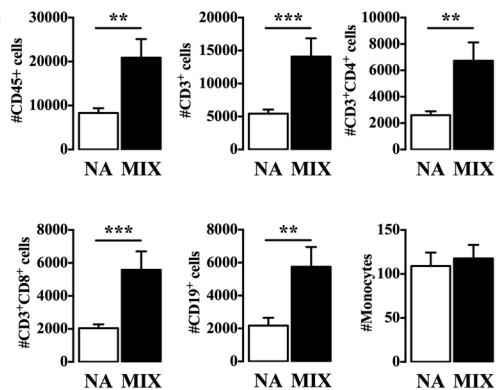
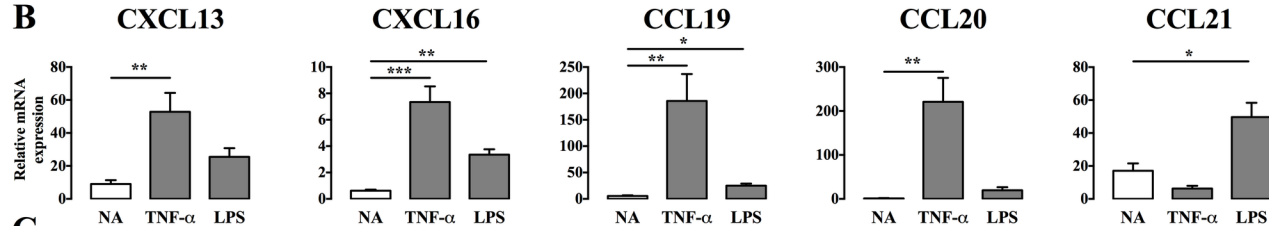
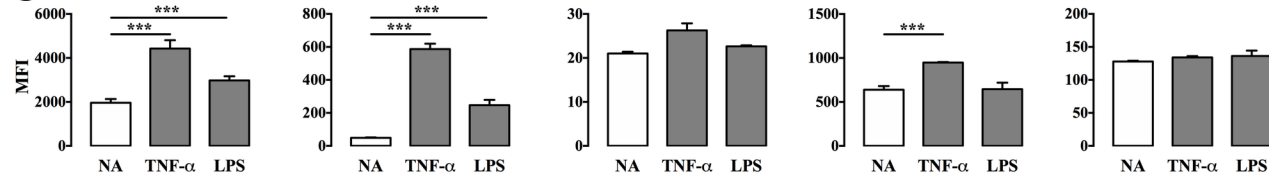




**A****CCL19**

\*

**CCL20****CCL21****CXCL16****CXCL13****B**

**A****D****B****C**

**Adipocytes orchestrate  
TLO formation  
in the creeping fat of  
Crohn's disease mesentery**

