



HAL
open science

Proposal for a Combined Histomolecular Algorithm to Distinguish Multiple Primary Adenocarcinomas from Intrapulmonary Metastasis in Patients with Multiple Lung Tumors

Audrey Mansuet-Lupo, Marc Barritault, Marco Alifano, Aurélie Janet-Vendroux, Makmoud Zarmaev, Jérôme Biton, Yoan Velut, Christine Le Hay, Isabelle Cremer, Jean-François Régnard, et al.

► **To cite this version:**

Audrey Mansuet-Lupo, Marc Barritault, Marco Alifano, Aurélie Janet-Vendroux, Makmoud Zarmaev, et al.. Proposal for a Combined Histomolecular Algorithm to Distinguish Multiple Primary Adenocarcinomas from Intrapulmonary Metastasis in Patients with Multiple Lung Tumors. *Journal of Thoracic Oncology*, 2019, 14, pp.844 - 856. 10.1016/j.jtho.2019.01.017 . hal-03486393

HAL Id: hal-03486393

<https://hal.science/hal-03486393v1>

Submitted on 20 Dec 2021

HAL is a multi-disciplinary open access archive for the deposit and dissemination of scientific research documents, whether they are published or not. The documents may come from teaching and research institutions in France or abroad, or from public or private research centers.

L'archive ouverte pluridisciplinaire **HAL**, est destinée au dépôt et à la diffusion de documents scientifiques de niveau recherche, publiés ou non, émanant des établissements d'enseignement et de recherche français ou étrangers, des laboratoires publics ou privés.



Distributed under a Creative Commons Attribution - NonCommercial 4.0 International License

1 **Title:**

2 Proposal for a combined histo-molecular algorithm to distinguish multiple primary
3 adenocarcinomas from intrapulmonary metastasis in patients with multiple lung tumors.

4

5 **Short title:** Multiple lung adenocarcinomas classification

6

7 Audrey Mansuet-Lupo^{a,b,*}, MD, PhD; Marc Barrिताult^{c,d,*}, MD, PhD; Marco Alifano^e, MD,
8 PhD; Aurélie Janet-Vendroux^{b,e} MD, Makmoud Zarmaev^b, PharmD, Jérôme Biton^b, PhD;
9 Yoan Velut^b, Christine Le Hay^d, Isabelle Cremer^b, PhD; Jean-François Régnard^e, MD;
10 Ludovic Fournel^e, MD; Bastien Rance^f, PhD; Marie Wislez^{b,g} MD, PhD; Pierre Laurent-
11 Puig^{c,d}, MD, PhD; Ronald Herbst^h MD, PhD, Diane Damotte^{a,b}, MD, PhD; Hélène Blons^{c,d},
12 PharmD, PhD.

13

14 * authors contributed equally to the work

15

16 Affiliations:

17 ^a Department of Pathology, Hôpitaux Universitaire Paris Centre, Cochin Hospital, Assistance
18 Publique - Hôpitaux de Paris, Paris, France.

19 ^b INSERM UMRS 1138, Team cancer, Immune Control, and Escape, Centre de Recherche
20 des Cordeliers; Université Paris Descartes-Paris 5, Paris, France

21 ^c Department of Biochemistry, Unit of Pharmacogenetic and Molecular Oncology, Georges
22 Pompidou European Hospital, Assistance Publique - Hôpitaux de Paris, Paris, France.

23 ^d INSERM UMR-S1147, Paris Sorbonne Cite University, Paris, France.

24 ^e Department of Thoracic Surgery, Hôpitaux Universitaire Paris Centre, Cochin Hospital,
25 Assistance Publique - Hôpitaux de Paris, Paris, France.

26 ^f Department of Medical Informatics, University Hospital Georges Pompidou, HEGP, AP-HP,
27 Paris, France.

28 ^g Department of pneumology, Hôpitaux Universitaire Paris Centre, Cochin Hospital,
29 Assistance Publique - Hôpitaux de Paris, Paris, France.

30 ^h Department of Oncology Research, MedImmune, LLC, Gaithersburg, Maryland, USA.

31

32 **Corresponding author:** Pr Diane Damotte, Centre de Recherche des Cordeliers, UMRS
33 U1138, 15 Rue de l'Ecole de Médecine, 75006, Paris France. Email: diane.damotte@aphp.fr

1 **Funding information:** This work was supported by the Institut National de la Santé et de la
2 Recherche Médicale (INSERM), Paris Descartes-Paris 5 University, Pierre et Marie Curie-
3 Paris 6 University, Site de Recherche Intégrée sur le Cancer SIRIC CAnCer Research for
4 PErsonnalized Medicine (CARPEM), LabEx Immuno-oncology, the Institut National du
5 Cancer (2011-PLBIO-06-INSERM 6-1), and MedImmune.

6

7 **Disclosure:** The authors declare no conflict of interest related to this manuscript.

8

9

1 **Abstract**

2
3 **Introduction:** Multiple nodules in lung are diagnosed with an increasing frequency due to
4 high quality CT-scan imaging. In patients suffering from lung cancer, this situation represents
5 up to 10% of operated patients. For clinical management, it is important to classify the disease
6 as intra-pulmonary metastasis or multiple primary lung carcinomas to define TNM
7 classification and optimize therapeutic options. In the present study, we evaluated the
8 respective and combined input of histological and molecular classification in order to propose
9 a classification algorithm for multiple nodules.

10 **Methods:** we studied consecutive patients undergoing surgery with curative intent for lung
11 adenocarcinoma (n=120) and harboring two tumors (n=240). Histological diagnosis according
12 to the WHO 2015 classification and molecular profiling using a 22 hotspot genes targeted
13 NGS allowed classifying samples as multiple primary lung adenocarcinomas (MPLA) or as
14 intra-pulmonary metastasis (IPM).

15 **Results:** NGS identified molecular mutations in 91% (n=109/120) of tumor pairs. Genomic
16 and histologic classification showed a fair agreement using kappa test ($K = 0.43$). Discordant
17 cases (n=30/109, 27%) were reclassified using a combined histo-molecular algorithm. *EGFR*
18 mutations (p=0.03) as well as node involvement (p=0.03) were significantly associated to
19 IPM, whereas *KRAS* mutations (p=0.00005) were significantly associated to MPLA. *EGFR*
20 mutations (p=0.02) and node involvement (p=0.004) were the only independent prognostic
21 factors.

22 **Conclusion:** We showed that combined histo-molecular algorithm represents a relevant tool
23 to classify multifocal lung cancers, which could guide adjuvant treatment decisions. Survival
24 analysis underlines the good prognosis of *EGFR* mutated adenocarcinoma in patients with
25 intra-pulmonary metastases.

26
27 **Keywords:** multiple lung cancer, intrapulmonary metastasis, histological and molecular
28 classification, NGS.

1 **Introduction**

2

3 The improvement of lung cancer detection by CT-scan has increased the frequency of
4 multiple pulmonary nodules situation, representing up to 10% of all lung cancers.¹⁻³ Multiple
5 nodules may be synchronous when diagnosed at the same time, or metachronous since
6 patients with lung cancer have a 3.5 times higher risk of developing a second lung cancer.⁴
7 Patients with independent primary tumors are expected to have a better prognosis than
8 patients with intra-pulmonary metastasis (IPM).⁵⁻⁷ Martini and Melamed proposed the first
9 classification of multiple lung nodules to distinguish multi-primary carcinoma from IPM,⁸
10 based on clinical and pathological data. However, this empirical classification does not take
11 into account the latest WHO 2015 classification and does not include molecular analysis
12 which is now routinely performed for lung adenocarcinoma.⁹⁻¹¹ Since the previous TNM
13 classification,¹²⁻¹⁴ lung cancer are classified T3 if more than one nodule is found in the same
14 lobe, T4 when found in a different but homolateral lobe and M1a when found in the
15 contralateral side. However, it is based on the assumption that multiple nodules are IPM.
16 Therefore, classifying multi-nodular lung cancer disease is important because the therapeutic
17 management may change from no adjuvant treatment to multimodal therapy combining
18 radiotherapy-chemotherapy-immunotherapy. Histological classification and clinical data are
19 not themselves fully satisfactory to identify IPM, and molecular profiling has been assessed in
20 this setting. Loss of heterozygosity,¹⁵⁻¹⁷ genomic profiling using CGH² and genomic
21 rearrangement profiles¹⁸ were shown to be efficient in classifying tumors but could be hard to
22 implement in routine practice. Recently, a concordance of 70% was found between
23 morphologic and molecular classification in lung adenocarcinoma using 4 drivers
24 oncogenes.¹⁹ Oncogenic driver mutations appear early in carcinogenesis with a limited intra-
25 tumor heterogeneity,²⁰⁻²³ but these frequent alterations might also be shared between
26 independent tumors. Thus, the implementation of next-generation sequencing (NGS)
27 enhances the accuracy of molecular testing to distinguish multiple primary lung
28 adenocarcinoma (MPLA) from IPM.²⁴⁻²⁶ Here, we studied 120 patients harboring two
29 synchronous or metachronous lung adenocarcinomas and report a proposal for histo-
30 molecular algorithm to classify patients as IPM or MPLA.

31

1 **Materials and methods**

2

3 *Patients and tumor selection*

4 Between January 2010 and December 2012, 1173 lung carcinoma patients were operated on
5 at Cochin hospital, Paris, France, 136 (11.6%) of these patients had more than one lung
6 carcinoma, including 120 patients who presented two adenocarcinomas with sufficient
7 material for histological and molecular analysis. Patients had synchronous tumors or
8 metachronous, defined by a second tumor occurring at least 6 months after the first one.
9 Patients who received neo-adjuvant therapies and those with extra-thoracic metastasis were
10 excluded. Overall survival (OS) was retrospectively obtained. This study was approved by the
11 local ethic committee (CPP Ile de France II, n°2008-133, n°2012 06-12 and 2018 MS1).

12

13 *Histological assessment*

14 All tumor slides were reviewed (range 1 to 9 according to tumor size) by two experienced
15 lung cancer pathologists (ALM, DD), in order to re-classify adenocarcinoma according to the
16 latest WHO classification (2015),²⁷ depending on predominant architectural pattern. For each
17 tumor, the percentage of each histological component (architectural pattern) was semi-
18 quantitatively recorded with 5% increments for each slide. The predominant pattern was
19 defined as the pattern with the largest percentage and was grouped into low, intermediate and
20 high prognostic grades, as previously described.^{9,28} Histological criteria for distinguishing
21 IPM from MPLA were adapted from Detterbeck³⁰ and Nicholson,³¹ and consisted of: (a)
22 architectural pattern; (b) cytologic features (cell size, cuboid or cylindrical cells, nuclear
23 pleomorphism, nuclear inclusion, nucleolar size, mitotic rate, estimated amount of cytoplasm,
24 quantity of cells with mucin); (c) tumor stroma (cellular or not, estimated number and type of
25 immune cells); and (d) TTF1 expression (SP24 clone, Novocastra). We proposed an algorithm
26 detailed in Figure 1A to classify, using histological criteria, tumor pairs as multiple primitive
27 lung adenocarcinomas (MPLA) or as intrapulmonary metastatic (IPM). *In situ*
28 adenocarcinoma (AIS) and minimally invasive adenocarcinoma (MIA) were always
29 considered as MPLA, as a recent publication suggests that they are genetically independent.¹⁴
30 Localization (same, different lobe or contralateral), emboli, pleural invasion and lymph node
31 status were not taken into account to classify tumors histologically.

32

1 *Martini and Melamed classification*

2 All multiple lung adenocarcinoma patients were classified as MPLA and as IPM with the
3 reference Martini and Melamed classification published in 1975.⁸ This classification is based
4 on histological type, ie adenocarcinoma or squamous cell carcinoma but the histological
5 subtyping of adenocarcinoma, as described in the WHO's classification was not taken into
6 account since it has been defined recently. In Martini and Melamed classification,
7 synchronous tumors exhibiting similar histological type with no lymphatic or systemic
8 metastases were classified as MPLA when they were located in different segments.
9 Metachronous tumors were classified as MPLA when time lapse between tumors was over 2
10 years; as IPM when time lapse between tumors was less than 2 years with both tumors in the
11 same lobe as IPM when time lapse between tumors was less than 2 years and tumors were in
12 different lobes with lymph node involvement or systemic metastasis.

13

14 *Molecular analysis*

15 For each tumor, DNA was extracted from the FFPE block containing the highest percentage
16 of tumor cells (at least 30%). DNA extraction and NGS analysis was performed as previously
17 described,²⁹ using the (Ion AmpliSeq™ Colon-Lung Cancer Research Panel v2 (Life
18 Technologies™, France), covering more than 500 hotspot mutations within 22 genes (*KRAS*,
19 *EGFR*, *BRAF*, *PIK3CA*, *AKT1*, *ERBB2*, *PTEN*, *NRAS*, *STK11*, *MAP2K1*, *ALK*, *DDR2*,
20 *CTNNB1*, *MET*, *TP53*, *SMAD4*, *FBXW7*, *FGFR3*, *NOTCH1*, *ERBB4*, *FGFR1* and *FGFR2*),
21 using Ampliseq technology (Ion ampliseq library kit V2, Ion library equalizer kit, Life
22 Technologies™), then clonal amplification on the Ion Chef™ System (ION P1 HI-Q CHEF,
23 ION PI CHIP KITV3) and sequencing (Ion Proton system). Torrent Suite 5.0.4 was used to
24 analyze data. VCF files from the variant caller were annotated using the Safir2report tool.
25 Quality criteria used as end-points were a detection threshold of 2% and a minimum coverage
26 depth of 300X. For each patient, concordance of polymorphisms between all tumors was
27 verified. A minimum coverage depth of 300X was required to validate the variants. NGS
28 coverage depth data were used to identify gene amplifications using an algorithm locally
29 developed based on the identification of outliers from the expected coverage mean + 3SD.²⁹
30 As, gene amplifications were not taken into account to classify tumors because they might be
31 missed by targeted NGS when heterogeneous or might be acquired during tumor
32 progression.²³ Thus, the link between both adenocarcinomas was determined according to the
33 concordance of somatic molecular mutations as follows: -1- multiple primary lung

1 adenocarcinoma (MPLA) when tumors had no mutation in common or when tumors had
2 different driver mutations in *EGFR*, *KRAS*, *BRAF*, *ERBB2*, *NRAS* or *MET* genes ; -2-
3 metastatic tumor (IPM) when all alterations were common between tumors ; -3- IPM with
4 additional alteration (IPM w AA) when at least one mutation was shared between tumors with
5 one or more additional alterations in one of the samples, including amplification; -4-
6 undetermined when both tumors were wild type. Silent (n=13), amplification (N=24) and
7 intronic alterations (n=9) were not considered as classifiers. Tumors were classified
8 independently from the histological analysis and clinical data.

9 10 *Proposed algorithm for classifying multiple lung tumors*

11 This algorithm, based on integrated clinical and histo-molecular criteria (Figure 1B) defines
12 the final classification. Firstly, tumors were classified as MPLA when one nodule presented as
13 either an *in situ* adenocarcinoma or a minimally invasive adenocarcinoma. We chose a
14 threshold of 5 years to consider metachronous nodules as MPLA. Secondly, tumor pairs were
15 classified as MPLA or as IPM according to molecular results, except for tumor pairs that
16 harbored the same frequent mutation in *KRAS* (p.G12X) or *EGFR* (del19 or p.L858R) genes
17 that were classified according to the histological classification, defined by the histological
18 algorithm (Figure 1A). Wild type tumor pairs, without AIS or AIM in one tumor and/or
19 metachronous >5 years, were classified undetermined. The final classification was compared
20 with Martini's one.”

21 22 *Statistical analyses*

23 Clinical, pathological and molecular characteristics were collected using Research Electronic
24 Data Capture (REDCap).³⁰ Variables were compared using a Student's t-test (continuous) or
25 chi-squared test (categorical). Level of agreement between classifications was assessed by
26 Cohen's kappa.³¹ Kaplan-Meier plots, log-rank and Cox proportional hazards regression were
27 used to describe the effect of variables on survival in univariate analysis. Multivariate analysis
28 was performed using a Cox model for variables significantly associated with OS (p-
29 value < 0.05) except for Martini's classification, which is dependent on nodal status. Analyses
30 were performed with R software (<http://www.r-project.org/>) (R version 3.4.3) using the
31 'survival' (version 2.41-3) and the 'survminer' (version 0.4.2) packages.³²

1 **Results**

2

3 *Patient and histological characteristics*

4 A total of 120 patients, predominantly men (71; 59%) and smokers (105; 87%) were included
5 in this study (Table 1), 86 patients (72%) had synchronous tumors and 34 metachronous
6 tumors. Forty-two patients (35%) had a lymph node-positive disease (19 N1 and 23 N2).
7 Among synchronous patients, 43 (50%) had both tumors in the same lobe, 35 (41%) in
8 another ipsilateral lobe and 30 (35%) had a lymph node-positive disease (18 N2 and 12 N1).
9 Among metachronous patients, 17 (50%) were on the same side among which 7 in the same
10 lobe; and 6 (18%) had lymph node-positive disease in the first tumor. The three most
11 frequently predominant architectural pattern were tubular (N=91, 38%), papillary (N=59,
12 25%), and solid (N=48, 20%) (Table 1). Tumor emboli were found in 124 tumors (52%) and
13 87 had pleural infiltration (36%).

14

15 *Tumor molecular characteristics*

16 A total of 340 genetic mutations were identified in these 240 tumors (Supplementary-Figure
17 1). At least two mutations were found in 90 tumors (38%) and no mutation was identified in
18 39 tumors (16%). Frequently mutated genes were *TP53* (n=91), *KRAS* (n=90; p.G12C n=38),
19 *EGFR* (n=31; exon 19 deletion n=15; p.L858R n=10; exon 20 insertion n=2 and rare
20 mutations n=4), *STK11* (n=17) and *BRAF* (n=16). *KRAS* mutations were not associated with
21 *EGFR*, *ERBB2* or *MET* activating alterations. Five tumors harbored co-driver mutations
22 involving *BRAF* with another potential driver. Gene amplifications (e.g. *EGFR*, *KRAS*,
23 *FGFR1* and *ERBB2*) were identified in tumor samples from 20 patients but were only present
24 in paired tumors for 4 patients.

25

26 *Classification of patients into intra-pulmonary metastatic (IPM) or multi-primitive lung 27 adenocarcinoma (MPLA)*

28 Histological classification identified 56 IPM and 64 MPLA patients, while 39 IPM, 70 MPLA
29 and 11 undetermined cases (both tumors being wild type) were defined by molecular analysis
30 (Supplementary-Figure 2). Molecular and histological classifications were concordant for
31 79/109 (72%) patients (29 IPM and 50 MPLA) and discordant for 30 cases (10 MPLA-
32 histology/IPM-molecular and 20 IPM-histology/MPLA-molecular) with a final kappa score of
33 0.43 (Figure 2). Among the 10 MPLA-histology/IPM-molecular discordant patients, IPM

1 molecular classification relied on the presence of a shared hotspot mutation (5 *KRAS* p.G12X)
2 for 6 patients, and two shared alterations for 3 patients. Among the 20 IPM-histology/MPLA-
3 molecular discordant patients all, except one, had a frequent predominant architectural pattern
4 either tubular, papillary or solid. The combined histo-molecular classification based on the
5 algorithm proposed in Figure 1 allowed the classification of 111/120 patients with 33 IPM
6 and 78 MPLA. IPM and MPLA patients differed significantly for: smoking history ($p=0.007$),
7 time lapse between tumors ($p=0.03$), tumor location ($p=0.0001$), node involvement ($p=0.03$)
8 and mutational status for *EGFR* ($p=0.03$) and *KRAS* ($p=0.00005$) (Table 3, Supplementary-
9 Figure 3).

10 Using Martini and Melamed classification, we identified 57 IPM and 63 MPLA. We
11 compared our histo-molecular classification to that of Martini and Melamed and found
12 discordance for 37 patients (Kappa score 0.31). Ten patients were MPLA-Martini/IPM-histo-
13 molecular due to time to relapse >2 years ($N=3$), location in different segment ($N=3$) or lobes
14 ($N=4$) and N0; 27 patients were IPM-Martini/MPLA-histo-molecular due to N+ disease
15 ($N=15$) and to nodules located in the same lobe/segment ($N=12$).

16

17 *Follow-up and survival*

18 Survival information was available for 119 patients, 58 (49%) had died at the time of the
19 study and among them one patient died within perioperative period (18 days after surgery)
20 and was excluded from the survival analysis. Time to death was measured from the time of
21 the first surgery in metachronous diseases. The median survival was 57.5 months [1.6-152.9].
22 In univariate analysis, OS was significantly associated with nodal status ($p=0.0001$), vascular
23 tumor emboli ($p=0.008$), *EGFR* mutations ($p=0.03$) and Martini classification ($p=0.01$) (Table
24 4, Supplementary-Figure 4). Survival did not differ significantly between MPLA and IPM
25 (molecular, histological and combined histo-molecular classification) (Table 4). Median
26 survival times for MPLA and IPM patients, using our histo-molecular classification, were
27 62.5 months [range: 1.6-152.9] and 56.5 months [range: 6.3-104.5], respectively. In
28 multivariate analysis, *EGFR* status ($p=0.02$) and nodal status ($p=0.004$) remained independent
29 prognostic factors.

30

31

32

1 Discussion

2

3 In the era of precision oncology, the context of multiple lung nodules has to be revisited.
4 Here, we proposed an algorithm to classify multiple lung adenocarcinomas according to histo-
5 molecular data to accurately define tumor stage and adapt therapeutics. Surgical samples from
6 the patients of our study were analyzed at histological and molecular levels, and compared to
7 Martini's classification. The studied population has similar histology and molecular profiles
8 to that already described in adenocarcinoma regardless of the presence of multiple nodules.
9 Interestingly, only 11 wild type paired tumors (9% of all patients) were found and therefore
10 inconclusive for molecular classification using a NGS lung panel, whereas, up to 34 patients
11 (28%) would have been classified "undetermined" if we had only looked at the 5 theranostic
12 genes (*KRAS*, *EGFR*, *ERBB2*, *BRAF*, *MET*). In a previous study¹⁹ analyzing only 4 drivers
13 (*KRAS*, *EGFR*, *BRAF*, *ALK*), the frequency of inconclusive cases was 24%. The concordance
14 between histological and molecular classification was moderate with a kappa score of 0.55, in
15 agreement with our finding. This moderate agreement level is mainly due to frequent patterns
16 in both classifications that are not robust classifiers: tubular, papillary and solid pattern in
17 IPM-histology/MPLA-molecular and *KRAS* mutations p.G12X in MPLA-histology/IPM-
18 molecular.

19 Molecular classification is based on the presence of a common driver as a marker of similar
20 origin. This assumption may be discussed, particularly when a frequent driver alteration is
21 used as a unique classifier. Indeed in our study, 6 patients had paired tumors with *KRAS*
22 (p.G12C or p.G12V) or *EGFR* (p.L858R) mutations but we reclassified them as MPLA
23 thanks to differences in the histological pattern. In smokers, tobacco injury may favor the
24 development of multiple de novo primary cancers with independent *KRAS* mutations. This is
25 in line with our observation of a significant association between *KRAS* mutations and
26 MPLA.³³ In contrast, *EGFR* mutations were statistically related to IPM, suggesting that tumor
27 cells may spread locally and/or form local clonal metastasis, which is already known.³⁴ The
28 *TP53* gene mutation was an interesting discriminating factor due to its frequent involvement
29 in lung cancer and to the absence of hotspot variants.^{16,17,35-38} *TP53* mutation was the only
30 classifier in 4 IPM patients and in 6 MPLA patients. However, *TP53* gene mutations were
31 also reported to be implicated in clonal evolution within tumors.³⁵ In our analysis, among the
32 14 metastatic tumors with additional molecular alterations, 4 were *TP53* mutated. Similarly,
33 gene amplifications may be heterogeneous and acquired during tumor progression.²³ In our

1 study, we detected gene amplifications in 8 IPM patients among which 4 were present in
2 tumor pairs. Concordant gene amplifications could be an additional argument to diagnose
3 tumors as IPM. In case of gene amplification discordance, as seen in 4 IPM pairs, the
4 amplification was probably acquired during progression. Finally, rare alterations represented
5 an interesting and an additional way to differentiate IPM from MPLA, and we classified as
6 IPM 4 tumors harboring *BRAF*, *NRAS*, *ERBB2* or *ERBB4* mutations.

7 Morphological assessment of architectural pattern is mostly contributive when the
8 predominant patterns are rare, but tubular, papillary or solid patterns are so frequent that they
9 can be observed even in different primary tumors, therefore it impairs some histological
10 classification. Interestingly, different predominant pattern paired-tumors turned out to be IPM
11 in 3 patients (Table 2), strengthening the fact that molecular assessment is mandatory to
12 distinguish MPLA to IPM. We used standard of care methods for histological diagnosis and
13 for molecular profiling in order to propose a “real life algorithm” for therapeutic guidance. In
14 contrast to other publications which focused either on genetics or morphology,^{25,26}
15 comparison of histo-molecular classification to Martini’s showed poor agreement and may
16 indicate the limits of Martini classification in several situations, as previously reported.^{39,40}
17 Indeed, clinical data such as nodal involvement has a strong impact on classifying IPM
18 samples in Martini’s. Nevertheless, the lymph node status was not consistently helpful to
19 classify MPLA. Here, we showed that 20 MPLA patients have node invasion and 13 IPM are
20 N0. Moreover, like previous studies⁴¹ we showed, that metachronous cancers could be IPM
21 even when relapses occurred after 2 years, but never after 5 years.

22 Survival analysis showed that node and vascular involvements and *EGFR* mutations were
23 statistically linked to OS. There are discrepancies concerning the prognostic value of *EGFR*
24 mutation in patients with resected lung adenocarcinoma.⁴² In our study, we analyzed a subset
25 of operated patients having two lung nodules with *EGFR* mutations and this specific situation
26 has not been clearly analyzed previously. However, one limitation of our study is the
27 interpretation of the positive prognostic value of *EGFR* mutated tumors. Indeed, we found
28 that among the 13 patients with *EGFR* mutated tumors with available clinical data, 6 received
29 post-operative EGFR-TKI. This treatment may interfere with final *EGFR* mutations
30 prognostic even if there is no OS significant difference for patients treated or not with EGFR-
31 TKI (p=0.8). In contrast to Martini’s classification, which relies on nodal status, in our cohort
32 neither histological nor molecular nor combined histo-molecular classifications were
33 associated with OS. This deserves some discussion. Indeed, our results suggest that patients

1 with surgical resection for multifocal MPLA or IPM tumors have similar prognosis and that
2 OS is mainly impacted by nodal status. This is now referred to as “oligo-metastatic” disease
3 with patient reported to have similar survival as non-metastatic ones.⁴³⁻⁵⁰ It may also reflect a
4 bias in our study because only highly selected patients underwent surgical resection of
5 multiple pulmonary nodules (PS 0-1). In agreement with others, we did not find any
6 differences of OS between metachronous and synchronous tumors.⁷ In a previous publication,
7 Roepman *et al* showed a trend toward improved prognosis in MPLA patients but they did not
8 mention disease stage or node involvement, and the study analyzed squamous cell carcinoma
9 and adenocarcinoma histology together which may modify the survival.²⁶
10 Our study shows that molecular screening leads to an increased detection of MPLA compared
11 to previous classifications mainly relying on histology, and could help to better classify
12 patients with multiple lung tumors. When tumors-paired are classified as IPM in absence of
13 lymph node metastasis, thus T3N0 or T4N0 according to the location, patients should receive
14 an adjuvant treatment which is not the case when tumors are classified as MPLA tumors (T1-
15 2N0). But large prospective studies are needed to assess the clinical value of this
16 classification.

17

18 **Conclusion**

19 Our results showed that in standard care settings, our combined histo-molecular algorithm
20 allows classification of multiple lung adenocarcinomas as IPM or MPLA. The absence of
21 significant survival impact suggests that surgery is probably the best option when possible,
22 even in oligo-metastatic situation. Classification could find its major application in post-
23 surgical adjuvant treatment decisions with the assumption that some MPLA patients may not
24 benefit from adjuvant chemo-radiotherapy and that some IPM patients may benefit from
25 surgery and adjuvant therapy.

26

27

28

29

30

31

32

1 **Author contributions:**

2 H.B. and D. D. are guarantors of the article.

3 H.B. and D. D. contributed to conception, design and leading the work;

4 A. M.-L., M. B., H. B., D. D., J. B. and M. A. contributed to data analysis and interpretation;

5 A. M.-L., M. B., D. D. and H. B. contributed to the drafting of the manuscript and to article
6 redaction;

7 A. M.-L., M. B., M. A., A. J. -V, M. Z., J. B., Y. V., C. L., I. C., J.-F. R., L. F., P. L.-P and R.

8 H. contributed to data collection;

9 All authors approved the final manuscript.

10

1 **References**

- 2 1. Carey FA, Donnelly SC, Walker WS, Cameron EW, Lamb D. Synchronous primary
3 lung cancers: prevalence in surgical material and clinical implications. *Thorax*.
4 1993;48(4):344-346. <http://www.ncbi.nlm.nih.gov/pubmed/8390108>. Accessed July 16,
5 2018.
- 6 2. Girard N, Ostrovnaya I, Lau C, et al. Genomic and mutational profiling to assess clonal
7 relationships between multiple non-small cell lung cancers. *Clin Cancer Res*.
8 2009;15(16):5184-5190. doi:10.1158/1078-0432.CCR-09-0594.
- 9 3. Girard N, Deshpande C, Lau C, et al. Comprehensive Histologic Assessment Helps to
10 Differentiate Multiple Lung Primary Nonsmall Cell Carcinomas From Metastases. *Am*
11 *J Surg Pathol*. 2009;33(12):1752-1764. doi:10.1097/PAS.0b013e3181b8cf03.
- 12 4. Tucker MA, Murray N, Shaw EG, et al. Second primary cancers related to smoking
13 and treatment of small-cell lung cancer. Lung Cancer Working Cadre. *J Natl Cancer*
14 *Inst*. 1997;89(23):1782-1788. <http://www.ncbi.nlm.nih.gov/pubmed/9392619>.
15 Accessed July 16, 2018.
- 16 5. Arai J, Tsuchiya T, Oikawa M, et al. Clinical and molecular analysis of synchronous
17 double lung cancers. *Lung Cancer*. 2012;77(2):281-287.
18 doi:10.1016/j.lungcan.2012.04.003.
- 19 6. Ono K, Sugio K, Uramoto H, et al. Discrimination of multiple primary lung cancers
20 from intrapulmonary metastasis based on the expression of four cancer-related proteins.
21 *Cancer*. 2009;115(15):3489-3500. doi:10.1002/cncr.24382.
- 22 7. Jiang L, He J, Shi X, et al. Prognosis of synchronous and metachronous multiple
23 primary lung cancers: Systematic review and meta-analysis. *Lung Cancer*.
24 2015;87(3):303-310. doi:10.1016/j.lungcan.2014.12.013.
- 25 8. Martini N, Melamed MR. Multiple primary lung cancers. *J Thorac Cardiovasc Surg*.
26 1975;70(4):606-612. <http://www.ncbi.nlm.nih.gov/pubmed/170482>. Accessed July 16,
27 2018.
- 28 9. Mansuet-Lupo A, Bobbio A, Blons H, et al. The new histologic classification of lung
29 primary adenocarcinoma subtypes is a reliable prognostic marker and identifies tumors
30 with different mutation status: the experience of a French cohort. *Chest*.
31 2014;146(3):633-643. doi:10.1378/chest.13-2499.
- 32 10. Warth A, Muley T, Meister M, et al. The novel histologic International Association for
33 the Study of Lung Cancer/American Thoracic Society/European Respiratory Society

- 1 classification system of lung adenocarcinoma is a stage-independent predictor of
2 survival. *J Clin Oncol.* 2012;30(13):1438-1446. doi:10.1200/JCO.2011.37.2185.
- 3 11. Travis WD, Brambilla E, Burke AP, Marx A, Nicholson AG. *WHO Classification of*
4 *Tumours of the Lung, Pleura, Thymus and Heart. Fourth Edition.* World Health
5 Organization; 2015. doi:10.1097/JTO.0000000000000630.
- 6 12. Goldstraw P, Crowley J, Chansky K, et al. The IASLC Lung Cancer Staging Project:
7 proposals for the revision of the TNM stage groupings in the forthcoming (seventh)
8 edition of the TNM Classification of malignant tumours. *J Thorac Oncol.*
9 2007;2(8):706-714. doi:10.1097/JTO.0b013e31812f3c1a.
- 10 13. Nicholson AG, Chansky K, Crowley J, et al. The International Association for the
11 Study of Lung Cancer Lung Cancer Staging Project: Proposals for the Revision of the
12 Clinical and Pathologic Staging of Small Cell Lung Cancer in the Forthcoming Eighth
13 Edition of the TNM Classification for Lung Cancer. *J Thorac Oncol.* 2016;11(3):300-
14 311. doi:10.1016/j.jtho.2015.10.008.
- 15 14. Park E, Ahn S, Kim H, et al. Targeted Sequencing Analysis of Pulmonary
16 Adenocarcinoma with Multiple Synchronous Ground-Glass/Lepidic Nodules. *J Thorac*
17 *Oncol.* 2018;13(11):1776-1783. doi:10.1016/j.jtho.2018.07.097.
- 18 15. Dacic S, Ionescu DN, Finkelstein S, Yousem SA. Patterns of allelic loss of
19 synchronous adenocarcinomas of the lung. *Am J Surg Pathol.* 2005;29(7):897-902.
20 <http://www.ncbi.nlm.nih.gov/pubmed/15958854>. Accessed July 17, 2018.
- 21 16. Wang X, Wang M, MacLennan GT, et al. Evidence for Common Clonal Origin of
22 Multifocal Lung Cancers. *JNCI J Natl Cancer Inst.* 2009;101(8):560-570.
23 doi:10.1093/jnci/djp054.
- 24 17. van der Sijp JRM, van Meerbeeck JPAM, Maat APWM, et al. Determination of the
25 molecular relationship between multiple tumors within one patient is of clinical
26 importance. *J Clin Oncol.* 2002;20(4):1105-1114. doi:10.1200/JCO.2002.20.4.1105.
- 27 18. Murphy SJ, Aubry M-C, Harris FR, et al. Identification of independent primary tumors
28 and intrapulmonary metastases using DNA rearrangements in non-small-cell lung
29 cancer. *J Clin Oncol.* 2014;32(36):4050-4058. doi:10.1200/JCO.2014.56.7644.
- 30 19. Asmar R, Sonett JR, Singh G, Mansukhani MM, Borczuk AC. Use of Oncogenic
31 Driver Mutations in Staging of Multiple Primary Lung Carcinomas: A Single-Center
32 Experience. *J Thorac Oncol.* 2017;12(10):1524-1535. doi:10.1016/j.jtho.2017.06.012.
- 33 20. Mansuet-Lupo A, Zouiti F, Alifano M, et al. Intratumoral distribution of EGFR

- 1 mutations and copy number in metastatic lung cancer, what impact on the initial
2 molecular diagnosis? *J Transl Med.* 2014;12(1):131. doi:10.1186/1479-5876-12-131.
- 3 21. Zhang J, Fujimoto J, Zhang J, et al. Intratumor heterogeneity in localized lung
4 adenocarcinomas delineated by multiregion sequencing. *Science.* 2014;346(6206):256-
5 259. doi:10.1126/science.1256930.
- 6 22. de Bruin EC, McGranahan N, Mitter R, et al. Spatial and temporal diversity in genomic
7 instability processes defines lung cancer evolution. *Science.* 2014;346(6206):251-256.
8 doi:10.1126/science.1253462.
- 9 23. Yatabe Y, Matsuo K, Mitsudomi T. Heterogeneous distribution of EGFR mutations is
10 extremely rare in lung adenocarcinoma. *J Clin Oncol.* 2011;29(22):2972-2977.
11 doi:10.1200/JCO.2010.33.3906.
- 12 24. Goto T, Hirotsu Y, Mochizuki H, et al. Mutational analysis of multiple lung cancers:
13 Discrimination between primary and metastatic lung cancers by genomic profile.
14 *Oncotarget.* 2017;8(19):31133-31143. doi:10.18632/oncotarget.16096.
- 15 25. Patel SB, Kadi W, Walts AE, et al. Next-Generation Sequencing: A Novel Approach to
16 Distinguish Multifocal Primary Lung Adenocarcinomas from Intrapulmonary
17 Metastases. *J Mol Diagn.* 2017;19(6):870-880. doi:10.1016/j.jmoldx.2017.07.006.
- 18 26. Roepman P, Ten Heuvel A, Scheidel KC, et al. Added Value of 50-Gene Panel
19 Sequencing to Distinguish Multiple Primary Lung Cancers from Pulmonary
20 Metastases: A Systematic Investigation. *J Mol Diagn.* 2018;20(4):436-445.
21 doi:10.1016/j.jmoldx.2018.02.007.
- 22 27. Travis WD, Brambilla E, Nicholson AG, et al. The 2015 World Health Organization
23 Classification of Lung Tumors: Impact of Genetic, Clinical and Radiologic Advances
24 Since the 2004 Classification. *J Thorac Oncol.* 2015;10(9):1243-1260.
25 doi:10.1097/JTO.0000000000000630.
- 26 28. Russell PA, Wainer Z, Wright GM, Daniels M, Conron M, Williams RA. Does lung
27 adenocarcinoma subtype predict patient survival?: A clinicopathologic study based on
28 the new International Association for the Study of Lung Cancer/American Thoracic
29 Society/European Respiratory Society international multidisciplinary lung adeno. *J
30 Thorac Oncol.* 2011;6(9):1496-1504. doi:10.1097/JTO.0b013e318221f701.
- 31 29. Legras A, Barritault M, Tallet A, et al. Validity of Targeted Next-Generation
32 Sequencing in Routine Care for Identifying Clinically Relevant Molecular Profiles in
33 Non-Small-Cell Lung Cancer. *J Mol Diagnostics.* May 2018.

- 1 doi:10.1016/j.jmoldx.2018.04.002.
- 2 30. Harris PA, Taylor R, Thielke R, Payne J, Gonzalez N, Conde JG. Research electronic
3 data capture (REDCap)--a metadata-driven methodology and workflow process for
4 providing translational research informatics support. *J Biomed Inform.* 2009;42(2):377-
5 381. doi:10.1016/j.jbi.2008.08.010.
- 6 31. Cohen J. A Coefficient of Agreement for Nominal Scales. *Educ Psychol Meas.*
7 1960;20(1):37-46. doi:10.1177/001316446002000104.
- 8 32. R Core Team. *R: A Language and Environment for Statistical Computing.* Vienna,
9 Austria.; 2017.
- 10 33. Tam IYS, Chung LP, Suen WS, et al. Distinct epidermal growth factor receptor and
11 KRAS mutation patterns in non-small cell lung cancer patients with different tobacco
12 exposure and clinicopathologic features. *Clin Cancer Res.* 2006;12(5):1647-1653.
13 doi:10.1158/1078-0432.CCR-05-1981.
- 14 34. Dotto GP. Multifocal epithelial tumors and field cancerization: stroma as a primary
15 determinant. *J Clin Invest.* 2014;124(4):1446-1453. doi:10.1172/JCI72589.
- 16 35. Mitsudomi T, Yatabe Y, Koshikawa T, et al. Mutations of the P53 tumor suppressor
17 gene as clonal marker for multiple primary lung cancers. *J Thorac Cardiovasc Surg.*
18 1997;114(3):354-360. doi:10.1016/S0022-5223(97)70180-6.
- 19 36. van Rens MTM, Eijken EJE, Elbers JRJ, Lammers J-WJ, Tilanus MGJ, Slootweg PJ.
20 p53 mutation analysis for definite diagnosis of multiple primary lung carcinoma.
21 *Cancer.* 2002;94(1):188-196. doi:10.1002/cncr.10001.
- 22 37. Matsuzoe D, Hideshima T, Ohshima K, Kawahara K, Shirakusa T, Kimura A.
23 Discrimination of double primary lung cancer from intrapulmonary metastasis by p53
24 gene mutation. *Br J Cancer.* 1999;79(9-10):1549-1552. doi:10.1038/sj.bjc.6690247.
- 25 38. Chang Y-L, Wu C-T, Lin S-C, Hsiao C-F, Jou Y-S, Lee Y-C. Clonality and prognostic
26 implications of p53 and epidermal growth factor receptor somatic aberrations in
27 multiple primary lung cancers. *Clin Cancer Res.* 2007;13(1):52-58. doi:10.1158/1078-
28 0432.CCR-06-1743.
- 29 39. Girard N, Deshpande C, Azzoli CG, et al. Use of epidermal growth factor
30 receptor/Kirsten rat sarcoma 2 viral oncogene homolog mutation testing to define
31 clonal relationships among multiple lung adenocarcinomas: comparison with clinical
32 guidelines. *Chest.* 2010;137(1):46-52. doi:10.1378/chest.09-0325.
- 33 40. Leuzzi G, Cesario A, Chiappetta M, et al. N2 nodal involvement in multiple primary

- 1 lung cancer: really an exclusion criterion? *Chest*. 2013;144(2):714-715.
2 doi:10.1378/chest.13-0758.
- 3 41. Detterbeck FC, Franklin WA, Nicholson AG, et al. The IASLC Lung Cancer Staging
4 Project: Background Data and Proposed Criteria to Distinguish Separate Primary Lung
5 Cancers from Metastatic Foci in Patients with Two Lung Tumors in the Forthcoming
6 Eighth Edition of the TNM Classification for Lung Cancer. *J Thorac Oncol*.
7 2016;11(5):651-665. doi:10.1016/j.jtho.2016.01.025.
- 8 42. Fang S, Wang Z. EGFR mutations as a prognostic and predictive marker in non-small-
9 cell lung cancer. *Drug Des Devel Ther*. 2014;8:1595-1611.
10 doi:10.2147/DDDT.S69690.
- 11 43. Ashworth AB, Senan S, Palma DA, et al. An individual patient data metaanalysis of
12 outcomes and prognostic factors after treatment of oligometastatic non-small-cell lung
13 cancer. *Clin Lung Cancer*. 2014;15(5):346-355. doi:10.1016/j.clcc.2014.04.003.
- 14 44. Congedo MT, Cesario A, Lococo F, et al. Surgery for oligometastatic non-small cell
15 lung cancer: long-term results from a single center experience. *J Thorac Cardiovasc*
16 *Surg*. 2012;144(2):444-452. doi:10.1016/j.jtcvs.2012.05.051.
- 17 45. He J, Li Y, An J, Hu L, Zhang J. Surgical treatment in non-small cell lung cancer with
18 pulmonary oligometastasis. *World J Surg Oncol*. 2017;15(1):36. doi:10.1186/s12957-
19 017-1105-8.
- 20 46. Kozower BD, Lerner JM, Detterbeck FC, Jones DR. Special treatment issues in non-
21 small cell lung cancer: Diagnosis and management of lung cancer, 3rd ed: American
22 College of Chest Physicians evidence-based clinical practice guidelines. *Chest*.
23 2013;143(5 Suppl):e369S-e399S. doi:10.1378/chest.12-2362.
- 24 47. Yang J, Liu M, Fan J, et al. Surgical treatment of metachronous second primary lung
25 cancer. *Ann Thorac Surg*. 2014;98(4):1192-1198.
26 doi:10.1016/j.athoracsur.2014.05.050.
- 27 48. Yang H, Sun Y, Yao F, et al. Surgical Therapy for Bilateral Multiple Primary Lung
28 Cancer. *Ann Thorac Surg*. 2016;101(3):1145-1152.
29 doi:10.1016/j.athoracsur.2015.09.028.
- 30 49. Koezuka S, Hata Y, Otsuka H, et al. Metachronous second primary lung cancer
31 surgically treated five years or more after the initial surgery. *Mol Clin Oncol*.
32 2015;3(5):1025-1028. doi:10.3892/mco.2015.594.
- 33 50. Hamaji M, Allen MS, Cassivi SD, et al. Surgical treatment of metachronous second

1 primary lung cancer after complete resection of non-small cell lung cancer. *J Thorac*
2 *Cardiovasc Surg.* 2013;145(3):683-90; discussion 690-1.
3 doi:10.1016/j.jtcvs.2012.12.051.
4

1 Tables

| | Variable | N (%) |
|--------------------------|--|--------------|
| Patients (N=120) | Sex | |
| | Female | 49 (41%) |
| | Male | 71 (59%) |
| | Age at first resection, mean [range] | 63.5 [40-85] |
| | Smoking history | |
| | No | 12 (10%) |
| | Yes | 105 (87%) |
| | Unknown | 3 (3%) |
| | Number of patients with different tumor chronology | |
| | Synchronous | 86 (72%) |
| | Metachronous | 34 (28%) |
| | Interval between resections, (months) mean [range] | |
| | Synchronous tumors | 0.3 [0-10.9] |
| | Metachronous tumors | 26 [6-80,3] |
| | Distribution of tumors | |
| Ipsilateral (same lobe) | 50 (42%) | |
| Ipsilateral (other lobe) | 45 (37%) | |
| Contralateral | 25 (21%) | |
| Tumors (N=240) | Type of resection | |
| | Non-anatomic resection (wedge resection) | 51 (21%) |
| | Segmentectomy | 60 (25%) |
| | Lobectomy | 100 (42%) |
| | Extended lobectomy (bilobectomy and pneumonectomy) | 29 (12%) |
| | Side | |
| | Right | 148 (62%) |
| | Left | 92 (38%) |
| | Tumor size (cm) median [range] | 1.8 [0.2-11] |
| | ≤ 3 | 180 |
| | 3-5 | 41 |
| | 5-7 | 12 |
| | > 7 | 7 |
| | Adenocarcinoma subtype | |
| | Low grade | |
| | AIS | 2 (<1%) |
| | MIA | 10 (4%) |
| | Intermediate grade | |
| | Lepidic | 7 (3%) |
| | Tubular | 91 (38%) |
| | Papillary | 59 (25%) |
| | High grade | |
| | Solid | 48 (20%) |
| Mucinous | 11 (4.5%) | |
| Cribriform | 11 (4.5%) | |
| Micropapillary | 1 (<1%) | |
| Nodal status | | |
| N0 | 146 (60%) | |
| N1 | 30 (13%) | |
| N1 + N2 | 19 (8%) | |
| N2 without N1 | 15 (6%) | |
| Nx | 30 (13%) | |

1 Table 1: Clinical and histological characteristics of 120 patients operated for multiple lung
2 adenocarcinomas.

3 Lung adenocarcinomas are classified into 3 histo-prognostic grades according to the 2015
4 WHO classification. Metachronous tumors were defined by a second tumor occurring at least 6
5 months after the first one. AIS: adenocarcinoma in situ; MIA: minimally invasive
6 adenocarcinoma; Nx: regional lymph nodes not assessed.

7
8
9

| T | Histological pattern (predom.) | Molecular alterations | N | Martini class. | Chronology (m) and locations | Final class. | Surv. (m) |
|--------------------------------------|--------------------------------|--|----|----------------|------------------------------|--------------|-----------|
| MPLA histology-IPM molecular (N=10) | | | | | | | |
| T1 | MIA | KRAS p.G12C | N0 | | S | | Alive |
| T2 | Tubular | KRAS p.G12C | N0 | MPLA | I (other lobe) | MPLA | (81) |
| T1 | Papillary | EGFR p.L858R | N0 | | S | | Alive |
| T2 | tubular | EGFR p.L858R | N0 | MPLA | C | MPLA | (79) |
| T1 | solid | KRAS p.G12C // TP53 p.R337L | N0 | | S | | Dead |
| T2 | mucinous | KRAS p.G12C | N0 | MPLA | I (other lobe) | MPLA | (1) |
| T1 | papillary | KRAS p.G12V // CTNNB1 p.S37C | N0 | | S | | Alive |
| T2 | MIA | KRAS p.G12V | N0 | MPLA | I (same lobe) | MPLA | (63) |
| T1 | solid | KRAS p.G12C // TP53 p.G245C | N2 | | M (70) | | Alive |
| T2 | tubular | KRAS p.G12C // STK11 p.M51fs | Nx | MPLA | C | MPLA | (124) |
| T1 | papillary | KRAS p.G12C | N0 | | S | | Dead |
| T2 | tubular | KRAS p.G12C | N0 | IPM | I (same lobe) | MPLA | (58) |
| T1 | solid (CC) | STK11 p.Y60* // ampl KRAS | N0 | | M (20) | | Dead |
| T2 | solid | STK11 p.Y60* // ampl KRAS | N1 | IPM | I (other lobe) | IPM | (43) |
| T1 | papillary | TP53 p.Y236C // PTEN c.635-99G>A // ampl ERBB2 | N0 | | S | | Dead |
| T2 | solid | TP53 p.Y236C // PTEN c.635-99G>A | N1 | IPM | I (same lobe) | IPM | (58) |
| T1 | tubular | KRAS p.G12D // TP53 p.R273L | N0 | | M (13) | | Dead |
| T2 | solid | KRAS p.G12D // TP53 p.R273L // DDR2 p.E516Q | N1 | IPM | I (same lobe) | IPM | (31) |
| T1 | papillary | BRAF p.G469A // TP53 p.R273L // ERBB2 p.G882A | Nx | | S | | Alive |
| T2 | solid | BRAF p.G469A // TP53 p.R273L | Nx | IPM | I (same lobe) | IPM | (51) |
| IPM histology-MPLA molecular (N =20) | | | | | | | |
| T1 | tubular | KRAS p.G13C | Nx | | S | | Alive |
| T2 | tubular | WT | Nx | MPLA | C | MPLA | (78) |
| T1 | solid | STK11 p.M51fs // TP53 p.V157F // TP53 p.V272L | N0 | | M (20) | | Alive |
| T2 | solid | WT | Nx | MPLA | C | MPLA | (96) |
| T1 | solid | NRAS p.Q61L | N0 | | M (62) | | Alive |
| T2 | solid | KRAS p.G12C // TP53 p.R249S | Nx | MPLA | I (other lobe) | MPLA | (139) |
| T1 | solid (CC) | KRAS p.G13C | N0 | | M (52) | | Alive |
| T2 | tubular (CC) | KRAS p.G12C | Nx | MPLA | I (other lobe) | MPLA | (121) |
| T1 | solid | TP53 p.E204* | N0 | | S | | Dead |
| T2 | solid | PIK3CA p.E545K // FBXW7 p.N592S | N0 | MPLA | I (other lobe) | MPLA | (17) |
| T1 | tubular | KRAS p.G12A // TP53 p.M237I | N0 | | S | | Alive |
| T2 | tubular | EGFR p.N771_P772insNV // TP53 p.G302fs | N0 | MPLA | I (other lobe) | MPLA | (64) |
| T1 | mucinous | KRAS p.G12V | N0 | | S | | Alive |
| T2 | mucinous | TP53 p.H214L | N0 | MPLA | C | MPLA | (75) |

| | | | | | | | |
|----|-----------|---|----|------|----------------|------|-------|
| T1 | tubular | BRAF G466V // TP53 p.G154V // TP53 p.Y236C | Nx | | S | | Alive |
| T2 | tubular | KRAS p.G12R // TP53 p.M246V | Nx | MPLA | I (other lobe) | MPLA | (60) |
| T3 | papillary | KRAS p.G12C | N0 | | S | | Alive |
| T4 | papillary | KRAS p.Q61H | N0 | MPLA | I (other lobe) | MPLA | (57) |
| T1 | papillary | KRAS p.G12V | Nx | | S | | Alive |
| T2 | papillary | KRAS p.G12C | Nx | MPLA | I (other lobe) | MPLA | (57) |
| T1 | solid | KRAS p.G12V // STK11 p.P281fs | N0 | | S | | Alive |
| T2 | solid | BRAF p.V600E // ERBB4 p.G599W // TP53 p.G266V | N0 | MPLA | I (other lobe) | MPLA | (51) |
| T1 | tubular | ampl PIK3CA | N0 | | S | | Dead |
| T2 | tubular | KRAS p.G12D | N0 | IPM | I (same lobe) | MPLA | (22) |
| T1 | papillary | KRAS p.G12C | N1 | | S | | Dead |
| T2 | papillary | SMAD4 p.G352R | N1 | IPM | I (other lobe) | MPLA | (7) |
| T1 | solid | KRAS p.G12A | N2 | | S | | Dead |
| T2 | solid | WT | N2 | IPM | I (other lobe) | MPLA | (2) |
| T1 | tubular | TP53 p.D281Y | Nx | | S | | Dead |
| T2 | tubular | TP53 p.H179L | Nx | IPM | I (same lobe) | MPLA | (17) |
| T1 | papillary | KRAS p.G12V | N0 | | S | | Alive |
| T2 | papillary | STK11 p.Y49_L50fs | N0 | IPM | I (same lobe) | MPLA | (76) |
| T1 | tubular | KRAS p.G12C | N1 | | M (29) | | Dead |
| T2 | tubular | KRAS p.G12A | N1 | IPM | C | MPLA | (50) |
| T1 | tubular | EGFR p.K745_A750del // CTNNB1 p.S37C | N1 | | S | | Alive |
| T2 | tubular | EGFR p.L858R | N1 | IPM | I (other lobe) | MPLA | (33) |
| T1 | papillary | KRAS p.G12V // DDR2 p.R105C | N0 | | M (19) | | Alive |
| T2 | papillary | WT | N1 | IPM | C | MPLA | (55) |
| T1 | papillary | TP53 p.G245V | N2 | | S | | Dead |
| T2 | papillary | TP53 p.G105V // KRAS p.G12C // SMAD4 p.E193D | N2 | IPM | I (other lobe) | MPLA | (33) |

1
2 Table 2: Final classification of the 30 discordant patients according to the proposed algorithm
3 (Figure 1). Ampl: amplification; C: contralateral; CC: clear cells; class: classification; fs:
4 frameshift; IPM: intra pulmonary metastasis; MPLA: multiple primary lung adenocarcinomas;
5 MIA: minimally invasive adenocarcinoma; M: metachronous (months), m: month; N: Nodal
6 status; predom: predominant; S: synchronous; Surv: survival; Tumor locations (I: ipsilateral,
7 C:contralateral); WT: wild type.

8
9

| Variables | IPM (N=33) | MPLA (N=78) | p-value |
|---|-------------------|--------------------|----------------|
| Sex | | | |
| Female | 12 | 36 | 0.4 |
| Male | 21 | 42 | |
| Age at first resection, median [range] (years) | 64 [40-82] | 62 [45-85] | 0.7 |
| Smoking history | | | |
| Yes | 24 | 73 | 0.007 |
| No | 9 | 5 | |
| Tumors chronology | | | |
| Synchronous tumors | 24 | 55 | 0.2 |
| Metachronous tumors (< 5 years) | 9 | 16 | |
| Metachronous tumors (> 5 years) | 0 | 7 | |
| Interval between resections, median [range] (month) | 21.1 [5.9-45.9] | 35.7 [7.2-79.2] | 0.03 |
| Type of resection | | | |
| Sublobar resection (both tumors) | 11 | 29 | 0.7 |
| Supralobar resection (at least one tumor) | 22 | 49 | |
| Side | | | |
| Ipsilateral (same lobe) tumors | 23 | 22 | 0.0001 |
| Ipsilateral (other lobe) tumors | 8 | 32 | |
| Contralateral tumors | 2 | 24 | |
| Tumor size median [range] (cm) | 2 [0.1-11] | 1.6 [0.1-10] | 0.07 |
| Tumor grade | | | |
| Low or intermediate grade (both tumors) | 21 | 46 | 0.8 |
| High grade (at least one tumor) | 12 | 32 | |
| Node involvement | | | |
| N0 or Nx (both tumors) | 17 | 57 | 0.03 |
| N+ (at least one tumor) | 16 | 21 | |
| Pleural invasion | | | |
| No (both tumors) | 11 | 36 | 0.2 |
| Yes (at least one tumor) | 22 | 42 | |
| Vascular involvement | | | |
| No (both tumors) | 5 | 26 | 0.09 |
| Yes (at least one tumor) | 28 | 52 | |
| EGFR status | | | |
| WT (both tumors) | 23 | 69 | 0.03 |
| Mut (at least one tumor) | 10 | 9 | |
| KRAS status | | | |

| | | | |
|--------------------------|----|----|----------------|
| WT (both tumors) | 24 | 24 | 0.00005 |
| Mut (at least one tumor) | 9 | 54 | |

1
2 Table 3: Clinical, pathologic and molecular characteristics of 111 patients with multiple lung
3 adenocarcinomas based on final classification (histo-molecular). Among the 120 patients
4 included, 11 were wild type on both tumors and among the later 2 were finally reclassified as
5 MPLA since one of their tumors was a minimally invasive adenocarcinoma), MPLA: multiple
6 primary lung adenocarcinomas; IPM: intra pulmonary metastasis. Significant p-value < 0.05 are
7 highlighted in bold.

8
9
10

| Variable | Univariate analysis | | | Multivariate analysis | |
|---|--|---------------|----------------------|-----------------------|----------------------|
| | estimate of survival at 5 years [95% CI] | p-value | HR [95% CI] | p-value | HR [95% CI] |
| Age at first resection * | | 0.08 | 1 [1-1.1] | | |
| Smoking history | | | | | |
| No | 71% [51%-99%] | 0.1 | 2.1 [0.8-5.8] | | |
| Yes | 55% [46%-66%] | | | | |
| Tumors chronology | | | | | |
| Metachronous | 66% [52%-84%] | 0.3 | 1.4 [0.8-2.5] | | |
| Synchronous | 54% [44%-66%] | | | | |
| Interval between resections * | | 0.08 | 0.9 [0.7-1] | | |
| Location | | | | | |
| Different lobes | 63% [53%-75%] | 0.2 | 1.4 [0.8-2.5] | | |
| Same lobe | 47% [34%-65%] | | | | |
| Patient's largest tumor size * | | 0.6 | 1 [0.98-1] | | |
| Grade status | | | | | |
| Low or Intermediate Grade (both tumors) | 62% [51%-75%] | 0.1 | 1.5 [0.9-2.6] | | |
| High Grade (at least one tumor) | 50% [37%-67%] | | | | |
| Nodal status | | | | | |
| N0 or Nx | 69% [59%-80%] | 0.0001 | 2.7 [1.6-4.5] | 0.004 | 2.5 [1.4-5] |
| N+ | 36% [24%-54%] | | | | |
| Pleural invasion | | | | | |
| No (both tumors) | 61% [49%-77%] | 0.5 | 1.2 [0.7-2.1] | | |
| Yes (at least one tumor) | 54% [43%-67%] | | | | |
| Vascular involvement | | | | | |
| No (both tumors) | 76% [62%-93%] | 0.008 | 2.5 [1.2-5.2] | 0.2 | 1.8 [0.8-3.9] |
| Yes (at least one tumor) | 50% [40%-62%] | | | | |
| EGFR status | | | | | |
| WT (both tumors) | 52% [43%-63%] | 0.03 | 0.3 [0.1-0.9] | 0.02 | 0.3 [0.1-0.8] |
| Mut (at least one tumor) | 83% [67%-100%] | | | | |
| KRAS status | | | | | |
| WT (both tumors) | 58% [46%-73%] | 0.9 | 1 [0.6-1.6] | | |
| Mut (at least one tumor) | 57% [45%-71%] | | | | |
| TP53 status | | | | | |
| WT (both tumors) | 55% [44%-69%] | 0.4 | 0.8 [0.5-1.3] | | |
| Mut (at least one tumor) | 60% [48%-75%] | | | | |
| Histological classification | | | | | |
| MPLA | 59% [48%-72%] | 0.9 | 1 [0.6-1.8] | | |
| IPM | 56% [44%-71%] | | | | |
| Martini classification | | | | | |
| MPLA | 70% [59%-82%] | 0.01 | 2 [1.1-3.4] | | |
| IPM | 43% [32%-59%] | | | | |
| Molecular classification | | | | | |
| MPLA | 61% [51%-74%] | 1 | 1 [0.6-1.8] | | |
| IPM | 52% [38%-71%] | | | | |
| Final classification | | | | | |
| MPLA | 62% [51%-74%] | 0.5 | 1.3 [0.7-2.2] | | |
| IPM | 50% [35%-71%] | | | | |

1
2 Table 4: Five years overall survival, univariate and multivariate analyses. For discrete variables a
3 Kaplan-Meier method with a log-rank test was performed; for continuous variables* a cox

1 proportional-hazards model with Wald-test was performed. Hazard ratios (HR) with 95%
2 confidence interval (CI) were obtained using a Cox Model. Significant p-value < 0.05 and their
3 HR are highlighted in bold.

4

5

1 **Figures legends**

2

3 Figure 1: 1A: Histological algorithm for classifying multiple lung adenocarcinomas into MPLA
4 or IPM, based on 2015 WHO classification. This comprehensive histologic assessment involves
5 evaluation of relative percentage of each architectural pattern defining predominant and minor
6 patterns, cytologic and stromal features and TTF1 expression.

7 1B: Proposed algorithm for classifying multiple lung adenocarcinomas, based on histo-molecular
8 criteria. AIS: adenocarcinoma in situ; MIA: minimally invasive adenocarcinoma; MPLA:
9 multiple primary lung adenocarcinomas; IPM: intra pulmonary metastasis. Rare mutations are
10 defined as non-*EGFR* (del 19 or p.L858R) and non-*KRAS* (p.G12X).

11
12 Figure 2: Contingency table for the comparison of histological and molecular classifications of
13 tumors. Eleven tumors out of 120 are not included because they are not conclusive for molecular
14 classification (both tumors were wild type). An illustration for each situation is shown.

15 The Kappa test ($K = 0.43$) shows a fair agreement between both molecular and histological
16 classifications.

17

18 Supplementary-Figure 1: Global distribution of gene mutations in the 240 studied lung
19 adenocarcinomas.

20

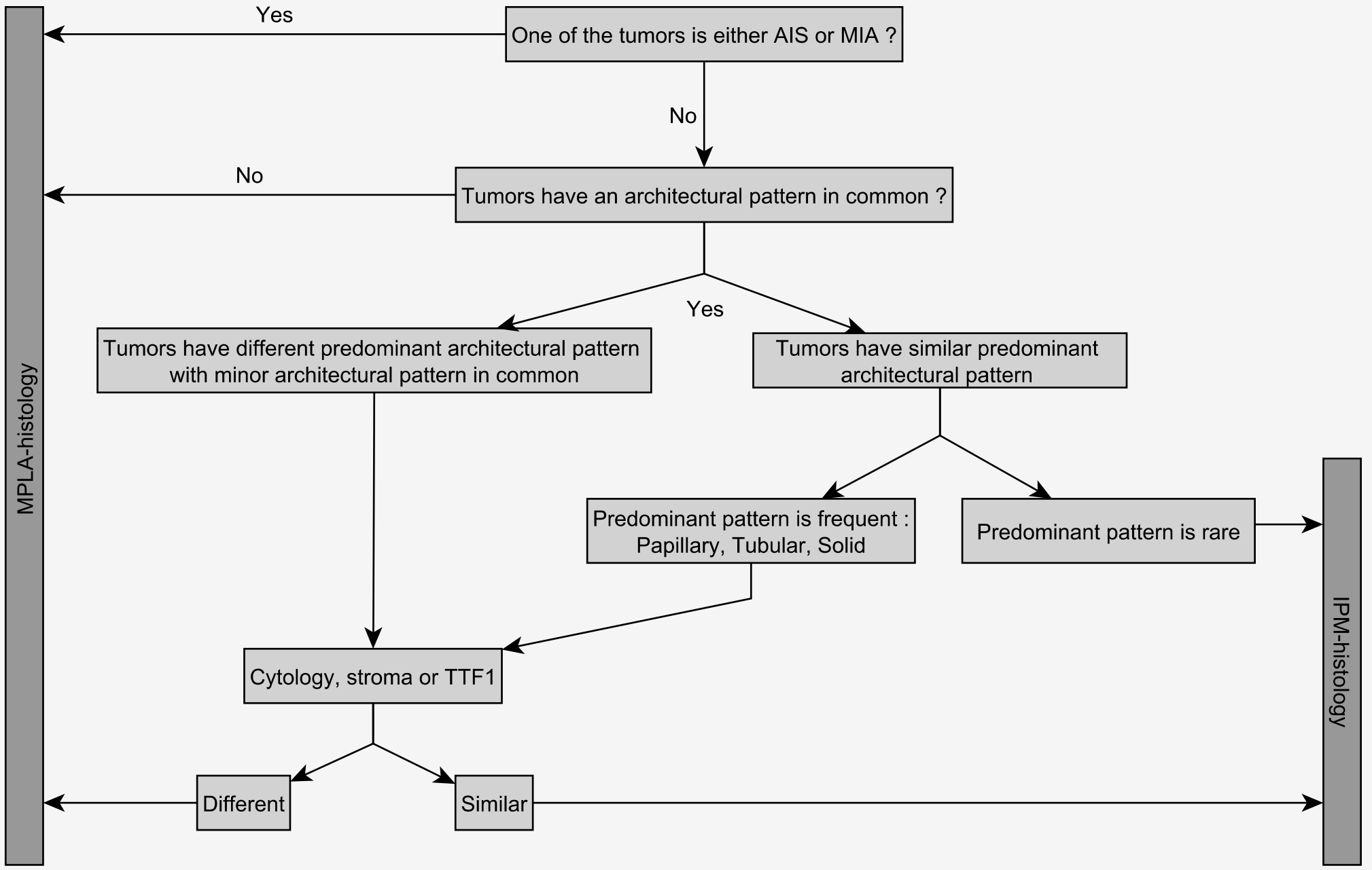
21 Supplementary-Figure 2: Molecular classification of patients with multiple lung tumors
22 according to gene mutations. Both tumors (T1 and T2) are classified into 3 groups (MPLA, IPM
23 and IPM w AA). MPLA: multiple lung primary adenocarcinoma is defined by the absence of
24 common molecular mutation between both tumors (T1 and T2), or different driver mutations in
25 *EGFR*, *KRAS*, *BRAF*, *ERBB2*, *NRAS* or *MET* genes. Intrapulmonary metastasis (IPM) is defined
26 by a common molecular profile. Intrapulmonary metastasis with additional alterations (IMP w
27 AA) is defined by at least one common alteration(s) with additional alteration(s) in one of the
28 samples, including amplification. U: undetermined; Amp: amplification; Mut: mutation.

29

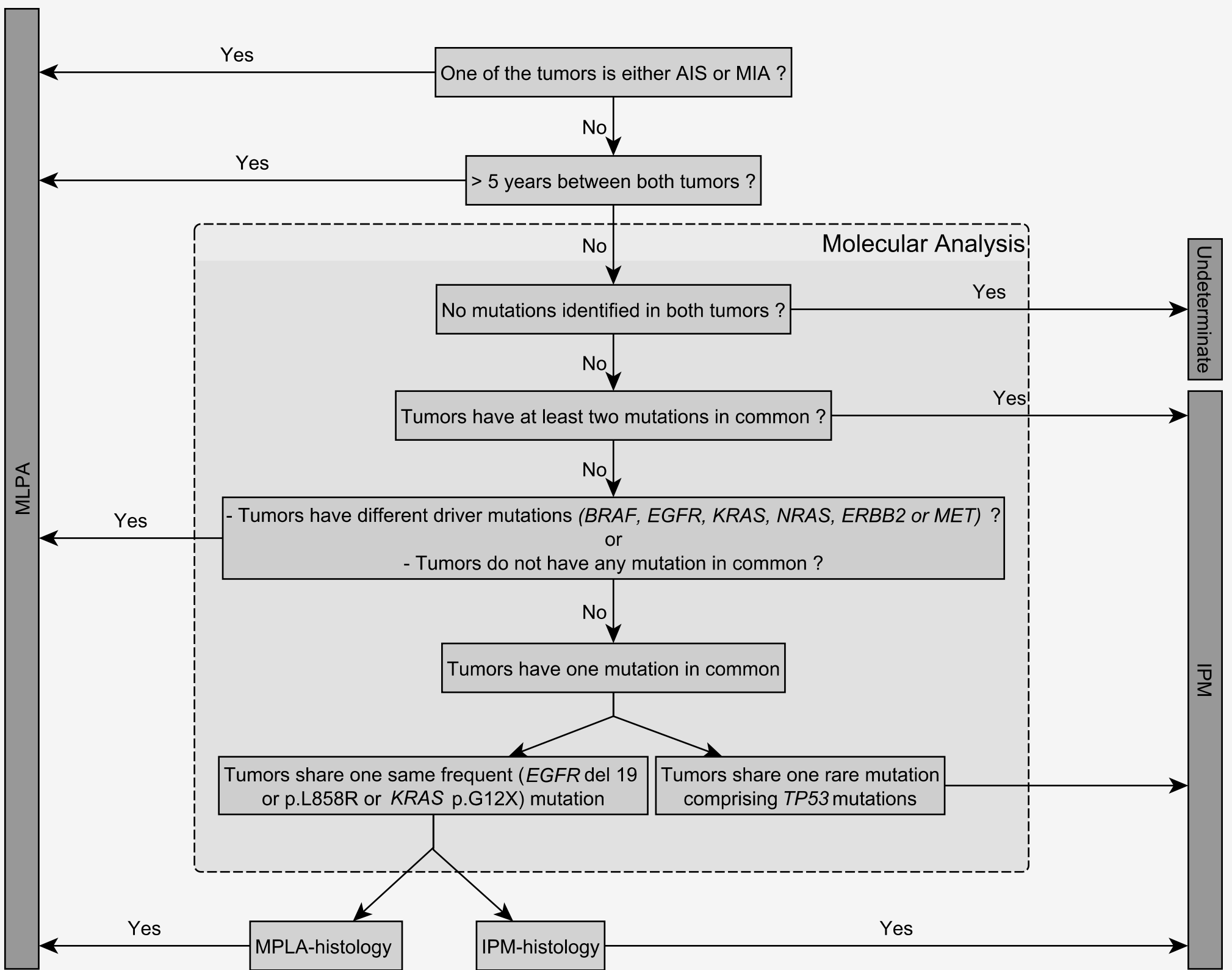
30 Supplementary-Figure 3: Repartition of *TP53*, *KRAS* and *EGFR* mutations according to MPLA
31 and IPM final classification (histo-molecular) for the 111 patients.

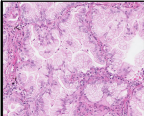
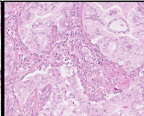
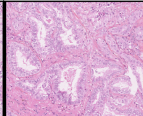
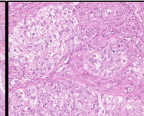
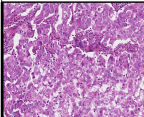
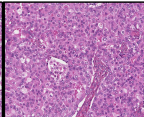
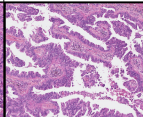
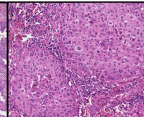
1
2 Supplementary-Figure 4: Overall survival by Kaplan-Meier curves (log-rank test) of patients with
3 multiple lung adenocarcinomas, according to EGFR status (A) and to Nodal-status (B). Survival
4 was calculated from the resection of the first tumor.

A/ Histological algorithm for classifying multiple lung adenocarcinomas



B/ Integrated histo-molecular algorithm for classifying multiple lung adenocarcinomas



| | | Histological Classification | | | |
|--------------------------|--------------------|---|---|--|---|
| | | IPM : 49 patients | | MPLA : 60 patients | |
| Molecular Classification | IPM : 39 patients | 29 patients | | 10 patients | |
| | | Mucinous | Mucinous | Tubular | Solid |
| | |  |  |  |  |
| | | KRAS p.G12V | KRAS p.G12V | KRAS p.G12D TP53 p.R273L | KRAS p.G12D TP53 p.R273L DDR2 p.E516Q |
| Molecular Classification | MPLA : 70 patients | 20 patients | | 50 patients | |
| | | Solid | Solid | Papillary | Solid |
| | |  |  |  |  |
| | | KRAS p.G12V STK11 p.P281fs | BRAF p.V600E ERBB4 p.G599W TP53 p.G266V | TP53 c.673-1G>T | TP53 p.C135W |