



**HAL**  
open science

## Hepatitis E virus genotype 3 and capsid protein in the blood and urine of immunocompromised patients

Marion Olivier, Nicolas Capelli, Sebastien Lhomme, Martine Dubois, Mélanie Pucelle, Florence Abravanel, Nassim Kamar, Jacques Izopet

► **To cite this version:**

Marion Olivier, Nicolas Capelli, Sebastien Lhomme, Martine Dubois, Mélanie Pucelle, et al.. Hepatitis E virus genotype 3 and capsid protein in the blood and urine of immunocompromised patients. *Journal of Infection*, 2019, 78, pp.232 - 240. 10.1016/j.jinf.2019.01.004 . hal-03486006

**HAL Id: hal-03486006**

**<https://hal.science/hal-03486006>**

Submitted on 20 Dec 2021

**HAL** is a multi-disciplinary open access archive for the deposit and dissemination of scientific research documents, whether they are published or not. The documents may come from teaching and research institutions in France or abroad, or from public or private research centers.

L'archive ouverte pluridisciplinaire **HAL**, est destinée au dépôt et à la diffusion de documents scientifiques de niveau recherche, publiés ou non, émanant des établissements d'enseignement et de recherche français ou étrangers, des laboratoires publics ou privés.



Distributed under a Creative Commons Attribution - NonCommercial 4.0 International License

1 **Hepatitis E virus genotype 3 and capsid protein in the blood and urine of**  
2 **immunocompromised patients**

3

4 Olivier Marion<sup>1,2</sup>, Nicolas Capelli<sup>2,3</sup>, Sebastien Lhomme<sup>2,3,4</sup>, Martine Dubois<sup>2,3</sup>, Mélanie  
5 Pucelle<sup>3</sup>, Florence Abravanel<sup>2,3,4</sup>, Nassim Kamar<sup>1,2,4</sup>, Jacques Izopet<sup>2,3,4</sup>

6

7 <sup>1</sup> Department of Nephrology and Organ Transplantation, CHU Rangueil, Toulouse, France

8 <sup>2</sup> Inserm UMR1043, Centre de Physiopathologie de Toulouse Purpan, Toulouse, France

9 <sup>3</sup> Laboratory of Virology, CHU Purpan, Toulouse, France

10 <sup>4</sup> Université Paul Sabatier, Toulouse, France

11

12 **Corresponding author:**

13 Jacques IZOPET, PharmD, PhD

14 Department of Virology, National Reference Center for hepatitis E virus

15 CHU Purpan, 330 avenue de Grande Bretagne, TSA 40031, 31059 Toulouse, France

16 E-mail: izopet.j@chu-toulouse.fr

17 Phone: +33 5 67 69 04 24

18 Fax: +33 5 67 69 04 25

19

1 **Keywords:** hepatitis E virus, HEV ORF2 capsid protein, transplantation, urine.

2 **Running title:** HEV ORF2 capsid protein in blood and urine

3 **Manuscript word count:** 4333 words

4 **Number of figures and tables:** 6

5 **Supplementary table:** 1

6

7 **Conflict of interest:** None of the authors has anything to declare.

8

9 **Financial support:** Institut National de la Santé et de la Recherche Médicale (INSERM)

10 UMR1043 operating grant.

11

12 **Authors' contributions:** Virological work-up: OM, NC, SL, MD, MP and FA; data

13 collection and statistical analyses: OM; paper preparation and review: OM, SL, FA, NK, JI;

14 study design: JI.

15

16 **Abbreviations:** Ag, antigen; ALT, alanine aminotransferase; AP, alkaline phosphatase; AST,

17 aspartate aminotransferase; AUC, area under the curve; CI, confidence interval; eGFR,

18 estimated glomerular filtration rate; GGT, gamma-glutamyl transpeptidase; HEV, hepatitis E

19 virus; IQR, interquartile range; ORF, open reading frame; ROC, receiver operating

20 characteristic; RT-PCR, real-time polymerase chain reaction; S/CO, signal-to-cutoff ratio;

21 SOT, solid organ transplant.

1 **ABSTRACT**

2 **Objectives** Hepatitis E virus genotype 3 (HEV3) is responsible for acute and chronic liver  
3 disease in solid organ transplant (SOT) recipients. HEV was recently found in the urine of  
4 some acutely and chronically genotype 4-infected patients.

5 **Methods.** We examined the urinary excretion of HEV3 by 24 consecutive SOT recipients at  
6 the acute phase of HEV hepatitis and characterized the excreted virus.

7 **Results.** Urinary HEV RNA was detected in 12 (50%) of the 24 transplanted patients  
8 diagnosed with HEV hepatitis. Urinary HEV antigen (Ag) was detected in all but one of the  
9 patients (96%). The density of RNA-containing HEV particles in urine was low (1.11-1.12  
10 g/cm<sup>3</sup>), corresponding to lipid-associated virions. The urinary HEV RNA/Ag detected was not  
11 associated with impaired kidney function or *de novo* proteinuria. Finally, there was more  
12 HEV Ag in the serum at the acute phase of HEV infection in SOT recipients whose infection  
13 became chronic.

14 **Conclusions.** HEV3 excreted via the urine of SOT recipients at the acute phase of HEV  
15 hepatitis has a lipid envelope. Renal function was not impaired. While urinary HEV Ag was a  
16 sensitive indicator of HEV infection, only acute phase serum HEV Ag indicated the  
17 development of a chronic infection.

18

19

20

21

1 Hepatitis E virus (HEV), a major cause of acute viral hepatitis worldwide, is enterically  
2 transmitted. Seven genotypes of the virus are currently identified.<sup>1</sup> Genotypes 1 and 2 infect  
3 only humans and are associated with epidemics in developing countries, mainly due to  
4 drinking contaminated water. Conversely, HEV genotypes 3 (HEV3), 4 and 7 are zoonotic  
5 and responsible for sporadic cases in developed countries.<sup>2,3</sup> HEV genotypes 5 and 6 are  
6 known to infect wild boar but no human infections have yet been reported. HEV infection  
7 results from direct contact with infected animals, eating infected pork or game products, or  
8 drinking contaminated water.<sup>2</sup> Cases of HEV infection via blood products and transplanted  
9 organs have been also reported.<sup>4,5</sup>

10 HEV is a single-stranded, positive-sense RNA virus that is a member of the *Hepeviridae*. The  
11 HEV genome is approximately 7.2 kb long and contains three open reading frames (ORFs).<sup>2</sup>  
12 ORF1 encodes nonstructural proteins, including methyltransferase, papain-like cysteine  
13 protease, helicase and RNA-dependent RNA polymerase.<sup>6</sup> ORF2 encodes the virus capsid  
14 protein whose sequence includes the immunogenic epitopes.<sup>7</sup> ORF3 encodes a 113 or 114  
15 residue phosphoprotein involved in virion release; it interacts with the endosomal sorting  
16 complexes required for transport.<sup>8</sup> HEV virions are unenveloped in the environment and feces  
17 but are associated with a lipid membrane in cell culture supernatants and the serum of HEV-  
18 infected patients.<sup>9,10</sup> However, this HEV-membrane complex lacks the glycoprotein needed  
19 for recognizing the cell entry receptor for enveloped virus. Hence, HEV is presently  
20 considered to be a quasi-enveloped virus.<sup>11</sup>

21 While the liver is the main site of HEV replication, HEV RNA and antigen (Ag) have been  
22 detected in extra-hepatic sites like the gut, the central nervous system and the kidneys in  
23 animal models.<sup>12-15</sup> Subjects acutely and chronically infected with genotype 4 excrete HEV in  
24 their urine,<sup>16</sup> but no data are currently available for genotype 3-infected patients and nothing

1 is known about the characteristics of the urinary HEV3 virion or its association with lipid  
2 membrane.

3 Although most HEV infections are mild and self-limiting in immunocompetent subjects,  
4 immunocompromised patients, such as solid-organ transplant (SOT) recipients,<sup>17</sup> human  
5 immunodeficiency virus-infected patients with low CD4+ T lymphocyte counts,<sup>18</sup>  
6 hematological patients on chemotherapy<sup>19</sup> and those on immunotherapy,<sup>20</sup> can develop  
7 chronic hepatitis. The infections of more than 60% of SOT patients become chronic and about  
8 10% of these develop HEV-related cirrhosis.<sup>21</sup> Reducing the immunosuppressive therapy of  
9 HEV-infected SOT recipients leads to HEV clearance in around one third of them. Any  
10 persistent HEV replication despite decreased immunosuppression 3 months after diagnosis  
11 can be treated with ribavirin, leading to a sustained virologic response in approximately 80%  
12 of patients.<sup>22</sup> It was suggested recently that measuring the HEV ORF2 Ag in sera could  
13 discriminate between acutely and chronically infected patients.<sup>23</sup> The discriminatory value of  
14 urinary HEV ORF2 Ag has not yet been studied.

15 This study investigates the urinary excretion of HEV by SOT recipients during the acute  
16 phase of HEV3 infection. It also assesses the values of urinary and serum HEV Ag  
17 concentrations as indicators of the development of a chronic infection.

18

## 19 **Methods**

### 20 **Patients and Samples**

21 We studied 24 consecutive SOT recipients followed in Toulouse University Hospital who  
22 developed an HEV infection between September 2010 and December 2016 and whose urine  
23 samples were available. The acute phase of HEV infection was defined as the first month

1 following the diagnosis of HEV hepatitis, characterized by *de novo* elevated liver  
2 aminotransferase activity and the presence of HEV RNA in the blood. Other causes of  
3 hepatitis were excluded by serological and molecular tests for hepatitis A virus, hepatitis B  
4 virus, hepatitis C virus, Epstein-Barr virus and cytomegalovirus. The presence of biliary  
5 stones was excluded by abdominal ultrasound imaging in case of abdominal pain, fever or  
6 jaundice. All SOT recipients diagnosed with an HEV infection were placed on a minimal  
7 immunosuppressive regimen. A chronic HEV infection was defined as persistent HEV RNA  
8 in the blood 3 months after diagnosis, despite the reduced immunosuppressive therapy.<sup>24</sup>

9 Blood and urine samples tested in the study were collected the same day for a standard  
10 management, at the acute phase of infection for all patients and at the chronic phase for  
11 patients who did not eliminate the virus. Urine samples were cleared by centrifugation (3,650  
12 g/10 minutes). All serum and urine samples were stored at -80°C. This non-interventional  
13 study involved no additional sampling, hence requires no specific written informed consent  
14 (CSP Art L 1121-1.1). All data were analyzed using an anonymized database.

15 All patients underwent an exhaustive clinical and biological examination during their acute  
16 infection phase. We measured liver enzyme activities (AST, ALT, GGT and AP), total  
17 bilirubin, kidney parameters (serum creatinine, estimated glomerular filtration rate (eGFR),  
18 proteinuria (mg/g urine creatinine) and cytology), hematological parameters (hemoglobin,  
19 platelet count, lymphocyte count) and immunosuppressive regimen.

20

## 21 **Laboratory Methods**

22 HEV Ag was measured in all serum and urine samples using the Wantai HEV Antigen ELISA  
23 Plus kit (Beijing Wantai Biological Pharmacy Enterprise Co., China) according to the  
24 manufacturer's instructions.<sup>25</sup> Briefly, samples (50 µL) were incubated in microwell strips

1 coated with anti-ORF2 antibody. The wells were then washed with buffer and incubated with  
2 peroxidase-conjugated anti-ORF2 antibody followed by chromogen solution. The optical  
3 densities were read and results expressed as signal-to-cutoff ratios (S/CO). A ratio of > 1.1  
4 was taken as positive for HEV Ag, 0.9-1.1 as borderline and < 0.9 as negative. Linear ranges  
5 of HEV Ag ELISA were determined for both serum and urine samples by serial dilutions.  
6 Out-of-range samples (S/CO > 15) were diluted and retested. Because the urinary excretion of  
7 creatinine can be considered to be constant throughout the day in the presence of stable renal  
8 function,<sup>26</sup> the urine S/COs were normalized to urinary creatinine to compensate for  
9 concentration bias.<sup>27</sup>

10 The concentrations of HEV RNA in the plasma and urine were measured by real-time  
11 polymerase chain reaction (RT-PCR) targeting the ORF3 gene (detection limit: 60 IU/mL;  
12  $1.78 \log_{10}$  IU/mL).<sup>28,29</sup> Samples were genotyped by sequencing a 345-nucleotide fragment  
13 within the ORF2 gene.<sup>30</sup> The sequences were compared to reference HEV strains.<sup>31</sup>

14 We used the Wantai HEV IgM enzyme immunoassay kit and the Wantai HEV IgG enzyme  
15 immunoassay kit to detect anti-HEV IgM and IgG, according to the manufacturer's  
16 instructions (Beijing Wantai Biological Pharmacy Enterprise Co., China). The concentrations  
17 of anti-HEV IgG were determined using the WHO anti-HEV IgG reference material (95/284),  
18 as previously described.<sup>32</sup>

19 Iodixanol gradients (7.5 to 40%) were prepared manually with solutions of OptiPrep Density  
20 Gradient Medium (Sigma-Aldrich). One milliliter of a positive urine sample, with or without  
21 1% NP-40 detergent solution (Thermo Scientific) treatment, was layered on top of the  
22 gradient and centrifuged in a SW41Ti<sup>®</sup> rotor (Beckman Coulter) at 125,000 g and 10°C for 14  
23 hours (Optima L80-XP ultracentrifuge, Beckman Coulter). Fractions (500 µL) were collected  
24 starting from the top and the density of each fraction was measured by refractometry. The



1 HEV RNA and Ag in each fraction were quantified by one-step RT-PCR and Wantai<sup>®</sup> HEV  
2 Antigen test, respectively.

3 The tissue culture infectious dose 50 (TCID<sub>50</sub>) was determined by an endpoint dilution  
4 method and calculation of the Spearman-Kärber formula.<sup>33-35</sup> Briefly, HepG2/C3A cells  
5 (CRL-10741, ATCC) that had been seeded in 96-well plates (10<sup>5</sup> cells per well) a day earlier  
6 were infected with tenfold dilutions of viral suspensions in Dulbecco's modified Eagle's  
7 medium (DMEM). Six replicates of each dilution were tested. The cells were incubated with  
8 virus at 35.5°C for 6 hours. The inoculum was then removed and the cells were washed five  
9 times with phosphate-buffered saline (PBS). HEV-infected HepG2/C3A were incubated at  
10 35.5°C in a 5% CO<sub>2</sub> humidified atmosphere in DMEM supplemented with 10% heat  
11 inactivated fetal bovine serum, 2% dimethyl sulfoxide (DMSO), 10,000 U/mL penicillin  
12 G/streptomycin and 25 µg/mL amphotericin B. Half of each culture medium was changed  
13 every two to three days for a total of 12 days. Cells were lysed by freezing/thawing the plates  
14 and HEV RNA in the lysates was detected by RT-PCR. Wells with detectable HEV RNA  
15 were considered positive and wells with undetectable HEV RNA as negative (limit of  
16 detection: 60 IU/mL).

17 Urine inoculum was obtained from the urine of an acutely HEV3-infected patients  
18 (subgenotype 3chi), selected for its high HEV RNA content (~4.0 log<sub>10</sub>IU/mL). The initial  
19 urine inoculum (~6.0 log<sub>10</sub>IU/mL) was obtained by passing the urine sample through an  
20 Amicon<sup>®</sup> filter (Amicon<sup>®</sup> Ultra 15 mL Centrifugal Filters Millipore; molecular weight cutoff  
21 100kDa) and centrifuging it at 4,000 g and 25°C for 40 min. Unenveloped HEV virions of the  
22 same strain were obtained directly from the patient's stools. Briefly, stools were diluted in  
23 PBS, centrifuged at 3,560 g for 10 minutes and filtered through a 0.22 µm filter unit. Quasi-  
24 enveloped HEV virions of the same strain were obtained from the patient's plasma and a  
25 culture supernatant of HepG2/C3A infected with the patient's stools.

1

## 2 **Statistical Analysis**

3 Data were analyzed using GraphPad Prism v 7.04 (GraphPad Software, Inc., La Jolla, USA).  
4 Discrete variables are shown as counts and continuous variables as medians (interquartile  
5 range, IQR[25-75]). Correlation was assessed by Spearman analysis. Fisher's exact test was  
6 used to compare proportions. The Mann-Whitney U-test was used to compare continuous  
7 variables, the Wilcoxon signed rank test was used to compare paired data, while a Bonferroni  
8 correction was applied for multiple comparisons. A  $p$  value  $< 0.05$  was considered significant  
9 in all analyses.

10

## 11 **Results**

### 12 **Patient Characteristics**

13 The median age of the 24 HEV-infected SOT patients (18 men; sex ratio: 3.0) was 53 [43-63]  
14 years and the average time between transplantation and HEV infection was 77 [32-154]  
15 months (Table 1). The immunosuppressive regimens consisted of tacrolimus (n=16/24, 67%),  
16 mTOR inhibitors (n=5/24, 21%), tacrolimus plus mTOR inhibitors (n=2/24, 8%) and  
17 belatacept (n=1/24, 4%). Seventeen patients were given mycophenolic acid (n=17/24, 71%)  
18 and 14 were given steroids (n=14/24, 58%). A total of 9 patients spontaneously cleared the  
19 virus (n=9/24, 37.5%), the others (n=15/24, 62.5%) developed chronic infections.

20 HEV infection was associated with cytolytic hepatitis and cholestasis but the renal (creatinine,  
21 eGFR or proteinuria) and hematological (hemoglobin, lymphocyte, neutrophil and platelet  
22 counts) parameters remained unchanged (**Supplementary Table 1**).

1 The median serum HEV RNA concentration at diagnosis was 5.52 [5.31-6.84]  $\log_{10}$ IU/mL.  
2 The sera of all but one patients (n=23/24; 96%) tested positive for HEV Ag, with a median  
3 value of 3.56 [2.14-3.84]  $\log_{10}$ S/CO. The patient whose serum HEV Ag was undetectable had  
4 a low HEV RNA concentration (2.19  $\log_{10}$ IU/mL). The serum HEV Ag and HEV RNA  
5 concentrations were correlated ( $r=0.674$ ;  $p<0.001$ ;  $n=24$ ) (Fig. 1.A). **No correlation was found**  
6 **between HEV Ag values and anti-HEV IgG concentrations ( $r=-0.046$ ;  $p=0.83$ ).**  
7 The HEV3 subgenotype was determined for 22/24 strains: genotype 3e (n=2), 3f (n=10), 3c  
8 (n=6), 3i (n=1) and 3chi (n=3).

9

#### 10 **HEV RNA and Antigen in Urine and Characterization of HEV Particles**

11 The urine of 12 patients (n=12/24, 50%) tested positive for HEV RNA at the acute phase of  
12 HEV infection. The median urinary HEV RNA concentration was 2.28 [1.83-3.42]  
13  $\log_{10}$ IU/mL. The urine of 23 patients (n=23/24, 96%) tested positive for HEV Ag; thus the  
14 same samples from 11 of the 12 patients with no detectable urinary HEV RNA tested positive  
15 for HEV Ag. The patient whose urine HEV Ag was undetectable was the same patient who  
16 had a negative HEV Ag and a low HEV RNA concentration in serum. Finally, the urine  
17 median HEV Ag concentration (3.86 [2.87-4.19]  $\log_{10}$ S/CO/g) was higher than that of the  
18 serum (3.56 [2.14-3.84],  $p=0.04$ ).

19 The urinary HEV Ag and HEV RNA concentrations were not correlated ( $r=0.346$ ;  $p=0.098$ ;  
20  $n=24$ ), unlike those of the serum (Fig. 1.B). However, the HEV Ag in the urine was correlated  
21 with that of the circulating serum HEV Ag ( $r=0.617$ ;  $p=0.001$ ;  $n=24$ ) (Fig. 1.C).

22 We also compared the ratios of HEV Ag ( $\log_{10}$ S/CO) to HEV RNA ( $\log_{10}$ IU/mL) in the urine  
23 and serum at the acute phase of HEV infection (Fig. 1.D). The urinary HEV Ag to RNA ratios

1 (1.76 [0.94-2.28], n=12) were significantly higher than those for the blood (0.56 [0.39-0.66],  
2 n=24;  $p < 0.001$ ).

3 The densities of the HEV particles in the urine (Fig. 2.A) were compared to those of  
4 enveloped HEV particles obtained from the plasma of patients infected with HEV3 and  
5 unenveloped HEV particles isolated from the feces of a chronically HEV3-infected patient  
6 (Fig. 2.B). The urine HEV particles formed a major peak at a density of 1.11-1.12 g/cm<sup>3</sup>,  
7 close to the 1.08-1.09 g/cm<sup>3</sup> peak density observed for enveloped HEV particles from the  
8 plasma. Treating the urine with detergent (1% NP40) shifted the HEV-RNA-containing  
9 particles to a higher density (1.18-1.20 g/cm<sup>3</sup>) corresponding to that of fecal HEV particles.  
10 These data indicate that urinary HEV particles were associated with a lipid membrane, as  
11 were those in the serum and culture supernatants. Measurements of the HEV Ag in each  
12 fraction of the urine gradient (Fig. 2.A) indicated that HEV Ag was present only in very low-  
13 density fractions, with no detectable HEV RNA (1.00-1.08 g/cm<sup>3</sup>). HEV Ag was not detected  
14 in any HEV RNA-positive fractions, regardless of density. The results for NP40-treated urine  
15 were similar, indicating that removing the lipid membrane did not enable the Wantai<sup>®</sup> Ag test  
16 to recognize the capsid-associated ORF2 protein.

17 The infectivity of urinary HEV particles was assessed by an endpoint dilution method on  
18 HepG2/C3A cells culture system.<sup>34</sup> We also studied viral particles from stools (unenveloped  
19 virions), plasma (quasi-enveloped virions) and culture supernatant (quasi-enveloped virions)  
20 of the same HEV strain (from the same patient). HEV RNA and HEV Ag concentrations for  
21 each inoculum were measured. Both urine and plasma-derived virions were similarly infective  
22 *in vitro* (respectively 148 ±2 and 135 ±3 infectious particles/10<sup>6</sup> IU HEV RNA) (Fig. 3).  
23 Conversely, the HEV Ag concentration in the urine was 30-times higher than that of the  
24 plasma inoculum and did not seem to influence infectivity *in vitro*. Unenveloped HEV virions  
25 were more infectious than quasi-enveloped virions from both clinical samples (plasma and

1 urine) and HEV-infected HepG2/C3A cells (supernatant), while the HEV Ag concentrations  
2 associated with enveloped-virions were broadly higher in urine and plasma samples than in  
3 culture supernatants (Fig. 3).

4

#### 5 **Factors Associated with the Detection of HEV RNA in Urine**

6 Patients with detectable HEV RNA in their urine had greater serum virus RNA loads and  
7 higher urine and serum Ag concentrations than did those with no urinary HEV RNA  
8 (Table 2). And patients whose urine was HEV RNA-positive at diagnosis had a deeper  
9 tacrolimus trough (9.1 [7.4-10.2] ng/mL) than did patients whose urine was HEV RNA-  
10 negative (5.9 [4.8-6.5] ng/mL,  $p<0.001$ ). The serum creatinine, eGFR and proteinuria data for  
11 the two groups were similar, as were those for liver and hematological parameters. HEV  
12 excretion in the urine was not sub-genotype-specific. There was no association between the  
13 presence of HEV RNA or HEV Ag in the urine and the organ transplanted (kidney *versus*  
14 liver transplants).

15

#### 16 **HEV Markers Associated to the Development of a Chronic HEV Infection**

17 The 24 SOT recipients included fifteen (62.5%) who developed a chronic infection; the other  
18 nine spontaneously cleared the virus. Chronic phase serum and urine HEV Ag concentrations  
19 were also available for 12 patients who developed chronic HEV infections.

20 The acute phase serum HEV RNA concentration of patients who developed a chronic HEV  
21 infection was higher (6.41 [5.48-6.86]  $\log_{10}$ IU/mL) than that of patients who eliminated the  
22 virus (5.30 [3.64-5.55]  $\log_{10}$ IU/mL;  $p=0.018$ ). Moreover, patients who developed a chronic  
23 infection had a significantly higher acute phase serum Ag level ( $\log_{10}$ S/CO: 3.78 [3.60-4.25])

1 than those who spontaneously cleared the virus (2.32 [0.56-3.18];  $p=0.002$ ) (Fig. 4.A). ROC  
2 analysis showed that the AUC used to predict the evolution toward chronicity was lower  
3 when based on serum HEV RNA concentrations (AUC: 0.793, 95%CI [0.595-0.990];  
4  $p=0.019$ ) than the AUC obtained using the serum HEV antigen values (AUC: 0.896, 95%CI  
5 [0.769-1.023];  $p=0.001$ ). We identified the HEV Ag threshold for distinguishing between  
6 patients whose infection became chronic and those who recovered using an ROC curve (Fig.  
7 4.B). An acute phase  $\log_{10}S/CO$  threshold of 3.56 differentiated SOT recipients whose  
8 infection would become chronic from those who recovered; its sensitivity was 80% (95%CI  
9 [52-96]) and specificity was 100% (95%CI [66-100]) (AUC: 0.896, 95%CI [0.769-1.023];  
10  $p=0.001$ ). For this threshold, the positive and negative predictive values of the HEV Ag assay  
11 were 100% and 75%.

12 Finally, the acute (median  $\log_{10}S/CO$ : 3.56 [2.25-3.81];  $n=15$ ) and chronic phase (median  
13  $\log_{10}S/CO$ : 3.65 [3.17-4.07];  $n=12$ ) serum HEV Ag concentrations of patients whose  
14 infections evolved toward chronicity were not significantly different ( $p=0.648$ ).

15 The urinary acute phase HEV Ag concentrations in patients whose infections became chronic  
16 ( $\log_{10}S/CO/g$ : 4.06 [3.13-4.24]) and those who cleared the virus (3.34 [2.29-3.92]) were not  
17 significantly different ( $p=0.123$ ) (Fig. 4.C). We detected similar concentrations of HEV Ag in  
18 the urine of chronic phase patients (3.24 [2.72-4.48]). Urinary HEV RNA tended to be more  
19 frequent in acute phase patients who developed a chronic infection ( $n=10/15$ , 67%) than in  
20 those who spontaneously cleared the virus ( $n=2/9$ , 22%), but the difference was not  
21 statistically significant ( $p=0.089$ ). The urine of 8 patients ( $n=8/12$ , 67%) tested positive for  
22 HEV RNA at the chronic phase (median RNA concentration: 2.64 [2.16-2.73]  $\log_{10}IU/mL$ ).  
23 The urine HEV RNA concentrations were similar whatever the phase of infection or the  
24 disease evolution.

1

## 2 Discussion

3 ~~HEV3 is a major cause of acute hepatitis in Western Europe and is responsible for chronic~~  
4 ~~liver disease in immunocompromised patients.~~ The results of this study in  
5 immunocompromised subjects indicate that HEV RNA and Ag are frequently present in the  
6 urine of both acutely and chronically HEV3-infected patients. ~~The HEV particles in urine~~  
7 ~~were low density, like blood HEV virions, indicating their association with a lipid membrane~~  
8 ~~and we detected no HEV Ag in urine RNA containing HEV fractions, suggesting that most~~  
9 ~~urinary Ag is excreted independently of infectious virus particles. The presence of HEV in the~~  
10 ~~urine was associated with higher concentrations of HEV markers (serum virus RNA and HEV~~  
11 ~~Ag) and deeper tacrolimus troughs. Finally, patients whose infection became chronic could be~~  
12 ~~discriminated from those who cleared the virus only by the HEV Ag concentration in the~~  
13 ~~serum and not by the HEV Ag in the urine.~~

14

15 This study of a homogeneous cohort of HEV3-infected SOT recipients revealed that 12/24  
16 patients (50%) had detectable HEV RNA in their urine during the acute phase of HEV  
17 infection. We detected HEV Ag in the urine and blood of all but one of them (96%). Other  
18 hepatotropic viruses - hepatitis A virus, hepatitis B and hepatitis C virus - have also been  
19 detected in the urine of infected patients.<sup>36-38</sup> Thus, 7 to 57% of patients having an HCV  
20 infection had detectable HCV RNA in their urine.<sup>37,39</sup> Geng et al. also found that the urine of  
21 all 8 of their immunocompetent patients with acute HEV genotype 4 infections tested positive  
22 for HEV Ag and they detected HEV RNA in 3/8 (38%) of them.<sup>16</sup> The sensitivity of the  
23 ORF2 Ag test kit is reported to be 60-91% for the serum of immunocompetent subjects and  
24 94% for that of immunocompromised patients.<sup>25,40</sup> Although detection of HEV RNA in blood

1 remains the gold standard for diagnosing HEV infections, screening urine samples for HEV  
2 Ag could be a practical alternative in resource-limited regions, as it needs no molecular  
3 diagnostic devices or venipuncture. **If its utility is confirmed in immunocompetent patients, it**  
4 **could be particularly appropriate for monitoring epidemics in resource-limited countries.**

5 The HEV virions in urine have never been characterized. We showed that urinary RNA-  
6 containing HEV particles form a low density (1.11-1.12 g/cm<sup>3</sup>) band after fractionation on an  
7 iodixanol gradient, at a slightly higher density than that of HEV particles from the plasma of  
8 infected patients (1.08-1.09 g/cm<sup>3</sup>). The difference in the densities of the plasma and urine  
9 HEV particles could be due to small differences in lipid membrane compositions. Particles  
10 treated with NP40 detergent to remove the lipid membrane had a higher density, similar to  
11 that of unenveloped particles (1.18-1.20 g/cm<sup>3</sup>). Thus, urinary HEV virions seem to be quasi-  
12 enveloped like the particles in the plasma and culture supernatants of HEV infected cells.<sup>9,10</sup>

13 Geng et al. showed that intravenous inoculation of genotype 4 urine-derived HEV virions  
14 could infect cynomolgus monkeys.<sup>16</sup> One of our patients had a urinary HEV RNA load high  
15 enough to assess urine HEV3 virions infectivity *in vitro*. The urine-derived HEV particles  
16 from this patient were as infectious as his plasma HEV particles.<sup>34</sup> Unenveloped HEV  
17 particles were more infectious than quasi-enveloped virions, as previously reported.<sup>10,34,41</sup>  
18 Thus, although the infectivity of urinary HEV seemed to be low (~1 infectious particle/10<sup>4</sup> IU  
19 HEV RNA), it may well contribute to the spread of virus in the environment.

20 We did not detect HEV RNA in the urine of all our patients. We have previously failed to  
21 detect HEV RNA in the urine of acutely and chronically infected SOT recipients.<sup>42</sup> The  
22 populations that were the subjects of these two studies were distinct. We could have failed to  
23 amplify some HEV genomes because most of the urinary HEV virus loads were low. But we  
24 have also improved our in-house RT-PCR assay for quantifying HEV RNA by using the



1 WHO reference standard.<sup>28,29</sup> Furthermore, only those patients with deep tacrolimus troughs  
2 and greater HEV markers concentrations, with high virus loads in the serum and elevated  
3 HEV Ag index in both serum and urine, were likely to have HEV RNA-positive urines.  
4 Calcineurin inhibitors enhance HEV replication *in vitro*<sup>43</sup> and promote the development of  
5 chronic hepatitis in SOT recipients.<sup>21</sup> Thus detecting virus in the urine may indicate over-  
6 immunosuppression. Just how tacrolimus favors HEV infection and the persistence of virus in  
7 the urine requires further study.

8 Montpellier et al. identified three forms of the ORF2 capsid protein,<sup>44</sup> and showed that  
9 glycosylated by-products (ORF2g, approximately 90 kDa, and ORF2c, approximately 75  
10 kDa) are secreted by infected cells, independently of any infectious particles. This observation  
11 is in line with the recent study by Yin et al.<sup>45</sup> The secreted form of ORF2 proteins could be  
12 the main antigens recognized by the Wantai<sup>®</sup> test.<sup>44</sup> The HEV Ag and the virus RNA in the  
13 urine formed bands at different densities after iodixanol density gradient centrifugation, as  
14 they do in the serum.<sup>9,45</sup> Moreover, we found that HEV Ag concentrated in the urine with a  
15 higher RNA to Ag ratio than that in the serum, similarly to the situation in immunocompetent  
16 patients.<sup>16</sup> This indicates that there was a high concentration of free HEV Ag in the urine,  
17 independently of the number of RNA-containing HEV particles. With its elevated molecular  
18 weight, ORF2 protein, like lipid-associated HEV virions, should not freely cross the  
19 glomerular filtration barrier.<sup>44,46</sup> However, it is possible that some lower molecular weight  
20 HEV antigen byproducts could be excreted in the urine and detected by the Wantai test.  
21 Otherwise, HEV antigen could be secreted into the urine by kidney epithelial cells, resulting  
22 in a higher HEV antigen concentration in urine than in plasma. Therefore, the kidney or the  
23 urinary tract could be HEV reservoirs.

24 None of our subjects showed any sign of kidney injury (increased serum creatinine or  
25 proteinuria), whatever the HEV status of their urine. The hepatitis A virus also continues to

1 replicate in renal tubules and particles are shed into the urine without causing any clinical  
2 renal dysfunction.<sup>47</sup> HEV positive and negative-strand RNA and ORF2 protein have also been  
3 detected in the kidneys of infected animals.<sup>12,13,16,48</sup> The main damage shown by  
4 histopathological analysis of kidney biopsies was tubule-interstitial with interstitial  
5 inflammatory cell infiltrates.<sup>13,16,48</sup> Peptidome analysis of samples from patients with acute  
6 hepatitis E showed increased urine alpha-1-microglobulin, a marker of tubular dysfunction in  
7 several nephropathies.<sup>49</sup> *De novo* membranous nephropathy and some cases of  
8 cryoglobulinemic membranoproliferative glomerulonephritis have been reported in both  
9 immunocompetent<sup>50</sup> and immunocompromised HEV-infected patients.<sup>51,52</sup> Our study of 51  
10 SOT patients also showed that the glomerular filtration rate tended to be decreased during an  
11 acute hepatitis E infection (mean eGFR decrease: 5 mL/min).<sup>42</sup> However, the pathogenicity of  
12 HEV for the human kidney is essentially unknown.

13 As a chronic HEV infection can lead to liver fibrosis and extra-hepatic manifestations,<sup>53</sup>  
14 distinguishing patients who will develop chronic infections from those who will  
15 spontaneously eliminate the virus at diagnosis could justify the early initiation of antiviral  
16 therapy. Although we reduced the dose of immunosuppressant, 15 of our 24 acutely-infected  
17 SOT recipients (62.5%) developed chronic hepatitis, in agreement with previous studies.<sup>17,21</sup>  
18 Finding HEV Ag and RNA in the urine of patients during the acute phase of infection did not  
19 discriminate between SOT recipients who recovered from those who developed a chronic  
20 infection. Conversely, the acute phase serum HEV Ag and RNA concentrations of patients  
21 whose infection became chronic were higher than those of SOT recipients with resolving  
22 hepatitis E. ROC analysis indicated that serum HEV Ag discriminated between the two  
23 groups and a  $\log_{10}$ S/CO HEV Ag threshold  $> 3.56$  was associated with 80% sensitivity and  
24 100% specificity. Behrendt et al. recently found that HEV Ag was significantly higher in  
25 chronically infected patients than in acutely infected subjects.<sup>23</sup> The threshold proposed for

1 discriminating between acutely and chronically infected patients was lower ( $\log_{10}S/CO >$   
2 1.20) but most of the acutely infected patients were immunocompetent and we have reported  
3 that the serum HEV Ag level in immunocompetent patients is lower than in  
4 immunocompromised individuals.<sup>25</sup> In our study, the acute and chronic phase serum HEV Ag  
5 concentrations of patients whose infections evolved toward chronicity were not significantly  
6 different. Thus, measuring the serum HEV Ag at diagnosis provides a useful predictive  
7 marker of the development of a chronic infection in SOT patients.

8 Our study has some limitations. Although our cohort was homogeneous and all patients were  
9 on similar T-cells targeting immunosuppressive regimens, the group was small. Studies on  
10 larger cohorts are needed to confirm that serum HEV Ag can be used to assess the risk of  
11 developing a chronic hepatitis E infection. Also, we did not examine kidney tissue for HEV  
12 infection and replication. Lastly, our work was restricted to immunocompromised patients.  
13 Studies in immunocompetent patients need to be done.

14

15 To conclude, we have shown that HEV3 RNA and Ag are often present in the urine of SOT  
16 recipients at both the acute and chronic phases of an HEV infection, without any apparent  
17 adverse renal effect. Urinary RNA-containing HEV particles were quasi-enveloped and most  
18 of the HEV Ag detected in the urine was not associated with infectious virions. The utility of  
19 urinary HEV Ag screening should now be studied in immunocompetent patients. Finally, the  
20 value of the serum HEV Ag concentration as a marker of developing a chronic infection  
21 should be defined by studies on a larger cohort.

22

23

1

2

3

4 **Figure legends:**5 **Fig. 1. HEV Ag and HEV RNA in serum and urine.**

6 A, HEV RNA ( $\log_{10}$ IU/mL) and HEV Ag ( $\log_{10}$ S/CO) in the serum ( $r=0.674$ ;  $p<0.001$ ;  $n=24$ );  
 7 B, HEV RNA ( $\log_{10}$ IU/mL) and HEV Ag ( $\log_{10}$ S/CO/g) in the urine ( $r=0.346$ ;  $p=0.098$ ;  
 8  $n=24$ ); C, HEV Ag ( $\log_{10}$ S/CO) in the serum and HEV Ag ( $\log_{10}$ S/CO/g) in the urine  
 9 ( $r=0.617$ ;  $p=0.001$ ;  $n=24$ ); D, HEV Ag:RNA ratios ( $\log_{10}$ S/CO/ $\log_{10}$ IU/mL) in serum and  
 10 urine.

11 Abbreviations: HEV, hepatitis E virus; Ag, antigen; S/CO, signal-to-cutoff ratio; S/CO/g,  
 12 signal-to-cutoff ratio normalized to urine creatinine.

13

14 **Fig. 2. Iodixanol density gradient centrifugation of HEV particles from the urine,**  
 15 **plasma and stools.**

16 A. HEV-RNA-containing particles from urine ( $\bullet$ ) migrated at a major peak density of 1.11-  
 17 1.12  $\text{g}/\text{cm}^3$ ; Greater density (1.18-1.20  $\text{g}/\text{cm}^3$ ) after treatment with the nonionic detergent  
 18 NP40 ( $\blacksquare$ ), corresponding to unenveloped particles. HEV Ag was detected in detergent-treated  
 19 ( $\square$ ) and untreated ( $\circ$ ) fractions of urine, after iodixanol density gradient centrifugation. B.  
 20 Enveloped HEV particles ( $\blacklozenge$ ) from the plasma of a patient infected with HEV3. Their  
 21 migration density of 1.08-1.09  $\text{g}/\text{cm}^3$  reflects their association with a lipid membrane. The  
 22 unenveloped HEV particles ( $\blacktriangle$ ) from the feces of a patient chronically infected with HEV3  
 23 migrated at a higher density (1.20-1.22  $\text{g}/\text{cm}^3$ ).

24 Abbreviations: HEV, hepatitis E virus; Ag, antigen; S/CO, signal-to-cutoff ratio.

25

26 **Fig. 3. Infectivity of HEV virions derived from stools (unenveloped virions) and plasma,**  
 27 **urine or cell cultures supernatant (quasi-enveloped virions).**

28 Abbreviations: HEV, hepatitis E virus; eHEV, enveloped HEV; Ag, antigen; S/CO, signal-to-  
 29 cutoff ratio.

30

31 **Fig. 4. HEV Ag in the urine and serum during an HEV infection.**

32 The HEV Ag concentrations in the sera (A) and urines (C) of SOT patients during the acute  
 33 and chronic phases of HEV infection were assayed. The dashed line in panel A indicates a  
 34 putative  $\log_{10}$ S/CO threshold (3.56) for distinguishing patients with chronic evolution from  
 35 those who cleared their HEV, as calculated in panel B. B, receiver operating characteristic

1 curve showing the true positive rate plotted against the false positive rate at different serum  
 2 HEV Ag threshold values to identify patients according to the evolution of their HEV  
 3 infection. The open circle represents 80% sensitivity (95%CI [52-96]) and 100% specificity  
 4 (95%CI [66-100]) at an HEV Ag value of 3.56 (area under the curve: 0.896, 95%CI [0.769-  
 5 1.023];  $p=0.001$ ).

6 Differences were tested with a Bonferroni corrected Mann-Whitney U-test; ns:  $p>0.05$ .

7 Abbreviations: HEV, hepatitis E virus; Ag, antigen; SOT, solid organ transplant; S/CO,  
 8 signal-to-cutoff ratio; S/CO/g, signal-to-cutoff ratio normalized to urine creatinine.

## 9 **References**

- 10 1 Lhomme S, Marion O, Abravanel F, Chapuy-Regaud S, Kamar N, Izopet J. Hepatitis E  
 11 Pathogenesis. *Viruses* 2016; **8**. doi:10.3390/v8080212.
- 12 2 Kamar N, Izopet J, Pavio N, Aggarwal R, Labrique A, Wedemeyer H *et al*. Hepatitis E  
 13 virus infection. *Nat Rev Dis Primer* 2017; **3**: 17086.
- 14 3 Lee G-H, Tan B-H, Teo EC-Y, Lim S-G, Dan Y-Y, Wee A *et al*. Chronic Infection With  
 15 Camelid Hepatitis E Virus in a Liver-transplant Recipient Who Regularly Consumes  
 16 Camel Meat and Milk. *Gastroenterology* 2015. doi:10.1053/j.gastro.2015.10.048.
- 17 4 Hewitt PE, Ijaz S, Brailsford SR, Brett R, Dicks S, Haywood B *et al*. Hepatitis E virus in  
 18 blood components: a prevalence and transmission study in southeast England. *Lancet*  
 19 2014; **384**: 1766–1773.
- 20 5 Schlosser B, Stein A, Neuhaus R, Pahl S, Ramez B, Krüger DH *et al*. Liver transplant  
 21 from a donor with occult HEV infection induced chronic hepatitis and cirrhosis in the  
 22 recipient. *J Hepatol* 2012; **56**: 500–502.
- 23 6 Koonin EV, Gorbalenya AE, Purdy MA, Rozanov MN, Reyes GR, Bradley DW.  
 24 Computer-assisted assignment of functional domains in the nonstructural polyprotein of  
 25 hepatitis E virus: delineation of an additional group of positive-strand RNA plant and  
 26 animal viruses. *Proc Natl Acad Sci U S A* 1992; **89**: 8259–8263.
- 27 7 Xing L, Wang JC, Li T-C, Yasutomi Y, Lara J, Khudyakov Y *et al*. Spatial configuration  
 28 of hepatitis E virus antigenic domain. *J Virol* 2011; **85**: 1117–1124.
- 29 8 Emerson SU, Nguyen HT, Torian U, Burke D, Engle R, Purcell RH. Release of Genotype  
 30 1 Hepatitis E Virus from Cultured Hepatoma and Polarized Intestinal Cells Depends on  
 31 Open Reading Frame 3 Protein and Requires an Intact PXXP Motif. *J Virol* 2010; **84**:  
 32 9059–9069.
- 33 9 Qi Y, Zhang F, Zhang L, Harrison TJ, Huang W, Zhao C *et al*. Hepatitis E Virus  
 34 Produced from Cell Culture Has a Lipid Envelope. *PloS One* 2015; **10**: e0132503.
- 35 10 Takahashi M, Tanaka T, Takahashi H, Hoshino Y, Nagashima S, Jirintai *et al*. Hepatitis E  
 36 Virus (HEV) Strains in Serum Samples Can Replicate Efficiently in Cultured Cells  
 37 Despite the Coexistence of HEV Antibodies: Characterization of HEV Virions in Blood  
 38 Circulation. *J Clin Microbiol* 2010; **48**: 1112–1125.

- 1 11 Yin X, Li X, Feng Z. Role of Envelopment in the HEV Life Cycle. *Viruses* 2016; **8**.  
2 doi:10.3390/v8080229.
- 3 12 Williams TPE, Kasorndorkbua C, Halbur PG, Haqshenas G, Guenette DK, Toth TE *et al*.  
4 Evidence of Extrahepatic Sites of Replication of the Hepatitis E Virus in a Swine Model.  
5 *J Clin Microbiol* 2001; **39**: 3040–3046.
- 6 13 Soomro MH, Shi R, She R, Yang Y, Hu F, Li H. Antigen detection and apoptosis in  
7 Mongolian gerbil's kidney experimentally intraperitoneally infected by swine hepatitis E  
8 virus. *Virus Res* 2016; **213**: 343–352.
- 9 14 Izopet J, Dubois M, Bertagnoli S, Lhomme S, Marchandeanu S, Boucher S *et al*. Hepatitis  
10 E virus strains in rabbits and evidence of a closely related strain in humans, France.  
11 *Emerg Infect Dis* 2012; **18**: 1274–1281.
- 12 15 Zhou X, Huang F, Xu L, Lin Z, de Vrij FMS, Ayo-Martin AC *et al*. Hepatitis E Virus  
13 Infects Neurons and Brains. *J Infect Dis* 2017; **215**: 1197–1206.
- 14 16 Geng Y, Zhao C, Huang W, Harrison TJ, Zhang H, Geng K *et al*. Detection and  
15 assessment of infectivity of hepatitis E virus in urine. *J Hepatol* 2016; **64**: 37–43.
- 16 17 Kamar N, Selves J, Mansuy J-M, Ouezzani L, Péron J-M, Guitard J *et al*. Hepatitis E  
17 virus and chronic hepatitis in organ-transplant recipients. *N Engl J Med* 2008; **358**: 811–  
18 817.
- 19 18 Dalton HR, Bendall RP, Keane FE, Tedder RS, Ijaz S. Persistent carriage of hepatitis E  
20 virus in patients with HIV infection. *N Engl J Med* 2009; **361**: 1025–1027.
- 21 19 Tavitian S, Peron J-M, Huguet F, Kamar N, Abravanel F, Beyne-Rauzy O *et al*. Ribavirin  
22 for Chronic Hepatitis Prevention among Patients with Hematologic Malignancies. *Emerg*  
23 *Infect Dis* 2015; **21**: 1466–1469.
- 24 20 Alric L, Bonnet D, Laurent G, Kamar N, Izopet J. Chronic hepatitis E virus infection:  
25 successful virologic response to pegylated interferon-alpha therapy. *Ann Intern Med* 2010;  
26 **153**: 135–136.
- 27 21 Kamar N, Garrouste C, Haagsma EB, Garrigue V, Pischke S, Chauvet C *et al*. Factors  
28 associated with chronic hepatitis in patients with hepatitis E virus infection who have  
29 received solid organ transplants. *Gastroenterology* 2011; **140**: 1481–1489.
- 30 22 Kamar N, Izopet J, Tripon S, Bismuth M, Hillaire S, Dumortier J *et al*. Ribavirin for  
31 chronic hepatitis E virus infection in transplant recipients. *N Engl J Med* 2014; **370**:  
32 1111–1120.
- 33 23 Behrendt P, Bremer B, Todt D, Brown RJP, Heim A, Manns MP *et al*. Hepatitis E Virus  
34 (HEV) ORF2 Antigen Levels Differentiate Between Acute and Chronic HEV Infection. *J*  
35 *Infect Dis* 2016; **214**: 361–368.
- 36 24 Kamar N, Marion O, Izopet J. When Should Ribavirin Be Started to Treat Hepatitis E  
37 Virus Infection in Transplant Patients? *Am J Transplant* 2016; **16**: 727.

- 1 25 Trémeaux P, Lhomme S, Chapuy-Regaud S, Peron J-M, Alric L, Kamar N *et al.*  
2 Performance of an antigen assay for diagnosing acute hepatitis E virus genotype 3  
3 infection. *J Clin Virol* 2016; **79**: 1–5.
- 4 26 Ginsberg JM, Chang BS, Matarese RA, Garella S. Use of single voided urine samples to  
5 estimate quantitative proteinuria. *N Engl J Med* 1983; **309**: 1543–1546.
- 6 27 Dyson EH, Will EJ, Davison AM, O'Malley AH, Shepherd HT, Jones RG. Use of the  
7 urinary protein creatinine index to assess proteinuria in renal transplant patients. *Nephrol*  
8 *Dial Transplant* 1992; **7**: 450–452.
- 9 28 Abravanel F, Sandres-Saune K, Lhomme S, Dubois M, Mansuy J-M, Izopet J. Genotype 3  
10 diversity and quantification of hepatitis E virus RNA. *J Clin Microbiol* 2012; **50**: 897–  
11 902.
- 12 29 Baylis SA, Blümel J, Mizusawa S, Matsubayashi K, Sakata H, Okada Y *et al.* World  
13 Health Organization International Standard to harmonize assays for detection of hepatitis  
14 E virus RNA. *Emerg Infect Dis* 2013; **19**: 729–735.
- 15 30 Legrand-Abravanel F, Mansuy J-M, Dubois M, Kamar N, Peron J-M, Rostaing L *et al.*  
16 Hepatitis E virus genotype 3 diversity, France. *Emerg Infect Dis* 2009; **15**: 110–114.
- 17 31 Smith DB, Simmonds P, Izopet J, Oliveira-Filho EF, Ulrich RG, Johne R *et al.* Proposed  
18 reference sequences for hepatitis E virus subtypes. *J Gen Virol* 2016; **97**: 537–542.
- 19 32 Abravanel F, Lhomme S, Chapuy-Regaud S, Mansuy J-M, Muscari F, Sallusto F *et al.*  
20 Hepatitis E Virus Reinfections in Solid-Organ-Transplant Recipients Can Evolve Into  
21 Chronic Infections. *J Infect Dis* 2014; **209**: 1900–1906.
- 22 33 Ramakrishnan MA. Determination of 50% endpoint titer using a simple formula. *World J*  
23 *Virol* 2016; **5**: 85–86.
- 24 34 Chapuy-Regaud S, Dubois M, Plisson-Chastang C, Bonnefois T, Lhomme S, Bertrand-  
25 Michel J *et al.* Characterization of the lipid envelope of exosome encapsulated HEV  
26 particles protected from the immune response. *Biochimie* 2017; **141**: 70–79.
- 27 35 Kärber G. Beitrag zur kollektiven Behandlung pharmakologischer Reihenversuche.  
28 *Naunyn-Schmiedebergs Arch Für Exp Pathol Pharmacol* 1931; **162**: 480–483.
- 29 36 Joshi MS, Bhalla S, Kalrao VR, Dhongade RK, Chitambar SD. Exploring the concurrent  
30 presence of hepatitis A virus genome in serum, stool, saliva, and urine samples of  
31 hepatitis A patients. *Diagn Microbiol Infect Dis* 2014; **78**: 379–382.
- 32 37 Liou TC, Chang TT, Young KC, Lin XZ, Lin CY, Wu HL. Detection of HCV RNA in  
33 saliva, urine, seminal fluid, and ascites. *J Med Virol* 1992; **37**: 197–202.
- 34 38 Knutsson M, Kidd-Ljunggren K. Urine from chronic hepatitis B virus carriers:  
35 implications for infectivity. *J Med Virol* 2000; **60**: 17–20.
- 36 39 Numata N, Ohori H, Hayakawa Y, Saitoh Y, Tsunoda A, Kanno A. Demonstration of  
37 hepatitis C virus genome in saliva and urine of patients with type C hepatitis: usefulness

- 1 of the single round polymerase chain reaction method for detection of the HCV genome. *J*  
2 *Med Virol* 1993; **41**: 120–128.
- 3 40 Gupta E, Pandey P, Pandey S, Sharma MK, Sarin SK. Role of hepatitis E virus antigen in  
4 confirming active viral replication in patients with acute viral hepatitis E infection. *J Clin*  
5 *Virol* 2013; **58**: 374–377.
- 6 41 Yin X, Ambardekar C, Lu Y, Feng Z. Distinct Entry Mechanisms for Nonenveloped and  
7 Quasi-Enveloped Hepatitis E Viruses. *J Virol* 2016; **90**: 4232–4242.
- 8 42 Kamar N, Weclawiak H, Guilbeau-Frugier C, Legrand-Abravanel F, Cointault O, Ribes D  
9 *et al.* Hepatitis E virus and the kidney in solid-organ transplant patients. *Transplantation*  
10 2012; **93**: 617–623.
- 11 43 Wang Y, Zhou X, Debing Y, Chen K, Van Der Laan LJW, Neyts J *et al.* Calcineurin  
12 inhibitors stimulate and mycophenolic acid inhibits replication of hepatitis E virus.  
13 *Gastroenterology* 2014; **146**: 1775–1783.
- 14 44 **Montpellier C, Wychowski C**, Sayed IM, Meunier J-C, Saliou J-M, Ankavay M *et al.*  
15 Hepatitis E Virus Lifecycle and Identification of 3 Forms of the ORF2 Capsid Protein.  
16 *Gastroenterology* 2017. doi:10.1053/j.gastro.2017.09.020.
- 17 45 Yin X, Ying D, Lhomme S, Tang Z, Walker CM, Xia N *et al.* Origin, antigenicity, and  
18 function of a secreted form of ORF2 in hepatitis E virus infection. *Proc Natl Acad Sci U S*  
19 *A* 2018. doi:10.1073/pnas.1721345115.
- 20 46 Robinson RA, Burgess WH, Emerson SU, Leibowitz RS, Sosnovtseva SA, Tsarev S *et al.*  
21 Structural characterization of recombinant hepatitis E virus ORF2 proteins in baculovirus-  
22 infected insect cells. *Protein Expr Purif* 1998; **12**: 75–84.
- 23 47 Ou X, Mao S, Jiang Y, Zhang S, Ke C, Ma G *et al.* Viral-host interaction in kidney  
24 reveals strategies to escape host immunity and persistently shed virus to the urine.  
25 *Oncotarget* 2017; **8**: 7336–7349.
- 26 48 Han J, Lei Y, Liu L, Liu P, Xia J, Zhang Y *et al.* SPF rabbits infected with rabbit hepatitis  
27 E virus isolate experimentally showing the chronicity of hepatitis. *PloS One* 2014; **9**:  
28 e99861.
- 29 49 Taneja S, Sen S, Gupta VK, Aggarwal R, Jameel S. Plasma and urine biomarkers in acute  
30 viral hepatitis E. *Proteome Sci* 2009; **7**: 39.
- 31 50 Guinault D, Ribes D, Delas A, Milongo D, Abravanel F, Puissant-Lubrano B *et al.*  
32 Hepatitis E Virus-Induced Cryoglobulinemic Glomerulonephritis in a  
33 Nonimmunocompromised Person. *Am J Kidney Dis* 2016; **67**: 660–663.
- 34 51 Taton B, Moreau K, Lepreux S, Bachelet T, Trimoulet P, De Ledinghen V *et al.* Hepatitis  
35 E virus infection as a new probable cause of de novo membranous nephropathy after  
36 kidney transplantation. *Transpl Infect Dis* 2013; **15**: E211–E215.
- 37 52 Del Bello A, Guilbeau-Frugier C, Josse A-G, Rostaing L, Izopet J, Kamar N. Successful  
38 treatment of hepatitis E virus-associated cryoglobulinemic membranoproliferative  
39 glomerulonephritis with ribavirin. *Transpl Infect Dis* 2015; **17**: 279–283.



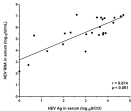
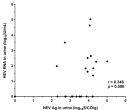
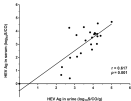
1 53 Kamar N, Bendall R, Legrand-Abravanel F, Xia N-S, Ijaz S, Izopet J *et al.* Hepatitis E.  
2 *Lancetl* 2012; **379**: 2477–2488.

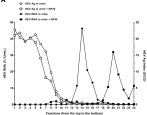
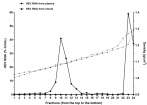
3

4 Authors names in bold designate shared co-first authorship.

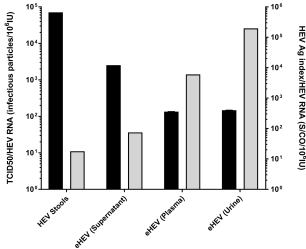
5 **Acknowledgements:** The English text has been checked by Owen Parkes.

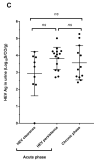
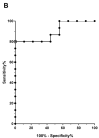
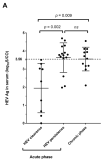
6

**A****B****C****D**

**A****B**

- TCID50/HEV RNA
- HEV Ag index/HEV RNA





**Table 1. Patient characteristics at diagnostic of HEV infection**

Patient infection evolution	Gender M/F	Age years	Organ transplanted	Duration of transplantation, months	Immunosuppressive regimen	AST IU/L	ALT IU/L	Bilirubin $\mu\text{mol/L}$	Anti-HEV IgM	Anti-HEV IgG (titer <sup>a</sup> )	S/CO <sup>b</sup> serum	S/CO/g <sup>b</sup> urine
<b>Clearance</b>												
1	F	68	Kidney	67	Tacrolimus, MPA, steroids	104	195	8.1	+	+ (>400.0)	2.99	3.89
2	M	62	Kidney	107	Tacrolimus, MPA	43	92	14.3	+	+ (0.3)	3.51	3.94
3	F	52	Liver	160	Tacrolimus, MPA	97	157	23.0	+	-	0.48	2.74
4	M	63	Kidney	70	Tacrolimus, MPA, steroids	16	16	6.0	-	-	0.00	0.00
5	M	62	Kidney	29	Tacrolimus, MPA, steroids	216	461	5.6	+	-	1.26	2.31
6	M	43	Liver	83	Tacrolimus, MPA	768	1172	16.9	+	+ (1.6)	3.02	4.21
7	F	50	Kidney	335	Tacrolimus, MPA	338	677	5.9	+	+ (0.3)	2.32	3.33
8	M	51	Kidney	24	Belatacept, MPA, steroids	177	378	6.4	+	+ (20.1)	3.29	3.59
9	M	36	Liver	159	mTORi	543	1232	8.1	+	+ (4.5)	0.70	2.27
<b>Persistence</b>												
10	M	75	Kidney	236	mTORi, MPA, steroids	63	60	12.0	+	+ (5.4)	4.30	3.50
11	M	32	Kidney	35	Tacrolimus, MPA, steroids	64	209	14.0	-	-	3.80	4.12
12	F	74	Kidney-Liver	138	Tacrolimus, mTORi	388	502	8.0	+	+ (394.2)	2.05	3.13
13	F	49	Kidney	163	Tacrolimus, MPA, steroids	83	217	9.4	+	-	4.58	4.25
14	M	55	Liver	3	Tacrolimus, steroids	90	240	71.6	-	-	4.70	5.01
15	M	59	Kidney	175	Tacrolimus, MPA, steroids	43	66	8.8	+	+ (22.4)	4.25	2.71
16	M	43	Kidney-Liver	24	Tacrolimus, MPA, steroids	60	71	17.0	+	+ (>400.0)	3.69	3.10
17	M	39	Liver	34	mTORi, steroids	140	164	11.0	+	-	3.64	4.41
18	M	70	Liver	133	mTORi, steroids	70	105	11.1	+	-	3.76	4.06
19	M	44	Kidney	13	Tacrolimus, MPA, steroids	61	106	9.3	+	+ (0.4)	3.78	4.22
20	M	54	Kidney	132	mTORi, MPA	254	564	12.7	+	+ (5.0)	2.59	3.94
21	F	53	Kidney-Pancreas	107	Tacrolimus, azathioprine	91	57	6.0	+	-	3.60	4.24
22	M	50	Liver	42	Tacrolimus, MPA, steroids	105	140	23.5	+	+ (41.9)	3.90	3.84
23	M	34	Kidney	31	Tacrolimus, mTORi, steroids	65	172	6.7	+	+ (42.6)	1.97	2.75
24	M	75	Liver	44	Tacrolimus, MPA, steroids	33	54	6.9	+	-	3.85	4.09

Abbreviations: AST, aspartate aminotransferase; ALT, alanine aminotransferase; S/CO, signal-to-cutoff ratio; S/CO/g, signal-to-cutoff ratio normalized to urine creatinine; mTORi, mammalian target of rapamycin inhibitors; MPA, mycophenolic acid.

<sup>a</sup>, anti-HEV IgG titers are expressed in U/mL.<sup>32</sup>

<sup>b</sup>, S/CO values are expressed in log<sub>10</sub>.

**Table 2. Patients with and without HEV RNA in their urine during the acute phase of infection.**

Variable	HEV RNA positive urine (n=12)	HEV RNA negative urine (n=12)	p-value
Age (years)	54 [42-61]	52 [43-67]	0.810
Gender (male/female)	10/2	8/4	0.640
Serum creatinine (μmol/L)	108.5 [72.3-145.3]	100.0 [65.0-137.5]	0.561
eGFR CKD-EPI (mL/min/1.73m <sup>2</sup> )	59.5 [41.0-100.0]	65.5 [50.0-91.8]	1
Proteinuria (mg/g)	40.0 [13.0-127.0]	14.5 [8.3-77.5]	0.230
Hematuria (> 10 red cells/mm <sup>3</sup> , n)	0	0	-
AST activity (IU/L)	87 [48-131]	101 [62-308]	0.541
ALT activity (IU/L)	152 [73-234]	184 [80-492]	0.590
GGT activity (IU/L)	203 [130-413]	170 [62-342]	0.319
AP activity (IU/L)	123 [84-277]	158 [94-467]	0.551
Bilirubin (μmol/L)	11.1 [8.3-14.2]	8.1 [6.1-15.7]	0.173
Hemoglobin (g/dL)	13.4 [11.3-15.4]	13.7 [13.1-15.3]	0.486
Platelet count (G/L)	177 [139-243]	216 [173-259]	0.340
Lymphocyte count (/mm <sup>3</sup> )	1 026 [596.5-2421]	1750 [1417-2450]	0.101
Neutrophil count (/mm <sup>3</sup> )	3900 [2450-5250]	5150 [3850-6050]	0.155
Tacrolimus trough (ng/mL)	(n = 8) <b>9.1 [7.4-10.2]</b>	(n = 10) <b>5.9 [4.8-6.5]</b>	<b>&lt;0.001</b>
mTOR inhibitors trough (ng/mL)	(n = 3) 14.2 [12.4-18.8]	(n = 3) 7.1 [5.9-8.7]	0.100
Subgenotypes (3: e/f/c/chi/i/na)	1/7/2/2/-/-	1/3/4/1/1/2	0.537
HEV RNA in serum (log <sub>10</sub> IU/mL)	<b>6.58 [5.51-6.95]</b>	<b>5.40 [3.92-5.56]</b>	<b>0.015</b>
HEV Ag in serum (log <sub>10</sub> S/CO)	<b>3.78 [3.53-4.19]</b>	<b>2.77 [1.57-3.62]</b>	<b>0.017</b>
HEV Ag in urine (log <sub>10</sub> S/CO/g)	<b>4.08 [3.87-4.25]</b>	<b>3.24 [2.74-3.83]</b>	<b>0.028</b>

Abbreviations: HEV, hepatitis E virus; eGFR, estimated glomerular filtration rate; AST, aspartate aminotransferase; ALT, alanine aminotransferase; GGT, gamma-glutamyl transpeptidase; AP, alkaline phosphatase; mTOR, mammalian target of rapamycin; na, not available; Ag, antigen; S/CO, signal-to-cutoff ratio; S/CO/g, signal-to-cutoff ratio normalized to urine creatinine.