



**HAL**  
open science

## Les cryoglobulinémies

Anne Claire Desbois, Patrice Cacoub, David Saadoun

► **To cite this version:**

Anne Claire Desbois, Patrice Cacoub, David Saadoun. Les cryoglobulinémies. *Revue du Rhumatisme*, 2019, 86, pp.241 - 248. 10.1016/j.rhum.2018.12.009 . hal-03485077

**HAL Id: hal-03485077**

**<https://hal.science/hal-03485077>**

Submitted on 20 Dec 2021

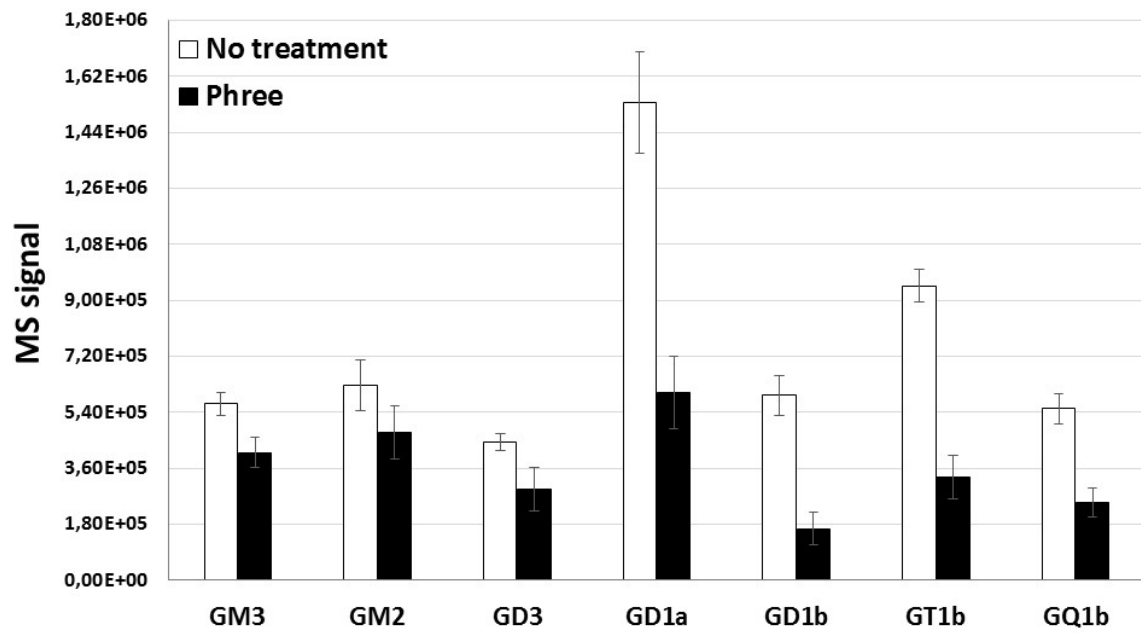
**HAL** is a multi-disciplinary open access archive for the deposit and dissemination of scientific research documents, whether they are published or not. The documents may come from teaching and research institutions in France or abroad, or from public or private research centers.

L'archive ouverte pluridisciplinaire **HAL**, est destinée au dépôt et à la diffusion de documents scientifiques de niveau recherche, publiés ou non, émanant des établissements d'enseignement et de recherche français ou étrangers, des laboratoires publics ou privés.



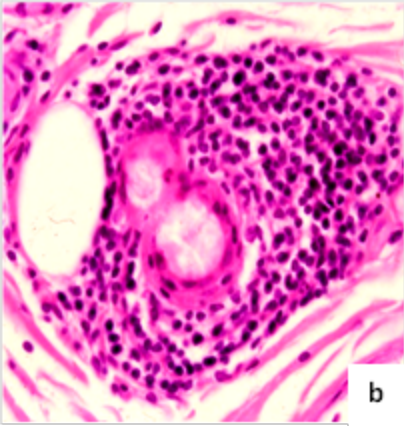
Distributed under a Creative Commons Attribution - NonCommercial 4.0 International License

Fig 4.





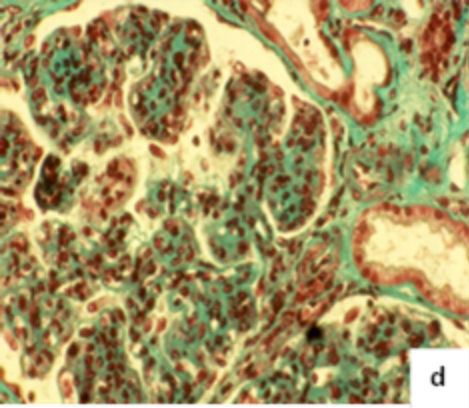
**a**



**b**



**C**



d

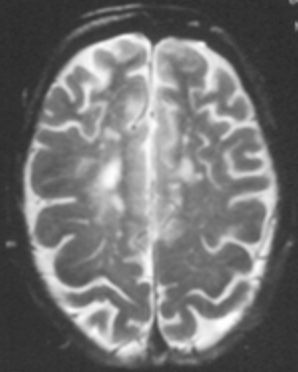
Set: 2/2  
In: 20/36  
Ax: 548.8

Patient: 04-83-93  
04-83-93  
13:31  
WF: 1.2

R  
9  
9

L  
3  
3

SE/V  
TR: 2500  
TE: 90  
EC: 2/2 4Hz  
Head  
FOV: 22cm  
6.0114/2.01p  
36/60:30  
256=192/1.00 NEX



e

# Typage cryoglobuline

```
graph TD; A[Typage cryoglobuline] --> B[Cryoglobulinémie de type 1]; A --> C[Cryoglobulinémie mixte]; B --> D[IgM++]; B --> E[IgG>IgA]; D --> F["Lymphome non hodgkinien B (Waldenstrom, zone marginal...)"]; E --> G["Myélome Lymphome non Hodgkinien B MGUS"]; C --> H["Hépatite C Connectivite (Gougerot, Lupus) Lymphome B Autres"];
```

Cryoglobulinémie de type 1

IgM++

Lymphome non hodgkinien B  
(Waldenstrom, zone marginal...)

IgG>IgA

Myélome  
Lymphome non Hodgkinien B  
MGUS

Cryoglobulinémie mixte

Hépatite C  
Connectivite (Gougerot, Lupus)  
Lymphome B  
Autres