



HAL
open science

Plasma amyloid β 40/42 ratio predicts cerebral amyloidosis in cognitively normal individuals at risk for Alzheimer's disease

Andrea Vergallo, Lucile Mégret, Simone Lista, Enrica Cavedo, Henrik Zetterberg, Kaj Blennow, Eugene Vanmechelen, Ann de Vos, Marie-Odile Habert, Marie-Claude Potier, et al.

► To cite this version:

Andrea Vergallo, Lucile Mégret, Simone Lista, Enrica Cavedo, Henrik Zetterberg, et al.. Plasma amyloid β 40/42 ratio predicts cerebral amyloidosis in cognitively normal individuals at risk for Alzheimer's disease. *Alzheimer's & Dementia: the Journal of the Alzheimer's Association*, 2019, 15 (6), pp.764 - 775. 10.1016/j.jalz.2019.03.009 . hal-03484725

HAL Id: hal-03484725

<https://hal.science/hal-03484725v1>

Submitted on 20 Dec 2021

HAL is a multi-disciplinary open access archive for the deposit and dissemination of scientific research documents, whether they are published or not. The documents may come from teaching and research institutions in France or abroad, or from public or private research centers.

L'archive ouverte pluridisciplinaire **HAL**, est destinée au dépôt et à la diffusion de documents scientifiques de niveau recherche, publiés ou non, émanant des établissements d'enseignement et de recherche français ou étrangers, des laboratoires publics ou privés.



Distributed under a Creative Commons Attribution - NonCommercial 4.0 International License

Plasma amyloid β 40/42 ratio predicts cerebral amyloidosis in cognitively normal individuals at risk for Alzheimer's disease

Andrea Vergallo^{a, b, c, *}

andrea.vergallo@icm-institute.org

Lucile Mégrét^e

Simone Lista^{a, b, c, d}

Enrica Cavedo^{a, b, c, d}

Henrik Zetterberg^{f, g, h, e, f, g, h}

Kaj Blennow^{e, f}

Eugeen Vanmechelenⁱ

Ann De Vosⁱ

Marie-Odile Habert^{h, i, j, k, l}

Marie-Claude Potier^m

Bruno Dubois^{n, o, p, q, r, s, t, u, v, w, x, y, z, a, b, c}

Christian Neri^d

Harald Hampel^{g, h, e, f, g, h}

and the ► INSIGHT-preAD study group

H. Bakardjian; H. Benali; H. Bertin; J. Bonheur; L. Boukadida; N. Boukerrou; E. Cavedo; P. Chiesa; O. Colliot; B. Dubois; M. Dubois; S. Epelbaum; G. Gagliardi; R. Genthon; M.O. Habert; H. Hampel; M. Houot; A. Kas; F. Lamari; M. Levy; S. Lista; C. Metzinger; F. Mochel; F. Nyasse; C. Poisson; M.C

Potier; M. Revillon; A. Santos; K.S. Andrade; M. Sole; M. Surtee; Thiebaut de Schotten M; A. Vergallo; N. Younsi

for the ► Alzheimer Precision Medicine Initiative (APMI)

Lisi Flores Aguilar; Claudio Babiloni; Filippo Baldacci; Norbert Benda; Keith L. Black; Arun L.W. Bokde; Ubaldo Bonuccelli; Karl Broich; Francesco Cacciola; Juan Castrillo; Enrica Cavedo; Roberto Ceravolo; Patrizia A. Chiesa; Jean-Christophe Corvol; Augusto Claudio Cuello; Jeffrey L. Cummings;

Herman Depypere; Bruno Dubois; Andrea Duggento; Valentina Escott-Price; Howard Federoff; Maria Teresa Ferretti; Massimo Fiandaca; Richard A. Frank; Francesco Garaci; Hugo Geerts; Filippo S. Giorgi; Manuela Graziani; Marion Haberkamp; Marie-Odile Habert; Harald Hampel; Karl Herholz;

Eric Karran; Seung H. Kim; Yosef Koronyo; Maya Koronyo-Hamaoui; Foudil Lamari; Todd Langevin; Stéphane Lehericy; Simone Lista; Jean Lorenceau; Dalila Mango; Mark Mapstone; Christian Neri; Robert Nisticò; Sid E. O'Bryant; George Perry; Craig Ritchie; Simone Rossi; Amira Saidi; Emiliano

Santarnecchi; Lon S. Schneider; Olaf Sporns; Nicola Toschi; Steven R. Verdooner; Andrea Vergallo; Nicolas Villain; Lindsay A. Welikovitsh; Janet Woodcock; Erfan Younesi

^aAXA Research Fund & Sorbonne University Chair, Paris, France

^{ba}Sorbonne University, GRC no 21, Alzheimer Precision Medicine (APM), AP-HP, Pitié-Salpêtrière Hospital, Boulevard de l'hôpital, Paris, France

^{bb}Brain & Spine Institute (ICM), INSERM U 1127, CNRS UMR 7225, Boulevard de l'hôpital, Paris, France

^{cd}Institute of Memory and Alzheimer's Disease (IM2A), Department of Neurology, Pitié-Salpêtrière Hospital, AP-HP, Boulevard de l'hôpital, Paris, France

^{de}Sorbonnes Université, [CNRS UMR 8256, INSERM ERL U1164](#), [Centre National de la Recherche Scientifique, Research Unit Biology of Adaptation and Aging \(B2A\)](#), Team Compensation in Neurodegenerative diseases and Aging (Brain-C), Paris, France

^{ee}Institute of Neuroscience and Physiology, Department of Psychiatry and Neurochemistry, The Sahlgrenska Academy at the University of Gothenburg, Mölndal, Sweden

^{ef}Clinical Neurochemistry Laboratory, Sahlgrenska University Hospital, Mölndal, Sweden

^{ga}Department of Molecular Neuroscience, UCL Institute of Neurology, London, UK

^{lh}UK Dementia Research Institute, London, UK

^lADx NeuroSciences NV, Ghent, Belgium

^{ki}Sorbonne Université, CNRS, INSERM, Laboratoire d'Imagerie Biomédicale, Paris, France

^{lk}Centre pour l'Acquisition et le Traitement des Images (www.cati-neuroimaging.com), Paris, France

^mAP-HP, Hôpital Pitié-Salpêtrière, Département de Médecine Nucléaire, Paris, France

^{mm}ICM Institut du Cerveau et de la Moelle épinière, CNRS UMR7225, INSERM U1127, UPMC, Hôpital de la Pitié-Salpêtrière, Paris, France

*Corresponding author. Tel.: +33 1 42 16 19 93; Fax: [+33 1 57 27 40 27](tel:+33157274027).

Sorbonne University Clinical Research Group (GRC no 21), "Alzheimer Precision Medicine (APM)," Établissements Publics à caractère Scientifique et Technologique (E.P.S.T.), Alzheimer Precision Medicine Initiative (APMI) <https://www.apmiscience.com/>.

Abstract

Introduction

Blood-based biomarkers of pathophysiological brain amyloid β ($A\beta$) accumulation, particularly for preclinical target and large-scale interventions, are warranted to effectively [treat-enrich](#) Alzheimer's disease [clinical trials and management](#).

Methods

We investigated whether plasma concentrations of the $A\beta_{1-40}/A\beta_{1-42}$ ratio, assessed using the single-molecule array (Simoa) immunoassay, may predict brain $A\beta$ positron emission tomography status in a large-scale longitudinal monocentric cohort (N = 276) of older individuals with subjective memory complaints. We performed a hypothesis-driven investigation followed by a [nonparametric](#), no-a-priori hypothesis [study](#) using machine learning.

Results

The receiver operating characteristic curve and machine learning showed a balanced accuracy of 76.5% and 81%, respectively, for the plasma $A\beta_{1-40}/A\beta_{1-42}$ ratio. The accuracy is not affected by the apolipoprotein E (*APOE*) $\epsilon 4$ allele, sex, or age.

Discussion

Our results encourage an independent validation cohort study to [validateconfirm](#) the indication that the plasma $A\beta_{1-40}/A\beta_{1-42}$ ratio, assessed *via* Simoa, may improve future standard of care and clinical trial design.

Keywords: Alzheimer's disease; Plasma amyloid β ; Simoa immunoassay; Machine learning; Subjective memory complainers; Amyloid PET; Classification and regression trees (CART)

1 Introduction

Blood-based biomarkers are expected to facilitate critical clinical solutions catalyzed by the global threat of the evolving Alzheimer's disease (AD) epidemic [1–3]. They will support early screening and identification of individuals who are very unlikely to develop AD-related pathophysiology and increase the probability that individuals with AD pathophysiology are being selected for further investigations using more specific, expensive, and/or more invasive methods with reduced accessibility (e.g., positron emission tomography [PET] imaging or cerebrospinal fluid [CSF] assessment). The broad availability of blood-based biomarkers will also generate a critical step toward a cost-, resource-, and time-effective multistep diagnostic workup and facilitate the reengineering of drug Research & Development [programs/pipelines](#), from proof of pharmacology to clinical trial design [4–8].

Brain accumulation of amyloid β ($A\beta$) and $A\beta$ -induced neuronal and glial proteotoxicity is a core feature of the complex pathophysiological landscape of late-onset polygenic AD [7–14]. In [this regard addition, there is](#) growing evidence [has shown that for](#) plasma $A\beta$ concentrations [can](#) accurately predict cerebral β -amyloidosis in AD and mild cognitively impairment (MCI). Previous population-based studies reported that the $A\beta_{1-40}/A\beta_{1-42}$ ratio, assessed using mass spectrometry, demonstrated an accuracy of approximately 90% using $A\beta$ -PET imaging as a standard of truth in two pooled cohorts (either combined or alone) of cognitively normal, prodromal (MCI), and mild dementia stage AD participants [9]. In patients with MCI or dementia, the strength of the association (concordance) between plasma $A\beta$ and $A\beta$ -PET imaging (or CSF) was assessed using both a dichotomized composite status (i.e., $A\beta$ "positivity" or "negativity") and quantitative threshold measures, such as the standardized uptake value ratio (SUVR) [10–13]. Plasma $A\beta_{1-42}/A\beta_{1-40}$ ratio was also

suggested to constitute surrogate biomarkers of cortical A β deposition in cognitively normal subjects without suffering from any condition at risk for AD [14]. However, the predictive value of plasma A β levels has not been investigated in cognitively normal individuals facing subjective memory complaint (SMC) or **facing** subjective cognitive decline with or without memory impairment, which are conditions at risk for MCI or dementia within the clinical **spectrum** of AD [15,16]. It has also been shown that **both condition SMC and subjective cognitive decline with or without memory impairment** may be associated with an increased risk of being positive when assessed for core biomarkers of AD [15,16]. Here, we investigated the performance of plasma A β_{1-42} and of the A β_{1-40} /A β_{1-42} ratio in the "INveStIGation of AlzHeimer's PredicTors in Subjective Memory Complainers" (INSIGHT-preAD) cohort, which provides a high-quality framework for a standardized large-scale, observational, monocentric, university-based expert-center longitudinal study of cognitively intact individuals with SMC [17]. We analyzed the accuracy of A β_{1-42} , A β_{1-40} , ratio A β_{1-40} /A β_{1-42} , and four other pathophysiological plasma biomarkers (total tau [t-Tau], neurofilament light chain [NFL], human cartilage glycoprotein-39 and chitinase-like protein 1 [YKL-40], and β -site amyloid precursor protein cleaving enzyme 1 [BACE1]) in predicting brain amyloidosis in 276 cognitively intact individuals with SMC through the analysis of measures gathered across three timepoints over a 3-year follow-up to test whether the prediction might be timepoint independent. For statistical modeling, we first applied a hypothesis-driven statistical approach commonly used for biomarker studies with univariate and receiver operating characteristic curve (ROC) analyses. We then carried out an unbiased machine learning approach involving random forest analysis (RFA) and classification and regression trees (CART) analysis in which we made no *a priori* hypothesis on the presence of a predictive variable in the data and in which we evaluated for the effect of the time at which the measures are collected. As developed below, these statistical models identify the A β_{1-40} /A β_{1-42} ratio as the only one variable that may predict brain A β amyloidosis. These models systematically yielded a balanced accuracy comprised between 71% and 81% for the A β_{1-40} /A β_{1-42} ratio to predict brain A β amyloidosis, which represents high accuracy considering the relatively small sample. These results call for independent validation cohort studies to test if the A β_{1-40} /A β_{1-42} ratio may constitute a cost-effective biomarker useful for assessing brain amyloidosis in individuals who are at risk for AD.

2 Materials and methods

2.1 Study participants

We designed a large-scale monocentric research program using a cohort of SMC recruited from the INSIGHT-preAD study [17], a French academic university-based cohort, which is part of the Alzheimer Precision Medicine Initiative Cohort Program (APMI-CP) [18,19]. Participants were enrolled at the Institute of Memory and Alzheimer's disease (*Institut de la Mémoire et de la Maladie d'Alzheimer*, IM2A) at the Pitié-Salpêtrière University Hospital in Paris, France. The main objective of the INSIGHT-preAD study is to explore the earliest preclinical stages of AD through intermediate to later stages until conversion to first cognitive symptoms, using clinical parameters and biomarkers associated with cognitive progression.

The INSIGHT-preAD study includes 318 cognitively and physically normal Caucasian individuals, recruited from the community in the wider Paris area, France, aged 70 to 85 years, with SMC. The status of SMC was confirmed as follows: (1) participants gave an affirmative answer ("YES") to both questions: "Are you complaining about your memory?" and "Is it a regular complaint that has lasted for more than 6 months?" (2) participants showed intact cognitive functions based on the Mini-Mental State Examination score \geq 27, Clinical Dementia Rating scale score = 0, and Free and Cued Selective Rating Test total recall score \geq 41. A β -PET investigation was performed at baseline visit, as mandatory inclusion criterion. Thus, all subjects enrolled into the study have SMC and are stratified as either positive or negative for cerebral A β deposition. Time-series data for plasma concentrations of A β_{1-42} and A β_{1-40} were collected at three timepoints (within a 3-year follow-up) using a highly sensitive in-house immunoassay (see **Section 2.3, "Immunoassays for plasma biomarkers"-below**). In addition, four novel candidate surrogate markers of AD-related pathways were longitudinally assessed in plasma, including upstream regulators of amyloidogenic pathways and axonal sprouting, such as BACE1, astrocytes, and microglia overactivation, neuroinflammation (YKL-40), and damage of large-caliber myelinated axons (NFL), **and t-Tau** [8,20,21]. At the point of the study inclusion, several data were collected, namely demographic and clinical data and apolipoprotein E (*APOE*) genotype. Exclusion criterion was having a history of neurological or psychiatric diseases, including depressive disorders. The study was conducted in accordance with the tenets of the Declaration of Helsinki of 1975 and approved by the local institutional review board at the participating center. All participants or their representatives gave written informed consent for use of their clinical data for research purposes.

2.2 Blood sampling and collection tube storage

Blood samples were taken in the morning, after a 12-hour fast, handled in a standardized way, and centrifuged for 15 minutes at 2000 G-force at 4°C. Per sample, plasma fraction was collected, homogenized, aliquoted into multiple 0.5-mL cryovial-sterilized tubes, and finally stored at -80°C within 2 hours from collection.

2.3 Immunoassays for plasma biomarkers

All analyses of plasma A β_{1-42} and A β_{1-40} , t-Tau, NFL, and YKL-40 concentrations were performed at the Clinical Neurochemistry Laboratory, Sahlgrenska University Hospital, Sweden [22-25]. In particular, a volume of 0.5 mL of plasma for each subject was required for performing the analyses using the aforementioned platforms.

Plasma BACE1 concentrations were measured at ADx NeuroSciences, Belgium, using a research prototype ELISA, based on the commercially available ELISA for CSF measurements (EQ 6541-9601-L; Euroimmun AG, Lübeck, Germany) [26]. The measurements of each biomarker were performed in one round of experiments, using the same batch of reagents, by board-certified laboratory technicians who were blinded to the clinical data (for more details see **Supplementary Material**).

2.4 PET data acquisition and processing

All ¹⁸F-florbetapir-PET scans are acquired in a single session on a Philips Gemini GXL CT-PET scanner 50 (\pm 5) minutes after injection of approximately 370 MBq (333-407 MBq) of ¹⁸F-florbetapir (for imaging acquisition, reconstructions as well as for SUVR

calculation, and threshold identification see [Supplementary Material](#) [17].

2.5 Statistical modeling

2.5.1 Comparisons between A β -PET–stratified groups, univariate correlation analysis, and diagnostic performance ROC test of the plasma A β ratio

The χ^2 test was used to study categorical variables in the sample stratified for A β -PET burden. Independent sample *t* tests (corrected for multiple comparisons) were carried out to compare continuous variables (clinical demographic data) in the sample stratified for brain amyloidosis. Normality of variables and residuals and heteroskedasticity were checked visually. However, the samples size **was** large enough for the *t* test to be valid even if all variables **were** not normally distributed.

To evaluate the performance of plasma A β markers in predicting the individual A β -PET status, we carried out ROC tests (*a priori* statistical modeling). ROCs were built up only for those plasma markers significantly different between A β -PET groups. A confidence interval of 95% was chosen. The area under the curve (AUC) and the representative best values for the sensitivity (sensitivity*100) and specificity (1-specificity*100) were used for evaluating the performance of the model. AUCs were compared with each other using the DeLong test [27]. For each ROC, the best cutoff point was determined by using Youden's index, which optimizes biomarker performance when equal weight is given to sensitivity and specificity and which represents the likelihood of a positive test result in subjects with the condition versus those without the condition [28]. We elected to not apply any correction for random measurements error at our ROCs as we used a highly reproducible protocol that minimizes intra-assay variability [28]. We tested the association between the plasma concentrations of A β_{1-42} and A β_{1-40} at the three timepoints, by performing Pearson's correlation coefficient (ρ) adjusting for the timepoint-related age, if appropriate. To follow, we investigated the association between plasma A β markers and the global/regional A β -PET SUVRs, at timepoint 1 (T1, the study inclusion time-point), by performing ρ between residuals. Residuals were recovered through carrying out a linear regression analysis between each dependent variable (either plasma markers or regional SUVRs) and age plus sex as independent variables.

All tests were two-tailed, and *P* values < 0.05 were considered statistically significant. The Bonferroni correction was applied to adjust the false discovery rate for multiple comparisons. Data analysis was performed using the SPSS 23.0 IBM software for macOS.

2.5.2 Tree-based analysis of time-series data

We applied a machine learning approach to test, in a *no-a-priori* hypothesis manner, whether the brain amyloidosis status might be explained by candidate classifiers grouped into a panel of plasma biomarkers reflecting distinctive pathophysiological mechanisms of AD (herein A β_{1-42} , A β_{1-40} , t-Tau, NFL, BACE1, YKL-40) and whether the performance of such classifier(s) might be conserved across subjects and timepoints; **we applied a machine learning approach**. Specifically, we applied a tree-based approach involving the use of RFA for variable selection [29,30] and that of CART [30] analysis for selecting optimal classifiers (pruned trees) from deep trees [31]. RFA, a nonparametric statistical method, is amenable to analyzing small data sets [32], and it may perform better than logistic regression, a parametric statistical method, as previously observed in 69% of the cases in a large benchmarking study [33]. RFA and CART analysis have been successfully used for biomarker-based research on neurodegenerative disease (ND) discovery in neurodegenerative disease (ND) research, including AD [34–37]. RFA and CART analysis were performed after oversampling of T1 data to obtain a well-balanced training set, as well as on the true data. To perform oversampling, we used the Synthetic Minority Oversampling Technique (SMOTE) as implemented in the R package DMwR (<https://cran.rproject.org/web/packages/DMwR/index.html>). The resulting data set is herein referred to as the training set. We also evaluated whether the classifier is time dependent, i.e., whether the performance of the classifier might collapse for the biomarker data collected at T2 and T3. To this end, we built a test set including 140 subjects at T2 and 56 additional subjects at T3.

RFA was performed by using the library randomForest for R (<https://CRAN.R-project.org/package=randomForest>). CART analysis was performed using the library rpart for R (<https://CRAN.R-project.org/package=rpart>). Briefly, CART analysis was performed to generate an explicit model of the data set containing the most important predictors resulting from RFA. To test the influence of age and other plasma markers included in our panel on the performance of the classifier, we used a logistic regression analysis as implemented in the R package (<https://stat.ethz.ch/R-manual/R-devel/library/stats/html/00Index.html>).

3 Results

3.1 Association between plasma A β levels and brain amyloidosis: Univariate and ROC analysis

At T1, 276 subjects had plasma A β_{1-40} and A β_{1-42} concentrations available with a sex ratio (F/M) of 170/107. In this sample set, 74 subjects were A β -PET positive, whereas 56 subjects showed at least one *APOE* $\epsilon 4$ allele (see [Table 1](#) for clinical and demographic baseline data). These two SMC subgroups (A β -PET–positive vs. A β -PET–negative and *APOE* $\epsilon 4$ carriers vs. $\epsilon 4$ noncarriers) differed regarding plasma A β_{1-42} concentrations and A β_{1-40} /A β_{1-42} ratio. A β -PET–positive subjects exhibited lower plasma A β_{1-42} concentrations ($P < .001$) and a higher A β_{1-40} /A β_{1-42} ratio ($P < .001$) than A β -PET–negative subjects ([Supplementary Fig. 1](#)). We observed a significant difference between *APOE* $\epsilon 4$ carriers and noncarriers regarding plasma A β_{1-42} concentrations, with the former group characterized by decreased concentrations of this marker ($P = .013$; see [Supplementary Fig. 2A](#)). However, plasma A β_{1-40} /A β_{1-42} ratios were similar between *APOE* $\epsilon 4$ carriers and noncarriers ([Supplementary Fig. 2B](#)). No sex differences were found, either in the whole sample of SMC individuals or in the two A β -PET status subgroups separately. No significant differences across A β -PET, sex, and *APOE* $\epsilon 4$ groups were found for the other blood-based candidate biomarkers: t-Tau, NFL, BACE1, and YKL-40 (see [Supplementary Table 1](#)). A trend was found at T1 between age and plasma A β_{1-42} ($\rho: 0.117$; $P = 0.052$), whereas age and plasma A β_{1-40} were correlated ($\rho: 0.135$; $P < 0.023$). There was no effect of age on plasma A β_{1-42} , A β_{1-40} , and the composite ratio at baseline and over time (data not shown). The plasma concentrations of A β_{1-42} and A β_{1-40} were positively correlated at each timepoint ($\rho: 0.807$; $P < 0.0001$ T1 [N = 276]; $\rho: 0.723$; $P < 0.0001$ T2 [N = 215]; $\rho: 0.518$; $P < 0.0001$ T3 [N = 134]).

Table 1 Demographic and clinical data of subjects at timepoint 1

	Positive Aβ-PET status (N = 73)	Negative Aβ-PET status (N = 203)	Statistics (df), P value*
Sex (F/M)	47/27	123/80	$\chi^2 = 0.19 (1), P = .67$
Age (years)	77.3; SD 3.2	76.6; SD 3.4	$F = -1,5 (275), P = .13$
APOE ε4 (n/p)	46/27	176/27	$\chi^2 = 18.5 (1), P < 0.001$
Aβ ₁₋₄₂ (pg/mL)	15.1; SD 4.0	18.4; SD 5.8	$F = 5,2 (188, 4), P < 0.001$
Aβ ₁₋₄₀ (pg/mL)	295.5; SD 75.4	301.9; SD 87.8	$F = 0,5 (274), P = .58$
Aβ ₁₋₄₀ /Aβ ₁₋₄₂	19.4; SD 3.3	16.7; SD 5.2	$F = -4,0 (274), P < 0.001$
Mean Aβ-PET SUVR	1.07; SD 0.27	0.608; SD 0.05	$F = -11,7 (74, 8), P < 0.001$

NOTE. Quantitative demographic and clinical characteristics (at timepoint 1) are expressed as mean (SD).

Abbreviations: Aβ₁₋₄₀, plasma concentrations of 40 amino acid-long amyloid-β; Aβ₁₋₄₂, plasma concentrations of 42 amino acid-long Aβ; Aβ₁₋₄₀/Aβ₁₋₄₂, plasma concentrations of ratio Aβ₁₋₄₀/Aβ₁₋₄₂; Aβ-PET, amyloid-β positron emission tomography; SUVR, standardized uptake value ratio; APOE ε4, apolipoprotein E ε4 allele; n/p, ε4 allele negative/positive; χ^2 , χ^2 test; F, Fisher's F-test.

* Statistical tests are presented as test value (degree of freedom), P value (significant level $P < .05$, two tailed).

Baseline correlation analysis between global/regional Aβ-PET SUVR and plasma Aβ₁₋₄₂ presented a significant negative association in all tests performed even after correction for multiple-comparisons analysis (false discovery rate value of 0.0038) with the exception of three brain regions (Table 2). All results were controlled for age and sex by using residuals to perform these correlation tests. When we examined the diagnostic performance test at T1, the ROCs displayed an AUC of 0.680 for Aβ₁₋₄₂, at the best cutoff point, with a sensitivity of 52% and a specificity of 80% (balanced accuracy of 66%). The Aβ₁₋₄₀/Aβ₁₋₄₂ ratio exhibited an AUC of 0.794 with a sensitivity of 78.1% and a specificity of 74.9% (balanced accuracy of 76.5%), at the best cut-off point (17.82). DeLong's test indicated a statistically significant difference between the two ROCs ($P = .006$, Fig. 1).

Table 2 Correlation between regional Aβ-PET SUVRs and plasma Aβ markers

Regional Aβ-PET SUVRs	Aβ ₁₋₄₂ (pg/mL)
Cingulum posterior R	$\rho = 0.189*$ $P = .0015$
Cingulum posterior L	$\rho = 0.183*$ $P = .0022$
Cingulum anterior R	$\rho = 0.198*$ $P < .001$
Cingulum anterior L	$\rho = 0.210*$ $P < .001$
Frontal superior orbital L	$\rho = 0.183*$ $P = .0024$
Frontal superior orbital R	$\rho = 0.189*$ $P = .0015$
Parietal inferior L	$\rho = 0.155$ $P = .0099$
Parietal inferior R	$\rho = 0.188*$ $P = .0016$
Precuneus	$\rho = 0.198*$

L	$P < .001$
Precuneus R	$\rho = 0.168$ $P = .0051$
Temporal middle L	$\rho = 0.157$ $P = .0088$
Temporal middle R	$\rho = 0.173$ $P = .0039$
Mean cortical binding	$\rho = 0.181^*$ $P = .0025$

NOTE. Pearson's correlation coefficients seek through residuals (original value cleaned from the potential effect of age and sex).

P value significant level $\alpha < 0.05$, two tailed. False discovery rate: $P = 0.0038$.

Abbreviations: $A\beta_{1-40}$, plasma concentrations of 40 amino acid–long amyloid- β ; $A\beta_{1-42}$, plasma concentrations of 42 amino acid–long $A\beta$; $A\beta$ -PET, amyloid- β positron emission tomography; SUVR, standardized uptake value ratio; ρ ,

Pearson's correlation coefficient; P : uncorrected P -value; P -value; R, right; L, left.

* Significant correlations after correction for multiple comparisons.

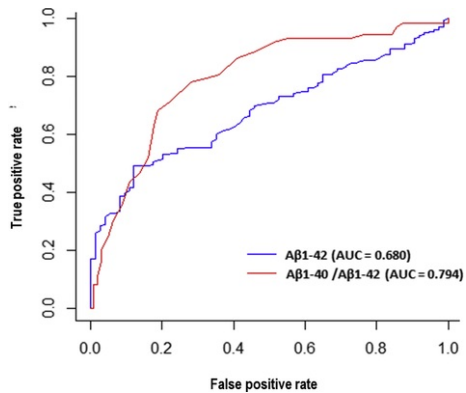


Fig. 1 ROC of plasma $A\beta_{1-42}$ levels and of the plasma $A\beta_{1-40}/A\beta_{1-42}$ ratio in predicting the individual $A\beta$ -PET status. Baseline diagnostic performance test ROCs show for $A\beta_{1-42}$ at the best cutoff point an AUC 68.1% with a sensitivity of 52.3% and a specificity of 79.7% (balanced accuracy of 66%), whereas the ratio $A\beta_{1-40}/A\beta_{1-42}$ shows an AUC of 0.794 with a sensitivity of 78.1% and a specificity of 74.9% (balanced accuracy of 76.5%), at the best cutoff point (17.82). The DeLong's test discloses a statistically significant difference between the two ROCs ($P = .006$). Abbreviations: AUC, area under the curve; $A\beta_{1-40}$, plasma concentration of 40 amino acid–long amyloid- β ; $A\beta_{1-42}$, plasma concentrations of 42 amino acid–long $A\beta$; $A\beta$ -PET, amyloid- β positron emission tomography; ROC, receiver operating characteristic curve.

3.2 RFA and CART analysis identify plasma $A\beta_{1-40}/A\beta_{1-42}$ ratio as the best predictive variable of brain amyloidosis

Next, we applied an unbiased statistical modeling approach to determine whether any of seven biomarker variables, including $A\beta_{1-40}$, $A\beta_{1-42}$, ratio $A\beta_{1-40}/A\beta_{1-42}$, t-Tau, YKL-40, NFL, and BACE1, might accurately predict the brain $A\beta$ -PET status in SMC subjects, either alone or in combination. To this end, we carried out RFAs followed by CART analyses in which classifiers were constructed in training sets and tested in replication sets, taking advantage of the data collected across three timepoints (T1, T2, and T3) over a time period of 3 years.

Two hundred sixty-four subjects exhibited no missing values at T1, and 212 subjects and 126 subjects showed no missing values at T2 and T3, respectively. Sixty-six subjects showed no missing values for the three timepoints. There was no significant difference in the distribution of plasma $A\beta_{1-42}$ and ratio $A\beta_{1-40}/A\beta_{1-42}$ across timepoints.

The group with no missing value at T1 showed an excess of $A\beta$ -PET–negative subjects (196 subjects are $A\beta$ -PET negative and 68 subjects are $A\beta$ -PET positive), which could impair the performance of the RFA, leading to high accuracy for the majority class but low prediction accuracy for the minority class. To overcome this problem, we applied the SMOTE before performing RFA (see Methods). We set SMOTE parameters so that, for each subject in the minority class, SMOTE creates an $A\beta$ -PET–positive subject using the information from the 5 nearest neighbors [38]. With these settings, 68 synthetic $A\beta$ -PET–positive subjects are generated by SMOTE. Then, 60 $A\beta$ -PET–negative subjects were removed to obtain a balanced data set with 136 $A\beta$ -PET–positive and 136 $A\beta$ -PET–negative

subjects. On oversampling, RFA indicated that plasma $A\beta_{1-40}/A\beta_{1-42}$ ratio may best explain cerebral A β deposition out of 7 variables initially included into the analysis ($A\beta_{1-40}/A\beta_{1-42}$ ratio, $A\beta_{1-40}$, $A\beta_{1-42}$, t-Tau, YKL-40, NFL, and BACE1). The model (training set) showed 92% specificity and 86% sensitivity with a balanced accuracy of 89% (Fig. 2A, left panel). Of note, predictive performance was preserved in the test set (i.e., true subjects and biomarker data for T1 and T2), showing a balanced accuracy of 76% (Fig. 2A, right panel).

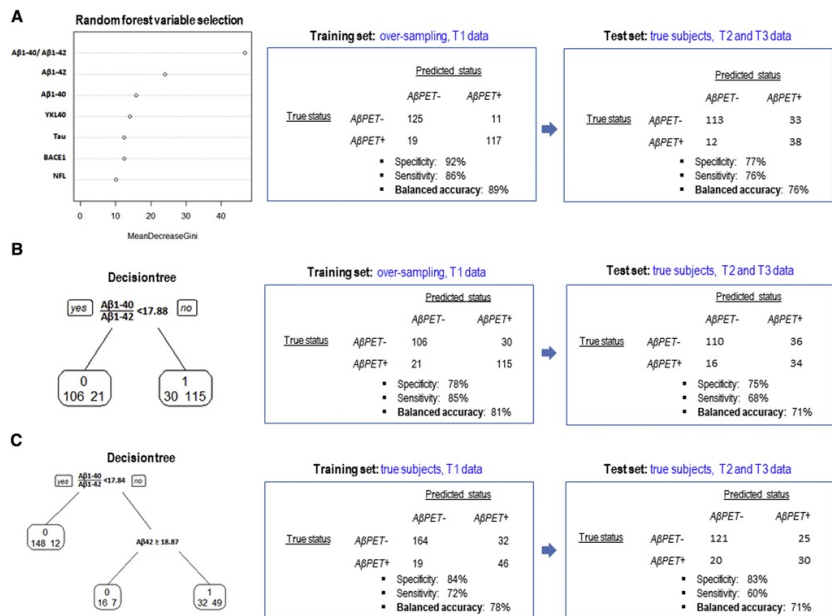


Fig. 2 RFA and CART analysis retain the plasma $A\beta_{1-40}/A\beta_{1-42}$ ratio as a predictive classifier of the brain amyloid status in the INSIGHT-preAD cohort. (A) RFA identifies the ratio $A\beta_{1-40}/A\beta_{1-42}$ as the best variable explaining the brain amyloidosis status (i.e., positive, negative) out of seven biomarkers ($A\beta_{1-40}$, $A\beta_{1-42}$, ratio $A\beta_{1-40}/A\beta_{1-42}$, t-Tau, YKL-40, NFL, and BACE1). The performance of the model is preserved between the training set (built from oversampled data at timepoint 1) and the test set (built using unseen data from true subjects at time-point 2, and time-point 3). (B) CART analysis identifies the ratio $A\beta_{1-40}/A\beta_{1-42}$ as the only predictive variable. The threshold selected for the classification is the same as the one retained via the ROC-AUC analysis (see Fig. 1). The performance of the model is preserved between the training set (built from oversampled data at timepoint 1) and the test set (same test set as in A). (C) CART analysis identifies the ratio $A\beta_{1-40}/A\beta_{1-42}$ and $A\beta_{1-42}$ levels as predictive variables in true subjects. The performance of the model is preserved between the training set (built from data at timepoint 1) and the test set (same test set as in A). Abbreviations: $A\beta_{1-40}$, plasma concentrations of 40 amino acid–long amyloid- β ; $A\beta_{1-42}$, plasma concentrations of 42 amino acid–long A β ; $A\beta_{1-40}/A\beta_{1-42}$, plasma concentrations of ratio $A\beta_{1-40}/A\beta_{1-42}$; A β -PET, amyloid- β positron emission tomography; SUVR, standardized uptake value ratio; APOE $\epsilon 4$, apolipoprotein E $\epsilon 4$ allele; INSIGHT-preAD, INveStigation of AlzHeimer's PredicTors in Subjective Memory Complainers; t-Tau, total tau; YKL-40, chitinase-like protein 1; NFL, neurofilament light chain; BACE1, β -site amyloid precursor protein cleaving enzyme 1; RFA, random forest analysis; CART, classification and regression trees.

Next, we used CART for analyzing the oversampled data and original data, using the two best explanatory variables (i.e. plasma $A\beta_{1-42}$ and $A\beta_{1-40}/A\beta_{1-42}$ ratio) obtained through RFA. In the oversampled data set, the resulting decision tree only retained the ratio $A\beta_{1-40}/A\beta_{1-42}$ as a discriminative variable (Fig. 2B, left panel). In so far, the ratio $A\beta_{1-40}/A\beta_{1-42}$ kept discriminating A β -PET–positive and A β -PET–negative subjects with a performance similar to that found when carrying out the ROC-AUC analysis (Fig. 1). The sensitivity was 85% and the specificity was 78%, with a balanced accuracy of 81% (Fig. 2B, middle panel). These performances were well preserved in the test set, showing a sensitivity of 68%, a specificity of 75%, and a balanced accuracy of 71% (Fig. 2B, right panel). On CART analysis of the original data (true subjects), the final output is changed compared with the oversampled model because the resulting decision-tree retained both the $A\beta_{1-40}/A\beta_{1-42}$ ratio and $A\beta_{1-42}$ concentrations (Fig. 2C, left panel). The performance of the classifier built for this latter data set shows a sensitivity of 72% and a specificity of 84%, for a balanced accuracy of 78% (Fig. 2C middle panel). As expected, these performances slightly decreased, being nonetheless well preserved considering the sample size, in the test set for true subjects because the sensitivity was 60% and specificity was 83% with a balanced accuracy of 71% (Fig. 2C, right panel).

Finally, we tested whether age, APOE $\epsilon 4$, and sex might influence the performance of the classifier built using the training set (entire population of SMC individuals at timepoint 1 with oversampling). To this end, we analyzed the variation of the performances of this classifier on the test set (i.e., true subjects at T2 and T3) across the subjects. The age distribution was homogeneous and centered onto 80 years (see Supplementary Fig. 3). To test whether the age has an influence on the performance of the classifier, we used the fact of being well classified or miss classified as a dependent variable and the age as an explanatory variable. Logistic regression analysis ($P < .05$ was considered significant) indicated no significant association between age and the performance of the classifier in predicting brain amyloidosis ($P > .1$), suggesting that the performance of the global CART classifier in predicting brain amyloidosis is independent of age.

Logistic regression using the same criterion as mentioned previously ($P < .05$) also indicated no significant association between any of the other candidate biomarkers (t-Tau, NFL, BACE1, and YKL-40) considered individually and the performance of the global CART classifier in predicting brain amyloidosis (all P values > 0.09). These results indicate that the prediction of A β status, using a global classifier in which the plasma $A\beta_{1-40}/A\beta_{1-42}$ ratio is the discriminative feature, is not influenced by the plasma concentrations of other

AD-related plasma biomarkers.

Regarding a putative effect of the *APOE* $\epsilon 4$ allele, we compared the performances of the CART classifiers between the population carrying at least one *APOE* $\epsilon 4$ allele and the population without *APOE* $\epsilon 4$ allele in the test set. We observe no differences of performance between both populations, suggesting that the performance of the CART classifier is independent of the *APOE* $\epsilon 4$ status, suggesting the global CART classifier in predicting brain amyloidosis is independent of the *APOE* $\epsilon 4$ status (data not shown). Regarding a putative effect of sex, 31% of the women and 21% of the men were incorrectly classified as false positive or false negative in the test. This effect was not statistically significant, as indicated by the χ^2 test ($P > .1$), thus suggesting that the performance of the CART classifier might be equally well in both populations. However, there is a trend toward females to be more often misclassified than males, which led us to further explore this question as developed below.

Next, we tested whether the predictive performances of the CART classifiers might be altered when separating male and female subjects for constructing these classifiers. To this end, we carried out RFA and CART analysis in each of these subgroups of SMC subjects, considering only the subjects with no missing value at T1 (see [Supplementary Fig. 4 A–D](#)).

Taken together, these data suggest that the performances of the CART classifier in predicting the A β -PET status in the INSIGHT-preAD cohort were sex independent, corroborating the conclusion obtained for the classifier built using the entire population of SMC individuals.

4 Discussion

Robust translational evidence suggests that disease-modifying therapies for NDs, including AD, are more likely to achieve significant efficacy if initiated as early as possible in the early preclinical, asymptomatic stages of the disease process, when ~~the homeostasis and integrity of~~ neuronal networks [homeostasis](#) may be relatively well preserved and [pathomechanistic pathophysiological](#) alterations are potentially reversible [6,39,40]. There is compelling demand for blood-based biomarker-guided investigations in cognitively normal individuals at risk for AD. Blood-based biomarkers are anticipated to help improve early detection and stratification of individuals according to their underlying individual pathophysiology, at certain timepoints, during disease progression and to enable a precise biological staging [6,8,40]. Herein, our data show that the plasma A β_{1-40} /A β_{1-42} ratio has good diagnostic performance in predicting cerebral A β deposition, as determined using the A β -PET status as standard of truth (see [Fig. 1](#) and [2A](#)) within a population of cognitively normal individuals at risk for AD. Our results indicate that the plasma A β_{1-40} /A β_{1-42} ratio is the best CART predictor of cerebral A β amyloidosis in the INSIGHT-preAD cohort, using both ROC test and tree-based modeling. RFA showed an AUC of 0.794 with a sensitivity of 78.1% and a specificity of 74.9% (balanced accuracy of 76.5%), at the best cutoff point (17.82), and CART analysis retained a predictor that yielded a 78%-81% balanced accuracy at T1 ([Fig. 2B, C](#), middle columns). Interestingly, this performance is well preserved (71% balanced accuracy) when using data collected at different timepoints (T2 and T3) over a period of time of 3 years (see [Fig. 2 B, C](#), right columns), thus suggesting the CART predictor is not affected by the time at which marker data were collected. Of note, this statement should be taken carefully because no follow-up A β -PET data are available and thus the number of SMC subjects who converted to a positive A β -PET status is unknown.

Our findings extend to SMC individuals the recent data reported for prodromal and dementia populations in which the A β_{1-40} /A β_{1-42} ratio replaced the A β_{1-42} /A β_{1-40} ratio in the prediction of cerebral A β deposition [9]. However, we observed that the distributions of A β -PET–positive subjects are similar for both ratios in the INSIGHT-preAD cohort. We also observed a similar performance of the global CART classifier in predicting brain amyloidosis when using both ratios (data not shown), suggesting that the two ratios may be equally suitable for predicting brain amyloidosis.

From a practical and translational standpoint, our results indicate that only two plasma biomarkers (A β_{1-40} and A β_{1-42}) and the related A β_{1-40} /A β_{1-42} ratio are adequate for predicting cerebral A β deposition with a good accuracy. These observations provide an encouraging basis for prospective studies aimed at developing a blood-based analysis platform that may increase global accessibility as it would be cost- and time-effective compared with the assessment of brain amyloidosis using A β -PET scanning technology. For instance, our data raise the possibility for the plasma A β_{1-40} /A β_{1-42} ratio to support baseline screening to rule out individuals who do not need A β -PET scanning in scenarios other than confirmatory diagnosis cases. This possibility is supported by the observation that the predictive performance of the plasma A β_{1-40} /A β_{1-42} ratio does not appear to be affected by age, sex, and the *APOE* $\epsilon 4$ allele (although the number of *APOE* $\epsilon 4$ -positive individuals is relatively small in our study).

Moreover, we found a strong positive correlation between the concentrations in plasma of A β_{1-42} and A β_{1-40} at all the timepoints. This observation is consistent with previous studies investigating the association of the two A β peptides in plasma in individuals with MCI (both converters and stables) and AD dementia [13,41].

Thus, the plasma A β_{1-40} /A β_{1-42} ratio can be considered a robust candidate for *in vivo* prediction of brain amyloidosis across the large biological *spectrum* of AD that shows high interindividual heterogeneity along its clinical *continuum*, including preclinical phases.

Our results support the development and usefulness of blood-based biomarkers because they may inform all contexts of use (1) in clinical research studies investigating large-scale heterogeneous populations of cognitive normal individuals at risk of AD and (2) when time series are part of the study design. The collection, processing, and storage of blood are minimally invasive, easy to perform, and widely accessible to biotech and pharmaceutical industry, academic research, and primary health care facilities [1–3]. Blood-based biomarkers are currently on the way to optimize clinical decision-making and therapeutic practice in advanced fields of biomarker-based medicine, such as oncology and immunology [42], and have gained *momentum* to be introduced in the area of neuroscience, including NDs such as AD.

The [amyloid/tau/neurodegeneration \(A/T/N\)](#) system is an agnostic hypothesis-independent biomarker-driven classification system that has been proposed to stratify individuals, from cognitively normal to MCI and demented ones, according to core AD-related pathological and pathophysiological hallmarks [43]. The A/T/N system is based on CSF, MRI, and PET core biomarkers of AD that have been validated, qualified, and integrated into current diagnostic research criteria.

The present study is in line with the worldwide aim of expanding the unbiased A/T/N biomarker classification system to the blood matrix level, making the real-world application of the ATN system more feasible, cost- and time-effective, and globally accessible [3,44].

Moreover, although the ATN system provides key pathophysiological insights, it only partially reflects the expanding spectrum of pathomechanistic alterations occurring in AD.

On these conceptual bases, we built up a panel encompassing novel candidate biomarkers, capable of charting a wider set of age- and AD-related pathophysiological pathways. In particular, we included plasma NFL, which is a candidate marker of axonal damage of myelinated large-caliber fibers and potentially reliable predictor of neurodegeneration. Besides plasma A β plasma, NFL is the most investigated candidate blood-based marker for several neurological conditions, including AD. Plasma t-Tau has been recently proposed as a marker of axonal damage of unmyelinated small-caliber fibers, thus suggesting that t-Tau and NFL may also provide different information over the course of NDs, including AD. BACE1 is a crucial candidate drug target for treating AD in preclinical stages. Thus, the development of blood-based biomarkers of BACE1 concentrations and enzymatic activity has increasingly been speed up. Indeed, a reliable marker for in vivo demonstration of proof of mechanism needs urgently to be integrated in clinical trials for BACE1-targeted therapies. YKL-40 is to date the strongest candidate to chart in vivo microglial overactivation, which is a key component of the complex neuroinflammatory dynamics occurring during the earliest pathophysiological events of AD. After having identified, in a *no-a-priori* hypothesis manner, the best predictor in plasma of cerebral amyloidosis, we sought to explore whether the performance might have been influenced by the expression levels of other pathomechanistic alterations as reflected by related candidate markers. We outline that there was no influence of the levels of neurodegeneration, neuroinflammation, or BACE1-related pathways on the performance of the plasma A β_{1-40} /A β_{1-42} ratio in predicting cerebral amyloidosis. We firmly think that this finding is encouraging for the development of a future blood-based A/T/N system. A growing number of working groups under the umbrella of the precision medicine paradigm have been funded to support the discovery, validation, and development of blood-based biomarkers in the field of AD [3,6,16,17]; to this end, the choice of the assay is of primary importance. Simoa is a sensitive candidate assay for the assessment of comprehensive blood-based biomarker panels to be used in future large-scale population studies targeting the earliest phase of disease as it makes use of the same reagents of conventional ELISAs to simultaneously detect thousands of single-protein molecules in different matrices—blood (plasma/serum) and CSF—at femtomolar (fg/mL) concentrations. Simoa provides about a 1000-fold improvement in terms of sensitivity and is cost-effective. As a result, a more sensitive assessment will likely be produced to get an earlier detection of the disease [45].

In summary, our data suggest that the plasma A β_{1-40} /A β_{1-42} ratio, examined using the Simoa immunoassay, is a reliable predictor of brain amyloidosis, which may open the gate toward the development of (1) a feasible prescreening tool to evaluate risk of developing AD in individuals with SMC in a multistage diagnostic process and (2) a valuable selection and enrichment tool for amyloid targeted clinical trials.

The relatively small size of the INSIGHT-preAD cohort, especially with regard to participants longitudinally assessed with plasma A β_{1-40} /A β_{1-42} ratio measurement, represents a limit inherent to the study that deserves to be outlined.

We have already planned to extend the clinical and biological follow-up of the INSIGHT-preAD study to explore whether certain longitudinal trajectories of plasma A β_{1-40} /A β_{1-42} ratio may predict the development of objective cognitive impairment (either MCI or overt dementia). A longitudinal study design will be necessary to test the association between the slope of A β -PET SUVRs (i.e., the rate of brain A β accumulation over time) and the temporal dynamics of the plasma A β_{1-40} /A β_{1-42} ratio, at the individual level and in asymptomatic individuals, to establish the positive predictive performance. This step will support the understanding of the question whether plasma A β ratios may represent a practical, accurate, and robust prescreening tool, besides being a diagnostic test, for early identification of preclinical individuals with biomarker trajectories reflecting incipient cerebral amyloidosis. Indeed, longitudinal studies on the rate of changes in A β -PET SUVRs coupled with temporal changes in neurodegeneration biomarkers and psychometric measures, suggested that higher subtle (i.e., below the threshold for assessing A β -PET positivity) increases in A β -PET SUVRs predict faster neuronal loss and cognitive decline [46,47]. Thus, we expect that changes over time of plasma A β ratios, rather than a single assessment, may serve as a peripheral surrogate biomarker of early phases of brain A β accumulation that are likely to progress toward overt cerebral amyloidosis (accumulators vs. nonaccumulators). The validation of plasma A β ratios according to A β -PET rates of accumulation, rather than the A β -PET status, represents a paradigm shift toward the investigation of anti-A β disease-modifying compounds in large-scale populations of very early preclinical individuals, which represent the most suitable target.

We deductively argue that a longitudinal study design, carried out in cognitively healthy individuals, will substantially help overcome the limitations affecting findings of cross-sectional pooled cohort-based studies. In fact, such studies have shown (1) remarkable overlapping in terms of individual assessments of plasma A β ratios among cognitively healthy individuals as well as subjects with MCI and AD dementia and (2) the problem to consider the individual vulnerability to early regional brain regional accumulation deposition of A β .

We would like to add a comment regarding the use of machine learning techniques for the evaluation of biomarker performance. We recommend the use of double statistical approaches (hypothesis-driven ROCs and non-a-priori approaches such as RFA and CART) in further biomarker validation studies. Machine learning analysis may untangle, in an unbiased manner, multiple genetic and biological factors that may account for interindividual variability in terms of biomarkers trajectories and endophenotypes [48]. Accomplishing such a map of pathophysiological interactions represents a key challenge along the path to develop effective and safe drugs for precision medicine treatments [18].

To conclude, we suggest a large-scale longitudinal multicenter study including at least one discovery and one independent validation cohort of cognitively healthy individuals both at risk for AD and not, to optimize the standardization and harmonization of preanalytical and analytical protocols, and at the same time, to investigate key predictive biomarker performance parameters. We assume that such study design will ultimately fill the void along the roadmap of qualification of the plasma A β_{1-40} /A β_{1-42} (or A β_{1-42} /A β_{1-40}) ratio as a peripheral surrogate biomarker of early cerebral amyloidosis, thus enriching both pharmacological trials and clinical management during early stages of preclinical AD.

1. Systematic review: We first delivered a brief state of art on the development of blood-based biomarkers tracing brain amyloidosis. The following words were used for a key-based search strategy: "plasma," "blood-based," "amyloid β ," and "Alzheimer's disease". We used a unique time-series data for plasma concentrations of $A\beta_{1-42}$ and $A\beta_{1-40}$ that were collected at three timepoints (within a 3-year follow-up) in a monocentric cohort of cognitively normal individuals at risk for Alzheimer's disease (AD). To substantially rule out *the limitations of a proposed biomarker based on or derived from cross-sectional data* and to overcome the limitations inherent to traditional statistical modeling (i.e., receiver operating characteristic curves), for the first time in the field of blood-based biomarkers for detecting cerebral amyloidosis, we carried out no-a-priori hypothesis approach. In particular, we performed a nonparametric machine learning approach looking for the best predictor of amyloid positron emission tomography status (positive *versus* negative) among a panel of 5 strong candidate biomarkers of AD pathophysiology. We found that the plasma $A\beta_{1-40}/A\beta_{1-42}$ ratio is significantly and largely the best predictor of cerebral amyloidosis (best balanced accuracy: 81% at baseline). We also show that such a performance is well preserved (balanced accuracy: 71%) when using data collected at the subsequent time-points (after 1-year follow-up and 3-year follow-up).
2. Interpretation: The same statistical modeling allowed us to show that the performance of plasma $A\beta_{1-40}/A\beta_{1-42}$ ratio is not affected by the apolipoprotein E (*APOE*) $\epsilon 4$ allele, sex, or age. This original finding is of primary importance for the qualification of the marker as a (1) prescreening tool to evaluate risk of developing AD in individuals at risk in a multistage diagnostic process and a (2) valuable selection and enrichment tool for amyloid targeted clinical trials.
3. Future directions: We call for independent validation cohort studies to further investigate the value of plasma $A\beta_{1-40}/A\beta_{1-42}$ ratio. On the flip side, we do inform the reader with our intention to extend the clinical and biological follow-up of the INSIGHT-preAD study to explore whether certain longitudinal trajectories of plasma $A\beta_{1-40}/A\beta_{1-42}$ ratio may predict the development of objective cognitive impairment (either mild cognitive impairment or overt dementia).

Acknowledgments

This research benefited from the support of the program **"PHOENIX"** led by the Sorbonne University Foundation and sponsored by *la Fondation pour la Recherche sur Alzheimer*. This study was financially supported by the Agency for Innovation and Technology (IWT O&O 140105) and Flanders Innovation and Entrepreneurship (VLAIO 160548). H.Z. is a Wallenberg Academy Fellow and holds grants from the Swedish and European Research Councils as well as the Medical Research Council (UK). K.B. holds the Torsten Söderberg Professorship of Medicine. C.N. is supported by INSERM, CNRS, and Sorbonne Université. H.H. is supported by the AXA Research Fund, the *"Fondation partenariale Sorbonne Université,"* and the *"Fondation pour la Recherche sur Alzheimer,"* Paris, France. Ce travail a bénéficié d'une aide de l'Etat *"Investissements d'avenir"* ANR-10-IAIHU-06. The research leading to these results has received funding from the program *"Investissements d'avenir"* ANR-10-IAIHU-06 (Agence Nationale de la Recherche-10-IA Agence Institut Hospitalo-Universitaire-6).

INSIGHT-preAD Study Group: Bakardjian H, Benali H, Bertin H, Bonheur J, Boukadida L, Boukerrou N, Cavedo E, Chiesa P, Colliot O, Dubois B, Dubois M, Epelbaum S, Gagliardi G, Genthon R, Habert MO, Hampel H, Houot M, Kas A, Lamari F, Levy M, Lista S, Metzinger C, Mochel F, Nyasse F, Poisson C, Potier MC, Revillon M, Santos A, Andrade KS, Sole M, Surtee M, Thiebaud de Schotten M, Vergallo A, and Younsi N.

INSIGHT-preAD Scientific Committee Members: Dubois B, Hampel H, Bakardjian H, Benali H, Colliot O, Habert Marie-O, Lamari F, Mochel F, Potier MC, and Thiebaut de Schotten M.

Contributors to the Alzheimer Precision Medicine Initiative–Working Group (APMI–WG): [Lisi Flores Aguilar \(Montréal\)](#), [Claudio Babiloni \(Rome\)](#), [Filippo Baldacci \(Pisa\)](#), [Norbert Benda \(Bonn\)](#), [Keith L. Black \(Los Angeles\)](#), [Arun L.W. Bokde \(Dublin\)](#), [Ubaldo Bonuccelli \(Pisa\)](#), [Karl Broich \(Bonn\)](#), [Francesco Cacciola \(Siena\)](#), [Juan Castrillo† \(Derio\)](#), [Enrica CAVEDO \(Paris\)](#), [Roberto Ceravolo \(Pisa\)](#), [Patrizia A. Chiesa \(Paris\)](#), [Jean-Christophe Corvol \(Paris\)](#), [Augusto Claudio Cuello \(Montréal\)](#), [Jeffrey L. Cummings \(Las Vegas\)](#), [Herman Depypere \(Gent\)](#), [Bruno Dubois \(Paris\)](#), [Andrea Duggento \(Rome\)](#), [Valentina Escott-Price \(Cardiff\)](#), [Howard Federoff \(Irvine\)](#), [Maria Teresa Ferretti \(Zürich\)](#), [Massimo Fiandaca \(Irvine\)](#), [Richard A. Frank \(Malvern\)](#), [Francesco Garaci \(Rome\)](#), [Hugo Geerts \(Berwyn\)](#), [Filippo S. Giorgi \(Pisa\)](#), [Manuela Graziani \(Roma\)](#), [Marion Haberkamp \(Bonn\)](#), [Marie-Odile Habert \(Paris\)](#), [Harald Hampel \(Paris\)](#), [Karl Herholz \(Manchester\)](#), [Eric Karran \(Cambridge\)](#), [Seung H. Kim \(Seoul\)](#), [Yosef Koronyo \(Los Angeles\)](#), [Maya Koronyo-Hamaoui \(Los Angeles\)](#), [Foudil Lamari \(Paris\)](#), [Todd Langevin \(Minneapolis-Saint Paul\)](#), [Stéphane LeHéricy \(Paris\)](#), [Simone LISTA \(Paris\)](#), [Jean Lorenceau \(Paris\)](#), [Dalila Mango \(Rome\)](#), [Mark Mapstone \(Irvine\)](#), [Christian Neri \(Paris\)](#), [Robert Nisticò \(Rome\)](#), [Sid E. O'Bryant \(Fort Worth\)](#), [George Perry \(San Antonio\)](#), [Craig Ritchie \(Edinburgh\)](#), [Simone Rossi \(Siena\)](#), [Amira Saidi \(Rome\)](#), [Emiliano Santarnecchi \(Siena\)](#), [Lon S. Schneider \(Los Angeles\)](#), [Olaf Sporns \(Bloomington\)](#), [Nicola Toschi \(Rome\)](#), [Steven R. Verdooner \(Sacramento\)](#), [Andrea Vergallo \(Paris\)](#), [Nicolas Villain \(Paris\)](#), [Lindsay A. Welikovitch \(Montréal\)](#), [Janet Woodcock \(Silver Spring\)](#), [Erfan Younesi \(Esch-sur-Alzette\)](#); [Mohammad Afshar \(Paris\)](#), [Lisi Flores Aguilar \(Montréal\)](#), [Levly Akman-Anderson \(Sacramento\)](#), [Joaquín Arenas \(Madrid\)](#), [Jesus Avila \(Madrid\)](#), [Claudio Babiloni \(Rome\)](#), [Filippo Baldacci \(Pisa\)](#), [Richard Batrla \(Rotkreuz\)](#), [Norbert Benda \(Bonn\)](#), [Keith L. Black \(Los Angeles\)](#), [Arun L.W. Bokde \(Dublin\)](#), [Ubaldo Bonuccelli \(Pisa\)](#), [Karl Broich \(Bonn\)](#), [Francesco Cacciola \(Siena\)](#), [Filippo Caraci \(Catania\)](#), [Juan Castrillo† \(Derio\)](#), [Enrica Cavedo \(Paris\)](#), [Roberto Ceravolo \(Pisa\)](#), [Patrizia A. Chiesa \(Paris\)](#), [Jean-Christophe Corvol \(Paris\)](#), [Augusto Claudio Cuello \(Montréal\)](#), [Jeffrey L. Cummings \(Las Vegas\)](#), [Herman Depypere \(Gent\)](#), [Bruno Dubois \(Paris\)](#), [Andrea Duggento \(Rome\)](#), [Enzo Emanuele \(Robbio\)](#), [Valentina Escott-Price \(Cardiff\)](#), [Howard Federoff \(Irvine\)](#), [Maria Teresa Ferretti \(Zürich\)](#), [Massimo Fiandaca \(Irvine\)](#), [Richard A. Frank \(Malvern\)](#), [Francesco Garaci \(Rome\)](#), [Hugo Geerts \(Berwyn\)](#), [Filippo S. Giorgi \(Pisa\)](#), [Edward J. Goetzl \(San Francisco\)](#), [Manuela Graziani \(Roma\)](#), [Marion Haberkamp \(Bonn\)](#), [Marie-Odile Habert \(Paris\)](#), [Harald Hampel \(Paris\)](#), [Karl Herholz \(Manchester\)](#), [Felix Hernandez \(Madrid\)](#), [Dimitrios Kapogiannis \(Baltimore\)](#), [Eric Karran \(Cambridge\)](#), [Steven J. Kiddle \(Cambridge\)](#), [Seung H. Kim \(Seoul\)](#), [Yosef Koronyo \(Los Angeles\)](#), [Maya Koronyo-Hamaoui \(Los Angeles\)](#), [Todd Langevin \(Minneapolis-Saint Paul\)](#), [Stéphane LeHéricy \(Paris\)](#), [Alejandro Lucía \(Madrid\)](#), [Simone Lista \(Paris\)](#), [Jean Lorenceau \(Paris\)](#), [Dalila Mango \(Rome\)](#), [Mark Mapstone \(Irvine\)](#), [Christian Neri \(Paris\)](#), [Robert Nisticò \(Rome\)](#), [Sid E. O'Bryant \(Fort Worth\)](#), [Giovanni Palmero \(Pisa\)](#), [George Perry \(San Antonio\)](#), [Craig Ritchie \(Edinburgh\)](#), [Simone Rossi \(Siena\)](#), [Amira Saidi \(Rome\)](#), [Emiliano Santarnecchi \(Siena\)](#), [Lon S. Schneider \(Los Angeles\)](#), [Olaf Sporns \(Bloomington\)](#), [Nicola Toschi \(Rome\)](#), [Steven R. Verdooner \(Sacramento\)](#), [Andrea Vergallo \(Paris\)](#), [Nicolas Villain \(Paris\)](#), [Lindsay A. Welikovitch \(Montréal\)](#), [Janet Woodcock \(Silver Spring\)](#), [Erfan Younesi \(Esch-sur-Alzette\)](#).

The authors thank Antoine Chambaz (Université Paris Descartes) for expert advice on machine learning techniques. The study was promoted by INSERM in collaboration with ICM, IHU-A-ICM, and Pfizer and has received support within the "Investissement d'Avenir" (ANR-10-AIHU-06) program. The study was promoted in collaboration with the "CHU de Bordeaux" (coordination CIC EC7), the promoter of Memento cohort, funded by the Foundation Plan-Alzheimer. The study was further

supported by AVID/Lilly.

S.L. received lecture honoraria from Roche. H.Z. and K.B. are cofounders of Brain Biomarker Solutions in Gothenburg AB, a GU venture-based platform company at the University of Gothenburg. A.D.V. is an employee and shareholder of ADx NeuroSciences. E.V. is a cofounder of ADx NeuroSciences. B.D. reports personal fees from Eli Lilly and company. **H.H. is supported by the AXA Research Fund, the "Fondation partenariale Sorbonne Université" and the "Fondation pour la Recherche sur Alzheimer", Paris, France. Ce travail a bénéficié d'une aide de l'Etat "Investissements d'avenir" ANR-10-IAIHU-06. The research leading to these results has received funding from the program "Investissements d'avenir" ANR-10-IAIHU-06 (Agence Nationale de la Recherche-10-IA Agence Institut Hospitalo-Universitaire-6).** H.H. serves as a senior associate editor for the Journal Alzheimer's & Dementia; he received lecture fees from Biogen, Roche, and Eisai, research grants from Pfizer, Avid, and MSD Avenir (paid to the institution), travel funding from Functional Neuromodulation, Axovant, Eli Lilly and company, Takeda and Zinfandel, GE-Healthcare and Oryzon Genomics, consultancy fees from Qynapse, Jung Diagnostics, Cytox Ltd., Axovant, Anavex, Takeda and Zinfandel, GE Healthcare and Oryzon Genomics, and Functional Neuromodulation, and participated in scientific advisory boards of Functional Neuromodulation, Axovant, Eli Lilly and company, Cytox Ltd., GE Healthcare, Takeda and Zinfandel, Oryzon Genomics, and Roche Diagnostics. He is a co-inventor in the following patents as a scientific expert and has received no royalties: (1) *In Vitro* Multiparameter Determination Method for the Diagnosis and Early Diagnosis of Neurodegenerative Disorders Patent Number: 8916388; (2) *In Vitro* Procedure for Diagnosis and Early Diagnosis of Neurodegenerative Diseases Patent Number: 8298784; (3) Neurodegenerative Markers for Psychiatric Conditions Publication Number: 20120196300; (4) *In Vitro* Multiparameter Determination Method for The Diagnosis and Early Diagnosis of Neurodegenerative Disorders Publication Number: 20100062463; (5) *In Vitro* Method for The Diagnosis and Early Diagnosis of Neurodegenerative Disorders Publication Number: 20100035286; (6) *In Vitro* Procedure for Diagnosis and Early Diagnosis of Neurodegenerative Diseases Publication Number: 20090263822; (7) *In Vitro* Method for the Diagnosis of Neurodegenerative Diseases Patent Number: 7547553; (8) CSF Diagnostic *In Vitro* Method for Diagnosis of Dementias and Neuroinflammatory Diseases Publication Number: 20080206797; (9) *In Vitro* Method for The Diagnosis of Neurodegenerative Diseases Publication Number: 20080199966; and (10) Neurodegenerative Markers for Psychiatric Conditions Publication Number: 20080131921. A.V., L.M., C.N., M.-O.H., M.-C.P., and E.C. declared no conflicts of interest.

Authors' contributions: A.V. wrote the article and provided data interpretation and a critical review of the literature. L.M. performed the **data modeling and** statistical analyses, contributed to the writing of the article, and made artwork. S.L. contributed to the writing of the article and provided a critical review of the literature. E.C. contributed to the writing of the article and provided a critical review of the literature. H.Z. provided the plasma biomarkers assessment and data interpretation. K.B. provided the plasma biomarkers assessment and data interpretation. E.V. provided the plasma biomarkers assessment and data interpretation. A.D.V. provided the plasma biomarkers assessment and data interpretation. M.-O.H. provided the amyloid-PET biomarkers assessment. M.-C.P. provided the APOE genotype assessment. B.D. contributed the writing of the article and conceptualization. C.N. contributed to the writing and conceptualization of the article and **performed data modeling and** interpretation. H.H. wrote the article and provided data interpretation and a critical review of the whole manuscript. **(† Deceased.)**

Supplementary Data

Supplementary data related to this article can be found at <https://doi.org/10.1016/j.jalz.2019.03.009>.

References

- [1] J. Abbasi, Plasma Biomarkers Predict Brain Amyloid-beta Burden, *JAMA* **319**, 2018, 972.
- [2] S.E. O'Bryant, M.M. Mielke, R.A. Rissman, S. Lista, H. Vanderstichele, H. Zetterberg, et al., Blood-based biomarkers in Alzheimer disease: Current state of the science and a novel collaborative paradigm for advancing from discovery to clinic, *Alzheimers Dement* **13**, 2017, 45–58.
- [3] H. Hampel, S.E. O'Bryant, J.L. Molinuevo, H. Zetterberg, C.L. Masters, S. Lista, et al., Blood-based biomarkers for Alzheimer disease: mapping the road to the clinic, *Nat Rev Neurol* **14**, 2018, 639–652.
- [4] J.L. Cummings, Biomarkers in Alzheimer's disease drug development, *Alzheimers Dement* **7**, 2011, e13–e44.
- [5] J. Cummings, N. Fox, B. Vellas, P. Aisen and G. Shan, Biomarker and Clinical Trial Design Support for Disease-Modifying Therapies: Report of a Survey of the EU/US: Alzheimer's Disease Task Force, *J Prev Alzheimers Dis* **5**, 2018, 103–109.
- [6] H. Hampel, A. Vergallo, L.F. Aguilar, N. Benda, K. Broich, A.C. Cuello, et al., Precision pharmacology for Alzheimer's disease, *Pharmacol Res* **130**, 2018, 331–365.
- [7] H.M. Snyder, M.C. Carrillo, F. Grodstein, K. Henriksen, A. Jeromin, S. Lovestone, et al., Developing novel blood-based biomarkers for Alzheimer's disease, *Alzheimers Dement* **10**, 2014, 109–114.
- [8] **S. Lista, H. Zetterberg, S.E. O'Bryant, K. Blennow and H. Hampel, Evolving Relevance of Neuroproteomics in Alzheimer's Disease, *Methods Mol Biol* **1598**, 2017, 101–115. Martiskainen H, Herukka SK, Stančáková A, Paananen J, Soininen H, Kuusisto J, et al. Decreased plasma β -amyloid in the Alzheimer's disease APP A673T variant carriers. *Ann Neurol* 2017;82:128-32.**
- [9] A. Nakamura, N. Kaneko, V.L. Villemagne, T. Kato, J. Doecke, V. Dore, et al., High performance plasma amyloid-beta biomarkers for Alzheimer's disease, *Nature* **554**, 2018, 249–254.

- [10] A. Nabers, L. Perna, J. Lange, U. Mons, J. Schartner, J. Guldenhaupt, et al., Amyloid blood biomarker detects Alzheimer's disease, *EMBO Mol Med* **10**, 2018, <https://doi.org/10.15252/emmm.201708763>.
- [11] V. Ovod, K.N. Ramsey, K.G. Mawuenyega, J.G. Bollinger, T. Hicks, T. Schneider, et al., Amyloid beta concentrations and stable isotope labeling kinetics of human plasma specific to central nervous system amyloidosis, *Alzheimers Dement* **13**, 2017, 841–849.
- [12] C.E. Teunissen, M.-J. Chiu, C.-C. Yang, S.-Y. Yang, P. Scheltens, H. Zetterberg, et al., Plasma Amyloid-beta (Abeta42) Correlates with Cerebrospinal Fluid Abeta42 in Alzheimer's Disease, *J Alzheimers Dis* **62**, 2018, 1857–1863.
- [13] O. Hanon, J.-S. Vidal, S. Lehmann, S. Bombois, B. Allinquant, J.-M. Treluyer, et al., Plasma amyloid levels within the Alzheimer's process and correlations with central biomarkers, *Alzheimers Dement* **14**, 2018, 858–868.
- [14] N. Fandos, V. Perez-Grijalba, P. Pesini, S. Olmos, M. Bossa, V.L. Villemagne, et al., Plasma amyloid beta 42/40 ratios as biomarkers for amyloid beta cerebral deposition in cognitively normal individuals, *Alzheimers Dement (Amst)* **8**, 2017, 179–187.
- [15] R.F. Buckley, P. Maruff, D. Ames, P. Bourgeat, R.N. Martins, C.L. Masters, et al., Subjective memory decline predicts greater rates of clinical progression in preclinical Alzheimer's disease, *Alzheimers Dement* **12**, 2016, 796–804.
- [16] A.C. van Harten, M.M. Mielke, D.M. Swenson-Dravis, C.E. Hagen, K.K. Edwards, R.O. Roberts, et al., Subjective cognitive decline and risk of MCI: The Mayo Clinic Study of Aging, *Neurology* **91**, 2018, e300–e312.
- [17] B. Dubois, S. Epelbaum, F. Nyasse, H. Bakardjian, G. Gagliardi, O. Uspenskaya, et al., Cognitive and neuroimaging features and brain beta-amyloidosis in individuals at risk of Alzheimer's disease (INSIGHT-preAD): A longitudinal observational study, *Lancet Neurol* **17**, 2018, 335–346.
- [18] H. Hampel, N. Toschi, C. Babiloni, F. Baldacci, K.L. Black, A.L.W. Bokde, et al., Revolution of Alzheimer Precision Neurology Passageway of Systems Biology and Neurophysiology, *J Alzheimers Dis* **64**, 2018, S47–S105, <https://doi.org/10.3233/JAD-179932>.
- [19] H. Hampel, S.E. O'Bryant, S. Durrleman, E. Younesi, K. Rojkova, V. Escott-Price, et al., A Precision Medicine Initiative for Alzheimer's disease: the road ahead to biomarker-guided integrative disease modeling, *Climacteric* **20**, 2017, 107–118.
- [20] Y. Shen, H. Wang, Q. Sun, H. Yao, A.P. Keegan, M. Mullan, et al., Increased Plasma Beta-Secretase 1 May Predict Conversion to Alzheimer's Disease Dementia in Individuals With Mild Cognitive Impairment, *Biol Psychiatry* **83**, 2018, 447–455.
- [21] H. Hampel, N. Toschi, F. Baldacci, H. Zetterberg, K. Blennow, I. Kilimann, et al., Alzheimer's disease biomarker-guided diagnostic workflow using the added value of six combined cerebrospinal fluid candidates: Abeta1-42, total-tau, phosphorylated-tau, NFL, neurogranin, and YKL-40, *Alzheimers Dement* **14**, 2018, 492–501.
- [22] B. Olsson, R. Lautner, U. Andreasson, A. Ohrfelt, E. Portelius, M. Bjerke, et al., CSF and blood biomarkers for the diagnosis of Alzheimer's disease: a systematic review and meta-analysis, *Lancet Neurol* **15**, 2016, 673–684.
- [23] A. Jeppsson, M. Holttta, H. Zetterberg, K. Blennow, C. Wikkelso and M. Tullberg, Amyloid mis-metabolism in idiopathic normal pressure hydrocephalus, *Fluids Barriers CNS* **13**, 2016, 13.
- [24] N.J. Ashton, A. Leuzu, Y.M. Lim, C. Troakes, T. Hortobagyi, K. Hognlund, et al., Increased plasma neurofilament light chain concentration correlates with severity of post-mortem neurofibrillary tangle pathology and neurodegeneration, *Acta Neuropathol Commun* **7**, 2019, 5.
- [25] S. Palmqvist, P.S. Insel, H. Zetterberg, K. Blennow, B. Brix, E. Stomrud, et al., Accurate risk estimation of beta-amyloid positivity to identify prodromal Alzheimer's disease: Cross-validation study of practical algorithms, *Alzheimers Dement* **15**, 2018, 194–204.
- [26] A. De Vos, H. Struyfs, D. Jacobs, E. Fransen, T. Klewansky, E. De Roeck, et al., The Cerebrospinal Fluid Neurogranin/BACE1 Ratio is a Potential Correlate of Cognitive Decline in Alzheimer's Disease, *J Alzheimers Dis* **53**, 2016, 1523–1538.
- [27] E.R. DeLong, D.M. DeLong and D.L. Clarke-Pearson, Comparing the areas under two or more correlated receiver operating characteristic curves: a nonparametric approach, *Biometrics* **44**, 1988, 837–845.
- [28] N.J. Perkins and E.F. Schisterman, The Youden Index and the optimal cut-point corrected for measurement error, *Biom J* **47**, 2005, 428–441.
- [29] L. Breiman, Random Forests, *Mach Learn* **45**, 2001, 5–32.
- [30] M.J. van der Laan and S. Rose, Targeted Learning in Data Science, 2018, Springer; Cham.
- [31] S. Lista, Z.S. Khachaturian, D. Rujescu, F. Garaci, B. Dubois and H. Hampel, Application of Systems Theory in Longitudinal Studies on the Origin and Progression of Alzheimer's Disease, *Methods Mol Biol* **1303**, 2016, 49–67.
- [32] T. Shaikhina, D. Lowe, S. Daga, D. Briggs, R. Higgins and N. Khovanova, Decision tree and random forest models for outcome prediction in antibody incompatible kidney transplantation, *Biomed Signal Process Control* 2017 <https://doi.org/10.1016/j.bspc.2017.01.012>.

- [33] R. Couronne, P. Probst and A.-L. Boulesteix, Random forest versus logistic regression: a large-scale benchmark experiment, *BMC Bioinformatics* **19**, 2018, 270.
- [34] A.V. Lebedev, E. Westman, G.J.P. Van Westen, M.G. Kramberger, A. Lundervold, D. Aarsland, et al., Random Forest ensembles for detection and prediction of Alzheimer's disease with a good between-cohort robustness, *Neuroimage Clin* **6**, 2014, 115–125.
- [35] S.I. Dimitriadis, D. Liparas and M.N. Tsolaki, Random forest feature selection, fusion and ensemble strategy: Combining multiple morphological MRI measures to discriminate among healthy elderly, MCI, cMCI and Alzheimer's disease patients: From the Alzheimer's disease neuroimaging initiative (ADNI) data, *J Neurosci Methods* **302**, 2018, 14–23.
- [36] H. Kaduszkiewicz, M. Eisele, B. Wiese, J. Prokein, M. Lupp, T. Luck, et al., Prognosis of mild cognitive impairment in general practice: results of the German AgeCoDe study, *Ann Fam Med* **12**, 2014, 158–165.
- [37] A. Besga, I. Gonzalez, E. Echeburua, A. Savio, B. Ayerdi, D. Chyzyk, et al., Discrimination between Alzheimer's Disease and Late Onset Bipolar Disorder Using Multivariate Analysis, *Front Aging Neurosci* **7**, 2015, 231.
- [38] N.V. Chawla, K.W. Bowyer, L.O. Hall and W.P. Kegelmeyer, SMOTE: Synthetic Minority Over-sampling Technique, *J Artif Int Res* **16**, 2002, 321–357.
- [39] P.S. Aisen, B. Vellas and H. Hampel, Moving towards early clinical trials for amyloid-targeted therapy in Alzheimer's disease, *Nat Rev Drug Discov* **12**, 2013, 324.
- [40] R.A. Sperling, J. Karlawish and K.A. Johnson, Preclinical Alzheimer disease—the challenges ahead, *Nat Rev Neurol* **9**, 2013, 54–58.
- [41] M.I. Kester, N.A. Verwey, E.J. van Elk, P. Scheltens and M.A. Blankenstein, Evaluation of plasma Abeta40 and Abeta42 as predictors of conversion to Alzheimer's disease in patients with mild cognitive impairment, *Neurobiol Aging* **31**, 2010, 539–540, author reply 541.
- [42] V.B. Kraus, Biomarkers as drug development tools: discovery, validation, qualification and use, *Nat Rev Rheumatol* **14**, 2018, 354–362.
- [43] C.R.J. Jack, D.A. Bennett, K. Blennow, M.C. Carrillo, B. Dunn, S.B. Haeberlein, et al., NIA-AA Research Framework: Toward a biological definition of Alzheimer's disease, *Alzheimers Dement* **14**, 2018, 535–562.
- [44] J.L. Molinuevo, S. Ayton, R. Batrla, M.M. Bednar, T. Bittner, J. Cummings, et al., Current state of Alzheimer's fluid biomarkers, *Acta Neuropathol* **136**, 2018, 821–853.
- [45] D.H. Wilson, D.M. Rissin, C.W. Kan, D.R. Fournier, T. Piech, T.G. Campbell, et al., The Simoa HD-1 Analyzer: A novel fully automated digital immunoassay analyzer with single-molecule sensitivity and multiplexing, *J Lab Autom* **21**, 2016, 533–547.
- [46] P.S. Insel, R. Ossenkoppele, D. Gessert, W. Jagust, S. Landau, O. Hansson, et al., Time to amyloid positivity and preclinical changes in brain metabolism, atrophy, and cognition: Evidence for Emerging amyloid pathology in Alzheimer's disease, *Front Neurosci* **11**, 2017, 281.
- [47] M.E. Farrell, K.M. Kennedy, K.M. Rodrigue, G. Wig, G.N. Bischof, J.R. Rieck, et al., Association of longitudinal cognitive decline with amyloid burden in middle-aged and older adults: Evidence for a dose-response relationship, *JAMA Neurol* **74**, 2017, 830–838.
- [48] B. Goudey, B.J. Fung, C. Schieber and N.G. Faux, A blood-based signature of cerebrospinal fluid Abeta1-42 status, *Sci Rep* **9**, 2019, 4163.

Supplementary data

[Multimedia Component 1](#)

Supplementary Material

Queries and Answers

Query: If there are any drug dosages in your article, please verify them and indicate that you have done so by initialing this query

Answer: No drug dosages reported within the manuscript text

Query: Please provide fax number for the corresponding author.

Answer: Fax number added: +33 1 57 27 40 27

Query: Please provide address details and affiliations for all authors listed.

Answer: Affiliations edited as follows (see also attached file):

Andrea Vergallo^{a,b,c*}, Lucile Mégret^d, Simone Lista^{a,b,c}, Enrica Cavedo^{a,b,c},
Henrik Zetterberg^{e,f,g,h}, Kaj Blennow^{e,f}, Eugeen Vanmechelenⁱ, Ann De Vosⁱ,
Marie-Odile Habert^{j,k,l}, Marie-Claude Potier^m, Bruno Dubois^{a,b,c},
Christian Neri^d, and Harald Hampel^{a*}

and the INSIGHT-preAD study group

for the Alzheimer Precision Medicine Initiative (APMI)

(a) Sorbonne University, GRC n° 21, Alzheimer Precision Medicine (APM), AP-HP, Pitié-Salpêtrière Hospital, Boulevard de l'hôpital, F-75013, Paris, France (b) Brain & Spine Institute (ICM), INSERM U 1127, CNRS UMR 7225, Boulevard de l'hôpital, F-75013, Paris, France (c) Institute of Memory and Alzheimer's Disease (IM2A), Department of Neurology, Pitié-Salpêtrière Hospital, AP-HP, Boulevard de l'hôpital, F-75013, Paris, France. (d) Sorbonnes Université, CNRS UMR 8256, INSERM ERL U1164, Team Compensation in Neurodegenerative diseases and Aging (Brain-C Lab), F-75252, Paris, France (e) Institute of Neuroscience and Physiology, Department of Psychiatry and Neurochemistry, The Sahlgrenska Academy at the University of Gothenburg, Mölndal, Sweden. (f) Clinical Neurochemistry Laboratory, Sahlgrenska University Hospital, Mölndal, Sweden. (g) Department of Molecular Neuroscience, UCL Institute of Neurology, Queen Square, London, UK. (h) UK Dementia Research Institute, London, UK. (i) ADx NeuroSciences NV, Technologiepark 4, 9052, Ghent, Belgium. (j) Sorbonne Université, CNRS, INSERM, Laboratoire d'Imagerie Biomédicale, F-75013, Paris, France. (k) Centre pour l'Acquisition et le Traitement des Images (www.cati-neuroimaging.com), Paris, France. (l) AP-HP, Hôpital Pitié-Salpêtrière, Département de Médecine Nucléaire, F-75013, Paris, France. (m) ICM Institut du Cerveau et de la Moelle épinière, CNRS UMR7225, INSERM U1127, UPMC, Hôpital de la Pitié-Salpêtrière, 47 Bd de l'Hôpital, F-75013 Paris, France

Attachments: affiliations_edited.docx

Query: Please check the hierarchy of section heads for this article.

Answer: We confirm the hierarchy is fine

Query: Have we correctly interpreted the following funding source(s) and country names you cited in your article: Flanders Innovation and Entrepreneurship, Belgium; Medical Research Council, United Kingdom; INSERM, France; CNRS, France; Sorbonne Université, France; AXA Research Fund, France; Pfizer, United States; Lilly, United states?

Answer: Yes

Query: Please mention the section head instead of the term “below” given in the sentence “Time series data for plasma....”

Answer: Text edited accordingly

Query: Please check the edits made to the sentence “In addition, four novel candidate surrogate...” and amend if necessary.

Answer: The sentence is fine

Query: Please check the edits made to the sentence “Exclusion criterion was having...” and amend if necessary.

Answer: The sentence is fine

Query: Please check the edits made to the sentence “The plasma concentrations of Aβ₁₋₄₂...” and amend if necessary.

Answer: The sentence is fine

Query: Please check the edits made to the sentence “Of note, this statement should be...” and amend if necessary.

Answer: The statement is fine

Query: Please provide the expansion of “A/T/N system” given in the sentence “The A/T/N system is an agnostic....”

Answer: Please find below a suggested expansion: The "A (amyloid) / T (tau) / N (neurodegeneration)" system

Query: Please check the edits made to the sentence “After having identified, in a *no-a-priori* hypothesis...” and amend if necessary.

Answer: The sentence is fine

Query: Please check the edits made in “Acknowledgments” and “Conflicts of interest” and amend if necessary.

Answer: Please, find below the updated list of the APMI contributors (see also attached file): Mohammad AFSHAR (Paris), Lisi Flores AGUILAR (Montréal), Leyla AKMAN-ANDERSON (Sacramento), Joaquín ARENAS (Madrid), Jesus AVILA (Madrid), Claudio BABILONI (Rome), Filippo BALDACCI (Pisa), Richard BATRLA (Rotkreuz), Norbert BENDA (Bonn), Keith L. BLACK (Los Angeles), Arun L.W. BOKDE (Dublin), Ubaldo BONUCCELLI (Pisa), Karl BROICH (Bonn), Francesco CACCIOLA (Siena), Filippo CARACI (Catania), Juan CASTRILLO† (Derio), Enrica CAVEDO (Paris), Roberto CERAVOLO (Pisa), Patrizia A. CHIESA (Paris), Jean-Christophe CORVOL (Paris), Augusto Claudio CUELLO (Montréal), Jeffrey L. CUMMINGS (Las Vegas), Herman DEYPERE (Gent), Bruno DUBOIS (Paris), Andrea DUGGENTO (Rome), Enzo EMANUELE (Robbio), Valentina ESCOTT-PRICE (Cardiff), Howard FEDEROFF (Irvine), Maria Teresa FERRETTI (Zürich), Massimo FIANDACA (Irvine), Richard A. FRANK (Malvern), Francesco GARACI (Rome), Hugo GEERTS (Berwyn), Filippo S. GIORGI (Pisa), Edward J. GOETZL (San Francisco), Manuela GRAZIANI (Roma), Marion HABERKAMP (Bonn), Marie-Odile HABERT (Paris), Harald HAMPEL (Paris), Karl HERHOLZ (Manchester), Felix HERNANDEZ (Madrid), Dimitrios KAPOGIANNIS (Baltimore), Eric KARRAN (Cambridge), Steven J. KIDDLE (Cambridge), Seung H. KIM (Seoul), Yosef KORONYO (Los Angeles), Maya KORONYO-HAMAOU (Los Angeles), Todd LANGEVIN (Minneapolis-Saint Paul), Stéphane LEHÉRICY (Paris), Alejandro LUCÍA (Madrid), Simone LISTA (Paris), Jean LORENCEAU (Paris), Dalila MANGO (Rome), Mark MAPSTONE (Irvine), Christian NERI (Paris), Robert NISTICÒ (Rome), Sid E. O'BRYANT (Fort Worth), Giovanni PALERMO (Pisa), George PERRY (San Antonio), Craig RITCHIE (Edinburgh), Simone ROSSI (Siena), Amira SAIDI (Rome), Emiliano SANTARNECCHI (Siena), Lon S. SCHNEIDER (Los Angeles), Olaf SPORNS (Bloomington), Nicola TOSCHI (Rome), Steven R. VERDOONER (Sacramento), Andrea VERGALLO (Paris), Nicolas VILLAIN (Paris), Lindsay A. WELIKOVITCH (Montréal), Janet WOODCOCK (Silver Spring), Erfan YOUNESI (Esch-sur-Alzette).

Attachments: Contributors to the Alzheimer Precision Medicine I

Query: Please check the edits made in “Tables 1–2” and amend if necessary.

Answer: Tables 2 and 2 are fine

Query: Please provide a definition for the significance of dagger in the acknowledgement.

Answer: † stands for "passed away"

Query: Please verify the in-text citation of Refs. 7–14, amend if necessary.

Answer: Reference 8 is incorrect and needs to be replaced. Correct reference: Martiskainen H et al. Decreased plasma β -amyloid in the Alzheimer's disease APP A673T variant carriers. Ann Neurol. 2017

Query: Please provide city for affiliation 'l'.

Answer: Paris. Text edited

Query: Please confirm that given names and surnames have been identified correctly and are presented in the desired order and please carefully verify the spelling of all authors' names.

Answer: Yes