



HAL
open science

Electrophysiology in diagnosis and management of neuropathic pain

L. Garcia-Larrea, K. Hagiwara

► **To cite this version:**

L. Garcia-Larrea, K. Hagiwara. Electrophysiology in diagnosis and management of neuropathic pain. *Revue Neurologique*, 2019, 175, pp.26 - 37. 10.1016/j.neurol.2018.09.015 . hal-03484594

HAL Id: hal-03484594

<https://hal.science/hal-03484594>

Submitted on 20 Dec 2021

HAL is a multi-disciplinary open access archive for the deposit and dissemination of scientific research documents, whether they are published or not. The documents may come from teaching and research institutions in France or abroad, or from public or private research centers.

L'archive ouverte pluridisciplinaire **HAL**, est destinée au dépôt et à la diffusion de documents scientifiques de niveau recherche, publiés ou non, émanant des établissements d'enseignement et de recherche français ou étrangers, des laboratoires publics ou privés.



Distributed under a Creative Commons Attribution - NonCommercial 4.0 International License

Comprehension of conventional gestures in typical children, children with autism spectrum disorders and children with language disorders

Compréhension des gestes conventionnels chez les enfants typiques, les enfants avec troubles du spectre autistique et les enfants ayant des troubles du langage oral

Annabelle Perrault^{1,2}, Laurence Chaby^{2,3}, Fabienne Bigouret¹, Alice Oppetit¹, David Cohen^{1,2}, Monique Plaza², Jean Xavier^{1,2}

1Département de Psychiatrie de l'Enfant et l'Adolescent, APHP, Groupe Hospitalier Pitié-Salpêtrière, Paris, France;

2Institut des Systèmes Intelligents et Robotique, ISIR, CNRS UMR 7222, Paris, France;

3Université Paris Descartes, Sorbonne Paris Cité, Institut de Psychologie, Boulogne-Billancourt, France.

Corresponding author:

Dr. Alice Oppetit

Département de Psychiatrie de l'Enfant et l'Adolescent

APHP, Groupe Hospitalier Pitié-Salpêtrière

47-83 Bd de l'hôpital, Paris 75013 – France

Phone: +33 (0)1 42 16 23 42

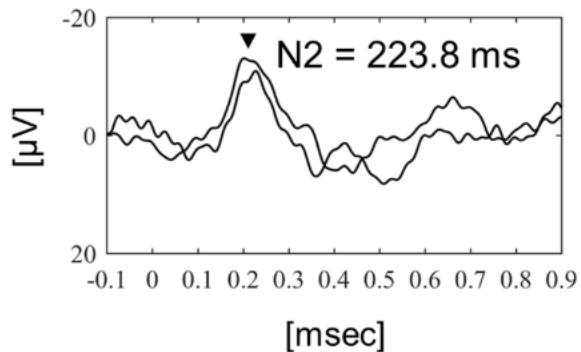
Email : alice.oppetit@aphp.fr

Scalp
EPs
(Cz)

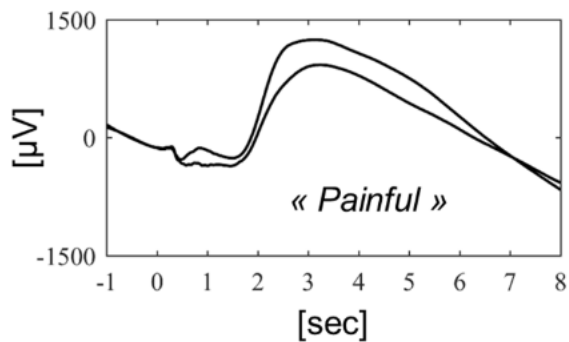
a

Laser-A δ
(Nd:YAP, 80 mJ/mm²)

Nociceptive



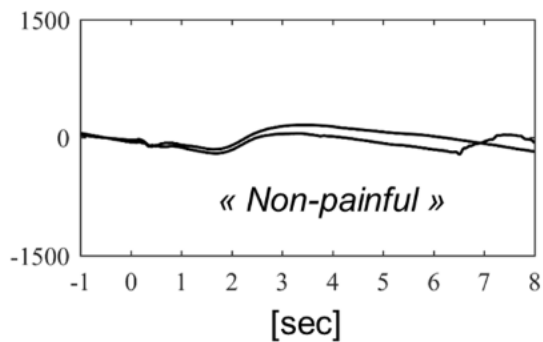
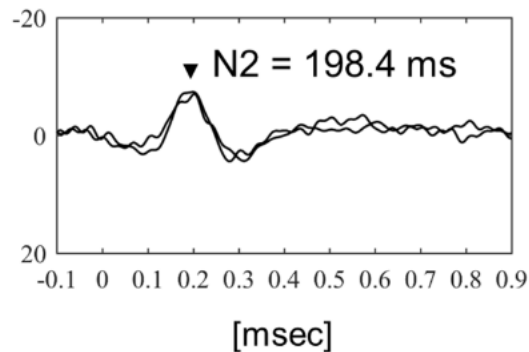
SSRs



b

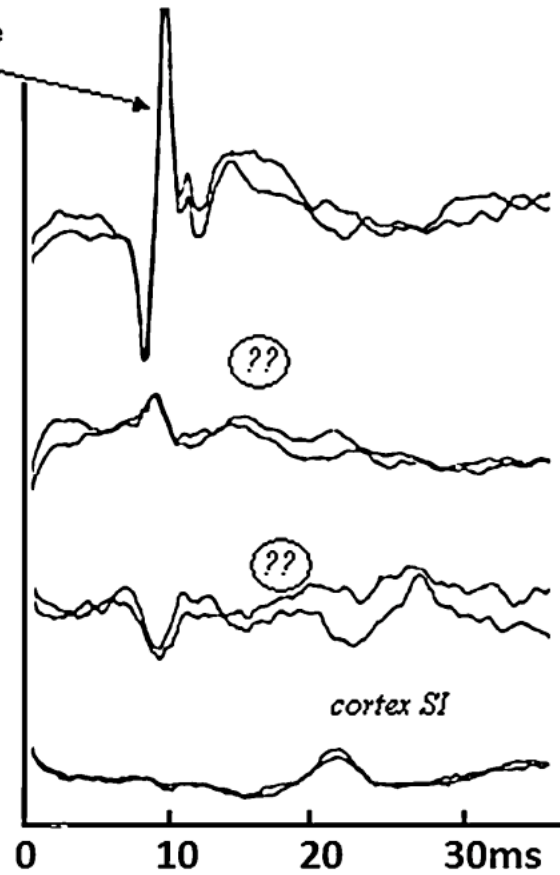
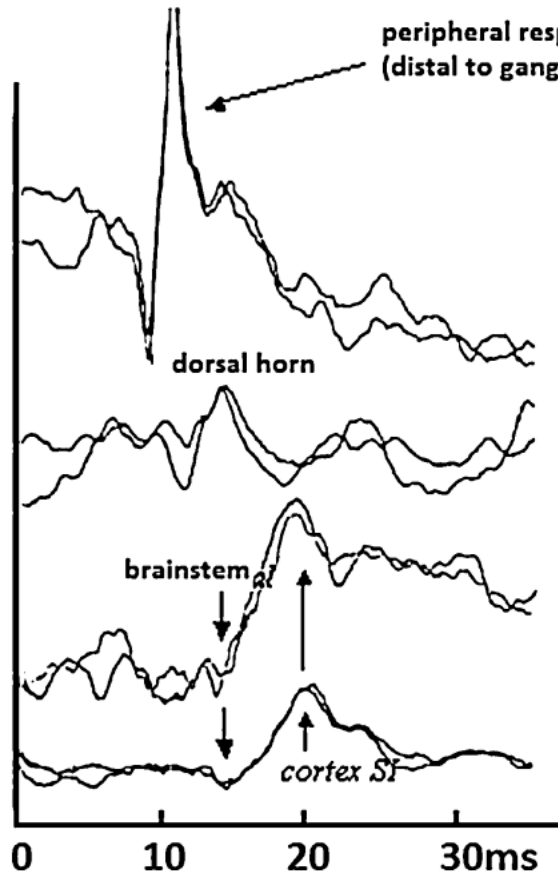
Intraepidermal-A δ
(electrical, 0.2 mA)

Non-nociceptive

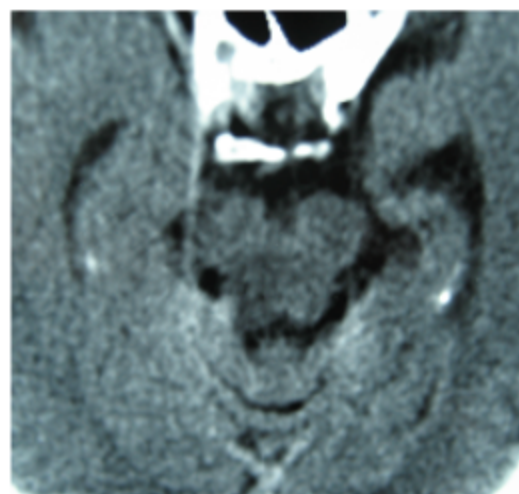
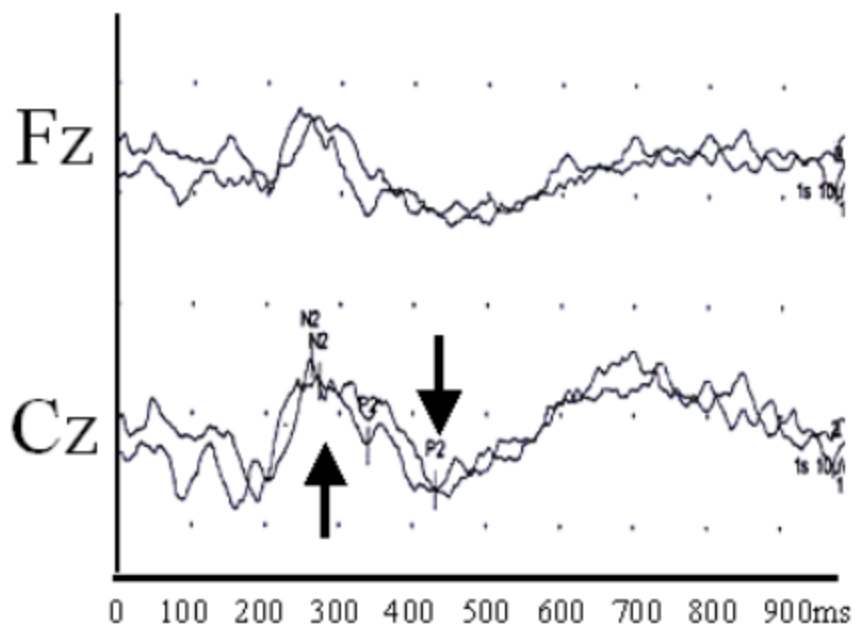


Stim: left median n.

Stim: right median n.

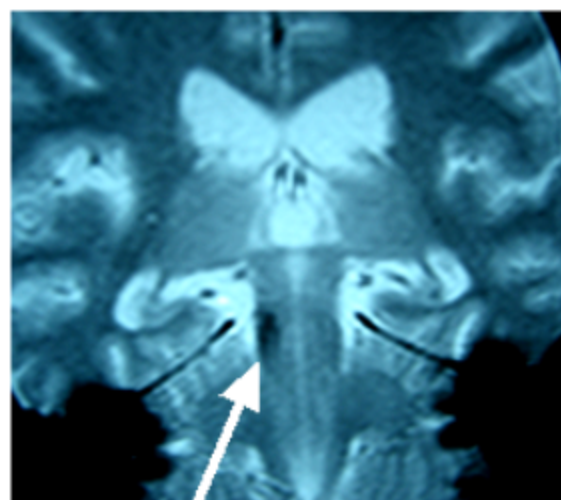
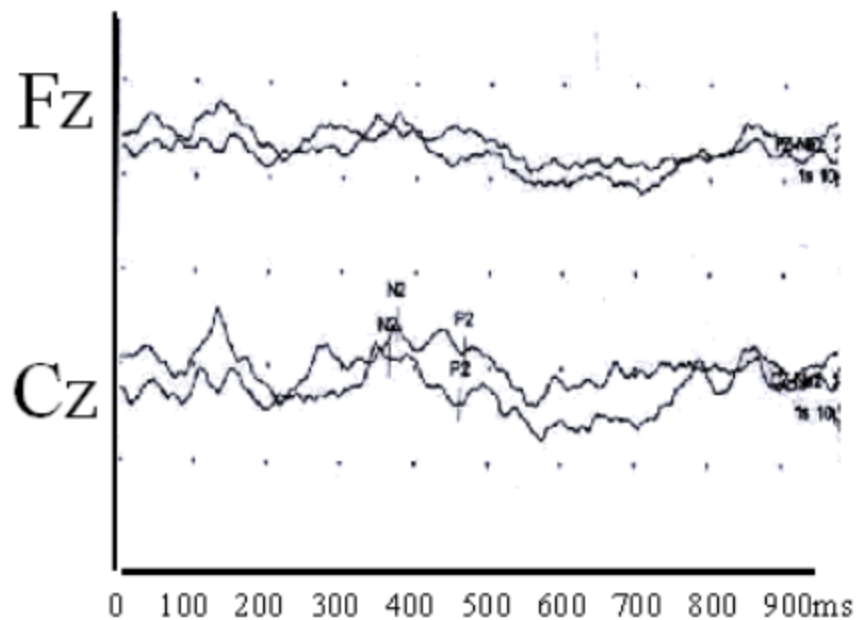


left hand stimulation

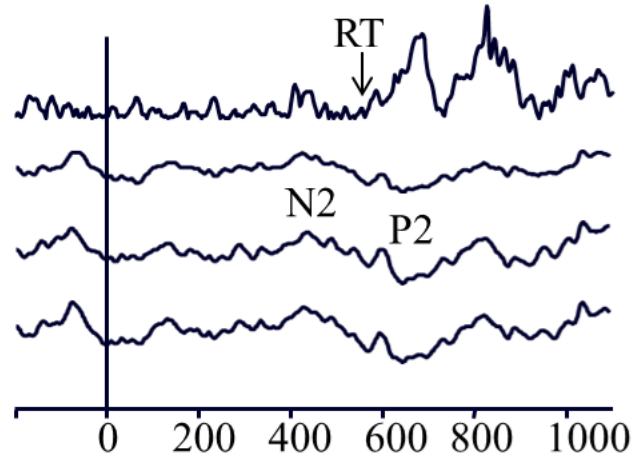


June 2006

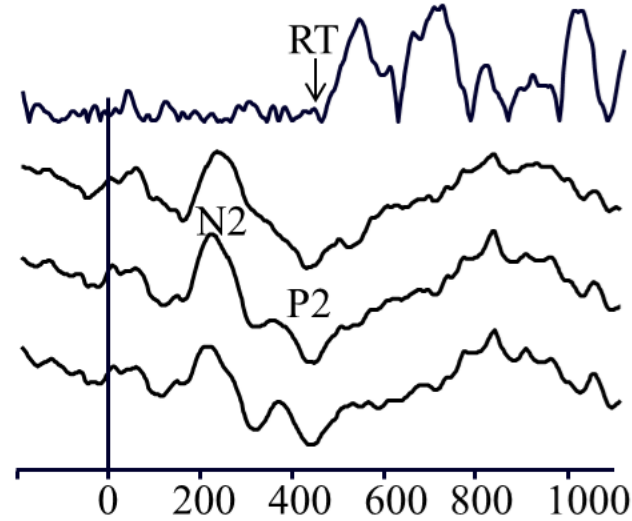
right hand stimulation



December 2006



Pre-derivation



Post-derivation

Post-thoracotomy pain : laser evoked potentials (LEPs)

