



**HAL**  
open science

# DICE: DIVERSITY IN DEEP ENSEMBLES VIA CONDITIONAL REDUNDANCY ADVERSARIAL ESTIMATION

Alexandre Ramé, Matthieu Cord

► **To cite this version:**

Alexandre Ramé, Matthieu Cord. DICE: DIVERSITY IN DEEP ENSEMBLES VIA CONDITIONAL REDUNDANCY ADVERSARIAL ESTIMATION. ICLR 2021 - 9th International Conference on Learning Representations, May 2021, Vienne, Austria. hal-03483364

**HAL Id: hal-03483364**

**<https://hal.science/hal-03483364>**

Submitted on 16 Dec 2021

**HAL** is a multi-disciplinary open access archive for the deposit and dissemination of scientific research documents, whether they are published or not. The documents may come from teaching and research institutions in France or abroad, or from public or private research centers.

L'archive ouverte pluridisciplinaire **HAL**, est destinée au dépôt et à la diffusion de documents scientifiques de niveau recherche, publiés ou non, émanant des établissements d'enseignement et de recherche français ou étrangers, des laboratoires publics ou privés.

# DICE: DIVERSITY IN DEEP ENSEMBLES VIA CONDITIONAL REDUNDANCY ADVERSARIAL ESTIMATION

**Alexandre Rame**

Sorbonne Université  
Paris, France  
alexandre.rame@lip6.fr

**Matthieu Cord**

Sorbonne Université & valeo.ai  
Paris, France  
matthieu.cord@lip6.fr

## ABSTRACT

Deep ensembles perform better than a single network thanks to the diversity among their members. Recent approaches regularize predictions to increase diversity; however, they also drastically decrease individual members' performances. In this paper, we argue that learning strategies for deep ensembles need to tackle the *trade-off between ensemble diversity and individual accuracies*. Motivated by arguments from information theory and leveraging recent advances in neural estimation of conditional mutual information, we introduce a novel training criterion called DICE: it increases diversity by *reducing spurious correlations among features*. The main idea is that features extracted from pairs of members should only share information useful for target class prediction without being conditionally redundant. Therefore, besides the classification loss with information bottleneck, we adversarially prevent features from being conditionally predictable from each other. We manage to reduce simultaneous errors while protecting class information. We obtain state-of-the-art accuracy results on CIFAR-10/100: for example, an ensemble of 5 networks trained with DICE matches an ensemble of 7 networks trained independently. We further analyze the consequences on calibration, uncertainty estimation, out-of-distribution detection and online co-distillation.

## 1 INTRODUCTION

Averaging the predictions of several models can significantly improve the generalization ability of a predictive system. Due to its effectiveness, **ensembling** has been a popular research topic (Nilsson, 1965; Hansen & Salamon, 1990; Wolpert, 1992; Krogh & Vedelsby, 1995; Breiman, 1996; Dietterich, 2000; Zhou et al., 2002; Rokach, 2010; Ovadia et al., 2019) as a simple alternative to fully Bayesian methods (Blundell et al., 2015; Gal & Ghahramani, 2016). It is currently the de facto solution for many machine learning applications and Kaggle competitions (Hin, 2020).

Ensembling reduces the variance of estimators (see Appendix E.1) thanks to the diversity in predictions. This reduction is most effective when errors are uncorrelated and members are diverse, *i.e.*, when they do not simultaneously fail on the same examples. Conversely, an ensemble of  $M$  identical networks is no better than a single one. In deep ensembles (Lakshminarayanan et al., 2017), **the weights are traditionally trained independently**: diversity among members only relies on the randomness of the initialization and of the learning procedure. Figure 1 shows that the performance of this procedure quickly plateaus with additional members.

To obtain more diverse ensembles, we could adapt the training samples through bagging (Breiman, 1996) and bootstrapping (Efron & Tibshirani, 1994), but a reduction of training samples has a negative impact on members with multiple local minima (Lee et al., 2015). Sequential boosting does not scale well for time-consuming deep learners that overfit their training dataset. Liu & Yao (1999a;b); Brown et al. (2005b) explicitly quantified the diversity and regularized members into having negatively correlated errors. However, these ideas have not significantly improved accuracy when applied to deep learning (Shui et al., 2018; Pang et al., 2019): while members should predict the same target, they force disagreements among strong learners and therefore increase their bias. It highlights the main objective and challenge of our paper: finding a training strategy to reach an improved **trade-off between ensemble diversity and individual accuracies** (Masegosa, 2020).

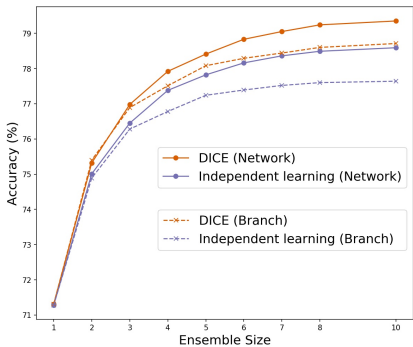


Figure 1: **DICE better leverages ensemble size.** Without weights sharing, 5 networks trained with DICE match 7 networks trained independently. With low-level weights sharing, 4 branches trained with DICE match 7 traditional branches. Dataset: CIFAR-100. Backbone: ResNet-32. Details in Table 8.

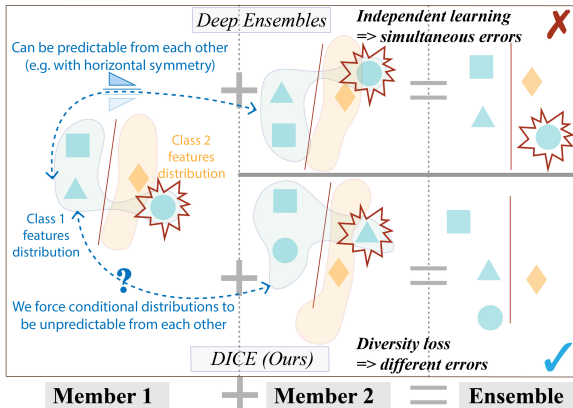


Figure 2: **Outline.** DICE prevents features from being predictable from each other *conditionally* upon the target class. Features extracted by members (1, 2) from one input (●, ●) should not share more information than features from two inputs in the same class (●, ▲): i.e., (●, -) should not be able to differentiate (-, ●) and (-, ▲).

Our core approach is to encourage all members to **predict the same thing, but for different reasons**. Therefore the diversity is enforced in the features space and not on predictions. Intuitively, to maximize the impact of a new member, extracted features should bring information about the target that is absent at this time so unpredictable from other members’ features. It would remove **spurious correlations**, e.g. information redundantly shared among features extracted by different members but useless for class prediction. This redundancy may be caused by a detail in the image background and therefore will not be found in features extracted from other images belonging to the same class. This could make members predict badly simultaneously, as shown in Figure 2.

Our new learning framework, called DICE, is driven by **Information Bottleneck (IB)** (Tishby, 1999; Alemi et al., 2017) principles, that force features to be concise by forgetting the task-irrelevant factors. Specifically, DICE leverages the Minimum Necessary Information criterion (Fischer, 2020) for deep ensembles, and aims at reducing the **mutual information (MI)** between features and inputs, but also information shared between features. We prevent extracted features from being redundant. As mutual information can detect arbitrary dependencies between random variables (such as symmetry, see Figure 2), we increase the distance between pairs of members: it promotes diversity by reducing predictions’ covariance. Most importantly, DICE protects features’ informativeness by **conditioning** mutual information upon the target. We build upon recent neural approaches (Belghazi et al., 2018) based on the Donsker-Varadhan representation of the KL formulation of MI.

We summarize our contributions as follows:

- We introduce DICE, a new adversarial learning framework to explicitly increase diversity in ensemble by minimizing the conditional redundancy between features.
- We rationalize our training objective by arguments from information theory.
- We propose an implementation through neural estimation of conditional redundancy.

We consistently improve accuracy on CIFAR-10/100 as summarized in Figure 1, with better uncertainty estimation and calibration. We analyze how the two components of our loss modify the accuracy-diversity trade-off. We improve out-of-distribution detection and online co-distillation.

## 2 DICE MODEL

**Notations** Given an input distribution  $X$ , a network  $\theta$  is trained to extract the best possible dense features  $Z$  to model the distribution  $p_{\theta}(Y|X)$  over the targets, which should be close to the Dirac on the true label. Our approach is designed for ensembles with  $M$  members  $\theta_i, i \in \{1, \dots, M\}$  extracting  $Z_i$ . In branch-based setup, members share low-level weights to reduce computation cost. We average the  $M$  predictions in inference. We initially consider an ensemble of  $M = 2$  members.

**Quick overview** First, we train each member separately for classification with information bottleneck. Second, we train members together to remove spurious redundant correlations while training adversarially a discriminator. In conclusion, members learn to classify with conditionally uncorrelated features for increased diversity. Our procedure is driven by the following theoretical findings.

## 2.A DERIVING TRAINING OBJECTIVE

### 2.A.1 BASELINE: NON-CONDITIONAL OBJECTIVE

The Minimum Necessary Information (MNI) criterion from (Fischer, 2020) aims at finding minimal statistics. In deep ensembles,  $Z_1$  and  $Z_2$  should capture only *minimal* information from  $X$ , while preserving the *necessary information* about the task  $Y$ . First, we consider separately the two Markov chains  $Z_1 \leftarrow X \leftrightarrow Y$  and  $Z_2 \leftarrow X \leftrightarrow Y$ . As entropy measures information, entropy of  $Z_1$  and  $Z_2$  not related to  $Y$  should be minimized. We recover IB (Alemi et al., 2017) in deep ensembles:  $\text{IB}_{\beta_{ib}}(Z_1, Z_2) = \frac{1}{\beta_{ib}} [I(X; Z_1) + I(X; Z_2)] - [I(Y; Z_1) + I(Y; Z_2)] = \text{IB}_{\beta_{ib}}(Z_1) + \text{IB}_{\beta_{ib}}(Z_2)$ . Second, let's consider  $I(Z_1; Z_2)$ : we minimize it following the minimality constraint of the MNI.

$$\begin{aligned} \text{IBR}_{\beta_{ib}, \delta_r}(Z_1, Z_2) &= \frac{1}{\beta_{ib}} \overbrace{[I(X; Z_1) + I(X; Z_2)]}^{\text{Compression}} - \overbrace{[I(Y; Z_1) + I(Y; Z_2)]}^{\text{Relevancy}} + \delta_r \overbrace{I(Z_1; Z_2)}^{\text{Redundancy}} \\ &= \text{IB}_{\beta_{ib}}(Z_1) + \text{IB}_{\beta_{ib}}(Z_2) + \delta_r I(Z_1; Z_2). \end{aligned}$$

**Analysis** In this baseline criterion, relevancy encourages  $Z_1$  and  $Z_2$  to capture information about  $Y$ . Compression & redundancy (R) split the information from  $X$  into two compressed & independent views. The relevancy-compression-redundancy trade-off depends on the values of  $\beta_{ib}$  &  $\delta_r$ .

### 2.A.2 DICE: CONDITIONAL OBJECTIVE

The problem is that the compression and redundancy terms in IBR also reduce necessary information related to  $Y$ : it is detrimental to have  $Z_1$  and  $Z_2$  fully disentangled while training them to predict the same  $Y$ . As shown on Figure 3, redundancy regions (blue horizontal stripes) overlap with relevancy regions (red stripes). Indeed, the true constraints that the MNI criterion really entails are the following **conditional** equalities given  $Y$ :

$$I(X; Z_1|Y) = I(X; Z_2|Y) = I(Z_1; Z_2|Y) = 0.$$

Mutual information being non-negative, we transform them into our main DICE objective:

$$\begin{aligned} \text{DICE}_{\beta_{ceb}, \delta_{cr}}(Z_1, Z_2) &= \frac{1}{\beta_{ceb}} \underbrace{[I(X; Z_1|Y) + I(X; Z_2|Y)]}_{\text{Conditional Compression}} - \underbrace{[I(Y; Z_1) + I(Y; Z_2)]}_{\text{Relevancy}} + \delta_{cr} \underbrace{I(Z_1; Z_2|Y)}_{\text{Conditional Redundancy}} \\ &= \text{CEB}_{\beta_{ceb}}(Z_1) + \text{CEB}_{\beta_{ceb}}(Z_2) + \delta_{cr} I(Z_1; Z_2|Y), \end{aligned} \quad (1)$$

where we recover two conditional entropy bottleneck (CEB) (Fischer, 2020) components,  $\text{CEB}_{\beta_{ceb}}(Z_i) = \frac{1}{\beta_{ceb}} I(X; Z_i|Y) - I(Y; Z_i)$ , with  $\beta_{ceb} > 0$  and  $\delta_{cr} > 0$ .

**Analysis** The relevancy terms force features to be informative about the task  $Y$ . But contrary to IBR, DICE bottleneck constraints only minimize irrelevant information to  $Y$ . First, the conditional compression removes in  $Z_1$  (or  $Z_2$ ) information from  $X$  not relevant to  $Y$ . Second, the conditional redundancy (CR) reduces spurious correlations between members and only forces them to **have independent bias, but definitely not independent features**. It encourages diversity without affecting members' individual precision as it protects information related to the target class in  $Z_1$  and  $Z_2$ . Useless information from  $X$  to predict  $Y$  should certainly not be in  $Z_1$  or  $Z_2$ , but it is even worse if they are in  $Z_1$  and  $Z_2$  simultaneously as it would cause simultaneous errors. Even if for  $i \in \{1, 2\}$ , reducing  $I(Z_i, X|Y)$  indirectly controls  $I(Z_1, Z_2|Y)$  (as  $I(Z_1; Z_2|Y) \leq I(X; Z_i|Y)$  by chain rule), it is more efficient to directly target this intersection region through the CR term. In a final word, DICE is to IBR for deep ensembles as CEB is to IB for a single network.

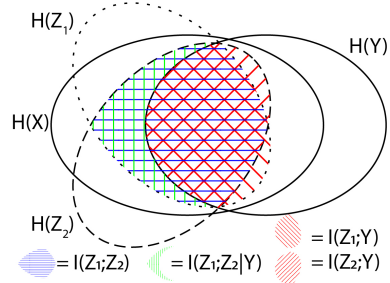


Figure 3: **Venn Information Diagram** (Yeung, 1991). DICE minimizes conditional redundancy (green vertical stripes) with no overlap with relevancy (red stripes).

We now approximate the two CEB and the CR components in DICE objective from equation 1.

## 2.B APPROXIMATING DICE INTO A TRACTABLE LOSS

### 2.B.1 VARIATIONAL APPROXIMATION OF CONDITIONAL ENTROPY BOTTLENECK

We leverage Markov assumptions in  $Z_i \leftarrow X \leftrightarrow Y, i \in \{1, 2\}$  and empirically estimate on the classification training dataset of  $N$  i.i.d. points  $D = \{x^n, y^n\}_{n=1}^N, y^n \in \{1, \dots, K\}$ . Following Fischer (2020),  $CEB_{\beta_{ceb}}(Z_i) = \frac{1}{\beta_{ceb}} I(X; Z_i|Y) - I(Y; Z_i)$  is variationally upper bounded by:

$$VCEB_{\beta_{ceb}}(\{e_i, b_i, c_i\}) = \frac{1}{N} \sum_{n=1}^N \frac{1}{\beta_{ceb}} D_{\text{KL}}(e_i(z|x^n) \| b_i(z|y^n)) - \mathbb{E}_{\epsilon} [\log c_i(y^n | e_i(x^n, \epsilon))]. \quad (2)$$

See explanation in Appendix E.4.  $e_i(z|x)$  is the true features distribution generated by the *encoder*,  $c_i(y|z)$  is a variational approximation of true distribution  $p(y|z)$  by the *classifier*, and  $b_i(z|y)$  is a variational approximation of true distribution  $p(z|y)$  by the *backward encoder*. This loss is applied separately on each member  $\theta_i = \{e_i, c_i, b_i\}, i \in \{1, 2\}$ .

Practically, we parameterize all distributions with Gaussians. The encoder  $e_i$  is a traditional neural network features extractor (e.g. ResNet-32) that learns **distributions** (means and covariances) rather than deterministic points in the features space. That’s why  $e_i$  transforms an image into 2 tensors; a features-mean  $e_i^{\mu}(x)$  and a diagonal features-covariance  $e_i^{\sigma}(x)$  each of size  $d$  (e.g. 64). The classifier  $c_i$  is a dense layer that transforms a features-sample  $z$  into logits to be aligned with the target  $y$  through conditional cross entropy.  $z$  is obtained via reparameterization trick:  $z = e_i(x, \epsilon) = e_i^{\mu}(x) + \epsilon e_i^{\sigma}(x)$  with  $\epsilon \sim N(0, 1)$ . Finally, the backward encoder  $b_i$  is implemented as an embedding layer of size  $(K, d)$  that maps the  $K$  classes to class-features-means  $b_i^{\mu}(z|y)$  of size  $d$ , as we set the class-features-covariance to 1. The Gaussian parametrization also enables the exact computation of the  $D_{\text{KL}}$  (see Appendix E.3), that forces (1) features-mean  $e_i^{\mu}(x)$  to converge to the class-features-mean  $b_i^{\mu}(z|y)$  and (2) the predicted features-covariance  $e_i^{\sigma}(x)$  to be close to 1. The **advantage of VCEB versus VIB** (Aleml et al., 2017) is the **class conditional**  $b_i^{\mu}(z|y)$  versus non-conditional  $b_i^{\mu}(z)$  which protects class information.

### 2.B.2 ADVERSARIAL ESTIMATION OF CONDITIONAL REDUNDANCY

**Theoretical Problem** We now focus on estimating  $I(Z_1; Z_2|Y)$ , with no such Markov properties. Despite being a pivotal measure, mutual information estimation historically relied on nearest neighbors (Singh et al., 2003; Kraskov et al., 2004; Gao et al., 2018) or density kernels (Kandasamy et al., 2015) that do not scale well in high dimensions. We benefit from recent advances in **neural estimation of mutual information** (Belghazi et al., 2018), built on optimizing Donsker & Varadhan (1975) dual representations of the KL divergence. Mukherjee et al. (2020) extended this formulation for conditional mutual information estimation.

$$\begin{aligned} \text{CR} &= I(Z_1; Z_2|Y) = D_{\text{KL}}(P(Z_1, Z_2, Y) \| P(Z_1, Y)p(Z_2|Y)) \\ &= \sup_f \mathbb{E}_{x \sim p(z_1, z_2, y)} [f(x)] - \log (\mathbb{E}_{x \sim p(z_1, y)p(z_2|y)} [\exp(f(x))]) \\ &= \mathbb{E}_{x \sim p(z_1, z_2, y)} [f^*(x)] - \log (\mathbb{E}_{x \sim p(z_1, y)p(z_2|y)} [\exp(f^*(x))]), \end{aligned}$$

where  $f^*$  computes the pointwise likelihood ratio, i.e.,  $f^*(z_1, z_2, y) = \frac{p(z_1, z_2, y)}{p(z_1, y)p(z_2|y)}$ .

**Empirical Neural Estimation** We estimate CR (1) using the empirical data distribution and (2) replacing  $f^* = \frac{w^*}{1-w^*}$  by the output of a discriminator  $w$ , trained to imitate the optimal  $w^*$ . Let  $\mathcal{B}_j$  be a batch sampled from the observed joint distribution  $p(z_1, z_2, y) = p(e_1(z|x), e_2(z|x), y)$ ; we select the features extracted by the two members from one input. Let  $\mathcal{B}_p$  be sampled from the product distribution  $p(z_1, y)p(z_2|y) = p(e_1(z|x), y)p(z_2|y)$ ; we select the features extracted by the two members from two different inputs that share the same class. We train a multi-layer network  $w$  on the binary task of distinguishing these two distributions with the standard cross-entropy loss:

$$\mathcal{L}_{ce}(w) = -\frac{1}{|\mathcal{B}_j| + |\mathcal{B}_p|} \left[ \sum_{(z_1, z_2, y) \in \mathcal{B}_j} \log w(z_1, z_2, y) + \sum_{(z_1, z_2, y) \in \mathcal{B}_p} \log(1 - w(z_1, z_2, y)) \right]. \quad (3)$$

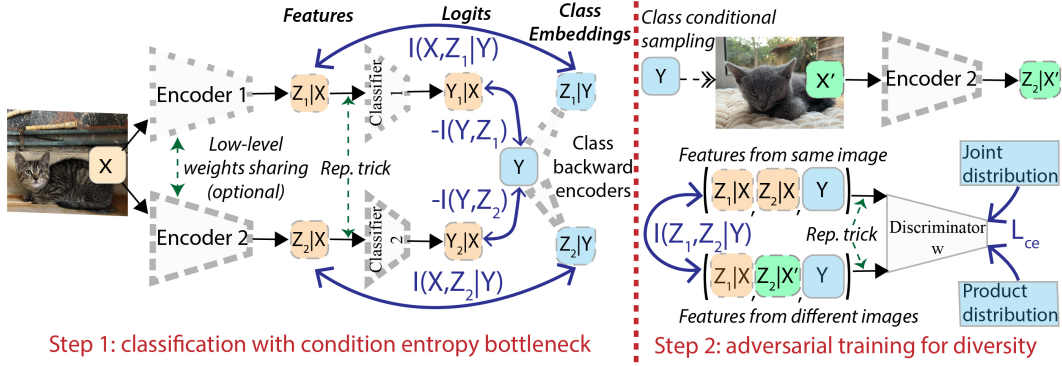


Figure 4: **Learning strategy overview.** Blue arrows represent training criteria: (1) classification with conditional entropy bottleneck applied separately on members 1 and 2, and (2) adversarial training to delete spurious correlations between members and increase diversity.  $X$  and  $X'$  belong to the same  $Y$  for **conditional redundancy** minimization. See Figure 13 for a larger version.

If  $w$  is calibrated (see Appendix B.3), a consistent (Mukherjee et al., 2020) estimate of CR is:

$$\hat{\mathcal{L}}_{DV}^{CR} = \frac{1}{|\mathcal{B}_j|} \sum_{(z_1, z_2, y) \in \mathcal{B}_j} \underbrace{\log f(z_1, z_2, y)}_{\text{Diversity}} - \log \left( \frac{1}{|\mathcal{B}_p|} \sum_{(z_1, z'_2, y) \in \mathcal{B}_p} \underbrace{f(z_1, z'_2, y)}_{\text{Fake correlations}} \right), \text{ with } f = \frac{w}{1-w}.$$

**Intuition** By training our members to minimize  $\hat{\mathcal{L}}_{DV}^{CR}$ , we force triples from the joint distribution to be indistinguishable from triples from the product distribution. Let’s imagine that two features are conditionally correlated, some spurious information is shared between features only when they are from the same input and not from two inputs (from the same class). This correlation can be informative about a detail in the background, an unexpected shape in the image, that is rarely found in samples from this input’s class. In that case, the product and joint distributions are easily distinguishable by the discriminator. The first adversarial component will force the extracted features to reduce the correlation, and ideally one of the two features loses this information: it reduces redundancy and increases diversity. The second term would create fake correlations between features from different inputs. As we are not interested in a precise estimation of the CR, we get rid of this second term that, empirically, did not increase diversity, as detailed in Appendix G.

$$\hat{\mathcal{L}}_{DV}^{CR}(e_1, e_2) = \frac{1}{|\mathcal{B}_j|} \sum_{(z_1, z_2, y) \in \mathcal{B}_j \sim p(e_1(z|x), e_2(z|x), y)} \log f(z_1, z_2, y). \quad (4)$$

**Summary** First, we train each member for classification with VCEB from equation 2, as shown in Step 1 from Figure 4. Second, as shown in Step 2 from Figure 4, the discriminator, conditioned on the class  $Y$ , learns to distinguish features sampled from one image versus features sampled from two images belonging to  $Y$ . Simultaneously, both members adversarially (Goodfellow et al., 2014) delete spurious correlations to reduce CR estimation from equation 4 with differentiable signals: it conditionally aligns features. We provide a pseudo-code in B.4. While we derive similar losses for IBR and CEBR in Appendix E.5, the full DICE loss is finally:

$$\mathcal{L}_{DICE}(\theta_1, \theta_2) = \text{VCEB}_{\beta_{ceb}}(\theta_1) + \text{VCEB}_{\beta_{ceb}}(\theta_2) + \delta_{cr} \hat{\mathcal{L}}_{DV}^{CR}(e_1, e_2). \quad (5)$$

## 2.C FULL PROCEDURE WITH M MEMBERS

We expand our objective for an ensemble with  $M > 2$  members. We only consider pairwise interactions for simplicity to keep quadratic rather than exponential growth in number of components and truncate higher order interactions, e.g.  $I(Z_i; Z_j, Z_k|Y)$  (see Appendix F.1). Driven by previous variational and neural estimations, we train  $\theta_i = \{e_i, b_i, c_i\}$ ,  $i \in \{1, \dots, M\}$  on:

$$\mathcal{L}_{DICE}(\theta_{1:M}) = \sum_{i=1}^M \text{VCEB}_{\beta_{ceb}}(\theta_i) + \frac{\delta_{cr}}{(M-1)} \sum_{i=1}^M \sum_{j=i+1}^M \hat{\mathcal{L}}_{DV}^{CR}(e_i, e_j), \quad (6)$$

while training **adversarially**  $w$  on  $\mathcal{L}_{ce}$ . Batch  $\mathcal{B}_j$  is sampled from the concatenation of joint distribution  $p(z_i, z_j, y)$  where  $i, j \in \{1, \dots, M\}, i \neq j$ , while  $\mathcal{B}_p$  is sampled from the product distribution,  $p(z_i, y)p(z_j|y)$ . We use the same discriminator  $w$  for  $\binom{M}{2}$  estimates. It improves scalability by reducing the number of parameters to be learned. Indeed, an additional member in the ensemble only adds  $256 * d$  trainable weights in  $w$ , where  $d$  is the features dimension. See Appendix B.3 for additional information related to the discriminator  $w$ .

### 3 RELATED WORK

To reduce the training cost of deep ensembles (Hansen & Salamon, 1990; Lakshminarayanan et al., 2017), Huang et al. (2017) collect **snapshots** on training trajectories. One stage end-to-end **co-distillation** (Song & Chai, 2018; Lan et al., 2018; Chen et al., 2020b) share low-level features among members in *branch-based* ensemble while forcing each member to mimic a dynamic weighted combination of the predictions to increase individual accuracy. However both methods correlate errors among members, homogenize predictions and fail to fit the different modes of the data which overall reduce diversity.

Beyond random initializations (Kolen & Pollack, 1991), authors **implicitly** introduced stochasticity into the training, by providing *subsets of data* to learners with bagging (Breiman, 1996) or by backpropagating *subsets of gradients* (Lee et al., 2016); however, the reduction of training samples hurts performance for sufficiently complex models that overfit their training dataset (Nakkiran et al., 2019). Boosting with sequential training is not suitable for deep members (Lakshminarayanan et al., 2017). Some approaches applied different *data augmentations* (Dvornik et al., 2019; Stickland & Murray, 2020), used *different networks* or *hyperparameters* (Singh et al., 2016; Ruiz & Verbeek, 2020; Yang & Soatto, 2020), but are not general-purpose and depend on specific engineering choices.

Others **explicitly** encourage orthogonality of the *gradients* (Ross et al., 2020; Kariyappa & Qureshi, 2019; Dabouei et al., 2020) or of the *predictions*, by *boosting* (Freund & Schapire, 1999; Margineantu & Dietterich) or with a *negative correlation* regularization (Shui et al., 2018), but they reduce members accuracy. Second-order PAC-Bayes bounds motivated the diversity loss in Masegosa (2020). As far as we know, adaptive diversity promoting (ADP) (Pang et al., 2019) is the unique approach more accurate than the independent baseline: they decorrelate the non-maximal predictions. The limited success of these logits approaches suggests that we seek diversity in *features*. Empirically we found that the increase of ( $L_1, L_2, -\cos$ ) distances between features (Kim et al., 2018) reduce performance: they are not invariant to variables’ symmetry. Simultaneously to our findings, Sinha et al. (2020) is somehow equivalent to our IBR objective (see Appendix C.2) but without information bottleneck motivations for the diversity loss.

The uniqueness of **mutual information** (see Appendix E.2) as a distance measure between variables has been applied in countless machine learning projects, such as reinforcement learning (Kim et al., 2019a), metric learning (Kemertas et al., 2020), or evolutionary algorithms (Aguirre & Coello, 2004). Objectives are often a trade-off between (1) informativeness and (2) compression. In computer vision, unsupervised deep representation learning (Hjelm et al., 2019; van den Oord et al., 2018; Tian et al., 2020a; Bachman et al., 2019) maximizes correlation between features and inputs following Infomax (Linsker, 1988; Bell & Sejnowski, 1995), while discarding information not shared among different views (Bhardwaj et al., 2020), or penalizing predictability of one latent dimension given the others for disentanglement (Schmidhuber, 1992; Comon, 1994; Kingma & Welling, 2014; Kim & Mnih, 2018; Blot et al., 2018).

The ideal level of compression is **task dependent** (Soatto & Chiuso, 2014). As a selection criterion, features should not be redundant (Battiti, 1994; Peng et al., 2005) but relevant and complementary given the task (Novovičová et al., 2007; Brown, 2009). As a learning criteria, correlations between features and inputs are minimized according to Information Bottleneck (Tishby, 1999; Alemi et al., 2017; Kirsch et al., 2020; Saporta et al., 2019), while those between features and targets are maximized (LeCun et al., 2006; Qin & Kim, 2019). It forces the features to ignore task-irrelevant factors (Zhao et al., 2020), to reduce overfitting (Alemi et al., 2018) while protecting needed information (Tian et al., 2020b). Fischer & Alemi (2020) concludes in the superiority of conditional alignment to reach the MNI point.

## 4 EXPERIMENTS

In this section, we present our experimental results on the *CIFAR-10* and *CIFAR-100* (Krizhevsky et al., 2009) datasets. We detail our implementation in Appendix B. We took most hyperparameter values from Chen et al. (2020b). Hyperparameters for adversarial training and information bottleneck were fine-tuned on a validation dataset made of 5% of the training dataset, see Appendix D.1. **Bold** highlights best score. First, we show gain in accuracy. Then, we further analyze our strategy’s impacts on calibration, uncertainty estimation, out-of-distribution detection and co-distillation.

### 4.A COMPARISON OF CLASSIFICATION ACCURACY

Table 1: **CIFAR-100 ensemble classification accuracy (Top-1, %).**

Name	Components		ResNet-32				ResNet-110		WRN-28-2		
	Div.	I.B.	3-branch	4-branch	5-branch	4-net	3-branch	4-branch	3-branch	4-branch	3-net
Ind.			76.28 $\pm$ 0.12	76.78 $\pm$ 0.19	77.24 $\pm$ 0.25	77.38 $\pm$ 0.12	80.54 $\pm$ 0.09	80.89 $\pm$ 0.31	78.83 $\pm$ 0.12	79.10 $\pm$ 0.08	80.01 $\pm$ 0.15
ONE (Lan et al., 2018)			75.17 $\pm$ 0.35	75.13 $\pm$ 0.25	75.25 $\pm$ 0.22	76.25 $\pm$ 0.32	78.97 $\pm$ 0.24	79.86 $\pm$ 0.25	78.38 $\pm$ 0.45	78.47 $\pm$ 0.32	77.53 $\pm$ 0.36
OKDDip (Chen et al., 2020b)			75.37 $\pm$ 0.32	76.85 $\pm$ 0.25	76.95 $\pm$ 0.18	77.27 $\pm$ 0.31	79.07 $\pm$ 0.27	80.46 $\pm$ 0.35	79.01 $\pm$ 0.19	79.32 $\pm$ 0.17	80.02 $\pm$ 0.14
ADP (Pang et al., 2019)	Pred.		76.37 $\pm$ 0.11	77.21 $\pm$ 0.21	77.67 $\pm$ 0.25	77.51 $\pm$ 0.25	80.73 $\pm$ 0.38	81.40 $\pm$ 0.27	79.21 $\pm$ 0.19	79.71 $\pm$ 0.18	80.01 $\pm$ 0.17
IB (equation 8)		VIB	76.01 $\pm$ 0.12	76.93 $\pm$ 0.24	77.22 $\pm$ 0.19	77.72 $\pm$ 0.12	80.43 $\pm$ 0.34	81.12 $\pm$ 0.19	79.19 $\pm$ 0.35	79.15 $\pm$ 0.12	80.15 $\pm$ 0.13
CEB (equation 2)		VCEB	76.36 $\pm$ 0.06	76.98 $\pm$ 0.18	77.35 $\pm$ 0.14	77.64 $\pm$ 0.15	81.08 $\pm$ 0.12	81.17 $\pm$ 0.16	78.92 $\pm$ 0.08	79.20 $\pm$ 0.13	80.38 $\pm$ 0.18
IBR (equation 9)	R	VIB	76.68 $\pm$ 0.13	77.25 $\pm$ 0.13	77.77 $\pm$ 0.21	77.84 $\pm$ 0.12	81.34 $\pm$ 0.21	81.38 $\pm$ 0.08	79.33 $\pm$ 0.15	79.90 $\pm$ 0.10	80.22 $\pm$ 0.10
CEBR (equation 10)	R	VCEB	76.72 $\pm$ 0.08	77.30 $\pm$ 0.12	77.81 $\pm$ 0.10	77.82 $\pm$ 0.11	81.52 $\pm$ 0.11	81.55 $\pm$ 0.33	79.25 $\pm$ 0.15	79.98 $\pm$ 0.07	80.35 $\pm$ 0.15
DICE (equation 6)	CR	VCEB	<b>76.89</b> $\pm$ 0.09	<b>77.51</b> $\pm$ 0.17	<b>78.08</b> $\pm$ 0.18	<b>77.92</b> $\pm$ 0.08	<b>81.67</b> $\pm$ 0.14	<b>81.93</b> $\pm$ 0.13	<b>79.59</b> $\pm$ 0.13	<b>80.05</b> $\pm$ 0.11	<b>80.55</b> $\pm$ 0.12

Table 1 reports the Top-1 classification accuracy averaged over 3 runs with standard deviation for CIFAR-100, while Table 2 focuses on CIFAR-10.  $\{3,4,5\}$ - $\{\text{branch,net}\}$  refers to the training of  $\{3,4,5\}$  members  $\{\text{with,without}\}$  low-level weights sharing. Ind. refers to *independent* deterministic deep ensembles without interactions between members (except optionally the low-level weights sharing). DICE surpasses concurrent approaches (summarized in Appendix C) for ResNet and Wide-ResNet architectures, in network and even more in branch setup. We bring significant and systematic improvements to the current state-of-the-art ADP (Pang et al., 2019): e.g.,  $\{+0.52, +0.30, +0.41\}$  for  $\{3,4,5\}$ -branches ResNet-32,  $\{+0.94, +0.53\}$  for  $\{3,4\}$ -branches ResNet-110 and finally  $+0.34$  for 3-networks WRN-28-2. Diversity approaches better leverage size, as shown on the main Figure 1, which is detailed in Table 8: on CIFAR-100, DICE outperforms Ind. by  $\{+0.60, +0.73, +0.84\}$  for  $\{3,4,5\}$ -branches ResNet-32. Finally, learning only the redundancy loss without compression yields unstable results: CEB learns a distribution (at almost no extra cost) that stabilizes adversarial training (see Appendix F.1) through sampling, with lower standard deviation in results than IB ( $\beta_{ib}$  can hinder the learnability (Wu et al., 2019b)).

Table 2: **CIFAR-10 ensemble classification accuracy (Top-1, %).**

Backbone	Structure	Ind.	ONE	OKDDip	ADP	IB	CEB	IBR	CEBR	DICE
ResNet-32	4-branch	94.75 $\pm$ 0.08	94.41 $\pm$ 0.05	94.86 $\pm$ 0.08	94.92 $\pm$ 0.04	94.76 $\pm$ 0.12	94.93 $\pm$ 0.11	94.91 $\pm$ 0.14	94.94 $\pm$ 0.12	<b>95.01</b> $\pm$ 0.09
ResNet-110	3-branch	95.62 $\pm$ 0.06	95.25 $\pm$ 0.08	95.21 $\pm$ 0.09	95.43 $\pm$ 0.12	94.54 $\pm$ 0.07	94.65 $\pm$ 0.05	95.68 $\pm$ 0.05	95.67 $\pm$ 0.06	<b>95.74</b> $\pm$ 0.08

### 4.B ABLATION STUDY

Branch-based is attractive: it reduces bias by gradient diffusion among shared layers, at only a slight cost in diversity which makes our approach even more valuable. We therefore study the 4-branches ResNet-32 on CIFAR-100 in following experiments. We ablate the two components of DICE: (1) deterministic, with VIB or VCEB, and (2) no adversarial loss, or with redundancy, conditionally or not. We measure diversity by the ratio-error (Aksela, 2003),  $r = \frac{N_{\text{single}}}{N_{\text{shared}}}$ , which computes the ratio between the number of single errors  $N_{\text{single}}$  and of shared errors  $N_{\text{shared}}$ . A higher average over the  $\binom{M}{2}$  pairs means higher diversity as members are less likely to err on the same inputs. Our analysis remains valid for non-pairwise diversity measures, analyzed in Appendix A.5.

In Figure 5, CEB has slightly higher diversity than Ind.: it benefits from compression. ADP reaches higher diversity but sacrifices individual accuracies. On the contrary, co-distillation OKDDip sacri-



finds diversity for individual accuracies. DICE curve is above all others, and notably  $\delta_{cr} = 0.2$  induces an **optimal trade-off between ensemble diversity and individual accuracies** on validation. CEBR reaches same diversity with lower individual accuracies: information about  $Y$  is removed.

Figure 6 shows that starting from random initializations, diversity begins small: DICE minimizes the estimated CR in features and increases diversity in predictions compared to CEB ( $\delta_{cr} = 0.0$ ). The effect is correlated with  $\delta_{cr}$ : a high value (0.6) creates too much diversity. On the contrary, a negative value ( $-0.025$ ) can decrease diversity. Figure 8 highlights opposing dynamics in accuracies.

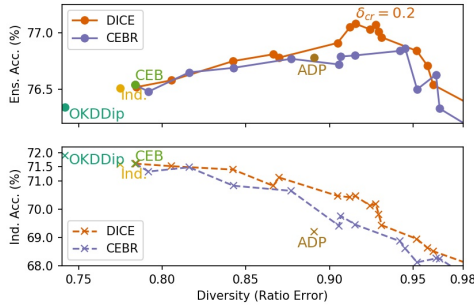


Figure 5: **Ensemble diversity/individual accuracy trade-off** for different strategies. DICE (r. CEBR) is learned with different  $\delta_{cr}$  (r.  $\delta_r$ ).

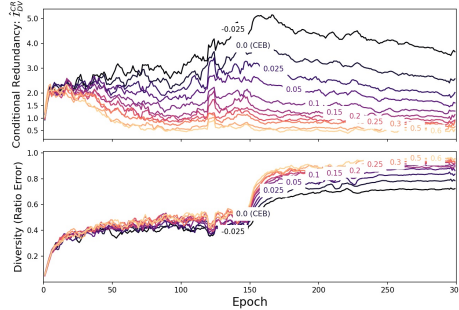


Figure 6: **Impact of the diversity coefficient  $\delta_{cr}$**  in DICE on the training dynamics on validation: CR is negatively correlated with diversity.

#### 4.C FURTHER ANALYSIS: UNCERTAINTY ESTIMATION AND CALIBRATION

**Procedure** We follow the procedure from (Ashukha et al., 2019). To evaluate the quality of the uncertainty estimates, we reported two complementary proper scoring rules (Gneiting & Raftery, 2007); the *Negative Log-Likelihood* (NLL) and the *Brier Score* (BS) (Brier, 1950). To measure the calibration, *i.e.*, how classification confidences match the observed prediction accuracy, we report the *Expected Calibration Error* (ECE) (Naeini et al., 2015) and the *Thresholded Adaptive Calibration Error* (TACE) (Nixon et al., 2019) with 15 bins: TACE resolves some pathologies in ECE by thresholding and adaptive binning. Ashukha et al. (2019) showed that “comparison of [...] ensembling methods without temperature scaling (Guo et al., 2017) might not provide a fair ranking”. Therefore, we randomly divide the test set into two equal parts and compute metrics for each half using the temperature  $T$  optimized on another half: their mean is reported. Table 3 compares results after temperature scaling (TS) while those before TS are reported in Table 9 in Appendix A.6.

Table 3: **Uncertainty estimation** (NLL, BS) and **calibration** (ECE, TACE) on CIFAR-100 **after** temperature scaling.

	1-net	Ind.	OKDDip-E	ADP	IB	CEB	IBR	CEBR	DICE
$T$	1.49	1.31	1.33	0.64	1.21	1.24	1.17	1.19	1.11
NLL $\downarrow$ ( $10^{-1}$ )	10.38	8.10	8.13	8.51	8.12	8.11	8.09	8.05	<b>7.98</b>
BS $\downarrow$ ( $10^{-3}$ )	3.92	3.24	3.19	3.27	3.20	3.19	3.17	3.18	<b>3.12</b>
ECE $\downarrow$ ( $10^{-2}$ )	1.83	<b>1.60</b>	1.73	2.99	2.17	2.07	1.97	2.02	2.59
TACE $\downarrow$ ( $10^{-3}$ )	1.98	1.78	1.74	1.79	<b>1.68</b>	1.69	1.75	1.72	1.70
Acc. $\uparrow$ (%)	71.28	76.71	76.85	77.21	76.93	76.98	77.25	77.30	<b>77.51</b>

**Results** We recover that ensembling improves performances (Ovadia et al., 2019), as one single network (1-net) performs significantly worse than ensemble approaches with 4-branches ResNet-32. Members’ disagreements decrease internal temperature and increase uncertainty estimation. DICE performs best even after TS, and reduces NLL from 8.13 to 7.98 and BS from 3.24 to 3.12 compared to independent learning. Calibration criteria benefit from diversity though they do “not provide a consistent ranking” as stated in Ashukha et al. (2019): for example, we notice that ECE highly depends on hyperparameters, especially  $\delta_{cr}$ , as shown on Figure 8 in Appendix A.4.

## 4.D FURTHER ANALYSIS: DISCRIMINATOR BEHAVIOUR THROUGH OOD DETECTION

To measure the ability of our ensemble to distinguish in- and out-of-distribution (OOD) images, we consider other datasets at test time following (Hendrycks & Gimpel, 2017) (see Appendix D.2). The confidence score is estimated with the maximum softmax value: the confidence for OOD images should ideally be lower than for CIFAR-100 test images.

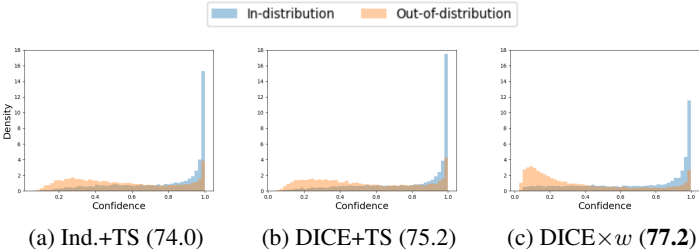


Figure 7: **Confidence estimates** separate images from CIFAR-100 and OOD images from TinyImageNet (crop) for different strategies (AUROC  $\uparrow$ ). DICE $\times w$  uses the discriminator to scale its confidence:  $1 - w$ 's predictions behave like an "input-dependant temperature".

Temperature scaling (results in Table 7) refines performances (results without TS in Table 6). DICE beats Ind. and CEB in both cases. Moreover, we suspected that features were more correlated for OOD images: they may share redundant artifacts. DICE $\times w$  multiplies the classification logits by the mean over all pairs of  $1 - w(z_i, z_j, \hat{y}), i \neq j$ , with predicted  $\hat{y}$  (as the true  $y$  is not available at test time). DICE $\times w$  performs even better than DICE+TS, but at the cost of additional operations. It shows that  $w$  can detect spurious correlations, adversarially deleted only when found in training.

## 4.E FURTHER ANALYSIS: DIVERSE TEACHER FOR IMPROVED CO-DISTILLATION

Table 4: **Individual accuracy for branch-based co-distillation** on CIFAR-100

$T$ co-distillation	1-net	Ind.	ONE (Lan et al., 2018)			OKDDip (Chen et al., 2020b)			PCL (Wu & Gong, 2020)			OKDDip+CEB			OKDDip+DICE		
			3	2.5	2	3	2.5	2	3	2.5	2	3	2.5	2			
ResNet-32	3-branch	71.28 $\pm$ 0.11	72.15 $\pm$ 0.08	73.32 $\pm$ 0.22	73.90 $\pm$ 0.15	74.01 $\pm$ 0.08	74.12 $\pm$ 0.12	74.14 $\pm$ 0.16	73.95 $\pm$ 0.09	74.10 $\pm$ 0.09	74.08 $\pm$ 0.11	74.14 $\pm$ 0.11	74.28 $\pm$ 0.12	74.56 $\pm$ 0.18			
	4-branch	-	-	73.42 $\pm$ 0.18	74.40 $\pm$ 0.13	74.42 $\pm$ 0.11	74.31 $\pm$ 0.09	-	74.01 $\pm$ 0.11	74.15 $\pm$ 0.23	74.61 $\pm$ 0.17	74.22 $\pm$ 0.08	74.43 $\pm$ 0.18	74.95 $\pm$ 0.13			

The inference time in network-ensembles grows linearly with  $M$ . Sharing early-features is one solution. We experiment another one by using only the  $M$ -th branch at test time. We combine DICE with OKDDip (Chen et al., 2020b): the  $M$ -th branch (= the student) learns to mimic the soft predictions from the  $M-1$  first branches (= the teacher), among which we enforce diversity. Our teacher has lower internal temperature (as shown in Experiment 4.c): DICE performs best when soft predictions are generated with lower  $T$ . We improve state-of-the-art by  $\{+0.42, +0.53\}$  for  $\{3,4\}$ -branches.

## 5 CONCLUSION

In this paper, we addressed the task of improving deep ensembles' learning strategies. Motivated by arguments from information theory, we derive a novel adversarial diversity loss, based on conditional mutual information. We tackle the trade-off between individual accuracies and ensemble diversity by deleting spurious and redundant correlations. We reach state-of-the-art performance on standard image classification benchmarks. In Appendix F.2, we also show how to regularize deterministic encoders with conditional redundancy without compression: this increases the applicability of our research findings. The success of many real-world systems in production depends on the robustness of deep ensembles: we hope to pave the way towards general-purpose strategies that go beyond independent learning.

## ACKNOWLEDGMENTS

This work was granted access to the HPC resources of IDRIS under the allocation 20XX-AD011011953 made by GENCI. We acknowledge the financial support by the ANR agency in the chair VISA-DEEP (project number ANR-20-CHIA-0022-01). Finally, we would like to thank those who helped and supported us during these confinements, in particular Julie and Rouille.

## REFERENCES

- Arturo Hernández Aguirre and Carlos A Coello Coello. Mutual information-based fitness functions for evolutionary circuit synthesis. In *Proceedings of the 2004 Congress on Evolutionary Computation (IEEE Cat. No. 04TH8753)*, volume 2, pp. 1309–1316. IEEE, 2004.
- Matti Aksela. Comparison of classifier selection methods for improving committee performance. In *International Workshop on Multiple Classifier Systems*, pp. 84–93. Springer, 2003.
- Alex Alemi, Ian Fischer, Josh Dillon, and Kevin Murphy. Deep variational information bottleneck. In *International Conference on Learning Representations*, 2017. URL <https://arxiv.org/abs/1612.00410>.
- Alexander A Alemi, Ian Fischer, and Joshua V Dillon. Uncertainty in the variational information bottleneck. *arXiv preprint arXiv:1807.00906*, 2018.
- Arsenii Ashukha, Alexander Lyzhov, Dmitry Molchanov, and Dmitry Vetrov. Pitfalls of in-domain uncertainty estimation and ensembling in deep learning. In *International Conference on Learning Representations*, 2019.
- Philip Bachman, R Devon Hjelm, and William Buchwalter. Learning representations by maximizing mutual information across views. In *Advances in Neural Information Processing Systems*, pp. 15535–15545, 2019.
- Roberto Battiti. Using mutual information for selecting features in supervised neural net learning. *IEEE Transactions on neural networks*, 5(4):537–550, 1994.
- Mohamed Ishmael Belghazi, Aristide Baratin, Sai Rajeshwar, Sherjil Ozair, Yoshua Bengio, Aaron Courville, and Devon Hjelm. Mutual information neural estimation. In *International Conference on Machine Learning*, pp. 531–540, 2018.
- Anthony J Bell and Terrence J Sejnowski. An information-maximization approach to blind separation and blind deconvolution. *Neural computation*, 7(6):1129–1159, 1995.
- Hedi Ben-Younes, Remi Cadene, Nicolas Thome, and Matthieu Cord. Block: Bilinear superdiagonal fusion for visual question answering and visual relationship detection. In *Proceedings of the AAAI Conference on Artificial Intelligence*, volume 33, pp. 8102–8109, 2019.
- Sangnie Bhardwaj, Ian Fischer, Johannes Ballé, and Troy Chinen. An unsupervised information-theoretic perceptual quality metric. *arXiv preprint arXiv:2006.06752*, 2020.
- Michael Blot, Thomas Robert, Nicolas Thome, and Matthieu Cord. Shade: Information-based regularization for deep learning. In *2018 25th IEEE International Conference on Image Processing (ICIP)*, pp. 813–817. IEEE, 2018.
- Charles Blundell, Julien Cornebise, Koray Kavukcuoglu, and Daan Wierstra. Weight uncertainty in neural networks. In *Proceedings of the 32nd International Conference on International Conference on Machine Learning-Volume 37*, pp. 1613–1622, 2015.
- Nicholas A Bowman. How much diversity is enough? the curvilinear relationship between college diversity interactions and first-year student outcomes. *Research in Higher Education*, 54(8):874–894, 2013.
- Leo Breiman. Bagging predictors. *Machine learning*, 24(2):123–140, 1996.
- Glenn W Brier. Verification of forecasts expressed in terms of probability. *Monthly weather review*, 78(1):1–3, 1950.
- Gavin Brown. A new perspective for information theoretic feature selection. In *Artificial intelligence and statistics*, pp. 49–56, 2009.
- Gavin Brown, Jeremy Wyatt, and Ping Sun. Between two extremes: Examining decompositions of the ensemble objective function. In *International workshop on multiple classifier systems*, pp. 296–305. Springer, 2005a.

- Gavin Brown, Jeremy L Wyatt, and Peter Tiño. Managing diversity in regression ensembles. *Journal of machine learning research*, 6(Sep):1621–1650, 2005b.
- Changrui Chen, Xin Sun, Yang Hua, Junyu Dong, and Hongwei Xv. Learning deep relations to promote saliency detection. In *AAAI*, 2020a.
- Defang Chen, Jian-Ping Mei, Can Wang, Yan Feng, and Chun Chen. Online knowledge distillation with diverse peers. In *AAAI*, pp. 3430–3437, 2020b.
- Nadezhda Chirkova, Ekaterina Lobacheva, and Dmitry Vetrov. Deep ensembles on a fixed memory budget: One wide network or several thinner ones? *arXiv preprint arXiv:2005.07292*, 2020.
- Inseop Chung, SeongUk Park, Jangho Kim, and Nojun Kwak. Feature-map-level online adversarial knowledge distillation. *arXiv preprint arXiv:2002.01775*, 2020.
- Pierre Comon. Independent component analysis, a new concept? *Signal processing*, 36(3):287–314, 1994.
- Thomas M Cover. *Elements of information theory*. John Wiley & Sons, 1999.
- Ali Dabouei, Sobhan Soleymani, Fariborz Taherkhani, Jeremy Dawson, and Nasser M. Nasrabadi. Exploiting joint robustness to adversarial perturbations. In *Proceedings of the IEEE/CVF Conference on Computer Vision and Pattern Recognition (CVPR)*, June 2020.
- J. Deng, W. Dong, R. Socher, L.-J. Li, K. Li, and L. Fei-Fei. ImageNet: A Large-Scale Hierarchical Image Database. In *CVPR09*, 2009.
- Terrance DeVries and Graham W Taylor. Learning confidence for out-of-distribution detection in neural networks. *arXiv preprint arXiv:1802.04865*, 2018.
- Thomas G Dietterich. Ensemble methods in machine learning. In *International workshop on multiple classifier systems*, pp. 1–15. Springer, 2000.
- Monroe D Donsker and SR Srinivasa Varadhan. Asymptotic evaluation of certain markov process expectations for large time, i. *Communications on Pure and Applied Mathematics*, 28(1):1–47, 1975.
- Nikita Dvornik, Cordelia Schmid, and Julien Mairal. Diversity with cooperation: Ensemble methods for few-shot classification. In *Proceedings of the IEEE International Conference on Computer Vision*, pp. 3723–3731, 2019.
- Bradley Efron and Robert J Tibshirani. *An introduction to the bootstrap*. CRC press, 1994.
- Ian Fischer. The conditional entropy bottleneck. *arXiv preprint arXiv:2002.05379*, 2020.
- Ian Fischer and Alexander A Alemi. Ceb improves model robustness. *arXiv preprint arXiv:2002.05380*, 2020.
- François Fleuret. Fast binary feature selection with conditional mutual information. *Journal of Machine learning research*, 5(Nov):1531–1555, 2004.
- Yoav Freund and Robert Schapire. A short introduction to boosting. *Journal-Japanese Society For Artificial Intelligence*, 14(771-780):1612, 1999.
- Yarin Gal and Zoubin Ghahramani. Dropout as a bayesian approximation: Representing model uncertainty in deep learning. In *international conference on machine learning*, pp. 1050–1059, 2016.
- Weihao Gao, Sewoong Oh, and Pramod Viswanath. Demystifying fixed  $k$ -nearest neighbor information estimators. *IEEE Transactions on Information Theory*, 64(8):5629–5661, 2018.
- Timur Garipov, Pavel Izmailov, Dmitrii Podoprikin, Dmitry P Vetrov, and Andrew G Wilson. Loss surfaces, mode connectivity, and fast ensembling of dnns. In *Advances in Neural Information Processing Systems*, pp. 8789–8798, 2018.

- Tilman Gneiting and Adrian E Raftery. Strictly proper scoring rules, prediction, and estimation. *Journal of the American statistical Association*, 102(477):359–378, 2007.
- Ian Goodfellow, Jean Pouget-Abadie, Mehdi Mirza, Bing Xu, David Warde-Farley, Sherjil Ozair, Aaron Courville, and Yoshua Bengio. Generative adversarial nets. In *Advances in neural information processing systems*, pp. 2672–2680, 2014.
- Chuan Guo, Geoff Pleiss, Yu Sun, and Kilian Q Weinberger. On calibration of modern neural networks. In *International Conference on Machine Learning*, pp. 1321–1330, 2017.
- Qiushan Guo, Xinjiang Wang, Yichao Wu, Zhipeng Yu, Ding Liang, Xiaolin Hu, and Ping Luo. Online knowledge distillation via collaborative learning. In *Proceedings of the IEEE/CVF Conference on Computer Vision and Pattern Recognition (CVPR)*, June 2020.
- Lars Kai Hansen and Peter Salamon. Neural network ensembles. *IEEE transactions on pattern analysis and machine intelligence*, 12(10):993–1001, 1990.
- Kaiming He, Xiangyu Zhang, Shaoqing Ren, and Jian Sun. Deep residual learning for image recognition. In *Proceedings of the IEEE conference on computer vision and pattern recognition*, pp. 770–778, 2016.
- Dan Hendrycks and Kevin Gimpel. A baseline for detecting misclassified and out-of-distribution examples in neural networks. *Proceedings of International Conference on Learning Representations*, 2017.
- David Hin. Stackoverflow vs kaggle: A study of developer discussions about data science. *arXiv preprint arXiv:2006.08334*, 2020.
- Geoffrey Hinton, Oriol Vinyals, and Jeff Dean. Distilling the knowledge in a neural network. *stat*, 1050:9, 2015.
- R Devon Hjelm, Alex Fedorov, Samuel Lavoie-Marchildon, Karan Grewal, Phil Bachman, Adam Trischler, and Yoshua Bengio. Learning deep representations by mutual information estimation and maximization. In *International Conference on Learning Representations*, 2019.
- Gao Huang, Yixuan Li, Geoff Pleiss, Zhuang Liu, John E. Hopcroft, and Kilian Q. Weinberger. Snapshot ensembles: Train 1, get m for free. 2017.
- Kirthevasan Kandasamy, Akshay Krishnamurthy, Barnabas Poczos, Larry Wasserman, et al. Non-parametric von mises estimators for entropies, divergences and mutual informations. In *Advances in Neural Information Processing Systems*, pp. 397–405, 2015.
- Sanjay Kariyappa and Moinuddin K. Qureshi. Improving adversarial robustness of ensembles with diversity training. *arXiv preprint arXiv:1901.09981*, 2019.
- Mete Kemertas, Leila Pishdad, Konstantinos G. Derpanis, and Afsaneh Fazly. Rankmi: A mutual information maximizing ranking loss. In *Proceedings of the IEEE/CVF Conference on Computer Vision and Pattern Recognition (CVPR)*, June 2020.
- Hyungseok Kim, Jaekyeom Kim, Yeonwoo Jeong, Sergey Levine, and Hyun Oh Song. Emi: Exploration with mutual information. In *International Conference on Machine Learning*, pp. 3360–3369, 2019a.
- Hyunjik Kim and Andriy Mnih. Disentangling by factorising. In *International Conference on Machine Learning*, pp. 2649–2658, 2018.
- Jangho Kim, Minsung Hyun, Inseop Chung, and Nojun Kwak. Feature fusion for online mutual knowledge distillation. *arXiv preprint arXiv:1904.09058*, 2019b.
- Wonsik Kim, Bhavya Goyal, Kunal Chawla, Jungmin Lee, and Keunjoo Kwon. Attention-based ensemble for deep metric learning. In *Proceedings of the European Conference on Computer Vision (ECCV)*, pp. 736–751, 2018.
- Diederik P. Kingma and Max Welling. Auto-encoding variational bayes. In Yoshua Bengio and Yann LeCun (eds.), *2nd International Conference on Learning Representations, ICLR 2014*, 2014.

- Andreas Kirsch, Clare Lyle, and Yarin Gal. Unpacking information bottlenecks: Unifying information-theoretic objectives in deep learning. *arXiv preprint arXiv:2003.12537*, 2020.
- Ron Kohavi, David H Wolpert, et al. Bias plus variance decomposition for zero-one loss functions. 1996.
- John F Kolen and Jordan B Pollack. Back propagation is sensitive to initial conditions. In *Advances in neural information processing systems*, pp. 860–867, 1991.
- Alexander Kraskov, Harald Stögbauer, and Peter Grassberger. Estimating mutual information. *Physical review E*, 69(6):066138, 2004.
- Alex Krizhevsky et al. Learning multiple layers of features from tiny images. 2009.
- Anders Krogh and Jesper Vedelsby. Neural network ensembles, cross validation, and active learning. In *Advances in neural information processing systems*, pp. 231–238, 1995.
- Solomon Kullback. *Information Theory and Statistics*. Wiley, New York, 1959.
- Ludmila I Kuncheva and Christopher J Whitaker. Measures of diversity in classifier ensembles and their relationship with the ensemble accuracy. *Machine learning*, 51(2):181–207, 2003.
- Balaji Lakshminarayanan, Alexander Pritzel, and Charles Blundell. Simple and scalable predictive uncertainty estimation using deep ensembles. In *Advances in neural information processing systems*, pp. 6402–6413, 2017.
- Xu Lan, Xiatian Zhu, and Shaogang Gong. Knowledge distillation by on-the-fly native ensemble. In *Proceedings of the 32nd International Conference on Neural Information Processing Systems*, pp. 7528–7538, 2018.
- Yann LeCun, Sumit Chopra, Raia Hadsell, Marc’Aurelio Ranzato, and Fu Jie Huang. A tutorial on energy-based learning. *To appear in “Predicting Structured Data*, 1:0, 2006.
- Stefan Lee, Senthil Purushwalkam, Michael Cogswell, David J. Crandall, and Dhruv Batra. Why M heads are better than one: Training a diverse ensemble of deep networks. *CoRR*, 2015.
- Stefan Lee, Senthil Purushwalkam Shiva Prakash, Michael Cogswell, Viresh Ranjan, David Crandall, and Dhruv Batra. Stochastic multiple choice learning for training diverse deep ensembles. In *Advances in Neural Information Processing Systems*, pp. 2119–2127, 2016.
- Shiyu Liang, Yixuan Li, and Rayadurgam Srikant. Enhancing the reliability of out-of-distribution image detection in neural networks. In *6th International Conference on Learning Representations, ICLR 2018*, 2018.
- Ralph Linsker. Self-organization in a perceptual network. *Computer*, 21(3):105–117, 1988.
- Cheng-Lin Liu and Masaki Nakagawa. Evaluation of prototype learning algorithms for nearest-neighbor classifier in application to handwritten character recognition. *Pattern Recognition*, 34(3):601–615, 2001.
- Yong Liu and Xin Yao. Ensemble learning via negative correlation. *Neural networks*, 12(10):1399–1404, 1999a.
- Yong Liu and Xin Yao. Simultaneous training of negatively correlated neural networks in an ensemble. *IEEE Transactions on Systems, Man, and Cybernetics, Part B (Cybernetics)*, 29(6):716–725, 1999b.
- Wesley J Maddox, Pavel Izmailov, Timur Garipov, Dmitry P Vetrov, and Andrew Gordon Wilson. A simple baseline for bayesian uncertainty in deep learning. In *Advances in Neural Information Processing Systems*, pp. 13153–13164, 2019.
- Dragos D Margineantu and Thomas G Dietterich. Pruning adaptive boosting. Citeseer.
- Andres R. Masegosa. Learning under model misspecification: Applications to variational and ensemble methods. In *Advances in Neural Information Processing Systems*, 2020.

- Sina Molavipour, Germán Bassi, and Mikael Skoglund. On neural estimators for conditional mutual information using nearest neighbors sampling. *arXiv preprint arXiv:2006.07225*, 2020.
- Sudipto Mukherjee, Himanshu Asnani, and Sreeram Kannan. Ccmi: Classifier based conditional mutual information estimation. In *Uncertainty in Artificial Intelligence*, pp. 1083–1093. PMLR, 2020.
- Ryan Muldoon. *Social contract theory for a diverse world: Beyond tolerance*. Taylor & Francis, 2016.
- Mahdi Pakdaman Naeini, Gregory Cooper, and Milos Hauskrecht. Obtaining well calibrated probabilities using bayesian binning. In *Twenty-Ninth AAAI Conference on Artificial Intelligence*, 2015.
- Preetum Nakkiran, Gal Kaplun, Yamini Bansal, Tristan Yang, Boaz Barak, and Ilya Sutskever. Deep double descent: Where bigger models and more data hurt. In *International Conference on Learning Representations*, 2019.
- Nils J. Nilsson. *Learning machines: Foundations of trainable pattern-classifying systems*. 1965.
- Jeremy Nixon, Michael W Dusenberry, Linchuan Zhang, Ghassen Jerfel, and Dustin Tran. Measuring calibration in deep learning. In *Proceedings of the IEEE Conference on Computer Vision and Pattern Recognition Workshops*, pp. 38–41, 2019.
- Jana Novovičová, Petr Somol, Michal Haindl, and Pavel Pudil. Conditional mutual information based feature selection for classification task. In *Iberoamerican Congress on Pattern Recognition*, pp. 417–426. Springer, 2007.
- Sebastian Nowozin, Botond Cseke, and Ryota Tomioka. f-gan: Training generative neural samplers using variational divergence minimization. In *Advances in neural information processing systems*, pp. 271–279, 2016.
- Yaniv Ovadia, Emily Fertig, Jie Ren, Zachary Nado, David Sculley, Sebastian Nowozin, Joshua Dillon, Balaji Lakshminarayanan, and Jasper Snoek. Can you trust your model’s uncertainty? evaluating predictive uncertainty under dataset shift. In *Advances in Neural Information Processing Systems*, pp. 13991–14002, 2019.
- Tianyu Pang, Kun Xu, Chao Du, Ning Chen, and Jun Zhu. Improving adversarial robustness via promoting ensemble diversity. In *International Conference on Machine Learning*, pp. 4970–4979, 2019.
- Hanchuan Peng, Fuhui Long, and Chris Ding. Feature selection based on mutual information criteria of max-dependency, max-relevance, and min-redundancy. *IEEE Transactions on pattern analysis and machine intelligence*, 27(8):1226–1238, 2005.
- Zhenyue Qin and Dongwoo Kim. Rethinking softmax with cross-entropy: Neural network classifier as mutual information estimator. *arXiv preprint arXiv:1911.10688*, 2019.
- Hippolyt Ritter, Aleksandar Botev, and David Barber. A scalable laplace approximation for neural networks. In *6th International Conference on Learning Representations, ICLR 2018-Conference Track Proceedings*, volume 6. International Conference on Representation Learning, 2018.
- Lior Rokach. Ensemble-based classifiers. *Artificial intelligence review*, 33(1-2):1–39, 2010.
- Andrew Slavin Ross, Weiwei Pan, Leo Anthony Celi, and Finale Doshi-Velez. Ensembles of locally independent prediction models. In *Thirty-Fourth AAAI Conference on Artificial Intelligence*, 2020. URL <https://arxiv.org/abs/1911.01291>.
- Adrià Ruiz and Jakob Verbeek. Distilled Hierarchical Neural Ensembles with Adaptive Inference Cost. working paper or preprint, March 2020. URL <https://hal.inria.fr/hal-02500660>.
- Antoine Saporta, Yifu Chen, Michael Blot, and Matthieu Cord. REVE: Regularizing Deep Learning with Variational Entropy Bound. In *2019 IEEE International Conference on Image Processing (ICIP)*. IEEE, 2019.

- Jürgen Schmidhuber. Learning factorial codes by predictability minimization. *Neural computation*, 4(6):863–879, 1992.
- Claude E Shannon. A mathematical theory of communication. *The Bell system technical journal*, 27(3):379–423, 1948.
- Changjian Shui, Azadeh Sadat Mozafari, Jonathan Marek, Ihsen Hedhli, and Christian Gagné. Diversity regularization in deep ensembles. 2018.
- Demetrio Sierra-Mercado and Gabriel Lázaro-Muñoz. Enhance diversity among researchers to promote participant trust in precision medicine research. *The American Journal of Bioethics*, 18(4):44–46, 2018.
- Harshinder Singh, Neeraj Misra, Vladimir Hnizdo, Adam Fedorowicz, and Eugene Demchuk. Nearest neighbor estimates of entropy. *American journal of mathematical and management sciences*, 23(3-4):301–321, 2003.
- Saurabh Singh, Derek Hoiem, and David Forsyth. Swapout: Learning an ensemble of deep architectures. In *Advances in neural information processing systems*, pp. 28–36, 2016.
- Samarth Sinha, Homanga Bharadhwaj, Anirudh Goyal, Hugo Larochelle, Animesh Garg, and Florian Shkurti. Dibs: Diversity inducing information bottleneck in model ensembles. *arXiv preprint arXiv:2003.04514*, 2020.
- Stefano Soatto and Alessandro Chiuso. Visual representations: Defining properties and deep approximations. *arXiv*, 2014.
- Casper Kaae Sønderby, Jose Caballero, Lucas Theis, Wenzhe Shi, and Ferenc Huszár. Amortised map inference for image super-resolution. 2016.
- Guocong Song and Wei Chai. Collaborative learning for deep neural networks. In *Advances in Neural Information Processing Systems*, pp. 1832–1841, 2018.
- Jiaming Song and Stefano Ermon. Understanding the limitations of variational mutual information estimators. In *International Conference on Learning Representations*, 2020.
- Asa Cooper Stickland and Iain Murray. Diverse ensembles improve calibration. *arXiv preprint arXiv:2007.04206*, 2020.
- Talia H Swartz, Ann-Gel S Palermo, Sandra K Masur, and Judith A Aberg. The science and value of diversity: Closing the gaps in our understanding of inclusion and diversity. *The Journal of infectious diseases*, 220(Supplement 2):S33–S41, 2019.
- Yonglong Tian, Dilip Krishnan, and Phillip Isola. Contrastive multiview coding. 2020a.
- Yonglong Tian, Chen Sun, Ben Poole, Dilip Krishnan, Cordelia Schmid, and Phillip Isola. What makes for good views for contrastive learning. *arXiv preprint arXiv:2005.10243*, 2020b.
- Naftali Tishby. The information bottleneck method. In *Proc. 37th Annual Allerton Conference on Communications, Control and Computing, 1999*, pp. 368–377, 1999.
- Naonori Ueda and Ryohei Nakano. Generalization error of ensemble estimators. In *Proceedings of International Conference on Neural Networks (ICNN’96)*, volume 1, pp. 90–95. IEEE, 1996.
- Aaron van den Oord, Yazhe Li, and Oriol Vinyals. Representation learning with contrastive predictive coding. 2018.
- Bogdan Vasilescu, Daryl Posnett, Baishakhi Ray, Mark GJ van den Brand, Alexander Serebrenik, Premkumar Devanbu, and Vladimir Filkov. Gender and tenure diversity in github teams. In *Proceedings of the 33rd annual ACM conference on human factors in computing systems*, 2015.
- David H Wolpert. Stacked generalization. *Neural networks*, 5(2):241–259, 1992.



- A Wu, S Nowozin, E Meeds, RE Turner, JM Hernández-Lobato, and AL Gaunt. Deterministic variational inference for robust bayesian neural networks. In *7th International Conference on Learning Representations, ICLR 2019*, 2019a.
- Guile Wu and Shaogang Gong. Peer collaborative learning for online knowledge distillation. *arXiv preprint arXiv:2006.04147*, 2020.
- Tailin Wu and Ian Fischer. Phase transitions for the information bottleneck in representation learning. 2020.
- Tailin Wu, Ian Fischer, Isaac L Chuang, and Max Tegmark. Learnability for the information bottleneck. *Entropy*, 21(10):924, 2019b.
- Pingmei Xu, Krista A Ehinger, Yinda Zhang, Adam Finkelstein, Sanjeev R. Kulkarni, and Jianxiong Xiao. Turkergaze: Crowdsourcing saliency with webcam based eye tracking. *arXiv preprint arXiv:1504.06755*, 2015.
- Yanchao Yang and Stefano Soatto. Fda: Fourier domain adaptation for semantic segmentation. In *Proceedings of the IEEE/CVF Conference on Computer Vision and Pattern Recognition*, pp. 4085–4095, 2020.
- R. W. Yeung. A new outlook on shannon’s information measures. *IEEE Transactions on Information Theory*, 37(3):466–474, 1991. doi: 10.1109/18.79902.
- Fisher Yu, Ari Seff, Yinda Zhang, Shuran Song, Thomas Funkhouser, and Jianxiong Xiao. Lsun: Construction of a large-scale image dataset using deep learning with humans in the loop. *arXiv preprint arXiv:1506.03365*, 2015.
- Tianyuan Yu, Da Li, Yongxin Yang, Timothy M Hospedales, and Tao Xiang. Robust person re-identification by modelling feature uncertainty. In *Proceedings of the IEEE International Conference on Computer Vision*, pp. 552–561, 2019.
- Sergey Zagoruyko and Nikos Komodakis. Wide residual networks. In Edwin R. Hancock Richard C. Wilson and William A. P. Smith (eds.), *Proceedings of the British Machine Vision Conference (BMVC)*, pp. 87.1–87.12. BMVA Press, September 2016. ISBN 1-901725-59-6. doi: 10.5244/C.30.87. URL <https://dx.doi.org/10.5244/C.30.87>.
- Ruqi Zhang, Chunyuan Li, Jianyi Zhang, Changyou Chen, and Andrew Gordon Wilson. Cyclical stochastic gradient mcmc for bayesian deep learning. In *International Conference on Learning Representations*, 2019.
- Ying Zhang, Tao Xiang, Timothy M Hospedales, and Huchuan Lu. Deep mutual learning. In *Proceedings of the IEEE Conference on Computer Vision and Pattern Recognition*, 2018.
- Han Zhao, Amanda Coston, Tameem Adel, and Geoffrey J. Gordon. Conditional learning of fair representations. In *International Conference on Learning Representations*, 2020.
- Zhi-Hua Zhou, Jianxin Wu, and Wei Tang. Ensembling neural networks: many could be better than all. *Artificial intelligence*, 137(1-2):239–263, 2002.

# Appendices

Appendix A shows additional experiments. Appendix B describes our implementation to facilitate reproduction. In Appendix C, we summarize the concurrent approaches (see Table 10). In Appendix D, we describe the datasets and the metrics used in our experiments. Appendix E clarifies certain theoretical formulations. In Appendix F, we explain that DICE is a second-order approximation in terms of information interactions and then we try to apply our diversity regularization to deterministic encoders. Appendix G motivates the removal of the second term from our neural estimation of conditional redundancy. We conclude with a sociological analogy in Appendix H.

## A ADDITIONAL EXPERIMENTS

### A.1 COMPARISONS WITH CO-DISTILLATION AND SNAPSHOT-BASED APPROACHES

Table 5: **Ensemble Accuracy** on different setups. Concurrent approaches’ accuracies are those reported in recent papers. DICE outperforms co-distillation and snapshot-based ensembles collected on the training trajectory, which fail to capture the different modes of the data (Ashukha et al., 2019).

Dataset	Architecture			Concurrent Approach			Baseline	Ours		
	Backbone	Structure	Ens. Size	Name	Acc.	According to	Ind. Acc.	DICE Acc.		
CIFAR-100	ResNet-32	Branches	3	CL-ILR (Song & Chai, 2018)	72.99	(Chen et al., 2020b)	76.28	<b>76.89</b>		
		Nets	3	DML (Zhang et al., 2018) AFD (Chung et al., 2020)	76.11 76.64	(Chung et al., 2020) (Chung et al., 2020)	76.45	<b>76.98</b>		
	ResNet-110	Branches	3	FFL (Kim et al., 2019b) PCL-E (Wu & Gong, 2020)	78.22 80.51	(Wu & Gong, 2020) (Wu & Gong, 2020)	80.54	<b>81.67</b>		
		4	CL-ILR (Song & Chai, 2018)	79.81	(Chen et al., 2020b)	80.89	<b>81.93</b>			
	Nets	5	5	SWAG (Maddox et al., 2019) Cyclic SGLD (Zhang et al., 2019) Fast Geometric Ens (Garipov et al., 2018) Variational Inf. (FFG) (Wu et al., 2019a) KFAC-Laplace (Ritter et al., 2018) Snapshot Ensembles (Huang et al., 2017)	77.69 74.27 78.78 77.59 77.13 77.17	(Ashukha et al., 2019) (Ashukha et al., 2019) (Ashukha et al., 2019) (Ashukha et al., 2019) (Ashukha et al., 2019) (Ashukha et al., 2019)	81.7 (Ashukha et al., 2019)	<b>81.82</b>		
				WRN-28-2	Nets	3	DML (Zhang et al., 2018) AFD (Chung et al., 2020)	79.41 79.78	(Chung et al., 2020) (Chung et al., 2020)	80.01

### A.2 OUT-OF-DISTRIBUTION DETECTION

Table 6 summarizes our OOD experiments in the 4-branches ResNet-32 setup. We recover that IB improves OOD detection (Alemi et al., 2018). Moreover, we empirically validate our intuition: features from in-distribution images are in average less predictive from each other compared to pairs of features from OOD images.  $w$  can perform alone as a OOD-detector, but is best used in complement to DICE. In  $DICE \times w$ , logits are multiplied by the sigmoid output of  $w$  averaged over all pairs. Table 7 shows that temperature scaling improves all approaches without modifying ranking. Finally,  $DICE \times w$ , even without TS, is better than DICE, even with TS.

Table 6: **Out-of-distribution** performances **before** temperature scaling.

Train	Dataset Test OOD	FPR (95 % TPR) ↓				Detection ↓				AUROC ↑				AUPR In ↑				AUPR Out ↑								
		Ind.	CEB	DICE	DICE×w	Ind.	CEB	DICE	DICE×w	Ind.	CEB	DICE	DICE×w	Ind.	CEB	DICE	DICE×w	Ind.	CEB	DICE	DICE×w					
CIFAR-100	TinyImageNet (crop)	80.1	80.4	77.9	82.2	<b>73.7</b>	33.0	32.1	31.2	32.4	<b>28.8</b>	72.4	73.8	74.7	71.1	<b>77.2</b>	71.5	73.0	73.4	66.0	<b>74.3</b>	70.5	71.7	72.4	69.6	<b>75.9</b>
	TinyImageNet (resize)	84.4	83.6	81.0	87.9	<b>78.8</b>	35.5	34.5	33.6	35.7	<b>31.7</b>	69.1	70.6	71.7	66.1	<b>73.6</b>	68.0	69.3	70.4	60.5	<b>70.3</b>	66.8	68.5	69.3	64.4	<b>71.9</b>
	LSUN (crop)	79.1	82.7	81.1	74.9	<b>73.3</b>	28.6	29.2	29.3	29.9	<b>28.5</b>	77.7	76.2	75.9	76.3	<b>78.9</b>	79.9	78.6	77.8	74.7	<b>79.2</b>	73.9	71.8	71.8	75.1	<b>76.8</b>
	LSUN (resize)	83.1	81.0	80.0	82.5	<b>75.9</b>	34.2	32.1	31.4	32.0	<b>29.2</b>	71.5	74.2	74.2	71.6	<b>77.1</b>	73.2	75.5	75.4	66.3	<b>74.6</b>	68.3	71.5	71.2	69.7	<b>75.0</b>
	iSUN	85.3	83.4	83.8	84.2	<b>79.7</b>	35.3	33.2	33.3	34.3	<b>31.7</b>	69.6	72.5	71.9	68.7	<b>74.4</b>	72.7	75.3	74.7	65.6	<b>74.7</b>	63.7	66.9	65.7	64.9	<b>69.5</b>
	TinyImageNet+LSUN+iSUN	82.3	82.2	80.7	82.3	<b>76.2</b>	33.4	32.2	31.8	32.8	<b>30.2</b>	72.1	73.5	73.8	70.9	<b>76.4</b>	38.1	39.9	<b>40.3</b>	28.7	<b>39.4</b>	91.5	91.9	91.9	91.4	<b>93.1</b>
CIFAR-10		80.1	82.9	<b>78.5</b>	90.0	79.9	30.0	30.3	28.8	36.6	<b>28.7</b>	76.6	76.0	78.1	66.5	<b>78.4</b>	79.7	79.1	<b>80.9</b>	64.6	80.8	72.5	71.6	<b>73.9</b>	62.8	<b>73.9</b>

Table 7: **Out-of-distribution** performances **after** temperature scaling.

Train	Dataset Test OOD	FPR (95 % TPR) ↓				Detection ↓				AUROC ↑				AUPR In ↑				AUPR Out ↑								
		Ind.	CEB	DICE	DICE×w	Ind.	CEB	DICE	DICE×w	Ind.	CEB	DICE	DICE×w	Ind.	CEB	DICE	DICE×w	Ind.	CEB	DICE	DICE×w					
CIFAR-100	TinyImageNet (crop)	77.7	78.4	77.1	<b>73.2</b>	32.1	31.2	31.5	<b>27.9</b>	74.0	74.8	75.2	<b>77.9</b>	72.6	74.1	74.0	<b>74.8</b>	72.3	73.4	73.4	66.4	<b>76.4</b>	70.5	70.2	70.3	72.5
	TinyImageNet (resize)	83.0	82.3	80.4	<b>78.5</b>	34.4	33.6	32.9	<b>30.7</b>	70.5	71.5	72.6	<b>74.3</b>	69.0	70.5	<b>70.9</b>	70.8	68.3	70.2	70.3	64.4	<b>71.9</b>	66.8	68.5	69.3	64.4
	LSUN (crop)	76.7	81.7	80.2	<b>72.7</b>	27.6	28.6	28.5	<b>28.2</b>	79.3	77.2	77.0	<b>79.2</b>	81.2	79.4	78.7	79.5	75.9	73.1	72.5	77.1	77.1	77.1	77.1	77.1	
	LSUN (resize)	81.5	79.0	79.5	<b>75.4</b>	33.1	30.9	30.6	<b>28.3</b>	73.0	75.4	75.1	<b>78.1</b>	74.3	76.8	76.0	<b>76.9</b>	70.1	73.4	72.2	65.6	<b>70.1</b>	63.7	66.9	65.7	64.9
	iSUN	84.3	82.3	83.2	<b>79.3</b>	34.5	32.3	32.2	<b>30.8</b>	70.9	73.5	72.7	<b>75.0</b>	73.5	<b>76.4</b>	74.6	75.6	65.2	68.6	66.6	60.5	<b>70.1</b>	63.7	66.9	65.7	64.9
	TinyImageNet+LSUN+iSUN	80.5	80.7	80.0	<b>75.8</b>	32.3	31.3	31.2	<b>29.3</b>	73.6	74.4	74.7	<b>76.9</b>	39.3	<b>41.4</b>	40.9	39.8	92.0	92.5	92.2	93.3	93.3	93.3	93.3	93.3	
CIFAR-10		78.8	82.1	<b>78.2</b>	80.0	79.9	29.6	29.9	28.6	<b>28.3</b>	77.5	76.7	78.5	<b>78.6</b>	80.2	79.4	<b>81.2</b>	81.0	73.5	72.5	<b>74.5</b>	74.0	74.0	74.0	74.0	

### A.3 ACCURACY VERSUS SIZE

We recover from Table 8 the Memory Split Advantage (MSA) from Chirkova et al. (2020): splitting the memory budget between three branches of ResNet-32 results in better performance than spending twice the budget on one ResNet-110. DICE further improves this advantage. Our framework is particularly effective in the branch-based setting, as it reduces the computational overhead (especially in terms of FLOPs) at a slight cost in diversity. A 4-branches DICE ensemble has the same accuracy in average as a classical 7-branches ensemble.

Table 8: **Ensemble effectiveness evaluation.** Top-1 accuracy (%), number of parameters (M) and floating point operations (GFLOPs). This table is summarized in Figure 1. DICE always outperforms the independent learning baseline, even with only 1 member because of the CEB component. The saturation phenomenon is reduced.

Architecture			CIFAR-100				
Backbone	Structure	Ens. Size	Params. (M)	GFLOPs	Ind.	DICE	
ResNet-32	Base	1	0.47	0.14	71.28	<b>71.31</b>	
		2	0.83	0.18	74.89	<b>75.40</b>	
	Branches	3	1.19	0.23	76.28	<b>76.89</b>	
		4	1.55	0.28	76.78	<b>77.51</b>	
		5	1.91	0.32	77.24	<b>78.08</b>	
		6	2.27	0.36	77.39	<b>78.29</b>	
		7	2.63	0.40	77.52	<b>78.44</b>	
		8	2.99	0.44	77.60	<b>78.60</b>	
	Nets	10	3.71	0.51	77.64	<b>78.71</b>	
		2	0.95	0.28	75.01	<b>75.32</b>	
		3	1.42	0.42	76.45	<b>76.98</b>	
		4	1.89	0.56	77.38	<b>77.92</b>	
			5	2.36	0.70	77.82	<b>78.41</b>
			6	2.83	0.84	78.16	<b>78.83</b>
		7	3.29	0.98	78.36	<b>79.05</b>	
		8	3.78	1.12	78.49	<b>79.24</b>	
10		4.71	1.41	78.59	<b>79.35</b>		
ResNet-110		Base	1	1.73	0.51	76.21	<b>76.25</b>
	3		4.33	0.84	80.54	<b>81.67</b>	
	Branches	4	5.68	1.02	80.89	<b>81.93</b>	

### A.4 TRAINING DYNAMICS IN TERMS OF ACCURACY, UNCERTAINTY ESTIMATION AND CALIBRATION

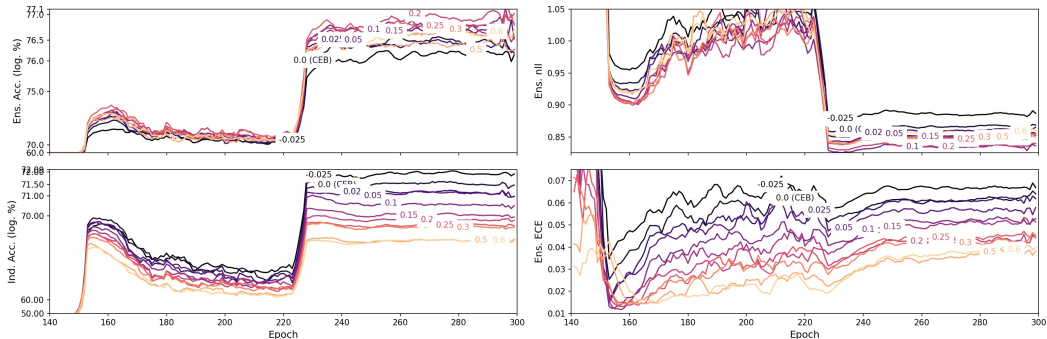


Figure 8: **Training dynamics on the validation dataset** while training on 95% of the training dataset. A higher diversity coefficient decreases individual performance (lower left), but increases ensemble performance in terms of accuracy (upper left), uncertainty estimation (upper right) up to a value, found at  $\delta_{cr} = 0.2$  for 4-branches ResNet-32. Calibration before temperature scaling (lower right) highly benefits from higher diversity. Learning rate updates create "steps" in the curves.

### A.5 TRAINING DYNAMICS IN TERMS OF DIVERSITY

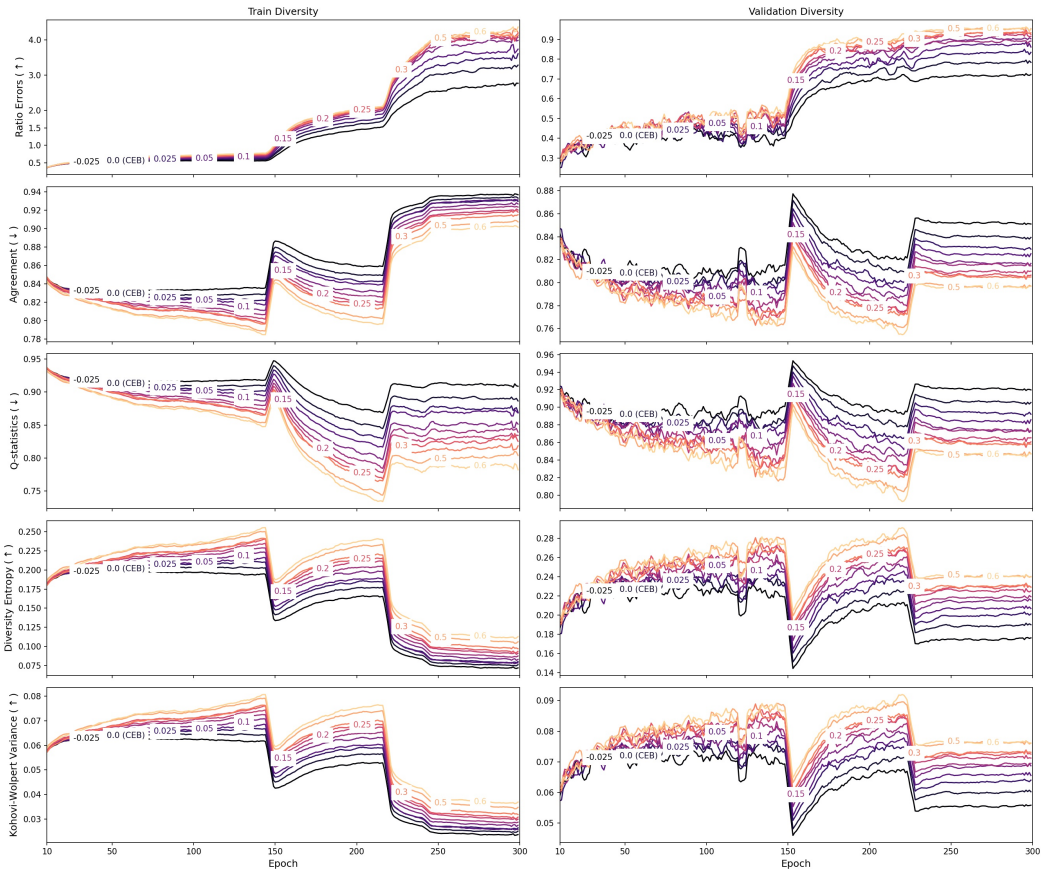


Figure 9: **Diversity dynamics** on train and validation dataset. DICE increases diversity for pairwise (ratio errors, agreement, Q-statistics) and non-pairwise (entropy, Kohavi-Wolpert variance) measures.

We measured diversity in 4.b with the ratio error (Aksela, 2003). But as stated by Kuncheva & Whitaker (2003), diversity can be measured in numerous ways. For pairwise measures, we averaged over the  $\binom{M}{2}$  pairs: the Q-statistics is positive when classifiers recognize the same object, the agreement score measures the frequency that both classifiers predict the same class. Note that even if we only apply pairwise constraints, we also increase non-pairwise measures: for example, the Kohavi-Wolpert variance (Kohavi et al., 1996) which measures the variability of the predicted class, and the entropy diversity which measures overall disagreement.

### A.6 UNCERTAINTY ESTIMATION AND CALIBRATION BEFORE TEMPERATURE SCALING

Table 9: **Uncertainty estimation** (NLL, BS) and **calibration** (ECE, TACE) on CIFAR-100 before temperature scaling for 4-branches ResNet-32.

Metrics	1-net	Ind.	OKDDip-E	ADP	IB	CEB	IBR	CEBR	DICE
NLL ↓ ( $10^{-1}$ )	11.56	8.55	8.38	10.85	8.37	8.37	8.27	8.25	<b>8.06</b>
BS ↓ ( $10^{-3}$ )	4.12	3.35	3.28	3.79	3.25	3.25	3.21	3.23	<b>3.15</b>
ECE ↓ ( $10^{-2}$ )	10.47	7.45	6.67	21.14	5.32	5.76	5.15	5.46	<b>4.05</b>
TACE ↓ ( $10^{-3}$ )	2.42	1.86	1.81	4.53	1.58	1.67	1.60	1.65	<b>1.46</b>
Acc. ↑ (%)	71.28	76.71	76.85	77.21	76.93	76.98	77.25	77.30	<b>77.51</b>

## B TRAINING DETAILS

### B.1 GENERAL OPTIMIZATION

**Experiments** Classical hyperparameters were taken from (Chen et al., 2020b) for conducting fair comparisons. Newly added hyperparameters were fine-tuned on a validation dataset made of 5% of the training dataset.

**Architecture** We implemented the proposed method with ResNet (He et al., 2016) and Wide-ResNet (Zagoruyko & Komodakis, 2016) architectures. Following standard practices, we average the logits of our predictions uniformly. For branch-based ensemble, we separate the last block and the classifier of each member from the weights sharing while the other low-level layers were shared.

**Learning** Following (Chen et al., 2020b), we used SGD with Nesterov with momentum of 0.9, mini-batch size of 128, weight decay of 5e-4, 300 epochs, a standard learning rate scheduler that sets values  $\{0.1, 0.001, 0.0001\}$  at steps  $\{0, 150, 225\}$  for CIFAR-10/100. In CIFAR-100, we additionally set the learning rate at 0.00001 at step 250. We used traditional basic data augmentation that consists of horizontal flips and a random crop of 32 pixels with a padding of 4 pixels. The learning curve is shown on Figure 8.

### B.2 INFORMATION BOTTLENECK IMPLEMENTATION

**Architecture** Features are extracted just before the dense layer since deeper layers are more semantics, of size  $d = \{64, 128, 256\}$  for  $\{\text{ResNet-32, WRN-28-2, ResNet-110}\}$ . Our encoder does not provide a deterministic point in the features space but a feature distribution encoded by mean and diagonal covariance matrix. The covariance is predicted after a Softplus activation function with one additional dense layer, taking as input the features mean, with  $d(d+1)$  trainable weights. In training we sample once from this features distribution with the reparameterization trick. In inference, we predict from the distribution’s mean (and therefore only once). We parameterized  $b(z|y) \sim N(b^\mu(y), \mathbf{1})$  with trainable mean and unit diagonal covariance, with  $d$  additional trainable weights per class. As noticed in (Fischer & Alemi, 2020), this can be represented as a single embedding layer mapping one-hot classes to  $d$ -dimensional tensors. Therefore in total we only add  $d(d+1+K)$  trainable weights, that all can be discarded during inference. For VIB, the embedding  $b^\mu$  is shared among classes: in total it adds  $d(d+2)$  trainable weights. Contrary to recent IB approaches (Wu et al., 2019b; Wu & Fischer, 2020; Fischer & Alemi, 2020), we only have one dense layer to predict logits after the features bottleneck, and we did not change the batch normalization, for fair comparisons with traditional ensemble methods.

**Scheduling** We employ the jump-start method that facilitates the learning of bottleneck-inspired models (Wu et al., 2019b; Wu & Fischer, 2020; Fischer & Alemi, 2020): we progressively anneal the value of  $\beta_{ceb}$ . For CIFAR-10, we took the scheduling from (Fischer & Alemi, 2020), except that we widened the intervals to make the training loss decrease more smoothly:  $\log(\beta_{ceb})$  reaches values  $\{100, 10, 2\}$  at steps  $\{0, 5, 100\}$ . No standard scheduling was available for CIFAR-100. As it is more difficult than CIFAR-10, we added additional jump-epochs with lower values:  $\log(\beta_{ceb})$  reaches values  $\{100, 10, 2, 1.5, 1\}$  at steps  $\{0, 8, 175, 250, 300\}$ . This slow scheduling increases progressively the covariance predictions  $e^\sigma(x)$  and facilitates learning. For VIB, we scheduled similarly using the equivalence from (Fischer, 2020):  $\beta_{ib} = \beta_{ceb} + 1$ . We found VCEB to have lower standard deviation in performances than VCEB:  $\beta_{ib}$  can hinder the learnability (Wu et al., 2019b). These schedulings have been used in all our setups, without and with redundancy losses, for ResNet-32, ResNet-110 and WRN-28-10, for from 1 to 10 members.

### B.3 ADVERSARIAL TRAINING IMPLEMENTATION

**Redundancy** Following standard adversarial learning practices, our discriminator for redundancy estimation is a MLP with 4 layers of size  $\{256, 256, 100, 1\}$ , with leaky-ReLus of slope 0.2, optimized by RMSProp with learning rate  $\{0.003, 0.005\}$  for CIFAR- $\{10, 100\}$ . We empirically found that four steps for the discriminator for one step of the classifier increase stability. Specifically, it takes as input the concatenation of the two hidden representations of size  $d$ , sampled with a repara-

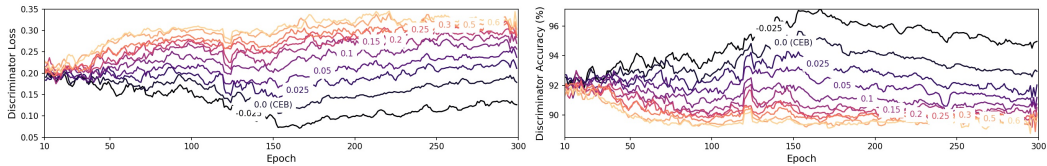


Figure 10: **Discriminator** dynamics and learning curve. The task becomes harder for higher values of  $\delta_{cr}$ : the joint and product features distributions tend to be indistinguishable.

rameterization trick. Gradients are not backpropagated in the layer that predicts the covariance, as it would artificially increase the covariance to reduce the mutual information among branches. The output, followed by a sigmoid activation function, should be close to 1 (resp. 0) if the sample comes from the joint (resp. product) distribution.

**Conditional Redundancy** The discriminator for CR estimation needs to take into account the target class  $Y$ . It first embeds  $Y$  in an embedding layer of size 64, which is concatenated at the inputs of the first and second layers. Improved features merging method could be applied, such as Ben-Younes et al. (2019). The output has size  $K$ , and we select the index associated with the  $Y$ . We note in Figure 11 that our discriminator remains calibrated.

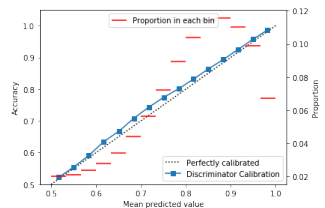


Figure 11: **The discriminator remains calibrated** even at the end of the adversarial training.

**Ensemble with  $M$  Models** In the general case, we only consider pairwise interactions, therefore we need to estimate  $\binom{M}{2}$  values. To reduce the number of parameters, we use only one discriminator  $w$ . Features associated with  $z_k$  are filled with zeros when we sample from  $p(z_i, z_j, y)$  or from  $p(z_i, y)p(z_j|y)$ , where  $i, j, k \in \{1, \dots, M\}, k \neq i$  and  $k \neq j$ . Therefore, the input tensor for the discriminator is of size  $(M * d + 64)$ : its first layer has  $(M * d + 64) * 256$  dense weights: the number of weights in  $w$  scales linearly with  $M$  and  $d$  as  $w$ 's input grows linearly, but  $w$ 's hidden size remains fixed.

$\delta_{cr}$  **value** For branch-based and network-based CIFAR-100, we found  $\delta_{cr}$  at  $\{0.1, 0.15, 0.2, 0.22, 0.25\}$  for  $\{2, 3, 4, 5, 6\}$  members to perform best on the validation dataset when training on 95% on the classical training dataset. For CIFAR-10,  $\{0.1\}$  for 4 members. We found that lower values of  $\delta_r$  were necessary for our baselines IBR and CEBR.

**Scheduling** For fair comparison, we apply the traditional ramp-up scheduling up to step 80 from the co-distillation literature (Lan et al., 2018; Kim et al., 2019b; Chen et al., 2020b) to all concurrent approaches and to our redundancy training.

**Sampling** To sample from  $p(z_1, z_2, y)$ , we select features extracted from one image. To sample from  $p(z_1, y)p(z_2|y)$ , we select features extracted from two different inputs, that share the same class  $y$ . In practise, we keep a memory from previous batches as the batch size is 128 whereas we have 100 classes in CIFAR-100. This memory, of size  $M * d * K * 4$ , is updated at the end of each training step. Our sampling is a special case of  $k$ -NN sampling (Molavipour et al., 2020): as we sample from a discrete categorical variable, the closest neighbour has exactly the same discrete value. The training can be unstable as it minimises the divergence between two distributions. To make them overlap over the features space, we sample  $num_{sample} = \{4\}$  times from the gaussian distribution of  $Z_1$  and  $Z_2$  with the reparameterization trick. This procedure is similar to instance noise (Sønderby et al., 2016) and it allows us to safely optimise  $w$  at each iteration. It gives better robustness than just giving the gaussian mean. Moreover, we progressively ease the discriminator task by scheduling the covariance through time with a linear ramp-up. First the covariance is set to 1 until epoch 100, then it linearly reduces to the predicted covariance  $e_i^\sigma(x)$  until step 250. We sample a ratio  $ratio_{pos}^{neg}$  of one positive pair for  $\{2, 4\}$  negative pairs on CIFAR- $\{10, 100\}$ .

**Clipping** Following Bachman et al. (2019), we clip the density ratios (*tanhclip*) by computing the non linearity  $\exp[\tau \tanh \frac{\log[f(z_1, z_2, y)]}{\tau}]$ . A lower  $\tau$  reduces the variance of the estimation and stabilizes the training even with a strong discriminator, at the cost of additional bias. The clipping threshold  $\tau$  was set to 10 as in Song & Ermon (2020).

#### B.4 PSEUDO-CODE

**Algorithm 1:** Full DICE Procedure for  $M = 2$  members

---

```

/* Setup                                                                    */
Parameters:  $\theta_1 = \{e_1, b_1, c_1\}, \theta_2 = \{e_2, b_2, c_2\}$  and discriminator  $w$ , randomly initialized
Input: Observations  $\{x^n, y^n\}_{n=1}^N$ , coefficients  $\beta_{ceb}$  and  $\delta_{cr}$ , schedulings  $sche_{ceb}$  and
           $rampup_{startstep}^{endstep}$ , clipping threshold  $\tau$ , batch size  $b$ , optimisers  $g_{\theta_{1,2}}$  and  $g_w$ ,
          number of discriminators  $nstep_d$ , number of samples  $num_s$ , ratio of
          positive/negative sample  $ratio_{pos}^{neg}$ 
/* Training Procedure                                                        */
1 for  $s \leftarrow 1$  to 300 do
2    $\beta_{ceb}^s \leftarrow sche_{ceb}(\text{startvalue}=0, \text{endvalue}=\beta_{ceb}, \text{step}=s)$ 
3    $\delta_{cr}^s \leftarrow rampup_0^{80}(\text{startvalue}=0, \text{endvalue}=\delta_{cr}, \text{step}=s)$ 
4   Randomly select batch  $\{(x^n, y^n)\}_{n \in \mathcal{B}}$  of size  $b$  // Batch Sampling
   /* Step 1: Classification Loss with CEB                                    */
5   for  $m \leftarrow 1$  to 2 do
6      $z_i^n \leftarrow e_i^\mu(z|x^n) + \epsilon e_i^\sigma(z|x^n), \forall n \in \mathcal{B}$  with  $\epsilon \sim N(0, 1)$ 
7      $\text{VCEB}_i \leftarrow \frac{1}{b} \sum_{n \in \mathcal{B}} \{ \frac{1}{\beta_{ceb}^s} D_{\text{KL}}(e_i(z|x^n) || b_i(z|y^n)) - \log c_i(y^n | z_i^n) \}$ 
   /* Step 2: Diversity Loss with Conditional Redundancy                      */
8   for  $m \leftarrow 1$  to 2 do
9      $e_i^{\sigma, s}(z|x^n) = rampup_{100}^{250}(\text{startvalue}=1, \text{endvalue}=e_i^\sigma(z|x^n), \text{step}=s)$ 
10    for  $k \leftarrow 1$  to  $num_s$  do
11       $z_{i,k}^n \leftarrow e_i^\mu(z|x^n) + \epsilon e_i^{\sigma, s}(z|x^n), \forall n \in \mathcal{B}$  with  $\epsilon \sim N(0, 1)$ 
12     $\mathcal{B}_J \leftarrow \{(z_{1,k}^n, z_{2,k}^n, y^n)\}, \forall n \in \mathcal{B}, k \in \{1, \dots, num_s\}$  // Joint Distrib.
13     $\hat{\mathcal{L}}_{DV}^{CR} \leftarrow \frac{1}{|\mathcal{B}_J|} \sum_{t \in \mathcal{B}_J} \log f(t)$  with  $f(t) \leftarrow \text{tanhclip}(\frac{w(t)}{1-w(t)}, \tau)$ 
14     $\theta_{1,2} \leftarrow g_{\theta_{1,2}}(\nabla_{\theta_1} \text{VCEB}_1 + \nabla_{\theta_2} \text{VCEB}_2 + \delta_{cr}^s \nabla_{\theta_{1,2}} \hat{\mathcal{L}}_{DV}^{CR})$  // Backprop Ensemble
   /* Step 3: Adversarial Training                                          */
15  for  $_ \leftarrow 1$  to  $nstep_d$  do
16     $\mathcal{B}_J \leftarrow \{(z_{1,k}^n, z_{2,k}^n, y^n)\}, \forall n \in \mathcal{B}, \forall k \in \{1, \dots, num_s\}$  // Joint Distrib.
17     $\mathcal{B}_p \leftarrow \{(z_{1,k}^n, z_{2,k'}^n, y^n)\}, \forall n \in \mathcal{B}, \forall k \in \{1, \dots, num_s\}, k' \in \{1, \dots, ratio_{pos}^{neg}\}$ 
18    with  $n' \in \mathcal{B}, y^n = y^{n'}, n \neq n'$  // Product distribution
19     $w \leftarrow g_w(\nabla_w \mathcal{L}_{ce}(w))$  // Backprop Discriminator
20    Sample new  $z_{i,k}^n$ 
/* Test Procedure                                                            */
Data: Inputs  $\{x^n\}_{n=1}^T$  // Test Data
Output:  $\arg \max_{k \in \{1, \dots, K\}} (\frac{1}{2} [c_1(e_1^\mu(z|x^n)) + c_2(e_2^\mu(z|x^n))])$ ,  $\forall n \in \{1, \dots, T\}$ 

```

---

#### B.5 EMPIRICAL LIMITATIONS

Our approach relies on very recent works in neural network estimation of mutual information, that still suffer from loose approximations. Improvements in this area would facilitate our learning procedure. Our approach increases the number of operations because of the adversarial procedure, but only during training: the inference time remains the same.

Table 10: Summary of different approaches.

Method	Co-distillation	Diversity	I.B.	Merging	Others	Branch/Net	Consistently better than Ind.
DML (Zhang et al., 2018)	Pred. pairwise			Gate Feat. Fus.		Net Branch	
CL-ILR (Song & Chai, 2018)							
ONE (Lan et al., 2018)	Pred. asymmetric	Data Augmentation		Weights on val Feat. Fus.	Mean teacher	Both Net	≈
FFL (Kim et al., 2019b)							
OKDDip (Chen et al., 2020b)	Pred.	Data Augmentation				Branch Net	≈
KDCL (Guo et al., 2020)							
PCL (Wu & Gong, 2020)	Features					Both Net	≈
AFD (Chung et al., 2020)							
GAL (Kariyappa & Qureshi, 2019)		Gradients			Grads. Magnitude Entropy Pred. Custom sampling	Net Both	✓
GPMR (Dabouei et al., 2020)		Gradients					
ADP (Pang et al., 2019)		Non maximum pred.	VIB			Both	?
DIBS (Sinha et al., 2020)		JSD Features					
IB			VIB			Both	✓
CEB			VCEB			Both	✓
IBR (Ours equation 9)		R	VIB			Both	✓
CEBR (Ours equation 10)		R	VCEB			Both	✓
DICE (Ours equation 5)		CR	VCEB			Both	✓

## C CONCURRENT APPROACHES

Concurrent approaches can be divided in two general patterns: they promote either individual accuracy by co-distillation either ensemble diversity.

### C.1 CO-DISTILLATION APPROACHES

Contrary to the traditional distillation (Hinton et al., 2015) that aligns the soft prediction between a static pre-trained strong teacher towards a smaller student, online co-distillation performs teaching in an end-to-end one-stage procedure: the teacher and the student are trained simultaneously.

**Distillation in Logits** The seminal "Deep Mutual Learning" (DML) (Zhang et al., 2018) introduced the main idea: multiple networks learn to mimic each other by reducing KL-losses between pairs of predictions. "Collaborative learning for deep neural networks" (CL-ILR) (Song & Chai, 2018) used the branch-based architecture by sharing low-level layers to reduce the training complexity, and "Knowledge Distillation by On-the-Fly Native Ensemble" (ONE) (Lan et al., 2018) used a weighted combination of logits as teacher hence providing better information to each network. "Online Knowledge Distillation via Collaborative Learning" (KDCL) (Guo et al., 2020) computed the optimum weight on an held-out validation dataset. "Feature Fusion for Online Mutual Knowledge Distillation" (FFL) (Kim et al., 2019b) introduced a feature fusion module. These approaches improve individual performance at the cost of increased homogenization. "Online Knowledge Distillation with Diverse Peers" (OKDDip) (Chen et al., 2020b) slightly alleviates this problem with an asymmetric distillation and a self-attention mechanism. "Peer Collaborative Learning for Online Knowledge Distillation" (PCL) (Wu & Gong, 2020) benefited from the mean-teacher paradigm with temporal ensembling and from diverse data augmentation, at the cost of multiple inferences through the shared backbone.

**Distillation in Features** Whereas all previous approaches only apply distillation on the logits, the recent "Feature-map-level Online Adversarial Knowledge Distillation" (AFD) (Chung et al., 2020) aligned features distributions by adversarial training. Note that this is not opposite to our approach, as they force distributions to be similar while we force them to be uncorrelated.

### C.2 DIVERSITY APPROACHES

On the other hands, some recent papers in computer vision explicitly encourage diversity among the members with regularization losses.

**Diversity in Logits** "Diversity Regularization in Deep Ensembles" (Shui et al., 2018) applied negative correlation (Liu & Yao, 1999a) to regularize the training for improved calibration, with no impact on accuracy. "Learning under Model Misspecification: Applications to Variational and Ensemble methods" (Masegosa, 2020) theoretically motivated the minimization of second-order PAC-Bayes bounds for ensembles, empirically estimated through a generalized variational method.



”Adaptive Diversity Promoting” (ADP) (Pang et al., 2019) decorrelates only the non-maximal predictions to maintain the individual accuracies, while promoting ensemble entropy. It forces different members to have different ranking of predictions among non maximal predictions. However, Liang et al. (2018) has shown that ranking of outputs are critical: for example, non maximal logits tend to be more separated from each other for in-domain inputs compared to out-of-domain inputs. Therefore individual accuracies are decreased. Coefficients  $\alpha$  and  $\beta$  are respectively set to 2 and 0.5, as in the original paper.

**Diversity in Features** One could think about increasing classical distances among features like  $L_2$  in (Kim et al., 2018), but in our experiments it reduces overall accuracy: it is not even invariant to linear transformations such as translation. ”Diversity inducing Information Bottleneck in Model Ensembles” from Sinha et al. (2020) trains a multi-branch network and applies VIB on individual branch, by encoding  $p(z|y) \sim \mathcal{N}(0, 1)$ , which was shown to be hard to learn (Wu & Fischer, 2020). Moreover, we notice that their diversity-inducing adversarial loss is an estimation of the JS-divergence between pairs of features, built on the dual  $f$ -divergence representation (Nowozin et al., 2016): similar idea was recently used for saliency detection (Chen et al., 2020a). As the JS-divergence is a symmetrical formulation of the KL, we argue that DIBS and IBR share the same motivations and only have minor discrepancies: the adversarial terms in DIBS loss with both terms sampled from the same branch and both terms sampled from the same prior. In our experiments, these differences reduce overall performance. We will include their scores when they publish measurable results on CIFAR datasets or when they release their code.

**Diversity in Gradients** ”Improving adversarial robustness of ensembles with diversity training.” (GAL) (Kariyappa & Qureshi, 2019) enforced diversity in the gradients with a gradient alignment loss. ”Exploiting Joint Robustness to Adversarial Perturbations” (Dabouei et al., 2020) considered the optimal bound for the similarity of gradients. However, as stated in the latter, ”promoting diversity of gradient directions slightly degrades the classification performance on natural examples ... [because] classifiers learn to discriminate input samples based on distinct sets of representative features”. Therefore we do not consider them as concurrent work.

## D EXPERIMENTAL SETUP

### D.1 TRAINING DATASETS

We train our procedure on two image classification benchmarks, CIFAR-100 and CIFAR-10, (Krizhevsky et al., 2009). They consist of 60k 32\*32 natural and colored images in respectively 100 classes and 10 classes, with 50k training images and 10k test images. For hyperparameter selection and ablation studies, we train on 95% of the training dataset, and analyze performances on the validation dataset made of the remaining 5%.

### D.2 OOD

**Dataset** We used the traditional out-of-distribution datasets for CIFAR-100, described in (Liang et al., 2018): TinyImageNet (Deng et al., 2009), LSUN (Yu et al., 2015), iSUN(Xu et al., 2015), and CIFAR-10. We borrowed the evaluation code from [https://github.com/uoguelph-mlrg/confidence\\_estimation](https://github.com/uoguelph-mlrg/confidence_estimation) (DeVries & Taylor, 2018).

**Metrics** We reported the standard metrics for binary classification: FPR at 95 % TPR, Detection error, AUROC (Area Under the Receiver Operating Characteristic curve) and AUPR (Area under the Precision-Recall curve, -in or -out depending on which dataset is specified as positive). See Liang et al. (2018) for definitions and interpretations of these metrics.

## E ADDITIONAL THEORETICAL ELEMENTS

### E.1 BIAS VARIANCE COVARIANCE DECOMPOSITION

The Bias-Variance-Covariance Decomposition (Ueda & Nakano, 1996) generalizes the Bias-Variance Decomposition (Kohavi et al., 1996) by treating the ensemble of  $M$  members as a single learning unit.

$$\mathbb{E}[(\bar{f} - t)^2] = \overline{\text{bias}}^2 + \frac{1}{M}\overline{\text{var}} + (1 - \frac{1}{M})\overline{\text{covar}}, \quad (7)$$

with

$$\begin{aligned} \overline{\text{bias}} &= \frac{1}{M} \sum_i (\mathbb{E}[f_i] - t), \\ \overline{\text{var}} &= \frac{1}{M} \sum_i \mathbb{E}[(\mathbb{E}[f_i] - t)^2], \\ \overline{\text{covar}} &= \frac{1}{M(M-1)} \sum_i \sum_{j \neq i} \mathbb{E}[(f_i - \mathbb{E}[f_i])(f_j - \mathbb{E}[f_j])]. \end{aligned}$$

The estimation improves when the covariance between members is zero: the reduction factor of the variance component equals to  $M$  when errors are uncorrelated. Compared to the Bias-Variance Decomposition (Kohavi et al., 1996), it leads to a variance reduction of  $\frac{1}{M}$ . Brown et al. (2005a;b) summarized it this way: “in addition to the bias and variance of the individual estimators, the generalisation error of an ensemble also depends on the covariance between the individuals. This raises the interesting issue of why we should ever train ensemble members separately; why shouldn’t we try to find some way to capture the effect of the covariance in the error function?”.

### E.2 MUTUAL INFORMATION

Nobody knows what entropy really is.

*John Van Neumann to Claude Shannon*

At the cornerstone of Shannon’s information theory in 1948 (Shannon, 1948), mutual information is the difference between the sum of individual entropies and the entropy of the variables considered jointly. Stated otherwise, it is the reduction in the uncertainty of one variable due to the knowledge of the other variable (Cover, 1999). Entropy owed its name to the thermodynamic measure of uncertainty introduced by Rudolf Clausius and developed by Ludwig Boltzmann.

$$\begin{aligned} I(Z_1; Z_2) &= H(Z_1) + H(Z_2) - H(Z_1, Z_2) \\ &= H(Z_1) - H(Z_1|Z_2) \\ &= D_{\text{KL}}(P(Z_1, Z_2) \| P(Z_1)P(Z_2)). \end{aligned}$$

The conditional mutual information generalizes mutual information when a third variable is given:

$$I(Z_1; Z_2|Y) = D_{\text{KL}}(P(Z_1, Z_2|Y) \| P(Z_1|Y)P(Z_2|Y)).$$

### E.3 KL BETWEEN GAUSSIANS

The Kullback-Leibler divergence (Kullback, 1959) between two gaussian distributions takes a particularly simple form:

$$\begin{aligned} D_{\text{KL}}(e(z|x) \| b(z|y)) &= \log \frac{b^\sigma(y)}{e^\sigma(x)} + \frac{e^\sigma(x)^2 + (e^\mu(x) - b^\mu(y))^2}{2b^\sigma(y)^2} - \frac{1}{2} \quad (\text{Gaussian param.}) \\ &= \frac{1}{2} \left[ \underbrace{(1 + e^\sigma(x)^2 - \log(e^\sigma(x)^2))}_{\text{Variance}} + \underbrace{(e^\mu(x) - b^\mu(y))^2}_{\text{Mean}} \right]. \quad (b^\sigma(y) = 1) \end{aligned}$$

The variance component forces the predicted variance  $e^\sigma(x)$  to be close to  $b^\sigma(y) = 1$ . The mean component forces the class-embedding  $b^\mu(y)$  to converge to the average of the different elements

in its class. These class-embeddings are similar to class-prototypes, highlighting a theoretical link between CEB (Fischer, 2020; Fischer & Alemi, 2020) and prototype based learning methods (Liu & Nakagawa, 2001).

#### E.4 DIFFERENCE BETWEEN VCEB AND VIB

In Fischer (2020), CEB is variationally upper bounded by VCEB. We detail the computations:

$$\begin{aligned}
\text{CEB}_{\beta_{ceb}}(Z) &= \frac{1}{\beta_{ceb}} I(X; Z|Y) - I(Y; Z) && \text{(Definition)} \\
&= \frac{1}{\beta_{ceb}} [I(X, Y; Z) - I(Y; Z)] - I(Y; Z) && \text{(Chain rule)} \\
&= \frac{1}{\beta_{ceb}} [I(X; Z) - I(Y; Z)] - I(Y; Z) && \text{(Markov assumptions)} \\
&= \frac{1}{\beta_{ceb}} [-H(Z|X) + H(Z|Y)] - [H(Y) - H(Y|Z)] && \text{(MI as diff. of 2 ent.)} \\
&\leq \frac{1}{\beta_{ceb}} [-H(Z|X) + H(Z|Y)] - [-H(Y|Z)] && \text{(Non-negativity of ent.)} \\
&= \int \left\{ \frac{1}{\beta_{ceb}} \log \frac{e(z|x)}{p(z|y)} - \log p(y|z) \right\} p(x, y, z) \partial x \partial y \partial z && \text{(Definition of ent.)} \\
&\leq \int \left\{ \frac{1}{\beta_{ceb}} \log \frac{e(z|x)}{b(z|y)} - \log c(y|z) \right\} p(x, y) e(z|x) \partial x \partial y \partial z && \text{(Variational approx.)} \\
&\approx \frac{1}{N} \sum_{n=1}^N \int \left\{ \frac{1}{\beta_{ceb}} \log \frac{e(z|x^n)}{b(z|y^n)} - \log c(y^n|z) \right\} e(z|x^n) \partial z && \text{(Empirical data distrib.)} \\
&\approx \text{VCEB}_{\beta_{ceb}}(\theta = \{e, b, c\}), && \text{(Reparameterization trick)}
\end{aligned}$$

where

$$\text{VCEB}_{\beta_{ceb}}(\theta = \{e, b, c\}) = \frac{1}{N} \sum_{n=1}^N \left\{ \frac{1}{\beta_{ceb}} D_{\text{KL}}(e(z|x^n) \| b(z|y^n)) - \mathbb{E}_{\epsilon} \log c(y^n | e(x^n, \epsilon)) \right\}.$$

As a reminder, Alemi et al. (2017) upper bounded:  $\text{IB}_{\beta_{ib}}(Z) = \frac{1}{\beta_{ib}} I(X; Z) - I(Y; Z)$  by:

$$\text{VIB}_{\beta_{ib}}(\theta = \{e, b, c\}) = \frac{1}{N} \sum_{n=1}^N \left\{ \frac{1}{\beta_{ib}} D_{\text{KL}}(e(z|x^n) \| b(z)) - \mathbb{E}_{\epsilon} \log c(y^n | e(x^n, \epsilon)) \right\}. \quad (8)$$

In VIB, all features distribution  $e(z|x)$  are moved towards the same class-agnostic distribution  $b(z) \sim N(\mu, \sigma)$ , independently of  $y$ . In VCEB,  $e(z|x)$  are moved towards the class conditional marginal  $b^{\mu}(y) \sim N(b^{\mu}(y), b^{\sigma}(y))$ . This is the **unique difference between VIB and VCEB**. VIB leads to a looser approximation with more bias than VCEB.

#### E.5 TRANSFORMING IBR AND CEBr INTO TRACTABLE LOSSES

In this section we derive the variational approximation of the IBR criterion, defined by:

$$\text{IBR}_{\beta_{ib}, \delta_r}(Z_1, Z_2) = \text{IB}_{\beta_{ib}}(Z_1) + \text{IB}_{\beta_{ib}}(Z_2) + \delta_r I(Z_1; Z_2).$$

**Redundancy Estimation** To estimate the redundancy component, we apply the same procedure as for conditional redundancy but without the categorical constraint, as in the seminal work of Belghazi et al. (2018) for mutual information estimation. Let  $\mathcal{B}_j$  and  $\mathcal{B}_p$  be two random batches sampled respectively from the observed joint distribution  $p(z_1, z_2) = p(e_1(z|x), e_2(z|x))$  and the product distribution  $p(z_1)p(z_2) = p(e_1(z|x))p(e_2(z|x'))$ , where  $x, x'$  are two inputs that may not belong to the same class. We similarly train a network  $w$  that tries to discriminate these two distributions. With  $f = \frac{w}{1-w}$ , the redundancy estimation is:

$$\hat{\mathcal{L}}_{DV}^R = \frac{1}{|\mathcal{B}_j|} \sum_{(z_1, z_2) \in \mathcal{B}_j} \underbrace{\log f(z_1, z_2)}_{\text{Diversity}} - \log \left( \frac{1}{|\mathcal{B}_p|} \sum_{(z_1, z_2') \in \mathcal{B}_p} f(z_1, z_2') \right),$$

and the final loss:

$$\hat{\mathcal{L}}_{DV}^R(e_1, e_2) = \frac{1}{|\mathcal{B}_j|} \sum_{(z_1, z_2) \in \mathcal{B}_j} \log f(z_1, z_2).$$

**IBR** Finally we train  $\theta_1 = \{e_1, b_1, c_1\}$  and  $\theta_2 = \{e_2, b_2, c_2\}$  jointly by minimizing:

$$\mathcal{L}_{IBR}(\theta_1, \theta_2) = \text{VIB}_{\beta_{ib}}(\theta_1) + \text{VIB}_{\beta_{ib}}(\theta_2) + \delta_r \hat{\mathcal{L}}_{DV}^R(e_1, e_2). \quad (9)$$

**CEBR** For ablation study, we also consider a criterion that would benefit from CEB’s tight approximation but with non-conditional redundancy regularization:

$$\mathcal{L}_{CEBR}(\theta_1, \theta_2) = \text{VCEB}_{\beta_{ceb}}(\theta_1) + \text{VCEB}_{\beta_{ceb}}(\theta_2) + \delta_r \hat{\mathcal{L}}_{DV}^R(e_1, e_2). \quad (10)$$

## F FIRST, SECOND AND HIGHER-ORDER INFORMATION INTERACTIONS

### F.1 DICE REDUCES FIRST AND SECOND ORDER INTERACTIONS

Applying information-theoretic principles for deep ensembles leads to tackling interactions among features through conditional mutual information minimization. We define the order of an information interaction as the number of different extracted features involved.

**First Order** Tackling the first-order interaction  $I(X; Z_i|Y)$  with VCEB empirically increased overall performance compared to ensembles of deterministic features extractors learned with categorical cross entropy, at no cost in inference and almost no additional cost in training. In the Markov chain  $Z_i \leftarrow X \rightarrow Z_j$ , the chain rules provides:  $I(Z_i; Z_j|Y) \leq I(X; Z_i|Y)$ . More generally,  $I(X; Z_i|Y)$  upper bounds higher order interactions such as third order  $I(Z_i; Z_j, Z_k|Y)$ . In conclusion, VCEB reduces an upper bound of higher order interactions with quite a simple variational approximation.

**Second Order** In this paper, we directly target the second-order interaction  $I(Z_i; Z_j|Y)$  through a more complex adversarial training. We increase diversity and performances by remove spurious correlations shared by  $Z_i$  and  $Z_j$  that would otherwise cause simultaneous errors.

**Higher Order** interactions include the third order  $I(Z_i; Z_j, Z_k|Y)$ , the fourth order  $I(Z_i; Z_j, Z_k, Z_l|Y)$ , etc, up to the  $M$ -th order. They capture more complex correlations among features. For example,  $Z_j$  alone (and  $Z_k$  alone) could be unable to predict  $Z_i$ , while they  $[Z_j, Z_k]$  could together. However we only consider first and second order interactions in the current submission. It is common practice, for example in the feature selection literature (Battiti, 1994; Fleuret, 2004; Brown, 2009; Peng et al., 2005). The main reason to truncate higher order interactions is computational, as the number of components would grow exponentially and add significant additional cost in training. Another reason is empirical, the additional hyper-parameters may be hard to calibrate. But these higher order interactions could be approximated through neural estimations like the second order. For example, for the third order, features  $Z_i, Z_j$  and  $Z_k$  could be given simultaneously to the discriminator  $w$ . The complete analysis of these higher order interactions has huge potential and could lead to a future research project.

### F.2 LEARNING FEATURES INDEPENDENCE WITHOUT COMPRESSION

The question is whether we could learn deterministic encoders with second order  $I(Z_i; Z_j|Y)$  regularization without tackling first order  $I(X; Z_i|Y)$ . We summarized several approaches in Table 11.

**First Approach Without Sampling** Deterministic encoders predict deterministic points in the features space. Feeding the discriminator  $w$  with deterministic triples without sampling increases diversity and reaches 77.09, compared to 76.78 for independent deterministic. Compared to DICE,  $w$ ’s task has been simplified: indeed,  $w$  tries to separate the joint and the product deterministic distributions that may not overlap anymore. This violates convergence conditions, destabilizes overall adversarial training and the equilibrium between the encoders and the discriminator.

**Sampling and Reparameterization Trick** To make the joint and product distributions overlap over the features space, we apply the reparameterization trick on features with variance 1. This second approach is similar to instance noise (Sønderby et al., 2016), which tackled the instability of adversarial training. We reached 77.33 by protecting individual accuracies.

Table 11: **Comparison between deterministic and distribution encoders** on 4-branches ResNet-32 for Top-1 accuracy (%) on CIFAR-100.

Method	CR	Reparameterization trick	Variance in Sampling	Categorical Cross-Entropy (Deterministic Encoder)	VCEB (Distribution Encoder)
No CR				76.78±0.19	76.98±0.18
CR without sampling	✓			77.09±0.24	77.12±0.17
CR with variance=1	✓	✓	<b>1</b>	77.33±0.21	77.29±0.14
CR with input-dependant variance	✓	✓	$e_i^\sigma(x)$	-	<b>77.51±0.17</b>

**Synergy between CEB and CR** In comparison, we obtain 77.51 with DICE. In addition to the theoretical motivations, VCEB and CR work empirically in synergy. *First*, the adversarial learning is simplified and only focuses on spurious correlations VCEB has not already deleted. Thus it may explain the improved stability related to the value of  $\delta_{cr}$  and the reduction in standard deviations in performances. *Second*, VCEB learns a Gaussian distribution; a mean but also an input-dependant covariance  $e_i^\sigma(x)$ . This covariance fits the uncertainty of a given sample: in a similar context, Yu et al. (2019) has shown that large covariances were given for difficult samples. Sampling from this input-dependant covariance performs better than using an arbitrary fixed variance shared by all dimensions from all extracted features from all samples, from 77.29 to 77.51.

**Conclusion** DICE benefits from both components: learning redundancy along with VCEB improves results, at almost no extra cost. We think CR can definitely be applied with deterministic encoders as long as the inputs of the discriminator are sampled from overlapping distributions in the features space. Future work could study new methods to select the variance in sampling. As compression losses yield additional hyper-parameters and may underperform for some architectures/datasets, learning only the conditional redundancy (without compression) could increase the applicability of our contributions.

## G IMPACT OF THE SECOND TERM IN THE NEURAL ESTIMATION OF CONDITIONAL REDUNDANCY

### G.1 CONDITIONAL REDUNDANCY IN TWO COMPONENTS

The conditional redundancy can be estimated by the difference between two components:

$$\hat{\mathcal{L}}_{DV}^{CR} = \frac{1}{|\mathcal{B}_J|} \sum_{(z_1, z_2, y) \in \mathcal{B}_J} \underbrace{\log f(z_1, z_2, y)}_{\text{Diversity}} - \log \left( \frac{1}{|\mathcal{B}_P|} \sum_{(z_1, z'_2, y) \in \mathcal{B}_P} \underbrace{f(z_1, z'_2, y)}_{\text{Fake correlations}} \right), \quad (11)$$

with  $f = \frac{w}{1-w}$ . In this paper, we focused only on the left hand side (LHS) component from equation 11 which leads to  $\hat{\mathcal{L}}_{DV}^{CR}$  in equation 4. We showed empirically that it improves ensemble diversity and overall performances. LHS forces features extracted from the same input to be unpredictable from each other; to simulate that they have been extracted from two different images.

Now we investigate the impact of the right hand side (RHS) component from equation 11. We conjecture that RHS forces features extracted from two different inputs from the same class to create fake correlations, to simulate that they have been extracted from the same image. Overall, the RHS would correlate members and decrease diversity in our ensemble.

### G.2 EXPERIMENTS

These intuitions are confirmed by experiments with a 4-branches ResNet-32 on CIFAR-100, which are illustrated in Figure 12. Training only with the RHS and removing the LHS (the opposite of what is done in DICE) reduces diversity compared to CEB. Moreover, keeping both the LHS and the RHS leads to slightly reduced diversity and ensemble accuracy compared to DICE. We obtained  $77.40 \pm 0.19$  with LHS+RHS instead of  $77.51 \pm 0.17$  with only the LHS. In conclusion, dropping the RHS performs better while reducing the training cost.

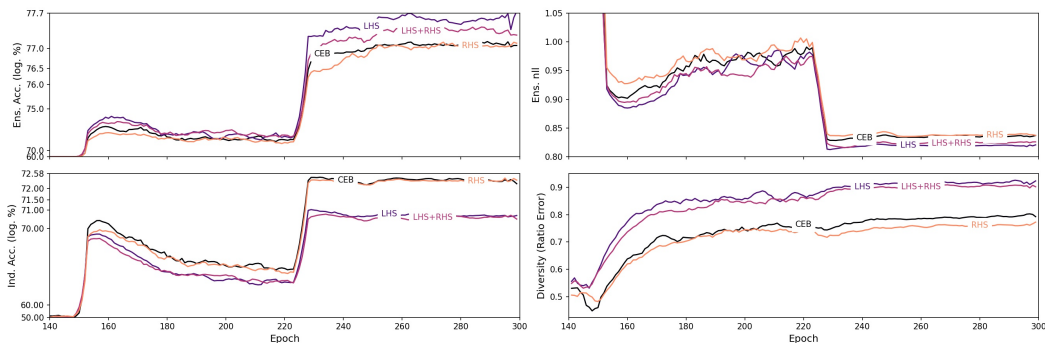


Figure 12: **Training dynamics and ablation study of components from equation 11.** Adding the RHS overall decreases ensemble performances, in terms of accuracy (upper left) or uncertainty estimation (upper right), when combined with CEB or DICE(=LHS). It decreases diversity (lower right) with no clear impact on individual accuracy (lower left).

## H SOCIOLOGICAL ANALOGY

We showed that increasing diversity in features while encouraging the different learners to agree improves performance for neural networks: the optimal diversity-accuracy trade-off was obtained with a large diversity. To finish, we make a short analogy with the importance of diversity in our society. Decision-making in group is better than individual decision as long as the members do not belong to the same cluster. Homogenization of the decision makers increases vulnerability to failures, whereas diversity of backgrounds sparks new discoveries (Muldoon, 2016): ideas should be shared and debated among members reflecting the diversity of the society’s various components. Academia especially needs this diversity to promote trust in research (Sierra-Mercado & Lázaro-Muñoz, 2018), to improve quality of the findings (Swartz et al., 2019), productivity of the teams (Vasilescu et al., 2015) and even schooling’s impact (Bowman, 2013).

## I LEARNING STRATEGY OVERVIEW

We provide in Figure 13 a zoomed version of our learning strategy.

## J MAIN TABLE

Table 12 unifies our main results on CIFAR-100 from Table 1 and CIFAR-10 from Table 2.

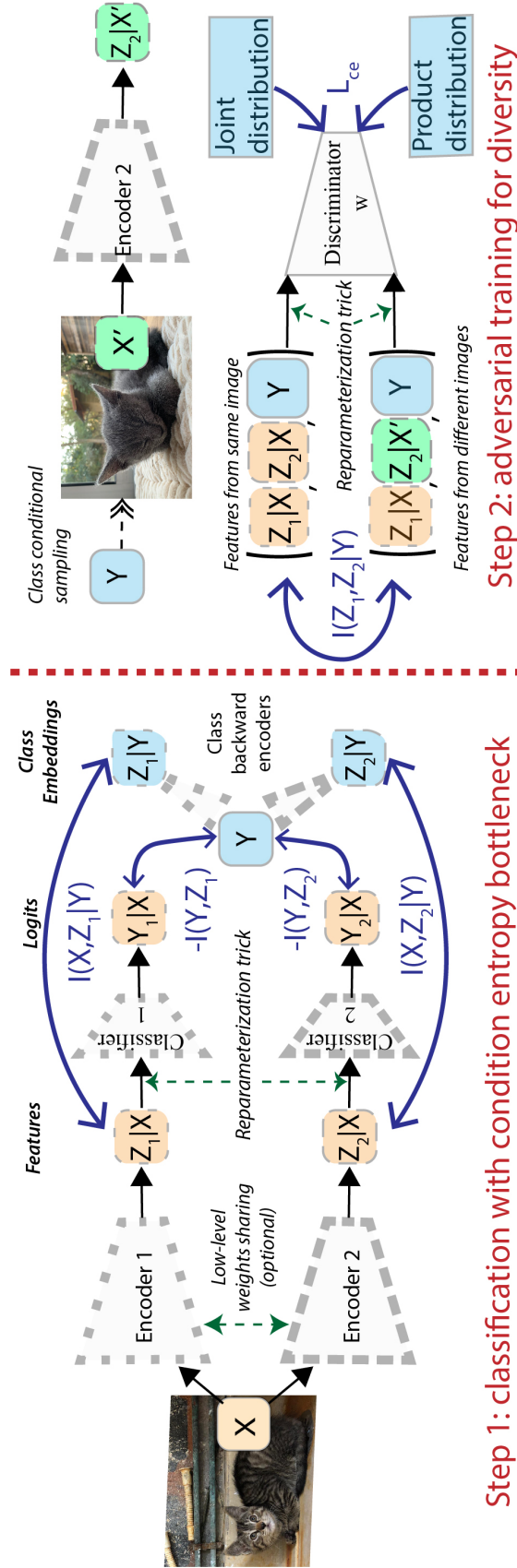


Figure 13: **Learning strategy overview.** Blue arrows represent training criteria: (1) classification with conditional entropy bottleneck applied separately on members 1 and 2, and (2) adversarial training to delete spurious correlations between members and increase diversity.  $X$  and  $X'$  belong to the same  $Y$  for **conditional redundancy** minimization.

Table 12: Ensemble classification accuracy (Top-1, %).

Method		CIFAR-100										CIFAR-10		
Name	Components Div.	3-branch	4-branch	5-branch	4-net	3-branch	4-branch	ResNet-110 3-branch	4-branch	WRN-28-2 3-branch	4-branch	3-net	ResNet-32 4-branch	ResNet-110 3-branch
Ind.		76.28 $\pm$ 0.12	76.78 $\pm$ 0.19	77.24 $\pm$ 0.25	77.38 $\pm$ 0.12	80.54 $\pm$ 0.09	80.89 $\pm$ 0.31	78.83 $\pm$ 0.12	79.10 $\pm$ 0.08	80.01 $\pm$ 0.15	80.01 $\pm$ 0.15	94.75 $\pm$ 0.08	95.62 $\pm$ 0.06	
ONE (Lan et al., 2018)		75.17 $\pm$ 0.35	75.13 $\pm$ 0.25	75.25 $\pm$ 0.22	76.25 $\pm$ 0.32	78.97 $\pm$ 0.24	79.86 $\pm$ 0.25	78.38 $\pm$ 0.45	78.47 $\pm$ 0.32	77.53 $\pm$ 0.36	77.53 $\pm$ 0.36	94.41 $\pm$ 0.05	95.25 $\pm$ 0.08	
OKDDip (Chen et al., 2020b)		75.37 $\pm$ 0.32	76.85 $\pm$ 0.25	76.95 $\pm$ 0.18	77.27 $\pm$ 0.31	79.07 $\pm$ 0.27	80.46 $\pm$ 0.35	79.01 $\pm$ 0.19	79.32 $\pm$ 0.17	80.02 $\pm$ 0.14	80.02 $\pm$ 0.14	94.86 $\pm$ 0.08	95.21 $\pm$ 0.09	
ADP (Pang et al., 2019)	Pred.	76.37 $\pm$ 0.11	77.21 $\pm$ 0.21	77.67 $\pm$ 0.25	77.51 $\pm$ 0.25	80.73 $\pm$ 0.38	81.40 $\pm$ 0.27	79.21 $\pm$ 0.19	79.71 $\pm$ 0.18	80.01 $\pm$ 0.17	80.01 $\pm$ 0.17	94.92 $\pm$ 0.04	95.43 $\pm$ 0.12	
IB (equation 8)	VIB	76.01 $\pm$ 0.12	76.93 $\pm$ 0.24	77.22 $\pm$ 0.19	77.72 $\pm$ 0.12	80.43 $\pm$ 0.34	81.12 $\pm$ 0.19	79.19 $\pm$ 0.35	79.15 $\pm$ 0.12	80.15 $\pm$ 0.13	80.15 $\pm$ 0.13	94.76 $\pm$ 0.12	94.54 $\pm$ 0.07	
CEB (equation 2)	VCEB	76.36 $\pm$ 0.06	76.98 $\pm$ 0.18	77.35 $\pm$ 0.14	77.64 $\pm$ 0.15	81.08 $\pm$ 0.12	81.17 $\pm$ 0.16	78.92 $\pm$ 0.08	79.20 $\pm$ 0.13	80.38 $\pm$ 0.18	80.38 $\pm$ 0.18	94.93 $\pm$ 0.11	94.65 $\pm$ 0.05	
IBR (equation 9)	R	76.68 $\pm$ 0.13	77.25 $\pm$ 0.13	77.77 $\pm$ 0.21	77.84 $\pm$ 0.12	81.34 $\pm$ 0.21	81.38 $\pm$ 0.08	79.33 $\pm$ 0.15	79.90 $\pm$ 0.10	80.22 $\pm$ 0.10	80.22 $\pm$ 0.10	94.91 $\pm$ 0.14	95.68 $\pm$ 0.05	
CEBR (equation 10)	R	76.72 $\pm$ 0.08	77.30 $\pm$ 0.12	77.81 $\pm$ 0.10	77.82 $\pm$ 0.11	81.52 $\pm$ 0.11	81.55 $\pm$ 0.33	79.25 $\pm$ 0.15	79.98 $\pm$ 0.07	80.35 $\pm$ 0.15	80.35 $\pm$ 0.15	94.94 $\pm$ 0.12	95.67 $\pm$ 0.06	
DICE (equation 6)	CR	<b>76.89</b> $\pm$ 0.09	<b>77.51</b> $\pm$ 0.17	<b>78.08</b> $\pm$ 0.18	<b>77.92</b> $\pm$ 0.08	<b>81.67</b> $\pm$ 0.14	<b>81.93</b> $\pm$ 0.13	<b>79.59</b> $\pm$ 0.13	<b>80.05</b> $\pm$ 0.11	<b>80.55</b> $\pm$ 0.12	<b>80.55</b> $\pm$ 0.12	<b>95.01</b> $\pm$ 0.09	<b>95.74</b> $\pm$ 0.08	