



HAL
open science

Phase-Only Synthesis for Large Planar Arrays via Zernike Polynomials and Invasive Weed Optimization

P. Angeletti, L. Berretti, S. Maddio, G. Pelosi, S. Selleri, G. Toso

► **To cite this version:**

P. Angeletti, L. Berretti, S. Maddio, G. Pelosi, S. Selleri, et al.. Phase-Only Synthesis for Large Planar Arrays via Zernike Polynomials and Invasive Weed Optimization. *IEEE Transactions on Antennas and Propagation*, 2022, 70 (3), pp.1954 - 1964. 10.1109/TAP.2021.3119113 . hal-03480443

HAL Id: hal-03480443

<https://hal.science/hal-03480443>

Submitted on 28 Jan 2022

HAL is a multi-disciplinary open access archive for the deposit and dissemination of scientific research documents, whether they are published or not. The documents may come from teaching and research institutions in France or abroad, or from public or private research centers.

L'archive ouverte pluridisciplinaire **HAL**, est destinée au dépôt et à la diffusion de documents scientifiques de niveau recherche, publiés ou non, émanant des établissements d'enseignement et de recherche français ou étrangers, des laboratoires publics ou privés.



Distributed under a Creative Commons Attribution - NonCommercial 4.0 International License

Phase-Only Synthesis for Large Planar Arrays via Zernike Polynomials and Invasive Weed Optimization

Piero Angeletti, *Senior Member, IEEE*, Lisa Berretti *Student Member, IEEE*, Stefano Maddio *Member, IEEE*, Giuseppe Pelosi *Life Fellow, IEEE*, Stefano Selleri, *Senior Member, IEEE* and Giovanni Toso, *Senior Member, IEEE*

Abstract—A synthesis method for the design of large planar array antennas with phase-only control is here presented. The synthesis is based on the use of Zernike polynomials, as global basis function for the phase, to reduce the number of optimization variables with respect to the number of elements of the array. Invasive weed optimization (IWO) is applied to polynomial coefficients' optimization to circumvent non-linearity and local trapping issues typical of phase-only problems. The periodicity of the array factor is exploited to reduce the optimization to a Voronoi cell of the grating-lobes' lattice and non-uniform meshing is introduced to best adapt the control stations to the beam shape requirements. The technique is applied to the design of shaped beams for continental coverage from geostationary satellites.

Index Terms—Beam shaping, evolutionary optimization algorithm, large phased arrays, phase-only synthesis

I. INTRODUCTION

SPACEBORNE antennas have always been on the edge of technology, needing extreme performances in terms of beam shaping, efficiency, and reliability. In the continuous evolution of satellite communication systems active array antennas have become the preferred configuration being capable to adapt the antenna performance to the mission needs which evolve during the satellite lifetime [1].

Active arrays have distributed amplification (i.e. typically one amplifier per radiator or per subarray) and offer several advantages, among them full power allocation flexibility in transmission and re-configurable generation of multiple beams.

The beams to be generated often need to cover a specific geographical coverage with gain requirements within the region of interest and isolation requirements in areas reusing the same satellite resources (i.e. frequency and polarization). Several amplitude and phase optimization methods are known in the literature and could be used for this purpose. Nevertheless, in transmitting arrays, phase-only optimization can provide maximum amplifier efficiency and is attracting growing interest.

Submitted on:

P. Angeletti and G. Toso are with Radio Frequency Payloads & Technology Division, European Space Agency, ESA/ESTEC, Noordwijk, The Netherlands (e-mail: [piero.angeletti,giovanni.toso]@esa.int).

L. Berretti, is with the Institut d'Electronique et des Technologies du numérique (IETR), UMR CNRS 6164, INSA Rennes, France (e-mail: lisa.berretti@insa-rennes.fr).

S. Maddio, G. Pelosi and S. Selleri are with the Department of Information Engineering Engineering, University of Florence, Florence, Italy (e-mail:[stefano.maddio, giuseppe.pelosi, stefano.selleri]@unifi.it).

A non-exhaustive list of phase-only optimization approaches addressing all the individual phases of the array include gradient methods [2], [3], [19], integer programming [5], alternate projections [6], more recently semi-definite programming relaxations [7], the steepest descent method [8], [9], Taguchi method [10] and the non uniform FFT [11]. Furthermore, for these tough problems, evolutionary algorithm as particle swarm [12], [13], bat algorithm [14] or cross entropy [15] are usually preferred since they perform a global optimization, and do not easily get trapped in local minima, as deterministic techniques do, especially in complex non-convex optimization problems as the one faced here. These techniques consent optimization of spot or contoured beams (which are necessary for broadcasting applications) with control of gain in the beam and sidelobes in co-frequential areas.

Main limitation of phase-only stands in the reduced space of the degrees of freedom (all the excitations have the same amplitude) and in the high non-linearity of the optimization problem which may trap the algorithm in largely sub-optimal local minima. Additionally, the large increase of the number of elements in future active antennas requires paying attention to the computational aspects and efficiency of the optimization methods. As an example, phased arrays antennas in the Ka frequency band can have dimensions larger than 2 meters and can be composed by more than 1000 elements.

It is important to note that other antenna architectures have been also adopted to generate shaped beams. In particular, shaped reflector antennas have been successfully used in several missions [16]. An excellent overview of synthesis techniques for this problem is offered in [17]. While simplified synthesis techniques exploiting the first-order approximation of the surface variation as a phase variation were initially explored in [18], more accurate synthesis tools had to be developed mainly due to the coupling of the amplitude and phase in the projected aperture field which forbids the problem to be considered as a strictly phase-only optimization problem [19]. Part of the complexity and cost associated to the manufacturing of shaped reflectors can be overcome by reflectarray antennas. They are typically based on flat panels and to modify the required coverage only the dimensions of printed elements are varied [20], [21] with advantages in terms of lead time.

Active phased arrays represent a further evolution because they permit reconfiguring the coverage when the antenna is operational; on the other hand, the beamforming network

tend to be complex and the power efficiency and thermal management is critical. For these reasons, especially for a phased array to be embarked on a satellite with limited power resources, phase-only excitation represent a suitable solution. In this respect equi-amplitude excitation have been proposed together with aperiodic placement of the array elements for generating shaped beams [22-23]. The objective of the paper is to present a design method for very large phased array antennas based on Zernike polynomials and the Invasive Weed optimization (IWO) evolutionary algorithm.

Zernike polynomials will be used to represent an auxiliary continuous wave-front which can be sampled to obtain the array phase excitations. The truncation order of the Zernike representation substantially limits the number of variables to be optimized with respect to the number of elements and allows obtaining a relatively smooth phase wave-front while a drastic variability is usually observed when implementing a direct optimization of the phase excitation variables. The use of Zernike polynomials is well established in optical aberration analysis [24] and has been used in shaped-reflector synthesis to represent the reflector metallic surface deviation with respect to a nominal conic profile [17].

Early examples of the use of global basis functions for phase optimization problems can be found in [18], in relation to shaped reflector synthesis, and in [25], in relation to linear phased arrays, respectively. Notwithstanding the reduction in the number of optimization variables, the synthesis problem remains highly non linear, non convex, and subject to local traps. Previous studies in electromagnetics [26], applications to reflector antennas [27], [28] or to arrays given fixed amplitude tapering and optimizing for phase [29] proved IWO validity in electromagnetics. A more recent paper [30] on phase-only synthesis of linear arrays, showed that with phase distribution expressed in terms of a reduced set of full-domain basis functions in order to decrease the variables to be optimized, IWO outperformed other state-of-the-art evolutionary algorithms like particle swarm or grey wolf optimizer.

The method proposed in this paper can be implemented for the design of phased array antennas generating spot beams and shaped beams. The paper is organized as follows: Section II describes the problem geometry with regards to planar array in the Voronoi space, in Section III the expansion of the phase distribution as a combination of basis function is presented, while in Section IV the IWO optimization algorithm together with implemented cost function and optimization parameters are sketched. In Section V the main results are presented for several cases from the easiest pencil beam to the most complex shaped and irregular coverages.

II. PROBLEM GEOMETRY

An array of isotropic sources will be considered, to keep tractation simpler. The element factor, which, anyway, has a reduced impact on large arrays, can be added trivially to all subsequent reasonings. If the array elements are arranged periodically, the periodicity of their array factor can be exploited to limit the control points of the radiation pattern (i.e. the points where the radiation pattern need to be evaluated

and controlled) to a single periodic cell in the Fourier domain which corresponds to the first Brillouin zone (or equivalently to the Voronoi cell of the main beam in the grating-lobes' lattice) [31]. The mathematical details are elaborated in the following.

The array lattice geometry is fully described by two linearly independent lattice vectors \mathbf{d}_1 , \mathbf{d}_2 , usually arranged in a single matrix $\mathbf{D} = [\mathbf{d}_1, \mathbf{d}_2]$.

The set of all linear combinations of \mathbf{d}_1 , \mathbf{d}_2 with integer coefficients defines a bi-dimensional lattice $\Lambda(\mathbf{D})$ (Fig. 1).

By a bi-dimensional Fourier transform of the periodic lattice in the direct space \mathbf{D} , a dual lattice is obtained, having a base \mathbf{G} given by:

$$\mathbf{G} = (\mathbf{D}^{-1})^\top \quad (1)$$

The direct space periodicity matrix, \mathbf{D} , and the Fourier domain periodicity matrix, \mathbf{G} , indeed satisfy an orthogonality condition, $\mathbf{D} \cdot \mathbf{G}^\top = \mathbf{I}$, where \mathbf{I} represents the identity matrix. For a cophasal array the lattice $\Lambda(\mathbf{G})$ corresponds to the periodic lattice of the main-lobe and of all grating lobes in the (u, v) space (Fig. 2).

Indeed, if a Cartesian reference is used for \mathbf{d}_1 , \mathbf{d}_2 and $\hat{\mathbf{r}} = \sin(\theta) \cos(\phi) \hat{\mathbf{x}} + \sin(\theta) \sin(\phi) \hat{\mathbf{y}} + \cos(\theta) \hat{\mathbf{z}}$ is the unit vector of the observation direction, being (θ, ϕ) the angles of a spherical reference, then the array factor can be expressed as:

$$P(\hat{\mathbf{r}}) = a \sum_{p=1}^{N_1} \sum_{q=N_2^-(p)}^{N_2^+(p)} e^{j \frac{2\pi}{\lambda} [p\mathbf{d}_1 \cdot \hat{\mathbf{r}} + q\mathbf{d}_2 \cdot \hat{\mathbf{r}}]} e^{j\Phi_{pq}} \quad (2)$$

having N_1 elements along \mathbf{d}_1 and $N_2^+(p) - N_2^-(p)$ along \mathbf{d}_2 . If N_2^- and N_2^+ are not function of p , then the array is a parallelogram, otherwise it can be of any shape, for example, circular as in our case. Amplitude a is the same for all elements, and Φ_{pq} are the phases of every single element. The pattern, since \mathbf{d}_1 and \mathbf{d}_2 are on the xy plane, is more commonly expressed in the (u, v) plane, defined by:

$$\begin{aligned} u &= \sin(\theta) \cos(\phi) \\ v &= \sin(\theta) \sin(\phi) \end{aligned} \quad (3)$$

as:

$$P(u, v) = a \sum_{p=1}^{N_1} \sum_{q=N_2^-(p)}^{N_2^+(p)} e^{j \frac{2\pi}{\lambda} [p\mathbf{d}_1 + q\mathbf{d}_2] \cdot [u\hat{\mathbf{x}} + v\hat{\mathbf{y}}]} e^{j\Phi_{pq}} \quad (4)$$

The array factor $P(u, v)$ is periodic in the (u, v) plane with periodicity matrix \mathbf{G} . The main beam and all the grating lobes can be considered the center of periodic cells determined by the Voronoi tessellation of $\Lambda(\mathbf{G})$ (refer to Fig. 2). Due to the periodicity of the array factor, we can limit the evaluation of the pattern and its cost function to the Voronoi cell of the main beam which corresponds to the first Brillouin zone (i.e. the locus of points in reciprocal space that are closer to the origin of the reciprocal lattice). The phases Φ_{pq} in (4) are the only degrees of freedom. They can be independent, and each is an optimization variable, in a so-called "brute force" approach; or they can be expressed as the sampling of a continuous function defined as a linear combination of a reduced number of basis functions S , as detailed below.

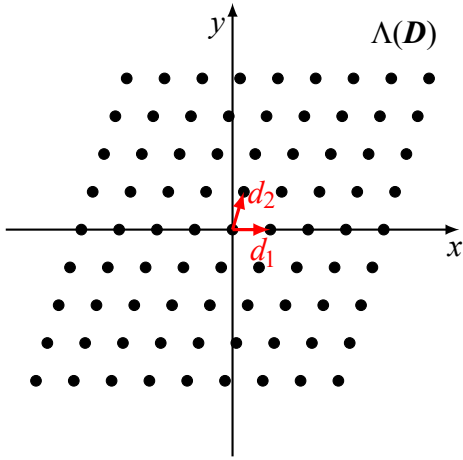


Fig. 1: Planar array lattice in direct space.

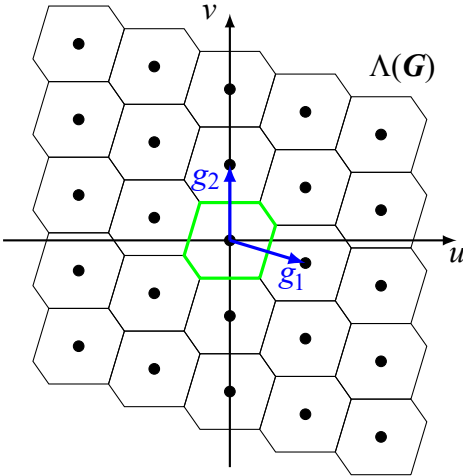


Fig. 2: Planar array lattice in dual space with pertinent Voronoi tessellation. in green the Voronoi cell relative to the main beam.

From the relation among lattices it is apparent how the closer the elements in the direct space, the farther away the grating lobes from the main lobe in the dual space.

In satellite applications, the main point is not to suppress grating lobes, but to guarantee that no grating lobe falls in the field of view (FoV) of the Earth as seen from the satellite.

Considering the limited FoV of the Earth, that for a geostationary satellite is of few degrees, a large distance between elements is possible. Indeed, if the Voronoi tessellation of the dual space is performed, and assuming the Earth FoV is within the Voronoi cell of the broadside beam, then it is also guaranteed that, by electronically scanning within the Earth FoV, and hence within the Voronoi cell, no grating lobe will ever enter the cell to cause undesired Earth illumination (Fig. 2).

In Fig. 3, direct space (top) and main beam Voronoi cell in the dual space (bottom) are shown for a triangular equilateral distribution of the radiating elements. Within the main beam Voronoi cell (black filled hexagon in the figure) a target beam contour can be defined (e.g. the red polygon representing an European coverage as seen by a Geostationary satellite). The figure also shows how the dual space can be sampled

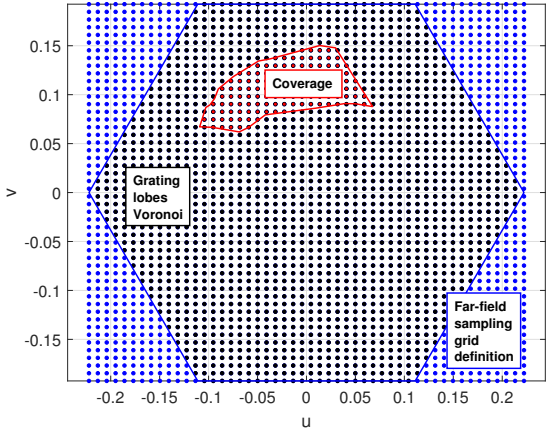
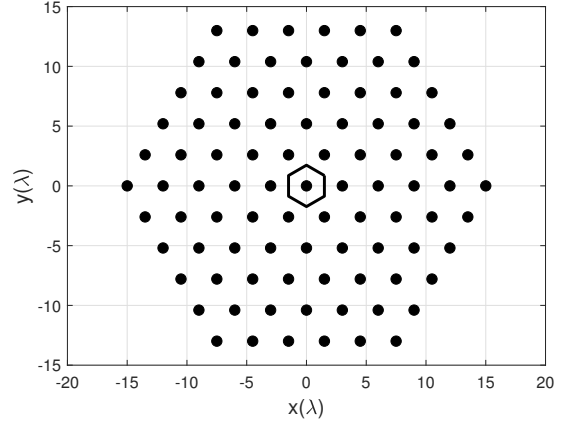


Fig. 3: Triangular lattice with $d_1 = [1, 0.5]$, $d_2 = [0, \sqrt{3}/2]$ for a hexagonal array and relevant far-field Voronoi Cell

TABLE I: Field of view for triangular and squared lattices.

Triangular	$d = 3\lambda$	$d = 2\lambda$	$d = 1\lambda$	$d = 0.5\lambda$
u_{\min}, u_{\max}	± 0.22	± 0.33	± 0.67	± 1.33
v_{\min}, v_{\max}	± 0.19	± 0.29	± 0.58	± 1.15

Square	$d = 3\lambda$	$d = 2\lambda$	$d = 1\lambda$	$d = 0.5\lambda$
u_{\min}, u_{\max}	± 0.17	± 0.25	± 0.5	± 1
v_{\min}, v_{\max}	± 0.17	± 0.25	± 0.5	± 1

(far-field sampling grid) and how the cost function can be limited to the sampling points falling within the Voronoi cell (black dots). The mesh of points where the array factor is sampled for the evaluation of the cost function can be either structured (e.g. bottom of Fig. 3) or unstructured (e.g. in FEM-like discretization of Fig. 9).

Depending on the array lattice base, inter-element distance can be varied, as in Table I, in order to guarantee that the Voronoi cell is larger than the Earth FoV.

III. PHASE EXPANSION INTO ZERNIKE POLYNOMIALS

As stated earlier, phases Φ_{pq} shall not be optimized independently but rather seen as a sampling of a continuous phase distribution described in terms of a limited number of full-domain polynomial bases.

In this paper Zernike polynomials will be used. Even if “polynomials” is the usual way of addressing Zernike

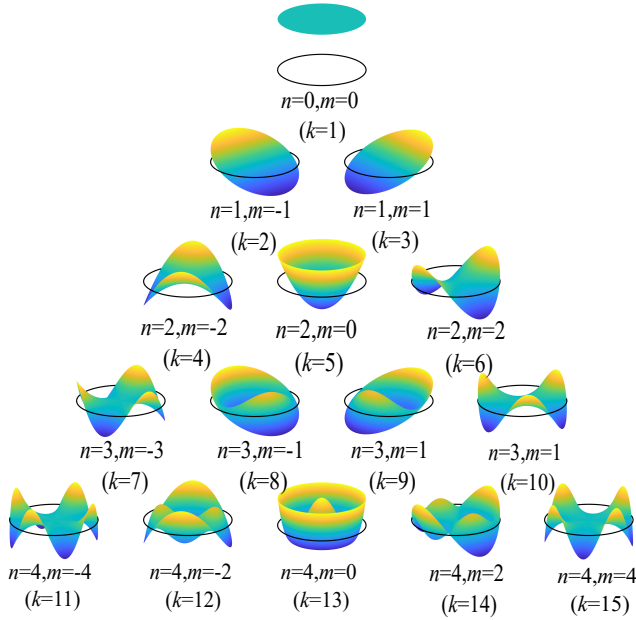


Fig. 4: First Zernike functions, up to radial order four.

functions, these are not polynomials strictly speaking since trigonometric functions are present in their definition. These form a class of orthogonal functions over the continuous unit circle (see [32], [33]) and are particularly suitable for this application, since the unit circle maps naturally with just a scale factor over a circular array.

Indeed the radial-azimuth dependence of Zernike polynomials, as opposed to 2D polynomials resulting by the product of x -dependant and y -dependant polynomials in a Cartesian reference, makes them the optimal choice when dealing with a circular array since the domain is exactly covered. Other bases, like Bessel functions, exhibit the same symmetry with no additional advantage but at a higher computational complexity.

In polar coordinates, Zernike function $Z_n^m(\rho, \theta)$ is expressed as:

$$Z_n^m(\rho, \theta) = \begin{cases} N_n^m R_n^{|m|}(\rho) \cos(m\theta) & \text{if } m \geq 0 \\ -N_n^m R_n^{|m|}(\rho) \sin(m\theta) & \text{if } m < 0 \end{cases} \quad (5)$$

being N_n^m is a normalization factor and $R_n^m(\rho)$ a polynomial in ρ . In detail:

$$N_n^m = \sqrt{\frac{2(n+1)}{1 + \delta_0^m}} \quad (6)$$

being δ_0^m the Kronecker delta function (i.e. $\delta_0^m = 1$ for $m = 0$, and $\delta_0^m = 0$ for $m \neq 0$), and:

$$R_n^m(\rho) = \sum_{k=0}^{\frac{n-m}{2}} \frac{(-1)^k (n-k)!}{k! (\frac{n-m}{2} - k)! (\frac{n+m}{2} - k)!} \rho^{n-2k} \quad \text{for } n-m \text{ even, and zero otherwise} \quad (7)$$

In Zernike functions definition, n is a positive integer named the *radial degree* or *order*, and m , named the *azimuthal* or *angular frequency*, is a negative or positive integer such that $|m| \leq n$.

A continuous phase distribution is then defined as:

$$\bar{\Phi}(\rho, \theta) = \sum_{n,m} \alpha_n^m Z_n^m \left(\frac{\rho}{r}, \theta \right) \quad (8)$$

being r the radius of the circle circumscribed to the array. The discrete phases Φ_{pq} in (1) are hence samples of $\bar{\Phi}$:

$$\bar{\Phi}_{pq} = \bar{\Phi} \left(|p\mathbf{d}_1 + q\mathbf{d}_2|, \tan^{-1} \left[\frac{(p\mathbf{d}_1 + q\mathbf{d}_2) \cdot \hat{\mathbf{y}}}{(p\mathbf{d}_1 + q\mathbf{d}_2) \cdot \hat{\mathbf{x}}} \right] \right) \quad (9)$$

For the sake of simplicity the two indexes n, m are replaced by a single-index k :

$$\bar{\Phi}_{pq}(\rho, \theta) = \sum_{k=0}^K \alpha_k Z_k \left(\frac{\rho}{r}, \theta \right) \quad (10)$$

To obtain the single index k , it is convenient to arrange the polynomials in a pyramid with row number n and column number m . It will be $k = 1$ for $n = 0, m = 0$ and the index increases from top to bottom and from left to right (Fig. 4):

$$k = \frac{n(n+2) + m}{2} \Leftrightarrow \begin{cases} n = \lceil (\sqrt{9+8k} - 3) \rceil \\ m = 2k - n(n+2) \end{cases} \quad (11)$$

Obviously, if

$$N = \sum_{p=1}^{N_1} (N_2^+(p) - N_2^-(p)) \quad (12)$$

is the total number of elements in the array, if $K \ll N$ the optimization will have a much lower number of variables to work on, with respect to a brute force approach.

Furthermore, additional reductions can be obtained if symmetries in the desired patterns are present, by excluding Zernike functions non complying to said symmetry. For example if a broadside beam independent of ϕ is desired then only $m = 0$ Zernike functions are necessary.

IV. OPTIMIZATION IMPLEMENTATION

There are two main key points in a numeric optimization strategy: the definition of the cost function to be minimized and the choice of the optimization algorithm. In our case a third key point, related to the selection of an appropriate subset of the complete Zernike basis set is analyzed.

A. Cost function

Cost function for the optimization procedure is defined in terms of two or more masks to which the pattern must comply. The simplest presented here is for a wide-angle uniform circular beam, while the most complex is aimed at a South America coverage with different pattern levels on different countries.

Hence, in general, several masks $C^{(t)}$ are defined with a desired gain level for each zone within the coverage, plus an outer mask O for controlling the side lobe maximum level. Between the SLL mask and the coverage mask(s) a transition zone in which the gain is unchecked allows faster convergence (Fig. 5).

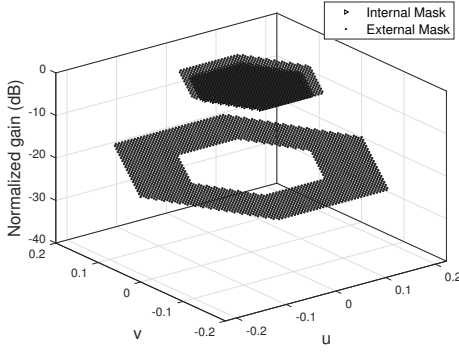


Fig. 5: Example of implemented internal and external masks.

Pattern is sampled uniformly or non-uniformly within the main Voronoi cell to check for out-of-mask levels. Sampling points in (u, v) plane are indexed with a single index $s = 1, \dots, S$, sampled pattern values are $P_s = P(u_s, v_s)$ and the same notation is used for mask samples $C_s^{(t)} = C^{(t)}(u_s, v_s)$ and $O_s = O(u_s, v_s)$.

With this notation the cost function is:

$$c = \sum_{t=1}^T \left[\sum_{s=1}^S \eta_1^{(t)} |P_s - C_s^{(t)}| \delta_{P_s}^{C_s^{(t)} \pm R^{(t)}} \right] + \sum_{s=1}^S \eta_2 |P_s - O_s| \delta_{O_s}^{P_s} \quad (13)$$

where:

- $\delta_a^{b \pm c} = 1$ if $a < b - c$ or $a > b + c$ or if point q is not within the current mask definition area;
- $\varepsilon_a^b = 1$ if $a < b$ and zero otherwise or if point q is not within the current mask definition area;
- $\eta_1^{(t)}$ and η_2 are appropriate weights of the coverage and side lobe masks, taken inversely proportional to the number of evaluation points within each sub-area.

The cost function is evaluated on the normalized pattern and evaluated in logarithmic scale. The coverage mask allows for a dynamic $R^{(t)}$ within each coverage mask.

B. IWO algorithm

Optimization is then performed by a single-objective implementation of the IWO algorithm [26], [34], [36]. Such an algorithm relies on the paradigm of an invasive weed specie colonizing a field, producing seeds proportionally to the richness of the soil (how good the cost function value is at the point where the plant grows) and spreading these seeds around its location with a Gaussian distribution.

The algorithm has a few control parameters:

P_i : initial number of plants, randomly scattered on the domain;

P_m : maximum number of plants. To avoid exponential grow of plants, worse specimens are discarded, so as to maintain this maximum number of plants at next generation.

M_i : maximum number of iterations;

M_s : stall; if the optimal solution is not updated within this number of steps the algorithm ends (with a warning) even if M_i is not reached;

S_{min} : minimum number of seeds a plant produces at each iteration;

S_{max} : maximum number of seeds a plant produces at each iteration;

σ_i : initial variance for seed dispersion;

σ_f : final variance (at iteration M_{iter}) for seed dispersion; variance is decreased linearly with iteration number;

Optimization variables are internally rescaled in the IWO algorithm to $[0, 1]$ so that σ_i and σ_f are not problem-dependent.

Details on the algorithm can be found also in [35], [37], [38]. It is worth mentioning that in [30] an accurate comparison between different optimization techniques was carried out on the problem of the phase-only synthesis of linear arrays and IWO over-performed the competitors. Hence it is used here.

C. Criteria of polynomials selection

While in the linear case [30] a symmetrical mask would call for symmetrical phases and hence the number of basis functions at a given order could be reduced by selecting only even basis, in the planar case, we must distinguish patterns with a rotational symmetry, which would call for the same symmetry in the phases and hence only Z_n^0 functions and non-rotationally symmetrical masks which will need, in principle, all Z_n^m . In practice, if the beam is rotationally symmetric but not pointing broadside, just the two Z_1^m functions, can be added since they allow for a linear phase and hence for the beam scanning to a generic (u_0, v_0) .

For what concerns the maximum radial degree n to be chosen, preliminary studies in [30] showed that the key issue is allowing enough variation for the phase, as a rule of thumb one full variation (from maximum to minimum or vice versa) in a 4λ radial direction, as the following example will show. Variation of α_k coefficients is constrained within an allowable range $[UB_k, LB_k]$, which, also according to the previous experience [30], are decreasing with the square of the radial order of the considered Zernike polynomials:

$$UB_k, LB_k = \pm \frac{\Phi_{max}}{\frac{\partial Z_{n,m}(r)}{\partial r}} \propto \frac{1}{n^2} \quad (14)$$

with k the single index given by (11) and Φ_{max} selected taking into account the overall array dimension and maximum order, as analyzed in the next section.

V. NUMERICAL RESULTS

A list of results is presented for planar arrays using the combination of the Zernike functions for the IWO synthesis. Three cases are here presented, from the easiest case of a broadside wide-angle pencil beam followed by two more challenging masks: an Europe uniform coverage and a South America non-uniform coverage.

Table II shows IWO parameters for the three cases. P_i , P_m , S_{min} , and S_{max} are chosen, according to the authors'

TABLE II: Invasive weed optimization parameters.

	Pencil beam	Europe	South America
P_i	20	20	30
P_m	50	50	60
M_i	100	300	500
S_{min}	1	1	1
S_{max}	5	5	5
σ_i	0.1	0.1	0.1
σ_f	0.001	0.001	0.001

TABLE III: Optimized amplitude coefficients for the pencil beam.

α_k	k					
	2	3	5	13	25	38
(a)	-	-	2.876	1.452	-0.401	-0.382
(b)	-	-	2.600	1.496	-	-

experience, to have an average number of plants per iteration of about ten times the dimension of the variable space. The total number of iterations presented is experience based and related to a control over algorithm stall in finding better solutions.

A. Pencil beam coverages

Firstly, a planar array with triangular lattice of diameter $D = 30\lambda$ and element spacing $d = 3\lambda$ with an internal circular mask centred in zero with radius $r_C = 0.05$ (which corresponds to an angular aperture $\theta = 2.87^\circ$) and an external concentric mask with radius $r_O = 0.06$ (an angular aperture $\theta = 3.43^\circ$) is considered. Only Z_n^0 polynomials are used, due to symmetry, and in particular those for $k = 5, 13, 25, 41$. Note that, since Z_0^0 would give a uniform phase distribution, that is a simple bias, the base for $k = 1$ is never considered in the optimization. Here $\eta_1 = 0.7$, $\eta_2 = 0.3$ and $\Phi_{max} = 8\pi$ are considered.

Patterns are presented in Fig. 6 in (u, v) plane by selecting an appropriate parameter w as linear coordinate along the cuts ($w = u$ and $w = v$ in the principal planes for the broadside pattern). The optimal α_k are reported in Table III, row (a). Due to the negligible amplitude of the $k = 25$ and $k = 38$ coefficients, a separate optimization with only two variables is also carried out, leading to the values in the row (b) of Table III. Anyway four coefficients produce a better pattern as compared to only two, as Fig. 6 clearly shows, while further coefficients do not significantly improve the compliance to the mask, while lengthening computational time and making convergence slower.

B. Irregular coverages

Focusing on irregular coverages, both even and odd polynomials are investigated in the synthesis of the pattern within the phase distribution.

1) *Typical European Coverage*: the typical European coverage has a polygon defined in (u, v) space for the internal mask, uv_{poly} . The external mask is constructed by enlarging the internal mask in all direction by a quantity $\Delta = 0.01$ to allow for a transition zone (Fig. 7, where the internal mask is

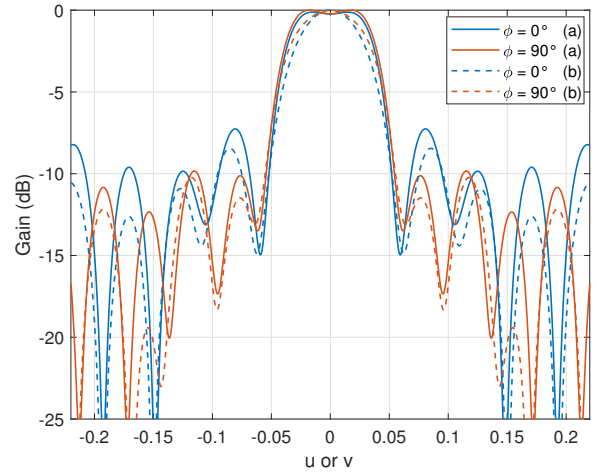
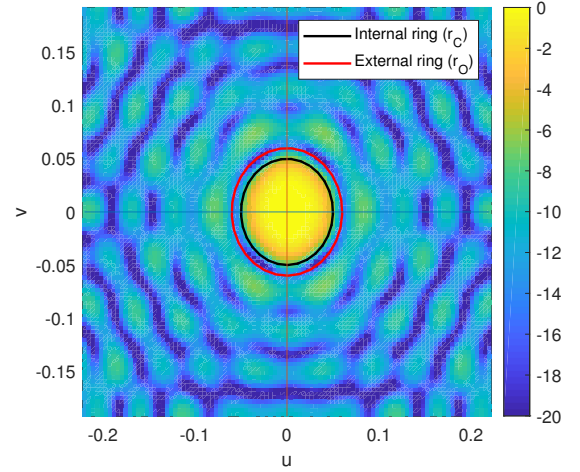


Fig. 6: Synthesis of the broadside pencil beam. Top: normalized gain on the (u, v) plane, internal mask is defined by the black circle, external mask by the red circle; bottom, normalized gain on the principal planes (blue and red lines on top map).

TABLE IV: Optimized amplitude coefficients for the European coverage.

k	2	3	4	5	6
α_k	-19.847	4.719	1.116	2.591	2.098
k	11	12	13	14	15
α_k	-0.204	-0.038	-0.783	-0.006	-0.012

black and the external mask red). The weights in (13) are: $\eta_1 = 0.7$, $\eta_2 = 0.3$ and $\Phi_{max} = 8\pi$.

The analyzed planar array with triangular lattice has a diameter of $D = 60\lambda$ and intra-element spacing $d = 3\lambda$, $N_{el} = 363$ elements.

The amplitude of computed coefficients versus the Zernike order functions and their combination in the phase distribution is hence displayed in Table IV. There is still an important advantage in the reduction of the computational complexity as optimization variables are:

- 10 optimized weights with Zernike,
- 363 optimized weights with Brute Force technique.

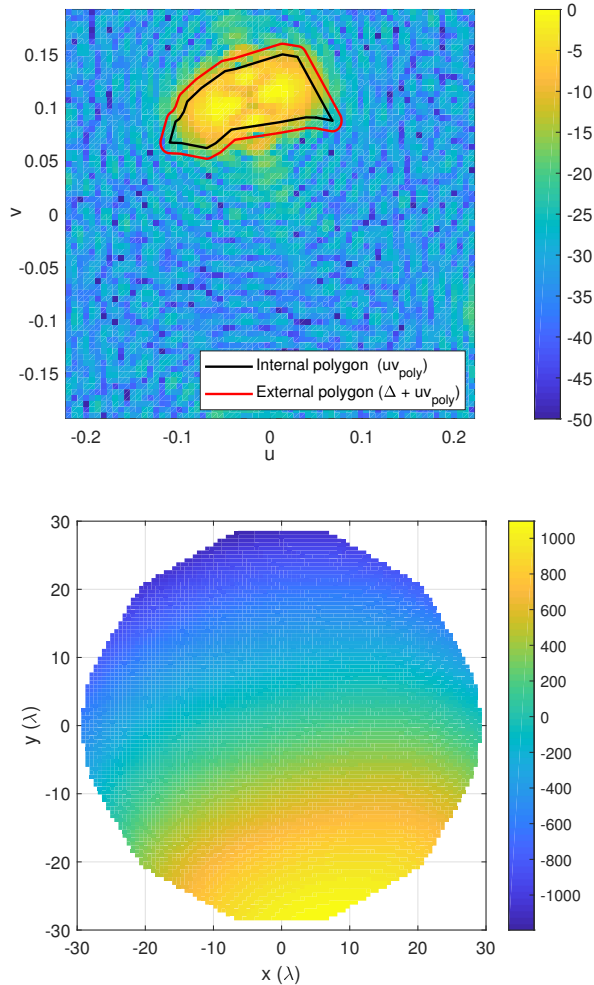


Fig. 7: Synthesis of the European coverage. Top: normalized gain on the (u, v) plane. Bottom: map of the continuous phase distribution synthesized and sampling points at elements.

TABLE V: Gain mask specifications.

Nominal Gain (dB)					
SA1	SA2	SB	SC1	SC2	SD
28.82	28.81	25.81	22.81	20.66	19.81

2) *Multi-polygonal of South-America Test Case:* The final challenging problem is to guarantee a multi-gain coverage of the regions of South-America exploiting the phase-only tapering, as in Fig. 8. Gain requirements, summarized in Table V are relative to an existing shaped reflector realized by AIRBUS currently on orbit. The same problem has been addressed by synthesizing a reflectarray comprising 6944 three layers patches [40]. Here the problem will be addressed with just 199 or 177 active elements.

Indeed attaining simultaneously several desired levels of gain on neighbouring zones, as well as a maximum value of -20dB , with respect to the maximum, for the SLL out-of-coverage is extremely challenging. Although a transition zone is defined between the main beam and the out of coverage area, no transition is foreseen in the requirements between different areas of the coverage, this too makes the problem really tough.

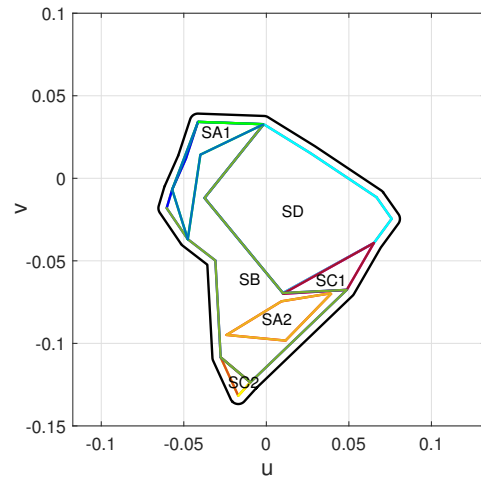


Fig. 8: Implemented masks for South America for a geostationary satellite positioned at $61^\circ W$ longitude.

To ease convergence the cost function implemented is an extension of the (13) attained as a sum over $T = 6 + 1$ areas of single costs. Within each coverage area a dynamic with respect to the nominal value, $R^{(t)} = -1\text{dB}$ is tolerated and the level of side lobes imposed is $\text{SLL} = -20\text{ dB}$.

Indeed the upper cap to gain could be avoided, leading to an easier optimization, but this would reflect into a lower efficiency of the system since, to guarantee the minimum power level in the lowest-illuminated zones, an excess of power would be delivered to zones where gain is unneedingly high, hence requiring higher than necessary output power from the transmitter.

Each contribution of the cost function in this case is weighted proportionally to the number of evaluation points belonging to the area, hence achieving an error which is consistent between areas. As for the previous analysis on planar arrays, the discretization of the evaluation points for the pattern could be done using a regular grid in the (u, v) plane. Another approach is possible, and used here, that to define sampling points on an unstructured grid which is finer in critical areas and coarser in less-critical ones, for example out of coverage.

Optimization is computed by evaluating the cost function either on a structured (regular, square) and a unstructured mesh of points, this latter based on a FEM-like mesh of the domain [39], which allows for a coarser sampling in the SLL region and hence faster optimization (Fig. 9). Distance between elements is either 2λ or 3λ , in both cases grating lobes fall outside Earth and, of course, the latter requires less radiating elements for a given aperture area.

The results obtained shows a good matching with earlier results presented in literature, but using much less elements for the present array. Fig. 10 shows synthesized pattern and phase distribution by an array of $D = 45\lambda$ diameter and distance between elements $d = 3\lambda$ considering a triangular lattice ($N_{el} = 199$) for the conventional structured discretization in the (u, v) plane. In this case the element factor is either with a $\cos^q(\theta)$ [41] or a more realistic Bessel-like pattern of an

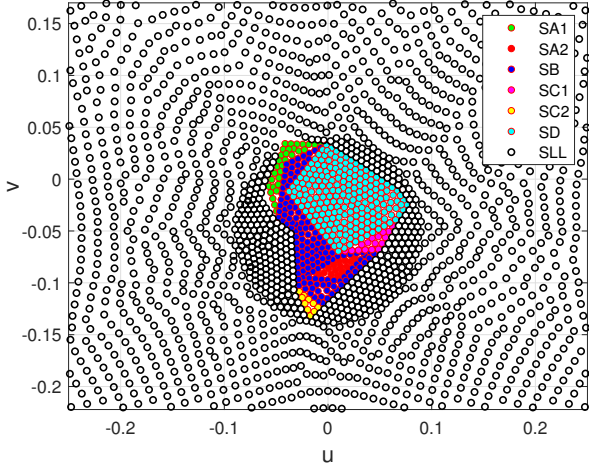


Fig. 9: FEM-like discretization of the (u, v) plane for the multi-gain problem cost function evaluation.

uniform aperture of radius r_B . The optimization has been addressed exploiting only 27 optimized coefficients related to the Zernike functions from $k = 2$ up to $k = 28$ and attaining the values in Table VI. In Table VII the compliances within each areas, defined as the percentage of sampling points where gain is equal or greater than the required, are given.

Using the unstructured discretization in the (u, v) plane, and for an array of $D = 45\lambda$ diameter and distance between elements $d = 3\lambda$ but with a square lattice of only ($N_{el} = 177$), the performances in Fig. 11 are attained.

The number of coefficients used for the expansion is 20 (so from $k = 2$ to $k = 21$). The amplitude of the optimized coefficients are displayed in Table VIII.

Compliances for the unstructured discretization are presented in Table IX. Finally Table X gives computing time for an optimization run. The relative speed up linked to the limited number of samples, concentrated in critical area, is evident.

It is interesting to note how the unstructured lattice gives both better results and lower CPU times. This because pattern sampling points are better distributed: more concentrated in the coverage zone, and less concentrated in the SLL areas.

TABLE VI: Optimized amplitude coefficients for the South America coverage and structured discretization.

k	2	3	4	5	6	7
α_k	3.869	2.290	1.506	-3.344	1.311	-0.097
k	8	9	10	11	12	13
α_k	0.330	-0.497	0.451	0.377	-0.412	0.662
k	14	15	16	17	18	19
α_k	-0.288	-0.629	0.053	0.151	0.198	0.561
k	20	21	22	23	24	25
α_k	-0.165	0.477	-0.076	-0.218	0.332	-0.083
k	26	27	28			
α_k	0.696	0.628	-0.101			

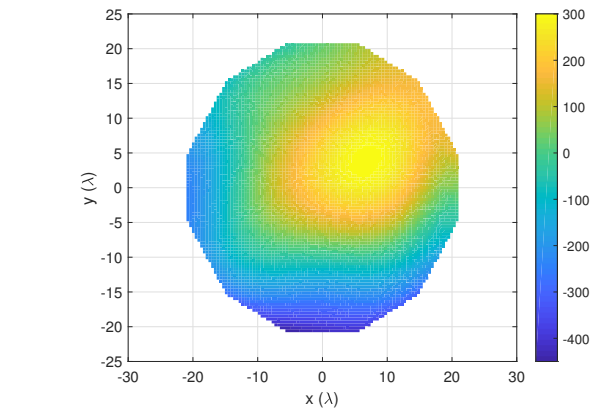
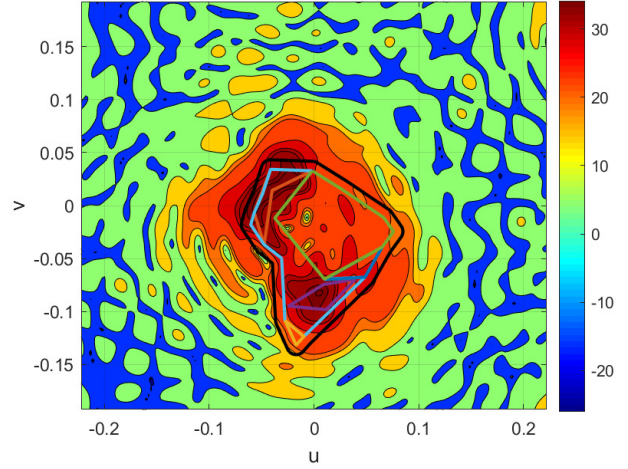


Fig. 10: Synthesized denormalized gain and phase distribution using the structured discretization (with element factor $\cos^2(\theta)$).

VI. CONCLUSION

A novel synthesis of planar arrays exploiting the phase-only technique with an efficient number of basis functions within the phase distribution has been investigated. Considering that only phase tapering has been exploited, the results for shaped coverages and multi-gain problems are very satisfying. A reduced number of basis functions has been combined to synthesize the phase distribution in order to reduce the computational time in the optimization process. The proposed design procedure is particularly effective in the case of complex coverages and large arrays as the ones considered for satellite applications.

TABLE VII: Compliances of the multi-gain problem with structured discretization.

		Compliances $\cos^2(\theta)$ (%)					
		SA1	SA2	SB	SC1	SC2	SD
$d = 3\lambda$		100.0	94.59	97.76	100.0	100.0	97.46
	$d = 2\lambda$	100.0	100.0	100.0	100.0	100.0	100.0
		Compliances Bessel (%)					
		SA1	SA2	SB	SC1	SC2	SD
$r_B = 1.3\lambda$	$d = 3\lambda$	100.0	92.97	97.53	100.0	100.0	97.39
	$d = 2\lambda$	100.0	100.0	100.0	100.0	100.0	99.84

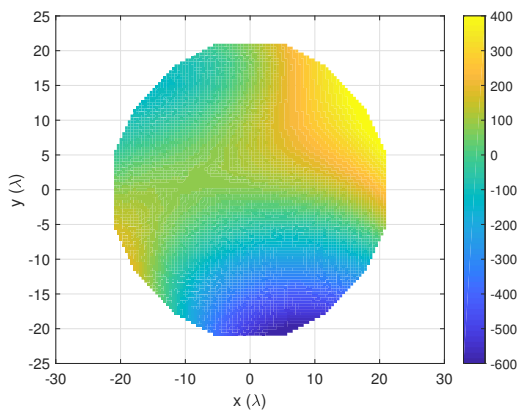
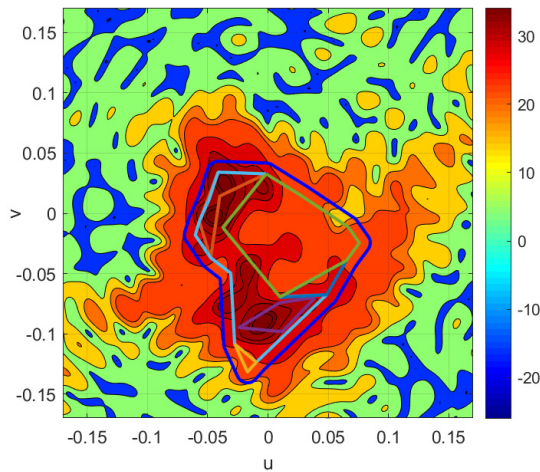


Fig. 11: Synthesized denormalized gain and phase distribution using the unstructured discretization (with element factor $\cos^2(\theta)$).

TABLE VIII: Optimized amplitude coefficients for the South America coverage and unstructured discretization

k	2	3	4	5	6	7
α_k	5.138	1.186	4.913	-0.706	4.388	-1.141
k	8	9	10	11	12	13
α_k	-0.453	0.118	0.446	0.122	-0.210	0.576
k	14	15	16	17	18	19
α_k	-0.779	-0.233	0.017	-0.090	0.222	-0.124
k	20	21				
α_k	0.569	0.073				

VII. ACKNOWLEDGMENT

The authors are grateful to Prof. J.A. Encinar, Universidad Politécnic de Madrid, for having provided useful discussions in the preparation of the manuscript.

REFERENCES

[1] P. Angeletti, R. De Gaudenzi, M. Lisi, "From 'Bent Pipes' to 'Software Defined Payloads': Evolution and Trends of Satellite Communications Systems," 26th AIAA International Communications Satellite Systems Conference (ICSSC 2008), San Diego (California), USA, 10-12 Jun. 2008.

[2] J. F. Bull, P. Kalkata, C. E. Profera, "Application of the Method of Steepest Descent Optimization to the Design of Shaped Beam Antennas," 1982 Antennas and Propagation Society International Symposium, Albuquerque (NM), USA, 24-28 May 1982.

TABLE IX: Compliances of the multi-gain problem with unstructured discretization.

Compliances $\cos^2(\theta)$ (%)						
	SA1	SA2	SB	SC1	SC2	SD
$d = 3\lambda$	100.0	100.0	100.0	100.0	100.0	98.84
$d = 2\lambda$	100.0	100.0	100.0	100.0	100.0	100.0
Compliances Bessel (%)						
	SA1	SA2	SB	SC1	SC2	SD
$r_B = 1.3\lambda$ $d = 3\lambda$	100.0	100.0	100.0	100.0	100.0	98.66
$r_B = 0.8$ $d = 2\lambda$	100.0	100.0	100.0	100.0	100.0	99.95

TABLE X: Computing times.

Type	Samples	Iterations	Time
Structured	10000	500	117m55s
Unstructured	2356	500	29m51s

[3] A. Cherrette, D. Chang, "Phased array contour beam shaping by phase optimization," 1985 Antennas and Propagation Society International Symposium, Vancouver, Canada, pp. 475-478, 17-21 Jun. 1985.

[4] A. R. Cherrette, S. Lee, R. J. Acosta, "A method for producing a shaped contour radiation pattern using a single shaped reflector and a single feed," IEEE Transactions on Antennas and Propagation, Vol. 37, No. 6, pp. 698-706, Jun. 1989

[5] J. I. Echeveste, M. A. González de Aza, J. Rubio, J. Zapata, "Synthesis of coupled antenna arrays using digital phase control via integer programming," IET Microwaves, Antennas Propagation, Vol. 12, No. 6, pp. 999-1003, May 2018

[6] O. M. Bucci, G. D'Elia, G. Mazzarella, G. Panariello, "Antenna pattern synthesis: a new general approach," Proceedings of the IEEE, Vol. 82, No. 3, pp. 358-371, Mar. 1994

[7] P. J. Kajenski, "Phase Only Antenna Pattern Notching Via a Semidefinite Programming Relaxation," IEEE Transactions on Antennas and Propagation, Vol. 60, No. 5, pp. 2562-2565, May 2012

[8] J. F. DeFord O. P. Gandhi, "Phase-only synthesis of minimum peak sidelobe patterns for linear and planar arrays," IEEE Transactions on Antennas and Propagation, Vol. 36, No. 2, pp. 191-201, Feb. 1988

[9] J. F. DeFord, O. P. Gandhi, "Mutual coupling and sidelobe tapers in phase-only antenna synthesis for linear and planar arrays," IEEE Transactions on Antennas and Propagation, Vol. 36, No. 11, pp. 1624-1629, Nov. 1988

[10] E. Agastra, G. Pelosi, S. Selleri, R. Taddei, "Taguchi's method for multi-objective optimization problems," International Journal of RF and Microwave Computer-Aided Engineering, Vol. 23, No. 3, pp. 357-366, May 2013

[11] A. Capozzoli, C. Curcio, A. Liseno, G. Toso, "Fast, phase-only synthesis of aperiodic reflectarrays using NUFFTs and CUDA," Progress In Electromagnetics Research, Vol. 156, 83-103, 2016.

[12] D. Gies, Y. Rahmat-Samii, "Particle swarm optimization for reconfigurable phase-differentiated array design," Microwave and Optical Technology Letters, Vol. 38, No. 3, pp. 168-175, Aug. 2003

[13] S. Selleri, M. Mussetta, P. Pirinoli, R. E. Zich, L. Matekovits, "Differentiated meta-PSO methods for array optimization," IEEE Transactions on Antennas and Propagation, Vol. 56, No. 1, pp. 67-75, Jan. 2008

[14] T. Van Luyen, T. Vu Bang Giang, "Interference Suppression of ULA Antennas by Phase-Only Control Using Bat Algorithm," IEEE Antennas and Wireless Propagation Letters, Vol. 16, pp. 3038-3042, 2017

[15] M. H. Weatherspoon, J. D. Connor, S. Y. Foo, "Shaped beam synthesis of phased arrays using the cross entropy method," International Journal of Numerical Modelling: Electronic Networks, Devices and Fields, Vol. 26, No. 6, pp. 630-642, 2013

[16] R. A. Pearson, Y. Kalatidazeh, B. G. Driscoll, G. Y. Philippou, B. Claydon, D. J. Brain, "Application of contoured beam shaped reflector antennas to mission requirements," 1993 International Conference on Antennas and Propagation, Edinburgh, UK, 30 Mar. - 2 Apr. 1993.

[17] K. Clausing, M. Aliamus, "Reflector Shaping", in S. K. Sharma, S. Rao, L. Shafai, (Eds), Handbook of Reflector Antennas and Feed Systems: Vol 1, Artech House, 2013

[18] R. Jorgensen, "Coverage shaping of contoured-beam antennas by aperture field synthesis," IEE Proceedings H Microwaves, Antennas and Propagation, Vol. 127, No 4, pp. 201-208, Aug. 1980.

[19] A. R. Cherrette, S.-W. Lee, R. J. Acosta, "A method for producing a

shaped contour radiation pattern using a single shaped reflector and a single feed," IEEE Transactions on Antennas and Propagation, Vol. 37, No. 6, pp. 698-706, Jun. 1989

[20] A. Capozzoli, C. Curcio, A. Liseno, G. Toso, "Fast, Phase-Only Synthesis of Aperiodic Reflectarrays Using NUFFT and CUDA," Progress in Electromagnetics Research - PIER, Vol. 156, pp. 83-103, 2016.

[21] J. A. Encinar, R. Florencio, M. Arrebola, M. A. S. Natera, M. Barba, J. E. Page, R. R. Boix, G. Toso "Dual-polarization reflectarray in Ku-band based on two layers of dipole arrays for a transmit-receive satellite antenna with South American coverage," International Journal of Microwave and Wireless Technologies, Vol. 10, No. 2, pp. 149-159, Mar. 2018.

[22] G. Toso, P. Angeletti, "Aperiodic linear arrays for rectangular shaped beams," 3rd European Conference on Antennas and Propagation, 23-27 Mar. 2009

[23] C. Luison, A. Landini, P. Angeletti, G. Toso, P. Valle, P. Capece, S. Selli, G. Pelosi, "Aperiodic Arrays for Spaceborne SAR Applications," IEEE Transactions on Antennas and Propagation, Vol. 60, No. 5, pp. 2285-2294, May 2012

[24] M. Born, E. Wolf, Principles of Optics: Electromagnetic Theory of Propagation, Interference and Diffraction of Light, 7th Ed., Cambridge University Press, 1999.

[25] R. Vincenti Gatti, L. Marcaccioli, R. Sorrentino, "A novel phase-only method for shaped beam synthesis and adaptive nulling," 33rd European Microwave Conference, Munich, Germany, Vol. 2, pp. 739-742, 2-10 Oct. 2003.

[26] S. Karimkashi, A. A. Kishk, "Invasive Weed Optimization and its Features in Electromagnetics," IEEE Transactions on Antennas and Propagation, Vol 58, No. 4, pp. 1269-1278, Apr. 2010

[27] A. Foudazi, A. R. Mallahzadeh and M. M. S. Taheri, "Pattern synthesis for multi-feed reflector antenna using IWO algorithm," 2012 6th European Conference on Antennas and Propagation (EUCAP), pp. 1-5, 2012.

[28] A. Dastranj, H. Abiri and A. Mallahzadeh, "Design of a Broadband Coscant Squared Pattern Reflector Antenna Using IWO Algorithm," in IEEE Transactions on Antennas and Propagation, vol. 61, no. 7, pp. 3895-3900, July 2013.

[29] Y. Liu, Y.-C. Jiao, Y.-M. Zhang, Y.-Y. Tan, "Synthesis of Phase-Only Reconfigurable Linear Arrays Using Multiobjective Invasive Weed Optimization Based on Decomposition," International Journal of Antennas and Propagation, vol. 2014, Article ID 630529.

[30] P. Angeletti, L. Berretti, S. Maddio, G. Pelosi, S. Selli, G. Toso, "A comparison between basis functions for the efficient invasive weed optimization-based optimization of phase-only linear array patterns," Microwave and Optical Technology Letters - early view, 2021

[31] P. Angeletti, "Multiple Beams From Planar Arrays," IEEE Transactions on Antennas and Propagation, Vol. 62, No. 4, pp. 1750-1761, Apr. 2014

[32] V. Lakshminarayanan, A. Vasudevan, "Zernike polynomials: A guide," Journal of Modern Optics, Vol. 58, No. 7, pp. 1678-1678, Apr. 2011

[33] V. Mahajan, "Zernike circle polynomials and optical aberrations of systems with circular pupils," Applied Optics, Vol. 33, No. 34, pp. 8121-8124, Dec. 1994

[34] A. R. Mehrabian, C. Lucas, "A novel numerical optimization algorithm inspired from weed colonization," Ecological Informatics, Vol. 1, No. 4, pp. 355-366, Dec. 2006

[35] S. Maddio, G. Pelosi, M. Righini, S. Selli, "A Multi-Objective Invasive Weed Optimization for Broad Band Sequential Rotation Networks," 2018 IEEE International Symposium on Antennas and Propagation, Boston (MA), USA, pp. 955-956, 8-13 July 2018

[36] B. Xing, W. J. Gao, "Invasive Weed Optimization Algorithm", pp. 177-181, in B. Xing, W. J. Gao, (Eds), *Innovative Computational Intelligence: A Rough Guide to 134 Clever Algorithms*, Springer, 2014

[37] S. Maddio, G. Pelosi, M. Righini, S. Selli, "A Comparison Between Grey Wolf and Invasive Weed Optimizations Applied to Microstrip Filters," 2019 IEEE International Symposium on Antennas and Propagation, Atlanta (GA), USA, pp. 1033-1034, 7-12 Jul. 2019

[38] S. Maddio, G. Pelosi, M. Righini, S. Selli, I. Vecchi, "Optimization of the Shape of Non-Planar Electronically Scanned Arrays for IFF Applications via Multi-Objective Invasive Weed Optimization Algorithm," Applied Computational Electromagnetics Society Journal, Vol. 35, No.5, May 2020

[39] G. Pelosi, R. Coccioli, S. Selli, *Quick Finite Elements for Electromagnetic Waves*, 2nd Ed., Artech House, London, UK, 2009

[40] J. A. Encinar, M. Arrebola, L. F. de la Fuente, G. Toso, "A Transmit-Receive Reflectarray Antenna for Direct Broadcast Satellite Applications," IEEE Transactions on Antennas and Propagation, Vol. 59, No. 9, pp. 3255-3264, Jul. 2011

[41] P. Angeletti, F. Frezza, R. Vescovo, G. Toso, "On the Directivity of Planar Arrays with $\cos^q(\theta)$ Element Patterns," 30th ESA Antenna Workshop, ESA/ESTEC Noordwijk, The Netherlands, 27-30 May 2008.



Piero Angeletti (M'07-SM'13) received the Laurea degree (summa cum laude) in electronics engineering from the University of Ancona, Italy, in 1996, and the Ph.D. degree in electromagnetism from the University of Rome La Sapienza, Italy, in 2010. He has more than 20 years of experience in RF systems engineering and technical management encompassing conceptual/architectural design, trade-offs, detailed design, production, integration and testing of satellite payloads, and active antenna systems for commercial/military telecommunications and navigation (spanning all the operating bands and set of applications) as well as for multifunction RADARs and electronic counter measure systems. He is currently a Member of the Technical Staff of the European Space Research and Technology Center (ESTEC), European Space Agency, Noordwijk, The Netherlands. He is heading the Radio Frequency Payloads and Technology Division, Directorate of Technology, Engineering and Quality (TEC), which is responsible for RF payloads, instruments, and relevant technologies. In particular, he oversees ESA research and development activities related to flexible satellite payloads, RF front-ends, and on-board digital processors. He has authored/coauthored over 300 technical reports, book chapters, and articles published in peer reviewed professional journals and international conferences' proceedings. He holds several patents related to satellite payload and antenna technology. Together with Giovanni Toso, he is an Instructor of the course on Multibeam Antennas and Beamforming Networks, which has been offered at main IEEE and European microwaves, wireless and antenna conferences (the IEEE APS, the IEEE IMS, EuMW, EuCAP, the IEEE ICWITS, ESA Internal University, and so on), since 2012.



Lisa Berretti (S'19) was born in Grosseto, Italy in 1995. She received the M.Sc. degree in electronics engineering from the University of Florence in 2020. Since 2021, she has been a PhD candidate at the National Institute of Applied Sciences (INSA), Institut d'Électronique et des Technologies du numÉriques (IETR), Rennes, France. Her research interests include numerical optimizations, phase-only synthesis, full-metal devices, study of waveguide feed chain components and analysis of additive manufacturing for RF design. She was a recipient of some prizes, including the Tiera Travel Grant in the IEEE AP-S/URSI of 2019, Atlanta, GA, USA and the best paper in the field of Microwave Theory and Technique in the IEEE MTT-S/AP-S Chapter Central & Southern Italy.



Stefano Maddio (M'12) was born in Florence, Italy, in 1978. He received the Laurea and Ph.D. degrees in electronics engineering from the University of Florence, Florence, in 2005 and 2009, respectively. He joined the Department of Information Engineering, University of Florence, as a Research Associate. His current research interests include both the electromagnetic and electronic topics of the microwave engineering, such as the analysis and design of radiative systems for microelectronics in the field of smart antenna technology for wireless applications with a particular emphasis on the issues of wireless localization and special-purpose antenna systems for dedicated short range communications and the area of signal elaboration and manipulation at front-end level with a particular emphasis on active and passive filtering and noise mitigation as well as numerical techniques for free and guided electromagnetic propagation.



Giuseppe Pelosi (M'08–SM'91–F'00–LF'21) was born in Pisa, Italy, in 1952. He received the Laurea (Doctor) degree in physics (*summa cum laude*) from the University of Florence, Florence, Italy, in 1976. He is currently with the Department of Information Engineering of the same university, where he is Full Professor of Electromagnetic Fields. He was a Visiting Scientist at McGill University, Montreal, Quebec, Canada, from 1993 to 1995, and a Professor at the University of Nice- Sophie Antipolis, France, in 2001. He was coauthor of several scientific pub-

lications on the aforementioned topics, appeared in international refereed journals, and national and international conferences. He has been guest editor of several special issues of international journals: *IEEE Antennas and Propagation Magazine*, 2013 (with Y. Rahmat-Samii and J. L. Volakis); *IEEE Transactions on Antennas and Propagation*, 2001 (with V. Grikunov and I. L. Volakis); *International Journal of Numerical Modelling: Electronic Networks, Devices and Fields*, 2000 (with P. Guillon and T. Itoh); *Electromagnetics*, 1998 (with J. L. Volakis); *Annales des Telecommunications* (with J. L. Bernard and P. Y. Ufimtsev), 1995; *COMPEL*, 1994 (with P. P. Silvester); *COMPEL*, 2002; *Alta Frequenza- Rivista di Elettronica*, 1992. He is also coauthor of three books: *Finite Elements for Wave Electromagnetics* (with P. P. Silvester, IEEE Press, 1994), *Finite Element Software for Microwave Engineering* (with T. Itoh and P. P. Silvester, Wiley, 1996), and *Quick Finite Elements for Electromagnetic Fields* (with R. Coccioli and S. Selleri, Artech House, 1998 and 2009). With P. P. Silvester (McGill University), he was promoter of the International Workshop on Finite Elements for Microwave Engineering. This workshop is held every two years, and is the meeting point for finite-element researchers from all over the world. He is also active in the history of the telecommunications engineering field. He has been Associate editor for the Historical Corner of the *IEEE Antennas and Propagation Magazine* 2006-2020 and of *URSI Radio Science Bulletin* since 2015. Among his latest publications in this field is the book, *A Wireless World. One Hundred Years Since the Nobel Prize to Guglielmo Marconi* (series contribution to the History of the Royal Swedish Academy of Sciences, 2012). His research activity is mainly focused on numerical techniques for applied electromagnetics (antennas, circuits, microwave and millimeter-wave devices, scattering problems). Dr. Pelosi has been a member of the Board of Directors of the Applied Computational Electromagnetics Society (ACES) (1999–2001), of the Board of Directors of the IEEE Central and South Italy Section (1992–1995 and 1995–1998), and Chair of the IEEE Magnetics Chapter of the same Section (1996–1999).



Giovanni Toso (S'93–M'00–SM'07) received the Laurea Degree (*cum laude*), the Ph.D. and the Post Doctoral Fellowship from the University of Florence, Italy, in 1992, 1995 and 1999. In 1996 he was visiting scientist at the Laboratoire d'Optique Electromagnetique, Marseille (France). In 1999 he was a visiting scientist at the University of California (UCLA) in Los Angeles, he received a scholarship from Alenia Spazio (Rome, Italy) and he has been appointed researcher in a Radio Astronomy Observ-

atory of the Italian National Council of Researches (CNR). Since 2000 he is with the Antenna and Submillimeter Waves Section of the European Space Agency, ESA ESTEC, Noordwijk, The Netherlands. He has been initiating and contributing to several R&D activities on satellite antennas based on arrays, reflectarrays, discrete lenses and reflectors. In particular, in the field of onboard satellite antennas, he has been coordinating activities on multibeam antennas (active and passive) mainly for Telecom Applications. In the field of terminal antennas for Telecom applications, he has been initiating several R&D activities on reconfigurable antennas with electronic, mechanical and hybrid scanning; some of these antennas are now available as commercial products. He has been initiating and supporting the development of the commercial software tool QUPES by TICRA, now used worldwide, for the analysis and design of periodic and quasi-periodic surfaces such as reflectarrays, frequency selective surfaces, transmitarrays and polarizers. G. Toso has been coauthoring the best paper at the 30th ESA Antenna Workshop and the most innovative paper at the 30th and 36th ESA Antenna Workshops. Giovanni Toso holds more than 20 international patents. In 2009 he has been coeditor of the Special Issue on Active Antennas for Satellite Applications in the *International Journal of Antennas and Propagation*. In 2014 he has been guest editor of the Special Issue on "Innovative Phased array antennas based on non-regular lattices and overlapped subarrays" published in the *IEEE Transactions on Antennas and Propagation* and, for the same society, has been an Associate Editor (2013-2016). Since 2010, together with Dr. P. Angeletti, he has been instructing short courses on Multibeam Antennas and Beamforming Networks during international conferences (IEEE APS, IEEE IMS, IEEE IWCS, EUCAP, EuMW) that have been attended by more than 800 participants. In 2018 G. Toso has been the chairman of the 39th ESA Antenna Workshop on "Multibeam and Reconfigurable Antennas" and received, together with Prof. A. Skrivervik, the Best Teacher Award of the European School of Antennas (ESoA) out of 101 teachers. G. Toso is the organiser of the new ESoA course on Active Antennas.



Stefano Selleri (S'92–M'96–SM'03) received the Laurea (*cum laude*) degree in electronic engineering and the Ph.D. degree in computer science and telecommunications from the University of Florence, Florence, Italy, in 1992 and 1997, respectively. He was a Visiting Scholar at the University of Michigan, Ann Arbor, MI, USA, in 1992, the McGill University, Montreal, Canada, in 1994, and the Laboratoire d'Electronique, University of Nice Sophia Antipolis, Nice, France, in 1997. From February to July 1998, he was a Research Engineer with the Centre National

d'Etudes Telecommunications (CNET) France Telecom, La Turbie, France. He is currently an Associate Professor of Electromagnetic Fields with the University of Florence, where he conducts research on numerical modeling of microwave, devices, and circuits with particular attention to numerical optimization. He is author of about 125 papers on peer reviewed journals on the aforementioned topics, as well as books and books chapters. He is also active in the field of telecommunications and electromagnetism history, having published about 30 papers or book chapters.

He is an Associate Editor of the *International Journal of Antennas and Propagation*, since September 2007 and on the Editorial board of the *International Journal of RF and Microwave Computer-Aided Engineering* from August 2008 to January 2018. Since 2020 he is an associate editor of *ACES Journal*.