



HAL
open science

Electrical and mechanical characterisation of Si/Al ohmic contacts on diamond

Gabriel Civrac de Fabian, Sabeur Msolli, Joël Alexis, Olivier Dalverny, Henri Schneider

► **To cite this version:**

Gabriel Civrac de Fabian, Sabeur Msolli, Joël Alexis, Olivier Dalverny, Henri Schneider. Electrical and mechanical characterisation of Si/Al ohmic contacts on diamond. *Electronics Letters*, 2010, 46 (11), pp.791-793. 10.1049/el.2010.0803 . hal-03474199

HAL Id: hal-03474199

<https://hal.science/hal-03474199>

Submitted on 10 Dec 2021

HAL is a multi-disciplinary open access archive for the deposit and dissemination of scientific research documents, whether they are published or not. The documents may come from teaching and research institutions in France or abroad, or from public or private research centers.

L'archive ouverte pluridisciplinaire **HAL**, est destinée au dépôt et à la diffusion de documents scientifiques de niveau recherche, publiés ou non, émanant des établissements d'enseignement et de recherche français ou étrangers, des laboratoires publics ou privés.



Open Archive Toulouse Archive Ouverte (OATAO)

OATAO is an open access repository that collects the work of Toulouse researchers and makes it freely available over the web where possible.

This is an author-deposited version published in: <http://oatao.univ-toulouse.fr/>
Eprints ID: 6486

To link to this article: DOI:10.1049/el.2010.0803
URL : <http://dx.doi.org/10.1049/el.2010.0803>

To cite this version:

Civrac de Fabian, Gabriel and Msolli, Sabeur and Alexis, Joël and Dalverny, Olivier and Schneider, Henri *Electrical and mechanical characterisation of Si/Al ohmic contacts on diamond*. (2010) Electronics Letters, vol. 46 (n° 11). pp. 791-793. ISSN 0013-5194

Any correspondence concerning this service should be sent to the repository administrator: staff-oatao@listes.diff.inp-toulouse.fr

Electrical and mechanical characterisation of Si/Al ohmic contacts on diamond

G. Civrac, S. Msolli, J. Alexis, O. Dalverny and H. Schneider

A new ohmic contact technology on diamond with low resistivity is presented. A Si/Al metallisation is used and leads to a $7 \times 10^{-6} \Omega \cdot \text{cm}^2$ specific contact resistivity, measured by the transfer length method. Comparison is made between this technology and the Ti/Pt/Au traditional technology. Both technologies show very good electrical, thermal and mechanical characteristics.

Introduction: Diamond is well known to be a promising material for power electronics. Its wide bandgap, high breakdown field, thermal conductivity and electrical carrier mobility are particularly well fitted to high voltage, high temperature and high power device fabrication requirements [1]. Still, many technological issues need to be solved to make proper use of diamond to manufacture competitive electronic devices.

Many researches have focused on the deposition of ohmic contacts on diamond. In particular, AlSi (99:1) based contacts gave, to our knowledge, the best electrical characteristics [2]. However, Ti-based contacts are more widely used because the thick TiC layer that is formed during the contact annealing provides both good low contact resistivity and good mechanical adhesion [3–5].

Here, a Si/Al multilayer metallisation was used. The use of a thick silicon layer allows the formation of a strong bonding SiC layer, which is important if diamond device packaging is wanted. Transfer length method (TLM) measurements were performed and compared to TLM measurements made on Ti/Pt/Au contacts. Mechanical tests have been made to compare the mechanical properties of the coatings and to assess their adherence to diamond substrates.

Experimental details: A $1.5 \mu\text{m}$ -thick heavily boron-doped diamond film deposited on a $3 \times 3 \text{mm}^2$ 1b diamond sample was used in this study. The boron density in the film is approximately $3 \times 10^{20} \text{cm}^{-3}$. Its square resistivity was measured by four probes measurement to be about $110 \Omega/\square$. The sample was primarily coated with a 200 nm heavily boron-doped silicon layer deposited in a plasma enhanced chemical vapour deposition (PECVD) reactor. It was then annealed in a 1200°C hot furnace for 10 s in order to produce a strong bonding SiC layer at the diamond/silicon interface. TLM patterns with 5, 10 and $50 \mu\text{m}$ -long Al contacts (500 nm thickness) were fabricated using inductively coupled plasma reactive ion etching and metal deposition by evaporation and lift-off, as shown in Fig. 1. Finally, the contacts were annealed in a 450°C furnace for 20 mn. On the other hand, Ti/Pt/Au (50nm/50nm/500nm) TLM patterns were fabricated, annealed to 500°C for 1 h, and I(V) measurements were performed so that comparison could be made.

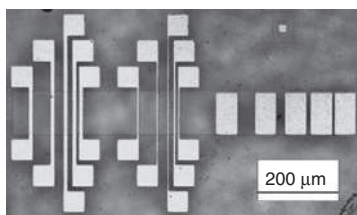


Fig. 1 Si/Al TLM patterns fabricated on diamond film

The mechanical behaviour of the coating films and the adherence properties of the contacts were investigated through nano-indentation and nano-scratching tests. Indentation tests with a three-sided pyramidal Berkovich tip were carried out using a commercial indentation system (NanoIndenter XP, MTS). The principle is to penetrate the nanometric tip into the deposited layers according to a load/unload cycle by applying a maximal load of 1600 mN. Once the loading–unloading curve was extracted, the values of hardness and elastic moduli were determined applying the procedure proposed by Oliver and Pharr [6] and assuming a Poisson’s ratio of 0.33 for the Si/Al sample and 0.42 for the Ti/Pt/Au sample [7]. This technique was chosen because it allows the properties to be determined directly inside the different coating layers avoiding macroscopic samples.

Nano-scratching tests were performed using the same apparatus equipped with a Berkovich diamond stylus (point-on orientation). Scratches with $500 \mu\text{m}$ lengths were made by translating a small sharp tip on the sample surface under linearly increasing load from 0.1 to 80 mN and horizontal speed of the sample table of $10 \mu\text{m s}^{-1}$. We then recorded the applied scratch load against the displacement into the surface. Associated with microscopic observations, these tests allowed evaluating the adherence between layers and substrate.

Results and discussion: Measurements carried out on the Ti/Pt/Au TLM structures indicated a contact resistivity $\rho_C = 2 \times 10^{-6} \Omega \cdot \text{cm}^2$. I(V) measurements performed on the Si/Al TLM test structures showed very good ohmic behaviour. Specific contact resistivity and square sheet resistivity are extracted from R(L) characteristics (Fig. 2). The contact resistivity and square resistivity are $\rho_C = 7 \times 10^{-6} \Omega \cdot \text{cm}^2$ and $R_{SH} = 105 \Omega/\square$, respectively. The transfer length was estimated to be $L_T = 2.3 \mu\text{m}$. In both cases, contacts showed no sensibility to temperature, which is due to the very high doping level of the diamond film.

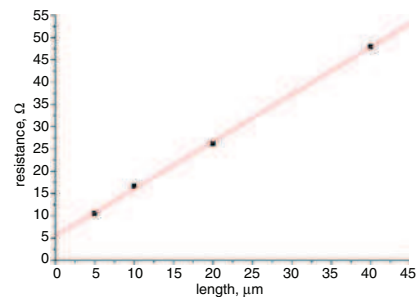


Fig. 2 Resistance against inter-contact spacing extracted from $50 \mu\text{m}$ length TLM

The nano-indentation test results of Si/Al coatings, presented in Fig. 3, were comparable to those of Ti/Pt/Au coatings. The small slope at the beginning of the loading–unloading curve is due to low stiffness and hardness of both types of coatings compared to diamond. The rigidities of the upper Au and Al layers are, respectively, $102 \pm 12 \text{ GPa}$ and $64 \pm 16 \text{ GPa}$. Their hardnesses are, respectively, $1 \pm 0.16 \text{ GPa}$ and $0.97 \pm 0.3 \text{ GPa}$. The obtained values are close to those indicated in [8, 9].

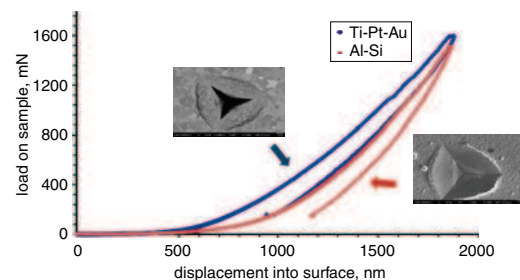


Fig. 3 Nano-indentation curves for Ti/Pt/Au and Si/Al coatings

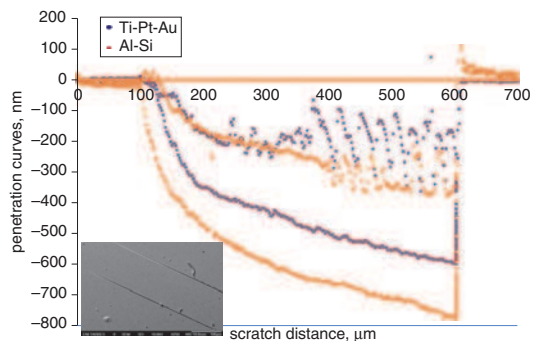


Fig. 4 Nano-scratching curves for Ti/Pt/Au and Si/Al coatings

The scratching profiles of the coatings are shown in Fig. 4. No cracking is noted in the bottom and at the edge of the stripe in spite of the

strong load applied. No interfacial delamination between the coating and the diamond substrate is observed. Thus, we can estimate that the layer adhesion is greater than their own cohesion.

Conclusion: New Si/Al contacts were fabricated and characterised using electrical and mechanical tests. Low contact resistivity and, good thermal stability, as well as excellent interfacial and tribological properties, were observed. This contact technology is well suited for use in power electronic applications. Moreover, a major benefit of this Si/Al technique is that it is compatible with classical silicon device packaging.

doi: 10.1049/el.2010.0803

G. Civrac and H. Schneider (*LAAS-CNRS, Université Toulouse, 7 avenue du colonel Roche, Toulouse F31077, France*)

E-mail: schneider@laas.fr

S. Msolli, J. Alexis and O. Dalverny (*Université de Toulouse, INP/ENIT, LGP, 47, avenue d'Azereix, Tarbes F-65013, France*)

References

- 1 Schneider, H., Sanchez, J.L., and Achard, J.: 'The diamond for power electronic devices'. Proc. 2005 European Conf. on Power Electronics and Applications, Dresden, Germany, p. 9
- 2 Werner, M., Johnston, C., Chalker, P.R., Romani, S., and Buckley-Golder, I.M.: 'Electrical characterisation of Al/Si ohmic contacts to heavily boron doped polycrystalline diamond films', *J. Appl. Phys.*, 1996, **79**, pp. 2535–2541
- 3 Tachibana, T., Williams, B.E., and Glass, J.T.: 'Correlation of the electrical properties of metal contacts on diamond films with the chemical nature of the metal-diamond interface. II. Titanium contacts: a carbide-forming metal', *Phys. Rev. B*, 1992, **45**, p. 11975
- 4 Chen, Y.G., Ogura, M., Yamasaki, S., and Okushi, H.: 'Ohmic contacts on p-type homoepitaxial diamond and their thermal stability', *Semicond. Sci. Technol.*, 2005, **20**, pp. 860–863
- 5 Yokoba, M., Koide, Y., Otsuki, A., Ako, F., Oku, T., and Murakami, M.: 'Carrier transport mechanism of ohmic contact to p-type diamond', *J. Appl. Phys.*, 1997, **81**, pp. 6815–6821
- 6 Oliver, W.C., and Pharr, G.M.: 'An improved technique for determining hardness and elastic modulus using load and displacement sensing indentation experiments', *J. Mater. Res.*, 1992, **7**, (6), pp. 1564–1583
- 7 Sakai, T., Hoshiai, S., and Nakamachi, E.: 'Processing and functional evaluation of titanium thin films for biomimetic micro actuator', *JSME Int. J. Ser. A*, 2005, **48**, pp. 451–457
- 8 Khan, M.K., Hainsworth, S.V., Fitzpatrick, M.E., and Edwards, L.: 'Application of the work of indentation approach for the characterisation of aluminium 2024-T351 and Al cladding by nanoindentation', *J. Mater. Sci.*, 2009, **44**, pp. 1006–1015
- 9 Verdyan, A., Soifer, Ya.M., and Azoulay, J.: 'Nano indentation inspection of the mechanical properties of gold nitride thin films', *J. Syst. Cybern. Inf.*, 2006, **5**, pp. 75–80