



HAL
open science

Autonomous, connected ultrasonic microsystem dedicated to monitoring the pathophysiology of the phonic and respiratory apparatus

Marwa Sawan, Hilal Reda, Nadine Saad, Sun Bin, Georges Nassar

► To cite this version:

Marwa Sawan, Hilal Reda, Nadine Saad, Sun Bin, Georges Nassar. Autonomous, connected ultrasonic microsystem dedicated to monitoring the pathophysiology of the phonic and respiratory apparatus. 3rd International Conference on Mathematical Models & Computational Techniques in Science & Engineering, MMCTSE 2020, Feb 2020, London, United Kingdom. pp.012001, 10.1088/1742-6596/1564/1/012001 . hal-03472318

HAL Id: hal-03472318

<https://hal.science/hal-03472318>

Submitted on 9 Dec 2021

HAL is a multi-disciplinary open access archive for the deposit and dissemination of scientific research documents, whether they are published or not. The documents may come from teaching and research institutions in France or abroad, or from public or private research centers.

L'archive ouverte pluridisciplinaire **HAL**, est destinée au dépôt et à la diffusion de documents scientifiques de niveau recherche, publiés ou non, émanant des établissements d'enseignement et de recherche français ou étrangers, des laboratoires publics ou privés.



Distributed under a Creative Commons Attribution 4.0 International License

Autonomous, connected ultrasonic microsystem dedicated to monitoring the pathophysiology of the phonic and respiratory apparatus

M Sawan¹, H Reda², N Saad³, S Bin⁴ and G Nassar¹

¹Institute of Electronics, Microelectronics and Nanotechnology, Opto-Acousto-Electronic Department, University Polytechnic Hauts-De-France, 59300 Valenciennes, France.

²Faculty of Engineering, Lebanese University, Hadath Campus, Beirut, Lebanon.

³Faculty of Science, Lebanese University, Fanar Campus, Beirut, Lebanon.

⁴College of Physics, Qingdao University, Qingdao 266071, P.R. China.

marwa.sawan@etu.uphf.fr

Abstract. This work tackles a combination of two technological fields: "integrated ultrasonic biosensors" and "connected modules" coupled with "Artificial Intelligence" algorithms to provide healthcare professionals with additional indices offering multidimensional information and a "Decision Support" tool. This device comprises a connected telemedical platform (PC or Smartphone) dedicated to the objective and remote assessment of pathophysiological states resulting from dysphonia of laryngeal origin or respiratory failure of inflammatory origin..

1. Introduction

Today, smart devices govern numerous aspects of our lives and some can even think for us. In all technological sectors, researchers are focusing on the design or optimization of operations to generate a new model of interaction between the various actors in society involved in the fields of health, comfort, and safety with a very low risk of infection [1–3].

Far from replacing the role of professionals, embedded electronic systems strengthen the links between scientists, patients, and caregivers. The practice of "continuous monitoring" reassures and actively involves individuals in their health. The study of interactions between sensors and living things goes far beyond biological and health impact studies. Continuous monitoring and data collection are often complicated and only a few restrictive intrusive devices (e.g. wire probes) allow continuous monitoring of a person's pathophysiology. Practices are often conditioned by health constraints, the morphology and/or age of the patient, or both, as in the case of the situation linked to the scourge of the Covid-19 epidemic. It is in this context that this paper focuses on the development of a suitable, miniaturized, autonomous, and connected prevention and diagnosis system. This system will meet the requirements of both current health constraints and increasing demand from professionals who are looking for prevention tools with a real-time, remote response.

The voice is the vector of our identity and witness of our emotions. In the current context, assessing the health of the phonatory (respiratory) apparatus and the possible causes of its degradation through different vocal indices is more than ever vital to detect fine variations in the frequency imprints, which could be an indicator of a potential disease or viral infection.

This proposal aims to implement a connected telemedical platform (Smartphone) dedicated to the objective and remote assessment of pathophysiological states resulting from dysphonia of laryngeal origin or respiratory failure of inflammatory origin. This platform primarily considers biocompatible vibration sensors for passive listening to the laryngeal apparatus. The combination of two technological



fields: "integrated micro-sensors" and "connected modules" coupled with "Artificial Intelligence" algorithms will provide health professionals with additional indices offering multidimensional information and a "Decision Support" tool for assessing the pathophysiological condition representative of the symptoms identified. Our goal is:

- ✓ To make the individual reactive through their contribution by providing them with the means to be more autonomous with new generations of connected wireless systems distributed in the desired environment.
- ✓ To help the development of Decision Support tools by "listening to the body" with the aim of implementing an adjustment protocol according to the risks and hazards (nature and positioning of sensors, connection failure, etc.)
- ✓ To adapt smart mobility and therefore ensure maximum security for the individual and the information communicated
- ✓ To overcome difficulties regarding coordination between professionals by developing systems of analysis and technological advances to facilitate understanding of the data and consequently adopt a common vision (common language).

2. Physical concept

2.1. Tissue interfaces

This part of the work has contributed to the evolution and development of techniques relating to the study, design, and implementation of miniaturized, autonomous acoustic/ultrasonic systems to ensure maximum contact with the skin [4-7]. Optimizing the properties of the Sensor/Tissue interface will allow better transmission of the physiological information in laryngitis dysphonia.

To quantify the response of the skin, a micromechanical model based on a finite element homogenization method was used under both static and harmonic applied loads.

The creep function associated with a pure normal stress was computed by finite element simulation of a two-dimensional Kelvin-Voigt (K-V) viscoelastic model. The general constitutive law for 2D K-V is given by:

$$\begin{bmatrix} \sigma_{xx} \\ \sigma_{yy} \\ \sigma_{xy} \end{bmatrix} = \begin{pmatrix} \lambda + 2\mu & \mu & 0 \\ \mu & \lambda + 2\mu & 0 \\ 0 & 0 & 2\mu \end{pmatrix} \begin{pmatrix} \varepsilon_{xx} \\ \varepsilon_{yy} \\ \varepsilon_{xy} \end{pmatrix} + \begin{pmatrix} \eta_v + 2\eta_s & \eta_s & 0 \\ \eta_s & \eta_v + 2\eta_s & 0 \\ 0 & 0 & 2\eta_s \end{pmatrix} \begin{pmatrix} \dot{\varepsilon}_{xx} \\ \dot{\varepsilon}_{yy} \\ \dot{\varepsilon}_{xy} \end{pmatrix} \quad (1)$$

Where λ, μ are the Lamé coefficients, and η_v, η_s are the volume and shear viscosity, respectively.

When applying constant vertical shear stress $\sigma = [0 \ \sigma_{yy}^0 = cte \ 0]^T$ as shown in Fig.1, the creep functions under vertical constant load will be as written in equation (2).

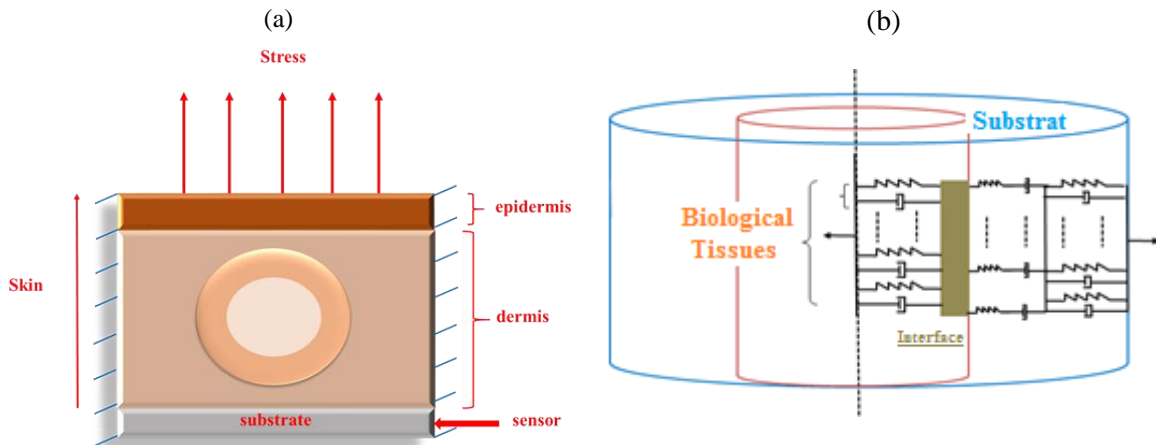


Figure 1. Vertical stress applied to the corresponding tissue unit; a) Finite element model; b) Mechanical generalized Kelvin-Voigt model.

$$\begin{aligned}\varepsilon_{xx} &= -\frac{\sigma_{yy}}{4(\lambda + \mu)} e^{-\frac{(\lambda + \mu)t}{\eta_v + \eta_s}} + \frac{\sigma_{yy}}{4(\mu)} e^{-\frac{(\mu)t}{\eta_s}} - \frac{\sigma_{yy}}{4\mu(\lambda + \mu)}; \\ \varepsilon_{yy} &= -\frac{\sigma_{yy}}{4(\lambda + \mu)} e^{-\frac{(\lambda + \mu)t}{\eta_v + \eta_s}} - \frac{\sigma_{yy}}{4(\mu)} e^{-\frac{(\mu)t}{\eta_s}} + \frac{(\lambda + 2\mu)\sigma_{yy}}{4\mu(\lambda + \mu)}; \varepsilon_{xy} = 0\end{aligned}\quad (2)$$

At $t \rightarrow \infty$, the deformation tends to horizontal asymptote of value $\frac{(\lambda + 2\mu)\sigma_{yy}}{4\mu(\lambda + \mu)}$ at time $t = 5\tau$. We present the calculation of the first Lamé coefficient λ from the value of the maximum deformation according to equation 2. Then, from the relation between λ and μ given by $\frac{2\mu\nu}{(1-2\nu)}$, we can calculate the effective Poisson's ratio. The velocity of deformation is a function dependent on time. During the execution stage, the user must define an initial constraint, a step increment of time, as well as the characteristic of the material used (Young's modulus, Poisson's ratio, viscosity). Boundary conditions reflect the definition of the problem. In the calculation of nodal solutions, the software solves for the unknown displacement values with the given boundary conditions. The deformation can be calculated from the displacement history and the time step size. From the results of the Free FEM, the deformation was plotted as a function of time to characterize the creep response at short time.

In dynamic mode, we take a general 2D viscoelastic medium of KV under a normal harmonic stress $= \sigma_0 e^{i\omega t}$, where ω is the frequency. The general constitutive law for the 2D KV is given by a coupling of the rigidity and viscosity matrices:

$$\sigma(y, t) = \mathbf{a}(y)\varepsilon(y, t) + \mathbf{b}(y)\frac{\partial}{\partial t}\varepsilon(y, t) \quad (3)$$

Where $\mathbf{a}(y)$ is the rigidity matrix, $\mathbf{b}(y)$ is the viscosity matrix. They represent the harmonic elastic behavior of the effective viscoelastic medium. Applying constant stress σ_0 and changing the frequency, we obtain the deformation as a function of the frequency.

2.2. Strain profile

To validate the concept, this part of study uses known physical properties of the sensor (composite) and a skin cell formed of an epidermis and a dermis.

In the model, the cell strain has an area of 12 m² and two spheres of radius 4 mm and 3 mm, respectively. The skin consists of a single incompressible homogeneous layer with linear viscoelastic, isotropic

behavior. The study is carried out using KV model. A vertical normal stress is applied to the cell strain as shown in Fig. 1.

Table 1 shows the mechanical properties of substrate, epidermis, dermis composed of collagens, collamod, and membrane.

Table 1. The mechanical properties of substrate

| | E (MPa) | η (MPa.s) | ρ |
|-----------|----------------|----------------------------------|--------------------------|
| Epidermis | 0.06 | 0 | 0.3 |
| Collagens | 0.05 | 5000 | 0.4 |
| Collamod | 0.05 | 5000 | 0.39 |
| Membrane | 0.005 | 2 | 0.4 |
| composite | 94.103 | 0.4 | 0 |

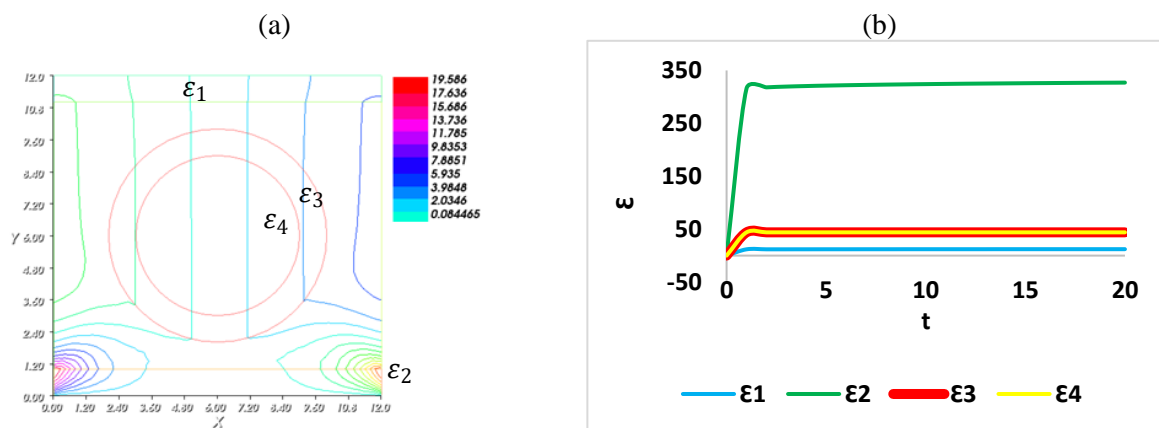


Figure 2. Variation of the (a) displacement along the y-axis as a function of time showing the deformation at regions and (b) the deformation as a function of time for the four regions at $t=20$ seconds and $\sigma=0.6$ MPa.

The numerical approach (Free FEM) shows the internal deformations in different regions: ε_1 between the interface of the dermis and the epidermis, ε_2 between the interface sensor-skin cell, ε_3 nodule surface, and ε_4 the hole. As for the boundary conditions, a vertical stress is applied to the entire cell from region 3 with the interface of region 1 along the x and y axes. Figure 2 shows the deformation at different regions for $t=20$ seconds and a normal stress of $\sigma = 0.6$ MPa.

These results show that there is a maximum deformation on the cell strain-substrate interface considered as a sensor. Even with a maximum stress, the maximum deformation remains in the elastic region. Thus, we can tear the skin without having any distortion inside. The variation of the deformation in function of time for the four regions is drawn in Figure 2.

2.3. Formalism approach

To supplement the phenomenon of Wave/Biological tissue interactions and consequently adjust the system parameters dedicated to prevention or diagnosis, a method modeling the propagation of ultrasonic waves in multilayer biological tissues was developed from a formalism combining the physical and mechanical characteristics of the interfaces (boundary conditions) between each of the layers shown in Fig. 3.

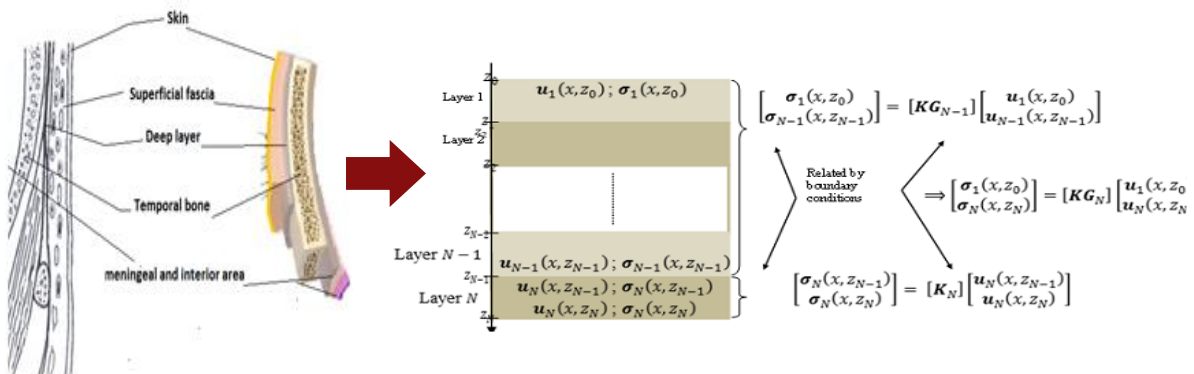


Figure 3. Biological tissues according to a multilayer formalism [8]

2.4. Nanowire vibrating sensor

Based on the work that has been carried out, this part consisted in transposing an existing collar comprising PZT elements implanted discreetly in its mass into a globally active collar by exploiting the vibratory mechanical properties of a nanowire electroactive polymer.

The curves in figure 4 show the advantage of doping electroactive polymers such as PLA and/or PVDF with BaTiO₃ and GNR components on the flexibility and electrical conversion (sensitivity) of these types of sensors [9-12].

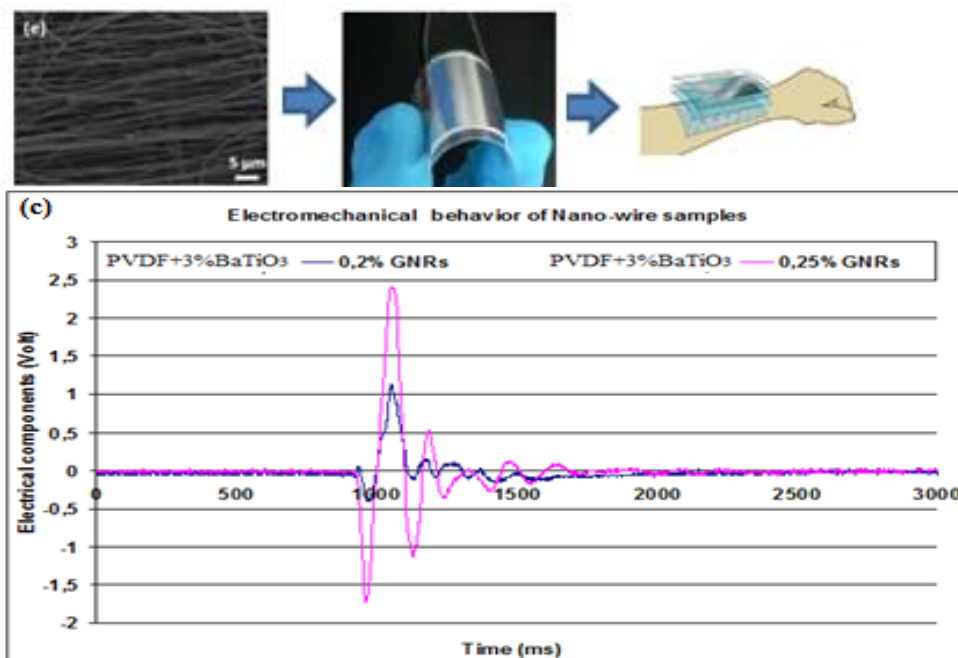


Figure 4. Design and characterization of sensors based on flexible, optimized electroactive polymers

2.5. Preventing passive listening microsystem

It is a diagnostic device composed of a network of electroactive nanowire sensors covering a wide resonance frequency range (0.1 KHz - 2 MHz) wired to a local CPU unit dedicated to coding, control, and analysis. This unit is coupled to a telemedical platform via a Wireless protocol for the objective evaluation and monitoring of chronic laryngeal dysphonia by means of a spectro-temporal analysis of the vibration of the vocal cords (Fig. 5). This non-invasive, non-intrusive protocol does not require the patient's physical cooperation [13-15].

The wave emanating from the mechanism of the laryngeal apparatus is transmitted through a multilayer tissue support before reception by vibratory sensors distributed adequately around the patient's neck. A matrix formalism introducing the physical properties of multilayer tissues (muscle, fat, skin) was used to determine the optimal position of the sensors. The results of the model provide the optimal dimensional parameters for pathophysiological exploration and this for a field width of 0 to 70° and a frequency band of 2 KHz (vibrational band of the vocal cords).

2.6. Modalities of applications and analyses

The experimental version of the intelligent collar is equipped with a bus connecting the micro-receivers to the central control unit. Signals from four different categories of one hundred patients (average age of 53 years, 20% women): healthy subjects and subjects with larynx cancer, inflammatory polyps, and chronic laryngitis, were classified after analysis by an algorithm exploiting the Time-Frequency parameters of the crossed signals (Fig. 5). The recognition rate of this approach was over 90%.

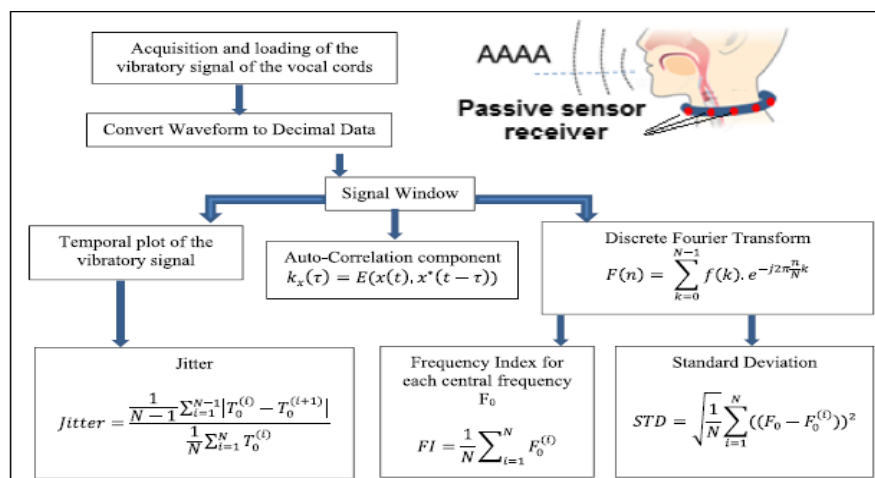


Figure 5. I Schematic illustration of the passive listening system showing the principle of setting up the multi-receiver device on a collar adjusted to the patient's neck and the modalities of signal processing.

The powerful information and communication techniques currently available have allowed the gradual integration of a multitude of technical platforms to form a versatile, adaptive, and scalable medical platform by transforming a computer terminal into a real physiological monitoring station in the domain of e-Health. Figure 6 shows the exchange of information over the Internet TCP / IP protocol between the patient and the doctor.

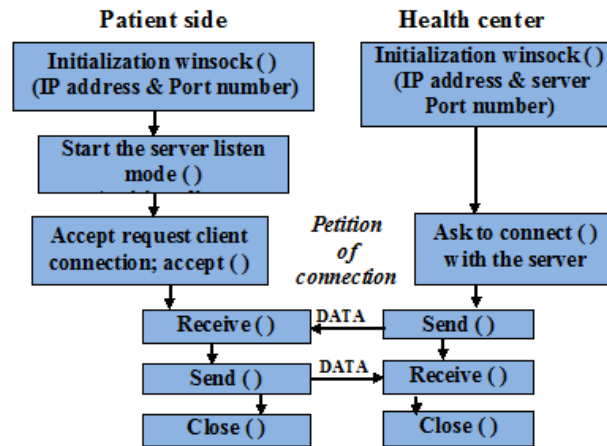


Figure 6. “Host”/“Target” architecture

The powerful information and communication techniques currently available have allowed the gradual integration of a multitude of technical platforms to form a versatile, adaptive, and scalable medical platform by transforming a computer terminal into a real physiological monitoring station in the domain of e-Health. Figure 7 shows the exchange of information over the Internet TCP / IP protocol between the patient and the doctor.

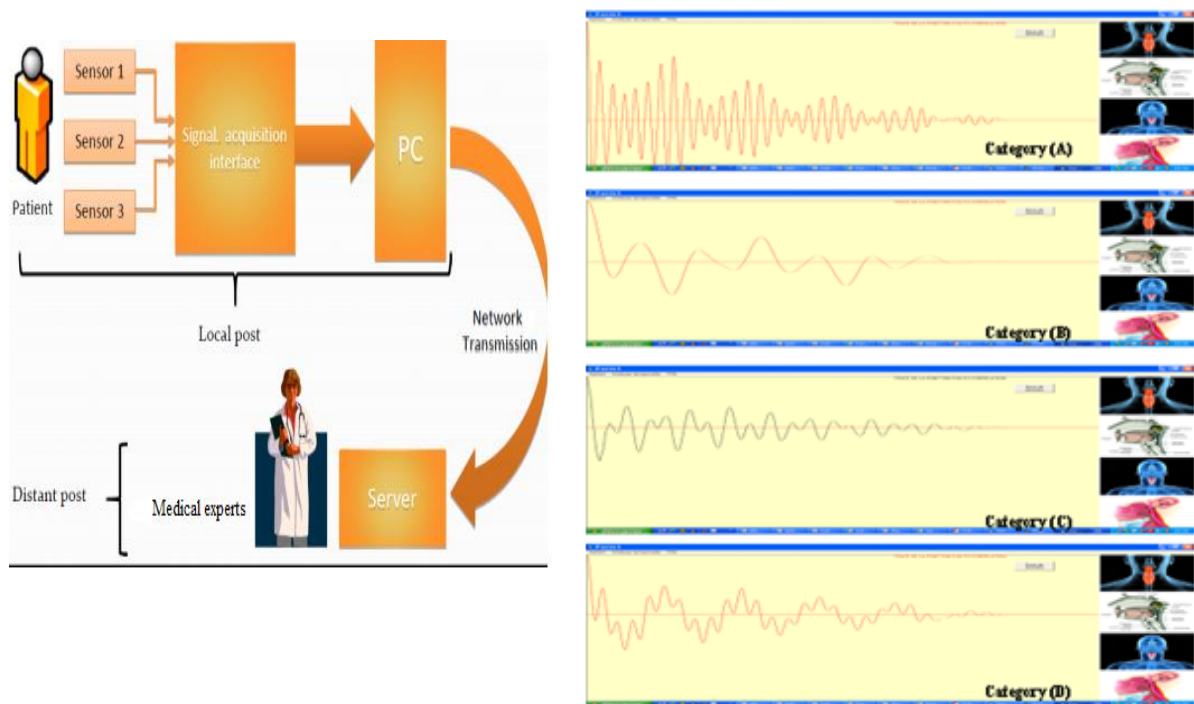


Figure 7. Pathophysiological identification showing the four distinct pathophysiological states: (A) healthy patient, (B) cancer status, (C) inflammatory polyp, and (D) chronic laryngitis.

3. Discussion and knowledge

This flexible “Hard” (Fig.8a) and “Soft” (Fig. 8b) architecture combined with an artificial intelligence unit and a decision support unit could help prevent the systematic referral of patients to various specialized departments to carry out examinations and thus save precious time for both patients and

physicians and, if necessary, could allow almost unlimited integration of additional examinations. These could include **ECG** (electrocardiograms), **PTG**, representative of respiratory function and respiratory muscular function, **PPG**, representative of circulo-respiratory function.

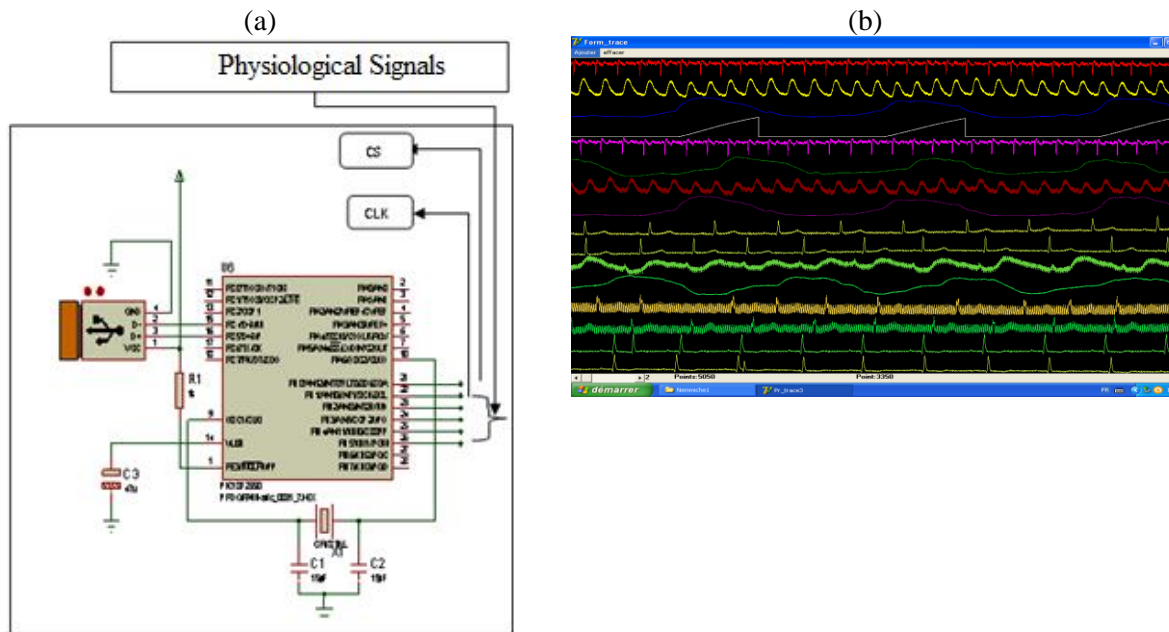


Figure 8. (a) “Hard” circuit ensuring the connection of the host to the peripherals via a USB terminal (local) and (b) “Soft” configuration showing the display of 16 distinct physiological signals obtained from a patient and transmitted remotely to a “Target” terminal of a healthcare professional (WAV transformation into HEXADECIMAL coded on 16 bits with a sampling frequency of 8 KHZ).

4. Conclusions

In this paper, we investigated the behavior of the phonatory and respiratory apparatus using an intelligent collar equipped with nanowire electroactive sensors coupled with an artificial intelligence algorithm. A micromechanical description based on a mathematical formulation was employed to evaluate the biomechanical behavior of the biological tissues. Based on this study, the most appropriate biomechanical factors were determined and quantified to help optimize the sensor/biological tissue interface conditions.

The coupling of the vibration system to a remote data transmission unit allowed the implementation of a telemedical device ensuring the remote monitoring of a patient by the physician via a secure TCP-IP communication protocol.

References

- [1] Donlan R M and Costerton J W 2001 *Clin Microbiol Rev* **15** 167–93.
- [2] Arciola C R, Cenni E, Caramzza R and Pizzoferrato A 1995 *Biomaterials* **25** 681–4.
- [3] Millsap K W, Bos R, Van Der Mei H C and Busscher H J 2001 *Anton Leeuw* **79** 337–43.
- [4] Huttmacher D W 2000 *The Biomaterials: Silver Jubilee Compendium* 175–89.
- [5] Verran J and Boyd R D 2001 *Biofouling* **17** 59–71.
- [6] Zinger O *et al.* 2004 *Biomaterials* **25**(14) 2695–711.
- [7] Lange R, Lüthen F, Beck U, Rychly J, Baumann A and Nebe B 2002 *Biomol Eng* **19** 255–61.
- [8] Sandrine Matta 2018 *INSA – HdeF* Acoustic wave propagation in a multilayer composed of fluid, solid, and porous viscoelastic layer.
- [9] Sun B, Long YZ, Chen ZJ, Liu SH, Zhang HD, Zhang JC and Han WP 2014 *Journal of Materials*

- Chemistry C* **2** 1209–19.
- [10] Sun B, Jiang XJ, Zhang S, Zhang JC, Li YF, You QZ and Long YZ 2015 *Journal of Materials Chemistry B* **3** 5389–410.
- [11] Shi K, Sun B, Huang X and Jiang P 2018 *Nano Energy* **52** 153–62.
- [12] Guo W, Tan C, Shi K, Li J, Wang XX, Sun B, Huang X, Long YZ and Jiang P 2018 *Nanoscale* **10** 17751–60.
- [13] Nemnich A, Benabdallah M, Hamlil M, Rerbal S and Nassar G 2015 *International Journal of Engineering & Technology* **15**(3) 20–7.
- [14] Sandrine Matta, Daher Diab, Nadine Saad3, Dany Ishac, Georges Nassar 2020 *Review of Scientific Instruments* **91**, 015115- 1-9
- [15] Fayssal Hamza Cherif, Lotfi Hamza Cherif, Mohammed Benabdellah, Georges Nassar 2020 *Review of Scientific Instruments* **91** 035110 1-7.