



HAL
open science

Crystal Structure, Microstructure and Electronic Properties of a Newly Discovered Ternary Phase in the Al-Cr-Sc System

Monika Kušter, Anton Meden, Boštjan Markoli, Zoran Samardžija, Maja Vončina, Pascal Boulet, Émilie Gaudry, Jean-Marie Dubois, Sašo Šturm

► **To cite this version:**

Monika Kušter, Anton Meden, Boštjan Markoli, Zoran Samardžija, Maja Vončina, et al.. Crystal Structure, Microstructure and Electronic Properties of a Newly Discovered Ternary Phase in the Al-Cr-Sc System. *Crystals*, 2021, This article belongs to the Special Issue Crystallography of Structural Phase Transformations (Volume II), 11 (12), pp.1535. 10.3390/cryst11121535 . hal-03472061

HAL Id: hal-03472061

<https://hal.science/hal-03472061>


Submitted on 9 Dec 2021

HAL is a multi-disciplinary open access archive for the deposit and dissemination of scientific research documents, whether they are published or not. The documents may come from teaching and research institutions in France or abroad, or from public or private research centers.

L'archive ouverte pluridisciplinaire **HAL**, est destinée au dépôt et à la diffusion de documents scientifiques de niveau recherche, publiés ou non, émanant des établissements d'enseignement et de recherche français ou étrangers, des laboratoires publics ou privés.

Article

Crystal Structure, Microstructure and Electronic Properties of a Newly Discovered Ternary Phase in the Al-Cr-Sc System

Monika Kušter^{1,2}, Anton Meden³, Boštjan Markoli⁴, Zoran Samardžija¹, Maja Vončina⁴, Pascal Boulet⁵ ,
Émilie Gaudry⁵, Jean-Marie Dubois^{1,2,5} and Sašo Šturm^{1,2,*}

- ¹ Department for Nanostructured Materials, Jožef Stefan Institute, Jamova Cesta 39, 1000 Ljubljana, Slovenia; monika.kuster@ijs.si (M.K.); zoran.samardzija@ijs.si (Z.S.); jean-marie.dubois@ijs.si (J.-M.D.)
- ² Jožef Stefan International Postgraduate School, Jožef Stefan Institute, Jamova Cesta 39, 1000 Ljubljana, Slovenia
- ³ Faculty of Chemistry and Chemical Technology, University of Ljubljana, Večna Pot 113, 1000 Ljubljana, Slovenia; Anton.Meden@fkkt.uni-lj.si
- ⁴ Department of Materials and Metallurgy, Faculty of Natural Sciences and Engineering, University of Ljubljana, Aškerčeva Cesta 12, 1000 Ljubljana, Slovenia; bostjan.markoli@ntf.uni-lj.si (B.M.); maja.voncina@ntf.uni-lj.si (M.V.)
- ⁵ Institut Jean Lamour, UMR 7198 CNRS, Université de Lorraine, 2 Allée André Guinier, BP 50840, CEDEX, 54011 Nancy, France; p.boulet@univ-lorraine.fr (P.B.); emilie.gaudry@univ-lorraine.fr (É.G.)
- * Correspondence: saso.sturm@ijs.si; Tel.: +386-1-477-3418; Fax: +386-1-477-3221



Citation: Kušter, M.; Meden, A.; Markoli, B.; Samardžija, Z.; Vončina, M.; Boulet, P.; Gaudry, É.; Dubois, J.-M.; Šturm, S. Crystal Structure, Microstructure and Electronic Properties of a Newly Discovered Ternary Phase in the Al-Cr-Sc System. *Crystals* **2021**, *11*, 1535. <https://doi.org/10.3390/cryst11121535>

Academic Editor: Hongbin Bei

Received: 11 November 2021

Accepted: 3 December 2021

Published: 9 December 2021

Publisher's Note: MDPI stays neutral with regard to jurisdictional claims in published maps and institutional affiliations.



Copyright: © 2021 by the authors. Licensee MDPI, Basel, Switzerland. This article is an open access article distributed under the terms and conditions of the Creative Commons Attribution (CC BY) license (<https://creativecommons.org/licenses/by/4.0/>).

Abstract: This study focused on the crystal and electronic structures of a newly discovered phase in the Al-Cr-Sc system. The latter two species do not mix in a binary alloy, but can be alloyed with aluminium in the vicinity of the $\text{Al}_{2-x}\text{Cr}_x\text{Sc}$ composition, where $0.3 < x < 0.5$. After preparation of the pure constituents via arc melting, high-temperature annealing at 990 °C for 240 h was required to achieve full mixing of the elements. A detailed characterisation of the crystal structure, alloy microstructure and stability was obtained using single-crystal X-ray diffraction (SCXRD) and powder X-ray diffraction (PXRD), in addition to transmission electron microscopy (TEM), especially in high-angle annular dark-field scanning transmission electron microscopy (HAADF-STEM) mode, scanning electron microscopy (SEM) with energy-dispersive X-ray spectroscopy (EDXS) and differential scanning calorimetry (DSC) measurements. The crystal structure was refined to a hexagonal unit cell of the MgZn_2 type, space group no. 194, $P6_3/mmc$, which belongs to the Laves phases family. Special attention was paid to the occupancy of the crystallographic sites that were filled by both Cr and Al atoms. First-principles calculations based on the density functional theory (DFT) were performed to investigate the electronic structure of this ternary phase. The total density of states (DOS) exhibited a pronounced sp character, where a shallow pseudo-gap was visible 0.5 eV below the Fermi energy that brought a small but definite contribution to the thermodynamic stability of the compound.

Keywords: Al-Cr-Sc system; Laves phase; crystal structure refinement; HAADF-STEM

1. Introduction

With the only exception of the binary Cd-Ca and Zn-Sc systems [1], all stable metallic quasicrystals discovered so far belong to a ternary (or multinary) system in which two of the constituents are mutually immiscible but can be combined with a third species. This fact has led to the concept of push-pull alloys (PPAs), which were introduced a few years ago by one of us and his late colleagues, E. Belin-Ferré and A.P. Tsai [2]. The motivation behind the present study was to exemplify the case of PPA with the study of another typical alloy, namely, Al-Cr-Sc, which, to date, has received little attention. Of specific relevance to the present aim is the formation, or not, of a pseudo-gap at the Fermi energy that is recognised as one of the main features of the total density of states (DOS) characteristic

of quasicrystals and of the broad family of complex metallic alloys (CMA) that are often found to accompany quasicrystals in the same systems.

A PPA is a ternary system with a generic composition $A_xB_yC_z$ ($x + y + z = 100$ at%) that is characterised by two important features: (i) the binary components A-B (Al-Cr) and A-C (Al-Sc) form well-defined compounds and the interactions of the constituents are attractive (i.e., correspond to negative formation enthalpies) and (ii) the B-C (Cr-Sc) components do not form a compound or B and C are immiscible, i.e., the formation enthalpy of the B-C compounds is positive (or close to 0). Alternatively, a PPA can be understood as a system where the formation enthalpies of pairs of atoms have comparatively large differences. As mentioned above, it was observed that such systems are prone to favour the occurrence of complex atomic arrangements and occasionally lead to the formation of icosahedral clusters that can order themselves in the form of icosahedral quasicrystals.

The Al-Cr-Sc system was already studied by our group [3]. We pointed out the existence of a tetragonal crystal structure in the vicinity of the Al_8Cr_4Sc generic composition. Independently, Radziejowski et al. [4] reported the existence of a new ternary phase in a different composition region around the 1:1:1 equiatomic ratio. Here, we shed new light on the occupancy of the Al/Cr site in the crystal structure that forms in this system in a region that is centred on the $Al_{60-40}Cr_{40-14}Sc_{35-20}$ (at%) composition field (see details in the next section), and on its physical properties, especially the DOS. Chromium [5] and scandium [6] belong to the series of 3d transition elements, which are well known to form numerous crystalline compounds when alloyed separately with aluminium. Some of these compounds exhibit a certain degree of complexity and crystal unit cells that can contain tens, if not hundreds, of atoms [7]. This is related to the findings of Mizutani et al., who investigated the roots of stability in a variety of binary compounds, based on *ab initio* computations [8], and demonstrated to what extent the Fermi surface–Brillouin zone interaction determines the crystal structure selection, which implies that its composition corresponds to a precise electron concentration ratio. This quantity is expressed as the number of valence electrons per atom, i.e., e/a (el/at) [9]. Special care was devoted to finding the correct values for the e/a ratio and the atomic radius of the constituent atoms. The average metallic radius (AMR) is equal to 143.2 pm for Al, 128.2 pm for Cr and 164.1 pm for Sc [10], while the e/a ratio, according to Mizutani and Sato [11], are e/a (Al) = 3.01 el/at, e/a (Cr) = 0.92 el/at and e/a (Sc) = 1.3 el/at. As a light rare earth element, Sc is usually considered to be trivalent. However, in a metallic environment like in the present context, its valence has to be reconsidered, as shown by Mizutani et al. [8]. The composition-averaged optimum value of e/a that favours complexity in ternary systems is found around 2.2 el/at [11], which was very well verified experimentally in a series of Al-based CMAs with an optimum of $e/a = 2.2$ el/at corresponding to the Al-Cu-Fe icosahedral quasicrystal [12].

The compositions in the $Al_xCr_ySc_z$ system that can lead to the optimal value of e/a therefore obey the following equation (since $x + y + z = 100$ at%): $e/a = 3.01(1 - y - z)/100 + 0.92y/100 + 1.3z/100 = 2.2$ el/at. Our goal was thus to explore in detail, using different experimental techniques, the phase equilibrium that occurs in the composition region corresponding to the above equation. This region is essentially embedded in the Al-rich corner of the Al-Cr-Sc system. Our main aim was to determine the occupancy ratio of the Al/Cr in the investigated ternary phase that occurs in this system.

A series of samples with different nominal compositions that are representative of the region of interest were produced and additionally annealed in evacuated quartz ampoules at 990 °C for 240 h to achieve full mixing of the constituents. The crystal structure was investigated using powder X-ray diffraction (PXRD), scanning electron microscopy (SEM), differential scanning calorimetry (DSC), single-crystal X-ray diffraction and transmission electron microscopy (TEM). Special focus was placed on the Rietveld refinement technique and single-crystal diffraction to determine the exact positions of the atoms. The theoretical approach involved density functional theory (DFT) calculations.

2. Materials and Methods

2.1. Sample Preparation

For the investigations, three alloys with different nominal compositions were prepared with a total weight of 2 g using the following raw elements: aluminium 99.9 wt%, chromium 99.995 wt% and scandium 99.9 wt%. The constituents were alloyed in an arc-melting furnace using a water-cooled copper crucible in a pure argon atmosphere. Titanium was used as an oxygen-getter material. The alloys were repeatedly melted with multiple turning and melting cycles to improve the homogeneity. The final weight loss was less than 1 wt% after the melting cycles. The range of concentrations of Al, Cr and Sc was chosen to establish the size of the region of primary crystallisation of the intermetallic phases. Three different nominal compositions were chosen (Table 1), giving a range of targeted e/a values from 1.88 to 2.22 e/a in which the formation of intermetallic phases was expected. The samples were subsequently annealed at 990 °C for 240 h. Each melted alloy button was placed in an Al_2O_3 crucible and sealed under a vacuum of 1×10^{-5} mbar in a quartz glass tube together with an ingot of titanium to minimise the oxidation during the heat treatment because of the very high affinity of scandium for oxygen. After annealing, the samples were quenched in liquid nitrogen in order to prevent interaction with oxygen from the atmosphere, mimicking the method used in [13]. We are well aware that gaseous nitrogen develops around the container, which hinders very fast cooling, but this was nevertheless adequate to preserve the integrity of the quartz container and prevent oxidation (which quenching in water would not allow). Yet, full thermodynamic equilibrium of the high-temperature range is hard to keep down to room temperature with this method as the following study will show.

For all three specimens, Al was the most abundant constituent and the compositions were found at the boundary of the Al-rich corner. Figure 1 presents a sketch of the location of the samples in a ternary composition field together with the crystalline phases that were relevant to the present study.

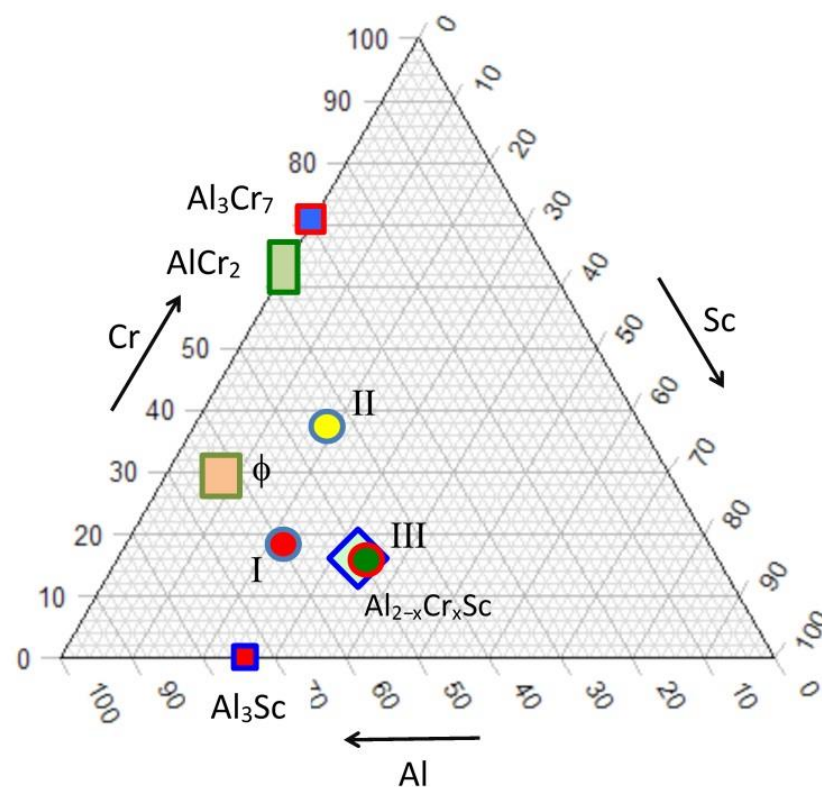


Figure 1. Location of the compositions of the three samples (circles) and crystalline compounds (squares) that were relevant to the present study in a ternary Al-Cr-Sc composition field.

Table 1. Nominal compositions of the three samples. The target value of e/a is also given.

Sample	Al (at%)	Cr (at%)	Sc (at%)	Target e/a (el/at)
I	58.2	19.4	22.4	2.2
II	42.7	38.6	18.7	1.9
III	52.0	14.0	34.0	2.1

2.2. Experimental Techniques

A JEOL JSM-7600F field emission gun scanning electron microscope (SEM) that was equipped with energy-dispersive X-ray spectroscopy (EDXS) capability was used to characterise the microstructures of the prepared samples. The analyses were performed using the Oxford Instruments INCA Microanalysis Suite with a X-Max 20 SDD-EDS detector. The average compositions of the alloys were measured with a 16 kV accelerating voltage within several different regions of the specimen's cross-sectioned polished areas. This accelerating voltage was selected as the optimum because it reduces absorption effects and improves spatial resolution compared to the usually used 20 kV voltage. Samples that were used for the microstructural characterisation were prepared using standard metallographic procedures for aluminium alloys.

The X-ray powder diffraction (PXRD, Almelo, The Netherlands) data were collected with a Malvern Panalytical Empyrean X-ray diffractometer using a non-monochromated X-ray beam that was produced by a Cu-target tube ($\lambda K\alpha_1 = 0.15406$ nm and $\lambda K\alpha_2 = 0.154439$ nm). The measurements were collected in the Bragg–Brentano geometry using a divergence slit of 0.02 rad in a range $10^\circ < 2\Theta < 140^\circ$ using a step size of 0.0263° and with a counting time of 1 s per step. The PXRD data were compared using HighScore Plus XRD Analysis Software. The Rietveld refinement was performed using TOPAS V2.1 software (Bruker-AXS, Karlsruhe, Germany) [14].

A differential scanning calorimetry (DSC, Netzsch Group, Selb, Germany) analysis of arc-melted sample III was carried out in a protective argon atmosphere using the Jupiter 449c Netzsch apparatus in the range 800–1500 °C with a heating and cooling rate of 3 °C/min.

Single-crystal X-ray diffraction (SCXRD, Karlsruhe, Germany) at room temperature was performed on a pure intermetallic phase sample that was mechanically extracted by grinding. The SCXRD data were collected on a Bruker Kappa Apex II diffractometer equipped with a mirror monochromator and a Mo-K α 1 μ S ($\lambda = 0.71073$ Å) X-ray source. The Apex2 program package was used for the cell refinements and data reduction. The structure was identified using direct methods and refined with the SHELXL-2014 program. A semi-empirical absorption correction was applied to the data using SADABS (Program for Empirical Absorption Correction of Area Detector Data) software [15,16].

For the atomic-scale structural analysis of the Al-Cr-Sc ternary phase, a thin electron-transparent lamella was prepared with a focused ion beam scanning electron microscope, FIB-SEM (HeliosNanolab 650, FEI, Eindhoven, The Netherlands). The selected area electron diffraction (SAED) analysis combined with the high-angle annular dark-field scanning transmission electron microscopy (HAADF-STEM) was performed by applying a C_s -aberration-corrected probe (JEM-ARM 200CF; JEOL, Tokyo, Japan) that was operated at 200 keV, with a spatial resolution in scanning transmission electron microscopy (STEM) imaging mode of 0.08 nm. The convergence and collection semi-angles for the probe and the HAADF detector were set to 24 mrad and 45–180 mrad, respectively. Quantitative image analysis was performed by matching the experimental and calculated HAADF-STEM images, which were based on the given experimentally determined electron-optical parameters and the refined Al-Cr-Sc hexagonal ternary-phase crystal structure using quantitative scanning transmission electron microscopy (QSTEM) open-source software [17]. The high-intensity regions of the atomically resolved HAADF-STEM images were directly correlated with the projected atomic columns, reflecting their average atomic number (Z contrast), which made the reconstruction of the underlying crystal structure relatively straightforward.

2.3. Computational Details

Calculations based on DFT were performed with the Vienna ab initio simulation package (VASP) [18–21]. The interactions between the valence electrons and the ionic core were described using the projector-augmented wave (PAW) method [22,23], and the calculations were performed with the spin-polarised generalised gradient approximation (GGA-PBE) [24]. A plane-wave basis set for the electron wavefunctions with a cut-off energy of 370 eV was used. Integrations in the Brillouin zone were performed using a $23 \times 23 \times 15$ k-grid that was generated according to the Monkhorst–Pack scheme. The structures were relaxed until the atomic forces were less than 0.02 eV.

3. Results and Discussion

3.1. Multi-Grained Materials

Figure 2 shows the PXRD patterns of samples I, II and III after being annealed at 990 °C for 240 h. The intensities are drawn on a logarithmic scale to enhance the weakest peaks. Therefore, the background noise, mostly visible at high Bragg angles, exhibited a relative increase when relating it to the adjacent low-intensity peaks. The PXRD patterns revealed the presence of five different intermetallic compounds. All the diffraction peaks were sharply defined Bragg peaks. They were deconvoluted into separated patterns and subsequently indexed using the PDF4+ database. The AlCr_2 compound crystallises in the MoSi_2 tetragonal structure type with space group $I4/mmm$ and lattice parameters $a = 0.29984$ nm and $c = 0.86303$ nm [25]. Al_3Sc has the space group $Pm\bar{3}m$, with a cubic structure and a lattice parameter $a = 0.41030$ nm [26]. Al_3Cr_7 has the space group $Im\bar{3}m$ and a lattice parameter $a = 0.30000$ nm [27]. The $\varphi\text{-Al}_8\text{Cr}_4\text{Sc}$ ternary phase [3] belongs to the $\text{Al}_8\text{Cr}_4\text{RE}$ prototype crystal structure, which crystallises in the tetragonal structure type with space group $I4/mmm$ and lattice parameters $a = 0.88557$ nm and $c = 0.50970$ nm. The fifth compound is the ternary phase, which was the focus of our research.

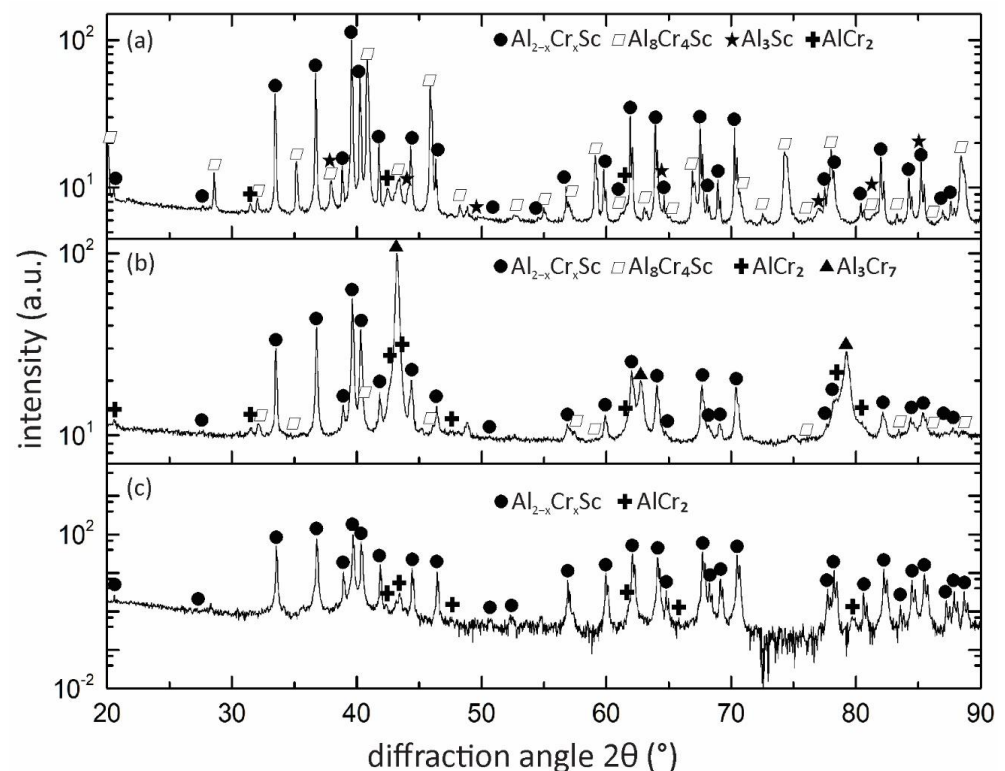


Figure 2. PXRD patterns of (a) sample I, (b) sample II and (c) sample III after being annealed at 990 °C for 240 h. Each phase is denoted with a different symbol as specified in the insert.

The PXRD pattern of sample I (Figure 2a) showed that four intermetallic compounds coexisted in the specimen: the φ - $\text{Al}_8\text{Cr}_4\text{Sc}$ ternary phase, two binary phases with compositions AlCr_2 and Al_3Sc and a predominant phase with a hexagonal crystal structure of a MgZn_2 prototype that we called $\text{Al}_{2-x}\text{Cr}_x\text{Sc}$ for reasons that are explained later in this article. This particular hexagonal crystal structure in the Al-Cr-Sc system was first identified from SCXRD data by Radzieowski et al. [4], but with a different composition, i.e., a different Al/Cr ratio, when compared with our system.

Sample II (Figure 2b) consisted of the binary Al_3Cr_7 phase [27] and the $\text{Al}_{2-x}\text{Cr}_x\text{Sc}$ crystal structure, in addition to a tiny amount of AlCr_2 and $\text{Al}_8\text{Cr}_4\text{Sc}$. In sample III (Figure 2c), the $\text{Al}_{2-x}\text{Cr}_x\text{Sc}$ crystal structure was identified as the dominant phase with the highest peak intensity, together with the binary phase AlCr_2 in a smaller amount. These results indicated that the $\text{Al}_{2-x}\text{Cr}_x\text{Sc}$ compound was stable in all three samples.

The SEM/BSE images for the three annealed samples provided a direct microstructural comparison of the alloys (Figure 3a,c,e). These images were taken from the central areas of the samples. The contrast variations in the SEM/BSE images due to the atomic number Z-contrast indicated the existence of different phases with different chemical compositions. Several quantitative EDXS point-beam analyses were systematically performed on grains with different grey levels to extract the chemical compositions of the phases with high statistical confidence. The detailed chemical compositions of the samples, grain size distributions and prototype crystal structures are presented in Table 2. All the identified phases are marked in the high-magnification SEM/BSE micrographs (Figure 3b,d,f): φ - $\text{Al}_8\text{Cr}_4\text{Sc}$, AlCr_2 , Al_3Sc , Al_3Cr_7 and $\text{Al}_{2-x}\text{Cr}_x\text{Sc}$.

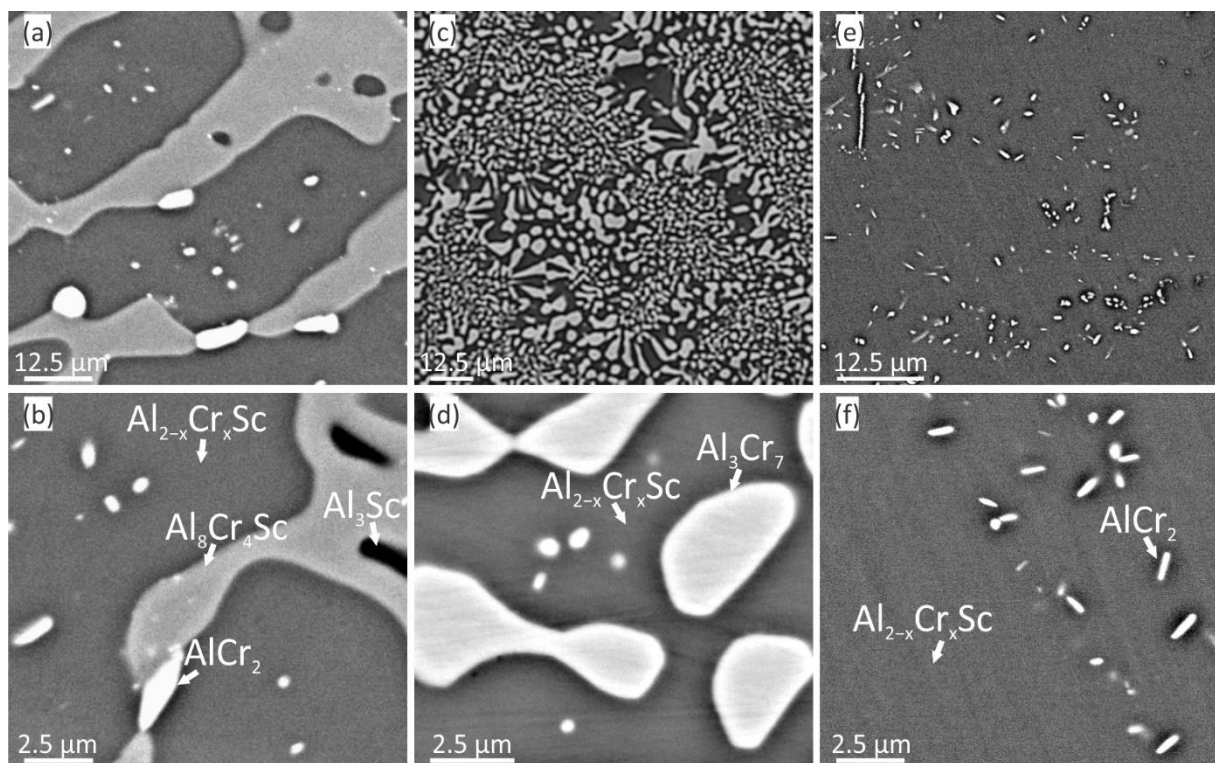


Figure 3. SEM/BSE images at two different magnifications of cross-sectioned samples after being annealed at 990 °C for 240 h: (a,b) sample I with composition $\text{Al}_{58.2}\text{Cr}_{19.4}\text{Sc}_{22.4}$; (c,d) sample II, $\text{Al}_{42.70}\text{Cr}_{38.60}\text{Sc}_{18.7}$; (e,f) sample III, $\text{Al}_{52}\text{Cr}_{14}\text{Sc}_{34}$. The arrows in the higher-magnification micrographs denote different phases.

Table 2. Chemical compositions of the phases that were formed in our samples, with the corresponding experimental uncertainties.

Sample and Nominal Composition (at%)	Element Concentration			Phase Assigned
	Al (at%)	Cr (at%)	Sc (at%)	
I Al _{58.2} Cr _{19.4} Sc _{22.4}	52 ± 0.5	15.9 ± 2.2	32.1 ± 1.8	Al _{2-x} Cr _x Sc, x = 0.4
	58.15 ± 0.3	32.99 ± 0.4	8.86 ± 0.2	φ-Al ₈ Cr ₄ Sc
	38.8 ± 2.3	58.0 ± 4.3	3.30 ± 2.0	AlCr ₂
	67.85 ± 0.5	9.52 ± 0.8	22.63 ± 0.5	Al ₃ Sc
II Al _{42.7} Cr _{38.6} Sc _{18.7}	28.4 ± 0.5	70.4 ± 0.4	1.2 ± 0.3	Al ₃ Cr ₇
	53.0 ± 0.5	13.2 ± 0.3	33.8 ± 0.3	Al _{2-x} Cr _x Sc, x = 0.4
III Al _{52.0} Cr _{14.0} Sc _{34.0}	50.8 ± 0.1	14.2 ± 0.1	35.0 ± 0.1	Al _{2-x} Cr _x Sc, x = 0.5
	46.2 ± 0.2	32.6 ± 1.2	21.1 ± 1.1	AlCr ₂

The dominant phase was analysed first in all three samples. In sample I (Figure 3a,b), a binary eutectic (ϕ -Al₈Cr₄Sc + Al_{2-x}Cr_xSc) was formed with a morphology that was typical of a normal eutectic (eutectic cell or rod-like structures). The Al₃Sc and AlCr₂ compounds were minor phases with volumes that were smaller than the analytical interaction volumes for the EDXS analysis. It should be noted that determining the exact chemical composition of these two phases using EDXS was very difficult because of the relatively small analysed grains when compared with the analytical interaction volume for the EDXS in the SEM, leading to the partial signal formation from the surrounding or neighbouring phases. As a result, the assigned phases were deduced by combining the EDXS and PXRD data with the SEM/BSE images.

The microstructure of the binary eutectic (Al₃Cr₇ + Al_{2-x}Cr_xSc) also had the typical morphology of rod-like eutectics in sample II and is visible in Figure 3c,d. The predominant Al_{2-x}Cr_xSc phase, along with the particles of the AlCr₂ phase in sample III, are easily identified in Figure 3e,f. The average composition of the Al_{2-x}Cr_xSc phase corresponded to Al 53.0 ± 0.5 at%, Cr 13.2 ± 0.3 at% and Sc 33.8 ± 0.3 at% and it departed slightly from these figures in the other two samples. This phase was attributed to a MgZn₂ prototype compound with a chemical formula Al_{2-x}Cr_xSc, where x varied between 0.4 and 0.5. The estimated volume fraction of the Al_{2-x}Cr_xSc phase was the largest in sample III, and this sample was used in the subsequent experimental characterisations.

Figure 4 presents the DSC curves of a pristine fragment of the arc-melted sample III with a nominal composition of Al₅₂Cr₁₄Sc₃₄. DSC was used to investigate the thermal stability of the phases under flowing Ar in the range 24–1500 °C during heating and cooling at a rate of 3 °C/min.

The DSC experiments revealed that both the heating and cooling curves featured three major peaks, as marked in Figure 4. The beginning of each of the most noticeable peaks is marked with an arrow, accompanied by the corresponding initial temperature. It was observed (Figure 4) that the liquidus temperature was 1397 ± 1 °C where the primary crystallisation of the Al_{2-x}Cr_xSc phase began. The solidus lay at 1141 °C where the peritectic formation of the Al₃Sc phase [26] started. It was followed by the peritectic formation of the AlCr₂ [28] phase at 1124 °C.

The metallographic analysis (inset in Figure 4) showed the existence of three different phases. The results of the EDXS analyses of the sample after the DSC experiment are presented in Table 3. They were consistent with those that were already observed in the same sample III after being annealed at 990 °C for 240 h (Table 2). The sample after the DSC analysis was further checked using the PXRD technique, which confirmed that all the phases were identical to the phases that were observed in the annealed sample. A tiny amount of a few wt% of the AlCr₂ phase could be detected thanks to its most intense peak, as shown by an arrow in Figure 5. Lines due to other compounds were too weak to be observed.

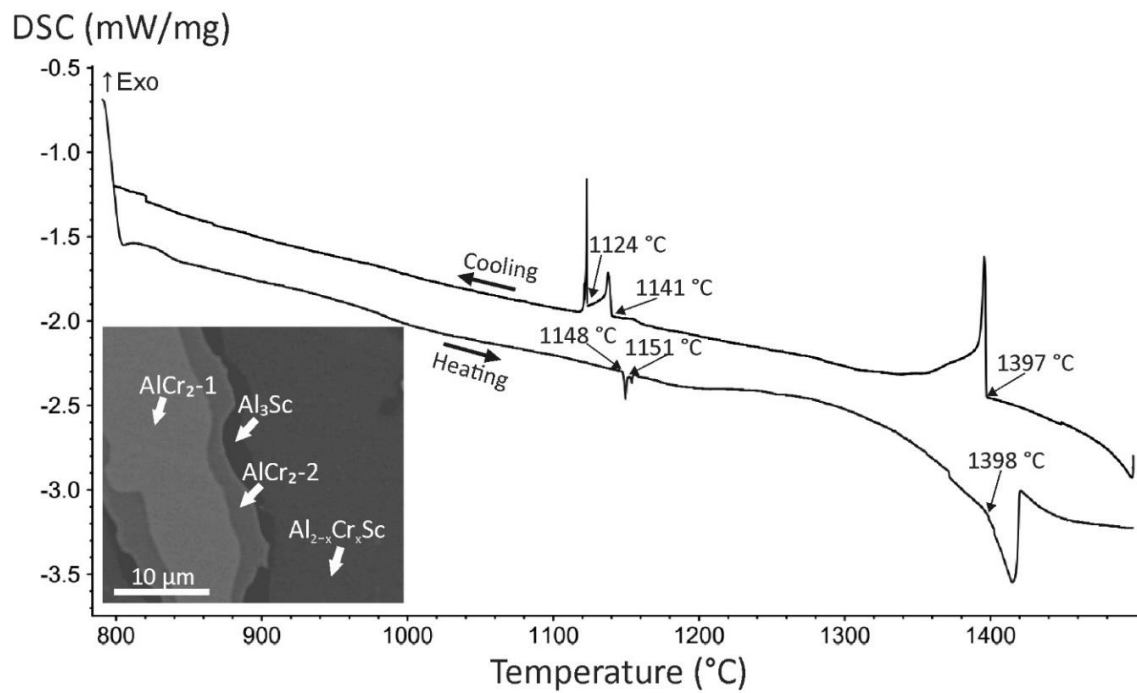


Figure 4. DSC heating and cooling curves of a piece of arc-melted sample III with rates of 3 °C/min. Inset: SEM/BSE image of the resulting microstructure with the indicated phases that were formed during the DSC experiment.

Table 3. Chemical compositions that were measured in different areas of sample III after the DSC experiment (Figure 4), together with the corresponding experimental uncertainties.

Sample Area *	Composition			Phase Assigned
	Al	Cr	Sc	
#1	56.3 ± 0.5	10.4 ± 1.0	33.3 ± 0.56	$\text{Al}_{2-x}\text{Cr}_x\text{Sc}$, $x = 0.3$
	68.1 ± 2.9	2.8 ± 0.3	24.7 ± 1.4	Al_3Sc
#2	56.2 ± 0.4	43.1 ± 0.3	0.6 ± 0.4	AlCr_2
#2	56.0 ± 2.5	31.6 ± 1.8	8.3 ± 0.3	AlCr_2

* As shown in the inset of Figure 4.

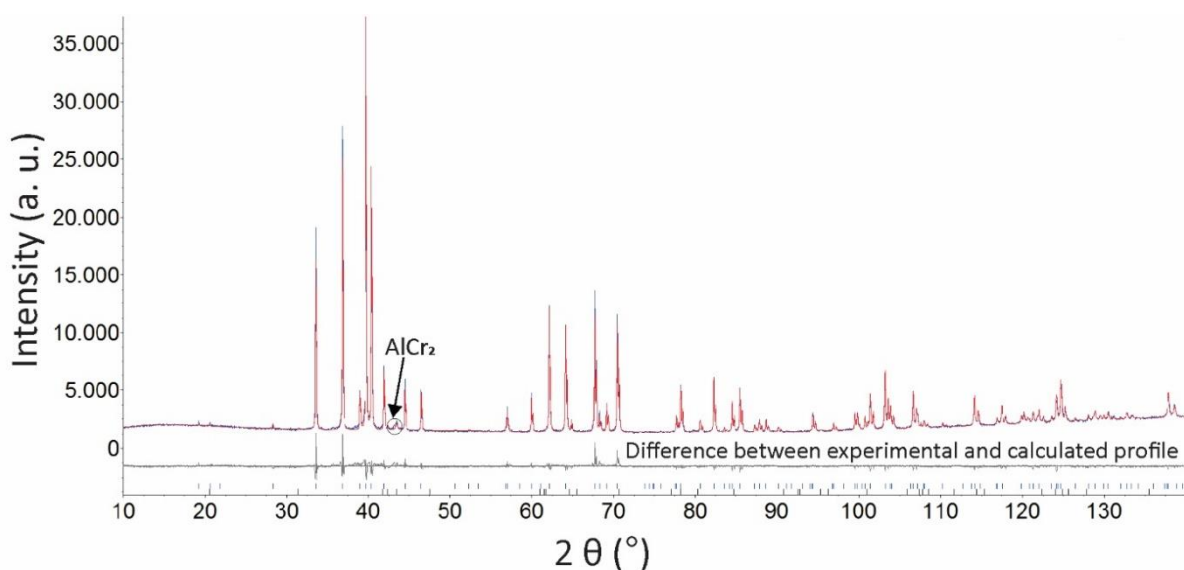


Figure 5. Rietveld plot of the annealed sample III. The experimentally measured PXR pattern is shown with a blue line, while the calculated pattern is in red. The difference between the calculated and experimentally determined patterns is presented in grey. The final reliability factor was $R_{wp} = 4.18\%$.

The structure refinement was initiated with an approximate model based on the two AlCr_2 and $\text{Al}_{2-x}\text{Cr}_x\text{Sc}$ phases that were clearly identified in the annealed sample III. The structures were refined using TOPAS (full-matrix least square) with isotropic atomic displacement parameters for all the atoms. The confirmation of the crystal structures was assessed using a Rietveld refinement. The final refinements were carried out using the atomic occupancy, leading to a final reliability factor of $R_{\text{wp}} = 4.18\%$ and $R_{\text{Bragg}} = 2.30\%$. The dimensions of the $\text{Al}_{2-x}\text{Cr}_x\text{Sc}$ hexagonal unit cell thus obtained were $a = 0.533993(2)$ nm and $c = 0.862609(5)$ nm.

According to the single-crystal refinement, as explained below, final refinements for all the atomic positions showed a mixed occupation at the Al/Cr sites with 0.37/0.63 for Cr (1)/Al (1) and 0.89/0.11 for Al (2)/Cr (2). The final reliability factor was $R_{\text{wp}} = 4.18\%$. The calculated composition from the powder Rietveld refinement data was $\text{Al}_{54.9}\text{Cr}_{11.8}\text{Sc}_{33.3}$ (at%). As mentioned in Figure 2c, the diffraction peak that was observed at $2\theta = 43.48^\circ$ was assigned to AlCr_2 , leading to the tetragonal lattice parameters $a = 0.3014$ nm and $b = 0.8656$ nm according to the MoSi_2 type of structure mentioned in the literature.

3.2. Single Grain Sample

To obtain reliable crystallographic data, a single crystal with approximate dimensions of $15 \mu\text{m} \times 20 \mu\text{m} \times 20 \mu\text{m}$ as extracted by mechanical grinding from sample III, which was essentially formed of the $\text{Al}_{2-x}\text{Cr}_x\text{Sc}$ phase. It was studied using SCXRD at room temperature. Figure 6 presents SCXRD precession patterns in two low-index zones of the ternary phase and the corresponding crystal structure when moving along the $[10\bar{1}0]$ zone axis.

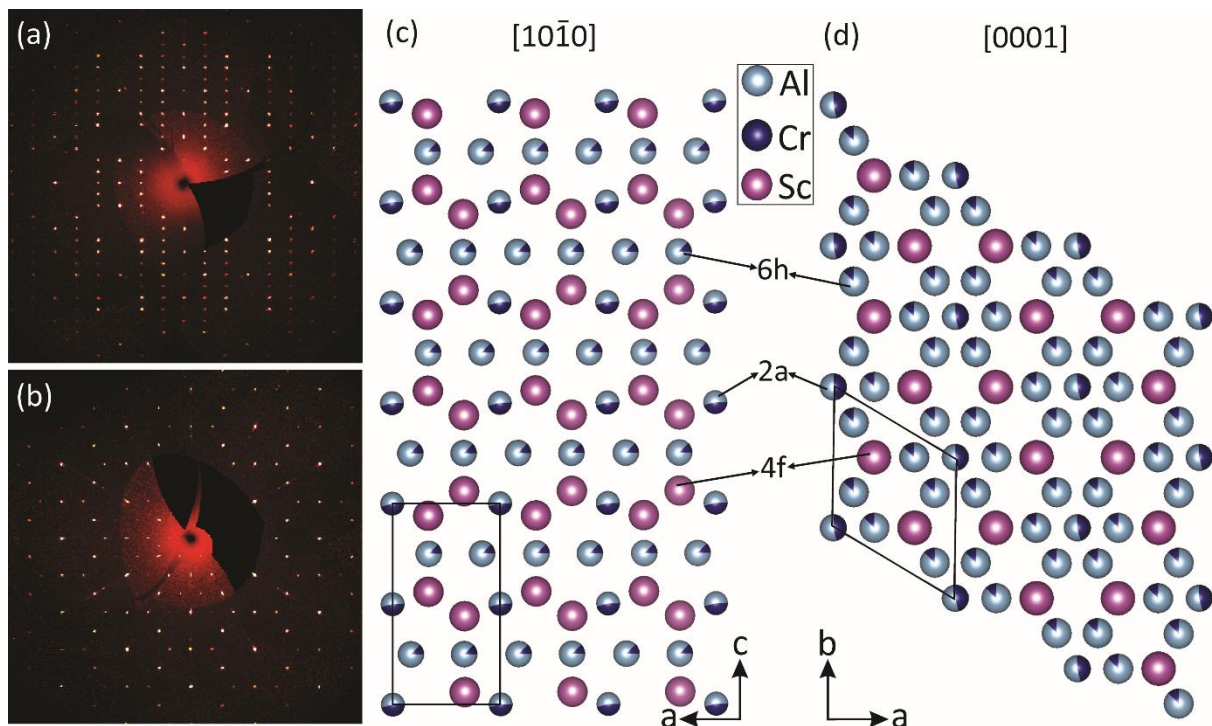


Figure 6. Single-crystal analysis of a grain of the $\text{Al}_{2-x}\text{Cr}_x\text{Sc}$ ternary phase shown in two low-index zone axes: (a) $[01\bar{1}0]$ and (b) $[0001]$. The crystal structure that was deduced from the single-crystal analysis is shown on the right with its unit cell projected along the (c) $[10\bar{1}0]$ and (d) $[0001]$ zone axes, as indicated in the top part of the figure. The double colouring of the blue circles is in proportion to the occupancy factor of those sites.

The crystallographic data and positional parameters using the program Structure Tidy [29] for the single crystal are listed in Table 4. The atomic coordinates and isotropic and anisotropic displacement parameters are gathered in Table 5 in comparison with single-crystal refinement data. The corresponding crystallographic information file (CIF)

of the ternary Laves phase (see next sub-section) can be found in the Supplementary Materials section.

Table 4. Crystallographic data and structure refinement parameters * for the $\text{Al}_{2-x}\text{Cr}_x\text{Sc}$ hexagonal phase, as determined from the single-crystal diffraction.

Composition	$\text{Al}_{53.3}\text{Cr}_{13.3}\text{Sc}_{33.3}$
Formula weight (g mol^{-1})	109.08
Temperature (K)	293(2)
Wavelength (nm)	0.07107
Crystal size (μm)	$15 \mu\text{m} \times 20 \mu\text{m} \times 20 \mu\text{m}$
Crystal system	Hexagonal
Space group	P 63/mmc
Unit cell dimensions (nm)	a = 0.53424(2)
	b = 0.53424(2)
	c = 0.86302(3)
Volume (nm^3)	0.21332(18)
Z	2
Calculated density (g cm^{-3})	2.630
Absorption coefficient (mm^{-1})	5.559
F(000)	158
Θ range for data collection ($^\circ$)	4.41–51.68
Reflections collected	1518
Independent reflections	499 (R(int) = 0.0252)
Coverage of independent reflections (%)	99.8
Data/restraints/parameters	499/0/13
Goodness of fit on F^2	1.644
Final R indices	371 data, $I > 2\sigma(I)$
	R1 = 0.0223, wR2 = 0.0357
	R1 = 0.0346, wR2 = 0.0373
Extinction coefficient	0.0240(40)

* The CIF file was deposited at CCDC under the deposition number CSD 2125072.

The ternary compound crystallised with a hexagonal close-packed unit cell, with a = 0.53424(2) nm and c = 0.86302(3) nm, space group no. 194 P6₃/mmc. Direct methods were used to define the positions of the independent atoms: Sc (1) in (4f), Cr (1) and Al (1) in (2a), Cr (2) in (6h) and Al (2) in (6h). A mixed occupation at the Al/Cr sites with 0.528/0.472 for Cr (1)/Al (1) and 0.886/0.114 for Al (2)/Cr (2) was confirmed after the final refinements, including occupation factors for all the atoms. No other mixed occupancy was observed. The final reliability factors were R1 = 2.23% and wR2 = 3.57%. After the final refinement of the single crystal, the composition of the investigated crystal was $\text{Al}_{53.3}\text{Cr}_{13.3}\text{Sc}_{33.3}$ (at%).

Table 5. Atomic coordinates and isotropic and anisotropic atomic displacement parameters (Å) that were obtained from the single-crystal data (the second lines in italic correspond to the values that were obtained from the powder refinement).

Atom	Site	Isotropic Atomic Displacement Parameters			U(eq)	Occupancy
		x/a	y/b	z/c		
Sc01	4f	0.3333	0.6667	0.43916(4)	0.00779(7)	1
				<i>0.4387(1)</i>	<i>0.007(1)</i>	1
Cr01	2a	0.0	0.0	0.0	0.00945(14)	0.471(6)
					<i>0.008(1)</i>	<i>0.36(1)</i>
Al01	2a	0.0	0.0	0.0	0.00945(14)	0.529(6)
					<i>0.008(1)</i>	<i>0.64(1)</i>
Al02	6h	0.66332(11)	0.83166(6)	0.75	0.01168(13)	0.886(4)
		<i>0.6620(1)</i>	<i>0.8310(1)</i>	<i>0.75</i>	<i>0.009(1)</i>	<i>0.888(6)</i>
Cr02	6h	0.66332(11)	0.83166(6)	0.75	0.01168(13)	0.114
		<i>0.6620(1)</i>	<i>0.8310(1)</i>	<i>0.75</i>	<i>0.009(1)</i>	<i>0.112(6)</i>
Atom	U11	Anisotropic Atomic Displacement Parameters			U13	U12
		U22	U33	U23		
Sc01	0.00775(8)	0.00775(8)	0.00788(11)	0	0	0.00388(4)
	<i>0.009(1)</i>	<i>0.007(2)</i>	<i>0.006(1)</i>	<i>0</i>	<i>0</i>	<i>0.005(2)</i>
Cr01	0.01088(16)	0.01088(16)	0.0066(2)	0	0	0.00544(8)
	<i>0.009(1)</i>	<i>0.022(5)</i>	<i>0.006(1)</i>	<i>0</i>	<i>0</i>	<i>0.010(2)</i>
Al01	0.01088(16)	0.01088(16)	0.0066(2)	0	0	0.00544(8)
	<i>0.009(1)</i>	<i>0.022(5)</i>	<i>0.006(1)</i>	<i>0</i>	<i>0</i>	<i>0.010(2)</i>
Al02	0.00765(18)	0.01023(16)	0.0163(2)	0	0	0.00383(9)
	<i>0.009(1)</i>	<i>0.009(1)</i>	<i>0.013(1)</i>	<i>0</i>	<i>0</i>	<i>0.005(2)</i>
Cr02	0.00765(18)	0.01023(16)	0.0163(2)	0	0	0.00383(9)
	<i>0.009(1)</i>	<i>0.009(1)</i>	<i>0.013(1)</i>	<i>0</i>	<i>0</i>	<i>0.005(2)</i>

3.3. Site Occupancy

It was observed from the PXRD and SCXRD measurements that the Al-Cr-Sc ternary phase was characterised by the coexistence of all three elements, namely, Al, Cr and Sc, and it belonged to the prototype structure $MgZn_2$, which is a well-known Laves phase. The crystal structure was hexagonal with the space group $P6_3/mmc$ and lattice parameters $a = 0.53424(2)$ nm and $c = 0.86302(3)$ nm from the single crystal data and $a = 0.533993(2)$ nm and $c = 0.862609(5)$ nm from the powder refinement. From both diffraction methods, the Wyckoff site 4f had full Sc occupancy. The Rietveld refinement from the polycrystalline sample indicated a mixed occupancy of both Al Wyckoff sites: for site 2a with a ratio of 0.64 Al to 0.36 Cr and site 6h with a ratio of 0.89 Al to 0.11 Cr. From the extracted single crystal, the mixed occupancy of both sites was 0.53 Al/0.47 Cr for site 2a and 0.89 Al/0.11 Cr for site 6h. The calculated composition from single-crystal diffraction was $Al_{53.3}Cr_{13.3}Sc_{33.3}$ (at%) and from the powder, it was $Al_{54.9}Cr_{11.8}Sc_{33.3}$ (at%). The difference between the occupancy ratios at site 2a confirmed the slight homogeneity that was observed by EDXS for this phase.

SAED pattern analysis combined with high-resolution HAADF-STEM imaging was performed to verify the predicted crystal structure of the Al-Cr-Sc ternary phase at an atomic scale. Figure 7a shows the experimental SAED patterns that were acquired along the $[10\bar{1}0]$ zone axis, exposing both the basal (0001) and prism ($0\bar{1}10$) principal planes of the analysed hexagonal ternary phase. The measured lattice parameters for the given basal and prism set of planes were 0.87 nm and 0.46 nm, which is in excellent agreement with the corresponding theoretical values of 0.863 nm and 0.462 nm, respectively.

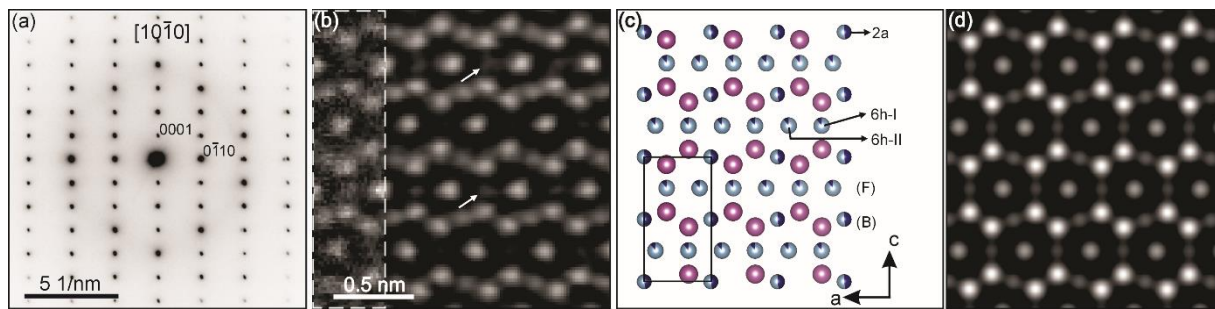


Figure 7. TEM studies of the $\text{Al}_{2-x}\text{Cr}_x\text{Sc}$ ternary phase: (a) SAED pattern analysis with the corresponding (b) atomically-resolved HAADF-STEM image. (c) Projected atomic model of the ternary phase, viewed in the $[10\bar{1}0]$ zone axis with the related (d) calculated HAADF-STEM image.

An experimental atomic resolution HAADF-STEM image that was acquired from the same specimen region as the SAED pattern of Figure 7a is shown in Figure 7b. Experimental images were processed by applying a low-frequency filter to reduce the slowly varying intensity extending over the large image section well beyond the individual atomic columns. For clarity, the original experimental image is shown as an inset in the left-side part of the figure. As the contrast variation in the atomic resolution HAADF-STEM images roughly followed a Z^2 dependence on the average atomic number Z , small compositional differences in the probed atomic columns are reflected in significant contrast variations. The observed image intensity could be characterised by two sets of basal planes (B) with an undulated appearance, separated by flat planes (F), as marked in Figure 7c. The undulated planes are mirrored over the flat planes, following the predicted atomic model of the ternary phase (Figure 7c). A detailed analysis of the intensity variations within the undulated planes shows a periodic arrangement of two bright spots that were intercalated with a spot of slightly weaker intensity. According to the predicted model, the highest-intensity spots corresponded to a pair of Sc ($Z = 21$) columns, which were intercalated with a mixed Al(13)-Cr(24) column. Here, 47% of the Al sites were replaced by Cr atoms (from here on denoted as the 2a site), which was in fair agreement with the observed intensity variations. The intensity variation within the flat plane showed a periodic exchange of high-intensity spots with spots of very low intensity (marked by arrows). According to the predicted structure model, the atomic columns of the flat plane all had the same composition, namely, Al-Cr mixed with 11.4% of Al exchanged by Cr atoms (6h-site), which was not directly evident from the corresponding experimental observation. This can be explained by the fact that the projected atomic density within the individual Al-Cr mixed atomic columns was different, which had a direct impact on the observed signal intensity. Namely, within a unit cell, the 6h sites were characterised by a single-atom site, namely, 6h-I, that was exchanged with two-atom sites, namely, 6h-II, when the atomic columns were observed in the $[10\bar{1}0]$ viewing direction. In other words, the projected atomic density within the flat planes periodically oscillated between neighbouring columns, thus explaining the observed intensity oscillations.

The HAADF-STEM image simulations were performed to quantify the observed intensity variations as a function of the mixed occupancies that were predicted by the structural model, as shown in Figure 7d. The overall arrangement of the atomic columns, as revealed by the simulated image, agreed with the experimental observation. Furthermore, the relative intensity differences within the undulated planes between the Sc 4f and Al/Cr 2a sites and within the flat planes followed similar trends to the experimental image. Small differences between the simulation and experiment could be found by comparing the relative intensity variations between the 2a and 6h-II sites, where the experimentally observed intensities at the 6h-I sites were higher than those predicted by the model. This result suggested that the amount of Cr was not entirely fixed to the given Al sites and could be locally changed, which partially explained the small differences in the composition between the EDXS and the single-crystal diffraction analyses.

The symmetry of the neighbourhood around the 2a Al/Cr sites in (0,0,0) and (0, 0, 0.5) is shown in Figure 8a,b, respectively. It consisted of a perfect icosahedron made of six (6h) Al/Cr and six Sc atoms, which were connected by sharing an edge of two Sc atoms located in the (a, b) plane and a triangular facet of three Al/Cr atoms along the c axis. This specific configuration enforced the $a = b = c/\tau$ relationship, where $\tau = (1 + \sqrt{5})/2$ is the golden ratio. Like in other Laves phases, icosahedral order was therefore dominant in this Al-Cr-Sc compound. It also extended to the next-nearest neighbours of the 6h Al/Cr atoms, which was a pentagonal dodecahedron of atoms that were located at distances of 0.32 and 0.49 nm (Figure 8c).

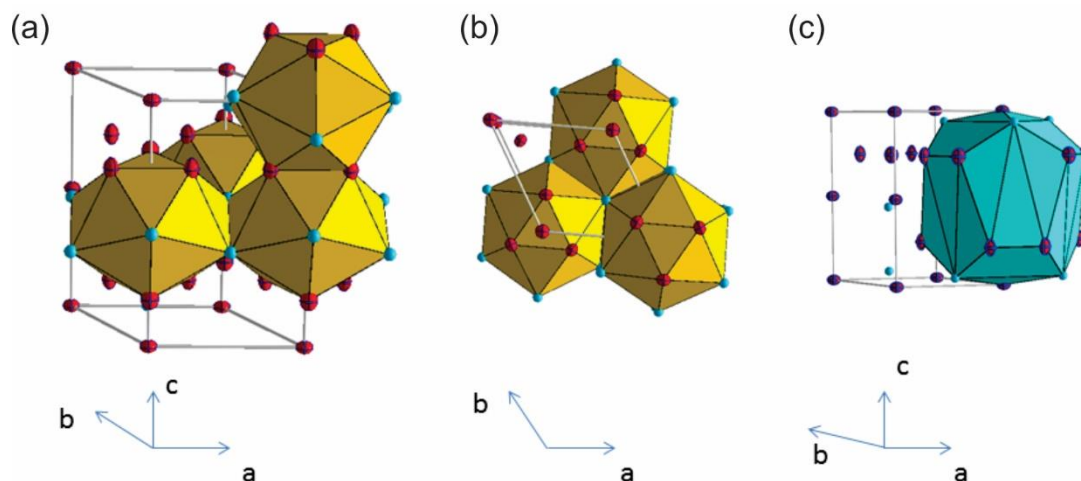


Figure 8. First and second neighbourhoods, with Al/Cr atoms in red and Sc atoms in blue. Left: (a) side view, (b) top view. Both shells were perfect icosahedra that were connected by edge sharing in the (a,b) plane and facet sharing along the c axis. (c) Second-neighbour shell around 6h Al/Cr atoms, which formed a pentagonal dodecahedron.

3.4. Computed Structure and Density of Electronic States

According to Table 5, the crystal structure of the $\text{Al}_{2-x}\text{Cr}_x\text{Sc}$ compound contained positions with mixed occupancies. Such disorder was not straightforward to implement within our modelling method based on periodic boundary conditions. Indeed, the previous long-range vision had no physical relevance at the local level, where two atoms could not occupy the same physical position. As a consequence, large ordered supercells were used here, followed by configurational averaging, as detailed below [30].

Using a supercell generally implies a study of numerous atomic configurations. Before starting an extensive exploration of possible crystal structures, we first built a model by assuming that the 6h position was fully occupied by Al atoms. The input structure was built starting from the MgZn_2 type (P63/mmc). Six Al and four Sc atoms were positioned in 6h and 4f sites, respectively. According to the experimental study, the 2a sites had a mixed occupancy (Al/Cr, close to 1:1). Thus, one site—(0,0,0)—was filled with one Al atom and the other one—(0,0,0.5)—with one Cr atom. Therefore, the symmetry of the structure was reduced to P-3m1. We then performed a geometric optimisation using DFT. Accurate geometry optimisations were ensured using tight criteria for the convergence of both total electronic energy ($\pm 10^{-6}$ eV) and residual forces acting on the nuclei (± 0.02 eV·Å⁻¹). The resulting disorder was thus restricted to the 2a position, which was occupied by Al/Cr atoms with 0.5 occupancy. This led to a first model, which was labelled M0, that contained one Cr, four Sc and seven Al atoms in the cell, and exhibited the P-3m1 symmetry (space group 164). Atomic relaxations kept the shape of the cell intact. This led, after relaxation, to the lattice parameters $a_{\text{calc}} = 0.537$ nm and $c_{\text{calc}} = 0.862$ nm and atomic coordinates that were in good agreement with the experimental ones. The atomic coordinates of the output structure are detailed in Table 6. In particular, the computed values of the lattice parameters came from the atomic optimisation based on the DFT. These theoretical values, as obtained

from DFT, were in very good agreement with the experimental single-crystal XRD data that is provided in Table 4 ($a = 0.53424(2)$ and $c = 0.86302(3)$), since the differences were less than 0.6%.

Table 6. Atomic coordinates of the relaxed $\text{Al}_{52.08}\text{Cr}_{14.58}\text{Sc}_{33.33}$.

Atom	Site	x/a	y/b	z/c	Occupancy
Sc	2d	0.3333	0.6667	0.4370	1
Sc	2d	0.3333	0.6667	0.0563	1
Cr	1b	0.0	0.0	0.5	1
Al	1a	0.0	0.0	0.0	1
Al	6i	0.1689	−0.1689	0.2573	1

Other models with atomic compositions closer to the experimental observations (Table 7) resulted from a protocol that was based on the supercell code [30] using the cell parameters from the previous relaxation and the occupancies from the experimental analysis (Table 5). Sufficiently large supercells were required to minimise the size effects, i.e., to reduce the influence of local environments on their own periodic images in all directions. Each run included a symmetry-based search for equivalent structures. The $2 \times 2 \times 1$ supercell showed the lowest anisotropy (side dimension of approx. 8–10 Å in all directions) and contained several atoms (25 Al, 7 Cr and 16 Sc), which was perfectly compatible with the DFT calculations. While the M_{111} model ($1 \times 1 \times 1$ cell) was fully optimised (cell shape, cell volume, atomic positions), only the atomic positions were relaxed in the M_{112} , M_{211} and M_{221} models ($1 \times 1 \times 2$, $2 \times 1 \times 1$ and $2 \times 2 \times 1$ supercells). Their lattice parameters were fixed according to the ones of the M_{111} model.

Table 7. Structural models resulting from the supercell approach and the corresponding formation enthalpy $\Delta H_f = E_{\text{total}}(\text{Al}_x\text{Cr}_y\text{Sc}_z) - x E_{\text{bulk}}(\text{Al}) - y E_{\text{bulk}}(\text{Cr}) - z E_{\text{bulk}}(\text{Sc})$, where E_{bulk} are the total energies of the elemental bulk crystals.

Supercell	N_{Al} (at% Al)	N_{Cr} (at% Cr)	N_{Sc}	Total Number of Combinations	Combinations after Merge	Formation Enthalpy (meV/at)
$1 \times 1 \times 1$	6 (50.00)	2 (16.67)	4	12	1	−361
$1 \times 1 \times 2$	13 (54.17)	3 (12.50)	8	72	4	−394
$2 \times 1 \times 1$	13 (54.17)	3 (12.5)	8	72	8	−377
$2 \times 2 \times 1$	25 (52.08)	7 (14.58)	16	1.4×10^5	1660	−364
$2 \times 1 \times 2$	25 (52.08)	7 (14.58)	16	1.4×10^5	4816	
$2 \times 2 \times 2$	51 (54.16)	13 (13.54)	32	2.2×10^{10}	114,886,588	

Total energy calculations were systematically performed using a variety of configurations within the $1 \times 1 \times 1$, $1 \times 1 \times 2$ and $2 \times 1 \times 1$ supercells, which limited the number of combinations that were achievable with quantum chemical calculations. For the $2 \times 2 \times 1$ supercell, a single configuration was considered (M_{221}) after a random selection from among all possible configurations. It was found to be representative of the grown crystal according to its chemical composition and exhibited a diffraction pattern that was close to the experimental observations. Yet, DFT calculations cannot be achieved with partial or mixed occupancies in a simple way. Our structural models were then built from XRD data but were modified in order to obey the constraints of full occupancy of all sites that were introduced in the computational box. It then modified the composition that was determined using XRD. We believe that this difference was not sufficient to make our conclusions invalid. Note that the DFT computation was done at 0 K, with an accuracy of approx. 1%, which was much smaller than any lattice parameter variation due to temperature.

The total energy calculations were systematically performed using all possible combinations in the case of the $1 \times 1 \times 1$ (1), $1 \times 1 \times 2$ (4) and $2 \times 1 \times 1$ (8) supercells (the number between brackets is the number of calculations performed). According to these calculations, the deviation that was calculated for the formation energies was smaller than 3 meV/atom, i.e., much smaller than the formation energies (between -361 meV/atom and -394 meV/atom), and rather similar within a given cell type. It strongly depended on the cell shape, as demonstrated by the comparison of our results that were calculated using the elongated $1 \times 1 \times 2$ simulation box and the more isotropic $2 \times 1 \times 1$ one. Only one configuration was considered for the $2 \times 2 \times 1$ supercell because our objective was the determination of the formation energy, which was shown to present only tiny variations within a given supercell.

Electronic structure calculations were performed using the M_{221} model. Standard DFT calculations highlighted a magnetic compound due to the presence of Cr 3d states, resulting in a calculated total magnetisation of $12.27\mu_B$ in the cell. The magnetic properties of the compound were also indicated by a shift between the observed spin-up and spin-down contributions to the DOS, which is shown in Figure 9, together with the Al s,p; Cr s,p and d; and Sc s,p and d partial DOSs. We took the non-magnetic Cr crystal as the reference to calculate the formation energies. Obviously, this is not the realistic ground state for bcc chromium [31,32]. Indeed, neutron diffraction and coherent X-ray diffraction experiments showed the magnetic ground state of bcc Cr to be a spin-density wave (SDW) with an incommensurate period regarding the crystal lattice below its Néel temperature of 311 K. The SDW corresponded to a quasi-sinusoidal modulation of the magnitude of the magnetic moments along the propagation of the wave, keeping a locally antiferromagnetic order. More precisely, from 0 to 123 K, the SDW was longitudinally polarised with magnetic moments that were oriented along a 100 axis of the crystal lattice, roughly corresponding to a period of 20 lattice parameters. At 123 K, the polarisation of the SDW switched to transverse, with magnetic moments directed perpendicular to its propagation direction, before vanishing at the Néel temperature.

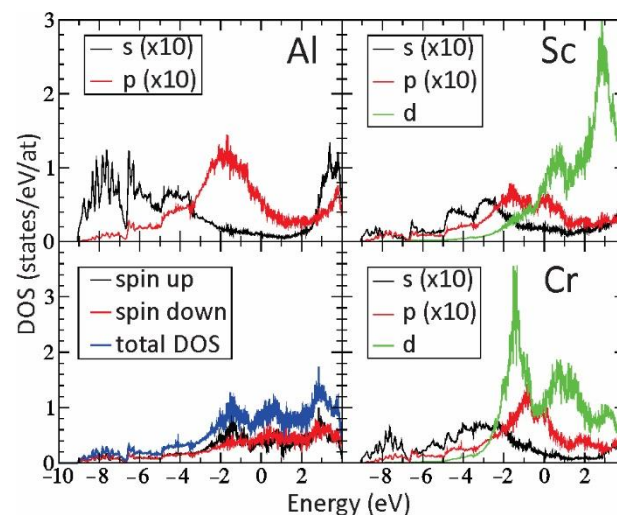


Figure 9. Densities of states (DOS): total DOS (**bottom left**); Al s and Al p partial DOS (**upper left**); s, p and d Sc partial DOS (**upper right**); and s, p and d Cr DOS (**bottom right**). The Fermi energy is shown on the x-axis while the DOS is shown on the y-axis.

A deeper investigation of the magnetic properties of Al-Cr-Sc would require extensive calculations. Using the M_{221} model, our spin-polarised calculation ended up with six Cr atoms showing a positive magnetic moment, and one Cr atom that was coupled antiferromagnetically with the others. The mean magnetic moment per Cr atom was calculated by dividing the total magnetic moment of the supercell by the number of Cr atoms

($12.27/7 = 1.75 \mu_B$). The magnetic moment that was carried by Cr atoms was found to be larger than the magnetic moment of bcc chromium, which lies between 0.9 and $1.2 \mu_B$ [32].

The Bader charge analysis [32–36] showed that a charge transfer occurred from the Sc atoms that were positively charged (+1.27 e/atom), whereas the Cr and Al atoms exhibited an average charge of -0.82 e/atom and -0.59 e/atom, respectively. These results were consistent with the respective electronegativities of the Sc, Al and Cr elements, respectively, according to the Pauling scale. The amount of charge transfer was also found to be very similar to the one that was calculated recently for the φ - Al_8Cr_4Sc compound, except for Al (which was positively charged in φ - Al_8Cr_4Sc) [4].

The total DOS presented a pronounced sp character in the $[-10, +4]$ eV region, which mostly arose from the Al atoms. The Cr and Sc d states showed main contributions above -3 eV, where several maxima were observed. Faint features overlapped along the energy axis in the DOS between the Cr and Sc d states, and the Al sp states, highlighting a non-negligible hybridisation. The metallic character of the compound was assessed from the many states that were present at the Fermi energy (E_F). No marked pseudo-gap was found at E_F or in its close vicinity, but a shallow pseudo-gap was visible at approx. -0.5 eV under the Fermi energy, which produced a weak but definite contribution to the thermodynamic stability of the compound.

4. Conclusions

We can summarise that the ternary phase in the Al-Cr-Sc push-pull system with composition $Al_{2-x}Cr_xSc$ ($0.4 \leq x \leq 0.5$) belonged to the Laves phases family with a $P6_3/mmc$ hexagonal crystal structure and was prototypic to $MgZn_2$. Samples of this ternary phase were investigated using different characterisation methods. The Rietveld refinement and single-crystal diffraction confirmed the full occupancy of Sc on the 4f Wyckoff site and mixed occupancy of Al/Cr on sites 2a and 6h. The $Al_{2-x}Cr_xSc$ phase was also investigated using HAADF-STEM transmission electron microscopy, which confirmed that the amount of Cr sharing site occupancy with Al was not completely fixed. This was in agreement with the differences in composition found for the $Al_{2-x}Cr_xSc$ compound using EDXS and single-crystal diffraction. DFT calculations were performed using a supercell approach to model the mixed occupancies. The structure of the resulting model was found to be very similar to the one that was deduced from the XRD experiments. The density of electronic states exhibited a shallow pseudo-gap that was slightly below the Fermi energy, which added a small contribution to the stability of this compound.

Supplementary Materials: The following are available online at <https://www.mdpi.com/article/10.3390/cryst11121535/s1>, CIF file: crystal structure of ternary phase.

Author Contributions: Conceptualization: M.K., B.M., J.-M.D., S.Š.; Methodology: M.K., J.-M.D., S.Š.; Software: M.K., A.M., Z.S., M.V., P.B., É.G., S.Š.; Validation: M.K., B.M., A.M., Z.S., M.V., P.B., É.G., J.-M.D., S.Š.; Formal analysis: M.K., A.M., B.M., P.B., É.G., S.Š.; Resources: M.K., A.M., P.B., É.G., J.-M.D., S.Š.; Data curation: M.K., A.M., M.V., P.B., É.G., J.-M.D., S.Š.; Writing—original draft preparation: M.K.; Writing—review and editing: B.M., A.M., Z.S., M.V., P.B., É.G., J.-M.D., S.Š.; Visualization: M.K., B.M., A.M., Z.S., M.V., P.B., É.G., J.-M.D., S.Š.; Supervision: J.-M.D., S.Š.; Project administration: J.-M.D., S.Š. All authors have read and agreed to the published version of the manuscript.

Funding: This work was performed within the framework of the International Research Project (IRP) PACS2. The research was financially supported by the Slovenian Research Agency (P2-0084), the CNRS and Université de Lorraine, France, and the European Union Horizon 2020 research and innovation programme under grant agreement no. 823717–ESTEEM3. E.G. acknowledges financial support through the COMETE project (Conception in silico de matériaux pour l’environnement et l’énergie), which is co-funded by the European Union under the program FEDER-FSE Lorraine et Massif des Vosges 2014-2020.

Data Availability Statement: The data presented in this study are available within the manuscript. The CIF file of a ternary Al-Cr-Sc Laves phase was deposited at CCDC under the deposition number CSD 2125072.

Acknowledgments: This work was granted access to the HPC resources of TGCC, CINES and IDRIS under the allocation 99642 attributed by GENCI (Grand Equipement National de Calcul Intensif). High-performance computing resources were also partially provided by the EXPLOR Centre that is hosted by the University de Lorraine (project 2017M4XXX0108). We are grateful to Pavlo Solokha, Matejka Podlogar, Luka Kelhar, Jaafar Ghanbaja and Sylvie Migot who contributed their knowledge to the research.

Conflicts of Interest: The authors report no conflict of interest regarding the manuscript.

References

1. Tsai, A.P.; Cui, C. Crystal Growth of Quasicrystals. In *Handbook of Crystal Growth*, 2nd ed.; Nishinaga, T., Ed.; Elsevier: Amsterdam, The Netherlands, 2015; Volume I, pp. 1113–1156.
2. Dubois, J.-M.; Belin-Ferré, E.; Tsai, A.P. *Quasicrystals and Complex Metallic Alloys*, *Kirk-Othmer Encyclopedia of Chemical Technology*; John Wiley & Sons, Inc.: Hoboken, NJ, USA, 2016; pp. 1–19.
3. Burkhardt, F.; Skela, B.; Daneu, N.; Samardzija, Z.; Šturm, S.; Gaudry, E.; Kobe, S.; Dubois, J.-M. A new complex ternary phase in the Al-Cr-Sc push-pull alloy. *J. Alloy. Compd.* **2018**, *768*, 230–239. [[CrossRef](#)]
4. Radzieowski, M.; Benndorf, C.; Haverkamp, S.; Eckert, H.; Janka, O. On new ternary equiatomic scandium transition metal aluminum compounds ScTAl with T = Cr, Ru, Ag, Re, Pt, and Au. *Z. Naturforsch.-Sect. B J. Chem. Sci.* **2016**, *71*, 553–566. [[CrossRef](#)]
5. Connelly, N.G.; Damhus, T.; Hartshorn, R.M.; Hutton, A.T. *Nomenclature of Inorganic Chemistry: IUPAC Recommendations 2005*; Royal Society of Chemistry (RSC Publishing): Cambridge, UK, 2005. [[CrossRef](#)]
6. Okamoto, H. *Phase Diagrams for Binary Alloys*, 2nd ed.; ASM International: Novelty, OH, USA, 2010; pp. 29–291.
7. Pauling, L. *The Nature of the Chemical Bond*, 3rd ed.; Cornell University Press: Ithaca, NY, USA, 1960; pp. 10–13.
8. Mizutani, U. *The Hume-Rothery Rules for Structurally Complex Alloy Phases, Book Series on Complex Metallic Alloys*; CRC Press: Boca Raton, FL, USA, 2010; pp. 323–399.
9. Mizutani, U.; Sato, H.; Inukai, M.; Nishino, Y.; Sieds Zijlstra, E. Electrons per Atom Ratio Determination and Hume-Rothery Electron Concentration Rule for P-Based Polar Compounds Studied by FLAPW–Fourier Calculations. *Inorg. Chem.* **2015**, *54*, 930–946. [[CrossRef](#)] [[PubMed](#)]
10. Tilley, R.J.D. *Understanding Solids*, 2nd ed.; Wiley: New York, NY, USA, 2013; p. 584.
11. Mizutani, U.; Sato, H. The Physics of the Hume-Rothery Electron Concentration Rule. *Crystals* **2017**, *7*, 9. [[CrossRef](#)]
12. Dubois, J.M.; Belin-Ferré, E. Wetting and Adhesion Properties of Quasicrystals and Complex Metallic Alloys. *Appl. Adh. Sci.* **2015**, *3*, 16. [[CrossRef](#)]
13. Pang, M.; Zhan, Y.; Du, Y. Solid state phase equilibria and intermetallic compounds of the Al-Cr-Ho system. *J. Solid State Chem.* **2013**, *198*, 344–356. [[CrossRef](#)]
14. *Bruker Advanced X-Ray Solutions TOPAS V2.1, User Manual*; Version 2; Bruker AXS: Karlsruhe, Germany, 2000.
15. Sheldrick, M.G. Structure Refinement with SHELXL. *Acta Cryst. Sect. C* **2015**, *71*, 3–8. [[CrossRef](#)] [[PubMed](#)]
16. Sheldrick, G.M. *SADABS: Area-Detector Absorption Correction*; Siemens Industrial Automation, Inc.: Madison, WI, USA, 1996; Göttingen University: Göttingen, Germany, 1994; Unpublished Work.
17. Koch, C. Determination of Core Structure Periodicity and Point Defect Density along Dislocations. Ph.D. Thesis, Arizona State University, Tempe, AZ, USA, May 2002.
18. Kresse, G.; Hafner, J. Ab initio molecular dynamics for liquid metals. *Phys. Rev. B* **1993**, *47*, 558–561. [[CrossRef](#)]
19. Kresse, G.; Hafner, J. Ab initio molecular-dynamics simulation of the liquid-metal-amorphous- semiconductor transition in germanium. *Phys. Rev. B* **1994**, *49*, 14251–14269. [[CrossRef](#)]
20. Kresse, G.; Furthmüller, J. Efficient iterative schemes for ab initio total-energy calculations using a plane-wave basis set. *Phys. Rev. B-Condens. Matter Mater. Phys.* **1996**, *54*, 11169–11186. [[CrossRef](#)]
21. Kresse, G.; Furthmüller, J. Efficiency of ab-initio total energy calculations for metals and semiconductors using a plane wave basis set. *Comput. Mater. Sci.* **1996**, *6*, 15–50. [[CrossRef](#)]
22. Blöchl, P.E. Projector augmented-wave method. *Phys. Rev. B* **1994**, *50*, 17953–17979. [[CrossRef](#)]
23. Kresse, G.; Joubert, D. From ultrasoft pseudopotentials to the projector augmented-wave method. *Phys. Rev. B* **1999**, *59*, 1758–1775. [[CrossRef](#)]
24. Perdew, J.P.; Burke, K. Gradient Approximation Made Simple. *Phys. Rev. Lett.* **1996**, *78*, 3865–3868. [[CrossRef](#)] [[PubMed](#)]
25. Mahdouk, K.; Gachon, J.C. Thermodynamic investigation of the aluminum-chromium system. *J. Phys. Equil. Diff.* **2000**, *29*, 157–166. [[CrossRef](#)]
26. Murray, J.L. The Al-Sc (Aluminum-Scandium) System. *Phase Equilibria* **1998**, *19*, 380. [[CrossRef](#)]
27. Chakrabarti, D.J.; Beck, P.A. Transport properties of Cr-Al solid solutions. *J. Phys. Chem. Solids* **1971**, *32*, 1609–1615. [[CrossRef](#)]
28. Murray, J.L. The Al-Cr (Aluminum-Chromium) System. *Phase Equilibria* **1998**, *19*, 368. [[CrossRef](#)]

29. Parthe, E.; Cenzual, K.; Gladyshevskii, R. Standardization of crystal structure data as an aid to the classification of crystal structure types. *J. Alloys Comp.* **1993**, *197*, 291. [[CrossRef](#)]
30. Okhotnikov, K.; Charpentier, T.; Cadars, S. Supercell program: A combinatorial structure-generation approach for the local-level modeling of atomic substitutions and partial occupancies in crystals. *J. Cheminform.* **2016**, *8*, 17. [[CrossRef](#)] [[PubMed](#)]
31. Bienvenu, B.; Fu, C.C.; Clouet, E. Impact of magnetism on screw dislocations in body-centered cubic chromium. *Acta Mater.* **2020**, *200*, 570–580. [[CrossRef](#)]
32. Hafner, R.; Spisak, D.; Lorenz, R.; Hafner, J. Magnetic ground state of Cr in density-functional theory. *Phys. Rev. B* **2002**, *65*, 184432. [[CrossRef](#)]
33. Tang, W.; Sanville, E.; Henkelman, G. A grid-based Bader analysis algorithm without lattice bias. *J. Phys. Condens. Matter* **2009**, *21*, 084204. [[CrossRef](#)]
34. Sanville, E.; Kenny, S.D.; Smith, R.; Henkelman, G. Improved grid-based algorithm for Bader charge allocation. *J. Comput. Chem.* **2007**, *28*, 899–908. [[CrossRef](#)] [[PubMed](#)]
35. Henkelman, G.; Arnaldsson, A.; Jónsson, H. A fast and robust algorithm for Bader decomposition of charge density. *Comput. Mater. Sci.* **2006**, *36*, 354–360. [[CrossRef](#)]
36. Yu, M.; Trinkle, D.R. Accurate and efficient algorithm for Bader charge integration. *J. Chem. Phys.* **2011**, *134*, 064111. [[CrossRef](#)] [[PubMed](#)]